

# Totley Independent

Published continuously since 1977

[www.totleyindependent.co.uk](http://www.totleyindependent.co.uk)

August/September 2024

No. 429



## Les Firth 1939 - 2024

**We recently received the sad news that Les Firth has passed away. Les was one of Totley's most well-known residents and a long-standing contributor, in a number of capacities, to the Totley community.**

*John Perkinton writes:* I have known Les for many years - probably too many to remember. Les joined the *Totley Independent* team along with his wife Dorothy, and took over the job as editor from Maurice Snowdon in June 1991. He did an excellent job for many years before handing the job over to Ian Clarke in February 2003.

Les was involved with Transport 17 for many years and was also involved with Totley Show where he became

president, taking over from Tom Steel.

A number of us always enjoyed meeting up at the Cross Scythes on Tuesday evenings for a chat and to take part in a quiz. When he was not feeling well Les used to come up on his mobility scooter, but after losing a leg, he had to have an electric wheelchair so it was not convenient to get in to the main bar area.

Later a few of us would go and meet him at an alternative venue - the Shepley Spitfire - on Sunday afternoons as that was somewhere he could get in with his wheelchair.

He will be sadly missed by all his friends, especially for his dry humour. *(More tributes on page 3)*

### UKRAINE HUMANITARIAN APPEAL

**Apart from donating food, blankets and other essentials through local churches and other organisations, you can help by sending money to the Disasters Emergency Committee at any Post Office, or online at [DEC.org.uk](http://DEC.org.uk)**







## Les Firth 1939 - 2024

**Dorothy Firth writes:** Ann-Margaret and I are overwhelmed by the amount of cards, flowers and tributes sent to us on the passing of our "lovely Les" as he has been described.

To us he was a much loved husband and dad who brought love and laughter into our lives.



Les enjoyed all he did within the community, from running Children's Sports Day at the Cricket Inn ground in the 80s, to editing the *Independent*, helping Transport 17 and being a member of the Totley Show Committee.

Les made many friends and met many like-minded community orientated people, who are carrying on the work. We are all lucky to live in such a caring community. Let's try to keep it that way.

We send you heartfelt thanks for all your tributes and messages of sympathy.

\*\*\*\*

**Mick Warwick writes:** It was with great sadness that the Totley Show committee heard of Les's passing. He has been the greatest stalwart and supporter of the Show for a huge part of his life. Les and his wife Dorothy were part of the original committee at its inception in 1985. The Show was initially held at the Totley Rise Methodist but then moved up to Totley Primary School after several years, where it is still held today.

Les was always heavily involved in the organisation of the Show and was Chairman for many years, moving up to President in 2016 when Tom Steel retired from the position.

Even after his illness he has insisted on being very involved, both presenting prizes to the overall Section winners and each class in the Children's Section, opening the Show one year and offering his considerable advice to the current committee. He will be sorely missed by us and the Totley Show community itself.

\*\*\*\*

**Tony Marples writes:** I first met Les, before I actually knew him. Let me explain.

Me and some of my walking mates would quite often end up stopping off at the Grouse Inn, Froggatt, on a Sunday afternoon, for a couple of pints. Trying to get to the bar in the back room (walkers bar, muddy boots etc.) would usually prove quite a challenge as there would always be a bunch of guys drinking, smoking and playing darts, directly in front of the bar. A right PITA.

It was several years later when I worked out that these guys were members of the Parnassus Mountaineering Club, by which time I was their Club Secretary.

My first proper meeting with Les (and the Parnassus) was to introduce a couple of good climbers from our Venture Scout group, who I reckoned could benefit from proper climbers with more experience than myself. I also rather hoped that they would let me join, but alas no. Young aspiring climbers was one thing, anyone else quite another. I was told the club

was really made up from a group of friends, and I wasn't one of them!



*Les (right) in his climbing days*

Anyhow, at some point I was welcomed into the club, of which Les was a founding member. As a bit of an introduction Les took me climbing on a route called Heather Wall, Froggatt. He led the climb (ie. went first), only to get stuck half way up. At which point I had to run round to the top of the crag and throw down a rope! I think that was the only time we actually did a proper climb together.

Eventually I brought to the club a group of 'young 'uns' (and some not so young - Jim Couldwell & Mike Hollindale). Over the years we had many trips throughout the UK and abroad, mountaineering, climbing & walking. All as 'a group of friends'.

Les, ably abetted by Dot, was the main driving force of the Club for over 50 years, amassing many friends, of which I was proud to be one.

\*\*\*\*

**Fiona Smith writes:** I only had the pleasure of knowing Les in the latter years of his life once I became involved in the running of Transport 17 in 2021. However, my understanding is that he was one of the members of the founding committee back in 1984, and has supported the organisation ever since, both directly and indirectly through his role as Chair of Totley Show Committee. In a professional capacity it was always a pleasure to welcome Les to our AGM's where he would often keep us on track regarding official business such as the voting in of committee members and their designated roles; always done in a gentle way with a twinkle in his eye.

It is only very recently that I was starting to realise the depth of his and Dorothy's knowledge regarding the history of the organisation. I had taken some old photos I'd found in a box in the T17 office around to them in the hope that they would be able to identify the people and events and I wasn't disappointed. It was great to be able to put a face to the names I have read about in some of the old management committee and banking papers, and to hear about the community events such as those held in Green Oak Park, and by the Cricket Inn.

On a personal level, I remember Les's sense of humour, evident when we first met and often used to make people feel comfortable. We shared conversations about the benefits and challenges of having close family members living in New Zealand - a beautiful country, but oh such a long flight away! I feel thankful to have known Les, even for a short time, and to be able to witness the importance he placed on community, friendship and family.

## R.D. Howe Plastering

*City & Guilds Advanced Craftsman*

- Architectural Moulding
- Restoration & Fitting
- Domestic Plastering
- Re-skims

Contact Richard

Telephone: 0114 262 1905 Mobile: 07963 556295

The Fletcher Family invites you to

## The Grouse Inn

### Longshaw

Sheffield S11 7TZ

Meal times: Mondays 12.00 to 2.30pm

Tuesdays to Fridays 12.00 to 2.30 pm  
and 6.30pm to 9.30pm

Saturdays 12.00 to 3.00pm and 6.30pm to 9.00 pm  
(drinks – open all day)

Sundays 12.00 to 9.00pm

Phone 01433 630 423

## LIBERTY FOODS

Caterers  
Quality Meat Shop  
& Fresh Farm Produce

Fresh and Frozen Prepared Meals  
Fresh Meat and Poultry  
Outside Catering  
Home Delivery

253 Baslow Road, Sheffield, S17 4DU  
Tel: 0114 2360 583 Mobile: 07801 346 455  
Email: damianbower@liberty-foods.co.uk

## Tristan Swain

Garden Services and Maintenance  
Established 1984

Unit C4 Sheaf Bank Business Park  
Prospect Road Heeley  
Sheffield S2 3EN  
Tel/Fax: 0114 255 4689  
Mobile: 07831 802 539  
Email: tristan@tristanswain.co.uk



[www.tristanswain.co.uk](http://www.tristanswain.co.uk) Public Liability Insurance Waste Transfer Licence

## Hair-ium by Latia

In your home, expanding by client demand!

Professional, qualified, experienced

From perming to modern techniques.

I am also fully DBS checked, with professional  
experience of clients with vulnerabilities etc.

Call for bookings on

07944 878585 or 0114 2361993

For group bookings of 3+ - get % off!!



## Got a computer?

Having Problems?

Is it running slow? Stops responding?

Having problems running the latest games or  
applications? Broadband / WiFi problems?

**Give me a call!**

I am available for home visits at any time  
including evenings and weekends. I can also  
suggest upgrades to improve performance, or  
even build you a system to your specific  
requirements.

Phone: 0114 247 2619

Mobile: 078 1746 4703

Email:

[service@timbrownplus.co.uk](mailto:service@timbrownplus.co.uk)

Tim Brown

Building,  
Installation,  
Upgrading and  
Troubleshooting  
Computer  
Systems

Over 30 years'  
Professional  
Experience

## PhysioFOCUS

at Totley Rise Dental Practice  
85 Baslow Road,  
Sheffield, S17 4DP



**Physiotherapy** treatment available for:

- Back and neck pain
- Sports injuries
- Sprains and strains
- Joint and muscle pain
- Arthritic pain
- Whiplash
- Repetitive strain injury
- Headaches

**Appointments: 0114 2360333**

Also available:

- Pilates classes
- Pilates 1-2-1
- Golf Fitness Screening  
(as used by consultants to UK,  
European and Australian PGAs)

For more information please call:

Emer on: 07792 422909

Rachel on: 07956 908454



## Picnic in the Park

It was rather amusing to walk into Totley Library on a Saturday afternoon in June to the tune of "Three Lions on a Shirt" from The Woodhouse Prize Brass Band, just as the sun poked its head out from behind the morning's rainclouds, but rather fitting, as the village celebrated the anniversary of four local organisations. While many dream of football coming home to England this summer, for this afternoon, music is coming home to a library full of families bundled together to picnic near the park.



The room was filled with all sorts of people, families and friends gathered together to smile away the Saturday afternoon – could it be the warmth of the community encouraging the sun out? Call me an optimist if you like, but there is something special about a group of strangers and friends coming together to listen to some good old fashioned live music; it would seem our conductor agreed, as the band promptly followed up with a charming rendition of "Bring Me Sunshine".

I did overhear one gentleman remark how – though charming – it felt rather odd, even a little mischievous, to hear such noise in a library! Perhaps he was right, though I think we can make an exception for now.

Fear not, there were plenty of picnics in sight, packed lunches paired with wellington boots to battle the mud left in Greenoak Park, and the wonderful sounds of children laughing and parents and grandparents catching up with neighbours and strangers – the friends we haven't met yet, but may just have done so this afternoon.

As mentioned, this afternoon was a celebration of four very special anniversaries, so as Totley All Saints Church celebrates its 100th birthday, and Totley CRIC reaches double figures at 10 years, we also wish a happy 40th anniversary to Transport 17, and a happy 50th to our hosts for the afternoon, Totley Library.

Despite June's uncharacteristic wet and windy weather threatening to spoil this year's Picnic in the Park, the last-minute change of location did little to dampen the spirits of anyone who attended the celebrations, thanks to the efforts of our organisers. On behalf of the village, thank you to all involved, and I look forward to next year's event, hopefully with some more of that British sunshine!

*Amelia Snape, Totley Independent*

## Holmesfield Church Walking Group

### Fox House Walk

On Wednesday 21st August at 10am Robin Greetham will lead a walk starting from the Fox House, Longshaw House Hathersage Road S11 7TY. We will walk along the road to Houndkirk Road bridleway then after about 400 yards take a left turn then onto Sheffield country walk and back to Fox House where we have lunch (optional).

The cost of the walk is £5 and the proceeds will go to Holmesfield Church, If you would like to come just turn up on the day. The walk is about 4 miles long but there is a short cut. Note that in a few places it is a little stony underfoot. If you have any queries phone Robin on 01246 412767.



## Dore Garden Club

Dore Garden Club traditionally takes a break during August and the 2024 programme resumes in September.

Our events are held in Dore Methodist Church Hall at 7.30pm. Doors open at 7.10pm and visitors are welcome and pay only £4 at the door.

### Wednesday 18 September

Seasonal Jobs in the Garden by Jeff Bates. Jeff has over 40 years professional gardening experience,

offering talks on a wide range of topics. His career in horticulture began as an apprentice gardener in the Royal Gardens at Windsor Castle. He trained at the Berkshire College of Agriculture and Askham Bryan College in Yorkshire, then worked in landscape design and construction, finally becoming a senior lecturer in Horticulture in Derbyshire. For 20 years he has also been a judge for East Midlands in Bloom.

In this talk, we will hear about what needs to be done towards the end of the gardening season to extend the season and to prepare the garden for Winter, whilst ensuring the best start next Spring.



## Totley History Group

The Group has enjoyed its usual variety of meeting topics, as diverse as 'The Folklore of Yorkshire', the 150 year history of Sheffield's own Henderson's Relish, and a guided

walk in July to hear the history of Whirlow Brook Park. This was our final meeting prior to the summer break.

The AGM was held in June when the current committee was re-elected and two vacancies to join them were announced. New committee members bring fresh ideas and help to keep the group interesting and relevant to our audience. If you are thinking of volunteering you would be welcomed by a relaxed group of folk who meet just two or three times a year to discuss THG business. Just contact [secretary@totleyhistorygroup.org.uk](mailto:secretary@totleyhistorygroup.org.uk)

In the coming months you may see our large board display that is helping to highlight this year's centenary for All Saints' Parish Church. It will be in the church during their November celebrations, but prior to that at Totley Show on September 14th.

As well as recording the church's 100 years the display outlines the story of how Totley got its Church School, from the purchasing of land in 1753 with the intention of building a schoolhouse in Monnybrook, to eventually opening the first school in Totley Hall Lane some 70 years later.

Pictured right is the first schoolmistress, Hannah Wild.

We hope to feature the full story in Totley Independent later this year.

### Future Meetings

September 25th, David Templeman, '(Further) Ancient suburbs of Sheffield';  
October 23rd, Mary Garside 'Sheffield Hospitals during WWII'  
November 27th, Dr Jenny Stephenson, 'The Life of a GP'

All meetings are held in Totley Library at 7.30pm on 4th Wednesday of the month. £3 for non-members, £2 for members. Membership £5 per annum. All Welcome.



# What's on at Totley Library



## 10 Years of Totley CRIC

An enjoyable event took place in the Library on the 20th June. The topic was how Totley Cric has developed over the last 10 years. The evening was enhanced by the support and knowledge of present and former Trustees and volunteers. Thanks to the articles from the *Totley Independent* archives we could relive the early days of the 'Save Totley Library' campaign. Then we touched on our organisation, the volunteers, the books, events and community engagement. Also the 50th birthday of the Library on this site referring to the display in our foyer. We gave a tour of the building, inside and out, to show the improvements we have made. The audience was appreciative and interested, asked questions and bought books!

*Julie Kitlowski, Chair, Totley CRIC*

### Current Library Opening Hours

Mondays 1pm - 7pm

Tuesdays and Wednesdays 10am - 5pm

Fridays and Saturdays 10am - 1pm

### Art Competition Prize-giving

The library anniversary art competition prize-giving took place on 6 July. Most of the prize-winners came with their families to receive their certificates and prizes and see their art works displayed in the library. Volunteers from the library were also there to congratulate the children. Award-winning Sheffield artist, Ranaa Farooq, presented the certificates and prizes and spoke to each of the children, telling them what she particularly liked about their picture.

Four local schools took part, and we were delighted that Mrs Underwood, from Totley All Saints, was also able to attend and see her pupils collect their prizes.

Hesed (Reception) and Robyn (Yr 2) were our youngest entrants and their talents meant they were both awarded Judge's Special Mentions. 5 pupils received Judge's Commendations and there were 4 Winners in each year group, from Year 3 to Year 6.

We managed to keep the overall winner a secret, and Ranaa opened the special envelope to reveal that Phainos, a Year 4 pupil from Totley All Saints had claimed this honour! Phainos' beautiful painting, which tells the story of the poem in



*Ranaa Farooq with overall prizewinner Phainos (right) and his younger brother who got the judges' Special Mention*

detail and with insight, will be permanently displayed in the library foyer. Thanks to everyone who supported this project and once again to Imtiaz Dharker and The Manchester Poetry Library for giving us permission to use the poem "The Welcome", which was the inspiration!

### Totley Library Community Cinema

On Thursday 22nd August to celebrate our 10th Anniversary we'll be screening a 'People's Choice' film as our Thursday 3pm matinee. This is your chance to vote for your favourite film of the last 10 years. Give us your recommendation on the last page of our online film survey. Alternatively, drop your film choice recommendation into our suggestion box in the library.

Our cinema programme is available for booking in person or by calling 0114 236 3971. Refreshments will be served at all films. Raffle tickets: £3 per person for Friday films. Thursday matinee films are FREE for Over 65s.

### Library Lottery Winners

In the May draw, first-prize winner was Eileen Mason, and Simon Gray won second prize. First-prize winner in the June draw was Stella Kelly, and second prize was won by Peter Gregory.

### New Book Additions

We have many new adult titles and children's books now available. Let us know if you have suggestions of authors or book events you would like to see via our library suggestion box. You can reserve books and make recommendations online via our website. We add between 100 and 150 books to our library stock every month so you can always be sure of finding new and interesting titles.

Please check that you haven't got any library books hidden in unexpected places! We currently have over £900 worth of our own library books (Orange Sticker) that have been out for more than 12 weeks and may be marked as lost. Now that there are no fines for late returns, it is easy to forget. Please remember that if you do not return books, this depletes our library stock and there are less books for other library users. We encourage all users to return or renew on time. Lost or damaged books are charged for at replacement value.

### Totley Library Community Art Space - Original Art and Prints for sale

Totley Library Community Art Space was established to showcase the work of new and established local artists. All art works are exhibited for a period of three months to six months, free of charge, and are available for sale at a price set by the artists. Totley Library takes a small commission on each picture sold to support the ongoing running costs of the library.

The library is now looking for local artists who would like to join this exciting community initiative and who would like to exhibit in October 2024 and January 2025. For further information, please call in at Totley Library and take a look at the Art Space or email [carolynjallcroft@gmail.com](mailto:carolynjallcroft@gmail.com).

Art works by local artists Keith Turton, Kath Horner, Francisca Veliz and Gina Hodges are currently on display and available for sale at very competitive prices. Come and have a look, we may have just what you are looking for to brighten up a wall or to give as a unique gift.

### Summer Reading Challenge: 'Marvellous Makers'

The challenge runs for 8 weeks and finishes on Saturday 7th September. It is free and open to children up to 11 years old. Children need to read 6 Library books and will then get a certificate, medal and a free book. There is a display in the Children's Library that explains everything and lots of new books as well.

### Folk Concert at the Library

Totley Library's annual Folk Night will be held this year on Friday, 20th September at 7.30pm. Our talented line-up of musicians and singers are already rehearsing and the evening promises to be as fabulous as ever! Expect excellent musicianship on a wide range of instruments - including Jon Scaife on guitar and Geof Hepple on concertina - and powerful voices, including the gorgeous vocals of Judy Dunlop.

Tickets are £10 and will be available from the library, in person or by phone, from Monday 12 August.



## Totley Show 2024

The Totley Show this year will take place on Saturday 14 September, as usual at Totley Primary School. We are pleased to welcome our regular band, Seven Hills Quintet. There will be a new local choir this year, Shine, who are based at the United Reform Church.

As we have so many exhibits now, we will continue to spread the entries across the two rooms at Totley Primary School. Refreshments will be served in the Dining room but the seating for that will be at the rear of that room. We are always grateful for donations of homemade cakes and buns for the refreshment stall - please bring them on the Saturday morning anytime up to 1pm.

Entries for the various classes can be dropped off in the morning from 8.45am until 10.45am. Please try and drop your entries off early as it is always busier in the last 30 minutes and registration sometimes overruns. The entries will then be judged between 11am and 1pm.

Elsewhere in this issue there is the Entry Form which can be used for your entries on the day. If you can, please bring a completed form with you, as this speeds up the process on the Saturday morning. Entry forms can also be picked up from the usual places - Totley Library, the Ironing Parlour and Totley Rise Newsagents and Post Office - from about four weeks before the Show

The Show opens to the public at 1.30pm. In the main hall the Seven Hills Quintet will perform two sessions and the Shine Choir will sing in between those performances.



*Best in Show 2023*

It was a great success having the charity stalls outside last year, and provided the weather behaves itself, we will be having those stalls outside again on the all weather pitch. There will be a bouncy castle sponsored by Totley All Saints Church again, together with other entertainment for children.

We will have the presentation of prizes to the Section winners and each Children's class at 3.30pm and then hold the auction

to sell off the donated prizes.

We are always grateful to all the sponsors who are: Totley All Saints Church, Staves Estate Agents, Hamnett Wealth Management, Totley Rise Methodist Church and The Cross Scythes.

We were very sorry to hear of the death of Les Firth. He was our current president having taken over from Tom Steel in 2016. He had been the Chair for a number of years before that, including being one of the people responsible for resurrecting the Show in 1985. His contributions to the Show will be sadly missed by us all.

We look forward to seeing you on Saturday 14 September. If you have any questions about the Show you can email me at the address below.

*Mick Warwick, Totley Show Chair*  
[totleyshowchair@hotmail.com](mailto:totleyshowchair@hotmail.com)

## Longshaw Sheep Dog Trials

2024 will be the 126th year of the Longshaw Sheep Dog Trials Association, thought to be the oldest continuous sheep dog trials in England with the two world wars and 2001 because of foot and mouth being the only years when no trials were held.

The trials will take place this year on 29th, 30th and 31st August on Longshaw Pastures in front of Longshaw Lodge, near Grindleford, starting at approximately 7.30am each morning. We are very honoured this year to have His Grace The Duke of Rutland as our President.

On 29th and 30th there will be open class and brace class sheep dog trials when many of the "One Man and His Dog" competitors will be taking part. We are very pleased to have Mr. George Bonsall from Slinden to judge the open classes and championship for us once again, Mr. Stuart Wilkinson from Thurgoland, to judge the brace class, Mr. Nick Denniff from Holmesfield to judge the beginners class and Mr. Malcolm Sowerby from Bradwell, Hope Valley to judge the local class on Saturday 31st.

On Saturday 31st at 10.30am the Longshaw Fell Race is to be run. For further information please see the Dark Peak Fell Runners website [www.dpfr.org.uk](http://www.dpfr.org.uk)

At 12.30 on Saturday 31st the trials culminate in a double gather championship, which consists of the 8 highest pointed runs from both Thursday and Friday, when the winner will take home and keep the prestigious Longshaw Championship silver tea pot kindly sponsored by Grayson's Solicitors

Entrance charges are £5.00 per adult each day, with no charge for children, and there is free parking on the field. For further information please contact the Secretary, Mrs. Sheila Humphreys MBE on 01433 651852, e-mail [lsda@talktalk.net](mailto:lsda@talktalk.net) or check out the website [www.longshawsheepdog.co.uk](http://www.longshawsheepdog.co.uk)

There will be a licensed bar, hot and cold food and drinks, and ice cream available. Please come and join us for "A day on the moors" to see some of the wisest dogs in the world.

## ATKIN ELECTRICAL

- Rewire specialist
- Lights and sockets
- All domestic work carried out
- Electric car chargers installed

Steve Atkin, your local NICEIC registered  
Part P Electrician

Call for a no obligation quote, no job too small.

Call 07939 285615

[steveatkin@sky.com](mailto:steveatkin@sky.com)

## TopsforJeans

OPEN Monday-Saturday

Super soft knitwear, beautiful tops and so much more.

Call in or shop from the comfort of your own home on our website.

Catch up with the latest news on our Facebook site.



[www.topsforjeans.co.uk](http://www.topsforjeans.co.uk)

164 Baslow Road, Totley. S17 4DR



# Totley Pharmacy

**Your local independent pharmacy  
serving you since 1996**

# 24/7

prescription collection

**Call: 0114 236 1070**



## Totley Wildflower Group

The wildflower 'meadows' at Totley Grange have flourished in this, their second year, with more flowers on show than ever. The ox-eye daisies are eye-catching, but other varieties have established themselves - I have spotted plenty of yellow



rattle, hawkweed, and sorrel, and a few other specimens including red campion, knapweed, yarrow, chamomile and even a corn cockle, which we hope will spread in future years. We also sowed a few annual poppies and cornflowers at the top end, which did well and we hope to repeat.

There are plenty of insects, too, especially drone flies, a common but important pollinator, and the odd butterfly, including two spotted the other day, which I think were ringlets.

With continued careful management, let's hope these meadows, which have already proved a small haven for wildlife and have given a lot of pleasure to us humans, continue to thrive and develop. More and more people are recognising that wildflower planting, even in small areas, can contribute to the much-needed recovery of nature and biodiversity.

Isabella Stone, Totley Wildflower Group  
totleywildflowers@gmail.com

## Totley Open Gardens

The Totley Open Gardens 2024 event on 6th and 7th July was very successful in attracting visitors, and generating income, despite the rainy weather on both days.

We sold 312 programmes, and took £5,176 after expenses were paid. This was really gratifying for the 13 gardens which took part.

Andy Holme and Avril Kuhrt made the amazing amount of £1,832 from sale of cakes and refreshments.

On pages 24 and 25 of this issue are photographs taken over the Open Gardens weekend by gardeners and visitors. The photographers were Catherine Clarke, Avril Kuhrt, Peter Lawson, Amelia Snape and Isabella Stone.

With the takings from two Totley Vintage Fayres and the Yard Sale, we are likely to distribute over £6,000 to the community organisations we support.

It will be distributed as follows:

Beavers - £250

Cherry Tree Support Services - 35%

Transport 17 - 30%

Scout Hut - 25%

Totley Library - 10%

This was the 22nd year that TOG has been running and we expect to have a new garden and a new allotment opening next year.

A garden does not have to be large to be inspiring - many people have small gardens, so we would appreciate some more small gardens opening for TOG. If you know a good garden or would like to consider opening yours please contact me.

Jennie Street  
jennie@hadish.f9.co.uk  
Tel. 07527 929592

## BRADWAY INSTALLATIONS

**Kitchens, Bathrooms and everything in between**

**Complete Kitchens** Installation or supply & installation

**Kitchen Refits** Replacement worktops/sink/hob etc

Worktop/cabinet repairs

**Bathrooms - Cloakrooms - Domestic plumbing**

**Tiling - Laminate/Vinyl flooring**

**All work undertaken is fully insured and guaranteed**

**Ring Peter - 0114 236 5995**

**Mobile - 07766 411355**

## John Heath & Sons

AN INDEPENDENT FAMILY FUNERAL BUSINESS

*Sometime.....*

You will probably have the responsibility of making funeral arrangements. No one looks forward to this responsibility, but the death of a family member or friend brings with it an obligation that must be met. There are people who can help you meet this responsibility. We have been helping people combine the different aspects of the funeral into a meaningful service for over 125 years.

Please Call Day Or Night

**(0114) 272 2222**

**Head Office - Earsham Street**

Also at Meadowhead, Ecclesall Rd,  
Crookes and Stannington

[www.johnheath.co.uk](http://www.johnheath.co.uk)



## John Collins Cabinetmaker

Fine furniture, antique furniture restoration, fitted  
wardrobes, alcove units

0114 2585355

[www.cabinetmakercollins.com](http://www.cabinetmakercollins.com)

## TrainwithSuzy

**Train with Suzy offers Personal Training  
Focussed on Fitness, Fat loss and Toning.  
Based in Dore with own Gym. I offer  
private sessions individually  
tailored to your goals.**

**Call to book your free consultation  
07825-167411 [www.trainwithsuzy.com](http://www.trainwithsuzy.com)**





## Totley Primary School

### Moving on up...

The end of the school year is a time for excitement and reflection in equal measure.

In amongst a host of enriching trips, PTA events and sporting activities, children spend their

final weeks with their class teachers before looking ahead to moving up to the next year group. It's a time to celebrate achievements and progress, along with personal and emotional growth. Change is most definitely in the air...

Whilst this situation brings excitement, change can also create uncertainty. Of course, this is amplified for our Y6 children, who are about to make the leap up to secondary school - a rite of passage into a whole new world, that most of us remember well!

This transition has been something we have considered more carefully than ever this year. Working closely with King Egbert School (where the vast majority of Totley children go) an extensive programme has been in place. All Y6 children have



participated in a Design and Technology project recently, where they walked the journey from Totley to KES and were taught in the DT workshop for a day and learned about 3D printing, sustainable home design and more. In return, we hosted a KES chemistry teacher at Totley, who taught a secondary style lesson in the children's familiar learning environment.

Children with additional needs have experienced extra visits to KES throughout the summer term, where they have been introduced to the pastoral team and supported in familiarising themselves with the building and routines.

Regular invitations to sporting competitions and the KES drama production, 'Shrek', have given further informal opportunities



for Y6 children to experience the facilities, layout and feel of their new school and build confidence.

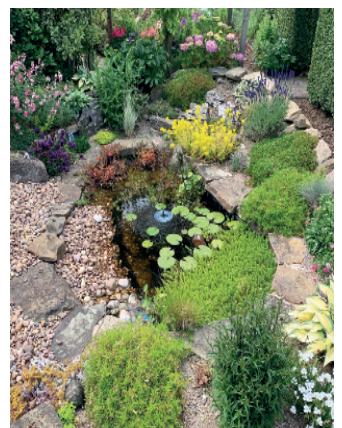
Feedback on this year's Y6 transition arrangements has been overwhelmingly positive - we have certainly come a long way from the 'sink or swim' approach that many of us will recall from the past. So good luck to all of our children as they prepare for their next steps but especially our Y6s, to whom we wish a very fond farewell!

*Ben Paxman, Head Teacher*

## Totley Open Gardens - A Visitor's View

Despite being rained off early Saturday afternoon, the sun beamed down for Sunday's Open Gardens, as families, couples and familiar faces roamed Totley, soaking up the outdoors, and number 202 battled the wind to prop up their gazebo advertising the event. Community spirit once again prevailed, and it was clear our garden owners took immense pride in their gardens, many of which have been cultivated for decades. Intense smells of lavender and bright purple foxgloves featured in many gardens, as well as charming photographs and descriptions of their history before Totley's green fingers helped them blossom.

The generosity and pride demonstrated by these gardeners, to open their gates to us, share tips and tricks for growing your own delightful garden, and refreshments made with home-grown produce was heartwarming. With all proceeds going to local community organisations (Totley Library, Totley Scouts and Beavers, Cherry Tree Support Services and Transport 17), Totley's kindness shone through.



Whilst all the gardens I visited were wonderful, there are a few moments worth highlighting. On Quarry Road, I interrupted some curious characters (think: 'Wind in the Willows') having a meeting beside a toilet that had been repurposed as a flower bed, just a stone's throw from Rob's handmade wooden sculptures at number 1. The sheer length of the woodland maze on The Quadrant was astounding: this was the type of garden you might walk a marathon in without leaving the boundary, and a special mention for those wonderful cakes from Andy and Avril! Finally, after navigating the winding paths lined with wildflowers, gentle bumblebees and a gorgeous pond filled with bright orange fish, I chatted with the owner of 192 Baslow Road, who told me she woke up that morning to see a heron, fast asleep, head tucked, right next to her lily pads! Once again, the event was a resounding success, as I'm sure anybody who attended or hosted would agree - to quote a fellow garden-visitor, this year's Totley Open Gardens was "a bit of therapy in a busy world".

*Amelia Snape, Totley Independent*

# A1

## Plumbing & Bathrooms

### Complete Installation Specialist

Info@A1plumbingandbathrooms.co.uk

www.A1plumbingandbathrooms.co.uk

## Tel - 07738 688 807

- Plumbing Leaks, Bursts & Blockages
- Taps, showers, Radiators, Etc
- All Tiling And Plastering
- Reliable, Fully Insured & Guaranteed
- No Job Too Small, NVQ Qualified

25 Five Trees Ave, Dore, S17 3LW



## Letter to the Editor

From Tom and Eileen Ogley

Dear Editor,

I write from our new home at Beaconsfield on the A40 near to High Wycombe to say a belated goodbye to Totley and to say a general "thank you" to all those who, knowingly or unknowingly, have helped to make our lives there so wonderful.

Having, until recently, lived our married lives exclusively in Totley and, having never entertained the idea of living anywhere else, we must now come to the conclusion that there isn't anywhere better, but because of our increasing frailty we needed to move away to be near to our family.

On Boxing Day 1956, (yes that was 67+ years ago) fresh out of National Service, I, Tom, my wife of 2 years Eileen, and our bouncing baby daughter Julie, took possession of 7 Laverdene Way. We picked up the parcel of fresh fish which was lying in the porch - a welcoming gift from our new neighbour, fishmonger Mr. Chambers, and set about sticking up the anaglyptic wallpaper which we had bought from Lowes on Christmas Eve. We moved in when the paste was dry. The kitchen had the basics including a 'fold to the wall' formica table, so we borrowed a couple of chairs, a bed, a cot and a few other necessities (no removal van necessary) and set up our first home. 5 years later we moved into somewhere bigger on Baslow road, and 25 years ago to somewhere smaller on The Grove.

Attendance at Totley's wonderful Junior Council School lead by its much loved disciplinarian, Mrs. Clareborough, marked the start of Julie's education and 10 years later did likewise for our son Philip. The nearby Secondary schools were well up to coaching them into top universities (Bristol and Cambridge).

We have seen many changes, constrained perhaps by the proximity of the Peak District National Park. For example the

replacement of the wartime estate of 'prefabs' by a new low density Council Estate of which Sheffield Council should be very proud, and the demolition of Totley Grange to be replaced by an array of modern detached and semi-detached houses.

Then came the Domestic Science Department of Sheffield's College where Eileen worked as a Cashier, and the building of high rise apartment block to accommodate its students - yes and we were there to cheer its demolition some years later, to be replaced by the high-class houses at each side of Totley Hall Lane.

We lost part of our driveway to the half-hearted building of a dual carriageway road but, short as it is, I was glad to be able to relax on its wide expanse before turning into our driveway (and it does now provide ample parking spaces for the doctors' surgery). We lost the branch of the Westminster Bank but the Post Office at the Totley Rise shopping lay-by has continued to provide basic banking facilities.

The building of a new modern library provided Totley with a first class community centre and Eileen was in at the start when she headed a team of local ladies to provide a coffee morning on one day per week. I understand that the coffee is still available, mainly for our hardy local walking group and still very drinkable, although now dispensed from a machine, I think.

In the early days Eileen was also involved in the publication of the *Totley Independent*. Many articles were then submitted in a handwritten form and because of her friendship with John Perkington and the then editors Les and Dorothy Firth, she would type them out before they were sent to the printers. Incidentally, how good it is to have witnessed the growth of this publication and the huge increase in its availability, circulation and readership.

So goodbye to all you lucky Totleyites and THANK YOU!

Tom and Eileen Ogley

## Caring for the local landscape for over 25 years



**TREES** - Felling, pruning & advice

**HEDGES** - Trimming, lowering & removal

**07393 878091**

[www.totleytreecare.com](http://www.totleytreecare.com)

[steve@totleytreecare.com](mailto:steve@totleytreecare.com)



**QUALIFIED ARBORIST • FULLY INSURED**

**We offer a very tidy service with all green waste fully recycled**



# Totley Rise Methodist Church

Grove Road, Sheffield, S17 4DJ

Totley Rise Methodist Church aims to be a church in the community and for the community, increasing an awareness of God's presence, celebrating God's love, caring for people, helping people to grow and encouraging people to follow Christ.

## Quiet Time

At the end of June we participated once again in Totley Open Gardens. At Totley Rise Methodist Church we are blessed to have a lovely garden space where anyone can set aside the bustle of everyday life and reconnect with nature, becoming more in touch with the contemplative side of life. The sensory experience gained from nature can enrich our spiritual growth and development through reflection and prayer. Anyone is welcome to visit the garden for quiet contemplation during daylight hours. Please be respectful of the space and of others using it.



It takes considerable effort to maintain the garden and we are very grateful to the members and friends who volunteer to look after sections of it. We could always use more help!

## Regular Services Information

9am for 9.30am most Sundays – **Toddler Praise**. A 30-minute service for pre-school children and their parents/carers, preceded by refreshments from 9am.

10.30am **Mid-morning Service** every Sunday. An informal and contemporary service usually lasting approximately 1 hour 15 minutes, with a monthly Communion. Children usually leave the service for Junior Church after the first 15 minutes or so, except on the 4th Sunday of the month when the service is even more informal for **All Age Worship**.

At 3pm on the second Sunday of each month **Focus Church** takes place. This is a time of worship specially structured for those who have learning disabilities and cognitive difficulties.

We also support **Outdoor Church**, a movement where families with children can meet (usually on the 1st and 3rd Sundays of each month) to learn more about God's world and the Christian faith through an informal nature-focused time of fun and worship. See facebook.com/groups/outdoorchurch

## Tuesdays at TRMC

Tuesday is a busy day for us. From 10am until noon our free **Welcoming Places Coffee Morning** in the church lounge



provides an opportunity to call in for free refreshments and a chat with others from the community. This began as part of the need for warm spaces for people to use when energy costs began to soar, and is now a permanent activity. In one part of the lounge there are toys and books for young children with parents or carers.

**Knit, Natter, Craft and Chatter** immediately follows the coffee morning, running to 3pm. This is a busy and friendly group, offering tea, coffee, biscuits and most importantly, friendship for up to three hours. Young and old, men and women are all welcome. Feel free to bring a packed lunch.

## Thursday Pushchair Club

Babies and toddlers aged from 0 to 5 years are welcome to join us, with their carers, on Thursday mornings from 10.30 to 12 noon. Every week in term time, the Pushchair Club fills the TRM Centre, giving children, their parents and carers a place to come together, play, sing, chat and enjoy refreshments.

## Room Hire

We make our facilities in the TRM Centre available to hire for a variety of purposes, from community groups to birthday parties. There is the large church hall with a stage, and room hire also includes the use of kitchen facilities if required. For all information, please visit our website.

## The Quiet Garden

All are welcome to find stillness and peace in the Totley Rise Methodist Quiet Garden. You are invited to come, sit and wonder about our creative God. It is a place of tranquillity and offers an opportunity, in the rush of modern life, to lay down your concerns. You can do this any time during daylight hours.

## Getting and Staying in Touch

The best source of further information is our website, [www.totleyrise.co.uk](http://www.totleyrise.co.uk) for our weekly notices and links to video recordings of many of our services. You can also submit prayer requests, and we are on Facebook at [facebook.com/TotleyRise](https://facebook.com/TotleyRise)

If you can't find what you need on the website, you can email [enquiries@totleyrise.co.uk](mailto:enquiries@totleyrise.co.uk).

**ZUMBA**

Mobile: +44 734 228 27 67

**ZUMBA WITH ANASTASIIA**

£6 per class

WhatsApp Instagram

+380007737226

Abbeydale Rd S, Sheffield S17 3LJ, Abbeydale Squash & Fintess Club

Tuesdays ---> 19:30  
Fridays ---> 19:00  
Start: on the 11th June

Send me a personal message or call to enroll  
Comfortable workout clothes, water, and positive attitude. That is all you will need!



# Totley Show 2024

A celebration of our community and its talent in aid of local charities

**Saturday 14<sup>th</sup> September  
at Totley Primary School**

Admission to the show will be 50p for adults and 20p for children

***We would be delighted to see you at the show and to receive your entries using the entry form overleaf***

## The Programme

- 8.45 Registration opens
- 10.45 Registration closes
- 11.00 Judging of classes
- 1.30 Doors open to the public**
- 1.45 Official opening of the Show
- 2.30 Prize money may be collected
- 3.15 Last raffle ticket sales
- 3.30 Collection of non-auction entries & prize giving followed by raffle draw
- 3.45 Auction of donated items
- 4.15 Show closes**

Refreshments will be available throughout the afternoon together with live music, craft stalls and various children's activities.

The Show will end with a charity auction of donated items.

## How to Enter the Show

Please feel free to enter as many classes as you like! The entry fee is 50p per entry. You can enter up to three entries in any one class; no entry can have been in a previous Totley Show. If your entry doesn't fit one of our classes please still bring it along for display. Children may enter any class. All entries are left at owners' risk.

First (£3), second (£2) and third (£1) prizes will be awarded in each class, unless there are fewer than three entrants in an adult class in which case only a first prize will be awarded. All children's entries are recognised with a certificate and all children's class winners receive a medal. Cups or trophies are awarded to all section winners. A special trophy is awarded for the 'best in show'.

You may donate your item to be auctioned at the end of the show, but this is not compulsory. Any prize money not collected by 4pm will be put towards next year's show. Thank you for entering!

### Notes:

**Recipe to be used for Dundee cake class** (use a deep 7" tin): 175g/6oz plain flour; 125g/4oz butter/margarine; 125g/4oz soft brown sugar; 2¼tsp baking powder; 1 rounded tsp mixed ground spice; 3 eggs, 125g/4oz raisins; 125g/4oz sultanas; 125g/4oz currants; 85g/3oz chopped mixed peel and chopped cherries; 40g/1½oz blanched almonds to decorate.

**Recipe to be used for Victoria Sandwich class** (use two 7" tins): 125g/4oz Margarine; 125g/4oz self raising flour; 125g/4oz caster sugar; 2 eggs. Fill with strawberry jam.

**Children's handwriting classes** (on an A5 page): 6-8s a nursery rhyme, 9-11s a poem, 12-14s: a Shakespeare quote.

# Totley Show 2024

## Entry Form

Please complete prior to bringing your entries for registration between 8.45 and 10.45am.

Name	
Phone	
email	
Address	

Please enter the number of items you would like to enter against each class at 50p per entry:

### HANDICRAFT SECTION

1	Knitted or crocheted item	
2	Decorative cushion	
3	Soft toy	
4	Sewn garment	
5	Cross stitch	
6	Quilting / patchwork	
7	Greetings card	
8	Open handicraft any medium	

### DOMESTIC SECTION

9	A cake (any recipe)	
10	Victoria sandwich (see recipe)	
11	Dundee cake (see recipe)	
12	Carrot cake (any recipe)	
13	Free from (any recipe)	
14	3 Fruit scones	
15	Loaf of bread	
16	Jam	
17	Lemon curd	
18	Marmalade	
19	Chutney	

### FLORAL SECTION

20	Arrangement 18"x10"x10"	
21	3 Cut home grown flowers	
22	Flowering pot plant	

### FRESH PRODUCE SECTION

23	4 Eating apples	
24	4 Cooking apples	
25	8 Blackberries	
26	5 or more mixed veg/ salad	
27	3 Courgettes	
28	5 Matching runner beans	
29	5 Tomatoes	
30	5 Cherry tomatoes	
31	1 Cucumber	
32	Heaviest marrow	
33	Longest runner bean	
34	3 Eggs from own hens	

### ART & SCULPTURE SECTION

35	An original poem	
36	Oil or acrylic painting	
37	Watercolour	
38	Sketch in ink or pencil	
39	Upcycled item	
40	Open art any medium	
41	Open sculpture any medium	

### PHOTOGRAPHY SECTION

42	Black and white	
43	Portrait	
44	Animal – domestic or wild	
45	Landscape	

### WOODWORK SECTION

46	Wood turning	
47	Open woodwork	

### CHILDREN'S SECTION (up to 14)

48	Vegetable animal (up to 8)	
49	3 Decorative buns (up to 8)	
50	A cake any recipe (9 to 14)	
51	3 Biscuits (up to 8)	
52	3 Biscuits (9 to 14)	
53	Decorated gingerbread man	
54	Egg cup flower arrangement	
55	Painting or drawing (up to 5)	
56	Painting or drawing (6-8)	
57	Painting or drawing (9-11)	
58	Painting or drawing (12-14)	
59	Lego model <25cm <sup>2</sup> (up to 8)	
60	Lego model <25cm <sup>2</sup> (9-14)	
61	Colour photo (up to 14)	
62	Open any medium (up to 8)	
63	Open any medium (9 to 11)	
64	Open any medium (12 to 14)	
65	Handwriting (up to 8)	
66	Handwriting (9-11)	
67	Handwriting (12-14)	
68	An original poem	

Official use only

Entrant number	
Total number of entries	

Total entry fee due	
Entry fee paid	



## A Different Totley Childhood

I read with great interest the account by Jeremy Watson of his childhood growing up in Totley. Mine is similar in many ways, yet mine begins 10 years earlier in 1948, when I was born in our humble prefab on Green Oak Avenue.

They were very much post War years where there was a great sense of community and a common sense of purpose that followed the rigours and deprivation of the previous decade

All my neighbours were 'Aunties and Uncles' and it was common practice to be dodging from house to house borrowing a cup of sugar or a drop of milk. There was no crime on Green Oak estate and yes, boring as it may sound to you young 'uns, doors remained unlocked and everyone looked after each other.

Like Jeremy, I attended Totley County School (a.k.a. Totley Cow Sheds or Turnip, Carrot and Spuds which was a popular nickname with those who stopped for dinners). The erstwhile Miss Clarebrugh was the Head we all lived in fear of. The other teachers were extremely likeable. I can name Miss Redmayne, Miss Richards, Miss Willoughby and Mr Roberts (or Pop as he was affectionately known).

I received an excellent education in those early years that led to an 11-Plus pass and a place at King Edward VII Grammar (in those days the top school in the city).

Time out of school was spent in the woods at the bottom of Aldam Road, in the Rec, or just playing in the streets outside our house. It was so rare to see a car on Green Oak in those days that you could play uninterrupted for hours.

I remember the playground being built in the park and the trenches thick with yellow clay and mud that I caked my clothes with to my mums delight. I remember the huge mound of earth they built behind it that later became the tennis courts. We played 20-a-side multi-aged football on Sunday afternoon in all weathers. If there was only a small turnout it required someone playing 'goalie if ness' which wasn't a popular choice of position. It wasn't unusual to see a kid playing in Wellingtons.

The parkie was Harry Bellamy, a top bloke who kept it all in order and the bowls running smoothly. Incidentally, Harry's son Clive is desperate for a photo of his Dad in his uniform, if anyone was out with their Brownie 127 back then....

In summer we spent whole days trainspotting at the 'Cutting' - the triangle of land off Twentywell Lane just above Dore station. There was also a bike dirt track to fill in the time between collecting numbers. In winter we'd spend a lot of time in the woods off Totley Brook Road, riding bikes through the aqueduct and gathering branches for the obligatory Bonfire Night get-together.

I spent most of my pocket money in Westleys and inevitably ended up with a paper round there. I loved that shop. It had everything a proper newsagents had in those days. Unfortunately that 8/6 a week didn't seem to go very far.

If you wanted groceries you went to the Co-op or Tindales at the top of Main Avenue. The Co-op was in its heyday with 3 three departments - Grocery, Butchery and Greengrocery. They had sawdust on the floor and the famous cash system that saw your money whizzing over your head in a little metal tube into a kiosk in the corner of the Grocery department. 28856 was our Co-op number, permanently etched in my brain.

Mr Perkinton had the PO at the top of Totley and delivered our papers for years. Out on his bike with panier attached to the front, rain or shine, always reliable. Knocking on the back door to get a GreenUn was a feature of Saturday nights during the football season.

The Fleur was always busy and Ozzie Tyler is the landlord most people remember. The Cross was a bit quieter. Ada Tummon is the last landlady that I remember.

A haircut? Then it was Monty's opposite the end of Mickley Lane, or Mr Harper, the end shop on the corner of Baslow Road and Marstone Crescent. Resplendent in their little white jackets which made them look like the sort of people you could confidently purchase 'something for the weekend' from!

On Totley Rise, we had Grattons, Mrs Jackson at the PO,

Springs sweet shop and Bonners at the end - oh, and the little chippy in between! A bag of chips after a night at Totley Rise Youth Club spinning the very latest 45s....Living the dream.

I left in 1966 and relocated to Abbey Lane. It was a massive wrench but we all knew the prefabs were being pulled down. I had 18 memorable years there and I still get that ache in the pit of my stomach at the bottom of Totley Rise when I'm heading that way.

You can take the boy out of Totley.....

*Paul Hibberd*

## A Walk Along Gillfield Wood - 50 Years On

In September, it will be 50 years since Bob Warburton wrote his thesis as a Diploma in Environmental Studies through the University of Sheffield.

This fascinating document, which can be found on our web site, covered the flora, fauna and history of this ancient wood in 1974. Bob concluded his paper with an easy round walk that begins in Totley Hall Lane, goes through the wood to the Baslow Road bus terminus and back up to the Cross Scythes.

In 1974, the future of the wood in those days was uncertain. Bob was concerned that Gillfield Wood was at a point when its future could take either of two obviously related, but divergent courses: it could follow its initially intended role and be regarded as a commercial undertaking; or it could have its *raison d'être* altered to that of conservation area and amenity. In 2011 Friends of Gillfield Wood was formed and we have helped to promote the latter option. Working together with Sheffield City Council Rangers we have contributed to conserving, improving and learning about the wood.



Wanting to mark this half century we decided to retrace Bob's footsteps. Some aspects of change are obvious - the saplings planted all those years ago are now mature trees so there is less light. As mentioned in an earlier issue of the *Totley Independent*, volunteers are currently surveying and recording the flora of the wood. This will help in understanding how life in the wood has changed and will take a snapshot in case changes are forced on us due to diseased trees and damage from squirrels or deer. This will also inform future management.

Do you have memories of the wood worth sharing? Join us on the afternoon of Saturday 21st September, when we will celebrate Bob's achievement by following in the footsteps of his round walk.

Bob finishes his walk with the words, "Crossing Hillfoot Road, the walker may rest on the seat on a grassed section on the corner of Baslow Road and Hillfoot Road", having walked back along Baslow Road. Since said bench is too small to cope with more than a few, we might just retire to the Cross Scythes!

*Paul Hancock and Yvonne Newey (Friends of Gillfield Wood)*

## Are you suffering from hearing loss?

Get in touch with your local clinical audiologist expert today!



Our Services  
Hearing Tests  
Tinnitus  
Treatment  
Hearing Aids  
Ear Cleaning

**Bupa &  
CQC**  
Registered

To book an appointment at our Dore clinic, or for further details:

**0114 349 3326**  
[hearingtherapy.co.uk](http://hearingtherapy.co.uk)  
[info@hearingtherapy.co.uk](mailto:info@hearingtherapy.co.uk)



## ELLIS WILLIS & BECKETT

**Auctioneers & Valuers**

Ellis Willis & Beckett can trace its roots back to 1870 and is a well-known name in Sheffield and the north of England. We hold monthly antique and collectible, specialist and quarterly fine art auctions. Including country and fine furniture, ceramics, paintings, toys, jewellery, watches and everything in between.

- Free Valuations & Home Visits
- Inheritance / Probate Valuations
- Deceased Estates & House Clearance Services
- Low Commission Rates For Vendors & Buyers

[www.ewbauctions.com](http://www.ewbauctions.com)

 **01142 796959**





## All Saints Church, Totley

As I write this during the month of a general election and as we head into the summer, there is a palpable sense of change sweeping across our nation. We're witnessing changes in school years, a change in the Prime Minister, and the ever-

changing colours of the fields surrounding Totley. Of course the British 'summer' with its changing weather, adds to this dynamic atmosphere. While some changes are exciting, others can be quite challenging.

I should note that I now also add this after the shocking assassination attempt at an American political rally and the tragic death of at least one person. Such events remind us how change can feel threatening, and sometimes the direction of travel can be a real concern for us. In these moments, we find comfort in our changeless God. At church we've been reflecting on the book of Hebrews, where we're reminded that our unchanging God knows what it's like to live in this world. He understands our struggles and offers us both stability and understanding as we grapple with change.

As a church, we've experienced significant changes over the last three years. This centenary year, we celebrate not only the rich history of All Saints but also the positive changes that have shaped us. Our community involvement remains a key part of our identity, while new energy infuses our ministry. We're welcoming a new Youth, Children's, and Families' Minister, and our programmes for young people are thriving with over 60 regularly involved. Our work with the over 60s, like the Natter group and midweek communion services, continues to flourish. We've also invested in our church grounds, ensuring they can be enjoyed by the community and support the expanding ministry at church.

The past few weeks have been particularly busy and joyful. The massive JOY Fun Day, organised in conjunction with other local churches, saw hundreds enjoying the free activities. A huge thanks to the High Sheriff, Lord Mayor, and Olivia Blake MP for joining us. We also proudly participated in the Open Gardens event, celebrating the beauty of our surroundings and the strength of our community. We are so thankful for Jennie and the team and we loved being a part of this wonderful event, welcoming visitors and sharing the story of All Saints with help from the fantastic folk at the Totley History Group.

Multiple work mornings have transformed our buildings and grounds, ready for the expanding ministry at All Saints. Additionally, the Nabucco concert was a highlight of our centenary celebrations, bringing beautiful music and community together.

We have also been saddened by the loss of well-known community figures: John Hill-Wilson, a dedicated school governor for 20 years and designer of much of the church school; Les Firth, whose work with the Totley Show among other contributions will be a lasting memory; and Ken Filleul, loved by many and who had a profound impact on our lunch club and toddler group. Their legacies remind us of the importance of community and the enduring impact of service.

Looking ahead, we have many exciting events planned. Over the summer, on the 4th and 25th of August, we will be having a picnic after church in the grounds. It's a super low-key event—just bring a picnic and join us as we enjoy each other's company.

As part of our centenary celebrations, on Saturday, 31st August, we will walk around the Totley Parish boundary (or 'Beat the Bounds'). This 16km/10 mile walk is open to everyone, offering a wonderful way to explore and connect with our beautiful surroundings. We will meet at All Saints Church at 9.45 am and start promptly at 10.00 am. Please email [neilhayden5454@gmail.com](mailto:neilhayden5454@gmail.com) if you would like to participate.

For your diaries, here are some dates for upcoming events:

6th October: Harvest Service at church

2nd November: All Saints Party (part of our centenary programme)

12th November: Remembrance Sunday

17th November: Centenary Service (AST 2024 at 10 am, AST as it was in 1924 at 2 pm with the bishop and bubbly—a great combo!)

5-7 December: The Christmas Experience

15th December: Carols By Candle Light

Change is a constant, but so is the love and stability we find in God. At All Saints, we continue to be a place of welcome, hope, and community. We invite you to join us, whether it's praying together, serving others, or simply enjoying friendship and fellowship. So if you'd like to pray or talk to someone, please get in touch. Of course, you're also welcome to pop in any Sunday at 10 am. We want to be a blessing to our community in this special centenary year and beyond. We can't wait to celebrate all that God has in store for All Saints, for Totley, and for Sheffield!

*Rev'd Ben Tanner, Vicar*

*M: 07912 890512*

*E: [ben@allsaintstotley.church](mailto:ben@allsaintstotley.church) | [www.allsaintstotley.church](http://www.allsaintstotley.church)  
Totley Hall Lane, Sheffield, S17 4FA*

## Friends of Dore & Totley Station

**Last time I said "We'll be fully there by September!"**

I'd become so fed up with delay after delay that I resigned myself to a fairly vague prediction. As I write, the car park is being repaired and 100 spaces will soon be available. The final 29 probably won't be until some time in September. Four EV (electric vehicle) charging points should become available sometime later this year. In the meantime we have lots of room to shelter bikes.



Restoring the railway triangle, the hillside below Poynton Wood and the area in front of the West View Lane flats should happen this year, but probably not entirely until early 2025?

### Pile driving

At midnight on Sunday 19th May residents from West View Lane all the way up to Dore village and as far as the Green Oak area were awakened by the sound of pile driving. It was remorseless and continued almost non-stop until 6.30.

Letters had been sent to nearby residents. 'Nearby' seems to have been taken as an arbitrary distance from the railway rather than from where the work was being done. Noise doesn't limit itself to such criteria. In this case Bradway Bank behind the work acted as a great reflector, much like a satellite dish in reverse, projecting sound waves out across the valley. On a lovely clear and still morning following a nice warm sunny day most residents had their windows open. The contractors received over 150 complaints. Local Facebook groups went wild with many more. Curiously none were from Bradway residents although some had received letters. The lie of the land kept the noise away.

In theory this was supposed to continue for 6 more Sundays however the contractors and Network Rail called a halt for a rethink. The pile driving can only be done when trains aren't running. Early Sunday mornings are the only times it's possible to get long enough between scheduled trains. It takes over 6 months to arrange a scheduled blockade of the line to allow daytime working. After a pause of 5 weeks with almost total inactivity, work resumed on 8th July. *(Continued page 18)*

### **(Friends of Dore & Totley Station (from p.17)**

At the time of writing we understand there'll be further early Sunday morning work, potentially until the end of August. They say they'll use a quieter method for most of it. Roll on September.

### **Train services, industrial action, and politics!**

At the time of writing our principal operator, Northern, is unable to provide a full hourly service on Sundays. Crew terms and conditions are based on a railway that ran far fewer trains on Sundays than their current timetable demands. It's complicated. Unions are fighting hard for better deals to resolve the issues. Essentially, without voluntary overtime, only 30% of trains can reliably run. To negotiate new contracts more money is needed on the table. That's mostly to come from government subsidies. It costs them on average 42p for every mile every passenger travels on Northern. (Even the best routes may require 10p a mile, the worst possibly over £1.25!) The old government's wish was to reduce that to nearer 40p. The new regime won't want to increase it significantly.

In the meantime we may lose at least 1 in 3 of our Sunday trains. This is rather a shame as leisure use is growing fast. As I write it seems an emergency reduced timetable may be being worked. If using Northern services on Sundays take great care to check on the day to see if your intended trains are running.

Over the last six months I've spoken to five MPs about our station and the services between here and Manchester. All three local Derbyshire Tories, plus the former Rail Minister who called in on 8th April, are no longer MPs. Our own MP, Olivia Blake, retained her seat and Louise Haigh, the new Transport Minister, has Ladies Spring Wood in her constituency. We must hope they can find ways to break the current impasse – and find a magic way to do so with minimal extra subsidy.

### **A comparative digression**

Sheffield-Manchester is about 42 miles by rail. The fastest trains take about 50 minutes averaging about 50 mph. When former Rail Minister Huw Merriman visited in April he suggested (not a promise) that electrification of our line was in the pipeline of projects following cancellation of HS2. He implied that such work could reduce travel times between the two cities to 30 minutes – wow! 45 minutes relatively easy, 40 minutes getting hard, 35 minutes very challenging. The final miles into Manchester and Sheffield, plus 3 long Victorian

tunnels and unstable Peak District geology will/would make the cost enormous. Do we need such speed?

My wife and I have just returned from Norway using the Oslo-Bergen line. That's about 308 miles with the fastest trains taking under 7 hours averaging about 45 mph. That line crosses mountains up to 4,058 feet high within the recent six-mile Finse tunnel (Ben Nevis is 4,413 ft) that's designed for 110mph trains. The full line has been fully electrified since the early 1960s. There are many tunnels plus special snow sheds to protect the line in winter. The scenery is spectacular as the line meanders through and across the glaciated landscape.

But Norway has a \$1.6 trillion sovereign wealth fund tucked away for when the oil and gas revenue runs out. It could cover their needs for hundreds of years. They also have lots of hydro-electricity. Their rocks are hard and most tunnels need very little lining. Our tunnels tend to run through more difficult and softer geology and usually need to be lined. They're more difficult to construct and maintain. We don't have a sovereign wealth fund. Norway lives well.

We were impressed with the fast train service from the airport into Oslo, the Oslo-Bergen line, the very scenic Flam railway and the not-so-fast light rail link from the centre of Bergen to their airport. We would recommend a visit both on and away from the fjords and big cities!

**Coming soon** – a fully operational Dore & Totley station, eventually more stopping trains, possibly a toilet and seated shelter on Platform 2, and, as soon as we can, some local touches to soften the harsh modern construction.

If you're a Facebook user, you can find and join us by searching for FoDaTS. It's an active group with over 930 members and is updated frequently with topical information and comments. Alternatively look for our website at [www.fodats.net](http://www.fodats.net) We hold bi-monthly committee meetings at Totley Library and are always happy to hear of new ideas.

If you're not on Facebook and would like more information please send an email to our Secretary; [njbarnes@outlook.com](mailto:njbarnes@outlook.com) or to myself; [chrismorgan4@btinternet.com](mailto:chrismorgan4@btinternet.com)

*Chris Morgan, Chairman*



**Apple Landscapes and Paving**

Established 19 years

Specialise in full garden makeovers.  
Patios, paths, walls, turfing, fencing.

Check out our FB page.

07782167540  
01246237505



## Totley Scouts

Totley Scouts Fun Day on Sunday 30th June was a great afternoon. We were pleased to be joined by plenty of local people, all enjoying the games and activities on offer - as well as the homemade cakes, the bbq and bar! There was a brilliant atmosphere in our refurbished Hut - and in the outdoor area, too.



As well as helping us to raise funds, the Fun Day was also an opportunity for us to hold our AGM, where Sue Bridgens, our Group Scout Leader, gave a short speech thanking everyone for all their efforts over the last 12 months. In particular, Sue thanked Helen Armstrong, who has stood down from the committee after 5 years, having seen us through our successful bid to the Youth Investment Fund and the resulting building work at the Hut.

Sue also reminded everyone present that she will be retiring from Scouting next year, along with two other longstanding leaders - Mick Hollindale and John Lawrie. Our Group will be very sorry to see the three of them go - between them, they have contributed 135 years to Scouting!



### Can you help us?

We spoke to a number of people at the Fun Day who were interested in getting involved with supporting the Group, either on the committee or as leaders, and we're grateful to them for considering volunteering with us. We are still very much on the look out for more people to help as leaders - at the moment, we have sections on 4 out of 5 nights at risk of closure next summer, because we simply don't have the leaders to run them. If we have to close those sections, that will mean 120 children and young people are no longer able to attend their regular meetings, where they learn valuable skills and have opportunities that they simply don't get elsewhere.

We're asking you to consider if you could volunteer some time to help us keep all of our sections going - or if you know someone else who you could share our request with. Full training is provided by Scouting UK and you don't have to have been a Scout yourself in order to get involved. A willingness to learn and work as part of a team is all you need to get started in Scouting.

You'll learn new skills, get to know new people and feel a real sense of achievement supporting your local community. In addition, if you have children in our Group, as a leader you'll only have to pay half price subs for them - and if they're on the waiting list to join us, you'll jump the queue if you sign up to be a leader with us. If you're interested, please get in touch with us via [totley1stscouts@gmail.com](mailto:totley1stscouts@gmail.com). We'll then contact you to have a chat and find out more about how best we can involve you in a way that works for you. It's a couple of hours a week - can you spare the time and help keep these groups running?

Fran Arnold

## Traffic News

At our Community Speed Watch on Bradway Road, at the junction with Hemper Lane, we checked 110 vehicles. 33 were moving at over 35mph, including vehicles from British Gas, Amazon and Morrisons, and a police car, not on blues and twos but doing 40mph!. We also witnessed a learner driver attempting to go to the right of a keep left sign!

### Akley Bank Update

Not strictly traffic-related, but I now have the names of more people who are involved with the Akley Bank problem. I have been told that Yorkshire Water does not class it as urgent and Sheffield City Council does not intend to stabilise the Bank. Both statements are contrary to what each party has told me before! Our new councillor, Bex Atkinson, is on the case.

### Deer on Baslow Road

I have asked for deer warning signs, as we know that deer cross the road above the 97 bus terminus. The response was that there was no money for such signs, and anyway it would need two, one to say 'Deer' and the other to warn us of a sign saying 'Deer', so four in all. I replied, as you might have guessed, and I said that Derbyshire CC, when I alerted them, got a single sign erected at the City boundary and near to Owler Bar, within days. I queried her argument that not many accidents had been reported. How would a motorist know where to report such an accident? Reminds me of when we were campaigning for a pedestrian crossing near Totley Co-op. The Road Safety manager said "not enough people have been killed!"

### Surface of Baslow Road and footpath

I took Bex to see the defects on the road and explained how a local guy sustained a broken collar bone when he was thrown from his bike. The Council replied to my email by saying they had carried out one patch immediately (it wasn't over the worst defect) and would be carrying on the footpath repairs (started about 4 months ago) later this month - only 12 years after the contract to relay them all started.

Roger Hart



**THE HARDY PLANT SOCIETY**  
South Pennine Group

Web site: [southpenninehps.webador.co.uk](http://southpenninehps.webador.co.uk)

[Facebook](#) @HPSsouthpennine [Instagram](#) south\_pennine\_hps

**AUTUMN PLANT SALE 2024**



**Sunday 22 September, 1100 -1500**  
**Sheffield Botanical Gardens**  
Wide selection of hardy and other plants  
grown by our expert members  
Everyone welcome - Free admission  
CASH AND CARD PAYMENTS  
TO HELP US REDUCE THE USE OF PLASTIC, PLEASE  
BRING YOUR OWN BAGS TO TAKE YOUR PLANTS HOME





# Twelve Trees

*Always there to care*

## FAMILY RUN, AWARD WINNING, PREMIUM HOMECARE SERVICE


Twelve Trees is an innovative Homecare provider operating from our offices in Nether Edge. We offer something unique to our clients by providing bespoke care packages designed to meet your care needs. We are proud to have been providing care for the elderly for over 25 years.

### WE PROVIDE




- Household & Domestic
- Companionship
- Personal Care
- Mobility Care
- Respite
- Specialist Care
- Day Care
- Overnight Care
- Hospital Discharge
- Transport Service

### MEALS ON WHEELS



We offer nutritious and delicious home-cooked meals freshly prepared at our award winning residential care home, delivered to your door with a 30 minute care call.

### CONTACT US



Twelve Trees Homecare Limited,  
Suite 9, Cherry Tree Business Centre,  
Sheffield, S11 9EF  
Email: [admin@twelvetreescare.co.uk](mailto:admin@twelvetreescare.co.uk)

0114 349 7837

[www.twelvetreescare.co.uk](http://www.twelvetreescare.co.uk)

## Totley Deli

*Where quality and friendliness count*

Look out for our daily specials or join us for breakfast.

Why not come in and sample our wide range of hot & cold sandwiches and home made produce. Freshly made daily to eat in or take away. All produced from locally sourced suppliers.

- Fresh Roses bread delivered daily & available to order
- Selection of cooked meats sliced to your specification
- Superb selection of fine cheeses, preserves & pickles
- Moss Valley bacon & sausage
- Longley Farm dairy products
- Waterfalls pork pies
- Freshly baked pastries

All available to take away.

Homemade  
scones, lasagne  
& quiches



If you are having a party or family gathering why not let us take the strain and provide a buffet for you.



51-53 Baslow Road, Totley Rise. S17 4DL.  
Call 0114 2364238

## Unstone GardenScapes

Let us  
transform your  
garden

From concept to  
completion

Fully insured.  
Over 25 years experience.  
Portfolio available.

Decking Fencing Patios Turfing Planting  
Or just a general tidy up

Call Jason for a free quote  
Mobile 07791069360



## Councillor News

The recent local and national elections have had a significant impact on decision-making in the City Council, as there are strict legal restrictions on what local politicians can and cannot do in the run up to a vote. With both elections happening so close to each other, this has created a significant backlog in activity that is now beginning to clear. One of the most immediate actions has been the reopening of the Ward Pot scheme, which provides small grants of up to £750 to local voluntary and community groups. Details can be found on the Council's website and if you think your organisation might be eligible, do get in contact.

On a related topic, we are very pleased to see that Totley residents are in the process of organising a 'Friends Group' to support and promote Totley Hall and Green Oak parks. We are aware that these are vital green spaces in our neighbourhood,



and experience tells us that when there is an active Friends Group it is often easier to attract funding for improvements, as recently happened in Bradway and Dore. Rebecca has attended the one of the first meetings and will be leading for us on this issue. If you would like to contact the group to get involved, please email [totleygreenspaces@gmail.com](mailto:totleygreenspaces@gmail.com)

Martin is also in discussion with the Council on the road closures for the Totley Remembrance Service on Baslow Road. Attendance has steadily increased over recent times and we need to make sure that it can take place safely. The arrangements for last year's event worked very well and we are keen to see them repeated.

Residents may also be aware that the Council is proposing a number of small-scale parking restrictions at junctions along Mickley Lane. At the time of writing the consultation process was still active, but if approved the changes would involve double yellow lines for a few metres either side of the junctions to increase visibility and improve road safety. This would reinforce the existing guidance contained in the Highway Code which states that drivers should not park close to a junction. We are also aware of complaints about the condition of the road surface further along Mickley Lane (towards Dronfield). The worst areas are on the Derbyshire side of the border and have been reported on numerous occasions. Joe has followed this up again with the County Council, but regrettably a decision on those repairs is not within our remit.

Housing remains a significant part of our casework, particularly housing repairs. The local authority has a duty of care to ensure that the people it houses have decent living conditions, with any remedial work carried out as soon as possible. We were dismayed that a recent report by the Regulator of Social Housing shows that the City Council has failed to meet their new consumer standards and "does not have an accurate record of the condition of tenants' homes". This is simply not good enough and we continue to press the Housing Department for improvement. Do get in touch if you are experiencing significant delays with repair work and we will contact the housing department on your behalf.

And finally ..... the new government has made a series of pledges on house building and the potential release of sites in the Green Belt. The Council has spent a lot of time developing and consulting on a new housing strategy for the city, also known as the 'Local Plan'. After a huge amount of work this

document was passed by a vote in the Town Hall and is now with the Planning Inspectorate for review and (hopefully) approval. Whilst any initiative that delivers more new homes in the right areas is to be welcomed, we are concerned that yet another government scheme could delay things. We are monitoring the situation closely and will report back should things change.

As ever, please feel free to contact us with any questions or feedback about Council services or come and meet us at one of our regular surgeries. These are held at on the 2nd Monday of the month at 6pm in Totley Library, and the 2nd Saturday of the month at 10.30am in Dore Old School.

[martin.smith@councillor.sheffield.gov.uk](mailto:martin.smith@councillor.sheffield.gov.uk)  
[joe.otten@councillor.sheffield.gov.uk](mailto:joe.otten@councillor.sheffield.gov.uk)  
[rebecca.atkinson@councillor.sheffield.gov.uk](mailto:rebecca.atkinson@councillor.sheffield.gov.uk)

## A Community Calendar for S17

Having spoken to several community groups within S17, many of whom rely on the generous support of the local residents to continue functioning, the idea of having a community calendar was mooted. There were some thoughts that there had previously been one prior to Covid that had been held at Totley Library but that it was no longer in existence? It is hoped that one of the main benefits of having such a calendar would be that groups would be able to schedule events, particularly fundraising events, so they were not clashing.

The calendar we are proposing setting up would be online using Google Calendar and called Dore, Totley and Bradway Community Calendar. If you are part of a group within the S17 community that meets regularly, and would like to add events/have access to such a calendar, please contact Emma Knight at [admin@transport17.co.uk](mailto:admin@transport17.co.uk), or by phone on 0114 236 2962. Let's help S17 stay connected!

*Fiona Smith, Transport 17*

**Totley History Group presents**

**Ancient Suburbs of  
SHEFFIELD**

**(Part 3)**  
**a talk by**  
**David**  
**Templeman**

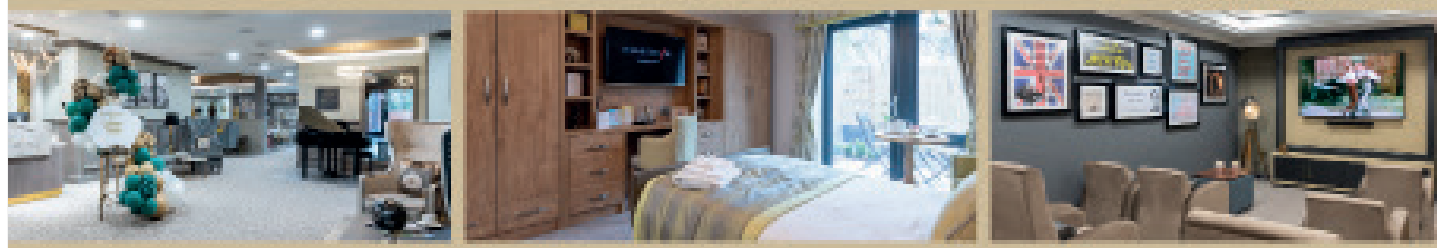
**WEDNESDAY 25 SEPTEMBER 2024**  
**7.30PM IN TOTLEY LIBRARY**  
**NON-MEMBERS ARE WELCOME**



## OUTRAM FIELDS

CINNAMON LUXURY CARE

**BOOK A  
PERSONALISED  
TOUR**  
**TODAY**



# A CARE HOME LIKE NO OTHER

## BOOK A TOUR TODAY

Outram Fields offers superior facilities for our residents to enjoy along with the very best care and support. As a brand new, purpose-built care home, it provides the very latest design innovations in a luxurious yet homely setting.

Outram Fields offers much more than excellent 24-hour personalised care. It is a special place where our residents can continue to live life to the full, enjoy new experiences and make new friends. Whether your loved ones need residential care, dementia care or just a short stay, we are passionate about making a difference.



**For more information or to take a personal tour  
call our friendly team today: 01144 934 334**



**At Outram Fields, people will always come first**

RESIDENTIAL CARE | DEMENTIA CARE | RESPITE CARE | POST OPERATIVE CARE

**Luxury Care Home in Sheffield**

Outram Fields Care Home, 250 Twentywell Lane, Bradway, Sheffield S17 4QF  
[www.cinnamoncc.com/outramfields](http://www.cinnamoncc.com/outramfields) Our What3Words location: **Plates.Button.Dishes**





OUTRAM FIELDS  
CINNAMON LUXURY CARE



## SPECIALIST DEMENTIA COMMUNITY NOW OPEN AT OUTRAM FIELDS



We believe that it is possible to live an active and fulfilled life after a diagnosis of dementia. Our compassionate team understand the different types and stages of dementia and the challenges associated with each.

We plan and deliver a range of engaging activities tailored to meet the needs of residents with dementia focusing on community, purpose, and joy. Person-centred care is at the heart of everything we do, ensuring residents feel valued and included in our community.

Our dementia community is designed to be visually captivating, emotionally uplifting, and specifically tailored to enhance the well-being of individuals with dementia.



For more information or to take a personal tour  
call our friendly team today: **01144 934 334**

RESIDENTIAL CARE | DEMENTIA CARE | RESPITE CARE | POST OPERATIVE CARE

### Luxury Care Home in Sheffield

Outram Fields Care Home, 250 Twentywell Lane, Bradway, Sheffield S17 4QF  
[www.cinnamoncc.com/outramfields](http://www.cinnamoncc.com/outramfields) Our What3Words location: **Plates.Button.Dishes**



# Totley Open

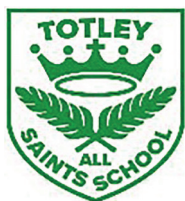




# Gardens 2024







## Totley All Saints Primary School

### What has been happening at Totley All Saints Primary?

The wealth of musical talent at Totley All Saints is something we are extremely proud of. We love to give the children the opportunity to share their talents in assemblies and most recently our Musical Showcase. We invited parents in to see just how amazing the musical talent is at Totley All Saints. From September we will also be offering opportunities to learn an instrument through peripatetic music lessons from Year 1 onwards. From Year 2, all children will be learning an instrument in class each year and taught how to read musical notation.



Our second sports day of the year took place during sports week and we had pupils from across classes working together to gain points for their merit team. The children showed great team spirit and supported each other across the year groups.

Next was our first Summer picnic and even the rain didn't stop us! We were joined by Reverend Ben Tanner who led an opportunity for reflection and then the Year 6 entertained us with their dance performance from a previous competition.



Our Summer Fair raised an amazing £2000! Thank you to all who came and supported and especially to FOTAS for arranging such a fabulous event. The money will be going towards building a platform next to the pond enabling more children to

be able to observe, pond dip and enjoy the area. We will also be opening this up to other schools to come and visit.

If you have a child due to start school in September 2025 then please feel free to come and have a look around the school and our wonderful grounds. All you need to do is contact the school via telephone or email. All the information you need is on the website: <https://www.totleyallsaints.sheffield.sch.uk/>

*Melissa Drake, Head Teacher*



## Chapel of Ease, English Martyrs in Totley

**Usual Mass Times: Tuesday 10 am, Saturday Vigil 5pm**

How often are we Christians asked, "Do you really believe in God and all the stuff in the bible?" More importantly, perhaps, "How do we answer?" (Take a moment to consider YOUR response.)

Christ told His disciples that they would be ridiculed for their faith, but not to let it trouble them or stop them from spreading The Good News. As a church dedicated to The English Martyrs, we are particularly aware of those who gave up their lives for the sake of their faith.

We are called upon to live out our lives as Christ would wish, as God made us to live. Going to Mass, even every day, is just not enough. Better to be at Mass once a week and carry out God's work the other six? We are told to seek God in all those we meet. He made us all in His image. Is it easy for others to see God in us?

I've also been asked, "How do you pray?" I'm not sure if my answer is typical. I use the prayers we all say at Mass, but I worry that familiarity might breed contempt and my daily conversations with God tend to be more "off the cuff." The word "conversation" is very important to me. I try to resist monologues and leave space for Him to answer, for me to listen and understand.

I do seem to spend quite a lot of time just saying, "Thank you!" "Thank You" for there being Bisto in the supermarket, for a fellow driver letting me onto the road, for there being a parking space I can get into! "Thank you" for a good drying day, for rain in a 42 degree heat in Medjugorje! "Thank You" for birds, flowers, trees, skies and friends.

If I sound like a Goodie Two Shoes I will also admit that I pray at my beloved Munster Rugby matches. Those prayers start out as "Let my boys play their best game today" but have sometimes sunk to "Just let us win!!"

I pray that you enjoy all God's gifts, including His strength to deal with adversity.

God Bless and Keep You.

*Barbara Richardson, Parishioner*



# GWS



Technology Solutions

PC Problems, Repairs, Servicing, Setup No Job Too Small  
Wireless & Internet Setup Apple Macs Data Transfer  
New PCs, Laptops, Upgrades Tuition Safe PC Disposal  
Tablets, iPads, iPhone, Setup & Tuition Smart TV, Media box  
Wireless/Airprint printers Wireless/ Internet boosters

**\*\* For All Your PC & Technology Needs \*\***

Guy Senior

Phone: 0114 2352662 Mobile: 07890030453

Email: [guy@gwstech.co.uk](mailto:guy@gwstech.co.uk)

Web: [www.gwstech.co.uk](http://www.gwstech.co.uk)

GWS, 5 Canalan Avenue, (Broadway, Sheffield S17 4HG)



## Common Threads

**Continuing the series of articles by Richard Wrigglesworth, covering 800 years of local history. Part Six: Early Years Continued: William Ibbotson 1766-1852**

Another Ibbotson, William of Carr Head farm in Hathersage, was another to make his mark. In the late 1700s he had supplemented his income by carting millstones to Sheffield over Stanage Edge and returning with goods to the Hope Valley, whilst his wife Hannah and six children farmed during the day. In Sheffield he learned about the profits from 'wire drawing' which had involved heating steel wire then drawing it through specially graded holes in the millstone grit to attain the required gauge and thickness, before allowing it to slowly cool. The next product was the manufacturing of steel fenders, the guards used in the steel works.

William went into partnership with his younger brother-in-law, a Henry Ibbotson, and they established themselves as Ibbotson Brothers of the Globe Iron & Steel Works, steel converters, merchants, manufacturers of fire grates, fenders, edge tools etc., and built a new steel works on the Alma Street site in Sheffield. There is a later private letter to George Wilson in his archive signed by Alfred B. Ibbotson asking him to use his influence as Chairman of the Lancashire and Yorkshire Railway with his fellow directors when 'the tenders for steel, files, and fishplates are decided about' and assuring him of both the quality and service, and to 'bring him under notice of the writers patent mode of uniting rails, drawings of which I have left at your house.'

Another reference to William is in 'Church and People in an Industrial City' by E.R. Wickam, the Canon Residentiary of Sheffield Industrial Mission from 1944 and later Bishop of Middleton, quoting from an address to Workmen in the File Trade by William Ibbotson in 1836 when they had gone on strike for an advance in wages, and been locked out for eight weeks:

'....while the foreman gets his 30s or 40s a week, the striker whose labour is more severe only receives his 20s or 30s; while he that has served his apprenticeship obtains his 20s or 30s, and the learner and the mere labourer gets his 10s to 18s. In all these cases the God of nature has established a just and equitable law which no man has a right to disturb; when he ventures to do so, it is always certain that he, sooner or later, meets with a corresponding punishment. That law is the natural operation of things, and in proportion as man, by trickery, manoeuvre, or an abuse of power, violates this law of nature and equity, in the same degree does he receive his reward. Thus when masters audaciously combine, that they may effectually oppress their servants, they insult the Majesty of Heaven, and bring down the curse of God upon themselves, while on the other hand when servants try to extort from employers that share of profit which of right belongs to the master, they equally violate the laws of equity... The master manufacturers of England were foremost in their glorious struggles to secure that glorious reform in Parliament which I doubt not will end in the moral and political regeneration of the world.... singlehanded, you must submit to receive the share of profits which the God of nature assigns ....'

How that went down with the trade unions and the grinders in the file trade, working daylight hours for six days a week, and a life expectancy of thirty years, is not recorded and probably unprintable but it perhaps demonstrates his Methodist roots. Tom Tomlinson, a Hathersage historian, includes references in his history of this branch of the Ibbotson family suggesting they met in the old farmhouse in Main Street.

In July 1842 William probably redeemed himself, at least in the eyes of the League. About 150 delegates went to a conference in Downing Street and ten representatives from northern manufacturing areas were introduced to Sir Robert Peel to inform him of the distress and suffering of the population. W. Ibbotson Esq. represented Sheffield and told him 'five eighths of Sheffield goods were sent to America but that our refusal to take their grain had well nigh destroyed that great trade. The population was unemployed - they were literally starving and something must be done, and speedily. The increase in the Poor Rates was enormous, and still progressing. The only

remedy was the repeal of the Corn Laws and its adoption would immediately revive the trade - without it he was convinced that entire ruin must overtake that great town. He implored the government to act.



*Sir Robert Peel*

The Rev Mr Bailey of Sheffield had already addressed the main meeting and had canvassed the local working classes, receiving 2,156 statements from the heads of families affecting upwards of 10,000 individuals. The distress extended to every branch of trade. He calculated that in 1838 when wages were supposed to have reached their minimum, operatives who were earning 20s, 25s, and 30s were now receiving sums varying from 5s, to 8s or 10s. He said the decline and distress was not due to the introduction of machinery, and the poor did not in general attribute their condition to Poor Laws but to the influence of class legislation. He confirmed that Mr Ibbotson, a man well known in Yorkshire and Lancashire had told him he would be able tomorrow to find employment for 500 fresh hands. The other representatives from the Potteries, Manchester, Bilston, Stockport, Bury, Leeds, and Forfar gave similar reports. The Chairman of the group concluded that this would be the last appeal on behalf of the League and their last attempt to avert the evils they had so much dreaded. The peace had been preserved by a last glimmering ray of hope, and Robert Peel must be answerable for the consequences. The deputies went back feeling they had discharged their duties and that the people would have to take their own course.

Sir Robert asked a few pertinent questions. Had the trade and exports of Liverpool fallen off, was Bury his home town under the new Poor Law, and asked a shopkeeper from Leeds as to whether the consumption of tea and coffee had fallen off, having obviously been told it had increased. He was informed that the food of the poorer classes generally consisted of bread, milk, meat, potatoes, cheese and butter, and that the male part did not, except when obliged, take tea and coffee. What was used was of the worst quality and the lowest price and the revenue was scarcely benefitted by its consumption. Another fact was the men who had tea and coffee dinners, instead of food of a more substantial kind, as a consequence were becoming extremely haggard and emaciated, and vast numbers were dying gradually for lack of food.

Sir Robert argued that his sliding scale must have diminished the protection to agriculture, to be told by a Mr Ashworth it was only a nominal alteration affected by the Corn Laws, a duty of 13s had been substituted for 23s, and six feet of water might drown a man as well as six yards. Out of the 22 million articles the tariff embraced, 16 million were left untouched and the 6 million it did embrace would not assist the starving

operative - did the poor man care for French boots and shoes, cosmetics, silks and perfumery? Sir Robert: I have made a great reduction on the duty for imported meat. Mr Ashworth: pork is purchased in Cincinnati for 8s cwt. whilst you have imposed a duty of 14s upon American pork. Sir Robert: 8s. Mr Ashworth: It is no wonder if we impose a cent per cent upon American pork that they should impose a duty of 35s per cent on our manufactures. Mr Ashton: I merely wish to refer to the emigration of the best, the careful, steady, industrious men leaving all the manufacturers for America. Sir Robert: Should you say they went to America to invest what money they had in hand, or get employed? Mr Ashton: I should say to obtain employment.

In the face of this onslaught Sir Robert Peel could only fall back on the the standard 'you will be aware these subjects are being debated nightly in the House....I shall take care to bring these matters to her Majesty's government....nothing more to communicate....except to express my deep sympathy to the distresses.... thank you for the testimony you have borne, which I fear is incontestable.

Further meetings by other delegations with the Colonial office, Lord Wharcliffe at the Privy Council, the Home Secretary, and Gladstone at the Board of Trade, met a similar reaction and it became obvious that the Peel Government was awaiting the chance of a good harvest and a revival of trade, but they were also anxious to dissolve the daily sitting Parliament. On the 21st July an address was moved to re-assemble Parliament to review commerce in corn if no improvement should take place. However, on the previous day the Manchester Guardian made an announcement that there was some improvement in trade, much to the astonishment of Manchester people who had experienced none. A London merchant commented that: if Peel had paid a million of money for this account 'it would not have been misspent' He did receive it as a God-send and with the paper in his hand quoted from it triumphantly. An adjournment was requested to form a Committee of Supply but Peel and his ministers remained silent.

On being taunted, Peel launched into a bitter invective against the obstruction of public business. Richard Cobden was vicious in his reply: 'The public business being referred to is the voting of the militia estimates, to put down, he supposed, the starving people. He believed they might be better employed in finding them food. If a person had the malice of a fiend he would rejoice at the mode in which they were proceeding. The new Poor Law would not save their estates. Their present policy would create a policy that would break through stone walls. The people were now lying by the sides of hedges and walls, but when the winter came where would they go? If they were driven from the ditch-sides by the terrors of the bastilles they would have become banditti, or they must be put into the workhouse. Would the right honourable baronet resist the appeals which had been made to him, or would he rather cherish the true interests of the country and not allow himself to be dragged down by a section of the aristocracy? He must take sides and that instantly; and should he, by doing so, displease his political supporters there was an answer for them. 'He might say he found the country in distressing and he gave it prosperity; that he found the people starving and he gave them food; that he found the large capitalists of the country paralysed, and he made them prosperous.'

Sir Robert did say something to that effect four years afterwards but on 22nd July 1842, the time had not come for a triumph over a selfish party. It was resolved by the votes of 156 against 64, that the distressed condition of the country should not be taken into consideration. A League conference closed on the 1st August, and Parliament on the 12th August 1842 in time to devote themselves to partridge shooting, presumably including the moors above Hathersage and Sheffield. The League returned to their various localities resolved 'to labour incessantly for the great object of the League - the total and unconditional repeal of the Corn Law, prepared to reassemble at such time and place as the Council in Manchester might determine. The poor continued to go to the hedges and walls or if they were lucky the workhouse or the sulphurous towns such as Sheffield and 'submit to their share of the profits that the God of nature had assigned to them.'

After nearly four years in existence that one simple phrase that 'the distress of the poor should not be taken into

consideration' both galvanised and provoked a crisis for the League. Until then they had been the preservers of the peace and while there was hope that they might be successful, those who had maintained that nothing could be achieved without violent measures were listened to with mistrust. The middle class manufacturers naively thought that their virtuous cycle to repeal the Corn Laws and reduce protection to allow Free Trade, thus releasing the ample stocks of wheat held in the warehouses of America, Canada, and the Baltic States, and in turn allowing them to obtain our manufactured goods and allow us to pay wages to enable the starving operatives to buy their bread, blindly obvious.

Throughout the Agitation Cobden had consistently had to bring the Leaguers back to the central issue of the Corn Laws to avoid the wider more intimidating approach of the Chartists and restrain the hot headed, but in 1842 his own frustration was showing. In 1842 he had been bombarded by both advice and mockery and Peel had won the support of many with his tariff concessions. He was admitting privately that we are 'nowhere in the opposition now' and although the concessions had been a partial victory and they could still blame any further protectionism and depression on the Corn Laws, he had committed himself to total repeal without concession, and was learning the brutal truth that the 'middle classes are a compromising set' and an opposition consisting of Whigs, Liberals, Radicals, Reformers, and Leaguers still facing the slurs of their own self-interest, was divided. In the current recession the Chartist message on fighting for the suffrage was regaining momentum. McCord writes that it was clear that the reluctance of the leaders of the League Cobden and Wilson to adopt any of the bold measures suggested by extremists, was not dictated by moral scruples but by expediency. Short of funds and being told that 'unless we do something i.e strike a blow, we shall lose public confidence. Cobden asked, 'what can we do... theres always a danger of looking ridiculous by showing ones teeth before one can bite?' In June 2024, over 180 years since these exchanges, it is sad that these divisions still persist.

## VIOLIN AND VIOLA LESSONS

*from beginners to diploma level*

- Qualified, experienced (30+ years), fun and patient teacher
- DDC checked (April 2023)
- All ages (6 years and over)
- Late starters and restarters welcome

07787 417 527

SUNDARI HELLER  
LRAM, MISM





Activity	Venue	Primary Contact (Group leader)
Coffee and exercise classes: Strength and balance Welcoming spaces- Exercise and coffee Gentle and seated Gentle Circuits	Bradway Community Hall Dore and Totley United Reformed Church Totley Library/CRIC Fulwood Chapel St Peter/St Oswald's Abbeydale	Community Wellness Service – 0114 553 7807
Sporting Chatter / Sporting Chatter films	Dore & Totley United Reformed Church	Michael Tomlinson 07896 003941 or Mike Pettitt Tel: 0750 3060990
Singing Teapot Choir	Dore & Totley United Reformed Church	Yo Tozer Loft -07925 634420
Welcoming space (board games, refreshments and biscuits)	Dore Methodist Church Hall	10.30 to 13.30 every Wednesday- No booking requirement just drop in
Dore and Totley Rosemary memory café (Dementia targeted)	Dore Methodist Church Hall	Elsie.ledger@ageuksheffield.org.uk Tel. 07384 833594
Reminisce and Revive: Zoom group sharing stories & poems	Zoom -Monday (fortnightly)	anne.grange77@googlemail.com 07815 966784
Nature Natter: Coffee, nature chat and mindfulness activity.	Cross Scythes, Totley, Mondays 11 am 12.30 pm	Caroline Cook – 07583 551705 <a href="http://www.wellwithnature.co.uk">www.wellwithnature.co.uk</a> <a href="mailto:caroline@wellwithnature.uk">caroline@wellwithnature.uk</a>
Herbal Wellness: Learn about a different herbal medicine every week	Abbeydale Industrial Hamlet - Friday (fortnightly)	Caroline Cook- 07583 551705
Woodwork Wellbeing	Bradway Community Hall	Steven Fridlington 07900 344361 <a href="mailto:woodworkwellbeing@ouytlook.com">woodworkwellbeing@ouytlook.com</a>
Ecclesall Forum	Cherry Tree Pub, Carterknowle	Paul May – paulmay@blueyonder.co.uk
Dance to Health Sheffield	St Augustine's church, Endcliffe	Charlotte Bridle 07942 276312 <a href="mailto:charlottebridle@ae-sop.org">charlottebridle@ae-sop.org</a>
Table Tennis	Bradway Community Hall	Jan – 07787 954842/0114 418 6463
S11 Carers Walk	Various	Sheffield Carers Centre -0114 278 8942
Natter Coffee Morning	Totley CRIC Thursdays	Totley All Saints Church -0114 236 7627
South West Friendship Lunches (dinner, entertainment)	Shepley Spitfire pub, Totley	0114 236 0298
	Greystones Pub	0114 266 5599
	Crosspool Tavern, Crosspool	0114 266 2113
	The Ball Inn, Crookes	0114 266 1211
Fulwood Memory Café (Dementia targeted)	Fulwood Scout Hut	Elsie.ledger@ageuksheffield.org.uk- 07384 833594
S17 Carers Café	Border View Farm	Sheffield Carers Centre – 278 8942
Calmly Create	Fulwood Old Chapel School Room, 8 Whiteley Lane, Sheffield, S10 4GL	South Yorkshire Chaplaincy and Listening Service 07903 899751 <a href="mailto:sycls@sycls.co.uk">sycls@sycls.co.uk</a>

## Neighbourhood Watch

Summer (joke) has arrived, they say, but unfortunately it does not mean the criminals are on holiday, often quite the opposite. Whilst we are sweltering under a heat wave, leaving doors and windows open to let in some air, it often means letting the sneak thieves in at the same time. Not that we have too long a summer to start with but still a time to take precautions to protect our properties. While always a problem our area has not been plagued by the rash of burglaries and theft that most of the South West area is suffering. Shop lifting is still the largest crime in our area with 49 incidents at the Bradway Sainsbury's this year.

Our current incidents revolve around vehicle theft or theft from vehicles. Our local Inspector informs me that they have had a recent rash of high performance BMW & Audi/VW cars being stolen: a change from the regular stolen Range Rovers. Unmarked patrols are taking place on a regular basis to try to catch the criminals. Ensure you lock your vehicles and if left out overnight that remote key fobs are protected in a RFI wallet or even a tin box. This will prevent the fob signal being scanned to unlock the doors and turn off the alarm.

Quite a few of you will be aware of the scams which are a particular nuisance if not financially damaging. Almost everyday I receive messages from our members about a suspected scam telephone call or email. Remember neither your bank or credit card company will phone you to say there is suspicious activity on your account. Most will send you a text message informing you of a transaction giving you the option to confirm you made the transaction or not.

If you receive such a call/email, the scammers never say which bank they are calling from, they will try to get you to provide that plus your account details. Do NOT provide any account details to the caller, put the phone down to cut off the call and if you are concerned at all, contact your bank or credit card company using the telephone number on the rear of your bank/credit card.

Another of the common scam calls comes as a recorded message claiming they are from Amazon regarding unusual purchases on your account, telling you to press button 1 to connect to the fraud department. Again disconnect the call and check your Amazon account on line to confirm that the call was bogus. I always screen my calls by listening to the caller until my answer phone clicks on, the scammers and cold callers always disconnect themselves as soon as it connects.

There is also a relatively new threat where the scammers are somehow using telephone numbers which show up as Sheffield numbers, trying to con you into thinking it is a local call from someone you may know. I have had a couple of those but the most recent funny call was to one of our members supposedly from Amazon but was apparently coming from his own number! If in doubt just cut off the call.

I have not had or heard of any of our members being involved in a so called 'love scam' but the Scam Detectors programme on BBC shows this to be one of the most prolific scams affecting both lonely male and females who are looking for some new love interest. Should you be in a similar situation the show

highlights some of the things to look out for. Photographs that have been copied from social media - do your own search for the name being used by the contact to check who the photo actually belongs to. Excuses why they cannot meet you personally, problems with passports, requests for a monetary loan, the list goes on. Unfortunately too often the person being scammed is too keen to have a relationship that they do not see the clues or even deny them and end up losing out financially.

It is with regret that I have to notify the membership that we have had to close our website. Increased hosting and internet costs are proving far more than any returns we may achieve as we are an unfunded community group. This, with the bank now charging monthly service charges, is rapidly depleting our funds. We are actively working with Bradway Action Group to have the important details from our site added to theirs, including an electronic version of our membership form. Any resident wishing to join the S17NWA group can email me directly or call me on my mobile.

By the time you read this article we will have had our AGM for S17NWA. All the committee have put themselves forward for re-election, although Gail, our Secretary, has said she would like to stand down if someone else can take over as note taker. Any volunteer can contact me for details of the role and how little it impacts on your time.

*Les Day, Chairman*

*Mob: 07985 424363 email: les\_nhw@hotmail.com*

## Dore and Totley United Reformed Church

**Events coming up later this year Supporting S4C (Sheffield Churches Council for Community Care)**

### Table top sale.

Saturday 28th September, 10am to 12noon.

New and used items for sale. Refreshments and cakes. To book a table please call Margaret on 0114 2311831 or text Elaine on 07929720977



### Jigsaw sale

Saturday 2nd November, 10 am to 1 pm.

Once again we are holding our great jigsaw sale. Refreshments will include bacon or vegetarian butties and cakes.

If you have new or good as new jigsaws to donate please drop off at the URC on Monday

28th October between 2 and 3.30 pm or Wednesday 30th October from 10 to 11.30am



**CHARISMA  
BLINDS**

For  
Windows  
With Style

Sheffield Factory Showroom  
106 PROSPECT ROAD  
HEELEY, SHEFFIELD  
Sheffield (0114) 258 5496  
Rotherham (01709) 512113

## RICHARDS TELEVISION, SATELLITE, VCR, DVD REPAIR OR INSTALLATIONS

- City & Guilds London Inst. Fully Qualified
- Over 25 Years Professional Experience
- Most Makes & Models Repaired. No VAT
- For Prompt, Friendly Service Ring:

**0114 2876806**

Ask for Richard. Ex Bunker & Pratley



## Dore Gilbert and Sullivan Society

Please – when is summer going to arrive? I put a vest back on this month. Four or five degrees below the average! Luckily, Ann and I picked a fairly good week in early June for a week in north Norfolk. I think we've had two really warm days since then. There, that's one moan over.

I thought that I'd heard mention that the Merlin Theatre may become available again but it seems to have come to nothing. The Montgomery Theatre refurbishment is behind schedule but I understand that the fees to use it will double which probably puts it out of reach without making the ticket prices almost on a par with the professional theatres. (Not that we are not good enough – he says).

However, it was revealed at the AGM that the *Iolanthe* performances were so successful that it was thought that the format was worth repeating. So next year the Society intends to undertake *The Mikado*, one of the most popular operettas, as a staged concert version in the same mould as *Iolanthe* earlier this year with costumes but with restricted movements. We are fortunate that Graham Weston, our producer for several years before Covid struck, has expressed an interest in directing it, so it will be a dream team of Graham and Martin Yates leading the Society for next year's show. The shows will be all matinee performances on Sunday 6th April at Crookes Social Club, on Saturday 12th April in Dore Community Hall on Townhead Road and on Saturday 26th April at Whittington Moor Methodist Church. If anyone is interested in joining us, especially young people, rehearsals will begin in early September at Millhouses Methodist Church Hall on Wednesdays at 7.30pm.

More recently, we held our Summer Concert in Dore to a very appreciative audience, smaller than we had hoped for but unfortunately it clashed with the England quarter final, Wimbledon and Baslow Choir's concert. Still, it was reasonably well attended and an extremely enjoyable evening with music from a wide range of shows such as *Les Miserables*, *Fiddler on the Roof*, *Jekyll and Hyde* and *The Sound of Music* as well as popular G&S pieces. For me, the highlight was Mike Tipler, Alex Hayward-Brown and Steve Andrews rendition of *O Solo Mio* (or Just One Cornetto as it ended up), it was brilliant. This concert is being repeated at Wentworth Music Festival in the church on 27th September and at Bolsover Assembly Rooms on October 12th. The quality of the entertainment is always excellent and at prices way below their southern equivalents. Our next outing in Dore will be the Christmas concert which will be in Dore Methodist Church Hall at 2.30pm on Saturday 21st December, but more of that in future editions.



Finally, if modesty permits, I was voted in as President of the Dore Gilbert and Sullivan Society after some 35 years of service. It is very humbling and gratifying to be honoured thus in such a high quality musical organisation, and while it involves little effort on my part, I will keep blowing their trumpet. They deserve it. Please support us whenever you can.

Derek Habberjam

## Shepley Spitfire Friendship Lunch

The Shepley Spitfire Friendship Lunch re-started again last month following a takeover and refurbishment. The new Manager, Gary Marshall, said "It was great to welcome back the local community to the new look Shepley Spitfire for the first of many more Friendship Lunches. Events like this are central to our role as we try to be the best community pub we can be for everyone".

Guests were treated to a delicious two-course lunch and entertainment with the amazing Oliver Harris who goes down a storm at the other Friendship Lunches across South Yorkshire.



Guests enjoying the event at the Shepley Spitfire

Lisa Abbot, General Manager for Twelve Trees Care, said "Twelve Trees are extremely proud to be supporting this fantastic event. It is so important for communities to have these groups to encourage social interaction, especially for people who are unable to get out as much as they would like. We often receive positive feedback from people attending who tell us how much they enjoy it and look forward to the next event".

Kathy Markwick, Freelance Community Consultant, who launched 'dementia friendly' events 10 years ago when she joined the care sector having worked for HSBC for 34 years, said she was beyond delighted that Gary had reinstated the Friendship Lunch which started at this venue two years ago.

Gary's first event last month was a huge success with around 50 guests and a superb performance by Oliver Harris. Oliver is back again on Friday 26 July - and thereafter the event will be held on the last Friday of every month. Tickets must be booked in advance by calling the venue on 0114 236 0298.

Kathy added "We are extremely grateful to Age UK Sheffield, People Keeping Well and Sheffield City Council's Local Area Committee for their support with this Friendship Lunch and those at the Ball Crookes (1st Tuesday of the month), Crosspool Tavern (2nd Monday) and the Sportsman Crosspool (third Friday). We would also like to thank Jay Bhayani, MD Bhayani HR & Employment who sponsor events on a monthly basis and to poster sponsors, Twelve Trees Care, Norrie Waite Slater Solicitors and SCCCC."

For queries or to discuss hosting or sponsoring a Friendship Lunch please contact Kathy on 07729 528 844 or email [kathymarkwick@gmail.com](mailto:kathymarkwick@gmail.com)

Kathy Markwick  
Freelance Community Consultant



## Walking the Dog

**RONY** It's an upside-down-and-in-and-out-the-dusky-bluebells quiz AGAIN!

**SALLY** It was very confusing last time. Can you kindly try to explain what an upside-down-and-in-and-out-the-dusky-bluebells quiz is?

**RONY** Yes. Instead of me asking the questions I give you the answers.

**SALLY** Does that make sense?

**BLUE** No.

**SALLY** Try again.

**RONY** I say the answer first, and you answer it with any question that it might be the answer to. Everybody has a turn, but they can't have the same question as each other.

**SALLY** Are you sure you've taken your pills?

**BLUE** He's making another dog's dinner Sally.

**SALLY** Let's get on, or the Head Eater will run out of paper

**BLUE** Can you make him say it again, how it all works Sally?

**RONY** Here's an example of an answer — Lemont. All you each have to do now is give me a question or questions that Lemont is an answer to.

**BLUE** Is it - which road do Rony, Sally and I live on?

**RONY** Yes! But the question now is - can Sally think of another answer to the question that Lemont is also an answer to?

**SALLY** (*tetchily*) Is it -the name of which road means "the mountain" in French?

**RONY** Yes!

**HEAD EATER** The question/answers are on page 98. And now we must get on with this back-to front-quiz before we run out of space.

**BLUE** Can we please have one more practice to help our reader get what's going on before it does?

**HEAD EATER** Yes.

**RONY** Yes! And the answer this time is -yes! So now give me a question that yes is the answer to.

**SALLY** Is it your bedtime?

**RONY** Yes - no, I mean yes is the answer, but no it's not.... I need a drink.

**SALLY** What's new?

**BLUE** Let's just play and see if it's as daft as it sounds then we can all go in Greenoak Park and bite someone and then have a poo.

**HEAD EATER** Are you sure I haven't published all this rammel in my *Totley Independent* before?

**BLUE** Yes, but nobody minds now you're free.

### TWENTY ANSWERS (but what are the questions?)

- 1 Health and Efficiency magazine.
- 2 Cobblers.
- 3 Because Blue got his greyhound boot back after he'd lost it in Greenoak Park.
- 4 We had segs in ours. Elvis's were green suede. The Beatles had rubber ones.
- 5 Neither Old Smellor, nor Ben Barrett could, any more. But Bert Shirt was still trying sometimes.
- 6 35448 in the Co-op.
- 7 Consilio et Animis, Rerum Cognoscere Causas.
- 8 Spike, Nipper, Cracky, Perks, Podge.
- 9 Miss Furtado.
- 10 Old Adamson, Old Linfoot, Old Smellor and Mrs Stubbs
- 11 45 17 97 98 218
- 12 A lion rampant gorged with a collar.
- 13 Tha's nesh thesen dearn, owd love.
- 14 Janet and John had a dog in the book, whereas me

and Janet Smith didn't. But we did kiss once in the air raid shelters at All Saints by mistake.

- 15 Because you'd think All Saints School being so clever, would put a comma in between the t and the s or after the s.
- 16 He used to sprinkle them with vinegar then wrap them up in the *News of the World*
- 17 They were called the Buffs but they were really the Fraternity of Aunty Diluvian Buffaloes, since 1822. They probably still go in the Cross and pretend to be buffaloes till closing time.
- 18 Gary at the Shepley.
- 19 Because his *Independent* is spelt with two e's, but dependant isn't.
- 20 637.70, ask in Totley Library

Rony Robinson

## Activ's 'Pain Killers' take 2nd place Trophy!

Activ Physiotherapy's staff and friends certainly had fire in their bellies when they entered the first Theo's Dragon Boat Race on Sunday June 2nd. From this fundraising event the Activ team raised over £1400.

All competitors were fundraising for thousands of children who are championed and supported by The Children's Hospital Charity every day of the year.

This year's inaugural dragon boat race event, named after Sheffield Children's Hospital's friendly mascot bear, is to raise funds for the build of a much-awaited National Centre for Child Health Technology (NCHT) which will benefit children from across Sheffield and the UK.

Activ's team, 'The Pain Killers', won all the heats and semi-final and exerted extra paddle-power in the final when they were up against strong opposition - Team Nick - to propel their ornately carved dragon boat across 200m of water at Manvers Lake, Rotherham.



Despite their best efforts, the determined team came second. It was a close race as they finished in 1:04:29 compared to Team Nick's winning 1:03:03.

Totley's Activ Physiotherapy Director Andy Okwera said: "It was a fantastic day in the sun. I am so proud of the team. We did so well working together in the dragon boat. Only losing by a second to an all male team is a great achievement. They were rowing in honour of a friend that had passed away, so they are definitely worthy winners and we are so pleased for them and applaud them!"

TCHC's Events Fundraising Manager Emily Beahan said: 'We are delighted to have staged our first Theos Dragon Boat Race and have been delighted by the support from local companies and teams. The funds raised from this event will go towards building our new world class facility on the Sheffield Olympic Legacy Park.'





## Transport 17

Well, we are more than half way through 2024, the year that Transport 17 is celebrating 40 years of serving the community, and enabling older and isolated individuals to get out and socialise with others within their local area.

We wanted to start this month's article by expressing some thanks to local individuals and community groups. On Saturday 15th June, it was our pleasure to join Totley Library and Totley All Saints Church in celebrating our joint 'birthday' year and the volunteers who make our organisations a success, with music from the Wisewood Prize Band. Thank you to all those who joined us. By happy coincidence, June 15th just happens to be the day 40 years ago that the first minibus was handed over to Transport 17! After a significant community effort to fundraise the £5,000 to match the funding from Help the Aged, Transport 17 began providing accessible transport to those who wouldn't otherwise have been able to get out.

It was an unexpected surprise to receive a small legacy from Jim Martin's estate recently. Many of you will have known him better as Jimmy, and may have visited Martin's newsagent and sweetshop at the bottom of Busheywood Road. Not knowing anything about him, we have enjoyed finding out some information about Jim's life and history, helped immensely by the TI article written by Jeanne Clark following his passing in November 2022. Martin's shop was a meeting place for people, where all were made to feel welcome. Jim was also an amazing source of local knowledge and an active member of Totley History Group. As a loyal and hardworking member of Dore and Totley United Reformed Church, Jim came into contact with Transport 17, as he helped at the lunch club, becoming familiar with the service they provided.

Thank you also to Our Lady & St Thomas Outreach Group for their donation (£300) following the annual Cakes and Cuttings event in May, and to Outram Fields Care Home who held their Summer Party in mid-July, raising just over £400 for Transport 17. This £400 could fund:

- Two MiDAS training courses for our volunteer minibus drivers, or
- six new tyres for our minibuses, or
- fuel to drive all 3 minibuses for just over 1 month, or
- 1% of the cost of purchasing a 5yr old second-hand fully accessible Peugeot Boxer minibus!

### New Minibus

Some of you who are familiar with our buses at T17 will be aware that they are an aging bunch, with one being 19 years old, one at 14 years old, and the Spring chicken of the bunch at 8 years old. We are increasingly finding that we are spending large amounts on repairs on a much more frequent basis, and the reliability of one of them is questionable. In fact, in the last 3 months from April to June, we have had to

cancel 10% of our journeys as a result of one or more buses being out of service. The time has come for us to replace at least one bus and after much research, we have decided to purchase a second-hand bus. There are several reasons for this, the two main ones being (a) the lead time for new minibuses can be 9 – 12 months and even then, organisations often wait a lot longer due to delays in manufacturing, and (b) the cost.

Back in 1983/1984, when Rev. Alan Jockel launched the fundraising drive to raise £5,000 (50% of the initial capital cost of a minibus), they reckoned the cost to be less than 30p per head for everyone living in the area. Today, with an estimated 15,000 adults living within the S17 postcode, we reckon if every adult contributed £2.50, we would be within touching distance of the £40,000 needed to purchase a 5-year-old second-hand minibus, with a low mileage, and fully converted to make it accessible (for example, with a tail lift). So, look out for our fundraising initiatives over the next few months as we aim to raise the funds to purchase a replacement minibus. If you would like to hold an event to support our fundraising efforts, we would love to hear from you.

Purchasing a replacement minibus will enable us to continue to provide a service to those older and vulnerable members of our community, and a more reliable and consistent service as we see the demand for our service increase. In 2023 we had to decline four requests for accessible group transport. In 2024, in the first 6 months alone, we have had to decline nine requests from new groups needing accessible transport to enable their members to attend. Please help us to help them, and a small proportion of those ½ million older people who go at least 5 or 6 days a week without seeing or speaking to anyone at all.

As always, we can be contacted on 0114 236 2962, by email at [admin@transport17.co.uk](mailto:admin@transport17.co.uk), or via our Facebook page – Transport17Ltd

## Regular events at Totley Library

### Monday:

**French lessons for children** following the award winning course material from La Jolie Ronde. After-school classes are available for children in the children's library: 3.40pm – Y5/6; 4.10pm – Y3/4; 4.40pm – Y1/2; 5.30pm – Y4/Y5  
Contact Joanna on 07854 148809 or email [speaquesheffield@gmail.com](mailto:speaquesheffield@gmail.com) to find out more about local availability for French language classes.

**Friends of Gillfield Wood**, occasional Mondays, 7.30pm onwards. Talks on local nature and conservation. See posters, the FoGW article in this issue, or [www.friendsofgillfieldwood.com](http://www.friendsofgillfieldwood.com)  
**Councillors' Surgery**, 2nd Monday of the month, 6–7pm

### Tuesday:

**Baby Time** 1.30–2.15pm (term times only). Come along to meet other parents/carers and babies. We sing simple songs, have fun and allow time to chat.

**Friends of Dore and Totley Station** Occasional Tuesdays, 7.30pm. See [www.FODATS.net](http://www.FODATS.net)

### Wednesday:

**Coffee Morning**, 10.30 – 12noon

**Story Time** for toddlers and pre-school children from 10am – 11.30am (except school holidays). Children can take part in weekly themed craft activities, sing songs and listen to a story. £1 donation per child greatly appreciated.

**Health Walks**, 10.30am, meet at Library. Contact Step Out Sheffield on 07505 639524 or email [stepoutsheffield@gmail.com](mailto:stepoutsheffield@gmail.com)

**Totley History Group**, usually last Wednesday of the month, 7.30. Talks on matters of historical interest. Check posters, the Totley Independent Diary, or [www.totleyhistorygroup.org.uk](http://www.totleyhistorygroup.org.uk)

**Yoga sessions** 7.00 – 8.30pm, Wednesdays (except the last Wednesday of the month). For more details call Ann Zielonka on 0114 2361585 or 07929 736966. Beginners welcome. You are advised to call Ann to check that the sessions are taking place.

### Thursday:

**Thursday Morning Natter** 10.30 – 11.30. Hot drinks and good company - for people aged 60 or over.

**Chair Aerobics** 12noon for 45–60 minutes. An Age UK and People Keeping Well weekly exercise class. £4 per week - no need to pre-book, just turn up.

### Saturday:

**Regular second-hand book sales.** Check CRIC website: <http://www.totleycric.org.uk/>

**Very Helpful Licensed Waste Removal**

We offer single item or part house clearance services

We collect for disposal/recycle sheds, garage or outbuilding contents

We also do single item removals or collections

We don't collect beds or sofas

**07720 845 326**

Text now for more details

Karl Nuttall-Allsop 23 South Street North S43 2AA

E mail [veryhelpfulman@yahoo.com](mailto:veryhelpfulman@yahoo.com)



## TOTLEY & DISTRICT DIARY

<b>MONDAYS</b>	<p><b>AGE UK FITNESS</b> Dore &amp; Totley United Reformed Church, 1.30-2.30 pm. Contact Community Wellness Service - 0114 553 7807</p> <p><b>GUIDES</b>, All Saints Church Hall, 6.45pm-9pm</p> <p><b>SLIMMING WORLD</b> Totley Rise Methodist Church, 5pm and 7pm. Call Sarah on 07577 070797</p>
<b>TUESDAYS</b>	<p><b>PILATES</b> The Old School, Dore, 9.30-10.30am. Phone Sally Kilner 07917 762502</p> <p><b>TOTLEY OPERATIC AND DRAMATIC SOCIETY (TOADS)</b> meets 7.30pm to 10pm, in the Guild Room, St John's Church, Abbeydale Road South. For more information call 0114 2351206</p> <p><b>BABY TIME</b> Totley Library, Tuesday 1.30-2.15pm (term-times only). Come along to meet other parents/carers and babies. We sing simple songs, have fun and allow time to chat</p> <p><b>SHEFFIELD MARQUETRY GROUP</b> 10am-12noon, St Oswald's Church Crypt, Bannerdale Rd. Small friendly group - beginners welcome. For information phone Graeme 07947 127909 or Pat 0114 2819915</p> <p><b>KNIT, NATTER, CRAFT &amp; CHATTER</b> Totley Rise Methodist Church, 12 noon-3pm</p> <p><b>JAZZ IN THE AFTERNOON</b> 1.30-3.30pm, Totley Rise Methodist Church Schoolroom. A weekly afternoon of all forms of recorded jazz, plus discussion. Tea, coffee and biscuits available</p> <p><b>YOGA CLASS</b> 1.15 - 2.45pm at Dore and Totley United Reformed Church. Contact Rachel (qualified level 4 BWY teacher) 07708 996984 or yogaq@hotmail.co.uk</p> <p><b>WELCOMING PLACES COFFEE MORNING</b> open to all, Totley Rise Methodist Church, 10am to 12 noon</p> <p><b>TAI CHI</b> Dore and Totley United Reformed Church 4-5 pm. Contact Bernice on 07999 617387</p>
<b>WEDNESDAYS</b>	<p><b>PILATES CLASSES</b> Dore &amp; Totley United Reformed Church, 9.00-10.00am and 10.15-11.15am. Contact Caroline tel: 0781 722 0324, email Carolinenorth1@me.com, www.pilatescarolinenorth.co.uk</p> <p><b>CARERS' CAFE MONTHLY</b> Dore &amp; Totley United Reformed Church 10-11.30 am. Contact Jan Outram 0114 278 942</p> <p><b>COFFEE IN THE LIBRARY</b> 10.30am-12.30pm. Come and have a coffee and a chat</p> <p><b>STORY TIME</b> for toddlers and pre-school children at Totley Library from 10am - 11.30am (except school holidays). Children can take part in weekly themed craft activities, sing songs and listen to a story. £1 donation per child greatly appreciated</p> <p><b>TODDLER GROUP</b> 10am-11.30am, All Saints' Church Hall. Details tel. Liz Hayden 07969 826464</p> <p><b>HEALTH WALKS</b> 10.30am, meet at Totley Library. Contact Step Out Sheffield on 07505 639524 or email stepoutsheffield@gmail.com</p> <p><b>YOGA CLASS</b> 6.30 - 8pm at St Johns Church Hall Totley. Contact Rachel (qualified level 4 BWY teacher) 07708 996984 or yogaq@hotmail.co.uk</p>
<b>THURSDAYS</b>	<p><b>RHYTHM TIME</b> Baby, toddler &amp; pre-schooler music sessions 9.00-11.30 Details Email: beth.w@rhythmtime.org Phone/WhatsApp: 07748 589468 To book: <a href="https://rhythmtime.net/find-a-class">https://rhythmtime.net/find-a-class</a></p> <p><b>ROCKCHOIR</b> United Reformed Church, Totley Brook Rd, 11.30-1pm. See <a href="http://www.rockchoir.com">www.rockchoir.com</a> or call 01252 714276</p> <p><b>CHAIR AEROBICS</b> Totley Library, 12-12.45pm with Laura. An Age UK and People Keeping Well weekly exercise class. £4 per week, no need to pre-book, just turn up.</p> <p><b>SOCIAL CLUB</b> Dore and Totley URC fortnightly 2.30-4.30 pm Contact Alison Holden for information 236 0441</p> <p><b>PUSHCHAIR CLUB</b> Totley Rise Methodist Church Hall, 10.30-12noon. Tel. 07912 352543 for details</p> <p><b>PILATES CLASS</b> run by qualified Pilates Instructor/Physiotherapist for all abilities and ages. 1.30-2.30pm,</p>

## AUGUST

**SUN 11th MINIATURE TRAIN RIDES** Children's Hospital Charity day when **THEO the bear visits us**. All ticket sales will go to the charity. 1pm - 5pm - Abbeydale Road South. £2 per ride per person. Car park closes 5pm. See [www.sheffieldmodelengineers.com](http://www.sheffieldmodelengineers.com)

**WED 14th TOTLEY PROBUS CLUB** 10am in Room 1, Totley Rise Methodist Church. Talk by John Kirkman entitled "Travels and Wildlife in Brazil and Botswana". Guests are always welcome - we are always looking for new members.

**SUN 25th MINIATURE TRAIN RIDES** 1pm - 5pm - Abbeydale Road South. £2 per ride per person. Car park closes 5pm. See [www.sheffieldmodelengineers.com](http://www.sheffieldmodelengineers.com)

**SAT 31st TOTLEY LITTER PICKING MORNING** 10-11am. Equipment provided. This activity is done at participants' own risk. Children must be accompanied by an adult. Meet Baslow Rd, outside Totley Library. All welcome.

## SEPTEMBER

**SUN 8th MINIATURE TRAIN RIDES** Annual exhibition of our members' work, plus visiting locos and trade stands. 1pm - 5pm Abbeydale Road South. £2 per ride per person. Car park closes 5pm. See [www.sheffieldmodelengineers.com](http://www.sheffieldmodelengineers.com)

**WED 11th TOTLEY PROBUS CLUB**, 10am, Room 1, Totley Rise Methodist Church. Talk by Farouk Kardahji entitled "From the Nile to Damascus - a Personal Journey". Guests are always welcome - we are always looking for new members.

**WED 18th DORE GARDEN CLUB** "Seasonal Jobs in the Garden", hosted by Jeff Bates, Lecturer, Garden Designer, Horticulturist. Dore Methodist Church, 7.30pm. Visitors £4 at the door.

**SUN 22nd MINIATURE TRAIN RIDES** 1pm - 5pm Abbeydale Road South. £2 per ride per person. Car park closes 5pm. See [www.sheffieldmodelengineers.com](http://www.sheffieldmodelengineers.com)

**WED 25th TOTLEY HISTORY GROUP** David Templeman, "(Further) Ancient Suburbs of Sheffield", 7.30pm, Totley Library. Non-members welcome.

**SAT 28th TOTLEY LITTER PICKING MORNING** 10-11am. Equipment provided. This activity is done at participants' own risk. Children must be accompanied by an adult. Meet Baslow Rd, outside Totley Library. All welcome.

## Brambles Landscapes

Fencing, Gates & Garden Bars Installed To Last

NEW for 2022: Licensed driveway moss & weed control



Established 12 Years All Installations Guaranteed 10 Years

Karl Nuttall-Allsop 23 South Street North S43 2AA

Text or Call for a quote **07720 845 326**

[veryhelpfulman@yahoo.com](mailto:veryhelpfulman@yahoo.com)

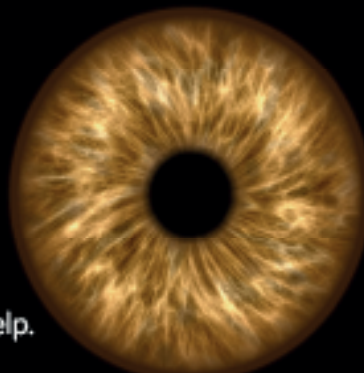


# Dore Optician

Ian Truelove BSc(Hons) MCOptom      Family Optometrist  
Personal and Professional eye care for all the family

Ian and Tina Truelove have refurbished Dore Optician with the very latest technology

- Hospital-quality 3D OCT imaging allows earlier detection and diagnosis of many eye problems.
- Hundreds of frames to choose from for all the family, covering a wide range from £10 to designer.
- Home eye tests available if you are unable to leave the house without help.



- Digital retinal photography.
- ReadEZ: Coloured overlays and Enhanced reading assessments for those with reading difficulties or visual stress.
- Free comprehensive hearing assessments now available.

➤ Free NHS and private eye examinations – hourly appointment slots, never feel rushed.

Please contact the practice for more information, or pop in for a chat.

25 Townhead Road, Dore, Sheffield, S17 3GD

Tel: 0114 3273737

Email: [enquiries@dore-optician.co.uk](mailto:enquiries@dore-optician.co.uk)

Web: [dore-optician.co.uk](http://dore-optician.co.uk)



Providing NHS services and registered with the Association of Optometrists, College of Optometrists, General Optical Council

## S17 DECORATORS

### PAINTING & WALLPAPERING



TRUSTED LOCAL RESIDENT  
WITH REFERENCES.  
FULLY INSURED.  
HIGH QUALITY PAINTING AND  
DECORATING ACROSS SHEFFIELD  
AND NORTH DERBYSHIRE.  
35 YEARS EXPERIENCE.

★★★★★

"THANKS FOR ALWAYS GIVING US SUCH A PROFESSIONAL  
FINISH WHEN YOU DECORATE FOR US."  
MRS AL (MILLINGHAMS)

"THANK YOU FOR AN AMAZING JOB.  
WE KEEP RECOMMENDING YOU!"  
MR & MRS D. (BRADWAY)

"WE HAVE COME TO CONSIDER YOU AS A FRIEND"  
MR S. (DORE)

"YOUR DECORATING WORK IS SPOT ON - SO QUICK  
AND EFFICIENT TOO! WE RELY ON YOU NOW."  
MRS A. (DORE)

"YOU'VE DONE A MARVELLOUS JOB DECORATING  
THE OUTSIDE OF OUR HOUSE"  
MR & MRS W (DORE)

## CALL JULIAN TODAY!

07905 523499 OR 0114 2369664

JULIANCROOKES@GMAIL.COM  
LONGFORD ROAD, BRADWAY, S17 4LP

FIND ME ON FACEBOOK



Est 1971

## R.S. HEATING & BUILDING CO.

### Heating division

Experienced installers of all types of domestic  
boilers. Authorised installers of Vaillant, Worcester  
Bosch and Glow Worm boilers.

Full after sales service dept.

### Plumbing division

Bathrooms, showers, wet rooms,  
individually designed washing rooms  
for the disadvantage a speciality.

A complete service, from design  
to even laying a new floor surface

### Building division

Kitchens, complete House renovations including  
general building, joinery, plastering, tiling,  
electrical, decorating etc.

88 Sunnyvale Road, Sheffield S17 4FB

Tel: 0114 2364421

[enquires@rshb.co.uk](mailto:enquires@rshb.co.uk)

[www.rshb.co.uk](http://www.rshb.co.uk)





**ACTIV**  
PHYSIO

Call us on **0114 235 2727**  
to book now!

Evening & Saturday appointments available

Say Goodbye to aches & pains and make an appointment with our team of friendly Physiotherapists at our **Totley Clinic**

- Back & Neck Pain
- Headaches
- Joint & Muscle pain
- Post Operative Rehabilitation
- Sports Injuries & Massage
- Women's Health Issues
- Acupuncture
- Home Visits & much more...

**Open**  
**Monday - Saturday**  
**5\* Google rating**

E: [admin@activphysiotherapy.co.uk](mailto:admin@activphysiotherapy.co.uk)  
W: [www.activphysiotherapy.co.uk](http://www.activphysiotherapy.co.uk)  
A: 88, Baslow Rd, Totley, Sheffield, S17 4DQ

**Scrivens Quality Greengrocer**

Free delivery service available 6 days per week

Mark Billingsley - Owner 37 Baslow Road  
Home Delivery - 0114 2367116 Sheffield S17 3DL  
Trade Enquiries - 07885 866376 [scrivensyou@gmail.com](mailto:scrivensyou@gmail.com)

# Millthorpe Nursery

## Gaps to fill?



It's been a challenging year in the garden and now's the time to sit back and enjoy it.

But perhaps you still need that little something to finish it off? We can help you fill those holes and get your garden set for the rest of the year.

**Millthorpe Lane, Holmesfield, S18 7SA**



**01142 890334**



**Open Wednesday - Sunday 10am - 4pm**

**Oven Wizards®**

*We clean your oven...so you don't have to*

Call today to have your oven, hob, extractor or Aga professionally cleaned by Pippa Weir! Pippa's contact details are:  
**Tel 0114 258 3466 or mobile tel. 07716 992648**  
[www.ovenwizards.com](http://www.ovenwizards.com)

**Editor: Phil Harris**  
Tel. 07956 858944 or email:  
[editor@totleyindependent.co.uk](mailto:editor@totleyindependent.co.uk)  
**Advertising: John Perkinson**  
Tel. 236 1601 or email:  
[advertising@totleyindependent.co.uk](mailto:advertising@totleyindependent.co.uk)  
**Proof reader: Margaret Spencer**

We welcome items submitted for publication, which may be left at or sent to 'Totley Independent', 2 Main Ave, Totley, Sheffield S17 4FG  
**[www.totleyindependent.co.uk](http://www.totleyindependent.co.uk)**

Printed in the UK by  
The Magazine Printing Company  
using only paper from FSC/PEFC suppliers  
[www.magprint.co.uk](http://www.magprint.co.uk)

## 'Totley Independent' for October/November

The next issue of the *Totley Independent* will be published on

**Saturday 28th September**  
**COPY CLOSE DATE for this issue**  
**will be**  
**Saturday 7th September**

Published by Totley Independent CIC. Totley Independent is a registered Community Interest Company, number 07750166. We welcome letters about local affairs and will publish as many as possible. Items will not be considered that are submitted anonymously. The views expressed are not necessarily those of the editor or the editorial staff and must not be attributed to them. © Totley Independent 2024