

Totley Independent

Published continuously since 1977

www.totleyindependent.co.uk

June/July 2024

No. 428



Great way to spend a school morning! Children from Totley All Saints Primary School being trained in cycling skills by Cycle North. See story on p.3

New City Councillor for Totley

Councillor Martin Smith writes: Congratulations to Rebecca Atkinson on her election to the City Council in May. Bex (as she is known) will be a fantastic Councillor for Dore and Totley ward and has already got stuck into casework, helping residents who are having problems with local services. We also want to thank all of the unsuccessful candidates for the way in which they fought the election. Locally at least it was a dignified and well-mannered campaign which reflected well on our community.

As we welcome Bex to the City Council, we also recognise the outstanding support that our long-time friend and colleague Colin Ross has given to the local community. Colin has been a Councillor for 26 years and recently served as the 126th Lord Mayor of Sheffield. He did not seek re-election this year and is looking forward to a well-earned break. We wish him well in whatever he decides to do next. One thing is for sure - he will continue to speak up for Totley and the

surrounding area.

At the Council AGM, Martin was re-elected Chair of the Economic Development and Skills Committee, and Joe was re-elected to lead Waste and Streetscene.

One of the issues that Bex is following up is Housing. We have all seen a significant rise in casework related to Council House repairs, many of which have been weather and damp related. While the local authority cannot control the weather it does have a duty of care to ensure that the people it houses have decent living conditions, and any remedial work should be carried out as quickly as possible. Do get in touch if you are experiencing significant delays with repair work and we will contact the housing department on your behalf.

Planning is also high on the list of local issues, particularly for sites in the Green Belt. As we reported in the previous *Totley Independent*, an application for a major development on (continued page 4)

UKRAINE HUMANITARIAN APPEAL

Apart from donating food, blankets and other essentials through local churches and other organisations, you can help by sending money to the Disasters Emergency Committee at any Post Office, or online at DEC.org.uk



**DISASTERS
EMERGENCY
COMMITTEE**

Est 1971

R.S. HEATING & BUILDING CO.

Heating division

Experienced installers of all types of domestic boilers. Authorised installers of Vaillant, Worcester Bosch and Glow Worm boilers.

Full after sales service dept.

Plumbing division

Bathrooms, showers, wet rooms, individually designed washing rooms for the disadvantage a speciality.

A complete service, from design to even laying a new floor surface

Building division

Kitchens, complete House renovations including general building, joinery, plastering, tiling, electrical, decorating etc.

88 Sunnyvale Road, Sheffield S17 4FB

Tel: 0114 2364421

enquires@rshb.co.uk

www.rshb.co.uk



Millthorpe Nursery

Bring on the colour!



We're looking forward to summer with a colourful range of plants for your basket and bedding displays, plus fantastic shrubs, perennials and dahlias.

Millthorpe Lane, Holmesfield, S18 7SA



01142 890334



Open Tuesday - Sunday 10am - 4pm

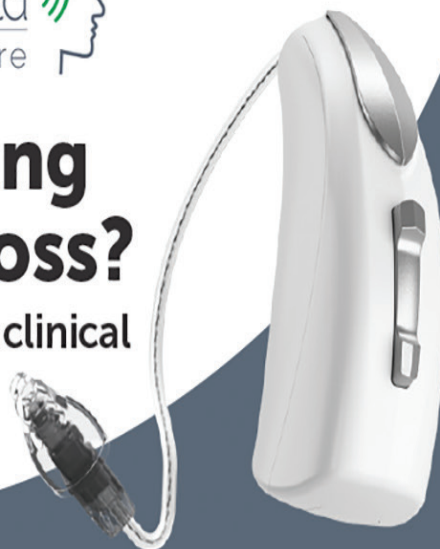
HEARING THERAPY Ltd

Hearing & Tinnitus Care



Are you suffering from hearing loss?

Get in touch with your local clinical audiologist expert today!



Our Services
Hearing Tests
Tinnitus
Treatment
Hearing Aids
Ear Cleaning

**Bupa &
CQC**
Registered

To book an appointment at our Dore clinic, or for further details:

0114 349 3326

hearingtherapy.co.uk
info@hearingtherapy.co.uk

Cycle North boosts cycling confidence!

Our front cover picture shows a group of pupils from Totley All Saints Primary School receiving training from staff from Cycle North.

Cycle North provides two types of activities in schools, Bikeability Training, which is free, and Cycling Activity sessions, which are mostly paid for.

Bikeability in schools builds pupils' cycling confidence and introduces them to riding on the road.

Pupils will have lots of fun during their training and learn core cycling skills at the same time! Cycle North say that "our team have trained over 35,000 pupils over the last three years and our experienced staff will make it easy and simple to arrange training with as little disruption to your school as possible."

Bikeability is now an annual event for year 5 or 6 pupils in many Leeds, Sheffield, Wakefield and Rotherham schools. We are also now seeing a demand from pupils, parents, and high schools, across the cities for advanced Level 3 training.



Singing Teapot Choir

Wondering if you've heard of the Singing Teapot Choir? We meet every Tuesday morning in term time at Dore & Totley United Reformed Church. Come and sing with us!

And in case you're wondering, it's 'Singing Through Each Age People Of Totley' (and Dore!)...TEAPOT!

We're a small and friendly bunch who sing with our established community Choir leader, Yo Tozer-Loft (YoyoSongShop Website/YouTube/Instagram) and our trusty piano accompanist.



We're in our 4th year of Community Singing and join with Yo's other choirs for fun, optional performances twice a year

Everyone is welcome to our choir - no singing experience or ability to read music is necessary - we're a 'Natural Voice' choir, using songbooks with lyrics but learning tunes and simple harmonies by heart.

The Choir was set up by Age UK just before lockdown as an intergenerational project linked to a school with a view to singing together monthly. We have high hopes of returning to this model! Watch this space!

The Singing Teapot Choir is a 'People Keeping Well' project - a social prescribing initiative that recognises the power of

community music making to enhance healing, wellbeing and joy!



The cost is £5 per session and each session starts with a cuppa from 10am, then singing for an hour at 10.30. We are currently learning 3-part harmony songs from the film 'O Brother Where Art Thou'.

Our end of term concert will be at St Mary's Bramall Lane on Friday 5th July at 5pm. All welcome!

Do visit us any Tuesday in June with a view to joining us properly in September!

If you have any enquires call Yo Tozer-Loft
07925 634 420

Letter to the Editor

Joan Woodman of Bradway writes:

I recently visited Morrisons supermarket to do a fortnightly shop. Arriving at the cashier with four bags of shopping, I found that for some reason my credit card wasn't accepted. The cashier explained that it was just a security check, and that I needed to put in my PIN number. Now, I am a widow in my late 80s, and not in good health. At this point I panicked, and couldn't remember the PIN number as I seldom use it.

The supervisor then suggested getting cash from the machine. He kindly accompanied me to the cash machine (I took his arm as I had only taken one walking stick with me). But further disaster awaited, as the cash machine indicated that no money was available. By this time I was really very fraught. I told the supervisor that he had better empty my four bags of shopping, as I couldn't pay.

And then another cashier, aware of my predicament, said "I will pay"! I couldn't believe my ears - here was a complete stranger offering to pay for nearly £40 worth of shopping! I replied that I couldn't possibly accept that. But she insisted, and in the end I accepted her kind offer only on condition that she gave me her name and address so that I could repay her. A dangerous thing to do these days! However she agreed and I came home with my shopping, and my son was able to deliver the cheque to her the next day.

In these days when there are so many dishonest people, and such a variety of scams, with elderly people being particularly vulnerable, I feel overwhelmed by the extreme kindness of the help given to an old lady who was in distress.

Thank you dear lady, and other members of Morrisons staff who were extremely helpful and sympathetic.

I just want to broadcast some good news for a change!

Joan Woodman



GWS

Technology Solutions



PC Problems, Repairs, Servicing, Setup No Job Too Small
Wireless & Internet Setup Apple Macs Data Transfer
New PC's, Laptops, Upgrades Tuition Safe PC Disposal
Tablets, iPads, iPhone, Setup & Tuition Smart TV, Media box
Wireless/Airprint printers Wireless/ Internet boosters

**** For All Your PC & Technology Needs ****

Guy Senior

Phone: 0114 2352662 Mobile: 07890030453

Email: guy@gwstech.co.uk

Web: www.gwstech.co.uk

GWS, 5 Conalan Avenue, Bradway, Sheffield S17 4PG

New City Councillor for Totley (from page 1)

the Dore Moor Garden Centre site was rejected by the Council, though the developer still has the right of appeal to the Planning Inspectorate. We also expect an application to come forward for development on the HSBC Sports Club site in Dore, following its sale to Sheffield United. This has led to some uncertainty over the use of existing facilities by community sports clubs, so please let us know if this might have an impact on any clubs based in Totley. We also continue to monitor the situation regarding the Dyson site on Baslow Road. This planning application was submitted to the Council on 5th July 2023 and (at the time of writing) no decision has yet been made.



Left to right: Councillors Martin Smith, Joe Otten and Rebecca Atkinson, with Lib Dem Group Leader Shaffaq Mohammed

An unexpected and unwelcome item in our inbox was the extraordinary announcement by Network Rail that the long-running Hope Valley upgrade project will not be delivering a more frequent train service between Sheffield and Manchester after all. This was a key commitment in the original business case and the decision to drop it only became public a week before work on the line was due to be completed. Improving transport connections between major cities is widely accepted to be a major driver of economic growth. Simply dropping it quietly without consulting key stakeholders (like the Council) was frankly disgraceful.

As ever, please contact us with any questions or feedback about Council services, or come and meet us at one of our regular surgeries. These are held at on the 2nd Monday of the month at 6pm in Totley Library, and the 2nd Saturday of the month at 10.30am in Dore Old School.

martin.smith@councillor.sheffield.gov.uk

joe.otten@councillor.sheffield.gov.uk

rebecca.atkinson@councillor.sheffield.gov.uk



Transport 17

Transport 17 celebrated 40 years of serving the community, supporting older, isolated individuals at our Spring Fayre/Celebration event on the 23rd March at Dore Old School. We would like to say a big thank you to all those individuals who helped in the preparations and the planning for the

event, as well as those that came and celebrated with, and supported, Transport 17 on the day.

In particular, the generosity of Ruth and her volunteers from Dore Old School was integral to the success of the event – thank you. A big thank you also to the Seven Hills Jazz Quintet who entertained us with their music, the local stall holders who joined us, the volunteers from Sky who provided invaluable help, and all those who donated raffle prizes, Easter chocolate for the bonanza stall, and homemade cakes. It was a pleasure to welcome the Lord Mayor of Sheffield, Colin Ross, and Lady Mayoress. Colin officially opened the celebrations with a short speech and made the first cut into the 'birthday' cake (a cake made by Lynne of the Ironing Parlour, Totley).

Although we didn't set out to raise significant funds at this event with it being more of a time for celebration and ref-

lection, we were fortunate to take home a sum of £850 for Transport 17. This £850 will fund:

- 5 MiDAS training courses for our volunteer minibus drivers, or
- The 10 weekly-statutory safety inspections for ALL 3 minibuses for the next 8mths, or
- 1/5 cost of a replacement tail lift on one minibus, or
- Fuel to drive all 3 minibuses for 2.5months



The Lord Mayor and Lady Mayoress with some of the T17 volunteers and a minibus

Many of the challenges faced by the fledgling Transport 17 organisation in those early years remain similar to those faced by us 40 years on, for example, the availability of regular volunteers to drive the buses and assist the passengers, and of course raising funds.



The birthday cake, with Lynne and Operations Manager Fiona Smith

We look forward to being in touch with, and meeting, many of our supporters (old and new) over this year, learning more about the history of the organisation, and the part played by you and/or friends and members of your family. As always, we can be contacted on 0114 236 2962, by email at admin@transport17.co.uk, or via our Facebook page – Transport17Ltd

Oven Wizards®
We clean your oven...so you don't have to

Call today to have your oven, hob, extractor or Aga professionally cleaned by Pippa Weir! Pippa's contact details are:
Tel 0114 258 3466 or mobile tel. 07716 992648
www.ovenwizards.com

Totley Show 2024

Totley Show 2024 is on Saturday 14 September and we will be using Totley Primary School again for the day. Last year we had an increase yet again in the number of entries, in particular in the children's section which is always good to see. The children are the future of our Show.

With the number of entries now for the Show we have to split them over the two rooms we hire from the School. This helps with the flow of people looking at the entries. This therefore means that the charity stalls will again be based outside on the 'MUGA' area. This went down extremely well last year with the stall holders and gives them more room.



Elsewhere in this issue of the *Totley Independent* is the Entry Form. This gives you a full list of the classes. There is just one change this year. Class 39 used to be Upcycled art or sculpture and we have widened this and called it any Upcycled Item. This category never has many entries and we have tried to widen it to encourage more entries. Why not give it a try!



As usual the entries can be dropped off on the Saturday morning between 8.45 am and 10.45 am. All the entries are then judged between 11 am and 1pm. The school will be open to the general public from 1.30 pm.

There will be refreshments available, as usual, in the dining room. Entertainment, in the main hall, will be provided by the Seven Hills Quintet and a local choir. Last year we were quite short of homemade cakes and buns for the refreshment stall and we would be grateful for any donations that can be dropped off on the Saturday morning between 9am and 12 noon. They are always needed and go down well with the public.

We always have a good number of people who come forward and volunteer on the Friday night before the Show and during Saturday both morning and afternoon but if you can spare an hour to help them please contact me on my email address below. You will be most welcome.

We are well supported by donations from the local shops but if you would like to add to that list by offering a prize for the raffle then please contact me at the email address below.

If you like to sew, paint, bake, grow vegetables, work in wood, photograph or whatever your hobby is, we would love to see the results at your Community Show.

If anyone has any questions please feel free to email me at the address below and I will get back to you as soon as possible.

Hope to see you on Saturday 14 September!

Mick Warwick
Totley Show Chair
totleyshowchair@hotmail.com

Totley Open Gardens

Coming up soon! Totley Open Gardens will happen on Saturday 6th and Sunday 7th July from 1-5.30pm. 14 gardens will be open to the public. Come and get inspiration and ideas from all the different gardens, which range from woodland to small and self-contained.

Refreshments, teas and cakes will be served in two gardens. Plants will be for sale in others, and toilets will be available in some gardens.

Programmes detailing all the gardens will be on sale for £5 at Totley Library in the month before the event and at 202, Baslow Road, S17 4DS on the TOG weekend.

This year the TOG Association will allocate the takings as follows, after a donation of £250+VAT to Totley Beavers:-

Transport 17: 30%

Totley Library: 10%

Totley Scouts: 25%

Cherry Tree Support Services: 35%

Takings from the weekend will be supplemented by takings of £2,438 from two Vintage Fayres, run in October (£689) and March (£1,289) and the Yard Sale (£210).

Let's hope for good weather on the TOG weekend, and lots of visitors to the gardens.

Jennie Street - jennie@hadish.f9.co.uk

RICHARDS TELEVISION, SATELLITE, VCR, DVD REPAIR OR INSTALLATIONS

- City & Guilds London Inst. Fully Qualified
- Over 25 Years Professional Experience
- Most Makes & Models Repaired. No VAT
- For Prompt, Friendly Service Ring:

0114 2876806

Ask for Richard. Ex Bunker & Pratley

PhysioFOCUS

at Totley Rise Dental Practice
85 Baslow Road,
Sheffield, S17 4DP



Physiotherapy treatment available for:

- Back and neck pain
- Sports injuries
- Sprains and strains
- Joint and muscle pain
- Arthritic pain
- Whiplash
- Repetitive strain injury
- Headaches

Appointments: 0114 2360333

Also available:

- Pilates classes
- Pilates 1-2-1
- Golf Fitness Screening
(as used by consultants to UK,
European and Australian PGAs)

For more information please call:

Emer on: 07792 422909

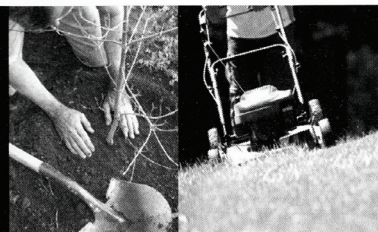
Rachel on: 07956 908454

Tristan Swain

Garden Services and Maintenance

Established 1984

Unit C4 Sheaf Bank Business Park
Prospect Road Heeley
Sheffield S2 3EN
Tel/Fax: 0114 255 4689
Mobile: 07831 802 539
Email: tristan@tristanswain.co.uk



www.tristanswain.co.uk Public Liability Insurance Waste Transfer Licence



Got a computer?

Having Problems?

Is it running slow? Stops responding?
Having problems running the latest games or
applications? Broadband / WiFi problems?

Give me a call!

I am available for home visits at any time
including evenings and weekends. I can also
suggest upgrades to improve performance, or
even build you a system to your specific
requirements.

Phone: 0114 247 2619
Mobile: 078 1746 4703

Tim Brown

Building,
Installation,
Upgrading and
Troubleshooting
Computer
Systems

Over 30 years'
Professional
Experience

Email:
service@timbrownplus.co.uk

TrainwithSuzy

**Train with Suzy offers Personal Training
Focussed on Fitness, Fat loss and Toning.**

**Based in Dore with own Gym. I offer
private sessions individually
tailored to your goals.**

**Call to book your free consultation
07825-167411 www.trainwithsuzy.com**

John Heath & Sons

AN INDEPENDENT FAMILY FUNERAL BUSINESS

Sometime.....

You will probably have the responsibility of making funeral
arrangements. No one looks forward to this responsibility, but the death of a
family member or friend brings with it an obligation that must be met. There
are people who can help you meet this responsibility. We have been helping
people combine the different aspects of the funeral into a meaningful service for
over 125 years.

Please Call Day Or Night

(0114) 272 2222

Head Office - Earsham Street

Also at Meadowhead, Ecclesall Rd,
Crookes and Stannington

www.johnheath.co.uk



John Collins Cabinetmaker

Fine furniture, antique furniture restoration, fitted
wardrobes, alcove units

0114 2585355

www.cabinetmakercollins.com



For
Windows
With Style

Sheffield Factory Showroom
106 PROSPECT ROAD
HEELEY, SHEFFIELD

Sheffield (0114) 258 5496
Rotherham (01709) 512113

1924 in Totley

Election fever was with us in Totley 100 years ago. Conservative Prime Minister Stanley Baldwin resigned in January after losing a vote of no confidence. Ramsey MacDonald briefly led a minority Labour government until the General Election in October when Stanley Baldwin got the job back. John Logie Baird succeeded in sending crude TV pictures a short distance, and the hourly 'pips' started to be broadcast on radio from the Greenwich Observatory.

The January crime wave included timber merchant Arnold Laver's bungalow in Bushey Wood Road being broken into one evening. Cash, jewellery and cigars were taken. Oddly, the thieves ignored the silver, took down the curtains, but put them back up again! Five local men were prosecuted under the Game Acts, fined £1 each and had their nets and rabbits confiscated. Three Sheffield youths were each fined £1 with 12/6d costs for 'furiously riding bicycles at Totley'! A few months later, Derbyshire Police announced that they were providing 'Speed Cop' motorcycles to officers so that law-breaking motorists could be apprehended. A correspondent to a newspaper wrote in to say it was a good job as there was too much 'road hogging' by heavy commercial vehicles and charabancs. The disgruntled writer had been forced to drive at 28 mph behind a charabanc between Baslow and Bakewell as he simply couldn't overtake.

Totley Bridge Garage was advertising the new Bayliss-Thomas car as a 'genuine bargain which expresses reliability and no after-expense'. This was an American brand made in Birmingham. Hyperbole was alive and well in the motor trade back then! More modestly, a Totley Rise resident was selling his seven month-old Carfield Villers motor bike which had cost £37 for £24. Perhaps he had decided on a car given the weather.

The annual prize shoot of the Sherwood Foresters regiment at Totley rifle range attracted 87 competitors. However, the weather was so bad with mist and rain that the 500 yard target disappeared as visibility was only 60 yards and the event was abandoned. Mr Milner at Totley Hall had been keeping rainfall records for 25 years, and the average for Totley over that time was just under 37 inches a year.

The Dore, Totley and District Ratepayers' Association reported its successes in getting extra evening buses for Totley (up to 10.40pm), a later collection of letters from Totley Rise Post Office at 8.25pm and repairs to the highway and pavements between Grove Road and Dore station. The Association was also working on atmospheric pollution by steam vehicles and motor traffic, electric and gas lighting for the area, new roads and repairs to old ones.

The new Totley All Saints' Church was consecrated by the Lord Bishop of Southwell in November. A procession led by the Bishop went to the entrance door on which the Bishop knocked. The procession was admitted and after prayers and a hymn, the Bishop dedicated the font, lectern, pulpit as places of marriage and confirmation. A legacy from Ebenezer Hall of Dore and a gift from Mr and Mrs Milner of Totley Hall had greatly added to the parishioners' own efforts to raise £2,300 towards the total cost of over £10,000. The first sod had been cut in May 1923 and the foundation stone had been laid in July that year by Mr and Mrs Milner.

Local houses were being advertised for £50 to £75 annual rent. A substantial freehold house was for sale at £950, and a stone-built example with six bedrooms was a mere £1,600. A new three-piece suite might cost 20 guineas, a gramophone could be anything between £5 and £85 and a new piano between £38 and £112. If it was all too much, a large bottle of the restorative Hall's Wine was five shillings (25p). A pair of spectacles would cost between 5/6d and 25/- so that you could check out the engagement rings costing upwards from £2.10s. Bird's Custard Powder was excellent value at 1½d a packet. If the womenfolk overdid the custard, the new rubber reducing girdle 'designed to melt away the pounds' was yours for a pretty pricey 39/11d. It's probably good advice even today – just don't overdo the custard....

Mike Peart

Dore Gilbert & Sullivan Society

Not a lot to report this time round. We have started rehearsals for the Summer Concert. The concert version of *Iolanthe* was performed at Crookes Social Club, Dore and Whittington in April and these were very successful. It was more than a concert version really because it included the full dialogue and all the principals wore the appropriate costume. All the concerts were very well attended and for many attendees it was their first taste of light opera which, speaking to them afterwards, they said how much they had enjoyed it. It was nice to see a number of young people in the audience. I hope it fosters their love of musical theatre. We have to thank both committee (especially Tim Bates) and Steve Andrews (as performance Director) and of course the cast for their parts in making the concerts more than just stand-up and sing events but much more like an actual show. The attached photograph gives some idea of the performance with the whole cast on show at Crookes.



We have the AGM coming up and we will have to wait and see what will happen next year with performance venues. The Montgomery is due to re-open soon and I am sure I've heard mention that the Merlin Theatre may become available again. I do hope so.

Later in the year we have the annual Summer Concert in Dore Methodist Church on Saturday July 6th at 7.30pm, then on Friday 27th September at Wentworth Church and at Bolsover Assembly rooms on Saturday 12th October at 7.30pm. These programmes will include a mix of Gilbert and Sullivan songs and songs from other shows such as *The Sound of Music* and *Jekyll and Hyde* as well as stand-alone pieces.

Tickets will be available by phone on 07565 805405 or via the web at <https://doregass.weebly.com/tickets.html>

Have a good summer and hopefully we'll see you at one of the concerts.

Derek Habberjam

Scrivens Quality Greengrocer
Free delivery service available 6 days per week
Mark Billingsley - Owner 37 Baslow Road
Home Delivery - 0114 2367116 Sheffield S17 3DL
Trade Enquiries - 07885 866376 scrivensyou@gmail.com

Dore Optician

Ian Truelove BSc(Hons) MCOptom Family Optometrist
Personal and Professional eye care for all the family

Ian and Tina Truelove have refurbished Dore Optician with the very latest technology

⇒ Hospital-quality 3D OCT imaging allows earlier detection and diagnosis of many eye problems.

⇒ Hundreds of frames to choose from for all the family, covering a wide range from £10 to designer.

⇒ Home eye tests available if you are unable to leave the house without help.



⇒ Digital retinal photography.

⇒ ReadEZ: Coloured overlays and Enhanced reading assessments for those with reading difficulties or visual stress.

⇒ Free comprehensive hearing assessments now available.

⇒ Free NHS and private eye examinations – hourly appointment slots, never feel rushed.

Please contact the practice for more information, or pop in for a chat.
25 Townhead Road, Dore, Sheffield, S17 3GD

Tel: 0114 3273737 Email: enquiries@dore-optician.co.uk Web: dore-optician.co.uk



ReadEZ



THE COLLEGE OF
OPTOMETRISTS
MEMBER 2024

Providing NHS services and registered with the Association of Optometrists, College of Optometrists, General Optical Council



Twelve Trees
Always there to care

FAMILY RUN, AWARD WINNING, PREMIUM HOMECARE SERVICE

Twelve Trees is an innovative Homecare provider operating from our offices in Nether Edge. We offer something unique to our clients by providing bespoke care packages designed to meet your care needs. We are proud to have been providing care for the elderly for over 25 years.

WE PROVIDE

Household & Domestic
Companionship
Personal Care
Mobility Care
Respite
Specialist Care
Day Care
Overnight Care
Hospital Discharge
Transport Service

MEALS ON WHEELS

We offer nutritious and delicious home-cooked meals freshly prepared at our award winning residential care home, delivered to your door with a 30 minute care call.

CONTACT US

Twelve Trees Homecare Limited,
Suite 9, Cherry Tree Business Centre,
Sheffield, S11 9EF
Email: admin@twelvetreescare.co.uk

0114 349 7837
www.twelvetreescare.co.uk



My Totley Childhood

Jeremy Watson was born in Totley in 1958 and while at journalism college became a founder of the Totley Independent. He trained at the Sheffield Star and after winning a series of national awards for his writing fancied a spell north of the border. He has since worked for Scotland on Sunday (sister title to The Scotsman) and latterly The Times in his adopted home. After retiring from the front line, he is now a travel writer for The Times, the best job he has ever had!

We all think - hope - we had an idyllic childhood. Long summer days spent out in the fields and hills messing around with your mates. Outdoor games played on your doorstep in a spirit that grew friendships and bonds that would last for life. A sense of freedom and a lack of danger that many of today's children can only dream about.

Well, I think I did and that was what it was like, although rose-tinted specs are firmly on. And it all happened in Totley, that cosy blend of ancient village and bright new community of aspiring 20th-century families where the town became the country.

Ground zero for me and my pals was Meadow Grove Road, a sloping cul-de-sac of 1950s semis that backed onto the grander houses of Main Avenue on one side and the playing fields of Totley Primary on the other. It was always a great source of disappointment to me that I couldn't just hop over the wall at the bottom of our garden to get to my classroom, but instead join all the other kids in having to trek down Meadow Grove Road, along Sunny Vale Avenue and up Sunny Vale Road - what cheery optimist thought those names up - to enter the gates before what seemed then to be a long climb up the drive.

But hopping over the wall - strictly forbidden - would have risked the X-ray vision of the headmistress Miss (did she have a first name?) Clareborough, whose reputation as a disciplinarian only matched her ferocious passion for teaching her young charges to spell, and an embarrassing ordeal sitting cross-legged on the spiky crush hall mat. No fun in short trousers but, as a career journalist, it's the English lessons I cherish the most.

Out of school, Meadow Grove Road was our field of dreams. For football, the green lamp post near the top was transformed into one goal post and whoever had coats or jumpers had to give them up for the other three. Whoever kicked the ball into a front garden had to fetch it, risking the wrath of the homeowner, but few of them seemed to mind too much. The cry of "car" alerted the pack to an approaching vehicle but the drivers always slowed down to wave.

The wooden telegraph pole outside my house served as a wicket and raising teams for cricket was never a problem in a road full of young and growing families. Games started after school and went on until teatime or near dark. It was fun and free, with never any need for adult supervision. The only real disputes were with the imaginary and invisible Germans we invented to make use of the toy guns bought for us by our parents. Only about 20 years out from the end of a world war which most of our parents had lived through, it was totally acceptable to act out the scenes from our weekly Victor comics.

As we grew older our horizons expanded, especially down Main Avenue and the narrow, weedy cut through to Green Oak Road and the glorious council-run park beyond, a route familiar to me from an early age as my grandparents lived in the prefabs. What wonders they were with their asbestos walls and their corrugated iron sheds that used to be air-raid shelters. At least that's what my grandad used to tell me.

What a park with its children's playground, its brightly-painted swings, nausea-inducing rocking horse, a roundabout lethal if you got your foot stuck underneath and a slide that deposited you onto hard asphalt! It toughened us up.

Then the magnificent tennis courts and a pristine bowling green surrounded by colourful flower beds tended by a real-life "parkie". I don't know if he was related to Miss Clareborough but woe betide any kid who ventured into the tended areas or tried to get onto the courts or the green without paying. Bowling with "Big Phil" Thompson was always entertaining. A strong lad, he hurled one so vigorously it hit the wooden rail around the sides, shot into the air over the tennis court fence

and struck a glancing blow to a young lady player about to serve. Seeing she had survived, we all scarpered. If the young lady is reading this now, we can only apologise and hope the injuries weren't long lasting.

As we entered our teens, we started to venture in the opposite direction towards the mysteries of Gillfield Wood. On the way was the teacher training college at Totley Hall and the college fields where we honed our tennis on the free courts, played footie on a field that was light years from Green Oak Park's tricky inclines and we could have a decent-sized cricket pitch. In dry summers, the ground got a little hard. I don't think my mate Ian Clarke - esteemed former editor of this journal - ever really forgave me for a rip-snorting bouncer that rattled his teeth and drew his blood.

Gillfield Wood beyond was our summer paradise. A beautiful stretch of woodland where dens could be built, streams dammed, hills roly-polyed down, and, when a little older, girlfriends met for canoodling. But all that paled in comparison to the winter wonderland of Shep's Bank, our very own Cresta Run, with its exhilaratingly-steep sledging track that led down to the Totley Brook below. The trick was to hurtle down through the massed ranks of fellow sledgers to the tree line above the water and then hurl yourself off into the snowdrifts before plunging into the ravine. You were wet and cold but largely unbroken. Failing to bail out at the right point could be catastrophic.

Wikipedia says Totley, a suburb on the extreme southwest of Sheffield, was recorded in the Domesday Book of 1086 when it was called Totinglee, a forest clearing belonging to Tota, a Saxon lord. There's no record of whether he ever went to the top of Shep's Bank and gazed out over his lands to the heather-clad moors where today's Peak District begins - and we got purple hands from bilberrying - but he owned that view no more than the generations of Totley kids who followed in his wake.

Jeremy Watson
Edinburgh





Fun, developmental music classes!

Join us in
Totley

All Saints Church Hall
Thursday
Toddlers – 9:30
Babies – 10:15

Contact Beth
beth.w@rhythmtime.org
07748 589 468

or book here:
rhythmtime.net

Also in:
Greenhill
Crosspool
Bents Green
Bakewell
Dronfield
Fulwood




CARE TO JOIN US FOR TEA?

RAISING FUNDS TO REDUCE LONELINESS ONE CUPPA AT A TIME




WE ARE HOSTING A TEA PARTY, WHY NOT BRING ALONG A CAKE & JOIN US FOR A CUPPA & A CHAT.

Where:
DORE AND TOTLEYUNITED REFORMED CHURCH
Totley Brook Road S17 3QS

Date: SUNDAY 7TH JULY

Time: 4 PM

#S4CTEA

FR Registered with FUNDRAISING REGULATOR
Sheffield Churches Council for Community Care is a CIO registered in England & Wales: 1168077



ELLIS WILLIS & BECKETT

Auctioneers & Valuers

Ellis Willis & Beckett can trace its roots back to 1870 and is a well-known name in Sheffield and the north of England. We hold monthly antique and collectible, specialist and quarterly fine art auctions. Including country and fine furniture, ceramics, paintings, toys, jewellery, watches and everything in between.

- Free Valuations & Home Visits
- Inheritance / Probate Valuations
- Deceased Estates & House Clearance Services
- Low Commission Rates For Vendors & Buyers

www.ewbauctions.com

01142 796959

What's on at Totley Library



Greetings to everyone I trust we are all enjoying the much awaited sunshine! Firstly thank you to everyone who volunteered and helped to make our May Plant Sale a success again. Thank you to all in the community who supported us - we raised over £1300! Our fundraising efforts are especially needed this year as the trustees have decided we need to spend significant funds on several items including replacing the adult library heater, repairs to the roof and replacement of the book self check-in machine which the council are no longer providing.

We are also aware that our website is in need of a serious upgrade!! If there are any experts in our community that would be able to assist us with this in any way please do contact me for a discussion! Thank you again for all your support!

Totley Library Anniversary celebration – Save the Dates
 Saturday 15 June – Picnic in Green Oak Park 12 – 2.30pm with live music from Woodhouse Prize Band
 Friday 12 July – Mamma Mia! Here We Go Again (Film event)
 Friday 20 September – Folk Music Evening
 Sunday 29 September – 10th Anniversary Big Celebration
 Sunday 24 November – Totley Library Christmas event

Julie Kitlowski, Chair, Totley CRIC

Current Library Opening Hours

Mondays 1pm – 7pm
 Tuesdays and Wednesdays 10am – 5pm
 Fridays and Saturdays 10am – 1pm

Library Lottery Winners

In the March draw, first-prize winner was Abbi Bell, and Amanda Hardwick won second prize. First-prize winner in the April draw was Clare Howard, and second prize was won by Brenda Fryer.

Totley Library Community Cinema

Thursday 27 June, 3pm – The Great Escaper (12) Starring Michael Caine and Glenda Jackson. Based on the true story of 89 year old British WWII Royal Navy veteran Bernard Jordan, who 'broke out' of his nursing home to attend the 70th anniversary D-Day commemorations in France.

Friday 21 June, 7pm and Thursday 18 July, 3pm – A Haunting in Venice (12) The return of Poirot played by Kenneth Branagh, who reluctantly attends a séance at an old haunted Palazzo on All Hallows Eve.

Friday 12 July, 7pm – Mamma Mia! Here We Go Again (Sing-A-long) Totley Library Anniversary Film Event.

Our matinee on **Thursday 22 August, 3pm** will be a 'People's

Choice' – suggest your favourite film from the last 10 years by dropping a recommendation into our suggestion box in the library.

Our cinema programme is available for booking in person or by calling 0114 236 3971. Refreshments will be served at all films. Raffle tickets: £3 per person for Friday films. Thursday matinee films are FREE for Over 65s.

New Book Additions

We have many new adult titles and children's books now available. Let us know if you have suggestions of authors or book events you would like to see via our library suggestion box. You can reserve books and make recommendations online via our website. In response to readers' requests we have recently upgraded our Large Print section and have purchased popular best sellers in this format. If you have been struggling with ordinary size print do come and have a look at what we have to offer. We add between 100 and 150 books to our library stock every month so you can always be sure of finding new and interesting titles.

Please check that you haven't got any library books hidden in unexpected places! We currently have over £900 worth of our own library books (Orange Sticker) that have been out for more than 12 weeks and may be marked as lost. Now that there are no fines for late returns, it is easy to forget. Please remember that if you do not return books, this depletes our library stock and there are less books for other library users. We encourage all users to return or renew on time. Lost or damaged books are charged for at replacement value.

Totley Library Community Art Space - Original Art and Prints for sale

New art works by local artists Judy Randle (right), Francisca Veliz, Gina Hodges, Matthew Lee-Potter, Anna Stephenson, are currently on display in the Adult Library at very competitive prices. We may have just what you are looking for to brighten up a wall or to give as a unique gift. The library is looking for local artists who would like to exhibit in July 2024 and October 2024. For further information, please call in at Totley Library and take a look at the Art Space or email carolynjallcroft@gmail.com for further details.



Summer Reading Challenge

The 2024 Reading Challenge runs in the School holidays from late July until early September. Over 250 children registered at Totley Library last year so we hope to see them all again this summer. Posters and a display promoting the theme will be in the Library in June.

Summer Reading Challenge 2024

Delivered in partnership with libraries

Marvellous Makers

Celebrating creativity

Illustrations by Natelle Quek and logo artwork by Lizzie Everard. All © The Reading Agency 2024.



Totley Pharmacy

**Your local independent pharmacy
serving you since 1996**

24/7

prescription collection

Call: 0114 236 1070

Totley Show 2024

A celebration of our community and its talent in aid of local charities

**Saturday 14th September
at Totley Primary School**

Admission to the show will be 50p for adults and 20p for children

We would be delighted to see you at the show and to receive your entries using the entry form overleaf

The Programme

- 8.45 Registration opens
- 10.45 Registration closes
- 11.00 Judging of classes
- 1.30 Doors open to the public**
- 1.45 Official opening of the Show
- 2.30 Prize money may be collected
- 3.15 Last raffle ticket sales
- 3.30 Collection of non-auction entries & prize giving followed by raffle draw
- 3.45 Auction of donated items
- 4.15 Show closes**

Refreshments will be available throughout the afternoon together with live music, craft stalls and various children's activities.

The Show will end with a charity auction of donated items.

How to Enter the Show

Please feel free to enter as many classes as you like! The entry fee is 50p per entry. You can enter up to three entries in any one class; no entry can have been in a previous Totley Show. If your entry doesn't fit one of our classes please still bring it along for display. Children may enter any class. All entries are left at owners' risk.

First (£3), second (£2) and third (£1) prizes will be awarded in each class, unless there are fewer than three entrants in an adult class in which case only a first prize will be awarded. All children's entries are recognised with a certificate and all children's class winners receive a medal. Cups or trophies are awarded to all section winners. A special trophy is awarded for the 'best in show'.

You may donate your item to be auctioned at the end of the show, but this is not compulsory. Any prize money not collected by 4pm will be put towards next year's show. Thank you for entering!

Notes:

Recipe to be used for Dundee cake class (use a deep 7" tin): 175g/6oz plain flour; 125g/4oz butter/margarine; 125g/4oz soft brown sugar; 2¼tsp baking powder; 1 rounded tsp mixed ground spice; 3 eggs, 125g/4oz raisins; 125g/4oz sultanas; 125g/4oz currants; 85g/3oz chopped mixed peel and chopped cherries; 40g/1½oz blanched almonds to decorate.

Recipe to be used for Victoria Sandwich class (use two 7" tins): 125g/4oz Margarine; 125g/4oz self raising flour; 125g/4oz caster sugar; 2 eggs. Fill with strawberry jam.

Children's handwriting classes (on an A5 page): 6-8s a nursery rhyme, 9-11s a poem, 12-14s: a Shakespeare quote.

Totley Show 2024

Entry Form

Please complete prior to bringing your entries for registration between 8.45 and 10.45am.

Name	
Phone	
email	
Address	

Please enter the number of items you would like to enter against each class at 50p per entry:

HANDICRAFT SECTION

1	Knitted or crocheted item	
2	Decorative cushion	
3	Soft toy	
4	Sewn garment	
5	Cross stitch	
6	Quilting / patchwork	
7	Greetings card	
8	Open handicraft any medium	

DOMESTIC SECTION

9	A cake (any recipe)	
10	Victoria sandwich (see recipe)	
11	Dundee cake (see recipe)	
12	Carrot cake (any recipe)	
13	Free from (any recipe)	
14	3 Fruit scones	
15	Loaf of bread	
16	Jam	
17	Lemon curd	
18	Marmalade	
19	Chutney	

FLORAL SECTION

20	Arrangement 18"x10"x10"	
21	3 Cut home grown flowers	
22	Flowering pot plant	

FRESH PRODUCE SECTION

23	4 Eating apples	
24	4 Cooking apples	
25	8 Blackberries	
26	5 or more mixed veg/ salad	
27	3 Courgettes	
28	5 Matching runner beans	
29	5 Tomatoes	
30	5 Cherry tomatoes	
31	1 Cucumber	
32	Heaviest marrow	
33	Longest runner bean	
34	3 Eggs from own hens	

ART & SCULPTURE SECTION

35	An original poem	
36	Oil or acrylic painting	
37	Watercolour	
38	Sketch in ink or pencil	
39	Upcycled item	
40	Open art any medium	
41	Open sculpture any medium	

PHOTOGRAPHY SECTION

42	Black and white	
43	Portrait	
44	Animal – domestic or wild	
45	Landscape	

WOODWORK SECTION

46	Wood turning	
47	Open woodwork	

CHILDREN'S SECTION (up to 14)

48	Vegetable animal (up to 8)	
49	3 Decorative buns (up to 8)	
50	A cake any recipe (9 to 14)	
51	3 Biscuits (up to 8)	
52	3 Biscuits (9 to 14)	
53	Decorated gingerbread man	
54	Egg cup flower arrangement	
55	Painting or drawing (up to 5)	
56	Painting or drawing (6-8)	
57	Painting or drawing (9-11)	
58	Painting or drawing (12-14)	
59	Lego model <25cm ² (up to 8)	
60	Lego model <25cm ² (9-14)	
61	Colour photo (up to 14)	
62	Open any medium (up to 8)	
63	Open any medium (9 to 11)	
64	Open any medium (12 to 14)	
65	Handwriting (up to 8)	
66	Handwriting (9-11)	
67	Handwriting (12-14)	
68	An original poem	

Official use only

Entrant number	
Total number of entries	

Total entry fee due	
Entry fee paid	



THE
DIOCESE OF
SHEFFIELD
ACADEMIES
TRUST

Totley All Saints School

Forthcoming Events:

We know how important it is to have the involvement of parents at Totley All Saints and we regularly invite parents in to see the children's success in class, whether this be the learning that is taking place in class, or through events arranged by the school or FOTAS. We have some very exciting events to look forward to before we break up for the summer.

These include our musical showcase, which is a celebration of music learnt in school as well as those who learn an instrument out of school. It may also include one or two budding bands! We also have our whole school performance, led by our Year 6 children. On top of this we will be having our Summer Picnic where all parents are invited to picnic with their children on our beautiful grounds.

After School Club:

We are hoping to open our doors to our own full wrap around care with a breakfast club and now an after school club, so watch this space come September!



Wider curriculum opportunities:

Our curriculum has been going from strength to strength and although the weather hasn't been the kindest to us we have been venturing out to our woodland collecting wood and cooking up some delights on the fire!



The Year 5 children visited The Oakes and had a fabulous time taking part in a range of outdoor adventurous activities, some a lot more muddy than others. Year 6 have also got a residential to look forward to and Year 4 will be dipping their toes into the Outdoor Adventurous experience too.

Totley All Saints Summer Fair - Saturday 8th June

FOTAS, our fundraising committee, has organised a Summer Fair at Totley All Saints School kindly sponsored by JC Lettings. There'll be Bouncy Castles, face painting and music as well as many other stalls. Please come and join us on 8th June from 12 noon to 3pm.

Sports

We have taken part in many sporting events over the past few months including Cross Country events, Boys and Girls football competition and more recently the B Braun Dance competition where all our Year 6 children took part and brought home a trophy coming third – fantastic considering that it's the first year of taking part! We have also had our Year 3 children visiting Abbeydale Sports Club and learning how to play squash.

Following our successful Sports Day at the EIS we have our Sports week coming up with yet another sports day on our wonderful grounds.

Melissa Drake, Headteacher



Totley History Group

The group has recently been given items that in the past had been held by the Church school. These are a portrait of Hannah Wild, the first mistress at the school which opened on Totley Hall Lane in 1827, and a small embroidered sampler executed by her at the age of 9 years in 1785. We also have the Indenture for the land on which the school was built. Although the portrait is in excellent condition the other items are in need of attention, which we will pursue. The sampler is in a very fragile condition and will need expert restoration. The group hopes the portrait can be on view for the residents of Totley and are currently seeking a suitable site.

Summer events:

June 26th Mark Dawson, 'A Spicy Tale: Henderson's Relish' Preceded by the short AGM.

July 24th Susan Turner, 'A Walk and Talk in Whirlow Park Gardens'. Note the time for this is 11 am. As numbers are restricted please contact www.totleyhistorygroup.org.uk to reserve a place.

There will be no meeting in August.

Annual membership of the group is £5.

Meetings are in Totley Library on 4th Wednesday each month at 7.30pm unless otherwise indicated. £2 for members and £3 non-members. All welcome.

Refreshments served after our meetings to encourage the sharing of memories and a chance to catch up with friends

BRADWAY INSTALLATIONS

Kitchens, Bathrooms and everything in between

Complete Kitchens Installation or supply & installation

Kitchen Refits Replacement worktops/sink/hob etc

Worktop/cabinet repairs

Bathrooms - Cloakrooms - Domestic plumbing

Tiling - Laminate/Vinyl flooring

All work undertaken is fully insured and guaranteed

Ring Peter - 0114 236 5995

Mobile - 07766 411355

Friends of Dore and Totley Station

At 5.22 on Monday 25th March the first train arrived in the new platform

The TransPennine Express service to Liverpool was only confirmed to be stopping on the Saturday before. Nobody had booked to board – apart from FoDaTS committee member Andrew Dyson who went into Sheffield so he could be the first to step out onto the platform when it arrived. Andrew had been the last passenger to step down from the last train to stop at the old platform before it was demolished in 1985! A number of us were there together with representatives from Network Rail, TPE and Northern. We were pleased to welcome our MP, Olivia Blake. She has a family interest in railways.



Any official opening ceremony had to be deferred because one of the lifts didn't work. Men had to be stationed on the platforms until emergency exit arrangements had been completed.

Politics being what they are, a Ministerial visit was arranged by the Department for Transport to coincide with working lifts. Rail Minister Huw Merriman called in on the 8th April, together with Neil Holm, Network Rail's Transpennine Route Upgrade Director, Kerry Peters, Northern's Regional Director East, Sarah Dines, MP for Derbyshire Dales, and others. It was not an official opening ceremony, or was it? We're still wondering if there'll be another for local people later. After seeing us he dropped in to Hathersage, Bamford and Matlock.

Huw said positive things suggesting (not a promise) that a third fast service would come after congestion issues in Manchester and Sheffield were resolved. When? 5-10 years? He suggested a 30 minute timing from Sheffield – Manchester. The current fastest service takes 50 minutes. He didn't say how that could be achieved although he suggested Hope Valley electrification will help. When? Tricky that, as the Midland Mainline between London and Sheffield probably won't be fully electrified for another 10 years. With bi-mode trains and battery back up possibly, but under 45 minutes will be difficult.

The current scheme is supposed to cut a few minutes off end to end times. That ambition is currently downgraded to a hope that keeping to the current timetable may be achieved more often. Over the four weeks prior to the time of writing Dore & Totley was in 2309th place out of 2623 national stations for punctuality of trains. We were 2414th over the last 6 months so maybe it is getting better. Huw did listen and does know a little about railways but after 25 years waiting for this work to be completed he may not have fully understood the frustration of users when told there'll be no faster or more frequent trains before June 2025, if then.

But at least we have two long platforms to wait for them.

We'll be fully there by September!

In May 2021 I wrote that, at long last, work was about to start with completion planned for September 2023. Two deferments of 3 months took it until the end of March 2024 before the scheme could be declared operational.

The last year's extremely wet weather made that incredibly

challenging to achieve, resulting in a lot of non-essential tasks still being unfinished. The contractors are now engaged on snagging, when they fix all the remaining details to complete the job, then a final tidying up.

That should include some replanting at the back of the extended old platform and around the car park. It needs quite a bit of attention and will be reopened in stages as it is restored. We had hoped that would be for the 1st June but all spaces won't now be fully handed back for public use until the end of August.

The railway triangle and West View Lane sites will also be tidied away by September, all being well. Sadly Totley Tunnel East



signal box will be removed. It was offered to a heritage railway who surveyed it and found it to be in too poor a condition to justify the cost of removal and re-erection on their site.

There are more line closures from Saturday 24 to Thursday 29 August (the Summer Bank Holiday period) to cover all this, plus repairs resulting from a landslip near New Mills. Currently our trains are being diverted from Chinley, stopping at Hazel Grove and Stockport.

We won't be fully settled down until the autumn but by that time we'll have regained a little control over our by then much bigger little station and time for some softening measures.

Maybe we can celebrate the weekend of 31st August and 1st September?

Services and strikes!

There are no changes in the new timetable operative from June and we aren't expecting any significant changes in December. By the June 2025 review there may be room for changes.

ASLEF strike days can happen with only two weeks notice as their dispute seems no nearer resolution. That said the *Financial Times* has suggested there may be behind the scenes talks about talks, although both sides seem unable to find ways to climb down. The dispute could drag on until after the general election!

Spring is here

Some of our daffodils along Abbeydale Road South survived the upheaval and the cherry blossom has been and gone. Buzzards soar above Ladies Spring Wood and a heron has been spotted in the trees immediately opposite the footbridge.

Arriving passengers may be heading for a 218 bus to Chatsworth or walking to Robin Hood's Cave on Stanage Edge. On sunny mornings the new platform is crowded with those off walking at Edale or for Manchester to fly away to more exotic parts.

Our new station is coming alive. It won't be long now before the car park is fully open and once all the construction workers have gone we can make it our own.

Please check <https://www.nationalrail.co.uk/> for information on changes to journeys and for details of the bus replacement services.



A busy Saturday morning

If you're a Facebook user, you can find and join us by searching for FoDaTS. It's an active group with over 920 members and is updated frequently with topical information and comments.

Alternatively look for our website at www.fodats.net

If you're not on Facebook and would like more information please send an email to our Secretary; njbarnes@outlook.com or to myself: chrismorgan4@btinternet.com

Chris Morgan, Chairman



All Saints Totley

As I write this at the start of May I feel like the small child in the back of the car asking "are we nearly there yet?!" The past few weeks have felt like summer is tantalisingly close but not quite here. The flowers around the vicarage and in the churchyard are beginning to pop up, the

bees have begun buzzing and the days of evening walks and paddling in the river are just around the corner.

Of course, for many these summer days bring exams, assessments and change. Yesterday I was talking with the children at All Saints School. We talked about how valuable an original work of Monet or Ken Sugimori (the illustrator behind Pokémon) would be. Then we saw something amazing: the Bible says that each one of us was knitted together by the Lord. As Christians we believe that when we see people we are looking at the original work of an artist far greater than Monet or Sugimori - you are an original masterpiece handmade by the God of all creation! (Feel free to read that sentence again and again!) And we saw that whatever this summer brings, whatever the results of assessments or change you are of infinite worth because of who made you. At All Saints we really believe that and in a world where so many lack self-worth we think it is so important to share.

So it is all go at AST - we had a fantastic Easter season with so many of the community at the Easter services and events celebrating the joy of Jesus' resurrection. But the fun is only just beginning! Plans are already underway to enable this year's Remembrance commemorations and we are working with the council to try to close the road for the parade again.

In other news, we're absolutely thrilled to announce that All Saints has appointed a new Children's, Youth and Families' Minister who will be joining our team in September. This dedicated staff member will help us better support the high numbers of young ones already involved and connect with families and young people in the wider community too.

Whilst there is loads going on for youth and kids at AST, it's been really exciting to see our "Natter" group at the library

taking off too. This casual weekly meetup every Thursday morning offers tea, biscuits and great conversation for the over 60s. It's become a cherished gathering place for so many - do drop in - it's free and friendly at 10.30 most Thursdays. Alongside that I'm also delighted to report we've restarted our fortnightly midweek midday spoken communion services. This short, contemplative service is particularly popular with some of our older church members but open to all who want to pause for spiritual nourishment midweek.



As you've likely heard, 2024 marks the 100th anniversary of All Saints Church here in Totley. That means a calendar jam-packed with special centenary events over the next few months! We're taking part in the Totley Open Gardens weekend on July 6-7, so you can come admire the church building surrounded by and filled with the beauty of God's creation. There will also be refreshments available in the Church Hall.



In late August we're planning on 'beating the bounds' - more details on that soon on our social media. Then in October, we're hosting a Festival of Light building on our popular annual 'Streets of Light' event. It's sure to be a magical, meaningful experience for the whole community.

But perhaps the biggest date to put in your diary is November 17th for our Centenary Celebration Services. At 10am, we'll have an all-age contemporary service celebrating 'All Saints 2024'. Then at 2.30pm, the Bishop of Sheffield will join us for 'All Saints 1924' - a traditional service re-creating the church's very first worship experience complete with former clergy, dignitaries, and using the classic Book of Common Prayer. Of course at both there will be a great bun fight too :)

Before that, on June 22nd, we're partnering with other local churches for the JOY Fun Day, a free event for all at Totley Primary School.

Wow, so much is happening at All Saints! We'd love you to be a part of it. Why not join us any Sunday at 10am or for our midweek services on Wednesdays at noon? Or get in touch if we can help out.

Whether it's praying together, serving others, or just enjoying friendship and fellowship, All Saints strives to be a blessing to our community in this special centenary year and beyond. We can't wait to celebrate all that God has in store for All Saints, for Totley and for Sheffield!

Rev'd Ben Tanner, Vicar

M: 07912 890512

*E: ben@allsaintstotley.church | www.allsaintstotley.church
Totley Hall Lane, Sheffield, S17 4FA*

LIBERTY FOODS

Caterers
Quality Meat Shop
& Fresh Farm Produce

Fresh and Frozen Prepared Meals
Fresh Meat and Poultry
Outside Catering
Home Delivery

253 Baslow Road, Sheffield, S17 4DU
Tel: 0114 2360 583 Mobile: 07801 346 455
Email: damianbower@liberty-foods.co.uk

ACTIV PHYSIO

Call us on **0114 235 2727**
to book now!

Evening &
Saturday
appointments
available



Say Goodbye to aches & pains and make an appointment with our team of friendly Physiotherapists at our **Totley Clinic**

- Back & Neck Pain
- Headaches
- Joint & Muscle pain
- Post Operative Rehabilitation
- Sports Injuries & Massage
- Women's Health Issues
- Acupuncture
- Home Visits & much more...

Open
Monday - Saturday
5* Google rating

E: admin@activphysiotherapy.co.uk
W: www.activphysiotherapy.co.uk
A: 88. Baslow Rd, Totley, Sheffield.
S17 4DQ

S17 DECORATORS

PAINTING & WALLPAPERING



**TRUSTED LOCAL RESIDENT
WITH REFERENCES.
FULLY INSURED.
HIGH QUALITY PAINTING AND
DECORATING ACROSS SHEFFIELD
AND NORTH DERBYSHIRE.
35 YEARS EXPERIENCE.**



"THANKS FOR ALWAYS GIVING US SUCH A PROFESSIONAL
FINISH WHEN YOU DECORATE FOR US."
MRS M. (MILLHOUSES)

"THANK YOU FOR AN AMAZING JOB.
WE KEEP RECOMMENDING YOU!"
MR & MRS D. (BRADWAY)

"WE HAVE COME TO CONSIDER YOU AS A FRIEND"
MR S. (DORE)

"YOUR DECORATING WORK IS SPOT ON - SO QUICK
AND EFFICIENT TOO! WE RELY ON YOU NOW."
MRS A. (DORE)

"YOU'VE DONE A MARVELLOUS JOB DECORATING
THE OUTSIDE OF OUR HOUSE"
MR & MRS W (DORE)

CALL JULIAN TODAY!

07905 523499 OR 0114 2369664

JULIANCROOKES@GMAIL.COM
LONGFORD ROAD, BRADWAY, S17 4LP

FIND ME ON FACEBOOK



Dental – Medical – Physiotherapy – Acupuncture



HIGH TREES CLINIC

Specialist and Routine Private Dental and Medical Clinic located in Dore

NEW PATIENTS WELCOME

APPOINTMENTS FROM £50.00

We're here to help you monitor and optimise your health with our GP
and Physical Therapists.
Keeping track of your well-being should be an essential part of your self-care routine



DENTAL

Routine Dental Appointments
Restorative Treatment
Fixed braces and Clear aligners
Teeth Whitening
Composite Bonding and
Veneers
Emergency Appointments



MEDICAL THERAPIES

Medical Examinations
Occupational Health and Travel
Vaccinations
Skin Lesion Check and Removal
Medical Forms and Referrals
Blood Tests & Analysis
Facial Aesthetics



Tel: 0114 349 3326

37 Townhead Road, Dore, Sheffield, S17 3GD

hightreesclinic@gmail.com www.hightreesclinic.co.uk

Please call or email the clinic for further information or to schedule an appointment

Dore and Totley United Reformed Church

Events coming up later this year:

Supporting S4C - Sheffield Churches Council for Community Care

Sunday 7th July at 4 pm: Tea and cakes

Saturday 28th September 10 am to 12 noon: Table top sale.
To book a table please call Margaret on 0114 2311831
or text Elaine on 07929 720977

Saturday 2nd November: Jigsaw sale

Lunch club's 50th anniversary celebration:

Thursday 18th July at 2.30pm
Thanksgiving service led by Rev. Zaidie Orr followed by refreshments in the church hall.

Elaine Ferguson

Traffic News

Community Speed Watch - 30 mph; 34mph; 35 mph?

Four members of S17 Neighbourhood Watch were on duty on Bradway Road, opposite the entrance to Hemper Lane. The speed limit is 30mph, having changed from 40 before Low Edges Road, therefore technically, we could have been recording vehicles doing over 30. However, South Yorkshire Police have adopted a tolerance of speed - $30 + 10\% + 2 = 35$. However, they have adopted the speed of 35 as being the speed from which enforcement starts!

When we had our training, our paperwork (and our trainer), clearly stated that we should not record any vehicle doing less than 36. How lucky a lot of motorists were this morning. Had we been a speed camera, quite a few people would not have been smiling, as they did when they passed us.



We checked 82 vehicles and 38 were exceeding 35, including one learner driver, an Amazon Prime Driver, and, by chance, two blue Skodas, and an HGV tipper lorry. One van driver was clearly exceeding the limit, but braked hard to follow a slower car, before we had time to focus on him. As he passed by, I gave him a thumbs up, to which he was laughing heartily, and gave a thumbs up in return. The aim of Community Speedwatch, is education! I think he might have learned. Our highest recorded speed was 44mph.

Those exceeding the limit receive a warning letter, unless they have a past history with the police. To assist drivers, we erect a 'hi-viz' sign to warn them, after they have passed the 30 sign.

If anyone would like to join us, you will be most welcome. We will train you and give you a hi-viz vest. We have more areas to cover than we have helpers for, where drivers need educating about speed.

Roger Hart
07831 305881



Friends of Gillfield Wood

Ranger. Meet in wood, by central interpretation board (from Entrance 1)

Friends of Gillfield Wood

Diary for June and July

Saturday 13th July 8.30am. Birds and Butterflies Walk led by Stuart Davies. Start at end of Totley Hall Lane.

Saturday 27th July 1-3pm River Dipping with Paul Hancock and

Dore Male Voice Choir



At 7pm on Saturday 22 June, Dore Male Voice Choir is holding a special concert with Stannington Brass Band. It's our 60th Anniversary Concert and will be at St John's Church in Ranmoor.

Our guest performer is a cornet player - Tom Hutchinson. Tom grew up locally, was taught by our Music Director, played with the Band and is now a world renowned cornet player.

Tickets are £12.50 each and can be obtained by writing to . enquiries@doremalevoicechoir.com

Regular events and meetings at Totley Library

Monday:

French lessons for children following the award winning course material from La Jolie Ronde. After-school classes are available for children in the children's library
3.40pm - Y5/Y6; 4.10pm - Y3/Y4; 4.40pm - Y1/Y2
5.30pm - Y4/Y5

Contact Joanna on 07854 148809 or email speakesheffield@gmail.com to find out more about local availability for French language classes.

Friends of Gillfield Wood, occasional Mondays, 7.30pm onwards. Talks on local nature and conservation. See posters, the FoGW article in this issue, or www.friendsofgillfieldwood.com

Councillors' Surgery, 2nd Monday of the month, 6-7pm

Tuesday:

Baby Time 1.30-2.15pm (term times only). Come along to meet other parents/carers and babies. We sing simple songs, have fun and allow time to chat.

Poetry Group, first Tuesday in month, 7.00 - 9.00pm. *Please note that this group cannot accept new members at present.*

Friends of Dore and Totley Station Occasional Tuesdays, 7.30pm. See www.FODATS.net

Wednesday:

Coffee Morning, 10.30 - 12noon

Story Time for toddlers and pre-school children from 10am - 11.30am (except school holidays). Children can take part in weekly themed craft activities, sing songs and listen to a story. £1 donation per child greatly appreciated.

Health Walks, 10.30am, meet at Library. Contact Step Out Sheffield on 07505 639524 or email stepoutsheffield@gmail.com

Totley History Group, usually last Wednesday of the month, 7.30. Talks on matters of historical interest. Check posters, the Totley Independent Diary, or www.totleyhistorygroup.org.uk

Yoga sessions 7.00 - 8.30pm, Wednesdays (except the last Wednesday of the month). For more details call Ann Zielonka on 0114 2361585 or 07929 736966. Beginners welcome. You are advised to call Ann to check that the sessions are taking place.

Thursday:

Thursday Morning Natter 10.30 - 11.30. Hot drinks and good company - for people aged 60 or over.

Chair Aerobics 12noon for 45-60 minutes. An Age UK and People Keeping Well weekly exercise class. £4 per week - no need to pre-book, just turn up.

Saturday:

Regular second-hand book sales. Check CRIC website :<http://www.totleycric.org.uk/>

Totley Rise Methodist Church

Grove Road, Sheffield, S17 4DJ

Totley Rise Methodist Church aims to be a church in the community and for the community, increasing an awareness of God's presence, celebrating God's love, caring for people, helping people to grow and encouraging people to follow Christ.

Events in June and July

At the time of writing (mid-May) we're lucky to be enjoying a spell of warm, sunny weather, and we'll be hoping for more of the same in June and July as we support and participate in two outdoor events in quick succession.

On Saturday 22nd June at Totley Primary School, from 1pm to 4pm, we will join with other Christians and churches in S17 to hold a Family Joy Event - a joyful free gift to our community. This fun day was very popular last year, and once again there will be plenty of activities for kids, plus refreshments. Details can be found at familyjoy.co.uk.

Two weeks later, on Saturday 6th and Sunday 7th July from 1pm to 5.30pm, we will once again be one of the Totley Open Gardens, which can be visited in support of local charities and organisations. Programmes giving entry to all the gardens can be bought for £5 from Totley Library during the month before.

Between those events, we will be holding a Healing Service on Sunday the 30th June at 3pm. All are welcome.

Regular Services Information

9am for 9.30am most Sundays - **Toddler Praise**. A 30-minute service for pre-school children and their parents/carers, preceded by refreshments from 9am.

10.30am **Mid-morning Service** every Sunday. An informal and contemporary service usually lasting approximately 1 hour 15 minutes, with a monthly Communion. Children usually leave the service for Junior Church after the first 15 minutes or so, except on the 4th Sunday of the month when the service is even more informal for **All Age Worship**.

At 3pm on the second Sunday of each month **Focus Church** takes place. This is a time of worship specially structured for those who have learning disabilities and cognitive difficulties.

We also support **Outdoor Church**, a movement where families with children can meet (usually on the 1st and 3rd Sundays of each month) to learn more about God's world and the Christian faith through an informal nature-focused time of fun and worship. See facebook.com/groups/outdoorchurch

Tuesdays at TRMC

Tuesday is a busy day for us, beginning with a **Prayer Meeting** from 9.30-10am in the church. We focus on prayers for the community, for the world and any situations needing healing and the touch of God's hand.

From 10am until noon our free **Welcoming Places Coffee Morning** in the church lounge provides an opportunity to call in for free refreshments and a chat with others from the community. This began as part of the need for warm spaces for people to use when energy costs began to soar, and is now a permanent activity. In one part of the lounge there are toys and books for young children with parents or carers.

Knit, Natter, Craft and Chatter immediately follows the coffee morning, running to 3pm. This is a busy and friendly group, offering tea, coffee, biscuits and most importantly, friendship for up to three hours. Young and old, men and women are all welcome. Feel free to bring a packed lunch.

Thursday Pushchair Club

Babies and toddlers aged from 0 to 5 years are welcome to join us, with their carers, on Thursday mornings from 10.30 to 12 noon. Every week in term time, the Pushchair Club fills the TRM Centre, giving children, their parents and carers a place to come together, play, sing, chat and enjoy refreshments.

Room Hire

We make our facilities in the TRM Centre available to hire for a variety of purposes, from community groups to birthday parties. There is the large church hall with a stage, and room hire also includes the use of kitchen facilities if required. For all information, please visit our website.

The Quiet Garden

All are welcome to find stillness and peace in the Totley Rise Methodist Quiet Garden. You are invited to come, sit and wonder about our creative God. It is a place of tranquillity and offers an opportunity, in the rush of modern life, to lay down your concerns. You can do this any time during daylight hours.

Getting and Staying in Touch

The best source of further information is our website, www.totleyrise.co.uk for our weekly notices and links to video recordings of many of our services. You can also submit prayer requests, and we are on Facebook at facebook.com/TotleyRise

If you can't find what you need on the website, you can email enquiries@totleyrise.co.uk.

TOTLEY RISE METHODIST CHURCH

A service of healing
for body mind and spirit



Sunday 30th June 2024
3:00 pm

ALL WELCOME

Brambles Landscapes

Fencing, Gates & Garden Bars Installed To Last

NEW for 2022: Licensed driveway moss & weed control



Established 12 Years All Installations Guaranteed 10 Years

Karl Nuttall-Allsop 23 South Street North S43 2AA

Text or Call for a quote **07720 845 326**

veryhelpfulman@yahoo.com

Ask Your Pharmacist

Summer Holidays

If I start talking about lizards, mosquitoes and monkeys, fret not; I have not yet given up pharmacy and become a zoologist. If you bear with me, I will explain why these may be relevant to your summer.

Let's start with the lizard. The Gila monster had a significant part to play in the development of one of the most revolutionary medicines of modern times. An endocrinologist I spoke to recently called this drug as important as insulin for diabetes. The gift this lizard gave to human medicine is akin to GLP-1 yet significantly different. GLP-1 is a hormone humans make that promotes insulin production hoping to reduce blood sugar levels. However, attempts to use this to control diabetes failed because it broke down within minutes of being injected. The lizard tends to eat infrequently, but binges, so needs to slow



down its digestion over a period of time. Thus, its version of GLP-1 acts for a long time. Modern humans also binge eat, but unlike the lizard, we tend to eat frequently too, leading to increasing cases of diabetes and obesity. By studying the lizard, scientists have managed to produce a long-acting GLP-1 agonist. While using it to treat diabetes, it was found to aid weight loss, with many patients losing up to 20% of body weight.

This is where the lizard and this wonder medicine become relevant to a summer holiday article. We have been providing a weight management service for many years, and we always see a large uptake just before the summer holidays. We expect the demand to be even greater this year as we now have a tool far more powerful than anything before. Previous medicines to aid weight loss have either caused too many side-effects to be particularly effective, or programmes such as very low-calorie diets have required extreme willpower. This new medicine makes you feel full for longer, and reduces hunger, making dieting far easier. We have had many patients already trying this new medicine with great success (less than 1% of patients finding it not to be beneficial). Many patients have lost over a stone in the first month. The greatest loss achieved so far has been 38kg (or 6 stones in old money).

Our service is provided entirely by one of our pharmacists, and patients are counselled regularly throughout their journey. With detailed and regular advice on how best to use this medicine, we can achieve greater success together, and minimise or even eliminate the side effects that these medicines can cause. By personalising and tweaking programmes for individual patients we have managed to avoid any patients needing to stop the programme due to side effects. Should you be nervous about injecting yourself, we can also provide this medicine as a tablet, which has proved very successful for some of our patients.

The great thing about this new medicine is that not only does it help you lose weight, it also dramatically improves your overall health. A recent trial of nearly 20,000 people shows that it significantly cuts the risk of heart disease. Also, obesity is known to cause over 20,000 cancer cases each year in the UK. Losing such significant amounts of weight will also help with breathing issues and joint pains. Because of these multitude of pathways through which this medicine improves lives, we are very excited to offer it to patients as part of our weight management service. To make it accessible to as many people as possible, we have priced it as competitively as we can. With prices starting from £95 per month, we are far

cheaper than many providers including online options where little or no advice is provided. As part of the service, we will also provide advice on the right foods to eat, and exercise, to maximise the benefit of this medicine.

Moving on to the monkeys and mosquitoes, I will now mention our travel and vaccination service. Yet again, this is a service we've provided for many years with large uptake every year. This is another service carried out by our pharmacists rather than support staff, unlike many other providers. As above, we have priced our vaccine service as competitively as possible.

This year has been a particularly busy year with a couple of local schools having trips to Africa and Southeast Asia. The complete advice provided by our pharmacists, combined with our local convenience means many parents have used us. The one significant problem this year has been irregular supply of many vaccines, most acutely felt with rabies and Japanese encephalitis vaccines (which are spread by mosquitoes and, among others, monkeys). I'm really pleased to announce that we have now found another supplier to obtain more supplies of both vaccines. If you are a parent with a child on one of these trips, please get in touch as soon as possible to arrange any vaccines still needed including rabies and Japanese encephalitis. We can advise on accelerated schedules should you feel you have left things too late.

Of course, many other people will be heading to locations that may need vaccinations. Please get in touch with us and we can advise which vaccines you need, and the appropriate timing schedule for them. We will also advise if they are compatible with any conditions you have and medicines you take. As we have two pharmacists, we should be able to accommodate appointments around most people's schedules. For busy individuals, you will be glad to know we usually only need a 15 minute appointment. We will also advise on what to put in your travel first-aid and medicines kit.

I'm also delighted to let you know that we have completed the extra training required to be a yellow fever vaccine provider - there are not many people who provide this vaccine locally. Should you need a yellow fever vaccine, or any other vaccines, please get in touch with us. To book an appointment for this service or for our weight management service you can call the pharmacy on 01142361070 (or our work mobile 07368876056), or book online at www.totleypharmacy.co.uk

Wherever you venture for your holidays, have a great time.

Tajinder Singh



Chapel of Ease, English Martyrs in Totley

Pilgrim Walk from Totley to Padley Chapel Shrine

Sunday July 7th - starting from English Martyrs car park, Totley at 11am (Walk approx 3 hours)

David and Anne-Marie Fletcher, parishioners at English Martyrs Totley, are inviting anyone who wishes to join them in a 6 mile pilgrim walk (with picnic lunch stop at Longshaw). Starting point is from English Martyrs Church Carpark S17 4DF-through Totley Bents and across Blackamoor - descending to Padley Gorge and finishing at Padley at approx 2pm.

Wear walking boots as terrain is good but not smooth and bring waterproofs just in case; bring water and pack-up lunch. The walk would not be suitable for those with walking difficulties but some may wish to join us at Longshaw Cafe lunch stop. We aim to be at Padley Chapel grounds with plenty of time to rest before the 3pm procession from Grindleford Station and 3.30pm Outdoor Catholic Mass honouring the Padley Priest Martyrs who were captured at Padley in July 1588. There are toilets at English Martyrs Church, Fox House, Longshaw Cafe and Grindleford Cafe. There will be portaloos at Padley. Return either by foot, by train (from Grindleford station) or possibility of car lift.

If you would like to join us or find out more then email Anne-Marie at amfletcher2800@gmail.com or simply turn up at 11am on July 7th.

'Hello' from Unravel!

We really feel at home here in Totley and can't believe that six months have passed since we opened our new Baslow Road Unravel Hub! We thought this would be a good time to say hello and introduce ourselves to the community.



Unravel was founded in 2014 by Lead Children's Emotional and Behavioural Psychologist Andrea Chatten, after 25 years teaching in Sheffield schools, both primary and secondary. It was as a special needs teacher in a pioneering learning support unit and a team leader in a pupil referral unit where Andrea really found her calling. Andrea recognised the need for further support for children and young people who had difficulties with managing their emotions and behaviour, Andrea was also acutely aware of the long delays in accessing support from outside agencies such as CAMHS.

So, Unravel was born: a place where families could access additional support for young people struggling with difficult feelings and at times challenging behaviours. All without the complex and lengthy referral and wait times.

Unravel's founding ethos is to provide expert, bespoke and timely support for children and young adults across the city. Over the last ten years Unravel has grown significantly and has supported thousands of Sheffield children, both in the schools and as private clients. We currently work in partnership with 34 secondary and primary schools across the city and we also see an increasing number of private referrals at our Hub in Totley.

Our unique approach is designed to work alongside the young person to explore challenges associated with behaviour and wellbeing, and to equip them with psychological tools and techniques to enable them to make positive and long-lasting change. We know that each child is an individual, and their specific needs are at the heart of our approach. We have grown to a team of 23 amazing professionals, all our psychologists are appropriately qualified, highly trained and very experienced; meaning they can draw on a wide range of psychological techniques so that children can better understand their changing emotions and behaviours. Our range of techniques includes:

- CBT (Cognitive Behavioural Therapy)
- DBT (Dialectic Behaviour Therapy)
- Positive Psychology
- Solution-focussed approaches
- NLP (Neuro-linguistic programming)
- Mindfulness
- Acceptance and Commitment Therapy
- Drawing and Talking
- Theraplay
- Motivational Interviewing

If you feel that your family could benefit from some specialist support, we offer the following services:

- 1:1 sessions for children and young adults.
- 1:1 sessions for adults.
- Adaptive Parenting Sessions (designed to help parents manage their children's changing emotions).
- Parenting workshops (group sessions for parents to share and learn about how to manage their children's changing emotions).

If you'd like to arrange an appointment, please email on hello@unravelsupport.co.uk, call on 0114 2016347 or call into the Hub.

Andrea is also the author of The Blinks books, a series of children's books launched in 2015 that entwine strategies for emotional and behavioural development into magical stories for children aged 7 to 12 years. Each novel tackles a different emotion and is accompanied by a reference manual for parents and professionals to explain the impact that worry, anger, low self-esteem, anger, love or shyness have on emotional development. Each section provides psychological insight together with some simple activities that can be used as a talking point to encourage positive conversations between parents or carers and children.

Andrea is a regular contributor for the BBC, both for television and radio, commenting on a wide range of psychological matters. She has also featured in The Telegraph, Daily Mail, The Star and several professional journals.

The Blinks books are available online at www.theblinks.co.uk or can be purchased from our Hub at 162 Baslow Road S17 4DR.

Devastators of Detritus!

Picking up litter may not be glamorous but there's a positive point to it. It's a great way to meet others, care for community, help prevent injury or death to wildlife and is environmentally beneficial.

I used to grumble loudly until Mr. Long Suffering (husband Richard) said "stop moaning and do something positive!"

As we got stuck in we noticed others doing the same and wanting to join us. This was the motivation required!



We now have a wonderful group of volunteers (from toddlers to septuagenarians and everyone in between) who team up once a month to keep Totley in tip top shape.

Julie & Richard Gay

PS I'm the one who looks like I've walked through a hedge backwards because I generally have!!

The Fletcher Family invites you to

The Grouse Inn

Longshaw

Sheffield S11 7TZ

Meal times: Mondays 12.00 to 2.30pm

**Tuesdays to Fridays 12.00 to 2.30 pm
and 6.30pm to 9.30pm**

**Saturdays 12.00 to 3.00pm and 6.30pm to 9.00 pm
(drinks – open all day)**

Sundays 12.00 to 9.00pm

Phone 01433 630 423



Dore Garden Club

One of our committee members, Lindsay Fox, has been instrumental in introducing more social media to help publicise our activities. As well as posters and these features we are now using Instagram to reach a wider audience. The link to this account is:
<https://instagram.com/doregardenclubsheffield>

Our forthcoming events are held in Dore Methodist Church Hall at 7.30pm. Doors open at 7.10pm and

visitors are welcome and pay only £4 at the door.

Wednesday 18 June Flowers of the Algarve, by Ken Balkow. Ken is a regular local speaker at the Club having given talks on wildflowers in the Porter Valley and along the Tinsley Canal. He is an author and has been a columnist for the *Daily Telegraph*.

This time he will introduce us to the rich Mediterranean flora of the Algarve region of southern Portugal. The Algarve is a much-loved holiday destination for British tourists. Despite the proliferation of golf courses and holiday villas, large swathes of coast have been turned into nature reserves. Because of its mild, damp winters and hot dry summers, it is a paradise for wildflowers. You can expect to see some wonderful images.

Wednesday 17 July Experience of a Chatsworth Trainee Gardener. The Chatsworth Estate has a record of providing training and development opportunities, amongst others for their young employees, ranging from apprenticeships to graduate trainees. Last July we heard from Mick Brown, the Production Garden Manager at Chatsworth Gardens who also leads on the training and development of students and apprentices at the gardens. This month we are pleased to welcome two of those Chatsworth trainees, Hannah and Joe. Joe and Hannah started work at Chatsworth at the end of August 2023 and will spend a year with the Gardens team learning everything there is to know about how an historic



Photo courtesy of the Chatsworth Estate

garden is managed. Chatsworth is one of many famous gardens which offer this opportunity under a National Garden Scheme supported initiative. They will share their perspective on being trainee gardeners in over 105 acres of historic grounds.

The Historic and Botanic Garden Training Programme began in 2006, with an aim to ensure that the skills needed to work in a historic or botanic garden were passed on to those passionate about a career in horticulture.

Pauline Drissell



Update from Olivia Blake MP

I hope you have been enjoying the longer (and sometimes brighter!) days – and to everyone celebrating Easter, Eid, Vaisakhi, and Passover over the last few months, I hope you had a joyous and peaceful time with your loved ones. And to everyone who voted in the local elections, thank you!

It's been a busy time both in Sheffield Hallam and Westminster.

At home here in Sheffield, I was delighted to join commuters to mark the reopening of Dore and Totley station. It was great to speak to Friends of Dore and Totley Station and train operators about the new platform, footbridge, and lifts which have been installed to provide disabled access to and from the new platform. As many of you may already know, the work is part of a £137m upgrade of the Hope Valley Railway, and the completion of this leg of work marks a key milestone.

A few weeks ago, I was thrilled to meet with local campaigners to mark the historic news that after nearly 30 years Sheffield's Supertram network is coming back into public control! I'm super pleased that we're taking our transport system back into public control and giving people in Sheffield a real say over how our tram network runs.



I also recently visited Tapton School. I was pleased to meet with teachers, pupils, and parents to hear about the good work, and of course, challenges that young children with special educational needs and disabilities face.

In Westminster, as you may have already seen, the government passed their appalling Rwanda Bill. I have been working with campaigners to continue holding the government to account and to call for safe passages for refugees and asylum seekers. In a parliamentary debate on spousal visas, I also spoke about how the government should rethink the prohibitive financial barriers they have put on visas for spouses. As I said in my speech, you can't put a price on family life but that's exactly what the government are trying to do.

Like many people in Hallam and across the country, I remain deeply concerned about the conflict in Palestine. In recent weeks I have asked Ministers what the UK government is doing to pressure Israeli authorities to allow aid into Gaza and have also signed a letter calling on the Foreign Secretary to demand that Israel must not use starvation as a weapon of war. I will continue to call for a ceasefire and for the ICJ ruling to be implemented.

I'm proud to be a co-sponsor of the Climate and Nature Bill introduced in the Commons in March. We must keep pushing to keep climate and environmental ambition and action as high as possible. I was also pleased to meet with campaign group, Zero Hour UK, to discuss how the #CANBill will help us build a healthier, more prosperous, nature rich future.

As always, thank you for reading my update. Please do get in touch if there is an issue you are facing, or campaign you would like me to join.

Olivia Blake - MP for Sheffield Hallam olivia.blake.mp@parliament.uk <https://www.oliviablake.org.uk/>



OUTRAM FIELDS
CINNAMON LUXURY CARE

**NOW
OPEN**



A CARE HOME LIKE NO OTHER **BOOK A TOUR TODAY**

Outram Fields is now open and offers superior facilities for our residents to enjoy along with the very best care and support. As a brand new, purpose-built care home, it provides the very latest design innovations in a luxurious yet homely setting.

Outram Fields offers much more than excellent 24-hour personalised care. It is a special place where our residents can continue to live life to the full, enjoy new experiences and make new friends. Whether your loved ones need residential care, dementia care or just a short stay, we are passionate about making a difference.



**For more information or to visit our Show Suite
call our friendly team today: 01144 934 334**

At Outram Fields, people will always come first

RESIDENTIAL CARE | DEMENTIA CARE | RESPITE CARE | POST OPERATIVE CARE

Luxury Care Home in Sheffield

Outram Fields Care Home, 250 Twentywell Lane, Bradway, Sheffield S17 4QF
www.cinnamoncc.com/outramfields



OUTRAM FIELDS
CINNAMON LUXURY CARE



Sheffield

GANG WARS

THURSDAY 4TH JULY AT 7PM

Outram Fields presents Sheffield Gang Wars by speaker Martin Rowley, Thursday 4th July at 7pm

The true story of the 1920's "Sheffield Gang Wars" Violence, Treachery, Theft and Corruption

The legacy left in the city...
"The greatest story never told"
plus inception of "The Flying Squad"
and MI 5.

Arrival from 7pm for fizz and canapés,
talk starts at 7.30pm



CANAPÉS &
REFRESHMENTS
WILL BE SERVED

As places are limited, booking is essential
so please call Claire on **01144 934 334**
or email: **outram.haa@cinnamoncc.com**
to reserve your place.

RESIDENTIAL CARE | DEMENTIA CARE | RESPITE CARE | POST OPERATIVE CARE

Luxury Care Home in Sheffield

Outram Fields Care Home, 250 Twentywell Lane, Bradway, Sheffield S17 4QF
www.cinnamoncc.com/outramfields

Multi-agency training exercise tackles Peak District wildfire scenario

Firefighters have joined forces with Peak District National Park rangers and moorland managers in a training exercise to prepare for a wildfire scenario.

The exercise, at Stanage Edge, between Hathersage and Sheffield, on the National Park Authority's Stanage-North Lees estate, tested how specialist equipment would be used in a real-life emergency and how teams would work together to tackle a moorland fire.



It was organised by Derbyshire Fire & Rescue Service (DFRS) and supported by partners in the Fire Operations Group (FOG).

FOG brings together a partnership of fire and rescue services, National Park rangers, National Trust and RSPB wardens, water companies, major landowners and gamekeepers to draw up fire plans, oversee specialist fire-fighting equipment, raise awareness of moorland fires and the consequences and train for emergencies.

In attendance at this exercise were fire crews from Hathersage, Bakewell, Staveley, Buxton, Glossop and Duffield alongside land managers, farmers and gamekeepers.

Wildfire in the open landscape is a high risk for Peak District habitats. The National Park's moorlands – which include large expanses of blanket bog and upland heath – are of global environmental importance. Wildfires have devastating effects on the habitats and wildlife which rely on them.

While not always the source of ignition, activities such as disposable BBQ use, campfires and dropped cigarettes are increasingly the reason for major blazes and a larger number of smaller fires which tie up emergency service resources and could potentially cause a delay to other life risk emergencies.

One of the largest fires in 2023 took place on the Eastern Moors, less than a mile from the exercise location.

Peak District National Park Authority ranger team manager, Andy Farmer, said: "This is a scenario we hope will never happen but, unfortunately, all too often it does. Multi-agency training exercises allow us to plan for prompt, effective reactions to real-life events. They test joint decision-making and incident command and are also an opportunity to highlight how easily fires can start. We urge visitors to help us to minimise the risks.

"Regular training also allows new members of staff to understand what an emergency may be like, reduce confusion and delay and to build familiarity with people from other agencies."

The exercise demonstrated the specialist knowledge of the landscape that rangers and gamekeepers can contribute to support of the fire service. It did not include live fire use, due to landscape conditions and bird nesting on the estate.

Derbyshire Fire & Rescue Service Wildfire Lead, Station Manager Mark King said: "We have seen firsthand the devastation that wildfires can cause across our Derbyshire moorland, taking up a lot of our resources, causing untold damage to our local ecosystem and disrupting our communities.

"Regular multi-agency training exercises allow us to test our procedures and joint decision making to ensure we are prepared to respond to all incidents and emergency situations.

"The terrain at Stanage Edge presents a great opportunity to bring together our skills and knowledge ahead of the warmer weather, while also highlighting steps everyone can take to reduce the risk of wildfire and protect our landscape."

Preventing a wild fire

What to do if you see a fire in the countryside:

- Never have a BBQs in open countryside/moorland. Public Space Protection Orders (PSPOs) ban their use in many areas across Derbyshire.
- Discard all rubbish, including glass bottles in bins provided, or take it home
- Do not light campfires
- Ensure cigarettes are extinguished and discarded responsibly.

If you spot an uncontrolled fire in the open countryside, or you see large volumes of smoke call 999, giving as much detail about the fire's location as possible. Do not put yourself at any risk by tackling a fire.

Be a FireStopper

If you see someone deliberately setting a fire or know of anyone having a BBQ or campfire on the moors, tell Firestoppers 100% anonymously.

Call 0800 169 5558 or report online at www.firestoppersreport.co.uk

Hair-ium by Latia

In your home, expanding by client demand!

Professional, qualified, experienced

From perming to modern techniques.

I am also fully DBS checked, with professional experience of clients with vulnerabilities etc.

Call for bookings on

07944 878585 or 0114 2361993

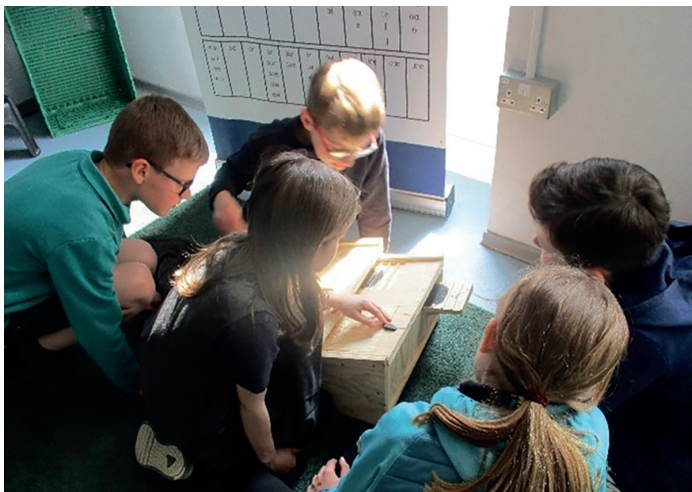
For group bookings of 3+ - get % off!!



Totley Primary School

Green is the Theme at Totley Primary!

The ongoing impact of our Green Team continues to be a cause for celebration at Totley Primary! Under the leadership of one of our teachers, Miss Ellis, the team of junior children has again been beavering away at improving food growing spaces, building up raised beds, erecting mini-greenhouses and planting lots of veggies including potatoes, peas, onions, rhubarb, and much more!



They have also been building bird feeders and bug hotels. All of this improves the ecosystem within the grounds and will help our food grow successfully at school. Alongside this, the team held a successful 'Go Green' dress up day in February to raise money to purchase some new recycling bins for classrooms. They used this to highlight the importance of their work and raise awareness of various issues linked to the environment and sustainability.



The Green Team is also keen to link to local environmental groups within Totley. Trips to Gillfield woods and tree planting in Greenoak are both activities which the children have enjoyed. Recently, they welcomed Julie and Richard (local litter picking legends and swift enthusiasts) for a talk about environmental concerns such as the impact of climate change and loss of biodiversity, as well as swifts – of course! The children are excited that the electronic swift lure we have here at school has been reactivated – fingers crossed that a nesting pair of swifts decide to make TPS their home for the season!

Ben Paxman, Head Teacher

Sheffield Vulcan Rotary Club

Perhaps you noticed us at the Sheffield Half Marathon finishing line where we helped to provide refreshments to the finishers, or as you passed by Beauchief Gardens you wondered who those cheerful hi-vizzed souls were. We have spent many months renovating, restoring and planting to bring it back to its former glory. And maybe you kindly donated to Marie Curie Cancer Care at Morrisons at Meadowhead and chatted with the collectors in the very silly hats?

Most of our charitable work is for the benefit of both old and young within our local Community, and Sheffield Vulcan Rotary Club thrives on different challenges.

For example and as part of our environmental work, we have planted thousands of bulbs and many hundreds of trees of various sizes and varieties around Sheffield. We have many activities including recycling unwanted glasses and sourcing books to help younger disadvantaged children.

We have links to the education system, through which we help students at school and college, such as carrying out 'mock' interviews using our long and deep experience so that they can gain confidence by meeting a person they've never before encountered, and receive feedback on their presentation skills. Through the Pitchfork Trust, we are also able to take children from a local school annually to the panto (oh yes we do!).

We collaborate with other Rotary Clubs both in the UK and abroad and have funded shelter and water purification aid for distressed families in both conflict and natural disaster areas, and last Christmas we also put together a number of boxes of toys, books, and other items to be enjoyed by Ukrainian children when they are confined to a bomb shelter.

Many charities are suffering through lack of funding, mainly due to the current economic situation. The Club in the past 12 months has supported over 30 of those organisations, mostly local, by raising over £25,000 through our annual Golf Day at Sicklehome, a Christmas Raffle, generosity of members and friends, and grants from the National Lottery and J G Graves Trust.

The above are just some examples of how we service our community by giving time and enthusiasm - but please don't think it's all work. We meet once a week (not compulsory!) at the Norfolk Arms at Ringinglow, for a meal and fellowship. Social visits have included a trip down a coal mine, walks around over twenty Derbyshire villages with a knowledgeable guide, and we have toured a workshop that makes hand-made boots.

A keen walking group steps out most weeks, and Club members have been known to demonstrate their lack of skill at both crown and ten-pin bowling.

If you're attracted to the idea of joining Sheffield Vulcan, we'd be pleased to welcome you to a meeting! Contact us at secretary@vulcanrotary.org.uk.

Alan Brown, Rotary Club of Sheffield Vulcan

Very Helpful Licensed Waste Removal

We offer single item or part house clearance services

We collect for disposal/recycle sheds, garage or outbuilding contents

We also do single item removals or collections

We don't collect beds or sofas

07720 845 326

Text now for more details!

Karl Nuttall-Allsop 23 South Street North S43 2AA



E mail veryhelpfulman@yahoo.com



Walking the Dog

BLUE	This is a special edition of Walking the Dog! As you know, I am the carer for Sally and Rony in their kennels on Le Mont.	9. BLUE	If you needed to look up dogs in the Totley Library next Wednesday, could you?
HEADEATER BLUE	I know! I've got some special rules: Sally and Rony must answer these questions in private. They must not look at each others answers until they read the next edition of the <i>Totley Independent</i> (published without a mistake since 1977.)	RONY	Yes because Totley Library closes on Thursdays.
	They must be as honest as they dare. But we must remember that they are not very young any more, and are already beginning to forget that they once were.	SALLY	Yes, you could ask a kind volunteer.
HEADEATER	Agreed — so off we go!	10. BLUE	If you did look up dogs in Totley Library (but not on a Thursday) what number would you find me at in the cat-a-log?
<i>Enter the Vicar, in his dog collar</i>		RONY SALLY	637.70 You wouldn't need a number — it's a very small library.
1. VICAR	Dog is God back to front. Name me another dog's name that does something interesting when you turn it round?	11. BLUE	Here is a joke. A Courting Couple are overheard in Gilly Wood by the Vicar:
RONY SALLY	Bob. Bonzo.	VICAR NUN VICAR NUN VICAR NUN	To the woods! I'll tell the Vicar! I am the Vicar! To the woods! Amen! Ah men!
2. VICAR SALLY RONY BLUE RONY SALLY VICAR BLUE VICAR	How many dogs are there in the Bible? 4. 41 (9 in the New Testament, 32 in the Old.) How many dogs went into the Ark? 2. 2. Amen. Is there a greyhound in the Bible? Yes, in Proverbs 30.	BLUE SALLY	What do you think of that joke ? It's worse than Rony's. And it's rude and unfair to Vicars and Nuns. And a bit dog-eared.
<i>Exit the Vicar, still in his dog collar</i>		RONY	
3. BLUE	Who is the best dog — apart from me and Jack and Maisie?	12. BLUE	Which of these most popular dog names of 2024 would you choose for the next dog that chooses to come and live with us on Lemont? Bailey, Max, Lily or Ellie ?
RONY SALLY RONY	Sally. You think I'm a dog? No, Sally. I meant the Sally who was Nanny Chandler's dog Sally, up Long Line. She looked like Black Bob from the Wizard. Nanny Chandler did. Not Sally. And not you Sally, either. Sorry, Sally. I'm being silly. Silly is as Silly does. And you are silly.	RONY	That's hard... Max was my best friend at Oxf—
SALLY		HEAD EATER	No more showing off by mentioning 'Oxford' all the time. Or Max. We aren't impressed are we, Totley?
4. BLUE RONY	Which dogs have ever bitten you? The dog just beyond The Green up the Grove in 1947. I told Old Smellor the headteacher, so he bit me too.	TOTLEY HEADEATER RONY	No sire. Three dog bags full sire.
SALLY	None. I don't taste nice.	SALLY	Just choose then! Bailey, Max, Lily or Ellie ?
5. BLUE	We all know what dog poo is, and that Sally thinks a whole page should be devoted to it in the next <i>Totley Independent</i> . But where is there a place called Poo?	13. BLUE	My Mum was called Lily. My oldest daughter is called Ellie. And Tanty Nelly Bailey of Laverdene had a telly.
RONY SALLY	In Asturia in Spain. I don't know, but there's a bear called Pooh who lives in 100 Acre Wood.	RONY	I want a dog called Arnold.
6. BLUE RONY SALLY	What pub round here has a dog in it ? The Hare and Hounds. They all allow dogs. But the Hare and Hounds has several dogs.	14. BLUE RONY SALLY	Sally thinks my next Walking the Dog article should be about dog poo. Should it?
7. BLUE	What question about dogs would you like to ask each other?	RONY	No. That would be too coprophiliac even at Oxf—
RONY SALLY	Are four legs better than two? Is Blue's poo less yucky than other dog's poo and why?	SALLY	Yes. Everybody always gets worked up about dog poo in the <i>Totley Independent</i> .
8. BLUE RONY SALLY	Can dogs be gay? Anyone can be, if we want. Yes. Maisie would hump anyone's leg.	15. BLUE SALLY	How old are you in dog years? Twelve. Ten-and-a-bit.
		RONY	You have 20 nails. How many have I got? Not sure but they're very long and need cutting. So are mine.
		16. BLUE	What's your favourite colour in France? Mine's Bleu. Verte. Rouge.
		SALLY RONY	Is that it? Yes thank Dog! There is just room for one more joke. What's black and white and red (read) all over?
		17 BLUE YOU HEADEATER BLUE	The <i>Totley Independent</i> ! I think...you're all barking!
		RONY & SALLY HEADEATER	That's a bit wuff, sir!
		ALL ALL AT ONCE	
		Rony Robinson, fed by Sally Goldsmith	

Activity	Venue	Primary Contact (Group leader)
Coffee and exercise classes: Strength and balance Welcoming spaces- Exercise and coffee Gentle and seated Gentle Circuits	Bradway Community Hall Dore and Totley United Reformed Church Totley Library/CRIC Fulwood Chapel St Peter/St Oswalds Abbeydale	Community Wellness Service – 0114 553 7807
Sporting Chatter / Sporting Chatter films	Dore & Totley United Reformed Church	Phillip Staton – 07788 620313
Singing Teapot Choir	Dore & Totley United Reformed Church	Yo Tozer Loft -07925 634420
Welcoming space (board games, refreshments and biscuits)	Dore Methodist Church Hall	10.30 to 13.30 every Wednesday- No booking requirement just drop in
Dore and Totley Rosemary memory café (Dementia targeted)	Dore Methodist Church Hall	AUKS-0114 2502 850
Cosy Creatives	Online with trained art Therapist	AUKS -0114 250 2850
Well With Nature	Cricket Inn, Totley	Caroline Cook – 07583 551705
Forrest Bathing	Graves Park	Caroline Cook- 07583 551705
Woodwork Wellbeing	Bradway Community Hall	Steven Fridlington 07900 344361 woodworkwellbeing@ouytlook.com
Ecclesall and Bannercross Forum	Cherry Tree Pub, Carterknowle	Paul May – paulmay@blueyonder.co.uk
Dance to Health Sheffield	St Augustine’s church, Endcliffe	Charlotte Bridle 07942 276312 charlottebridle@ae-sop.org
Community Journalism and Memoir Writing	Online activity with qualified writer and journalist	Kathryn Reaney - reaneywrites@gmail.com , 07854 751932
Table Tennis	Bradway Community Hall	Jan – 07787 954842/0114 418 6463
S11 Carers Walk	Various	Sheffield Carers Centre -0114 278 8942
Natter Coffee Morning	Totley CRIC	Totley All Saints Church -0114 236 7627
Coffee on the corner social drop in	Coffee on the corner – Totley	Coffee on the corner- 07941 780772
South West Friendship Lunches (dinner, entertainment)	Shepley Spitfire pub, Totley	0114 236 0298
	Robin Hood Pub, Millhouses	0114 236 9107
	Crosspool Tavern Pub, Crosspool	0114 266 2113
	The Ball Inn, Crookes	0114 266 1211
	The Shiny Chef , Fulwood	0114 303 0556
Fulwood Memory Café (Dementia targeted)	Fulwood Scout Hut	Eliza@AUKS - 0114 250 2850
S17 Carers Café	Border View Farm	Sheffield Carers Centre – 278 8942
Calmly Create	Fulwood Old Chapel School Room, 8 Whiteley Lane, Sheffield, S10 4GL	South Yorkshire Chaplaincy and Listening Service 07903 899751 sycls@sycls.co.uk

Totley Deli

Where quality and friendliness count

Look out for our daily specials or join us for breakfast.

Why not come in and sample our wide range of hot & cold sandwiches and home made produce. Freshly made daily to eat in or take away. All produced from locally sourced suppliers.

- Fresh Roses bread delivered daily & available to order
- Selection of cooked meats sliced to your specification
- Superb selection of fine cheeses, preserves & pickles
- Moss Valley bacon & sausage
- Longley Farm dairy products
- Wateralls pork pies
- Freshly baked pastries

All available to take away.

Homemade scones, lasagne & quiches



If you are having a party or family gathering why not let us take the strain and provide a buffet for you.



51-53 Baslow Road, Totley Rise. S17 4DL.
Call 0114 2364238

Unstone GardenScapes

Let us transform your garden

From concept to completion

Fully insured.
Over 25 years experience.
Portfolio available.

Decking Fencing Patios Turfing Planting
Or just a general tidy up

Call Jason for a free quote
Mobile 07791069360

IRONING PARLOUR

01142 364073

**CARPET CLEANER
FOR HIRE**

£25

OPEN
MONDAY - FRIDAY
8:30AM - 4:00PM
SATURDAY
9:00AM - 1:00PM

IRONING
DRY CLEANING
WASHING
REPAIRS

DRY CLEANING

10% OFF

4 OR MORE GARMENTS

**IRONING
PARLOUR**
LOCAL
COLLECTION
&
DELIVERY
SERVICE

Established 2001
Serving the Community for
23 years
Call Lynne and Gail for all
your laundry needs

Common Threads

Continuing the series of articles by Richard Wrigglesworth, covering 800 years of local history. Part Five: Early Years

One lesson I have learned from studying Richard Furness and George Wilson is that they were both fortunate in having received a good early education for their time. Richard was the eldest in his family and had parents committed to education. He attended a well-run local school in Eyam, and was later given open access to a subscription library in Chesterfield. George was an only child brought up in Hathersage by a father in business as a miller. At the age of eleven he went to the Manchester school and attended lectures by such as the famous chemist John Dalton, later having the priceless good fortune to meet a mentor in Richard Cobden.

Although George Wilson has good claims to helping finish the agitation for repeal of the Corn Laws, another local man to the Sheffield area, Ebenezer Elliott, the 'Corn Law Rhymer', has an equally good claim to starting it and there were others who made significant contributions.

These include other members of the Hathersage branches of the Ibbotsons who were traditionally farmers and landowners in the Hope Valley - staunch Methodists who ventured into manufacturing and founded the Globe Iron and Steel Works in Sheffield - George Calvert Holland (1801-1865), the first biographer of Richard Furness, born in Pitsmoor in Sheffield who initially served his time as a wig maker but was later funded to train for medicine in Edinburgh; George Jacob Holyoake (1817-1906) born in Birmingham but came to Sheffield as a Social Missionary and claimed to have invented the religion of Secularism. He once visited Sheffield carrying two primed bombs in his greatcoat for testing and he actually exploded one in a disused quarry - the other he took home. Later he became a newspaper editor and lead the fight against the stamp duty.

Finally: Ebenezer Elliott (1781-1849). The 'Corn Law Rhymer' Ebenezer Elliott in contrast had a horrendous early life. He was born at the New Foundry, Masbrough, in Rotherham and later felt compelled to write his own biography up to the age of twenty five.

"My mother was a the daughter of a Yeoman farmer from Penistone, a believer in dreams who once dreamed that she saw a little broad-set, dark, ill-favoured man, with black eyes and hair, thick stob nose and tup-shins. 'This is thy father'."



Ebenezer Elliott

Ebenezer's father, also known as Devil Elliot, was a man of great virtue, but not without faults, and with a superstitious reference for the cabalistic number three. For example, when he bathed his children in the canal he ducked them thrice, on the third time keeping them some seconds under the water, producing a horror of suffocation which increased with the

years. He used to preach every fourth Sunday his tremendous doctrines of ultra-Calvanism and was a man who knew no fear. Ebenezer junior had small-pox in his sixth year which left him frightfully disfigured and six weeks blind. His early education was at a Dame's School where he learnt his ABC, then to the 'Hollis' school which taught him to write and little more, and at nine he ran away from home hidden in a great pan his father had cast, to live with an uncle. He then spent a year and a half in another school in Penistone before his father sent for him and he returned to the Hollis school. Next was the Dalton school two miles away having got into the 'rule of three' without having first learned the numeration of addition, subtraction and division. "But oh the misery of reading without having learning to spell, standing for hours beside the desk with tears running down my cheeks utterly unable to set down one correct figure. I doubt the master ever suspected I had not been taught the preliminary rules. Dreading school I played truant during the summer months of the second year. These were not happy days and it was impossible to prevent my father from discovering that I was learning nothing but vagabondism, or that my slow progress owed more to idleness than want of ability to learn, and he sent me to work in the foundry as a punishment."

This proved to be his salvation. It released him from his sense of inferiority which had for so long depressed him "for I was not found to be less clever than other beginners. I had an early fondness for carpentering and excelled in handicrafts such as kite making and building little fleets of ships, and by thirteen had built a model of an eighteen-gun ship. However, my wondrous brother Giles was beautiful as an angel and in the presence of his splendid abilities I was ugliness itself. I might well look a fool, and believe myself to be one. As I grew my fondness for solitude increased for I could not but observe the homage that was paid to him, and feel the contempt with which I was regarded, although I am not aware that I ever envied or at all disliked him."

Further salvation arrived when he called to see his aunt Robinson, left a widow with three children and £30 p.a. on which she contrived to live respectably and give to two sons an education which ultimately made them both gentlemen: "She laid before me a number of Sowerby's English Botany. Never shall I forget the impression made on me by the beautiful plates. On finding that I could draw them correctly I was lifted at once above the inmates of the alehouse at least a foot in mental stature. My first effort was a copy from the primrose, under which I wrote its latin 'Primula veris vulgaris.' The next revealed marvel was a book of dried plants. I now passed my Sundays in gathering flowers that I may make pictures of them. There were now mysteries about me, people stopped me with plants and asked what diseases I was going to cure. But I was not the least aware that I was learning the art of poetry, which I then hated - especially Pope's! which gave me a headache. I had become a person of some note. So obvious were their merit that even my all-praised and all-able brother sometimes condescended to look at and admire my 'Hortus Siccus' as I pompously named my book of specimens. Next I took my book into the garden to compare with the living flowers. Here was a new idea, botany in verse, a promise that days of scribbling were at hand. My first poetical attempt was an imitation of a thunderstorm. I new that sheep could not take flight after being killed but the 'rhyme' seemed to be of opinion that they should be so described, and as it doggedly abided by this perversity there was nothing for it but to describe my flock scudding away after the lightning had slain them. I read this to my cousin Benjamin, from whom I received infliction, the first of merciless criticism. God forgive him I never could. Neither could I help perceiving the superiority of his learning, but never so happy as when listening to his recitations of Homer's Greek, of which I did not understand a word; willingly too I would have shared the praises showered on my brother Giles. I now resolved to undertake the great task of self-instruction."

"From my sixteenth to my twenty third year I worked for my father as laboriously as any servant he had, and without wages, except an occasional shilling or two for pocket-money; weighing every morning all the unfinished castings and afterwards in their unfinished state, and closing our iron mongers shop in Rotherham when my brother was ill or absent. I do not call myself a working man, certainly never

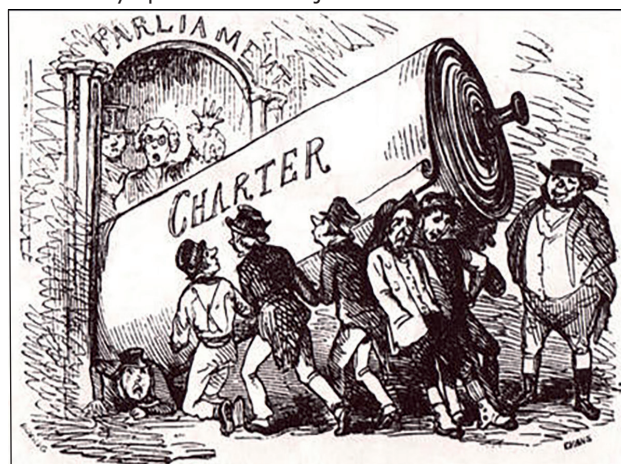
as an excuse for my poetry if bad, or if good as a claim for wonder. As a literary man I claim to be self taught; not because none of my teachers ever read to me, or required me to read, a piece of English, but because I have of my own free will read some of the best books in our language, original and translated, and the best only, laboriously forming my mind on the highest models. I purchased a Murray's grammar (as did Richard Furness) but proved unable to remember a single rule, however laboriously committed to memory. A year later I added the 'Key' to my grammar and read it a hundred times and found at last by reflection I could detect and correct grammatical errors. The pronouns bothered me most as they still do, and at this moment I still do not know a single rule of grammar; and yet I flatter myself I can now read English as well as Samuel Johnson could, and detect errors in a greater author, Samuel Bailey. To the great joy of my father I resolved to learn French, but though I could read with ease and say my lessons I could not remember a word of them.

At the end of my fourteenth year (1805) my mind began to make efforts for itself and was favoured by an accident of importance in the history of my education. A clergyman called Firth who held a poor curacy in Middlesmoor in Nidderdale, bequeathed to my father his library. A vast range of authors is listed, Barrow, Ray, Derham, Young, Hervey, Henepin, three embellished volumes of the *Royal Magazine*; I could repeat all the mottoes of Shenstone, translated from the Greek and Latin which he has prefixed to his poems; followed by Milton, who held me captive long. Then Ossian, Tom Paine's *Common Sense*, Swift, Schiller, Gibbons' *Decline and Fall*, and long afterwards Tasso, Dante, De Staal, Schlegel, and Haslitt. I have a strange memory. Sometimes it fails me altogether, yet when I was twelve I always knew the bible by heart and by sixteen I could without missing a word say the first, second, and sixth books of *Paradise Lost*. I cannot like Byron or James Montgomery, pour poetry from my heart as from an unfailing fountain; and my inability to identify myself like Shakespeare and Scott with the characters of other men are melancholy instances of my rejected failures. My thoughts are all exterior; my mind is the mind of mine own eyes. A primrose is to me a primrose and nothing more. I love it because it is nothing more. There is not in my writing one good idea that has not been suggested to me by some real occurrence, or some object before my eyes, or by the thoughts of men, heard or real. I never read a feeble book; it follows that I read masterpieces only, thefts thoughts of the highest minds."

Five years before the end of the Corn Law and eight years before his death, this account of his early years was given 'to my friend George Calvert Holland' but recovered by a John Watkins who had married Elliott's daughter with his blessing, two weeks before he died on the first of December 1849 at Darfield near Barnsley. He was too unwell to go to the wedding but his final wish was to be buried where she was married. Ebenezer Elliott actually formed the first society in England to call for the reform of the corn laws, the Sheffield Anti Bread Tax Society. In 1834 he was the prime mover to establish the Sheffield Anti - Corn Law Society and set up the local Mechanics Institute. He was also active in the Sheffield Political Union, and following the relative disappointment of the Great Reform Act in 1832, joined the Chartist movement to campaign for the vote for the working man. He was the representative of Sheffield in the Great Chartist Meeting in Westminster Palace Yard on 17 September 1838 where he was on the platform and made a speech. Possibly this was the first time he was exposed to a large audience, and his legs gave way. The *Sheffield Iris* in praising him said "We have seldom read a composition of more beautiful and impassive eloquence, breathing throughout a spirit of genuine frank philanthropy, and couched in language of the head as the sentiments are of the heart of the excellent author." After the meeting the Charter was introduced to the general populace at rallies throughout the country.

The Manchester meeting was held on 25 September 1838. James Russell the American poet, critic and anti-slavery campaigner wrote "at Manchester Ebenezer Elliott, a man of who you must have heard, a man of true genius and the poor man's poet was chairman where 300,000 were present." The problem was that Elliott was not even there! He was in Sheffield preparing for their rally the next day. John Fielden MP was in the chair and there were the usual conflicting est-

-imates of crowd numbers of 250,000 plus. The procession started at 9am in Oldham and Ashton, took three hours to reach Kendal Moor in Manchester, with sixty bands and three hundred banners proclaiming, for example, Universal Suffrage, Short Parliaments, and Remember the Foul Deeds of Waterloo. The next day in Sheffield was less auspicious. After the Master Cutler refused to call a meeting for the Chartists, notices were posted all over Sheffield and Rotherham announcing the radical demonstration on the 26th. They assembled in Barkers Pool, moved along Regent Street to await delegates from Birmingham and Manchester, then along West Street and Church Street to Roscoe Field near St Phillips Church at Shalesmoor. There was a disappointing turnout at 11am of about 700 in Barkers Pool; it had rained all night with heavy rain in the morning, and the main speaker, Dr Bowring the celebrated writer, critic and MP, pulled out at the last moment (raising the question whether he been nobbled?). The procession had two bands and two banners. The attendance at Roscoe Field was estimated by the platform at 40,000, the supportive *Iris* 20,000, 'various folk' 4-12,000, the antagonistic *Mercury* 5,000 and a 'careful calculation' by the *Sheffield and Rotherham Independent* 4,000. The mad poet as he called himself took the chair and there was a little drama as the platform collapsed. The crowd stilled but none of the worthy speakers was injured.



Ebenezer made the first speech, reminding them to be peaceful and some of his own verses were sung - first line 'God of the poor! Shall labour eat' - the Lord being called upon continuously to support the cause sung to the tune of the 100th psalm. His speech concentrated at first on the Westminster Palace Yard meeting. Travelling to London and sharing a platform with national figures had been big events in his life. He went on to complain about the lack of support from the 'Respectables' in Sheffield who had failed to turn up, they cared for the poor in India and Africa but failed to see the suffering for poor working people in Sheffield. They had benefited by commerce without contributing anything to progress, and their policies had cost the country millions. The Chartists had to stop the Aristocracy from making bad laws and needed to get the power of making laws themselves. If they failed trade would slump, wages would fall and the price of bread would soar.

Three Chartist resolutions were passed unanimously:

1. That the sources of national prosperity are failing - that our legislators in consequence of their selfishness, their ignorance and their covert bankruptcies are unwilling - our electors in consequence of their small numbers and dependant conditions are unable to help us; therefore it is necessary that the universal people obtain the power to vote in electing MP's.
 2. That the People's Charter - containing universal suffrage, vote by ballot, annual parliaments, no property qualification, equal representation, and paid members, is a practical measure calculated to obtain honest representation - and it solemnly adopted by the meeting.
 - 3 That the 'National Petition' now read, embodying the principles of the Peoples Charter be adopted by this meeting.
- In the evening 200 attended a soiree in the Bath Saloon, a pleasant time was had with speeches of congratulation and in the chair yet again was the Corn Law Rhymer.

The *Mercury* called the Roscoe Field Rally a 'wretched exhibition of conceit, ignorance and bad feeling'. The *Independent* said

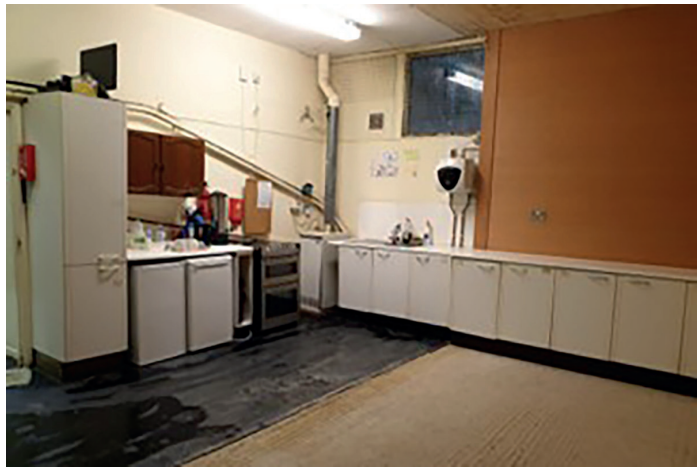
part of the rally was composed of idle youths and the curious without interest in politics, the speeches rambled, the crowd restless, jostling, and with a few fights!

Keith Hearne and Ray Hearne in their book *Ebenezer Elliott Corn Law Rhymer & Poet of the Poor* make the point that following the tumultuous reception in Manchester, preparation in Sheffield was inadequate and hasty. He was the main attraction, but his Doctors were advising him to take it easy, and his business was also needing attention. At 57 it was time to think about retiring. The fight had moved to Manchester and the League helped finish off Chartism. Did something in him and the fight die in Roscoe Field? He never got involved with the League and "never contributed a single farthing to them" which is a great pity because his instincts were right. He withdrew from the Chartists in 1839 but made a brief return to the fray in June 1841 making a personal Petition in the House of Commons and pleading that no legislative measure short of total and immediate repeal of all laws which prevent the importation of food into this country can serve your petitioner, the class to which he belongs, and all other classes of Britons from utter ruin.' Sheffield was still the land of the 'Little Mesters' and even the 'Respectables' in Manchester needed another five years to achieve what he was asking.

Totley Scouts

A New Kitchen at the Heart of our Hut

Since the good news that we'd been successful in our bid to the Youth Investment Fund, building work has got well under way at the Totley Scout Hut. After the great work they did on the wall of the hut, our builders have worked really hard to fit a brand new kitchen in the Scout Hut. The old kitchen has been in the hut for as long as anyone can remember and, as you can see from the photo, it had definitely seen better days. Leaders and children alike were all very happy to see the old units ripped out!



The old kitchen

The new kitchen was ordered from Howdens in Dronfield, and when they heard about our project, they very kindly offered to donate new appliances to go with the units we were buying. So we'd like to say a huge thank you to Jack



The new kitchen!

Warwick and the team at Howdens for their help in planning the kitchen with us, and for their generous donation of a brand new gas hob, two ovens and an extractor fan. They also kindly delivered everything to the hut free of charge.

The new kitchen has two sinks, so that there's plenty of space for the children to wash up after they've been cooking together. And there's a large island for them to gather around, with plenty of storage beneath for the leaders to store resources for meetings. To complete things, new lighting has replaced the outdated strip lights.

As part of the kitchen refurbishment, we also had a brand new boiler fitted, along with new radiators around the hut. This has made a huge difference to the heating in the building - and because the system is more efficient, it should have a positive effect on our gas bills, too!



Smart new boiler!

"I am really proud to have worked alongside you with this ... it makes me feel really proud that we have helped our local community and played our part in making the space more appealing for everyone who will be using the space." Jack Warwick, Lead Kitchen Designer

"The kitchen looks fantastic. Thanks so much to the builders for their hard work; we can't wait to get in there and be able to use it! The Cubs are looking forward to working towards their Chef badge in this wonderful space" said Sue Bridgens, Group Scout Leader.

<p>SAVE</p>	<p>SUNDAY 30 JUNE 2024</p>
<p> BBQ Drinks Games</p>	<p>THE</p>
<p>DATE</p>	<p> Find out how you can get involved</p>
<p> Sheffield 215th (1st Totley) Scouts Aldam Road, S17 4GA</p>	

TOTLEY & DISTRICT DIARY

MONDAYS	AGE UK FITNESS Dore & Totley United Reformed Church, 1.30-2.30 pm. Contact Community Wellness Service - 0114 553 7807 GUIDES , All Saints Church Hall, 6.45pm-9pm SLIMMING WORLD Totley Rise Methodist Church, 5pm and 7pm. Call Sarah on 07577 070797
TUESDAYS	PILATES The Old School, Dore, 9.30-10.30am. Phone Sally Kilner 07917 762502 TOTLEY OPERATIC AND DRAMATIC SOCIETY (TOADS) meets 7.30pm to 10pm, in the Guild Room, St John's Church, Abbeydale Road South. For more information call 0114 2351206 BABY TIME Totley Library, Tuesday 1.30-2.15pm (term-times only). Come along to meet other parents/carers and babies. We sing simple songs, have fun and allow time to chat SHEFFIELD MARQUETRY GROUP 10am-12noon, St Oswald's Church Crypt, Bannerdale Rd. Small friendly group - beginners welcome. For information phone Graeme 07947 127909 or Pat 0114 2819915 KNIT, NATTER, CRAFT & CHATTER Totley Rise Methodist Church, 12 noon-3pm JAZZ IN THE AFTERNOON 1.30-3.30pm, Totley Rise Methodist Church Schoolroom. A weekly afternoon of all forms of recorded jazz, plus discussion. Tea, coffee and biscuits available YOGA CLASS 1.15 - 2.45pm at Dore and Totley United Reformed Church. Contact Rachel (qualified level 4 BWY teacher) 07708 996984 or yogaq@hotmail.co.uk WELCOMING PLACES COFFEE MORNING open to all, Totley Rise Methodist Church, 10am to 12 noon TAI CHI Dore and Totley United Reformed Church 4-5 pm. Contact Bernice on 07999 617387
WEDNESDAYS	PILATES CLASSES Dore & Totley United Reformed Church, 9.00-10.00am and 10.15-11.15am. Contact Caroline tel: 0781 722 0324, email Carolinenorth1@me.com, www.pilatescarolinenorth.co.uk CARERS' CAFE MONTHLY Dore & Totley United Reformed Church 10-11.30 am. Contact Jan Outram 0114 278 942 COFFEE IN THE LIBRARY 10.30am-12.30pm. Come and have a coffee and a chat STORY TIME for toddlers and pre-school children at Totley Library from 10am - 11.30am (except school holidays). Children can take part in weekly themed craft activities, sing songs and listen to a story. £1 donation per child greatly appreciated TODDLER GROUP 10am-11.30am, All Saints' Church Hall. Details tel. Liz Hayden 07969 826464 HEALTH WALKS 10.30am, meet at Totley Library. Contact Step Out Sheffield on 07505 639524 or email stepoutssheffield@gmail.com YOGA CLASS 6.30 - 8pm at St Johns Church Hall Totley. Contact Rachel (qualified level 4 BWY teacher) 07708 996984 or yogaq@hotmail.co.uk
THURSDAYS	RHYTHM TIME Baby, toddler & pre-schooler music sessions 9.00-11.30 Details Email: beth.w@rhythmtime.org Phone/WhatsApp: 07748 589468 To book: https://rhythmtime.net/find-a-class ROCKCHOIR United Reformed Church, Totley Brook Rd, 11.30-1pm. See www.rockchoir.com or call 01252 714276 CHAIR AEROBICS Totley Library, 12-12.45pm with Laura. An Age UK and People Keeping Well weekly exercise class. £4 per week, no need to pre-book, just turn up. SOCIAL CLUB Dore and Totley URC fortnightly 2.30-4.30 pm Contact Alison Holden for information 236 0441 PUSHCHAIR CLUB Totley Rise Methodist Church Hall, 10.30-12noon. Tel. 07912 352543 for details PILATES CLASS run by qualified Pilates Instructor/Physiotherapist for all abilities and ages. 1.30-2.30pm, 5.15-6.15pm and 6.15-7.15pm at the United Reformed Church, Totley Brook Road. Call Emer on 07792 422909

JUNE

SUN 9th MINIATURE TRAIN RIDES 1pm - 5pm - Abbeydale Road South. £2 per ride per person. Car park closes 5pm. See www.sheffieldmodelengineers.com
WED 12th TOTLEY PROBUS CLUB 10am in Room 1, Totley Rise Methodist Church. Talk by Peter Stubbs on "Britain & Germany: The War at Sea 1914-18, Part 2". Guests are always welcome - we are always looking for new members.
WED 19th DORE GARDEN CLUB "Flowers of the Algarve", hosted by Ken Balkow. Dore Methodist Church, 7.30pm. Visitors £4 at the door.
SAT 22nd DORE MALE VOICE CHOIR Concert with Stannington Brass Band, St. John's Church, Ranmoor, 7pm. For tickets email enquiries@doremalevoicechoir.com
SUN 23rd MINIATURE TRAIN RIDES 1pm - 5pm - Abbeydale Road South. £2 per ride per person. Car park closes 5pm. See www.sheffieldmodelengineers.com
WED 26th TOTLEY HISTORY GROUP, talk by Mark Dawson, "A Spicy Tale: Henderson's Relish". 7.30pm, Totley Library. Non-members welcome.
SAT 29th TOTLEY LITTER PICKING MORNING 10-11am. Equipment provided. This activity is done at participants' own risk. Children must be accompanied by an adult. Meet Baslow Rd, outside Totley Library. All welcome.

JULY

SAT 6th DORE GILBERT & SULLIVAN SOCIETY Summer Concert, 7.30, Dore Methodist Church. Tickets available by phone on 07565 805405 or via the web at <https://doregass.weebly.com/tickets.html>
WED 10th TOTLEY PROBUS CLUB, 10am, Room 1, Totley Rise Methodist Church. Talk by Fiona Ainsworth on "A day in the life of a Forensic Psychologist". Guests are always welcome - we are always looking for new members.
SAT 13th FRIENDS OF GILLFIELD WOOD Birds and Butterflies Walk led by Stuart Davies. Start at end of Totley Hall Lane, 08.30.
SUN 14th MINIATURE TRAIN RIDES Annual exhibition of our members' work, plus visiting locos and trade stands. 1pm - 5pm Abbeydale Road South. £2 per ride per person. Car park closes 5pm. See www.sheffieldmodelengineers.com
WED 17th DORE GARDEN CLUB "Experience of a Chatsworth Trainee Gardener", hosted by Joe and Hannah. Dore Methodist Church, 7.30pm. Visitors £4 at the door.
WED 24th TOTLEY HISTORY GROUP Susan Turner, 'A Walk and Talk in Whirlow Park Gardens'. 11am. To reserve a place contact www.totleyhistorygroup.org.uk
SAT 27th FRIENDS OF GILLFIELD WOOD River Dipping with Paul Hancock and Ranger. 1 - 3pm. Meet in wood, by central interpretation board (from Entrance 1).
SAT 27th TOTLEY LITTER PICKING MORNING 10-11am. Equipment provided. This activity is done at participants' own risk. Children must be accompanied by an adult. Meet Baslow Rd, outside Totley Library. All welcome.
SUN 28th MINIATURE TRAIN RIDES 1pm - 5pm Abbeydale Road South. £2 per ride per person. Car park closes 5pm. See www.sheffieldmodelengineers.com

VIOLIN AND VIOLA LESSONS

from beginners to diploma level

- Qualified, experienced (30+ years), fun and patient teacher
- DDC checked (April 2023)
- All ages (6 years and over)
- Late starters and restarters welcome

07787 417 527
SUNDARI HELLER
LRAM, MISM



Pottery Classes



- Hand building pottery lessons
- All ages & abilities
- Relaxed and friendly environment
- Daytime, evening & weekend sessions



Rachel Collyer Ceramics

Call or text 07763 983736

www.rachelcollyerceramics.com

Peak View Pottery, 4 Lane Head Rd, Totley, Sheffield S17 3BD

Apple Landscapes and Paving

Established 19 years

Specialise in full garden makeovers.
Patios, paths, walls, turfing, fencing.

Check out our FB page.

07782167540

01246237505

Caring for the local landscape for over 25 years



TREES - Felling, pruning & advice
HEDGES - Trimming, lowering & removal

07393 878091

www.totleytreecare.com
steve@totleytreecare.com



QUALIFIED ARBORIST • FULLY INSURED

We offer a very tidy service with all green waste fully recycled



Plumbing & Bathrooms
Complete Installation Specialist

Info@A1plumbingandbathrooms.co.uk
www.A1plumbingandbathrooms.co.uk

Tel - 07738 688 807

- * Plumbing Leaks, Bursts & Blockages
- * Taps, showers, Radiators, Etc
- * All Tiling And Plastering
- * Reliable, Fully Insured & Guaranteed
- * No Job Too Small, NVQ Qualified

25 Five Trees Ave, Dore, S17 3LW



TopsforJeans

OPEN Monday - Saturday

Super soft knitwear, beautiful tops and so much more.

Call in or shop from the comfort of your own home on our website.

Catch up with the latest news on our Facebook site.



www.topsforjeans.co.uk

164 Baslow Road, Totley. S17 4DR

Editor: Phil Harris
Tel. 07956 858944 or email:
editor@totleyindependent.co.uk

Advertising: John Perkinson
Tel. 236 1601 or email:
advertising@totleyindependent.co.uk

Proof reader: Margaret Spencer

We welcome items submitted for publication, which may be left at or sent to 'Totley Independent', 2 Main Ave, Totley, Sheffield S17 4FG

www.totleyindependent.co.uk

Printed in the UK by
The Magazine Printing Company
using only paper from FSC/PEFC suppliers
www.magprint.co.uk

'Totley Independent' for August/September

The next issue of the *Totley Independent* will be published on

Saturday 3rd August

COPY CLOSE DATE for this issue
will be

Saturday 13th July

Published by Totley Independent CIC. Totley Independent is a registered Community Interest Company, number 07750166. We welcome letters about local affairs and will publish as many as possible. Items will not be considered that are submitted anonymously. The views expressed are not necessarily those of the editor or the editorial staff and must not be attributed to them. © Totley Independent 2024