

# Totley Independent

Published continuously since 1977

[www.totleyindependent.co.uk](http://www.totleyindependent.co.uk)

April/May 2024

No. 427



Guy Mitchell (seated, left) built his Brookhouse Miniature Railway in his garden on Grove Road, Totley Rise, in the early 1900s. He was one of the first model engineers in the world to do so. His daughters, his wife, and his children's nanny are seated on the train in all their Edwardian splendour! There's more information on page 7. (Photo courtesy of Guy's granddaughter Mrs Julie Malam. Our thanks to Mick Savage.)

## Cash Boost for Totley Scout Hut!

*Fran Arnold writes:* Great news for young people in Totley! Our Scout group has been awarded a Youth Investment Fund Refurbishment Grant to renovate our Scout Hut, supporting our youth service.

The Department for Culture, Media and Sport and Social Investment Business have announced that our service is one of 140 youth projects across England to be awarded a Youth Investment Fund grant to create new opportunities for young people. The funding will enable youth services like ours to transform health, wellbeing, skills, and opportunities for young people. Our Youth Investment Fund Refurbishment Grant of nearly £100k will give us the funds for a number of the bigger tasks that really need to be done - fitting a complete new kitchen, re-roofing the building and fitting a new heating system.

In addition, our local councillors have supported us by granting us £4k from the CIL (Community Infrastructure Levy) fund to improve the hut's drainage to support the refurbishment work.

Welcoming the Youth Investment Fund Refurbishment Grant, Sue Bridgens, Group Scout Leader, said "This is amazing news for our group, and will make such a huge impact on the group and young people. A huge thank you to the amazing members of our Group Executive Committee who have worked so hard to secure this grant for us. We can't wait for the work to begin."

Our Scout Group would like to thank everyone who has supported us in getting to this stage by helping with fundraising and renovating our hut so far. Many thanks go to Councillor Martin Smith, who supported us with a vital amendment to our lease. We look forward to everyone's continued support as we get this work done for the future of the hut and the Group. Finally, we'd like to say a huge thank you to Helen Armstrong, who was our Chair when we put in the bid, and who has remained on the committee to project manage the work being done with this grant. (See photos on p.20)

### UKRAINE HUMANITARIAN APPEAL

**Apart from donating food, blankets and other essentials through local churches and other organisations, you can help by sending money to the Disasters Emergency Committee at any Post Office, or online at [DEC.org.uk](http://DEC.org.uk)**



DISASTERS  
EMERGENCY  
COMMITTEE



# Totley Pharmacy

**Your local independent pharmacy  
serving you since 1996**

# 24/7

## prescription collection

**Call: 0114 236 1070**





## Totley Primary School

In the fast-paced world of 2024, it is so easy for food to be viewed as 'fuel' to propel us from one busy part of the day to the next. Unfortunately, this need for convenience can result

in a narrowing of children's understanding of how their meals arrive in front of them and their wider view on the importance of the quality of the food they consume.

With this in mind, at Totley Primary School, we are passionate about teaching children that food knowledge and cooking skills are vital components of growing up to become healthy and responsible adults. Our Food and Cooking curriculum instils a pro-food attitude in all children, teaches the most useful knowledge and understanding so children can make informed decisions about the food they choose and cook, and teaches the necessary skills so children can competently and confidently work with food to prepare balanced, nutritious, tasty and mainly savoury dishes – it's not all about having our cake, and eating it!



In Reception, the focus is on which foods are associated with typical meals in the day, and cultural, religious and national events and celebrations. Children learn how to make smoothies, fruit kebabs and celebration biscuits alongside the culinary skills of slicing, skewering, cutting and rolling.

As children move up through the school, this foundation is built on. In Y2, for example, children learn about seasons and seasonality in food through making cheese and vegetable-filled omelette pockets – cubing, grating, whisking, measuring, peeling, snipping and slicing – before using the hob safely.

By the time children are in Upper KS2, things really ramp up as they are taught to make comparisons between traditional and modern British cuisine, and understand the reasons for the changing influences in British food. In recent weeks, the mouth-watering aromas of slow-cooked scouse stew and Caribbean lamb curry (goat is hard to source!) have wafted down the corridors alongside traditional Victoria Sponge cakes and 'wartime' fruitcakes which developed children's understanding of how recipes needed to be adapted for the availability of ingredients. Browning, folding, pureeing, glazing and simmering have been just a few of the new culinary skills taught.

Having conducted extensive sampling of the children's work (!) I can conclude that the future of the nation's food quality is in very safe hands!!

*Ben Paxman, Head Teacher*

## Councillors' Update

We want to start by congratulating Totley Scouts on their fantastic achievement in winning a £100k grant from the Department for Culture, Media & Sport to refurbish the Scout Hut. This will help the group to deliver transformational changes to the building. There was a last-minute legal issue

that Martin managed to resolve within the Council, after which local Councillors were able to add another £4k to the pot from the Community Infrastructure Levy for improvements to the drains. All in all a fantastic result for the local community and we look forward to visiting the building when work is complete.

On a far less positive note we were shocked at the outrageous burning of waste on a building site on Baslow Road, where clouds of smoke drifted across the local area and the nearby school. Events such as this constitute a Statutory Nuisance and we welcome the swift intervention of the Environmental Protection team at the City Council following numerous complaints from residents. Further details of how to report any environmental concerns in the local area can be found on the Council website.

As we reported in a previous article, heavy winter rainfall caused several flooding incidents in our area, particularly on Totley Brook Road. Extensive investigation has revealed a few issues on this street. Yorkshire Water have undertaken repairs on something called a 'combined sewer overflow system', but so far this hasn't solved the problem, and we continue to press them for a satisfactory solution. Surveys have also found that some highway gullies on Totley Brook Road are connected to an unmapped watercourse rather than the surface water drain. Amey have been commissioned to connect these gullies to the correct sewer and this work is expected to begin before long.

The annual budget has also been taking up a lot of our time, with numerous meetings and briefings on the city's finances. Thankfully Sheffield is not in the same situation as other councils who have effectively declared bankruptcy, but due to some poor decisions in the past and non-delivery of savings in some critical areas, our financial reserves are at a very low level. On 6th March a full meeting of the city council made some difficult choices and agreed a budget for the next twelve months. We will be scrutinising its delivery very carefully.

And finally....we are very pleased that the major planning application for a green belt site around the Dore Moor Garden Centre has been rejected by the City Council. Members of the local community as well as Colin spoke at the meeting against the proposal which was overwhelmingly rejected by the committee. The developer has the right of appeal to the national Planning Inspectorate but we sincerely hope that they will take on board the very clear feedback from local residents. This is a very important test case for the protection of the Green Belt in our local area, not just Dore, and we will keep a close eye on what happens next.

As ever please feel free to contact us with any questions or feedback about Council services or come and meet us at one of our regular surgeries. These are held at on the 2nd Monday of the month at 6pm in Totley Library, and the 2nd Saturday of the month at 10.30am in Dore Old School.

colin.ross@ councillor.sheffield.gov.uk  
martin.smith@councillor.sheffield.gov.uk  
joe.otten@councillor.sheffield.gov.uk



**Train with Suzy offers Personal Training Focussed on Fitness, Fat loss and Toning. Based in Dore with own Gym. I offer private sessions individually tailored to your goals.**

**Call to book your free consultation  
07825-167411 [www.trainwithsuzy.com](http://www.trainwithsuzy.com)**



The Fletcher Family invites you to

## The Grouse Inn

### Longshaw

Sheffield S11 7TZ

**Meal times: Mondays 12.00 to 2.30pm**

**Tuesdays to Fridays 12.00 to 2.30 pm  
and 6.30pm to 9.30pm**

**Saturdays 12.00 to 3.00pm and 6.30pm to 9.00 pm  
(drinks – open all day)**

**Sundays 12.00 to 9.00pm**

**Phone 01433 630 423**

## John Heath & Sons

AN INDEPENDENT FAMILY FUNERAL BUSINESS

*Sometime.....*

You will probably have the responsibility of making funeral arrangements. No one looks forward to this responsibility, but the death of a family member or friend brings with it an obligation that must be met. There are people who can help you meet this responsibility. We have been helping people combine the different aspects of the funeral into a meaningful service for over 125 years.

Please Call Day Or Night

**(0114) 272 2222**

**Head Office - Earsham Street**

Also at Meadowhead, Ecclesall Rd,  
Crookes and Stanington

[www.johnheath.co.uk](http://www.johnheath.co.uk)



## LIBERTY FOODS

Caterers  
Quality Meat Shop  
& Fresh Farm Produce

Fresh and Frozen Prepared Meals  
Fresh Meat and Poultry  
Outside Catering  
Home Delivery

253 Baslow Road, Sheffield, S17 4DU  
Tel: 0114 2360 583 Mobile: 07801 346 455  
Email: [damianbower@liberty-foods.co.uk](mailto:damianbower@liberty-foods.co.uk)



For  
Windows  
With Style

**Sheffield Factory Showroom**

**106 PROSPECT ROAD  
HEELEY, SHEFFIELD**

**Sheffield (0114) 258 5496  
Rotherham (01709) 512113**

## Tristan Swain

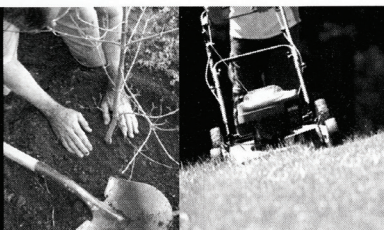
Garden Services and Maintenance  
Established 1984

Unit C4 Sheaf Bank Business Park  
Prospect Road Heeley  
Sheffield S2 3EN

Tel/Fax: 0114 255 4689

Mobile: 07831 802 539

Email: [tristan@tristanswain.co.uk](mailto:tristan@tristanswain.co.uk)



[www.tristanswain.co.uk](http://www.tristanswain.co.uk) Public Liability Insurance Waste Transfer Licence

## John Collins Cabinetmaker

Fine furniture, antique furniture restoration, fitted  
wardrobes, alcove units

0114 2585355

[www.cabinetmakercollins.com](http://www.cabinetmakercollins.com)

## Hair-ium by Latia

In your home, expanding by client demand!

Professional, qualified, experienced

From perming to modern techniques.

I am also fully DBS checked, with professional.  
experience of clients with vulnerabilities etc.

Call for bookings on

07944 878585 or 0114 2361993

For group bookings of 3+ - get % off!!

## BRADWAY INSTALLATIONS

Kitchens, Bathrooms and everything in between

**Complete Kitchens** Installation or supply & installation

**Kitchen Refits** Replacement worktops/sink/hob etc  
Worktop/cabinet repairs

**Bathrooms - Cloakrooms - Domestic plumbing**

**Tiling - Laminate/Vinyl flooring**

*All work undertaken is fully insured and guaranteed*

**Ring Peter - 0114 236 5995**

**Mobile - 07766 411355**



## A Message from the Editor: Let's try again!

**Phil Harris writes:**

In the last issue of *Totley Independent* back I asked for volunteer potential editors to help with the preparation of the next few issues, with a view to taking on the full role of editor in due course. Unfortunately, I didn't receive a single response!

Just to repeat: after 10 years, it is getting to be time for me to hand over to someone new. It is my intention therefore to step down from the role of editor at some point in the not-too-distant future.

If you have some spare time to help put together the *Totley Independent* every two months, and to become familiar with the software we use to prepare the layout etc, please get in touch via the email address or phone number on the back page. Please consider getting involved, maybe with a group of friends, and help keep *Totley Independent* going!



**Friends of  
Gillfield Wood**

### Gillfield Wood benefits from Peak District Grant

Gillfield Wood is adjacent to the Peak District National Park and forms a corridor for people and wildlife into the park. The Friends of Gillfield Wood (FOGW), with the permission and support of the council have been able to access grant funding under the Farming in a Protected Landscape

scheme managed by the National Park for a range of projects to improve access, increase people's awareness of the wood and improve the environment over the long term.

We started with the replacement of three stiles by new gates funded by the grant and installed by the Council Public Rights of Way Department as a follow up to the kissing gates installed by them last year along the path from Totley Hall Lane. It's now possible to take a circular walk from the end of the lane down into the woods then returning through the field and track on Totley Hall Farmland without having to climb over a single stile.



The second project was to install two new interpretation boards based on the one already in place which was funded by Sheffield Southwest Area Local Committee. We now have similar boards at the bus terminus and by the scout hut.

The third project is just starting and involves a full survey of the wood identifying the different areas and the type of woodland in place. This will form the basis for planning future actions in the wood both as part of our routine conservation work and hopefully more significant developments by the Council's Woodland Department in the future management of the wood. FOGW have now set up a special group to identify and monitor flora and will use the survey as a basis for this.

The final project should take place later in the year to improve the surface of the main path and reduce the extent of very muddy patches. The grant will fund material and the Council will install.

As a group, FOGW are always looking to find ways to improve the wood for people, flora and fauna. We are pleased to have been able to facilitate these projects when the Council are struggling for funds and resources.



### Totley Yard Sale

**Sunday 28th April, 10am**

Sell from your front garden/area. £7 per seller. A map listing every seller will be sold to buyers for £1.

All monies raised go to Totley organisations supported by Totley Open Gardens! In 2023 we distributed £6,000.

To book your address on the list, email: [jennie@hadish.f9.co.uk](mailto:jennie@hadish.f9.co.uk)

### Traffic News

The data regarding speeding offences detected by the speed detector van in January and February this year show that a total of 41 offences were detected. Ten of these were identified on Baslow Road near Main Ave, and 31 were detected by the van on Baslow Road near Marstone Crescent.

Of the total offences detected, 13 speeding offenders were from the S17 post code area - which works out at 32% of detected speeding offenders during this two-month period.

*Data provided by Roger Hart*



### THE HARDY PLANT SOCIETY South Pennine Group

Web site: [South Pennine HPS \(webador.co.uk\)](http://South Pennine HPS (webador.co.uk))



@HPSsouthpennine



south\_pennine\_hps

### SPRING PLANT SALE 2024



**Saturday 18 May, 1100 -1500 & Sunday 19 May, 1100 -1400**  
**Sheffield Botanical Gardens**

**Wide selection of hardy and other plants  
grown by our expert members**

**Everyone welcome - Free admission**

**We can now accept card payments**

**To help us reduce the use of plastics, please  
bring your own bags to take your plants home.**



## Dementia Friendly Friendship Lunches

The Friendship Lunches in the south west of the City continue to go from strength to strength, namely the Ball in Crookes (first Tuesday of the month) and the Crosspool Tavern (second Monday). Although the Shepley Spitfire Friendship Lunch has now ceased due to the venue being taken over by Greene King, the founder of the Friendship Lunch, Kathy Markwick, Freelance Community Consultant, said she is confident that the new Manager will reinstate the event due to how successful it was with 50 or 60 guests every month. Kathy said "I am delighted with the success of the Friendship Lunches in the local area



*The Lord Mayor and Lady Mayoress of Sheffield, Cllr Colin Ross and Susan Ross, with guest, Christian, at a recent event at the Shepley Spitfire.*

and in August we shall be celebrating the event's 8th birthday at the Crosspool Tavern. I am also very excited to confirm that Tom Green, the Manager of the Sportsman in Crosspool, has also come on board and we will launch his new Friendship

Lunch on Friday 19 April." Thanks to sponsorship by Sheffield City Council and support by Age UK Sheffield, People Keeping Well and Twelve Trees Care, 50 elderly guests from the south west have received complimentary tickets and will be treated to a delicious two course lunch and entertainment with the fantastic Oliver Harris. The event is now fully booked with a waiting list! Thereafter the event will be held on the third Friday of every month. For further information, please contact the venue or Kathy on 0772 9528844 kathyarkwick@gmail.com

Kathy added "The Friendship Lunches are 'dementia friendly'. It may be that those who live with dementia will not remember the event afterwards, but they will undoubtedly enjoy the moment and that is hugely important for them, their families/ carers and for everyone involved with the events. And as the Lord Mayor and Lady Mayoress come to the end of their term in office, I would like to personally thank them for their support and enthusiasm for the Friendship Lunches - their attendance undoubtedly made the events extra special and our guests loved meeting and chatting to them!"

## Totley Open Gardens

### A summer date for your diary!

Totley Open Gardens will be taking place for the 22nd year on Saturday 6th and Sunday 7th July from 1pm to 5.30pm.

14 gardens and an allotment will be open for visitors to come and enjoy, and get inspiration and ideas.

Teas, coffees and delicious cakes will be available in one garden, which has level access. Plants will be on sale in other gardens, and toilets will be available in some places.

The proceeds from this event will be distributed among local community organisations.

Come and support a wonderful local event, and have a good day out. Get it in the diary now!

*Jennie Street*



# ELLIS WILLIS & BECKETT

## Auctioneers & Valuers

Ellis Willis & Beckett can trace its roots back to 1870 and is a well-known name in Sheffield and the north of England. We hold monthly antique and collectible, specialist and quarterly fine art auctions. Including country and fine furniture, ceramics, paintings, toys, jewellery, watches and everything in between.

- Free Valuations & Home Visits
- Inheritance / Probate Valuations
- Deceased Estates & House Clearance Services
- Low Commission Rates For Vendors & Buyers

[www.ewbauctions.com](http://www.ewbauctions.com)

☎ 01142 796959



## The Brook House Miniature Railway

Model steam locomotives have been made from the time of the invention of the full size ones in the 1840s, often by railway apprentices. Examples can be seen in the National Railway Museum at York, but complete passenger carrying miniature railways did not appear in Britain until the early 1900s. Remarkably, three of the very first were in Sheffield and in particular, one of them was in this area. It belonged to Guy Mitchell of Brook House, Grove Road - coincidentally only about about a mile from the present Abbeydale Miniature Railway and a stone's throw from what was then the Midland Railway's main line from Sheffield to Manchester. Mitchell's 'Brook House Miniature Railway' was built in his extensive back garden and his house was extended to accommodate his coal fired steam locomotive, carriages and workshop. Dams on the Old Hay Brook behind his garden were built to provide a stream feeding a lake, complete with a rowing boat. There was a tunnel and signals. Guy died young and the family eventually moved away. Brook House later became part of Miss Trott's private girls' school. Guy Mitchell was a true pioneer in the history of miniature railways, owning the first of the Northampton based W. J. Bassett-Lowke's 7¼" gauge LNWR Precursor class 4-4-0 live steam locos, designed by the famous Henry Greenly.

A contemporary description of the railway appeared in the Sheffield *Daily Telegraph* in November 1910:

"What is probably one of the most perfect little garden railways in existence is to be found at Totley, a mile or so past the recognised railway station.

It is situated in the grounds of Mr. G. S. Mitchell. of Brook House, Grove Road, and that gentleman is the designer and constructor. His garden is far from large - as country gardens go - but every advantage has been taken of what space there is, and the length of the track runs into nearly four hundred yards. Seventy odd feet of this is laid under a beautifully-built brick tunnel, which for stability would pass Board of Trade regulations. The track is laid in circular form, and winds round a pretty model lake. It is an exact facsimile, except in size, of the Midland Railway Company's line, which runs within a very short distance of the spot. There are miniature sleepers and chairs, and the gradient of the track is denoted on boards placed along the embankment. The whole railways is built to scale, and is an eighth of the size of the real thing. The points and signals are worked from a signal box, which is large enough to accommodate three or four persons.



The engine needs little description. It is an exact model of those used by the London and North-Western Railway Company for fast passenger services. It is built on the same scale as the railway, and is an eighth

of the size of an ordinary locomotive. It weights about four hundredweight, and the tender is estimated to weigh another hundredweight. It is a beautiful piece of machinery, and can easily attain a speed of 15 miles an hour. When Mr. Mitchell takes a tour round his garden he drives the engine from the tender.

In the course of an interesting chat, which he had with a representative of the "Sheffield Daily Telegraph," he laughingly declared that it was rather difficult to balance when the engine was rounding the curves at twelve miles an hour. "I have had one or two spills," he said, "but nothing serious. They were due to the 'pointsman' on duty working the wrong lever."

Mr. Mitchell explained that his wife, or a friend, generally worked the points and signals whilst he drove round the grounds. The engine, he said, was capable of pulling a load of seven or eight people at a good speed.

He gave our representative a few details regarding the construction of the railway. The track, he said, took him six months to construct. Tons and tons of ashes were strewn over the grounds as a foundation for the line, and over the top were placed several loads of stone chippings. Then came the sleepers, and afterwards the line itself.

Mr. Mitchell has two engines, one of which he built entirely himself. His workshop adjoins the house, and the clever mechanic spends most of his time in the former. It was there that he divulged to our representative his latest idea for perfecting his miniature railway. He explained that the engine consumed an enormous amount of water when travelling along the track. At present the water supply is obtained from a tank in the tender. When that is used up, the journey comes to an abrupt termination.

"I intend," said Mr. Mitchell, "to overcome that difficulty by constructing a water feed along the track, and so enable the engine to pick up its own supply of water as it travels along"

*With thanks to Mick Savage and to Totley History Group*

**Totley History Group presents**

**Yorkshire Folk Lore**  
**by Catherine Warr**

**WEDNESDAY 22 May 2024**  
**7.30PM IN TOTLEY LIBRARY**  
**NON-MEMBERS ARE WELCOME**



# Millthorpe Nursery

## Spring is here!



Time to brighten up your garden with bold splashes of spring colour.

We have lots of potted bulbs, shrubs, perennials and much more

Millthorpe Lane, Holmesfield, S18 7SA



01142 890334

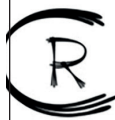


**Open Tuesday - Sunday 10am - 4pm**

# Pottery Classes



- Hand building pottery lessons
- All ages & abilities
- Relaxed and friendly environment
- Daytime, evening & weekend sessions



Rachel Collyer Ceramics

Call or text 07763 983736

[www.rachelcollyerceramics.com](http://www.rachelcollyerceramics.com)

Peak View Pottery, 4 Lane Head Rd, Totley, Sheffield S17 3BD

## Caring for the local landscape for over 25 years



**TREES** - Felling, pruning & advice

**HEDGES** - Trimming, lowering & removal

# 07393 878091

[www.totleytreecare.com](http://www.totleytreecare.com)

[steve@totleytreecare.com](mailto:steve@totleytreecare.com)



## QUALIFIED ARBORIST • FULLY INSURED

We offer a very tidy service with all green waste fully recycled



# Ask Your Pharmacist

## Pharmacy First!

Following on from my last article about media coverage community pharmacy has recently received, it is encouraging to see that pharmacy has remained in the spotlight over the last couple of months. What is also nice is that the coverage this time is more positive than the TV programme I mentioned in the last edition. While that programme centred on serious problems facing community pharmacy, current media coverage is about some enormous positive benefits that pharmacy can provide for the NHS and patients.

You may have seen press articles and posters promoting the bold new NHS service 'Pharmacy First'. Many pharmacists and pharmacies have long been advocating for the NHS to make better use of their clinical knowledge. While the powers that be have also long trumpeted their desire to use these skills of highly trained pharmacists, actual use has been sporadic. Finally, a national, rather than localised, and comprehensive scheme is being rolled out. The NHS Pharmacy First scheme, launched by the government and NHS England on January 31, 2024, is set to revolutionize the way patients in England access treatment for common health conditions.

This initiative allows patients to receive treatment for seven common conditions directly from their local pharmacy without the need for a GP appointment or prescription.

### Conditions Covered by Pharmacy First Scheme

Under this scheme, patients can seek treatment for a range of common ailments including:

- Infected insect bites
- Shingles
- Sinusitis
- Sore throat
- Uncomplicated urinary tract infections in women
- Impetigo
- Middle ear infections

This new scheme aims to provide quick and accessible care to patients, making it more convenient for them to seek treatment. It is estimated that this initiative will save up to 10 million GP appointments a year, thus freeing up GP time and space to see patients with more complex conditions. Due to a shortage of GPs, and an ever increasing burden placed upon the NHS, GPs remain under enormous pressure, and patients continue to say they want quicker access to treatment.

In the interests of safety, and clinical governance, there are caveats and exclusions to this scheme. Not every patient will be eligible to access treatment from the scheme, but our pharmacists will conduct a thorough assessment with you to decide the right course of action. If it is not appropriate to supply antibiotics or antivirals, we will advise you on the best course of action. Of course, as myself and Jasmine have completed the prescribing course, we may still be able to prescribe for you outside of the scheme if appropriate.

If you suspect you are suffering from any of the above-mentioned conditions, please pop in to see us. There is no need to make an appointment – we're happy to see you at any time. Please do bear in mind though that the NHS continues to push lots of extra work into pharmacy, and this new service will mean lots of extra patients attending pharmacies too. If you have to wait few minutes to see a pharmacist, please be patient. We will endeavour to treat you as soon as possible. In fact, due to the extremely high demands placed upon pharmacy currently, some pharmacies have decided not to offer this service. However, everybody should be able to access a pharmacy close to them offering this service, even if your pharmacy does not. We are fortunate in having two pharmacists, so we should be able to offer plenty of appointments. I have discussed this scheme with local surgeries, and we are working closely together to maximise the benefits for outpatients under surgeries. So far, we have seen many patients and have been able to offer assessment and treatment very quickly. Patients have been very pleased and satisfied with the service provided, and the speed and convenience of it.

### So, for minor illnesses, think Pharmacy First.

Another topic you may be seeing publicised soon relates to

the NHS hypertension finding service. This aims to identify people who have blood pressure issues without realising it. The service will guide eligible patients to pharmacies, where you can have your blood pressure checked for free. Upon checking your blood pressure, if necessary, we will provide you with a free 24 hour blood pressure monitoring check. This is a very useful service as it can either diagnose if you have high blood pressure that needs treating, or can give you peace of mind that your blood pressure is not a problem. Again, there is no need to book an appointment for this service. We have plenty of capacity to offer this service every day. If you have any concerns, please do pop in to see us.

Tajinder Singh



## Update from Olivia Blake MP

It's been a busy start to the year, and I wanted to update you all on some of what I've been up to both in Sheffield Hallam and Parliament.

I've continued to receive thousands of messages from people in Sheffield Hallam about the devastating situation in Gaza, where over 30,000 Palestinians have now been killed. Sheffield Labour MPs

have organised an appeal for Medical Aid for Palestinians. I hope that, if you can, you'll join us in raising much needed support: <http://www.justgiving.com/page/paul-blomfield-mp-1700558076785>. I've been calling on Ministers to do all they can to push for an immediate ceasefire, for aid to enter Gaza, and for the release of hostages.

In Parliament, I was also pleased to support the report launch of Sir Michael Marmot's Institute of Health Equity, which lay bare the dire state of Britain's homes. The latest evidence shows that 9.6 million UK households are living in heat-leaking, poorly insulated homes and have incomes below the minimum required for an acceptable standard of living. It was good to meet with campaigners and hear more about the action the UK needs to take to tackle this issue. I will continue to press the Government to insulate the millions of homes needed to tackle fuel poverty and the rising cost of energy.

Last month – and closer to home – I took part in a public meeting on what can be done about the burning on the moorland we've recently seen in the constituency. Many people have reached out to me about the poor air quality caused by the burns. I hosted a parliamentary debate earlier in the year to highlight their experiences and the damaging effect the practice has on natural habitats and our ability to tackle the climate emergency. For this latest discussion, I was joined by the South Yorkshire Mayor, Oliver Coppard, alongside experts in moorland land management and nature recovery to talk about the alternative to the burns – rewetting and restoring peatland habitats.

Even closer to home, I was very pleased to visit the Tunnel Tap – a local micro pub serving the community in Totley Rise. It was great to hear from the owner, Mark, about the positive impact of his business on the local community who don't have to travel too far afield for refreshment!

I also paid a visit to Sheffield Forgemasters, the origins of which I learnt date back to the 1750s! It was great to meet with Edward, the Business Development Manager, and hear more about Forgemasters' goals and ambitions for the future. I was especially impressed by the STEM Engagement plan which partners with the Work-wise Foundation on several of their programmes, and their apprenticeship programme which currently has 60 apprentices.

As always, thank you for reading my update. Please do get in touch if there is an issue you are facing, or campaign you would like me to join.

Olivia Blake, MP for Sheffield Hallam  
[olivia.blake.mp@parliament.uk](mailto:olivia.blake.mp@parliament.uk)  
<https://www.oliviablake.org.uk/>



As winter's chill gives way to spring's warm embrace, the daffodils have burst forth in a golden chorus around All Saints Church, heralding Mothering Sunday. In this wondrous season of renewal, we are reminded that just as the perennial flowers wither and fall with winter's grip, only to spread new life in spring's gentle awakening, so too did Jesus rise on Easter morn, offering hope of resurrection and rebirth.

Though Easter has come early this year, its arrival on March 31st is still a world away from the earliest possible date of March 22nd, which has not graced the church calendar since 1818 and shall not return until 2285 - thankfully I imagine I may have handed over the reigns to another by then! Yet whether celebrating Christ's triumph in late March or April, the hope it holds out is the same. It's a hope we look at each Sunday as we gather - you're welcome to come and check it out too - any Sunday at 10am.

As the church enters its centenary year, there is so much going on - you can see all the events at [www.allsaintstotley.church/centenary/](http://www.allsaintstotley.church/centenary/). But let me tell you about a couple of upcoming events.

On May 8th, the Nabucco concert by the acclaimed John Wade Singers is coming to AST, a musical feast raising funds for the vital Grace Food Bank and Oakes Holiday Centre. Then, on July 6th and 7th, we're partnering with Totley's annual Open Gardens, wandering through a tapestry of stunning blooms and verdant delights, with refreshments and fascinating historical insights at AST from the Totley History Group.

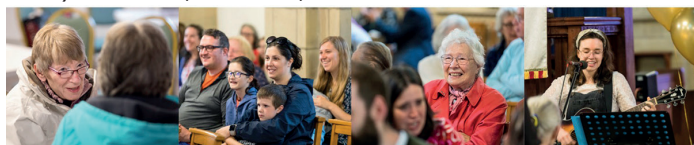
And our celebration extends beyond our walls, as we partner with local churches for a JOY Community Fun Day at Totley Primary on 22 June, offering free festivities for all to enjoy.

Though the daffodils' bright chorus may fade, the spirit of new beginnings, hope, growth, life is to be found wherever Jesus is, if we can be praying for you or you want to find out more about AST or what were all about please don't hesitate to be in touch.

*Rev'd Ben Tanner, Vicar*

*M: 07912 890512*

*E: [ben@allsaintstotley.church](mailto:ben@allsaintstotley.church) | [www.allsaintstotley.church](http://www.allsaintstotley.church)  
Totley Hall Lane, Sheffield, S17 4FA*



## Neighbourhood Watch

First, residents are reminded that the whole of the S17 area is a designated "NO Cold Calling Zone" as approved by the authorities and Trading Standards. Every road into Dore, Totley and Bradway has signs confirming this, as well as many of our other roads. Many residents also have NCC stickers on their properties which, to be honest, most cold callers either ignore or do not see. You are under no obligation to open your door, give them access or even listen to their pitch - just point out your stickers and tell them to leave your property. They can be reported to Trading Standards on 0808 223 1133, or via email at [tradingstandards@sheffield.gov.uk](mailto:tradingstandards@sheffield.gov.uk).

Many of our residents are being plagued by cold callers trying to sign up homes for the new Fibre Optic broadband services. Whilst it is appreciated that the companies have to sign up people to pay for the expense of installing the cabling etc, some of the people employed are not, to put it politely, very good at hearing. Some of the comments reported to me include very pushy, insolent, rude and refusing to accept 'not interested' or 'no one available to discuss'. Even worse was the following: "I had a rude bloke a couple of weeks ago! He came to the door I saw him through the window (I was sat on my sofa feeding my newborn) and he told me to answer the door I shook my head and mouthed I can't. He could clearly see I was feeding my son he shouted answer the bloody door!... at this point I put my son down and shouted what did you just say! He scuttled off down the road!!! He came back

another three times since then." All the incidents reported to me have been forwarded to Trading Standards who hopefully will be in touch with the companies involved.

Most of us are aware of the gang of youths riding e-bikes causing havoc and breaking into properties recently. They were recorded in Dore, Totley and Bradway. Fortunately prompt reaction from the rapid response team resulted in one of them being apprehended near the Wollaton Road shops/Longford Crescent area. CCTV images were available from a number of the victims and adjacent residents and we have been asked to collate the details of anyone having any CCTV footage that might prove useful in a prosecution. The Officer involved with the incidents can contact me for the details should they need them. There were 13 burglaries in the S17 area during the period and only one vehicle theft. To put this in context the Gleadless Valley area had 278 incidents in the same period.

Following a meeting with our new Inspector we should be receiving a monthly update of incidents in our area. Whilst not in the format we had previously, anything is better than nothing. In the first four weeks of 2024 the S17 area had approximately 97 incidents of which 28 were shoplifting from the Bradway Sainsbury's. The latest info for February shows a total of 113 incidents in our area of which only 57 related to domestic incidents but included 40 shoplifting incidents, many again from Sainsbury's, and probably the Tesco Express and the Co-op. Apparently the shop staff are not allowed to challenge any offenders in case of a violent reaction.

If the proposed increases in manning levels happen, we should have an additional five new PCSO's by the end of March plus a couple more PCs for the NPT.

We will have run the second Community Speed Watch session on Wednesday 13th along Bradway Road from the Low Edges speed restriction sign to the golf club. Any resident wishing to take part should contact me or John Sharpe to arrange the required training.

*Les Day, Chair, S17NWA  
[les\\_nhw@hotmail.com](mailto:les_nhw@hotmail.com)*

## Unstone GardenScapes

Let us  
transform your  
garden

From concept to  
completion

Fully insured.  
Over 25 years experience.  
Portfolio available.

Decking Fencing Patios Turfing Planting  
Or just a general tidy up

Call Jason for a free quote  
Mobile 07791069360





## Who am I?

I have been having quite a bit to do with the NHS at the moment. So I thought that for the purposes of easy communication in these days of the 'app', I would try to get the NHS app. I don't have a smart phone that will take it so I tried to download it on my iPad. Call me an antediluvian dinosaur if you wish, but I didn't think I would have much use for a smart phone as I already have an iPad, desktop computer and landline phone. I was also influenced a few years ago by the horror of walking in the opposite direction to rush hour crowds and being bumped into by some of them in Euston Road, London, all of who seemed to be unaware of anything or anybody other than what their smart phone was showing them.

I set about finding how to access the NHS app on my iPad. Not for the first time, I discovered that I would need photo ID in the form of either a passport, UK driving licence, European driving licence, European national identity card (with some exceptions for Italy and Greece), or a UK residence card or biometric residence permit. I've never driven, my last passport was decades ago, and I don't have any of the other things mentioned. The NHS doesn't accept travel cards, bus passes, NHS ID cards, visa stickers, UK citizen ID cards, proof of age cards, school or university ID cards and some other identifying documents from Syria, Italy or Greece. "There are no ends to administration, only loose ends" as they say.

For those of us who need to 'get with the programme', you can get the NHS app by contacting your surgery to get something called a linkage key or passphrase, another thing with three alternative names called an ODS code or Organisation Code or Practice ID, and finally an Account ID. I asked for these and after a couple of false starts, careful entering of numbers, upper- and lower-case letters and other symbols, a fortnight later I was in! So, for a while, bedtime reading consisted of going through the fascinating tale of my GP record from 1992 onwards.



Apart from the many hurdles to jump to get there, it is annoying to us dinosaurs that the possession of a fancy phone and up-to-date photo ID seems to be required by so many organisations these days. Photo ID will be needed for voting in the upcoming elections, and I gather that bus passes are accepted. My bus pass photo was taken over 20 years ago and shows the ravages of two further decades on

Earth. So, rather than risk creating a scene at the polling station, I changed to voting by post. One small triumph at least.

It all used to be so simple. I still have my National Registration Identity Card issued during World War Two. It documents who I am, my ID number and where I've lived since birth. It reminds me that when we lived in West London at a time when the German 'doodlebug' V1 flying bombs started falling towards the end of the war, I was taken up to my grandparents in Elland Road, Leeds, for a while. I'd already been blasted out of my cot, and my father was furious that a huge clod of earth from the same nearby bomb blast had smashed through the roof of his beloved shed.

Anyway, I'm still here - and I still know who I am.

Mike Peart



## Totley History Group

Unfortunately the free talk about the Dore and Totley knitters who supported the East coast minesweeping trawlers during WW2 had to be postponed because of snow that arrived just at the wrong moment on February 8th. It was re-scheduled for March 14th.

The AGM, usually held in our April meeting, will this year be in June. Annual membership subs (£5) will be due and received in either month.

### Future Programme

April 24th John Wilson, 'Sheffield, Home of Football'  
May 22nd Kathryn Warr, 'Yorkshire Folk Lore'.

Our meetings take place in Totley Library on 4th Wednesday of each month at 7.30. £2 for members, £3 non-members. All welcome

## The Northern Battle Of Britain Memorial

The unveiling of the Memorial will take place on Sunday May 5th. The time will probably be 11am - but if you are planning to be there, please call to confirm the time! Please contact [www.southyorkshireaircraftmuseum.org.uk](http://www.southyorkshireaircraftmuseum.org.uk)  
Tel: 01302 761616

It's been a long, long journey to reach this point of preparing to unveil this memorial to honour those who gave their lives in the 'Greatest Air Battle' ever fought during the dark days of 1940.

This Memorial is to be placed at South Yorkshire Aircraft Museum in Doncaster. This is stage one of three phases of construction. The information attached to the wall is the most important part of the memorial. A single panel will display the 'Roll of Honour' remembering those 544 pilots and airmen who gave their lives that Great Britain would prevail and overcome the constant air attacks by an almost overwhelmingly brutal German enemy.

Raising the money has been a serious challenge during these difficult times. There has been a constant trickle of monetary support deposited by visitors to the museum, into a re-utilized WW2 Defused Bomb Casing - as they say, 'every little helps' - and loyal members and friends too.

We came across a local sculptor who makes terrific models in metal. We commissioned him to make two models of a Hurricane and a Spitfire (each aircraft with a 6 foot wingspan) to be mounted on pylons, to fly above the newly constructed brick Memorial wall; Royal Air Force Crest; plus further additional relevant information to be attached to the wall with Winston Churchill's famous words, 'Never, in the field of human conflict, was so much owed by so many to so few'.

There will be a QR code to update information about the 1940s Air Battle, pilots, airmen etc available to museum / memorial visitors with links to 'The Battle of Britain Memorial Flight' etc.

It is possible that there will be a fly-past on the day, subject to weather conditions.

South Yorkshire Aircraft Museum.  
Dakota Way,  
Airborne Road,  
Lakeside,  
Doncaster

Directions: When you get to Lakeside, follow the brown signs.  
Sat Nav Users — DN4 7NW

Frank Donnelly, representing the Northern Battle of Britain Appeal Group

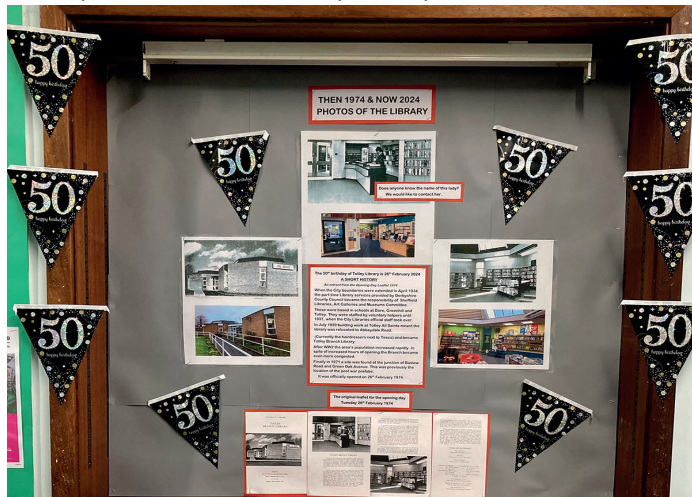
# What's on at Totley Library



As many of you are aware, 2024 is an anniversary year for Totley Library – 50 years since the library first opened to the public (26th February 1974), and in September 2024 it will be 10 years since Totley CRIC took over the library from Sheffield City Council as a volunteer run charity. Now over 100 people are involved in keeping it open as a lending library and community hub, with 107 volunteers working a shift in 2023! Of that number, 19 original volunteers from the relaunch 10 years ago are still regularly involved! To mark this occasion, we have a number of fundraising and celebration events taking place throughout the year which I've listed below. We hope the community will join in with us – we look forward to welcoming you.

## Totley Library Anniversary celebration – Save the Dates

Saturday 11 May – Community Plant Sale (annual fundraiser)  
Saturday 15 June – Picnic in Green Oak Park with live music  
Friday 12 July – Mamma Mia! Here We Go Again Sing – Along (Film event)  
Friday 20 September – Folk Music Evening  
Sunday 29 September – 10th Anniversary Big Celebration  
Sunday 24 November – Totley Library Christmas event



Our celebration community project involves permission to use a poem by internationally renowned poet and artist Imtiaz Dharker. Her poem 'The Welcome' is about books, reading and the way libraries provide a welcoming space for those who visit them. Working with local schools, we will be asking pupils to illustrate the poem and displaying some of the artwork in the library. One piece will then be chosen to illustrate a copy of the poem for permanent display in the library foyer. For details of this and other above events keep an eye on our website <https://www.totleycric.org.uk/> and social media posts on our facebook page.

Julie Kitlowski, Chair, Totley CRIC

## Current Library Opening Hours

Mondays 1pm - 7pm  
Tuesdays and Wednesdays 10am - 5pm  
Fridays and Saturdays 10am - 1pm

## Library Lottery Winners

In the January draw, first-prize winner was Ken Moore, and Raymond Thompson won second prize. First-prize winner in the February draw was Finola Marks, and second prize was won by Brenda Fryer.

## Totley Library Community Cinema

Thanks to funding from the South West Community Ward funding pot, Totley Library secured a grant of £550 to support our FREE Thursday matinee films for Over 65s during our 10th anniversary year. This will mean that we will have a film each month throughout 2024, including July, August and December. Upcoming films from April to May are:

**Thursday 25th April, 3pm – Save the Cinema** (12) Based on the true story of a Welsh hairdresser who ran a campaign to save her small town's theatre from closure by staging the premiere of a Hollywood blockbuster film. Starring Samantha Morton and Jonathan Pryce.

**Friday 19 April 7.30pm and Thursday 30 May 3pm – The Miracle Club** (12) Comedy-drama starring Kathy Bates and Maggie Smith who play a group of working-class women from Dublin on a pilgrimage to Lourdes in France.

**Friday 24 May, 7.30pm – The Great Escaper** (12) Film based on the true story of 89-year-old British World War II Royal Navy veteran Bernard Jordan who 'broke out' of his nursing home to attend the 70th anniversary D-Day commemorations in France. Starring Michael Caine and Glenda Jackson.

Our cinema programme is available for booking in person or by calling 0114 236 3971. Refreshments will be served at all films. Raffle tickets: £3 per person for Friday films. Thursday matinee films are FREE for Over 65s.

## New Book Additions

We have many new adult titles and children's books now available. We also have a display of a few local authors and illustrators and have purchased copies of their newest books to give you the opportunity to read some of their work. Let



Some of our new books for children

us know if you have suggestions of any local authors you would like to see represented in the library. You can reserve books and make recommendations online via our website or through our library suggestion box. There are no fines on items that are returned late. However, we encourage all users to return or renew on time. Lost or damaged books are charge for at replacement value.

**Finally**, in March 2023, the library community raised £200 for the appeal to help the 18 million people in the areas affected by a devastating earthquake in Turkey and Syria. One year on from this unprecedented disaster, we have received a letter from Saleh Saeed, Chief Executive of the Disasters Emergency Committee, to thank us for the donation, plus a leaflet with messages from just a few of the people the money contributed to helping. The leaflet is in the library foyer for anyone who would like to read it.

## Very Helpful Licensed Waste Removal

We offer single item or part house clearance services

We collect for disposal/recycle sheds, garage or outbuilding contents

We also do single item removals or collections

We don't collect beds or sofas

07720 845 326

Text now for more details!

Karl Nuttall-Allsop 23 South Street North S43 2AA



E mail [veryhelpfulman@yahoo.com](mailto:veryhelpfulman@yahoo.com)





# Totley Rise Methodist Church

Grove Road, Sheffield, S17 4DJ

Totley Rise Methodist Church aims to be a church in the community and for the community, increasing an awareness of God's presence, celebrating God's love, caring for people, helping people to grow and encouraging people to follow Christ.

## How can we help?

There's an important process taking place in the life of Totley Rise Methodist Church. We are entering a time of reviewing the church's focus and activities and deciding what we can, and what we should be doing as we look to the future. As we think about the life and mission of our Church and understand what God wants us to be and to do, it would be helpful to know what people in the local community think are the needs and issues in the area, and any ways they think the church might contribute.

We already run a free coffee morning for the community, a pushchair club, a knit and natter group and our Quiet Garden (details for each below). We recently ran a stall to raise funds for Totley Library, and after last year's success, we will be working again with the other churches in S17 to provide a free Family Fun Day on the 22nd of June.

Our resources are limited and so need to be used wisely, but we would really like to hear about other areas where we can help – perhaps with activities or perhaps through advocacy, prayer, or just listening. If you have any ideas for how we can help in the local community please email [enquiries@totleyrise.co.uk](mailto:enquiries@totleyrise.co.uk).

In the meantime, we will be holding a Healing Service on Sunday the 28th April at 3pm. All are welcome.

## Regular Services Information

9am for 9.30am most Sundays – **Toddler Praise**. A 30-minute service for pre-school children and their parents/carers, preceded by refreshments from 9am.

10.30am **Mid-morning Service** every Sunday. An informal and contemporary service usually lasting approximately 1

hour 15 minutes, with a monthly Communion. Children usually leave the service for Junior Church after the first 15 minutes or so, except on the 4th Sunday of the month when the service is even more informal for **All Age Worship**.

At 3pm on the second Sunday of each month **Focus Church** takes place. This is a time of worship specially structured for those who have learning disabilities and cognitive difficulties.

We also support **Outdoor Church**, a movement where families with children can meet (usually on the 1st and 3rd Sundays of each month) to learn more about God's world and the Christian faith through an informal nature-focused time of fun and worship. See [facebook.com/groups/outdoorchurch](https://facebook.com/groups/outdoorchurch)

## Tuesdays at TRMC

Tuesday is a busy day for us, beginning with a **Prayer Meeting** from 9.30-10am in the church. We focus on prayers for the community, for the world and any situations needing healing and the touch of God's hand.

From 10am until noon our free **Welcoming Places Coffee Morning** in the church lounge provides an opportunity to call in for free refreshments and a chat with others from the community. This began as part of the need for warm spaces for people to use when energy costs began to soar, and is now a permanent activity. In one part of the lounge there are toys and books for young children with parents or carers.

**Knit, Natter, Craft and Chatter** immediately follows the coffee morning, running to 3pm. This is a busy and friendly group, offering tea, coffee, biscuits and most importantly, friendship for up to three hours. Young and old, men and women are all welcome. Feel free to bring a packed lunch.

## Thursday Pushchair Club

Babies and toddlers aged from 0 to 5 years are welcome to join us, with their carers, on Thursday mornings from 10.30 to 12 noon. Every week in term time, the Pushchair Club fills the TRM Centre, giving children, their parents and carers a place to come together, play, sing, chat and enjoy refreshments.

## Room Hire

We make our facilities in the TRM Centre available to hire for a variety of purposes, from community groups to birthday parties. There is the large church hall with a stage, and room hire also includes the use of kitchen facilities if required. For all information, please visit our website.

## The Quiet Garden

All are welcome to find stillness and peace in the Totley Rise Methodist Quiet Garden. You are invited to come, sit and wonder about our creative God. It is a place of tranquillity and offers an opportunity, in the rush of modern life, to lay down your concerns. You can do this any time during daylight hours.

## Getting and Staying in Touch

The best source of further information is our website, [www.totleyrise.co.uk](http://www.totleyrise.co.uk) for our weekly notices and links to video recordings of many of our services. You can also submit prayer requests, and we are on Facebook at [facebook.com/TotleyRise](https://facebook.com/TotleyRise)

If you can't find what you need on the website, you can email [enquiries@totleyrise.co.uk](mailto:enquiries@totleyrise.co.uk).

# Totley Rise Methodist Church

A Service of Healing for  
Body, Mind and Spirit



Sunday 28th April  
3pm

ALL WELCOME

**Oven  
Wizards®**  
We clean your oven...so you don't have to

Call today to have your oven, hob, extractor or Aga professionally cleaned by Pippa Weir! Pippa's contact details are:  
Tel 0114 258 3466 or mobile tel. 07716 992648  
[www.ovenwizards.com](http://www.ovenwizards.com)



## Friends of Gillfield Wood

## Friends of Gillfield Wood

### Diary for April and May

**Saturday 6th April:** Flora Walk through Gillfield Wood with members of Sorby Natural History Society Botany Group, to identify flora of the wood. This meeting is for Sorby Botany Group to help us discover more of the plant life in the main section of the wood.

FoGW members are welcome to come along and experience a slightly more in-depth search for plants. People can leave when they wish, but if people want to stay into the afternoon, they will need a packed lunch.

We will work from entrance 1 toward the bus terminus starting at 10.30am and probably finishing no later than 3.30pm. Meet at 10.30am at the end of Totley Hall Lane. Please let FoGW Secretary know if you wish to attend.

This is a great opportunity to learn more about wild flowers. Attendees will go away with some new knowledge. A x10 hand lens is very useful or try any magnifying glass. Good footwear is essential.

For further details, please check [www.friendsofgillfieldwood.com](http://www.friendsofgillfieldwood.com) or email the FOGW Secretary on [fogwsecretary@gmail.com](mailto:fogwsecretary@gmail.com).

**Monday 15th April:** FoGW Annual General Meeting, followed by a talk on Willow Tits by Jim Clarke. Totley Library, 7.30pm

**Saturday 11th May:** Spring Bat Walk led by local ecologist Dave Gash, 8.30pm. Meet at the end of Totley Hall Lane. This will be a repeat of the highly popular September walk, and we're hoping to see and hear bats emerging from their hibernation.



Dave will give us a 15 minute introduction to bats and how to detect them. We will have information leaflets and bat detectors for people to borrow, but please feel free to bring your own. These help to identify which species are about by recording their sound. Last time there were common pipistrelle (pictured above), soprano pipistrelle, whiskered, noctule and brown long eared bats. There will be a small charge for this walk.

For further details, please check [www.friendsofgillfieldwood.com](http://www.friendsofgillfieldwood.com) or email the FOGW Secretary on [fogwsecretary@gmail.com](mailto:fogwsecretary@gmail.com)

As usual, please wear appropriate clothing and footwear on the night, and bring a torch/headtorch. Note that if the weather is bad we may have to cancel.

**Saturday 18th May:** Bird Walk led by Stuart Davies. Meet Totley Hall Lane at 08.30am. Looking out for the spring migrants and listening for their calls as well as those of the resident species. Please bring binoculars and wear suitable footwear and clothing for the weather.

There will be a charge for non-members for all of these events, and a small charge for members on the Bat Walk.

Please note that there will be no Ranger-led Conservation sessions until September. Please see emails and website for details of ad hoc sessions before then, led by FoGW committee members.

## Delivery Volunteers wanted!

Inevitably, over time, some members of our 25-strong team of magazine delivery volunteers need to drop out for various reasons, or we need to augment teams on some longer rounds. We need one more volunteer at the moment, specifically to take on one delivery round to cover Totley Hall Drive and Totley Hall Mead, comprising about 45 houses in total. If you can deliver the *Totley Independent* to these roads every two months, please contact the editor on 07956 858944.

## Speed Limit Tolerances?

Some Chief Police Officers have signed up to an agreement on tolerances for speed limits. South Yorkshire has, but note - not all areas have. For example if 30 mph is the limit, one can be prosecuted for being over it. However, a tolerance is provided (with lots of text to go with it) as follows:

30 mph +10% + 2mph = 35mph. STOP! Read this again!

I have been requested to confirm my details of driver, etc., for driving past a camera at 35 mph. (I have mitigating circumstances!) My dash cam did not record on 28 or 29 February (leap year?).

Question: is 35 mph the speed which I am allowed, or the speed at which I can be prosecuted?



I am a member of the Community Speed Watch Team, and we were told at our training not to book anyone at less than 36. That suggests to me that I should not be booked for 35. However, I spoke to the Chief Enforcing Officer (who supplies the speeding statistics for TI) who told me that 35 is the speed from which they can prosecute. These are not his words, but in some official documents.

In engineering, a 'tolerance' is an allowance up to which one can go, and no more. I have read the DVLA rules for driving instructors, and they say that 35mph is prosecutable.

It is ironical, in my view, that the tolerances have been introduced to stop alienating drivers!

Are any readers scholars in the English Language who might like to adjudicate, please?

### Don't exceed 34 mph in a 30 zone!

Footnote: I have now received a summons for exceeding 30 mph, tolerances not considered, and no opportunity to give mitigating circumstances unless I gamble and go to court. I read today of one guy doing 37 mph, went to court, was fined, with costs etc, £1.5K, got points and will have it recorded on his insurance, with an increase in premium no doubt.

Roger Hart

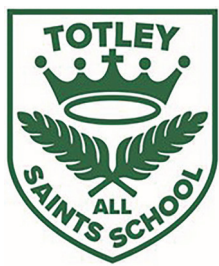
## RICHARDS TELEVISION, SATELLITE, VCR, DVD REPAIR OR INSTALLATIONS

- City & Guilds London Inst. Fully Qualified
- Over 25 Years Professional Experience
- Most Makes & Models Repaired. No VAT
- For Prompt, Friendly Service Ring:

**0114 2876806**

**Ask for Richard. Ex Bunker & Pratley**





## Totley All Saints Primary School

### Curriculum Showcases

Each term we invite parents into school to find out what the children have been learning about and to take part in some of the learning with the children. Parents had the opportunity to see the work the children had been doing, but also to take part in a range of lessons including Science investigations, DT lessons, History lessons as well as Maths and English. Some parents even got to be involved in the PE sessions!

### FOTAS!

FOTAS (school charity) have organised many events across the year to raise money for our Sensory Garden and KS1 play area. These include the school disco, Mothers Day breakfasts and bake sales. We look forward to the Fathers Day breakfast and Summer Fair coming up in the future. All the money supports the school in developing areas and providing much needed resources for the school.

### World Book Day

What an amazing World Book Day 2024! The children have produced some fantastic writing and art work relating to their class book. We were lucky enough to have a special guest in to carry out workshops with all classes. The workshops fed into our English lessons for the two weeks leading up to World Book Day, where we invited the parents in to share and celebrate our learning during assembly. This included poetry, biographies, diaries and drama from our Year 6 children.

### Sports Day at the EIS

What a wonderful time we all had at the English Institute of Sport, celebrating our annual sports day- one of the many highlights of the sporting calendar. The atmosphere was electric and the children were fabulous. It was great to see so many children not only participate in the events, but challenge themselves to reach their personal best and take part in a range of sports that they may not usually participate in, including the longer track distances. Our children have such a great attitude towards one another and the support they showed for each and every child was second to none.

*Melissa Drake. Head Teacher*

## Dore and Totley United Reformed Church

### Totley Brook Road, S17 3QS

#### Dore & Totley Lunch Club - 50th Anniversary Celebration

A short, informal service of thanksgiving to celebrate 50 years of our lunch club will be held at the United Reformed Church on Thursday 18th July at 2.30pm. This will be followed by tea, coffee and cakes.

We are giving this advance notice hoping that all volunteers, ex-volunteers and anyone with a connection to this club can join us. Please pass the word around.

The original idea for the lunch club came from Vivien Filleul, All Saints Church Totley, after she had visited a lonely, isolated lady. Following that, a public meeting was held on 22nd November 1973 at the URC, arranged by Rev'd Duncan Wilson. This was to see if a club was a viable proposition for the housebound of the area, as the need had become very obvious. The meeting was addressed by a member of Family and Community Services who supported us throughout, and we also had support from the local Council of Churches.

Enough volunteers came forward (male and female) to make this possible and the club opened on Tuesday 8th January 1974 with approximately six visitors, which slowly built up to sixteen.

After 50 years we still meet every Tuesday at the United Reformed Church here in Totley. We provide a hot two-course meal cooked on our premises, but, most important of all, companionship.

We have chairbics, two meals out during the year plus a Christmas meal at the club, occasional sing-songs and rem-

-iniscing. On occasions during the year the Teapot Choir sing to us as they rehearse in the church on Tuesday mornings.

We are fortunate to still have Vivien's involvement and we much appreciated her husband Ken who was our Treasurer for many years until he passed away recently. We will miss you so much, Ken. The continued running of the club has to be thanks to the loyal support of so many volunteers over all these years. And our club could not survive without Transport 17 mini-buses which are manned by wonderful caring volunteers.

*Elaine Ferguson and Elizabeth Walkden*

## Totley Operatic and Dramatic Society

Hello Readers!

Last time I wrote to you was on the 9th September 2023 in the middle of a late heatwave. I was sweltering over the keyboard while we had a maximum temperature of 26°C. Sitting here today with my scarf on in my sitting room at 5°C in March I look back to September with nostalgia and look forward to the return of those warm sunny days. They can't come too soon for me. My favourite month in the garden is May because almost everything has come back to life and is in full beauty. However, as you know, not only is a May a good month for the garden, it is also the time for our next play. See what I did there, that was a nice smooth segue wasn't it! Let me tell you all about it...

This May we will be performing *Last Séance* written by Herb Hasler and produced by arrangement with Lazy Bee Scripts. Here we have a dodgy family who are operating a scam séance business. It's all very low tech and you will see during the course of the evening some of the 'tricks of the trade' being played out, not always to plan. Séances draw in clients from all walks of life, those who are sceptical, those who believe, those who come for a laugh and some who just want to know where the treasure was hidden.

As in all good comedies, the best is saved until last and you will learn in the final twists and turns of the play why this one really must be the 'Last Séance'. Why don't you come along and we can promise you a great night's entertainment?

The evening performances of the play are from Wednesday 15th May 7.30pm to Friday 17th May 7.30pm and the final performance will be a matinee on Saturday 18th May at 2.30 pm. Tickets for the play are very reasonably priced at £7 per person with a concessionary rate of £6 for students and people aged over 65.

Please call Jeff on 0114 235 1206 to reserve your ticket, email [tickets@toads-drama.co.uk](mailto:tickets@toads-drama.co.uk) or contact any Toads member.

We all look forward to seeing you in May at the play which will take place at St John's Church Hall, Abbeydale Road South.

*Deb Taylor*



**Plumbing & Bathrooms**  
**Complete Installation Specialist**

[Info@A1plumbingandbathrooms.co.uk](mailto:Info@A1plumbingandbathrooms.co.uk)  
[www.A1plumbingandbathrooms.co.uk](http://www.A1plumbingandbathrooms.co.uk)

**Tel - 07738 688 807**

- ★ Plumbing Leaks, Bursts & Blockages
- ★ Taps, showers, Radiators, Etc
- ★ All Tiling And Plastering
- ★ Reliable, Fully Insured & Guaranteed
- ★ No Job Too Small, NVQ Qualified

**25 Five Trees Ave, Dore, S17 3LW**





# Totley Deli

*Where quality and friendliness count*

Look out for our daily specials or join us for breakfast.

Why not come in and sample our wide range of hot & cold sandwiches and home made produce. Freshly made daily to eat in or take away. All produced from locally sourced suppliers.

- Fresh Roses bread delivered daily & available to order
- Selection of cooked meats sliced to your specification
- Superb selection of fine cheeses, preserves & pickles
- Moss Valley bacon & sausage
- Longley Farm dairy products
- Wateralls pork pies
- Freshly baked pastries

All available to take away.

Homemade scones, lasagne & quiches



If you are having a party or family gathering why not let us take the strain and provide a buffet for you.



51-53 Baslow Road, Totley Rise. S17 4DL.  
Call 0114 2364238

## VIOLIN AND VIOLA LESSONS

*from beginners to diploma level*

- Qualified, experienced (30+ years), fun and patient teacher
- DDC checked (April 2023)
- All ages (6 years and over)
- Late starters and restarters welcome

07787 417 527  
SUNDARI HELLER  
LRAM, MISM



**Twelve Trees**  
*Always there to care*

### FAMILY RUN, AWARD WINNING, PREMIUM HOMECARE SERVICE

Twelve Trees is an innovative Homecare provider operating from our offices in Nether Edge. We offer something unique to our clients by providing bespoke care packages designed to meet your care needs. We are proud to have been providing care for the elderly for over 25 years.

#### WE PROVIDE

Household & Domestic  
Companionship  
Personal Care  
Mobility Care  
Respite  
Specialist Care  
Day Care  
Overnight Care  
Hospital Discharge  
Transport Service

#### MEALS ON WHEELS

We offer nutritious and delicious home-cooked meals freshly prepared at our award winning residential care home, delivered to your door with a 30 minute care call.

#### CONTACT US

Twelve Trees Homecare Limited,  
Suite 9, Cherry Tree Business Centre,  
Sheffield, S11 9EF  
Email: [admin@twelvetreescare.co.uk](mailto:admin@twelvetreescare.co.uk)

0114 349 7837  
[www.twelvetreescare.co.uk](http://www.twelvetreescare.co.uk)





## 'How well do you know Totley's past?'

Totley History Group set this quiz in the February/March edition of *Totley Independent*. Here are the answers!

1. The Manor of Totingelei was first mentioned in the Domesday survey circa 1086. It was recorded as waste land worth XII pence, having been greatly devalued by William the Conqueror who ravaged much of Northern England.
2. The canons of Beauchief Abbey (12th-15th centuries) had grazing rights on land in Strawberry Lee. Landowners would grant them this in exchange for a tithe, and prayers said for their souls.
3. Totley's oldest standing building is Lower Bents Farm. Its deeds go back to 1621, although a reference in these indicates it existed prior to that date.
4. Totley Hall was originally a modest farmhouse built in 1623. Extended in the 19th century.
5. The Milner family lived in Totley Hall 1883-1931. They donated land and money in memory of their son Roy (a casualty of WWI) towards the building of All Saints Church, consecrated in 1924. This is its centenary year.



Roy Milner 1893-1914

6. The old police house and lock-up is within the terrace of houses below Totley Hall Lane.
7. The sites of three pinfolds are known. The first adjacent to The Fleur de Lys pub, a second near the entrance to All Saints primary school on Hillfoot Rd (now a small public garden) and the third in Strawberry Lee Lane near Lenny Hill.
8. Industries that relied on water power from Old Hay Brook included corn grinding, paper making, lead smelting, steel forging and rolling, scythe and sickle manufacture.
9. Totley's first school was opened in Totley Hall Lane in 1827 and is now a domestic dwelling. The donation of land and money from D'Ewes Coke, living in Totley Hall, helped in its construction. His determination to ensure the children of Totley could access basic literacy and numeracy skills was unusual at that time and compulsory schooling was only introduced with the passing of The Education Act in 1870.
10. Baslow Rd was completed in 1821 and was a turnpike road, the use of which entailed paying a toll. The tollhouse stood at its junction with Mickley Lane.
11. Balaclava House was in (Queen) Victoria Road, named and lived in by David Stanley, a veteran of the Crimean War battle, 1854.



Left: David Stanley 1830-1893

12. The Hillfoot Road/ Butts Hill area was central to the home industry of file cutting during the late 19th century.

13. The Midland Railway Co. built Totley tunnel as part of the Dore-Chinley line. It was completed in 1893. The arrival of the navvies doubled the local population for four years, many being housed in temporary huts around the village. This brought prosperity for shop owners, publicans and landlords, but also drunkenness, minor crimes, overcrowded living conditions and outbreaks of disease.



*Thomas Oliver, the engineer responsible for overseeing the building of the Totley tunnel, of whom the following was written at the time: "Mr Oliver, the contractor, has provided accommodation for his men by erecting picturesque looking huts at Totley Bents and elsewhere; he has enlarged the village school, so that the children might attend and be educated; and he has provided a mission hall for the adults, and contemplates further erections of the same character."*

14. A Sunday motorised bus to Bakewell was introduced in 1913, more as an outing than a bus service. A regular service was introduced in 1921.

15. An ex-electricity showroom near Busheywood Rd (now occupied by a hairdresser) was used by Totley's Branch Library 1939-1974.

**Bonus question:** Mr Barker was the Co-op butcher who sported a pencilled-in moustache!

Prize-winners will be notified!

Pauline Burnett

# TopsforJeans

**OPEN** Monday - Saturday

Super soft knitwear, beautiful tops and so much more.

Call in or shop from the comfort of your own home on our website.  
Catch up with the latest news on our Facebook site.

[www.topsforjeans.co.uk](http://www.topsforjeans.co.uk)  
164 Baslow Road, Totley, S17 4DR



# Walking the Dog Or Dogger and Bite

**HEAD EATER** Head Eater here!  
**BLUE** Blue here! I'm afraid Rony has just compiled another of his daft back-to-front quizzes that he wants you to put in the *Independent*.

**HEAD EATER** What's a back-to-front quiz?  
**BLUE** It's when, instead of asking your reader a question for them to answer, you give them an answer for them to question.

**HEAD EATER** Er — can you give my younger readers an example? I don't think this is in The National Curriculum.  
**BLUE** Yes. Say the answer is 'Blue'? Your readers then have to ask a question that 'Blue' is the answer to.

**HEAD EATER** Like — what colour will the sky be in the summer if we ever got a summer in Totley?  
**BLUE** Yes! Or the question could also be — what and white are the colours of the worst football team in Sheffield?

**HEAD EATER** (*suddenly very nervous*) Shhhhhhh! Half of my *Totley Independent* readers will stop reading if we say a thing like that — even if it's true.

**BLUE** Well, the *Independent's* free these days, so it won't make any difference. Here we go! The daft back-to-front quiz! These are ten Totley answers, but what are the ten Totley questions they are answering? Answers on page 16.

1. Egg — but no bacon.
2. The underground tunnel between The Cross Scythes and The Flu.
3. The *Totley Independent* is all e's, but dependant is one e and one a.
4. Perks.
5. I certainly will not! I come from Dore .
6. Tottingley, but it was too hard to spell.
7. The chemist on Totley Rise did, but we were too ashamed to ask.
8. It wasn't really a wreck because in those days there were two football pitches, as well as the bowling green and the tennis courts.
9. Because she was the only Elva in all Totley, even if Elva is a real name meaning an elfin
10. Brian Edwards and Potty Edwards

**BLUE** Are you enjoying it so far?  
**HEAD EATER** No. I can't understand a word of it. I much preferred the old Walking the Dog.

**JACK AND MAISIE** (*in Heaven*) So did we.  
**BLUE** Shhh. It's time for ten more answers. And remember you, Dear Reader, have to say the ten more questions that then get these ten more answers.

1. Because it rises.
2. Because there aren't Ten any more — and there never really were, because two were in Dore. Mind you, who'd drink at those prices and with all their la-di-da-di-da?
3. At Chairiobics on Thursdays, if you're not careful.
4. Because they weren't his trousers anyway.
5. He was Frank Storm Mottershaw's fourth cousin, twice removed.
6. Because the answers are on page 97.
7. 45 24 17 208.
8. Our Dave and their Patsy.
9. Herbert Hodgkiss, Harold Loukes, Hewson, Horace King.
10. Because All Saints school should have an apostrophe of possession and it's (sic) teachers should be ashamed.

**BLUE** Enjoying it now?  
**HEAD EATER** No.  
**BLUE** Well here are 10 more answers, to not enjoy!

1. Akley Bank.
2. The Crescent wasn't. Nor was the uadrant.
3. Old Linfoot.
4. Old Ma Peacock.
5. Old Smellor.
6. Podge, Nobby, Spadge, Dickie, Spam, Cracky, Nippy, Rod. Oh, and Splodge.
7. Because it wasn't Queen Victoria at first.
8. Mrs Shaw the fish and chips, Eric Shaw the footballer and R U Shaw the doubting Thomas.
9. In the middle of the bridge over the railway.
10. The Vicar, who really should have known better — but at least he tried not to.

**HEAD EATER** Any more daft answers?  
**BLUE** Ask Rony. He's the one who's writing us.  
**RONY** I -

**A MOTHER** (*off*) You will not! You will quit while you're losing, and come home and do the washing up. You don't do a hand's turn. Typical Lemont, just making smells and getting crabs and voting Labour. And writing silly things that don't make anyone laugh. Yes mummy. Sorry mummy. Three shoppingbags full, mummy .

**RONY**

**TOTLEY MOTHER** And you lot can chuff off too! Wasting your time with silly back-to-front quizzes when you should be taking care of the older generation.

**HEAD EATER** Dear Reader! You got here!?! So now turn to page 75 and score yourself! Then email me your score!

And claim your PRETTY AMAZING PRIZE!  
**ALL TOTLEY** (*off*) What is the PRETTY AMAZING PRIZE?  
**HEAD EATER** It's free drinks at the —  
(*All Totley, including you dear reader, rush to do the back-to-back quiz.*)

**HEAD EATER** — the Fleur de Lys! (*He laughs at this overdone joke, even if we don't.*)

## The Dog End

Rony Robinson and Blue

## PhysioFOCUS

at Totley Rise Dental Practice  
85 Baslow Road,  
Sheffield, S17 4DP



**Physiotherapy treatment available for:**

- Back and neck pain
- Sports injuries
- Sprains and strains
- Joint and muscle pain
- Arthritic pain
- Whiplash
- Repetitive strain injury
- Headaches

**Appointments: 0114 2360333**

Also available:

- Pilates classes • Pilates 1-2-1
- Golf Fitness Screening  
(as used by consultants to UK,  
European and Australian PGAs)

For more information please call:

Emer on: 07792 422909

Rachel on: 07956 908454

# Friends of Dore and Totley Station

## We really are near the end of our saga...

If all has gone to plan the two-platform station should have been open for at least a week by the time you're reading this. A small group intends to welcome the first train to stop in the new platform at 6.14 on 25th March, the Transpennine Express for Manchester and Liverpool. Bunting will be displayed to mark the occasion.

The contractors will still have a lot of tidying up to do. That will include some replanting at the back of the extended old platform and around the car park. It has suffered some damage and isn't expected to be restored for full public use until the 1st of June.



There are more line closures ahead to cover further improvements being made further west, particularly in the Chinley area, and final clearing up. We won't be fully settled down until the autumn. By that time we'll have regained a little control over our by then much bigger little station and time for some softening measures.

## Upcoming line closures

- Saturday 27 April to Wednesday 1 May
- Saturday 24 to Thursday 29 August.

Please check <https://www.nationalrail.co.uk/> for information on changes to journeys and for details of the bus replacement services.

## The design and impact of the railway

In the late 1860s a massive project built Bradway Tunnel and the line down the Sheaf Valley into Sheffield, opened in 1870, but no station. The Duke of Devonshire put his money into building Dore Road through green fields and persuaded the Midland Railway to build the station which opened in 1872.

In 1888, just as nature was recovering, they started building the Hope Valley line, opened in 1892. Within 10 years there was another period of major construction as the two lines into Sheffield were doubled to make four.

This 4th round comes over 100 years later when the work has been undertaken in much more regulated fashion than in Victorian days. The bridge is receiving what may be called a Marmite reception - some hate it yet a few love it. When the job is finished there'll be time to reflect on all four periods of construction.

## Effect of Covid on local rail travel

There are many statistics the train operators use to determine priorities. As we find them we'll try to use them to help make cases for better services and all round facilities.

The estimated passenger numbers table below tries to put local railway travel into perspective.

STATION	2018-19	2019-20	2020-21	2021-22	2022-23	Average*
DORE & TOTLEY	198,948	219,336	29,118	136,438	166,858	10.03
GRINDLEFORD	58,616	64,024	22,114	93,622	79,656	6.78
HATHERSAGE	68,642	73,200	22,144	67,774	72,670	6.02
BAMFORD	34,526	43,746	20,208	45,520	49,270	4.10
HOPE	68,820	75,922	21,814	68,514	76,240	6.19
EDALE	93,860	99,808	45,800	109,250	116,982	10.33
CHINLEY	128,602	129,220	21,856	80,106	93,244	6.72
NEW MILLS CENTRAL	213,872	226,986	42,654	146,650	175,450	8.90
SHEFFIELD	9,907,724	10,094,758	1,906,820	7,205,884	8,677,012	53.59
MANCHESTER PICCADILLY	30,132,552	32,198,704	5,188,066	19,581,442	23,558,364	78.38

It illustrates how -

1. Passenger numbers were growing strongly from 2018-19 to 2019-20
2. Covid resulted in a massive crash in rail use everywhere in 2020-21
3. A recovery in 2021-22 and further recovery in 2022-23
4. The Hope Valley stations are doing better than pre-Covid - leisure travel
5. Dore, Chinley and New Mills are still below previous levels - commuting
6. Sheffield and Manchester are both still well below pre-Covid levels
7. Manchester Piccadilly is three times busier than Sheffield
8. The final column shows the average number of users boarding and leaving each train stopping at each station

Why is that final column important? What does it tell us?

Clearly big city centre stations have many terminating trains so more get on and off. Our average of 10 represents only 5 people using each train stopping here, once when they get on, and again when they get off. We used to see 100 boarding the 7.14 at commuting times but other trains stopped for only 1 or 2 passengers.

When a train stops it adds about 3 minutes to the total end to end journey time. Looking at the table above an average 53 Sheffield passengers may have 3 minutes added to their journey time to Manchester, possibly 78 from Manchester, to allow for a stop to help an average 10 at Dore. 53 or 78 want shorter journey times, 10 want another stop. That's a contest it will be hard to win.

Edale has been the big success of the Covid lockdowns. Don't stay at home, stay in the UK, explore your own country - head for the hills! And they are, from both sides of the Pennines, but the railway needs to raise revenue and relatively little comes from the smaller stations like ours.



*Installing the Dore loop - West View Lane residents have had this in front of them now for over 6 months longer than they were told to expect.*

No route operated by Northern runs without subsidy. The Hope Valley line has seen one of the best recovery rates in the country since Covid. Nevertheless Northern Trains Managing Director Nick Donovan recently said 'Every one of our routes is subsidised; that is why the economic output from those routes is so important. The subsidy level equates to about 40 pence per passenger mile, so anyone making a 10 mile journey into Manchester should say "thank you very much" to the taxpayer for their £4. That is the reality of the Northern network and that is why getting the volumes back in terms of numbers is so important.'

The higher we can get that average number of passengers per train figure the more we can encourage train operators to stop more trains and add more carriages. So how tight do the sardines need to get before we get longer trains and/ or more frequent trains? That's a subject I'll be returning to in the autumn once we see how the new station has been operating for a few months.



## Friends of Dore and Totley Station (continued)

### More stopping trains, why?

7 minutes by train into town, once an hour. You can't beat that time by bus or car but you can beat the frequency. Every hour 2 fast trains of up to 6 coaches flash through our new 6 coach length platforms built to take them – without stopping. We will get more stops, maybe in June 2025 if we're lucky?

### Car parking!

It won't be until the 1st June that we get our restored car park back. In the meantime users are becoming used to walking from home or parking some distance away. There seem to be more drop offs and pick ups too. It will be interesting to see how quickly it fills up again. Then we'll return to the challenging topic of extra parking based on evidence of current use.

### Services and strikes!

No changes have been spotted in the new timetable operative from June. We understand it's too late to get any significant changes into the December review, by June 2025 just maybe. ASLEF strike days can happen with only 2 weeks notice as their dispute seems no nearer resolution.

### Spring is here

Some of our daffodils have survived the upheaval and the cherry blossom will soon be in bloom. Let's look forward to using our new station, and helping it to mellow back a little more into its green surroundings.

If you're a Facebook user, you can find and join us by searching for FoDaTS. It's an active group with over 870 members and is updated frequently with topical information and comments.

Alternatively look for our website at [www.fodats.net](http://www.fodats.net)

If you're not on Facebook and would like more information please send an email to our Secretary at [njbarnes@outlook.com](mailto:njbarnes@outlook.com) or to myself at [chrismorgan4@btinternet.com](mailto:chrismorgan4@btinternet.com)

Chris Morgan, Chairman

## Scout Hut Refurbishment

On page 1 Fran Arnold gave us the good news about funding for the Scout Hut. Here are some of the ways the funding will be spent!



Just some of the rotten wood being replaced with the Youth Investment Fund grant



Newly installed drainage to replace old, cracked pipes -fitted thanks to funding from the Community Infrastructure Levy.



The finished, strengthened wall - ready for a new roof to be fitted next!



## Got a computer?

### Having Problems?

Is it running slow? Stops responding?  
Having problems running the latest games or applications? Broadband / WiFi problems?

### Give me a call!

I am available for home visits at any time including evenings and weekends. I can also suggest upgrades to improve performance, or even build you a system to your specific requirements.

Phone: 0114 247 2619  
Mobile: 078 1746 4703

Email: [service@timbrownplus.co.uk](mailto:service@timbrownplus.co.uk)

### Tim Brown

Building,  
Installation,  
Upgrading and  
Troubleshooting  
Computer  
Systems  
Over 30 years'  
Professional  
Experience



## Floral Survey of Gillfield Wood

Historically, Gillfield Wood is part of an ancient wood of which there are records dating back to the Domesday Book. Having been almost clear-felled during WWII and replanted by Sheffield Council during the 60s it is now designated a PAWS (Plantation on Ancient Woodland Site).

Friends of Gillfield Wood are concerned with threats to the wood from disease and overcrowding due to lack of management, though this is not to lower the importance of the voluntary work done by FoGW's conservation team led by Andrew Brewster.

We have, over the years, engaged with SCC about the future of the wood. Working with the Rangers has been a positive experience and we have had close relations with two of them. Looking to the future we want to assist with a management plan for the wood and to this end we have undertaken two surveys. One of these proposes a compartmentalisation of the wood.



The second survey will look at the distribution of flora in the wood relating it to the trees whose canopy of leaves has such a strong influence. This is a huge undertaking and to date we have 18 people from Friends of Gillfield Wood interested. If any residents or other FoGW members are interested in observing the flowering plants across the year, please contact Paul Hancock (paulatfgw@gmail.com) to register your interest.

We will be using quadrats (square sections of the woodland floor) to get an idea of the plants that can be found and their density. In the main part of the wood, we have stands of coniferous trees (eleven larch plus one western hemlock) at intervals amongst the deciduous trees of oak (though mostly red oak – a non-native American species), sycamore, beech, birches with understories of holly, hazel and other species. We expect quite different flora between the coniferous and the deciduous areas.

In an indeterminate amount of time, but not that far in the future, the wood is likely to undergo significant changes due to *Phytophthora ramorum* (a water mould) killing larch trees and some others. Should this happen many or all of these 'islands' of larch will have to be felled and removed. Friends of Gillfield Wood would like to play some part in restoring the wood possibly by planting native trees. (This would likely mean removing most of the non-native Red Oak as well.)

The floral survey, therefore, becomes an important record of flowering plants today. As new woodland is developed changes will occur in the distribution of plants. We would like to help in monitoring this. We therefore ask for help from interested people who may already be confident about recognising flowering plants, or would like to learn more about them in our local wood.

*Paul Hancock, Floral Survey lead.*



## Chapel of Ease, English Martyrs in Totley

**USUAL MASS TIMES: Tuesday 10 am, Saturday Vigil 5pm  
Easter Sunday Mass is 9am  
HAPPY EASTER**

It's the most important weekend in the Christian year!

How did your Lenten observances go?

Each Tuesday at English Martyrs we have prayed the Stations of The Cross. I always find this very emotional, as we spiritually and prayerfully accompany Jesus on his journey to crucifixion, on his last day on earth, as a man. We reflect on the knowledge that God was willing to sacrifice His own Son for our sake. How much must he love us?

As we welcome April, and its inevitable showers, signs of Spring are all around us. We are blessed in S17 that every road side verge is alive with daffodils, crocuses and trees bursting with blossom.

### Coffee, Cakes and Cuttings

Our parishioners are exercising their green fingers as our charities group prepares for our annual fundraiser. It will take place in our car park on Saturday 18th May from 10am until 12 noon.

Funds raised help support Transport 17 as well as some of our other charity partners. We look forward to welcoming you all to this very sociable event.

*Barbara Richardson, Parishioner*

## Regular events and meetings at Totley Library

### Monday:

**French lessons for children** following the award winning course material from La Jolie Ronde. After-school classes are available for children in the children's library  
3.40pm – Y5/Y6; 4.10pm – Y3/Y4; 4.40pm – Y1/Y2  
5.30pm – Y4/Y5

Contact Joanna on 07854 148809 or email [speaquesheffield@gmail.com](mailto:speaquesheffield@gmail.com) to find out more about local availability for French language classes.

**Friends of Gillfield Wood**, occasional Mondays, 7.30pm onwards. Talks on local nature and conservation. See posters, the FoGW article in this issue, or [www.friendsofgillfieldwood.com](http://www.friendsofgillfieldwood.com)

**Councillors' Surgery**, 2nd Monday of the month, 6–7pm

### Tuesday:

**Baby Time** 1.30–2.15pm (term times only). Come along to meet other parents/carers and babies. We sing simple songs, have fun and allow time to chat.

**Poetry Group**, first Tuesday in month, 7.00 – 9.00pm. *Please note that this group cannot accept new members at present.*

**Friends of Dore and Totley Station** Occasional Tuesdays, 7.30pm. See [www.FODATS.net](http://www.FODATS.net)

### Wednesday:

**Coffee Morning**, 10.30 – 12noon

**Story Time** for toddlers and pre-school children from 10am – 11.30am (except school holidays). Children can take part in weekly themed craft activities, sing songs and listen to a story. £1 donation per child greatly appreciated.

**Health Walks**, 10.30am, meet at Library. Contact Step Out Sheffield on 07505 639524 or email [stepoutsheffield@gmail.com](mailto:stepoutsheffield@gmail.com)

**Totley History Group**, usually last Wednesday of the month, 7.30. Talks on matters of historical interest. Check posters, the *Totley Independent* Diary, or [www.totleyhistorygroup.org.uk](http://www.totleyhistorygroup.org.uk)

**Yoga sessions** 7.00 – 8.30pm, Wednesdays (except the last Wednesday of the month). For more details call Ann Zielonka on 0114 2361585 or 07929 736966. Beginners welcome. You are advised to call Ann to check that the sessions are taking place.

### Thursday:

**Thursday Morning Natter** 10.30 – 11.30. Hot drinks and good company - for people aged 60 or over.

**Chair Aerobics** 12noon for 45–60 minutes. An Age UK and People Keeping Well weekly exercise class. £4 per week - no need to pre-book, just turn up.

### Saturday:

**Regular second-hand book sales.** Check CRIC website :<http://www.totleycric.org.uk/>





## OUTRAM FIELDS CINNAMON LUXURY CARE

**NOW  
OPEN**



# A CARE HOME LIKE NO OTHER BOOK A TOUR TODAY

Outram Fields is now open and offers superior facilities for our residents to enjoy along with the very best care and support. As a brand new, purpose-built care home, it provides the very latest design innovations in a luxurious yet homely setting.

Outram Fields offers much more than excellent 24-hour personalised care. It is a special place where our residents can continue to live life to the full, enjoy new experiences and make new friends. Whether your loved ones need residential care, dementia care or just a short stay, we are passionate about making a difference.



**For more information or to visit our Show Suite  
call our friendly team today: 01144 934 334**

**At Outram Fields, people will always come first**

RESIDENTIAL CARE | DEMENTIA CARE | RESPITE CARE | POST OPERATIVE CARE

**Luxury Care Home in Sheffield**

Outram Fields Care Home, 250 Twentywell Lane, Bradway, Sheffield S17 4QF  
[www.cinnamoncc.com/outramfields](http://www.cinnamoncc.com/outramfields)





OUTRAM FIELDS  
CINNAMON LUXURY CARE



Booking is essential, please call  
01144 934 334 or  
email [outram.haa@cinnamoncc.com](mailto:outram.haa@cinnamoncc.com)  
to reserve your place

# Community EVENTS

JOIN US FOR SOME  
EXCITING EVENTS

## STRENGTH & CONDITIONING EVENT 18TH APRIL 2.30PM - 3.45PM

Speaker - Chartered Physiotherapist  
Peter Thomason MSc, BSc, Hallamshire Physio

- ❖ The effects of ageing on our bodies
- ❖ The benefits of strength and conditioning
- ❖ What the research says
- ❖ How to adapt exercise around pain and other problems

## DEMENTIA TALK TUESDAY MAY 7TH 6PM - 7.30PM

Speaker - Grace Stead from Enrichment for the Elderly

- ❖ Want to know more about dementia?
- ❖ Want to know how to support a person with dementia better?
- ❖ Come to our talk and explore dementia with Grace



## LIVING WELL WITH CHRONIC PAIN THURSDAY MAY 16TH, 2.30PM - 3.45PM

Speaker - Chartered Physiotherapist  
Peter Thomason MSc, BSc, Hallamshire Physio

- ❖ How pain works
- ❖ Developing good and bad habits
- ❖ When to keep going vs resting
- ❖ Managing your pain
- ❖ Will exercise help

## PLANNING FOR FUTURE LIVING EVENT TUESDAY MAY 21ST 6PM-7.30PM

Speakers - Erica Dietsch and Jonathan Rowley  
(Hamnett Wealth Management) and Suzanne Porter  
(Wake Smith Solicitors)

- ❖ The importance of having a will and Lasting Powers of Attorney, why you need both Finance & Health and Welfare
- ❖ Navigating the care maze – options available to pay for private care fees including:
- ❖ Equity release, care annuities, sale of property, investments
- ❖ Insights into the sensitive topic of deliberate deprivation of assets

For more information please contact our  
friendly team today on - 01144 934 334

RESIDENTIAL CARE | DEMENTIA CARE | RESPITE CARE | POST OPERATIVE CARE

### Luxury Care Home in Sheffield

Outram Fields Care Home, 250 Twentywell Lane, Bradway, Sheffield S17 4QF  
[www.cinnamoncc.com/outramfields](http://www.cinnamoncc.com/outramfields)





# HIGH TREES CLINIC

Specialist and Routine Private Dental and Medical Clinic located in Dore

NEW PATIENTS WELCOME

APPOINTMENTS FROM £50.00

We're here to help you monitor and optimise your health with our GP and Physical Therapists.  
Keeping track of your well-being should be an essential part of your self-care routine



## DENTAL

Routine Dental Appointments  
Restorative Treatment  
Fixed braces and Clear aligners  
Teeth Whitening  
Composite Bonding and Veneers  
Emergency Appointments

## MEDICAL THERAPIES

Medical Examinations  
Occupational Health and Travel  
Vaccinations  
Skin Lesion Check and Removal  
Medical Forms and Referrals  
Blood Tests & Analysis  
Facial Aesthetics



**Tel: 0114 349 3326**

37 Townhead Road, Dore, Sheffield, S17 3GD

[hightreesclinic@gmail.com](mailto:hightreesclinic@gmail.com) [www.hightreesclinic.co.uk](http://www.hightreesclinic.co.uk)

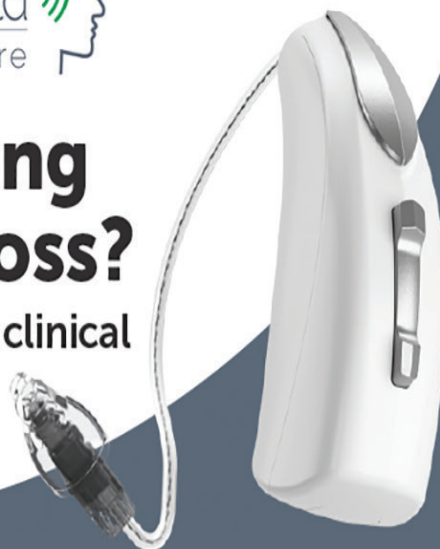
Please call or email the clinic for further information or to schedule an appointment

**HEARING THERAPY Ltd**  
Hearing & Tinnitus Care



# Are you suffering from hearing loss?

Get in touch with your local clinical audiologist expert today!



Our Services  
**Hearing Tests**  
**Tinnitus Treatment**  
**Hearing Aids**  
**Ear Cleaning**

**Bupa &  
CQC**  
Registered

To book an appointment at our Dore clinic, or for further details:

**0114 349 3326**  
[hearingtherapy.co.uk](http://hearingtherapy.co.uk)  
[info@hearingtherapy.co.uk](mailto:info@hearingtherapy.co.uk)



## Dore Gilbert & Sullivan Society

Although it is always sad to experience the demise of an old friend, when they get to 88 as Mike Tolson did, it becomes a celebration of a long and varied life. It was nice to see several ex-members at the funeral and the wake. Many fun and silly times were recalled with great affection. When my time comes I hope there are very few tears but plenty of happy memories. The Society has not yet chosen a replacement for the role of President but I expect that the subject will crop up at the AGM in July. Mike's son Adrian handed over several volumes of photographs which gave Ann and me much pleasure, and I know that the older members will get a lot of joy out of wading through them and being reminded of all sorts of things that have long been forgotten.

The Society now looks forward to a series of concerts, some of which I mentioned in the last edition, performing concert versions of *Iolanthe* in Crookes, Dore (Dore Church Hall, Townhead Road on Saturday 13th April at 2.30pm) and Chesterfield. Later in the year we have the annual Summer Concert in Dore Methodist Church on Saturday July 6th at 7.30pm, then on Friday 27th September at Wentworth Church and at Bolsover Assembly rooms on Saturday 12th October at 7.30pm. Tickets will be available by phone on 07565 805405 or via the web at <https://doregass.weebly.com/tickets.html>

For those of you who do not know the Gilbert and Sullivan operettas this would be a good opportunity to check one out. Don't confuse them with Grand Opera, like Verdi or Puccini. They are much more lighthearted and fun with very singable tunes. They generally poke fun at an area of the British Establishment, in the case of *Iolanthe* it is the House of Lords which is the butt of the jokes. There is always some silly element in the stories, maybe a love potion as in *The Sorcerer* or an anomaly caused by being born on 29th February in a leap year. In *Iolanthe* it is the elevation to the Peerage of Strephon who is half a fairy (don't ask). It all gets explained in the operetta. One striking thing about Gilbert's writing is

how relevant it is even today, for example in Private Willis's song he states that "MPs have to leave their brains outside and vote just as their leaders tell them to". If you've never



A D'Oyly Carte photo of 'Iolanthe'

been to see one of these delights now's your chance. It may be a concert version but the dialogue is all there so the whole story is revealed.

Finally, we've finally got to the end of Ann's scalded leg saga. She has been signed off from the hospital with little more to show for it than a mild scar, hooray.

Have a good early summer and hopefully we'll see you at one of the concerts.

Derek Habberjam

## Help Keep Totley Library Open Play the Totley Library Lottery!



Running Totley Library costs over £28,000 per year.

To help keep Totley Library open, the volunteers launched the Totley Library

Lottery. To date nearly £14,000 has been given out in prize money and raised £42,000 for the library.

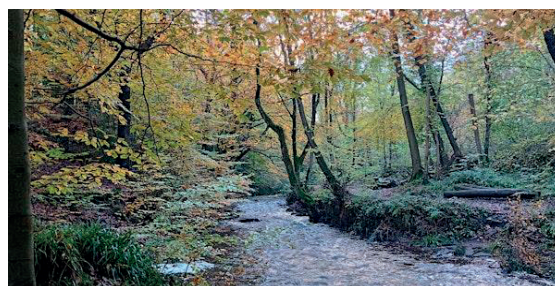
### Win Cash Prizes!

At each monthly draw, 25% of all lottery income is allocated as the prize fund. The remaining 75% goes into library funds to cover its running costs. Each month there are two prizes. 1<sup>st</sup> prize is 20% of the ticket income and 2<sup>nd</sup> prize is 5% of the ticket income. Cash prizes below are based on example monthly ticket income:

Monthly ticket income	£500	£600
First Prize	£100	£120
Second Prize	£25	£30

Lottery numbers each cost £1 per month. If you pay just £1 per month you get one number, if you pay £3 per month you get three numbers, for £5 per month you get five, and so on. You keep the same numbers you are given for as long as you wish to be in the lottery.

For more details or to enter, just collect and fill in a Lottery form available from Totley Library



## Mindful River Walks

Come and take time to slow down, notice, and reflect as we immerse our senses in the beauty of our Sheffield rivers across the seasons. Open to anyone aged 16 and over. Sessions will be run by Caroline Cook from Well with Nature.

£10 for each event. Book online via [eventbrite.co.uk/o/sheffield-museums-8948836410](http://eventbrite.co.uk/o/sheffield-museums-8948836410)

### The River Porter

Sat 23 Mar, Sat 27 Jul, 10.30–12.30pm

### The River Don

Sat 18 May, Sat 28 Sep, 10.30–12.30pm





## Common Threads

**Part four in series of articles by Richard Wrigglesworth, which are part of a major history project which Richard has undertaken, covering 800 years of local history. In this issue, we find out more about George Wilson. The story continues.....**

### George Wilson: Career and Legacy

The response to my first three articles confirmed my suspicion that the Anti-Corn Law League does not rate very highly in the public conscience! The fascination over the centuries has been with the family feuds and behavioural issues of Kings and Queens. Cobden and Bright may be my heroes but doing good is not as interesting as harrowing the population, or sending some hapless Queen to the block for being the wrong religion or failing to produce a male heir. Suppressing a riot with a drunken militia also helps to preserve the status quo. The logical next step in my biography is the League to which George Wilson made such a significant contribution. However in October 2023 the controversy over High Speed 2 erupted due to a spiralling cost overrun. It has been much curtailed and the 'savings' of some 38 billion are to be split between numerous smaller projects in the Northern Powerhouse. This will include the Northern Powerhouse Rail 3 running from Liverpool to Leeds.....

1838 was a big year in the life of George with his work in obtaining the Charter of Incorporation for Manchester, the forming of the League and the first meeting of the directors of the Manchester and Leeds railway (the M&L). In 1846 when the Corn Laws were repealed and the Anti-Corn Law League wound up, George Wilson was out of a job. He joined the Board of the Manchester & Leeds railway, the 'Lanky', and he was also recommended by John Bright to John Lewis Ricardo (1812-1862), nephew of David Ricardo the economist who was both a politician and businessman. He was the founder and chairman of the North Staffordshire railway, the 'Knotty', and had purchased the patent for their Cooke and Wheatstone Electric Telegraph which was expanding alongside the railways. George Wilson acted as the northern superintendent for the Manchester and Liverpool offices but this proved to be a more fractious arrangement than his involvement with the more gentlemanly William Houldsworth, the chairman of the Lanky, and one of their initial shareholders. George's relationship with this company lasted for twenty four years until his own death on a train as Chairman of the Lancashire and Yorkshire in 1870, the same year as the Electric Telegraph was nationalised.

The research for the railways comprised about 70% of my total research and I spent five years visiting the National Archives in Kew researching the minute books and financial accounts of the Lanky, under the heading how to 'Create a Northern Powerhouse.' George Wilson's main role was the amalgamation of the numerous small 'speculative' no-hope companies that had been formed in Lancashire and Yorkshire.

However the immediate need is to give more background to the Anti-Corn Law League. George did not join the Lanky until the repeal of the corn laws in mid-1846, and I have split the growth of the railways from 1838 up to that time by analysing the board meetings in detail. This embraces the financing by the issue of shares and bonds, the wealthy directors who just wanted to get their products to market, famous engineers, labourers, rolling stock climbing up to the Summit tunnel from Lancashire, and down to Normanton before joining the North Midland and into Leeds - in effect the main line. Plus having later to deal with the toxic George Hudson and fulfilling the vision of George Stephenson to connect Liverpool to Hull and spread the branch lines throughout Yorkshire and Lancashire. This was the working-class line that drove the industrial revolution. The capital account was closed by 1850.

The Anti Corn Law League existed from 1838 to 1846 when Richard Furness entered his 'Black Dog' period. My research includes the backgrounds of Richard Cobden

and John Bright, names which will be forever associated with the League, and also includes short biographies of their main parliamentary adversaries Sir Robert Peel and Gladstone. George Wilson remained as the head of the Manchester Men, making the bullets for Cobden and Bright to fire. They got their statues in Westminster Abbey but George never became an MP, although he did get to the final selection for Huddersfield at one election, and was offered York by Joseph Rowntree, before being advised by Bright to stay loyal to Manchester and Lancashire 'as he would be of more use to them'! - which did prove to be more beneficial to the country but probably ensured his final anonymity!



*George Wilson*

The origins of the Corn Laws lie in the work of the historian Norman McCord: 'At the end of the Napoleonic Wars the Corn Law of 1815 imposed a prohibition on the import of foreign agricultural produce until the price at home reached a high figure - eighty shillings per quarter in the case of wheat. In 1828 this absolute prohibition was replaced by a sliding scale of import duties, the duty paid on foreign produce dropping as the price at home rose, the intention being to promote a smoother flow of trade than afforded by the law of 1815. These Corn Laws were enacted by a Parliament dominated by the landed interest, but it would be misleading to suppose that their enactment was dictated solely by selfish class interests; for one thing, the desirability of being independent of foreign food imports in time of war weighed strongly with the legislators. Nevertheless from 1815 onwards there was always a strong body of opinion opposed to this system of legislative protection for agriculture; in the rising industrial interests these laws were regarded by many as a tax in the form of high food prices paid to the landed interest.'

The wars against Napoleon had been long and costly and many of the moneyed classes had given financial support, often in return for a peerage, and they wanted their money back. This protection of their interests took many forms.

I have already covered the enclosures at a local level in Hathersage and Dore, but at a national level, and to-



together with the clearances in Scotland, the effects were catastrophic. In Ireland the historian G. Kitson Clark calculated that in 1845 the population numbered about 8,250,000, and in the census of 1851 had decreased to 6,552,385, for in the autumns of 1845, 1846 and 1847 the potatoes which had made the increase of population in Ireland possible had been stricken by disease. The English had wrecked Irish economic developments in the eighteenth century, and had imposed landlords on Ireland who were often at best no more than a worthless encumbrance on Irish life and a drain on Irish resources. Partly as a result of this, land tenures became a museum for all that can be intolerable in land tenures and probably prevented the proper cultivation of the soil. Sir Robert Peel who earlier in his career had carried out an energetic policy to improve the lives of the Irish was unfortunately sidetracked and driven out of office on the repeal of the Corn Laws. The Whig Government of Lord John Russell ('Lord John' as the ACL League rather contemptuously referred to him) which succeeded Peel lacked his force and supreme administrative ability and mismanaged the famine relief at the most critical period. The cultivation of the potato which had made possible a great increase of the Irish population, had failed, and many of the people who had depended on it died or went away to avoid death.

They went to the United States, Canada or Australia, but they also came to Britain. The passage from Ireland to England and Scotland was the cheapest and easiest line of escape. In the 1820s there had been a regular service at half-a-crown a head, a rate at which intensive competition reduced to four or five pence. Many came in the famine years, often starving, nearly naked, many with fever. The impact was immediate on Liverpool, South Lancashire and Cheshire but also into Glasgow, South West Scotland, Dundee and South Wales, and then further where unskilled work was available. By 1851 the number born in Ireland was 733,866 and of these 519,959 lived in England, making up 3% of the population, and this figure omitted their children. They were mainly Roman Catholics, often deeply unpopular, desperately needy with low standards, and worst of all they threatened the wage rates of their neighbours.

On the other hand as unskilled labourers and navvies they were perfect for the economic growth of Britain. It is doubtful whether they had any clear idea of what they would find: they only knew they could not stay in Ireland and live, and that knowledge was enough. The countryside could not support them, so inevitably they came into the towns. The result was catastrophic, with no suitable housing and crammed into every nook and cranny from attic to cellar of old decaying property, into cottages run up hastily in folds and folds within folds, in the backyards of existing houses or what had been their gardens. Water and sanitation was often not provided and where they were, there was often a mingling of cesspools and wells with an occasional overstocked graveyard or active slaughter house to add to the richness of the mixture. Where the water for the town was drawn from rivers or streams, sewage and waste products were now poured. Night soil deposited in privies and ash pits was from time to time carried away by hand but if it was removed it was quite likely to be dumped in a street for a contractor who dealt in manure.

Many industrial processes now needed coal furnaces and domestic fires were starting to burn coal in many towns, particularly in winter. A heavy sulphurous smoke was emitted to combine with other atmospheric conditions to make the fogs which were such a feature of Victorian England, and which probably slew them in their thousands. This was the price paid for an Industrial Revolution. The cholera monument in Sheffield alone commemorates over 400 victims in 1832.

The summer of 1838 brought a poor harvest with consequent unemployment and distress in many manufacturing districts. A small gathering of Manchester Radicals met at the York Hotel on September 10th and the decision was taken to form an Association. This meeting became the stuff of legends but George Wilson was actually present and the only one both to give his place of birth (Hathersage) and religion as Sandemanian. The chairman was Archibald Prentice, a radical newspaper editor of the Manchester Times who became the Anti-Corn Law League historian.

Sandemanians or Glasites were the followers of John Glas (1695-1773), a Minister in the Church of Scotland and his son-in-law Robert Sandeman. It was a fundamentalist approach

with strict adherence to New Testament authority: rejection of human authority such as clergy or human leadership, with self-governing decisions made by members; observance of rituals such as adult baptisms and foot washing denoting unity among themselves; ethics and morality with a simple lifestyle of honesty, integrity, selflessness and no swearing of oaths or participation in warfare. It appears fairly exclusive with some famous names such as Michael Faraday, the Scottish distillers Dewar and Bell, David Lloyd George and Sandeman himself and was only wound up in the 1990s. (Having been brought up in a family of Catholic Recusants until the age of eleven, for me it demonstrates a ruthless ambition.)

The Association was soon actively canvassing for support and the first list of their Provisional Committee appeared in the first week of October - now including John Bright, a Rochdale manufacturer, and Thomas Potter, a leading Manchester merchant, very rich, and soon to be the first Lord Mayor and who gave an appearance of solidity and respectability. Richard Cobden was abroad at the time and appeared on the second list when he returned. The provisional Treasurer was John Benjamin Smith with a history of anti-corn law agitation in Manchester and dubbed as 'Corn Law' Smith. The Manchester Association was soon corresponding with other similar organisations throughout the country who were requesting their rules book, and acting as a central clearing house, answering all sorts of enquiries and providing propaganda of various kinds. Smith continued to take a leading part but came to share the leadership with Cobden and George Wilson. Norman McCord acknowledges that their contribution was greater than any other. and Cobden was later to acknowledge in their private correspondence that 'You and I made the League George - others profited by it.'

The first three years were marked by slow progress and frustration through lack of funding. In 1841 the conservatives under Peel had won a General Election, but by concentrating on a previous by-election at Walsall in 1840 the Leaguers had made a significant step forward in seeking representation. The Whigs had put up a non-free trader against the Tory candidate, Captain Gladstone, elder brother of W.E Gladstone, and in a fit of pique the League had put in their own candidate who had driven off the Whig, eventually only losing by 363 votes to 336. This was against the usual background of violence, claims of vote rigging and opposition from the press, but the point had been made and as McCord stated, it was as if the league had come of age. Both the Tories and the Whigs began to see the threat. In early 1842 Peel had brought in a sliding graduated scale into the Corn Laws in place of the fixed duty intended to rise and fall with the price of imported corn. At the same time a seven-pence-in-the pound tax was introduced to relieve the temporary emergency, but which was to last until 1852. A reduction of import duties on some 750 items was intended to alter prohibition in all cases, and materially reduce duties on raw materials and partially manufactured items. This was welcomed as a move in the right direction but the price of bread still rose and famine was 'still sore in the land.' While the objective remained to defend the Corn Laws, the farming interest was so immense that all other interests must still be taxed for its protection.

*To be continued*



**Scrivens Quality Greengrocer**  
Free delivery service available 6 days per week

Mark Billingsley - Owner 37 Baslow Road  
Home Delivery - 0114 2367116 Sheffield S17 3DL  
Trade Enquiries - 07885 866376 scrivensyou@gmail.com 



# ACTIV PHYSIO

Call us on **0114 235 2727**  
to book now!

Evening &  
Saturday  
appointments  
available



Say Goodbye to aches & pains and make an appointment with our team of friendly Physiotherapists at our **Totley Clinic**

- Back & Neck Pain
- Headaches
- Joint & Muscle pain
- Post Operative Rehabilitation
- Sports Injuries & Massage
- Women's Health Issues
- Acupuncture
- Home Visits & much more...

**Open**

**Monday - Saturday**  
**5\* Google rating**

E: [admin@activphysiotherapy.co.uk](mailto:admin@activphysiotherapy.co.uk)  
W: [www.activphysiotherapy.co.uk](http://www.activphysiotherapy.co.uk)  
A: 88. Baslow Rd, Totley, Sheffield.  
S17 4DQ

**Est 1971**

## R.S. HEATING & BUILDING CO.

### Heating division

Experienced installers of all types of domestic boilers. Authorised installers of Vaillant, Worcester Bosch and Glow Worm boilers.

Full after sales service dept.

### Plumbing division

Bathrooms, showers, wet rooms, individually designed washing rooms for the disadvantage a speciality.

A complete service, from design to even laying a new floor surface

### Building division

Kitchens, complete House renovations including general building, joinery, plastering, tiling, electrical, decorating etc.

88 Sunnyvale Road, Sheffield S17 4FB

Tel: 0114 2364421

[enquires@rshb.co.uk](mailto:enquires@rshb.co.uk)

[www.rshb.co.uk](http://www.rshb.co.uk)



## Apple Landscapes and Paving

Established 19 years

Specialise in full garden makeovers.  
Patos, paths, walls, turfing, fencing.

Check out our FB page.

07782167540

01246237505



Activity	Venue	Primary Contact (Group leader)
Coffee and exercise classes (Strength/Circuits/Seated) Variety of gentle exercise sessions combined with refreshments	Bradway Community Hall -Monday (weekly) Dore and Totley United Reformed Church -Monday (weekly), Totley Library/CRIC- Thursday (weekly) St Peter/St Oswald's Abbeydale Road- Friday (weekly)	Community Wellness Service – 0114 553 7807
Sporting Chatter / Sporting Chatter films: A social group who meet to discuss all things sport	Dore and Totley United Reformed Church – 1 <sup>st</sup> and 3 <sup>rd</sup> Friday each month.	Michael – 07896 003941 or Mike – 07503 060990
Singing Teapot Choir - A singing group for all abilities	Dore and Totley United Reformed Church-Tuesday (weekly)	Yo Tozer Loft -07925 634420
Welcoming warm space - meet others and have fun. refreshments provided	Dore Methodist Church Hall- Monday (weekly) 10.30am to 1pm.	No booking requirement - just drop in
Dore and Totley Rosemary memory café (Dementia targeted) - a welcoming social space for people living with Dementia.	Dore Methodist Church Hall – Tuesdays - 1 <sup>st</sup> and 3 <sup>rd</sup> week of every month	Contact : <a href="mailto:Elsie.ledger@ageuksheffield.org.uk">Elsie.ledger@ageuksheffield.org.uk</a> Tel. 07384 833594
Reminisce and Revive: a Zoom group where we share stories and poems we have written as well as favourite pieces of writing, including favourite films and TV programmes.	Zoom -Monday (fortnightly)	Anne: <a href="mailto:anne.grange77@googlemail.com">anne.grange77@googlemail.com</a> 07815 966784
Forest Bathing - a chance to slow down and enjoy mindfulness in nature	Graves Park (Abbeydale Industrial Hamlet in winter months) - Saturday (weekly)	Caroline Cook- 07583 551705
Herbal Wellness: Learn about a different herbal medicine every week	Abbeydale Industrial Hamlet - Friday (fortnightly)	Caroline Cook- 07583 551705
Woodwork Wellbeing: a seasonal woodworking course	Bradway Community Hall - Tuesday (weekly)	Steven Fridlington – <a href="mailto:woodworkwellbeing@ouytlook.com">woodworkwellbeing@ouytlook.com</a> 07900 344361
Ecclesall Forum: a space to socialise and make new friends. This group is part of the wider Ecclesall forum	Cherry Tree Pub, Carterknowle - Monday (weekly)	Paul May – <a href="mailto:paulmay@blueyonder.co.uk">paulmay@blueyonder.co.uk</a>
Dance to Health Sheffield: gentle dance classes for all abilities	St Augustine's church, Endcliffe- Multiple days of the week	<a href="mailto:NesreenShah@ae-sop.org">NesreenShah@ae-sop.org</a> 01993 870159
Table Tennis	Bradway Community Hall- Thursday and Friday (weekly)	Jan – 07787 954842/0114 418 6463
S11 Carers Walk: keep fit and healthy and make new friends on these gentle walks, designed to give carers respite	Thursday - (First week of every month)	Sheffield Carers Centre -0114 278 8942
Natter Coffee Morning: a welcoming space to meet new people and enjoy cakes and coffee	Totley Library/CRIC- Thursday (weekly)	Totley All Saints Church -0114 236 7627
Coffee on the Corner social drop in: enjoy great food and drink and meet new people	Coffee on the Corner – Baslow Road –Friday (weekly)	Coffee on the corner- 07941 780772
South West Friendship Lunches: Book onto one of our local friendship lunches and enjoy great food and entertainment	Crosspool Tavern Pub, Crosspool - Monday (2 <sup>nd</sup> monthly) The Ball Inn, Crookes -Tuesday (1 <sup>st</sup> monthly) The Greystones Pub -Tuesday (2 <sup>nd</sup> monthly) Shepley Spitfire pub -Friday (last monthly)	0114 266 2113 0114 266 1211 0114 266 5599 0114 236 0298
Fulwood coffee and games morning: dementia friendly	Fulwood Scout Hut, Fulwood Road-Tuesday (2 <sup>nd</sup> and 4 <sup>th</sup> Tuesday of the month)	<a href="mailto:Elsie.ledger@ageuksheffield.org.uk">Elsie.ledger@ageuksheffield.org.uk</a> - 07384 833594
S17 Carers Café: a social space for carers to come together and make new friends. Designed to give carers respite in a warm and welcoming environment	Meet at Totley URC on Totley Brook Road - 10.30am on 1st Wednesday of each month Meet at Border View Farm on Rod Moor Road - 11.00am on 3rd Wednesday of each month	Sheffield Carers Centre – 0114 278 8942
Calmly Create: the main objective of the sessions is for patients who may be experiencing stress, anxiety or loneliness to create something in a warm environment	Fulwood Old Chapel School Room, 8 Whiteley Lane, Sheffield, S10 4GL-Wednesday (weekly)	South Yorkshire Chaplaincy and Listening Service 07903 899751 <a href="mailto:sycls@sycls.co.uk">sycls@sycls.co.uk</a>
Bents Green Rosemary Memory Café (Dementia targeted): a welcoming social space for people living with Dementia.	Bents Green Methodist Church, Ringinglow Road, S11 7PU-Thursday (1 <sup>st</sup> and 3 <sup>rd</sup> monthly)	<a href="mailto:Elsie.ledger@ageuksheffield.org.uk">Elsie.ledger@ageuksheffield.org.uk</a> – 07384 833594





# Handel's MESSIAH

Saturday  
27th April  
7.00 pm

VICTORIA HALL, NORFOLK ST.  
SHEFFIELD CITY CENTRE, S1 2JB

over 100 singers, guest soloists, & orchestra

CONDUCTOR: ANDREW MARPLES

**TICKETS: £15**

from choir members \* [tickets@baslowchoir.co.uk](mailto:tickets@baslowchoir.co.uk)  
wegottickets.com \* 0114 236 0820 or 01246 463193



Holymoorside  
Choral Society



SPONSORED BY THE ROBERT GRAY TRUST FUND

# TOTLEY LIBRARY PLANT SALE



Sat 11th May  
10am-12pm

Lots of good quality  
plants on sale to get  
your gardens ready for  
the summer.

Children's Sunflower  
Planting.

Raffle tickets £1 Each

Prize Donated by Harveys Flowers & Plants.

07720485946

Books, Cakes & Refreshments

[www.totleycric.org.uk](http://www.totleycric.org.uk)



Totley History Group presents

## Sheffield Home of Football by John Wilson



**WEDNESDAY 24 April 2024**  
**7.30PM IN TOTLEY LIBRARY**  
**NON-MEMBERS ARE WELCOME**

### ABBEYDALE INDUSTRIAL HAMLET



## Spring Herbal Wellness

6-week course, Fri 19 Apr – Fri 5 Jul

10.30 – 12.30pm

Abbeydale Industrial Hamlet

£66, book online via [wellwithnature.co.uk/buy-tickets](http://wellwithnature.co.uk/buy-tickets)

Connect with the energy and beauty of spring in the picturesque  
setting of Abbeydale Industrial Hamlet.

Learn about a different plant each week including recipes and  
herbal remedies. You'll hear about ancient folklore, learn mindful  
techniques, and enjoy herbal tea tasting as we connect with  
nature.

Image credit: Freepik

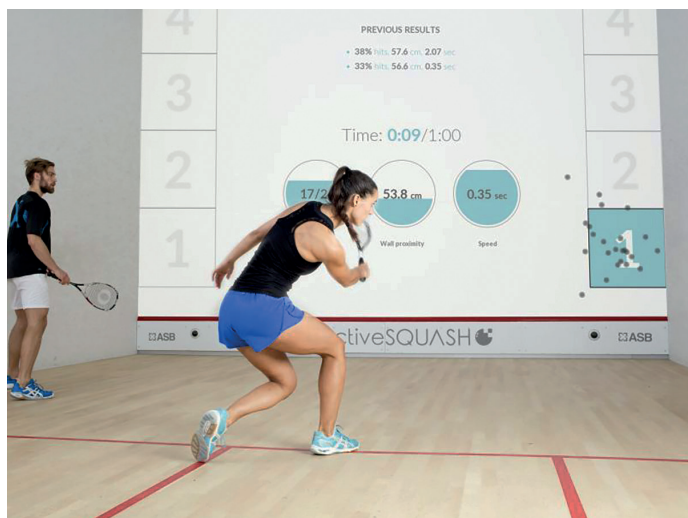




## iCourt at Abbeydale

### New Interactive Squash Court at Abbeydale – the first in South Yorkshire!

Abbeydale Squash and Fitness Club has recently installed a new Interactive Squash iCourt – the only one in South Yorkshire.



Interactive Squash is a game-changing fusion of sports and technology. Immersive projection graphics showcase exciting video-game-style play, with many training routines and games for all ages. The system is currently installed in only a few locations in the country, including Center Parcs, where it is proving to be extremely popular.

Interactive Squash turns the front wall of the court into a giant interactive screen with many training routines and games that respond to a ball hitting the wall. It has applications for squash and racketball training for all levels, and a big variety of interactive games from retro-arcade to more creative and educational ones, for all ages, all developed to meet fun and entertainment standards while improving players' skills like hand-eye coordination, speed, strength and reaction times.



The iCourt is available to members and non-members, with games and training activities to suit all ages and abilities. From Squash Invaders (a game like the classic arcade game) to Monster Match (think Candy Crush meets Monsters Inc.), there are tons of fun games for the little ones, or the big kids!

The more experienced squash player will find that the iCourt is not all about fun and games - there are numerous training drills and activities designed to hone your skills. Area Focus will sharpen your accuracy on court, while Ghosting tracks your movement, as you move as quickly as possible around the court.

Other current favourites of the staff at Abbeydale include Darts, where players can compete by hitting or throwing balls at giant dart boards; Ocean, where players must protect the happy fish of the sea by scaring away the nasty fish; and Idol Rush, a frenetic game in which opposing teams compete to break down a totem pole first. The range of games and activities, which numbers more than 35 at present, is set to grow further with continual developments occurring over in

Munich, where the manufacturer is based.



The iCourt can be booked by non-members subject to guest fees. Family/group guest bookings are available for up to 6 non-members able to use the iCourt for interactive giant screen fun (many of the games can be played by throwing a ball - of varying sizes - instead of using a racket).

You can check it out at

<https://www.abbeydalesquashandfitness.co.uk/icourt>

**Ball Blast Interactive Parties** are now also available for booking on the Abbeydale iCourt. A Ball Blast party consists of one hour of supervised activity on the court with a dedicated Party Leader for up to 12 participants, with an optional 1-hour room hire for refreshments in the spacious studio, situated just outside reception. Refreshments can be catered by Abbeydale Squash and Fitness for an additional charge. Parties can be booked now, by calling reception on 0114 262 0550, or emailing [parties@abbeydalesquashandfitness.co.uk](mailto:parties@abbeydalesquashandfitness.co.uk).

## Young entrepreneurs start new business!

Young Totley residents Ellie and Hannah Moreton are taking the entrepreneurial plunge and opening their own new beauty salon in Lowedges. The salon, called 'Sister Sister Beauty Bar', will open during week beginning 1st April, and will be based at 124 Lowedges Road.

The salon will predominately be for eyelash extensions and brow treatments, but there will be another member of staff doing nails. Hannah (17) has been a lash technician for the past 3 years and has been successfully building up her client base. She is currently studying a level 2 course in beauty therapy. Ellie (21) has given up her previous job as a customer service advisor in order to start on her beauty journey - she is qualified in brows - tints, wax, lamination, henna brow, air brush brows and lash lifts.

Ellie and Hannah have lived all their lives on Queen Victoria Road, and have talked about this business venture for a few years. Mum Melanie said "I think this is a brave move at a young age and I'm very proud of them for making the leap!"

Good luck girls!

## Defibrillator at the Tennis Club

The Dore and Totley Tennis Club at 48 Devonshire Road has recently had a defibrillator fitted at the club. It is located by the door to the clubhouse, at the top of the drive, and is available for use at any time of the day or night by the public.

Although installed for the potential benefit of club members, the defibrillator, like others in the area, can be used by anyone who needs it. Instructions for use are provided automatically when the device is switched on.

Hopefully, it may never be needed, but it is a potentially useful addition to health support in the Dore and Totley area.

*Pete Alcock, Tennis Club Chair*





## Dore Garden Club

Dore Garden Club meets on the third Wednesday of the month in the Methodist Church Hall in Dore village. Doors open at 7.10 pm for a 7.30 start. Visitors are always welcome, and entrance is only £4, payable at the door. We are now using Instagram. The link to this account is: <https://instagram.com/doregardenclubsheffield>

If you are a seasoned Instagram user: Instagram: @doregardenclubsheffield

Some speakers bring a great selection of plants to sell. In addition, we encourage members and visitors to bring along any unwanted house or other plants to sell on our plant table. The proceeds are split equally between the Club and the donor. One of the benefits of membership is 10% off all products at Dore Moor Nursery on production of a 2024 membership card.

### April 17th: Linda Heywood: Echium World

If you're unsure what Echiums are – please see the photograph. I'd never heard of them until I started to holiday in the Isles of Scillies where they are prolific and can grow to enormous heights. Linda and Ray Heywood, who describe themselves as "only keen gardeners", are based in Nottinghamshire and established Echium World in 2010 to share their experiences. How do you start to display and share knowledge of magnificent echium plants, magnets for bees and many other pollinators? Their presentation will answer your questions and track their journey from sowing the first packet of seeds to exhibiting and meeting celebrity gardeners and other stories.

Linda and Ray are holders of the National Plant Collection of Echium which is on display in a dedicated border at Renishaw Hall and Gardens, Derbyshire, from May to September.



*Photo courtesy of Linda Heywood*

### May 15th: Rachel Barrowcliffe: Future-Proof your Garden

Rachel has been a professional gardener for over 30 years, a gardener and adviser at Hodsock Priory and the Tropical

Butterfly House Conservation Park and Zoo, Sheffield. The theme of "Future Proof your Garden" is about what we might do to adapt to enable our gardens to thrive in the light of our changing climate and as we grow older. What plants will



*Photo courtesy of Rachel Barrowcliffe*

thrive best in warmer, drier summers and warmer, wetter winters? The photo above shows what can be achieved with raised beds.

*Pauline Drissell and Jean Dykes*



## Concert Performance of Verdi's Nabucco

One of the events planned to celebrate the Centenary of All Saints Church, Totley, will be a concert performance in the church of Verdi's opera *Nabucco* on Saturday 18

May 2024 at 7.30 pm. Tickets, priced £10, will be available from 5 April at All Saints Church from Ann Powell, as well as through members of the chorus, or they can be ordered by phoning John Wade (0114 236 0820) or James Powell (0114 236 5857). The proceeds are to be shared between the Grace Foodbank and the Oakes Christian Activity Centre.

Forty years ago, James Powell, Lay Reader at All Saints Church, and at that time one of the leading soloists of South Yorkshire Opera, came up with the idea of celebrating the Diamond Jubilee of All Saints Church with a concert performance of *Nabucco* which had just been staged at the Lyceum Theatre by SYO. He and several of his colleagues teamed up with the talented organist, the late Paul Green, and John Wade, then choirmaster at All Saints, who recruited a large chorus from the church choir and other choirs in the area, to put on that performance in 1984 with great success. That chorus then became the John Wade Singers, who went on to put on concert versions of many operas in aid of local charities.

With 2024 marking the centenary of the church, James Powell once again contacted John Wade, and once again the same result: a concert performance of *Nabucco* with some top-class principal singers, the talented organist Andrew Booth and a chorus of over forty, again recruited from JWS and other local choirs (and friends) to form the All Saints Centenary Chorus. Proceeds from the concert will be given to two local charities, the Grace Foodbank at Lowedges and The Oakes.

While, as in most operas, the storyline is a little complicated, essentially it is tuneful throughout with chorus and soloists and is entertaining. The story is one of reconciliation and salvation, based loosely on the Hebrews' experience in exile.





## Transport 17

As many of you will be aware, this year Transport 17 is celebrating 40 years of serving the community, and in particular 40 years supporting older, isolated members of the community. By the time

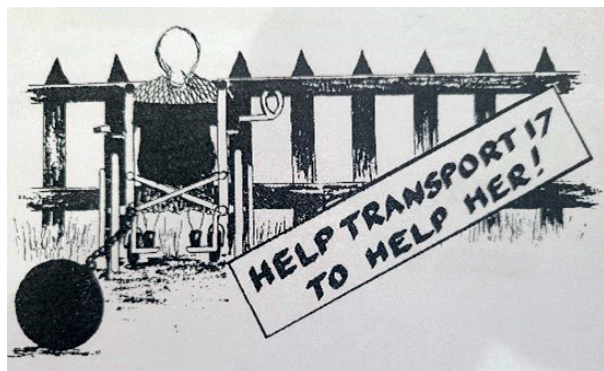
this issue of the *Totley Independent* has gone to print, we will have had our Spring Fayre/Celebration event on the 23rd March. We hope to bring you news and pictures of a successful event in the June/July issue but would like to say a big thank you in advance to all those individuals who have helped in the preparations and the planning for the event.



Over this year we will also be taking a look back through the archives and bringing you a potted history of the organisation, some of its memorable events and celebrations, as well as the challenges faced over the years. Here's a reminder of the beginnings.

In 1983/1984, Rev. Alan Jockel, then vicar at Totley All Saints Church, noticed that within the local community there were a considerable number of older people who were isolated from the community because of their immobility, as well as a number of clubs in the area that were not functioning to capacity because of the lack of accessible transport for older, vulnerable people who were unable to travel by public transport and/or private car.

Along with several other local individuals, including the chairman of the new organisation Bert Jackson, Alan Jockel launched a fundraising drive in an effort to raise 50% of the initial capital cost of a minibus, estimated to be in the region of £10,500. They reckoned the cost to be less than 30p a head for everyone living in the area. Help the Aged had promised to provide the other 50% if Transport 17 could raise the funds by June 1984. The postal district of Sheffield 17 – the sprawling, hilly, residential area that covers Dore, Totley and Bradway – was (and often still is) regarded by many to be one of the more affluent areas of the city and questions were raised regarding the necessity of such a transport resource.



However, as is still the case 40 years on, the feelings of isolation and deprivation experienced by older people who are no longer able to leave their homes independently cannot be overcome by financial security. We are social beings, and face to face social contact with others is vital for our mental health and general wellbeing.

With a new logo and a local artist providing some emotive images (see examples on this page), individuals, churches, schools and businesses within S17 held events to raise money for the minibus fund. The total sum was raised with 2 weeks to spare before the deadline of 1st June. The *Sheffield Star* and *Telegraph's* Old Folk's Fund also donated £750. Transport 17's first minibus was accepted from Help the Aged at a 'handing-over' ceremony on 15th June, 1984, in Green Oak Park.

At the end of the first year of operating (June 1984 – June 1985), the minibus had travelled over 3,000 miles collecting over 70 people each week and taking them to lunch clubs and afternoon social meetings. Transport 17 had obtained the services of a regular part-time driver through the Community Programme, making manning the minibus much easier.

Volunteer drivers were still being used for extra journeys, and passengers contributed to the running costs – a charge of 30p a mile! The provision of regular, accessible transport meant that during this first year of operating, a second lunch club had opened within Totley, with a third being planned. By the end of 1985, the minibus was in operation every day of the week.



Many of the challenges faced by the fledgling organisation in those early years remain similar to those faced by us 40yrs on, for example, safe and easy-to-access locations for the minibuses, the availability of regular volunteers to drive the buses and assist the passengers, and of course raising funds. We look forward to being in touch with, and meeting, many of our supporters (old and new) over this year, learning more about the history of the organisation, and the part played by you and/or friends and members of your family.

As always, we can be contacted on 0114 236 2962, by email at [admin@transport17.co.uk](mailto:admin@transport17.co.uk), or via our Facebook page – Transport17Ltd

Fiona Smith

## Parents Support Group



We are a friendly Parent/Carer Support Group which meets once a month for a coffee morning at Totley Rise Methodist Church. All of the parents who attend the group have a child or children with additional needs or are awaiting a diagnosis.

It is a safe space for you to come along and talk about the journey you are on, a journey which can be difficult.

Our parents have a wealth of knowledge, understanding and experience between them, that helps support and navigate your way through a system that doesn't make it easy to obtain the help your child or children deserve.

10th January  
7th February  
13th March  
8th May  
12th June

Our dates for 2024 are:  
10am-12pm



10th July  
11th September  
9th October  
13th November  
11th December

Contact Helen 07580566164

Emphasis is on peer support and many have found this invaluable.



## TOTLEY & DISTRICT DIARY

<b>MONDAYS</b>	<b>AGE UK FITNESS</b> Dore & Totley United Reformed Church, 1.30-2.30 pm. Contact Community Wellness Service - 0114 553 7807 <b>GUIDES</b> , All Saints Church Hall, 6.45pm-9pm <b>SLIMMING WORLD</b> Totley Rise Methodist Church, 5pm and 7pm. Call Sarah on 07577 070797
<b>TUESDAYS</b>	<b>PILATES</b> The Old School, Dore, 9.30-10.30am. Phone Sally Kilner 07917 762502 <b>TOTLEY OPERATIC AND DRAMATIC SOCIETY (TOADS)</b> meets 7.30pm to 10pm, in the Guild Room, St John's Church, Abbeydale Road South. For more information call 0114 2351206 <b>BABY TIME</b> Totley Library, Tuesday 1.30-2.15pm (term-times only). Come along to meet other parents/carers and babies. We sing simple songs, have fun and allow time to chat <b>SHEFFIELD MARQUETRY GROUP</b> 10am-12noon, St Oswald's Church Crypt, Bannerdale Rd. Small friendly group - beginners welcome. For information phone Graeme 07947 127909 or Pat 0114 2819915 <b>KNIT, NATTER, CRAFT &amp; CHATTER</b> Totley Rise Methodist Church, 12 noon-3pm <b>JAZZ IN THE AFTERNOON</b> 1.30-3.30pm, Totley Rise Methodist Church Schoolroom. A weekly afternoon of all forms of recorded jazz, plus discussion. Tea, coffee and biscuits available <b>YOGA CLASS</b> 1.15 - 2.45pm at Dore and Totley United Reformed Church. Contact Rachel (qualified level 4 BWY teacher) 07708 996984 or yogaq@hotmail.co.uk <b>WELCOMING PLACES COFFEE MORNING</b> open to all, Totley Rise Methodist Church, 10am to 12 noon <b>TAI CHI</b> Dore and Totley United Reformed Church 4-5 pm. Contact Bernice on 07999 617387
<b>WEDNESDAYS</b>	<b>PILATES CLASSES</b> Dore & Totley United Reformed Church, 9.00-10.00am and 10.15-11.15am. Contact Caroline tel: 0781 722 0324, email Carolinenorth1@me.com, www.pilatescarolinenorth.co.uk <b>CARERS' CAFE MONTHLY</b> Dore & Totley United Reformed Church 10-11.30 am. Contact Jan Outram 0114 278 942 <b>COFFEE IN THE LIBRARY</b> 10.30am-12.30pm. Come and have a coffee and a chat <b>STORY TIME</b> for toddlers and pre-school children at Totley Library from 10am - 11.30am (except school holidays). Children can take part in weekly themed craft activities, sing songs and listen to a story. £1 donation per child greatly appreciated <b>TODDLER GROUP</b> 10am-11.30am, All Saints' Church Hall. Details tel. Liz Hayden 07969 826464 <b>HEALTH WALKS</b> 10.30am, meet at Totley Library. Contact Step Out Sheffield on 07505 639524 or email stepoutsheffield@gmail.com <b>YOGA CLASS</b> 6.30 - 8pm at St Johns Church Hall Totley. Contact Rachel (qualified level 4 BWY teacher) 07708 996984 or yogaq@hotmail.co.uk
<b>THURSDAYS</b>	<b>RHYTHM TIME</b> Baby, toddler & pre-schooler music sessions 9.00-11.30 Details Email: beth.w@rhythmtime.org Phone/WhatsApp: 07748 589468 To book: <a href="https://rhythmtime.net/find-a-class">https://rhythmtime.net/find-a-class</a> <b>ROCKCHOIR</b> United Reformed Church, Totley Brook Rd, 11.30-1pm. See <a href="http://www.rockchoir.com">www.rockchoir.com</a> or call 01252 714276 <b>CHAIR AEROBICS</b> Totley Library, 12-12.45pm with Laura. An Age UK and People Keeping Well weekly exercise class. £4 per week, no need to pre-book, just turn up. <b>SOCIAL CLUB</b> Dore and Totley URC fortnightly 2.30-4.30 pm Contact Alison Holden for information 236 0441 <b>PUSHCHAIR CLUB</b> Totley Rise Methodist Church Hall, 10.30-12noon. Tel. 07912 352543 for details <b>PILATES CLASS</b> run by qualified Pilates Instructor/Physiotherapist for all abilities and ages. 1.30-2.30pm, 5.15-6.15pm and 6.15-7.15pm at the United Reformed Church, Totley Brook Road. Call Emer on 07792 422909

## APRIL

**SAT 6th FRIENDS OF GILLFIELD WOOD** Flora Walk with members of Sorby Natural History Society. Meet 10.30, end of Totley Hall Lane. For details see FOGW website.

**WED 10th TOTLEY PROBUS CLUB** 10am in Room 1, Totley Rise Methodist Church. Talk by Mike Waters on "God's Terrorists". Guests are always welcome - we are always looking for new members.

**SAT 13th DORE GILBERT & SULLIVAN SOCIETY** Concert Performance of "Iolanthe", 2.30pm, Dore Church Hall, Townhead Road, Dore S17 3GA. For tickets call 07565 805405 or via the website <https://doregass.weebly.com/tickets.html>

**SUN 14th MINIATURE TRAIN RIDES** 1pm - 5pm - Abbeydale Road South. £2 per ride per person. Car park closes 5pm. See [www.sheffieldmodelengineers.com](http://www.sheffieldmodelengineers.com)

**MON 15th FRIENDS OF GILLFIELD WOOD** Annual General Meeting, followed by talk by Jim Clarke on "Willow Tits". 7.30, Totley Library.

**WED 17th DORE GARDEN CLUB** "Echium World", hosted by Linda Heywood, National Collection Holder. Dore Methodist Church, 7.30pm. Visitors £4 at the door.

**WED 24th TOTLEY HISTORY GROUP**, talk by John Wilson, "Sheffield - Home of Football". 7.30pm, Totley Library. Non-members welcome.

**SAT 27th TOTLEY LITTER PICKING MORNING** 10-11am. Equipment provided. This activity is done at participants' own risk. Children must be accompanied by an adult. Meet Baslow Rd, outside Totley Library. All welcome.

**SUN 28th TOTLEY YARD SALE** 10am. To participate and sell from your drive or yard (cost £7) contact Jennie Street at [jennie@hadish.f9.co.uk](mailto:jennie@hadish.f9.co.uk)

**SUN 28th MINIATURE TRAIN RIDES** 1pm - 5pm - Abbeydale Road South. £2 per ride per person. Car park closes 5pm. See [www.sheffieldmodelengineers.com](http://www.sheffieldmodelengineers.com)

## MAY

**WED 8th TOTLEY PROBUS CLUB**, 10am, Room 1, Totley Rise Methodist Church. Talk by Peter Stubbs on "Britain & Germany: The War at Sea 1914-18, Part 1". Guests are always welcome - we are always looking for new members.

**SAT 11th FRIENDS OF GILLFIELD WOOD** Spring Bat Walk led by Dave Gash. Meet 8.30pm, end of Totley Hall Lane. For details see FOGW website.

**SUN 12th MINIATURE TRAIN RIDES** 1pm - 5pm Abbeydale Road South. £2 per ride per person. Car park closes 5pm. See [www.sheffieldmodelengineers.com](http://www.sheffieldmodelengineers.com)

**WED 15th to SAT 18th TOTLEY OPERATIC AND DRAMATIC SOCIETY (TOADS)** presents a comedy entitled "Last Seance". For tickets email [tickets@toads-drama.co.uk](mailto:tickets@toads-drama.co.uk) and see article on p.xx of this issue.

**WED 15th DORE GARDEN CLUB** "Future-Proof your Garden, hosted by Rachel Barrowcliffe, Garden Advisor. Dore Methodist Church, 7.30pm. Visitors £4 at the door.

**SAT 18th FRIENDS OF GILLFIELD WOOD** Bird Walk led by Stuart Davies. For details see FOGW website.

**WED 22nd TOTLEY HISTORY GROUP**, talk by Catherine Warr, "Yorkshire Folklore", 7.30pm, Totley Library. Non-members welcome.

**SAT 25th TOTLEY LITTER PICKING MORNING** 10-11am. Equipment provided. This activity is done at participants' own risk. Children must be accompanied by an adult. Meet Baslow Rd, outside Totley Library. All welcome.

**SUN 26th MINIATURE TRAIN RIDES** 1pm - 5pm Abbeydale Road South. £2 per ride per person. Car park closes 5pm. See [www.sheffieldmodelengineers.com](http://www.sheffieldmodelengineers.com)



# Dore Optician: Now Open

Ian Truelove BSc(Hons) MCOptom

Family Optometrist

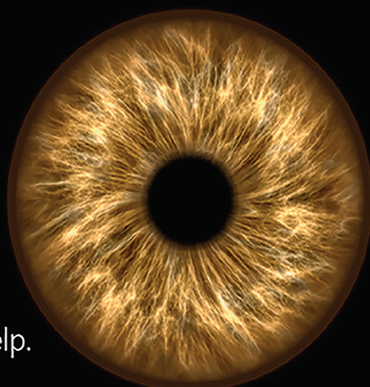
Personal and Professional eye care for all the family

Ian and Tina Truelove have re-opened Dore Optician and refurbished the practice with the very latest technology.

➔ Hospital-quality 3D OCT imaging allows earlier detection and diagnosis of many eye problems.

➔ Free complete spectacles available for children and all eligible under the NHS.

➔ Home eye tests available if you are unable to leave the house without help.



➔ Digital retinal photography.

➔ ReadEZ: Coloured overlays and Enhanced reading assessments for those with reading difficulties or visual stress.

➔ Hundreds of frames to choose from for all the family, covering a wide range from £10 to designer.

➔ Free NHS and private eye examinations – hourly appointment slots, never feel rushed.

Please contact the practice for more information, or pop in for a chat.

25 Townhead Road, Dore, Sheffield, S17 3GD

Tel: 0114 3273737

Email: [enquiries@dore-optician.co.uk](mailto:enquiries@dore-optician.co.uk)

Web: [dore-optician.co.uk](http://dore-optician.co.uk)



Providing NHS services and registered with the Association of Optometrists, College of Optometrists, General Optical Council

**RHYTHM TIME**

Fun, developmental music classes!

Join us in **Totley**

All Saints Church Hall  
**Thursday**  
Toddlers – 9:30  
Babies – 10:15

Also in:  
Greenhill  
Crosspool  
Bents Green  
Bakewell  
Dronfield  
Fulwood

Contact Beth  
[beth.w@rhythmtime.org](mailto:beth.w@rhythmtime.org)  
07748 589 468

or book here:  
[rhythmtime.net](http://rhythmtime.net)

**S17 DECORATORS**

**PAINTING & WALLPAPERING**

TRUSTED LOCAL RESIDENT  
WITH REFERENCES.  
FULLY INSURED.  
HIGH QUALITY PAINTING AND  
DECORATING ACROSS SHEFFIELD  
AND NORTH DERBYSHIRE.  
35 YEARS EXPERIENCE.

★★★★★

"THANKS FOR ALWAYS GIVING US SUCH A PROFESSIONAL  
FINISH WHEN YOU DECORATE FOR US."  
MRS M. (MILLHOUSES)

"THANK YOU FOR AN AMAZING JOB.  
WE KEEP RECOMMENDING YOU!"  
MR & MRS D. (BRADWAY)

"WE HAVE COME TO CONSIDER YOU AS A FRIEND"  
MR S. (DORE)

"YOUR DECORATING WORK IS SPOT ON – SO QUICK  
AND EFFICIENT TOO! WE RELY ON YOU NOW."  
MRS A. (DORE)

"YOU'VE DONE A MARVELLOUS JOB DECORATING  
THE OUTSIDE OF OUR HOUSE"  
MR & MRS W (DORE)

**CALL JULIAN TODAY!**

07905 523499 OR 0114 2369664

[JULIANCROOKES@GMAIL.COM](mailto:JULIANCROOKES@GMAIL.COM)  
LONGFORD ROAD, BRADWAY, S17 4LP

FIND ME ON FACEBOOK



# IRONING PARLOUR

01142 364073

**CARPET CLEANER  
FOR HIRE**

**£25.**

**IRONING  
PARLOUR**

**LOCAL  
COLLECTION  
&  
DELIVERY  
SERVICE**

OPEN  
MONDAY - FRIDAY  
8:30AM - 4:00PM  
SATURDAY  
9:00AM - 1:00PM

IRONING  
DRY CLEANING  
WASHING  
REPAIRS

**DRY CLEANING**

**10% OFF**

**4 OR MORE GARMENTS**

**Established 2001**

**Serving the Community for  
23 years**

**Call Lynne and Gail for all  
your laundry needs**

## Brambles Landscapes

**Fencing, Gates & Garden Bars Installed To Last**

**NEW for 2022: Licensed driveway moss & weed control**



**Established 12 Years All Installations Guaranteed 10 Years**

Karl Nuttall-Allsop 23 South Street North S43 2AA

**Text or Call for a quote 07720 845 326**

veryhelpfulman@yahoo.com



## GWS

**Technology Solutions**



PC Problems, Repairs, Servicing, Setup No Job Too Small  
Wireless & Internet Setup Apple Macs Data Transfer  
New PC's, Laptops, Upgrades Tuition Safe PC Disposal  
Tablets, iPads, iPhone, Setup & Tuition Smart TV, Media box  
Wireless/Airprint printers Wireless/ Internet boosters

**\*\* For All Your PC & Technology Needs \*\***

**Guy Senior**

**Phone: 0114 2352662 Mobile: 07890030453**

**Email: [guy@gwstech.co.uk](mailto:guy@gwstech.co.uk)**

**Web: [www.gwstech.co.uk](http://www.gwstech.co.uk)**

GWS. 5 Conalan Avenue, Bradway, Sheffield S17 4PG

**Editor: Phil Harris**

Tel. 07956 858944 or email:  
[editor@totleyindependent.co.uk](mailto:editor@totleyindependent.co.uk)

**Advertising: John Perkinson**

Tel. 236 1601 or email:  
[advertising@totleyindependent.co.uk](mailto:advertising@totleyindependent.co.uk)

**Proof reader: Margaret Spencer**

We welcome items submitted for publication, which may be left at or sent to 'Totley Independent', 2 Main Ave, Totley, Sheffield S17 4FG

**[www.totleyindependent.co.uk](http://www.totleyindependent.co.uk)**

Printed in the UK by

**The Magazine Printing Company**

using only paper from FSC/PEFC suppliers  
[www.magprint.co.uk](http://www.magprint.co.uk)

## 'Totley Independent' for June/July

The next issue of the *Totley Independent* will be published on

**Saturday 1st June**

**COPY CLOSE DATE for this issue**

**will be**

**Saturday 11th May**

Published by Totley Independent CIC. Totley Independent is a registered Community Interest Company, number 07750166. We welcome letters about local affairs and will publish as many as possible. Items will not be considered that are submitted anonymously. The views expressed are not necessarily those of the editor or the editorial staff and must not be attributed to them. © Totley Independent 2024