

Totley Independent

Published continuously since 1977

www.totleyindependent.co.uk

February/March 2024

No. 426



A photo taken in the days when Totley Rise shops were actually on the main road, and parking on Totley Rise was easy! For more on this corner of Totley, see page 5.

Akley Bank: Storms Cause More Erosion

Roger Hart writes: I was alerted to the latest fall on Akley Bank by a contact from the Sheaf and Porter Rivers Trust. It is best viewed from the Methodist Church car park. It occurred when we had the storm at the end of November. There was damage to a 225 mm pipe, which takes road surface and house surface water from Marstone Crescent, and possibly Stonecroft Road, to the Old Hay Brook. (This is why we should not put dirty water down street gullies or rainwater gullies at our houses).

The pipe was situated on Akley Bank, and surrounded by concrete. It was thought that the force of the river water, in the storm, washed the concrete and pipe off the bank, leaving a short length of pipe. It is now believed that a landslide caused the problem. Any water from this pipe, is now running down the

bank, therefore eroding it more. At the top of the bank are some large trees, very close to the boundaries of one property in Marstone Crescent. Their roots are exposed and a 'cave' like area has been formed underneath. A similar nearby tree has the similar configuration. A large rock can be seen in the river beneath this one.

Yorkshire Water met us on site, the pipe being in their domain. The two technicians were concerned about the detrimental effect that the discharging water would have on the bank, and the problems involved with relaying a very steep pipe on an unstable steep bank, on someone else's land - the Council's. On Tuesday 16th January, the Council Land Manager, possibly Sheffield's tree expert, representatives from Yorkshire Water, and I were due (*continued p.3*)

UKRAINE HUMANITARIAN APPEAL

Apart from donating food, blankets and other essentials through local churches and other organisations, you can help by sending money to the Disasters Emergency Committee at any Post Office, or online at DEC.org.uk



DISASTERS
EMERGENCY
COMMITTEE

VIOLIN AND VIOLA LESSONS

from beginners to diploma level

- Qualified, experienced (30+ years), fun and patient teacher
- DDC checked (April 2023)
- All ages (6 years and over)
- Late starters and restarters welcome

07787 417 527
SUNDARI HELLER
LRAM, MISM



Unstone GardenScapes

Let us
transform your
garden

From concept to
completion

Fully insured.
Over 25 years experience.
Portfolio available.

Decking Fencing Patios Turfing Planting
Or just a general tidy up

Call Jason for a free quote
Mobile 07791069360

Dore Optician: Now Open

Ian Truelove BSc(Hons) MCOptom

Family Optometrist

Personal and Professional eye care for all the family

Ian and Tina Truelove have re-opened Dore Optician and refurbished the practice with the very latest technology.

➔ Hospital-quality 3D OCT imaging allows earlier detection and diagnosis of many eye problems.

➔ Free complete spectacles available for children and all eligible under the NHS.

➔ Home eye tests available if you are unable to leave the house without help.



➔ Digital retinal photography.

➔ ReadEZ: Coloured overlays and Enhanced reading assessments for those with reading difficulties or visual stress.

➔ Hundreds of frames to choose from for all the family, covering a wide range from £10 to designer.

➔ Free NHS and private eye examinations – hourly appointment slots, never feel rushed.

Please contact the practice for more information, or pop in for a chat.
25 Townhead Road, Dore, Sheffield, S17 3GD

Tel: 0114 3273737 Email: enquiries@dore-optician.co.uk Web: dore-optician.co.uk



Providing NHS services and registered with the Association of Optometrists, College of Optometrists, General Optical Council

Akley Bank: Storms Cause More Erosion (from p.1)
to meet to find a resolution. The owners of the property on Marstone Crescent are anxious about the stability of the trees and bank, as their boundary is very close to the trees.

This much-awaited meeting, between Sheffield City Council Woodlands Manager, John Gilpin, Land Manager and Yorkshire Water Officer, at 10.30, turned out to be a long wait in very cold conditions, for John Gilpin and me. The Land Manager was not coming! A phone call to YWA revealed how inefficient their system is. Two very helpful ladies did their best to sort it, though my contact of last week, Kelly, wasn't known to them!

It all relies on a post code. But what is a post code for a river bank? I asked them if they used 'What Three Words' to locate the spot. Brilliant system for locating off-street places. (see my article on this page!). To make some progress, I had originally given them my postcode, so once they found that, we started to move. The technician (not 'officer', note) was due between 11 and 12. Thanks for telling me. A few minutes later the technician called. He didn't know Sheffield, and he didn't use 'What three words'! He was going to go to my home address! He duly arrived (a technician, as he put it, 'at the bottom of the pile'). I explained that we needed an officer and he had spoken to the previous guys, mentioned above, at the time of the discovery, (one from Birmingham), so he asked his boss why he was coming again. Reply: take some photos and email them in! His job is normally rodding blocked drains! He has agreed to add a note about the urgency of the job.

More erosion of the bank has taken place. Very disappointing, but the challenge continues! I just hope that the trees and Bank don't move in the meantime!

really is something for everyone, with further improvements to be introduced later in the year.

Ultimately, we believe that the provision of high quality play opportunities within a carefully considered environment is fundamental to our vision of nourishing our children to flourish in the world.

Ben Paxman, Head Teacher

Time Travellers Archaeology Group

For anyone interested in all things archaeological don't forget there is a thriving Archaeological group based in Dore, but draws in membership from all over South Yorkshire and North Derbyshire. After the Covid restrictions on meeting or carrying out practical field work, we are firmly back in business. Our programme of walks, talks and practical opportunities can be found on The Time Travellers website: www.thetimetravellers.org.uk (Don't miss out the critical 'the' otherwise you will be directed to Dr Who!)

What have we done recently? We have had some fascinating talks: Aethelflaed, Lady of Mercia – a feisty lady indeed – everything you ever wanted to know about Medieval archery from the amazing Knights in Battle medieval reenactment group, and more talks scheduled for the New Year. All our talks are held at Dore Old School.

Our regular monthly coffee mornings can turn up some unexpected information or finds. The most recent one had us scratching our heads over a collection of coins from a 'hoard'. Still working on just how old some of them might be.

Walks and visits will recommence when weather allows. We have been to Dronfield church already to start our 2024 programme. Parish church for Dore and Totley dating back to 1135 it is a must see for its medieval stained glass, brasses and much more. And on our doorstep too.

Do come along to any of the events or get in touch to be put onto our email list– we are a really friendly group with a common passion for history.



In my article about Akley Bank, I referred to 'what3words'. It is a relatively new, very accurate means of locating the smart phone which has used it, or some car sat navs have it. Not only does it locate, to a 3 metre square, any where in the world, or on any sea in the world, it will navigate you to the location, like the side of the Old Hay Brook!

As I type this, my location is: [///backup.repay.tender](https://www.what3words.com/backup.repay.tender). That comes up automatically! If I had an incident in the back garden, it would be a different set of 3 words. This system will locate anyone on the moors whilst walking, or a vehicle/bike breakdown on a remote road, for rescue services to find you. Mountain Rescue and all Emergency services use it, especially as it navigates one to the incident.

How to get it: It is a free app called 'what3words'. Install it, make sure your location is switched on, (in settings), open the app, and it might immediately show you what three words apply to where you are. At the bottom of the screen it gives you the opportunity to save your location (not a good idea, I am told, if it is your home, for security); Navigate, which does as it says, to the destination you choose; and share.

How to get the 'address' or location of where you need – in the space where it might have put your 3 words, type in the location you want. Within seconds, a map arrives with an arrow leading from the three words to the 3 metre square of your location. If you now press 'Location' it will give you the option of which navigating system you want to use. (Waze is good as it updates frequently to show road works or delays.)

Example video – How to find an Airbnb in Mongolia The Dukha Reindeer Tribe's Airbnb | Airbnb and what3words (youtube.com) (Pres Ctrl +click to watch)

Roger Hart



Totley Primary School

Playtime Push at Totley Primary!

One of our key priorities at Totley Primary is to make our playtimes as engaging as possible for all children – after all, playtimes make up 20% of children's time in school! We view play as a process that should be

intrinsically motivated, as well as directed and freely chosen by children wherever possible. We believe that play has its own value and provides its own purpose, which may or may not involve equipment or other people. It may be serious or light hearted. It may produce something or it may be done simply for its own sake. It allows children an opportunity to be creative, to make decisions and to assess and manage risks.

With this in mind, we have opened up access to both sides of the school site at lunchtime play and our staff team have worked together to introduce many enhancements to children's play spaces and play times so far this year. These include a daily dancefloor with music to bop to, a scooter circuit, den building equipment, dressing up clothes and boxes of small world toys. We have also taken delivery of dozens of tyres, which the



children have loved stacking, rolling and building with! Alongside our reading shelter and two sports areas, there

PhysioFOCUS

at Totley Rise Dental Practice
85 Baslow Road,
Sheffield, S17 4DP



Physiotherapy treatment available for:

- Back and neck pain
- Sports injuries
- Sprains and strains
- Joint and muscle pain
- Arthritic pain
- Whiplash
- Repetitive strain injury
- Headaches

Appointments: 0114 2360333

Also available:

- Pilates classes
- Pilates 1-2-1
- Golf Fitness Screening
(as used by consultants to UK,
European and Australian PGAs)

For more information please call:

Emer on: 07792 422909

Rachel on: 07956 908454



Got a computer?

Having Problems?

Is it running slow? Stops responding?
Having problems running the latest games or
applications? Broadband / WiFi problems?

Give me a call!

I am available for home visits at any time
including evenings and weekends. I can also
suggest upgrades to improve performance, or
even build you a system to your specific
requirements.

Phone: 0114 247 2619

Mobile: 078 1746 4703

Email:

service@timbrownplus.co.uk

Tim Brown

Building,
Installation,
Upgrading and
Troubleshooting
Computer
Systems

Over 30 years'
Professional
Experience

LIBERTY FOODS

Caterers
Quality Meat Shop
& Fresh Farm Produce

Fresh and Frozen Prepared Meals
Fresh Meat and Poultry
Outside Catering
Home Delivery

253 Baslow Road, Sheffield, S17 4DU
Tel: 0114 2360 583 Mobile: 07801 346 455
Email: damianbower@liberty-foods.co.uk



**Train with Suzy offers Personal Training
Focussed on Fitness, Fat loss and Toning.
Based in Dore with own Gym. I offer
private sessions individually
tailored to your goals.**

**Call to book your free consultation
07825-167411 www.trainwithsuzy.com**

Nutrition Coaching & Cooking Classes

Private pasta parties, hen do's, children's birthday packages, guides and
scouts, team building events
&
Nutrition Coaching



Viktoria Garbett

07756728479
twiddlefood@gmail.com
www.twiddlefood.co.uk

Member of The Federation of Nutritional Therapy Practitioners.
Fully insured.

John Collins Cabinetmaker

Fine furniture, antique furniture restoration, fitted
wardrobes, alcove units

0114 2585355

www.cabinetmakercollins.com

RICHARDS TELEVISION, SATELLITE, VCR, DVD REPAIR OR INSTALLATIONS

- City & Guilds London Inst. Fully Qualified
- Over 25 Years Professional Experience
- Most Makes & Models Repaired. No VAT
- For Prompt, Friendly Service Ring:

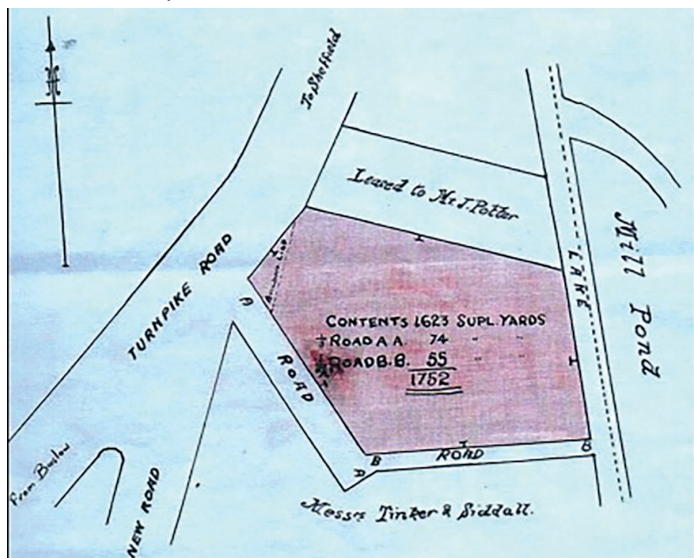
0114 2876806

Ask for Richard. Ex Bunker & Pratley

The service road in front of Totley Rise shops

The photograph on the front page of this issue shows a small section of Totley's original road, formed when the dual carriageway was constructed in 1962. In today's environment when cars are king, it provides precious parking space and a fairly safe environment for customers using the shopping parade.

Looking at the road surface one would believe that every inch of this had previously been public highway.....but not so! For many years a small section in front of the top three shops was private land, as can be seen in the 1879 plan, below, drawn when the land was being sold to extend the terrace of shops and houses.



Look closely in the red section where a small triangle is sectioned off. The line creates a straight frontage with that of the plot below, and was probably a restriction in place when the plans for the subsequent shops were submitted. The small triangle remained, to be used as a private piece of land by the tenants of the shops. Horse-drawn provision carts rested there, and in the postcard below we see a definite change of surface on which the cart is parked.



Its status was even recorded in a court case in the late 1890s when William Whiteley, tenant of the top provision shop, was accused of letting customers drink on the public highway in front of his shop. He held a license to sell alcohol from a small beer-off sub-division of his shop, accessed from Back Lane. The Law stated that anyone selling alcohol had to ensure customers did not consume it on public property within 15yds of the building. There had been a problem with excessive drinking in the street and a plot was hatched to catch those responsible and to charge Whiteley, the licensee. A policeman staked out one evening and surreptitiously recorded unfolding events.

The case for the prosecution was that a group of four lads had had a large jug of beer repeatedly filled by Whiteley and were consuming it in front of the shops.

However, the defence was able to point out that they had in fact been on this said piece of private land, adding that the door of the beer-off was around the corner in Back Lane and therefore Whiteley would not have been able to see them from his shop! Case dismissed!

A second photograph of the shop (below) clearly shows the door of the beer-off, now only pinpointed by the step supports that remain in the wall since the door has long been blocked up and the small beer-off incorporated into the main shop.



In 1913 Colin Thompson, butcher at no.69 and member of the Parish Council, expressed concern about the dangers from increased motorised traffic at the junction of Totley Rise and Glover Road. Newspaper reports the following year indicate road-widening work being undertaken. It is probable that at this time the private triangle of land was sold and incorporated into the highway improvement.

Pauline Burnett

Totley History Group presents

Victorian Pioneers, Sheffield's First Public Libraries

Part 2

by Val Hewson

WEDNESDAY 28 February 2024
7.30PM IN TOTLEY LIBRARY
NON-MEMBERS ARE WELCOME

TOTLEY HISTORY GROUP

That Model Gun!

In our last issue we featured a photo of a diecast model naval gun, which seemed to have been made by 'Totley Products' although no-one seemed to know anything about such a company. We asked whether any readers could throw any light on the mystery. Mick Savage wrote to us saying "My late uncle, Les Biggin, was a an engineer and also model engineer



in his spare time - I got the bug from him. He sometimes came to Totley to get parts for his models, such as castings. I am fairly sure it was to the wooden shed at number 87 Baslow Road. I believe the current shed is a replacement for the original, which if memory serves me correctly, had been a dance hall. Maybe this is where the gun came from."

Mick's further research came up with some more information in this model-

makers' magazine from March 1956 which contained the advertisement pictured below!

FT COLLEGE

nd to SUCCESS

THROUGH
ONAL POSTAL TUITION

FREE book vital to your career!

the famous Bennett College can help you
1. Send now for this recently published
ok. "Train your mind to SUCCESS".
is you about The Bennett College proven
postal tuition...
can help you to
your

*Train your
mind to
SUCCESS*

SHEFFIELD
ree copy of
the College

ick Letters

**THIS COUPON
COULD BE YOUR
PERSONAL PASSPORT
TO SUCCESS.**
Send it NOW!

**W & W SETS
OF TOOLS**

are made up in attractive
k wallets; there are nine
ous sets of tools available
well as certain other
ges of our tools in similar
allets. Our Catalogue
ives full information.

et, **THE USE AND
S** (which includes 25
ts), will be sent to you
ool Dealer's receipt
f 20s. worth or more

entioning this
ur Catalogue.

(Sheffield) LTD.
SHEFFIELD 8

100,000 Steel and Brass Instrument Screws, 2, 4, 5, 6, 7, 8 B.A. 4 Gross assorted 4/9, postage 1/3.

4 Pairs Only Hardened Ground Steel Precision Vee Blocks with clamps, 1 1/2" square, 2 1/2" long, 4 1/2" pair.

200 H.S. Slab Mills, spiral teeth, 2 1/2" diam., 3" long, 1" hole, 40/- each, also 4" diam., 2 1/2" wide, 1 1/2" hole, 45/- each.

50 H.S. End Mills 2" diam., No. 10 B. & S. shank, worth 75/-, gift 17/6 each.

150 American Pattern Tap Wrenches, sliding Vee jaw, 1/2" to 3/4" capacity, worth 12/6, clear 5/- each.

3,000 H.S. Drills 9/32" diam., No. 1 M.T. shank, worth 6/6 each, clear 15/- per doz., 2/- each.

400 H.S. Twist Drills, No. 2 M.T. shanks, sizes 14.5 mm. to 21.5 mm. seven assorted, 35/-.

200 H.S. Side and Face Cutters, 5" diam., 1" hole, 1" thick, 45/- each, 1" thick 50/- each.

1,000 High Speed Parting Off Tool Blades, Eclipse brand; 1 1/2" x 3/32" x 5" long, 5/- each; 1 1/2" x 3/32" x 6" long, 5/- each; 1 1/2" x 3/32" x 6" long, 6/- each.

7,000 Pratt & Whitney, circular split dies, superior quality precision ground cutting edges, 1/2" dia., suitable for machine or hand use. Sizes: 2, 4, 5, 6 B.A., 8/6 per set. 1 1/2" die-stock, 3/6 each.

5,000 Ball Races, 1" bore, 1" o.d., 1" thick, 4/- pair; 1 1/2" bore, 3/4" o.d., 7/32" thick, 4/- pair; 6 mm. bore, 19 mm. o.d., 6 mm. thick, 4/- pair; 8 mm. bore, 26 mm. o.d., 8 mm. thick, 4/- pair; 1" bore, 1 1/2" o.d., 7/32" thick, 5/- pair, 1 1/2" bore, 1 1/2" o.d., 5/32" thick, 4/- pair.

2,000 Files, 4" to 6" flats, half-rounds, rounds, squares, warding, assorted cuts, good general lot, 10/6 doz.; three doz. 28/6.

2,000 Straight Shank End Mills, size 1/2", 5/32", 3/16", 7/32", 1/4", 5/8", list price 30/- set, handy bargains, 15/- set, also 1", 1 1/2", 1 3/4" ditto 12/6 set, all in makers' wrappings.

500 H.S. 90° Countersinks, body 1/2" dia., teeth cut to point. An essential tool for any workshop using c/s screws. Gift 5/- each.

1,000 Bevelled Wood Chisels, handled, 1", 1 1/4", 1 1/2", 1 3/4", 2", 2 1/4", 1". Actual value 37/6. Gift 25/- set.

3,000 High Speed Routing Cutters, straight shank, two lip, as used for cutting slots in wood, sizes 1/2", 5/8", 3/4", 1", clear 4/- each.

1,000 Toolmakers' Needle Files, good assortment of shapes and cuts, worth 1/9 to 2/6 each, 12/6 doz.

10,000 High Speed End Mills Straight Shank. 3/32" to 1/2" dia., some with teeth cutting both end but not standard sizes, clear 5 assorted, 10/-.

200 Cast Steel Circular Saws for Wood, 4" dia., 6/- each; 6" 10/-; 8", 13/6; 10", 18/-; 12", 24/- . Larger sizes. Prices on application.

100 doz. 6" Three square Saw Files, 10/6 per dozen.

100 H.S. Slotting Cutters, 5" dia., 1/2" thick, 1" hole, 12/6 each.

1,000 Semi High Speed Centre Drills, Slocombe brand, 1/2" body dia., 3/32" point, 1/6 each, 16/6 per doz.

20,000 Small High Speed Milling Cutters, various shapes and styles. We want to clear these quickly, 12 assorted 15/-.

200 Large Expanding Reamers, 3/16" to 3/4" capacity: 4" overall length, micrometer index, worth about £10 each. Ten super high speed blades, a gift 10/- each, cheap enough to use the blades as toolbits and make the body into expanding mandrel. Postage 2/- extra for this item even with £1 order.

500 High Speed Straight Shank Twist Drills, Long Series, 1/2", 27/32", 1 1/4" dia., honestly worth 50/-, clear 12/- the three; postage 2/- extra.

J. BURKE
192 Baslow Road, Totley, Sheffield
Inspection Only at Rear 36 Fitzwilliam St., Sheffield

All Saints Church

I know it's late but with this being the first issue this year, let me wish you a Happy New Year, Totley! We at All Saints Church hope 2023 was a year of joy and blessings for you and your loved ones.

We want to say a huge thank you to everyone who came and participated in our Christmas events. It was an absolute delight to welcome over 2000 people from our local community at various celebrations over the festive season. A personal highlight for me was joining with so many of you at our candlelit Carol Services on December 17th and at midnight on Christmas Eve. There's nothing quite like singing beloved carols together and sharing the light, hope and joy that Jesus brings.



AS we enter 2024, this is a special year for us as a church family, as we celebrate 100 years of worship and ministry here in Totley! We look forward to commemorating this milestone and all that God has done over the past century. We have loads of centenary events planned for later this year, including a special celebratory service on November 17th.

Here are just a few others to look out for:

- Valentine's Day '100 Hearts for Totley' - 14th February
- Easter Family Fun Day - 23rd March
- Nabucco Concert - 18th May
- Taking part in Totley Open Gardens - 6th & 7th June
- Children's Art Competition - June
- Pray for Totley Month - August
- Light Festival - 26th & 27th October
- The Christmas Experience - 12th - 14th December

Visit our website at www.allsaintstotley.church for more details on these and other events as they are finalised. We want All Saints to continue to be a place where people find belonging, joy and meaning. Please do get in touch if there are ways we can bless or serve you or your family this year. We are here for our community every step of the way.

Rev'd Ben Tanner, Vicar

M: 07912 890512

E: ben@allsaintstotley.church | www.allsaintstotley.church



Transport 17 - Your Help Needed!

The blue Transport 17 (T17) buses will be familiar to many readers, and some of you may also be users of our service. We need your help please!

We are currently reviewing the governance of Transport 17. Part of this is the plan to move from a Co-operative and Community Benefit Society structure to a Charitable Incorporated Organisation structure, thereby changing its legal status. A formal meeting to agree and implement this change will be held in March this year. The management committee are anxious to trace as many original shareholders as is possible, particularly those who may have lost contact with T17 over the years. Perhaps you know of friends, colleagues, or elderly relatives who may have been an original shareholder in the 1980s. If so, please can you ask them to contact T17 either by email or telephone (details below) so that we can update our records and obtain their views on our proposals. If you know of an original shareholder who is unable to contact us for whatever reason, please help us to update our records by contacting us yourself. You can call the office on 0114 236 2962, email us at admin@transport17.co.uk, or contact us via our Facebook page - www.facebook.com/Transport17Ltd

We look forward to hearing from you.

Looks like Totley was once a hive of industry - but we still don't know who made the model gun!



Totley Vintage and Artisan Fayre

The Totley Vintage and Artisan Fayre will take place on Saturday 23rd March from 10-3pm.

It will be in St John's Hall, Abbeydale Road South, S17 3LE. There will be 22 inside stalls and three outside stalls.

Tea/coffee and delicious cakes available to eat in or take out.

Admission £1. For more information, contact Steve Bate at totleyfayre@gmail.com



Totley History Group

Here is our forthcoming programme. Although you might only be anticipating Spring's arrival when you receive your magazine it comes with a warm invitation to join us in Totley Library at 7.30pm on the 4th Wednesday evening of each month. Non-members welcome

Many local causes and affiliated charities benefit from the interest raised by our speakers.

February 28th: Val Hewson, 'Victorian Pioneers - Sheffield's First Public Libraries Part 2'

March 27th: Martin Rowley, 'Sheffield's Gang Wars'

April 24th: John Wilson, 'Sheffield - Home of Football'

Councillors' News

As we have all seen, this winter the country experienced a sequence of major storms and record-breaking amounts of rain. Sheffield was not spared and at the time of writing we are just recovering from storm Henk. Contractors are checking the condition of drains and gullies and clearing any major obstructions; however ground water levels are extremely high and surface water run-off has been an issue in many places. One of the worst affected areas was Totley Brook Road where several houses were flooded and without power. Colin attended the scene with the Fire Brigade who sent two engines. Council officers also attended to conduct welfare checks and support residents.



Abbeydale Road is usually another hot spot for flooding but appears to have seen the benefit of earlier jobs to clear gullies and investigate slow running drains with CCTV. In light of this, Martin will be requesting a review of drain and gully maintenance work once the winter storm season is over.

Another storm-related incident was a significant landslip on a section of banking along Ecclesall Road South, near the junction with Whinfell Court, causing a risk to the integrity of both the adjacent footpath and carriageway. One lane of the road was closed with temporary traffic lights to allow geotechnical engineers to investigate the problem in more detail. At the time of writing those restrictions were still in place and could be there for some time.

On a more positive note, Colin was very busy with Lord Mayoral duties in the run up to Christmas. He attended several carol services and Christmas parties around the city including St. Luke's Festival of Light, a degree ceremony at She-

ffield Hallam University and the Snow Flake switch-on at the Children's Hospital. More locally, Colin also attended festive events at the Knit and Natter Group at Totley Rise Methodist Church and at Totley Library. He says it's a real privilege and pleasure to support all these different groups...and a lot of mince pies were consumed as well!

Despite the recent festive cheer, we remain acutely aware that social isolation and loneliness remain significant issues within some parts of our community. As part of the city's response to this we have awarded new grants towards the cost of tea dances and chair-based exercise classes in Dore and Bradway, in addition to our ongoing support for activities provided by Age UK across the Ward.

Highways: concerns about parking and road safety remain a significant part of our casework. It is therefore a source of enormous frustration that the introduction of safety measures to improve visibility around some road junctions in Totley has been delayed by several months due to problems with the introduction of a new IT system, and also linked to a change in national legislation. Martin raised this at a meeting of the Full Council in December and was told that a Traffic Regulation Order would be raised in early 2024.

And finally....Discussions on the City's budget are well underway. You may have seen stories in the media about some Councils declaring bankruptcy. Sheffield is not at that stage yet but, due to some poor decisions in the past and non-delivery of savings in some critical areas, financial reserves are at a very low level. Some difficult choices will have to be made and your local Councillors will be scrutinising these very carefully.

As ever please feel free to contact us with any questions or feedback about Council services or come and meet us at one of our regular surgeries. These are held at on the 2nd Monday of the month at 6pm in Totley Library, and the 2nd Saturday of the month at 10.30am in Dore Old School.

colin.ross@councillor.sheffield.gov.uk

martin.smith@councillor.sheffield.gov.uk

joe.otten@councillor.sheffield.gov.uk

Dore and Totley United Reformed Church

Totley Brook Road, S17 3QS

Coffee morning and bring and buy sale

Saturday March 23rd 10 am to 12 noon

We will be launching our new fundraising project at this event. All welcome!

Wednesday coffee mornings

Between 10.30 and 12 on Wednesdays we meet to chat and knit. We have made fidget muffs for people with dementia, bonding squares for Barnsley Neonatal Unit and various items for Baby Basics. You don't have to knit to join us but it's a nice warm space and you will be welcomed!

Brambles Landscapes

Fencing, Gates & Garden Bars Installed To Last

NEW for 2022: Licensed driveway moss & weed control



Established 12 Years All Installations Guaranteed 10 Years

Karl Nuttall-Allsop 23 South Street North S43 2AA

Text or Call for a quote **07720 845 326**

veryhelpfulman@yahoo.com

S17 DECORATORS

PAINTING & WALLPAPERING



**TRUSTED LOCAL RESIDENT
WITH REFERENCES.
FULLY INSURED.
HIGH QUALITY PAINTING AND
DECORATING ACROSS SHEFFIELD
AND NORTH DERBYSHIRE.
35 YEARS EXPERIENCE.**



*"THANKS FOR ALWAYS GIVING US SUCH A PROFESSIONAL
FINISH WHEN YOU DECORATE FOR US."*
MRS M. (MILLHOUSES)

*"THANK YOU FOR AN AMAZING JOB.
WE KEEP RECOMMENDING YOU!"*
MR & MRS D. (BRADWAY)

"WE HAVE COME TO CONSIDER YOU AS A FRIEND"
MR S. (DORE)

*"YOUR DECORATING WORK IS SPOT ON - SO QUICK
AND EFFICIENT TOO! WE RELY ON YOU NOW."*
MRS A. (DORE)

*"YOU'VE DONE A MARVELLOUS JOB DECORATING
THE OUTSIDE OF OUR HOUSE"*
MR & MRS W (DORE)

CALL JULIAN TODAY!

07905 523499 OR 0114 2369664

JULIANCROOKES@GMAIL.COM

LONGFORD ROAD, BRADWAY, S17 4LP

FIND ME ON FACEBOOK



ACTIV

PHYSIO

Call us on **0114 235 2727**
to book now!

Evening &
Saturday
appointments
available



Say Goodbye to aches & pains and make an appointment with our team of friendly Physiotherapists at our **Totley Clinic**

- Back & Neck Pain
- Headaches
- Joint & Muscle pain
- Post Operative Rehabilitation
- Sports Injuries & Massage
- Women's Health Issues
- Acupuncture
- Home Visits & much more...

Open

Monday - Saturday

5* Google rating

E: admin@activphysiotherapy.co.uk

W: www.activphysiotherapy.co.uk

A: 88. Baslow Rd, Totley, Sheffield.

S17 4DQ

Totley Deli

*Where quality and
friendliness count*

Look out for our daily
specials or join us for
breakfast.

Why not come in and sample our wide range of hot & cold sandwiches and home made produce. Freshly made daily to eat in or take away. All produced from locally sourced suppliers.

- Fresh Roses bread delivered daily & available to order
- Selection of cooked meats sliced to your specification
- Superb selection of fine cheeses, preserves & pickles
- Moss Valley bacon & sausage
- Longley Farm dairy products
- Wateralls pork pies
- Freshly baked pastries

All available to take away.

Homemade
scones, lasagne
& quiches



If you are having
a party or family
gathering why
not let us take the
strain and provide
a buffet for you.



51-53 Baslow Road, Totley Rise. S17 4DL.

Call 0114 2364238

Est 1971

R.S. HEATING & BUILDING CO.

Heating division

Experienced installers of all types of domestic boilers. Authorised installers of Vaillant, Worcester Bosch and Glow Worm boilers.

Full after sales service dept.

Plumbing division

Bathrooms, showers, wet rooms, individually designed washing rooms for the disadvantage a speciality.

A complete service, from design to even laying a new floor surface

Building division

Kitchens, complete House renovations including general building, joinery, plastering, tiling, electrical, decorating etc.

88 Sunnyvale Road, Sheffield S17 4FB

Tel: 0114 2364421

enquires@rshb.co.uk

www.rshb.co.uk



What's on at Totley Library



Greetings for the new year from Totley Library and a very big thank you for all who came to support our Christmas event. We raised £1400 for the library which was very much appreciated. Santa was kept very busy all afternoon, we had some beautiful craft stalls and of course the best home-made cakes in Totley! Not only did the event raise considerable funds for the library but it was a great community event bringing all ages together. There is to be a meeting early in 2024 with the Council to discuss ongoing provision of a council grant for the volunteer-run libraries which is critical to us. Ongoing fundraising events continue to be essential to the running of the library so we really value the support of the community.

2024 is a significant year for us.

Totley Library first opened its doors in this location 50 years ago in February 1974, and October 2024 marks Totley CRIC's first decade as a volunteer-run Library.

Watch this space for some events to mark this special year.

We are very pleased to receive donations of top quality books, recent best sellers and jigsaws. Unfortunately, the company that previously collected damaged/unsuitable books is no longer operating. This is causing a significant problem in disposing of stock we are unable to use. We have very limited storage space so please only donate books that are suitable to add to library stock or to sell. Thank you for helping us keep our library stock looking good!

Remember - there are no fines on items that are returned late. Library users are still encouraged to return or renew their library books on time. Lost and damaged items are charged at replacement value.

Julie Kitlowski, Chair, Totley CRIC

Current Library Opening Hours

Mondays 1pm - 7pm
Tuesdays and Wednesdays 10am - 5pm
Fridays and Saturdays 10am - 1pm

Totley Library Community Art Space: Original Art and Prints for Sale

Are you looking for a special Christmas present? Or maybe something unique to brighten up a wall?

New art works on display by local artists Anna Stephenson and Judy Randle (below), are available for sale at very competitive prices. Other artists exhibiting include Dana Kucewicz, Anne Atkinson and John Wells.



Totley Library Community Art Space was established to showcase the work of new and established local artists. All art works are exhibited for a period of three - six months, free of

charge, and are available for sale at a price set by the artists. Totley Library takes a small commission (20%) on each picture sold to support the ongoing running costs of the library.

The library is now looking for local artists who would like to join this exciting community initiative and who would like to exhibit in April 24. For further information, please call in at Totley Library and take a look at the Art Space or email carolynjallcroft@gmail.com.

Totley Library Cinema

Our 2024 cinema programme will be available for booking in person or by calling 0114 236 3971. Refreshments will be served at all films. Raffle tickets: £3 per person. Thursday matinee films are FREE for Over 65s..

For more details of films to be shown, please see posters in the library or visit our website at www.totleycric.org.uk

Library Lottery Winners

In the November draw, first-prize winner was Colin White, and Louise Dodd won second prize. The first-prize winner in the December draw was Angela Harpham, and second prize was won by Chris Cave.

New Book Additions

We have plenty of lovely adult titles and children's books from well-known authors! Don't forget - you can make a book recommendation online at our website or email us.



Some of our new books for adults



TotleyCRIC

TOTLEY COMMUNITY
Resource & INFORMATION CENTRE

Plant sale 2024

We are planning to hold our plant sale again this year on Saturday 11th May 10-12.30pm
Please spread the word!

As many of you will know, the library is a charity managed and run by volunteers with minimal funding from Sheffield City Council. In May last year we raised well over £1000 for the library and were very grateful for all plant donations!

We are looking for green-fingered people to donate plants again this year. You might be dividing herbaceous plants or planning seed sowing. If you can help, please let us know and we'll contact you nearer the time.

Please email totleycric@gmail.org.uk
Thank you.

We look forward to seeing as many of you as possible there in May.



Walking the Dog

BLUE Wednesday
RONY United

BLUE When I ran at Owlerton Dog Track I was always Always a Blue. But I don't run now, so I'm always only Blue.
RONY I've always been a Blade.
BLUE How do we choose whether to be a Blade or to be a Blue ?
RONY We don't. We just are.
BLUE When?
RONY From birth, if not before.
BLUE Can we change sides ?
HEADEATER Never!
BLUE So I'm always Always a Blue?
RONY Yes, and I'm always a Blade even if things could ever get so terrible that one day we absolutely unbelievably end up at the bottom of the Premier League .
BLUE Aaah... but console yourself by remembering you only lost to us 19-1 in 1937.
RONY Are you sure it was that way round?

RONY My Mum was always a Blade.
BLUE Why?
RONY She liked red because she was a socialist. And she taught at a school so near to Bramall Lane that she could hear the the tap tap of the ball whenever Jimmy Hagan was dribbling

BLUE Was your Dad always a Blue?
RONY Always. Till he didn't dare not to be. He grew up in Hillsborough. And he was in Hillsborough Freemason's Lodge so he had to secretly roll up his trouser leg on Wednesdays. But...
BLUE But what?
RONY But then he had to get a free transfer to Totley in 1936 because of his even more terribly secret secret than his freemasons's secret.
BLUE What was that?
RONY He had to get married. To a Unitedite! And... in extra time!

ENTER HEADWATER WHO WAGGLES HIS FINGER AT THE FLOOR AND BLOWS A WHISTLE

EXITS

BLUE Can't you support both Sheffield teams?
RONY NO !!!!!!!!!!!!!!!
BLUE But...
RONY But oddly you can play for both. For example, Derek Dooley scored 59 goals for the Owls from 1946 -53 and was manager from 1971-73. Later he became managing director and Chairman of the Blades.

RONY Sociologists have discovered that Unitedites tend to be on the cleverer side because they live on the posher side of town, where there used to be all the grammar schools and no trams.

BLUE Which local pubs are full of laughing triumphant Wednesdayites?
RONY The Grouse and the Flu.
BLUE What about the Hare in Dore? I've heard some funny noises there on Saturday nights.
RONY That's because they play 'rugby' or something, and prefer singing vulgar sexist songs and pulling down each others' shorts. Enough out-of-date nostalgia, thank you.
HEAD EATER Anyone who understands these jokes will already be dead.

BLUE

RONY
BLUE
RONY

BLUE
RONY

BLUE

RONY

BLUE
RONY

RONY
BLUE

RONY
BLUE
RONY

Final Whistle

BLUE
RONY

Do you have to support the same team as your parents?

It's safer to.

What about your grandparents?

Nanny Robbo in Mildred Rd at Hillsborough pretended to be too posh to support a football team and whenever the crowds started swearing down at Wednesday Ground, she waggled her fingers at our trousers.

What about Nanny Chandler?

She had a wet bungalow on Long Line. She pretended she was posh too, so always forgot her number when she was shopping at the Co-op.

Did your grandparents get on with your other grandparents?

They never met — even at Mum and Dad's secret wedding.

Were they nice grandparents?

No.

I met Jimmy Hagan .

I saw Albert Quixall's legs.

You're The Pigs.

Why?

Because Hillsborough was built on a pig sty.

ENTER SALLY a bit late, and blowing her whistle

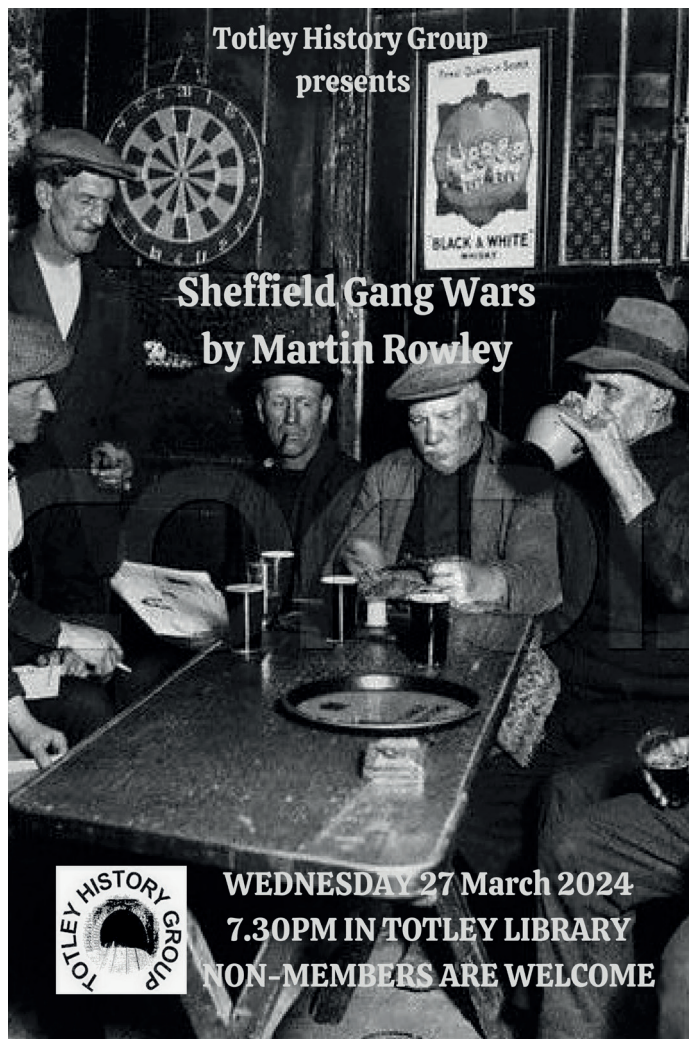
RONY
BLUE
SALLY

Hello Silly !

Hello Silly!

It's full time you two. Come and get in the bath.

Rony Robinson (Blade)



Totley History Group
presents

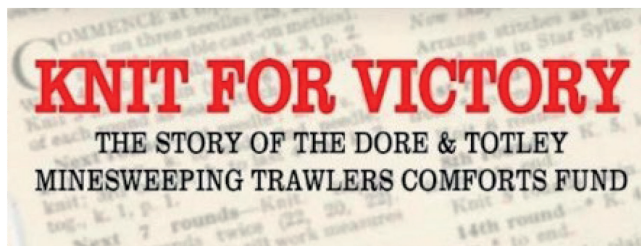
Sheffield Gang Wars
by Martin Rowley

WEDNESDAY 27 March 2024
7.30PM IN TOTLEY LIBRARY
NON-MEMBERS ARE WELCOME

TOTLEY HISTORY GROUP

Totley Library Readers Group

A free illustrated talk by Pauline Burnett



How a small group of local women became the country's most prolific supporters of these seamen during WW2

plus

a brief discussion on self-publishing

and

Display of the original WW2 correspondence

United Reformed Church Totley Brook Rd

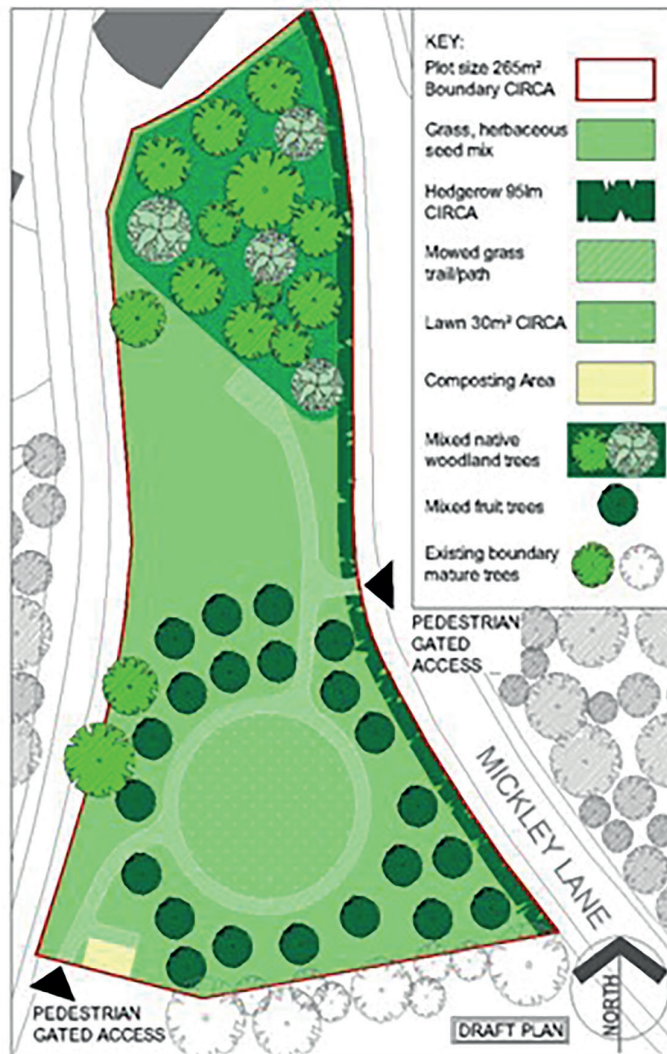
Thursday February 8th 1.30pm

exercise, like yoga and tai chi. It will be ideal for meditation, sketching and painting.

- We want to encourage birds, pollinators and wildlife of all kinds.

We are also planning to plant native woodland trees at one end and maintain hedgerows, which would shield the site. We want to provide an open area with seating too.

The site is a small, neglected field on the corner of Mickley Lane near the Shepley Spitfire and next to the allotments. We are exploring charitable status, an appropriate constitution, funding and a clear management plan.



We are looking for support for the project from organisations and individuals. We'd like to hear from you - whether you could offer practical support, you have interest in using the space or you would like more information as the project develops. If you are interested in this project, please contact us at mickley.orchard@gmail.com

A Community Orchard in S17?

A group of us have come together to create a community orchard on an unused plot of land. We would like others to join or support us in our vision for a beautiful growing space, rich in wildlife. We have the beginnings of positive feedback from Sheffield City Council and we are hopeful that, given support and a clear way forward, this could become a real possibility.



How will the space be used?

- For local people to get actively involved in growing, pruning, gathering, cooking, eating and learning about tree fruit.
- It will be open and accessible to all.
- To celebrate fruit in all its variety - e.g. Apple Day in October, Wassailing in January, gathering and pressing fruit in the Autumn.
- It will provide a shady and peaceful area for doing gentle



GWS

Technology Solutions



PC Problems, Repairs, Servicing, Setup No Job Too Small
Wireless & Internet Setup Apple Macs Data Transfer
New PC's, Laptops, Upgrades Tuition Safe PC Disposal
Tablets, iPads, iPhone, Setup & Tuition Smart TV, Media box
Wireless/ Airprint printers Wireless/ Internet boosters

**** For All Your PC & Technology Needs ****

Guy Senior

Phone: 0114 2352662 Mobile: 07890030453

Email: guy@gwstech.co.uk

Web: www.gwstech.co.uk

GWS: 5 Conalan Avenue, Bradway, Sheffield S17 4PG

IRONING PARLOUR

01142 364073

**CARPET CLEANER
FOR HIRE**

£25

**IRONING
PARLOUR**
LOCAL
COLLECTION
&
DELIVERY
SERVICE

OPEN
MONDAY - FRIDAY
8:30AM - 4:00PM
SATURDAY
9:00AM - 1:00PM

IRONING
DRY CLEANING
WASHING
REPAIRS

DRY CLEANING

10% OFF

4 OR MORE GARMENTS

Established 2001

**Serving the Community for
23 years**

**Call Lynne and Gail for all
your laundry needs**

Dental – Medical – Physiotherapy – Acupuncture



**HIGH TREES
CLINIC**

Specialist and Routine Private Dental and Medical Clinic located in Dore

NEW PATIENTS WELCOME

APPOINTMENTS FROM £50.00

We're here to help you monitor and optimise your health with our GP
and Physical Therapists.

Keeping track of your well-being should be an essential part of your self-care routine



DENTAL

Routine Dental Appointments
Restorative Treatment
Fixed braces and Clear aligners
Teeth Whitening
Composite Bonding and
Veneers
Emergency Appointments



MEDICAL THERAPIES

Medical Examinations
Occupational Health and Travel
Vaccinations
Skin Lesion Check and Removal
Medical Forms and Referrals
Blood Tests & Analysis
Facial Aesthetics



Tel: 0114 349 3326

37 Townhead Road, Dore, Sheffield, S17 3GD

hightreesclinic@gmail.com www.hightreesclinic.co.uk

Please call or email the clinic for further information or to schedule an appointment

Ask Your Pharmacist

Before getting on to the subject matter, I would like to say a very big thank you to everyone -and there were lots! - who gave us presents over Christmas. It is very much appreciated by me and the whole team.

You may have seen the ITV programme in January entitled "Pharmacy - the new NHS frontline?" Given that the media treats community pharmacy not so much as the poor cousin of the NHS, but more like the invisible cousin, it was surprising to see a programme dedicated to problems currently encountered by community pharmacy.

"86% of pharmacists surveyed could not fulfil prescriptions on a daily basis"

"We are facing record drug shortages"

The focus of the programme was the desperate shortage of prescription drugs. To be honest, a couple of patients and talking heads did not manage to adequately convey the seriousness of this problem. Pharmacies have now been struggling for a couple of years with medicines shortages. The problem applies to all manner of drugs including critical medicines for mental health and even cancer care.



The media previously highlighted this problem by focusing on HRT medications. This high-profile campaign managed to instigate changes allowing more patients to obtain their medications. Hopefully this programme may again highlight the problem and force the authorities to act. We have seen recently with

the Post Office programme that authorities seem only to bow to public pressure now rather than choosing to do the decent thing themselves. While this issue does not compare to that scandal, the forces that be sticking their head in the sand and ignoring the problem is a serious issue, leading to thousands of patients being deprived of essential medicines. I will point out that the price of ezetimibe was increased by the NHS very soon after this programme - this was the drug highlighted in the programme. Rather than being a coincidence, this suggests the authorities are fully aware of the problem but are ignoring it.

Brexit and international conflicts have definitely been a factor in the shortages. However, the bigger problem is the NHS system of setting prices that it will pay for medicines. For decades now, they have relied on the expertise of pharmacists to negotiate best prices for them, leading to one of the best value worldwide systems for drug prices. Their greed to continually lower prices has led to prices becoming unsustainable for manufacturers, and they are now killing the goose that laid the golden egg. Most manufacturers are international companies, so they obviously supply other countries preferentially rather than lose money supplying to the NHS. Drug pricing is a less emotive subject than reducing hospital staffing levels, so it becomes an easier target for cost cutting. Their methodology is outdated and needs a complete remodelling rather than tweaking. It seems to be a systemic NHS problem rather than of any political party, but I would urge you to highlight the issue with your MP.

To minimise the effects of this crisis, please do not let any of your medicines run out before coming to collect them. In this way, we will be able to arrange alternatives for you if we cannot source your medicine. We will liaise with your surgery and, if necessary, discuss the most appropriate change. However, it can take a few days for a substitute prescription to arrive. We have tried to minimise the problem by allocating a dedicated member of staff who spends a couple of hours every day chasing hard to get hold of stock. Hopefully, by working together, we can minimise the stress to you, and eliminate any harm. We can also minimise any extra strain on the local GP network.

"93% of staff surveyed have suffered from verbal or physical abuse"

"71% of staff surveyed say abuse is increasing"

"I have been threatened to be stabbed"

The above quotes from the programme show the horrific consequences of this crisis for pharmacy staff. I will mention that the pharmacist who was threatened said his pharmacy is in a "nice rural, leafy market town". As I have explained, we work very hard to maintain appropriate stock, so our problems are far fewer than for most pharmacies. So, the complaints we get do not seem of the nature seen in other pharmacies, especially as the majority of our patients are lovely to us and appreciative of our efforts.

However, we encounter abuse most days, and the abusive minority is definitely growing. The complaints are never about the quality of our work, rather always about how quickly a prescription is processed. Incredibly, we are regularly asked (or even TOLD rather than asked) by patients to ensure their prescription is dealt with before anybody else's. Of course speed is a factor in providing a quality prescription service; however, we will always prioritise safety, accuracy and patient care over simple speed. I'm sure all of you would rather receive the best care and correct medicines a few minutes later, rather than an inferior service quicker. I have owned this pharmacy for almost three decades, and over this time, I believe we have fine-tuned our processes to provide the most efficient and complete service we can. Asking us to disrupt our procedures so an individual gets their prescription a bit quicker reduces this efficiency, and then our patients suffer as a whole. With co-operation from our patients, we will always ensure every patient receives their medication in a timely manner with appropriate advice.

I ask everyone to please consider the greater good of our community as a whole. Please allow enough time for your prescription to be processed, and please be patient in the rare circumstances when your prescription is not complete when you come to collect it. Over 99% of our prescriptions are ready when the patient comes to collect. I feel we are victims of our own success, with our patients being used to no waiting at all in the past when the NHS was less of a chaotic mess. Inevitably, things may be a little slower now with more and more work being shifted from other parts of the NHS onto pharmacies. The problem is exaggerated by the time we're having to spend searching for medicines. Also, medication shortages will delay the completion of some prescriptions. However, I would argue strongly the waiting times in our pharmacy are shorter than in any other part of the NHS. It was also interesting to note in the programme how long queues were in other pharmacies, with patients actually queuing outside pharmacies in certain cases - far longer than anything we have. Talking to colleagues who work in other pharmacies, and to many patients who have switched from other pharmacies to us, waiting times of half an hour in other pharmacies is a regular occurrence.



We genuinely believe we do everything we can to complete all prescriptions in a timely manner, and that our patients have to wait far less than in other pharmacies and other parts of the NHS. We appreciate the support from the majority of our patients, and ask for patience from the minority who complain in these very testing times in the NHS. With your support, we can continue to help our patients and community, and the wider NHS.

Another point made by patients was that online pharmacies were very difficult to deal with for shortages. This does not surprise me as online pharmacies do not offer a full pharmacy service - they effectively deliver medicines but do not offer a good level of advice. This is another reason for you to support actual pharmacy to maintain a local pharmacy network rather than falling for the supposed "convenience" of online pharmacies.

To eliminate waiting times altogether, please sign up to our 24/7 prescription collection machine. With this you will receive a message when your prescription is ready to collect. You then simply click your prescription any time of day in a matter of seconds without even having to enter the pharmacy or waiting in a queue.

Tajinder Singh, Totley Pharmacy

Friends of Dore and Totley Station

Approaching the end of a long saga...

We can't see the end yet, but we can see significant and real tangible progress, a little more each day. The footbridge lift shafts are in place and by the time you read this the covered footbridge itself should be in position.



Fitting out the two platforms comes next, first by making the surfaces level and adding coping stones at the edges with tactile paving for the visually impaired. Lighting is already going in on the new platform to be followed by two new shelters. Details of the old platform's restoration are currently unconfirmed and a concern, but all parties are well aware that this must be resolved.

There's a lot of frantic catching up to do after 2023 ended with so much wet weather. It's not for nothing that the main civil engineering work was planned for over the drier Spring and Summer months with completion by August. Replanting to replace disturbed vegetation below Poynton Wood should have started in October.



Unfortunately when the soil nailing work got under way they discovered that the hillside wasn't soil over rock as expected. When the Midland Railway built the line they diverted the River Sheaf and built an embankment on the west side to screen Ebenezer Hall's Abbeydale Hall from the smoke and noise of trains. (He'd asked for it to go in a cut and cover tunnel like the Duke of Rutland had arranged behind Haddon Hall.) For reasons not now known, a line of relatively unstable broken bricks was dumped on the east side of the railway below Poynton Wood. Maybe it was rubble left over from the lining of Totley Tunnel? Whatever, a new solution had to be designed, costed and signed off before new sub-contractors could be engaged to build new retaining walls.

It doesn't take much observation to see that this part of the work is running a lot behind the original plan timescale. Residents of West View Lane flats have had a lot to put up with. We have been assured it will all be ready for the track to be laid on schedule. We'll see.

Intended timetable for track installation and follow up work:

Earthworks - installation of retaining wall & track installation in front of Poynton Woods: present - March 2024.
Track for new loop scheduled to be laid on 11th February.

This work is now critical. Residents were originally told this work would be completed in August with woodland restoration starting in October. It's a complicated story but it's normal to avoid winter for civil engineering work and the last few months illustrate why!

Upcoming line closures

- Saturday 20th and Sunday 21st January 2024
- Saturday 27th and Sunday 28th January 2024
- Sunday 4th February 2024
- Sunday 11th February 2024
- Saturday 16th March - Monday 25th March 2024

Please check <https://www.nationalrail.co.uk/> for information on changes to journeys and for details of the bus replacement service.

Assuming all work at the station and on the new loop line is completed as now planned, the station should reopen with two operational platforms on the morning of Monday 25th March.

Car Parking!

On the front page of the December/January *Totley Independent* I prudently said ".... all statements about car park opening are estimates. To ensure safe working we'll have to accept limited or no parking until April." I was too optimistic.

Unfortunately the latest communication from Network Rail includes the following;

"We are now required to keep the car park closed until Friday 31st May.... This is to allow us to facilitate work safely for the remainder of the scheme, and to complete any remedial work required so that the car park is in a fit condition to hand back to the public."

This is rather a shame as we'd hoped to be fully up and running in early April! However it's clear that there's still a lot to do and the car park has taken a hammering. The community doesn't like it, I don't like it, but it's the most sensible thing to do - as long as the job is finished on time and the car park is fully restored.

Friends have as good as given up maintaining planters for now. Some of our daffodils will defy adversity and pop up here and there to brighten the Spring days. The cherry blossom surely won't fail us.

Services and strikes!

As I write, more ASLEF strike days have just been announced. In fairness to the drivers they haven't had a pay rise for some time. However that is not the sticking point. It gets too complicated to explain but shifts and rosters are at the bottom of it all and a settlement won't come without that being resolved. Currently the package gives a below-inflation pay offer that might be accepted if the working conditions were improved. Until it is, ASLEF appear determined to give the statutory two weeks' notice for one day strikes and bans on overtime.

Apart from that, and the blockades for our engineering work, services have been running more reliably. But (there's always another but on the railway) there's another cloud on the horizon - major work going on between Manchester and Leeds, the Transpennine Route Upgrade and Electrification project. It's taking years. Some trains will be diverted along our line, most notably so far wood pellets from Canada via Liverpool to Drax, and that will add congestion. More positively, it may give different loco spotting opportunities!

We need more stopping trains

Details of the top 10 passenger destinations from Dore for the 2021-2 year have been obtained.

These figures are still very depressed after Covid but will have improved considerably in the 2022-3 and (*continued p.15*)

(continued from p.14) 2023-4 years, and will do even more in 2024-5 when everything's fully operational. Nearly twice as many go to Manchester as to Sheffield. Almost as many travel to the Hope Valley stations as into Sheffield. We face away from our own city centre!

Manchester	26,752
Sheffield	14,963
Hathersage	2,977
Grindleford	2,838
Leeds	2,825
Edale	1,755
Hope	1,137
Meadowhall	1,040
Bamford	879
London	830

The reasons are fairly obvious to those using our station. We need more trains into Sheffield to pick up more connections and that's what we're pressing for. It could be by stopping the fast East Midlands service that passes about the right time to give us effectively a half hourly service. Clearly it would also give us a better Manchester service. Those wanting quicker long distance services will resist the extra 3 minutes that would be added to their journey time.

We face understandable opposition!



If you're a Facebook user, you can find and join us by searching for FoDaTS. It's a very active group with over 800 members and is updated frequently with topical information and comments.

Alternatively look for our website at www.fodats.net

If you're not on Facebook and would like more information please send an email to our Secretary: njbarnes@outlook.com or to myself; chrismorgan4@btinternet.com

Chris Morgan, Chairman

A Message from the Editor

Phil Harris writes:

I took over from Ian Clarke as editor of *Totley Independent* back in 2014. Now, after 10 years, it is getting to be time for me to step down and let someone with fresh eyes and maybe a different outlook take the helm.

At this stage, though, we're making this appeal for aspiring (or experienced) potential editors to help with the preparation of the next few issues, with a view to taking on the full role of editor in due course.

If you have some spare time to help put together the *Totley Independent* every two months, and to become familiar with the software we use to prepare the layout etc, please get in touch via the email address or phone number on the back page. Please consider getting involved, maybe with a group of friends, and help keep *Totley Independent* going!



Totley Yard Sale

Sunday 28th April, 10am

Sell from your front garden/area.

£7 per seller. A map listing every seller will be sold to buyers for £1.

All monies raised go to Totley organisations supported by Totley Open Gardens! In 2023 we distributed £6,000.

To book your address on the list, email: jennie@hadish.f9.co.uk

RHYTHM TIME

Fun, developmental music classes!

Join us in **Totley**

All Saints Church Hall

Thursday

Toddlers - 9:30
Babies - 10:15

Also in:
Greenhill
Crosspool
Bents Green
Bakewell
Dronfield
Fulwood

Contact Beth
beth.w@rhythmtime.org
07748 589 468

or book here:
rhythmtime.net

Are you suffering from hearing loss?

Get in touch with your local clinical audiologist expert today!



Our Services
Hearing Tests
Tinnitus
Treatment
Hearing Aids
Ear Cleaning

**Bupa &
CQC**
Registered

To book an appointment at our Dore clinic, or for further details:

0114 349 3326
hearingtherapy.co.uk
info@hearingtherapy.co.uk

Caring for the local landscape for over 25 years



TREES - Felling, pruning & advice
HEDGES - Trimming, lowering & removal

07393 878091
www.totleytreecare.com
steve@totleytreecare.com



QUALIFIED ARBORIST • FULLY INSURED

We offer a very tidy service with all green waste fully recycled

Totley Rise Methodist Church

Grove Road, Sheffield, S17 4DJ

Totley Rise Methodist Church aims to be a church in the community and for the community, increasing an awareness of God's presence, celebrating God's love, caring for people, helping people to grow and encouraging people to follow Christ.

A Movable Feast

At the time of writing, Christmas seems only just over, but we are already looking towards the next major event in the church calendar - Easter. Easter Sunday is a 'movable feast' and falls this year on 31st March, which (together with 16th April) is the most common date for Easter Sunday in the 500 years between 1600 and 2099.

The slightly over-simplified definition for Easter Sunday is the 1st Sunday after the full Moon that occurs on or after the spring equinox. This can happen any day between 22nd March and 25th April, with 24th March being the least frequent date. The Greenwich Museums website contains a formula to work out when Easter falls in a given year, but you'll find it much easier to just ask Google!

Whenever it is though, Easter is an extremely important event for Christians, marking the love of God, the death and resurrection of Jesus and our redemption from sin. At Totley Rise we will hold a reflective service in the church garden at 2.30pm on Good Friday, and two services on Easter Sunday - at 7am and 10.30am. All are welcome.



(The information above relates to western Christian traditions. In the eastern tradition Easter Sunday can fall 1, 4 or 5 weeks later).

Regular Services Information

9am for 9.30am most Sundays - **Toddler Praise**. A 30-minute service for pre-school children and their parents/carers, preceded by refreshments from 9am.

10.30am **Mid-morning Service** every Sunday. An informal and contemporary service usually lasting approximately 1 hour 15 minutes, with a monthly Communion. Children usually leave the service for Junior Church after the first 15 minutes or so, except on the 4th Sunday of the month when the service is even more informal for **All Age Worship**.

At 3pm on the second Sunday of each month **Focus Church** takes place. This is a time of worship specially structured for those who have learning disabilities and cognitive difficulties.

We also support **Outdoor Church**, a movement where families with children can meet (usually on the 1st and 3rd Sundays of each month) to learn more about God's world and the Christian faith through an informal nature-focused time of fun and worship. See facebook.com/groups/outdoorchurch

Tuesdays at TRMC

Tuesday is a busy day for us, beginning with a **Prayer Meeting** from 9.30-10am in the church. We focus on prayers

for the community, for the world and any situations needing healing and the touch of God's hand.

From 10am until noon our free **Welcoming Places Coffee Morning** in the church lounge provides an opportunity to

call in for free refreshments and a chat with others from the community. This began as part of the need for warm spaces for people to use when energy costs began to soar, and is now a permanent activity. In one part of the lounge there are toys and books for young children with parents or carers.

Knit, Natter, Craft and Chatter immediately follows the coffee morning, running to 3pm. This is a busy and friendly group, offering tea, coffee, biscuits and most importantly, friendship for up to three hours. Young and old, men and women are all welcome. Feel free to bring a packed lunch.

Thursday Pushchair Club

Babies and toddlers aged from 0 to 5 years are welcome to join us, with their carers, on Thursday mornings from 10.30 to 12 noon. Every week in term time, the Pushchair Club fills the TRM Centre, giving children, their parents and carers a place to come together, play, sing, chat and enjoy refreshments.

Room Hire

We make our facilities in the TRM Centre available to hire for a variety of purposes, from community groups to birthday parties. There is the large church hall with a stage, and room hire also includes the use of kitchen facilities if required. For all information, please visit our website.

The Quiet Garden

All are welcome to find stillness and peace in the Totley Rise Methodist Quiet Garden. You are invited to come, sit and wonder about our creative God. It is a place of tranquillity and offers an opportunity, in the rush of modern life, to lay down your concerns. You can do this any time during daylight hours.

Getting and Staying in Touch

The best source of further information is our website, www.totleyrise.co.uk for our weekly notices and links to video recordings of many of our services. You can also submit prayer requests, and we are on Facebook at facebook.com/TotleyRise

If you can't find what you need on the website, you can email enquiries@totleyrise.co.uk.

Vulcan Rotary Club

Club members and friends have been active in planting 500 bulbs in Beauchief Gardens. The Club meets at the Norfolk Arms, at Ringinglow, on Tuesday evenings, for a meal and a speaker, and have also been planning the year ahead. Recently they have visited a bus garage, a traditional hand made shoe factory in Stoney Middleton, and the Great British Car Journey at Belper.

Plans are afoot for the charity Golf Day, in June, a Classic Car Show at Whirlow Hall Farm, jointly with Abbeydale Rotary Club, a cruise on a canal boat at Cromford, and a guided tour around Tissington (the one last year was around Edensor). Many charities are supported in different ways - cosmetic and personal hygiene products to long term patients at Northern General Hospital, old clean towels to Aquabox, to pack water filters going to disaster areas all over the world, books to schools, children to Sheffield Panto and more.

Roger Hart



**CHARISMA
BLINDS**



MEMBER

For
Windows
With Style

Sheffield Factory Showroom
106 PROSPECT ROAD
HEELEY, SHEFFIELD

Sheffield (0114) 258 5496
Rotherham (01709) 512113

Pottery Classes



- Hand building pottery lessons
- All ages & abilities
- Relaxed and friendly environment
- Daytime, evening & weekend sessions



Rachel Collyer Ceramics

Call or text 07763 983736

www.rachelcollyerceramics.com

Peak View Pottery, 4 Lane Head Rd, Totley, Sheffield S17 3BD

Millthorpe Nursery We're getting ready



We're busy growing lots of lovely
spring-flowering bulbs and plants and will be
back open in mid February

We look forward to seeing you!

Millthorpe Lane, Holmesfield, S18 7SA



01142 890334



Open Wednesday - Sunday 10am - 4pm

Apple Landscapes and Paving

Established 19 years

Specialise in full garden makeovers.
Patos, paths, walls, turfing, fencing.

Check out our FB page.

07782167540

01246237505



How well do you know Totley's past?

This is your chance to win a copy of Josie Dunsmore's book!

1st prize: 'The Story of Totley Hall and its Owners'

2nd prize: One year's membership to Totley History Group

Complete these questions and leave your answers at the Library by 28th February. A box will be placed in the foyer. Answers and winners will be published in April's edition of *Totley Independent*.

1. In which document is a settlement named Totingelei first recorded?
2. Local pastures were used by the canons of Beauchief Abbey for grazing their sheep...where?
3. Which is Totley's oldest standing building? (Bonus point for the date)
4. What year was Totley Hall built? Who lived there from 1883 to 1931?
5. The building of All Saints C of E Church was greatly helped by the family living in Totley Hall who donated the land and money. What was their commitment to it being built? Why is 2024 a significant year?
6. Where can you see the old Police House and lock-up?
7. The pinfold garden on Hillfoot Road is just one site of three original pinfolds in the village. Can you name the other two sites?
8. Between the 16th and 19th centuries Old Hay Brook provided water power for a number of industries. Name as many as you can.
9. When did Totley get its first school? Who paid for its construction?
10. Baslow Rd was a turnpike road. What is that, and approximately when did it open?
11. Where was Balaclava House and why was it so named?
12. What was the prevalent cottage industry in the Hillfoot Rd/Butts Hill area during late 19th century?
13. When was the Totley tunnel on the Dore-Chinley railway line completed? By which Railway Company?
14. When did a motorised bus replace the horse and carriage service to Bakewell?
15. Totley's first borrowing library operated from All Saints School before it had its own building. This building was later deemed too small and the library moved to its current site 50 years ago. Where was its previous location?

And a bonus prize of free entry for two persons to any of our meetings! Name the butcher who worked in the Co-op in 1960s who sported a pencilled-in moustache.

Many of the answers can be found on our website (although probably not the last one!) www.totleyhistorygroup.org.uk

Good luck!

that many care about locally. As you may remember, back in October the city was blanketed in smoke from burning on our moorlands. Constituents from Ecclesall to Crosspool, as well as residents in the city centre, wrote to me with concerns about the environmental and health impacts the burning would have.

Gamekeepers burn the heather to create the ideal habitat for breeding grouse for shoots. But the practice is dangerous and destructive, damaging the precious peatland habitats that would otherwise exist without the burns – while also creating the air pollution we saw in October.

The UK holds 13% of the Earth's blanket peat bog – the largest proportion in the world. We should be proud that a significant percentage of that is within the Peak District National Park. Unfortunately, the vast proportion of our peatlands are in a degraded state, due to the burning or because they have been used for horticulture.

Not only does that damage an ecosystem that supports an abundance of wildlife, it's also bad for the climate. In a natural or rewetted state, peatlands have the potential to store CO2 on a large scale and can be a vital asset in decarbonising our country.

But when they are degraded, they do the opposite. The damage means that nationally, our peatlands emit the equivalent amount of CO2 to 140,000 cars per year. The burns themselves release 260,000 tonnes of CO2 annually.

The burning that routinely takes place on our city's borders increases air pollution, damages the environment, and undermines action to tackle the climate crisis. That's why, since being elected, I've been campaigning to see a full ban on peatland burning, and for our peatlands to be restored.

In January 2021, we won a concession from the Government that it would legislate to prevent burning on peat of a certain depth. This was a huge win for campaigners but doesn't go far enough.

Since October, I've been working closely with Sheffield City Council and Oliver Coppard, South Yorkshire's Mayor, to co-ordinate efforts to ban the burns. Together we are looking at what powers are currently in place to prevent the city from being routinely subsumed in smoke, and what changes we need from central Government.

Oliver has recently written to the Duke of Rutland, who owns the 6,000 acre Moscar shooting estate where many of the burns took place, to try to work with him to prevent further burns. I hope through this engagement we can work to see the grounds used to support carbon sequestration and mitigate flood-risk.

In South Yorkshire we have an opportunity to lead the way, ending peatland burning and protecting our environment for people and planet. I will continue to campaign to end burns and restore our peatlands through all available means.

Thank you for reading my update. As ever, if there is an issue you would like me to raise or project you would like me to visit, please do get in touch: olivia.blake.mp@parliament.uk

Olivia Blake, MP for Sheffield Hallam

olivia.blake.mp@parliament.uk

<https://www.oliviablake.org.uk/>

Very Helpful Licensed Waste Removal

We offer single item or part house clearance services

We collect for disposal/recycle sheds, garage or outbuilding contents

We also do single item removals or collections

We don't collect beds or sofas

07720 845 326

Text now for more details!

Karl Nuttall-Allsop 23 South Street North S43 2AA



E mail veryhelpfulman@yahoo.com



Update from Olivia Blake MP

I want to wish you a happy new year, and I hope you had a restful and restorative Christmas break.

I've previously conducted surveys to help shape my priorities for the year, and to know what my constituents would like me to campaign on. Many of these issues are ongoing, such as the climate and ecological

emergency, and the Government's refusal to act; better pay and conditions for working people; properly funding our NHS and other public services; and seeking a ban on heather burning on peatlands. I'll continue to prioritise and raise a voice for them in my Parliamentary work.

Given recent events in the constituency, I want to update you on the work I've been doing to tackle the last of these issues – heather burning on the moors – as I know it's an issue



OUTRAM FIELDS

CINNAMON LUXURY CARE

OPENING
FEBRUARY
2024



A CARE HOME LIKE NO OTHER

BOOK A TOUR TODAY

Opening February 2024, Outram Fields has superior facilities for our residents to enjoy along with the very best care and support. As a brand new, purpose-built care home, it provides the very latest design innovations in a luxurious yet homely setting.

Outram Fields offers much more than excellent 24-hour personalised care. It is a special place where our residents can continue to live life to the full, enjoy new experiences and make new friends. Whether your loved ones need residential care, dementia care or just a short stay, we are passionate about making a difference.



For more information or to visit our Show Suite
call our friendly team today: 01144 934 334

At Outram Fields, people will always come first

RESIDENTIAL CARE | DEMENTIA CARE | RESPITE CARE | POST OPERATIVE CARE

Luxury Care Home in Sheffield

Outram Fields Care Home, 250 Twentywell Lane, Bradway, Sheffield S17 4QF

www.cinnamonncc.com/outramfields



OUTRAM FIELDS
CINNAMON LUXURY CARE

Planning FOR FUTURE LIVING

WEDNESDAY 28TH FEBRUARY 6PM-7.30PM

Are you unsure about how to cover the costs of private care home fees?

We invite you to join us for an informative legal and financial event on planning for future living where we'll guide you how to effectively manage and pay private care home fees.

Our speakers will give independent advice on:

- ❖ The importance of having a will and Lasting Powers of Attorney and why you need both Finance and Health and Welfare.
- ❖ Navigating the care maze - options available to pay for care including:
 - ✓ equity release ✓ care annuities ✓ sale of property
 - ✓ investments as effective solutions to secure your loved ones' future living
- ❖ Insights into the sensitive topic of deliberate deprivation of assets.

CANAPÉS &
REFRESHMENTS
WILL BE SERVED



Speakers:

Suzanne Porter

Director and Head of Wills and Probate at Wake Smith Solicitors, Sheffield



Erica Dietsch

(Hamnett Wealth Management)
Adv Dip FA, Dip PFS, Cert CII (MP & ER),
CeMap, PETR, Cert LTCP Chartered
Financial Adviser, SOLLA Accredited
Later Life Adviser (LLAA)



Jonathan Rowley

(Hamnett Wealth Management)
FPFS, Cert CII (MP & ER) Chartered Financial Planner,
SOLLA Accredited Later Life Adviser, Director

As places are limited, booking is essential so

please call Claire on 01144 934 334 or email: outram.haa@cinnamoncc.com

Totley Scouts

Fundraising News from 215th Sheffield (1st Totley) Scout Group

Scout Christmas Raffle Firstly, a huge thank you to everyone who bought tickets in our Christmas Raffle! We raised £1876, which will go towards new camping equipment and a trailer, making our camping experiences even better for our children, young people and leaders. Our winners were drawn by our Group Scout Leader, Sue Bridgens, in a Facebook Live event on 21st December, and were as follows:

1st - Nintendo Switch - Alfons Mobbs (ticket 01140)
 2nd - Strictly The Professionals tickets - Luke Smith (ticket 00199)
 3rd - £100 local vouchers - Lila Orange (ticket 01335)
 4th - £100 local vouchers - Daniel (ticket 00068)
 5th - 2 tickets to Beauty & The Beast at the Lyceum - Helen Heath (ticket 02424)
 6th - artificial flower bouquet - Rachel (ticket 00062)



Fundraising at Abbeydale Park Rise

We're very grateful to these local businesses who donated the prizes that helped us to make the raffle such a success: Totley Tails and Whiskers, Tulsi Indian takeaway, Totley Deli, The Dore, Rachel Collyer Ceramics, Pedal Bike Repair and the Cross Scythes Hotel. And thank you to the Cub parent who donated the theatre tickets!

Christmas Craft Fayre Update Another recent fundraising success has been our Scout Christmas Craft Fayre, which really embodied community spirit. The event, held at Totley Rise Methodist Church Hall back in November, brought together families, friends, and neighbours for an enjoyable chance to do some Christmas shopping and enjoy a cuppa



and a cake together. It was great to see attendees exploring the variety of handcrafted treasures on offer, enjoying seasonal treats and, of course, buying tickets for our raffle. Thank you to all who contributed, attended, and helped make this event a real success.

More Thank Yous! We're really grateful to two of our Cubs, Alice and Freddie, for coming up with the idea to sell sweets and mince pies to people visiting the Christmas lights on Abbeydale Park Rise one evening in December. They raised £76 to be split between our Group and the Dogs' Trust - well

done to them! And finally, a big thank you to Totley Rise Methodist Church's Knit & Natter group, who kindly donated £200 to our Group in December 2023.

Together, we're building a brighter future for our Scouts and ensuring the longevity of our Scout hut.



Co-op Local Community Fund

An easy way that everyone in the community can help us with raising more funds is by selecting Totley Scouts as your chosen cause at the Co-op. Then every time you shop at Co-op, you'll be helping us, without it costing you any extra. You can do this easily by scanning this QR code or going to <https://membership.coop.co.uk/causes/85291>.



Regular events and meetings at Totley Library

Monday:

French lessons for children following the award winning course material from La Jolie Ronde. After-school classes are available for children in the children's library
 3.40pm - Y5/Y6; 4.10pm - Y3/Y4; 4.40pm - Y1/Y2
 5.30pm - Y4/Y5

Contact Joanna on 07854 148809 or email speaquesheffield@gmail.com to find out more about local availability for French language classes.

Friends of Gillfield Wood, occasional Mondays, 7.30pm onwards. Talks on local nature and conservation. See posters, the FoGW article in this issue, or www.friendsofgillfieldwood.com

Councillors' Surgery, 2nd Monday of the month, 6-7pm

Tuesday:

Baby Time 1.30-2.15pm (term times only). Come along to meet other parents/carers and babies. We sing simple songs, have fun and allow time to chat.

Poetry Group, first Tuesday in month, 7.00 - 9.00pm. Please note that this group cannot accept new members at present.

Friends of Dore and Totley Station Occasional Tuesdays, 7.30pm. See www.FODATS.net

Wednesday:

Coffee Morning, 10.30 - 12noon

Story Time for toddlers and pre-school children from 10am - 11.30am (except school holidays). Children can take part in weekly themed craft activities, sing songs and listen to a story. £1 donation per child greatly appreciated.

Health Walks, 10.30am, meet at Library. Contact Step Out Sheffield on 07505 639524 or email stepoutsheffield@gmail.com

Totley History Group, usually last Wednesday of the month, 7.30. Talks on matters of historical interest. Check posters, the Totley Independent Diary, or www.totleyhistorygroup.org.uk

Yoga sessions 7.00 - 8.30pm, Wednesdays (except the last Wednesday of the month). For more details call Ann Zielonka on 0114 2361585 or 07929 736966. Beginners welcome. You are advised to call Ann to check that the sessions are taking place.

Thursday:

Thursday Morning Natter 10.30 - 11.30. Hot drinks and good company - for people aged 60 or over.

Chair Aerobics with Kay 12noon for 45-60 minutes. An Age UK and People Keeping Well weekly exercise class. £3 per week - no need to pre-book, just turn up.

Saturday:

Regular second-hand book sales. Check CRIC website :<http://www.totleycric.org.uk/>

Common Threads

A series of articles by Richard Wrigglesworth, which are part of a major history project which Richard has undertaken, covering 800 years of local history. In the last issue, we read more of Richard Furness, his life, and work. In this third article, we learn of the mercurial rise of George Wilson (Furness's nephew by marriage), and how Richard's life fell apart, but then recovered in his later years. The story continues.....

When George Wilson died suddenly on a train in 1870 his papers were placed in a trunk and not rediscovered until 1955. At the time the historian Norman McCord was a research student at Trinity College, Cambridge and the subject of the Anti-Corn Law League had been suggested to him by Dr G. Kitson Clark. His book with this title relies significantly on the Wilson Papers and in 1956 he published an article in the Manchester Review. Although George Wilson is mentioned in many history books it is the only public record I can find specifically designated to his contribution to history and confirming his origins in Hathersage.

The Archives of the Manchester Central Library have recently received an addition in the deposit of several thousands of documents relating to George Wilson, one of the most prominent men in the Manchester of a century ago. The collection which includes letters from Gladstone, Cobden and Bright, has been made available by the generosity of Mr G.M.T Wilson, of Beckenham, Kent, the present head of the Wilson family.



George Wilson was born at Hathersage, Derbyshire on 4 April 1808 but from the age eleven onwards his home was in Manchester. In 1819 his father John Wilson moved there to set up in business as a corn and flour merchant. George was educated at the Manchester school, and later attended evening classes, being fortunate to number among his teachers the famous chemist John Dalton. As a young man he was a member of a circle of young liberals, who organised among themselves lectures and discussions on a variety

of subjects, including politics, literature and the fine arts. Phrenology was then becoming a popular subject and he became President of the Manchester Phrenological Society while still a young man. He initially involved himself in his father's business as a corn and flour merchant and then entered into the manufacture of starch and gum, setting up works for the purpose at Newton Heath. What happened to this is unknown but in 1832 at the age of 24 he appears on a committee on the liberal side which secured Charles Poulett Thomson, the first Baron Sydenham, as one of the first two Reform MPs for Manchester at the election which followed the 1832 Great Reform Act. The other was Mark Phillips who was to become a good friend and associate in the Anti Corn League. This was the first time his voice was heard in public, arguing that it was possible to elect two liberal MPs for Manchester.

In the mid 1830's he was involved in the campaign for National Education and acted as Secretary for the Manchester Association. This brought him into close co-operation with Richard Cobden, another Phrenologist, who was to become his great friend and mentor. In the late 1830's he made his first great contribution to Manchester by his services as secretary to the Borough Reform Association and Cobden sought him to give time to obtaining a Mayor and Corporation. Cobden, Wilson and a Mr Nield were the three leading figures, and when Cobden began to sicken at the obstacles, Nield asked Wilson what he thought about it and he reputedly replied 'I never give up when I have begun.' Mr Nield said 'well then art thou willing to go on?' Yes, was the answer, but how about the expenses? 'Thou has nothing to do with that, but carry out the work and the funds will not be wanting.'

The timetable for Borough Reform in 1838 was as follows: 20th January: Notice issued inviting Leypayers from each District in the Borough to a preliminary meeting to be convened for the purpose of ascertaining the opinion of the inhabitants upon the propriety of applying for a Municipal Charter of Incorporation for the Borough of Manchester, and respectively requesting their attendance at the Thatched House Tavern on Wednesday the 24th inst. The Chair to be taken at six o'clock precisely. George Wilson, Hon.Sec.

7th June: A letter from the Town Hall on behalf of the Lords of the Privy Council. 'I am instructed to prepare the draft to obtain to obtain the approval of the Attorney General, and requesting a detailed statement of the expenses incurred in the township of Cheetham for the last 7 years, under the following heads. (1) Night Watch (2) Day Police. Under these heads detailing expenses on superintending wages, clothing, officers, clerks etc. (3) Lighting (4) Scavenging (5) Paving and Lighting (6) Improvements (7) Collecting (8) Miscellaneous, serving to show total expenditure within the Acts. Also the number of assessments, the amount of property, amount of rate levied specifying also if the property is rated at its full value or otherwise, and how much in the pound has been collected.'

14th August: The Privy Council advised the Queen to grant a Charter of Incorporation to Manchester. 'I am instructed to prepare the draft to obtain the approval of the Attorney General - the boundaries to include Manchester, Chorlton upon Medlock, Hulme, Ardwick, Cheetham and Burwick.' Signed Joseph Parker cc R Cobden.

8th October: Letter from Richard Cobden confirming signature by Lord John Russell.

18th October: Mayfield. 'Mr Nield requests the pleasure of Mr G. Wilson's company on Wednesday next the 24th at half past five to meet a few Gentlemen friendly to Incorporation.

18th December: Letter from Thomas Potter, the first Lord Mayor, expressing the 'best thanks of this Council be given to George Wilson Esquire, for his valuable services as Secretary to the Incorporation Committee.' Resolved by the Mayor, Aldermen and Councillors at their first meeting. It had only taken eleven months!

At the age of thirty the Miller's son from Hathersage appears to have established his reputation. The next project for George Wilson was the Anti - Corn Law League.

The problems for me during the period I was visiting Manchester Archives were twofold. First, the contents of the trunk had been pasted roughly in date order in forty three volumes comprising letters to him, some of which were from friends but very few from family or his early life in Hathersage, and nothing of his replies. Secondly, not having studied history at school apart from knowing from Mrs Peacock at Totley All Saints that King Alfred burnt some cakes and a brief period studying the Enlightened Despots of Europe at A level. One other galling fact is that a good school friend with whom I am still in contact and who now lives in Stockport took an extra 'O' level in 'the origins and causes of the First World War' which is much more relevant to the later career of George Wilson!

The journey was also instructive. There was a Greater Manchester daily saver costing £5 which you could buy on the train but only extended to Grindleford and comes into effect after 9.30am. The train from Sheffield arrived there at that exact time so I was told that I could buy a single at Dore, step onto the platform at Grindleford and then re-join. In the event I went to Bamford or Hope in the car where it is easier to park and got on one of the old rattle cans that creeps up the Hope Valley and stops at every station down into Manchester Piccadilly. The walk to the Archives was just about enough to alleviate the backache and feeling of sickness. (Having spent seven years going from Dore station to Dronfield when it was a four-platform major junction from Manchester to the London Midland I am awaiting the current improvements with great interest.) There was a similar experience when visiting Kew Archives. The obsession with reaching St Pancras in under two hours, even from Chesterfield, combined with the timing of day returns and with the surge of speed from electrification after Leicester, then another hour to Kew with one change on the underground, is tiring. Going into Sheffield and coming back through Dore station would add another hour. The other little gem is that on the return journey with the need to allow

enough time you could return to St Pancras before the previous train had left and then not be allowed on, even though it can be half empty, under their terms and conditions. Three days is necessary!

Back In Dore the Enclosure of the Common Land Act enacted in 1809 was only completed in 1822. The new turnpike and enclosure roads were complete but the fields were still in the process of being fenced and walled in. The commissioners were the same as had supervised in Eyam when Richard Furness was in London, and Hathersage which adjoins Dore was actively disputed by another Ibbotson (George) and not completed until 1829. Dore enclosure took in 2,248 acres out of a total of 3,439 acres. This was carved up by the Duke of Devonshire who was the Lord of the Manor and naturally awarded 38%, five other non-residents including D'Ewes Coke of Totley Hall 36%, with only 26% going to resident villagers, some of whom were unable to pay their share of costs for erecting walls and hedges and were forced to sell up and move out to find work in towns such as Sheffield. Dore, Hathersage and Eyam had their common land enclosed by Acts of Parliament which was mainly used as grouse moors and game reserves for local landowners. In Hathersage it took 27 years of wrangling, bitter quarrelling, and at times open hostility, and after enclosure the Dukes of Rutland and Devonshire exchanged land.

Richard Furness was thus denied the pleasure of applying his mensuration skills and poured out his frustration in his poetry, but the issue arises later when George Wilson was involved as an amalgamation expert on the Manchester and Leeds Railway. In my view this is no less an evil than six hundred years earlier when the Staffords, having been formerly involved in the harrowing of the country, were given numerous manorial titles from which they could earn rents from its former owners. In my next story on the railways many were also well compensated for selling part of the land they were given to the railway companies.

Richard was allowed to keep on his merry way for about twenty years. One problem is that there are no minutes recorded by the School Trustees for the fifteen years between October 1823 and May 1838, despite his vaunted position as both Parish and Vestry Clerk for which he got some payment. There is no doubt he was a poor teacher but it was a hard task to perform. Recommended hours were 7am to 11am and 1pm to 5pm in Summer, and 6 hours in Winter, concentrated mainly between the years of seven and eleven. Younger children were obliged to look after the babies at home while older ones were expected to work. Between five and eleven more boys than girls went to school in Derbyshire, while between eleven and fifteen more girls were educated. A teacher was expected to be the servant of society, a paragon of all virtues who needed the support of local gentry and clergy to maintain their position. In 1839 a 'Bond' was given to him extending the date of notice from one to six months, and his salary increased to £30 per annum with a corresponding increase of free scholars to teach.

In 1840 there was a change in attitude by the Trustees. The minutes took on a more businesslike attitude and in April 1841 the name appeared of a new curate, the Reverend Richard Martin, to replace Francis Parker who had died in 1840. Parker was a strong Tory, who disapproved of Richard's radical views and independent behaviour resulting in a clear clash of personalities. Francis Parker was lame and also non-resident in Dore and Richard was often asked to deputise for him in emergencies. Their relationship appears to have been amicable, despite differences in outlook. There is a story that he was preaching one Sunday afternoon when the hunt went by. In one body the congregation rose and rushed to watch the spectacle. Parker rushed from the pulpit and said 'No my friends we will start together.' Another story is that he would refuse to say 'Amen' when required to read the Athanasian Creed, which condemns heretics, and would sit to allow a local 'gentleman of wealth and influence,' possibly D'Ewes Coke, to read it commenting 'leave them (the heretics) to a higher being.'

Parker sounds very much like the Reverend John Le Cornu at Hathersage who had been so concerned when Richard and Frances Ibbotson had hammered on the door of Saint Michaels early on the morning of 29 December 1816 de-

-manding that he married them, protesting 'old Matthew' would strip his gown. He was eventually to hold that living for fifty years but early in his career had incurred the wrath of Ashton Shuttleworth, a distinguished retired Army officer who had recently become the owner of Hathersage Hall and took his duties very seriously. He viewed the new Vicar with dissatisfaction and began to keep a record of his shortcomings: there was only one Sunday service in winter and that was at 2pm; he had refused the Sacrament to a Henry Ibbotson and a John Bunting on their deathbeds; and his clerk was drunk and unruly in a service. On his death in 1844 the Vestry was left in a very decayed state due to his resistance to change in his later years. Richard's relationship with Richard Martin, the curate, was very fractious, and in 1847 His Majesty's Inspector of Schools gave a bad report. "the children are dirty; many of them sit without any means of employing their time and no check is offered to their fighting and squabbling among themselves". Ex-scholars later commented that he did not bother much with the children and let them play marbles while he wrote music; another said he would call up the class for spelling and while a boy was answering, the master not infrequently never heard him, being absorbed in settling to the satisfaction of his own mind the derivation of it - a point which had no relation or value to the new pupil.

The reason for this is easy to understand. Richard and Frances also suffered much sorrow in their private lives in Dore. After the three boys, six more children were born: five girls of which three died young - Elizabeth in 1827 aged two, and Margaret in 1829 also aged two. Anna in July 1843 died aged seven in a violent storm which prompted Richard Furness to write an anguished poem 'To Anna in Heaven.' Mary, born in 1824, never married and my grandmother Eliza born 1833, (fortunately) seems to have thrived very well, as did John Peter 1829-1910 who trained as a scythe maker, and who lived in Bradway and was buried in Holmesfield. The three young daughters are all commemorated in Eyam. The death of Anna appears to have finally destroyed her mother, described in the poem as a weeping 'woe worn' mother. She died on 12 August 1844 aged fifty two. My great grandmother was eleven. We have seen no evidence that Frances ever helped as a classroom assistant. The presence of the Reverend Richard Martin would not have helped although he did not survive in Dore much longer. Richard was forced to resign in June 1848 with a pension of £15 pa and with Mary and Eliza vacated the schoolhouse in 1848 to live at Moss Farm on Limb Lane which they rented for £5 per annum. Mary and Eliza are then recorded as Dressmakers in a local publication and he retained some of his income from Census Returns and as Registrar.

For the last ten years of his life Richard suffered from humoral asthma, either as a result of his earlier life as a Currier, being an inveterate pipe smoker, or the family stress of the 1840s. However, this did not stop him from doing what every sensible man would do: he (allegedly) married again in 1850 to Mary, the widow of Mr John Lunn (a grocer of substantial means trading as Lunn and Swift of Staveley near Chesterfield) a lady eleven years his junior. They were able

TopsforJeans

OPEN Monday - Saturday

Super soft knitwear, beautiful tops and so much more.

Call in or shop from the comfort of your own home on our website.

Catch up with the latest news on our Facebook site.



www.topsforjeans.co.uk
164 Baslow Road, Totley. S17 4DR

to move into the 'old' Ash House on Ash House Lane in Dore and live in some style. Somehow I have managed to inherit a very good oil painting of Ash House which certainly matches Townhead Farm in Eyam where he was born, and forsook his primogeniture.

Josie Dunsmore was unable to find any evidence of his wedding or registration in either Dore or Staveley which I find very satisfying. It is entirely in character for his life as a Poet and Composer of carols.

The curate Richard Martin did not remain much longer as incumbent and was replaced by the Reverend John Aldred and life seems to have returned to normal.

This concludes my introduction and overview of the life of Richard Furness and the early life of George Wilson up to when he joined the Anti-Corn Law League. The person I feel sorry for is Frances Furness who was unable to acknowledge her Catholicism, gave birth to nine children and suffered the loss of three young daughters. It is deeply sad, especially as she had an older sister Mary who moved to Manchester and had one son who was so capable and yet he was also forgotten. I now concentrate on George Wilson's career and legacy as a basis for numerous short stories, and which derives from my own research. Again many thanks to Josie Dunsmore to which the Furness family owe so much.

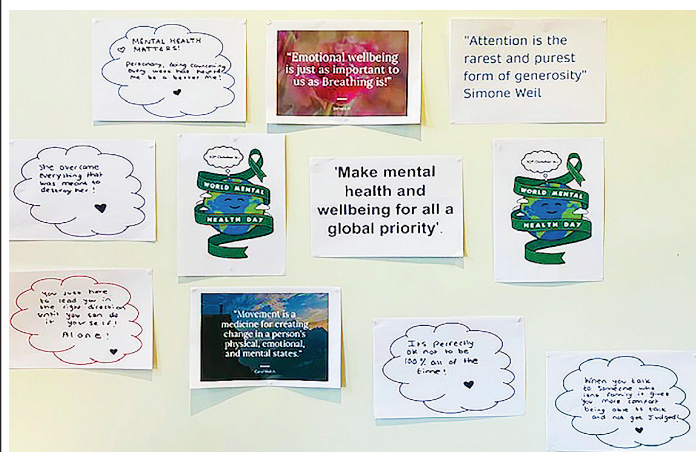
Richard Wrigglesworth

Local charity requires a treasurer for its Board of Trustees

Did you know that there is a 160 year old charity in Totley? Cherrytree Support Services, which is located on Mickley Lane, started life as an orphanage, and currently offers young people between the ages of 16 to 21 support and accommodation to assist with their personal development during a period of their life which has been traumatic and led them to become homeless.

The site on Mickley Lane accommodates up to 20 young people, and a satellite site in Sheffield can support a further 8 young people. A dedicated team of staff support our residents on both sites with guidance on life skills and financial requirements with an aim of supporting them back into their family life or their own accommodation. Our young people can stay with us for up to 12 months, during which time we offer them the chance to gain skills in cooking and budgeting. We take a personalised, flexible approach and provide tailor-made advice and support to meet the individual's needs.

Our aim is to give young people in need a safe place to stay and the opportunity to gain the confidence and independence they need to move towards the life they want to lead. As part of our supportive environment, we offer all residents an in-house counselling and mediation service. During their stay our young people are also offered the chance to take part in activities and life enhancing trips.



Young residents' ideas board

The Charity is overseen by a small group of volunteer trustees whose aim is to ensure Cherrytree Support Services continues to operate on a sound financial basis for the benefit of staff and residents.

The board of trustees requires a treasurer, who is able to oversee the finances on behalf of the trustees, so that the board can ensure that all the financial matters are monitored and the accounts which are prepared by the staff of Cherrytree Support Services are accurate.

This volunteer role would ideally suit someone with a financial background, who can spare a few days per month to liaise with the Managers on site and attend four meetings per year when the trustees get together to review progress of the charity.

Anyone who feels they may be suitable for this position, or who may wish to discuss the needs of this post, should contact Steve Walker who is the current Chair of the board of trustees. Initial contact can be via email - swalker@cherrytreesupportservices.co.uk

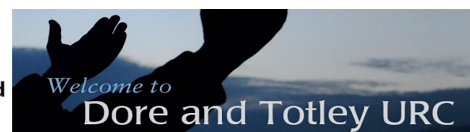
Steve Walker

Dore and Totley United Reformed Church

At Dore and Totley United Reformed Church, we try our best to be a friendly, welcoming and inclusive church where all are able to explore their relationship with God in a very positive way. We offer a weekly service on Sundays at 10.30am which includes praying, singing, reflecting upon scripture and good fellowship. Our tradition is very open to a broad range of views on the Christian faith, believing that we are on a journey of discovery, bound together by our love for God and God's love for us.

We also offer a shorter midweek service at 11.30 on Wednesdays which is almost always preceded by a chance for a chat and some refreshment from about 10.30am. There are regular fellowship events and church is a good place to make friendships and find company.

From mid-February we move into the season of Lent, a period of reflection upon our lives, our attitudes and our faith. What is good and what needs to change? Where is there room for improvement? How can we seek that transformation? How can we deepen our faith and strengthen our relationship with God? Many of us can testify to how our faith has changed us for the better and brought something that was missing, something that makes life much better.



Lent is a time when we reflect upon the journey of Jesus to the Cross, refusing to live by the standards of often selfish human values and priorities. He simply chose to offer a new way of living and thinking, where compassion was at the heart of all things, rejecting violence, oppression and injustice. It seems that the world has many deepening problems and we seek to listen to what Jesus had to say and learn from how he treated people. Despite the rejection that he experienced, which led to his death, hope was not extinguished. God transformed what seemed to be a disaster into a new beginning of hope built upon forgiveness and radical love.

We invite anyone who is interested to come and join us as we explore and seek to deepen our faith and relationship with God, serving the people of S17 and beyond. A warm welcome is guaranteed!

Rev Barry Welch

Dore Gilbert & Sullivan Society

I was looking forward to showing off by telling you how well I performed as Cinderella in the Christmas Concert but pride has fallen with a catastrophic bump. I didn't play Cinderella, I didn't play anything. I didn't sing anything. I wasn't there! I diligently attended all the rehearsals and then went down with a very nasty bronchial infection the night before the concert so I spent the weekend in bed feeling sorry for myself. Like a dutiful husband I passed it on to the wife who is suffering a day or so behind me but Ann did get to the concert and said that it went well. My understudy was excellent. It seems that I was not alone in missing out. At least three of the audience who had intended to be there never made it due to illness and two more of the singers left early not feeling well.

We have some very sad if not totally unsurprising news in that Mike Tolson, our Chairman and long time member has died after a fairly long illness at the age of 88. Mike was one of many thousands of UK military personnel who witnessed the UK's nuclear tests in Kiritimati and Australia. He told me that all they had to do was turn away and cover their eyes with their hand. He said that when the flash went off he could see every detail of every bone in his fingers. One of his favourite hobbies was building model aeroplanes (lots of Spitfires, obviously) and he was meticulous in the detail. He was a well known storyteller and, until the last 10 years or so went round schools acting and singing stories. He often played Father Christmas but he was probably best known for



Mike playing Colonel Calverley dressed as an Aesthetic poet to try and win the maidens over in 'Patience'

his love of the Gilbert and Sullivan operettas where he played all the patter roles such as Major General Stanley in *The Pirates of Penzance* or The Lord Chancellor in *Iolanthe* or Sir Joseph Porter KGB in *HMS Pinafore*. He has been a member of Dore G & S Society since 1973, not quite a founder member, but almost. One role he wished he had played but never did was King Gama in *Princess Ida*, and alas it's too late now. Most of his family were involved in the Society in one way or another - Beryl, his late wife with Front of house, his son Adrian as a lead tenor and Syl, his daughter-in-law as an exceptional costume designer and maker who has since worked for many professional organisations including the Crucible Theatre. Mike was president from 2017 and will be sadly missed.

As I have mentioned before, the Montgomery Theatre is now closed and we have not found a suitable alternative. Sheffield is woefully short of amateur theatre venues, so this year we are performing a semi-staged concert version of *Iolanthe*. The venues for which we have confirmed dates are Crookes Social Club at 2pm on Sunday 7th April, Dore Church Hall, Townhead Road on Saturday 13th April at 2.30pm and at Whittington Moor Methodist Church on Saturday 20th April at 2pm.

Tickets will be available from about the time this edition is published by phone on 07565 805405 or via the web at <https://doregass.weebly.com/tickets.html> so don't miss out on one of the very best of the G&S operettas.

Derek Habberjam



Friends of
Gillfield Wood

Friends of Gillfield Wood: Fungi Walk

with Ziggy Senkans, Saturday 11 November 2023

As usual, we gathered in Totley Hall Lane to meet our guide Ziggy Senkans. He was accompanied by Pete Feetham who kindly took recordings of our many (33) sightings. Without him most of us would have struggled to take notes and photos at the same time!

We were equally lucky with the weather which was perfect. Around 30 of us set off across the fields in bright sunshine and stopped almost immediately at the base of an old oak tree. Here were *Tremella mesenterica* also known as yellow brain, golden jelly fungus, yellow trembler, witches' butter - bewitching names with even more fascinating histories.



Tremella mesenterica, or yellow brain fungus

According to legend, if yellow brain fungus appeared on the gate or door of a house it meant that a witch had cast a spell on the family living there. The only way the spell could be removed was by piercing the fungus several times with straight pins until it went away. Hence the common name of 'witches' butter'. In China it is used to give a signature texture to soups!

Suddenly the world of fungi becomes something other than wild mushrooming. The walk became a folklore/history lesson stretching back over the long life of the ancient wood. We learned that fungi have a tale to tell if we are prepared to read the signs.

Over the bridge and the rickety stile into a field full of waxcaps nestling in wet grass. Crimson and white, and loveliest of all, the uncommon beautiful Pink Ballerina. Waxcaps, we are told, are significant as they are strongly associated with unimproved grasslands. This tells us that the farmer has not used much fertiliser on the land.

Once again, I realise that despite walking through these wood many times I often fail to see what is under my feet. The value of these guided walks is learning.

"The more that is revealed the more wondrous the wood becomes" Colin Tudge.

As we head for home, Ziggy is clutching mushrooms to take home for lunch. We were all very jealous. Fortunately Ziggy has kindly offered to lead another walk next Autumn so plenty of time to learn how to forage safely in future.

Consult our web site for a comprehensive list of what was found!

Yvonne Newey, FoGW



Dore Garden Club

What a soggy, windy winter it has been. I'm sure, like me, many of you have had casualties, losing shrubs, trees, fences or worse. Spring can't come soon enough for us all. In this feature are details of our March speaker. One of our committee members, Lindsay Fox, has been instrumental in introducing more social media to help publicise our activities. We are now using Instagram. The link to this account is: <https://instagram.com/doregardenclubsheffield>

If you are a seasoned Instagram user: Instagram: @doregardenclubsheffield

We are also grateful to the DVS and the Methodist Church (the venue for our meetings) for publicising our activities on their websites, and also *Dore to Door* and *Totley Independent*.

Some of our committee members have been custodians of the Club since it was established over 15 years ago and are looking to stand down. If we are to secure a longer-term future for our volunteer-led organisations we need new people to join our committee. If you would like to find out more, please contact our Chair, Carole Whitehead 0114 262 1760.

The Club is very grateful to Jean Dykes who has once again co-ordinated another excellent programme of speakers for 2024. We hope you will be tempted to try some of the interesting presentations, some of which have a distinctly seasonal theme. We start the programme with inspirational stories about what can be achieved by those with a love of gardening and growing.

March 20th, Mairi Longden: Route to an RHS Gold Medal

Mairi Longden has given regular talks for Dore Garden Club, illustrated with her own beautiful photographs. It has been fantastic to follow the progress Mairi has made in her horticultural career. She has developed from a young nursery



Photo courtesy of Mairi Longden

holder who established a small nursery on the Tislington Estate, to exhibitor at RHS Hampton Court and Tatton Park Flower Shows. Last year she won a much-coveted RHS gold medal at Tatton Park Flower Show. Some exciting news for Mairi is that she has just been accepted as an exhibitor at this year's Chelsea Flower Show. None of this comes easily. Mairi will share with us the rigorous requirements for exhibiting and the exacting standards required to achieve an RHS Gold Medal.

Dore Garden Club meets on the third Wednesday of the month in the Methodist Church Hall in Dore village. Doors open at 7.10 pm for a 7.30 start. **Membership fees (still only £18), which cover eight events, are due in March.** Payment by cheque is preferred, made out to Dore Garden Club; we cannot handle contactless payments. Please arrive a little earlier than usual, ideally with your cheque already made out, as we anticipate there will be a queue to pay subscriptions. Visitors are always welcome, and entrance is only £4, payable at the door.

Some speakers bring a great selection of plants to sell. In addition, we encourage members and visitors to bring along any unwanted house or other plants to sell on our plant table. The proceeds are split equally between the Club and the donor. One of the benefits of membership is 10% off all products at Dore Moor Nursery on production of a 2024 membership card.

Thank you to the team at Dore Moor for continuing to provide this special discount to us given the continued uncertainty about their future.

Pauline Drissell and Jean Dykes



Chapel of Ease, English Martyrs in Totley

Usual Mass Times: Tuesday 10 am, Saturday Vigil 5pm

HAPPY NEW YEAR!

The Christian year is a bit weird in 2024.

Shrove Tuesday (who doesn't love pancakes?) is on the 13th February and therefore Ash Wednesday is also St Valentine's Day! A peculiar, if romantic, way to start the season of Lent, but perhaps we can tie it into our Lenten observance. (See Wednesdays below)

This year I plan to mix things up a bit. I was taught to take up good habits during Lent rather than give things up. I think my priest knew my limitations! 40 days (+ Sundays) is long enough to form good habits so I have hope that during this time I will become a better person.

Here's my weekly plan....

MONDAYS: Go outside, look at the trees, the sky and the new life emerging all around us, breathe and be grateful.

TUESDAYS: How many "good deeds" can you do in 1 day?

WEDNESDAYS: Tell your friends you love them. Smile at strangers, admire a baby in a buggy, chat to someone on the bus, make a point of thanking the cashier in a supermarket or shop.

THURSDAYS: -Make use of your talents. Can you sew, knit, write, sing, draw, cook, bake, pray?

FRIDAYS: Spend time with others. The greatest gift anyone can give is time.

SATURDAY: Try to think positive thoughts, say positive things.

SUNDAY: Be kind to yourself. Rest. Life isn't always easy, and we can only do our best.

Before we know it, the end of March will be here, and we'll be celebrating Easter.

Barbara Richardson Parishioner



Friends of Gillfield Wood

Friends of Gillfield Wood: Nature and Christmas

Talk by Derek Whiteley, 4 December 2023

On the 4th December, wildlife expert Derek Whiteley of Sorby Natural History Society gave us a fascinating talk on Nature and Christmas. Although Derek is a highly thought of author of dozens

of books and papers on mammals, reptiles, amphibians, bats, butterflies, dragonflies, beetles, snails and millipedes, the theme of the evening, based on the earlier work of his friend the much missed Partick Hardy, was folk tales, myths and ancient customs.

Starting at the beginning of the Christian story we were asked to consider that being born in a stable (no room at the inn) was not uncommon 2000 or so years ago. Many of our own rural ancestors would have thought nothing of sharing their homes with their precious livestock – safety for the beasts and free heating for the humans.

Father Christmas has been on a long journey since his origin as kind St Nicolas, a 4th century bishop known for gift-giving in Turkey. By Victorian times he has metamorphosed from saintly cleric to jolly pipe-smoking figure clad in furs and toting a bag full of toys on his back. Old plates picture him on foot wearing a large coat of blue or green or even brown. At around this time, he moved to Lapland, home of the reindeer when apparently, under the influence of fly algaric he took to the skies with the help of Rudolf and co. It is also claimed that the crimson and white of the fungi may also account for colours that Santa sports today.

Bringing the outdoors indoors, like many of our customs, have their roots in pagan times. The holly and the ivy, lighting of candles, gathering together with loved ones and remembering times past.

Holly is associated with the Holly King – another precursor to Santa Claus. In pre-Christian times it was often associated with protection. Since Ivy often lives on after its host plant has died, it reminds us that life goes on. The festive wreath also illustrates the unending cycle of life and renewal. We made it through those dark days.

Derek's kaleidoscope of images and facts behind our many festive traditions, myths and mysteries of Yuletide/ Christmas was merry and totally engrossing. The sloe gin, mulled wine and mince pies helped too. The perfect end to an eventful year in the life of Gillfield Wood.

And So to Spring! Starting in February, we are planning to survey the wild flowers of the wood. Details of the project will be announced shortly on our website. Do join us!

www.friendsofgillfieldwood.com.

Yvonne Newey. FoGW

the police accepted the images for their investigation. The same group was involved in similar incidents in Dore, in December. All the incidents happened between 2-4am; some of the properties were unoccupied at the time but others had residents at home. The question is, did the properties have alarms installed and more importantly were they switched on?

It has been mooted that we should have a register of all the properties that have a CCTV system so we can check when similar incidents occur in a specific area, ready to provide to the police should they want them.

Just a reminder: S17NWA has some door handle and window vibration alarms as well as some panic (rape) alarm key rings available at £5 each.

On a brighter note, we held our first Community Speed Watch session on Twentywell Lane in December - in the hour we operated the speed gun. These sessions will not take place where the camera van operates. We only monitored vehicles we considered might be speeding in excess of 35mph. They totalled sixty vehicles being checked and only six were reported to the police and the drivers will receive a warning letter. The fastest offender was doing 47mph and the others all were above the 35mph speed allowed over limit (30mph plus 10% plus 2mph). I am sure that many more would have been caught if we did not have to put the 'Speed Check' warning signs along the road.

If any resident wishes to participate in any future CSW sessions, they will need to complete a short online training course followed by attending one of the CSW sessions as an observer. The course is not difficult and we try to keep the CSW sessions to about one hour in any of the designated locations.

Looking forward to springtime with hopefully better weather, we will be installing more of the 'NHW' and 'No Cold Calling' signs and we will be looking to the roads around the Main Avenue area including by the library. If there are any old signs where the details have weathered over the years we will seek to replace or refurbish them as time permits. If any of the existing signs have slipped down the lamp standards, can someone notify me so that we can ensure they are adjusted to the correct height?

Another activity we hope to carry out is a recruitment campaign, seeking to encourage as many residents as possible to join S17NWA (NHW). Invitation letters will be delivered to as many properties as possible where we do not have a resident registered as a member. Hopefully some of our existing members will help with the letter-drop when we get started.

Residents can sign to join up via the online membership form on our website: www.s17nwa.co.uk

Les Day, Chairman S17NWA

07985 424363

Les_nhw@hotmail.com



Neighbourhood Watch

The dark nights certainly brought with it the increase in burglaries we have become accustomed to; Bradway in particular has suffered more than any other area in the S17 NWA catchment. On December 28th five properties on Bradway Road

were burgled, and more were subjected to visits by the same group of men. The same group were also responsible for similar incidents in November on Birchitt Road. The offenders were caught on CCTV on a number of locations and at least



A1 Plumbing & Bathrooms Complete Installation Specialist

Info@A1plumbingandbathrooms.co.uk
www.A1plumbingandbathrooms.co.uk

Tel - 07738 688 807

- * Plumbing Leaks, Bursts & Blockages
- * Taps, showers, Radiators, Etc
- * All Tiling And Plastering
- * Reliable, Fully Insured & Guaranteed
- * No Job Too Small, NVQ Qualified

25 Five Trees Ave, Dore, S17 3LW



Activity	Venue	Primary Contact (Group leader)
Coffee and exercise classes (Strength/Circuits/Seated) Variety of gentle exercise sessions combined with refreshments	Bradway Community Hall -Monday (weekly) Dore and Totley United Reformed Church -Monday (weekly), Totley Library/CRIC- Thursday (weekly) St Peter/St Oswald's Abbeydale Road- Friday (weekly)	Community Wellness Service - 01145537807
Sporting Chatter / Sporting Chatter films: A social group who meet to discuss all things sport	Dore and Totley United Reformed Church -Friday (weekly)	Phillip Staton – 07788 620313
Singing Teapot Choir - A singing group for all abilities	Dore and Totley United Reformed Church-Tuesday (weekly)	Yo Tozer Loft -07925 634420
Welcoming warm space - meet others and have fun. refreshments provided	Dore Methodist Church Hall- Monday (weekly) 10.30am to 1pm.	No booking requirement just drop in
Dore and Totley Rosemary memory café (Dementia targeted) - a welcoming social space for people living with Dementia.	Dore Methodist Church Hall – Tuesdays - 1 st and 3 rd week of every month	Contact : Elsie.ledger@ageuksheffield.org.uk Tel. 07384 833594
Reminisce and Revive: a Zoom group where we share stories and poems we have written as well as favourite pieces of writing, including favourite films and TV programmes.	Zoom -Monday (fortnightly)	Anne: anne.grange77@googlemail.com 07815 966784
Forest Bathing - a chance to slow down and enjoy mindfulness in nature	Graves Park/ Abbeydale Industrial Hamlet in winter months) - Saturday (weekly)	Caroline Cook- 07583551705
Herbal Wellness: Learn about a different herbal medicine every week	Abbeydale Industrial Hamlet - Friday (fortnightly)	Caroline Cook- 07583551705
Woodwork Wellbeing: a seasonal woodworking course	Bradway Community Hall - Tuesday (weekly)	Steven Fridlington – woodworkwellbeing@ouytlook.com 07900 344361
Ecclesall Forum: a space to socialise and make new friends. This group is part of the wider Ecclesall forum	Cherry Tree Pub, Carterknowle - Monday (weekly)	Paul May – paulmay@blueyonder.co.uk
Dance to Health Sheffield: gentle dance classes for all abilities	St Augustine's church, Endcliffe- Multiple days of the week	NesreenShah@ae-sop.org 01993 870159
Table Tennis	Bradway Community Hall- Thursday and Friday (weekly)	Jan – 07787 954842/0114 418 6463
S11 Carers Walk: keep fit and healthy and make new friends on these gentle walks, designed to give carers respite	Thursday - (First week of every month)	Sheffield Carers Centre -0114 278 8942
Natter Coffee Morning: a welcoming space to meet new people and enjoy cakes and coffee	Totley Library/CRIC- Thursday (weekly)	Totley All Saints Church -0114 236 7627
Coffee on the corner social drop in: enjoy great food and drink and meet new people)	Coffee on the corner – Baslow Road –Friday (weekly)	Coffee on the corner- 07941 780772
South West Friendship Lunches: Book onto one of our local friendship lunches and enjoy great food and entertainment	Crosspool Tavern Pub, Crosspool - Monday (2 nd monthly) The Ball Inn, Crookes -Tuesday (1 st monthly) The Greystones Pub -Tuesday (2 nd monthly) Shepley Spitfire pub -Friday (last monthly)	0114 266 2113 0114 266 1211 0114 266 5599 0114 236 0298
Fulwood coffee and games morning: dementia friendly	Fulwood Scout Hut, Fulwood Road-Tuesday (2 nd and 4 th Tuesday of the month)	Elsie.ledger@ageuksheffield.org.uk - 07384 833594
S17 Carers Café: a social space for carers to come together and make new friends designed to give carers respite in a warm and welcoming environment	Meet at Totley URC on Totley Brook Road - 10.30am on 1st Wednesday of each month Meet at Border View Farm on Rod Moor Road - 11.00am on 3rd Wednesday of each month	Sheffield Carers Centre – 0114 278 8942
Calmly Create: the main objective of the sessions is for patients who may be experiencing stress, anxiety, loneliness to create something in a warm environment	Fulwood Old Chapel School Room, 8 Whiteley Lane, Sheffield, S10 4GL-Wednesday (weekly)	South Yorkshire Chaplaincy and Listening Service 07903 899751 sycls@sycls.co.uk
Bents Green Rosemary Memory Café (Dementia targeted): a welcoming social space for people living with Dementia.	Bents Green Methodist Church, Ringinglow Road, S11 7PU-Thursday (1 st and 3 rd monthly)	Elsie.ledger@ageuksheffield.org.uk - 07384833594

John Heath & Sons

AN INDEPENDENT FAMILY FUNERAL BUSINESS

Sometime.....

You will probably have the responsibility of making funeral arrangements. No one looks forward to this responsibility, but the death of a family member or friend brings with it an obligation that must be met. There are people who can help you meet this responsibility. We have been helping people combine the different aspects of the funeral into a meaningful service for over 125 years.

Please Call Day Or Night

(0114) 272 2222

Head Office - Earsham Street

Also at Meadowhead, Ecclesall Rd,
Crookes and Stannington

www.johnheath.co.uk



Tristan Swain

Garden Services and Maintenance

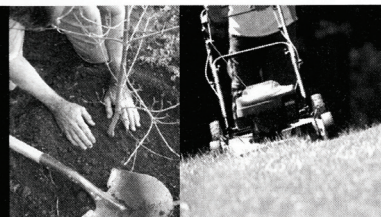
Established 1984

Unit C4 Sheaf Bank Business Park
Prospect Road Heeley
Sheffield S2 3EN

Tel/Fax: 0114 255 4689

Mobile: 07831 802 539

Email: tristan@tristanswain.co.uk



www.tristanswain.co.uk Public Liability Insurance Waste Transfer Licence

BRADWAY INSTALLATIONS

Kitchens, Bathrooms and everything in between

Complete Kitchens Installation or supply & installation

Kitchen Refits Replacement worktops/sink/hob etc
Worktop/cabinet repairs

Bathrooms - Cloakrooms - Domestic plumbing

Tiling - Laminate/Vinyl flooring

All work undertaken is fully insured and guaranteed

Ring Peter - 0114 236 5995

Mobile - 07766 411355

Hair-ium by Latia

In your home, expanding by client demand!

Professional, qualified, experienced

From perming to modern techniques.

I am also fully DBS checked, with professional.
experience of clients with vulnerabilities etc.

Call for bookings on

07944 878585 or 0114 2361993

For group bookings of 3+ - get % off!!



**Children's Author and
Illustrator event at
Totley Library
Friday 16th February
10-12pm**

**Meet local children's author, Joe
Moorwood, and children's illustrator,
Anna Stephenson.**

Signed copies of their books, "The Outside is
Inside" and "Beyond the Brambles" will be
available for sale or can be ordered on
Amazon or borrowed from the library.

Listen to a story, talk with the author and
illustrator about how the books were created
and enjoy an art activity.

This event is suitable for primary age
children. Children should attend with parent
or carer.

The event is free but numbers are limited so
please book a ticket at Totley Library,



Totley CRIC
TOTLEY COMMUNITY
Resource & INFORMATION CENTRE

Totley Library Book Sale

**SATURDAY 17TH
FEBRUARY
2-4PM**





Transport 17

Despite the new year being well established by the time you read this, Transport 17 would like to wish all our supporters, and Totley Independent readers, the very best wishes for 2024. We are looking forward to the year ahead; a year when we celebrate 40yrs of Transport 17 buses being

on the road, enabling older and vulnerable people to get out and socialise with others in their local community thereby reducing isolation and having a positive impact on their mental wellbeing.

But first, a quick look back at the end of 2023 and some 'thank you's to the local community. As many of you will be aware, T17 was selected to be one of Co-op's Local Causes for 12 months between October 2022 and October 2023. This meant that anyone who was a Co-op member and had selected T17 as their local cause raised funds for us when they bought Co-op products and services. Your contributions through this scheme make a significant difference and as a result we received £4272.40 from the Co-op Local Community Fund.



Fiona Smith, T17 operations Manager, receiving the cheque from Dan, Totley Co-op store manager, and Stephanie Huang, Co-op Community Liaison

Rotary Club of Abbeydale – Pitchfork Party

Transport 17 once again supported the local Rotary and Inner Wheel Pitchfork Party held at the start of December, 2023, transporting two full buses of passengers to the event. Providing this transport enabled those older, isolated members of the community to attend, allowing them to benefit from the social contact, and the pleasure of eating a meal with others. Back in the mid 1960's a Dore resident Mr Ralph Pitchfork, was a leading Rotarian in South Yorkshire. He owned a confectionary business in the City with his colleague Mr Dickson, and was a member of the relatively new Rotary Club of Abbeydale. On their deaths the Dickson/Pitchfork Trust was set up and each year donations are made to local Rotary and Inner Wheel Clubs. For over 30 years the Rotary Club of Abbeydale has used its grant to entertain older and vulnerable people to both a summer and a winter afternoon tea party. A meal is served and entertainment provided with most of the attendees coming from the Dore, Totley, Ecclesall, Millhouses area.

Christmas Fayre

Thank you to all those who helped to make the Transport 17 Christmas Fayre such a success - the individuals and businesses for their generous donations, and the fantastic volunteers who lent a helping hand. Over £1,200 was raised for the organisation. We may not have had the chance to personally thank everyone or say a proper hello on the day but every contribution and effort put in didn't go unnoticed. A big thank you to the new management team at the Cross Scythes for hosting the event, and providing the refreshments.

2024 – A Year of Celebration

This year sees the 40th anniversary of the start of Alan Jockel's vision becoming a reality, with a local charitable organisation using accessible minibuses to enable older and vulnerable members of the community to get out and socialise with others. Being able to get out, chat with people, and eat a meal in the company of others has a hugely positive impact on an individual's health and emotional well-being. We are privileged to still be running the service 40yrs later, with the ongoing support of local individuals and community organisations.

We are planning a celebratory event on Saturday, 23rd March, venue to be confirmed, and would like to invite you all to attend. Plans are progressing and we can confirm that music will be provided by the Seven Hills Jazz Band, and the Lord Mayor will be opening proceedings and celebrating with us. We would like to put together a display illustrating the history of Transport 17. Please get in touch if you have any photos, memories, or general information about the organisation, the buses, or the building where the office is based on Baslow Road, that you would be happy for us to include. We look forward to finding out more about the history of T17 in the process, and thank you in advance.

We can be contacted on 0114 236 2962, by email at admin@transport17.co.uk, or via our Facebook page – Transport17Ltd



TRANSPORT 17 VOLUNTEERS NEEDED

Providing group transport for older people
who wouldn't otherwise get out



volunteerco@transport17.co.uk
Tel: 0114 236 2962
www.transport17.co.uk
Totley, Sheffield, S17 4DR

[f](https://www.facebook.com/Transport17Ltd) [i](https://www.instagram.com/Transport17Ltd) [t](https://www.tiktok.com/@Transport17Ltd) [y](https://www.youtube.com/Transport17Ltd) Transport17Ltd

WEDNESDAY COFFEE

10.30am to 12 noon
Coffee, Chat and Knitting

1st Wed of Month : Carers' Cafe

ALL WELCOME



Dore and Totley United Reformed Church

Totley Brook Road

www.doreandtotleyurc.org.uk

Ladies Tuesday Group

Dore Methodist Church Ladies Tuesday Group, Sheffield, celebrated their Diamond Jubilee at their Christmas event on December 12th. Following a short carol service, festive entertainment was led by Jimmy McWilliams and John Bailey followed by a delicious buffet. This culminated in the cutting of a special cake to mark the occasion.



Cutting the cake: long standing member Val Edwards and President Janet Tomlinson

The Ladies Tuesday Group began in 1963 as the Young Wives and has gone from strength to strength. In recent years, the Tuesday Group and Wives Fellowship have merged and ladies from other churches and other new members have joined for the afternoon meetings making a current membership of 41. All ladies are welcomed into the fellowship.

60 years of interesting speakers, thousands of pounds raised for local charities but more than that, a place for fellowship, laughter and catching up with friends over a cup of coffee. Long may it remain at the heart of village life in Dore.

JUMBLE SALE

I am a Y11 student at King Ecgbert School and all profit will go towards my volunteer expedition to Borneo with Camps International to improve life in the jungle, for both people and the environment!



Totley Rise
Methodist Church

Saturday 9th
March

11:30-13:00

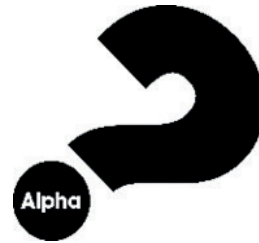
Adults and kids clothes
Adults designer rail
Shoes
Bric a brac and toys
Books



A New You for 2024? - Alpha @ S17

"Come to me all who are weary and burdened, and I will give you rest" Matthew 11:28

The beginning of any year is a natural time for reflection for all of us. By the time you are reading this, you may well have already let slip some of the more traditional New Year resolutions which revolve around the likes of exercising more, drinking less, etc.



But how about something far more powerful, enduring and fulfilling – the opportunity to explore questions such as 'Is there more to life than this?', 'Why am I here?', 'How does God guide us?', and 'How does a living relationship with Jesus change things?'

Alpha is a series of group conversations that freely explore the basics of the Christian faith in an open, friendly environment. Everyone's welcome. No matter what your background or beliefs, you're invited – and it's FREE!



Alpha brings together people from all walks of life who are curious about life's big questions. Each session starts with some time to eat, relax and get to know your group. We then cover a different topic, either in a short talk or video. They're about thirty minutes long and explore the big issues, unpacking the basics of Christianity. You have the opportunity to share your thoughts on the session's topic if you wish to, and listen to others and discuss in your small groups. It's an open and welcoming environment, no matter what your opinion.

As part of a city-wide programme, the S17 churches are hosting Alpha and praying for all those who are curious enough to wish to explore.

More details and how to book can be accessed via tryalphasheffield.org.uk or by scanning the QR code above. It is free – no charge! (Booking a place kindly helps with our planning & catering).

Dip a toe in: if you didn't make the launch in January or the first session, still feel free to come along – we are meeting every Wednesday evening at the Community Centre in Dore from 7pm (the last session is on 20 March).

If you, or someone you know, may be curious about exploring faith and the big questions of why we are here, or even rediscovering and deepening faith, Alpha could be the answer to a new you in 2024.

David Fletcher, English Martyrs, Totley



Totley Swift Group

As we eagerly await the return of our Swifts to S17 in early May we can look back with a great deal of pleasure regarding the successes we have had in 2023. With all the Swift nest boxes we have erected around the village over the last three years it was thrilling to know that a pair of Swifts had returned to a box on a property in The Grove.

The birds are site faithful and are known to come back to the same nest site year after year. And on this occasion, it was not only seeing the birds enter the box and having to assume they were nesting and not just roosting together, but this box had been fitted with a camera inside so positive proof of nesting was established.

We then heard that a nest box on another house on The Grove was occupied by Swifts and yet another box on the same road was being regularly checked out by 'bangers' - an apt name for young Swifts that inspect a potential nest site by flying up to it and gently touching it in flight. Sometimes these birds will alight and peer into the nest box. These birds are normally two or three years old and are prospecting for a nest site. The real hope is that they will return to that nest site the following year if they survive the massive migration they undertake to Africa. There and back, overwintering there, never landing in all that time - quite remarkable.



We always tell residents when they enquire about having a box fitted that getting Swifts to take to a box must be regarded as a long-term project. We have always hoped that once these younger birds start choosing a nest box and then nesting in it, their young will return and seek out a similar nest box. It is great that currently we still have quite a good population of Swifts in and around the village using gaps in brickwork or under gutters to nest. Nationally Swifts have declined dramatically over the last twenty years and we know they have declined in Totley over the years, but we are hoping that by providing all these new nest sites by way of erecting over 150 nest boxes so far, we will see our Swift population stabilize and eventually increase.

Further evidence that our boxes are working is that we know Swifts have been using a box on Totley Hall Lane and a pair have also been seen showing interest in the box on the house next door to that. In addition, a box fitted in Dore has proved successful in attracting Swifts. Swifts are communal birds; they like other Swifts nesting alongside, which is why we have fitted a lot of dual-chambered nest boxes. We are just hoping that this is the start of things to come for these lovely birds using our boxes around the village. It will be a special reward for all the local people who have supported this project.

If you are interested in purchasing a Swift box and having our group arrange the fitting then please contact totleyswifts@outlook.com and we will be pleased to do a site visit and have a chat with you. If you are interested in reading more about our work have a look at the Totley Swifts Facebook page. You will see there the idea of having fitted in a property, house bricks that are specifically designed for Swifts to nest in. These bricks are certainly worth considering if you are having a new build, house improvements or a house extension. You can even have Swift bricks retrofitted in your property, one

brick out and a Swift brick in; we can put you in touch with someone who is specializing in this work if you are interested.

A further success last year was our evening walk around the Laverdene estate in the summer to watch the Swifts performing overhead - an open event that local residents thoroughly enjoyed. Laverdene is the hotspot for Swifts, where you can experience up to 40 birds flying high overhead and some flying low over the roof tops screaming or flashing by silently when entering a nest hole. It can be a real spectacle, so we will be organizing another walk this year at the height of the Swift breeding season. Please keep a look out for the event date.

Our work surveying the distribution of Swifts in Totley, Dore and Bradway will continue so if you are interested in helping us, please get in touch - the more eyes the better! We try to establish how many Swifts are flying over houses in S17 and where, so if you are aware they are flying low over your house or are entering a nest box on your property or a property near to you, we would love to hear from you. Please do not assume we know all the sites in S17! We are also very keen to learn if there are any House Martins nesting in the area too: they are the birds that build a cup shaped nest under the gutters but again there has been a big decline in the numbers nationally.

As we await the arrival of the first wave of Swifts in Totley in May (if not before) you can visit the Sheffield Swift Network website for more information relating to this iconic species.

The photo is of just one of many Swifts that have been picked up and handed to Chet Cunago for rehabilitation over the last two years. Chet is one of our committee members and does a great job caring for and hand-feeding these birds before they are fit and strong enough to be released back into the Totley sky.

Chris Measures

Friendship Lunches

The 'Music Makes Memories' Friendship Lunch at the Crosspool Tavern, which was the first such event in Sheffield 8 years ago, continues to be a huge success. The 'dementia friendly' event comprises a delicious two-course standard carvery and live entertainment. Tickets are just £10.99 and must be booked in advance by contacting the venue. The event is held on the second Monday of every month. The dates for the next two events are Monday 12 February with Joseph O'Brien & Monday 11 March with Oliver Harris. Joseph and Oliver are two amazing performers. The photo shows Oliver with two regular guests, Joyce Goodison (95) and Michael Harrison (80).



The Friendship Lunch at the Ball, Crookes, is held on the first Tuesday of the month and at the Greystones on the second Tuesday. The Shepley Spitfire is being taken over by Greene King and is to be refurbished. We are hoping that the event there will continue as it has been a huge success since its launch two years ago.

We are all extremely grateful to Age UK Sheffield, People Keeping Well and Sheffield City Council for their support with these events. For a full list of all the Friendship Lunches across Sheffield, please contact Kathy Markwick, Freelance Community Consultant, 0772 9528844.

Kathy Markwick

TOTLEY & DISTRICT DIARY

MONDAYS	AGE UK FITNESS Dore & Totley United Reformed Church, 1.30-2.30 pm. Contact Jo Woodward 250 2850 GUIDES , All Saints Church Hall, 6.45pm-9pm SLIMMING WORLD Totley Rise Methodist Church, 5pm and 7pm. Call Sarah on 07577 070797
TUESDAYS	PILATES The Old School, Dore, 9.30-10.30am. Phone Sally Kilner 07917 762502 TOTLEY OPERATIC AND DRAMATIC SOCIETY (TOADS) meets 7.30pm to 10pm, in the Guild Room, St John's Church, Abbeydale Road South. For more information call 0114 2351206 BABY TIME Totley Library, Tuesday 1.30-2.15pm (term-times only). Come along to meet other parents/carers and babies. We sing simple songs, have fun and allow time to chat SHEFFIELD MARQUETRY GROUP 10am-12noon, St Oswald's Church Crypt, Bannerdale Rd. Small friendly group - beginners welcome. For information phone Graeme 07947 127909 or Pat 0114 2819915 KNIT, NATTER, CRAFT & CHATTER Totley Rise Methodist Church, 12 noon-3pm JAZZ IN THE AFTERNOON 1.30-3.30pm, Totley Rise Methodist Church Schoolroom. A weekly afternoon of all forms of recorded jazz, plus discussion. Tea, coffee and biscuits available YOGA CLASS 1.15 - 2.45pm at Dore and Totley United Reformed Church. Contact Rachel (qualified level 4 BWY teacher) 07708 996984 or yogaq@hotmail.co.uk WELCOMING PLACES COFFEE MORNING open to all, Totley Rise Methodist Church, 10am to 12 noon TAI CHI Dore and Totley United Reformed Church 4-5 pm. Contact Bernice on 07999 617387
WEDNESDAYS	PILATES CLASSES Dore & Totley United Reformed Church, 9.00-10.00am and 10.15-11.15am. Contact Caroline tel: 0781 722 0324, email Carolinenorth1@me.com, www.pilatescarolinenorth.co.uk CARERS' CAFE MONTHLY Dore & Totley United Reformed Church 10-11.30 am. Contact Jan Outram 0114 278 942 COFFEE IN THE LIBRARY 10.30am-12.30pm. Come and have a coffee and a chat STORY TIME for toddlers and pre-school children at Totley Library from 10am - 11.30am (except school holidays). Children can take part in weekly themed craft activities, sing songs and listen to a story. £1 donation per child greatly appreciated TODDLER GROUP 10am-11.30am, All Saints' Church Hall. Details tel. Liz Hayden 07969 826464 HEALTH WALKS 10.30am, meet at Totley Library. Contact Step Out Sheffield on 07505 639524 or email stepoutsheffield@gmail.com YOGA CLASS 6.30 - 8pm at St Johns Church Hall Totley. Contact Rachel (qualified level 4 BWY teacher) 07708 996984 or yogaq@hotmail.co.uk
THURSDAYS	RHYTHM TIME Baby, toddler & pre-schooler music sessions 9.00-11.30 Details Email: beth.w@rhythmtime.org Phone/WhatsApp: 07748 589468 To book: https://rhythmtime.net/find-a-class ROCKCHOIR United Reformed Church, Totley Brook Rd, 11.30-1pm. See www.rockchoir.com or call 01252 714276 CHAIR AEROBICS Totley Library, 12-12.45pm with Laura. An Age UK and People Keeping Well weekly exercise class. £4 per week, no need to pre-book, just turn up. SOCIAL CLUB Dore and Totley URC fortnightly 2.30-4.30 pm Contact Alison Holden for information 236 0441 PUSHCHAIR CLUB Totley Rise Methodist Church Hall, 10.30-12noon. Tel. 07912 352543 for details PILATES CLASS run by qualified Pilates Instructor/Physiotherapist for all abilities and ages. 1.30-2.30pm, 5.15-6.15pm and 6.15-7.15pm at the United Reformed Church, Totley Brook Road. Call Emer on 07792 422909
FRIDAYS	PILATES The Old School, Dore, 9.30-10.30am and 10.45-11.45am. Phone Sally Kilner 07917 762502

FEBRUARY

SUN 11th FRIENDS OF GILLFIELD WOOD Practical Conservation session. For details see FOGW website.
WED 14th TOTLEY PROBUS CLUB 10am in Room 1, Totley Rise Methodist Church. Talk by Andrew Beard entitled "Build a boat and sail away". Guests are always welcome - we are always looking for new members.
SAT 24th TOTLEY LITTER PICKING MORNING 10-11am. Equipment provided. This activity is done at participants' own risk. Children must be accompanied by an adult. Meet Baslow Rd, outside Totley Library. All welcome.
WED 28th TOTLEY HISTORY GROUP, talk by Val Hewson, "Victorian Pioneers: Sheffield's First Public Libraries Part 2", 7.30pm, Totley Library. Non-members welcome.

MARCH

SUN 10th MINIATURE TRAIN RIDES 1pm - 5pm - Abbeydale Road South. £2 per ride per person. Car park closes 5pm. See www.sheffieldmodelengineers.com
SUN 10th FRIENDS OF GILLFIELD WOOD Practical Conservation session. For details see FOGW website.
WED 13th TOTLEY PROBUS CLUB, 10am, Room 1, Totley Rise Methodist Church. Talk by Peter Stubbs entitled "Thoughts on Crime, Courts and Capital punishment". Guests are always welcome - we are always looking for new members.
WED 20th DORE GARDEN CLUB Talk by Mairi Longden, Tislington Nursery, "Route to an RHS Gold Medal". Dore Methodist Church, 7.30pm. Visitors £4 at the door.
SAT 23rd TOTLEY VINTAGE AND ARTISAN FAYRE 10am - 3pm, St John's Hall, Abbeydale Road South, S17 3LE. Admission £1.
SUN 24th MINIATURE TRAIN RIDES 1pm - 5pm
 Abbeydale Road South. £2 per ride per person. Car park closes 5pm. See www.sheffieldmodelengineers.com
WED 27th TOTLEY HISTORY GROUP, talk by Martin Rowley, "Sheffield Gang Wars", 7.30pm, Totley Library. Non-members welcome.
SAT 30th TOTLEY LITTER PICKING MORNING 10-11am. Equipment provided. This activity is done at participants' own risk. Children must be accompanied by an adult. Meet Baslow Rd, outside Totley Library. All welcome.

If you have any local event which you'd like to let people know about, please send details to *Totley Independent* (copydates are on the back page) and we'll do our best to include the information in this Diary!

The Fletcher Family invites
you to

The Grouse Inn

Longshaw

Sheffield S11 7TZ

Meal times:-

Mondays 12.00 to 2.30pm

Tuesdays to Friday's 12.00 to 2.30pm and

6.30pm to 9.30 pm

Saturdays 12.00 to 3.00pm and

6.30pm. to 9.00pm (drinks - open all day)

Sundays 12.00 to 9.00pm

Phone 01433 630 423



Totley Pharmacy

**Your local independent pharmacy
serving you for 26 years.**

24/7

prescription collection

Call: 0114 236 1070



Twelve Trees

Always there to care

FAMILY RUN, AWARD WINNING, PREMIUM HOMECARE SERVICE

Twelve Trees is an innovative Homecare provider operating from our offices in Nether Edge. We offer something unique to our clients by providing bespoke care packages designed to meet your care needs. We are proud to have been providing care for the elderly for over 25 years.

WE PROVIDE

Household & Domestic
Companionship
Personal Care
Mobility Care
Respite
Specialist Care
Day Care
Overnight Care
Hospital Discharge
Transport Service

MEALS ON WHEELS

We offer nutritious and delicious home-cooked meals freshly prepared at our award winning residential care home, delivered to your door with a 30 minute care call.

CONTACT US

Twelve Trees Homecare Limited,
Suite 9, Cherry Tree Business Centre,
Sheffield, S11 9EF
Email: admin@twelvetreescare.co.uk

0114 349 7837
www.twelvetreescare.co.uk



Scrivens Quality Greengrocer

Free delivery service available 6 days per week

Mark Billingsley - Owner 37 Baslow Road
Home Delivery - 0114 2367116 Sheffield S17 3DL
Trade Enquiries - 07885 866376 scrivensyou@gmail.com 

Oven Wizards®

We clean your oven...so you don't have to

Call today to have your oven, hob, extractor or Aga professionally cleaned by Pippa Weir! Pippa's contact details are:
Tel 0114 258 3466 or mobile tel. 07716 992648
www.ovenwizards.com

Editor: Phil Harris
Tel. 07956 858944 or email:
editor@totleyindependent.co.uk

Advertising: John Perkinson
Tel. 236 1601 or email:
advertising@totleyindependent.co.uk

Proof reader: Margaret Spencer

We welcome items submitted for publication, which may be left at or sent to 'Totley Independent', 2 Main Ave, Totley, Sheffield S17 4FG
www.totleyindependent.co.uk

Printed in the UK by
The Magazine Printing Company
using only paper from FSC/PEFC suppliers
www.magprint.co.uk

'Totley Independent' for April/May

The next issue of the *Totley Independent* will be published on

Saturday 30th March
COPY CLOSE DATE for this issue
will be
Saturday 9th March

Published by Totley Independent CIC. Totley Independent is a registered Community Interest Company, number 07750166. We welcome letters about local affairs and will publish as many as possible. Items will not be considered that are submitted anonymously. The views expressed are not necessarily those of the editor or the editorial staff and must not be attributed to them. © Totley Independent 2024