

# TOTLEY INDEPENDENT

PUBLISHED BY THE TOTLEY RESIDENTS ASSOCIATION SINCE 1977

JULY/AUGUST 2007

No. 305

15p.



Totley Tunnel, one of the longest tunnels in the country at 3 miles 950 yards long (5.6Km), 22 feet 6 inches deep with a span of 27 feet. It is over 700 feet under the moors and the western end emerges at Grindleford (Padley Wood).

## In the Beginning

**Who remembers the 1 July 1977, Totley Independence Day?**

Yes it is 30 years ago.

The venue was Green Oak Park. It was not only the launch of Totley Residents Association but also the first sight of the Totley Independent.

The event was to revive the old Totley Village Sports Night, which had been held in the field that is now Totley Primary School.

It really was quite a spectacular event with hot air balloons, a fly past by Totley Airforce, a brass band, stalls, races and refreshments.

It did not rain that year, but it certainly did in the following years!

The event was organised by Brian Edwards and his team, it really did bring the Totley community together and Totley Sports Night became an annual event with Les Firth and Barry Catton continuing the good work.

Totley Sports Night moved from Monday nights in Green Oak Park to Sunday afternoons at Totley Bents Recreation Ground, next to The Cricket Inn, where it ran for several more years. The last event to be held at Totley Bents was to celebrate the centenary of Totley Tunnel in 1994.

However, times change and Totley Sports Night came to an end. But to celebrate the 30 years of Totley Residents Association a major community event is back to its roots, Green Oak Park and the little acorn has grown into something that Totley can be justly proud of.

Let's keep up the good work for another 30 years.

Mike Williamson

## Totley Residents Association Update

The Totley Festival has been arranged so the whole Community can come together, to have fun and celebrate 30 years of Totley Residents Association.

It didn't just happen; it has taken many hours of work from the Festival Committee.

TRA Committee Members, Marlene Marshall, Janet Chapman, Betty Higgins, Jennie Street and myself were joined by representatives from Cherry Tree, Activity Sheffield, Local Youth Workers, Sheffield Futures, Totley All Saints Church and Totley Rise Methodist Church.

Together we have spent many hours in meetings, on site visits, on computers and on the phone, putting together an event with something for us all.

We hope everyone young and old will enjoy taking part, having a chat with old friends and meeting new ones.

Our theme of Active Living has given us the opportunity to try out new ideas, new foods, listen to the music and to take part as a family in the games and activities.

Don't forget to buy the Totley Revisited Calendar, put together by Duncan Froggatt, Brian Edwards, Marlene Marshall and myself.

I would like to say a Big Thank You to all who worked before hand and to those who volunteered to help on the day, to make our celebrations a success.

May I wish the Community a healthy and restful summer.

I look forward to seeing you all at our next Community Event, Totley Show on 15th September.

Avril Critchley

Chairman TRA

## TOTLEY FESTIVAL

Totley's biggest event  
ever on

**Sunday 1<sup>st</sup> July**

1.00-5.00 pm

in Greenoak Park

to be opened by the Lord Mayor

Something for everyone - active living activities, craft stalls, climbing wall, Sports Van, U3A, family competitions, brass band, Battle of the Bands, barbecue, grass boarding, Bike Rodeo, Children's Corner, talks, health care taster sessions, Salsa dancing, plastic bag knitting, speciality foods and drinks.

More details from: 236-1568  
avril.critchley@btopenworld.com

## Totley Open Gardens

Saturday 14<sup>th</sup> and  
Sunday 15<sup>th</sup> July

2-6pm

*Come and visit 14  
Totley gardens and  
allotments open to  
the public*

*Entry by programme only, available  
from Totley Library before 14<sup>th</sup>, or from  
outside Busy Bee shop, 170 Baslow Road  
on 14<sup>th</sup> and 15<sup>th</sup>*

*Afternoon tea available and plants  
for sale in some gardens.*

Enquiries to 236-2302 or Jennie@hadish.f9.co.uk



## Dore Festival 2007 Sunday 1st July - Sunday 15th July

Sun 1st	<b>Village Gardens Open Day</b> 2pm-6pm
Mon 2nd	<b>Preparation of Village &amp; Guide Well</b>
-Fri 6th	<b>Dressing Scout HQ</b> Rushley Road, visitors welcome
Mon 2nd	<b>Local Walks</b> arranged by Dore Village Society
-Sun 15th	- see village notice board for details
Tues 3rd	<b>Dore Ladies Group</b> - Bradwells Ice Cream
	Dore Church Hall 7.45pm Visitors welcome
Sat 7th	<b>Coffee &amp; Church Open Morning</b> Dore
	Methodist Church 10am - 1pm
	<b>Guide &amp; Village Well Dressing erected</b>
	10am Dore Village Green
	10am Devonshire Terrace
	<b>Summer Concert</b> Dore Gilbert & Sullivan
Sun 8th	Society, Church Hall 7.30pm Tickets: 236 2299
	<b>Well Dressing Service</b> Village Green 3pm
	<b>Afternoon Cream Teas</b>
	Methodist Church Hall 3 - 5pm
Mon 9th	<b>Family Fun Run</b> Dore Rec 7pm
	<b>Lord Conyers Morris Men</b>
	Devonshire Arms 8pm
Wed 11th	<b>Open Air Theatre</b> 'Pride & Prejudice' by
	The Company, Village Green
	7.30pm Interval Collection
Thurs 12th	<b>Open Evening</b> Dore Male Voice Choir & Dore
	Mercia & Totley Townswomens Guild Choirs
	Invite you to Dore Church Hall 7:30-9:30pm
	No ticket required Collection for Charity
Fri 13th	<b>The Walker Brothers Jazz Band,</b>
	Dore Parish Church 7.30pm
	Tickets £5 including wine Tel: 236 0002
Sat 14th	<b>Annual Gala</b> Recreation Ground, 2pm
Sun 15th	<b>Festival Songs of Praise</b>
	Dore Parish Church 6pm

# TOTLEY SHOW SATURDAY 15th. SEPTEMBER. TOTLEY PRIMARY SCHOOL

**9.30- 11.00 am ENRTANTS REGISTRATION**  
**11-00 am. JUDGING OF ENTRIES**  
**1.30 pm. DOORS OPEN**  
**2.00 pm. OFFICIAL OPENING**  
**3-30 pm. PRIZE GIVING followed by**  
**AUCTION of donated entries.**

Entry forms available from:-

THE IRON PARLOUR

ROSIES

TOTLEY RISE POST OFFICE

Entry forms to be available at the above from the beginning of August.

Could anyone wishing to have a charity stall at the show, please contact Les at "lesanddotfirth@talktalk.net or 2364190 or 6 Milldale Road, S17 4HR

Les Firth



## ***Transport 17***

We would like to thank everyone who has supported us, physically or financially, so far this year. Hopefully they will carry on the good work until December!! We have had a few problems with our oldest bus, so we are even more determined to replace it as soon as we can. This will need at least £40,000. If Michael did not look after our buses as well as he does, we would not be able to keep them as long as we do.

One of our helpers was taken ill recently. Many thanks to the staff at Dore Pharmacy for their kindness and for calling the ambulance.

Transport 17 will close on Friday 10th August, when our last passenger is delivered to their door. We re-open on Wednesday 29th August. This gives the clubs, their helpers and our staff a chance to catch up with our families, gardening and, possibly, looking after grandchildren. On that subject we would like to congratulate John Savournin, our Treasurer, and his wife Judy on the birth of a grand-daughter called Eleanor Rose.

Take care all of you. Support all the local events. Many people are working hard to make things pleasant and enjoyable for us in this area.

Margaret Barlow

## **30 Years Later – 1977 to 2007**

It does not seem like 30 years ago that a few of us got together and were talking about setting up the Totley Independent led by our first editor Brian Edwards. We had a good working committee with some keen budding reporters such as Jeremy Watson, Caroline Parsons, Felicity Crowther and Kathy Wilkinson to name a few.

After the magazine was printed we used to get together in each others houses to fold and collate the magazine ready to deliver to the shops the next day. The first few months it was delivered on a push bike by Geoffrey Nixon before being taken over by me to deliver but not on a bike. Further copies were delivered around the Green Oak flats by Harry Woofinden to people unable to get out to purchase it.

It has been my pleasure to work along with all the past editors, Mike Williamson, John Butterworth, Maurice Snowden, Les Firth and now Ian Clarke. Over the past few years it has been down to the editor and me to collect information and advertisements as well as distribution and collecting in the revenue etc.

On behalf of The Residents Association and Totley Independent I would like to thank all our contributors and all our local businesses who have advertised with us. Some such as John Heaths, Totley Private Hire and Totley Hall Farm have been with us for most of the 30 years. Also, thanks to the local shops and pubs and the library who have sold the magazine all these years.

I would also like to thank the staff at Starprint who have done a good job and looked after us with their excellent service.

So 30 years on we are still distributing around 900 copies 10 months a year to shops, pubs, the library, some local houses and flats and quite a number are posted each month to people who have left the area but are still interested in what goes on in Totley.

We welcome any articles of local information, letters or any old photographs of the area that we could borrow to copy and then return.

John Perkinton

## **SBS**

### **Schofield Building services**

**Kitchen & bathroom fitting**  
**building maintenance**  
**No job too small**

**Ring for free quote:**  
**Matt: 07949 299083**  
**Dan: 07932 743878**

## **Councillor Surgeries**

### **Conservatives:**

4th Saturday of each month 10.00 to 11.00 am Dore Village Society room, Dore Old School, corner of Vicarage Lane and Savage Lane, Dore,. Contact details: telephone 273 4108 Email: anne.smith@sheffield.gov.uk

### **Liberal Democrats:**

2nd Monday in the month 6.00-7.00 p.m., Totley Library, Baslow Road and 2nd Saturday in the month from 10.30 a.m. to 12.00 noon, Dore Old School Hall, Savage Lane, Dore Contact details: telephone 235 2289 Email: keith.hill@sheffield.gov.uk or mike.davis@sheffield.gov.uk

## **TOTLEY RESIDENTS ASSOCIATION WEBSITE**

**www.totley.org.uk**

## Thefts at the Scout Hut (II)



Many of you will have read about the mindless Thefts and Damage at the 215th Totley Beavers Hut on Aldam Road. None more so than the Local Bobbys for Totley, PCs Wadsworth and Spencer, who are regular visitors at the Hut. Anyone with information can contact them on 0114 2963681. The officers in addition to investigating the crimes took it upon themselves to try and replace bird boxes, tables, plants etc so that the Beavers Wildlife garden could be restored. The officers approached local shops and stores and received an overwhelming response with donations to the Beavers. The officers would like to thank Abbeydale Garden Centre, Dore Garden Centre, and Mr Elliott of Valley Wild Bird Supplies (whose wife Lisa works at Synergie), B & Q, and Sainsburys for all their contributions.



During a fun evening of presentations and activities the Beavers Leader Miss Faye Catton said....OUR LOCAL BOBBYS ARE THE BEST, THEY ARE SHINING STARS WE CANT THANK THEM ENOUGH AND TO THE LOCAL BUSINESSES WHO HELPED OUT THANKS ALSO. THE BEAVERS WERE REALLY UPSET BY THE DAMAGE AND THEFTS BUT THIS HAS PUT A SMILE BACK ON THEIR FACES.

## Can you help?

Can anyone throw any light on a problem I am trying to solve? Back in the early 1930s I understand the people of Totley made a regular subscription for the upkeep of Green Oak Park. Does anyone remember their parents talking about this or who was in charge of looking after any monies. Also, was there any documentation regarding this. I should be very interested to know. I can be contacted on 0114 2351005.

Mrs Marlene Marshall

## TOTLEY AND DORE SUPPORT GROUP FOR THE VISUALLY IMPAIRED

Resulting from a debate at our May meeting, we shall not be recommencing after the August break. So our final meeting will be on July 19th. We look forward to seeing you then.

Best wishes, Pat and John



The next Bakewell Show will be held on Wednesday 1st and Thursday 2nd August 2007.

Bakewell Show is a celebration all aspects of farming and rural life, from the best of British livestock to the latest business and technological innovations.

Set in the picturesque Wye Valley, the event offers the perfect day out for the whole family, with the very best of shopping, food, flowers, crafts, country pursuits, equestrian competitions and arena displays.

As usual this year we will be featuring Horse of the Year Show qualifier competitions and we also boast a premier status dog show.

Bakewell Show has something for everyone and it really does provide a full days entertainment for all our visitors - around 65,000 of them over the two days.

2007 will mark the 177th anniversary of Bakewell Show - Derbyshire's premier agricultural and horticultural event.

T: 01629 812736 F: 01629 813597

W: [www.bakewellshow.org](http://www.bakewellshow.org) E: [info@bakewellshow.org](mailto:info@bakewellshow.org)



**King  
Egbert  
School**

Headteacher  
Mr Bob Evans B.Sc.  
Totley Brook Road,  
Sheffield, S17 3QU

Telephone  
(0114) 235 3855  
Facsimile  
(0114) 236 2468

E-mail  
[enquiries@ecgbert.sheffield.sch.uk](mailto:enquiries@ecgbert.sheffield.sch.uk)  
Website  
[www.ecgbert.sheffield.sch.uk](http://www.ecgbert.sheffield.sch.uk)

### Community Education Programme

Over the next 12 months, King Egbert School are offering the following courses for the community:-

#### Touch Typing



Gain a recognised qualification in typing, and learn how to type with more than two fingers!

#### Computing



Gain an internationally recognised computing qualification with the ECDL course

#### Beginners ICT



Learn the basics of computing - suitable for those with little or no computing experience

#### Intermediate ICT



Learn more advanced aspects of computing such as photo editing

For more information, please contact Mr A Gibson



0114 2353855

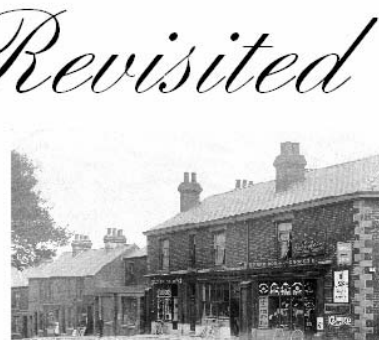
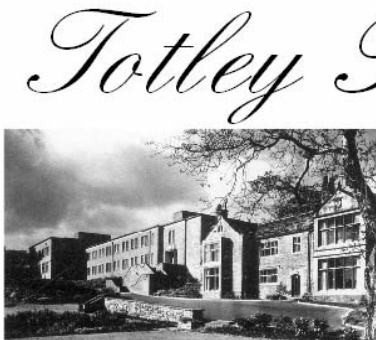


[enquiries@ecgbert.sheffield.sch.uk](mailto:enquiries@ecgbert.sheffield.sch.uk)



[www.ecgbert.sheffield.sch.uk](http://www.ecgbert.sheffield.sch.uk)





# Totley Revisited

## Calendar 2008

The 'Totley Revisited' 2008 calendar contains historic photographs of Totley and the contemporary views. It will go on sale at the Totley Festival at a bargain price of £3.99. For people unable to get to the Festival on 1 July it will be available after then from Totley Rise Post Office and Totley Library.

## Fundraising champion

Mickley Hall Leonard Cheshire Services Sheffield is recruiting a volunteer fundraising champion to support us in the following ways:-

- Take a lead in planning and organising events to raise money
- Attend meetings with regional fundraising manager
- Put forward ideas to committees on funding

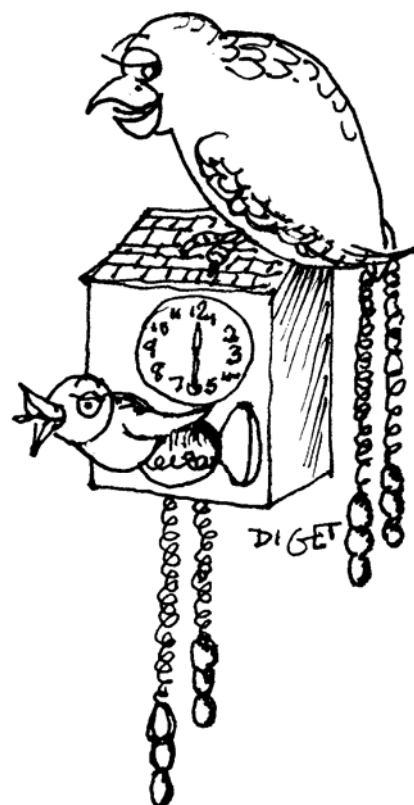
It is important that you are committed, friendly and creative and have leadership skills. This role would ideally suit someone with a professional background or who has done work that involves planning and coordinating.

All volunteers receive expense costs, training, support and the chance to meet new people whilst doing something fun.

This role is not about sales or asking for money. It is about building relationships within the community which in turn leads to support for our organisation. All money raised will benefit service users at Mickley Hall.

If you are interested please call Stacey or Gwen on 0114 2369952 or write to:-

Mickley Hall  
Mickley Lane  
Sheffield  
S17 4HE



WHILST LIVING IN TOTLEY  
MY MOTHER FELL IN LOVE  
WITH A CUCKOO CLOCK!

## OLD TOTLEY by Jo Rundle

England had been very reluctant to follow the lead of France and Germany to provide free education, regarding it to be entirely the responsibility of voluntary or private enterprise, as was the first school in Totley in 1827, which was built on land given by D'Ewes Coke owner of Totley Hall after much discussion and consideration of various sites. Today one of the sites, the sic in Moss Road on the edge of the moors, was considered at the time as most unsuitable, but at the time the thriving community in the Bents must have had legitimate reasons for consideration. However, money and rents from land donated by 17 local dignitaries had been mounting during the last century and D'Ewes Coke's offer of a free site in Hall Lane appears to have been the decisive factor, and in 1827 Totley children had their first school for which their parents paid the price of 2d. per week. From the directory of 1841 'The School has £6. per year partly from land allotted as an enclosure, soil belongs to various owners'. 'Soil' referring to the land from which the rents were donated by various dignitaries (an earlier record in 1821 states). 'Partly from an endowment'; the School had no affiliation to any other Society, and was known throughout the 19<sup>th</sup>C as The Totley Independent School.

For some time the State had hoped that the Church of England, the Catholics, the Nonconformists and other dissenting churches would join in an effort to provide a national system of voluntary education, but discordant views prevented such a move, and two voluntary societies were created, one by the Catholic Church, the other by the dissenting societies, together known as The National Societies. In 1829, two years after the opening of the private school in Totley, the Catholics, recently liberated from restrictions, were able to build their own schools, but the Church of England could not raise finances to provide schools for all the growing population and their need for free education. In 1833 state intervention began when the government made a small building grant to the dissenting societies, which, by 1839 were administered by a newly established committee of the privy council, leading eventually to State education.

The Education Act of 1870, stated that every child between the age of 5 and 12 yrs. should have free primary education in schools provided by the Churches or by Boards of Governors elected from local dignitaries, councillors, or other prominent citizens, with one proviso, that the curriculum must allow for ½hr. each morning for religious education from which those other than the established Church could abstain by absenting themselves during that time. The Church of England had been considering the possibility of building a Church in Totley since Totley and Dore had become two separate parishes in 1834, the main consideration as well as the cost of building was the land on which to build it. With the passing of the 1870 Education Act it was possible that if the church did not fund a new school the local dignitaries would be compelled to do so, and an additional tax would be levied for building and for upkeep. This had been the situation at Dronfield Woodhouse that had been separated from Dronfield and become a parish in its own right in 1844 where, although having a chapel they had no Church, nor any desire to have one, the inhabitants were apparently satisfied to attend the Church at Holmesfield. Consequently the new school, paid for by local taxes and opened in 1875 with a Board of Governors, was always known as Dronfield Woodhouse Board School.

Circumstances were different at Totley for the Church of England, having planned for a Church in Totley for many years, it could not afford to build both a Church and a School. Religious Education was already available through the Wesleyan Chapel and a Church School was urgent in order to comply with the new Act to avoid the alternative of a Board School and must have priority. Therefore, the Church was delayed, and a new School was built and funded by the Church of England in accordance with the above proviso, which was later upheld when children from Cherrytree Orphanage, some of whom were Scottish, others from various parts of the Empire, were allowed to attend at 9-30a.m. when the short religious service was over. I recall hearing my parents discussing how the Parish Council, the Church and

other organisations had been involved in building the new Church School, including comments from my youngest Aunt who often spoke of her schooldays when she attended until the age of ten in 1904.

An entry in a Totley Directory of 1875 states, 'Totley School for 140 children, average attendance 28 boys, 27 girls and 20 infants, Miss Louisa Yates and assistant Miss Pattie Yates'. Both sisters had taught at the 1827 School, which was too small for such a high number of pupils, an indication that the old School had closed and the new Church School was in use for two years before the official opening in 1877. The date of the entry was at first confusing, yet it is not unusual for a School or College, or even a business, to delay the official opening for various reasons: South East Northumberland Technical College, (Changed to North Tyneside College of Further Education during the boundary changes in 1974) was opened for students in 1963 yet the official opening by The Princess Margaret was ten years later in 1973. The first entry in the records of the new School states '2nd January 1877 officially opened, New School opened on 4th January. Miss Yates only teacher until January 1878 Martha later in 1878'. An inspection in 1882 refers to Miss Louisa Yates and her sister: another in 1884 tells us that, 'Miss Louisa Yates left, Martha stayed on'. Yet the Census of 1891 tells us that the Residents in the Old Schoolhouse. were Louisa Yates Headmistress, Martha sister 24 assistant mistress, Agnes sister 22 assistant mistress, Ethel sister 15 pupil teacher, Martha Yates 60 Mother: all a bit confusing, yet it appears to confirm my memories of a large painting of a beautiful woman that hung on the wall overlooking the piano in the big room of the School who, we were told, was the first teacher of the Church school Miss Louisa Yates.

For two years before I left school I played the piano every morning for assembly, when Louisa's eyes followed every movement of my eyes above the hymn-book: not the stern face of Hannah Wild whose picture now hangs in that place. My Aunt had spoken about Louisa Yates as an extremely popular Headteacher, who appears to have changed places with her sister Pattie by 1899 just after my Aunt joined the Infants class when the directory states that Miss Pattie Yates was the Head-mistress and Louisa and another sister Agnes were assistants. This partly confirms what my Aunt said, that when she left Totley School in 1904 the Head-teacher was Miss Pattie Yates. These little differences are not very important, except that they tend to dispute the belief that All Saint's School dates back to 1827, when, in fact it was known, at least until the mid thirties, as Totley Church of England School. It has been suggested that because the Vicar of Dore visited the Totley Independent School it was a Church School, when he was simply fulfilling the wishes of the parents.

Throughout the 19th.C and the first half of the 20th.C the Christian Faith was extremely important and, before there were Teachers of Religious Studies as we have today, many Private Schools either took their pupils to the local Church

once a week, or like the Private School at Totley Rise, the local Vicar, in this case St. John's Church Abbeydale, was requested to visit the School and talk to the pupils. The Vicars of Dore, the Rev's Aldred and Gibson were recorded as visiting Totley Church of England School, and Rev. Jermyn Hutton visited once whilst I was a pupil, but they were probably courtesy visits for I don't remember him entering the classrooms nor speaking to pupils. The new Church provided Religious Education, therefore one can only assume that they were courtesy rather than official visits, as the compulsory morning Assembly was always conducted by the Headteacher. In 1928 a suggestion from the Headmaster that the school should have a uniform, resulted in a red beret being chosen for the girls and a black school-cap for the boys, both having a badge on which the word Totley was embroidered above a quartered Shield bearing in the four quarters the letters C of E.S. My brothers refused to wear a cap, as did most of the boys, but I loved my red beret, that cost my Father 1 s-6d. I don't know when the name was changed to All Saint's; I left school in 1929, was Sunday School infant teacher in the infants' room from the age of 16 until 21, when I left to get married in 1936, but I cannot recall the change. To be continued

### St Vincent's Furniture Store

St Vincents's Furniture Store, Sheffield welcome this opportunity to say thank you to readers of the Totley Independent for their kind donations of Furniture, Household Goods, time and money given over the years to help our project survive. Many disadvantaged and vulnerable families have benefited from your generosity. If you would like to know more about our work or maybe volunteer your help in any way or request an information pack to be sent to you, please contact Ralph Dickens on 0114 258 4075 or 07742 918154.

Sheffield  
**LEONARD CHESHIRE**

**MICKLEY HALL CHESHIRE HOME  
WANTED**

**DRIVER**

**6 HOURS PER WEEK (FLEXIBLE)  
- £6.00PER HOUR**

**FOR FURTHER INFORMATION OR APPLICATION FORM CONTACT:**

**SHEFFIELD CHESHIRE HOME, MICKLEY HALL, MICKLEY LANE,  
TOTLEY, SHEFFIELD S17 4HE  
TEL: 0114 236 9952**

### Local History

I am still looking for people who are interested in local history and would like to help set up or join a group to help keep the history of Totley alive. We have an enormous amount of history in this area with a lot of knowledgeable people who could help pass information on to us. So if you would like more information please give me a call on 0114 2351005.

Mrs Marlene Marshall

### Brunsmear Athletic AAFC

**Under 10s 2007/2008 (September Y5s)**

Require new players due to several existing players signing for Sheffield Wednesday FC. For further information contact Andrew Hanson on 0114 262 1303/ 07973 301455

# Fleur De Lys, Totley

**Now Open from 8.00 am  
Fleur Tea Rooms**

✦ **All day breakfast including tea and toast £3.99**

✦ **Selection of fresh sandwiches**

✦ **Homemade cakes and pastries**

✦ **Special introductory offer**

**Sandwich, cream tea only £4.50**

**Bikers and Walkers Welcome**

## Gardening Tips for July/August

It is raining so I thought I would get this article written so that the editor will be pleased to see it early, and I am not going into the garden until it eases up a bit. I have just had delivery of some geranium, they will need potting up soon. I like to have a few new items so that the greenhouse does not get stale looking, there's nothing like having something new to look at. The garden is very colourful at the moment; we seem to have got a nice balance of spring/summer colours, also various shades of leaf colours giving a nice background to the borders and around the lawn. The lawn looks very good, just now it really pays off to give it a good winter/spring dressing of feed and I cut it a bit longer than usual to prevent brown patches forming in the dry spells. The veg patch is coming on OK though I have not got as much in as last year, the pigeons are pecking my cabbages. I suppose we are lucky to have any, Rosie my next door neighbour has just got a few stalks left in her patch, they have eaten the lot! I cannot think of any cure for that except perhaps pigeon pie that means to first catch your pigeon.

Onions are looking good and healthy; they should be up to scratch in time for the show. I hope you are well prepared to bring something along on 15 September; a lot of work goes on behind the scenes by the volunteers so please make a big effort to support them, have a look at the schedule printed in this issue and have a look at the various categories. I shall be doing some cakes and scones (have I told you I am certified) and a bit of photography. My onions should be a fair contender in that class, my marrow at the moment might take a prize in the green radish class if there was such a class. I do not think I gave it enough talking to when I planted it, anyway we shall see, I will give it a bit of TLC and see whether that improves things. I suppose the snails and slugs will be chomping away at things with this nice drop of warm rain, the recent thunderstorm battered a few plants down; they will need staking up asap.

The strefitias (bird of paradise) are still flowering, what a very unusual flower, very exotic with orange and blue petals, it takes them a long time to flower particularly the one I have grown from seed but it is worth trying if you have the time. I am afraid T.M.B. has caught up with me; I will not be planting any more B.O.P. seeds.

The tomatoes are looking healthy. I have a few trusses with small tomatoes on; I usually have a few on my birthday on 13 July (nudge, nudge, wink, wink). Sungold are usually very early and are lovely and sweet. My pond is looking a bit overgrown. I have been told to leave it alone until the autumn before cutting any of this back because of the possibility of the wildlife eggs etc etc but I think I will tidy it up just a bit and watch out for any wildlife that may pop up.

Do not forget to arrange for a garden friend to look after your plants, fish and birds while you are on holiday, there must be nothing worse than coming back to a dried up garden, dead fish and starving birds, also remember that these notes cover July and August so bear in mind when planting things.

### Flowers

Remove any blooms or flower spikes that are so faded as to be no longer decorative. The object is to prevent seed formation which weakens the plant unnecessarily. Unless of course you want some seed for next year then just leave one or two plants for this purpose. Water and feed your plants so they can give their best show and stay healthy. Summer prune wisterias, shorten to about 6 leaves all side growths formed on the main branches. Watch out for the nasties, caterpillar, aphids etc will all be munching or sucking at your plants, deal with them before they get a strangle hold. Tulips, hyacinth and other bulbs will now have completed their growth and may be lifted and cleaned, lay the bulbs in shallow trays and stand them in a cool, dry place but not in full sun, crocuses only need thinning if they are overcrowded, they gain nothing for being out of the ground. Border carnations can be increased by layering, select non flowering shoots that can easily be bent down to soil level, and make an incision with a sharp clean knife through a joint near the base of each then the slit portion of the stem is bent down to open the slit covered with fine sandy soil and held firmly in position with a wooden or wire peg. If they are kept well watered roots will soon be formed late August or early September, the rooted layers can be cut completely from the parent plant and potted up or planted elsewhere. Lightly prune bush and standard roses when the first flush of is over. Cut back to about 2 leaves all stems that have flowered, that have no promising buds on them, give the beds a good dusting of Tonks or other rose fertiliser and hoe this in. July is a good month to plant Madonna Lilies, plant them about 8 inches, 20cm, apart and 2 inches, 5cms, deep, this lily prefers a sunny position in good but not freshly manured soil.

Plant colchicums, autumn flowering crocuses and sternbergias, if you can find supplies, they are rare at this time. At the end of July start to feed chrysanthemums, give small doses every 5 days, the more varied the better. Some gardeners have some disgusting methods of producing the liquid feed, which I would rather not detail, as I have just had

my breakfast, there are quite a number of fertilisers made specially for chrysanthemums, which are not quite so smelly, stick strictly to the manufacturer's instructions.

Take geranium cuttings. Propagate pansies and violas by cutting off the present flowering shoots to within one inch, 25mm, of the roots, cover with a little fine soil mixed with sand and leaf mould. They will produce shoots which will provide cuttings next month. Prune hydrangeas, at the end of August, cut off each faded flower truss as far back as the first plump looking growth bud, and remove any weak looking stems.

### Vegetables

Thin out any vegetable seedlings sown last month, before they become overcrowded. Cut globe artichokes as they become available, do not leave them on the plant too long. Continue to plant wintergreens, by drawing earth up around the stems or wrapping them with a bit of roofing felt or similar. They should be just right for the Totley Show in September. Keep making successional sowings of your favourite veg, turnips (for the last time), lettuce, endive, and summer spinach, choose a shaded spot for these as they will soon run to seed in the summer heat. Have you tried letting a few radishes run to seed? The pod they produce, if picked early, are quite delicious and make an interesting addition to a salad. If you are contemplating sowing more carrots choose a stump rooted variety, they will produce young roots by autumn.

Gather herbs for winter use. Mulch and spray runner beans. Beetroot should be getting big by early August, don't leave them too long as they do not improve with age. Water marrows regularly, this will make them nice and plump ready for the Show. (See the schedule). To help onions ripen towards the end of August bend over the leaves just above the neck of the bulb.

### Trees, Shrubs and Fruit

Cut off and burn and branches of apples and pears, and plums which show any signs of silver leaf, be drastic as it kills your trees. Start to summer prune apples and pears by shortening

side shoots by two thirds. Do not leave the trimming of hedges especially evergreens later than August, or the new growth will be damaged by frost later. July is a good month for taking cuttings from most shrubs, if your strawberries have any mildew or other disease or attacked by greenfly and the beds have been covered by straw, set fire to the straw when you have gathered the last of the fruit. This will burn all the foliage and leave the bed looking rather sad and bare for a week or so, but the crowns themselves will not be damaged and will soon produce healthy new growth. If you are producing runners from the strawberries, do not fire these plants, peg the runners into pots of compost let into the ground by the parent plant, and take no more than 5 plantlets from each parent. Cut off the runners which are not needed. If you have been troubled with codling moth on apples (small creamy grubs) inside the apple, spray insecticide after the blossom has fallen and as the fruitlets form. Kill woolly aphids on apples, it looks like little tufts of cotton wool on branches, brush with methylated spirit into the patches, if it is widespread use a spray of fentrithiolm or similar.

#### Greenhouse and Indoor Plants

As with all the summer months, ventilation and watering are the most important criteria for a healthy greenhouse, so shading particularly the younger plants is important. Pick over plants removing dead or yellowing leaves regularly. Watch out for the greenhouse nasties, yes, we do get them in the greenhouse. White fly and green fly are most common. Spray as soon as they are seen as they increase quite rapidly. To avoid the dread spider mite, it lives in a gossamer style web, and is not regularly seen without a magnifying glass, spray the plants regularly with clean water. They thrive in dry conditions. If it is too bad, use an insecticide specifically for this pest. If you have vine weevil in your greenhouse, which at one time was difficult to eradicate (this is a little fat creamy white grub with a black head which eats the roots of plants), do not despair.

Good old PBI have come up with a vine weevil knobbler called "Pravado" and it works. It is a bit pricey but it goes a long way.

Pot on any plants and cuttings sown earlier. Continue removing side shoots from tomatoes and do not let them dry out, feed continually as soon as the first truss has set. Greenhouse primulas, calceolarias and cinerarias, sown in June will need pricking off into trays and boxes, earlier ones can be put into pots. Cuttings from most greenhouse plants can be taken now, geraniums, fuchsias, busy lizzies, keep them well shaded. Geraniums do not need a lot of water to start with. Late August begonias and gloxinias will have finished flowering, their water supply should be gradually reduced so that they ripen their growth and go to rest. If you keep a warmish greenhouse through the winter, sow Brompton stock and schianthus for an early show from Christmas to February or March. Pot up freesias for early flowering. Restart old cyclamen corms, in second week of August, clean off all the old foliage and soil and repot in the smallest pot, which will take the roots comfortably without any doubling up. Keep them in shady spot, water moderately at first but spray the corms daily with tepid water to encourage them to make new growth. Give a little water to nerines that have been resting (third week August) and increase the amount as soon as the growth appears. A sunny spot is ideal. If you want narcissi before Christmas then pot the bulbs now.

#### Lawns

Set the mower to high if the weather is dry and remove the grass box so the cuttings act as a mulch to keep in the

moisture, at the end of August seed can be sown on a prepared bed, keep well watered.

Well that is it, have a nice summer holiday, let's hope for good weather so that we can sit in our gardens or have a Barbie, it makes all our labours worth while.

Cheerio for now,

Tom

## Baslow Road/Mickley Lane Junction

There are revised plans in the library regarding the alterations to this junction. If you have any comments regarding this issue contact numbers can be obtained from the plans in the library. Written comments have to be in by 15 July.

Mrs Marlene Marshall

## Services at ALL SAINTS CHURCH Totley Hall Lane

**10.00A.M**

**6.30P.M**

### JULY

1st Short service (Totley Festival)	Holy Communion
8th Holy Communion	Holy Communion
15th Baptism	Evening Prayer
22nd All Ages All Together	Holy Communion
29th Holy Communion	Evening Prayer

### AUGUST

5th Family Communion	Holy Communion
12th All Ages All Together	Holy Communion
19th All Ages All Together	Holy Communion
26th Family Communion	Evening Prayer

### CHRISTIAN AID

From the office:-

Thank you for your contribution in making Christian Aid Week such a success. It's too early to know exactly how much money has been raised but by the way resources were whizzing out of the door we know you worked hard. All this will help to build a better life for many of the world's poorest people. From them and from all of us in the Yorkshire Unit, a very big thank you.

Thank you to everyone at All Saints and those in our collecting area, who worked so hard and contributed so much. We raised £1,600. The most yet at All Saints. Our area (a third of Sheffield) has raised £20,000, so far.

### WHY SHOULD WE CARE?

Climate change is happening now. The poorest communities are the worst affected. Yet they've done the least to cause it. We need to speak up for justice. Support Fair Trade.

### WHO ARE OUR NEIGHBOURS?

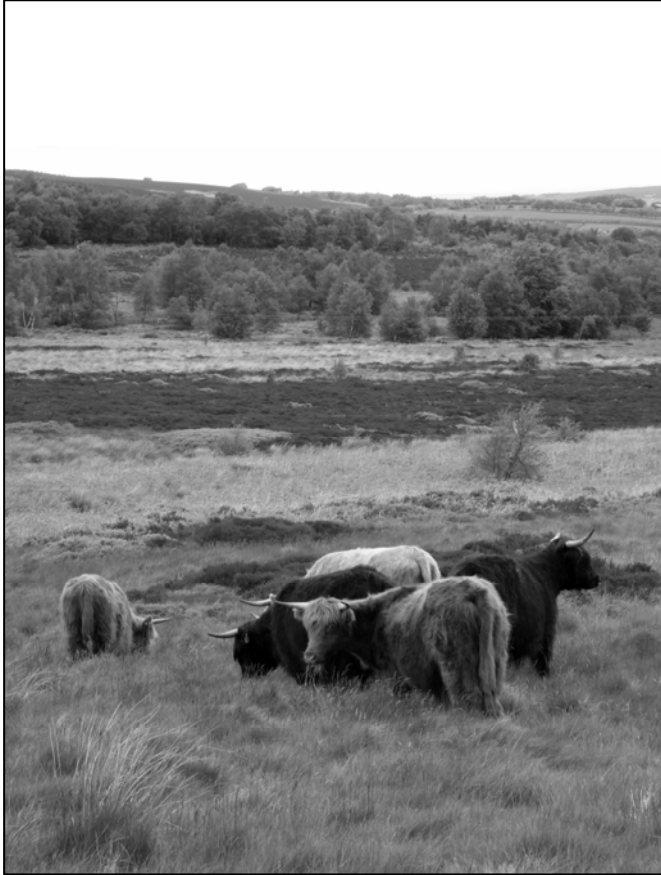
We are called to reach out whenever we see need. Our actions affect people around the world. And we know about it. More than that, we also have the resources to help people and change destructive behaviours. Think Green!!

**BLACK GOLD**, a powerful documentary following Ethiopian farmers as they fight for a fair price for their coffee is being screened at the Showroom, Paternoster Row.S1 2BX. Friday, 13th July - Thursday, 18th July, at 2.15 4.25 6.30 8.45. To book phone 0114 275 7727.

## Blacka's Beauties

10 Highland heifers have recently been introduced onto the heathland at Blacka Moor, in an attempt to save the nature reserve from scrubbing over, and to help provide better opportunities for breeding heathland birds and other wildlife. Blacka Moor is one of Sheffield's gems, and provides a wonderful escape from the city. It is heralded by local naturalists as one of the best wildlife sites in the city because of its mix of heath (heather and bilberries), scattered trees, copses, pastures and woodland. However, this mosaic is seriously under threat and urgent action is needed to prevent the whole site becoming scrubbed over and its specialist wildlife habitats lost forever. To rob future generations of this wonderful place would be a tragedy.

Cattle are used throughout the UK to help conserve upland and lowland heathland. Heathland has developed through woodland clearance and livestock grazing over hundreds of years. Without grazing, many of the heathland in the UK would be lost, and with them the assemblage of birds and plants and of course here at Blacka Moor, the bilberries would also be lost.



Highland cattle are particularly beautiful animals. The breed has a long and distinguished ancestry. It is one of Britain's oldest, distinctive and well-known breeds. With a long shaggy coat and majestic horns, the cattle have remained largely unchanged over centuries and are well adapted to harsh environments such as Blacka Moor. Cattle are ideal for the site, as they'll browse birch seedlings and hence prevent them spreading across the heath. This is particularly important at this stage of the heathland's development, because many of the heather plants have reached an age where they'll start to collapse, resulting in a proliferation of birch and rowan saplings; the transition from heathland to woodland will be rapid and irreversible, resulting in the loss of an internationally important ecosystem. The cattle will help control that transition. Cattle will also help create a mosaic of grasses and heathland plants, ideal for skylark, meadow pipit and we may even see the return of nesting nightjar.

Sheffield Wildlife Trust's Reserve Manager Annabelle Kennedy says *'following a lengthy process of consultation, plus the commissioning of a Grazing Impact Assessment, the conclusion is that this is the most sustainable way of conserving the heathland and improving conditions for*

*wildlife, which has been tried and tested throughout the UK. The assessment found that cattle grazing would reduce the effects of wildfire, and increase the amount of wildlife supported.'* Margaret Spencer, local resident says *'I am a local resident who is very keen to keep the current habitat diversity maintained and prevent the site declining because of the invasion of bracken and scrub. I have recently become a Trustee for Sheffield Wildlife Trust, partly because I fully support the action that the SWT is proposing'.*

A number of different options for conserving and enhancing the heathland have been considered including grazing sheep and undertaking the work entirely by people including volunteers. However, the problem of the birch and bracken on the surface is merely indicative of how the soil is changing below. Over the years the accumulation of vegetation dying off every year has resulted in an enriched soil. Heathland needs a nutrient-poor soil to survive, so the accumulation of nutrients spells disaster for the heather and bilberry. Removing bracken and birch alone does little to remedy the root of the problem. Cattle are perfect for taking those nutrients out by grazing and preventing the build-up of vegetation and nutrients.

Sheffield City Council's Ecologist Jean Glasscock says *'It is widely recognised that grazing is a proven cost effective and efficient method of controlling invasive plant species, when applied alongside other techniques.'*

The grazing will be monitored to show the effects on plants and wildlife, birds in particular. This is also a great opportunity for local people to get involved in surveys so they can really get to know the nature reserve intimately. Sheffield Wildlife Trust is currently fundraising to build on the current indispensable involvement of local people and their love and passion for the site, and enable them to continue to be engaged in a positive and enjoyable way.



Jane Chapman from the Peak District National Park Authority says *'The proposed management of Blacka Moor will bring significant achievements and positive progress in landscape, biodiversity, recreation and cultural heritage whilst at the same time increasing the awareness and involvement of urban communities. The Peak District National Park Authority welcomes this as a contribution to the shared vision and outcomes for the National Park'.*

# TOTLEY SHOW ENTRY FORM 2007

THE TOTLEY SHOW THIS YEAR WILL BE HELD AT TOTLEY PRIMARY SCHOOL, SUNNYVALE ROAD, ON  
SATURDAY, SEPTEMBER 15<sup>th</sup>.

The classes for this year are as follows: -

## HANDICRAFTS

1. Hand Knitted Garment.
2. Decorative Cushion.
3. Soft Toys
4. Tapestry.
5. Cross Stitch..
6. Decoupage
7. Paper Craft.
8. Textile Art.

## DOMESTIC SECTION.

9. 4oz. Victoria Sandwich Plain(see recipe)
10. Dundee Cake (see Recipe)
11. 3 Decorative Buns.
12. 3 Scones on a plate.
13. Apple Pie.
14. Jam
15. Lemon Curd.
16. Marmalade.
17. A 1lb.(455grms) Loaf of white bread.
18. Chutney

## CHILDRENS SECTION.

52. Age up to 7yrs. Animal Vegetable.
54. Age up to 8 yrs. Computer Art A4 size maximum
56. 3 decorative bun (up to 14 yrs.)

## FLORAL SECTION

19. Table Decorations Fresh (up to 6").
20. Table decorations Fresh (over 6")
21. Table Decorations Artificial(up to 12")
22. Cut Flowers 3 of any variety in season.
23. Any one house plant in container up to 6".
24. Any one house plant in container above 7" to 12"

## FRESH PRODUCE.

25. 1 Plate 4 Eating apples.
26. 1 Plate 4 cooking Apples.
27. 1 Plate 8 Blackberries.
28. 4 Matching Potatoes.
29. 3 Matching Leeks.
30. 3 Matching Onions.
31. Tray of 6 mixed veg. 16" by 11.5"
32. 5 Matching Runner Beans.
33. 1 Plate of 5 Tomatoes.
34. 1 cucumber.

35. 3 Courgette.
36. Largest Onion.
37. Heaviest Marrow.
38. Longest runner Bean(One per person)
39. Miscellaneous Veg.

## ART

40. Oil or Acrylic Painting
41. Water Colour.
42. Pen and Ink Sketch.
43. Pencil sketch.
44. OPEN Multi media.

## PHOTOGRAPHY (Prints only)

45. Colour
46. Black and White
47. Computer Prints
48. Totally Totley (any medium)

## WOODWORK

49. Wood Turning
50. Small furniture
51. Sculpture. (ANY MEDIUM)

### DUNDEE CAKE

- |  |                                       |
|--|---------------------------------------|
| 175gms.(6oz) Plain Flour                               | 1 rounded teaspoon mixed ground spice |
| 125gms.(4oz.) Margarine                                | 3 eggs                                |
| 125gms.(4oz.) Soft brown sugar                         | 125gms.(4oz) Sultanas                 |
| 125gms.(4oz.) Raisins                                  | 125gms.(4oz.) Currants                |
| 75gms. (3oz.) Chopped mixed peel and chopped cherries. |                                       |
| 40gms.(1.5oz.) Blanched almonds to decorate.           |                                       |
| 21/4 level teaspoons of baking powder.                 |                                       |

METHOD. Line 7" deep cake tin. Sift flour & spice together. Cream Margarine & sugar, Beat in eggs 1 at a time adding a tablespoon of flour with the last two. Fold in remaining flour and fruit till thoroughly mixed. Put in tin & decorate with nuts.

Bake in a preheated oven 140c:290f: gas 2: for 1 hr. then lower to 130c:270F: gas 1 for 1/2 to 1 hour approx., pierce with skewer to test.

### VICTORIA SANDWICH

- |                                   |
|-----------------------------------|
| 125gms. (4oz.) Margarine          |
| 125gms. (4oz.) Castor Sugar       |
| 125gms. (4oz.) Self Raising Flour |
| 2 eggs.                           |

METHOD. Cream margarine and sugar. Beat in eggs 1 at a time with a little flour. Fold in remaining flour. Divide between 2\* 7" sandwich tins greased or lined with greaseproof paper.

Bake in pre-heated oven 180c:350f: gas mark 4: for 20 – 25 mins. Sandwich with jam and sprinkle top with castor sugar.

Please note classes may change. No entry in any class should have been in previous Totley shows. Entries may be donated to be auctioned at the end of the show but this is not compulsory nor a condition upon which entries will be accepted.

## SHOW PROGRAMME

**9-30 am. to 11-00 am.** Entrants registration..

**2-00 pm.** Official Opening

**11-00 am. to 12-30 pm.** Judging and awarding of certificates

**1-30 pm.** Doors open to the public.(Entrance fee 50p.Children 20p.)

**3-30 pm.** Prize Giving & Auction of donated items.

Please leave all exhibits in place until **3-15 pm.** For public viewing. **Prizes First £2.00, second £1-50, third £1.00**

If less than three entries in a class then there will be a first prize only. Any monies not collected by 4-30pm. Will be put to the Totley show fund for next year.

If an entry does not fit with a class it can be left for viewing but no prize will be given and there will be no entry charge, which for other entries will be **50 pence** per exhibit.

ENTRY FEE **50p.** PER ITEM

PLEASE BRING THIS FORM WITH YOU WHEN YOU BRING YOUR ENTRIES.  
PUT A TICK AGAINST THE CLASS OR CLASSES YOU WISH TO ENTER.  
YOU MAY ENTER AS MANY CLASSES AS YOU WISH.

NAME \_\_\_\_\_

ADDRESS \_\_\_\_\_

If your produce or exhibit does not fit into a class, it can be left for public viewing but no prize will be given and no charge will be made for the entry.

# **TOTLEY SHOW ENTRY PROCEDURE**

PLEASE REPORT TO THE RECEPTION DESK

AT THE DESK PLEASE GIVE YOUR

NAME

ADDRESS

**AND STATE IF YOUR ENTRY CAN BE AUCTIONED.**

YOU WILL THEN BE GIVEN AN ENTRY CARD AFTER PAYING THE EXHIBIT FEE PER ITEM.

THE CARD WILL BE GIVEN AN EXHIBITORS NUMBER.

ENTER ON THE CARD THE "DIVISION" AND "CLASS NUMBER" OF YOUR EXHIBIT.

PLACE YOUR EXHIBIT ON THE TABLE WITH THE APPROPRIATE CLASS NUMBER.

IF YOUR EXHIBIT IS NOT TO BE AUCTIONED PLEASE COLLECT IT AFTER **3-15 p.m.**

PRIZES AND AWARDS TO BE GIVEN AT APPROXIMATELY 3-30 pm.

GOOD LUCK.

## **14th. International Gilbert and Sullivan Festival**

### **Buxton Opera House and Pavilion Gardens Complex**

**28<sup>th</sup>. July to 19<sup>th</sup>. August 2007**

A full programme of performances of the Gilbert and Sullivan works in the Opera House featuring the Gilbert & Sullivan Opera Company, Carl Rosa Opera and the best amateur societies from around the world. Also, an extensive programme of events in the Fringe, every morning and afternoon, mostly in the Paxton Suite, includes Charles Court Opera's acclaimed production of "HMS Pinafore" on August 11<sup>th</sup>.

After show Festival Club in the Pavilion Gardens restaurant every evening with entertainment from around the world including your chance to sing along in the choruses in Pot Luck performances of some of the most popular of the G & S operas.

## Totley's need for more allotments

Given that the interest in growing your own vegetables has mushroomed in the last five years, Totley has very little land available for Totley people who want to grow their own produce. There are only 16 plots on the current allotment site at Francis Fields, of which three of them are shared by two people, because of the high demand for allotments. All of them are well cultivated; there is no allotment likely to come available for some time to come.



Pat Barsby, Secretary of Sheffield Allotment and Leisure Gardeners Federation has informed the Residents' Association that the Council Allotment Officer, John Martin, is preparing a report to propose another allotment site for Totley. Under law if more than six people want an allotment in an area, then the Council should make provision for another. The Federation would like at least one, if not two, new allotment sites in Totley.

John Martin has reported that in June 2007 there were over 40 people on the waiting list for the Francis Fields allotments in Totley, and the person at the top of the list has been on it since 1998. That means about a 10 year wait.

The site that he has identified for Totley and Dore (who also have a long waiting list) is the old Whirlow Playing Fields on Limb Lane, Dore. This is obviously not Totley!



John Martin is interested to know any other potential sites in Totley as he does not know the area well enough.

Anyone living in Totley who is either on the waiting list for an allotment (or knows someone who is) or

who would like to get an allotment in the future should take the following action to get the Council to designate at least one new allotment site for Totley:-

1. Write to the three local Totley councillors

- Anne Smith [anne.smith@sheffield.gov.uk](mailto:anne.smith@sheffield.gov.uk)
- Keith Hill [keith.hill@sheffield.gov.uk](mailto:keith.hill@sheffield.gov.uk)
- Mike Davis [mike.davis@sheffield.gov.uk](mailto:mike.davis@sheffield.gov.uk)

and the local MP Nick Clegg

- [casework@sheffieldhallam.org.uk](mailto:casework@sheffieldhallam.org.uk)

and tell them that you want an allotment (or that more allotments are needed), what the position with the waiting list is, and that you want their help to get another allotment site in Totley, for all the Totley people on the waiting list.



2. Let John Martin [john.martin@sheffield.gov.uk](mailto:john.martin@sheffield.gov.uk) Tel. 273-4528 know of any possible land that could be considered for a new site in Totley. e.g. the old firing range.

3. Contact me if you want to be put in touch with other people also wanting allotments so you could put pressure on together.

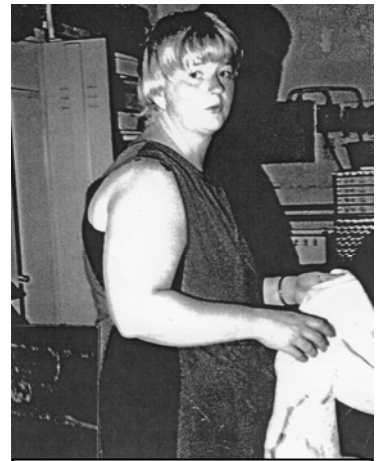
Jennie Street  
Tel. 236-2302  
[jennie@hadish.f9.co.uk](mailto:jennie@hadish.f9.co.uk)

## Leonard Cheshire

Congratulations and celebrations have been going on at Mickley Hall recently for Barbara Woodhead. Barbara was a local girl and is the Domestic Supervisor at Mickley and has just completed 33 years of working there, making her the longest serving member of staff.

She was originally from Dorset but on the death of her mother when Barbara was 17, she came to Sheffield. She eventually married and settled in Totley. As well as Domestic Supervisor Barbara is also chairperson of the Staff Association.

She was recognised at a buffet lunch at Mickley Hall by the presentation of a portable DVD player and given 5 days extra paid holiday. She was thanked by staff and service users for her work during the 33 years. She was also



A younger Barbara

presented with flowers and wine at Champion House in Pudsey, Leeds by Jonathan Giles, Regional Director and Graham Mitchell, Chairman of the North East Yorkshire Region. 2008 is the 60th year of the Leonard Cheshire Care Homes and the 40th year of their being at Mickley Hall. We are currently trying to gather information about the people who have either worked or volunteered at Mickley or who have had relatives or friends as service users. Barbara has been able to give us some information from first hand experience. If anyone has any recollections please get in touch on 2369952 or 2360743

Ann Lee

**Tel: 0114 236 9673**

**288a Abbeydale Road South**  
**Sheffield**

### Summer Offer

10% off all colours and perms on Mondays and Tuesdays

## PEAK DISTRICT EVENTS

**30 June to 26 August**

**Art Exhibition – Following the Line**

Buxton Museum and Art Gallery, Buxton 01298 24658

1 July

Toy/Train Collectors Fair

Pavilion Gardens, Buxton 01298 23114

**6 to 22 July**

**Buxton Festival Fringe**

Largest fringe in England. The programme runs alongside the Buxton International Festival 01298 97351

**7 July**

**Bakewell Carnival**

Bakewell 01629 814112

**8 July**

**Marvellous Moths**

Carsington Water, See how many of the 4,000 species of moths are present around the reservoir

01629 540696

**8 to 16 July**

**Buxton Well Dressing**

Blessing service 8 July at 2pm 01298 70156

**14 July**

**Ranger Walk, Bakewell and the Old Saxon Portway**

7 miles exploring the old market of Bakewell, the church, Queen Anne guide stoops and the Old Saxon Portway. Meet 10.30 am Bakewell Visitor Centre, finish 3.30pm 01629 816290

**14 to 15 July**

**Book Fair**

Pavilion Gardens, Buxton 01298 23114

**15 July**

**Buxton Carnival**

01298 71352

**15 to 23 July**

**Bamford Well Dressing**

Blessing service 15 July at 6.30 pm 01433 650544

**16 July**

**Ranger Walk, Wildlife and Calver Weir**

2 miles along the River Derwent, Meet 6.30 pm, Bridge Inn, Curbar

Finish 9pm 01629 816290

**21 July**

**Ranger Walk – Experiencing Peak Photography, Heritage Trail**

5 miles with a professional photographer to look at the Landscape of Edale, meet 10.30 am, Moorland Centre, Edale, finish 4pm

Booking essential 01443 670216

**21 to 30 July**

**Stoney Middleton Well Dressing**

Blessing service 21 July at 3.00 pm 01433 631942

**21 July to 2 September**

**Polish Your Own Blue John Stone**

Treak Cliff Cavern, Castleton 01433 620571

**22 July**

**Record and CD Fair**

Pavilion Gardens, Buxton 01298 23114

**23 July**

**Ranger Walk – Dovedale at Dusk**

2 miles watching and listening as the sun goes down, ideal for families.

Bring a torch, meet 7.30 pm Milldale Car Park SK137547 finish 9.30 pm 01629 816290

**28 July**

**Ranger Walk – Railway Tunnels Walk**

9 miles along the Monsal Trail, bring £2 bus fare and a torch, meet 10.45 am, Bakewell Old Station, finish 5.30 pm booking essential 01298 871869

**28 July to 18 August**

**Gilbert and Sullivan Festival**

Buxton 14th Gilbert and Sullivan Festival in Buxton taking place at Buxton Opera House and the Pavilion Gardens 01422 323252

**29 July**

**Ranger Walk – Goyt Valley Discover Walk**

6 miles on rough tracks, one steep slope and a stream crossing to look at the valley. Meeting 11am, The Street car park in the Goyt Valley, finish 4.30 pm 01629 816290

**1 to 2 August**

**Bakewell Show**

01629 812736

**4 to 5 August**

**1940s Weekend**

Peak Rail, Darley Dale

Rowsley Station will be transformed into a French Station under German occupation 01629 580381

**5 August**

**Birdwatching for Beginners**

Carsington Water 01629 540696

Craft and Gift Fayre

Hartington 01782 822713

**7 August**

**Ranger Walk – Family Fun Earth Walk**

2 miles for families with activities along the way. Booking essential, meet 11am Millers Dale Old Station, finish 2pm 01298 871869

**11 August**

**Ranger Walk – Railway Tunnels Walk**

9 miles along the Monsal Trail Bring £2 bus fare and torch Meet 10.45 am Bakewell Old Station, finish 5.30pm Booking essential from 22 July 10am on 01298 871869

**Water Aid Raft Race**

Carsington Water, A great family day out with barbecues, entertainment and Children's activities 07747 118933

**12 August**

**Ranger Walk – Tales of Murder and Highway Robbery**

9 mile walk of moor and dale with tales of crime and punishment in bygone days. Some steep climbs. Meet 10.30 am, view point Monsal Head Hotel Finish 5pm 01629 747786

**18 August**

**Historic Railway Walk**

Peak Village, Rowsley, Near Matlock 0114 2364728

**18 to 25 August**

**Taddington Well Dressing and Flower Festival**

Blessing service 18 August at 2.30 pm 01298 85396

**19 August**

**Motley Mutts Dog Day**

Eyam Hall Historic House

A fun dog show for all the family 01433 631976

**25 August**

**Bat Safari**

Carsington Water, listen and look out for these unusual creatures of the night, booking essential 01629 540696

**Froggat Show**

Calver 01433 631722

**25 to 27 August**

**Antiques Fair**

Pavilion Gardens, Buxton 01298 23114

**All the above, plus many more events, can be found in "What's On Peak District" the National Parks Free Guide. [www.visitpeakdistrict.com](http://www.visitpeakdistrict.com)**



## Buxton Festival's spectacular Literary Series line-up

The list of speakers at this year's **Buxton Festival 6 – 22 July** is impressive - **from Britain's most famous Rabbi, to the bestselling chronicler of contemporary fiction to leading BBC Correspondents, the King of the adapters and even a talk by 'Westminster's baby-faced hitman'!** Buxton Festival's morning literary series celebrates its 7th year with a superb line-up of some of the country's most respected authors. It runs from 7 – 22 July with a talk starting at 10.45am every morning.

*Buxton now boasts an array of literary talent of which the biggest and best book festivals would be proud* Roy Hattersley, Festival Chairman



Highlights include one of the BBC's most senior journalists **Jeremy Bowen**, (7 July) who will talk about his career as a War Correspondent, reporting from the front lines of various hot-spots around the world. His fellow colleague the BBC's World Affairs Editor, **John Simpson**, (14 July) describes some of the dangerous situations he has faced, and why Osama Bin Laden tried to have him killed, in a candid and compelling talk.

Whitbread award winner **Claire Tomalin** (11 July) returns to discuss her latest biography of English novelist Thomas Hardy, and renowned biographer **Antonia Fraser** (20 July) vividly brings to life the court of Louis XIV in a talk about her portrait of the philandering King. The charismatic and entertaining star of Radio 4's *Thought for the Day* **Rabbi Lionel Blue** (10 July) will have people rolling in the aisles as he shares the wisdom he has learnt in services, supermarkets and saunas concerning health, happiness, ageing, this life and the next!



**Joanna Trollope**

Other star names include: **Joanna Trollope** (8 July), talking about her many bestselling novels including *Marrying the Mistress* and *Girl from the South*; **Michael Dobbs** (9 July), who as adviser to two Prime Ministers has been at the right hand of political controversy, discusses his critically acclaimed novel

*First Lady* all about the human drama and scandal in

Westminster's corridors of power. Leading novelists include **Andrew O'Hagan** (13 July), who's first novel *Our Fathers* was shortlisted for the Booker Prize, and **Julian Barnes** (15 July) one of the most distinguished and refined intellectuals in contemporary British literature talking about his detective novel based on true events, the brilliant *Arthur and George*. Leading theatre actress **Jane Lapotaire** (17 July) takes time out from treading the boards to talk about her childhood in the fifties. BAFTA award winning **Andrew Davies** (18 July), dubbed the 'King of the adapters' thanks to ratings-grabbing successes *Bleak House*, *Vanity Fair* and *Pride and Prejudice*, gives an sneak preview of clips from his eagerly awaited adaptation of *Sense and Sensibility* which is due out in the autumn – a must for Jane Austen fans!



**Jeremy Bowen**

The *Today* presenter, **James Naughtie** (16 July), turns his inquisitive eye on the world of music with an exploration of the soundtrack of our lives from the Renaissance right through to the romantic explosion. **Fiona MacCarthy** (19 July) provides an engaging account of what it was like to be one of the final débutantes in the fifties with her memoir *Last Curtsey*. **Stanley Wells** (21 July) - Britain's greatest authority on Shakespeare's life and work makes his first visit to the Festival examining the many myths and some true stories about our greatest writer.

And finally, **Roy Hattersley** (22 July) marks his final day as Buxton Festival Chairman with a talk about his latest book *Buster's Secret Diaries*, including many fascinating tales and an entertaining insight into the life of the most famous dog in Britain! Roy will be holding a questions and answers session and signing copies of his book (along with Buster!) after his talk at **Buxton Opera House** on **22nd July** at 10.45am.

Roy Hattersley has been the Festival's Chairman since 1999, and has been instrumental in building the Festival's national reputation and profile. He introduced the Festival's successful morning Literary Series which has gone from strength to strength over the past seven years, attracting high calibre authors of fiction, politics, biography and personal memoir including this year's all star line up.

*'July 2007 will be Roy's last as Festival Chairman. The Festival has grown enormously under Roy's leadership. He has been one of our best assets and a great help to me. On the last day (July 22) we offer him the Opera House stage to focus on his books The Edwardians and the second volume of Buster's Diaries. In doing so, we thank him for his exceptional service to the Festival. He will be missed.'*

Glyn Foley, Chief Executive

Tickets for the Literary Series cost £9, call the Box Office on 0845 12 72190 or book online at [www.buxtonfestival.co.uk](http://www.buxtonfestival.co.uk).

To request a Festival brochure Tel: 01298 70395.

### **Buxton Festival 6 – 22 July 2007**

Rarely performed operas, classical music recitals, afternoon concerts and a star studded morning literary series in the beautiful Edwardian Buxton Opera House in the heart of the Peak District. With over 110 events in just 17 days, including 7 Operas, 16 Literary speakers, 36 concerts, an afternoon ballet, cooking demonstrations, workshops, walks, a ghost tour and much more, it's easy to see why the Festival attracts over 36,000 people to the heart of the Peak District each year from all over the country and abroad.



**John Simpson**

Creating opportunities with disabled people

Sheffield  
**LEONARD CHESHIRE**

TEL. NO. 0114 236 9952

CHARITY NO. 218186

## SUMMER FETE

AT MICKLEY HALL, TOTLEY

ON

SATURDAY, JUNE 23<sup>rd</sup>

2pm – 4.30pm

OPENER TO BE ARRANGED

GAMES, TEAS, CAKES, PLANTS,  
PRESERVES, RAFFLE, TOMBOLA,  
BRIC-A-BRAC, MUSICAL  
ENTERTAINMENT &  
LOTS MORE  
PLEASE JOIN US FOR A FUN DAY OUT  
50p ENTRANCE CHILDREN FREE

## EXECUTIVE TRANSFERS for 1 – 8 passengers



TO ANY U.K. DESTINATION  
INCLUDING ALL

AIRPORTS : COASTAL  
CORPORATE : COURIER  
GOLF : PORTS : RACING  
RUGBY : SOCCER : SOCIAL

FULLY INSURED  
CLIMATE CONTROL & TOWING FACILITY  
MEET & GREET POLICY  
A SERVICE TAILORED TO YOUR  
REQUIREMENTS

TELEPHONE OR TEXT

*Hello*

*Travel Club Limited*

0779 265 2746

Are you living the life you  
would choose?  
Have you good intentions  
you've not yet made happen?  
Let me help you.

Alison Bushnell - Life Coach

0114 236 4301 or

[alisonbushnell@hotmail.co.uk](mailto:alisonbushnell@hotmail.co.uk)

for more information and a free  
confidential taster consultation

One man went to mow...  
...but his mower wouldn't go!

Now is the time to call

# MOWER MENDER

and be ready for the forthcoming  
growing season.

A local friendly business  
servicing all makes of  
garden machinery.

Phone:

0114 236 6958

Mobile:

0781 2211149



Blade Sharpening and  
Collections & Delivery Service Available

## R Rose & Co

Chartered Accountants & Business Advisors

Specialists at  
looking after the affairs  
of small businesses.

For a FREE initial consultation  
please contact Roger Rose FCA on  
**0114 281 2331**

From business start-ups and general accounting, to support  
and advice in business development and strategy,  
we pride ourselves in our personal one-to-one service.  
To find out more please call 0114 281 2331.

621 Chesterfield Road, Woodseats, Sheffield S8 0RX  
Email: [info@r-rose.co.uk](mailto:info@r-rose.co.uk) [www.r-rose.co.uk](http://www.r-rose.co.uk)

## Beauty by Lisa Elliott

Treatments include Clarins range, Jessica nails,  
St. Tropez tanning, Swedish massage, Hair removal,  
Electrolysis and Eye treatments. Special packages  
are available as well as gift vouchers.

Special monthly offers, please ask for details.

Lisa is available on Wednesdays, Thursdays and Fridays  
till late.

10% discount on your first visit.

Beauty by Lisa Elliott is located in  
Synergy at 162, Baslow Road, Totley.

Synergy 01142 357845

Creating opportunities with disabled people.

Registered Charity No. 218186

Sheffield  
**LEONARD CHESHIRE**

Leonard Cheshire Services in Offers choice &  
opportunity to people with disabilities.  
A Specialist Unit for the Younger Disabled.  
Residential & Respite Care – Single Rooms  
Day resources – Aromatherapy –  
Reflexology – Physiotherapy – Toning  
Tables.

Activities include: - Arts & Crafts –  
Computers – Cookery – Shopping  
Expeditions – Theatre Outings – Church.  
Further details can be obtained from –  
The Service Manager, Mickley Hall,  
Mickley Lane, Totley, Sheffield S17 4HE.  
Tel. 0114 236 9952  
Fax. 0114 262 0234

The Care at Home Service supports  
disabled people who wish to remain in their  
own homes.

We provide flexible care packages from  
1 hour to 24 hours meeting individual needs.  
The service operates throughout  
Sheffield.

Our service includes: - help with getting  
up and going to bed, dressing, washing,  
bathing, shopping, cooking, light household  
duties.

Further details from: -  
The Care at Home Manager  
Tel. 0114235 1400  
Fax 0114 235 1499

## SLIMMING WORLD

**10 WAYS TO MAKE SURE IT WILL BE THE LAST TIME LOSING WEIGHT IS YOUR NEW YEAR RESOLUTION. THIS TIME MAKE IT LAST FOREVER**

1. Focus on your weight loss goal and prioritise it.
2. Be sure you really want to lose weight for yourself. Doing it to please someone else may only lead to short term weight loss.
3. Take advantage of all the group support at your local Slimming World class. Even if you are not a 'joining in' person, you'll be surprised how motivating it is.
4. Accept that you will have ups and downs in your weight loss journey, and be forgiving of yourself if you hit a difficult patch.
5. Listen to your 'inner script' and make a conscious effort to talk to yourself in a positive, encouraging way.
6. Keep up your interest in your healthy eating plan by trying new foods, new recipes, and new ways of using your Sins. This will help you avoid getting in to a dieting rut which can be boring and demotivating.
7. Be honest with yourself about what you are expecting from your weight loss and how you are getting on with Food Optimising week by week. People who set unrealistic targets for weight loss or body shape are more likely to give up than those who set achievable targets and share their ups and downs.
8. Go back to your class even after (especially after) you've had a weight gain. You will not be judged, just helped and supported.
9. Keep setting new goals and rewarding yourself for milestones until you reach your target weight, and afterwards!
10. Don't put your life on hold until you've lost weight. You can still enjoy life and lose weight. Think of your dreams and ambitions and bring them to the fore. The positive feelings you get from starting to 'live a little' can only help your motivation and your weight loss.

Group details:

**Bradway Annexe, Sheffield 17 - Thurs. 5pm and 7pm (6 times award winning group)**

**Dore Old School, Sheffield 17 - Tues. 5.30pm**

**The Michael Church, Lowedges Rd, Sheffield 8 - Wed. 10am**

Telephone consultant Alison Murphy (01246) 410145 for further information.

## Bairstow eves

Countrywide

**BAIRSTOW EVES BANNER CROSS**

**FEES FROM 0.75% - for a limited time**  
(not to be used in conjunction with any other offer)

Please quote Totley Independent when you call us for a **FREE, NO OBLIGATION**, market appraisal.

- Full colour advertising in the Sheffield Property Telegraph
- Your property on [www.rightmove.co.uk](http://www.rightmove.co.uk) - the UK's most visited property website
- Advertising in 9 branches across the Sheffield area

**NO withdrawal fees - NO sale, No fee**

Bairstow Eves Countrywide,  
997A Ecclesall Rd,  
Banner Cross,  
Sheffield S11 8TN  
Tel: 0114 266 0030

[www.rightmove.co.uk](http://www.rightmove.co.uk)



## Apple Fencing

**Suppliers of good quality wood and concrete fencing, gates and driveway gates.**

**Supplied only or supplied and fitted.**

**Fully insured.**

**For a free quote call Darren on : 01246 237505 or mobile : 07782167540.**

Would you like someone to

Type letters? Pay bills? Help record family memories?  
Sort and file papers? Prepare an inventory?  
Anything else ???

Then you should call

**Secretarial and Administrative Services**

Swift, efficient, confidential service at your home.

Pay-as-you-go.

Ring us on 0114 235 0071



Tel/Fax: (0114) 255 4689

Mobile: 07831 802539

**TRISTAN SWAIN**

LANDSCAPING AND MAINTENANCE

72 Nettleham Road  
Sheffield S8 8SX



## LADIES FASHIONS

SKIRTS, JUMPERS  
T-SHIRTS,  
TROUSERS  
HABERDASHERY  
& ALTERATIONS

DRY CLEANING  
SERVICE  
LAUNDRY SERVICE

**ROSIES**

164 BASLOW ROAD, TOTLEY.  
TEL: 2621060



**M. Scriven**  
(FRUITERAMA)

**MARTIN SCRIVEN**

HIGH CLASS FRUIT  
& VEGETABLES

37, Baslow road

Tel. 236 7116

Orders Delivered



## ***Allweld Forge Ltd***

**Bespoke hand made wrought iron  
BAY WINDOW CURTAIN POLES**

**Large choice of finials and brackets**

**Also gates, railings, furniture etc.**

**Unit 3, 300, Archer Road, Millhouses S8 0LA**

**Next door to Thomas Fencing**

**Phone/fax 0114 2368239**

**email: [sales@allweldforge.co.uk](mailto:sales@allweldforge.co.uk)**

**Website: [allweldforge.co.uk](http://allweldforge.co.uk)**

**R.S. HEATING & BUILDING CO**  
EST. 1971

**HEATING DIVISION:**  
Experienced Installers of condensing,  
combination and regular boilers.  
Systems fully guaranteed.  
Complete after sales service.  
Also Bathrooms, showers  
and small plumbing works.

**BUILDING DIVISION:**  
Loft conversions, House  
renovations including general  
building, joinery, plastering,  
electrical decorating etc.

**62 Machon Bank, Sheffield, S7 1GP**  
**Tel : 0114 255 9425**  
**Fax 0114 255 9431**  
Email: [enquiries@rsheatingandbuilding.co.uk](mailto:enquiries@rsheatingandbuilding.co.uk)  
Web: <http://www.rsheatingandbuilding.co.uk>

  
**LIBERTY FOODS**  
Caterers  
Quality Meat Shop  
& Fresh Farm Produce

Fresh and Frozen Prepared Meals  
Fresh Meat and Poultry  
Outside Catering  
Home Delivery

253 Baslow Road, Sheffield, S17 4DU  
Tel: 0114 2360 583 Mobile: 07801 346 455

**Dronfield Landscapes** 

Gardens cleared and maintained, Lawns mowed,  
Turfing, Tree felling & pruning, Hedges trimmed &  
reduced, Pond maintenance, Fencing etc.

for free quotation call  
Chris on: (0114) 2746158 Mobiles: 07976072785 or  
Richard on: 07789497104

8am-6pm mon-fri HazelBarrow Farm, Norton S8 8BA

## **// R.M.M. BUILDING SERVICES //**

Block paving a speciality.

Brickwork

Call **Rob** on

Groundwork

Tel. **0114 2352190**

Patio's

Mob. **07906 108567**


For your free estimate

**22 years experience, City & Guild Qualified**

**Nigel Watson**

 **Carpenter & Joiner**  
Doors, locks, floors, architraves, skirting boards,  
stairs, stud walling, boxing off etc  
No job too small

For a reliable, quality service  
Tel: 0114 236 4778  
Mobile: 07971 528149

 **D.T. TAYLOR**  
**DRIVING INSTRUCTION**

**David Taylor**

Driving Standards Agency Approved Driving Instructor (Car)

**South Sheffield & North Derbyshire**

Discounts for Students and Block Bookings

**Phone: 0114 236 8094**

**VALLEY WILD BIRD  
SUPPLIES**



**DO YOU BUY WILD BIRD FOOD?**  
If you do, why not get it delivered direct to your home, with  
free delivery (subject to a minimum order) or collection by  
appointment.

FOR THE HIGHEST QUALITY PEANUTS, MIXED SEED, BLACK  
SUNFLOWER AND HEARTS, NIGER SEED, MEALWORMS, FAT  
BALLS, SUET BLOCKS AND A WIDE RANGE OF FEEDERS AND  
ACCESSORIES AT COMPETITIVE PRICES.

**PLEASE CONTACT MARK ELLIOTT ON 01433 620048 /  
07971 808106**

## **RUBBISH REMOVED**

*Environment agency registered.  
ID shown at door.*

Beds, settees, garden and DIY,  
Washers, Baths, carpets, furniture,  
Cookers Garages cleared, broken  
sheds and fencing removed.

*Free quotes! Genuinely no obligation!*

**Tel: Mick 0114 2681330**

**Mobile 07710 446438**

*Established five years.*

*Courteous reliable service.*

[http://uk.geocities.com/draggletail\\_waste\\_services/](http://uk.geocities.com/draggletail_waste_services/)



Central Heating

Domestic Plumbing

Glazing, Double Glazing and Glass

House Maintenance

UPVC and Wood Windows & Doors

Mini Digger & Driver, Muck Shifts, Footings Etc.



## **TOTLEY PRIVATE HIRE**

*PROFESSIONAL CAR SERVICE  
FOR  
AIRPORTS & LONG DISTANCE  
TRAVEL etc.*

**Tel: 0114 - 2361547  
Mobile: 07974-355528**

## **PATRICIA BARBER**

53 Wollaton Road, Bradway  
Sheffield, S17 4LF  
Tel 0114 236 6247

**Gents Hairdresser**

## **Don Allott**



Has now moved to the above address  
Thursday, Friday & Saturday from 9.00am  
Full Barber Service Available  
Walk in service and appointments available

## **APPLE LANDSCAPES**

*Quality service at an affordable price!*

Patios and walling, paths, steps, Indian stone paving, turfing,  
soil, railway sleeper beds, garden tidy-ups, fencing supplied or  
fitted.

Only quality materials used. Fully insured.

For a free quote call: 01246 237505 or mobile:  
07782167540

Mark & Sally Fletcher invite you to

## **The Grouse Inn**

### **Longshaw**

SHEFFIELD S11 7TZ

**Open for Meals Every Lunchtime  
12 to 2-30 pm.**

**Evenings Tuesday to Sunday  
6.45p.m. to 9.15p.m.**

**Phone 01433 630423**

## **HARD OF HEARING?**

If you need a Hearing Aid, I can cut the cost by  
30% or more on prices currently charged by the  
large Hearing Aid companies

**I Am Now Fitting All In The Ear,  
Digital Aids from £495**

For a free, no obligation consultation and  
Hearing Test, simply phone me:

**Maurice Naylor MBSHAA:  
4 Twentwell Drive, Bradway,  
Sheffield. S17 4PY  
Tel: 2620010**

## **Horizon Electrical**

*Faults, Rewires, Sockets, Lights,  
Cooker Points, Electrical Showers,  
Phone Points, Security Lights*

*No job too small*

*Fully qualified with friendly advice*

Ring Totley 236 4364 or  
mobile 0776 5036849

FOR SIX GENERATIONS

**THE LEADING FUNERAL DIRECTORS**

## **John Fleath & Sons**

**PROMPT and COMPREHENSIVE SERVICE  
AT ALL TIMES**

**☎ 2 722222**

**LIMOUSINES FOR SPECIAL OCCASIONS**

## TOTLEY & DISTRICT DIARY

<b>MONDAYS</b>	<b>COFFEE MORNING</b> , All Saints' Church Hall, 10am. To noon
<b>TUESDAYS</b>	<b>COFFEE MORNING</b> . Totley Rise Methodist Church Hall, 10am. To noon. <b>CRAFT GROUP</b> . Totley Library, 2pm. <b>TODDLER GROUP</b> . All Saints Church Hall, 10.00a.m. to 11.30 a.m. Details Jo Smith tel. 262 0741
<b>WEDNESDAYS</b>	<b>COFFEE in the LIBRARY</b> . 10am. to 11.30am. <b>MODERN SEQUENCE DANCING</b> . All Saints Church Hall 8pm. to 10pm. <b>TODDLER GROUP</b> . 10-00 a.m. to 11-30 a.m., All Saints' Church Hall. Details tel. 236 0163 or 236 6789 or 236 3603 <b>HEALTH WALKS</b> . 10-30 a.m., Totley Library foyer. For a current programme and/or further details contact: Sue, The Health Walk Ranger: 0114 2839195
<b>THURSDAYS</b>	<b>TOTLEY RISE METHODIST PLAYGROUP</b> . Grove Road 9:30-12.00, Phone: Judith 236 3456 or Gill 236 1373 <b>PUSHCHAIR CLUB</b> . Totley Rise Methodist Church Hall. 1.30pm.. to 3pm. Tel. 2363157 for further details. <b>CHAIROBICS</b> . Totley Library, 2pm to 3pm. £1. <b>TOTLEY RISE METHODIST PLAYGROUP</b> . Grove Road 9:30-12.00, Phone: Judith 236 3456 or Gill 236 1373 <b>HATHA YOGA</b> , United Reformed Church, Totley Brook Road, 9.45-11.15, Phone Caroline Skelton 07837 876429
<b>SATURDAYS</b>	<b>MODERN SEQUENCE DANCING</b> . All Saints Church Hall 2 <sup>nd</sup> . And 4 <sup>th</sup> . Saturdays 7.30pm. to 10pm.

### JULY 2007

**WED 4<sup>th</sup> WEDNESDAY FRIENDSHIP**, "St Cuthbert's Way – a walk from Melrose to Holy Island", Dr Jim Headridge, Totley Rise Methodist Church, in the Church Lounge, 7.30p.m.  
**FRI 6<sup>th</sup> to SUN 22<sup>nd</sup> BUXTON FESTIVAL 2007**  
**SAT 7<sup>th</sup> & SUN 8<sup>th</sup> MINIATURE TRAIN RIDES OPEN DAY & EXHIBITION**. Abbeydale Road South, First train 1 p.m. – last train 5 p.m. [www.sheffieldsmee.co.uk](http://www.sheffieldsmee.co.uk)  
**SAT 7<sup>th</sup> DERBYSHIRE MONUMENTS CHALLENGE**, Totley Primary School  
**MON 9<sup>th</sup> – FRI 13<sup>th</sup> TOTLEY ALL SAINTS SCHOOL CELEBRATION**, 170<sup>th</sup> Year  
**SAT 14<sup>th</sup> & SUN 15<sup>th</sup> TOTLEY OPEN GARDENS**  
**SAT 14<sup>th</sup> TABLE TOP SALE**, Scout HQ, Aldam Road 10:30am – 12noon  
**SAT 14<sup>th</sup> SATURDAY NIGHT LIVE**, Heatherfield Club, John Shelley, Baslow Road. 8-30 pm. Non members welcome, small charge on door.  
**TUES 17<sup>th</sup> TOTLEY TOWNSWOMEN'S GUILD**, "History of Holidays", Mrs. P. Flinders, Totley Rise Methodist Church Hall, 10.00 am  
**WED 18<sup>th</sup> WEDNESDAY FRIENDSHIP**, "John Wesley" Shirley Ellins, Totley Rise Methodist Church, in the Church Lounge, 7.30p.m.  
**THU 19<sup>th</sup> TOTLEY & DORE SUPPORT GROUP FOR THE VISUALLY IMPAIRED, Final Meeting**. Totley Methodist Church, Grove Road, 11.30 a.m. – 12.30 p.m.  
**SUN 22<sup>nd</sup> MINIATURE TRAIN RIDES**. Abbeydale Road South, First train 1 p.m. – last train 5 p.m. [www.sheffieldsmee.co.uk](http://www.sheffieldsmee.co.uk)  
**SUN 22<sup>nd</sup> SHEFFIELD FARMERS MARKET**, 10.00am-3.00pm, Barkers Pool  
**SAT 28<sup>th</sup> SATURDAY NIGHT LIVE**, Heatherfield Club, Michael J. Oliver, Baslow Road. 8-30 pm. Non members welcome, small charge on door.

### AUGUST 2007

**SUN 5<sup>th</sup> MINIATURE TRAIN RIDES**. Teddy Bears' Picnic, Abbeydale Road South, First train 1 p.m. – last train 5 p.m. [www.sheffieldsmee.co.uk](http://www.sheffieldsmee.co.uk)  
**SAT 11<sup>th</sup> SATURDAY NIGHT LIVE**, Heatherfield Club, Tony Brooklyn, Baslow Road. 8-30 pm. Non members welcome, small charge on door.  
**SAT 25<sup>th</sup> SATURDAY NIGHT LIVE**, Heatherfield Club, Summer Special, Vince Lee Gayle, Baslow Road. 8-30 pm. Non members welcome, small charge on door.  
**SAT 26<sup>th</sup> & SUN 27<sup>th</sup> MINIATURE TRAIN RIDES**. Bank Holiday, Abbeydale Road South, First train 1 p.m. – last train 5 p.m. [www.sheffieldsmee.co.uk](http://www.sheffieldsmee.co.uk)

### THE INDEPENDENT FOR SEPTEMBER

The next issue of the Totley Independent will be available from the usual distribution points on

**SATURDAY 1st SEPTEMBER 2007**

**COPY CLOSE DATE for this issue will be SATURDAY 18th AUGUST 2007**

Editor Ian Clarke Tel. No. 235 2526. Email [iangclarke@hotmail.com](mailto:iangclarke@hotmail.com)  
 Distribution & Advertising. John Perkinson. Tel. No. 236 1601.  
 Email [johnandpaulineperkinson@talktalk.net](mailto:johnandpaulineperkinson@talktalk.net)  
 Items for publication may be left or sent to 2, Main Avenue, Totley, Sheffield, S17 4FG or Totley Library

PRINTED by STARPRINT

### B. K. JEAVONS PAINTER & DECORATOR



**Interior  
Exterior  
Decorating  
No job too  
small.**

**86, WOLLATON ROAD  
BRADWAY  
SHEFFIELD, S17 4LG  
Telephone 2350821**

## Starprint

601 Abbeydale Road, Sheffield 7. Fax: 0114 258 8599

**DESIGN & PRINTING of**

- LETTERHEADS • BUSINESS CARDS •
- BOOKLETS & PADS •
- INVOICES • LEAFLETS •
- CARBONLESS SETS • BROCHURES •
- RAFFLE TICKETS •
- WEDDING STATIONERY •
- ENVELOPES & POSTCARDS •

**SPECIALISTS IN THERMOGRAPHY  
FOIL BLOCKING AND ENCAPSULATION**

**0114 258 0707  
For a Quick Quotation**



**CHARISMA  
BLINDS**

For  
Windows  
With Style

**Sheffield Factory Showroom  
106 PROSPECT ROAD  
HEELEY, SHEFFIELD**

**Sheffield (0114) 258 5496  
Rotherham (01709) 512113**



We welcome letters about local affairs and will publish as many as possible. However the views expressed are not necessarily those of Editor, editorial staff or the Totley Residents Association and must not be imputed to them. © Totley Residents Association 2007.