

# TOTLEY INDEPENDENT

PUBLISHED CONTINUOUSLY SINCE 1977

www.totleyindependent.co.uk

MAY 2012

No. 353

20p.



## The Quadrant

Another postcard from the Thompson Collection. This colour card is taken from the bottom of The Grove at the junction of The Crescent, Terrey Road and looking down the Quadrant towards Bradway Bank beyond. Although telegraph poles are evident there are no TV aerials so maybe late 40's/early 50's. The road surfaces look poorly made with a single street light (probably gas) on the corner so maybe earlier – the clothes of the dog walker don't give too many dating clues. Are those 2 flagpoles in the garden of the house at the top of The Crescent?

## Totley Residents Association

### CHAIR REPORT 2012

The AGM last year saw a newly formed committee that had been given the perfect opportunity to shape themselves into a community association that was something different than had been before. Rather than being an umbrella organisation I felt that the TRA should stand in its own right.

We sat around the table for the first official committee meeting - it was inspiring that we all held the same views and all had the Totley community at the centre of any discussions and decisions.

The Youth shelter installation in Green Oak Park, which despite initial reservations has been a success. There has been little youth nuisance reported, and the shelter has been kept clean by volunteers. This was financed by funds from Totley Open Gardens.

My first official role was to chair the Ward Forum, Heather Moran and I met with BAG and DVS initially. The forums have now changed in the way that they work, but the TRA are committed to ensuring that they remain a focus for Ward issues and a way for you to feed into the Community Assemblies. We continue to enjoy good relations with BAG and DVS. Thank you to Roger Hart for moving forward with the focus groups.

A great deal of my time was taken building relationships with other agencies and getting in touch with local groups forging links that were essential to our future effectiveness. We donated £2,000 to Transport 17 who do an amazing job.

Heather and I attended the Older Persons Road Show in Totley and gathered local views. It was a rewarding day with children in attendance from King Egberts and the generation gap bridged.

The **Totley Independent** also had another successful year and has indeed become independent this year. It continues to flourish, well done to all involved.

TRA thanks go out to Les, Dorothy and the whole Totley Show committee for doing such a splendid job of

**PTO**

organising it, and raising over £500 which the show committee donated to T17. This year we hope it will be a great success and hopefully I will be able to enjoy it this year!

Once again the TRA sponsored the Totley Music Festival which commenced with the Totley show and it was a week packed full of music and activities for all ages. We are pleased to be sponsoring this again this year. Phil and Sue really need your help for this to go ahead so please offer your help to them if you can.

Plans for a Barn Dance had to be shelved and we took the decision to postpone this until mid-2012. We have decided to hold an event during the Totley Music Festival.

We have built up a good working relationship with the local councillors, the South West Community Assembly and the local police. The Police surgeries held in Green Oak Park have proved a success.

We were fortunate to secure funding of £798 for a Christmas Party for older people and in December most of the TRA committee and a lot of helpers gathered to welcome over 30 residents who were treated to a Christmas lunch, afternoon entertainment and a present from an absent Santa to take home. It was a fantastic afternoon and thanks to Marlene, Betty, Johnny, Rachel and Transport 17 who with Heather, Dave and Janet made sure that every whim was catered for. My memories are of Colin Ross and myself trying to build the bingo machine in record time and then calling the numbers as they echoed round the room by all the helpers so nobody missed a number.

We also launched a TRA logo competition in December and Hetty worked with both schools making visits and ensuring we got a good number of entries. All children living in Totley were invited to submit entries.

This was judged last month with local representatives including Angela Grayson from Cherrytree and Colin Ross who have been very supportive of the TRA. The finalists are displayed here in the library so please take the time to vote for your favourites.

We have recently met with local church groups as part of our initiative to become more inclusive. There are some exciting activities happening for the Jubilee and the Olympics. We had a really lively meeting with an update about the Music Festival and ideas were shared.

The highlight of my year but the hardest 3 months work for Heather Moran was the Farmers Market, held on the 15th April. It was a brilliant day and a great success. It was well attended, well organised and Totley Rise was a perfect venue. Heather worked tirelessly to organise it, and with help from Dave and myself, she ensured that it ran like clockwork. The market is expected to raise around £600 for TRA community activities, but more importantly it was a community event that brought people together and gave us an immense sense of pride in Totley and its people. **A further market is planned for July the 22nd.** The feedback has been fabulous, thanks to all the helpers and local businesses and residents of Totley Rise.

On the whole it's been a rewarding year. I realise that when I was voted in as Chair last year, some were sceptical and untrusting of my motives. The whole committee have dedicated time and given me their trust over the past year. I hope that you can now see how we have refocused the energies of the association and that the vision of a community association is being realised. My heartfelt thanks to everyone who has contributed to the successes.

The future plans are a fresh look at the constitution, a Tea Dance for the Jubilee and a family event is planned for this year.

However this can only be realised with help and passion from others, and we need people to come forward to join us, no matter how little time you have, you will be made welcome.

Kathryn Higgins

## SEEKING WORLD WAR ONE SHEFFIELD FAMILIES

Can you help, please? If your ancestors lived in Sheffield during the Great War, they might have a place in a forthcoming book about the city.

The book is looking at people's experiences in Sheffield during the 1914-1918 period, not at soldiers and events on the battlefield. It will cover the many changes in family life, the huge expansion of armaments production, the key role of women workers, the treatment of German residents, widespread help for Belgian refugees, and Sheffielders' voluntary activities of many kinds. It will include material from the archives of principal companies, the Cutlers' Company, the University and other city organizations.

As well as general information the book describes some individual families, how they coped, where they worked during the war, how they learned about war-zone activities of their menfolk, and so on. For example, readers would like to know about Sheffield women who worked in munitions or other jobs, people with War Service Badges to exempt them from military service, descendants of Belgian refugees or interned Germans in the city, families affected by the influenza epidemic of 1918, or about other Sheffield WW1 happenings. It would also be good to include some local ration books or other documents, as well as letters or telegrams about a casualty or death.

If you might be able to help in any of these (or other) ways, could you please contact Peter Warr at [warr@ranmoor.plus.com](mailto:warr@ranmoor.plus.com) or 80 Storth Lane, S10 3HP? You don't need to commit yourself at this stage, and all contributors will be fully acknowledged. Thank you very much.

## RSPCA SHEFFIELD ANIMAL CENTRE LAUNCH NEW MEMBERS SCHEME:

People are invited to join the RSPCA Sheffield's new membership scheme – **Friends of Sheffield Animal Centre** (FoSAC) – which promises a number of exciting things in which they can take part, whilst at the same time raising money for a worth-while cause. Friends of Sheffield Animal Society (FoSAC) aim to provide a regular, reliable income for the Centre and we hope you can help by joining up and giving a minimum of £5 per month or £3 pounds for pensioners. With the assistance of Gift Aid, your £5 will become £6.25. As a member of our new scheme, we will keep you up to date with news and updates; 10% off our charity shops and our RSPCA Sheffield pet shop; advanced invites to upcoming events; a percentage off dog training; insider's information on special offers and more. There will also be opportunities to socialise with like-minded people who love animals."

To join - please call Cheryl Bracey for a membership form on 289 8057 or visit our website to download a form at: <http://bit.ly/JFY0z>



## Transport 17

Unfortunately, we are sad to report that over the Easter weekend some kind souls vandalised our vehicles whilst they were parked up breaking in to take fuel out of all three. The newest vehicle had so little left in it that it nearly didn't make it to the petrol station. We would like to take this opportunity to thank all the very generous people who made donations to offset the cost of the fuel and the repairs that were necessary so a really big **THANK YOU**

As you know we are always asking for more volunteers to help run our service as both drivers and escorts. The following is a contribution from Bob Harris, who has been with us for many years and has now moved out of the area.

Perhaps it will encourage you to come and offer your services.

Felicity Revill, Chair

### GIVING BACK

When I retired 5 years ago, I wasn't sure exactly what I wanted to do with my time (except that I knew I didn't want to play golf or watch TV all day). I came across a request for volunteers for Transport 17 in a local free paper and thought I'd like to give it a go.

I was a bit unsure about exactly what was involved and didn't know how I'd get on with the 'clients'. I probably had in mind a driving role, but most people start as an escort and I found that I really enjoyed that. Later I became a regular escort and 'stand in' driver.

So, what is it about? Put simply it's a way of helping (usually older) people to get out of their houses and meet up with their friends. Most of the trips support a lunch club or similar venture. Some of these clubs have guest speakers, some play games after lunch. Whatever happens it means people aren't locked up alone in their homes. You'd be surprised how many people said "If it wasn't for you lot, I'd never get out from one week to the next". There is genuine gratitude and I never once went home feeling put upon, or unappreciated.

Whilst a certain level of fitness is required in order to help people to and from the bus and to handle wheelchairs, it is not arduous work. The key thing that Transport 17 requires is commitment. It's best to get a regular 'run' and be able to give plenty of notice for holidays and the like. If a volunteer has to go missing at short notice there is a tremendous commitment from the others in the team to 'keep the show on the road' – Transport 17 never likes to let people down.

I had to leave because I've moved away from the area. I miss everyone, fellow volunteers and passengers. I'm struggling to find a similar venture where I now live.

I recommend anyone with a bit of time on their hands, a feeling for the community and a desire to 'put a little back' call Mike or John a call 236 2962.

Bob Harris

### Totley Litter Pick

Have you noticed how much the verges, pavements and hedgerows in Totley have become clogged with litter? So have we. We are organising a communal litter pick on Saturday 26th May. Meet in the library car park at 9.30. The council have provided us with a small number of litter grabbers, gloves and high vis vests. We will provide refuse sacks. Please bring your own equipment if you have it. You should wear sturdy footwear and long sleeves.

## Shine on for St Luke's Hospice Starlight Walk 2012

THE St Luke's Hospice Starlight Walk is back...and this time it's even bigger and better!

Last year, the hospice's first sponsored 5k walk from Endcliffe Park to Forge Dam and back attracted almost 1,000 people and raised a fabulous £65,000.

For the 2012 event, the St Luke's team are hoping that even more people will take part – and, with the sponsorship of family, friends and colleagues, raise more than £80,000 for Sheffield's only hospice.

And to make sure the whole family can get involved, this year will also see the start of a special 2k Mini Star's Walk, specifically created for St Luke's youngest supporters.

The 2012 Starlight Walk will be held on Saturday May 12, from 4pm to 11pm and will include live music, entertainment and a fun group warm up for all walkers in Endcliffe Park.

Perfect for individuals, families, community groups and businesses, the individual registration cost is £15 per person or £10 per person for groups of six or more, while young people aged five to 15 can also take part for £10.

The walk itself starts at sunset at 8.45pm but entertainment in Endcliffe Park begins from 4pm, kicking off with the new 2k Mini Stars event, created specially for four to eight-year-olds and costing only £5 per child to register – a fun introduction to supporting charity!

The official closing date for entries is Friday May 4. For further information call 0114 235 7594, email [eventinfo@hospicesheffield.co.uk](mailto:eventinfo@hospicesheffield.co.uk) or visit: - [www.stlukeshospice.org.uk](http://www.stlukeshospice.org.uk)

Go on line too for a glimpse of what last year's event was like. There's also a great opportunity to order your St Luke's Starlight Walk merchandise in advance.

### PARK & RIDE

Soil testing was carried out at the site of the new park and ride scheme at Dore & Totley Station in April.

Unfortunately, funding has not yet been secured to cover the pedestrian crossing which is a condition of the planning permission. This means it is unlikely that work will start on the new car park before the autumn.

**Ed:-** *Why can't the car park build start now with funding for the crossing being progressed in parallel? Isn't it ironic that work on the new facilities, which will make access to the station much safer, is itself being delayed by this new crossing. Didn't anyone consider if the new pedestrian refuge could have been better positioned to support the Park and Ride?*

### Councillor Surgeries

#### Liberal Democrats:

2nd Monday in the month 6.00-7.00 p.m., Totley Library, Baslow Road and 2nd Saturday in the month from 10.30 a.m. to 12.00 noon, Dore Old School Hall, Savage Lane, Dore Contact details:

Keith Hill 235 2289 Email: [keith.hill@sheffield.gov.uk](mailto:keith.hill@sheffield.gov.uk),

Colin Ross 235 1948 Email: [colin.ross@sheffield.gov.uk](mailto:colin.ross@sheffield.gov.uk)

Joe Otten 230 3290 Email: [joe.otten@sheffield.gov.uk](mailto:joe.otten@sheffield.gov.uk)

**Totley Independent Website:-**  
**[www.totleyindependent.co.uk](http://www.totleyindependent.co.uk)**



INVITE YOU TO A WALK IN  
ECCLESALL WOODS, ON EITHER  
TUESDAY MAY 15<sup>TH</sup> AT 2PM OR  
WEDNESDAY MAY 16<sup>TH</sup> AT 6.45PM  
WITH JOHN GILPIN

TO EXPLORE THE PAST HISTORY AND THE PRESENT MANAGEMENT  
OF THE WOODS. MEET AT THE SAWMILL

PLACES LIMITED, CONTACT PAULINE BURNET, 0114 235 2344

**PLEASE NOTE**

STOUT SHOES SHOULD BE WORN AND BE AWARE THERE MAY BE  
SLIPPERY SURFACES

OPEN TO MEMBERS AND NON-MEMBERS

THESE WALKS REPLACE OUR USUAL MEETING IN MAY

**TOADS  
PRESENT  
"MURDER WEEKEND"**

**WRITTEN  
BY**

**BETTINE MANKTELOW**

"Murder Weekend" is a comedy thriller and is the next play to be performed by TOADS. The dates are from Wednesday 16th May to Saturday 19th May and the venue is, as usual, St John's Hall, Abbeydale Road South, at 7.30pm.

The play centres around a group of people who attend a Murder Mystery weekend in a hotel. Trouble abounds when it transpires that 2 of the guests know each other - very well indeed! An uninvited guest appears, giving us a recipe for a good thriller, with humour aplenty.

Call 2351206 to reserve your ticket - £4 or £3.50 for concessions - or contact any TOADS member.

**R. S. CERAMIC TILING**

56 Mickley lane  
Totley  
Sheffield  
S17 4HE

All ceramic tiling work undertaken, Underfloor Heating

15 years experience, Private and commercial

All work guaranteed, Competitive prices

For a free no obligation quote call

Ron Shilton

Mobile: 07887 990059, Home: 0114 418 1209

Email: ronshilton@ntlworld.com

## Scout Lottery

### April Draw

1st Prize No 57  
Mele Jewellery Box  
Mrs and Mrs Laurie  
Totley Grange Road

2nd Prize No 07  
£10 Voucher  
Mr and Mrs Smith  
Lemont Road

Pete Casson

## Totley Scouts

On the 17th March the Scouts took part in the County Apprentice Challenge where Scouts from all over South Yorkshire entered. This culminated in an evening cooking challenge where each patrol had to cook a three course meal outside. The event was held at the Scout Activity Centre at Hesley Wood. I couldn't tell you how well we did in the last **Totley Independent** due to the editorial deadline. However I am pleased to report that we entered two patrols and they came 2nd and 3rd. Well done.

At the end of March we hosted an Antiques Fayre at St Johns Church Hall. This is always a major fund raiser for us and was again. We look forward to the next one in October.

We celebrated St Georges Day on the 22nd April. The whole Scout Group paraded and joined in the service at St Johns Church to celebrate our patron saint. St George is not only the patron saint of England (as well as many other countries) but is also the patron saint of Scouting.

Thank you to everybody who has collected Sainsbury's Active Kids and Tesco for Schools and Clubs vouchers and donated them to the Scouts. If you still have any vouchers, please do pass them on to us. The simplest way is through our letterbox at the Scout Hut. We use the vouchers to exchange for equipment to be used by the children. Last year we obtained various types of play equipment.

A note from our Explorer Scouts:- Are you between the ages of 15 and 18? If so are you interested in developing your leadership skills? Well here's your chance. Not only is this your opportunity to pump points into your cv; it's a chance to sign off your DofE voluntary service!

It's also a chance to home in on some of those vital life skills such as cooking, first aid, navigation and self-reliance. Not to mention night-hikes, shooting, archery, climbing, camping (including International), camp fires and assault courses. Besides, it'll be an adventure. Interested? Email:-

John\_Lawry@europe.bd.com (Explorer Scout Leader).

Finally it is Scout Community Week from the 14th-20th May. On the 19th we shall be opening the Scout Hut for tea and cakes to support the Friends of Gillfield Wood. See their publicity for more information. Also on the same day the Scouts and Explorers will be carrying out a survey in St Luke's Hospice shops on behalf of St Luke's. During the week the Beavers, Cubs, Scouts and Explorers will be delivering leaflets around Totley promoting Scouting and offering our services for Sunday the 20th to collect garden waste (to compost for our own 'allotment'), rags/clothing (which we can sell to raise funds) and also wood for use on our camp fires. This is a new version of 'bob a job' week. So we will be asking for donations. Please look out for the leaflet.

For a quick and easy online way to donate please follow this link: - <http://bit.ly/Jj0JeW>. Thank you.

Richard Frost, Chairman, 1st Totley Scouts

Email: - TotleyChair@aol.com

## The Ward Forum

At the Ward Forum meeting, the issue (sic) of dog deposits was raised by a dog lover, who was sickened by deposits on footpaths & in Green Oak Park. As the coordinator of the Forum, I have been looking at the problem & gathering information. The **Totley Independent** carried an article about the footpath at Butts Hill, being contaminated; the footpath between Bradway Primary School & Kenwell Drive is also frequently contaminated.

Harry Hunter has researched the enforcement of "Enviro Crime" & found that Sheffield is well behind other authorities, for enforcement. I was hoping to form a focus group on the subject & Harry is willing to share his information with us & which he has now shared with The Star (Tuesday 17 April) & got front page coverage. From the information which I have received so far, farmers are concerned that professional dog walkers are allowing their fields to become contaminated. Some dog walkers do not realise that the law has been changed & has now made it an offence to fail to pick up waste from grass verges, &, very sadly, some dog walkers pick up the waste but then deposit it in a hedge or tree. Some dog waste offences carry a maximum fine of £1,000 but others may be classed as anti-social behaviour & therefore attract an ASBO.

I am still willing to form a focus group, to collate information on the matter (sic) & to then take it to a Ward Forum meeting where, hopefully, we could get the Environmental Health Officer to detail what action they will be taking. If you will be interested in forming a focus group, please call or email me. Ideally we need a representative from each of Dore, Bradway, Totley & Whirlow.

**20 MPH Zones.** The principal of creating zones, or more correctly, 20 MPH areas, is now Council Policy. A map of the proposals for Dore, Totley & Bradway put forward at the public meeting held in Totley Library, is now displayed in the library. A summary of that meeting, with the plan of the proposals is on the SWCA website or blog: - <http://bit.ly/HRPcbF>

However, pilot schemes will be carried out within the next two years, one in each Community Assembly Area & the areas will be chosen according to criteria set down by the Council - one of the criteria being the number of accidents which include personal injury.

**HGV routes.** The topic of which routes HGVs use has been debated with councillors, council officials & interested groups. Alan Kewley is our man on the subject & has attended meetings. A discussion document has been produced but appears to have some dated information on it & is lacking current problems. The Council will be seeking the views of the public hopefully within the next four weeks & a public meeting is to be held, where questions can be asked & views submitted. It will be somewhere in the South West Community Area & not specifically for our Ward. Details are not available at the time of going to

press†, but will be posted in the library & notice boards. The closing date for responses is 25th May. Alternatively, if any one who is interested wishes to send me their email, Subject - "HGV" then I will inform them as soon as I find out. Local concerns, which I have heard about are HGV's turning in Five Trees, (is this in order that they can then go the wrong way up the Dual Carriageway outside Tesco?) HGV's driving the wrong way up the dual carriageway both at Tesco Express & the Co-op & the speed of HGV's on Baslow Road (to see one empty articulated HGV passing a loaded stone truck is frightening).

**SID.** The Speed Indication Device at the top of Main Avenue, has been fitted with a solar panel, meaning it works much more frequently than it did. Apparently another one has been ordered for use in the South West Community Assembly Area delivery awaited.

Roger Hart, Ward Forum Coordinator. 07831 305881 / [roger@rogerhart.co.uk](mailto:roger@rogerhart.co.uk)

† Stop press - see back page Tues 15th for meeting

## TOTLEY FARMERS MARKET

Totley Residents' Association would like to thank all residents and businesses on Totley Rise for helping to make the Farmers Market/Spring fair such a success. It was brilliant to see so many people attend and Totley Rise was the perfect site. Thanks also to Heather Moran the event organiser who ensured the event ran as smoothly as possible and all the helpers both before and on the day that contributed to the success of this community event.

Kathryn Higgins Chair TRA.



Totley Rise was transformed, on Sunday afternoon, 15th April, to a Farmers Market. It was organised by a small team from the TRA committee, who succeeded in getting the road closed, 30 stalls booked a Police presence all afternoon by a Special Constable & dry weather. It was a great community effort, bringing folk from Totley & further afield together as well as raising funds for community use. Appreciation has also to go to the residents, whose normally peaceful Sunday afternoon was disturbed. Well done to all concerned.

Roger Hart



## Kate Reynolds.

Hello! It's been nearly 5 months since Kate went into Henleigh Hall C H, and I thought I'd bring you up to date. She has settled in quite well, and has made a small circle of friends, though the winter days curtailed many outside trips! However, on sunny days we manage to go "next door" to Millhouses Park and similar little excursions, so we are looking forward to the Summer outings.

She still has contact with TOADS, and we talk over the past, but she would welcome any letters or visits from old friends and neighbours who wish to call in and see her. There is almost 24 hrs access to visit, and you are made most welcome.

You can call me on 236 6891 or just turn up!

With best wishes from us both, Kate & Tony.

Join us at our Scottish Country Dance Class

**Tuesday Evenings 7.30 – 10.00pm**

- ✓ Scottish Country Dancing is a great way to get exercise.
- ✓ Come and enjoy keeping fit in a sociable atmosphere.
- ✓ Beginners very welcome.
- ✓ No partners or special dress necessary, but
- ✓ soft shoes are recommended.

**Holy Trinity Church Hall,  
Grove Road, Millhouses, S7 2GY**



**Adults £2.70, Students £1.00**  
including light refreshments

For further information please contact:  
Hugh Porteous 0114 235 6853  
Liz Rankin 0114 236 0917

There is no need to be a member of the Sheffield Caledonian Society or to be of Scots descent.



The Inner Wheel Club of Dronfield



presents



## A BEAUTY EVENING

**including cheese and wine**

at Holmesfield Church Hall,  
St Swithin's Church

on

**Thursday, 24 May 2012**

7.30 pm

*Treat yourself to an evening with friends and enjoy a talk and demonstration by Guerlain*

*Cheese, wine and nibbles served on arrival*



**Tickets £10 each**

For more info or tickets, telephone 0114 2620013 or 01246 414786

This is a fundraising event in aid of the RSCPA Sheffield Animal Centre



# hairunion

*hairunion welcomes our new stylist 'Emily May'*

formerly of Pride hairdressing, to their accomplished hair and beauty team.

If you love colour and style and want to stay on trend, then why not start out on the road to professional hair care with our new young stylist Sam?

hairunion is a hair salon complimented with a beautician offering a full range of treatments and a nail technician.

We also stock a wide range of excellent hair care products including

**JOICO**  
THE ART OF HEALTHY HAIR

  
**WELLA**  
PROFESSIONALS

**PAUL MITCHELL**

**10% OFF**

Bring this along and get 10% off your first visit to Sam or Emily

Telephone 0114 235 2233 today to book your appointment

289 Abbeydale Road South, Sheffield, S17 3LB  
near Dore train station

## ROTARY CLUB OF SHEFFIELD VULCAN AND THE BIG TREE PLANT

The Big Tree Plant is a campaign to encourage people and communities to plant more trees in England's towns, cities and neighbourhoods. It is a partnership bringing together national tree-planting organisations and local groups working with Defra and the Forestry Commission to plant trees throughout England. To date over 195,000 trees have been planted.



The Rotary Club of Sheffield Vulcan, with the assistance of Sheffield City Council and Handsworth Community Trust, made a successful application to the Big Tree Plant Fund, and a grant of £945 enabled the purchase of over two hundred young trees, which also covers the cost of three years' maintenance. During February, March, and April these trees were planted by Vulcan Rotary Club members in Handsworth Community Park, with a small number also at Fox Lane. The trees are all British native deciduous trees, mainly oaks, hornbeams, ash and rowans, and vary in size and age. Sheffield Vulcan annually also plants thousands of bulbs and tens of trees in Sheffield in schools, parks, waste land, and alongside roads and verges, and in collaboration with Sheffield Parks Department.

Sheffield Vulcan is one of 34,000 member clubs of Rotary International, a volunteer service organisation of 1.2 million members worldwide. The Club meets weekly at Abbeydale Sports Ground in Dore, and undertakes many projects for charities, schools and other worthwhile causes, both locally and Overseas, typically through fund raising, guidance and support, and the provision of manpower from its volunteer membership. For more information, see [www.vulcanrotary.org.uk](http://www.vulcanrotary.org.uk).

Alan Brown

Rotary Club of Sheffield Vulcan  
[alanstuartbrown@yahoo.co.uk](mailto:alanstuartbrown@yahoo.co.uk)

## Police Response

I had reason to call the Police non-emergency number (101) just after 10pm on 23rd April. I have never dialled 101 before and want to report how impressed I was.

I was walking past the bus shelter outside the Catholic Church on Baslow Road. Three youths (for want of a polite description) were being loud. One was kicking the timetable post and the perspex. It did not look as though any actual damage had been inflicted. Nevertheless I walked on out of sight and called 101 on my mobile phone. The default option seemed to be to get through to Derbyshire Police but other options meant I quickly got through to South Yorkshire Police. A few minutes later I had just got home and had a call from the Duty Sergeant at Woodseats Police asking some more questions. About half an hour later I had a call from the PC who had gone to the bus shelter. By then more youths had congregated and had been dispersed. The bus shelter had also been inspected and found not to be damaged.

As I said the purpose of this letter is to let you know how impressed I was with the Police response. The situation, which wasn't an emergency, was dealt with and I was informed within 45 minutes. I was pleased my call wasn't just a statistic, that I wasn't ignored and very importantly was told what had happened and wasn't left wondering.

It has certainly given me confidence to use 101 again if I should.

By email

## All the Fun of the Fair as Hospice event moves to new home

THE popular annual St Luke's Hospice Summer Fair is on the move!

For the past 35 years, the fair has been held in the grounds of the hospice in Little Common Lane at Whirlow. But with work about to begin on a £5.5 million redevelopment of the site, this year's event is moving to a new home.

And on Saturday, June 9, the Summer Fair will open at the St Mary's Church and Conference Centre on Bramall Lane, just a short walk from Sheffield city centre.

One thing does not change however – the hospice team will need as many donations as possible to make this year's fair the most successful ever.

There will also be live music throughout the afternoon, as well as a food zone with the popular Kelham Island Beer Tent.

To make donations of from good quality toys, books, CDs, DVDs and bric-a-brac through to toiletries and bottles for our popular bottle stall, get involved or to seek further information about the St Luke's Hospice Summer Fair call Anna Sheppard on 0114 235 7561 or email: [a.sheppard@hospicesheffield.co.uk](mailto:a.sheppard@hospicesheffield.co.uk)

## The Three Valleys Beer Festival 2012

10 pubs over 3 valleys!

Dronfield – Holmesfield - Barlow – Bradway - Totley

The Coach & Horses

The Horns Inn

Barlow Brewery

The Three Tuns

The Dronfield Arms

The Cricket Inn

Jolly Farmer

Miners Arms

Castle Inn

Hearty Oak

[www.threevalleysfestival.org.uk](http://www.threevalleysfestival.org.uk)



**SATURDAY 2<sup>ND</sup> JUNE**

Free bus service all day | Live music | Food | Beer Cider & Lager

## 'Coffee, Cakes and Cuttings'

In support of 'Transport 17' and other Charities  
Will be held at:

English Martyrs (Catholic Church)

Baslow Road, Totley Sheffield S17 4DR

On: **Saturday 19th May – 10am to 12noon**

Plants, Cakes and small Bric-a-Brac items can be collected contact: Frank Donnelly 236 2789

## Friends of Green Oak Park

At last I can report the drainage is finished, but the area is still fenced off to protect the newly planted grass seed. Some residents have voiced concerns about the safety of the three new ponds. The project, following the Masterplan, was instigated by the Council, designed by a drainage consultant and agreed by them. The work was carried out by a reputable company chosen by the Council.

Suggestions the ponds should be fenced have received the following:- "The health and safety aspect of the new pond scheme was discussed and assessed prior to the specification being finalised, in our opinion there is no need for the ponds to be fenced off". Anyone who has concerns should contact Parks and Countryside on 2500500.

At present, behind the barrier are two wonderful sculptures of squirrels and hares. They have been designed and carved by Lorraine Botterill from tree stumps. By the time you read this, she will have returned to carve a third stump into a seat, with an otter and a fish. The money for the sculptures came from the Community Assembly and the Tree Officer. If you would like to see more of her work or to request a carving for your garden, Lorraine is based at Ecclesall Sawmills on Abbey Lane. She can be contacted on 07702 078279 or [lorraine@brackenmoor.plus.com](mailto:lorraine@brackenmoor.plus.com) Many people keep enquiring about what has happened to the fitness equipment which was chosen by the community at Totley show in 2010. We are still waiting for a decision from the council. We are also waiting for a decision about extra equipment for the children's playground.

There is anger and concern about the boundary hedge bordering the park along Aldam Road. Recently, parts of it have been cut down by residents to make an easy entrance into the park. The hedge is old and appears on maps dated 1840 and 1875. If destruction of this hedge continues, the park will lose a valuable asset and it will be ruined for everyone. Parks and Countryside are aware of what has happened. If you wish to express your concerns please ring them. 250 0500

The Lemont Road Entrance bed has now been planted up. It was designed by Trevor, one of the team who maintain the park, to give year round colour. In the past he has designed the other beds. Friends have paid for the plants.

We would like to thank Neil Grant, Manager of Ferndale Garden Centre for sponsoring the plants and delivering them quickly, so we could complete the planting of the bed this Spring. If you want good plants for your garden, take a trip to Ferndale, Dyche Lane Coal Aston, Dronfield. Neil can be heard on Radio Sheffield with Rony on Sundays at 9am.

An explanation as to why grass was killed in the park was explained in the November edition along with information about how Pictorial Meadows seeds were developed. I am delighted to tell everyone the seeds have now been planted.

### **Sunday May 13th Community Afternoon**

Our community afternoon is from 1.30-4.30pm. The Ranger Booklet says "Green Oak Friends have joined forces with the Rangers for Fun Activities for Families and Young People".

Do come along, bring your books and plants to swap, enjoy a cuppa and learn how to make a kite, grow a sunflower, join in the treasure hunt and have a go at the competitions. You could try your hand on the climbing boulder or the zip line. Younger children can enjoy the equipment in the playground.

If you have not been to the park for a long time this is your chance to come and see what has been done to improve your park.

We hope to see you there.

Avril Critchley  
Chair FoGOP

## South Yorkshire Police

### **South West Team, Dore, Totley & Bradway**

Hello Everyone

Here is some news from your local Policing team. We have a new Police Officer joining the Dore, Totley and Bradway Team. Our new officer is PC 0192 Martyn Civil and he will be joining us from the 1st April. Our team now consists of two Police Officers, PC Kevin Marsh and PC Martyn Civil and one Police Community Support Officer, PCSO Katie Gavin. We can be contacted on the Local Police number 101 or via email which is

- [martyn.civil@southyorks.pnn.police.uk](mailto:martyn.civil@southyorks.pnn.police.uk) - for PC 0192 Martin Civil
- [kevin.marsh@southyorks.pnn.police.uk](mailto:kevin.marsh@southyorks.pnn.police.uk) - for PC 0753 Kev Marsh
- [katie.gavin@southyorks.pnn.police.uk](mailto:katie.gavin@southyorks.pnn.police.uk) - for PCSO Katie Gavin

Police Officer Kevin Marsh and Police Community Support Officer Katie Gavin has been covering the Dore and Totley area now for a number of years and we are really happy to welcome our new area of Bradway.

**Op K Kiddo** - which is targeting the key ASB (anti social behaviour) hot spots in the area Police Officers and Police Community Support Officers have been working late shifts on the most common times which ASB has been reported. This operation proved a great success with the reports of ASB falling by a considerable amount.

**Op K Anchor** - A large operation took place across the whole on the South West area where teams worked with VOSA and the council licensing team checking on scrap metal merchants that are in and around the area. The outcome was very positive with a number of vehicles stopped and checked, some were referred due to licensing problems and others were issued with notices regarding their vehicles. The plan is to repeat this operation in the near future but we would like your help to gather information please. We would like you to report any suspicious vehicles to us giving as much detail as you can i.e. vehicle registration, the number of people and what they were wearing and doing.

The South West Policing Team have a Newsletter with updates and crime prevention which is sent out every month if you would like to receive the Newsletter please send me your name, email and address to: [katie.gavin@southyorks.pnn.police.uk](mailto:katie.gavin@southyorks.pnn.police.uk)

## Totley Residents' Tea Dance

### **Saturday June 9th**

Totley Residents' Association are holding a tea dance to celebrate the Jubilee, from 4pm until 6pm in the Heatherfield Club. Entrance is free, and there will be dancing and a vintage afternoon tea provided. If you would like to attend please phone 07709 780606 for tickets, as numbers will be limited. Transport can be provided. It promises to be a fun afternoon.



## WHEN WE CAME TO TOTLEY

We moved into our present house in December 1957. I had been working in Sheffield from January of that year, travelling on buses from our home in Doncaster as we didn't have a car.

We came into a small development of sixteen new houses built onto a road of properties built between the two world wars. We then had two daughters and more than half of the houses had children of, or approaching school age, so there never seemed a shortage of playmates when they were young. As the road is a cul-de-sac and the cars were fewer and slower, the children were fairly free to visit each other's houses.

Our house in Doncaster had been built post war, still with building restrictions, and was very cold except close to the fire. It took major courage to leave the fireside and go into the kitchen to prepare a bedtime drink. Our newer house in contrast was almost tropical. It didn't have central heating, double glazing or cavity wall insulation. It did have a coke boiler in the kitchen which could be left on all night and was very cosy. The boiler fed a copper radiator on the landing to keep the upstairs chill at bay.

One of the first letters my wife wrote to a former neighbour in Doncaster extolled the shops in easy reach compared to the two with us in reach in Bessacarr. This, of course, was before the days of deep freeze and domestic refrigerators. Shopping was almost a daily necessity so to have Ormes store as we reached the main road, greengrocer next door and then Jimmy Martin's treasure trove of a shop next and a branch of the city I library. On Totley Rise, then still the main road, were the newsagent, fishmonger, two butchers, sweet shop, haberdashery, children's clothing and footwear, cobbler, post office and even a branch of the large Sheffield provision merchant Davys. On the opposite side of the road up on the bank, were ladies and gents hairdressers (separate in those days), a bank, electricians and painter and decorator, wallpaper shop. Ormes employed a lady to go round and collect grocery orders for later delivery- a far cry from a visit to the supermarket and scrabbling on shelves at floor level or at unattainable heights to load a trolley for oneself.

Something she didn't mention which I am sure would have amused - a lamplighter still came round each evening to light individual gas lamps.

Early in 1958 we purchased our first car, a three year old "Ford Pop". Again this was "local shopping" from the Cross Scythes car dealer. Petrol was bought and servicing carried out at Thompson's garage on the site above the Glover Road junction, more recently a veterinary surgery.

After the Easter holiday of that year came an important family event, start of school. Many members of staff at Totley Primary are remembered by all our girls with affection and mentioned from time to time. One mentioned recently raised a smile. One of our girls, when in Mrs White's class, had a slight "accident". On the way home when her mother collected her from school said matter of factly "mummy, I've got Mrs White's panties on!"

Of course so many things have happened in the time since we came. For example I can think of more than twenty major building developments in the vicinity and yet there is still a housing shortage! Car ownership and usage has increased x-fold. Public transport buses do not seem as well maintained and as clean as they were when part of the local authority fleet.

However, to return to an earlier statement, if my wife were to write a similar letter today she would still be able to comment on a reasonable variety of shops though very different from when we came. One good aspect which is still with us is the friendly helpful nature of the staff in the shops. Even so I am not sure we could replicate an event we remember. A gentleman in the road, then in his nineties, had looked after his invalid wife over many years. After she died, he decided to take a holiday in the Hebrides. This was in the days before package holidays were so common. One day, as my wife passed his home, he asked her to take a telegram to the post office. This was to book his sailing. "Ask Mrs Jackson to send it and tell her I'll pay her next time I'm in."

Don Ashford

## TOTLEY OPEN GARDENS

**14th and 15th JULY-REVISED date for your diary**

Around Totley there are now a group of people getting their gardens ready to open for Totley Open Gardens on the weekend of July 14th and 15th from 1-5pm.

If you have missed going round the gardens in previous years, put the dates in your diary. From about three weeks beforehand, programmes will be on sale in Totley Library. Over the weekend of 14th and 15th, programmes can be bought outside the Ironing Parlour on Baslow Road, or at any of the gates of the gardens that are open.

There will again be a variety of gardens, from the quirky to the formal and the small to the large. There is one new garden this year.

Queries to: Jennie Street 236-2302  
jennie@hadish.f9.co.uk



## Joyce Martin

**Victoria Gardens, Totley Rise**

Joyce passed away on the 9 March 2012. She died bravely in the same way she had always lived her life. Born in Totley, service in the WAAF, marriage, motherhood and widowhood contributed to Joyce's strength of character, honesty and humility. Our family has many connections with Dore and Totley. She enjoyed the Totley Independent and Dore to Dore publications, contributing to both with personal memories and photographs, she had a remarkable, accurate memory. I am proud to have had such a lovely lady as my mother and with her companionship, love and support.

S Hobson

## Toy and Clothes Sale

We are organising our annual Toy and Clothes Sale in aid of Totley All Saints School at Totley All Saints Church Hall on Saturday, 26 May 12 noon til 1.30pm  
Sellers numbers can be acquired by ringing Sally on 235 1651

# 195 HAIRLINES

195 Baslow Road  
Totley  
Tele 0114 236 6025

## HAIR

Ladies Gents & Children's Cuts  
Blows  
Sets  
Cut/Blow  
Colours  
Roots, Semi or Full Head Foils  
Brazilian Blow Dry  
Clip in Human Hair Extensions

## BEAUTY

Facials  
Massage  
Indian Head Massage  
Nails  
Manicure/ Pedicure  
Gelish Manicure  
Nail Extensions  
Waxing  
Eye Lash Tint/ Brown Tint  
Sienna X Spray Tan

## WIGS

Synthetic & Human Hair  
Hairpieces  
Private Consultation Room  
Medical or Fashion

---0000000000---

Pamper Parties for Children or  
Adults

## Special OFFER

Dermalogica Facial  
20 Mins Basic Massage  
Gelish Manicure  
All for only  
£25.00

50%  
OFF!!

**GELISH MANICURE  
&  
SIENNA X SPRAY TAN  
Only £22.00**

## Dermalogica

Nioxin	Bed Head Tigi
Gelish Nail polish	Sienna X
Amore	Norilco

[www.195hairlines.co.uk](http://www.195hairlines.co.uk)

## Artists 'open up' Sheffield

More than 150 artists in and around Sheffield are opening their doors to the public. Taking place over the first two weekends in May - including the bank holiday Monday - visitors can watch artists at work, engage in conversation, see working spaces and studios, arrange commissions and tuition, or even purchase a work of art. If visitors wish to participate in some workshop activities or taster sessions there may be a small cost for those, but entry to all the participating venues is free of charge.

"Open Up" Sheffield is firmly in the diary of art lovers from Sheffield, South Yorkshire and beyond. We are delighted that this year an unprecedented number of artists are taking part, which should attract more visitors than ever before", says Brian Holland, Chair of Open Up Sheffield.

Geographically, artists are spread from as far afield as Kexborough near Barnsley down to Coal Aston and Clowne, and from Bamford across to Rotherham with plenty in between. "What's local to some may be a long way for others but, wherever you live, we think it's worth the effort to go that little bit further, whether on foot, by bus or by car." says Brian. "Whether you head north, south, east or west, there are some great studios on the outskirts and there'll be a range of studios to visit along the way too. Many visitors make a day of it with family and friends, and with 5 dates to choose from there's a chance to go in all directions!"

In 2012, Open Up Sheffield is featuring three artists in particular. Simon Clements, a Broomhill-based painter much loved for his landscape art and illustrations of the concerts of Music in the Round; Joe Dixon, a final year student at Freeman College, working mainly in felting and silversmithing, and Sabine Little, a glass artist and previous winner of the Craft and Design Selected Awards (Silver), who is based in Bolsterstone, near Stocksbridge. Joe Dixon and Sabine Little will be exhibiting as part of the event.

Two Totley artists will be taking part in the event, landscape artist Steve Elliott and Hazel Lale, who paints and teaches from her studio in Totley.

As in previous years, brochures are available to collect from many public outlets, including libraries, the Millennium Galleries, the Showroom cinema and Workstation. The brochure and its map can help visitors to plan their journeys in advance, but they can also be picked up from venues on the day (while stocks last!). "The brochure is more than just a guide to event", says Catherine Brown, Vice Chair. "Visitors can use it to navigate their way through the two open weekends, but can also keep it as a catalogue of local

artists, referring to it throughout the year to make contacts, place commissions, and read about the variety of art we have right on our doorstep."

The event takes place on Saturday 5th, Sunday 6th, Bank Holiday Monday 7th May, plus Saturday 12th, and Sunday 13th of May, 11am - 5pm. Further information about all participating artists, including details of their individual opening times and directions to their studios, are available from the website [www.openupsheffield.co.uk](http://www.openupsheffield.co.uk)

## INVITATION TO JOIN OUR SUMMER FUN DAY!

**SATURDAY 23rd JUNE 1-4PM**

Totley Primary School PTA invites you to take a trip to Totley Primary School on Saturday 23 June 2012 between 1 and 4pm to enjoy our Summer Fun Day. Bouncy castles, face painting and all manner of classic games form part of the programme for both younger and older children alike. These, together with a tombola, a raffle, a variety of stalls, as well as arena events and displays, promise a fun afternoon for the whole family on the green grounds of the school. Refreshments will be available for sale throughout the afternoon including our legendary homemade cakes and a quality barbeque.

Admission to the Summer Fun Day is free and a warm welcome awaits you. The access to the school and grounds is via Main Avenue (off Baslow Road) and Sunnyvale Road. Parking is available at the rear of the nearby Cross Scythes pub car park.

Mark and Sally Fletcher invite you to

**The Grouse Inn**

**Longshaw**

**Sheffield S11 7TZ**

**Meal times:-**

**Mondays 12.00 to 2.30pm**

**Tuesdays to Friday's 12.00 to 2.30pm and**

**6-30pm to 9-30 pm**

**Saturdays 12.00 to 3.00pm and**

**6.30pm. to 9.00pm (drinks - open all day)**

**Sundays 12.00 to 9.00pm**

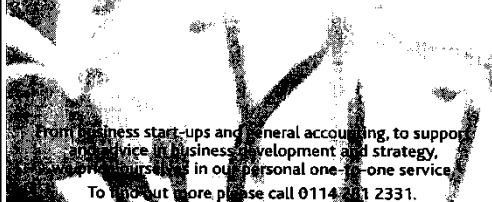
**Phone 01433 630 423**

**R Rose & Co**

Chartered Accountants & Business Advisors

Specialists at looking after the affairs of small businesses.

For a **FREE** initial consultation please contact Roger Rose FCA on **0114 281 2331**



213 Derbyshire Lane, Norton Lees, Sheffield S8 8SA  
Email: [info@r-rose.co.uk](mailto:info@r-rose.co.uk)

*One man went to mow...  
...but his mower wouldn't go!*

Now is the time to call

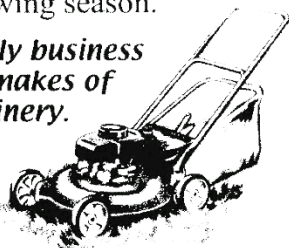
**MOWER MENDER**

and be ready for the forthcoming growing season.

**A local friendly business servicing all makes of garden machinery.**

Phone: 0114 236 6958

Mobile: 0781 2211149



**Blade Sharpening and Collections & Delivery Service Available**

## GARDENING TIPS FOR MAY

May is one of the busiest months in the gardening calendar. Seedlings should be coming along and require potting on or planting out in their final growing position, vegetable seeds can also be planted directly where they are to grow. Seeds planted in a prepared nursery bed to be ready for following on to give a continuous supply of lovely home grown tasty vegetables.

Our garden is looking colourful with the spring flowers and the blossom on the fruit trees coming into bloom. The new seating (most important) area is now completed and is looking good. We can hear the tinkling of the water in the ponds and watch the fish when we have a little break (they the fish, have produced young again this year). The tadpoles are quite plentiful despite the fact that I had to get rid of quite a lot of frogspawn earlier to enable the fish to swim around.

The birds are enjoying the feeders, and squabbling over the titbits we put out.

Lawns need a bit of attention if you have left them to fend for themselves over the winter. The first cut should be set high, and a good quality feed including weed killer if necessary applied. This treatment should give your lawn a good start, keep up with regular mowing, not too short, and a regular feeding routine (read manufacturer's instructions) this should keep lawns looking good all summer.

Prepare for shading the greenhouse to avoid getting your precious plants scorched, the sunshine is nice but it can devastate any young plants, and dry out pots very quickly. Tomatoes need careful temperature control to give good quality and abundant crops. They don't like it too hot 75 degrees max if possible and regular watering is a must (I water early morning and again in the evening on hot days).

My garden furniture is showing a bit of neglect, so I will have to get this attended to before it gets any worse. Now is a good time if the weather is fine as varnish soon dries out in a sunny spot.

We are looking for ways to make looking after our garden easier by planting more perennials and small shrubs not too many bedding plants (which take a lot of time or can be quite expensive to buy) so if anyone has any good ideas for easing the work load in the garden please let me know. I'm sure there are lots of people looking to do the same (I don't like the idea of concreting it over, so that's not an option).

You youngsters must think about later in life when planning the more permanent features in the garden bearing in mind that may not be able to lift heavy things later or reach over the pond as far when cleaning up. Food for thought.....

**FLOWERS** Prepare beds ready for summer bedding plants. Dig in plenty of well-rotted manure or compost. Remove any weeds. Thin and stake herbaceous perennials, watch out for green fly and treat it before it gets too bad. Encourage Blue tits, hover flies, lace wings and ladybirds they love green fly. Slugs will be on the rampage; beer traps work but are a bit smelly if you forget to empty them regularly. Tie up sweet peas and give them a mulch to keep them moist. Dead head bulbs which have finished flowering, don't cut the leaves or tie them in knots let them die back naturally or move them to another plot. Place them in a trench and cover the bulbs until the leaves have died back, then dry them in the sun or greenhouse. Thin out chrysanthemum growth, plant out dahlia tubers, and cover with 8cm (3 ins) of soil. Spray roses with fungicide if you have had trouble with black spot last season. Plant up window boxes and hanging baskets, keep them in the greenhouse or in a sheltered spot until the frosts have finished. Plant out seedlings of hardy perennials; place them in a nursery bed where they can grow undisturbed during the summer. Trim aubrietia to prolong the flowering period and top dress with compost or well-rotted manure. Pinch out the growing points of herbaceous plants such as Phlox, Michaelmas daisy and golden rod. Sow hardy annuals such as Clarkia, Cornflower, Calendula, Candytuft, Godetias etc. Liquid feed container grown plants; seaweed fertilizer is ideal and it's organic!!

**VEGETABLES** Earth up potatoes, support peas and runner beans, thin out carrot, lettuce, parsnip, turnip and spinach seedlings. Keep all crops well watered especially cauliflower. Harden off indoor raised vegetables and salad crops, clear the remains of spring greens and prepare beds for leeks, digging in plenty of well-rotted manure and compost, add a bit of hoof and horn. Prepare mound for planting out courgettes, marrows, pumpkins etc. To have a constant supply of veg through the season, sow small

amounts of seeds every 3 or 4 weeks to obtain a succession of crops and avoid a glut.

Plant out winter greens particularly Brussels sprouts, cauliflower and purple sprouting broccoli. Runner beans can be planted out now, put in 2 seeds together about 9 ins apart. If they both germinate cultivate the weakest looking one, you need about 3ft between rows. At the end of the month sow vegetable marrow and ridge cucumbers outdoors, on the mounds previously mentioned. I think I have told you before I use 2 bales of straw with well-rotted compost and manure mixed in between them with a topping of soil; this keeps them off the ground. I soak the bales thoroughly; this keeps the moisture topped up. Watch out for pests and diseases and deal with them as soon as they are seen before they get established and beyond control. Onions require a lot of feeding especially those which are going in 'The Totley Show' in September. A high nitrogen fertilizer (seaweed again) or sheep droppings tied in a bag and left in a tub of water lovely! Give them this until the end of July, and then change to a high potash feed like tomato fertilizer. By the way keep the tub of sheep dropping juice at the far end of your garden as it can hum a bit especially during the summer. Keep your vegetable patches clear of weeds; vegetables don't like the competition for nourishment.

**TREES SHRUBS and FRUIT** Mulch around fruit trees and bushes with well-rotted manure or compost, this helps retain moisture and keeps down weeds and gives them nourishment. Give apples and pears a spray of fungicide if you were troubled with canker or scab last season. Replace grease bands to counter caterpillar infestation. Start to pick gooseberries as they form thinning them out so that the remainder can develop evenly along the branches (cook the thinnings you will need plenty of sugar, see naked chef). Keep all fruit well watered prune overcrowded raspberry canes. Keep newly planted evergreens mulched and spray with water especially on hot days. Remove any suckers from trees and roses. Trim over

and top dress heathers after flowering, bonemeal is ideal. Give your ericaceous subjects a special treat with iron sequestrine plant tonic. Plant out tender shrubs like fuchsias and hydrangea. Prune spring flowering shrubs such as flowering currant, forsythia, willows and dogwood. Trim back dead shoots on rose of sharon.

**GREENHOUSE and INDOOR PLANTS** As the sun becomes stronger and more prolonged (we hope) it is very important that the ventilation and shading is controlled carefully. Begonia and gloxinias in particular enjoy being shaded. Seedlings must never be in full sun although they must have plenty of light to aid their development and stop them going 'leggy'. Watering is also important check the plants regularly. Pot on Pelargonium and other greenhouse cuttings which were struck earlier. Allow nerine, arums, freesias etc. to go to rest by gradually reducing water. Place them in a sunny spot this will ripen the bulbs ready for a good show next season. Remove side shoots from tomato plants and pollinate regularly by tapping the supports or brushing the flowers. Trim and feed melons and cucumbers bear in mind they soon rot if overwatered. Best water from the bottom if possible (put a small plant pot in the side of the large pot or growbag and water into this and not directly onto the plants).

Sow cineraria's and schizanthus for plants later in the year. Keep insulation in place until all chance of frost is past. Cuttings can be taken now of most common houseplants, sow flowering pot plants such as browallia, indoor primulas, calceolaria, cineraria, ornamental peppers and cacti. Pot on seedlings and cuttings and once again watch out for pests and diseases and deal with them as soon as they are seen. Don't forget watch the weather it can still turn cold at night, so keep your heaters at the ready. I would hate to think that all your hard work nurturing those seedlings is knobbled by old Jack Frost.

**LAWNS** Give weedy lawns a top dressing of lawn sand. Keep new lawns well watered. Regular cutting at a medium height is much better than cutting it too short. If you use a liquid weed killer make sure you do it on a still day. If it's windy the killer may drift onto your borders with devastating results.

Spike and top dress lawns which have not been done earlier, spread it evenly and brush it in. I don't think I have mentioned the Totley Show yet this month. 15th SEPTEMBER is the date to aim for. It promises to be an even better Show this year. Preparations are well in hand it only needs you to make a special effort and bring along those prize winning plants, photographs, tapestry, cakes, jams, an work and crafts, go on have a go! In the meantime enjoy your garden. Cheerio for now, TOM

**Barber Bonsai  
Sales**

**Phone 237 7966**



Tony and Julie at

## **The Crown Inn**

**Welcome you for**

**Good Quality, Home Cooked Food**

**Tuesday – Friday**

**12-2pm & 5.30-8pm**

**Saturday & Sunday**

**12-2pm**

**Come & join us for**

**Good Beer, Good Food & Good Music**

**Tel 0114 236 0789**

**CLOSED SUNDAY EVENING**

Visit our website: [www.crowninntotley.co.uk](http://www.crowninntotley.co.uk)

**LIVE MUSIC**

**8th May**

**DALE STORR**

**22nd May**

**Laughing Gravy**

**Hair By**

**Patricia Barber**

**Anniversary Offer**

**20% Off**

**All Ladies**

**Hairdressing Services**

**During May & June**

**On**

**Tuesdays & Thursdays**

**Please Phone 0114 236 6247**

**Or call in at**

**53, Wollaton Road Bradway.**

# FRIENDS OF GILLFIELD WOOD

[www.friendsofgillfieldwood.com](http://www.friendsofgillfieldwood.com)

**An evening walk through Totley's Gillfield Wood on Thursday May 17th with PROFESSOR IAN ROTHERHAM of Sheffield Hallam University.**

Professor Rotherham, lecturer, writer and broadcaster, has very kindly agreed to lead a walk through Gillfield Wood on the evening of May 17th starting from the Scout Hut off Aldam Road at 6.30pm. This is a great opportunity to meet Dr Rotherham and join the Friends of Gillfield Wood as they learn more about the heritage, archaeology and ecology of our local wood and some of the surrounding fields and hedgerows.

This walk is just a small part of the programme that we have put together for the.....

## **BIO-BLITZ EVENT on 17th to 19th MAY - A COMMUNITY EVENT**

**3pm Thursday to 3pm Saturday. One Thousand Species to find.**

Bio-Blitz events are happening across the City over a forty eight hour period. Sorby Natural History Society together with Museums Sheffield and other organisations and groups, such as ours, are participating. The aim is to record 1000 species within the City of Sheffield boundary in 48 hours; quite a challenge.

The programme of our events is as set out in the advert (p16) that accompanies this article and was also referred to in last month's **Totley Independent**. Participating should be great fun and we do hope families and individuals will come along and join us, because we want this to be a real community event. Remember, you do not have to be an expert, just come with a willingness to take part and who knows you may find a species that will surprise us all and add to that list of one thousand.

Please note that all the walks, **except the one relating to Hoverflies**, will start from the Scout Hut off Aldam Road and the searches for flora and fauna will be in the wood and adjoining fields so you can come and go as you please. If attending, suitable clothing and footwear should be worn and please try to bring a torch for safety if it is a night time event.

To contribute to the City event we will be trying our hardest to find and identify as many species of flora and fauna as possible within our own area so please come and help us find those birds, butterflies, bugs, bats etc. We will try to cover as much of the area and its natural history as possible. Make a note of the start times and the dates in your diary and please let your friends and neighbours know as well.

## **BUG HUNT plus Teas, Cakes, Plants, Displays at the Scout Hut on May 19th**

Following the success of last year's Bug Hunt when individuals and families searched the area for invertebrates, we have organised a similar event for Saturday 19th May as part of our Bio-Blitz. This hunt starts at 10am on the Saturday morning and finishes at 3pm. You can come along and join in whenever it is convenient for you. For this event you are given the opportunity to go out with one of the trays supplied and capture any mini creatures you can find, and then bring them back to the marquee for identification. Children and adults got as much pleasure looking through the microscopes at specimens and studying other people's collections in the trays and pots as they did finding the bugs themselves. Experts will be on hand to give advice and information so it should be another special day for everyone.

On the same morning we are also joining forces with the scouts who have very kindly agreed to open up the Scout Hut. Together we will be selling teas and cakes for all to enjoy. A few plants and some freshly cut canes from our coppiced woodland hazel will also be on sale for use in allotments or gardens. And we

will have a photographic display of our work for all to see as well. We do hope you will come along and support this event and your local scout group.

## **BLUEBELL SURVEY April 16th to May 6th 2012**

You are all no doubt aware of the spectacular show of Bluebells we have in our wood each year. Well, if you are interested in helping with a very simple survey of these beautiful spring flowers in our wood then contact Richard Hibberd for a survey form and instructions, but as you will see from the dates, please be quick. Richard's details are 0114 289 0833 or [richard@rhibberd.demon.co.uk](mailto:richard@rhibberd.demon.co.uk). Or try going on to.....

## **OUR VERY OWN WEBSITE**

A new "Friends of Gillfield Wood" website has been created and is now accessible for all to explore via [www.friendsofgillfieldwood.com](http://www.friendsofgillfieldwood.com).

The site is well worth visiting and you now have the opportunity to post messages to the group. You can also submit to the group your own photos of birds, flowers, mammals etc. or submit any of your new or old records of flora and fauna sightings relating to the wood and surrounding fields. We would love to hear from you.

## **CONSERVATION WORK**

Our next conservation workday is on **Sunday morning July 29th**. The other three mornings arranged for later in the year are **September 30th, October 28th and November 25th**. Please bear in mind the work is varied so there is light and heavy work for all to get involved. So if you fancy helping with dry stone walling, fencing, coppicing etc then why not get in touch with us. If you are interested in helping conserve our special piece of woodland please get in touch with Dave Gash, details below.

## **INDOOR MEETING**

Our next indoor meeting will be on Tuesday June 12th. As usual it will be held in Totley Library and will start at 7pm. This meeting is one of our open meetings when the committee and members get together to discuss a wide range of topics relating to Gillfield Wood and the work we are undertaking. A member of the City Council's Ranger Service sometimes attends to provide updates relating to our wood and answer questions any of us may wish to raise. So if you would like to attend you will be made very welcome you do not have to be a member. Whether you attend to ask a burning question, contribute or just sit and listen, we will be very pleased to see you.

Our April indoor meeting featured Mike Richardson with his illustrated talk "Walk on the Wildside". This proved to be an excellent talk relating to a small piece of woodland near to where Mike lives and his marvellous photographs taken over the last eight years covered the history, the habitat, the seasons and a wide range of mammals, flowers, fungi, insects and amphibians. What with the key-hole pond and the Great Crested Newt with yellow feet, it was certainly a special evening for everyone who attended.



### CONTACTS

Either Dave Gash 0114 262 0564 (or daveygash@hotmail.com) or Sally Goldsmith 0779 063 7016 (or goldsally@googlemail.com) will be more than pleased to chat with you and provide more detail regarding any of the above. If you contact Sally she will be very happy to add you to our mailing list if you wish, so you are kept up to date with all our activities.

### VISITING THE WOOD

This is a great time to walk the wood as those migrant birds arrive from their winter quarters. Chiffchaffs have been singing throughout the area from the Scout Hut to the bus terminus and Blackcaps have now arrived to claim their territories. Great Spotted Woodpeckers are either calling from the tops of trees or drumming; Nuthatches and Treecreepers are making their presence known with their different calls and Long Tailed Tits have already made their nests and are sitting on eggs in many areas. Curlews are doing their evocative bubbling calls as they glide into fields to feed, whilst Buzzards soar, call and display overhead. Have you caught up with those colourful Mandarin Ducks that secretly work the brook and wood in search of a suitable nesting site? And yes, they do sit in trees sometimes.

The Wood Anemones have put on a stunning display this year and since that sudden fall of snow, Wood Sorrel with its beautiful green heart-shaped leaflets have put in a strong appearance. By the time you read this, hopefully Willow Warblers will have arrived and the bluebells will have blanketed the wood with their stunning blue flowers and the Speckled Wood butterflies will be showing as they twist and turn along footpaths and at entrances. Small Tortoiseshell butterflies and Peacock butterflies have already been out flying and sun bathing during those sunny afternoons in March and it is pleasing to note that there has been a good number of Seven-Spot Ladybirds glistening red in the sun, having survived the mild winter.

Enjoy the spring and I hope you can take advantage of what is on your doorstep.

Chris Measures

### King Ecgbert School Association

are holding a Car Boot Sale

Saturday 19th May 2012

King Ecgbert School

10am to 2pm

Entry £1

Refreshments available

If you would like to bring your car along to sell goods it will cost £5 per car/£8 per van.

To book a space or for further details contact:

Sue Bridgens

2360097/07982 719284

[bridgens181@sky.com](mailto:bridgens181@sky.com)

Advance notice, a date for your diaries

King Ecgbert School Association

are holding a Quiz Night

Friday 6th July 2012

King Ecgbert School

more details to follow

## GOD CAN HELP YOU

Do you have Cancer?

Are you in a wheel chair?

Do you have problems with your circumstances, worry, stress?

Do you have spiritual problems?

Do you want to carry on like that?

## GOD CAN CHANGE THAT GIVE JESUS A CHANCE

### TOTLEY LIBRARY BUILDING ON

**SATURDAYs on May 5th and 19th**

between: **12.45 and 1.45 pm**

For information ring Brian on 07722236037

(or Totley Rise Methodists or All Saints Parish Church).

## Thompson Collection

I am delighted that Totley History Group has been able to secure the postcard collection which Frank and Peter Thompson had accumulated over many years. Not only postcards but Frank had built up a wonderful collection of photographs during his life farming and running the butchery business. The collection is priceless and I hope we shall be able to see more printed in the **Totley Independent** in due course.

Studying the front page of the last issue and talking to my 93 year old uncle he tells me that he and his parents (my grandparents) moved into Mickley Lane in 1929/30 to what was one of the Lavers new houses. The Corporation houses opposite on Mickley Lane, Aldam Road and Greenoak had not yet been built, therefore, we can assume the date of the postcard to be quite a bit earlier than 1929?

Mike Roberts

## LEONARD CHESHIRE DISABILITY

### MICKLEY HALL, MICKLEY LANE

**SATURDAY MAY 19<sup>TH</sup> 10AM – 4PM**



## CLASSIC CAR SHOW

**AND**

**CAR WASH**

Friends of Gillfield Wood, Totley invite you to their

# BioBlitz




An exciting event spread over 3 days full of wildlife workshops, guided walks, displays and surveys. Come and learn about our local wildlife or share your expert knowledge to help us 'blitz' Gillfield Wood and record as many species as possible.

For more information:

[www.friendsofgillfieldwood.com](http://www.friendsofgillfieldwood.com)

## Thursday 17<sup>th</sup> May – Saturday 19<sup>th</sup> May 2012

Day	Time	Theme	Description
Thursday 17 <sup>th</sup> May	3pm – 5pm	Birds	Join members of the FoGW as we try to find and identify birds during a two hour walk with brief stops at key points in the wood. Leaders Chris Measures and Dave Gash.
	3pm – 5pm	Flora	Join members of the FoGW as they search for and record woodland plants and flowers. A two hour walk with brief stops at key points in the wood. Leaders Christine Hibberd and Sally Goldsmith.
	6.30 – 9pm	History & Natural History	A walk with Professor Ian Rotherham of Sheffield Hallam University, which will look at the Heritage, History and Natural History of Gillfield Wood. With brief stops at key points in the wood.
Friday 18 <sup>th</sup> May	10am – Noon	Hoverflies	Join Derek Whiteley of Sorby Natural History Society who will be searching our woodland for this fascinating group of insects and sharing his expert knowledge.
	1pm – 4pm	Water	Join Stuart Crofts as he searches for aquatic life in Totley Brook. Learn about fish and freshwater invertebrates in the UK and the impact non-native crayfish are having on our freshwater species.
	8.30pm – 10pm	Bats	Join Dave Gash as he uses bat detection equipment and introduces us to bat sounds during a short night time walk through our wood. Warm clothes and torches required for personal safety.
	8pm – 9pm	Moths	Help set humane moth traps to catch nocturnal moths ready for recording type and quantity on Saturday morning.
Saturday 19 <sup>th</sup> May	4am – 5.30am	Bird Song & Mammals	Revel in the intoxicating 'Dawn Chorus' by joining Dave Gash and Chris Measures as they identify bird song at first light. We may be lucky and see some mammals as well.
	5.30am – 7am	Moths	Collect traps from previous night; open and record contents and then release moths.
	10am – 3pm	Tea, Coffee Cakes Garden Plants & Information at the Scout Hut	<p><b>Tea, coffee and cakes</b>, plants and coppiced hazel pole sale – ideal for your runner beans!</p> <p>Also a photographic display by Friends of Gillfield Wood showing work undertaken in the wood.</p> 
	10am – 3pm	Bug Hunt	Invertebrates under the microscope – have a closer look at invertebrates you collect from the wood and bring back to the Sheffield Rangers marquee for expert identification and recording. Led by Sheffield Rangers and Paul Richards.

**Hoverfly walk – meet at Bus Terminus**

**For all other events meet near the Scout Hut, Aldam Road, Totley**

For more information call Dave Gash - Phone 0114 262 0564 or e-mail: [daveygash@hotmail.com](mailto:daveygash@hotmail.com)

# All Saints Church

Totley Hall Lane

---

## ALL SAINTS SERVICES IN MAY

6th 10am Morning Praise  
6.30pm Holy Communion  
13th 10am Morning Praise  
6.30pm Evening Prayer  
20th 10am All Ages All Together  
6.30pm Holy Communion  
27th 10am Morning Praise  
6.30pm Evening Prayer  
Every Wednesday 10am Holy Communion.

## SATURDAY WALKS AT ALL SAINTS

All welcome. All ages. 10.30 – 12 noon  
12th May  
26th May  
Meet All Saints Church Totley Hall Lane 10.20am.

## CARD MAKING IN THE CHURCH HALL

All welcome  
1<sup>st</sup> and 3<sup>rd</sup> Thursday of each month.  
1.45pm – 3.00pm  
No previous experience necessary,  
Just come along and join in.

## ENGLISH TRADITIONS IN MAY

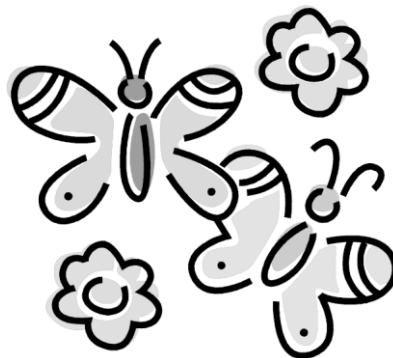
May is named after the Greek goddess, Maia. The Anglo-Saxon name for May was Tri-Milchi, because with the growth of fresh lush grass, the cows could be milked three times a day. It was first called May in about 1430.

In Britain as in most parts of the Northern Hemisphere, May Day marked the end of the harsh winter months, welcomed the beginning of Summer and optimistically looked forward to the bright and productive months. For our ancestors, largely in rural areas, it was a major annual festival and was celebrated throughout the country, especially on the first of May with music, dancing round the Maypole, games and crowning of the May Queen.

In some parts of Britain 1st May is called Garland Day.

Greenery was collected by primary school children to make garlands. In many English villages children would parade with garlands of flowers, sometimes fixed to sticks or in the shape of a cross or fixed to hoops. This was done in the hope of collecting money, sometimes it was known as May Dolling because often a small doll was placed in the centre of the garland.

The 29th of May was known as Oak Apple Day. Traditionally people wore oak apples or oak leaves pinned to their clothes to remember that on 29th of May King Charles 2nd returned triumphantly to London after the restoration of the monarchy.



## POEM FOR TODAY

Have you ever wondered at the meaning of  
His Life,  
Brought sharply into focus by the trouble and the  
strife.  
When the journey seems so daunting and your  
load just drags you down  
Every step requires such effort and your face just  
wears a frown.  
Each day becomes relentless in the problems that  
you face  
And there seems no end to worry and you're never  
blessed with grace  
Well my friend there is a blessing, one where you'll  
find peace  
A blessing that gives you courage to face troubles  
that never cease.  
The blessing is called Jesus and He will always walk  
with you,  
So offer Him your burdens be they many or a few.  
He ever will be with you and encourage you along  
Then share your life with Jesus where you are weak  
you will be strong.  
Don't take my words too lightly but try it for  
yourself.  
Make friends with this guy Jesus in sickness and in  
health  
He never is found wanting, you always can always  
trust in Him  
He'll always be there for you His guiding light will  
never dim.  
In sharing life with Jesus you'll receive his loving  
care  
And well before You know it in your heart there's  
singing there.

# ACTIV physiotherapy

is stronger  
& more flexible

**ACTIV & BRADWAY**  
physiotherapy & Physiotherapy Clinic  
have combined . . .

so our new partnership can offer you a wider  
range of treatments in 3 convenient locations  
. . . Bradway, Totley and Norton Lees



our wide range of treatments include:

- Repetitive Strain Injuries
- Muscle & Joint Problems
- Women's Health Issues
- Sports Injuries
- Back & Neck Pain
- Acupuncture

Registered with major insurance companies,  
BUPA, Aviva, Westfield Health, AXA

email: [mail@activphysiotherapy.co.uk](mailto:mail@activphysiotherapy.co.uk)  
web: [www.activphysiotherapy.co.uk](http://www.activphysiotherapy.co.uk)

**ACTIV Physiotherapy 0114 235 2727**

## Dore Moor Garden Centre & Nursery

Under new Family Ownership

Hathersage Road · Dore · Sheffield · S17 3AB

(Opposite the Dore Moor Inn)

**Reopened, restocked and looking forward to  
welcoming you to our first spring season**

Wide range of seeds, bulbs, plants, shrubs, pots, composts and chemicals

Logs, coal and smokeless winter fuels

Specialist section for mowers, trimmers,  
fencing, garden tools and much much more

Stockists for Haddon Stone statuary  
and David Austin Roses

**Quality Plants  
Competitively priced**

Call in and see us

**Enquiries  
0114 235 0092**



**TRISTAN SWAIN**  
Landscaping & Maintenance  
Established 20 years

Fully insured

**GARDEN RESTORATION & MAINTENANCE**

Unit C4  
Sheaf Bank Business Park  
Prospect Road  
Heeley  
Sheffield S2 3EN

Tel/Fax: 0114 255 4689  
Mobile: 07831 802539



# MOGGY MAID



**Gail Kitchen: 07986473415**

Does going away from home mean your cat is sad and unhappy?  
Does a trip to the cattery scare your cat *not to mention your wallet?*

**WORRY NO MORE!**

**MOGGY MAID** is on hand to feed, love and provide  
everything your cat needs in the relaxing comfort of its own home.

As we cat-lovers know, unfamiliar sights and smells can stress your cat,  
whereas leaving them in the familiar surroundings of their own home  
carries less worries, for your cat and for you.

If only for a night, weekend, or a month; holiday, Christmas or any time of  
the year, **MOGGY MAID** is here to help **LIGHTEN YOUR LOAD**

We promise no mischief allowed!

In a professional manner and with quality service, you can ensure  
individual care and attention, whilst you relax away from home.

We haven't forgotten the rest of the family; mice, rabbits, budgies,  
goldfish, etc will receive care and affection too.

**LOCAL FRIENDLY SERVICE**  
From £5 a day

For more Information, contact Gail Kitchen on:  
**07986473415** 5 Ullswater Place, Dronfield Woodhouse

# Slimming WORLD

because you're amazing

If you want to lose weight healthily and with no deprivation or  
humiliation then join your local Slimming World class in Totley,

Mondays at 7pm and at Greenhill on Wednesdays at 10am

Telephone Jo Elsey on 0114 2620523

or 07590 545 253

(Offer cannot be used in conjunction with any other offer)

**1/2** Price membership  
on production of  
this advert



# SEE THE DIFFERENCE!



- **COMPREHENSIVE EYE EXAMINATIONS**  
including special tests for glaucoma, colour vision, dyslexia & diabetes
- **CONTACT LENS CONSULTATIONS**  
free contact lens trials and monthly direct debit payment schemes
- **PRESCRIPTION SUNGLASSES**
- **LEISURE SPECTACLES**  
for computer work, fishing, swimming and safety wear
- **ACCESSORIES**  
ready readers, chains and magnifiers

**LENSES BY SEIKO**  
In all non-budget spectacles

**TOTLEY**  
63 Baslow Road  
236 4485

**ABBEYDALE**  
634 Abbeydale Road  
255 6554

For more help and information please phone or call into the practice of your choice  
For a full list of our practices visit

**WWW.MKO.CO.UK**

Terms and conditions apply.



## Shepley Spitfire

56 Mickley Lane, Totley Sheffield - S17 4HE 0114 236 0298

2 meals for **£8.95**

Now serving Fresh Local Veg.

Served everyday 11am until 9pm

Carvery every Sunday from 12 noon

Quality Cask Ales

### The Home of Big Fish Friday!!

Beer battered Cod fillets, Chips and Peas Two for **£9.99**

Eat in or Takeaway

FOR THOSE OF YOU WITH A LITTLE APPETITE

WE HAVE INTRODUCED A SMALL

PLATES MENU FROM **£2.99**

ALL DAY EVERYDAY

Quiz night Sundays 9pm

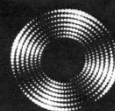
Poker night Mondays 9pm

Pool night Tuesdays 9pm

Last Saturday of the month DJ Theme night

Sky Sports & ESPN showing live games

# Entrust Electrical



For all your electrical requirements in or outside the home you can trust **Entrust** to do it right!

- ✓ Full or Partial House Rewiring
- ✓ Additional Sockets, Switches, etc
- ✓ Energy Efficiency Enhancements
- ✓ Contemporary & Classical Refurbishments
- ✓ General Electrical Maintenance & Repair
- ✓ Homebuyer Electrical Safety Surveys
- ✓ Telephone and Computer Data Points
- ✓ Garden, Pond & Other Outdoor Electrics
- ✓ Security Lighting & CCTV



City & Guilds  
Qualified

**(0114) 2352084**  
**07935 250814**

[www.entrustelectrical.co.uk](http://www.entrustelectrical.co.uk)

Old Hay Close, Dore, S17 3GP



## "need *help* in your garden?"

**"right plant, wrong place?  
Stuck, don't know where to start?"**

We can offer a Design Consultancy without the designer price-tag.

**"Selling your House?"**

We can tidy your garden, also with use of planted containers/hanging baskets, make your house more desirable to prospective buyers.

### Season by Season

- Regular Lawn Maintenance.
- Hedge Cutting.
- Small Tree/ Shrub pruning.
- Beds/Borders tidied, planted.
- Planted Containers.
- Green waste removed



the **Abbeydale** gardeners...  
...we can help you.

Formerly of  
The Abbeydale Garden Centre

Kevin Hunter 07818 20 12 42  
Mark Naylor 07739 75 23 19

[www.theabbeydalegardeners.co.uk](http://www.theabbeydalegardeners.co.uk)

## Music Tuition



Piano • Keyboard • Flute • Singing  
Guitar (rock, metal, blues, jazz, funk, pop, folk)  
Music Theory • GCSE work

Music graduates, each with 25 years  
teaching and playing experience

All ages, beginners welcome.

Exam work or just for fun!

Call Mark or Karin

0114 237 4853 & 07981 888352

## HEARING AIDS

**MAURICE NAYLOR FBSHAA RHAD** is your  
local hearing aid specialist and at your  
request will test your hearing in your own  
home, free of charge, and if needed you can  
try a custom made aid for four weeks  
without obligation to purchase.

Tel : 237 4817

In the ear digital from £495



THE COMPLETE BUILDING SERVICE

New Build & Extension Specialists

**From Design to Completion**

**Full Project Management  
House Building  
Extensions**

Find  
us in  
Yell.com

**New Roofs/Tile/Stone  
Stonework Specialists  
Loft Conversations**

Established for 25 years with over 90%  
of our work coming from recommendations, to  
find out why call:

**0114 2353314**

**Mobile 07973 908187**

[www.mwoolhousebuilders.com](http://www.mwoolhousebuilders.com)



Christchurch Cottage,  
Townhead Road,  
Dore, Sheffield  
S17 3GA



## Kitchen Solutions

By Nigel Watson

Fully fitted quality kitchens at affordable prices,  
planned and designed to your specification. View a  
computer generated impression prior to installation.

For a local, friendly, reliable service call for a free  
brochure and quotation.

TEL: 0114 236 4778

Mobile: 07971 528149

## Horizon Electrical

*Faults, Rewires, Sockets, Lights,  
Cooker Points, Electrical Showers,  
Phone Points, Security Lights*

No job too small

*Fully qualified with friendly advice*

**Ring Totley 236 4364 or**

**Mobile 07772 483154**



[yogaq@hotmail.co.uk](mailto:yogaq@hotmail.co.uk)

0114 236 9943

07708 996984

Body, Mind & Breath  
enjoy the union of yoga

YOGA CLASSES in TOTLEY & RANMOOR

Rachel Quinn BWY Dip



## BRADWAY INSTALLATIONS

**Kitchens, Bathrooms.....and everything in  
between**

- **Complete Kitchens** - Installation or supply and  
installation
- **Kitchen Refits** - Replacement worktops/sink/hob etc.  
Worktop / cabinet repairs
- **Bathrooms** - Cloakrooms - Domestic plumbing - Tiling  
Laminate / Vinyl flooring

**All work undertaken is fully insured and guaranteed**

**Ring Peter - 0114 236 5995**

**Mobile - 07766 411355**



## SLIMMING WORLD

10 WAYS TO MAKE SURE IT WILL BE THE LAST TIME LOSING WEIGHT IS YOUR NEW YEAR RESOLUTION. THIS TIME MAKE IT LAST FOREVER

1. Focus on your weight loss goal and prioritise it.
2. Be sure you really want to lose weight for yourself. Doing it to please someone else may only lead to short term weight loss.
3. Take advantage of all the group support at your local Slimming World class. Even if you are not a 'joining in' person, you'll be surprised how motivating it is.
4. Accept that you will have ups and downs in your weight loss journey, and be forgiving of yourself if you hit a difficult patch.
5. Listen to your 'inner script' and make a conscious effort to talk to yourself in a positive, encouraging way.
6. Keep up your interest in your healthy eating plan by trying new foods, new recipes, and new ways of using your Sins. This will help you avoid getting in to a dieting rut which can be boring and demotivating.
7. Be honest with yourself about what you are expecting from your weight loss and how you are getting on with Food Optimising week by week. People who set unrealistic targets for weight loss or body shape are more likely to give up than those who set achievable targets and share their ups and downs.
8. Go back to your class even after (especially after) you've had a weight gain. You will not be judged, just helped and supported.
9. Keep setting new goals and rewarding yourself for milestones until you reach your target weight, and afterwards!
10. Don't put your life on hold until you've lost weight. You can still enjoy life and lose weight. Think of your dreams and ambitions and bring them to the fore. The positive feelings you get from starting to 'live a little' can only help your motivation and your weight loss.

Group details:

**St Peter's Church, Greenhill Roundabout, S8 7FN**  
Thu 5pm & 7pm

**Dore Old School, Tues 5.30pm**

Tel: Alison Murphy 07815 046569 for further details

## PhysioFOCUS

at Totley Rise Dental Practice  
85 Baslow Road,  
Sheffield, S17 4DP



**Physiotherapy treatment available for:**

- Back and neck pain
- Sports injuries
- Sprains and strains
- Joint and muscle pain
- Arthritic pain
- Whiplash
- Repetitive strain injury
- Headaches

**Appointments: 0114 2360333**

Also available:

- Pilates classes
- Pilates 1-2-1
- Golf Fitness Screening  
(as used by consultants to UK,  
European and Australian PGAs)

For more information please call:

Emer on: 07792 422909

Rachel on: 07956 908454

## APPLE LANDSCAPES and APPLE FENCING

www.applelandscapes.com

QUALITY SERVICE AT AFFORDABLE PRICES

**Patios • Paths • Walling • Dry Stone Walling • Drainage Work**

**• Indian York Stone Paving • Railway Sleeper Beds**

**Garden Tidy Ups etc. No job too small**

**Fencing & Gates Supplied Only**

**or Supplied & Fitted**

**Only Quality Materials Used**

**FULLY INSURED**

Call for free quote

**01246 237505 • 07782 167540**

## Homeopathy @ Synergy.

162 Baslow Road, Totley, Sheffield, S17 4DR

Advanced Indian Sensation Method Homeopathy

Alternative medical treatment for all chronic conditions

Registered with major insurance companies. Can claim through the Westfield scheme

Registered member of  
The Society of Homeopaths

Ring: Lindsay Allison RSHom for more information:  
0114 235 7845 or 07968 167036

M.Scriven  
(FRUITERAMA)

## MARTIN SCRIVEN

HIGH CLASS FRUIT  
& VEGETABLES

**37, Baslow Road**

**Tel. 236 7116**

**Orders Delivered**

## B.K. JEAVONS PAINTER & DECORATOR



Interior  
Exterior  
Decorating  
No Job too small

**Tel: 01246 416484**

**and mobile 07882 278306**



# GWS

Technology Solutions



PC Problems/ Repairs/ Servicing      No Job Too Small  
 Wireless & Internet Setup      New PC's & Upgrades  
 PC Setup/Data Transfer      Safe PC Disposal    Tuition  
 Software/Hardware      For All Your PC Needs

**Guy Senior**

Phone: 0114 2352662    Mobile: 07890030453

Email: [guy@gwstech.co.uk](mailto:guy@gwstech.co.uk)

Web: [www.gwstech.co.uk](http://www.gwstech.co.uk)

GWS, 5 Conalan Avenue, Bradway, Sheffield S17 4PG

**R.S. HEATING & BUILDING CO**  
 EST. 1971

**HEATING DIVISION:**  
 Experienced Installers of condensing, combination and regular boilers. Systems fully guaranteed. Complete after sales service. Also Bathrooms, showers and small plumbing works.

**BUILDING DIVISION:**  
 Loft conversions, House renovations including general building, joinery, plastering, electrical decorating etc.

**13 Overcroft Rise, Sheffield, S17 4AX**  
**Tel:- 0114 236 4421**  
 Reg. Office:- 62 Machon Bank, Sheffield, S7 1GP  
**Te:- 0114 2559425**  
**Fax:- 0114 255 9431**  
 Email: [enquiries@rsheatingandbuilding.co.uk](mailto:enquiries@rsheatingandbuilding.co.uk)  
 Web: <http://www.rsheatingandbuilding.co.uk>

**LIBERTY FOODS**  
 Caterers  
 Quality Meat Shop  
 & Fresh Farm Produce

Fresh and Frozen Prepared Meals  
 Fresh Meat and Poultry  
 Outside Catering  
 Home Delivery

253 Baslow Road, Sheffield, S17 4DU  
 Tel: 0114 2360 583    Mobile: 07801 346 455

**Dronfield Landscapes**

Gardens cleared and maintained, Lawns mowed, Turfing, Tree felling & pruning, Hedges trimmed & reduced, Pond maintenance, Fencing etc.

for free quotation call  
 Chris on: (0114) 2746158 Mobiles: 07976072785 or  
 Richard on: 07789497104

8am-6pm mon-fri    HazelBarrow Farm, Norton S8 8BA

**R.M.M BUILDING SERVICES**  
**25 YEARS EXPERIENCE**  
 All types of building work carried out including- Drop kerbs, block paving (drives, paths, etc), extensions, general building repairs and maintenance.  
 Phone Rob on- Mob- 07906108567  
 Home-2352190

**Nigel Watson**  
**Carpenter and Joiner**

Fitted kitchens, sliding wardrobe doors with bespoke interiors, internal and external doors supplied and fitted, new handrail and spindles, laminate and wood flooring, locks, architraves, skirting board, stud walling, boxing off etc.

For a reliable and quality service  
 TEL: 0114 236 4778  
 MOBILE: 07971 528149

**Serenta HomeCare**

Are you in need of a little help and support within your own home? The older we get the more help we need to enable us to live a more independent life.

Personal Care • Medication • Domestic • Sitting Service • Social and Leisure activities

To find out more call Sue 07715 636 395 Pat 07715 634 781  
 or visit [www.serentahomecare.co.uk](http://www.serentahomecare.co.uk)  
 For reference from an existing client please call 0114 2366891

**Got a computer?**

**Tim Brown**  
 Building, Installation, Upgrading and Troubleshooting Computer Systems  
 Over 25 years professional experience

**Having Problems?**  
 Is it running slow? Stops responding?  
 Having problems running the latest games or applications? Broadband installation?

**Give me a call!**  
 I'm available for home visits at any time including evenings and weekends. I can also suggest upgrades to improve performance, or even build you a system to your specific requirements.

Phone: 0114 2472619    Fax: 0870 7060080  
 Mobile: 078 17464703 Email: [service@timbrown.plus.com](mailto:service@timbrown.plus.com)



## DRONFIELD LANDSCAPES

### Logs and wood chippings For Sale

#### Ring for details

Chris 0114 274 6158  
Mobile 07976 072785

Richard  
Mobile 07789 497104

## Totley

### Private Hire

**24 hour taxi service**

**Advanced bookings only**

**Local • long distance • airports**

**Telephone 0114 283 9692**

**Mobile 07974 355 528**



Domestic electrical work by  
award winning  
*Lady Electrician*

- \* House rewires \* Replacement fuse boards \*
- \* New sockets and lights \* Security systems \*
- \* CCTV \* Telephone and computer points \*
- \* Garden power and lighting \*



All work guaranteed and fully insured. For a free quotation, without obligation,



*ring Mandy on 07788-544225*



**Tiling, Plastering,  
Plumbing & Complete  
Bathroom Fitting Service**

**Tel: 0114 274 6775**

**07738 688807**

- ◆ Under Floor Heating
- ◆ All Aspects of Home Improvements & Maintenance Work Undertaken
- ◆ Competitive Prices
- ◆ NVQ Qualified
- ◆ No Job Too Small
- ◆ Fully Insured & Guaranteed

**A1tilingandplastering.co.uk**  
**33 Glen View Road, Greenhill, S8 7SF**

### Taylor Personal Training

*"Tailored to you"*

"Let me help you reach your fitness goals"  
Professional, Friendly & Reliable Service

- Personal Training
- Sports Massage
- Fell, Mountain, XC & Road Running Coaching
- Nutritional Profiling



Call now for your free consultation  
Discounts for block bookings

Contact: *Adam Taylor BSc (Hons), Cert PT*  
Tel: 07773 386 996  
Email: [aditaylor@aol.co.uk](mailto:aditaylor@aol.co.uk)  
Web: [www.taylorpersonaltraining.yolasite.com](http://www.taylorpersonaltraining.yolasite.com)



Creating opportunities with disabled people.

Registered Charity No. 218186

**Leonard  
Cheshire  
Disability**

Leonard Cheshire Services in Offers choice & opportunity to people with disabilities. A Specialist Unit for the Younger Disabled. Residential & Respite Care – Single Rooms  
Day resources – Aromatherapy – Reflexology – Physiotherapy – Toning Tables.  
Activities include: - Arts & Crafts – Computers – Cookery – Shopping Expeditions – Theatre Outings – Church. Further details can be obtained from – The Service Manager, Mickley Hall, Mickley Lane, Totley, Sheffield S17 4HE.  
Tel. 0114 236 9952  
Fax. 0114 262 0234

The Care at Home Service supports disabled people who wish to remain in their own homes. We provide flexible care packages from 1 hour to 24 hours meeting individual needs. The service operates throughout Sheffield. Our service includes: - help with getting up and going to bed, dressing, washing, bathing, shopping, cooking, light household duties. Further details from: - The Care at Home Manager  
Tel. 0114235 1400  
Fax 0114 235 1499

## John Heath & Sons

AN INDEPENDENT FAMILY FUNERAL BUSINESS

*Sometime.....*

You will probably have the responsibility of making funeral arrangements. No one looks forward to this responsibility, but the death of a family member or friend brings with it an obligation that must be met. There are people who can help you meet this responsibility. We have been helping people combine the different aspects of the funeral into a meaningful service for over 125 years.

Please Call Day Or Night

**(0114) 272 2222**

**Head Office - Earsham Street**

Also at Meadowhead, Ecclesall Rd,  
Crookes and Stanington

[www.johnheath.co.uk](http://www.johnheath.co.uk)



**CHARISMA  
BLINDS**



For  
Windows  
With Style

**Sheffield Factory Showroom**  
**106 PROSPECT ROAD**  
**HEELEY, SHEFFIELD**

**Sheffield (0114) 258 5496**  
**Rotherham (01709) 512113**

## TOTLEY & DISTRICT DIARY

<b>MONDAYS</b>	<b>COFFEE MORNING</b> , All Saints' Church Hall, 10am-noon <b>TAI-CHI</b> , United Reformed Church, Totley Brook Road, 11.30am-12.30pm <b>RAINBOWS and GUIDES</b> , All Saints' Church Hall, 5.45pm-9pm
<b>TUESDAYS</b>	<b>COFFEE MORNING</b> , Totley Rise Methodist Church Hall, 10am-noon <b>KEEP FIT &amp; COFFEE</b> , For the not-so-young, Bannerdale Centre, Carterknowle Road, 10.15am, Phone 258 5364 <b>WOODSEATS ADVICE CENTRE</b> , Drop in service, free, impartial, and confidential. TR Methodist Church, 10am-noon <b>CRAFT GROUP</b> , Totley Library, 2pm
<b>WEDNESDAYS</b>	<b>PILATES CLASSES</b> , Dore Old School, 9.00-10.00 and 10.15-11.15. Contact Caroline - Tel: 0781 722 0324, email caroline1north@btinternet.com, www.pilatescarolinenorth.co.uk <b>COFFEE in the LIBRARY</b> , 10am-11.30am <b>TODDLER GROUP</b> , 10am-11.30am, All Saints' Church Hall. Details tel. Andy Holmes 0114 236 2088 <b>HEALTH WALKS</b> , 10.30am, Totley Library foyer. Phone Sue, The Health Walk Ranger: 0114 283 9195 <b>MODERN SEQUENCE DANCING</b> , All Saints Church Hall, 8pm-10pm
<b>THURSDAYS</b>	<b>CHAIROBICS</b> , Heatherfield Club, 1.15pm <b>NCT COFFEE GROUP FOR DORE TOTLEY &amp; BRADWAY</b> , 10am-noon, For mums & babies/toddlers, meeting in various locations, Phone Lucy Street 07837 000405 or email: lucy@streetr.plus.com for further details <b>PUSHCHAIR CLUB</b> , Totley Rise Methodist Church Hall. 1.30pm-3pm. Tel. 236 3157 for further details <b>PILATES CLASS</b> , United Reformed Church, Totley Brook Road, 6.15pm-7.30pm, Phone Emer Coffey 07792 422909
<b>FRIDAYS</b>	<b>PILATES</b> , The Old School, Dore, 9.15-10.15 & 10.45-11.45am. Phone Teresa Tinklin 07906 312372
<b>SATURDAYS</b>	<b>MODERN SEQUENCE DANCING</b> , All Saints Church Hall 2 <sup>nd</sup> . And 4 <sup>th</sup> . Saturdays 8pm-10pm

### MAY

**SUN 6th CASTLETON FARMERS MARKET**, the Village Hall, 10am-3pm  
**SUN 6th & MON 7th (BH) MINIATURE TRAIN RIDES**, Abbeydale Road South, First train 1 p.m. - last train 5 p.m. (weather permitting) www.sheffieldsmee.co.uk  
**SAT 12th OPEN NURSERY**, Little Saints Nursery, School House, Hillfoot Road are having an open session 11-2.30pm come along and experience a nursery session. www.littlesaintsnursery.org.uk.  
**SAT 12th SATURDAY NIGHT LIVE**, TREVOR ALLEN, Heatherfield Club. 8.30pm. Non-members welcome  
**TUE 15th 2pm & WED 16th 6.45pm TOTLEY HISTORY GROUP**, Ecclesall Woods, Past and Present with John Gilpin, numbers are strictly limited for this event and so booking is essential details page 4  
**TUES 15th PUBLIC MEETING**, City Wide Review of HGV Routes - Quaker Meeting House, St James St, 7pm - 8.30pm, details: - http://bit.ly/IpLglq  
**TUES 15th TOTLEY TOWNSWOMEN'S GUILD**, 'The Beginning of Jazz and Rock and Roll', John Lee, Totley Rise Methodist Church Hall, 10am  
**WED 16th - SAT 19th T.O.A.D.S. SPRING PLAY**, details page 4  
**SAT 19th COFFEE, CAKES & CUTTINGS**, 10am-noon, English Martyrs Ch.  
**SUN 20th MINIATURE TRAIN RIDES**, Abbeydale Road South, First train 1pm - last train 5pm (weather permitting) www.sheffieldsmee.co.uk  
**THU 24th SHEFFIELD FARMERS MARKET**, 8.30am-5pm, Fargate  
**SAT 26th TOTLEY LITTER PICK**, 9.30am, Totley Library, details page 3  
**SAT 26th SATURDAY NIGHT LIVE**, IAN JONES, Heatherfield Club. 8.30pm. Non-members welcome

### JUNE

**SAT 2nd THREE VALLEYS FESTIVAL**, further details page 7  
**SUN 3rd CASTLETON FARMERS MARKET**, the Village Hall, 10am-3pm  
**SUN 3rd & MON 4th (BH) MINIATURE TRAIN RIDES**, Abbeydale Road South, First train 1pm-last train 5pm (weather permitting)  
**SAT 9th TEA DANCE**, Heatherfield Club, 4pm-6pm, details page 8  
**SAT 9th SATURDAY NIGHT LIVE**, STEVE A, Heatherfield Club. 8.30pm. Non-members welcome

### TOTLEY INDEPENDENT FOR JUNE

The next issue of the Totley Independent will be available from the usual distribution points on

**SATURDAY 2nd June 2012**

**COPY CLOSE DATE for this issue**  
*will be*

**SATURDAY 19th May 2012**

Editor: **Ian Clarke**  
 Tel. No: **235 2526** or Email:  
**editor@totleyindependent.co.uk**

Advertising & Distribution:  
**John Perkinson**  
 Tel. No: **236 1601** or Email:-  
**advertising@totleyindependent.co.uk**

Items for publication may be left or sent to:  
**2, Main Avenue, Totley, Sheffield, S17 4FG** or  
**Totley Library**

www.totleyindependent.co.uk  
**PRINTED by STARPRINT**



- Central Heating,
- Domestic Plumbing,
- Glazing, Double Glazing and Glass,
- House Maintenance,
- UPVC and Wood Windows & Doors



**Mini Digger & Driver, Muck Shifts, Footings Etc.**

**starprint**

**5000**  
 130 GSM GLOSS  
 FULL COLOUR  
 DOUBLE SIDED  
**A5 LEAFLETS**  
**£99.95**

**250**  
 FULL COLOUR  
 SINGLE SIDED  
**BUSINESS CARDS**  
**£19.95** + VAT

**BANNERS**  
 AVAILABLE FROM  
**£29.95** + VAT

**Full design service available!**

**Tel: 0114 258 0707**  
 Email: mail@starprint.co.uk  
 601 Abbeydale Road, Sheffield, S7 1TA