

Totley Independent

Published continuously since 1977

www.totleyindependent.co.uk

October/November 2018

No. 394

20p



First prize winner in the 'vegetable animal' category of the Children's Section

Totley Show 2018!

After the usual months of planning, preparations for the Totley Show got seriously under way on the Friday night before the Show, with battalions of eager helpers, including Totley Scouts, getting tables, chairs, display boards, and everything else into place.

The Show has not been without a degree of mystery and drama. Three notices advertising the Show, which had been specially made for this year, disappeared twice from the central reservation on Baslow Road where they had been placed for maximum publicity.

First, the signs were removed but later recovered from under a hedge. They were put back on the central reservation but next day they had disappeared again, this time completely. Why do people do things like this? Not only does it potentially affect attendance at an important community

event, but also those signs cost money - they were paid for from community funds, so it's theft from the community as a whole.

Then we had Dore Show targeted by the thieves who offloaded fake £20 notes, once again taking money - this time in real cash - from the community. Another fake note showed up at the Library, and another at Totley Rise Post Office, a few days later. So for the Totley Show, the library, and other events and organisations, some detector pens were bought, and every banknote tested!

The Show was opened once again by Rony Robinson, and was very well attended - everyone had a good time. Both inside and outside the school, local organisations were kept busy with their stalls - the Scouts, Transport 17, Friends of Gillfield Wood, Totley Library, Totley History Group, the Police Community Support Officers, the Knit

and Natter Group, and the CLIC Sargent organisation.

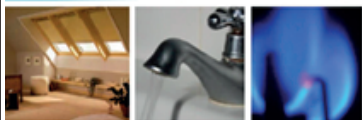
Entries overall for the Show were down a little on last year, but although there weren't as many children's entries this year, there were more impressive quilts, woodwork items, and handwriting and poetry.

There'll be full details of all the prize-winners in the next issue of the *Independent*. Totley Show Committee Chairman Mick Warwick said "We have had a great day at our 33rd Show. It has been busy and exhausting but I think everyone has enjoyed the day. There was a fantastic buzz around the two halls and everyone has been impressed by our entertainment from the Seven Hills Quartet and The Rock Choir. The stall holders also said how much they had appreciated the atmosphere.

Many thanks to our president, Les Firth, for stepping in (*continued p. 3*)

RS HEATING & BUILDING CO.

Est 1971



Heating Division - Experienced Installers of condensing, combination and regular boilers. Authorised installers of Valiant, Worcester Bosch and Glowworm systems, fully guaranteed. Complete aftersales service. Also bathrooms, showers and small plumbing works.



Building Division - Loft conversions, house renovations, including general building, joinery, plastering, electrical, decorating etc.



RS HEATING & BUILDING CO.

88 Sunnyvale Road, Sheffield S17 4FB
Tel: 0114 236 4421

62 Machon Bank, Sheffield S7 1GP
Tel: 0114 255 9425 / Fax: 0114 255 9431

www.rshtgld.co.uk E-mail: enquiries@rshtgld.co.uk

more rehab
Neurological Physiotherapy & Services

More Rehab offer a high quality multidisciplinary therapy service to patients that require specialised neurological or respiratory care.

The specialised services we offer include:

- Hands-On Therapy
- Exercise Programmes
- Hydrotherapy
- Electrical Stimulation (Upper & Lower Limb)
- Gymnasium Work
- Splinting (Upper & Lower Limb)
- FES Bike Assessments & Programmes
- Carer Training
- Amputee Rehab
- Accommodation Assessments
- Equipment & Aids Assessments including wheelchair & posture
- Vocational Rehabilitation and much more, please contact us for more details.

We have clinics in South Yorkshire, Derbyshire and the surrounding areas. We are happy to do visits to your home, school or work place.

Tel: 0114 2353150

Web: www.more rehab.com



Totley Deli

51-53 Baslow Road, Totley Rise. S17 4DL.
Call 0114 2364238

Why not come in and sample our wide range of hot & cold sandwiches and home made produce, freshly made daily to eat in or take away. Cakes, quiches and pies can be made to order if required. All produced from locally sourced suppliers.

- Fresh Roses bread delivered daily & available to order
- Selection of cooked meats sliced to your specification
- Superb selection of fine cheeses, preserves & pickles

Look out for our daily special meals or join us for breakfast.
All available to take away.



If you are having a party or family gathering why not let us take the strain and provide a buffet for you.



Where quality and friendliness count

G K Cleaning Services

Specialists in Carpet & Upholstery Cleaning



**Carpet & Rug Cleaning
Upholstery Cleaning
Pet Stain & Odour Removal
Laminate & Tiled Floor Cleaning**

**We use the "Dirt Devil"
Cleaning System
Quick Drying Time
AFFORDABLE PRICES**

From £2.00 per square metre
Lounge - £35
Bedroom - £25
Hallways - £15
Stairs - £10 - £15
Discounts for Multiple Rooms
3 Piece Suites from £30
Oven Cleaning from £25

Call Gary on 07538 255115

0114 258 8297

Suite 2, 1 Priory Road, Sheffield S7 1LW
gary8430@gmail.com

Totley Show 2018 (continued from p.1)

at the last minute to run the auction, in Rony Robinson's absence. Hopefully Rony will be back next year. We have had a number of donations again from many of the local shops in Totley, which boosted our main raffle ticket sales by 10% this year. We would like to thank those shops for their continued support. Many thanks to our committee members and army of volunteers for all their hard work over the year."



Totley History Group

Programme 2018

24th October: A Harvest of Healing: the Historical and Medicinal use of Sphagnum moss, by Thelma Griffiths. Sphagnum moss has remarkable properties to hold liquid and to cure or stop infection.

In a medical era before antibiotics the combination of the power to mop up copious quantities of blood and staunch open wounds, along with its healing powers, made sphagnum invaluable for helping the terrible injuries of war. 7.30 pm, United Reformed Church, Totley Brook Road.

28th November: Open Meeting: Sports, Social and Community groups. Everyone is invited to bring their memories, photos and memorabilia of local groups, clubs etc All welcome so come along and remember days gone by. 7.30, Totley Library.

Children's Art Competition: "Portraits"

A very big thank you to everyone who entered our Totley Library Children's Art Competition this summer.

We had nearly thirty entries this year and the standard was very high indeed. Well done to everybody for making such a big effort and taking the time to make so many beautiful pictures. The prize-winners and runners-up were as follows:-

Under Fives section

First prize - "Mummy" by Hattie Holdaway age 4
Second prize - "My Brother Ethan" by Oscar Stanbra-Bird age 4

5-7 years section

First prize - "Me" by Zoe Wade age 5
Second Prize - "My Mummy" by Victoria Lee age 6

8 - 11 years section

First Prize - "Galaxy Wolf" by Ava Challis age 10
Second Prize - "The Queen" by Amina Rahim age 10



The winners and runners-up received prizes and all entrants were awarded a certificate.

If any children were unable to collect their prize and/or certificate at the prize-giving on Saturday September 8th please ask the staff at the Library desk and they should be able to help you.

Once again thank you all for entering the competition and for continuing to support the children's activities at the Library.

Jill Hnat

Recently spotted....

The Co-op continues to support local community organisations and events. Julia Laurie of Totley Co-op is pictured here presenting a hamper, to be a prize in the raffle at Totley Show, to Totley Show Committee Chair Mick Warwick.



Holmesfield Flower Club

Wednesday 17th October, 7.30 pm: Demonstration of flower arranging by Sue Spencer (NAFAS Area Demonstrator) entitled "A Rhapsody of Flowers" at Holmesfield Village Hall, Vicarage Road (Off Woodside Avenue), Holmesfield, S18 7WZ - ample parking.

Tickets available at the door: visitors £8, members £4 (includes refreshments). The arrangements will be raffled at the end of the evening. All are welcome.

Diana Holland, Holmesfield Flower Club.



Councillor Surgeries

Liberal Democrats:

2nd Monday in month 6-7pm, Totley Library, Baslow Road.

2nd Saturday in month, 10.30am to 12 noon, Dore Old School Hall, Savage Lane, Dore.

Contact details:

Colin Ross 235 1948
Email: colin.ross@sheffield.gov.uk

Joe Otten 230 3290
Email: joe.otten@sheffield.gov.uk

Martin Smith 0781 205 5346
Email: martin.smith@sheffield.gov.uk

Don't forget your brown bins!

Now that we've all received our brown bins, remember that these are only for glass, cans and plastic. The blue bin will ONLY be for paper and card. The black bin will continue to be for food waste and other non-recyclable waste.

After a final collection during week beginning October 15, the old blue box will no longer be used for waste collection. You can re-use it yourself (in the garden, maybe?) or take it to a recycling centre.

Tristan Swain

Garden Services and Maintenance
Established 1984

Unit C4 Sheaf Bank Business Park
Prospect Road Heeley
Sheffield S2 3EN
Tel/Fax: 0114 255 4689
Mobile: 07831 802 539
Email: tristan@tristanswain.co.uk



www.tristanswain.co.uk Public Liability Insurance Waste Transfer Licence

HAPPY FEET CHIROPODY

HCPC Registered & Westfield approved

Professional, reliable & friendly service

Home visits only

Karen Clarke & Brendan Clarke

Tel : 07391 454096

CHARISMA BLINDS



For
Windows
With Style

Sheffield Factory Showroom

106 PROSPECT ROAD
HEELEY, SHEFFIELD

Sheffield (0114) 258 5496
Rotherham (01709) 512113

R.M.M BUILDING SERVICES

25 YEARS EXPERIENCE

All types of building work carried out including- Drop kerbs, block paving (drives, paths, etc), extensions, general building repairs and maintenance.

Phone Rob on- Mob- 07906108567

Home-2352190

Dronfield Landscapes



Gardens cleared and maintained, Lawns mowed, Turfing, Tree felling & pruning, Hedges trimmed & reduced, Pond maintenance, Fencing etc.

for free quotation call

Chris on: (0114) 2746158 Mobiles: 07976072785 or
Richard on: 07789497104

8am-6pm mon-fri

HazelBarrow Farm, Norton S8 8BA



Got a computer?

Having Problems?

Is it running slow? Stops responding?
Having problems running the latest games
or applications? Broadband installation?

Give me a call!

I'm available for home visits at any time including evenings and weekends. I can also suggest upgrades to improve performance, or even build you a system to your specific requirements.

Phone: 0114 2472619 Fax: 0870 7060080

Mobile: 078 17464703 Email: service@timbrown.plus.com

Tim Brown

Building,
Installation,
Upgrading and
Troubleshooting
Computer
Systems
Over 25 years
professional
experience

RICHARDS TELEVISION, SATELLITE, VCR, DVD REPAIR OR INSTALLATIONS

- City & Guilds London Inst. Fully Qualified.
- Over 25 Years Professional Experience.
- Most Makes & Models Repaired. No VAT.
- For Prompt, Friendly Service Ring:

0114 2876806

Ask for Richard. Ex Bunker & Pratley.



M. Scriven Quality Greengrocer

Supplier to the Catering Trade

Pubs • Clubs • Schools etc

Daily Deliveries • Very Competitive Pricing

Quality Guaranteed

Tel: 0114 2367116

37 Baslow Road • Totley • Sheffield S17 4DL

Traffic News

A new location for the speed camera van

A few drivers have been surprised to find a police camera van in operation on the Bridge, at the junction of Baslow Road and Abbeydale Road South.

The following is from the Police Speed Camera Safety Unit:

"We received a request from residents on Abbeydale Road South, so conducted a review similar to the one on Baslow Road. As there have been a number of collisions near the Tesco Express and the speed surveys showed there was reason for concern, we have taken this on as one of our Community Concern sites.

In response to your question, yes, the site has been productive and many are local people."

When will local drivers, who should know better, learn?

The camera at the Totley Brook Road junction was packing up at 9pm, recently. There have been comments that it was obstructing the view of motorists travelling outbound to turn into Busheywood or Totley Brook Road.

This matter has been raised with the Officer in charge. The highest speed

recorded was 53 mph.

Roger Hart

Restrictions at last on HGVs?

After a long campaign we have managed to get the Council to agree to consult on a HGV 7.5 tonne restriction which would bar these vehicles from using Twentywell Lane, Queen Victoria Road and Prospect Road and all the surrounding roads.



After a survey across the City it emerged that this area was one of the 5 worst hot spots in terms of unsuitable HGV usage. There have been reports of large vehicles coming down Queen Victoria Road

and then getting stuck on Green Oak Road or Mickley Lane.

Once the consultation period ends it is hoped that these restrictions will be enacted as soon as possible to relieve the pressure on these steep residential roads.

Cllrs Colin Ross Martin Smith Joe Otten

New pedestrian crossing and parking restrictions at TPS

Following the new build and the expansion of pupil capacity at Totley Primary School, Sheffield City Council approved the installation of a new signal-controlled pedestrian crossing just below Totley Grange Road.

The Council report explains that "in this location the crossing will be convenient for those parents parking on Totley Grange Road and Totley Grange Drive. It is in the best place for pupils observed emerging from the gennel connecting to The Green and reduces the number of pedestrians needing to cross Totley Grange Road before crossing Baslow Road."

In addition, in the interests of road safety, new parking restrictions will operate from the Cross Scythes down to a point just beyond the junction with Main Avenue. These will include red-line "no stopping at any time" sections.

* EX-BRITISH GAS, LOCAL GAS AND HEATING ENGINEER.

*GAS SAFE REGISTERED AND PUBLIC LIABILITY INSURANCE.

*INSTALLATION- SERVICE- REPAIR

* BOILERS, FIRES, COOKERS, SAFETY CHECKS, RADIATORS, PLUMBING.

* SAME DAY SERVICE

CALL MATT ON: 07975 856 727

17 LAVERDENE AVENUE, TOTLEY, S17 4HF



DRONFIELD LANDSCAPES

Logs and wood chippings
For Sale

Ring for details

Chris 0114 274 6158

Mobile 07976 072785

Richard Mobile 07789 497104

TOTLEY LIBRARY Christmas Fair SAT NOV 24TH 10AM-1PM

Buy your Christmas presents and stocking fillers • Craft stalls • Music • Refreshments including mulled wine and mince pies • Activities for children with the Needle and Thread craft group • Christmas themed books for sale



Visit www.totleycric.org.uk or visit us at 205 Baslow Road, Totley, Sheffield, S17 4DT for more info!

Walking the Dog....

Question - Who Is The Only True Totley Person In Totley?

I'm sorry Jack, but you are not a true Totley person.

I've lived here for years?

But you were born under a hedge on a farm somewhere else.

What about Tempuss and Sally then?

Tempuss started out in Gleadless, I'm afraid. And Sally's been all over, and that's all I'm saying. Whereas, I've lived in Totley my whole life, and no one else in all my family can say that.

I thought you reckoned your mum and dad lived at 6 Laverdene Drive happily ever after, till they each died there?

Well remembered Jack! It's true that on Feb 1 1935, only just married, and only just in time, they came to live here. And for the next fifty years they caught the 45, and played bowls in Totley Rec, and acted in the Totley Toads, and had three lovely Totley boys. But they themselves weren't Totley. Lily came from Woodseats. Gethin came from Wadsley.

But what about their three lovely boys then?

Little Geth, was born in May 1935 on Abbey Lane, and when he was 30 he married his child bride Lorna and went up Bents Green. Our Dave ran away to sea at 16 and had to get married in Cardiff. Whereas -

Hark at you with your 'whereases' . I thought we were going for our w-

- I, the middle child, was conceived on the Laverdene, on Easter Sunday 1940, and born there in the Blitz. Even when I sort of left Totley for twenty years to try to be a teacher and a writer and a clever dick generally, my mum always kept my bed ready for me at 6 Laverdene, just in case. So 6 Laverdene was always my address, till I came back to Totley full time in 1981 to have my own kids, and to live as a grown-up in Totley for ever.

That must mean your kids are Totleyites then? Your Goronwy for instance? He went to Totley Cowsheds and he had Mrs Holding three times, and you couldn't get much more Totley than that? You've written about it. I think? It's hard to remember. You do go round the houses a bit these days. Wuff!

Goronwy was born in London and went back there as soon as he could. My Eleanor and Megan were both conceived and both born in Totley, and I was there on all four occasions, but they've gone south now, too. My three, or maybe four, grandchildren know nothing about Totley, whereas I remember growing -

I bet you're now going to remember growing up on the Laverdene estate and how all your houses -

- up on the Laverdene estate. All the houses were the same. Kitchen. Dining room we never dined in (the posh people on Laverdene Avenue called it the Lounge). Pantry. Two bedrooms. Box-room. Landing. Lav with bath. Two square lawns. Back door next to the coal hole. Front door never used except for the doctor, or, when he got it wrong, the funeral director. Best estate in Totley.

What about Aldam and Greenoak then?

They were council, and didn't pay proper rent.

What about the prefab estate then?

Full of incomers who smelt of cardboard when it rained.

I bet you're now going to start whereasing about All Saints, and I want my -

All Saints! In those once-upon-those- times, Jack, it had outdoor dubs that the seniors tried to wee over, up and onto Mr Mellor's Triumph Mayfair in the yard by the coke heap and -

Old Smellor and the dubs again? It'll be the Old Stores next, when your Co Op number was 3 5 -

- the main road used to squiggle between the lumpy trees. And the Co Op was the Stores with three different shops and sawdust and zingy things for your number, which

was 3 5 double 4 8. We had proper barriers at the end of Laverdene Road up from Trevor Stacey's and he had a sister. And all the Laverdenes were different in those days. The Close was common. The Avenue was posh. The Way had dogs. The Drive had the grammar school boys. Glover didn't count. And interestingly, Lemont Road used to be Mickley Lane when the Laverdene Estate was still a rhubarb farm, Jack.

And that's enough rhubarb for today, Rony. Less talking more walk -

But to go back to where we started, we can safely say that I'm fully Totley born and bred, but that no one else in my family, including you Jack, was, is, or ever can be.

What about your niece Steph then? And her Eric and Bronwyn and Bridie and Ruby, who are all living happily ever after on Laverdene Close?

Steph was Bents Green. Eric was Heeley. They bought Ruby in Halifax or somewhere .

But what about Brownyn and Bridie?

They were born in the Hallamshire Hospital, which as far as I know Jack, is not in Totley yet, is it?

No but -

And I'm sorry if I keep having to repeat myself, but I still think I am the only person in all my family, and possibly in all of Totley, who's lived in Totley all his life.

You'll have to die before you can say it's 'all your life'? I'll have to die then.

But if you do, you won't be able to say it, anyway. Why not?

Because you'll be dead.

Shall we go for our walk? Before I won't? Because I will be?

Eh?

Wuff!

Go wuff yourself!

Jack & Rony Robinson



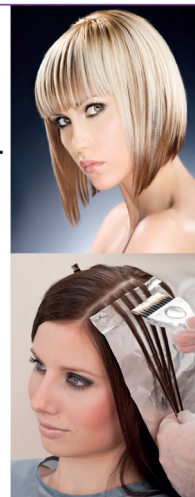
Call today to have your oven, hob, extractor or Aga professionally cleaned by Pippa Weir! Pippa's contact details are:
Tel 0114 258 3466 or mobile tel. 07716 992648
www.ovenwizards.com

Hair by Suzi Mobile Hairdresser

Professional, reliable, friendly local service.
City & Guilds qualified since 1985.

- ✦ Cutting,
- ✦ colouring,
- ✦ perming, highlights and lowlights,
- ✦ blowdrys and shampoo and sets etc.

Competitive rates
in the comfort of your own home
Call Suzanne 07970 832292
Now moved to Dore





Friends of Gillfield Wood

Diary for October and November

October

Sunday 7th: Small Mammal Trapping with Val Clinging. Join us to look at any small mammals that we have trapped over the previous night. These will be carefully examined, recorded and released into the surroundings that are familiar to them.

It may be possible to photograph individuals. Good footwear and appropriate clothing should be worn. Meet at the end of Totley Hall Lane by 8:30am.

Sunday 28th: Friends of Gillfield Wood practical conservation morning, run with the help of the Sheffield Council Ranger Service. Meet 10am at Baslow Road bus terminus. Refreshments, tools, etc. provided. Please wear strong footwear and appropriate clothing. All levels of help required and guidance given. Check our website at www.friendsofgillfieldwood.com where any late changes of venue will be published.

November

Saturday 17th: November Bird Walk with FoGW's Chris Measures. Chris' final walk of the year will be a gentle stroll in and around Gillfield Wood to see and hear our wintering birds. Meet at the bottom of Totley Hall Lane at 9am. No experience necessary. Bring binoculars and cameras. Strong shoes are essential. The walk will last about 2-3 hours.

Sunday 25th: Friends of Gillfield Wood practical conservation morning, run with the help of the Sheffield Council Ranger Service. Meet 10am at Baslow Road bus terminus. Refreshments, tools, etc. provided. Please wear strong footwear and appropriate clothing. All levels of help welcome, and guidance given. Check our website at www.friendsofgillfieldwood.com where any late changes of venue will be published.

Paul Hancock

Totley History Group presents...

A HARVEST OF HEALING HISTORICAL AND MEDICAL USE OF SPHAGNUM MOSS

BY THELMA GRIFFITHS



**WEDNESDAY 24 OCTOBER 2018
AT 7.30 PM IN DORE & TOTLEY
U.R.C., 28 TOTLEY BROOK ROAD**



People Keeping Well

Age UK Sheffield is working in the Totley area to encourage older people (over 50) to enjoy a better quality of life, by supporting activities which maintain good physical and mental wellbeing. The project is called **People Keeping Well** and it does exactly what it says on the tin. We want Totley and Dore residents to have a range of opportunities to participate in activities which will keep them well.

There is a small grants programme which can offer grants of up to £500 for groups to develop activities targeted at those in 'later life'. So far, we are supporting three principal activities in the area.

There is an **Exercise to Music Group**, which meets on a Monday afternoon at Totley Rise URC Church Hall. This group combines lively music with gentle exercise, designed to promote core strength, stability and flexibility and is suitable for most abilities. The fully-qualified trainer will discuss any particular medical issue to ensure that the exercises don't exacerbate existing conditions.



There is also a **Table Tennis Group** at Bradway Community Hall, on a Friday evening from 7.00pm to 9.00pm, when members play what they describe as 'only slightly' competitive table tennis and include members aged over 80 in their number!

On a less physical, but more cerebral level, there is **Sporting Memories**, which is held fortnightly on a Thursday morning, 10am – 12.00noon. The library is not open to the public on a Thursday morning, so

the group can discuss a range of sports, players and memorable games old or new. Refreshments are available and it is quite a convivial gathering.

We are also keen to explore what other activities people in Totley and Dore might enjoy, so we have developed a **Community Survey**, which asks about ideas for new activities not currently available. These surveys are available at the Library and other local hubs, e.g Post Offices and Church Halls and includes a Freepost envelope for a swift return. If you would like more information about these groups please ring AgeUK Sheffield on 0114 2502850 or contact elspeth.mallowan@ageuksheffield.org.uk.

Many of AgeUK Sheffield's activities, both in the local area and sometimes more citywide, rely on the involvement of volunteers to support a number of projects. These range from visiting socially isolated people in their homes, helping out at events, and supporting wellbeing activities through to fundraising. If you are interested in becoming an Age UK Sheffield volunteer, you could contact Virginia Lowe on 0114 250 2850 or email her on auks.volunteering@ageuksheffield.org.uk.

Age UK Sheffield also gives advice and information on many concerns older people might have. They have a very wide range of leaflets and information and offer 'drop-in sessions' where you can talk to an advisor on all sorts of subjects.

Age UK Sheffield's offices are above the new Fire Station on Eyre Street, opposite the rear entrance to the Moor Market



FREE
Repeat Prescription
Service

FREE
Delivery service

St Luke's

Totley 
Pharmacy



CARING FOR SHEFFIELD

Totley Pharmacy, 158 Baslow Road, S17 4DR.
Tel : 01142361070 www.totleypharmacy.co.uk



Friends of Dore and Totley Station

125 years ago and before

One of Sheffield's difficulties is that it is not on the major north-south routes for road or rail transport, and that goes back to at least Roman times. Geography makes that inevitable. The Great North Road runs on relatively level land through Doncaster and York and was largely replicated by railways who were running from London to Edinburgh by 1849. Various routes were used to bring the railway to Sheffield from the east, originally terminating at the Wicker.

The Sheaf Valley line was opened in 1870 by the Midland Railway, and came after many trials and tribulations including several competing schemes not unlike the HS2 saga today! The good people of Dore, Bradway, Holmesfield and Totley weren't happy that the nearest station and yard was built at Beauchief. The Duke of Devonshire and others saw an opportunity to develop land to the south west of Sheffield and by 1872 Dore & Totley had a station – but unusually no station yard. Dore Road, Queen Victoria Road and others soon followed. Rail commuting from Dore & Totley was born, mostly to Sheffield and the Don Valley stations towards Rotherham. Nobody would have imagined commuting to Manchester.

It is interesting to note that the Dore & Chinley Railway was planned primarily to carry freight, mostly coal to industry in Lancashire. Various plans for a line began in the 1860s but it wasn't until 1884 that an Act of Parliament was passed to authorise the line, including Totley and Cowburn Tunnels. Despite major engineering difficulties the line was ready for the first goods train on 6th November 1893, 125 years ago. It wasn't until June 1894 that passenger services ran. Stations were built of wood, reducing building costs considerably. Only Grindelford station café survives to remind us what they were like.

10 years from Act of Parliament to full opening of a line with immense challenges, not least the three-and-a-half mile long Totley Tunnel. Subsequently traffic built up and 4 lines were provided from Dore & Totley into Sheffield from 1904/5 – until the 1960s when 2 sets were torn up again.



30 year old refurbished Class, typical of those replacing Pacers.

125 years – Free Over and Under Walk – Saturday 30th October

We hope to start walking from the station at 10.30 to allow anyone coming from the west or east by train to join us. We'll follow the line as closely as possible with explanations given about some of the features along the way, both old and potentially new. It's quite hilly so stout footwear and warm and waterproof clothing are essential. We'll pause at Longshaw for light refreshments and then drop down to Grindelford to get the train back. Please look out for more details on local posters, our Facebook page and our website. If Northern are still striking on Saturdays the event will have to be postponed.

Strikes!

Sadly, at the time of writing Northern members of the RMT

are striking every Saturday until at least the end of September. This dispute has been going on for about 2 years and neither the RMT or Northern are giving an inch. It centres on how many people are operating the trains and who does what. Some trains could operate with only a driver, and many of up to 12 coaches in the South-East do. As things stand it's unlikely that Hope Valley trains would normally be operated that way, not least because tickets can't be sold or checked by the driver. However, if a conductor could not be present it might be permitted for the train to operate with driver only, rather than being cancelled. Would we prefer to wait an hour or two for the next train or accept the risk of riding in a train with no conductor? Thin edge of a wedge that would be! Talks are scheduled at ACAS but the RMT has said it will continue to strike until Christmas if they don't get what they want – guards on all trains. In the meantime staff who aren't normally train crew are manning some Northern trains on strike days, but not on the Hope Valley line.

The new second platform

Some may ask how it's taking so long to at least reinstate a second platform and track at Dore & Totley, a much simpler project than building the entire line. An outline planning application went in to Sheffield City Council in 2005. We've heard no more about timescales despite repeated requests. Our best guess remains that work may start in 2019/20 and might be completed by late 2021.



Looking better after a new coat of paint!

Station canopy

We'd hoped to be able to reveal more about this by now. Various parties are chipping in to pay for it and it seems likely that it will be completed this winter – not autumn as previously hoped. It may not be helping that the members of the Northern team who are progressing this are taking days out to act as conductors on strike days! At our last meeting with Northern there was talk of who pays for a plaque, and whether the Sheffield City Region Mayor should be asked to open it, so we believe it will happen, soon.

The ticket machine: a comedy of errors, continued

The old ticket machine was troublesome. The new one (pictured right, and out of order on the day this photo was taken) has proved even worse. At least cooler weather and the lower sun has prevented it from overheating and it is performing better. We now know the present position was temporary because the one originally planned wasn't appropriate. A new site has been established and it should soon be moved. Whether that, and the changes attendant upon it, will improve matters remains to be seen. Completion is supposed to be by the end of September.

We're all encouraged to use the various Apps provided by all the train operators and thereby



Friends of Dore and Totley Station (continued)

avoid using the ticket machine at all. They're the way of the future and many of us are plucking up courage to try them. When more use them every day it should make a big difference. Dare you give it a go?

Service out of Sheffield

There's not a lot that can be said about this other than there aren't enough trains and it is no surprise that more travel into Sheffield from Dore & Totley than return by rail. It would be nice to have a half hourly service like they do from New Mills into Manchester. We're trying to get improvements but it's unlikely we'll get more than one or two extra stops before the new platform is completed. We won't stop trying, though.

Looking forward

At present we're suffering from major delays on almost all services along the Hope Valley line. Each train company tends to blame the others, who in turn blame Network Rail or the Department for Transport. The truth is that the rail industry is the victim of its own success. All the various parties are trying to push too many trains along tracks and infrastructure that's not yet sufficiently robust to cope with it all. New electrification and other projects are behind schedule, including that due here. Unfortunately the trains are here now, or will be quite soon, and the timetables they were hoping to operate can't be achieved.

We feel the organisation and timing of freight trains in the Hope Valley could be improved. The quarries and cement works are doing very well at present and are producing more train movements. The redoubling through the station, together with the two freight loops below Poynton Wood and at Bamford, will help by allowing longer trains to run and possibly not as often.

However, the biggest factor in improving services between Sheffield and Manchester is reducing congestion around Manchester, particularly so for the East Midlands service to Liverpool which gets very badly hit. A plan exists to add two new through platforms at Piccadilly, 15 and 16, but it has been stalled at the Department for Transport for years; far longer than our scheme. If you hear anything about that scheme going forward we may be able to see better services on our line. No holding of breath.

Electrification work in the North-West is proceeding and they should be seeing more electric trains in operation by the early 2019. That means we should soon see the end of Pacers, probably before May. TransPennine will also be getting more trains and hope to run more with 6 coaches between Sheffield and Manchester. East Midlands have got more rolling stock so we shouldn't see so many short trains.

One day we'll be able to tackle car parking. In the meantime it's good to see so many walking to the station.

If you're a Facebook user, you can find and join us by searching for FoDaTS. It's a very active Facebook group. If you're not on Facebook and would like more information please send an email to our Secretary; nj-barnes@outlook.com

There's lots of information on our website at: www.fodats.net

Chris Morgan, Chairman

Totley Operatic and Dramatic Society

TOADS' November production is in the pipeline. The play is a murder/mystery, written by the master of the genre, Norman Robbins, entitled "At the Sign of the Crippled Harlequin", and set at Christmas-time in a hotel in the Peak District.

The dates of performances are Wednesday 21st November to Friday 23rd November at 7.30pm, and Saturday 24th November at 2.30pm. Please come along and support your very own local AmDram society, it will be lovely to see you!

Toads meet every Tuesday at 7.30pm in the Guild Room at St John's Hall, Abbeydale Road South, and if you feel like treading the boards or helping out in any way please pop in

and see us. AmDram is not all about the actors - there are numerous jobs that all contribute to the whole thing - we are a friendly lot and you would be very welcome. You can contact Anne Bettridge on 01246 460318, or visit our web-site www.toadsdrama.co.uk.

The venue is as always, St John's Hall, Abbeydale Road South. Please call 0114 2351206 to reserve your ticket, or contact any Toads member. Ticket price £6, or £5 for concessions.



Neighbourhood Watch

I have resigned (as has Neil Bunting but for different reasons) from serving Totley as NHW Coordinators. We have both served around 10 years, the last 3 being during a very difficult time in the organisation.

That is hopefully over now, but as I have been a member for around 30 years, I thought that it was time to hand over to some younger, enthusiastic soul, though we haven't found him or her yet. The roles are not onerous, and can be very satisfying. NHW members will be needed even more with the reduction in PCSOs, to be replaced with PCs we are told.

Les Day, area coordinator, will be pleased to talk to anyone who is interested.

Thanks to all who have helped me or the group in any way. One member has been very diligent, even giving evidence to Police and Trading Standards which helped them to successfully commit a guy to prison. He likes to be anonymous.

Roger Hart
07831 305881

Dore and Totley United Reformed Church

Totley Brook Road

There are two events planned, supporting SHARE (Sheffield Health Action Research for Ethiopia):

Sunday November 18th at 3 pm:

"From Proms to Poppies" with Dronfield Genquip Band
Join us for an afternoon of seasonal music with this award winning brass and silver band.

Tickets are £6 each, available from Margaret on 0114 2311831 or Elaine on 07929 720977

Saturday 1st December, 10 am to 12 noon:

Christmas Coffee Morning.

Please let Elaine or Margaret know if you would like to book a stall (contact numbers above)



Plumbing & Bathrooms
Complete Installation Specialist

www.A1tilingandplastering.co.uk

Tel - 07738 688 807

- * Plumbing Leaks, Bursts & Blockages
- * Taps, showers, Radiators, Etc
- * All Tiling And Plastering
- * Reliable, Fully Insured & Guaranteed
- * No Job Too Small, NVQ Qualified

25 Five Trees Ave, Dore, S17 3LW



What's on at the Library



Building work begins!

We're excited that the building work on the extension at the back of the library will start in the final week of September. Once complete, this scheme will provide a fully accessible toilet facility and, for the first time, provide a much-needed public toilet for our library users! Improving toilet facilities at the library has been a top priority for everyone involved in running the library since taking it on as a volunteer-led service, so it's great news that we will soon achieve this goal! The new extension will also provide extra storage space for the library, which will help us to organise our book-stock.

The building work is expected to take around two months. Whilst we aim to keep disruption to the library to a minimum during the building work, the library will have to close for a period of two or three days on three occasions during the scheme. We will do our best to let library users know in advance of any temporary closures, so please look out for information notices.

Unfortunately, during the eight weeks of the building works we will have put the chairs we use for events into storage. This means that our regular film showings will be temporarily suspended. But don't worry, film showings will resume from December!

We apologise in advance for any inconvenience to our users during the work being undertaken but hope you will appreciate the improvements once complete!

Sheffield City Council had been planning to complete the external fire safety improvement works during the Summer. This work was however delayed and we now expect it to be undertaken during the Autumn. This work involves improving the escape routes outside the building from the fire doors.

Fund-raising

Our ability to make these improvements depends on our fund-raising activities, as the funding from the Council is to meet essential running costs. We are exceedingly grateful for all the help we have from our local supporters who attend events or have signed up to our Lottery, all of which helps us to raise funds to improve the library. Thank you to all of you who grew plants or attended our Spring Plant Sale – which raised a fantastic £1000 for the library! We also held a number of successful events at the library over the last few weeks including an interesting talk on the Shepleys of Woodthorpe Hall and our summer concert provided by the wonderful Beekeepers, which was very well received!

Library Lottery Winners

Congratulations to David Godbehere and Liz Collins, our July Totley Library Lottery winners, with winnings of £135 and £33.75 respectively. Pat Krause won the first prize of £135.20 in May, with Elizabeth Derbyshire winning the second prize of £33.80. Thank you to all of you who are members of our library lottery and congratulations to all our Summer winners!

Summer Reading Challenge

We were delighted that over the holidays 180 children signed up for the Summer Reading Challenge. In celebration of the *Beano* comic's 80th birthday, the theme of the challenge this year was Mischief Making, and children were encouraged to read six or more books of their choice - fact books, joke books, picture books or audio books - borrowed from the library during the school summer holidays. Congratulations to the 93 children who completed the challenge!

People Keeping Well/Age Concern

Over the last few months we have been very pleased to be working in partnership with Age UK to support the People Keeping Well in the Community initiative. Totley Library is a

venue for a number of new groups which have been set up as part of the project, including Sporting Memories, Life Stories and Digital Drop-in. For more information please contact Steve.Chu@ageuksheffield.org.uk

New Volunteers

Don't forget, we're still looking for new volunteers and if you're not involved yet, do consider signing up. The library is run entirely by volunteers who work in a whole range of different ways to help deliver the library service, run the film club, clean, bake, help with children's story time and events, look after the garden and grounds and a range of other things! It's a sociable place and many people enjoy volunteering with us as it enables them to use and develop their skills and give something back. If you are interested in finding out more please pop into the library or complete our volunteer registration form at www.totleycric.org.uk.

Story Time for Toddlers and Pre-school children

Our Story Time for Toddlers and Pre-school children which is held weekly from 10.30am on a Wednesday morning continues to be very popular. Each week has a different theme and children can come along with their parents or carers to enjoy a story and related activities.

Isabel Hemmings

Regular events and meetings at Totley Library

Library users are advised that during the building of the new toilet facilities, the library will need to close for three days in mid-October, and for three days at the beginning of November. A further closure may be required later in November. Because of factors such as weather conditions and unforeseen problems, we cannot provide precise dates at this stage. Users are advised to look for notices and/or telephone the library to check that events are taking place at these times.

Monday:

French for children – 10 am toddlers and babies; 3.40 reception and Yr 1; 4.10 years 2-4; 4.40 years 5 to 6.
Readers Book Group, every first Monday, 1.30–2.45 pm
Friends of Gillfield Wood, occasional Mondays, 7.30 pm onwards. Talks on local nature and conservation. See posters, the FoGW Diary on p.10, or www.friendsofgillfieldwood.com
Councillor Surgery, 2nd Monday of the month, 6.00–7.00 pm

Tuesday:

Basic ITC Sessions, 10am – 12 noon. To book, phone Heeley Development Trust on 0114 250 0613.
Baby Time 1-2 pm. Fun music session with songs, rhymes and musical instruments for babies aged 0 - 18 months.
Craft Group, 2.00 – 4.00pm
Poetry Group, last Tuesday in month, 7.00 – 9.00 pm. *Please note that this group cannot accept new members at present.*

Wednesday:

Coffee Morning, 10.30 – 12 noon
Toddler Story Time, 10.30 – 11.30 Craft activities, singing and stories.
Health Walks, 10.30am Wednesday, Totley Library. One longer of up to one hour duration and one shorter walk, followed by refreshments from Totley CRIC. Contact Step Out Sheffield on 07505 639524 or email stepoutssheffield@gmail.com www.healthwalksinnsheffield.btck.co.uk/
Totley History Group, usually last Wednesday of the month, 7.30. Talks on matters of historical interest. Check posters in library, the Independent Diary, or www.totleyhistorygroup.org.uk
Yoga sessions 7.00 – 8.30 pm, Wednesdays (except the last Wednesday of the month). For more details call Ann Zielonka on 0114 2361585 or 07929 736966. Beginners welcome.



Transport 17

Well, what a wonderful summer we've had! Hopefully you've managed to enjoy it to the full. Transport 17 has had its summer break too but is now back and ready to roll, although a number of our volunteers are still on vacation, enjoying the quieter pace after the school holidays!!!!

The quiz sheet for Totley Show is now completed and off to be printed. The quiz sheet has been sponsored by Hamnett Wealth Management. Hamnetts are almost next door to the office on Baslow Road and offer a bespoke financial planning service for personal and corporate clients and we are very grateful for their support.

By the time you read this Totley Show will be long past and hopefully it will have been a huge success once again. We hope that you enjoyed the quiz, seeing the bus and chatting to all our volunteers. It would be great to think that once again this year we have gained some more volunteers to help us in any aspect of the organisation.

As we start back after the break we are pleased to report that the lunch club at Meersbrook has restarted and our volunteers who service this event are looking forward to renewing friendships as well as meeting new faces.

Unfortunately numbers at Woodseats lunch club have declined to such an extent that everyone can be transported on one bus and sadly the services of Transport 17 are no longer required, so once again we are looking for another opportunity for this bus.

In the last article the Bridge Drive at Abbeydale Golf Club was mentioned. The date of this has had to be altered to Tuesday 2nd October. We have re-issued posters for this and are looking forward to another successful event.

That will take us ever closer to Christmas and our next event, the ever popular Christmas Fayre to be held at the Cross Scythes on Saturday 17th November 10.00 - 12.00, so pop the date in your diary. Arrangements still have to be finalised with Ben and Scott but we believe the mince pies will be available as always. There will be a seasonal raffle, a home produce stall, The Bottle Bonanza Lucky Dip and a Strictly Christmas Stall. Deb and Holly from Tropic Skincare will be joining us and hopefully Lynn Munro with her ever popular knitted items will be there. We look forward to seeing you there and if you have anything you would like to donate for any of the stalls please drop them into the office the week before the event. We are going to be collecting all kinds of bottles, any Christmas items, a range of home produce including jams, pickles, savoury items as well as cakes, tray bakes or any other goodies you might love making.

Over the summer we have received a very generous donation from the Facey Family Foundation which we intend to use to update our IT equipment. We are very grateful for this support. We have also received donations from Dore Methodist Church and Step out Sheffield.

Of course, we now have the facility for you to donate online at <https://mydonate.bt.com/charities/transport17> for commission and fee-free giving. Every donation we receive is hugely appreciated no matter how large or small: it is this support which helps us to operate. Thank you to everyone for their generosity and in many cases hard work. Finally just a quick reminder about our website, www.transport17.co.uk, which Jenny Nuttall is going to be working on this autumn - and of course please keep following us on Facebook!

Sandra Longley (on behalf of the Management Committee)

Ask Your Pharmacist

A New School Term - New Head Lice Infestations

Your children are back at school and the annual problems of head lice and nits will once again appear. Head lice are tiny insects which live by sucking blood from the scalp. They lay eggs which hatch after 7- 10 days. It takes about 10 days for a newly hatched louse to grow to an adult and start to lay eggs. Nits are the empty white egg shells which are left when the lice hatch.

Head lice live in hair and are common among school children 4-11 years old. Head lice are spread by direct head to head contact. They climb from one person's hair to another's. They're very small whitish or grey-brown insects that range from the size of a pinhead to the size of a sesame seed. The only way to be sure someone has head lice is to find a live louse by combing the hair with a special fine-toothed comb. This is called detection combing. Once detached from the hair, head lice will usually die within 12-24 hours

Exploding the myths

There are many myths about head lice and how they are transmitted. Here are some facts

- They can't fly, jump or swim
- They are very unlikely to be spread by objects such as hats, combs and pillows
- They don't have preferences for dirty, clean, short or long hair
- They only affect people and can't be caught from animals
- Head lice are not just caught at school- close family and friends may be the source of the infection.

How to do Detection Combing

Detection combing can be done on dry or wet hair. Dry combing takes less time but wet combing is more accurate. To use the wet method you:

- Wash your hair with ordinary shampoo and apply plenty of conditioner
- Use an ordinary wide toothed comb to straighten and untangle the hair
- Once the comb moves freely from the hair, switch to the louse detection comb
- Make sure the teeth of the comb slot into the hair at the roots, with the edge of the teeth lightly touching the scalp
- Draw the comb down from the roots to the ends of the hair with every stroke and check the comb for lice every time.
- Remove the lice by wiping the comb with tissue paper or rinsing it
- Work through the hair section by section, so that the whole head is combed through
- Do this at least twice to help ensure you haven't missed any areas and keep going till you find no more lice
- Repeat this procedure on days 5, 9 and 13
- Detection combing should be done again on day 17 to check for any live lice.

Treatment

If you find head lice, you should check the rest of the family. Treat everyone found to have head lice on the same day.

There are 3 main ways of getting rid of head lice - physical insecticides, chemical insecticides and wet combing.

Physical

- Dimeticone 4% lotion or lotion spray- applied and left for 8 hours (usually overnight)
- Dimeticone 4% spray gel- applied and left for 15 minutes
- Isopropyl myristate and cyclomethicone solution- applied and left for 5-10 minutes

Chemical

Permethrin or Malathion: With these products, treatments need to be done twice - seven days apart - to make sure any newly hatched lice are killed. Detection combing should usually be done two to three days after finishing treatment and again 7 days after that to check for any live head lice.

Self-care tips

Examine children's hair regularly- use a detector comb as part of a weekly routine at home

Check clothes and bedding regularly for black spots (which are head lice droppings)

Inform all close contacts if lice are found.

Tajinder Singh

Totley Rise Methodist Church

The Church on the Rise!

Autumn Services Information

9.00am Early Services (1st and 3rd Sundays). A quiet, traditional service lasting about 45 minutes.

9.30 am Praise Together (2nd Sunday). A 30 minute service for pre-school children and their parents/carers

10.30am Mid-morning Service every Sunday. An informal and contemporary service with a monthly Communion, usually lasting approximately 1 hour 15 minutes. Prayer ministry is available after every service.

There is a supervised crèche available plus Youth/Junior Church at all morning services.

6.30 pm Café worship service. This informal and relaxed service is held with coffee and biscuits on the 4th Sunday of each month.

We welcomed Reverend Gail Hunt in September!

Sunday the 2nd of September was a lovely day to welcome our new minister, Gail Hunt, and her husband, David, a Methodist Deacon, to our community. Our first service together was a vibrant and inclusive event, followed by a fantastic barbeque in delightful sunny weather. Dore Methodist Church members joined in as Gail's ministerial appointment includes both Totley Rise and Dore Methodist. Gail and David have come to us from the Nid Valley circuit, a combination of churches in Harrogate and Knaresborough. We also had the pleasure of meeting Gail and David's grown daughters and their families who travelled from North and East Yorkshire to attend this welcome service.

Focus Church

October 14th and November 11th will be the next two services of the unique and inspiring Focus Church. Focus Church is particularly geared for people with learning disabilities and cog-

native difficulties and their carers. The service is a time for worship, creativity, fun and fellowship . . . and an opportunity for carers to chill. For further information, please contact Sue or John Freeman on 236 6819 or email sueandjohn6@talktalk.net

Tuesdays at TRM

Every Tuesday there is a lot happening at TRM:

Prayer meeting 9.30-10am in the church. We focus on prayers for the community, for the world and any situations needing healing and the touch of God's hand.

Coffee morning in the church Lounge from 10-11.30 offers folks an opportunity to get to know others better, discover common interests and catch up on the many happenings in our church and Totley communities.

Citizens Advice Bureau 10 - 12 noon in the TRM Centre, No appointment needed. Drop-in free confidential advice service. Advice on legal, financial, employment, benefits and any other matters of concern.

Knit, Natter, Craft and Chatter in the TRM Centre runs from 12 noon - 3 pm with a light exercise session offered from 12-12.30. This busy and friendly group has grown a lot, demonstrating great appeal in our local community. Young and old, men and women are all welcome. The group offer tea, coffee, biscuits and most importantly, friendship for up to three hours.

Maxine is the organiser and is keen to help housebound folks be involved. The group will happily provide wool, needles and a chat for those who can't travel to the church. Contact Maxine on 348 5220 or 07761 829824 for more information.

Tuesday Ladies meet the 2nd Tuesday of each month at 8pm in the church Lounge. About 35 ladies consisting of both church and non-church members meet to enjoy speakers or a quiz or beetle drive. Sometimes the evening includes food such as salmon and strawberries or cheese and biscuits. If you would like more information, please call Janet Savage on 236 9002.

Room Hire We make our facilities in the TRM Centre available for a variety of purposes, from community groups such as Probus, to Brownies, Rainbow Guides, language classes and birthday parties. There is the large church hall with a stage, and room hire also includes the use of kitchen facilities and audio-visual equipment if required. For information please visit our website for a booking form and details of room charges, send an email to enquires@totleyrise.co.uk or contact the caretaker, Dean Duke, on 236 0389 for more information.

Looking ahead to Christmas

Our popular and widely attended 'Journey to Bethlehem' will be held on 8th and 9th December, 4.15 - 7.30 p.m. All tours are free, but bookings are essential for management of group sizes. Please contact via our Facebook page or www.totleyrise.co.uk

Wednesday 12th December will host a Contemporary Carol Service at 7 p.m. On Sunday 16th December we will hold our Youth Church Nativity at 10.30 am and have a Carol Service on Sunday 23rd December at 6.30 pm. Our Crib Service will be held at 4 pm on the 24th December and the Christmas Family Day Service at 10.30 am on Christmas Day.

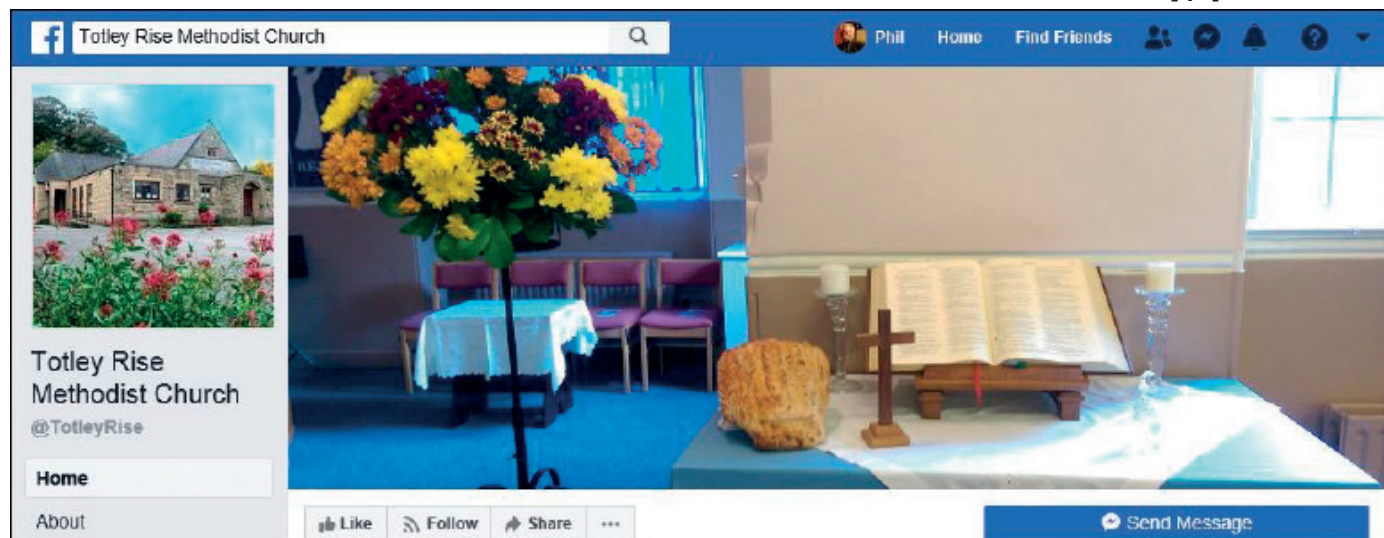
Community Defibrillator at Totley Rise Methodist Church

The Church has been fitted with a public access defibrillator. It is a portable device that can be used by a member of the public to help restart the heart when someone has a cardiac arrest.

Always call 999 and follow the instructions from your local ambulance service. It is really important that the professionals are called and are on their way.

The defibrillator is in a yellow box, attached to the Community Hall, reached via the church car park. It is easily visible from the main road.

For more ongoing events see this issue's Totley & District Diary, p.26.



Our Facebook page gets daily updates of events and is a way to send a query or ask for further information. It also contains a link to our website, www.totleyrise.co.uk, which publishes our Sunday notices and offers a link to a recent recorded sermon.

John Wade Singers

Present

A concert commemorating
the Centenary of the 1918 Armistice

Faure Requiem

and

Movements from Karl Jenkins *The Armed Man*

Saturday 20th October 2018

at 7.30pm

Millhouses Methodist Church
Millhouses Lane, Sheffield S7 2HA

Conductor: Jonathan Lavel

Accompanist: David Burgess

Soloist: Rebecca Lambert (Soprano)

Tickets: £10

Concessions: £8

Children: free

For tickets and information, please contact:

Janey Packard 0114 266 0966

Heaven Harwood 0114 266 1022

or pay on the door.

www.johnwadesingers.org.uk



Holmesfield Parish Church
proudly presents an illustrated talk by

His Grace The Duke of Devonshire

'CHATSWORTH AND THE DERBYSHIRE ESTATE'

**The historic development of the Estate and how
the business of Chatsworth looks today**

**Thursday 25th October at 7.00pm
at Holmesfield Church**

The cost is £7 - please pay on the door

Tea and coffee will be served.

Proceeds will go to Holmesfield Church Maintenance Fund

**If you have any queries please phone
Robin Greetham on 01246 412767**

November Booksale

**AT TOTLEY LIBRARY
SAT NOV 3RD 10AM-12PM**

- History books individually priced •
- General Paperbacks 50p •
- Activities for children with the Needle and Thread craft group •
- Stalls from The Time Travellers and Gillfield Wood •



Visit www.totleycric.org.uk or visit us at
205 Baslow Road, Totley, Sheffield, S17 4DT for more info!

Cathedral Archer Project

**Appeal in aid of the homeless in Sheffield
Sat, 20th Oct 2018 10am to 12 noon
Totley Rise Methodist Church**

Please call in and
drop off any of the
items listed and have a
chat with a friendly
member of the Project
over coffee & cake.

Tinned Food

- ☒ Soups
- ☒ Stewed steak
- ☒ Fish
- ☒ Meats
- ☒ Ravioli
- ☒ Baked beans
- ☒ Meatballs
- ☒ Tomatoes
- ☒ Veggies
- ☒ Desserts
- ☒ Fruit

Clothes

- ☒ Coats
- ☒ Jumpers

Other Food

- ☒ Cereals
- ☒ Sugar
- ☒ Tea bags
- ☒ Coffee
- ☒ Biscuits
- ☒ Pot Noodles
- ☒ Cuppa Soups
- ☒ Orange Juice
- ☒ Squash
- ☒ Snacks

- ☒ Hats
- ☒ Scarves

- ☒ Gloves
- ☒ Sleeping bags



Cathedral
Archer
Project

Gardening Tips for October and November

The Totley Show! It was a good turnout. People were enjoying themselves, some looking to see if they had any prizes, others listening to the musical entertainment. Sue and the instrumentalists gave their all, and the choir singing outside were well received.

It was good to see all this activity. The new committee must be pleased that all their efforts were rewarded by such a good turnout - and the children also enjoyed all the goings on. It's lovely to see that this village tradition is carrying on, and that younger people are coming up with new ideas to keep it going. Well done!

The fresh produce section was a bit sparse, I didn't expect a lot as the weather this season has not been conducive to exhibiting at shows. However, the standard was very good, taking everything into consideration. Well done to Sally Goldsmith on winning the fresh produce shield, and the best in show cup! Wow!

Busy busy! The garden is looking OK - quite colourful. I see lots of work to do. The apple trees seem to need more pruning this year, the 9 cordons are relatively easy, the other two are a different matter; the bramley has to be pruned heavily every two or three years. It's just had a few branches removed to keep it manageable. I notice a fair amount of canker (knobbly lumps). to get rid of it all would be far too drastic, so I will cut out as much as possible without destroying it altogether. It has given us a good crop this year, so this has saved it from the big chop. I suppose it will have to be replaced soon - like us it is getting very old. The Worcester has also done well but it is leaning over, held up by supports. I am going to prune one side to balance the weight more - I might try to pull it a bit more upright and prop it up until it is supporting itself more perpendicularly.

The Ginkgo biloba has outgrown its position. I don't think it will be easy to move it. Might be easier to start again, more drastic decisions. The smoke bush is also getting out of hand - insufficient pruning in the past has left it rather straggly. A friend of mine has cut his down to about two feet; after about two years it looks really healthy and has a lovely shaped bush forming nicely I will follow his advice and do the same.

Last but not least in the pruning is the plum tree. It has not done very well at all and has developed a nasty disease even after a lot of TLC so I must sadly say farewell and turn it into a bird feeding station.

This time of year is busy dividing the perennial plants that have developed into large clumps. These need digging up and dividing. The phlox in our garden is in need of this treatment - these clumps will make at least five or six separate plants, potted up ready for the library plant sale in May. Quite a few perennial plants will be treated this way.

Christine's hanging baskets are still looking good (see picture). She is planting her troughs and some of her baskets with winter flowers, pansies, primulas etc. so they should be looking good when they get established.

I am clearing some of the raised vegetable beds. Kale and sweetcorn have finished. I will be preparing for overwintering crops - possibly onions, garlic and spring cabbage. I will be mulching all around with our own compost. This will be stirred into the top two inches (50mm) of soil - the raspberries will love this! I must check that the compost is neutral Ph and adjust the lime content if necessary.

The lawn seems to be recovering after the period of no rain and hot sun. I will be giving it an Autumn/Winter treat shortly. A good feed will set it up ready for the springtime.

I have just taken delivery of a pond liner. The small pond has a leak. I can't find the leak so a new liner is needed - another job waiting to be done. The eagle needs polishing, and the chickens need a spray of WD40 to keep their joints supple. This gardening caper is never-ending and seems to get harder as the years go by.



October

Flowers: Order roses ready for planting next month. Prepare beds for spring plantings, removing summer bedding and forking over the soil, adding a dressing of fertilizer.

Herbaceous plants can be put in now, except in exposed gardens which are best left till Spring. Lift and divide Michaelmas daisies and other herbaceous plants which have outgrown their allotted space. Tender plants which have been outdoors must be lifted and placed indoors; and begonia tubers must be lifted, dried off and stored in a cool frost-free place.

Summer bulbs must be lifted or covered with mulch before the frost comes. Keep newly planted plants well-watered during any dry spells. Plant out spring-flowering bulbs (narcissi, lilies, daffodils and crocus). Hold tulips and hyacinth until the end of the month. Don't forget if you are into planting forget-me-nots, polyanthus and primulas with spring bulbs the plants go in first.

Dahlias can be lifted when the frost has blackened the tops. You needn't wait for that if the ground is required for planting - lift them carefully with a fork, cut down the stems to about 6-9" above the tuber, and lay them with stalks downwards in a frost-free place. 10 days or so later the tubers may be cleaned, cutting away any damaged roots or doubtful pieces, and dusted with flowers of sulphur - and don't forget to label them.

Vegetables: Dig vacant ground as crops are cleared. Plant out spring cabbage in firm soil, earth up leeks and celery for

the last time, cut marrows and hang them in nets in a cool dry place. Remove any discoloured leaves from brassicas, put onions in store by roping them or in nets, inspect regularly and remove any suspect bulbs. Keep the hoe going around all growing crops. Watch out for pests and deal with them before they are established.

Turnips can be lifted and tops screwed off. Store them in sand, or you could leave some in the ground and use the tops as an alternative vegetable, cooking as for spinach. Make sure brussels sprouts are well supported - it would be a shame to lose them having got this far. All root crops other than parsnips, swedes and Jerusalem artichokes should be lifted and stored. Store potatoes in a dark well-ventilated frost-proof place - if they are stored in heat they will begin to sprout.

Trees Fruit and Shrubs: Hardwood cuttings of gooseberries and blackcurrants can be taken now, inserting 9" to 10" cuttings 6" deep in a sheltered position outdoors. Peaches should be sprayed at leaf-fall with lime sulphur against leaf curl. Cut out any dead or crossing branches from trees and bushes and paint any cuts larger than a half-inch diameter with arbrex. Don't forget to inspect any fruit in store and dismiss any doubtful apples and pears; pick any fruit still on the trees before they are dashed by weather and remember to limit the new growth of raspberries to 6 to 8 canes per plant. Make sure all cordon trees are well-supported and the ties are not fraying.

Evergreen shrubs and trees should be planted by mid-month;

hardwood cuttings can be taken from shrubby plants. Give established shrubs and trees a mulch of manure or compost, working it into the soil with a dressing of bone meal. If the weather prevents the planting of newly-delivered trees and shrubs, undo the packaging and stand them in a dry shed until the weather breaks, covering the roots with straw or sacking which must be kept damp.

Greenhouse and Indoor Plants: Remove all traces of shading from the greenhouse. If you have had trouble with pests clear the greenhouse and fumigate with smoke cones and wash down with disinfectant. Any tender plants that have been left out should be brought inside or the frost will kill them: a minimum temperature of 4 - 7 degrees C (39-45 degrees F) should be maintained. Cineraria is a bit temperamental - it will collapse if allowed to dry out or go soggy so watch out. Bring in primula abconica from the frame - this plant can affect sensitive skin so gardeners beware. Pot on schizanthus to larger pots, as they don't like to be pot-bound. Grapes which are slow to ripen can be hurried along by removing more leaves around the bunches. A final batch of viola and pansy cuttings may be put in pots in the cold frame.

Gradually cut down watering on fuchsias, but do not let them dry out completely. Treat cyclamen to a fortnightly feed.



Cyclamen

Watch the temperature, don't forget a sunny winter's day can soon raise the temperatures to over 100 degrees F - and this can be devastating to resting plants.

Lawns: Carry out any final repairs, rake and scarify, brush over with a fine compost and treat with autumn, winter lawn fertilizer. This will give you a fine green sward in the spring.

November

Flowers: Tidy up herbaceous borders, cutting off dead or dying leaves and stems, and dig over any vacant plots. If you have not fed the ground recently then a good dusting of bone meal will work wonders - work it into the top 2 inches of soil and the worms will do the rest. It is a good time to half-prune roses, which stops the wind from rocking them. You can prune them down properly in the spring when the frost has done its worst.

It is also a good time for planting roses. Dig a large enough hole to spread the roots in a natural formation and fork a bit of bonemeal or better still rose fertiliser into the bottom of the hole (but don't let the roots lay directly on the bonemeal). Fill up the hole making sure there are no air pockets, firm them in well but leave the final 2 inches or so loose.

Check dahlia tubers in store, cutting out any rotting parts, and dust with flowers of sulphur. The planting of hyacinth and tulips should be completed this month. Check over bulbs planted in pots for winter flowering - one or two of the most forward can be brought into the light but keep them cool (60 deg F max), and make sure they have plenty of root formed. Time to plant honeysuckle, clematis, jasmine and ornamental vines. If they are dry when they arrive give them a soak in tepid water and drain them for an hour or so before planting them and tie them to the supports straight away.

Herbaceous and moisture-loving plants can be planted now. Split up perennials like michaelmas daisies, gold rod and scabious, replant the best bit (usually the outer portion) and pot up any surplus for the charity plant stalls. Don't forget to wrap up the tender plans or bring them indoors before they get nipped by frost.

Vegetables: Clear any plots of old veg and roughly dig over leaving the clods big so that the frost can get to them. This is one way the frost helps the gardener in breaking down clay soils and killing off any nasties. Stake up brussels sprouts and broccoli, removing any yellowing leaves. Cover any green crops with netting or fleece to protect from birds, watch out for the dreaded slugs and deal with them pronto. Keep the old hoe busy eliminating weeds before they take over. Lift and store Jerusalem artichokes, and also a few roots of parsnip, as they will be difficult to dig up if the ground becomes frozen. Lift a few crowns of rhubarb for growing in the greenhouse. Leave them on top of the ground for a week or so before taking them inside. The crowns can be close to one another and light excluded (a grow bag would do if you do not plant in the ground).

Trees Fruit and Shrubs: Move container-grown ever-greens to a sheltered spot out of the wind; and any deciduous hedges etc can be cut back now. Fruit trees (especially those trained against a wall) can be pruned, but after pruning make sure they are tied back securely. Make sure all supports for your fruit stock are in good condition and the wires etc are not biting into the stems or trunks. Prepare ground for planting all kinds of fruit trees, bushes and canes, dig it as deep as possible and work in some manure especially if you are planting blackcurrants. When pruning trees watch out for canker (a crusty like scab on the branches), cut it out with a sharp knife and paint the wound with a tree paint. Look over fruit in store - use any suspect ones or discard them.

Greenhouse and Indoor Plants: If you have not already done so, give your greenhouse a good fettle, removing all dying plants and any other debris that is lying around. Give the glass a good wash with greenhouse cleaner, making sure none goes on the plants; and fix up the insulation. One of the most important things at this time is getting a nice balance of temperature and ventilation. The temperature on a sunny day can reach 100 deg F which would build up quite a damp atmosphere if adequate ventilation is not provided. Most plants do not like it. So keep a wary eye open and try to avoid these conditions. If you are a summer greenhouse gardener when the greenhouse is empty in the winter (shame on you) then a good wash down with Jeyes or similar is all that is required, and do not store tools etc in the greenhouse, as this reduces their life quite considerably.

Cyclamen and winter flowering primulas are ready to come into flower and will benefit from a feed once a fortnight. Remember that calceolarias must be quite dry before they are watered - this rule applies to most pot plants except those that are in full flower or those that are growing rapidly in a heated greenhouse. Seedlings and cuttings should be kept on a shelf as near to the glass as possible. Plant indoor lilies, gladioli and hyacinth to flower in spring (you see! There is no need to have an empty greenhouse!)

Prune flowering maple, musk, fuchsias, oleander and plum-bago. Try to keep the atmosphere moist around indoor plants, especially those near radiators etc, by placing them in a tray of damp pebbles (or glass chips which look a bit posher) and spray-mist them occasionally (except for the hairy leafed specimens). Do not over-water plants at this time, and avoid spilling water about in the greenhouse and cold frames.

Lawns: Keep lawns clean and well raked, scarify and give them a feed of autumn/winter fertiliser. Keep off when they are covered in frost. In mild spells you can dig and prepare new lawn sites ready for sowing or turfing in spring.

Cheerio for now,

Tom

Totley Scouts

Sadly, the Summer is now well and truly over and Autumn and the darker nights are well upon us. The lovely Summer weather we had meant that all our sections were able to get out and about most weeks and we definitely made the most of all our outdoor Scouting activities.

The summer holidays gave us all a chance to rest and unwind for a few weeks but our Scout Troops took advantage of the holidays and enjoyed a week-long camp in Lancaster. Although a bit wet the week was very much enjoyed by Scouts and Leaders alike.

The start back to School also sees the start of our weekly sectional meetings and we are welcoming plenty of new children into our Group. We are now home to approximately 180 young people every week meaning our sections are busier than ever. Everyone has a new, exciting programme planned for the coming term with lots of activities both at the hut and out in the community.

Sue Bridgens, Group Scout Leader

Totley Scouts Summer Camp 2018

Scout camp this year was at Littledale Scout camp site in the Lune Valley, near Lancaster. It was attended by 17 Scouts and 6 Leaders from both the Monday and the Friday Troop. We had sole occupancy of the site and split into three Patrols. The Scouts mainly looked after themselves, cooking all their meals over wood fires, and even feeding the Leaders for each evening meal.



The long hot summer was over and it rained at some time every day, but even so the Scouts were kept busy. When not finding and chopping firewood ready for cooking, they enjoyed an assault course, a sports day, building bridges, games and messing about in the river.

On one day they hiked through the local countryside along the River Lune; three Scouts did their Expedition Challenge hiking and camping out overnight, carrying their stove, food and tent; and three others did a shorter practise trip camping on their own nearby.

On the last night they had a big camp fire with songs and entertainment, when badges earned during the week were presented, plus the Camp Trophy to the Fox Patrol and Most



Improved Camper prize to Sara Weawall. So well done to them as well as all the Scouts who did very well more or less looking after themselves.

Mick Hollindale, Friday Scout Leader

Vacancies at 215th Sheffield (1st Totley) Scout Group

We have a number of vacancies at Totley Scout Group at present and would love to hear from anyone who might be interested in joining our lively and busy group. No previous experience is necessary, just an interest in Scouting and a desire help provide exciting opportunities and skills for life to the young people in our community.

Assistant Beaver Scout Leader/Beaver Sectional Assistant – our Monday Beaver Colony was established in January 2018 and has grown from 8 young children to a group of 26. We would love some extra pairs of hands at our weekly meetings to help with games, crafts and activities.

Assistant Cub Scout Leader/Cub Sectional Assistant – the Thursday Cub Pack currently has 25 young people who come along every week to enjoy fun, games and Cub Scout activities. We have two adults Leaders who attend every week but some more adult help would be good.

Group Chairman and Treasurer – unfortunately our current Chair, Kirstie Stott, and current Treasurer Abbie McGregor are having to step down due to increased workload commitments and so we are urgently looking for someone to fill their shoes. At the moment we are all working hard to get a new headquarters built for our group and we need someone who can help the committee to push this forward. Again, no previous Scouting experience is necessary.

If you would like to know more about any of the above vacancies please do not hesitate to get in touch with me and I give you any further information you need, You can contact me on hallamadccubs@gmail.com.

Sue Bridgens, Group Scout Leader



**Domestic electrical work by
award winning
*Lady Electrician***

- * House rewires * Replacement fuse boards *
- * New sockets and lights * Security systems *
- * CCTV * Telephone and computer points *
- * Garden power and lighting *



All work guaranteed and fully insured. For a free quotation, without obligation,



ring Mandy on 07788-544225

Mobile Drum Teacher

Interested in having lessons at home?
Professional drum teacher:
Grade 8 qualified.
Lessons available for all ages,
Including beginners.

Contact Jason for more details:

Mobile: 07955822996

email:

jasoncsmith5@gmail.com

www.s17drumlessons.com



PhysioFOCUS

at Totley Rise Dental Practice
85 Baslow Road,
Sheffield, S17 4DP



Physiotherapy treatment available for:

- Back and neck pain
- Sports injuries
- Sprains and strains
- Joint and muscle pain
- Arthritic pain
- Whiplash
- Repetitive strain injury
- Headaches

Appointments: 0114 2360333

Also available:

- Pilates classes • Pilates 1-2-1
- Golf Fitness Screening
(as used by consultants to UK,
European and Australian PGAs)

For more information please call:

Emer on: 07792 422909

Rachel on: 07956 908454

John Heath & Sons

AN INDEPENDENT FAMILY FUNERAL BUSINESS

Sometime.....

You will probably have the responsibility of making funeral arrangements. No one looks forward to this responsibility, but the death of a family member or friend brings with it an obligation that must be met. There are people who can help you meet this responsibility. We have been helping people combine the different aspects of the funeral into a meaningful service for over 125 years.

Please Call Day Or Night

(0114) 272 2222

Head Office - Earsham Street

Also at Meadowhead, Ecclesall Rd,
Crookes and Stannington

www.johnheath.co.uk



Horizon Electrical

*Faults, Rewires, Sockets, Lights,
Cooker Points, Electrical Showers,
Phone Points, Security Lights*

No job too small

Fully qualified with friendly advice

**Ring Totley 236 4364 or
mobile 07772 483154**

LIBERTY FOODS

Caterers
Quality Meat Shop
& Fresh Farm Produce

Fresh and Frozen Prepared Meals
Fresh Meat and Poultry
Outside Catering
Home Delivery

253 Baslow Road, Sheffield, S17 4DU
Tel: 0114 2360 583 Mobile: 07801 346 455
Email: damianbower@liberty-foods.co.uk

BRADWAY INSTALLATIONS

Kitchens, Bathrooms and everything in between
Complete Kitchens Installation or supply & installation

Kitchen Refits Replacement worktops/sink/hob etc
Worktop/cabinet repairs

Bathrooms - Cloakrooms - Domestic plumbing

Tiling - Laminate/Vinyl flooring

All work undertaken is fully insured and guaranteed

**Ring Peter - 0114 236 5995
Mobile - 07766 411355**

John Collins

Cabinetmaker

Fine furniture, antique furniture restoration, fitted
wardrobes, alcove units

0114 2585355

www.cabinetmakercollins.com

TOTLEY PRIVATE HIRE

EXECUTIVE CAR TRAVEL



AIRPORTS AND LONG DISTANCE

PROP - PAUL SOUTH

24HR SERVICE

Tel: 0114 2839692

Mobile: 07974 355528

Email: paulsouth91@gmail.com

Tales of the River Bank

Desirable riverside properties in the Peak District National Park, within easy reach of Sheffield and local schools. Underwater entrances available at some apartments. Particularly suitable for small amphibious vegetarian families.

"If you look carefully, you can see that some of them have carefully cropped lawns outside," said Nabil Abbas. "They're condominiums for water voles."



Redmires conduit is a revelation for anyone lamenting the dramatic decline of one of the nation's favourite animals, the water vole, popularised 110 years ago as 'Ratty' from *Wind in the Willows* when 'water rats' were a common sight on English riverbanks.

The conduit's far bank is dotted with water vole burrows, and if you approach from downwind, the short-sighted voles will

let you watch them nibbling grass and reeds only yards away.

But please keep your dog on a lead, pleaded Nabil from Sheffield and Rotherham Wildlife Trust (SRWT), and Angus Hunter, Sheffield Council's biodiversity officer. "You could see some people from dog walking companies with up to twelve dogs off their leads running through the water, out of control," said Angus. "And if you remind people their dogs should be on leads, they say: 'Oh, he loves the little rats in there.'"

Although dogs rarely catch them, canine attention alarms water voles who are then unable to feed until the dogs eventually lose interest. The reduced eating time can be critical when water voles are trying to feed their young, said Nabil.

Twenty years ago water voles could be easily seen around Sheffield, on the canal, the river Don, around Woodhouse, and near Abbeydale Industrial Hamlet and Forge Dam. Now the only significant populations are at Redmires and Burbage, along with a new set of sightings around Strines reservoir. "The water vole is our giant panda, in terms of being one of the most threatened species we have in the UK," Nabil said. "These sites where the water voles remain are extremely precious, and being disturbed by dogs reduces their life chances, so if you're a dog owner, please keep it on a lead and don't let it go into the water."

A key reason for their decline is the spread of the American mink, said Angus. After escaping from the many fur farms across Yorkshire, amphibious mink began to prey on water voles, who had no strategy to escape their transatlantic foe - water voles evade British predators like owls and foxes by diving under water, but mink can happily pull water voles out

of their underwater burrows.

Mass mink releases by animal rights activists accelerated the problem, and when the mink fur market declined, some owners just opened their farm gates to cut their losses.

Earlier this summer, Yorkshire Water installed a 700 metre fence along the Redmires conduit to protect the vole condominiums from disturbance by dogs and it looks like the voles are doing well behind the fence compared with the unfenced area further out onto the moors.

Yorkshire Water ecologist Ben Aston said the company aim for a 'net gain for biodiversity' in the work they carry out. "It's the right thing to do, and for me it's great to see so many water voles at Redmires conduit. It really is a refuge for them up there." The company aims to carry out further work with the council and SRWT around Redmires in the next few years to improve water vole habitats, and possibly install more protective fencing for a new set of lakeside apartments.

"We're desperately trying to stabilise the water vole population we have," said Angus Hunter, "because as it stands we've nearly lost them in Sheffield."

David Bocking, National Trust

Totley Primary School

The end of the building work in sight!

Following close to two years of discussion, planning, designing and building, the expansion of the school site here at Totley Primary is finally nearing completion.

Our Y4, Y5 and Y6 children have all benefited from brand new classrooms, which are considerably larger and more 'grown up' in feel, when compared to those in the old part of the school. They will provide the ideal stepping stone for our older children as they prepare for the more formal environment of their Secondary Schools.

Builders will be on-site until the end of September to complete work on the ground floor of the new two-storey block and finish the landscaping at the top of the junior playground, as well as any snagging!

The food technology and science room planned to be built in the old Y6 classroom has had some flooring issues and may not be completed until the half term holidays. However, the plans are stunning and it is clear that it will be well worth the wait!

It has been a tremendous effort by both the construction team and school staff to get school ready in time for the new term. Delays at the start of the project back in January and February, largely due to the icy weather, meant that the builders were behind schedule before a brick had been laid - so a huge well done to them.

The full scale of what the children will now benefit from is now clear: a fantastic, purpose-built state of the art facility which propels our lovely 1950s school into the 21st century!

Ben Paxman, Assistant Head Teacher



GWS



Technology Solutions

PC Problems/ Repairs/ Servicing No Job Too Small
Wireless & Internet Setup PC Setup/Data Transfer
New PC's/ Laptops & Upgrades Safe PC Disposal
Reconditioned PC's & Laptops available Tuition
Software/Hardware supplied & installed
For All Your PC Needs

Guy Senior

Phone: 0114 2352662 Mobile: 07890030453

Email: guy@gwstech.co.uk

Web: www.gwstech.co.uk

GWS, 5 Conalan Avenue, Bradway, Sheffield S17 4PG



Cornerstone Carpet and Upholstery Care

Richard Lee

0114 4000073
07725 795999

care@cornerstonecarpet.co.uk
www.cornerstonecarpet.co.uk

A Nature Walk for Children and Families

A Totley Library event organised by Jill Hnat and led by Chris Measures (Friends of Gillfield Wood)

What a relief - the good weather held! The predicted rain had not materialised in Totley but it had perhaps rained heavily nearby because the rumble of thunder had been heard earlier in the morning. A party of seventeen children emerged from the library, into the sunshine, with a great deal of excitement; their parents, grandparents and guardians in tow, armed with a suitable supply of sun cream and liquid refreshment.

As always Jill Hnat had organised this annual event perfectly so that each child had a pencil and a sheet of paper headed "Nature Detectives". This year's event was a Mini-beast Hunt and within seconds the children were ticking the first picture on their sheet of paper.... "Bumblebee"! They had found several bumblebees landing on a Lavender plant in the grounds of the library. Here they were able to run their hands over the blue flowers of the plant and smell the fragrance whilst watching the bees perform. It was pointed out to the children the slightly different way the bees fly around the flowers when compared to the hovering flight of the gentle hoverflies. "Little wasps!" one boy exclaimed as he pointed to a hoverfly, so it was good to be able to explain that these lovely hoverflies were indeed not wasps even though they appeared to be of similar colours and markings.

Crossing over the road we headed towards Green Oak Park, but before we got there a young girl pointed out a spider. It was a tiny spider in a web at her eye level; an excellent find. As everyone carefully gathered on the pavement to take it in turns to get a closer look, two more spiders were found in their webs on a Cotoneaster bush. One young boy stated that spiders build webs to catch their food; "Flies!" he said proudly. As the children ticked the second picture on their sheet "Spider", a white butterfly suddenly appeared in flight so a third picture was successfully ticked. This butterfly was a Small White, one of several we would see on this walk.

On entering the park we headed straight for the circular flower bed which has provided so much interest in previous years. This year it did not disappoint as the children searched for more creatures of interest. More bumblebees and more hoverflies were studied at close quarters and then a ladybird was found; another good tick.... "Ladybird". It was a Seven-spot Ladybird which, as soon as it was found, opened its wing-casing and did an almost vertical take-off to go high up into the sky with parents eagerly pointing out the flight so their child did not miss it; one or two "oohs and aahs" were heard to come enthusiastically from the gathered group. This was not the only ladybird found - more of the Seven-spot variety were creeping up the stems of flowers and at least two of the invasive species, the Harlequin Ladybird, were captured in pots for observation purposes. It was lovely to see the children getting close views of these tiny creatures as they passed around the pots.

A snail was then held out in the palm of a hand for all to see. As pencils hovered to complete another tick on the sheet a child turned the shell over, only to exclaim "It's empty!", which caused a number of people to smile. Fortunately one of the mums then rescued the situation by producing a snail that just looked like the one in the picture on the sheet; it was extending out of its shell with feelers moving about like tentacles detecting its surroundings. Now that certainly did deserve a big tick. And just to prove how hard the children were searching, some pointed out the slime trails of snails or slugs.... "Look! They were here as well".

Each child deserved praise for their enthusiasm and contribution. And as we moved through the park, sharp eyes noticed a caterpillar feeding on a small Ragwort plant. It was a Cinnabar Moth caterpillar with the distinctive orange and black body. As



Cinnabar moth caterpillar

the identification was being explained, a young boy stepped forward to open his wildlife book to show everyone pictures of the caterpillar and the amazing moth; the Cinnabar Moth, black and crimson red in colour. A few minutes later several small white moths were seen flying amongst grasses so another tick for the sheet.... "Moth". There was no photograph on the sheet to tick the caterpillar find so "Caterpillar" was added to the list of mini-beasts, including "Hoverfly", that the children were carefully writing on the back of their sheet of paper.

At the outset the children had been asked to use their ears as well as their eyes and as we walked in the park a small group of Swifts was heard screaming overhead and was then seen flying over the roof tops of nearby houses. And then the children stood very quietly by a grassy bank where grasshoppers can be heard on a hot day. Unfortunately we did not hear them buzzing on this particular morning, however one child did, when asked, explain quite clearly how grasshoppers make their sound, "By rubbing their legs against their wings". He gave a good demonstration too!

Still in the park a great deal of interest was being given to the butterflies that were flying above our heads as we stood by a tall Buddleia. The bright colours of the Peacock butterfly were noted, particularly those wonderful large eye-spots on the forewings which bring to mind the "eyes" on the fanned tail of a male Peacock. A Gatekeeper butterfly also put in a brief appearance but a Comma butterfly landed on a flower head



Comma butterfly

and allowed everyone to get great views. The ragged edges of the wings and the small white "comma" shaped marks on the underside of the wings were pointed out for all to see. It was very pleasing to hear even some adults saying how much they were learning.

Our next stop was under a spreading Oak tree, partly to provide a little shade for all present and partly to see whether a few mini-beasts could be shaken off the leaves of the tree onto a large white (well, nearly white) dust-sheet that had been stretched out on the grass below. Although it was not quite as successful as one would have hoped, a few insects did catch the eyes of the children as they searched the dust-sheet for some form of activity. One or two specimens from tiny spiders to lacewing larvae were potted temporarily, via a pouter, for all to observe more closely. However, some of the children preferred to hold their arms out and declare "Look what's walking up my arm". Who knows what was disappearing down their necks as they stood directly underneath the tree when the branches were being shaken! The children were very amused when someone told them to look out in case a monkey fell out of the tree.....it didn't, thankfully.

Our walk slowly moved out of the park and down to the Scout Hut off Aldam Road, with Woodpigeons and Magpies being seen and heard; a couple of snails were also discovered nestling inside the hole in a wall. Once by the Scout Hut all were advised to keep bare arms in, as we walked west along the main footpath, because there would be overhanging brambles and stinging nettles in certain places.



Mini-beast hunter in action!

As the vegetation began to get closer to us and much taller than the children, one child was heard to say with excitement "It's like being in a jungle". Several more butterflies and invertebrates appeared on either side of the footpath before we arrived at an open area by the side of the brook. Chris Brewster and Paul Hancock, both of Friends of Gillfield Wood, had provided their assistance and shared their knowledge along the way; Paul had also come prepared, with wellington boots, to step into the brook and with net in hand fish out one or two aquatic specimens for the children to study. With the children eagerly gathered, Paul was able to show them two small shrimps and two caddis larvae; and one of the caddis was even poking its head out of its case for all to see. It was here also that some of the children took the opportunity to grab hold of some ropes that were hanging from the branches of an Oak tree and do, what children do, and swing with giggles of delight in the dappled sunlight. A perfect setting for a family outing with the brook slowly trickling by.

It was now time to finish the last leg of the walk and as the group progressed carefully by the tall stand of Rosebay Wil-

lowherbs with more butterflies on the wing including two Small Skippers, a Wasp was seen feeding on the white flower head of a Wild Angelica. "Wasp" was another new species to add to the list as was "Chiffchaff", which was heard to sing its name from the top of a bush. When told that the Cuckoo was another bird that sang its own name there was a line of children marching along going "Cuckoo, Cuckoo!" with their arms swinging.

Due to the ground being so rock-hard, it had not been possible to find and tick the pictures "Worm" and "Millipede", so to avoid disappointment, the children were asked if they thought it was possible that we might see a Frog before finishing at the library. Only one child thought we might and was brave enough to raise her hand. When then asked if they thought we might see a Pig as well, more than one child said "No Way!" and laughed. Oh those of little faith in their leader who, as we turned a corner, was able to point out a beautiful small porcelain frog and pig standing on stones in the front garden of a house; both were almost smiling at the children. "But that's a statue" one boy said "It doesn't count" but he was smiling too as were the others.

And so it was, the party retired to the cool of the library with refreshments provided to end another very enjoyable time with nature. All the children proved to be wonderful company and will hopefully have memories to keep, stories to tell, and will continue to be great "Nature Detectives".

Chris Measures

Journey to Bethlehem

This presentation of the Christmas story will take place at Totley Rise Methodist Church, Grove Road, on December 8 and 9, lasting from 4 to 7 pm.

Details regarding bookings will be found at the Church's web site, www.totleyrise.co.uk in mid October.

Totley History Group presents...

**AN OPEN MEETING WHEN
EVERYONE IS INVITED TO SHARE
PHOTOGRAPHS AND MEMORIES OF
SPORTS, SOCIAL AND
COMMUNITY GROUPS**

WEDNESDAY, 28 NOVEMBER 2018

AT 7.30 P.M. IN TOTLEY LIBRARY

NON-MEMBERS ARE WELCOME

Dore Gilbert & Sullivan Society

It has been quite a summer. I cut my grass last week (well, what's left of it) for the first time since May. It now looks like it's got partial alopecia. I've no doubt that it will right itself in due course, at least I hope so. Not a lot has happened over the summer in the society except for two notable events. Pete and Fiona Geary have had a beautiful baby girl (no name as of yet) who came in at 7lb 3oz. All doing well, (see picture) and Alice Nelson has got herself married to Robert Bird so she is now Mrs. Alice Bird. The wedding was held in the Cathedral on 1st September and was almost full. The Society was well represented and a few contributed to the proceedings by singing in an octet. The singing was beautiful. They sang two pieces - Howard Goodall's setting of the 23rd Psalm (you will all know the piece as the introductory music to *The Vicar Of Dibley*) and a gorgeous rendering of a waltz from the Disney animation classic *Cinderella*, a piece I did not know, but I can't wait to see if the Troubadores can get hold of it and sing it.

Talking of The Troubadores, our next concert is on 1st December at Carlton-in-Lindrick and then we have our annual Christmas Concert in Dore Methodist Church on Saturday 22nd December at 2.30pm when all the usual fun and games will be going on. I have no idea what will be in the programme yet as we have not started rehearsals but I'm sure it will be as enjoyable as ever and hopefully a sellout. Tickets will be available from me from about mid-October so if you want to reserve any you can always give me a ring on 0114 2362299.

That's it for now. The December edition will have more de

tails of our concert and of next year's show which will be at the newly restored Merlin Theatre in Nether Edge next April. Let's hope winter doesn't come too soon.

Derek Habberjam.

On The Beat



Sadly this will be my last contribution to the *Independent!* Due to border changes the Totley beat will now come under my colleague Ken Blake who has been covering Bradway and Greenhill. I will still be around as my beat will still take in Dore but now also has Whirlow, Parkhead, Bents Green, Mill-houses and Greystones as well!

It's been a privilege being around Totley for the last couple of years and thanks to everyone who has been in touch or spoken to me on my wanderings and for all the support I have received.

I'm sure Ken will be letting you know his contact details shortly but please feel free to still contact me for the moment and I can pass any messages on. Usual contact details adrian.tolson@southyorks.pnn.police.uk or on my work mobile 07787 881945.

8136 signing off!

PCSO 8136 Adrian Tolson
Sheffield West Neighbourhood
Police Community Support Officer
South Yorkshire Police, Woodseats Police Station
699 Chesterfield Road, Sheffield, S8 0SL

T: 0114 2963657 (ext.: 713657)
M: 07787 881945



TOTLEY RISE METHODIST CHURCH

A Service of Thanksgiving and Remembrance.
Sunday 28 October at 3.00 pm



Please come and join us for the above service when we take a moment to stop and remember those who are no longer with us.

It will be a time of reflection with music and readings to help remember, with thanksgiving, family and friends who have died. During the worship there will also be an opportunity for a candle to be lit in memory of those who are no longer with us.

Totley Rise Methodist Church, Grove Road, Totley Rise, Sheffield
www.totleyrise.co.uk

OCTOBER BOOKSALE AT TOTLEY LIBRARY SAT OCT 6TH 10AM-12PM

General
Paperbacks
50p

Art books
individually
priced

Activities for
children with
the Needle
and Thread
craft group



Visit www.totleycric.org.uk or visit us at
205 Baslow Road, Totley, Sheffield, S17 4DT for more info!

THE TIME TRAVELLERS

The Time Travellers resumed excavating at Whirlow Hall Farm in May as part of a University of Sheffield led project. We dug a pretty large trench over a feature that had appeared on a geophysical survey of the farm. Despite digging four or five feet down we couldn't absolutely determine what the feature was or just how old it was. We can't win them all, and we still found some lovely flints during this excavation! This activity was part of the Department of Archaeology's summer Field School and over 50 students took part, most of them having their first taste of practical archaeology. A handful of the more experienced members of The Time Travellers were happy to show the students the ropes in digging and trowel work. One of the highlights for the youngsters was to see and handle some of the more interesting artefacts unearthed by our 2011 and 2016 projects, such as sherds of Iron Age and Roman pottery and flint tools, especially our iconic Bronze Age arrow head. Many of these finds are now on display in the café at Whirlow Hall Farm, and we think they are worth a look next time you visit the farm. You could also familiarise yourself with the progress made by our activities and see the history of the Whirlow area through the information boards that we have erected there.

Also in the Whirlow area, The Time Travellers were delighted to have been invited to dig 'test pits' in the rear gardens of some of the houses backing onto the field at Whirlow Hall Farm where we made such fantastic discoveries over the last few years. These are shallow trenches around a metre square and just a few centimetres deep, just like those often dug during the excavations shown on TV by the professional archaeologists on 'The Time Team'. Unfortunately, our small scale explorations found very little but the residents seemed very happy to have been part of our work and were very satisfied that we left their lawns as good as new. In fact, in one garden we even threw in a bit of landscaping as part of the service. If you think that you might have an interesting archaeological feature lurking underneath your garden then please get in touch with us but not just for a horticultural job though!

We did our usual stint at the recent Whirlow Hall Farm Fayre and delighted local children by setting up a 'digging area' where they could find their own 'treasure'. We had a stand beside the original dig site of 2011 and 2016 that was popular with visitors both young and old. The 'clay pipe test' was a favourite of visitors as they tried to identify stems from 1700's, 1800's and the 1850's. As well as Iron Age and Roman remains right on our doorstep, the more recent finds can be just as fascinating.

During this glorious long hot summer it was nice to escape the heat by seeking the cool refuge of an Ice Age cave. At the end of July a large group of Time Travellers paid a fantastic visit to Creswell Crags where we had special access to Pin Hole Cave which was occupied by Neanderthals around 50,000 years ago. Our day was greatly enhanced by a very informative and enjoyable talk which told us lots about the history of Creswell Crags. We also got to view and handle the collection of finds that have been made, including many animal bones that have been left behind over the millennia.

We also managed to fit in a quick return walk up to Froggatt Edge this summer where we saw one of the best examples of a white coal kiln in this area. Finally, plans are taking shape for our annual archaeological excursion to North Wales, taking in Chester Castle, town walls and amphitheatre, Caernarvon Castle, Conway Castle, Beaumaris Castle plus a range of pre-historic sites on Anglesey.

If you are interested in finding out more about the programme of activities that The Time Travellers have lined up for the next few months then log on to our website at www.thetimetravellers.org.uk

Glynn Burgin, The Time Travellers

All Saints Church

Totley Hall Lane



What are you certain about?

It has been a glorious summer. We've had endless days of warm sunshine and it has been good to enjoy the longest period of fine weather for many years. However, even the beautiful weather brought with it problems and uncertainty. The news was full of reports of potential food shortages and, warnings about the dangers to our health and wellbeing from over exposure to the sun. Roads melted, rail tracks buckled, machines overheated. In short life became, for some people, unpredictable and uncertain. Now, as we move into autumn, there are concerns that the hot weather has impacted on crops and produce and as a result we may all have to pay more for our food in the coming months. Added to this is the speculation and uncertainty surrounding Brexit. No one can say for certain what will be the outcome.

For some people, uncertainty isn't too much of a problem. They can take it in their stride. Others find it overwhelming and a source of great anxiety and many of us fluctuate between the two. Benjamin Franklin wrote that ".....Nothing can be said to be certain except death and taxes." Having a support network can be invaluable, especially when there are no easy answers or certain outcomes. Christians know that no matter what the season, "Jesus is the same yesterday, today and for ever". Not even a "no deal" Brexit can change that.

Our Sunday Services are held at 10am. Except for the first Sunday of every month, children's groups are held in the church hall during the service. Coffee is served in the church hall after the service. Everyone is welcome. Our 10am service on a Wednesday is a said service and lasts about 45 minutes.

This year marks 100 years since the end of World War One. A service of Remembrance will be held at 10 am on Sunday November 11th and this will be followed by an Act of Remembrance at the War Memorial.

Some dates for your diary: there will be a Christmas Tree Festival in church from December 13th to December 15th and a quiz night on December 15th. There will also be a special Christmas Tree service on Sunday 16th. More details will be in the December Independent.

Chris Tupling (Katie's husband) had a kidney transplant in December 2017. Happily, all went well and he has made a good recovery. In September 2018 he took part in the Thames Bridges Trek (25kms) to raise funds for the National Kidney Federation. Well done Chris!

If you have any queries about baptisms, weddings or funerals or any church related enquiries please contact Rev. Katie Tupling 0114 2360967 or the church office 0114 2363335 or contact the churchwardens Liz Hayden 0114 2364944 or Angela Waite 0114 2364728

Cattle Crowdfunder!

Sheffield's runners and walkers got together in a unique 'cow-funder' appeal this year. The aim was to raise nearly £3,000 in under 48 hours for a new fence on a popular run route near Ringinglow, also frequented by a herd of Limousin cattle.

"There'd been a few incidents over the last few years, and we knew that a lot of people felt nervous about running through that field," said Doug Banks of Kandoo Events, who organise the Round Sheffield Run race that uses the route at the top of the Limb Valley. "If you've got 20 cattle weighing about 7-800 kilograms each staring at you, it can feel quite intimidating."

In 2014, runner Simon Coldrick was hospitalised after being trampled by cattle when leading a Totley AC fell race through the field. So after talking to farmer Andrew Clark, Sheffield Council and runners and walkers groups, Doug set up a 'crowdfunder' appeal in June to raise £2,675 for a new fence to separate the beasts from the athletes.

He was amazed at the stampede to contribute, with the total raised in 14 hours - too fast for many people to get involved, said Doug. "There are enough people who connect with the Outdoor City and realise it's great that we've got all this on our doorstep that we don't formally pay anything for," he said. "So this seems to say that if there's a specific thing that needs solving, there's definitely a lot of people who will chip in."



Before: nothing between the path and the cows:



After: fence in place and not a cow in sight!

He added that the discussions helped him understand the difficulties faced by farmers, who have to keep rights of way available while raising their animals, but have no obligation to keep livestock away from paths.

"We hope we've come up with a solution that benefits everyone," said Doug.

The fence is now in place, and Sheffield Council is resurfacing the path. A plaque will go up shortly to celebrate the appeal, marking everyone who donated more than £25, including Dig Deep Races and the Steel City Striders club who each donated a three figure sum.

"I'm really pleased how it went. Walkers, runners and families will now be able to use that route safe in the knowledge they won't be chased by cattle," said Doug. "People in the Outdoor City connect with each other, and this appeal gave me the real sense that people care for Sheffield."

David Bocking, National Trust



growtheatre
connecting youth, landscape and theatre

**JOIN SHEFFIELD'S
ONLY OUTDOOR
YOUTH THEATRE
BASED IN
ECCLESALL WOODS**

Whether you are brand new or experienced you will love taking theatre outdoors!

Develop acting and performance skills with professional theatre directors. Learn practical outdoor making skills with experts. Uncover stories in the landscape. Design and make outdoor theatre sets and props. Gain confidence and independence and make new friends. Be part of a unique, creative adventure!

WHERE

J.G. Graves Woodland
Discovery Centre,
Ecclesall Woods,
Abbey Lane,
Sheffield, S7 2QZ



**THURSDAY EVENINGS
(TERM TIME)**

Juniors (Years 3 - 4): 5.00 - 6.00 PM

Intermediates (Years 5 - 7): 6.05 - 7.35 PM

Seniors (Year 8+): 7.40 - 9.10 PM

**FIRST SESSION
FREE**

Juniors £6 per session

Intermediates & Seniors £7.50 per session

BOOK NOW

www.growtheatre.org.uk

TEL 07745 465 391



@growtheatre

/growtheatre

Both Sides of the City

I've always had a healthy respect for my elders. It comes from having older parents for a start.

For instance, my paternal grandfather was born in a place called Tintern in Wales in 1858- the year after the world's oldest football Club was born in the Steel City.



Now, he moved to Sheffield in 1892 and was the clerk of works at the cutlery manufacturer Viners and was watching the Blades from around 1894 - in fact he actually went to 4 FA Cup Finals with the Club in the days when a trip to London must have been a hell of an ordeal.

He died when he was 74 in 1932.

I recall Dad telling me that the family wouldn't let him attend the funeral as they felt he was too young. He sat in a passage a little up Club Garden Road and cried his eyes out as he watched the horses festooned in their black plumes pull the hearse up outside no.47 on the day

My parents were raised by Victorians- both of my nans were born in the early 1890's as was my maternal Granddad Noble- sadly they were all gone when I came along as a very late addition in 1968. Dad refused to believe Mum was expecting and for six months told her she was "going through the change"- how little did he know!!

I always used to like to listen to the stories of the family that were told of an evening when the family had a caravan at the Lakeside Lido in North Somercoates- a few of you may know it- it's in between Grimsby and Mablethorpe - and it's there that I had some of the happiest summers of my life

Most of my family lived in Grimsby - they all evacuated out there before the war and settled down. My Uncle married a local girl and everyone bar us followed out there. I did and still do love the place - me and our kid are honorary cod heads. If we were over there and Town played there was a fair chance that we would end up at Blundell Park watching the game - so for that reason I have the most unglamorous second team in the history of the game!!

Tales were always good. My Uncle George and Auntie Rita were born to my Nan Garrett's first marriage. She came from Barnby Dunn, a little village the other side of Doncaster where the family had a farm. This became the holiday destination of the family for years - a bit of sun and cheap labour getting the crops in!!

Nan was in service- a bit Downton Abbey I suspect- her first husband was killed in a mining accident before the Second World War. She was left with two young children and £340 for his life. She decided the best thing to do was try her luck in the big city and moved to Sheffield, taking a corner shop on Dykes Hall Road in S6. For this reason Unc and Auntie went to Parkside Road School in the shadow of Hillsborough and Unc in particular was very much of the blue and white persuasion.

Remarrying, she moved to the Sharrow where she ran a bakery on Club Garden Road and lived facing it at no. 47. Unsurprisingly Pop Garrett and my Uncle Eric grew up as Blades. Separated by a few years, they would weed and pick litter over the summer for a ticket to watch cricket, and do anything they could over the season to get in and watch the footy- ranging from the customary litter picking to lighting braziers and spreading straw on the pitch over the winter months to stop the quagmire freezing up.

Their other trick was one which we cottoned on to years later. If someone had the silver original share-holders tag it entitled them to take a child into the John Street paddock free of charge. Money given for the game by Mum could be easily re-appropriated elsewhere and put to better use in Bri and Irenes if you had your wits about you.

Uncle George was there when the other side lifted the Cup in 1935 at Wembley against the Baggies. He also took my Dad along to see the Blades dip the mighty Arsenal the following year as an 11 year

old. They set off to the game in an open top charabanc from Blonk Street at 2 o'clock on the morning of the game- arriving finally at Wembley Stadium for around 2 in the afternoon- the journey is bad enough on the M1 today so just imagine the speed and the length of the trip then - also imagine what a ball ache it must have been doing the return journey after losing!! I still have Dad's programme today!

George was the oldest brother and the last to pass away a few years ago - it must have been the Grimsby air because he lived to a hell of an age. He never drove and well into his life he would still come across by train a few times a season to go to Hillsborough. Mum would say to Dad "Why don't you ask George to stop over instead of going back?" Dad's reply would always be "If he is bloody stupid enough to watch that then he deserves it."



His funeral was in a lovely little church at Old Clee in between Grimsby and Cleethorpes. It was the usual stuff - a vicar whom I suspect he had never met waxing lyrical about someone he didn't know; however, he managed to come out with something that made my day!

"As we look down at George's coffin, I feel it would make him very proud that, on the lid, there are these wonderful floral tributes in the colours of his beloved Sheffield United." God knows how I stopped myself howling with laughter. He despised all things Blades!! Still, I bet he would have seen the funny side because he was an absolute star - one of the funniest people I have ever known!!

Then you have my granddad Noble. They lived on Deerlands Avenue and yes, you guessed it, he was one as well! Born and brought up in Parkwood Springs before he married my Nan he was also shall we say, a little passionate about his football.

Now Granddad, bless him, lost both his legs - sadly no-one in the family knew where (only joking!) - but still wanted to get to matches. Mum and Dad after getting married and demobbing, lodged across the road with an old lass called Ma Hughes whilst waiting for their first council house to be built. If they were at home Dad would quite happily push granddad in his wheelchair down Halifax Road to the game - no problems. But when it came to going in with him that was a different matter. Knowing a gateman at the stadium Dad would leave him there, disappear to do something else, and then fetch him later. Dad wasn't one of the ones who, in that era, would watch one one week and the other the next - in fact for many years he wouldn't watch us at Hillsborough because it meant giving Wednesday his hard earned - partisan, us Garrett's you know!!

John Garrett
Club Engagement Manager and Historian,
Sheffield United

Piano/Keyboard~Guitar~Singing~Flute
Theory & GCSE Coaching

MUSIC TUITION

SOUTH - WEST SHEFFIELD

Experienced & enthusiastic tutors

All styles, all ages - beginners welcome

Exam work or just for fun!

Please contact:

KARIN FINNEY

0114 237 4901 ~ 07854 747153

notetokarin@hotmail.com

TOTLEY & DISTRICT DIARY

- MONDAYS** **COFFEE MORNING**, All Saints Church Hall, 10am-12noon. Transport usually available on request. Tel 236 0872 before 9.45 am.
TAI-CHI, United Reformed Church, Totley Brook Road, 11.30am-12.30pm.
RAINBOWS and GUIDES, All Saints Church Hall, 5.45pm-9pm.
SLIMMING WORLD, Abbeydale Sports Club, 5.30pm and 7.30pm. Tel. Ang Ibbottson on 07772 241711.
- TUESDAYS** **PILATES**, The Old School, Dore, 9.15-10.15am. Phone Teresa Tinklin 07906 312372.
BABY TIME, Totley Library, 1-2pm. A fun music session with songs, rhymes and simple musical instruments for babies aged 0-18months
COFFEE MORNING, Totley Rise Methodist Church Hall, 10am-noon.
KNIT, NATTER, CRAFT & CHATTER, Totley Rise Methodist Church, 12 noon - 3.00pm.
CITIZENS ADVICE BUREAU Drop-in, free, impartial and confidential. Totley Rise Methodist Church, 10am-noon.
CRAFT GROUP, Totley Library, 2pm.
JAZZ IN THE AFTERNOON, 2-4 pm, Totley Rise Methodist Church Schoolroom. A weekly afternoon of all forms of recorded jazz, plus discussion. Tea, coffee and biscuits available.
- WEDNESDAYS** **PILATES CLASSES**, Dore & Totley United Reformed Church, 9.00-10.00am and 10.15-11.15am. Contact Caroline tel: 0781 722 0324, email Carolinenorth1@me.com, www.pilatescarolinenorth.co.uk.
COFFEE in the Library, 10am-11.30am.
STORY TIME in the Library, 10.30-11.30am. Craft activities, songs and a story for pre-school children. Call in at the Library for more information.
TODDLER GROUP, 10am-11.30am, All Saints' Church Hall. Details tel. Katy Maclean 07790 411893.
HEALTH WALKS, 10.30am, Totley Library. Contact Step Out Sheffield on 07505 639524 or email stepoutshel@gmail.com www.healthwalksinnsheffield.btck.co.uk. For more information see Totley Library item in this issue.
MODERN SEQUENCE DANCING, All Saints Church Hall, 8pm-10pm.
CHILDREN'S FITNESS CLASSES for pre-school girls and boys aged 2-5. Wednesday mornings 9.30 - 10.10am, Abbeydale Sports Club. Free taster sessions. See www.minimovez.com or call Steph on 07838 818743.
- THURSDAYS** **BELROBICS**, United Reformed Church, 9.15-10am, email: jenny@belrobics.co.uk or tel 07816 850132.
NCT COFFEE GROUP FOR DORE TOTLEY & BRADWAY, 10am-noon, for mums & babies/toddlers, various locations. Phone Lucy Street 07837 000405 or email: lucy@streetr.plus.com for further details.
ROCKCHOIR, United Reformed Church, Totley Brook Rd, 11.30 - 1pm. See www.rockchoir.com or call 01252 714276
PUSHCHAIR CLUB, Totley Rise Methodist Church Hall, 1.30-3pm. Tel. 07912 352543 for details.
PILATES CLASS run by qualified Pilates Instructor/Physiotherapist for all abilities and ages. 1.30 - 2.30pm at the United Reformed Church, Totley Brook Road. Call Emer on 07792 422909.

OCTOBER

- SUN 7th FRIENDS OF GILLFIELD WOOD Small Mammal Trapping** with Val Clinging. Join us to look at any small mammals that we have trapped over the previous night. Meet at the end of Totley Hall Lane, 8:30am. For more information see page 7.
- WED 10th TOTLEY MEN'S PROBUS CLUB** 9.30am, Totley Rise Methodist Church. AGM followed by members' forum..
- SUN 14th MINIATURE TRAIN RIDES** Abbeydale Road South. 1pm-5 pm (weather permitting). Car park closes 5pm. £1.50 per ride per person. See www.sheffieldmodelengineers.com/
- TUES 16th TOTLEY TOWNSWOMEN'S GUILD**, Stephen Gay. "Railways in a Cornish Landscape". Totley Rise Methodist Church, 10 am.
- WED 24th TOTLEY MEN'S PROBUS CLUB** 10am Totley Rise Methodist Church. Illustrated talk by Peter Slater, "Don't You Know Who I Am? - 35 years being ignored by sport's rich and famous." Visitors Welcome.
- WED 24th TOTLEY HISTORY GROUP** "A Harvest of Healing - Historical and Medical Uses of Sphagnum Moss", a talk by Thelma Griffiths. *Please note this meeting will be held at the United Reformed Church on Totley Brook Road at 7.30pm, as the library is not available due to building work taking place.*
- SUN 28th FRIENDS OF GILLFIELD WOOD** Practical Conservation morning run with the help of Sheffield Council Ranger Service. Meet 10am, Baslow Road bus terminus. For more details see page 7.

NOVEMBER

- WED 14th TOTLEY MEN'S PROBUS CLUB** 10am Totley Rise Methodist Church. Illustrated Talk by Dr. George Clarke, "The Boer Wars"-Visitors Welcome.
- SAT 17th TRANSPORT 17** Christmas Fayre at the Cross Scythes, 10am - 12 noon. For more information see page 5.
- SAT 17th FRIENDS OF GILLFIELD WOOD** November Bird Walk with FoGW's Chris Measures. Meet at the bottom of Totley Hall Lane at 9am. For more information see page 7.
- TUES 20th TOTLEY TOWNSWOMEN'S GUILD**, Catherine McKay, "The Sovereign Isle of Man". Totley Rise Methodist Church, 10 am.
- WED 21st to SAT 24th TOTLEY OPERATIC AND DRAMATIC SOCIETY** November production, 'At The Sign Of The Crippled Harlequin'. For details see page 10.
- SUN 25th FRIENDS OF GILLFIELD WOOD** Practical Conservation morning run with the help of Sheffield Council Ranger Service. Meet 10am, Baslow Road bus terminus. For more details see page 7.
- WED 28th TOTLEY MEN'S PROBUS CLUB** 10am Totley Rise Methodist Church. Visit by John Anderson, Buskin' Buddies (live music). Visitors Welcome.
- WED 28th TOTLEY HISTORY GROUP** Open Meeting: Sports, Social and Community groups. Everyone is invited to bring along their memories, photos and memorabilia of local groups, clubs etc All welcome so come along and remember the days gone by Totley Library, 7.30 pm.

**Mark and Sally Fletcher invite
you to**

**The Grouse Inn
Longshaw**

Sheffield S11 7TZ

Meal times:-

Mondays 12.00 to 2.30pm
Tuesdays to Friday's 12.00 to 2.30pm and 6-30pm to 9-30 pm
Saturdays 12.00 to 3.00pm and 6.30pm. to 9.00pm (drinks - open all day)
Sundays 12.00 to 9.00pm
Phone 01433 630 423

0114 255 04 33
info@sharpsofsheffield.com

Sharps Of Sheffield Est 100yrs

Welcoming old and new custom!
10% off your first shop at Sharps Ref: #freshsharps



#freshsharps

626 Abbeydale Rd
Sheffield

The Household Skip Specialists

Sheaf Skips Ltd

Providing On Time Delivery & Collections Across Sheffield

**If you need to
tip it,
SHEAF SKIP it.**



Same Day Service Available
Professional and Efficient
Fast, Reliable & Affordable
Mini & Midi Skips Available
We welcome Business Account Customers

Credit Cards
& Debit Cards
accepted



Unit 5, Heeley Arches, Oak St., Heeley, Sheffield S8 9UB

Tel: 0114 2583279

MWB

M. WOOLHOUSE BUILDERS LTD
THE COMPLETE BUILDING SERVICE

- Design to Completion
- New Builds
- Extensions
- New Roofs
- Slates / Tiles / Stone
- Stonework Specialist
- Renovations

T : 0114 235 3314
M: 07973 908 187



www.mwoolhousebuilders.com
info@mwoolhousebuilders.com



ACTIV
physiotherapy
Est. in 2007

Relieve Pain. Restore Movement. Prevent Injuries.

At Activ Physiotherapy we are committed to providing you with the best treatment available in a clean and comfortable environment.

Our qualified and friendly physiotherapists come highly recommended and will ensure you get targeted treatments such as massage, electrotherapy, acupuncture and more.

Established in 2007, we now have clinics in Sheffield, Doncaster, and Hope. Our Totley and Doncaster clinics are equipped with brand-new gym and studio facilities that we use for rehabilitation and Pilates sessions.

We treat:

Back & Neck Pain • Sports Injuries • Trapped Nerves
Muscle & Ligament Strains • Headaches • Women's Health Problems
Jaw & Facial Pain • Arthritis

www.activphysiotherapy.co.uk Call 0114 235 2727

Totley Tree & Garden Care

25 yrs Qualified Tree Surgeon &
Experienced Gardener
Full Insurance
Tree Pruning and Felling
Hedge trimming
Garden Maintenance
Planting, Turfings
All work cleared

Tel - 0114 236 7884

07393 878091

07796 513520 email-stevenbarnett@hotmail.co.uk

Millthorpe Nursery It's bulb planting time



Nothing's better than tulips and daffodils to brighten your spring garden, and now's time to think about putting them in. We have a great range of bulbs available plus fantastic pansies and violas for late season colour.

Millthorpe Lane, Holmesfield, S18 7SA

(Behind the Royal Oak pub at the bottom of Millthorpe Lane)



0114 289 0334



Open Tuesday-Sunday

Mar-Sep 9am-5pm Oct-Feb 10am-4pm

Piano Lessons ♦ GCSE Music Tutor



- Piano Lessons – all ages and abilities, from beginner to diploma, children to adults
- Music Theory - Grades 1 to 8
- GCSE Tutor - all syllabuses
 - 25 years school based teaching experience
 - Based in Totley, S17
- adelight@btinternet.com

Alison Moore B Mus PGCE ATCL LTCL ♦ 07773 692 576

Editor: Phil Harris
Tel. 07956 858944 or email:
editor@totleyindependent.co.uk

Advertising & Distribution:
John Perkinton
Tel. 236 1601 or email:
advertising@totleyindependent.co.uk

Proof reader: Margaret Spencer

We welcome items submitted for publication, which may be left at or sent to:

'Totley Independent',
2, Main Avenue, Totley, Sheffield, S17 4FG
www.totleyindependent.co.uk

Printed by PREMIER PRINT DIRECT
www.premierprintgroup.co.uk

'Totley Independent' for December/January

The next issue of the Totley Independent will be available from the usual distribution points on

Saturday 1st December
COPY CLOSE DATE for this issue
will be
Saturday 10th November

Published by Totley Independent CIC. Totley Independent is a registered Community Interest Company, number 07750166. We welcome letters about local affairs and will publish as many as possible. Items will not be considered that are submitted anonymously. The views expressed are not necessarily those of the editor or the editorial staff and must not be attributed to them. © Totley Independent 2018