

# Totley Independent

Published continuously since 1977

[www.totleyindependent.co.uk](http://www.totleyindependent.co.uk)

April/May 2018

No. 391

20p



*Reasons to be cheerful - at last! Wood anemones in Gillfield Wood (photo: Chris Measures)*

## Second platform confirmed for Dore and Totley Station

The Secretary of State for Transport has finally given the go-ahead for the Hope Valley Capacity Scheme which includes reinstating a second platform at Dore & Totley railway station and constructing a freight passing loop below Poynton Wood.

Confirmation is awaited of the likely timetable for the project but work should start by the end of 2019. There remains ambiguity as to when the project will be completed: the Friends of Dore and Totley Station (FoDaTS) group believes it could be as early 2021, but possibly as late as 2023. Clarification is being sought.

Clearly there is much to be done to get final plans drawn up to allow for any changed circumstances since the work was originally planned. Tenders will

need to be requested from contractors and agreed. Chris Morgan, the Chair of FoDaTS, told the *Totley Independent*: "It will be some months before the full details are known, but as they become known we'll ensure *Totley Independent* readers hear about them as soon as possible".

In the meantime, the request from FoDaTS to Northern Rail for more cover at the station had been met with a concept plan for a canopy over part of the platform in front of the old station building. The Dore & Totley station building is the only one to survive on the old Dore and Chinley line - all the rest were primarily made of wood and were demolished many years ago. Grindleford station cafe is the last remnant of that era.

Comments were invited, and many were

received, regarding the canopy, the most commonly heard being 'get on with it', and to make it a little more nostalgic with a period edging to the front. At present, however, there are no funds for the canopy project. The FoDaTS group has pointed out to Northern Rail that with passenger numbers rising by about 5% each year, the price Northern Rail had quoted for the canopy would be covered within 2 years from extra ticket sales.

Chris Morgan explained, however, that "unfortunately, that is to be swallowed up by the cost of a new ticket machine - which we'd heard would be with us by the end of 2017, then the end of March. It may be installed before the end of June - or possibly even the end of September!"

CCTV will be coming to (*continued p.3*)





SHOP:  
CONVENIENTLY  
LOCALLY  
RESPONSIBLY

Enjoy the flavours of the Peak District

Offering a full basket of products handsourced from the area's top purveyors, all via one flexible delivery

**Supermarket convenience – artisan quality**

10% OFF your first 3 orders  
Enter **Totley** at checkout

[www.SaucedHere.co.uk](http://www.SaucedHere.co.uk)



## BRING BACK YOUR HAPPY FEET!

At Peveril Podiatry we provide specialist podiatry services and treatments to leave your feet feeling happy & healthy.

### Our Services

Nail Care • Thickened & ingrown toe nails • Hard skin & corns

Foot and ankle pain • Diabetic foot assessments

Leg circulation assessment

You can visit **one of our clinics** or receive our high quality footcare in the **comfort of your own home**.

For more information you can visit our website or call one of our clinics:

Bradway 99 Bradway Road, Sheffield, S17 4QS | 0114 235 2727

**NEW CLINIC** Totley 88 Baslow Road, Sheffield S17 4DQ | 0114 236 5532



[www.peverilpodiatry.co.uk](http://www.peverilpodiatry.co.uk)

Peveril Podiatry Service

HOLIDAYS ARE COMING !

NEED TO SHAPE UP ?

# LOSE WEIGHT

FEEL HEALTHY AND HAVE  
MORE ENERGY WITH  
OUR 3-DAY TRIAL

DISCOVER HOW YOU CAN LOSE WEIGHT  
WITHOUT FEELING HUNGRY OR TIRED

START YOUR TRIAL NOW  
TEXT TRIAL TO 07720394597

[www.inshape4u.com/trial](http://www.inshape4u.com/trial)

## Millthorpe Nursery

Spring is here!



Come and see our fantastic displays of spring colour.  
Why not take a pot to enjoy in your own garden?  
**Open all over the Bank Holiday weekend**

Millthorpe Lane, Holmesfield, S18 7SA

(Behind the Royal Oak pub at the bottom of Millthorpe Lane)



0114 289 0334

Find us on Facebook



Open Tuesday-Sunday  
Mar-Sep 9am-5pm Oct, Nov, Feb 10am-4pm



## Totley Co-op break-in: thieves arrested after car-chase

At around 5 am on the morning of Friday 9 March, thieves attacked Totley Co-op on Baslow Road. Using a heavy hammer or similar implement, they smashed a hole in the glass at the front of the store (pictured left), entered the shop, and made off with a quantity of alcoholic drinks. However, after a police chase, the perpetrators' car was stopped by the police in the Gleadless area of town, and two people – a man aged 25 and a woman aged 51 – were arrested, though not before damage was done to three police cars, a private vehicle, and a lamp-post.



One of the thieves cut themselves in the process of smashing the glass and entering the store, which meant that the police were also able to recover DNA evidence from the scene.

Totley Co-op store manager Jamie Marshall told Totley 'Independent' that Woodseats police had received seven or eight phone calls from people in Totley around the time of the break-in, giving the police descriptions both of the thieves and their car. "We're really grateful to these members of the Totley community for their actions, which made possible for the police to give chase and arrest the perpetrators" said Jamie. "It's great that we have such a vigilant community. Our thanks to everyone who made those calls to the police".

### Second platform confirmed for Dore and Totley Station (from p.1)

the platform about the same time.

Northern's plans to operate an hourly weekday stopping service from the end of May were going well until Network Rail got severely behind on electrification work in the North West. Consequently, the new electric trains can't run, so the diesels currently running can't be redeployed to places like the Hope Valley route. At the moment confirmation is awaited as to exactly what the service will be, though it is clear that it should be better from the December timetable changes.

### Chris Morgan's other news from FoDaTS:

**The Artisan Van:** Sadly, the toll of winter on the old vehicle's battery and bodywork, the unsocial hours and the lack of enough sales defeated Sandra Russo in her attempt to make her van pay from 6-10 am. Maybe another brave soul may be able to give it a go when we see greater passenger numbers.

**Car parking!** Suffice to say that the volunteers who planted bulbs around the station car park are distinctly unimpressed by some car drivers parking in obstructing positions, like on newly emerging daffodils (see photo). We have confirmed with station operators Northern and car park owners SYPTe that there are no current plans to introduce charges at Dore & Totley. A recent site visit by representatives of SYPTe, Sheffield City Region and Network Rail viewed the car park issue, and eventually a solution will have to be found. It's all down to money, environmental concerns, and traffic issues!



You can join us via Facebook by searching for FoDaTS. Or you may join by sending an email with your contact details to our Secretary at [nj-barnes@outlook.com](mailto:nj-barnes@outlook.com). And see [www.fodats.net](http://www.fodats.net)



## Totley History Group

### Programme 2018

**25th April:** AGM, followed by a talk by Penny Rea, 'Winco-bank - Hillfort, Hall and Community - a quick trip through 5,000 years of history'. Totley Library, 7.30 pm.

**23rd May:** A talk by Pauline Burnett, 'The Tenants and workers of Abbeydale Hamlet 1740 – 1933'. Totley Library, 7.30 pm.

**27th June:** A talk by Rachel Parkin, 'The History of Chatworth Gardens'. Totley Library, 7.30 pm.

**John Wade Singers**  
present

## A Spring Spectacular

Saturday 21 April 2018, 7.30 pm

Millhouses Methodist Church,  
Millhouses Lane S7 2HA

**Conductor Jonathan Lazell**  
**Accompanist David Burgoyne**

Tickets £11 (Concessions £9,  
Children free)

### Proceeds to Sheffield Young Carers

Ticket information:

Jenny Parker 0114 2360798  
Helen Hancock 0114 2351433  
or pay on the door

# What's on at the Library



## Springtime at Totley Library!

Many of you will have noticed signs of Spring arriving at Totley Library, and we are very grateful to the Gardening Team for all their hard work in planting bulbs and plants for the new season. It's great to see the spring flowers emerging after the long cold winter and I'm sure you will agree that the garden and landscaped area around the library are looking really good.

We're delighted that the successful Plant Sale previously organised by our Gardening Team will take place again this year, on Saturday 12th May. Please make a note in your diary and let us know if you have any plants to contribute to the Plant Sale. Last year the sale raised over £800 for library funds so we're hoping to match this if possible in May.

### Building Improvements

We are pleased to announce that we have received planning permission from Sheffield City Council to allow us to go ahead with the extension at the rear of the library, to provide the long-awaited new disabled public toilet and a new store room.

The Fire Safety improvements being made to the library by Sheffield City Council are nearing completion. These improvements include a new fire alarm system, new fire doors and compartmentalisation and improved fire escape routes. Thank you for bearing with us during these works, but I'm sure you'll agree it's important that we make these improvements

### New Books

Following the receipt of a small grant from Sheffield City Council, we have placed orders for a variety of new books which we expect to arrive in the library in the next few weeks. We based the choice of books on the feedback received from our users about books they would like us to buy, and on information on highly acclaimed and prizewinning books, which we hope will be enjoyed by our users.

### This Year's Lottery Winners

The first prize of £124.80 in the January Lottery was won by Margaret Griffiths and Audrey Tims won the second prize of £31.20. In February our winners were Mary Jo Titterton and Nina Smith who won £128.20 and £32.05 respectively. Congratulations to all our winners!

## Children's Activities at the Library

### Story Time for Toddlers and Pre-school children

Story Time for Toddlers and pre-school children is held weekly from 10am on a Wednesday morning and continues to be popular. Each week has a different theme and children can come with their parents or carers to enjoy a story and related activities.

### Easter Holiday Activities at the Library

During the school holidays, (other than August), Story Time at the library is extended with a welcome given to primary school aged children, aged 5-11 years. Children are invited to join activities during the holidays. Plans for Easter Story Time sessions include the following:

**Wednesday 4th April** – a variety of Easter activities.

**Wednesday 11th April** – our theme will be Insects and Minibeasts and we will be joined by members of the Gardening Team and also by some Friends of Gillfield Wood. Older children will be invited to join in with a project to build an Insect House which will be sited in the grounds of the library to encourage more insects and mini-beasts to visit the library garden.

## Events at the Library this Spring

We have lots of interesting events planned to take place in

the library over the next few months. Please keep a look out in the library for further details. Events include the following:

Thursday 19th April, 7.30 pm - Talk on Nepal: Local GP Dr Julie Kitlowski will be giving an illustrated talk on her experience of volunteering to support village communities in Nepal following the earthquake, with interesting and funny stories. Free, with donations to the library.

Saturday 12th May, morning: Plant Sale: Sale of a wide variety of plants, including herbaceous plants, vegetable and bedding plant seedlings, cuttings, along with a cake sale and sale of gardening books.

Friday 29th June, 7.00 pm: Pie and Peas Supper followed by 'The Shepleys of Woodthorpe Hall', an illustrated talk by Dick Shepley on the history of the Shepley family from Victorian times to the current day, including events of the second world war and the Shepley Spitfire story. See the display advertisement in this issue. Tickets £10 or £8 for Friends of CRIC.

## Totley Library Community Cinema

We have a programme of films for both children and adults planned for the Spring as shown below. Tickets include prize entry and cost £4 for adults and £2.50 for children.

### Children's films

Sunday 15th April, 2.00pm Sing  
Sunday 13th May, 2.00pm Paddington 2

### Films for adults

Friday 20th April, 7.30pm My Cousin Rachel  
Thursday 26th April, 3.00pm Victoria and Abdul  
Friday 18th May, 7.30pm Dunkirk  
Thursday 24th May, 3.00pm Shawshank Redemption

Isabel Hemmings

## Regular events and meetings at the Library

### Monday:

**French for children** – 10 am toddlers and babies; 3.40 reception and Yr 1; 4.10 years 2-4; 4.40 years 5 to 6.  
**Readers Book Group**, every first Monday, 1.30–2.45 pm  
**Friends of Gillfield Wood**, occasional Mondays, 7.30 pm onwards. Talks on local nature and conservation. See posters, the FoGW Diary on p.10, or [www.friendsofgillfieldwood.com](http://www.friendsofgillfieldwood.com)  
**Councillor Surgery**, 2nd Monday of month, 6.00 – 7.00 pm

### Tuesday:

**Basic ITC Sessions**, 10am – 12 noon. To book, phone Heeley Development Trust on 0114 250 0613.  
**Baby Time** 1-2 pm. Fun music session with songs, rhymes and musical instruments for babies aged 0 - 18 months.  
**Craft Group**, 2.00 – 4.00pm  
**Poetry Group**, last Tuesday in month, 7.00 – 9.00 pm.  
*Please note that this group cannot accept new members at present.*

### Wednesday:

**Coffee Morning**, 10.30 – 12 noon  
**Toddler Story Time**, 10.30 – 11.30 Craft activities, singing and stories.  
**Health Walks**, 10.30am Wednesday, Totley Library. One longer of up to one hour duration and one shorter walk, followed by refreshments from Totley CRIC. Contact Step Out Sheffield on 07505 639524 or email [stepoutssheffield@gmail.com](mailto:stepoutssheffield@gmail.com) [www.healthwalksinnsheffield.btck.co.uk/](http://www.healthwalksinnsheffield.btck.co.uk/)  
**Totley History Group**, usually last Wednesday of the month, 7.30. Talks on matters of historical interest. Check posters in library, the Independent Diary, or [www.totleyhistorygroup.org.uk](http://www.totleyhistorygroup.org.uk)  
**Yoga sessions** 7.00 – 8.30 pm, Wednesdays (except the last Wednesday of the month). For more details call Ann Zielonka on 0114 2361585 or 07929736966. Beginners welcome.



## Snippets

### Some items of local news.....

.....We hear that the move of Totley Rise Post Office to its new home - the premises currently occupied by Baslow Road News - may take place as early as July.

.....Totley Library reports that NEW BOOKS have started to arrive! This week they received some Young Adult and Children's titles, and there will be many more in the coming weeks. "Look out for other genres such as general Adult Fiction, Fantasy, Crime and a variety of Non-Fiction! And thank you to everyone who completed the survey in January and gave suggestions for new books they would like to see at Totley Library. Look out for the books you requested in the pictures!"



....Just before we went to press, rumours were rife on Facebook and elsewhere about the future of the Cross Scythes. We've no definitive news about ownership, but General Manager Harry Page told Totley 'Independent' that the kitchen, pub and restaurant area were to be refurbished, and to make a start on that, the kitchen was closed in March to clear equipment out. "We will be closed for a couple of weeks after Easter while the refurbishment work is done", he explained, "but it's certainly not closing down!"....

....the long-running saga of the rubbish bins at the bottom of Totley Rise rumbles on. Veolia have made trial runs to check access to Back Lane, but as we go to press we are still waiting for Veolia to resume refuse collection services from Back Lane, so that the bins can be cleared from the pavement at Totley Rise shops....



....Readers will recall that in issue 389 we reported on a meeting of a re-established Totley Forum, at which it was suggested that a new Facebook group might be established through which ideas and concerns could be shared by Totley residents and organisations. That FB group has now been set up - search Facebook for 'Totley Independent Forum'!

## Traffic News

A new vehicular access to Totley Primary School is under construction, adjacent to the outbound bus stop opposite the Cross Scythes. The Highways engineers have approved it, but it seems to be a dangerous place when one considers the narrowness of the road, bus stops, exits from the Cross Scythes and the flats, and parked vehicles outside the cottages.

In addition to the vehicle entrance/exit, there will be a pedestrian entrance/exit, presumably lower down Baslow Road. On the face of it, this will be a much-needed convenient access point, which will benefit all parents/carers who have had to walk down Main Avenue and along Sunnyvale, back up to the school. Residents on Sunnyvale might also be pleased if car drivers no longer block, or make it difficult to access, their drives. But where will those car-drivers park if they don't

drive down to Sunnyvale? On the main road? On Totley Grange? I can see a lot of yellow lines and enforcement being needed to keep traffic flowing!



Site of the new vehicle entrance on Baslow Road

And it will not flow quite as easily when the pedestrian crossing is provided. According to Cllr. Colin Ross, highways engineers are considering where to locate the crossing, which is being paid for by the school as a planning approval condition. There is already a crossing at the junction of Hillfoot Road/Totley Hall Lane, so it will not be near to that one. It needs to be near the school, so it will not be at the Mickley Lane junction (where one is really needed and was suggested by a previous highways engineer) so it seems reasonable to believe that it will be near to the Main Avenue junction - but will it be on the bus stop side, or the Liberty Foods side? That is the question!

Roger Hart

Totley Community Resource and  
Information Centre (Totley Library) presents

## An Illustrated Talk by Dick Shepley "The Shepleys of Woodthorpe Hall"

*Woodthorpe Hall is at the end of Fanshaw Gate Lane. Dick's talk will include tales of the Shepley family from Victorian times, World War Two, the Shepley Spit-fire story, the naming of the pub in Mickley Lane, and Woodthorpe Hall today - the farm, weddings and other events, cider making and memorable parties!*

The talk will be preceded by a magnificent  
**Pie and Peas Supper!**

Fri June 29th at 7.00 pm at Totley Library

**Tickets £10 (Library volunteers and  
Friends of CRIC £8) from Totley  
Library**

Tea and coffee available - or bring your own drinks!

**Proceeds to Totley Library, with a donation  
to the RAF Benevolent Fund**

*Tickets from Totley Library, or you can reserve through  
the Library ticket hotline on 07480 576888*



# Horizon Electrical

*Faults, Rewires, Sockets, Lights,  
Cooker Points, Electrical Showers,  
Phone Points, Security Lights*

**No job too small**

*Fully qualified with friendly advice*

**Ring Totley 236 4364 or  
Mobile 07772 483154**



# Got a computer?

## Having Problems?

Is it running slow? Stops responding?  
Having problems running the latest games  
or applications? Broadband installation?

## Give me a call!

I'm available for home visits at any time  
including evenings and weekends. I can  
also suggest upgrades to improve perform-  
ance, or even build you a system to your  
specific requirements.

Phone: 0114 2472619

Mobile: 078 17464703 Email: service@timbrown.plus.com

**Tim Brown**

Building,  
Installation,  
Upgrading and  
Troubleshooting  
Computer  
Systems  
Over 25 years  
professional  
experience

# LIBERTY FOODS

**Caterers  
Quality Meat Shop  
& Fresh Farm Produce**

Fresh and Frozen Prepared Meals  
Fresh Meat and Poultry  
Outside Catering  
Home Delivery

253 Baslow Road, Sheffield, S17 4DU  
Tel: 0114 2360 583 Mobile: 07801 346 455  
Email: damianbrown@liberty-foods.co.uk



**M. Scriven  
Quality Greengrocer**  
*Supplier to the Catering Trade*

Pubs • Clubs • Schools etc  
Daily Deliveries • Very Competitive Pricing  
Quality Guaranteed  
Tel: 0114 2367116

37 Baslow Road • Totley • Sheffield S17 4DL

# DRONFIELD LANDSCAPES

**Logs and wood chippings  
For Sale**

## Ring for details

**Chris 0114 274 6158**

**Mobile 07976 072785**

**Richard Mobile 07789 497104**

# John Heath & Sons

AN INDEPENDENT FAMILY FUNERAL BUSINESS

## Sometime.....

You will probably have the responsibility of making funeral  
arrangements. No one looks forward to this responsibility, but the death of a  
family member or friend brings with it an obligation that must be met. There  
are people who can help you meet this responsibility. We have been helping  
people combine the different aspects of the funeral into a meaningful service for  
over 125 years.

Please Call Day Or Night

**(0114) 272 2222**

**Head Office - Earsham Street**

Also at Meadowhead, Ecclesall Rd,  
Crookes and Stannington

www.johnheath.co.uk



# BRADWAY INSTALLATIONS

**Kitchens, Bathrooms and everything in between**  
**Complete Kitchens** Installation or supply & installation

**Kitchen Refits** Replacement worktops/sink/hob etc  
Worktop/cabinet repairs

**Bathrooms - Cloakrooms - Domestic plumbing**

**Tiling - Laminate/Vinyl flooring**

*All work undertaken is fully insured and guaranteed*

**Ring Peter - 0114 236 5995**

**Mobile - 07766 411355**

# TOTLEY PRIVATE HIRE

## EXECUTIVE CAR TRAVEL



**AIRPORTS AND LONG DISTANCE**

**PROP - PAUL SOUTH  
24HR SERVICE**

**Tel: 0114 2839692**

**Mobile: 07974 355528**

**Email: PAUL.SOUTH1@TESCO.NET**



## Totley Residents Association

At a public meeting held on Monday 12th of March, it was resolved that the Totley Residents Association be dissolved. The wording of the proposition put to the public meeting was "It is proposed that Totley Residents Association be dissolved, and that, after the satisfaction of any debts and liabilities of the Association, the Committee shall have the power to dispose of any assets held by or in the name of the Association. Any assets remaining after the satisfaction of any proper debts and liabilities shall be applied towards charitable purposes for the benefit of the inhabitants of Totley as the committee may decide."

Under the terms of the TRA constitution, such a decision had to be confirmed by a two-thirds majority of those present and voting at the public meeting. When the motion was put to the meeting, however, it was passed unanimously.

The treasurer of the committee reported on the assets and liabilities of the Association. First he pointed out that there were no outstanding debts or liabilities. After discussion and taking the views of those present at the meeting, it was decided that, after transferring money held in the name of Totley Music Festival to Totley Community Resource and Information Centre (CRIC), for the specific purpose of funding concerts at the library, the remaining monies would be divided between Transport 17, CRIC and the Totley Show Society, with a possible contribution to the costs of refurbishing part of Green Oak Park, currently under consideration under the People Keeping Well initiative.

## Totley Open Gardens

Totley Open Gardens will be happening again this summer – for the 17th year!



On Saturday 7th and Sunday 8th July, from 1.30pm to 5.30pm, a number of gardens will be open to the public to visit and get inspiration.

Cream teas will be served at two venues, and there will be plants for sale in several gardens. All the proceeds will go to local organisations that Totley Open Gardens supports every year.

In addition, funds raised from people participating in the Totley Yard Sale on Sunday 29th April will also go to TOG funds for local distribution. Over the years, Totley Open Gardens has raised over £30,000 for the community.

Please come along and support the Open Gardens, and if you would like to take part, or you know someone who would like to take part, please contact Jennie Street, Tel. 236-2302, or email [jennie@had-ish.f9.co.uk](mailto:jennie@had-ish.f9.co.uk)

Remember, gardens are never perfect, but visitors can always find something of interest when they visit a garden – every garden is different and suits different people! We want small ones, as well as larger ones, and if anyone on the allotment sites is interested in taking part, we would really welcome you.

Jennie Street



## Totley Operatic and Dramatic Society

### Our Spring Production!

As I write, large parts of Britain are covered in a blanket of snow – the worst snow falls for several years, with chaos abounding! The 'Beast from the East' has left its mark!!

But roll on Spring with the promise of sunny days, Spring flowers and lambs in the fields, tra lah lah! And of course, Toads Spring play, which we hope will add some enjoyment to this, my favourite time of the year.

'Lathered Up' was our last play, in November 2017, and very enjoyable and successful it was too, with Monica Stagg directing. Even though the weather was a bit 'iffy', we had really good audiences who enjoyed a giggle at the expense of their favourite soap!



Our raffles, which we held at every performance, raised an amazing £266.88p, which was donated to St Luke's Hospice. We are grateful to our audience for supporting the raffles, allowing us to donate the money raised to charity, and hopefully winning a nice prize into the bargain.

Rehearsals are under way for our May play, although they have been somewhat disrupted because of the aforementioned snow! However, we are all very enthusiastic and keen to make up for the missed rehearsals. Onwards and upwards!

The play is to be that well-known classic, 'Arsenic and Old Lace', written by Joseph Kesselring, to be directed by Alan Wade. Alan has a wealth of experience in Am Dram and Dore G&S Society, so we are in safe hands.

The dates for the performances are Wednesday 16th May to Friday 18th May at 7.30pm, and Saturday 19th May at 2.30pm. We hope you will be able to join us for what we hope will be a very enjoyable experience!

The venue is, as usual, St John's Hall, Abbeydale Road South. Please call 0114 235206 to reserve your ticket, or contact any TOADS member. Ticket price £6 or £5 for concessions.

As always, if you are interested in treading the boards or helping backstage in any way, why not pop down to the Guild Room at St John's Hall on any Tuesday at 7.30pm, or contact me on 01246 460318, or visit our web-site [www.toadsdrama.co.uk](http://www.toadsdrama.co.uk). We are a very friendly lot and it would be lovely to see you.

Anne Bettridge

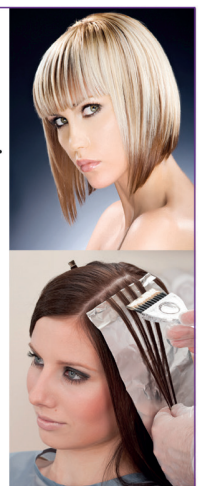
### Hair by Suzi Mobile Hairdresser

Professional, reliable, friendly local service.  
City & Guilds qualified since 1985.

- ✧ Cutting,
- ✧ colouring,
- ✧ perming, highlights and lowlights,
- ✧ blowdrys and shampoo and sets etc.

Competitive rates  
in the comfort of your own home  
Call Suzanne 07970 832292

Now moved to Dore





## Holmesfield Flower Club 2018 - Golden Anniversary year!

Wednesday 18th April 2018, 7.30 pm. Demonstration of flower arranging by NAFAS Area demonstrator Lynne Sharpe entitled "Car Boot Collection". Holmesfield Village Hall, Vicarage Road (off Woodside Avenue), Holmesfield. Ample parking.



Tickets are available at the door: visitors £8, members £4 includes refreshments. The arrangements will be raffled at the end of the evening. All are welcome. For information call 0114 2377601.

Wednesday 16th May 2018, 7.30 pm. To celebrate the club's 50th anniversary the well-known acclaimed NAFAS National Demonstrator Jonathan Moseley will give a demonstration entitled "Grow, Cut, Arrange". Holmesfield Village Hall, Vicarage Road (off Woodside Avenue), Holmesfield. Ample parking.

Tickets are available at the door: visitors £12, members £6 includes refreshments. The arrangements will be raffled at the end of the evening. All are welcome. For information call 0114 2377601.

*Diana Holland, Holmesfield Flower Club*

## Totley Yard Sale

A community Yard Sale will take place on Sunday 29th April, starting at 11.00am.

If you want to sell items from the front of your house, you register your name, and pay £5, and we publicise the Yard Sale all over. Everything you sell at your house is your own takings.

The proceeds of the £5 registration will be for Totley Open Gardens Association, to add to the monies we raise for local voluntary organisations. In 2017 we raised just over £3,000 at TOG, and this has been a big help to Cherry Tree Support Services, Transport 17, Totley Library, Totley Scout Hut, Friends of Gillfield Wood, and Totley History Group.



The more people who take part the better – in previous years we have had 40-50 houses taking part, which not only raises money for TOG, but brings lots of buyers from all over the city.

**Booking is now open** for the Yard Sale. Please email Jennie Street at [jennie@hadish.f9.co.uk](mailto:jennie@hadish.f9.co.uk) with details of your name, address and phone number, and take your £5 registration to her at 16 The Grove, Totley. You can phone her on 236 2302.

The day before the Yard Sale, maps will be emailed to everyone showing where all the participating addresses are. These maps should be sold for 50p each, to people who ask for them, and then please bring the money you make from the sale of maps to Jennie after the event – the income from maps will be added to the income from participating houses, and be added in turn to the takings of Totley Open Gardens in July, for distribution to Totley voluntary organisations.

In total, since Totley Open Gardens began in 2002, over £30,000 has been donated to local community groups. We want to be able to continue this, so please remember that if you participate in the Yard Sale, which we advertise on lots of websites, your contribution of £5 is part of this.

*Jennie Street*

*Email: [jennie@hadish.f9.co.uk](mailto:jennie@hadish.f9.co.uk)*

*Tel: 236 2302*

## Dore Art Group

Dore Art Group will be holding their Annual Art Exhibition in the Old School, Dore on:

Friday April 27th, 2pm - 6pm  
Saturday April 28th, 9.30am - 5pm

Admission Free

Come and enjoy a wide range of art works including framed and unframed pictures, cards and notelets.

We have a tea room serving refreshments including home-made cakes.

*Our groups meet on Tuesday and Thursday afternoons - there is room in the Tuesday group for a few more people, and if you are interested contact Gerry Doherty on 01142 368418*

# MWB

M. WOOLHOUSE BUILDERS LTD  
THE COMPLETE BUILDING SERVICE

- Design to Completion
- New Builds
- Extensions
- New Roofs
- Slates / Tiles / Stone
- Stonework Specialist
- Renovations

T : 0114 235 3314  
M: 07973 908 187



[www.mwoolhousebuilders.com](http://www.mwoolhousebuilders.com)  
[info@mwoolhousebuilders.com](mailto:info@mwoolhousebuilders.com)





## Diary for April and May

### April

#### Thursday 12th: Photography Day

This Easter holiday take a look at Gillfield Wood through the lens of your camera focusing on big trees, quarries, footbridges, bluebells and other flowers. Meet at the bottom of Totley

#### Friends of Gillfield Wood

Totley Hall Lane at 9.45am for a 10am start, finishing around 3.30pm or earlier if you wish. Instruction will be on hand to aid in that perfect shot. Check that your own insurance covers your camera, bring an extra battery and any other equipment you might need.

Numbers are limited so please register with Paul (paulatfoggw@gmail.com) giving details of camera type (phones to DSLRs), and if you are a family, age and gender of participants. Children under 14 must be accompanied by an adult. A small charge of £3 per family or individual adult will be collected on the day.

**Monday 23rd: Annual General Meeting** followed by talk, "Flies Undone". The first 30 minutes will be given over to our AGM which will be followed by a talk from Derek Whiteley (Sorby Natural History Society). Derek, who has been a



Hoverfly

keen naturalist for well over 40 years, will present a cornucopia of slides ranging from hoverflies and other insects to molluscs, millipedes, biological recording and a bit of local history. With Derek's extensive knowledge this will prove to be a very interesting evening. Totley Library, Baslow Road, 7.30 pm.

**Saturday 28th: Bird Walk 2.** Join Chris Measures for his second Bird Walk of 2018. It is the time of year to be looking out for early migrants and improving our recognition of spring bird song. As usual it is recommended that you wear good footwear and appropriate clothing. Binoculars and cameras welcome. Meet for an early start at 8am outside the Scout Hut, off Aldam Road. The walk will last around 2-3 hours. No experience necessary.

**Sunday 29th: Friends of Gillfield Wood practical conservation morning**, run with the help of the Sheffield Council Ranger Service. Meet 10am at Baslow Road bus terminus. Refreshments, tools, etc. provided. Please wear strong footwear and appropriate clothing. All levels of help required and guidance given. Check our website at [www.friendsofgillfieldwood.com](http://www.friendsofgillfieldwood.com) where any late changes of venue will be published.

### May

**Saturday 5th: Moth Trapping.** Richard Harris returns to guide us through the process of trapping moths. We hope to be a little more ambitious this time with two traps rather

than one in use. One trap will be run using a generator into the late evening, the other will run off batteries and be checked for insects in the morning. As this is weather-dependent look out for further details to follow via posters and email.



Bordered Sallow Moth

**Sunday 27th: Friends of Gillfield Wood practical conservation morning**, run with the help of the Sheffield Council Ranger Service. Meet 10am at Baslow Road bus terminus. Refreshments, tools, etc. provided. Please wear strong footwear and appropriate clothing. All levels of help welcome and guidance given. Check our website at [www.friendsofgillfieldwood.com](http://www.friendsofgillfieldwood.com) where any late changes of venue will be published.

**Thursday 31st: Art in the Wood.** Here is an opportunity for young and old alike to take a look at Gillfield Wood using art materials. This is not a masterclass but rather a muck-in-and-try way of expressing yourself with pastels, charcoal and water colours (possibly some made from natural pigments). You can also work with woodland materials if 3D effects interest you.

Meet at the bottom of Totley Hall Lane at 9.45am. The sessions will run from 10am - 12.30pm and 1pm - 3.30pm. Registration is essential (paulatfoggw@gmail.com) to help with organisation and materials. Leave your name, preferred materials to work with, session attending or both, and, if you are a family, age and sex of participants. Children under 14 must be accompanied by an adult. We will need to charge £3 per family or individual adult to cover materials.

Paul Hancock



### Very Helpful Man & Van



Full Property Clearance Services (Bereavement / End of Tenancy)

Removals @ Reasonable rates. Self Load, All hands on deck or 2 Man

We demolish & remove walls/aggregate/outbuildings etc

We remove unwanted hedges/soil/hardcore etc

We remove for disposal single items/sheds/garages etc

**call Karl now 07720 845 326**

very helpful...very reasonable...very licensed

Karl Nuttall 2 Ferndale Rise Coal Aston s183bs



recycle

E mail [veryhelpfulman@yahoo.com](mailto:veryhelpfulman@yahoo.com)

recycle



## Walking the Dog....

### Bob a Job, British Bulldog and Why Arkela Shouldn't Have Been, Really.

Jack (A dog) I've just heard you on Radio Sheffield slagging people off again.  
Rony (A man) What was I saying?  
Jack You said about when you were a wolf.  
Rony And?  
Jack Then you said about when you met Rudyard Kipling. Then you said about Baden Powell and purity.  
Rony And then?  
Jack Then you said Baden Powell was a war criminal in Africa in 1896. And you quoted a letter from him saying that he agreed with Hitler's Mein Kampf. But then you said they didn't tell you that on Wednesday nights down Totley Hall Lane in 1947, when you went dob dob dobding.  
Rony What did you think about that?  
Jack I thought you sounded even more of a chuff than usual.  
Rony ...You shouldn't listen then.  
Jack I have to listen because you always leave Radio Sheffield on when you go out, to keep up your audience figures.  
Rony To keep out burglars.  
Jack Well it won't now they know will it? And I still don't get how you could be a wolf.  
Rony Because I'd been initiated. I'd promised to serve God and the King and keep the laws of the wolf cub pack and tie knots and believe in purity and badges and hygiene. And only do one good deed a day. I was in Red Six, and we were the best, and I had a woggle. And we -  
Jack What's a wo - ?  
Rony - were the very 1st Totley wolf cub pack because someone had made the Vicar cross, so we had to meet in the secret cellar at Totley Hall, and then in a hut that wobbled when we played British Bulldog. But then I left.  
Jack Why?  
Rony Because of British Bulldog. And Bob a Job.  
Jack What's Bob a Job?  
Rony It's when you get a bob a job.  
Jack Is that where that rhyme comes from?  
Rony What rhyme?  
Jack 'If your Bob doesn't give our Bob that bob your Bob owes our Bob, our Bob's going to give your Bob a bob over the ear.'  
Rony You're being silly now, Jack.  
Jack You're being sillier than me, with your woggle and your purity. And your bobs a jobs whatever they were when they were at home.  
Rony They weren't at home, and that was the whole point.  
Jack What whole point?  
Rony In those days, Jack, a bob was a shilling -  
Jack Eh?  
Rony - and a shilling was a 5p. So we had to knock on strangers' doors all over Totley in the week before Easter and offer to spring clean them and walk their alsatians in Gilly Woods. And if we were satisfactory they had to give us a bob and sign our cards....Only we weren't and they didn't.  
Jack Why not?  
Rony Our mums said knocking on strange doors was too dangerous even in 1947, so they made up some jobs and signed our cards in different handwritings. Then our dads gave us five bobs to take in to cubs on the Wednesday after Easter for Arkela to give to Baden Powell. But she couldn't, because he was dead.  
Jack Who was Arkela ?  
Rony Arkela was someone's mother off the Grove. But she shouldn't have been Arkela, because the real Arkela is a Lone Wolf in the Jungle Book, and he's a he.  
Jack I could be Arkela?  
Rony You?  
Jack I'm a he, and I'm a lone wolf! Roar!  
Rony You're a Manchester Terrier cross. And you've never dared bite anybody in thirteen years.  
Jack I'm still more of a wolf than you and Arkela? I've got four legs and a tail. And forty-two teeth.  
Rony You could still never be a real wolf cub, I'm afraid, Jack.  
Jack Why not?  
Rony Because you could never stand round a pretend fire in a wolf's circle and get initiated by saying dib dib dib and dob dob dob, because you can't say anything in English when there's anybody else around.  
Jack ...I could play at British Bulldog, then?  
Rony You don't want to.  
Jack I do. Only I don't know what it is?  
Rony The Bulldog stands in the middle and shouts 'British Bulldog!' Both teams have to run past him but when he catches you he's allowed to hurt you till he says 'British Bulldog!' Then you join his team in the middle. The game ends when everyone's in the middle and there's only one cub still trying to run past everyone else, and they all shout 'British Bulldog!' and hurt him at the same time till he cries. Then it starts again, only he's the Bulldog this time.  
Jack Who wins?  
Rony Nobody.  
Jack So how do you know when it's over?  
Rony Oh, that's when someone gets sent to hospital. But I think we should go for our walk now?  
Jack You always say that when you can't think of any other way of getting out of things.  
Rony Wuff!  
Jack And then you just wuff. And anyway I still don't know what a woggle is?

### Jack and Rony Robinson



**Roots - Family History Research**

Need help plotting your family tree? Looking to trace a lost branch of the family? Get in touch for research assistance and advice.

Tel: 07751 430 412

Email: [roots-family-history@hotmail.com](mailto:roots-family-history@hotmail.com)



## Letter to the Editor

### "The Milk of Human Kindness Still Flows...."

I would just like to publicly thank two real 'stars' – Diane and Carol. During the recent bad weather they have made sure that I did not go without food etc., also clearing away the snow from my path. They also did this act of kindness for others on the road. 'Stars and angels of mercy' – they deserve a medal.

P. Borland

## On the Beat

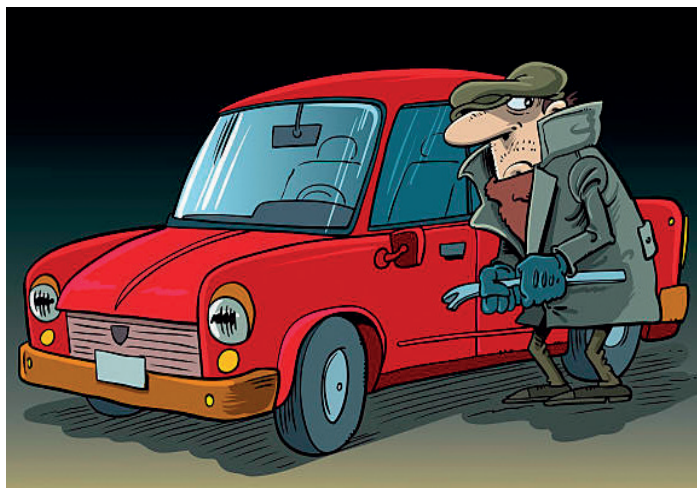


By the time you read this we have hopefully said a final goodbye to Winter which at the moment seems to be staying well beyond its welcome! At least the recent snow has kept our crimes figures down, nobody likes leaving footprints as a trail of evidence. Before the snow came our burglars seemed to have resorted to using bricks and stones from gardens to break windows and patio doors to gain entry. Whilst you are out tidying up the garden have a look round and see what you might use to break in if you forgot your

keys, if you can see something obvious, so can the burglars. I'm not saying remove the rockery, just any loose bricks or stones near to the windows or doors.

And while you are thinking about getting out into the garden just check you've locked any doors and windows you can't see before you go out there. Entering insecure properties is still the favoured method for many thieves. We're also now beginning to enjoy longer lighter evenings, adjust any timer lights you have and make sure you're still leaving a light on if you're going out, it's easy to forget if you're leaving the house in bright sunlight (he says optimistically).

The other trend at the moment seems to be targeting cars, particularly those with keyless entry. People who believe they have locked their car are returning to find items missing but no damage to the vehicle. Whilst some may be insecure you



will have also read about the ability to scan for signals from keys. If you do have this feature please ensure you secure your keys as far away from the car as possible. If they are in something which will block the signal altogether all the better, your manufacturer should be able to advise of the range of the keys and how to protect them.

The ideal advice still is to not leave anything of value in the vehicle and definitely not on show. Remember to remove any device holders when you leave the car and if possible leave

the glove box open so potential criminals can see that it is not worth breaking in because there is nothing there to take.

We have now made changes to the 101 system so that the issues the Council deal with should be reported directly to them on 2734567. My previous article back in October set out who does what but if you are unsure contact me via the details below and I will try and advise.

My drop ins continue in Tesco on Abbeydale Drive, look out for details on the Sheffield West LPT Facebook page. I am trying to find other ways to advertise the date but if you do want to see me at other times just give me a call or drop me an email on my work mobile 07787 881945 or to [adrian.tolson@southyorks.pnn.police.uk](mailto:adrian.tolson@southyorks.pnn.police.uk)

PCSO 8136 Adrian Tolson  
Sheffield West Neighbourhood  
Police Community Support Officer  
South Yorkshire Police  
Woodseats Police Station  
699 Chesterfield Road  
Sheffield,  
S8 0SL  
T: 0114 2963657 (ext.: 713657)  
M: 07787 881945  
A: 8136

## Totley Library Plant Sale Saturday 12th May 2018, at Totley Library



**Your library is a charity, managed and run by volunteers. To keep it open we need to raise funds throughout the year and we are very grateful to local people for their support. In May 2017 we raised over £800 for the library and were very grateful for all plant donations!**

**If you have any queries or wish to donate plants, please contact Fiona Smith at [fion-akhsmith@gmail.com](mailto:fion-akhsmith@gmail.com) or leave a message for her at the library**

*Totley Library serving Totley, Dore and Bradway*

## Totley Show 2018

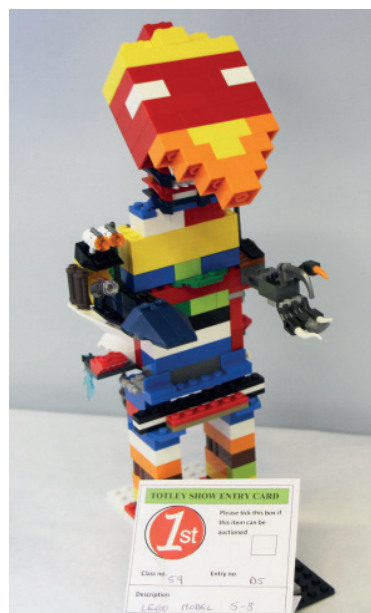
Totley Show this year will be on the third Saturday of September, which is 15 September 2018.

We hope that it will be as popular as last year, and hopefully the entries and people visiting the Show will continue to increase. Last year we had an increase of 30% overall in entries and 25% increase in people coming to the Show in the afternoon. This was even more satisfying when we realised that two families who regularly enter a number of exhibits across all the categories were away that weekend!

It was also particularly encouraging to see that the Children's section of the Show increased by 63%. Despite the problems our gardeners have with getting produce ready at the right time for the Show, there was a 25% increase in entries to that section.

I would like to thank the local businesses and churches that sponsor the Show: All Saints Church, Totley, Hamnett Wealth Management, Teatime Vintage, the Cross Scythes Hotel, the Grouse, the Shepley Spitfire and Totley Rise Methodist Church.

I would also like to thank all the local businesses which support the Show with prizes for the raffle. Last year they were



the following, in alphabetical order: Angela Harpham, local artist, Totley Co-op, the Ironing Parlour, Liberty Foods, Looby Loo, Luxury Gap, Martin Scrivens Fruiterama, Rendezvous, the Shepley Spitfire, Mr Singh at Totley Pharmacy, Totley Deli, Totley DIY, Totley Post Office, Totley Rise Newsagents, Totley Tails and Whiskers and 195 Headlines.

All of the above were very generous with their prizes and we would be grateful if you would support them with your custom. If there are any other businesses in Totley that would like to donate raffle prizes, please get in touch with me, at the e-mail address at the end of this article.

We are always looking for ways to improve the Show and encourage anyone with ideas or suggestions - including positive criticism - to let us know.



*Pictured here are a couple of prize-winners from 2017*

With the substantial increase in numbers last year we were over-running and did not manage to keep to the timetable. We have decided therefore to extend the Show this year by 30 minutes. This will give everyone more time to look at the entries, buy raffle tickets, have some refreshments and enjoy the musical accompaniment.

We are always looking for more volunteers and if you can spare a few hours on Saturday 15th September, either in the

morning or the afternoon, please contact me on my e-mail address at the end of this article.

There is a Show entry form in this issue of the Totley 'Independent', so that you can do some advance planning. It will also appear in next two issues of the magazines prior to the Show.

Last year we added 'poetry' to the Children's Section, which was popular, but we would love to get more entries in this category. This year we have changed one of the categories in the Photography Section and called it 'Totley Life'. We are looking for photographs that represent what you perceive as Life in Totley. We have also changed one of the categories in the Children's Section as well. Having been into one of the classes in a local school, we listened to their feedback and added a class for a cake, any recipe, on the back of how many watch the Bake Off programmes on television!

I hope putting out the Entry Form early in this issue of the magazine gives you plenty of time to plan ahead and keep the date free in your diary, Saturday 15 September 2018.

*Mick Warwick, Totley Show Chair*  
email: [totleyshowchair@hotmail.com](mailto:totleyshowchair@hotmail.com)

## Neighbourhood Watch

Neighbourhood Watch is structured, as a national Organisation, from The Home Office, via OurWatch (National), to a Force or County organisation, South Yorkshire Neighbourhood Watch Association, and then to districts, ours being Sheffield District NW Alliance.

The Home Office have required some changes to be made at National Level, resulting in paid experienced staff being employed. National have been having discussions with our County Association, a charity, and we have had political turmoil for two years at Sheffield District level.

In mid-March, the County Association, having taken advice from the National advisor, decided to disband, and that should be finalised by the time this article goes to print. Sheffield District planned an EGM in order to change its constitution. We were not involved in this discussion. The EGM was postponed, due to the snow, but their secretary/treasurer has threatened to resign, and they have had difficulty in forming a quorum. The Chair has lost her position of SYNWA as it has disbanded.

South Yorkshire Police are optimistic that our District will become a Pilot Area for the Home Office, and we look forward to working with them. Your Area Co-ordinators have maintained a robust stance during all of these troubles (I am sure that some of us are on a nerve gas hit list!) but I am delighted to say that our membership has increased and continues to do so.

We are actively working on 'No Cold Calling' activities, including protective zones, despite the Council having no money and Amey not helping by their high charges for erecting the signs on their lamp posts.

We are also designing new membership forms to allow for the disbandment of SYNWA, and to incorporate the new Data Protection legislation. Our intention is to have membership cards with your membership number on, in order that you will be able to claim, with proof, your entitlement to discounts on Insurance for your homes, and purchases from Harrolds, the master locksmiths. Membership brings email alerts to scams, fraud and burglaries in our area, as well as advice on the efficacy of your door locks and general advice on reducing and preventing crime.

We have been successful, using our network, in locating a guy needed for GBH (Grievous Bodily Harm) and the arrest of three youths, wanted by both South Yorkshire and North Derbyshire Police. And two burglars, who have been busy in Sheffield and Barnsley, including a house in Bradway, have been gaoled for 10 years.

The next issue of Totley 'Independent' should bring good news about the way forward for Neighbourhood Watch in our part of Sheffield. If you wish to join us, I am happy to pass your details to my colleagues, Neil Driver for Dore, Neil Bunting for Totley South (of Baslow Road) and Les Day for Bradway.

*Roger Hart, Totley North (of Baslow Road), 07831 305881*



## Chris and five other folks from Totley have coffee in Amsterdam

How did it come to pass that six older folks from Totley ran away to sea, had a coffee (and more) in Amsterdam, and came back the next day, refreshed and feeling that they had been away for ages?

It had been, we all agreed, a long and rather drawn-out winter; and a change of scene was surely called for. Not one of those 'retreats to my second home in the south', but something rather briefer (and distinctly cheaper). That was our side of things, we six neighbours from S17.

And on the other side of things was a smart ferry company, in danger of running its vessels largely empty in the less-fashionable time of the year.

P and O Ferries run across the North Sea from Hull to Holland, and also to Belgium, and have the bright idea of using their spare capacity to offer very short 'cruises': dine on board, sleep overnight, a dedicated coach to Amsterdam for one's day out, coached back at five to another excellent dinner, before returning to one's now-familiar comfortable cabin, sleep, and awake to coffee and croissants as we steam up the Humber. (Read 'Bruges' for the Belgian version of the cruise).



Expensive? How about twenty pounds per person each way, for boat and coach, though food not included, obviously. Welcoming, bright dining rooms on board and a huge selection of food, from carvery through a very varied salad area, to Asian and European hot choices. Almost as wide a range of puddings and cheeses, coffee and tea, and really pleasant waiters offering a range of wines etc. - everyone seeming proud to work there.

The same relaxed and helpful attitude seemed to characterise everyone we encountered in Holland (to my mind one of the most civilised countries), whether they be locals on the trams, attendants in the galleries (much less jumpy than in some places one has been, even though we were close to



several million euros of the world's most famous pictures), the laid-back café owner apparently fluent in joking in many languages, the street traffic of so many relaxed cyclists....

We three couples each followed our own interests in Amsterdam, as typical happy tourists: of course, some went for the canal boat tour, with its intelligent in-ear guide (available in, they said, sixty languages, but we only tried one); the delightful yet dignified domestic canalside architecture; lovely old lettering over the shops, retaining an elegance while retailing the most stylishly modern.

Some of us were serious about our art, spent most time in the galleries, and marveled at the sheer number of world-class artists who were at work in Holland's Golden Age. Some came home empty-handed of any mementos but with just such enrichment of mind. Some of us found good Dutch cheese, and were indeed to be found generously sharing it with the other travelers, once we were all safely and happily returned to Totley, and sharing photographs of the holiday.

"Holiday?" you say. "It wasn't much more than a day!"

Yet it felt so much more, packed with sensations. Even the coach journey returning to the boat in Europort had been through the golden glow of early evening - memorable in itself!

*Chris Spencer (and the other five, who all hasten to reassure readers of the Totley 'Independent' that they buy their own tickets)*

## Totley Men's Probus Club

We are a social club for retired and semi-retired gentlemen and meet at Totley Rise Methodist Church for two hours every second and fourth Wednesday of each month. We have guest speakers who give talks on a variety of subjects and also have occasional lunches and days out. If you are interested in joining, please visit us when you would be made most welcome.

For a list of our forthcoming meetings see the Totley & District Diary in this issue of Totley 'Independent'. For further information telephone John Appleton 2366106.

## Holmesfield Parish Church

proudly presents a  
Jazz evening featuring

## The New Orleans Strollers

preceded by a

PIE AND PEA SUPPER

Monday 16th April at 6.30.p.m.

Holmesfield Church Hall

Tickets £15

Please phone Jane and Robin Greetham  
on 01246 412767 to reserve a place.

*Proceeds to Holmesfield Church  
Maintenance Fund and to fund an  
Aqua Box for the 3rd World*





## THE SHINE LADIES CHOIR IS HERE!

- ★ Have you always wanted to sing?
- ★ Do you love music?
- ★ Do you want to feel part of something special?

### COME TO THE SHINE CHOIR!

- ★ Every Thursday from 7pm until 8pm
- ★ Dore and Totley Golf Club, Bradway Road
- ★ Call Liz on 07921162489 or email: shineacademy@live.co.uk

Check Shine choirs FB page for details.



EVERY THURSDAY!  
Dore and Totley Golf club  
7pm until 8pm  
Call in for your  
FREE SESSION!



## Domestic electrical work by award winning Lady Electrician

- \* House rewires \* Replacement fuse boards \*
- \* New sockets and lights \* Security systems \*
- \* CCTV \* Telephone and computer points \*
- \* Garden power and lighting \*



All work guaranteed and fully insured. For a free quotation, without obligation,



ring Mandy on 07788-544225



## Moorland Matured Beef and Lamb

off the Burbage, Houndkirk and Totley Moors

Call Liz or Nick Denniff

on 0114 289 9359 or 079 0559 6851

info@moorlandmeat.co.uk



51-53 Baslow Road, Totley Rise. S17 4DL.

Call 0114 2364238

Enjoy delicious freshly cooked food in our  
NEWLY REFURBISHED  
coffee shop

Why not come in and sample our wide range of hot & cold sandwiches and home made produce, freshly made daily to eat in or take away. Cakes, quiches and pies can be made to order if required. All produced from locally sourced suppliers.

- Fresh Roses bread delivered daily & available to order
- Selection of cooked meats sliced to your specification
- Superb selection of fine cheeses, preserves & pickles

Look out for our daily special meals or join us for breakfast.

**All available to take away.**



If you are having a party or family gathering why not let us take the strain and provide a buffet for you.



Where quality and friendliness count



## Relieve Pain. Restore Movement. Prevent Injuries.

At Activ Physiotherapy we are committed to providing you with the best treatment available in a clean and comfortable environment.

Our qualified and friendly physiotherapists come highly recommended and will ensure you get targeted treatments such as massage, electrotherapy, acupuncture and more.

Established in 2007, we now have clinics in Sheffield, Doncaster, and Hope. Our Totley and Doncaster clinics are equipped with brand-new gym and studio facilities that we use for rehabilitation and Pilates sessions.

### We treat:

Back & Neck Pain • Sports Injuries • Trapped Nerves  
Muscle & Ligament Strains • Headaches • Women's Health Problems  
Jaw & Facial Pain • Arthritis

www.activphysiotherapy.co.uk Call 0114 235 2727



# Totley Show 2018

A celebration of our community and its talent in aid of local charities

**Saturday 15<sup>th</sup> September  
at Totley Primary School**

Admission to the show will be 50p for adults and 20p for children

***We would be delighted to see you at the show and to receive  
your entries using the entry form overleaf***

## The Programme

- 8.45 Registration opens
- 10.45 Registration closes
- 11.00 Judging of classes
- 1.30 Doors open to the public**
- 1.45 Official opening of the Show
- 2.30 Prize money may be collected
- 3.15 Last raffle ticket sales
- 3.30 Prize giving followed by raffle draw and auction of donated items
- 3.45 Collection of non-auction entries

Refreshments will be available throughout the afternoon together with live music, craft stalls and various children's activities.

The Show will end with a charity auction of donated items conducted by Totley's very own Rony Robinson.

## How to Enter the Show

Please feel free to enter as many classes as you like! The entry fee is 50p per entry. You can enter as many entries as you like to each class, but no entry can have been in a previous Totley Show. If your entry doesn't fit one of our classes please still bring it along for display. Children may enter any class. All entries are left at owners' risk.

First (£3), second (£2) and third (£1) prizes will be awarded in each class, unless there are fewer than three entrants in an adult class in which case only a first prize will be awarded. All children's entries are recognised with a certificate and all children's class winners receive a medal. Cups or trophies are awarded to all section winners. A special trophy is awarded for the 'best in show'.

You may donate your item to be auctioned at the end of the show, but this is not compulsory. Any prize money not collected by 4pm will be put towards next year's show. Thank you for entering!

### Notes:

**Recipe to be used for Dundee cake class** (use a deep 7" tin): 175g/6oz plain flour; 125g/4oz butter/margarine; 125g/4oz soft brown sugar; 2½tsp baking powder; 1 rounded tsp mixed ground spice; 3 eggs, 125g/4oz raisins; 125g/4oz sultanas; 125g/4oz currants; 85g/3oz chopped mixed peel and chopped cherries; 40g/1½oz blanched almonds to decorate.

**Recipe to be used for Victoria Sandwich class** (use two 7" tins): 125g/4oz Margarine; 125g/4oz self raising flour; 125g/4oz caster sugar; 2 eggs. Fill with strawberry jam.

**Children's handwriting classes** (on an A5 page): 6-8s a nursery rhyme, 9-11s a poem, 12-14s: a Shakespeare quote.

# Totley Show 2018

## Entry Form

Please complete prior to bringing your entries for registration between 8.45 and 10.45am.

|                   |  |
|-------------------|--|
| <b>Name</b>       |  |
| <b>Home phone</b> |  |
| <b>Mobile</b>     |  |
| <b>Address</b>    |  |

Please enter the number of items you would like to enter against each class at 50p per entry:

### HANDICRAFT SECTION

|   |                            |  |
|---|----------------------------|--|
| 1 | Knitted or crocheted item  |  |
| 2 | Decorative cushion         |  |
| 3 | Soft toy                   |  |
| 4 | Tapestry                   |  |
| 5 | Cross stitch               |  |
| 6 | Quilting / patchwork       |  |
| 7 | Greetings card             |  |
| 8 | Open handicraft any medium |  |

### DOMESTIC SECTION

|    |                                |  |
|----|--------------------------------|--|
| 9  | A cake (any recipe)            |  |
| 10 | Victoria sandwich (see recipe) |  |
| 11 | Dundee cake (see recipe)       |  |
| 12 | Carrot cake                    |  |
| 13 | 5 Biscuits                     |  |
| 14 | 3 Fruit scones                 |  |
| 15 | Loaf of bread                  |  |
| 16 | Jam                            |  |
| 17 | Lemon curd                     |  |
| 18 | Marmalade                      |  |
| 19 | Chutney                        |  |

### FLORAL SECTION

|    |                          |  |
|----|--------------------------|--|
| 20 | Arrangement 18"x10"x10"  |  |
| 21 | 3 Cut home grown flowers |  |
| 22 | Flowering pot plant      |  |

### FRESH PRODUCE SECTION

|    |                            |  |
|----|----------------------------|--|
| 23 | 4 Eating apples            |  |
| 24 | 4 Cooking apples           |  |
| 25 | 8 Blackberries             |  |
| 26 | 5 or more mixed veg/ salad |  |
| 27 | 3 Courgettes               |  |
| 28 | 5 matching runner beans    |  |
| 29 | 5 Tomatoes                 |  |
| 30 | 1 Cucumber                 |  |
| 31 | Heaviest marrow            |  |
| 32 | Longest runner bean        |  |
| 33 | 3 Eggs from own hens       |  |

### ART & SCULPTURE SECTION

|    |                           |  |
|----|---------------------------|--|
| 34 | An original poem          |  |
| 35 | Oil or acrylic painting   |  |
| 36 | Water colour              |  |
| 37 | Sketch in ink or pencil   |  |
| 38 | Upcycled art or sculpture |  |
| 39 | Open art any medium       |  |
| 40 | Open sculpture any medium |  |

### PHOTOGRAPHY SECTION

|    |                 |  |
|----|-----------------|--|
| 41 | Black and white |  |
| 42 | Totley Life     |  |
| 43 | Wildlife        |  |
| 44 | Landscape       |  |

### WOODWORK SECTION

|    |               |  |
|----|---------------|--|
| 45 | Wood turning  |  |
| 46 | Open woodwork |  |

### CHILDREN'S SECTION (up to 14)

|    |   |  |
|----|---|--|
| 47 | Vegetable animal (up to 8)              |  |
| 48 | Vegetable animal (9-14)                 |  |
| 49 | 3 Decorative buns (up to 8)             |  |
| 50 | A cake any recipe (9 to 14)             |  |
| 51 | 3 Biscuits (up to 8)                    |  |
| 52 | 3 Biscuits (9 to 14)                    |  |
| 53 | Decorated gingerbread man               |  |
| 54 | Egg cup flower arrangement              |  |
| 55 | Painting or drawing (up to 5)           |  |
| 56 | Painting or drawing (6-8)               |  |
| 57 | Painting or drawing (9-11)              |  |
| 58 | Painting or drawing (12-14)             |  |
| 59 | Lego model <25cm <sup>2</sup> (up to 8) |  |
| 60 | Lego model <25cm <sup>2</sup> (9-14)    |  |
| 61 | Colour photo (up to 14)                 |  |
| 62 | Open any medium (up to 8)               |  |
| 63 | Open any medium (9-11)                  |  |
| 64 | Open any medium (12-14)                 |  |
| 65 | Handwriting (up to 8)                   |  |
| 66 | Handwriting (9-11)                      |  |
| 67 | Handwriting (12-14)                     |  |
| 68 | An original poem                        |  |

Official use only

|                         |  |
|-------------------------|--|
| Entrant number          |  |
| Total number of entries |  |

|                     |  |
|---------------------|--|
| Total entry fee due |  |
| Entry fee paid      |  |



## Friends of Gillfield Wood

### Bird Walk

20 January 2018: Those hardy souls that had managed to negotiate the icy conditions and gather at the bottom of Tottle Hall Lane for the start of the first Bird Walk of the New Year were able to carefully scan the small field adjacent to the lane to get excellent views of four species of the thrush family that were feeding on the ground in the short grass.

Two of the species present were Redwing and Fieldfare. These are regarded as Britain's "winter thrushes" because they visit our shores during the autumn and winter, having



*Redwing*

moved west from Scandinavia and from even further east, Russia. A quick count showed we were looking at ten Redwings and two Fieldfares. The differences in size and plumage were very clear for all to study and compare. The Redwings, the size of a Song Thrush, had the rusty-red markings on their flanks and the distinctive pale stripe above their eyes. The Fieldfares were bigger, more upright in stance, with an orange tinge to their heavily marked breasts, and the grey of the rump and crown were noticeable. So our two main target species for the day were already "in the bag"!

Amongst the Redwings and Fieldfares, a couple of Mistle Thrushes, the same size as Fieldfares, seemed to be as intent on keeping watch as they were on feeding, standing proud and alert after each short run across the field. These birds came quite close to us, so their pale brown appearance and the large round black spots on the breast and under-belly were clear for all to see. The fourth type of thrush feeding in the field was the Blackbird, also known in the old days in Yorkshire as the "Black Thrush". A small group of six of these birds was feeding in the leaf litter at the field edge. There certainly seem to have been more Blackbirds about over the last few weeks, no doubt the resident number being supplemented by birds moving down from further north or migrating in from the continent. Yes, those Blackbirds overwintering in your own garden may have travelled from Denmark, Germany or Scandinavia for the pleasure of feeding at your bird table, which is always a nice thought.

Anyway, as we watched and admired these thrushes a Robin sang from the hedge behind us and a Great Spotted Woodpecker briefly called overhead. The trees at the bottom of Tottle Hall Lane are always productive and did not disappoint this morning, as two Nuthatches and a Treecreeper put in an appearance while a Wren dived quickly across a gap in the piles of wood nearby and was seen to search for food amongst the logs. As we stepped over the new stile into the first field a flock of Goldfinches flew high across the field; we could see their gold wing-bars and hear their tingling call: a "charm" is a perfect collective noun for this species. And as we turned to move on, a small party of Long-tailed Tits flew close-by us in a tight-knit group. This very small tit has an egg-shaped body and a distinctive long thin tail; one member of our group stated that these tits, when in flight, always remind her of dragonflies. All these encounters were a great start to this January walk.

We then searched nearby fields for more winter thrushes as we moved across the first field - a flock of more than one hundred Redwings had been feeding in one of the fields a few days before. There were none to be found today but we managed to see a small flock of Starlings feeding on the ground with a number of Magpies and Woodpigeons near them. Four Carrion Crows also made their presence known as they interacted and called loudly from the tops of hedgerow trees.

Pressing on along a track towards Gillfield Wood, we then noticed a Jay feeding below the outreaching branches of an Oak tree at the edge of a field. Everyone stood quite still and took it in turns to get better views of this striking bird through the telescope we had to hand. A member of the Crow family, Jays seem to be doing quite well locally, and it is not unusual to find these birds, in ones or twos, in and around our wood. This particular bird stayed just long enough for its exceptional colours to be noted; the pinkish tinge to the head and body and the blue, white and black markings in the wing. Then it just disappeared from view which is typical of this shy species. And as we stood there the loud call of a Great Tit was pointed out to the group, and then as if in competition another bird, same species, was heard to emit from deep cover the "Teacher, Teacher" call to add to the atmosphere of the morning.

And then it happened: a bird of prey, flying towards us on lazy long wings. It was Buzzard size, but it wasn't a Buzzard. It was a Kite, a Red Kite! Unbelievable! This was only the second time this raptor has been formally recorded in our Gillfield Wood area and there it was flying low over our heads. The light was not great so we were not seeing all its glorious red colouration but nevertheless the long forked tail was seen to do that characteristic twisting as this majestic bird adjusted its flight. It completed a tight circle in the air before drifting northwards out of sight. Great excitement, a brilliant "tick".

Clearly this moment would not be beaten today, but we moved on to higher ground so we could have good views over the top of the wood onto the fields beyond in the hope of "pulling" a Common Buzzard. Unfortunately, on this occasion, one did not put in an appearance, but the trusted Great Spotted Woodpecker did - not just one but several were seen or heard calling during the rest the walk. From our vantage



*Great Spotted Woodpecker*

point one was heard to call out its distinctive "click" noise which enabled us to locate it at the top of a Larch. It was a male with the red patch at the back of its head. The woodpecker then moved sideways-on so we all had good views of the bright black and white markings on the wings and that lovely flush of red on the underside of the body. As we studied this bird, an excited member of our group called out that there was another one clinging directly below to the same

## Bird Walk (continued)

Larch. A pair, or was this a rival male? No calls of aggression were uttered but one bird was seen to drop from the tree top and in deep undulating flight it passed over our heads to land in another tree on the other side of the field. It is always surprising to see how far some of these woodpeckers will fly when they leave Gillfield Wood; some continue in what appears to be an energy sapping flight, across many fields, to reach the gardens of Topley without stopping in any of the available trees on the way.

As we entered the wood today, Coal Tits and Blue Tits were heard calling from on high, and were seen feeding in the tree canopy. As Long-tailed Tits joined them, a solitary Treecreeper was seen to be working its way up a tall Oak, switching from one side of the trunk to the other and then going out on the underside of a branch demonstrating how adept they are. On the previous walk it had been very difficult to point out this tiny bird to those attending - we all remember too well the constant rain and mist on our binoculars that day. It was however very pleasing to learn afterwards that one member had been thrilled that he had managed to see that Treecreeper despite the weather conditions - it was his first sighting of this species. He would have certainly enjoyed seeing this delicate bird today as we got better views as it performed so well for us.

Continuing through the wood we could hear the occasional Robin, Wren and Chaffinch calling from the edges and, of course, those Great Spotted Woodpeckers made their presence known in several areas. On leaving the wood at the east end we managed to see and hear Tree Sparrow and Bullfinch which are always good birds to add to our list of species seen on these quarterly walks. And as we neared our finishing point we had the opportunity of watching a tall Grey Heron



Grey Heron

quietly walking with stealth along the centre of the brook; you could not help but wonder what morsels of food it would find in the flowing waters on such a day in January.

As the group dispersed there were thoughts of our next Bird Walk which is planned for the spring. Hopefully some summer migrants, such as Chiffchaffs and Blackcaps will have arrived and their songs will add to the songs of our resident birds that will be on territory and probably nesting. There is so much to see and experience in and around our wood so hopefully you will join us on one of these Bird Walks. We may even see the odd butterfly but sorry, another Red Kite cannot be guaranteed!

Chris Measures

*Please remember you do not have to be a member to come along to any of the events run by The Friends of Gillfield Wood. The events are advertised on the FoGW website and within the diary in this publication. No experience is necessary to attend; you will be made very welcome. The next Bird Walk is on Saturday April 28th and starts at the Scout Hut by Aldam Road at the earlier time of 0800 hours.*

## Ask Your Pharmacist

### Electronic Prescription Service

If you are a patient of Topley Rise Surgery, you will by now know that your surgery is using the NHS Electronic Prescription Service (EPS for short). This change was recently made in mid-March, and is a significant change from paper prescriptions, so you may still be getting to grips with the new service.

Below, we try to provide some information about EPS and answer some of the more common questions. At Topley Pharmacy, we have been providing this service to patients of other surgeries for many years now, so are well placed to answer any queries you may have. Please feel free to pop in for a chat; we can also help you set up your prescription.



Not only can we use this service to make ordering your prescriptions easier, at Topley Pharmacy we can save you even more time by using our FREE DELIVERY SERVICE. Thus you can order and receive your prescription from the comfort of your home. By using our website [www.topleypharmacy.co.uk](http://www.topleypharmacy.co.uk) you can make this process easier and even more convenient as you can contact us outside office hours too.

#### What does EPS mean for you?

If you collect your repeat prescriptions from the surgery you will not have to visit your GP practice to pick up your paper prescription. Instead, your surgery will send it electronically, saving you time. Of course, if we usually collect your prescription from the surgery, you will not notice any difference.

You also may not have to wait as long at the pharmacy as there will be time for your repeat prescriptions to be ready before you arrive.

#### Is EPS reliable, secure and confidential?

Yes. Your electronic prescription will only be seen by the same people in GP practices, pharmacies and NHS prescription agencies that see your paper prescription now. It only takes a few minutes to complete the application form.

#### Do I have to pay for using EPS?

No, you don't have to pay anything extra to use EPS. The service is provided and offered by NHS.

#### I use my paper prescription to request my next repeat prescription issue. How can I do this if I don't receive a paper copy?

As electronic prescriptions are used more and more, GP practices may start offering different ways to order repeat prescriptions that will not require a paper copy of the prescription. However, if you do require a paper copy, simply let us know and we will arrange for one to be printed.

#### Can I nominate a chain of pharmacies or dispensing appliance contractors?

No, you can only nominate a specific location to receive your electronic prescriptions.

#### Can I choose for my prescription not to be sent using the EPS?

Yes, you have a choice of how your prescription is generated. We can advise you about this.

#### Does using EPS mean I will see my GP less often?

No, it just means that you may not have to call at your GP practice just to collect a prescription.

Taj Singh



### TASS Aspire Day

Once again, we held our annual TASS Aspire Day in February with the aim of inspiring our children to think about their futures and what they would like to become 'when they grow up'. We had a fantastic variety of parents / carers and members of the community who volunteered their time to come in and talk to classes about the jobs that they do, plus how and why they chose such a route. Everyone was asked to bring something in for the children to look at in order to make their 'story' real. This involved something like a PowerPoint with pictures, an object that they use or have produced in their work, awards, certificates or something that represents their learning/life journey. They also told the children about themselves, why they do what they do as well as anecdotes to make it real and relevant. Each session was 25 minutes long which enabled lots of varied learning journeys to be shared. All in all, it was a great day and our children were all inspired to go on to do amazing things!

### World Book Day

World Book Day had to be cancelled this year due to the closure of the school through snow. However, not to be put off, we held it the week after! The day was amazing with the usual dressing up as a favourite book character, holding our annual 'Speed Read' event as well as having our 'Book Bunting' competition. The school was awash with everyone from 'Where's Wally?' to Willy Wonka — it was great!



*The Diamond Merit Captains who won the treat for the half term*

### Rights Respecting Schools Award

This year, we have been continuing our journey from Recog-

nition of Commitment (ROC) towards Level 1 of the UNICEF Rights Respecting Schools award (RRSA) and are due for our big assessment in April! With support from Unicef and with thousands of schools across the country, we have been working to embed children's rights in our ethos and culture. Amongst the events this year, we've had a Fairtrade bun sale, we've hosted the 'Right Click' E-Safety Parent Workshops in partnership with BT and we've been doing work for Waste Week and World Water Day. The Award recognises a school's achievement in putting the United Nations Convention of the Rights of the Child into practice within the school and beyond. Children and adults at TASS have been learning about the UN Convention of the Rights of the Child in assemblies and in the classroom led by Mrs J Brown (Y2 class teacher) plus our TASS Rights Respecters.

### Egg-cellent Easter

We're looking forward to celebrating a fantastic time at Easter and will make our usual visit to All Saints Church. We will be hosted by our vicar, Rev. Katie Tupling, who is also a governor at our school. The children will give thanks with a selection of singing, prayers, poems and presentations and then came back to school to take part in our competition to find the best Easter Bonnets and Decorated Eggs. Celebrations will then culminate in our PTA 'Fun-d Raisers' putting on an Easter Egg Hunt for each class plus a special awards assembly. We can't wait and are very egg-cited!

So what else? Well, we're in the process of having our sports Day at the EIS, preparing for the Y4, Y5 and Y6 residentials, getting ready for SATs and gearing up for our summer production. It's all happening at TASS!

If you want to find out more of the exciting things that are happening at our school, then please visit our website or email us at [enquiries@totleyallsaints.sheffield.sch.uk](mailto:enquiries@totleyallsaints.sheffield.sch.uk). We'll be so happy to let you know!

*Karole Sargent, Head teacher*

## Friends of Ecclesall Woods

Local voluntary group Friends of Ecclesall Woods aims to protect, preserve, and find out about Sheffield's largest ancient woodland, working in collaboration with the Parks and Countryside Department, as well as on their own projects.

Ecclesall Woods cover over 100 hectares (more than 300 acres), and a walk round the perimeter is about 3 miles (5 km). The woods contain a network of footpaths and bridle ways, streams and drains, wetland and open woodland.

**Walks in the Woods during Sheffield Environment Weeks** (28th April - 10th June) All walks last approximately 2 hours.

Sunday 29th April: Woodland Walk and Tree Identification. 2pm - Leader Fran Halsall. Meet outside the Woodland Discovery Centre.

Saturday 5th May 2018: Dawn Chorus Walk. 6am - Leader Dr Paul Medforth. Meet at the entrance to Wood 3 opposite Beauchief Gardens' bus stop.

Saturday 5th May 2018: Walk to see Bluebells and other Spring Flowers. 10am - Leader Julie Riley. Meet outside the Woodland Discovery Centre.

Sunday 20th May 2018: Woodland Walk and Tree identification. Morning walk 10.30am. Afternoon walk 2.30pm - Leader Fran Halsall. Meet outside the Woodland Discovery Centre

See [www.sheffieldwoodlandconnections.co.uk](http://www.sheffieldwoodlandconnections.co.uk) for more information about the walks.

In addition to general activities organised by the 'Friends' there are specialist groups with their own programmes of activities.

Membership of the Friends of Ecclesall Woods costs just £10 per household. To find out more, contact the membership secretary, John Baker on 0114 236 9025.

## Gardening Tips for April and May

I was in the garden at the weekend of March 3rd. It was a lovely picture. Everywhere had a coating of white: there were little toppings of snow capping the seed heads and branches, and it was starting to warm up after the Beast from East, so I took a photo. Not my best effort but it gives you the idea. Three days later the snow had almost finished, and what a sorry sight the garden is now. We have neglected it a little; one of the ponds is leaking and they are frozen over, so the frogs had better wait a while before their annual get-together. I suppose mother nature has told them to cool their ardour for a bit, otherwise the ice will do the job for them.

We were on holiday down South during the worst temperatures. I was quite worried that everything would be spoilt so I was pleased to see that the greenhouses had done a good job - the plants look OK, with one or two exceptions, but that is to be expected at this time. The cuttings in the propagator were looking good - they have a heating cable keeping them warm enough to survive, but I thought the extreme temperatures might have scorched them a bit I gave them a nice feed and look forward to them giving of their best. I took my own advice and did not overwater them before going away.

The tidying-up will have to be done in earnest, as we are opening our garden in July! I hope we will be able to get it reasonably tidy for then. If not perhaps the visitors will muck in with weeding, leaf sweeping etc.(ha ha!). We are looking at seed and plant catalogues, planning what to do this season. It's always a problem - whether we stick to the usual veg etc. or try something new.

We are buying more plants these days, though I do miss seed planting. It is quite satisfying to see the little seedlings popping up, but we are getting a bit long in the tooth to sit for hours pricking out and hardening off the many plants we need, so we take the easy way and buy what is required. They still have to be looked after, and talked into giving us a good showing.

I hope the low temperatures have nobbled a few nasties, and the snail and slug population has been cut back a bit. I will be putting beer traps out to keep them at bay, and I will also be using nematodes on the veg patches to help keep them and the other nasties from making lace curtains out of my cabbages.



I've just been to check the greenhouses (6th March) and discovered a little surprise. In the corner near the propagator is a daffodil plant I don't know how it got there but it flowers every year at this time and puts forth two of the most pristine flowers (see photo). It's always a nice surprise because the main plant is almost covered by the bench and a mimosa plant, so it is hardly noticeable throughout the year. But it's a great forecaster of things to come.

We had a flurry of snow last night - not a lot, but Radio Sheffield gave out a list of school closures. I don't remember the school I went to closing, and the snow seemed to last longer. I remember we always looked forward to air raid drill because we always had a few sweets when we came out of the shelter (remember sweets were on ration) which was a real treat....but I digress: back to gardening.

March and April are busy months for gardeners, I hope you have done all the winter jobs, so that you have a clear schedule to get on with the necessary preparation for all the sowing, planting, grass cutting, digging, etc. The forecast is for frost tonight so I'd better get the heaters set in the outside toilet and the cold greenhouse - we don't want any bursts or to lose any tender plants! The plants are just showing buds which might get nipped by old Jack frost. It's nice to think in a little while we will be enjoying the best two months for gardeners, well I think so....

### April

**Flowers:** Prepare supports for your perennials, especially the taller varieties such as lupin, delphiniums and oriental poppies. Complete the planting of herbaceous perennials; continue planting gladioli corms for a succession of blooms. Alpine plants can be moved and replanted now, and give roses a good feed (Tonks formula is recommended as this will encourage first class blooms right through the season).

Sow hardy annuals, plant out sweet peas and give them a good supporting frame. Pansies and violas can be planted now if they have been properly hardened off. A cool semi-shaded place will give a longer life to the flowers. Start dahlias in a frame, cover the tubers with light soil and water sparingly, keeping well ventilated unless frost is forecast. Plant out antirrhinums and penstemons once they are hardened off, and clematis can be planted now - a good pot-grown specimen is best. Keep all beds weed-free and mulch them to make it easier to retain moisture.

**Vegetables:** Finish planting early potatoes at the start of the month. Plant second earlies at the end of the month. Sow brussels sprouts late summer and autumn cabbage and cauliflower in a seed bed, and small rows of lettuce and radish every 3 weeks to avoid a glut. Feed spring cabbages which are near maturity with a top dressing of nitrate of soda and hoe it in, and another dressing in 3 weeks' time. Plant onion sets 4 to 6 inches (10 to 15 cms) apart in rows about one foot (30 cms) apart. Prepare trenches for runner beans with plenty of humus and other moisture-retaining material in the bottom. Sow parsley outdoors but don't forget that carrot-fly grubs love parsley, so make a fleece tent to prevent the

fly getting to it. For those of you who grow celery, prepare trenches now, unless you grow the self-blanching variety. If you want a few early French beans sow a few now in pots and place them in a greenhouse. They need about 13C (55F) to germinate, and the seedlings will be hardened off later on for planting out late May. Sow main crop carrots thinly, in drills about half an inch (1cm) deep and one foot (30cm) apart. If carrot-fly is about, make a fleece tent to prevent attack. Sow globe beetroot in a fairly sheltered border out-of-doors. It need not be a large sowing, as it will be followed by another one in May. Sow seeds 6 inches (15 cm) apart in rows one foot (30 cm) apart. Sow seed in threes and reduce the seedlings to one at each point later on.

**Trees, Shrubs and Fruit:** Watch out for disease in apples and pears; if scab and mildew were present last year, spray when leaves start to show, and continue this over one month - Nimrod T or Supercurb should help to control it. Renew mulches around bushes and cane fruits and rhubarb. Make sure that newly-planted trees and shrubs are kept moist during dry spells. Forsythia, winter jasmine, flowering currant and other winter flowering shrubs can be cut back to within a few buds of the old growth once the flowers have finished. Prune late-flowering clematis, and hybrid T and floribunda roses.

**Greenhouse and Indoor Plants:** Sensitive plants should be shaded from strong sunlight. It is a bit early to use the side vents on your greenhouse as most plants hate draughts, particularly during early development. Prick off seedlings as soon as they can be handled carefully, and do not let them get too deep-rooted as this will cause them to check their





their growth when transplanted. Pot on seedlings pricked out earlier. Take cuttings of winter-flowering begonia, rest free-sias, lachenalias, arum lilies and cyclamen, placing them on a shelf near the glass and gradually reducing the watering. Pinch out the tips of chrysanthemum cuttings on those required for spring flowering. Plant tomatoes, cucumbers, cap-sicum etc in a heated greenhouse, maintaining a temperature of a minimum of 55F, or otherwise wait a few weeks and buy plants ready brought on. Watch out for all the creepy crawlies and deal with them as soon as they appear - ants and woodlice can wreck a tray of seedlings overnight!!! Gently wash leaves of indoor foliage plants (except the furry-leaf kind) and put them outside in a warm rain shower. Pot on geraniums and young plants like begonias and gloxinias. Feed established plants regularly and split up and re-pot ferns.

**Lawns:** Keep all grassed areas clean. Spike, aerate and top-dress if you have not already done so. Start or continue routine mowing, dealing with any moss patches as soon as possible. Trim edges for that 'looked-after' appearance. Give a good dressing of fertiliser if you did not autumn feed last year, and water it in well.

## May

**Flowers:** Prepare beds for summer bedding whilst hardening off the plants. Give plants which are growing fast, such as delphiniums, hollyhocks etc, a dressing of fertiliser or liquid



*Hollyhock*

feed. Plant dahlia tubers outdoors. Cover them with 3 inches (8cm) of soil and make sure you mark the spot. Protect any shoots from late frosts. Sow hardy and half-hardy plants if you want a show in early autumn - the seeds should be broadcast where the plants are to flower and cover lightly with soil. Stake, tie and train sweet peas and keep them well mulched throughout their growth. Dead-head bulbs which have finished flowering. Pinch out the growing points of herbaceous plants, such as phlox, michaelmas daisy and golden rod to ensure bushiness but do not overdo this as it may delay the flowering too long. Watch out for slugs and snails, especially around young growing shoots. Get window boxes and hanging baskets ready. Plant them up if you have space indoors, or else wait a week or two until chances of frost are past, or make a temporary shelter for them, bringing them out in the daytime. Don't forget to water all newly set-out plants. Watch out for greenfly and eradicate as soon as you see them - they reproduce at an alarming rate and can devastate a young plant in a few days.

**Vegetables:** Earth up potatoes; support peas and beans; prepare mounds for marrows, pumpkin and squash. I grow my marrow in rich compost placed between two bales of straw - this keeps them moist and off the ground away from too many slugs and is nice and clean for the marrow to rest on. If you are growing outdoor tomatoes this year, prepare the ground now, they need a good rich soil. Plant out winter greens as soon as they are hardened off. Sow dwarf beans, main crop beetroot, sweet corn etc. Thin out vegetables sown earlier, such as carrots and parsnips (which you will have grown under a fleece tent if you have had trouble with carrot fly as I have). Sow runner beans outdoors. From now on make successional sowings of salad, lettuce, onions, radish, leaf chicory and also parsley. Plant up your herb garden, and increase your plants by dividing or cutting.

**Trees, Shrubs and Fruit:** As before, keep all newly planted

specimens well-watered. Give all fruit a good feed when the buds start to well up. Tie in new growth of blackberry and loganberry. Prune overcrowded raspberry canes and then mulch. Watch out for aphid and caterpillar on gooseberries and blackcurrants and deal with them as soon as possible by spraying or dusting. Clean straw can be put round strawberries, but make sure it is well tucked underneath the plants - you could use black polythene as an alternative. Remove all suckers from trees and roses. With lilacs remove secondary shoots at soil level so they grow up as single stems. Trim over and top-dress heathers after flowering. Water azaleas, camellias, rhododendrons, magnolias, wisteria and hydrangeas with sequestrene plant tonic. Complete the planting of container-grown roses, heathers, clematis etc. Prune spring flowering shrubs such as flowering currant, forsythia, kerria, willows and dogwood as soon as they have finished flowering. Lightly prune specimen evergreens to shape.

**Greenhouse and Indoor Plants:** Liquid feed and water flowering and fruiting plants, including any which have been in their pots for more than a month. Shade most plants from strong sunlight and ventilate well. Pinch back any straggly shoots on pot plants. Pot on spring-rooted pelargoniums and other greenhouse plants. Allow nerines, arums, and freesias to rest by gradually reducing the amount of water given. Feed, disbud and pollinate tomatoes. Train and feed melons and cucumber. Sow cinerarias if you want to have plants in December. Pot begonias, gloxinias and streptocarpus. Greenhouse primulas sown in April will now need to be pricked-off into other boxes or seed trays - water well and place them in a sheltered frame. Harden off bedding plants, watch the weather and protect from frost. Feed tuberous begonias as pots fill with roots. Think about shading as the sun gets stronger. Although the weather (hopefully) will be getting warmer at this time, clear frosty nights can follow warm days so watch out for these variable conditions.

**Lawns:** Feed established lawns and treat for weeds. Keep new lawns well-watered. Top dress joints in new turf. Set your mower high for the first few cuts. That should keep you busy for a while!

**Cheerio for now,**

**Tom**

Totley History Group presents...

# THE TENANTS AND WORKERS OF ABBEYDALE HAMLET

1740-1933

by Pauline Burnett

**WEDNESDAY, 23RD MAY 2018**  
**AT 7.30 PM, TOTLEY LIBRARY**  
**NON-MEMBERS ARE WELCOME**

TOTLEY HISTORY GROUP

## PhysioFOCUS

at Totley Rise Dental Practice  
85 Baslow Road,  
Sheffield, S17 4DP



**Physiotherapy** treatment available for:

- Back and neck pain
- Sports injuries
- Sprains and strains
- Joint and muscle pain
- Arthritic pain
- Whiplash
- Repetitive strain injury
- Headaches

**Appointments: 0114 2360333**

Also available:

- Pilates classes • Pilates 1-2-1
- Golf Fitness Screening  
(as used by consultants to UK,  
European and Australian PGAs)

For more information please call:

Emer on: 07792 422909

Rachel on: 07956 908454

## R.M.M BUILDING SERVICES

### 25 YEARS EXPERIENCE

All types of building work carried out including- Drop kerbs, block paving (drives, paths, etc), extensions, general building repairs and maintenance.

Phone Rob on- Mob- 07906108567

Home-2352190

### RICHARDS

#### TELEVISION, SATELLITE, VCR, DVD REPAIR OR INSTALLATIONS

- City & Guilds London Inst. Fully Qualified
- Over 25 Years Professional Experience.
- Most Makes & Models Repaired. No VAT.
- For Prompt, Friendly Service Ring:

**0114 2876806**

Ask for Richard. Ex Bunker & Pratley

John Collins

## Cabinetmaker

Fine furniture, antique furniture restoration, fitted wardrobes, alcove units

0114 2585355

[www.cabinetmakercollins.com](http://www.cabinetmakercollins.com)

*Dronfield Landscapes* 

Gardens cleared and maintained, Lawns mowed, Turfing, Tree felling & pruning, Hedges trimmed & reduced, Pond maintenance, Fencing etc.

for free quotation call

Chris on: (0114) 2746158 Mobiles: 07976072785 or

Richard on: 07789497104

8am-6pm mon-fri

HazelBarrow Farm, Norton S8 8BA

  
**Tristan Swain**

Garden Services and Maintenance  
Established 1984

Unit C4 Sheaf Bank Business Park  
Prospect Road Heeley  
Sheffield S2 3EN  
Tel/Fax: 0114 255 4689  
Mobile: 07831 802 539  
Email: [tristan@tristanswain.co.uk](mailto:tristan@tristanswain.co.uk)



[www.tristanswain.co.uk](http://www.tristanswain.co.uk)

Public Liability Insurance Waste Transfer Licence

  
**CHARISMA  
BLINDS**



For  
Windows  
With Style

**Sheffield Factory Showroom**  
106 PROSPECT ROAD  
HEELEY, SHEFFIELD

**Sheffield (0114) 258 5496**  
**Rotherham (01709) 512113**



## Dore Gilbert & Sullivan Society

I should have kept my big mouth shut! I ended last time by saying "until then I hope the weather is not too severe" and look what we've just been through! Oh well, at least it should have got rid of some bugs.

Anyway, on to the main topic which has to be our next shows - *Trial by Jury* and *The Sorcerer*. I am getting to the age where on-stage movements, especially the fast-paced ones which Graham (our producer) choreographs, are getting too much. I can sing or I can move, but I can't do both without almost collapsing. Two years ago I had said that it would be my last year, but here we are three shows later and I am still on stage - but this year will definitely be my last show. I'll still sing in the concerts if I am wanted, but no more getting dressed up to perform. I had said that I would only be in *Trial by Jury* this year since, as I had told others, being a Juryman would involve little more than sitting and singing. How wrong can you be! I should have known our producer wouldn't let us get away with no movements. I hope I can remember them all. I've done *Trial* eight or nine times so I know it pretty well without any effort on my part - in fact at rehearsals I often sing in any of the parts that are missing (show off!).



Pete Geary as Nanki-Poo in last year's *Mikado*

I was not going to be in *The Sorcerer* - until last week. There is one small part which is usually taken by a young boy (often a son of one of the cast members). Not this time. Hercules, as the character is known, is to be played by an old man - guess who. He has all of ten words to say and is on stage for all of 30 seconds. I think even I can manage that. After my lines I can watch from the wings to see the village folk wake up singing "Where be oi and what be oi a doin'?" having just come round from drinking the love potion which makes them fall in love with the first person they see. You might imagine the frolics that ensue. Why not come and see me milk the smallest part in the show and enjoy the fun and frolics for yourself!

The shows will be performed from Wednesday April 11th to Saturday April 14th at The Montgomery Theatre, Surrey Street, Sheffield.

Tickets are available now by telephoning 07598 054708 or by booking via our Facebook page (Dore G&S) or by contacting the Montgomery box office. Do have a night out at the theatre! We'd love to see you there.

Derek Habberjam

## Letter to the Editor

Dear Editor,

What a shame that Rony and Jack Robinson's brilliantly whimsical view of life is often spoilt by their left-wing leanings.

In the last issue they were moaning about "having" to attend Sheffield's finest old grammar school, King Edward VII. When I passed the 11+ from Abbey Lane school to K.E.S. In 1942 might first year there could not have been happier. Mr Carter, our form master, looked after his 30 Scholarship boys like a good shepherd. In one year, we had to learn algebra and French up to the standard of the 90+ fee-paying students. They had been studying in the Junior School on Clarkehouse Road and already had the grasp of those subjects.

We had kindness and concern from all the staff. Yes, if you seriously misbehaved the cane came out but most of us were sensible and avoided the dreaded punishment.

"Streaming" in the subsequent years was good, in my opinion. The brainy boffins went on to Oxbridge while the rest of us found proper jobs which suited our abilities.

Rony wrote that he hated the school, but he must have learnt a lot to qualify later as a teacher, as a playwright, article writer and as a brilliant broadcaster. King Edward could not have been that bad!

Robert Jackson

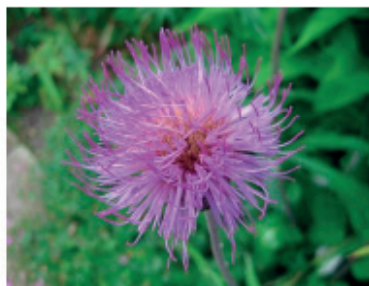


## THE HARDY PLANT SOCIETY

### South Pennine Group

[www.southpenninehps.btck.co.uk](http://www.southpenninehps.btck.co.uk)

Also see us on Facebook.



## SPRING PLANT SALE 2018

Saturday 18th May, 11.00 am - 2.30 pm and

Sunday 20th May, 10.00 am - 1.30 pm

### Sheffield Botanical Gardens

Wide selection grown by our expert members

Drinks and homemade cakes available

Free admission : Everyone welcome

**Plus Art Exhibition by Porter Brook Art Group and Northern Society for Botanical Art, 10-5 both days**

**TO HELP US REDUCE THE USE OF PLASTICS PLEASE BRING YOUR OWN BAGS TO TAKE YOUR PLANTS HOME.**

**REUSE BAGS WILL BE AVAILABLE TO PURCHASE AT A LOW COST.**

## Two sides of mountain biking

A recent March weekend saw two sides of Peak District mountain biking. Twenty members of the 'Ride Sheffield' mountain bike advocacy group spent a day maintaining muddy trails on Blackamoor.

But on the same weekend, on a little known track above Ladybower Reservoir, 45 mountain bikers (many from outside Sheffield) were listed posting their descent times at speeds of up to 24mph to the Strava app.

Over 7,200 times have been posted on the route so far, which is on 'Access Land' usable only by walkers and runners - despite over 2,700 cycling Strava users, the route is not legally available to cyclists.



*Ride Sheffield Work Day on Blackamoor*

Riding at such speeds on a gradient as steep as 1 in 3 damages the hillside and could also seriously hurt and definitely frighten someone walking the route and its blind corners, said fell runner David Holmes, who recently met several women who'd had just such an experience laughed off by bikers in a nearby pub.

"That's unforgivable," said John Horscroft of Ride Sheffield.

"People talk about rights in the countryside, but I say it's a privilege to be out in a national park. If you're on a bike you ride safely, you ride within your own limits and in my opinion if you see a walker you should stop, or if you're behind say hi or ring your bell and say is it ok if I come past? You'll often end up in conversation with that walker and you'll both have enjoyed your day better."

South Yorkshire's 'Love to Ride' programme (which started in March) is stressing the need for everyone riding, walking or running in the Peak District to get on with each other.

"Over 2,000 people took part in South Yorkshire's Love to Ride cycling programme last year, many of them people who love off road cycling in the Peak District. This year we'll be encouraging mountain bikers to ride in the city too, to work or just to the shops," said Jack Windle of 'Love to Ride'.

"We're also keen to support Ride Sheffield's work in the Outdoor City and the Peak District by supporting their 'Peak Bike Code'. In a nutshell, you should always think about other people when you're out there, and just as importantly think about how and where you ride affects the wildlife and the trails. We want everyone who loves to ride in South Yorkshire to make sure they keep loving the Peak District too."

"This is the Natural Health Service out here. This is where we want people, we don't want them in gyms", said John Horscroft.

Fell race organiser David Holmes was meeting John Horscroft to discuss safe and responsible trail use, and praised 'Ride Sheffield' for their conservation work planting trees and maintaining trails. Everyone causes erosion, they agreed, and better education on how (and when) to use the trails is needed, along with more Peak District visitors volunteering for conservation work.

With resources low at the National Park and local councils, private industries benefiting from Sheffield's Outdoor City status could join the likes of local 'Ride Sheffield' supporters Cotic and Go Outdoors by investing in countryside education, said David Holmes. "I'd like to see more people like Strava putting their hands in their pockets too," he said.

'Ride Sheffield' Trail Advice: [www.ridesheffield.org.uk/trail-essentials/](http://www.ridesheffield.org.uk/trail-essentials/)

'Love to Ride' South Yorkshire: [lovetoride.net/southyorkshire](http://lovetoride.net/southyorkshire)

David Bocking, National Trust

Piano/Keyboard~Guitar~Singing~Flute  
Theory & GCSE Coaching

**MUSIC TUITION**

**SOUTH - WEST SHEFFIELD**

Experienced & enthusiastic tutors

All styles, all ages - beginners welcome

Exam work or just for fun!

Please contact:

**KARIN FINNEY**

0114 237 4901 ~ 07854 747153

[notetokarin@hotmail.com](mailto:notetokarin@hotmail.com)

**Home Instead**  
SENIOR CARE  
*To us, it's personal.*



*Are poor standards of care making you worried about your loved one?*

*Worried that your loved one isn't receiving the best care possible?*

Home Instead Senior Care could be the answer to your worries! We focus on providing care of the highest quality to all of our lovely clients

- Companionship, Home Help and Personal Care Services
- 2 to 24 hours calls
- We match our client and carers based on personality

We employ, train and mentor our staff to ensure your loved one feels like they have someone they can rely on to help them remain independent in their own home.

**Call Now for a FREE Care Consultation 0114 250 7709**

[www.homeinstead.co.uk/sheffieldsouth](http://www.homeinstead.co.uk/sheffieldsouth)

6 Shirley House, 31 Psalter Lane, Sheffield, S11 8YL



## Mean Streets

**New readers start here:** *US private detective Harry Kerry is trying to make a living in a quiet English village near here, where Reg the greengrocer can't tell his apostrophes from his parentheses, and the undertaker endangers the health of the community by throwing sickies. A client, Elsie Throttle, asks Harry to find her spectacles, last seen on the nose of her husband Jim, who has also vanished. After meeting local big-wig Lawrence Crump, and receiving a strange note asking 'what's in store', Harry acts on a hunch, and enters the Big 'O' Self-Storage depot where he pulls open the door of one of the storage boxes.....*



She sat alone in the storage container, eating a burger. Her black hair shone under the neon lights and her eyes were as beautiful as ever. All the guys back then knew her as Momma the Comma. But her real name was Marta, and way back in Detroit, we two were an item. We had been part of the shadowy underground team sworn to eradicating bad grammar – everything from misplaced apostrophes to bad punctuation. And now here she was, back to haunt me.

"Marta! What are you doing here?"

She came over, gave me a hug and offered me a bite of her burger. "Harry! I never thought I'd see you again. And I certainly never thought I'd see you here!"

Years ago she had vanished from my life. I'd heard she was working for the CIA, infiltrating the Apostrophe Liberation Army after the Quotation Marks Uprising in Philadelphia in 1987. Then she just disappeared. No number, no forwarding address. It sure came close to breaking my heart. Now she was back. Back here, in this village. But could she be back in my life?

"Marta, we need to talk –"

At that moment a car pulled up outside the storage depot.

"Not now Harry. I have to go. I'll call you. I'll explain everything." She turned, ran across to the main door, got into the car, and sped off into the drowsy afternoon.

I drove slowly back to the office, turning all this over in my head. I made a strong coffee and to take my mind off things, I tore open a package which had arrived by post a day or so before. I unfolded the contents carefully.

Checking out the street was what I get paid to do. That's why I'd bought this – a pair of two-way lace curtains. Works just like a two-way mirror in a cop-shop. Hang them at the window, and I can see in, but nobody can see out. No, hang on, that's wrong. Everybody can see in, but I can't see out. Nope, that can't be right. I can see out, and everyone else can see in, so we can all see each other. No, let's try again....I can't see in, but everybody else can see out.....Hmm. Maybe I'll just send them back for a refund.

I looked at my watch. 5 pm. A fat and lazy bluebottle buzzed in from the back toilet, heavy with the heat and the Floral disinfectant. It settled on the shade over my desklight. We stared at each other for a moment or two, but as a blind date I don't think we'll be seeing each other again. Across the street Reg the Veg was going through his routine of taking in the fruit and vegetables from his outside display: "'Cooking' Apple's, 35 pence a 'pound' – 'fresh' strawberries', 18 p a 'punnet'....". Sometimes Reg and I would sit in his shop with a coffee around this time, putting the world to rights and listening to music on his ancient record-player.

Not today, though. I had enough to do, thinking about this case. Where was Reg Throttle? What did Lawrence Crump know? And how did Marta fit in? I sighed and realised I was hungry. A few doors away was the guy who sold the best sausages in the district, though the sign over his door perplexed me: "Stanley Jones. Family Butcher". Surely nobody

wanted their families butchered nowadays? Then my attention was suddenly drawn to the gents' barber shop next to the butcher. A new sign had appeared in the window: "Hair-Cut and Shave - While You Wait!" Now that's what I call a Unique Selling Point.

The late afternoon heat hung in the air as I sat at my desk, every muscle in my body as tense as a rubber band stretched over an imitation elephant's foot waste-paper basket.

Then I heard car-tyres screech. I sprang to the window. A car – the same car that had driven Marta away from the Storage Depot – had stopped outside Reg's Fruit and Veg shop and two people were getting out. One of them was Marta. They went into Reg's shop.

I ran down the stairs two-at-a-time, slipped, turned head-over-heels, followed through with a sprightly back-flip, and was about to try for a full-on arabesque when I banged my head on a radiator. I must have come round a minute or so later. Nursing a sore head and hoping I wasn't too late I dashed out of the building. At that moment the car accelerated hard, away down the street. I crossed the road and went into Reg's shop, only to hear the strains of Black Lace's appalling song 'Agadoo' coming out of his record player.

I sighed. "Reg, I thought I told you never to play..." But Reg had his head on his hands, sobbing. "Of all the fruit and veg shops in all the cities in all the world, she has to walk into mine!"

At that moment the door to the store-room at the back of the shop was flung open, and none other than Lawrence Crump walked out, for some reason carrying a box of huge marrows in his arms. He didn't see me, but turned to Reg and snarled "Remember – tomorrow never comes!" Lawrence seemed to have a problem with words. It was then that the shot rang out, and, not for the first time, I heard the sound of a body slumping to the floor....

*To be continued.*

## R S HEATING & BUILDING CO.



Est 1971

**Heating Division** - Experienced Installers of condensing, combination and regular boilers. Authorised installers of Valiant, Worcester Bosch and Glowworm systems, fully guaranteed. Complete aftersales service. Also bathrooms, showers and small plumbing works.



**Building Division** - Loft conversions, house renovations, including general building, joinery, plastering, electrical, decorating etc.



Gas Safe Register 14025

### R S HEATING & BUILDING CO.

88 Sunnyvale Road, Sheffield S17 4FB

Tel: 0114 236 4421

62 Machon Bank, Sheffield S7 1GP

Tel: 0114 255 9425 / Fax: 0114 255 9431

www.rshtgld.co.uk E-mail: enquiries@rshtgld.co.uk

## Recently Spotted....

Readers will recall the photo feature in the last issue of Totlewy 'Independent' in which we lamented the state of many grass verges in the area after cars, vans and delivery trucks had wreaked their havoc on them. It was pleasing to see, therefore, that a stretch of grass verge on Mickley Lane had been raked level and reseeded - with signs warning people to keep off the re-seeded area - see photo below!



What was odd, though, was that only this small stretch of grass verge had been repaired, out of the dozens of patches of wrecked verges throughout Totley and elsewhere. Who had carried out this work? Residents assured us that they hadn't done it themselves...so on the basis that we weren't witnessing some supernatural variant of the fairy story of the elves and shoemaker, we presumed it was the council - or Amey.

Then we began to get reports that one or two other small areas in front of houses in Totley and in Bradway had been similarly re-seeded, and it turns out that these repairs were indeed done by Amey following reports made by someone to Streetsahead. Now, before everyone gets excited and telephones Streetsahead on Sheffield 2734567....take a look at the second photo of the same site, below, taken a few days after the first.



Can you spot the difference?

You guessed it! Within just a few days, some clown had driven over the re-seeded area, leaving a thick tyre-track and damaging the repaired area.

It's depressing to think that while litter-picking groups meet to try to rid Totley of unsightly rubbish on its streets, and council workers are sent out to rake and re-seed grass verges - all of which should go towards making this village reasonably attractive once again, the objective is frustrated by drivers who carry out acts of needless and thoughtless vandalism like this.

## Woods for the future

Lovers of the Peak District are being asked to help the National Trust charity provide 'woods for the future'.

"The Peak District is the jewel in the crown of Sheffield and Manchester," said retired National Trust ranger Bob James, adding that he hopes people who marvel at such a landscape on their doorstep will "try to protect it for future generations."

The charity has now launched its 'Peak District Appeal' which aims to raise £50,000 to help plant and maintain trees and woodlands, and to help set up a native tree nursery at Longshaw, where young British broad leaf species will be grown from local seeds.

The trees of the Peak District really need our help, said National Trust project officer for the High Peak, Tom Harman. "The woodlands around Dovedale are under threat from Ash Dieback disease, whilst in the High Peak we're trying to plant more trees to bring back the upland clough woodlands that would have been here centuries ago," he said.

In Dovedale and the White Peak, the plan is to encourage a wider range of tree species to return to the area's ravine woodlands, now under threat from the Ash Dieback fungus.

"And in the High Peak, over the coming decades, we hope you'll see more and more native species like oak, birch, holly, hawthorn, rowan, aspen and alder spreading up the valleys and into the steep cloughs below the moors," Tom said.

There are already examples near the Howden and Derwent Reservoirs where areas were fenced off in the past to prevent sheep eating young trees. Now little woods are thriving on the valley sides, with recovering wildflowers like foxgloves and even bluebells growing among the young trees.

Bob James was part of the team helping woodlands get established in the Derwent valley in the 1980s. "It's absolutely tremendous to see these woods here now, and it's very humbling to think that you've been part of it," he said.

Small woods and hillside shrubs on the moorland edges will encourage insects like butterflies and bumblebees, said ecologist Chris Wood, along with birds like ring ouzels, pied flycatchers, nightjars and maybe even the rare black grouse. And trees growing along moorland streams should also increase fish species and provide homes for scarce water voles.

There'll be an online donation facility and there'll be events throughout the year. Tom said a donation of £10 would pay for a new tree sapling, sheep guard and stake, but would also lead to a whole family of trees over time.

"When the conditions are right, a young tree will set seed and you could see over a dozen trees growing in the future from one sapling," he said. "With public support, these woodlands and their wildlife can be protected and thrive."

For more information see: [www.nationaltrust.org.uk/Peak-DistrictAppeal](http://www.nationaltrust.org.uk/Peak-DistrictAppeal) or #PeakDistrictAppeal

David Bocking, National Trust

## HAPPY FEET CHIROPODY

HCPC Registered & Westfield approved

Professional, reliable & friendly service

Home visits only

Karen Clarke & Brendan Clarke

Tel : 07391 454096



## Totley Scouts

Everyone here at Totley Scout Group is now hoping that Spring is on its way and we can finally get our young people back outdoors again doing some Scouting activities.

All the sections have great programmes on the go and there has been lots of fantastic badge work taking place this term. The Beavers have been to Pets At Home to do their Animal Carer Badge, and we have had some fantastic scientific experiments to complete the Experiments Badge; the Cubs have been working hard to earn their Disability Badge and Local Knowledge Badge, and the Scouts have been working on Pioneering and knots. Both our Scout Troops got the chance to have a go at Fencing when we had a visit from a



Leader from another Scout Troop which was thoroughly enjoyed by everyone. The Cubs had an amazing evening when Gemini Dance came in to do some Street Dance/Hip Hop with them - they surprised us all with their dancing talents.

Even the snowy weather didn't dampen our spirits and most sections managed to meet and enjoy some snowy activities followed by hot dogs cooked on a nice warm fire afterwards. There has been lots of new starters in all our sections this term and we have been delighted to carry out lots of investiture ceremonies to welcome the young people into Scouting at Totley, meaning that nearly all our sections are full.

The next term will bring lots of exciting activities for all the sections. Later this month the Cubs will be going to Ice Sheffield for an epic sleepover with a chance to ice skate at midnight, the Scouts will be going on a camp over the Easter break and plans for our summer camps are now well under way. We are also looking forward to a County Beaver and Cub Fun Day in June.

*Sue Bridgens, Group Scout Leader*

### Looking ahead - our new Scout Hut

We've been busy at the Scout hut here on Aldam Road. You may or may not be aware that we have a big, well actually huge, challenge ahead of us. We wanted to share this with you and will do over the months and years to come as the work progresses, as we know that the scout group is cherished in the Totley community and that many of the readers will be ex-scouts themselves!

If I can take you back at least 30 years when the scout hut was then a hospital ward/centre and part of the old lodge moor hospital. ...the scouts took over the lease of the pre-fab hut which was deconstructed and moved to this site in the early 1980s, and I think it's fair to say it has seen some use since then, with hundreds if not thousands of our children spending time there (if only the walls could talk). Sadly though, the hut is coming to the end of its life as you can see from the pictures on the right, and it will only be a year or two before it is unusable. The hut will need to be demolished and rebuilt from scratch.

Late last year we set up a new executive committee who are keen to start helping with the planning and fundraising and we currently estimate that the build could total up to £200,000. There are currently 120 children who are part of

one of the scout groups such as Beavers or Cubs, and we really need to enable the rich experiences they gain to continue for generations to come.

The Scout group is very popular and there is often a waiting list to join, and once you are a part of the scouting family it's easy to see why. It enables and supports children to develop skills and gain experiences they wouldn't always get at home or through education, such as team work, and social skills. It embeds an ethos of social responsibility for our future community which is vital and offers the children the opportunity to try new things, build confidence and resilience and self-reliance.

Scouting empowers children and facilitates core values such as Integrity, respect, care, honesty, self-respect and respect for others. It also teaches them to take care of the world we live in by contributing to society in a positive way. It also supports community projects by, for example, supporting local charities and helping with community events; it brings children across the community together, from different schools and backgrounds (Beaver motto: fun and friendship) and is the first link into world outside school. Its inclusive and open to all and allows kids to thrive in a non-school setting and provides a different type of learning.

We are raising awareness of all the things we do and what we hope to achieve, and we hope to bring the community with us. We need your support and you can do this in many ways. The obvious one is through donations which can be made through our site <https://mydonate.bt.com/charities/totleyscoutgroup>



We will also require help with the work, and any support from local businesses and builders is most welcome. You can also fundraise on our behalf and donate through the link above, or anything you can think that will help us raise money and awareness. Finally, any interim support for the hut as it is until we have reached our target to brighten things up!

*Kirstie Stott, Chair, 215th (1st) Totley Scouts*  
07725 033409

## Totley Rise Methodist Church

### Spring at Totley Rise Methodist Church

9.00am Early Services (1st and 3rd Sundays). A quieter, more traditional service.

9.30am (2nd and 4th Sundays) Toddler Praise aimed at the under 5s and their parents/carers

10.30am Mid-morning Service every Sunday. An informal and contemporary service with a monthly Communion

6.30pm Reflective Worship most Sundays. A quieter space for worship and listening to God

9.30 – 10am Tuesday Prayer: every Tuesday. Prayer for the world, community and for healing and wholeness in the Church

### Easter Sunday

April 1st, 10.30 am. He is Risen! Hallelujah!

There is a creche available plus Youth/Junior Church at all morning services.

**Totley Rise Methodist Church welcomes you....** We extend a warm and friendly welcome to you from the community here at Totley Rise Methodist Church.

Everyone is welcome. You are welcome if you are a lifelong follower of Jesus or if you are a seeker, or just starting to wonder.... or if you have just hopped off the bus and you're looking for refreshment for your onward journey.

Come along and meet us at one of our services or group activities.

**Messy Church** at Totley Rise Methodist Church. We hold a Messy Church on a Saturday afternoon most months. Every Messy Church has a particular theme. All are welcome – contact Rachel Wilson on 07912 352543 for more details on themes, etc, or just turn up. Tea and snacks are included.

Messy Church is not just a club for kids to come and do activities – not just a bridge into 'normal' church – not just a social activity for Saturday afternoons. If Messy Church isn't any of these things, then what is it?

Messy Church is an all-age way to help people discover Jesus, not just church families but the whole community. A relatively new concept, it has now spread internationally (Denmark has to call it something else as they don't have a word for messy in their language!). This happy mixture of games, craft activities, food and lively worship, all based on a bible theme, is bringing families together in a new and special way. Churches that have been providing Messy Church are find-

ing that it is creating a new worshipping congregation in its own right. Messy Church is here at Totley Rise.

Come along and give it a try - you won't be disappointed!

**Pushchair Club** Every Thursday afternoon, 1.30pm-3.00pm. Babies and toddlers 0-5 years come together with their carers to play and chat in a Christian atmosphere in the TRM Centre. Contact Rachel, our Family and Children's Worker, on 07912 352543 for more details.

**Little Lights** Wednesdays 1.30pm-2.30pm during term time. A chance for Mums/carers, babies and pre-school children to meet for songs, fun, snacks and crafts all based on a bible story. Contact Rachel on 07912 352543 for more details.

**Meeting Place** Every other Wednesday afternoon, 2.00pm-3.30pm. A Meeting Place at Totley Rise Methodist Church. All parents and carers are welcome with their babies and toddlers. There will be a bible story, singing, prayer and a chat with each other to discuss the challenges of parenting. Tea and coffee will be provided. Please contact Rachel on 07912 352543 for further information.

**Tuesday Ladies** 2nd Tuesday of each month at 8.00pm, Totley Rise Methodist Church Lounge. About 35 ladies consisting of both church and non-church members meet to enjoy speakers or a quiz or beetle drive.



Sometimes the evening includes food such as salmon and strawberries or cheese and biscuits. If you would like more information please call Janet Savage on 0114 2369002.

**Coffee morning** Tuesday, 10 am - 12 noon, TRMC Lounge. Come and meet new and old friends from the community and chat over coffee and biscuits.

**Knit, Natter, Craft and Chatter** Every Tuesday, 12.00noon - 3.00pm, TRMC Centre. They may natter and chatter but they are certainly productive. This busy and friendly group has been a great success. They aim to include more people from the area, even the housebound. Housebound does not mean isolated. The group will happily provide wool, needles and a chat for those who can't travel to the church. Young people are also welcome as part of our community. There are skilful, lovely ladies ready and willing to

help those new to knitting and sewing.

Many charities benefit from the group's work: Butterfly Wings (still-born babies), Sheffield premature baby unit and the Christmas shoebox appeal. Sheffield Royal Society for the Blind have adopted knitted Ellie the elephant as their mascot and have given a certificate of grateful thanks. Members can knit/sew (a sewing machine is available) for their chosen charities.

Maxine, the organiser, says that all the ladies love coming. Men are also welcome. You can stay for as long as you like for up to three hours. We offer tea, coffee, biscuits and, most importantly, friendship.

### Sheffield Citizens Advice Bureau



Every Tuesday, 10 am-12 noon. No appointment needed. Drop-in free confidential advice service. Advice on legal, financial, employment, benefits and any other matters.

**Room Hire** Available Monday to Saturday. We have a variety of rooms for hire, which include the use of kitchen facilities and audio-visual equipment. Please contact the caretaker, Dean Duke, for more information or to make a booking, on 236 0389 or email Dean on deano1972@sky.com. Or visit our website for a booking form and details of room sizes and charges.

**Community Defibrillator at Totley Rise Methodist Church** the Church has been fitted with a public access defibrillator. It is a portable device that can be used by a member of the public to help restart the heart when someone has a cardiac arrest.

Always call 999 and follow the instructions from your local ambulance service. It is really important that the professionals are called and are on their way.

The defibrillator is in a yellow box, attached to the Community Hall, reached via the church car park. It is easily visible from the main road.

**Hear our sermons** If you are unable to come to Totley Rise Methodist Church on a Sunday morning, you can still hear the service as a podcast online. Just visit our website [www.totleyrise.co.uk](http://www.totleyrise.co.uk) and find a selection of recent services at Podomatic Podcast Page.

**For more ongoing events see this issue's Diary, p.34.**





## Transport 17

2018 seems to be racing along, March already!! It means we must have been busy...

Apart from the wintry conditions at the end of February and the beginning of March, the buses have been out and out and about and able to get everyone to their respective clubs. Unfortunately, in January Mike Finn had an accident ice-skating and broke his wrist and two fingers!! Ian, who joined us briefly at the end of last year, returned to help us out along with our brilliant band of volunteers who did extra days and we have managed to cover all the journeys Mike would do. Huge thanks to them all. The pot is now off and we're looking forward to seeing him behind the wheel again and resuming normal service.

We would like to thank the Bradway Discussion Group and Totley URC for their donations which are much appreciated.

Saturday 10th March was our Coffee Morning and launch of the new mini-bus at the Cross Scythes. It was a fantastic morning and there was a great atmosphere. Lots of people turned out to support the event. We decided that we would



*A great Totley turn-out on 10th March!*

have fewer stalls ourselves this time so all those who usually help with the day could come and enjoy a cup of coffee and a chat. The Bottle Bonanza Lucky Dip was such a success at Christmas we decided to repeat it but substitute chocolate for bottles. Thanks to local businesses and individuals we had an amazing selection of Easter items - everything from cream eggs to Thorntons Chocolate Bunnies. Lynn at the Ironing Parlour made us one of her amazing cakes for a Guess the Weight competition. She had hidden items inside it so it got everyone thinking. The weight was 5lb 2oz. Three ladies were invited to have stalls. Katherine Maughan brought her Flamingo Paperie cards and wrapping paper, Lynn Munro had her wonderful hand knitted items and Deb Leonard, who has been a brilliant supporter of us, brought her Tropic Skincare range. It was great to have them there. In all, we made a grand total of £512 which was fantastic. Thanks go to everyone for their support.

The Cross Scythes continues to be a huge help to us. We can't thank them and their staff enough for all they do. In recognition of this we presented them with a watercolour painting of the Cross Scythes produced by our very own local artist, Len Capper.

We were so pleased that Councillor Colin Ross was able to join us for the Bus Launch. The bus had a big ribbon around it donated by the new Hartley's Fruit Cabin at Bradway and Mike Finn had got a unique number plate from Imperial Signs so with that and the balloons it all looked quite festive. Councillor Ross cut the ribbon and said a few words about Transport 17 and its importance in the community. Sadly, Felicity Revill was unable to be there due to illness,

but she is now feeling much better and says thank you for everyone's best wishes. Sandra Longley stepped in and spoke on behalf of Transport 17, thanking everyone for coming along, and continued:

"Today we're celebrating the fact that we have this fantastic bus funded by the Department for Transport Community Minibus Fund. We've been using it for a while and I'm told that it is very comfortable for our passengers which is of course what we want to hear as that is what it is all about. We know



how important it is for our passengers that they can get out to the lunch clubs that we take them to. When Alan Jockell set up Transport 17 in 1984, it was because he knew how important it was to help to get people out of their homes. I think he'd be pleased to know that over 30 years later, we're still helping them to get out and that new buses such as this one mean that we're doing so in comfort! We are thrilled to have Alan's wife Stella with us today. Up until last year she has still been helping out with our fundraising efforts and even now takes a keen interest in what we are doing.

There are a whole host of other people who have been involved with Transport 17 for a long time and it is thanks to their hard work over the years that the organisation is still going strong and we plan to continue this work for many years to come. We wouldn't be able to take anyone anywhere if we didn't have our team of volunteers who give up their time each week to drive the buses and help our passengers. We don't often get a chance to thank them publicly so can we take this opportunity to have a round of applause for our volunteers - some of whom are here today (in blue). This includes Glennis who is our only female volunteer at the moment unless Jenny steps in to cover.

And of course we're taking them to lunch clubs that are also run by volunteers, some of whom are here today. I want to take this opportunity to also put on the record our thanks for all their hard work in running the clubs where so many folk can go to enjoy a hot meal and good company.

This minibus was fully funded by Government money, and we're very thankful for that, but we know that we can't rest in our fundraising work as it'll soon be time to get another bus to replace the older one in our fleet. Mike does a great job in looking after the buses and we know he is rightly proud of the condition that he keeps them in but they do need replacing quite regularly. We've set ourselves a target of £20,000 over the next couple of years for our new minibus fund and events like today are all part of working towards that. So, thank you once again for coming, for your support in organising and running our events and of course in your financial contributions. We couldn't do any of this without you."

Now we're looking forward to our next coffee morning on Saturday 16th June. It seems a long way off but there's no time like the present to get the date in the diary.

Finally: Transport 17 has taken a step into the social media world and now has a Facebook Page!!!!!! Please look us up, like us and follow us.

*Sandra Longley (Chair, Fundraising sub-committee)*





## Ground broken as expansion work begins!

Readers will be aware that planning permission has been granted by the Local Authority for the second

phase of the expansion programme at Totley Primary School to go ahead. This will involve a major period of construction over the coming months in order to convert the site into a two-form entry school to meet the demand for additional school places within the locality. After months of consultations, planning meetings and discussions, it was great to finally see some action!

In spite of some very cold, wintry conditions, the early part of the building work has gone smoothly. During the weekend following the go-ahead from the planning department, safety hoardings were erected around the top and bottom of the school field, to allow for heavy machinery to commence work on preparing the ground for the new MUGA (multi-use games area) and staff car park respectively.



*A view over the junior playground at the back of the school site. New foundations in the process of being excavated for the new classroom block.*

Meanwhile, at the back of school, the junior playground – while still usable – has been reduced in size and fenced off. This has facilitated the creation of a service road in from an entrance in the Baslow Road boundary wall and allowed dig-

-ging equipment to start excavating the ground which will eventually lead onto the preparation of the foundations for the new classroom block adjacent to the hall. Excess earth is being transported from the back of the school to the front, so as to build up the ground at the downhill end of the MUGA so that it lies as flat as possible.

The builders are currently on schedule and have been brilliant in trying to keep noise levels to a minimum during the school day. They have also created a viewing point in the hoarding at the front of the school so that we can keep an eye on what is going on and continue to admire the diggers, of course!



*Our temporary playground space – we are having to be creative in our play at the moment!*

We thank the whole of our school community and, in particular, local residents for being patient and putting up with a degree of disruption both around the school site and on the roads around the school.

We are posting regular updates via a special blog our school website if people are interested in what's going on. This can be accessed at: <http://www.totley.sheffield.sch.uk/blogs/expansion>

*Ben Paxman, Assistant Head Teacher*

**Below and continuing on the next page is an original panorama photograph of pupils and staff of Norwood High School, Totley Brook Road, in 1952, sent in by Roger Hart. Roger says, "if anyone was a pupil there, in 1952, I am happy to give them a print of the photo, if they can help me with the names of the pupils." Please contact Roger via the Totley 'Independent' - postal and email addresses on the back page of this issue.**





## Lay-bys aren't just for roads....

Now we rail users of 2018 finally have the go-ahead for the Hope Valley Capacity Scheme. This will give us much-needed improvements at Dore and Totley railway station, more trains and a nearby 'lay-by' line to allow faster trains to run past slower ones. In all this I was reminded of the tragic accident on the railway at Hope on 3rd September 1925. The three-coach 3 pm fast passenger train from Manchester Central to Sheffield collided head-on with a stationary ballast train, at a speed reckoned to be 45 to 50 mph. The ballast train had been temporarily shunted onto the Manchester to Sheffield line from the line in the opposite direction, to allow another mineral train to pass. As a result, Driver Wolfe (47) and Fireman Henderson (22) from the passenger train, and Platelayer Chapman (20), who was near the ballast train, were killed. The passenger train was hauled by a 1910 built engine number 384, which was scrapped immediately after the accident. The ballast train had goods engine number 3773 in charge - this 1903 vintage locomotive lived to fight another day and was eventually scrapped at Doncaster Works in 1960.

The signalman at Hope signal box had simply forgotten that he had put the ballast train on the line to Sheffield when he signalled the passenger train to run through. He had a reminder device to put on the signal lever to stop him pulling it - but he didn't use it. Some signal boxes didn't have these reminder devices at all, and some used a duster or a piece of stick for the same vital purpose.

At the time, the signalman had been distracted by receiving a telegraph transmission from Sheffield station destined for Bamford, which he then had to pass by phone to Bamford signal box. The Bamford signalman couldn't work the telegraph instrument and this was an unofficial arrangement. The message was about some missing cricket goods sent 20 days earlier, and the Hope signalman said it took him about a minute per word to receive eleven words. Later in 1925 after the official enquiry, the Ministry of Transport Inspector, Lieutenant-Colonel Mount, made his first recommendation that the railway company should be asked for their observations regarding the necessity for adequate lay-by accommodation having regard to the traffic conditions on the Hope Valley line. 93 years later, we may now be getting it!

The funerals of the three men killed all took place on 8th September 1925. Driver Wolfe was taken from his house in Ulverston Road, Woodseats, to Abbey Lane cemetery, with eight passenger train drivers from the Millhouses engine shed acting as bearers. Nearly all the houses in Ulverston Road had their blinds drawn. Local railway staff who could be spared from their duties lined Archer Road. Platelayer James Chapman was taken from his house at Railway Cottages, Grindleford, by hearse to a service at Dore Church, before interment at Abbey Lane. The Chapman family had been particularly unfortunate as James Chapman's uncle had been

killed while at work on the railway in Totley Tunnel, and his seven-year old sister had been knocked down and killed by a motor bike and sidecar on Abbeydale Road South while on her way to Sunday school.

I'm currently writing a book about the history of safety devices used on the railway, and this is how I came across the tragic local story. Safety on the railways is always 'work in progress' but we 21st century passengers can be thankful that it has improved in leaps and bounds since earlier times.

*Mike Peart*

## Councillor Surgeries

### Liberal Democrats:

2nd Monday in month 6-7pm, Totley Library, Baslow Road.

2nd Saturday in month, 10.30am to 12 noon, Dore Old School Hall, Savage Lane, Dore.

### Contact details:

Colin Ross 235 1948  
Email: [colin.ross@sheffield.gov.uk](mailto:colin.ross@sheffield.gov.uk)

Joe Otten 230 3290  
Email: [joe.otten@sheffield.gov.uk](mailto:joe.otten@sheffield.gov.uk)

Martin Smith 0781 205 5346  
Email: [martin.smith@sheffield.gov.uk](mailto:martin.smith@sheffield.gov.uk)

## Coffee, Cakes and Cuttings

This annual fundraising event will be held on

**Saturday 19th May**

**10.00am – 12.00 noon**

**English Martyrs Catholic Church  
Baslow Road, Totley**

**Plants and Bric-a-brac items can be collected in advance. For more information please contact Frank Donnelly on 236 2789**



# All Saints Church

Totley Hall Lane



## The Story of the Three Trees

Once upon a mountain top, three little trees stood and dreamed of what they wanted to become when they grew up. The first little tree looked up at the stars and said: "I want to hold treasure. I want to be covered with gold and filled with precious stones. I'll be the most beautiful treasure chest in the world!" The second little tree looked out at the small stream trickling by on its way to the ocean. "I want to be traveling mighty waters and carrying powerful kings. I'll be the strongest ship in the world!" The third little tree looked down into the valley below where busy men and women worked in a busy town. "I don't want to leave the mountain top at all. I want to grow so tall that when people stop to look at me, they'll raise their eyes to heaven and think of God. I will be the tallest tree in the world."



Years passed. The rain came, the sun shone, and the little trees grew tall. One day three woodcutters climbed the mountain.

The first woodcutter looked at the first tree and said, "This tree is beautiful. It is perfect for me." With a swoop of his shining axe, the first tree fell. "Now I shall be made into a beautiful chest. I shall hold wonderful treasure!" the first tree said. The second woodcutter looked at the second tree and said, "This tree is strong. It is perfect for me." With a swoop of his shining axe, the second tree fell. "Now I shall sail mighty waters!" thought

the second tree. "I shall be a strong ship for mighty kings!" The third tree felt her heart sink when the last woodcutter looked her way. She stood straight and tall and pointed bravely to heaven. But the woodcutter never even looked up. "Any kind of tree will do for me," he muttered. With a swoop of his shining axe, the third tree fell.

The first tree rejoiced when the woodcutter brought her to a carpenter's shop. But the carpenter fashioned the tree into a feedbox for animals. The once beautiful tree was not covered with gold, nor with treasure. She was coated with sawdust and filled with hay for hungry farm animals. The second tree smiled when the woodcutter took her to a shipyard, but no mighty sailing ship was made that day. Instead, the once strong tree was hammered and sawed into a simple fishing boat. She was too small and too weak to sail on an ocean, or even a river; instead, she was taken to a little lake. The third tree was confused when the woodcutter cut her into strong

beams and left her in a lumberyard. "What happened?" the once tall tree wondered. "All I ever wanted was to stay on the

mountain top and point to God..."

Many, many days and night passed. The three trees nearly forgot their dreams. But one night, golden starlight poured over the first tree as a young woman placed her newborn baby in the feedbox. "I wish I could make a cradle for him," her husband whispered. The mother squeezed his hand and smiled as the starlight shone on the smooth and the sturdy wood. "This manger is beautiful," she said. And suddenly the first tree knew he was holding the greatest treasure in the world.

One evening a tired traveler and his friends crowded into the old fishing boat. The traveler fell asleep as the second tree quietly sailed out into the lake. Soon a thundering and thrashing storm arose. The little tree shuddered. She knew she did not have the strength to carry so many passengers safely through with the wind and the rain. The tired man awakened. He stood up, stretched out his hand, and said, "Peace." The storm stopped as quickly as it had begun. And suddenly the second tree knew he was carrying the king of heaven and earth.

One Friday morning, the third tree was startled when her beams were yanked from the forgotten woodpile. She flinched as she was carried through an angry jeering crowd. She shuddered when soldiers nailed a man's hands to her. She felt ugly and harsh and cruel. But on Sunday morning, when the sun rose and the earth tremble with joy beneath her, the third tree knew that God's love had changed everything. It had made the third tree strong. And every time people thought of the third tree, they would think of God. That was better than being the tallest tree in the world.

The next time you feel down because you didn't get what you want, sit tight and be happy because God is thinking of something better to give you.

(Source Unknown)

**Services at All Saints are held every Sunday and Wednesday at 10am. Everyone is most welcome.**

**Happy Easter**

Liz Hayden. Churchwarden

## Holmesfield Church Walking Group

### Lathkill Dale Walk

On Wednesday 25th April at 10am Robin Greetham will lead a walk starting from the Lathkill Hotel at Over Haddon. We will walk up Lathkill Dale then back along a minor road to the pub where we will have lunch (optional).

The cost of the walk is £3 and the proceeds will go to Holmesfield Church maintenance fund. If you wish to come, just turn up on the day at the pub.

The walk is about 4.5 miles.

If you have any queries please phone Robin on 01246412767.



# GWS



Technology Solutions

PC Problems/ Repairs/ Servicing      No Job Too Small  
Wireless & Internet Setup      PC Setup/Data Transfer  
New PC's/ Laptops & Upgrades      Safe PC Disposal  
Reconditioned PC's & Laptops available      Tuition  
Software/Hardware supplied & installed  
For All Your PC Needs

**Guy Senior**

**Phone: 0114 2352662      Mobile: 07890030453**

**Email: [guy@gwstech.co.uk](mailto:guy@gwstech.co.uk)**

**Web: [www.gwstech.co.uk](http://www.gwstech.co.uk)**

GWS, 5 Conalan Avenue, Bradway, Sheffield S17 4PG



## People Keeping Well

Hello to you all! Lots of news to update you with!

### Sporting Memories

'Sporting Memories' is now up and running and already shaping up to be a great group with some exciting possibilities for the future. We had a fantastic two hours with ex-Sheffield Wednesday footballer John Pearson, who I'd like to thank for taking the time to speak with us about his fascinating career. We would love to have you join us anytime, John, as an honorary member, and we look forward to a trip down to Hillsborough to visit and hopefully join in a few of the great activities you have in place. Join us for some laughs, a great quiz and discussion around current sporting events and trips and feel free to bring in your sporting memorabilia to show us. Remember - everyone regardless of age, gender or where you live, is welcome to the group, as long as you're over 50.

It's planned that meetings are held every two weeks on Thursdays, 10am-12pm, at Totley Library - check notice-boards etc for dates!

### Life Stories Group

I'm now very excited to confirm that our new Life Stories sessions will be taking place every other Saturday from the 14th April 2018, at Totley Library between 1pm and 3pm. They will be run by an experienced life stories facilitator. More details will follow but in brief this group is for anyone over 50 who would like the opportunity to work with others to work on group art and craft projects, and also to make new friends and create a life stories book, filled with your memories both past and present. This group will have limited spaces of up to 12 people and will run on a 12 week programme so contact me to ensure your place is secured.

### Target Fitness Classes

There have been lots of enquires in relation to our fitness classes. We are hoping to confirm the venue, start date and times in the next few weeks, and the classes will start shortly after. I will update you with the details as soon as I have them.

### Park Projects - Green Oak Park and Dore Recreational Ground Eco Clean Up

I am pleased to announce that with Spring on its way we are now looking at getting this project up and running. The first meeting was arranged for Saturday the 24th of March 2018, and I'll update you in the next issue of the 'Independent'.

### Table Tennis Sessions

We have been approached to support and assist in setting up a new social and table tennis group which will be held on a Friday evening (venue to be confirmed). This is fantastic for anyone who has decent hand /eye coordination and would like to learn how to play and/or has had previous experience of playing Table Tennis or similar sport. This will not be a competitive group, it's an opportunity for people to come together socially and have a game together whilst enjoying tea and biscuits. This group will be run by a lady who has had a lot of previous experience in running successful table tennis groups in the south of England before moving up to Sheffield a short while ago. Please contact me if you are interested.

### Get Involved Grants

We are in the final planning stages of our application process for small community grants up to £500. We want to allocate funding for existing activities or new activities/projects in Dore and Totley which support the overall aims of the Dore and Totley People Keeping Well (PKW). Please note that funding will be provided in a lump sum to be used for a specific purpose, and not for long term 'staggered' funding. I will send out more details and the application form once we have been signed off to start the process.

As always please feel free to contact me with any questions, ideas or queries!

Joanna Graves, Community Development Worker, Age UK Sheffield Tel: 0114 250 2850  
[www.ageuk.org.uk/sheffield](http://www.ageuk.org.uk/sheffield)

## Letter to the Editor

### Living in Totley

I look forward to reading your magazine and find everything in it very interesting, as I am new to the area and absolutely love it here.

I lived at Banner Cross most of my life, and my friends said "won't you miss Ecclesall Road, the buzz and the shops?" Well, not at all! Totley is beautiful and peaceful and even if there is a bit of litter, overfull dustbins, and muddy grass verges, so what? It's not the council's fault so stop blaming them (apart from the potholes, but that's a different story.)

I have to walk down Green Oak Road to go to the local shops and when I drive down I do notice the churned-up grass verges, and yes, they are disgusting and I feel very sorry for the residents on this road. I was going to write to the council and invite them to walk up or down Green Oak Road and then ask them if they'd like to live with it, then go back to my house for a nice cup of tea and a chat, because we are very friendly here in Totley! I say 'was', because I've noticed that there's a bit of council action happening, so I'll give them another chance.

What I'd like to know is where does all the water come from when it floods in the deep outside the Shepley Spitfire on Mickey Lane? Has it always been like this, and is there a solution? I know we like to moan and complain, but most of the time we ourselves can do something about it.

I was out having a walk with my daughter and her dog, and before we reached the woods, she noticed some dog poo in the middle of the pavement. It was not from her dog, but she got out a plastic bag and picked it up! Good on her! It's our area and we should be proud to live here. I am.

Yours sincerely

Lorna (name and address supplied)

*Totley History Group presents...*

# WINCOBANK

## HILL FORT, HALL & COMMUNITY

A quick trip through 5,000 years of history

*by Penny Rea*

**Wednesday, 25th April 2018**  
**at 7.30 pm in Totley Library**  
**Non-members are welcome**

## TOTLEY & DISTRICT DIARY

- MONDAYS** **COFFEE MORNING**, All Saints Church Hall, 10am-12noon. Transport usually available on request. Tel 236 0872 before 9.45 am.  
**TAI-CHI**, United Reformed Church, Totley Brook Road, 11.30am-12.30pm.  
**RAINBOWS and GUIDES**, All Saints Church Hall, 5.45pm-9pm.  
**SLIMMING WORLD**, Abbeydale Sports Club, 5.30pm and 7.30pm. Tel. Ang Ibbottson on 07772 241711.
- TUESDAYS** **PILATES**, The Old School, Dore, 9.15-10.15am. Phone Teresa Tinklin 07906 312372.  
**BABY TIME**, Totley Library, 1-2pm. A fun music session with songs, rhymes and simple musical instruments for babies aged 0-18months  
**COFFEE MORNING**, Totley Rise Methodist Church Hall, 10am-noon.  
**KNIT, NATTER, CRAFT & CHATTER**, Totley Rise Methodist Church, 12 noon - 3.00pm.  
**CITIZENS ADVICE BUREAU** Drop-in, free, impartial and confidential. Totley Rise Methodist Church, 10am-noon.  
**CRAFT GROUP**, Totley Library, 2pm.  
**JAZZ IN THE AFTERNOON**, 2-4 pm, Totley Rise Methodist Church Schoolroom. A weekly afternoon of all forms of recorded jazz, plus discussion. Tea, coffee and biscuits available.
- WEDNESDAYS** **PILATES CLASSES**, Dore & Totley United Reformed Church, 9.00-10.00am and 10.15-11.15am. Contact Caroline tel: 0781 722 0324, email Carolinenorth1@me.com, www.pilatescarolinenorth.co.uk.  
**COFFEE in the Library**, 10am-11.30am.  
**STORY TIME in the Library**, 10.30-11.30am. Craft activities, songs and a story for pre-school children. Call in at the Library for more information.  
**TODDLER GROUP**, 10am-11.30am, All Saints' Church Hall. Details tel. Katy Maclean 07790 411893.  
**HEALTH WALKS**, 10.30am, Totley Library. Contact Step Out Sheffield on 07505 639524 or email stepoutshf field@gmail.com www.healthwalksinnsheffield.btck.co.uk. For more information see Totley Library item in this issue.  
**MODERN SEQUENCE DANCING**, All Saints Church Hall, 8pm-10pm.  
**CHILDREN'S FITNESS CLASSES** for pre-school girls and boys aged 2-5. Wednesday mornings 9.30 - 10.10am, Abbeydale Sports Club. Free taster sessions. See www.minimovez.com or call Steph on 07838 818743.
- THURSDAYS** **BELROBICS**, United Reformed Church, 9.15-10am, email: jenny@belrobics.co.uk or tel 07816 850132.  
**NCT COFFEE GROUP FOR DORE TOTLEY & BRADWAY**, 10am-noon, for mums & babies/toddlers, various locations. Phone Lucy Street 07837 000405 or email: lucy@streetr.plus.com for further details.  
**ROCKCHOIR**, United Reformed Church, Totley Brook Rd, 11.30 - 1pm. See www.rockchoir.com or call 01252 714276  
**PUSHCHAIR CLUB**, Totley Rise Methodist Church Hall, 1.30-3pm. Tel. 07912 352543 for details.  
**PILATES CLASS** run by qualified Pilates Instructor/Physiotherapist for all abilities and ages. 1.30 - 2.30pm at the United Reformed Church, Totley Brook Road. Call Emer on 07792 422909.

## APRIL

- SUN 8th MINIATURE TRAIN RIDES** Abbeydale Road South. 1pm-5 pm (weather permitting). Car park closes 5pm. £1.50 per ride per person. See www.sheffieldmodelengineers.com/  
**WED 11th TOTLEY MEN'S PROBUS CLUB** 10am Totley Rise Methodist Church. Talk by John Taylor, "So You Think You Are British, Do You?". Visitors Welcome.  
**THURS 12th FRIENDS OF GILLFIELD WOOD** Photography Day in the Wood. Note that registration is necessary as numbers are limited. £3 per family or individual adult. For full details see page 9.  
**TUES 17th TOTLEY TOWNSWOMEN'S GUILD**, Ann Beedham, "Clarion Ramblers". Totley Rise Methodist Church, 10 am.  
**SUN 22nd MINIATURE TRAIN RIDES** Abbeydale Road South. 1pm-5 pm (weather permitting). Car park closes 5pm. £1.50 per ride per person. See www.sheffieldmodelengineers.com/  
**MON 23rd FRIENDS OF GILLFIELD WOOD** AGM followed by talk by Derek Whiteley (Sorby Natural History Society) "Flies Undone". Totley Library, 7.30. For more details see p. 9.  
**WED 25th TOTLEY MEN'S PROBUS CLUB** 10am Totley Rise Methodist Church. Talk by David Templeman, "Lady Arabella Stuart - the Queen That Never Was". Visitors Welcome.  
**WED 25th TOTLEY HISTORY GROUP AGM**, followed by "Wincobank: Hill Fort, Hall and Community: A quick trip through 5,000 years of history" - a talk by Penny Rea. Totley Library, 7.30 pm.  
**SAT 28th FRIENDS OF GILLFIELD WOOD** Bird Walk with Chris Measures. 8am at Scout Hut, Aldam Rd. For more details see p. 9.  
**SUN 29th FRIENDS OF GILLFIELD WOOD** Practical Conservation morning run with the help of Sheffield Council Ranger Service. Meet 10am, Baslow Road bus terminus. For more details see page 9.

## MAY

- SAT 5th FRIENDS OF GILLFIELD WOOD** Moth Trapping with Richard Harris. Details to follow via posters and email.  
**WED 9th TOTLEY MEN'S PROBUS CLUB** 10am Totley Rise Methodist Church. Talk by Pat McLaughlin, "The Romans". Visitors Welcome.  
**SUN 13th MINIATURE TRAIN RIDES** Abbeydale Road South. 1pm-5 pm (weather permitting). Car park closes 5pm. £1.50 per ride per person. See www.sheffieldmodelengineers.com/  
**TUES 15th TOTLEY TOWNSWOMEN'S GUILD**, Keith Whatlin, "History of British Architectural Styles". Totley Rise Methodist Church, 10 am.  
**WED 23rd TOTLEY MEN'S PROBUS CLUB** 10am Totley Rise Methodist Church. Talk by John Doorkamp, "The Journey - the River Danube from Melk to the Black Sea Delta". Visitors Welcome.  
**WED 23rd TOTLEY HISTORY GROUP** "The Tenants and Workers of Abbeydale Hamlet, 1740-1933", a talk by Pauline Burnett. Totley Library, 7.30pm.  
**SUN 27th FRIENDS OF GILLFIELD WOOD** Practical Conservation morning run with the help of Sheffield Council Ranger Service. Meet 10am, Baslow Road bus terminus. For more details see page 9.  
**THURS 31st FRIENDS OF GILLFIELD WOOD** Art in the Wood: an opportunity to look at Gillfield Wood using art materials. "Not a masterclass but a muck-in-and-try way of expressing yourself with pastels, charcoal and water colours". Note that registration is essential. For full details see page 9.

Mark and Sally Fletcher invite you to

**The Grouse Inn**

**Longshaw**

Sheffield S11 7TZ

*Meal times:-*

*Mondays 12.00 to 2.30pm*

*Tuesdays to Friday's 12.00 to 2.30pm and*

*6-30pm to 9-30 pm*

*Saturdays 12.00 to 3.00pm and*

*6.30pm. to 9.00pm (drinks - open all day)*

*Sundays 12.00 to 9.00pm*

**Phone 01433 630 423**





**FREE**  
**Repeat Prescription**  
**Service**

**FREE**  
**Delivery service**

St Luke's

**Totley**   
**Pharmacy**



**CARING FOR SHEFFIELD**

**Totley Pharmacy, 158 Baslow Road, S17 4DR.**  
**Tel : 01142361070 [www.totleypharmacy.co.uk](http://www.totleypharmacy.co.uk)**



# more rehab

Neurological Physiotherapy & Services

**Specialist Adult & Paediatric Neurological Physiotherapy, Occupational Therapy & Speech Therapy.**



Clinic & home visits available - T : 0114 2353 150  
E : [info@morerehab.com](mailto:info@morerehab.com) - W : [www.morerehab.com](http://www.morerehab.com)



**Plumbing & Bathrooms**  
Complete Installation Specialist

[www.A1tilingandplastering.co.uk](http://www.A1tilingandplastering.co.uk)

**Tel - 07738 688 807**

- \* Plumbing Leaks, Bursts & Blockages
- \* Taps, showers, Radiators, Etc
- \* All Tiling And Plastering
- \* Reliable, Fully Insured & Guaranteed
- \* No Job Too Small, NVQ Qualified

**25 Five Trees Ave, Dore, S17 3LW**



**R-Rose & Co**

Chartered Certified Accountants & Business Advisors

Helping small businesses from start up through growth to maturity.  
Tax returns, investigations and more specialist tax planning advice.

**One hour free initial consultation.**

Give us a call if you need any further info on

t: **0114 281 2331**

e: **[info@r-rose.co.uk](mailto:info@r-rose.co.uk)**

w: **[www.r-rose.co.uk](http://www.r-rose.co.uk)**

ACCA



**Matco Heating**  
Gas Services

INSTALLATION - SERVICE - REPAIR

Boiler or Central Heating Faulty? We can Help. **NO FIX NO FEE**

Landlord Checks - Boilers - Fires - Cookers

Call Matt 07975 856 727 for a free no obligation quote  
Over 16 years experience

**Local Gas & Heating Engineer**



**Editor: Phil Harris**  
Tel. 07956 858944 or email:  
[editor@totleyindependent.co.uk](mailto:editor@totleyindependent.co.uk)

**Advertising & Distribution:**  
**John Perkinson**  
Tel. 236 1601 or email:  
[advertising@totleyindependent.co.uk](mailto:advertising@totleyindependent.co.uk)

**Proof readers: Chris & Margaret Spencer**

We welcome items submitted for publication,  
which may be left at or sent to:

**'Totley Independent',**  
**2, Main Avenue, Totley, Sheffield, S17 4FG**  
[www.totleyindependent.co.uk](http://www.totleyindependent.co.uk)

**Printed by PREMIER PRINT DIRECT**  
[www.premierprintgroup.co.uk](http://www.premierprintgroup.co.uk)

## TOTLEY INDEPENDENT for June/July

The next issue of the Totley Independent will be available from the usual distribution points on

**Saturday 2nd June**

**COPY CLOSE DATE for this issue**  
**will be**

**Saturday 12th May**

Published by Totley Independent CIC. Totley Independent is a registered Community Interest Company, number 07750166. We welcome letters about local affairs and will publish as many as possible. Items will not be considered that are submitted anonymously. The views expressed are not necessarily those of the Editor or the editorial staff and must not be attributed to them. © Totley Independent 2018