

Totley Independent

Published continuously since 1977

www.totleyindependent.co.uk

August/September 2017

No. 387

20p



Visitors enjoying the glorious weekend of Totley Open Gardens 2017. For more pictures see page 17.

Standing with our trees

Sally Goldsmith writes: What is happening to street trees in Totley? What are campaigners doing? Are we really 'tree huggers' or 'crazy hippies', as one new Amey worker asked me? When I explained, I think he was satisfied we weren't (though some of us might be). Personally I've never hugged a tree. The campaign includes all kinds of people – pensioners, young families, bank employees and builders – all classes and occupations, keen to protect healthy mature trees. And where a tree is badly diseased, dangerous or irreparably damaging a pavement we do not contest felling. And we love tree planting too!

We are, however, in opposition to the felling of large healthy trees, felling which seems to be sanctioned by the Council and their contractor Amey for reasons which are hard to understand, though ease of road planning and perhaps easier profits seem to be at the heart of it. The criteria for felling is inflexible: other local authorities, the Woodland Trust, Sheffield and Rotherham Wildlife Trust, and Trees for Cities are all incredulous

that Sheffield should be so intransigent, content to see important trees, like a rare Huntingdon Elm in Nether Edge, or our own Vernon Road oak, disappear. Where possible, we advocate engineering solutions which are already within the contract, but which the Council appear not to be using – flexi-paving, gentle ramping and thinner kerbs for example. None of these would cost the Council extra money.

We know that large canopied trees such as limes, planes, ash and oak, as well as being beautiful, help to soak up pollution and improve air quality, mitigate flooding and of course provide a habitat for diverse forms of wildlife. An oak alone can be colonised by hundreds of tiny creatures. A small replacement sapling can take forty years to provide the same benefits as a large mature tree. The Council continue in their intransigence. Their contractor Amey, a huge global Company with headquarters in Spain, is unaccountable to citizens. Our only recourse is to argue with the felling, to find support from residents,

politicians, writers, the press, naturalists, landscape architects, wildlife and landscape organisations – and to hold up felling through action on the street where we can. Meanwhile, we continue to ask the Council to negotiate.

Some people want trees to be felled. None of us want to be at odds with our neighbours, and of course we want the Council to do more to maintain the trees – pruning and pollarding for example. However, the Council do not fell trees because of leaves on the street, bird mess, sticky sap on windscreens – the reasons many put forward for wanting them to go. It's what trees do and if we want their beauty then maybe we have to put up with that – though we do wish the Council would help by doing more clearing up in the Autumn.

Bear in mind that this was written in early July. By the time you read this, more trees may have gone. But as I write, which trees are still at risk locally? Well, the largest trees in Totley are two London planes and an ash (*continued p.3*)

Totley Deli

51-53 Baslow Road, Totley Rise. S17 4DL.

Call 0114 2364238

Enjoy delicious freshly
cooked food in our
NEWLY REFURBISHED
coffee shop

Why not come in and sample our wide range of hot & cold sandwiches and home made produce, freshly made daily to eat in or take away. Cakes, quiches and pies can be made to order if required. All produced from locally sourced suppliers.

- Fresh Roses bread delivered daily & available to order
- Selection of cooked meats sliced to your specification
- Superb selection of fine cheeses, preserves & pickles

Look out for our daily special meals or join us for breakfast.

All available to take away.



If you are having a party or family gathering why not let us take the strain and provide a buffet for you.



Where quality and friendliness count

more rehab

Neurological Physiotherapy & Services

Specialist Adult & Paediatric Neurological Physiotherapy, Occupational Therapy & Speech Therapy.



Clinic & home visits available - T : 0114 2353 150

E : info@morerehab.com - W : www.morerehab.com



Relieve Pain. Restore Movement. Prevent Injuries.

At Activ Physiotherapy we are committed to providing you with the best treatment available in a clean and comfortable environment.

Our qualified and friendly physiotherapists come highly recommended and will ensure you get targeted treatments such as massage, electrotherapy, acupuncture and more.

Established in 2007, we now have clinics in Sheffield, Doncaster, and Hope. Our Totley and Doncaster clinics are equipped with brand-new gym and studio facilities that we use for rehabilitation and Pilates sessions.

We treat:

Back & Neck Pain • Sports Injuries • Trapped Nerves
Muscle & Ligament Strains • Headaches • Women's Health Problems
Jaw & Facial Pain • Arthritis

www.activphysiotherapy.co.uk Call 0114 235 2727

R•Rose&Co

Chartered Certified Accountants & Business Advisors

Helping small businesses from start up through growth to maturity. Tax returns, investigations and more specialist tax planning advice.

One hour free initial consultation.

Give us a call if you need any further info on

t: **0114 281 2331**

e: info@r-rose.co.uk

w: www.r-rose.co.uk

ACCA

Standing with our trees (continued from p.1)

(the latter recommended to be saved by the Council's Independent Tree Panel) on Aldam Road. Only this morning, while I was writing this article, residents alerted each other to an attempted felling there – frantic texts and phone calls, and then all running to stand under a tree before barriers were erected. We were successful, though a small diseased rowan did go. On Aldam Way a graceful twin-trunked alder is beautifully situated on a curve of the road and is loved by at least half the households on the street. A couple of small cherry



Abbeydale Park Rise during attempted felling

trees are listed on Sunnyvale Road – one a poor specimen severely disrupting the pavement, though the other is healthy and supported in its retention by the Independent Tree Panel. On The Grove there are cherry trees, and a lovely ash tree at the far end of the road, none of which have yet had decisions published and we think are safe for the time being – though by the time you read this, they may not be.

So, which have already gone? A cherry on Laverdene Way was recently taken, despite the promise of seven days' grace after the early morning Rustlings Road debacle. (The decisions on Rustlings Road trees, you may remember, were published scarcely an hour before felling.) Even worse though, cherry trees on Greenoak Road were taken before Council decisions on them were even online, despite residents voting in a survey to keep them.



The Vernon Road oak

In Dore, Abbeydale Park Rise has nineteen of its famous large cherry trees, bought by residents forty years ago, on the felling list. Present day residents have had officious letters warning them that their Christmas lights are 'illegal' and must be taken down or they would be taken down. Passers-by and onlookers at an attempted felling were handed intimidatory legal notices. One young mother was in tears. Elsewhere in Dore, we continue to try to protect seven gorgeous limes on Chatsworth Road (two attempted fellings so far thwarted by residents) and to argue against the unbelievable threat to the iconic oak, an ex field-edge tree, on Vernon Road.

Campaigners and residents never know where the next strike is coming, or which new bit of Council spin or legal challenge they will have to respond to. One moment we're tweeting, another we're pursuing the progress (or otherwise) of a Tree Protection Order. We are continually looking out for tree fellers on the prowl to take what they can. It takes its toll emotionally and physically, but every new bit of intransigence on the part of Sheffield City Council just strengthens our resolve. And so far, though smaller trees have gone, the large and beautiful trees have mostly stood firm and rooted, protected by local citizens.

Save Dore, Totley and Bradway Trees has a Facebook Page. Contact us through this if you want to help. The Vernon Road Oak tweets @SAVEDORETREES

A new blog about what we are up to is viewable www.tree-boundblog.wordpress.com

Letter to the Editor

Dear Editor,

Research into Chas. H. Hall's mighty work of 1977, "Sheffield Transport", would suggest that the 'bus shown in the photograph on the front of Issue 386 was one of a batch of AEC Regents, with MCW (Weymann) bodies, delivered to Sheffield Transport in 1935. As these were all disposed of by 1950, I would suggest the photograph dates from the 1940s.

With regards,

John K Savournin (Treasurer at Transport 17)



THE HARDY PLANT SOCIETY South Pennine Group

www.southpenninehps.btck.co.uk

Also see us on Facebook



AUTUMN PLANT SALE 2017

Sheffield Botanical Gardens

Sunday 17th September

11.00 am - 3.00 pm

Wide selection grown by our members.

Free admission : Everyone welcome.

To carry your plants home and to help protect the environment by cutting down on the use of plastics bags, it would be helpful if you would kindly bring your own.



M. Scriven Quality Greengrocer

Supplier to the Catering Trade

Pubs • Clubs • Schools etc
Daily Deliveries • Very Competitive Pricing
Quality Guaranteed
Tel: 0114 2367116

37 Baslow Road • Totley • Sheffield S17 4DL



Got a computer?

Having Problems?

Is it running slow? Stops responding?
Having problems running the latest games
or applications? Broadband installation?

Give me a call!

I'm available for home visits at any time
including evenings and weekends. I can
also suggest upgrades to improve perform-
ance, or even build you a system to your
specific requirements.

Phone: 0114 2472619 Fax: 0870 7060080

Mobile: 078 17464703 Email: service@timbrown.plus.com

Tim Brown

Building,
Installation,
Upgrading and
Troubleshooting
Computer
Systems
Over 25 years
professional
experience

Horizon Electrical

*Faults, Rewires, Sockets, Lights,
Cooker Points, Electrical Showers,
Phone Points, Security Lights*

No job too small

Fully qualified with friendly advice

**Ring Totley 236 4364 or
Mobile 07772 483154**



TOTLEY PRIVATE HIRE

EXECUTIVE CAR TRAVEL



AIRPORTS AND LONG DISTANCE

PROP - PAUL SOUTH

24HR SERVICE

Tel: 0114 2839692

Mobile: 07974 355528

Email: PAUL.SOUTH1@TESCO.NET

PhysioFOCUS

at Totley Rise Dental Practice
85 Baslow Road,
Sheffield, S17 4DP



Physiotherapy treatment available for:

- Back and neck pain
- Sports Injuries
- Sprains and strains
- Joint and muscle pain
- Arthritic pain
- Whiplash
- Repetitive strain injury
- Headaches

Appointments: 0114 2360333

Also available:

- Pilates classes • Pilates 1-2-1
- Golf Fitness Screening
(as used by consultants to UK,
European and Australian PGAs)

For more information please call:

Emer on: 07792 422909

Rachel on: 07956 908454

LIBERTY FOODS

Caterers
Quality Meat Shop
& Fresh Farm Produce

Fresh and Frozen Prepared Meals
Fresh Meat and Poultry
Outside Catering
Home Delivery

253 Baslow Road, Sheffield, S17 4DU

Tel: 0114 2360 583 Mobile: 07801 346 455

Email: dominibower@liberty-foods.co.uk

*One man went to mow...
...but his mower wouldn't go!*

Now is the time to call

Mower Mender

and be ready for the forthcoming growing season
A friendly local business
servicing all makes of
garden machinery

phone: 0114 236 6958

mobile: 0781 2211149

winter
servicing!



Blade Sharpening and
Collections and Delivery Service Available



Totley History Group

Programme 2017

There will be no meeting of the Group in August

27th September: David Templeman, 'The Final Journey:

Mary Queen of Scots'. This talk relates the compelling tale of the events leading up to and including Mary's trial and execution. Mary's courage and conduct come to the fore as she takes her tragic story through Wingfield Manor, Tutbury Castle, Chartley Manor, Texall and culminating in the climax at Fotheringhay Castle where she is tried and executed for High Treason. But was she guilty? That is the question this talk addresses. Totley Library, 7.30.

25th October: The October meeting of the Totley History Group will be an open discussion evening, concentrating on the buildings of Totley. Many changes have taken place. Many houses have been built, and even more have been extended both upwards and more recently outwards.

Not just houses have changed. Pubs have become homes. Some shops have been lost and others have opened.

One very big change was the demolition of Totley Hall College. Did that demolition have an effect on your life? Do you live in a house built on that site? Did your profits fall because you no longer had the business from students?

Please can you search for old photographs or records of your homes or businesses that you would be willing to share?

The meeting will be at Totley Library at 7.30. We look forward to sharing your memories.

Please contact Norman Rolfe on 01142361999 or email n.rolfe@btinternet.com

On the Beat

Hello from Woodseats Police Station. As in my last update we are still fortunate in S17 not to have been part of the recent spate of burglaries in other parts of the city. As I've stated before, the majority of these have been through insecure doors or windows so I don't apologise for quickly repeating my advice to check all your doors and windows advice on leaving the house or even leaving a room.

We have however had a couple of attempted burglaries where eurolocks have been targeted again. Please take a moment to check up on your locks and make sure they are Anti Bump and Snap (ABS).



An ABS lock

If you are unsure there is plenty of information available online or you can contact your local Neighbourhood Watch coordinator who will happily check your current locks and advise on your needs. I can put you in touch with them if you are unsure who to call.

As the holiday season approaches please also have a look

back at advice given previously on security whilst you are away. Contact me if you have any concerns or questions however I can't promise a 24/7 guard duty!

We are experiencing an increase in the number of thefts from motor vehicle again. This mostly involves vans having doors forced or levered and the main target seems to be gardening equipment or tools. Please ensure your vehicle alarms are working and wherever possible remove any equipment if the vehicle is going to be parked overnight. If working at an address try and make sure your van is in sight or at least secured properly. This also applies to cars, where we still have people losing satnavs, mobiles and wallets etc that have been left in sight in their vehicles. Please take a moment to check your vehicle before locking and make sure anything which may tempt thieves is out of sight. I attended a job where a car had been broken into due to a carrier bag being left on the back seat. All it contained was windfall apples which the thieves didn't end up taking but the owners still had to cope with the inconvenience and expense of replacing a window. If you can, empty your glovebox and leave it open so thieves can see at a glance that there is nothing worth taking in it.

As ever I can be contacted via email on adrian.tolson@southyorks.pnn.police.uk or on my work mobile 07787 881945. Please leave your name and number if it goes to voicemail and I'll get back to you when next on duty.

Thanks!

*PCSO 8136 Adrian Tolson
Dore, Totley and Bradway Area Contact
Sheffield SW LPT
Woodseats Police Station
07787 881945*

Litter-picking dates for your diary!

Did you know that animals and birds can suffocate inside plastic bags, can be killed by swallowing balloons, choked or poisoned by cigarette butts, trapped inside cans, bottles and plastic bags, strangled by fishing lines or ribbons or killed by oil that has been poured down the drain?

If you would like to join my wonderful group of volunteer litter pickers to help address these issues we would love to see you!



Forthcoming dates are:

Saturday 30th September, 10 am, starting at Totley Library
Saturday 28th October, 10 am, starting at the main entrance to King Ecgbert School, Totley Brook Road.
Saturday 25th November, 10 am, Totley Library

All equipment provided, but wear sensible clothing/footwear!

If you would like to do something fantastic for Sheffield, our community, environment and wildlife please join us. For more information text Julie Gay on 07775585471

Email ju.gay@btinternet.com
Facebook: Sheffield Litter Pickers

Julie Gay



It's been a very busy term at Totley All Saints – but then, that's just how we like it! From visits and visitors to residential and special curriculum days - it's all been happening at TASS!

TASS Global Week, Green Day and Unicef 'Day for Change'

We recently had our Global Week where each class took a country and learned about various aspects such as arts, culture and food. The countries included Australia (FS2), India (Y1), China (Y2), Russia (Y3), Africa (Y4), USA (Y5) and Japan (Y6). We also invited parents and carers to come and see their children's work in their classrooms after school.

The week culminated in our annual Green Day where our children were divided into their Merit teams and took part in various activities designed by the Eco-Saints and including roasting marshmallows in our Woodland Workshop. Parents and carers sent in lots of 'rubbish' items for activities and we then sent a lot of those back home – all in the name of recycling of course!



As part of the week, we also took part in the Unicef 'Day for Change' which focussed on the rights of all children around the world to have nutritious food to enable them to stay healthy (Article 24). Children were asked to fill an empty food pot to collect small change in and to bring it into school with all donations going to UNICEF. It was a great week and certainly prepares our children to be citizens of the future!

took part in the Unicef 'Day for Change' which focussed on the rights of all children around the world to have nutritious food to enable them to stay healthy (Article 24). Children were asked to fill an empty food pot to collect small change in and to bring it into school with all donations going to UNICEF. It was a great week and certainly prepares our children to be citizens of the future!

Go Team TASS!

This term has been a busy time for sport and PE with children enjoying weekly orienteering and dance workshops led by outside coaches. This has certainly paid off with our orienteering team doing well in competitions. Our Y6 Boys came in first place and the Y5/6 Girls came second amongst 88 teams in events held at Westfield School, and qualified for the final! A massive 'well done!' goes to all those children who took part in the last meeting of South Yorkshire Orienteering Competition. Because all of the competitive races had finished for the season, they ran to collect as many points as possible in 30 minutes over a woodland course near Forge Dam – and in the blistering heat! Congratulations to Jesse Johnson Drought, Jacob Parr, Hugo Deeks, George Brown (all Y4) plus to Kassia Smith who came third place in the Y5 girls!

The City Championships for Athletics also took place at the end of June, seeing our children compete with the elite of the city's primary school athletes! Archie McKay finished a fantastic second place in the Y5 Long Jump and Toby Snowden also finished in second position in the Y6 Long Jump! Our team was especially supportive and included Rafi Day (Y5) helping a runner who had fallen. Thanks to all the parents / carers who supported the event as well as staff who went along - Mr Johnson, Mrs Bell, Mrs Taylor and Miss Morrell!

We also recently held our Mini-Olympics on site (in addition to our Sports Day held earlier in the year at the EIS). Although the weather was quite dull, the event was very well supported by parents, and the children had a great time taking part in a wide variety of sporting activities which showed off their sporting prowess as well as their excellent team work skills.



TASS PTA Fun-d Raisers

The TASS PTA Fun-d Raisers have been very busy this term and carried out the first stage of their regeneration of the school front playgrounds – all with the help of the Mormon Helping Hands Team. Thanks to their hard work, children can now enjoy newly-painted floor activities such as hopscotch and target games, doodle on an immense chalk board, take shade in the newly painted sun house and play pirates on a tyre ship! All in all, the results look fabulous and the children have certainly given it the thumbs up!

If that wasn't enough, the PTA Fun-d Raisers also put on a fantastic Summer Fayre in June. For the second year running it rained, but the team weren't phased at all and just brought most things inside. There were loads of activities for families to enjoy from 'hook a duck' to face painting, plus a tea room and BBQ! Despite the bad weather affecting attendance, they still managed to raise an incredible £1,600 for our school!

Over the year, the PTA Fun-d Raisers have raised an astonishing £7,488 for our children. This has been used to support the school by buying such things as reading books, a scooter shed, playground equipment, the Queens 90th birthday street party and photo, Y6 graduation gowns, Science Week activities, basketball nets plus a Christmas Panto booked for December 2017.

Our PTA Fun-d Raisers never rest and are planning separate discos for the infants and juniors later this term as well as continuing to regenerate our playgrounds.

We're so grateful for all the hard work that they do in supporting the school and we couldn't put on all of the added extras that make school life so special for our children without them! Thanks so much to Kelly Lawton and Sally McCann (Joint Chairs) plus everyone who plays a part in supporting these events!

Future Plans

So what now? Well, we're in the process of getting ready for our summer production, Robin and the Sherwood hoodies, experiencing new year groups as part of 'Passport Day', plus saying goodbye to our amazing Y6s with our graduation event. It's all happening at TASS!

If you want to find out more of the exciting things that are happening at our school, then please visit our website or email us at enquiries@totleyallsaints.sheffield.sch.uk. We'll be so happy to let you know!

Karole Sargent (Proud to be) Head teacher

The Totley Show Committee is proud to announce

Totley Show 2017

A celebration of our community and its talent in aid of local charities

**Saturday 16th September
at Totley Primary School**

Admission to the show will be 50p for adults and 20p for children

***We would be delighted to see you at the show and to receive
your entries using the entry form overleaf***

The Programme

- 8.45 Registration opens
- 10.45 Registration closes
- 11.00 Judging of classes
- 1.30 Doors open to the public**
- 1.45 Official opening of the Show
- 2.00 Prize money may be collected
- 3.00 Raffle draw
- 3.15 Prize giving
- 3.30 Auction of donated items

Refreshments will be available throughout the afternoon together with live music, craft stalls and various children's activities.

The Show will end with a charity auction of donated items conducted by Totley's very own Rony Robinson.

How to Enter the Show

Please feel free to enter as many classes as you like! The entry fee is 50p per entry. You can enter as many entries as you like to each class, but no entry can have been in a previous Totley Show. If your entry doesn't fit one of our classes please still bring it along for display. All entries are left at the show at owner's risk.

First (£3), second (£2) and third (£1) prizes will be awarded in each class, unless there are fewer than three entrants in an adult class in which case only a first prize will be awarded. All children's entries are recognised with a certificate and all children's class winners receive a medal. Cups or trophies are awarded to all section winners. A special trophy is awarded for the 'best in show'.

You may donate your item to be auctioned at the end of the show, but this is not compulsory. Any prize money not collected by 4pm will be put towards next year's show. Thank you for entering!

Notes:

Recipe to be used for Dundee cake class (use a deep 7" tin): 175g/6oz plain flour; 125g/4oz butter/margarine; 125g/4oz soft brown sugar; 2½tsp baking powder; 1 rounded tsp mixed ground spice; 3 eggs, 125g/4oz raisins; 125g/4oz sultanas; 125g/4oz currants; 85g/3oz chopped mixed peel and chopped cherries; 40g/1½oz blanched almonds to decorate.

Recipe to be used for Victoria Sandwich class (use two 7" tins): 125g/4oz Margarine; 125g/4oz self-raising flour; 125g/4oz caster sugar; 2 eggs. Fill with strawberry jam.

Children's handwriting classes (on an A5 page): 6-8s a nursery rhyme, 9-11s a poem, 12-14s: a Shakespeare quote.

Totley Show 2017

Entry Form

Please complete prior to bringing your entries for registration between 8.45 and 10.45am.

Name	
Home phone	
Mobile	
Address	

Please enter the number of items you would like to enter against each class at 50p per entry:

HANDICRAFT SECTION

1	Knitted or crocheted garment	
2	Decorative cushion	
3	Soft toy	
4	Tapestry	
5	Cross stitch	
6	Quilting / patchwork	
7	Greetings card	
8	Open handicraft any medium	

DOMESTIC SECTION

9	A cake (any recipe)	
10	Victoria sandwich (see recipe)	
11	Dundee cake (see recipe)	
12	Carrot cake	
13	5 Biscuits	
14	3 Fruit scones	
15	Loaf of bread	
16	Jam	
17	Lemon curd	
18	Marmalade	
19	Chutney	

FLORAL SECTION

20	Arrangement 18"x10"x10"	
21	3 Cut home grown flowers	
22	Flowering pot plant	

FRESH PRODUCE SECTION

23	4 Eating apples	
24	4 Cooking apples	
25	8 Blackberries	
26	5 or more mixed veg/ salad	
27	3 Courgettes	
28	5 matching runner beans	
29	5 Tomatoes	
30	1 Cucumber	
31	Heaviest marrow	
32	Longest runner bean	
33	3 Eggs from own hens	

ART & SCULPTURE SECTION

34	An original poem	
35	Oil or acrylic painting	
36	Water colour	
37	Sketch in ink or pencil	
38	Upcycled art or sculpture	
39	Open art any medium	
40	Open sculpture any medium	

PHOTOGRAPHY SECTION

41	Black and white	
42	Creative	
43	Wildlife	
44	Landscape	

WOODWORK SECTION

45	Wood turning	
46	Open woodwork	

CHILDREN'S SECTION

47	Vegetable animal (up to 8)	
48	Vegetable animal (9-14)	
49	3 Decorative buns (up to 8)	
50	3 Decorative buns (9 to 14)	
51	3 Biscuits (up to 8)	
52	3 Biscuits (9 to 14)	
53	Decorated gingerbread man	
54	Egg cup flower arrangement	
55	Painting or drawing (up to 5)	
56	Painting or drawing (6-8)	
57	Painting or drawing (9-11)	
58	Painting or drawing (12-14)	
59	Lego model < 25cm sq (5-8)	
60	Lego model < 25cm sq (9-14)	
61	Colour photo (up to 14)	
62	Open any medium (up to 14)	
63	Handwriting (6-8)	
64	Handwriting (9-11)	
65	Handwriting (12-14)	
66	An original poem	

Official use only

Entrant number	
Total number of entries	

Total entry fee due	
Entry fee paid	



Friends of Gillfield Wood

Diary for August and September

August

Saturday 12th: Bird Walk. Wakey, wakey! Rise and shine for an early morning exploration through Gillfield Wood looking for the various birds of summer and, of course, there will be a good chance of seeing what butter-

butterflies are around this year. We will start at a not-so-late 8am at the Scout Hut off Aldam Road. No experience necessary. Bring binoculars and cameras. We advise wearing strong shoes and appropriate clothing. The walk will last 2-3 hours depending on what we find but you can leave whenever you want.

Sunday 20th: Friends of Gillfield Wood practical conservation morning run with the help of the Sheffield Council Ranger Service. Meet 10am at Baslow Road bus terminus. Refreshments, tools, etc. provided. Please wear strong footwear and appropriate clothing. All levels of help required and guidance given. Do also check our website at www.friendsofgillfieldwood.com - any late changes of venue will be published there.

Thursday 24th: Family Activities - Woodland Day. Please join us for an exciting day in Gillfield wood with Ranger Nell Dixon and members of the Friends of Gillfield Wood!

This local family day out for children will involve: Stream Dipping 10am to 12 noon. Discover the minibeasts living in Totley Brook. This is hands-on session using nets for dipping in the brook. Wear wellies or shoes that can go in the water. Bring a towel in case you get splashed!

Dens and Fires 1pm to 3pm If you were stuck in the middle of a forest and had to spend the night there, would you survive? Build your family a shelter and try and make yourselves a fire to cook marshmallows on! Wear sensible shoes and old clothing to work in the wood.

Please register your interest with our FoGW secretary (fogwsecretary@gmail.com). Children must be accompanied by parents or guardians for the whole event. Families can take part in just one or both of these activities. Please bring a packed lunch if you intend to stay for the whole day as well as drinks and snacks to keep you going. The activities are run in partnership with the Tree Charter campaign and are free of charge to families of young children.

Meet at the end of Totley Hall Lane at 9.45 (morning session) and 12.45 (afternoon session).

We are hoping to run a follow-up session in the October half-term - watch this space!

September

Sunday 3rd: Moth Trapping You are welcome to join us as we reveal the moths trapped overnight at a location in Totley Wood. Richard Harris, a member of Sorby and the recorder for Moths and Butterflies, will be there to help us learn which moths have been caught in the light trap.

Meet at the end of Totley Hall Lane at 8.30am. This session will end around 11am. Please be aware that high winds and rain the night before will result in the session being cancelled. If so, we will attempt to run the session the following weekend, Saturday 9th September, same time, same place.

Saturday 16th: The Totley Show. Come and meet members of the Friends of Gillfield Wood. We have much to share of the events undertaken since last year's Show. Can we even entice you to join and get involved with conservation, researching the wood or just come along for talks and walks.

Sunday 17th: Friends of Gillfield Wood practical conservation morning run with the help of the Sheffield Council Ranger Service. Meet 10am at Baslow Road bus terminus. Refreshments, tools, etc. provided. Please wear strong footwear and appropriate clothing. All levels of help required and guidance given. Do also check our website at www.friendsofgillfieldwood.com - any late changes of venue will be published there.

Paul Hancock

Dore Gilbert and Sullivan Society

July 1st and it must be a first for more than July. I picked the first Sungold tomatoes in my greenhouse; the first day lily opened up in the garden; the first morello cherry turned a pale red on our poor little tree and oh! of course it was our first concert of the summer season. Dore Church Hall was full and we played to an enthusiastic audience who, by the sound of it, came to enjoy themselves and by golly they certainly did from the after-show comments we received. Thank you all for making it such an enjoyable evening.

The highlight this year was probably Peter Oxley's and Judy Savournin's rendition of 'Summer Night's from *Grease*. We were all in tucks! Other highlights came from Carolyn Bean, Dick Wells and Kathryn Parkin, the Barbershop Quartet and not forgetting Peter Waring, our pianist who wowed everyone with his Elvis selection. We must also thank Monica Eyley our musical director, an unsung hero. Thank you to all who took part and thanks to everyone who has supported us through the year, without you we would not be here.



Alex Hayward-Brown (left) and Derek Habberjam with 'yet another Flanders and Swann number'!

We have three more concerts to come, raising money for good causes, before rehearsals start for next year's show or should I say "shows", as we will be doing a double bill next April - *The Sorcerer* (a tale of unintended consequences when a love potion is used willy-nilly and one of my favourites), and *Trial By Jury*, a real romp and the only G & S operetta with no spoken libretto. It is a very short piece, only lasting 35 minutes but full of fun the whole time. Don't miss it.

Enjoy your summer. We all hope the weather lives up to expectations and we will see you in December at Dore Methodist Church for our winter concert.

Derek Habberjam.

What's on at the Library



Fantastic Fundraising by Totley Schools!

We're delighted with the support we are getting from the local community to help us keep Totley Library open. In particular, we want to congratulate local children for their fantastic efforts recently in raising funds for the library. Children at both primary schools have been really busy. Totley All Saints School held a cake sale and Totley Primary School held a fundraising challenge over May half term, raising a fantastic amount for the library, with plenty of books read along the way! We are so grateful to the children of both schools for all they have done to help us - it really does make a difference to our being able to keep the library open and improved.

We'd also like to say a big thank you to Little Saints Nursery who are helping us by buying some more books for the younger aged children. These will be available as part of the Orange Sticker scheme in the near future. We are also grateful to a number of other local businesses who support us on an ongoing basis, including the Cross Scythes, the Rendez-Vous café and the Totley branch of the Co-op.

We are just reaching the anniversary of our introduction of the Orange Sticker scheme. In July last year we set up the new scheme - which involves holding a separate collection of books which are owned by and held at just Totley Library. Using new and nearly-new books donated to us, we can offer more recent book titles to our library users. The scheme has been very popular, and we continue to add to our stock of books. Please let us know what you think and tell us of any particular books you would like to see in this scheme.

We continue to organise fund-raising events at the library. Lots of fun was had at the Grease Sing-a-long special showing in June, and we had a really enjoyable Folk evening featuring 'Spoil the Dance' and 'Half a Rake' on Friday July 14th. We're busy making plans for more events in the autumn!

Totley Library Lottery

Thank you also to those of you who support us by being members of the Totley Library Lottery. The lucky winners this month were Jackie Butcher who won first prize with winnings of £93.80 and Christine Dawn, who won the second prize of £23.45! If you would like to enter, you can collect a form at Totley Library.

**Totley
Library
Lottery**

Children's Art Competition 'Mad about Minibeasts' This is for pre-school and school-age children. There are prizes to be won! Entry forms can be collected at the Library front desk - cost 50p per entry. The closing date is August 26th.

Children's Summer Reading Challenge The Library is running the Children's Summer Reading Challenge from Saturday 15th July until Saturday 2nd September. The theme is 'Animal Agents', a detective agency manned by all kinds of clever animals with illustrations by Tony Ross. The challenge is open for all children from 4 to 11 years old. To register go to the desk at the Library and fill out a card. We will also register your child for our Orange Sticker scheme which has lots of new books.

Children are asked to read six books over the holiday period and there will be various rewards to keep them motivated!

The Reading Agency website and the Facebook page will keep you up to date:

<https://readingagency.org.uk/children/quick-guides/sum->

[mer-reading-challenge/](#)

Facebook page: <https://www.facebook.com/SummerReadingChallengeUK/>

Cinema Listings for August and September

Our popular Totley Library Cinema continues with the following showings planned for August and September:

Thursday 31 August at 3pm - Jackie: a searing and intimate portrait of one of the most important and tragic moments in American history, seen through the eyes of the iconic First Lady, then Jacqueline Bouvier Kennedy.

Sunday 17th September at 2.00pm - Beauty and the Beast: Disney's Beauty and the Beast is a live-action re-telling of the studio's animated classic which refashions the classic characters from the tale as old as time for a contemporary audience, staying true to the original music while updating the score with several new songs. Beauty and the Beast is the fantastic journey of Belle (Emma Watson), a bright, beautiful and independent young woman who is taken prisoner by a beast (Dan Stevens) in his castle. Despite her fears, she befriends the castle's enchanted staff and learns to look beyond the Beast's hideous exterior and realize the kind heart and soul of the true Prince within.

Friday 22nd September at 7.30pm - Jackie

Thursday 28th September at 3pm - Hidden Figures: The story of a team of female African-American mathematicians who served a vital role in NASA during the early years of the U.S. space program.

Tickets (entry into raffle draw) Adult - £4.00; Child - £2.50

Isabel Hemmings

Regular events and meetings at the Library

Monday:

French for children - 10 am toddlers and babies; 3.40 reception and Yr 1; 4.10 years 2-4; 4.40 years 5 to 6.
Readers Book Group, every first Monday, 1.30-2.45 pm
Friends of Gillfield Wood, occasional Mondays, 7.30 pm onwards. Talks on local nature and conservation. See posters, the Diary on p.34, or www.friendsofgillfieldwood.com
Councillor Surgery, 2nd Monday of month, 6.00 - 7.00 pm

Tuesday:

Basic ITC Sessions, 10am - 12 noon. To book, phone Heeley Development Trust on 0114 250 0613.
Craft Group, 2.00 - 4.00pm
Poetry Group, last Tuesday in month, 7.00 - 9.00 pm

Wednesday:

Coffee Morning, 10.30 - 12 noon
Toddler Story Time, 10.30 - 11.30 Craft activities, singing and stories.
Health Walk, 10-30 - 12 noon. One short and one longer ranger-led walk, and then tea, coffee and biscuits in library.
Totley History Group, usually last Wednesday of the month, 7.30. Talks on matters of historical interest. Check posters in library, the Independent Diary, or www.totleyhistorygroup.org.uk
Yoga sessions 7 - 8.30 pm, Wednesdays (except the last Wednesday of the month). For more details call Ann Zielonka on 0114 2361585 or 07929736966. Beginners welcome

Councillor Surgeries

Liberal Democrats:

2nd Monday in month 6-7pm, Totley Library, Baslow Road.

2nd Saturday in month, 10.30am to 12 noon, Dore Old School Hall, Savage Lane, Dore.

Contact details:

Colin Ross 235 1948
Email: colin.ross@sheffield.gov.uk

Joe Otten 230 3290
Email: joe.otten@sheffield.gov.uk

Martin Smith 0781 205 5346
Email: martin.smith@sheffield.gov.uk

Chris has Coffee with Lionel Boniface

Parish priests can be shrewd observers of a community; and if they have had experience of contrasted livings during their career, then their measured views of place and people are well worth listening to.

Lionel Boniface came to Totley in retirement, having served in Nottinghamshire and South Yorkshire; and is able to reflect on our community in comparison with (amongst others) Mansfield and Oughtibridge. In these two parishes, great social changes were occurring, as their industrial bases were taken away; and the menfolk having to accept that in many cases their wives were to be the main breadwinners. Lionel talks with affection of the manifest strength of community that there had been, especially in the mining areas...marches, banners, solidarity.



Lionel Boniface

So how has settling in Totley been for him? Lionel sings the praise of a vibrant, engaged place, with a real sense of identity, with a focus round its shops and facilities, retaining its post office, enjoying its cafes and its parks (although is there enough to engage the teenagers, even if the churches together are supporting youth workers?)

The quality of drama on offer via TOADS (who sometimes are indeed authors of their own plays), the accessibility of films in the library, for young and grown-up audiences, the library-based activities and clubs, the health walks: all of these make for a real sense of things happening here; and one can rely on seeing people one knows.

Living in the Green Oak area means that Lionel can easily get out into greenery; and the direct bus line into the city centre means that he can participate in activities in town - he is a keen treble recorder player in a U3A music group who rehearse in a hall in town, and who have given carol concerts at Christmas time. But on the music front, he has been sad that people in Totley have not realized how good the concerts in our own summer music festival have been, staying away and missing some excellent and enjoyable events.

How is our part of town perceived? The view from the centre is, he feels, of a well-heeled area, self sufficient and needing little in the way of support: we are seen as yoked to Dore, and to lack any people in poverty. Yet we are in fact a very varied community, with quite a bit of the area less visible to the casual passer-through, leading to this simple image, and the easy assumption at the centre that we do not need any extra resources.

Having spent a lifetime serving varied communities, Lionel proclaims himself happiest of all here, amid all his engagements....

Before we finish our coffees, I have to ask Lionel about the origin of what to me sounds like a lovely, Norman-French surname, Boniface, which roughly translates as the Maker of Good Things.

He claims that in olden times, this was taken to imply a steward or publican, which had led to good humoured teasing at theological college as he trained for the ministry!

Chris Spencer (Lionel and Chris met for the TI interview at Rendezvous on Baslow Road)

Holmesfield Church Walking Group

Barlow Walk

On Wednesday 30th August at 10 am Mike Ibbotson will lead a walk starting from the village hall car-park in Barlow. We will walk to Linacre Woods and Reservoir, returning to Hackney house cafe for lunch (optional). The cost of the walk is £3 and the proceeds will go to Holmesfield Church maintenance fund.

If you wish to come, just turn up on the day. The walk is approximately 4.5 miles long.

If you have any queries please phone Robin on 01246 412767

A new way to see the doctor?

Britons are rightly proud of the NHS but as resources are stretched ever further, it is becoming impossible for the NHS to meet every need in a timely manner. One of the problems can be trying to get an appointment with a GP quickly even though locally we have two very good GP services. That's where a new service - Push Doctor - hopes to make a difference.

Instead of having to register with a practice, patients can book a video conference with a GP. Whether you're unwell, looking to improve your fitness, have a specific aspiration in mind, or just have a quick question - you can talk face-to-face with a professional, caring UK doctor in as little as six minutes. After the consultation, if you need a prescription it will be faxed to us and you can collect it from us straight away. So you could have your condition assessed and receive your medication within 15 minutes of starting the process. You can even have your consultation while at work and collect your prescription on the way home or have someone collect it for you. This means it would be a lot quicker than a trip to a walk-in centre with no need to travel either. Patients can access the service using the Push Doctor website or app. The cost for the service is £19 for each ten-minute slot.

Three years after launching, Push Doctor now claims 7,000 registered GPs have signed up to the service, and thousands of appointment hours have been booked and fulfilled. We have recently started working with Push Doctor. So far we - and our patients who have used the service - have found it to be efficient and useful. While I think we are very fortunate in Totley to have two wonderful and efficient GP surgeries who we work very well with, I believe this can still be a useful additional service for us to provide for some patients, especially those whose work commitments can reduce the time they have available to see their GP. Please pop in or give us a call for more information about this new service.



Taj Singh, Totley Pharmacy

Totley All Saints School Reunion

At the Cross Scythes Hotel

Monday 25th September from 2.00pm

For pupils who left around 1940s to mid - 1950s

We look forward to meeting you!

Forty Years On!

by Jack and Rony!

A late summer quiz for the dog days! With deliberate added mistakes!

1 We all know that the present Head of All Saints School is Mrs Sargent. But who was the little man with the big striped suit, the dropping aitches, the bottle of Owbridge's Lung Tonic and the Triumph Mayflower parked in our playground so we couldn't play football and kiss catch, in 1951?

- A Mr Milly.
- B Mr Mandy.
- C Mr Molly.
- D Mr Smellor.

2 Totley County School was built like it was so it could be a nuclear shelter when the world ended in 1950. But who of these four were members of its governing body in 1990?

- A Miss Julie Frith
- B Mr Les Firth
- C Mrs Frith
- D Mr Ken Firth

3 We all remember the fish and chip shop on the Rise, when it was near where the shoe shop is now, and was run by a man who used to be in the Socialist Sunday School with my Mum in Woodseats in 1916. But how much would you pay for cod and chips in the new fish and chip shop on the Rise tonight, in 2017?

4 What would Martin Scriven be buying if he went in Vic Martin's shop in 1980?

- A Reynolds News.
- B The News Chronicle.
- C A Fruity Magazine.
- D The Star.

5 It was, in 1947, a Community Centre that had a Holiday Section that went with George Loukes to Prestatyn; a Drama Section that did for Night Must Fall; a Youth Section with a May Queen called Pat Needham; and a lake where you could kiss. But when had John Roberts bought it and made it Ab-beydale Hall?

- A 1851
- B 1852
- C 1853
- D 1854

6 We all know Totley is the number one place to live. But what do these numbers mean in Totley?
(Clue - one of them is my Mum's S and E dividend number that you had to remember every time you went shopping; and not mix up with our new phone number (which is another of them) like Our Dave did in 1953.)

- A 17.
- B 24.
- C 45.
- D 97.
- E 218.
- F 35448.
- G 74365.

7 Where are these now?

- A The streetlamp with the skull and crossbones.
- B The Flu.
- C The air raid shelter where you weren't allowed in till you'd failed the scholarship and then not even then.
- D The old folks' home near the prefabs.
- E The prefabs near the old folks' home.

8 Opposite the Spitfire (1971), there used to be the red brick Brook Terrace where Mrs Kendrick lived at one end (1950). But who was the Harry who honeymooned at the other end, nearly gave his name to the pub (1971), but invented stainless steel instead (1913)?

- A Harry Freeman.
- B Harry Hanson.
- C Harry Houdini.
- D Harry Brearley.

9 My Aunt Olwen (1907) used to cut women's hair for Mrs Harper where Dr. Pressley now dishes out our pills and looks at our bottoms. But who is the odd man out here?

- A Monty.
- B Mr Harper.
- C Don Chambers.
- D Mick Hurst's Dad.

10 We all remember the Mrs Spring, Quality Fish and Alf - but where was Janet Ryalls's shop in the year the Totley Independent was born (1977)?

- A In the Chemist's next to the doctor's at the top of Mickley.
- B Opposite Steph and Eric on the other side of the road but a bit to the left.
- C At the other end from where OH King was but isn't any more.

11 Totley Library - the present one with the sliding doors that won't slide properly - started in 1974. How many books were borrowed per year then?

- A 196,056.
- B 74,365.
- C 35,448.
- D Other.

12 Totley Hall started as Totley Hall in 1625 so why, when it became the domestic science teachers' college after the War, didn't the students all get frostbite in the winter of 1947?

- A They burned wood from the Wood.
- B Students know how to keep each other warm.
- C Students didn't enrol till 1948.

13 Four questions to keep you awake for the next forty years.

- A There was an All Saints' Church School before there was an All Saints' Church. How could there have been?
- B What happened to Miss Freeborough? And Miss Goldsborough, come to that?
- C Why can't anyone remember what the White Line is called?
- D Mike Williamson, Totley hero, last seen in public being Harry Brearly in a community play up the White Line, and remembering his lines (unlike some), wrote a lovely front page article in the last Totley Independent. So why is Totley still not independent?

14 There used to be another Rendezvous cafe in Totley before the present Rendezvous cafe in Totley, now next to the Co Op. The old one used to sell Kunzle Cakes. But where?

- A The Quadrant.
- B The Rise.
- C The Grove.
- D The Crescent.

And that's it folks! Strive for excellence! Wuff for now!

Answers on page 18!

Jack n Rony



Transport 17

We seem to be enjoying some wonderful weather in between the downpours!! Just hope it isn't wearing you all out. It has been a fairly quiet couple of months with everything running very smoothly. We had a

good coffee morning on July 1 although not as many people came as usual. We managed to raise £431.90, plus £45 as a donation from Debs Leonard who sold Tropic cosmetic products on the day. There were some lovely donations from numerous companies throughout the area and I would like to take this opportunity to thank you all. You helped us to raise £135, which is a very good result. Thanks also go to the staff at the Cross Scythes who provided some excellent cakes, coffee and tea - very yummy! And last but not least a big thanks to all our volunteers.

We also launched our raffle for "Flight for Two" tickets - there are 100 tickets at 5 pounds each and we sold 16 on the day. The winner will be able to book a flight for two at a time that is convenient to them and to the pilot. We will be drawing the raffle on September 30 at the Cross Scythes at 10:30am.

You will next see us at the Totley Show, where I hope I will be in one piece, unlike last year when my gearbox packed up on me!! Our Christmas Fair has been moved to Saturday, November 25, at 10am at the Cross Scythes. We are hoping that the year will give us a good boost in raising funds for our next new bus. At £55,000 each they take a lot of hard work!

Of course, we also need to recruit some new volunteers, as we are struggling at times to provide a reliable and efficient service. If you can spare us as little as four to six hours per week, we would welcome you with open arms! Please give us a try!

See you at the Totley show,

Felicity Revill

Physiotherapy clinic celebrates 10 years

A thriving Physiotherapy business is celebrating ten successful years. Activ Physiotherapy, based locally at clinics in both Totley and Bradway, has grown considerably since it was founded in 2007 and offers a wide variety of assessments, screenings and treatments.

Activ Physiotherapy is owned and run by Andrew Okwera, Clare Firth and Georgina Hollinrake who are all thrilled that their tenth anniversary has coincided with the recent launch of a smart new practice at 88 Baslow Road, Totley.

Originally launched by Andy as a specialist sports injury clinic in a rented room, he joined forces with Clare, who had started Bradway physiotherapy clinic at a similar time and Georgina at a later date. Since then the business has grown to incorporate four busy clinics with a team of seven additional physiotherapists, three podiatrists, two sports massage therapists and three admin staff.

The development of the business means it can now offer clients a much wider range of treatments, with extended hours including evenings and weekends. Explained Andy: "We have treatments available for back and neck pain, trapped nerves, muscle and ligament strains, women's health issues and arthritis. We have specialists in sports injuries and massage, cupping, acupuncture, post-operative rehabilitation, work-station assessments, physio in the workplace and Pilates. We also offer bike-fit and golf-fit assessments, physio in the home and MOTs for the elderly."

Clare adds: "The business has a friendly, family atmosphere and by sharing our expertise and skills we can offer a comprehensive service to our clients. We are proud of our reputation and the fact that almost 50 per cent of patients who come to our clinics have been recommended by word of mouth."



Left to right: Clare Firth, Andy Okwera, and Georgina Hollinrake

Appointments can be made six days a week on 0114 2352727 or at info@activphysiotherapy.co.uk. In addition to clinics at Totley and Bradway, Activ Physiotherapy also operates at Woodfield in Doncaster and the village of Hope in the Peak District.

Totley Show 2017

Saturday 16th September 2017

Totley Primary School

Please email h.moran2653@gmail.com if you can help us to set up on the evening of Friday 15th September and/or lend a hand with refreshments, stewarding and carpark management on the day. Just an hour of your time will help.

We are pleased to confirm that Junior Vice Presidents from the two primary schools will be helping to award the prizes.

Have a look at the Entry Form and Classes printed in this issue of the Totley Independent and note the six new categories:

- No. 9. A cake (any recipe)
- No. 26. 5 or more mixed vegetables/salad
- No. 34. An original poem
- No. 46. Open woodwork
- Children's Section
- No. 53. A decorated gingerbread man
- No. 66. An original poem

Rony Robinson will be opening the event at 1.45pm with the Seven Hills Quartet and the Rock Choir entertaining us.

Come and enjoy the community spirit, browse the stalls and support the talents of Totley folk! Lots of fun and games for the children - a true family event!

Hetty Moran, Chairman, Totley Show
h.moran2653@gmail.com

Road Traffic News

It's been reported by the police that in one week in July, there were 101 road traffic offences committed on Baslow Road in just 4.75 hours!

70% of these involved speeds of above 40 mph, though there were none above 50 mph.

Roger Hart

Gardening Tips for August and September

It's raining again, though the gardens do need the water. I was planning to get ready for the Open Gardens weekend – we have quite a bit of tidying up to do – the paths need clearing, the veg beds need weeding and we must make a good show after all that preaching I do in the TI!

The vegetables raised beds are looking good and sweetcorn is growing well. I think I mentioned in the last issue that it's a first for me, and it looks good. I have quite a lot of catch cropping going on – that is growing fast growing crop (like lettuce and radish) in between the slower crops.

We went to the RHS Chatsworth show on the final day. I felt sorry for the folks who went earlier as it was quite a washout for them. We were very lucky as we were able to see most things. There was quite a lot of mud about but we enjoyed it (it cools the blood you know!). We saw the well dressings – it always amazes me how they achieve such detail with a lot of petals, mosses, roots and patience. The school section was interesting: the children were there to tell us how they made the exhibits, and it was nice to see the enthusiasm they had.

The two bridges were good. One was a bit wobbly but was a good thing as it kept the flow of people moving. The floral one must have taken a lot of people quite a time to make such a display of flowers, leaves etc. The floral marquees were very spectacular with the large mobile hanging displays and the superb flower arrangements.

We bought a couple of very nice clematis plants – I had to make a temporary place for them which looks like a memorial plot. I will move them to a more permanent site when some of the perennials have finished and we can see a bit of earth near the choice. Christine enjoyed a short snooze on a £4000 garden swing seat, very nice. There was plenty of seating, and resting places, we had a lovely (expensive) coffee in the hazy sunshine.... we enjoyed the day and it started to rain just as we were leaving. The show will be there next year and we will be looking forward to that.

I am trying to reinstall the solar irrigation system in the large greenhouse. It was working well last season but when I took it out of storage it did not perform as it should. I had a word with the company, 'Irrigatia', and they were very helpful. They sent me a new PCB but he did not cure the fault. They told me to send it back, and I was hoping to get it back in time to show how it worked to the people who visited our open garden, but it did not arrive. It's a great idea – it uses water from the water butts, the solar panel tops up the battery which drives a small pump which feeds the plants via a drip feed system

The weather for the two Open Garden days was really good. We had about 100 visitors. They kept us very busy – they were very keen gardeners, interested in what we were doing to the garden. One person spotted the desfontania bush which appeared in the garden very mysteriously a few years ago (we can't remember planting it). The lady told us that it has another name – New Zealand Holly. She told us it flowers in their winter, hence the flowers in our summer – you learn something every day! At the end of the two days we were exhausted, so on Monday we had a relaxing day visiting relations and we also went to the Dukeries garden centre, had a relaxing lunch, and bought my birthday present – a hose reel!

The irrigation system I am installing in the raised vegetable patches is coming along nicely. I hope it will cut down the time it takes to water the garden. It will use water from the water butts and also from the mains if the butts are empty. The tomatoes and cucumbers are coming good – we have had a few and are looking forward to salad days.....

August

Flowers: Give flowers a good general fertiliser regularly. This will pay dividends in healthy plants and better blooms, and sweet peas, dahlias, and chrysanthemums especially benefit. Stake the taller plants as they grow. Cut down lupins and delphiniums as they finish flowering unless you are collecting seeds from them.

Watch out for the usual pests – aphids, earwigs, caterpillars and slugs – and deal with them as soon as they are seen.

Sow forget-me-nots, brompton stocks, pansies and violas for planting in autumn or spring. Plant out crocus, narcissus, and snowdrops if you want to naturalise them.

Plant up any empty window boxes or tubs with bulbs. Take cuttings of pinks, phlox and penstemons. Keep picking sweet peas off to encourage more flowers. When cutting gladioli leave some foliage so as not to starve the bulbs.

Vegetables: Give outdoor tomatoes and cucumbers a liquid feed. Give the onions (which you are growing for the show!) special attention! Liquid feed regularly and do not let them dry out until the leaves start to yellow a bit, then bend over the leaves to encourage the bulbs to swell, and then stop watering.

Marrows like plenty of water and a high potash feed, and don't forget to pollinate by hand if insects are scarce. Slip a piece of board under them to keep them clean. Pick runner beans regularly, keeping an eye out for the largest (ready for the show!) and cut cucumbers and marrows as soon as they are ready – do not leave on the plant.

Take cuttings of herbs – rosemary, sage, mint, etc – and root in open ground or under a frame.

Trees, Shrubs and Fruit: Thin out fruit on apples and pears, tie in blackberry canes, clean up and clip over strawberry beds once the fruiting has finished. Use nets to protect

autumn fruiting raspberries and strawberries. Plant out strawberry runners for an early crop next year – these need to be covered by a cloche from December to February. Summer prune apple, pear, peach, plum, and blackcurrants; cut out raspberry canes which have finished fruiting to about 4 to 6 inches above ground, and mulch over the area to prevent the roots drying out.

Cuttings can be taken off many shrubs such as buddleia, hydrangea, and viburnum.

Cuttings of camellia, jasmine and honeysuckle should be planted in warmth.

Prune jasmine, wisteria, clematis and mock orange when they have finished flowering.

Greenhouse and Indoor Plants: Shade water frequently and give liquid feed. Spray with water in the mornings (except hairy-leaved plants). Take cuttings from fuchsias, busy lizzies, hydrangeas, geraniums, plumbago etc. Pot up hyacinth and freesia bulbs for Christmas – put them in a cool dark place until the shoots show.

Lawns: Prepare any new areas ready for sowing at the end of August, and set your lawn mower higher in drought conditions to conserve moisture. Rake regularly.



buddleia

September

Flowers: Keep up with the dead-heading of flowers, as this prevents moulds from forming and spoiling later flowers. Take some cuttings of lavender now - they root easily outdoors in a sheltered spot. Put them in a shallow trench to which plenty of sharp sand has been added.

Reduce the growth of herbaceous plants which have finished flowering, but don't overdo it! Stake up plants that might be in danger of rocking or breaking when the winds pick up. Take cuttings from violas, insert non-flowering shoots in a sandy soil and put them in the cold frame. In fact there are lots of plants which can be propagated this way - penstemon, calceolaria, honey-suckle, potentilla, weigela etc.

Winter flowering pansies may be producing a few flowers by now, if they are, it will pay off later to nip these flowers off now - the plants will be stronger before the winter sets in. Plant hardy primula plants, they will make better plants prior to winter. Plant out bulbs and corms and tubers in beds and borders to flower next spring.

September is the month when mildew can be a real nuisance so try to deal with it as soon as it is seen - a good fungicide will help. Pot up hyacinths, tulips, narcissi for forcing, keep them as cool as possible (48 deg F/9 deg. C) for the first 8-12 weeks. This can be achieved by covering them with 3-4 inches of moist peat in a sheltered north facing corner. If the pots are not drained, they should be kept covered from rain etc.

Towards the end of the month pot up geranium, fuchsia, begonias which were outdoors etc., which you want to protect over winter: this must be done before the first frosts.

Vegetables: Gather french and runner beans regularly. Never leave any pods on the plants to become old and stringy unless they are required for seed (or you're entering the longest runner bean at the show). Earth up celery a little at a time. Prepare ground ready for planting spring cabbage later in the month. Marrows can be stored if there are too many for immediate use - hang them in nets or old nylons in a frost free but cool place. I put collars around my leeks at this time to help the blanching process; I find it cleaner than earthing them up, though a little earthing on the outside of the collar helps to keep them stable.

When the stem of main crop potatoes is set that is it cannot be easily rubbed off by pressure with the thumb, this is a sign that they are ready for lifting. Keep a weather eye out for warnings of frost so that outdoor tomatoes and marrows can be picked before they are ruined. Lift some parsley seedlings and transplant them into a frame in good soil. They will provide pickings throughout the winter if you use the lights to protect from frost.

Trees, Shrubs and Fruit: Deadheading is the order of the day especially for roses; you should get a late flush of flowers if you have kept up with the job. Prepare ground ready for planting evergreens, heathers and conifers. Always keep newly planted trees & shrubs well watered. Give new conifers a treat by spraying them on warm, dry, windy days.

Take cuttings of shrubs and climbers, root in a cold frame or indoors. Cover autumn fruiting strawberries 'with cloches. Prepare your storage area for apples and pears in a cool airy place. Place grease bands round fruit trees especially apples. Unwanted laterals should be removed from peaches and nectarines for the last time.

Greenhouse and Indoor Plants: Gradually decrease watering all round and dry off tuberous begonias, cacti, gloxinia, clivias etc. Feed plants in flower such as African violets, begonias, bush violets, chrysanthemums. As flowering finishes, discard summer annuals which have been used as pot plants.

Disbud carnations and chrysanthemums. Bring indoors tender plants which have been enjoying their holiday outdoors during the summer. Re-pot arum lilies to flower at Easter. If you want a bit of greenhouse colour in the spring, sow a few annuals such as clarkia godetia, or perhaps a few snaps. Most pot plants will stand a few cuttings taken at this time.

Pot up freesias using 5" pots; put 6 to 8 bulbs in each. Give ferns a feed of very weak liquid manure. As I always say, but

it always needs repeating - watch the ventilation; close up side vents until spring. Wash off any shading except where you are growing shade-loving plants of course. Discontinue spraying and damping down.

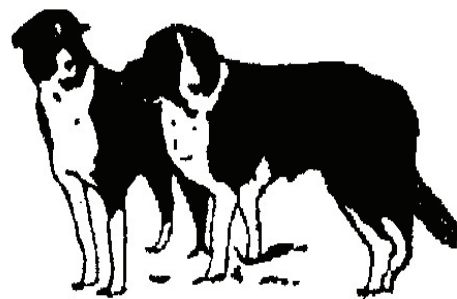
Lawns: Continue regular mowing and raking. Give lawns a treat by scarifying, spiking and a top dressing of sieved potting compost. You could mix in some autumn lawn food for good measure. September is a good time to sow or turf a new lawn. I look forward to seeing you at the Totley Show.

**Cheerio for now,
Tom**

Longshaw Sheep Dog Trials Association

www.longshawsheepdog.co.uk

Longshaw Sheep Dog Trials will take place on 7th, 8th and 9th September on Longshaw Pastures in front of Longshaw Lodge, near Grindleford, starting at 7.30am each morning. On 7th and 8th there will be open class sheep dog trials with many of the "One Man and His Dog" competitors.



3.30pm on 7th: parade of local hounds courtesy of the Barlow Hounds, Pennine Foxhounds, High Peak Harriers and the Ecclesfield Beagles.

Following the local class sheep dog trial on Saturday 9th the Longshaw Fell Race is to be run. Starting at approx. 10.30am, this is open to all adults and is entered on the field. Following the start of the fell race there will be a demonstration of dog obedience and agility.

Starting at approximately 12.30 on Saturday 9th the trials culminate in a double gather championship, which consists of the 8 highest pointed runs from both Thursday and Friday, when the winner will take home the prestigious Longshaw Championship silver tea pot sponsored by Taylor & Emmet LLP.

Entrance charges: £5.00 per adult per day, children free. Free parking. For further information please contact the Secretary, Mrs. Sheila Humphreys, MBE on 01433 651852, or e-mail lsda@talktalk.net

There will be a licensed bar, hot and cold food and drinks, and ice cream available. The magnificent array of trophies will be on display, so please come and join us for a day on the moors to see some of the wisest dogs in the world. We look forward to meeting you.



Moorland Matured Beef and Lamb

Call Liz or Nick Denniff on 01142 899359 or 07905596851

info@moorlandmeat.co.uk

Our Services

- Plastering
- Rendering
- Monocouche Rendering (Colour)
- Acrylic / Silicone Rendering (Colour)
- Waterproof Rendering
- Insurance repairs
- Internal & External Wall Insulation

We Offer

- Manufacturers Guarantees
- Applicator Guarantees
- FREE 2 Year Crack Repair Guarantees



07849 946 223

0114 437 2004

Approved Applicators



Visit Website : www.MAC-Plastering.com



GWS

Technology Solutions



PC Problems/ Repairs/ Servicing No Job Too Small
Wireless & Internet Setup PC Setup/Data Transfer
New PC's/ Laptops & Upgrades Safe PC Disposal
Reconditioned PC's & Laptops available Tuition
Software/Hardware supplied & installed
For All Your PC Needs

Guy Senior

Phone: 0114 2352662 Mobile: 07890030453

Email: guy@gwstech.co.uk

Web: www.gwstech.co.uk

GWS, 5 Conalan Avenue, Bradway, Sheffield S17 4PG

Home Instead
SENIOR CARE
To us, it's personal.



Are poor standards of care making you worried about your loved one?

Worried that your loved one isn't receiving the best care possible?

Home Instead Senior Care could be the answer to your worries! We focus on providing care of the highest quality to all of our lovely clients

- Companionship, Home Help and Personal Care Services
- 2 to 24 hours calls
- We match our client and carers based on personality

We employ, train and mentor our staff to ensure your loved one feels like they have someone they can rely on to help them remain independent in their own home.

Call Now for a FREE Care Consultation 0114 250 7709

www.homeinstead.co.uk/sheffieldsouth

6 Shirley House, 31 Psalter Lane, Sheffield, S11 8YL

Piano/Keyboard~Guitar~Singing~Flute
Theory & GCSE Coaching

MUSIC TUITION

SOUTH - WEST SHEFFIELD

Experienced & enthusiastic tutors

All styles, all ages - beginners welcome
Exam work or just for fun!

Please contact:

KARIN FINNEY

0114 258 3397 ~ 07854 747153

notetokarin@hotmail.com

**THE ELECTRICAL AND
HARDWARE SHOP**

SERVING THE S17 AREA

Large range of DIY & Hardware

TOOL REPAIRS AND BLADE SHARPENING

Hand Made at The Heatherfield

Side entrance 191-193 Baslow Road, Totley.

wheelchair access - free customer car park

Opening hours: 9am to 5pm Tues to Fri (12.30 - 1.30 lunch)

9am to 1pm Sat. Tel 235-1444.



Totley Open Gardens 2017



Longshaw Bee Safari!

Longshaw recently held its first ever 'bee safari' led by the Bumblebee Conservation Trust in its new Woodcroft Hay Meadow by the site's car park. But before the event, bee experts were surprised to see a rare 'bilberry bumblebee' spurning the meadows to feed on wild flowers in the car park verge.

"We found six species of bumblebee in a small patch of verge, which shows how important these places are," said Rhodri Green who works on the new Heritage Lottery Funded 'Pollinating the Peak' project for the Bumblebee Conservation Trust. "Many people are familiar with the problems facing the honeybee, but not so many people know a lot about our wild bees," he said. Pollinating the Peak is hosting a series of events this summer, with a special focus on the orange and yellow striped bilberry bumblebee, a Peak District National Park priority moorland species.

In the Peak District, wildflower meadows declined by 75% between the 1980s and 1990s, while, around Europe, over a third of bee species are in serious decline. All of which has implications for our own food, said Rachel Bennett, lead National Trust ranger at Longshaw.

"The loss of hay meadows is one reason British bees have been declining. Many British crops only flower at certain times of year, but hay meadows flower all spring and summer, so bees can refuel there at any time. We need meadows so we have healthy populations of pollinators like bees and butterflies that then go and pollinate our own crops and fruit trees.

In the past farmers would allow grasses and wild flowers to grow in fields with poor soil, with the resulting hay gathered later in the year to feed cattle and sheep over the winter. Adding fertiliser more recently improved the soil for higher grass yields, but led to fewer wild flowers. Now environmental stewardship grants can help manage meadows more traditionally again, bringing wildlife back to our fields. "The flowers are food for bees, the bees are food for birds, which are then food for foxes and birds of prey," said Rachel, adding that Longshaw's owls and kestrels are producing more chicks, thanks to the food they find in the meadows.

An example is a monitored kestrel nest at Longshaw, which has produced nine chicks over the last two years, an unusually high birth rate showing there's plenty of food for baby kestrels, with nest of barn and tawny owls also doing well this year. "Traditional hay meadows are like jungles to children, who get a real sense of wonder as they walk through next to bugs and bees and butterflies. In our fields you might even see a vole, or a kestrel hunting for one if you're really lucky," she said.

For more information: www.nationaltrust.org.uk/longshaw

www.bumblebeeconservation.org/pollinating-the-peak



Sally Cuckney sweeping for bees in the small car park

Recently Spotted....



Julia and Jamie from Totley Co-op join the Totley Litter-picking group. They removed three bags of rubbish from the streets!

Answers to Jack and Rony's late summer quiz for the dog days!

- 1 D
- 2 B D
- 4 D
- 5 A
- 6 A-D are buses, E and F aren't,
- 7 They aren't.
- 8 D
- 9 C. Don did fish. The others did hair.
- 10 A B C
- 11 A !!!
- 12 C
- 14 B

R.M.M BUILDING SERVICES

25 YEARS EXPERIENCE

All types of building work carried out including- Drop kerbs, block paving (drives, paths, etc), extensions, general building repairs and maintenance.

Phone Rob on Mob- 07906108567
Home-2352190

All Saints Church

Totley Hall Lane



Insurance and Assurance

TV and radio advertisements tell us almost every day, about seemingly irresistible offers for every kind of insurance. If you've ever been on an insurance comparison website, you will know what a long and complicated task it often can be. Car insurance, especially, requires you to note down all the dates and details of accidents and if applicable, offences and then your suitability is assessed and your premium judged against your answers. Hopefully you will be accepted and your premium will be affordable. The following year, you may have to repeat the process, but the conditions may change and the premiums certainly will.



What a good thing that Jesus doesn't have the same criteria for judging our suitability for acceptance and worthiness of His love. Jesus isn't interested in our mistakes, our misdemeanours, our age or what sort of car we drive. It doesn't matter what we've been, how ashamed or proud we are of what we have done or said or thought. None of that matters, all Jesus asks is that we come to Him and know that He died for us and accept His unconditional love and forgiveness. He doesn't ask us to understand it all, merely to trust him. He doesn't set conditions saying that we should never make mistakes and then penalise us when we do. Even if we try and fail countless times, the conditions never change and there is never a premium to pay. Of course, being a Christian doesn't mean we will have an easy life, free from stress and pain, that isn't what Jesus is offering. Jesus is offering us assurance, not insurance. He asks us to believe and trust in Him, in other words to have faith and in return he offers us His unconditional love. For some people, this offer is of no

interest to them; for others it sounds too good to be true or something that needs careful consideration. Whatever your view on it there is nothing to pay. The price has been paid, once and for always on the cross.

If you would like to find out more about what it means to be a Christian, you would be very welcome at our Services at 10.00 every Sunday and Wednesday

Here are some other activities in the community that church members are involved in, that you may also like to attend. There is a Monday Drop-In Coffee Session from 10 am in the church hall lounge, which is open to anyone who just wants to meet people and have a chat.

A Parent and Toddler group is held every Wednesday during term time, also in the Church Hall.

Looking ahead, our Holiday at Home for older people will be taking place again this August. Guests have already been invited and they are looking forward to two days of activities and the chance to spend time meeting with others and enjoying a break from the routine.

The annual Totley Show, which is organised by the hard-working Totley Show Committee, takes place on September 16th and will be held in Totley Primary School. Members of All Saints Church are involved in providing children's games at the event.

Our Harvest festival will be held on October 1st and we will be receiving food donations which will be shared between the Grace Food bank and the Cathedral Archer Project, which supports the homeless.

Liz Hayden (Churchwarden, Totley All Saints)

Letter to the Editor

Running the gauntlet of bins on Totley Rise

Dear Editor,

I'm writing to highlight the issue of commercial and private bins being left permanently at the bottom of Totley Rise shops. Residents who live nearby are having to endure walking past not only an eyesore blocking their path but, at this time of year, a large number of stinking bins and assorted rubbish dumped near them.

I do understand the issue of Back Lane access and sympathise with the problems local Totley people are having with refuse collection, however this is a long running saga now and others are being affected. Would it be possible for Back Lane residents and businesses to take and collect their bins for collection? Is there help available from the council for people physically unable to do this if needed?



I was faced with this sight coming home to Milldale Road and, I'm sad to say, this is now a new, very unpleasant normality. Surely this is not acceptable to the council to have this unhygienic situation continue?

If you possibly can, please consider your neighbours and take out and collect your bin, just like the rest of us.

Milldale Road resident



Dispensing of NHS and private prescriptions

Repeat Dispensing and Repeat prescription management

FREE delivery. We also deliver non-prescription items

FREE medicine use reviews

FREE New Medicine Service

Medication dispensed in Monitored Dosage System trays.

Stop smoking service

Weight loss service including Lipotrim weight management service.

Vitamins and supplements to keep you healthy.

Mobility and living aids to make everyday tasks easier.

Minor Ailments service

Full range of over the counter medicines for sale.

Stoma and incontinence supplies including customization. FREE bags & wipes. Only 24 hours from order to delivery.

Disposal of unwanted medicines

Emergency supply of medicines

We now have two pharmacists working so we can answer any questions you have quicker.

Totley Pharmacy, 158 Baslow Road, S17 4DR. Tel : 01142361070



Serving Totley since 1996

Totley Scouts

Last time I reported on the Beaver camp. This time will be the Cub camp and when the Explorers went to the 'Crewboree' camp.

The Crewboree camp was 30th June – 2nd July 2017 at Hesley Wood Scout Campsite. The Explorers who attended were – George, Oliver, Daniel W, Daniel E, Faye, Izzy, James and Jacob. Activities included action inflatables (last man standing, laserquest, commando course), cave bus, abseiling, shooting, axe throwing, archery, raft race, kayaking, crafts, crate stacking etc, and in the evening, disco, cinema, campfire, widegame. All seemed to have a good time and came back tired from a busy weekend.



The Cub camp was a weekend in the middle of June at Walesby-Forest scout campsite. The Cub camp was changed into a Spy Training Camp for the weekend. Cubs were assigned into teams with a suitable agency name, made ID cards, took fingerprints and invented passwords. When it was dark, they had to find precious items hidden in the woods using their torches.

Next morning they were trained in secret messages, ballista making, kite flying, den building, target practice and avoiding laser beams. In the afternoon it was cave maze, low ropes course, orienteering and assault course. Dinner was followed by a tremendous camp fire before supper and bed. Training was put to the test on Sunday as the Cubs had to foil a plot to destroy the world by finding bombs hidden on the camp site. Clues were followed and bombs discovered, cunningly disguised as piñatas filled with sweets.



In the last week of July, Scouts will be on their week long annual camp at Linnet Clough in the Peak District with 30 Scouts and Leaders attending. They will cook their meals on wood fires and be responsible for looking after themselves.

Kayaking, raft making, caving and ropes courses are organised, with opportunity for hikes, games and a good time.



Our website (www.215thtotleyscouts.co.uk) and Facebook page are getting a lot of views. Please take a look. There is lots of useful information, and news stories. You can also follow the links to Facebook (or it can be found by searching for 215th Sheffield - 1st Totley Scout Group) and our donation page on BT Mydonate. So you will be able to get up-to-the-minute news! Also if you are on Facebook it would help us if you follow our Facebook page. It will increase the awareness of Scouting in Totley and hopefully help with fundraising for the new building.



We have counted the Sainsburys Active Kid vouchers, and this year we have collected a record number. We use them to swap for valuable equipment for Scouts. Last year we concentrated on kitchen equipment but previously we have also received play equipment, and even a Bear Grylls survival kit. This year we decided to spend a few of the vouchers on a £70 ingredients card which will help pay for food used on camps.

But we are saving the vast majority for next year, by which time we hope to have our new building, and then use the vouchers for new equipment. Thank you to everyone who has helped us by donating your vouchers.

Richard Frost
Chairman
1st Totley Scouts
TotleyChair@aol.com
0114 236 3603



The Poetry Slot....

Sally Goldsmith

Each issue, Sally looks at a poem by a published poet from South Yorkshire or North Derbyshire.

LODE

Fay Musselwhite

Here is the field
walled from the road

here is the shovel and here's the hole
we dug in the slant of the sun

Here is the new turned soil
here is the pile of exigent stones

pulled from the earth
here is the two-square of turf

Here are the berries from home
here the bundle of bone and fur

Hear the weep of the burn
bleeding the peat-brown last week's rain

over the limestone laying it down
leaching it into the loam

Here is the blanket light of her
now is the season's turn

here are the long-night logs and leaves
here's where the basket burns

Such sorrow in this litany of images. Simple in its language, short lines, nothing wasted, it presents the concreteness of things – the shovel, the hole, the stones. There are lots of half-rhymes – unobvious but intentional – which enhance the almost spell-like list. No punctuation, lots of white space emphasise the starkness of the place and situation.

Half way down we come to that almost unbearable 'bundle of bone and fur' and we can see the old dog, in its scraggy thinness. Then the list of 'Here is' becomes 'Hear' and the landscape itself embodies the sorrow – 'the weep of the burn / bleeding the peat-brown last week's rain'. We get the sense of a ritual in burying the dog – the old companion who must have walked over this wild landscape – the fire with its logs and leaves, the burning basket. 'Leaves' at the end of the penultimate line also contains within it the resonance of leaving.

The poem is part of a sequence of poems about the old dog. It is gentler in its language than many of Fay's poems, yet still with a muscularity, no mawkish sentiment, a connection with nature in the raw. Do read more of her work, much of which is focussed on the Rivelin in the north west of the city.

Fay Musselwhite lives in Sheffield. She leads workshops and walks focussing on local and working class history, often featuring the culture and ecology of the Rivelin Valley. Her work includes collaborations with artists in film, sound and other media. Lode comes from her collection Contraflow, published by Longbarrow Press www.longbarrowpress.com

People Keeping Well

A big hello from Age UK Sheffield and the 'People Keeping Well' partnership!

My name is Joanna Graves and I have recently joined the fantastic team at Age UK Sheffield as your local Community Development Worker.

Having spent the last ten years working in communities all over Sheffield I am excited to have the opportunity to work within the area I grew up in. My early childhood years were spent living in Dore village and my teenage years in Totley and both are very close to my heart. I am passionate about creating a positive impact on the lives of the residents here, both supporting the brilliant services already available and providing new events and services which everyone can get involved in and enjoy. My role has been created through the Sheffield Council's 'People Keeping Well' partnership made up of local community groups, volun-



tary and faith organisations and the local health services with a shared goal of keeping all residents, both young and old, physically and mentally well throughout their life.

We will shortly be hosting a local free pie and pea supper to tell you more about what we have to offer, and find out what you feel we could do for you. This will also be an ideal opportunity to sign up to any upcoming volunteer projects you may be interested in and give something back to the community you love whilst having fun at the same time.

I will be spending a great deal of time in the local area and I'm looking forward to getting to know you all! If you see me please say hello and let me know of anything we could do for you, or somebody you know. You can also look out for information and updates on my board in Totley library opposite the reception desk. I can also be contacted on 0114 2502850 should you prefer to give me a call.

Joanna Graves



Totley Rise Methodist Church

Summer at Totley Rise Methodist Church

9.00am Early Services (1st and 3rd Sundays). A quieter, more traditional service.

9.30am (2nd and 4th Sundays) Toddler Praise aimed at the under 5s and their parents/carers

10.30am Mid-morning Service every Sunday. An informal and contemporary service with a monthly Communion

6.30pm Reflective Worship most Sundays. A quieter space for worship and listening to God

9.30 – 10am Tuesday Prayer: every Tuesday. Prayer for the world, community and for healing and wholeness in the Church

There is a creche available plus Youth/Junior Church at all morning services.

Totley Rise Methodist Church welcomes you.... We extend a warm and friendly welcome to you from the community here at Totley Rise Methodist Church.

Everyone is welcome. You are welcome if you are a lifelong follower of Jesus or if you are a seeker, or just starting to wonder.... or if you have just hopped off the bus and you're looking for refreshment for your onward journey.

Come along and meet us at one of our services or group activities.

Holiday Club at Totley Rise Methodist Church Monday 14 – Wednesday 16 August, 9.45am – 12noon each day. A chance to join in the fun with games, crafts, a quiz, stories and prizes. Please book your place as soon as possible. There is a charge of £5 per day. Contact Rachel, our Family and Children's Worker, on 07912 352543

Focus Church: Totley Rise Methodist Church, Sunday 10 September, 3.00–4.30pm. A special church for people with learning disabilities and cognitive difficulties. The service is a time for worship, creativity, fun and fellowship... and an opportunity for carers to chill.

The services are held on the 2nd Sunday of each month from 3 – 4.30pm. If you are interested, please come along or if you would like to know more, please contact Sue or John Freeman on 0114 2366819 or email sueandjohn6@talktalk.net **Please note that there is no Focus Church in August.**

Men's Breakfast Would you like to begin your Saturday with a complimentary English breakfast and great conversation?

Men's Breakfast meets on occasional

Saturdays during the year at 9.30 am. Our speakers have covered topics ranging from football legends to life as a long-haul airline pilot. All men are welcome - no pressure, and an easy environment. For more information see the Church website.

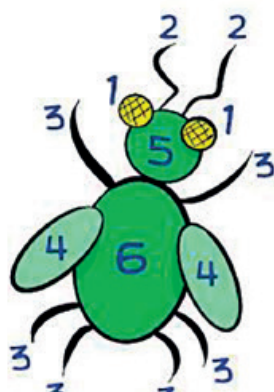
Messy Church: We hold a Messy Church on a Saturday afternoon most months. Every Messy Church has a particular theme. All are welcome - contact Rachel Wilson on 07912 352543 for more details on themes etc or just turn up. Tea and snacks are included.

Messy Church is not just a club for kids to come and do activities - not just a bridge into "normal" church - not just a social activity for Saturday afternoons. If Messy Church isn't any of these things then what is it?

Messy Church is an all-age way to help people discover Jesus, not just church families but the whole community. A relatively new concept, it has now spread internationally (Denmark has to call it something else as they don't have a word for messy in their language!). This happy mixture of games, craft activities, food and lively worship, all based on a bible theme, is bringing families together in a new and special way. Churches that have been providing Messy Church are finding that it is creating a new worshipping congregation in its own right. Messy Church is here at Totley Rise.

Come along and give it a try - you won't be disappointed!

Tuesday Ladies: 2nd Tuesday of each month at 8.00pm, Totley Rise Methodist Church Lounge. About 35 ladies consisting of both church and non-church members meet to enjoy speakers or a quiz or beetle drive.



Sometimes the evening includes food such as salmon and strawberries or cheese and biscuits. If you would like more information please call Janet Savage on 0114 2369002.

Coffee morning: Tuesday, 10 am—12 noon, TRMC Lounge. Come and meet new and old friends from the community and chat over coffee and biscuits.

Knit, Natter, Craft and Chatter: Every Tuesday, 12.00noon - 3.00pm,

TRMC Centre. They may natter and chatter but they are certainly productive. This busy and friendly group has been a great success. They aim to include more people from the area, even the housebound. Housebound does not mean isolated. The group will happily provide wool, needles and a chat for those who can't travel to the church. Young people are also welcome as part of our community. There are skilful, lovely ladies ready and willing to help those new to knitting and sewing.

Many charities benefit from the group's work: Butterfly Wings (still-born babies), Sheffield premature baby unit and the Christmas shoebox appeal. Sheffield Royal Society for the Blind have adopted knitted Ellie the elephant as their mascot and have given a certificate of grateful thanks. Members can knit/sew (a sewing machine is available) for their chosen charities.

Maxine, the organiser, says that all the ladies love coming. Men are also welcome. You can stay for as long as you like for up to three hours. We offer tea, coffee, biscuits and, most importantly, friendship.

Sheffield Citizens Advice Bureau: Every Tuesday, 10 am–12 noon. No appointment needed. Drop-in free confidential advice service. Advice on legal, financial, employment, benefits and any other matters.

Room Hire: Available Monday to Saturday. We have a variety of rooms for hire, which include the use of kitchen facilities and audio-visual equipment. Please contact the caretaker, Dean Duke, for more information or to make a booking, on 236 0389 or email Dean on deano1972@sky.com. Or visit our website for a booking form and details of room sizes and charges.

Community Defibrillator at Totley Rise Methodist Church: the Church has been fitted with a public access defibrillator. It is a portable device that can be used by a member of the public to help restart the heart when someone has a cardiac arrest.

Always call 999 and follow the instructions from your local ambulance service. It is really important that the professionals are called and are on their way.

The defibrillator is in a yellow box, attached to the Community Hall, reached via the church car park. It is easily visible from the main road.

Hear our sermons

If you are unable to come to Totley Rise Methodist Church on a Sunday morning, you can still hear the service as a podcast online. Just visit our website www.totleyrise.co.uk and find a selection of recent services at Podomatic Podcast Page.

For more ongoing events see this issue's Diary, p.30

HAPPY FEET CHIROPODY

HCPC Registered & Westfield approved

Professional, reliable & friendly service

Home visits only

Karen Clarke & Brendan Clarke

Tel : 07391 454096

BRADWAY INSTALLATIONS

Kitchens, Bathrooms and everything in between
Complete Kitchens Installation or supply & installation
Kitchen Refits Replacement worktops/sink/hob etc
Worktop/cabinet repairs

Bathrooms - Cloakrooms - Domestic plumbing

Tiling - Laminate/Vinyl flooring

All work undertaken is fully insured and guaranteed

Ring Peter - 0114 236 5995

Mobile - 07766 411355

RICHARDS TELEVISION, SATELLITE, VCR, DVD REPAIR OR INSTALLATIONS

- City & Guilds London Inst. Fully Qualified.
- Over 25 Years Professional Experience.
- Most Makes & Models Repaired. No VAT.
- For Prompt, Friendly Service Ring:

0114 2876806

Ask for Richard. Ex Bunker & Pratley.

DRONFIELD LANDSCAPES

Logs and wood chippings
For Sale

Ring for details

Chris 0114 274 6158

Mobile 07976 072785

Richard Mobile 07789 497104



For
Windows
With Style

Sheffield Factory Showroom

106 PROSPECT ROAD
HEELEY, SHEFFIELD

Sheffield (0114) 258 5496
Rotherham (01709) 512113

John Heath & Sons

AN INDEPENDENT FAMILY FUNERAL BUSINESS

Sometime.....

You will probably have the responsibility of making funeral arrangements. No one looks forward to this responsibility, but the death of a family member or friend brings with it an obligation that must be met. There are people who can help you meet this responsibility. We have been helping people combine the different aspects of the funeral into a meaningful service for over 125 years.

Please Call Day Or Night

(0114) 272 2222

Head Office - Earsham Street

Also at Meadowhead, Ecclesall Rd,
Crookes and Stanington

www.johnheath.co.uk



Dronfield Landscapes 

Gardens cleared and maintained, Lawns mowed,
Turving, Tree felling & pruning, Hedges trimmed &
reduced, Pond maintenance, Fencing etc.

for free quotation call

Chris on: (0114) 2746158 Mobiles: 07976072785 or
Richard on: 07789497104

8am-6pm mon-fri

HazelBarrow Farm, Norton S8 8BA


Tristan Swain

Garden Services and Maintenance

Established 1984

Unit C4 Sheaf Bank Business Park
Prospect Road Heeley
Sheffield S2 3EN

Tel/Fax: 0114 255 4689

Mobile: 07831 802 539

Email: tristan@tristanswain.co.uk



www.tristanswain.co.uk Public Liability Insurance Waste Transfer Licence



Charity begins at... Totley Primary!

This year, we have really stepped up our charitable work and the whole of the school community has contributed towards a brilliant joint effort. The children learn so much from raising money for good causes and have genuinely experienced that giving isn't just about making a donation but about making a difference.

As well as getting involved in traditional national fundraising days such as Children in Need and Comic Relief, we have also made use of our House system within school to target local causes. Led by house captains and staff, campaigns have been run, events organised, and lots of fun had. Even better, the money raised has been handed over in special assemblies so that the children have been able to see the benefits their efforts will have.



The Pudsey bear buns didn't last long on our Children in Need fundraising day!

Curbar House kicked off proceedings back at the end of the Autumn term with their Christmas jumper day, raising £105 for Cheshire Homes. Burbage House then followed up with their 'Bake it Better' day in April. A fabulous array of cakes, buns and biscuits helped to secure £405 for the Children's Hospital in Sheffield. Recently, Stanage House ran a sponsored reading event to raise funds for Totley Library. So many children got involved and dedicated themselves to reading for as many minutes as they possibly could. Their hard work certainly paid off as a total of £510.81 was achieved. A special mention must go to our top 4 readers: Hera, Daniel Webster, Matilda Harris and Monty. Between them they managed an incredible 39 hours of reading and contributed over £200 towards the grand total! Next year, it will be the turn of Froggatt House to take centre stage and

lead our charity fundraising—so keep your ear to the ground as to how they will go about it!

Sticking with the fundraising theme, we also had a highly successful visit from Olympic athlete James Kirton last month. He came to talk to the children about he overcame injury to compete in the 2008 Beijing Olympics. It was a brilliant message about the importance of being resilient and



Former Olympian, James Kirton, gives an inspirational talk about being resilient and aiming high.

never giving up. All children had the chance to take part in some circuit training with James on the day — a big thank-you to those who organised sponsorship for this. £561 was raised from this activity, with the profits being split between supporting budding Olympians with their training programmes and vouchers for school to purchase new PE equipment.

Ben Paxman, Assistant Head Teacher



TOTLEY TOWNSWOMEN'S GUILD

SUMMER CONCERT

IN AID OF
ST. LUKE'S HOSPICE AND THE AUTISM SOCIETY

TO BE HELD AT
TOTLEY RISE METHODIST CHURCH HALL

ON

TUESDAY AUGUST 8TH 2017

AT 2.00pm

TICKETS £6 each including refreshments can be ordered and delivered to you by telephoning Maureen on 0114 2509670

Please come along and support us and enjoy a very pleasant afternoon of entertainment



Sheffield & Rotherham

Popular Sheffield moorland restored

Thanks to funding from Veolia

A grant of almost £15,000 from Veolia Environmental Trust has made it possible for Sheffield and Rotherham Wildlife Trust to carry out conservation work to protect Blacka Moor, a moorland nature reserve on the outskirts of Sheffield, popular with locals and visitors alike.

The project had three major components. First, dilapidated fencing and gates were replaced. This allowed the Trust to carry out conservation grazing which prevents saplings and scrub taking over the precious heathland habitat, while still allowing safe access to the public. Second, invasive species have been dealt with; bracken has been cut and sprayed, while encroaching rhododendron and birch have been cut back. Finally, two long firebreaks have been cut into mature areas of heather. In the event of a wild fire, this will reduce the risk of it spreading across the site. The whole restoration project took 12 months to complete.

At 181 hectares, Blacka Moor is the largest of the Trust's reserves, and is noted for its amazing views and diverse wildlife, including the UK's largest mammal, the red deer. It forms part of an internationally important wild landscape which is designated as a Site of Special Scientific Interest (SSSI) because of some unique features including various heathers, the transition from woodland to open moor and its population of bilberry bumblebees.



Nabil Abbas, Sheffield and Rotherham Wildlife Trust's Living Landscapes Manager (South), oversaw the work, and said: "Blacka Moor is a real gem amongst Sheffield's green spaces. Its location right on the edge of the city and its rich array of wildlife make it a unique place. Thanks to this year-long con-

servation project we've been able to restore the threatened moorland habitat, providing a home for unusual upland species including common lizard, whinchat and green hairstreak butterfly."

Paul Taylor, Executive Director of The Veolia Environmental Trust, added: "It is clear that the restoration project will have many benefits for the reserve and people who visit it. Sheffield and Rotherham Wildlife Trust should be proud of all they have achieved across this important site."

If you would like to help carry out some of the land management tasks on Blacka Moor, please come along to one of our regular volunteer work days. See wildsheffield.com/whats-on for details.

With over 800,000 members, the Wildlife Trusts are the largest UK voluntary organisation dedicated to conserving the full range of the UK's habitats and species. Collectively they manage over 2,300 nature reserves covering more than 90,000 hectares.



Totley Operatic and Dramatic Society

I am very happy to report that our May 2017 play, 'That Week In August', which was written and directed by our very own Alan Wade, was a resounding success. We were very proud to be the first drama group to present this play, and hope we did it, and Alan, proud. We enjoyed performing it and hope that those of you who saw it enjoyed it too.



A scene from 'That Week in August'

But, onwards and upwards, our November play has already been chosen and rehearsals are underway as we speak.

The play of choice is a comedy (our audiences seems to like a good laugh!) called 'Lathered Up', written by Lynn Brittney – some of you may remember "Old Actors Never Die... they simply lose the plot!" which was also written by Lynn Brittney and was another successful play. Monica Stagg is to direct 'Lathered Up'. It tells the story of two rival TV soap dramas, and their cut-throat approach to publicity, and the devious and dirty tricks they use to be top of the ratings. Intriguing! We certainly hope you enjoy it. Just the thing to brighten up a dreary November!

The dates for your diary for 'Lathered Up' are Wednesday 22nd November to Friday 24th November at 7.30, and Saturday 25th November at 2.30pm. You will notice that this is a week later than usual.

The venue is, as usual, St John's Hall, Abbeydale Road South. Please call 0114 2351206 to reserve your ticket or contact any TOADS member. Ticket price £6, or £5 for concessions.

As always, if you are interested in treading the boards or helping backstage, why not pop down to the Guild Room at St John's Hall on any Tuesday at 7.30pm, or contact me on 01246 460318, or visit our web-site www.toadsdrama.co.uk

I hope you all have a very pleasant summer and look forward to seeing you in November.

Anne Bettridge

Friends of Dore and Totley Station – FoDaTS

Our latest Open Meeting and AGM was held on 23rd May at Totley Library when Richard Isaac from Northern Rail gave a short presentation and answered as many questions as he could. He explained how Northern hope to squeeze hourly trains down the Hope Valley line from May 2018 – good news – but suggested they can't stop at all stations due to congestion caused by freight movements. He told us of the refurbished trains we'll have before the end of 2019, by which time the 30 year old Pacer units will all have been scrapped. The refurbished trains are also 30 years old but should be to as new standard with free wi-fi and are longer carriages.

Since the AGM a small group has been looking through the details of Northern's draft timetable for May 2018. As forewarned, it doesn't give us the regular hourly service we'd like, but we're hopeful that we'll get at least 3 more trains in each direction from Monday to Friday. We've suggested that running them through to Doncaster would give us a link to Meadowhall but that might make the service less reliable. Our feedback was requested and was given in as constructive a way as possible. We tried to take full account of the current operational issues that may prevent achieving more until the long awaited improvements are completed to re-double the tracks through the station.

Our request to Northern for a grant to design a new canopy for the existing station building seemed to be supported by all parties concerned: Northern Rail, Network Rail, Department for Transport, the local transport and council bodies and the Community Rail Partnerships. We're still awaiting the formal outcome but understand the consensus was that the project was highly desirable but should be completed in a different way. It will get done, but not very soon.



One of the Class 156 trains due to be refurbished and hopefully allocated to our line

For our part we're trying to get Network Rail, Northern, Sheffield City Region, SYPTE, and other parties together to ensure we get the best possible station built once the main work starts. The canopy is only the beginning.

As I write we're in the middle of a 3 day strike by Northern train crews who have fallen out with their employers about plans for Driver Only Operation of some trains. As far as we can tell that policy wouldn't normally apply to our line. A second crew member is needed to check tickets and we'd have qualms about trains going through the long tunnels with only a driver aboard. On other lines with staffed stations it may be reasonable to allow a driver-only operated train if they were short of staff. Unions see that as the thin edge of the wedge.

There is another argument about drivers operating the doors. It could save the service 20 seconds a stop if the driver were to open and close the doors, allowing the conductor to concentrate on selling and checking tickets. Some of us remember when passengers opened and closed the doors – sometimes leaping on and off moving trains. Health and safety won't allow any of that today.

Whatever the rights and wrongs, we'll have had no Northern trains for 3 days from Saturday 8th to Monday 10th July. East Midlands have arranged to stop a number of their services to help out. The snag about that is that those changes weren't very easy to discover, and came late, so we doubt if many made use of them. FoDaTS has made them known on our Facebook page and will look to advertise them in good time at the station if there any further strikes of this type. We might have expected the rail companies to do this.

Observations at the station reveal that Dore & Totley is used by people from a very wide area, not just S17. It's not just outgoing passengers. A surprising number of journeys may originate in the Manchester area. On a recent Saturday morning, the 8.04 Trans Pennine and 8.27 East Midlands services dropped off almost as many as they picked up. Grandparents were collecting grandchildren to be taken to Dalewood and Dronfield. Cyclists were off to cycle into the Peak District. Six people, in two separate groups, were heading for Chatsworth by changing onto a 218 bus. On another morning three young people alighted en route to Abbeydale Sports ground to take part in filming a programme about hockey at the 1948 Olympics. And one young lady seems to commute each day from Chesterfield to Dore & Totley before walking to Dobcroft School.

Maybe we should consider taxis a bit more? Getting the M17 bus diverted to run past the station wouldn't help much. It's an hourly service and the trains are similar, with most of the passengers departing and arriving outside the M17s operating hours. A lady was observed who'd arrived from Chester to get to a business meeting in Dronfield. She called an Uber which took 30 minutes to arrive! We tend to think of our station as a starting point for journeys, but we may need to look more closely at promoting it as a destination.

The Dore and Chinley railway, the Hope Valley line, was opened to freight traffic in 1893, 125 years ago next year. Passenger traffic didn't come until 1894. Other Hope Valley stations may be commemorating this event, and we may too.

In the short term we're looking at arranging a Totley Tunnel history walk in the autumn. It will start at our station, go past the Cricket Inn, up over Totley Moss and down to Grindleford station with a return by train. Details to come. This will be in conjunction with Friends of Grindleford Station who will have come through the tunnel by train to join us at the start. Members of National Trust's Longshaw walks team will accompany us as guides.

We've heard that Northern plan to introduce a £2 parking fee at many stations from September. Dronfield and Grindleford are the first near us and the good people of both are objecting. Prices at our car park are set by SYPTE who have a policy of free park and ride car parks. How long can that last?

We'll keep plugging away, keeping in regular touch with all the interested rail parties, plus the Hope Valley Rail Users Group, the High Peak and Hope Valley Community Rail Partnership and the Friends groups at Dronfield and Grindleford.

If you use the trains, or are just interested in developments at our station, please join us by sending an email with your contact details to our Secretary; nj-barnes@outlook.com

You can also join us on Facebook – just search for FoDaTS. Look in from time to time to see the latest news – and to post constructive comments, please! And try looking through our website at www.fodats.net

Chris Morgan, Chairman

Classic Car Show

Sheffield Vulcan Rotary Club will be managing the 11th Annual Classic Car Show on the Moor, Sheffield, on Sunday August 6, 10 am – 5 pm. 76 cars are booked, with more bookings being taken each day. There will be other attractions such as face painter, a Lego exhibition and remote control cars. Shops are open 11am until 5 pm. Council Car Parking both on and off-street is £1 for all day on Sundays. For more information contact Roger Hart on 07831 305881 or Tony Cosens on 07730 927670.

Thirteen Acres: John Ruskin and the Totley Communists

Each morning when I wake up, smack bang in the middle of the view from our Totley window is St George's Farm, that site of utopian dreams. John Ruskin, the Victorian art critic and social reformer bought it in 1877 in order for Sheffield working men and their families to work the land collectively and to make high quality boots and shoes. No machines. No booze. We've often joked that we live on a wonky socialist ley line – St George's Farm, then Holmesfield Church where Joseph



St George's Farm, 1940s

Sharp - harpist, socialist and one of the original group renting the farm from Ruskin - is buried, and down the other side of the ridge in the Cordwell Valley, the house of Edward Carpenter - gay writer, simple lifer and socialist - who knew the farm and its occupants. Our everyday default dog walk takes us past the Shepley Spitfire and along White Lane, just below the farm.

But I first went to take a look at St George's Farm as a young woman, over thirty years ago and fresh from my own spot of utopian, argumentative, commune dwelling. I was, appropriately enough, on my bike. I'd learned about it from an evening class taught by socialist-feminist historian Sheila Rowbotham. She told us how, like most of us attending the class in the radical-vegetarian-lets-all-wear-dungarees 1970's, socialists a hundred years before had ridden bikes, grown their own food, worn smocks, and tried (and sometimes failed) to live collectively.

Two years ago, I researched and wrote a two-mile walking performance about St George's Farm and its legacy for the greening of our city – *Boots, Fresh Air and Ginger Beer*. It was a sort of promenading flash-mob in which characters from the story emerged from the audience in the very landscape around the farm. Though I sort of knew the story, none of the accounts of what had happened there quite made sense, and the whole research process for the play was appropriately rather like unravelling a huge ball of garden twine. I roped in Dorothy Prosser from the Totley History Group to help with research on the men and their families – the self styled "Totley Communists". Another member of the History Group, Kerry Clark, helped with deciphering some early Victorian Pitman's shorthand. After the performance, the Guild of St George, the charitable trust that was set up by Ruskin to carry out some of his ideals and which still exists, asked me to capture all my research and to write it up. My new book, *Thirteen Acres: John Ruskin and the Totley Communists*, is the result.

In it I attempt to reassess the story of the farm. We meet a whole cranky cast of characters - Ruskin himself at his most authoritarian and patronising best; Henry Swan, his man on the ground and a cycling vegetarian artist and Quaker; vociferous and argumentative early communard Mrs Maloy; ex Chartist Joseph Sharp who prayed not to God but

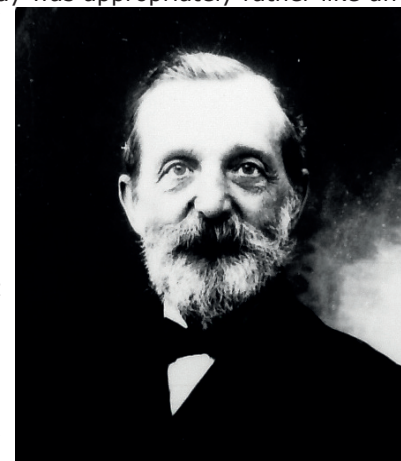


to the stars; international socialist journalist William Harrison Riley, showing off in town in his labourer's hob-nailed boots; the drunken old Ruskin family gardener David Downs with his 'flaming pitchfork barring everyone out'; the original radical sandal wearer and early gay liberationist Edward Carpenter; and trespassing 'King of the Ramblers' Bert Ward. I also tell, for the first time, the story of the man who with his family made a success of the farm (see

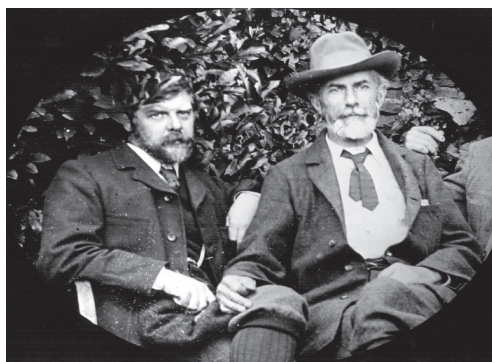
photo left), anti-vaccinating socialist George Pearson whose grandson Howard still runs a market garden nearby.

I've tried to make the whole thing engaging, not only of interest to academics but also to a wider

aud-ience who enjoy a good story of folk who saw the world differently and wanted to change it. There's still some of those about. The book is available from Totley Post Office or from The Guild of St George Publications, 10 St Oswald's Road, York YO1 4PF or via their on-line shop at www.guildofstgeorge.org.uk



William Harrison Riley



Sally Goldsmith

(Right: Lucy Pearson, George's daughter. She was in the socialist Clarion Cyclists Club.)



(Above left: Edward Carpenter on right, with friend and razor grinder George Hukin. Carpenter lived for a while on Queen Victoria Road. Hukin later lived next door to the young Harry Brearley (inventor of stainless steel) on Mickley Lane)

Farmer Denniff's Day

Nick Denniff's family has farmed around southern Sheffield for generations. "We came over in 1790 from County Wexford. It's said someone got their f's and s's mixed up so we ended up as Denniff rather than Denniss. But my Auntie Beryl says we were descended from German pirates."

Nick can often be seen chatting to mountain bikers, walkers and climbers as he goes about his work. "This landscape that we're conserving here has been created by farming," he said. "Who do you think put these gates and walls and fields in?"

In 2013 Nick took on the grazing tenancy for 4500 acres of moorland at Burbage, Houndkirk and Totley from the Eastern Moors Partnership. The partnership of the RSPB and the National Trust manage the moors on Sheffield's outskirts for wildlife, and for over 250,000 visiting outdoor citizens every year. Nick is an enthusiastic supporter of wildlife and landscape conservation on his moorland, and of the Burbage valley's recreational status originally set up by Sheffield Council. "This place is here for everybody," he said. "But it's also a factory floor."

Recent springtime tensions for local sheep farmers are dogs illegally off their leads. "I had to get a team of climbers in to help a group of sheep driven onto a rock face by dogs recently," Nick said.

He's a supporter of the 'Take the Lead' campaign in the Peak District, and encourages responsible dog walkers to spread the word about keeping their dogs on a lead or under effective control during lambing and bird nesting season between 1 March and 31 July.

He says modern farmers need to be diplomats as well as business people. "Most upland farmers I know are forward thinking. We're like a swiss army knife - multi functional." He keeps sheep and a herd of picturesque white bred short horn / highland cross cattle, for 'conservation grazing' (where meat production is balanced with measurable wildlife benefits, resulting from fewer animals grazing the moor in a more natural way).

Nick and wife Liz use their 'moorlandmeat' website to sell the resulting produce. "It's superb, because they're eating hay like it used to taste," Nick enthused. "A farmer I know wrote to say it was the best meat she'd had since she was a kid."

He said he could just stick a few highland cattle on the moors to satisfy the conservation grazing requirement, and then take them off and still claim the farming subsidy. Instead, he's chosen a placid breed that can make a profit, but is unlikely to "stomp on some climber," as he put it. "I could be a subsidy junkie, but it's not in my make up," he said, noting that conservation-minded owners and tenants are having to do a lot of hard work to redress years of environmental harm caused after the post war imperative to maximise production.



He hopes the subsidies after leaving the EU will strike a happy medium between environmental benefits like the clean air, clean water, and thriving wildlife required by governments and progressive land-owners, and the income needed to keep farmers producing food for the nation. "Some of the earlier generations had money handed to them for negative farming practices, and still think the tail can wag the dog," he said. "But it can't."

Pictured left: Sale of Denniff cattle at Heeley Bottom in the 1920s.

David Bocking, National Trust



Farmer Nick Denniff: with sheepdog Ben in one of his fields above Totley



**Domestic electrical work by
award winning**

Lady Electrician

- * House rewires * Replacement fuse boards *
- * New sockets and lights * Security systems *
- * CCTV * Telephone and computer points *
- * Garden power and lighting *



All work guaranteed and fully insured. For a free quotation, without obligation,



ring Mandy on 07788-544225

John Collins

Cabinetmaker

Fine furniture, antique furniture restoration, fitted wardrobes, alcove units

0114 2585355

www.cabinetmakercollins.com

TOTLEY & DISTRICT DIARY

- MONDAYS** **COFFEE MORNING**, All Saints Church Hall, 10am-noon. Transport usually available on request. Tel 236 0872 before 9.45 am.
TAI-CHI, United Reformed Church, Totley Brook Road, 11.30am-12.30pm.
RAINBOWS and GUIDES, All Saints Church Hall, 5.45pm-9pm.
SLIMMING WORLD, Abbeydale Sports Club, 5.30pm and 7.30pm, Jo Elsey: 262 0523 or 07590 545253.
FITNESS LEAGUE fitness class 1.45 - 2.45pm, United Reformed Church, Totley Brook Road. Call Ali on 07927 420726.
- TUESDAYS** **PILATES**, The Old School, Dore, 9.15-10.15am. Phone Teresa Tinklin 07906 312372.
COFFEE MORNING, Totley Rise Methodist Church Hall, 10am-noon.
KNIT, NATTER, CRAFT & CHATTER Totley Rise Methodist Church, 12 noon - 3.00pm.
CITIZENS ADVICE BUREAU. Drop-in, free, impartial, and confidential. Totley Rise Methodist Church, 10am-noon.
CRAFT GROUP, Totley Library, 2pm.
FITNESS LEAGUE fitness class 10 - 11am, United Reformed Church, Totley Brook Road. Call Ali on 07927 420726.
JAZZ IN THE AFTERNOON, 2-4 pm, Totley Rise Methodist Church Schoolroom. A weekly afternoon of all forms of recorded jazz, plus discussion. Tea, coffee and biscuits available.
- WEDNESDAYS** **PILATES CLASSES**, Dore & Totley United Reformed Church, 9.00-10.00am and 10.15-11.15am. Contact Caroline tel: 0781 722 0324, email Carolinenorth1@me.com, www.pilatescarolinenorth.co.uk.
COFFEE in the Library, 10am-11.30am.
STORY TIME in the Library, 10.30-11.30am. Craft activities, songs and a story for pre-school children. Call in at the Library for more information.
TODDLER GROUP, 10am-11.30am, All Saints' Church Hall. Details tel. Andy Holmes 0114 236 2088.
HEALTH WALKS, 10.30am, Totley Library. Phone Tina, the Health Walk Ranger: 0114 203 9335.
MODERN SEQUENCE DANCING, All Saints Church Hall, 8pm-10pm.
CHILDREN'S FITNESS CLASSES for pre-school girls and boys aged 2-5. Wednesday mornings 9.30 - 10.10am, Abbeydale Sports Club. Free taster sessions. See www.minimovez.com or call Steph on 07838 818743.
- THURSDAYS** **BELROBICS**, United Reformed Church, 9.15-10am, email: jenny@belrobics.co.uk or tel 07816 850132.
NCT COFFEE GROUP FOR DORE TOTLEY & BRADWAY, 10am-noon, for mums & babies/toddlers, various locations. Phone Lucy Street 07837 000405 or email: lucy@streetr.plus.com for further details.
ROCKCHOIR, United Reformed Church, Totley Brook Rd, 11.30 - 1pm. See www.rockchoir.com or call 01252 714276
PUSHCHAIR CLUB, Totley Rise Methodist Church Hall, 1.30-3pm. Tel. 07912 352543 for details.
PILATES CLASS run by a qualified Pilates Instructor and Physio-therapist for all abilities and ages. 1.30 - 2.30pm at the United Reformed Church, Totley Brook Road. Call Emer on 07792422909.

AUGUST

- SUN 6th MINIATURE TRAIN RIDES** Abbeydale Road South. Teddy Bears' Picnic in aid of Sheffield Children's Hospital Charity. 1pm-5pm (weather permitting). Car park closes 5pm. £1.50 per ride per person. See www.sheffieldmodelengineers.com
- TUES 8th TOTLEY TOWNSWOMEN'S GUILD** Summer Concert in aid of St Luke's Hospice and the Autism Society. Totley Rise Methodist Church Hall, 2 pm. Tickets £6. Tel. 250 n9670.
- WED 9th TOTLEY PROBUS CLUB** 10am Totley Rise Methodist Church. Talk by Silvi-Atkinson, 'An Unexpected Family History'. Visitors Welcome.
- SAT 12th FRIENDS OF GILLFIELD WOOD** Bird Walk through Gillfield Wood. Meet 8 am at Scout Hut, off Aldam Road. For more details see page 9.
- SUN 20th FRIENDS OF GILLFIELD WOOD** Practical Conservation morning run with the help of Sheffield Council Ranger Service. Meet 10am, Baslow Road bus terminus. For more details see page 9.
- WED 23rd TOTLEY PROBUS CLUB** 10 am Totley Rise Methodist Church. Talk by Richard Booth, 'Route 66'. Visitors Welcome.
- THURS 24th FRIENDS OF GILLFIELD WOOD Family Activities - Woodland Day.** 10 am - 12 noon Stream Dipping - discover the minibests in Totley Brook/ 1 pm - 3 pm Dens and Fires - how would you survive? For full details and information on booking, see page 9.
- SUN 27th & MON 28th MINIATURE TRAIN RIDES** Abbeydale Road South. 1pm-5 pm (weather permitting). Car park closes 5pm. £1.50 per ride per person. See www.sheffieldmodelengineers.com/

**Mark and Sally Fletcher invite
you to**

The Grouse Inn

Longshaw

Sheffield S11 7TZ

Meal times:-

Mondays 12.00 to 2.30pm

***Tuesdays to Friday's 12.00 to
2.30pm and***

6-30pm to 9-30 pm

***Saturdays 12.00 to 3.00pm
and***

***6.30pm. to 9.00pm (drinks -
open all day)***

Sundays 12.00 to 9.00pm

Phone 01433 630 423

SEPTEMBER

- SUN 3rd FRIENDS OF GILLFIELD WOOD** Moth Trapping - Richard Harris will help us identify moths caught overnight in the Wood. Meet 8.30 am at end of Totley Hall Lane. For full information see page 9.
- SUN 10th MINIATURE TRAIN RIDES** Abbeydale Road South. Visiting locos & Free Exhibition 1pm-5 pm (weather permitting). Car park closes 5pm. £1.50 per ride per person. See www.sheffieldmodelengineers.com/
- WED 13th TOTLEY PROBUS CLUB** 10am Totley Rise Methodist Church. Presentation by Ray Lawrence, 'Original Comic Verse and Monologues'. Visitors Welcome.
- SAT 16th TOTLEY SHOW** Doors open 1.30 pm, Totley Primary School. See pp. 7-8 for more details.
- SUN 17th FRIENDS OF GILLFIELD WOOD** Practical Conservation morning run with the help of Sheffield Council Ranger Service. Meet 10am, Baslow Road bus terminus. For more details see page 9.
- TUES 19th TOTLEY TOWNSWOMEN'S GUILD** Kath Lawrence, 'Jewish Life Events'. Totley Rise Methodist Church, 10 am.
- SUN 24th MINIATURE TRAIN RIDES** Abbeydale Road South. 1pm-5 pm (weather permitting). Car park closes 5pm. £1.50 per ride per person. See www.sheffieldmodelengineers.com/
- WED 27th TOTLEY PROBUS CLUB** 10am Totley Rise Methodist Church. Talk by Keith Booker, 'Fascinating World 2'. Visitors Welcome.
- WED 27th TOTLEY HISTORY GROUP** David Templeman, 'The Final Journey: Mary Queen of Scots'. Totley Library, 7.30pm.



Heating Division - Experienced Installers of condensing, combination and regular boilers. Authorised installers of Valiant, Worcester Bosch and Glowworm systems, fully guaranteed. Complete aftersales service. Also bathrooms, showers and small plumbing works.



Building Division - Loft conversions, house renovations, including general building, joinery, plastering, electrical, decorating etc.



R S HEATING & BUILDING CO.

88 Sunnyvale Road, Sheffield S17 4FB
Tel: 0114 236 4421

62 Machon Bank, Sheffield S7 1GP
Tel: 0114 255 9425 / Fax: 0114 255 9431

www.rshtgld.co.uk E-mail: enquiries@rshtgld.co.uk

Massage at Duo



Therapeutic massage tailored to you

Unwind • Relax • Refresh

For more information contact

Alison: 07894 454047

alisonsmithholistics@yahoo.co.uk

251 Baslow Road, Totley, S17 4DU

30 mins £25 • 45 mins £30
60 mins £40

25% OFF your first massage
mention Totley Independent on booking

SHEFFIELD TELEGRAPH
BASLOW ROAD NEWS & OFF LICENCE
Tel: 0114 2364411

Baslow Road News and Off-Licence
71, Baslow Road, Totley Rise, S17 4DL

Under New Management

We are delivering papers through Totley, Dore and Bradway -
Highly reliable service On-time delivery - 35p per day
Monthly Payment - your payment can be made by cheque, by post, online transfers, or cash and card at the counter.

For more information please ring us on 0114 2364411



M. WOOLHOUSE BUILDERS LTD
THE COMPLETE BUILDING SERVICE

- Design to Completion
- New Builds
- Extensions
- New Roofs
- Slates / Tiles / Stone
- Stonework Specialist
- Renovations

T : 0114 235 3314
M: 07973 908 187



www.mwoolhousebuilders.com
info@mwoolhousebuilders.com

MOVING STRONG
movement matters

**A STRONGER, FITTER,
MORE FLEXIBLE YOU**

Bodyweight Conditioning class
Tuesdays 7pm to 8pm

Flexibility class
Tuesdays 8pm to 9pm

King Egbert School, Dore. £8 per class

All abilities welcome

For full details and to sign up, visit
www.movingstrong.co.uk or call 0114 419 1948

Run by Mark Campbell, a highly experienced Strength and Conditioning Coach from the elite sporting world. Now adapting his training techniques to get people fitter, stronger and moving better for everyday life.



WWW.MOVINGSTRONG.CO.UK



**Tiling, Plumbing,
Plastering & Complete
Bathroom Installations**

Tel : 07738 688 807

- All Plumbing Leaks, Bursts & Blockages
- Taps, Showers, Radiators Etc
- No Job To Small
- Home Improvements & Maintenance
- Underfloor Heating, NVQ Qualified
- Reliable, Fully Insured & Guaranteed

www.A1tilingandplastering.co.uk
25 Five Trees Ave, Dore, S17 3LW



**Domestic gas boiler, cooker and fire repair
and servicing.**

For a free no obligation quote call-

Mobile: 07975 856727
Tel : 0114 2350793

matcoheating@yahoo.co.uk



Matco Heating

Editor: Phil Harris
Tel. 07956 858944 or email:
editor@totleyindependent.co.uk

Advertising & Distribution:
John Perkinson
Tel. 236 1601 or email:
advertising@totleyindependent.co.uk

Proof readers: Chris & Margaret Spencer

We welcome items submitted for publication,
which may be left at or sent to:

'Totley Independent',
2, Main Avenue, Totley, Sheffield, S17 4FG
www.totleyindependent.co.uk

Printed by PREMIER PRINT DIRECT
www.premierprintgroup.co.uk

TOTLEY INDEPENDENT for October/November

The next issue of the Totley Independent will be
available from the usual distribution points on

Saturday 30th September
COPY CLOSE DATE for this issue
will be
Saturday 9th September

Published by Totley Independent CIC. Totley Independent is a registered Community Interest Company, number 07750166. We welcome letters about local affairs and will publish as many as possible. Items will not be considered that are submitted anonymously. The views expressed are not necessarily those of the Editor or the editorial staff and must not be attributed to them. © Totley Independent 2017