

Totley Independent

Published continuously since 1977

www.totleyindependent.co.uk

December 2015/January 2016

No. 377

20p



Historic photo of the waterfall at Avenue Farm, Old Hay, Totley, from the Totley History Group's Thompson Collection

The Sheffield Plan: Have Your Say!

In 1938 Sheffield was the first city to have a green belt - the result of hard campaigning. Now we need new houses - but are you concerned about the possibility of building on parks and even fields? There is an important new development plan for the city - the Sheffield Plan. This will guide development and planning for the city for the foreseeable future. Crucially, this lays out options for identifying land for new housing and business - whether in the city centre, on previously developed sites and/or on amenity and green field sites. A brief scan through reveals no plans

for building on the green belt in Totley, though sites like Dysons, a previously developed, or brown-field, site, must surely be more vulnerable, as may small pockets of green belt land. **There is a public consultation period during which comments are accepted from members of the public.** This runs from Wednesday 11th November until Monday 4th January. Our local watchdog and campaigning group, SPACE (Sheffield and Peak Against City Encroachment) will be looking at the Plan and commenting on it - as no doubt will the Campaign to Pro- (cont.p.3)

A Merry Christmas and a Happy and Peaceful New Year to all our readers from everyone at Totley Independent!

Don't forget Christmas posting dates — see page 12





AVAILABLE NOW
NEW DISNEY FROZEN
FRAMES FOR GIRLS

**MARTYN KEMP
OPTICIANS**
VISIT MKO.CO.UK FOR DETAILS



Thrive

Helping small businesses from start up through growth to maturity.
Tax returns, investigations and more specialist tax planning advice.
1 hour free initial consultation

Contact us on:
T: 0114 281 2331 F: 0114 281 2171
E: info@r-rose.co.uk
www.r-rose.co.uk



R-Rose & Co
Chartered Accountants and Tax Specialists

R S HEATING & BUILDING CO.

Est 1971



Heating Division - Experienced Installers of condensing, combination and regular boilers. Authorised installers of Valiant, Worcester Bosch and Glowworm systems, fully guaranteed. Complete aftersales service. Also bathrooms, showers and small plumbing works.



Building Division - Loft conversions, house renovations, including general building, joinery, plastering, electrical, decorating etc.



R S HEATING & BUILDING CO.

88 Sunnyvale Road, Sheffield S17 4FB
Tel: 0114 236 4421

62 Machon Bank, Sheffield S7 1GP
Tel: 0114 255 9425 / Fax: 0114 255 9431

www.rshtgld.co.uk E-mail: enquiries@rshtgld.co.uk



Crocus Homecare

Homecare with Compassion



Care and Support in your own Home

Crocus Homecare provides high quality care and support services to help you, or the person you care for, when it is most needed.

Crocus prides itself, and has built its reputation, on providing the highest quality care with compassion, understanding and respect for each individual and their families.

For more information, please call Debbie Crowhurst, or have a look at our website

Personal Care - Practical Help - Respite Care - Dementia Care
24 Hours a Day / 7 Days a Week

Tel: 01629 812874
www.crocuscare.com

The Sheffield Plan- Have Your Say! (Cont. from p.1)
-tect Rural England, the body that won the green belt in the first place. You are able read the Sheffield Plan and to send your own comments to Sheffield City Council online at www.sheffield.citizenspace.com There is also an exhibition in the Winter Gardens about the Sheffield Plan from Monday 7th December until Friday 11th December.



Transport 17

Wow! I am just home from the Christmas Fayre and you have supported us in your droves, it has been so busy. The Cross Scythes excelled themselves in their support, which is always wonderful, but they spoil us with many home-made mince pies that were to die for, I understand – no, I didn't manage to taste one, but I was assured by several people who were more lucky, that they were absolutely scrummy!!! Thanks to you all and also to Stuart and all his staff, you are the best.

Also a big thanks to all the various organisations who donated to our raffle. It was very kind and generous of you all. Overall we made £750, which included several donations from private individuals. Thank you, thank you, thank you! We were also pleased to receive a cheque from the organisers of Totley Show for £350, so



Felicity Revill and John Savourin receive a cheque from Les Firth, for £350 raised at the Totley Show

our day has been magnificent and it is all down to you for being so generous. A few weeks ago we received a donation from Totley Open Gardens for £985 – it was a life saver, mainly because we live on a financial knife-edge permanently, and without your continued support we will not be able to continue to provide our service.

We are not making any inroads into buying a new bus because our overheads are crippling us, but as long as you keep giving us support we will fight to keep going. You may remember that some months ago we were promised a new bus through a government initiative. At present we know it will be a bus with wheels!! It is unlikely to have a tail-lift or an adjustable step for people to board it. Only time will tell and time seems to be the one thing that we are running out of as our oldest bus is hanging on by a thread. Don't worry, though, if you ride in it—we spend everything that is necessary to keep it safe and shipshape but it is bleeding us dry. All the money that is being spent does not improve its value for trade-in purposes. We are on a merry go round that doesn't have an end and that is why we have to keep having fund raisers, just to keep treading water. A new

bus will cost us at least £51,000. It seems that buses are one of the few things that don't come down in price!! If there is anyone out there with a magic wand that can help us, please come forward before we drown.

Thank you again for all your help throughout 2015. May you all have a wonderful Christmas Season and may 2016 bring you all your hearts desire.

Felicity Revill

Letters to the Editor

Avril Critchley

I would like to say a heartfelt thank you to everyone at Totley for being so kind and helpful both before and after my sister Avril's death.

It was lovely to see so many people at her Celebration and to talk to some of you afterwards.

I am sure you are missing seeing her walking the dog and at the many events and meetings she attended.

I hope all her plants are surviving so you have a living memory.

I wish you all a very happy Christmas and a healthy and prosperous 2016.

Maureen Hodson

WEA French classes at St Johns Church, Abbeyle

Here are details of the WEA French courses from January 2016. The actual dates will not be finalised until after your deadline, but I can give you the following.

'Brush up your French year 1' - the expected enrolment for the new course is 19th January, but you are welcome to join us for the 2 previous sessions on 5th and 12th January as well if you would like to. The course length is 7 weeks or 11 weeks.

'Brush up your French year 2' - the start date is 7th January and the course length is 11 weeks.

Please email on sylviamay@gmail.com or phone me on 07958 940821, or contact the WEA directly via their website or on 0114 242 3609 nearer the time, as I don't know yet when the courses will go live on the website.

There are also places on levels 3 and 4 courses at the same venue, on Tuesday afternoons and Tuesday mornings respectively. Please contact me for details, or to discuss which level would best suit you.

The cost of 7-week courses is £45.50 and the 11-week courses cost £71.50. The levels 3 and 4 courses will both run for 11 weeks. Please note that people on some benefits do not have to pay.

Sylvia May

Paul's Waterless Car Wash

My car is eleven years old, and goes from time to time into the car wash. I decided to try Paul's 'wash', expecting to collect a cleaner car than usual, but was amazed to find that not only was the car spotlessly clean, with the tar dots carefully removed, but it shone like new! Even the battered greyish-looking tyres were black!

Definitely a beauty treatment—and only £10! I have taken it out in several very heavy downpours, and it has dried with the same shine as before! I could lean on it in my best jacket!

So cheer yourself and your car up, and take it to Paul!

Jo Collie

M. Scriven
(FRUITERAMA)

MARTIN SCRIVEN

HIGH CLASS FRUIT
& VEGETABLES

37, Baslow Road

Tel. 236 7116

Orders Delivered

One man went to mow...
...but his mower wouldn't go!

Now is the time to call

Mower Mender

and be ready for the forthcoming growing season
A friendly local business
servicing all makes of
garden machinery

winter
servicing!

phone: 0114 236 6958
mobile: 0781 2211149

Blade Sharpening and
Collections and Delivery Service Available

TOTLEY PRIVATE HIRE

EXECUTIVE CAR TRAVEL

AIRPORTS AND LONG DISTANCE
PROP - PAUL SOUTH
24 HOUR SERVICE



Tel: 0114 283 9692
Mobile: 07974 355 528
Email: PAUL.SOUTH1@TESCO.NET

DRONFIELD LANDSCAPES

Logs and wood chippings
For Sale

Ring for details

Chris 0114 274 6158

Mobile 07976 072785

Richard Mobile 07789 497104



yogaq@hotmail.co.uk
0114 236 9943
07708 996984

Body, Mind & Breath
enjoy the union of yoga

YOGA CLASSES in TOTLEY & RANMOOR

Rachel Quinn BWY Dip



Tristan Swain

Garden Services and Maintenance
Established 1984

Unit C4 Sheaf Bank Business Park
Prospect Road Heeley
Sheffield S2 3EN
Tel/Fax: 0114 255 4689
Mobile: 07831 802 539
Email: tristan@tristanswain.co.uk



www.tristanswain.co.uk Public Liability Insurance Waste Transfer Licence



Gail Kitchen: 07986473415

Does going away from home mean your cat is sad and unhappy?
Does a trip to the cattery scare your cat not to mention your wallet?

WORRY NO MORE!

MOGGY MAID is on hand to feed, love and provide
everything your cat needs in the relaxing comfort of its own home.

As we cat-lovers know, unfamiliar sights and smells can stress your cat,
whereas leaving them in the familiar surroundings of their own home
carries less worries, for your cat and for you.

If only for a night, weekend, or a month; holiday, Christmas or any time of
the year, MOGGY MAID is here to help LIGHTEN YOUR LOAD

We promise no mischief allowed!

In a professional manner and with quality service, you can ensure
individual care and attention, whilst you relax away from home.

We haven't forgotten the rest of the family; mice, rabbits, budgies,
goldfish, etc will receive care and affection too.

LOCAL FRIENDLY SERVICE
From £12 a day

For more information, contact Gail Kitchen on:
07986473415 5 Ullswater Place, Dronfield Woodhouse

Friends of Gillfield Wood

www.friendsogillfieldwood.com

The group ran three very successful outdoor events this autumn. All three were well attended and luck was on our side as we had good weather for each event.

The first event was a **Bat Walk** on Wednesday September 9th. It was a warm still evening, the ideal conditions for bats, so we were all very hopeful. We met our leader Derek Whiteley, of Sorby Natural History Society, at the bottom of Totley Hall Lane at 8.30pm, and immediately the bat detectors, handed out by Derek, were crackling away as two small Pipistrelle Bats flew along the hedge-row which we were standing against. What a start!

Derek is, without doubt, a great naturalist and was only too keen to share his knowledge about the lives of bats. So the people attending took the opportunity to fire questions at him regarding calls, feeding, roosting, preferred habitat and the mating behaviour of these fascinating creatures. And while Derek answered the questions, the bats continued to fly near to us calling.



Pipistrelle bat in flight (Library picture)

Derek then demonstrated how the hand-held detectors (the size of a 3cm thick mobile phone) can be adjusted to pick up the numerous calls that are emitted at different pitches by bats and he explained how the pitch can help identify the species of bat. He pointed out the "dry clicks" and "wet smacks" and even mentioned a "chip chop" sound which, needless to say, one or two thought he had said "chip shop"! Giggles all round at that.

We then moved slowly along the footpath dissecting Totley Hall Fields, and as we headed towards Gillfield Wood more Pipistrelle Bats were seen in the fading light as they worked the trees and hedgerows alongside the path. One bat actually zipped between us all as we stood and listened to our detectors; it was flying just below head height as it hunted for food on this warm evening. It was now clear to us that the bats were making different sounds as they echo-located prey items and as they came into close contact with other bats.

The highlight for most of us was, however, standing by the brook inside the wood and 'picking up', with the detectors, the call of a Whiskered Bat and then seeing this special bat in bright torchlight as it flew twisting and turning through the trees. It then flashed by us into the dark as it followed the curves in the brook. A great end to an exciting and rewarding evening which was enjoyed

by all.

Our second event was on Saturday September 26th when a group of sixteen people met again at the bottom of Totley Hall Lane at 10:30am. This time it was for a **Fungi Walk**. As Paul Hancock writes:

We were a good balance of male and female individuals and one young man who made our average number of



The fungi walk group (photo: Chris Brewster)

years more respectable. Our expert for the day was Steve Clements who has had a lifetime of interest in Fungi of all types, not just simple mushrooms and toadstools but 'crusts' and 'slime moulds', etc. We searched around a few fields before heading into Gillfield Wood. This resulted in some mushrooms being discovered around an old oak and a more unusual Powdery Mildew on stinging nettles close to a hedgerow.

On reaching the wood we took a right turn away from the main trail through Gillfield Wood, venturing along the northern edge of the wood until we reached the farthest point of the section we know as Pheasant Wood. Along this route we saw a wide variety of fungi including milkcaps, 'parasols' and 'bonnets', bracket fungi, puff



Birch Milkcap (Photo: Paul Hancock)

balls and 'crusts'. The variety of shapes, sizes, colours made this a very interesting morning. All fungi have an association with other plants or animals and sometimes with each other. It was surprising to come across a black, almost rubbery encrustation on a log which gave the impression of fire damage. On further examination we saw orange 'dust' scattered across part of this fungus

which, Steve informed us, were the fruiting bodies (seen with a hand lens) of another microscopic fungi which parasitizes the black fungus.

All in all, a very interesting morning in which we came across over 40 different species with several new records to add to our database of approximately 300 different species of fungi. Many thanks to Steve Clements for his time, interest and enthusiasm. We learnt a little bit more about these easily-missed organisms.

Our third get-together was the annual and ever popular **Small Mammal Trapping** event. A joint meeting with Sorby Natural History Society, this took place on Sunday October 4th and started at 8.30am. A number of traps had been set in the wood the previous evening and as usual there was a keenness to get on and find out exactly what the traps had caught overnight...if anything at all!

The traps we use are metal Longworth traps specially designed for catching small mammals alive. Each trap was well prepared with an appropriate amount of food and bedding so any small mammal caught had a comfortable warm night and could be released unharmed the following morning after close inspection and identification.

And so it was, four of the traps proved to be occupied and with great excitement each of these traps was carefully opened into individual plastic bags for all to observe the contents. With eyes popping out on stalks (the eyes, that is, of the attendees, not the mammals) two Bank Voles and two Wood Mice were seen to drop or more accurately, be manoeuvred, into the four bags. It was great to have caught both species so everyone



Wood Mouse (Photo: Chris Brewster)

could clearly see the identification features and the differences in the sizes of their eyes and ears, their shape and the texture and colour of their coat. Our excellent leader, Val Clinging, shared her wealth of knowledge throughout the morning and advised us that all four were young animals, born during the summer, and it was reassuring to note what good condition each one was in.

All four were released back into the woodland habitat where they had been caught. One lady, as she knelt down close to the floor, was fortunate enough to hold a Bank Vole in her cupped hands before release. It was however noticed with much amusement that she tight-

ened the cuffs on her jacket, so the creature didn't turn around quickly and run up the inside of her sleeve - which they have been known to do!

The morning ended with us standing in a field on the south side of the wood listening to a Red Deer stag bell-



Red deer stag (Photo: Chris Measures)

owing out its loud roar from the dense cover of a nearby wooded hillside. A magical moment only bettered the night before when some were lucky enough to see the proud stag in all its glory, with a full set of antlers, walk out into the field bellowing away with a number of hinds in attendance. In addition, two young stags were seen to be keeping well out of its way further down the field. Just one of the many fabulous experiences you can have in and around Gillfield Wood.

We have certainly had a perfect autumn. The colours have been particularly wonderful this year. Now for winter, and whatever that may bring. Please remember, you do not have to be a member to join us on any of our events! You will be made very welcome, and absolutely no experience is necessary.

In the meantime, best wishes to all for Christmas and the New Year. We hope you have a lovely time and we hope we'll see you at one or more of our events in 2016.

Chris Measures

Totley Residents Association

Thank you to all the people who turned out to support Totley Market on Saturday 7th November. The weather was vile and there were several last minute cancellations for the outdoor pitches.

But eventually the rain stopped and visitors started to arrive. The stall-holders were very pleased with the event and the feedback has been excellent.

People liked being able to sit and enjoy tea and cake courtesy of Teatime Vintage whilst listening to the sounds of Phil and Sue and their band. Khalil with his olives and mezze was as popular as ever, and the Charity stalls did very well, one of them raising in excess of £200.

The next Market will be in May though the date has yet to be confirmed.

TRA was pleased to be part of Remembrance (*cont. p.7*)

(Cont'd from p.6)

Remembrance Sunday at Totley All Saints. The church was packed, with many having to stand at the back.



The 'new' view of— and from— the War Memorial

As many of you will have noticed work has been completed on the laurels at the rear of the War Memorial. It was lovely to be able to look out across the moors once again. The Memorial looks very much as was intended when first erected.

Thank you to Johnny Moran for laying the wreath on behalf of TRA.



One of the most popular stalls at the Market!

Have a Happy Christmas and all good wishes for 2016.

Hetty Moran, Chairman, TRA

Totley Scouts

Well done to Thomas Martin whose excellent work and commitment earned him the Chief Scouts Silver Award. This is the highest award that can be earned in Cubs.

Likewise the highest award that can be earned in Scouts is the Chief Scouts Gold Award. Luke Freeman, Alister Greaves, Harry Lashmar, Jacob Shipley, Oliver Robinson, Daniel Evans, Daniel Whitely, George Frost and Alex Scott all achieved theirs in the last few months. Well done to them all as well.

Our autumn Antiques Fair at St Johns Church hall in October went very well and was the best attended for a few years. Unusually there was a wedding in the Church at the same time so we had a bit of juggling in the car park. But we did manage to sell some cakes to the wedding guests!

And on the 6th November we held our annual Bonfire Night. This was a very enjoyable evening for the boys and girls, and for parents, grandparents and friends. As well as the bonfire and fireworks we had hot roast pork sandwiches, burgers and hot dogs as well as nice warming soup. We were very lucky with the weather. It rained beforehand and during the night afterwards but stayed dry for us. Thankyou to Tesco for donating a large Christmas hamper, the Cross Scythes for donating a meal for two and S.I.V for donating a round of golf for two. These donations were used as raffle prizes. Also thankyou to Turners Bakery for supplying the bread.

Both the Antiques Fair and Bonfire raised hundreds of pounds for Scout funds.

We were lucky with the weather again on the 8th November for the Remembrance service at Totley All Saints Church and at 11am at the memorial on Baslow Road. All sections of the Totley Scout Group paraded with their flags, which were also taken to the memorial. This year one of our Scouts, Alister Greaves, carried a wreath on behalf of the Scout Group to the memorial which he also laid. I don't think the Church were expecting so many young people



Our bonfire!



Totley Scouts at the Memorial Service on November 8th

for the service as about two thirds of our whole group turned up to Remember. A fantastic turnout.

Our Treasurer, Andrew Eaton, is resigning, but has agreed to stay on a little longer. Andrew has carried out the role for many years and we will be sorry to see him leave us. That means we need a new Treasurer, so if you have accounting experience and would like to help Totley Scouts as Treasurer, please contact me.

Please also take a look at our job advert on page 27 if you are interested in helping any of our sections. We always need more adults to help with fun and exciting programmes for the children.

Richard Frost, Chairman, 1st Totley Scouts
TotleyChair@aol.com
0114 236 3603

Totley Rise Methodist Church

Winter at Totley Rise Methodist Church

9.00 am Early Services (1st and 3rd Sundays). A quieter, more traditional service.

9.30am (2nd and 4th Sundays) Toddler Praise aimed at the under 5's and their parents/carers

10.30 am Mid-morning Service every Sunday. An informal and contemporary service with a monthly Communion

6.30 pm Reflective Worship: every Sunday. A quieter space for worship and listening to God

9.30 – 10 am Tuesday Prayer, every Tuesday. Prayer for the world, community and for healing and wholeness in the Church

Christmas at Totley Rise Methodist Church

9th December, 7.30 pm: Carols by Candlelight

13th December, 6.30 pm: Carol Service

20th December, 6.30 pm: Sacred Space Service: 'Hope was heard singing.....' Quiet reflections for Advent.

24th December, 4.00 pm: Christmas Eve Crib Service

25th December, 10.00am: Christmas Day Family Service.

Journey to Bethlehem

Saturday 5th and Sunday 6th December, Totley Rise Methodist Church. A free walk-through experience for the whole family that tells the story of Jesus' birth. Travel back in time to see the people and places that surrounded the miraculous birth of Jesus Christ. Actors tell the story with shepherds and sheep, wise men, A bustling marketplace, refreshments and that special stable.

30-minute guided tours from 4.15pm–7.15 pm. Booking essential. Email suekirkman.uk@gmail.com or phone 07854 968011.

Please provide your name, phone number, number of people in your party and preferred day of tour (Saturday or Sunday). Report to Registration Desk on arrival.

Messy Church

We hold a Messy Church at Totley Rise Methodist Church on a Saturday afternoon most months. Every Messy Church has a particular theme. All are welcome - contact Rachel Wilson on 07912352543 for more details on themes etc or just turn up. Tea and snacks are included.

Messy Church is not just a club for Kids to come and do activities - not just a bridge into "normal" church - not just a social activity for Saturday afternoons. If Messy Church isn't any of these things then what is it?

Messy Church is an all age way to help people discover Jesus, not just church families but the whole community. A relatively new concept, it has now spread internationally (Denmark have to call it something else as they don't have a word for messy in their language!). This happy mixture of games, craft activities, food and lively worship, all based on a bible theme is bringing families together in a new and special way. Churches that have been providing Messy Church are finding that it is creating a new worshipping congregation in its own right. Messy Church is here at Totley Rise.

The Quiet Garden at Totley Rise Methodist Church

Stillness and Hospitality: you are invited to come and sit here and wonder about our creative God. It is a place to find peace in the stillness of the garden and an opportunity in the 'busyness' of modern life to lay down your concerns. You can do this any time during daylight hours. Or you may want to share an experience with others by taking part in a Quiet Garden day or evening event. Visit www.totleyrise.co.uk for details.



'Come with me by yourselves to a quiet place and get some rest' (Mark 6:31)

Hear our sermons

If you are unable to come to Totley Rise Methodist Church on a Sunday morning, you can still hear the service as a podcast online. Just visit our website www.totleyrise.co.uk and find a selection of recent services at Podcasting Podcast Page.

Ongoing Events (and see Diary, p.34)

Knit, Natter, Craft and Chatter
Every Tuesday 12.00noon -3.00pm,
Totley Rise Methodist Church Centre.

This busy and friendly group has been a great success. They aim to include more people from the area,

even the housebound. Housebound does not mean isolated. The group will provide wool, needles and a chat



for those who cannot travel to the church. Young people are welcome too. There are skilful, lovely ladies ready and willing to help those new to knitting and sewing.

Many charities benefit from the group's work: Butterfly Wings (stillborn babies), Sheffield premature baby unit and the Christmas shoebox appeal. Sheffield Royal Society for the Blind have adopted knitted Ellie the elephant as their mascot and have given a certificate of grateful thanks. Members can knit/sew (a sewing machine is available) for their chosen charities.

Maxine, the organiser, says that all the ladies love coming. Men are also welcome. You can stay for as long as you like up to three hours. We offer tea, coffee, biscuits and, most importantly, friendship.

Little Lights Wednesdays 1.30pm – 2.30pm during term time. A chance for Mums/carers, babies and pre-school children to meet for songs, fun, snacks and crafts all based on a bible story. Contact Rachel on 07912 352 543 for more details.

Meeting Place Every other Wednesday 2pm – 3.30pm at Totley Rise Methodist Church. All parents and carers are welcome with their babies and toddlers. There will be a bible story, singing, prayer and a chat with each other to discuss the challenges of parenting. Tea and coffee will be provided. Please contact Rachel on 07912 352543 for further information.

Tuesday Ladies 2nd Tuesday of each month at 8.00pm, Totley Rise Methodist Church Lounge. About 35 ladies consisting of both church and non-church members meet to enjoy speakers or a quiz or beetle drive.

Sometimes the evening includes food such as salmon and strawberries or cheese and biscuits. If you would like more information please call Janet Savage on 01142369002.

Boots, Fresh Air and Ginger Beer

Review by Dorothy Prosser, Totley History Group

Throughout 2015 a series of events named 'Ruskin in Sheffield' is taking place celebrating John Ruskin, the Victorian art critic and philanthropist. In June there were three performance walks around Totley where, in 1877, Ruskin bought St George's Farm which was to be worked communally by a group of working class men and their families. The performance, written by Sally Goldsmith, also included other local characters who were connected with Totley and the surrounding area between 1877 and the early 1950s. I went on the final walk on a rather wet and dismal Sunday afternoon.



Above is Harry Brearley, the inventor of stainless steel. He was born into a poor working class family in Sheffield



and started working as a labourer in a steel mill when he was 12 years old. He was a very bright boy and gradually worked his way up the ladder finally becoming a director of Brown Bayley one of Sheffield's major steel companies. He married in 1895 and he and his wife came to live in a little cottage on Brook Terrace a little lower down and on the opposite side of road to St George's Farm.

Then we have Joseph Sharp and Mrs Malloy, who are two of the people who were involved in the St George's Farm experiment. Joseph Sharp was a musician, originally from Nottinghamshire, who earned his living by playing the harp in pubs and at social functions.

On the left below is Edward Carpenter



who was born in Sussex into a wealthy family and was a Cambridge graduate. He became a socialist poet and philosopher and was also an early gay rights activist. He lived for a while in Totley before moving to nearby Millthorpe where he had a small market garden. On the right is William Harrison Riley who was another of those involved with St George's Farm. He later went to live in America and became a friend of the poet Walt Whitman.

The last two characters - Bert Ward and Ethel Haythornthwaite. G.H.B. Ward founded the Clarion Ramblers Club in 1900 and they were the chief organization campaigning for public access to the moorland areas of the Dark Peak. The Clarion Ramblers handbooks are very collectable now and the early ones can cost over £30 which is a lot for a tiny book measuring about 4x3 inches:) Though born in Sheffield, in the later part of his life Bert Ward lived locally on Moorwood Lane.

Ethel Haythornthwaite founded the Sheffield Association for the Protection of Local Scenery in 1924 which in 1927 became the Sheffield and Peak District Committee of CPRE. She and her husband saved areas such as Edale, Mam Tor and Blackamoor from



development and were instrumental in establishing the Peak District as the UK's first National Park in 1951.

In spite of the weather the whole walk was great fun and I now know the route down from Woodthorpe Hall to Gillfield Wood. Oh, and the title - boots for Bert Ward and the Clarion Ramblers, Fresh Air for all the outdoor activities and Ginger Beer - well I don't know quite why Sally chose that but it's a jolly good drink to take on a picnic:)

Dorothy Prosser

(If you missed the walking performances and the showing of the video at the Library, you can enjoy the film on YouTube. Just put 'Boots, Fresh Air and Ginger Beer' into the YouTube search box.)



www.cbpianotuner.co.uk

Colin Brown

PIANO TUNER

07850 247358

Your total piano service

Cost from £38



M. WOOLHOUSE BUILDERS LTD
THE COMPLETE BUILDING SERVICE

- Design to Completion
- New Builds
- Extensions
- New Roofs
- Slates / Tiles / Stone
- Stonework Specialist
- Renovations

T : 0114 235 3314
M: 07973 908 187



www.mwoolhousebuilders.com
info@mwoolhousebuilders.com

Totley Deli

51-53 Baslow Road, Totley Rise. S17 4DL.

Call 0114 2364238

Enjoy delicious freshly
cooked food in our
NEWLY REFURBISHED
coffee shop

Why not come in and sample our wide range of hot & cold sandwiches and home made produce, freshly made daily to eat in or take away. Cakes, quiches and pies can be made to order if required. All produced from locally sourced suppliers.

- Fresh Roses bread delivered daily & available to order
- Selection of cooked meats sliced to your specification
- Superb selection of fine cheeses, preserves & pickles

Look out for our daily special meals or join us for breakfast.

All available to take away.



If you are having
a party or family
gathering why
not let us take the
strain and provide
a buffet for you.



*Where quality and
friendliness count*

Paul and Mandy at the Hardware Shop in Totley, are pleased to announce the opening of a **Waterless Car Wash Service.**

Our car care products are endorsed by
The Williams Formula One Racing Team for use on the most
valued vehicles in the world – yours!

Prices start at **only £10.00** for a **Bronze Valet**, which includes:

- ✦ Exterior Wash ✦ Exterior Glass Polish ✦ Tyres Dressed
By appointment only.

Car park to the rear of and at The Heatherfield
191-193 Baslow Road, Totley.

All day Tuesday to Friday and Saturday mornings
To book your car in NOW, Telephone **235-1444.**



Totley History Group

Programme 2015-16

Unless stated otherwise, meetings take place at Totley Library at 7.30 pm

Dec 16th: Spitewinter Concert at Ecclesall church 7.30pm An evening of winter songs and music old and new. Sheffield folk chorale with guest York Waits. Contact Pauline for tickets.

Jan 27th The Dore to Chinley Railway - the Hope Valley railway with emphasis on the Dore and Totley area by Ted Hancock.

Feb 24th A - Z of Sheffield by Mick Spick. An exploration of the history and geography of Sheffield, in alphabetical order, visiting diverse places and buildings and giving knowledge of events and people in our past who have shaped the city.

Mar 23rd Open meeting - A chance to talk about recent research

Another Totley Yard Sale!

Sunday 17th April 2016, 11.00am

Sell your unwanted goods from your own front garden! You pay £5 which goes to Totley Open Gardens Association (which distributes money to various local community organisations every year — the total raised to date is over £25,000) and you are included on a list with a map which is sold to buyers on the day for 50p.

To register, email jennie@hadish.f9.co.uk or Tel. 0114-236-2302

It's a great way to have a clear out, raise some money for yourself and contribute to supporting the local community!

Jennie Street

Speed Cameras

Many motorists in our area will dread seeing these words again. There have been 2300 offences in 12 months, with the highest speed being 74 mph by a vehicle travelling out of town (westbound). If prosecuted, drivers are fined £100. It is said that if motorists choose to take a driver awareness course, they do not have to report the fact to DVLA or to their insurers. But the press reported a case recently where a motorist who had not reported the speeding offence to their insurers had an accident, and when the insurer's questionnaire found out about the DAC he was told his insurance was null and void. My suggestion is that you check with your insurers to ensure

that their small print does not require notification.

South Yorkshire Safety Cameras have carried out another survey, using rubber tubes across the road which to determine speeds without the presence of an enforcing camera. The figures below show the 85th percentile speeds now and for 12 months ago. The 85th percentile speed is the speed at, or below, which 85% of vehicles are travelling. So in essence 15% of the traffic using the road travel over those speeds reported.



At the moment, the speed for eastbound traffic is 32.9mph, while that for westbound traffic is 33.3mph. This compares to the speeds recorded last year of 35.1 mph for eastbound, and 36 mph for westbound, traffic.

This means that speeds generally are lower, but 15% of motorists are still exceeding the limit. South Yorkshire Safety Cameras have, painfully for some, educated drivers by enforcement, education at Driver Awareness Courses, their presence on the road, and the erection of 30 MPH reminder signs. As far as I know, there have been no accidents since the cameras appeared.

The cameras will continue to have a presence on the road, but it will not be as often as it has been - unless drivers go back to their old ways!

Roger Hart, Chair of the Ward Traffic Focus Group.

**A1 Tiling, Plumbing,
Plastering & Complete
Bathroom Installations**
Tel : 07738 688 807

- * All Plumbing Leaks, Bursts & Blockages
- * Taps, Showers, Radiators Etc
- * No Job To Small
- * Home Improvements & Maintenance
- * Underfloor Heating, NVQ Qualified
- * Reliable, Fully Insured & Guaranteed

www.A1tilingandplastering.co.uk
25 Five Trees Ave, Dore, S17 3LW

Piano/Keyboard~Guitar~Singing~Flute
Theory & GCSE Coaching

MUSIC TUITION

SOUTH - WEST SHEFFIELD

Experienced & enthusiastic tutors

All styles, all ages - beginners welcome
Exam work or just for fun!

Please contact:

KARIN FINNEY

0114 258 3397 ~ 07854 747153

notetokarin@hotmail.com



On yer bike...at Totley Primary

In recent years we have done a lot here at Totley Primary School to promote the message that cycling and scooting are healthy, environmentally friendly ways to travel. When the staff carpark was remodelled, for example, a generously proportioned bike park was factored into the design to allow space for children, parents and staff to leave bikes and scooters safely and securely.



The bike park

In the Spring term, our Y5 and 6 children have cycling training via "Bikeability", with the vast majority of children achieving Level 2, which means that they have received training on the roads under expert guidance. This is then followed up at our Y6 residential at Thornbridge, where the children are taught "mountain bike skills" before heading out onto the Monsal Trail for an extended ride through the old railway tunnels!

We have been partnered with the "BikeIt" organisation for some time now and our local BikeIt officer, Amy, pays us regular visits to ensure that the cycling agenda remains high on our priority list. She has also helped us to set up a "BikeIt crew" in school – a team of 6 highly motivated Y5 and Y6 children who help her to spread the two-wheeled word! Last week, for example, Amy and her crew delivered an assembly about the importance of being easily visible when out and about on the roads and pavements at this time of year. On the back of this, the whole school dressed in a dazzling array of luminous and reflective clothing on Friday to reinforce the "Be Bright Be Seen" message. Amy also helps us to host regular "BikeIt Breakfasts", when children coming to school on their bikes and scooters can pop in for a free healthy breakfast to kick start their day.



The Bikelt Crew

Next in the pipeline are a series of "Learn to Ride" sessions to support any children who need a little bit of extra help to ditch those stabilisers and get riding.

It wheely is all go!!

Ben Paxman, Assistant Head Teacher

Last dates for Christmas post!

For mail to addresses in the UK:

Second-class - Saturday, 19th December

First class - Monday 21st December

Special Delivery Guaranteed: Wednesday 23rd December

International airmail:

Friday 4th December: *Africa and the Middle East*

Monday 7th December: *Eastern Europe, Asia, Cyprus, Far East including Japan*

Tuesday 8th December: *Caribbean, Central and South America*

Thursday 10th December: *Australia, Greece, and New Zealand*

Monday 14th December: *Czech Republic, Germany, Italy and Poland*

Tuesday 15th December: *Canada Finland, Sweden and the USA*

Wednesday 16th December: *Austria, Iceland, Ireland, Portugal and Spain*

Thursday 17th December: *France*

Friday 18th December: *Belgium, Denmark, Luxembourg, Netherlands, Norway, Slovakia and Switzerland*



(Information from www.royalmail.com)

Walking the Dog

13 Ghosts of Xmas Past

1 I always wanted a dog for Xmas, Jack. And never got one because of Our Geth's asthma. When we moved to a bigger house maybe I could? But we never did, so I never could.

2 At All Saints, just once, we had a Xmas party and we all pooled whatever our mums made - potted dog, marmalade and marmite scones, and jelly with condensed milk and grape nuts etc. Everybody's else's mum sent better things. But then there was a miracle. We ate whatever we wanted, in any order, or at the same time, and started again once we'd been sick. But next day there was still stuff left for playtime - proving that if you share, everybody gets more, Jack.

3 The troops were still guarding the reservoirs in case the Germans weed in them, and my dad took us out to see them, and Father Xmas. Once we got there my dad had to go and make a phone call even though nobody had a phone, and there was a war on, just. He left the soldiers to sing Lili Marlene, but then Father Xmas came and gave us a bag of crisps with blue salt, one between threes. He looked like my dad, and he smelt like my dad, only he had a white beard. He'd not been long gone back up the chimney when dad came back from the phone and asked if he had missed anything, so we gave him a crisp and went home.

4 In the Lyceum panto, Simple Simon ate the goldfish and belched, and it was the rudest thing I ever saw in any theatre ever, and everyone said he was disgusting. But I tried to remember his name for ever, and it's Frank Randle.

5 And we all learned to belch on the Pinfold when we went back to school in January, even the kids who'd been to the other panto at the Empire.

6 Someone had to sing Once in David's every year unaccompanied without fainting by the latch door into the vestry at All Saints. And they had to stay dead in tune or when everybody came in in verse two the congregation would laugh, as they always did. Every year it was the senior badge boy whose voice was always breaking by 'Mary was that mother mild,' when it goes right up, and it was me in 1952.

7 In the panto at the Abbeydale Hall Community Centre, which was Cinderella, and I was Buttons, I had to salute Pat Needham who was our May Queen, but not in the panto. And in rehearsals Margaret Dexter kissed me when I wasn't looking and tasted of onions and it was lovely. There was a joke but I didn't get it and it went, 'There aren't any flies on buttons'.

8 Old Barrett told us in the Chapel in J 2 that there wasn't a Father Christmas and we should grow up and stop believing in him. But we didn't believe Old Barrett, Jack. He said we had to believe in God instead, even if we couldn't even see him. But we didn't.

9 The year I asked for Archie Andrews, I saw him on top of their wardrobe all boxed up in October. My mum said that Father Xmas had come early in case there was snow, like in 1947.

10 I never worked out why Father Xmas brought all our big presents, but my mum and dad only bothered to give us satsumas.

11 'If you haven't got a penny
A halfpenny will do
If you haven't got a halfpenny
Your door's going through.'

12 'Did Jesus get Xmas presents as well as birthday presents?'
'Yes Jack '
'Did he ever ask for a dog?'

13 When I grew up, I was allowed to have a dog, Jack. Everybody lived happily ever after, and it was Xmas every day.

Rony Robinson

Keep well this winter

It may seem a bit early to be thinking about Christmas, but this will be the last issue before the festive season. You may need to plan a little more carefully this year with regards to your health. With Christmas Day falling on Friday, and Monday qualifying as a Bank Holiday, doctors' surgeries and most pharmacies will be closed for four consecutive days. To aggravate the situation, it is predicted to be the coldest winter for 50 years with heavy snowfall likely. This may make getting to the surgery more difficult. The weather may also impact on deliveries of medicines. To avoid being left without your medicines over this period ensure you order them sufficiently early.

Even if you don't take prescription medicines, you may still need to plan ahead. It would be wise to stock up on cough and cold remedies rather than being caught short. Vitamins to boost your immune system can be useful during cold periods. And past experience teaches us that it would be wise to stock up on indigestion and over-indulgence remedies even if you have the best of intentions (those best intentions often seem to fade don't they?) Pop in to see us and I will be happy to advise on the best options. We have certain stronger medicines which can only be bought from pharmacies, and we will ensure the treatment we recommend suits you and takes into account any other medicines you may take. We will refer you if you need further medical attention. You can see our pharmacist for advice without an appointment.

I appreciate that even with the best planning, things may still go wrong, so I will open for a few hours on Saturday 26th from 10am to 1pm. Hopefully this will help deal with any emergencies that arise. If you need medical help or advice when your surgery and pharmacy are closed phone 111. An adviser will ask you questions to assess your symptoms and give you the advice you need, or direct you to the best service for you in your area.

Practical tips to keep well in winter: ensure your house is kept warm. It is important to eat well, as food gives you energy, helping to keep you warm. So, try to have regular hot meals and drinks throughout the day. If you are in an at-risk group, you should ensure you have a flu jab.

I hope you find this useful, and wish you all a Merry Christmas and a happy new year. Eat, drink and enjoy the season with your loved ones.

Taj, Totley Pharmacy

BRADWAY INSTALLATIONS

Kitchens, Bathrooms and everything in between
Complete Kitchens Installation or supply & installation

Kitchen Refits Replacement worktops/sink/hob etc
Worktop/cabinet repairs

Bathrooms - Cloakrooms - Domestic plumbing

Tiling - Laminate/Vinyl flooring

All work undertaken is fully insured and guaranteed

Ring Peter - 0114 236 5995

Mobile - 07766 411355

IN TOTLEY:

700sq ft LOCK UP BUILDING

suitable for

WORKSHOP or STORAGE SPACE

Complete with office area.

To let @ £50 per week

Tel: 2364761 or 07710 212753

Your Local Party Venue.

Facing the prospect of a birthday party or other family event?

Consider Tigers rugby club.

**Local function room,
yet out of the way**

Plenty of space & still economical

**Ideal for all family celebrations
where you need a little more room,
but want to be close by.**

Sheffield Tigers Rugby Club

Hathersage Road

Dore.

S17 3AB

Tel: 2360075

(answer phone)

bookings@sheffielddtigers.co.uk

www.sheffielddtigers.co.uk/venue-hire



BIKE REPAIRS and SERVICING

By Will Watson



For a free quote please contact me on

0114 236 4778 or 07532106264

<http://williamwatsonbikeservicing.weebly.com/>

R.M.M BUILDING SERVICES

25 YEARS EXPERIENCE

All types of building work carried out including- Drop kerbs, block paving (drives, paths, etc), extensions, general building repairs and maintenance.

Phone Rob on- Mob- 07906108567

Home-2352190



Got a computer?

Having Problems?

Is it running slow? Stops responding?
Having problems running the latest games
or applications? Broadband installation?

Give me a call!

I'm available for home visits at any time including evenings and weekends. I can also suggest upgrades to improve performance, or even build you a system to your specific requirements.

Tim Brown

Building,
Installation,
Upgrading and
Troubleshooting
Computer
Systems
Over 25 years
professional
experience

Phone: 0114 2472619 Fax: 0870 7060080

Mobile: 078 17464703 Email: service@timbrown.plus.com

Pronfield Landscapes



Gardens cleared and maintained, Lawns mowed, Turfing, Tree felling & pruning, Hedges trimmed & reduced, Pond maintenance, Fencing etc.

for free quotation call

Chris on: (0114) 2746158 Mobiles: 07976072785 or
Richard on: 07789497104

8am-6pm mon-fri

HazelBarrow Farm, Norton S8 8BA

GBR Triathlete runs for Hospital Appeal

One of the UK's top female triathletes has vowed to run up funds for a hospital to say thanks for her daughter's recent care.

Mum-of-two Caz Kay, who competes all over Europe for Great Britain in triathlon and duathlon events, is set to complete more than 30 runs over the next 12 months for the Children's Hospital Charity. Caz wants to give back to Sheffield Children's Hospital after spending time there while her eight-year-old daughter, Casey, underwent an adenoid operation.



She said: "The treatment Casey had at Sheffield Children's Hospital was lovely. Everyone was fantastic with her even though she was really scared. They distracted her with 'Where's Wally' when she went in for her general anaesthetic, and then she went to sleep on my knee."

"Seeing my child go under general anaesthetic really affected me. It just made me think about all the parents with babies and toddlers going through the same and worse. During Casey's four hours I had to time to reflect, and I realised I am doing all of these runs anyway, so I might as well do them for a good cause."

Caz, who lives in Bradway and runs for Totley Athletics Club, has already completed a fell race, and the Worksop Half Marathon in October. She plans to compete for Great Britain in Germany and Portugal in 2016, in between her time as a PE teacher at Notre Dame high school. "I want to inspire my children and the children that I teach to get into sport and to keep healthy" she added. "I regularly give lessons on the importance of health and nutrition, so it is fitting that I am choosing to support a charity that is also committed to keeping children healthy."

Caz has joined Team Theo, The Children's Hospital Charity's group of active challenge participants. Tonya Kennedy, events fundraiser and Team Theo champion at The Children's Hospital Charity, said: "It is really exciting to have such an accomplished athlete joining Team Theo,

and we are delighted that Caz has made such a brilliant start to her fundraising. Every penny raised will help us make Sheffield Children's Hospital even better."

Caz says, "My fundraising is at £162 which is amazing, but it's still got a lot to go to reach my £1000 target. I did the Worksop Half Marathon, and struggled round in 1hr40. Not in great shape right now due to resting from training, plus fighting off a cold. But a fabulous event."

All money raised for the Children's Hospital Charity helps fund life-saving medical equipment, research into the prevention and cure of childhood illnesses and improvements to the environment. For more information on the charity, including details of upcoming active challenges and events, please visit www.tchc.org.uk. Caz is sponsored by Katie Bell Physiotherapy and Wellness.

Undal

(The Kitchen)

Authentic Indian Cuisine



0114

2366021

www.undalsheffield.co.uk

OPEN 7 DAYS A WEEK

5PM till 11pm

Open all bank holidays. Closed Christmas day.

FREE DELIVERY

Home delivery within a 3 mile radius.

Undal now have a new Head Chef who has over 30 years experience in Indian Cuisine.

All our dishes are cooked to order using fresh ingredients prepared on site.



All major cards accepted

995 Abbeydale Road, Millhouses
Sheffield, S7 2QD

Gardening Tips for December and January

I have just been reading one of the most sleep inducing books I have ever come across, I bought it on a whim – oh, and it was also in the reduced section at Waterstones. It's called *The Science of Gardening*, I ought to have known that it would be a bit heavy going when in the first paragraph words like taxonomy and cyanobacteria appeared. I persevered and read more. I did cherry-pick, looking for the useful bits like encouraging plants to make their own chemicals to ward off the nasties which chew the veg, or diseases which make them inedible.

As I read on it became more and more fascinating and I did pick up one or two pieces of interest which I will try out. I tell you what - you could get really hooked on the biology parts! The stuff they gave out when I was at school was piffing compared to this chap's rendition! The birds and bees don't hold a candle to plasmodesmata (for communicating between cells).

I have always known that corn has ears but I did not know that plants could communicate! Now don't go listening to your veg plants! They don't make any noise but they communicate chemically - though I am sure the plants react when I give them a good talking to.

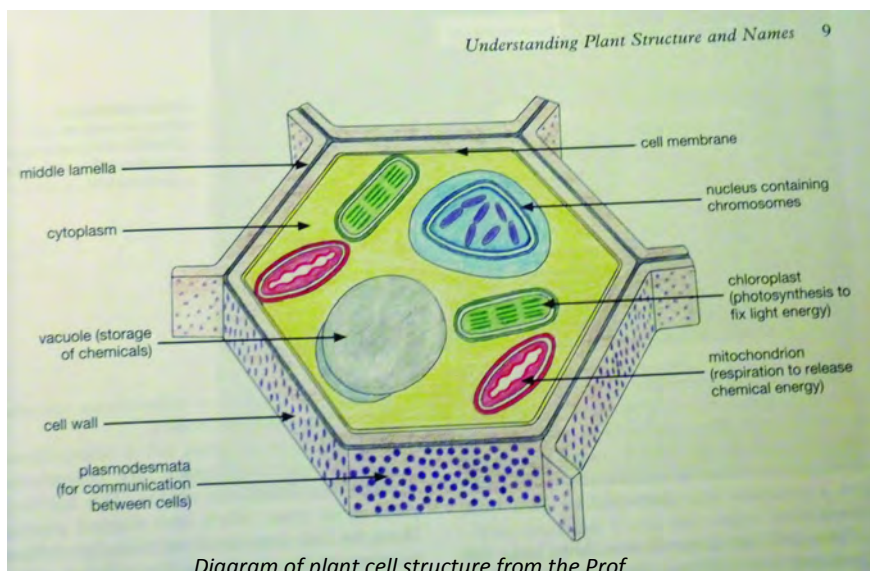
If you are interested in knowing how plants, soils etc, work then Professor Peter Jones is your man. There are one or two recipes for knobbling aphids and fungi, but you will have to have your brain in top gear to last more than an hour or so of reading. There is a section at the back of the book which gives the definitions of the big words, but I found the definition was more difficult to understand than the word!

I was watching *Gardeners World* recently - the last one in the series. Carol Klein was talking about propagation and pollination and about getting more tomatoes to set (have you noticed I'm using more big words? I put it down to Prof Pete!) Carol really came down to basics. I have always used a stick with a bit of sheep's wool fixed to the end and I go

around the flowering tomato plants touching each one. It seems to work for me and the tomatoes seem to be satisfied with this arrangement - I haven't heard any complaints verbally or chemically - but I have noticed that the flowers brighten up a little when I have finished going round with my little tickling stick, as Christine calls it.

Now it seems Carol has gone all modern and high tech. She recommends that we go around the flowers with an electric toothbrush! Now I don't know about you but I am a bit fussy what I put in my mouth. I dread to think what might be on the brush-head when it's been waved about in the greenhouse. It might be a bit better than my way but it won't be much good on my gums afterwards, no I don't think so...

I did say that I would give you some tips if you are serious about growing produce to put on the show benches at the various



horticultural shows.

I will start with leeks and onions. It is now time to prepare your leek and onion beds so that they will be ready to receive your seedlings in March or April, depending on the weather.

First, clear the area of all plants and debris. For each row dig a trench about 18 inches deep and 18 inches wide, loosen the soil at the bottom of the trench, and then put a layer of runner bean haulms (what's left when the beans are finished - leaves, stalks, roots etc.) but do not put on any seeds. The seed pods are good, and pea haulms are also ok.

Place a good thick layer of well-rotted farmyard manure or good compost, and top that with a good dusting of bone meal. Make sure the manure/compost is within 10cm of the surface. Cover roughly with soil and leave rough over the winter period.

Starting in March work the top into a fine tilth adding the following into an area of 4 square metres: 55gms superphosphate, 28gms hydrated lime or 500gms of calcified seaweed, though if you are only growing for kitchen use then this amount of seaweed can be reduced before planting. Check the Ph value of the soil.

Onion seeds are generally planted in warmth - 12 degrees C - late December to February. Leeks should not be sown before the third week in January. Transfer the seedlings (they should look like spring onions) into a cold frame during mid to late March, and plant out mid-April depending on the weather, Plants earmarked for exhibition will benefit from being covered with cloches at this time. Here endeth the first lesson...

Have a great Christmas and a fulfilling new year.....

Flowers: Dig any vacant ground and top dress with a good manure or fertilizer, if you are putting in bedding plants next season don't overdo the fertilizer or they will make more green than flowers. A touch of bone meal or hoof and horn will do nicely. Make sure your insulation around the plants which are likely to be affected by frost is

adequate, straw or agricultural pease or even newspaper can help (newspaper can only be used where it is a sheltered spot, otherwise it goes all soggy and freezes up). You can take root cutting at this time, oriental poppies, perennial verbascums, anchuvas and phlox can be propagated this way, dig up a root mark the top cut into small pieces about an inch long noting the up end, push them into a sandy compost in a well-drained box or pots. The tops of the cuttings should be just level with the soil. Place in a greenhouse either warm or not and water moderately. They will be slow at shooting, and in late spring when they are properly hardened off the small plants can be established outdoors.

Check dahlia tubers in store, cut out any rotting bits and dust the cuts with flower of sulphur. Prune clematis, jackmanii and the hybrid types. Increase stocks of rhododendron and azaleas by layering, that is, bending one of the lower branches down to earth and pegging it down. A bit of sand mixed with the soil where it touches the ground will help, and a small nick in the branch will also encourage it to 'strike' sooner.

Vegetables: Dig any vacant plots, clearing away any crops that are finished. Leave the clods of earth large so that the frost can get at them - this is the only thing that frost is good for. Oh, and it also knobbles a few slugs. Check your soil condition and balance the pH. To suit the crops you are going to grow, do not add any lime to freshly manured soil, as the lime locks the good-



ness in the manure and takes a long time to be of benefit to the soil. Protect cauliflowers from frost by bending a leaf or two over the curds.

You should all know by now if you have been paying attention, that Boxing Day is the traditional day for planting onion seeds, especially for the Totley Show. Kelseo or Robinsons mammoth are the real whoppers. If you want really good flavoured onions use Ailsa Craig seeds, they are great for kitchen use. If you are not growing from seed, onion sets make good bulbs but are planted in May under cloches or April in the open. (Turbo or Sturon are good varieties.) Seeds need to be in deep boxes or in individual fibre pots. Pots are best because there is less root disturbance when planting out in May or April and therefore less check to growth. They don't need a lot of heat - 55 to 60 degrees or so, lowering to 50 degrees F when they show through.

Start planning what you are going to plant and where, trying not to plant the same crops in the same place as last year: rotation is the order of the day. Buy the seeds in good time so that you have an early start if the weather is clement (we hope).

Trees, Shrubs and Fruit: Continue pruning if it is not already done - it must be completed by the end of January. Also the winter tar oil wash - this will kill off

any aphid eggs and other nasties waiting to pounce in spring. Check any potted shrubs and ornamental trees in pots, making sure they're comfortable in their winter quarters and that they have not blown over or the insulation is loose. These things can be expensive so a little thought at this time can save a lot of heartache later.

Cover any soft fruit bushes with fleece or netting in January as birds can be a nuisance pecking off developing buds. Treat spring flowering almonds and any shrubs or trees susceptible to silver leaf curl or black spot or canker with a good healthy quality fungicide, choosing a bright calm day. Wear a mask and any other protection recommended by the manufacturers. If we have snow this winter go round knocking it off the branches of conifer trees, as the weight of snow can seriously deform this type of tree, especially if they are quite small ones.

Greenhouse and Indoor Plants: Your greenhouse should not be empty at this time, but if it is, give it a good clean up with a good disinfectant, especially if you had nasties in there last season. Those proper gardeners who have plants in will have to be extra careful when disinfecting and cleaning. Cleaning the glass is particularly important as in the winter the plants which are growing will need as much light as possible during the shorter days. Whilst you have the disinfectant out, give the empty pots and trays a good dowsing ready for the busy springtime ahead. Where watering is needed, do it sparingly and don't splash around, you need to keep the atmosphere as dry as possible. On sunny days, even in winter, the temperature can be quite high, so be ready to ventilate when it reaches 60 degrees F or so, but remember to close the vent in the afternoon, or when it turns dull, when the temperature can drop quite rapidly.

Mid January is the time to sow cyclamen (they take 15 months to flower), geranium and begonias. Start taking chrysanthemum cuttings and at the end of January you can start off begonia and gloxinia tubers. Begonia will need a minimum temperature of 55° F. Gloxinias need more - around 60 to 65F. If you can't maintain these temperatures leave them dormant until later.

After the daffodils and hyacinth you got for Christmas have finished flowering give them a weak feed of house plant food and let the leaves die back before storing the bulb away until next season. It's a shame to throw them away and they will give good flowers given the chance. Mother Nature is wonderful you know, especially if she is given a little help from us wonderful gardeners (ha ha!).

House plants don't like high temperatures and draughts (well most of them) so don't put them near heating appliances. The non-flowering specimens will not need a lot of water at this time, so standing them on damp pebbles and spraying over them will do just fine. The exception is any plant with hairy leaves, they need watering from the bottom, though again, quite sparingly. It's given me quite a funny turn thinking that there may be an empty greenhouse out there!

Lawns: As usual rake up any leaves etc. but only on fine days. Don't walk on lawns if it is frosty or snow-covered or you will have yellow footprints in your grass in the spring. If you have a wet spot on your lawn area give it a bit of sharp sand - that should help. If that does not cure it, then land drains are the answer, but that can be quite a big job. Don't forget the old mower may need an overhaul, it's cheaper to have it done before February. Whilst you are at it get the shears out, as they may need a bit of fettling too.

A Happy and Joyful Christmas to you all and a good gardening year to all you proper gardeners. Don't forget the Totley Show and as the scouts say, Be Prepared!

**Cheerio for now,
Tom**

Bradway bistro increases its capacity!

S17, Bradway's popular coffee shop and bistro, re-launched in November with a new menu and an exciting new look which has seen its capacity increase.

The striking refurbishment is the work of Sheffield-based interior designer, Sally Flude, who has updated the bistro with a modern, industrial and chic look. Bi-fold windows have been fitted across the shop front to make the most of the light and an arched theatre pass has been built to provide an insight into the kitchen. A significant change has been to the capacity of S17, which has increased its seating to 36 inside with an additional 20 seats outside.

Andy Forder, owner and head chef at S17, says: "We've been running successful bistro nights once a month for a while now and they always sell out. The decision to expand and relaunch S17 was based partly on this but it's also customer-driven. Bradway is currently underserved by dining experiences yet this is a thriving area with a great sense of community. Our customers told us they wanted more flexibility to dine with us in the evenings and so we listened and extended our opening hours."

This new chapter for S17 is a dream come true for Andy. Born and raised in neighbouring Greenhill, Andy's passion for food started with a work experience session at the prestigious Cutler's Hall. This inspired him to achieve his Diploma in Catering Hospitality and from here, he secured his first job at the revered Michelin starred Fischer's at Baslow Hall. A change in direction brought him to S17 and, when the opportunity to purchase the café bistro arose, Andy jumped at the chance.

Andy says: "I'm so pleased to have launched our new innovative menu as it showcases the most delicious, locally sourced, seasonal food. I would like us to be achieving awards for it within a year." But, he stresses, "It's not pretentious. I want customers to leave feeling fully satisfied, both in terms of food and value for money. That's one of the reasons we've remained a BYO."

Recently Spotted



The stretch of Hillfoot Road from the Crown pub up to Old Hay Lane was recently closed to allow the repair, refurbishing and repointing of the two bridges over the streams. The photo above shows the completed work on the bridge over Needham's Dyke near the Crown pub.

What's on at the Library



Latest news from Totley Library

It was a very busy summer at Totley Library with many fundraising events and preparing for the launch of our new community cinema. We were very pleased that many of our events sold out, including all four performances of "Boots, Fresh Air and Ginger Beer", Jan Flamanck's comedy night "The Best Medicine" and the very first Totley Library Cinema screening of the children's film "Home". We continue our events this winter with Jan Flamanck who returns with a Christmas special performance, and our community cinema will be showing two films per month, one for families and one for adults – though note that there is no adult (evening) film in December. Do remember that due to the restrictions of our licence we cannot publicise which films we are showing, but you can find out by checking posters in the Library or joining our Facebook group 'Totley Library Cinema'.

Sunday 13th December – 2 pm: Family film

Sunday 17th January – 2 pm: Family film

Friday 29th January – 7.30 pm: Evening film

We are very lucky to have a dedicated team of volunteers at the library, however we do have some vacancies. If you have some spare time to help our community please consider volunteering with us. If you are interested in any of the vacancies listed on pages 19 and 20 of this issue of the *Independent* you can complete the form on page 20, pick up an application form at the library or visit our website <http://www.totleycric.org.uk/volunteer-registration-form.html>

Regular events and meetings at the Library

Monday:

French for children – 10 am toddlers and babies; 3.40 reception and Yr 1; 4.10 years 2-4; 4.40 years 5 to 6. Readers Book Group, every first Monday, 1.30 – 2.45 pm Friends of Gillfield Wood, occasional Mondays, 7.30 pm onwards. Talks on local nature and conservation. See posters, the *Independent* Diary, or www.friendsofgillfieldwood.com Councillor Surgery, every two weeks, 7.00 – 9.00 pm

Tuesday:

Basic ITC Sessions, 10am – 12 noon. To book, phone Heeley Development Trust on 0114 250 0613. Craft Group, 2.00 – 4.00pm Poetry Group, last Tuesday in month, 7.00 – 9.00 pm

Wednesday:

Coffee Morning, 10.30 – 12 noon Toddler Story Time, 10.30 – 11.30 Craft activities, singing and stories. Health Walk, 10.30 – 12 noon. One short and one longer ranger-led walk. Tea, coffee and biscuits in library afterwards. Totley History Group, occasional Wednesdays 7.30 onwards. Talks on matters of historical interest. Check posters in library, the *Independent* Diary, or www.totleyhistorygroup.org.uk

Thursday:

Friends of Gillfield Wood, occasional Thursdays, 7.30 pm onwards. See entry for Monday, above.

Natasha Watkinson

Totley Library Volunteering Opportunities



**Totley Library is a
charitable community
resource managed and
run purely by
volunteers**

CAN YOU HELP?

**Totley Library
serving**

Totley - Dore - Bradway

Deputy Buildings Manager

Perhaps you have responsibility for buildings in your working life or are now retired? Working with the buildings manager could you

- Help to maintain and manage the building
- Do small scale DIY jobs
- Occasionally meet contractors, obtain quotes and support any work as necessary
- Work with the Health and Safety lead?

**Interested? Have a chat with
Dom Harris on 07403 276481**

Cleaning team

Recently in the library an elderly gentleman was overheard to say "Since the library was taken over by volunteers it has been so lovely, clean and tidy". There you have it - cleaning is not a thankless task. It is really important. Could you give a few hours a week and join the team? People from all walks of life have opted for this task. You can see where you have been!

Hospitality team

Do you enjoy meeting people and chatting whilst serving tea and cakes? Our hospitality team is looking for more people to call on. This is a fun way to contribute and of course you get to attend events free.

Join the snow team

We want to keep the library open whenever we can. When a storm is over could you be on call to shovel snow to ensure a safe journey along the library paths?

Do you enjoy baking cakes?

Our tea and cakes are very popular but we need more bakers. Could you join the group of people who bake cakes and contribute them for events? You can do this from the comfort of your home! It helps us to raise money to keep the library open.

Deputy Treasurer

Could you support our Treasurer, to manage our limited finances effectively. You would need good people skills, knowledge and work experience of financial administration and be prepared to develop - working knowledge of Sage Instant Accounts and financial accounting practises understanding of the Finance procedures operated by Totley CRIC understanding of the structure of the Totley CRIC accounts familiarity with the financial relationship between Totley CRIC and Sheffield City council.
Interested? Call Norman Rolfe on 0114 236 1999 for a chat.

The cinema club

Three jobs and a free film to see!

Firstly, we need a couple more people to be technicians operating our up-to-date equipment. Training provided. Currently there are two sessions (soon to be three) once a month so it is not a big draw on your time especially if sessions are shared out.

Secondly, we are looking for people to support elderly or vulnerable people to get to the Cinema in partnership with our local transport provider Transport 17. This will be a once a month commitment on a Thursday afternoon. Training will be given. All you need is a bit of spare time, a cheerful outlook and to be reasonably active.

Thirdly, we need volunteers to support the film sessions front-of-house. Sessions are monthly, one for adults and one for kids, and a new one in the New Year on Thursday (see above).

Health and Safety

Do you have knowledge and work experience of H & S? If so could you come and help all volunteers make sure that we meet relevant regulations and guidance.

Be a librarian?

We would like to recruit more people to work in the library during the day issuing books, answering queries, filling the shelves, helping with children's story time and keeping the administration on track. If any of this appeals to you, get in touch. You can pick your role and choose shifts according to your availability on-line.

Help with story time?



Chairs and room preparation

When we hold events we have to bring extra chairs into the library and set the room up. We have a trolley to help as spare chairs are kept outside in a secure shed. It is a good way of keeping fit and strong. Can you join the list of volunteers to do this so that the work is shared?

Calling all gardeners



The gardening team has made great progress in a short space of time. If you enjoy gardening or want to give it a try come and join us. People tend to take responsibility for a specific task and we have a developing plan. In the spring we'll think more of planting schemes and adding colour but so far we have been getting to grips with an out of control hedge, cutting the lawns, weeding, adding a bit of winter colour and bulbs to come up in spring. .

TotleyCRIC
TOTLEY COMMUNITY
Resource & INFORMATION CENTRE

Registered Charity number
1158493

Totley Library Volunteer opportunities

I am interested in helping with the following

Tick one or more. You can also copy and paste

- ☐ Hospitality
- ☐ Baking cakes
- ☐ Snow team
- ☐ Deputy Treasurer
- ☐ Deputy Buildings Manager
- ☐ Health and Safety adviser
- ☐ Chairs/room prep.
- ☐ Cleaning
- ☐ Cinema Club – technical
- ☐ Cinema Club – transport
- ☐ Cinema Club – front-of-house
- ☐ Gardening team
- ☐ Librarian
- ☐ Story time

Your full name:

Your address:

Phone number:

Mobile:

Email:

To return your form drop it in or post it to: Totley Library, 205 Baslow Road, Sheffield, S17 4DT

OR Email: totleyCRIC@gmail.com

OR you can register as a volunteer on our website <http://www.totleycric.org.uk/volunteer-registration-form.html>

The Story of the Pinfold

As Stan Bingham's daughter, I would like to tell the history behind the Pinfold as my father is no longer with us to do so. My reasons for this are that a few incorrect articles have been written lately, and I wanted to point out that many people were involved with its creation.

The Pinfold was not just my father, although he had a very major role and put much time and many hours of physical work into it.

A group called TADES - Totley and District Environment Society- took on the project. These people were very passionate about Totley and its surroundings. It was their wish to turn a dumping site into a garden area with seating, to retain some of Totley's history for its residents.

The idea came about in approximately 1975 when the disused site at the top of Hillfoot Road had become an eyesore. After much research by my father with maps dating back to 1814, he found that the land was listed as a village public watering place and for the impounding of stray cattle, and also a place villagers would go for their water. On a map dated 1842 he found the troughs were in a hollow served by an underground watercourse.

TADES spoke to older Totley residents, one being Cyril Wortley, a well-known Totley gentleman. They remembered as children playing dare, jumping from the school wall into the troughs. They gave directions as to the position but unfortunately, these were not entirely correct as the people digging found out.

After 12 weeks of intensive digging down by residents and students of the former Totley polytechnic campus who gave their time for a bacon sandwich and a pint or two, they were all becoming a bit despondent and ques-



tioning whether the troughs were still there.

It was on week 13 that a corner of a trough was struck, buried 10 feet down. There was then much excitement as two troughs were discovered, as it had been thought there was only one.

The project was estimated to cost £500 and dad wrote to Sheffield Council and Recreation Department for help. Unfortunately, he was turned down. He applied for a Lottery grant from which he got £50, and then many begging letters were sent to Sheffield firms etc. for donations of money or materials to create the garden. Sheffield United gave a signed football for an auction, and many

pea and pie suppers, jumble sales and sponsored walks were organised to raise funds.

Planning permission was sought in 1976 and a little later was obtained. The troughs were brought up in 1980 after 3 months of digging, and then the hard work of landscaping the garden began. The garden was to be a natural wild garden with seating for the residents of Totley to enjoy.

I feel they created a wonderful space and am very proud of my mother and father, the people of Totley at the time and the students of the polytechnic who gave their time for this garden.

After my mother died in 1984 and dad's health deteriorated, they needed someone to carry on maintaining the garden. Jerry Roberts kindly came on board at that point, taking on the hard work of caring for the garden which was very time consuming. He did an amazing job which dad really appreciated and was extremely thankful for.

The monument now on the Pinfold is a lovely acknowledgement for the work dad did and he would be very thankful for it. However, I also want to thank all those others who gave a lot of time as I know my father would, one of these being Bob Fyles.

Bob is pictured in the ground with the trough with his back to us in the photo in the last Independent and not Jerry Roberts as was printed. He is with my father in the photo here and he also put many hours into the project.

Thank you again to Totley residents for the acknowledgement to my father Stan Bingham.

Kind regards,

Shirley Carmedy (Bingham)



love life love Slimming World

Join a warm and friendly group near you today...

NEW for 2015!
Power up your weight loss

TOTLEY (SHEFFIELD)
Monday's 5.30pm & 7.30pm
Abbeydale Sports Club
Abbeydale Road South
S17 3LJ

GREENHILL (SHEFFIELD)
Wednesdays 10.00am
St Peters Church,
Reney Avenue, S8 7FN
Morning Group

Call Jo: 07590 545 253

the UK's favourite way to lose weight

slimmingworld.com
0844 897 800

save £5 join now!
and £5 HD on week 10
then £10.00 each week

**Slimming
WORLD**
know you're amazing

*More people choose to attend a Slimming World group each week than any other weight loss group.

Totley History Group

Or

What we get up to in the Library on 4th Wednesday of the month (and lots of other days at home)

Readers of Totley Independent will have seen our advertisements in each edition, publicising the meetings we hold in the library, where non-members are always welcome.

Some members enjoy doing their own research. Once bitten by this research bug it's satisfying, yet a little sad, when a project is complete. So off one goes to look for another... Sometimes new topics may take a bit of searching out, actively or metaphorically, to find one that grabs you with that 'must do' factor. Another time one may drop in your lap, almost taking on a life of its own, with you in hot pursuit!

A short conversation with someone in the street, an enquiry to our website, totleyhistorygroup.org.uk, an old box of photographs, can be the birth of another project. Topics can be found anywhere, anytime.

We have a huge amount of information on our website which is constantly being updated and has downloadable historical walks etc. Some projects have also led to the publication of leaflets and books.

Totley War Memorial WW1 1914-1918

The story of the men from a small
Derbyshire village who gave their lives
in The Great War



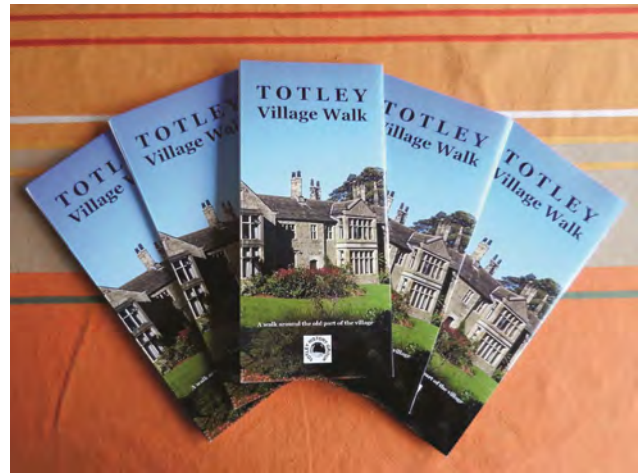
by Pauline Burnett, Jim Martin and Dorothy Prosser

published by Totley History Group

In 2012 we published our book about the 10 Totley men who died in WWI and are named on our war memorial.

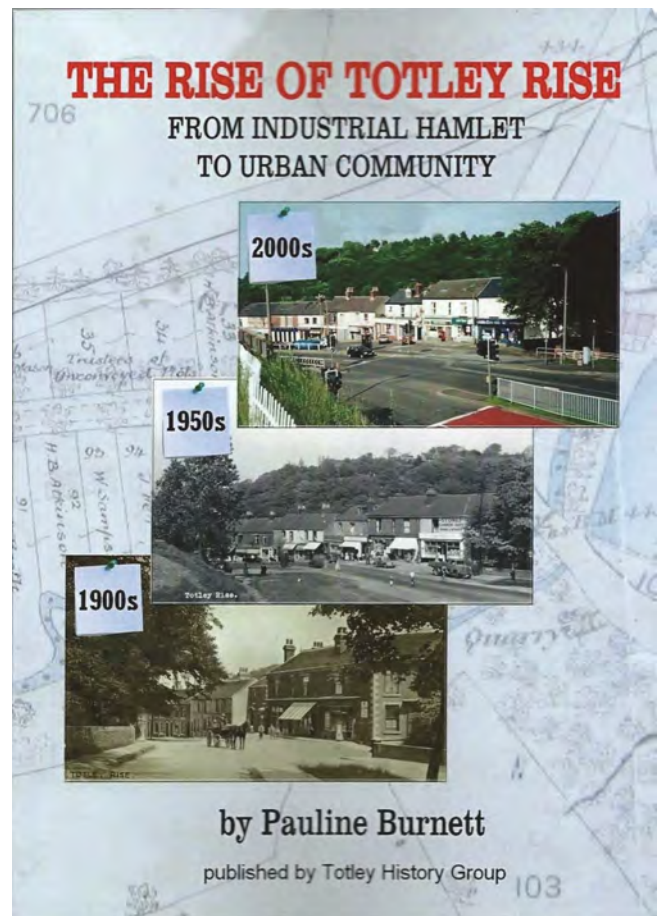
This tells the story of their lives in our (then) small village, before the map of Europe was re-drawn, and how the future for sons of gentry and villagers alike was sacrificed.

2013/14 brought the publication of historical walk leaflets. You may find a copy in the library or local pubs, but they do get snapped up quickly because they're free! Downloadable versions of a number of walks are



available on our website under the sub-heading 'History of Totley'.

Earlier this year we published the fascinating story of the growth of Totley Rise from 1870's, when the coming of the railway made access to and from the village so much easier.



Projects in the Pipeline

The 1939 Register has just been published online. This was taken at the outbreak of war to register all households for ID cards and later rationing allowance. This may make it possible to begin researching the backgrounds of the 12 men and 1 woman named on the war memorial's second plaque.

Only very recently one of those serendipity moments I mentioned earlier occurred. Brook Hall was in the process of being sold, having been occupied by the same family for over 80 years. During the clearing of cupboards a box of World War 2 correspondence was found. It contained

all the accounts, fund raising events, minutes and letters of 'The Dore and Totley Minesweeping Trawlers Comforts Fund'.

Nobody in Totley or Dore had heard of this.



Reading the letters to and from the naval depot in North Shields, wool orders for knitting into garments, fund

raising events, thank-you notes from sailors etc. we can see this is about to take us off into new territory, and another book.

We are looking for any WW2 stories linked to the above two projects

- Is one of your relatives named on the war memorial?
- Did your mother or grandmother help with the knitting of 1000's of garments sent by the comforts group?

If you have any stories to share please contact us:

Pauline Burnett tel. 2352344 or
paulineburnett17@gmail.com

Dorothy Prosser tel. 2362483 or
apple-garth@supanet.com

Or via the link on our website

Our books are available at Totley Rise Post Office and are priced at £5— an ideal Christmas gift!

Year 5 commemorate Remembrance Day

On the 10th-11th November, Y5 at Totley Primary School created poppies and planted them outside on the field. Our inspiration grew from Paul Cummins and Tom Piper who made the *Seas of Poppies* displayed at the Tower of London last year. You are able to view the poppies from the up-hill path leading to the school.



With only red card, black modelling clay and wooden sticks (see picture left), every individual pupil put together one poppy to remember a soldier who fought in World War One. Some children made poppies to honour citizens; others made theirs to remember Totley citizens that died in the war.

At ten to eleven, Y5 went onto the school field and planted the poppies in the soil. As the bell rang, we all held one minute's silence and remembered the brave people that fought for our country.

Mrs Wileman (Head Teacher of Totley Primary School) shared her

thoughts about our installation. She was impressed with the way Y5 had showed respect for the fallen soldiers. "There's a real significance in displaying poppies to remember Totley's soldiers," she explained. One Year 5 pupil described, "When I was creating my poppy, I thought it was a great chance to remember people that went to fight in the war."

Remembrance Day (Armistice Day, 11th November) is a brilliant opportunity to thank the soldiers that saved our country. All our poppies are different and show that every soldier is unique - not one the same. Come and see our poppies on the field!

Maria Ai and Amelia White, Y5 pupils, Totley Primary School

Microchip unaware

Almost half of all dog owners are unaware that it will be compulsory for all dogs to be microchipped next spring.

Research carried out by Blue Cross among 2,000 dog owners in the UK, revealed that 70 per cent of owners didn't know they could face a fine if their dog wasn't wearing a collar or tag when in public, and many were not even aware of existing laws.

Half of the dog owners surveyed also admitted that they probably wouldn't get their dogs chipped.



Home Instead
SENIOR CARE
To us, it's personal.

Sheffield Most Trusted
Home Care Provider



*There's no care quite like
Home Instead's*

- Companionship Services
- Care from 2 to 24 hours a day
- Specialists Dementia Care
- Home Help and Personal Care
- 'Continuity of Care' through our Client and Carer Matching Process
- Accompanying to Appointments/Shopping
- Medication Reminders

What makes us number one?

We focus on providing care of the highest quality to our lovely clients in Sheffield

Calls at a time that suit you with a person you know!



LaingBuisson



Home Instead



Great British
Care Awards



2014
National
Winner



Dementia
Friends

Call: 0114 250 7709

www.homeinstead.co.uk/sheffieldsouth
6 Shirley House, Psalter Lane, Sheffield, S11 8YL

Totley Independent Poetry Workshop

Sally Goldsmith

Apologies that there was no poetry workshop last month. Surprisingly, no entries to the last task either. Come on writers – you don't need to be Wordsworth!

This month I'm giving you this lovely conversational poem by Peter Sansom. The task is to read it carefully, seeing how Peter does it – achieving that deceptively simple conversational tone. Could you write a poem that consciously avoids the over "poetic" to talk in ordinary - but still carefully chosen and arranged - language? For subject, I'd like you to also write about things you do instead of doing something else, perhaps starting your poem, like Peter, "Instead of...."

Instead of Going to Work

Peter Sansom

Instead of going to work I read a book.
I wasn't ill or particularly tired, there was
nothing at work I wanted to avoid, it wasn't
the sort of book you stay off work to read;
but even so I didn't go to work. Instead
I mowed the lawn, as if that was work, too damp
between drizzle, then sat with a cup of tea
and went on with the sort of book you put down
and never finish. I did the kitchen window,
as if that was work, then opened some soup
for lunch with the radio I didn't listen to,
and thought of a drive or a walk, the museum,
but instead ironed a shirt and pottered round
on the piano, as if that was work, and had
the house to myself, talking to the cat and listening
to the rain, a real downpour, and tried not to feel
I should be doing more with the day
than the nothing I did instead of going to work.

Please send your entries to Sally Goldsmith, goldsally@googlemail.com by Wednesday 6th January. I'll choose one to publish and comment on.

Sally Goldsmith is a prize winning poet, script and songwriter. You can order her collection of poetry, 'Are We There Yet?' through www.poetrybusiness.co.uk

Is This Soldier One Of Your Ancestors?

With reference to the feature in the last issue concerning the photos of WW1 soldiers, military historian Stephen Acaster once again offers his views.

The first thing which strikes me is the air of a festive occasion about the five-man group...I'm no social historian but it occurs to me that they're maybe at a wedding - judging by their spruce appearance - button-holes and maybe a bit more than 'Sunday best' outfits? The two soldiers look almost out of place....but before I get to deal with their dress, the fact that the majority of the all-male group is in civilian clothes does surprise me a little. On the basis that even young men often looked older then (maybe 'more mature' would be better), it seems to me that all present in the shot were of 'Service-age' - say 18-40 - yet they're not all in uniform - particularly IF, indeed, it was a wedding occasion, as soldiers, if not their consorts/female friends, tended/tend to like the glamour of their uniform on such occasions!

The aspect on which I have a little more knowledge is the uniforms!

On this occasion - we don't really need to see the lower halves of the soldiers' bodies to examine their leg - wear in order to determine their units because more than a strong clue is in the distinctive leather ammunition bandoliers (bullet pouches) strapped across each man's chest. Those are the mark of, and peculiar to, mounted soldiers - either

cavalry *per se*, or Corps men whose units relied heavily on horsed-transport - eg the artillery, Army Service Corps or Royal Engineers. Clearly men in those units/jobs couldn't wear the more cumbersome leather or webbing ammunition equipment of the infantryman when riding or even driving wagons. Were we to be able to see their feet, I'm pretty certain that the two men would be wearing spurs - with the appropriately bound puttees!

The style of tunics themselves - largely unaltered during the conflict - don't help with dating the photo as with the bandoliers, which remained standard for mounted soldiers well into the '20s and '30s and in some cases even longer.

The white shoulder lanyards were too widely used at than time to be real indicators of unit although white did become the preserve of cavalry and artillerymen - a tradition which to some degree remains to this day. The images of the buttons are simply too diminutive to help and in the absence of head-wear we cannot see any cap badges.

Frustratingly, JUST visible, apparently on the lower jacket sleeve jacket of the man to the viewer's left seems to be some sort of badge although it may also be a flaw in the photograph - and whilst I'd favour the former theory, the detail in the image, if indeed that is what it is, is simply too small and indistinct for certainty.

Neither of the uniformed men appears to be wearing badges of rank - though the barely visible 'arm badge' possibly provides contradiction to this statement - so I'm assuming private soldiers rather than NCOs in the absence of better evidence.

All Saints Church

Totley Hall Lane



Christmas Services 2015

Dec 13th 10am All Age Advent Service

Dec 20th 6.30pm Carol Service

Dec 24th 4pm Crib Service – bring an item for 'Baby Basics'

Dec 24th 11.30pm Holy Communion

Dec 25th 9.30am All Age Christmas Service, followed by Holy Communion

January 2016

Sun 3rd: 10 am. All Ages All Together

Sun 10th, 17th, 24th and 31st: 10 am. Informal Family Worship.

Every Wednesday 10 am: Traditional service of Holy Communion

Seek and you shall find...

When the wise men set out to find the new-born baby they knew they were on to something special. Years before, the prophets in the Old Testament had written about a ruler to lead God's people being born in Bethlehem – a nondescript town in the Judea region of Israel. We can't be sure how far they travelled or how long their journey took, but we can be sure they knew the journey was worthwhile to see for themselves God's promised Son. In the book of the Bible written by Matthew, we can read that the wise men followed a star which led them to where the baby had been born. They had looked hard to find Jesus and, when they found him, Mathew writes that they bowed and worshipped the new king.

"Seek and you shall find" is a phrase from the Bible many of us might be familiar with. It's something Jesus himself said about 30 years after he was born when, once again, people had gone looking for him to see and hear for themselves what this promised king was all about. You can read the passage in the book written by Matthew – where he also writes that the crowds were amazed at what Jesus said. The wise men were determined to see the new baby for themselves and many years later people were still looking for Jesus and found what they were looking for.

In the few weeks leading up to Christmas, members of Totley All Saints will be offering a number of free Bibles to those who would like to receive one, by calling personally at homes in the area. There's no obligation to take one of course – but we'll be delighted if you'll accept this gift and maybe use it to read for yourself the story of God's son being born and some of the great and life changing things he did and said in the few years before he made the ultimate sacrifice for us all. Alternatively, feel free to give me a call on 0114 2362322 or drop me an email at paul@oakleym.plus.com and I'll be delighted to let you have a copy.

We'd love to see you at any (or all) of our Christmas services – you'll find the details on this page. You'll receive a very warm welcome and we look forward to seeing you.

Wishing you a very peaceful and happy Christmas

Paul Oakley, Vicar

Members of All Saints Church will be carol-singing in the pubs on Tuesday 22nd December. We'll be at the Spitfire at 7 pm; the Cross Scythes at 7.45 pm, and the Crown at 8.30 pm. Please come and join us!



Sheffield Rugby Union Football Club – 1st XV

Sheffield Rugby Union Football Club was founded in 1902 and have played at Abbeydale Park since 1920. Jason

Soden, Director of Rugby, oversees up to five senior XV's, two Colts XV's and a Ladies XV. In addition, Jason says over 300 Minis (U12 to U7 and RuggerEds) and Juniors (U16 to U13) are involved in learning and playing the game.

The 1st XV gained promotion at the end of last season to League National 3 North and are currently lying in 6th position in the league table.

Head coach Adam Byron and Assistant coach Nick Crapper work hard to encourage open, running rugby at Abbeydale and the team is worthy of greater support from the people of Totley. Why not come along, join us some Saturdays and enjoy a good afternoon's honest endeavour. National League Rugby at Abbeydale costs much less than a visit to Hillsborough or Bramall Lane!

Home fixtures are displayed at the entrance to Abbeydale Sports Club and can be seen on line at <http://www.pitchero.com/clubs/sheffield>

Home games for December/January are—

Saturday 5th December, 2015: Rossendale - 1415

Saturday 19th December, 2015: Sheffield Tigers - 1415

Saturday 16th January, 2016: Burnage - 1415

Saturday 30th January, 2016: Billingham - 1415

Can we count on your support?

For Sale

Large Freezer, with 7 drawers. Perfect condition. Surplus to requirements now. £80. Buyer to transport. Tel. 0114 236 3410.

PhysioFOCUS

at Totley Rise Dental Practice
85 Baslow Road,
Sheffield, S17 4DP



Physiotherapy treatment available for:

- Back and neck pain
- Sports injuries
- Sprains and strains
- Joint and muscle pain
- Arthritic pain
- Whiplash
- Repetitive strain injury
- Headaches

Appointments: 0114 2360333

Also available:

- Pilates classes
- Pilates 1-2-1
- Golf Fitness Screening
(as used by consultants to UK,
European and Australian PGAs)

For more information please call:

Emer on: 07792 422909

Rachel on: 07956 908454



For
Windows
With Style

Sheffield Factory Showroom

**106 PROSPECT ROAD
HEELEY, SHEFFIELD**

**Sheffield (0114) 258 5496
Rotherham (01709) 512113**

LIBERTY FOODS
Caterers
Quality Meat Shop
& Fresh Farm Produce

Fresh and Frozen Prepared Meals
Fresh Meat and Poultry
Outside Catering
Home Delivery

253 Baslow Road, Sheffield, S17 4DU
Tel: 0114 2360 583 Mobile: 07801 346 455



**Domestic electrical work by
award winning
Lady Electrician**

- * House rewires * Replacement fuse boards *
- * New sockets and lights * Security systems *
- * CCTV * Telephone and computer points *
- * Garden power and lighting *



All work guaranteed and fully
insured. For a free quotation,
without obligation,



ring Mandy on 07788-544225

Horizon Electrical

*Faults, Rewires, Sockets, Lights,
Cooker Points, Electrical Showers,
Phone Points, Security Lights*

No job too small

Fully qualified with friendly advice

**Ring Totley 236 4364 or
Mobile 07772 483154**



John Heath & Sons

AN INDEPENDENT FAMILY FUNERAL BUSINESS

Sametime.....

You will probably have the responsibility of making funeral arrangements. No one looks forward to this responsibility, but the death of a family member or friend brings with it an obligation that must be met. There are people who can help you meet this responsibility. We have been helping people combine the different aspects of the funeral into a meaningful service for over 125 years.

Please Call Day Or Night

(0114) 272 2222

Head Office - Earsham Street

Also at Meadowhead, Ecclesall Rd,
Crookes and Stannington

www.johnheath.co.uk



New to the area or looking for a
Non Denominational Independent Fellowship?
Join the Christian community in worship at

**South Sheffield Evangelical Church
Greenhill Parkway, Bradway S8 7JP**

On Sundays @10.45am and 6.30pm

For more information visit www.sseconline.com

215th (1st Totley) Scout Group

Due to a recent change in leadership we are URGENTLY seeking to recruit some new leaders to our thriving Scout Group. In particular we need:

**Cub Scout Leader
Scout Leader
Group Scout Leader**

All of these roles are very rewarding and we have a great group of enthusiastic boys and girls who love coming along every week to enjoy all the activities that Scouting has to offer.

Do you think you could help us?

All of the above roles could be done as a 'job share'. Maybe your expertise lies in the paperwork side of things, maybe you are more hands on and enjoy the practical activities that Scouting has to offer. We can offer lots of help and support if Scouting is new to you. All you need is enthusiasm and a willingness to learn and have fun.

If you feel you could help us out with any of the above, or indeed know of someone who might be interested please get in touch.

If you want to find out more about what the different roles entail we would be very happy to talk to you.

Contact: Sue Bridgens 07982 719284 or email hallamadccubs@gmail.com

Sheffield and Rotherham Wildlife Trust

Sheffield and Rotherham Wildlife Trust has been working with the ranger team at Rother Valley Country Park for the last three years on practical conservation work.

As part of the Rotherham Rivers Project they recently completed eight days of conservation work clearing scrub from the marshland and pastures at the Country Park.

With funding from WREN Biodiversity Action Fund they have restored areas of grazing marsh, lowland meadow and areas of open breeding habitat created for wetland birds on the park's islands, and there are two more days of woodland management planned for the coming months.

"The work we have been doing on the site over the last



three years will restore woodland, wetland and grassland habitats allowing the Rangers Team to provide continual management fewer resources into the future" said Jono Collett, a land management officer for the trust who is in charge of the project. "The habitat restoration should see an increase in ground flora, wild flowers and the invertebrates they support, followed by an increase in bird and small mammal populations."

Local Charities Support Refugee Children

The Northern Refugee Centre in Sheffield has been awarded a grant from fellow local charity Cash for Kids to help enrich the lives of refugee children living in Sheffield.

The grant, worth nearly £1,000, will provide essentials including school uniforms and packs which include the basics families are struggling to afford from nappies to talcum powder.

Last October around 218,000 refugees travelled to Europe. With the number of refugees entering Europe continuing to increase, this causes increased concern for their well-being. Refugee centres help to reduce the number of people with nowhere safe to live, whilst giving them access to education and employment, giving them opportunities they would have had very little access to.

Jim Steinke, Chief Executive of The Northern Refugee Centre said "this country has a long tradition of supporting children in difficult times, and should support refugee children too. We want to support children not just from Syria, where it is very public what is happening, but from refugee families across the world, from oppressive and war torn countries, who are coming to this country for safety."

Cash for Kids, Hallam FM's charity, have just completed their recent round of grant funding, where they gave over £10,000 to a number of causes alongside The Northern Refugee Centre, supporting thousands of disadvantaged children across South Yorkshire.

Allan Ogle, Charity Manager at Cash for Kids, added: "Thanks to our recent fundraising campaigns at the VW Festival and our Big Bake Day, the funds raised by local businesses and Hallam FM listeners in South Yorkshire can support disadvantaged children where we live.

"Cash for Kids is proud to support local charities and we're incredibly pleased to have supported Jim and his mission in what is a huge issue affecting people across the world and it's happening right here in South Yorkshire."

Harry Harpham, MP for Hillsborough and Brightside and Cash for Kids Ambassador, said "Cash for Kids are doing great work in the local area making a real difference to the lives of many children and I welcome the work they are now doing to support the ongoing humanitarian crisis where many children have been badly affected." Funding from Cash for Kids is available throughout the year. Families, community groups, organisations and local charities are eligible to apply. Visit www.hallamfm.co.uk/charity for more information.

Recently Spotted

This sad-looking bear was clearly looking for a carer when we spotted him at the Knit and Natter stall at the last Totley Market! The person who guessed his name (50p a go, all proceeds to charity) got to give the bear a home. So well done young Alec for correctly coming up with 'Bruno'! Watch out for more on the Knit and Natter group in a later issue of the Independent!



Totley and District Community – a time to reflect: the future and a reboot!

Roger Hart

This is written in the hope that it helps promote discussion about the Totley community. It's essentially my own reflections and thoughts.

I was born in 1944, in my parents' house on Marstone Crescent. The estate was not complete, the war having stopped the building to complete it. My father had the use of 'Marstone Garage' where the vet's is now, to keep his lorry in overnight, away from the east end, where his work was, to avoid enemy action.

When I grew up there was no dual carriageway (it arrived in 1961), no library in Totley (it was in Dore, next to Seasons and did not welcome children – the assistants stood on a raised platform to stamp books in and out, but children could not reach! We could be seen, but certainly not heard, and must not dream of asking what the wooden books were!!). Totley County School had not been built, nor had the tower block for the college. Miss Trott owned large houses on Grove Road, for her girls' school. There was a Community Association, which used Abbeydale Hall – now private flats, but owned then by the Council. I recall my mother attending it for various activities, mostly for the ladies. There was no youth club, but there were uniformed groups such as Scouts, Guides and Boys' Brigade, located elsewhere.

Pre-war council houses were supplemented by rapid build 'pre fabs' after the war, in the Aldam/Green Oak areas. The prefabs were eventually replaced with the properties which we see now. The Community Association, in Abbeydale Hall, seemed to dry up (I am sure someone will know why), and a youth club was started at the Methodist Church, followed by one at the Dore and Totley Reformed Church (where I eventually met my wife).

In 1977 the Totley Residents Association was formed, and the Totley Independent began life. Over the years the TRA's activities have fluctuated, and in the April/May issue of this magazine, people were invited to join the discussion about the TRA's future at the 2015 Annual General Meeting. There wasn't much discussion then, but I'm told that a discussion paper written by Phil Harris will be published early in 2016.

It's clear that Totley and District (words chosen carefully so as to not offend any of our neighbouring groups) has seen and is seeing change. Anyone who reads Street-life.com knows only too well where the change is happening, and anyone who delves into Council documents can see where change might occur, which could seriously affect Totley as we know it. Totley Hall Farm is now up for sale, and we shall lose a great supporter in Edwin Pocock and his family when they leave. What will happen to the land which he farmed? The Council are actively looking for land to build on. Is the Rifle Range vulnerable?

The Scout group is in need of a new HQ (I was chairman when we built that, with a great community spirit). TRA have talked about a Community Centre since I joined the committee 7 years ago, but who wants to pay towards it? Could it be linked to the Library? I cannot see that being a viable proposition. The best idea of location was at the bottom of Green Oak Park, but I am sure that someone would object. It could have a common storage area where groups could store & borrow equipment such as chairs and tables, and archives etc., could be stored with easy access when needed. It could provide a meeting room for many of our existing groups, and could be let

out during daytimes and weekends. How would we fund the building of it? Read on.

Our Parks - three of them - should be a great asset to all of us. Green Oak Park benefitted from Avril Critchley's energy, although when I acquired the Youth Shelter for the park things began to change. I helped to get the



The youth shelter in Green Oak Park

bike track, table tennis table, trees and bulbs into Totley Hall Park. The changing room and shelter at Totley Bents was rebuilt. Totley Hall Park itself is seldom used now for team sports as there are no changing facilities or toilets.

What is there for youth and younger folk? Sadly, some members of the youth community don't respect some facilities, and activities which are not sport orientated,



Totley Hall Park

like a radio-controlled car club, or a science club, need involvement by adults. How many adults have the time to spare? Many parents work long hours to give their families a good life. We have more child carers than we used to, house-fathers, and home-workers. The area is not generally poor – look how many cars there are on the roads. Our estate of 100 houses probably has 120 vehicles!

But where is the Community who built the Scout hut? Retired, aged, moved away, and some sadly deceased. What is the future for Totley Show? Les and Dorothy Firth, and Tom and Christine Steel, all of whom are standing down, will be very hard acts to follow! Hetty Moran, Chair of TRA, has stepped in as an interim measure, and plans are progressing for next year. Who will take over Neighbourhood Watch as Neil Bunting and I want to stand down? We have not had any volunteers since we asked in August. We will need NHW more than ever following the Police financial cuts. We might have the time, as retired folk, but we do not have the energy any more, and the energy we do have, we have to keep

for childcaring duties!

Who are on the committees of TRA, History Group, etc? People with long memories and good intentions, who are long-term workers for the community; but we need young folk to take over, and we need to accept them with their energy, enthusiasm and good ideas. We older ones need to move out, and let them come in, like the library leaders have done. We will still, hopefully, be around to help where we can, offer advice if needed and share our contacts and knowledge.

Which now brings me to funding. Reluctantly, the TRA committee, five years ago, agreed to us setting up a charity. We needed it as we had too many funds at the time, but if we were to develop, more funds would have been needed. I believe, we are at that point again where we need more funds to progress activities in the Community.

Now for the controversial bit. Let us consider forming a new organisation, Totley and District Community Association, with an encompassing set of rules, so that folk from, say, Grove Road, (officially in Dore) can choose to go to whichever area group they wish without being ostracised from one or the other. The committee structure would be open and transparent, with democratic elections which would not be to just fill a post, but to fill a task – e.g. environment, parks, transport, shops and businesses, youth activities, history, Gillfield Wood, Christmas deco-

rations, fundraising, youth activities, to name but a few. An existing group would retain its own identity, but be part of a cohesive umbrella committee, to which funding appeals could be made, and the funding section would help the applicant to find those funds to apply to, and, if necessary, guide them on the application. (I have as I write, received notification of funds for between £10 and £10,000 for community use). As part of this new structure, a charity would be formed to cover all of these areas, like an umbrella. It would be run by trustees who were not on the committee but whose job would be to oversee the committee's works and, in particular, funding, to ensure compliance with the charity's stated objectives.

Charitable status brings recognition and respect and attracts money, whether it be for sports funding (improving sports grounds funding is on offer at present) a community centre, or activities for the elderly, infirm or children.

What can charities do? I am a Rotarian and have just read that next year, it is anticipated that the world will be free of polio, there being only 59 cases recorded this year. It was Rotary International – a registered charity – that kick-started the programme and the Bill Gates Foundation came on board with matched funding.

Come on Totley and District. Are you up for it?

Roger Hart

Ice Queen Welcomes the Frozen Specs to Martyn Kemp Opticians!



Young girls across South Yorkshire, who wear spectacles and are crazy about Disney's *Frozen*, will be over the moon to know that the first collection of frames, featuring their favourite characters from the film, has arrived at Martyn Kemp Opticians (MKO) practices.

Suitable for Disney-loving young ladies between four and 12-years-old there are six different styles and 12 stylish frames to choose from. Each featuring one of the favourite characters - Elsa, Anna or Olaf - and in pretty shades of pink or lilac, with flex hinges to make sure they fit well.

To celebrate their arrival at MKO, the Ice Queen, Elsa from Little Princess Parties, came to the MKO Totley practice with four-year-old Isabel who was thrilled to wear one of the bright pink pairs in the collection.

The optometrist at the practice on Baslow Road, Allan Forster said: "We are expecting a rush to be one of the first to wear these stunning specs so I advise popping in as soon as possible before they sell out."

In the last issue, veteran 'Independent' contributor Don Ashford wrote in praise of some of the conveniences provided by the modern mobile phone. In this issue we are given an alternative view!

Why have a baby when you can have a mobile phone?

It does seem that a mobile phone is the answer to a prayer for young mothers. No longer do you need to pay any attention to your child in the buggy, or when it's toddling round. You don't have to be bored by baby talk or "discussions" with a toddler, because you have so many interesting things to do on your mobile. There are games, emails, shopping and of course there is Facebook. All these things can provide you with 24-hour interest, so that you really don't need to have the boredom of paying attention to your baby or small child.

Granted, you might have to feed them and change their nappies, just for a bit of peace, but nowadays there's absolutely no need to do any talking with that small person. You can sit on the sofa with the baby on your lap and just work on your mobile.

Even if you have to hold on to your toddler with one hand, you still have the other hand and all your attention free to concentrate on what is so important and much more interesting on the mobile.

And when you meet your child from school, as they grow up, make sure you are having a very detailed phone conversation with someone adult, so that you don't have to find out anything about how their day was, or how they are feeling. Don't let yourself be distracted in any way by your children when your phone beckons.

Make sure you never put your phone away in a bag or pocket, so that your child gets the message that you are not at all interested in them, and will not bother you with any discussion or questions. Better to have passive and dull children than ones who want to talk and find out about life, because they will just interrupt you while you are enjoying your mobile phone.



Gone are the bad old days when I was bringing up my child in the 1990s when there was no phone and you actually talked to your child, and had to spend time with them unmitigated by the fun of electronic devices.

Young mothers are so lucky nowadays to be able to happily ignore their children and do exactly as they please, answering the phone in the middle of them telling them something or ordering a takeaway instead of having to do boring cooking. And as for shopping, you can do that while the children are eating their food, or walking home from school "with" you.

And as soon as they are old enough, which can be very young now, make sure you give them a mobile and then you will be completely trouble-free, they will look after

themselves from then on.

Better still, if you haven't already got children, bear in mind that a phone is much more interesting than a child and if you reflect on this, you will realise that there's no point in having children if you have a mobile phone. They'll only disturb your enjoyment of all that the mobile phone can offer.

Jennie Street

Streets Ahead Works Update

A05 Totley: The outstanding pavement work by the dam on Abbeydale Road South and outside the Co-op on Baslow Road is programmed for completion by February 2016. Streets Ahead hope to complete this sooner if the weather allows.

B50 Whirlow: The street lighting and tree replacement programme is ongoing in this zone. The jointing work will commence week commencing 16 November. Pavement resurfacing work has been reprogrammed for January 2016 and road resurfacing work has been reprogrammed to start in February 2016 (weather dependent).

B52 Dore: Pavement resurfacing is due to start in February 2016, and road resurfacing is currently planned for June 2016.

B53 Totley: Street lighting work is currently underway in the zone. The rest of the works in the zone (e.g. pavement and road resurfacing) will not take place until 2017.

Keeping you informed

There are lots of ways you can keep up to date with Streets Ahead works. You can...

- Attend a roadshow - prior to work starting in an area the Streets Ahead team hold public roadshows so people can ask questions about the types of works planned in their area, timescales for works, tree management (including removal and replacement) and The impact of works on the local community.

You'll also have the chance to speak to technical experts and meet the Community Steward for your area.

Details of dates, times and locations of roadshows will be sent to residents and businesses directly affected by the works and publicised on the website www.sheffield.gov.uk/streetsaheadroadshows. Posters will also be placed in your local community advertising the events.

- Visit the website www.sheffield.gov.uk/streetsahead where you will obtain information on when and where work will be taking place.
- Follow Streets Ahead on twitter - Streets Ahead regularly tweet updates about the project. Follow @sccstreetsahead
- Sign up for email alerts - Visit www.sheffield.gov.uk click on the sign up button and select Streets Ahead for up to date information directly to your inbox.

Reporting service issues

If you would like to report any issues please contact Streets Ahead by one of these methods:

Online at: www.sheffield.gov.uk/reportmystreet

By email: streetsahead@sheffield.gov.uk

By phone: 0114 273 4567

Please note that Streets Ahead works will only be carried out on adopted roads, private and unadopted roads are not included in the project.



It's been another exciting start to the year at Totley All Saints with our focus being particularly on outdoor learning. We have a new Foundation Stage outdoor area (complete with a mud kitchen!) plus our very own Woodland Workshop on the school site. We have also been consolidating our New Curriculum, developing even better



sporting and entrepreneurial skills, plus helping our children to understand more about how they can take charge of their own learning through our assessment systems. That's aside from all of our usual lessons, activities, residentials, visits and visitors! As we always say - *it's all happening at TASS!*

TASS Healthy Snack Shack Leaders and Other Responsibilities

Our TASS Healthy Snack Shack is into its second year and was initially financed as a result of Church Burgess funding. A whole host of healthy snacks are available at reasonable prices and the children are served by our Y6 Healthy Snack Shack Leaders. Other roles and responsibilities are also enjoyed by our children, such as: Merit Team Captains, School Council, Eco-Saints and Playground Leaders. All of the children involved go through some sort of selection process from applications and interviews to hustings and public votes. The children are becoming well established in their roles now and are developing excellent skills of leadership.

TASS Harvest Celebrations:

Our Harvest Celebration took place in October and began with a fantastic family breakfast provided by our PTA Fun-d Raisers followed by a special time of thanksgiving held at All Saints Church, Totley. This involved children in every year group contributing with prayers, poems, songs and presentations. It was also pulled together with a fantastic talk by our vicar (and governor to the school), Rev. Paul Oakley. Parents and carers contributed through food gifts which were sent out as hampers for nominated people in the area with left overs (and donations of money) being donated to the Sheffield Cathedral Archer Project.

TASS Woodland Workshop

Building on the work that has taken place over the last couple of years, we now have our own purpose-made area that we call our 'Woodland Workshop' (sadly, we can't use the term 'Forest School' as it is a trade name). The concept of a

Forest School is that it is a fun and exciting way to learn in an outdoor setting and is known to improve children's self confidence, resilience, safety awareness and communication skills. This term, the children have covered such aspects as safety rules and getting to know the area. They will then be able to take part in a whole range of activities including: den building, wood craft, playing games and cooking on a camp fire. We look forward to seeing even more of what our children get up to!



TASS Remembers

Our Remembrance Assembly for children took place on Wednesday 11th November and focussed on some of the young men who actually attended TASS before later going on to fight in WWI. This certainly brought history alive for our children and helped them to focus on the sacrifice made by others during the world wars.

Global Links

As part of our drive towards attaining the UNICEF Rights Respecting Schools Award, children took part in the world's largest lesson to celebrate the Global Goals for Sustainable Development. The goals were agreed in September by 193 world leaders committed to achieving 3 extraordinary aims over the next 15 years: ending extreme poverty, fighting inequality and injustice and fixing climate change. We are starting links with a school in Nigeria and will be sending shoeboxes through Samaritan's Purse for their Christmas appeal. We will be tracking where the gifts ended up in January.

Go Team TASS!

TASS Sports Teams certainly have been busy this term. Our Y5/6 Cross Country Team goes from strength to strength with more children from our school running than ever before in one race. Toby Moorwood came first, Tom Storey third, Eddie Mezza 20th and Louis Farrow 31st! Other super performers were Eddie Banks, Seb Deeks, Billy Fryer, Sam Shipley, Ben Lashmar, plus Oscar and Toby Snowden. Three girls ran in the Y4 girls' race including Megan Hill, Ruby Winslow and Daisy Snowden. All finished in the top half! The first event of the Orienteering season also took place at Endcliffe Park earlier in the term. Top finishers included Daniel Hill and Kassia Smith. Our Y6 Boys' Football team played two and won two, beating Lower Meadow (5-0) and St Thomas Of Canterbury (3-1). The boys were a real credit to us in terms of sportsmanship, behaviour and quality of play! Go Team TASS!



If you want to find out more of the exciting things that are happening at our school, then please visit our website or email us at:

enquiries@totleyallsaints.sheffield.sch.uk. We'll be so happy to let you know!

Karole Sargent **Proud** Headteacher

Hathersage Carollers

Hathersage Carollers will be singing their usual popular blend of local and traditional carols at:

Scotsman's Pack Inn, Friday Dec 18th at 9.00 pm
Millstone Inn, Monday Dec 21st at 9.00 pm
Plough Inn, Wednesday Dec 23rd at 9.00 pm
Little John Inn, Monday Dec 28th at 12.00 noon

Each session lasts about two hours. Everyone welcome. Carol sheets available. Collection in aid of a local charity.

Dore Gilbert & Sullivan Society

I was reading recently that Yorkshire theatre attendances had fallen by over 5 percent. In the same paragraph it said that theatre ticket prices had risen by over 23 percent to just under £24. Is it rocket science to see any correlation? Thank goodness the price for our show next April, Orpheus in The Underworld, will be about half that and our concert ticket price will be just over a quarter of it!



There was superb value in Sheffield over the weekend of 23rd, 24th, 25th October when the city centre was full of excellent music during Classical Sheffield Weekend. There were over 20 performances to choose from at £5 for any single performance, superb value for money. There was a weekend ticket at £20 which entitled you to fit in as many concerts as you could. The quality of all the concerts I attended was excellent with everything from a flute ensemble through choirs, opera groups to full orchestras (we sang as part of a concert in the City Hall Ballroom). During one of the free performances in the Winter Gardens, more than one person said to me that they had never experienced anything classical before and didn't realise how enjoyable it was. One lady told me that she would have re-arranged her whole weekend if she had realised how much she would have enjoyed it. If is on again next year, don't miss it.

Our next show is now cast and music rehearsals are well under way. Much of the music is familiar to my ears with The Can-Can being the most famous. On more than one occasion during rehearsals I have not been alone in saying "I didn't know that was from Orpheus" when we heard it played, so I'm sure most of the audience will

recognise a lot of the music. I'll explain Orpheus in greater detail in the next edition of this illustrious local magazine but for now onto more seasonal matters.

We have two Christmas concerts coming up, one of which is our local one in Dore Methodist Church at 2:30pm on Saturday December 19th. Hopefully it will be as well attended as last year when it was sold out, so don't wait too long before ordering your tickets! The programme is as varied as always and includes Christmas favourites such as "O Holy Night" as well as many more light-hearted offerings such as a very different take on "Jingle Bells". I'm still deciding which Flanders & Swann song might get an airing this time round. The one thing I am certain of is that it will be a very enjoyable afternoon for everyone! We always enjoy these concerts and it sets Christmas up nicely!

Tickets (£7 each) are available from me - telephone 0114 2362299. Hope to see you there.

Derek Habberjam

Holmesfield Church Walking Group

Chatsworth Walk

On Wednesday December 9th at 10 am Robin Greetham will lead a walk starting at the Robin Hood public house near Baslow. We will walk down into Chatsworth Park passing the Jubilee Stone, then into the Stables where we will have coffee and a comfort break. We will then go up the steps to the Hunting Tower and back to the Robin Hood where we will have lunch (optional). The cost of the walk is £3 and the proceeds will go to Holmesfield Church Restoration Fund. If you wish to come just turn up on the day.

If you have any queries please phone Robin on 01246 412767. The walk is approximately 4 miles long.

Totley Probus Club

We are a social club for retired and semi-retired gentlemen and meet at Totley Rise Methodist Church for two hours each second and fourth Wednesday each month.

We have guest speakers who give talks on a variety of subjects and also have occasional lunches and days out.

If you are interested in joining why not visit us? You would be made most welcome! Please see the Totley Independent Diary (page 34) for dates and further information, or telephone John Appleton on 0114 236 6106.

Councillor Surgeries

Liberal Democrats:

2nd Monday in the month 6.00-7.00 pm, Totley Library, Baslow Road and 2nd Saturday in the month, 10.30 am to 12.00 noon, Dore Old School Hall, Savage Lane, Dore.

Contact details:

Colin Ross 235 1948

Email: colin.ross@sheffield.gov.uk

Joe Otten 230 3290

Email: joe.otten@sheffield.gov.uk

Martin Smith 0781 205 5346

Friends of Dore & Totley Station

The future's bright at Dore & Totley station, or so we're assured. By the end of 2018 we should have a second platform with waiting room for Manchester bound passengers, a bridge with lifts, and stopping trains every hour. Reliability should also be improved. There's no current plan for more parking.

In the last two months some of the small band of Friends of the station have met three managers from Northern Rail, two from ISS with responsibility for day to day maintenance of the station, and one from SYPT. By doing so we're discovering just how difficult it is to run a modern rail service. British Rail isn't coming back, and it's got very complicated. We're trying to get our heads round exactly who does what, when, where, how, and for how long.

Each weekday our station offers 20 trains into Sheffield and 15 to Manchester. Dore & Totley is managed by Northern Trains, who operate the Hope Valley stopping service. Ours is just one of the 464 they manage.

Fast First Trans Pennine Express trains stop en route to Meadowhall, Doncaster and Cleethorpes to the east, or Manchester Airport to the west. East Midlands fast trains go to Warrington and Liverpool to the west, and Nottingham, Peterborough and Norwich to the east. However, many stops at Dore are timed for Manchester commuters.

Then there's Network Rail. They're responsible for the track, and line-side equipment. Northern look after the platforms, everything up to the platform edge is Network Rail. Any work a Friends Group does is only possible with their agreement. Northern sub-contract maintenance to ISS who have a lot of stations to cover. SYPT built the car park, but have handed it over to Northern to manage. ISS maintain that as well. Network rail have leased the station building as a restaurant. It gets more complicated.

Northern is a partnership between Serco Group and Abellio, a subsidiary of NS Dutch Railways. Their franchise runs out in March and they haven't tendered to carry on. However, Abellio Northern, Arriva Rail North, and Govia Northern have, and the winner will be announced in December. Then there'll be a frantic scramble to reorganise and rebadge everything for the new company. At the same time the Trans Pennine Express franchise is also up for review, with Keolis Go-Ahead and Stagecoach bidding with First. The same period of frantic restructuring may occur there too. East Midlands franchise has been extended to March 2018.

Where do the Friends fit in? What can they do? As a first step our meetings with various interested parties have been helpful. In the old days each station had a station master. Now one person is responsible for the train services to hundreds of stations. Another manager looks after the servicing of the stations, sub-contracted in our case to ISS. Another manager is responsible for marketing of services and keeping in contact with people like us. SYPT have no funds to do any more in the foreseeable future.

Our meetings were positive. By gathering people together at our station we were able to demonstrate how busy it is, and its future potential. These people aren't aware of every detail of every station, so that a lone was helpful. We

can't claim credit for the recent developments at the station, but some things may have been speeded up as a result of our contacts. We were unhappy with the overgrown car park. It was cleared – maybe with a little too much vigour. Some of the trees and shrubs originally planted haven't survived. Some will be replaced. Ones next to the platform may be left until the platform has been extended and the bridge built. We've got a train departures screen. CCTV is being installed, with at least 13 cameras in the car park alone.

We emphasised that Dore draws passengers from a much wider area than S17. People drive from places in Derbyshire and all parts of south-west Sheffield. The free car park is usually full by 8 each weekday morning with 60 or more cars on nearby roads. We'll now be standing back until the new year when the new franchise arrangements are confirmed. It's likely that most staff will transfer over to the new company, but it will take time for things to bed back in. The new companies may have different ideas.

Meanwhile, the Hope Valley rail improvement scheme is proceeding with objections to be received by 6th November. FoDaTS is broadly supportive of the scheme to imp-



55k in 2004/5, 1.38k in 2013/14—passenger numbers keep rising

rove the reliability of the service, and increase the number of stopping trains. However, we're expressing strong reservations about some design features at the station. We feel inadequate covered waiting space is being planned. We're not happy with the design and position of the footbridge. We'd like the new buildings to be more empathetic with the existing station than appears likely. We're particularly unhappy about the present parking arrangements and feel the plans should be addressing this now. It is nonsensical to redesign the station and leave that problem unaddressed.

To sum up, we want a vibrant station at Dore & Totley. Better maintained, better facilities, better services and well integrated into its surroundings. It won't come without a little effort.

Please add your support by joining us. Join our Facebook page – Friends of Dore & Totley Station. It will be updated with news. We'll also email occasional newsletters. To join the list email Nick Barnes at nj-barnes@outlook.com At present we're few in number, but the more friends we have the more we can do – on all fronts.

Chris Morgan, FoDaTS

TOTLEY & DISTRICT DIARY

MONDAYS

COFFEE MORNING, All Saints' Church Hall, 10am-noon. Transport usually available on request. Tel 236 0872 before 9.45 am.

TAI-CHI, United Reformed Church, Totley Brook Road, 11.30am-12.30pm

RAINBOWS and GUIDES, All Saints' Church Hall, 5.45pm-9pm

SLIMMING WORLD, Abbeydale Sports Club, 5.30 pm and 7.30 pm, Jo Else: 262 0523 or 07590 545253

TUESDAYS

PILATES, The Old School, Dore, 9.15-10.15am. Phone Teresa Tinklin 07906 312372

COFFEE MORNING, Totley Rise Methodist Church Hall, 10am-noon

KNIT, NATTER, CRAFT & CHATTER Totley Rise Methodist Church, 12 noon - 3.00pm

CITIZENS ADVICE BUREAU. Drop in, free, impartial, and confidential. Totley Rise Methodist Church, 10am-noon

CRAFT GROUP, Totley Library, 2pm

WEDNESDAYS

PILATES CLASSES, Dore & Totley United Reformed Church, 9.00-10.00 and 10.15-11.15. Contact Caroline - Tel: 0781 722 0324, email Carolinenorth1@me.com, www.pilatescarolinenorth.co.uk

COFFEE in the Library, 10am-11.30am

STORY TIME in the Library 10.30-11.30am. Craft activities, songs and a story for pre-school children. Call in at the Library for more information.

TODDLER GROUP, 10am-11.30am, All Saints' Church Hall. Details tel. Andy Holmes 0114 236 2088

HEALTH WALKS, 10.30am, Totley Library foyer. Phone Tina, the Health Walk Ranger: 0114 203 9335

MODERN SEQUENCE DANCING, All Saints Church Hall, 8pm-10pm

THURSDAYS

BELROBICS, United Reformed Church, 9.15-10am, email: jenny@belrobics.co.uk or tel 07816 850132.

NCT COFFEE GROUP FOR DORE TOTLEY & BRADWAY, 10am-noon, for mums & babies/toddlers, various locations. Phone Lucy Street 07837 000405 or email: lucy@streetr.plus.com for further details

ROCKCHOIR, United Reformed Church, Totley Brook Rd, 11.30 - 1.00pm. See www.rockchoir.com or call 01252 714276

PUSHCHAIR CLUB, Totley Rise Methodist Church Hall. 1.30pm-3pm. Tel. 07912 352543 for details

PILATES CLASS, United Reformed Church, Totley Brook Road, 6.15pm-7.30pm **also new class 1.30pm to 2.30pm**, Phone Emer Coffey 07792 422909

FRIDAYS

PILATES, The Old School, Dore, 9.15-10.15am, 10.30-11.30am. Phone Teresa Tinklin 07906 312372

DECEMBER

DEC 10th 11th and 12th DORE MALE VOICE CHOIR: Christmas Concerts, Dore Parish Church, 7.00 pm

SUN 13th FRIENDS OF GILLFIELD WOOD: practical conservation morning run with the help of the Sheffield Council Ranger Service. Meet 10am at Baslow Road bus terminus. Refreshments, tools, etc. provided. Please wear strong footwear and appropriate clothing. All levels of help required and guidance given. Check website at www.friendsofgillfieldwood.com for any late changes of venue etc.

TUES 15th TOTLEY TOWNSWOMEN'S GUILD: 'Christmas Entertainment - Penny Bun', talk by Kath and Geoff Deighton. Totley Rise Methodist Church Hall, 10 am.

WED 16th TOTLEY HISTORY GROUP: Spitewinter Concert at Ecclesall Parish Church, 7.30 pm. An evening of winter songs and music, old and new. Sheffield Folk Chorale and guests The York Waits.

TUES 22nd CAROL SINGING IN THE PUBS with members of All Saints Church: 7 pm: the Spitfire; 7.45 pm: the Cross Scythes; 8.30 pm: the Crown Inn. Please come and join us!

JANUARY

WED 13th TOTLEY PROBUS CLUB 10 am Totley Rise Methodist Church. Talk: Dr Neville Flavell, 'Sheffield Banking Scandal of 1843'. Visitors welcome.

TUES 19th TOTLEY TOWNSWOMEN'S GUILD: 'Mystery Tour', talk by Ann and Graham Cresswell. Totley Rise Methodist Church Hall, 10 am.

SUN 24th FRIENDS OF GILLFIELD WOOD: practical conservation morning run with the help of the Sheffield Council Ranger Service. Meet 10am at Baslow Road bus terminus. Refreshments, tools, etc. provided. Please wear strong footwear and appropriate clothing. All levels of help required and guidance given. Check website at www.friendsofgillfieldwood.com for any late changes of venue etc.

WED 27th TOTLEY PROBUS CLUB 10 am Totley Rise Methodist Church. Talk: Dr Andy Parsons, 'Viking Way Up North'. Visitors welcome.

WED 27th TOTLEY HISTORY GROUP: The Dore and Chinley Railway, with emphasis on the Dore and Totley area, by Ted Hancock. Totley Library, 7.30 pm.

Mark and Sally Fletcher invite you to

The Grouse Inn

Longshaw

Sheffield S11 7TZ

Meal times:-

Mondays 12.00 to 2.30pm

Tuesdays to Friday's 12.00 to 2.30pm and

6-30pm to 9-30 pm

Saturdays 12.00 to 3.00pm and

6.30pm. to 9.00pm (drinks - open all day)

Sundays 12.00 to 9.00pm

Phone 01433 630 423

If your organisation wants to publicise its events, or if you know about any local event, such as community markets or concerts, which you'd like to let Totley people know about, please send details to Totley Independent (copydates are provided on the back page or on our website at www.totleyindependent.co.uk) and we'll do our best to include the information on this Diary page!



Chartered, experienced Physiotherapists
Registered with all major insurance companies

- Repetitive Strain Injuries
- Women's Health Issues
- Back & Neck Pain
- Sports Injuries
- Musculoskeletal Pain
- Acupuncture
- Muscle & Joint Problems



Bradway: 0114 235 2727 Totley: 0114 235 7845 Hope: 0143 362 3602

email: mail@activphysiotherapy.co.uk
web: www.activphysiotherapy.co.uk

more rehab

Neurological Physiotherapy & Services

Specialist Adult & Paediatric Neurological
Physiotherapy, Occupational Therapy &
Speech Therapy.

- Acquired Brain Injury
- Spinal Cord Injury
- Parkinsons Disease
- Stroke
- Epilepsy
- Cerebral Palsy
- Multiple Sclerosis
- Fatigue Syndromes
- Balance and Co-ordination Problems
- Amputee Rehabilitation
- Many Other Conditions
- Hydrotherapy
- Electrical Stimulation
- Gymnasium Work
- Splinting
- Saeco Assessments and Fittings
- FES Bike Programs
- Cognitive Testing
- Cater Training Equipment, Accommodation and Aids
- Assessments
- Elderly Rehabilitation

Clinic & home visits available - T : 0114 2353 150
E : info@morerehab.com - W : www.morerehab.com



International Freight Forwarding Specialists

International & UK freight forwarding on your doorstep in Totley
Call us anytime for a competitive quote for your Export,
Import & Domestic consignments by road, air and sea
on 07946 093129 or landline 0114 283 5936

Please visit our website www.freightdespatch.com for
details of all our services

Registered office: 130 Baslow Road S17 4DQ

THE ELECTRICAL AND HARDWARE SHOP

SERVING THE S17 AREA

Light bulbs, fuses, batteries, filler, sealants, fixings,
DIY, hardware, tools, pest control, repairs undertaken

CHRISTMAS LIGHTS, SNOW SHOVELS, GRIT SALT

Hand made at The Heatherfield
Side entrance 191-193 Baslow Road, Totley.
wheelchair access - customer car park
Opening hours: 9am to 5pm Tues to Fri (12.30 – 1.30 lunch)
9am to 1pm Sat. Tel 235-1444.

TUFF-ROOF

The Tuff Roof System comes with a 25-year guarantee

THE LEADERS IN SEAMLESS FLAT ROOFING & BALUSTRADES

PERMANENT SOLUTION TO YOUR FLAT ROOF PROBLEMS



TEL: 0114 2899286 www.tuff-roof.co.uk



TUFF ROOF, 3 LITTLE CHATSWORTH,
HOLMESFIELD, DERBYSHIRE, S18 7SA



Nigel Watson ADI
Driving lessons for all ages
Under 17's courses available

Home: 0114 236 4778 Mobile: 07506 537681
E-Mail: nigelmwatson@googlemail.com

WANTED : SPORTSPEOPLE / COACHES / PT's



Do you exercise ? or play any sports?

Do you want to improve your performance?

Want to try Ronaldo's personal sports drink he created with the Herbalife science team?

**For SAMPLE & more info.
Contact Mike and Gillian
Text CR7 to 07720 394597**

**CR7
DRIVE**



GWS

Technology Solutions



PC Problems, Repairs, Servicing, Setup No Job Too Small
Wireless & Internet Setup Apple Macs Data Transfer
New PCs, Laptops, Upgrades Tuition Safe PC Disposal
Tablets, iPads, iPhone, Setup & Tuition Smart TV, Media box
Wireless/Airprint printers Wireless/ Internet boosters

**** For All Your PC & Technology Needs ****

Guy Senior

Phone: 0114 2352662 Mobile: 07890030453

Email: guy@gwstech.co.uk

Web: www.gwstech.co.uk

GWS, 5 Conalan Avenue, Bradway, Sheffield S17 4PG

**Reiki Healing
Jacqui Saint**

Hands on Healing
Excellent for Balancing
Physical & Emotional Problems.



E-jesaint@uwclub.net

T - 07922 150 300

Editor: Phil Harris
Tel. 07956 858944 or email:
editor@totleyindependent.co.uk

Advertising & Distribution:

John Perkinson
Tel. 236 1601 or email:
advertising@totleyindependent.co.uk

Proof readers: Chris & Margaret Spencer
Items for publication may be left at or sent to:
2, Main Avenue, Totley, Sheffield, S17 4FG

www.totleyindependent.co.uk

Printed by PREMIER PRINT DIRECT
www.premierprintgroup.co.uk

TOTLEY INDEPENDENT for February/March

The next issue of the Totley Independent will be available from the usual distribution points on

**SATURDAY 30th January
COPY CLOSE DATE for this issue
will be
SATURDAY 9th January**

Published by Totley Independent CIC. Totley Independent is a registered Community Interest Company, number 07750166. We welcome letters about local affairs and will publish as many as possible. Items will not be considered that are submitted anonymously. The views expressed are not necessarily those of Editor or the editorial staff and must not be attributed to them. © Totley Independent 2015.