

TOTLEY INDEPENDENT

PUBLISHED CONTINUOUSLY SINCE 1977
October/November 2014

www.totleyindependent.co.uk

No. 370

20p



Totley Rise, in the days when traffic problems were few and far between

Tackling Totley's traffic problems

Two accidents in one month, at the same location, brought a reaction from residents and road users. Both accidents resulted in injuries. A Facebook page has been set up and had over 100 members. Roger Hart became involved, as Chair of the Ward Traffic Focus group, as did the Totley representative on the group, Neil Bunting. Roger and Neil decided, rather than look at just the one location, to look at the stretch of road from Dore & Totley Station up to Lane Head Road (which includes part of Dore). It was known, for example, that a lorry had caused an accident with a car outside Tesco Express, whilst carrying out a U-turn.

It was felt that the time and effort involved in compiling a report on this length of road would

be beneficial when talking with Councillors, Highway officers and Police.

There might, for example, be a recommendation that more double yellow lines are needed. For every set of lines applied for individually, there is a £1000 fee to the Government for a Traffic Regulation Order, and the cost of painting and maintenance is on top of that. But if more than one set of double yellow lines is required, then multiple applications can be made at once. Roger said "We also considered that it was more beneficial to raise all issues at one attempt, getting all relevant officers involved at one go, rather than tackling the issues piecemeal".

The 14-page report has been widely circulated to relevant council officers, as well (*continued page 5*)

Totley Deli

Where quality and friendliness count

If you are having a party or family gathering why not let us take the strain and provide a buffet for you.

51-53 Baslow Road, Totley Rise, Sheffield S17 4DL. **Call 0114 2364238**

Why not come in and sample our wide range of hot & cold sandwiches and home made produce, freshly made daily to eat in or take away. Cakes, quiches and pies can be made to order if required. All produced from locally sourced suppliers.

- Fresh Roses bread delivered daily & available to order
- Selection of cooked meats sliced to your specification
- Superb selection of fine cheeses, preserves & pickles

Look out for our daily special meals or join us for breakfast.
All available to take away.



Enjoy delicious freshly cooked food in our
NEWLY REFURBISHED
coffee shop



Totley Deli Supporters of local businesses **0114 2364238**



Crocus Homecare

Homecare with Compassion



Care and Support in your own Home

Crocus Homecare provides high quality care and support services to help you, or the person you care for, when it is most needed.

Crocus prides itself, and has built its reputation, on providing the highest quality care with compassion, understanding and respect for each individual and their families.

For more information, please call Debbie Crowhurst, or have a look at our website

Personal Care - Practical Help - Respite Care - Dementia Care
24 Hours a Day / 7 Days a Week

Tel: 01629 812874
www.crocuscare.com

SEE THE DIFFERENCE!

AT



- **COMPREHENSIVE EYE EXAMINATIONS**
including special tests for glaucoma, colour vision, dyslexia & diabetes
- **CONTACT LENS CONSULTATIONS**
free contact lens trials and monthly direct debit payment schemes
- **PRESCRIPTION SUNGLASSES**
- **LEISURE SPECTACLES**
for computer work, fishing, swimming and safety wear
- **ACCESSORIES**
ready readers, chains and magnifiers

LENSES BY SEIKO
In all non-budget spectacles

TOTLEY
63 Baslow Road
236 4485

ABBEYDALE
634 Abbeydale Road
255 6554

For more help and information please phone or call into the practice of your choice
For a full list of our practices visit

WWW.MKO.CO.UK

Terms and conditions apply.



Transport 17

We were extremely sad to hear of the sudden death of Margaret Barlow, a founder member of Transport 17 and a regular escort to many of our members. We can only wish Danny (our ex-Chairman) and his family our sincerest condolences.

We have received several donations from you, for which we are eternally grateful, and by the time you read this article we will have also received a cheque from Totley Open Gardens for £1500. We were hoping that that would cover the refurbishment of our buses but unfortunately it didn't and we are still trying plug the hole in our finances. We have also lost some of our regular volunteer drivers and escorts, mainly due to retirement, and we hope that some of you have a few hours to spare each week. You need to contact Mike Finn or John Savournin at our on 0114 2362962, or pop into our offices at 172 Baslow Road, open Monday to Friday, 9.00 to 12.00 noon.

We will have started something new at the Totley Show - guess the name of our doll. The doll has been donated and there are loads of names to choose from, so we will be taking it to some of the clubs and winding it all up at the Christmas Fayre on Saturday 15th November, at 172 Baslow Road - 10.00 a.m. to 12.00 noon. If you have any unwanted gifts that would be appropriate please leave them at our office.

I hope, by the time you read this, I will have seen lots of you at the Totley Show and I will see even more of you at the Christmas Fayre.

Until the next time - stay safe and keep well.

Felicity Revill

Letters to the Editor

Kate Reynolds

I would like to take advantage of the 'Independent' to thank off the kind people who have contacted me either by phone or letter, with condolences on the death of my wife Kate. It started with a trickle, and finished up a flood. Far too many for me to recall names and addresses individually, so will you please accept this as a big 'Thank You'?

With regard to the service at Hutcliffewood Road Crematorium...WOW! I was stunned by the turnout. I expected to see a few folks from 'the past'. But that was wonderful, with people happily talking to each other. Kate would have liked that very much, so once again 'Thank You' to anyone who I have overlooked in any way, and Bless you all.

Tony

Totley Library

Just a little letter to say 'Thank you' for all the kindness, friendship and supportive comments I have received recently.

Whereas I will never agree with the reasoning behind closing any Library I acknowledge that these are tough

times for our city. I am therefore really pleased that Totley Library will remain open and would like to wish all the volunteers every success for a bright future.

I have been privileged to have had such a wonderful job which has been made special by all the lovely people I have met, and especially the children and young adults who have always lifted my spirits and taught me how to look at life in a fresh and positive way - along with many, many laughs and giggles.

Keep those wheels on the bus going round!

Jane

Flight Officer Bernard Moores

At the Dore village Armistice Service at the War Memorial last November, a wreath was laid in memory of Flight Officer Bernard Moores, killed in action in January 1945.

Despite emails to the War Office and other Memorial Organisations, we have been unable to find any relative or friend of Bernard; and we do not know who arranged for this wreath to be laid on the War Memorial.

We would like to officially recognise Bernard and include his name in our service and possibly on our memorial plaques.

If you knew Bernard or have any information as to living relatives or friends, please contact Dore Parish Church or at the Parish Office.

TOTLEY LIBRARY FUNDRAISING EVENT

HAPPY BIRTHDAY DYLAN THOMAS

**Monday 27th October at 8.00pm at
Totley Library, Baslow Road, Sheffield,
S17 4DT**

Tickets £4/£3 (concessions) on the door

Fresh from their event at Dylan Thomas's childhood home in Swansea, Rony Robinson and Sally Goldsmith bring their celebration of the famous hell-raising Welsh writer to Totley - on what would have been his 100th birthday.

A Yorkshire salute to the bard with: Laughs! Tears! Songs! Refreshments! Seaside trips that never get there! Christmases that never change! If you've never read Dylan or have never even heard of him, don't worry, you're bound to have a lovely time. And you'll also be supporting the very first fundraising event at our community-run library.

B.K. JEAUVONS PAINTER & DECORATOR



Interior
Exterior
Decorating
No Job too small

Tel: 01246 416484

and mobile 07882 278306

John Heath & Sons

AN INDEPENDENT FAMILY FUNERAL BUSINESS

Sometime.....

You will probably have the responsibility of making funeral arrangements. No one looks forward to this responsibility, but the death of a family member or friend brings with it an obligation that must be met. There are people who can help you meet this responsibility. We have been helping people combine the different aspects of the funeral into a meaningful service for over 125 years.

Please Call Day Or Night

(0114) 272 2222

Head Office - Earsham Street

Also at Mendowhead, Ecclesall Rd,
Crookes and Stannington

www.johnheath.co.uk



Electrical and Hardware Supplies

* Sand, cement, plaster and plasterboard * paints & varnishes *
* homewares * electrical items repaired * lamps and
chandeliers rewired * Need something fixing? Call Paul.
If we don't have what you want, just ask and we will get it for you.

New in - Home brew beer making
and wine making kits

Side entrance at The Heatherfield Club, 191-193 Baslow Road, Totley.

* Totally stair-free * wheelchair access * car park*

Opening hours: 9am to 5pm Tuesday to Friday (12.30 - 1.30 lunch)
9am to 1pm Saturday. Tel 235-1444.



yoga@hotmail.co.uk

0114 236 9943

07708 996984

Body, Mind & Breath
enjoy the union of yoga

YOGA CLASSES in TOTLEY & RANMOOR

Rachel Quinn BWY Dip



THE COMPLETE BUILDING SERVICE
New Build & Extension Specialists
From Design to Completion

**Full Project Management
House Building
Extensions
New Roofs/Tile/Stone
Stonework Specialists
Loft Conversations**

Find
us in
Yell.com

Established for 25 years with over 90%
of our work coming from recommendations, to
find out why call:

0114 2353314

Mobile 07973 908187

www.mwoolhousebuilders.com



Christchurch Cottage,
Townhead Road,
Dore, Sheffield
S17 3GA



253 Baslow Road, Sheffield, S17 4DU
Tel: 0114 2360 583 Mobile: 07801 346 455

TOTLEY PRIVATE HIRE EXECUTIVE CAR TRAVEL



AIRPORTS AND LONG DISTANCE

PROP - PAUL SOUTH

24HR SERVICE

Tel: 0114 2839692

Mobile: 07974 355528

Email: PAUL.SOUTH1@TESCO.NET

(from page 1) as all ward councillors. Readers are urged to read the report to inform discussion when the Forum is held. Paper copies are available in the library (and paper copies will shortly be more widely available) and is also on the *Totley Independent* website at www.totleyindependent.co.uk. Roger Hart has tried unsuccessfully to get



information from the police on speeding (and in particular whether or not speed was implicated in the U-turn accidents) and also the outcome of the recent speed checks on Baslow Road. Councillor Colin Ross is considering holding a public meeting (Forum) where residents and road users will be able to contribute. It is hoped that relevant council and police officers would be present. Interestingly, however, the web site "crashmap.co.uk" reveals that the area has not suffered as many accidents as others in the City, and it has been suggested this might well be used as an argument against prioritising action in the Totley area in the current financial climate. This website is, however, considerably out of date by some years, and does not include recent accidents.

Two-car accident, Baslow Road, 22 July (photo: Roger Hart)

Meanwhile the U-turn and speeding issues remain a concern for many. Amanda McGovern, who began the 'Stop Speeding in Totley' Facebook group, explained to the *Independent* "We have seen two accidents at the Marstone Crescent - Baslow Road junction, with one person trapped. My husband attended one incident and helped assist the unconscious driver. I started the Facebook group to raise awareness, but this needs to be a community issue, not just something run by one person. I am amazed at the number of Totley residents that are not aware that Baslow Road has a 30mph speed limit. We need to raise issues – for example, the speed monitor which was near Main Avenue was in the wrong place – drivers tend to pick up speed further on, just after the doctors' surgery." Speed indicators are, however, always located temporarily. The one placed in Totley has now been removed and located elsewhere. And Roger Hart reports that just a few days before this issue of the *Independent* went to press, he observed an Audi travelling down Baslow Road "at something around 60 miles per hour".

GOLD AND SILVER COME TO TOTLEY

Totley resident Nick Matthew, Flag Bearer and current World Squash Champion, won gold and silver in the recent Commonwealth Games in Glasgow. In the singles final he played fellow Englishman James Willstropp to a packed audience which over a million people watched live on TV.



Nick has an impressive record at world class events - three times World Champion! He also won three Gold Medals at the Delhi 2010 commonwealth games, and lots of other silver ware. If you are interested in sport and would like a good read you can buy his book "Sweating Blood my life in Squash", from the Post Office on the Rise. Nick pulls no punches. But, then, you would not expect him to. Nice to have a World Champion living in Totley!

Martin Campion

In association with Dore & Totley United Reformed Church, Totley History Group presents...

TOTLEY IN WW1

an exhibition of photographs, information and memorabilia to commemorate the centenary of the First World War.

Free entry.

Everyone welcome.

Refreshments available.

The Church Hall,
Dore & Totley URC,
Totley Brook Road.

Saturday 8th November, 10 a.m. to 4 p.m.

Sunday 9th November, 12 noon to 3 p.m.

Tuesday 11th November, 10 a.m. to 4 p.m.

We ♥ Flame Grill *The Shepley Spitfire Totley*

New Menu Starting Thursday 2nd October

We ♥ Halloween

On Friday 31st October we will be having lots of family fun in our scary lair! We will be holding a fancy dress and colouring competition for the kids, with a chance to win a big box of sweets for each competition. We will also be bobbing for apples, guessing what's in the box and a messy game of eating the doughnut. We have lots of spooky pictures for the children to colour in before they enjoy our special for the day "monster mash and cooked fingers smothered in zombie blood" (that's sausage mash and gravy on a normal day of the week).



We ♥ Christmas

As of the 1st December the pub will be decorated for Christmas with our fabulous trees and hidden snowman for the children to try and find.

Our Christmas menus will be available from November with a great 2 course menu option for £10.95 including for starters Baked Mushrooms Stuffed with Cream Cheese and for a main Hand-Carved British Turkey with all the trimmings. You also have the option to upgrade to 3 courses for an extra £2.00 so why not book and try our Christmas pudding for dessert to give you that extra festive feel. For another great reason to book with us if you have your party in November you get your pudding free and 25% off wine.

Now for Christmas Day its 4 courses for only £39.95 with some fabulous choices including our Classic Four Bird Roast with all the trimmings or Our Roast Cod Loin with Sage and Three Onion Topping.



If you would like to view our menu please call us on 01142360298 and we will gladly post one out for you or just pick one up on your next visit.

TOTLEY LIBRARY NOW RUN BY VOLUNTEERS

From early October the management of Totley Library was transferred to a newly established community charity "Totley Community Resource and Information Centre". Totley CRIC has been set up entirely by local people and will run Totley Library with volunteers, initially for a three year period.

How will the library change?

The main services offered at Totley Library will not change. Anyone with a Sheffield library card will still be able to use the library to borrow, return and reserve books. The PCs and Internet access will also remain. The main difference will be that volunteers will be running the library. So in the first few weeks please be patient with the new volunteers as they get up to speed.

Please support us!

To run Totley Library costs over £20,000 per year and the grant from the council only covers this in full for the first year. We are holding our first fundraising event on Monday 27th October at 7.30pm. Rony Robinson and Sally Goldsmith will be hosting a Yorkshire tribute to the writer Dylan Thomas, on what would have been his 100th birthday. Tickets are £4/£3 (concessions) on the door.

We will also need help from volunteers to help with fundraising initiatives. If you don't have time to volunteer in the library itself this is a great way to support the library. If you can help with fundraising please get in touch using the contact details below.



Please also consider becoming a Friend of Totley CRIC. As a Friend you will make a small financial contribution, be able to contribute your views to how Totley Library should be run and will receive regular information updates.

Please email savetotleylibrary@gmail.com and we can send you further information on volunteering, fundraising or becoming a Friend of Totley CRIC.

Totley CRIC Trustee Committee

FRIENDS OF DORE AND TOTLEY RAIL STATION

In Victorian times, Dore and Totley was a busy and important station. In the 1980s, the middle platform and track were removed, though thankfully the original building has remained. The photo below shows Dore and Totley station with its middle platform in the 1960s.



With the increased need for rail travel there are plans to restore the station and to replace the middle platform and one track.

Would you like to join a 'Friends of Dore and Totley Station' group to -

- help maintain and conserve the station; and
- liaise with Network and Northern Rail to try to ensure it is developed to meet the needs of passengers, whilst respecting its history and beautiful environment, opposite Sheffield's only SSSI woodland.

Interested? Then please contact Dawn Biram, by email at dawn.biram@btinternet.com or by telephone on 0114 2356907

Dawn Biram

Scout Lottery

1st Totley Scout Group Lottery winners

July 2014 draw:

1st Prize – No. 56

Kenwood 3-speed Hand-mixer
Mr & Mrs Rose, Milldale Road

2nd Prize – No. 20

£10 voucher
Mr Jackson, Rowan Tree Dell

August 2014 draw

1st Prize – No. 62

Touch Control Table Lamp
Mrs Critchley, Baslow Road

2nd prize – No 19

£10 voucher
Andrew Casson, Leebrook Court

R.M.M BUILDING SERVICES

25 YEARS EXPERIENCE

All types of building work carried out including- Drop kerbs, block paving (drives, paths, etc), extensions, general building repairs and maintenance.

Phone Rob on- Mob- 07906108567
Home-2352190

M.Scriven
(FRUITERAMA)

MARTIN SCRIVEN

HIGH CLASS FRUIT
& VEGETABLES

37, Baslow Road

Tel. 236 7116

Orders Delivered

Dronfield Landscapes



Gardens cleared and maintained, Lawns mowed, Turfing, Tree felling & pruning, Hedges trimmed & reduced, Pond maintenance, Fencing etc.

for free quotation call

Chris on: (0114) 2746158 Mobiles: 07976072785 or
Richard on: 07789497104

8am-6pm mon-fri

HazelBarrow Farm, Norton S8 8BA



Got a computer?

Having Problems?

Is it running slow? Stops responding?
Having problems running the latest games
or applications? Broadband installation?

Give me a call!

I'm available for home visits at any time
including evenings and weekends. I can
also suggest upgrades to improve perform-
ance, or even build you a system to your
specific requirements.

Tim Brown

Building,
Installation,
Upgrading and
Troubleshooting
Computer
Systems
Over 25 years
professional
experience

Phone: 0114 2472619 Fax: 0870 7060080

Mobile: 078 17464703 Email: service@timbrown.plus.com

One man went to mow...
...but his mower wouldn't go!

Now is the time to call

Mower Mender

and be ready for the forthcoming growing season
A friendly local business
servicing all makes of
garden machinery

phone: 0114 236 6958
mobile: 0781 2211149



Blade Sharpening and
Collections and Delivery Service Available



Domestic electrical work by
award winning

Lady Electrician

- * House rewires * Replacement fuse boards *
- * New sockets and lights * Security systems *
- * CCTV * Telephone and computer points *
- * Garden power and lighting *



All work guaranteed and fully
insured. For a free quotation,
without obligation,



ring Mandy on 07788-544225

E. & L. Wilson

Builders & Plumbers
☎ 0114 236 8343

- Central Heating,
- Domestic Plumbing,
- Glazing, Double Glazing and Glass,
- House Maintenance,
- UPVC and Wood Windows & Doors



Mini Digger & Driver, Muck Shifts, Footings Etc.



Nigel Watson



Carpenter and Joiner

Fitted kitchens, sliding wardrobe doors with
bespoke interiors, internal and external doors
supplied and fitted, new handrail and spindles,
laminated and wood flooring, locks, architraves,
skirting board, stud walling, boxing off etc.

For a reliable and quality service

TEL: 0114 236 4778

MOBILE: 07971 528149

Totley Show 2014

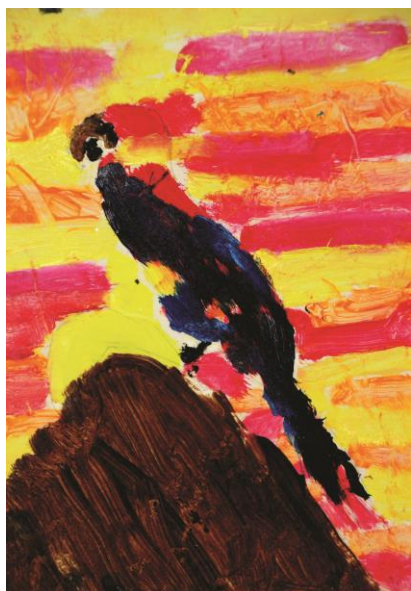
Here are some pictures of the 2014 Show. Full report in next issue!



Rony Robinson opens the show



Music from the Escafeld Brass Band



Colourful children's artwork



Prize-winning onions...



....and flowers



Two young prize-winners receive their awards from Show President Tom Steele. The young lady on the left walked away with no less than five prize awards!



NEW
Pilates Studio
opening 7 April

Do you want to tone up, improve your strength and flexibility, learn to relax and have fun?
Then Pilates is PERFECT for you!
Classes available for all ages and fitness levels.

15 Buttermere Road
(off Abbeydale Road) S7 2AX
Veronica Hutchinson
Over 40 years experience in
teaching dance and Pilates

Visit our website at
www.choicepilates.com
Call 07913 621 727
or email choicepilates@gmail.com



**FREE
TASTER
SESSIONS**
*dance like no one
is watching!*



Love to dance? Want to have fun?

Want to increase stamina, co-ordination and confidence whilst getting fit?

'On Broadway' is a dance class themed on routines and dance styles from popular musicals like 'Mamma Mia', 'A Chorus Line', and 'Chicago'.

Now is your chance to pick up your cane, hat & bag, get fit and have fun whilst strutting your stuff and dance like no one is watching!!
Reveal your inner show girl!

Previous dance experience is not essential but a love of dance is and of course those all-important 'jazz hands'!

Guaranteed Fun and Fitness!

"Good fun, great exercise, a great way to escape into make believe" - Nicola Hill

FREE TASTER SESSIONS

Tuesday 28th October 2014

6.45pm - Dance Unlimited, Little London Road, Heeley, Sheffield, S8

Sunday 2nd November 2014

10.30am - Dronfield Dance and Theatre Academy, 2 Gomersal Lane, Dronfield, S18

Monday 3rd November 2014

9.45am - Hallam Community Centre, Hallam Grange Crescent, Fulwood, Sheffield, S10

1.30pm - Totley United Reform Church, Totley Brook Road, Totley, Sheffield, S17

Tuesday 4th November 2014

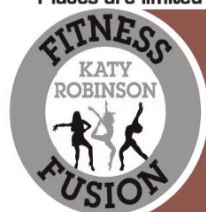
9.30am - Broadway Community Hall, Broadway Road, Sheffield, S17

1.20pm - Stephen Hill Methodist Church, Manchester Road, Crosspool, Sheffield, S10

Wednesday 5th November 2014

9.30am - Bakewell Town Hall, The Square, Bakewell, Derbyshire, DE45

Places are limited so please book early to avoid disappointment



To book your FREE place register via the website at least a week before each taster class. To find out more please contact Katy directly

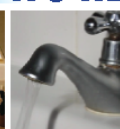
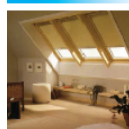
info@katyrobinsontfitnessfusion.co.uk

07803 906114

www.katyrobinsontfitnessfusion.co.uk

R S HEATING & BUILDING CO.

Est 1971



Heating Division - Experienced Installers of condensing, combination and regular boilers. Authorised installers of Valiant, Worcester Bosch and Gloworm systems, fully guaranteed. Complete aftersales service. Also bathrooms, showers and small plumbing works.



Building Division - Loft conversions, house renovations, including general building, joinery, plastering, electrical, decorating etc.



Gas Safe Register 14025

R S HEATING & BUILDING CO.

88 Sunnyvale Road, Sheffield S17 4FB

Tel: 0114 236 4421

62 Machon Bank, Sheffield S7 1GP

Tel: 0114 255 9425 / Fax: 0114 255 9431

www.rshtgld.co.uk E-mail: enquiries@rshtgld.co.uk

Helping You with M.E.

What is M.E.?

Many people will have either heard of the illness known as M.E. or who will know someone who has got it, but very few people will really understand the illness beyond the fact that 'it's that illness where you get very tired'

In reality it is much more than that and M.E. stands for Myalgic Encephalomyelitis – myalgic meaning a description of the muscle pain involved and encephalomyelitis meaning inflammation in the brain and spinal cord. The illness can also be known as Chronic fatigue Syndrome or Post Viral Fatigue Syndrome.

The World Health Organisation classifies M.E. as a neurological disease and this is recognized by the Department Of Health as well.

M.E. often starts with a viral infection, sometimes brought on after having glandular fever, or it can develop after an accident or operation or after a particularly stressful time where the immune system simply shuts down. The most characteristic feature of the illness is chronic exhaustion following minimal physical activity, the full extent of which may not become apparent until 24-48 hours after the activity.

There are many other symptoms such as muscle or nerve pain, problems with short-term memory, concentration, constantly feeling unwell with flu-like symptoms and sleep disturbance, especially waking unrefreshed.

There is no diagnostic test or cure for M.E. The diagnosis has to be made from the typical pattern of symptoms, with the exclusion of other possible causes, and anyone suspected of having ME/CFS should have a number of routine blood tests to identify other possible illnesses.

Although there is research going on to find a treatment for the illness, nobody has as yet arrived at the answer. Clinical guidelines for ME/CFS have now been published by the National Institute for health and Clinical Excellence (NICE) and since 2005 there has been a regional service ME/CFS service based in Sheffield.

It is important that newly-diagnosed sufferers try and manage their illness by getting as much rest as possible in order for the body to recover and to take medical advice about managing their symptoms.

Sheffield M.E. Group

Sheffield M.E. Group is the local support group for people with M.E. and their carers, friends and family. The group covers the whole of Sheffield and Chesterfield, though members have joined from as far away as Southampton. Our main aim is to support members with services such as an Information Line (5 days a week), a Lending Postal Library, a 'Listening Ear' service, a members' contact scheme, regular drop-ins, an Annual Conference and Christmas social, and many other events. The group attends many galas and events and also has a Part-time Outreach Worker who can help with the ever increasing minefield of the benefits system.

The Information line is open every day Monday to Friday from 10.00am to 12.00 and 1.00pm to 4pm and the telephone number is 0114 2536700.

There is also a website at www.sheffieldmegroup.co.uk and the email address is info@sheffieldmegroup.co.uk

The group is always looking for volunteers and further details can be obtained from ringing the Information Officer on 0114 2536700.

*Chris Wintle (Outreach Worker)
Sheffield M.E. Group*

Puzzle Corner

Three C's per word!

1. A changing into lime
2. Triangular bone in the back
3. Money reckoning profession
4. Delivery in childbirth
5. Not periodic
6. Not conforming to common rules
7. Encouraging cancer growth
8. Rim of a disc
9. Draw a line around
10. Without error
11. Coincidence
12. Of sugar
13. Prudent
14. Invent and prepare
15. Welsh resort

Solution: page 29

Totley Scouts

Thank you to everyone who collected Sainsbury's Active Kids vouchers and donated them to Scouts. We have already received a 'Rainbowchute' and various assorted balls. Vouchers for ingredients should be received shortly.

All the leaders, together with assistants and other helpers, are now rested after the summer and into another programme of events for the children.

We have a wide variety of events planned including shooting, archery, camp fires, hiking, orienteering, cooking, survival skills, climbing and good old fashioned games, as well as many others.

Before the summer holidays, the Beavers enjoyed a weekend at Walesby Forest, and the Cubs went the following weekend. The Scouts, being older, could camp for a full week at the beginning of August at Gradbach, near Buxton.



The Scouts are already looking forward to next year's summer camp - a week at Chatsworth. This is an event held every five years with around 6,000 Scouts and Guides from around the world attending.

There is a whole group outing to the RAF Museum at Duxford on the 27 September. About 60 children will be going and they are looking forward to seeing all the aircraft.

On the 25th of October we will be having our autumn Antiques Fayre at St John's Church Hall. I hope you manage to come along and look at the antiques, and also sample the excellent food for sale - main meals as well as delicious buns and cakes. This is one of our major fund raising events of the year.

The whole group will be on parade at All Saints Church for Remembrance Sunday on the 9th November. With our growing number of children we are expecting a record turnout.

More and more girls are getting involved in Scouting. Like the boys, most join Beavers, work their way up through Cubs and Scouts and then onto Explorers. It is particularly pleasing that last term we had four girls who had not previously been involved in scouting join Scouts, and they will move on to be Explorers next year. Scouting is for girls as well as boys!

Richard Frost
Chairman
1st Totley Scouts
TotleyChair@aol.com
0114 236 3603

The Inner Wheel Club of Dronfield
and Holmesfield Parish Church

proudly present

An Evening of Music featuring

Johnny & The Moondogs

A Tribute to The Beatles



plus

The Trish Heenan Quintet
(Jazz Music)



Friday 24th October - 7:00 pm

at

Holmesfield Village Hall

Refreshments will be served in the interval

Tickets £7

from Jane & Robin Greetham

01246 412767

email greetham1968@gmail.com

Proceeds to

Holmesfield Church Restoration Fund and
the Balikywunya Orphanage in Uganda

Holmesfield Parish Church &

The John Wade Singers

proudly present

An Evening of Light Music & Song with the combined

St. Swithin's &

John Wade Singers

Festival Chorus

Conductor Dr John Wade

Organist Mr Mark Rothman



Saturday 15th November - 7:00 pm

at

Holmesfield Parish Church

£7.50

including a glass of wine/soft drink & light refreshments served during the interval

To reserve places contact

Jane & Robin Greetham 01246 412767

email greetham1968@gmail.com

or Jenny Parker 0114 2360798

Proceeds to Holmesfield Church Restoration Fund

Interview with Totley's Norman Iosson at 100 years of age

Norman Iosson, who may well be Totley's oldest resident, celebrates his 100th birthday in October. We asked him to share some thoughts and memories with us. These will be published in two parts, in this and the next issue.

Part 1: Schooldays, Work and Thoughts on Retirement

Many Congratulations on your 100th birthday on October 30th! You were born in 1914, the same year that World War I started, and you would have been four years old when the war finished. Do you have any early memories of that particular time?



Yes. My father worked days one week and nights the next, which was common in Sheffield. He worked in a steelworks as a fitter and turner. I remember my mum came upstairs and woke me up and brought me downstairs. I heard a noise, and it was the zeppelins dropping bombs on Sheffield. We had no defence against the zeppelins because they were only flying at 500 feet, and the bombs they dropped were little bombs - they couldn't carry big ones - which did quite a bit of damage. I remember because she was frightened and that frightened me. I remember that... and I also remember, after that war, having my tonsils out on the kitchen table, with two doctors! I was about seven and fought like a tiger because I didn't know what they wanted me on the table for! These are early memories of years ago."

Have you and your family always lived in Sheffield?

"Yes, and they still live within 15 miles of Sheffield. I was born at Pitsmoor, in a terraced house. In those days they had to build houses for the workers to live in for the steelworks. We shared a loo with next-door, and they all had cellars because that's where the coal

went, as that was the only heating. But when I was about 12 or so, my father bought a house of his own at Firth Park. In those days not many people owned their own houses..... there weren't such things as mortgages like today.

In my hundred years there's been the most change in all history. And there have been two main changes - the attitude of people to women and the attitude of people to children. The attitude to children was that they were to be seen and not heard. And in those days the women stayed at home - all the women stayed at home. The men were the bosses, the men had more meat to eat, because they were out working, and the women stayed at home, and they looked after the children. The men went to work at 6:30 or 7.00 in the morning and they were at work until 5 o'clock at night. So the women brought the children up. Even as a six or seven-year-old, after breakfast I'd be out to play with other children, and I stayed out until I was hungry and I came in to eat. And then I went out again. In those days it was it was safe for children to play outside."

What about school?

"I went to Firs Hill School and then got the '11

plus' and went to the Pupil Teacher Centre which became City Grammar School. That's an excellent idea in education. Do away with grammar schools and standards drop. It meant that a child from a poorer area who was intelligent could mix with children of a different area but of equal intelligence - something they would never be able to do. I became a teacher and taught for five years at Hartley Brook School near Ecclesfield. Then came the war.

After the war you came back to teach in Sheffield?

Yes, I came back because by law they had to offer you your job back. Anyway I enjoyed teaching. I like teaching. I went to Gleadless School. I taught 11-12-year-olds - I taught everything - it wasn't specialist. It was a very happy school, although the five years in the RAF had been a peak period in my life. As long as everything was happy that's all that mattered to me. I was happy there. I didn't want to move to

another school; I didn't want to become a headmaster. And I stayed there for 30 years teaching and became deputy head and then retired. I'd done 35 years teaching and 5 in the RAF, and I retired in 1974 at the age of 60.



German World War 1 Zeppelin

What advice for a successful retirement would you give to someone retiring now?

Have a hobby. Go out if you can. Visit places that you always wanted to go to. Go and see people. Don't let it get you down. Don't be miserable!

And what's your hobby?

Cars have always been my hobby. And reading, Sudoku, crosswords, puzzles - that sort of thing. Because although I can't walk now, I can go out in the car! I keep a record of all the cars I have had, what they cost, and so on. So far I've had 27 !

How different is driving compared to 60 years ago?

No test! Never had a test! The roads were very quiet. Not many people had cars. And if you came across somebody with a car bonnet up, you stopped and you went and said, 'are you all right? What's the trouble?' and you would help to get the car going again if you could. Nothing like it is now.

How do you get on with modern technology?

I don't. I don't need it. No computer. I've got things to read and things to do. I've got my family - I have two sons. One is a dealer in antique weapons, and the other is a computer expert. One grandchild is a chemical engineer and the other works in an accountant's office. I enjoy life, I'm quite happy and blessed that I have a good family - they come to see me every week - and that's another important thing when you retire - your family.

And every day is another day to live! People say, '100 and you buying a new car?' Well, I'm getting a Ford Fiesta automatic which is the best supermini! What more can you want?!!

In the next issue: Norman tells us about World War II and his years in the RAF.

Totley Residents' Association

What wonderful news the last *Totley Independent* - "Totley Library Saved!" Thanks to everyone who worked so hard to make this possible and to all the volunteers who have offered their time and expertise.

Unfortunately we were unable to host the September Farmers' Market due to last-minute cancellations. We decided to re-schedule rather than run a 'half-hearted' event, so the next Market will be on Saturday November 22nd at Totley Rise Methodist Church. For the first time, we will have craft stalls indoors as well as those in the car-park, so make a date in your diaries.

The Christmas Luncheon is booked at the Shepley Spitfire for Tuesday 9th December. Last year's event was so successful thanks to the hard work of Mike and his team, so again we will enjoy a two-course festive meal with a glass of wine, coffee and mince pies. If you know an older person in Totley who would like to be our guest please send their details to totleychair@gmail.com.

Hetty Moran, Chair, TRA.

The local venue for 18th & 21st Birthday parties.

Facing the prospect of a birthday party or other family event?

Consider Tigers rugby club.

**Local function room,
yet out of the way**

Plenty of space & still economical

**Ideal for all family celebrations
where you need a little more room,
but want to be close by.**

Sheffield Tigers Rugby Club
Hathersage Road
Dore.

S17 3AB

Tel: 2360075

(answer phone)

bookings@sheffielddtigers.co.uk

www.sheffielddtigers.co.uk/venue-hire



Walking the Dog....

New Baby in the Family

'We've got a new baby, Jack.'

'You and Sally? Bit of a miracle, that?'

'Babies are supposed to be miracles. But it's Aunty Steph and Eric the Blade and Bronwyn and Ruby's new baby.'

'...What kind of new baby is it?'

'Quite a small one, Jack.'

'Has it got a small name?'

'It's got four names starting with Bridie. Which is Irish.'

'What's wrong with patriotic names like Jack? Or Janet? Or John?'

'John???'

'You were a John once.'

'Only once.'

'And your first girl friend was Janet. You believed J = J in those days.'

'Still do.'

'...You know this Bridie?'

'Nobody does yet.'

'Will she love me?'

'Everyone loves you, Jack.'

'Even if I'm only Jack?'

'Yes.'

'...Will Bridie have to go to school?'

'Yes, and she might even sit in the very same classroom her granddad Gethin Robinson sat in at All Saints, seventy-nine years earlier.'

'...I won't have to go to school will I?'

'No.'

'Good. Can we go for that walk now?'

When your number's up

I had a nasty turn in the Co-op this summer. Everyone was lovely. I got several kisses of life, kept coming and going, and bit my tongue. Then I got het up because I couldn't remember my mum's Co-op number. It wasn't 74365, because that was our first phone number when we had the first phone on the Laverdene and lived at number 6. And it wasn't 918273645, either, because that was the 9 times table in Miss Freeborough's. And - By this time the paramedics and the ambulance had come, so off we sailed to the Northern General, which is where everybody goes to die. But I didn't, because at 4 in the morning I suddenly remembered our Co-op number. If you ever need it, it's 3 5 double 4 8. And you'll be able to tell you've got it right if you do adds (+) and it still = 24, or times-by (x), when it still = 1920.

How Ozzie Cured His Piles

Jack and I were walking past The Flu, all boarded-up and sad, so I told him about the landlord Ozzie's cure for piles, and how, in the olden days, Joe Cocker used to sing in the lounge to the posh college girls sipping Babychams and waiting for a bit of rough with the Totley lads, who were drinking jungle juice in the bar, to fizz themselves up. Jack said the olden days must have been daft if they called their pubs The Flu, like some mucky chimney or a disease. And I said maybe, but The Flu it was, and it was the first pub my dad ever took us to, and the one he always chose to tell us family secrets in. He could get an illegal bet on the horses there, too, and something once happened with a gun and someone's wife. And as for Ozzie's piles, whenever they came down, Ozzie cured them by switching to lager for a week.

Rony Robinson

GARDENING TIPS FOR OCTOBER AND NOVEMBER

It's happened. The dreaded words. The words that, to all magpie creatures such as me, sound like the end of our world. A skip! "That old wood, those bags of bent nails, those tools without handles, and the bird table awaiting repair, and that old hut - they will have to go". I ask you, a skip? Why even mention such a drastic action item? I must admit that the old hut, which had served us well for 25 or 30 years, was looking a bit tatty. It really needed a makeover, but it was lovely and dry, and kept the treasured pieces of hardwood in pristine condition, awaiting a time when I could think of something to do with it. The fresh air which came from the gaps around the bottom also helped to keep the bags of lime (for the garden) and sundry other useful items in condition waiting to be used eventually.... those things lovingly nurtured by me for many years.... the hardwood picked up and stroked occasionally, to admire the intriguing patterns of the grain structure, and the lovely patina which the years have given to it; the tins of paint showing the colours which we have painted the various rooms in the shop and the barn - all of them bringing back memories - all destined for the skip. I tried in vain to think of alternatives. I felt sure I would get round to doing all those projects which would make all the contents of the hut and workshop come in useful. Now, as you know (or perhaps you don't) I am getting on a bit, and some of the 'stuff' (as my wife calls it) has also been around a while. So I reluctantly had to admit that some of the 'stuff' I had collected over the years (for example, I have a packing-case nail extractor which does not take up much room, and a block and tackle for lifting heavy things, which might need a new rope) was collecting a bit of dust. I said that I could select one or two items that could be taken to the council dump, sorry reclamation site? But that was not good enough: "we need a skip, and not only a skip but a *large* skip...."

I went for a lie down, then I went to the hut and workshop to say goodbye to my treasures...The LARGE skip arrived a day or two later, and was full in no time. Those lovely offcuts; the part-used plastic drainpipes; the wood with only a few nails in it; and all the garden stuff. And the hut!! A few days later, after the dust had settled, I was asked whether a shelf could be put up in the spare bedroom. Reluctantly I had to reply "sorry love all the wood went in the skip"!

The next two months are busy ones for us gardeners: tidying borders, treating lawns to an autumn winter feed, repairing huts (I've just finished renovating hut no. 2 before it gets skipped), checking over paths and fences, clearing vegetable plots of plants that that are finished, and dug over and checking that the ph is correct for the plants you are planning for next year.

It's time to start thinking about ordering seeds. They need to be obtained in good time. That should keep you busy, and remember - gardening keeps you fit and healthy! Just look at me (ooh me bad back!)

OCTOBER

FLOWERS Plant spring flowering hardy annuals and bi-annuals as soon as possible. Plant up window boxes, tubs and hanging baskets for winter interest. Lift tender bulbs, corms, and tubers such as dahlias and gladioli, store them in a frost-free place. Check bowls of bulbs planted for winter flowering indoors; do not let them dry out. All tender plants should be brought indoors or placed in cold frames. Tidy up borders, remove leaves and debris which could harbour slugs, snails etc over the winter.

Continue planting border carnations and pinks in beds if soil and growing conditions allow, or pot up cuttings and place in cold frame ready for planting in March. Finish planting spring bulbs.

You can still take cuttings of fuchsias and geraniums etc if you have a warm greenhouse or propagator. Most cuttings root quite readily at 65F. Top dress rock and alpine plants with fine grit. Most herbaceous perennials can be lifted and split up at this time.

VEGETABLES Earth up celery and leeks. Firm in sprouts and stake or earth up. Plant out spring cabbage plants, lift the last of the main crop potatoes, carrots and turnips. Lift young parsnips for immediate use; leave others in the ground to pull as required. Keep a close eye on vegetables in store, remove any suspect ones.

Plant in the frame a few roots of parsley taken up with plenty of soil for winter use. Prepare any spare vegetable plots by a good dig over and apply farmyard manure or

well-rotted compost. Leave rough dug so the frost can get at the soil, which is really beneficial.

TREES, FRUIT AND SHRUBS Young fruit trees and shrubs can be planted at this time. Take hardwood shrub cuttings, these may take quite a time to root, but are well worth the wait. Hedging plants such as barberry, heathers and lavender oleaster and rosemary can be planted.

Put fresh grease bands around apple and cherry trees. Cover autumn fruiting strawberry with cloches and watch out for slugs and snails.

Gather apples and pears as they become ready for picking (they should come off the branch into your hand when gently lifted with a slight pressure on the stalk towards the branch). Handle all fruit with care and only store really sound fruit. Tie into place all raspberry canes and cut them back to encourage fruiting. Prepare ground for planting new raspberry canes, gooseberry and blackcurrant bushes. Prune established blackcurrants.

GREENHOUSE & INDOOR PLANTS Gradually reduce watering on most plants except those which are coming into flower. Give your fuchsias, geraniums, hydrangeas etc a rest, keep them just moist. If you want a nice show next spring, sow seeds of annuals like clarkia, poor man's orchid and salpiglossis in warmth.

Chrysanthemums should be brought indoors before the petals begin to open or if frost threatens. If you have

not taken tender plants indoors, do so now or they will be lost to frost or cold, wet conditions.

Remove all dead or decaying leaves from plants, otherwise they will go mouldy and this can spread rapidly across the greenhouse. When the foliage of gloxinias and begonias has withered completely the tubers can be removed from pots, dusted with flowers of sulphur to prevent mould and stored in a frost free place.

Do not overheat the greenhouse, but provide slight warmth when necessary to keep the air dry and on the move and so prevent a damp stagnant atmosphere. Make sure all your heaters are working well, renewing wicks where necessary and give them a general clean-up - this will add to their safety and efficiency.

LAWNS As last month. Keep them clean. Rake or scarify to pick up the thatch at ground level (and it will also remove a lot of moss if you have it). Spike and top dress with old potting compost (grow bags are ideal) or use an autumn/winter fertiliser. You should have a lovely sward by next spring.

NOVEMBER

FLOWERS Clean up and tidy perennial borders. Clear away any leaves. If you are composting these, keep them separate from the main compost heap, as they take a little longer to rot down, and they are handier as leaf mould for potting purposes.

Check your dahlia tubers in store, cut out any disease. If withered, soak and dry them, then dust with flowers of sulphur.

Plant out hardy lilies in mild weather and cover with mulch.

Plant herbaceous and moisture-loving perennials. Split up perennials like michaelmas daisy and golden rod, and replant the young vigorous outer portions. Prepare the tender plants for winter by bringing them indoors or wrapping them up in straw or polybubble. Complete the planting of tulips and hyacinths -the sooner the better. Check bulbs which were potted up earlier and water if necessary. Any which are more forward can be brought into a moderately heated greenhouse or a cool bedroom windowsill until the buds are formed. Take down hanging baskets, and remove and pot up any plants that are worth saving. Those in tubs (fuchsias and geraniums) are very often worth saving along with ivies and some trailing plants.

VEGETABLES Dig over any vacant plots, leaving the clods large to enable the frost and wind to break them down. Stake up Brussels sprouts and remove any yellowing leaves. Cover any green crops with netting or fleece to protect against birds, and watch out for slugs and snails and deal with them. Keep the weeds under control as they seem to grow better than the plants in wintertime!

Lift and store Jerusalem artichokes in the same way as potatoes, also a few roots of parsnip as they will be difficult to get at if the ground is frozen.

TREES, FRUIT & SHRUBS Move container-grown evergreens to a sheltered spot out of the wind. I keep my bay trees in the cold greenhouse until the frost has finished. Protect any tender shrubs from frost by wrapping them with fleece or straw. Any deciduous hedges that have been neglected can be cut back at this time.

Fruit trees trained against a wall or fence should be pruned now. After pruning see that all the branches and shoots are securely tied. Inspect the posts and wires supporting raspberries, making sure they are secure and not in need of replacement. Deal with old or neglected fruit trees now. Don't just go round snipping bits off, but rather remove the complete branch here and there to open up the centre of the tree to let in light and air. Large wounds made this way should be trimmed carefully with a sharp knife and painted with a priming paint to prevent disease getting into the tree. Look out for affected parts and paint these also. It is a good time to plant blackberries and loganberries. Look over your fruit in store, remove any which show signs of rotting etc. Plant fruit trees - apple, pear, plum and cherry. Give tree, bush and cane fruit a tar-oil winter wash to help control pests and diseases.

GREENHOUSE & INDOOR PLANTS During November, lack of light and a damp coldness in the atmosphere are two of the principle obstacles that we usually have to overcome in the greenhouse. Make sure the glass is really clean inside and out and also the insulation if any. Ventilate cautiously. Open top ventilators a little for a few hours during the day when the weather is mild and reasonably clear. Keep them shut if it is cold and foggy. Remove all decayed leaves or bracts. Avoid splashing water about if you have a mixture of plants stored in your greenhouse. A day temperature of 13C (55F) will be OK but don't let it fall below 7C (45F). As chrysanthemums in the greenhouse finish, cut them back to within 5 or 8cm (2 - 3ins) off ground level - this will make more room and also encourage the roots to throw up suckers which will make ideal cuttings later on.

Cyclamen and winter flowering primulas are ready to come into flower and will benefit from a feed once a fortnight. Remember that calceolarias must be quite dry before they are watered - this rule applies to most pot plants except those which are in full flower and are growing rapidly in heated houses. Seedlings and cuttings should be kept on a shelf as near to the glass as possible.

Sow cyclamen seeds now. They take about 15 months to make good plants. Pot on seedlings and cuttings planted earlier. Plant indoor gladioli, lilies and hyacinths to flower in spring. Prune flowering maple, musk, fuchsia, oleander and plumbago.

LAWNS Keep lawns clear of leaves and debris by raking regularly. Keep off if frost is around. In mild spells dig new lawn sites ready for sowing or turfing in spring.

**Cheerio for now,
Tom**

Horizon Electrical

*Faults, Rewires, Sockets, Lights,
Cooker Points, Electrical Showers,
Phone Points, Security Lights*

No job too small

Fully qualified with friendly advice

**Ring Totley 236 4364 or
Mobile 07772 483154**



BRADWAY INSTALLATIONS

**Kitchens, Bathrooms.....and everything in
between**

- **Complete Kitchens** - Installation or supply and installation
- **Kitchen Refits** - Replacement worktops/sink/hob etc. Worktop / cabinet repairs
- **Bathrooms** - Cloakrooms - Domestic plumbing - Tiling Laminate / Vinyl flooring

All work undertaken is fully insured and guaranteed

**Ring Peter - 0114 236 5995
Mobile - 07766 411355**

Creating opportunities with disabled people.

Registered Charity No. 218186

**Leonard
Cheshire
Disability**

Leonard Cheshire Services in Offers choice & opportunity to people with disabilities.

A Specialist Unit for the Younger Disabled.
Residential & Respite Care - Single Rooms

Day resources - Aromatherapy -
Reflexology - Physiotherapy - Toning
Tables

Activities include: - Arts & Crafts -
Computers - Cookery - Shopping

Expeditions - Theatre Outings - Church.

Further details can be obtained from:-
The Service Manager, Mickley Hall,

Mickley Lane, Totley, Sheffield S17 4HE.
Tel. 0114 236 5932
Fax: 0114 262 0234

The Care at Home Service supports disabled people who wish to remain in their own homes.

We provide flexible care packages from 1 hour to 24 hours meeting individual needs.

The service operates throughout Sheffield.

Our service includes: - help with getting up and going to bed, dressing, washing, bathing, shopping, cooking, light household duties.

Further details from:-
The Care at Home Manager

Tel. 0114 235 1400
Fax 0114 235 1499

Tristan Swain

Garden Services and Maintenance

Established 1984

Unit C4 Sheaf Bank Business Park

Prospect Road Heeley

Sheffield S2 3EN

Tel/Fax: 0114 255 4689

Mobile: 07831 802 539

Email: tristan@tristanswain.co.uk



www.tristanswain.co.uk Public Liability Insurance Waste Transfer Licence



Gail Kitchen: 07986473415



Does going away from home mean your cat is sad and unhappy?
Does a trip to the cattery scare your cat *not to mention your wallet?*

WORRY NO MORE!

MOGGY MAID is on hand to feed, love and provide everything your cat needs in the relaxing comfort of its own home.

As we cat-lovers know, unfamiliar sights and smells can stress your cat, whereas leaving them in the familiar surroundings of their own home carries less worries, for your cat and for you.

If only for a night, weekend, or a month; holiday, Christmas or any time of the year, **MOGGY MAID** is here to help **LIGHTEN YOUR LOAD**

We promise no mischief allowed!

In a professional manner and with quality service, you can ensure individual care and attention, whilst you relax away from home.

We haven't forgotten the rest of the family; mice, rabbits, budgies, goldfish, etc will receive care and affection too.



LOCAL FRIENDLY SERVICE

From £5 a day

For more Information, contact Gail Kitchen on:
07986473415 5 Ullswater Place, Dronfield Woodhouse

PhysioFOCUS

at Totley Rise Dental Practice
85 Baslow Road,
Sheffield, S17 4DP



Physiotherapy treatment available for:

- Back and neck pain
- Sports injuries
- Sprains and strains
- Joint and muscle pain
- Arthritic pain
- Whiplash
- Repetitive strain injury
- Headaches

Appointments: 0114 2360333

Also available:

- Pilates classes
- Pilates 1-2-1
- Golf Fitness Screening
(as used by consultants to UK, European and Australian PGAs)

For more information please call:

Emer on: 07792 422909

Rachel on: 07956 908454

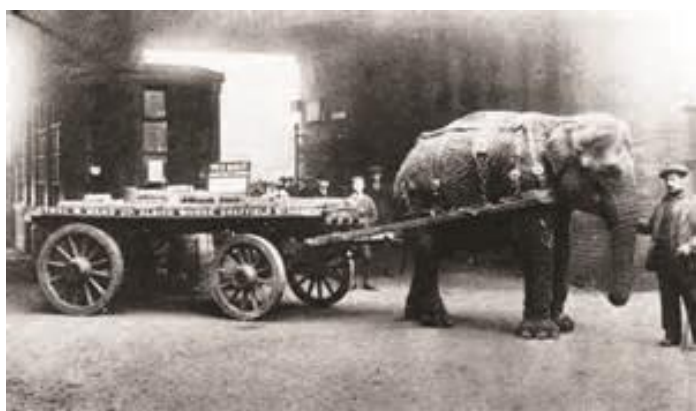
Hallamshire Archaeological and Historical Association

Adult education classes on a wide variety of subjects from Biblical and Ancient history through to the Great War

Did you know that if Jesus was crucified in ~33AD then he would have been crucified by men of the 4th Cohort of the Gauls. The same unit was then stationed at, and built, the fort at Templeborough in the early 50s AD.

Did you know that Carbrook Hall was owned by the Bright family, who later besieged and took Sheffield Castle for Parliament in the English Civil War?

Did you know that Thomas Ward used an elephant to haul his wagons around the streets of Sheffield during the First World War, to replace the many horses that had been drafted into the Army?



All of these points serve to highlight the rich fabric of Sheffield's past. That is one of the main reasons why Hallamshire History was formed this summer, to deliver informative and interesting adult education history classes, primarily aimed at older people.

There are no exams or pressure attached to our classes, just a meeting of likeminded people interested in History – from Biblical, Ancient, or Dark Age, right through to the Stuarts, Napoleonic and the First World War. We aim to provide expert lecturers to lead the classes who will cover all the important aspects of the period, but also bring to light interesting facts that often aren't covered in the history books. These classes are ideal for those with any interest in history, but are also a good way to meet new people who share a common interest.

We also run regular trips away to different places of historical interest such as Bolton Castle, Naseby Battlefield, the Fitzwilliam Museum, as well as many others. We also run archaeological summer schools, and are hoping to excavate a medieval farm house next summer.

We currently offer a wide range of classes across Sheffield, Rotherham and Chesterfield, but are seeking to expand and add more classes. If we can get 10 people in an area, we'll put on a class!

If you would like to find out more about our classes, then please feel free to check out our website at www.hallamshirehistory.com, email us at

hallamshire.history@gmail.com or ring Pete on 0797 2848946.

Pete Scholey

Music at the Cross Scythes

🎵 Sunday 16th November, 8 pm 🎵
Music & Lyrics

End your weekend with Totley-based four-piece band, fresh from their appearances at Totley Farmers Market and Totley Music Festival at Mickley Hall, playing jazz standards with a modern touch

Letter to the Editor

Thanks Again!

Hello Everyone

Just to update all my friends in the community about the progress of my cancer treatment: after three months I was scanned and this showed the cancer was responding to the chemotherapy. There was the suggestion of an operation, but after listening to what could occur and the length of time required for recuperation I decided not to have the operation. The response from my specialist nurse that I had made a wise decision gives me confidence for the future.

Having completed six cycles of chemotherapy I will shortly be scanned. I will then be on the follow up list with a check every three months for two years. If all is well the checks are then made every six months.

My quality of life has been greatly enhanced by the arrival of Halle. She is an ex-show-dog, a black cocker spaniel from the Cocker Spaniel Breed, Rescue and Re-Homing Club.

Halle was confused and upset to begin with, but is now my constant companion. She knows where she lives, is finding her way round the area and has learned to bark when the doorbell rings. She gets on well with children, adults and other dogs. Everyone who has met her finds her delightful. She is quiet at home and waits patiently if required. Obviously show-dogs must have to sit for long periods doing nothing!

Because of Halle I can now go out, enjoy the exercise and chat to everyone as I used to.

Finally and most importantly I would like to repeat my thanks for the love and kindness of all the friends who have continued to offer their help and support over the last six months. Without this I would have found it very difficult to keep going.

For the next few months I intend to give myself the chance to recuperate fully so I can carry on with my life to the full.

Avril Critchley

The Totley Independent Poetry Workshop

Sally Goldsmith

The last task was to write from an old photograph and residents rose to the challenge, the youngest only 7 and the oldest in her 80's! These included a lovely song-like poem from Margaret Day, another delightful one from Patricia Pillow, and an offering from little James Caroe about two generations of babies in their christening gowns. What a shame there's not room for all! I have chosen one by Gaynor Brook addressed to her sister Kim. It's in rhyming couplets – it rhymes in the middle of the lines as well as the ends - with an evocative seaside theme. My only suggestion would be to ask whether you need both the first and last verse?

Poem for Kim

by Gaynor Brook



Although your world's beyond my reach, I know you're not too far away
And when it's time, I'll cross the breach, and we can play again some day

Remember playing on the sand, socks tucked in our plastic shoes
Spades and buckets in our hands, imaginations on the loose

Shorts and tee shirts, sandy knees, later there would be ice creams
Salty air upon the breeze, making real our summer dreams

And as we stood upon the pier, watching seagulls overhead
Mum and dad sat drinking beer, fishing boats of blue and red

What happened to those very bones that laughed and splashed in salty waves
Collecting tiny shells and stones, exploring craggy coves and caves

Walking home with chips and fish, sleepy at the setting sun
Dreaming of tomorrow's wish, carefree days of summer fun

And when I'm in my slumber deep, I dream of you on the other side
And when at last our two souls meet, we'll ride upon the rolling tide

Now, October 27th is the one hundredth anniversary of the birth of our most famous twentieth century poet, Dylan Thomas. So in celebration, here is something a bit different. His most popular piece wasn't really poetry at all but a radio script, *Under Milk Wood*, with narrators and a cast of Welsh seaside characters. Thomas described it as 'prose with blood pressure.' If you read the beginning below, you'll

see why! It is written with a poet's ear and in the process he's turned nouns into verbs which think they are adjectives (snouting, fishingboatbobbing, bridesmaided, jollyrogered), made new words by sticking two together (bible-black, sloebblack, organplaying) and done it all with such oomph, humour and humanity.

So the task this month is, like Dylan, to write some 'prose with blood pressure' about Totley at night. Notice how he is specific about places and relishes their names – the Welfare Hall (in widow's weeds!), the town clock, Coronation Street, Cockle Row, Llaregyb Hill, Milk Wood. He describes the dreams of the inhabitants too – and all with more than a pinch of imagination. None of it is really true and yet we recognise what he's writing about. Here is a selection from the start:

Under Milk Wood (extract)

Dylan Thomas

"To begin at the beginning:

It is spring, moonless night in the small town, starless and bible-black, the cobblestreets silent and the hunched, courtiers'-and-rabbits' wood limping invisible down to the sloebblack, slow, black, crowblack, fishingboatbobbing sea. The houses are blind as moles (though moles see fine to-night in the snouting, velvet dingles) or blind as Captain Cat there in the muffled middle by the pump and the town clock, the shops in mourning, the Welfare Hall in widows' weeds. And all the people of the lulled and dumbfound town are sleeping now.

Hush, the babies are sleeping, the farmers, the fishers, the tradesmen and pensioners, cobbler, schoolteacher, postman and publican, the undertaker and the fancy woman, drunkard, dressmaker, preacher, policeman, the webfoot cocklewomen and the tidy wives. Young girls lie bedded soft or glide in their dreams, with rings and trousseaux, bridesmaided by glowworms down the aisles of the organplaying wood. The boys are dreaming wicked or of the bucking ranches of the night and the jollyrodgered sea....

....Listen. It is night moving in the streets, the processional salt slow musical wind in Coronation Street and Cockle Row, it is the grass growing on Llaregyb Hill, dewfall, starfall, the sleep of birds in Milk Wood."

Please send your attempts to Sally Goldsmith, goldsally@googlemail.com by Thursday 7th November. I'll choose one to publish and comment on. I'm sorry I can't give individual detailed feedback on others.

And just to say, Rony (a bit of a Yorkshire Dylan Thomas himself) and I are presenting an event, *Happy Birthday Dylan Thomas!* to raise funds for the newly reopened Totley Library on 27th October. Bound to be great fun!

Sally Goldsmith is a prize winning poet, script and songwriter. You can order her collection of poetry, 'Are We There Yet?' through www.poetrybusiness.co.uk

Holmesfield Flower Club

The Flower Club welcomes you to the following forthcoming events:

Wednesday 15th October- Workshop Evening by flower designer Lauretta Morley entitled "Autumnal Arrangement". Contact Sandra (tel: 01709 541187) for details of the workshop and materials needed. Non-members are welcome to attend the workshops (fee £4). 7.30 pm at Holmesfield Village Hall, Vicarage Road (Off Woodside Avenue), Holmesfield S18 7WZ. Ample parking. Early arrival to set up is advisable.

Wednesday 19th November - Demonstration of flower arranging by NAFAS demonstrator Heather Shaw entitled "Ho Ho Ho Come on in". 7.30 pm at Holmesfield Village Hall, Vicarage Road (Off Woodside Avenue), Holmesfield S18 7WZ. Ample parking. Tickets: visitors £7, members £3.50. Includes refreshments. The arrangements will be raffled at the end of the evening. All are welcome.

PHILIP DAVID TURTON 1928 - 2014

Older Totley residents and families may remember the Turton family. They came here in 1932 from Nether Edge to the new Laverdene estate.

David Turton, who passed away on August 14th 2014, attended Totley Church School in Hillfoot Road and from there, after taking the scholarship (11+) examination at the young age of nine, he passed for the Nether Edge Grammar School, and later went to Sheffield University to study for a degree in geography. He was also in the RAF after this. After being demobbed his job was with Sheffield City Council in the Social Care department with great responsibility amongst the elderly residents in the "old folk's homes", as we called them in those days.

His great interest and expertise in photography enabled him to give many slide film shows and talks to church groups, clubs, societies and meetings all over this area. He had a superb memory and could recall places visited when on holidays in the UK and abroad, and often the names of the hotels, B&Bs and guesthouses they stayed in!

David was a committed Christian, as indeed were his parents Jim and Ada. They were all members at Dore and Totley Union (now United Reformed) Church on Totley Brook Road, where later on, David worked for at least 25 years in the primary department of the flourishing Junior Church, when Rev. Frank Duckworth was Minister. Frank was a keen photographer and arranged many Church holidays to the Lake District, and abroad to Austria. It was in Austria that David and Margaret, his wife for 55 years, became lifelong partners. They married in 1959, and have a son, Richard and a daughter, Helen.

We send our love and condolences to the Turton family.

Judith Norris

From or to?

Most mornings at breakfast time we listen to Radio 4 for news, weather forecasts, and any other items which attract our interest. The danger with this routine is the frustration it may induce. I feel sure I am not a particularly intolerant person but at least four regular occurrences tend to raise my blood pressure.

The first is endemic to the programme – you have to listen to some "rubbish" as you don't know whether or not something interesting may be coming later. Unlike a magazine, you cannot be selective. Inevitably in the programme most time is devoted to interviews or reports, from reporters, people in the news, experts, politicians etc. Two aspects of these cause disappointment and almost anger. The time

factor is one. How often do we hear "sorry I must stop you there, that's all we have time for..."?

Another is the interviewer failing to ask the question you think is obvious. As an illustration of these points I can quote an interview with the former politician Lord Hattersley. This came at the end of the programme, a few minutes before the 9 o'clock time pips, so time considerations were obviously important. In answer to questions about his political life, Lord Hattersley said he would have liked to serve as Minister of State for Education. He would have wanted to ensure all children got a good education, not only a selected few. So many questions could have followed this, but they did not!

In a way this leads on naturally to my final criticism – errors in speech. My wife's secondary schooling was at an all-girls school in Sheffield, and mine at an all-boys school in Rotherham. I cannot imagine for one minute that the nuns from her establishment and the schoolmasters from mine got together to discuss what should be taught. Nevertheless some guiding had made sure we both left school knowing that "different from" is correct, and "different to" is incorrect! I dread hearing this misuse on the bus. Whenever my wife hears it on the radio her voice fills the house – "different from"! In similar vein I also cringe at the use of "less" instead of "fewer". For example, "a recent poll showed less people intending to vote". It is strange how some things, drilled into us at an early age, stay with us so many years later.

Another such for me is the address on an envelope. An annual chore for us at the end of summer term was to write our parents' address on a foolscap envelope (no A4 in those days!). Admonishment was in store for anyone not obeying this instruction to make sure the end to be sealed was at the right-hand-side. To this day I don't know whether this is standard office procedure, or just something devised by the staff to ease the task of filling over 400 envelopes with school reports. But I still address such envelopes this way after 80 years. I wonder if any surviving fellow pupils do the same, or are "different from me" in this respect!

Don Ashford

DRONFIELD LANDSCAPES

Logs and wood chippings
For Sale

Ring for details

Chris 0114 274 6158

Mobile 07976 072785

Richard

Mobile 07789 497104

FRIENDS OF GILLFIELD WOOD –

BIRD AND BUTTERFLY WALK, 2 August 2014

Three weeks of sun and the ground is cracking open it is so dry. But the weather is changing and we have been assured heavy rain will fall at the weekend, in particular on Saturday August 2nd. So the question is "Do Friends of Gillfield Wood cancel their walk planned for that morning?" It was not looking good but cancelling was not really an option.

The nine people who risked the weather and turned up at the Scout Hut at 0900 hours felt they had made the right decision when almost immediately they were watching a young Jay quietly perched in an old Oak tree. It is not very often you get really good views of such a secretive bird but it had chosen a branch where it was not obscured by leaves and we were all able to fully appreciate its wonderful contrasting colours. Yes, a member of the crow family, but pinkish grey-brown in colour with black moustachial stripe, black tail and black and white wings. Also a bright blue panel is a beautiful highlight in the wings.

Then as the Jay hopped to a higher position in the tree an excited call came from a member of the group encouraging us to turn our attention to a Great Spotted Woodpecker that was actively pecking on a horizontal dead branch high up in another Oak tree. The bird, outlined against the sky, was working its way along the branch backwards and then, disturbed by an in-flying Jay, flipped to the underside of the branch and clung on perfectly as they do. A great start to our walk and throughout the morning we heard Great Spotted Woodpeckers calling in various parts of the wood and on several occasions we saw individuals directly overhead in undulating flight.



Great Spotted Woodpecker

Woodpigeon, Nuthatch and Wren were calling as we entered the next open area. Here we found Coal Tits calling loudly as they moved through the canopy of some trees. We then watched Chiffchaffs flitting over tall Rosebay Willow-herbs into the tangled branches of a Hawthorn bush. As we listened to the Chiffchaffs' contact calls we managed to see Goldfinches and Chaffinches in flight and a solitary Swift scything low through the sky.

As we moved out of this area a Southern Hawker Dragonfly put in an appearance despite the overcast weather. It was darting back and forth, twisting and turning, with the blue tip at the end of the abdomen clearly showing. The youngest member of our party looked on in awe as it flashed in front of him several times at chest height.



After watching a Lesser Blackbacked Gull and then a Heron in flight our next stop was the open field before the wood, where we stood and counted a dozen House Martins flying and feeding above the tops of the trees. House Sparrows were calling from within nearby bushes and a small flock of colourful Goldfinches appeared on the tops whilst a single Greenfinch flew in a large circle overhead. And then, a powerful Sparrowhawk (see picture left) with distinctive broad wings was spotted flapping and gliding over the

rooftops of Totley before it started to soar up to a greater height and drift out of sight.

As we entered and passed through Gillfield Wood it was noticeable how quiet it was, apart from the tick of Robins and the calls of Great Tits and Blue Tits. The distant call of a Bullfinch was detected but it quickly fell silent as we moved out into the field below Woodthorpe Hall. Edging our way up the hill towards the Hall we were joined by low flying Swallows and then as we looked back not one but three Kestrels appeared above the wood to provide us with excellent views. At least two of these were young birds and, as if on cue, they put on a short display of their newly developed skills on fast pointed wings. A real pleasure to see, but if that was not enough, we also managed to get brief views of a Common



Buzzard (*see picture left*) gliding low over fields at the west end of the wood. Three species of birds of prey in one morning had certainly made it worthwhile turning out on this anticipated wet day. But fortunately it had not rained and guess what, it was getting a bit warmer and brighter.

That could mean, as we turned to head back to the Scout Hut, we may just be lucky enough to see at least one butterfly. After all, this event was advertised as a Bird and Butterfly Walk and we had joked at the outset that a claim could be made under the Trades Description Act if a butterfly did not put in an appearance.

A few minutes later we were roughly five hundred metres from our start point, the weather conditions having slightly improved, when suddenly excitement. A call came out that a butterfly had been seen in flight and had dropped back into the long grass. On close inspection, as it clung with closed wings to a blade of grass, we identified it as a Green-veined White (*see picture right*). And then, as if by magic, a small number of butterflies began to appear on the wing around us and soon we had studied at close quarters several more Green-veined Whites, two Ringlets and at least six Gatekeepers.



Some of the relevant features on the underside of the wings of these three species were pointed out to help with identification; the faint dusting on the veins of the Green-veined White; the small circles or eye spots of the Ringlet and the two distinctive white spots on each of the small black "eyes" on the Gatekeeper's forewings.



Finally, we were treated to two Speckled Wood Butterflies (*see picture left*) spiralling together in a territorial dance by the footpath, a fitting end to another successful walk. We had no idea then, just how hard it would be raining fifteen minutes later. Back home, in the dry, reflecting on the walk, one could not help but wonder just how those delicate insects that had delighted us so much at the end of our walk, were now coping as it literally hammered it down with rain outside. I am sure they will delight us again, I know "our" wood and surrounding area certainly will no matter what the weather.

Chris Measures

(This article features Library photos)

Dore Gilbert & Sullivan Society

The year certainly gets round faster than ever. It seems no time since we broke for summer but we have just started music rehearsals for our next production which will be *The Gondoliers*, many peoples' favourite. The production team is the same as last year so we will be assured of another fantastic show. We could still use new members, particularly men, so if you fancy your chances come along. We rehearse every Wednesday at 7:30pm in Millhouses Methodist Church Hall. The show will be from 29th April to 2nd May 2015 at the Montgomery Theatre in Surrey Street.

In the meantime we will be performing our Christmas Concert, which will be, as usual, in Dore Methodist Church at 2:30pm on Saturday 20th December when there will be the usual mix of comedy and fun with an eclectic mix of high quality entertainment on offer.

Tickets will be available from October onwards from me (Tel: 0114 2362299) or other society members at £6 each. It's the best value for money around! Don't delay too long - our Summer Concert was sold out.

Have an enjoyable late summer and autumn and we'll see you in December.

Derek Habberjam

Totley Rise Methodist Church

Sunday Services at Totley Rise Methodist Church

9.00am (1st and 3rd Sundays): A quieter, more traditional service. First service of the month usually includes communion.

9.30am (2nd and 4th Sundays): Toddler Praise is a fun time of worship aimed at the under 5s and their parents or carers.

10.30am (Every Sunday): An informal and contemporary service; communion is monthly. Youth Church and crèche facilities are available for children. 6.30pm (Every Sunday): A quieter space for worship and listening to God, preparing for the week ahead.

Sunday 5th October: 10.30 am Harvest Celebrations

Sunday 9th November: 10.30 am Remembrance Service

Autumn/Winter at Totley Rise Methodist Church

Sat 11th October, 9.30 am – 4.00 pm Women of God: Conference. Totley Rise Methodist Church is hosting the next Women of God Conference under the general theme of 'Inspiring Women in Today's Busy World'. The speakers are Maureen Green, Jo Hird and Eileen Turner. Bring your own lunch. Tickets £6.50, sold in aid of Soulroots which works with young people in S17. For information and tickets contact Diane Capps on 07984 722605, Sue Freeman 0114 2366819 or Louise Grosberg, minister@totleyrise.co.uk.

Sat 18th October, 9.30 am. Men's Breakfast: Totley Rise Methodist Church Lounge. Would you like to begin your Saturday with a complimentary English breakfast and great conversation? The speaker will be James Hope-Gill, former chief executive of Sheffield and Hallamshire FA. All men are welcome - no pressure, an easy environment. For more information see the church website, www.totleyrise.co.uk or contact Richard, 0114 2363157, evenings.

Messy Church (for pre and primary aged children). Come and enjoy watching your children enjoy crafts, games and friendship. Share a light meal together and learn about God and the amazing stories in the Bible. Watch for the church banner or contact Rachel on 07912 352543 or email racheltrm@yahoo.com.

Ongoing Events (and see Diary, p.30)

Knit, Natter, Craft and Chatter Every Tuesday 12.00noon -3.00pm Totley Rise Methodist Church Centre. They may natter and chatter but they are certainly productive. This busy and friendly group has been a great success.

They aim to include more people from the area, even the housebound. Housebound does not mean isolated. The group will happily provide wool, needles and a chat for those who cannot travel to the church. Young people are welcome. There are skilful, lovely ladies ready and willing to help those new to knitting and sewing.

Many charities benefit from the group's work: Butterfly Wings (still-born babies), Sheffield premature baby unit and the Christmas shoebox appeal. Sheffield Royal Society for the Blind have adopted knitted Ellie the elephant as their mascot and have given a certificate of grateful thanks. Members can knit/sew (a sewing machine is available) for their chosen charities.

Maxine, the organiser, says that all the ladies love coming. Men are also welcome. Stay for as long as you like, up to three hours. We offer tea, coffee, biscuits and most important, friendship.

Beginners Group: Every Sunday 10.30am-11.45am. A weekly children's group for 3-6 year olds. Bible stories, songs, games and a simple craft plus a drink and biscuit.

Tuesday Ladies: 2nd Tuesday of each month at 8.00pm, Totley Rise Methodist Church. Do you want to make new friends? Would you like to listen to talks, or take part in a wide variety of events for ladies? Next date is October 14 - '1000 years of Millhouses - 1066 to present day' - John Brighton. For more information call Janet on 0114 2369002



Totley History Group Programme 2014

Meetings take place at Totley Library at 7.30 pm unless otherwise announced.

Oct. 22nd "Longshaw as a WW1 Convalescent Home" - a talk by Thelma Griffiths.

Nov. 26th Open meeting. Come and share your thoughts. Do you know the age of your house? Do you remember Baslow Road? Do you remember the old shops?

ALL SAINTS CHURCH

Totley Hall Lane

SERVICES IN OCTOBER AND NOVEMBER

October

- 5th 10.00 am All Age and Baptism
6.30 pm Holy Communion
- 12th 10.00 am Holy Communion
6.30 pm Evening Prayer
- 19th 10.00 am Morning Praise
6.30 pm Holy Communion
- 26th 10.00 am Holy Communion
6.30 pm Evening Prayer

November

- 2nd 10.00 am All Age and Baptism
6.30 pm Holy Communion
- 9th REMEMBRANCE DAY: 10.00 am
Morning Praise
11.00 AM AT WAR MEMORIAL
6.30 pm Holy Communion
- 16th ALL SAINTS 90TH BIRTHDAY: 10.00 am
Morning Praise
6.30 pm Holy Communion
- 23rd MAASAI: Holy Communion
6.30 pm Evening Prayer

Every Wednesday 10.00 am Holy Communion

October 1st is St. Teresa Day

She entered the Carmel at Lisieux at the age of 15. Because of tuberculosis her activities were limited, but she pioneered "the little way". Fidelity in small things, trust and complete surrender to God.

October 12th is Columbus Day.

The first Columbus Day celebration was held in New York in 1792, celebrating the 300th anniversary of the landing. Columbus Day has been celebrated annually since 1920.

Saturday 15th November: Family Entertainment - All Saints 90th Birthday

Family Entertainment with a Magician and the Rock Choir in the Church Hall at 6.30 pm. Tickets are FREE and available from 37, Sunnysvale Rd. or by asking any member of the church.

The Church was consecrated on 15th November 1924, exactly 90 years ago.

The Big Questions: God? Life? Jesus?

Is there a God? For and against, from experience and science. Are people who talk to God deluded or wise?

Jesus Who? What did he say and do? Is there life after death?

Life? What about a spiritual dimension? How does Christianity work?

Come with your questions and ideas!
8 – 9.30 pm on October 7th, 14th, and 21st at 37 Sunnysvale Road, Totley. For more info, please contact Rev Paul Oakley on 01142362322 or paul@oakleym.plus.com

TOADS' NOVEMBER PRODUCTION

A reminder that TOADS' next production will be a comedy written by Derek Webb entitled 'Agatha Crusty and the Village Hall Murders'. We hope you will come along and have a good chuckle at the antics of Ms Crusty and Inspector Twigg – a good antidote to the usual dreary November weather!

Monica Stagg is directing the play and if the rehearsals are anything to go by, it promises to be a real rib-tickler!

The dates are Wednesday 19th November to Friday 21st November at 7.30pm, and Saturday 22nd November at 2.30pm. The venue is St John's Hall, Abbeydale Road South. call 0114 2351206 to reserve your ticket or contact any TOADS member. We hope you'll be able to come.

We have been lucky this past year to be joined by several new members, some of whom are in this play, and others who are doing invaluable work backstage. Please come along to any TOADS' meeting. or contact me or any of us, if you are interested in joining our ranks. Or visit our web-site www.toadsdrama.co.uk. We are a very friendly group of people, and we would be delighted to see you!

We were all of us very saddened at the death of Kate Reynolds, who had been a stalwart of the society for many years and was a very dear friend of John and myself. Prior to her stroke Kate had worked tirelessly for TOADS, not only as an actor and director, but behind the scenes in many capacities too numerous to mention. Many of you will remember her talent and vivacity both on-stage and front of house.

She will be sadly missed, but not forgotten.

Anne Bettridge

Dore & Totley Clothes and Toy Sale

Children's and Adults' clothes; Toys and Equipment
Plus Cake Stall and Refreshments

**Saturday 8th November, 11 am – 12.30 pm
at Totley All Saints Church Hall**

For a seller's number, call Sally on 235 1651. Organised by and on behalf of Totley All Saints School PTA. With permission of Sheffield City Council.

Councillor Surgeries

Liberal Democrats:

2nd Monday in the month 6.00-7.00 p.m., Totley Library, Baslow Road and 2nd Saturday in the month from 10.30 a.m. to 12.00 noon, Dore Old School Hall, Savage Lane, Dore.

Contacts: Colin Ross 235 1948

Email: colin.ross@sheffield.gov.uk

Joe Otten 230 3290

Email: joe.otten@sheffield.gov.uk

Martin Smith 0781 205 5346

Email martin.smith@sheffield.gov.uk

Flower makes its comeback on Blacka Moor!

The Bog Asphodel flower is flourishing on Blacka Moor nature reserve! The flower has been in decline nationally due to the reduction in its mire (bog) habitat due to the drainage of wet areas. Volunteers from Sheffield and Rotherham Wildlife Trust recorded 3,115 flower spikes of Bog Asphodel on Blacka in July this year.

This attractive yellow flower can be found in mire or bog at Blacka Moor (*Cowsick Bog*). It is the ideal time to spot them now, as the flowers appear from June to August. When they fruit in autumn, the plants turn deep orange, changing the appearance of the bogs.



The Latin name for Bog Asphodel is *Narthecium ossifragum*; otherwise known as 'bone breaker'. The story behind the name is that, if cows or sheep graze on the mires where the flower is found, they are likely to develop brittle bones. The plant favours growing in acidic conditions and is in fact poor in calcium, which can cause poor bone formation in the livestock.

Blacka Moor is the largest of the Sheffield and Rotherham Wildlife Trust's reserves and covers an area of 181 hectares and forms part of the area of the Peak District known as the South Sheffield Moors. It is leased to the Trust (for a period of 30 years from 2001) by Sheffield City Council. It is a Site of Scientific Interest, and also forms part of the Dark Peak Special Protection Area (Birds Directive) and Special Area of Conservation (Habitats Directive). As with the other adjacent moorland, the reserve's habitats and bird life are considered to be of national and international importance and are protected under National and European legislation. In addition, part of Blacka Moor (Bole Hill) is protected as a Scheduled Ancient Monument.

Totley Primary School

September is an exciting time as children move up into the next class and work alongside new members of staff. For our Y5 and Y6 children, we try to kick the year off in style by taking them away on 3-day residential visits. As well as fitting in with our school philosophy of making happy memories for our children, taking the children into the great outdoors is a brilliant way of bonding the class as a team at the start of the year.

The Y5 children take advantage of Totley's fantastic location by donning their walking boots and hiking up over Blacka Moor to Parson House Outdoor Centre. This characterful old farmhouse is used as a base for a range of team building activities in the surrounding countryside, led by expert instructors.



These include caving, abseiling and rock hopping. The children sleep in cosy dorms and are fuelled by hearty cooked breakfasts!

The Y6 children go to Thornbridge Outdoors, near Bakewell, where they get to experience the joy of camping (come rain or shine!) A range of physical challenges are organised, including cycling on the stunning Monsal trail and the legendary sky ropes. On the final evening, a barbeque and campfire gives the opportunity for other school staff to come and join in the fun!

So here's to a sunny September for all of these outdoor shenanigans in Derbyshire. I'm sure our children and staff will have truly memorable trips and give each other maximum support when the challenges get tough!



Ben Paxman, Assistant Head Teacher



Neighbourhood Watch: Dore, Totley and Bradway

Keith Hill has stood down as Area Co-ordinator for the above areas, following many years of service in the post. He has diligently organised bi-monthly meetings for Co-ordinators and representatives from our local Safer Neighbourhood Police Team, to receive local updates and crime statistics. Co-ordinators also had the opportunity to raise any specific concerns that they or their Members had and, where deemed necessary, request priority policing assistance. On behalf of all the Co-ordinators and Members we thank him for his service to our community.

Neil Bunting, who some two months ago, became Area Coordinator for the new Totley North Scheme, has volunteered to take on, for the foreseeable future, the role of Area Co-ordinator for the whole of Totley, assisted by his Deputy, Roger Hart. Neil will endeavour to make contact with all existing Co-ordinators who are currently registered, to receive "Confirmer" messages, at the earliest opportunity. However, in the meantime, Neil and Roger would be more than pleased to receive any direct communication from existing Co-ordinators and Members via the email and telephone contact details listed below.

Les Day has taken on the role of Area Co-ordinator for Bradway and we are presently looking for a volunteer to take on the role of Area Co-ordinator in Dore. In the short term, both Neil and Roger will provide whatever assistance they can to keep the existing Co-

ordinators in Dore informed, until a replacement Area Co-ordinator is appointed.

The Police need our support more than ever before. We have recently been advised by a senior officer that 'reorganisation number one' was just completed, when 'reorganisation number two' was introduced! Before that has been completed they are planning for 'reorganisation number three' - all apparently necessary to meet the ever-reducing budget criteria without, we are assured, affecting frontline policing resources and services!

To date we have an enthusiastic band of volunteer Co-ordinators and Members, some new and some with past service. Neil has developed good links with the Police and we want to recruit more Members, Co-ordinators and Area Co-ordinators, in order to spread both the word and the workload, all to the benefit of our local community. It is not onerous and you do not have to have a computer. Your interest in the local community and wellbeing of your fellow residents are the essential ingredients, plus bags of enthusiasm.

Please contact either Neil or Roger and provide us with your contact details, which we will keep confidential.

Neil Bunting, 07703 269367 – email:

nbunting@talk21.com

Roger Hart, 07831 305881 –

email:roger@rogerhart.co.uk

Internet moments to share.....



Margaret Barlow 1941-2014

Many of you reading this will know my parents, Danny and Margaret Barlow, who lived in Hillfoot Road, Totley from 1988 to 2011. Very sadly, my Mum died suddenly and totally unexpectedly at the end of August, from a brain haemorrhage.

In typical style, she and Dad were enjoying a cream tea and a laugh at a local café when she collapsed. How much did she love her tea?! It was very quick, apparently; she would not have suffered and she was with the person she loved most in the world. This was a good way for her to go but it has been difficult for those of us left behind.

Mum started life in Peckham, South East London, met Dad and had my twin brother Paul and me. We moved to Kent and our younger brother Simon came along. Paul and I flew the nest and Mum, Dad and Simon moved up to Totley with Dad's job.

Mum kept herself busy by becoming a volunteer escort with Transport 17, and she and Dad also helped with fundraising. We three children and our partners can remember many phone calls requesting bric-a-brac, asking us to buy raffle tickets, or wondering if we could guess how many balloons would fit in a minibus!

Mum wrote about T17 in a regular article for the 'Totley Independent' but also wrote her own thoughts on life and other stuff under another name. Unfortunately none of us can remember what it was! She also liked to write and send cards to people, and whether she was sharing good times or bad with you, she was always thinking of you. She sent so many cards that we fear that Royal Mail's profits may now suffer!

The last three years or so were spent in Hampshire, near the New Forest, enjoying her garden, doting on her three grandchildren and sorting out the new house. She never forgot her friends 'up north' and it's obvious from all the cards and messages Dad has received that many of you still remember her with affection. He asked me to thank you all very much for them.

By the time you read this, the funeral will have taken place. If anyone is sorry to have missed the chance to send flowers then please don't worry. Maybe you could donate to your favourite charity in her name or plant a few bulbs in your garden, and think of her when they come up and smile.

Mum wanted to be remembered as someone who always did her best and hopefully you agree with us that she did just that.

God bless

Ann Garner

Friends of Gillfield Wood



Sunday 5th October: Trapping and release of small mammals for identification and recording. With Sorby Natural History Society. Leaders Val Clinging and Chris Measures. Meet 8.30am at gate at bottom of Totley Hall Lane. The meeting will finish mid-morning.

Sunday 19th October: Practical Conservation Morning with council rangers. Meet 10.00am at gate at bottom of Totley Hall Lane. Refreshments, tools etc. provided. Wear strong footwear and appropriate clothing. All levels of help required, and guidance given. Stay as little or long as you wish.

Saturday 15th November: Bird Walk with Chris Measures. Meet 9.00am at gate at end of Totley Hall Lane.

Tuesday 25th November: Naturalist Derek Bateson, 'Hidden Treasures in Gillfield Wood'. Totley Library, 7.30pm. Free to members, £3 non-members. Refreshments available.

Sunday 30th November: Practical Conservation Morning. 10.00am, place to be confirmed. Further details – see 19th October, above.

For confirmation of events see www.friendsofgillfieldwood.com or email fogwsecretary@gmail.com

Puzzle Corner Solution

1. Calcification
2. Coccyx
3. Accountancy
4. Accouchment
5. Acyclic
6. Eccentric
7. Carcinogenic
8. Circumference
9. Circumscribe
10. Accuracy
11. Concurrence
12. Saccharic
13. Circumspect
14. Concoct
15. Cricceith

TOTLEY & DISTRICT DIARY

MONDAYS	COFFEE MORNING , All Saints' Church Hall, 10am-noon TAI-CHI , United Reformed Church, Totley Brook Road, 11.30am-12.30pm RAINBOWS and GUIDES , All Saints' Church Hall, 5.45pm-9pm SLIMMING WORLD , United Reformed Church Hall, 5.30 pm and 7.30 pm, Jo Elsey: 262 0523 or 07590 545253
TUESDAYS	PILATES , The Old School, Dore, 9.15-10.15am. Phone Teresa Tinklin 07906 312372 COFFEE MORNING , Totley Rise Methodist Church Hall, 10am-noon KNIT, NATTER, CRAFT & CHATTER See Totley Rise Methodist Church article in this issue - 12 noon - 3.00pm CITIZENS ADVICE BUREAU . Drop in, free, impartial, and confidential. Totley Rise Methodist Church, 10am-noon CRAFT GROUP , Totley Library, 2pm
WEDNESDAYS	PILATES CLASSES , Dore Old School, 9.00-10.00 and 10.15-11.15. Contact Caroline - Tel: 0781 722 0324, email caroline1north@btinternet.com, www.pilatescarolinenorth.co.uk COFFEE in the LIBRARY , 10am-11.30am TODDLER GROUP , 10am-11.30am, All Saints' Church Hall. Details tel. Andy Holmes 0114 236 2088 HEALTH WALKS , 10.30am, Totley Library foyer. Phone Tina, The Health Walk Ranger: 0114 203 9335 MODERN SEQUENCE DANCING , All Saints Church Hall, 8pm-10pm
THURSDAYS	BELROBICS , United Reformed Church, 9.15-10am, email: jenny@belrobics.co.uk or telephone: 07816 850132. NCT COFFEE GROUP FOR DORE TOTLEY & BRADWAY , 10am-noon, For mums & babies/toddlers, meeting in various locations, Phone Lucy Street 07837 000405 or email: lucy@streetr.plus.com for further details ROCKCHOIR , United Reformed Church, Totley Brook Rd, 11.30 - 1.00pm. See www.rockchoir.com or call 01252 714276 CHAIROBICS , Heatherfield Club, 1.15pm PUSHCHAIR CLUB , Totley Rise Methodist Church Hall. 1.30pm-3pm. Tel. 236 3157 for further details PILATES CLASS , United Reformed Church, Totley Brook Road, 6.15pm-7.30pm also new class 1.30pm to 2.30pm , Phone Emer Coffey 07792 422909
FRIDAYS	PILATES , The Old School, Dore, 9.15-10.15am, 10.30-11.30am. Phone Teresa Tinklin 07906 312372
SATURDAYS	MODERN SEQUENCE DANCING , All Saints Church Hall 1st Saturday Monthly 8pm-10pm

OCTOBER

SUN 5th MINIATURE TRAIN RIDES Abbeydale Road South. 1 pm - 5 pm (weather permitting) Car Park closes 5.15pm. £1 per ride per person. See www.sheffieldsmee.co.uk

WED 8th TOTLEY PROBUS CLUB 9.30 am Totley Rise Methodist Church: AGM, followed by Talk - Mrs Cath Lawrence, "Six in the City: My Career in the City of London"

SUN 19th MINIATURE TRAIN RIDES Abbeydale Road South. 1 pm - 5 pm (weather permitting) Car Park closes 5.15pm. £1 per ride per person. See www.sheffieldsmee.co.uk

SUN 19th FRIENDS OF GILLFIELD WOOD: 10 am: Practical Conservation Morning with the Council Rangers. Meet at Baslow Road bus terminus. All levels of work, light and heavy, fully supervised. Stay as little or long as you wish. Tools provided, refreshments too. Wear appropriate footwear and clothing.

TUES 21st TOTLEY TOWNSWOMEN'S GUILD: Doug Bradbury, "Master Farriers". Totley Rise Methodist Church Hall, 10 am.

WED 22nd TOTLEY HISTORY GROUP: Thelma Griffiths, "Longshaw's Use as a World War 1 Convalescent Home", 7.30, Totley Library.

WED 22nd TOTLEY PROBUS CLUB 10 am Totley Rise Methodist Church: Talk - Dr George Clark, "Alfred the Great".

FRI 31st WHIRLOW HALL FARM: Halloween Spooktacular Extravaganza! half term fun! Exciting activities and children's entertainment (two sessions at 10am -1pm and 2pm-5pm, each providing the same attractions). Prizes for best costume! Tickets need to be booked in advance - last year was very popular so don't leave it too late! Children £3.50, Adults £2.50. For more information and to purchase tickets call 0114 2352678.

NOVEMBER

WED 12th TOTLEY PROBUS CLUB 10 am Totley Rise Methodist Church: Talk: Mike Gildersleeve, "North to Norway"

SAT 15th FRIENDS OF GILLFIELD WOOD: 9am. Morning BIRD WALK with Chris Measures. Meet at the gate at the end of Totley Hall Lane.

TUES 25th FRIENDS OF GILLFIELD WOOD: Illustrated talk by local naturalist Derek Bateson on "Hidden Treasures in Gillfield Wood" 7.30 pm. Venue tbc

TUES 18th TOTLEY TOWNSWOMEN'S GUILD: John Taylor, "Curiosities - Derbyshire and South Yorkshire". Totley Rise Methodist Church Hall, 10 am.

WED 26th TOTLEY PROBUS CLUB 10 am Totley Rise Methodist Church: Talk -Rev. Alan Sprowson, "What's That Butterfly?"

WED 26th TOTLEY HISTORY GROUP: Open Meeting - a chance to discuss and share recent research and discoveries. Do you know the age of your house? Do you remember Baslow Road? Do you remember the old shops? 7.30, Totley Library.

SUN 30th FRIENDS OF GILLFIELD WOOD: 10 am: Practical Conservation Morning with the Council Rangers. Meet at Baslow Road bus terminus. All levels of work, light and heavy, fully supervised. Stay as little or long as you wish. Tools provided, refreshments too. Wear appropriate footwear and clothing.

Mark and Sally Fletcher invite you to

The Grouse Inn

Longshaw

Sheffield S11 7TZ

Meal times:-

Mondays 12.00 to 2.30pm

Tuesdays to Friday's 12.00 to 2.30pm and

6-30pm to 9-30 pm

Saturdays 12.00 to 3.00pm

and

6.30pm. to 9.00pm (drinks -

open all day)

Sundays 12.00 to 9.00pm

Phone 01433 630 423



**CHARISMA
BLINDS**

For
Windows
With Style



Sheffield Factory Showroom
106 PROSPECT ROAD
HEELEY, SHEFFIELD

Sheffield (0114) 258 5496
Rotherham (01709) 512113

more rehab

Neurological Physiotherapy & Services

Specialist Adult & Paediatric Neurological Physiotherapy, Occupational Therapy & Speech Therapy.



Clinic & home visits available - T : 0114 2353 150
E : info@morerehab.com - W : www.morerehab.com

1st Totley Scout Group Vacancies

Assistant Beaver leader, Assistant Cub leader and Assistant Scout leader

Two hours a week
Can also job share

No experience necessary as full training given
You need lots of enthusiasm and a willingness to have fun

No pay, but a very rewarding experience helping boys and girls to develop practical skills

Do you want to find out more or even have a trial run one evening?

Call John Smith, our Group Scout Leader
07507 560287

A1 Tiling, Plumbing, Plastering & Complete Bathroom Installations

Tel : 07738688807
0114 4182346

- * All Plumbing Leaks, Bursts & Blockages
- * Taps, Showers, Radiators Etc
- * No Job To Small
- * Home Improvements & Maintenance
- * Underfloor Heating, NVQ Qualified
- * Reliable, Fully Insured & Guaranteed

www.A1tilingandplastering.co.uk
25 Five trees Ave, Dore, S17 3LW



Installation, service and repair.
Boilers, radiators, fires, cookers and plumbing.
Same day emergency response.

17 Laverdene Avenue
Totley, Sheffield
S17 4HF

Mobile: 07975 856727
Office: 0114 3482650

www.matcoheating.co.uk
matcoheating@yahoo.co.uk



Matco Heating




Thrive

Helping small businesses from start up through growth to maturity.
Tax returns, investigations and more specialist tax planning advice.
1 hour free initial consultation

Contact us on:
t: 0114 281 2331 f: 0114 281 2171
e: info@r-rose.co.uk
www.r-rose.co.uk



R-Rose & Co
Chartered Accountants and Tax Specialists



love food love Slimming World



Join a warm and friendly group near you today...

TOTLEY (SHEFFIELD)
Mondays 5.30pm & 7.30pm
Dore & Totley
United Reformed Church
Totley Brook Road, S17 3QS

GREENHILL (SHEFFIELD)
Wednesdays 10.00am
St Peters Church,
Reney Avenue, S8 7FN
Morning Group

Call Jo: 07590 545 253

**save £5
half price
membership**
Just £9.95 on your first night
then £4.95 a week.
See website for details.

slimmingworld.com
0844 897 800  

*Slimming
WORLD*
know you're amazing

*More people choose to attend a Slimming World group each week than any other weight loss group.

ACTIV physiotherapy

Registered with  westfield health
and all other major insurers

Chartered & State Registered Physiotherapists

Wide experience in the fields of:
Musculoskeletal medicine • Women's Health Issues • Acupuncture

As an expansion of our expert services, are about to introduce additional Physiotherapy options



Providing occupational physiotherapy, workplace assessments, DSE assessor training courses and more, designed to help the wellbeing of employees so improving company productivity.



Providing safe, friendly low cost treatment in your own home from our experienced physiotherapists. In-house rehabilitation in residential or nursing homes also available.

For more information about our new services, or to make an appointment at one of our clinics, telephone 0114 235 2727

Clinics in Bradway, Totley and Hope

email: mail@activphysiotherapy.co.uk
web: www.activphysiotherapy.co.uk

design etc.

your local full service design agency ...

- corporate branding
- stationery
- brochures
- advertising
- web design

Call us on 0114 2622130
e craig@designetcetera.co.uk w designetcetera.co.uk
or call in at 61 Baslow Road, Totley Rise. S17 4DL

GWS

Technology Solutions

PC Problems/ Repairs/ Servicing No Job Too Small
Wireless & Internet Setup PC Setup/Data Transfer
New PC's/ Laptops & Upgrades Safe PC Disposal
Reconditioned PC's & Laptops available Tuition
Software/Hardware supplied & installed
For All Your PC Needs

Guy Senior
Phone: 0114 2352662 Mobile: 07890030453
Email: guy@gwstech.co.uk
Web: www.gwstech.co.uk
GWS. 5 Conalan Avenue, Bradway, Sheffield S17 4PG

Editor: Phil Harris
Tel. 07956 858944 or email:
editor@totleyindependent.co.uk
Advertising & Distribution:
John Perkinson
Tel. No: 236 1601 or email:-
advertising@totleyindependent.co.uk

Proof readers: Chris & Margaret Spencer
Items for publication may be left or sent to:
2, Main Avenue, Totley, Sheffield, S17 4FG
www.totleyindependent.co.uk
PRINTED by DESIGN ETC, TOTLEY RISE

TOTLEY INDEPENDENT FOR December/January

The next issue of the Totley Independent will be available from the usual distribution points on

SATURDAY 6th December
COPY CLOSE DATE for this issue
will be
SATURDAY 15th November

Published by Totley Independent CIC. Totley Independent is a registered Community Interest Company, number 07750166. We welcome letters about local affairs and will publish as many as possible. Items will not be considered that are submitted anonymously. The views expressed are not necessarily those of Editor or the editorial staff and must not be attributed to them. © Totley Independent 2014