

TOTLEY INDEPENDENT

PUBLISHED CONTINUOUSLY SINCE 1977
August/September 2014

www.totleyindependent.co.uk

No. 369

20p



Totley Library Saved!

Community volunteers successful in bid to keep Library open

The plan to form a local community charity to operate Totley Library has been approved by Sheffield City Council. From 29th September 2014 volunteers will take over the running of the library from the council.

This is a great achievement, as unfortunately without a community group stepping forward to run the library it would have closed. The Save Totley Library campaign committee has worked tirelessly over the last 12 months, campaigning against the planned closure, persuading the council that community groups would need financial support to run a community library, writing a business plan and recruiting volunteers to work in the library. Particular thanks go to Matt Kik who established and led the campaign and Isabel Hemmings who has been instrumental in writing the business plan. The committee would also like to thank everyone who has supported the campaign thus far. It has been a real community effort and there are so many people who have (continued page 3)

**BUMPER SUMMER
ISSUE!**

**16 colour pages!
Loads of pictures of
community events –
Open Gardens,
Totley Music Festival,
Farmers Market...and
much more!**

Getting your back on track!

- Back & Neck Pain
- Sports Injuries
- Muscle & Joint Problems
- Repetitive Strain Injuries
- Post-operative rehabilitation
- Women's Health Issues
- Acupuncture Available

Chartered, experienced
Physiotherapists, registered
with all major
insurance companies



• email: mail@activphysiotherapy.co.uk • web: www.activphysiotherapy.co.uk •



Bradway:
0114 235 2727

Totley:
0114 235 7845

Hope:
0143 362 3602



Crocus Homecare

Homecare with Compassion



Care and Support in your own Home

Crocus Homecare provides high quality care and support services to help you, or the person you care for, when it is most needed.

Crocus prides itself, and has built its reputation, on providing the highest quality care with compassion, understanding and respect for each individual and their families.

For more information, please call Debbie Crowhurst, or have a look at our website

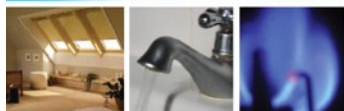
Personal Care - Practical Help - Respite Care - Dementia Care
24 Hours a Day / 7 Days a Week

Tel: 01629 812874

www.crocuscare.com

R S HEATING & BUILDING CO.

Est 1971



Heating Division - Experienced Installers of condensing, combination and regular boilers. Authorised installers of Valiant, Worcester Bosch and Glowworm systems, fully guaranteed. Complete aftersales service. Also bathrooms, showers and small plumbing works.



Building Division - Loft conversions, house renovations, including general building, joinery, plastering, electrical, decorating etc.



R S HEATING & BUILDING CO.

88 Sunnyvale Road, Sheffield S17 4FB
Tel: 0114 236 4421

62 Machon Bank, Sheffield S7 1GP
Tel: 0114 255 9425 / Fax: 0114 255 9431

www.rshtgld.co.uk E-mail: enquiries@rshtgld.co.uk

more rehab

Neurological Physiotherapy & Services

Specialist Adult & Paediatric Neurological
Physiotherapy, Occupational Therapy &
Speech Therapy.

- | | |
|---|---|
| <ul style="list-style-type: none"> ➤ Acquired Brain Injury ➤ Spinal Cord Injury ➤ Parkinsons Disease ➤ Stroke ➤ Epilepsy ➤ Cerebral Palsy ➤ Multiple Sclerosis ➤ Fatigue Syndromes ➤ Balance and Co-ordination Problems ➤ Amputee Rehabilitation ➤ Many Other Conditions | <ul style="list-style-type: none"> ➤ Hydrotherapy ➤ Electrical Stimulation ➤ Gymnasium Work ➤ Splinting ➤ Saebo Assessments and Fittings ➤ FES Bike Programs ➤ Cognitive Testing ➤ Carer Training ➤ Equipment, Accommodation and Aids ➤ Assessments ➤ Elderly Rehabilitation |
|---|---|

Clinic & home visits available - T : 0114 2353 150

E : info@morerehab.com - W : www.morerehab.com

Totley Library Saved! (from page 1)

been involved. From the team who collected over 2,800 petition signatures, the team who distributed campaign leaflets to every house in Totley, the local schools who completed over 350 children's surveys, everyone who has attended our public meetings and in particular the fantastic volunteers who have registered to work in the library. The strength of feeling against the closure and the support the campaign has received have been overwhelming.

August and September will be very busy with running training sessions for all the volunteers, agreeing the lease, establishing how the building will be managed with the council and setting up a charity to form the legal organisation that will manage the volunteers and run the library. The Committee will be in touch with everyone who has registered to volunteer in the library shortly to let them know when training sessions will be held.

For library users the main aim is to take over the running of the library with as little disruption to the service provided as possible. As an associate library, anyone who is a user of the Sheffield City Library Service can continue to use Totley Library to borrow books, use the computers, attend groups etc. You can use the same library card and will still be able to reserve books from anywhere in the city-wide library service. The main difference will be that the library will be staffed by volunteers and not professional librarians.



The Save Totley Library Committee also proposes to change the opening hours. The feedback gathered from library users and volunteers suggested that the library should stay open at lunchtime and this is important so that we can have a handover from the morning to afternoon volunteer shifts. So from 29th September 2014 it is proposed to change the opening hours to:

Monday 10am - 7pm (currently 10.00-12.30 and 1.30-7pm)
Tuesday 10am - 5pm (currently 9.30-12.30 and 1.30-5.30pm)
Wednesday 10am - 5pm (currently 9.30-12.30 and 1.30-5.30pm)
Thursday closed (currently closed)
Friday 10am - 5pm (currently 9.30-12.30 and 1.30-5.30pm)
Saturday 10am - 1pm (currently 9.30-12.30)

Finally, we would like to say a big thank you to all the dedicated library staff who managed Totley Library over the years. Our campaign was originally set up to keep the library and its staff but in these times of austerity this was not seen as a viable option by Sheffield council. This is a sensitive time for staff,

as many will be losing their jobs when the library transfers over to the volunteers. If you have any questions regarding the new arrangements or are interested in volunteering please contact us rather than asking staff via:

Website - www.SaveTotleyLibrary.info
E-mail - SaveTotleyLibrary@gmail.com
Facebook and Twitter - "Save Totley Library"
Telephone - 07968 343425

The Totley Library Committee

Hi,

I just wanted to thank whoever it was that returned my Holland & Barrett bag to me after the concert at the Heatherfield club by Bob Hall's Last Chance Saloon on Sunday 20th July. It contained such things as a newspaper and recently opened mail, as we had just got in after a weekend away and rushed out for the concert.

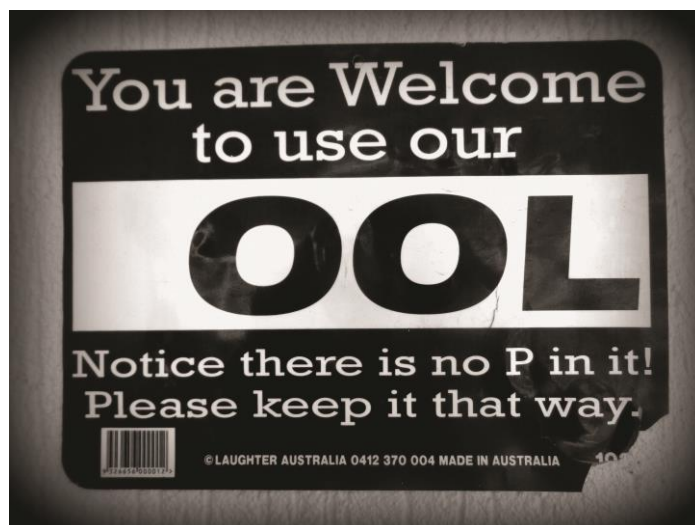
I must have left it in the club, but did not realise this until Monday 21st when I got home and found that someone had left the bag hanging on our front door handle. I think the person had rung the bell but no-one was able to get to the door in time, so I don't know who it was (maybe someone from the club or someone else who was in the audience). I think they must have got the address from my mail, of course. Many thanks.

And to the Festival organisers - congratulations on another great Totley Music Festival, although we only managed two of the events this year. You invited comments on how it should be done next year - is there any chance of bringing Hallmark of Harmony back?

Best wishes,

Jonathan Lee

Spotted at an Australian swimming-pool:



Dore Moor

Garden Centre

(Opposite the Dore Moor Inn)

Hathersage Road · Dore · Sheffield · S17 3DQ

- Wide range of seeds, bulbs, plants & pots
- Compost & Chemicals
- Mowers, fencing & garden tools
- Bird, Horse and Poultry feeds
- Haddon Stone statuary and David Austin Roses

Call in and see us

Tel: 0114 235 0092

Open 9.30 to 5.00
Sundays 10.30 to 4.30
Mondays Closed

Tristan Swain

Garden Services and Maintenance

Established 1984

Unit C4 Sheaf Bank Business Park
Prospect Road Heeley
Sheffield S2 3EN

Tel/Fax: 0114 255 4689

Mobile: 07831 802 539

Email: tristan@tristanswain.co.uk

www.tristanswain.co.uk Public Liability Insurance Waste Transfer Licence

CHARISMA BLINDS



For
Windows
With Style

Sheffield Factory Showroom
106 PROSPECT ROAD
HEELEY, SHEFFIELD

Sheffield (0114) 258 5496
Rotherham (01709) 512113

Matco Heating

CENTRAL HEATING AND GAS ENGINEERS
INSTALLATION, SERVICE AND REPAIR

**SPECIAL OFFER-
BOILER SERVICE ONLY £35!**

BOILERS, GAS FIRES/ COOKERS AND PLUMBING.

CALL FOR A FREE QUOTE OR ADVICE ON:

Tel: 07975 856727 / 0114 3482650

17 Laverdene Ave, Totley, Sheffield, S17 4HF
email: matcoheating@yahoo.co.uk



MWB

THE COMPLETE BUILDING SERVICE

New Build & Extension Specialists

From Design to Completion

**Full Project Management
House Building
Extensions
New Roofs/Tile/Stone
Stonework Specialists
Loft Conversations**

Find
us in
Yell.com

Established for 25 years with over 90%
of our work coming from recommendations, to
find out why call:

0114 2353314

Mobile 07973 908187

www.mwoolhousebuilders.com



Christchurch Cottage,
Townhead Road,
Dore, Sheffield
S17 3GA



Totley Primary PTA leads the way!

Here at Totley Primary, we are lucky to have a fantastic PTA. Their fundraising efforts this summer have been truly remarkable!

Our annual Summer Fun day has been running for several years now, but this year's event was grander and more profitable than ever. Under sunny skies, the crowds flocked to school to enjoy a wide range of activities, entertainments, stalls and attractions. This year, the children got in on the fundraising act, with



each year-group being challenged to organise and run a stall. The big incentive was that the winners would win a posh picnic to enjoy as a class. This was a huge success, with ideas such as a water pistol Tin Can Alley, Guess the Name of the Teddy and a 'Loom Band' Bonanza proving to be highly popular with the punters. Another innovative event which added to the excitement of the day was a World Cup tournament, with keen footballers being put into countries to compete against one another. Worryingly, the 'Soak the Teacher' game once again proved to be a great money spinner!

Another summertime PTA treat that we all enjoy is our



Duck Race. Every year the whole school heads off to Millhouses Park for a day of fun together. After a morning on the swings and climbing frames (followed, of course, by a picnic) the children gather along the banks of the stream which runs through the park. Having bought tickets in advance, children and parents cheer on the hundreds of numbered plastic ducks which are then

released into the water and bob downstream towards the finish line. Prizes await the lucky winners whose ducks successfully navigate the treacherous course and finish in the top 3. It really is a sight to behold!

So a big thank you to our PTA for working so hard to raise money for the school and helping to create so many happy memories.

Ben Paxman, Assistant Head Teacher



Gardening with hardy perennials

THE HARDY PLANT SOCIETY

South Pennine Group

www.hardy-plant.org.uk/fairs



Crocosmia 'Columbus'

AUTUMN PLANT SALE 2014

Sheffield Botanical Gardens

Sunday 21st September

11.00 am - 3.00 pm

Free admission

Refreshments available

Everyone welcome.

If you would like further information about the South Pennine Group, please visit our website above.



Home Maintenance Services

Local, reliable handyman

Call now for a free, no obligation quote

Range of Services

Painting and Decorating (interior & exterior)
Tiling, re-grouting, resealing bathrooms
Plastering and repairs to internal walls
Small plumbing jobs
Garden maintenance
Trees pruned, hedges trimmed
Small roof repairs and gutters cleaned
Patio/Paving re-laying and cleaning
Exterior wall repairs, pointing etc.

Tel: 07866004981

Home or Garden ❖ No job too small!

"A Bouncy Castle in Church – whatever next?"

It seems a while ago now – well it was June 7th – the Saturday afternoon when people walked into All Saints church and found not only a full-size bouncy castle but also a candy floss machine, face painting, and other games for children scattered over the church floor, the chairs having been stacked against a side wall.

It was part of the 'Big Birthday Bash', Dore and Totley churches' celebration of Pentecost, the 'birthday of the world-wide church', along with a celebration of 30 years of 'Transport 17', 40 years of the Lunch Club, and 90 years of All Saints Church.

'Plan A' was to have the bouncy castle and other children's activities outside, but the wet weather and the threat of thunder meant that we adopted 'Plan B' and moved them all into church. But is it right to fill the 'sacred space' of a church building with such 'secular', even frivolous, activity? I believe it is not only permissible but positively helpful, for two reasons.



First, according to the Christian Faith, there is no division between the 'sacred' and the 'secular' – God is the God of all of life and so nothing is really 'secular.' It's interesting that Jesus' first miracle was turning water into wine at a wedding party – not what some would see as a 'sacred' action. This is good news in that it means that God is interested and involved in every part of our lives – work, family, sport, leisure..... Also it's a challenge because it means that whatever I do, God is present and I can choose to do it 'His way' or not.

Second, it was significant that it was the activities for children which were in the church building, those for adults (mainly eating and drinking!) being in the church hall. Children don't divide life into 'sacred' and 'secular' areas – for them it's all just 'life', and we adults can learn from them. Didn't Jesus say that we need to become like children (trusting and straight-forward) to enter his kingdom? So I venture to suggest that children enjoying a bouncy castle in a church building is not only 'OK' – it's a taste of Jesus' kingdom!

Watch this space!

Paul Oakley, vicar of All Saints

Three cakes for three Totley birthdays!



Women's Fellowship

Ladies! Would you like to come to a friendly informal afternoon meeting, held fortnightly on Monday afternoons starting on the 15th September at Dore Methodist Church at 2-30 pm. We have various speakers and outings, plus informal times plus a cuppa of course. Transport can be arranged. Do not be lonely, come and join us. We are waiting to meet you. Phone 2363027.

TOTLEY SHOW 2014

Saturday September 20 - Totley Primary School

Programme:

8.45 am to 10.45 am - Entrants' registration

11.00 am to 12.30 pm - Judging and awarding of Certificates.

1.30 pm - Doors open to the public (entrance 50p, children 20p.).

1.45 pm - Official Opening by Rony Robinson and collection of prize money

3.15 pm - Prize-giving, followed by Auction of donated items.

4.00 pm - Conclusion

We would like to stress that the timing for entries is most important so that we do not have disappointed entrants unable to show their work due to lateness. Entry forms will be available at Totley Library (hopefully), Totley Post Office, the Ironing Parlour, or at the door on the day.

Note: an entry form must be filled before registration. There will be a table at reception for this purpose.

Escafield Brass Band will entertain us in the afternoon, playing for two sessions, the times of which will be announced during the day.

If you have not helped before and would like to be involved please contact us. See below for contact details.

We are again asking for Sponsors for the Class Prizes, £6-00 covering First, Second and Third place prize money and donations for the Tombola stall which will be greatly appreciated.

Anyone requiring a stall should please contact us.

Donations can be left at either the 'Ironing Parlour' on Baslow Road, or at 6, Milldale Road, Totley.

If you can help with making cakes or scones please contact Dorothy at the address below:

Any queries to:

Les or Dorothy Firth
6 Milldale Road
Tel. 0114 236 4190
Email: lesanddotfirth@talktalk.net

All proceeds after costs will be donated to Transport 17

We look forward to seeing you all again!

Les & Dorothy Firth

Totley All Saints School Re-Union

**At the Cross Scythes Hotel
Monday 15th September from 2
pm**

**For pupils who left around the
1940s to 1950s
We look forward to meeting you!**



Physiotherapy clinic expands its services

Activ Physiotherapy is a well-established clinic based in Bradway and Totley in Sheffield and Hope in the Hope Valley. It has gained a fabulous reputation for providing an excellent, diverse physiotherapy service. As well as treatment for various musculoskeletal conditions, it provides specialist services including sports injury management, women's health therapy and acupuncture.

Now, they are branching out into the area of occupational physiotherapy. Clare Heward of Activ Physiotherapy introduced the service, termed Activ@Work. "We have always worked with various businesses providing workstation assessments and advice, but now we are going to provide a more specialist, focused service. This will concentrate on return to work rehabilitation, work hardening programmes, return to work assessments, workplace ergonomic assessments and manual handling training."

In addition, a new occupational health physiotherapist, Jenny Willis, adds a wealth of experience with over 10 years' experience working in the industry. "This is an exciting opportunity for the clinic to work with local businesses who value the health of their workforce", adds Activ Physiotherapy's Andrew Okwera.

For more information or if you would like a visit to your company contact Activ Physiotherapy on 0114 2352727 or email mail@activphysiotherapy.co.uk.



Friends of Gillfield Wood

Sunday 24 August: Practical Conservation Morning with the Council Rangers. 10 am. Meet at Baslow Road bus terminus. All levels of work, light and heavy, fully supervised. Stay as little or long as you wish. Tools provided, refreshments too. Wear appropriate footwear and clothing.

Tuesday 16 September: Illustrated talk by SHEFFIELD WILDLIFE TRUST - Creating A Living Landscape for People & Wildlife. Totley Library at 7.30pm. £3 non-members, free to members. Refreshments available.

Sunday 21 September, 10am Practical Conservation Morning (see above).

For further details and updates please check www.friendsofgillfieldwood.com or email fogwsecretary@gmail.com

What happened to the stream?

It was only a stream, never a river, but it was certainly a stream or a brook if you prefer.

It began as a spring in the field next to All Saints Church then it ran along the hedge bottom which formed the boundary of the gardens in Sunnyvale Road. When it reached the stile (at the end of the footpath leading to Main Avenue) it flowed under a bridge made of two huge stone slabs – one was a regular rectangle shape, the other was also rectangular but had a bulge along one side. This bridge was removed sometime in the 1960s - for what reason I do not know.

On went the stream turning downhill in an almost 90° angle around the edge of Mr Parker's field forming the boundary of this property.

When it reached Main Avenue, it was directed into a big round pipe under the road, reappearing again below the path which still runs behind the houses on Green Oak Road, then, still going downhill, the stream ran on through a little wood between banks of celandines. Some of the trees are still there, near to where the prefabs were built.

From the wood, it flowed on down the lower end of Green Oak Park but I'm afraid I never followed it any further than the little wood.

The fields I mention are all covered in houses now, but I wonder what has happened to the stream?

If you live in one of the new houses near to the church, does your garden become quite boggy? If so, maybe you are quite close to the spring!

J. Smithson

The Totley Poster Thief

We have a strange person living in Totley who was seemingly trying to sabotage the Totley Open Gardens event.

In the three weeks prior to the Totley Open Gardens weekend, eight posters advertising the Open Gardens, put up by open gardeners around the Totley Rise and Glover Road area, were taken down repeatedly.

Open gardeners replaced the posters FOUR times, to let people know about the Open Gardens, but this bizarre person kept removing them, cutting the cable ties on the boards they were attached to, and removing the posts.

In addition, a corrugated board was taken.

When one of the open gardeners left a letter attached to one of the boards explaining that Totley Open Gardens raises money for good local causes, the thief then later left an envelope on the board with "donation" written on it, and 15p inside.

If you know who this person was, please name and shame them. Or get them some help.

*Jennie Street
Co-ordinator
Totley Open Gardeners*

Puzzle Corner

Which offer?

An engineering student just qualified had offers of employment from three employers. All the work looked interesting but the salary arrangements were different.

Offer one: start £22,000 per annum. Increase of £500 every six months for five years.

Offer two: start £22,000 per annum. Increase of £1000 each year for five years.

Offer three: start £23,000 per annum. Increase of £2000 after two years and another £2000 after four years.

How did the annual salaries compare at the start of year six, and how much did each offer pay in the first five completed years?

Solution: page 22

Don Ashford

Sheffield Children's Hospital's 'Make It Better' Appeal

The Children's Hospital, Sheffield is an extraordinary place. It is one of four stand-alone specialist Children's Hospitals in the UK, providing world class care for children on its doorstep and from all over the country. Several UK-wide and international centres are at our hospital and we have clinicians who are UK leaders forging the way in paediatric care and in research.

Since 1876, The Children's Hospital has grown from a small modest infirmary to a world renowned hospital providing specialist medical care to thousands of young children. However, lots of wards were built in the 1960s; the hospital is becoming increasingly cramped and there is limited outdoor space. Take a look at the pictures to see how the hospital has changed and how, with your help, we plan to make it even better.

You've been helping to Make it Better since 1876:

1880 St Barnabas' School, Cecil Road donates £1 "collected specially and solely for The Children's Hospital".

1881 Mr Proctor, a local potato merchant, donates vegetables to the hospital for two months as a thank you for the care his children received.

1890s £13 was "raised through the sale of marmalade". Owlerton Poultry Show sends a donation of 10 shillings and 50 eggs.

1900 For 20 years a group of local anglers donate a penny for every fish they catch.

There is an urgent need to transform the hospital and consequently The Children's Hospital Charity's **Make it Better appeal** is vital to the future of our hospital. The appeal aims to match world class facilities with the existing world class care, creating the best possible environment for children to get better more quickly.

The transformation includes a new block with basement car park, a new spacious main entrance, a new ground floor outpatients department with space to play, single rooms with en-suite facilities so patients can recover in peace and quiet and get better more quickly, external landscape areas so patients and their families can get some fresh air, specialist medical equipment and facilities. Together, we can transform the hospital and ensure children continue to receive the very best care in a child friendly environment for generations to come.

Let's make it better with Team Theo

Whether you run, walk, cycle or swim – join Team Theo and raise vital funds to transform the Children's Hospital.

- Gather your friends together for the Great Yorkshire Run on 28th September
- Take on a spooky Fright Hike through Sherwood Forest on 25th October



Cleaver Ward around 1910

- Cycle from London to Paris in the tyre tracks of the cycling greats – 22nd – 26th July 2015.

The Make It Better appeal continues with more exciting events planned for the coming year. You can help by making a donation – or find out how you can get involved by visiting www.tchc.org.uk.



Akley Bank Tree Felling

Marstone Crescent was closed for two days in July to allow for the felling of three trees, two beech and a sycamore. Hallam University own some of the trees on Akley Bank, the City Council own some, a resident on Grove Road owns one and the ownership of the others is being researched. Hallam University took their responsibilities seriously and had all of their trees surveyed. Some needed pruning, but these three needed removal due to disease and infection. Had they not been removed, there was a serious risk that they could have fallen onto properties off Grove Road, taking part of Akley Bank with them and leaving properties on Marstone Crescent vulnerable to further erosion of the Bank and their back gardens. 18 months of planning went into the scheme, including arranging for two households to vacate their homes for two days, as trees were lifted over their rooftops. The project was finished a day early. It is believed that the work cost the University £30,000.



Clockwise from top: A tree-top being lifted out; the tree surgeon being hoisted over houses to the trees; Edward Watchall, the tree surgeon; lorry loaded with felled logs; the crane towering over Marstone Crescent houses. Photos by Roger Hart

The Totley Independent Poetry Workshop

Sally Goldsmith

Last time I asked you to write first thing in the morning, noticing how the light falls on ordinary things around you. *This Morning*, a poem by Esther Morgan, was given as inspiration. You were to make your poem 15 lines only and to pay attention to your line endings. Patricia Pillow sent in a really engaging poem that did just that:

Morning Sunshine

Patricia Pillow

The light enters through a chink in the curtains,
Like an old friend using the back door.
It falls on my dressing gown hanging waiting for me,
I anticipate its warmth and comfort.

I stretch out my arm and tug the curtain open,
It moves in the draught and light dances into the room.
It shimmers over the glossy paper of my calendar,
It reminds me to give thanks to God
For the gift of yet another day.

Suddenly the light floods in, warm and strong,
Lighting up my books, my photos, my duvet and my bright beads.
All the sweet and silly things which fill my life now.

I can manage well without hearing,
But light and sight are made more precious.
The sun sheds life and loveliness over everyday things.

I particularly like the opening of Patricia's poem, the light entering "Like an old friend using the back door – a wonderful image! We get a sense of the bedroom as the sun gradually lights it – almost like a stage set. The way the sun seems to bless the writer's life and her precious, ordinary things (I love the 'bright beads') is beautifully done. The line "All the sweet and silly things which fill my life now" is really poignant – so poignant that perhaps she should end the poem there? The last stanza seems to sum up something that we can already intimate from that lovely line.

The task for the next issue is to write from an old photograph, carefully giving us specific details and personal connections as Charles Causley does so powerfully here:

Eden Rock

by Charles Causley

They are waiting for me somewhere beyond Eden Rock.
My father, twenty-five in the same suit
Of genuine Irish Tweed, his terrier Jack
Still two years old and trembling at his feet.

My mother, twenty-three in a sprigged dress
Drawn at the waist, ribbon in her straw hat,
Has spread the stiff white cloth over the grass.
Her hair, the colour of what, takes on the light.

She pours tea from a Thermos, the milk straight
From an old H.P. sauce bottle, a screw
Of paper for a cork, slowly sets out
The same three plates, the tin cups painted blue.

The sky whitens as if lit by three suns.
My mother shades her eyes and looks my way
Over the drifted stream. My father spins
A stone along the water. Leisurely

They beckon to me from the other bank.
I hear them call, 'See where the stream path is!
Crossing is not as hard as you might think.'

I had not thought it would be like this.

Please send your poems to Sally Goldsmith, goldsally@googlemail.com by Tues 9th September. I'll choose one to publish and comment on. I'm sorry I can't give individual detailed feedback on others. Sally Goldsmith is a prizewinning poet, script and songwriter. You can order her collection of poetry, 'Are We There Yet?' through www.poetrybusiness.co.uk

B.K. JEAVONS PAINTER & DECORATOR



Interior
Exterior
Decorating
No Job too small

Tel: 01246 416484
and mobile 07882 278306

John Heath & Sons

AN INDEPENDENT FAMILY FUNERAL BUSINESS

Sometime.....

You will probably have the responsibility of making funeral arrangements. No one looks forward to this responsibility, but the death of a family member or friend brings with it an obligation that must be met. There are people who can help you meet this responsibility. We have been helping people combine the different aspects of the funeral into a meaningful service for over 125 years.

Please Call Day Or Night

(0114) 272 2222

Head Office - Earsham Street

Also at Meadowhead, Ecclesall Rd,
Crookes and Stannington

www.johnheath.co.uk



~ * ~ * ~ and ~ * ~ * ~

Electrical and Hardware Supplies

* Sand, cement, plaster and plasterboard * paints & varnishes *
* homewares * electrical items repaired * lamps and
chandeliers rewired * Need something fixing? Call Paul.
If we don't have what you want, just ask and we will get it for you.

New in - Home brew beer making
and wine making kits

Side entrance at The Heatherfield Club, 191-193 Baslow Road, Totley.

* Totally stair-free * wheelchair access * car park*

Opening hours: 9am to 5pm Tuesday to Friday (12.30 - 1.30 lunch)
9am to 1pm Saturday. Tel 235-1444.

M. Scriven
(FRUITERAMA)

MARTIN SCRIVEN

HIGH CLASS FRUIT
& VEGETABLES

37, Baslow Road

Tel. 236 7116

Orders Delivered

Creating opportunities with disabled people.

Registered Charity No. 218186

**Leonard
Cheshire
Disability**

Leonard Cheshire Services in Offers choice &
opportunity to people with disabilities.

A Specialist Unit for the Younger Disabled.

Residential & Respite Care - Single Rooms

Day resources - Aromatherapy -

Reflexology - Physiotherapy - Toning

Tables.

Activities include: - Arts & Crafts -

Computers - Cookery - Shopping

Expeditions - Theatre Outings - Church.

Further details can be obtained from -

The Service Manager, Mickley Hall,

Mickley Lane, Totley, Sheffield S17 4HE.

Tel. 0114 236 9952

Fax. 0114 262 0234

The Care at Home Service supports
disabled people who wish to remain in their
own homes.

We provide flexible care packages from

1 hour to 24 hours meeting individual needs.

The service operates throughout

Sheffield.

Our service includes: - help with getting

up and going to bed, dressing, washing,

bathing, shopping, cooking, light household

duties.

Further details from: -

The Care at Home Manager

Tel. 0114 235 1400

Fax 0114 235 1499

One man went to mow...
...but his mower wouldn't go!

Now is the time to call

Mower Mender

and be ready for the forthcoming growing season

A friendly local business

servicing all makes of

garden machinery

phone: 0114 236 6958

mobile: 0781 2211149

Blade sharpening and
Collections and Delivery Service Available



Horizon Electrical

Faults, Rewires, Sockets, Lights,
Cooker Points, Electrical Showers,
Phone Points, Security Lights

No job too small

Fully qualified with friendly advice

Ring Totley 236 4364 or
Mobile 07772 483154



BRADWAY INSTALLATIONS

Kitchens, Bathrooms.....and everything in
between

- Complete Kitchens - Installation or supply and installation
- Kitchen Refits - Replacement worktops/sink/hob etc. Worktop / cabinet repairs
- Bathrooms - Cloakrooms - Domestic plumbing - Tiling Laminate / Vinyl flooring

All work undertaken is fully insured and guaranteed

Ring Peter - 0114 236 5995

Mobile - 07766 411355



Totley History Group Programme 2014

Meetings take place at the Totley Library at 7.30 pm, unless otherwise announced.

Note that there will be no meeting in August.

September 24th

"Randini - The Greenhill lad who followed in Houdini's footsteps" - A talk by Ann Beedham.

October 22nd

"Longshaw as a World War 1 Convalescent Home" - A talk by Thelma Griffiths.

Holmesfield Flower Club

The Flower Club welcomes you to the following forthcoming events:

Wednesday 20th August: A Joint Demonstration of Flower Arranging by NAFAS demonstrators Susie Marsh and Christine Hinchliffe, entitled "Black is Back". 7.30 pm at Holmesfield Village Hall, Vicarage Road (Off Woodside Avenue), Holmesfield S18 7WZ - ample parking.

Tickets: visitors £7, members £3.50 includes refreshments. The arrangements will be raffled at the end of the evening. All are welcome.

Wednesday 20th September: Workshop Evening - tutor Barbara Colley. Contact Sandra tel: 01709 541187 for details of the workshop and materials needed. Non-members are welcome to attend the workshops, fee £4. 7.30 pm at Holmesfield Village Hall, Vicarage Road (off Woodside Avenue), Holmesfield S18 7WZ - ample parking.

Early arrival to set up is advisable.

Holmesfield Church Walking Group

COWLEY LANE WALK

On Wednesday 27th August at 10.000 a.m. we will meet at the Rutland Arms in Holmesfield where we will order lunch (optional). We will then proceed to Cowley Mission car park where we start our walk. The walk takes us to Lees Common, Monk Wood and then the fish ponds where we will have coffee in the cafe. The cost of the walk is £3 and the proceeds will go to Holmesfield Church Restoration Fund. If you would like to come just turn up on the day. The walk is approximately 5mls long. Any queries - please phone Robin Greetham on 01246 412767.

TOADS November Production!

The next production by Totley Operatic and Dramatic Society will be a comedy, written by Derek Webb and entitled **Agatha Crusty and the Village Hall Murders**. As is to be expected from the title, this is a spoof on the Agatha Christie plays! We hope that you will enjoy this very funny play which is to be directed by Monica Stagg.



The dates are Wednesday 19th November to Friday 21st November at 7.30pm, and Saturday 22nd November at 2.30pm. Please come and support your very own local am-dram society. The venue is St John's Hall, Abbeydale Road South. Please call 0114 2351206 to reserve your ticket or contact any TOADS member - we look forward to seeing you there.

As always, if you are interested in treading the boards or helping out backstage, why not pop down to the Guild Room at St John's Hall any Tuesday at 7.30pm, or contact Anne Bettridge, on 01246 460318, or any TOADS member, or visit our web-site www.toadsdrama.co.uk

Bring Your Bike to Longshaw!

Horses welcome too!

You can now experience the beautiful views that the National Trust at Longshaw has to offer whether on foot, horseback or on your bike by using the new concessionary bridleway routes. Two new way marked routes have opened which connect Longshaw to the wider landscape making Froggatt, Curbar and Sheffield all easily accessible.

The Longshaw bridleway development is part of a wider plan to develop a better connected network across the area known as the "Sheffield Moors" that will increase the number and quality of routes available to cyclists and horse riders.

Jon Stewart, General Manager of the National Trust in the Peak District says "The National Trust is committed to providing opportunities for all to discover the very special Peak District whether that is on foot, bike, or horse. I'm really pleased that we've been able to open these new bridleways at Longshaw, a really great place to get to know and enjoy the National Park. Increasing the connectivity of the cycle network in the area can only be a good thing for residents of the Peak District and all our visitors with post-Tour de France fever."

John Horscroft of Ride Sheffield (an advocacy group committed improving, preserving and promoting access interests for mountain bikers) says "Longshaw's new permissive bridleways are great news and will allow mountain bikers to pass through the estate for the very first time and enjoy its beautiful landscape. Add to that the delights of the famous tea room and it makes it an obvious place to stop off during a Peak District ride. Well done National Trust!"

Letter to the Editor

Dear Editor,

I find, when I read adverts in the Totley Independent, that (in common with other people who live alone), I still have the question 'do I feel happy with this person coming to my house'?

As usual when I want advice about a problem of that sort, I go to Paul at the Electrical and Hardware shop, near the lovely Rendezvous Cafe. Along with plenty of friendly chat, I find that Paul is the sort of shopkeeper that we used to value in the old days. He will sell you one item out of a sealed pack which contained another item that you didn't want (and possibly couldn't open anyway!) If you are unable to buy an item in the shop, he will willingly get it for you. When you have an electrical item you wish to have repaired, but in this modern world seen to have no choice but to throw it out, don't! Take it to Paul. Don't take your lawn mower for service miles away - take it to Paul. It most certainly will be cheaper, and you will have the satisfaction of knowing that you have supported a very worthwhile local business. Do go in - you won't be disappointed.

My other main point was to say that Paul contacted A1 Tiling and Plastering for me, because I had a blocked drain. I received excellent, efficient, and friendly service. The price was exceedingly reasonable, and I would happily ask them back to do another job on my property. The advert says 'No job too small' which is of course invaluable.

Jo Collie

When was this?



King's and Monty's shops, Baslow Road – now Transport 17 and Looby-Lou. But can anyone date this picture?

Councillor Surgeries

Liberal Democrats:

2nd Monday in the month 6.00-7.00 p.m., Totley Library, Baslow Road and 2nd Saturday in the month from 10.30 a.m. to 12.00 noon, Dore Old School Hall, Savage Lane, Dore. Contact details:

Colin Ross 235 1948 Email: colin.ross@sheffield.gov.uk

Joe Otten 230 3290 Email: joe.otten@sheffield.gov.uk

Martin Smith 0781 205 5346 Email: martin.smith@sheffield.gov.uk

TOTLEY SHOW ENTRY FORM 2014

THE TOTLEY SHOW THIS YEAR WILL BE HELD AT **TOTLEY PRIMARY SCHOOL, SUNNYVALE ROAD**
ON SATURDAY, 20th SEPTEMBER. **ENTRIES SHOULD BE SUBMITTED BETWEEN 8.45am AND 10.45am.**

1 No entry in any class should have been in previous Totley shows.

2 Entries may be donated to be auctioned at the end of the Show but this is not compulsory nor a condition upon which entries will be accepted

3 Prize money may be collected from 1.45pm

4 If fewer than three entries in a class only a First Prize will be awarded except in Children's Section

5 Any prize monies not collected by 4pm will be put towards next year's Show

6 You may enter as many classes as you wish (The more the merrier!)

7 If an entry does not fit a class, it can be left for viewing but no prize will be given and there will be no entry charge.

8 You may only collect your entries after the public viewing ends at 3.15 pm

9 Goods left after 3.30pm will be auctioned.

SHOW PROGRAMME

8.45am to 10.45am Entrants' registration

11am to 12.30pm Judging and awarding of certificates

1.30pm Doors open to the public. Entry 50p, children 20p

1.45pm Official Opening and collection of prize money

3-15pm Prize giving followed by auction of donated items

PRIZES: First £3, Second £2, Third £1

Entries 50p each

PLEASE BRING THIS FORM WITH YOU WHEN YOU BRING YOUR ENTRIES OR FILL IN PRIOR TO REGISTRATION

NAME TEL NO

HANDICRAFT SECTION

- 1 Hand knitted or crochet garment
- 2 Decorative cushion
- 3 Soft toy
- 4 Tapestry
- 5 Cross stitch
- 6 Collage, any medium
- 7 Greetings card
- 8 Any medium

DOMESTIC SECTION

- 9 Victoria sandwich - as recipe below
- 10 Dundee cake - as recipe below
- 11 Carrot cake
- 12 5 Biscuits
- 13 3 Fruit Scones
- 14 Apple pie
- 15 Jam
- 16 Lemon curd
- 17 Marmalade
- 18 Chutney

FLORAL SECTION

- 19 Floral arrangement - 18" high 10" x 10"
- 20 3 Cut Flowers of any variety in season - home grown
- 21 Foliage plant in pot
- 22 Flowering plant in pot

FRESH PRODUCE SECTION

- 23 1 plate 4 Eating apples
- 24 1 plate 4 Cooking apples
- 25 1 plate 8 Blackberries
- 26 4 matching Potatoes
- 27 3 matching Leeks
- 28 3 matching Onions
- 29 5 matching Runner beans
- 30 1 plate 5 Tomatoes
- 31 1 Cucumber
- 32 3 Courgettes
- 33 Largest onion
- 34 Heaviest marrow
- 35 Longest runner bean -1 per person

CHILDREN'S SECTION

- 51 Vegetable/fruit animal - up to 7
- 52 Vegetable/fruit animal - 8 - 14
- 53 3 decorative Buns - under 7
- 54 3 decorative Buns - 8-14
- 55 Wobbly Wobbly Jelly - up to 14
- 56 Flower arrangement in an eggcup - Up to 14

- 57 Painting - under 5
- 58 Painting - 6-7
- 59 Painting - 8-11
- 60 Painting - 12-14

- 36 1 plate 3 eggs from own hens - No embellishment

ART SECTION

- 37 Oil or acrylic painting
- 38 Water colour
- 39 Pen and ink sketch
- 40 Pencil sketch
- 41 Open multi-media
- 42 Upcycled art/sculpture
- 43 Sculpture, any medium

PHOTOGRAPHY SECTION

- (prints only)
- 44 Monochrome, any colour
- 45 Creative
- 46 Wildlife
- 47 Landscape

WOODWORK SECTION

- 48 Wood turning
- 49 Small furniture
- 50 Wood sculpture

NB all Lego models max size 25cm square

- 61 Lego model - 5-8
- 62 Lego model - 9-14
- 63 Colour photo - up to 14
- 64 Open, any medium eg Hama beads - Up to 14

DUNDEE CAKE

- 175gms/6oz Plain flour
- 125gms/4oz Margarine/Butter
- 125gms/4oz Soft brown sugar
- 2¼ tsps Baking powder
- 1 rounded tsp Mixed ground spice

- 3 eggs
- 125gms/4oz Raisins
- 125gms/4oz Sultanas
- 125gms/4oz Currants

- 75gms/3oz Chopped mixed peel and chopped cherries
- 40gms/1.5oz Blanched almonds to decorate

METHOD: Line 7" deep cake tin. Sift flour, baking powder and spice together. Cream margarine/butter and sugar. Beat in eggs 1 at a time adding a tbsp of flour with last 2. Fold in remaining flour and fruit till thoroughly mixed. Put in tin and decorate with nuts.

Bake in a preheated oven 140°C/290°F/gas 2 for 1 hour then lower to 130°C/270°F/gas 1 for ½ to 1 hour approx.

VICTORIA SANDWICH

- 125gms/4oz Margarine/Butter
- 125gms/4oz Self raising flour

- 125gms/4oz Caster sugar
- 2 eggs

METHOD: Cream margarine/butter and sugar. Beat in eggs 1 at a time with a little flour. Fold in remaining flour. Divide between two 7" sandwich tins greased or lined with greaseproof paper.

Bake in a preheated oven 180°C/350°F/gas 4 for 20-25 minutes. Sandwich with jam and sprinkle top with caster sugar - please note, recipe quantities only.

Number

The birthday card

My birthday this year fell on a Saturday so eight of my immediate family were able to join my wife and I for a celebration lunch in Derbyshire. Afterwards we returned home for chatter and casual circulation of my cards. There is tremendous choice in birthday cards these days – racks and racks on display, enough to discourage any but the most determined searcher.

Before I continue, I have to give two bits of information. The first is that my youngest daughter (determined searcher) tries to send me a quirky card rather than just a Derbyshire or other view. The other bit of information is that the only male other than me, was a son-in-law now resident in Kent. He was born in Scotland and stayed a little while but spent his later school life and adulthood in London. Consequently he thinks people north of Watford Gap have more in common with their Stone Age ancestors than with the nobs in the south!

My daughter's card this time was the simple legend in bold silver lettering "Well, I'll go t'foot of our stairs". This amused me and most of the others but not John. He literally could not see the point. Although it is not one of my sayings, I suppose I think of it as perhaps coming from say a Les Dawson show, like "four candles" from the Two Ronnies, and "don't tell him Pike" from Dad's Army.

The first similar expression I remember teaching John was soon after their marriage. Someone in conversation made the observation "he's not behind the door" and more recently the weather comment "it's bleak o'er Bill's mother's". Nonsense if strictly analysed but the sort of saying most people (except Southerners) would understand

It is really quite wrong of me to poke gentle fun at John in this matter. I have to admit the "boot is on the other foot" when it comes to most modern humour. He and others of his generation can be almost helpless with laughter at remarks and references, which I, quite honestly, cannot understand.

Perhaps I shouldn't have digressed like this as Fathers Day also falls in June and there will be another set of cards to ponder over. And now Fathers Day has come before I complete the grumble. My card from another daughter was an unexpected delight. On the front was a coloured photo of me standing up playing the strongman – youngest daughter sitting on my shoulder, eldest cradled in my right arm and the middle one cradled in my left arm! The photograph dates from the mid-1960s ages thirteen, ten and five.

Life was a lot simpler in the old days before the invention of cards for every occasion. You went away to the seaside and chose a black-and-white picture postcard to send home to your parents, meanwhile casting a surreptitious eye over the gaudy saucy seaside cards on the adjacent rack! I don't even know whether birthday cards had been invented when I was a lad. I certainly have no memory of them - let alone Fathers Day!

Don Ashford



Abbeydale Miniature Railway

SANTA SPECIALS

Sunday 7th December & Sunday 14th December

11 am to 5 pm

ENTRY IS BY PRE-BOOKED TICKET ONLY

Tickets are on sale during normal public running days.
For timetable visit our website at www.sheffieldsmee.co.uk

Tickets are £7 each — cash sales only
Strictly limited to 600 for each event

Last ticket sales on Sunday 19th October or when sold out.

A ticket entitles the holder to a visit to Santa's Grotto, a present for children and seasonal refreshments for adults. No extra charge or limit on number of train rides — usually £1 each *

We are in Ecclesall Woods, near the Glen Nursing Home. Look for the yellow sign on the grass verge.*

*T & C's Apply



Totley History Group

World War 1

The Totley History group are mounting a display of WW1 memorabilia at the United Reform Church on Totley Brook Road over the weekend of the 8th and 9th Nov. 2014.

It will include the history of our soldiers from Totley who are on the war memorial but we would love any memorabilia that people living in Totley today or those who have left the area may have inherited from their families.

Please contact Dorothy Prosser 2362483 or apple-garth@supanet.com

Jean Byron 2350291 or byronjeanm@btinternet.com

We look forward to hearing from you!

Totley Residents Association

We are pleased to announce that the applications for two grants from the Ward Pot have been accepted. This means that we can buy a new Public Notice Board for Baslow Road, the old one badly needs replacing. The other grant will allow us to organise another Christmas Luncheon in December.

Our next Market will be held on Saturday 6th September at Totley Rise Methodist Church. This venue proved very popular in May with both stallholders and visitors. Please come & support us! Already, new and exciting stalls are booked as well as old favourites.



What a wonderful weekend we had in Totley on 7th and 8th of June for The Big Birthday Bash. TRA was invited to display pictorial information of the many events and installations with which we have been involved and I was pleased to see the interest this provoked. Well done to Totley All Saints' Church for the terrific birthday party held on the Saturday. The weather was not very kind although it did clear up later. Plan 'B' was declared whereupon the chairs in the church were removed and the Bouncy Castle, childrens' games and Candy Floss machine took their place. The food was tip-top and the number of visitors surprised us all. Totley Rise Methodist Church and United Reform Church provided breakfast on the Sunday and with some canny moves it was possible to have Continental Breakfast at one and finish with Bacon Sarnies at the other.

A wonderful turn out from residents of Totley for a great community event, let's keep it up.....

*Hetty Moran, Chair, Totley Residents Association
Pictures of Farmers Market by Simon Deeks*

More pictures of the May Farmers Market



Totley Music Festival - so much talent in Totley!

The sixth Totley Music Festival, shortened this year to five days in mid-July, got off to a brilliant start with Tea 'n' Tunes at All Saints School, followed by the Variety Cabaret concert at Mickley Hall. Although some of our regular performers couldn't make it this year, the singers and musicians ensured that a splendid time was had by all. Thanks to all of the performers, particularly to Gerry Doherty for his inspired and very funny compering and singing and Ian Bellamy who closed the show with a rousing set. Craig, on behalf of the residents, was especially enthusiastic about the evening when he gave his closing remarks. Once again, the 'Totley Boot' was passed around in order to raise a few bob, and the contributions of the audience were, as usual, passed on to Mickley Hall to help pay for other events there.



The next night, Chris, Kevin and Howard Walker gave us another top-class evening of jazz, first from the



Djanganauts, and later from Howard who crooned beautifully through a superb set of songs - some very well-known, and some a little less so. Performing with them were John Watterson, providing a master class in percussion; virtuoso Piero Tucci on keyboard, accordion and sax, and the excellent Jamie Taylor on rhythm guitar.

Steve Brook produced the most successful folk concert of the Festival to date. The quality of the music would be hard to



beat anywhere. It featured a wonderful range of talent. Starting with Spoil the Dance (Steve and Gaynor Brook and Charlie Smallwood), the audience was entranced by Gaynor's voice, the lyrics and accompaniment. 'In the summer of my dreams' was wonderful. Hilary Blythe on guitar and vocals, accompanied by Bob Hall on mandolin, brought a unique style and fascinating range of lyrics. John Snook from Chapelton provided a strong Welsh vocal. John Scaife and Geoff Trend astounded the audience with mandolins beautifully played at speed! Gerry Doherty on vocals and guitar was on fine form both musically and in terms of his very funny commentary. Judy Dunlop with John Scaife was the headline act and held the audience totally, everyone asking for more. Folk music is often very poetic and Judy shared a few lines written by Dixie Lee and adapted by Alice Barnfather which had been given to her by her school teacher. Judy had set the words entitled 'Alice's Autograph' to music and we'd like to share them with you

Count your garden by the flowers
Never by the leaves that fall
Count your days by golden hours
Don't remember clouds at all
Count your nights by stars, not shadows
Count your life with smiles not tears
And with joy through all your journey
Count your age by friends, not years

Photos from top: Ian Bellamy; Howard Walker and the band; Judy Dunlop.

Finally thanks to Pete Burnett for his songs, for sharing his jokes, for compering in his inimitable way and keeping everyone in order. Steve produced a wonderful show.

Redback added a night of rock music to the programme, playing music to dance to and although bums remained firmly on seats there was a lot of 'chairbics' going on. A shy lot, Totlely folks.

Bob Hall's Last Chance Saloon - Bob Hall (piano, Mandolin, vocals), Hilary Blythe (bass, guitar, vocals) and Dave Peabody (guitar, vocals) - provided a fantastic finale to the Festival. They blended classic blues, boogie woogie and swinging guitar ragtime with excellent original compositions. A truly entertaining group on the blues circuit here and abroad.

Our thanks to James for the PA and engineering; to the Heatherfield for providing the venue and providing a bar; and to the Totlely Residents Association, the Totlely Independent, and Totlely Open Gardens for their financial support. (Above: Bob Hall, Hilary Blythe, Dave Peabody)



Gerry Doherty

Sue Hare
Co-organiser, Totlely Music Festival



HMS GARDEN DESIGNS

Full or part design
Border redesign
Online design
Unusual design gifts
Garden maintenance or one off tidy

We offer affordable,
hassle free garden design,
to create your perfect garden.

Contact Helen on
01246 569775
Or visit our website
hms.gardendesign.co.uk

Neighbourhood Watch

Neighbourhood Watch (NHW) was formed in Dore and Totley, around 1980, by Keith Hill, who has been the area coordinator ever since. He currently has some 80 names with 'phone numbers or email addresses, but attendance at the bi-monthly meetings has dropped, with only 11 attending the last meeting.

We doubt that anyone reading this article will have failed to notice that the Police are struggling for funds, staff have been laid off, and restructuring has taken place. "Our" Police were stationed at Crewe Flats, near to the Botanical Gardens. That office has now been closed, with some officers going to Hammerton Road, Hillsborough, and one PCSO (Katie Gavin) having gone to Woodseats, which covers our area, where, of course, we started. We have another PCSO, Daniel Taylor, but we have not been informed which PCs we are going to get.



NHW is more important than ever, not only to help the Police with information, but also to help prevent crime in our area, car crime being a particular problem. An hour before we wrote this article, a car was noticed with a door left wide open, with the owner being quite surprised when told; and, apparently, the night before, someone had left the rear boot door open on their car, with goodies on show. A good neighbour alerted the owners to both incidents.

To assist Keith Hill, Les Day is creating a new area in Bradway, and Neil Bunting and Roger Hart are creating a new area in Totley, to be called Totley North (north of Baslow Road). The current idea is to have the new area with 7 zones:

- 1) Marstone Crescent/Stonecroft Road/Baslow Road
- 2) The Crescent/ The Grove/ Baslow Road
- 3) Terry Road/ Quarry Road/The Quadrant
- 4) The Green/The Grove/Baslow Road
- 5) Totley Grange Estate
- 6) The Cross Scythes up to and including Moss Cottages, with Butts hill, and the top of Hillfoot Road
- 7) Totley Bents.

We currently have volunteers for zones 1, 2, 3 and 4. There is hopefully a volunteer for zone 5, but we need help in the form of volunteer(s) for zones 6 and 7. The

more the merrier. Because we have some names this does not stop other volunteers getting involved.

What does a volunteer do? We do not go door knocking (cold calling). We deliver letters inviting residents to get involved by giving us their phone numbers, or preferably email addresses, in order that we can keep them informed of incidents/events in our area, requests for help if an incident has occurred, and to invite them to meetings which we want to keep to a minimum. Meetings are more likely to be to hear speakers on relevant subjects and will be structured, with no waffle and no politics! All phone numbers and emails are secure, and we will always use the Blind Copy Facility, so no one else sees your email address.

Neil Bunting will be the Area Coordinator and Roger Hart will be his deputy. Together, they will attend the meetings with the Police and the District Coordinator, who is a director of the board of Trustees, as NHW is a charity in South Yorkshire. In all other areas of the country, NHW is part of the Policing structure.

We believe that we can make a significant difference to living in this community by being the eyes and ears on behalf of the Police. As you will have seen elsewhere in this edition, we work with our Councillors to make this a great place to live. Please join us.

Neil Bunting, nbunting@talk21.com 07703 269367
Roger Hart, roger@rogerhart.co.uk 07831 305881.

Come

SCOTTISH COUNTRY DANCING



and enjoy keeping fit in friendly classes.

Classes for beginners and experienced dancers

Mondays 7.30pm - 9.45pm

Starting Monday September 1st 2014

**Silverdale School, Bents Crescent,
S11 9QH**

September 8th - a free Taster session and general class
7.30pm to 8.45pm General class 9.00pm to 9.45 pm

For further details contact:

Norma Hutchinson. (0114) 236 6723

Kate Bould (0114) 285 4181

Visit our website:

<http://www.rscds-sheffield.org> e-mail: rscds.sheffield@gmail.com

Sheffield Branch

The Royal Scottish Country Dance Society

Registered Charity No: 1065106

PhysioFOCUS

at Totley Rise Dental Practice
85 Baslow Road,
Sheffield, S17 4DP



Physiotherapy treatment available for:

- Back and neck pain
- Sports injuries
- Sprains and strains
- Joint and muscle pain
- Arthritic pain
- Whiplash
- Repetitive strain injury
- Headaches

Appointments: 0114 2360333

Also available:

- Pilates classes
- Pilates 1-2-1
- Golf Fitness Screening
(as used by consultants to UK,
European and Australian PGAs)

For more information please call:

Emer on: 07792 422909

Rachel on: 07956 908454



Gail Kitchen: 07986473415



Does going away from home mean your cat is sad and unhappy?
Does a trip to the cattery scare your cat *not to mention your wallet?*

WORRY NO MORE!



MOGGY MAID is on hand to feed, love and provide everything your cat needs in the relaxing comfort of its own home.

As we cat-lovers know, unfamiliar sights and smells can stress your cat, whereas leaving them in the familiar surroundings of their own home carries less worries, for your cat and for you.

If only for a night, weekend, or a month; holiday, Christmas or any time of the year, MOGGY MAID is here to help **LIGHTEN YOUR LOAD**



We promise no mischief allowed!



In a professional manner and with quality service, you can ensure individual care and attention, whilst you relax away from home.

We haven't forgotten the rest of the family; mice, rabbits, budgies, goldfish, etc will receive care and affection too.



LOCAL FRIENDLY SERVICE

From £5 a day

For more Information, contact Gail Kitchen on:
07986473415 5 Ullswater Place, Dronfield Woodhouse

DRONFIELD LANDSCAPES

Logs and wood chippings
For Sale

Ring for details

Chris 0114 274 6158

Mobile 07976 072785

Richard

Mobile 07789 497104

Puzzle Corner Answers:

All three offers generate the same annual salary of £27,000 at the end of five years. The total salary bill in five years would be:

Offer one: £121,250;

Offer two: £120,000;

Offer three: £121,000.

The local venue for 18th & 21st Birthday parties.

Facing the prospect of a birthday party or other family event?

Consider Tigers rugby club.

**Local function room,
yet out of the way**

Plenty of space & still economical

**Ideal for all family celebrations
where you need a little more room,
but want to be close by.**

Sheffield Tigers Rugby Club
Hathersage Road
Dore.

S17 3AB

Tel: 2360075

(answer phone)

bookings@sheffielddtigers.co.uk

www.sheffielddtigers.co.uk/venue-hire



ALL SAINTS CHURCH

Totley Hall Lane

SERVICES IN AUGUST / SEPTEMBER

August

- 3rd 10.00am All Ages All Together
6.30pm Evening Prayer
- 10th 10.00am Holy Communion
6.30pm Evening Prayer
- 17th 10.00am Morning Praise
6.30pm Holy Communion
- 24th 10.00am Morning Praise
6.30pm Evening Prayer
- 31st 10.00am Morning Praise
6.30pm Holy Communion

September

- 7th 10.00am All Ages All Together
6.30pm Holy Communion
- 14th 10.00am Holy Communion
6.30pm Evening Prayer
- 21st 10.00am HARVEST FESTIVAL
6.30pm Evening Prayer
- 28th 10.00am Holy Communion
6.30pm Evening Prayer

Letter to the Editor

Thank you

We wish to thank all those who supported the 'Tea Party' on Saturday 17th May on behalf of Weston Park Cancer Care Charity's 20th year. The support was amazing and very much appreciated. The total raised was £1,152! Well done!

Jenny, John and the Woodhead Family

Scout Lottery

1st Totley Scout Group Lottery Winners in May and June draws

May 2014:

1st Prize - No. 63
Three bottles Shiraz Rosé Wine
Mrs Purnell, Milldale Road

2nd Prize - No. 54

£10 Voucher
Louise Dood, Green Oak Avenue

June 2014:

1st Prize - No. 32
12 inch Oscillating Desk Fan
Mr & Mrs Willis, Totley Grange Rd

2nd Prize - No. 66

£10 Voucher
Mrs C Freeman, The Quadrant

Amey's Army Disbanded.

We wrote in May last year that Amey's army had arrived to start the road improvement works. We were told that it would take them three months to complete. We did not know it then, but certainly do now, that Amey have different timescales and calendars from us. In the first week of July they informed Cllr. Colin Ross that the lamp standard opposite the Cross Scythes, which was nearer to the centre of the footpath than against the wall, had been completed the previous Monday. In fact it had not been done on Tuesday! It *had* been moved by Friday 4th.

Our regular contributions have shown some of the frustrations in dealing with the Company. The Steward left, and we made contact with the new one asking if we could meet. She refused, but said that if we wrote in with our concerns, she would "work through them" and then contact us again.

We spent a couple of hours on Friday 30th May, driving from the City Boundary down to Millhouses Café and back, noting outstanding works, and faults in completed works. We noted a total of 66 items, some being generic, such as grass verges needed soil and seeding. We forwarded our report on 6th June and had an acknowledgement from the steward. The report was circulated to the Head of Amey in Sheffield, their network director, the steward, all our three councillors and Sheffield Council's monitoring officer and his deputy. The following week, work started, and is continuing. No updates from Amey have been received, nor any completion dates, but, would we believe them if there were any?

A number of residents complained that the two sets of steps which crossed the grass verge, on the Laverdene side of Baslow Road directly opposite Marstone Crescent, have not been reinstated by Amey. Our report noted this fact but Amey have now replied to say that the steps will not be reinstated as this is deemed to be a dangerous place to cross. Where was the consultation? In fact, crossing the road *anywhere* from the end of Laverdene to the start of the dual carriageway by the library, is dangerous!

Neil Bunting & Roger Hart

Dore & Totley Traffic Focus Group

Totley Rise Methodist Church Summer Events

See our website and the Diary page in this issue for details of regular events – www.totleyrise.co.uk

22 September Quiet Garden 12noon – 2pm. A drop in session over lunchtime with a period of quiet at the beginning and end. Anna Steele will be helping us to relax at this session. All are welcome.

22 September Messy Church 3.30pm-5.00pm. Crafts based on a bible story, a time to wonder about God and a meal together for all the family. Please visit our website for more details, or email Rachel Wilson – racheltrm@yahoo.com

GARDENING TIPS FOR AUGUST/SEPTEMBER 2014

Writing in July: We are just sorting out the equipment, stationary, cups, shields, medals, certificates, etc, for the Totley Show. We like to get them organised early so that any snags are avoided later. A reminder: the show is on the 20th September 2014, so make sure your entries are ready in time.

There is no show without your exhibits in place. The show committee invests a lot of time and effort organising everything so please make their efforts worthwhile by attending and taking part! It's lots of fun and you may win a cup, medal, or certificate - the schedule is once again in this issue of TI.

There are three words in our household which I dread. They are "I've been thinking". This usually means there is a job needs doing by me or a decorator or landscape gardener (me) or cleaner, or cleaning up after these jobs, or going on holiday (yuk). Now I don't mind so much if it refers to things like vacuuming the hallway when the decorators have gone, or easing sliding doors which have been stuck together by the painter, but when these three words refer to the garden then I run for cover. It usually means uprooting something.

A couple of weeks before our holiday in Torquay (yuk) a lovely conifer bush which I admit had grown a bit, had the dreaded words aimed at it. "It blocks the light from the plants behind" ("yes but the plants behind like the shade"). "It's too big and dominates the area" ("well it looks so healthy...") "Can you see it's dying at the bottom?" It was a bit brown looking. I am afraid the shredder was brought out of hibernation and before you could say coniferous the said bush was in three sacks awaiting disposal. Two minutes and a cup of tea later the aforementioned words were uttered again: "it's left a big space hasn't it?" "Yes." "I think a low wall with plants in between...." "but..." and we were at Homebase yesterday looking at walling stones.

We are doing a bit of tidying ready for the open gardens on 19th and 20th July. We are selling programs at our place, 170a Baslow Road, and although we are not on the program you are welcome to come and see our efforts, though things will not be as pristine as some of the other gardens.

As the garden is getting a bit out of hand, we are trying to make things easier by planting more perennials, and putting plants in pots to give a bit of colour which can easily be replaced, I must admit it looks lovely at the moment with things tumbling about (as well as me). The roses look very good despite a bit of black spot, and we have had a bit of help with the weeding - the bending down these days is not so bad - it's getting back up which is a problem (poor old souls) so the pathways don't look too bad. I hope to have more pebbles down so it should look a bit tidier.

"I've been thinking" is looking at a pollarded acer tree which even after pollarding (nice word meaning chopping the top off and letting it grow again). Well, it did regrow at an alarming rate, and I agree that it will have to be reduced again - a bird bath was mentioned, perhaps not!!

The golden eagle will be in place when you come, oops, silly me, I've just remembered you will have visited the gardens when you read this. This is what happens when I write this piece two months in advance. I hope you enjoyed looking round all of the gardens; I will try to look round a few of them and report back next time. Well, get cracking with your gardening and if you hear those dreaded words from you know who, make a quick getaway - slip into the hut or hide under a bush, otherwise you might be letting yourself in for a big project. "I've been thinking..." Oo-er!!!

AUGUST

FLOWERS Continue dead-heading to give a continuation of blooms; lightly prune bush and standard roses - cut back to about 2 leaves all stems which have flowered, give the beds a dusting of Tonks or other rose fertiliser and work it into the top layer of soil. Tie up the taller perennials - if we get a bit of wind in summer, they are soon broken down. August is the time for cutting dried flowers for winter decoration. Tie the stems up in bunches and hang them upside down in a cool airy place. Give flower beds a regular feed of compound fertiliser as this will keep them growing and flowering. Sweet peas need a layer of mulch and a good liquid feed.

VEGETABLES Sow a bit more parsley, and earth up brussels sprouts. Do not feed onions after July as ripening may be hindered. Marrows should be cut whilst they are still young and before the skin hardens - and save a nice big one for the show in September! Cucumbers grown in frames outdoors will need regular watering and feeding- and keep stopping the runners (side shoots).

Remove any caterpillars as soon as they appear on cabbages and other brassicas; keep runner beans

mulched and well-watered, especially during hot dry periods (we hope). Outdoor tomatoes need a good feed once a week with a good tomato fertiliser and each plant should be stopped one leaf above the 2nd or 3rd truss depending on the variety.

TREES, SHRUBS AND FRUIT When propagating strawberry plants, always choose a perfect parent plant, with no yellow or curling leaves, peg the baby plants into pots of new compost set into the ground and allow them to root before cutting them from the parent plant. Do not take more than five plants from each parent and keep them well watered. Prune raspberries as soon as they have finished fruiting, cutting them down to ground level. Retain six of the strongest new canes from each plant for fruiting next year and tie them onto supports.

GREENHOUSE AND INDOOR PLANTS As usual keep the greenhouse well ventilated and any seedlings which are coming along should be shaded, especially if the sun is very strong. Cuttings from most greenhouse plants can be taken now: geraniums, fuchsias, busy Lizzies etc and keep them shaded.

Geraniums do not need a lot of water to start with. Late August begonias and gloxinias will have finished flowering. Their water supply should be gradually reduced so that they ripen the corms and go to rest. Restart old cyclamen around the second week of August. Clear off the old foliage and soil and re pot in the smallest pot which can accommodate the roots comfortably. Keep them in a shady spot, water moderately at first, but spray the corms daily with tepid water to encourage them to make new growth. If you want to have narcissus by, or even before, Christmas, pot up bulbs now

LAWNS At the end of August lawn seed can be sown on a prepared bed - and keep well watered. If we have very dry conditions set the mower high to retain moisture at the roots.

SEPTEMBER

Flowers Keep up with the deadheading of plants. Remove summer bedding plants which have finished and prepare any spare beds for spring planting, the earlier you can get wallflowers, primulas etc in the stronger the plants will be to survive the winter. Lift and pot up geraniums, fuchsias and other tender plants you want to keep over the winter. They need to be kept dryish and in a frostfree place. Tuberous begonias need to be lifted and dried off to keep indoors. Make sure you remember to water regularly any newly planted plants. Plant out spring flowering bulbs, narcissi, lilies, daffodils etc. These can be planted at any time during autumn, but early planting gives better results (hold tulip and hyacinth for a bit longer – end of October). Pot up bulbs for early flowering, hyacinths, tulips, narcissi, ixias, should be potted up now in bulb fibre and bulbs should be almost touching one another and barely covered with the fibre. Stand the containers in the coolest place available and as dark as possible for 8-12 weeks. Keep checking that they are kept moist (not wet) and dust with flowers of sulphur if slight mould is showing. Rambler roses can be pruned now, cut the growths of those which have carried flowers to ground level and remove from trellis, tie back the new growth made this year. Cuttings of lavender can be put in now; they are easy to root in a sheltered place outdoors, in a shallow trench in soil and plenty of sharp sand. Check the supports of taller plants, to reduce the growth of those which have finished flowering (not too much), take cuttings of penstemons now, use non-flowering shoots, put them in a sandy soil round the edge of a pot and place them in a cold frame or COLD greenhouse. If you have planted winter flowering pansies, pick off any flowers to encourage the plant to grow stronger.

Vegetables This is a busy month for harvesting, make sure you pick all runner beans before the first frosts, this applies to marrows, courgettes and all squashes. Stake up brussel sprouts, plant out spring cabbages, cover the curds (white part) of cauliflower with a turned over leaf to protect from frost and keep them white. Onions which have finished ripening can be tied up (like the French do) and hung in a cool frost-free place. Peppers and tomatoes sown outdoors should be picked or given protection. You must have heard that to encourage ripening of peppers (and tomatoes) place them in a tray, put them in a drawer with a couple of

ripe apples (and don't forget which drawer you have put them in!) If your onions are a bit late ripening (brown skins) turn the tops over to expose them to as much light as possible. Leeks can be fed with a quick acting nitrogenous fertilizer, such as Nitrate or Soda or with a liquid fertilizer. Herbs should be gathered now for drying. Marrows can be hung in a dry, frostproof place if you have too many for immediate use. Lift and store carrots and beetroot. Continue earthing up celery, test main crop potatoes before lifting: the skin should NOT rub off when thumb pressure is applied, if they are "set" they are ready for lifting.

Trees, Fruit and Shrubs Pick all fruit as it ripens, order new bushes, trees or canes as required, choose late flowering varieties if you live in a frost pocket. Prune the shoots on all espalier and cordon trained trees. Apply or renew grease bands on trunks to catch winter moths as they climb up the trunk, the caterpillars from their eggs feed on the blossoms in spring. Cut out fruited canes of summer raspberries and tie in the new growth. Autumn varieties are pruned next spring. Finish planting summer fruiting strawberries by the middle of the month. Watch out for slugs and snails. Keep any newly planted stock well watered. Dead-head and shorten the flowering shoots of floribunda and hybrid tea roses. Prepare ground for planting heathers and evergreens. Take hardwood and semi-ripe cuttings of berberis, forsythia, juniper, privet, honeysuckle etc and root in a cold frame or guard indoors. Cutting back wisteria and clematis which has become rampant is best done at this time.

Greenhouse and Indoor Plants Disbud late chrysanthemums regularly. Most plants, except annuals will propagate readily at this time, place cuttings in a mix of compost and perlite or vermiculite and place in a propagator or warm greenhouse. The end of the month should see the end of the tomatoes, clear away the finished plants ready to accommodate the plants coming in to overwinter. The nights will begin to get much colder so watch carefully the ventilation, side vents should be closed for the winter, and shading washed off the glass to give maximum light at this time. Spraying and damping down should be discontinued gradually. Pot on primulas and calceolarias, cyclamen seedlings planted earlier should be ready for pricking out. The ideal time for potting is when they have 2 or 3 leaves each.

Lawns Rake, scarify and spike ready for a top dressing of autumn winter fertilizer towards the end of the month, this will help develop a healthy root system for next year's lovely green sward. See you at the Totley Show on 20 September.

Cheerio for now,

Tom



Transport 17

What an interesting couple of months it has been since our last missive. For those of you who missed the Birthday Bash it turned out to be a great day in spite of the weather. The bouncy castle and the face painting were moved into the church so that everyone was able to enjoy the activities that were supposed to be outside. Food was provided by a massive team of volunteers and it was really great. There were three special cakes for each of the birthday organisations and they looked/tasted great.

Thank you to everyone who participated: it was a fabulous day. Hopefully there will be some pictures elsewhere in this issue as I know Les Firth was snapping away for the whole event. In all, £390 was raised on the day. The Cakes and Cutting event was a great success from which we received a donation of £557. Our Coffee Morning at the Cross Scythes went extremely well raising another £170. The cakes and coffee were exceptional and we can only give a big thank you to our hosts.

We have also received donations from Totley Rise and several individuals which have been a great blessing, especially in view of our most recent major breakdown of the chair lift on one of the buses.

We are also pleased to report that the vehicle insurers have at last made a contribution to the costs involved so, for now, we are almost solvent!!

You will next see us at the Totley Show where we will be selling books and various items that we hope will be of interest. We may also be running a guess the name of the doll competition so look out for us.

Again we thank you from the bottom of our hearts for your generosity and support. Without it we would not survive.

See you at the Totley Show.

Felicity Revill

Longshaw Sheep Dog Trials Association

www.longshawsheepdog.co.uk

Registered Charity No 234523

We are pleased to announce that the Longshaw Sheep Dog Trials will take place this year on 28th, 29th & 30th August on Longshaw Pastures in front of Longshaw Lodge, near Grindleford, starting this year at 7.30am each morning. We are very honoured this year to have as our President Mr. Andrew Chester from Holmesfield. On 28th and 29th there will be open class sheep dog trials when many of the "One Man and His Dog" competitors will be taking part. We are very pleased to have Mr. John

Whitely, winner of the championship in 1983 and 1985, to judge the open classes and championship, and to judge the local class Mr. Jan Pieters, from Holland, who will be competing in the open class.

At approximately 3.30pm on 28th, subject to any unforeseen circumstances, there will be a parade of local hounds, courtesy of the Barlow Hounds, Pennine Foxhounds and the Ecclesfield Beagles.

Following the local class sheep dog trial on Saturday 30th the Longshaw Fell Race is to be run. Starting at approximately 10.30am, this is open to all adults and is enter on the field. Following the start of the fell race there will be a demonstration of dog obedience and agility.

Starting at approximately 12.30 on Saturday 30th the trials culminate in a double gather championship,



which consists of the 8 highest pointed runs from both Thursday and Friday, when the winner will take home the prestigious Longshaw Championship silver tea pot.

Entrance charges are just £5.00 per adult each day, no charge for children, free parking, and we start at 7.30am, weather permitting, finishing at approximately 5.30pm. For further information please contact the Secretary, Mrs. Sheila Humphreys, MBE on 01433 651852, or e-mail lsdta@talktalk.net

This will be the 116th year of the Association, thought to be the oldest continuous sheep dog trials in England with the two world wars and 2001 (because of foot and mouth disease) being the only years when no trials were held.

There will be a licensed bar, hot and cold food and drinks, and ice cream available. The magnificent array of trophies will be on display, so please come and join us for a day on the moors to see some of the wisest dogs in the world. We look forward to meeting you.

Totley Book Club

Totley Book Club is looking for new members. We meet in the Cross Scythes every 6 weeks, and read a range of books, mainly novels. Whilst we enjoy reading we are quite an informal group and don't take ourselves too seriously. If you think you might be interested please contact Isabel Hemmings on 07979535416 or email her on isabelhemmings@yahoo.com.uk

Norton Ploughing Association

NPA's annual Farmers Market, Stalls and Carboot will be held on Saturday 30th August on the showground, off Bochum Parkway, Norton S8 8BA. Exhibitors entrance from 8am, public entrance from 10am - 2pm. Enquiries to the Secretary on [01246 434404](tel:01246434404) or website www.nortonshow.co.uk.



The PTA Fun-d Raisers Big Project

Our amazing PTA Fun-d Raisers - brilliantly organised by Alex Garside (Chair), Emma Giles (Secretary) & Andrew Snowden (Treasurer) - have been busy once again! From Play & Stay events to organising the up & coming Totley Country Games (27th September), they also held the launch of their BIG PROJECT: funding a Climbing Wall. John Parr, Y1 parent, had a large hand in its development & the launch was held on 6th June. The children love the final result & the wall itself looks amazing! The PTA Fun-d Raisers will also be part funding some playground improvements over the summer holiday with games, sports & road markings. We're very grateful to have such an amazing PTA as well as have the support of our wonderful community!

TASS Green Day

Our Eco-Saints have also been busy (alongside Mrs Scarpello, Mrs Leggett & Mrs Kirkby) organising our first ever Green Day in June! All of our children were divided into teams & took part in various activities designed by the Eco-Saints themselves. These included: up-cycling with margarine tub boats & paper crafts, wildlife conservation with bird feeders & insect houses, improving the school grounds with natural art, weeding & litter gathering, plus keeping fit with aerobics & healthy baking. We also started collecting 2 litre plastic bottles in order to make our very own green - green house! We're doing well, but are still collecting!

Sheffield Young Artists for TASS

Many of our children had their art work on show at the Sheffield Young Artists Exhibition at Ponds Forge (9th-10th May) as well as at the Town Hall (14th-15th July). Our young artists in FS2 were: Emily Walkden, Maia Haewood, Annabel Maynard, Isla Carter & Eli Rose; in Year One: Samuel Giles, Guy Eckersley, Jessica Diggins, Serene Davies & Alex Radbourne-Harris; in Year Two: Phoebe Bland, Oliver Scott, Edward Maynard, Jessica Smith & Emily Stonecliffe-Jones; in Year Three: Jonah Cole, Marcy Bennett, Elijah Toombs, Anna Wright & Sienna Harris; In Year Five: David Walmsley, Fleur Orford, Rebekah Young, Hattie Sharp, Keira Harris, Ava Blanks, Marcy Bennett, Daniel Hill & Esme Naylor; in Year Six: Diana Cotovan, Lotte Hotston, Olivia Bee, Alex Coggins, Hattie Tomkinson, Martha Wilder, Daniel Farrow, Lucy Parsons & Sophie Lindley. David Walmsley, in Y5, was chosen to have his work shown on the John Lewis Community Art Wall, & was invited to an event to celebrate his achievement. Martha Wilder will also have a painting on display at Botanical Gardens (6th & 7th September) as part of Art in the Gardens! Well done, to our amazing TASS Artists.

Y5 Enterprise Project with YMCA White Rose

The Y5s have been taking part in an amazing Enterprise Project this last year with Jonathan Buckley from YMCA White Rose. As part of the year, they've set up their own charity 'TASS Children's Charity Miracle Makers' & organised lots of events to raise money for their chosen charity, Green Pastures. From afternoon teas to holding toy & clothing amnesties, they've done it all. This term's final event was to hold a talent show for parents with: gymnastic displays, rock groups, musical items, singing & comedians. It was truly amazing & showed off what a wonderfully talented lot our TASS superstars are!



So what now? Well, we're in the process of getting ready for our summer production at King Egbert's on a *Tour de France* theme & titled: 'On Your Bike!' holding our Mini-Olympics, plus saying goodbye to our Y6s with our graduation event. *It's all happening at TASS!*

If you want to find out more of the exciting things happening at our school, please visit our website or email us at enquiries@totleyallsaints.sheffield.sch.uk. We'll be so happy to let you know!

Karole Sargent, Head teacher



FREE TASTER SESSIONS
dance like no one is watching!



Love to dance? Want to have fun?
Want to increase stamina, co-ordination and confidence whilst getting fit?

'On Broadway' is a dance class themed on routines and dance styles from popular musicals like *'Mamma Mia'*, *'A Chorus Line'*, and *'Chicago'*. Now is your chance to pick up your cane, hat & bag, get fit and have fun whilst strutting your stuff and dance like no one is watching!! Reveal your inner show girl!

Previous dance experience is not essential but a love of dance is and of course those all-important 'jazz hands'!

Guaranteed Fun and Fitness!
"Good fun, great exercise, a great way to escape into make believe" - Nicola Hill

FREE TASTER SESSIONS AVAILABLE IN SEPTEMBER 2014

Tuesday 2nd Sept & Sunday 14th Sept
7.00pm on 2nd & 10.30am on 14th - Dance Unlimited, Little London Road, Heeley, Sheffield, S8

Sunday 7th Sept
10.30am - Dronfield Dance and Theatre Academy, 2 Gomersal Lane, Dronfield, S18

Monday 8th Sept
9.45am - Hallam Community Centre, Hallam Grange Crescent, Fulwood, Sheffield, S10
1.30pm - Totley United Reform Church, Totley Brook Road, Totley, Sheffield, S17

Tuesday 9th Sept
9.30am - Bradway Community Hall, Bradway Road, Sheffield, S17
1.20pm - Stephen Hill Methodist Church, Manchester Road, Crosspool, Sheffield, S10

Wednesday 10th Sept
9.30am - Bakewell Town Hall, The Square, Bakewell, Derbyshire, DE45

Places are limited so please book early to avoid disappointment



To book your FREE place register via the website at least a week before each taster class. To find out more please contact Katy directly
info@katyrobinsfitnessfusion.co.uk
07803 906114
www.katyrobinsfitnessfusion.co.uk

'Tour de Yorkshire' for Children's Hospital

It was hard not to be moved by the effect of the Tour De France in Yorkshire this year. The sight of the crowds lining all areas of the route was almost enough to eclipse the beauty of God's own county. But there were no such crowds on the weekend of 31st May when 4 Sheffield lads did the exact same journey to help raise money for The Sheffield Children's Hospital, save for myself and Jason Duffield who acted as support. Paul Deeks, Steve Fox, Pete Holdaway and Steve Howe took a little longer to complete the course than the pros (indeed we finished to near darkness on the Sunday outside of the EIS) but they still managed the 120 miles a day in just 2 days, averaging 13 hours a day in the saddle. Immense respect for them hitting climb after climb especially on the second day! 'The Children's Hospital is a great resource for Sheffield and a great comfort and support for parents of ill children' said Paul Deeks, who spent a lot of time in the hospital himself as a child with asthma. 'It so important that the hospital is still here for my kids when they need it'. Steven Fox added 'We raised money for Weston Park Hospital a couple of years ago. It's important that we support our local services.' Their sponsorship page is open to donations if you wish to help: <https://www.justgiving.com/TourDeYorkshire2014/> Well done lads!



Simon Deeks

Dore Gilbert & Sullivan Society

What a wonderful first weekend in July we've just experienced. Firstly, the Tour de France Grande Depart and the huge crowds at the most inaccessible places such as Buttertubs, and Crag Vale and then, it seemed, an equivalent number attending our Summer Concert on the Saturday evening. The concert was entitled "From Silly to Sublime" and it certainly lived up to its name with silly duets from Alan and Angela Wade (even if it was by Offenbach) and Alex Hayward-Brown and me (Flanders & Swann, of course). The sublime came from Kathryn Parkin with "When A Merry Maiden Marries" from "The Gondoliers" and David Bramah with songs from Lehar and Lillian Ray but the lady who stole the show was Judy Savournin whose rendition of "I Want to Sing in Opera" was hilarious! In between were lovely light contributions from many members which provided a couple of hours of extremely well received entertainment. Well done to everyone who took part and to the audience who were absolutely splendid. Thank you all and commiserations to those of you who missed it! Thank you also for your contributions to the NSPCC collection which raised over £100.

On the Sunday a small gang of us went from Dore (complete with a splendid picnic and lots to drink!) to watch the cycle race as it came towards the day's end in Sheffield. We had a splendid time. Now we look forward to starting rehearsals in September for our next production The Gondoliers, which will be from 29th April to 2nd May, 2015 at The Montgomery Theatre in Surrey Street. Before that, however,

there is our annual December concert to compile and rehearse.

This will be on Saturday 20th December in Dore Methodist Church at 2.30 pm. Keep a lookout for posters and more information in later editions of The 'Independent'. After the success of our last concert there could be a fight for tickets! Make sure you get yours early! You can contact me on 0114 236 2299 or Mark White on 0114 236 0723 for more information. Have an enjoyable summer.

Derek Habberjam

A1 Tiling, Plumbing,
Plastering & Complete
Bathroom Installations
Tel : 07738688807
0114 4182346

- * All Plumbing Leaks, Bursts & Blockages
- * Taps, Showers, Radiators Etc
- * No Job To Small
- * Home Improvements & Maintenance
- * Underfloor Heating, NVQ Qualified
- * Reliable, Fully Insured & Guaranteed

www.A1tilingandplastering.co.uk
25 Five trees Ave, Dore, S17 3LW

Walking the Dog....

Fred Walters and Mr Reynolds

The trouble with still having a milkman in 2014 is Monday nights. It's always just when you think you're safe to start tea or drink or undress. There's the tallyman rattle on the front door and the grand slam of the jennel door. Before you can say we don't live here, we're not in, we're lactose intolerant and we died last week, and we're Wednesday anyway, George is standing hunched at the kitchen window like Jimmy Hagan himself.

Now, my mum used to bone up on Fred Walters in the Green 'Un all Sunday afternoons, before her bath, so that she could talk Sheffield United at George and hope he'd forget why he called. Though he never did. And these days we have Football Heaven so we know how to say how our defence has let us down again, and how we've not enough strength in depth, or depth in strength, and how we always peak too early. But once George knocks, the game's up, and we pay up, saying how proud we are to still have a milkman in 2014, keeping the community on the ball.

Between Martin's and the Garage

We were walking between the Bushey Wood garage and Martin's, so I told Jack about a Totley library that wasn't saved.

It had crammed shelves - libraries did then - of Dr Dolittles and Famous Fives and Lone Pine Fives and Just Williamses, only they weren't just William because there was a girl as well, and Swallowses and Amazonses with Titty.

The once-upon-a-time books all had the same purple and brown stiff covers, and inside on the left there was always a little envelope for the ticket with the book's name. And on the right there was always a stuck-in sheet that said Clean Hands, for the librarian to stamp with her stamper that stamped the date a fortnight in front of whenever you were borrowing, but no one could work out how, even Our Geth.

What happened was, you had your own library ticket with your own name and you could take that home, but it wasn't a ticket really, more a toy envelope with a flap for when the librarian took it off you for the book ticket to go, and then you had to leave it in this long thin shelf, and you couldn't take your book back on the same day. You could only borrow books with C on the spine until you went to grammar school and even then you could never borrow the adult Adult books, which were blocks of wood you had to take to the counter, and were by D H Lawrence all about -

And Jack interrupted to say who are the Martins when they are at home?
And where was this garage supposed to be?

And why is it spelt Bushey if it's a wood with bushes? And where is it, so we can we have a wee in it?

Jack Speaks Up

'We were talking about you at the History Group, Jack.'

'Why?'

'Graham Gregory used to live on Laverdene Avenue like you.'

'That's not history.'

'What is then?'

'Mary Queen of Scots. And dates. And everything dead and in order.'

'That's not what the Totley History Group think.'

'They think Laverdene Avenue is history?'

'Many histories. It was rhubarb fields. Before that it was Belle Vue. And after, one of the Mr Lavers built his Bayko houses all over it for Graham and the Whites and Christine Stocks, and the Baggies and the Swifts. When there was a proper Chemical Yard with the Nicholsons and the bully heads in the river, before the flood.'

'And is that what you learn at this Totley History Group?'

'Yes.'

'And you don't have to be dead?'

'No.'

'...Can I be history?'

'Yes. And if you join, you can make history too.'

Rony Robinson



YOGA CLASSES in TOTLEY & RANMOOR

Rachel Quinn BWY Dip



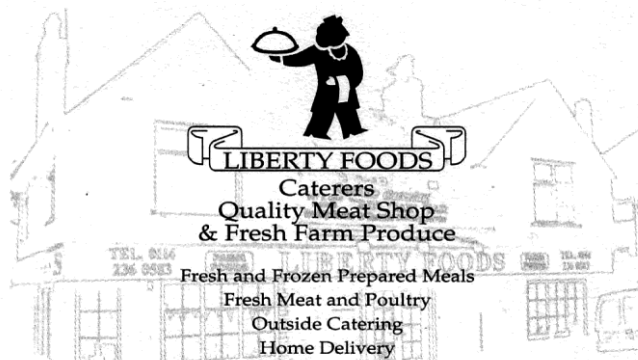
R.M.M BUILDING SERVICES

25 YEARS EXPERIENCE

All types of building work carried out including- Drop kerbs, block paving (drives, paths, etc), extensions, general building repairs and maintenance.

Phone Rob on- Mob- 07906108567

Home-2352190



253 Baslow Road, Sheffield, S17 4DU
Tel: 0114 2360 583 Mobile: 07801 346 455



Gardens cleared and maintained, Lawns mowed, Turfing, Tree felling & pruning, Hedges trimmed & reduced, Pond maintenance, Fencing etc.

for free quotation call

Chris on: (0114) 2746158 Mobiles: 07976072785 or
Richard on: 07789497104

8am-6pm mon-fri

HazelBarrow Farm, Norton S8 8BA

TOTLEY PRIVATE HIRE

EXECUTIVE CAR TRAVEL



AIRPORTS AND LONG DISTANCE

PROP - PAUL SOUTH
24HR SERVICE

Tel: 0114 2839692

Mobile: 07974 355528

Email: PAUL.SOUTH1@TESCO.NET



- Central Heating,
- Domestic Plumbing,
- Glazing, Double Glazing and Glass,
- House Maintenance,
- UPVC and Wood Windows & Doors



Mini Digger & Driver, Muck Shifts, Footings Etc.



Carpenter and Joiner

Fitted kitchens, sliding wardrobe doors with bespoke interiors, internal and external doors supplied and fitted, new handrail and spindles, laminate and wood flooring, locks, architraves, skirting board, stud walling, boxing off etc.

For a reliable and quality service

TEL: 0114 236 4778

MOBLIE: 07971 528149



Got a computer?

Having Problems?

Is it running slow? Stops responding?
Having problems running the latest games
or applications? Broadband installation?

Give me a call!

I'm available for home visits at any time including evenings and weekends. I can also suggest upgrades to improve performance, or even build you a system to your specific requirements.

Tim Brown

Building,
Installation,
Upgrading and
Troubleshooting
Computer
Systems
Over 25 years
professional
experience

Phone: 0114 2472619 Fax: 0870 7060080

Mobile: 078 17464703 Email: service@timbrown.plus.com

Totley Open Gardens saved by the weather!

14 Totley people worked hard to get their gardens ready to open on the weekend of Saturday 19th and Sunday 20th July. Four of them were opening for the first time, which is quite stressful!

And on Saturday it poured with rain virtually the whole afternoon. A few rainless intervals brought a few visitors, the most to any garden being 30. A *Sheffield Telegraph* reporter managed to get some photos in between cloudbursts! BUT the weather on Sunday was perfection itself, and the crowds came out in force, glad to get in the gardens after Saturday's miserable day.

In total we had 215 visitors. Different gardens get different numbers, and of course, visitors always like to go and see the new gardens. They came from all across South Yorkshire and Derbyshire but some came from longer distances - Stockport, Norwich, Wakefield, Lincoln, Goole, Worksop, and even two couples from Angola and Sydney!!



Visitors to Totley Open Gardens

Ray's garden on Main Avenue wowed the visitors with his own steel sculptures; Sue's large garden on Main Avenue gave visitors plenty to look at; Chris's garden on the Grove charmed people with its cottage garden style, and Jane on Totley Hall providing teas sold out of cakes!



Tom Steele

TOG has raised over £22,000 since we first started in 2002.

Once again, the Cross Scythes supported Totley Open Gardens by advertising in the programme and sponsoring the printing of the programme! They also allowed visitors to the gardens to park in the pub car park. Thank you Stuart!

Keep an eye on *Totley Independent* for the date of next year's Open Gardens event. We already have several more new gardens lined up for 2015.

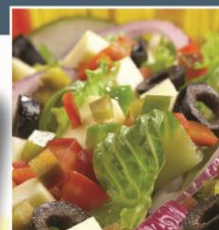
Jennie Street
TOG Co-ordinator
jennie@hadish.f9.co.uk Tel. 236-2302



Martin and Chris Campion

Totley Deli

Where quality and friendliness count



51-53 Baslow Road, Totley Rise, Sheffield S17 4DL. Call 0114 2364238

Why not come in and sample our wide range of hot & cold sandwiches and home made produce, freshly made daily to eat in or take away. Cakes, quiches and pies can be made to order if required. All produced from locally sourced suppliers.

- Fresh Roses bread delivered daily & available to order
- Selection of cooked meats sliced to your specification
- Meadow Fresh & Toppings Pies
- Superb selection of fine cheeses, preserves & pickles

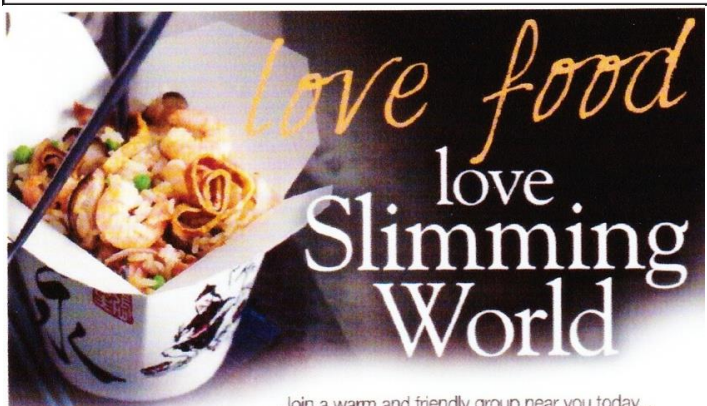
Look out for our daily special meals or join us for breakfast.
All available to take away.



If you are having a party or family gathering why not let us take the strain and provide a buffet for you.



Totley Deli Supporters of local businesses 0114 2364238



Join a warm and friendly group near you today...

TOTLEY (SHEFFIELD)
Mondays 5.30pm & 7.30pm
Dore & Totley
United Reformed Church
Totley Brook Road, S17 3QS

GREENHILL (SHEFFIELD)
Wednesdays 10.00am
St Peters Church,
Reney Avenue, S8 7FN
Morning Group

Call Jo: 07590 545 253



save £5
half price
membership
Just £3.95 on your first night
then £4.95 a week.
See website for details.

slimmingworld.com

0844 897 800



Slimming
WORLD
know you're amazing

*More people choose to attend a Slimming World group each week than any other weight loss group.

SEE THE DIFFERENCE!

AT
**MARTYN
KEMP
OPTICIANS**

- **COMPREHENSIVE EYE EXAMINATIONS**
including special tests for glaucoma, colour vision, dyslexia & diabetes
- **CONTACT LENS CONSULTATIONS**
free contact lens trials and monthly direct debit payment schemes
- **PRESCRIPTION SUNGLASSES**
- **LEISURE SPECTACLES**
for computer work, fishing, swimming and safety wear
- **ACCESSORIES**
ready readers, chains and magnifiers

LENSES BY SEIKO
In all non-budget spectacles

TOTLEY
63 Baslow Road
236 4485

ABBEYDALE
634 Abbeydale Road
255 6554

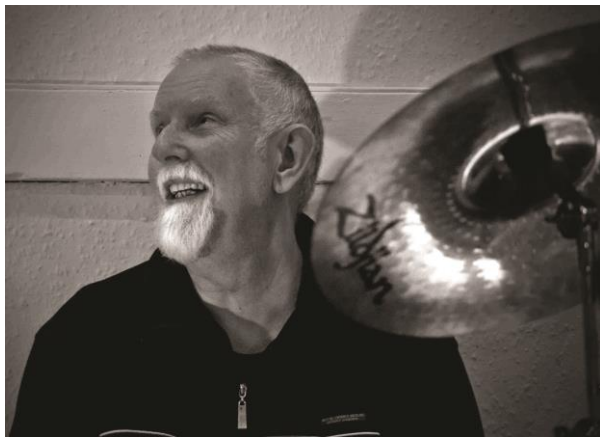
For more help and information please phone or call into the practice of your choice
For a full list of our practices visit

WWW.MKO.CO.UK

Terms and conditions apply.

Totley Drummer Plays With The Hallé Orchestra

Wednesday 18th July was very special for Totley resident John Beazer. On that day, Shirebrook Brass Band, for which John plays percussion, performed two concerts with the Hallé Orchestra in front of packed audiences at Shirebrook Academy. The concert featured a work called 'Shirebrook – A Living Heritage', specially written for orchestra and brass band by Hallé double bass player, Bea Schirmer.



"It was a thrilling, once-in-a-lifetime experience", John told *Totley Independent*, "performing with seasoned professional players under the Hallé's Resident Assistant Conductor, Jamie Phillips."

When not performing with world famous orchestras, John plays drums with Totley's long-standing rock band, 'Redback', which many readers will have seen at Totley Music Festival. He also plays with jazz quartet 'Music and Lyrics'. Bookings welcome!

Protecting our Grass Verges

Too many residents – and visitors – are parking on grass verges, and spoiling what should be a pleasant piece of grass. As far as Totley is concerned, the Council does not seem to be aware that cars are here to stay, and that cars have gradually increased in size. John Lewis have lost parking spaces to make their bays larger; the Transport Executive took our information on board when they consulted over the Park and Ride, and increased the bays to the EU standard (they had not heard of it before!) so street parking is more hazardous – especially to wing mirrors. The installation of new kerb stones means that cars cannot park a little way onto the verge any more. Two years ago I wrote in the *Independent* about the forthcoming road improvement works and asked if anyone on Mickley Lane thought that hard standings would be better than grass verges, possibly with grass growing between mesh. No response from anyone. Too late now. The cost of creating hard standing would be around £600, as services beneath the verges need protecting. Incidentally, if it can be proved that your vehicle, parked on the grass verge, has damaged services beneath, you may be liable for the cost of repairing those services.

Roger Hart

City Car Users Switching To Bus

New figures show that fewer people are using cars on Sheffield's roads, with more people using public transport instead. Over the past two years, the number of people traveling by car has fallen by 4,489 people (nearly 2%), while fare-paying passenger numbers for bus journeys in the city have grown by nearly 10% – an increase of 4.65 million.

Transport bosses have attributed the move to the success of Sheffield Bus Partnership, which aims to make using the bus a viable alternative to the car in a bid to reduce congestion and pollution on the city's roads.

Since its launch in October 2012, the Partnership between Sheffield City Council, South Yorkshire Passenger Transport Executive (SYPT), and bus operators Stagecoach in Sheffield, First South Yorkshire and Sheffield Community Transport, has created a simpler, more co-ordinated bus network for the city that has seen continued improvements to bus punctuality, reliability, and customer satisfaction.

It has also introduced a new range of value-for-money tickets that can be used on any bus or tram in Sheffield, put 120 new environmentally-friendly buses on the city's roads, and invested £4.5 million in bus stops, bus routes and traffic management.

Sheffield City Council Cabinet Member for Business, Skills and Development, Councillor Leigh Bramall, said: "These figures are good news for everybody. The Bus Partnership Agreement has led to many more journeys by bus and a reduction in the number of cars on our roads, which helps to tackle congestion and benefits everyone."

Records also show improvements in punctuality and reliability, with 98.7% of buses running as scheduled, and up to 170 (44%) fewer customer complaints received per month, compared to pre-Partnership levels and levels elsewhere in the county.

(Editor's note: Have Totley people felt these benefits with the 97 service?)



**Domestic electrical work by
award winning
*Lady Electrician***

- * House rewires * Replacement fuse boards *
- * New sockets and lights * Security systems *
- * CCTV * Telephone and computer points *
- * Garden power and lighting *



**All work guaranteed and fully
insured. For a free quotation,
without obligation,**



ring Mandy on 07788-544225

TOTLEY & DISTRICT DIARY

MONDAYS	COFFEE MORNING , All Saints' Church Hall, 10am-noon TAI-CHI , United Reformed Church, Totley Brook Road, 11.30am-12.30pm RAINBOWS and GUIDES , All Saints' Church Hall, 5.45pm-9pm SLIMMING WORLD , United Reformed Church Hall, 5.30 pm and 7.30 pm, Jo Elsey: 262 0523 or 07590 545253
TUESDAYS	PILATES , The Old School, Dore, 9.15-10.15am. Phone Teresa Tinklin 07906 312372 COFFEE MORNING , Totley Rise Methodist Church Hall, 10am-noon KNIT, NATTER, CRAFT & CHATTER See Totley Rise Methodist Church article in this issue - 12 noon - 3.00pm CITIZENS ADVICE BUREAU . Drop in, free, impartial, and confidential. Totley Rise Methodist Church, 10am-noon CRAFT GROUP . Totley Library, 2pm
WEDNESDAYS	PILATES CLASSES . Dore Old School, 9.00-10.00 and 10.15-11.15. Contact Caroline - Tel: 0781 722 0324, email caroline1north@btinternet.com, www.pilatescarolinenorth.co.uk COFFEE in the LIBRARY . 10am-11.30am TODDLER GROUP . 10am-11.30am, All Saints' Church Hall. Details tel. Andy Holmes 0114 236 2088 HEALTH WALKS . 10.30am, Totley Library foyer. Phone Tina, The Health Walk Ranger: 0114 203 9335 MODERN SEQUENCE DANCING . All Saints Church Hall, 8pm-10pm
THURSDAYS	BELROBICS , United Reformed Church, 9.15-10am, email: jenny@belrobics.co.uk or telephone: 07816 850132. NCT COFFEE GROUP FOR DORE TOTLEY & BRADWAY , 10am-noon, For mums & babies/toddlers, meeting in various locations, Phone Lucy Street 07837 000405 or email: lucy@streetr.plus.com for further details ROCKCHOIR , United Reformed Church, Totley Brook Rd, 11.30 - 1.00pm. See www.rockchoir.com or call 01252 714276 CHAIROBICS . Heatherfield Club, 1.15pm PUSHCHAIR CLUB . Totley Rise Methodist Church Hall. 1.30pm-3pm. Tel. 236 3157 for further details PILATES CLASS , United Reformed Church, Totley Brook Road, 6.15pm-7.30pm also new class 1.30pm to 2.30pm , Phone Emer Coffey 07792 422909
FRIDAYS	PILATES , The Old School, Dore, 9.15-10.15am, 10.30-11.30am. Phone Teresa Tinklin 07906 312372
SATURDAYS	MODERN SEQUENCE DANCING . All Saints Church Hall 1st Saturday Monthly 8pm-10pm

AUGUST

SUN 10th MINIATURE TRAIN RIDES Abbeydale Road South. **TEDDY BEARS' PICNIC and FUND RAISING FOR SHEFFIELD CHILDRENS HOSPITAL**. 1 pm - 5 pm (weather permitting) Car Park closes 5.15pm. £1 per ride per person. See www.sheffieldsmee.co.uk

WED 13th TOTLEY PROBUS CLUB 10 am Totley Rise Methodist Church: Talk - Jim Garton, "Cuba, Ecuador and the Galapagos Islands"

SUN 24th FRIENDS OF GILLFIELD WOOD: 10 am: Practical Conservation Morning with the Council Rangers. Meet at Baslow Road bus terminus. All levels of work, light and heavy, fully supervised. Stay as little or long as you wish. Tools provided, refreshments too. Wear appropriate footwear and clothing.

SUN 24th and MON 25th MINIATURE TRAIN RIDES Abbeydale Road South, 1 pm - 5 pm (weather permitting) OPEN DAY and EXHIBITION. Car Park closes 5.15pm. £1 per ride per person. See www.sheffieldsmee.co.uk

WED 27th TOTLEY PROBUS CLUB 10 am Totley Rise Methodist Church: Talk - Keith Booker, "Fascinating World".

SEPTEMBER

WED 10th TOTLEY PROBUS CLUB 10 am Totley Rise Methodist Church: Talk - Dr Rod Amos, "Sun Worshippers (Ancient Egyptian Religion)"

SUN 7th MINIATURE TRAIN RIDES Abbeydale Road South, 1 pm - 5 pm (weather permitting) Car Park closes 5.15pm. £1 per ride per person. See www.sheffieldsmee.co.uk

SUN 14th WHIRLOW HALL FARM Farm Fayre, 10 am - 4 pm. Lots to see and do including workshops, live demonstrations, up to 100 stalls, alpacas, Extreme Mountain Biking performances, Drakes of Hazard, antiques tent with free valuations, delicious food outlets, Punch & Judy show, live music, fun children's activities, pony riding, face painting and much, much more! Adults £6, children free admission.

TUES 16th FRIENDS OF GILLFIELD WOOD: Illustrated talk by SHEFFIELD WILDLIFE TRUST - Creating A Living Landscape for People & Wildlife. Totley Library, 7.30. £3 non-members, free to members. Refreshments available.

TUES 16th TOTLEY TOWNSWOMEN'S GUILD: Mike Waters, "From British Lion to Chinese Dragon". Totley Rise Methodist Church Hall, 10 am.

SAT 20th TOTLEY SHOW - for details see this issue

SAT 20th TOTLEY HISTORY GROUP Totley Show Display - photographs of old Totley and a display of WW1 related items

SUN 21st FRIENDS OF GILLFIELD WOOD: 10 am: Practical Conservation Morning with the Council Rangers. Meet at Baslow Road bus terminus. All levels of work, light and heavy, fully supervised. Stay as little or long as you wish. Tools provided, refreshments too. Wear appropriate footwear and clothing.

WED 24th TOTLEY PROBUS CLUB 10 am Totley Rise Methodist Church: Talk - Tony Hallam, "The Family - Markham"

WED 24th TOTLEY HISTORY GROUP: "Randini - the Greenhill lad who followed in Houdini's footsteps" by Ann Beedham

SUN 21st MINIATURE TRAIN RIDES Abbeydale Road South, 1 pm - 5 pm (weather permitting) Car Park closes 5.15pm. £1 per ride per person. See www.sheffieldsmee.co.uk

Mark and Sally Fletcher invite you to

The Grouse Inn

Longshaw

Sheffield S11 7TZ

Meal times:-

Mondays 12.00 to 2.30pm
Tuesdays to Friday's 12.00 to 2.30pm and 6-30pm to 9-30 pm
Saturdays 12.00 to 3.00pm and 6.30pm. to 9.00pm (drinks - open all day)
Sundays 12.00 to 9.00pm
Phone 01433 630 423

R Rose & Co

Chartered Accountants & Business Advisors

Specialists at
looking after the affairs
of small businesses.

For a **FREE** initial consultation
please contact Roger Rose FCA on
0114 281 2331

From business start-ups and general accounting, to support and advice in business development and strategy, we offer our services in our personal one-to-one service.
To find out more please call 0114 281 2331.

213 Derbyshire Lane, Norton Lees, Sheffield S8 8SA
Email: info@r-rose.co.uk

What's on at The Shepley Spitfire?

Family Fun Day on Saturday 23rd August 12.00pm - 4.00pm

- Bouncy Castle and Bungee Run
- Stocks to soak the managers
- Loads of outdoor games
- And lots more fun

We would also like to run a stall selling any donated items, so please if you have anything you no longer need or use please bring it down to the pub.

All money raised will be donated to Totley All Saints Primary School for them to spend on new equipment for the children.

Every week we have

Tuesdays – Sticky 13's from 9pm

Thursdays – Ladies come down for our great wine offers

Fridays and Saturdays – It's time to celebrate as the weekend is finally here!

Sundays – Quiz night from 9pm

And not forgetting all the great menu offers we have running every week

Two Meals for £9.99 Monday to Saturday All Day

Burger, Fries and a Drink from £6.99 Monday to Saturday All Day

Flame Grill and a Drink for only £1 extra Monday to Saturday All Day

Coffee and a Cake for only £2.99 All Day Every Day

Delicious Sunday Roast only £7.99 for adults and £3.49 for children

Like us on Facebook – The Shepley Spitfire New to keep up to date with all upcoming events.



NEW
Pilates Studio
opening 7 April

Do you want to tone up, improve your strength and flexibility, learn to relax and have fun?
Then Pilates is PERFECT for you!
Classes available for all ages and fitness levels.

15 Buttermere Road
(off Abbeydale Road) S7 2AX
Veronica Hutchinson
Over 40 years experience in
teaching dance and Pilates

Visit our website at
www.choicepilates.com
Call **07913 621 727**
or email **choicepilates@gmail.com**



GWS



Technology Solutions

PC Problems/ Repairs/ Servicing No Job Too Small
Wireless & Internet Setup PC Setup/Data Transfer
New PC's/ Laptops & Upgrades Safe PC Disposal
Reconditioned PC's & Laptops available Tuition
Software/Hardware supplied & installed
For All Your PC Needs

Guy Senior
Phone: 0114 2352662 Mobile: 07890030453
Email: guy@gwstech.co.uk
Web: www.gwstech.co.uk
GWS. 5 Conalan Avenue, Bradway, Sheffield S17 4PG

design **etc.** your local full service
design agency ...

corporate branding

stationery

brochures

advertising

web design

Call us on **0114 2622130**
e craig@designetcetera.co.uk w designetcetera.co.uk
or call in at **61 Baslow Road, Totley Rise. S17 4DL**

Editor: Phil Harris
Tel. 07956 858944 or email:
editor@totleyindependent.co.uk

Advertising & Distribution:
John Perkinson

Tel. No: 236 1601 or email:-
advertising@totleyindependent.co.uk

Proof readers: Chris & Margaret Spencer

Items for publication may be left or sent to:
2, Main Avenue, Totley, Sheffield, S17 4FG

www.totleyindependent.co.uk

PRINTED by DESIGN ETC, TOTLEY RISE

TOTLEY INDEPENDENT FOR October/November

The next issue of the Totley Independent will be available
from the usual distribution points on

SATURDAY 4th October
COPY CLOSE DATE for this issue
will be
SATURDAY 13th September

Published by Totley Independent CIC. Totley Independent is a
registered Community Interest Company, number 07750166.
We welcome letters about local affairs and will publish as many
as possible. Items will not be considered that are submitted
anonymously. The views expressed are not necessarily those of
Editor or the editorial staff and must not be attributed to them.
© Totley Independent 2014