

TOTLEY INDEPENDENT

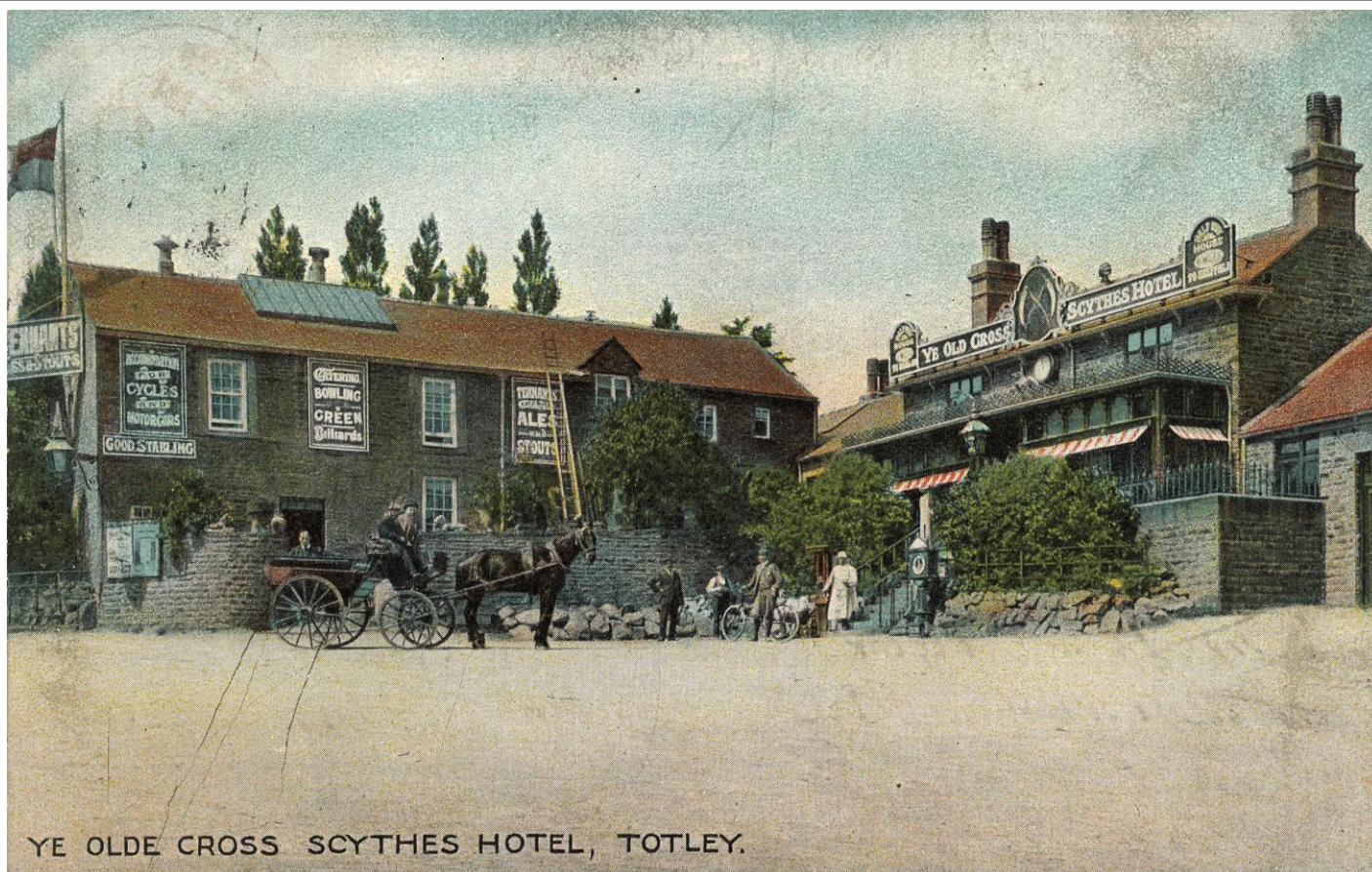
PUBLISHED CONTINUOUSLY SINCE 1977

www.totleyindependent.co.uk

October/November 2013

No. 364

20p.



Cross Scythes

The Cross in the early 20th century: a postcard from the Totley History Group's Thompson Collection. The History Group meets at the library monthly now the summer holidays are over and has a full schedule – see their events listing on page 11. The Cross Scythes Christmas Lunches Party Menu has been released – see their advert on page 2.

TRA Latest News

We held a Farmers' Market on Sunday 18th August and although we had several last minute cancellations it was well attended by visitors, with five new stalls rebooking for the next event.

The Christmas Market will be held on Sunday 15th December, 12-4pm. There will be new stalls as well as old favourites, entertainment and Father Christmas. If you would like to book a pitch the Booking Form will be available very soon on the website, www.totleycommunity.org.uk

The Totley Show, held on Saturday 7th September, was, as always, an excellent event. Les and Dorothy Firth with their team worked so very hard and this year raised £300 to support Transport 17.

In previous years we have hosted a **Christmas Luncheon** for senior residents of Totley with a lovely two course meal, entertainment and Bingo. We are planning to hold the next one on **Tuesday 10th December at 12.30pm at The Shepley Spitfire.** If you know someone whom you think would enjoy joining us, please get in touch at the email address below.

At our last Meeting in September we were delighted to welcome Beverley Barratt and co-opt her onto the Committee. She has already been invaluable helping at the Show, and we are sure we will find lots more for her to do.

We are very pleased with the response to our new website and email address. Two topics have been raised which we have subsequently investigated.

Development Green Oak Avenue/Lemont Road.

The Planning Department has told us that, whereas a developer has a time limit of three years to commence work from a Planning Application being granted, once work has commenced there is no time limit for completion.

We spoke to one of the Agents selling the Town Houses, of which four remain. He said that as soon as the others are sold, the local builder, who purchased the site at Auction from the previous developers, will complete the

TOTLEY SHOW

Full list of Show results published in this issue

CROSS SCYTHES

PUB, RESTAURANT & HOTEL

CHRISTMAS PARTY MENU 2013

£19.95 PER HEAD

TOMATO & THYME SOUP

FINISHED WITH BALSAMIC REDUCTION & A DASH OF CREAM

CRUNCHY PEAR & WALNUT SALAD

WITH CROUTONS, MIXED LEAVES, YORKSHIRE BLUE CHEESE DRESSING

PRESSED HAM HOCK TERRINE

WITH PERSILLADE DRESSING & HOMEMADE PICCALILLI, FOCCACIA TOAST

SMOKED SALMON

HORSERADISH & DILL DRESSING, CUCUMBER, LIME & WATERCRESS

ROAST TURKEY CROWN

WITH ROAST POTATO, PIG IN BLANKET, STUFFING & GRAVY

ROAST BEEF RUMP

PARSNIP PUREE, RED WINE & ROSEMARY JUS, ROAST POTATOES

DUCK BREAST (£2 SUPPLEMENT)

WITH BEETROOT, RISOLE POTATOES, AND RED WINE SAUCE

PAN FRIED SEABASS

MIXED BEANS & JERUSALEM ARTICHOKE, PORT SAUCE

SWEET POTATO, BRIE & CHESTNUT PIE

ROAST POTATOES, CREAMY BRIE SAUCE

ALL MAIN COURSES SERVED WITH SEASONAL VEGETABLES

LIGHT CHRISTMAS PUDDING

WITH BRANDY SAUCE

CHOCOLATE & ORANGE CHEESECAKE

WITH BRANDY SNAP AND SPICED SYRUP

MINCEMEAT YORKSHIRE CURD TART

LIGHT SPONGE TART FLAVOURED WITH MINCEMEAT, CLOTTED CREAM

CHRISTMAS PARTY BOOKINGS NOW BEING TAKEN

Book before 30th October and your party will receive a free bottle of prosecco

Telephone: 0114 236 0204

Email: enquiries@cross-scythes.com

Baslow Road, Totley, Sheffield, S17 4AE



apartments at the rear and envisages this happening by the middle of next year. The Agent also stated that he has a waiting list for these apartments.

Removal of Trees

We understand that the removal of trees at Meadowhead was due to a redesigning of the roundabout to improve traffic safety. We are assured that some of the trees will be replaced. We have been told that Amey only takes out trees which have been vetted by the Council and that it has to seek the Council's approval before any action is taken.

On a further note, we know there is a lot of concern regarding the holes which have been left by Amey during the Lights Replacement. Amey has been contacted and although there are technical reasons for this happening, Amey is doing its best to catch up. Please contact us if you have any concerns or requests.

Hetty Moran. Chairman. TRA.
totleychair@gmail.com

Do You Remember?...

Replying to the recent article "Do you remember": there was a full A.A. battery stationed at Winns Hill (also known as Wings Hill) near White Lane during the war (search light and A.A. gun). The search light and the gun were often tested and used when enemy aircraft were about. I was in the RAF and knew some of the soldiers concerned with the AA battery. Some corresponded with me after the war.

There were of course many soldiers billeted in private houses in and around Totley.

Before the war, as young boys we would take farmers' horses to be shod at the blacksmiths in the chemical yard. Of course when he no longer shoe'd horses we took them to Holmesfield - Bill Rayner being the blacksmith.

J W Abson

T.O.A.D.S. AUTUMN PRODUCTION

Just to remind all of our followers, both old and new, that TOADS autumn production will be, by popular demand, a murder mystery!! Yes, we do listen to our audience!

"Cat's Cradle" (presented by arrangement with Josef Weinberger Ltd) was written by the actor Leslie Sands, who some of you may remember as Cluff in the TV series back in the 80's. I, of course am far too young to remember that far back!! Hm.....

Leslie Sands was also a prolific play-wright and I hope you will enjoy this particular play which will be directed by yours truly, Anne Bettridge.

The dates are **Wednesday 20th November to Friday 22nd November at 7.30pm**, and following our recent trend, the performance on **Saturday 23rd November will be a matinee at 2.30pm**.

The venue is as usual St John's Hall, Abbeydale Road South. Please call 2351206 to reserve your tickets or contact any TOADS member - we look forward to seeing you there.

As always, if you are interested in treading the boards or helping out backstage, why not pop down to the Guild Room at St John's Hall, any Tuesday at 7.30pm. Or contact me on 01246 460318, or any TOADS member.



Transport 17

A big thanks to all the people who supported us at the Farmers Market and Totley Show where we managed to raise £65 in total and also to All Saints' Church for a very useful donation. All contributions are gratefully received as we rely heavily on them for our day to day running.

Our next event will be a Coffee Morning on Saturday 12th October, 9.30 to 12 noon at the Cross Scythes, where you will receive an extremely warm welcome with delicious tea, coffee and cakes. We are hoping to run the usual raffle but are going to extend it to all of our clubs for the people who are unable to attend on the day.

We are also holding our usual Christmas Fayre at the office, 172 Baslow Road, on Saturday 16th November. We have been very lucky with the Fayre for the last 2 years when people have been able to sit outside with coffee and cakes but it will probably be too much to ask for that kind of weather this year - though you never can tell!! We are also hoping to have a cake stall similar to last year, when it was very popular, so any donations would be gratefully accepted. We will be happy to see you all and have a good chat.

Next year we will be celebrating 30 years of providing the services that we have established over the years and of which you are well aware and of which we are proud. Without your continued support we will be unable to survive so please come and support our various functions to aid our survival.

Looking forward to seeing you all soon.

Felicity Revill
Chair

Totley Independent - Editor

I first got involved with Totley Independent in October 2002, taking over from the long-standing Les Firth, and expected my tenure to be for 2 maybe 3 years at the most. Now, after 11 years as editor it is more than time to move on, and the next issue in December, my 108th, will be my last.

I appealed for help on the editorial side a year ago but had no takers at that time. If no interest is shown there is the real possibility that after 36 years the **Totley Independent** will cease publication.

So come on you aspiring or experienced editors (I was neither!) please consider getting involved, maybe with a group of friends, and help keep the Independent going. Contact details on the back page.

Ian

Councillor Surgeries

Liberal Democrats:

2nd Monday in the month 6.00-7.00 p.m., Totley Library, Baslow Road and 2nd Saturday in the month from 10.30 a.m. to 12.00 noon, Dore Old School Hall, Savage Lane, Dore Contact details:

Keith Hill 235 2289 Email: keith.hill@sheffield.gov.uk,

Colin Ross 235 1948 Email: colin.ross@sheffield.gov.uk

Joe Otten 230 3290 Email: joe.otten@sheffield.gov.uk

**Totley Independent Website:-
www.totleyindependent.co.uk**

PhysioFOCUS

at Totley Rise Dental Practice
85 Baslow Road,
Sheffield, S17 4DP



Physiotherapy treatment available for:

- Back and neck pain
- Sports injuries
- Sprains and strains
- Joint and muscle pain
- Arthritic pain
- Whiplash
- Repetitive strain injury
- Headaches

Appointments: 0114 2360333

Also available:

- Pilates classes
- Pilates 1-2-1
- Golf Fitness Screening
(as used by consultants to UK,
European and Australian PGAs)

For more information please call:

Emer on: 07792 422909

Rachel on: 07956 908454

Dore Moor

Garden Centre

(Opposite the Dore Moor Inn)

Hathersage Road · Dore · Sheffield · S17 3DQ

- Wide range of seeds, bulbs, plants & pots
- Compost & Chemicals
- Mowers, fencing & garden tools
- Bird, Horse and Poultry feeds
- Haddon Stone statuary and David Austin Roses

Call in and see us



Tel: 0114 235 0092

Open 9.30 to 5.00
Sundays 10.30 to 4.30
Mondays Closed

Steve Webster • Maths tutor

Do you need help with Maths?

Friendly and supportive local Maths tutor (based in Totley). Range of levels covered including GCSE, A level and Key Stage 3. Adult learners also welcome.

Home visits available. Full DBS (CRB) check.

Tel. 0114 2350826 / 07910 277151

www.stevewebsterconsultancy.co.uk/mathstutor

Slimming
WORLD

because you're amazing

If you want to lose weight healthily and with no deprivation or humiliation then join your local Slimming World class in Totley,

Mondays at 7pm and at Greenhill on Wednesdays at 10am

Telephone Jo Elsey on 0114 2620523

or 07590 545 253

(Offer cannot be used in conjunction with any other offer)

1/2 Price membership
on production of
this advert



Gail Kitchen: 07986473415



Does going away from home mean your cat is sad and unhappy?
Does a trip to the cattery scare your cat *not to mention your wallet?*

WORRY NO MORE!



MOGGY MAID is on hand to feed, love and provide everything your cat needs in the relaxing comfort of its own home.

As we cat-lovers know, unfamiliar sights and smells can stress your cat, whereas leaving them in the familiar surroundings of their own home carries less worries, for your cat and for you.

If only for a night, weekend, or a month; holiday, Christmas or any time of the year, MOGGY MAID is here to help

LIGHTEN YOUR LOAD



We promise no mischief allowed!



In a professional manner and with quality service, you can ensure individual care and attention, whilst you relax away from home.

We haven't forgotten the rest of the family; mice, rabbits, budgies, goldfish, etc will receive care and affection too.



LOCAL FRIENDLY SERVICE

From £5 a day

For more Information, contact Gail Kitchen on:
07986473415

5 Ullswater Place, Dronfield Woodhouse

Help Celebrate The Story of Gillfield Wood

Did you see those TV programmes where chucky historian Michael Wood helped ordinary people to be archaeologists on their own patch? Well, all this year local people interested in our own Totley wood have been doing just that with the support of a Heritage Lottery Grant. Why? We know that Gillfield Wood is an ancient wood and that ancient woods are really historical monuments in their own right. We may think of it now as a place to walk the dog, ramble on a Sunday or look at the bluebells, but to our ancestors it was a valuable commodity, managed for its products for various industries and crafts. You may have found farmers, charcoal burners, whitecoal makers, barkers, craftspeople. Woods were a workplace and many of us would have been kept out!

So, in order to find out more we have learned how to methodically survey the whole thing - trekking up and down banks in straight lines armed with compasses, GPS devices, clipboards, tape measures, camera, sandwiches, and flasks of tea. We've found and recorded pits, odd stone posts, charcoal hearths, trees of great age, sawpits, shelters and lots of mysteries. Even a possible Romano-British field system. We've ferreted in archives, puzzled and argued. So, lots of answers now - but also lots of questions. It's been endlessly interesting and now we want to share our findings - our discoveries about the Story of Gillfield Wood - with everyone. We are doing this in a number of ways.

On November 14th (see separate advert) we will be holding daytime and evening events in Totley All Saints Church Hall:

- Between 3pm and 6pm there will be a chance to visit us and see attractive displays of our findings - including mysteries and artefacts. Refreshments and practical activities for children and adults will be provided. All welcome - come and chat, look at the displays, have a cuppa, try out an activity. Just drop in at any time.
- At 7pm there is a celebration ticketed event (free, but please book through fogwsecretary@gmail.com). This will include the Friends of Gillfield talking about our discoveries and our main guest speaker Professor Mel Jones on The History of Ancient Woods. There may even be a woodland song or two! Oh, and glasses of wine!

An attractive handy colour leaflet about the Story of Gillfield Wood will be launched at the above event, locating the wood and telling the tale of how it has been used from medieval times to the present day. It will be available at the usual Totley outlets after November 14th.

Our website at www.friendsofgillfieldwood.com will, early next year, have a downloadable report of our findings. In the meantime you can check it out to look at our progress so far. Also see our online diary about how we've been getting on at www.storyofgillfieldwood.wordpress.com or follow us on twitter @gillfieldwood

Winter walk - we also hope to host a woodland walk in December or January visiting the sites of some of our findings. More details to follow.

Can you help us solve one of our mysteries?

And before I end, can you help us? We have come across some oral references to 'Bull Wood'. We believe this was a small wood separated by a piece of open field from Gillfield Wood. Part of this field was planted with trees in the 1960s and so the two woods were joined together. So far we haven't found any written record of the name 'Bull Wood', and we wondered if any locals have any information or memories of this little wood - or even photographs of people paddling in the Totley Brook there?

We hope to see you soon.

Sally Goldsmith

Friends of Gillfield Wood

Gillfield Wood The Story of our Totley Wood

Thursday November 14th

Come along and celebrate the launch of a new leaflet and learn about the history of the Wood

From 3pm to 6pm
Totley All Saints' Church Hall
Totley Hall Lane

FREE event open to all
Exhibitions, children's activities,
refreshments available

MEET THE FRIENDS OF GILLFIELD WOOD
We've measured trees, pits and walls; counted butterflies, birds, bees, insects and mammals; found many ancient woodland plants; researched the history ancient and modern.

CELEBRATION EVENING EVENT. Professor Mel Jones, our guest speaker. Same venue, 7p.m. Free admission by ticket only, apply to FOGW Secretary. email: fogwsecretary@gmail.com
www.friendsofgillfieldwood.com



Ash Dieback

Last October newspapers devoted pages to the terrible scourge of this latest tree fungus and the prognosis that 90% of our 80 million ash trees might die (as has happened in Denmark).

All the ones I've seen (perhaps a hundred locally) look very healthy and in full leaf. The first sign of the disease is leaves dying at the crown. That isn't true of the 30 on Whitelow Lane or the many elsewhere in the district. Neither have I seen dark lesions on lower branches. Have any of your readers noticed problems with their garden ash trees? Apart from the usual one - saplings pushing up through the lawn.

There have been a few cases in Yorkshire where the disease has been found in recent plantings of saplings and it would be reassuring to know that all is well in our area. Perhaps mature trees will not be as susceptible and we won't lose a third of our beautiful woodland.

Gillian Farnsworth

Advice and videos showing how to identify ash dieback are available from the Forestry Commission's website at <http://www.forestry.gov.uk/chalara>. The site also includes an alert form to notify the Commission if you think you've identified the disease in our area.

Ameys Army runs out of.....

I wrote in **Totley Independent** that "Amey's Army Marches on". It did whilst it installed the lampposts. Then, it seemed to run out of ammunition, rations, and the ability to communicate! Illness and leave made it difficult to get in touch with our contacts, so I contacted their director, whom Neil Bunting (Traffic Focus Group) and I met. We presented him with detailed information of our concerns about bad road signage, roads closed with no diversions, Baslow Road closed at 7pm but no work starting until 11pm, and then the absence of any works for over a month. There is a considerable amount of unfinished works, and dangerous situations (for example guiding pedestrians onto the unguarded highway outside the GP's practice).

The Director arranged for us to give the managers a tour of Totley and Twentywell Lane on 3rd September. We met the area manager, the lighting manager and his supervisor, and took them on a tour of the area. Perhaps the appropriate term to use is "they were enlightened"! But I have to say that if I had been one of them, I would have had my team out BEFORE the inspection. However, it worked, with significant works taking place for the rest of the week. Apparently, the Mickley Lane works stopped due to no foundations having originally been laid for the kerb edges, so more excavations were needed; and then the staff were called away to complete some works at Greenhill, outside a school, before the new term started. It would have been appreciated if we had been notified. One excuse for the street light works not being completed was that they could not get their crane next to the old posts to remove them, due to parked cars. I asked where the parked cars had come from, and they had to explain - from Mickley Lane, as residents had been told, by Amey, to move them, for fear of them being towed away!

I sent three emails (the director being copied in) about pedestrians being diverted onto the unguarded highway, outside the doctors' practice. We are pleased to say that significant efforts have been made in the last 7 days to remedy the issues which we raised. However, big excavations have taken place outside the Co-Op and the Deli. It appears that when Amey dug down to connect the new street lights, they found old concrete lamp-post stumps, and unconnected cables. This was unexpected, and was of some significance; hence the deep holes and greater amount of time to connect and complete. At the time of writing, nearly all the footpaths are clear for pedestrians again.

We sent a 6-page report, with photographs, detailing our concerns, hoping for a response which gave reasons for the delays on various aspects of the job, such as the long delays on completing the lighting works on Twentywell Lane. We have received an acknowledgement after requesting one. Some work on Twentywell Lane has now been completed as a result of our report and visit.

Whilst the works at Dore and Totley station were not part of the Zone AO5 Totley works (the full title for the major scheme), we raised the delays with the team whom we met. There were various reasons given, but, I am pleased to report that progress has now been made, with the old shelter having been removed, and resurfacing carried out. We have heard of some complaints from drivers, about the "build out" at the site of the new bus stop. We have heard that it is to enable disabled persons to enter and leave the 'bus more easily, but also (according to the planner himself) it was to reduce vehicle speeds. The first excuse does not seem to stand up, as there are many examples where raised kerb edges have been provided to enable easier access, but which are "in line" with the existing kerb. The second reason came from the Horse's Mouth, so to speak. If you feel strongly about this carbuncle (like the pun?) may I suggest that you write to your councillor, Colin Ross, as I have done. He tells me that he has lodged a report.

Now on to the Marstone Crescent/Baslow Road double yellow lines. In November 2011 (yes, 2011) I requested double yellow lines, as it has become very difficult to see oncoming traffic coming down Baslow Road, for vehicles wanting to exit Marstone Crescent. This is due to vehicles parked by patients visiting the GP's surgery. The increase in staff and use by patients has resulted in an increase in vehicles. The provision

of the lines was approved by the Community Assembly, and funded by them (with the support of Cllr Ross) the following year, 2012. When I asked the officer concerned when they would be done, he assured me that it would be before the year end, that is, March 2013! Needless to say I started to chase him at the end of March. He then told me that the money was to be carried forward into the 2013/2014 year. Not amused, I carried on my campaign, to be eventually told that the scheme had not been funded and that it would not happen!

I will leave out the rest of the negotiations, by our councillors, but to say that the order has been given, mid- August 2013, to Amey, to carry out the work. Unfortunately, the heavy rains have revealed that a puddle now appears just where the yellow lines should go- and this has been notified to Amey's area manager.

Amey return, in 2015, to carry out works on the roads, footpaths, trees and verges, on this estate, and all roads on the north side of Baslow Road. The south side have to wait until 2017.

Roger Hart, Chair of The Dore and Totley Ward Forum and Neil Bunting, The Dore and Totley Ward Forum Traffic Focus Group

TABLE TOP SALE

Dore & Totley URC
Totley Brook Road

Saturday October 19th
10 am to 1 pm

Proceeds for Cerebral Palsy Sport and The Lost Chord (taking music to dementia sufferers)

Wanted: Wheeled Chair

A smaller, wheeled chair is required to be used for transfers around the house, from wheel chair to armchair/Toilet etc.

A bath chair or commode would probably suit. The present wheelchair is too wide for internal corners etc. Please phone Tony Reynolds on 438 3472.

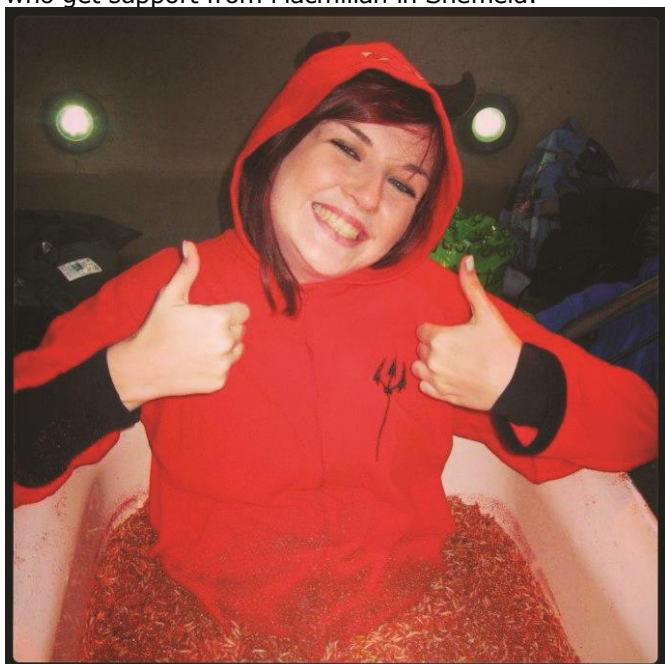
Thank you.

Fancy a bath... with 5 million Maggots?

As part of Sheffield City Centre's Fright Night Halloween celebrations, **Macmillan Cancer Support** is looking for brave individuals to take part in it's terrifying Bath of Maggots Challenge!

Two tin baths will be filled with over 5 million maggots, kindly donated by Superbait from Conisbrough, and placed in the Peace Gardens on Sunday 27 October from 4pm to 8pm. Fright Night is organised by Yellow Bus Events Ltd.

The brave individuals will be sharing a bath with its wriggling inhabitants for 20 minutes, whilst trying to raise £100 in sponsorship. Former Lord Mayor of Sheffield Councillor Peter Price has taken part in the event ever since it began, he explains "People living with cancer go through a lot worse than sitting in a bath of maggots – and for every minute you're in there you are making a huge difference to not only to the patients lives but those of the families and communities who get support from Macmillan in Sheffield."



If you're brave enough to take part in the challenge then contact Rob Turner on 07545 419 725 or Email rturner@macmillan.org.uk

THE INNER WHEEL CLUB OF DRONFIELD AND HOLMESFIELD CHURCH PROUDLY PRESENT

A TALK BY DOUG BRADBURY ENTITLED THE LIFE AND TIMES OF A FARRIER

THE TALK WILL BE PRECEDED BY A

PIE AND PEA SUPPER

DATE MONDAY NOVEMBER 4TH AT 6.30.

VENUE HOLMESFIELD CHURCH HALL

TICKETS ARE £12 AND ARE AVAILABLE FROM JANE
AND ROBIN GREETHAM TEL 01246 412767

PROCEEDS WILL GO TO HOLMESFIELD CHURCH
RESTORATION FUND AND THE BALIKYEWUNYA
ORPHANAGE IN UGANDA

Abbeydale Miniature Railway



SANTA SPECIALS

Abbeydale Miniature Railway

Sunday 8th December & Sunday 15th December

Gate opens at 11 am Last
Entrance 3.30 pm

**Admission is £7 per person at
the gate.**

**No pre-booking, cash only
please.**

Admission covers seasonal
refreshments, a visit to Santa in his
grotto with a present for each child and
unlimited train rides.

Abbeydale Road South, Sheffield S17 3LB
www.sheffieldsmee.co.uk

**SHEFFIELD & DISTRICT SOCIETY OF MODEL &
EXPERIMENTAL ENGINEERS**

A COFFEE MORNING

at

**The
"CROSS SCYTHES"
Baslow Road, Totley
Saturday,
October 12th. 2013**

From 9.30 – 12.00 noon

In aid of TRANSPORT 17

A SEASONAL RAFFLE

**Proceeds from refreshments and raffle will
go towards upkeep of the minibuses**



SEE THE DIFFERENCE!

AT



MARTYN KEMP OPTICIANS

- **COMPREHENSIVE EYE EXAMINATIONS**
including special tests for glaucoma, colour vision, dyslexia & diabetes
- **CONTACT LENS CONSULTATIONS**
free contact lens trials and monthly direct debit payment schemes
- **PRESCRIPTION SUNGLASSES**
- **LEISURE SPECTACLES**
for computer work, fishing, swimming and safety wear
- **ACCESSORIES**
ready readers, chains and magnifiers

LENSES BY SEIKO
In all non-budget spectacles

TOTLEY
63 Baslow Road
236 4485

ABBEYDALE
634 Abbeydale Road
255 6554

For more help and information please phone or call into the practice of your choice
For a full list of our practices visit

WWW.MKO.CO.UK

Terms and conditions apply.



Crocus Homecare

Homecare with Compassion



Care and Support in your own Home

Crocus Homecare provides high quality care and support services to help you, or the person you care for, when it is most needed.

Crocus prides itself, and has built its reputation, on providing the highest quality care with compassion, understanding and respect for each individual and their families.

For more information, please call Debbie Crowhurst, or have a look at our website

Personal Care - Practical Help - Respite Care - Dementia Care
24 Hours a Day / 7 Days a Week

Tel: 01629 812874
www.crocuscare.com

R S HEATING & BUILDING CO.

Est 1971



Heating Division - Experienced Installers of condensing, combination and regular boilers. Authorised installers of Valiant, Worcester Bosch and Glowworm systems, fully guaranteed. Complete aftersales service. Also bathrooms, showers and small plumbing works.



Building Division - Loft conversions, house renovations, including general building, joinery, plastering, electrical, decorating etc.



R S HEATING & BUILDING CO.
88 Sunnyvale Road, Sheffield S17 4FB
Tel: 0114 236 4421
62 Machon Bank, Sheffield S7 1GP
Tel: 0114 255 9425 / Fax: 0114 255 9431
www.rshtgld.co.uk E-mail: enquiries@rshtgld.co.uk

ACTIV physiotherapy

... going from **strength** to **strength**

Exciting news from
ACTIV Physiotherapy

Building on the success of last year we are delighted to announce the opening of our new clinic in Hope and are looking forward to working with new clients, and existing customers of **Hope Physiotherapy Clinic**



our core strengths are:

- Repetitive Strain Injuries
- Muscle & Joint Problems
- Women's Health Issues
- Sports Injuries
- Back & Neck Pain
- Acupuncture
- Musculoskeletal Pain



Official Clinic for the Sheffield Steelers Ice Hockey Team

email: mail@activphysiotherapy.co.uk
web: www.activphysiotherapy.co.uk



0114 235 2727 Bradway
0114 235 7845 Totley
0143 362 3602 Hope

Totley Scouts

All the leaders, together with assistants and other helpers, are now rested after the summer and into another programme of events for the children.

We have a wide variety of events planned including shooting, archery, camp fires (maybe some winter camping), hiking, orienteering, cooking, survival skills, climbing and good old fashioned games. As well as many activities.

Our cubs will also be making bird nesting boxes on behalf of the Friends of Gillfield Wood, and the scouts will be placing them in appropriate locations.

On the day this edition of the TI comes out we will be having our autumn antiques fayre at St Johns Church Hall. I hope you manage to come along and look at the antiques but also sample the excellent food (main meals as well as delicious buns and cakes) for sale.

The whole group will be on parade at All Saints Church for Remembrance Sunday on the 10th November.

We have had a good response to our 'job advert' in the last edition; and have placed it again in this edition as we still need more help. We are very pleased that we are getting more help for both our cub packs especially. If you are interested in helping have a look at our advert.

As I have explained before we have been very successful in attracting more children to scouting and as a result opened a second cub pack last term. This was needed because not only do Beavers from our scout group move up to cubs, so do Beavers from the group held at the United Reformed Church on Totley Brook Road. Also because of our success we have had to temporarily stop taking Beavers until after Christmas. We now have over 30 Beavers each week and cannot take more until some move onto cubs. This was not a decision taken lightly but we are lucky to have enough volunteers to be able to look after this many boys and girls.

We have meetings 4 nights a week.

Beaver Scouts (for 6-8 years olds) on Tuesdays from 6:30pm until 7:45pm.

Cubs Scouts (for 8-10½ year olds) on Wednesdays from 6:30 until 8pm; and also now on Thursdays from 6:30 until 8pm. Scouts and Explorer Scouts (for 10 ½ – 16 year olds) on Fridays from 7:30pm until 9:15pm.

If any boy or girl is interested in joining any of the groups please come along to find out more and try a session or two to see if you like it. Of course we do need your parents permission, so ask one to come along too to find out more. We are next to the woods off Aldam Road.

Richard Frost, 1st Totley Scouts

TotleyChair@aol.com, 0114 236 3603

Scout Lottery

1st Totley Scout Group Lottery

July Draw

1st Prize No 49
Bathroom Scales
Mr and Mrs Watson
Marstone Crescent

2nd Prize No 65
£10 Voucher
Mr and Mrs Hall
Millhouses Lane

August Draw

1st Prize No 56
Theatre Tickets
Mrs Whitley
Marstone Crescent

2nd Prize No 12
£10 Voucher
Mrs Critchley
Baslow Road

Peter Casson

1st Totley Scout Group

Vacancies

Assistant Beaver leader, Assistant Cub leader and Assistant Scout leader

Two hours a week

Can also job share

No experience necessary as full training given
You need lots of enthusiasm and a willingness to have fun

No pay, but a very rewarding experience helping boys and girls to develop practical skills

Do you want to find out more or even have a trial run one evening?

Call John Smith our Group Scout Leader
07507 560287

THE MEANINGFUL CHOCOLATE COMPANY

In the Victorian era hundreds of Quaker families were key players in the UK economy.

Back then the Barclays, Lloyds, Cadburys, Rowntrees and Lever Brothers believed in justice for their workers, and producing quality products and were not afraid to talk about faith and putting it into action.

Today many of these companies have left their Quaker past behind.

When we founded the Meaningful Chocolate Company in 2010, the aim was to restore a business tradition that brought together our passion for faith, justice and inventive products.

So, we don't just sell high quality Fairtrade products, we run campaigns. We're not afraid to talk about faith.

We've donated £125,000 to charitable, development and education projects. To learn more go to www.realadvent.co.uk

This year they are producing the Real Advent Calendar, hoping to share the real meaning of Christmas.

Among 5-7 year olds 36% don't know whose birthday is celebrated at Christmas.

Among adults less than 12% know the full Nativity story and 51% say that the birth of Jesus is irrelevant to their Christmas.

It is hoped you will share the Christmas story by buying and giving Real Advent Calendars.

Behind each of the windows is a Fairtrade chocolate star. Behind the final large window is a 24 page Christmas story booklet.

TESCO is the only supermarket that will be stocking The Real Advent Calendar this year.

From 7th October it will have supplies in most stores. You can pick up smaller quantities in store or by home delivery or order them online. www.realadvent.co.uk/shop.

If you wish to make a bulk order via churches or schools contact your local store or go to the website above.

Dorothy Firth



THE COMPLETE BUILDING SERVICE
New Build & Extension Specialists
From Design to Completion

**Full Project Management
House Building
Extensions
New Roofs/Tile/Stone
Stonework Specialists
Loft Conversations**

Find
us in
Yell.com

Established for 25 years with over 90%
of our work coming from recommendations, to
find out why call:

0114 2353314

Mobile 07973 908187

www.mwoolhousebuilders.com



Christchurch Cottage,
Townhead Road,
Dore, Sheffield
S17 3GA



~ * ~ * ~ and made ~ * ~ * ~

Electrical and Hardware Supplies

Electrical items repaired; Lamps and chandeliers
rewired; Need something fixing? Call me!

~ * ~ * ~

We stock bulbs, tubes, clips, padlocks, hinges, paint,
nails, screws, nuts, bolts, etc. Cable cut to size.

~ * ~ * ~

** If we don't stock it, we will get it in for you! **

Opening hours: 9am to 5pm Tuesday to Friday,

9am to 1pm Saturday. Or telephone Paul on 235-1444.

Upstairs at The Heatherfield Club, 191-193 Baslow Road, Totley.



Domestic electrical work by
award winning

Lady Electrician

- * House rewires * Replacement fuse boards *
- * New sockets and lights * Security systems *
- * CCTV * Telephone and computer points *
- * Garden power and lighting *



All work guaranteed and fully
insured. For a free quotation,
without obligation,



ring Mandy on 07788-544225

B.K. JEAUVONS PAINTER & DECORATOR



Interior
Exterior
Decorating
No Job too small

Tel: 01246 416484

and mobile 07882 278306

Creating opportunities with disabled people.

Registered Charity No. 218186

**Leonard
Cheshire
Disability**

Leonard Cheshire Services in Offers choice &
opportunity to people with disabilities.

A Specialist Unit for the Younger Disabled.

Residential & Respite Care - Single Rooms

Day resources - Aromatherapy -

Reflexology - Physiotherapy - Toning
Tables.

Activities include: - Arts & Crafts -

Computers - Cookery - Shopping

Expeditions - Theatre Outings - Church.

Further details can be obtained from -

The Service Manager, Mickley Hall,

Mickley Lane, Totley, Sheffield S17 4HE.

Tel. 0114 236 9952

Fax. 0114 262 0234

The Care at Home Service supports
disabled people who wish to remain in their
own homes.

We provide flexible care packages from

1 hour to 24 hours meeting individual needs.

The service operates throughout
Sheffield.

Our service includes: - help with getting
up and going to bed, dressing, washing,
bathing, shopping, cooking, light household
duties.

Further details from: -

The Care at Home Manager

Tel. 0114235 1400

Fax 0114 235 1499

John Heath & Sons

AN INDEPENDENT FAMILY FUNERAL BUSINESS

Sometime.....

You will probably have the responsibility of making funeral
arrangements. No one looks forward to this responsibility, but the death of a
family member or friend brings with it an obligation that must be met. There
are people who can help you meet this responsibility. We have been helping
people combine the different aspects of the funeral into a meaningful service for
over 125 years.

Please Call Day Or Night

(0114) 272 2222

Head Office - Earsham Street

Also at Meadowhead, Ecclesall Rd,
Crookes and Stannington

www.johnheath.co.uk



**CHARISMA
BLINDS**



For
Windows
With Style

Sheffield Factory Showroom
106 PROSPECT ROAD
HEELEY, SHEFFIELD

Sheffield **(0114) 258 5496**
Rotherham **(01709) 512113**



Abbeydale Park Rackets & Fitness Club

Right on your doorstep! In the lovely grounds of Abbeydale Sports Club

Welcoming & Friendly: Great Value! Great Facilities!

Your Local Gym & Rackets Club (Squash & Racketball)



- ★ Racketball is one of the UK's fastest growing rackets sports
- ★ Racketball beginner sessions Mon 10-11.30am, Thurs 1.30-2.30pm & 6-7pm
- ★ First session FREE
- ★ All equipment provided
- ★ Fun team leagues, box leagues and club night available for all ages and abilities
- ★ **GYM** -£15* for a month trial **BUT ONLY £5* WHEN YOU BRING THIS ADVERT**
- ★ Your nearest gym/fitness club
- ★ FREE one to one personal training session and programme with one of our experienced instructors
- ★ Well equipped and spacious gym with pleasant views
- ★ Gym membership includes squash and racketball

(*adults only)

Also available: Fitness Classes, Spinning, Personal Training, Physiotherapy, Reiki, Applied Kinesiology and Massage

**THIS
ADVERT
IS WORTH
£10**

Call **0114 236 1354** to talk to someone or visit our Website **www.abbeydalepark.co.uk**
Twitter **@AbbeydaleSquash** Facebook **Abbeydale Rackets & Fitness**

Abbeydale Park, Abbeydale Road South - Free Parking plus further Pedestrian access off Ashfurlong Rd T1013

A funeral with a difference

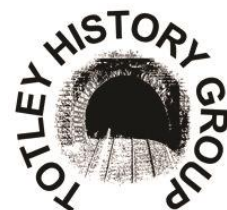
Why should I wish to go to a funeral of a person whom I have only met five times at the most? When I got to Hutcliffe Wood, I realised that I was not alone in paying my respects to this person. An estimated 299 others were there. Having managed the Medico Legal Centre for four years, and been to numerous funerals, my emotions don't usually show, but this was the most emotionally charged funeral that I have attended. The room was packed, and tears flowed. Sobbing, by men and women, was prevalent and uncontrolled. The eulogy was led by one of his friends, with control and dignity. His daughter read a poem, which she had written, his secretary read a poem, which she had written, and then his friend read a poem, written by his partner. My cheek was wet! Who was this guy - fun loving singer, dancer, drinker and gambler?

I met him when I was doing a project in Millhouses Park, with my Rotary Club. I wanted to borrow a measuring wheel. "Yes", was the answer. "When do you want it? I am coming to Totley this afternoon- I'll drop it off for you. You will want some spray paint as well". The sort of guy I like. One who gets things done, no fuss, no bureaucracy.

Most of us, reading this, owe him our gratitude for maintaining our parks and open spaces, because Dave Wright was the maintenance manager for Parks and Countryside in our area. He chose to end his life 3/08/2013, aged 53.

Roger Hart

Future Events for the Totley History Group



Wed 25th Sept. 7.30 pm.

Khaki Suited Me. Bessie Renwick talks of her time in the ATS

Wed 16th Oct. 7.30pm.

An Open Meeting. A chance to discuss recent research.

Wed 27th Nov. 7.30pm.

Unmentionable Foundations. The history of undergarments by Janet Swain.

Wed 18th Dec. 7.30pm.

Victorian Christmas. Susan Deal will tell us how the Victorians influenced the way we celebrate Christmas.

The Grove

Can any reader help to locate the postal address of Jock and Nicky Waugh? A letter from them dated 13 July 2013 was hand delivered to many residents of The Grove in Totley. It claims that the Waughs now own the field, meadow and woodland which runs behind the even numbered homes in The Grove. I would like to reply to the letter but the writer has only given an email address and I am not computer literate.

Perhaps the letter is some sort of scam?

Name withheld, contact via **Totley Independent**

TOTLEY SHOW RESULTS September 2013

Overall Best in Show :- Pamela Challis (For her entry of a Rocking Horse)

HANDICRAFTS. Best of Class:- Joyce Gilligan

	FIRST	SECOND	THIRD
1. Hand Knitted Garment	Mary Robinson	Heather McAllister	Maureen Fletcher
2. Decorative Cushion	Heather Shulver	W.McAllister	Joyce Gilligan
3. Soft Toys	Joyce Gilligan	Dorothy Firth	Hannah Corby
4. Tapestry	Pamela Challis		
5. Cross Stitch	W.McAllister	W.McAllister	Eileen Ogley
6. Collage, any medium	Hannah Corby		
7. Greeting Cards	Hannah Corby	Kathryn Deakin	John Elliott
8.Any Medium	John Elliott	Hannah Corby	Hannah Corby

DOMESTIC SECTION. Best of Class Barbara O'Connor

	FIRST	SECOND	THIRD
8. Victoria Sandwich	Dorothy Firth	Eileen Ogley	Valerie Loft
9. Dundee Cake	Claire Rose	Tom Steel	Barbara O'Connor
10 Carrot Cake	Barbara O'Connor	Christine Steel	Christine Shimell
11. 5 Biscuits.	Sandra Doyle	Sandra Doyle	Jo Connolly
12. 3 Scones	Dorothy Firth	Barbara O'Conner	Chris Scott
13. Apple Pie	Doreen Scotton	Chris Scott	Christine Steel
14. Jam	Sally Goldsmith	Christine Steel	Dawn Lansdown
15. Lemon Curd	Barbara O'Connor	Eileen Ogley	Chris Scott
16. Marmalade	Simon Gray	Ian Shulver	Rebekah Newman
17. Chutney	Chris Scott	Angela Harpham	Christine Shimell

FLORAL SECTION. Best of Class John Plumridge

	FIRST	SECOND	THIRD
19. Floral arrangement- Jubilee 18"high, 10"*10"	Mary Helm		
20 3 cut Flowers	Pauline Perkinton	Pauline Perkinton	Pauline Perkinton
21. Cut Flowers 3	John Plumridge		
22. Flowering in a pot	John Plumridge		

FRESH PRODUCE. Best of Class Tom Steel

	FIRST	SECOND	THIRD
23. 4 Eating Apples	Challis Family	Jennifer Burns	Tom Steel
24. 4 Cooking Apples	Tom Steel	John Plumridge	D.O'Connor
25. 8 Blackberries	Eileen Ogley	Chris Caroe	Kathryn Deakin
26. 4 Matching Potatoes	John Plumridge	D.O'Connor	Richard Farnsworth
27. 3 Matching Leeks	John Plumridge		
28. 3 Matching Onions	John Plumridge		
29. 5 Matching Runner Beans	Chris Caroe	Eileen Ogley	Kathryn Deakin
30. 5 Tomatoes	Richard Farnsworth	Tom Steel	Tom Steel
31. 1 Cucumber .			
32 3 Courgettes.	Kathryn Deakin	John Plumridge	Chris Caroe
33 . Largest Onion	Tom Steel		
34. Heaviest Marrow	Sarah Hotson	Tom Steel	
35. Longest Runner Bean	Tom Steel	Joan Elliot	D.O'Connor
36. 3, Eggs	Christine Shimell		

ART. Best of Class :- Doreen Scotton

	FIRST	SECOND	THIRD
37. Oil Acrylic Painting	Valerie Wigglesworth	Lionel Boniface	Mrs. Scotton
38 Water Colour	Doreen Scotton	Kate Caroe	Gordon Fletcher
39. Pen & Ink Sketch			
40. Pencil Sketch	Doreen Scotton		
41. Open Multi Media	Hannah Corby	Pamela Challis	Hannah Corby
42. Reclaimed Art,/ Sculpture	Mell Camateras		
43 Sculpture any medium	R.Sable		

PHOTOGRAPHY. Best of Class:- Tom Steel

	FIRST	o	THIRD
44. Monochrome any colour	Angela Harpham	Barbara O'Conner	Barbara O'Connor
45. Creative	Barbara O'Connor	D. O'Connor	Tom Steel
46. Wildlife	Les Firth	Tom Steel	Angela Harpham
47. Landscape	Tom Steel	Tom Steel	John Elliot

WOODWORK Best of Class:- Tony Sturdy

	FIRST	SECOND	THIRD
48. Wood Turning	Tony Sturdy	Andrew Rose	Tony Sturdy
49. Small Furniture			
50. Wood Sculpture	Pamela Challis		

CHILDRENS SECTION. Best in Class:- Up to 8 Peter Caroe, 9 to 14- Elizabeth Mill

	FIRST	SECOND	THIRD
51. Animal Veg. Up to 7yrs.	Peter Caroe	Liam Oats	Jessica Camateras
52. Miniature Garden 8 to 14	Challis Family		
53. 3 Decorative Buns under 7yrs.	Peter Caroe	James Caroe	Oliver Scott
54. 3 Decorative Buns 8 to 14	Elizabeth Mill	Elizabeth Mill	Kiera Scott
55. Wobbly Wobbly Jelly up to 14	Elizabeth Mill	Elizabeth Mill	Elizabeth Mill
56. Flowers in an Egg Cup to age 14	Elizabeth Mill	Chloe Challis	Elizabeth Mill
57. Painting under 5	Cary Perzl	Peter Caroe	Sunny Tayler
58. Painting under 6 - 7.	James Caroe	Poppy Tayler	
59. Painting 8 to 11	Emma Hardie	Elizabeth Wrigglesworth	Isabel Deakin
60. Painting 12 to 14	Eve Hudston		
61. Lego Model 5 to 8 yrs	David Caroe	Emily Scott	Nathaniel Tozer-Loft
62. Lego Model 9 to 14 yrs.	Reuben Tozer-Loft		
63. Colour Photo up to 14	Megan Hardie	Elizabeth Mill	Emma Hardie
64. Open any Medium up to 14	Elizabeth Mill	Isabel Deakin	David Caroe

All the children who came first in their class received a Medal.

We thank 83 exhibitors who entered 294 entries for all to see.

Many thanks to our Class Sponsors:- The Cross Scythes Inn, Totley Rise Methodist Church, PHFS Wealth Management, Tom and Christine Steel, Gill Warburton, Mary Hanson, Avril Critchley, Beth Booth, Kathryn Deakin and Chris Measures

Thanks also to our local shops for their generous raffle prizes:- Iron Parlour, Looby Lou, Totley Co-op, Mr Singh of Totley Pharmacy, Baslow Road, Totley Rise Newsagents, Totley Tails and Whiskers, Totley Flowers and Gifts, King Fisheries, Luxury Gap, Totley Deli, and Martin Scrivens and Totley Rise Post Office

A very big thank you to all our helpers who make the Show possible and thank all who came along to support the show.

We would also like to give a big thank you to Totley Primary School and Allen Miller, the 1st Totley Scout group for helping to set up the tables etc, and supplying some of the tables, Edwin Pocock for storing and supplying tables and trestles and to Andrew Bridgens for making and donating some new trestles to replace old and damaged ones.

We are proposing to make the date next year the second week in September which would be Saturday September 13th. This will be confirmed next year. See you all then.

Les and Dorothy Firth

Holmesfield Flower Club

Wednesday 20th November: Demonstration of Flower Arranging by Jean Fordham entitled "A Village Christmas". Commencing 7.30 pm. Tickets available at the door: £6 (members £3) includes refreshments. Venue: Holmesfield Village Hall (off Woodside Avenue), Holmesfield - ample parking. The arrangements will be raffled at the end of the evening. All are welcome.

Dore & Totley URC invites you to join us on Wednesday mornings

From 10am to noon each week you are invited to drop in for coffee. Meanwhile in another part of the church, a short mid-week service commences at 11.30am. On the first Wednesday of the month we gather for an informal sandwich lunch from 12 until 2 pm - you can bring your own sandwich or order one through us (contact 235 0900).

Gardening for October and November

The Totley Show! Friday was set-up day. The heavy gang were in good form, bringing in the display boards and tables from the various storage places. The scouts were helping and they all did a good job - thank you lads. All the other volunteers were on hand to fix tablecloths, set up registration desks etc etc. ready for the entrants to bring their exhibits - and the rain kept off.

Saturday: after a short shower earlier, the sun shone for most of the day. We had a good turnout. It would be nice to see a few more people exhibiting, but nevertheless we had a good show. The children's section as usual was lovely; only one miniature garden which was really great, but let's see a few more next year - it's a bit of fun and must be interesting to do. Well done to Peter Caroe and Elizabeth Mill who won the cups for best in each of the children's sections. Every entrant who won first prize was given a medal - well done everyone! They gave the judges a really hard time choosing the winners.

The fresh produce section was quite healthy with lots of beans and tomatoes. Mr Plumbridge's leeks were a sight to behold, but he was beaten to the post by a short head by yours truly! Come on you gardeners, give us oldies a beating next year. The bakers were on form - the domestic section looked a real delicious treat. My Dundee cake came second (I must try harder) so well done all you cake makers and jammers for a fantastic turnout. Clair's winning Dundee cake was delicious (I had a crafty nibble before it was auctioned).

The tombola and raffle were well patronised - after a lot of cajoling from the ladies who ran the stalls.

The display stalls of the various volunteers and clubs were very interesting and a lot of people were making enquiries.

The "Cafe" was buzzing with everyone catching up on the Totley gossip. They were entertained by the Escafeld BrassBand (I understand they could do with a few donations to keep them going).

Back to gardening. Get digging! Yes, it's time to get the spade out again. As crops are lifted, the veg plots should be cleared and dug over - and the sooner the better. By digging now the soil will be weathered and replenished throughout the winter. You may have to do small areas at a time because some crops will still be in the ground, but you must try to do them before the bad weather sets in.

Order manure if you use it, and get it dug in the ground if the weather permits.

You should be enjoying the results of your labours - sprouts, celery, leeks etc, and parsnips should be left in the ground - the longer the better as exposure to frost increases their sugar content so they have a better flavour.

I hope you have got your greenhouse insulated by now, old jack frost can wreak havoc to those tender plants...

Keep up the good work and put your thermals on.

October

Flowers Order roses ready for planting next month. Prepare beds for spring plantings, removing summer bedding and forking over the soil, adding a dressing of fertilizer.

Herbaceous plants can be put in now, except in exposed gardens which are best left till Spring. Lift and divide Michaelmas daises and other herbaceous plants which have outgrown their allotted space. Tender plants which have been outdoors must be lifted and placed indoors; and begonia tubers must be lifted and dried off and stored in a cool frost-free place.

Summer bulbs must be lifted or covered with mulch before the frost comes. Keep newly planted plants well-watered during any dry spells. Plant out spring flowering bulbs (narcissi, lilies, daffodils and crocus). Hold tulips and hyacinth until the end of the month. Do not forget if you are into planting forget-me-nots, polyanthus and primulas with spring bulbs the plants go in first. Dahlias can be lifted when the frost has blackened the tops. You needn't wait for that if the ground is required for planting - lift them carefully with a fork, cut down the stems to about 6-9" above the tuber, and lay them with stalks downwards in a frost-free place. 10 days or so later the tubers may be cleaned, cutting away any damaged roots or doubtful pieces, and dusted with flowers of sulphur and do not forget to label them.

Vegetables Dig vacant ground as crops are cleared. Plant out spring cabbage in firm soil, earth up leeks and celery for the last time, cut marrows and hang them in nets in a cool dry place, remove any discoloured leaves from brassicas, put onions in store by roping them or in nets, inspect regularly and remove any suspect bulbs. Keep the hoe going around all growing crops and watch out for pests and deal with them before they are established. Turnips can be lifted and tops screwed off, store them in sand,

or you could leave some in the ground and use the tops as an alternative vegetable, cooking as for spinach. Make sure brussels sprouts are well supported - it would be a shame to lose them having got this far. All root crops other than parsnips, swedes and Jerusalem artichokes should be lifted and stored. Store potatoes in a dark well-ventilated frost-proof place - if they are stored in heat they will begin to sprout.

Trees Fruit and Shrubs Hardwood cuttings of gooseberries and blackcurrants can be taken now, inserting 9" to 10" cuttings 6" deep in a sheltered position outdoors. Peaches should be sprayed at leaf fall with lime sulphur against leaf curl. Cut out any dead or crossing branches from trees and bushes, paint any cuts larger than a half-inch diameter with arbrex. Do not forget to inspect any fruit in store and dismiss any doubtful apples and pears, pick any fruit still on the trees before they are dashed by weather, remember to limit the new growth of raspberries to 6 to 8 canes per plant. Make sure all cordon trees are well-supported and the ties are not fraying. Evergreen shrubs and trees should be planted by mid month, hardwood cuttings can be taken from shrubby plants. Give established shrubs and trees a mulch of manure or compost, working it into the soil with a dressing of bone meal. If the weather prevents the planting of newly-delivered trees and shrubs, undo the packaging and stand them in a dry shed until the weather breaks, covering the roots with straw or sacking which must be kept damp.

Greenhouse and Indoor Plants Remove all traces of shading from the greenhouse. If you have had trouble with pests clear the greenhouse and fumigate with smoke cones and wash down with disinfectant. Any tender plants that have been left out should be brought inside or the frost will kill them: a minimum temperature of 4 degrees to 7 degrees C (39-45 degrees F) should be maintained. Cineraria is a bit

temperamental, it will collapse if allowed to dry out or go soggy so watch out. Bring in primula abconica from the frame - this plant can affect sensitive skins so gardeners beware. Pot on schizanthus to larger pots, as they do not like to be pot-bound. Grapes which are slow to ripen can be hurried along by removing more leaves around the bunches. A final batch of viola and pansy cuttings may be taken and inserted in pots in the cold frame.

Gradually cut down watering on fuchsias, but do not let them dry out completely. Treat cyclamen to a fortnightly feed. Watch the temperature, do not forget a sunny winter's day can soon raise the temperatures to over 100 degrees F - and this can be devastating to resting plants.

Lawns Carry out any final repairs, rake and scarify, brush over with a fine compost and treat with autumn, winter lawn fertilizer. This will give you a fine green sward in the spring.

November

Flowers. Tidy up herbaceous borders, cutting off all dead or dying leaves and stems, and dig over any vacant plots. If you have not fed the ground recently then a good dusting of bone meal will work wonders - work it into the top 2 inches of soil and the worms will do the rest. It is a good time to half-prune roses, which stops the wind from rocking them. You can prune them down properly in the spring when the frost has done its worst. It is also a good time for planting roses. Dig a large enough hole to spread the roots in a natural formation, and fork a bit of bonemeal or better still rose fertiliser into the bottom of the hole (but don't let the roots lay directly on the bonemeal). Fill up the hole making sure there are no air pockets, firm them in well but leave the final 2 inches or so loose. Check dahlia tubers in store, cut out any rotting parts and dust with flowers of sulphur. The planting of hyacinth and tulips should be completed this month. Check over bulbs planted in pots for winter flowering - one or two of the most forward can be brought into the light but keep them cool (60 deg F max), and make sure they have plenty of root formed. Time to plant honeysuckle, clematis, jasmine and ornamental vines. If they are dry when they arrive give them a soak in tepid water and drain them for an hour or so before planting them, and tie them to the supports straight away. Herbaceous and moisture-loving plants can be planted now. Split up perennials like michaelmas daisies, gold rod and scabious, replant the best bit (usually the outer portion) and pot up any surplus for the charity plant stalls. Don't forget to wrap up the tender plants or bring them indoors before they get nipped by frost.

Vegetables. Clear any plots of old veg and roughly dig over leaving the clods big so that the frost can get to them. This is one way the frost helps the gardener in breaking down clay soils and killing off any nasties. Stake up brussels sprouts and broccoli, removing any yellowing leaves. Cover any green crops with netting or fleece to protect from birds, watch out for the dreaded slugs and deal with them pronto. Keep the old hoe busy eliminating weeds before they take over. Lift and store Jerusalem artichokes, also a few roots of parsnip, as they will be difficult to dig up if the ground becomes frozen. Lift a few crowns of rhubarb for growing in the greenhouse. Leave them on top of the ground for a week or so before taking them inside, the crowns can be close to one another and

light excluded (a grow bag would do if you do not plant in the ground).

Trees Fruit and Shrubs. Move container-grown evergreens to a sheltered spot out of the wind; and any deciduous hedges etc can be cut back at this time. Fruit trees (especially those trained against a wall) can be pruned, but after pruning make sure they are tied back securely. Make sure that all supports for your fruit stock are in good condition and the wires etc are not biting into the stems or trunks. Prepare ground for planting all kinds of fruit trees, bushes and canes, dig it as deep as possible and work in some manure especially if you are planting blackcurrants. When pruning trees watch out for canker (a crusty like scab on the branches), cut it out with a sharp knife and paint the wound with a tree paint. Look over fruit in store - use any suspect ones or discard them.

Greenhouse and Indoor Plants. If you have not already done so, give your greenhouse a good fettle, remove all those dying plants and any other debris that is lying around. Give the glass a good wash with greenhouse cleaner, making sure none goes on the plants; and fix up the insulation. One of the most important things at this time is getting a nice balance of temperature and ventilation. The temperature on a sunny day can reach 100 deg F which would build up quite a damp atmosphere if adequate ventilation is not provided. Most plants do not like it. So keep a wary eye open and try to avoid these conditions. If you are a summer greenhouse gardener when the greenhouse is empty in the winter (shame on you) then a good wash down with Jeyes or similar is all that is required, and do not store tools etc in the greenhouse, as this reduces their life quite considerably. Cyclamen and winter flowering primulas are ready to come into flower and will benefit from a feed once a fortnight. Remember that calceolarias must be quite dry before they are watered - this rule applies to most pot plants except those that are in full flower or those that are growing rapidly in a heated greenhouse. Seedlings and cuttings should be kept on a shelf as near to the glass as possible. Plant indoor lilies, gladioli and hyacinth to flower in spring (you see there is no need to have an empty greenhouse). Prune flowering maple, musk, fuchsias, oleander and plumbago. Try to keep the atmosphere around indoor plants, especially those near radiators etc, moist by placing them in a tray of damp pebbles (or glass chips which look a bit posher) and spray-mist them occasionally (except for the hairy leafed specimens). Do not over-water plants at this time, and avoid spilling water about in the greenhouse and cold frames.

Lawns. As usual keep lawns clean and well raked, scarify and give them a feed of autumn winter fertiliser. Keep off when they are covered in frost. In mild spells you can dig and prepare new lawn sites ready for sowing or turfing in spring. Cheerio for now,
Tom.

Mary McGee

Popular Totley post lady Mary McGee died in September after losing her battle with cancer. She was well known to many residents running her round with the heavy post bag. She always had a cheery word and we will miss her. Our thoughts with her family and many friends.

One man went to mow...
...but his mower wouldn't go!

Now is the time to call

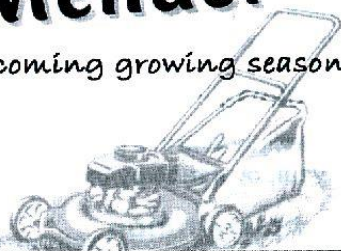
Mower Mender

and be ready for the forthcoming growing season

A friendly local business
servicing all makes of
garden machinery

phone: 0114 236 6958

mobile: 0781 2211149



Blade Sharpening and
Collections and Delivery Service Available



Got a computer?

Having Problems?

Is it running slow? Stops responding?
Having problems running the latest games
or applications? Broadband installation?

Give me a call!

I'm available for home visits at any time
including evenings and weekends. I can
also suggest upgrades to improve perform-
ance, or even build you a system to your
specific requirements.

Tim Brown

Building,
Installation,
Upgrading and
Troubleshooting
Computer
Systems
Over 25 years
professional
experience

Phone: 0114 2472619 Fax: 0870 7060080

Mobile: 078 17464703 Email: service@timbrown.plus.com



ECCLESALL FIRST AID TRAINING

Do you require certification for work?
Want to learn lifesaving skills to protect the ones you love?
Our experienced and professional trainers are accredited to
deliver fully certificated qualifications in;

Adult and Paediatric First Aid

For a free quote and advice call
Tel - 07742068599

Web - www.ecclesallfirstaidtraining.co.uk
Email - info@ecclesallfirstaidtraining.co.uk



253 Baslow Road, Sheffield, S17 4DU
Tel: 0114 2360 583 Mobile: 07801 346 455

Tristan Swain

Garden Services and Maintenance
Established 1984

Unit C4 Sheaf Bank Business Park
Prospect Road Heeley
Sheffield S2 3EN
Tel/Fax: 0114 255 4689
Mobile: 07831 802 539
Email: tristan@tristanswain.co.uk



www.tristanswain.co.uk Public Liability Insurance Waste Transfer Licence

Horizon Electrical

Faults, Rewires, Sockets, Lights,
Cooker Points, Electrical Showers,
Phone Points, Security Lights

No job too small

Fully qualified with friendly advice

Ring Totley 236 4364 or
Mobile 07772 483154



yogaq@hotmail.co.uk
0114 236 9943
07708 996984

Body, Mind & Breath
enjoy the union of yoga

YOGA CLASSES in TOTLEY & RANMOOR

Rachel Quinn BWY Dip



BRADWAY INSTALLATIONS

Kitchens, Bathrooms.....and everything in
between

- Complete Kitchens - Installation or supply and installation
- Kitchen Refits - Replacement worktops/sink/hob etc. Worktop / cabinet repairs
- Bathrooms - Cloakrooms - Domestic plumbing - Tiling Laminate / Vinyl flooring

All work undertaken is fully insured and guaranteed

Ring Peter - 0114 236 5995
Mobile - 07766 411355

The older the better!

I've been spending time recently with the 1839 Totley Tithe Schedule and Map that is kept in the Derbyshire Record Office at Matlock. The twenty or so pages of this large, rolled, document are a bit larger than A1 and arrive from the archive store wrapped in sugar paper - that rough, dark blue paper that we used to be given at school to paint on, but I'm sure was once used to wrap sugar. The Tithe Schedule is a hefty document and when unrolled, the sides have to be held down with weights to stop them flipping back into the roll. The pages have become almost translucent with age and use. I describe all this because for me the intimacies and personality of old documents are of almost as much interest as the contents.

Tithe maps and schedules were drawn up all over the country in response to the The Tithe Computation Act 1839. Prior to this act, tithes or tenths of local production could be paid in kind, and although many parishes had long since allowed tithe payment to be made in cash, the Act formalised this change. And a good thing it was too for us modern local historians as these documents are a valuable source of information about property ownership, field patterns and land condition and use. Great care was taken with the accuracy of the maps and schedules and both had to be certified by commissioners.

The Totley Tithe Map and Schedule identifies all the fields in the parish by number and name; the owners and tenants of the fields and buildings are named. Written in a large clear hand and straightforward language, it is easy to understand and read; none of this frowning over a tiny copperplate hand that was never meant to be read with ease. Here is a ledger of the holdings and dues owed in clear and unambiguous language.

Its size and clarity suggest it might have been placed at the centre of a gathering at which its contents were discussed. No squinting necessary or elbowing others out of the way in order to read the text.

The close association in this period between Totley and Holmesfield led me on to look at the Holmesfield Enclosure Award of 1816. Slightly smaller than the Totley Tithe Schedule and in book form, it has beautifully marbled pages front and back and is written in a large, bold hand. It lists land and property holdings, and names their owners and value. The final statement of the document, written in a different hand, illustrates that both these documents only fulfilled their purpose if they were known about and accepted by the local people. The statement reads...

"I attended holy service at Dronfield church on Sunday the twelfth day of November one thousand eight hundred and twenty and heard this award proclaimed therein and afterwards on the same day at Holmesfield chapel and heard this award proclaimed therein." signed William Walker.

William Walker was an attorney practicing in Chesterfield and one of the commissioners overseeing the preparation of the Holmesfield Enclosure Award. In the blank space under his signature he took the precaution of adding a couple of rows of X s so that nothing else could be added.

There is much talk at the moment about transparent government, and here we see transparency nineteenth century style. Clarity and accuracy served the community.

If you would like to find out more about the history of Totley, come along to one of our meetings and visit our website at www.totleyhistorygroup.org.uk

Negotiations are underway with Derbyshire Archives to allow Totley History Group to put a transcript of the Totley Tithe Map and Schedule onto its website.

Christine Shimell

The Brian Edwards' Collection and Totley History Group

For people in Totley, Brian Edwards is Mr History. Over the years he has published an armful of books that are required reading for anyone with an interest in the history of Totley. There cannot be many households in Totley who do not own at least one of his publications.

Brian's search for Totley history took him to libraries and archives all over Yorkshire, Derbyshire and the Midlands. And he talked to everyone; gathering snippets of local memory along with copies of documents, house sales and other records of local life. Over the years his research material accumulated until it filled a large bookcase and a well-packed card index box.

It had always been Brian's aim to involve local people in his research and his passion for local history inspired the setting up of the Totley History Group. At the inaugural meeting of the group in January 2008, Brian explained the process of gathering local history and, inspired by his example, many of us took our first steps into local history research.



Ill health over the last few years forced Brian to cut back and then abandon his research work, but his determination to share the information he had gathered remains undimmed. He and the management committee of Totley History Group began discussions at the beginning of last year to find the best way to store and share his archive of research. We are all concerned that the collection should be preserved for future generations and that anyone interested should have access to his work. Thanks to the generosity of a local resident, we found a home for the Edwards' Collection that will keep it safe and allow regular public access.

The History Group will open the Edwards' Collection to the public in late October. Details of the opening times will be advertised nearer the time. With the help of a librarian, we are creating a limited online search facility on the Totley History Group website for visiting researchers.

We are indebted to Brian for the tenacity with which he pursued his research and his generously in loaning it to Totley History Group. We hope his collection will inform and inspire generations of local historians.

Christine Shimell

Burbage Valley

The site of a conifer plantation in one of the most popular areas of the Peak District is going to be transformed as part of a conservation initiative to restore declining woodland and improve the landscape for local people and wildlife.

The 83 acre Burbage plantation, owned by Sheffield City Council, was originally planted in the Burbage Valley in the early 1970s and is well-known to the many people who climb, walk and relax in the Valley. However, the plantation has not grown well and now needs to be removed as it has reached maturity. The current woodland provides few benefits for wildlife and is in significant decline. Trees are beginning to blow over causing health and safety concerns and a fire risk.

Ted Talbot, Woodland Manager for the City Council, says: "Work on removing the trees is being scheduled to start at the beginning of September and, weather permitting, should be completed by Christmas. Some of the site will then be restored back to moorland, while the rest of the area will be replanted with native oak and birch woodland, benefiting a range of wildlife."

The project is funded through the Dark Peak Nature Improvement Area, a large-scale conservation initiative which was created to improve, expand and link up existing wildlife-rich areas within the Dark Peak including Burbage Moor. Ross Frazer, Project Manager for the Dark Peak Nature Improvement Area, says: "The Burbage plantation has been part of the landscape of the valley for several decades but it was never meant to be a permanent fixture; it was originally planted as a crop.

Once the site has been cleared, it will look much like it did 40 years ago but in another 20 to 30 years there will eventually be a new native woodland much like Padley Gorge along the valley, which future generations will be able to enjoy.

The removal will take place after the holidays and we will only be working on weekdays to minimise disturbance."

'Dumpit' more often

Sheffield Council have announced extended opening hours at Blackstock Road 'dumpit' site, which is now to open for an extra two days a week in an effort to spread the load and reduce queues of cars. The recycling centre will now open six days a week, being closed only on Wednesdays instead of Tuesday to Thursday.

Three days opening a week were taken from all the city's recycling centres last year in the face of central government grant cuts, which has resulted in the traffic, already a problem at the Blackstock Road site, getting worse. Critics pointed out that the changes in opening times were made at the same time as the switch to fortnightly grey bin collections, which was a mistake.

Even with the restricted hours, Blackstock Road processes as much waste each year as the Deepcar and High Green sites combined, despite being open for fewer hours a week. Sheffield's dumpit sites handle around 26,000 tonnes of waste a year, recycling some 74%.

Of the other dumpit sites around the city, Beighton will now be closed only on Tuesdays, Deepcar on Tuesdays and Wednesdays, and High Green on Wednesdays and Thursdays.

Where now after Community Assemblies?

An update.

Community Assemblies were set up in 2009 after the LibDems won Council control in 2008, replacing the previous Area Panels, but when Labour won control in 2011, their future was put under review. After two years of uncertainty, a proposal that CAs should be disbanded due to costs was put to public consultation, and as a result, funding for the original CAs was withdrawn when Council budgets for 2013-14 were finalised. This came as no surprise to most citizens who felt that CAs had not fulfilled their promise of putting them in the driving seat.

An alternative proposal on what should replace CAs was put to public consultation over the past few months, and although the response was low, this was eventually endorsed by Cabinet on 17 July. This proposed ward-based "forums" led by locally elected councillors to allow easier access for ordinary citizens. However this created a framework only, and details would have to be discussed in each of the city's 28 electoral wards between local citizens and their elected representatives.

A smaller Council budget has been allocated to support this slimmed-down "Locality Management", and senior officials have already been appointed, with lower posts to follow. This new structure is intended to be in place by September, but I'm not yet aware of any grass-roots discussion on how this would operate in our ward.

A separate review of Sheffield's electoral Ward Boundaries is about to be launched by the national Boundary Commission, triggered by population shifts since these were last reviewed over 10 years ago, and this could affect any ward-based structures set up in this process. As a preliminary to this boundary review, the Council is now considering the main roles of City Councillors, and how many are required to do this effectively. Their Scrutiny Committee called a public meeting on 11 July, and invited written and verbal evidence from interested parties, which is on their website.

The trend for more community awareness and involvement in local government could be a hot potato, for some politicians fear that if local forums become more knowledgeable, they may raise some awkward questions. But are you satisfied with being kept in the dark, or would you prefer to know more about how decisions are made to spend public money on our behalf?

Alan Kewley

Searching for the Parish family

An enquiry has come in to the Totley History Group website from Alison Denton asking for help in discovering whether Sydney Parish (1887-1959) and his second wife Florence Parish nee Tasker (1894-1977) ever lived in Totley. Alison is also trying to trace their daughter Pauline E Parish (born 1937) who she believes is still alive. Pauline Parish may have married a Derek Watling in Trowbridge, Wiltshire in 1962.

If anyone can help with this query please contact either **Totley Independent** or e-mail enquiries@totleyhistorygroup.org.uk

ROYAL MAIL

Christmas Post 2013

Last Recommended Posting Dates - Personal Customers

Services	Dates
International Services	
International Surface Mail	
Monday 30 September	Africa, Asia, Australia, Caribbean, Central & South America New Zealand
Tuesday 1 October	Far and Middle East (except Hong Kong and Singapore)
Tuesday 15 October	Canada, Hong Kong, Singapore, South Africa, USA
Tuesday 5 November	Cyprus, Eastern Europe, Greece, Iceland, Malta, Turkey
Tuesday 19 November	Western Europe
International Airmail including Airsure® and International Signed For™	
Wednesday 4 December	Asia, Far East (including Japan), New Zealand
Thursday 5 December	Australia
Friday 6 December	Africa, Caribbean, Central & South America, Middle East
Monday 9 December	Cyprus, Eastern Europe
Tuesday 10 December	Canada, France, Greece, Poland
Friday 13 December	USA
Saturday 14 December	Western Europe (excluding France, Greece, Poland)
HM Forces Mail - British Forces Post Office (BFPO)	
Friday 29 November	Airmail to Operational BFPOs
Friday 13 December	Airmail to Static BFPOs
UK Services	
Inland Services	
Wednesday 18 December	2nd Class and Royal Mail Signed For™
Friday 20 December	1st Class and Royal Mail Signed For™
Monday 23 December	Royal Mail Special Delivery Guaranteed™

Sheffield Libraries

Just as we are going to press, news broke about Sheffield library proposals. Sheffield Council plans to retain 11 branch libraries as 'hubs', and reduce or remove funding from the rest. Up to 5 libraries could be supported as community-led joint ventures, but the remainder, including Totley and Greenhill, face closure unless an independent group is willing to run them. A public consultation on these proposals takes place over the next few months starting in October. Further information is available on the council website and there is a 'Save Totley Library' Facebook group.

Quote

"It is easier to criticise than to invent". Norman Victor Holden, 1914.

Music Festival 2013

The 5th Totley Music Festival took place between Sunday 14th and Saturday 20th July. Musically, the week was really enjoyable, with jazz, folk, rock, blues and pop performances by an impressive array of musicians and bands (thanks everyone!). As always, the variety cabaret show at Mickley Hall drew a large audience for what was probably the biggest number of performers so far!

Once again we were supported financially by the Totley Residents Association, Totley Open Gardens, the Totley Independent, and the Heatherfield Club - our thanks to all these organisations, and also to all the individuals who supported the Festival in various ways.

We had made a special effort to swell the ranks of audiences this year by cunningly-placed features in the 'Independent' during the year, and by leafleting all Totley houses nearer the week itself. Despite these tactics, audience numbers could have been better for these events - especially bearing in mind that they were all free! Looking ahead to next year, it might be that we should produce fewer events over a shorter period of time.

Watch this space - and, as always, let us know what you think about the TMF by writing to us at totleymusicfestival@talktalk.net. Specifically, we have two questions for you - first, what kind of music would you like to have, and second, what would get you off the settee and out to some events to make the festival sustainable?

Phil and Sue

Totley Primary School Blog

September 2013

So, a hectic start to the new academic year at Totley Primary School, and lots of exciting developments to report. We have, of course, welcomed our new starters who walked up the school drive looking extremely smart in their uniforms ready for their first days of school life. So far they have settled in incredibly well, and I am sure we will share many memorable experiences over the next few years!

There are a number of interesting events planned over the next few weeks and both our Year 5 and Year 6 children will have completed residential visits by the time this article is published. The Year 5 residential is to Parson's House (near Fox House) and the Year 6 children are camping at Thornbridge at Great Longstone. I look forward to telling you all about our experiences in my next article.

In other news, the Governing Body took the decision last term to consult with parents and staff over the conversion to Academy Status and in doing so, join with King Egbert and Newfield School to form the Mercia Academy Trust. We have been very interested to see what a positive impact Academy Status has had on King Egbert and we are convinced that Totley Primary School could also benefit hugely from making this move. By working in partnership with King Egbert, I am certain we can have a consistent and long term impact on the education of our children in the years to come. There is a lot of paperwork to be completed over the next few months, but the wheels are in motion and we hope to convert in February or March 2014.

Chris Stewart
Headteacher

TOTLEY PRIVATE HIRE

EXECUTIVE CAR TRAVEL



AIRPORTS AND LONG DISTANCE

PROP - PAUL SOUTH

24HR SERVICE

Tel: 0114 2839692

Mobile: 07974 355528

Email: PAUL.SOUTH1@TESCO.NET

R.M.M BUILDING SERVICES

25 YEARS EXPERIENCE

All types of building work carried out including- Drop kerbs, block paving (drives, paths, etc), extensions, general building repairs and maintenance.

Phone Rob on- Mob- 07906108567

Home-2352190



Tiling, Plastering, Plumbing & Complete Bathroom Fitting Service

Tel: 0114 4182346

07738 688807

- ◆ Under Floor Heating
- ◆ All Aspects of Home Improvements & Maintenance Work Undertaken
- ◆ Competitive Prices
- ◆ NVQ Qualified
- ◆ No Job Too Small
- ◆ Fully Insured & Guaranteed

A1tilingandplastering.co.uk
25 Five trees Ave, Dore, S17 3LW



Gardens cleared and maintained, Lawns mowed, Turfing, Tree felling & pruning, Hedges trimmed & reduced, Pond maintenance, Fencing etc.

for free quotation call

Chris on: (0114) 2746158 Mobiles: 07976072785 or Richard on: 07789497104

8am-6pm mon-fri

HazelBarrow Farm, Norton S8 8BA



- Central Heating,
- Domestic Plumbing,
- Glazing, Double Glazing and Glass,
- House Maintenance,
- UPVC and Wood Windows & Doors



Mini Digger & Driver, Muck Shifts, Footings Etc.



Carpenter and Joiner

Fitted kitchens, sliding wardrobe doors with bespoke interiors, internal and external doors supplied and fitted, new handrail and spindles, laminate and wood flooring, locks, architraves, skirting board, stud walling, boxing off etc.

For a reliable and quality service

TEL: 0114 236 4778

MOBLIE: 07971 528149

M.Scriven
(FRUITERAMA)

MARTIN SCRIVEN

HIGH CLASS FRUIT
& VEGETABLES

37, Baslow Road

Tel. 236 7116

Orders Delivered

G W A Tiling

Wall & Floor Tiling

Bathrooms Kitchens Wetrooms

No job too small, Best Quality work

George Allen

Mobile 07801 790973

Himalayan Balsam Bash

Himalayan Balsam was introduced into the UK in the 19th Century, and has since escaped to become a nuisance in the wild, especially in damp areas alongside streams.

It is the tallest annual in the UK, growing up to 3 metres and is a very attractive plant with a distinctive purple pink flower. Each plant can produce up to 800 seeds which are explosively released when the seed pods are mature, capable of projecting the seeds 7 metres. The problem with Himalayan Balsam is that it crowds out native plants and spreads rapidly.

However it is easy to control. The plant has very shallow roots and so pulls up very easily by its distinctive bamboo-like stems. The pulled plants have to be left in piles to decay on site to prevent the risk of transmission elsewhere.



During late June and July volunteers have helped Totley Brook Residents Association in clearing as many of these plants as possible from the Totley Brook Open Space stream area, before it had chance to form flowers and seeds. The Council are mapping the locations of this plant and are trying to encourage private land-owners to also control it.

Dawn Biram

Himalayan Balsam

My husband and I read with delight the article by Dawn Biram (reproduced above from Dore to Door) about the Himalayan Balsam Plant.

We live on Akley Bank Close, Dore which is off Grove Road, and our bungalow garden runs down to a stream. We have lived here for four years and each year we have cleared the bank on our side of the stream (Old Hay Brook, the Dore/Totley) to rid ourselves of the plant. The other side of the stream we believe, is land owned by Hallam University. In order to clear our side my husband has to put a ladder down, then climb down about 15 feet to the side of the stream.

He is nearly 85 yrs and this is something that he said he could not do this year as he is not very stable on a ladder without me footing it and I am 82. At the moment there are several plants in full bloom and they are further up the bank on the opposite side than there were last year.

There are 4 other cul-de-sacs running off Grove Road - Haybrook Court, Grove House Court, Mountford Croft and Haybrook Court at the bottom of which this stream runs.

We would very much appreciate some help in clearing the banks of this beautiful but very invasive plant. If the other side of the stream from us is not cleared, naturally the plant when it scatters its seeds, re-infects our side each year.

The other problem is, I am told, that the plant destabilises the banks which could cost a considerable amount to repair.

Many thanks for including this article by Dawn Biram.

Yvonne Gutsell

MARTYN KEMP OPTICIANS

HANDS OVER THE COMPETITION

CASH IN SUPPORT OF SRSB

The funding coffers of Sheffield Royal Society for the Blind (SRSB) are £500 better off thanks to the support of Martyn Kemp Opticians (MKO).

The cash was raised by the hot selling of 500 unique spectacle cleaning cloths, not only in MKO's practices across South Yorkshire and at SRSB's centre on Mappin Street, Sheffield but also at the school attended by the seven-year-old boy who designed them!

It was seven-year-old Leo Eaton Taylor who has a visual impairment and won MKO's competition to design the cloths.

Leo, who won a £50 book token, donated by MKO, for his creative genius, enjoys SRSB's regular activity days and often joins his friends, with a range of visual impairments, on the charity's seaside coach trips.

The cash raised through the MKO competition will fund either another SRSB trip or activity event to grow children's and families' confidence through cooking, painting, crafts and games in a safe environment.



Journey planning made easier

Travel South Yorkshire is helping public transport users become more confident and independent by launching new searchable online maps to support them in planning their journeys around the region.

The new interactive maps are designed to help users understand the various public transport planning options available to them for their specific journey.

Designed to help customers find out everything they need to know about local public transport services, the online tools and information available mean you can:

- Access live disruption information by following @TravelSYorks on Twitter
- Sign up to have information about any changes to your bus service emailed directly to you
- Find out when your next bus will arrive at your stop using YourNextBus service either via a text service to your mobile phone or by receiving updates via the website
- Plan journeys with the new, searchable online maps

To access the online journey planning tools and for more information visit

www.travelsouthyorkshire.com/journeyplanning

Hannah Wild, Schoolmistress of Totley and the Jacobean Chair (and who's that girl?)

The Archive and Heritage Collection side of Dore Village Society has a most curious tale to tell.

Recently we have had donated to us two separate items which were both once in the possession of the family of the Reverend Gibson, one time Rector of Dore Church. He is most famous for having written in 1927 a book called 'A History of Dore'. In his book there is a photograph of three items of furniture – a long-case clock, a table and an imposing wooden chair.

The chair has been donated to Dore Village Society by the granddaughter of the Reverend Gibson so that it could come back to the village in which it had belonged.

But now it gets really interesting because the story takes an unexpected twist. At the same time as the chair was being donated we also received an oil painting of the first Schoolmistress of Totley, a lady called Mrs Hannah Wild who is recorded as being the Schoolmistress of Totley School in the 1841 census. She is recorded as being 65 and therefore born in 1776. When the picture was restored, having been in a rather damaged state, it became very clear that when the portrait was painted, in around the 1850s, Hannah was sitting on 'our' chair.



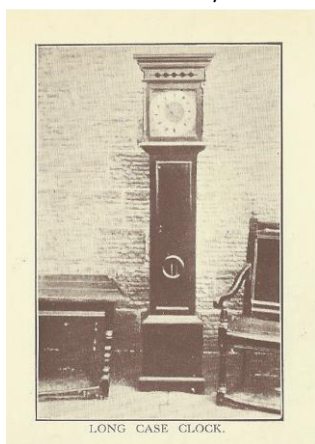
Peter Machan, the Director of Manor Lodge Discovery Centre and a well-known authority on the period, said that no-one was able to absolutely verify that Mary once sat on the chair and did remind me that if the Chair was made in the 1600s Mary had departed the Manor to her execution at Fotheringhay Castle in 1587. However he did agree that both chairs are remarkably similar and did both date from the 1600s. They are in the same style, are of the same quality - although ours is bigger (the two finials on our chair are later additions) - and bear the same mouldings and hand carved shaping.

If the chair in the photograph and our chair are from the same source then we return to likely sources for them. Was the source the D'Ewes Coke family? Peter Machan said that their 'Mary' chair had been in the Turret House at least since the 1700s and had always had the association with Mary attached to it. Our chair has come down through time with an importance attached to it as at the very least the seat of the Schoolmistress.

A mystery indeed, which it would be wonderful to solve. After 400 years it may never be possible to be certain how all the pieces fit together.

More about the Restoration of the Hannah Wild Portrait

Dore resident and fine art restorer Marilyn Mooney worked on the restoration of the portrait. On donation to Dore Village Society it was in a poor condition with flaking paint and damage along the stretchers. We believe that it was not the work of a master portrait



Although it is supposition, the window to the right of her is remarkably like the window of Totley Old School on Totley Hall Lane. We know that the D'Ewes Cokes of Totley Hall endowed the little Totley School in 1827 and they were also very important landowners in Dore, owning many of the fields and property recorded on the Fairbanks maps of the time. But does the story stop there? The chair on close inspection did not look to be merely from the 1850s, so an expert in oak country style furniture was consulted to date it. Imagine our surprise to discover that the chair was considerably older than the nineteenth century and did in fact date from the Jacobean period, placing its time of manufacture round about 1600! Further inspection revealed the evidence of hand-made pegs, hand chiselling on the curved arms and considerable wear and patina on the wood. Great news indeed but now the story becomes even more intriguing. Where had it come from? Who had made it? An imposing piece of furniture such as this would be beyond the finances of most families of the time in the Dore and Totley area.

Incredibly the story twists and turns even more. If you visit the Manor Lodge Turret House in Sheffield where Mary, Queen of Scots was held for many years you will see a chair which legend has it was the chair Mary used when she embroidered in the company of Bess of Hardwick, the wife of her jailer, the Earl of Shrewsbury. See what you think!



painter but probably a journeyman painter who would have travelled around the area. At the time of the 1841 census Hannah Wild was living in the Totley Schoolhouse along with her daughter Jane Wild, aged 40 and her granddaughter Jane, aged 8. The portrait has several mysterious elements in it which Marilyn describes:

'The painting of Hannah is an oil on un-primed canvas 47.5cm x 38 cm and stretched onto a wooden strainer. It was painted in about 1850 when Hannah was an elderly lady. She is painted in a rather stark room with a flagged floor and a window to her left. She has a book on her lap and a pair of glasses. Her foot rests on an embroidered footstool.

The condition of the painting when I first examined it was very poor; the varnish was discoloured and there were many areas of paint loss. This paint loss and large areas where the paint was detaching meant that the canvas needed to be lined. The canvas was attached to Irish linen with a beeswax and resin adhesive; this is a method that has been used for several centuries and consolidates the unstable paint. This was done before any cleaning began as more paint would have been lost in the cleaning process.

The canvas was re-attached to the strainer with copper tacks. After cleaning the areas of paint loss were filled with picture putty and retouched with dry pigment in resin. Finally a varnish was applied.

During my original examination I could detect a faint image of a face to the right side of Hannah. During cleaning this figure began to appear as a girl but only the top half of her was revealed, giving her the appearance of rising from the floor. As there was no over-painting it would appear that she was always meant to be visible, yet intriguingly the bottom of her body had been over-painted. One can just make out where her skirt was; this has become more visible with age as the over-painting has become transparent with time – a term known as pentimenti. The style of dress on the girl seems to be about 1830 which is even more intriguing. Who could this figure be? I don't suppose we will ever know.'

Maybe the clue lies in Hannah's family? Several of Hannah's family are recorded in the 1851 Census. We would be thrilled if anyone can take the story further. Please do contact us.

Dorne Coggins

A Population on the Move

Parts of Sheffield have experienced a population growth of almost 50 per cent in the last decade, according to new statistics.

The number of adults aged 18 or over in Central Ward has grown by 43 per cent, while major increases of 12 per cent have occurred in Burngreave and 9 per cent in Darnall ward, which includes Tinsley.

But populations in outlying areas have fallen, with a 9 per cent decrease in Birley, and 6 per cent falls in Dore and Totley and Graves Park.

The percentages have been revealed by the Local Government Boundary Commission, which is currently reviewing Sheffield's council wards to ensure all 28 areas are of equal size.

Sheffield Council said recommended changes to wards will have to be approved by councillors before they can be implemented.

Sheffield's 550,000 population is due to grow to about 600,000 in the next decade.

A Tribute to Vincent Simpson and to Totley

Many of you will have known Vincent, if only by sight. He was a familiar figure in Totley, waving his white stick in the air as he negotiated the busy traffic on Baslow Road. In 2005 Vincent moved to Totley from Salford, Manchester to be near his daughter and grandchildren, following the death of his wife. He was 82 and had lived in Salford all his life. Such a big move at an advanced age would have phased many, but not Vincent! Despite his years and being registered blind, he threw himself into life in Sheffield, and Totley in particular, with great enthusiasm.

He found Totley a very welcoming and friendly place. With his enduring love of books, he was delighted to find a library on his doorstep with helpful staff who always met him with a smile and a chat. Doubling as a community centre, the library was also the place to also join the history group, attend weekly chairbics and contribute to poetry sessions. It was here he gave his first rendition of 'Albert and the Lion', which went down a storm. There were many more performances, at the Totley Music Festival and other local celebrations and events. Vincent made many good friends in Totley and his love of a pint and a chance to put the world to rights took him to the Heatherfield Club on a regular basis. He told all who would listen what a marvellous place Totley is, with everything he could need close to hand, kind neighbours and beautiful countryside.

Vincent also took part in wider Sheffield life, enjoying events at Blind Veterans UK (ex St Dunstan's) in Fulwood, the Sheffield Royal Society for the Blind on Mappin Street and a 'Chance to Dance' in the City Centre, where he watched his grandson perform. At the Remembrance Parade at the cenotaph, he marched with the Veterans before he was forced to retire to the sidelines in 2011 as his step grew weaker.

Vincent died on 11th July 2013 in the Northern General Hospital after a short illness. He was not ready to go, and was still enthusiastic about all life has to offer. He is my role model for how to live life to the full right to the end, always embracing the positives. Thank you to Totley for receiving him with such generosity and making him feel so at home. Janis Blackburn, Vincent's daughter.

PUMP TRACK

Totley Hall Park

A 4 minute video viewed over 300 times showing the new Pump Track in operation is available on the 'net. Type the link bit.ly/1f5zBse into your browser.

Fly Tipping

Incidents of fly tipping on public and open spaces in Sheffield have more than doubled in the last year according to council statistics.

If you see any tipping, report it to the council on 273 4567 or online via the www.sheffield.gov.uk website.

Christmas Fayre

Mickley Hall, Leonard Cheshire Disability, Mickley Lane are having their Christmas Fayre on Wed 4th Dec 10am-12noon Christmas Carols and mince pies 24th Dec 11am

TOTLEY & DISTRICT DIARY

MONDAYS	COFFEE MORNING , All Saints' Church Hall, 10am-noon TAI-CHI , United Reformed Church, Totley Brook Road, 11.30am-12.30pm RAINBOWS and GUIDES , All Saints' Church Hall, 5.45pm-9pm SLIMMING WORLD , United Reformed Church Hall, 7pm, Jo Elsey: 262 0523 or 07590 545253
TUESDAYS	PILATES , The Old School, Dore, 9.15-10.15am. Phone Teresa Tinklin 07906 312372 COFFEE MORNING , Totley Rise Methodist Church Hall, 10am-noon KEEP FIT & COFFEE , For the not-so-young, Bannerdale Centre, Carterknowle Road, 10.15am, Phone: 258 5364 SHEAF CITIZENS ADVICE BUREAU . Drop in, free, impartial, and confidential. TR Methodist Church, 10am-noon CRAFT GROUP , Totley Library, 2pm
WEDNESDAYS	PILATES CLASSES , Dore Old School, 9.00-10.00 and 10.15-11.15. Contact Caroline - Tel: 0781 722 0324, email caroline1north@btinternet.com, www.pilatescarolinenorth.co.uk COFFEE in the LIBRARY , 10am-11.30am TODDLER GROUP , 10am-11.30am, All Saints' Church Hall. Details tel. Andy Holmes 0114 236 2088 HEALTH WALKS , 10.30am, Totley Library foyer. Phone Tina, The Health Walk Ranger: 0114 203 9335 MODERN SEQUENCE DANCING , All Saints Church Hall, 8pm-10pm
THURSDAYS	BELROBICS , United Reformed Church, 9.15-10am, email: jenny@belrobics.co.uk or telephone: 07816 850132. NCT COFFEE GROUP FOR DORE TOTLEY & BRADWAY , 10am-noon, For mums & babies/toddlers, meeting in various locations, Phone Lucy Street 07837 000405 or email: lucy@streetr.plus.com for further details ROCKCHOIR , United Reformed Church, Totley Brook Rd, 11.30 - 1.00pm. See www.rockchoir.com or call 01252 714276 CHAIROBICS , Heatherfield Club, 1.15pm PUSHCHAIR CLUB , Totley Rise Methodist Church Hall. 1.30pm-3pm. Tel. 236 3157 for further details PILATES CLASS , United Reformed Church, Totley Brook Road, 6.15pm-7.30pm also new class 1.30pm to 2.30pm , Phone Emer Coffey 07792 422909
FRIDAYS	PILATES , The Old School, Dore, 9.15-10.15am, 10.30-11.30am. Phone Teresa Tinklin 07906 312372
SATURDAYS	MODERN SEQUENCE DANCING , All Saints Church Hall 1st Saturday Monthly 8pm-10pm

OCTOBER

SUN 6th CASTLETON FARMERS MARKET, the Village Hall, 10am-3pm
SUN 6th MINIATURE TRAIN RIDES, Abbeydale Road South, First train 1pm - last train 5pm (weather permitting) Car Park closes 5.15pm. www.sheffieldsmee.co.uk
TUES 15th TOTLEY TOWNSWOMEN'S GUILD 'Gardens of Cornwall, Mr & Mrs Thomas, Totley Rise Methodist Church Hall, 10am
WED 16th TOTLEY HISTORY GROUP, Totley Library, 7.30pm, Open meeting, A chance to share and discuss recent research., all welcome
SAT 19th TABLE TOP SALE, Dore & Totley URC, 10 am to 1 pm.
SUN 20th MINIATURE TRAIN RIDES, Abbeydale Road South, First train 1pm - last train 5pm (weather permitting) Car Park closes 5.15pm. www.sheffieldsmee.co.uk
WED 23rd STARGAZING - SHEFFIELD ASTRONOMICAL SOCIETY, Totley Library 6.30pm, details back page
THU 24th SHEFFIELD FARMERS MARKET, 8.30am-5pm, Fargate
SUN 27th FRIENDS OF GILLFIELD WOOD Conservation Morning, 10-12 in the wood with the Council Rangers. Tools and refreshments provided. Get involved! Check the website www.friendsofgillfieldwood.com for further details.

NOVEMBER

SUN 3rd CASTLETON FARMERS MARKET, the Village Hall, 10am-3pm
Thu 14th FRIENDS OF GILLFIELD WOOD Celebration Day and launch of new leaflet about the wood. For further details see poster in this issue (p.5) or www.friendsofgillfieldwood.com.
TUES 19th TOTLEY TOWNSWOMEN'S GUILD, 'Nature's Year', Mr J Lintin Smith, Totley Rise Methodist Church Hall, 10am
WED 20th - SAT 23rd TOADS AUTUMN PRODUCTION, St John's Hall, Cat's Cradle, full details on page 3
SUN 24th FRIENDS OF GILLFIELD WOOD Conservation Morning, 10-12 in the wood with the Council Rangers. Tools and refreshments provided. Check the website www.friendsofgillfieldwood.com for further details.
WED 27th TOTLEY HISTORY GROUP, 'Unmentionable Foundations': The history of undergarments, by Janet Stain. Totley Library, 7.30 pm.
THU 28th SHEFFIELD FARMERS MARKET, 8.30am-5pm, Fargate

DECEMBER

SUN 1st CASTLETON FARMERS MARKET, the Village Hall, 10am-3pm
WED 4th CHRISTMAS FAIR, Mickley Hall, Leonard Cheshire Disability, Mickley Lane, 10am-12noon, Christmas Carols and mince pies 24th Dec 11am
TUES 10th TOTLEY TOWNSWOMEN'S GUILD, CHRISTMAS MEETING - Entertainment, Totley Rise Methodist Church Hall, 10am
WED 18th TOTLEY HISTORY GROUP, 'Victorian Christmas': Susan Deal will tell us how the Victorians influenced Christmas. Totley Library, 7.30 pm.

Mark and Sally Fletcher invite you to

The Grouse Inn

Longshaw

Sheffield S11 7TZ

Meal times:-

Mondays 12.00 to 2.30pm
Tuesdays to Friday's 12.00 to 2.30pm and 6-30pm to 9-30 pm
Saturdays 12.00 to 3.00pm and 6.30pm. to 9.00pm (drinks - open all day)
Sundays 12.00 to 9.00pm
Phone 01433 630 423

R Rose & Co

Chartered Accountants & Business Advisors

Specialists at looking after the affairs of small businesses.

For a **FREE** initial consultation please contact Roger Rose FCA on **0114 281 2331**

From business start-ups and general accounting, to support and advice in business development and strategy, we can assist you in our personal one-to-one service. To find out more please call 0114 281 2331.

213 Derbyshire Lane, Norton Lees, Sheffield S8 8SA
 Email: info@r-rose.co.uk

All Saints Church

Totley Hall Lane

Services in October and November

6th October 10.00am

All Ages All Together

HARVEST - All Welcome

6.30pm. Holy Communion

13th October 10.30AM

JOINT SERVICE AT

KING ECGBERT'S SCHOOL

All Welcome

6.30pm Holy Communion

20th October 10.00am

Holy Communion

6.30pm Evening Praise

27th October 10.00am

Holy Communion

6.30pm Holy Communion

3rd November 10.00am

All Ages All Together

6.30pm Evening Praise

10th November 10.00am

REMEMBRANCE

6.30pm Holy Communion

17th November 10.00am

Holy Communion

6.30pm Holy Communion

24th November 10.00am

Holy Communion

6.30pm Evening Praise

10.00am every Wednesday

Holy Communion

Christians Against Poverty

The words "Loan Shark", "Pay Day Loans". "Credit Unions" have come into prominence recently because there are a lot of people who have found themselves in difficult financial circumstances. Sometimes the reason may be just sheer bad luck or accident and sometimes there is a suggestion of carelessness. Whatever the reason, being in long term debt is very uncomfortable, especially if there are family members dependent on the situation. Once a debt has been incurred it can be extremely difficult to escape.

The debt counselling charity known as "Christians Against Poverty" (CAP) was set up in Bradford in 1996 to offer help to

anyone who finds themselves in financial trouble. There is no judgement as to why the circumstances have arisen but a sincere and genuine desire to help and give hope to the people involved. Each circumstance is different so there has to be an individual answer given privately to the person concerned.

There are now over 200 centres across the country based on local churches and offering free advice to over 20,000 people a year. As the name implies this is seen as God's work for people in difficulties. Many of us want to help in this work either by prayer, by giving money or even by becoming a debt counsellor. Help in any of these ways will be most welcome but also someone reading this may want help for themselves. You can find out a lot more by visiting the web site www.capuk.org. If this is difficult I will willingly put you in touch.

Maurice Snowdon



Christians United

It is all too obvious that Christians can be divided on all sorts of issues. The Church itself is divided into different denominations and that inherent sin makes all of us fall short of the beliefs and values we profess. Our common understanding that God sent Jesus into the world to save us from our sinfulness, to guide us and restore us through His gift of the Holy Spirit and to show us how to receive his promise of eternal life, are unifying factors which far outweigh our imperfections and differences.

For several years now members of the various Christian churches in S17 have met twice a year in the main hall of King Ecgbert's School for a Joint Service to demonstrate our underlying unity and to strengthen our community relationships.

The next such Service will be held at 10.30am on Sunday 13th October. Everyone, whether Church members or not, are welcome to join what should be a Joyful Celebration,

Card Making

On the 1st and 3rd Thursdays of the month there is a card making group meeting in All Saints Church Hall from 1.45pm – 3.00pm. All are welcome.

TOTLEY RISE METHODIST CHURCH

www.totleyrise.co.uk

Forthcoming Events for Autumn 2013

THE BIG WELCOME SERVICE September 22, 10.30am

This service is for folks who haven't been to Church in some while and would like to come but are unsure of what to expect. Come just as you are, relax and share our love of Jesus. You can be sure of a BIG WELCOME

ALPHA COURSE A 10wk course beginning September 30 7.00pm

Alpha is where you can ask your questions such as What is Christianity all about and Who is this Jesus character? Come for food, friendship, faith and fun.

For more information contact John Freeman 0114 2366819

MESSY CHURCH October 5 3.00pm-5.00pm

Every month on a Saturday, and with a different theme each time, Messy Church is an all-age way to help discover Jesus. Come along and give us a try, you won't be disappointed.

For more information contact Rachel at racheltrm@yahoo.com or visit our website www.totleyrise.co.uk

HARVEST CELEBRATIONS October 6 10.30am

A thanksgiving service where we can both thank God that He has provided and share that with others. Any non-perishable food gifts given will go to the Grace Food Bank in South Sheffield and money to Methodist Relief and Development Fund.

WOMEN OF GOD CONFERENCE 24/7 October 12 9.30am-4.00pm

For all women in the S17 area and beyond. A day of wonderful worship, inspiring speakers and an opportunity to meet other women in the area.

Please bring your own lunch. A fee of £5.00 will be in aid of SoulRoots.

MEN'S BREAKFAST October 12 9.30am

The speaker is Bob Hall who will be talking about his life in Music – one of the UK's leading exponents of Boogie Woogie piano. Breakfast will be served on arrival. Please contact Richard Grosberg to book a place 0114 2363157

REMEMBRANCE SERVICE November 10 10.30am Remembrance Sunday Service

SHEFFIELD CITIZENS ADVICE BUREAU Every Tuesday 10.00am-12 noon. A drop in free and confidential Advice Service at the TRM Centre.

Advice on legal, financial, employment, benefit and any other matters.

PUSHCHAIR CLUB Every Thursday afternoon.

Babies and Toddlers 0-5yrs come together with their carers to play and chat in a Christian atmosphere in the TRM Centre.

For more information contact Rachel, our Family and Children's Worker 07912352543

BEGINNERS GROUP

Every Sunday 10.30am-11.45am

A weekly children's group for 3-6 year olds. There will be bible stories, songs, games and a simple craft plus a drink and biscuit. By popular demand this group started in September.

YOUTH CLUB run by SoulRoots of S17 Beginning September 20 7.30pm-9.00pm (A Friday night Youth Club for 14-18 year olds (Years 9-13). info@soulroots.org.uk)

QUIET GARDEN The Quiet Garden is situated at the side of Totley Rise Methodist Church. A place for anyone to visit at any time. Whether it's time to think or just enjoy the peace, come and take a seat in the garden. See the article below.

The Garden is a resource that we offer for individuals, churches, and schools. People are invited to come and sit and wonder about our creative God. It is a place to find peace in the garden's stillness, and an opportunity in the 'busyness' of modern life to lay aside our concerns. We seek to create a place of stillness and beauty amidst the hustle and bustle of

life. You can visit the garden personally any time during daylight hours, or you may want to share an experience with others by taking part in a Quiet Garden day or evening event. For details see visit www.totleyrise.co.uk. The next organised session is Thursday October 10th, 10am-12noon

We hope that by being in this place we can become more in touch with the contemplative side of life and reconnect with nature. The sensory experience gained from nature can enrich our spiritual growth and development.

In 2013 TRM affiliated with the Quiet Garden Movement and we have been focusing on enhancing our garden to become a place of stillness, and a place of reflection on the beauty of God's creation. The Quiet Garden Movement encourages the provision of places where people can set aside time for renewal, contemplation, and prayer. There are currently about 300 Quiet Gardens in 18 countries, and the idea has grown to encompass quiet spaces in churches, schools, hospitals and prisons. The gardens are open to people for stillness and reflection.

1 Grove Road, Sheffield S17 4DJ www.totleyrise.co.uk

KNIT AND NATTER Every Tuesday 12.00noon - 3.00pm at the TRM Centre.

A time to knit and a time to natter. You don't have to be an expert knitter, just keen to make new friends. See article below.

Place: Totley Rise Methodist Church

Time: Tuesdays, noon to 3pm

Activity: Knit, Natter, Craft and Chatter group

This busy and friendly group has been meeting since May 2013 and has been a great success.

The aim is to include more people from the area, even if they are housebound. Housebound should never mean isolated. The group will happily provide wool, needles and a chat for those who cannot travel to the church hall. Young people are also welcome as part of our community. There are skilful, lovely ladies ready and willing to help those new to knitting and sewing.

Many charities benefit from our group's work: Butterfly Wings (still born babies), Sheffield premature baby unit, Christmas shoebox appeal and knitted elephants for the RNIB from whom we have received a certificate of grateful thanks. Members can knit/sew (a sewing machine is available) for their chosen charities.

All the ladies (men also welcome!) love coming. There is no need to stay for three hours - stay for as long as you like.

We offer tea, coffee, biscuits and, most importantly, friendship.

Maxine Walton

Friends Together



Domestic Cook Wanted

Friends Together provides bespoke support to those who need a little extra help.

Our customers, an elderly couple who live in Bradway, are looking for a reliable friendly individual preferable who lives locally to help them prepare their cooked afternoon meal two or three times a week.

They like to eat around 1pm but are flexible on the days and prefer traditional English food. Help may be required at other times but this will be on an as needed basis.

If interested please contact James either by email Jamesbuckley@Friendstogethersuport.com or call 07725 656 018

DRONFIELD LANDSCAPES

Logs and wood chippings For Sale

Ring for details

Chris 0114 274 6158

Mobile 07976 072785

Richard

Mobile 07789 497104

Christmas Fayre Transport 17

172 BASLOW ROAD

**Saturday,
November 16th,
2013**

From 10 a.m. to noon

Gifts, Books, and Cake Stall

Teas, Coffees & Mince Pies

**The Annual Christmas Raffle
and many other items**



**Specialist Adult & Paediatric Neurological
Physiotherapy, Occupational Therapy &
Speech Therapy.**



- Acquired Brain Injury
- Spinal Cord Injury
- Parkinsons Disease
- Stroke
- Epilepsy
- Cerebral Palsy
- Multiple Sclerosis
- Fatigue Syndromes
- Balance and Co-ordination Problems
- Amputee Rehabilitation
- Many Other Conditions

- Hydrotherapy
- Electrical Stimulation
- Gymnasium Work
- Splinting
- Saebo Assessments and Fittings
- FES Bike Programs
- Cognitive Testing
- Carer Training
- Equipment, Accommodation and Aids
- Assessments
- Elderly Rehabilitation

Clinic & home visits available - T : 0114 2353 150
E : info@morerehab.com - W : www.morerehab.com



GWS



Technology Solutions

PC Problems/ Repairs/ Servicing No Job Too Small
Wireless & Internet Setup PC Setup/Data Transfer
New PC's/ Laptops & Upgrades Safe PC Disposal
Reconditioned PC's & Laptops available Tuition
Software/Hardware supplied & installed
For All Your PC Needs

Guy Senior

Phone: 0114 2352662 Mobile: 07890030453

Email: guy@gwstech.co.uk

Web: www.gwstech.co.uk

GWS, 5 Conalan Avenue, Bradway, Sheffield S17 4PG

Update on the Streets Ahead Improvement Works in the Totley zone

We are working hard to complete the improvement to the roads, pavements and street scene in the Totley area. However as I am sure you will have realised, we have been experiencing delays.

Street lighting has encountered significant technical difficulties across the city but we are now progressing with the works in the area. Once the street lighting has been fully installed we will start resurfacing the footways.

Mickley Lane is due to be resurfaced at the end of September once the kerbing replacement work has been completed.

***All dates are subject to change as influences such as severe weather or unforeseen additional works can delay the schedule.**

Temporary signs will be displayed in the area five days before the road resurfacing work starts, confirming the start date and expected duration of the work. If it is necessary to change these arrangements the signs will be updated accordingly.

Work has been planned to minimise traffic disruption and we intend to do as much as possible outside peak travel periods.

We are coming to the end of these highway improvements and are keen to find out what people think. A number of properties in the area will receive a Highway Scheme Feedback Survey. The survey gives residents and business owners the opportunity to tell Amey what they think about different aspects of the works including information about the work,

impact of the work and customer services. Comments and suggestions collected from the survey will help Amey improve any future schemes.

If you are not selected to complete a survey you can still feed comments and suggestions through to Amey via the council website at www.sheffield.gov.uk

Thank you for your co-operation and apologies for any disruption caused by these works.

You can keep up-to-date with the improvements taking place at www.sheffield.gov.uk/streetsahead or @scstreetsahead on Twitter. If you would like any further information or to discuss any issues, please contact us on 0114 273 4567, email streetsahead@sheffield.gov.uk

Moiria Coad

Assembly Steward Streets Ahead

Stargazing for Families with the Sheffield Astronomical Society

At Totley Library. Wednesday
23rd October 6.30pm Children
and Adults WELCOME.

Admission Free. To book a place 293 0406 or call into Library! Totley.library@sheffield.gov.uk

Have you or your family ever looked up at the night sky and felt slightly lost? Let the Sheffield Astronomical Society guide you with a taster session on stargazing. Suitable For All Children And Grown Ups too!!

Piano/Keyboard~Guitar~Singing~Flute
Theory & GCSE Coaching

MUSIC TUITION

SOUTH - WEST SHEFFIELD

Experienced & enthusiastic tutors

All styles, all ages - beginners welcome

Exam work or just for fun!

Please contact:

KARIN FINNEY

0114 258 3397 ~ 07854 747153

totetokarin@hotmail.com

design **etc.**

your local full service
design agency ...

corporate branding

stationery

brochures

advertising

web design

Call us on 0114 2622130

e craig@designetcetera.co.uk w designetcetera.co.uk

or call in at 61 Baslow Road, Totley Rise. S17 4DL

Editor: Ian Clarke

Tel. No: 235 2526 or Email:
editor@totleyindependent.co.uk

Advertising & Distribution:

John Perkinson

Tel. No: 236 1601 or Email:-
advertising@totleyindependent.co.uk

Proof reader: Phil Harris

Items for publication may be left or sent to:
2, Main Avenue, Totley, Sheffield, S17 4FG

www.totleyindependent.co.uk

PRINTED by DESIGN ETC, TOTLEY RISE

TOTLEY INDEPENDENT FOR December/January

The next issue of the Totley Independent will be available from the usual distribution points on

SATURDAY 30th November
COPY CLOSE DATE for this issue
will be

SATURDAY 9th November

Published by Totley Independent CIC. Totley Independent is a registered Community Interest Company, number 07750166. We welcome letters about local affairs and will publish as many as possible. Items will not be considered that are submitted anonymously. The views expressed are not necessarily those of Editor, editorial staff or the Totley Residents Association and must not be attributed to them. © Totley Independent 2013