

# TOTLEY INDEPENDENT

PUBLISHED CONTINUOUSLY SINCE 1977

www.totleyindependent.co.uk

APRIL/MAY 2013

No. 361

20p.



## WARD FORUM

**Totley Hall Park.** The new **pump track** (photo above) was opened for use on Friday 1st March. It was being well used on the following Saturday & Sunday, by young (a three year old) & old (40+ year olds). Two older mountain bikers who came to look at it said they were too scared to try it - didn't want to be shown up by the three year old, I think! The novelty of it brought bikers from Crookes and Eckington, (who want to build one for their village), but most of the users to whom I spoke were local to Totley & Bradway. Funding came from Cotic Bikes, Big Stone (supplier to Cotic), the Freshgate Trust, the Sheffield Town Trust and the South West Community Assembly - our appreciation to them and the involvement of our local councillors.

**The Table Tennis pad** is in place, and we await the OK from the builders before the table is put in place, which we hope will be before the end of the month. A pair of bats with balls will be provided, but we ask users to bring their own if possible. I'm told that a professional blade (the wooden bit) costs about £160, and the rubbers cost around £50 each. The "Ping" ones that we will provide, (courtesy of the English Table Tennis League) will not be at that price! Totley Residents Association has offered to supply some IF any go missing! The table was provided free of charge via the Sheffield Table Tennis League from the English Table Tennis league; and the pad was paid for by the South West Community Assembly. We will miss the Assembly it when it goes later this year as a result of financial cuts.

**300 Daffodil Bulbs,** planted by the Rotary Club of Sheffield Vulcan to complement the trees, are in bud. The trees were supplied by Parks and Countryside, and planted jointly by Rotary Members & Park Rangers, under the supervision of the Forester.

**Cable Laying.** Interserve has been laying a new high-capacity electricity cable from the main substation at Jordanthorpe to the smaller sub station by the railway bridge. The trenches have been protected by blue barriers. A problem arose on Wollaton Road when the contractors reduced the entrance to

*continued page 8*

## TOTLEY RESIDENTS ASSOCIATION

**AGM - Totley Library - Monday 15th April 7pm**

## **Move Over Supermarkets... Scriven's: Selling Quality Produce In Totley Since 1967**



**Photo: Martin Scriven outside the family business**

### **SCRIVEN'S HISTORY**

- ❖ Scriven's first established in Meersbrook and run by father John Scriven
- ❖ 1967 John sets up Scriven's in Totley
- ❖ 1970 Scriven family relocate to Totley
- ❖ 1980 Martin Scriven takes over and continues the family business
- ❖ Early days: at one stage Scriven Enterprise owned the Green Grocer's, the Florist's and another grocery store which is now the Deli's cafe
- ❖ Current day: going strong with more customers than ever and in May Martin is celebrating 33 years of running his family business
- ❖ Interesting fact: Martin is a huge Sheffield United fan and has had a season ticket since the age of 6!

Figures for the British high streets in recent years have highlighted the dramatic decline of traditional shops. The closures highlight the "slow death" of the British high street, caused by the growing power of supermarkets and the increasing costs of running an independent business. However, recent incidents such as the 'Horsegate' saga which is continuing to gallop on and on (excuse the pun) with more outbreaks week after week, beg the question whether we really know what is put into the food products we buy.

***Continued Page 4***



### **Friends of Gillfield Wood**

[www.friendsofgillfieldwood.com](http://www.friendsofgillfieldwood.com)

**Events for April and May, 2013  
ALL WELCOME**

**7.30p.m. Tuesday 9 April, Totley library**

A short AGM with reports and election of officers and committee, followed by:

An illustrated talk by Danny Udall, Estate Manager of the Eastern Moors Partnership (RSPB, NT and Peak Park).

An update on the management of the moors close to Totley, including Big Moor and Totley Moss.

**10a.m. Sundays 24 April and 26 May,  
Gillfield Wood**

Practical conservation work with Sheffield City Council Ranger Service.

It is your local wood, come and join us.

**Thursday 16 - Saturday 18 May  
Sheffield Bioblitz - with Sorby Natural  
History Society, Gillfield Wood**

Wildflower I.D., bug hunts, moth trapping, count creepy crawlies! Bird walks and more.

*For more details and contacts, please see article in this issue.*



### **FORTHCOMING EVENTS**

**WEDNESDAY 24TH APRIL**

**TOTLEY LIBRARY, 7.30PM**

**AGM**

**£5 ANNUAL SUBSCRIPTION DUE**

**FOLLOWED BY DORE/TOTLEY POSTCARD SLIDES**

**ALL WELCOME**

**WEDNESDAY 22ND MAY, 2PM**

**VISIT TO THE CUTLERS HALL**

**SEE LOCAL NOTICE-BOARDS FOR DETAILS**



## Transport 17

Well, well, I honestly thought that we were

seeing the last of the snow when I wrote my last article, silly me. We were actually closed for a whole week and odd other days. I do hope that by the time you are reading this we will have seen the end of this horrible weather. We do our best but even with all the efforts of our valiant volunteers we cannot combat weather like we have been experiencing. Normal service will be resuming soon, we hope.

Thank you to all the people who attended our Coffee Morning. Considering the lateness of the publicity, for which I apologise, (it was due to a misunderstanding), many of you turned out. On the day we raised £135.20 and we received a further £30 in donations to the office after the day. Stuart, the landlord of the Cross Scythes, has offered to run a coffee morning every 3/4 months for us. so watch this space. You receive a lovely welcome from his staff and the cakes are delightful. A big thank you to Stuart and his staff for their generosity.

I hope you are all keeping fit and well and that by the next missive we really will have seen the last of the snow (2 months - it has to have gone doesn't it?!?!?)  
Felicity Revill, Chair

## Totley Scouts

Sainsburys are again giving out Active Kid vouchers when you shop with them. Please collect them and pass them on to the Scout group. We use them to swap for valuable equipment for Scouts. Last year we concentrated on renewing kitchen equipment such as pans, knives, chopping boards, can openers etc. With your help we can obtain even more. Either hand them to someone you know who is involved with scouts or simply post them through our letterbox. Thank you.

We recently held our bi-annual Antiques Fayre at St Johns Church hall. It was again a great fund-raising activity for us, as well as being an enjoyable day for those involved in helping.

St George's day is coming up. St George is not only the patron saint of England but is also the patron saint of scouting. Our whole scout group will be on parade on 21st April and marching to Totley All Saints church to celebrate.

In past articles I have regularly asked for adults to help run activities for the scout group. We have been successful in getting extra help but always need more. But the ethos of helping is also taken on by our Scouts. Many regularly volunteer to help in the community and scouting. This month I want to focus on two scouts who volunteer and help with the younger children in Beavers. Beavers are aged 6-8 years old. Harry and George both aged 12 years enjoy scouting so much that they want to put something back. As well as attending Scouts on a Friday evening they help out at Beavers on a Tuesday evening. Harry started several months ago by helping at the Beaver group at the United Reformed Church. When George heard how much Harry was enjoying volunteering, he decided to volunteer too. George has started helping at the Beavers at Totley Scout Group. That way both Beaver colonies are getting welcome help. And Harry and George are getting a valuable life experience.

Richard Frost, Chairman, 1st Totley Scouts  
TotleyChair@aol.com  
0114 236 3603

## TRA Latest News

**February Luncheon.** On February 6th we hosted a luncheon for a group of senior residents of Totley. The event was originally to take place at The Fleur de Lys; however last minute problems with the gas



supply made this impossible. Our warmest thanks to landlady Alex of The Fleur and the staff at The Cross Scythes for saving the day by arranging for the transfer of the event. Transport 17 rearranged the dropping off point with no qualms. What a wonderful example of generous co-operation between local businesses to ensure our success.

Everyone tucked into a lovely two course meal, we had a free raffle with prizes kindly donated by the business community and were brilliantly entertained by Len Capper in which we all joined. We look forward to hosting more of these functions.

**Farmers' Markets.** The next three Markets for 2013 will be 7th July, 29th September and 15th December. Please support these great days and invite all your friends. We have a large database of stallholders; however it is good to have variety and welcome new faces. So if you or anyone you know would like to join us, please get in contact.

**TRA Annual General Meeting.** We would like to remind you that the AGM will take place on Monday 15th April at 7.00pm in Totley Library. Let's have a really good attendance and achieve many positive things in the year to come. If you would like to join the Committee and contribute your ideas, you will be most welcome. We meet on the 2nd Wednesday of the month.

**Betty Higgins.** On Wednesday 30th January we lost a tireless worker for the Totley Community and a well-loved friend. It was heart-warming to see the number of mourners who came to celebrate her life at her funeral. Betty was straightforward, caring and giving. She is sadly missed. Our sincere condolences go out to her husband Jim, her three fine daughters and her family.

Hetty Moran. TRA Secretary



## Councillor Surgeries

### Liberal Democrats:

2nd Monday in the month 6.00-7.00 p.m., Totley Library, Baslow Road and 2nd Saturday in the month from 10.30 a.m. to 12.00 noon, Dore Old School Hall, Savage Lane, Dore Contact details:

Keith Hill 235 2289 Email: keith.hill@sheffield.gov.uk,  
Colin Ross 235 1948 Email: colin.ross@sheffield.gov.uk  
Joe Otten 230 3290 Email: joe.otten@sheffield.gov.uk

**Totley Independent Website:-**  
**www.totleyindependent.co.uk**



## From Page 2

Perhaps now consumers will possibly think twice before heading to their nearby supermarkets and instead rely more on natural home cooking with produce provided from their local food businesses.

Despite the dominance of supermarkets, one local food business that has ridden the storm and prides itself on its quality natural produce is the longest running business in Totley: the family run greengrocers - *Scriven's*. The **Totley Independent** visited the owner Martin Scriven to find out more...

### How did the business end up here in Totley?

My father John originally had a grocer's in Meersbrook, which is where I was born and where our family lived for a period. But then my father could see the onset of the dominance with supermarkets so when he was given the opportunity to come up to Totley he took it and started a greengrocer's here in 1967. For a time we had the two places but then in 1970 we all moved up as a family.

I always wanted to follow in my father's footsteps and go into this business. Once I realised I wasn't going to be a professional footballer (in my dreams) than that was it. I started as a Saturday lad, then used to come after school on the odd days, and then the month before my 16<sup>th</sup> birthday I left school and started here full time. I finally took over the business in 1980! So for many years I have been here - I'm part of the woodwork you could say.



### What's the secret to your success?

There are no secrets, I promise! If you've got a good business it's not down to luck. You have to put the hard work in, simple as that. My alarm is set for 1.50 a.m. (yes, that isn't a misprint, readers!) to go to Park Lane Market in Sheffield, six days a week. That probably seems impossibly early to some people but I'm used to it now, it's in my blood.

Another key to the business is that I will only select the freshest and best produce from the market which isn't as easy as it may seem as some produce can look good but the flavour just isn't there! For me now though, after 30-odd years of doing this, it's just second nature; I instinctively know which is the best produce to get. It's what we specialise in so we deliver the best.

Here at *Scriven's* it's also vital to look after our customers and in Totley they are as loyal as they come. I'm very fortunate to have fantastic staff here to help me and we make sure to offer excellent personal counter service. When you head to a supermarket, people just have their heads down zooming round with a trolley, and most of the time you won't say a word to anyone. Here, you can come in and have a chat about anything, and we will always give tips and advice about all the produce. It is personal service and I think around here in Totley that means a lot.

### Do you feel you've ever had to compete against other people in the trade?

Personally no, and we are doing better than ever at the moment. There have been lots of other produce shops in the area - for instance fruit shops on this same stretch of the Rise. If people can remember, there was one where the florist's is now, and also at the top of Main Avenue, and Mickley Lane; and there was one where the Seasons café is, by Tesco Express. We have ridden the competition and I put this down to our loyal customers - they have been brilliant ever since we opened and I thank them for this.

Also we don't see larger shops, such as the Co-op and supermarkets, as a problem to be honest. The key to success has been that we only sell high quality produce. Big supermarkets don't sell you fruit and vegetables properly - you can never be 100% sure with what you're getting. Here we can give you personal advice about what's best in season and things that can help with cooking meals, also we always offer an ear to listen.

### Do you worry about the modern day trend in take-always and packaged convenience food?

For society in general yes! People need to learn how to cook again, even if it's starting with the basics and building from there. You don't see people who are overweight because they have eaten too much broccoli now do you? A lot of people are putting on weight by eating too many foods packed with additives and other nasty artificial flavourings.

At *Scriven's* we find a very busy time is just after New Year with people coming in to 'detox,' so to speak, on healthy food. We've all been there when we've overdone it during the festive period and every year come January, we are packed! Sadly though we only see some of those customers once in the whole year! It really does pay to eat the healthy veg and fruit we have and it isn't boring! Come here and give me £10 and you wouldn't be able to eat all the produce I could give you in a week.



### What does the future hold for *Scriven's*?

Well I'm not going to stop working here any time soon even after being here for 33 years in May. It's a long time, especially with the early mornings six days a week but I love this job and wouldn't change it. However I don't want it to kill me and I know there

are other things to life than work so I do think about the future as well. I'm not sure whether my two boys are going to follow me into this, you can make a living out of it but it is very, very hard with the hours being difficult. At the end of the day I will support whatever decision they make.

#### **Do you have any particular seasonal produce recommendations?**

Finally we are heading into spring which sees the winter crop finishing and summer crop starting.

A particularly good staple at this time of year is the new season Jersey Royal potatoes, which are lovely to

**Martin Scriven will be celebrating his 33rd anniversary of working at Scriven's in May and from everybody at the T.I. we wish him and the business all the best!**

#### **Contact**

37 Baslow Road, Totley, S17 4DL

Phone: 0114 236 7116

**Reporter:** Ruth Dacey

use in salads and with joints of meat. All the English salad produce is coming through as well: lettuce, spring onions, bunched radishes and English tomatoes, which all have a wonderfully fresh and flavoursome taste. Summer greens are starting also and we offer fresh peas, summer cabbage and cauliflowers, which are all different varieties to what we usually get.... and mustn't forget with May just around the corner it's a fantastic time for English strawberries and soft fruits.

If you ever need any recommendations, tips and advice just come in and we will be happy to help!



#### **It's all happening at TASS!**

It's been a very busy term at Totley All Saints – but then, that's just how we like it!! After fighting off lots of sickness towards the end of Christmas, everyone came back fighting fit and ready for learning! From visits, residential and special curriculum days - *it's all happening at TASS!*

#### **Reading, Reading and More Reading!**

One new innovation this term has been the daily 'Book Club' whereby children start off every day with reading activities using an amazing selection of new books entirely funded by our fantastic PTA. This has really served to get

children enthusiastic about reading as well as kick start their learning at the very start of the school day. Our push on reading has also been boosted with our Book Week involving loads of activities from 'Extreme Reading' photographs to 'Speed Reads' in the classroom. Finally, we all dressed up as favourite book characters for the day. For anyone who has ever done this, they will know that this can feel very strange, particularly before getting to school where everyone else is in costume! *Travelling to school as Willy Wonka can get you some funny looks I can tell you!*

#### **St Luke's 'Biz Kids' Challenge**

Another big event this term, is that our Y5 children have been taking part in the St Luke's 'Biz Kids' Challenge, whereby a small number of chosen Sheffield primary schools and businesses work together to raise money for St. Luke's Hospice. The class was provided with a £100 loan to seed fund their chosen project, a school magazine, and were given business guidance by representatives from Sheffield Eagles Rugby Club! The class is through to the final and we are eagerly awaiting to see how they've done. Whatever the result, we know that lots of money has been raised for a fantastic cause and many entrepreneurs of the future have been birthed!

#### **Quizzie Rascals**

The PTA Quiz Night was a fantastic event and saw top place going to the *Quizzie Rascals* – the staff team!! A great time was had by all, lots of prizes were won by raffle and two dads, *Aiden Giles and Nick Skeet* came up with a fantastic variety of questions and activities! The pie and peas were delicious and lots of money was raised for school funds. Our sincere thanks go to *Janine Scott, Charli Buxton, Lynda Sharp and Andrew Snowden plus all of the other members of the PTA* who did such a fantastic job!

#### **Fan-TASS-tic Kitchen Staff!**

Finally, amidst headlines of horsemeat and dwindling quality of school meals, our kitchen team have been officially recognised as top of the table! During our recent 'School Performance Monitoring Core Audit and Standard Assessment' by SCC School Food Service, our amazing kitchen staff were awarded Grade 1 with a massive 97% rating overall! This is indeed an amazing achievement and a fantastic stamp of approval as our kitchen staff are employed by the school and are independent of the council apart from being audited. Congratulations go to Julie Maw, Sue Appleby, Liz Grant and Christine Clifford!! We always knew we had the best and now it's been recognised!

So what now? Well, we're getting ready for Red Nose Day, celebrating Easter in school and at All Saints Church, gearing up for Sports Day at the EIS and having our very first Forest School Adventure! *It's all happening at TASS!*

If you want to find out more of the exciting things that are happening at our school, then please look at our newsletters (posted on our 'soon to be modernised' website) or email us at [enquiries@totleyallsaints.sheffield.sch.uk](mailto:enquiries@totleyallsaints.sheffield.sch.uk). We'll be so happy to let you know!

Karole Sargent

Head teacher

## **PUZZLE CORNER**

#### **IT SOUNDS OK**

Solve each clue to find two words which sound the same but have different spellings. E.g. Reduced cost of canvas wind catcher would be SALE and SAIL

1. Animal head cover.
2. Animal to make a hole.
3. Not a lady with the post.
4. Chicken chatter far from dear.
5. Not dark food.
6. Metal source for propelling boat.
7. A line of fish eggs.
8. Falling water horse restrainer.
9. Self- complacent weather-cock.
10. Fashioned young lady.

# mellows

185 Baslow Road, 0114 2350884,  
mellows6394@hotmail.co.uk

We have a lovely selection of **homemade foods** including breakfasts, lunchtime meals, daily specials, cakes and many more! We use **Pollards** coffee which tastes divine!

We have night-time events which will be advertised in our shop or on Mellows facebook, so like us to be updated!

We do children's birthday parties for baking or paint a pot and do all kinds of birthday cakes. We also do **outside catering, food to order**, or feel free to **hire out the shop** for a night to do your own thing!

We are a **family** and **dog friendly** café and hope to see you all soon!

# Mellows Events



Saturday, 6 April

## Bistro Night

Bring a bottle, relax for the evening, 2 course meal with complimentary breads, dips and coffees. 7.30 pm onwards, £20 per head, all food homemade.

Saturday, 4 May

## Open Evening

Come and try our homemade food and see what we are all about! B.Y.O., all ages welcome, 7.30pm to 10.30pm, completely free! Why not?

## B.K. JEAVONS PAINTER & DECORATOR



Interior  
Exterior  
Decorating  
No Job too small

Tel: 01246 416484  
and mobile 07882 278306

Creating opportunities with disabled people.

Registered Charity No. 218186

## Leonard Cheshire Disability

Leonard Cheshire Services in Offers choice & opportunity to people with disabilities.

A Specialist Unit for the Younger Disabled.

Residential & Respite Care - Single Rooms

Day resources - Aromatherapy -  
Reflexology - Physiotherapy - Toning  
Tables.

Activities include: - Arts & Crafts -  
Computers - Cookery - Shopping

Expeditions - Theatre Outings - Church.

Further details can be obtained from -

The Service Manager, Mickley Hall,

Mickley Lane, Totley, Sheffield S17 4HE.

Tel. 0114 236 9952

Fax. 0114 262 0234

The Care at Home Service supports disabled people who wish to remain in their own homes.

We provide flexible care packages from

1 hour to 24 hours meeting individual needs.

The service operates throughout Sheffield.

Our service includes: - help with getting up and going to bed, dressing, washing, bathing, shopping, cooking, light household duties.

Further details from: -

The Care at Home Manager

Tel. 0114235 1400

Fax 0114 235 1499

## John Heath & Sons

AN INDEPENDENT FAMILY FUNERAL BUSINESS

Sometime.....

You will probably have the responsibility of making funeral arrangements. No one looks forward to this responsibility, but the death of a family member or friend brings with it an obligation that must be met. There are people who can help you meet this responsibility. We have been helping people combine the different aspects of the funeral into a meaningful service for over 125 years.

Please Call Day Or Night

(0114) 272 2222

Head Office - Earsham Street

Also at Meadowhead, Ecclesall Rd,  
Crookes and Stanington

www.johnheath.co.uk



## CHARISMA BLINDS



For  
Windows  
With Style

Sheffield Factory Showroom

106 PROSPECT ROAD  
HEELEY, SHEFFIELD

Sheffield (0114) 258 5496  
Rotherham (01709) 512113

## Harry Brearley

Bill Glossop is a lifelong resident of Totley and a fount of knowledge about Totley people, shops and other Totley miscellany. The article below is an edited extract from **Auntie Wyn's Briefcase**, an account Bill wrote of the connection his family has with Harry Brearley. 2013 is the centenary of when Harry Brearley invented stainless steel.

Harry Brearley was fortunate to have two loyal women in his life; his wife Helen and his secretary, Winifred Beard. Between them they managed the smooth running of his domestic and work life enabling him to concentrate his energy on the invention he is famous for: stainless steel. This is the story of these two women.

### Auntie Wyn's Briefcase

By W.A.D. Glossop



Harry Brearley

Being born into a family in the cutlery trade, one may expect that the name of Harry Brearley would excite my curiosity. We know from his autobiography (Knotted String) that he had considerable problems getting his invention accepted. Once he had discovered and named stainless steel he wasted no time in telling his employers of his belief that given suitable treatment this material could be made to make cutlery. They did not believe him. He was very disappointed at their reaction, but trusted his own judgement.

I would like to introduce the lady (the owner of the briefcase) without whom I should have no story to tell. I think many would agree that among those who are likely to know a person best could well be his secretary, so I'd better say a little about Winifred Beard.

She was born in Stroud in 1897 and came to live in "Moorland View", Victoria Road, Totley in 1913. She was trained as a shorthand typist and went to work for Brown Bayley's, probably in that year. She spent all her working life there. Her work for Harry Brearley would most likely start around 1925. No doubt she went to work on the train (two shillings a week return, Dore to Attercliffe Road). She would use the short cut from Victoria Road - down through the wood and across Totley Brook into Colin Thompson's field and across the farmyard on to the Back Lane. Victoria Road residents paid a penny for this privilege.

The letters and other documents in Wyn's briefcase reveal something of Harry Brearley's wife, Helen. She was a private person and little mentioned in his writings, but she was his loving partner and number one supporter for nearly 47 years. She was born Ellen Theresa Crank in 1874 in Nottingham Street. Her father's occupation was recorded as a clerk and later on he became a coal dealer. When she married Harry he could not have been regarded as much of a "catch" because he was only earning £2 a week.

They came to Brook Terrace, Mickley Lane, Totley (1895), almost penniless but much in love. The first Saturday evening they had spent fourpence on a Chivers jelly tablet to make a special sweet for the Sunday dinner, but they had nibbled most of it before it could be made into a jelly!

Once, in the Cogging Mill, where there had been a prolonged strike, endless meetings had not settled the matter. It was decided to give a whole day to discussing outstanding issues. The meeting was on a Sunday at the Brearley's. Because of rationing, meat was not obtainable, so Mrs Brearley made two large sage and onion pies and a very big rice pudding. The morning discussions went badly, but after the sage and onion pies things went much better, agreement was reached and relations became much better all round - the Sage and Onion Pie Agreement was long remembered!

The Brearleys moved to Torquay in 1929. A letter from Helen to Wyn asks for help with a problem and is the start of their direct relationship.

"Mr Brearley says he is going to adjust his comings to Sheffield so that the stress of work there and the two journeys won't be too fatiguing. It would add to his comfort if you came down to Torquay when necessary & save a journey at times. As you & I haven't met, although I feel I know you, don't you think it would be nice if you could spend a week with us, say this next

Friday? I am quite a simple person, not a bit clever, but I think we might have things in common & I am so often grateful to you for looking so well after Mr Brearley. "

In late February 1948, just a few months before he died, Mr Brearley was recovering from an illness and he and Helen were seeking a way of adjusting their lives to some sort of comfortable living. They asked Wyn if she would consider going to live with them and Mrs Brearley asked her to let them know "Honest and true". This was a request that she gracefully declined without upsetting them. They both understood, and sent their love.

Two years later, when Auntie Wyn was preparing to start looking after her father when he moved to Millhouses from Stroud, Mrs. Brearley wrote and said, "I'm venturing to send you something I prize & would like you to have to greet your coming to the new home. R.L. Stevenson has meant a lot to me since the days I was homesick in Riga. "Give us courage and gaiety and the quiet mind." It was a book of prayers written when Stevenson was in Samoa.

Towards the end of his life, when he was closing his office in Sheffield, Harry Brearley asked Wyn to dispose of his office paraphernalia. He wrote to her, "When I am in travelling condition and there are good reasons for coming to Sheffield you may see me again in my office, but when I am gathered to my fathers I should like you to accept the toys and tools I have used there to dispose of as you please..... The Bessemer Medal - let no man have it who lusts for its gold. You are free to do whatever seems to you at the time to be best. " \*

Auntie Wyn was named executor in both Harry and Helen Brearley's wills. There is a codicil to Mrs Brearley's will that reads "To my friend, Miss Winifred Beard, all my personal clothing, table linen, and my old oak rocking chair."

There will be another story from Auntie Wyn's briefcase in the next edition of the **Totley Independent**.

**\*The Bessemer Gold Medal** is an annual prize awarded by the Institute of Materials, Minerals and Mining for "outstanding services to the steel industry". It was established and endowed by Sir Henry Bessemer in 1874.

You can read about Harry Brearley and other notable residents of Totley on the Totley History Group website at [www.totleyhistorygroup.org](http://www.totleyhistorygroup.org)  
Christine Shimell

from front page

Longford Road to such an extent that the bus service was curtailed and emergency vehicle access was impossible. Within an hour of receiving an email, there was a meeting on site, the problem was resolved and the bus route opened an hour later.

Last weekend, I heard from a resident on **Glover Road** that the trenching work would proceed along that road and that traffic would be controlled by traffic lights. The resident was justified in her concerns. A call to the contractor on Sunday afternoon resulted in a meeting on Monday morning with the Council Highways Engineer. He agreed that the road would be closed except to residents.

However, the contractor's plans were to erect traffic lights on Sunday 17th to control traffic whilst the trench was taken across Baslow Road to enter Glover Road. The Totley Rise service road would therefore be very difficult to access on the day of the Farmers Market. When he was made aware of this, he immediately changed his plans to enable easy access to the service road.

Signs will be erected warning of the forthcoming closure.

**Riverside Repairs.** Repairs to the river banks of the Oldhay brook, both by the Methodist Church and at the Mill Lane side of the bridge, have been taking place, coincidentally at the same time as cable-laying in the highway.

**Road Safety Matters.** Recent police operations have been taking place at the request of the Ward Forum Traffic Focus Group, as a result of residents' concerns about speeding and also about scrap collectors. Light commercial vehicles were also checked for road-worthiness. One was taken off the road for being overweight with gas cylinders. Numerous motorists were advised about their speeding. The latest speed operation, and those to follow, will not be advisory, but offenders will be offered speed awareness courses. Those who do not pass the course will receive the fine that they would have had as well as the points and, most likely, a record on their insurance. It is worrying that **60%** of offenders were local!

Seen recently:

- A car enters the Totley Rise service road, near the post office, performs a three-point turn, and then leaves by driving up Baslow Road against the red light!
- A car parks outside the Co-op to go to the cash machine, facing the wrong way, i.e. down the dual carriageway. It then leaves by driving on the wrong carriageway as far as the Mickley Lane junction then transfers to the correct carriageway!
- A vehicle exits Mickley Lane to go down Baslow Road, and then has to stop in middle of road. Oncoming vehicle has to take evasive action.
- A vehicle passes me by the library at a speed clearly higher than 30 mph, brakes hard, and turns left into Main Avenue.

Some residents think that these problems are just caused by vehicles passing through!

There was a belief that the removal of the Speed Indicator Device (SID) opposite Main Avenue had resulted in higher speeds. The machine records speeds, but we await the analysis of speeds for the months up to its removal. However, before that, in 2011 & 2012, three vehicles were recorded at 60 to

69 mph. In 2011, 4000 vehicles exceeded 30 mph, and in 2012, 5000 vehicles exceeded 30 mph. If we assume, as suggested above, that 60% offenders were local, then 2400 of us in 2011, and 3000 of us in 2012, were guilty of speeding. **Remember:** a few years ago, a pedestrian was killed crossing the road near the Co-op. And last year, three youths were lucky to escape when their car crashed into the wall opposite the Co-op.

Roger Hart

Chair of the Ward Forum

## Totley Primary School Update



It's been a busy few weeks at Totley Primary School and a common 'dressing up' theme has been in evidence with a number of whole school events which saw pupils and staff come to school in fancy dress.

We celebrated World Book Day by dressing up as our favourite book characters and invited parents to come in to school to read traditional stories and poems. We then ended the day with a performance of all the poems we had learnt during the day.

A week later we started our Comic Relief celebrations and 'The Great Totley Bake Off.'

Each class spent a day in the kitchen baking biscuits for the grand tasting session. Mr Stewart, Mrs Fetch and one of our resident 'bakers,' Mrs Gregory made up the panel and the Year 5 version of the Jammy Dodger proved the winning biscuit. The day after on Comic Relief Day itself we all



dressed as famous chefs and had a biscuit sale with the remaining biscuits.

In other news we have taken the step to purchase a heart defibrillator for the school. This will ensure we are as well-equipped as possible should anyone suffer a cardiac arrest. After Easter we will have 8 staff trained to use the defibrillator. Clearly the equipment will be kept on school premises; however it may be of interest to members of the community to

know that there is one based locally.

We're all looking forward to the various Easter celebrations including our annual Easter Egg hunt on 24th March and our Easter Service on 25th March.

Have a great Easter from everyone at Totley Primary School.

Chris Stewart, Headteacher



We  Shepley Spitfire

NEW FLAME GRILL COMING 4<sup>TH</sup>

APRIL 2013

Great New Dishes

POP IN TUESDAY 2<sup>ND</sup> APRIL FOR A SPECIAL TASTER NIGHT

QUALITY FOOD AND CASK ALES

AT GREAT PRICES

*Sunday Lunch with fresh vegetables and all  
the trimmings.*

**EASTER IS COMING**

*Great family themed weekend planned*



*56 Mickley Lane, Tolley 0114 236 0298*



We  Flame Grill

**20%** DISCOUNT  
VOUCHER



# SEE THE DIFFERENCE!

AT



## MARTYN KEMP OPTICIANS

- **COMPREHENSIVE EYE EXAMINATIONS**  
including special tests for glaucoma, colour vision, dyslexia & diabetes
- **CONTACT LENS CONSULTATIONS**  
free contact lens trials and monthly direct debit payment schemes
- **PRESCRIPTION SUNGLASSES**
- **LEISURE SPECTACLES**  
for computer work, fishing, swimming and safety wear
- **ACCESSORIES**  
ready readers, chains and magnifiers

**LENSES BY SEIKO**  
In all non-budget spectacles

**TOTLEY**  
63 Baslow Road  
236 4485

**ABBEYDALE**  
634 Abbeydale Road  
255 6554

For more help and information please phone or call into the practice of your choice  
For a full list of our practices visit

**WWW.MKO.CO.UK**

Terms and conditions apply.



## Crocus Homecare

Homecare with Compassion



### Care and Support in your own Home

Crocus Homecare provides high quality care and support services to help you, or the person you care for, when it is most needed.


Crocus prides itself, and has built its reputation, on providing the highest quality care with compassion, understanding and respect for each individual and their families.

For more information, please call Debbie Crowhurst, or have a look at our website

**Personal Care - Practical Help - Respite Care - Dementia Care**  
24 Hours a Day / 7 Days a Week

Tel: 01629 812874

[www.crocuscare.com](http://www.crocuscare.com)



# I ♥ Slimming World

because...

Join a warm and friendly group near you today...

**FREE membership worth £10 plus 2 weeks FREE\***

**NEW! your ULTIMATE SLIMMING GUIDE It's never been so easy!**

**DORE (SHEFFIELD)**  
Tuesdays 5:30 pm  
Dore Old School, Savage Lane  
Tel: Alison 07815 046569

**BRADWAY (SHEFFIELD)**  
Thursdays 3:00 pm, 5:00 pm & 7:00 pm  
St Peters Church,  
(formerly Bradway Annexe Garp),  
Renee Avenue  
Tel: Alison 07815 046569

**0844 897 8000**  
[www.slimmingworld.com](http://www.slimmingworld.com)

SW on f

**Slimming WORLD**  
because you're amazing

\*when you buy a 12-week Countdown course 1-26 January 2013

## ACTIV physiotherapy

... going from **strength** to **strength**



### Exciting news from ACTIV Physiotherapy

Building on the success of last year we are delighted to announce the opening of our new clinic in Hope and are looking forward to working with new clients, and existing customers of **Hope Physiotherapy Clinic**

our core strengths are:

- Repetitive Strain Injuries
- Muscle & Joint Problems
- Women's Health Issues
- Sports Injuries
- Back & Neck Pain
- Acupuncture
- Musculoskeletal Pain



Official Clinic for the Sheffield Steelers Ice Hockey Team

email: [mail@activphysiotherapy.co.uk](mailto:mail@activphysiotherapy.co.uk)

web: [www.activphysiotherapy.co.uk](http://www.activphysiotherapy.co.uk)



**0114 235 2727** Bradway  
**0114 235 7845** Totley  
**0143 362 3602** Hope

## Development on the green belt?

### Planning application 13/00660/FUL

Now this is complicated. Once upon a time, the Stocks Green estate was built behind the Fleur de Lys pub. But not quite all the land sold to developers was built on - a narrow strip bordering the Green Belt was left. At the request of the Peak District this should have been planted with trees to hide the view of the new development. Due to a bureaucratic technicality, this land was now officially classified as within the housing area, though it had not been built on. Sheffield City Council, recognising this anomaly, intended to return the land to the Green Belt. Keeping up?

Now unfortunately, under the council's present development plan - known as the UDP - this strip was left (due to technicalities, and despite its openness) as within the housing area. The Council, over the past few years, has been seeking to rectify this anomaly under their new plan, now called the SLP or Sheffield Local Plan, and to finally return the strip to the Green Belt. Still keeping up?

In the meantime (because these things take a long time) there have been attempts to build on this highly lucrative land before the Green Belt is officially restored. In order to do this, and despite an enforcement order to prevent it, trees and shrubs were razed and burned on this particular piece of land which is the subject of this present application - and the land denuded. A former application was withdrawn - partly due no doubt to strong local opposition. Now the new application is to build two houses together with a promise to a plant trees to shield them from view!

Only two houses you say? This may seem a small matter. But piecemeal attempts to chip at this border zone which was always intended to be returned to Green Belt will surely lead to attempts by others - and local residents are concerned.

The present government's new planning laws say that there should be a presumption in favour of sustainable development where local plans are not yet in place. The Council is actually trying to do the decent thing here, but the fact that the new Sheffield Local Plan is not quite fully adopted may make this land vulnerable. Told you it was complicated.

But the moral argument is clear. Please write to Roy McCloud, Planning Officer, Sheffield City Council, Howden House, 1 Union Street, Sheffield, S1 2SH or object online at <http://bit.ly/R7XS5Q> Tell councillors to refuse this application on the grounds that this land is clearly intended to be returned to the Green Belt. There may be a strong argument that because the new Sheffield Local Plan is now so close to ratification, such applications should not be approved. Expect more such applications and the further eroding of our countryside here if this goes through.

*Concerned local residents*

## Threat to Totley's Green Belt

A planning application has been submitted to Sheffield Council for "the erection of 2 detached dwelling houses (C3 use) including private access road associated landscaping" on land next to 7 Stocks Green Court and to the rear of 3 and 7 Stocks Green Court

The land is next to the conservation area and previously was a "buffer zone" of trees and grassland

between gardens and green belt farmland. The land was proposed to return to green belt in the forthcoming Sheffield Development framework

It appears that this application is an attempt to develop the land before it can be returned to the Green Belt, since a previous planning application on this land in 2012 was withdrawn

If you wish to object please quote the planning reference 13/00660/FUL with your comments and name and address and send to

Development Services, Howden House, 1 Union Street, Sheffield S1 2SH or to [www.sheffield.gov.uk/planning](http://www.sheffield.gov.uk/planning) again quoting 13/00660/FUL and your details

Please object as quickly as possible as the closing date is near the beginning of April

*Via email*

## Marathon effort for Sheffield's wildlife

As the nights grow lighter and milder, runners are already braving the elements of the turning seasons to train for the Sheffield Half Marathon this May.

If a full 13 miles isn't for you, the 3k fun run is always popular with more recreational runners and families wanting to run with their children.

The Trust is fortunate to be one of the ten benefitting charities in the half marathon.

### Secure your place.

To take part in the Sheffield Half Marathon you need to sign up for a place. You can do this online at [www.sheffieldhalfmarathon.com](http://www.sheffieldhalfmarathon.com) by downloading the PDF entry form from our website [www.wildsheffield.com](http://www.wildsheffield.com), or we can send you a form in the post. Please call Jo Walker on 0114 263 4335 to request an entry form and let us know that you're running for Sheffield Wildlife Trust.



**Sheffield & Rotherham**

### Easter egg trail and giant nests

#### **Blacka Moor Nature Reserve**

**Thursday 4th April, 1pm - 3pm**

Fun for all the family. Have an egg-cellent day out at Blacka Moor, exploring the reserve through an Easter egg trail. Follow the trail of eggs from Strawberry Lee Lane car park, and see where it leads. Easter wouldn't be the same without a nest, so practise your den-building skills to create your own giant woodland nest. Don't forget wellies and suitable clothing, and watch out for the Easter bunny...

The trail starts at Strawberry Lee Lane car park.

### Conservation Work Days

Regular volunteer days take place on several of our nature reserves, both during the week and on weekends. All volunteer days start at 10am and finish at 3pm; come along for the whole day or join us for an hour or two in the morning. Tools and gloves are provided. Please wear warm, waterproof clothing, and sturdy footwear. If you are able to join us for the whole day, please also bring a packed lunch and drinking water.

**Blacka Moor** - third Thursday of the month

**Blacka Moor** - first Saturday of the month

Meeting at Stoney Ridge Carpark at 10am

Contact [nature.reserves@wildsheffield.com](mailto:nature.reserves@wildsheffield.com) or Hannah Wittram 0114 263 4335 or for more information.

## Up close and political - MP & Deputy Prime Minister Nick Clegg



Deputy Prime Minister & Sheffield Hallam MP Nick Clegg, with reporter Ruth Dacey and a copy of the **Totley Independent**

### Fact File

- Nick Clegg was born in 1967 in Chalfont St Giles, Buckinghamshire
- He attended the University of Cambridge, University of Minnesota and the College of Europe in Belgium
- He speaks English, French, Dutch, German and Spanish
- In November 2004, the then Sheffield Hallam MP Richard Allan announced his intention to stand down from parliament and Clegg was selected as the candidate for Sheffield Hallam constituency
- In 2007 Clegg was elected leader of the Liberal Democrat party
- Clegg became Deputy Prime Minister of the United Kingdom and Lord President of the Council on 11 May 2010 through a coalition with the Conservative Party under Prime Minister David Cameron

### Q. Are you aware of issues and problems that concern the Totley area?

As a constituency MP I am incredibly aware of what is going on in Totley. It's a very important part of the constituency and over the years whether it's to do with the parks, schools, planning and transport issues or anti-social behaviour I have frequently been involved. I also think it's very important to be in regular contact with Colin Ross, who is the Liberal Democrat Councillor in the Dore/Totley/Bradway ward.

Lots of people write to me every week via letter or email or they ring into the office with individual issues. I also have surgery for an hour, which is an opportunity for residents to come in and directly speak to myself about any concerns they have, and I encourage everyone to make use of this.

### What can residents do about traffic problems which have come to attention recently?

I am very keen to work with residents about any concerns, so this may be things such as the increase in heavy vehicles, dangerous speeds that have been recorded along the busy Baslow road and parking problems. I will work alongside Colin Ross, the council and the Highways Agency and with the police if necessary to sort these types of issues.

I myself use Baslow road often and it is obvious to see why it is becoming an issue. People are treating the road like a fast dual carriage way at times but this will not carry on. I think a lot of people especially those from out of town, don't realise that they are driving straight into a lovely residential area. I am not a traffic control expert, but I am keen to do what I can.

### Community Assemblies have been lost under the Labour majority council in Sheffield, what are your views on this decision?

I think it was a very foolish move to scrap the Community Assemblies as they acted as a way of offering an important voice to communities such as Totley. I was very proud of the fact that the Liberal Democrats created these assemblies because it gives smaller places like Totley a voice in this city.

With Labour they have had a long tradition of always favouring other areas in the city, and we see them doing it again now. We are all aware that an area like Totley is a more 'affluent area' than other parts of the city, but that doesn't mean that residents in Totley don't deserve support and a proper voice within the city, which is precisely what the community assemblies offered. Also, another difference was that in the communities the money available and spent in our name was done by residents and it tended to be on things such as traffic issues, cleaning parks and those small improvements locally which may seem very tiny but they make a massive difference.

I think Labour made a mistake by giving way to their centralising instincts and saying we are not going to trust people spending our money, we are going to do it for them. I don't think this is the right way to do things. I will always campaign to give places like Totley more say in how money is spent for people locally, and not having these decisions taken remotely in the town hall.

### How will the HS2 project benefit Totley?

I pushed really hard for this scheme to come through and I believe this will really benefit the residents, and even though the station will be out near Meadowhall we will make sure that Totley is connected.

We know that we cannot carry through the HS2 links without having a parallel plan to improve the links from South-West Sheffield. This will involve either extending the Supertram out towards areas like Totley or improving smaller stations. Totley will no longer feel like a 'forgotten back water' in some respects, as in the future the community will be far more connected to the life in the rest of the city.

There is no point having an out of town station (as proposed in the HS2 plans) if it cannot benefit everybody within the city. At the beginning I was a big advocate for having the station in the heart of Sheffield, but the more I looked at it, the more pitfalls arose. Two major factors were that it would have cost one billion pounds more and we would have had to demolish a lot of the ancient woodland in the Ecclesfield area, so it is definitely the right decision to have it where it is. At the same time, however, it is crucial to sort the links in Totley, Dore and even further afield as we want people to be able to drive in from areas such as Derbyshire and benefit from the transport links. It's going to be a great thing - my only frustration is that it is going to take so long to get everything complete.



### **Are you pleased with the new park and ride facility that will shortly be complete in the area?**

I am very proud of this development, as it was the very first thing I started work on when I arrived in Sheffield, it has taken a long time to properly do but finally it has come through. Problems we were seeing on Dore Road with cars backed up will no longer be there, it was just ridiculous having a residential road being used as a car park. Recently I joined your local councillors to inspect on-going work to complete this much needed new park and ride facility which will see a new 130 space park and ride, a new entrance to the car park and rail station, a covered cycle shelter for 20 cycles and blue badge holder specific parking bays. Also an important development is that we will be re-building Dore and Totley station to have extra capacity on the trans-Pennine route already so the services will dramatically increase from what runs currently. The plans are to have a platform added which will allow for longer, faster and more efficient trains to stop at the station. At the moment it can be like a cattle truck because it is so congested, this will become a thing of the past. That is happening already, so we are investing in the line that serves Dore and Totley which improves services to Manchester and into Sheffield station. This is part of the investment in the 'Northern Hub' scheme which includes cities like Manchester and Sheffield.

Concerning transport in the next few years we are going to see a complete improvement for the city. There is already the AMEY work on the roads taking place, the Dore and Totley station will have the new parking, a new platform is going to be built and then looking further ahead the line is being electrified from London to Sheffield. There will be a rebirth of the transport links for this city.

### **Q. What would you like your legacy to be at a local level in Sheffield?**

I think to look at a legacy you need to look at the city's past. Sheffield is a wonderful city, with a world famous heritage as the city of steel known around the world. Those old industries have fallen away, we have lived through terrible problems in the 80's under the Thatcher governments and then over the last 10 years there has been a massive expansion of people working in the public sector. Sheffield now finds itself in a position where it is having to re-invent itself again. We have done it before and we will do it again, and emerge stronger and better. We are having to re-invent because of the financial crisis. We have to strive for the best and I think we do this by making sure that we have the best transport links, the best schools, that we have safe and attractive places to live.

I am incredibly proud of the decisions we have taken recently such as investing 11 million more pounds into the schools in the city through the 'pupil premium.' We have also had a 68% increase in apprentice programmes because of the decisions taken by people like me in government for young people in this city. Decisions like this will guide us towards a brighter future. I want to see more jobs for youngsters, excellent schools for pupils to go to and a stable property market in residential areas like Totley. On the transport front we will be properly connected with the rest of the country and Europe, so I hope my legacy and the party's over time, is that whilst the city re-invents itself we make sure it is as a better and more prosperous place.

I am confident can achieve our aims. It does require tough decisions because we have to save the money from somewhere, so people will have to grit their teeth as we go through this difficult period. Importantly for me this period should also mean that we have to trust people to make their own decisions and that's why scrapping things like the community assemblies is precisely the wrong thing to do at a time like this because as we are re-inventing ourselves as a city, everyone has to be involved.

**Reporter: Ruth Dacey**

## **Green Oak Park**

At last I can report the Fitness Equipment has been erected in the Park. It is already proving to be popular with all ages. There are some adults who are using it on a daily basis. This is wonderful, just what the doctor ordered!

I have not tried it yet, I am waiting for some warmer weather!

The new swing in the children's playground was in use as soon as it was put in place. Very young toddlers or disabled children can now be strapped in safely. Removal of very old notices on the railings and a new gate which closes, means children can now play safely on the new tarmac.

It is thanks to the efforts of the late Betty Higgins for her perseverance and determination behind the scenes, for the arrival of the equipment.

We are still waiting for the picnic benches to be erected.

The refurbishment of the cycle pump track and imminent arrival of the table tennis table in Totley Hall Park means Totley youngsters now have plenty to keep them occupied when we get suitable weather.

Some of the snowdrops kindly donated by residents are in flower. Given time they will establish and spread to give us an annual welcome to spring.

Crocuses are in flower, but struggling in the cold. Daffodil buds are showing as well; like us they are waiting for the sun.

The flower meadows which were much admired and gave great pleasure to locals and visitors last year will be back. The ground will be rotivated and allowed to settle once the weather allows. It will then be sown with fresh seed and we can all look forward to another wonderful display.

In spite of the freezing conditions there was frogspawn in the usual place, the top of the stream on 1st March. Last year the spawn was laid on 23rd February. Hopefully the spawn will be protected from the frost by the water starwort; it's bright green cress like foliage is good for wildlife, providing a balanced diet for pond dwellers.

The area alongside the bridge over the stream is very boggy. The Parks and Countryside Department are dealing with the problem.

We are all aware of the financial problems; they mean the team who service our parks are unable to spend as much time as they would like in maintenance.

## **All Park users can help**

**Please can everyone try to keep our Parks tidy by putting rubbish in the bins provided.**

**Dog owners please clean up after your dogs and use the bins, don't throw the bag in the bushes.**

Avril Critchley

## **DRONFIELD LANDSCAPES**

### **Logs and wood chippings For Sale**

#### **Ring for details**

**Chris 0114 274 6158  
Mobile 07976 072785**

**Richard  
Mobile 07789 497104**

## **HEARING AIDS**

**MAURICE NAYLOR FBSHAA RHAD is your local hearing aid specialist and at your request will test your hearing in your own home, free of charge, and if needed you can try a custom made aid for four weeks without obligation to purchase.  
Tel : 237 4817  
In the ear digital from £495**

## **Tristan Swain**

**Garden Services and Maintenance**  
Established 1984

Unit C4 Sheaf Bank Business Park  
Prospect Road Heeley  
Sheffield S2 3EN  
**Tel/Fax: 0114 255 4689**  
**Mobile: 07831 802 539**  
**Email: tristan@tristanswain.co.uk**



**www.tristanswain.co.uk** Public Liability Insurance Waste Transfer Licence



yogaq@hotmail.co.uk  
0114 236 9943  
07708 996984

YOGA CLASSES in TOTLEY & RANMOOR

Rachel Quinn BWY Dip



**THE COMPLETE BUILDING SERVICE**  
New Build & Extension Specialists  
**From Design to Completion**

**Full Project Management  
House Building  
Extensions  
New Roofs/Tile/Stone  
Stonework Specialists  
Loft Conversations**

Find  
us in  
Yell.com

Established for 25 years with over 90%  
of our work coming from recommendations, to  
find out why call:

**0114 2353314**

**Mobile 07973 908187**

**www.mwoolhousebuilders.com**



Christchurch Cottage,  
Townhead Road,  
Dore, Sheffield  
S17 3GA



## **Horizon Electrical**

*Faults, Rewires, Sockets, Lights,  
Cooker Points, Electrical Showers,  
Phone Points, Security Lights*

**No job too small**

*Fully qualified with friendly advice*

**Ring Totley 236 4364 or  
Mobile 07772 483154**



## **BRADWAY INSTALLATIONS**

**Kitchens, Bathrooms.....and everything in  
between**

- **Complete Kitchens - Installation or supply and installation**
- **Kitchen Refits - Replacement worktops/sink/hob etc. Worktop / cabinet repairs**
- **Bathrooms - Cloakrooms - Domestic plumbing - Tiling Laminate / Vinyl flooring**

**All work undertaken is fully insured and guaranteed**

**Ring Peter - 0114 236 5995  
Mobile - 07766 411355**

## CHARITY CHALLENGE!

My name is Lauren Ellis and I work for the Home and Hospital Education Team in Sheffield. I teach a number of young children throughout the city who are affected by cancer. The positivity and bravery of these little stars, despite all they have to endure, has completely changed my outlook on life. They have inspired me to do something crazy to raise as much money as I can to help.



So... on the 5th October 2013, I will be grabbing my bike (hopefully having fixed the brake by this point) and cycling 400km across Tanzania to raise money for the Children's Cancer and Leukaemia Group. I'm not an exercise freak, I haven't got the best co-ordination, and I am genuinely worried that I may struggle to outrun a lion. I am positive that this is going to be a difficult challenge. But when I think of my students having to handle the painful side effects of chemotherapy, (as well as having to deal with constant blood tests, transfusions, operations and radiotherapy), a 250 mile bike ride is nothing in comparison. A 250 mile bike ride in the sweltering heat of Africa is tough, but it is not as tough as being 7 years old and not being able to go to school because you are too ill. It's not as tough as being 5 years old and not being able to play with your friends because you are always in hospital.

Survival for children with cancer and leukaemia has improved from 10% in 1970, to around 75% today. The clinical trials and laboratory research conducted by members of Children's Cancer and Leukaemia Group (CCLG) has been a major factor in this. The



CCLG is the only charity dedicated to supporting the work of those looking after children and teenagers with these life-threatening illnesses. The Group is committed to research and

development in the treatment of cancer in these age groups. But although childhood cancer treatment is rightly regarded as a great success, it should not be forgotten that still today three out of ten children diagnosed with cancer will not survive their disease. The ultimate aim of CCLG is to maximise cure while minimising the early and late side effects of treatment.

I feel confident in my decision to bike on behalf of CCLG and hope that you agree this is a well worthy cause. I can't wait to see the look on my students faces when I tell them what I'm doing! So far I have raised £200 in sponsors for my Cycle Challenge, and would like to thank everybody who has sponsored me so far. My target is to reach £3000. I am quite a way off that yet so need all the support I can get! Remember that even small donations can make a huge different and I really appreciate every penny. If you would like to support me in my challenge then please visit my fundraising page at: <http://bit.ly/16Cm3jv>

Lauren Ellis

~ \* ~ \* ~  ~ \* ~ \* ~

## Electrical and Hardware Supplies

Electrical items repaired; Lamps and chandeliers rewired; Need something fixing? Call me!

~ \* ~ \* ~

We stock bulbs, tubes, clips, padlocks, hinges, paint, nails, screws, nuts, bolts, etc. Cable cut to size.

~ \* ~ \* ~

*\* If we don't stock it, we will get it in for you! \**

~ \* ~ \* ~

Please call in, or telephone Paul on 235-1444  
Upstairs at The Heatherfield Club, 191-193 Baslow Road, Totley.



Domestic electrical work by  
award winning  
*Lady Electrician*

- \* House rewires \* Replacement fuse boards \*
- \* New sockets and lights \* Security systems \*
- \* CCTV \* Telephone and computer points \*
- \* Garden power and lighting \*



All work guaranteed and fully insured. For a free quotation, without obligation,



ring Mandy on 07788-544225



The Crown Inn

Tony and Julie at

## The Crown Inn

Welcome you for

Good Quality, Home Cooked Food

Tuesday – Friday

12-2pm & 5.30-8pm

Saturday & Sunday

12-2pm

Come & join us for

Good Beer, Good Food & Good Music

**Tel 0114 236 0789**

CLOSED SUNDAY EVENING

Visit our website: [www.crowninntotley.co.uk](http://www.crowninntotley.co.uk)

9th April

Dale Storr

23rd April

Highway Child

7th May

Cary Bayliss and  
Ian Bellamy

21st May

Shaun Mac and  
Chris Friminger

## Scout Lottery

### 1st Totley Scout Group Lottery

#### January Draw

This is the first month of the next 12 monthly draws.

1st Prize No 20  
Bedside Lamp.  
Mr and Mrs Ashby  
Sunnyvale Avenue

2nd Prize No 28  
£10 Voucher  
Mrs Hanson  
Laverdene Drive

#### February Draw

1st Prize No 13  
Steam Iron  
Mr and Mrs Lloyd  
Old Hay Close

2nd Prize No 44  
£10 Voucher  
Mr and Mrs Parker  
Sunnyvale Road

Best Wishes  
Peter Casson

## WORLD VISION

During WWII, while visiting a missionary school outside Tibet, Bob Pierce noticed a little girl on the steps. She was malnourished, ragged and her eyes revealed a lifetime of suffering. When he asked about her, one of the teachers said, "Oh, she sits there every day. She wants to attend school, but we've no room." Troubled, Pierce replied, "Can't you make room for just one more?" The teacher replied, "We've made room for 'just one more' so often that our food's stretched to the limit. We've got to draw the line somewhere." Refusing to accept this brutal reality, Pierce exclaimed, "A child needing help shouldn't be turned away. Why isn't something being done?" Quietly the teacher picked up the little girl, plonked her in Pierce's arms and asked, "What are you going to do about it?" That day Bob Pierce reached into his pocket to buy rice for one little girl, and it led to the founding of - World Vision. [www.worldvision.org](http://www.worldvision.org)



## The Porter Valley Round Walk



*Sunday 19th May 2013*

## Raise Money for your Favourite Charity or Good Cause

Join us for a pleasant 10k walk in the South West of Sheffield following part of the Sheffield Round Walk starting at Limb Lane in Dore, taking in the Porter Valley and Limb Valley.

A shorter 5k walk is available for those not wanting to walk the full 10k

Entrance Fee: £6.50 per walker (family tickets £15)

**All sponsorship money raised by you  
will go directly to your chosen charity**

For Details, Entry Form and Sponsorship Form  
see our website [www.vulcanrotary.org.uk](http://www.vulcanrotary.org.uk)

Organised by The Rotary Club of Sheffield Vulcan  
Registered Charity No: 1139500



## SUMMER FAYRE



**LEONARD CHESHIRE DISABILITY**

**MICKLEY HALL, MICKLEY LANE**

**SATURDAY JUNE 29TH, 11am – 3pm**

**LOTS OF STALLS SELLING CAKES, PRESERVES,  
PLANTS, JEWELLERY AND MUCH MORE**

**ENTERTAINMENT**

**ENTRANCE 50P, CHILDREN FREE**

**FURTHER DETAILS IN JUNE/JULY ISSUE**

## Crown Green Bowling in Totley

Sadly, Green Oak Park Bowling Club closed down at the end of the 2012 season having existed for 53 years. Crown green bowling, as a recreation and a sport, is thus lost to residents in Totley.

Fortunately, Millhouses Park Bowling Club, which is nearby and easily accessible, is pleased to make its facilities available to Totley people, either as members of the club or as casual bowlers on a pay as you play basis. Some Green Oak players have already transferred. The club welcomes others of all levels of ability, whether they are beginners or experts. It caters for all ages, from juniors to senior citizens. It gives tuition, opportunity for social play and for match play. All will be warmly welcomed. If you think you may be interested in playing please ring Ken Jagger, membership secretary, on 2367565. He will be very happy to talk to you.

## Services at All Saints

### April and May

Sun April 7th 10am Informal worship with communion

6.30pm Traditional worship

Sun April 14th 10am Informal worship

6.30pm Traditional worship

Sun April 21st 10am St. George's Day Parade Service

10.30am Joint S17 service at King Egbert School

6.30pm Traditional worship

Sun April 28th 10am Informal worship

6.30pm Traditional worship

Sun May 5th 10am Informal worship

6.30pm Traditional worship

Sun May 12th 10am Informal worship

6.30pm Traditional worship

Sun May 19th 10am Informal worship

6.30pm Traditional worship

Sun May 26th 10am Informal worship

6.30pm Traditional worship



## TOADS PRESENTS "CURTAIN UP"

BY PETER QUILTER

"Curtain Up" is a comedy for 5 women and is the next play to be presented by TOADS. The dates are from Wednesday 15th May 2013 to Friday 17th May 2013 starting at 7.30pm, and Saturday 18th May 2013 starting at 2.30pm. The venue is, as usual, St John's Hall, Abbeydale Road South.

**"Curtain Up" is a hilarious story of 5 women who inherit a theatre, and their plans to bring it back to life.**

Call 235 1206 to reserve your ticket - £4 or £3.50 for concessions - or contact any TOADS member

## Fund Raising Concert

Classical Duo Ingrid Clement, violinist, who hails from Crookes and guitarist, Danny Holland, will be performing on Fri April 19th at 7.30 at St Vincents Church, Pickmere Road, Crookes. The concert will raise funds for projects in Ethiopia such as skills training for women and income generating projects such as bread making, computer skills, soap making and banana art. The money is sent directly to people who work there. Tickets cost £10 / £5 and include a glass of wine at the interval. Music played will include Paganini, Bach and Piazzolla. Ingrid was awarded the Sheffield City Award for Outstanding Achievement for Musical Performance in 2007 and she is now a graduate of The Royal College Of Music. Danny was leader of the National Youth Guitar Ensemble 2009-11. Tel: Marie 268 3202 for tickets. Marie Miller



## The Sunflower Bakery

Your local Artisan Bakery

Tel: 07538 784635

Hand crafted breads are the order of the day at the new Artisan bakery in Dore village. From traditional Bloomers, authentic Russian Rye, Bavaria Seedy and Corn Bread, a varied daily baking schedule ensures a constant supply of fresh healthy breads. Their flours are sourced from the finest millers. Baking continues the natural baking traditions based on authentic recipes from around Britain and Europe. We hope to have a longer article in the next issue of **Totley Independent**.

## Ebay bargains at St Luke's

LOOKING for the latest designer fashion brands, some quirky choices in interior design or even a signed copy of football legend Jimmy Greaves' autobiography?

Look no further than the St Luke's Hospice Ebay site, an Aladdin's cave of bargains, all raising money for one of Sheffield's best loved charities.

The site was only launched at the start of the year but in one week in January alone it raised almost £1,400 towards the annual £4 million plus needed simply to keep the hospice open for all the people of Sheffield.

Staff at all ten St Luke's shops are now always on the lookout for items that they think could be of particular interest to internet shoppers.

To follow the St Luke's Hospice Ebay auction simply visit <http://bit.ly/WoH9io>

## Betty Higgins 1941-2013

As most of you will know, Mum sadly passed away on January 30th 2013. Her family has been overwhelmed with messages and cards and would like to thank everyone. It was wonderful to see so many friends old and new at her funeral. One of the main themes of the messages and comments from people was how she will be missed around Totley and how she was remembered for the work that she has done for many years.

When I attended Totley All Saints school I have fond memories of her baking scones for the cream teas and attending planning meetings. There were always fun days in Green Oak Park, where Mum ran a stall whilst Dad played at tug of war.

In her later years she was a big part of the TRA and when she resigned from the secretary role she then worked tirelessly for Friends of Green Oak Park. Even in her last weeks she was still sending emails regarding the play equipment installation. Recently the equipment has been installed and will be enjoyed for generations to come. I am just so sorry that she will not see the fruits of her labour.

Mum never did anything for personal appreciation, nor did she ever tell people just how much she did away from the public. The Christmas Party in 2011 was organised by Mum, she loved it as she told me it was like the old days!

Mum gave us all our sense of community and moral fibre. We have a gaping hole in our family, one that is totally irreplaceable.

Kathryn Higgins

## INVITATION TO JOIN OUR SUMMER FUN DAY!

**SATURDAY 22ND JUNE 1-4PM**

Totley Primary School Saturday 22 June 2013 between 1 and 4pm. Bouncy castles, face painting and lots of classic games will mean that there's plenty to do for both younger and older children alike. With a tombola, a raffle, different stalls, arena displays and lots of activities to join in with, it will be a fun afternoon for the whole family on the green grounds of the school. Refreshments will be available for sale throughout the afternoon including our legendary homemade cakes and a quality barbeque.

Admission to the Summer Fun Day is free and a warm welcome awaits you. Access to the school and grounds is via Main Avenue (off Baslow Road) and Sunnyvale Road. Parking is available locally. Bus 97 runs every 20mins from Sheffield town centre to Baslow Road.

## Egg-stravaganza!

Join us at Totley Rise Methodist Church on Wednesday 3rd April for the Egg-stravaganza. A time for children and families to enjoy this fun activity, reflect in the Easter garden located at Totley Rise and enjoy the art exhibition situated in the church. The hunt starts at 10am until 12 noon.

## PUZZLE CORNER

**SOLUTION TO "IT SOUNDS OK."**

- |                |               |
|----------------|---------------|
| 1. HARE HAIR   | 6. ORE OAR    |
| 2. BOAR BORE   | 7. ROW ROE    |
| 3. MALE MAIL   | 8. RAIN REIN  |
| 4. CHEEP CHEAP | 9. VAIN VANE  |
| 5. FAIR FARE   | 10. MADE MAID |

Don Ashford

## GARDENING TIPS FOR APRIL/MAY

April and May are two of the busiest months in the gardener's calendar, when things are gearing up to give gardeners a lot more work, weeds are developing and must be kept under control, seeds need planting, and plants which have been left to get out of control must be dealt with asap

Buy in compost, growbags, vermiculite etc., ready for the arrival of seedlings, bulbs and plants, which will need to be potted on.

We managed to have a good couple of days tidying up the garden during the recent sunny spell (March 6th) - it was nice to do the necessary chores in the warmth. I am always a bit wary of doing too much planting or bringing things outside: it's always a temptation when the sun shines, but we gardeners know that old jack frost can sneak around looking to nobble the tender plants, so we must restrain our eagerness until more stable weather conditions prevail. The fish are stirring a bit now, especially when the sun shines. I suppose the frogs will be filling the pond by the time you read this. They make such a palaver - and if I left all the frogspawn in the pond the poor old fish would have nowhere to swim.

I am looking forward to receiving my bedding plant order. I am not doing as much seed sowing this year so buying plants should work out a bit cheaper than propagating my own, as the cost of paraffin and electricity is prohibitive for growing such a small quantity that we will require this year. I will miss the satisfaction of growing my own plants from seed but needs must.....

We are planting a few more perennials this year so that the work of bedding-out is reduced. We have to think about these things as we are not as nimble as we used to be: getting down is OK - it's getting back up which is a problem! The summerhouse looks good after its refurbishment earlier. The new finial on the roof looks very posh- it really pays to look after these things.

I'm afraid I have not practiced what I preach regarding taking care of the garden shed, I think it looks like a replacement is in order rather than renovation (oh dear another job to do).

Christine keeps adding paving slabs here and there to reduce the flower beds. They look a bit wonky but they only need a sweep now and then, and that's not nearly as time-consuming as planting out flowers. They are not as pretty as a flower bed in full bloom though.

The vegetable patch is almost ready for planting out when we get well into April. We don't plant much before then as we take the odd holiday around mid-March and I don't like leaving them to fend for themselves when they are young and vulnerable. Well, I must get on with last minute plant ordering.

Don't forget the Totley Show in September! Also, bear in mind that these comments are for two months.....

### **APRIL**

**Flowers** - Complete the planting of herbaceous perennials, plant gladioli. April is a good time to plant or replant alpinists. Apply a good fertiliser to roses - it will give them the food they require throughout the summer. Sow hardy annuals. Plant out and stake sweet peas, and also violas and pansies if they have been properly hardened off. A rather cool semi-shaded place is best. This will give a longer life to the flowers and a well-manured bed will ensure fine blooms.

Start dahlias in a frame, cover tubers with a light soil and water moderately. Those of you who planted half-hardy bedding plants early can transfer them to a cold frame. Keep the frames closed for the first few days unless it is really hot. Cover over with sacks or insulation at night in case of frost.

Plant antirrhinums and penstemons once they are hardened off. Clematis can be planted now: a good pot-grown specimen is best.

**Vegetables** - Feed spring cabbages which are near maturity with a top dressing of nitrate of soda and hoe it in - and another dressing in 3 weeks time. Plant the second early and maincrop potatoes to give them plenty of room. Plant onion sets 4-6" (10-15cms) apart in rows about a foot (30cm) apart. Sowings of lettuce, radish, peas etc. should be made. Soil should be pulled up along each side of broad-bean rows. Sow winter cabbage, savoy cabbage and broccoli. Prepare trenches for runner beans, which will be sown or planted next month. Keep the hoe going on all plots - the frequent aeration of soil and checking of weeds does a great deal of good and certainly encourages growth. Those of you who grow celery should prepare trenches now unless of course you grow the self-blanching type. Sow parsley outdoors. If your garden is susceptible to carrot fly then make a fleece tent for your parsley, as carrot fly grubs love a change.

**Trees, Shrubs and Fruit** - Clean up strawberry beds - Take off dead or damaged leaves and clean up generally making the whole tidy. Spray blackcurrants against big bud mite with a proprietary insecticide or lime sulphur. Spray gooseberries against mildew. Make sure any newly planted shrubs or trees are kept moist during dry spells while they are getting established. Keep an eye on plum trees for the first sign of aphids and deal with them as soon as they are seen. Remove grease bands from around trees, which have been on since September.

**Greenhouse and Indoor Plants** - There will now be much less difficulty in maintaining sufficient temperature in the greenhouse. It may even be necessary to shade temporarily on the hottest days - do not use side vents or doors which can cause damaging draughts.

Prick off seedlings as soon as they are handleable. Do not let them get too deep-rooted as this causes them to check growth when transplanted. Pot on seedlings pricked out earlier.

Take cuttings of winter flowering begonias. Rest freesias, lachenalias, arum lilies and cyclamen. Place them on a shelf near the glass and gradually reduce watering. Stop early flowering chrysanthemums by pinching out the tips of rooted cuttings required for spray flowering.

Plant tomatoes, cucumbers, capsicum etc. in a heated greenhouse. Sow annuals for flowering pots in the greenhouse. Watch out for ants and woodlice, they can do an awful lot of damage to seedlings.

Indoor plants should have their watering increased and established houseplants given a good feed. Split up and repot ferns.

**Lawns** - Rake up debris and lightly roll. Scarify, spike and aerate. Start or continue routine mowing. Apply lawn dressing or liquid feed. Treat any moss or lawn diseases as soon as they are seen. Seed new lawns and keep well watered in dry weather.

## **MAY**

**Flowers** Prepare beds ready for summer bedding plants. Dig in plenty of well-rotted manure or compost. Remove any weeds. Thin and stake herbaceous perennials. Watch out for greenfly and treat it before it gets too bad. Encourage blue tits, hover flies, lacewings and ladybirds - they love greenfly. Slugs will be on the rampage. Beer traps work but are a bit smelly if you forget to empty them regularly. Tie up sweet peas and give them a mulch to keep them moist. Dead-head bulbs that have finished flowering. Don't cut the leaves or tie them in knots - let them die back naturally or move them to another plot. Place them in a trench and cover the bulbs until the leaves have died back, then dry them in the sun or greenhouse. Thin out chrysanthemum growth, plant out dahlia tubers, cover with 8cm (3in) of soil. Spray roses with fungicide if you had trouble with black spot last season. Plant up window boxes and hanging baskets, keep them in the greenhouse or in a sheltered spot until the frosts have finished. Plant out seedlings of hardy perennials. Place them in a nursery bed where they can grow undisturbed during the summer. Trim aubrietia to prolong the flowering period and top dress with compost or well rotted manure. Pinch out the growing points of herbaceous plants such as phlox, Michaelmas daisy and golden rod. Sow hardy annuals such as clarkia, cornflower, calendula, candytuft, godetias etc. Liquid feed container-grown plants. Seaweed fertilizer is ideal and it's organic!

**Vegetables** Earth up potatoes, support peas and runner beans, thin out carrot, lettuce, parsnip, turnip and spinach seedlings. Keep all crops well watered especially cauliflower. Harden off indoor raised vegetables and salad crops. Clear the remains of spring greens and prepare beds for leeks, digging in plenty of well-rotted manure and compost. Add a bit of hoof and horn. Prepare mound for planting out courgettes, marrows, pumpkins etc. to have a constant supply of veg throughout the season. Sow small amounts of seeds every 3 or 4 weeks to obtain a succession of crops and avoid a glut.

Plant out winter greens particularly Brussels sprouts, cauliflower and purple sprouting broccoli. Runner beans can be planted out now: put in 2 seeds together about 9in apart. If they both germinate cultivate the weakest looking one - you need about 3ft between rows. At the end of the month sow vegetable marrow and ridge cucumbers outdoors. On the mounds previously mentioned, as I think I have told you before, I use 2 bales of straw with well-rotted compost and manure mixed in between them with a topping of soil; this keeps them off the ground. I soak the bales thoroughly - this keeps the moisture topped up. Watch out for pests and diseases and deal with them as soon as they are seen before they get established and beyond control. Onions require a lot of feeding especially those that will be going in 'The Totley Show' in September. A high nitrogen fertilizer (seaweed again) or sheep droppings tied in a bag and left in a tub of water - lovely! Give them this until the end of July, then change to a high potash feed like tomato fertiliser. By the way, keep the tub of sheep dropping juice at the far end of your garden as it can hum a bit, especially during the summer. Keep your vegetable patches clear of weeds. Vegetables don't like the competition for nourishment.

**Trees, Shrubs and Fruit** Mulch around fruit trees and bushes with well-rotted manure or compost. This helps retain moisture, keeps down weeds and gives them nourishment. Give apples and pears a spray of fungicide if you were troubled with canker or scab last season. Replace grease bands to counter caterpillar infestation. Start to pick gooseberries as they form thinning them out so that the remainder can develop evenly along the branches. (cook the trimmings - you will need plenty of sugar: see naked chef). Keep all fruit well watered, prune overcrowded raspberry canes. Keep newly planted evergreens mulched and spray with water especially on hot days. Remove any suckers from trees and roses. Trim over and top dress heathers after flowering - bone meal is ideal. Give your ericaceous subjects a special treat with iron sequestrine plant tonic. Plant out tender shrubs like fuchsias and hydrangea. Prune spring flowering shrubs such as flowering currant, forsythia, willows and dogwood. Trim back dead shoots on rose of Sharon.

**Greenhouse and Indoor Plants** As the sun becomes stronger and more prolonged (we hope) it is very important that the ventilation and shading is controlled carefully. Begonia and gloxinias in particular enjoy being shaded. Seedlings must never be in full sun although they must have plenty of light to aid their development and stop them going 'leggy'. Watering is also important - check the plants regularly. Pot on pelargonium and other greenhouse cuttings that were struck earlier, allow nerine, arums, freesias etc. to go to rest by gradually reducing water. Place them in a sunny spot - this will ripen the bulbs ready for a good show next season. Remove side shoots from tomato plants and pollinate regularly by tapping the supports or brushing the flowers. Trim and feed melons and cucumbers bearing in mind that they soon rot if overwatered. Best water from the bottom if possible (put a small plant pot in the side of the large pot or growbag and water into this and not directly onto the plants). Sow cinerarias and schizanthus for plants later in the year. Keep insulation in place until all chance of frost is past. Cuttings can be taken now of most common houseplants. Sow flowering pot plants such as browallia, indoor primula, calceolaria, cineraria, ornamental peppers and cacti. Pot on seedlings and cuttings and once again watch out for pests and diseases and deal with them as soon as they are seen. Don't forget - watch the weather it can still turn cold at night, so keep your heaters at the ready. I would hate to think that all your hard work nurturing those seedlings is knobbled by old Jack Frost.

**Lawns** Give weedy lawns a top dressing of lawn sand. Keep new lawns well-watered, regular cutting at a medium height is much better than cutting it too short. If you use a liquid weed killer make sure you do it on a still day. If it's windy the killer may drift onto your borders with devastating results.

Spike and top-dress lawns which have not been done earlier, spread it evenly and brush it in. I don't think I have mentioned the Totley Show yet this month 7th SEPTEMBER is the date to aim for. It promises to be an even better Show this year. Preparations are well in hand - it only needs you to make a special effort and bring along those prize winning plants, photographs, tapestry, cakes, jams, and work and crafts - go on, have a go! In the meantime enjoy your garden.

Cheerio for now, TOM

## TOTLEY PRIVATE HIRE

### EXECUTIVE CAR TRAVEL



AIRPORTS AND LONG DISTANCE

PROP - PAUL SOUTH

24HR SERVICE

Tel: 0114 2839692

Mobile: 07974 355528

Email: PAUL.SOUTH1@TESCO.NET



## Tiling, Plastering, Plumbing & Complete Bathroom Fitting Service

Tel: 0114 4182346

07738 688807

◆ Under Floor Heating

◆ Competitive Prices

◆ All Aspects of Home  
Improvements & Maintenance  
Work Undertaken

◆ NVQ Qualified

◆ No Job Too Small

◆ Fully Insured & Guaranteed

A1tilingandplastering.co.uk  
25 Five trees Ave, Dore, S17 3LW



- Central Heating,
- Domestic Plumbing,
- Glazing, Double Glazing and Glass,
- House Maintenance,
- UPVC and Wood Windows & Doors



**Mini Digger & Driver, Muck Shifts, Footings Etc.**

M. Scriven  
(FRUITERAMA)

## MARTIN SCRIVEN

HIGH CLASS FRUIT  
& VEGETABLES

37, Baslow Road

Tel. 236 7116

Orders Delivered

## PhysioFOCUS

at Totley Rise Dental Practice  
85 Baslow Road,  
Sheffield, S17 4DP



**Physiotherapy** treatment available for:

- Back and neck pain
- Sports injuries
- Sprains and strains
- Joint and muscle pain
- Arthritic pain
- Whiplash
- Repetitive strain injury
- Headaches

**Appointments: 0114 2360333**

Also available:

- Pilates classes
- Pilates 1-2-1
- Golf Fitness Screening  
(as used by consultants to UK,  
European and Australian PGAs)

For more information please call:

Emer on: 07792 422909

Rachel on: 07956 908454

## Lindsay Allison Associates Consultant Homeopath

Improving wellbeing, in  
a safe and natural way

Call for a consultation:

**07968 167 036**

www.lindsayallison.co.uk

Registered Member of  
The Society of Homeopaths

Clinics in Totley and Tideswell

## G W A Tiling

Wall & Floor Tiling

Bathrooms Kitchens Wetrooms

No job too small, Best Quality work

George Allen

Mobile 07801 790973



## BACK LANE

A series of enquiries and requests made under the Freedom of Information Act has disclosed both a breach of planning use and unpaid rates, relating to property built in 2001. As a result, a Planning Committee meeting will be held in the old Town Hall, on Monday 8th April 2013 at 14.00hrs to consider an application for a change of use, by the owner of a garage/storeroom located on land behind 69, Baslow Road, Totley Rise, adjacent to Back Lane. Anyone wishing to make representations will need to arrive before 14.00hrs on the day and make their wishes known to the Committee clerk before the meeting starts. When the building was originally built, the designated planning use for the unit was solely for purposes ancillary to the main shop, namely a Beauty Salon owned by a Mrs Flowers, a Director of Metropolitan Homes Ltd which was responsible for the initial build.

For a considerable period of time (approximately 12 years) numerous controversial issues relating to the 'garage' and a narrowing of Back Lane during the demolition and rebuild of cottages around 2002, namely 15 – 21 Baslow Road have been encountered by local residents/shopkeepers and by Sheffield Planning & Highways. These controversial issues (as evidenced by Council records and local press coverage) include planning breaches, boundary encroachment, trespass and various retrospective planning applications.

In the past, attempts have been made to obtain permission for the garage at 69 Baslow Road, to be converted into residential accommodation – something that local residents suspected in the early days of construction. Until recently and without Sheffield Council's knowledge, the building has also been used as an operational builder's yard used by Metropolitan Homes Ltd. The Council has confirmed, in writing, that the owners/users of the building have **never declared their interest in the property to the rating authorities or paid any rates since 2001.**

Despite the above, there is every reason to believe that any change of use granted by Sheffield Council will mean that the garage/storeroom will again be used by a 'building services company'. If permission is granted this may lead to excessive traffic movement of trucks and vans delivering and collecting building materials, illegal parking on land belonging to other residents and vehicles making dangerous manoeuvres on a blind bend.

Apparently, Sheffield Planning intends to write to those local residents who recently provided information, in response to a recent 'consultation procedure' questionnaire. However, any Totley resident who wishes to contribute and/or express their concern regarding a possible recommendation/approval, by Sheffield Council, for the re-establishment of an operational builders yard, please write to: Mr T Sullivan, Principal Planning Officer, Development Management, Howden House, 1 Union Street, Sheffield S1 2SH

Many of us may have noticed an article that appeared in the Sheffield Star on 1st October 2012 which confirmed that the Council has over £30m outstanding Council Tax debts and they would therefore have to make a further £55m cuts. In that article, John Mothersole was quoted as saying "The debt is from individuals and companies and we intend to pursue them vigorously"

We trust that John Mothersole will stand by his word and bring an end to the iniquity that the residents and shopkeepers have had to suffer on Back Lane/Baslow Road for far too long.

Jim Webb

## Friends of the woods . . . .

Local voluntary group '**Friends of Ecclesall Woods**' aim to protect, preserve, and find out about Sheffield's largest ancient woodland, working in collaboration with the Parks and Countryside Department, as well as on their own projects.

Ecclesall Woods covers more than 300 acres, and a walk round the perimeter is about 3 miles.

### **Forthcoming events:**

**20 April.** Dawn chorus walk with Paul Medforth. Meet at Wood 3 entrance opposite Beauchief Gardens, on Abbeydale Road South, at 6am

**4 May.** Environment Week Bluebell Walk, led by Monica Rorison. Meet at the Woodland Discovery Centre at 10am.

**11 May.** Environment Week Archaeology Walk, led by Geoffrey Hartland. Meet at the Woodland Discovery Centre at 10am.

**18 May.** Bird Song Walk, led by Paul Medforth. Meet at Wood 3 entrance opposite Beauchief Gardens, on Abbeydale Road South, at 8am.

In addition to general activities organised by the 'Friends' there are specialist groups with their own programmes of activities.

The Ecology Group undertakes annual plant surveys looking at different environments and plants within the woods. A survey last year of the distribution of Bluebells was compared with the survey from 1999 clearly indicating a decline in parts of the wood.

The plant survey for 2013 will look at flowering plants, including trees, shrubs and herbaceous plants along with identifying ash trees, because of the impending spread of the fungus disease which threatens them.

It is also hoped to form a "Nature into Art group" starting in March at the Woodland Discovery Centre.

The Footpath Group work every Tuesday morning, meeting on the Sawmill site at 9.30 am. This winter they have mostly been working on clearing the drains throughout the wood, which have tended to flood, and the pipes under bridges which have tended to block up with debris. Regular users of the woods owe much to the efforts of this group.

The Watch Group for the children of FEW members, meet once a month, usually the last Saturday, at the Woodland Discovery Centre, and aim to give the children a hands-on experience of the woods.

In June, they met other Wildlife Watch groups from across the city, and explored the woods, made dens, feasted on campfire treats, and did wildlife quizzes. In August, they worked on survival skills, like lighting campfires and den-building. In September they did pond dipping and identification, and boat building. October was a family event in the evening, when they went looking for bats. In November Helen Ensor of the RSPB led them in bird watching, and making bird feeders and boxes.

The group covers ages from 6 to 12; children under 8 must be accompanied by an adult.

Membership of the Friends of Ecclesall Woods costs just £10 per household. To find out more, contact the membership secretary Lorna Baker on 0114 236 9025.

# FRIENDS OF GILLFIELD WOODS

## Activities and Planned Events

**Sunday 24th February 2013.** Practical Conservation Workday.

The workday planned for the end of January having to be cancelled because of heavy snow. It was thus with lots of enthusiasm and gusto that the friends group of 10 volunteers and 2 Sheffield City Council Park and Countryside rangers, tackled the repairing of the dry-stone wall on the top boundary of the wood, next to the wooden gate and style. Chris Roberts, the SCC ranger leading the day, gave some instruction on de-constructing the wall and then re-building it. The group then set about the task with lots of energy, so as to keep warm in the cold weather and in no time at all the re-constructed wall began to take shape. It was then decided to have a tea-break, brewed up on the SCC brew kit, along with some of those extra chocolate biscuits, as Chris informed us. During the break a buzzard was spotted flying over the top part of the wood, no doubt with an eye on those extra chocolate biscuits that we were tucking into. We then carried on with the job of re-building the wall and by mid-afternoon this was completed. The group complemented each other on a job well done and stood and admired their handy work for several minutes. The wall now looks superb and compliments the top boundary of the wood with the wooden gate and style. Other tasks undertaken were to clear some of the brushwood from the recent tree thinning exercise and to create some woodpile habitats for the birds, small mammals and mini beasts. Together with the erecting of a no cycling sign at the bus terminus entrance to the wood, to discourage pedal cyclists.

## Tree Thinning by Sheffield City Council - Update

The footpath work in the area has now been completed and there is now a 2 metres wide path which no longer has a slope. I've received lots of comments from members of the public, about how much better it is for walking on. As a result of the new path being put in place, the remaining cut trees have been taken out of the wood and all of the felled timber has been removed from the bus terminus area and taken down to the saw mill in Eccleshall Woods.

## Future Events Planned for 2013

**Practical Conservation Days with SCC Parks and Countryside Ranger. Meet at the metal gate at the bottom of Totley Hall Lane at 10am.** Sunday 24th March, Sunday 28th April, Sunday 26th May, Sunday 30th June, Sunday 28th July, Sunday 25th August.

## Thursday 21st March: The Story of Gillfield Wood – Heritage Lottery Project Workshop

The first of our Heritage Lottery funded workshops - this one with Professor Mel Jones and Christine Handley in which we begin to learn about surveying and researching the history and archaeology of the wood. This research will tell us so much about our ancestors' work and lives and how the wood was used and worked in the past. We are expecting that participants, as well as coming to these workshops, will help us by being part of our survey team in the wood. Great fun!

**THIS WORKSHOP IS NOW FULL** but contact Sally (details below) in case there are places on future workshops on April 11th and 25th.

## 9.30 - 4pm Scout Hut off Aldam Road FREE

**Tuesday 9th April.** FoGW AGM and talk by Danny Udall of the RSPB about the work being undertaken by the RSPB and National Trust, on the Eastern Moors of the Peak District National Park. 7.30pm. Totley Library.

## Thursdays 11th April and 25th April: The Story of Gillfield Wood – Heritage Lottery Project Workshop

The second and third of our workshops with woodland experts, uncovering the story of the wood - this time with archaeologist Mike McCoy and ecologist and archaeologist Dr Paul Ardron. There may be a few places so contact Sally (details below) if you are interested in attending to this and also being part of our survey team. **9.30 - 4pm Scout Hut off Aldam Road FREE**

## Thursday 16th to Saturday 18th May. Sorby Sheffield 48 hour Bio-Blitz Event.

### Events Timetable as follows:

**Thursday 16th May.** Discover invertebrates in the Totley Brook with Stuart Crofts of the Sorby Natural History Society. Meet at the Totley Scout Hut 3pm. Wildflower Survey with Barry Wright of Sheffield Hallam University, 3pm at the Totley Scout Hut.

**Friday 17th May.** Bird Walks led by Chris Measures and Dave Gash of the FoGW. The walks will be at the following times:

10am to 12 Noon

1pm to 3pm

3.30pm to 5.30pm.

Mothwatch with Frank Botterill of The Sorby Natural History Society. 8.30pm at the Totley Scout Hut.

Bat Walk with Barry Wright of Sheffield Hallam University. 8.30pm at the Totley Scout Hut.

**Saturday 18th May.** Bug Hunt with the SCC Parks and Countryside Rangers. 10am at the Totley Scout Hut. Tea, Coffee & Cakes, plus information at the Totley Scout Hut, 10am to 3pm.

**Tuesday 2nd July.** History and Natural History Walk with Sally Goldsmith, Dave Gash & Chris Measures of the Friends of Gillfield Wood. 7pm. Totley Scout Hut.

**Tuesday 17th September.** Talk by Stuart Crofts entitled 'Caddisfly Magic'. 7.30pm Totley Library.

## Membership of Friends of Gillfield Wood

This is only £15 for a family, £10 for an individual, or £5 concessions for a whole year. This entitles you to: free entry to all our talks and guided walks which are usually £3 (at least 4 such events per year), monthly email of news and upcoming events, the opportunity to give your views on issues concerning the wood, stand for committee and vote at our AGM. **But most of all, it helps the wood!** It gives us a more secure financial footing from which to look after and improve the wood, to run the Friends group and put on educational events and surveys. If you wish to join, we will be very grateful - please send your subscription to: Richard Hibberd, Treasurer, The Leylands, Moorwood Lane, Sheffield, S17 3BS Phone 0114 2890833, Mobile 07814 934 118

Cheques are payable to Friends of Gillfield Wood. Alternatively you may wish to set up a standing order at your bank for annual payments to our HSBC Account - Friends of Gillfield Wood; Account Number 81518259; Sort Code 40-19-51 In this case please email Richard (richard@rhibberd.demon.co.uk) your intentions so he can compile the membership list and recognise the source of the standing order payments. Contacts: Sally Goldsmith 07887 383282 goldsally@googlemail.com or Dave Gash 262 0564, daveygash@hotmail.com. Please visit our website

[www.friendsofgillfieldwood.com](http://www.friendsofgillfieldwood.com)

## Super-slimming couple are seeing less of each other!

A super-slimming couple from Sheffield have discovered a new zest for life after losing nearly 6st between them and winning a weight loss competition.

Pete Guest and Clare Oxley-Guest's success has transformed their lives and seen them crowned Totley's Slimming World Couple of the Year 2013.

The pair, who have been married for 7 years, decided to join the Totley Slimming World group after realising that their weight was putting their health at risk.

Pete, 51, says: "We didn't suddenly wake up with a weight problem, like most people our weight crept up gradually. I think it's easy for couples to become comfortable with one another, and meals out and nights in with a takeaway or a bottle of wine take the toll on the waistline over time. But in January 2012 we both realised that our size had reached a point where it was making us unhappy and we knew it was affecting our health."

Being overweight increases the risk of developing a long list of health problems including diabetes, heart disease, stroke and cancer. Around one in four people in the UK are so overweight their health is seriously at risk.

But Pete and Clare are no longer part of that statistic after joining Slimming World and losing a combined weight of 5st 12.5lbs in 12 months. Pete lost 4st 7lbs and Clare dropped 1st 5.5lbs following Slimming World's Food Optimising healthy eating plan and swapping high calorie, fatty, sugary foods for healthy, home-cooked meals. The plan encourages slimmers to satisfy their appetite with 'Free Foods', foods that are filling but low in calories and fat, like fruit and veg, pasta, rice, potatoes, lean meat, fish and eggs – so it's possible to lose weight without ever feeling hungry or having to count a single calorie.

Pete says: "It's amazing how much we've both changed in such a short space of time and it hasn't been hard work – we still enjoy all of our favourite meals like roast dinners, curries and stir fries, we just cook them differently now. It's never felt like being 'on a diet' – and we're both confident that we've made the change for life now, there's no going back to the way we were."

Clare, 44, says: "At first I was nervous about joining a slimming club but there was nothing to be scared about, everyone was so friendly and supportive from day one and now we look forward to going every week, even as Target members. I think what really worked for us was losing weight together because it meant we spurred each other on and, with the support of the group too, we stayed motivated. And I suppose there's been a little bit of healthy competition too!"

Having lost weight and become more physically confident, the couple are much more active and now enjoy going to the gym. Jo Elsey, who runs the Totley Slimming World group, says: "Pete and Clare have got so much more energy and look years younger too."

She adds: "They're real proof that slimmers are more successful when they lose weight with a friend or loved one because they can make changes together, which is often easier. Men often think that slimming clubs and healthy eating are just for women but once they come along they soon feel at home and realise that the plan is great for men too because they can eat to satisfy even the biggest appetite and still enjoy the foods they love. It's been great to watch Pete and Clare slim down – they're a real inspiration to the rest of the group."

Anyone who'd like to join the Totley Slimming World group and change their lives like Pete and Clare have can come along every Monday at 7pm at Dore & Totley United Reformed Church on Totley

Brook Road or call Jo Elsey on 0114 2620523 or 07590 545253 for more information.



## DORE ART GROUP EXHIBITION

After a few ups and downs, stays in hospital, coping with the lovely snow and not being able to get out and about, we, the Dore Art Group, are up and running and happy to say that "the show will go on". This year's dates for you to put on your wall charts and diaries are Friday, 12 April 2pm to 6pm and Saturday, 13 April, 9.30am to 5.00pm when we will have some delightful pictures for you to admire, perhaps purchase for yourself or as a gift for a wedding or housewarming maybe. We also can offer some nice copies of our work as cards and notelets, all done by our members. Plenty of variety and all at our usual reasonable prices. Just come and see what we have to offer and don't forget our lovely refreshments too. Entrance is free and we can promise you all a warm welcome at The Old School in Dore.

Looking forward to meeting you!

Connie Bedford

Event Co-Ordinator

DORE ART GROUP  
**ART**  
**EXHIBITION**  
*Dore Old School*

Friday 12th April 2013

2.0pm to 6.0pm

&

Saturday 13th April 2013

9.30am to 5.0pm

Refreshments available  
Free admission





ECCLESALL FIRST AID TRAINING

Do you require certification for work?  
Want to learn lifesaving skills to protect the ones you love?  
Our experienced and professional trainers are accredited to deliver fully certificated qualifications in;

Adult and Paediatric First Aid

For a free quote and advice call  
Tel - 07742068599

Web - [www.ecclesallfirstaidtraining.co.uk](http://www.ecclesallfirstaidtraining.co.uk)  
Email - [info@ecclesallfirstaidtraining.co.uk](mailto:info@ecclesallfirstaidtraining.co.uk)



253 Baslow Road, Sheffield, S17 4DU  
Tel: 0114 2360 583 Mobile: 07801 346 455

## R.M.M BUILDING SERVICES

### 25 YEARS EXPERIENCE

All types of building work carried out including- Drop kerbs, block paving (drives, paths, etc), extensions, general building repairs and maintenance.

Phone Rob on- Mob- 07906108567

Home-2352190

## Hallowes Dog Walking and Pet Services

Totley, Dore and Dronfield

Dog Walking Service (1-2-1)

from just £10 per hour

Small Pet and Cat Sitting available

CRB Checked and fully insured

Website: [www.hallowesdogsandpets.co.uk](http://www.hallowesdogsandpets.co.uk)

E-mail: [info@hallowesdogsandpets.co.uk](mailto:info@hallowesdogsandpets.co.uk)

Tel: 07927 478858

**R.S. HEATING & BUILDING CO**  
EST. 1971

**HEATING DIVISION:**  
Experienced Installers of condensing, combination and regular boilers. Systems fully guaranteed. Complete after sales service. Also Bathrooms, showers and small plumbing works.

**BUILDING DIVISION:**  
Loft conversions, House renovations including general building, joinery, plastering, electrical decorating etc.

13 Overcroft Rise, Sheffield, S17 4AX  
**Tel:- 0114 236 4421**  
Reg. Office:- 62 Machon Bank, Sheffield, S7 1GP  
**Te:- 0114 2559425**  
**Fax:- 0114 255 9431**  
Email: [enquiries@rsheatingandbuilding.co.uk](mailto:enquiries@rsheatingandbuilding.co.uk)  
Web: <http://www.rsheatingandbuilding.co.uk>

**Dronfield Landscapes**

Gardens cleared and maintained, Lawns mowed, Turfing, Tree felling & pruning, Hedges trimmed & reduced, Pond maintenance, Fencing etc.

for free quotation call  
Chris on: (0114) 2746158 Mobiles: 07976072785 or  
Richard on: 07789497104

8am-6pm mon-fri HazelBarrow Farm, Norton S8 8BA



**Nigel Watson**



**Carpenter and Joiner**

Fitted kitchens, sliding wardrobe doors with bespoke interiors, internal and external doors supplied and fitted, new handrail and spindles, laminate and wood flooring, locks, architraves, skirting board, stud walling, boxing off etc.

For a reliable and quality service

TEL: 0114 236 4778

MOBILE: 07971 528149



## Got a computer?

### Having Problems?

Is it running slow? Stops responding?  
Having problems running the latest games or applications? Broadband installation?

### Give me a call!

I'm available for home visits at any time including evenings and weekends. I can also suggest upgrades to improve performance, or even build you a system to your specific requirements.

**Tim Brown**

Building, Installation, Upgrading and Troubleshooting Computer Systems  
Over 25 years professional experience

Phone: 0114 2472619 Fax: 0870 7060080

Mobile: 078 17464703 Email: [service@timbrown.plus.com](mailto:service@timbrown.plus.com)



## **Dore & Totley URC celebrates a double Anniversary**

In May 2013, Dore & Totley URC celebrates its 125th Anniversary and we also remember that it was 100 years ago that the congregation of the Union Church, as it then was, moved out of its Tin Tabernacle and into their brand new stone sanctuary.

From the outside, the sanctuary on Totley Brook Road is still recognizable as that Gothic style building with a red tiled roof, but the interior is very different - gone are the fixtures and fittings of Oregon pine, the great pulpit and all the fixed seats. Today's church is lighter and brighter and, where that Tin Tabernacle once stood, there is now our new Church Hall.

However, the ethos that was expounded on that day one hundred years ago remains central to our faith and purpose in this place.

Our fellowship maintains that open door to the presence of God and to the needs of the world around. And to emphasize the point the changes in our buildings incorporate large glass doors to both the church and the central linking area which extend a visible welcome to the community. We trust the Rev Titchmarsh would approve!

We invite you to join us on Saturday 4th May between 10 am and 12 noon for coffee and cakes with cello accompaniment, and to see a display of our Church's life, past and present. Donations will go to The Lost Chord and Cerebral Palsy Sport.

On Sunday 12th May, the Anniversary Service at 10.30 am will be led by our Group minister, Rev. Shirley Knibbs. This will be followed by a soup lunch with proceeds for Christian Aid. You will be very welcome to come to either or both the Service and the lunch.

## **125<sup>th</sup> CHURCH ANNIVERSARY**

### **Dore and Totley United Reformed Church,**

**Totley Brook Road.**

### **COFFEE, CAKES & CELLO**

**Saturday 4<sup>th</sup> May, 10 am to 12 noon**

**Tea, coffee and cakes  
with musical entertainment,  
and a display of church life, past and present.**

**Donations in support of the Lost Chord and  
Cerebral Palsy Sport**

**++++**

### **ANNIVERSARY SERVICE**

**Sunday 12<sup>th</sup> May at 10.30 am**

**Followed by a Soup Lunch  
with proceeds in support of Christian Aid**

## **135 DORE ROAD**

*A further Planning Application (ref: 13/00383/FUL) was submitted in February 2013 to the Council for this site. It is as controversial as the previous application and the revised scheme still does not respect the nature and character of the area in terms of density, scale, bulk and massing.*

Information obtained from the Land Registry has confirmed that Sheffield City Council held a freehold interest in the site at 135 Dore Road. Readers will recall that this site has been the subject of much controversy and an application for multi-storey apartments received around 2,000 objections and was eventually turned down on appeal by the Planning Inspectorate in January of this year. The Council did not disclose its interest in the site to either the residents of Dore, local councillors or the planning committee on any of the 7 applications submitted by Metropolitan Homes Limited between 9 September 2009 and 5 February 2013. Nor did the Council disclose its interest to the Planning Inspector acting on behalf of the Secretary of State.

Information obtained under the Freedom of Information Act in February 2013 reveals that the Council was involved in negotiations to sell its freehold interest to Metropolitan Homes Limited for several years and only recently completed the sale on 5 February 2013 for a nominal sum of £2,600. What is also of significant interest is that the lease between the Council and Metropolitan Homes Limited contained restrictive covenants which would have precluded any of the schemes set out in the various planning applications from being built. This includes the applications for housing schemes of 6 and 8 units. It is also clear that several covenants in the lease were breached but it appears that no enforcement action was taken by the Council.

The site was purchased by Metropolitan Homes Limited for £800,000 in 2008 and the combined value of the freehold and leasehold titles is estimated to be in the region of £1.25m.

The Council has been asked to disclose further information and documentation relating to the sale of its interest in the site as well as details of what other offers it may have received for the site in recent years so that the rate payers of Sheffield can determine whether or not the Council has met its obligations under Section 123 of the Local Government Act 1972 in achieving best value in its capacity as trustee for the citizens of Sheffield.

We can also confirm that evidence is being compiled by a small group of residents with a view to submitting misconduct complaints on several planning related matters to the Royal Town Planning Institute against several Council officers including the Director of Development Services and the Head of Planning.

A further update will be provided in the next edition.  
Paul Millington and Aubrey Read



It was the Saxons who put Totley on the map. I've not heard of the Saxons and I know all the families round here!

## A CAT COLUMN

Christmas has now come and gone so what we have left are thoughts and reflections. As usual the various catalogues and charity exhortations started arriving months ahead of the event and most went in the bin unopened. This unduly early start always invites comments from my wife whereas I could easily ignore it.

Next comes the arrival of the first Christmas card. For years in our household we have been able to forecast the sender of the first card to arrive. This year, had we laid a bet on it, we would have lost - the usual first runner was beaten by two others!

The cards themselves show a tremendous variation in subject matter, most of which are pleasing and show that at last some fine art students have found employment. I will pass over the printed interior which goes from simple Merry Christmas to verses which are frankly tawdry. Of course what is hand written by the sender is of more interest. In our case these range from just the signature, through "hope you are well" to almost filling all the available space. Beyond this are the separate hand written letter and then king of all, the PC produced newsletter. Many of these, carrying titles such as the Smith News or the Megan Monitor, are lavish productions including coloured photographs. The most elaborate one we received this time was from a male friend, now in his sixtieth year. Just over two years ago this bachelor married an American lady who joined him in his home in Yorkshire. The period since then has allowed him to introduce her to lots of places in Britain and his publication this time included photographs of places visited. However this was not the innovation which interested me most. They have acquired two cats named Tuxedo and Magpie, and Tuxedo had been allowed to write a column in the newsletter about their life during the year.

Unlike my wife I have never lived in a house with a resident cat. As in most houses before WWII her kitchen had a Yorkshire Range. For readers who do not remember these, the normal style was a central coal fire, oven on one side and hot water tank on the other. The front of the fire had horizontal metal bars between which hot ash fell to the hearth below. Naturally, with no central heating, the cosiest place was near the fire. Unfortunately, as their cat got older it sometimes got hit by descending hot ash and a smell of burning hair would elicit a cry of "cat's on fire"!

We have lived in this house since it was newly built in 1957 and during that time we have had four different families each side of us. One couple on one side had a cat and we were asked to feed it when they went off on holiday. Quite a common experience you might say, many neighbours look after pets in similar situations. What, I suspect, is different is the instruction we had beforehand- "the only way she will drink is in the bath with just a little water in it". Well that was not too bad. Provided we didn't tell anyone, nobody need know of our curious ministrations to a cat in our neighbours' bathroom. Not so with a cat on the other side. Called on for similar services instructions were different. To get the cat to feed someone had to stand outside, clicking a pair of scissors as loudly as possible, and shouting endearing words to the moggy. I am pleased to report we survived these events without being registered as lunatics but I still wonder how such curious fetishes ever started.

For many years we were visited by a cat living up the road. If we sat out in the garden having coffee or a sandwich lunch she had a habit of rubbing herself around our ankles. Even when working in the garden she would do the same, being more persistent than robins hopping around. I am sure she was not hoping for worms like the robins- she just had a friendly nature.

Our latest cat experience is with Maisie, now 10 years old and member of our daughter's household in Leeds. She is the most unfriendly cat I have met. Whenever we visit the best we get is a sniff around the shoes. Normally she walks past with such a disdainful air one could believe she had trained at RADA. Our son-in-law can however vouch that her attitude is better to the immediate family. He is a keen cyclist and rose early one morning before the rest of the family to go on a training run. When eating his breakfast alone in the kitchen, Maisie came in from the garden carrying an injured mouse in her jaw. A kind man, he released the mouse and took it into the garden to give it a chance of survival. Returning to the kitchen he was just in time to see Maisie finishing off his bowl of Weetabix. He swears the look on her face meant "thanks, that was a nice swap of breakfasts!"

Don Ashford

### Friends of The Peak District

#### One Magnificent Peak District-Three Magnificent Walks

Supporters of the 'Friends' have the chance to take part in a walk with Simon Groom, who began his broadcasting career as a 'Blue Peter' presenter, and now works behind the camera as a Producer/Director. There will also be a special tour and treasure hunt around the gardens of stunning Thornbridge Hall at this year's Friends of the Peak District Magnificent Walk. There is a choice of three different walks, so everyone can take part:

- The Magnificent Marathon - a 25 mile whistlestop tour through some of the Peak District's finest countryside, including Chatsworth Park, Derwent Valley, Baslow and Curbar Edges and Frogatt Wood.
- The Great 8 Miles - a more leisurely walk that takes in some different and truly stunning views of Monsal Dale.
- The Three Cake Challenge - a short relaxing walk, suitable for even the smallest of feet, with three cake stops on route. Taking in the Monsal Trail and exclusive access to the gardens of Thornbridge Hall for a treasure hunt.

"I'm absolutely delighted to be joining Friends of the Peak District's Magnificent Charity Walk on 13 April. I'm so keen to support the vital work that the charity does in making sure that the Peak District is nurtured and protected for everyone to enjoy - now and in the future," added Simon Groom.

Friends of the Peak District's Magnificent Charity Walk is on Saturday 13 April at Thornbridge Hall, near Ashford in the Water.

To find out more, please phone 0114 279 2655 or go to [www.friendsofthepeak.org.uk](http://www.friendsofthepeak.org.uk)



## Update on the Streets Ahead Improvement Works in Totley

The Totley zone covers work in 3 wards; Totley, Ecclesall, Beauchief & Greenhill. Work is due to start in March and will last approximately 20 weeks\*.

Work will focus on the main primary and secondary routes running through Totley, Bradway, Greenhill, Lowedges, Ecclesall and Dore.

### Work includes:

Baslow bridge maintenance – February to April 2013

Trees maintenance and replacement – February/March 2013

- Signal replacement on Baslow Road – February/March 2013
- Street lighting – March/April 2013
- Drainage improvement in preparation for road resurfacing – March to May 2013
- Pavement surfacing and kerbing – March/April 2013
- Road surfacing and white-lining – May to July 2013

\*All dates are subject to change as external influences such as severe weather or unforeseen additional works can delay the schedule.

Temporary signs will be displayed in the area five days before the road resurfacing work starts, confirming the start date and expected duration of the work. If it is necessary to change these arrangements the signs will be updated accordingly.

Work has been planned to minimise traffic disruption and we intend to do as much as possible outside peak travel periods. Residents and businesses that are directly affected by the works will receive a letter about what is happening on their road before any works start.

### Tree replacement

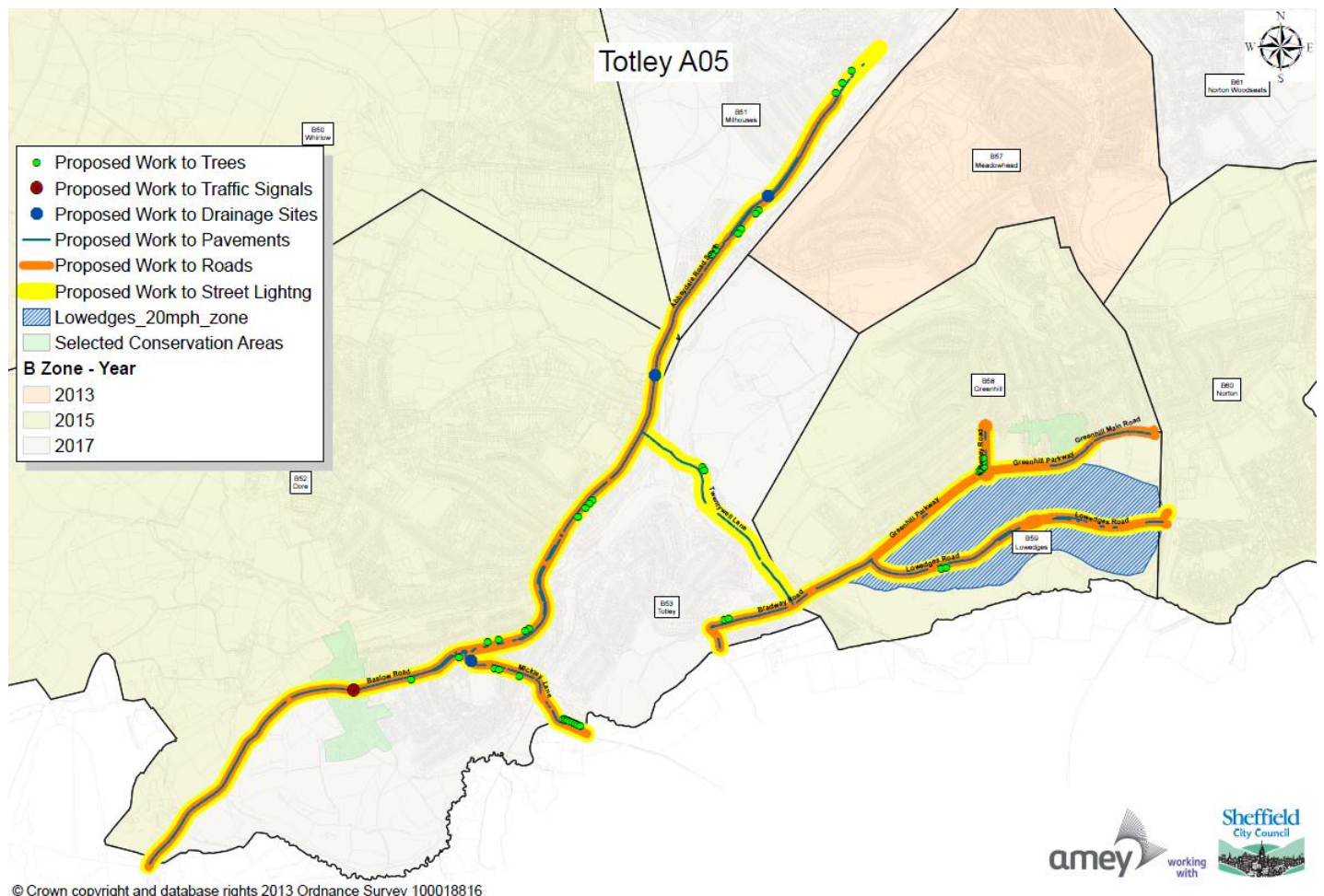
Trees in Sheffield are getting a health check as part of a city-wide survey to identify unhealthy and dangerous trees which need replacing. Qualified tree experts have been working since October to carry out a comprehensive survey of the city's highway trees – those on the roadside and in grass verges – to identify those that are unhealthy and unsafe.

Trees have been identified in the Totley zone that need replacing because they are dead, dying, diseased or causing damage to the roads or pavements.

The trees that are being removed have a notice displayed on them. We are replacing all the trees we are removing, however, please note that this will not happen until the next tree planting season (November 2013 to March 2014).

You can keep up-to-date with the improvements taking place at [www.sheffield.gov.uk/streetsahead](http://www.sheffield.gov.uk/streetsahead) or @sccstreetsahead on Twitter. If you would like any further information or to discuss any issues, please contact us on 0114 273 4567, email [streetsahead@sheffield.gov.uk](mailto:streetsahead@sheffield.gov.uk)

Sheffield City Council and Amey thank all residents for their co-operation and apologies for any disruption caused by these temporary works.





## Baslow Road



Amey's army have been busy during the last couple of weeks, digging holes and planting lamp standards from Beauchief to Totley. Their progress has been dramatic. This is the time to take those historic photos, like this one, of Totley's main road before LED lighting arrives. It will be interesting to compare the differences.  
Roger Hart



# GWS



Technology Solutions

PC Problems/ Repairs/ Servicing      No Job Too Small  
Wireless & Internet Setup      PC Setup/Data Transfer  
New PC's/ Laptops & Upgrades      Safe PC Disposal  
Reconditioned PC's & Laptops available      Tuition  
Software/Hardware supplied & installed  
For All Your PC Needs

**Guy Senior**

Phone: 0114 2352662      Mobile: 07890030453

Email: [guy@gwstech.co.uk](mailto:guy@gwstech.co.uk)

Web: [www.gwstech.co.uk](http://www.gwstech.co.uk)

GWS, 5 Conalan Avenue, Bradway, Sheffield S17 4PG

# 3 VALLEYS BEER FESTIVAL

SATURDAY 8<sup>TH</sup> JUNE 2013

OVER 100 REAL ALES PLUS CIDER, FOOD AND  
MUSIC ACROSS TEN VENUES WITH A FREE BUS  
SERVICE FROM DRONFIELD RAIL STATION



## The "Save our library" petition

At the time of writing 635 people have signed the petition to save Totley library, with more still coming in. The council's exact plans for the library service are still unknown, but Totley is on a list of at-risk sites.

Totley Library is essential to our community and is highly regarded both for its library services as well as serving as a community hub. There is talk of opportunities for volunteer support.

We will keep up pressure on this, and we understand that the Council is consulting widely across the city and preparing new plans for our library services over the next few years. Do let you're your views and suggestions be known

Councillors Keith Hill, Joe Otten, Colin Ross (contact details page 3)

[www.threevalleysfestival.org.uk](http://www.threevalleysfestival.org.uk)



## Open Up Sheffield



'Open Up' are a not for profit organisation, promoting professional art and artists in and around Sheffield throughout the year with its web site. It offers artists opportunities to showcase their work, engage a curious public and network with other artists, all within a supportive digital and live environment. This year's Open Studios event will take place on the following dates:

Saturday 4th Sunday 5th Bank Holiday Monday 6th: Saturday 11th: and Sunday 12th May. Opening Times: 11 am to 5 pm - unless otherwise stated.

You can visit any of the venues with no prior appointment across 2 weekends and will be welcomed by a range of artists of different genres, who produce an astonishing array of quality, creative work in every style and medium imaginable.

Free brochures will be available near the time and will be found across the city in shops, galleries, libraries, art clubs and from local artists. This should help you organise your visit more easily as the artists are grouped into districts. Totley and Dore are featured once again this year.

This is your chance come and see what they do, how they do it, and talk to them first-hand about why they do it and what drives them.

Christine Rodger

## HELP FOR HEROES

More than £700 has been raised with the sale of hundreds of charity wristbands at Martyn Kemp Opticians' (MKO) ten practices, which will help soldiers to get back to normal after service in Afghanistan - including a MKO staff member's son.

Nineteen-year-old

Connor Millward, an infantry man in the 3rd Battalion Yorkshire Regiment and son of Liz Rhodes who is based at MKO's City Road practice, returned to the UK a few weeks ago following a tour of duty in the Helmand province.



Connor, along with his colleagues, are now benefitting from the soldiers' convalescence and training activities provided by The Yorkshire Regiment Trust for which the cash was raised.

Captain Trevor Edgar, representing the trust, said: "This great donation will certainly make a difference. For one thing it will buy an iPad for a soldier shot in both shoulders and right hand who will now be able to communicate with colleagues still in Afghanistan and family members who cannot be at his bedside. On behalf of the colonel of the regiment I would like to say a big thank you to MKO and the firm's patients for their superb support."

Martyn Kemp, chairman of MKO, South Yorkshire's largest independent firm of opticians, said: "As a company we were extremely proud to have done our bit for a charity which does so much to ease the harmful effects of military service in this particularly challenging area of the world. I am very grateful to the public for contributing as much as they have."

## Highway "Grumpy/Smiley" signs (speed indicator devices)

These appear to be popular with the motoring public and we get frequent requests for them to be located permanently on the same site. We would like more but unfortunately, they are costly to purchase, install and maintain and we have many more "hotspot" locations than we can afford devices. There is also a suspicion that familiarity can breed contempt.

Hence we hope that careful rotation through the hotspot sites enables us to offer timely reminders to motorists. They also provide us with useful records of speed levels and the volume of traffic. When more funding is available there is no doubt that will apply for more.

Keith Hill (Cllr.)

## Anyone remember?

So there we were in Dronfield listening to the great David Hey talk about medieval Dronfield at a meeting that had been arranged to try to get us to give some money to save some barn there.

Quite a few other Totley people were hanging about, because we were Dronfield ourselves once, of course.

Anyway at half time, mainly to avoid buying the raffle tickets, I was lingering by the tea queue and my old All Saints school pal Graham Gregory turned up out of the past and said did I remember the WW2 gun placement at the top of the White Drive on the right hand side going up, just before the gate near the cycling hut.

I said no but why did he call it the White Drive when everyone else calls it the White Lane, except my family who've always called it the White Line.

We agreed the best thing to do was to write to the **Independent** and ask what anyone else remembers. Rony Robinson

## Drivers, please stop ruining our grass verges!

### A letter from a concerned resident:

Would people parking on the Crescent for their journeys and visits please NOT mount the kerb and put the wheels of their vehicles on the grass verges?

For people who live nearby and for those who use the pavements next to them, it's extremely irritating when cars (or other vehicles) gouge out huge deep gulleys, destroy the grass and fill with mud and water. This behaviour makes the place look awful and shows a total lack of consideration for the environment and for other people. It would also enable people getting out of cars to do so without getting muddy shoes. It's quite a wide road - there is plenty of space to park cars without mounting the grass verge!

I am sure everyone would be very pleased to see an end to this behaviour, and to see more respect for the environments they use and live in.

## Activ Physiotherapy

Activ Physiotherapy are pleased to announce a new podiatry service at their clinic in Bradway. Michelle Martin of Peverill Podiatry will be offering clinics on Saturdays. As well as general chiropody services, Michelle will be able to fit orthotics and is a diabetes specialist. For appointments please call Michelle direct on 01246 563630 or phone the Bradway clinic on 0114 235 2727.

## "need *help* in your garden?"

**"right plant, wrong place?  
Stuck, don't know where to  
start?"**

We can offer a Design  
Consultancy without the  
designer price-tag.

**"Selling your House?"**

We can tidy your garden, also  
with use of planted  
containers/hanging baskets,  
make your house more desirable  
to prospective buyers.

### Season by Season

- Regular Lawn Maintenance.
- Hedge Cutting.
- Small Tree/ Shrub pruning.
- Beds/Borders tidied, planted.
- Planted Containers.
- Green waste removed



the **Abbeydale**  
gardeners...

...we can help you.

Formerly of  
The Abbeydale Garden Centre

Kevin Hunter 07818 20 12 42  
Mark Naylor 07739 75 23 19

[www.theabbeydalegardeners.co.uk](http://www.theabbeydalegardeners.co.uk)

## **Dore Moor** Garden Centre

(Opposite the Dore Moor Inn)

Hathersage Road · Dore · Sheffield · S17 3DQ

- Wide range of seeds, bulbs, plants & pots
- Mowers, fencing, garden tools
- Horse & Poultry Feeds
- Logs, kindling and winter fuels
- Christmas trees and decorations

*Call in and see us*

Tel: 0114 235 0092

Open 9.30 to 5.00  
Sundays 10.30 to 4.30  
Mondays Closed

### R. S. CERAMIC TILING

56 Mickley lane  
Totley  
Sheffield  
S17 4HE

All ceramic tiling work undertaken, Underfloor Heating

15 years experience, Private and commercial

All work guaranteed, Competitive prices

For a free no obligation quote call

Ron Shilton

Mobile: 07887 990059, Home: 0114 418 1209

Email: [ronshilton@ntlworld.com](mailto:ronshilton@ntlworld.com)

**Slimming**  
WORLD

because you're amazing

If you want to lose weight healthily and with no deprivation or  
humiliation then join your local Slimming World class in Totley,

Mondays at 7pm and at Greenhill on Wednesdays at 10am

Telephone Jo Elsey on 0114 2620523

or 07590 545 253

(Offer cannot be used in conjunction with any other offer)

**1/2** Price membership  
on production of  
this advert



Gail Kitchen: 07986473415



Does going away from home mean your cat is sad and unhappy?  
Does a trip to the cattery scare your cat *not to mention your wallet?*

WORRY NO MORE!

MOGGY MAID is on hand to feed, love and provide  
everything your cat needs in the relaxing comfort of its own home.

As we cat-lovers know, unfamiliar sights and smells can stress your cat,  
whereas leaving them in the familiar surroundings of their own home  
carries less worries, for your cat and for you.

If only for a night, weekend, or a month; holiday, Christmas or any time of  
the year, MOGGY MAID is here to help **LIGHTEN YOUR LOAD**



We promise no mischief allowed!

In a professional manner and with quality service, you can ensure  
individual care and attention, whilst you relax away from home.

We haven't forgotten the rest of the family; mice, rabbits, budgies,  
goldfish, etc will receive care and affection too.



**LOCAL FRIENDLY SERVICE**

From £5 a day

For more information, contact Gail Kitchen on:  
07986473415 5 Ullswater Place, Dronfield Woodhouse

## Reminiscences (continued)

The item by Carole Thurkettle (nee Reynolds) which appeared in the Dec12/Jan13 issue of the **Totley Independent**, and part of which was prompted by the item headed 'Thanks for the memories' by my brother Martin and which appeared in the September 2012 issue, stirred further memories.

Carole refers to my late father Steward Hawke taking Carole and her late father Danny Reynolds in my father's milk van to Manchester for 'a cup match' involving Wednesday. I believe this would have been the FA Cup Semi Final of 1960, played at Maine Road, in which Wednesday - having beaten United in the previous round - played Blackburn Rovers. Blackburn won the match, but, by general consent, they deprived Wednesday of a place in the final only by virtue of one of their goals being allowed when it shouldn't have been, and another by Wednesday being disallowed when it should have stood.

If my memories of this occasion are still reasonably accurate, it is because I - aged either 11 or 12 at the time (my birthday almost coincided) - was in Lodge Moor Hospital with scarlet fever, listening to the commentary on a very scratchy hospital radio; so scratchy, in fact, that, on one occasion when Blackburn scored, I thought for a moment that Wednesday had done so - and even convinced one of the nurses to that effect.

Robin Hawke

## TOTLEY RISE SHOPS

### ..a plea for your memories

Members of Totley History Group are researching the shops now known as The Rise, originally used to house the navvies building Totley Tunnel at the end of 19th century. Just one or two shops at that time served the needs of the residents but there is a fascinating story to uncover about the growth of The Rise, the changing character of the shops, the families who owned them often through more than one generation, and on to the present day.

Have you any memories of the shops, getting sweets as a child, rationing in the 40's, photographs, the owners etc. and more recent times? If so, we'd love to hear from you and perhaps include your memories in a forthcoming book.

Contact with us can be made at:

0114 235 2344 Email: fredpeterb@talktalk.net

0114 236 2483 Email: apple-garth@supernet.com

Pauline Burnett Dorothy Prosser

## Holmesfield Flower Club

### Forthcoming Events

Venue: Holmesfield Village Hall (off Woodside Avenue), Holmesfield - ample parking.

**Wednesday 17th April:** Demonstration of Flower Arranging by Catherine Gledhill (NAFAS National demonstrator) entitled "April Showers - here come the flowers". Commencing 7.30 pm. Tickets available at the door: £8 (members £4) includes refreshments. The arrangements will be raffled at the end of the evening. All are welcome.

**Wednesday 15th May:** Ikebana Workshop - tutored by Mary Wadsworth and daughter Terri Dow both Masters of the Ichiyo School of Ikebana. Commencing 7.30 pm (Setting up from 7.00 pm) - Visitors £3; members £2.

## Brolly Wallies

I don't think that I can stand them much longer! I am talking about the Outside Broadcast TV reporters. Can anyone tell me why they step out into the open, into the pouring rain or heavily falling snow to give their report? They never wear a hat or put the hood (if one is attached) up, and nine times out of ten, the overcoat is obviously bone dry. The thrown back hood is happily collecting snow, and it quite clear that the proceedings haven't been going on for very long. Yet these people belong to the same "Club" as the media knowalls who ridiculed, crucified, and successfully got rid of the ex-England football manager, who had the temerity to stand under an umbrella during a downpour (without an overcoat). He was deemed "wimp" for not choosing to be the macho image of the football fraternity, and the papers dubbed him "The Wally With The Brolly", and hounded the man out of his job. At least, he had the sense to keep dry, which is more than the present crop of commentators appear to have.

Shouldn't someone at the BBC et al, have spotted this, and pointed out to them that standing out in torrential rain or blizzard makes them look very foolish, or indeed, a "reight wally" to the rest of the country? Do tell!

Tony Reynolds.

## HOLMESFIELD CHURCH WALKING GROUP

### HATHERSAGE WALK

On Wednesday 17th April at 10.a.m. Robin Greetham will lead a walk from the Scotsman's Pack in Hathersage. We will walk to North Lees and near Bronte cottage (N.B. some may wish to take a shortcut near Bronte Cottage). The cost of the walk is £3 and the proceeds will go to Holmesfield Church restoration fund. Lunch (optional) will be at the pub which is near the church. If you would like to come just turn up on the day. The walk is approximately 4 miles long. Any queries call Robin on 01246 412767.

## THE INNER WHEEL CLUB OF DRONFIELD AND HOLMESFIELD CHURCH

proudly presents

### A HUMOROUS TALK BY SALLY MOSLEY

[A journalist with the Peak Advertiser]

entitled

### POTTY ABOUT THE PEAK DISTRICT

THE TALK WILL BE PRECEDED BY  
**A PEA AND PIE SUPPER**

**MONDAY APRIL 8TH AT 6.30**

HOLMESFIELD CHURCH HALL

TICKETS ARE **£12** AND ARE AVAILABLE FROM JANE  
AND ROBIN GREETHAM  
TEL 01246 412767

PROCEEDS WILL GO TO  
**HOLMESFIELD CHURCH RESTORATION FUND  
AND BALIKYEWUNYA ORPHANAGE IN UGANDA**



## TOTLEY & DISTRICT DIARY

<b>MONDAYS</b>	<b>COFFEE MORNING</b> , All Saints' Church Hall, 10am-noon <b>TAI-CHI</b> , United Reformed Church, Totley Brook Road, 11.30am-12.30pm <b>RAINBOWS and GUIDES</b> , All Saints' Church Hall, 5.45pm-9pm <b>SLIMMING WORLD</b> , United Reformed Church Hall, 7pm, Jo Elsey: 262 0523 or 07590 545253
<b>TUESDAYS</b>	<b>COFFEE MORNING</b> , Totley Rise Methodist Church Hall, 10am-noon <b>KEEP FIT &amp; COFFEE</b> , For the not-so-young, Bannerdale Centre, Carterknowle Road, 10.15am, Phone: 258 5364 <b>WOODSEATS ADVICE CENTRE</b> , Drop in service, free, impartial, and confidential. TR Methodist Church, 10am-noon <b>CRAFT GROUP</b> , Totley Library, 2pm
<b>WEDNESDAYS</b>	<b>PILATES CLASSES</b> , Dore Old School, 9.00-10.00 and 10.15-11.15. Contact Caroline - Tel: 0781 722 0324, email caroline1north@btinternet.com, www.pilatescarolinenorth.co.uk <b>COFFEE in the LIBRARY</b> , 10am-11.30am <b>TODDLER GROUP</b> , 10am-11.30am, All Saints' Church Hall. Details tel. Andy Holmes 0114 236 2088 <b>HEALTH WALKS</b> , 10.30am, Totley Library foyer. Phone Tina, The Health Walk Ranger: 0114 203 9335 <b>MODERN SEQUENCE DANCING</b> , All Saints Church Hall, 8pm-10pm
<b>THURSDAYS</b>	<b>BELROBICS</b> , United Reformed Church, 9.15-10am, email: jenny@belrobics.co.uk or telephone: 07816 850132. <b>NCT COFFEE GROUP FOR DORE TOTLEY &amp; BRADWAY</b> , 10am-noon, For mums & babies/toddlers, meeting in various locations, Phone Lucy Street 07837 000405 or email: lucy@streetr.plus.com for further details <b>CHAIROBICS</b> , Heatherfield Club, 1.15pm <b>PUSHCHAIR CLUB</b> , Totley Rise Methodist Church Hall. 1.30pm-3pm. Tel. 236 3157 for further details <b>PILATES CLASS</b> , United Reformed Church, Totley Brook Road, 6.15pm-7.30pm <b>also new class 1.30pm to 2.30pm</b> , Phone Emer Coffey 07792 422909
<b>FRIDAYS</b>	<b>PILATES</b> , The Old School, Dore, 9.15-10.15 & 10.45-11.45am. Phone Teresa Tinklin 07906 312372
<b>SATURDAYS</b>	<b>MODERN SEQUENCE DANCING</b> , All Saints Church Hall 2nd and 4th Saturdays 8pm-10pm

## APRIL

**SUN 1st MINIATURE TRAIN RIDES (Easter Monday)**, Abbeydale Road South, First train 1pm - last train 5pm (weather permitting) Car Park closes 5.15pm. www.sheffieldsmee.co.uk

**MON 8th HUMEROUS TALK**, by Sally Mosley, 'Potty about the Peak District', preceded by pie & pea supper, Holmesfield Church Hall, 6.30pm, tickets £12 Jane & Robin Greetham 01246 412767

**TUE 9th FRIENDS OF GILLFIELD WOOD**, Short AGM then illustrated talk by Danny Udall, Update on the Managemnt of the Moors, further details page 2, 7.30m, **Library. All are welcome.**

**WED 10th - SAT 13th IOLANTHE**, Dore Gilbert & Sullivan Society, Montgomery Theatre, Surrey St. from Wednesday 10th. To Friday 12th April at 7:30pm and on Saturday 13th. At 2:00pm (Matinee) and 6:30pm GALA evening in aid of St. Luke's Hospice.

**SUN 14th MINIATURE TRAIN RIDES**, Abbeydale Road South, First train 1pm - last train 5pm (weather permitting) Car Park closes 5.15pm. www.sheffieldsmee.co.uk

**FRI 12th - SAT 13th ART EXHIBITION**, Dore Art Group, Dore Old School, Friday 2-6pm, Sat 9.30am-5pm

**TUES 16th TOTLEY TOWNSWOMEN'S GUILD, 'History of Wedding Dresses', Janet Stain, Totley Rise Methodist Church Hall, 10am**

**SUN 21st MINIATURE TRAIN RIDES**, Abbeydale Road South, First train 1pm - last train 5pm (weather permitting) Car Park closes 5.15pm. www.sheffieldsmee.co.uk

**WED 24th TOTLEY HISTORY GROUP, Totley Library, 7.30pm** AGM then slide show 'Postcards of Dore & Totley'

## MAY

**SUN 5th CASTLETON FARMERS MARKET**, the Village Hall, 10am-3pm

**SUN 5th and MON 6th (Bank Holiday) MINIATURE TRAIN RIDES**, Abbeydale Road South, First train 1pm - last train 5pm (weather permitting) Car Park closes 5.15pm. www.sheffieldsmee.co.uk

**SUN 19th PORTER VALLEY ROUND WALK**, starting 9.30-11am, details page 16 and www.vulcanrotary.org.uk

### DATES FOR YOUR DIARIES!



The fifth Totley Music Festival is now being planned, and it looks as though we're going to have a fine line-up of new faces as well as some of our regulars. The dates for the Festival this year will be Sunday 14th to Saturday 20th July.

Look out for more details in the coming weeks! In the meantime, as always, contact us if you want to get involved or have any idea for performers or events - we're on 07956 858944 or at totleymusicfestival@talktalk.net Phil and Sue.

Mark and Sally Fletcher invite you to

**The Grouse Inn**

**Longshaw**

Sheffield S11 7TZ

**Meal times:-**

***Mondays 12.00 to 2.30pm***

***Tuesdays to Friday's 12.00 to***

***2.30pm and***

***6-30pm to 9-30 pm***

***Saturdays 12.00 to 3.00pm***

***and***

***6.30pm. to 9.00pm (drinks - open all day)***

***Sundays 12.00 to 9.00pm***

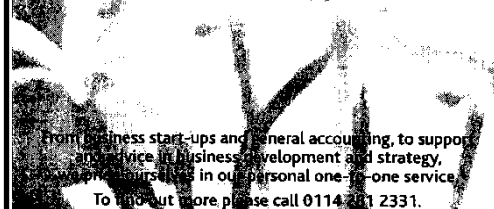
**Phone 01433 630 423**

**R Rose & Co**

Chartered Accountants & Business Advisors

Specialists at looking after the affairs of small businesses.

For a **FREE** initial consultation please contact Roger Rose FCA on **0114 281 2331**



From business start-ups and general accounting, to support and advice in business development and strategy, we provide a range of services in our personal one-to-one service. To find out more please call 0114 281 2331.

213 Derbyshire Lane, Norton Lees, Sheffield S8 8SA  
Email: info@r-rose.co.uk



## South Yorkshire lands £18m bus boost

Transport chiefs in South Yorkshire have been awarded a grant of £18.3 million of Government funding to further improve bus services and information across Sheffield.

Following the success of the recently launched Sheffield Bus Partnership, Transport Minister Norman Baker announced that the Department for Transport (DfT) has granted the money. South Yorkshire Passenger Transport Executive (SYPTe) bid on behalf of the Sheffield Bus Partnership to enable Sheffield to become the first Better Bus Area and trail-blaze this national scheme.

The grant combines money already paid directly to bus operators with new Government funding, which together will be invested in improving bus services and traffic management across Sheffield.

The Better Bus Area scheme is a new Government policy designed to promote economic growth and reduce emissions by improving bus services for passengers. The local bid, developed in partnership with operators, aims to improve access to jobs and services across the Sheffield City Council area.

The additional £18.3 million funding will allow further developments to be made in three key areas:

- Improvements to infrastructure used by routes in the city centre, such as Gleadless, Meadowhead, Heeley Bottom, Parkway and in north Sheffield
- Improvements to traffic control to reduce bottlenecks
- An extension to the provision of audio visual equipment on buses

Proposals, based on recent market research and consultations, also include revenue schemes to reduce costs for operators to minimise future fare increases, highways improvements along Ecclesall Road, and technology to better control traffic signals and give priority to buses.

## The Rise & Demise of Community Assemblies

Community Assemblies were introduced in 2009, a year after LibDems won control of the City Council, as part of the Community Involvement Strategy to "put us in the Driving Seat". Seven in total, each covering 4 electoral wards, they replaced Area Panels which had been in place since about 1995.

Each CA evolved differently, and in 2010 a public meeting was held to compare what worked, and what didn't city-wide. But this well-attended debate wasn't recorded, so most of its positive and negative comments were lost.

Labour won control of the City Council a year later in 2011, and put the future of CAs under review. Various discussions over the next 18-months suggested that public support was dwindling, and that CAs were in need of reform, but no major changes were made.

In Oct 2012 a public meeting was held by 'Sheffield for Democracy' to discuss the way forward for CAs, and showed remarkable cross-party agreement that changes were necessary. A detailed report was issued, which is still on their website - [www.sheffieldfordemocracy.org.uk](http://www.sheffieldfordemocracy.org.uk)

The City Council now faces major budget cuts from April 2013, and published its proposals to wind up the existing CAs and replace them with more cost-effective structures. It's likely they will be implemented in March. But a further consultation is planned to start in April to discuss what new local structures should replace the CAs.

It's now up to those with an interest in local democracy to engage in this further consultation to ensure a more satisfactory long-term solution with better public scrutiny, and not just another top-down quick fix. Watch this space ....

Alan Kewley

## Elfann Safety

This is perfectly true. It actually happened, and I was witness to it!!

My wife is a resident at a care home, and just recently, she moved into a larger room, with more drawer and wardrobe facilities. So, moving all the contents of the old drawers etc into the new ones, to the accompaniments of stage whispered comments like, "And we can do without sticky labels!" from a carer, the task was finally done.

Feeling very pleased, I cut a sticky label into narrow strips and labelled them and stuck them onto the edge of the shelf, depicting the new resting place of the above items.

The following day, I went into the wardrobe to get an item for her to wear, and noticed that the labels had gone. I called to her if she knew why the labels had been removed, and by whom?

The reply came from out of the toilet, "I have", from the Head Scrubber, "Why?", says I. "Elth and Safety", came the answer. "You are kidding", says I, "It says that all doors are to be kept shut to prevent fire spreading", she reposts, and set about the WC bowl with vigour.

I was too dumbstruck to argue the matter, and didn't have the heart to point out that the edge of the shelf was about 1" set back from the inside of the doors!!! (I secretly think that she is the local Union rep, either real or imaginary, but she sure is a bundle of laffs!).  
Via email



**Hardy Plant Society**  
**South Pennine Group**  
[www.hardy-plant.org.uk](http://www.hardy-plant.org.uk)

### **Spring Plant Sale**

**Saturday 18 May 2012 12.30-3.30**

**Sunday 19 May 2012 10.30-1.30**

**In Sheffield Botanical Gardens**

**Admission Free : Refreshments available**

*(For your diary - Autumn Sale - 15 September, 11.00-3.00.)*

On sale will be a wide range of both well-loved and more unusual hardy perennials at very reasonable prices, grown locally by our knowledgeable and friendly members who will give you a warm welcome and be on hand if you need any advice. The Group welcomes both novices and experienced plants people, meets the first Wednesday of each month at Shirley House, Psalter Lane, and covers South Yorkshire and North Derbyshire as well as the city. Activities include illustrated talks, plant sales, garden visits throughout the year, an annual coach trip to renowned gardens further afield, a national seed exchange and local seedling swap.

If you would like to join, contact the Secretary, Judy Coulson, at [judycoulson@blueyonder.co.uk](mailto:judycoulson@blueyonder.co.uk) or phone 0114 235 1290.



## **CHEF'S CORNER**



Sophie Wood: local resident, food technologist and lover of all things foody, introduces her exciting new recipe column to the **Totley Independent...**



### **SOPH'S LOAF**

This is my second loaf cake recipe to share with you, and I hope you enjoy it as much as the last! Loaf cakes are moist, versatile and not full of sickly cream (hmmm - unlike the dreaded cupcake!) Finding a dried up morsel of sponge at the bottom of a big whopping pile of cream really is not my cup of tea.

### **Cakey Rhubarb Crumble Loaf**

This recipe is adaptable in the way that you can add as much or little rhubarb as you like, dependant on your own preference, or whoever will be lucky enough to get a slice! As rhubarb will be coming into season this month it will be widely available at a reasonable cost. Serve cold or warm with custard or vanilla yoghurt.

#### **Ingredients:**

##### **Cake Layer**

- 140g Unsalted Butter
- 160g Golden Caster Sugar
- 2 Free range eggs
- 80g Ground Almonds and 40g Flaked Almonds
- 120g Self-Raising Flour
- 1tsp Cinnamon
- 1/2tsp Ground Ginger
- 3tbs milk

##### **Rhubarb Layer**

- 1tsp All Spice
- 300g-500g Rhubarb trimmed and cut into 2cm pieces
- 5cm Fresh Ginger Grated (Optional)

##### **Crumble Layer**

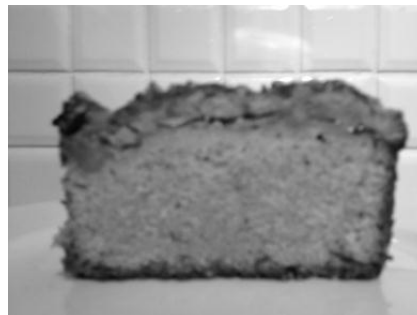
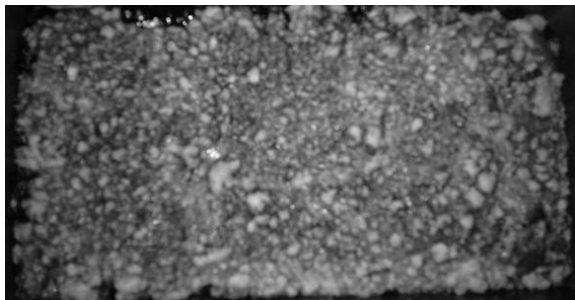
- 40g Unsalted Butter
- 40g Plain Flour
- 20g Oats
- 40g Demerara Sugar
- Pinch Freshly Grated Nutmeg

##### **Equipment:**

- Baking tray, Loaf Tin & Grease proof paper
- Sieve & large mixing bowl
- Large metal spoon, Wooden spoon & Sharp knife
- Oven heated to 170°C
- Pan
- Grater

#### **Method:**

1. Put the rhubarb into a pan with 25g of the sugar, 100ml water and the fresh grated ginger if you have chosen to add it.
2. Put the remaining sugar and butter in the bowl and mix with a wooden spoon until well combined and creamy.
3. To make the topping rub the butter, flour and oats together until they resemble breadcrumbs and stir in the nutmeg and demerara sugar.
4. Beat the eggs into the sugar mixture and gently, using a metal spoon, fold in the flour, ground and flaked almonds, milk and spices.
5. Spoon the cake mixture into a prepared greased and lined loaf tin then spoon in the rhubarb and finally top with the crumble mixture cooked for 1 hour/1 hour 10mins, depending on your oven.



**Look out for more tasty recipes in the next issue of the T.I... and remember: Keep Calm and Carry on Baking!!**



# more rehab

Neurological Physiotherapy & Services

**Specialist Adult & Paediatric Neurological Physiotherapy, Occupational Therapy & Speech Therapy.**

- 
- Acquired Brain Injury
  - Spinal Cord Injury
  - Parkinsons Disease
  - Stroke
  - Epilepsy
  - Cerebral Palsy
  - Multiple Sclerosis
  - Fatigue Syndromes
  - Balance and Co-ordination Problems
  - Amputee Rehabilitation
  - Many Other Conditions
  - Hydrotherapy
  - Electrical Stimulation
  - Gymnasium Work
  - Splinting
  - Saebo Assessments and Fittings
  - FES Bike Programs
  - Cognitive Testing
  - Carer Training
  - Equipment, Accommodation and Aids Assessments
  - Elderly Rehabilitation

Clinic & home visits available - T : 0114 2353 150  
E : [info@morerehab.com](mailto:info@morerehab.com) - W : [www.morerehab.com](http://www.morerehab.com)

## Ceremonies to Celebrate Life

The choice is yours...

You can choose to have a unique, creative and meaningful ceremony that reflects your own values and beliefs.

As a fully qualified **Independent Civil Celebrant**, I offer an alternative to traditional ceremonies and will help to make your ceremony special and tailored to you.

Ceremonies can be held almost anywhere and I will support organisers and venues to **make your occasion memorable, personal and touching.**

I produce ribbon bound copies of your ceremony and can help with scripts, order of service and even help you to organise it yourself.

### Family

Baby Namings  
Welcome Ceremonies  
Family Ceremonies

### Partnership

Wedding Celebrations ♥  
Civil Partnerships ♥  
Vow Renewal

### Honouring Life

Funeral Services  
Remembrance  
Scattering of Ashes

If you have any questions or ideas you would like to discuss, just get in touch

**Clare Freeland**

Telephone **07716 170582**

Email [clare@whenlifechanges.co.uk](mailto:clare@whenlifechanges.co.uk)

[www.whenlifechanges.co.uk](http://www.whenlifechanges.co.uk)



Legal preliminaries will need to be completed by the registry office

# DORE PAVING SERVICES

*Sheffield's longest established paving company*

Free consultations  
All work guaranteed  
All waste recycled

Welcome to Dore Paving Services, Sheffield's Premier Paving Company. Dore Paving has been providing a highly reputable service for over 30 years now, its name being highly respected within the Yorkshire area.

Its services range from block paving driveway installation, through patio laying to driveway and patio refurbishment and restoration. Dore Paving Services provides a complete start to finish package including a full design and landscaping service, an after care package and a 5 year guarantee.

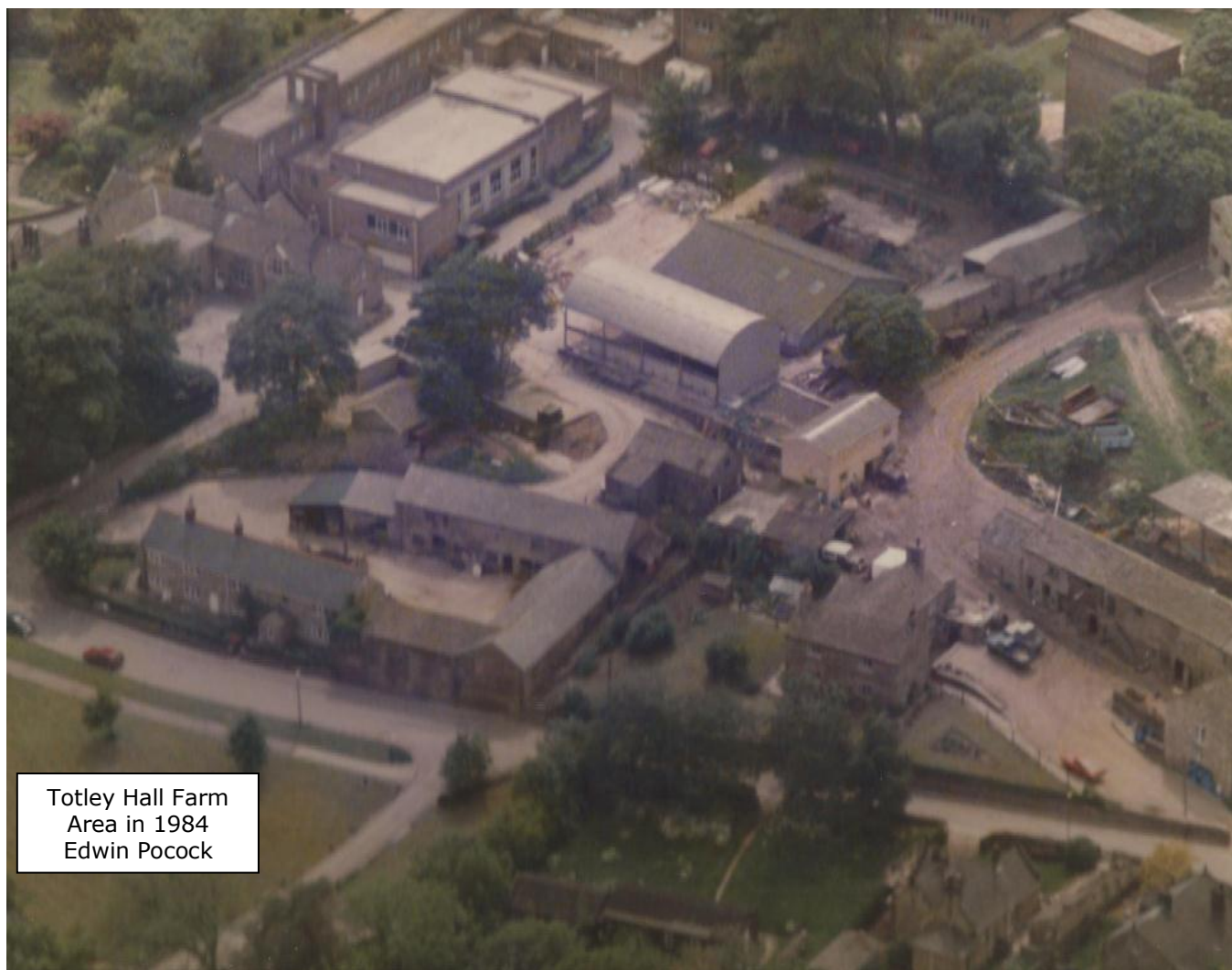
**Driveways  
Landscaping  
Patios  
Refurbishment**



*Sheffield's Premier Paving & Refurbishment Company*

**Call us now on 0800 026 0528 or [www.dorepaving.com](http://www.dorepaving.com)**





Totley Hall Farm  
Area in 1984  
Edwin Pocock

## TOTLEY INDEPENDENT FOR JUNE/JULY

The next issue of the Totley Independent will be available from the usual distribution points on

**SATURDAY 18th May**

**COPY CLOSE DATE for this issue**

*will be*

**SATURDAY 1st June**

**Editor: Ian Clarke**

Tel. No: 235 2526 or Email:  
editor@totleyindependent.co.uk

**Advertising & Distribution:**

**John Perkinson**

Tel. No: 236 1601 or Email:-  
advertising@totleyindependent.co.uk

**Reporter: Ruth Dacey**

**Proof reader: Phil Harris**

Items for publication may be left or sent to:  
**2, Main Avenue, Totley, Sheffield, S17 4FG**

[www.totleyindependent.co.uk](http://www.totleyindependent.co.uk)

**PRINTED by DESIGN ETC, TOTLEY RISE**

Piano/Keyboard~Guitar~Singing~Flute  
Theory & GCSE Coaching

**MUSIC TUITION**

**SOUTH - WEST SHEFFIELD**

Experienced & enthusiastic tutors

All styles, all ages - beginners welcome  
Exam work or just for fun!

Please contact:

**KARIN FINNEY**

0114 258 3397 ~ 07854 747153

notetokarin@hotmail.com

design **etc.**

your local full service  
design agency ...

corporate branding

stationery

brochures

advertising

web design

Call us on **0114 2622130**

e [craig@designetcetera.co.uk](mailto:craig@designetcetera.co.uk) w [designetcetera.co.uk](http://designetcetera.co.uk)  
or call in at **61 Baslow Road, Totley Rise. S17 4DL**