

TOTLEY INDEPENDENT

PUBLISHED CONTINUOUSLY SINCE 1977
DECEMBER 2012/JANUARY 2013

www.totleyindependent.co.uk

No. 359

20p.



This topical Christmas card showing Santa emptying the Jess Ennis post box by Sheffield artist Brian Smith, is available from a number of local retailers including Seasons Gallery, (Dore), All Occasions, (Greenhill); Love & Best Wishes, (Greenhill); Woodhouse Florists, (Millhouses), and Millhouses Post Office, (Jess Ennis's local post office). The Jess Ennis /Santa image, which is now available as a limited edition print from the Blighty Art Gallery on Ecclesall Road, is one of two new images in an already successful range. The other "Barkers Pool" has been chosen by Sheffield's Lord Mayor as his official Christmas card for 2012.

All ten cards in the range can be seen on Brian's web site and are available over-printed as bespoke cards to companies who want to celebrate their connection with the City. For details visit the website at: www.briansmithartist.co.uk or contact Brian at brian66artist@hotmail.co.uk

A MERRY CHRISTMAS

and a

HAPPY NEW YEAR

from us all at Totley Independent

Totley Residents Association

We are currently planning our Christmas Party for Older people to be held on 12th December. If you know someone who is socially isolated and they would like to attend please phone me on 07709 780 606. We have secured funding as we did last year from the South West Community Assembly.

Totley Residents Association would like to wish you all a very Happy Christmas and a Healthy New Year.

Kathryn Higgins, Chair TRA

TOTLEY RESIDENTS ASSOCIATION



TOTLEY RISE CHRISTMAS MARKET

SUNDAY DECEMBER 9th 11am to 3pm

With Christmas just around the corner what better way to get into the festive spirit then heading to the Totley Rise Christmas Market on Sunday the 9th of December. This will be the third market held in the area by the Totley Residents Association and is set to be the biggest and best yet with an exciting mixture of fabulous stalls and wonderful activities for people of all ages to take part in. I met up with the markets Co-ordinator Hetty Moran to find out more about the upcoming Christmas extravaganza and some history about the Markets.

So Hetty, what can people expect on the day?

Well it's going to be a very exciting day indeed! We are going to have approximately 35-40 different stalls, which is the largest number to date set up from the top of Totley Rise where the news agents is, down to the bottom on both sides. There will be a mixture of food stalls which will include food to be taken away, like cupcakes for example and there will also be food served that can be eaten on the spot. There is real variety ranging from Caribbean food to produce from *Whirlow Hall Farm Trust*. Then of course there is the crafts side of things, which is particularly important nearing Christmas time. One of the crafts I am particularly looking forward to seeing is the Christmas wreaths that one of the stall owners will be bringing along. Hand- made Christmas cards will also be available and lots of Christmassy things! We also have stalls that are selling lovely items which can be given as gifts or kept for yourself. These include *The Bindi people*, who will be selling aromatic oils and Indian Prints, and *Suds and Buds*, which sell Soaps, oils and bath bombs! My advice would be just to pop along and see for yourself- there really will be something for everyone.

Will all the stall holders be fairly local to the Totley area?

Yes for the Totley Residents Association it is very important to us that we do try to keep everything in a relatively close distance from where we are. There are a lot of stall holders who are local people who live within 3 miles from here. We don't have people coming in from say Lincolnshire or North Yorkshire. It's because we want this to be very community based and I think the furthest away stall holder will be travelling about 15 miles to get here.

Is there a particular stall you are most excited about?

Oh that's a really tough question as there are so many, but I am very excited about *Autumn Harvest*, who will be running a Mushroom stall! We have been trying to get them for the last two markets but they were unable to have them, so we are delighted that they can make this one. They are going to have a huge range of different types of mushrooms and they will be giving out expert information about all of them. Some of them are really amazing.

Has this market taken a lot of organisation?

Well to answer this properly I have to look back at how the markets were started and how we were able to hold our first one in April. I had tremendous help from another farmers market in Sheffield, who pointed me in the right direction and who told me who to contact, and since then my database has grown to about 80 stall holders who have either been in one of our markets or have expressed a desire to be a potential stall holder. This Christmas market has been the easiest to organise out of the three because after holding each one you learn something new that you can take into the next one, and our database of potential stall holders just keeps growing and growing.

With the actual running of the market, we always make sure that we do things properly. The important thing is that you have to fit criteria in order to get a licence to hold a market and also to obtain permission for the road closure. We have made sure that we have taken everything on board and are following procedures. For example there will be designated first

aiders on the day. The Totley Residents Association would also like to personally thank the police who have been extraordinarily helpful. They have attended the meetings we have held and have discussed safety and parking issues in depth with us. They will actually have their own stall on the day where people will be able to talk to them on issues such as safety in the area and crime prevention.

Is there any important information people need to know about the Christmas Markets?

Yes on the day the Vet's and Eco friendly group which are situated just above the rise have kindly let us use their Car park for stall holders only. For visitors I recommend that you park higher up Baslow road. Also some of the shops on the Rise will be open as usual such as the Deli. The area will have designated first aiders and proper traffic management in place.

Can you give some information about the history of the market?

This Christmas market in December will be the third market that has been held in Totley by the Totley Residents Association. The very first one was in April and then the second was in July. We had a great turn out for both and want to thank everybody that either helped or came along. It is because of how well those two went that we can now hold such a large one for Christmas. We have almost doubled the number of stalls from the very first one so there is a lot for people to look forward to. In the last July market, because it was a summer theme we had Morris Dancers so for the Christmas theme, we will have something along those lines but of a festive nature. I know I'm being rather secretive about the entertainment but it is a big surprise!

What are your future hopes for Totley Markets?

In the future we hope to hold a market four times a year- Spring, Summer, Autumn and Winter and importantly I aim to get more and more stall holders on my database. This will increase the variety of what's on offer and will keep on improving the markets every time they are held. The first one we did had about 22 stalls and now we are close to 40 so it just shows the progression we have made in a short space of time. But the future of the markets also relies on the support from the community as this is

at the heart of why we started running them in the first place. It's organised by the Totley Residents Association for the people in the community, and the money that is raised is ploughed back into the community to fund other events that we have. Because of this, I believe it's important for everyone to come and show their support at this wonderful event. The future looks very bright for the markets judging on previous turn outs and I'm sure this one will be no different.

Contact:

- To get in touch about running a stall download the booking forms on the **Totley Independent** website;
- www.totleyindependent.co.uk - these can be filled in and then posted to Hetty Moran
- A full list of the stalls will be produced a week before the event but here's a sample for you: *Autumn Harvest* (Mushrooms), *Whirlow Hall Farm Trust*, *Caribbean fusion*, *The Bindi people* (aromatic oils/ Indian Prints), *Seven Hills Bakery*, *Suds and Buds* (Soaps, oils, bath bombs) *Paintings by Angela Harpham* *Mrs Shah's Curry Mix*, *Bon Bombs* and *Hinchliffe Fused Glass*

Reporter: Ruth Dacey

Abbeydale Miniature Railway



**Sunday 9th December &
Sunday 16th December**

Gate opens at 11 a.m

Last Entrance 3.30 pm

Admission at the gate is £7 each

Admission covers all train rides,
seasonal refreshments,
a visit to Santa in his grotto and a
present for each child.

Abbeydale Road South, Sheffield S17 3LB (Next to The
Glen Nursing Home)

Look for the yellow notice board on the grass verge
www.sheffieldsmee.co.uk

SHEFFIELD & DISTRICT SOCIETY OF MODEL &
EXPERIMENTAL ENGINEERS



Transport 17

Here we are at the end of the year and what a year it has been. It has been a roller coaster ride since Easter, going from one trauma to another, but you have all been there for us and have come to our rescue when we needed you most, so a heartfelt thank you to you all.

During November we received a generous contribution from the Totley Show organisers of £500, for which we are really grateful, and by the time you read this we will have added a few more coppers to our funds with the Christmas Fayre; hopefully we will have seen many of you on the day.

If any of you would like to make a New Year resolution to spend a day each week with us on one of our buses, as a driver or an escort, we would be happy to hear from you. Our phone number is: 236 2962 and you can reach us between 9am and 12noon, Monday to Friday.

All that is left for me to do is to wish you the very very best of health and happiness during this festive season and coming year.

Felicity Revill
Chair

Christmas Post



UK last posting dates:

- Standard parcels: Thur 13th Dec
- Second Class: Tuesday 18th Dec
- First Class: Thursday 20th Dec

International Airmail

Wednesday 5th December

- Asia, Australia, Far East
- (including Japan), New Zealand

Friday 7th December

- Africa, Caribbean, Central America,
- Middle East and South America

Monday 10th December

- Canada, Eastern Europe and USA

Wednesday 12th December

- Western Europe

www.royalmail.com/christmasposting

Councillor Surgeries

Liberal Democrats:

2nd Monday in the month 6.00-7.00 p.m., Totley Library, Baslow Road and 2nd Saturday in the month from 10.30 a.m. to 12.00 noon, Dore Old School Hall, Savage Lane, Dore Contact details:

Keith Hill 235 2289 Email: keith.hill@sheffield.gov.uk,

Colin Ross 235 1948 Email: colin.ross@sheffield.gov.uk

Joe Otten 230 3290 Email: joe.otten@sheffield.gov.uk

Totley Independent Website:-
www.totleyindependent.co.uk

**WANTED
OLD BIKES**
We're looking for old
Rusty un-loved bikes,
clear out the shed and
give us a call or text
077153 88836
**CASH WAITING
QUICK COLLECTION**
Sorry, we can't take mountain bikes!



Totley Hall Farm
Totley Hall Lane, S17 4AA

Seasoned hardwood logs

- All logs seasoned for over 12 months
- Available in bulk or bags
- Free local delivery on orders of 1m³+

Contact Chris on 07740 309244
or call in at the farm

Music Tuition 

Piano • Keyboard • Flute • Singing
Guitar (rock, metal, blues, jazz, funk, pop, folk)
Music Theory • GCSE work

Music graduates, each with 25 years
teaching and playing experience
All ages, beginners welcome.
Exam work or just for fun!

Call Mark or Karin
0114 258 3397 & 07981 888352

mellows PATISSERIE

185 Baslow Road
0114 235 0884

We have a lovely selection of
homemade cakes, pastries, lunchtime
meals, Pollards Coffee and fresh breads
from Welbeck Bakehouse!

We also do pancakes and hot roast
sandwiches every Sunday.

We are a family friendly place and do
outside catering for all occasions.

We also do Paint a Pot every day and
parties, by appointment only, if you
would like to come and have a try.

Totley Hall Farm

Live nativity Plays



*Experience a magical start to your Christmas
celebrations as you visit an authentic manger
setting and your children dress up and take
part in a nativity play with real animals*

- * Ride Spirit the donkey, cuddle the new born lambs
and see Rosie our Hereford cow
- * Take time to enjoy seasonal refreshments including
mulled wine
- * Visit Father Christmas and receive your present

*Visit www.totleychristmasfestivals.co.uk
for full details, photos and a booking form*

Saturday 15th – Monday 24th December

Early booking essential

Call Chris or Jenny on 0114 2364761

The Ellison family of Totley Grove House by Christine Shimell

The Ellison family moved into Totley Grove House in the late 1890's. Thomas Edward Ellison, (44) a barrister; his wife Constance, (37) and their four children, Alban Cedric, 12 years; Thecla Winifred, (10); Cymbert Edward aged 9 and Elfrida Orley aged 5 lived in the house with their French/German governess, nursery maid, house/ parlour maid and cook. They had moved to Totley from Wortley where they had also lived in some style.

Thomas Edward Ellison, was born in St. Pancras in May 1856. His father, Thomas James Ellison was a judge and is remembered as "the miners' friend", for an agreement he brokered in the early 1870's between mine workers and mine owners in a dispute about wages. Judge Ellison argued that a man's wage should be sufficient for him to support his wife and children. This concept has ever since been known as a "living wage". His championing of the miners forged a bond between them and the Ellison family which lasted three generations.

Whilst his father was sorting out the mineworkers' dispute, Thomas was a boarder at the Mount St. Mary school in Spinkhill, a prestigious Catholic school. After leaving school he followed his father into the law and by 1881 was living with his parents at Barbot Hall in Greasborough and working as a barrister.

In 1888 Thomas married Constance Atkinson. Constance was born in Wakefield in 1864 and had an interesting family life. On the 1871 census when she was 7 years old, her physician father was running a private asylum. He had six patients all described on the census as "lunatic". The neighbouring house was a refuge for female ex-prisoners.

By 1881, the Atkinson family had moved to Kimberworth, Yorkshire and again Constance's father was running an asylum called Grange Hall where he had 16 "lunatic" patients including a child of 6 years! It was from this house that Constance married Thomas.

Thomas Ellison followed his father into the judiciary and seems to have been as well regarded in this role as his father was. He was leader of the bar on the Northern circuit and standing council for the Miners' Union of Yorkshire, Northumberland and Durham throughout his professional life. In his obituary Thomas Ellison is described as being a shrivelled swarthy man with a striking personality, penetrating voice and luminous piercing eyes who often terrified witnesses.

Thomas Edward Ellison died in Totley Grove House of pneumonia in the spring of 1920. Great efforts were made by his son, Alban to get oxygen to ease his father's breathing. Alban phoned the Yorkshire Miners Union, but there was no oxygen in any of their pits. They phoned Durham where two tanks were available. The oxygen was driven through the night to Totley, but arrived too late to save him.

Constance's life changed dramatically after Thomas' death. Her eldest son, Alban, married Florence Hawksford in the December after his father's death and emigrated with her to Saskatchewan, Canada shortly afterwards. They settled in Regina where Alban worked as a barrister and for many years served as legal registrar at the Regina courthouse. He was elected a Labour Party Counsellor from 1932 to 1936 and Mayor in 1939. Alban served in the Navy during both wars and was known in Regina as the Sailor Mayor for his continued interest in the Navy. Alban died in Canada in 1974 aged 85.

Her second son, Cymbert, served as a Signals Operator in the 1st WW and married in early 1916. He was living at 9 Cobnar Road in Sheffield when he died in 1923 aged 31. Constance was so shocked by his death that she took to her bed for the next 25 years. She was cared for by her daughter, Elfrida and her companion, Dorothy Rogers. Constance lived to be 90 and died in 1954 in Barnet, London, where she'd been living since Cymbert's death.

As is often the way with family history research, we know far more about the sons of the family than the daughters. Apart from caring for her mother, we know nothing else about Elfrida. Thecla Winifred, like Elfrida, has left little public trace of her life. Her Godfather was Arthur Conan Doyle and she married a barrister, Charles Hobson and seems to have lived in London for most of her life. She died there in 1977 aged 87.

There are more pictures of the Ellison family on the Totley History Group website at www.totleyhistorygroup.org.uk

New material is added regularly to the site, so please do go and take a look.



Totley History Group

Forthcoming meetings

Wed 12th December 7:30pm, Christmas Party at Totley Library at on Wednesday, , all welcome, bring along food and drink

Wed 23rd Jan 7:30pm, The History of Penknife and Cutlery making in Sheffield, A talk by John Clarke

Wed 27th Feb 7:30pm, Open/Research meeting, A chance for group members to catch up on the latest activities within the group.

Wed 27th Mar 7:30pm, Family Photographs as a Social History, A talk by Paul Cutts

TOTLEY HALL PARK

I am delighted to report that funding for both the pump track & the base for the table tennis table, has now been secured – from a number of sources. Unfortunately, the ground is very wet for vehicle movements & night temperatures are very low for the laying of concrete, so no date can be given for the start of the works.

Roger Hart

A Thought For A Local Officer

Many local Residents will know of and appreciate the work that SPC Andrew Bentley has done in supporting our local Community and will wish to offer condolences on the sad and sudden death of his dear Mother, Margaret, who passed away on 22nd October, aged 70 years.

Streets Ahead to transform Sheffield

The £2billion Streets Ahead contract to improve Sheffield's roads, pavements, street lights, bridges and street scene began in August 2012 and is a once in a life-time opportunity to improve and maintain the city's highway network for the benefit of all who use it.

It will take five years to bring the city's roads, pavement's, bridges and street scene up to a good standard and that standard will then be maintained for a further 20 years. Over the coming years all Sheffield residents, businesses and visitors to the city can begin to look forward to smoother and safer roads and pavements, brighter, well-lit streets that are clearly sign-posted for easier travel and enjoy a more attractive street scene and environment.

But how exactly will the scheme affect Totley and its residents? Local resident Ruth Dacey met with Moira Coad the Assembly Steward for the South West Area to find out more...

What is the aim for AMEY with the Streets Ahead contract?

The contract is for 25 years and the aim is to improve the roads but also most importantly maintain them. We have a real commitment to the city to deliver the highest quality of service. It a £2billion contract over 25 years and there will be no change to this; it's a fixed budget that we are working with. This is an important contract for the company and we agreed to very strict performance targets and we know it is going to be very challenging for the first five years.

What is the order in which the work of improving the highways will be carried out? We've split the city into zones, A zones, (primary and secondary routes), and B zones (link and local routes) as this was the most efficient way to carry out the vast amount of work and to bring the least disruption. Once we have completed a zone we will not have to return to do that level of major works for many years after.

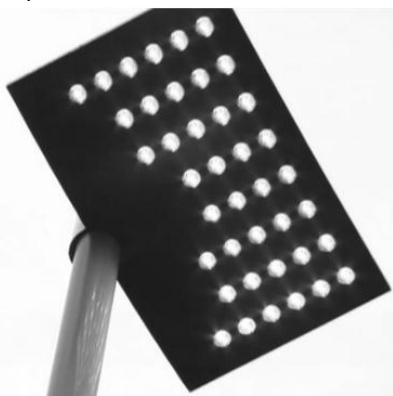
The first roads to be tackled in Totley are the main roads which are part of the A-Zone which includes Baslow Road, down to Abbeydale Road South (to the junction with Archer road). We will also be undertaking works on Twentywell Lane, Mickley lane, Bradway Road (from Tinkers corner), all the way through to the Meadowhead roundabout.

On these roads we will assess the **trees** to see if they are damaged, diseased, in the right place or damaging the footway/highway. There are three **drainage** improvement sites within the zone and we are assessing all other drains to see whether they need improving. All the **street lights** will be changed to LED lights and will be positioned towards the back of the pavement. The next areas we will consider are the **verges**, **footpaths** and **pavements** to see what, if any, improvements are required. We will also check that all **road signs** are appropriate. This includes street name plates, and whether traffic signals and signs are correct. And finally, if required we will re-lay the road surfaces.

So for Totley specifically, work will be beginning from early next year- January onwards on the main roads. The residential and local link roads, (e.g. Green Oak Road), will be done in 2017.

Can you give any more information regarding the new LED Street lights?

The LEDs provide clearer and better illumination than traditional street lights, improving conditions for cyclists, drivers and pedestrians. They have low power consumption and are very energy efficient compared to incandescent bulbs of the same luminance. They will also reduce light pollution. People will notice that they have a more accurate colour rendering because the light is clearer so you will be able to see colours better which will decrease safety issues for people walking. Also, crucially if the police or fire brigade have an incident where they may have to close a road off due to a major accident for instance, they can ask for the lights to be turned up so they have a better light to deal with that and get investigations complete. We know this is a modern and bold step and that people will find these new LEDs very different to what



there is now, however these lights have so many benefits and there has been great success with these lights already. One of the best examples being seen in specific areas in Birmingham. What is exciting is that Sheffield will be

the first city in Europe to be completely LED which it will be in five years' time. All of them are being changed; even the ones that have been put up recently by the council- the old design will be changing to the new LED lantern heads.

It was reported in last month's TI that "the new street lights... can be individually controlled, remotely, by computer" is this the case?

No, I think there has possibly been some confusion here. Residents will not be able to have access to controlling the light strength; there are not individual dimmer lights for residents. If this is what the comment was implying in last month's article. The lights will be set at a standard level by the council and if there are issues with the level then Sheffield City Council can be contacted.

How are you going to be carrying out effective tree management?

In Sheffield there are currently around 36,000 trees on the highways. This number will remain the same in five years' time and in twenty five years' time. We are not going to be removing trees simply because we can't be bothered to maintain and keep them. It is a very important part of the Streets Ahead contract and at the moment we are doing a condition survey on all the highway trees. We are looking at the ones that are damaged, diseased or have simply outgrown where they are and are dangerous, for instance if they are pulling up footpaths. It is crucial to understand that if we do remove trees we will replace them one for one. They may not be in the exact place but we will replace them.

We will start with the tree management in the New Year and I will be holding an information road show dedicated entirely to the topic of tree management. This will be advertised locally for all residents to attend and will be held locally. The road show is a chance for people to come along and hear exactly what is going to happen with the trees. We are very aware of how passionate people are about trees and we understand that, but actually we can't always keep the trees. For example if something is wrong with

them. When we start tackling the smaller roads in 2017- we will need to know if people have bought trees, contributed to trees on their street- if ones have been put up in memorial of someone. But everyone will be made aware of this nearer the time.

It was reported in the last TI that 'We are not allowed to communicate directly with you or any of the Amey Staff, due to a confidentiality clause, put in by the council!' is this correct?

It is correct in the fact that I cannot give my personal details out to individuals. However this is not because of a confidentiality clause put in by the council. The reason is so that the council can make sure we are delivering the contract to the agreed timescales and performing to the standards set out in the contract. It is all about performance management and making sure the contract is managed correctly and efficiently to deliver the vital benefits and service to the public. The point is if people were able to ring me directly I may give them a response such as 'of course we can sort that out,' but then there is no way of this being logged for the individual; whereas if things are logged through the council then it is so any faults can be recorded and rectified in agreed timescales.

My position is that I am the Assembly Steward for the South West Area, so I am the link between AMEY and local residents and businesses which are allocated in the following wards; Totley/Dore, Fulwood, Crookes, and Ecclesall.

If people have any queries regarding the work that will be taking place and want to report something and also want to inform me they can ask for it to be sent to me as well when they call Customer First at Sheffield City Council. An example could be if someone rings in who is concerned about access into their property whilst the works are underway - this would then be logged with the council and then passed onto me for me to contact the individual. But I will be asking these types of questions at the road shows- so people will have the opportunity to voice concerns and queries directly to me, so that is why it is very important that people come to the road shows!

How will the work being carried out affect Totley residents?

There will be disruption, there is no getting away from that fact but we will try to keep this to a minimum, in the long run we will have a better, safer community. I have lived in Sheffield for over 30 years and we have some of the worst roads in the country but in five years' time we will have the best. Of course there will be disruption, but we need to think about the long term benefits for the community and Sheffield as a whole.

For more information...

- **ROADSHOWS-** Attend any of the road shows that will be held locally soon.
- **WEBSITE** - Visit Streets Ahead webpages where you can access lots of information about the contract and up and coming works @ www.sheffield.gov.uk/streetsahead
- **TWITTER-** You can get the latest Streets Ahead updates by following us on twitter @sccstreetsahead
- **TELEPHONE-** For any current issues or queries concerning problems in the Totley community or about the work that will be taking place please contact the Sheffield City Council Customer Services on **0114 273 4567**

Reporter: Ruth Dacey

Totley Scouts

On the 11th November we were proud to take part in the Remembrance service at Totley All Saints Church and at 11am at the memorial on Baslow Road. All sections of the Totley Scout Group (about 50 children in all) paraded with their flags, which were also taken to the memorial. Our wreath was laid by our Scout Leader Andrew Casson.



And on the 2nd November we again held our annual Bonfire Night. This was a very enjoyable evening for the boys and girls, and of course parents, grandparents and friends. Despite this year being half term and many being away we still had about 250 people attending. As well as the bonfire and fireworks we had some traditional games such as apple bobbing and hoop la. And of course food. The hot roast pork sandwiches went down particularly well! To help with our fundraising we had a raffle. We are very grateful to the Lyceum for donating our top prize of 4 tickets to see this years pantomime, Cinderella. We are also grateful to Tesco, Martin Scriven, Shepley Spitfire, Cross Scythes, The Co-op, The Fleur, Liberty foods, Totley deli, Blue Water swimming and Duo Hairdressers.

I have included a photograph this time of two of our Scouts (although both are now Explorers) being George Eaton and Peter Rose, at St Luke's Church on Monday 12th November having been presented with their Gold Chief Scout Award Certificates - the highest award for Scouts. These were awarded by the County Commissioner but in the photograph are L-R: George Eaton, Andrew Casson (Scout Leader), Peter Rose and Neil McKay (District Commissioner). It is always a great pleasure when our Scouts obtain awards.

Asking people to fill up charity bags with clothes, linen and bedding seems to be a booming business, especially judging by the number of bags that come through my door. The Totley Scout Group have been collecting in this way for many years and it produces a useful income for us.

If you would like to help a local charity please fill those bags, but let us have them. If you know a Beaver, Cub, Scout or Explorer you can ask them to bring your bags to the Scout hut. You can bring them to us when we are using the hut. Or contact me to arrange a collection. If you can help us, thank you.

We would like to take the opportunity to wish you all a very happy Christmas.

Richard Frost, Chairman

1st Totley Scouts

TotleyChair@aol.com

0114 236 3603



Crocus Homecare

Homecare with Compassion



EXPERIENCED, RELIABLE CARE STAFF REQUIRED

Crocus Homecare is based in Bakewell and now provides high quality care and support services for those living in South Sheffield (S8, S10, S17, S18)

Crocus prides itself, and has built its reputation, on providing the highest quality care with compassion, understanding and respect for each individual and their families.

Excellent rates of pay for the right people with the right skills and experience

We aim to appoint only the most conscientious, caring individuals who have significant experience in social or health care, especially with Older Adults with complex care needs.

If you think you can meet, and most importantly, provide the genuinely high standards of care we demand, please see our website or contact

Debbie Crowhurst on 01629 812874

Personal Care - Practical Help - Respite Care - Dementia Care
24 Hours a Day / 7 Days a Week

Tel: 01629 812874

www.crocuscare.com

TOTLEY PRIVATE HIRE

EXECUTIVE CAR TRAVEL



AIRPORTS AND LONG DISTANCE

PROP - PAUL SOUTH

24HR SERVICE

Tel: 0114 2839692

Mobile: 07974 355528

Email: PAUL.SOUTH1@TESCO.NET



Tiling, Plastering, Plumbing & Complete Bathroom Fitting Service

Tel: 0114 4182346
07738 688807

- ◆ Under Floor Heating
- ◆ All Aspects of Home Improvements & Maintenance Work Undertaken
- ◆ Competitive Prices
- ◆ NVQ Qualified
- ◆ No Job Too Small
- ◆ Fully Insured & Guaranteed

A1tilingandplastering.co.uk
25 Five trees Ave, Dore, S17 3LW

B.K. JEAVONS PAINTER & DECORATOR



Interior
Exterior
Decorating
No Job too small

Tel: 01246 416484
and mobile 07882 278306

Creating opportunities with disabled people.

Registered Charity No. 218186

**Leonard
Cheshire
Disability**

Leonard Cheshire Services in Offers choice & opportunity to people with disabilities.
A Specialist Unit for the Younger Disabled.
Residential & Respite Care - Single Rooms
Day resources - Aromatherapy -
Reflexology - Physiotherapy - Toning
Tables.

Activities include: - Arts & Crafts -
Computers - Cookery - Shopping
Expeditions - Theatre Outings - Church.
Further details can be obtained from -
The Service Manager, Mickley Hall,
Mickley Lane, Totley, Sheffield S17 4HE.
Tel. 0114 236 9952
Fax. 0114 262 0234

The Care at Home Service supports disabled people who wish to remain in their own homes.

We provide flexible care packages from 1 hour to 24 hours meeting individual needs. The service operates throughout Sheffield.

Our service includes: - help with getting up and going to bed, dressing, washing, bathing, shopping, cooking, light household duties.

Further details from: -
The Care at Home Manager
Tel. 0114235 1400
Fax 0114 235 1499

John Heath & Sons

AN INDEPENDENT FAMILY FUNERAL BUSINESS

Sometime.....

You will probably have the responsibility of making funeral arrangements. No one looks forward to this responsibility, but the death of a family member or friend brings with it an obligation that must be met. There are people who can help you meet this responsibility. We have been helping people combine the different aspects of the funeral into a meaningful service for over 125 years.

Please Call Day Or Night

(0114) 272 2222

Head Office - Earsham Street

Also at Meadowhead, Ecclesall Rd,
Crookes and Stanington

www.johnheath.co.uk



CHARISMA BLINDS



For
Windows
With Style

Sheffield Factory Showroom
106 PROSPECT ROAD
HEELEY, SHEFFIELD

Sheffield (0114) 258 5496
Rotherham (01709) 512113



Totley Primary School

enquiries@totley.sheffield.sch.uk
Website: www.totley.sheffield.sch.uk



Christmas Round-Up

Christmas Performances

In light of some of the issues there have been in recent years regarding tickets for Christmas performances, the way the event is organised has changed this year. FS2, Y1 and Y2 (KS1) will perform *The Wiggly Nativity*, whereas Y3 to Y6 (KS2), classes will be performing the play *The Magical Christmas Jigsaw*. All of the children have started rehearsals in preparation for the big events.



Dates of performances:

Wednesday 12th December

9.30am: All classes will perform

6.30pm: Just FS2, Y1 and, Y2 performance

Thursday 13th December

1.30pm: All classes will perform

7.00pm Just Y3- Y6 performance



Pantomime

Keeping with tradition the school will be going to the Pantomime this year! The children and staff will be off to see the excellent production of Cinderella at the Lyceum Theatre in Sheffield on Thursday 20th December. Everyone in school will be going and for the past few years it has been a roaring success, with every child thoroughly enjoying themselves!

The school would like to express its thanks to the PTA who have agreed to fund the coaches for this trip, and we are looking forward to a fantastic show, (Oh no we're not!! Oh yes we are!!), to celebrate as a school. Roll on December!

Road Safety

As we head into the dark months of winter and with the clocks being turned back, this has once again had the impact of the journey to and from school being done surrounded by darkness for a few months. The children will be spoken to by the school about the importance of road safety and they would also be very grateful if this could be reinforced at home. The Head teacher is in regular contact with the Council to get a Road Crossing Officer for Baslow Road and Chris Stewart is increasingly concerned over the safety of the children when they cross this road, particularly in the winter months.

Parking

The Police have been in contact with the school about the parking situation outside school. They have received a number of complaints from parents who are putting the safety of our children at risk by double parking or parking inappropriately. They are in the process of organising 'ticketing' patrols to ensure that all the parents park in a manner that ensures the safety of the children.

Key Dates for your Diary

December

7th Y3s to Totley Methodist Church- Christmas story
11th Christmas Bauble Decorations, (company coming into school to make them with children)
12th and 13th Christmas Performances
14th PTA Christmas Gift Swap
WB 17th Christmas Parties
20th Lyceum Panto Visit
21st Christingle Service Break up for Christmas

January

7th School reopens
24th Young Voices Concert
30th class swap afternoon

So there are lots of things to look forward to leading up to Christmas and just after which will get you in the festive spirit. Happy Holidays everyone!!

Reporter: Ruth Dacey



The Crown Inn

Tony and Julie at

The Crown Inn

Welcome you for

Good Quality, Home Cooked Food

Tuesday – Friday

12-2pm & 5.30-8pm

Saturday & Sunday

12-2pm

Come & join us for

Good Beer, Good Food & Good Music

Tel 0114 236 0789

CLOSED SUNDAY EVENING

Visit our website: www.crowninntotley.co.uk

4th December
EMERALD

11th December
HIGHWAY CHILD

13th December (THUR)
CHRISTMAS BRASS

18th December
DALE STORR

20th December (THUR)
CHRISTMAS CAROLS
WITH TOTLEY

ALL SAINTS CHOIR
29th December (SAT)
IAN BELLAMY



Festive Fashion

'Tis the Season to Wear Sequins

With Christmas and New Year just around the corner, it's time to add some glitz to your Autumn/Winter wardrobe. This season's high street collections have provided an abundance of all things glam, from sequins and glitter to high-shine and silks. No matter what your budget, age or size, you'll have no trouble finding that special party piece with my guide to getting through the festive period.

The Autumn/Winter catwalks were awash with luxurious fabrics and the high street has followed suit with an array of velvet, brocade, metallics and plenty of embellishment. If you dare to bare, River Island has produced a line of sequin shorts (1) available in six colours. Wear with opaque black tights and ballerina flats for a dressed-down daytime look or vamp it up with sky high heels and a blazer for

evening glam. If shorts are not your thing, you can still shimmer your way through the festivities with French Connection's silver sequin trousers (5) or New Look's sequin blazer (10), available in black and silver. To create the illusion of curves, opt for waist clinching details in rich tones, like New Look's velvet top in burgundy (6) or Topshop's skater dress (4) in black and gold.

Dressing to flatter a curvier figure needn't be a problem this season, with high street stores such as Mango and Zara offering up fashionable, affordable and figure-enhancing pieces. Mango's silk wrap blouse (11) - available in magenta, cream, navy and purple - drapes beautifully, flattering fuller figures and revealing just enough décolletage. This blouse is perfect if, like me, you're likely to have one too many mince pies!

The contrasting colours on dresses at Warehouse, Zara and Dorothy Perkins create the illusion of a nipped-in waist, giving you the perfect hourglass figure. But if trousers and longer skirts are more your thing, M&S have designed a range of party pieces such as midi-skirts (17) in gold velvet with a black floral-detailed hem, and metallic print trousers (12) to suit all figures and ages.



1. Sequin shorts, £30, River Island
2. Lace embroidery blouse, £30, Mango
3. Metallic skirt, £30, River island
4. Gold & black velvet dress, £46, Topshop
5. Sequin trousers, £120, French Connection
6. Velvet peplum top, £13, New Look
7. Gold velvet skirt, £22, River Island
8. Glitter leggings, £28, Topshop
9. Gold bandeau dress, £45, Dorothy perkins



10. Sequin blazer, £35, New Look
11. Silk wrap blouse, £43, Mango
12. Metallic print trousers, £35, M&S
13. Embellished dress, £95, Miss Selfridge
14. Red & black dress, £40, Dorothy Perkins
15. PU sleeve dress, £70, Zara
16. Baroque print dress, £45, Warehouse
17. Gold velvet skirt, £45, M&S
18. Sequin collar blouse, £25, New Look

(Below)

19. Glitter court shoes, £65, Aldo
20. Earrings, £14, Oasis
21. Glitter clutch, £18, Very
22. Star Gazer ring, £12.50, Topshop
23. Jewelled flats, £60, Zara
24. Bronze heels, £42, Miss Selfridge
25. Blue heels, £40, Love Label @ Very
26. Metallic flats, £18, ASOS
27. Multi layer chain necklace, £13, H&M
28. Suede stud clutch, £38, Topshop
29. Sequin bag, £70, Mango
30. Jewel ring, £8.50, Miss Selfridge

A party outfit is never complete without the perfect accessories. This Christmas, go all out with as much sparkle as you dare. This silver envelope clutch (21) from Very also comes in black glitter; so perfect for adding a hint of glitz for daytime, and adding oomph to your evening party get-up. Very continued the glitter theme into their shoe collection with these blue and silver mid-heels (25) by Love Label – an ideal way to introduce a pop of colour *and* playing on a major catwalk trend this season: cobalt blue.



And why not celebrate New Year decked out in lavish jewels? These Art Deco style earrings (20) may look expensive but are, in fact, a snip at £14 from Oasis! Another great high street jewellery find is this 'Star Gazer' ring from Topshop (22) – a real statement piece with a unique yet timeless look.

Whatever you choose to wear during the festive period, just remember one thing:

'Tis the season to wear sequins.

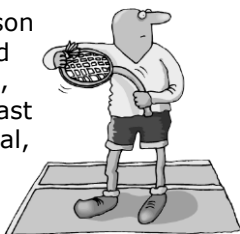
For more fashion tips, ideas and high street picks, visit The Fashion File at www.TheFashionFile.Wordpress.com or follow @RosieElectro on Twitter.

TOTLEY BROOK BADMINTON CLUB

Late September saw a new season start for the Club which was formed in 1947 and has played at St John's, Abbeydale church hall since then. Last season we enjoyed a Christmas social, where we were joined by spouses and past players, and finished the season with our annual dinner which was held at Dore and Totley Golf Club. Our current players range in age from the 40s to the late 70s and whilst we take our games seriously they are played at a "sociably competitive" level. The new season has begun well and our Tuesday Club nights, between 7.45 and 10pm, have been well attended.

A few of our players have retired recently and new members are always welcome. If anyone is interested in coming down one Tuesday to have a look at us and play a few games please call John Beard on 235 1129, or Norman Rolfe on 236 1999, and we'll be happy to arrange it.

Norman Rolfe



Totley Independent

What a magnificent edition the November 2012 was. Congratulations. Full of information about local events plus Tom's wonderful "Gardening Tips", Dan Reynolds regular nostalgia piece, Don Ashford's brainteasers and the latest from Gillfield Wood.

The extras this time about the SCOUTS – great work by all the leaders and helpers, Totley Music Festival (thanks to Phil Harris and Sue Hare), "latest on Dore Road housing plans", and Roger Hart's assembly report (talking shops and far too big an area to serve).

Those pieces allied with the useful article on vandalism (the curse of the 20th and 21st centuries), car parks and dog poo, were worth far more than your cover charge of 20p. How do you do it?

TRA, Transport 17, TOADS, and the local churches all add to our knowledge of available activities, performances and meetings.

PLEASE, keep up the good work.

Robert Jackson

PS – Sorry that Green Oak Bowling Club has folded due to lack of players, but those remaining are being made welcome at Millhouses Park Bowling Club.

Ed:- thank you for your kind comments Robert – they are much appreciated. We have had some additional help recently; Steph Elliott has been proof reading for a few months and this month we have articles from Ruth Dacey who is considering a career in journalism. We have some different types of article this month – please do let us know what you think of your community magazine. If anyone wants to help with the Totley Independent please do let us know.

TOTLEY RESIDENTS ASSOCIATION



TOTLEY RISE CHRISTMAS MARKET

SUNDAY DECEMBER 9TH
11am to 3pm

A great family fun day out, with Christmas surprises. A wide range of stalls to browse and buy from, including foods and crafts.



TOTLEY RISE
BASLOW ROAD, S17

ACTIV physiotherapy

... going from **strength**
to **strength**



Exciting news from ACTIV Physiotherapy

Building on the success of last year we are delighted to announce the opening of our new clinic in Hope and are looking forward to working with new clients, and existing customers of **Hope Physiotherapy Clinic**

our core strengths are:

- Repetitive Strain Injuries
- Muscle & Joint Problems
- Women's Health Issues
- Sports Injuries
- Back & Neck Pain
- Acupuncture
- Musculoskeletal Pain



Official Clinic for the Sheffield Steelers Ice Hockey Team

email: mail@activphysiotherapy.co.uk

web: www.activphysiotherapy.co.uk



0114 235 2727 **Bradway**
0114 235 7845 **Totley**
0143 362 3602 **Hope**

Dore Moor

Garden Centre

(Opposite the Dore Moor Inn)

Hathersage Road · Dore · Sheffield · S17 3DQ

- Wide range of seeds, bulbs, plants & pots
- Mowers, fencing, garden tools
- Horse & Poultry Feeds
- Logs, kindling and winter fuels
- Christmas trees and decorations

Call in and see us



Tel: 0114 235 0092

Open 9.30 to 5.00
Sundays 10.30 to 4.30
Mondays Closed

R. S. CERAMIC TILING

56 Mickley lane
Totley
Sheffield
S17 4HE

All ceramic tiling work undertaken, Underfloor Heating

15 years experience, Private and commercial

All work guaranteed, Competitive prices

For a free no obligation quote call

Ron Shilton

Mobile: 07887 990059, Home: 0114 418 1209

Email: ronshilton@ntlworld.com

Slimming WORLD

because you're amazing

If you want to lose weight healthily and with no deprivation or humiliation then join your local Slimming World class in Totley,

Mondays at 7pm and at Greenhill on Wednesdays at 10am

Telephone Jo Elsey on 0114 2620523

or 07590 545 253

(Offer cannot be used in conjunction with any other offer)

1/2

Price membership
on production of
this advert

MOGGY MAID



Gail Kitchen: 07986473415

Does going away from home mean your cat is sad and unhappy?
Does a trip to the cattery scare your cat *not to mention your wallet?*

WORRY NO MORE!

MOGGY MAID is on hand to feed, love and provide everything your cat needs in the relaxing comfort of its own home.

As we cat-lovers know, unfamiliar sights and smells can stress your cat, whereas leaving them in the familiar surroundings of their own home carries less worries, for your cat and for you.

If only for a night, weekend, or a month; holiday, Christmas or any time of the year, MOGGY MAID is here to help **LIGHTEN YOUR LOAD**

We promise no mischief allowed!

In a professional manner and with quality service, you can ensure individual care and attention, whilst you relax away from home.

We haven't forgotten the rest of the family; mice, rabbits, budgies, goldfish, etc will receive care and affection too.

LOCAL FRIENDLY SERVICE

From £5 a day

For more information, contact Gail Kitchen on:
07986473415 5 Ullswater Place, Dronfield Woodhouse

Green Oak Bowling Club

It is with great sadness that after 56 years Green Oak Bowling Club has closed. This is due to a declining membership, most members are pensioners and as ill health takes its toll the membership has reduced year on year. The ladies did have a full team but the gents unfortunately had not. Added to this the Council have said that all bowling clubs must maintain their own greens. The Council will provide a small grant but any other maintenance must be funded and organised by the club, this is something that the members of the club feel is too much responsibility.

The Ladies Team are not giving up bowling, they have been welcomed by the Millhouses Park Ladies Team and will join their leagues and tournaments.

The members of the Club would like to thank everyone who has been involved with it over the past 56 years and in particular to David Ruthven who played in the first and last games of the club's 56 year history.

It is a sad loss to Totley and the park and the membership are very sorry that it has had to end.

Sylvia Ruddle

Veteran Neighbourhood Watch Coordinator Steps Down

A stalwart of the local Neighbourhood Watch has stepped down after 26 years running a large Watch scheme.

Geoff Beech of Longford Drive, Bradway was one of the founder members of the Bradway and Totley Neighbourhood Watch, which for many years met separately from Dore, at the Cheshire Home on Mickley Lane. When new neighbourhood policing arrangements were introduced the two Neighbourhood Watch groups merged and now meet at Totley Rise Methodist Church.

Geoff, now 82, became Assistant Coordinator for the Longford Area Neighbourhood Watch in 1986. When the coordinator, Cliff Oates, decided to retire, Geoff took over.



There were a lot of problems in the area in those days, with petty crime and vandalism, but in conjunction with other local residents Geoff tracked down the source of the problem and tackled it together with the relevant authorities. Today, the area is quiet thanks to effective action by Geoff and his neighbours.

To mark his long service in a voluntary capacity, on 7th November the Sheffield Director of South Yorkshire Neighbourhood Watch, Wendy Zealand, presented Geoff with a certificate for outstanding service to the community signed by John Hallows, the Chairman of the SYNWA, and by Chief Inspector Iain Chorlton on behalf of South Yorkshire Police.

FREE CHANCE TO TRY CONTACT LENSES

Martyn Kemp Opticians (MKO), is giving contact lens wearers the opportunity not only to see near and far without glasses, but also more healthily and comfortably!

MKO, with ten locally-placed practices across the region, is offering free trials of the first multifocal daily contact lenses to be made of a special material which allows far more oxygen to pass through to the cornea, meaning that they are healthier for the eyes in the long term than conventional dailies.

The revolutionary multifocal daily contact lenses hit the optical market just months ago and are still capable of focussing at all distances but they are also more comfortable, keep eyes white and clear, and incorporate an ultraviolet blocker to protect eyes against harmful UV, which has been known to accelerate the onset of cataracts and macular degeneration.

Martyn Kemp, chairman of MKO, said: "Already wearing these ground-breaking lenses are some of our patients who can now answer their mobile and make calls, drive, read the dashboard and then a menu in their hand or on a blackboard ten feet away - all without specs!"

Free trials are offered for these state-of-the-art lenses, which are also available in single vision, for people with long or short sightedness or astigmatism. Wearers of varifocal or bifocal spectacles, and anyone, who have never worn lenses before, will need a contact lens fitting before the trial.

Details of all MKO's local practices - where bookings for the trials can be made - are available on the firm's website mko.co.uk.

Christmas at Mellows

From 20th to 23rd December we will be **serving hot turkey and stuffing sandwiches and mince pies** with **a complimentary glass of mulled wine** and a pick out of our lucky dip for the kiddies!

Hope to see you all soon!

Merry Christmas Everyone xxx

Snow Wardens

We should all have been notified, by Amey, that we shall be in use from October to April. We shall be subject to new training, but we shall receive the extra tonne of salt, which we had last year. The salt is for use on footpaths & highways, not for private drives. What is the point in using the salt to clear a driveway, when the road is not passable?

PUZZLE CORNER

One at a time

Change the first word into the second word in stages by changing one letter at each stage. Each stage must be a valid word of the same length. E. g. PORK, CORK, COOK, COOP, CHOP.

The aim is to find the lowest number of changes and I imagine some puzzlers will find better solutions than mine.

- | | | |
|----|-------|-------|
| 1. | SNOW | BALL |
| 2. | YULE | LOGS |
| 3. | PINE | TREE |
| 4. | MINCE | TARTS |
| 5. | PANTO | MIMES |

GARDENING TIPS FOR DECEMBER/JANUARY

Take it easy! Yes, this is the one month, (Dec) when gardeners, especially vegetable gardeners, can sit back and put their feet up... assuming the important jobs such as manuring and digging have been done. If not and the weather is OK, drag on the woollies and get outside!

Do keep an eye on the weather and protect any crops in the ground if a really cold spell is forecast. Earth up broad beans and spring cabbage by drawing up a little soil around them, and cover other crops with straw. If you're storing produce in a shed, it's also wise to cover the trays or boxes with a bit of insulation or straw. You can never be too careful.

If you do have time to put your feet up, spend a moment or two reviewing your successes and failures during the past year, and promise yourself you won't make the same mistakes next year, (assuming of course, you did go wrong somewhere along the line).

It's never too early to make plans especially with the vegetable plot for next year, working out which crops you will want to grow and preparing a rotation plan.

Your seed and plant catalogues will be dropping through the letterbox about now. This is dreamtime. Don't get carried away. Work out whether it might be more economical to buy plants later instead of seeds and avoid cost of heating and the possibility of failure due to lack of germination, (as many of us had this year). Also, take into account the likes and dislikes that the family might have as it's no good growing stuff they don't eat.

Jack frost is the main enemy for gardeners, (apart from getting rid of some nasties on freshly dug ground and helping to break up heavy soil). Insulation is a must, so cover cold frames at night, have a bit of heat on to keep overwintering plants in the greenhouse and any tender plants should be tucked up comfy by now otherwise you will lose them. Check over regularly any plants and produce in store and remove any suspect ones before they have a chance to spoil the good ones.

While you are making those new year resolutions, bear in mind the Totley Show is in September so get those onions and leeks planted early, (boxing day is the traditional day for planting onion seeds in a bit of warmth). Try and make one of your resolutions to enter some of your produce, or one or two of the other sections. You could also encourage the children to take part. Plant the idea early so that projects can be ready on show day.

Flowers Prune back any large rose bushes; chop them down to about half way, so that they can be pruned properly in the spring. The early chopping down will reduce any wind rock which can severely damage rootstock if rain and frost get down there. It also makes your rose bed look tidier. Work in humus making material into your soil during the winter months. Manure, leaf mould, spent hops, garden compost, old grow bags etc. are ideal. All of these will have a beneficial effect.

Herbaceous plants sometimes suffer from slug damage during the winter; delphiniums are generally first in line. To help prevent them spoiling your young plants, scrape away a little soil from around the crowns and replace with sharp sand, (better still cinder ashes). Check all the structures supporting flowers (arches, fences, trellis etc.) Make sure they are sound and ready for next season's weight of flowers and berries.

Mulch over any roots exposed by the rain. Top dress with compost or soil, peat and sand. Large flowered clematis such as Jackmanii can be cut back fairly severely. Order your seeds in good time. Try something new this year because there are a lot of new varieties to choose from. Or maybe, you can resurrect an old favourite that you haven't sown for a few years. They say a change is as good as a rest. You can divide and move or plant new stock of Michaelmas Daisy and Golden Rod.

Pick over plants in frames or cloches, and remove dead leaves etc. and dust with fungicide. Dig and prepare new beds. Place insulation over frames at night to give extra protection from frost, and ventilate well on sunny days. December is the last chance to plant out late tulips. If you haven't given your flower beds a slow acting fertiliser for a year or two, now is a good time (January). A dusting of hoof and horn or bone meal will do your flowers a world of good. Hoe it into the top inch or so and the worms will do the rest. Stand well back in the spring, as the flowers burst forth. If you want to increase your stock of Perennials or if you have some plants ready for the various charity stalls or swaps, you could take root cuttings.

Dig up the plant to be propagated, or cut a portion from one side. Wash off as much soil as possible so that the roots can be separated from each other and cut off the sound roots about the thickness of a pencil. Divide into sections about 2 inches long, (5cm). Trim off small fibrous roots and cut the bottom of the root diagonally and the top straight so that you know which way up to plant it. Insert into pots of cutting compost with the tops just buried. Water well and stand in a frost free cold frame or propagator, if you want them to root faster. Plants with thin roots can be multiplied in a similar way, 3 inches, (8cm) long pieces laid horizontally in the compost, (dusted with fungicide). Cover them with another 1-2cm of compost and water well. Some of the plants, which can be done this way, are *Acalthous*, *Brunnera*, *Caenothus*, *Dicentra*, *Echincea*, *Eryngium*, Japanese anemones, *Nepata* oriental poppies, phlox *Rhus*, *Verbascum* etc. Remember root cuttings taken from variegated plants will turn out green and NOT variegated.

Vegetables Firm in any plants loosened by frost. Dig any vacant plots and manure the ground. Apply lime to acid soil where cabbage is to be planted, Do not apply at the same time as manure, wait a month or two if possible. Prepare runner bean trench. Take off any yellowing leaves from brussel sprouts and compost them. In January chit seed potatoes, i.e. put them in a frost-free place in shallow boxes with the eye ends upwards. This will encourage them to sprout.

Prepare your onion bed, (I am giving away secrets now). Dig in manure deeply; spread bonfire ash over as well as bonemeal and hoof and horn at about 4ozs (100gms) per sq. yd. Prick this into the soil lightly. As mentioned before sow onion seeds around Boxing Day, either in separate pots, with two or three seeds per pot. Place a propagator or greenhouse at a temperature of 65F. When they have reached the loop stage, discard the weakest seedlings, leaving just one per pot. Or, put seeds in a tray when they are at the loop stage. Transplant into deep boxes or trays and reduce temperature to 55F. Lift a few roots of

mint, and place them in a deep wooden or plastic box. Cover them with potting soil, old stuff will do, and place them in a frame or greenhouse. This will give shoots for early picking. Mulch asparagus beds with well-rotted manure. Break it up well and spread it about 2ins thick.

Shrubs, trees and fruit Do not let snow hang on conifers; it can break off branches and spoil their shape. Firm in any newly planted trees and check all stakes and supports, making sure they are firm. New fruit trees can be planted now if weather permits, (keep roots moist and frost free prior to planting). Prune apple and pear trees, removing cankered branches. Prune fruit bushes and canes, check grease bands and renew if necessary.

January is a good time to give fruit trees a tar oil winter wash, so choose a fine and wind free day. Blackcurrants will benefit from feeding in January as they like plenty of nitrogen. So, a top dressing of Sulphate of ammonia or nitro chalk at 4-6oz per well established bush. Sprinkle it thinly over the soil and keep it away from the stems. Newly planted blackcurrant and raspberries should be pruned back severely, with blackcurrants to 2-3 inches from ground level, and raspberries 6-9 inches above ground. In mild spells, plant out deciduous trees, hedging plants, stored or heeled-in shrubs.

Greenhouse and Indoor Plants Dead head faded flowers and pick over all pot plants. Water sparingly. Keep bulbs fed and watered after flowering, but move to a cool spot.

Increase humidity around indoor Cyclamen, Azaleas and Winter Cherries.

Use insecticide to control aphids and white fly. Paint patches of scale and mealy bug with methylated spirit. Plant Amaryllis, Lily of the Valley and indoor gladioli. Pot on Cineraria, Primula and Slipper Flowers. Examine all bulbs placed in the dark. They should be about ready to bring into half light conditions prior to bringing into a light warm house. Don't rush them though. Seedlings and cuttings should be kept as near to the glass as possible, and stake up Schizanthus. Sponge over large leafed evergreen plants with half a teaspoon of milk stirred into a cup of water. This will make them nice and glossy. Make sure the greenhouse glass is kept clean. Cut back old geranium plants, shortening the growths to a joint or bud 6-9 inches above the pot. Replant the plants, shaking all the soil from the roots. Replant them in the smallest pot into which the roots can be placed, and use ordinary John Innes compost or similar.

Get ready for seed sowing by cleaning all pots, seed trays and boxes. Pot Lilies required for the greenhouse and feed Fuchsias pruned earlier. As geraniums, the plants will be potted on into larger pots as new growth develops. If you have a heated greenhouse you can start tuberous rooted Begonias and Gloxinias. Keep a careful watch on ventilation. Remember a sunny day can reach quite high temperatures in a greenhouse or cold frame even in the depth of winter. I have known mine to shoot up to 95F when snow was on the ground, so be warned. Heat at this time can do a lot of damage to young or freshly shooting plants, and quite a lot of plants cannot put up with large variations in temperature.

Lawns If you walk on your lawn at this time of year and find squelchy patches they need attention. Spiking is a real pain, but it is a good cure for squelchy bits. Note where they are and when they

have dried out a bit (hopefully) go over the area making holes at about 6 ins intervals with a fork. Do a couple of square yards at a time then brush in a good dressing of sharp sand (not buildings sand unless it has been in the rain for a long time) leave a shallow layer on top, this will encourage rooting in spring. Keep lawns clean and keep off in frosty weather. Clean and overhaul your mower, you could take advantage of the cheaper rates for servicing, up to the end of February.

Please bear in mind that these notes cover 2 months when doing the various jobs.

Have a Happy Christmas and a lovely gardening year. Cheerio for now

Tom

Green Oak Park Update

The fitness and children's playground equipment has now been delivered, and work will begin on the installation during the week beginning 19th November. The work will be done by Parks and Countryside. There will be 2 new swing seats for younger children and 2 springies in the playground for toddlers. The fitness equipment will consist of a multi-use apparatus.

We thought the community should know the cost of these. The gym equipment is £6,882 plus £2,000 installation. Swings & Springies £1,765.24 plus £2,700 installation.

Let us hope that a little more respect is shown to our beautiful park and that maybe we may get some more volunteers in the near future.

As you may have noticed, more trees have been planted and come next year the park will be looking even better.

Friends of Green Oak Park

November 5th, a beautiful sunny day, just right for planting trees. Christine Wood and her family planted a Multi-Stemmed White Birch on the bank below the bowling green, in memory of her late father Jim. He spent many happy hours sitting on the nearby bench enjoying the view. As he lived in a flat, he always said the park was his garden.

Another memorial tree, a Rowan was planted by Janet Crookes in memory of her friend who used to live on Rowan Tree Dell.

A class from Totley All Saints School planted a White-Stemmed Birch and another Silver Birch near the original one. This means the group of three will produce an open canopy, their small leaves allowing light shade to reach the ground. Grasses and flowers will flourish providing food for insects, birds and mammals.

The children also planted an Elm, Ulmus Americana Princeton in the bottom corner of the park near the horse chestnut trees. This American Elm shows good resistance to Dutch Elm Disease.

The children helped with mixing the compost into the soil, knocking in the stakes, rolling the trees into the holes and filling in the soil round the roots.

The best task was drilling the ties onto the stakes to secure the trees against winds and to give them the chance to grow into the soil.

Thanks to the Rangers from Activity Sheffield who helped the community forester.

We hope the trees will flourish and will help to keep the park green for years to come.

Avril Critchley

SEE THE DIFFERENCE!



- **COMPREHENSIVE EYE EXAMINATIONS**
including special tests for glaucoma, colour vision, dyslexia & diabetes
- **CONTACT LENS CONSULTATIONS**
free contact lens trials and monthly direct debit payment schemes
- **PRESCRIPTION SUNGLASSES**
- **LEISURE SPECTACLES**
for computer work, fishing, swimming and safety wear
- **ACCESSORIES**
ready readers, chains and magnifiers

LENSES BY SEIKO
In all non-budget spectacles

TOTLEY
63 Baslow Road
236 4485

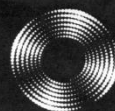
ABBEYDALE
634 Abbeydale Road
255 6554

For more help and information please phone or call into the practice of your choice
For a full list of our practices visit

WWW.MKO.CO.UK

Terms and conditions apply.

Entrust Electrical



For all your electrical requirements in or outside the home you can trust **Entrust** to do it right!

- ✓ Full or Partial House Rewiring
- ✓ Additional Sockets, Switches, etc
- ✓ Energy Efficiency Enhancements
- ✓ Contemporary & Classical Refurbishments
- ✓ General Electrical Maintenance & Repair
- ✓ Homebuyer Electrical Safety Surveys
- ✓ Telephone and Computer Data Points
- ✓ Garden, Pond & Other Outdoor Electrics
- ✓ Security Lighting & CCTV



City & Guilds
Qualified

(0114) 2352084
07935 250814

www.entrustelectrical.co.uk

Old Hay Close, Dore, S17 3GP



Shepley Spitfire

56 Mickley Lane, Totley Sheffield - S17 4HE 0114 236 0298

2 meals for **£8.95**

Now serving Fresh Local Veg.

Served everyday 11am until 9pm

Quality Cask Ales

The Home of Big Fish Friday!!

Beer battered Cod fillets, Chips and Peas Two for **£9.99**

Eat in or Takeaway

FOR THOSE OF YOU WITH A LITTLE APPETITE

WE HAVE INTRODUCED A SMALL

PLATES MENU FROM **£2.99**

ALL DAY EVERYDAY

Quiz night Sundays 9pm

Poker night Mondays 9pm

Pool night Tuesdays 9pm

Last Saturday of the month DJ Theme night

Sky Sports & ESPN showing live games

"need *help* in your garden?"

**"right plant, wrong place?
Stuck, don't know where to start?"**

We can offer a Design Consultancy without the designer price-tag.

"Selling your House?"

We can tidy your garden, also with use of planted containers/hanging baskets, make your house more desirable to prospective buyers.

Season by Season

- Regular Lawn Maintenance.
- Hedge Cutting.
- Small Tree/ Shrub pruning.
- Beds/Borders tidied, planted.
- Planted Containers.
- Green waste removed



the **Abbeydale** gardeners...
...we can help you.

Formerly of
The Abbeydale Garden Centre

Kevin Hunter 07818 20 12 42
Mark Naylor 07739 75 23 19

www.theabbeydalegardeners.co.uk

Friends of Gillfield Wood Update

Activities and Planned Events

Saturday 27th October - Tree Thinning and the use of 'Big Lad' the horse to take the timber away. It was good to see so many people turn out on the day to watch Big Lad working. This number included several families, with the children being particularly interested in watching him take the cut timber from the wood to the storage area close to the bus terminus. Some of the boys were more interested in playing in the mud than watching the horse though. So a hot bath, for some of them, being the order of the day when they returned home I think! The tree thinning exercise is continuing over the next few weeks with the sawn timber being taken down to the sawmill at Ecclesall Woods, to be made into furniture, fence posts and for selling on for commercial and domestic use. Once the work has been completed, Sheffield City Council will restore the footpath and mend the broken fence leading from the bus terminus down to the wooden kissing and barred gates, next to the drystone wall that is currently being restored.

Saturday 27th October - Fungal Conservation Walk with the Sorby Natural History Society. The walk was led by Steve Clements of Sorby, whose depth of knowledge on fungi is second to none. With the wood being a mixture of Broadleaf and Conifer Trees, with adjacent grassland and with the wet, cool weather conditions during the autumn, the group of a dozen people, was anticipating finding a good number of mushrooms and toadstools. They were not disappointed, with a total of 53 different fungi being found, with several rarely reported species amongst them. The figure of 53 brings the overall total of fungi found in the wood to well over 200 species!!

Sunday 4th November Practical Conservation Work Day. The day was lead by Chris Roberts, the Countryside and Parks Ranger for Sheffield City Council, with approximately 10 FoGW members in attendance, eagerly anticipating tackling the tasks at hand. The weather was dry, cloudy and mild, perfect for holding a workday in the wood. The first job undertaken was the immediate clearing of the brushwood, as a result of the current tree thinning exercise, from the footpath that runs close to the picnic area. Woodland piles were created nearby, which are the perfect habitat for the birds, small mammals and mini beasts that live in the wood. Whilst this work was going on, Chris Measures and Dave Gash endeavoured to clear the mud and leaves from the drainage channels on the main footpath that runs through the middle of the wood. Once these two tasks were completed and after a cup of tea, brewed on the SCC ranger 'trusty brew kit', together with chocolate biscuits of course. The group then turned its attentions to repairing and restoring the drystone wall located at the top of the wood, next to the wooden kissing-gate. This work is to be continued on the next workday in early December.

Tuesday 6th November. Talk given by Barry Wright of Sheffield Hallam University - The Flora of Gillfield Wood. Approximately 20 people attended the talk at the Totley Library, despite the inclement weather and they all gave Barry a warm welcome. Barry then went on to give a very interesting, informative and varied talk about the floral species found during the survey work carried out in the springs and summers of 2011/12. He also gave the group some analysis on the results of the surveys and from the species of flowers found such as Dogs Mercury, Yellow Archangel, Wood Anemone, Greater stitchwort and Lesser Celandine. Gillfield Wood was once an ancient woodland dating back several hundreds of years. Barry will be carrying out further floral surveys during 2013.

Future Events Planned for 2012/2013.

2012

Sunday 2nd December. Practical Conservation day with Chris Roberts, SCC Ranger. Meet at 10am at the wooden gate at the bottom of Totley Hall Lane.

2013

Sunday 27th January. Practical Conservation day with Dave Gash, FoGW. Meet at 10am at the wooden gate at the bottom of Totley Hall Lane.

Tuesday 5th February. Talk by Stuart Crofts called 'Caddisfly Magic'. 7.30pm Totley Library.

Sunday 24th February. Practical Conservation day with Dave Gash, FoGW. Meet at 10am at the wooden gate at the bottom of Totley Hall Lane.

Sunday 24th March. Practical Conservation day with Dave Gash, FoGW. Meet at 10am at the wooden gate at the bottom of Totley Hall Lane.



Friends of
Gillfield Wood

Contacts

If you have an interest in the history and/or natural history of the area, or would like to know more about the above planned events, please contact either Dave Gash (262 0564, daveygash@hotmail.com), or Sally Goldsmith (goldsally@googlemail.com, 07887 383282). Also if you would like to become a member of FoGW, they will be very pleased to talk with you and to provide more details. Funds are gratefully received and all used to help us to conserve and improve the biodiversity of the wood.

Dave Gash

Mark and Sally Fletcher invite
you to

The Grouse Inn

Longshaw

Sheffield S11 7TZ

Meal times:-

Mondays 12.00 to 2.30pm

***Tuesdays to Friday's 12.00 to
2.30pm and***

6-30pm to 9-30 pm

***Saturdays 12.00 to 3.00pm
and***

***6.30pm. to 9.00pm (drinks –
open all day)***

Sundays 12.00 to 9.00pm

Phone 01433 630 423

R Rose & Co

Chartered Accountants & Business Advisors

Specialists at
looking after the affairs
of small businesses.

For a **FREE** initial consultation
please contact Roger Rose FCA on
0114 281 2331

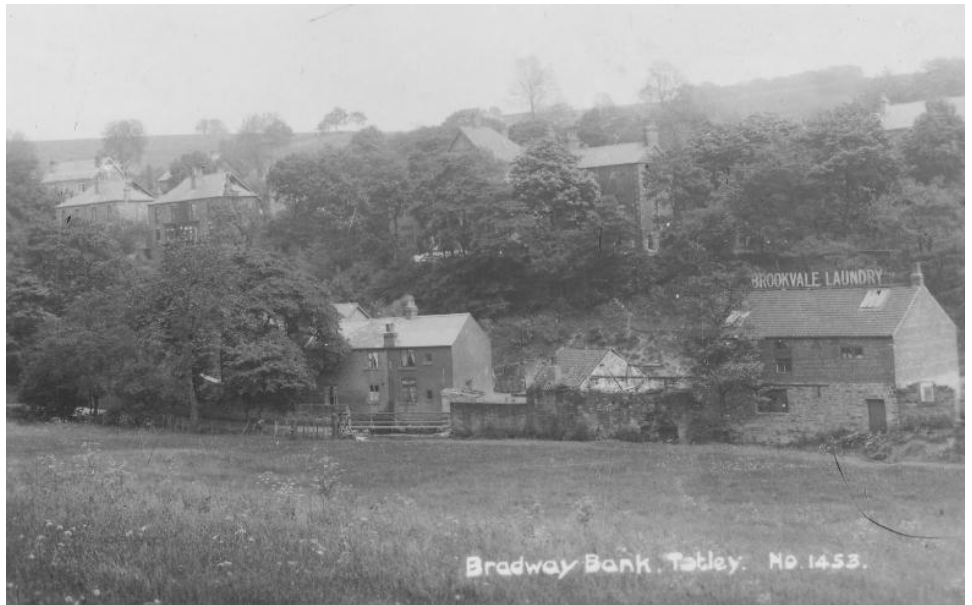
From business start-ups and general accounting, to support
and advice in business development and strategy,
we provide a full range of services in our personal one-to-one service.
To find out more please call 0114 281 2331.

213 Derbyshire Lane, Norton Lees, Sheffield S8 8SA
Email: info@r-rose.co.uk

MEMOIRS OF DAN REYNOLDS (Part VI) By Himself

At the back of the shops at Totley Rise leading to the chemical yard is a lane much used in those days by horse traffic where they had to cross the stream (ford). Pedestrians used the existing footbridge. Once we became part of Sheffield, some blundering idiots in the Town Hall had a low wall built at the side of the stream to stop this traffic, hence we lost the ford.

There were around eight cottages in the chemical yard, and a large two-storey building, where in the past chemicals were produced. It was later known as the boundary called Brookvale. In the 1920's it was bought by C J Marcroft, a slater and builder, and was used as a joiner's shop etc. It was here that I was employed as an apprentice and earned ten shillings per week for forty six and a half hours. The sign Brookvale Laundry, was made of wooden lettering and ran along the ridge. In the basement of the building was a big gas engine and on the walls were many large bracket supports for shafting. A smaller building attached to the main was where Bill Bradbury offered his service as farrier wheel.



Leaving the chemical yard and on the way to Greenoak, you came to Brookvale Terrace where you would find the building of Harry Green's business - joiner and funeral undertaker. A Mr Gledhill lived in a house nearby and he cultivated the monkey gardens better known as Laverdene estate. Along with his family, he ran a very successful wholesale business in Sheffield market with all home grown goods, with forced rhubarb being a highlight. His permanent workforce was of three or four and during the school summer holidays about four schoolboys were employed. My brother and I were employed five and a half days per week and were paid fifteen shillings, 'which was very, good in the year 1922, as in 1924 I only received ten shillings as an apprentice for forty six and a half hours as I said earlier.

Continuing up the lane with high hedges on either side, you came to Lemont Road where there were four back to back houses. Mr Carr, a smallholder, owned land behind Lemont Road, (now Greenoak Park). A few surrounding fields which were later sold to C Thompson, who eventually sold to Sheffield Corporation hence the housing estate (enough said!). Continuing up Baslow Road, and opposite was Greenoak House. A little further to your right was a newly made road leading to Heatherfield which was being developed by Mr T Newbould. Further up to your left is Main Avenue, developed by Mr Sheard. At the time about thirty houses had been built. Leaving Main Avenue and to your right was Totley Grange, after which you came to the Olde Totley of which I mostly refer.

The gentry were Mr Tyzack, Mr Ellison, Mr Mills, Mr Adams, Mr Milner and Mr Earnshaw. Mr Tyzack, barrister and gentleman farmer, owned and farmed land at Avenue Farm. He was also a member of the parish council. His land bordered the narrow lane leading to Dore, and due to some mishap due to the width of it, it was brought up at the next council meeting where he said he would give the land required at no charge for widening. He was asked if he was prepared to pay for the cost of earth movement which was instantly declined. His offer was therefore withdrawn. The road is much the same now as then. We were in N E Derbyshire in those days and Derbyshire County Cricket Club played many matches at Abbeydale Park, and in the 1930's Abbeydale Hall was used as council offices.

Mr Ellison lived at Grove House (opposite the Crown Inn), a grand residence with beautiful gardens and running brook with two entrances, one at Hillfoot Road, the other a private road over the brook at Totley Brook Road. The gardener was Mr Woodfin, who lodged with Mr Bowley at Rose Cottage on Hillfoot Road. To be continued

HATHERSAGE CAROLLERS

Will be leading the singing this Christmas at the following Hathersage Hostelrys

Monday Dec 17th Millstone Inn 9pm

Wednesday Dec 19th Plough Inn 9pm

Friday Dec 21st Scotsmans Pack Inn 9pm

Friday Dec 28th Little John Inn 12noon

Do come and join in. Collections will be taken for **Helens Trust** local charity

Locksmith

Just recently, I had the misfortune to have the front door key jam solid at 10pm with me on the outside! With the help of neighbours, I managed to find a local locksmith (look it up in Yellow pages, and see what I mean!), who turned up at 10.45pm.

The man was a Diamond! Although we got access quickly, problems arose when bits of the lock started falling inside the thickness of the PVC door itself.

This resulted in needing to lock the door from the inside, then having to traipse through the garage and out of the up and over door, for the next 8 days!

So I gladly pass on his details, with my thanks.

Mr Mike Postans (Woodseats) ph 258 3437 mob 07930 412772

Tony Reynolds

Boiler Room Scams

This telephone scam is the use of high pressure sales to sell 'sure thing' investments with the promise of massive returns. In fact, what you are being offered is probably worthless stock from unquoted companies which are overvalued, or simply don't exist.

A cold call to your phone number which may be publicly available from shareholder lists is all it takes. The protection of the UK laws regarding such sales does not apply since many of the calls originate in Spain, Switzerland or the US, outside the jurisdiction of the Financial Services Authority (FSA).

The Boiler Room can sound so promising; you'll hear stories about companies you know; you'll get phone numbers and addresses and websites that look and sound so secure and UK based; you'll get hounded for months grinding you down until you give in, and part with your money; on average the scam is for about £20,000.

The advice from banks is to be impolite and 'hang up'. Then ring the FSA on 0845 606 1234 to report as much detail as you can. More details of this type of scam can be found on the FSA website at www.fsa.gov.uk. Your bank may also be able to provide you with information. The best advice from the banks is, "If an opportunity sounds too good to be true, then it almost certainly is."

[edited from an HSBC circular to customers, June/12]

HOLMESFIELD CHURCH WALKING GROUP

MONSAL HEAD WALK

On Wednesday 5th Dec at 10am Robin Greetham will lead a walk starting at the Bull's Head in Ashford in the Water. We will walk through the fields to Monsal Head then along the road to Little Longstone then through the fields again back to Ashford. Lunch (optional) will be at the pub. The cost of the walk is £3 and the proceeds will go to Holmesfield Church refurbishment. If you would like to come just turn up on the day. The walk is approximately 4 miles long. Any queries phone Robin on 01246 412767.

Fresh from performing as a featured choir at the Grenoside Festival of Carols

Olympic Torch Photos

If you have not yet received your photographs taken at the last Totley Farmers Market, please see Kathryn or Hetty at the Christmas Market on 9th December. Thank you.

ST. JOHN'S CHURCH SERVICES

(Abbeydale Road South)

Sunday 2nd December 6.30pm

Advent Carol Service

Sunday 23rd December 6.30pm

Carols and Readings

Monday 24th December 5pm

Christingle

Monday 24th December

11.30pm Midnight Sung Eucharist

Tuesday 25th December 9.30am

Christmas Day Family Holy Communion

Ward Forum Update

At the Ward Forum, held 2nd July, the Enforcement Officer, from Sheffield city Council, informed us that PCSO's would also be enforcing dog fouling legislation. This is now not true, except in certain areas. Environmental Health Officers have carried out some patrols & have issued litter Fixed Penalty Notices, but only two have been issued for dog fouling, one in Graves Park & one in the Pitsmoor area. Chesterfield have increased their dog fouling fines to £80.

Roger Hart, Chairman, Dore & Totley Ward Forum

Totley Townswomen's Guild

Christmas will be here very soon, quickly followed by the New Year when some of us will consider making New Year resolutions and then endeavour to keep them! Will one of your resolutions be to make new friends or to become involved in a new activity?

If so, ladies you might consider joining the Townswomen's Guild here in Totley. Guild members meet on the 3rd Tuesday morning of every month at the Totley Rise Methodist Church Hall from 10am to noon.

The first part of the programme is an informal meeting which provides members with information about ongoing activities, new ones being arranged and other useful updates. This is followed by the essential coffee/tea break! The second hour is allocated to talks by visiting speakers

Also, monthly there are subgroups for walking, scrabble, social studies and the choir which meets weekly for rehearsals for concerts. Other occasional activities include coach outings, the birthday lunch in October and the Carol Concert at the Victoria Hall.

There is an annual fee and a small charge per meeting. So will you be making a New Year's resolution to come and join us? If so be assured of a friendly welcome.

Carols and Christmas Trees

Each Wednesday morning from 10 am, we serve coffee in our "Link" foyer at Dore & Totley URC from 10am. During Advent the "Link" and the Sanctuary will be decorated with Christmas trees so do drop in on us if you can.

We also hold a short service of worship at 11.30am on Wednesday for any who would like to join. On 19th December, we shall be singing traditional carols, so please come along, enjoy a mince pie and join in the carols.

You are also warmly invited to join us on Sunday 23rd December when we hold our Carol Service at 10.30am.

AGS & JLH Decorators

Interior & Exterior Painting & Decorating

No job too big or small /Free quotes

Fully insured All work guaranteed

Call James or Adrian

0114 2215917 /07913883188

/07906265611

DRONFIELD LANDSCAPES

Logs and wood chippings For Sale

Ring for details

**Chris 0114 274 6158
Mobile 07976 072785**

**Richard
Mobile 07789 497104**

HEARING AIDS

**MAURICE NAYLOR FBSHAA RHAD is your local hearing aid specialist and at your request will test your hearing in your own home, free of charge, and if needed you can try a custom made aid for four weeks without obligation to purchase.
Tel : 237 4817
In the ear digital from £495**

TRISTAN SWAIN

Landscaping & Maintenance

Established 20 years

Fully insured

GARDEN RESTORATION & MAINTENANCE

Unit C4
Sheaf Bank Business Park
Prospect Road
Heeley
Sheffield S2 3EN

Tel/Fax: 0114 255 4689
Mobile: 07831 802539



YOGA CLASSES in TOTLEY & RANMOOR

Rachel Quinn BWY Dip



**THE COMPLETE BUILDING SERVICE
New Build & Extension Specialists
From Design to Completion**

**Full Project Management
House Building
Extensions
New Roofs/Tile/Stone
Stonework Specialists
Loft Conversations**

**Find
us in
Yell.com**

Established for 25 years with over 90%
of our work coming from recommendations, to
find out why call:

0114 2353314

Mobile 07973 908187

www.mwoolhousebuilders.com



Christchurch Cottage,
Townhead Road,
Dore, Sheffield
S17 3GA



Horizon Electrical

*Faults, Rewires, Sockets, Lights,
Cooker Points, Electrical Showers,
Phone Points, Security Lights*

No job too small

Fully qualified with friendly advice

**Ring Totley 236 4364 or
Mobile 07772 483154**



BRADWAY INSTALLATIONS

**Kitchens, Bathrooms.....and everything in
between**

- **Complete Kitchens - Installation or supply and installation**
- **Kitchen Refits - Replacement worktops/sink/hob etc. Worktop / cabinet repairs**
- **Bathrooms - Cloakrooms - Domestic plumbing - Tiling Laminate / Vinyl flooring**

All work undertaken is fully insured and guaranteed

**Ring Peter - 0114 236 5995
Mobile - 07766 411355**

Danny Reynolds

With regards to the letter headed, 'Thanks for the memories', from Martin Hawke previously of Sunnybank, Totley Bents.

This brought back a lot of memories for me. My late Mum, ISABEL REYNOLDS, was Mrs Hawke's best friend and we spent many an afternoon at their house and vice versa. We also had many a picnic in Abbeydale Park, together with Elsie Coates, Betty Fisher and their children. I wonder if Martin remembers his Dad being a Wednesday supporter? My Dad used to take me to most of the home games, and now and then Mr Hawke would come too. He once took Dad and me to Manchester in his van to watch a cup match. I am talking about the time when players who played the game, and not the overpaid, oversexed prima donnas who arrive on the pitch nowadays.

Mr Ed, you mentioned that you used to help Mr Hawke with his milk round on a weekend. I did the same in the 50's, (showing my age now). On Sunday morning, he would pick me up and we would deliver all round Arbourthorne, drive back to Express dairies on Broadfield Road and then pick up another load. We would deliver that lot and then go back home. It's a good job and he paid me for it. As you can imagine, we were out in all weathers.

Since I started typing this, I have received a further copy of the Independent and read another instalment of my Dad's memoirs-the 5th in fact, and I hope all of you who read them find them as interesting as I do. He mentioned two seats in the Pinfold. Well, in memory of my Dad, and because his chosen profession was joinery, the family had a bench made in oak and had it sited on the old school wall so that it could be seen from 363, Baslow Road where Mum and Dad lived for 74 years.

Dad loved working with wood, and in the late 70's-80's he made a grandfather clock for four of his kids. One declined the offer, but the four of us treasure our gifts. In 1980, my husband, son and I had a holiday in the Bahamas and one day we went into Nassau. It was extremely hot so we called into this little cafe for a drink. We were the only one's there until a guy came in. He sat for a while then came over to us and stated that he had been listening to us and asked whether we came from Leeds, (how very dare he), or Sheffield. When we enlightened him, he said the best joiner he had ever employed came from a little village outside Sheffield called Totley. Yes, you've guessed it! His name was DANNY REYNOLDS. I proudly said 'THAT IS MY DAD' The man was Mr Smith who owned quite a few nursing homes in Sheffield and his son had bought Kirby's farm at the top of Totley. Small world isn't it?.

On a different note, I have the **Independent** sent to me. I live in a small village called Pollington in East Yorkshire. I cannot wait to read it. In fact, everything stops when it drops through the letterbox.

I saw a plea from Mr Ed for a copy of Totley Rifle Range book. I was not aware of its existence but if you are successful in your quest I would love to purchase a copy. You see my Mum lived there from 1923 to possibly 1934. My Granddad was I think a batman and Grandma Small was a cook and laundry lady. I only wish the TV programme, 'Who do you think you are', would have been aired earlier because I might have asked a lot of questions. Sadly it is too late now. Carry on the good work.

Carole Thurkettle (Reynolds)

Midden Tipping

"Night Doll", (midden contents), were tipped on the field adjacent to Strawberry Lee Lane at Hallfield Farm (Old Field Farm) in bell pits left from the old mine workings. I spent happy hours digging for bottles etc on this site, my daughter-in-law has them now. Samuel Fisher of Hallfield Farm had a contract from 1 April 1926 to 31 March 1927 to rip, this was a yearly contract and had to be applied for. Some of the bottles predate the 1920, a few late 19th century.

Regarding "spital" a hospital was on/near the Spital area of Sheffield near the area of the Castle providing care for local inhabitants. A map of 1736 still shows the buildings apparently intact. It was situated just outside the main area of the town, hopefully to keep infection away from the inhabitants.

By the way, Spital is a short version of hospital = hospitable = hospitality, hence Knights Hospitalers. The sick and infirm, and also travellers could obtain shelter there.

Regarding the Castle, Mary Queen of Scots spent about 12 years as a prisoner there, leaving only while cleaning work took place. One of the places she was taken to was Manor Lodge, erroneously believed by many to be the Castle. The Lodge is well worth a visit.

Jean Barber

Kate Reynolds.

It is almost a year since Kate moved into Henleigh Hall Care Home, and with Christmas almost upon us, and our day to day living, Kate and I would like, through the broad scope of **Totley Independent**, to pass our best wishes for Christmas to all out friends, current, and forgotten, and hope they keep well throughout the coming year.

Kate & Tony Reynolds.

Coffee, Cakes & Cello (plus other instruments)

Saturday 15th December
10 am to 12 noon

TEA, COFFEE, CAKES

Musical entertainment by students from the
University of Sheffield

Dore and Totley United Reformed Church
Totley Brook Road

Everyone welcome

More details tel: 0114 2365607

IN AID OF
LOST CHORD & CEREBRAL PALSY SPORT

Plus Christmas Tree Display!
(also open Wednesday mornings during December)

King Egbert U15 Cricket Champions

Not only have the King Egbert sports department set Jessica Ennis on the right path to Olympic glory in the women's heptathlon, but they also played a part in the rise of one of English cricket's star prospects- Joe Root. Root played for the school team and was also coached through the system at Sheffield Collegiate, the same nursery that produced Michael Vaughan. Root has made extraordinary strides in his game and plays his club cricket for Yorkshire. On the international stage Root has been part of the England Under-19 squad in Bangladesh, shortly before the youth World Cup in New Zealand in 2010 and has toured with England Lions. Notably, this year has seen him named Cricket Writer's Club Young Player of the Year and his performances over the season have helped earn him a call up to the England senior squad on the tour of India.



(Picture: Coach Mr Maw with signed shirt which Joe Root has given to King Egbert School)

Joe Root is an example of how dedication and hard work can pay off, and there must be something in the water with cricket players at King Egbert School as the U15 team remain undefeated in the South Yorkshire Sheffield League, having never lost from Y7-Y10. The team are coached by Mr Howse and Mr Maw and I caught up with Mr Maw and several of the squad to discuss their league success and also their incredible achievement of being the only State school to ever reach the Lord Taverners U15 Yorkshire Final!

What is the secret behind your success story with this team?

Mr Maw: There is no secret here; this group of players has done so well because it is very much a team. We know that you cannot win things with only one or two individuals in the side. I have to be honest; it is very unlikely that we can repeat what we have with this team. They have managed to win the South Yorkshire Sheffield League four years in a row, and this year we reached the Lord Taverners final which is mainly dominated by grammar schools. Even when Joe Root was playing here we didn't win everything! Here there is a core of good cricketers and that has made the difference with this group. It is pot luck with what people you have coming through every year and this team has been particularly fortunate.

Which League title stands out the most for you?

Harry Simpson (Captain): I think this year was the most outstanding achievement because we had to get passed a very strong side in the semi finals; we played Ecclesfield on their turf and they were intent

on toppling us. It was a very intense game, but we had a fantastic team performance and Ollie Pearson who also plays for Derbyshire as well, really stepped up to the mark with his batting and bowling. And then in the final played at Abbeydale, we had an equally tough challenge as we were set a high target by High Storrs of 128. We managed to reach the target with only two over's left to play and six of us were out by that stage. It was a real team performance. The biggest motivation for playing well was because we wanted to make Mr Maw proud, he has always put so much time and energy into the team and that was the last thing we could give him because we don't play after U15 level at school. It was basically about going out there and making him and the school proud.

How do you prepare before such big games?

Mr Maw: It really is about stressing teamwork but also about stressing the importance of backing each other up and that's on and off the pitch. I always want them to play with pride for the school and just show confidence in their ability!

Ollie Pearson: Crucially, it's also about making sure the mindset is right and this is something Mr Maw has really helped all of us with. Everybody has their own different ways of preparing- I know some people before they go onto the crease who like to hit a lot of balls, whereas other people just like to sit by themselves and think about things. I personally like to sit down and make sure I'm in the right frame of mind and then I'm still in that mindset when I have to bat. This way I won't give away a cheap or silly wicket.

What was it like playing in the Lord Taverners final?

Harry Simpson (Captain): it was absolutely amazing. We were already on a high after winning the Sheffield League but then to reach the National Yorkshire Final words can't really describe it. I gave a motivational speech before to jeer everyone up but made sure there was also a bit of banter because ultimately the day was also about enjoying ourselves.

Mr Maw: It really was such a great achievement- it was a shame that we lost to Leeds Grammar in the end but it's something these players will never forget- they were in a national final. It's so rare for a state school to make it to one; I think we are the only school ever to do that.

Saskia Payne: Everybody gave really good support on the day and it was really nervous to go out and play because of the pressure and nerves, but you know the team will always lift you up. It is all about the team spirit here.

Saskia, what is it like to be the only female playing in the team?

I wasn't sure at first but Mr Maw really encouraged me into the sport. I had been playing other sports at school like football and things but had never really thought about cricket but now I love it! The lads don't treat me any differently and since playing for them I have played for South Yorkshire girls and also the men's team at Sheffield Transport.

Mr Maw: I think it's fantastic that we have a female in the team. As Saskia said the lads have been absolutely first class with her and she is treated no differently- she is simply one of the players. She is in the team through pure merit not because I felt we had to let her. We do run other teams just for girls but we have always had the policy here that if a girl is good enough to play then she can play with the lads.

Who are your idols of the game?

Ollie Pearson: For me it has to be Joe Root because I was growing up when he was growing up. It just makes you want to try harder when you know he went to this school, because the targets and goals seem reachable. Of course, you have to have the talent but he is an example to us all and shows us that if you work and work at your game you can get there in the end.

Ruhith Chowdhury: It's difficult for me to answer this as I originally played football before joining but I have to say it's all the coaches and players here. I've had so much fun playing and everyone supports each other. I'm hoping as a Christmas present, Ollie lets me have one of his amazing bats, as he always lets me borrow it if I want to.

What does the future hold for of the players?

Ruhith Chowdhury: I'm definitely going to keep playing even though football was my first love. I've played for Millhouses Works for the past two years so will keep doing this.

Harry Simpson (Captain): I will keep playing for Coal Aston Cricket Club which I've been part of since U13 level, and will hopefully work my way into the first team there.

Saskia Payne: Cricket will be taking a bit of a back seat as I'm travelling to Uganda in the summer, however I will continue to play with Sheffield Transport.

Ollie Pearson: For me, cricket is a massive part of my life and I really want to reach the highest standard that I can. I've played for Derbyshire since U12's, and got onto their academy system which has the aim of feeding players through to the first team. For 6th form I am going to try and get into Repton Private School on a scholarship. This would greatly enhance my game as they are an important feeder for the Derbyshire squad, so fingers crossed!

Mr Maw will you continue to work with the cricket teams at King Egbert School?

Oh most certainly. It is an absolute privilege to work alongside these kids and also Coach Pat Howse. The main thing we do at the school with the cricket coaching, is putting everything together- a lot of the players get their serious coaching at their clubs, so at the school it is about sharpening them up on the day, motivational talks and getting them in the right mindset which is something I want to continue helping with. The school has really enabled some students to really excel and it's fantastic for all the other pupils as it spurs them on, and proves that if you put the practice in you really can make it.

Cricket is something that matters a lot at this school so I will definitely stay with the teams coming through. It enables a lot of different kids from different backgrounds to get together on that field and to really enjoy themselves. I want to give thanks to Pat who I work with, and very importantly the parents and fellow teachers that throughout my time coaching have either helped out with the team or come along to watch us play which is real dedication.

Reporter: Ruth Dacey



(Picture: U15 King Egbert School Cricket team, League Champions and runners up in Lord Taverners U15 Yorkshire Final)

I AM AN ANGLO-SAXON

In our attempts to trace the family tree we know the names of many forebears back to the middle of the eighteenth century. Most of these have been traced through the usual sources, births, marriages and census returns.

Earlier this year our three daughters, desperately casting around for my birthday present, came up with a novel idea - to get my DNA profile checked out. I dutifully used the kit supplied to send off a sample of my saliva to be tested. The report has only recently (6 months later) come through. It covers 8 typed A4 sheets.

I have to say, so that there is no misunderstanding, I do not fully understand the various background theories and how authentic the implications are. I think current belief is that in the distant past the evolutionary chain split into two branches, homo sapiens and the Neanderthals. It is undecided whether or not there was some interbreeding between them. Some colossal natural phenomenon then killed off the majority of the developed life forms on earth. This may have been a gigantic volcanic eruption causing vast dust cloud and poisonous gases. A comparatively small proportion of homo sapiens was still in Africa. Some of the descendants of these homo sapiens migrated northwards out of Africa and then split again east and west.

What the DNA examination aims to do is to identify some parts of the DNA passed from father to sons and hence identify the sub group origin in the past.

My report reads:

"Your paternal lineage is that of the CHAUCI, an ancient German kindred described as barbarians by Roman commentators and historians"

The suggestion is that my ancestors came from the North Sea coast in northern Germany as part of the Anglo Saxon invasion of the 4th and 5th Cs A.D. and probably settled in the north of England.

So what are my thoughts about what emerged from my birthday present? I suppose it would have been more interesting if they had found Neanderthal traces in my DNA or found links to a historical figure such as Henry VIII or Isaac Newton. My youngest granddaughter has already said that Mum (my daughter), and Grandpa have a German look about them!

Don Ashford.

SLIMMING WORLD

10 WAYS TO MAKE SURE IT WILL BE THE LAST TIME LOSING WEIGHT IS YOUR NEW YEAR RESOLUTION. THIS TIME MAKE IT LAST FOREVER

1. Focus on your weight loss goal and prioritise it.
2. Be sure you really want to lose weight for yourself. Doing it to please someone else may only lead to short term weight loss.
3. Take advantage of all the group support at your local Slimming World class. Even if you are not a 'joining in' person, you'll be surprised how motivating it is.
4. Accept that you will have ups and downs in your weight loss journey, and be forgiving of yourself if you hit a difficult patch.
5. Listen to your 'inner script' and make a conscious effort to talk to yourself in a positive, encouraging way.
6. Keep up your interest in your healthy eating plan by trying new foods, new recipes, and new ways of using your Sins. This will help you avoid getting in to a dieting rut which can be boring and demotivating.
7. Be honest with yourself about what you are expecting from your weight loss and how you are getting on with Food Optimising week by week. People who set unrealistic targets for weight loss or body shape are more likely to give up than those who set achievable targets and share their ups and downs.
8. Go back to your class even after (especially after) you've had a weight gain. You will not be judged, just helped and supported.
9. Keep setting new goals and rewarding yourself for milestones until you reach your target weight, and afterwards!
10. Don't put your life on hold until you've lost weight. You can still enjoy life and lose weight. Think of your dreams and ambitions and bring them to the fore. The positive feelings you get from starting to 'live a little' can only help your motivation and your weight loss.

Group details:

St Peter's Church, Greenhill Roundabout, S8 7FN
Thu 5pm & 7pm

Dore Old School, Tues 5.30pm

Tel: Alison Murphy 07815 046569 for further details

PhysioFOCUS

at Totley Rise Dental Practice
85 Baslow Road,
Sheffield, S17 4DP



Physiotherapy treatment available for:

- Back and neck pain
- Sports injuries
- Sprains and strains
- Joint and muscle pain
- Arthritic pain
- Whiplash
- Repetitive strain injury
- Headaches

Appointments: 0114 2360333

Also available:

- Pilates classes
- Pilates 1-2-1
- Golf Fitness Screening
(as used by consultants to UK, European and Australian PGAs)

For more information please call:

Emer on: 07792 422909

Rachel on: 07956 908454



Domestic electrical work by
award winning

Lady Electrician

- * House rewires * Replacement fuse boards *
- * New sockets and lights * Security systems *
- * CCTV * Telephone and computer points *
- * Garden power and lighting *



All work guaranteed and fully
insured. For a free quotation,
without obligation,



ring Mandy on 07788-544225

Homeopathy @ Synergy.

162 Baslow Road, Totley, Sheffield, S17 4DR

Advanced Indian Sensation Method Homeopathy

Alternative medical treatment for all chronic conditions

Registered with major insurance companies. Can claim
through the Westfield scheme



Ring: Lindsay Allison RSHom for more information:
0114 235 7845 or 07968 167036

M.Scriven
(FRUITERAMA)

MARTIN SCRIVEN

HIGH CLASS FRUIT
& VEGETABLES

37, Baslow Road

Tel. 236 7116

Orders Delivered

G W A Tiling

Wall & Floor Tiling

Bathrooms Kitchens Wetrooms

No job too small, Best Quality work

George Allen

Mobile 07801 790973

Top tips to help beat those winter blues

Seasonal affective disorder (SAD), also known as winter depression or winter blues, is a mood disorder where people who have normal mental health throughout most of the year experience depressive symptoms usually during winter time. It is officially recognised by Doctors and Psychiatrists as a medical condition that is thought to affect 2 million people in the UK and Ireland.

Symptoms may include difficulty waking up in the morning, tendency to oversleep and over eat, a lack of energy, difficulty concentrating on or completing tasks, and withdrawal from friends, family, and social activities. All of this leads to depression, pessimistic feelings of hopelessness, and lack of pleasure which characterize a person suffering from this disorder.

Treatment Previous treatments have involved the use of prescribed medication, which can have many side effects. However in recent years, research across the world has shown that SAD sufferers responded, often quite dramatically, to other natural techniques to help cope.

1. 5-HTP This plant extract is a natural source of 5-hydroxytryptophan, (5-HTP). The substance is made in the body and converted into serotonin, a brain chemical messenger. Serotonin is very important as it has been shown to affect our moods, and especially in the way that we think. If the serotonin production drops in your body this is what causes depression in many people so by taking the completely natural dietary supplement 5-HTP, you can improve low serotonin levels.

2. Diet Certain essential fatty acids, particularly omega-3s, have been proven to ease depression symptoms from SAD. These can be found in cold-water fish and certain nuts, as well as soybean, flax and canola oils. Herring, mackerel, salmon and flaxseed are among the richest sources of omega-3 fatty acids. Also it is important to try to increase your intake of fruits, vegetables, protein, and water for optimal mood and energy.

3. Exercise Regular exercise is recognised as a key, effective form of treatment as during exercise there is a release of the 'feel good hormone' known as endorphins, which in turn, result in an increased feeling of well-being. They are also the body's natural form of painkillers and it is through exercising for at least thirty minutes that the brain becomes stimulated leading to release these hormones.

4. Light Make sure you are exposed to full spectrum light every day. Sunlight is ideal, but if this is not possible, a special light called a 'SAD lamp' or light box can help. The light emitted mimics outdoor light. This is thought to cause a chemical change in the brain that lifts your mood and eases other symptoms of SAD. Light therapy can also be used to help adjust daily sleep cycles (circadian rhythm), which may play a role in mood. Light boxes are generally used for 30 minutes or longer each morning, with bright light shining indirectly toward your eyes.

5. Stress Management Techniques Studies show that chronic stress may increase your risk of depressive disorders such as SAD. A great way to help deal with this is through the regular practice of stress reduction techniques like yoga, meditation, guided imagery, and progressive muscle relaxation.

Reporter: Ruth Dacey

Friends of Gillfield Wood Sponsorship

An historic Totley inn is sponsoring a group who help to conserve an historic Totley wood. The multi award winning Cross Scythes on Baslow Road, renowned for the quality of its food and real ales, has helped the Friends of Gillfield Wood publicise their activities by generously sponsoring their website.

"Our website is crucial to us in getting the word out about this marvellous ancient wood and the activities we carry out," said Sally Goldsmith, the Secretary of the Friends of Gillfield Wood. "Some residents have told us they have never been in it or seen the fantastic Spring bluebells and anemones. We have a busy year ahead of us with events, surveys, talks and practical conservation days. The website not only publicises these, but helps us to collect information from local people about flora and fauna seen. This sponsorship will really help us to improve our online presence and we are very grateful to the Cross Scythes."

The Cross Scythes is pretty ancient itself – part of it being over 300 years old and over many years a stop for stagecoaches and buses. Since its twenty first century refurbishment a few years ago, it has steadily built up a name for itself. It was a finalist in the Sheffield Restaurant of the Year Awards in the Best Pub Food category and has a 4 star rating from the AA. It was also awarded the Best Leased Pub for the region of Yorkshire and North East of England and Best Pub Food at the Westside restaurant awards in 2011. Good for a pint and a meal after a strenuous day in the wood or on the moors round about then!

Find out about Friends of Gillfield Wood at www.friendsogillfieldwood.com

Find out about the Cross Scythes and their menu at <http://www.cross-scythes.com>

Local TV station

Sheffield Local Television (SLTV) has been awarded the licence to operate Sheffield's first digital local television channel by regulator Ofcom.

Chair of SLTV Steve Buckley, says this will be an open, diverse and inclusive channel, locally owned and not run for profit. A representative of Sheffield's Cultural Industries Quarter Agency, said it will be a great opportunity for the city to showcase local talent and creativity and to build the digital and creative economy.

SLTV hopes to commence broadcasting by the end of 2013 and will offer local news and information, cultural programming, a platform for independent and community producers and opportunities for local business and public sector organisations.

PUZZLE CORNER

Solutions to One at a time

1. SNOW; SHOW; SHOT; SOOT; BOOT; BOLT; BOLL; BALL
2. YULE; RULE; ROLE; DOLE; DOGE; DOGS; LOGS
3. PINE; PINT; PENT; PELT; FELT; FEET; FRET; FREE; TREE
4. MINCE; SINCE; SINGE; SINGS; PINGS; PANGS; PANTS; PARTS; TARTS
5. PANTO; PANTS; PINTS; PINES; MINES; MIMES

Don Ashford.



GWS

Technology Solutions



PC Problems/ Repairs/ Servicing No Job Too Small
 Wireless & Internet Setup New PC's & Upgrades
 PC Setup/Data Transfer Safe PC Disposal Tuition
 Software/Hardware For All Your PC Needs

Guy Senior

Phone: 0114 2352662 Mobile: 07890030453

Email: guy@gwstech.co.uk

Web: www.gwstech.co.uk

GWS, 5 Conalan Avenue, Bradway, Sheffield S17 4PG

R.S. HEATING & BUILDING CO
 EST. 1971

HEATING DIVISION:
 Experienced Installers of condensing, combination and regular boilers. Systems fully guaranteed. Complete after sales service. Also Bathrooms, showers and small plumbing works.

BUILDING DIVISION:
 Loft conversions, House renovations including general building, joinery, plastering, electrical decorating etc.

13 Overcroft Rise, Sheffield, S17 4AX
Tel:- 0114 236 4421
 Reg. Office:- 62 Machon Bank, Sheffield, S7 1GP
Te:- 0114 2559425
Fax:- 0114 255 9431
 Email: enquiries@rsheatingandbuilding.co.uk
 Web: <http://www.rsheatingandbuilding.co.uk>

LIBERTY FOODS
 Caterers
 Quality Meat Shop
 & Fresh Farm Produce

Fresh and Frozen Prepared Meals
 Fresh Meat and Poultry
 Outside Catering
 Home Delivery

253 Baslow Road, Sheffield, S17 4DU
 Tel: 0114 2360 583 Mobile: 07801 346 455

Dronfield Landscapes

Gardens cleared and maintained, Lawns mowed, Turfing, Tree felling & pruning, Hedges trimmed & reduced, Pond maintenance, Fencing etc.

for free quotation call
 Chris on: (0114) 2746158 Mobiles: 07976072785 or
 Richard on: 07789497104

8am-6pm mon-fri HazelBarrow Farm, Norton S8 8BA

R.M.M BUILDING SERVICES
 25 YEARS EXPERIENCE

All types of building work carried out including- Drop kerbs, block paving (drives, paths, etc), extensions, general building repairs and maintenance.

Phone Rob on- Mob- 07906108567
 Home-2352190

Nigel Watson
 Carpenter and Joiner

Fitted kitchens, sliding wardrobe doors with bespoke interiors, internal and external doors supplied and fitted, new handrail and spindles, laminate and wood flooring, locks, architraves, skirting board, stud walling, boxing off etc.

For a reliable and quality service
 TEL: 0114 236 4778
 MOBILE: 07971 528149

Serenta HomeCare

Are you in need of a little help and support within your own home? The older we get the more help we need to enable us to live a more independent life.

Personal Care • Medication • Domestic • Sitting Service • Social and Leisure activities

To find out more call Sue 07715 636 395 Pat 07715 634 781
 or visit www.serentahomecare.co.uk
 For reference from an existing client please call 0114 2366891

Got a computer?

Having Problems?
 Is it running slow? Stops responding?
 Having problems running the latest games or applications? Broadband installation?

Give me a call!
 I'm available for home visits at any time including evenings and weekends. I can also suggest upgrades to improve performance, or even build you a system to your specific requirements.

Tim Brown
 Building, Installation, Upgrading and Troubleshooting Computer Systems
 Over 25 years professional experience

Phone: 0114 2472619 Fax: 0870 7060080
 Mobile: 078 17464703 Email: service@timbrown.plus.com

All Saints Church

Totley Hall Lane

SERVICES

- 2nd 10am Morning Praise
6.30pm Holy Communion
- 9th 10am Holy Communion
6.30pm Evening Prayer
- 16th 10am Children's Christmas Presentation
6.30pm Holy Communion
- 23rd 10am Morning Praise
6.30pm Carol Service
- 24th 4pm Crib Service
11.30pm Holy Communion
- 25th 9.30am Family Service followed by
Shortened Holy Communion
- 30th 10am Holy Communion
6.30pm Holy Communion

There is a Holy Communion Service every Wednesday at 10am

SERVICES IN JANUARY

Will follow the normal pattern

Sunday 10am and 6.30pm Wednesday 10am.

THE CHRISTMAS STORY

Do you know the story of Christmas?
It's contained in a wonderful book
And if you are willing to try it
Together we could have a wee look.

It starts with a girl due to marry
When on the scene an angel appears
Which startles the girl called Mary
But he quickly dispels all her fears.

He says with God she's found favour
And will in time give birth to His son
For He longs to give earth a present
And baby Jesus will be the one.

She doesn't know how Joseph will take this
For he's the one she's to wed
But all is explained in a dream to him
One night while he's lying in bed.

There's one ruler called Caesar Augustus
A census he decided to take
So all must go to their place of birth
And many a long journey they'd make.



To Bethlehem did Joseph take Mary
But they could find nowhere to stay
A stable was all they could find there
And she lay the babe in the hay.

At that time on the hills were some shepherds
A watching their flocks through the night
When a host of angels burst on them
'Twas a glorious, wonderful sight.

They glorified God in the highest
With peace and goodwill to all men
They told of the birth of the baby
Then sent shepherds to Bethlehem.

They came to the stable before them
And went in the baby to see
Then they knelt and humbly worshipped
The baby that sets us all free.

They returned to their flocks rejoicing
And praising the Lord God above
Thanking Him for such a blessing
A present of goodness and love.

Now wise men followed on later
With presents of fabulous worth
But none can compare with the greatest
That God gave to men here on earth.

Now that is the story of Christmas
Though the tale does not come to an end
And that's why we give presents at Christmas
To bless those we love - family and friend.

TOTLEY & DISTRICT DIARY

MONDAYS	COFFEE MORNING , All Saints' Church Hall, 10am-noon TAI-CHI , United Reformed Church, Totley Brook Road, 11.30am-12.30pm RAINBOWS and GUIDES , All Saints' Church Hall, 5.45pm-9pm SLIMMING WORLD , United Reformed Church Hall, 7pm, Jo Elsey: 262 0523 or 07590 545253
TUESDAYS	COFFEE MORNING , Totley Rise Methodist Church Hall, 10am-noon KEEP FIT & COFFEE , For the not-so-young, Bannerdale Centre, Carterknowle Road, 10.15am, Phone: 258 5364 WOODSEATS ADVICE CENTRE . Drop in service, free, impartial, and confidential. TR Methodist Church, 10am-noon CRAFT GROUP , Totley Library, 2pm
WEDNESDAYS	PILATES CLASSES . Dore Old School, 9.00-10.00 and 10.15-11.15. Contact Caroline - Tel: 0781 722 0324, email caroline1north@btinternet.com, www.pilatescarolinenorth.co.uk COFFEE in the LIBRARY . 10am-11.30am TODDLER GROUP . 10am-11.30am, All Saints' Church Hall. Details tel. Andy Holmes 0114 236 2088 HEALTH WALKS . 10.30am, Totley Library foyer. Phone Tina, The Health Walk Ranger: 0114 203 9335 MODERN SEQUENCE DANCING . All Saints Church Hall, 8pm-10pm
THURSDAYS	BELROBICS , United Reformed Church, 9.15-10am, email: jenny@belrobics.co.uk or telephone: 07816 850132. NCT COFFEE GROUP FOR DORE TOTLEY & BRADWAY , 10am-noon, For mums & babies/toddlers, meeting in various locations, Phone Lucy Street 07837 000405 or email: lucy@streetr.plus.com for further details CHAIROBICS . Heatherfield Club, 1.15pm PUSHCHAIR CLUB . Totley Rise Methodist Church Hall. 1.30pm-3pm. Tel. 236 3157 for further details PILATES CLASS , United Reformed Church, Totley Brook Road, 6.15pm-7.30pm also new class 1.30pm to 2.30pm , Phone Emer Coffey 07792 422909
FRIDAYS	PILATES , The Old School, Dore, 9.15-10.15 & 10.45-11.45am. Phone Teresa Tinklin 07906 312372
SATURDAYS	MODERN SEQUENCE DANCING . All Saints Church Hall 2nd and 4th Saturdays 8pm-10pm

DECEMBER

SAT 1st DRONFIELD CHRISTMAS FOOD AND DRINK FAIR. Dronfield Civic Centre 10am-3pm. Details www.hartingtons.com or 01629 888586
SUN 2nd CASTLETON FARMERS MARKET, the Village Hall, 10am-3pm
SAT 8th CHRISTMAS FAIR & TABLE TOP SALE, Heatherfield Club, 193 Baslow Road, 11am-12.30pm - FREE ENTRY Festive Music & Fun
SUN 9th TOTLEY CHRISTMAS MARKET, Totley Rise, 11am-3pm, Wide range of food and craft stalls, Christmas surprises, see article page 2
SUN 9th MINIATURE TRAIN RIDES. SANTA SPECIAL, Abbeydale Road South, First train 11am-3.30pm (weather permitting) www.sheffieldsmee.co.uk
SAT 15th COFFEE & CAKES, Coffee, Cakes and Cello Plus; Dore & Totley URC, 10am - 12 noon, full details page 21
SAT 15th TOTLEY BASED ROCK BAND, RED BACK, Heatherfield Club, 193 Baslow Road, Doors open 8pm, on stage 9pm - FREE ENTRY
SUN 16th-24th, CONTINENTAL MARKET, FARGATE 10am-6pm (8pm Weds)
SUN 16th MINIATURE TRAIN RIDES. SANTA SPECIAL, Abbeydale Road South, First train 11am-3.30pm (weather permitting) www.sheffieldsmee.co.uk
TUES 18th TOTLEY TOWNSWOMEN'S GUILD, Christmas Meeting, Totley Rise Methodist Church Hall, 11.30am-note later start time - this month only
THU 20th SHEFFIELD FARMERS MARKET, 8.30am-5pm, Fargate
WED 12th TOTLEY HISTORY GROUP, Christmas Party at Totley Library at on Wednesday, , all welcome, bring along food and drink

JANUARY

SUN 6th CASTLETON FARMERS MARKET, the Village Hall, 10am-3pm
TUES 15th TOTLEY TOWNSWOMEN'S GUILD, 'Family Photographs as social history', Paul Cutts, Totley Rise Methodist Church Hall, 10am
THU 17th SHEFFIELD FARMERS MARKET, 8.30am-5pm, Fargate
WED 23rd TOTLEY HISTORY GROUP, Totley Library, 7.30pm John Clarke - The History of Penknife and Cutlery making in Sheffield, all welcome

TOTLEY INDEPENDENT FOR FEBRUARY

The next issue of the Totley Independent will be available from the usual distribution points on

SATURDAY 2nd February

COPY CLOSE DATE for this issue

will be

SATURDAY 17th January

Editor: **Ian Clarke**

Tel. No: **235 2526** or Email:

editor@totleyindependent.co.uk

Advertising & Distribution:

John Perkinson

Tel. No: **236 1601** or Email:-

advertising@totleyindependent.co.uk

Reporter: **Ruth Dacey**

Proof reader: **Steph Elliott**

Items for publication may be left or sent to:

2, Main Avenue, Totley, Sheffield, S17 4FG

www.totleyindependent.co.uk

PRINTED by STARPRINT



- Central Heating,
- Domestic Plumbing,
- Glazing, Double Glazing and Glass,
- House Maintenance,
- UPVC and Wood Windows & Doors



Mini Digger & Driver, Muck Shifts, Footings Etc.

starprint

130 GSM GLOSS
FULL COLOUR
DOUBLE SIDED
**5000
A5 LEAFLETS
£99.95**

SINGLE SIDED
FULL COLOUR
**250
BUSINESS CARDS
£19.95**
+ VAT

**BANNERS
AVAILABLE FROM
£29.95** + VAT

**Full design
service
available!**

Tel: 0114 258 0707

Email: mail@starprint.co.uk
601 Abbeydale Road, Sheffield, S7 1TA