

TOTLEY INDEPENDENT

PUBLISHED CONTINUOUSLY SINCE 1977
NOVEMBER 2012 No. 358

www.totleyindependent.co.uk
20p.



Remembrance Sunday

The service will be held on Sunday 11th November at 9.45am, All Saints Church and will move to the War Memorial in time for the 11am act of remembrance. This postcard from the Thompson collection shows a different looking memorial to the one that is familiar today. It is now being surrounded by foliage and has a WWII plaque. This plaque was not installed until 1983 when £600 was raised to pay for it. TRA fund-raised half the cost and Sheffield City Council paid the balance. Does anyone know who the small boys are in this postcard?

Totley Residents Association Update

This is my first update since the summer holidays and the beginning was very busy.

Phil Harris and Sue Hare ensured that the Totley Music Festival was once again a fantastic success.

This year as well as sponsoring the festival, the TRA also ran an event, the Barn Dance held at Totley Hall farm.

First, my thanks to everyone who helped to organise this event, especially to Liberty Foods, as not only did they sell tickets, they fed us very well on the evening and catered for around 20 more attendees at very short notice. This event was subsidised by monies raised by the association, and part of the very busy weekend in July was a bustling farmers market once again on Totley Rise. Thank you to Heather Moran for organising and running the market with such efficiency and for all the people who helped on the day. We honestly couldn't do it without you all! The July market raised around £800 which will provide valuable community activities.

We are holding a **Christmas Market** on **9th December**, once again on **Totley Rise**. There will be a wide range of stalls, both foods and crafts, so you can do some Christmas shopping on your doorstep. We are also planning some Christmas surprises for the market and who knows, Father Christmas may make an appearance. If you would like to book a stall, there is a booking form on the **Totley Independent** website, or you can call me for more information. If you can offer to help on the day, please also get in touch, it promises to be very festive!

I was on holiday when the Totley Show took place, but I am informed that it was very well attended and that it made £500 that will be presented to Transport17 by Les and Dorothy Firth who have been instrumental in planning and running the show for the past 2 years. Thank you to Les and the committee who work hard to make it such a success.

As we approach autumn, we are beginning to plan a Christmas Party for Older people as we did last year. If you know someone who is socially isolated and they would like to attend please phone me on 07709 780 606. We hope

to secure funding as we did last year from the South West Community Assembly.

As you start planning for your Christmas, please consider that the Association would love to organise more community wide activities and we really would love to hear your thoughts on what we should be planning, or which groups we should be making contact with. As there are more and more service cuts, and the recession bites deeper, community is more important than ever and we really need to pull together. I spoke to many people at the barn dance and the market who were impressed by what we were doing but we need help to keep doing what we are doing. If you can spare time to become involved in any capacity (as much or as little time that you have to spare) please come along to a committee meeting, or contact me on the mobile number above or e-mail us kathrynhiggins_totley@hotmail.co.uk.



WEDNESDAY NOVEMBER 28TH

TOTLEY LIBRARY, 7.30PM

PUS, POX AND PRIVVIES

**LIFE IN SHEFFIELDS'
VICTORIAN SLUMS**

**TALK AND SLIDES BY SUZANNE
BINGHAM**

MEMBERS £2, NON MEMBERS £3

Music Tuition



Piano • Keyboard • Flute • Singing
Guitar (rock, metal, blues, jazz, funk, pop, folk)
Music Theory • GCSE work

Music graduates, each with 25 years
teaching and playing experience

All ages, beginners welcome.

Exam work or just for fun!

Call Mark or Karin

0114 258 3397 & 07981 888352

Have Your Say

on the future development of...

THE FORMER KING EGGERT SCHOOL SITE, FURNISS AVENUE, DORE

The Council is looking at how best to progress this important site for development in the near future and will be submitting a planning application for residential development.

Your views are important and we will be consulting on planning issues via a draft planning and design brief from 22nd October to 6th December 2012.

We will then take your views on planning issues into account when the planning and design brief is finalised in December. We will consult again

before a planning application is submitted early next year.

Come along to our drop in session on 22nd November between 3-8pm at Dore Old School, Savage Lane, S17 where you can see a copy of the brief, give your views and talk to Council Officers.

You can also see a copy of the draft planning and design brief at:

- www.sheffield.gov.uk/kingeggbert
- Totley Library, 205 Baslow Road



CONTACTS:

Planning Brief comments to sarah.smith@sheffield.gov.uk

Or to Sarah Smith, Development Services,
Howden House, 1 Union Street, Sheffield, S1 2SH

For consultation information

Fiona Champion on 0114 205 2675

or email fiona.champion@sheffield.gov.uk



Sheffield City Council - Regeneration Team • This poster is printed on paper from a sustainable source • www.sheffield.gov.uk
We can provide copies of the planning and design brief in other languages, in large print, in Braille and on audio tape. Please contact us to arrange this.

Neighbourly Request

It is with great sadness that English Martyrs, (Catholic Church) on Baslow Road, has had to respond to the request to restrict access to the church's car park, for the sanity of it's most direct neighbours who for years have had to put up with disrespectful behaviour by a minority of young adults, some with cars, determined to spoil the peace and tranquillity of the locality.

The almost daily littering of bottles /cans /food debris/ cigarette packets / butts and damage to the church building etc... have been silently removed and repaired by regular carers, just wishing that the these visitors would respect the church, it's grounds, the neighbours and the locality.

However, the gathering groups of young male and female adults who regularly meet for various unacceptable activities - including drug dealing, has got to such an unacceptable degree, that the church feels it must act responsibly for the sake of our neighbours.

Therefore, the car park has had a chain placed across the entrance, (for the inconvenience of us all), but for the protection and respect of the difficulties that the open access has caused.

It is hoped that this action will not be a permanent arrangement, that temporary exclusion might emphasise the point, that respect for the site and the church's neighbours is paramount.

Recent restriction signs on the church, and the chained access now allow us to approach the Community Police for regular attention to persuade uninvited misbehaving visitors to treat the site with respect - please!

Regular Parishioner.



Transport 17

Well hasn't winter come in with a blast. I think summer gave us a miss this year. Thank you to all the people who came to the Totley Show. Although the numbers were lower than last year, we managed to raise £60 which has gone into the coffers to help towards the next catastrophe!!

By the time you read this article, our General Meeting will have been held and we will be preparing for our Christmas Fayre on 24th November from 10am to 12 noon. We will have lots of new items that will make excellent Christmas presents. I somehow doubt that we will be blessed with the weather we had last year - the day was so warm that I sat outside in a t-shirt selling raffle tickets - watch this space, you never know.

We are, as ever, still seeking new volunteers to help crew the mini buses to enable us to continue to provide a quality service, so anyone with a few hours each week please contact our office at 172 Baslow Road between 9am and 12 noon (236 2962).

Thank you again for your continued support, we would never be able to do it without you.

Felicity Revill
Chair

T.O.A.D.S.

Present

"STAGE STORIES"

"Stage Stories" is a comedy and is the next play to be performed by TOADS. The dates are from Wednesday 21st November to Friday 23rd November at 7.30pm, **and** Saturday 24th November at 2.30pm, and the venue is as usual, St John's Hall, Abbeydale Road South.

Note that as an experiment, TOADS has decided to do a MATINEE performance on the Saturday instead of an EVENING performance.

Call 0114 235 1206 to reserve your ticket - £4.00 or £3.50 for concessions - or contact any TOADS member.

Totley Hall Farm
Totley Hall Lane, S17 4AA

Seasoned hardwood logs

- All logs seasoned for over 12 months
- Available in bulk or bags
- Free local delivery on orders of 1m³+

Contact Chris on 07740 309244

or call in at the farm

Totley Scouts

I frequently finish my articles in what almost seems like an afterthought in asking for volunteers to help run the Totley Scout Group.

However, it is not an afterthought, and we do need help. We are very fortunate in that we do already have a lot of help but we always need more. We have some very committed people who run activities for boys and girls week in week out; and who get a huge amount of satisfaction from doing so. We have others who help out at camps or fundraising activities and others like myself who help out behind the scenes.

We need more helpers so that we can provide more activities for the children and for more children every week. The Totley Scout Group is growing and we want it to keep growing. Please contact me if you are interested in helping.

A very recent fun activity in October was a group camp at the Rotary Centre in Castleton. Beavers, Cubs, Scouts and Explorers went away for the weekend; 46 children in all. And of course a few adults. The Beavers, being the youngest, arrived on the Saturday morning and stopped one night. The others took the train from Dore to Hope, and then walked to Castleton, on the Friday evening. Torches were essential!

Each section had planned different activities on Saturday, but the weather was not as kind as was hoped. The Beavers spent the morning making medieval weapons with a view to storming Peveril Castle in the afternoon. Unfortunately, the rain and hail meant staying at the Rotary Centre. Perhaps next year. On the 27th October we will have held our twice yearly antiques fayre at St Johns Church. Hopefully, some of you will have been to look at the antiques stalls and sampled our home cooked food.

And on the 2nd November, we will have enjoyed our annual Bonfire Night. This is a very enjoyable evening for the boys and girls, and of course parents. To help with our fundraising we had a raffle. We are very grateful to the Lyceum for donating our top prize of 4 tickets to see this years pantomime, Cinderella.

There is an item that we would like to beg for. The electric cooker in the Scout Hut is in need of replacing with something a bit more modern. So, if anyone has an electric cooker, in good working order, that they no longer need we would be grateful. We can collect.

Finally, I would like to say that if you have walked past our Scout Hut recently, you will have noticed that it is getting a well-deserved lick of paint. We have taken advantage of the Community Payback Unit and those carrying out community service to paint the Scout Hut, inside and out. We are pleased with the result, although at the time of writing not quite finished.

Richard Frost, Chairman, 1st Totley Scouts
TotleyChair@aol.com, 0114 236 3603

Councillor Surgeries

Liberal Democrats:

2nd Monday in the month 6.00-7.00 p.m., Totley Library, Baslow Road and 2nd Saturday in the month from 10.30 a.m. to 12.00 noon, Dore Old School Hall, Savage Lane, Dore Contact details:

Keith Hill 235 2289 Email: keith.hill@sheffield.gov.uk,
Colin Ross 235 1948 Email: colin.ross@sheffield.gov.uk
Joe Otten 230 3290 Email: joe.otten@sheffield.gov.uk

Totley Independent Website:-
www.totleyindependent.co.uk



GWS

Technology Solutions



PC Problems/ Repairs/ Servicing No Job Too Small
 Wireless & Internet Setup New PC's & Upgrades
 PC Setup/Data Transfer Safe PC Disposal Tuition
 Software/Hardware For All Your PC Needs

Guy Senior

Phone: 0114 2352662 Mobile: 07890030453

Email: guy@gwstech.co.uk

Web: www.gwstech.co.uk

GWS, 5 Conalan Avenue, Bradway, Sheffield S17 4PG

R.S. HEATING & BUILDING CO

EST. 1971



HEATING DIVISION:

Experienced Installers of condensing,
 combination and regular boilers.
 Systems fully guaranteed.
 Complete after sales service.
 Also Bathrooms, showers
 and small plumbing works.

BUILDING DIVISION:

Loft conversions, House
 renovations including general
 building, joinery, plastering,
 electrical decorating etc.



13 Overcroft Rise, Sheffield, S17 4AX

Tel:- 0114 236 4421

Reg. Office:- 62 Machon Bank, Sheffield, S7 1GP

Te:- 0114 2559425

Fax:- 0114 255 9431

Email: enquiries@rsheatingandbuilding.co.uk
 Web: <http://www.rsheatingandbuilding.co.uk>



253 Baslow Road, Sheffield, S17 4DU

Tel: 0114 2360 583

Mobile: 07801 346 455

Dronfield Landscapes



Gardens cleared and maintained, Lawns mowed,
 Turfing, Tree felling & pruning, Hedges trimmed &
 reduced, Pond maintenance, Fencing etc.

for free quotation call

Chris on: (0114) 2746158 Mobiles: 07976072785 or

Richard on: 07789497104

8am-6pm mon-fri

HazelBarrow Farm, Norton S8 8BA

R.M.M BUILDING SERVICES

25 YEARS EXPERIENCE

All types of building work carried
 out including- Drop kerbs, block paving
 (drives, paths, etc), extensions, general
 building repairs and maintenance.

Phone Rob on- Mob- 07906108567

Home-2352190



Nigel Watson



Carpenter and Joiner

Fitted kitchens, sliding wardrobe doors with
 bespoke interiors, internal and external doors
 supplied and fitted, new handrail and spindles,
 laminate and wood flooring, locks, architraves,
 skirting board, stud walling, boxing off etc.

For a reliable and quality service

TEL: 0114 236 4778

MOBILE: 07971 528149



Serenta HomeCare

Are you in need of a little help and support within
 your own home? The older we get the more help we need
 to enable us to live a more independent life.

Personal Care • Medication • Domestic • Sitting Service • Social and Leisure activities

To find out more call Sue 07715 636 395 Pat 07715 634 781
 or visit www.serentahomecare.co.uk

For reference from an existing client please call 0114 2366891



Got a computer?

Having Problems?

Is it running slow? Stops responding?
 Having problems running the latest games
 or applications? Broadband installation?

Give me a call!

I'm available for home visits at any time
 including evenings and weekends. I can
 also suggest upgrades to improve perform-
 ance, or even build you a system to your
 specific requirements.

Tim Brown

Building,
 Installation,
 Upgrading and
 Troubleshooting
 Computer
 Systems
 Over 25 years
 professional
 experience

Phone: 0114 2472619 Fax: 0870 7060080

Mobile: 078 17464703 Email: service@timbrown.plus.com

SOUTH WEST COMMUNITY ASSEMBLY

TOTLEY HALL PARK.

On Friday 19th October, Cllr Hill, Neil Bunting & three Rotarians, Pete Chatterton, Dick Butterworth & myself, finished the planting of 300 daffodil bulbs. They have been planted around the eight new trees & a few along the bank, behind the seat, near to the spiders web.

TABLE TENNIS TABLE.

Unfortunately, we are no nearer to installing this. The cost, of creating a concrete pad, in the grass, will be not less than £2000, a figure which is prohibitive in the current financial climate. Using one corner of the tennis court, would be the easiest method, only needing four fixing holes drilling. One resident, however, is not happy in that it blocks the use of that area of the tennis court. The three councillors are being asked their opinions.

DOGS AND LITTER

At the last ward forum, the Environmental Enforcement Team Manager, Mark Parry, gave a presentation about his team's enforcement of litter dropping & dog poo fouling. He now reports as follows:

They have employed two staff working part time.

"They patrolled a mix of parks, city and suburbs.

The footfall in parks etc is low, and as a result in 23 hours patrolled in parks only. One FPN for dog fouling has been issued.

In contrast, the 41 hours patrolled in the city centre yielded 104 litter FPNs."

I have enquired in which park the offence took part and await his reply.

SPEED CAMERAS

PCSO's have just been issued with portable speed cameras after completing their training. They are working in different areas, especially where there have been complaints. They are advising at present! The cameras can check the speed of vehicles travelling in the opposite direction AFTER they have passed, as well.

SOUTH WEST COMMUNITY ASSEMBLY.

Thirteen councillors, a clerk, the Community Assembly Manager & her assistant, attended the meeting on 18th October. There were various officers to report on matters arising and affecting our area. There were also five students from the University, as observers. There was a resident from Bradway, two from Ecclesall & myself from Totley. Approximately 30 other residents, from other wards were present.

Briefly, the following items affected our Ward.

The Council is anxious to raise money, by selling off assets. King Egbert School's old site, is the first on the list. Views of local groups are being sought before outline planning consent is applied for. Consultation is planned to be in Totley Library week commencing, 22 October. The open space will not be affected. (There should be information elsewhere in this edition).

Whirlow Café will have been closed by the time this edition is published. The Council are looking to see if there is any legal requirement to keep it open.

A representative from SYPT, was present. She outlined some of the proposed changes to buses & tram services in Sheffield & had maps showing the routes, timings & brief details of changes in charges, (reductions), & wider use of tickets on different services. These changes came into effect 28 October. There are two maps, South & North. However Dore & Totley appear on both. They still claim that the 97 & 98 routes are a 10 minute, combined, service.

Our submission for 20 MPH zones has not been accepted this time.

No conclusions on the discussions about HGV routes, have been made, but The Chairman, Cllr. Andrew Sangar, agreed to get the Cabinet Chair & the lead officer to notify Alan Kewley, the secretary of The Ward Forum, of the current position.

Cllr. Hill asked what progress had been made on his suggestions for improved safety on Hillfoot Road, near the school. At the last Community Assembly meeting, the Officer had advised that no improvements could be made. The officer apologised for not advancing the suggestions.

The "Steward" for Amey, the road contractors, was present & advised everyone of the roadshows, all of which will have passed by the time you read this. Her role is to be the link person for our Community Assembly Area, but, we are not allowed to communicate directly with her, or any of the Amey Staff, due to a confidentiality clause, put in by the Council! Does this make sense? No wonder I have not got replies to two emails which I have sent them. I hope that they communicate with us when they close the roads & want all cars off the streets which they will be working on. I have been told, from a resident, that the new street lights will be LED's, drastically reduce light pollution and will be located adjacent to our boundary walls. They will drastically reduce power consumption & can be individually controlled, remotely, by computer. I asked the steward, about grass verge cutting frequencies. She will get back to me, if permitted, otherwise via Cllr. Hill!

I hope that I have recorded these notes accurately. Anyone is welcome at these meetings & beverages & food is usually provided. Unfortunately, the future of the Community Assemblies is being debated on Tuesday 23rd October. I believe that it will be a great loss for local democracy, if they are disbanded. The provision of information sent out by them, will also be missed.

I hope that the lack of attendance, by residents, is not taken as an indicator of the value of them.

Roger Hart

Chairman of the Dore & Totley Ward Forum.

Puzzle Corner

Quadgrams.

Solve the clues so that in each set of four the answers are anagrams of each other.

1. weapon; in reserve; fruit; violates.
2. frighten; land measure; worries; competes running.
3. water vapour; pals; sets of players; makes less wild.
4. smallest amount; pinch; stories; not hesh.
5. flower; metallic minerals; tender spot; fish eggs.
6. bench; direction; satisfy; meals.
7. crockery; flower parts; sewn folds; textile fibre.
8. small fish; not the whole; wrist watch holder; snares.
9. springs up; made by bells; cease to carry on; gets lighter.
10. flour and water; strips of material; flood; heads.



Crocus Homecare

Homecare with Compassion



EXPERIENCED, RELIABLE CARE STAFF REQUIRED

Crocus Homecare is based in Bakewell and now provides high quality care and support services for those living in South Sheffield (S8, S10, S17, S18)

Crocus prides itself, and has built its reputation, on providing the highest quality care with compassion, understanding and respect for each individual and their families.

Excellent rates of pay for the right people with the right skills and experience

We aim to appoint only the most conscientious, caring individuals who have significant experience in social or health care, especially with Older Adults with complex care needs.

If you think you can meet, and most importantly, provide the genuinely high standards of care we demand, please see our website or contact

Debbie Crowhurst on 01629 812874

Personal Care - Practical Help - Respite Care - Dementia Care
24 Hours a Day / 7 Days a Week

Tel: 01629 812874

www.crocuscare.com

TOTLEY PRIVATE HIRE

EXECUTIVE CAR TRAVEL



AIRPORTS AND LONG DISTANCE

PROP - PAUL SOUTH

24HR SERVICE

Tel: 0114 2839692

Mobile: 07974 355528

Email: PAUL.SOUTH1@TESCO.NET



Tiling, Plastering, Plumbing & Complete Bathroom Fitting Service

Tel: 0114 4182346
07738 688807

- ◆ Under Floor Heating
- ◆ All Aspects of Home Improvements & Maintenance Work Undertaken
- ◆ Competitive Prices
- ◆ NVQ Qualified
- ◆ No Job Too Small
- ◆ Fully Insured & Guaranteed

A1tilingandplastering.co.uk
25 Five trees Ave, Dore, S17 3LW

B.K. JEAUVONS PAINTER & DECORATOR



Interior
Exterior
Decorating
No Job too small

Tel: 01246 416484

and mobile 07882 278306

Creating opportunities with disabled people.

Registered Charity No. 218186

**Leonard
Cheshire
Disability**

Leonard Cheshire Services in Offers choice & opportunity to people with disabilities. A Specialist Unit for the Younger Disabled. Residential & Respite Care - Single Rooms Day resources - Aromatherapy - Reflexology - Physiotherapy - Toning Tables.

Activities include: - Arts & Crafts - Computers - Cookery - Shopping Expeditions - Theatre Outings - Church. Further details can be obtained from - The Service Manager, Mickley Hall, Mickley Lane, Totley, Sheffield S17 4HE. Tel. 0114 236 9952 Fax. 0114 262 0234

The Care at Home Service supports disabled people who wish to remain in their own homes.

We provide flexible care packages from 1 hour to 24 hours meeting individual needs. The service operates throughout Sheffield.

Our service includes: - help with getting up and going to bed, dressing, washing, bathing, shopping, cooking, light household duties.

Further details from: - The Care at Home Manager Tel. 0114235 1400 Fax 0114 235 1499

John Heath & Sons

AN INDEPENDENT FAMILY FUNERAL BUSINESS

Sometime.....

You will probably have the responsibility of making funeral arrangements. No one looks forward to this responsibility, but the death of a family member or friend brings with it an obligation that must be met. There are people who can help you meet this responsibility. We have been helping people combine the different aspects of the funeral into a meaningful service for over 125 years.

Please Call Day Or Night

(0114) 272 2222

Head Office - Earsham Street

Also at Meadowhead, Ecclesall Rd, Crookes and Stanington

www.johnheath.co.uk



CHARISMA BLINDS



For
Windows
With Style

Sheffield Factory Showroom
106 PROSPECT ROAD
HEELEY, SHEFFIELD

Sheffield (0114) 258 5496
Rotherham (01709) 512113

TOTLEY OPEN GARDENS



Jean Byron on behalf of Totley History Group receives a cheque for £220 from Mary Hodges of Totley Open Gardeners Group.



Sue Hare (L) and Phil Harris of Totley Music Festival receive a cheque for £225 from Jennie Street of Totley Open Gardeners Group.

Totley Open Gardens raised £1,445 this summer, despite the terrible weather before the event, and a lower than average turn out.

This year, TOG donated the proceeds to 3 local organisations - £1,000 to Transport17, £225 to Totley Music Festival, and £220 to Totley History Group.

Totley Open Gardeners are looking for more new gardens to open next year. If you enjoy your garden and want people to see your work, please contact Jennie Street on 236.2302 or jennie@hadish.f9.co.uk. Your garden doesn't have to be large, it's the variety of open gardens that counts.

HOLMESFIELD CHURCH WALKING GROUP

SHILLITO WOOD WALK

On Wednesday 7th November at 9.30am, we will meet at the Rutland Arms in Holmesfield where we will order our lunch, (optional). We will then proceed to Shillito Wood car park at the top of Fox Lane and then we will walk to Barbrook Reservoir. We will then go to Ramsley Reservoir and then back to the car park. The cost of the walk is £3 and the proceeds will go to Holmesfield Church. If you would like to come just turn up on the day. The walk is approximately 5 miles long. Any queries phone Robin, (he is leading the walk), on 01246 412767.

TOTLEY RESIDENTS ASSOCIATION



TOTLEY RISE CHRISTMAS MARKET

SUNDAY DECEMBER 9TH

11am to 3pm

A great family fun day out, with Christmas surprises. A wide range of stalls to browse and buy from, including foods and crafts.



TOTLEY RISE
BASLOW ROAD, S17

Totley Hall Farm

Live nativity Plays



Experience a magical start to your Christmas celebrations as you visit an authentic manger setting and your children dress up and take part in a nativity play with real animals

- * Ride Spirit the donkey, cuddle the new born lambs and see Rosie our Hereford cow
- * Take time to enjoy seasonal refreshments including mulled wine
- * Visit Father Christmas and receive your present

Visit www.totleychristmasfestivals.co.uk for full details, photos and a booking form

*Saturday 15th – Monday 24th December
Early booking essential
Call Chris or Jenny on 0114 2364761*

ACTIV physiotherapy

... going from **strength**
to **strength**



Exciting news from ACTIV Physiotherapy

Building on the success of last year we are delighted to announce the opening of our new clinic in Hope and are looking forward to working with new clients, and existing customers of Hope Physiotherapy Clinic

our core strengths are:

- Repetitive Strain Injuries
- Muscle & Joint Problems
- Women's Health Issues
- Sports Injuries
- Back & Neck Pain
- Acupuncture
- Musculoskeletal Pain



Official Clinic for the Sheffield Steelers Ice Hockey Team

email: mail@activphysiotherapy.co.uk

web: www.activphysiotherapy.co.uk



0114 235 2727 Bradway
0114 235 7845 Totley
0143 362 3602 Hope

Dore Moor Garden Centre

(Opposite the Dore Moor Inn)

Hathersage Road · Dore · Sheffield · S17 3DQ

- Wide range of seeds, bulbs, plants & pots
- Mowers, fencing, garden tools
- Horse & Poultry Feeds
- Logs, kindling and winter fuels
- Christmas trees and decorations

Call in and see us



Tel: 0114 235 0092

Open 9.30 to 5.00
Sundays 10.30 to 4.30
Mondays Closed

R. S. CERAMIC TILING

56 Mickley lane
Totley
Sheffield
S17 4HE

All ceramic tiling work undertaken, Underfloor Heating

15 years experience, Private and commercial

All work guaranteed, Competitive prices

For a free no obligation quote call

Ron Shilton

Mobile: 07887 990059, Home: 0114 418 1209

Email: ronshilton@ntlworld.com

Slimming WORLD

because you're amazing

If you want to lose weight healthily and with no deprivation or humiliation then join your local Slimming World class in Totley,

Mondays at 7pm and at Greenhill on Wednesdays at 10am

Telephone Jo Elsey on 0114 2620523

or 07590 545 253

(Offer cannot be used in conjunction with any other offer)

1/2

Price membership
on production of
this advert

MOGGY MAID



Gail Kitchen: 07986473415

Does going away from home mean your cat is sad and unhappy?
Does a trip to the cattery scare your cat *not to mention your wallet?*

WORRY NO MORE!

MOGGY MAID is on hand to feed, love and provide everything your cat needs in the relaxing comfort of its own home.

As we cat-lovers know, unfamiliar sights and smells can stress your cat, whereas leaving them in the familiar surroundings of their own home carries less worries, for your cat and for you.

If only for a night, weekend, or a month; holiday, Christmas or any time of the year, MOGGY MAID is here to help **LIGHTEN YOUR LOAD**

We promise no mischief allowed!

In a professional manner and with quality service, you can ensure individual care and attention, whilst you relax away from home.

We haven't forgotten the rest of the family; mice, rabbits, budgies, goldfish, etc will receive care and affection too.

LOCAL FRIENDLY SERVICE
From £5 a day

For more Information, contact Gail Kitchen on:
07986473415 5 Ullswater Place, Dronfield Woodhouse

Controversial Apartment Scheme on Dore Road Draws Nearer to a Conclusion

The planning inspectorate will be holding the public hearing at 10am on the 28th of November 2012. The Council has selected its premises at 53 Mowbray Street, Sheffield, S3 8EN as a provisional venue but local councillors are in discussion with the planners with a view to moving the public hearing to Dore. All members of the public are welcome to attend.

Around 250 representations have been made to the planning inspectorate which include Sheffield City Council, Dore Village Society, Sheffield and Peak Against City Encroachment, Carterknowle and Dore Medical Practice, our local Councillor Colin Ross, two legal practitioners, an individual who was a victim of a road traffic accident outside the site, several members of the Dore Local Neighbourhood Plan and many local residents. These are in addition to the 2,000 objections that were sent to Sheffield City Council. This represents an unprecedented level of objection and is a reflection of local peoples' wishes, needs and aspirations for the area in which they live as well as a measure of how inappropriate multi-storey apartments would be in a rural location, opposite greenbelt. Some of the major concerns surround the scale and massing of the development and the statistics back up those concerns.

The proposed scheme equates to 32 dwellings per hectare and represents an increase of 465% over the existing density in the surrounding area which equates to just under 7 dwellings per hectare.

The footprint of the scheme is 12.4 times the size of the smallest property in the locality and is 6.65 times the average size of the surrounding properties.

Concerns have also been raised regarding traffic safety, ecology and sustainability as well as allegations of significant errors and omissions in the appellant's appeal statements.

Carterknowle & Dore Medical Practice have raised some fundamental sustainability issues, arguing that it's resources are already overstretched following a 25% increase in its patient list over the last few years, reference to local children who cannot be accommodated in our schools, and the dangerous nature of the blind bend on which both the medical practice and the development are situated.

One feature that is gaining momentum and is referred to in around 80% of the representations is the concern over the increasing regularity of flooding caused through overdevelopment in Dore and its antiquated drainage systems and some spectacular photos have been sent to the planning inspectorate of the flooding in August 2012. The businesses in New Totley that were closed as a result of this flooding need look no further than the top of Dore Road to see where their problems lie.

Should the appeal be upheld it would set a precedent for further inappropriate development and would lead to an unacceptable intensification in dwellings per hectare as well as unsustainable demands on both our infrastructure and services across both Dore and Totley.

This is set to be an interesting hearing and certainly a date for your diary.

Paul Millington
and
Aubrey Read

Farming Scene

Spuds, Tups and Mule.

It has finally reached the National media! The poor weather has reduced crop yields and lifted shop prices. Someone was telling my wife the other day that their bill for wholesale fruit and veg has doubled over the last 12 months. I think agriculture may well feature more highly in political, media and city life shortly, as it becomes obvious that our very lives depend on it. We have gone through a phase over the last 15 years where manufacturing and agriculture have been ignored in favour of the service and banking sectors, combined with stock market speculations. A run of poor harvests will drive home the message of how important food production is for everyone, town or country dweller. This year's poor harvest could easily be followed by another one next year as farmers having struggled to reap this year's harvest are now struggling to get next year's crops sown into the ground due to the prolonged wet weather. Allotment holders will know that the seeds have to be planted in nice dry friable ground if they are to grow vigorously and maximise the production. Current ground conditions mean cereal crops are either being planted in poor seedbeds, or will not be planted at all! The potato harvest is well behind schedule, with low yields, and a lot of small and poor quality spuds being put into store. Consumers will notice 2 consequences of this. First higher prices and second smaller and cracked or scabby specimens in their bag of spuds. When supplies are short, wholesalers are prepared to lower their purchasing specifications in order to reduce waste/increase the proportion of the crop they can sell. A severe early frost would really put supplies under pressure now. Am I glad we were not trying to grow and sell soft fruit this year!

We knew there was a question mark over one of our stock tups this year. As a result we only put into 16 ewes back in July rather than the usual 40-50. Bad mistake!! We had our Dorset ewes pregnancy scan last week and instead of the normal 3 or 4 "empties", we had 10 - 6 of which were lavalots wives. Needless to say, his courting days have been brought to a sudden end! This is in sharp contrast to Nijinsky who will shortly be visiting Malvern semen collection centre. The plan is to collect enough semen from him to fertilise 300 ewes. Some for use in this country, some for Europe. Hopefully Canada and Denmark etc Export of semen to some overseas countries has now been suspended, due to the incidence of Schmallenberg virus in this country. Hopefully, this problem will be overcome shortly.

Those of you who see me driving around regularly will notice that I have bought myself a new toy to ride in. This is a birthday present to myself, and features a new style deluxe cab with glass doors etc. My excuse is that I am getting older and need more protection from the weather than I used to! The old one was 6 years old, had worked for 3,000 hours and travelled 17,500 miles in that time. That's 3,000 miles per year just running about around the farm, checking the sheep etc. The new one has a few improvements over the old one, including a faster steering wheel, tighter turning circle, power steering, integral fuel gauge and better clearance under the body. Nothing drastic except for the price. About 50% up on the price of the last one! Kawasaki sure know how to charge for these new style 4010 Mule ATVs, (all terrain vehicles). Edwin Pocock

TOTLEY MUSIC FESTIVAL - EVERYTHING YOU NEED TO KNOW

Interview with Festival Organisers Phil Harris and Sue Hare

TI: 2012 saw the fourth Totley Music Festival. How did it all start?

Phil: Like a lot of people, we have holidays in France, and in a lot of French towns, especially in the south, summer music festivals bring everyone out on the streets to have good time. You don't have to fight through traffic jams, or put tents up in the mud. You just hit the street and the music's there. That seemed to us to be a very sensible way of spending the summer,

Sue: But bands might not want to play on street-corners in an English summer like this year's, so we adapted the idea of a free music festival to local conditions!

TI: It seems to work! But you seem to mix new events with tried-and-tested and repeated events. What's the thinking behind the programme?

Sue: We repeat events which are really successful, and these are events which attract audiences because of the first-class musicians who support the Festival. Bob and Hilary Hall, Verlan Musique, Howard Walker and the Djangonauts, Steve and Gaynor Brook, and the Hallmark of Harmony barbershop choir, have all been fantastically supportive from the beginning. We are incredibly lucky to have these top-class musicians, especially considering that they are playing for free. They're the foundation on which the Festival rests. But it's true that an annual Festival needs variety, so every year we try to include something new.

Phil: Last year we were really lucky to have the Keith Peters Big Band, as well as Cary Baylis and Ian Bellamy - and this year we had a great evening at the Cross Scythes with Ian playing solo.

Sue: Let's not forget that some annual events involve Totley schools! From the start, we wanted to involve ALL age groups, and for younger pupils, we've had the support of both Totley Junior and Totley All Saints Schools -

Phil: - but also, originally we had this idea that young people in rock or jazz bands would busk on Totley Rise, and another idea that we could have bands playing in their own gardens for half an hour each, and people could tour from venue to venue, a bit like Open Gardens! But this would need the involvement of older school students, and it hasn't happened yet, partly because to make it happen, we really need the participation of King Egbert School, and this has proved very difficult.

TI: And the Mickley Hall concert?

Phil: The Variety Cabaret concert held at Mickley Hall has literally played to capacity audiences every year. They run out of chairs to seat the audience! This event started when we were planning the first Festival early in 2009. We were put in touch with a lot of talented Totley people who wouldn't be in a position to present a whole evening's concert, but who would be great at performing for a short spot. So we hit on the format of a variety concert, with short spots by a number of artists -

Sue: - including, this year, a performance by one of Mickley Hall's residents, Ray de Grussa, of some of his own compositions.

TI: And you yourselves play at these concerts each year as the Dave Miles Quartet!

Phil: Yes, it's a shabby excuse to foist ourselves onto a defenceless public! But seriously, we're there to provide musical backing if necessary for some of the solo singers, and to put together one or two songs for the finale which involve the performers and the audience themselves, hopefully to bring the evening to a rousing close.

Sue: It's great fun and everyone has a good time. Don't forget, too, that the Festival Boot is passed around to raise money for Mickley Hall.

TI: Tell us about the Festival Boot.

Sue: Back in 2009, at their concert at the Crown pub, Bob and Hilary Hall produced a wellington boot, with multi-coloured ribbon, which was passed around for the audience to contribute towards the cost of the Festival. We took it to other events that year, and since then the Boot has become a tradition - at the end of the Festival, we put the Boot money for safe keeping into the hands of the treasurer of our main sponsor, the Totley Residents Association, and it goes towards the costs of the next year's Festival.

TI: Since you've mentioned it: the big question - what does the Festival cost?

Phil: Every year so far, we've managed to bring in the Festival for under £1,500. This can only be done on the basis of musicians playing for nothing and most venues not charging for their use, and of course the

Boot money helps. Most of the money goes on the excellent sound system we hire in for various events. So we're putting on a week-long programme for very little cost, though we couldn't do it without the financial support of, in particular, the Totley Residents Association, the **Totley Independent**, with contributions to publicity costs from the Cross Scythes and from Secprint Ltd - to all of whom we say many thanks!

Sue: But there is a big issue about money. Getting funding for events like this has become virtually impossible. So far the Festival has been mainly free. We get decent audience numbers, but consider - there are about 17,000 people living in Totley, and a typical well-attended Festival concert will attract about 70 people. Why aren't more people coming to the concerts? Is it because people believe that 'you don't get owt for nowt'? If so, please be assured, readers, that at the Totley Music Festival you get a lot for nowt - first-class performances from first-class musicians!

Phil: Or at least, you have so far. If we're to develop the Festival in all kinds of ways - different music, with more age groups, different venues.... we need to improve funding, and to do this we would need to introduce reasonable admission charges. But we haven't got enough people to organise it.

Sue: And time is a problem too. The work involved in putting on individual events tends to be spread around - Steve and Gaynor Brook produce the folk concert, Chris, Kevin and Howard Walker produce the jazz evening, and so on. And for publicity, thanks to Hilary Hall's original design, we have an eye-catching poster for local publicity. In 2012, we used the Sheffield Telegraph, Twitter, Facebook, Postcode Gazette and so on - and there are other possibilities which need exploring, But it's the background stuff - negotiating who's available on which nights at which venue and putting the week together, arranging and booking sound systems, venues, staging, sponsorship from Totley traders, and a pile of other things. All of this takes a lot of time, which two people who also happen to have full-time day-jobs, just don't have!

Phil: So if we're going to develop the Festival we need more people prepared to give their time, and we need more money. We've talked about introducing modest admission charges. And we mean 'modest' - 80 people paying just £2 for a concert would cover most of the costs of putting that concert on. But to do that we need a rather more sophisticated level of organisation which can manage ticket sales through local traders, online, and so on. If we just had a small core group of people we could have a sensible division of labour so that everyone had a manageable amount to do. Then we could build on the first four years of the TMF to make it bigger and better.

Sue: And in an ideal world, of course, given that Totley doesn't have that too many suitable venues to hold events in, we'd also have people working towards establishing the one BIG thing Totley needs, and that's a Community Centre, which could be used for all kinds of events including Music Festival concerts.

Phil: For the moment, we're hoping that there will be a fifth Music Festival in the summer of 2013...let's wait and see if we can get the support - both from people and from funders, that we desperately need!

Sue: And if people have things to tell us about the Festival - likes, dislikes, ideas - let us know! Call us on 07956 858944 or write to us at totleymusicfestival@talktalk.net

ST. JOHN'S CHURCH SERVICES

(Abbeydale Road South)

Sunday 11th November 10am

A special service will be held followed by the Act of Remembrance at the War Memorial at 11am

Sunday 2nd December 6.30pm

Advent Carol Service

Sunday 23rd December 6.30pm

Carols and Readings

Monday 24th December 5pm

Christingle

Monday 24th December

11.30pm Midnight Sung Eucharist

Tuesday 25th December 9.30am

Christmas Day Family Holy Communion

Physiotherapy practice continues to grow

Activ Physiotherapy based in Bradway and Totley has had a lot of changes over the past year. After the launch of the clinic in Bradway early this year and the continuation of their link with the Sheffield Steelers Ice Hockey team in September, they have announced a new clinic in the Hope Valley.

The conversion of the existing 'Hope Physiotherapy clinic' to the Activ Physiotherapy group will begin in October 2012. Andrew Okwera of Activ Physiotherapy stated, "The practices in Bradway and Totley have been successful in providing the local communities with a good quality, accessible and affordable physiotherapy service. The level of interest has exceeded our expectations and we have a high level of recommended clients."

Georgina Hollinrake started the Hope Physiotherapy clinic in 2010 and has already built up a loyal client base. "I have seen Activ Physiotherapy grow from strength to strength as I already work in the Bradway clinic. I think a merger with them will help the Hope practice gain a diverse, more flexible service, where we shall continue to provide the local community with the service it deserves".

For more information telephone 0114 235 2727 or visit www.activphysiotherapy.co.uk.

G W A Tiling

Wall & Floor Tiling

Bathrooms Kitchens Wetrooms

No job too small, Best Quality work

George Allen

Mobile 07801 790973

Mark and Sally Fletcher invite
you to

The Grouse Inn

Longshaw

Sheffield S11 7TZ

Meal times:-

Mondays 12.00 to 2.30pm

Tuesdays to Friday's 12.00 to

2.30pm and

6-30pm to 9-30 pm

Saturdays 12.00 to 3.00pm

and

*6.30pm. to 9.00pm (drinks -
open all day)*

Sundays 12.00 to 9.00pm

Phone 01433 630 423

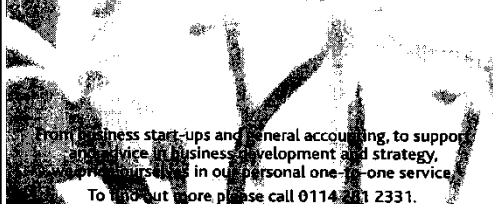
R Rose & Co

Chartered Accountants & Business Advisors

Specialists at
looking after the affairs
of small businesses.

For a **FREE** initial consultation
please contact Roger Rose FCA on

0114 281 2331



from business start-ups and general accounting, to support
and advice in business development and strategy,
we put ourselves in our personal one-to-one service.
To find out more please call 0114 281 2331.

213 Derbyshire Lane, Norton Lees, Sheffield S8 8SA
Email: info@r-rose.co.uk

Heatherfield Club
Baslow Road Sheffield s17
4dt

start Of the xmas season
after their success at the
Totley Music Festival
we welcome back

RED BACK

Saturday 15th December
Totley based rock/pop band
motown and more
doors open 8p.m. On stage
9p.m

regards Mary Barton
tel.0114 2620961

GARDENING TIPS FOR NOVEMBER

I have come to the conclusion that there is no such thing as a squirrel proof bird feeder. They have found a way into all our feeders either by wrecking them completely or squeezing through the barriers. I did buy a really strong one from Totley Tails & Whiskers which they have not been able to damage, however the little ones have still managed to get between the bars.

When they had finished with the bird food, they started on the courgettes, nibbling around the outside and spoiling what few we had. I suppose its one of the things gardeners have got to put up with, along with caterpillars on cabbages, black fly on beans, aphids in the flower beds, thrips on rose buds and the menace of slugs and snails. It's a wonder anything survives.

I am amazed that we keep up with such a battle with nature and surprised that we don't surrender and concrete the lot. Having said that, I read an article recently that there is a creature that burrows into stone and pebbles; I wonder if there is a concrete weevil or a cement beetle. I suppose we had better carry on the way we have always done, and moan about all these things including the weather...

Well I've got that off my chest and the sun is shining. The greenhouse will be nice and warm, so let's forget the nasties and concentrate on the nicer things to do with gardening.

November is the time for tidying up and getting ready for the winter, cutting back perennials that have finished, pruning roses, clearing leaves, (leave a few in the odd corner so that hedgehogs and frogs can keep cosy over winter), check fence supports and tree ties, making sure they are firm and will last through the winter. The insulation in the greenhouses should be in place now.

I have finished renovating the summer house and it looks quite posh with a new coat of wood preserver, (you see I do practice what I preach occasionally). The wobberly handrail up to the garden that was showing a bit of wood rot has now been replaced and is nice and firm. It has had a coat of green paint so it should last for a few years.

The fish are looking happy in the ponds. I was thinking about taking one of them away from the fence line. Having just one will be easier to manage. Christine fell in once trying to prune the plants round the edge, so that's a good reason for moving it. It's not a small job I will have to cogitate a bit more before tackling it.

The lawn is looking good and it will have had its annual autumn/winter feed by the time you read this.

Must go now and make use of the lovely sunshine and chase a few squirrels. Don't just sit there reading get out there and enjoy your gardening....

Flowers. Tidy up herbaceous borders cut off all dead or dying leaves and stems and dig over any vacant plots. If you have not fed the ground recently, then a good dusting of bone meal will work wonders. Work it into the top 2 inches of soil and the worms will do the rest. It is a good time to half prune roses and this stops the wind from rocking them. You can prune them down properly in the spring when the frost has done its worst. It is also a good time for planting roses, so dig a large enough hole to spread the roots in a natural formation. Fork a bit of bonemeal or better still, rose fertiliser, into the bottom of the hole, (don't let the roots lay directly on the bonemeal). Fill up the hole making sure there are no air pockets and firm them in well but leave the final 2 inches or so loose. Check dahlia tubers in store, and cut out any rotting parts and then dust with flowers of sulphur.

The planting of hyacinth and tulips should be completed this month. Check over bulbs planted in pots for winter flowering. One or two of the most advanced can be brought into the light but keep them cool. 60°F max, make sure they have plenty of root formed. It's time to plant honeysuckle, clematis, jasmine and ornamental vines. If they are dry when they arrive, give them a soak in tepid water and drain them for an hour or so before planting them. You should then tie them to the supports straight away. Herbaceous and moisture loving plants can be planted now. Split up perennials like michaelmas daisies, gold rod, scabious. Replant the best bit which is usually the outer portion. Pot up any surplus for the charity plant stalls. Don't forget to wrap up the tender plans or bring them indoors before they get nipped by frost.

Vegetables. Clear any plots of old veg and roughly dig over leaving the clods big so that the frost can get to them. This is one way in which the frost helps the gardener by breaking down clay soils and killing off any nasties. Stake up brussel sprouts and broccoli and remove any yellowing leaves. Cover any green crops with netting or fleece to protect from birds and watch out for the dreaded slugs. Deal with them

pronto. Keep the old hoe busy eliminating weeds before they takeover. Lift and store Jerusalem artichokes and also a few roots of parsnip. They will be difficult to dig up if the ground becomes frozen. Lift a few crowns of rhubarb for growing in the greenhouse and leave them on top of the ground for a week or so before taking them inside. The crowns can be close to one another and light excluded, (a grow bag would do if you do not plant in the ground).

Trees Fruit and Shrubs. Move container-grown evergreens to a sheltered spot out of the wind. Any deciduous hedges etc can be cut back at this time. Fruit trees, especially those trained against a wall can be pruned. After pruning, make sure they are tied back securely. Make sure that all supports for your fruit stock is in good condition and the wires etc are not biting into the stems or trunks. Prepare ground for planting all kinds of fruit trees, bushes and canes. Dig it as deep as possible and work in some manure especially if you are planting blackcurrants. When pruning trees watch out for canker, (a crusty like scab on the branches). Cut it out with a sharp knife and paint the wound with a tree paint. Look over fruit which is in store. Use any suspect ones or discard them.

Greenhouse and Indoor Plants. If you have not done so already, give your greenhouse a good fettle. Remove all those dying plants and any other debris that is lying around. Give the glass a good wash with greenhouse cleaner and make sure that none goes on the plants. Also fix up the insulation. One of the most important things at this time, is getting a nice balance of temperature and ventilation. The temperature on a sunny day can reach 100°F, which would build up quite a damp atmosphere if adequate ventilation is not provided. Most plants do not like it. So, keep a wary eye open and try to avoid these conditions. If you are a summer greenhouse gardener, when the greenhouse is empty in the winter, (shame on you), then a good wash down with Jeyes or similar is all that is required. Do not store tools etc in the

greenhouse as this reduces their life quite considerably. Cyclamen and winter flowering primulas are ready to come into flower and will benefit from a feed once a fortnight. Remember, calceolarias must be quite dry before they are watered. This rule applies to most pot plants, except those that are in full flower or those that are growing rapidly in a heated greenhouse. Seedlings and cuttings should be kept on a shelf as near to the glass as possible. Plant indoor lilies, gladioli and hyacinth to flower in Spring. You see there is no need to have an empty greenhouse. Prune flowering maple, musk, fuchsias, oleander and plumbago. Try to keep the atmosphere around indoor plants, especially those near radiators etc moist by placing them in a tray of damp pebbles, (or glass chips which look a bit posher). Spray mist them occasionally, except the hairy leafed specimens. Do not over water plants at this time and avoid spilling water about in the greenhouse and cold frames.

Lawns. As usual keep lawns clean and well raked. Scarify and give them a feed of autumn winter fertiliser, but keep off when they are covered in frost. In mild spells, you can dig and prepare new lawn sites ready for sowing or turfing in Spring.

Cheerio for now.

Tom

Abbeydale Miniature Railway



**Sunday 9th December &
Sunday 16th December**

Gate opens at 11 a.m

Last Entrance 3.30 pm

Admission at the gate is £7 each

Admission covers all train rides,
seasonal refreshments,
a visit to Santa in his grotto and a
present for each child.

Abbeydale Road South, Sheffield S17 3LB (Next to The
Glen Nursing Home)

Look for the yellow notice board on the grass verge
www.sheffieldsmee.co.uk

**SHEFFIELD & DISTRICT SOCIETY OF MODEL &
EXPERIMENTAL ENGINEERS**

HOLMESFIELD CHURCH

proudly presents

**A TALK BY
SUZANNE BINGHAM**

entitled

THE SHEFFIELD BLITZ

**THE TALK WILL BE PRECEDED BY A
PEA AND PIE SUPPER**

**DATE MONDAY 12TH NOVEMBER AT
6.30**

VENUE HOLMESFIELD CHURCH HALL
TICKETS ARE £11 AND ARE AVAILABLE FROM ROBIN
GREETHAM TEL. 01246 412767
PROCEEDS WILL GO TO THE REFURBISHMENT OF
HOLMESFIELD CHURCH



The Crown Inn

Tony and Julie at

The Crown Inn

Welcome you for

Good Quality, Home Cooked Food

Tuesday – Friday

12-2pm & 5.30-8pm

Saturday & Sunday

12-2pm

Come & join us for

Good Beer, Good Food & Good Music

Tel 0114 236 0789

CLOSED SUNDAY EVENING

Visit our website: www.crowninntotley.co.uk

Saturday 3rd

November

FIREWORK DISPLAY

20th November

JOEL WHITE

27th November

LINDSAY DRACASS &

CARY BAYLIS

SEE THE DIFFERENCE!



- **COMPREHENSIVE EYE EXAMINATIONS**
including special tests for glaucoma, colour vision, dyslexia & diabetes
- **CONTACT LENS CONSULTATIONS**
free contact lens trials and monthly direct debit payment schemes
- **PRESCRIPTION SUNGLASSES**
- **LEISURE SPECTACLES**
for computer work, fishing, swimming and safety wear
- **ACCESSORIES**
ready readers, chains and magnifiers

LENSES BY SEIKO
In all non-budget spectacles

TOTLEY
63 Baslow Road
236 4485

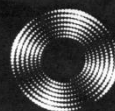
ABBEYDALE
634 Abbeydale Road
255 6554

For more help and information please phone or call into the practice of your choice
For a full list of our practices visit

WWW.MKO.CO.UK

Terms and conditions apply.

Entrust Electrical



For all your electrical requirements in or outside the home you can trust **Entrust** to do it right!

- ✓ Full or Partial House Rewiring
- ✓ Additional Sockets, Switches, etc
- ✓ Energy Efficiency Enhancements
- ✓ Contemporary & Classical Refurbishments
- ✓ General Electrical Maintenance & Repair
- ✓ Homebuyer Electrical Safety Surveys
- ✓ Telephone and Computer Data Points
- ✓ Garden, Pond & Other Outdoor Electrics
- ✓ Security Lighting & CCTV



City & Guilds
Qualified

(0114) 2352084
07935 250814

www.entrustelectrical.co.uk

Old Hay Close, Dore, S17 3GP



Shepley Spitfire

56 Mickley Lane, Totley Sheffield - S17 4HE 0114 236 0298

2 meals for **£8.95**

Now serving Fresh Local Veg.

Served everyday 11am until 9pm

Quality Cask Ales

The Home of Big Fish Friday!!

Beer battered Cod fillets, Chips and Peas Two for **£9.99**

Eat in or Takeaway

FOR THOSE OF YOU WITH A LITTLE APPETITE

WE HAVE INTRODUCED A SMALL

PLATES MENU FROM **£2.99**

ALL DAY EVERYDAY

Quiz night Sundays 9pm

Poker night Mondays 9pm

Pool night Tuesdays 9pm

Last Saturday of the month DJ Theme night

Sky Sports & ESPN showing live games

"need *help* in your garden?"

"right plant, wrong place? Stuck, don't know where to start?"

We can offer a Design Consultancy without the designer price-tag.

"Selling your House?"

We can tidy your garden, also with use of planted containers/hanging baskets, make your house more desirable to prospective buyers.

Season by Season

- Regular Lawn Maintenance.
- Hedge Cutting.
- Small Tree/ Shrub pruning.
- Beds/Borders tidied, planted.
- Planted Containers.
- Green waste removed



the **Abbeydale** gardeners...
...we can help you.

Formerly of
The Abbeydale Garden Centre

Kevin Hunter 07818 20 12 42
Mark Naylor 07739 75 23 19

www.theabbeydalegardeners.co.uk

FRIENDS OF GILLFIELD WOOD

Activities and Planned Events

Bat Survey with Derek Whiteley of the Sorby Natural History Society.

After a day of heavy rain and high winds, the three intrepid souls who attended the survey, including Derek, weren't very optimistic about finding many feeding bats. But the rain had stopped about an hour beforehand and it was definitely warmer, so we felt that there might be some bats around and so it turned out to be. Starting off at the scout hut, armed with our trusty bat detectors, we immediately located a Common Pipistrelle feeding around the trees in the area, followed by several more and a whiskered bat as we walked up the footpath on the South Yorkshire side of Gillfield wood. Entering the wood through the bottom gate, again several Common Pipistrelles were located as we walked up the footpath, Whiskered bats were found to be feeding over the stream close to the wooden fence and bridge which leads up to Woodthorpe Hall. Turning right at this point and heading out of the wood, over the stile and onto Edwin Pocock's farm. We then walked West up the side of the wood to the corner where there was plenty of shelter from the wind. At this point there were Common Pipistrelles feeding in abundance and they were even flying around and in between the three of us, feeding and sending out social calls as they did so. What a fantastic experience! Back tracking through the wood and then heading over the bridge and up the path, on the Derbyshire side, towards Woodthorpe Hall, we again found Common Pipistrelle feeding in the sheltered parts out of the wind. At Woodthorpe Hall itself, there were Common Pipistrelle and Whiskered bats feeding around the trees along the roadside next to the hall and we also found a Soprano Pipistrelle bat feeding and flying around near the farm buildings. As we walked down the bridleway from Woodthorpe to the Shepley Spitfire, lots of Common Pipistrelle's were flying and feeding at the side of the wood. Several more Common Pipistrelle were located on Mickley Lane and Aldam Road as we walked back to our starting point at the Scout Hut. So we had a very successful evening indeed, locating approximately 14 Common Pipistrelles, 1 Soprano Pipistrelle and 8 Whiskered bats.

Practical Conservation Day 30th September.

The day was led by Chris Roberts, the countryside and parks ranger for Sheffield City Council, with several FoGW members in attendance, eagerly looking forward to tackling the tasks at hand. The weather was dry, cloudy and mild, with rain forecast for the afternoon. The first job undertaken was the planting of 18 trees in the picnic area at the top of the wood. The species planted included Hawthorn and Rowan, and will provide plenty of food and shelter for the resident birds in the area and those passing through. Putting the trees in the ground turned out to be thirsty work, so a well-earned cup of tea, with biscuits, was the order of the morning, brewed by Chris Roberts using his portable brewing kit. Following on from this, we then commenced cutting back the trees and branches where they were overhanging the footpath that runs from the bus terminus to the wooden gate at the top of the wood. After several hours of honest hard work, excellent progress was made, and the trees and undergrowth, well over half way down the path, were cut back. The cut branches being used to create wood piles in the wood, for bugs and small animals to feed on and take shelter in.

Small Mammal survey with Val Clinging of the Sorby Natural History Society.

On a beautiful sunny and frosty Sunday morning, Val and Bob Clinging, Avril Critchley and Dave Gash, met on Totley Hall Lane at 8am and then walked over to Gillfield Wood to inspect the 18 mammal traps that had been put out the previous Saturday evening at around 6pm, just before nightfall. An area close to the entrance of the wood, which was rich in bramble, undergrowth, oak and hazel, not too far from the wooden fence and bridge that lead up to Woodthorpe Hall, had been chosen for the traps to be set. It was with excited anticipation that we inspected the first six traps that had been put out close to the Totley Brook. But to our disappointment none of the traps contained a single vole, mouse or shrew! Moving onto the next six, it was noted that on two of them the trapdoor at the front had been sprung, so hopefully there would be a mammal inside. The first of the two traps was examined but alas no sign of a mouse or vole, not



Friends of
Gillfield Wood

even a wood louse! We were more hopeful when the second trap was examined as it felt slightly heavier than an empty trap and yes, there it was, a wood mouse, which was our first record for the wood, as we didn't find one in the 2012 survey. After taking some pictures of the small, cute and very lively all action mouse, we released it back into the undergrowth. We inspected the last six traps that had been put out close to the edge of the wood, at the top of the slope and next to the farmer's field on the South Yorkshire side, hoping to catch a field vole. Once again, of the six traps, two of the trapdoors had been sprung and upon closer examination one trap contained a bank vole and the other, another wood mouse. The wood mouse managed to escape whilst being looked at, leaping for it's life from the plastic container used to hold it, back into the brambles below. Pictures were taken of the bank vole and notes made, before we watched it scurry back in to the undergrowth after being released back into the wild.

Future Events Planned for 2012/2013.

2012

Sunday 4th November. Practical Conservation day with Chris Roberts, SCC Ranger. Meet at 10am at the wooden gate at the bottom of Totley Hall Lane.

Tuesday 6th November. Talk by Barry Wright on his botanical survey work in Gillfield Wood and other areas. 7.30pm Totley Library.

Sunday 2nd December. Practical Conservation day with Chris Roberts, SCC Ranger. Meet at 10am at the wooden gate at the bottom of Totley Hall Lane.

2013

Tuesday 5th February. Talk by Stuart Crofts called 'Caddisfly Magic'. 7.30pm Totley Library.

Contacts

If you have an interest in the history and/or natural history of the area, or would like to know more about the above planned events, then please contact either Dave Gash (262 0564, daveygash@hotmail.com), or Sally Goldsmith (0779 063 7016, goldsally@googlemail.com). Also if you would like to become a member of FoGW, they will be very pleased to talk with you and provide more details.

Dave Gash

DRONFIELD LANDSCAPES

Logs and wood chippings For Sale

Ring for details

Chris 0114 274 6158

Mobile 07976 072785

Richard

Mobile 07789 497104

HEARING AIDS

MAURICE NAYLOR FBSHAA RHAD is your local hearing aid specialist and at your request will test your hearing in your own home, free of charge, and if needed you can try a custom made aid for four weeks without obligation to purchase.

Tel : 237 4817

In the ear digital from £495

TRISTAN SWAIN

Landscaping & Maintenance

Established 20 years

Fully insured

GARDEN RESTORATION & MAINTENANCE

Unit C4

Sheaf Bank Business Park

Prospect Road

Heeley

Sheffield S2 3EN

Tel/Fax: 0114 255 4689

Mobile: 07831 802539



Body, Mind & Breath
enjoy the union of yoga

YOGA CLASSES in TOTLEY & RANMOOR

Rachel Quinn BWY Dip



THE COMPLETE BUILDING SERVICE

New Build & Extension Specialists

From Design to Completion

**Full Project Management
House Building
Extensions**

**Find
us in
Yell.com**

**New Roofs/Tile/Stone
Stonework Specialists
Loft Conversations**

Established for 25 years with over 90%
of our work coming from recommendations, to
find out why call:

0114 2353314

Mobile 07973 908187

www.mwoolhousebuilders.com



Christchurch Cottage,
Townhead Road,
Dore, Sheffield
S17 3GA



Horizon Electrical

*Faults, Rewires, Sockets, Lights,
Cooker Points, Electrical Showers,
Phone Points, Security Lights*

No job too small

Fully qualified with friendly advice

Ring Totley 236 4364 or

Mobile 07772 483154



BRADWAY INSTALLATIONS

**Kitchens, Bathrooms.....and everything in
between**

- **Complete Kitchens - Installation or supply and installation**
- **Kitchen Refits - Replacement worktops/sink/hob etc. Worktop / cabinet repairs**
- **Bathrooms - Cloakrooms - Domestic plumbing - Tiling Laminate / Vinyl flooring**

All work undertaken is fully insured and guaranteed

Ring Peter - 0114 236 5995

Mobile - 07766 411355

A Totley Charabanc Outing?



This is a photograph from Anne Hart's collection - one of her parent's photos. This one is dated 1924. Her father, Sydney Herbert Walker, is the boy with the cap on, in the third row, along with his parents, Clara & Herbert. Syd has written on the back & wondered if it was a Dore & Totley United Reformed Church outing, but he wonders why his sisters were not on it (Dorothy Bailey & Elsie Walker). The passengers do not look happy, & as we do not recognise the location, wonder if they are anticipating the journey home, on solid rubber tyres. The charabanc apparently had acetylene lighting to help them if it got dark. The lady on the back row appears to have a book/brochure to read. The shops signs, from left to right, read ENGLISH MEAT; SANDERSON, FISH & POULTRY MARKET; WALSH?, BOOT REPAIRER, and J. SYKES and BRITISH PUMPS (Still made). Can anyone add any information to the photograph? Both Syd & Joyce Walker, and all of his contemporary relatives are now deceased. Connie Gordon, nee Bellinger, being the remaining relative on Joyce's side. Roger Hart

Dore and Totley Station Park and Ride

We understand that SYPTE's project manager has now agreed terms with their preferred bidder, Britcon (Scunthorpe) Ltd. Start date is expected to be week commencing 12th November, and will take up to 18 weeks, opening spring 2013.

Throughout the construction period, safe pedestrian access will be maintained to Dore railway station and a minimum of 20 parking spaces will be available at all times.

The new Park & Ride facility is hoped to be of great benefit and value, not only for the people of Dore, Totley and Millhouses, but also to commuters from the Sheffield City Region in neighbouring Derbyshire.

A pedestrian crossing on Abbeydale Road, will be introduced when funding becomes available in the 2013/2014 financial year.

Totley couple launch Gourmet Supper Club

Totley based couple Chris Horne and Julie Ryalls, have launched a series of monthly Gourmet Supper Clubs at their School of Food in Bakewell.

Once a month an expert chef is invited in to produce a unique 6 course tasting menu. The next one is an 'Alternative' Christmas Feast incorporating the best of the festive seasonal flavours but with a tantalising 'twist'.

The menu is prepared by University Chef of the Year Robert Stordy and will also incorporate a tutored wine tasting from Jane of John Hattersley Wines, with the best seasonal wines accompanying each course. The 'Alternative' Christmas Feast takes place on Friday 7th December at Rutland Mill in Bakewell, and costs £40. For the full menu and details: www.hartingtons.com or 01629 888586

MEMOIRS OF DAN REYNOLDS (Part V) By Himself

There were a few who typified with life in a village, such as Jimmy Larder, Jack Slack, John Osbourne, Jack Fox. Of course, you can't help but mention Joe Marshall for whom I have extra respect. Jimmy Larder used to ply a horse drawn service between Dore and Totley rail station and Totley, or wherever. The state of the roads were rough and many pot holes were encountered. Miss Harris had contributed a small article in the Totley Independent saying how she had made the journey from the station to Totley and what a rough ride it was, especially when a wheel dropped in a pot hole. I remember he used to bring water cress to our house, whether this was a little sideline I don't know. He was a small, smart man who was always pleasant and operated the service when the wagonettes came through Totley on their way to Derbyshire.

In later years, Sheffield Corporation ran a double decker bus service from Millhouses to Totley, (Cross Scythes). The roads were much the same except the pot holes were not as common but still a rough ride. They were open top deck and behind each seat was a rainproof cover for you to use as protection when raining. Three men were allowed to sit alongside the driver and the fare was tendered through a pigeon hole in and above seating. The wheels had solid rubber tyres, and always on reaching Cross Scythes the driver used to refill the radiator with water. This service proved to be a godsend for the working class as our parents, mostly our mothers, were able to board a bus at Totley to Millhouses and then board a tram car to town and the market - the old rag and tag, where great savings were made on purchases. Mind you it was hard work for the women walking from stall to stall making a purchase with the bags becoming heavier, though once returning home they never complained and very little help was offered by the menfolk. Such were the times, ways of existence and duties a woman conformed to once she married.

Jack Fox, a big chap who in his later years lived in a hut at the rear of number one tunnel shaft, would always be seen with his faithful dog by his side. He was seen many a time poaching, and apparently paid the penalty when caught. He never married, and though he spent a lot of time at his parents who lived at the old cottage to the right of the Cricket Inn, I have a feeling that there was no love lost between them. Though not a popular man, I found him interesting and a pleasure to talk to, and he never condemned anyone, which says a lot for village life where chatter and gossip took place. He was quite a different chap to the 4 already mentioned both in character and disposition, but again I admired Jack.

We now come to Jack Slack, but before referring to him I have to explain how his main function in our life came about. In the days of my early childhood, there was no gas, electricity or sewers, just cesspools and middens were cleaned out every fortnight. This is where Jack comes in as it was his job to jump in and shovel the garbage and such into a tank type of horse drawn cart, after which all was swept and a generous amount of powdered disinfectant was strewn around. I was never interested in -finding out where this was tipped, and to this day do not know of any tipping area. ' It was never understood how a man like Jack was doing such a distasteful job. He lived rough, much the same as Sweedy in farmers barns, but his mannerisms, vocabulary and his respect of others befitted any learned man, always tipping his bowler to the womenfolk, addressed the menfolk and always greeted you with the time of day - a true gentleman. It was assumed, though he would not give any inclination, that he belonged to the aristocracy and maybe differed with his family as to the way working class were exploited. The clothes he wore were all given to him, and more often than not his shoes were much the worse for wear. He was very much respected in Dore as he spent much time there and would help the gardeners in Dore Road. Here were the homes of many Sheffield industrialists. You would describe it today as the millionaire belt. After having him to talk to you, you could not help but like him - a great chap, but alas ill health claimed him and it was thought he would be buried in a paupers grave, but they were mistaken. The residents rallied round and he was given a proper funeral. I was in the choir at Dore church on the day of his funeral. He was given a full service and the church was packed with mourners from all walks of life. On coming out of the church to

the burial, I had never seen as many flowers and wreaths in my life waiting to be placed in the grave. It would be nice if anyone had a photograph of this mark of respect for a true gentleman.

As I said, I was a chorister at Dore church, the choir master being a Mr A Farnsworth. The dress for service was an Eton jacket, pinstripe trousers, white shirt with deep white stiff collar, black tie, shoes and socks. For services rendered, we were taken for a day trip to the seaside. Once we were taken to the Wembley Exhibition. At Christmas, we had a party in the old school (opposite the war memorial), and afterwards were presented with an annual of The Scout, Chums or Boys Own. Inside, was a piece of paper on which were three addresses of the people who had contributed to the prize. We were expected to write to the people concerned thanking them for the gifts and also their support to the church. I am not alone in assuming that the funding for our dress as choir boys, trips to the seaside, plus the funeral for Jack Slack was met by these people, who more or less all lived in Dore Road. Never will that class of people be repeated, I'm sorry to say.

Joe Marshall was a very good friend of mine and was able to give me much information, especially with regard to common land of which Totley has three areas. Two are quarries and the other one, as we all know, is the peace garden adjacent to the C of E school. We all must be grateful to Stan Bingham, his wife and helpers who toiled week in, week out to transform this tip into the picture it is today. The stone troughs which are the original troughs used when it was a pound for stray animals, were located and lifted by a heavy crane. The area was bigger until it was decided to make it a drive to the old Wesleyan Chapel.

The two bench seats already there are in honour of T Sampey and Frank Taylor. I am told Mr Sampey's son made a generous donation to the project. I along with others cannot see why Frank Taylor was chosen. I feel they did not do enough research otherwise they would have chosen Mr A J Foulstone, a great man who devoted the better part of his life to the community. I admired Frank for his sporting interests and devotion to whatever for the young men of the day, whereas Mr Foulstone's interests were spiritual. His daughter Freda was a school teacher at the C of E school and now lives at Baslow.

One of the quarries, of which there were two, was situated on the right hand side of Baslow Road, just

inside the border of Derbyshire and South Yorkshire which is now used as a tip for road materials by Derbyshire County Council. The other one is at the end of the narrow lane opposite Monny Brook Farm entrance, where we were allowed to quarry stone for our own use. Joe Marshall and my brother Richard Reynolds, who owned the farm quarried a few times to repair walls at the farm.

The recreation ground at Totley Bents was left to the people of Totley and near districts as a playing field. You were able to graze geese and donkeys, but no cloven footed animal. The deeds pertaining to these four areas were deposited in the vestry at Dore church, and by appointment would be allowed to see them. The last time I made enquiries about these I was told that they were in the safe keeping of Wilson Solicitors.

Frankie Fisher, who with his brother Bill and two sisters, lived at the Old Field Farm. He was a chap who lived by his wits and would often be seen in the village selling a rabbit or some eggs, and if anyone wanted a chicken he would oblige. He was a real wily bird, always dressed reasonably well and smoked a clay pipe, often upside down. He had a walking stick which he called his ash plant and wore a coat which was probably made in the first place for a 'beater'. They were men who used to drive the game towards the guns and these jackets, which almost reached the knee, had big pockets inside which most certainly were used to place game which the dogs had failed to find.

On a Sunday, the wagonettes used to take trippers into Derbyshire, and what a grand sight to see the four horses in hand come rattling by, and I mean rattling on the limestone road surfaces. No doubt after one or two trips, the backside was numb.

The Cross Scythes had every indication of having once been a coach station where a change of horses took place. It had under cover stabling for at least eight horses, complete with hay racks and two big stone drinking troughs. There was also a farriers shop and a tea room where passengers were able to have a meal whilst waiting for a change of horses. The Cross Scythes Hotel was first class and really looked the part. There were brown earthenware lions, one at the top and one at the bottom, each side of the stone stairway and one at each end of the rockery at the front. They were about twenty two inches long and proportionate; the posture was laying down with front legs outstretched. Maybe someone somewhere was able to acquire one, but on the other hand, as we have seen so often, were probably demolished.

There were five pubs in Totley:

The Grouse Inn on Totley Bents - Landlord: T Wright
Cricket Inn - Landlord: O Creswick
Crown Inn - Landlord: E Snowdon
Ye Olde Cross Scythes Hotel - Landlady: Misses Swallow
Fleur de Lys - Landlord: Kirby

The pubs were in great demand when the tunnel was being built and the law had to be enforced on many occasions by the two law officers, Constable Bagshawe and Sergeant Hall. At the rear of the Sergeant's house were the cells.

There were three shops:

One Grocer/Baker - Proprietor: Charlie Jackson
One Grocer/Greengrocer - Proprietor: Walt Evans
One Milliner/Dressmaker - Proprietor: Emily Green

There was also a Post Office, the proprietor being Tom Bradley.

At the Grocer/Baker (now the Post Office) you were able to purchase dark, medium and light loose treacle. At the rear of the counter were three barrels with a tap and we used to take a stone jar for whatever amount. Every housewife made the good old fashioned parkin and we kids loved it. At Totley Rise, there were many shops and led me to think that it was another village. However I could still say what kind of shop was what and who was its proprietor.

Starting at the top and working down:

Marrison Grocer - Wine Merchant and Beer-off
Thompson Butcher - Home fed and killed (slaughterhouse at the rear) Booker - Post Office
T Wint - Corn and General Dealer S & E Co-op - Manager: Moseley Cartledge - Butcher Wint - Pastry & Confection Mottershaw - Sweets and Tobacco Roebuck - Chemist Greaves - Milliner Collet - Fish and Chips
Theaker - Newsagent - Sweets and Tobacco

These shops had a good flow of business catering for Dore, Bradway and Totley, and even today attract much business.

Down the lane in front of Marrisons, were three houses where lived Mr Scott, Mr Martin and Mr Hawes, the latter being a staunch Wesleyan and rode a tricycle to church and to his employment in Sheffield. One son of Mr Martin worked for Mr T Wint for many years, and later on operated a newsagent and tobacco business, (now run by his son) at Baslow Road near the Mobil petrol station. As aforesaid, Marrison ran a wine shop, beer-off and groceries, and a Mr King, salesman, would come round and take delivery orders which in turn were delivered by Jack Wingle on horse and dray. Thompson butcher was a hard man with his workforce and catered more for the affluent. He owned much surrounding land and his highlight were the Highland cattle kept in the fields, (now Marstone estate). Frank Cartledge the butcher, was a different person than Thompson, he leaned to the working class and earned much respect. Mr and Mrs Theaker who sold tobacco, sweets and daily papers, were two small people and always jolly. Mr Theaker spoke bluntly and was very amusing in fact - they were both down to earth Yorkshire folk who kept a parrot near the doorway of the living room to the shop.
to be continued

The Wildlife Trust

The Wildlife Trust for Sheffield & Rotherham will be holding a Reserve Advisory Group meeting for Blacka Moor nature reserve on Wednesday 28th November, 7pm - 9pm at Totley Rise Methodist Church. A finalised agenda will be posted on the SWT website nearer to the time, but will likely include:

- General updates, including management planning,
- Workshop for access improvements,
- Higher Level Stewardship application,
- The Dark Peak Nature Improvement Area, (if time).

This meeting is open to anyone with an interest in finding out more about the management of Blacka Moor, or to raise any queries or concerns. For further information in due course, please see <http://bit.ly/TfLnpz>



Sheffield & Rotherham

Fishing in Totley Brook



L-R: Mick Hirst, ?, Keith Crawshaw, ?, Tony Broadhead, ?, Michael Oliver, Girls standing Eileen Gilchrist, Susan Sands

About 1951 or 1952

Ian Wade

HOLMESFIELD FLOWER CLUB

– invites you to the following event:

Wednesday 21 November - Demonstration of Flower Arranging by Kate Riley, NAFAS area demonstrator, entitled "Here Comes Christmas".

7.30 pm at Holmesfield Village Hall, off Woodside Avenue, Holmesfield. Ample parking. Tickets available at the door: £7 (members £3.50) includes refreshments. The arrangements will be raffled at the end of the evening.

Visit the club's web page at <http://holmesfieldflowerclub.clubbz.com> for photos and news. Details on how to join Holmesfield Flower Club or for information about the events, phone Diana on: 0114 237 7601 or contact us via the web page.

Puzzle Corner

Solution to Quadgrams.

1. spear; spare; pears; rapes.
 2. scare; acres; cares; races.
 3. steam; mates; teams; tames.
 4. least; steal; tales; stale.
 5. rose; ores; sore; roes.
 6. seat; east; sate; teas.
 7. plates; petals; pleats; staple.
 8. sprat; parts; strap; traps.
 9. leaps; peals; lapse; pales.
 10. paste; tapes; spate; pates.
- Don Ashford.

Dore Gilbert & Sullivan Society

Well, here we are again – keeping out of the rain on wet Wednesday evenings, rehearsing for our next show which will be *Iolanthe* and will be at the Montgomery Theatre from Wednesday 10th April 2013 to Saturday 13th April. See our website, "doregass.co.uk" for more information (or phone me on 0114 236 2299).

We'll have our work cut out to match our last show, *Pirates of Penzance*, but we are lucky to keep attracting new, young and talented members. We have a new Musical Director in Andrew Griffiths. We consider ourselves very fortunate to have secured the services of this young and talented professional MD. With Graham Weston once again as producer, we are sure that next year will be just as good.

We have two concerts coming up in December. The first one is at Dronfield Civic Centre on Wednesday 19th December, tickets via the theatre, and the second is our usual winter concert at Dore Methodist Church at 2:30pm on Saturday 22nd December, (tickets -£6 - from me on 0114 236 2299). The programme will contain the usual eclectic mix of light, comic, and popular music along with carols. Please come and join us for this light hearted afternoon but remember that the church has a limited capacity so get your ticket early to be sure of a seat for this well attended event. We are confident that you will enjoy it, whatever your taste in music.

Derek Habberjam

AN UNEXPECTED LESSON

Since starting grammar school in 1932 to my retirement from work in 1982 I always travelled to and from home by pedal cycle or by public transport - tram cars, trolley buses, steam trains, those propelled by diesel locos and, of course on various petrol or diesel buses. On these journeys I must have read for hundreds of hours. This reading was rarely fiction - unless you include newspapers in this category! This may stem from an occasion in my early working life which I can picture as though it had happened yesterday. I was travelling on a trolley bus reading *Three Men in a Boat* by Jerome K Jerome when something caused intense amusement and I had to close the book, aware of nudges and winks from other passengers suddenly aware of this idiot in their midst who couldn't stop laughing. These days it would probably be the authors name which caused further thought rather than an episode in the story. On a recent return from town my wife turned to other reading matter and as usual, informed me of her discovery. Reading her bus ticket she found she had a "concessionary ticket from SPITAL STREET? We had boarded the bus at the stop, we in our dotage still refer to as "Walsh's". - it is in fact at the end of George Street, a siting which must surely be the windiest in town. We cast our minds around the area but did not know Spital Street. Back home we thought it may be connected with Spital Hill running up towards the Barnsley Road from near the Wicker Arches. Consultation of our old Sheffield A-Z showed a small area off Spital Hill contained Spital Street, Spital Lane and Spitalfields. These are also shown on the 1903 Ordnance Survey map so were in use then. I suspect they go back well before that. We then fell to wondering what the word spital could mean. Reference to our Chambers Dictionary told us "same as SPITTLE and this in turn was "a hospital, especially one for foul diseases". What I now wonder is why HOSPITAL is the term we use instead of the shorter SPITAL. I immediately thought Spital Hill must have been named because it was the route to the Northern General Hospital. However my wife, born and bred in Sheffield, said there was a hospital nearer than that, the Firvale Hospital. She remembered there was a Sheffield expression akin to "Not wanting to end up in the workhouse" i.e. "Not wanting to end up in Firvale" I guess that when he issued the ticket the bus driver never realised what a fascinating learning curve he was putting in my way!

Don Ashford.

Autumn Baslow Food Fair

The next Baslow Food and Drink Fair takes place on Sunday 4th November at Baslow Village Hall from 10.30 a.m. to 4.30 p.m. There will be around 20 stalls offering a wide range of local produce with popular stalls such as The Loaf and Liberty Foods of Totley being joined by new stalls selling fine teas, an Italian Mercato provided by NONNAS (Ecclesall Road), cheesecakes, artisan preserves, home-made pates, speciality oils and lots more. Hot food will available from award winning Moss Valley Fine Meats and there will also be gourmet Italian coffee served up from a converted Piaggio van.

All are welcome. FREE ADMISSION.

For more information: www.hartingtons.com 01629 888586

Totley Rise Methodist Church Events

J2B

Totley Rise Methodist church is holding the popular event, 'Journey to Bethlehem' this Christmas for the 10th year running on December 8th and 9th at Totley Rise Methodist. This shows the Christmas story in an interactive and exciting way. Over 1,080 people have previously enjoyed the 30 minute tour in 2011 alone. Be led by a Wise Man through a market place, visit an Inn for refreshment, and see the baby Jesus. Free bookings for the event on 8th or 9th December should be made with Pat on 0114 235 1001.

Youth Church Service

All are welcome to our Youth Church Service at 10.30 on Sunday 16th December at Totley Rise Methodist. This lively service is led by the young people. Join the Angel Choir, be with the Shepard's, innkeepers, wise men or even the Marys group followed by a play. Everyone is welcome at this spirited event.

Carol service

Join us at Totley Rise Methodist church on the December 16th at 6.30 for a service of carols and have time and space to truly consider what Christmas is all about.

Crib service

Our Crib Service is a time for celebration, a service aimed for all the family at Totley Rise Methodist church. Be a shepherd, be a wise man or follow a star as we all look together for the infant king, Jesus. The service will be held at 4 o'clock on December the 24th. All are welcome.

Christmas day service

Turn the oven down and spend some time on Christmas day putting Christ at the centre. Bring your gifts to the short service of celebration that we might, together, be thankful for all that we've received and be thankful that Christ is among us. Join us at 10 o'clock on Christmas morning.

TRM Church family party

All are welcome to the New Year Totley party on January 26th at 7 o'clock @ Totley Rise Methodist Church. Come to laugh and eat together as a family as we celebrate the New Year of 2013!

Police and Crime Commissioner

The Police and Crime Commissioner (PCC) will be an elected individual overseeing policing in South Yorkshire. The PCC will represent the public in a role to reduce crime and reoffending and deliver an effective and efficient police service within their area. The role of the PCC was introduced under the Police Reform and Social Responsibility Act 2011 which was passed in September 2011. The act requires a PCC in each of the 41 police force areas in England and Wales (outside London).

The election for the first PCC will take place in all 41 areas on **Thursday 15 November 2012**. Polling stations will be open from 7am to 10pm.

The PCC will then take office on 22 November.

Future elections will be held every 4 years, and from 2016 onwards, they will be held on the first Thursday in May at the same time as the local elections.

Information about the 5 candidates that are standing for our area should shortly be coming through our letter boxes.

SLIMMING WORLD

10 WAYS TO MAKE SURE IT WILL BE THE LAST TIME LOSING WEIGHT IS YOUR NEW YEAR RESOLUTION. THIS TIME MAKE IT LAST FOREVER

1. Focus on your weight loss goal and prioritise it.
2. Be sure you really want to lose weight for yourself. Doing it to please someone else may only lead to short term weight loss.
3. Take advantage of all the group support at your local Slimming World class. Even if you are not a 'joining in' person, you'll be surprised how motivating it is.
4. Accept that you will have ups and downs in your weight loss journey, and be forgiving of yourself if you hit a difficult patch.
5. Listen to your 'inner script' and make a conscious effort to talk to yourself in a positive, encouraging way.
6. Keep up your interest in your healthy eating plan by trying new foods, new recipes, and new ways of using your Sins. This will help you avoid getting in to a dieting rut which can be boring and demotivating.
7. Be honest with yourself about what you are expecting from your weight loss and how you are getting on with Food Optimising week by week. People who set unrealistic targets for weight loss or body shape are more likely to give up than those who set achievable targets and share their ups and downs.
8. Go back to your class even after (especially after) you've had a weight gain. You will not be judged, just helped and supported.
9. Keep setting new goals and rewarding yourself for milestones until you reach your target weight, and afterwards!
10. Don't put your life on hold until you've lost weight. You can still enjoy life and lose weight. Think of your dreams and ambitions and bring them to the fore. The positive feelings you get from starting to 'live a little' can only help your motivation and your weight loss.

Group details:

St Peter's Church, Greenhill Roundabout, S8 7FN
Thu 5pm & 7pm

Dore Old School, Tues 5.30pm

Tel: Alison Murphy 07815 046569 for further details

PhysioFOCUS

at Totley Rise Dental Practice
85 Baslow Road,
Sheffield, S17 4DP



Physiotherapy treatment available for:

- Back and neck pain
- Sports injuries
- Sprains and strains
- Joint and muscle pain
- Arthritic pain
- Whiplash
- Repetitive strain injury
- Headaches

Appointments: 0114 2360333

Also available:

- Pilates classes
- Pilates 1-2-1
- Golf Fitness Screening
(as used by consultants to UK, European and Australian PGAs)

For more information please call:

Emer on: 07792 422909

Rachel on: 07956 908454



Domestic electrical work by
award winning
Lady Electrician

- * House rewires * Replacement fuse boards *
- * New sockets and lights * Security systems *
- * CCTV * Telephone and computer points *
- * Garden power and lighting *



All work guaranteed and fully
insured. For a free quotation,
without obligation,



ring Mandy on 07788-544225

Homeopathy @ Synergy.

162 Baslow Road, Totley, Sheffield, S17 4DR

Advanced Indian Sensation Method Homeopathy

Alternative medical treatment for all chronic conditions

Registered with major insurance companies. Can claim
through the Westfield scheme



Ring: Lindsay Allison RSHom for more information:
0114 235 7845 or 07968 167036

M.Scriven
(FRUITERAMA)

MARTIN SCRIVEN

HIGH CLASS FRUIT
& VEGETABLES

37, Baslow Road

Tel. 236 7116

Orders Delivered

willis plumbing

t • 0114 221 4578

m • 07789 792299

w • www.willisplumbing.co.uk

e • paul@willisplumbing.co.uk

- bathroom & kitchen fitting
- electrical & tiling work
- general plumbing & heating
- 24 hr emergency call out

'call Paul for free quotes or advice'

All Saints Church

Totley Hall Lane

SERVICES

Sunday 4th 10am Morning Prayer
 6.30 pm Holy Communion

Wednesday 7th 10am Holy Communion

11th REMEMBRANCE DAY

9.45am in Church

11am at the War Memorial

6.30 pm Evening Prayer

Wednesday 14th 10am Holy Communion

Sunday 18th 10am All Ages All
 Together

6.30pm Holy Communion

Wednesday 21st 10am Holy Communion

Sunday 25th 10am Holy Communion
 6.30pm Evening Prayer

Wednesday 28th 10am Holy Communion

NOVEMBER 1ST – ALL SAINTS DAY

In the year 835 AD the Roman Catholic Church made 1st November A church holiday to honour all the saints.

On All Saints Day, Christians remember all “men of good will” , who have died through the ages. Saints are men and women from all ages and all walks of life, who were outstanding Christians. Some – the martyrs died for their faith. All of them are honoured by the church.

NEW HEAD TEACHER AT ALL SAINTS SCHOOL

As the new head teacher of Totley All Saints Primary School since September, I am excited and honoured by the prospect of being the next in line to “take the baton” from all those who have gone before in the long history of 170 years!

My upbringing and background is in Sheffield, both as a pupil and then as a student, having completed a Bachelor of Arts & Master’s degree in Biblical Studies from Sheffield University, then my teaching qualification (PGCE) through what was Sheffield Polytechnic. I have taught in three varied Sheffield schools, serving as the Deputy Head in two of them for a period of twelve years. Finally, after completing the National Professional Qualification for Headship, I then applied for my dream job – one in which I could bring my Faith, education and career skills together

in what is affectionately called by all who know it: TASS (Totley All Saints School).

I have already worked closely with staff on our whole school vision and values as well as implementing various systems, including a positive behavioural policy involving all children and staff being split into Merit teams. Up to now every day has been a joy meeting and getting to know the most amazing children, staff and parents.

Karole Sargent.

AUTUMN

There’s death and decay, death and decay

Death and decay as the year slips away.

The leaves on the trees hang there in distress

Their colour all faded they fail to impress

The beauty of flowers are just memories

The weather ‘s so cold it’s likely to freeze.

The sun does not shine the sky is so grey

And fog like a shroud clings on night and day

The rain sweeps down from low leadened skies

Tearfully mourning the summer’s demise.

The wind howls with rage at all that it sees

With anger it threatens to pull up the trees.

The earth now it lies in utter despair

The fields and the trees have nothing to wear.

The dark and the cold their rule now holds sway

Joy has been banned only sorrow to pay

But deep in the earth where no one can see

Are seeds of the spring, one day they’ll break free.

October Issue (correction to text) Car mechanics /enthusiasts would question this glaring error!

The reference to the OIL FILLER CAP was printed as OIL FILTER CAP – each having different functions. The OIL FILLER (PRESSURE CAP) at the top of the engine – is where oil is poured in to top up the oil level.

The oil passes through the OIL FILTER – (at the bottom part of the engine), to cleanse it as the oil circulates around the engine – collecting debris and contaminants in the FILTER – as it passes through.

Blessings

Frank Donnelly

TOTLEY & DISTRICT DIARY

MONDAYS	COFFEE MORNING , All Saints' Church Hall, 10am-noon TAI-CHI , United Reformed Church, Totley Brook Road, 11.30am-12.30pm RAINBOWS and GUIDES , All Saints' Church Hall, 5.45pm-9pm SLIMMING WORLD , United Reformed Church Hall, 7pm, Jo Elsey: 262 0523 or 07590 545253
TUESDAYS	COFFEE MORNING , Totley Rise Methodist Church Hall, 10am-noon KEEP FIT & COFFEE , For the not-so-young, Bannerdale Centre, Carterknowle Road, 10.15am, Phone: 258 5364 WOODSEATS ADVICE CENTRE . Drop in service, free, impartial, and confidential. TR Methodist Church, 10am-noon CRAFT GROUP , Totley Library, 2pm
WEDNESDAYS	PILATES CLASSES . Dore Old School, 9.00-10.00 and 10.15-11.15. Contact Caroline - Tel: 0781 722 0324, email caroline1north@btinternet.com, www.pilatescarolinenorth.co.uk COFFEE in the LIBRARY . 10am-11.30am TODDLER GROUP . 10am-11.30am, All Saints' Church Hall. Details tel. Andy Holmes 0114 236 2088 HEALTH WALKS . 10.30am, Totley Library foyer. Phone Tina, The Health Walk Ranger: 0114 203 9335 MODERN SEQUENCE DANCING . All Saints Church Hall, 8pm-10pm
THURSDAYS	BELROBICS , United Reformed Church, 9.15-10am, email: jenny@belrobics.co.uk or telephone: 07816 850132. NCT COFFEE GROUP FOR DORE TOTLEY & BRADWAY , 10am-noon, For mums & babies/toddlers, meeting in various locations, Phone Lucy Street 07837 000405 or email: lucy@streetr.plus.com for further details CHAIROBICS . Heatherfield Club, 1.15pm PUSHCHAIR CLUB . Totley Rise Methodist Church Hall. 1.30pm-3pm. Tel. 236 3157 for further details PILATES CLASS , United Reformed Church, Totley Brook Road, 6.15pm-7.30pm also new class 1.30pm to 2.30pm , Phone Emer Coffey 07792 422909
FRIDAYS	PILATES , The Old School, Dore, 9.15-10.15 & 10.45-11.45am. Phone Teresa Tinklin 07906 312372
SATURDAYS	MODERN SEQUENCE DANCING . All Saints Church Hall 2nd and 4th Saturdays 8pm-10pm

NOVEMBER

SUN 4th CASTLETON FARMERS MARKET, the Village Hall, 10am-3pm
SUN 4th BASLOW FOOD AND DRINK FAIR, Baslow Village Hall 10.30am - 4.30pm. Full details www.hartingtons.com or 01629 888586
TUE 6th FRIENDS OF GILLFIELD WOOD, Barry Wright on his botanical survey work in Gillfield Wood & other areas, 7pm, Library. All are welcome.
MON 12th SHEFFIELD BLITZ TALK, by Suzanne Bingham, details page 13
FRI 16th - SUN 18th CITY LIGHTS CRAFT MARKET, Fargate
TUES 20th TOTLEY TOWNSWOMEN'S GUILD, 'Remember When - Amami night', Joanne Brunt, Totley Rise Methodist Church Hall, 10am
WED 21st - SAT 24th TOADS PLAY, 'Stage Stories' full details page 3
THU 22nd SHEFFIELD FARMERS MARKET, 8.30am-5pm, Fargate
SAT 24th CHRISTMAS FAYRE, Transport 17 offices, 172 Baslow Rd. 10am-12noon. Come and but your Christmas Presents at reduced prices.
WED 28th TOTLEY HISTORY GROUP, Totley Library, 7.30pm, Suzanne Bingham - Puss, Pots and Privvies - Victorian Life in Sheffield, all welcome

DECEMBER

SAT 1st DRONFIELD CHRISTMAS FOOD AND DRINK FAIR. Dronfield Civic Centre 10am-3pm. Details www.hartingtons.com or 01629 888586
SUN 2nd CASTLETON FARMERS MARKET, the Village Hall, 10am-3pm
SUN 9th CHRISTMAS MARKET, Totley Rise, 11am-3pm, Wide range of food and craft stalls, Christmas surprises
SUN 9th MINIATURE TRAIN RIDES. SANTA SPECIAL, Abbeydale Road South, First train 11am-3.30pm (weather permitting) www.sheffieldsmee.co.uk
SUN 16th MINIATURE TRAIN RIDES. SANTA SPECIAL, Abbeydale Road South, First train 11am-3.30pm (weather permitting) www.sheffieldsmee.co.uk
TUES 18th TOTLEY TOWNSWOMEN'S GUILD, Christmas Meeting, Totley Rise Methodist Church Hall, 10am
THU 20th SHEFFIELD FARMERS MARKET, 8.30am-5pm, Fargate

TOTLEY INDEPENDENT FOR DECEMBER

The next issue of the Totley Independent will be available from the usual distribution points on

SATURDAY 1st December

COPY CLOSE DATE for this issue

will be

SATURDAY 17th November

Editor: **Ian Clarke**
 Tel. No: **235 2526** or Email: editor@totleyindependent.co.uk

Advertising & Distribution:
John Perkinson
 Tel. No: **236 1601** or Email: advertising@totleyindependent.co.uk

Items for publication may be left or sent to:
2, Main Avenue, Totley, Sheffield, S17 4FG

www.totleyindependent.co.uk

PRINTED by STARPRINT



- Central Heating,
- Domestic Plumbing,
- Glazing, Double Glazing and Glass,
- House Maintenance,
- UPVC and Wood Windows & Doors



Mini Digger & Driver, Muck Shifts, Footings Etc.

starprint

130 GSM GLOSS
FULL COLOUR
DOUBLE SIDED
**5000
A5 LEAFLETS
£99.95**

FULL COLOUR
SINGLE SIDED
**250
BUSINESS CARDS
£19.95** + VAT

**BANNERS
AVAILABLE FROM
£29.95** + VAT

**Full design
service
available!**

Tel: 0114 258 0707

Email: mail@starprint.co.uk
 601 Abbeydale Road, Sheffield, S7 1TA