

# TOTLEY INDEPENDENT

PUBLISHED CONTINUOUSLY SINCE 1977  
OCTOBER 2012 No. 357

www.totleyindependent.co.uk  
20p.



## Baslow Road

Postcard from well before 1961 when work started on today's dual carriageway and the bungalows were built on the left in the 1930s – cattle are still grazing on Thompson's fields. Are those petrol pumps just showing at the old Marstone Garage, so perhaps the 1920's? This postcard from the Thompson Collection shows this old view.

## TRA and Farmers' Market

After a well-earned Summer Break we had a meeting on 12th September which was attended by representatives of South Yorkshire Police. They have been very supportive particularly with regard to the Farmers' Markets. There had been some parking issues for residents and stallholders alike and we are grateful to SYP for their assistance and advice in resolving them.

We are in the early stages of planning the next Market which is scheduled to take place on Sunday the 9th December, starting slightly earlier at 11am and finishing at 3pm. The time has been changed so as not to overlap with the "Journey to Bethlehem" taking place at Totley Methodist Church later that day.

We already have 12 stalls booked and are looking forward to a greater variety of produce being on offer. It is so encouraging that we now have over 75 names on our Database of Stallholders, who have either attended previous markets or have expressed interest in joining us in the future.

Another matter arising from our Meeting is the need for more assistance from the residents of Totley in the planning and staging of our various events. Volunteers are always most welcome. If you can give a little of your time please get in touch.

Hetty Moran. Secretary. Totley Residents Association.

## Totley Hall Park

**Pump Track.** We have £6,000 pledged for the work to upgrade the BMX track to a pump track, to be used by all the family. Three applications have been submitted to charities for the remaining funding. 64 residents were delivered leaflets, notifying them of the consultation meeting on 1st September. Approximately 25 people attended. No one was against the proposal, many expressing an enthusiastic positive opinion.

**Table Tennis Table.** This is now in storage. The possibilities for its location were discussed at the consultation meeting. No one seemed to be against the table, but its location is a moot point, "Not in my back yard" quoted, jovially, by one person, but inferred by others. There was some debate about how much the tennis courts were

**From page 1** used. One of them, nearest to the grass would be an ideal location, being level & a hard standing. Fixing would be four holes with bolts which could easily be filled if the table was moved.

The alternative is to create a pad, of concrete or Tarmacadam at a cost of about £1,000. If the table was then moved the area would be blighted, unless more money was spent removing the pad.

Those, not in the know, will say that I should have thought about this before accepting it. I was offered it for Totley Hall Park specifically & had 48 hours to decide or it would have gone elsewhere. It can still go elsewhere, if we cannot find a suitable location.

**Trees.** A meeting was held, in the park a few weeks ago, to see if some young trees (whips) could be planted along the side of Totley Hall Lane, on the bank in the park.

The Council's forester advised against them, but offered some mature trees, on the basis that Sheffield Vulcan Rotary Club would joint fund & help to plant them (they have done this in other parts of the City) with bulbs being planted as well. The Forester & I met on Wednesday 12th September. He has agreed to provide 8 trees; 4 Flowering cherries, 3 Acers & a disease resistant Elm. The cherries will be along between the seat & wooden animals, the acers grouped in three between the football pitches & the elm will be near the edge of the park, close to the Spider net. Consultation letters have been delivered to houses close to the park. If there are no objections, planting should take place soon!

**Track.** A couple of people have mentioned that a track, around the park, would be good for all weather walking or running. Enquiries have revealed that there is one. Unfortunately, it has been little used & has now grown over.

Roger Hart

ALES • STOUTS • PORTERS • CIDERS • PERRIES



**STEEL CITY**  
**38<sup>TH</sup>**  
**BEER & CIDER FESTIVAL**

**150 REAL CASK ALES**

**3rd - 6th**  
**October 2012**

Wed: 5pm - 11pm, Thu / Fri / Sat: 12noon - 11pm

**150 Beers & Ciders • Live Music**  
**Food & Entertainment, Classic Pub Games**

**PONDS FORGE in SHEFFIELD City Centre**  
close to the rail station, bus & coach interchange and tram stops

[www.sheffieldcamra.org.uk/](http://www.sheffieldcamra.org.uk/) @shfCAMRA

# Little Kickers



**Approved Football training for children**  
**aged 18 months to 7 years**

A positive, fun-filled pre-school football programme executed in a friendly, pressure-free environment. Learning invaluable social skills like listening, sharing, taking turns and teamwork and emphasis on simple learning concepts like colours and numbers whilst also improving their basic balance, agility and co-ordination.

There are classes near you, for more information please contact: **Becky Morton**  
**on 0114 266 8880 or 07532 180 852**  
**or email: [bmorton@littlekickers](mailto:bmorton@littlekickers)**







## Transport 17

As anyone who uses the Transport 17 service will have noticed, and

hopefully those of you who just see our vehicles going by, they have been freshened up on the outside as well as the inside. It is amazing how quickly they start to look jaded after 11 months on the road so Michael had the sign writing tidied up and any chips, etc put right. They look almost like new now. All the vehicles are now fully operational after all the yoyoing we have been doing lately.

You will probably not believe this but my contribution to the October issue is being submitted on 14th September, the day before the Totley Show. We are all hoping to see you there and that you will support all the worthwhile charities that will be participating. It is a good event and we enjoy doing our little bit to raise funds for ourselves.

There are a couple of dates for your diary - our General Meeting will be held at The Cross Scythes on Monday 22nd October at 7.15 pm and our Christmas Fayre will be on Saturday 24th November at the Office (172 Baslow Road) We are looking forward to seeing you there.

Thank you once again for all your support over the last few months - it has been greatly appreciated.

Felicity Revill Chair

## Purple Poppy Appeal: Remembering the Animal Victims of War

The release of the epic film 'The War Horse' in 2011 did a lot to raise awareness of the service and suffering of animals in wars. Unfortunately, for most, there was no fairytale ending. During the First World War, 8 million horses were killed, or abandoned to die in Europe.

Dolphins, seals, pigs, monkeys, dogs, rats, goats, pigeons, horses, are just some of those that have been used as tools in human conflict: as beasts of burden, messengers or for scouting, detection or rescue. Millions are abandoned in farms, zoos and homes in war zones. Animals are also being used in military research in laboratories to test chemical, biological and other weapons.

In 2004, a monument in London's Park Lane was dedicated to the gallantry of animals that have served and died alongside British and Allied forces in wars and campaigns throughout time. Alongside the red poppy, you can now extend your compassion and remember the animal victims of war by also purchasing a purple poppy. These will be available this year from:

| <b>Totley Rise</b> | <b>Dore</b>    | <b>Bradway</b>   |
|--------------------|----------------|------------------|
| Post Office        | Country Garden | Makinson's Fruit |
| Co-operative       | Co-operative   | Spar and PO      |
| Newsagents         | Dore Opticians |                  |

Horses will almost certainly have been taken away from the green fields of south west Sheffield to serve in World War I. Last year, representatives from Sheffield Animal Aid laid a purple poppy wreath at the main Remembrance Service in Bakers Pool. If anyone wants to join us this year, please get in touch dawn.biram@btinternet.com tel 0114 2356907, or if you would like to lay a purple wreath at your own local remembrance service, you can purchase them from Animal Aid. [www.animalaid.org.uk](http://www.animalaid.org.uk)

Proceeds from the sale of purple poppies will help animals affected by war. Animal Aid campaigns peacefully to raise awareness of animal suffering and to promote a cruelty free lifestyle.

Dawn Biram

## Friends of Green Oak Park Update

I am happy to say that at last the fitness equipment is on order and will be delivered in approx. 6 weeks. We then await the installation by the Parks and Countryside. There will be some new play equipment for toddlers and younger children but at this moment in time we are uncertain as to when the items will be ordered and installed.

When all this comes to fruition we hope to be back in the park working on the planted areas and the stream and ponds so if you would like to participate feel free to come and join us. We are usually in on Tuesday mornings.,

Betty Higgins F.O.G.O.P



**WEDNESDAY OCTOBER 24TH**

**TOTLEY LIBRARY, 7.30PM**

**OPEN MEETING. EVERYONE WELCOME**

**DISCUSSION ON CURRENT PROJECTS**

**WEDNESDAY NOVEMBER 28TH**

**TOTLEY LIBRARY, 7.30PM**

**SUZANNE BINGHAM**

**TALK & SLIDES**

**PUS, POX AND PRIVVIES**

**MEMBERS £2, NON MEMBERS £3**

## Councillor Surgeries

### Liberal Democrats:

2nd Monday in the month 6.00-7.00 p.m., Totley Library, Baslow Road and 2nd Saturday in the month from 10.30 a.m. to 12.00 noon, Dore Old School Hall, Savage Lane, Dore Contact details:

Keith Hill 235 2289 Email: [keith.hill@sheffield.gov.uk](mailto:keith.hill@sheffield.gov.uk),

Colin Ross 235 1948 Email: [colin.ross@sheffield.gov.uk](mailto:colin.ross@sheffield.gov.uk)

Joe Otten 230 3290 Email: [joe.otten@sheffield.gov.uk](mailto:joe.otten@sheffield.gov.uk)

**Totley Independent Website:-  
[www.totleyindependent.co.uk](http://www.totleyindependent.co.uk)**

## SLIMMING WORLD

10 WAYS TO MAKE SURE IT WILL BE THE LAST TIME LOSING WEIGHT IS YOUR NEW YEAR RESOLUTION. THIS TIME MAKE IT LAST FOREVER

1. Focus on your weight loss goal and prioritise it.
2. Be sure you really want to lose weight for yourself. Doing it to please someone else may only lead to short term weight loss.
3. Take advantage of all the group support at your local Slimming World class. Even if you are not a 'joining in' person, you'll be surprised how motivating it is.
4. Accept that you will have ups and downs in your weight loss journey, and be forgiving of yourself if you hit a difficult patch.
5. Listen to your 'inner script' and make a conscious effort to talk to yourself in a positive, encouraging way.
6. Keep up your interest in your healthy eating plan by trying new foods, new recipes, and new ways of using your Sins. This will help you avoid getting in to a dieting rut which can be boring and demotivating.
7. Be honest with yourself about what you are expecting from your weight loss and how you are getting on with Food Optimising week by week. People who set unrealistic targets for weight loss or body shape are more likely to give up than those who set achievable targets and share their ups and downs.
8. Go back to your class even after (especially after) you've had a weight gain. You will not be judged, just helped and supported.
9. Keep setting new goals and rewarding yourself for milestones until you reach your target weight, and afterwards!
10. Don't put your life on hold until you've lost weight. You can still enjoy life and lose weight. Think of your dreams and ambitions and bring them to the fore. The positive feelings you get from starting to 'live a little' can only help your motivation and your weight loss.

Group details:

**St Peter's Church, Greenhill Roundabout, S8 7FN**  
Thu 5pm & 7pm

**Dore Old School, Tues 5.30pm**

Tel: Alison Murphy 07815 046569 for further details

## PhysioFOCUS

at Totley Rise Dental Practice  
85 Baslow Road,  
Sheffield, S17 4DP



**Physiotherapy treatment available for:**

- Back and neck pain
- Sports injuries
- Sprains and strains
- Joint and muscle pain
- Arthritic pain
- Whiplash
- Repetitive strain injury
- Headaches

**Appointments: 0114 2360333**

Also available:

- Pilates classes
- Pilates 1-2-1
- Golf Fitness Screening  
(as used by consultants to UK, European and Australian PGAs)

For more information please call:

Emer on: 07792 422909

Rachel on: 07956 908454



Domestic electrical work by  
award winning  
*Lady Electrician*

- \* House rewires \* Replacement fuse boards \*
- \* New sockets and lights \* Security systems \*
- \* CCTV \* Telephone and computer points \*
- \* Garden power and lighting \*



All work guaranteed and fully  
insured. For a free quotation,  
without obligation,



ring Mandy on 07788-544225

## Homeopathy @ Synergy.

162 Baslow Road, Totley, Sheffield, S17 4DR

Advanced Indian Sensation Method Homeopathy

Alternative medical treatment for all chronic conditions

Registered with major insurance companies. Can claim  
through the Westfield scheme



Ring: Lindsay Allison RSHom for more information:  
0114 235 7845 or 07968 167036

M.Scriven  
(FRUITERAMA)

**MARTIN SCRIVEN**

HIGH CLASS FRUIT  
& VEGETABLES

**37, Baslow Road**

**Tel. 236 7116**

**Orders Delivered**

**willis plumbing**

t • 0114 221 4578

m • 07789 792299

w • www.willisplumbing.co.uk

e • paul@willisplumbing.co.uk

- bathroom & kitchen fitting
- electrical & tiling work
- general plumbing & heating
- 24 hr emergency call out

*'call Paul for free quotes or advice'*



## Less is more for local 'Woman of the Year' slimmer

After losing over 7 stone and winning a local slimming competition, the only thing that's big about Adele Peat is her beaming smile.

Adele, from Totley, lost weight with her local Slimming World group in Totley and has dropped from 18st 5lbs to 11st 2lbs in just over 10 months. And her transformation hasn't gone unnoticed as Adele has just been named the Totley group's Woman of the Year 2012.

Around one in four women in the UK and Ireland are already severely overweight and at risk of suffering a range of health problems including diabetes, heart disease and cancer. Slimming World's Woman of the Year competition recognises the achievements of women in making long-term healthy lifestyle changes for themselves and their families.

Adele joined Slimming World in September 2011 after becoming increasingly unhappy with her weight. She says: "I started to put on weight after having my children – of which I have 4! I tried lots of different diets but they usually left me feeling hungry and miserable. Slimming World is completely different, I never have to go hungry and I'm the happiest I've been in years!"



The 31-year-old started following Slimming World's famous Food Optimising eating plan 11 months ago. It's a healthy eating plan based on satisfying even the largest of appetites so slimmers never have to go hungry. Now, Adele fills up on unlimited amounts of everyday foods like fruit and veg, lean meat and fish, pasta, potatoes, rice and pulses which are all filling yet naturally low in calories and fat. She's cut out many of the convenience foods and sugary snacks she used to rely on. Adele loves trying out all the delicious slimming recipes she picks up from other members at her Slimming World group. She says: "My family and friends are all amazed how much I can eat and still lose weight. I cook for them now and they can't believe it's all healthy food because it tastes so good."

"I know a lot of people worry about joining a slimming club – they don't know what to expect. But from the minute I walked into Slimming World, the support I've received from my Consultant Jo Elsey and the rest of the group has been brilliant," adds Adele. "At first I was really nervous, especially about stepping on the scales, but straightaway I was made to feel welcome and now it's like a night out with friends. I couldn't have done it without them."

"I never dreamt I could achieve so much. I've gone from a size 22 to a 12 and it's made such a huge difference – it's changed my life. I've got so much more energy and I can do things now that I couldn't before. My fitness has improved – I enjoy being active now rather than thinking of it as a chore. I feel like a winner already, and being voted the Totley group's Woman of the Year 2012 is the icing on the cake." Now Adele will go forward to the regional finals of the competition, putting her in the running for the

national title. The national Slimming World Woman of the Year 2012 will be announced in November and the winner will take home a £5,000 cash prize.

Jo Elsey, who runs the Totley group, says: "I'm so proud of Adele. Not only does she look fabulous, she's improved her health and is bursting with energy. She's a huge inspiration to everyone in our group and I hope she inspires other women in Dore & Totley to change their lives in the same way. It can be hard to admit that you need to do something about your weight and to ask for help, but I think Adele shows just what's possible and what a huge difference losing weight can make."

The Totley Slimming World group is held every Monday at 7pm at Dore & Totley United Reformed Church, Totley Brook Road, Sheffield S17 3QS. To join or find out more call Jo Elsey on 0114 262 0523 or 07590 545 253.

### Dore Moor Garden Centre & Nursery

Hathersage Road • Dore • Sheffield • S17 3AB  
(Opposite the Dore Moor Inn)

**Reopened, restocked and looking forward to welcoming you to our first spring season**

Wide range of seeds, bulbs, plants, shrubs, pots, composts and chemicals

Logs, coal and smokeless winter fuels

Specialist section for mowers, strimmers, fencing, garden & DIY tools and much much more

Stockists for Haddon Stone statuary and David Austin Roses

**Quality Plants**

**Competitively priced**

**NOW STOCKING  
A WIDE RANGE OF HORSE FEEDS**

**Call in and see us**

Enquiries

0114 235 0092

mark@doremoor.com



# GWS

Technology Solutions



PC Problems/ Repairs/ Servicing      No Job Too Small  
 Wireless & Internet Setup      New PC's & Upgrades  
 PC Setup/Data Transfer      Safe PC Disposal      Tuition  
 Software/Hardware      For All Your PC Needs

**Guy Senior**

Phone: 0114 2352662      Mobile: 07890030453

Email: [guy@gwstech.co.uk](mailto:guy@gwstech.co.uk)

Web: [www.gwstech.co.uk](http://www.gwstech.co.uk)

GWS, 5 Conalan Avenue, Bradway, Sheffield S17 4PG

**R.S. HEATING & BUILDING CO**  
 EST. 1971

**HEATING DIVISION:**  
 Experienced Installers of condensing, combination and regular boilers. Systems fully guaranteed. Complete after sales service. Also Bathrooms, showers and small plumbing works.

**BUILDING DIVISION:**  
 Loft conversions, House renovations including general building, joinery, plastering, electrical decorating etc.

13 Overcroft Rise, Sheffield, S17 4AX  
**Tel:- 0114 236 4421**  
 Reg. Office:- 62 Machon Bank, Sheffield, S7 1GP  
**Te:- 0114 2559425**  
**Fax:- 0114 255 9431**  
 Email: [enquiries@rsheatingandbuilding.co.uk](mailto:enquiries@rsheatingandbuilding.co.uk)  
 Web: <http://www.rsheatingandbuilding.co.uk>

**LIBERTY FOODS**  
 Caterers  
 Quality Meat Shop  
 & Fresh Farm Produce

Fresh and Frozen Prepared Meals  
 Fresh Meat and Poultry  
 Outside Catering  
 Home Delivery

253 Baslow Road, Sheffield, S17 4DU  
 Tel: 0114 2360 583      Mobile: 07801 346 455

**Dronfield Landscapes**

Gardens cleared and maintained, Lawns mowed, Turfing, Tree felling & pruning, Hedges trimmed & reduced, Pond maintenance, Fencing etc.

for free quotation call  
 Chris on: (0114) 2746158      Mobiles: 07976072785 or  
 Richard on: 07789497104

8am-6pm mon-fri      HazelBarrow Farm, Norton S8 8BA

**R.M.M BUILDING SERVICES**  
 25 YEARS EXPERIENCE

All types of building work carried out including- Drop kerbs, block paving (drives, paths, etc), extensions, general building repairs and maintenance.

Phone Rob on- Mob- 07906108567  
 Home-2352190

**Nigel Watson**  
 Carpenter and Joiner

Fitted kitchens, sliding wardrobe doors with bespoke interiors, internal and external doors supplied and fitted, new handrail and spindles, laminate and wood flooring, locks, architraves, skirting board, stud walling, boxing off etc.

For a reliable and quality service  
 TEL: 0114 236 4778  
 MOBILE: 07971 528149

**Serenta HomeCare**

Are you in need of a little help and support within your own home? The older we get the more help we need to enable us to live a more independent life.

Personal Care • Medication • Domestic • Sitting Service • Social and Leisure activities

To find out more call Sue 07715 636 395 Pat 07715 634 781  
 or visit [www.serentahomecare.co.uk](http://www.serentahomecare.co.uk)  
 For reference from an existing client please call 0114 2366891

**Got a computer?**

**Tim Brown**  
 Building, Installation, Upgrading and Troubleshooting Computer Systems  
 Over 25 years professional experience

**Having Problems?**  
 Is it running slow? Stops responding?  
 Having problems running the latest games or applications? Broadband installation?

**Give me a call!**  
 I'm available for home visits at any time including evenings and weekends. I can also suggest upgrades to improve performance, or even build you a system to your specific requirements.

Phone: 0114 2472619      Fax: 0870 7060080  
 Mobile: 078 17464703      Email: [service@timbrown.plus.com](mailto:service@timbrown.plus.com)



## Reverend Edward Ridge Taylor; the founder of Cherrytree Orphanage

Edward Taylor returned to Sheffield from Barrackpore, India in 1862 with his wife, Marian and their new born daughter, Arabella. We know he was born in Sheffield in 1824, but know nothing about his parents or childhood. From his own writings we have learnt a little about his life before he came back to Sheffield. He travelled extensively throughout the Crimea, (where he set up a religious reading and rest station for British soldiers), and was in Egypt, Constantinople and the East Indies.

On the voyage home from India he decided to set up an orphanage and by August 1862 he had rented a house at the bottom of Osborne Road, Nether Edge and opened the Cherry-Tree orphanage.

The annual reports he wrote for the orphanage were all published in the local press. They read more like religious tracts than reports and give us a picture of a man guided in everything he did by his belief in God. He threw himself, his family and the orphans into the care of the Lord whom he trusted would provide for them. And so it was! Funds flowed in from all over the country; local people donated sacks of potatoes, coal and firewood. The orphanage flourished and by its fourth year there were thirty five children being cared for there.

In 1865 their landlord gave them notice to quit from the house on Osborne Road and so the orphanage was moved to Highfield, at the bottom of Sharrow Lane. The expense and instability of renting prompted Edward Taylor to find a permanent home for the orphanage. He launched an appeal for money to buy land for a purpose built orphanage. His appeal started an acrimonious correspondence in the press in which he was accused of being unfit to manage the orphanage finances and of not being qualified to use the title "reverend". Lots of people came to his defence and by 1867 enough money had been collected to buy Brook House and surrounding land on Mickley Lane and building work was started.

In August 1869 Edward Taylor resigned from Cherrytree and he and his family left Sheffield. The orphanage was well established by this time with its own board of trustees and a new building. Perhaps he felt that his work here was done. This seems to be borne out by the entry in the 1871 census which finds him and his family, (now with four children) at Ardwick in Manchester running another orphanage.

By 1881 the family had moved to Cardiff, but with no orphans and Edward Taylor describing himself as retired. We lose track of the family after this until in 1901 when his widow, Marian, is living in Worthing with her daughter, Arabella and her two children, both born in Calcutta. They were still living as an extended family in Worthing in 1911 and had four boarders living with them.

That is where the trail ends at the moment. We are hoping to find out more about this interesting man and his family. Where did they go after Cardiff? Where and when did Edward Taylor die? Did they all go aboard again?

What we do know is that throughout his life and, after Edward Taylor's death, the family continued to open their home to people in need of care and a place to live.

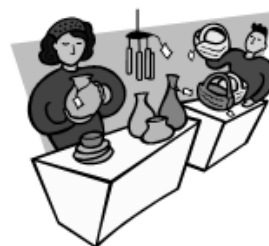
Christine Shimell, Totley History Group

AUTUMN FAYRE

LEONARD CHESHIRE DISABILITY

MICKLEY HALL

SATURDAY OCTOBER 20TH, 2-4PM



JAMS, CHUTNEYS, CAKES, CARDS,  
JEWELLERY, GIFTS FOR CHRISTMAS PRESENTS  
RAFFLES, REFRESHMENTS.



The Crown Inn

Tony and Julie at

## The Crown Inn

Welcome you for

Good Quality, Home Cooked Food

Tuesday – Friday

12-2pm & 5.30-8pm

Saturday & Sunday

12-2pm

Come & join us for

Good Beer, Good Food & Good Music

Tel 0114 236 0789

CLOSED SUNDAY EVENING

Visit our website: [www.crowninntotley.co.uk](http://www.crowninntotley.co.uk)

**LIVE MUSIC**

9th October

**ARROWS BETWEEN**

23rd October

IAN BELLAMY &

CARY BAYLIS

3rd November

FIREWORK DISPLAY

## Friends of Gillfield Wood

### Activities and Planned Events

#### Bird Talk given by John Kirkman Tues 4th Sept

A warm welcome was given to John who gave an interesting, informative and varied talk on the birds to be seen and found, in and around the Gillfield Wood area. John also talked about the birds to be found in your garden and told us a very amusing tale about the opportunistic wood pigeon, which has been descending upon his garden bird table in their dozens! The talk was also interspersed with bird calls and sounds. It reminded me so much of Percy Edwards, who used to impersonate birds on the T.V. many years ago. The meeting was attended by approx. 30 people, some of whom took out membership of the group. Many thanks to those of you who joined on the night, as funds are gratefully received and are used to help us conserve and improve the biodiversity of the wood and are for public use.

#### Mothwatch with Frank Botterill of the Sorby Natural History Society.

On a warm autumn evening a good number of FoGW members attended the mothwatch, which was held in the bottom half of Gillfield wood, near to some large oak trees and an extensive area of wetland, with lots of flowers, close to the exit from the wood into Aldam Way. 11 species of moths were seen which included such species as Centre Barred Sallow, Square Spot Rustic, Green and Marbled Carpet and the splendidly named Canary Shouldered Thorn. Some of the colours seen in the moths are very varied and beautiful, matching any of the day flying butterflies seen in the area. Everyone who attended agreed that it was two and a half hours well spent looking at these interesting and lovely creatures.

#### Future Events Planned for 2012/2013.

##### 2012

**Sunday 30th September.** Practical Conservation day with Chris Roberts, SCC Ranger. Meet at 10am at the wooden gate at the bottom of Totley Hall Lane. A number of Sheffield Conservation Volunteers will be joining the group to help with the tasks at hand.

**Sat./Sun. 6th/7th October.** Small Mammals survey with Val Clinging of Sorby. This is a follow up from the survey carried out in October 2011, when we found common shrew and bank vole. Meet at the wooden gate at the bottom of Totley Hall Lane at 5pm on Saturday 6th October, or 8am on Sunday 7th October. Sunday 4th November. Practical Conservation day with Chris Roberts, SCC Ranger. Meet at 10am at the wooden gate at the bottom of Totley Hall Lane.

**Tuesday 6th November.** Talk by Barry Wright on his botanical survey work in Gillfield Wood and other areas. 7.30pm Totley Library.

**Sunday 2nd December.** Practical Conservation day with Chris Roberts, SCC Ranger. Meet at 10am at the wooden gate at the bottom of Totley Hall Lane.

##### 2013

**Tuesday 8th January.** Talk by Stuart Crofts called 'Caddisfly Magic'. 7.30pm Totley Library.

#### Contacts

If you have an interest in the history and/or natural history of the area, or would like to know more about the above planned events, then please contact either Dave Gash (262 0564, daveygash@hotmail.com), or Sally Goldsmith (0779 063 7016, goldsally@googlemail.com). Also if you would like to become a member of FoGW, they will be very pleased to talk with you and provide more detail.

## Find 'Room To' support St Luke's Hospice

ST Luke's Hospice is asking the people of Sheffield to join in a £5 million appeal to rebuild and redevelop the hospice's In Patient Unit.

The 'Room To' Appeal was launched at a special event attended by more than 100 civic leaders, councillors, celebrities and representatives of the business community at the city centre premises of law firm DLA Piper.

They were told by St Luke's Chief Executive Peter Hartland that without significant investment the hospice's inpatient unit will fail and its role in caring for the people of Sheffield will be at risk.

"It is no longer fit for our purposes or to meet our aspirations for true hospice care," he said.

That is why work on the £5 million project to create a new In Patient Unit with 14 single en suite rooms and two three bed bays, again with en suite facilities, will be starting in June and is scheduled to be completed by August 2013.

The good news is that £1.6 million has already been raised, with £0.5 million also provided from the hospice's cash reserves.

The Sheffield Star, as media partner for the campaign, has also pledged to raise £100,000 over the next two years.

The launch also heard that DLSA Piper's Sir Nigel Knowles is aiming to raise £1 million from London contacts.

Sir Nigel commented: "St Luke's cannot continue as it is. But it cannot be allowed to fail, for the sake of every one of us in Sheffield."

To find out how you can support the 'Room To' campaign visit designated website [www.roomto.org.uk](http://www.roomto.org.uk)

## G W A Tiling

### Wall & Floor Tiling

Bathrooms Kitchens Wetrooms

No job too small, Best Quality work

George Allen

Mobile 07801 790973

## PUZZLE CORNER

### DIFFERENCE ARRANGEMENTS

One night recently for no reason I can think of I wondered if I could arrange the numbers 1 to 6 in a triangle so that each number was the sum of the two below it (excepting the bottom line of three numbers). I soon proved to myself this was impossible. I then wondered if the numbers could be arranged so that numbers were the difference between the two below. This was easy and I found four different sets for this. Are there more?

Don Ashford



# mellows

cafe - paint a pot - bistro

## BISTRO NIGHTS

First Saturday of every month  
B.Y.O

£25.00 per head

The price includes a three course meal with a vegetarian option as well

Coffees or teas to finish :)

Lovely atmosphere, starts at 7.30pm

Our next one is on the 6th of October! BOOK NOW! :)

## ADULT PAINT A POT NIGHT !!

Saturday 20th October @ 7.30pm

Sandwiches and snacks will be served @ £5.00 per person plus the value of your chosen pot.

Alcohol and hot and cold beverages can be purchased.

Great atmosphere, fun night and a memorable pot to take home with you.

You don't have to be Picasso to come along and paint...it can be so much FUN!!!

## CHILDRENS HALLOWEEN PARTY !!

Saturday 27th October 4.30-6.30.

Bring your child dressed in a Halloween party outfit and we will paint his/her face with face paints, play party games, enjoy food and drinks and paint a pumpkin pot.

Parents are more than welcome to stay with their children and have a coffee and cake :)

£12.00 per child.

Bookings are now being taken for all events .....

At Mellows we have the facilities to seat approx 32 people and welcome school children classes, brownie and guide groups.

# Totley Private Hire

**24 hour taxi service**

**Advanced bookings only**

**Local • long distance • airports**

**Telephone 0114 283 9692**

**Mobile 07974 355 528**



## Tiling, Plastering, Plumbing & Complete Bathroom Fitting Service

Tel: 0114 4182346  
07738 688807

- ◆ Under Floor Heating
- ◆ All Aspects of Home Improvements & Maintenance Work Undertaken
- ◆ Competitive Prices
- ◆ NVQ Qualified
- ◆ No Job Too Small
- ◆ Fully Insured & Guaranteed

**A1tilingandplastering.co.uk**  
**25 Five trees Ave, Dore, S17 3LW**

## B.K. JEAVONS PAINTER & DECORATOR



Interior  
Exterior  
Decorating  
No Job too small

Tel: 01246 416484  
and mobile 07882 278306

Creating opportunities with disabled people.

Registered Charity No. 218186

**Leonard  
Cheshire  
Disability**

Leonard Cheshire Services in Offers choice & opportunity to people with disabilities.  
A Specialist Unit for the Younger Disabled.  
Residential & Respite Care - Single Rooms  
Day resources - Aromatherapy -  
Reflexology - Physiotherapy - Toning  
Tables.

Activities include: - Arts & Crafts -  
Computers - Cooking - Shopping  
Expeditions - Theatre Outings - Church.  
Further details can be obtained from -  
The Service Manager, Mickley Hall,  
Mickley Lane, Totley, Sheffield S17 4HE.  
Tel. 0114 236 9952  
Fax. 0114 262 0234

The Care at Home Service supports disabled people who wish to remain in their own homes.

We provide flexible care packages from 1 hour to 24 hours meeting individual needs. The service operates throughout Sheffield.

Our service includes: - help with getting up and going to bed, dressing, washing, bathing, shopping, cooking, light household duties.

Further details from: -  
The Care at Home Manager  
Tel. 0114235 1400  
Fax 0114 235 1499

## John Heath & Sons

AN INDEPENDENT FAMILY FUNERAL BUSINESS

*Sometime.....*

You will probably have the responsibility of making funeral arrangements. No one looks forward to this responsibility, but the death of a family member or friend brings with it an obligation that must be met. There are people who can help you meet this responsibility. We have been helping people combine the different aspects of the funeral into a meaningful service for over 125 years.

Please Call Day Or Night

**(0114) 272 2222**

**Head Office - Earsham Street**

Also at Meadowhead, Ecclesall Rd,  
Crookes and Stanington

www.johnheath.co.uk



## CHARISMA BLINDS



For  
Windows  
With Style

**Sheffield Factory Showroom**  
**106 PROSPECT ROAD**  
**HEELEY, SHEFFIELD**

**Sheffield (0114) 258 5496**  
**Rotherham (01709) 512113**

## GARDENING TIPS FOR OCTOBER

**TOTLEY SHOW** On the Wednesday I was a bit worried that the forecast for the week end was for rain which is a real downer for shows. On Thursday weather brightened up a bit. On Friday a drop of rain but it cleared up, Saturday wow!! The clouds disappeared and we had blue skies and the sun came out. As did the people of Totley. Nearly 300 entries were recorded from wobbly jellies and Lego models to lovely pictures and craft work.

The fresh produce section was a little bit down on last year which is understandable considering the anomalies of this summer's weather. My garden was soggy, dry and soggy over the growing period which is not conducive to good quality crops. Having said that there was a fair representation and people were astonished at the size of the leeks. There is friendly rivalry there between myself and Mr Plumridge. He pipped me to the post and won the coveted fresh produce shield. Well done John. The overall winner was a very lively young girl who bounced on to the stage to collect 4 medals. The children's section cup also the best in show cup!! Well done Liz Mill.

The other children did well and the first prize winner in each section received medals as well.

The winners list is listed in this issue of **Totley Independent** (page 12/13).

The show was opened by Rony Robinson who made the point that it nearly didn't happen. The determination to keep it going by Les and Dorothy Firth and a few others made it happen. He was also in good form at the end of the show where he auctioned off the exhibits which were donated by the entrants.

The Escafeld Band was well received and the people were able to sit outside and listen to the music whilst enjoying tea and cakes. The tombola, raffle, and cake stalls were kept busy right up to closing time. The volunteers all worked hard making the show a success and the shifting team moved the tables etc very efficiently at the beginning and at the end of the show.

The old saying "a good time was had by all" is very appropriate.

Talking of volunteers we would welcome anyone who feels they could spare a little time during the build-up and also during the show. Please contact any member of the show team or TRA.

Well done Judges, MC, entrants, children, volunteers, and thank you for keeping the traditional thirty or more year old show going.

By the way my Dundee cake came nowhere this time. As they used to say in my school reports, 'he must do better'. Better get cracking in the garden lots to do getting ready for the next show....

**FLOWERS** Plant spring flowering hardy annuals and biennials as soon as possible. Plant up window boxes, tubs and hanging baskets for winter interest. Lift tender bulbs, corns and tubers such as dahlias and gladioli. Store them in a frost-free place. Check bowls of bulbs planted for winter flowering indoors, do not let them dry out. All tender plants should be brought indoors or placed in cold frames. Tidy up borders and remove all leaves and debris which could harbour slugs, snails etc over the winter.

Continue planting border carnations and pinks in beds if soil and growing conditions allow, or pot up cuttings and place in cold frame ready for planting in March.

Finish planting spring bulbs. You can still take cuttings of fuchsias and geraniums etc if you have a warm greenhouse or propagator. Most cuttings root quite readily at 65F.

Top dress rock and alpine plants with fine grit. Most herbaceous perennials can be lifted and split at this time.

**VEGETABLES** Earth up celery and leeks. Firm in sprouts and stake or earth up. Plant out spring cabbage plants, lift the last of the main crop potatoes, carrots and turnips.

Lift young parsnips for immediate use, leave others in the ground to pull as required. Keep a close eye on vegetables in store and remove any suspect ones.

Plant in the frame a few roots of parsley taken up with plenty of soil, for winter use. Prepare any spare vegetable plots by having a good dig over and apply farmyard manure or well-rotted compost. Leave rough dug so the frost can get at the soil, which is really beneficial.

**TREES, FRUIT and SHRUBS** Young fruit trees and shrubs can be planted at this time. Take hardwood shrub cuttings. These may take quite a time to root, but are well worth the wait.

Hedging plants such as barberry, heathers and lavender, oleaster and rosemary can be planted.

Put fresh grease bands round apple and cherry trees. Cover autumn fruiting strawberry with cloches and watch out for slugs and snails. Gather apples and

pears as they become ready for picking. They should come off the branch into your hand when gently lifted with a slight pressure on the stalk towards the branch. Handle all fruit with care and only store really sound fruit.

Tie into place all raspberry canes and cut them back to encourage fruiting. Prepare ground for planting new raspberry canes, gooseberry and blackcurrant bushes. Prune established blackcurrants.

**GREENHOUSE and INDOOR PLANTS.** Gradually reduce watering on most plants except those which are coming into flower. Give your fuchsias, geraniums, hydrangeas etc. a rest, but keep them just moist. If you want a nice show next spring, sow seeds of annuals like clarkia, poor mans orchid and salpiglossis in warmth. Chrysanthemums should be brought indoors before the petals begin to open or if frost threatens.

If you haven't taken tender plants indoors do so now, or they will be lost to frost or cold wet conditions. Remove all dead or decaying leaves from plants otherwise they will go mouldy and this can spread rapidly across the greenhouse. When the foliage of gloxinias and begonias has withered completely the tubers can be removed from pots and dusted with flowers of sulphur to prevent mould and then stored in a frost-free place.

Do not over heat the greenhouse, but provide slight warmth when necessary to keep the air dry and on the move. This will prevent a damp stagnant atmosphere.

Make sure all your heaters are working well, renewing wicks where necessary and give them a general clean up. This will add to their safety and efficiency.

### LAWNS.

Keep them clean like last month. Rake or scarify to pick up the thatch at ground level so it will also remove a lot of moss, (if you have it of course). Spike and top dress with old potting compost, (grow bags are ideal) or use an autumn/winter fertiliser. You should have a lovely green sward by next spring. Cheerio for now. TOM



# ACTIV physiotherapy

is stronger  
& more flexible

**ACTIV & BRADWAY**  
physiotherapy & Physiotherapy Clinic

have combined...

so our new partnership can offer you a wider  
range of treatments in 3 convenient locations  
... Bradway, Totley and Norton Lees



our wide range of treatments include:

- Repetitive Strain Injuries
- Muscle & Joint Problems
- Women's Health Issues
- Sports Injuries
- Back & Neck Pain
- Acupuncture

Registered with major insurance companies,  
BUPA, Aviva, Westfield Health, AXA

email: [mail@activphysiotherapy.co.uk](mailto:mail@activphysiotherapy.co.uk)  
web: [www.activphysiotherapy.co.uk](http://www.activphysiotherapy.co.uk)

**ACTIV Physiotherapy 0114 235 2727**

## R. S. CERAMIC TILING

56 Mickley lane  
Totley  
Sheffield  
S17 4HE

All ceramic tiling work undertaken, Underfloor Heating

15 years experience, Private and commercial

All work guaranteed, Competitive prices

For a free no obligation quote call

Ron Shilton

Mobile: 07887 990059, Home: 0114 418 1209

Email: [ronshilton@ntlworld.com](mailto:ronshilton@ntlworld.com)

**Slimming**  
WORLD

because you're amazing

If you want to lose weight healthily and with no deprivation or  
humiliation then join your local Slimming World class in Totley,

Mondays at 7pm and at Greenhill on Wednesdays at 10am

Telephone Jo Elsey on 0114 2620523

or 07590 545 253

(Offer cannot be used in conjunction with any other offer)

**1/2**

Price membership  
on production of  
this advert

## Sheaf Citizens Advice Bureau

citizens  
advice  
bureau

- Friendly & accessible advice for all
- Help with managing your day-to-day problems



- Housing
- Money & Debt Issues
- Family Issues
- Employment Rights
- Immigration

### Duke Street

207 Duke Street  
Sheffield  
S2 5QP  
Reception:  
Tel: 0114 275 4578  
Drop-in assessment:  
Open: Tue & Fri 9.30-1

### Chesterfield Road

Woodseats Library  
Sheffield  
S8 0SD  
From July 2012  
Drop-in assessment:  
Open: Mon am, Thu am  
Times TBC

### London Road

416-418 London Road  
Sheffield  
S2 4ND  
Reception:  
Tel: 0114 258 3363  
Drop-in assessment:  
Open: Mon, Wed, Thur 10-1

TELEPHONE ASSESSMENTS: 10.-4 MONDAY-FRIDAY:

Advice Sheffield Adviceline: 08444 113111

Appointments available at main offices and other community venues



Gail Kitchen: 07986473415



Does going away from home mean your cat is sad and unhappy?  
Does a trip to the cattery scare your cat *not to mention your wallet?*

WORRY NO MORE!



MOGGY MAID is on hand to feed, love and provide  
everything your cat needs in the relaxing comfort of its own home.

As we cat-lovers know, unfamiliar sights and smells can stress your cat,  
whereas leaving them in the familiar surroundings of their own home  
carries less worries, for your cat and for you.

If only for a night, weekend, or a month; holiday, Christmas or any time of  
the year, MOGGY MAID is here to help



We promise no mischief allowed!



In a professional manner and with quality service, you can ensure  
individual care and attention, whilst you relax away from home.

We haven't forgotten the rest of the family; mice, rabbits, budgies,  
goldfish, etc will receive care and affection too.



LOCAL FRIENDLY SERVICE

From £5 a day

For more Information, contact Gail Kitchen on:  
07986473415

5 Ullswater Place, Dronfield Woodhouse

# TOTLEY SHOW RESULTS September 2012

## Overall Best in Show :- Emma Caroe



"Best in Show" trophy for her painting of Children's Games. This was inspired by a painting she saw done in 1560 by Brueghel.

## HANDICRAFTS. Best of Class:- Joyce Gilligan

|                         | FIRST          | SECOND                  | THIRD           |
|-------------------------|----------------|-------------------------|-----------------|
| 1. Hand Knitted Garment | Joyce Gilligan | Joyce Gilligan          | Bet Warwick     |
| 2. Decorative Cushion   | Hannah Corby   | Joyce Gilligan          | Joyce Gilligan  |
| 3. Soft Toys            | Joyce Gilligan | Audrey Burgin           | Joyce Gilligan  |
| 4. Tapestry             | John Elliot    | Pat Blackwell           | Anne Rose       |
| 5. Cross Stitch         | Anne Rose      | Maureen Crookes         | Hannah Corby    |
| 6. Collage, any medium  | Hannah Corby   | Christine Steel         | Christine Steel |
| 7. Greeting Cards       | Jo Corrie      | Catherine Wrigglesworth | Hannah Corby    |
| 8.Any Medium            | Angela Waite   | Sally Measures          | Anne Rose       |

## DOMESTIC SECTION. Best of Class Valerie Loft

|                      | FIRST           | SECOND           | THIRD            |
|----------------------|-----------------|------------------|------------------|
| 8. Victoria Sandwich | Charli Buxton   | Linda Liddle     | Clare Rose       |
| 9. Dundee Cake       | Claire Rose     | Sally Goldsmith  | Barbara O'Connor |
| 10 Carrot Cake       | Valerie Loft    | Barbara O'Connor | Sandra Doyle     |
| 11. 5 Biscuits.      | Chris Scott     | Sandra Doyle     | Barbara O'Connor |
| 12. 3 Scones         | Dorothy Firth   | Ann Scott        | Sally Goldsmith  |
| 13. Apple Pie        |                 |                  |                  |
| 14. Jam              | Duncan Froggatt | P.A.Hill         | Duncan Froggatt  |
| 15. Lemon Curd       | Chris Scott     | Sharon Goldie    | Christine Steel  |
| 16. Marmalade        | Simon Gray      |                  |                  |
| 17. Chutney          | Duncan Froggatt | Kathryn Deakin   | Jo Connelly      |

## FLORAL SECTION. Best of Class Pauline Perkinson

|  | FIRST             | SECOND                | THIRD             |
|--|-------------------|-----------------------|-------------------|
| 19. Floral arrangement- Jubilee 18"high, 10"*10" | Mary Helme        | Sylvia Hammond        | Sylvia Hammond    |
| 20 3 cut Flowers                                 | Pauline Perkinson | Pauline Perkinson     | Pauline Perkinson |
| 21. Cut Flowers 3                                | Avril Critchley   | Maureen Crookes       |                   |
| 22. Flowering in a pot                           | Lindsey Howe      | Pauline Wrigglesworth |                   |

## FRESH PRODUCE. Best of Class:- J. Plumridge

|                             | FIRST              | SECOND         | THIRD          |
|-----------------------------|--------------------|----------------|----------------|
| 23. 4 Eating Apples         | Danny O'Connor     | Jennifer Burns | Tom Steel      |
| 24. 4 Cooking Apples        | Jennifer Burns     | Tom Steel      | Danny O'Connor |
| 25. 8 Blackberries          | Harry Liddle       |                |                |
| 26. 4 Matching Potatoes     | Richard Farnsworth | Mary Helme     |                |
| 27. 3 Matching Leeks        | John Plumridge     | Tom Steel      |                |
| 28. 3 Matching Onions       | Charlotte Freeman  |                |                |
| 29. 5 Matching Runner Beans | Chris Caroe        | Tom Steel      | Mark White     |



|                             |                    |                    |                    |
|-----------------------------|--------------------|--------------------|--------------------|
| 30. 5 Matching Runner Beans | Tom Steel          | Richard Farnsworth | Tom Steel          |
| 31. 1 Cucumber .            | Lindsey Howe       | Tom Steel          | Tom Steel          |
| 32. 3 Courgettes.           | Chris Caroe        | Kathryn Deakin     | Mark White         |
| 33. . Largest Onion         |                    |                    |                    |
| 34. Heaviest Marrow         | John Plumridge     | Tom Steel          | Charlotte Freeman  |
| 35. Longest Runner Bean     | Chris Caroe        | John Hammond       | John Elliot        |
| 36. 3, Eggs                 | Richard Farnsworth | Rebecca Newman     | Richard Farnsworth |

#### **ART. Best of Class :- A.Hart**

|                              | <b>FIRST</b>      | <b>SECOND</b>   | <b>THIRD</b>      |
|------------------------------|-------------------|-----------------|-------------------|
| 37. Oil Acrylic Painting     | Maralyn Staples   | John Wells      | Lionel Boniface   |
| 38. Water Colour             | Kate Caroe        | Joan Sutton     | Christine Shimell |
| 39. Pen & Ink Sketch         | John Hammond      |                 |                   |
| 40. Pencil Sketch            | Christine Shimell | Lionel Boniface | Lionel Boniface   |
| 41. Open Multi Media         | Anne Hart         | Matthew Rush    | Maralyn Staples   |
| 44. Reclaimed Art, Sculpture | Barry Mettam      |                 |                   |
| 45. Sculpture any medium     | Hannah Corby      | Ray Sables      |                   |

#### **PHOTOGRAPHY. Best of Class:- Tom Steel**

|                           | <b>FIRST</b>     | <b>SECOND</b>  | <b>THIRD</b>    |
|---------------------------|------------------|----------------|-----------------|
| 46. Monochrome any colour | Barbara O'Connor | Chris Blanksby | Avril Critchley |
| 46. Creative              | Tom Steel        | Les Firth      | Avril Critchley |
| 48. Still Life            | Tom Steel        | John Hammond   | John Hammond    |
| 49. Landscape             | Tom Steel        | John Hammond   | Les Firth       |

#### **WOODWORK Best of Class:- Andrew Rose**

|                     | <b>FIRST</b>  | <b>SECOND</b> | <b>THIRD</b> |
|---------------------|---------------|---------------|--------------|
| 50. Wood Turning    | Andrew Rose   | Andrew Rose   | Andrew Rose  |
| 51. Small Furniture | Chris Caroe   |               |              |
| 52. Wood Sculpture  | M. Loft       |               |              |
| 52A. Marquetry      | Pat Blackwell |               |              |

#### **CHILDRENS SECTION. Best in Class:-Up to 8 Liz Mill 8 plus- Emma Caroe**

|                               | <b>FIRST</b> | <b>SECOND</b>       | <b>THIRD</b>   |
|-------------------------------|--------------|---------------------|----------------|
| 53. Animal Veg. Up to 7yrs.   | Liz Mill     | Poppy Taylor        | David Caroe    |
| 54. Miniature Garden 8 to 12  |              |                     |                |
| 55. Computer Art, up to 8yrs. |              |                     |                |
| 56. Computer Art 9 to 14      | Liz Mill     |                     |                |
| 57. 3 Decorative Buns         | Liz Mill     | Oliver Scott        | Keira Scott    |
| 58. Wobbly Wobbly Jelly       | Liz Mill     | Liz Mill            | Alice Connelly |
| 59. Flowers in an Egg Cup     | Liz Mill     | Isabelle Stackhouse | Emma Caroe     |
| 60. Painting under 5yrs.      | James Caroe  | Thea Nuttall        | Jemimah Deakin |
| 61. Painting 6 to 11          | Emma Caroe   | Hannah Birch        | Edward Farrow  |
| 62. Painting 12 to 14         |              |                     |                |
| 63. Lego Model 5 to 8 yrs.    | Ben Marks    | Douggie Nuttall     | James Buxton   |
| 64. Lego Model 9 to 14 yrs.   | Emma Caroe   | Michael Lehane      | Daniel Farrow  |
| 65. Colour Photo              | Liz Mill     | Grace Kirk          | Liz Mill       |
| 66. Open any Medium           | Emma Caroe   | Liz Mill            | David Caroe    |

All the children who came first in their class received a Medal.

We thank 93 exhibitors who entered 232 entries for all to see. Many thanks to our Class Sponsors:-The Cross Scythes Inn, Totley Rise Methodist Church, PHFS Wealth Management, Tom and Christine Steel, Gill Warburton, Ian Clarke and Mary Hanson.

We also are very thankful to John Smith for providing the transport to move tables from the Scout hut and Edwin Pocock's farm along with Mike Hollindale and the Totley Scouts for their help in the moves.

Finally we thank Totley Primary School and Staff for the use of the school premises and Alan Miller the Building Supervisor for his help and assistance in making things happen.

Thanks also to our local shops for their generous raffle prizes:-Iron Parlour, Looby Loo, Synergy, Mellows, Totley Co-op, Mr.Singh of Totley Pharmacy, Baslow Road, Totley Rise Newsagents, Totley Tails and Whiskers, Totley Flowers and Gifts, Abbey Frier, Luxury Gap, Totley Deli, and Martin Scriven.

A very big thank you to all our helpers who make the Show possible and thank you to all who came along to support the show.

See you all next year.

*Les and Dorothy Firth*

## Dore Totley and Bradway South Yorkshire Police SNT

An update from your local Safer Neighbourhood Team. Police Officers and Police Community Support Officers have been working alongside partnering agencies such as VOSA and Environmental Services to target illegal Scrap Metal collection vans, with continued success for imposing restrictions on operators due to improper waste licenses, and/or vehicle paperwork. Vehicles being identified as not being roadworthy or other miscellaneous and/or substantive offences.



Local SYP SNT Police Officers (from right) Tim Beesley, Tony Cartwright, with PCSOs Gary Hizam and Katie Gavin work alongside the three Derbyshire Police Officers to Combat Auto Crime in local beauty Hot Spots.

Following an increase in auto crime at local beauty spots, a cross boarder Operation with Derbyshire Police has been conducted targeting Burbage Edge, Surprise View, Fox House and Dennis Knowle car parks. As a result there has been a reduction in reported offences.

Local SYP SNT Police Officers, from right, Tim Beesley, Tony Cartwright, with PCSOs Gary Hizam and Katie Gavin work alongside the three Derbyshire Police Officers to Combat Auto Crime in local beauty Hot Spots.

If you would like to receive the newsletter from the Police for your local area please email your details to [katie.gavin@southyorks.pnn.police.uk](mailto:katie.gavin@southyorks.pnn.police.uk). Details should include: Name, Address and the relevant email to send the Newsletter to.

## "We don't make owt anymore....."

Not true, perhaps, but a regular refrain since 1980 when I came to live and work in Sheffield. Now, however, at long last there are signs that the tide has begun to turn.

In September 2013 **Sheffield University Technical College** will open its doors to its first 300 students (14 and 16yr. olds). The following year numbers will rise to 600 with students specializing in manufacturing, engineering, digital and creative skills and working on real-life projects set by business. The working day will be longer and the school year will be 40 weeks instead 38, thereby providing nearly a whole year's extra tuition time in their four years' of study.

So at long last our engineering heritage will get the stimulus it deserves. **S.U.T.C.** is amongst the first of 18 similar colleges to be rolled out across the country. Cllr. Colin Ross, Deputy Prime Minister Nick Clegg and former Education Minister Kenneth Baker have worked hard to secure the college for Sheffield. The new college has direct links with Sheffield Hallam University and the team behind the project also includes Sheffield University and Sheffield College, as well as the city's Chamber of Commerce.....  
Keith Hill (Ward Cllr.)

## Harvest Social

There will be a Harvest Social on Saturday 6th October at 7.30pm at Dore and Totley United Reformed Church when we shall be having a pie and pea supper as well as a quiz. The cost will be £6 with proceeds to The Lost Chord Charity. Please ring 236 2403 to book your tickets.

Jeanne Clark

## Garden Waste Collection

I have spoken to Veolia about the collection of garden waste and have registered with them to say that I would be interested in having a wheelie bin for garden waste next year.

They haven't decided whether to introduce the service and are going to make the decision based on the level of interest raised by households, although they have only publicised this by a link on the garden bin page of their website: <http://bit.ly/SsZ8wE>. The more people in an area who request the service the more likely we will be to get it.

The current annual charge for the garden bin service is £57.60.

If you would be interested in having a wheelie bin for garden waste next year, call 273 4567 or e-mail [sheffieldenquiries@veolia.co.uk](mailto:sheffieldenquiries@veolia.co.uk)

I would be grateful if you could publicise this wider to increase our chances of getting this service.

Helen Matthews

## COME AND CELEBRATE CHRISTMAS WITH US AT THE CROSS SCYTHES HOTEL.

3 COURSE CHRISTMAS  
PARTY MENU  
£19.95 PER HEAD.

VISIT OUR WEBSITE  
[WWW.CROSS-SCYTHES.COM](http://WWW.CROSS-SCYTHES.COM)

NOW TAKING BOOKINGS FOR  
CHRISTMAS DAY LUNCH

FOR ANY ENQUIRIES PLEASE CALL  
0114 2360204



# SEE THE DIFFERENCE!



- **COMPREHENSIVE EYE EXAMINATIONS**  
including special tests for glaucoma, colour vision, dyslexia & diabetes
- **CONTACT LENS CONSULTATIONS**  
free contact lens trials and monthly direct debit payment schemes
- **PRESCRIPTION SUNGLASSES**
- **LEISURE SPECTACLES**  
for computer work, fishing, swimming and safety wear
- **ACCESSORIES**  
ready readers, chains and magnifiers

**LENSES BY SEIKO**  
In all non-budget spectacles

**TOTLEY**  
63 Baslow Road  
236 4485

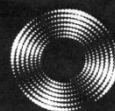
**ABBEYDALE**  
634 Abbeydale Road  
255 6554

For more help and information please phone or call into the practice of your choice  
For a full list of our practices visit

**WWW.MKO.CO.UK**

Terms and conditions apply.

# Entrust Electrical



For all your electrical requirements in or outside the home you can trust **Entrust** to do it right!

- ✓ Full or Partial House Rewiring
- ✓ Additional Sockets, Switches, etc
- ✓ Energy Efficiency Enhancements
- ✓ Contemporary & Classical Refurbishments
- ✓ General Electrical Maintenance & Repair
- ✓ Homebuyer Electrical Safety Surveys
- ✓ Telephone and Computer Data Points
- ✓ Garden, Pond & Other Outdoor Electrics
- ✓ Security Lighting & CCTV



**City & Guilds**  
Qualified

**(0114) 2352084**  
**07935 250814**

[www.entrustelectrical.co.uk](http://www.entrustelectrical.co.uk)

Old Hay Close, Dore, S17 3GP



## Shepley Spitfire

56 Mickley Lane, Totley Sheffield - S17 4HE 0114 236 0298

2 meals for **£8.95**

Now serving Fresh Local Veg.

Served everyday 11am until 9pm

Quality Cask Ales

**The Home of Big Fish Friday!!**

Beer battered Cod fillets, Chips and Peas Two for **£9.99**

Eat in or Takeaway

FOR THOSE OF YOU WITH A LITTLE APPETITE

WE HAVE INTRODUCED A SMALL

PLATES MENU FROM **£2.99**

ALL DAY EVERYDAY

Quiz night Sundays 9pm

Poker night Mondays 9pm

Pool night Tuesdays 9pm

Last Saturday of the month DJ Theme night

Sky Sports & ESPN showing live games

## "need *help* in your garden?"

**"right plant, wrong place? Stuck, don't know where to start?"**

We can offer a Design Consultancy without the designer price-tag.

**"Selling your House?"**

We can tidy your garden, also with use of planted containers/hanging baskets, make your house more desirable to prospective buyers.

## Season by Season

- Regular Lawn Maintenance.
- Hedge Cutting.
- Small Tree/ Shrub pruning.
- Beds/Borders tidied, planted.
- Planted Containers.
- Green waste removed



the **Abbeydale** gardeners...  
...we can help you.

Formerly of  
The Abbeydale Garden Centre

Kevin Hunter 07818 20 12 42  
Mark Naylor 07739 75 23 19

[www.theabbeydalegardeners.co.uk](http://www.theabbeydalegardeners.co.uk)

## ALLOTMENT BARBEQUE

Alan and Margaret from the Mickley Lane allotments thought it would be a nice idea for allotment people to get together for a Barbeque.

This was set for the 2nd September on site, it was a lovely evening warm and sunny, there must have been approx 40 people turned up for what was a very enjoyable event.



Families came with children. People who did not know one another due to shift patterns at work, engaged in discussions about plots and what people were doing. Advice on growing different vegetables' and fruit was given by the more experienced allotment workers.

There was plenty of food once the Barbeques were fired up and drink was kept cool in a wheelbarrow. Allotment people are very inventive and use what they can find.

We were entertained by Sally who played her accordion very nicely. Thank you Sally.

I should just like to say a big thank you to Alan and Margaret for arranging this event. It brought people together that had never met before for a very enjoyable evening. I think that it will become a regular event in the future.

My take on this is that if the community in different areas pulls together a lot can be achieved and enjoyed.

Marlene Marshall. Mickley Lane Allotments.

## Issue No 356

### Re Picture on Front of Totley Independent – Haymaking in Totley

This would have been better described as Bringing in the Sheaves. Anyone living in the countryside would note that sheaves of corn (probably oats) are being harvested.

In fact, the sheaves are tied and the stooks (a collection of tied sheaves stood for drying) can be seen at the field. Totley was a farmers' community in those days. Haymaking would have finished by the end of July.

J W Abson

## Music Hall.

Vulcan Varieties present "A Night at the Music Hall" at the Village Hall, Coal Aston on Sat. 20th October at 7.30pm.

Previous patrons have been treated to various themes, but this year, we chose to celebrate the Olympics, even reaching back to the 1908 Games! There is also a song that was specially written for the Games at that time.

Also included are four other songs that are probably new to the unsuspecting public!

Tickets £7.50, Concessions £6.50

Available from Chris Launders ph 243 1339

## Farming Scene

### Sheep with Athletes Foot?

What a summer we have had! Dry sunny weather has been at a premium, rarely lasting more than 2 or 3 days. This has created major problems for all farmers, whether growing crops or keeping livestock. The cereal harvest has been delayed by 2 weeks but is nearly finished now. All crops need plenty of sunshine to enable them to grow vigorously and to ripen. This year's dull weather has reduced the quality and quantity of many crops, be it fruit or cereals.

Cereal yields have been down and driven by this, reducing worldwide production, for which prices have risen. This has pushed up cereal based feed costs to livestock farmers and will eventually feed through to consumers in higher prices for bread and other foods based on cereals. Cattle and sheep keepers face a double whammy as poor quality late harvested hay and silage will force them to use more of this year's high priced cereal feed to supply the right amount of protein and energy to their stock. Flies, wasps and bees will also have suffered making me wonder how many will survive the winter if it is really harsh. I suspect butterflies could be in short supply next year as well.

Our lambs have not done very well this year. The last thing they like is cold, driving rain on their backs and wet muddy ground under their feet. These continuously wet conditions underfoot softens their hooves and allows fungal spores to invade the skin. These create what we call, "scald" a painful inflamed area between the hooves that causes the sheep to limp or hop along. If not treated quickly this can cause a serious infection in the foot leading to severe swelling. Scald can be cured by spraying on a topical application of a terramycin based antibiotic. Intramuscular injections of Oxytretrin based antibiotic are needed to care swollen foot cases.

I dread to think how much we have spent on these 2 items this summer. It must run into £200 or £300. Fortunately, there is a big demand for Poll Dorset Shearlings at the moment so we have been able to sell our Dorset inlamb shearlings for very good prices. This is in contrast to the rams where it has become very difficult to sell them at anything like the proper price. Some I think will actually end up being sold for meat and finish up on a kebab skewer!"

The sheep showing season is now over so we can relax a bit more. No more washing sheep for showing only for them to mess themselves up prior to the judging! We have done quite well this year, lots of second prices but the firsts seem to have alluded us this year. I think it is the judges getting it wrong, rather than the sheep not being top spec!

The heavy downpours over the last few weeks have overflowed the ditches on the farm as well as causing rivers of water to run off the fields. A lot of this water has run down the farm tracks, ripping up the store surface carrying it away and leaving rough uneven ruts behind it. Tracks that ended the winter in good repair have been damaged by our brilliant summer weather!

Looking ahead lambing starts again the third week of November, just as our nativities wind up once again. The year seems to have gone very quickly, perhaps it's because we are still waiting for summer to arrive. Edwin Pocock



## HOLMESFIELD CHURCH WALKING GROUP

### STANTON MOOR WALK

On Wednesday 3rd October at 10am Robin Greetham will lead a walk starting at the Red Lion pub in Birchover. We will walk to the tower on Stanton Moor then the 9 ladies stone circle then the Cork stone. Lunch (optional) will be at the pub.

The cost of the walk is £3 and the proceeds will go to Holmesfield Church.

If you would like to come just turn up on the day. The walk is approximately 4 miles long. Any queries phone Robin on 01246 412767.

## Tramps!

After a hard day on the road, a tramp needed to go to sleep.

He went to a nearby park, and covered himself as best he could. Only a few minutes later, a man approached him and asked if he could tell him the time. The tramp looked at him, but not wanting an argument, then looked at his watch and told the man that it was 11.30. The man said "Thank you", and walked off. In the next few minutes the whole thing was repeated four times! The tramp was really annoyed, and decided he didn't want to be disturbed again, so he got out a marker pen and a scrap of cardboard and wrote on it: "I CANNOT TELL THE TIME".

Hoping that he would not be bothered again, he settled down to sleep. After a few more minutes, he felt a tap on his shoulder, and screamed, "WHAT DO YOU WANT?" A man was looking down at him and said, "It's ten minutes to twelve, mate!"

Tony Reynolds.



## STREETS AHEAD

Streets Ahead is the huge city-wide project which will improve the majority of the city's streets, pavements and street-scene over the next 5 years, and the on-going Public Finance Initiative (PFI).

There is more information about the Streets Ahead project on the Sheffield City Council website - you can find out when works will happen on your street by accessing the schedule. The schedule is an interactive map on the website which you can get to by typing <http://bit.ly/RS3B0T> into your web browser.

Broadly, the schedule shows Baslow Road and Mickley Lane will be addressed in April-Jun 2013, roads north of Baslow Road in 2015 and south of Baslow Road at the end of the schedule in 2017.

## School Crossing Officer on Baslow Road



Sheffield City Council urgently require a School Crossing Officer to ensure the safety of Totley Primary School children as they cross Baslow Road

If you are interesting in fulfilling the role, are available between 8.30am-9.00am and 3.00pm-3.40pm (Monday -Friday) please contact Chris Stewart (Headteacher) on 0114 2364482 for further details.

Full training and uniform will be provided

## PUZZLE CORNER

Four solutions to Difference Arrangements

| 1     | 2     | 3     | 3     |
|-------|-------|-------|-------|
| 4 3   | 5 3   | 5 2   | 4 1   |
| 6 2 5 | 6 1 4 | 1 6 4 | 2 6 5 |

Don Ashford

Mark and Sally Fletcher invite  
you to

## The Grouse Inn

### Longshaw

Sheffield S11 7TZ

Meal times:-

**Mondays 12.00 to 2.30pm**

**Tuesdays to Friday's 12.00 to  
2.30pm and**

**6-30pm to 9-30 pm**

**Saturdays 12.00 to 3.00pm  
and**

**6.30pm. to 9.00pm (drinks -  
open all day)**

**Sundays 12.00 to 9.00pm**

**Phone 01433 630 423**

## R Rose & Co

Chartered Accountants & Business Advisors

Specialists at  
looking after the affairs  
of small businesses.

For a **FREE** initial consultation  
please contact Roger Rose FCA on  
**0114 281 2331**



From business start-ups and general accounting, to support  
and advice in business development and strategy,  
we offer a range of services in our personal one-to-one service.  
To find out more please call 0114 281 2331.

213 Derbyshire Lane, Norton Lees, Sheffield S8 8SA  
Email: [info@r-rose.co.uk](mailto:info@r-rose.co.uk)

*One man went to mow...  
...but his mower wouldn't go!*

Now is the time to call

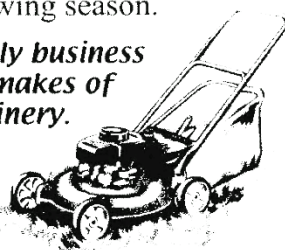
## MOWER MENDER

and be ready for the forthcoming  
growing season.

**A local friendly business  
servicing all makes of  
garden machinery.**

Phone:  
0114 236 6958

Mobile:  
0781 2211149



**Blade Sharpening and  
Collections & Delivery Service Available**

## **DRONFIELD LANDSCAPES**

### **Logs and wood chippings For Sale**

**Ring for details**

**Chris 0114 274 6158**

**Mobile 07976 072785**

**Richard**

**Mobile 07789 497104**

## **HEARING AIDS**

**MAURICE NAYLOR FBSHAA RHAD is your local hearing aid specialist and at your request will test your hearing in your own home, free of charge, and if needed you can try a custom made aid for four weeks without obligation to purchase.**

**Tel : 237 4817**

**In the ear digital from £495**

## **TRISTAN SWAIN**

**Landscaping & Maintenance**

**Established 20 years**

**Fully insured**

**GARDEN RESTORATION & MAINTENANCE**

Unit C4

Sheaf Bank Business Park

Prospect Road

Heeley

Sheffield S2 3EN

Tel/Fax: 0114 255 4689

Mobile: 07831 802539



yogaq@hotmail.co.uk  
0114 236 9943  
07708 996984

**YOGA CLASSES in TOTLEY & RANMOOR**

Rachel Quinn BWY Dip



**THE COMPLETE BUILDING SERVICE**

**New Build & Extension Specialists**

**From Design to Completion**

**Full Project Management  
House Building  
Extensions**

**Find  
us in  
Yell.com**

**New Roofs/Tile/Stone  
Stonework Specialists  
Loft Conversations**

Established for 25 years with over 90%  
of our work coming from recommendations, to  
find out why call:

**0114 2353314**

**Mobile 07973 908187**

**www.mwoolhousebuilders.com**



Christchurch Cottage,  
Townhead Road,  
Dore, Sheffield  
S17 3GA



## **Horizon Electrical**

*Faults, Rewires, Sockets, Lights,  
Cooker Points, Electrical Showers,  
Phone Points, Security Lights*

**No job too small**

*Fully qualified with friendly advice*

**Ring Totley 236 4364 or**

**Mobile 07772 483154**



## **BRADWAY INSTALLATIONS**

**Kitchens, Bathrooms.....and everything in  
between**

- **Complete Kitchens - Installation or supply and installation**
- **Kitchen Refits - Replacement worktops/sink/hob etc. Worktop / cabinet repairs**
- **Bathrooms - Cloakrooms - Domestic plumbing - Tiling Laminate / Vinyl flooring**

**All work undertaken is fully insured and guaranteed**

**Ring Peter - 0114 236 5995**

**Mobile - 07766 411355**

# All Saints Church

Totley Hall Lane

---

## SERVICES

Sunday 7th      10am Holy Communion  
                    6.30pm Holy Communion

Wednesday 10th 10m Holy Communion

Sunday 14th    10am Joint Service with the  
Churches of S17 in King Ecgbert's School Hall.  
                    6.30pm Holy Communion

Wednesday 17th 10am Holy Communion

Sunday 21st    10am Holy Communion  
                    6.30pm Evening Prayer

Wednesday 24th 10am Holy Communion

Sunday 28th    10am All Ages All Together  
                    6.30pm Holy Communion

Wednesday 31st 10am Holy Communion



## DIVINE EDUCATION

For me our Aid trip started badly. I damaged my back lifting a large box containing 40 shoe boxes filled with gifts for children, into the back of "Sidney" our "mechanical Elephant" (25 year old Bedford MK- Ex Military Truck), sharing the driving with Paul.

The lorry had done 17 trips to and from Bosnia, this was to be the last.....

Our destination, a small town – Ilijas about 10k outside of Sarajevo – Bosnian Capital. We were carrying a 5 ½ ton variety of humanitarian aid, food, clothing/shoes, medical supplies/hygiene, Baby buggies, sugar, flour, cooking oil etc, etc....and a Turkey!!

Trouble, in the form of an oil leak, started to develop soon after we got off the ferry at Ostend and became an increasing problem for almost our entire journey.....

At Stuttgart (800 miles from Sheffield and 800 to go) oil was getting on the clutch, giving us slippage even on low gradients, when our speed was down to 10 mph. At each fuel stop, we topped up with oil and bought extra cans of it, stacked around the co driver in the cab. At each stop a great pool of oil would gather under the lorry, as it dripped off the lower part of the engine and bodywork, much to the

amusement of fellow truckers and bystanders, who fell about laughing when they heard where we were headed for and we pressed on!!

I said to Paul, "how will we get over the mountains in Bosnia?", eventually arriving in Zagreb – Croatian Capital. After our overnight stay we checked and topped up the oil, then travelled 4 hours down a freezing motorway alongside the Serbian border, until we were both so frozen (no heater) that we had to stop and get hot drinks to thaw out.

Going back to the lorry we noticed that no oil had dripped out onto the snow beneath? Very puzzled , we immediately opened the engine side covers, to discover that the filter cap for the oil was missing!! It was presumably lost in Zagreb when we checked the oil level. We carried on without it, arriving at the ferry crossing over the river Sava. Staying in the totally ice encrusted port overnight, in a tower block, with all the windows on one side of the building blown out. We slept solidly for 12 hours in that icebox – totally exhausted.

Next morning again no oil leak underneath? We checked the engine oil and made a great discovery, the oil filter cap which we thought we had lost, had fallen to the side of the engine, so we put it back on and drove off!! Later pondering the events, it occurred to me that the oil filter has a dual purpose . As well as providing an opening into the engine to fill with oil, it also enables pressure to build up within the engine, which in turn forces oil from the sump in the bottom of the engine, to lubricate the moving parts at the top When we accidentally left the cap off, the oil remained in the sump and didn't spray out under pressure – onto the clutch or drip onto the ground when we parked up. "Eureka" the solution to get us over the Bosnian mountains.

## THANK YOU, GOD – DIVINE EDUCATION

Climbing mountains we took off the cap, crawled up at 10 mph, at the summit we put the cap back on and lubricated the top end of the engine on the way down... and that is how we reached Ilijas ...and the turkey got cooked on Christmas day 1997.

If the lorry hadn't been a military vehicle, an ordinary engine would have blown up without top end lubrication and under load!!

Frank Donnelly



## TOTLEY & DISTRICT DIARY

|                   |   |
|-------------------|---|
| <b>MONDAYS</b>    | <b>COFFEE MORNING</b> , All Saints' Church Hall, 10am-noon<br><b>TAI-CHI</b> , United Reformed Church, Totley Brook Road, 11.30am-12.30pm<br><b>RAINBOWS and GUIDES</b> , All Saints' Church Hall, 5.45pm-9pm<br><b>SLIMMING WORLD</b> , United Reformed Church Hall, 7pm, Jo Elsey: 262 0523 or 07590 545253   |
| <b>TUESDAYS</b>   | <b>COFFEE MORNING</b> , Totley Rise Methodist Church Hall, 10am-noon<br><b>KEEP FIT &amp; COFFEE</b> , For the not-so-young, Bannerdale Centre, Carterknowle Road, 10.15am, Phone: 258 5364<br><b>WOODSEATS ADVICE CENTRE</b> , Drop in service, free, impartial, and confidential. TR Methodist Church, 10am-noon<br><b>CRAFT GROUP</b> , Totley Library, 2pm  |
| <b>WEDNESDAYS</b> | <b>PILATES CLASSES</b> , Dore Old School, 9.00-10.00 and 10.15-11.15. Contact Caroline - Tel: 0781 722 0324, email caroline1north@btinternet.com, www.pilatescarolinenorth.co.uk<br><b>COFFEE in the LIBRARY</b> , 10am-11.30am<br><b>TODDLER GROUP</b> , 10am-11.30am, All Saints' Church Hall. Details tel. Andy Holmes 0114 236 2088<br><b>HEALTH WALKS</b> , 10.30am, Totley Library foyer. Phone Tina, The Health Walk Ranger: 0114 203 9335<br><b>MODERN SEQUENCE DANCING</b> , All Saints Church Hall, 8pm-10pm  |
| <b>THURSDAYS</b>  | <b>BELROBICS</b> , United Reformed Church, 9.15-10am, email: jenny@belrobics.co.uk or telephone: 07816 850132.<br><b>NCT COFFEE GROUP FOR DORE TOTLEY &amp; BRADWAY</b> , 10am-noon, For mums & babies/toddlers, meeting in various locations, Phone Lucy Street 07837 000405 or email: lucy@streetr.plus.com for further details<br><b>CHAIROBICS</b> , Heatherfield Club, 1.15pm<br><b>PUSHCHAIR CLUB</b> , Totley Rise Methodist Church Hall. 1.30pm-3pm. Tel. 236 3157 for further details<br><b>PILATES CLASS</b> , United Reformed Church, Totley Brook Road, 6.15pm-7.30pm <b>also new class 1.30pm to 2.30pm</b> , Phone Emer Coffey 07792 422909 |
| <b>FRIDAYS</b>    | <b>PILATES</b> , The Old School, Dore, 9.15-10.15 & 10.45-11.45am. Phone Teresa Tinklin 07906 312372  |
| <b>SATURDAYS</b>  | <b>MODERN SEQUENCE DANCING</b> , All Saints Church Hall 2nd and 4th Saturdays 8pm-10pm  |

### OCTOBER

**WED 3rd - SAT 6th STEEL CITY BEER & CIDER FEESTIVAL**, Ponds Forge, Wed 5-11pm else 12noon-11pm  
**SUN 7th CASTLETON FARMERS MARKET**, the Village Hall, 10am-3pm  
**SUN 7th MINIATURE TRAIN RIDES**, Abbeydale Road South, First train 1pm - last train 5pm (weather permitting) www.sheffieldsmee.co.uk  
**TUES 16th TOTLEY TOWNSWOMEN'S GUILD**, 'Art of pressed flowers', Joan Newton, Totley Rise Methodist Church Hall, 10am  
**SAT 20th AUTUMN FAYRE**, Cheshire Homes, 2-4pm  
**MON 22nd AGM, Transport 17, The Cross Scythes, 7.15pm** Please note the change of venue.  
**WED 24th TOTLEY HISTORY GROUP**, Totley Library, 7.30pm, Research Meeting, all welcome and bring along information/research you may have.  
**THU 25th SHEFFIELD FARMERS MARKET**, 8.30am-5pm, Fargate  
**SUN 21st MINIATURE TRAIN RIDES**, Abbeydale Road South, First train 1pm - last train 5pm (weather permitting) www.sheffieldsmee.co.uk  
**FRI 26th - SUN 30th AUTUMN CRAFT MARKET/FRIGHT NIGHT** Fargate

### NOVEMBER

**SUN 4th CASTLETON FARMERS MARKET**, the Village Hall, 10am-3pm  
**TUE 6th FRIENDS OF GILLFIELD WOOD**, Barry Wright on his botanical survey work in Gillfield Wood & other areas, 7pm, Library. All are welcome.  
**Fri 16th - SUN 18th CITY LIGHTS CRAFT MARKET** Fargate  
**TUES 20th TOTLEY TOWNSWOMEN'S GUILD**, 'Remember When - Amami night', Joanne Brunt, Totley Rise Methodist Church Hall, 10am  
**THU 22nd SHEFFIELD FARMERS MARKET**, 8.30am-5pm, Fargate  
**SAT 24th CHRISTMAS FAYRE**, 10am Transport 17 offices, 172 Baslow Rd.  
**WED 28th TOTLEY HISTORY GROUP**, Totley Library, 7.30pm, Suzanne Bingham - Puss, Pots and Privies - Victorian Life in Sheffield, all welcome

### TOTLEY INDEPENDENT FOR NOVEMBER

The next issue of the Totley Independent will be available from the usual distribution points on

**SATURDAY 3rd November**

**COPY CLOSE DATE for this issue**

*will be*

**SATURDAY 20th October**

Editor: **Ian Clarke**

Tel. No: **235 2526** or Email:

**editor@totleyindependent.co.uk**

Advertising & Distribution:

**John Perkinson**

Tel. No: **236 1601** or Email:-

**advertising@totleyindependent.co.uk**

Items for publication may be left or sent to:

**2, Main Avenue, Totley, Sheffield, S17 4FG**

[www.totleyindependent.co.uk](http://www.totleyindependent.co.uk)

**PRINTED by STARPRINT**



- Central Heating,
- Domestic Plumbing,
- Glazing, Double Glazing and Glass,
- House Maintenance,
- UPVC and Wood Windows & Doors



**Mini Digger & Driver, Muck Shifts, Footings Etc.**

**starprint**

130 GSM GLOSS  
FULL COLOUR  
DOUBLE SIDED  
**5000  
A5 LEAFLETS  
£99.95**

FULL COLOUR  
SINGLE SIDED  
**250  
BUSINESS CARDS  
£19.95** + VAT

**BANNERS  
AVAILABLE FROM  
£29.95** + VAT

**Full design  
service  
available!**

**Tel: 0114 258 0707**

Email: [mail@starprint.co.uk](mailto:mail@starprint.co.uk)  
601 Abbeydale Road, Sheffield, S17 1TA