

TOTLEY INDEPENDENT

PUBLISHED CONTINUOUSLY SINCE 1977

www.totleyindependent.co.uk

SEPTEMBER 2012

No. 356

20p.



Haymaking in Totley

Around this time of year in 1950. Bank View Farm on Totley Bents, hay-making before the weather breaks. From the left@ Alan Otter, Ken Turner, Morgan Pearson, John Perkinson, on the lorry Frank Hughes. Brian Edwards

TOTLEY SHOW 2012

Saturday 15th September

Totley Primary School

Show schedule

8.45am - 10.45am Entrants registration

11am - 12.30pm Judging & awarding of Certificates

1.30pm Doors open to the public (Entrance 50p, children 20p)

1.45pm Official opening by Rony Robinson

3pm Prize giving and Auction of donated items

4pm Conclusion



Entry forms available at Totley Library, Totley Post Office, The Ironing Parlour and **Totley Independent** website at <http://bit.ly/OYjX2I> or at the door on the day.

Within the Photographic section we have introduced some different sections to try and create interesting aspects of photography, the new sections are:-

Monochrome, that is any photograph in a single colour/hue.

Creative, use your imagination skills to present a photograph.

Still Life, every day inanimate objects.

Landscape, we hope to see some wonderful views.

PTO

Totley Show – continued from front page,

We have again been fortunate to get the Escafield Brass Band to entertain us in the afternoon playing for two sessions, the times of which will be announced during the day.

Our next meeting for all helpers will be at 6, Milldale Road Monday 3rd Sept. 7-45pm.

If you have not helped before and would like to be involved please contact us. See below for contact details.

We are again asking for Sponsors for the Class Prizes and donations for the Tombola stall which will be greatly appreciated.

Anyone requiring a stall please contact us.

Any donation can be left at either "The Ironing Shop" on Baslow Road or at 6, Milldale Road, Totley.

If you can help with making cakes or scones please contact Dorothy at the address below:

Any queries to

Les or Dorothy Firth

6, Milldale Road,

Telephone 0114 2364190

e mail: "lesanddotfirth@talktalk.net"

All proceeds after costs will be donated to Transport 17

Les & Dorothy Firth

Totley Residents Update

July was a busy month for the Residents Association. The Music Festival (14th -21st) was a huge success - a varied program at several venues around Totley including the Heatherfield Club and finishing off with Tapas & Jazz at Mellows bistro. Our thanks and congratulations to Phil and Sue Harris for their dedication and organisation and to all the musicians, who gave their time so generously.

The Family Barn Dance and Pie & Pea Supper on 21st was a lively and fun-filled event - we expect to run a similar event next year. Our second Farmers' Market was enthusiastically supported, with more stalls and the added attraction of the Sheffield Morris Men and a busker!

On 23rd August, Activity Sheffield will be running a Fun Day at Green Oak Park, which will round off an eventful Summer, with the Totley Show to look forward to on 15th September.

Dave Spivey

TRA.

Dore and Totley URC

Totley Brook Road

Coffee on Wednesdays

Drop in for refreshments in our new link coffee lounge from 10 onwards on Wednesday mornings. Make new friends or meet up with old ones-we'd love to see you. Services are held on Sundays at 10.30 am and Wednesdays at 11.30 am.

On Sunday 30th September we invite all former members and friends to join us for Back to Church Sunday, with worship led by Miss Anne Dale.

On Sunday October 7th we celebrate our Harvest Festival at 10.30 am with a collection of goods for the Cathedral Archer Project. This will be followed by a soup lunch in aid of Christian Aid.

All are welcome.

Green Oak Park

In spite of the weather conditions we have all endured for the last few months, the mixed flower meadow alongside the path is producing wonderful results and giving great pleasure to many people. They should continue to flower well into September. Congratulations have been received from lots of people. There are different seed mixes for a variety of situations. They are a carefully blended mix of native and non- native hardy annuals designed to provide an attractive display.

Details of where to buy the seeds have been requested by several residents. They are available from Pictorial Meadows Ltd. Tel. 267 7635 Email info@greenestate.org, www.pictorialmeadows.co.uk

Beware! I planted them in my garden this year, but found the woodpigeons are very partial to them.

Neil Grant, Managing Director of Ferndale Garden Centre, Dyche Lane, Coal Aston, Dronfield, who supplied the plants for the Lemont Road entrance has very kindly decided to donate the plants to the community.

We thank him for his generosity.

There are more plants to go in this autumn to complete the design which was drawn up by one of the parks maintenance team.

The Community Forester has found one of the rowan trees between the MUGA and the children's playground has been severely damaged by a dog.

Some owners are encouraging their dogs to chew the bark off trees. This means the tree will die. Apparently this is happening in other parks and has now reached Green Oak. A cage has been placed round the tree to prevent further damage and to hopefully allow the tree to recover.

Some park users have commented on the look of the pools because of the algal bloom. This is a perfectly natural response to extra fertility.

It occurs because it takes a long time for new pools to become balanced. The algae and blanket weed feeds on nutrients in the water and is much worse during the summer months. A natural control is available which does not harm small creatures. It needs to be sprayed on but does not mean instant success.

Most of it can be removed in autumn when small creatures are hibernating, (Dragonflies are laying eggs at the moment)

Unfortunately the algal bloom will return next year.

Patience is the word; the best advice from experts like Professor Chris Baines is to leave well alone and let nature take its course.

Avril Critchley, Friends of Green Oak Park.



**willis
plumbing**

t • 0114 221 4578

m • 07789 792299

w • www.willisplumbing.co.uk

e • paul@willisplumbing.co.uk

• bathroom & kitchen fitting

• general plumbing & heating

• electrical & tiling work

• 24 hr emergency call out

'call Paul for free quotes or advice'





Transport 17

As all of you know we have been having major issues trying to stem the flow of outgoing finances due to unexpected problems. I am pleased to report that we have had many donations, both large and small and we are grateful to all those who have been so generous. Colin Price (one of our long serving drivers who I am sure some of you know) and I were very pleased to accept a cheque from the Broomhill Festival for £1500 on 15th August as we were one of three charities that were being sponsored. Thank you so much to all concerned. We enjoyed being a part of the Festival and in spite of the rain it all went quite well.

August is quite a laid back month for Transport 17 volunteers as our clubs are closed until September but it isn't all plain sailing; Mike Finn prepares the buses for the coming year and makes sure that they are pristine and ready for our clients to use again in September. We are very lucky to have Mike as he is very fussy about the cleanliness and appearance of the vehicles and only ever accepts perfection for all of our clients. Thank you Mike, keep up the good work. We are looking forward to seeing you all at the Totley Show on 15th September. If you have anything that you think will be suitable for us to sell there would you please deliver it to our offices at 172 Baslow Road between 9.00 a.m. and 12 noon, Monday to Friday. Thank you in advance.
Fellicity Revill
Chair

Cross Scythes Hotel

The Cross Scythes Christmas menus are available now - details will be in the October issue.

THE TOTLEY SHOW

SATURDAY SEPTEMBER 15th.
TOTLEY PRIMARY
SCHOOL
SHOW TO BE OPENED BY
TOTLEY'S VERY OWN
RONY ROBINSON

Entry forms available from :-
Totley Library, The Iron Parlour, Totley Rise Post Office
Also presenting

"THE ESCAFELD BRASS
BAND"



ALL EXHIBITS WELCOME
REFRESHMENTS AVAILABLE
ENTRIES 8-45 a.m.
PUBLIC VIEWING 1-30 p.m.
OFFICIAL OPENING 1-45 p.m.
PRIZE GIVING & AUCTION 3-00pm.

1-30 p.m. ADMISSION 50p. Children 20p

Organised by the **Show Committee**
Underwritten by the **Totley Residents Association**

Developer Appeals Controversial Multi-storey Scheme on Dore Road

Metropolitan Homes Limited seems to have no regard for public opinion, no matter how overwhelming that might be, nor does it embrace the practice of community consultation or indeed the Localism Act 2012. In fact, quite the contrary, and it has recently lodged an appeal with the planning inspectorate on a scheme that has attracted more than 2,000 objections from local residents as well as a unanimous rejection from Sheffield's City Council's nine person planning committee.

The multi-storey scheme was rejected on the grounds of overdevelopment as well as being out of keeping with the nature and character of the area and for having an overbearing footprint. Extensive concerns were also raised regarding its adverse impact on residents' amenity, infra-structure and local services. It's location is on a dangerous bend in addition to the further traffic risks that would arise due to its close proximity to a busy doctors' surgery.

The appeal lodged attempts to exclude community participation by proposing what is effectively a "behind closed doors" process known as Written Representations. However, the rapid intervention of residents coupled with a flurry of procedural objections to the planning inspectorate has helped persuade the inspector to call for a full public hearing. This will now allow all residents, and their representatives, to put forward their views to the inspector in an open forum in the presence of the developer. The venue has not yet been decided but we suspect that residents will be pushing Sheffield City Council for the public hearing to take place in one of the village's community buildings. A sizeable turnout seems likely.

If you would like to object against the grounds of the appeal or any aspect of the development then you can do this by either emailing the inspector at teamp7@pins.gsi.gov.uk quoting reference 2180841 or by writing to:

Peter Lyne
The Planning Inspectorate
Temple Quay House
2 The Square
Temple Quay
Bristol
BS1 6PN also quoting reference 2180841.

We've no doubt that the public hearing will be an interesting one.
Paul Millington and Aubrey Read

Councillor Surgeries

Liberal Democrats:

2nd Monday in the month 6.00-7.00 p.m., Totley Library, Baslow Road and 2nd Saturday in the month from 10.30 a.m. to 12.00 noon, Dore Old School Hall, Savage Lane, Dore Contact details:
Keith Hill 235 2289 Email: keith.hill@sheffield.gov.uk,
Colin Ross 235 1948 Email: colin.ross@sheffield.gov.uk
Joe Otten 230 3290 Email: joe.otten@sheffield.gov.uk

Totley Independent Website:-
www.totleyindependent.co.uk



THE FLEUR DE LYS



OPEN LUNCHTIMES AS WELL AS EVENINGS FROM
8TH OCTOBER

UP & COMING EVENTS

Spectrum Social Care Summer Gala

15th September

The Fleur's Charity Golf Day in aid of Totley All Saints School

21st September



The Fleur's Comedy Night in Association with

29th September



Soul & Motown Night with Live 7 Piece Band

13th October



"We'll Meet Again"

**War time and Music Hall Songs with the
wonderful Caroline Fields**

Saturday 17th November



Matinee Performance 2pm – 4pm

Tickets £10 or £5 for Children up to 16 and adults over 65 – Ticket price includes afternoon tea

Evening Performance 7pm onwards

Over 18's only – £10 or £5 for adults over 65. Ticket price to include free glass of wine and nibbles

Daily Events

Mondays – Fun Pool Competition

All levels welcome – £1 entry and winner takes all

Tuesday – Ladies Night

BOGOF on all bottles of wine, cask ales and meals from our fantastic bar menu

Wednesday – Curry Night starts again from 10th October

Chef's Home-made curries from around the world with drinks offers each week

Thursday – The Fleur's Famous Quiz Night

Music and General Knowledge Quiz with great prizes including a cash rollover

Friday – Family Fun Nights

In association with **Sparkles Children's Entertainers** – 3.30pm – 8.30pm.

Great value, home-cooked family menu available from 4pm

Not forgetting The Fleur's Friday Meat Draw in association with **Liberty Foods**

Saturday – Events Each Week, Watch our boards for details

Sunday – Family Sunday Lunch from 8th October



*To enjoy September's offer of buy one hot drink and
Receive another **COMPLETELY FREE!***

Bring this advert to us at The Fleur on any day!

FOLLOW US ON

facebook

The Fleur De Lys, Totley, Sheffield

HI FOLKS!

*ALEX AND PAUL HERE. JUST LETTING YOU KNOW THAT THE FLEUR NOW
OFFERS PRIVATE HIRE FOR ALL YOUR CELEBRATIONS INCLUDING CHRISTMAS
PARTIES.*

*IF YOUR ARE LUCKY ENOUGH TO BE GETTING MARRIED IN 2013, PLEASE CALL
US FIRST TO DISCUSS HOW WE CAN MAKE YOUR DAY SPECIAL ON A BUDGET TO
SUIT. 07944 558403 PAUL OR 07572 464451 ALEX*

Councillor's report

Changes to waste collections

By the time you read this the change to fortnightly black bin collections will have happened, with the blue box and black bin being collected on the alternate week. There have been complaints from some residents that they were not informed in good time of the change and this has been raised with the council.

When other councils have moved to fortnightly collections of black bin waste, they have generally increased rather than reduced opportunities for recycling, and usually offer a food waste collection on the alternate week, to avoid having food waste sitting around for two weeks at a time.

With the recycling centre at Blackstock Road now closed for 3 days a week, and facing long queues on other days, blocking the road, even before the move to fortnightly black bin collection, we are most concerned that the new system will be inadequate. Let me have your horror stories and we will keep opposing this.

Roads PFI contract

A £2 billion contract with Amey to repair all the city's roads and maintain them for 25 years is due to start around now, with £1.2 billion of the cost being met by central government. This work is badly needed in Sheffield, but there will be some challenges.

Amey are proposing to work area by area across the city which means that there may be a number of roads closed at one time in one area - that is some small proportion of the total number of roads in the area. Residents will have to move their cars or have them towed, which may prove very difficult in those parts of the city where residential parking is on-road, particularly where more than one road is closed at one time.

Pump Track (BMX) in Totley Hall Park

As the commentators for the BMX events in the Olympics explained, one of the skills used to gain speed is to 'pump' - to use the shifting weight of the rider over the undulations without pedalling. While we don't propose to install the other features of the Olympic BMX track in Totley Hall Park, we have, thanks to fundraising, an opportunity to install a quality pump track of undulations designed for pumping over, in place of the present poor quality track.

Dore and Totley station Park and Ride

We have been advised that work will commence on the car park in November. While we are pleased to have a firm date, the delay is frustrating. It appears to be due to the cost of the pedestrian crossing that is required as a planning condition to accompany the car park.

District heating charges

I've been contacted by a resident of the Green Oaks who faces a large increase in district heating charges, such that it is no longer a cost-effective way of heating a home. It is not clear how many people are affected by this increase which does not appear to be universal. Please contact me via the Town Hall or joe.otten@sheffield.gov.uk if you have been affected.

Neighbourhood planning

Dore Village Society has initiated the process to adopt a Neighbourhood Plan, which is a new feature of the planning system that allows local communities to adopt, by referendum, planning policies to guide development in the area according to local priorities. The other councillors and I are happy to support a similar initiative in Totley if there is demand, and learning any lessons from Dore's experience.

Councillor Joe Otten

South West Community Assembly

19 July 2012.

It is disappointing to see how few residents attend these meetings. All of the Councillors, for the Community Area, attend, & officers are present to submit information on topics on the agenda. They are an opportunity to see how politics & democracy, work, in our communities, & we, the public, are encouraged to participate.

I give snippets only, from the meeting, which are of interest to our communities.

Dogs. The subject of dog caring was raised. New businesses have been formed where dog owners pay someone to walk their dogs, but also to take them into their own homes for the day. One example was a lady who cares for, it was alleged, 18 dogs. The planning officer was able to advise that approval for such a business would be unlikely & also the lady would have to register with the local authority as a boarding establishment. We were told that an "out of control" dog includes one which may cause fear, even if it is on private property, including its own home & is then subject to enforcement under the dangerous Dogs Act with a maximum £1000 fine.

The use of residential property, for the business of car repairs was discussed. Again, the planner said that there are criteria for such use & suggested that approval may not be given, but a councillor also said that such properties, used for business, were subject to Business rates, rather than Council Tax.

Petitions were heard, including one for speed reduction on Hillfoot Road Totley. The Highways Safety Officer gave details of the survey which his staff had carried out & also their findings. The average speed limit was 21mph. All of the children who crossed the road were deemed to be at risk, by the petitioner. 7 speed cushions were not only not practicable on the road because of the gradient of the road but also because of the prevalence of snow on the road & the difficulty of clearing it with ploughs. There was also the cost of £60,000. Signage was considered, but not deemed to be effective enough to warrant the expense. The petitioner did not attend the meeting & the Councillors voted to take no action, but Cllr. Hill requested that further consideration be given to signage.

Activity Sheffield, a Council Team who provide Sport & Events for Children aged 8 to 16, said the number of events has been doubled this year. Contact Kelly.Riley@sheffield.gov.uk or check with the local library. Roger Hart

A Bradway resident, who is a member of the English Table Tennis Association, has arranged for an all-weather table tennis table to be donated to Totley Hall Lane Park, by ETTA. Discussions are ongoing with Parks, about its location, & resident's views will be sought, along with the BMX track alterations to a Pump Track. Consultation, in the park, will be 10am to 11am on September 1st.

Roger Hart

Music Tuition



Piano • Keyboard • Flute • Singing
Guitar (rock, metal, blues, jazz, funk, pop, folk)
Music Theory • GCSE work

Music graduates, each with 25 years
teaching and playing experience

All ages, beginners welcome.

Exam work or just for fun!

Call Mark or Karin

0114 237 4853 & 07981 888352

HEARING AIDS

MAURICE NAYLOR FBSHAA RHAD is your
local hearing aid specialist and at your
request will test your hearing in your own
home, free of charge, and if needed you can
try a custom made aid for four weeks
without obligation to purchase.

Tel : 237 4817

In the ear digital from £495

TRISTAN SWAIN

Landscaping & Maintenance

Established 20 years

Fully insured

GARDEN RESTORATION & MAINTENANCE

Unit C4
Sheaf Bank Business Park
Prospect Road
Heeley
Sheffield S2 3EN

Tel/Fax: 0114 255 4689

Mobile: 07831 802539



YOGA CLASSES in TOTLEY & RANMOOR

Rachel Quinn BWY Dip



THE COMPLETE BUILDING SERVICE

New Build & Extension Specialists

From Design to Completion

**Full Project Management
House Building
Extensions**

Find
us in
Yell.com

**New Roofs/Tile/Stone
Stonework Specialists
Loft Conversations**

Established for 25 years with over 90%
of our work coming from recommendations, to
find out why call:

0114 2353314

Mobile 07973 908187

www.mwoolhousebuilders.com



Christchurch Cottage,
Townhead Road,
Dore, Sheffield
S17 3GA



Horizon Electrical

*Faults, Rewires, Sockets, Lights,
Cooker Points, Electrical Showers,
Phone Points, Security Lights*

No job too small

Fully qualified with friendly advice

Ring Totley 236 4364 or

Mobile 07772 483154



BRADWAY INSTALLATIONS

**Kitchens, Bathrooms.....and everything in
between**

- **Complete Kitchens** - Installation or supply and
installation
- **Kitchen Refits** - Replacement worktops/sink/hob etc.
Worktop / cabinet repairs
- **Bathrooms** - Cloakrooms - Domestic plumbing - Tiling
Laminate / Vinyl flooring

All work undertaken is fully insured and guaranteed

Ring Peter - 0114 236 5995

Mobile - 07766 411355

Memories of Balaclava House

Last month's article in the **Totley Independent** about David Stanley, the veteran of the Charge of the Light Brigade during the Crimean War, who lived the last years of his life in Totley and died here in Balaclava House on Queen Victoria Road, prompted Richard Tetley to get in touch and tell me his memories of the house and area.

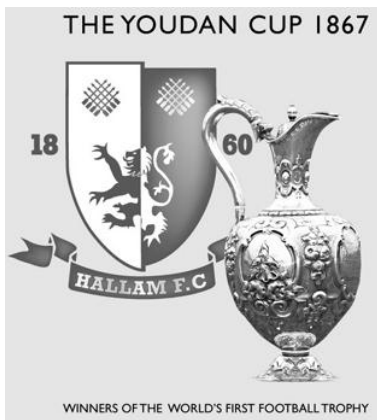
During his childhood Richard lived at Oakwood (no.60); the house stands next door to the site of the old Balaclava House. The Dingle was the old house's other neighbour up the hill.

When Richard lived at Oakwood the garden of Balaclava House was very overgrown. The owner, Mr Vickers-Edwards was rather reclusive and the house was a bit of a mystery. There was an orchard at the back of the houses on the land now occupied by Prospect Drive, and beyond that the fields up to Tinker's Corner were owned by Tedbar Tinker. Richard remembers the old house was still there when he moved away from the area in the early 70's, but thinks that it was demolished when Mr Vickers-Edwards died shortly after.

There is a possibility that Balaclava House is in the foreground of the picture on page 14 of Brian Edward's Totley Old Photographs.

The plot the old house stood on was extensive; far larger than the area now occupied by the flats and grounds of the present day Balaclava House. I had thought the old house was built further down Queen Victoria Road, so it was interesting to walk around the area with Richard as he remembered how it was and good to see that the name has survived the demolition of the old house.

The Totley connection with the Crimean War goes beyond David Stanley and Balaclava House. Another famous Totley resident was Tommy Youdan. In a trade journal of 1868, he is recorded as living in Totley Grove House. Youdan was a well-known Sheffield character and a bit of a lad! He converted his casino into the Surrey Street Music Hall in 1852 (it burnt down in 1865 after an extravagant production involving fire and explosions on stage); he also inspired the first association football competition with the Youdan Cup. The first match for the cup was played at the Sheffield Hallam ground; now Sheffield United.



The Crimean War ended in 1856 and in celebration Tommy Youdan asked the confectioner George Bassett to bake a cake. The cake was so huge (it weighed 4 tons) it had to be carried through the town on wagons three abreast. In total over 10,000 eggs were used, 2,000 pounds of flour, 1,300 pounds of butter, 3,400 pounds of currants and raisins. The icing alone weighed 412 pounds. There were complaints it was not properly cooked and Youdan's plans to sell tickets for a lottery of slices which contained medals was declared an illegal lottery by the Government. * Alma and Balaclava were the most well know events and places in the Crimea and are commemorated in street and pub names all over Sheffield.

If you have any memories of Balaclava House, I'd really like to hear from you.

Christine Shimell 2361631

*The details about Tommy Youdan's cake are taken from the Crimea study notes just produced by Sheffield Libraries and Archives.

Totley History Group meets at 7.30 in Totley Library on the 4th Wednesday of the month. You can join as a member if you like or just come along to a meeting.

Our next meeting is on Wednesday September 26th. David Templeman is talking about the History of Sheffield Manor.



Hardy Plant Society

South Pennine Group

www.hardy-plant.org.uk

Autumn Plant Sale

Lovingly grown by our members

Sunday 16th September 2012

11.00 am – 3.00 pm

In Sheffield Botanical Gardens

Admission Free : Refreshments

Everyone welcome



We would like to say a big thank you to 'Totley Independent' readers who attended our annual Spring Plant Sale and for making it such a success. We hope you found lots of interesting hardy perennials which are now thriving in your gardens. (**Are you in the photograph?**). You will find a wide and different seasonal selection at our forthcoming **Autumn Plant Sale in Sheffield Botanical Gardens on Sunday 16th September, 11.00 am – 3.00 pm.** At very reasonable prices, the plants are grown locally by our members, who will also be on hand to give advice and support, so please come along, see what you can find and also enjoy some refreshments.

The South Pennine Group meets monthly at Shirley House, Psalter Lane. Activities include illustrated talks where plants are also on sale, garden visits throughout the year, an annual coach trip to renowned gardens further afield, a national seed exchange and local seedling swap.

If you would like to join, contact the Secretary, Judy Coulson, at judycoulson@blueyonder.co.uk or phone 0114 235 1290.

Regular community work days at Blacka Moor

These days which are run by The Wildlife Trust for Sheffield and Rotherham, are continuing on the first Saturday and third Thursday of every month, as follows:

- Saturday 1st September
- Thursday 20th September
- Saturday 6th October
- Thursday 18th October
- Saturday 3rd November
- Thursday 15th November
- Saturday 1st December
- Thursday 20th December



The weekend work days have so far been well attended by individual volunteers, as well as groups including Ride Sheffield and the Sheffield University Conservation Volunteers.

The work of the Wildlife Trust is hugely dependent on the help of volunteers, with work days this year including bridleway work, dry-stone wall repair, and woodland management. All community work days are open to anyone with an interest in exploring this beautiful site, learning some new skills, and meeting like-minded people. Please contact Sarah Sidgwick (s.sidgwick@wildsheffield.com, 0114 263 4335) for further details.



WEDNESDAY SEPTEMBER 26TH

TOTLEY LIBRARY, 7.30PM

THE HISTORY OF SHEFFIELD MANOR

TALK BY DAVID TEMPLEMAN

ALL WELCOME

MEMBERS £2, NON MEMBERS £3

TOTLEY RIFLE RANGE

Does any reader have access to the book 'SHORT HISTORY OF TOTLEY RIFLE RANGE', by Stephen Johnson 1994 and can lend the editor a copy?

Usual contact details on back page.

HOLMESFIELD CHURCH WALKING GROUP

BARLOW WALK

On Wednesday 19th September at 10am Michael Ibbotson will lead a walk starting from the Hackney House Cafe in Barlow. We will walk through Monk Wood, Lees Common, the fish ponds and back to the cafe for lunch (optional). The cost of the walk is £3 and the proceeds will go Holmesfield Church. If you would like to come just turn up on the day. The walk is approximately 5mls long. Any queries phone Robin on 01246 412767.

Totley Scouts

Scouts do not usually meet during the summer due to many peoples holidays, so this article will be briefer than normal.

We do however have plenty to look forward to including a Group camp at Castleton in October, our regular Antiques Fayre and a Bonfire party. More about these and much else in the next article.

The summer has given us the opportunity for a good tidy up and clear out of the Scout Hut. We are also delighted that we now have hot water after an absence of two years. It does make those cleaning jobs easier. Thank you to all those who have helped raise money for this.

During the summer we have also enjoyed the spectacle of the Olympic Games. What has really struck me is how many volunteers helped out and without which the Olympics could not have been so successful. Amazingly 250,000 people applied to volunteer and 'only' 70,000 succeeded.

This shows a great volunteering spirit in this country, which is fantastic.

Scouting continues to grow with more boys and girls taking part all the time. This also means that more and more adults are volunteering to run or help run activities to engage the children.

BUT we always need more help. The more help we have the easier it is for everyone; and the more children we can provide activities for.

We need your help.

After all if our future Queen can spare the time to help her local Scout Group, can you?

Please contact me if you want to find out more.

Richard Frost

Chairman

1st Totley Scouts

TotleyChair@aol.com

0114 236 3603

Scout Lottery

1st Totley Scout Group Lottery

July Draw

1st Prize No 53
Glass Table Clock
Mrs Dollimore
Totley Hall Lane

2nd Prize No 76
£10 Voucher
Mr Shaw
Stocks Green Drive

August Draw

1st Prize No 65
Mrs Hanson
Laverdene Drive
Philips Steam Iron

2nd Prize No 23
Tony Marples
Sunnyvale Road
£10 voucher

August was the last Scout Lottery numbers of this series. My thanks to all who joined our lottery. The forms for a new lottery will be delivered late September. £15 for the year.

Best Wishes

Peter Casson

Totley All Saints School Re-Union

At the Cross Scythes Hotel

Monday 1st October from 7.30pm onwards

For pupils who left around 1940s to mid-1950's. We look forward to meeting you

SLIMMING WORLD

10 WAYS TO MAKE SURE IT WILL BE THE LAST TIME LOSING WEIGHT IS YOUR NEW YEAR RESOLUTION. THIS TIME MAKE IT LAST FOREVER

1. Focus on your weight loss goal and prioritise it.
2. Be sure you really want to lose weight for yourself. Doing it to please someone else may only lead to short term weight loss.
3. Take advantage of all the group support at your local Slimming World class. Even if you are not a 'joining in' person, you'll be surprised how motivating it is.
4. Accept that you will have ups and downs in your weight loss journey, and be forgiving of yourself if you hit a difficult patch.
5. Listen to your 'inner script' and make a conscious effort to talk to yourself in a positive, encouraging way.
6. Keep up your interest in your healthy eating plan by trying new foods, new recipes, and new ways of using your Sins. This will help you avoid getting in to a dieting rut which can be boring and demotivating.
7. Be honest with yourself about what you are expecting from your weight loss and how you are getting on with Food Optimising week by week. People who set unrealistic targets for weight loss or body shape are more likely to give up than those who set achievable targets and share their ups and downs.
8. Go back to your class even after (especially after) you've had a weight gain. You will not be judged, just helped and supported.
9. Keep setting new goals and rewarding yourself for milestones until you reach your target weight, and afterwards!
10. Don't put your life on hold until you've lost weight. You can still enjoy life and lose weight. Think of your dreams and ambitions and bring them to the fore. The positive feelings you get from starting to 'live a little' can only help your motivation and your weight loss.

Group details:

St Peter's Church, Greenhill Roundabout, S8 7FN
Thu 5pm & 7pm

Dore Old School, Tues 5.30pm

Tel: Alison Murphy 07815 046569 for further details

PhysioFOCUS

at Totley Rise Dental Practice
85 Baslow Road,
Sheffield, S17 4DP



Physiotherapy treatment available for:

- Back and neck pain
- Sports injuries
- Sprains and strains
- Joint and muscle pain
- Arthritic pain
- Whiplash
- Repetitive strain injury
- Headaches

Appointments: 0114 2360333

Also available:

- Pilates classes
- Pilates 1-2-1
- Golf Fitness Screening
(as used by consultants to UK, European and Australian PGAs)

For more information please call:

Emer on: 07792 422909

Rachel on: 07956 908454



Domestic electrical work by
award winning

Lady Electrician

- * House rewires * Replacement fuse boards *
- * New sockets and lights * Security systems *
- * CCTV * Telephone and computer points *
- * Garden power and lighting *



All work guaranteed and fully
insured. For a free quotation,
without obligation,



ring Mandy on 07788-544225

Homeopathy @ Synergy.

162 Baslow Road, Totley, Sheffield, S17 4DR

Advanced Indian Sensation Method Homeopathy

Alternative medical treatment for all chronic conditions

Registered with major insurance companies. Can claim
through the Westfield scheme



Ring: Lindsay Allison RSHom for more information:
0114 235 7845 or 07968 167036

M.Scriven
(FRUITERAMA)

MARTIN SCRIVEN

HIGH CLASS FRUIT
& VEGETABLES

37, Baslow Road

Tel. 236 7116

Orders Delivered



Bank View Farm



- Pure Breed Hens
- Hybrid Hens
- Chicken Keeping Courses
- Chicken Keeping shop
for all your chicken keeping needs
(Chicken food, medicines, houses etc.)



Open all day Saturday and by appointment
Lane Head Road, Totley S17 3BD
www.BankViewFarm.co.uk
Call Rachel on 07889 791 164



GWS

Technology Solutions



PC Problems/ Repairs/ Servicing No Job Too Small
 Wireless & Internet Setup New PC's & Upgrades
 PC Setup/Data Transfer Safe PC Disposal Tuition
 Software/Hardware For All Your PC Needs

Guy Senior

Phone: 0114 2352662 Mobile: 07890030453

Email: guy@gwstech.co.uk

Web: www.gwstech.co.uk

GWS, 5 Conalan Avenue, Bradway, Sheffield S17 4PG



253 Baslow Road, Sheffield, S17 4DU
 Tel: 0114 2360 583 Mobile: 07801 346 455

R.M.M BUILDING SERVICES

25 YEARS EXPERIENCE

All types of building work carried out including- Drop kerbs, block paving (drives, paths, etc), extensions, general building repairs and maintenance.

Phone Rob on- Mob- 07906108567

Home-2352190

1 To 1 Maths Tuition

Yr 5 to G.C.S.E A *

Algebra Made Easy !

Excellent Reputation

Tele 0114 2363649 (Bradway)

R.S. HEATING & BUILDING CO

EST. 1971



HEATING DIVISION:

Experienced Installers of condensing, combination and regular boilers. Systems fully guaranteed. Complete after sales service. Also Bathrooms, showers and small plumbing works.

BUILDING DIVISION:

Loft conversions, House renovations including general building, joinery, plastering, electrical decorating etc.



13 Overcroft Rise, Sheffield, S17 4AX

Tel:- 0114 236 4421

Reg. Office:- 62 Machon Bank, Sheffield, S7 1GP

Te:- 0114 2559425

Fax:- 0114 255 9431

Email: enquiries@rsheatingandbuilding.co.uk
 Web: <http://www.rsheatingandbuilding.co.uk>



Gardens cleared and maintained, Lawns mowed, Turfing, Tree felling & pruning, Hedges trimmed & reduced, Pond maintenance, Fencing etc.

for free quotation call

Chris on: (0114) 2746158 Mobiles: 07976072785 or

Richard on: 07789497104

8am-6pm mon-fri

HazelBarrow Farm, Norton S8 8BA



Nigel Watson



Carpenter and Joiner

Fitted kitchens, sliding wardrobe doors with bespoke interiors, internal and external doors supplied and fitted, new handrail and spindles, laminate and wood flooring, locks, architraves, skirting board, stud walling, boxing off etc.

For a reliable and quality service

TEL: 0114 236 4778

MOBILE: 07971 528149



Got a computer?

Having Problems?

Is it running slow? Stops responding?
 Having problems running the latest games
 or applications? Broadband installation?

Give me a call!

I'm available for home visits at any time including evenings and weekends. I can also suggest upgrades to improve performance, or even build you a system to your specific requirements.

Tim Brown

Building,
 Installation,
 Upgrading and
 Troubleshooting
 Computer
 Systems
 Over 25 years
 professional
 experience

Phone: 0114 2472619 Fax: 0870 7060080

Mobile: 078 17464703 Email: service@timbrown.plus.com

Totley Primary School Update

Sorry it's been a while since I last put pen to paper, the time flies by. As you will have seen the reception class have had a canopy built onto their play area so that the children can play out if it's raining.

On the school field an outdoor classroom/rotunda has been erected. The pupils will be able to watch the wild life go by and read in an open class area in the fresh air. Inside one area will have a stage with bench seats and a flag stone floor. This will be an ideal area for plays to be performed.

Another area will have astro turf with planters for children that need stimulation by feeling different materials. It will also feature mirrors on the walls in the shape of different animals. We are also having new doors fitted to all our classrooms.

Continuing with this fresh new look, the infant cloak rooms are also being revamped with new coat pegs, new carpet and the walls painted to match the school colours. The fence around the school is now finished; this was erected for the protection of the children which of course is a major concern to everyone in education. All we've got to achieve now is to protect them from the bad driving practices early in the morning when they are being dropped off for school. Without the help of community police officers it's just an accident waiting to happen.

Yet another Y6 class are on their way to Secondary School, this always makes me sad to say goodbye to the kids and their parents. I see them start in reception and all too quickly they are gone. I feel old just thinking about it.

To finish on a sad note I went to see Hi De Hi at the Abbeydale Picture House, produced and directed by a very talented 19 year old called Ben (Miller). Even after lots of publicity on Look North and BBC Radio Sheffield it was poorly attended. The money from this very funny musical comedy would have helped to keep the Picture House up and running. But the Picture House is now up for sale. So if any of you have a spare £150,000 doing nothing we could save this listed building for the up and coming actors, dancers and singers of the future. That's all for now.

Allen Miller

Building Supervisor.

PUZZLE CORNER

Trigrams

The answers to each trio of clues are anagrams of each other.

A. (1) Wooden container. (2) Provide food. (3) Act in opposite directions.

B. (1) Don't take all. (2) Timid animals. (3) Cut off fleece.

C. (1) Let off. (2) Curtains. (3) Extend more widely.

D. (1) A very thin line. (2) Intense dislike. (3) Lack of

E. (1) Transact business. (2) Heavy metal. (3) A valley.

F. (1) Gender. (2) Disabled. (3) Ground grain.

G. (1) Newspaper. (2) Bits of news. (3) Hit hard.

H. (1) Gap between letters. (2) Shoulder covers. (3) Steps.

I. (1) A drink. (2) Royal. (3) Big.

J. (1) Cures. (2) Flakes of rock. (3) Dog lead.

Don Ashford

LONGSHAW SHEEP DOG TRIALS

www.longshawsheepdog.co.uk

We are pleased to announce that the Longshaw Sheep Dog Trials will take place this year on 6th, 7th and 8th September, on Longshaw Pastures in front of Longshaw Lodge, near Grindleford, starting this year at 8.30am each morning. We are very honoured this year to have as our President Mr D R Stone CBE.



FOUNDED 1898

On 6th and 7th there will be open class sheep dog trials when many of the "One Man and His Dog" competitors will be taking part, and we are pleased to have Mr. Joe Relph, who is himself a keen and experienced competitor, to judge the trials. At approximately 3.00pm on 6th there will be a parade of local hounds courtesy of the Barlow Foxhounds, Pennine Foxhounds and Ecclesfield Beagles.

Following the local class sheep dog trial on Saturday 8th, the Longshaw Fell Race is to take place. Starting at 10.30am, this is open to all and is entered via the field. We are honoured this year to have a bride-to-be, her groom and some of their guests taking part in the race before going on to their wedding venue to be married.

Following the fell race there will be a demonstration of dog obedience and agility.

Starting at approximately 12.30 on Saturday 8th the trials culminate in a double gather championship, which consists of the 8 highest pointed runs from both Thursday and Friday, when the winner will take home the prestigious Longshaw Championship silver tea pot. Entrance charges are just £5.00 per adult each day, no charge for children, free parking, and this year we start at 8.30am, weather permitting, finishing at approximately 5.30pm. For further information please contact the Secretary, Mrs. Sheila Humphreys, MBE on 01433 651852, or e-mail lsdta@talktalk.net

This will be the 114th year of the Association, thought to be the oldest sheep dog trials in England. There will be a licensed bar, hot and cold food and drinks, and ice cream available. The magnificent array of trophies will be on display, so please come and join us for a day on the moors to see some of the wisest dogs in the world. We look forward to meeting you.

Registered Charity No 234523

Totley Memories

Re The Totley memories by Ann White in last month's issue

She mentions the family at the school house who were friends of her family, and their trips to Scarborough.

I think she means Ethel Smith and her family. They had two girls called Brenda and Janet and a boy Ian.

Mrs Smith's mother and other relatives lived at the little village of Staxton near Scarborough. It had a small pub just off the Main road and a pump and a village green and you did go down quite a long lane in to the village and church.

I too used to visit Staxton on numerous occasions to take Mrs Smith to visit her Mother, Brother and other relatives.

Ethel was buried in the church yard there a few years ago.

John Perkinson

GARDENING TIPS FOR SEPTEMBER

I am feeling shattered at the moment as I have just finished re-roofing the summer house with a lot of help from my neighbour, I have just realised that I am not as young as I used to be and I have got to give it a coat of wood-stain, that's another job. Watering is the order of the day the forecasters keep saying rain is on the way. We seem to be in a dry pocket in Sheffield which is very nice if we can find time to sit and enjoy the lovely sunshine. The veg patch is looking busy, lots of beans, cabbage, radishes, etc. Really tasty. Worth the effort of growing your own.

I hope the allotmenters are getting plenty of goodies ready for the TOTLEY SHOW on the 15th September, and all you photographers, artists, knitters, jammers, cake makers, legoers, are getting your exhibits finished in time, I really look forward to seeing all the latest efforts on the showboards and benches. I hope we get lots of entries. It is what makes a show a show, so do your best to help swell the entries and make the efforts of the organisers and volunteers worthwhile. By the way if you won a cup last year would you please return it to 170A Baslow Road or drop it into the ironing shop. Thank you.

I am looking forward to going to the Southport flower show on Sunday, 19th August. Its quite a large show second only to Chelsea in London. The gardens designed by the students are very interesting, some of them out of the ordinary with mirrors and giant sized pots etc. There is always some ideas that can be incorporated into our garden. Our totem pole of plant pots was an idea from one of the past shows. We always come back with something, perhaps a gadget we've not seen before, like the tube and stick thing which supported a plastic bottle that was supposed to make watering hanging baskets easier. It was a bit unwieldy when the bottle was full. One thing was the water never went down your sleeve, but it did give you a shower if it was tilted too far over. Like most of these gadgets the demonstrators made it look easy. I stick to tried and tested things nowadays as it's safer and drier

Flowers To encourage a late flush or to help the plants develop into stronger specimens keep up with removing the faded flowers and reduce by half any perennials which have finished flowering to prevent wind rocking them lose. Prepare ground for new borders, clearing away old summer bedding plants. Make ready for spring beddings, add a little bone meal or hoof and horn if you have not done so for a year or so. Lift and pot up geraniums and fuchsias ready for moving indoors. Take cuttings from herbaceous plants as insurance against frost. If you have beds which are ready you could plant out daffodils and narcissi, primrose, polyanthus viola, forget-me-nots and winter flowering pansies. Don't let the pansy flower, nip off any buds which appear, as this will make stronger plants which can face the winter frosts better. Mildew can be a nuisance at this time, so deal with it as soon as it is seen; a good fungicide should help. Pot up hyacinth, tulips and narcissi for forcing, keep them as cool as possible in a dark place for 8-12 weeks, and inspect from time to time to ensure they do not dry out or get mildew. Brambler roses will have finished flowering, so they can be pruned now. Cut out the old canes that have just borne flowers, and if there is not much young wood you will have to keep the best of the old, and simply remove the obviously worn out or diseased. If you have to do this cut back all old flower trusses and hips they may be bearing.

Vegetables Gather French and runner beans regularly, and do not leave any pods which are ready on the plant unless you are entering the largest bean in Totley Show. Keep the old hoe going by removing weeds; make sure that all plants are not short of water and thin out spinach being grown for harvesting late autumn. If your onions are slow ripening turn down the tops, lift and store as soon as they look reasonable (note the ones for the show and leave them until show day then dig them up, leave the roots on trimmed a bit, chop off the tops and bind the chopped end of the onion with a bit of raffia or twine. You need 3 matching and/or one whopper) and the best of luck!

Prepare ground ready for planting spring cabbage later in the month. Marrows can be stored if there are too many for immediate use. Hang them in old nylons in a cool frost free place. Earth up leeks and celery. Keep an eye on the weather forecast so that outdoor tomatoes and marrows can be picked before they are spoilt by frost. Lift a bit of parsley and pot up and place in the cold-frame. This will provide pickings for

the winter and food for the slugs if you are not careful. Divide and replant chives, thyme and welsh onions.

Trees, Shrubs and Fruit Prepare ground for planting new raspberries and blackcurrants. Place grease bands on fruit trees, especially apples. At the end of the month prune blackberries, cut out the old fruited canes and tie in the old shoots. Pick up windfall apples to prevent the spread of disease from the rotting fruit. Prepare ground for planting evergreens including heathers, hedges, shrubs and conifers. Plant them out at the end of the month. Take hardwood cuttings and semi-ripe cuttings of most shrubs at this time, rooting in a cold-frame, and bear in mind hardwood cuttings can take quite a time to root, (2 years sometimes). Start winter pruning apples and pears towards the end of the month.

Greenhouse and Indoor Plants Gradually decrease watering, except plants that are coming into flower, e.g. cyclamen, dry off tuberous begonias, cacti, gloxinias, hot water plants and clivias.

Feed plants in flower such as African violets, bush violets and chrysanthemums as flowering finishes. Discard summer flowering annuals that have been used as pot plants. Pot up seedlings of cinerarias, cyclamen, primula and poor man's orchid to flower late winter and early spring. Re-pot arum lilies to flower at Easter. Take cuttings of flowering maple, campanula, coleus, fuchsia, busy lizzie, ivy and geranium. Divide plants of pepperonia, mind your own business and rodahy poxis. Detach the plantlets from spider plants and pot them up. Be careful watering in the greenhouse as excess water at this time encourages mildew and fungal diseases. Also keep benches and floors clear of leaf droppings etc.

Lawns Continue regular mowing and edging. Rake, scarify and spike then apply a top dressing of sieved potting compost. It is a good time to sow new lawns or lay turf on well prepared ground.

Watch the weather in September. The variation can be quite marked early on. You can expect fine warm days but nights begin to feel colder and ground frost can occur so be prepared. Make space for those tender plants and sort out those insulation covers for cold-frames etc just in case.

DON'T FORGET THE TOTLEY SHOW, 15 SEPTEMBER AT TOTLEY PRIMARY SCHOOL, SUNNYVALE ROAD, SEE YOU THERE.

Cheerio for now, Tom

King Egbert School Summer 2012

Mr Matthew carries the flame for King Egbert On 25th June Matthew Hesmondhalgh, the Head of our Integrated Resource, had the honour of carrying the Olympic Torch on its journey through Sheffield. Many King Egbert staff and students joined thousands of others to cheer him on from Shalesmoor up to the university roundabout.

Mr Matthew, as he is known at school, was nominated for his work providing support for children and young adults with Autistic Spectrum Disorders (ASD) at King Egbert and the Autism Centre for Supported Employment - a charity run by The Resource which helps young autistic people find work placements, supports them during their placement and continues the support when they hopefully gain paid employment.

Retiring after 107 years at King Egbert Three teachers retired at the end of the term, having clocked up 107 years at King Egbert between them. Mr Rouse, Mrs Fitzpatrick and Mr Appelhoff all joined King Egbert in the mid 1970s. We thought it would be good to ask them about how it was at King Egbert in the 1970s and the changes they have seen in the five decades they have been here.

Guns and Knives Armed police officers are not usually found in school assemblies, but in May a team from the South Yorkshire Police's Firearms Support Group gave a lively and interactive presentation to students in Y8 and Y9. The 'Guns and Knives Take Lives' initiative has been running since 2005, visiting every secondary school in South Yorkshire, and is part of a police initiative to raise awareness of the issues surrounding weapons and to reduce gun and knife crime.

The students responded very well to the powerful messages given, and the officers' blend of professionalism, humour and presentation skills enabled them to appreciate the humanity, moral purpose and care shown by the team.

Y11 prom The Y11 Prom took place on the evening of 31st May to coincide with the last day of school before study leave. The event which was held at Kenwood Hall was attended by over 150 students all of whom had a fantastic time chatting, reminiscing, eating drinking and dancing! The students looked particularly well turned out in beautiful dresses, sharp suits and a more than occasional pair of killer heels! At 11pm the time came for an emotional goodbye. As proud Form Tutors, Mr Smith and Mrs Bowes waved them off, there were more than a few tears shed, but we look forward to welcoming the students back for a successful results day and as sixth form students in September!

Futsal At the end of May the King Egbert School Under 14 Girls Futsal Team became Yorkshire and North East Regional Champions. Futsal is a form of football that is played on a smaller pitch usually indoors. The girls now go to the National Finals at the NEC Birmingham in July. They played incredibly well against some tough opposition (most of who were regular Futsal teams rather than a school team). Their conduct was impeccable throughout and they were a credit to the school.

U15 Cricket Champions King Egbert School U15s cricket team, (consisting of students in Y8, Y9 and y10) reached the final of the Lord's Taverners 20/20 competition (Yorkshire area) for the first time in their history in June.

The journey began in early May with 97 schools competing. The team won the city competition, and represented Sheffield in the South Yorkshire play-off against Penistone which they won after a nail-biting climax. Representing the South Yorkshire area, the team travelled to face Heckmondwike Grammar School from Kirklees, notching up another victory.

The day after, the team was on the road again, this time to face Leeds Grammar School in the Yorkshire Final. King Egbert was set 131 to win after bowling and fielding creditably but sadly were unable to reach this, and so finished as Yorkshire runners-up.

It has been a memorable year for the team and teachers Pat Howse and Peter Maw have thoroughly enjoyed taking them through the tournament and they have been great ambassadors for the school and Sheffield.

Cricket photo in issue 355

I can identify one of the players in the photo, it is my grandfather Marriott Fox. He is second from the left on the front row. I also think that the player on the right front row is Arthur Turner

There is a similar photo in one of Brian Edward's books which says that this is St John's Abbeydale cricket team.

Sue Graham



Tony and Julie at

The Crown Inn

Welcome you for

Good Quality, Home Cooked Food

Tuesday – Friday

12-2pm & 5.30-8pm

Saturday & Sunday

12-2pm

Come & join us for

Good Beer, Good Food & Good Music

Tel 0114 236 0789

CLOSED SUNDAY EVENING

Visit our website: www.crowninntotley.co.uk

LIVE MUSIC

11th September

DALE STORR

25th September

HIGHWAY CHILD

9th October

ARROWS BETWEEN



Crocus Homecare

Homecare with Compassion



EXPERIENCED, RELIABLE CARE STAFF REQUIRED

Crocus Homecare is based in Bakewell and now provides high quality care and support services for those living in South Sheffield (S8, S10, S17, S18)

Crocus prides itself, and has built its reputation, on providing the highest quality care with compassion, understanding and respect for each individual and their families.

Excellent rates of pay for the right people with the right skills and experience

We aim to appoint only the most conscientious, caring individuals who have significant experience in social or health care, especially with Older Adults with complex care needs.

If you think you can meet, and most importantly, provide the genuinely high standards of care we demand, please see our website or contact

Debbie Crowhurst on 01629 812874

Personal Care - Practical Help - Respite Care - Dementia Care
24 Hours a Day / 7 Days a Week

Tel: 01629 812874

www.crocuscare.com

Totley

Private Hire

24 hour taxi service

Advanced bookings only

Local • long distance • airports

Telephone 0114 283 9692

Mobile 07974 355 528

A1



Tiling, Plastering, Plumbing & Complete Bathroom Fitting Service

Tel: 0114 4182346

07738 688807

- ◆ Under Floor Heating
- ◆ All Aspects of Home Improvements & Maintenance Work Undertaken
- ◆ Competitive Prices
- ◆ NVQ Qualified
- ◆ No Job Too Small
- ◆ Fully Insured & Guaranteed

A1tilingandplastering.co.uk
25 Five trees Ave, Dore, S17 3LW

B.K. JEAUVONS PAINTER & DECORATOR



Interior
Exterior
Decorating
No Job too small

Tel: 01246 416484

and mobile 07882 278306

Creating opportunities with disabled people.

Registered Charity No. 218186

**Leonard
Cheshire
Disability**

Leonard Cheshire Services in Offers choice & opportunity to people with disabilities. A Specialist Unit for the Younger Disabled. Residential & Respite Care - Single Rooms Day resources - Aromatherapy - Reflexology - Physiotherapy - Toning Tables.

Activities include: - Arts & Crafts - Computers - Cookery - Shopping Expeditions - Theatre Outings - Church. Further details can be obtained from - The Service Manager, Mickley Hall, Mickley Lane, Totley, Sheffield S17 4HE. Tel. 0114 236 9952 Fax. 0114 262 0234

The Care at Home Service supports disabled people who wish to remain in their own homes.

We provide flexible care packages from 1 hour to 24 hours meeting individual needs. The service operates throughout Sheffield.

Our service includes: - help with getting up and going to bed, dressing, washing, bathing, shopping, cooking, light household duties.

Further details from: - The Care at Home Manager Tel. 0114235 1400 Fax 0114 235 1499

John Heath & Sons

AN INDEPENDENT FAMILY FUNERAL BUSINESS

Sometime.....

You will probably have the responsibility of making funeral arrangements. No one looks forward to this responsibility, but the death of a family member or friend brings with it an obligation that must be met. There are people who can help you meet this responsibility. We have been helping people combine the different aspects of the funeral into a meaningful service for over 125 years.

Please Call Day Or Night

(0114) 272 2222

Head Office - Earsham Street

Also at Meadowhead, Ecclesall Rd,
Crookes and Stanington

www.johnheath.co.uk



CHARISMA BLINDS



For
Windows
With Style

Sheffield Factory Showroom
106 PROSPECT ROAD
HEELEY, SHEFFIELD

Sheffield (0114) 258 5496
Rotherham (01709) 512113

Thank You for the Memories

Today, 23 June, was a day of very mixed feelings as my brother Robin and I and some of our families were able to meet to commemorate with so much gratitude the lives of our parents Steward and Muriel Hawke, who (had they survived), would both have reached their 100th Birthdays this summer. I, (Martin), was the oldest of their 3 sons; then Robin, and Alan who alas died many years ago in Leicestershire after getting injured playing football. I moved from Totley in 1970, Robin earlier because he went to University in Manchester whilst I studied in Sheffield. In both cases, we have lived in many places as we have pursued our respective careers, but Totley, (and Bradfield where we originated), have never been forgotten.

Many will remember Dad as one of the several milkmen in Totley; and some of you may remember some of us kids delivering on his round before school or college and at weekends and bank holidays. At one point, early on, Dad had not a single day off for fully 15 years. But, as we kids got older he tried to get Christmas Day off to be with us: it was possible to do this for a few years, because Express Dairy, our suppliers, were able to stop cream and butter production for a few days before Christmas to build up enough liquid milk for retailers such as Dad to deliver double quantities on Christmas Eve. The Dairy also had to put many thousands of extra glass bottles into circulation to do this. Alas, it could not continue: there were so few empties getting back to the Dairy that they had to send out trucks on Christmas day afternoon to try to get enough bottles back in to bottle the milk for Boxing Day deliveries.

Today we met for lunch in The Cricket – fabulous – thank you to all concerned, and there for the first time in many years I was able to pick up the **Totley Independent** (June 2012). How strange, then, to find reproduced a copy of the 1953 Coronation Celebration Sports Programme, with our own names in print! I have little memory of that Day, except I recall seeing some of the Coronation itself on a small black and white TV in the home of the Woofindens at the bottom of Strawberry Lea. It was the first TV most of us had seen, and one of the first in the area.

As kids, we played many, many hours of cricket in 'The Wreck'! I still wonder how many cricket balls are still rotting in the bottom corner by the stream. Willis Pearson (groundsman) often chatted to us: we knew him as 'Plimper', because he teased us about our plimsols! And it's good to see a new clubhouse on the Ground.

'Sunny Bank', where we were brought up, has been extended and changed greatly; I fondly remember my very own veg patch there, and selling plants and flowers at the gate from a very young age (maybe aged 10?). And I remember being incensed when one of Dad's milk customers Mrs Gregory who owned 'Snowite' laundry in Abbeydale came to the house to pay her milk bill. I'd copied her technique: I thought 'Snowite' caught the eye, so I deliberately spelled my sign on the gate, the same gate still stands!, 'Kabij plants for sale'. She dared to criticise my spelling!!!!

There have been many changes, most for the better. Today we went up Strawberry Lea to the end, whereas kids we spent many hours picking bilberries (one year Robin picked over 100 pounds); and we went up to Bole Hill Lodge, where the Jones family lived. I remember Mrs Jones carrying shopping all the way from the then bus terminus at Cross Scythes; Robin reminded me that she also walked across the moors to work at the brick factory just below Owl Bar. I also remember their son, (Mark?) who walked all that way to the bus to go to King Edward VII school, later getting a job with the Council during one of his University vacations, but when they had a break, he got the sack because instead of leaning on his shovel as the regulars did, he sat down . . . so the story goes. We were also involved with All saints and Totley Rise Meths churches – good to see they're still active, (ad on p 21 of June **Totley Independent**).

Today aroused many happy memories – the Furnisses, Andrews, Johnsons, Pearsons, Hills, Burgesses, Higgots, Perkinsons, Muxlows, Robinsons – far too many to mention all, because through the milk round we knew so many.

So, may we thank you all for our memories. Also TRA and **Totley Independent** for pursuing all that is good. Well done to all concerned.

Martin and Robin Hawke and families, currently living in Telford and Bradford respectively.

ED:- This letter stirred personal memories for me, I did the weekend round with your 'Mr. Hawke' for a short while as a young teenager in the early 70's. It was especially hard work in winter - the door stop jam sandwiches & flask tea he produced for 'elevenses' were like nectar. I admired how he did the round day after day without fail and was left with an impression of how huge his hands seemed, cracked & calloused after all those years of toil at the round in all weathers.

The Bents remains my favourite part of Totley and I walk it several times a week, occasionally remembering my days on the round with affection as I walk by Sunny Bank.

LIBRARY SERVICES CONSULTATION

We are consulting on how we change our library services to make them fit and affordable for the future and meet people's needs across the city.

The scale of the reduction to the Council's budget means that efficiency savings alone will not be enough to cover the loss in funding. At this crucial point in time, we want to look at the library services afresh, to see how they can work in new and different ways. This could mean developing, changing or relocating some services and reducing or closing others.

Research has identified a range of opportunities that we could explore and we want to know what you think of them.

Opportunities to work differently include:

- opening hours and the buildings we operate from
- making our library services more efficient
- partnership working - collaboration with
- voluntary/community groups
- volunteering to enhance the service
- increasing income
- new technology

The survey was launched on 13 August 2012 and runs for a period of 8 weeks, closing on 8 October 2012.

How to have your say:

You can complete the survey online on our website www.sheffield.gov.uk/libraryreview

You can pick up a survey at any library or First Point.

Andrew Milroy

Acting Head of Libraries,

Archives and Information Service

Have your say on draft trails management plan



The Peak District National Park Authority would welcome people's views on its first management plan for four recreational trails used by thousands of walkers, cyclists and horse-riders each year.

A six-week public consultation on the draft five-year plan is now under way, and people have until September 17 to give their feedback on

www.peakdistrict.gov.uk/looking-after/trailsplan

The trails, owned and managed by the Authority, are all former railway lines with a relatively flat terrain that offers easy access and traffic-free enjoyment.

They are:

- Monsal Trail, 8.5 miles from Bakewell to Wyedale, near Buxton.
- Tissington Trail, 13 miles from Ashbourne to Parsley Hay, near Hartington
- High Peak Trail, 10.5 miles from south of Buxton to Longcliffe, near Wirksworth
- Thornhill Trail, a short two-mile stretch near the Upper Derwent Valley.

They are regarded as some of the best recreational routes in the country, passing through glorious countryside, rich in wildlife and historic interest. In addition, the Monsal Trail received a huge boost last year when four old railway tunnels were re-opened for walkers, cyclists and horse-riders.

The draft management plan was drawn up with the help of user-groups in a series of workshops over the past year, plus a Trails Saturday when trail-users were asked to fill in surveys.

It includes action plans for managing the trails and their verges, optimising their benefits and promoting people's awareness and understanding of their setting, history and habitats.

Trails manager Abi Ball said: "Given the importance of the trails to local people and visitors, we'd like to give people the opportunity to comment on the plan which is available to view and download from our website at www.peakdistrict.gov.uk/looking-after/trailsplan. Any comments should be emailed to me at abi.ball@peakdistrict.gov.uk"

Road Rage in Totley

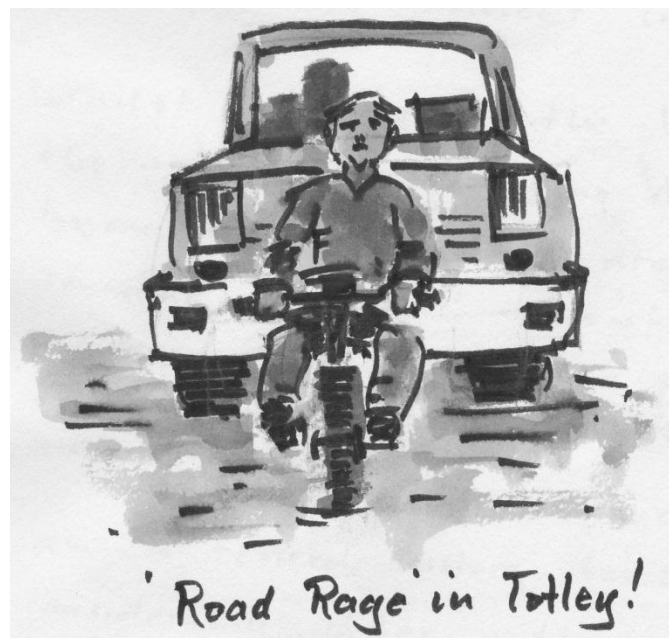
A Frightening Incident in Totley

Whilst cycling in the bicycle lane over the railway bridge along Abbeydale Road South towards town a motorist drew alongside me sounding his horn! Somewhat alarmed I indicated that I was in a protected lane and he should proceed without harassing me.

At this point let me state that I am a retired history teacher of 63, considerably older than my assailant who then pulled in front of me slowing to obstruct my path, forcing me onto the outside at which point he accelerated to run along inside me! Dangerous driving indeed!

Concerningly, from his open window he was threatening to follow me to my destination. I managed with some jeopardy to turn onto my road and to my drive, whereupon he parked menacingly and shouted he knew where I lived!

Using no 101 I reported the incident to the Police who were very reassuring and helpful. I remain extremely unsettled by the experience, it is dangerous out there! John Wells



Mark and Sally Fletcher invite
you to

The Grouse Inn

Longshaw

Sheffield S11 7TZ

Meal times:-

Mondays 12.00 to 2.30pm

***Tuesdays to Friday's 12.00 to
2.30pm and***

6-30pm to 9-30 pm

***Saturdays 12.00 to 3.00pm
and***

***6.30pm. to 9.00pm (drinks –
open all day)***

Sundays 12.00 to 9.00pm

Phone 01433 630 423

R Rose & Co

Chartered Accountants & Business Advisors

Specialists at
looking after the affairs
of small businesses.

For a **FREE** initial consultation
please contact Roger Rose FCA on
0114 281 2331



From business start-ups and general accounting, to support
and advice in business development and strategy,
our services are in our personal one-to-one service.
To find out more please call 0114 281 2331.

213 Derbyshire Lane, Norton Lees, Sheffield S8 8SA
Email: info@r-rose.co.uk

*One man went to mow...
...but his mower wouldn't go!*

Now is the time to call

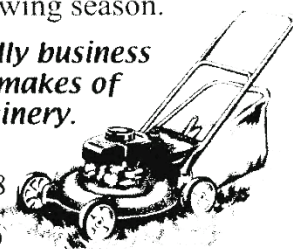
MOWER MENDER

and be ready for the forthcoming
growing season.

**A local friendly business
servicing all makes of
garden machinery.**

Phone:
0114 236 6958

Mobile:
0781 2211149



**Blade Sharpening and
Collections & Delivery Service Available**

ACTIV physiotherapy

is stronger
& more flexible

ACTIV & BRADWAY
physiotherapy & Physiotherapy Clinic
have combined . . .

so our new partnership can offer you a wider
range of treatments in 3 convenient locations
. . . Bradway, Totley and Norton Lees



our wide range of treatments include:

- Repetitive Strain Injuries
- Muscle & Joint Problems
- Women's Health Issues
- Sports Injuries
- Back & Neck Pain
- Acupuncture

Registered with major insurance companies,
BUPA, Aviva, Westfield Health, AXA

email: mail@activphysiotherapy.co.uk
web: www.activphysiotherapy.co.uk

ACTIV Physiotherapy 0114 235 2727

R. S. CERAMIC TILING

56 Mickley lane
Totley
Sheffield
S17 4HE

All ceramic tiling work undertaken, Underfloor Heating

15 years experience, Private and commercial

All work guaranteed, Competitive prices

For a free no obligation quote call

Ron Shilton

Mobile: 07887 990059, Home: 0114 418 1209

Email: ronshilton@ntlworld.com

Slimming WORLD

because you're amazing

If you want to lose weight healthily and with no deprivation or
humiliation then join your local Slimming World class in Totley,

Mondays at 7pm and at Greenhill on Wednesdays at 10am

Telephone Jo Elsey on 0114 2620523

or 07590 545 253

(Offer cannot be used in conjunction with any other offer)

1/2 Price membership
on production of
this advert

Introducing Mark



Professional gents barber

For all ages

No appointments needed

Special Offers for Senior citizens

Patricia Barber

(under new management)

53, Wollaton Road, Bradway, S17 4LF

Tele 0114 2366247

Parking Available

Opening hours Mon-Sat 9.0am-1900



Gail Kitchen: 07986473415



Does going away from home mean your cat is sad and unhappy?
Does a trip to the cattery scare your cat *not to mention your wallet?*

WORRY NO MORE!



MOGGY MAID is on hand to feed, love and provide
everything your cat needs in the relaxing comfort of its own home.

As we cat-lovers know, unfamiliar sights and smells can stress your cat,
whereas leaving them in the familiar surroundings of their own home
carries less worries, for your cat and for you.

If only for a night, weekend, or a month; holiday, Christmas or any time of
the year, MOGGY MAID is here to help



We promise no mischief allowed!



In a professional manner and with quality service, you can ensure
individual care and attention, whilst you relax away from home.

We haven't forgotten the rest of the family; mice, rabbits, budgies,
goldfish, etc will receive care and affection too.



LOCAL FRIENDLY SERVICE

From £5 a day

For more Information, contact Gail Kitchen on:
07986473415

5 Ullswater Place, Dronfield Woodhouse

Friends of Gillfield Wood

Summer Walk to Woodthorpe Hall, along Fanshaw Gate and visit to Wynford Rosser's Farm.

The rain started to fall about half an hour before the walk was due to start, however this didn't dampen the enthusiasm of the group of over a dozen people, who were keen to find out more about the history and wildlife of the Woodthorpe/Fanshaw Gate area.

As we walked up the bridleway from the Shepley Spitfire, the group stopped to look at St George's farm on the left, which has been occupied and privately farmed from 1929 to date. Before then it was previously purchased by John Ruskin (artist and social reformer), in 1877 under the guise of the Guild of St. George charity, with a view to running the farm sustainably together with art education and craftsmanship in mind. Also at this point it was mentioned that a Great Spotted Woodpecker could often be seen and heard drumming on the mobile phone mast in the spring and that this part of the wood is a good spot to see Nuthatch and Chiffchaff along with Speckled Wood and Meadow Brown butterflies.

As we walked up the bridleway and turned left into the Holloway, marked as a public footpath, that took us up to Woodthorpe Hall, slipping and squelching through the rain and mud as we did so. It was pointed out that this particular holloway has been there for hundreds of years and runs all the way from Holmesfield, along the side of Holmesfield Park Wood and down to Totley, close to Totley Hall Lane.

There is an excellent colony of swallows breeding at the farm at Woodthorpe Hall and Tree Sparrows are also breeding in the area. A Pied Wagtail and several Yellowhammers were also observed close by. But there was no sign of the Buzzard that is regularly seen flying over Gillfield and Holmesfield Park Woods, so our sandwiches were safe on this occasion!

Woodthorpe Hall itself dates back to the 17th century and is currently owned by Dick Shepley. He also owns and manages Holmesfield Park Wood.

As we walked along Fanshaw Gate from Woodthorpe Hall, members of the group were made aware of the aniseed smell given off by the Sweet Cicely that grows along the side of the road. Once again it was noted that Yellowhammer are often seen and heard singing along this stretch of road.

Comments were made on how lovely the gardens looked at Fanshaw Gate Hall. We then walked on to Wynford Rosser's farm, where we were met by an enthusiastic Wynford, who gave the group a very interesting and informative talk about his farm that dates back to the 16th century. The rain had relented by then so the plan was also to walk through the fields on the farm, however the light was fading fast and the group wanted to get back to Totley before dark. It was decided that a re-visit to Wynford's farm was the order of the day, so this was arranged for an evening in early August.

As the group set-off down the hill past Fanshaw Gate Hall towards Totley, Chris Measures saw a Spotted Fly Catcher using some barbed wire fencing as a perch from which to fly and catch flies from. It was also mentioned that this area around the hall is a good spot to see and hear Tawny Owls along with Pipistrelle bats.

As ever the time went really fast and upon departing for home, everyone commented on how interesting the walk had been and that they were keen to re-visit Wynford's farm in August.

Re-visit to Wynford Rosser's farm early August

The group met up at Wynford's farm at 7pm on what was a lovely warm summer's evening, which was a bonus bearing in mind the poor weather we've had so far this year.

The fields lie to the South of Gillfield Wood and run from the farm down to the woodland edge. As we walked down through the fields (this was the easy bit!!), Wynford explained about their management through the farm stewardship scheme and how this is helping to conserve the wildflowers and wildlife. The flowers noted growing in the fields were Yellow Rattle, Meadow Vetchling, Marsh Thistle, Ragwort, Red Clover and Mouse Ear.

We also saw some interesting archaeological features in the landscape, but none of the group members were sure as to what they were. Perhaps getting an expert in to have a look at them would be the order of

the day. Wynford did point out some ridge and furrow features in the bottom field next to the wood, but he explained that these only dated back to the 2nd world war. He also showed us some older, more mature trees along the edge of the Totley Brook in comparison to the smaller, younger trees that are growing in the main part of Gillfield.

The hard part was walking back up the hill to the farm, but this was made that much easier for us as we occasionally stopped to look at the glorious sunset over the hills of the Peak District.

Back at the farm we thanked Wynford for his interesting and informative walk and talk about the farm and fields and came to an agreement that the FoGW can carry out some survey work of the wild flowers during the Spring/Summer of 2013.

Future Events Planned for 2012/2013.

Tuesday 4th Sept. Talk by John Kirkman on the 'Birds of Gillfield Wood'. 7pm Totley Library.

Saturday 8th Sept. Moth watch with Frank Botterill of Sorby. Near the scout hut at the bottom of the wood. Time and place to be decided.

Monday 17th Sept. Bat Survey with Derek Whiteley of Sorby. Meet at the bus terminus at the top of the wood at 7.15pm.

Sunday 23rd Sept. Hedgerow Botanical Survey with Barry Wright of SHU. Meet at the wooden gate at the bottom of Totley Hall Lane. Time to be decided.

Sunday 30th Sept. Practical Conservation day with Chris Roberts, SCC Ranger. Meet at 10am at the wooden gate at the bottom of Totley Hall Lane. A number of Sheffield Conservation Volunteers will be joining the group to help with the tasks at hand.

Sat./Sun. 6th/7th October. Small Mammals survey with Val Clinging of Sorby. This is a follow up from the survey carried out in October 2011, when we found common shrew and bank vole. Meet at the wooden gate at the bottom of Totley Hall Lane at 5pm on Saturday 6th October.

Sunday 4th November. Practical Conservation day with Chris Roberts, SCC Ranger. Meet at 10am at the wooden gate at the bottom of Totley Hall Lane.

Tuesday 6th November. Talk by Barry Wright on his botanical survey work in Gillfield Wood and other areas. 7pm Totley Library.

Sunday 2nd December. Practical Conservation day with Chris Roberts, SCC Ranger. Meet at 10am at the wooden gate at the bottom of Totley Hall Lane.

Tuesday 8th January. Talk by Stuart Crofts called 'Caddisfly Magic'. 7pm Totley Library.

Contacts

If you have an interest in the history and/or natural history of the area, or would like to know more about the above planned events, then please contact either Dave Gash (262 0564, daveygash@hotmail.com), or Sally Goldsmith (07790 637016, goldsally@googlemail.com). Also, if you would like to become a member of FoGW, they will be very pleased to talk with you and provide more detail.

Yorkshire's fastest woman balances training for the USA National Swimming Trials with an ordinary life

Lucy Spencer is no ordinary 19 year-old. She is Yorkshire's 200m Individual Medley record holder, and the fastest woman in Sheffield in both the 400m and 200m swimming events. She is part of a team of 4 at the City of Sheffield Swim Squad, coached by Russ Barber who were training for the USA Nationals in August. She has already won two gold's, a silver, and a bronze in the most recent nationals in June and July this year.

Fancy joining her for a 5 a.m. warm-up? Or a 5-mile run after a 15-hour day?

Born and bred in Totley, Lucy is ambitious and dedicated to achieving her best. From a family of successful competitive swimmers; Lucy's sister Amy swam for England, and her mother Helen has competed in the Disability Great Britain team and qualified for the Sydney 2000 Paralympics. Lucy knows what it takes and still manages weekly shifts at The Co-operative Food to fund her training.

Lucy has trained at Ponds Forge over the last 10 years and is currently competing in the Aspiring World Performers program; the British Swimming program which is part of the Olympic Road to Rio 2016 tour which recognises budding British swimmers with the best chance of success in 2016.

She trains 10 times a week in the pool for over 2 hours. Each week consists of five 5am starts and a day off on Sunday. She also does four land training sessions and extra running to keep her overall fitness at its peak. Lucy has already successfully competed in Canada, Stockholm, Holland, Tenerife, Portugal, Greece, Spain, Belgium, and Majorca, and comments: *"My hopes for the future are to compete in the World Championships in Barcelona next year, and also to compete in the 2014 Commonwealth Games in Glasgow. I am hoping to make the Great Britain team for the Rio Olympics in 2016."*

My motto is 'no work, no swim' and I like to keep a sense of normality at work and the extra money helps to fund my training."



The Cross Scythes Pub, Restaurant and Hotel in Totley are proud to be sponsoring Lucy and are providing financial support for swimwear, travel, and parking costs. We wish her the best of luck, and for further information, you can follow her training online at: www.cross-scythes.co.uk

Totley All Saints School

I retire this August after 8 years as headteacher at Totley All Saints CE School and also after teaching for nearly 39 years. I would like to thank everyone for the support and kindness shown to me during this time. It has been a privilege to teach at TASS and to work with so many children and their families. I am sure that the school will continue to succeed in the safe hands of Mrs K Sargent, the new headteacher, and our wonderful staff.

The affection that ex-pupils hold for the school never ceases to amaze me. On a very wet July 29th old boys and girls met to plant an apple tree in the school grounds to commemorate the Queen's Diamond Jubilee. We celebrated with tea and cakes and a tour around the school led by children from our Eco Saints Committee.

Mrs Cook, teacher at our school during the 2nd WW, joined parents, ex pupils and community for our Tea and Tunes contribution to Totley Music Festival. Again, it was wonderful to hear memories of our school.

Due to families re-locating during the summer holidays a few places have become available in September. Please contact the school office, 236 1934, if you are interested, to check which year groups are available.

Bev Houghton

Beauchief Environment Group

We are a local group looking after the area of woodlands around Beauchief Abbey and up to Ladies Spring Wood. We have occasional evening meetings which are on general topics relating to the environment and which are open to all.

September 8th - Bob Gelattly will give an illustrated talk on Anston Stones Wood.

13th October - An illustrated talk by John Driskell entitled "7000 miles around Australia - Perth to Sydney via the northern route".

Talks will be held at St. Peter's Parish Centre, Reney Avenue, S8 and start at 7.30 p.m. Admission of £3 including refreshments. All welcome.

Trudi Parsons, Beauchief Environment Group

Dore and Totley Station Update

This is to update everyone on the Dore and Totley Park and Ride Scheme. If you have seen the article in The Star newspaper saying that the Dore and Totley Park and Ride is on hold this is wrong. I have been to a meeting of the Transport for all Group for People with Learning Disabilities and the early indications are now that work is in progress for the lighting. Work will start in November.

Paul Savage, Deputy Chair of Transport for All Group

PUZZLE CORNER

Solution to Trigrams.

- A. CRATE; CATER; REACT.
 - B. SHARE; HARES; SHEAR.
 - C. SPARED; DRAPES; SPREAD.
 - D. THREAD; HATRED; DEARTH.
 - E. DEAL; LEAD; DALE.
 - F. MALE; LAME; MEAL.
 - G. TIMES; ITEMS; SMITE.
 - H. SPACE; CAPES; PACES.
 - I. LAGER; REGAL; LARG.
 - J. HEALS; SHALE; LEASH.
- Don Ashford.

SEE THE DIFFERENCE!



- **COMPREHENSIVE EYE EXAMINATIONS**
including special tests for glaucoma, colour vision, dyslexia & diabetes
- **CONTACT LENS CONSULTATIONS**
free contact lens trials and monthly direct debit payment schemes
- **PRESCRIPTION SUNGLASSES**
- **LEISURE SPECTACLES**
for computer work, fishing, swimming and safety wear
- **ACCESSORIES**
ready readers, chains and magnifiers

LENSES BY SEIKO
In all non-budget spectacles

TOTLEY
63 Baslow Road
236 4485

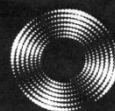
ABBEYDALE
634 Abbeydale Road
255 6554

For more help and information please phone or call into the practice of your choice
For a full list of our practices visit

WWW.MKO.CO.UK

Terms and conditions apply.

Entrust Electrical



For all your electrical requirements in or outside the home you can trust **Entrust** to do it right!

- ✓ Full or Partial House Rewiring
- ✓ Additional Sockets, Switches, etc
- ✓ Energy Efficiency Enhancements
- ✓ Contemporary & Classical Refurbishments
- ✓ General Electrical Maintenance & Repair
- ✓ Homebuyer Electrical Safety Surveys
- ✓ Telephone and Computer Data Points
- ✓ Garden, Pond & Other Outdoor Electrics
- ✓ Security Lighting & CCTV



City & Guilds
Qualified

(0114) 2352084
07935 250814

www.entrustelectrical.co.uk

Old Hay Close, Dore, S17 3GP



Shepley Spitfire

56 Mickley Lane, Totley Sheffield - S17 4HE 0114 236 0298

2 meals for **£8.95**

Now serving Fresh Local Veg.

Served everyday 11am until 9pm

Quality Cask Ales

The Home of Big Fish Friday!!

Beer battered Cod fillets, Chips and Peas Two for **£9.99**

Eat in or Takeaway

FOR THOSE OF YOU WITH A LITTLE APPETITE

WE HAVE INTRODUCED A SMALL

PLATES MENU FROM **£2.99**

ALL DAY EVERYDAY

Quiz night Sundays 9pm

Poker night Mondays 9pm

Pool night Tuesdays 9pm

Last Saturday of the month DJ Theme night

Sky Sports & ESPN showing live games

"need *help* in your garden?"

**"right plant, wrong place?
Stuck, don't know where to start?"**

We can offer a Design Consultancy without the designer price-tag.

"Selling your House?"

We can tidy your garden, also with use of planted containers/hanging baskets, make your house more desirable to prospective buyers.

Season by Season

- Regular Lawn Maintenance.
- Hedge Cutting.
- Small Tree/ Shrub pruning.
- Beds/Borders tidied, planted.
- Planted Containers.
- Green waste removed



the **Abbeydale**
gardeners...
...we can help you.

Formerly of
The Abbeydale Garden Centre

Kevin Hunter 07818 20 12 42
Mark Naylor 07739 75 23 19

www.theabbeydalegardeners.co.uk

New Sports Massage Therapist at Activ Physiotherapist

Activ Physiotherapy clinic have a new addition to their ever expanding team. Megan Edwards is a level 3 trained sports massage therapist who has had experience working in football and Rugby. She joins the team in August and will be working closely with the physiotherapists in the Bradway clinic.

'Sports massage is important for relieving muscle tension, managing stress and preventing or treating injury' says Andrew Okwera of Activ Physiotherapy. 'You don't have to be an Olympic athlete to benefit from sports massage. Anyone with an injury, chronic pain or restricted movement could benefit. Megan will be important when helping our patients recover from an injury and even the staff will benefit from her services'.

Treatments will be available from the Bradway clinic, telephone 0114 235272 for more information or go to www.activphysiotherapy.co.uk.

HOLMESFIELD PARISH CHURCH PROUDLY PRESENTS

AN ILLUSTRATED TALK BY

PROFESSOR DAVID HEY
ENTITLED

BEAUCHIEF ABBEY

DATE MONDAY 17TH SEPTEMBER AT 7.00.P.M.

VENUE HOLMESFIELD CHURCH

THE COST IS £5 PLEASE PAY ON THE DOOR

TEA AND COFFEE WILL BE SERVED

PROCEEDS WILL GO TO HOLMESFIELD PARISH
CHURCH

ANY QUERIES PHONE ROBIN GREETHAM
ON 01246 412767

HOLMESFIELD FLOWER CLUB

Wednesday 19th September - Demonstration of Flower Arranging by the acclaimed NAFAS National Demonstrator Andrew Grisewood entitled, "Aura of Autumn". 7.30 pm at Holmesfield Village Hall, (off Woodside Avenue) Holmesfield. Ample parking. Tickets available at the door: £8 (members £4), includes refreshments. The arrangements will be raffled at the end of the evening. EVERYONE IS WELCOME.

Wednesday 17th October - Workshop evening entitled "A Garden of Delight" with NAFAS National Tutor June Borrowdale. 7.30 pm at Holmesfield Village Hall, (off Woodside Avenue). Visitors are most welcome either just to watch or take part - Visitors £3. For information on materials to bring, contact Diana Holland tel: 0114 2377601 or email: mail@dianaholland.plus.com. Early arrival advised to set up for 7.30 pm start.

Visit the club's web page at <http://holmesfieldflowerclub.clubbz.com> for photos and news. Details on how to join Holmesfield Flower Club or for information about the events, phone Diana on 0114 237 7601 or contact us via the web page

Totley Rise Dental Practice

85 Baslow Road, Totley, Sheffield, S17 4DP

0114 236 0333

We would like to take this opportunity to introduce our practice to new patients and to thank our current patients for their continuing support.

Totley Rise Dental Practice was established over 30 years ago and has recently undergone extensive alterations and improvements.

We are able to offer a wide range of treatments and facilities, just a few of which are listed below:

- Disabled access, to our new surgery on the lower ground floor
- Hearing loop on reception
- Cosmetic treatment, including teeth whitening
- Consultations & second opinions with no obligation
- General restorative treatment
- Hygiene and oral health advice

We have three dentists working at our practice, along with our hygienist and nursing staff. All our staff members have been with the practice for several years and we would like to feel that we offer a relaxed and friendly atmosphere.

Due to recent changes in NHS dentistry we are in the unfortunate position of being unable to offer appointments to new NHS patients. However, we are able to accept new patients on a private basis.

The mention of "private" dentistry fills patients with fear and dread of the anticipated costs involved. We would like to reassure patients that many fees are comparable to the NHS. For example, an NHS examination is currently £17.50 whilst private fees are £22. We are always happy to provide a full examination and treatment plan with costs with no obligation.

We welcome new enquiries and are always happy to offer advice to new and old patients alike. If you would like further information please do contact us.

Sheaf Motors

The picture of Sheaf Motors and the petrol prices published in the July/August edition of the **Totley Independent** takes me back in time, reminding me of the photo of the small garage by The Cross Scythes. It depicted Cleveland diesel at 1/11½d per gallon or 10p in today's money. It would fill the tank for 10 gallons for £1. The pump was hand operated by Cliff Dronfield in those days.

Sheaf Motors by the way was in those days privately owned by Jim Thompson and his son Ian. Bill Taylor worked there for many years and my son learned his trade there.

J W Abson

Putting Life IN Years (PLINY)

Telephone friendship groups research study

The University of Sheffield are working with Age UK Sheffield on a research study to find out whether telephone friendship can improve wellbeing in later life. The study is for people aged 75 years and over living in Sheffield. Telephone friendship encourages a small number of participants to talk about interests or everyday life during weekly conversations over the telephone. The telephone groups are facilitated by a trained Age UK Sheffield volunteer. If you would like to find out more about the study you can either contact a member of the study team, Louise on: 0114 222 8274 or Rosie on: 0114 222 28276; or, visit our website: www.sheffield.ac.uk/pliny.

NAPPY MATTERS

No longer able to read newspapers, I am grateful to receive a weekly CD of local news provided by volunteer readers of the Sheffield Royal Society for the Blind.

A recent snippet of news was associated with the forthcoming change from weekly to fortnightly collection of the black dustbins. My personal reservation about the change is the possibility of an accumulation of smells from food remnants and packaging which we can no longer destroy on a kitchen fire as in earlier days. Perhaps the news item which caught my ear is not too far removed from my own fears.

It was reported a lady with three small children of different ages had to get rid of 240 soiled nappies each week. She had moved to Sheffield from the affluent south — Surrey I think- where a special bin was provided for soiled nappy collection, and wondered how the new bin collection service could possibly cope.

Before presenting any more of my thoughts on this topic, I have to confess I have no professional paediatric training in this area. I played a small amateur part in attending to each of our three daughters though I have no experience with the modern nappy system. My apprenticeship and subsequent experience was limited because I was rather ham fisted with the large safety pins needed to secure nether garments in those days. My expertise, such as it was, was dealing with the aforesaid articles after removal from the child. Older readers will remember before the "throwaway" age, nappies were washed, boiled and dried for reuse many times over. Because I have that sort of mind, I started to think about the 4 quoted figure of 240 per week. The average for each child comes to 80 - i.e. about 11 per day. Assuming each baby spends half its time asleep, 12 hours per day, suggests a clean nappy every hour for each child or every 20 minutes for the harassed parent. Even on a bad day I never experienced this volume of usage. I wonder if reporters ever think about the numbers they quote!

Another possible consequence of the change to fortnightly collection feared by some people was the probable increase in fly tipping by households who had too much rubbish for the bin. I also wondered about this possibility but in rather more detail. These days almost every street has one or two rubbish skips standing in the road awaiting filling by the hirer. Scrap metal merchants now routinely tour the streets in their flatbed trucks hoping to retrieve metal from the skips. In future we may face the prospect of a different group of skip prospectors - mothers driving round in cars looking for receptacles to receive their bags of soiled nappies. My generation grew up with the story of whole families being bathed in the same water, the youngest last of all - hence the expression, "don't throw the baby out with the bath water". Perhaps the new expression will be, "don't throw out the baby with the bin liners".

Well, we have all heard it said, "don't politicians ever think of possible consequences of the actions they take?"

Another item reported was the replacement of all Sheffield street lamps by individually switched on LED lights. Some of these to be turned off during some hours of darkness to save energy and money. My limited knowledge of electrical matters does not suggest to me any way of managing this. Short of an individual doing this like the old fashioned lamp lighter, I am sure there must be other ways. I believe there are still one or two Sheffield street lamps originally lit by burning sewer gas. I am not suggesting a return to these directly. However, I do wonder whether there is any way of using all, or some of the city sewer gas to generate electricity to light the streets. Our grandson is studying engineering so perhaps I could suggest he does a feasibility study of the idea! Perhaps a bin service for soiled nappies, these then used to generate gas to burn and to make electricity and demonstrate to the disappointed lady from the south that we do have some ideas in the northern regions!

Don Ashford

TOTLEY PROBUS CLUB

A CLUB FOR RETIRED GENTLEMEN

We meet every 2nd and 4th Wednesday each month and we wish to increase our membership. You are invited to attend initially as a visitor and to see what it is that we do.

The meetings take place at the Totley Rise Methodist Church from 10am to 12noon. We have speakers on a variety of subjects, days out and the occasional lunch. Our next speakers are — 12th September Max Payne-subject- Spanish Civil War

26th September Ken Bell- subject- God Bless America
Anyone interested please contact Edward Camm: on 236 6095 or David Latham on: 236 7012

SERVICES AT ST JOHN'S ABBEYDALE

www.stjohnsabbeydale.co.uk

- 8am Holy Communion (1662)
First and third Sundays, at St Johns, Abbeydale.
Second and fourth Sundays at Holy Trinity, Millhouses.
- 10am Parish Communion EVERY Sunday.
Provision for children on the 1st 2nd and 3rd Sundays of the month either by Family Communion or Fish and Sunday Clubs. Please see calendar for the month.

EVENTS AT ST. JOHN'S CHURCH

- October 14th Harvest Service 10am
October 20th Quiz Night with fish and chip supper
December 1st Beetle Drive with pea and pie supper

SHEFFIELD FOLK CHORALE

Folk Chorale are performing on 27th October at St John's. Adults £9, Concessions £7 and under 16 free. Tickets 0114 262 0027.

MICHAELMAS FAIR

Saturday, 29th September at St. John's Church.
Everyone welcome

THE ALPHA COURSE

At Totley Rise Methodist Church

From 6.45pm to 9.30pm

on Monday evenings for 10 weeks

starting on 24th September 2012

Dinner will be served promptly at 7pm, then there will be the weekly talk followed by group discussion.

For more information or to book a place, call John on 236-6819

Come and explore the possibilities
of life with us!



All Saints Church

Totley Hall Lane

SERVICES

The services in September follow our usual pattern.

| | |
|-------------------|--------|
| Sunday morning | 10am |
| Sunday evening | 6.30pm |
| Wednesday morning | 10am |

HARVEST FESTIVAL

| | |
|-----------------------|------|
| Sunday 30th September | 10am |
|-----------------------|------|

NEW VICAR

Totley All Saints is delighted to be able to let you know that we have appointed a new vicar, who will be joining us in September.

The Rev. Paul Oakley will be joining us straight from having worked for the past five years in the Church Army Training Team here in Sheffield. Before that he was vicar, for seven years each, in two very different parishes in Lichfield. Paul is married to Marion who has been a teacher of children with Special Educational Needs. Paul and Marion bring with them a wealth of experience, including having worked in a training role for the "Church of Christ Nigeria".

Paul and Marion's first Sunday in Totley will be 16th September.



MICHAELMAS

Michaelmas or the Feast of Michael and All Angels, is celebrated on the 29th September every year. As it falls near the equinox, the day is associated with the beginning of autumn and the shortening of the days. It used to be said that harvest had to be completed by Michaelmas, almost like marking the end of the productive season and beginning the new cycle of farming. It was the time at which new servants were hired or land was exchanged and debts were paid. This is how Michaelmas became the time for electing magistrates and also the beginning of legal and university terms.

St. Michael is one of the principal angelic warriors, protector against the dark of the night and the

Archangel who fought against Satan and his evil angels. As Michaelmas is the time when darker nights and colder days begin, the celebration of Michaelmas is associated with encouraging protection during these dark months.

Traditionally in the British Isles, a well fattened goose, fed on the stubble from the fields after harvest, was eaten to protect against financial need in the family for the next year.

It was said that Queen Elizabeth the 1st was eating goose when she heard the news of the defeat of the Armada and resolved to eat goose on Michaelmas Day thereafter. The custom of celebrating Michaelmas Day as the last day of harvest was broken when Henry VIII split from the Catholic Church, instead it is Harvest Festival that is celebrated now.

St. Michael is also patron saint of horses and horsemen.

BACK TO SCHOOL

S is for the new School year

E is for Early to bed

P is for Pencils and Paper

T is for the Teacher who said

E is for work that is Easy

M is for Me, Hooray!

B is for Books that are funny

E is for fun Every day

R is for Reading, 'riting, and 'rithmetic.

HARVEST

Lord we thank You for the harvest

The harvest of our years

For all the things around us

The laughter and the tears.

The way and road we've travelled

The wonders that we've seen

Just keep us looking forward

Not on the might have been.

We thank You for the treasure

Of family and friends

The riches that are found there

In love that never ends

So we thank You for the harvest

Shown in the life we live

And for the many blessings

That in our life You give.

TOTLEY & DISTRICT DIARY

MONDAYS

COFFEE MORNING, All Saints' Church Hall, 10am-noon
TAI-CHI, United Reformed Church, Totley Brook Road, 11.30am-12.30pm
RAINBOWS and GUIDES, All Saints' Church Hall, 5.45pm-9pm
SLIMMING WORLD, United Reformed Church Hall, 7pm, Jo Elsey: 262 0523 or 07590 545253

TUESDAYS

COFFEE MORNING, Totley Rise Methodist Church Hall, 10am-noon
KEEP FIT & COFFEE, For the not-so-young, Bannerdale Centre, Carterknowle Road, 10.15am, Phone: 258 5364
WOODSEATS ADVICE CENTRE, Drop in service, free, impartial, and confidential. TR Methodist Church, 10am-noon
CRAFT GROUP, Totley Library, 2pm

WEDNESDAYS

PILATES CLASSES, Dore Old School, 9.00-10.00 and 10.15-11.15. Contact Caroline - Tel: 0781 722 0324, email caroline1north@btinternet.com, www.pilatescarolinenorth.co.uk
COFFEE in the LIBRARY, 10am-11.30am

TODDLER GROUP, 10am-11.30am, All Saints' Church Hall. Details tel. Andy Holmes 0114 236 2088
HEALTH WALKS, 10.30am, Totley Library foyer. Phone Tina, The Health Walk Ranger: 0114 203 9335
MODERN SEQUENCE DANCING, All Saints Church Hall, 8pm-10pm

THURSDAYS

BELROBICS, United Reformed Church, 9.15-10am, email: jenny@belrobics.co.uk or telephone: 07816 850132.
NCT COFFEE GROUP FOR DORE TOTLEY & BRADWAY, 10am-noon, For mums & babies/toddlers, meeting in various locations, Phone Lucy Street 07837 000405 or email: lucy@streetr.plus.com for further details
CHAIROBICS, Heatherfield Club, 1.15pm

PUSHCHAIR CLUB, Totley Rise Methodist Church Hall. 1.30pm-3pm. Tel. 236 3157 for further details
PILATES CLASS, United Reformed Church, Totley Brook Road, 6.15pm-7.30pm **also new class 1.30pm to 2.30pm**, Phone Emer Coffey 07792 422909

FRIDAYS

PILATES, The Old School, Dore, 9.15-10.15 & 10.45-11.45am. Phone Teresa Tinklin 07906 312372

SATURDAYS

MODERN SEQUENCE DANCING, All Saints Church Hall 2nd and 4th Saturdays 8pm-10pm

SEPTEMBER

SAT 1st TOTLEY HALL PARK CONSULTATION, in the park 10am-11am, further details page 5

SUN 2nd CASTLETON FARMERS MARKET, the Village Hall, 10am-3pm

TUE 4th FRIENDS OF GILLFIELD WOOD, Talk by John Kirkman, 7-9pm, Totley Library, further details page 18, All are welcome

THU 6th - SAT 8th LONGSHAW SHEEPDOG TRIALS, from 8.30am daily, full details page 11

SUN 9th MINIATURE TRAIN RIDES, Abbeydale Road South, First train 1pm - last train 5pm (weather permitting) www.sheffieldsmee.co.uk

SAT 15th CAR BOOT & TABLE SALE, Heatherfield Club, Stall holders 9am, Sales 10am-noon, free entry, refreshments, booking 236 8333 or 275 2277

SATURDAY 15th TOTLEY SHOW, Totley Primary School, from 1.30pm full schedule front page

MON 17th BEAUCHIEF ABBEY, An illustrated talk by Professor David Hey, Holmesfield Church 7pm, full details page 21

TUES 18th TOTLEY TOWNSWOMEN'S GUILD, 'Victoria & Albert', Kenneth Loxley, Totley Rise Methodist Church Hall, 10am

SUN 23rd MINIATURE TRAIN RIDES, Abbeydale Road South, First train 1pm - last train 5pm (weather permitting) www.sheffieldsmee.co.uk

WED 26th TOTLEY HISTORY GROUP, Totley Library, 7.30pm, David Templeman - History of Sheffield Manor, all welcome

THU 27th SHEFFIELD FARMERS MARKET, 8.30am-5pm, Fargate

OCTOBER

SUN 7th CASTLETON FARMERS MARKET, the Village Hall, 10am-3pm

SUN 7th MINIATURE TRAIN RIDES, Abbeydale Road South, First train 1pm - last train 5pm (weather permitting) www.sheffieldsmee.co.uk

TOTLEY INDEPENDENT FOR OCTOBER

The next issue of the Totley Independent will be available from the usual distribution points on

SATURDAY 29th September

COPY CLOSE DATE for this issue
will be

SATURDAY 15th September

Editor: **Ian Clarke**
 Tel. No: **235 2526** or Email: **editor@totleyindependent.co.uk**

Advertising & Distribution:
John Perkinson
 Tel. No: **236 1601** or Email: **advertising@totleyindependent.co.uk**

Items for publication may be left or sent to:
2, Main Avenue, Totley, Sheffield, S17 4FG

www.totleyindependent.co.uk

PRINTED by STARPRINT



- Central Heating,
- Domestic Plumbing,
- Glazing, Double Glazing and Glass,
- House Maintenance,
- UPVC and Wood Windows & Doors



Mini Digger & Driver, Muck Shifts, Footings Etc.

starprint

5000
 130 GSM GLOSS
 FULL COLOUR
 DOUBLE SIDED
A5 LEAFLETS
£99.95

250
 FULL COLOUR
 SINGLE SIDED
BUSINESS CARDS
£19.95 + VAT

BANNERS
 AVAILABLE FROM
£29.95 + VAT

Full design service available!

Tel: 0114 258 0707

Email: mail@starprint.co.uk
 601 Abbeydale Road, Sheffield, S7 1TA