

TOTLEY INDEPENDENT

PUBLISHED CONTINUOUSLY SINCE 1977
JULY/AUGUST 2012 No. 355

www.totleyindependent.co.uk
20p.



Marstone Garage

The site that is now occupied by the vets was a garage for decades. Judging by the fuel prices (& these are per gallon) this photo was taken by Bob Warburton in the mid 1970's. In 1973 (pre-fuel crisis 4 star was less than 40p). Nowadays unleaded petrol is the equivalent of more than £6 per gallon.

Totley Residents Update

The first official activity after the committee meeting was the Jubilee tea dance. This was held in the Heatherfield club and was well attended. We had lots of help on the day and I would like to thank everyone who helped not only on the day but with planning, ticket distribution and publicity. We are planning to hold another event later in the year. We are seeking donations of china crockery, it doesn't have to match and it can be part sets etc. If you have anything you would like to donate please phone on 07709 780606.

We are pleased to announce that we will again be sponsoring the Totley Music festival. The TRA have also planned an event that will take place on the evening of the 21st July. This is a family event of a barn dance and pie and pea supper (bring your own bottles). Tickets are available from local outlets- look for the posters or by calling 235 1005. We really hope you will support the music festival and the barn dance. It promises to be a fun evening.

On Sunday the 22nd July there will be a second Famers Market. This will start at 12pm. After the success of April's Market, July's promises to be bigger and better. There are more stalls planned and we have a programme of entertainment. This will be provided by the Sheffield Morris Dances and we are also inviting street buskers to perform. Please come along and support the market, we had some fantastic feedback from the first one and it proved very popular.

In August we are hoping the activity Sheffield will be providing some kids fun and games in Green Oak Park, this is still in the planning stage and will be publicised as soon as we finalise the details.

I hope you all have a fantastic summer and that the sun shines! If you find yourself with time to spare we always need volunteers to help with activities, both on the day and with planning. If you can offer any time no matter how limited please get in touch. My phone number is 07709 780606 and email kathrynhiggins_totley@hotmail.co.uk.

Kathryn Higgins
Chair TRA

Jubilee Tea Dance

Having attended the Jubilee Tea Dance organised by Totley Residents Associated I would like to say a big thank you to Kathryn Higgins and her team of helpers, the food and entertainment was excellent and enjoyed by all.

Mary Hanson



I wish to thank the Totley Residents Association for the excellent afternoon tea dance at Heatherfield Club on 9 June to celebrate the Queen's Jubilee. The event was well run and food very good, having it on bone china tea set and cake stands added to the occasion, also the ability to sing along.

Thank you for your hard work.

Jean Barber.



Saturday June 9th gave quite a number of people the opportunity to celebrate 60 years of our Queens reign, and a good time was had by all if the chatting, singing, and dancing was anything to go by.

The chat was recalling 60 years or so in Totley and what changes had taken place, and what we liked and didn't like now.

The dancing brought back many memories for some, evenings spent cavorting at the City Hall, Locarno, and the Cutlers Hall were recalled, the creaking of knee joints and hip replacements was overshadowed by the proper music, not the thumperty thump we hear that purports to be music emanating at great volume from cars passing.

We were entertained by Scott James who was in good voice giving us music by Englebert, Dean Martin, Cliff Richard, Neil Diamond and many more tunes from the big band era.

We had tea in posh china cups (it always tastes better), tasty sandwiches and fancy cakes all served very efficiently by the volunteers.

The celebrations concluded with a song composed by Bill Owen (Compo) entitled "I'm Lucky" which sums up the proceedings. We were all lucky to be there to enjoy the festivities. Many thanks must go to the TRA committee, and the many volunteers who gave us a splendid afternoons entertainment.

Tom Steele

South West Community Assembly

The date of the next South West Community Assembly, to which all residents are invited, will be held on Thursday 19th July, at Abbeydale Sports Club, Abbeydale Road South, starting at 7pm.

Roger Hart

Bus route change proposals

New bus consultation maps (Sheffield North & Sheffield South) available from SYPTE at Arundel Gate show proposed changes throughout the City. Consultation closes 14 July. They give details of new fare structures (some are cheaper) & combined use of tickets on different service providers as well as route changes.

- Routes 97 & 98 show no change, with a "combined" frequency of 10 minutes.
- Dore, will be proposed 70, a "new" service.
- Bradway Route 25 revised route at Woodseats
- 25A Unchanged
- 53 Unchanged, but says it is Low Edges & not Bradway.
- Route 505, from Tesco Park & Ride, goes to "Broomhill" but, we believe, serves the hospitals.

Thanks to Alan Kewley for his research into this & the acquisition of a small number of maps from which I have précised these notes.

Roger Hart

Chairman, Ward Forum.

Calling all Music Lovers.....

The Programme for this year's Totley Music Festival appears in this issue of the **Totley Independent** on page 13. We're really hoping for loads of support for the events this year - we've got a really exciting week planned, so come along and enjoy some top-class entertainment. Organising the Festival this year has had its challenges! Funding for this type of local activity is scarce - almost non-existent - and we're really grateful to the Totley Residents Association and the **Totley Independent** for their financial support.

With regard to venues, Totley doesn't have many large performance spaces, and for various reasons we've not been able to produce events this year at the Fleur de Lys. Luckily, we have had the support of the Heatherfield Social Club, and we really hope that as many people who flocked to the Fleur will this year hasten to the Heatherfield! Working with the Club, the hall will look really good, and we're even bringing in a full-size stage for the performances. It has the advantage of being a good, easily accessible venue, and the same goes for Totley All Saints Church Hall, where we're holding the vocal harmony evening. We hope to see you at as many events as you can attend - and bring your friends from far and wide!

Phil and Sue

PUZZLE CORNER

Age in Years to Come

This year both Ann and John have ages in years which are prime numbers. Next year John will be half as old again as Ann. Five years ago John was twice as old as Ann. Both their mothers are 40 this year. How old will Ann be when she is half her mother's age?

Don Ashford



Transport 17

PLEASE PLEASE HELP

I am sure that you have heard that 'it never rains but what it pours'. It isn't just the weather that is dampening our spirits we are in deep, deep trouble. One of our buses has blown it's turbo charger, black smoke, had to be towed away, the Full Monty!! We have been without the bus for over 2 weeks now and although we have done our best to maintain 'service as usual' there are a few of you that have had to make alternative arrangements. Please accept our sincere apologies. The news has not been good about available parts but as I write this article on 16th June the latest news is that the parts may be available early next week. Needless to say as soon as the bus is available we will resume normal services.

The help that we need is cash towards the repairs which are going to be just over £3,000. I know how kind you our supporters out there have been in the past and most especially the recent past after the buses were vandalised during the Easter weekend. We are asking for your help again. Any donation, no matter how small, will be greatly appreciated. Thank you.

On a brighter note we gratefully received just over £300 from the Cakes and Cuttings morning at the Church and this will start off our fund.

I hope you all enjoy the holiday season and that the sun shines on you.

Felicity Revill
Chairman

CALLING NOTICE **Bradway, Dore, Totley & Whirlow**

WARD FORUM

2nd July 2012
Totley Primary School, Sunnyvale Road
7pm.

AGENDA

- 1 HGV preferred routes
- 2 Update on 20 MPH zones
- 3 Dog excreta (Enviro crime)
- 4 Dore Station Park & Ride

Two councillors & appropriate officers will be present. There will not be "any other business", but, if time permits, information will be given on local bus services. The meeting will finish at 9pm.

Roger Hart, Chairman
roger@rogerhart.co.uk

ATM Fraud

A warning to be extra vigilant when getting money out of cash machines. There was an incident at the Totley Co-op ATM on 13th June when thieves stuck a plate across the money dispensing chute.

This prevents the cash being dispensed and the customer believes the transaction has failed but in reality it is stuck to tape on the back of the plate.

The intention being when the customer walks away the thief retrieves the plate and the cash. The plate is designed to match the surround of the real ATM so the customer is usually unaware.

On this occasion the attempted theft was unsuccessful but the thieves went on to achieve the same fraud in Woodseats.

TOTLEY RESIDENTS ASSOCIATION

TOTLEY RISE FARMERS MARKET



**A wide range of stalls to browse and buy
from, including foods and crafts.**

**Entertainment from Sheffield Morris Dancers
and others. Great family fun!**

SUNDAY July 22nd
12pm to 4pm

TOTLEY RISE
BASLOW ROAD, S17

Masterchef becomes Mellows!

Exciting changes!!!

First up... A massive thank you to all our customers for being a part of Masterchef Delicatessen over the last 3 years.

On Friday 15th June we closed for one week, then re-opened on Friday 22nd as **MELLOWS**

Mellows is owned and run by our own lovely Emma Hayes & family.

Lindy and the rest of the crew are still here. Meanwhile Matt is off to Neepsend for his shot at a restaurant & bar... **THE BROOKLYN STEAK HOUSE!** Opening mid-August.

Love from all at Masterchef delicatessen

Councillor Surgeries

Liberal Democrats:

2nd Monday in the month 6.00-7.00 p.m., Totley Library, Baslow Road and 2nd Saturday in the month from 10.30 a.m. to 12.00 noon, Dore Old School Hall, Savage Lane, Dore Contact details:

Keith Hill 235 2289 Email: keith.hill@sheffield.gov.uk,
Colin Ross 235 1948 Email: colin.ross@sheffield.gov.uk
Joe Otten 230 3290 Email: joe.otten@sheffield.gov.uk

Totley Independent Website:-
www.totleyindependent.co.uk

SEE THE DIFFERENCE!



- **COMPREHENSIVE EYE EXAMINATIONS**
including special tests for glaucoma, colour vision, dyslexia & diabetes
- **CONTACT LENS CONSULTATIONS**
free contact lens trials and monthly direct debit payment schemes
- **PRESCRIPTION SUNGLASSES**
- **LEISURE SPECTACLES**
for computer work, fishing, swimming and safety wear
- **ACCESSORIES**
ready readers, chains and magnifiers

LENSES BY SEIKO
In all non-budget spectacles

TOTLEY
63 Baslow Road
236 4485

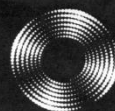
ABBEYDALE
634 Abbeydale Road
255 6554

For more help and information please phone or call into the practice of your choice
For a full list of our practices visit

WWW.MKO.CO.UK

Terms and conditions apply.

Entrust Electrical



For all your electrical requirements in or outside the home you can trust **Entrust** to do it right!

- ✓ Full or Partial House Rewiring
- ✓ Additional Sockets, Switches, etc
- ✓ Energy Efficiency Enhancements
- ✓ Contemporary & Classical Refurbishments
- ✓ General Electrical Maintenance & Repair
- ✓ Homebuyer Electrical Safety Surveys
- ✓ Telephone and Computer Data Points
- ✓ Garden, Pond & Other Outdoor Electrics
- ✓ Security Lighting & CCTV



City & Guilds
Qualified

(0114) 2352084
07935 250814

www.entrustelectrical.co.uk

Old Hay Close, Dore, S17 3GP



Shepley Spitfire

56 Mickley Lane, Totley Sheffield - S17 4HE 0114 236 0298

2 meals for **£8.95**

Now serving Fresh Local Veg.

Served everyday 11am until 9pm

Quality Cask Ales

The Home of Big Fish Friday!!

Beer battered Cod fillets, Chips and Peas Two for **£9.99**

Eat in or Takeaway

FOR THOSE OF YOU WITH A LITTLE APPETITE

WE HAVE INTRODUCED A SMALL

PLATES MENU FROM **£2.99**

ALL DAY EVERYDAY

Quiz night Sundays 9pm

Poker night Mondays 9pm

Pool night Tuesdays 9pm

Last Saturday of the month DJ Theme night

Sky Sports & ESPN showing live games

"need *help* in your garden?"

"right plant, wrong place? Stuck, don't know where to start?"

We can offer a Design Consultancy without the designer price-tag.

"Selling your House?"

We can tidy your garden, also with use of planted containers/hanging baskets, make your house more desirable to prospective buyers.

Season by Season

- Regular Lawn Maintenance.
- Hedge Cutting.
- Small Tree/ Shrub pruning.
- Beds/Borders tidied, planted.
- Planted Containers.
- Green waste removed



the **Abbeydale** gardeners...
...we can help you.

Formerly of
The Abbeydale Garden Centre

Kevin Hunter 07818 20 12 42
Mark Naylor 07739 75 23 19

www.theabbeydalegardeners.co.uk

David Stanley.

Totley Charger

This imposing looking gent is David Stanley. He lived in Totley at the end of his life and died here on 11 May 1893, aged 63 and is buried in Norton Cemetery, Derbyshire Lane. In his 20's he was part of an event which even now has the power to shock us.

He was born in 1830 in Nottingham, the son of an agricultural labourer. At the age of 19 he joined the 17th Lancers, a cavalry regiment, giving his occupation as mason. In 1853, the British Empire became involved in the war being fought over the disintegrating Ottoman Empire. The 17th Lancers joined with other regiments to create the Light Brigade and in 1854 were sent to the Crimean peninsula.

On 25th October 1854 the battle for Balaclava was underway. Ambiguous orders led to the Light Brigade mounting a charge against Russian forces who far outnumbered them and who were heavily armed with canon. The soldiers of The Light Brigade must have known they had little hope of surviving the battle. Despite this they charged into the valley and came under withering fire from all sides. What was left of the Light Brigade engaged the Russians at the end of the valley and forced them back. Eventually overwhelmed, the Light Brigade retreated back up the valley still under fire. Of the 673 men who charged fewer than 200 survived, and one of them was David Stanley. He was seriously wounded and in 1856 was discharged from the Lancers.

The Charge of the Light Brigade is legendary for the courage of the soldiers and the ineptitude of their commanders. The survivors of the Charge were treated as heroes by the public for many years after and it is no surprise then that David Stanley carried his Balaclava history with him in the naming of all the places he lived.

After his discharge he moved back to Nottingham, where he married Maria Dawson in 1857. In the 1871 census he and Maria were running the Balaclava Inn at 43 Wellington Street in Sheffield. They were still there 10 years later. By 1891 they were living in Balaclava House at the bottom end of on Queen Victoria Road and this is where both he and Maria died. A block of flats stands on the site today and for a while took the name Balaclava, but not even that now remains.

Does anyone remember Balaclava House? Do you know when the house was demolished and the flats built? Do you have a photograph of it?

Members of Totley History Group carry out research on subjects of local history that interest them. We have regular meetings to which anyone interested in the history of Totley is welcome. For more information about the group or if you know anything about David Stanley, contact Christine on 2361631

TOTLEY HALL PARK

A local firm of bike manufacturers have offered, along with one of their suppliers to help fund a new "Pump Track" to replace the old BMX track in Totley Hall Lane Park. Additional funding is required.

Consideration is also being given to installing extra facilities, such as a slide on the bank and some standard trees. Local residents will be consulted before any decisions are made.

How much is this park used & what new facilities would users like? Email: roger@rogerhart.co.uk
Roger Hart



Totley Litter Pick

An intrepid bunch of over 20 residents set out from the library on a sunny last Saturday and May with litter-grabbers and plastic bags in hand to clean up Totley's streets.

The pick was for just 2½ hours and in that short time 25 black bin bags of rubbish were collected back in the library car park. Some pickers disposed of their full bags in their own black bins so we know the total was higher.

Ackley Bank proved particularly fertile picking ground (may be school children on their journeys to/from school).

Motorists driving on Baslow Road seem to think they are at liberty to throw items out of their vehicles. Even a car radio was discovered!

Streetforce picked up the full bags on Monday morning, TRA and the council's South West Community Assembly team provided the equipment. We now have a number of litter grabbers and new black bags ready for the next litter pick. For a while at least the streets of Totley were litter-free.



A litter-picker with the day's 'haul'.

A TOTLEY MEMOIR

A move from High Green to Totley is a mere thirteen miles. When we (David, Sally and our three children) made that move on 30th December 1998, however, it felt as if we were travelling a considerable distance. Sheffield has a reputation of being a collection of many villages, and that is not without foundation. Each district has its own unique flavour, characteristics and indeed personal characters. Somebody wished to make that clear to me after we had only been here a week or two, when I was wheeling the wheelie bin from the church grounds to Sunnyvale Road, for the Monday collection. I was told "that is not how we wheel the bins in Totley". I must confess, thirteen years on, I am still not aware of a unique Totley technique in that department!

Certain special aspects of Totley life do, of course, stick in the mind. There's standing for the national anthem at TOADS, processing up Baslow Road on Remembrance Sunday, admiring the many gifts and talents on display at the Show, finding that Edwin Pocock had very kindly snow-ploughed the church drive before being asked, working out which is Hay Brook, and which Totley Brook, quailing before the portrait of the first headmistress of the Church School, still brooding over today's pupils, learning of the men, who in the 1920's depression, walked from Sheffield to Totley, when the church was being built, in the hope of a day's work - being disappointed - walking back home and then doing it all again the next day, swiftly discovering that my previous impression that Dore and Totley could really be viewed as one community (an opinion in much of the rest of Sheffield because of the station name?) was very far from reality. And so one could go on.

Then there are the folk who stick in the mind, or who have left their mark on me in various ways. Some of these, of course, are confidential - but some it is good to celebrate publicly.

There was Tony Baylis, retired army officer, in declining health when we arrived, but always with a gentle manner and probing mind welcoming conversation in their flat at the top of Main Avenue. Totley is a small community to have two junior schools - yet both thrive and via their wider life, and the impact of the staff in many ways, have a considerable impact on the community's children and families. It has been a privilege to have regular links with the schools (even if the weekly assembly at the church school could challenge one's powers of imagination), and get to know six different head teachers during our time in Totley.

The church school, is of course, a very long standing establishment - much older than the church. Over the years I met many adults - often well on in years, who had been to the school. Indeed, I enjoyed a quiet chuckle, when I realised that Derek Maltby (now in his 80's) on attending the regular reunions for past pupils, would be meeting Dillys Cooke - who had taught him!

We have regarded our 12 and a half years in Totley as a considerable privilege. It is in a marvellous location. Indeed, there cannot be a school in the city with a better outlook than All Saints, or a Lollipop person with a better view, than Sally's as she stands at the top of Hillfoot. In that time we have rejoiced and wept, been uplifted and also cast down, walked with people through times of great joy, but also of sadness, loss and bewilderment. We have seen God at work in remarkable ways, in provision of needs, occasionally healing, at times changing a life much for the better. We have also seen how a faith in Jesus has sustained people in the face of on-going difficulty and heartache, in the struggle in life that we all face in one way or another.

Whist life has been focussed primarily on our locality, we have enjoyed the various ways we have been encouraged to look beyond that. Various folk in the church have a passion for the two thirds world where life is very different - and have kept that before us, with an urge to make a practical difference. As well as financial support in various ways, occasions that stick in the memory are the time we put a ribbon around the entire exterior of the church, and another occasion where our post-service refreshments on a Sunday comprised ugali - the maize porridge which is a staple in much of Kenya. Over the years, too, links

with and support for a host of projects amongst the Maasai in that country, have strengthened, via the church's link with Pastor David Kereto.

So what really sticks in the memory? Being all geared up to participate in a special event to usher in the new millennium, and then being stricken with the flu, seeing King Ecgbert School hall overflowing, with folk having to stand in the foyer, for a joint service with other local churches, being part of the establishment of the youth project, now shared by six churches in Dore and Totley, and seeing the impact that has had in a host of ways on many young people within, and beyond the churches. Then there were services of full immersion baptism (and on one occasion going to check the pool as it was being filled, to discover that the hose pipe had leapt out, and it was the vestry that was being filled), the carol service of 2010, when some of the choir skied down from Bradway to take part. In the same year being at a conference at Whirlow Grange, but having to walk home because of the snow, being asked to pray at the bedside of one very sick lady, and having arrived, and thinking I would make a neutral comment to let us both catch our breath, but being asked in no uncertain terms to "Please get on with it".

But beyond all this, it is the kindness and grace, and generosity of spirit that we take with us. We have so often been on the receiving end of this, and frequently observed it in others. Part of the mission statement for the whole Diocese of Sheffield is "to grow a diverse network of Christ-like, lively and sustainable Christian communities." Our joy has been to see that, and be part of that, on the ground at All Saints. The church, like the community, is a mixture of some who have lived here for many years, even all their lives, and others who have more recently come to live here, and in some cases are only here for a few years. Again, as is true of the community, the church contains a wide range of ages. It would be true to say that most age decades are represented. At one time we had at least one person in every decade from 0-10 to 100+ But whether old or young, local or from elsewhere, as vicar of All Saints the joy has been to be part of a community where so many seek to follow Christ, and reflect His life and nature within and beyond that community.

A lady who exemplified that was Beatrice Collison. Here was a lady who had lived in Dore or Totley all her life. I don't believe she had ever been abroad. Hers was a quiet and unremarkable life (she died, in her 90's some three years ago). But here was a lady who with a quiet faith, gentle spirit, and open heart

left a gracious mark on many lives. Criticism and judgement of others were far from her, but gentle persevering love and faith marked her out.

We said our farewells last year. But in this short piece, can I say on behalf of all the Rhodes "Thank you Totley, so much, for nearly 13 memorable, frequently joyful, always fascinating, years" My last official act, as the vicar, was to conduct the wedding of our daughter Ruth, on one of the few glorious Saturdays last summer. As that day will always be in my memory and heart, so will Totley, and so many of her people.

David Rhodes

WIZZ KIDS RACE NIGHT

Wizz Kids Nursery & Pre-School held a very successful and enjoyable Race Night fundraising event on Saturday 26th May. The event was held at HSBC Sports & Social Club in Dore, and was attended by over 100 people. With 8 races to bet on and a raffle as well, everyone got into the spirit of the night, helping to raise a grand total of £618.69. Races were sponsored by a number of local businesses: Shake-Up Sheffield, Loop Printers, The Fleur De Lys pub, BTB Builders Limited, Martin Scriven greengrocer, The Production Company and Tesco (Abbeydale Road). Raffle prizes were also generously donated by a number of local businesses. The support of all those companies, and the generosity of everyone who attended on the night, are greatly appreciated.

The funds raised will enable us to complete work on our outdoor space, by putting in a bike track, turf and a water feature. The work we've completed so far has mainly been done thanks to parents giving up their time to dig, lift and plant, and this has enabled us to massively improve on the previous dirt space by creating a pond area, huge sandpit, decking areas, and raised vegetable and flower beds.

Home Library Service

(formerly Housebound Library Service)

Do you find it difficult to get to your local library or do you know someone who has difficulty getting to a library?

Then this service could be for either yourself or someone you know.

- Who is eligible for the Home Library Service?
- Any Sheffield resident;
- Who is unable to get to their local library and has no-one to help them do so
- Who cannot get into their local library because of access problems
- Who may be able to get to the library but who cannot carry the books they have chosen
- Who for cultural reasons cannot attend a library

We may also be able to offer the service on a temporary basis, for example, whilst you are recovering from an operation or during bad winter weather.

A service to your door

Each month we will bring you a selection carefully chosen with you in mind. We will talk to you about your reading interests, and select the books you enjoy. These can be in a variety of formats including:

- Hardback
- Paperback
- Large Print
- Books on CD and Cassette

We also have:

- Film on Video and DVD
- Music on CD and Cassette
- Jigsaw Puzzles

You can borrow books you particularly want to read from other libraries- just ask the staff when they call

If you would like to use this service or would like any more information please contact Tel: 0114 273 4277

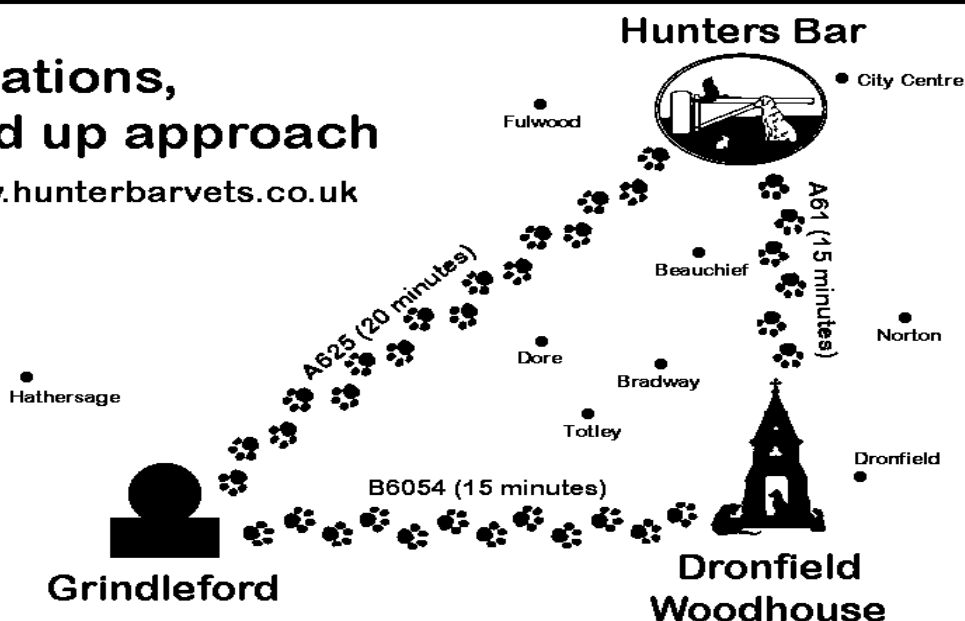
Email: mobileservices.library@sheffield.gov.uk

Hunters Bar Veterinary Group

Working together to help your pets

Three locations,
one joined up approach

More info: www.hunterbarvets.co.uk



Hunters Bar Veterinary Clinic, 613-615 Ecclesall Road, Sheffield 0114 2663607
Dronfield Veterinary Clinic, 39 Pentland Road, Dronfield Woodhouse 01246 410810
Grindleford Veterinary Clinic, Main Road, Grindleford 0114 2663607

Music Tuition



Piano • Keyboard • Flute • Singing
Guitar (rock, metal, blues, jazz, funk, pop, folk)
Music Theory • GCSE work

Music graduates, each with 25 years
teaching and playing experience

All ages, beginners welcome.

Exam work or just for fun!

Call Mark or Karin

0114 237 4853 & 07981 888352

HEARING AIDS

MAURICE NAYLOR FBSHAA RHAD is your
local hearing aid specialist and at your
request will test your hearing in your own
home, free of charge, and if needed you can
try a custom made aid for four weeks
without obligation to purchase.

Tel : 237 4817

In the ear digital from £495

TRISTAN SWAIN

Landscaping & Maintenance

Established 20 years

Fully insured

GARDEN RESTORATION & MAINTENANCE

Unit C4

Sheaf Bank Business Park

Prospect Road

Heeley

Sheffield S2 3EN

Tel/Fax: 0114 255 4689

Mobile: 07831 802539



yogaq@hotmail.co.uk
0114 236 9943
07708 996984

YOGA CLASSES in TOTLEY & RANMOOR

Rachel Quinn BWY Dip



THE COMPLETE BUILDING SERVICE

New Build & Extension Specialists

From Design to Completion

Full Project Management

House Building

Extensions

New Roofs/Tile/Stone

Stonework Specialists

Loft Conversations

Find
us in
Yell.com

Established for 25 years with over 90%
of our work coming from recommendations, to
find out why call:

0114 2353314

Mobile 07973 908187

www.mwoolhousebuilders.com



Christchurch Cottage,
Townhead Road,
Dore, Sheffield
S17 3GA



Horizon Electrical

*Faults, Rewires, Sockets, Lights,
Cooker Points, Electrical Showers,
Phone Points, Security Lights*

No job too small

Fully qualified with friendly advice

Ring Totley 236 4364 or

Mobile 07772 483154



BRADWAY INSTALLATIONS

**Kitchens, Bathrooms.....and everything in
between**

- **Complete Kitchens** - Installation or supply and
installation
- **Kitchen Refits** - Replacement worktops/sink/hob etc.
Worktop / cabinet repairs
- **Bathrooms** - Cloakrooms - Domestic plumbing - Tiling
Laminate / Vinyl flooring

All work undertaken is fully insured and guaranteed

Ring Peter - 0114 236 5995

Mobile - 07766 411355

SCULPTURES IN GREEN OAK PARK



The three sculptures have now been finished in the park and are looking really nice, a big thank you to the Community Assembly and Tree Officer for allowing us the funding.

The sculptures are being admired by the park users and their favourable comments are very much appreciated. Lorraine Bottrill from Ecclesall Saw Mills can be contacted on 07702 078279 as one of her sculptures would enhance anyone's garden and would certainly be a talking point.

Unfortunately we are experiencing damage already in the ponds which

have only just been completed, large stones and tree branches have been thrown in which is a real shame as the ponds are just taking off with pond plants and wildlife which have all been donated by local people. There are lots of tadpoles swimming around and we have even seen a newt this is all good news, the birds are also taking a bath in the rills.

I know the weather is not what we expect for June but it is well worth a visit to the Park to see the work which has been done, there is also a great deal more to be achieved but we are still waiting for the Council to make decisions regarding the Fitness Equipment and Equipment for the Children's Play Area which we were hoping would be in for this summer.

The wild flower area is now starting to flourish.

**IT WOULD BE APPRECIATED
IF PEOPLE WOULD NOT
ALLOW THEIR DOGS OR
CHILDREN INTO THE PONDS
AS THESE ARE FOR
WILDLIFE. THIS IS A
HEALTH AND SAFETY ISSUE.**

Marlene Marshall.

Friends of Green Oak Park.



Reply to Saddened and Disappointed

From reading Karen Critchley's last article we as a friends group feel it needs a response.

We didn't see it as a "hedge trimming incident" as the trimming was carried out over a number of days. Not only was the hedge trimmed but tree branches were sawn off as was the top of a tree.

As for asking their neighbours, why didn't Mrs Critchley communicate with the friends group who work tirelessly in the park every Tuesday morning (in all weathers) to improve the facilities and the environment for the community.

The group would have been happy to discuss the matter of the hedge with her. Also why not communicate with the housing dept. and parks officials?

If as she says that it was trimmed in error and there was no intention to open up the hedge then why is it still open and is being used as a thoroughfare into the park?

Also the photograph that appeared in the Star was taken in front of her next door neighbours gap.

We are sorry to hear of the suffering in tragic circumstances but feel this is not relevant to the events which have taken place in the park.

The secretary

Friends of Green Oak Park

HOLMESFIELD CHURCH WALKING GROUP RIVER DERWENT WALK

Wednesday 18th July 10am

Robin Greetham will lead a walk from the Plough Inn near Hathersage. We will walk along the River Derwent and then go up the hill to Offerton Hall. We will return via Callow Wood to Leadmill Bridge. Lunch (optional) will be at the Plough.

The cost of the walk is £3 and the proceeds will go to Holmesfield Church.

If you would like to come just turn up on the day.

The walk is approximately 3½ miles long. Any queries phone Robin on 01246 412767.

Mark and Sally Fletcher invite
you to

The Grouse Inn

Longshaw

Sheffield S11 7TZ

Meal times:-

Mondays 12.00 to 2.30pm

**Tuesdays to Friday's 12.00 to
2.30pm and**

6-30pm to 9-30 pm

**Saturdays 12.00 to 3.00pm
and**

**6.30pm. to 9.00pm (drinks –
open all day)**

Sundays 12.00 to 9.00pm

Phone 01433 630 423

R Rose & Co

Chartered Accountants & Business Advisors

Specialists at
looking after the affairs
of small businesses.

For a **FREE** initial consultation
please contact Roger Rose FCA on
0114 281 2331



From business start-ups and general accounting, to support
and advice in business development and strategy,
we put ourselves in our personal one-to-one service.
To find out more please call 0114 281 2331.

213 Derbyshire Lane, Norton Lees, Sheffield S8 8SA
Email: info@r-rose.co.uk

*One man went to mow...
...but his mower wouldn't go!*

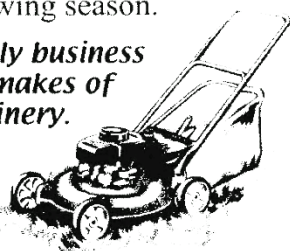
Now is the time to call

MOWER MENDER

and be ready for the forthcoming
growing season.

**A local friendly business
servicing all makes of
garden machinery.**

Phone:
0114 236 6958
Mobile:
0781 2211149



**Blade Sharpening and
Collections & Delivery Service Available**

A GAME OF SCRABBLE

Occasionally my wife entertains a group of lady friends to play scrabble. I hear they really enjoy the play though none of them would claim to be a scrabble aficionado - those who always manage to get high scoring letters on a triple scoring square and who know two letter words like AA and ZO, which we common mortals never learned. I come to write about this though my connection is only peripheral. If I return home before the games are over I have a word with the ladies and am occasionally asked my thoughts about a word or how it should be spelled. On one occasion recently as soon as I had got over the threshold and said "Good morning " to the ladies came the question — "Is GIRD a word? I Thinking as quickly as an old man can, not wanting to appear a complete fool I stuttered something like "well there's the expression 'girding your loins; I would think GIRD is OK'. After the guests had departed came the more detailed inquest. "What do you think 'girding your loins' means?"

I said I thought it meant tucking up your long clothes and preparing to run. The reply came with a demonstration. Clenching both fists and rapidly moving both arms in front like the pistons of a steam locomotive came "I said it was getting ready for physical action." There was nothing left other than to consult the dictionary. Much to my surprise I found three different entries for GIRD ranging from (1) to gibe or jeer, (2) a belt or loop and (3) a long entry including to make fast by a belt or girdle. 'Gird up one's loins' puts into words the graphic demonstration offered by the scrabble player - "to prepare for energetic action as if by tucking up one's clothes." And, thank goodness, my offering was near this. Oh, by the way, the Chambers Official Scrabble Lists has 106 two letter words in it. What an educational game scrabble is!

Don Ashford

Report on 20s Plenty/Accident Data

Councillors have now been briefed on the accident statistics that will inform the locations of the 7 pilot 20mph zones in Sheffield. The council's policy is to introduce one 20mph zone, an area where speed limits are reduced to 20mph without the usual traffic calming measures, in each of the community assembly areas. Each will be in a residential area, preferably centred on a school and priority will be informed by accident data.

It turns out that the vast majority of accidents causing death or injury are on arterial routes which would be exempt from a 20mph limit in any case. We have seen a number of accidents on Baslow Road over the last five years, including one fatality, and limited numbers of slight injuries in the rest of Totley.

It seems to me therefore unlikely that Totley will be the location of the South West of Sheffield's pilot. Elsewhere in Dore and Totley ward there are accident clusters at the junction of Dore Road and Abbeydale Road South and on Hathersage Road at the junction with Sheephill Road and at the Fox House. Each of these is on an arterial route and not eligible for a 20mph limit under the policy.

The other wards in the South West: Ecclesall, Fulwood and Crookes display a similar pattern - of accident clusters on arterial roads: Abbeydale Road South, Ecclesall Road South and Crookes. The one location that appears to fit the policy is around High Storrs School and Bents Green, particularly Ringinglow Road and High Storrs Road, which has seen a number of accidents of varying severity over the last five years.

The South West Community Assembly will be consulted on the final proposal, and you have my bet on what that proposal will be. But if readers want to make a case for something different I will be happy to feed their views in. Email me at joe.otten@sheffield.gov.uk
Joe Otten, Councillor



Now that the long hot summer days are here (?), can anybody recognise any anyone at the side of the cricket pavilion on the 'wreck' or hazard a guess at what date?. Carol Thurkettle (Reynolds)

TOTLEY SHOW ENTRY FORM 2012

THE TOTLEY SHOW THIS YEAR WILL BE HELD AT TOTLEY PRIMARY SCHOOL, SUNNYVALE ROAD, ON
SATURDAY, SEPTEMBER 15th. ENTRIES BETWEEN 8-45 am. To 10.45 am.

The classes for this year are as follows: -

HANDICRAFTS

1. Hand Knitted Garment.
2. Decorative Cushion.
3. Soft Toys
4. Tapestry.
5. Cross Stitch..
6. Collage, any medium.
7. Greetings card..
8. Any Medium

DOMESTIC SECTION.

9. 4oz. Victoria Sandwich Plain(to the recipe)
10. Dundee Cake (to the Recipe)
11. Carrot cake.
12. 5 Biscuits.
13. 3 Fruit Scones
14. Apple Pie.
15. Jam
16. Lemon Curd.
17. Marmalade.
18. Chutney

FLORAL SECTION

19. Floral Arrangement. (With a Jubilee Theme up to 18" high and 10" *10")
20. 3 Cut Flowers of any variety in season.

21. Foliage Plant in pot.
22. Flowering plant in pot

FRESH PRODUCE.

23. 1 Plate 4 Eating apples.
24. 1 Plate 4 cooking Apples.
25. 1 Plate 8 Blackberries.
26. 4 Matching Potatoes.
27. 3 Matching Leeks.
28. 3 Matching Onions.
29. 5 Matching Runner Beans.
30. 1 Plate of 5 Tomatoes.
31. 1 cucumber.
32. 3 Courgettes.
33. Largest Onion.
34. Heaviest Marrow.
35. Longest runner Bean(One per person)

36. 1 plate of three eggs from your own hen. (No embellishment)

ART

37. Oil or Acrylic Painting
38. Water Colour.
39. Pen and Ink Sketch.
40. Pencil sketch.
41. Open Multi media.
44. Reclaimed art/ sculpture
45. Sculpture any medium

PHOTOGRAPHY (Prints only)

46. Monochrome, any colour.
47. Creative
48. Still Life
49. Landscape

WOODWORK

50. Wood Turning
51. Small furniture
52. Wood sculpture

CHILDRENS SECTION.

53. Vegetable animal
54. Age 8 to 12, Miniature Garden.
55. Computer Art A4 size maximum for ages up to 8 yrs.
56. Computer Art A4 size maximum for ages up to 9-14 yrs.
57. 3 decorative buns (up to 14 yrs.)
58. A Wobbly Wobbly Jelly.
59. Flower arrangement in an eggcup.
60. Painting- aged under 5 years.
61. Painting- aged 6-11 years
62. Painting- aged 12 to 14 years.
63. A Lego Model aged 5 -8 years
64. A Lego model aged 9-14 years.
65. Colour Photo
66. Open any medium.

DUNDEE CAKE

175gms.(6oz) Plain Flour 1 rounded teaspoon mixed ground spice
125gms.(4oz.) Margarine 3 eggs
125gms.(4oz.) Soft brown sugar 125gms.(4oz) Sultanas
125gms.(4oz.) Raisins 125gms.(4oz.) Currants
75gms. (3oz.) Chopped mixed peel and chopped cherries.
40gms.(1.5oz.) Blanched almonds to decorate.
2¼ level teaspoons of baking powder.
METHOD.. Line 7" deep cake tin. Sift flour, baking powder & spice together.
Cream Margarine & sugar, Beat in eggs 1 at a time adding a tablespoon of
flour with the last two. Fold in remaining flour and fruit till thoroughly mixed.
Put in tin & decorate with nuts.
Bake in a preheated oven 140c:290f: gas 2: for 1 hr. then lower to 130c:270F:
gas 1 for ½ to 1 hour approx., pierce with skewer to test.

VICTORIA SANDWICH

125gms. (4oz.) Margarine
125gms. (4oz.) Caster Sugar
125gms. (4oz.) Self Raising Flour
2 eggs.

METHOD. Cream margarine and sugar. Beat in eggs
1 at a time with a little flour. Fold in remaining flour.
Divide between 2* 7" sandwich tins greased or lined
with greaseproof paper.
Bake in pre-heated oven 180c:350f: gas mark 4: for
20 – 25 mins. Sandwich with jam and sprinkle top with
caster sugar. (Please note, Recipe quantities only.)

1. No entry in any class should have been in previous Totley shows.
2. Entries may be donated to be auctioned at the end of the show but this is not compulsory nor a condition upon which entries will be accepted.
3. Prize money may be collected from 1-45 p.m.
4. If less than three entries in a class Then there will be a first prize only, except in Children's section.
5. Any prize monies not collected by 4-00 p.m. will be put towards next year.
6. You may enter as many classes as you wish. (The more the Better)
7. If an entry does not fit a class, it can be left for viewing but no prize will be given and there will be no entry charge.
8. You may only collect your entries after the public viewing ends at 3-00pm.
9. Goods left after 3-30 will be auctioned

SHOW PROGRAMME

8-45 am. to 10-45 am. Entrants registration..

11-00 am. to 12-30 pm. Judging and awarding of certificates

1.30 pm. Doors open to the public Entry 50p, children 20p.

1-45 pm. Official Opening and collection of prize money.

3-00 pm. Prize giving and Auction of Donated Items

4-00pm. End of Show

Prizes First £3.00, Second £2.00, Third £1.00

Entries 50p. each

Raffle winning numbers will be posted on a board and those not collected on the day will be held for next year.

ENTRY FEE 50p. PER ITEM

PLEASE BRING THIS FORM WITH YOU WHEN YOU BRING YOUR ENTRIES.
PUT A TICK AGAINST THE CLASS OR CLASSES YOU WISH TO ENTER.

NAME

ADDRESS.

Tel no.

Total number of classes entered.

SLIMMING WORLD

10 WAYS TO MAKE SURE IT WILL BE THE LAST TIME LOSING WEIGHT IS YOUR NEW YEAR RESOLUTION. THIS TIME MAKE IT LAST FOREVER

1. Focus on your weight loss goal and prioritise it.
2. Be sure you really want to lose weight for yourself. Doing it to please someone else may only lead to short term weight loss.
3. Take advantage of all the group support at your local Slimming World class. Even if you are not a 'joining in' person, you'll be surprised how motivating it is.
4. Accept that you will have ups and downs in your weight loss journey, and be forgiving of yourself if you hit a difficult patch.
5. Listen to your 'inner script' and make a conscious effort to talk to yourself in a positive, encouraging way.
6. Keep up your interest in your healthy eating plan by trying new foods, new recipes, and new ways of using your Sins. This will help you avoid getting in to a dieting rut which can be boring and demotivating.
7. Be honest with yourself about what you are expecting from your weight loss and how you are getting on with Food Optimising week by week. People who set unrealistic targets for weight loss or body shape are more likely to give up than those who set achievable targets and share their ups and downs.
8. Go back to your class even after (especially after) you've had a weight gain. You will not be judged, just helped and supported.
9. Keep setting new goals and rewarding yourself for milestones until you reach your target weight, and afterwards!
10. Don't put your life on hold until you've lost weight. You can still enjoy life and lose weight. Think of your dreams and ambitions and bring them to the fore. The positive feelings you get from starting to 'live a little' can only help your motivation and your weight loss.

Group details:

St Peter's Church, Greenhill Roundabout, S8 7FN
Thu 5pm & 7pm

Dore Old School, Tues 5.30pm

Tel: Alison Murphy 07815 046569 for further details

PhysioFOCUS

at Totley Rise Dental Practice
85 Baslow Road,
Sheffield, S17 4DP



Physiotherapy treatment available for:

- Back and neck pain
- Sports injuries
- Sprains and strains
- Joint and muscle pain
- Arthritic pain
- Whiplash
- Repetitive strain injury
- Headaches

Appointments: 0114 2360333

Also available:

- Pilates classes
- Pilates 1-2-1
- Golf Fitness Screening
(as used by consultants to UK,
European and Australian PGAs)

For more information please call:

Emer on: 07792 422909

Rachel on: 07956 908454

APPLE LANDSCAPES and APPLE FENCING

www.applelandscapes.com

QUALITY SERVICE AT AFFORDABLE PRICES

Patios • Paths • Walling • Dry Stone Walling • Drainage Work
• Indian York Stone Paving • Railway Sleeper Beds

Garden Tidy Ups etc. No job too small

Fencing & Gates Supplied Only
or Supplied & Fitted

Only Quality Materials Used

FULLY INSURED

Call for free quote

01246 237505 • 07782 167540

Homeopathy @ Synergy.

162 Baslow Road, Totley, Sheffield, S17 4DR

Advanced Indian Sensation Method Homeopathy

Alternative medical treatment for all chronic conditions

Registered with major insurance companies. Can claim
through the Westfield scheme

Registered member of
The Society of Homeopaths

Ring: Lindsay Allison RSHom for more information:
0114 235 7845 or 07968 167036

M.Scriven
(FRUITERAMA)

MARTIN SCRIVEN

HIGH CLASS FRUIT
& VEGETABLES

37, Baslow Road

Tel. 236 7116

Orders Delivered

Friendly and reliable service
Competitive rates
All work guaranteed
Small jobs welcomed

Tiling services
Plastering
Painting & decorating
Flooring
Paving services

For free estimate call

Vladimir on 0788 900 8282

- | | |
|-----------------------|---|
| Tiling services | • Wall & floor tiling, Kitchens, Bathrooms, Wet rooms |
| Plastering | • New plaster, Re-skims, Dry lining, Re-boarding |
| Painting & decorating | • Interior & Exterior, Wallpapering |
| Flooring | • Wood & Laminate flooring |
| Paving services | • Patios, Driveways, Pathways |
| Others | • Hedge trimming, Lawn mowing
• Home improvements |

Email: vladimir.pindjak@gmail.com

Sheffield S8 0UT

Totley Music Festival

Sat 14 - Sun 22 July 2012

Most events FREE ENTRY

Sat 14th **Rock Night with Redback!** Totley-based 8-piece rock band Redback kick off the Festival with 'Motown and More'. Before the live music, another Fab Pop Quiz with PopMeister John Bull.
9 pm Heatherfield Club, Baslow Road

Sun 15th **Music At the Cross Scythes:** Local guitar/vocalist Ian Bellamy performing a selection of acoustic guitar classics from such artistes as James Taylor, John Martyn, the Beatles and Elton John. Something for everyone. Not to be missed.
8.30 pm, Cross Scythes Restaurant

Mon 16th **More Music at the Cross Scythes:** The Bob Hall Show: An evening of pure musical enjoyment by Britain's finest blues and boogie pianist, and also a song writer of note. Hilary Blythe adds crystal clear vocals and rock steady bass.
8.30 pm, Cross Scythes Restaurant

Tues 17th **Early evening, Totley Primary School Concert** in the playing field (if dry) by school pupils. Bring a chair or blanket to sit on. Refreshments available to buy.
7 pm, Totley Primary School

Jazz concert with Howard Walker and the Djangonauts for an evening of entertaining, accessible instrumental and vocal jazz.
7.30 pm, Heatherfield Club, Baslow Road

Music at The Crown with Dale Storr. Great music and great atmosphere at a great Totley pub!
The Crown, Hillfoot Road, 8.30 pm

Wed 18th **Variety Cabaret Show** Another brilliant evening promised at Mickley Hall! Some old friends and some new faces to bring you a mixture of music and a little comedy. Classical, pop, folk and choral – it's all happening!
7.30 pm, Leonard Cheshire Home, Mickley Lane

Thur 19th **Tea & Tunes at All Saints Primary School** An afternoon concert by school pupils, with tea & biscuits, and featuring the school choir, Year 5 brass band, recorders, piano and woodwind.
2 pm

An evening with Hallmark of Harmony Sheffield's own Barbershop chorus, and 6 times British Barbershop Chorus Champions. These 40+ singers have entertained audiences both in the UK and abroad with their exciting repertoire.
7.30 pm, All Saints Church Hall, Totley Hall Lane

Fri 20th **Festival Folk Concert** This year's Folk Concert promises to be another exceptional evening. Please arrive early to reserve your seat at what promises to be splendid entertainment.
7.30 pm, Heatherfield Club, Baslow Road

Sat 21st **Barn Dance!** A first for the Music Festival; promises to be a great night out. Tickets £6 adults, £4 children. available from local shops - look out for posters! Ticket price includes pie and pea supper! Bring your own drinks!
6.0 - 10.00 pm, Totley Hall Farm Barn, Totley Hall Lane

Sun 22nd **Farmers' Market** on Totley Rise, . Featuring Sheffield City Morris Men and other musical entertainment to accompany the browsing and buying!
12 noon until 4 pm

Tapas 'n' Jazz! Musical and gastronomic evening with Verlan Musique - acoustic duo who play music of Parisian bars and cafes of the 1930s, 40s and 50s. Food approx. £6 per person. Bring Your Own wine. Call (0114) 235 0884 for seating reservations but plenty of standing-room!
7.30 pm Masterchef Deli, 185 Baslow Road

A more detailed programme is available **FREE** from all venues and from Totley Post Office, or see the festival website at www.totleymusicfestival.co.uk

The Organisers of Totley Music Festival would like to thank Totley Residents Association, **Totley Independent**, the Cross Scythes, Leonard Cheshire Home, John Beazer, Hilary Hall, John Bull, the Heatherfield Club, Totley All Saints Church, and Matt at Masterchef (*Masterchef re-launched as Mellows), and all the sponsors of the Pop Quiz prizes. Special thanks as always to all the performers for generously giving their services free of charge! Many thanks!

GARDENING TIPS FOR JULY/AUGUST

Holiday time is coming up I hope you have got your friends and neighbours primed and ready to look after those precious plants, fish, and birds when (if) you are going away.

July summer ??? - if the first two weeks of June are anything to go by we are in for a poor summer, floods all over the country cloudy raining what do we expect? It is England...

Everything in the garden is not as far on as I would like, my onions ear marked for the Totley show are not moving, they need lots of sunshine to get them going (like me). The rest of the veg patch is also a bit slow. It's a good job I have the greenhouses to fall back on with salad crops and a small amount cabbage growing ok they are in the new type of grow bags. A 3ft by 2ft hessian bag which I fill with my own mixture of compost and soil up to about 12" deep I have tried a few crops in these - lettuce, cabbage, kale are fine the radishes made a lot of leaf but very little root. Herbs were ok but were soon past their best. On the whole I think the new bag idea has been a success, it will be better for over-wintering some crops rather than using them in the summer unless I use them as a raised bed outside. I will have to try that.

I would imagine they would be good if you only have a small patio. They would enable you to have a few tasty veg, you would be able to empty them and fold them away when the growing season is over.

The garden is starting to colour up despite the inclement weather the hanging baskets are a bit slow and will need to be fed a bit more often if this rain still persists as it leaches out any nutrients in the compost.

All the bedding plants are in and should give us a lot more colour over the next 2 or 3 months again this depends on the weather, slugs etc.

There are quite a few horticultural shows advertising at the moment. It will be interesting to see whether the turnout is ok, the really keen exhibitors use Polly tunnels to give their plants a micro climate which makes our outdoor efforts look a bit sick.

I remember a TV programme showing one of the gold medal winners in his "garden". He had big metal tubes about 2ft dia. by 3ft high on 3ft beds in which he grew four or five leeks. There were at least 30 of these tubes in the covered area. The results were fantastic with leeks 6 or 7ft long and perfectly formed, that was just one variety, at the show we saw may be 15 different vegetables. He spent a whole year full time to get those sort of results, I don't think I will be trying to compete with him.

I always look forward to our local Totley show where the efforts of gardeners and all the other crafts are on show. I really appreciate the skills shown by people and children all done in their spare time.

It will be nice if we get more exhibits from the new allotments on Mickley lane. There seems to be a lovely group of people really making an effort up there.

The show entry form is printed in this issue of **Totley Independent** (p11), I hope you will all make a special effort to include your work on the show bench on the 15th September. The volunteers have been working hard getting everything ready, it only needs you the people to make it a success... Remember the gardening tips are for two months so bear this in mind when doing your planting etc.

Flowers Remove any blooms or flower spikes that are so faded as to be no longer decorative. The object is to prevent seed formation which weakens the plant unnecessarily. Unless of course you want some seed for next year then just leave one or two plants for this purpose. Water and feed your plants so they can give their best show and stay healthy. Summer prune wisterias; shorten to about 6 leaves all side growths formed on the main branches. Watch out for the nasties, caterpillar, aphids etc. will all be munching or sucking at your plants, deal with them before they get a strangle hold. Tulips, hyacinth and other bulbs will now have completed their growth and may be lifted and cleaned, lay the bulbs in shallow trays and stand them in a cool, dry place but not in full sun, crocuses only need thinning if they are overcrowded, they gain nothing for being out of the ground. Border carnations can be increased by layering, select non flowering shoots that can easily be bent down to soil level, and make an incision with a sharp clean knife through a joint near the base of each then the slit portion of the stem is bent down to open the slit covered with fine sandy soil and held firmly in position with a wooden or wire peg. If they are kept well watered roots will soon be formed late August or early September, the rooted layers can be cut completely from the parent plant and potted up or planted elsewhere. Lightly prune bush and standard roses when the first flush of is over. Cut back to about 2 leaves all stems that have flowered, that has no promising buds on them, give the beds a good dusting of Tonks or other rose fertiliser and hoe this in. July is a good month to plant Madonna Lilies, plant them about 8 inches, 20cm, apart and 2 inches, 5cms,

deep, this lily prefers a sunny position in good but not freshly manured soil.

Plant colchicums, autumn flowering crocuses and sternbergias, if you can find supplies, they are rare at this time. At the end of July start to feed chrysanthemums, give small doses every 5 days, the more varied the better. Some gardeners have some disgusting methods of producing the liquid feed, which I would rather not detail, as I have just had my breakfast, there are quite a number of fertilisers made especially for chrysanthemums, which are not quite so smelly, stick strictly to the manufacturer's instructions.

Take geranium cuttings. Propagate pansies and violas by cutting off the present flowering shoots to within one inch, 25mm, of the roots, cover with a little fine soil mixed with sand and leaf mould. They will produce shoots which will provide cuttings next month. Prune hydrangeas, at the end of August, cut off each faded flower truss as far back as the first plump looking growth bud, and remove any weak looking stems.

Vegetables Thin out any vegetable seedlings sown last month, before they become overcrowded. Cut globe artichokes as they become available, do not leave them on the plant too long. Continue to plant wintergreens, by drawing earth up around the stems or wrapping them with a bit of roofing felt or similar. They should be just right for the Totley Show in September. Keep making successional sowings of your favourite veg, turnips (for the last time), lettuce, endive, and summer spinach, choose a shaded spot for these as they will soon run to seed in the summer heat. Have you tried letting a few radishes run to

seed? The pod they produce, if picked early, are quite delicious and make an interesting addition to a salad. If you are contemplating sowing more carrots choose a stump rooted variety, they will produce young roots by autumn.

Gather herbs for winter use. Mulch and spray runner beans. Beetroot should be getting big by early August, don't leave them too long as they do not improve with age. Water marrows regularly, this will make them nice and plump ready for the Show. (See the schedule). To help onions ripen towards the end of August bend over the leaves just above the neck of the bulb.

Trees, Shrubs and Fruit Cut off and burn and branches of apples and pears, and plums which show any signs of silver leaf, be drastic as it kills your trees. Start to summer prune apples and pears by shortening side shoots by two thirds. Do not leave the trimming of hedges especially evergreens later than August, or the new growth will be damaged by frost later. July is a good month for taking cuttings from most shrubs, if your strawberries have any mildew or other disease or attacked by greenfly and the beds have been covered by straw, set fire to the straw when you have gathered the last of the fruit. This will burn all the foliage and leave the bed looking rather sad and bare for a week or so, but the crowns themselves will not be damaged and will soon produce healthy new growth. If you are producing runners from the strawberries, do not fire these plants, peg the runners into pots of compost let into the ground by the parent plant, and take no more than 5 plantlets from each parent. Cut off the runners which are not needed. If you have been troubled with codling moth on apples (small creamy grubs) inside the apple, spray insecticide after the blossom has fallen and as the fruitlets form. Kill woolly aphids on apples, it looks like little tufts of cotton wool on branches, brush with methylated spirit into the patches, if it is widespread use a spray of fenitrothion or similar.

Greenhouse and Indoor Plants

As with all the summer months, ventilation and watering are the most important criteria for a healthy greenhouse, so shading particularly the younger plants is important. Pick over plants removing dead or yellowing leaves regularly. Watch out for the greenhouse nasties, yes, we do get them in the greenhouse. White fly and green fly are most common. Spray as soon as they are seen as they increase quite rapidly. To avoid the dread spider mite, it lives in a gossamer style web, and is not regularly seen without a magnifying glass; spray the plants regularly with clean water. They thrive in dry conditions. If it is too bad, use an insecticide specifically for this pest. If you have vine weevil in your greenhouse, which at one time was difficult to eradicate (this is a little fat creamy white grub with a black head which eats the roots of plants), do not despair.

Good old PBI have come up with a vine weevil knobbler called "Pravado" and it works. It is a bit pricey but it goes a long way.

Pot on any plants and cuttings sown earlier. Continue removing side shoots from tomatoes and do not let them dry out, feed continually as soon as the first truss has set. Greenhouse primulas, calceolarias and cinerarias, sown in June will need pricking off into trays and boxes, earlier ones can be put into pots. Cuttings from most greenhouse plants can be taken now, geraniums, fuchsias, busy lizzies, keep them

well shaded. Geraniums do not need a lot of water to start with. Late August begonias and gloxinias will have finished flowering, their water supply should be gradually reduced so that they ripen their growth and go to rest. If you keep a warmish greenhouse through the winter, sow Brompton stock and schianthus for an early show from Christmas to February or March. Pot up freesias for early flowering. Restart old cyclamen corms, in second week of August, clean off all the old foliage and soil and repot in the smallest pot, which will take the roots comfortably without any doubling up. Keep them in shady spot, water moderately at first but spray the corms daily with tepid water to encourage them to make new growth. Give a little water to nerines that have been resting (third week August) and increase the amount as soon as the growth appears. A sunny spot is ideal. If you want narcissi before Christmas then pot the bulbs now.

Lawns Set the mower to high if the weather is dry and remove the grass box so the cuttings act as a mulch to keep in the moisture, at the end of August seed can be sown on a prepared bed, keep well watered.

Well that is it, have a nice summer holiday, let's hope for good weather so that we can sit in our gardens or have a Barbie, it makes all our labours worthwhile.

Cheerio for now,
Tom



The Crown Inn

Tony and Julie at

The Crown Inn

Welcome you for

Good Quality, Home Cooked Food

Tuesday – Friday

12-2pm & 5.30-8pm

Saturday & Sunday

12-2pm

Come & join us for

Good Beer, Good Food & Good Music

Tel 0114 236 0789

CLOSED SUNDAY EVENING

Visit our website: www.crowninntotley.co.uk

LIVE MUSIC

**3rd July
JOEL WHITE**

**31st July
LYNDSAY DRACASS &
CARY BAYLISS
14th Aug - RODGER**

Totley Memories – Anne White

I was delighted with the response to my memories of life in The Chemical Yard during the late forties/early fifties which you published in issue 342 of The **Totley Independent**.

When time allows I am hoping to write more of my memories and I had every intention of trying to organise them into chronological order or into some other kind of organised categories. However, after reading some of the recent letters, stories and other items of interest in your magazine I find that I can no longer hold back some of my memories.

Firstly I must apologize to David Lee, you published a letter from him in the July/August issue last year and I should have replied to his comments immediately. He mentions fishing in the river with either myself or my sister Audrey. I do remember him as being one of the friends I had at this time, and we spent many happy hours paddling or fishing together. I also remember the tree he describes which was high up on the bank overlooking the yard, someone had tied a thick, coarse rope to one of its branches and there was a thin stick attached to the other end for us to sit on as we launched ourselves out into mid-air. He also mentions a car which had been abandoned. Yes, we played in this car and used it as an unofficial den, but, I don't think that it was a Jaguar. However, as anyone who knows me will agree, I am not much of an authority on cars so he may well be correct! I intend to write about all of these subjects in much greater detail eventually so I hope my answers to his letter will suffice for the time being.

Recently there has been much interest shown in the old school house on Totley Hall Lane which is being refurbished.

Around 1949 when I was 8yrs old the school house was a private residence. The people who lived there were friends of our family, my mum in particular. I am annoyed, that try as I might, I cannot remember their names. As far as I can recall, they were a young couple with two children, a girl and a boy. I remember the inscription over the doorway which gave the date when the school was built. I would read the words over and over again and thought that it was rather romantic for someone to be living in an old school house. At that time, I was a pupil at Totley All Saints Church of England School. I didn't like school dinners but the school was too far away for me to go home for lunch so, my mum and the lady who lived in the school house came to some kind of arrangement whereby I would go to their house and she would provide me with a hot dinner each school day. I was very happy with this plan though I seem to remember that my lunch often consisted of a bowl of semolina with a spoonful of jam - and very nice it was too!

These lovely people even took me with them on a weeks family holiday to Scarborough; we stayed in a private house which I believe belonged to the lady's mother. I have a very vivid picture in my mind of the last part of our journey to this house. We were walking along a narrow path at the side of a quiet country road, it seemed a long way and the father was striding out in front of the rest of us as we tried to keep up with him. He carried my case on his shoulder with his arm raised above his head to support it, in his other hand he carried the family's case which presumably contained all the clothes and belongings which the four of them would require for their holiday. Even though I was only a child, I realised, with a mortifying feeling of guilt and embarrassment that my case seemed to be the heavier of the two. In the privacy of the bedroom I opened up my case and discovered that, apart from a few clothes and other small items, my mum had packed it to the brim with bars of chocolate and packets of sweets!

From our cottage in the Chemical Yard, my mum and dad sold sweets and cigarettes as a way of supplementing our income. It was all legal and 'above board' as my dad had a license to do so. Rationing was still in force so my mum must have saved our coupons in order to supply me with all those treats, she was certainly making sure that I didn't starve!

The house where we stayed was in a quaint picturesque country village, there was a village green

of neatly mown grass with a large jet-black pump in the centre. It became the children's duty for the week to take a bucket to the pump, fill it with pumped water and carry it back to the house. It was the only source of water for the entire household. This chore was a novelty and great fun at first but by the end of the week I was more than ready to return home to our cottage and the luxury of an indoor tap with cold running water!

During this holiday, we spent a day at the coast. We had played on the beach and paddled and splashed in the sea, I had been in my element and had had a great time but I started to feel very cold and shivery. As I lay on the damp sand with a towel wrapped tightly round me I felt a sharp stabbing pain in my tummy. I began to cry and desperately wanted my mum to be there to comfort me.

For several weeks after the holiday I felt this same pain, our local doctor was called upon many times to examine me and his diagnosis was that I had what was known as 'grumbling appendicitis'. His opinion was that, if it continued or became totally unbearable, I would have to have an operation to remove my appendix. Eventually, the pain subsided and I am still unsure whether it was my appendix or eating all those sweets which gave me such problems, all I do know is that, despite many other health problems over the years my appendix is still intact and in its rightful place!

A topical issue of interest at the moment is whether or not Totley should have a community centre. I wonder if anyone recalls that there was a thriving and very popular community centre for Totley based at Abbeydale Hall?

I loved this place and spent many happy hours there. There was a large room where dances could be held; it had tall windows with wide window seats and heavy wooden shutters. Upstairs there were games rooms with a snooker table, dart board and lots of room for other similar sporting activities.

Each year a concert would be organised and everyone was welcomed and encouraged to take part. I expect it was, in a way, Totley's own version of Britain's Got Talent! Audrey and I would always take part in little sketches or sing in a children's choir. One year, when I was about 9yrs old Audrey decided that we should create an act of our own for the concert. I would sing a solo while she played the piano. I chose a popular song of that time called 'Mockingbird Hill'. We rehearsed it at home, but, when the time came to rehearse at the hall, I refused to sing. This happened on several occasions; Audrey would sit at the piano and play the song in its entirety while the organisers

of the concert calculated the time required for our performance. They became increasingly concerned about my lack of co-operation. Audrey re-assured them telling them there was no need to worry as I would definitely sing on the night, and she was right. I stood all alone at the front of the stage while Audrey sat at the piano way below me to one side of the stage. I sang out loud and clear and word perfect exactly as we had rehearsed at home, the curtains closed and I could hear the audience applauding enthusiastically. Just as I was breathing a huge dramatic sigh of relief, the curtains suddenly re-opened and, at the sight of my startled face, the audience burst into laughter. That was the first and last time that I ever sang a solo in public.

The audience consisted mostly of local people and they always gave huge support and encouragement to all those taking part no matter how good or bad or talented their performance. There were no other distractions such as television etc in those days so the concerts played a big part in Totley's entertainment calendar. Whole families became involved in one way or another. The White family who lived in Laverdene Avenue were very active members. Mr. White was involved in administration and organisation and Mrs. White was the dressmaker. Their daughter Valerie attended ballet lessons and she would give a solo ballet performance which was always rewarded with rapturous applause. On the occasion when Audrey and I appeared in the concert, Mrs. White had made a special dress for me to wear. Dress material was almost unobtainable and very expensive in those austere years following World War II so my dress was made from fragile crepe paper in garish shades of orange and green. There was a type of 'ruff' with ties at each end made from the same paper and the lady who was helping me to dress for the concert wasn't sure where to fasten the 'ruff'. Mrs. White was busy elsewhere so my helper tried tying the 'ruff' round my waist then round my neck and finally she decided that it should be fastened on top of my head. I think I probably went on stage looking like a demented cockatoo!

On another occasion, several of the younger girls were chosen to take part in a little ballet dance scenario. The curtains would open to reveal a luxurious throne and a beautiful queen watching in regal silence as several girls, dressed as dainty little butterflies, fluttered around the stage their gossamer wings quivering with excitement as they whispered to each other. As the butterflies departed they were replaced by black and yellow bumble bees also whispering to each other and obviously spreading important news. After several groups of other insects and birds had made their appearance, the finale arrived with the grand appearance of a stork (me of course) dressed in a white ballet tutu and a white hat complete with yellow beak. In my tightly clenched mouth were the four corners of one of my dad's pristine white handkerchiefs. Enclosed in the handkerchief's folds was a small doll. I had to strut around the stage, full of my own importance before making my way to a small cot strategically placed next to the queen's throne and gently lower her 'newborn baby' into it. During rehearsals I was told that I was supposed to bend over the cot with my back to the audience. I flatly and adamantly refused to do this; I knew that it was bad manners to face away from the audience. What a Diva! In fairness to myself, I must explain that the main reason for my

refusal was that I was extremely conscious of unsightly scarring on the top of my leg which was a result of burns I had suffered in a dreadful accident two years earlier.

Sometimes, a play or other type of production took place at Abbeydale Hall and the people who performed in these became the original members of T.O.A.D.S. (Totley Operatic and Dramatic Society). Mr. and Mrs. White's son Norman became very influential within this group and the breakaway group who formed part of Sheffield Teachers Drama and Operatic Society. Mrs. White remained the chief dressmaker for some of their wonderful productions. Norman became an eminent Sheffield solicitor.

The gardens of Abbeydale Hall were beautiful and I loved to run around the front garden weaving in and out of the branches of the weeping willow tree. At the back of the hall was a walled garden with many different species of flowers and there was a shallow garden pond which was always overflowing with frogspawn in the springtime.



I am second from the right as you look at the picture and my sister Audrey can be seen 5th from the left

One of the main events of the year at the hall was the May Queen ceremony. This would take place in the grounds of the hall if the weather was fine. A parade would start inside the premises, it would wend its way round the front of the building to the walled garden at the back where a stage would have been erected and the throne for the queen placed in its centre. One year, the girls carried hoops decorated with flowers. We walked to a selected path where we opened up the hoops and facing a partner across the path we formed an archway for the queen to walk beneath. We all wore our own clothes for these events and, on one occasion, I wore a dress which had been given to us by Mrs. Gratton who owned the well known and prestigious grocery shop at the top of Totley Rise. The dress had belonged to one of her daughters; it was so pretty, I felt like a princess as I walked at the front of the procession with a smartly dressed boy of about my age by my side and a bouquet in my arms ready to be presented to the new May Queen. The dress was beautiful and unlike anything my parents would have been able to afford.

In March 1955 my sister Audrey married her fiancé Peter in a beautiful wedding ceremony at Totley All Saints Church. They held the wedding reception in the main room at Abbeydale Hall, with outside caterers providing the food. It was a very special and happy occasion.

A couple of years later I started going to a weekly Old Time Sequence Dance night at the hall. Scratchy vinyl records played on an old record player provided the music. Most of the people who attended were much older than myself but I loved it, one of my favourite dances being The Lancers which involved many different dance sequences and moves, it required a lot of concentration and was a serious challenge. Some of the other dances we enjoyed were the Progressive Barn dance, The Valetta Waltz and The Square Tango. During the interval the caretakers would disappear into the huge kitchen, they would return with biscuits and strong tea served in utility cups and saucers in a nauseous shade of green. The caretakers were called Hammond and their son, David, would sometimes play the piano for our dances, it provided a welcome relief from the scratchy records! Mrs. Cooper who lived in Laverdene Avenue was one of the people who came occasionally and Mr. Butterworth who owned the cycle shop on Abbeydale road regularly attended. Winnie Stanway, who was our next door neighbour, would come along with me sometimes as would my friend Judith Littler who lived in one of the prefabs on Green Oak Road. The girls and women far outnumbered the menfolk so we would have to learn both sets of steps and take turns dancing with each other.

My dad didn't approve of me going to the dances; he would frown at the sight of me dressed in my best 'Sunday' clothes on a weekday and wearing a hint of make-up which he strongly disliked. Sadly, my mum had died and dad took his role as single parent very seriously. He had only ever known a life of hard work without any holidays or leisure time, his health was rapidly deteriorating. He would give me firm instructions that I was to be back home by 10.30pm so I would have to choose whether to leave the dance early, in plenty of time to catch the last bus home, or enjoy the final dance of the night. If I chose the latter, I would more than likely miss the bus and have to walk home. Whichever choice I made, I would always receive a firm lecture as I entered the house, he wasn't a particularly religious man but he was convinced that by going dancing and staying out 'late' I was heading for a sinful and immoral life!

Find Your Feet Online!

If you think you'll never understand computers and the internet don't worry – help is at hand! A number of low-cost computer courses are running across the South West of the city this summer, funded by the South West Community Assembly and the Lifelong Learning and Skills Council.

The courses are being delivered by Heeley Development Trust, a local learning organisation with lots of experience delivering friendly, jargon-free training to absolute beginners, helping them to enjoy the many benefits of being online, like staying in touch with friends and family, making savings on fuel and shopping bills, and finding information on hobbies and interests. According to James Richardson of Heeley Development Trust, "when it comes to computers, there's no such thing as 'too late to learn'. We've had learners in their nineties using email and shopping online – it's easier than you think!"

Courses will run for 5 weeks and will cost £10 (free for people on means-tested benefits). If you're interested, please contact Heeley Development Trust on 0114 2500 613 to find out more.



12th year
TOTLEY OPEN GARDENS

SATURDAY 14th & SUNDAY 15th JULY 2012
1 - 5pm

Programmes available from Totley Library by the middle of June, and from outside the Ironing Parlour, 170 Baslow Road, S17 4DR on the days of opening

Visit www.totley.org.uk for more information

ALL PROCEEDS GO TO LOCAL CHARITIES

Plants needed

Do you have any plants – or garden equipment - we could sell for Totley Open Gardens?

If so, please bring them to 16 The Grove. If no-one in, leave at the front of the house. If collection needed, please ring 236-2302.

Last year Totley Open Gardens raised over £1,000 for Transport 17. We hope to better that sum this year, with the help of plants for sale, and cream teas on sale at two gardens.

Thank you

Abbeydale Writers

Abbeydale Writers meet on Tuesday nights at the Dore and Totley United Reformed Church in Sheffield (S17 3QS). The group has existed for well over twenty years and is a serious, though very supportive, writing group.

The group aims to help writers to improve and grow. New members should not be daunted as the group has a very wide mix of abilities and everyone is welcome. Abbeydale Writers operates with the help of the WEA. If you would like more information then please contact the group via the link below, or ring the tutor, Barry Nicholls, on 01909 560887. www.abbeydale-writers.co.uk



GWS

Technology Solutions



PC Problems/ Repairs/ Servicing No Job Too Small
 Wireless & Internet Setup New PC's & Upgrades
 PC Setup/Data Transfer Safe PC Disposal Tuition
 Software/Hardware For All Your PC Needs

Guy Senior

Phone: 0114 2352662 Mobile: 07890030453

Email: guy@gwstech.co.uk

Web: www.gwstech.co.uk

GWS, 5 Conalan Avenue, Bradway, Sheffield S17 4PG

R.S. HEATING & BUILDING CO

EST. 1971



HEATING DIVISION:

Experienced Installers of condensing,
 combination and regular boilers.
 Systems fully guaranteed.
 Complete after sales service.
 Also Bathrooms, showers
 and small plumbing works.

BUILDING DIVISION:

Loft conversions, House
 renovations including general
 building, joinery, plastering,
 electrical decorating etc.



13 Overcroft Rise, Sheffield, S17 4AX

Tel:- 0114 236 4421

Reg. Office:- 62 Machon Bank, Sheffield, S7 1GP

Te:- 0114 2559425

Fax:- 0114 255 9431

Email: enquiries@rsheatingandbuilding.co.uk
 Web: <http://www.rsheatingandbuilding.co.uk>



253 Baslow Road, Sheffield, S17 4DU
 Tel: 0114 2360 583 Mobile: 07801 346 455

Dronfield Landscapes



Gardens cleared and maintained, Lawns mowed,
 Turfing, Tree felling & pruning, Hedges trimmed &
 reduced, Pond maintenance, Fencing etc.

for free quotation call

Chris on: (0114) 2746158 Mobiles: 07976072785 or

Richard on: 07789497104

8am-6pm mon-fri

HazelBarrow Farm, Norton S8 8BA

R.M.M BUILDING SERVICES

25 YEARS EXPERIENCE

All types of building work carried
 out including- Drop kerbs, block paving
 (drives, paths, etc), extensions, general
 building repairs and maintenance.

Phone Rob on- Mob- 07906108567

Home-2352190



Nigel Watson



Carpenter and Joiner

Fitted kitchens, sliding wardrobe doors with
 bespoke interiors, internal and external doors
 supplied and fitted, new handrail and spindles,
 laminate and wood flooring, locks, architraves,
 skirting board, stud walling, boxing off etc.

For a reliable and quality service

TEL: 0114 236 4778

MOBILE: 07971 528149



Serenta HomeCare

Are you in need of a little help and support within
 your own home? The older we get the more help we need
 to enable us to live a more independent life.

Personal Care • Medication • Domestic • Sitting Service • Social and Leisure activities

To find out more call Sue 07715 636 395 Pat 07715 634 781
 or visit www.serentahomecare.co.uk

For reference from an existing client please call 0114 2366891



Got a computer?

Having Problems?

Is it running slow? Stops responding?
 Having problems running the latest games
 or applications? Broadband installation?

Give me a call!

I'm available for home visits at any time
 including evenings and weekends. I can
 also suggest upgrades to improve perform-
 ance, or even build you a system to your
 specific requirements.

Tim Brown

Building,
 Installation,
 Upgrading and
 Troubleshooting
 Computer
 Systems
 Over 25 years
 professional
 experience

Phone: 0114 2472619 Fax: 0870 7060080

Mobile: 078 17464703 Email: service@timbrown.plus.com

Can you volunteer?

Volunteer Allotment Buddy

Are you a keen gardener or interested in horticulture?
Maybe you can help us!

We are looking for someone who can help with planting, maintaining and harvesting flowers, fruits and vegetables on raise beds. Basic knowledge and experience of plants and gardening preferred.

You can do this role even if you have a just a few hours per week or month to spare; training, references and expenses provided. Volunteering with us will prove to be an enjoyable and rewarding experience meeting new people from a variety of backgrounds.



For more information please contact Stacey Lewis at Mickley Hall Cheshire Home
Email: staceylewis@lcdisability.org
Telephone 0114 2369952

Leonard Cheshire Disability is a company limited by guarantee, registered in England no. 552847, and a registered charity no. 218186 (England & Wales) and no. SC005117 (Scotland). VAT no. 899 3223 75. Registered office: 66 South Lambeth Road, London, SW8 1RL.



find us on facebook

Totley

Private Hire

24 hour taxi service

Advanced bookings only

Local • long distance • airports

Telephone 0114 283 9692

Mobile 07974 355 528

A1



Tiling, Plastering, Plumbing & Complete Bathroom Fitting Service

**Tel: 0114 4182346
07738 688807**

- ◆ Under Floor Heating
- ◆ All Aspects of Home Improvements & Maintenance Work Undertaken
- ◆ Competitive Prices
- ◆ NVQ Qualified
- ◆ No Job Too Small
- ◆ Fully Insured & Guaranteed

A1tilingandplastering.co.uk
25 Five trees Ave, Dore, S17 3LW

B.K. JEAVONS PAINTER & DECORATOR



**Interior
Exterior
Decorating
No Job too small**

**Tel: 01246 416484
and mobile 07882 278306**

Creating opportunities with disabled people.

Registered Charity No. 218186

**Leonard
Cheshire
Disability**

Leonard Cheshire Services in Offers choice & opportunity to people with disabilities. A Specialist Unit for the Younger Disabled. Residential & Respite Care – Single Rooms Day resources – Aromatherapy – Reflexology – Physiotherapy – Toning Tables. Activities include: - Arts & Crafts – Computers – Cookery – Shopping Expeditions – Theatre Outings – Church. Further details can be obtained from – The Service Manager, Mickley Hall, Mickley Lane, Totley, Sheffield S17 4HE. Tel. 0114 236 9952 Fax. 0114 262 0234

The Care at Home Service supports disabled people who wish to remain in their own homes. We provide flexible care packages from 1 hour to 24 hours meeting individual needs. The service operates throughout Sheffield. Our service includes: - help with getting up and going to bed, dressing, washing, bathing, shopping, cooking, light household duties. Further details from: - The Care at Home Manager Tel. 0114235 1400 Fax 0114 235 1499

John Heath & Sons

AN INDEPENDENT FAMILY FUNERAL BUSINESS

Sometime.....

You will probably have the responsibility of making funeral arrangements. No one looks forward to this responsibility, but the death of a family member or friend brings with it an obligation that must be met. There are people who can help you meet this responsibility. We have been helping people combine the different aspects of the funeral into a meaningful service for over 125 years.

Please Call Day Or Night
(0114) 272 2222
Head Office - Earsham Street
Also at Meadowhead, Ecclesall Rd,
Crookes and Stanington
www.johnheath.co.uk



CHARISMA BLINDS



**For
Windows
With Style**

Sheffield Factory Showroom
106 PROSPECT ROAD
HEELEY, SHEFFIELD
Sheffield (0114) 258 5496
Rotherham (01709) 512113

Farming Scene

Has climate change really kicked in now!! All sorts of weather related records have been broken over the last 3 or 4 months. These events may be interesting to those people who diligently follow weather patterns but to us farmers they create difficult or even impossible working conditions. One week we are up to our knees in mud and water and the next it is so hot we can only work in the shade. The sheep are sheltering under the trees one day to get out of the sun, the next to get away from the rain and cold winds. Most of our sheep have now been shorn so the cold and wet really has a detrimental effect on them. The unsettled weather has also delayed the harvesting of silage and haylage to feed the stock over the winter. We still have ours to make and it now looks as if it will be July before we can get going, some 5 weeks behind schedule.

We are now into the Dorset sheep showing, buying, selling and tupping season. We took 2 very nice looking yearling rams down to the main Dorset sale at Exeter at the beginning of May, which sold at an average price of £800. I was very pleased with this result. We did not do so well showing at the Stafford County Show this year. Only one first and 3 seconds. We would normally achieve 3 or 4 firsts plus a champion. Never mind, we will have to try harder next year. We will be exhibiting at The Yorkshire Show this month where the competition will be even stronger. After that we will be showing and selling at the breed sales at Worcester, Chelford and Carlisle.

The tup has already been busy serving the females we will be taking to Worcester and Carlisle. Selling these "inlamb" gives added interest from the buyers as well as improved prices.

Talking about prices the market price for meat lamb has been well down on last year's prices over the last month to 6 weeks. It would appear that the poor economic situation in this country is causing consumers to purchase cheaper meat products like chicken. The other factor involved is the rise of the pound against the euro. Nearly 40% of our sheep meat is exported mainly to Europe so any variation in exchange rates can increase or decrease the amount exporters will pay for spring lambs. I wonder if the price has gone down in the shops??

We continue to try to improve the performance of our Pedigree Dorset ewes. Each year we sell off those that perform below average and introduce into the



flock those that are genetically superior. This system has resulted in the recorded performance of the flock more than doubling over the last 7 years. Most of this year's lambs are in the top 50% performance range for the breed, with nearly half in the top 10%. Some are in the top 1% for the breed, and we will be using one of these ram lambs on our main flock ewes very

shortly. We came 2nd this year in the EBLEX (a government/stockholders funded organisation) sponsored competition to pinpoint the most genetically improved Dorset flock over the last 12 months. The winner runs a flock of Dorset horns so we in effect were 1st in the Poll Dorset grouping.

This is a significant milestone in the development of our flock. One to be proud of. We are aiming for the top spot next year. Are we setting ourselves an impossible target? Time will tell.

Edwin Pocock

WASTE COLLECTION SERVICES

Despite being offered cash from the Government to maintain current service Sheffield Council has made the decision to slash waste services. Sheffield Council claim the changes aim to save £2.5 million a year.

Alternate week collections

Fortnightly bin collections are being introduced in Sheffield from July. The switch will be implemented in two phases, with half of the city starting the new arrangements in July and the other half in September. All households will be able to choose which items of recycling they put in their blue bins and boxes once the changes come in. Details about which areas will be first to receive the new arrangements have not yet been revealed.

We understand leaflets will be dropping through residents letterboxes giving details about the changes

Green Waste

Sheffield City Council has taken the decision to cease garden waste collections. Now the service that was provided as part of the Council Tax you pay is no longer available, Veolia Environmental Services are offering residents a chargeable service between April and December 2012.

The cost is £12 per 10 sacks including VAT. The maximum number is 100 sacks.

To buy your clear sacks ring their Call Centre between 8am and 6pm, Monday to Friday on: 0114 273 4567. They will take your address and payment details. You can pay using most debit or credit cards.

You can also email them your contact details to: sheffieldenquiries@veolia.co.uk and they will call you back to take your payment. There is a minimum order quantity of 10 sacks and a maximum 100 sacks.

Sacks will be delivered within five working days of payment being received.

Any sacks you buy must be used before the service ends in December 2012.

Recycling Centres

If you thought you'd have to make more use of Blackstock Road Recycling Centre, guess again. The centre has had it's opening hours almost halved - it's opening times have been cut to 4 days a week from 7. Our councillors have already received many complaints from residents who after visiting Blackstock Road and finding it either closed or with huge queues.

PUZZLE CORNER

Solution to Age in Years to Come

This year:

Ann 11; John 17; Mothers 40. In 18 years Ann 29;

Mother 58

Don Ashford

FRIENDS OF GILLFIELD WOOD

www.friendsofgillfieldwood.com

Gillfield Wood Bio-blitz event 17th to 19th May

Despite the cool, cloudy, drizzly weather a good number of people turned out for the start of the event at 3pm on the Thursday (17th May) afternoon. The first two events, the flower and bird surveys, both started at the same time, so the group split into two smaller groups, dependent upon which subject individuals' interest was. Steve Clements also appeared to say that he would conduct a fungi survey and report back to us later with the results.

The flower survey was led by Sally Goldsmith and Christine Hibberd, with the bird survey being conducted by Dave Gash and Chris Measures.

117 species of plants (including trees) and 30 species of birds were recorded during the respective surveys from 3pm to 5pm. The bird species recorded list was constantly being updated over the 48 hours as new species were seen/heard, with the overall total numbering 40. The highlight being a lovely view of a buzzard as it flew at treetop height over our heads, no doubt looking for any sandwiches that may have been on offer!! The number of fungi identified and recorded by Steve amounted to 50 different species.

At 6.30pm on the Thursday evening, Professor Ian Rotherham of the Sheffield Hallam University, gave a fascinating walk and talk on the industrial heritage and natural history of Gillfield Wood, which was attended by over 35 people. This gave us the opportunity to identify and record more species of plants, trees and birds along the way, thus adding to the lists that we had compiled from the earlier surveys.

Again the weather was cool, cloudy and drizzly for the start of the Hoverfly search at 10am on Friday 18th May. But this didn't dampen the enthusiasm and enjoyment of the group as the survey was conducted in the top half of the wood, led by Derek Whiteley. 5 species of hoverfly were recorded and 25 species of invertebrates.

Stuart Crofts led the survey of the Totley Brook that runs through the wood, searching for aquatic life, in the afternoon of the 18th starting at 1pm. His knowledge and enthusiasm were second-to-none and all of the members of the group and public, who attended, thoroughly enjoyed the experience of splashing around in the water and searching for the mini beasts underneath stones and in every nook and cranny of the stream. A total of 20 species were found indicating that the stream is unpolluted and cleaner than the River Wye apparently!!

Unfortunately the heavy rain and windy conditions meant that the bat and moth surveys planned for Friday the 18th evening had to be cancelled. But we are going to re-schedule these at a later date in 2012. 4 of the hardier souls of the group attended the dawn chorus walk on Saturday the 19th morning at 4am!!! A few comments were made such as 'should have stayed in bed!!' and 'we must be mad!!', with the weather being cold, windy and rainy. But we persevered and were well rewarded with some lovely bird song.

The first birds started to sing at around 4.15am, which were the robin and blackbird, closely followed by the dunnock and wren. By 4.45am the birdsong reached a crescendo and was a wonderful sound to behold. The inclement weather didn't dampen their urge to sing one jot!! We recorded 30 species during the morning to 6.30am, several of which were added to the list already started on the Thursday afternoon.

The final event held was a bug hunt from 10am to 3pm on Saturday 19th May led by Paul Richards, former curator of the city museum.

Again the cool, drizzly and cloudy conditions weren't ideal but the event was well attended by numerous members of the public and a total of 30 species were recorded. The highlight being the pseudo-scorpion found by a certain Mr Richards!! It was good to see so many families turn up to hunt and the childrens' fascination and enthusiasm when looking at some of the bugs, that they had caught, through the microscopes brought along for the occasion. One of the local residents also brought along a tarantula spider for us to look at!! The local scout hut was also open where coffee, tea and cakes were on offer, to round off what was an excellent day's bug hunting and a thoroughly enjoyable and fascinating bio-blitz event.'

Summer Walk around Fanshaw Gate on Tuesday 3rd July

A guided walk is due to take place on Tuesday 3rd July. We will be meeting at the Shepley Spitfire car park at 6.45 to 7pm and setting off just after 7pm.

The walk will go up the bridleway and along the holloway to Woodthorpe Hall and then along Fanshaw Gate to the Hall. Information about the history and flora and fauna of the area will be shared with all.

This walk is open to anyone who would like to turn up and spend a couple of hours enjoying the sights and sounds of a July summer evening.

Please contact Dave Gash on 0114 2620564 or e-mail daveygash@hotmail.com, or Sally Goldsmith on 07790 637016 or e-mail goldsally@googlemail.com, for more information.

Practical Conservation Day on Sunday 29th July.

There will be another practical conservation day in the wood on Sunday 29th July. Meet at the farm end of Totley Hall Lane, near the metal gate at 10am. Tasks to be undertaken will include tree thinning, hazel coppicing and footpath drainage. If you are interested in coming along to help then please join us on the morning. There will be tea/coffee and biscuits on offer too! Contact Dave Gash on 0114 2362640 or e-mail daveygash@hotmail.com for more information.

Birds of Gillfield Wood Talk on Tuesday 4th September.

This meeting is being held in the Totley library and will start at 7pm. All are welcome, so please feel free to turn up on the night.

The talk is being given by John Kirkham who lives at Bradway and is a member of the British Trust for Ornithology and the Sheffield Bird Study Group.

John has been observing the birds of Gillfield Wood throughout the spring and summer of this year. So it should be a fascinating talk about his findings and observations.

So please do make a note of these dates in your diaries and there will be details of future meetings and events in the September edition of the **Totley Independent**.

Dave Gash

The Townswoman's Guild – Oh no not I!

A whole new life will begin for you now
You've retired at last, you've taken your bow
You'll have time to spare, Time to rest
But it wasn't like that, as you've probably guessed

Along came a sweet lady who just happened to mention
The townswoman's guild? But I'd no intention
Being bored by speakers, paying for the privilege with a fee
Not likely I said Oh no thank you not me!

I had a picture in my mind, of Mrs Bucket in her hat
With her followers a gossip, of just this and just that
But to please the sweet lady and because my excuses ran dry

I succumbed just the once and gave it a try

Well what a surprise, not a hat did I see
And apart from my coffee they let me in free
The business began, I was impressed from the start
The ladies were lovely. And then came the best part
After coffee and biscuits, The speaker began
We were intrigued everyone right down to the last man
Er ... If you'll excuse the expression, for here only ladies abound
(unless it suits the committee to admit one to hallowed ground)

So I came, month by month for over 2 years
Full of enthusiasm I'd buried my fears
I invited by friends and they came along too
Then came the crunch, It was too good to true
Come on the committee! You'll like it you'll see
Not likely I said, oh no thank you not me

Well! After a while I came round to the idea
I'd give it a try, just for one year
One morning a month, that's what they said
I've always been the type to be easily lead
They forgot to mention a few little things
That being on committee brings
Planning programmes, arranging cream teas
Organising outings, nearly on my knees
Attending social studies, supporting where I can
Oh what did I do before all this began?

Many years have flown by since that very first day
And not a regret, I can honestly say
There's always a laugh and smiling greetings
From friends I have made at my townswoman's meetings.

My sweet little old lady needs to push me no more
I'm grateful to her for opening the door
And I've described in a nutshell what it means to me
Learning and sharing, together is the key
I hope no one suggest that I leave, for you see
I'd say not likely I'd say oh no thank you not me.

Mrs I Rodgers, Chairman, Totley Townswomen's Guild



A VISIT TO WOODTHORPE HALL

SATURDAY JULY 14TH

Meet in front of Shepley Spitfire 2pm stroll up to the hall cars can approach via Fanshawe Gate Lane after the visit we have been invited to picnic in the gardens weather permitting please bring your own refreshments and wear stout shoes.

Please note there is no meeting in **August**
September 26th speaker to be confirmed
October 24th open/research meeting
November 28th pus, pox and privies talk by Suzanne Bingham about life in Victorian Sheffield

Totley Scouts

Thank you to everybody who has collected Sainburys Active Kids and Tesco for Schools and Clubs vouchers and donated them to the Scouts. We use the vouchers to exchange for equipment to be used by the children. Last year we had various types of balls, hockey sticks, chalk, and other play equipment. This year we have ordered kitchen utensils such as wooden spoons, knives, scissors, can openers and chopping boards. These will be used at camps.

In May we opened the Scout Hut for tea and cakes to support the Friends of Gillfield Wood. Despite the weather we were very pleased with the turnout. We shared the money raised to support both the Scouts and FOGW. We are always pleased to help the FOGW when we can, as the Scout Hut is on the edge of the wood and the wood gets used a great deal by the boys and girls. In fact we think it is one of the best locations for a Scout Hut in the country.

The Cubs have just returned from their annual weekend camp at Walesby Forest near Worksop. A total of 18 Cubs took part, along with 2 leaders and 7 parents.

Walesby is a large camp site run by the Scout Association, and provides exciting activities run by qualified staff. There's also a huge area of grass and trees for playing games, building dens, and generally running around having loads of fun!

Our special activities this year were fencing and the zip wire. All of the cubs had a great time doing these, and a few of the parents and leaders had a go on the zip wire as well which was great fun.

The Cubs also took part in the site campfire on the Saturday night with lots of fun songs, and cooked bread twists over an open fire.

The weather was kind to us over the weekend, and everyone went home very tired having had a great time. Many thanks to the parents who gave up their weekend to help out.

Our Beaver Colony will be going camping for a weekend in July at Walesby Forest. Given the timing, the camp will have an Olympic theme. They will be doing chariot racing, a treasure hunt, making Olympic torches and taking part in races for laurel leaf wreaths.

By the time you read this the Scouts will have run the BBQ at Totley Primary School Fayre. Totley Primary have kindly allowed us to do this for the second year running and raises money for the Totley Scouts. This year we plan to use the funds raised to go towards paying for a new hot water boiler which is desperately needed.

As Scouts are a charity we are always looking for donations and for a quick and easy online way to donate please follow this link: <http://bit.ly/Jj0jeW>.

Richard Frost

Chairman

1st Totley Scouts

TotleyChair@aol.com

Scout Lottery

1st Totley Scout Group Lottery

June Draw

1st Prize number 30
Sheffield knife block
Mr Reynolds
Totley Grange Close

2nd Prize number 22
£10 voucher
Mrs Critchley
Baslow Road

Pete Casson

ACTIV physiotherapy

is stronger
& more flexible



ACTIV & BRADWAY
physiotherapy & Physiotherapy Clinic
have combined . . .

so our new partnership can offer you a wider
range of treatments in 3 convenient locations
. . . Bradway, Totley and Norton Lees

our wide range of treatments include:

- Repetitive Strain Injuries
- Muscle & Joint Problems
- Women's Health Issues
- Sports Injuries
- Back & Neck Pain
- Acupuncture

Registered with major insurance companies,
BUPA, Aviva, Westfield Health, AXA

email: mail@activphysiotherapy.co.uk
web: www.activphysiotherapy.co.uk

ACTIV Physiotherapy 0114 235 2727

R. S. CERAMIC TILING

56 Mickley lane
Totley
Sheffield
S17 4HE

All ceramic tiling work undertaken, Underfloor Heating

15 years experience, Private and commercial

All work guaranteed, Competitive prices

For a free no obligation quote call

Ron Shilton

Mobile: 07887 990059, Home: 0114 418 1209

Email: ronshilton@ntlworld.com

Slimming
WORLD

because you're amazing

If you want to lose weight healthily and with no deprivation or
humiliation then join your local Slimming World class in Totley,

Mondays at 7pm and at Greenhill on Wednesdays at 10am

Telephone Jo Elsey on 0114 2620523

or 07590 545 253

(Offer cannot be used in conjunction with any other offer)

1/2

Price membership
on production of
this advert

Dore Moor Garden Centre & Nursery

Hathersage Road • Dore • Sheffield • S17 3AB
(Opposite the Dore Moor Inn)

Reopened, restocked and looking
forward to welcoming you to our
first spring season

Wide range of seeds, bulbs, plants, shrubs, pots,
composts and chemicals

Logs, coal and smokeless winter fuels

Specialist section for mowers, strimmers, fencing,
garden & DIY tools and much much more

Stockists for Haddon Stone statuary
and David Austin Roses

Quality Plants

Competitively priced

NOW STOCKING
A WIDE RANGE OF HORSE FEEDS

Call in and see us

Enquiries

0114 235 0092

mark@doremoor.com

MOGGY MAID



Gail Kitchen: 07986473415

Does going away from home mean your cat is sad and unhappy?
Does a trip to the cattery scare your cat *not to mention your wallet?*

WORRY NO MORE!

MOGGY MAID is on hand to feed, love and provide
everything your cat needs in the relaxing comfort of its own home.

As we cat-lovers know, unfamiliar sights and smells can stress your cat,
whereas leaving them in the familiar surroundings of their own home
carries less worries, for your cat and for you.

If only for a night, weekend, or a month; holiday, Christmas or any time of
the year, MOGGY MAID is here to help **LIGHTEN YOUR LOAD**

We promise no mischief allowed!

In a professional manner and with quality service, you can ensure
individual care and attention, whilst you relax away from home.

We haven't forgotten the rest of the family; mice, rabbits, budgies,
goldfish, etc will receive care and affection too.

LOCAL FRIENDLY SERVICE

From £5 a day

07986473415

For more information, contact Gail Kitchen on:

5 Ullswater Place, Dronfield Woodhouse

Ahmed Calls Time

I have just found out that our friendly newsagent and beer off proprietor Ahmed is calling time on his nearly 10 years tenure of Ahmed's News on Totley Rise.

This is the end of an era for Ahmed the perpetual motion man who is taking a long rest to recharge his batteries before he does something new.

I am sure he has shrunk by a number of inches during his Totley spell and of course he is never off his feet, after 2 hip replacements. I was in the shop a few days ago and a lady remarked she remembered him when he was tall and handsome (must have been his wife!!).

I have, like many of his customers found him friendly, respectful and very helpful and if he hadn't got an item in stock he would get it for you.

He has a strong work ethic and is on his feet for 16 hours per day, 7 days per week and has become known as the local guru, soothsayer, agony aunt and a good listener.

Just a little cameo on his background. He came from Pakistan with his parents, is married with 4 children, 3 girls and a boy. All have worked hard at university and have achieved distinctions in pharmacy, business law, ophthalmology, travel (very brainy must be on his wife's side?).

Over the years he has been reliable, and good for Totley. However, he assures me that Totley has been good for and to him.

Well done Ahmed. We will miss you

J W Abson

Many of your readers especially those who lived around here longer than my meagre span of 10 years will be more familiar than I am with Ahmed's presence behind the counter of the newsagents on Totley Rise so will be appreciative of his work in the local community.

He is selling his business and handing the work over. His friendly greetings and chit chat have made it a pleasure to go into the shop and enjoy a very human contact there, particularly in these days of increasing automation and dehumanisation of the shopping experience. We are indeed fortunate to live in an area where human shopping services are still found.

Ahmed's extra friendliness seems to have affected the general atmosphere of his shop, encouraging customers to catch something of his goodwill and human interest. My thanks to him for making life a bit brighter and more enjoyable will be shared I am sure by many other folk as will also my gratitude for his contribution to race relations. He is more of a Yorkshireman than I am.

Typically he is not planning to abandon the shop immediately but rather to stay on hand for the continuity of the business and the benefit of his successor.

I wish him well for both himself and his family for the next phase of his life.

Harry Liddle.

Thank you and Farewell

Friends and residents of Totley as you may be aware I am retiring from the paper shop and I would like to take this opportunity to thank each and every one of you. It was 10 years ago that I came to Totley and took over a failing business with massive potential receiving a mixed reception amongst the community.

I set about changing the business and attitudes with real dedication and commitment towards serving the community and working tirelessly over 100 hours a week to provide a great service and customer friendly environment. I was nervous at first but as I got more into the role I soon realised there was this huge abundance of people willing to help me to get to my groundings.

I have worked in many locations and had a few businesses but the real essence of Totley was the special people and community spirit that I discovered over the years, this was most personified during the floods when I was unable to travel home and I was inundated with offers of bed and breakfast. Real displays of care and friendship and this will always be the most special memory I will take away with me. I have made some special friends and had the pleasure of knowing some really good people in my time here but sadly all things must come to an end, I need to slow down as my health is not what it used to be and my family would like to see more of me. The children have all grown up and making their own ways in the world. My beautiful granddaughter who is nearly 2 years old is also going to demand some time from granddad. Life is precious and short and I intend to focus on things that I have always wanted to do like buying a motorhome and going travelling with my family (although Mrs Ahmed is not keen on motorhomes and is currently drawing up a list of DIY projects for me) as well as putting something back into society in the form of voluntary work.

So now that I have taken care of everything for my departure I would like to assure everyone that while departures are sad I am not sad. I am happy because while I cannot take you all with me I can keep the memories with me always and so can you.

Once again I want to thank you all.

I won't shed a tear because it is over, I will just smile because it has happened.

Thank you very much and God bless you all

Mr Zahir Ahmed

The Paper shop

And Finally

The **Totley Independent** would like to thank Ahmed of Baslow Road News for his services over the past few years and especially for his interest in the sales of our magazine of which he sells around 300 copies every month.

He is always very sociable and good for a laugh even though he always says we have given him short supply. He then decides to pay me in all small change. We wish him and his family well in their future ventures and he will be a hard act to follow for the new owners and we hope they will continue to sell our magazine which is a valuable asset to the community without our local business people we could not carry on.

John Perkinson

'New' Lemont Road Houses

Am I the only person in Totley disgusted with the so called "development" at the top of Lemont Road?

How many years since we lost a popular care home to be replaced by prison blocks that nobody wants? Can anyone tell me what is happening or who owns the site?

Mary Hanson

Woof n' Cut

All breeds welcome!

Professional dog grooming

Services include:

Bathing
Clipping
Trimming
Hand stripping

0779 044 8296



Crocus Homecare

Homecare with Compassion



EXPERIENCED, RELIABLE CARE STAFF REQUIRED

Crocus Homecare is based in Bakewell and now provides high quality care and support services for those living in South Sheffield (S8, S10, S17, S18)

Crocus prides itself, and has built its reputation, on providing the highest quality care with compassion, understanding and respect for each individual and their families.

Excellent rates of pay for the right people with the right skills and experience

We aim to appoint only the most conscientious, caring individuals who have significant experience in social or health care, especially with Older Adults with complex care needs.

If you think you can meet, and most importantly, provide the genuinely high standards of care we demand, please see our website or contact Debbie Crowhurst on 01629 812874

Personal Care - Practical Help - Respite Care - Dementia Care
24 Hours a Day / 7 Days a Week

Tel: 01629 812874

www.crocuscare.com



Domestic electrical work by
award winning

Lady Electrician

- * House rewires * Replacement fuse boards *
- * New sockets and lights * Security systems *
- * CCTV * Telephone and computer points *
- * Garden power and lighting *



All work guaranteed and fully insured. For a free quotation, without obligation,



ring Mandy on 07788-544225

Sarah nield
PERSONAL TRAINER

No time for the gym, struggling to get motivated, let me help you.

I can design total body workouts, combine CV and resistance in an effective progressive fitness program tailored to your individual wants and needs to fit in around your lifestyle.

Now Available for Daytime Bookings

Areas of Expertise:-

- Running Training • Boxercise
- Nutrition and Weight Management
- Advanced Trainer • Body Massage

My aim is to help YOU feel fit and fantastic, no matter what your age, size or gender. Get the body you dreamed of...it's easier than you may think!

FORGET DIETS AND BODYWEIGHT

THINK IMPROVED BODY COMPOSITION
= FASTER METABOLISM & FAT LOSS

Mobile: 075 7279 4796

Email: snpersonaltraining@gmail.com

Web: snpersonaltrainer.co.uk

Rep's No. R0079192



Mickley Hall Cheshire Home

volunteer fashion guru

Are you interested in fashion?

Maybe you can help the people who use our service!

We need someone to help to organise and creatively display donated clothes to sell at our fundraising events and fashion shows. Ideal volunteers to have good presentational and creative skills.

You can volunteer for this role even if you have a just a few hours per week or month to spare - training, references and expenses will be provided. Volunteering with us will prove to be an enjoyable and rewarding experience meeting new people from a variety of backgrounds.



For more information please contact Stacey Lewis at Mickley Hall Cheshire Home
Email: staceylewis@lcdisability.org
Telephone 0114 2369952



Find us on
Facebook

Leonard Cheshire Disability is a company limited by guarantee, registered in England no: 552847, and a registered charity no: 218186 (England & Wales) and no: SC005117 (Scotland) VAT no: 899 3223 75. Registered office: 66 South Lambeth Road, London, SW8 1RL.

**Leonard
Cheshire
Disability**

Celebrating Summer

Ideas and activities for celebrating summer from members of All Saints Church, Totley

Diamond Jubilee Family Garden Party

On the afternoon of Sunday 10th June Totley All Saints church hosted a family garden party to celebrate the diamond jubilee, open to everyone living and working in Totley. After an overcast start in the morning we were blessed by the sun shining in the afternoon as people of all ages enjoyed the activities provided. Both the children and our more elderly visitors enjoyed making jubilee crafts in the hall. Outside in the garden there was a range of activities including catch a duck (popular with our younger guests who enjoyed paddling in the pool rather than standing tamely by the side!), tin can alley, obstacle courses, penalty shoot out, a sand pit, face painting, nail painting, pitch and putt and a paper plane making competition.

Competitions were the order of the day with various trails around the grounds and a special jubilee competition about the royal family to puzzle over whilst enjoying refreshments.

Walking down the church drive visitors could admire the artwork of our guests who decorated the paving slabs in the street art competition, whilst in the church itself Nintendo Wiis were linked to the two projectors at the front so people could try out various Olympic sports and compete for the honour of being top athlete of the day. After enjoying these activities everyone gathered together at the end of the day for a party tea under the trees in the garden, or in the church hall for those who preferred shade. We hope that everyone who attended – from babies in arms through to those who could remember the queen's coronation 60 years ago, had a great time.

Services at All Saints

Services are held on Sundays at 10am and 6.30pm as well as Holy Communion on Wednesdays at 10am. There will be activities for the children over the summer during the Sunday mornings services.

Prayer for the Games

Eternal God,
Giver of joy and source of all strength, we pray for those who prepare for the London Olympic and Paralympic Games.

For the competitors training for the Games and their loved ones,

For the many thousands who will support them,
And for the Churches and others who are organising special events and who will welcome many people from many nations.

In a world where many are rejected and abused, we pray for a spirit of tolerance and acceptance, of humility and respect and for the health and safety of all.

May we at the last be led towards the love of Christ who is more than gold, today and forever.

Amen



CELEBRATION OF THE GAMES

organised by Totley Rise Methodist & All Saints

Sunday 15th July 11am

at Totley Primary School

FAMILY SERVICE

followed by

PICNIC LUNCH & GAMES

Bring a picnic and a rug!



ALL WELCOME

Kate Caroe

TOTLEY & DISTRICT DIARY

MONDAYS	COFFEE MORNING , All Saints' Church Hall, 10am-noon TAI-CHI , United Reformed Church, Totley Brook Road, 11.30am-12.30pm RAINBOWS and GUIDES , All Saints' Church Hall, 5.45pm-9pm
TUESDAYS	COFFEE MORNING , Totley Rise Methodist Church Hall, 10am-noon KEEP FIT & COFFEE , For the not-so-young, Bannerdale Centre, Carterknowle Road, 10.15am, Phone 258 5364 WOODSEATS ADVICE CENTRE , Drop in service, free, impartial, and confidential. TR Methodist Church, 10am-noon CRAFT GROUP , Totley Library, 2pm
WEDNESDAYS	PILATES CLASSES , Dore Old School, 9.00-10.00 and 10.15-11.15. Contact Caroline - Tel: 0781 722 0324, email caroline1north@btinternet.com, www.pilatescarolinenorth.co.uk COFFEE in the LIBRARY , 10am-11.30am TODDLER GROUP , 10am-11.30am, All Saints' Church Hall. Details tel. Andy Holmes 0114 236 2088 HEALTH WALKS , 10.30am, Totley Library foyer. Phone Tina, The Health Walk Ranger: 0114 203 9335 MODERN SEQUENCE DANCING , All Saints Church Hall, 8pm-10pm
THURSDAYS	BELROBICS , United Reformed Church, 9.15-10am, email: jenny@belrobics.co.uk or telephone: 07816 850132. NCT COFFEE GROUP FOR DORE TOTLEY & BRADWAY , 10am-noon, For mums & babies/toddlers, meeting in various locations, Phone Lucy Street 07837 000405 or email: lucy@stretr.plus.com for further details CHAIROBICS , Heatherfield Club, 1.15pm PUSHCHAIR CLUB , Totley Rise Methodist Church Hall. 1.30pm-3pm. Tel. 236 3157 for further details PILATES CLASS , United Reformed Church, Totley Brook Road, 6.15pm-7.30pm also new class 1.30pm to 2.30pm , Phone Emer Coffey 07792 422909
FRIDAYS	PILATES , The Old School, Dore, 9.15-10.15 & 10.45-11.45am. Phone Teresa Tinklin 07906 312372
SATURDAYS	MODERN SEQUENCE DANCING , All Saints Church Hall 2 nd . And 4 th . Saturdays 8pm-10pm

JULY

SUN 1st CASTLETON FARMERS MARKET, the Village Hall, 10am-3pm
SUN 1st MINIATURE TRAIN RIDES, Abbeydale Road South, First train 1pm - last train 5pm (weather permitting) www.sheffieldsmee.co.uk
MON 2nd WARD FORUM, Totley Primary School, 7pm, details page 3
TUE 3rd FRIENDS OF GILLFIELD WOOD, Guided Woods Walk, 7pm, Meet Shepley Spitfire car park, full details page 22, All are welcome.
SAT 7th CAR BOOT & TABLE SALE, Heatherfield Club, Stall holders 9am, Sales 10am-noon, free entry, refreshments, booking 236 8333 or 275 2277
SAT 14th TOTLEY HISTORY GROUP, Woodthorpe Hall, 2pm, followed by picnic, all welcome, full details page 23
SAT 14th & SUN 15th TOTLEY OPEN GARDENS, 1-5pm, details page 18
SAT 14th - SUN 22nd TOTLEY MUSIC FESTIVAL, Programme page 13
SUN 15th MINIATURE TRAIN RIDES, EXHIBITION, Abbeydale Road South, First train 1pm - last train 5pm (weather permitting) www.sheffieldsmee.co.uk
TUES 17th TOTLEY TOWNSWOMEN'S GUILD, 'Wills of the Rich and Famous', Paul Freeman-Keel, Totley Rise Methodist Church Hall, 10am
THUR 19th SOUTH WEST COMMUNITY ASSEMBLY, Abbeydale Sports Club, 7pm, further details page 2
SUN 22nd TOTLEY FARMERS MARKET, Totley Rise, midday-4pm
THU 26th SHEFFIELD FARMERS MARKET, 8.30am-5pm, Fargate
SUN 29th MINIATURE TRAIN RIDES, Abbeydale Road South, First train 1pm - last train 5pm (weather permitting) www.sheffieldsmee.co.uk

AUGUST

SUN 5th CASTLETON FARMERS MARKET, the Village Hall, 10am-3pm
SUN 12th MINIATURE TRAIN RIDES, Teddy Bears Picnic, Abbeydale Road South, First train 1pm - last train 5pm (weather permitting) www.sheffieldsmee.co.uk
THU 23rd SHEFFIELD FARMERS MARKET, 8.30am-5pm, Fargate
SUN 26th & MON 27th (BH) MINIATURE TRAIN RIDES, Abbeydale Road South, First train 1pm-last train 5pm (weather permitting)

TOTLEY INDEPENDENT FOR SEPTEMBER

The next issue of the Totley Independent will be available from the usual distribution points on

SATURDAY 1st September

COPY CLOSE DATE for this issue

will be

SATURDAY 18th August 2012

Editor: **Ian Clarke**

Tel. No: **235 2526** or Email:

editor@totleyindependent.co.uk

Advertising & Distribution:

John Perkinson

Tel. No: **236 1601** or Email:-

advertising@totleyindependent.co.uk

Items for publication may be left or sent to:

2, Main Avenue, Totley, Sheffield, S17 4FG or

Totley Library

www.totleyindependent.co.uk

PRINTED by STARPRINT



- Central Heating,
- Domestic Plumbing,
- Glazing, Double Glazing and Glass,
- House Maintenance,
- UPVC and Wood Windows & Doors



Mini Digger & Driver, Muck Shifts, Footings Etc.

starprint

130 GSM GLOSS
FULL COLOUR
DOUBLE SIDED
**5000
A5 LEAFLETS
£99.95**

SINGLE SIDED
FULL COLOUR
**250
BUSINESS CARDS
£19.95**
+ VAT

**BANNERS
AVAILABLE FROM
£29.95** + VAT

**Full design
service
available!**

Tel: 0114 258 0707

Email: mail@starprint.co.uk
601 Abbeydale Road, Sheffield, S7 1TA