

TOTLEY INDEPENDENT

PUBLISHED CONTINUOUSLY SINCE 1977

www.totleyindependent.co.uk

JUNE 2012

No. 354

20p.



Monnybrook

Monnybrook is a hamlet close to Totley Bents. In the 1980's these 3 cottages were altered to provide 2 cottages. Monny Brook is local dialect for many brooks. Brian Edwards

Totley Residents Association Update

A short update this month as the AGM was held on April the 23rd and the next committee meeting was a few weeks after. I am honoured to have been given the chair for a further year and even more pleased to welcome some new members onto the committee.

We have a tea dance planned on the 9th May in the Heatherfield club from 4pm to 6pm, we have lots of availability so please call 07709 780606 if you would like tickets, entry is free.

Planning and booking for the next Farmers Market is well underway, and this will be July the 22nd from 12pm. Please see the **Totley Independent** website for booking form. Thank you for all who have given us feedback from the last market, we know it will on a larger scale this time with some entertainment too.

As ever we always welcome your feedback and ideas, at the moment I am planning a kids activity day in the summer with Activity Sheffield, paid for from funds raised by the market. Will keep you posted. Thank you to everyone for your continued support of Totley Residents Association.

Kathryn Higgins, Chair kathrynhiggins_totley@hotmail.co.uk 07709 780606

TRA AGM 23rd April 2012

At the AGM the following Officers were elected to the Committee.

Chair Kathryn Higgins, **Secretary** Heather Moran, **Treasurer** Norman Rolfe.

Committee Members.

Dave Spivey, Edwin Pocock, Marlene Marshall, Sally Alleway, Christina Fitzsimmons, Dominic Harris.

The Vice Chair will be elected at our next Meeting.

Avril Critchley offered her assistance whenever needed.

Hetty Moran. TRA Secretary.

CHERNOBYL CHILDRENS LIFELINE

In April I was fortunate to be able to visit Belarus with the above charity. Belarus received 70% of the fallout from the Chernobyl disaster and as a consequence thousands are born with or go on to develop thyroid cancer, bone cancer or leukaemia. We were there on 26th April which was the 26th anniversary of the disaster.

The charity was set up in 1991, by Victor Mizzi, who lives in the south of England, in response to the plight of the children. The main aim of the charity was to bring child victims of the disaster to the UK for recuperative breaks of 4 weeks. 4 weeks away from the pollution and away from eating polluted food boosts their immune systems by 2 years. This was proved to us when visiting schools where they showed us how the attendance records of the children improved after their visits abroad. Over 46, 000 children have been brought to the UK since the charity began. We travelled around Belarus in minibuses, in fact we covered 2,500 kms in a week. Two of our drivers, now in their thirties, were amongst the first children to come to the UK with the charity and now they work for the charity in Belarus identifying the areas of greatest need and supporting families.

The aims of course have developed over the years and now include working with Belarusian partners in Minsk and Gomel to locate children in outlying villages in need of recuperative care.

To help by providing chemotherapy medicines to Children's Cancer Hospitals in Minsk, Gomel and other regions.

To provide ongoing supplies of multi-vitamins and basic health care products to the children on their return and many other projects.

One project which we visited was at Lapitchi village where the charity has built a laundry. This laundry services 3,000 people in a radius of 20 miles on a rota basis. People travel to the laundry by whatever means they can, public transport, car if you have one, hitching a lift or horse and cart.

The laundry has washing machines and an industrial sized press, but also showers and a toilet, so people can shower whilst their washing goes round. Previously they had to fetch water from the village well, heat it on a wood burning stove and use this water to wash, cook and feed the animals, even when the temperature is -20 or -30.

There are links to the charity all over the UK. The group I travelled with were from Inverness, Cornwall, Lincolnshire and Wales and other places inbetween. So it was truly north, south, east and west.

The Sheffield link began 5 years ago. This year we are bringing 10 children to Sheffield for a four week holiday. They stay with families all over the city and activities are arranged for them throughout the four weeks. Despite travelling to a foreign country with many differences and a different language, (though they do learn English in school) the children are well behaved and soon seem to settle down and enjoy themselves.

If you are interested in becoming involved in this charity, either by fund raising or hosting a child next year, there is a website www.ccil.org.uk where you will find a link to the Sheffield group.

Dorothy Firth.

WARD FORUM NEWS

The date of the next public meeting is given elsewhere, but these are notes to update readers of news of items previously discussed.

1. HGV preferred routes. A meeting was held 15 May, which was poorly attended, but gave useful information about the principal of preferred routes. The consultation closed on May 25th, but if anyone has any major concerns about HGVs please bring them to the Ward Forum, or email me.

2. 20 MPH zones. The Council have met & we wait for the outcome, which should be revealed at the Forum.

3. Enviro Crime (Dog poo) Following on from a complaint at the last Forum, I investigated & found that this is a Ward Wide problem. Requests for residents to join a Focus Group, brought no results, but I found that Harry Hunter was on to the case. He has done extensive research, has written to the leader of the Council, but has not received a reply but he didn't from the Environmental Health Officer either. He did, however, make the front



Local resident takes a stand on dog mess

page of The Star. He has pursued the EHO who has now responded with excellent news about the appointment of an enforcing officer & ways in which residents can help to control the problem in a non-confrontational way. It is anticipated that the EHO will be present at the Forum, to give us details. If residents can bring, or email me, areas where there is a problem, it will be useful to get the full picture.

4. The Station Park & Ride scheme. We are told that the current delay is due to the Council's demand for a pedestrian crossing being provided across the main road. The question that is being asked is, why do we need one. If the vehicles which presently park in Dore Road, use the car park, then there will be only the bus users who would use it. The usual criteria, quoted by the Council, is the number of accidents which have occurred. Have any occurred here? It is anticipated that a representative from SYPTTE will be present at the Forum.

I hope to see you there, for your Forum.

Roger Hart

roger@rogerhart.co.uk

Carpet & Upholstery Cleaning

Ian Atkinson

"we will beat any genuine quote!"

www.dcscleaningsolutions.co.uk

Ring

0800 080 7176 or

0773 4947410





Transport 17

It has been a very different month to norm for us T17. At the end of April our vehicles were broken into and fuel stolen. The damage, although only to filler caps and flaps, was expensive and again we were amazed at your generosity in helping us out. It started with a generous donation from 'The Friends of Ann Smith' and then numerous other donations came in both large and small and covered the not only the damages but also replacement fuel.

Next was our Coffee Morning at the Cross Scythes on the 28th April which was an incredible success. Not only did you turn out in great numbers (approx 60/70) you also dug deep making donations and buying copious amounts of raffle tickets. In all we raised just over £400 for which we are eternally grateful - THANK YOU ALL - one moment sticks in my mind when a couple came to me for coffee and cakes giving me a generous donation; I asked if they would like change and the lady said no thank you, we don't use T17's services yet but I always remember how well you looked after my mother. I felt so proud for all of the team.

As I am writing this I have just returned from the 'Cakes and Cuttings' event (19th May) at the Catholic Church. It sadly was blighted with bad weather but most of the plants were sold and the cakes flew away. We are pleased to report that we have 2 new volunteer drivers but we do still need more escorts, Do any of you have a day per week to spare???

Do hope all of you are fit and well and not succumbing to this grotty weather.

Felicity Revill
Chairman



12th year
TOTLEY OPEN GARDENS

SATURDAY 14th & SUNDAY 15th JULY 2012
1 - 5pm

Programmes available from Totley Library by the middle of June, and from outside the Ironing Parlour, 170 Baslow Road, S17 4DR on the days of opening

Visit www.totley.org.uk for more information

ALL PROCEEDS GO TO LOCAL CHARITIES

Totley Scouts

The Totley Scout Group is currently one of the fastest growing scout groups in Sheffield. That brings with it challenges. We not only need more adult helpers for the growth but also to replace those that leave for various reasons.

We have lost our Beaver Leader Faye Catton-Norton who has been involved with our Beavers for 14 years. Faye must have seen hundreds of children pass through Beavers and always with an excellent programme of events. We wish her luck in her future roles within Scouting.

Our Beaver colony will continue to meet on Tuesday evenings but this underlines our need for helpers. We can never have too many as the more there are the easier it is for everyone. And it helps when someone leaves or indeed sickness.

As part of our growth we also wish to create a new role. This does not involve looking after children but helping with administration. Now that we have around 100 boys and girls (and rising) at the Totley Scout Group we would like a Membership Secretary to look after the membership records. This would be a huge help to the Treasurer and the Group Scout Leader. If you are a good administrator with a little spare time please do let me know.

Thank you to everybody who has collected Sainburys Active Kids and Tesco for Schools and Clubs vouchers and donated them to the Scouts. The Sainsbury scheme has now finished for this year. If you still have any Tesco vouchers, please do pass them on to us.

The simplest way is through our letterbox at the Scout Hut. We use the vouchers to exchange for equipment to be used by the children. Last year we had various types of balls, hockey sticks, chalk, and other play equipment.

Finally it was Scout Community Week from the 14th-20th May. On the 19th we opened the Scout Hut for tea and cakes to support the Friends of Gillfield Wood. At the time of writing we do not know how successful that was. We will let you know in the next issue. Unfortunately we were unable to go ahead with the collection of garden waste etc. We will try something later in the year.

As Scouts are a charity we are always looking for donations and for a quick and easy online way to donate please follow this link

<https://mydonate.bt.com/charities/totleyscoutgroup>.

Thankyou.

Richard Frost

Chairman

1st Totley Scouts

TotleyChair@aol.com

Councillor Surgeries

Liberal Democrats:

2nd Monday in the month 6.00-7.00 p.m., Totley Library, Baslow Road and 2nd Saturday in the month from 10.30 a.m. to 12.00 noon, Dore Old School Hall, Savage Lane, Dore Contact details:

Keith Hill 235 2289 Email: keith.hill@sheffield.gov.uk,

Colin Ross 235 1948 Email: colin.ross@sheffield.gov.uk

Joe Otten 230 3290 Email: joe.otten@sheffield.gov.uk

Totley Independent Website:-
www.totleyindependent.co.uk

ACTIV physiotherapy

is stronger
& more flexible

ACTIV & BRADWAY
physiotherapy & Physiotherapy Clinic
have combined . . .

so our new partnership can offer you a wider
range of treatments in 3 convenient locations
. . . Bradway, Totley and Norton Lees



our wide range of treatments include:

- Repetitive Strain Injuries
- Muscle & Joint Problems
- Women's Health Issues
- Sports Injuries
- Back & Neck Pain
- Acupuncture

Registered with major insurance companies,
BUPA, Aviva, Westfield Health, AXA

email: mail@activphysiotherapy.co.uk
web: www.activphysiotherapy.co.uk

ACTIV Physiotherapy 0114 235 2727

R. S. CERAMIC TILING

56 Mickley lane
Totley
Sheffield
S17 4HE

All ceramic tiling work undertaken, Underfloor Heating
15 years experience, Private and commercial
All work guaranteed, Competitive prices
For a free no obligation quote call

Ron Shilton

Mobile: 07887 990059, Home: 0114 418 1209

Email: ronshilton@ntlworld.com

Slimming
WORLD

because you're amazing

If you want to lose weight healthily and with no deprivation or
humiliation then join your local Slimming World class in Totley,

Mondays at 7pm and at Greenhill on Wednesdays at 10am

Telephone Jo Elsey on 0114 2620523

or 07590 545 253

(Offer cannot be used in conjunction with any other offer)

1/2 Price membership
on production of
this advert

Dore Moor Garden Centre & Nursery

Under new Family Ownership

Hathersage Road · Dore · Sheffield · S17 3AB

(Opposite the Dore Moor Inn)

**Reopened, restocked and looking forward to
welcoming you to our first spring season**

Wide range of seeds, bulbs, plants, shrubs, pots, composts and chemicals

Logs, coal and smokeless winter fuels

Specialist section for mowers, trimmers,
fencing, garden tools and much much more

Stockists for Haddon Stone statuary
and David Austin Roses

**Quality Plants
Competitively priced**

Call in and see us

**Enquiries
0114 235 0092**



MOGGY MAID



Gail Kitchen: 07986473415

Does going away from home mean your cat is sad and unhappy?
Does a trip to the cattery scare your cat *not to mention your wallet?*

WORRY NO MORE!

MOGGY MAID is on hand to feed, love and provide
everything your cat needs in the relaxing comfort of its own home.

As we cat-lovers know, unfamiliar sights and smells can stress your cat,
whereas leaving them in the familiar surroundings of their own home
carries less worries, for your cat and for you.

If only for a night, weekend, or a month; holiday, Christmas or any time of
the year, **MOGGY MAID** is here to help **LIGHTEN YOUR LOAD**

We promise no mischief allowed!

In a professional manner and with quality service, you can ensure
individual care and attention, whilst you relax away from home.

We haven't forgotten the rest of the family; mice, rabbits, budgies,
goldfish, etc will receive care and affection too.

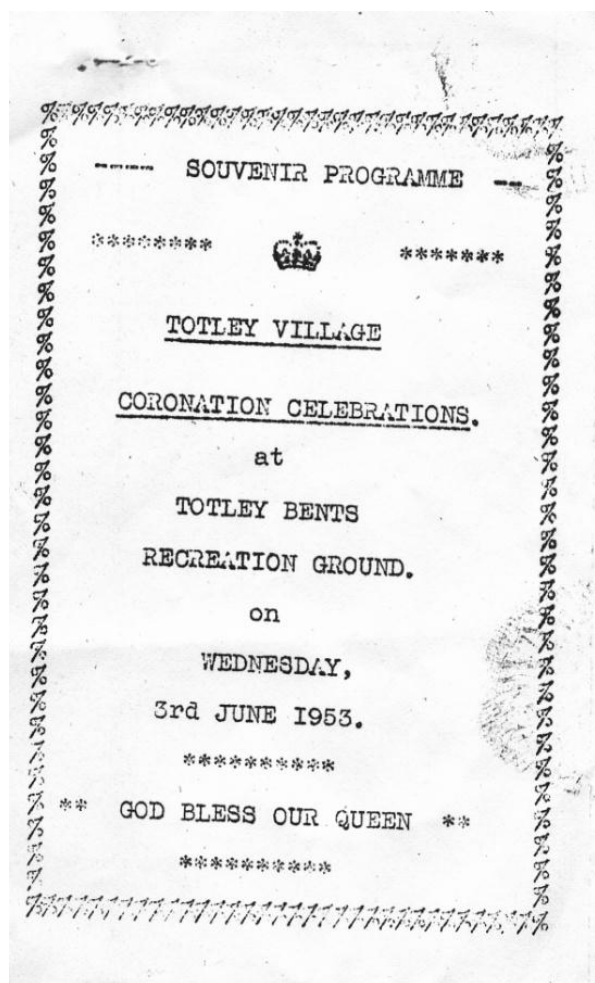
LOCAL FRIENDLY SERVICE

From £5 a day

For more Information, contact Gail Kitchen on:
07986473415 5 Ullswater Place, Dronfield Woodhouse

Coronation Celebration - 1953

Although the Queen acceded to the throne in February 1952, the coronation was more than a year later on 2nd June 1953. Totley held celebrations at the Bents, we are indebted to June Heald for lending us a copy of the programme of events. There are many familiar names on the programme.



** SPORTS PROGRAMME **

Please Note - Ages apply to Wed. June 3rd, 1953.

1. 10 YEARS - BOYS & GIRLS - 70yds.
J. Truswell, J. Fox, D. Wortley,
J. Taylor, G. Taylor, G. Bramall,
E. Coates, A. Stubbs, A. Reynolds.
2. 11 & 12 YRS. BOYS & GIRLS - 80yds.
P. Wortley, J. Stubbs, D. Newsholm
A. Taylor, B. Abson, M. Otter,
J. Smith, C. Garnett, E. Higgott.
3. 13 YEARS & OVER - GIRLS - 80yds.
M. Kirkby, M. Mather, Y. Hutchinson,
B. Fox, B. Taylor, J. Drury, C. Reynolds.
4. 13 YEARS & OVER - BOYS - 100yds.
J. Taylor, J. Wilkes, D. Wortley,
D. Maries, A. Otter, J. Biggin,
K. Husband.
5. 9 YEARS - BOYS & GIRLS - 60yds.
C. Maries, D. Drury, J. Husband,
P. Higgott, B. Shirt, D. Pearson,
G. Belk, C. Earle, J. Mather,
M. Fox, A. Dickey, S. Hutchinson.
6. 8 YEARS - BOYS & GIRLS - 50yds.
N. Reynolds, J. Parson, C. Coates,
S. Bramall, J. Hubbard.
7. 7 YEARS - BOYS & GIRLS - 40yds.
J. Woolfinden, J. Linfoot, C. Tym,
M. Hawke, J. Higginbottom, P. Otter,

** PROGRAMME OF EVENTS **

- 2.0 p.m.
CHILDREN'S SPORTS - See later
for details.
- 4.30 p.m.
CHILDREN'S TEA - in Cricket
Inn Tea Rooms. (Will all
children please bring their
own cup, plate and teaspoon?)
- 6.0 p.m.
PRESENTATION OF CORONATION
GIFTS - after a speech of
introduction by the Vicar-Rev.
F. Adamson.
Coronation Mugs - will be
presented by Mrs. Gregory.
Coronation Spoons - Mrs. J.D.
Linfoot.
Presents - Mrs. South.
Sports Prizes - Mr. J.H. Shirt.
- 7.30 - 10.0 p.m.
DANCING ON THE "VILLAGE GREEN"
- i.e. the Recreation Ground.
- 10.0 p.m.
FIREWORK DISPLAY AND BONFIRE.

---ooo00000ooo---

7. (Contd.) S. Benjamin, J. Eaton,
S. Garnett, M. Cooper.
 8. 6 YEARS - BOYS & GIRLS - 40yds.
R. Smith, J. Parkin, R. Stubbs,
R. Muxlow, A. Anderson, D. Andrews,
J. Wilkes, P. Wortley, P. Smith,
E. Linfoot, J. Lodge.
 9. 5 YEARS - BOYS & GIRLS - 30yds.
F. Otter, R. Drury, J. Dickey,
R. Hawk, I. Smith, T. Vaughan,
E. Cooper, R. Bramall, A. Fisher.
 10. UNDER 5 YEARS - B. & G. - 20yds.
A. Reynolds, D. Smith, J. Otter,
R. Hubbard, F. Knight, - Walton,
P. Johnson, B. Smith, C. Cooper,
A. Hawke.
- *** INTERVAL ***
11. CORONATION STEEPLECHASE- Penney
Lane, Hillfoot Road, Baslow Rd.
Lanehead Rd. Penney Lane, Cricke
Inn.
 12. 11 YEARS & OVER - GIRLS EGG &
SPOON RACE.
 13. TODDLERS CRAWLING RACE - 5 YEARS
& UNDER.
 14. 8, 9, & 10 YEARS - BOYS & GIRLS
SACK RACE.
 15. & 16. OVER 10 - B. & G. SACK RACES
 17. 7 & 6 YRS. - WHEELBARROW RACE.
 18. 8, 9, & 10 YEARS - THREE-LEGGED
RACE.

---ooo00000ooo---

SEE THE DIFFERENCE!



- **COMPREHENSIVE EYE EXAMINATIONS**
including special tests for glaucoma, colour vision, dyslexia & diabetes
- **CONTACT LENS CONSULTATIONS**
free contact lens trials and monthly direct debit payment schemes
- **PRESCRIPTION SUNGLASSES**
- **LEISURE SPECTACLES**
for computer work, fishing, swimming and safety wear
- **ACCESSORIES**
ready readers, chains and magnifiers

LENSES BY SEIKO
In all non-budget spectacles

TOTLEY
63 Baslow Road
236 4485

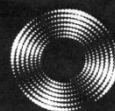
ABBEYDALE
634 Abbeydale Road
255 6554

For more help and information please phone or call into the practice of your choice
For a full list of our practices visit

WWW.MKO.CO.UK

Terms and conditions apply.

Entrust Electrical



For all your electrical requirements in or outside the home you can trust **Entrust** to do it right!

- ✓ Full or Partial House Rewiring
- ✓ Additional Sockets, Switches, etc
- ✓ Energy Efficiency Enhancements
- ✓ Contemporary & Classical Refurbishments
- ✓ General Electrical Maintenance & Repair
- ✓ Homebuyer Electrical Safety Surveys
- ✓ Telephone and Computer Data Points
- ✓ Garden, Pond & Other Outdoor Electrics
- ✓ Security Lighting & CCTV



City & Guilds
Qualified

(0114) 2352084
07935 250814

www.entrustelectrical.co.uk

Old Hay Close, Dore, S17 3GP



Shepley Spitfire

56 Mickley Lane, Totley Sheffield - S17 4HE 0114 236 0298

2 meals for **£8.95**

Now serving Fresh Local Veg.

Served everyday 11am until 9pm

Quality Cask Ales

The Home of Big Fish Friday!!

Beer battered Cod fillets, Chips and Peas Two for **£9.99**

Eat in or Takeaway

FOR THOSE OF YOU WITH A LITTLE APPETITE

WE HAVE INTRODUCED A SMALL

PLATES MENU FROM **£2.99**

ALL DAY EVERYDAY

Quiz night Sundays 9pm

Poker night Mondays 9pm

Pool night Tuesdays 9pm

Last Saturday of the month DJ Theme night

Sky Sports & ESPN showing live games

"need *help* in your garden?"

"right plant, wrong place? Stuck, don't know where to start?"

We can offer a Design Consultancy without the designer price-tag.

"Selling your House?"

We can tidy your garden, also with use of planted containers/hanging baskets, make your house more desirable to prospective buyers.

Season by Season

- Regular Lawn Maintenance.
- Hedge Cutting.
- Small Tree/ Shrub pruning.
- Beds/Borders tidied, planted.
- Planted Containers.
- Green waste removed



the **Abbeydale** gardeners...
...we can help you.

Formerly of
The Abbeydale Garden Centre

Kevin Hunter 07818 20 12 42
Mark Naylor 07739 75 23 19

www.theabbeydalegardeners.co.uk

Saddened and Disappointed

As a Totley resident of many years' standing, it is with great sadness that I feel compelled to write regarding the comments in articles in both the **'Totley Independent'** last month and in the 'Sheffield Star'; about 'hedge trimming incident' in Green Oak Park.

During my lengthy time in Totley I have always tried to do my best for the community when my health has permitted and served on Churches in S17; attended the local shows and my children attended local schools etc. I can testify that Totley is a genuinely lovely place to live with some of the friendliest and supportive people you can ever find anywhere.

Those of you who are familiar with me and my children will know that through a series of tragic circumstances we had to move from our former family home on Laverdene Avenue.

A couple of months ago I got a puppy to keep me company. Which brings me to the issue of the 'hole in the hedgerow' brought up in the second article by The Star. There was a largish gap in the hedgerow when we moved in but it was obscured by an awful amount of quite dangerous mound of rubble. This included glass, broken tiles etc. My neighbour cleared this as I wanted to erect a fence all around my back garden to provide a safe enclosure for my dog and we originally thought the boundary was the hedge. He did also trim the top of the hedge along both my and his property but this was a genuine mistake driven by a desire to tidy the hedge and he has agreed with the Park Rangers to not touch it again and let it grow back to its full height.

Can I stress that at no time I have craved 'easy access to the park' as was inferred in the **'Totley Independent'** article. Totally the opposite in fact, I want to secure the rear of my property as soon as I can afford it. I would have done this when I moved in except that I didn't know anyone I could trust to do it. I hope my story is a salutary tale of what can happen when people don't actually come and ask their 'neighbours' what is actually happening nor know the actual history behind something.

I have had to endure a photo of my garden in The Star this week with half a dozen people sitting in the 'hole' which, they allege my neighbour has created. This is not true - he only trimmed the hedge. However clearing the terrific amount of rubble in the original gap in the hedge for the intended fence site before we were advised of the true boundary, (previous tenants, vandals on park? who knows?) has emphasised it.

Sadly, I have to report that this morning as he worked on the fence, which is on the correct boundary as shown by the park ranger, my neighbour was 'papped' - in Totley?!!

I would ask all involved to consider their actions. A man trimmed a hedge in genuine error and said sorry. It was very unfortunate that hedge was of historical significance and I am sorry you are upset re that. I would never knowingly sanction any damage to the environs of Totley being a history buff myself. But ask yourselves this, how would you feel if someone was photographing you and your home and accusing of things you hadn't done or making assumptions about what you were about to do without any foundation? These are our homes after all, and I am extremely distressed by all of this.

However, rest assured I do know that this behaviour is not typical of my beloved Tottleites.

Karen Critchley (formerly Tiddy), Aldam Road

TOTLEY SHOW 2012 Saturday September 15th. Totley Primary School

8.45am to 10.45am Entrants registration

11am to 12.30pm Judging & awarding of Certificates.

1.30pm Doors open to the public (Entrance 50p, children 20p)

1.45pm Official opening by Rony Robinson

3pm Prize giving and Auction of donated items

4pm Conclusion

Entry forms available at Totley Library, Totley Post Office and The Ironing Parlour. Or at the door on the day.

Offers of help would be appreciated. There will be a planning meeting in July for all interested in helping to run the show. See the July **Totley Independent** for details.

Within the photographic section we have introduced some different sections to try and create interesting aspects of photography, the new sections are:-

- Monochrome; that is any photograph in a single colour/hue.
- Creative; use your imaginative skills to present a photograph.
- Still Life; every day inanimate objects.
- Landscape; we hope to see some wonderful views.

The Show will be opened by Rony Robinson at 1.45pm on the day.

Entertainment once again by the Escapade Brass Band.

If you would like to donate a gift for the Tombola stall, it would be greatly appreciated. Any donation can be left at either "The Ironing Shop" on Baslow Road. or at 6, Milldale Road, Totley.

Any group wishing to have a stall at the Show, please contact Les or Dorothy Firth at

6, Milldale Road ,

Telephone 0114 2364190

e mail "lesanddotfirth@talktalk.net"

All proceeds after costs will be donated to Transport 17

Les & Dorothy Firth

INVITATION TO JOIN OUR SUMMER FUN DAY!

SATURDAY 23rd JUNE 1-4PM

Totley Primary School PTA invites you to take a trip to Totley Primary School on Saturday 23 June 2012 between 1 and 4pm to enjoy our Summer Fun Day. Bouncy castles, face painting and all manner of classic games form part of the programme for both younger and older children alike. These, together with a tombola, a raffle, a variety of stalls, as well as arena events and displays, promise a fun afternoon for the whole family on the green grounds of the school. Refreshments will be available for sale throughout the afternoon including our legendary homemade cakes and a quality barbeque.

Admission to the Summer Fun Day is free and a warm welcome awaits you. The access to the school and grounds is via Main Avenue (off Baslow Road) and Sunnyvale Road. Parking is available at the rear of the nearby Cross Scythes pub car park.

Music Tuition



Piano • Keyboard • Flute • Singing
Guitar (rock, metal, blues, jazz, funk, pop, folk)
Music Theory • GCSE work

Music graduates, each with 25 years
teaching and playing experience

All ages, beginners welcome.

Exam work or just for fun!

Call Mark or Karin

0114 237 4853 & 07981 888352

HEARING AIDS

MAURICE NAYLOR FBSHAA RHAD is your
local hearing aid specialist and at your
request will test your hearing in your own
home, free of charge, and if needed you can
try a custom made aid for four weeks
without obligation to purchase.

Tel : 237 4817

In the ear digital from £495

TRISTAN SWAIN

Landscaping & Maintenance

Established 20 years

Fully insured

GARDEN RESTORATION & MAINTENANCE

Unit C4
Sheaf Bank Business Park
Prospect Road
Heeley
Sheffield S2 3EN

Tel/Fax: 0114 255 4689
Mobile: 07831 802539



YOGA CLASSES in TOTLEY & RANMOOR

Rachel Quinn BWY Dip



THE COMPLETE BUILDING SERVICE

New Build & Extension Specialists

From Design to Completion

**Full Project Management
House Building
Extensions**

Find
us in
Yell.com

**New Roofs/Tile/Stone
Stonework Specialists
Loft Conversations**

Established for 25 years with over 90%
of our work coming from recommendations, to
find out why call:

0114 2353314

Mobile 07973 908187

www.mwoolhousebuilders.com



Christchurch Cottage,
Townhead Road,
Dore, Sheffield
S17 3GA



Horizon Electrical

*Faults, Rewires, Sockets, Lights,
Cooker Points, Electrical Showers,
Phone Points, Security Lights*

No job too small

Fully qualified with friendly advice

**Ring Totley 236 4364 or
Mobile 07772 483154**



BRADWAY INSTALLATIONS

**Kitchens, Bathrooms.....and everything in
between**

- **Complete Kitchens** - Installation or supply and
installation
- **Kitchen Refits** - Replacement worktops/sink/hob etc.
Worktop / cabinet repairs
- **Bathrooms** - Cloakrooms - Domestic plumbing - Tiling
Laminate / Vinyl flooring

All work undertaken is fully insured and guaranteed

Ring Peter - 0114 236 5995

Mobile - 07766 411355

Totley Primary School

We are looking to recruit a new Lunchtime Supervisor to join our dedicated team. The role includes helping children and maintaining the cleanliness of the dining room, supervising the children in the playground, dealing with minor injuries and generally enhancing the children's enjoyment of lunchtimes.

We are committed to the safeguarding of all our children and promote active playgrounds. We encourage adults to take the lead in organising playground games and directing our team of playground leaders. We can offer a supporting and welcoming environment and a committed and hardworking team of staff.

The post is for 5 days per week, working from 12:00 to 1:15pm and the rate of is pay Scale point 4 - £12,145 pro rata

Enhanced CRB checks will be required for this post.

Chris Stewart

Head teacher

Food Fair in Baslow and Celebrity Chef comes to Bakewell

The next Baslow Food and Drink Fair takes place on Sunday 17th June at Baslow Village Hall from 10.30 a.m. to 4.30 p.m. There will be around 20 stalls offering a wide range of local produce with popular stalls such as The Loaf and Liberty Foods of Totley being joined by new stalls selling fine teas, fudge, deli items, desserts, hot food, preserves, home-made pates, speciality oils and lots more. All are welcome.

FREE ADMISSION.

June also sees celebrity chef Stephanie Moon, fresh from her appearance on the Great British menu, delivering a Fish Masterclass at Hartingtons School of Food in Bakewell (on 27 June). An exciting, inspirational day of fish cookery is promised. Full details at www.hartingtons.com or 01629 888586

Congratulations also to Olivia Palfreyman who was the winner of our free prize draw at the Totley Farmers Market in April and recently enjoyed a full day sushi course with our compliments.

Totley All Saints

Totley All Saints School will be celebrating the Queen's Jubilee by holding a playground party on May 31st and organising a host of related activities for the children. Children will be asked to dress in red, white and blue or Royalty related costumes. We planted a Jubilee Hedge earlier in the spring.

Our girls Football Team won the Family of Schools Tournament in May - well done everyone!

Our headteacher, Mrs Houghton, retires this summer. Mrs Sargent has been appointed and will take up post in September. Mrs Houghton and Mrs Sargent are working closely together to ensure a smooth transition.

Plants needed

Do you have any plants – or garden equipment - we could sell for Totley Open Gardens?

If so, please bring them to 16 The Grove. If no-one in, leave at the front of the house. If collection needed, please ring 236-2302.

Last year Totley Open Gardens raised over £1,000 for Transport 17. We hope to better that sum this year, with the help of plants for sale, and cream teas on sale at two gardens.

Thank you

Community Centres Part 2

In last month's issue of **Totley Independent** why are The Friends of Gillfield Wood using the scout hut as a community centre. Despite the opposition from the scouts this valuable area would be suited as a community centre. Can Richard Frost explain why is his opposition to community centres in Totley being excluded. The Friends of Gillfield Woods are having indoor talks in the scout building so should other local activities or local groups have their AGM meetings held there too. The Heatherfield Club could become a community centre along with a scout hut. I do feel these buildings need to be upgraded and painted to be used as a community centre.

Paul Savage

Holmesfield Flower Club

Saturday June 16th 2012 – Club Day – Coffee Morning and Plant Sale

Social and fund-raising event to be held in the new Holmesfield St. Swithin's Church Hall, 10 am-1pm. Stalls to include plants, books, cakes, flower arranging materials, raffle etc. Entrance £2 to include coffee and biscuits. ALL WELCOME

Wednesday 20th June 2012 - Flower Arranging

Holmesfield Flower Club invites you to a demonstration of Flower Arranging by Sasha Gallagher an area demonstrator. It is entitled "Summer Meadows" and begins at 7.30 pm at Holmesfield Village Hall (off Woodside Avenue) Holmesfield. There is ample parking. Tickets available at the door: £7 (members £3.50) including refreshments. The arrangements will be raffled at the end of the show. EVERYONE IS WELCOME

Puzzle Corner

Anagrams

Each answer to a clue is 2 words, each an anagram of the other, eg provide a small amount – CATER; TRACE

- 1 Sailor rodent
- 2 Carbohydrate sailing maps
- 3 Hit again a clubman
- 4 Seaside animal
- 5 Intensely disliked the end
- 6 Fear the snake
- 7 Without diversion on "tick"
- 8 Customer brush paint over a perforated plate
- 9 Chide to abate
- 10 Try hard for rail transport

Fun With Your Dog

Following the recent evening talk and demonstration at Totley all Saints church Hall, Christina Oxtoby is holding a full day of clicker training on Saturday June 16th.

Details may be found on her website at www.christinaoxtoby.co.uk, under the diary section.

MEMOIRS OF DAN REYNOLDS (Part IV) By Himself

The sports events were a great attraction for us kids, and took place in the field in the area of Totley County School which was owned and loaned for the day by Mr Tom Earnshaw of the Grange which was opposite. Although I remember taking part I never remember winning a prize, but it was still great fun. The older kids, that is, the teenagers, entered with a competitive spirit as there were good prizes to be won.

The main event, except for the tug-of-war, was the steeplechase which commenced by running once around the field, through the gate, up Baslow Road, down Hall Lane using the footpath to Woodthorpe Hall, then on the footpath through the fields to Mickley Lane, up Mickley Lane to Baslow Road and continuing to the entrance of the show area, once again around the field then to the finishing tape. The prize was a solid silver cup about fifteen inches high and was donated by Mr Tom Newbould, who was the first developer of Heatherfield - more of him later. He made a bold stipulation that the winner retained the trophy for one year only, and had to be won three times in succession before the winner could claim it outright. It was eventually won by none other than that great Totley athlete, Archie Thomas, but not before the two brothers, Neville and Fred Marshall were inscribed on it. The pity about this cup was, and I make no bones or pull any punches, is that in later years Archie had the inscription erased and donated to the Hope Valley Football League. To me that was very unjust, and I feel if Tom Newbould had foreseen this he would have had second thoughts. Some of you didn't know Tom and his interest in Totley, and that this trophy was for a running event, and could now have been the trophy for the local Reu Race which takes place yearly.

At this point I must refer to Frank Taylor who devoted a lot of time to the youth of the day. It was way back in 1920 that he persuaded many of the local young men to start keeping pigeons with a view to racing them. They did so, and very successfully, by flying from as far as Tamworth. Frank belonged to a pigeon society, and flew his pigeons from abroad and won many trophies. In 1923 he persuaded the athletic types to practise and join Sheffield United Harriers and Athletic Club, the three foremost were Ron Hoole, Herbert Green and afore-mentioned Archie Thomas.

A few years later the show and sporting events collapsed due to the introduction of non Totleyite committee men who introduced fur and feather. Prize money far exceeded funds for prizes and you sensed what would happen. So that was the end of what may today have been a big attraction for residents and outsiders, as now happens in some villages in Derbyshire. The TRA do a very good job, also the Crown Inn in trying to help the residents to revitalise the spirit of young and mid-age, but the response seems ignored. Here we have a much populated community with almost no facilities at all, which seems incredible to me after how much others and myself attained in our lives. The sports club still exists on small funding, not forgetting that the sports ground at Totley Bents was free and able to take collections; they are not allowed to do this now but have to pay Sheffield Corporation a fee for playing cricket and football, which prompts me to ask the question "Why, when this is a kind of common land, and who gave Sheffield the right to maintain this area?" Though this description has brought me up to the present day, I felt it had to be mentioned as a comparison.

The Ex-Service Mens Club which was founded was later taken over by Totley Social Club, and as lads of fourteen and over it was a good meeting place. There were card games and two billiard tables on which tournaments were held every year to decide who was best player. A cricket team and football team were also started. The subscription was one shilling (5p) per year, which was half of our spending money. We fourteen year olds got about two bob (10p), so we were not able to use the billiard tables as much, but we were happy and contented. The steward, Billy Drury, was a very dedicated man and used to hound us on pay day (Friday) if we owed any money. His sister, Lucy used to keep the place clean and I feel sure their services were free. As happened with the show, new members were elected on the committee. First one and then the other billiard table were disposed of to make way for Whist and Solo drives until eventually it was closed.

The social club's governing bodies at that time were Marriot Fox, Fred Fox (no relation) and A J Foulstone, and we looked on them as three old fogies. Although I admired and had great respect for the latter they were behind the times, hence the word 'fogies'. Opposite the club house is Cross Grove House where lived a Mr and Mrs Milnes who were moving house, and through their interest in village life offered the committee first refusal to buy, but it was turned down. It could well have been the social club's headquarters with space at the rear for activities. I may be wrong, but I feel sure there were a few people in Totley who would have sponsored this venture had they been approached, as was proven when the Totley show operated.

As I mentioned, we lived in Shrewsbury Terrace where the rent was nine shillings a fortnight (45p).

Next door was Cannon Hall Farm, the tenant being Mr Fred Creswick who had two daughters, Ida and Marjorie. We were all play pals so spent a lot of time at the farm and in the fields, but what I remember most was of the night times when we used to go and help Tommy Duddy pulp the turnip, cut the chaff and cut the cow cake. After the turnips had gone through the pulper it came out exactly like potato chips, the hay, which went into a chopper came out in half inch pieces, and the cow cake with slabs around twenty seven inches by twelve inches came out cubes of one inch. These machines were operated by a wheel around thirty inches in diameter and turned by a handle. The turnip and hay were mixed to make lick to feed the cows, they were fed the cake separately. We spent hours there and enjoyed every minute.

Our parents purchased milk from the farm where there were two kinds - old and new. The old was cheaper as it was what was left after having had the cream skimmed off. When a cow calved and the milk was too rich for the calf we were given that free - it was called 'beastings', yellow in colour, and made fine custard. When they killed a pig, which would be a sow, the menfolk in the terrace would assist and what a spectacle it was to watch. The butcher, Jack Wright, would go into the sty and thread a noose inside and over the snout to make sure its mouth was tightly shut, and then very reluctantly it was hauled and pushed to the scratch, a kind of table about twenty inches high, two foot wide and fifty four inches long. On either side the outer frame extended around twelve inches which formed handles for carrying when taking to hang after being scraped. It was no easy task getting the pig to the scratch and the even bigger problem was lifting it onto the scratch. When each man had made sure he had a firm hold, the butcher

inserted the knife into the jugular vein, it was then that the men were able to demonstrate their muscle power. We kids kept our distance on top of the wall and thought it great fun, but thank God more humane methods are used today. After having been hung for a day the pig was cut up for ham shoulders and belly bacon (after salting), the fry and head were given to the men, which meant we had a feast of a time - so to speak. We would blow up the bladder and use it as a football, that is if my dad didn't get there first because he used to hang it up to dry then shape it for a tobacco pouch. The intestines were cleaned by water under pressure which turned them inside out, the bag was done likewise and all was good eating. They say nothing is wasted on a pig and that is so, except at the farm they put the blood vein to waste - happy memories to me!

Our activities in the winter, apart from snowballing and sliding was sledging on Older Dam where we had lots of fun. Those of the men who could skate would skate on the dam, which is now filled in and grassed over, but fortunately evidence to prove it was a dam remain. It was said that the dam was dangerous, at the shuttle it would be around ten foot deep and at the other end at the bottom was sludge. I never remember of anyone having an accident so we were probably lucky.

To be continued

Scrap Collectors

Two articles have appeared in the Star on the operation involving scrap collectors & scrap dealers. The South West Police have been involved in it, using the title of Operation Anchor, which they were using before the wider scheme. We are all asked to notify the Police of any scrap collecting activity, giving details of make of vehicle, colour, registration number, time & place of sighting and most importantly details of the driver & any passengers. This is because the driver has to be registered. Our Neighbourhood Police have been involved in stop & investigate events & more are planned. Any information will be welcomed. PC Kevin Marsh or PCSO Katie Gavin will be pleased to hear from you. Please call 101, a free number.

Roger Hart

Chairman, Dore & Totley Ward Forum.

The Quadrant

On the front page of the last issue, you pose the question regarding the 'flag poles'

They are actually short wave radio aerials as in Tony Hancock's Radio Ham and are in the garden of the house on the corner of The Crescent and The Quadrant which I think might be 2 The Quadrant.

When we arrived on the Quadrant in 1963 there were a number of radio hams in the area. Certainly I think Mr Stamford (a veteran of the Battle of Jutland) had aerials at the back of his house at 12 The Grove and there were more aerials further up the Grove, all long gone I suspect.

John Parr



Plea for cakes

On the weekend of 30th

June and 1st July Totley will get national recognition when the garden at 16, The Grove is open for the National Gardens Scheme's Yellow Book.

As part of the opening, teas and cakes will be sold to raise money for charities supported by NGS - Macmillan Nurses among them.

It takes about 30 cakes to satisfy the demand at such a weekend!

Please would you be willing to provide a cake, or scones or buns, to help promote Totley's welcoming image and help raise money?

If so, please ring Jennie on 236-2302 or email: jennie@hadish.f9.co.uk

Mark and Sally Fletcher invite you to

The Grouse Inn

Longshaw

Sheffield S11 7TZ

Meal times:-

Mondays 12.00 to 2.30pm

Tuesdays to Friday's 12.00 to

2.30pm and

6-30pm to 9-30 pm

Saturdays 12.00 to 3.00pm

and

6.30pm. to 9.00pm (drinks - open all day)

Sundays 12.00 to 9.00pm

Phone 01433 630 423

R Rose & Co

Chartered Accountants & Business Advisors

Specialists at looking after the affairs of small businesses.

For a FREE initial consultation please contact Roger Rose FCA on 0114 281 2331



from business start-ups and general accounting, to support and advice in business development and strategy, we provide services in our personal one-to-one service. To find out more please call 0114 281 2331.

213 Derbyshire Lane, Norton Lees, Sheffield S8 8SA
Email: info@r-rose.co.uk

**One man went to mow...
...but his mower wouldn't go!**

Now is the time to call

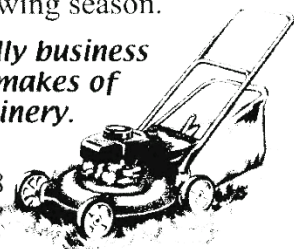
MOWER MENDER

and be ready for the forthcoming growing season.

A local friendly business servicing all makes of garden machinery.

Phone:
0114 236 6958

Mobile:
0781 2211149



**Blade Sharpening and
Collections & Delivery Service Available**

GARDENING TIPS FOR JUNE

I am beginning to wonder whether this gardening caper is worth the bother, rain, frost, snow, sun, bugs, weeds, etc, etc. All seem to be determined to eliminate all the effort we put in to having a nice garden with plenty of flowers, vegetables, etc. Last month I jokingly said that concrete is not an option, I am beginning to think otherwise.

However, the greenhouse and cold frame are bursting at the seams with plants waiting for the ground to warm up a bit so that we can them out. I hope they will be in their beds by the time you read this. Then I might be in a better frame of mind to appreciate that the frustration is worth putting up with when we see the results of everything more or less coming together.

The lawn is looking good after a spring feed, there is quite a bit of colour showing in the flower beds the perennials are starting to give us a nice display, the tulips and daffodils were lovely while they lasted they are a bit battered about now. Don't forget to let them die back and remove the dead heads so that they build up a good lot of energy in their bulbs to give us a lovely show next year.

We have a new young lady semi clad standing in the flower bed (stone of course) though I thought I saw goose bumps on her earlier old Jack Frost can be a nuisance. The fish are looking healthy, and the little black babies are scuttling about happily, (must clean the filters). The tadpoles have reduced in number quite considerably the fish and newts seem to enjoy eating them.

I hope you are giving your goodies earmarked for the show a lot of TLC, it will be good to see a fully loaded show bench this year especially from you allotmenters up on Mickley Lane. There seems to be a lot of activity especially at weekends, I hope you remember the date for the show is 15th of September plenty of time to get those fruit and vegetables into pristine condition and show Totley residents samples of your gardening prowess.....

FLOWERS If you have not planted out your bedding plants get cracking now. All those which are out will need to be watered add a little liquid feed to the water (not too much) they will really benefit from this. Keep the old hoe working on the weeds, before they get too well established, or if you prefer use a paraquat weedkiller but be careful it does not drift onto your precious plants; otherwise you will have a bare border. Cut the seed pod from lupins as soon as the flowers fade, the plants will be all the better for it. Hardy primulas of all type can be lifted and divided when they have finished flowering, the crowns can be split into several clumps and should be transplanted into a moist shady position. Aphids and caterpillars can be very troublesome and need to be dealt with as soon as possible, particularly on roses. Do not allow sweet peas to become dry, they cannot give of their best if they are starved of water; also give them a regular feed. Trim back alpine plants that have finished flowering this will keep them nice and compact. Biennials such as Canterbury Bells, wallflowers and Sweet William can be sown this month. When cutting roses for house display make sure you use sharp secateurs, or a good knife, and cut immediately above a strong but at a leaf joint, this will encourage the bud into early growth which will produce more flowers later on. Cut out any sucker growth that appear from below ground level as close to the rootstock as possible, this will prevent further growth.

VEGETABLES Marrows can be planted out now. I plant mine on a raised bed between two bales of straw, with well-rotted manure and compost in between, these keep the soil moist and the slugs don't like the dryness on top. Carrots and beetroot sown last month need to be thinned out. I was asked how to stop carrot fly attacking. I recommend a tent of fleece over the rows, the fly can't get to the plants and the fleece will let in air and rain, otherwise a good quality soil pest killer dusted against the rows. The same stuff can be used on members of the cabbage family to prevent cabbage root fly. Outdoor tomatoes can be planted out now, keep your fleece handy in case we have a late frost. Cucumber growing in frames should have the growing tip nipped off and as with all vegetables watch that they don't dry out.

Onions should have a weekly nitrogenous liquid feed up to the end of July, then change to a tomato type feed for a month- they should be just right for the

Totley Show, in September. Leeks can be dealt with the same way; they will need blanching by covering the growth with a tube of card or roofing felt, 6 inches or more high. Earth up potatoes. Keep planting salad crops for succession, Savoy and January King cabbage can be sown now. To help rhubarb to build up a good crown for next year, flower spikes that appear should be removed and the plants kept well watered and fed. They would appreciate a top dressing of well-rotted compost. Any curds on cauliflowers should be protected from the sun by bending over a leaf or two. There's a mixed feeling amongst gardeners as to whether spraying runner beans helps to set them. I say spray them in the evening it can't do them any harm and I feel it does help. Especially if you are entering them in The Show. There will be two prizes one for the best 5 matching beans and one for the longest bean. Take cuttings from rosemary and sage and root in pots on the window sill.

TREES SHRUBS and FRUIT As with everything in the garden at this time, keep newly planted and most established plants well watered. Remove dead tips of cotoneaster and cherry, remember to pick the seeds of Laburnum especially if there are children around. Do not allow newly planted fruit trees to flower, pick them off to encourage strong growth for the future. Trim apples and pears after the June drop of fruitlets. Tie in growth of Loganberry and blackberry to supports, check the supports and ties on other trees and bushes make sure that they are not too tight. Cut out any canker on apple trees; paint the cut with arbrex or similar. Any shrubs grown from seed should be hardened off and plunged rim deep in a bed of ashes, or in a shady part of the garden. Cytisus or brooms benefit if cut back immediately after flowering, remove any leggy growth and any seed pods, young growth low down on the plants may be slightly trimmed, avoid any severe pruning.

GREENHOUSE and INDOOR PLANTS As I say every year ventilation, shading and watering are the most important tasks for the greenhouse 65 - 75 degrees F. is the ideal temperature to aim for. Fresh air and light are most beneficial, strong sun must be shaded, especially if you have seedlings coming along. Grape thinning is a regular job from now on. Final potting of chrysanthemums must be completed now and should be stood out of doors. Cuttings of regal pelargoniums can be taken now. These should be taken from firm young growth, 1 part loam 2 parts peat and 3 parts

course sand would make the ideal medium for them to root in. Pot up cyclamen in their final pots; they need cool moist shady conditions in the summer. Cineraria seedlings should be pricked out as soon as possible. Mid season chrysanthemums can be stopped. Begonias may need staking to support the larger flowers. Tomatoes should be starting to ripen. If some show signs of greenback where hard green skin forms around the top of the fruit, water with a solution of sulphate of potash, 1 ounce in a gallon of water. Watch out for all the pasties, greenfly, whitefly, capsid bug, vine weevil, caterpillars, earwigs etc etc, and deal with them as soon as possible. There is a new insecticide developed especially for the troublesome vine weevil which has been difficult to eradicate in the past, it is called "Pravado" and the yellow sticky cards are great for aphids and white fly. If you are unfortunate enough to get red spidermite, spray with pyrethrum based insecticide and keep spraying plants with water, they don't like moist conditions. Indoor plants need light but not direct sunshine and a bit of humidity, stand them on a gravel tray and keep the gravel moist, they will love it. To increase your stock or for the charity sales take cuttings now of most indoor plants such as fuchsia, geraniums, kalanchoe, plumbago etc.

LAWNS Clean up cut and rake regularly, keep edges tidy. If you have a dry patch, spike the area and top dress with compost raked well in, in dry weather set the mower high and let the cuttings fall on the lawn, remember to rake them up when the weather is wetter. Don't forget the TOTLEY SHOW in September at the Totley Primary School, there will be lots to see. Do encourage your children to take part it's lots of fun for them and will keep them away from telly or computer for a little while. The schedule is in this month's issue of **Totley Independent**.

Cheerio for now.

Tom

WARD FORUM

Monday 2nd July at Totley Primary School, Sunnyvale Road at 7pm.

Agenda items

- 1 HGV preferred routes
- 2 Update on 20 MPH zones
- 3 Enviro Crime (dog poo)
- 4 Dore & Totley Park & Ride scheme.

It is intended that council & SYPT Officers to be present.

Isabel Louvain Reynolds

21.11.1914 – 30.4.2012

It is with sadness that I am informing you of our mum's passing. She lived in Totley at 363 Baslow Road with our dad from June 1935 until September 2009. Dad had a fall on the 12 September and subsequently died, just 7 weeks short of his 99th birthday. Mum who had suffered Alzheimers for many years went into Heeley Bank Care Home. She had a very nice room and she could see right across Sheffield from the window. She was looked after well whilst she was there but she suffered a stroke and died with some of her family with her on 30 April. We will miss her so much! She is at peace now and with our dad and Keith.

Carole Thurkettle (nee Reynolds)

Totley Music Festival



Totley Music Festival 2012

PUT THIS WEEK IN YOUR DIARY! The week of **14 – 21 July** will see the fourth annual Totley Music Festival, a week of concerts and musical events with something for almost every taste. Organisers Phil and Sue said "we're hoping that this year, the Festival will see even more contributions from local young people, as well as regular Festival events such as the Folk Concert and the popular Variety Cabaret evening at the Leonard Cheshire Home.

If you can offer any help with the organisation of the week, please get in touch on 07956 858944 or via the website (below). And we're always looking out for local musical talent - if anyone knows of talented people living locally who might perform, please let us know". In particular, the Variety Cabaret evening is an ideal opportunity for new performers to cut their musical teeth! Check the progress of the preparations at the Festival's website at:-

www.totleymusicfestival.co.uk where you can contact the organisers - and watch out for flyers and posters! The full programme will appear in the next issue of the **Totley Independent**.

Phil Harris & Sue Hare



Tony and Julie at

The Crown Inn

Welcome you for

Good Quality, Home Cooked Food

Tuesday – Friday

12-2pm & 5.30-8pm

Saturday & Sunday

12-2pm

Come & join us for

Good Beer, Good Food & Good Music

Tel 0114 236 0789

CLOSED SUNDAY EVENING

Visit our website: www.crowninntotley.co.uk

LIVE MUSIC

19th June

HIGHWAY CHILD

3rd July - JOEL WHITE

31st July

**LYNDASAY DRACASS &
CARY BAYLISS**

SLIMMING WORLD

10 WAYS TO MAKE SURE IT WILL BE THE LAST TIME LOSING WEIGHT IS YOUR NEW YEAR RESOLUTION. THIS TIME MAKE IT LAST FOREVER

1. Focus on your weight loss goal and prioritise it.
2. Be sure you really want to lose weight for yourself. Doing it to please someone else may only lead to short term weight loss.
3. Take advantage of all the group support at your local Slimming World class. Even if you are not a 'joining in' person, you'll be surprised how motivating it is.
4. Accept that you will have ups and downs in your weight loss journey, and be forgiving of yourself if you hit a difficult patch.
5. Listen to your 'inner script' and make a conscious effort to talk to yourself in a positive, encouraging way.
6. Keep up your interest in your healthy eating plan by trying new foods, new recipes, and new ways of using your Sins. This will help you avoid getting in to a dieting rut which can be boring and demotivating.
7. Be honest with yourself about what you are expecting from your weight loss and how you are getting on with Food Optimising week by week. People who set unrealistic targets for weight loss or body shape are more likely to give up than those who set achievable targets and share their ups and downs.
8. Go back to your class even after (especially after) you've had a weight gain. You will not be judged, just helped and supported.
9. Keep setting new goals and rewarding yourself for milestones until you reach your target weight, and afterwards!
10. Don't put your life on hold until you've lost weight. You can still enjoy life and lose weight. Think of your dreams and ambitions and bring them to the fore. The positive feelings you get from starting to 'live a little' can only help your motivation and your weight loss.

Group details:

St Peter's Church, Greenhill Roundabout, S8 7FN
Thu 5pm & 7pm

Dore Old School, Tues 5.30pm

Tel: Alison Murphy 07815 046569 for further details

PhysioFOCUS

at Totley Rise Dental Practice
85 Baslow Road,
Sheffield, S17 4DP



Physiotherapy treatment available for:

- Back and neck pain
- Sports injuries
- Sprains and strains
- Joint and muscle pain
- Arthritic pain
- Whiplash
- Repetitive strain injury
- Headaches

Appointments: 0114 2360333

Also available:

- Pilates classes
- Pilates 1-2-1
- Golf Fitness Screening
(as used by consultants to UK,
European and Australian PGAs)

For more information please call:

Emer on: 07792 422909

Rachel on: 07956 908454

APPLE LANDSCAPES and APPLE FENCING

www.applelandscapes.com

QUALITY SERVICE AT AFFORDABLE PRICES

Patios • Paths • Walling • Dry Stone Walling • Drainage Work
• Indian York Stone Paving • Railway Sleeper Beds

Garden Tidy Ups etc. No job too small

Fencing & Gates Supplied Only
or Supplied & Fitted

Only Quality Materials Used

FULLY INSURED

Call for free quote

01246 237505 • 07782 167540

Homeopathy @ Synergy.

162 Baslow Road, Totley, Sheffield, S17 4DR

Advanced Indian Sensation Method Homeopathy

Alternative medical treatment for all chronic conditions

Registered with major insurance companies. Can claim
through the Westfield scheme

Registered member of
The Society of Homeopaths

Ring: Lindsay Allison RSHom for more information:
0114 235 7845 or 07968 167036

M.Scriven
(FRUITERAMA)

MARTIN SCRIVEN

HIGH CLASS FRUIT
& VEGETABLES

37, Baslow Road

Tel. 236 7116

Orders Delivered

Friendly and reliable service
Competitive rates
All work guaranteed
Small jobs welcomed

Tiling services
Plastering
Painting & decorating
Flooring
Paving services

For free estimate call

Vladimir on 0788 900 8282

- | | |
|-----------------------|---|
| Tiling services | • Wall & floor tiling, Kitchens, Bathrooms, Wet rooms |
| Plastering | • New plaster, Re-skims, Dry lining, Re-boardings |
| Painting & decorating | • Interior & Exterior, Wallpapering |
| Flooring | • Wood & Laminate flooring |
| Paving services | • Patios, Driveways, Pathways |
| Others | • Hedge trimming, Lawn mowing
• Home improvements |

Email: vladimir.pindjak@gmail.com

Sheffield S8 0UT

TOTLEY SHOW ENTRY FORM 2012

THE TOTLEY SHOW THIS YEAR WILL BE HELD AT TOTLEY PRIMARY SCHOOL, SUNNYVALE ROAD, ON
SATURDAY, SEPTEMBER 15th. ENTRIES BETWEEN 8-45 am. To 10.45 am.

The classes for this year are as follows: -

HANDICRAFTS

1. Hand Knitted Garment.
2. Decorative Cushion.
3. Soft Toys
4. Tapestry.
5. Cross Stitch..
6. Collage, any medium.
7. Greetings card..
8. Any Medium

DOMESTIC SECTION.

9. 4oz. Victoria Sandwich Plain(to the recipe)
10. Dundee Cake (to the Recipe)
11. Carrot cake.
12. 5 Biscuits.
13. 3 Fruit Scones
14. Apple Pie.
15. Jam
16. Lemon Curd.
17. Marmalade.
18. Chutney

FLORAL SECTION

19. Floral Arrangement. (With a Jubilee Theme up to 18" high and 10" *10")
20. 3 Cut Flowers of any variety in season.
21. Foliage Plant in pot.
22. Flowering plant in pot

FRESH PRODUCE.

23. 1 Plate 4 Eating apples.
24. 1 Plate 4 cooking Apples.
25. 1 Plate 8 Blackberries.
26. 4 Matching Potatoes.
27. 3 Matching Leeks.
28. 3 Matching Onions.
29. 5 Matching Runner Beans.
30. 1 Plate of 5 Tomatoes.
31. 1 cucumber.
32. 3 Courgettes.
33. Largest Onion.
34. Heaviest Marrow.
35. Longest runner Bean(One per person)

36. 1 plate of three eggs from your own hen. (No embellishment)

ART

37. Oil or Acrylic Painting
38. Water Colour.
39. Pen and Ink Sketch.
40. Pencil sketch.
41. Open Multi media.
44. Reclaimed art/ sculpture
45. Sculpture any medium
- PHOTOGRAPHY (Prints only)**
46. Monochrome, any colour.
47. Creative
48. Still Life
49. Landscape

WOODWORK

50. Wood Turning
51. Small furniture
52. Wood sculpture

CHILDRENS SECTION.

53. Vegetable animal
54. Age 8 to 12, Miniature Garden.
55. Computer Art A4 size maximum for ages up to 8 yrs.
56. Computer Art A4 size maximum for ages up to 9-14 yrs.
57. 3 decorative buns (up to 14 yrs.)
58. A Wobbly Wobbly Jelly.
59. Flower arrangement in an eggcup.
60. Painting- aged under 5 years.
61. Painting- aged 6-11 years
62. Painting- aged 12 to 14 years.
63. A Lego Model aged 5 -8 years
64. A Lego model aged 9-14 years.
65. Colour Photo
66. Open any medium.

DUNDEE CAKE

175gms.(6oz) Plain Flour 1 rounded teaspoon mixed ground spice
125gms.(4oz.) Margarine 3 eggs
125gms.(4oz.) Soft brown sugar 125gms.(4oz) Sultanas
125gms.(4oz.) Raisins 125gms.(4oz.) Currants
75gms. (3oz.) Chopped mixed peel and chopped cherries.
40gms.(1.5oz.) Blanched almonds to decorate.
2¼ level teaspoons of baking powder.
METHOD.. Line 7" deep cake tin. Sift flour, baking powder & spice together.
Cream Margarine & sugar, Beat in eggs 1 at a time adding a tablespoon of flour with the last two. Fold in remaining flour and fruit till thoroughly mixed.
Put in tin & decorate with nuts.
Bake in a preheated oven 140c:290f: gas 2: for 1 hr. then lower to 130c:270F: gas 1 for ½ to 1 hour approx., pierce with skewer to test.

VICTORIA SANDWICH

125gms. (4oz.) Margarine
125gms. (4oz.) Caster Sugar
125gms. (4oz.) Self Raising Flour
2 eggs.

METHOD. Cream margarine and sugar. Beat in eggs 1 at a time with a little flour. Fold in remaining flour. Divide between 2* 7" sandwich tins greased or lined with greaseproof paper.
Bake in pre-heated oven 180c:350f: gas mark 4: for 20 – 25 mins. Sandwich with jam and sprinkle top with caster sugar. (Please note, Recipe quantities only.)

1. No entry in any class should have been in previous Totley shows.
2. Entries may be donated to be auctioned at the end of the show but this is not compulsory nor a condition upon which entries will be accepted.
3. Prize money may be collected from 1-45 p.m.
4. If less than three entries in a class Then there will be a first prize only, except in Children's section.
5. Any prize monies not collected by 4-00 p.m. will be put towards next year.
6. You may enter as many classes as you wish. (The more the Better)
7. If an entry does not fit a class, it can be left for viewing but no prize will be given and there will be no entry charge.
8. You may only collect your entries after the public viewing ends at 3-00pm.
9. Goods left after 3-30 will be auctioned

SHOW PROGRAMME

8-45 am. to 10-45 am. Entrants registration..
11-00 am. to 12-30 pm. Judging and awarding of certificates
1.30 pm. Doors open to the public Entry 50p, children 20p.

1-45 pm. Official Opening and collection of prize money.
3-00 pm. Prize giving and Auction of Donated Items
4-00pm. End of Show

Prizes First £3.00, Second £2.00, Third £1.00

Entries 50p. each

Raffle winning numbers will be posted on a board and those not collected on the day will be held for next year.

ENTRY FEE 50p. PER ITEM

PLEASE BRING THIS FORM WITH YOU WHEN YOU BRING YOUR ENTRIES.
PUT A TICK AGAINST THE CLASS OR CLASSES YOU WISH TO ENTER.

NAME

ADDRESS.

Tel no.

Total number of classes entered.

Rounders in the Park

It's a sport that conjures up memories of school days past, but the game of Rounders is currently going through a resurgence in popularity – and Macmillan Cancer Support is looking for teams to 'pitch' themselves against one another in a charity rounders tournament.

Rounders in the Park will take place at Endcliffe Park, Sheffield on Sunday 24 June from 1pm - 4pm. The charity is looking for teams of eight to sign up to the competition – there will also be afternoon tea and a raffle – with all proceeds going to support local people affected by cancer.

A Rounders England player will also be attending to provide tips and tactics as teams compete to lift the trophy and be crowned champions!

Rob Turner, Fundraising Manager for Macmillan said, "To take part each player pays ten pounds which means for every team that gets involved we can fund a Macmillan Nurse for three hours. Macmillan relies on donations for 96% of its income, which is why getting local businesses and people involved in events like this is so valuable."

Rounders in the Park is being organised in association with Rounders England. Michele Golland from Rounders England added, "Rounders is easy to play and people from all walks of life can enjoy the sport together regardless of experience, fitness and ability. We hope to have a fun day and help to raise money for Macmillan Cancer Support and to encourage people to take part in a game of Rounders."

If you fancy hitting runs for Macmillan contact Michele on 0114 248 0357 or Email

Michele.Golland@roundersengland.co.uk



WEDNESDAY JUNE 27TH.

TOTLEY LIBRARY, 7.30PM

INFORMAL DISCUSSION MEETING

EVERYONE WELCOME

SATURDAY JULY 14TH. 2PM

A VISIT TO WOODTHORPE HALL

WATCH OUT FOR FURTHER DETAILS

Hunters Bar Veterinary Group

Working together to help your pets

Three locations,
one joined up approach

More info: www.hunterbarvets.co.uk

£10 off your first
visit when you
present this advert

Hathersage

Grindleford

Hunters Bar



City Centre

Fulwood

Beauchief

Norton

Dore

Bradway

Totley

Dronfield

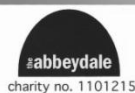
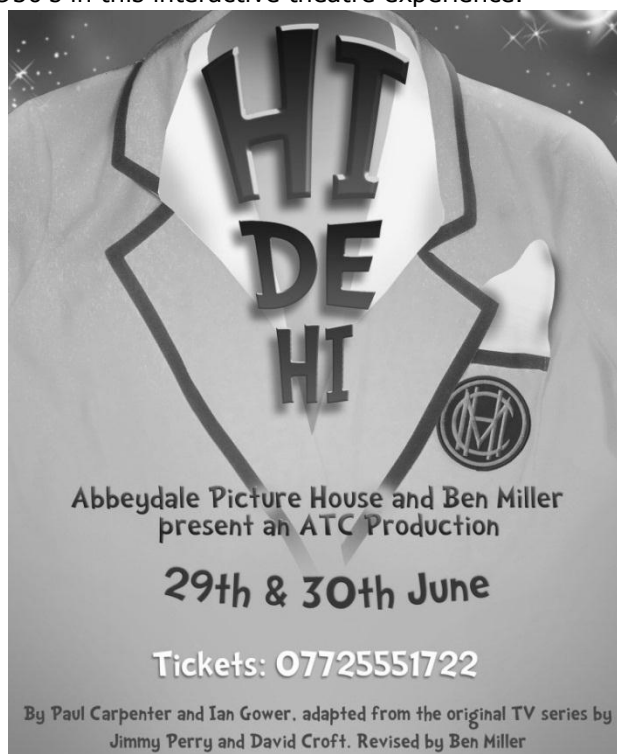
B6054 (15 minutes)

Dronfield
Woodhouse

Hunters Bar Veterinary Clinic, 613-615 Ecclesall Road, Sheffield 0114 2663607
Dronfield Veterinary Clinic, 39 Pentland Road, Dronfield Woodhouse 01246 410810
Grindleford Veterinary Clinic, Main Road, Grindleford 0114 2663607

Hi De Hi rocks Abbeydale this June!

A lot has happened in Abbeydale since my last article. We now have extremely comfy and warm theatre seating donated by Showroom Cinemas in Peterborough that are much more comfortable than those plastic tables and chairs we used to have. We have also made alterations to Palin's Bar and fitted even better disabled access to the building. But our most exciting news is that we are producing a new stage adaptation of Hi De Hi, based on the popular BBC TV Series. This is being performed by a selection of the best amateur performers in Sheffield and is on June 29th and 30th. This new stage show was adapted by Ben Miller and David Croft, the famous comedy writer. Tickets are going fast but there are still a few seats left. It is sure to be a fantastic night out filled with toe-tapping numbers, audience participation and much more. So grab your 1950's holiday gear and head down to the Picture House to experience what Holiday Camps were like in the 1950's in this interactive theatre experience.



Abbeydale Picture House

This is an amateur production with kind permission from Samuel French Ltd

For more information or to book please call 07725 551722 or visit hi-de-hi.weebly.com. You can even follow us on Twitter!

HI DE HI June 29th and 30th – Adults £10, Kids under 12 £8. Box office: 07725 551722.

Ben Miller

Scout Lottery

**1st Totley Scout Group Lottery
April Draw**

1st Prize No 36
Russell Hobbs Toaster
Mr and Mrs Jackson
The Grove

2nd Prize No 11
£10 Voucher
Mrs Westnedge
Everard Avenue

Pete Casson

Julia Bradbury becomes St Luke's Hospice patron

TELEVISION favourite Julia Bradbury has been named as a new patron of St Luke's Hospice.

The popular TV presenter grew up in Sheffield and is keen to support the city's only hospice, which last year celebrated its 40th anniversary and is now about to launch a £5 million extension and renovation programme. "Coming from Sheffield means I have heard so much about the great work that St Luke's does for Sheffield people," said Julia. "Knowing how much St Luke's means to so many families across the city, it is a pleasure and an honour to be asked to give my support to the hospice."

St Luke's Director of Fundraising and Communications Una Moran commented: "To have Julia's support at this most important point in our history is great news.

"As we embark on our refurbishment project, it's good to know that we have the backing of such a high-profile patron as Julia to help us encourage even more supporters and fundraisers.

"Julia and all our friends across Sheffield understand the importance of the work St Luke's is doing for people throughout the city and they are as committed as we are to ensuring that work continues."

To find out how you too can support St Luke's Hospice visit www.stlukeshospice.org.uk

Award winning creative play sessions launched in Sheffield



An innovative and award winning programme for pre-school children is being launched in Sheffield. The Creation Station's hands-on art and craft exploration sessions give even very young children the chance to experiment safely with a wide range of materials, tools and ideas. Jenny is leading the weekly, term-time programme for youngsters and their parents/carers on Mondays at Ecclesall Parish Halls, Ringinglow Road and then on Fridays at the Dore & Totley United Reform Church, Totley Brook Road, S17.

As an ex-lawyer, Jenny was searching for a new direction which would be inspiring and fun whilst enabling her to spend quality time with her children. Creation Station has certainly provided this opportunity and something exciting and educational for others to do with their own children. Not least allowing Jenny to leave the rat race behind!

To celebrate the launch, everyone buying a trial session will get a second session for free. Jenny said: "I am really excited about bringing the Creation Station to Sheffield. Our aim is to inspire children's imaginations through our specially designed art and craft activities and products. As well as being terrific fun for both child and adult the sessions encourage positive parenting skills through practical creative play. Creating their own piece of art each week also helps develop a child's thinking and creative skills. Another plus point for parents is that even when we get messy using paints and clay they don't have the worry and stress of cleaning up like they would at home."

For further information and to request a trial session contact Jenny on 0844 874 7328 or visit www.thecreationstation.co.uk to download a free booklet full of exciting play ideas.



GWS

Technology Solutions



PC Problems/ Repairs/ Servicing No Job Too Small
Wireless & Internet Setup New PC's & Upgrades
PC Setup/Data Transfer Safe PC Disposal Tuition
Software/Hardware For All Your PC Needs

Guy Senior

Phone: 0114 2352662 Mobile: 07890030453

Email: guy@gwstech.co.uk

Web: www.gwstech.co.uk

GWS, 5 Conalan Avenue, Bradway, Sheffield S17 4PG



253 Baslow Road, Sheffield, S17 4DU
Tel: 0114 2360 583 Mobile: 07801 346 455

R.M.M BUILDING SERVICES

25 YEARS EXPERIENCE

All types of building work carried out including- Drop kerbs, block paving (drives, paths, etc), extensions, general building repairs and maintenance.

Phone Rob on- Mob- 07906108567

Home-2352190



Serenta HomeCare

Are you in need of a little help and support within your own home? The older we get the more help we need to enable us to live a more independent life.

Personal Care • Medication • Domestic • Sitting Service • Social and Leisure activities

To find out more call Sue 07715 636 395 Pat 07715 634 781
or visit www.serentahomecare.co.uk

For reference from an existing client please call 0114 2366891

R.S. HEATING & BUILDING CO

EST. 1971

CORGI

HEATING DIVISION:
Experienced Installers of condensing, combination and regular boilers. Systems fully guaranteed. Complete after sales service. Also Bathrooms, showers and small plumbing works.

APHC

BUILDING DIVISION:
Loft conversions, House renovations including general building, joinery, plastering, electrical decorating etc.

13 Overcroft Rise, Sheffield, S17 4AX
Tel:- 0114 236 4421
Reg. Office:- 62 Machon Bank, Sheffield, S7 1GP
Te:- 0114 2559425
Fax:- 0114 255 9431
Email: enquiries@rsheatingandbuilding.co.uk
Web: <http://www.rsheatingandbuilding.co.uk>



Gardens cleared and maintained, Lawns mowed, Turfing, Tree felling & pruning, Hedges trimmed & reduced, Pond maintenance, Fencing etc.

for free quotation call

Chris on: (0114) 2746158 Mobiles: 07976072785 or

Richard on: 07789497104

8am-6pm mon-fri

HazelBarrow Farm, Norton S8 8BA



Nigel Watson



Carpenter and Joiner

Fitted kitchens, sliding wardrobe doors with bespoke interiors, internal and external doors supplied and fitted, new handrail and spindles, laminate and wood flooring, locks, architraves, skirting board, stud walling, boxing off etc.

For a reliable and quality service

TEL: 0114 236 4778

MOBILE: 07971 528149



Got a computer?

Having Problems?

Is it running slow? Stops responding?
Having problems running the latest games
or applications? Broadband installation?

Give me a call!

I'm available for home visits at any time including evenings and weekends. I can also suggest upgrades to improve performance, or even build you a system to your specific requirements.

Tim Brown

Building,
Installation,
Upgrading and
Troubleshooting
Computer
Systems
Over 25 years
professional
experience

Phone: 0114 2472619 Fax: 0870 7060080

Mobile: 078 17464703 Email: service@timbrown.plus.com

LOCAL INDEPENDENT OPTICIANS FIRM JOINS THE BAND TO HELP YORKSHIRE'S HEROES

Spurred on by a staff member with a teenage son who has just started a tour of duty in Afghanistan, Martyn Kemp Opticians (MKO), is boosting the Yorkshire Regiment's effort to improve the lives of all its soldiers following their return to the UK.



MKO, South Yorkshire's largest independent firm of opticians, is selling wristbands for a minimum of £1 at its ten practices to raise cash for The Yorkshire Regiment in Afghanistan fund, which supports soldiers' convalescence and training activities to bring them back to normality.

Nineteen-year-old Connor Millward, an infantry man in 3rd Battalion Yorkshire Regiment which was deployed to the Helmand province in April, is the son of Liz Rhodes, who has been based at the firm's City Road practice for seven years.

Martyn Kemp, the chairman of MKO, said: "We are privileged to do our bit for such a worthwhile effort to ease the distress of military service in this particularly challenging area of the world. I hope the public will contribute as much as they can to help the cause."

Please visit www.mko.co.uk for details of the MKO practices.

SUMMER FAYRE



**LEONARD CHESHIRE DISABILITY
MICKLEY HALL, MICKLEY LANE
SATURDAY JUNE 30th, 10am – 3pm
TO BE OPENED AT 11AM BY
RADIO SHEFFIELD'S GERRY KERSEY
LOTS OF STALLS SELLING CAKES, PRESERVES,
PLANTS, JEWELLERY AND MUCH MORE
ENTERTAINMENT ESCAFELD BRASS BAND,
LINE DANCERS AND ZUMBA
PARTY ANIMALS
ENTRANCE 50P, CHILDREN FREE**

BELROBICS

A new class is starting at Totley United Reformed Church on Thursdays 9.15-10am called Belrobics. This class is a belly dance based fitness class for women to shimmy themselves fit! Classes started at the end of May and will be free. Should ladies like to find out more they can email me: jenny@belrobics.co.uk or telephone: 07816 850132.

CROSS SCYTHES LAUNCH THEIR NEW XS LOYALTY CARD IN TOTLEY

Customers and visitors to the Cross Scythes pub, restaurant, and hotel in Totley will be able to enjoy their evenings out dining with fantastic new benefits from a special new XS Loyalty Card Scheme.

Launched on 1st May and running for a year, this exclusive offer has been developed as a special thank you to customers who enjoy regular meals, drinks, overnight stays, and entertaining. With a fixed purchase fee, and a range of exclusive discounts and vouchers, customers can make savings on every visit with the XS Loyalty Card.

The Cross Scythes pub has been awarded Sheffield Restaurant of the Year Award in the Best Pub Food Category, and offers a range of mouth-watering dishes created from first principles; breads, pastry and desserts made by hand, a personal philosophy of Head Chef, Alan Rigby. Following an extensive refurbishment programme and a successful 2 ½ years' trading, Stuart Hitchman, Director commented:

"The launch of our new XS Loyalty Card scheme marks a very exciting time for the Cross Scythes. We have invested extensively in refurbishment and are welcoming customers, new and existing to find out more about our fantastic offer. We have enhanced visitor experience and comfort, and achieved recognition through several awards and quality standards, including 'Best Pub Food' at Westside Awards 2011".

To find out more about the XS Loyalty Scheme, please enquire on your next visit, or via the website at www.cross-scythes.co.uk.

ngs gardens open
for charity

Garden Open 16 The Grove

Totley, Sheffield

Sat 30 June & Sun 1 July 12 - 5pm

Adm: £2.50

Children: free

Plants for Sale



The National Gardens Scheme: Registered Charity No. 1112954

www.ngs.org.uk

FRIENDS OF GILLFIELD WOOD

www.friendsofgillfieldwood.com

INDOOR MEETING – Tuesday June 12th Our next indoor meeting will be held **on Tuesday June 12th at 7 pm** in the Totley Library. Please note this date is the second Tuesday in the month, not on our usual first Tuesday.

We are very keen to make our future indoor meetings and outdoor events as interesting as possible for group members and the community so this June meeting will be an ideal opportunity for us to discuss a number of proposals and ideas for the months ahead.

The meeting is an open meeting when the committee and members get together to also discuss Gillfield Wood and the wide variety of activities the group is involved in. A member of the City Council's Ranger Service sometimes attends to provide updates relating to our wood and answer questions any of us may wish to raise. If you do come along you will be made extremely welcome and you certainly do not have to be a member to attend and have a say.

OUTDOOR MEETING – A GUIDED WALK – Tuesday July 3rd Due to our April walk being such a success we have organised (by public demand!) another local walk for July. So please mark those calendars and diaries; this walk will be in the evening of Tuesday **July 3rd starting at 7 pm**.

On this occasion we will meet in the car park at the Shepley Spitfire on Mickley Lane. Our intention is to slowly walk up the lane towards Woodthorpe Hall, skirt Holmesfield Park Wood and Fanshaw Gate before descending the fields into Gillfield Wood. This will be a circular walk but people can come and go as they please and you do not have to be a member to join us. It would be advisable to wear suitable clothing and footwear just in case it is cold and wet and muddy underfoot. But let us hope the weather is kind to us and we have a lovely evening. If you have a torch then please bring it with you, just in case, as it could be a little dark in the wood as the evening progresses. Again members of the group will be sharing their knowledge of the area, whilst chatting about the history, the footpaths, the woods, fields and hedgerows plus the birds, mammals and flora. It really is a great opportunity to meet people in a relaxed atmosphere and talk about this wonderful area of Totley that hugs the Derbyshire and South West Yorkshire border.

TALK BY JOHN KIRKMAN – Tuesday September 4th Our September indoor meeting will be John Kirkman giving a talk to the Group in the Totley Library at 7pm. The talk will be on The Birds of Gillfield Wood.

This will be a fine opportunity to learn a little more about the birds of the Totley area and even if you only have a small interest in or knowledge of birds, John does have that ability to make his talks very interesting for everyone. So we do hope you will come along and join us.

CONSERVATION WORK Our next conservation workday is on **Sunday morning July 29th**. The other three mornings arranged for later in the year are **September 30th, October 28th and November 25th**. There is light and heavy work for all to get involved, so if you fancy helping with Dry Stone Walling, Fencing, Coppicing etc then why not get in touch with Dave Gash, details below.

OUR RECENT SPRING WALK We were very lucky with the weather on that Saturday morning in April as it was a "window of opportunity", a dry three hours between constant rain in the days either side.

One member even had a solitary swallow fly over his head as he walked through the fields to join the group, this was surely a good omen.

Over twenty people gathered by the Scout Hut at 10am with Chiffchaff and Nuthatch calling overhead. Our own Sally Goldsmith led the walk passing on snippets of information regarding the history of the area and the wood as we walked through to the far

end near to the bus terminus. She pointed out features such as the old swimming pool, the intriguing stone posts in the brook and the remains, built into a bank, of a stone construction which was possibly used by the gamekeeper. Q pits were also pointed out and discussed on the way and Dave Gash explained the conservation work being carried out by the group to protect these important historic sites. Sally showed everyone an old Hollow Way track near the brook as a Blackcap sang and made contact calls nearby, and as the old original exit from the west end of the wood was investigated, Coal Tits and Goldcrest sang in the surrounding larches and conifers.

During the walk the opportunity was also taken to identify a number of wildflowers including wood sorrel, wood anemone, dog's mercury and yellow archangel, all indicators of an ancient woodland floor. And, of course, we did admire the wonderful display of bluebells although not quite at their best due to days of cold and wet weather.

Towards the end of the walk we took one of the paths out of the wood and across the fields to Totley Hall Lane allowing Sally to point out features relating to ancient hedgerows she is currently surveying.

So much to see and talk about the time flew by but everyone said how interesting they had found it, and all were keen for us to arrange another walk during the summer, thus the one now organised, as mentioned above, for July 3rd.

CONTACTS Either Dave Gash 0114 262 0564 (or daveygash@hotmail.com) or Sally Goldsmith 0779 063 7016 (or goldsmithsally@gmail.com) will be more than pleased to chat with you and provide you with more detail. If you contact Sally she will be very happy to add you to our mailing list if you wish, so you are kept up to date with all our activities.

Chris Measures

Summary of the Chairman's Report at the Annual General Meeting 3 April 2012

The Group in its inaugural year was involved in six practical conservation days with the Council. The tasks included:

- Tree Thinning - where trees have been planted too close together and the canopy now shades out the woodland floor, thinning encourages the ground flora to thrive and grow
- Halo thinning - this is the same as tree thinning but clears the smaller trees that are growing into the branches and canopy of the larger, more mature trees
- Hazel Coppicing - encourages new growth and allows more light onto the woodland floor encouraging the ground flora to grow
- Replacing an old stile and metal gate - the entry to the west end of the wood has been improved with the installation of a new wooden kissing gate and wooden five-bar gate, allowing easier access into the wood and providing a boundary that is more in keeping with the rural surroundings

• Drystone walling – the stone wall at the side of the kissing gate was rebuilt

• Footpath Drainage - five simple wooden drains have been introduced on the main footpath, in the top quarter of the wood, where the drainage was very poor.

With all of the tasks above, at the end of 4 to 5 hours hard work, everyone commented on having a really good feeling of satisfaction and a great sense of achievement.

The council have also installed four new benches at the side of the main footpath, in the top half of the wood allowing people who walk through the wood to rest and take in the sights and sounds at those locations.

Many surveys of the fauna and flora in the wood and the surrounding area have been carried out. It is very important that we have a permanent record of the different species of animals, plants, invertebrates and birds that inhabit Gillfield Wood and the surrounding area. This data will be invaluable in helping to conserve and protect the area should future planning and building development threaten. In particular surveys are determining whether the hedgerows are of ancient origins and as such of great importance. Other surveys undertaken have included Fungi, Flora, Small Mammals, Bats, Invertebrates and Archaeology. A big thank you was extended to Steve Clements, Val Clinging and Derek Whiteley of Sorby Natural History Society, Barry Wright of ADAS, Henk Littlewood of Sheffield City Council and our own Sally Goldsmith for lending their expertise in helping to carry out these important surveys.

The Group now has an excellent website www.friendsofgillfieldwood.co.uk which gives you details of what FOGW is all about, what future events are planned and what fauna and flora sightings there have been in recent days, weeks and months.

The Group also has a database now in place onto which the species recorded in and around the wood can be input.

Many sightings/records have been processed so far and I am sure more will follow. With the hand held GPS (Global Positioning System) that we have to help with recording the grid references, the database will be used in conjunction with mapping software, Map Maker, to produce detailed maps of species recorded and where they are to be found. Of course any sensitive information such as the exact sites of rare flowers, rare fungi or bird's nests will continue to remain confidential.

By having regular meetings and practical conservation days, throughout the year I feel that FOGW has provided opportunities for the community to attend and get involved. There certainly has been a real sense of community at the events which makes it all worthwhile. I am sure this will grow even stronger as more people become aware of and familiar with the Group.

Finally I gave a very big thank you to all the people who have joined together to make this first year such a big success and such a very enjoyable one. Everyone involved has given up a lot of their own time to make FOGW the group that it is today and this not only includes the committee but a number of other people who have provided their much needed support. To see the interest and enthusiasm of those attending is very satisfying indeed and it really has been a great team effort.

Dave Gash

GOD CAN HELP YOU

Do you have Cancer?

Are you in a wheel chair?

Do you have problems with your circumstances, worry, stress?

Do you have spiritual problems?

Do you want to carry on like that?

GOD CAN CHANGE THAT GIVE JESUS A CHANCE

**TOTLEY LIBRARY BUILDING ON
SATURDAYS on**

June 2nd, June 16th and June 30th

between: **12.45 and 1.45 pm**

Totley Hall Saints and Totley Rise Methodists. For information ring Brian on
07722236037

South West Community Assembly Team have moved office.....

On 18th May the South West Community Assembly Team moved out of the office at 82 Sheldon Road.

The Team were due to move straight into Sharrow Old Junior School on South View Road, but office refurbishment is still ongoing and we are now likely to be moving in at the beginning of July 2012. In the meantime the Team will be hotdesking in other council buildings around the city .

You can still contact the Team on 203 7212 or 203 7796 as these numbers are being diverted to New Bank House (please note that the 203 7796 number will no longer be in use once we have moved into the new office in July).

During this period you can continue to contact us on our mobiles or via email:-

Tammy Barrass (Community Assembly Manager) - 07838 682152 or tammy.barrass@sheffield.gov.uk

Matthew Rush (Assembly Officer) - 07764 1470067 or sarah.lucas@sheffield.gov.uk

Azra Razaq (Team Support Officer) - azra.razaq@sheffield.gov.uk

Please note that our postal address will be:-

South West Community Assembly
Sheffield City Council
Pinstone Street
Sheffield
S1 2HH

Further information will be circulated once the move in date for Sharrow Old Junior School has been confirmed.

Tammy Barrass

Puzzle Corner

Solution to Anagrams

- | | |
|------------------|--------------------|
| 1 TAR, RAT | 6 DREAD, ADDER |
| 2 STARCH, CHARTS | 7 DIRECTOR, CREDIT |
| 3 REFLOG, GOLFER | 8 CLIENTS, STENCIL |
| 4 SHORE, HORSE | 9 BERATE, REBATE |
| 5 HATED, DEATH | 10 STRAIN, TRAINS |
- Don Ashford

DRONFIELD LANDSCAPES

Logs and wood chippings For Sale

Ring for details

Chris 0114 274 6158
Mobile 07976 072785

Richard
Mobile 07789 497104

Totley

Private Hire

24 hour taxi service

Advanced bookings only

Local • long distance • airports

Telephone 0114 283 9692

Mobile 07974 355 528



Domestic electrical work by
award winning
Lady Electrician

- * House rewires * Replacement fuse boards *
- * New sockets and lights * Security systems *
- * CCTV * Telephone and computer points *
- * Garden power and lighting *



All work guaranteed and fully insured. For a free quotation, without obligation,



ring Mandy on 07788-544225



**Tiling, Plastering,
Plumbing & Complete
Bathroom Fitting Service**

Tel: 0114 274 6775

07738 688807

- ◆ Under Floor Heating
- ◆ All Aspects of Home Improvements & Maintenance Work Undertaken
- ◆ Competitive Prices
- ◆ NVQ Qualified
- ◆ No Job Too Small
- ◆ Fully Insured & Guaranteed

A1tilingandplastering.co.uk
33 Glen View Road, Greenhill, S8 7SF

B.K. JEAVONS PAINTER & DECORATOR



Interior
Exterior
Decorating
No Job too small

Tel: 01246 416484
and mobile 07882 278306

Creating opportunities with disabled people.

Registered Charity No. 218186

**Leonard
Cheshire
Disability**

Leonard Cheshire Services in Offers choice & opportunity to people with disabilities. A Specialist Unit for the Younger Disabled. Residential & Respite Care - Single Rooms Day resources - Aromatherapy - Reflexology - Physiotherapy - Toning Tables.

Activities include: - Arts & Crafts - Computers - Cookery - Shopping Expeditions - Theatre Outings - Church. Further details can be obtained from - The Service Manager, Mickley Hall, Mickley Lane, Totley, Sheffield S17 4HE. Tel. 0114 236 9952 Fax. 0114 262 0234

The Care at Home Service supports disabled people who wish to remain in their own homes. We provide flexible care packages from 1 hour to 24 hours meeting individual needs. The service operates throughout Sheffield.

Our service includes: - help with getting up and going to bed, dressing, washing, bathing, shopping, cooking, light household duties.

Further details from: - The Care at Home Manager Tel. 0114235 1400 Fax 0114 235 1499

John Heath & Sons

AN INDEPENDENT FAMILY FUNERAL BUSINESS

Sometime.....

You will probably have the responsibility of making funeral arrangements. No one looks forward to this responsibility, but the death of a family member or friend brings with it an obligation that must be met. There are people who can help you meet this responsibility. We have been helping people combine the different aspects of the funeral into a meaningful service for over 125 years.

Please Call Day Or Night

(0114) 272 2222

Head Office - Earsham Street

Also at Meadowhead, Ecclesall Rd,
Crookes and Stanington

www.johnheath.co.uk



**CHARISMA
BLINDS**



For
Windows
With Style

Sheffield Factory Showroom
106 PROSPECT ROAD
HEELEY, SHEFFIELD

Sheffield (0114) 258 5496
Rotherham (01709) 512113

All Saints Church

Totley Hall Lane



ALL SAINTS SERVICES IN JUNE

3rd 10am	Holy Communion
6.30pm	Holy Communion
10th 10am	Morning Praise
6.30pm	Evening Prayer
17th 10am	All Ages All Together
6.30pm	Holy Communion
24th 10am	Holy Communion
6.30pm	Evening Prayer.

PENTECOST

Sunday, 27th May was Pentecost this year. Pentecost together with Christmas and Easter is one of the three major festivals of the Christian Church. Following the resurrection and ascension of Jesus, the disciples gathered together, received the Holy Spirit who empowered them to spread the good news about Jesus as He had commanded them.

For the church today it is an occasion to remember that the same Holy Spirit is with us and empowering us to be disciples in our generation. It is a time to rejoice. Sometimes people have also named the day Whitsuntide even though that name is now largely out of fashion.

JUBILEE GARDEN PARTY



SUNDAY 12TH JUNE 2.30 – 5.00 PM

Totley All Saints Church is hosting a Diamond Jubilee Garden Party for everyone living and working in Totley. Please put the date in your diary and invite your family, friends and neighbours to come along. The event is free and open to everyone.

We are planning activities from 2.30 – 4.30 which (weather permitting) will include crafts, sports, face painting, toddler areas, traditional games (hook a duck, tin can alley) quizzes, trails, refreshments and competitions (penalty shoot out, street art, paper plane throwing). At 4.30pm we will be hosting a tea party for all. It should be a great day so do come along.

A special prayer has been released to commemorate the Queen's Diamond Jubilee.

The prayer was written at the Queen's direction by the Chapter of St. Paul's Cathedral and will be used in the Jubilee Thanksgiving Service in St. Paul's Cathedral on June 5th.

THE DIAMOND JUBILEE PRAYER

God of time and eternity,
Whose Son reigns as servant, not master
We give you thanks and praise
That you have blessed this Nation, the Realms and
Territories with ELIZABETH,
Our beloved and glorious Queen.
In this year of Jubilee
Grant her your gifts of love and joy and peace
As she continues in faithful obedience to you, her
Lord and God
And in devoted service to her lands and peoples
and those of the Commonwealth,
Now and all the days of her life,
Through Jesus Christ our Lord.
Amen.

JUBILEE CUPCAKES

This is a very simple recipe, easy for children to enjoy baking and decorating.

Ingredients

100grams butter

100grams caster sugar

100grams self raising flour

2 eggs

Cream the butter and sugar until light and fluffy, either by hand or with an electric whisk.

Add the beaten eggs a little at a time, beating the mixture well and adding a tablespoon of flour when half the egg is added. When all the egg is mixed in fold in the remainder of the flour. Half fill Jubilee cup cases with the mixture.

Bake at 180 degs for 12-15 mins,

To decorate use

Red, white and blue ready rolled icing.

Cut circles of icing in any colour to fit the cupcakes. Place on each cake and decorate appropriately with a crown or a Union Jack, cut from the ready rolled icing.

TOTLEY & DISTRICT DIARY

MONDAYS	COFFEE MORNING , All Saints' Church Hall, 10am-noon TAI-CHI , United Reformed Church, Totley Brook Road, 11.30am-12.30pm RAINBOWS and GUIDES , All Saints' Church Hall, 5.45pm-9pm
TUESDAYS	COFFEE MORNING , Totley Rise Methodist Church Hall, 10am-noon KEEP FIT & COFFEE , For the not-so-young, Bannerdale Centre, Carterknowle Road, 10.15am, Phone 258 5364 WOODSEATS ADVICE CENTRE , Drop in service, free, impartial, and confidential. TR Methodist Church, 10am-noon CRAFT GROUP , Totley Library, 2pm
WEDNESDAYS	PILATES CLASSES , Dore Old School, 9.00-10.00 and 10.15-11.15. Contact Caroline - Tel: 0781 722 0324, email caroline1north@btinternet.com, www.pilatescarolinenorth.co.uk COFFEE in the LIBRARY , 10am-11.30am TODDLER GROUP , 10am-11.30am, All Saints' Church Hall. Details tel. Andy Holmes 0114 236 2088 HEALTH WALKS , 10.30am, Totley Library foyer. Phone Sue, The Health Walk Ranger: 0114 283 9195 MODERN SEQUENCE DANCING , All Saints Church Hall, 8pm-10pm
THURSDAYS	BELROBICS , United Reformed Church, 9.15-10am, email: jenny@belrobics.co.uk or telephone: 07816 850132. NCT COFFEE GROUP FOR DORE TOTLEY & BRADWAY , 10am-noon, For mums & babies/toddlers, meeting in various locations, Phone Lucy Street 07837 000405 or email: lucy@stretr.plus.com for further details CHAIROBICS , Heatherfield Club, 1.15pm PUSHCHAIR CLUB , Totley Rise Methodist Church Hall. 1.30pm-3pm. Tel. 236 3157 for further details PILATES CLASS , United Reformed Church, Totley Brook Road, 6.15pm-7.30pm, Phone Emer Coffey 07792 422909
FRIDAYS	PILATES , The Old School, Dore, 9.15-10.15 & 10.45-11.45am. Phone Teresa Tinklin 07906 312372
SATURDAYS	MODERN SEQUENCE DANCING , All Saints Church Hall 2 nd . And 4 th . Saturdays 8pm-10pm

JUNE

SAT 2nd THREE VALLEYS FESTIVAL, details last issue, page 7
SUN 3rd CASTLETON FARMERS MARKET, the Village Hall, 10am-3pm
SUN 3rd & MON 4th (BH) MINIATURE TRAIN RIDES, Abbeydale Road South, First train 1pm-last train 5pm (weather permitting)
SAT 9th TEA DANCE, Heatherfield Club, 4pm-6pm, details page 8
TUE 12th FRIENDS OF GILLFIELD WOOD, 7-9pm, Totley Library, full details page 14, All are welcome.
SUN 17th BASLOW FOOD & DRINK FAIR, 10.30am-4.30pm, details p9
SUN 17th MINIATURE TRAIN RIDES, Abbeydale Road South, First train 1pm - last train 5pm (weather permitting) www.sheffieldsmee.co.uk
TUES 19th TOTLEY TOWNSWOMEN'S GUILD, 'Textiles, Fabric and Thread', Nora Rogerson, Totley Rise Methodist Church Hall, 10am
SAT 23rd SUMMER FUN DAY, Totley Primary School, 1-4pm, details p7
WED 27th TOTLEY HISTORY GROUP, Totley Library, 7.30pm, Open Meeting, all welcome
THU 28th SHEFFIELD FARMERS MARKET, 8.30am-5pm, Fargate
SAT 30th SUMMER FAYRE, Cheshire Home, 10am-3pm, details p 19

JULY

SUN 1st CASTLETON FARMERS MARKET, the Village Hall, 10am-3pm
SUN 1st MINIATURE TRAIN RIDES, Abbeydale Road South, First train 1pm - last train 5pm (weather permitting) www.sheffieldsmee.co.uk
SAT 14th & SUN 15th TOTLEY OPEN GARDENS, 1-5pm, details page 3
SUN 15th MINIATURE TRAIN RIDES, EXHIBITION, Abbeydale Road South, First train 1pm - last train 5pm (weather permitting) www.sheffieldsmee.co.uk
TUES 17th TOTLEY TOWNSWOMEN'S GUILD, 'Wills of the Rich and Famous', Paul Freeman-Keel, Totley Rise Methodist Church Hall, 10am
SUN 22nd TOTLEY FARMERS MARKET, Totley Rise, midday-4pm
SUN 29th MINIATURE TRAIN RIDES, Abbeydale Road South, First train 1pm - last train 5pm (weather permitting) www.sheffieldsmee.co.uk

TOTLEY INDEPENDENT FOR JULY/AUGUST

The next issue of the Totley Independent will be available from the usual distribution points on

SATURDAY 30th June 2012

COPY CLOSE DATE for this issue
will be

SATURDAY 16th June 2012

Editor: **Ian Clarke**
 Tel. No: **235 2526** or Email: **editor@totleyindependent.co.uk**

Advertising & Distribution:
John Perkinson
 Tel. No: **236 1601** or Email:-
advertising@totleyindependent.co.uk

Items for publication may be left or sent to:
2, Main Avenue, Totley, Sheffield, S17 4FG or
Totley Library

www.totleyindependent.co.uk
PRINTED by STARPRINT



- Central Heating,
- Domestic Plumbing,
- Glazing, Double Glazing and Glass,
- House Maintenance,
- UPVC and Wood Windows & Doors



Mini Digger & Driver, Muck Shifts, Footings Etc.

starprint

5000
 130 GSM GLOSS
 FULL COLOUR
 DOUBLE SIDED
A5 LEAFLETS
£99.95

250
 FULL COLOUR
 SINGLE SIDED
BUSINESS CARDS
£19.95 + VAT

BANNERS
 AVAILABLE FROM
£29.95 + VAT

Full design service available!

Tel: 0114 258 0707
 Email: mail@starprint.co.uk
 601 Abbeydale Road, Sheffield, S7 1TA