

TOTLEY INDEPENDENT

PUBLISHED CONTINUOUSLY SINCE 1977

www.totleyindependent.co.uk

APRIL 2012

No. 352

20p.



Green Oak and Heatherfield

Just one of over 200 postcards acquired at auction by Christine Shimell and Maureen Cope on behalf of the Totley History Group and Dore Village Society in March. The collection had been put together by Frank and Peter Thompson and was 1 lot out of many. This picture shows a very rural looking Mickley Lane in the lower right with the back of Lemont Road backing onto what is now Green Oak Park. The buildings now adjacent to the park bowling green can be seen jutting out into the farm land. We think the houses to the upper left are the back of Main Avenue.

The official opening of the park was in March 1929 so this picture is clearly much earlier.

Totley Residents Association Update

This is a short catch up this month as April is going to be really hectic.

Firstly the Farmers Market - on the 15th April Midday-4pm, I really do hope that you will come along and support the market, hopefully the sun will shine. We will also be displaying the finalists of the logo competition and we would love to you to come and vote for your favourites. It's not too late if you would like a stall, just call 077096 780606 and we'll try to accommodate you (stall application form on **Totley Independent** website under 'Events').

The residents committee meet once per month and we try to have inclusive meetings. This month we are meeting with representatives from the local churches and centres to plan activities for the Jubilee and the Olympics.

I have several issues to take forward to the local councillors, and will report on them next month.

I also chaired a meeting to decide the future of the Ward Forums. It was decided that all the local groups (TRA, BAG and DVS) would have a representative that would feed issues into the group, and that single issue meetings would be arranged when necessary. Full minutes are available if you would like to read them.

Whilst I am writing this I know that the grass verges in Totley are in a desperate state, this has been discussed at the committee meetings and Keith Hill has taken the matter forward with the council.

We are holding the AGM in the Totley Library at 7.30pm on Monday 23rd April. I do hope that you can come along, the TRA really need more people and practical assistance, activities can't happen without helping hands!

Hope to see you there, Kathryn Higgins Chair TRA.

TOTLEY RESIDENTS ASSOCIATION

Farmers Market, Totley Rise – Sunday 15th Midday-4pm

AGM - Totley Library - Monday 23rd April 7.30pm

Ward Forum

I was interested to hear, recently, from two sources, that the Ward Forum had died.

Both sources had been present at the public meeting, on 28th February along with about 25 other people, when I was elected as the coordinator of the Ward Forum in order to keep it going! It is not dead!

It was agreed, however, that there would not be regular meetings, as in the past, but meetings would be arranged to discuss the findings of "Focus Groups". An example is the Traffic Focus Group which was set up to discuss traffic problems affecting areas within the Ward i.e. Dore, Totley & Bradway.

Representatives from each of Bradway, Dore, Totley & Whirlow areas were present at the first meeting, & have subsequently kept in contact via email. I am the coordinator of the group & it has been kept as informal as possible. Dore told us that they were already investigating their parking problem with a survey & subsequent public meeting. The local councillors had already decided to carry out a survey, so we backed off that issue, but Alan Kewley, from Bradway, alerted the group to a proposal for 20 MPH restrictions on suburban roads. We involved the local councillors, who initially were not enthusiastic, the South West Community Assembly & members attended meetings to gather information. The outcome was that the councillors became enthusiastic & the South West Community Assembly called a public meeting, on 26 January. More details are contained in a separate article.

The Ward Forum has been an experiment but I hope to take it further than that; to get it established as a useful medium for residents, businesses & service organisations, to raise for discussion issues or complaints, which affect the wider area than that already covered by a community/residents group, or an issue which an existing group do not wish to pursue or do not have the time or skills to pursue. Existing groups will be invited to be involved on a Focus Group & I do not see the Ward Forum as taking anything over from anybody unless the existing group wish it to do so.

Interested residents will also be invited to play their part either as affected persons or having skills, knowledge or an interest in the area under discussion. My role is to act on an issue or complaint which has been raised, or has come to my attention, to coordinate the setting up of a Focus Group. I do not wish to be directly involved in each Focus Group.

I shall, however, hope to be "kept in the loop" by email by the group & when necessary, arrange a public meeting to inform the wider audience, including councillors, council officers & The South West Community Assembly Manager of the outcome of the Group's findings, together with recommendations.

The Ward Forum, those people in attendance at the public meeting will decide on the outcome of the deliberations & any actions which they deem is needed.

Appeal

I shall chair Ward Forum meetings but I will be very grateful **if anyone would offer their services as minute secretary**. It is not an onerous task, as it is unlikely that there will be more than three meetings a year, unless that person wishes to participate in the Focus Groups as a minute secretary.

Roger Hart

07831 305881

DORE GARDEN CLUB

Did you know that there is a garden club in Dore ?

Set up nearly 4 years ago it has continued to grow.

We meet monthly for a varied programme of talks, slideshows and demonstrations. We also have several coach trips, visits and plant sales.

The annual subscription is £12p.a. per person or £2 per person as a visitor.

We meet on the 3rd Wednesday or Thursday (alternately) at 7.30pm in the hall at the Methodist church in the High Street at Dore.

We welcome new members so if you are interested please come along or contact me or go to the Dore Village Society web site and follow links to the Garden Club.

Janet Herridge, Secretary, tel 236 0915,

e-mail: janet.herridge@btinternet.com

Totley Farmers' Market

We are really looking forward to hosting our first Farmers' Market/Spring Fair on Sunday 15th April and have had an excellent response from a variety of producers and artisans.

The Market, which is taking place on Totley Rise, is open from 12p.m. to 4p.m. and we have made every effort to source local stallholders from within a 10 mile radius.

We have arranged local parking, primarily in front of the Veterinary Practice on Baslow Road and also at the rear of that building.

Fingers crossed for good weather, do come and browse the stalls and help us make this a great event for the Totley Community.

Hetty Moran. TRA, Secretary

TOTLEY RESIDENTS ASSOCIATION
PROUDLY PRESENT

SPRING FAIR/ FARMERS MARKET



TOTLEY RISE
BASLOW ROAD, S17
SUNDAY APRIL 15th
12pm to 4pm

Come and browse the wide range of stalls

To apply for a stall please email
moranjaygee@tiscali.co.uk for an application
form or telephone 07709 780 606 for
further information



Transport 17

It has been a good month with little or no

interference from the weather so let's hope that the snow and ice have been left behind and we can look forward to a productive and colourful Spring.

We are holding a coffee morning on Saturday 28th April at the Cross Scythes. It will be a golden opportunity to meet up with friends and also meet some of the people who work to provide our services. There will be a raffle and some excellent tea/coffee and cakes for you to enjoy!!

We have asked for volunteers to help with escorting our many clients as well as driving the buses. To be eligible to escort you need to be reasonably fit and have a pleasant personality. To be eligible to drive you have to have a clean driving licence and be used to driving on a regular basis. We have, unfortunately, lost several people from our team over the last 12 months. We have always striven to provide a first rate, second to none, service to all of our users so if anyone out there thinks they can be of help please contact Michael Finn or John Savournin on 2362962 between 9.00 a.m. and 12. noon, Monday to Friday or call in to 172 Baslow Road during the same time period.

Hope to see you at the coffee morning if not before.
Felicity Revill



WEDNESDAY APRIL 25TH

TOTLEY LIBRARY, 7.30PM

AGM

MEMBERS PLEASE NOTE, £5 ANNUAL SUBSCRIPTION DUE

FOLLOWED BY SLIDES AND TALK BY

JIM RIEUWARTS

LEAD SMELTING IN TOTLEY

MEMBERS £2, NON MEMBERS £3

ALL WELCOME

WE ARE LOOKING AT FUTURE SPEAKERS, CAN YOU HELP BY
RECOMMENDING ANYONE

TOTLEY LIBRARIANS

The staff at Totley Library would like to wish their friends and colleagues Elaine and Carole a happy retirement as they leave us at the end of March. They will be missed by all of us and I am sure by all the people who enjoy using the library. Happily the Poetry Evenings and Book Group begun by Carole and Elaine will continue independently and undoubtedly they will be "popping along" to join in the fun!

We have all been very fortunate to work in such a pleasant environment and to have so many lovely people. I especially feel lucky to have had the absolute pleasure of working with so many fabulous children and young people and I know for certain that the future in their hands will be very bright.

HOLMESFIELD FLOWER CLUB

NEW MEMBERS WELCOME

Are you looking for a club to learn about or practise your flower arranging skills? If so, our long-standing friendly club would be pleased to hear from you. Membership is open to all and irrespective of ability, so why not come along and meet us to find out more. We have regular workshops with tutors, practise nights and demonstrations by national and regional NAFAS demonstrators. We also run an annual event for charity, have occasional talks and a club lunch. Meetings take place on the third Wednesday of the month (except December) at the Village Hall in Holmesfield, commencing 7.30 pm. The subscription for 2012 is £20 and ticket prices for the demonstrations is £8 for visitors and £4 for members (includes refreshments). Visitors to workshops £3. For more information contact Diana Holland tel: 0114 2377601 email: mail@dianaholland.plus.com



Holmesfield Flower Club

Invites you to our
Spring demonstration of Flower Arranging

by **Jonathan Moseley**

(NAFAS National Demonstrator)

"Altered Images"

Wednesday 18th April 2012

7.30 pm at the VILLAGE HALL, Holmesfield

Vicarage Road (off Woodside Avenue)

Ample parking

Tickets available at the door: Visitors: £8; Members: £4
includes refreshments

(arrangements will be raffled at the end of the show)

ALL WELCOME

for information tel: 0114 2377601

Councillor Surgeries

Liberal Democrats:

2nd Monday in the month 6.00-7.00 p.m., Totley Library, Baslow Road and 2nd Saturday in the month from 10.30 a.m. to 12.00 noon, Dore Old School Hall, Savage Lane, Dore Contact details:

Keith Hill 235 2289 Email: keith.hill@sheffield.gov.uk,

Colin Ross 235 1948 Email: colin.ross@sheffield.gov.uk

Joe Otten 230 3290 Email: joe.otten@sheffield.gov.uk

**Totley Independent Website:-
www.totleyindependent.co.uk**

Totley Scouts

On the day of publication (31st March) we will again be hosting an Antiques Fayre at St Johns Church Hall. This is a major fund raiser for us. Not only are there antiques to peruse but also delicious home-made food to eat. There are bacon butties for the early starters, hot lunches and of course cakes. I hope to see you there.

On the 17th March the Scouts took part in the County Apprentice Challenge where Scouts from all over South Yorkshire entered. This culminated in an evening cooking challenge where each patrol had to cook a three course meal outside. The event was held at the Scout Activity Centre at Hesley Wood. I will let you know next month how well we did.

Coming up is St Georges Day. The whole Scout Group parade and join in the service at St Johns Church on 22nd April to celebrate our patron saint. St George is not only the patron saint of England (as well as many other countries) but is also the patron saint of Scouting.

I am pleased to say that our Explorer Scout unit (for 14 to 18 year old boys and girls) is expanding and will shortly have 5 members. Two of these will be qualify for the Chief Scouts Award through completing a series of challenges. The only award higher than this is the Queens Scout Award.

Sainburys and Tesco support thousands of Scout Groups around the country, including ours, through Sainburys Active Kids and Tesco for Schools and Clubs vouchers. You can pick up the vouchers free when you shop with them. If you do, please do pass the vouchers on to us. The simplest way is through our letterbox at the Scout Hut. We use the vouchers to exchange for equipment to be used by the children. Last year we had various types of balls, hockey sticks, chalk, and other play equipment.

Richard Frost, Chairman

1st Totley Scouts, TotleyChair@aol.com

Scout Lottery

1st Totley Scout Group Lottery February Draw

1st Prize No 24
Glass Bathroom
Scales
Mrs Roberts
Green Oak Road

2nd Prize No 07
£10 Voucher
Mr and Mrs Smith
Lemont Road

March Draw

First Prize No 61
Garden Voucher
Miss Kingdon
The Meadow

2nd Prize No 63
£10 Voucher
Mrs Williams
Totley Grange Road

Thank you
Pete Casson

WARNING

The Police are always advising us to ensure that outbuildings sheds & greenhouses are secure. Insurance companies are unlikely to pay out on a claim, if they are not & they will not pay out if the keys are left on the inside of a locked door!

It is particularly topical to ensure that all out buildings are locked as a vagrant has been reported living one night in a greenhouse & another night in an unlocked shed in Totley.

Roger Hart

Make a will and support St Luke's Hospice

WHERE there's a will there's a way to support St Luke's Hospice!

Eight of Sheffield's top law firms are supporting Will Month, the hospice's annual fundraising campaign.

Throughout April, the public will be able to have a basic will drawn up for them for a suggested donation of £50 for a single will, £90 for a joint will or just £40 for a straightforward amendment to an existing will.

Places are strictly limited, however, and it is advised that a booking should be made as soon as possible – and preferably before the end of March – to avoid disappointment.

Taking part in the April event are Bell & Buxton Solicitors, Best Solicitors, Coates Solicitors, Keeble Hawson, Irwin Mitchell, Rosalind Watchorn Solicitors, Simpson Sissons & Brooke and Taylor & Emmet.

"You need to make sure that your family and loved ones are provided for and if you're over 18 and have any assets it's advisable to make a will, to make sure that all you've worked for goes where you want it to," said St Luke's Head of Fundraising Kathryn Burkitt.

"Will Month is an excellent way to not only keep your affairs in order but also to make a great contribution to St Luke because making your donation through one of our participating solicitors really will help Sheffield people who have life-limiting illness to experience a better quality of life."

For further information or an informal chat call the St Luke's Will Month hotline on 0114 235 7554 10am to 4pm Monday to Friday or visit:-

www.stlukeshospice.org.uk/willmonth2012

TOTLEY GRANGE 1943



Totley Grange was used by the RAF in the 1940s to assemble wiring (in Bundles) this work was undertaken by local woman.

Apparently all the work was done in secret as it was essential war work.

The picture is of a group of woman workers together with J.G. Graves (seated) and Lady Grant who appears to be giving a speech. What was the speech about I wonder, and why was J.G Graves there?

The gentleman seated second row appears to be in uniform.

Does anyone have any more information either regarding the work being carried out, or recognise anyone in the picture.

Please contact:- Marlene Marshall, 0114 235 1005

20 MPH Areas

The Traffic Focus Group has been investigating the Government initiatives on the above, & the intentions of Sheffield City Council. As mentioned elsewhere, a public meeting was held in Totley Library, at short notice, on January 26th. The meeting was led by Peter Bull, senior Highways Engineer, who explained the background to the initiative, & Sheffield's approach to it. We were encouraged to mark on a plan of the Ward, where we thought that 20 MPH areas would be most effective. We were encouraged to create large areas, as a major part of any such scheme was the cost of approval from the government. One application for an area is the same cost as for a Street. The physical works to create an area vary depending on the number of "Entry Streets" to the area. (There are no cushions, bumps or nips.) The Cabinet Highways Committee have met, & deliberated, but their decisions have been "recalled". We understood that they favoured groups submitting suitable STREETS for designation. The South West Community Assembly have now been informed that they will be given lists of suitable streets to choose from, perhaps only one being accepted for the whole of the Assembly's area (which includes Ecclesall, Broomhill & Crookes.) What was the point in organising a public meeting, & paying three members of staff, to tell us one thing, for it to be changed, at least once, within two months? No doubt someone will give us a reason, but don't hold your breath!

(20 MPH zones are not a foregone conclusion for any area. They will be subject to wider public consultation, before any scheme is submitted.)

Roger Hart

Go Back to the Drawing Board

I have to disagree yet again with the proposals of the Ward Forum to put speeding signs up in the Totley area. Glover Road and Marstone Crescent at the junction of Baslow Road do not need speed signs at all; these speed signs will be an eyesore in the area. The speed signs should be sited elsewhere, Owlerr Bar is a prime area for a speed sign to cut down accidents, also Hillfoot Road and Totley Grange Road and Queen Victoria Road do not need speed signs either. How many speed signs do you want? A speed sign should be put on a section at Abbeydale Road South near the train station. That would reduce accidents in the Dore area.

Paul Savage

Which drawing board?

It is good to see a response to my article, particularly from a non-car driver. Unfortunately, Paul did not attend the public meeting, where we were told that the 20MPH Areas concept is a Government initiative, which Councils are obliged to respond to. The traffic focus group has investigated this, on behalf of residents in Dore, Totley, Bradway & Whirlow, & developed ideas, in conjunction with officers of the Council, & other information which we obtained, in anticipation of the Council setting their own strategy. The public meeting, on 26 January, was called by the Senior Highways Link Officer, who advised us to include as much of our area (Bradway, Dore & Totley) as possible. He envisaged that some streets would be excluded (we thought that Marstone Crescent & Totley

Grange estate would be, for example). The Council Highways Committee met two weeks ago, to approve their strategy. The press issued information which was incorrect. I enquired, on behalf of the Traffic Focus Group, about how we should pursue the issue, to be told that, instead of each community being asked to submit ideas (as we were told in the public meeting) the Council Officers would tell us which roads they wanted considering. The Community Assembly Manager would then have the task of deciding. Since then, I have learned that The Highways Committee have been requested to "call in" their decision for "further scrutiny of the evidence used".

The Traffic Focus Group's sole purpose, is to bring ideas to the Ward Forum, for residents to debate issues which affect our entire Ward. (Whirlow were kept informed, but they had none of the basic criteria for 20 MPH zones, as one cannot include an A road, & they have no schools in the area. Accident statistics are also used).

To answer some of Paul's specific comments; the areas which we submitted "for consideration" are roads which would create a large zone as requested by the Highways engineer. Such areas should include a school(s), parks & places children use. The locations of Glover Road, Mickley Lane both at the city Boundary & at the junction with Baslow Road, (not Queen Victoria Road) & Main Avenue, gave an area which includes one park, one library & one school. It also includes a road, Main Avenue, where two accidents have occurred with vehicles turning over. Siting the 20 MPH signs at the City boundary also included Cherry Tree & Cheshire Home, as well as linking with Bradway.

Owlerr Bar is not in Sheffield, but Baslow Road has recently been made a 40 MPH area, from the City Boundary, down to Lane Head Road. We included Lane Head Road, & Hillfoot Road as those two roads linked up with Dore, a school is included (see below) & to make one large area. Hillfoot Road is also the subject of a petition of 140 names, calling for speed bumps to slow vehicles down, near the school.

The 30 MPH speed limit, on Abbeydale Road South, has recently been moved further towards the City centre, to reduce the speeds of traffic, passing Dore Station. As previously stated, an "A" road cannot be restricted to 20 MPH, under this scheme.

I trust that I have answered Paul's queries to his satisfaction.

Roger Hart, Coordinator of the Traffic Focus Group & the Ward Forum.

Wheelie Bin Fire Advice

Please see advice from South Yorkshire Fire & Rescue below:

- Don't make your bin an easy target – bring in the bin.
- Put your wheelie bin out early in the morning of collection, rather than the night before
- Take your bin from the kerbside as soon as possible after collection
- Help out your neighbour – bring their bin in for them if needed
- Don't overfill your bin – make sure the lid will close
- Store your bin away from your home but within the boundary of your property

Call Crimestoppers anonymously on 0800 555 111 if you have any information about people setting fires. In the event of a fire, dial 999.

Farming Scene

Midges, Moles and Movements

You may remember that about 3 years ago there was an outbreak of "blue tongue" virus amongst the cattle and sheep in the south and east of the country. This virus was carried into this country by "globe-trotting" midges. After originating in the southern Mediterranean countries, it was carried across Europe into England. Eventually a vaccination programme plus the extremely cold winter of 2010-11 eradicated this disease from this country.

But history is repeating itself. We now have a problem with another virus that has travelled the same route by the same type of carrier, a midge, into the shores of this country. This new livestock health hazard called Schmallenberg virus was first identified in Germany when farmers started to have extraordinary deformities in their new-born lambs and calves. It has now spread across the channel and nobody really knows how far up the country it has reached. The latest news that I have puts flocks in Lincolnshire, Leicester and the Midlands in the infected area. It may well have reached South Yorkshire last autumn and infected our ewes just after tupping time. This is the critical period that causes most damage to the newly created embryos in cattle and sheep. Unlike most animal diseases you cannot stop it spreading and you don't know if you have been infected until months after the midges have transmitted the virus to your livestock. Given the warm late autumn last year, the very mild winter and the current exceptionally warm weather, the midge vectors have had a favourable run for the last 6 months. The good news is that the ewes themselves are hardly affected and soon recover. The other good news is that this virus does not infect humans and does not affect the safety of meat products.

The warm weather has got the moles digging away, creating new molehills in our grassland fields. With the grass not growing much at the moment it is very easy to see where they are working. We seem to have an increased number this year so we have decided it is time to have a mole cull. We are doing this to prevent further damage to our grassland and to prevent these molehills becoming picked up in our round bale silage. This causes both spoilage of the bale and listeria infections - in sheep particularly. We have lost 4 ewes to this disease this spring. We are putting Phostoxin tablets in their runs. When they become damp they give off deadly Phospine gas that kills the moles almost immediately but quickly breaks down in the soil and becomes harmless causing no harm to livestock, dogs or walkers.

Our Dorset ewes and lambs are now back out in the fields enjoying the spring grass. They were when I wrote this anyway!! By the time you read this they could be wading through a foot of snow!! Now they are out we have cleaned out and disinfected our sheep sheds ready for the Texel ewes to come in for lambing. We are due to start on 26 March and should be done by the end of April. By then we will know if the Schmallenberg carrying midges paid us a visit last November. Hopefully, we had some cold weather just at the right time!

Edwin Pocock

Toy and Clothes Sale

We are organising our annual Toy and Clothes Sale in aid of Totley All Saints School at Totley All Saints Church Hall on Saturday, 26 May 12 noon till 1.30pm. Sellers numbers can be acquired by ringing Sally on 235 1651

Friends of Green Oak Park

The coming of spring has meant a very busy time for the Friends. We are always in the park on Tuesday mornings, but for the last couple of weeks this has extended to nearly every day.

Pugh-Lewis, the firm who have been carrying out the drainage have left the site for the moment, but will return when the ground has dried out to repair the damage caused by working in muddy conditions and to sow grass seed.

It has been necessary to fell two trees whose roots were damaged, making them unstable. One of them will be made into a rustic seat. The two stumps left when trees were felled some time ago will be carved into animal shapes.

A big thank you to all the people who have kindly donated snowdrops to us, they are being planted in various places round the park.

Cut backs mean the Parks and Countryside team who work alongside us in the park are now responsible for maintaining the grounds around social housing with no extra staff. In order to keep up standards in the park, the Friends have agreed to help with maintaining the flower beds, picking up litter and even watering the bowling green if the weather is dry.

We need more residents to give us a hand, if our park is to be kept up to scratch. You don't need to be an expert, just come for a coffee and a chat on a Tuesday morning and see what we do.

The crocuses and daffodils we planted over the last few years are looking lovely. We get many comments from park users saying how good the park is looking. Recently we were asked if we will be having an Open Day, well yes on Sunday 13th May from 1.30-4.30pm. Just drop in, see what we have achieved so far and hear what is planned for the future.

There will be a Book Swap, a Plant Swap, Treasure Hunt, Competitions and of course Refreshments. The Police will be putting on a display and Park Rangers will be there with crafts. You will be able to see how the new ponds will improve the park once they have been allowed to settle and plants have grown. Bird boxes have been put up round the park with the help of Park Rangers. We have great hopes the house sparrow box will be used. It has been visited by a blue-tit, but is usually surrounded by a flock of chattering house sparrows. The box has three compartments as house sparrows enjoy nesting communally. The latest bird table has been made by a regular park user. It has been constructed entirely from recycled wood.

The Annual Flower Meadow is due to be planted at the beginning of April. The seed will germinate in a short time and should give us a wonderful display until early autumn. The overall effect will be of changing colours from blues through to yellows and oranges. I am thinking of sowing some in my own garden if I have time! Anyone who is interested can buy them from Pictorial Meadows on line. They are also on sale in the shop in the Botanical Gardens.

Avril Critchley,
Chair FoGOP

TOTLEY SPORTS AND SOCIAL CLUB INVITES YOU TO OUR

FREE FAMILY FUN DAY!

To celebrate the opening of the new
TOTLEY SPORTS PAVILION
SATURDAY 14TH APRIL

1-5PM AND 6-11PM

SURPRISE CELEBRITY OPENING CEREMONY

For more information contact Malcolm Barnsley
Tel: 0114 2880093 Email: mjbarnsley@yahoo.co.uk

HOG ROAST

100pm OPENING
130pm CELEBRITY RIBBON CUTTING
145pm FAMILY SPORTING ACTIVITIES
including egg & spoon / 3-legged race etc

RAFFLE

230pm KIDS FELL RACE
300pm ADULT NOVICE FELL RACE
345pm TUG OF WAR*

ALL WELCOME!
ALL PROCEEDS TO TSSC

Teams of 8
Mens, women's and mixed
*Rules to be explained on day

ALL DAY BAR

KWICK CRICKET

ALL DAY BBQ

600-11pm EVENING FUN WITH LIVE MUSIC!

195 Hairlines
Coop
Gifts & Flowers
Maxims confectionary
Totley Shoe Repairs

Abbey Friar II
Coop pharmacy
Ironing Parlour
Mokul restaurant
Scrivens greengrocers

Accelerate
Cricket Inn
The Luxury Gap
Totley Tails & Whiskers
Shepley Spittite

ARS Ltd
The Cross Scythes
SSS Hire Service Ltd
Totley Rise News

Deli & Coffee shop
The Crown
Master Chef deli
Totley Rise Post Office

SPONSORED BY

TOTLEY OPEN GARDENS

JULY 10th and 11th - a date for your diary

Around Totley there are now a group of people getting their gardens ready to open for Totley Open Gardens on the weekend of July 7th and 8th from 1-5pm.

If you have missed going round the gardens in previous years, put the dates in your diary. From about three weeks beforehand, programmes will be on sale in Totley Library. Over the weekend of 7th and 8th, programmes can be bought outside the Ironing Parlour on Baslow Road, or at any of the gates of the gardens that are open.



There will again be a variety of gardens, from the quirky to the formal and the small to the large. There is one new garden this year.

Queries to: Jennie Street 236-2302
jennie@hadish.f9.co.uk

TOADS PRESENT

"MURDER WEEKEND"

WRITTEN
BY
BETTINE MANKTELOW

"Murder Weekend" is a comedy thriller and is the next play to be performed by TOADS. The dates are from Wednesday 16th May to Saturday 19th May and the venue is, as usual, St John's Hall, Abbeydale Road South, at 7.30pm.

The play centres around a group of people who attend a Murder Mystery weekend in a hotel. Trouble abounds when it transpires that 2 of the guests know each other - very well indeed! An uninvited guest appears, giving us a recipe for a good thriller, with humour aplenty.

Call 2351206 to reserve your ticket - £4 or £3.50 for concessions - or contact any TOADS member.

DOG MESS

I am not a Totleyite but my family lived here 70 years ago. I am a walker with the Totley Library Group and enjoy the countryside here but dog poo in bags, thrown on the side of pathways is such a sight, you have done the worst bit, picked it up, come on take it to a dog waste bin. There are plenty about or please take it home with your pet.

Thank you
A Wednesday Health Walker

The TRA have also received complaints about dog poo on the pathway between Butts Hill and The Grove. This is a popular route for school children and parents walking their children to the primary schools. Please, please, please clean up after your dogs and dispose of responsibly.

Wildflower Planting

Sheffield City Council has received accolades for the wildflower planting of the central reservation, on the inner ring road, from the Parkway to Penistone Road. They are impressive in summer. Sarah Raven has highlighted wildflower planting recently on a TV programme.

I have made some enquiries about such planting generally & in particular, for "our" central reservation. The Boston Seed Company was very helpful, offering numerous mixes of different seeds depending on soil types & locations. However, they recommended treating the site with a total weed killer before any seeding, but ideally to excavate to a depth of 450mm, 18 inches & replace with nutritious soil as previous grasses & weeds would have absorbed any existing nutrition & prevent root growth by the new seedlings. StreetForce were also very helpful. Again, they recommended removing 450 mm of soil, replace with nutritious soil & then apply the seed. However, such work would depend on the presence & depth of any services beneath the central reservation & the necessity to close off both an up lane & down lane of the dual carriageway until the work was completed. Such costs are, in the current climate, prohibitive.

Interestingly, I travelled along part of the inner ring road last week. The central reservation was covered in dead plants intermingled with thriving dandelions. It will be interesting to see how much recovery takes place in the next few weeks.

Optimistically, I am sure that there are areas within our existing three parks, where wildflower planting could take place but significant effort will be needed. Perhaps local Rotary Clubs or Scouts may be interested.

Roger Hart

ARTIST RETURNS TO HER ROOTS

After eighteen years living on Anglesey in North Wales, Christine Rodger has recently returned to her Sheffield roots, setting up home and studio in Dore where generations of her family lived and worked.

Christine graduated from the Sheffield Art College in 1962, and after a spell in London settled in Sheffield to teach and raise her family. In this time she continued to paint: exhibiting and selling work influenced predominantly by the local landscape.

In 1992, with family no longer at home, Christine and husband Ian moved base to Anglesey. From there they spent many years sailing the west coasts of Britain in their 25' yacht 'Blanche'. The coastal sailing provided new and exciting opportunities for exploration and painting the rocky islands and lochs of the Inner Hebrides. On deck she worked quickly, sketching with fine pen or watercolour in notebooks rather than with a camera, capturing the movement and rhythm of moving subjects on land and water, and then developing themes further back on dry land in oils and acrylics. Trips to Morocco, Norwegian coast, Alaska and Japan provided further opportunities for exploration and influence.



Home on the border of South Yorkshire and Derbyshire once again, Christine is re-engaging with the familiar gritstone edges of her earlier work. She is also enjoying the company of Dore based Time Travellers to introduce new themes of archaeology and fluidity of time.

Christine will be opening her studio as a part of **Open Up Sheffield** on the weekend of **5th, 6th and 7th of May**, from 11-5 pm, where there will be a wide variety of work and cards to browse. Directions can also be seen in the new 'O U Sh' booklet to be published soon. A small selection of her work and further details can be seen on her website www.christinerodger.co.uk

PUZZLE CORNER

A Prime Square

Some time ago a puzzle in The Times newspaper asked readers to form A magic 3x3 square in which the central box of the bottom row contains the number 1. The other eight boxes hold prime numbers. This is quite difficult. I can make the puzzle easier by telling you the central box of the top row holds the number 73, the highest in the solution .

	73	
	1	

DORE ART GROUP

ART EXHIBITION Dore Old School

Friday 20th April 2012
2.0pm to 6.0pm

&

Saturday 21st April 2012
9.30am to 5.0pm

Refreshments available
Free admission



LEONARD CHESHIRE DISABILITY

MICKLEY HALL

SPRING FAIR

WEDNESDAY APRIL 4TH

10AM - 12 NOON

CAKES, PRESERVES, BOOKS

RAFFLE, REFRESHMENTS ETC.

God can help you

- In coping with worry, illness,
depression or spiritual
problems.

Christians believe that God, through Jesus Christ, comforts, heals and brings peace of mind, in response to prayer.

Members from All Saints and Totley Rise Methodist churches are currently offering to pray in confidence for anyone who would like to come to:

TOTLEY LIBRARY BUILDING
ON SATURDAYS on:
7th and 21st APRIL 2012

12.30 and 1.45 pm

For information ring Brian on 07877303709

THE SID SAGA

(Speed Indicator Devices)

First, I would like to apologise for the erratic performance of our "Grumpy/Smiley" sign on Baslow Road. Drivers and local residents will have noted recently that the device is now solar-powered and re-installed in its original location. (We learned, belatedly, that the previous had been battery powered and had required frequent maintenance). I have requested that this one remain active on Baslow Road for at least 2 more months.



General opinion seems to be that drivers respond sensibly to the device and that it does induce better traffic manners. It is also valuable to highways engineers since it can record traffic flows.

In due course it will be rotated every 2/3 months or so through "hotspot" locations in the ward. At this time they are: Mickley Lane, Abbeydale Road South, Twentywell Lane and Rushley Road as well as Baslow Road.

Happy (and safer) motoring!
Keith Hill (Local Ward Cllr.)

Free Beekeeping Courses

One hundred training places for prospective beekeepers are available free of charge through Groundwork Sheffield's Bee Buddies project, which is running for a second year thanks to funding.

The project is funding the creation of community apiaries in seven sites across the city; housing a total of 35 new honeybee colonies, amounting to 525,000 bees. Each site will nominate two Bee Stewards who will work closely with the project's Head Beekeeper to learn how to maintain their hives over a 12 month period. Ownership of the hives and all provided beekeeping equipment will be transferred to the sites when the project finishes.

Staff at the host sites will be encouraged to integrate the bee hives into their existing activities, and will learn about the various educational activities that can be delivered using the bees as inspiration. Supporting educational resources and interpretation boards will be provided to all host sites.

Educational sessions will also be delivered to children as part of the project, helping youngsters to understand the important roles that bees fulfil in food production and local biodiversity.

Two-hour beekeeping taster sessions will run on:

- Thursday 26th April – 10.30am-12.30pm & 2-4pm – Wood Lane Countryside Centre
- Friday 27th April – 10.30am-12.30pm & 2-4pm – Centre in the Park, Norfolk Park
- Friday 4th May – 10.30am-12.30pm – Botanical Gardens

Three-day beekeeping courses will run on:

- Tuesday 1st, 2nd & 3rd May – 10am-4pm – Botanical Gardens
- Monday 7th, 8th & 9th May – 10am-4pm – Wood Lane Countryside Centre
- Monday 14th, 15th & 16th May – 10am-4pm – Centre in the Park, Norfolk Park
- Monday 28th, 29th & 30th May – 10am-4pm – Wood Lane Countryside Centre

Introductory and intensive courses are open to all over the age of eighteen, with priority given to people living in target wards, in line with funding requirements. All courses are free of charge, but attendees must bring their own food and drink as lunch and refreshments will not be provided.

Mark and Sally Fletcher invite you to

The Grouse Inn

Longshaw

Sheffield S11 7TZ

Meal times:-

Mondays 12.00 to 2.30pm

Tuesdays to Friday's 12.00 to 2.30pm and

6-30pm to 9-30 pm

Saturdays 12.00 to 3.00pm and

6.30pm. to 9.00pm (drinks – open all day)

Sundays 12.00 to 9.00pm

Phone 01433 630 423

R Rose & Co

Chartered Accountants & Business Advisors

Specialists at looking after the affairs of small businesses.

For a **FREE** initial consultation please contact Roger Rose FCA on **0114 281 2331**

From business start-ups and general accounting, to support and service in business development and strategy, we offer a range of services in our personal one-to-one service. To find out more please call 0114 281 2331.

621 Chesterfield Road, Woodseats, Sheffield S8 0RX
Email: info@r-rose.co.uk www.r-rose.co.uk

*One man went to mow...
...but his mower wouldn't go!*

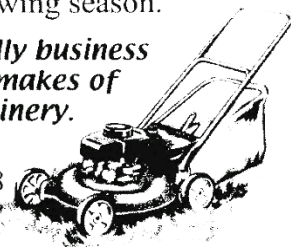
Now is the time to call

MOWER MENDER

and be ready for the forthcoming growing season.

A local friendly business servicing all makes of garden machinery.

Phone:
0114 236 6958
Mobile:
0781 2211149

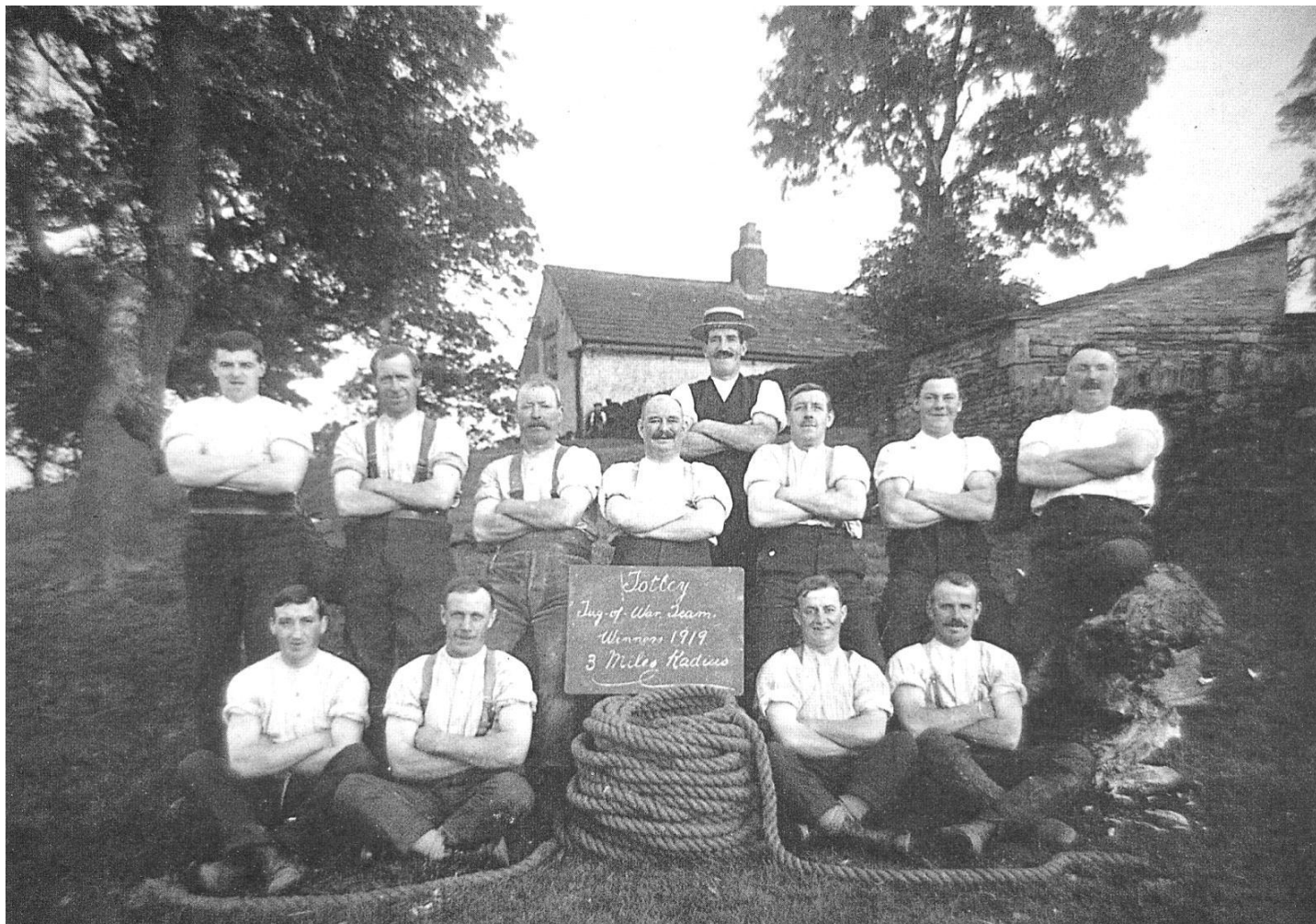


**Blade Sharpening and
Collections & Delivery Service Available**

MEMOIRS OF DAN REYNOLDS (Part III) By Himself

Continued from issue 349, December/January 2012 Around this time we boasted a very good tug-of-war team and were unbeaten in a radius of three miles, and when I say there was some very strong competition from very strong men, I mean just that. The one determined factor for our team was the Coach, Constable Bagshawe, who trained them twice a week in the field at the back of Cannon Hill Farm, (see photographs of them in training and when relaxed).

The ages of the men would be early forties and what a fine body of men they were. As I remember they once took on a team picked from the army troops at the rifle range and each were rewarded with a cut-throat razor which were inscribed to mark the event. Unfortunately all seem to have been lost. The rope, as used when training was loaned by Tennants Brewery.



The Totley Tug O'War team in 1919, posing with knuckles pushing out the biceps, after winning the trophy against villages in a three mile radius. From left to right standing: Joe Marshal (worked for Totley brickworks digging for ganister on Fisher's Moor off Strawberry Lee Lane), Israel Salt (in charge of the mine), Tommy Duddy (worked for George Creswick senior at Cannon Hall Farm), Tom Wright (landlord of the Grouse Inn at Totley Bents), Billy Gascoigne (traction engine driver for the brickyard), Straightback Bagshawe (trainer and village bobby), Joe Hillman (a 'comer' who replaced Frank Taylor because he was living in Holmesfield at the time and was thus not eligible) and Tom Reynolds (father Dan). Front row from left: Jack Wortley, Oscar Creswick, Duncan or 'Hunkie' Coates (7th son of a 7th son, worked down ganister mine), George Pearson (market gardener at St. George's Farm).

There was quite a lot of interest in affairs in most villages, but I can only speak for Totley. There was a garden produce show and sports event every year. Prizes were donated by local business men; many first prizes were solid silver. The produce show was for allotment holders only, but one person who shall be nameless was allowed to exhibit his produce, even though he was not a holder, but I admit that he had a garden near his home. His garden was very private so no-one was able to pry or do any scouting. Whereas on the allotments competition was keen and you had to be sure about your chances. Anyhow, to cut the story short, this person won many first and special prizes, and it was assumed he had cheated, so as the saying goes – "If you can't beat 'em then join 'em", which is exactly what my dad did. Come the next

show my dad's exhibits romped away with the first and special prizes. I became involved in this through my interest in our allotment. The Wednesday before the show on Saturday was choir practice at Dore Church, where I was a choir boy. I was told to call at the house of Dick Wragg who lived in Drury Lane, Dore, and say "Mr Reynolds, my dad has asked me to call", whereby he gave me a cardboard box and said "Mind tha dun't knock 'em abaht and tell thi dad to let me 'ave 'em back when tha comes to church on Sunday". I did as was instructed, delivered the parcel to my dad then returned the package on Sunday. Dick Wragg said "Good lad, I'm tekkin' these t'Daily Mail show next week". It turned out that the package contained six potatoes called 'Arrun Banner' which were first class.

To be continued



WE HAVE ARRANGED TWO WALKS IN ECCLESALL WOODS
WITH JOHN GILPIN TO EXPLORE THE HISTORY OF THE WOODS

THE DATES ARE TUESDAY MAY 15TH 2PM
AND WEDNESDAY MAY 16TH 6.45PM

PLACES ARE RESTRICTED TO 20 PERSONS PER WALK
SO BOOKING IS ESSENTIAL

PLEASE CONTACT PAULINE BURNET 0114 2352344

Hartingtons

Hartingtons School of Food, the brain child of Totley based couple Chris Horne & Julie Ryalls, will be attending Totley Residents Association's Totley Rise Farmers Market on 15th April.

Chris Horne speaking about the event says: "We were really delighted to be asked by the Residents Association to come along to the first ever Farmers Market in Totley. Although our School of Food is in Bakewell we have been amazed by the number of people from both Dore and Totley who have attended our Baslow Food Fairs and have then subsequently done cookery courses in Bakewell. We are really looking forward to meeting Totley residents and explaining what an exciting schedule we have planned for this year."

To find out more about Baslow Food Fairs and Hartingtons School of Food: www.hartingtons.com

THE INNER WHEEL CLUB OF DRONFIELD

proudly presents

A HUMOROUS TALK BY SALLY MOSLEY
(A JOURNALIST WITH THE PEAK ADVERTISER)

entitled

"THE HIGHS AND LOWS OF A GUIDED WALKING
BUSINESS"

THE TALK WILL BE PRECEDED BY A

PEA AND PIE SUPPER

DATE FRIDAY: 27TH APRIL AT 6.30

VENUE: HOLMESFIELD CHURCH HALL

TICKETS ARE: £10 AND ARE AVAILABLE FROM

MRS JANE GREETHAM: TEL 01246 412767

PROCEEDS WILL GO TO THE :

BALIKYEWUNYA ORPHANAGE IN UGANDA

EASTER IN THE GARDEN

AT TOTLEY RISE METHODIST CHURCH

Many of you may have made an Easter Garden in past years, and may even be planning to make one this year with young family members. This Easter at Totley Rise Methodist we are making a large version in the garden by the church.

There will be a cross, an empty tomb, a labyrinth path, space to ponder, pray and be still in lovely surroundings. The garden will be open over the Easter weekend from after the morning service on Good Friday until Easter Tuesday, 10th April, from 10am until dusk. Children will need to be accompanied, and there will be things to ponder on for adults and children alike. Visit the garden and reflect about the real meaning of Easter.

Our Easter Services are open to all and everyone will be made most welcome.

On **Good Friday** our joint service with Totley All Saints begins with a procession from the Coop at 10am with the service at 10-30 taking place partly in the Easter Garden.

On **Easter Sunday** morning there will be a dawn Breaking of the Bread at 6-15am, in the garden, and Easter Day Praise at 10-30 am in the church.

On **Easter Tuesday** (10th), there will be Messy Church from 10-30 to 12-30 for children with parents or carers, based around Easter, including an Egg Hunt around the garden. Please contact Rachel (racheltrm@yahoo.com) if you'd like to come, no charge.

A COFFEE MORNING

AT

The
"CROSS SCYTHES"
Baslow Road, Totley
Saturday,
April 28th. 2012

From 9.30 – 11.30 am

In aid of TRANSPORT 17

A SPLENDID RAFFLE

Proceeds from refreshments and raffle will
go towards upkeep of the minibuses

PUZZLE CORNER

Solution to A Prime Square

31	73	7
13	37	61
67	1	43

Don Ashford

GARDENING TIPS FOR APRIL

The frogs have filled the pond with frog spawn; they have killed 3 fish in their frenzy and have nearly all disappeared (mid-March) I wonder where they all go we don't see many about in the garden, I hope they are around at night gobbling up slugs and snails, I suppose they go a wooing as the old poem goes, though I would have they would have had enough of that sort of thing during the last couple of weeks.

The bedding plants we have ordered are starting to arrive, we are busy potting them on, they look nice and healthy, and we will know in a week or so whether they have survived the postal trauma, the seeds I planted a little while ago have popped their little heads up I think the lovely sunshine helped them to shoot up, this means a bit more work for us pricking them out and them on ready for transplanting into tubs and hanging baskets later on.

The veg. seeds also are coming up nicely we will be planting them out starting this month, a little at a time so that we get a succession throughout the season.

The garlic is well on its way, I have tried a couple of new strains this year, it is a good thing to introduce new items into the garden instead of propagating the same strains year after year, and it avoids virus build up and makes a change preventing us gardeners from getting bored with the same old things.

I hope your greenhouses and cold frames are nice and clean and tidy ready for the influx of plants that will need a bit of TLC during the next month or so.

I was on Radio Sheffield gardeners' question time with Rony Robinson and Neil Grant; I asked whether I could stop my tree Acer Autumn Blaze from growing so vigorously by ring barking (cutting a ring of bark about an inch wide part of the way round the trunk). I have used this method to encourage fruit trees to produce more flowers, and therefore more fruit, but I have heard of anyone slowing down growth by this method. Neil said he hadn't heard it being used, he thought it would be a bit risky, I don't think I will chance it, my friends and I have given it a good prune, a sort of mini pollarding in the hope that it will not produce such vigorous growth, if that doesn't cure it then it will have to have the chop like Jack and his beanstalk, I just hope there will be no ogres dropping down.

April is a lovely month, giving us fresh hope of things to come after the winter season with lots of colour and we hope lots of exciting new plants shooting up to give us rewards for the work we lavish on our gardens.

I hope we have a few nice days when we can relax a bit and sit back with a snack and a nice cup of tea, and look round at Mother Nature's efforts helped by us of course...

Enjoy your gardening.....

FLOWERS Given the right weather, seedlings and young plants can be planted out. some will need a little support use dead twigs or split cane, choose a showery day as the sun can be a bit traumatic for them at first, all your borders should be weed free and large clumps divided. Don't be in a rush to plant dahlias they are a bit vulnerable to late frosts. Iris unguicularis can be planted now. Plant butterfly gladioli for cutting; put a bit of sand under each corm if your soil is a bit heavy. Weed and replant when necessary in the rockery, the garden centres will be offering small plants in containers try not to disturb the roots when planting out, there's lots to choose from. Try to mix the colours a bit to give a bit of a change, fork in a sprinkling of bone meal. Prepare your window boxes, tubs and containers with rich compost for planting. Towards the end of the month sow the last of the annuals thinning them to 2 or 3 inches apart, those with long tap roots like poppies rarely transplant happily. Biennials should be sown, include Sweet Williams and wallflowers, the fiery red wallflowers are magnificent, but try some of the primrose, rose, lavender and purple varieties for a change. Make sure the taller border plants have all the support they need, a bit of a gusty wind can devastate your delphiniums, lupines etc. All garden flowering chrysanthemums should be planted out during a mild spell. Keep the rows at least 2ft apart so that you can work comfortably amongst the plants. Remove dead head from daffodils and narcissi but be patient and allow foliage to die back naturally. Pick off pansy and viola deadheads otherwise the plants will stop flowering and concentrate on producing seeds, watch out for greenfly. Water lilies can be planted from late April to June. Warning don't let them dry out whilst waiting to be planted, they do not need a great depth of water 18" suits them well.

VEGETABLES Thin any vegetable seedlings that are in danger of growing leggy due to overcrowding. Prepare celery trenches for further sowings. Catch crops of radishes and lettuce can be sown between

slower growing vegetable rows and in odd corners. Onions not destined for the "Totley Show", in September, can be grown in the less cultivated part of the garden. Sets can be planted out now, protect them with a cloche or newspaper if frost is forecast. Potatoes, apply a complete fertilizer mixture of 3 lbs. of superphosphate, 1½ lbs. of sulphate of potash and 1½ lbs. of sulphate of ammonia at 2- 3 ozs to the yard run of drills at planting time or dig in well-rotted manure or compost. Keep the potato growing tips lightly covered with soil if frost threatens or cover them with straw. Spring cabbage will benefit by an application of nitro chalk, 2ozs per yard run, apply in showery weather keep it clear of foliage. Brussels sprouts should be planted out in a rich loam that has been well fed from a previous crop, keep them well watered. Another sowing of French beans can be made for a continuity crop. Leeks need a rich deep soil if you are interested in having those fine specimens for the show. Make the first sowing of runner beans in deep boxes or pots under glass. Sow winter cabbage, savoys, broccoli, cauliflowers and a pinch of beetroot and lightly cover with finely sieved soil. Sow marrows in pots in the greenhouse. Ridge cucumbers can be raised in cold frames, cover with sacks or insulate if frost is forecast overnight, don't forget to remove it during the day. Sow carrots thinly to avoid having to thin them as this encourages carrot fly. A tent of fleece is an effective deterrent or a dressing of soot if you can find any.

TREES SHRUBS and FRUIT Spray blackcurrants if big bud is seen, break off and burn any affected buds. Spray gooseberries against mildew. Keep an eye on newly planted fruit stock - make sure they do not dry out. Spray or dust raspberries against the dreaded raspberry beetle. Spray apples with a fungicide if your trees have suffered from scab in previous years, whatever you spray avoid the period when the blossoms are in full flower we do not want to knobble Ian's bees even if they do come from New Zealand. Keep raspberry canes well mulched as their roots are

fairly close to the surface, be careful when hoeing round them for the same reason. Prime back any rose shoots that have not developed any buds, rub out any inward growing or unwanted buds. If you use lawn mowings as mulch do not put more than an inch or so because they can create heat which will not do the plants much good. Make sure newly planted trees, shrubs and fruit are firmed in well and are kept free of weeds. Evergreen planting should be completed this month. Give roses a treat, a dressing of Rose fertilizer based on Tonk's formula will do them a world of good, you can buy it ready mixed if you care to mix it yourself the formula is: -

10 parts nitrate of potash, 2 parts superphosphate of lime 8 parts sulphate of ammonia, 1 part sulphate of iron, 2 parts sulphate of magnesium. Wear protection when mixing.

Forsythia, winter jasmine, flowering currant and other winter flowering shrubs can be cut back to within a few buds of the old growth, once the flowers have finished. Prune late flowering clematis, hybrid tea and floribunda roses.

GREENHOUSE and INDOOR PLANTS Re-pot Indoor Azaleas and camellias as soon as they have finished flowering. Take cuttings of winter flowering begonias, rest freesias lachenal, as arum lilies and cyclamen. Place them on a shelf near the glass and gradually reduce the water supply. Take cuttings of greenhouse plants, fuchsia, geraniums etc., you can increase your stock quite easily for fuchsia take a non-flowering shoot about 2 or 3 inches long, dip it in a bit of rooting powder and put it in a 3 inch pot with a label on and water well. Allow to drain surplus water then put it in a clear plastic bag and pop it in the propagator at about 60-65F, 3 or 4 weeks should see it well rooted. Geraniums are easy place non flowering shoots in a tray filled with damp, sandy compost or vermiculite dip in rooting powder, pop them in the tray about 3" apart and hey presto, more plants! If you have too many save them for the plants and cuttings stall at your local church or school. Keep an eye on the weather and shade young plants and seedlings from strong sun, ventilate well (don't use side vents yet young plants don't like draughts) close up in late afternoon. Offsets from many houseplants can be detached and potted up if they have a heel or rootlet so much the better. When watering in the greenhouse it is best done in the morning. Plants not in flower will enjoy a spray with tepid water (except hairy varieties). Sow winter flowering primulas if you want a few plants to cheer you up in the winter and early spring.

LAWNS A regular mowing schedule should be established at this time, a good rake and spike if you haven't done it already. Also alter spiking a top dressing of a good lawn fertilizer will work wonders, water it in if rain is not imminent. April is a good time to sow a new lawn; a good firm bed is important spread seed as evenly as possible, water well, keep birds off do not let it dry out. Keep the blades on your mower high, do not cut lower than 1 inch Here's another formula for a good spring lawn fertilizer: 3 parts sulphate of ammonia, 3 parts dried blood, 4 parts super phosphate, 4 parts bonemeal, 1 part sulphate of potash.

We are all hoping to have a better summer this year so keep an eye on those special plants you have got earmarked for the Totley Show. Let's make it even better than the excellent Show we had last year. Cheerio for now. TOM



Tony and Julie at

The Crown Inn

Welcome you for

Good Quality, Home Cooked Food

Tuesday – Friday

12-2pm & 5.30-8pm

Saturday & Sunday

12-2pm

Come & join us for

Good Beer, Good Food & Good Music

Tel 0114 236 0789

CLOSED SUNDAY EVENING

Visit our website: www.crowninntotley.co.uk

LIVE MUSIC

10th April
HIGHWAY CHILD

24th April
ARROWS BETWEEN
8th May
DALE STORR

THE INNER WHEEL CLUB OF DRONFIELD
PROUDLY PRESENTS:

A GUIDED WALK AROUND SOME OF THE
HISTORIC HALLS OF HOLMESFIELD

On Wed. 18th APRIL. at 9.30 a.m.

Robin Greetham will lead a walk starting at

HOLMESFIELD VILLAGE HALL car park.

We will first go to HOLMESFIELD HALL then
WOODTHORPE HALL then FANSHAW GATE HALL
where Mr and Mrs Ramsden will kindly provide coffee
and biscuits.

We will then proceed to 2 more halls
.Lunch [optional] will be at the RUTLAND ARMS.

The cost of the walk is £3 and the proceeds will go to
THE BALIKYEWUNYA ORPHANAGE IN UGANDA.
If you would like to come come just turn up on the day.

Any queries phone JANE on
01246 412767

FRIENDS OF GILLFIELD WOOD

www.friendsofgillfieldwood.com

TUESDAY 3rd APRIL 2012...AN ILLUSTRATED TALK entitled "Walk on the Wildside" by Mike Richardson.

This meeting will be held in Totley Library and will start at 7pm. Booking in advance is not required. You do not have to be a member of the group to attend and you will be made very welcome.

Mike has been photographing his local wood and its wildlife for over ten years so it should be a fascinating talk with quality photos not to be missed. We do hope you will come along and join us for another special evening. In addition to Mike's talk you will have the opportunity to find out about the group's own plans and activities for this year in respect of Gillfield Wood and the surrounding area, and a short AGM will take place during the evening.

The **INDOOR MEETING** in May will be on **Tuesday May 1st**. Again it will be held in Totley Library and will start at 7pm. This meeting is one of our open meetings when the committee and members get together to discuss a wide range of topics relating to Gillfield Wood and the work we are undertaking. A member of the City Council's Ranger Service sometimes attends to provide updates relating to our wood and answer questions any of us may wish to raise.

SPRING WALK IN THE WOOD on SATURDAY 28th APRIL

A guided walk will take place on April 28th. We will meet at 10am by the entrance to the Scout Hut off Aldam Road, so make a note in your diary and we look forward to seeing you there on the day. Please wear suitable footwear especially if it is wet and muddy.

The walk will be led by our very own Sally Goldsmith and Dave Gash plus other members of the group. As we wind our way through the wood, information relating to the history and flora and fauna of the area will be shared with all. This slow paced walk is open to anyone who wishes to turn up and join us on the day. The bluebells should be out and the birds, including the summer visitors, will hopefully be singing, and if it is a sunny morning we may even see one or two butterfly, so all being well we should have a very enjoyable three hours in the field.

DR IAN D ROTHERHAM evening walk on Thursday May 17th

Dr Ian Rotherham of Hallam University has kindly agreed to lead a walk through Gillfield wood on the evening of May 17th starting from the Scout Hut at 6.30pm. This is a great opportunity to join Dr Rotherham, a writer and broadcaster, to look at and learn about the heritage, archaeology and ecology of our local wood.

His walk is just a small part of the programme that we have put together for the.....

BIO-BLITZ EVENT on 17th to 19th MAY - A COMMUNITY EVENT

This should be great fun and we do hope families and individuals will come and take part because we want this to be a real community event. All the walks, except the one relating to Hoverflies, will start from the Scout Hut off Aldam Road and the searches for flora and fauna will be in the wood and adjoining fields so you can come and go as you please.

"What's a Bio-Blitz event?" I hear you say.....well; this forty eight hour action packed event will be held from 3pm on Thursday May 17th to 3pm on Saturday May 19th. It is part of the main Sheffield Bio-Blitz and we, Friends of Gillfield Wood, will be trying to find and identify as many species of flora and fauna as possible within our own area.

So please do come along and help us find birds, butterflies, bugs, bats etc. We will try to cover as much of the area and its natural history as possible. Make a note of the dates in your diary and let your friends and neighbours know as well.

Members of the group will be leading a walk to find and record the flowers of the wood on the Thursday afternoon from 3pm, whilst at the same time other

members of the group are leading a search for the birds of the wood.

Derek Whiteley, a specialist on Hoverflies, will be joining us on the Friday morning at 10am. **Please note this is the only walk that will start at the west end of the wood by the new bus terminus on Baslow Road.** Derek will help us find, identify and record as many of these fabulous insects as we can. Stuart Crofts, another specialist will then be searching the brook for aquatic life in the afternoon.

In addition Dave Gash will be leading a search for bats at 8.30pm on that Friday evening, using a bat detector to pick up the sounds of these flying mammals as they hunt for food. We also hope to trap, identify and release a few moths during the whole event.

And if you are really keen and interested in birds why not join us at 4am on the Saturday morning to experience the dawn chorus and to see if we can hear a few extra species that we have not picked up on our Thursday afternoon walk.

BUG HUNT plus Teas, Cakes, Plants, Displays at the Scout Hut on May 19th

Following the success of last year's Bug Hunt when individuals and families searched the area for invertebrates, we have organised a similar event for Saturday 19th May as part of our Bio-Blitz. This hunt starts at 10am on the Saturday morning, finishes at 2pm but you can come along and join in whenever it is convenient for you. Here you have the opportunity to go out with one of the trays that are supplied and capture any mini creatures you can find, and then bring them back to the marquee for identification. Children and adults got as much pleasure looking through the microscopes at specimens and studying other people's collections in the trays and pots as they did finding the bugs themselves. Experts will be on hand to give advice and information so it should be another special day for everyone.

On the same morning we are also joining forces with the scouts who have very kindly agreed to open up the Scout Hut. Together we will be selling teas and cakes for all to enjoy. A few plants and some freshly cut canes from our coppiced woodland hazel will also be on sale for use in allotments or gardens. And we will have a photographic display of our work for all to see as well. We do hope you will come along and support this event and your local scout group.

CONTACTS

Either Dave Gash 0114 262 0564 (or daveygash@hotmail.com) or Sally Goldsmith 0779 063 7016 (or goodsally@googlemail.com) will be more than pleased to chat with you and provide more detail. If you contact Sally she will put you on our

mailing list if you wish, so you are kept up to date with all that is happening. And why not try.....

OUR OWN WEBSITE

A new "Friends of Gillfield Wood" website has been created and is now accessible for all to explore via www.friendsofgillfieldwood.com.

The site is well worth visiting and you now have the opportunity to post messages to the group. You can also submit to the group your own photos of birds, flowers, mammals etc or submit any of your new or old records of flora and fauna sightings relating to the wood and surrounding fields. We would love to hear from you.

MORE WALKS AND SURVEYS are in plan or being planned for later this year so if you have an interest in the history and/or natural history of the area please do not hesitate to get in touch with us.

Chris Measures

CONSERVATION WORK

On Sunday 26th February, half a dozen regular group members were joined by 15 Sheffield University student volunteers on a lovely spring morning, to enthusiastically carry out some tree thinning and hazel coppicing.

The students were given the task of thinning some of the smaller trees, under instruction from Chris Roberts, the SCC ranger and the FOGW members were tasked with carrying out some hazel coppicing and the clearing of small trees in and around one of the Q pits located nearby.

During the lunch break a buzzard circled overhead, eyeing up the sandwiches we were eating no doubt!! Also, the warm weather brought out queen wasps, bumblebees and seven spot ladybirds. Everyone worked extremely hard and was given the reward of a wooden coaster, cut from one of the downed trees, for their efforts.'

Our next conservation workday is on Sunday morning July 29th. The other three mornings arranged for later in the year are September 30th, October 28th and November 25th. Please bear in mind the work is varied so there is light and heavy work for all to get involved. If you are interested in helping us conserve our wood please get in touch with me on 0114 262 0564 or daveygash@hotmail.com.

Dave Gash

Use Your Vote

Referendum 3rd May 2012

On Thursday 3 May you will have the opportunity to vote in local government elections and to vote in a referendum on how Sheffield City Council is run.

What is the referendum about?

The referendum is taking place because Parliament has decided that the 10 largest cities outside London should have a referendum. The referendum will give you the chance to choose one of the following options on how you would like Sheffield City Council to be run.

1) By a Leader who is an elected Councillor chosen by a vote of the other elected Councillors - this is how the Council is run now.

2) By a Mayor who is elected by voters - this would be a change from how the Council is now.

Whichever of these two options is chosen by the majority of voters will be the way Sheffield City Council is run in the future.

Everybody who is registered to vote will receive a poll card by 9 April 2012.

Find out more at www.sheffield.gov.uk/elections

Adele's a winner at the losing game!

Adele Peat is enjoying the lighter side of life after losing 4 st 13.5 lbs in less than 6 months and being awarded the title 'Greatest Loser'.

In September, the 31-year-old from Totley, Sheffield weighed 18st 5lbs and her size was affecting every aspect of her daily life. Now after joining her local Slimming World group in Totley, not only is she 4st 13.5lb lighter she's also won the club's Greatest Loser

2012 prize for the member who's lost the most weight in the past 12 months.

Adele says: "I feel like a new woman since losing weight - in fact, people I haven't seen for a while say they don't recognise me - I look so different and much younger! I feel happier and healthier, I've got more energy and I'm more confident in general.

Adele's weight was also putting a huge strain on her health. She had to have extra tests for diabetes when pregnant and in an emergency, after the birth of her youngest child, had to be given a risky general anaesthetic as the doctor failed to inset a spinal block in the correct place due to her size. People who are severely overweight, with a BMI* above 30, are more likely to suffer from health problems like coronary heart disease, arthritis, diabetes and even cancer, and obesity is linked to a reduction in life expectancy of between seven and nine years.

The club's Food Optimising healthy eating plan was a surprise too: "People think slimming means going hungry, eating nothing but salad and weighing and measuring everything, but it's not like that at all. It's never once felt like I was on 'a diet'. I can still enjoy all my favourite meals like burgers and chips and roast dinners but now I cook them very differently. It fits in really well with the rest of my family too - whatever we're doing. It's a lifestyle change for us all."

Jo Elsey, who runs the Totley Slimming World Group, says: "The change we've seen in Adele is amazing. She's unrecognisable, inside and out, from the person who walked into the group all those months ago. She's a huge inspiration to the other members and I hope her success will inspire other people in Sheffield who'd like to lose weight and become happier and healthier to take action too."

The Totley Slimming World Group meets every Monday at 7pm at Dore & Totley United Reformed Church, Totley Brook Road, Sheffield S17 3QS.

Each of Slimming World's 8,500 groups in the UK and Ireland has their own 'Greatest Loser 2012' and winners will go forward to the national competition. Adele is now waiting to find out if she's in the running for the £3,000 cash prize. She says: 'Joining Slimming World is the best thing I have ever done and I feel like a winner. I would love to win but even if I don't, I feel so good and that feeling is priceless.'



South Pennine Group

www.hardy-plant.org.uk

Sale of Plants

Lovingly grown by our members

Saturday 19 May 2012 12.30-3.30

Sunday 20 May 2012 11.00-3.00

In Sheffield Botanical Gardens

Admission Free : Everyone welcome



The locally based South Pennine Group of the Hardy Plant Society has built a reputation for its excellent plant sales.

The next sales are on Saturday & Sunday, 19th & 20th May in the Sheffield Botanical Gardens. On sale will be a wide range of both well-loved and more unusual hardy perennials at very reasonable prices, grown locally by our members who will be on hand to give advice and support. A further Autumn Sale will be held on 16 September, 11am-3.00pm.

The South Pennine Group meets monthly at Shirley House in Sheffield 11, but covers South Yorkshire and North Derbyshire as well as the city. Activities include illustrated talks where plants are also on sale, garden visits throughout spring and summer, an annual coach trip to renowned gardens further afield, a national seed exchange and local seedling swap.

If you would like to join, contact the Secretary, Judy Coulson, at judycoulson@blueyonder.co.uk or phone 0114 235 1290.

MARTYN KEMP OPTICANS

....OFFERS TO PUT PEOPLE AT THE FOREFRONT OF PROTECTING YOUNG EYES

The region's largest firm of independent opticians, Martyn Kemp Opticians (MKO) is offering to put people at the 'head of the queue' for soon-to-be-launched products which promise to slow down the rate of short-sightedness (myopia) in children, teenagers and young adults.

Now being developed are spectacle and contact lenses which claim to reduce the rate of myopia in young people who spend a disproportionate time indoors.

The lenses are currently undergoing large scale trials in Asia and MKO is inviting parents, grandparents and short-sighted people less than 25 years of age to register their interest on the firm's website - admin@mko.co.uk.

When the revolutionary products are available MKO will contact all these people to see whether the lenses would be suitable for them, their children or grandchildren.

Regular updates will be published on the MKO website, www.mko.co.uk

Shine on for St Luke's

Hospice Starlight Walk 2012

THE St Luke's Hospice Starlight Walk is back...and this time it's even bigger and better!

And to make sure the whole family can get involved, this year will also see the start of a special 2k Mini Star's Walk, specifically created for St Luke's youngest supporters.

The 5k 2012 Starlight Walk will be held on Saturday May 12, from 4pm to 11pm and will include live music, entertainment and a fun group warm up for all walkers in Endcliffe Park. The individual registration cost is £15 per person or £10 per person for groups of six or more, while young people aged five to 15 can also take part for £10.

The walk itself starts at sunset at 8.45pm but entertainment in Endcliffe Park begins from 4pm, kicking off with the new 2k Mini Stars event, for four to eight-year-olds and costing only £5 per child to register - a fun introduction to supporting charity!

The official closing date for entries is Friday May 4.

For further information call 0114 235 7594, email eventinfo@hospicesheffield.co.uk or visit:-

www.stlukeshospice.org.uk

KES NEWS

Jess Ennis visits King Egbert



Olympic gold hopeful and former student and Jess Ennis visited the school recently while on a promotional photo shoot for Aviva, one of her sponsors. She took time out to talk to staff and students, and is here seen photographed with our Boccia team, and winners from the Sports Award presentation evening.

The Railway Children

The school production this year will be an adaptation of Edith Nesbit's classic children's novel 'The Railway Children'. The play will be performed on Monday, May 21st and Tuesday, May 22nd.

King Egbert Film Set

Eagle-eyed viewers of the BBC series Prisoners' Wives may have noticed some similarities between the fictional Highcross Prison. This is because over a five week period in the summer holidays the school was transformed into a film set for the series. The dining room was used as the prison visiting room, the DT corridor was turned into the prison recreation area and the Business ICT corridor became visitors' reception and screening area. Filming finished three days before school started and amazingly everything was restored to normal, with a new coat of paint in time for the beginning of term.

Tim Eldridge, Deputy Headteacher

Celebrating Easter

Ideas and activities for celebrating Easter at home from members of All Saints Church, Totley

Easter

Easter is the most important and exciting festival in the Christian calendar when we remember that Jesus actually rose from the dead after having been crucified by the Romans! He was seen and spoken to by many people during the weeks before he left again for heaven. Easter gives us hope that there is more to the world than meets our eyes, and we look forward to the day when we, our loved ones and all creation will be restored to be with God.

The Great Easter Egg Give-away!

To celebrate Easter with everyone in our community members of the church will be giving away Easter eggs on the streets of Totley on Holy Saturday. Look out for them while you do your shopping at the Co-op! And also look out for Hot Cross buns from members of Totley Rise Methodist church -see their article!



The Price

Lord Jesus as a human man
Accepted all the Father's plan
The plan that meant that He should die
By means of which great pain did lie
And He knew what it would cost
When His pure human life was lost
And in the garden He did know
The means of all that would be so

He drew aside and made a plea
To Father God that He would see
Another way to pay the price
To avoid the human sacrifice

The agony weighed on Him there
Led Him to three times ask in prayer
That for the price there'd be no need
But to "Thy Will" he did accede

Now what price did The Father pay
To send his son to die that way
How could He bear the torture there
Of "One" He loved with so much care
Did He flinch when the whip did flail
Did He have pain at every nail
Did He cope with Christ's agony
The price too large to set us free
At Jesus cry did He turn away
Father, how *did* you cope that day?

Services for April at All Saints

If you'd like to celebrate Easter by coming to church, there are a number in Totley to choose from! Here are details of services for April at All Saints - you would be very welcome:

1st 10.30am PALM SUNDAY JOINT SERVICE
of S17 churches at King Ecgbert's School

There will be a procession up to the school from the old police station on Totley Brook Road - meet at 10.00. Please come and wave a palm branch in this simple act of witness before the service.

6.30pm Holy Communion

6th 10.30am Good Friday Service

We will be joining with Totley Rise Methodist Church for our Good Friday Service.

There will be a procession from the Coop on Baslow Road starting at 10.00 followed by a service at TRM at 10.30. Everyone is welcome.

8th 10am EASTER DAY
6.30pm Holy Communion

15th 10am Morning Praise
6.30pm Evening Prayer

22nd 10am Morning Praise + AGM
6.30pm Holy Communion

29th 10am Holy Communion
6.30pm Evening Prayer

Viv Filleul, Kate Caroe

ACTIV physiotherapy

is stronger
& more flexible

ACTIV & BRADWAY
physiotherapy & Physiotherapy Clinic

have combined . . .

so our new partnership can offer you a wider
range of treatments in 3 convenient locations
. . . Bradway, Totley and Norton Lees



our wide range of treatments include:

- Repetitive Strain Injuries
- Muscle & Joint Problems
- Women's Health Issues
- Sports Injuries
- Back & Neck Pain
- Acupuncture

Registered with major insurance companies,
BUPA, Aviva, Westfield Health, AXA

email: mail@activphysiotherapy.co.uk

web: www.activphysiotherapy.co.uk

ACTIV Physiotherapy 0114 235 2727

Dore Moor Garden Centre & Nursery

Under new Family Ownership

Hathersage Road · Dore · Sheffield · S17 3AB

(Opposite the Dore Moor Inn)

**Reopened, restocked and looking forward to
welcoming you to our first spring season**

Wide range of seeds, bulbs, plants, shrubs, pots, composts and chemicals

Logs, coal and smokeless winter fuels

Specialist section for mowers, strimmers,
fencing, garden tools and much much more

Stockists for Haddon Stone statuary
and David Austin Roses

**Quality Plants
Competitively priced**

Call in and see us

**Enquiries
0114 235 0092**



TRISTAN SWAIN
Landscaping & Maintenance
Established 20 years

Fully insured

GARDEN RESTORATION & MAINTENANCE

Unit C4
Sheaf Bank Business Park
Prospect Road
Heeley
Sheffield S2 3EN

Tel/Fax: 0114 255 4689
Mobile: 07831 802539



**Slimming
WORLD**

because you're amazing

If you want to lose weight healthily and with no deprivation or
humiliation then join your local Slimming World class in Totley,

Mondays at 7pm.

Telephone Jo Elsey on 0114 2620523

or 07590 545 253

(Offer cannot be used in conjunction with any other offer)

**1/2 Price membership
on production of
this advert**

MOGGY MAID



Gail Kitchen: 07986473415

Does going away from home mean your cat is sad and unhappy?
Does a trip to the cattery scare your cat *not to mention your wallet?*

WORRY NO MORE!

MOGGY MAID is on hand to feed, love and provide
everything your cat needs in the relaxing comfort of its own home.

As we cat-lovers know, unfamiliar sights and smells can stress your cat,
whereas leaving them in the familiar surroundings of their own home
carries less worries, for your cat and for you.

If only for a night, weekend, or a month; holiday, Christmas or any time of
the year, **MOGGY MAID** is here to help **LIGHTEN YOUR LOAD**

We promise no mischief allowed!

In a professional manner and with quality service, you can ensure
individual care and attention, whilst you relax away from home.

We haven't forgotten the rest of the family; mice, rabbits, budgies,
goldfish, etc will receive care and affection too.

LOCAL FRIENDLY SERVICE

From £5 a day

For more Information, contact Gail Kitchen on:
07986473415 5 Ullswater Place, Dronfield Woodhouse

SEE THE DIFFERENCE!



- **COMPREHENSIVE EYE EXAMINATIONS**
including special tests for glaucoma, colour vision, dyslexia & diabetes
- **CONTACT LENS CONSULTATIONS**
free contact lens trials and monthly direct debit payment schemes
- **PRESCRIPTION SUNGLASSES**
- **LEISURE SPECTACLES**
for computer work, fishing, swimming and safety wear
- **ACCESSORIES**
ready readers, chains and magnifiers

LENSES BY SEIKO
In all non-budget spectacles

TOTLEY
63 Baslow Road
236 4485

ABBEYDALE
634 Abbeydale Road
255 6554

For more help and information please phone or call into the practice of your choice
For a full list of our practices visit

WWW.MKO.CO.UK

Terms and conditions apply.



Shepley Spitfire

56 Mickley Lane, Totley Sheffield - S17 4HE 0114 236 0298

UNDER NEW MANAGEMENT

2 meals for **£8.95**

Served everyday 11am until 9pm

Carvery every Sunday from 12 noon

Quality Cask Ales

Quiz Night every Tuesday form 9:30pm

The Home of Big Fish Friday!!

Beer battered Cod fillets, Chips and Peas Two for **£8.99**

Eat in or Takeaway

FOR THOSE OF YOU WITH A LITTLE APPETITE

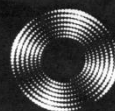
WE HAVE INTRODUCED A SMALL

PLATES MENU FROM **£2.49**

ALL DAY EVERYDAY

Sky Sports & ESPN showing live games

Entrust Electrical



For all your electrical requirements in or outside the home you can trust **Entrust** to do it right!

- ✓ Full or Partial House Rewiring
- ✓ Additional Sockets, Switches, etc
- ✓ Energy Efficiency Enhancements
- ✓ Contemporary & Classical Refurbishments
- ✓ General Electrical Maintenance & Repair
- ✓ Homebuyer Electrical Safety Surveys
- ✓ Telephone and Computer Data Points
- ✓ Garden, Pond & Other Outdoor Electrics
- ✓ Security Lighting & CCTV



City & Guilds
Qualified

(0114) 2352084
07935 250814

www.entrustelectrical.co.uk

Old Hay Close, Dore, S17 3GP



"need *help* in your garden?"

"right plant, wrong place? Stuck, don't know where to start?"

We can offer a Design Consultancy without the designer price-tag.

"Selling your House?"

We can tidy your garden, also with use of planted containers/hanging baskets, make your house more desirable to prospective buyers.

Season by Season

- Regular Lawn Maintenance.
- Hedge Cutting.
- Small Tree/ Shrub pruning.
- Beds/Borders tidied, planted.
- Planted Containers.
- Green waste removed



the **Abbeydale** gardeners...
...we can help you.

Formerly of
The Abbeydale Garden Centre

Kevin Hunter 07818 20 12 42
Mark Naylor 07739 75 23 19

www.theabbeydalegardeners.co.uk

Music Tuition



Piano • Keyboard • Flute • Singing
Guitar (rock, metal, blues, jazz, funk, pop, folk)
Music Theory • GCSE work

Music graduates, each with 25 years
teaching and playing experience

All ages, beginners welcome.

Exam work or just for fun!

Call Mark or Karin

0114 237 4853 & 07981 888352

HEARING AIDS

MAURICE NAYLOR FBSHAA RHAD is your
local hearing aid specialist and at your
request will test your hearing in your own
home, free of charge, and if needed you can
try a custom made aid for four weeks
without obligation to purchase.

Tel : 237 4817

In the ear digital from £495

Kitchen Solutions

By Nigel Watson

Fully fitted quality kitchens at affordable prices,
planned and designed to your specification. View a
computer generated impression prior to installation.

For a local, friendly, reliable service call for a free
brochure and quotation.

TEL: 0114 236 4778

Mobile: 07971 528149



THE COMPLETE BUILDING SERVICE

New Build & Extension Specialists

From Design to Completion

**Full Project Management
House Building
Extensions**

Find
us in
Yell.com

**New Roofs/Tile/Stone
Stonework Specialists
Loft Conversations**

Established for 25 years with over 90%
of our work coming from recommendations, to
find out why call:

0114 2353314

Mobile 07973 908187

www.mwoolhousebuilders.com



Christchurch Cottage,
Townhead Road,
Dore, Sheffield
S17 3GA



Horizon Electrical

*Faults, Rewires, Sockets, Lights,
Cooker Points, Electrical Showers,
Phone Points, Security Lights*

No job too small

Fully qualified with friendly advice

Ring Totley 236 4364 or

Mobile 07772 483154



Hatha
..YOGA CLASS..

Totley and Ranmoor

For more information or to book a place call

RACHEL on (0114) 236 9943

BWY Qualified Teacher

BODY, MIND & BREATH

Enjoy the union of yoga



BRADWAY INSTALLATIONS

**Kitchens, Bathrooms.....and everything in
between**

- **Complete Kitchens** - Installation or supply and
installation
- **Kitchen Refits** - Replacement worktops/sink/hob etc.
Worktop / cabinet repairs
- **Bathrooms** - Cloakrooms - Domestic plumbing - Tiling
Laminate / Vinyl flooring

All work undertaken is fully insured and guaranteed

Ring Peter - 0114 236 5995

Mobile - 07766 411355

SLIMMING WORLD

10 WAYS TO MAKE SURE IT WILL BE THE LAST TIME LOSING WEIGHT IS YOUR NEW YEAR RESOLUTION. THIS TIME MAKE IT LAST FOREVER

1. Focus on your weight loss goal and prioritise it.
2. Be sure you really want to lose weight for yourself. Doing it to please someone else may only lead to short term weight loss.
3. Take advantage of all the group support at your local Slimming World class. Even if you are not a 'joining in' person, you'll be surprised how motivating it is.
4. Accept that you will have ups and downs in your weight loss journey, and be forgiving of yourself if you hit a difficult patch.
5. Listen to your 'inner script' and make a conscious effort to talk to yourself in a positive, encouraging way.
6. Keep up your interest in your healthy eating plan by trying new foods, new recipes, and new ways of using your Sins. This will help you avoid getting in to a dieting rut which can be boring and demotivating.
7. Be honest with yourself about what you are expecting from your weight loss and how you are getting on with Food Optimising week by week. People who set unrealistic targets for weight loss or body shape are more likely to give up than those who set achievable targets and share their ups and downs.
8. Go back to your class even after (especially after) you've had a weight gain. You will not be judged, just helped and supported.
9. Keep setting new goals and rewarding yourself for milestones until you reach your target weight, and afterwards!
10. Don't put your life on hold until you've lost weight. You can still enjoy life and lose weight. Think of your dreams and ambitions and bring them to the fore. The positive feelings you get from starting to 'live a little' can only help your motivation and your weight loss.

Group details:

St Peter's Church, Greenhill Roundabout, S8 7FN
Thu 5pm & 7pm

Dore Old School, Tues 5.30pm

Tel: Alison Murphy 07815 046569 for further details

PhysioFOCUS

at Totley Rise Dental Practice
85 Baslow Road,
Sheffield, S17 4DP



Physiotherapy treatment available for:

- Back and neck pain
- Sports injuries
- Sprains and strains
- Joint and muscle pain
- Arthritic pain
- Whiplash
- Repetitive strain injury
- Headaches

Appointments: 0114 2360333

Also available:

- Pilates classes
- Pilates 1-2-1
- Golf Fitness Screening
(as used by consultants to UK,
European and Australian PGAs)

For more information please call:

Emer on: 07792 422909

Rachel on: 07956 908454

APPLE LANDSCAPES and APPLE FENCING

www.applelandscapes.com

QUALITY SERVICE AT AFFORDABLE PRICES

Patios • Paths • Walling • Dry Stone Walling • Drainage Work
• Indian York Stone Paving • Railway Sleeper Beds

Garden Tidy Ups etc. No job too small

Fencing & Gates Supplied Only
or Supplied & Fitted

Only Quality Materials Used

FULLY INSURED

Call for free quote

01246 237505 • 07782 167540

Homeopathy @ Synergy.

162 Baslow Road, Totley, Sheffield, S17 4DR

Advanced Indian Sensation Method Homeopathy

Alternative medical treatment for all chronic conditions

Registered with major insurance companies. Can claim
through the Westfield scheme

 Registered member of
The Society of Homeopaths

Ring: Lindsay Allison **RSHom** for more information:
0114 235 7845 or 07968 167036

M.Scriven
(FRUITERAMA)

MARTIN SCRIVEN

HIGH CLASS FRUIT
& VEGETABLES

37, Baslow Road

Tel. 236 7116

Orders Delivered

B.K. JEAVONS PAINTER & DECORATOR



Interior
Exterior
Decorating
No Job too small

Tel: 01246 416484

and mobile 07882 278306



GWS

Technology Solutions



PC Problems/ Repairs/ Servicing No Job Too Small
 Wireless & Internet Setup New PC's & Upgrades
 PC Setup/Data Transfer Safe PC Disposal Tuition
 Software/Hardware For All Your PC Needs

Guy Senior

Phone: 0114 2352662 Mobile: 07890030453

Email: guy@gwstech.co.uk

Web: www.gwstech.co.uk

GWS, 5 Conalan Avenue, Bradway, Sheffield S17 4PG



253 Baslow Road, Sheffield, S17 4DU
 Tel: 0114 2360 583 Mobile: 07801 346 455

R.M.M BUILDING SERVICES

25 YEARS EXPERIENCE

All types of building work carried out including- Drop kerbs, block paving (drives, paths, etc), extensions, general building repairs and maintenance.

Phone Rob on- Mob- 07906108567

Home-2352190



Serenta HomeCare

Are you in need of a little help and support within your own home? The older we get the more help we need to enable us to live a more independent life.

Personal Care • Medication • Domestic • Sitting Service • Social and Leisure activities

To find out more call Sue 07715 636 395 Pat 07715 634 781
 or visit www.serentahomecare.co.uk

For reference from an existing client please call 0114 2366891

R.S. HEATING & BUILDING CO

EST. 1971



HEATING DIVISION:

Experienced Installers of condensing, combination and regular boilers. Systems fully guaranteed. Complete after sales service. Also Bathrooms, showers and small plumbing works.

BUILDING DIVISION:

Loft conversions, House renovations including general building, joinery, plastering, electrical decorating etc.



13 Overcroft Rise, Sheffield, S17 4AX

Tel:- 0114 236 4421

Reg. Office:- 62 Machon Bank, Sheffield, S7 1GP

Te:- 0114 2559425

Fax:- 0114 255 9431

Email: enquiries@rsheatingandbuilding.co.uk
 Web: <http://www.rsheatingandbuilding.co.uk>

Dronfield Landscapes



Gardens cleared and maintained, Lawns mowed, Turfing, Tree felling & pruning, Hedges trimmed & reduced, Pond maintenance, Fencing etc.

for free quotation call

Chris on: (0114) 2746158 Mobiles: 07976072785 or

Richard on: 07789497104

8am-6pm mon-fri

HazelBarrow Farm, Norton S8 8BA



Nigel Watson



Carpenter and Joiner

Fitted kitchens, sliding wardrobe doors with bespoke interiors, internal and external doors supplied and fitted, new handrail and spindles, laminate and wood flooring, locks, architraves, skirting board, stud walling, boxing off etc.

For a reliable and quality service

TEL: 0114 236 4778

MOBILE: 07971 528149



Got a computer?

Having Problems?

Is it running slow? Stops responding?
 Having problems running the latest games
 or applications? Broadband installation?

Give me a call!

I'm available for home visits at any time including evenings and weekends. I can also suggest upgrades to improve performance, or even build you a system to your specific requirements.

Tim Brown

Building,
 Installation,
 Upgrading and
 Troubleshooting
 Computer
 Systems
 Over 25 years
 professional
 experience

Phone: 0114 2472619 Fax: 0870 7060080

Mobile: 078 17464703 Email: service@timbrown.plus.com

DRONFIELD LANDSCAPES

Logs and wood chippings For Sale

Ring for details

**Chris 0114 274 6158
Mobile 07976 072785**

**Richard
Mobile 07789 497104**

Totley

Private Hire

24 hour taxi service

Advanced bookings only

Local • long distance • airports

Telephone 0114 283 9692

Mobile 07974 355 528



**Domestic electrical work by
award winning**

Lady Electrician

- * House rewires * Replacement fuse boards *
- * New sockets and lights * Security systems *
- * CCTV * Telephone and computer points *
- * Garden power and lighting *



All work guaranteed and fully insured. For a free quotation, without obligation,



ring Mandy on 07788-544225



**Tiling, Plastering,
Plumbing & Complete
Bathroom Fitting Service**

Tel: 0114 274 6775

07738 688807

- ◆ Under Floor Heating
- ◆ All Aspects of Home Improvements & Maintenance Work Undertaken
- ◆ Competitive Prices
- ◆ NVQ Qualified
- ◆ No Job Too Small
- ◆ Fully Insured & Guaranteed

**A1tilingandplastering.co.uk
33 Glen View Road, Greenhill, S8 7SF**

Zumba!

Tuesdays

9.30-10.30 @ Calver Village Hall

Thursdays

19.30-20.30 @ Totley United Reformed Church

**Please contact Peta for more details and to book
your place! 07792 872211**

Creating opportunities with disabled people.

Registered Charity No. 218186

**Leonard
Cheshire
Disability**

Leonard Cheshire Services in Offers choice & opportunity to people with disabilities. A Specialist Unit for the Younger Disabled. Residential & Respite Care – Single Rooms Day resources – Aromatherapy – Reflexology – Physiotherapy – Toning Tables. Activities include: - Arts & Crafts – Computers – Cookery – Shopping Expeditions – Theatre Outings – Church. Further details can be obtained from – The Service Manager, Mickley Hall, Mickley Lane, Totley, Sheffield S17 4HE. Tel. 0114 236 9952 Fax. 0114 262 0234

The Care at Home Service supports disabled people who wish to remain in their own homes. We provide flexible care packages from 1 hour to 24 hours meeting individual needs. The service operates throughout Sheffield. Our service includes: - help with getting up and going to bed, dressing, washing, bathing, shopping, cooking, light household duties. Further details from: - The Care at Home Manager Tel. 0114235 1400 Fax 0114 235 1499

John Heath & Sons

AN INDEPENDENT FAMILY FUNERAL BUSINESS

Sometime.....

You will probably have the responsibility of making funeral arrangements. No one looks forward to this responsibility, but the death of a family member or friend brings with it an obligation that must be met. There are people who can help you meet this responsibility. We have been helping people combine the different aspects of the funeral into a meaningful service for over 125 years.

Please Call Day Or Night

(0114) 272 2222

Head Office - Earsham Street

Also at Meadowhead, Ecclesall Rd,
Crookes and Stanington

www.johnheath.co.uk



**CHARISMA
BLINDS**



**For
Windows
With Style**

**Sheffield Factory Showroom
106 PROSPECT ROAD
HEELEY, SHEFFIELD**

**Sheffield (0114) 258 5496
Rotherham (01709) 512113**

TOTLEY & DISTRICT DIARY

MONDAYS	COFFEE MORNING , All Saints' Church Hall, 10am-noon TAI-CHI , United Reformed Church, Totley Brook Road, 11.30am-12.30pm RAINBOWS and GUIDES , All Saints' Church Hall, 5.45pm-9pm
TUESDAYS	COFFEE MORNING , Totley Rise Methodist Church Hall, 10am-noon KEEP FIT & COFFEE , For the not-so-young, Bannerdale Centre, Carterknowle Road, 10.15am, Phone 258 5364 WOODSEATS ADVICE CENTRE , Drop in service, free, impartial, and confidential. TR Methodist Church, 10am-noon CRAFT GROUP , Totley Library, 2pm
WEDNESDAYS	PILATES CLASSES , Dore Old School, 9.00-10.00 and 10.15-11.15. Contact Caroline - Tel: 0781 722 0324, email caroline1north@btinternet.com, www.pilatescarolinenorth.co.uk COFFEE in the LIBRARY , 10am-11.30am TODDLER GROUP , 10am-11.30am, All Saints' Church Hall. Details tel. Andy Holmes 0114 236 2088 HEALTH WALKS , 10.30am, Totley Library foyer. Phone Sue, The Health Walk Ranger: 0114 283 9195 MODERN SEQUENCE DANCING , All Saints Church Hall, 8pm-10pm
THURSDAYS	CHAIROBICS , Heatherfield Club, 1.15pm NCT COFFEE GROUP FOR DORE TOTLEY & BRADWAY , 10am-noon, For mums & babies/toddlers, meeting in various locations, Phone Lucy Street 07837 000405 or email: lucy@streetr.plus.com for further details PUSHCHAIR CLUB , Totley Rise Methodist Church Hall. 1.30pm-3pm. Tel. 236 3157 for further details PILATES CLASS , United Reformed Church, Totley Brook Road, 6.15pm-7.30pm, Phone Emer Coffey 07792 422909
FRIDAYS	PILATES , The Old School, Dore, 10.45-11.45am & 12-1pm. Phone Teresa Tinklin 07906 312372
SATURDAYS	MODERN SEQUENCE DANCING , All Saints Church Hall 2 nd . And 4 th . Saturdays 8pm-10pm

APRIL

SUN 1st CASTLETON FARMERS MARKET, the Village Hall, 10am-3pm
SUN 1st - ARTISAN FOOD FAIR, Baslow Village Hall, 10.30am to 4.30pm
 FREE ADMISSION. www.hartingtons.com
TUE 3rd FRIENDS OF GILLFIELD WOOD, 'Walk on the Wildside', Mike Richardson, 7-9pm, Totley Library, full details page 7, All are welcome.
WED 4th SPRING FAIR, Cheshire Home, 10am-midday, details page 8
SAT 7th SATURDAY NIGHT LIVE, Easter Special, including buffet, MICHAEL J OLIVER, Heatherfield Club. 8.30pm. Non-members welcome
SUN 8th & MON 9th (BH) MINIATURE TRAIN RIDES, Abbeydale Road South, First train 1 p.m. - last train 5 p.m.(weather permitting) www.sheffieldsmee.co.uk
SAT 14th FAMILY FUN DAY, Totley Bents, details page 7
SAT 14th SATURDAY NIGHT LIVE, THOMAS MARX - top club act, Heatherfield Club. 8.30pm. Non-members welcome
SUN 15th FARMERS MARKET, Totley Rise, midday-4pm
TUES 17th TOTLEY TOWNSWOMEN'S GUILD, 'Story of the Sheffield Flood in 1864', Suzanne Bingham, Totley Rise Methodist Church Hall, 10am
FRI 20th DORE ART EXHIBITION, 2pm-4pm, Dore Old School
SUN 22nd DORE ART EXHIBITION, 9.30am-5pm, Dore Old School
SUN 22nd MINIATURE TRAIN RIDES, Abbeydale Road South, First train 1pm - last train 5pm (weather permitting) www.sheffieldsmee.co.uk
MON 23rd TOTLEY RESIDENTS ASSOCIATION AGM, 7.30pm, Totley Library - all residents welcome.
WED 25th TOTLEY HISTORY GROUP, AGM, Totley Library, 7.30pm, Lead Smelting in Totley with Jim Rieuwerts, all welcome, details page 3
THU 26th SHEFFIELD FARMERS MARKET, 8.30am-5pm, Fargate
SAT 28th BREADMAKING DEMOS, Hartingtons School of Food, Rutland Mill, Bakewell, Free breadmaking demos as part of the Bakewell Food Festival. Full details www.hartingtons.com or tel: 01629 888586
SAT 28th COFFEE MORNING, Cross Scythes, 9.30-11.30am, details p11
SAT 28th SATURDAY NIGHT LIVE, DEANO SINCER, Heatherfield Club. 8.30pm. Non-members welcome

TOTLEY INDEPENDENT FOR MAY

The next issue of the Totley Independent will be available from the usual distribution points on

SATURDAY 5th May 2012

COPY CLOSE DATE for this issue
will be

SATURDAY 21st April 2012

Editor: **Ian Clarke**
 Tel. No: **235 2526** or Email:
editor@totleyindependent.co.uk

Advertising & Distribution:
John Perkinson
 Tel. No: **236 1601** or Email:-
advertising@totleyindependent.co.uk

Items for publication may be left or sent to:
2, Main Avenue, Totley, Sheffield, S17 4FG or
Totley Library

www.totleyindependent.co.uk
PRINTED by STARPRINT



- Central Heating,
- Domestic Plumbing,
- Glazing, Double Glazing and Glass,
- House Maintenance,
- UPVC and Wood Windows & Doors



Mini Digger & Driver, Muck Shifts, Footings Etc.

starprint

5000
 130 GSM GLOSS
 FULL COLOUR
 DOUBLE SIDED
A5 LEAFLETS
£99.95

250
 FULL COLOUR
 SINGLE SIDED
BUSINESS CARDS
£19.95 + VAT

BANNERS
 AVAILABLE FROM
£29.95 + VAT

Full design service available!

Tel: 0114 258 0707

Email: mail@starprint.co.uk
 601 Abbeydale Road, Sheffield, S7 1TA