

# TOTLEY INDEPENDENT

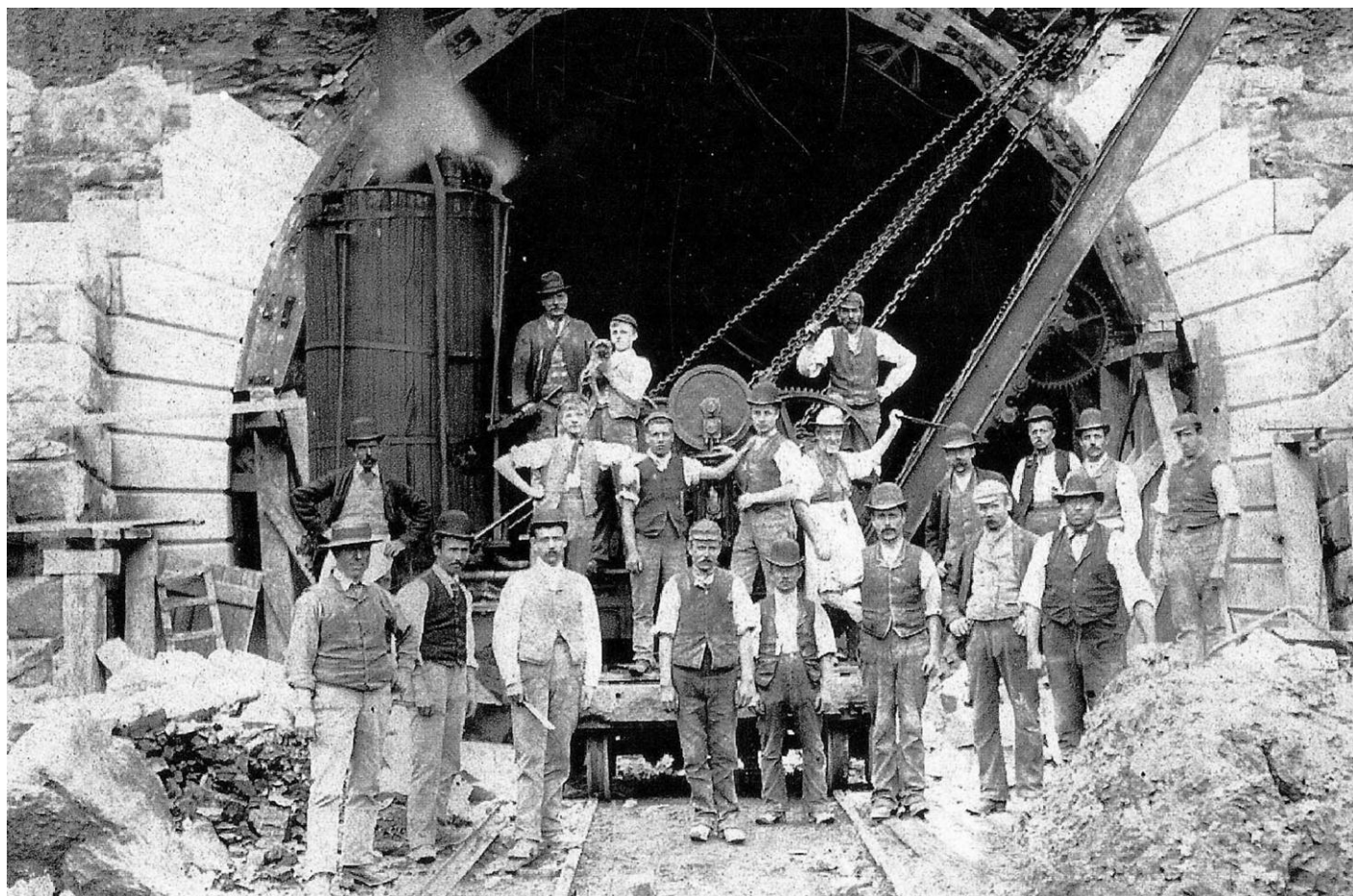
PUBLISHED CONTINUOUSLY SINCE 1977

[www.totleyindependent.co.uk](http://www.totleyindependent.co.uk)

MARCH 2012

No. 351

20p.



## Totley Tunnel

There was an audience of over 50 when Ted Hancock gave a talk about Totley Tunnel to the Totley History Group in January at Totley Library. Here is a rare photograph at the entrance to the tunnel during construction 1888-92 but gives few clues to the appalling conditions the workers had to endure. Totley's population swelled enormously when the navvies and their families were employed; the locals were quite unprepared!

The Dore-Chinley line was built primarily to get coal Lancashire, the passenger side only being secondary.

Brian Edwards has recently reprinted his book 'Totley and the Tunnel' – the 4th reprint, a review by Sally Goldsmith is in this issue on page 11. Available at Totley Rise Post Office £8.99.

Totley History Group meets on the last Wednesday monthly in Totley Library at 7.30pm, all welcome.

## Totley Residents Association Update

This month has been fairly quiet for us. Plans are moving ahead for the farmers market on the 15th April. Hopefully the weather will be warmer! Forms are available at Totley Library and Totley Rise Deli, we really do want to encourage local producers and crafters so encourage you to have a stall. We are also hoping to join with the local churches to arrange Jubilee celebrations in June, we will update you as soon as we have met.

Our Committee have been begun to meet with the local councillors to not only feed-back on issues but this also means that we are involved in what is happening locally and in the ward. In February we met with Colin Ross and Keith Hill. This time around we discussed parking in Totley, the footpath leading to Butts Hill and also received an update about the allotments on Mickley Lane. If you have something you would like us to discuss please email me or contact me by phone.

Totley Library was the venue for a meeting held by SW Community Assembly, that was a public consultation about 20 mile per hour areas. It was fairly well attended and I'm sure there will be more meetings when the Sheffield strategy is released and I encourage you to attend.

We were intending to hold an open meeting in March as I reported in the last **Totley Independent**. However due to the AGM in April and the Ward Forum meeting on February the 28th, we have decided that the first open meeting will take place after the AGM has taken place.

PTO

**TOTLEY RESIDENTS ASSOCIATION AGM**  
**Totley Library - Monday 23rd April 7.30pm**

Finally the AGM for the TRA has been set for Monday the 23rd April, Totley Library at 7.30pm. I hope that people will be encouraged by the work we have done in 2011, and come along and join the committee. Totley Residents Association would like to do more for the community this year and hold many more activities but we need more people to participate.

Kathryn Higgins Chair TRA

Email- Kathryn Higgins\_totley@hotmail.co.uk

Tel: 07709 780 606

## Twenty's Plenty

An appropriate title for a scheme for reducing the speed limit in urban areas. A meeting was held on 26 January, in Totley Library, to discuss the possibility of 20 MPH areas. Approximately twenty residents attended the meeting which was only notified to us on 13th January, despite the dates having been agreed 1st November.

Residents were informed that a 20 MPH area differs from a 20 MPH zone, in that a zone will have road narrowing structures & speed bumps, whereas an area only has signs at the beginning & end with 20 MPH repeater signs in between. A red road surface coating at the beginning of the area is optional. There is also a ten-fold difference in cost - £40,000 as against £400,000 (wherever do they get these costs from?). The benefits were explained to us & given out in a leaflet issued by the Twenty's Plenty campaign Group. There were, according to their information, very few disadvantages. The Council seem to be in favour of a blanket strategy to cover the City, like some other cities have done.

It is unusual to include an "A" road in a scheme but we have put forward proposals that include Mickley Lane - a "B" road. The Community Assembly had provided a large scale laminated map of Dore, Totley & Bradway & we were encouraged to mark on the map & write on post it notes our ideas for which roads to include. Bradway included all the roads in their area as I did for Totley as agreed at the Ward Forum held in September. The suggestions, for Totley, are as follows:-

"Gates" (two 20 MPH signs) to be sited as follows

- 1) Mickley Lane, to replace the current 30 MPH signs, near to Cheshire Home (this will link up with the Bradway area, on Queen Victoria Road, reducing the need for more signs, keeping the cost down.
- 2) Mickley Lane at junction with Baslow Road
- 3) Glover Road, by the traffic lights
- 4) Marstone Crescent, at both junctions with Baslow Road
- 5) The Crescent
- 6) Totley Grange Road
- 7) Hillfoot Road - this will link up with the Dore area, making Hillfoot Road & Old Hay Lane part of the same area
- 8) Lane Head Road, thereby including Totley Bents
- 9) Totley Hall Lane.

These proposals for one large area keep the costs down by only needing one application to the Government.

Not all of the roads in the Dore area will be included (Devonshire Road, Abbeydale Park Rise & Dore Road, from memory).

We anticipate that the map will be available with our proposals marked on it for residents to view at a more leisurely opportunity having been given more notice.

Roger Hart

The Ward Forum, Traffic Focus Group.

## Apartment Scheme Rejected Unanimously

The application for both the multi-storey apartments and 8 house scheme went before Committee on the 6th February. The Committee unanimously rejected the apartment scheme (10 votes to nil) and approved the housing scheme in what was a very marginal decision (6 votes to 4). The developer has the option of going to appeal on the apartments and may even come back with a resubmission. We have seen examples where this particular developer has either gone to appeal or has resubmitted applications over and over again as the residents of Baslow Road and Ecclesall Road South know only too well.

The 2,000 objections from residents played a big part in the decision and was a very clear demonstration that the apartment scheme did not meet the needs or aspirations of local people. Councillor Colin Ross has wholeheartedly supported residents throughout the process and has provided direct access to the Head of Planning to enable our representations and concerns to be heard. He has also consulted widely with residents and put forward representations along with Aubrey and myself at the Committee meeting. He has made a very positive contribution and we would like to thank him on behalf of the residents for his sterling support. We would also like to thank our fellow colleagues at the Dore Conservation Group as well as David Crosby at the DVS who helped us put the finishing touches to our representations.

We have made some interesting discoveries under the Freedom of Information Act and have extensive examples of material information that was withheld from both the public and the planning committee members and are now considering taking these matters up with the Local Government Ombudsman as part of a wider complaint against the Council for maladministration. This evidence takes the form of written statements made by officers which are contrary to the recommendations made by the Planning Officer in a report to Committee on which planning decisions are made.

We would advise any resident who is objecting to a planning application to use the Freedom of Information Act to disclose what discussions are taking place between the planners and developers and also to ascertain what is being said between officers. Anyone wanting to know how these requests work should get in touch with us via the Editor and we would be more than happy to share our experiences with you.

Finally the residents of Dore and Totley should be very proud of themselves for coming out in their numbers to preserve the character and nature of their village and preventing inappropriate development. We would like to think this is the end of the apartments but we may need to join forces once again should there be a resubmission.

Paul Millington and Aubrey Read

## Scout Lottery

### 1<sup>st</sup> Totley Scout Group Lottery January Draw

1st Prize No 12  
Tefal Set of 3 non-  
stick Saucepans  
Mrs Knight  
Milldale Road

2nd Prize No 70  
£10 Voucher  
Mrs Purnell  
Milldale Road

Thank you, Pete Casson



## ***Transport 17***

The snow affected us on several occasions leaving many of our passengers without their weekly outings to their various clubs. Hopefully now we are well into February and there will be no more snow or ice to cope with but you never can tell!! At least we haven't been as unfortunate as some of my friends who live at the top of the Loire Valley, they have had heaps of snow and sub-zero temps of -10 and have had 3 periods where they had no water as the mains had frozen solid for several days at a time!! The thought makes me shiver!!

We have had some talks with Ian Jenkinson of Sheffield Passenger Transport Executive; they have guaranteed to continue to fund our staffing costs and office rent until April 2013 but after that nothing is certain due to the economic measures that are being taken to save the council money.

On a sad note we will be losing a very valued, long term member of our volunteers, Bob Harris, at the end of February/beginning of March, when he moves to London. May we take this opportunity of thanking Bob for his valued contribution as a driver/escort; he will be greatly missed. We wish both him and his wife every happiness in their new home.

We will be holding our AGM at Totley Library on Monday 26th March at 7.15 p.m. All members will be made welcome.

We would still welcome any volunteers to escort or drive for us, Monday to Friday. Speak to Michael Finn or John Savournin on 2362962, or pop into the office (172 Baslow Road) between 9am and 12 noon. They will be pleased to talk over what it involves.

Felicity Revill

## **The Heatherfield Club**

The Heatherfield Club is Totley's local Club situated on Baslow Road, next door to the 195 Hairlines hairdressers, just up the road from Masterchef and The Co-op. The Heatherfield is run by local people for local people. The Club has an excellent live singer every other Saturday, you are all invited to join the regulars for an evening of singing and dancing to both old and new songs. Children are most welcome, why not come along and see for yourself? If you like what you find you could become a member for only £10.00 per year although membership is not necessary if you just want to come along to enjoy a trial evening.

The Heatherfield Club has a lovely room available for parties, weddings, funerals etc.....

The Club is open (also available for private functions outside these times)

Mon - Fri 9pm - Midnight

Sat 8.30pm - Midnight

Sun 9.00pm - 11.30pm

### **Forth coming Singers:**

#### **MARCH**

Sat 10th - Live Singer TBC

Fri 16th - St Patricks Night special - Whiskey Duo - Irish music and Buffet

Sat 24th - Bobby North

The Conservatives no longer use the two upstairs offices, both are now available for rent

For further details for all things regarding the Heatherfield Club contact Mary 0114 262 0961 or Sylvia 0114 236 5499

## **Totley Scouts**

The Beaver Scouts celebrated Burns Night this year with a traditional Scottish Pipe and Drum Band. They also sampled Haggis with Neeps and Tatties. Our District Commissioner (who is Scottish) was invited and came along in his kilt. Amazingly we now have 32 boys and girls in our Beaver colony.

I make no apology for repeating myself but we are always in need of more volunteers to help provide exciting activities for local children. We are especially in need now as we wish to start additional Cub and Beaver nights in order to accommodate children on waiting lists. This is in part because of more young children in Totley but also because of the increasing numbers of girls who wish to enjoy scouting.

Please contact John Smith our Group Scout Leader on 07507 560287 if you are interested in volunteering.

We are still inviting requests to see how we can help the community. The Scout Association has announced Scout Community Week from 14th-20th May. Totley Scouts will be taking part in some way but we need your suggestions for things we could do. Ideas could be:- litter picking in woods and parks, clearing out river bed, build a nature trail or a butterfly garden at an old peoples home. We would like the community to come up with ideas for us. We will also be setting up an online donation page for people to recognise the work we do. Many people do not realise it but the Totley Scouts are a registered charity.

We are pleased to say that Sainsbury's and Tesco support thousands of Scout Groups around the country, including ours, through Sainsbury's Active Kids and Tesco for Schools and Clubs vouchers. You can pick up the vouchers free when you shop with them. If you do, please do pass the vouchers on to us. The simplest way is through our letterbox at the Scout Hut. We use the vouchers to exchange for equipment to be used by the children. Last year we had various types of balls, hockey sticks, chalk, and other play equipment.

On the 31st March we will again be hosting an Antiques Fayre at St Johns Church Hall. This is a major fund raiser for us. Not only are there antiques to peruse but also delicious home-made food to eat. There are bacon butties for the early starters, hot lunches and of course cakes. I hope to see you there.

Richard Frost

Chairman

1st Totley Scouts

TotleyChair@aol.com

## **Councillor Surgeries**

### **Liberal Democrats:**

2nd Monday in the month 6.00-7.00 p.m., Totley Library, Baslow Road and 2nd Saturday in the month from 10.30 a.m. to 12.00 noon, Dore Old School Hall, Savage Lane, Dore Contact details:

Keith Hill 235 2289 Email: keith.hill@sheffield.gov.uk,

Colin Ross 235 1948 Email: colin.ross@sheffield.gov.uk

Joe Otten 230 3290 Email: joe.otten@sheffield.gov.uk

**Totley Independent Website:-  
[www.totleyindependent.co.uk](http://www.totleyindependent.co.uk)**

# FRIENDS OF GILLFIELD WOOD

**TUESDAY 3rd APRIL 2012...AN ILLUSTRATED TALK entitled "Walk on the Wildside" by Mike Richardson.**

This meeting will be held in Totley Library and will start at 7pm. Please make a note in your diary and just turn up on the night, booking in advance is not required.

Mike has been photographing his local wood and its wildlife for over ten years so it should be a fascinating talk with quality photos not to be missed. We do hope you will come along and join us for another special evening. You will be made very welcome and you certainly do not have to be a member of the group to attend.

In addition to Mike's talk you will have the opportunity to find out about the group's own plans and activities for this year in respect of Gillfield Wood and the surrounding area.

In the meantime we do have an **INDOOR MEETING on Tuesday 6th March**. Again it will be held in Totley Library and will start at 7pm. This meeting is one of our open meetings when the committee and members get together to discuss a wide range of topics relating to Gillfield Wood and the work we are undertaking. A member of the City Council's Ranger Service is usually in attendance to provide updates relating to our wood and answer any questions we may raise.

At our last meeting in February, **Edwin Pocock of Totley Hall Farm** very kindly spared the time to come along and give us a fascinating talk relating to his farm and the work he has carried out over the years on the land around Gillfield Wood. It generated a large number of questions which Edwin was only too pleased to answer and this insight into the recent history of the land, the wood and the farmhouse was very much appreciated by all those present.

## OUR OWN WEBSITE

A new "Friends of Gillfield Wood" website has been created and is now accessible for all to explore via [www.friendsofgillfieldwood.com](http://www.friendsofgillfieldwood.com).

Improvements are still being made to the website but we must take this opportunity to say a very big "Thank You" to Kevin Walker for his sterling efforts in getting this up and running in such a short space of time.

The site is well worth visiting and you now have the opportunity to post messages to the group. You can also submit to the group your own photos of birds, flowers, mammals etc or submit any of your new or old records of flora and fauna sightings relating to the wood and surrounding fields. We would love to hear from you.

## SPRING WALK IN THE WOOD on SATURDAY 28th APRIL

A guided walk is due to take place on April 28th. We will meet at 10am by the entrance to the Scout Hut off Aldam Road. The walk will go through the wood and information relating to the history and flora and fauna of the area will be shared with all.

This slow paced walk is open to anyone who wishes to turn up and join us on the day. The bluebells should be out and the birds, including the summer visitors, will hopefully be singing, and who knows if it is sunny we may be see a few butterfly, so we should have a very enjoyable three hours in the field.

## BIO-BLITZ EVENT on 17th to 19th MAY

This forty eight hour action packed event will be from 3pm on May 17th to 3pm on May 19th. Come along and help us find birds, butterflies, bugs, bats etc. We will try to cover as much of the area and its natural history as possible. It should be great fun and we do hope families will come and join us because we want this to be a real community event.

It is part of the main Sheffield Bio-Blitz event and we will help by trying to find and identify as many species of flora and fauna as possible within our own area. Once again, please make a note of these dates in your diary. More details will follow in next month's **Totley Independent**.

As a taster though we have arranged for **Dr Ian Rotherham**, to do a walk through the wood on the evening of May 17th to look at and discuss the heritage, archaeology and ecology of the wood. We are also hoping that Derek Whiteley, a specialist on Hoverflies, will join us on one of the days to help us

record and identify as many of these fabulous creatures as we can.

## OUR OWN DATABASE

We now have a detailed database into which all our natural history sightings are being entered. Records from individuals as well as the results from various surveys are added to this database and details will then be fed on a regular basis into the Council's own database.

Here we must extend a very big "Thank You" to Richard Hibberd for the huge amount of time and effort he has put into researching this side of our operation, from GPS to mapping systems, from databases to computer software. He has now provided the group with a solid I.T. foundation to enable us to link with other specialists, naturalists and the council.

The database has expanded considerably since the group was formed twelve months ago. We have carried out a number of surveys from which the records have been fed into the database. These records have related to bats, birds, mammals, fungi, flowers and invertebrates and now make very interesting reading.

**MORE WALKS AND SURVEYS** are in plan or being planned for this year so if you have an interest in the history and/or natural history of the area please get in touch with either Dave Gash 0114 262 0564 (or [daveygash@hotmail.com](mailto:daveygash@hotmail.com)) or Sally Goldsmith 07790 637016 (or [goldsally@googlemail.com](mailto:goldsally@googlemail.com)), they will be very pleased to chat with you and provide more detail. If you contact Sally she will put you on our mailing list if you wish, so you are kept up to date with all that is happening.

## OUR CONSERVATION WORKDAYS

After an early morning frost eight members of the group met up with two Sheffield City Council Rangers and a trainee on the last Sunday in January to carry out some more work in Gillfield Wood. A Great Spotted Woodpecker also popped by occasionally to call out its presence from the top of the larches as we dealt with the tasks in hand.

Together we cleared an area of the wood of invasive vegetation and trees as earmarked by the Council. Pleasingly we were also able to clear away a large amount of litter that had accumulated in that part of the wood. As you look at the site now there is a great deal of satisfaction in seeing the potential for ground cover to extend into the area and for certain trees to breathe and seed successfully. Log and brush piles

have also been created to provide an ideal habitat for invertebrates and other forms of wildlife.

We also had time to remove scrub and some small trees from within and from the edges of two Q pits. These pits are of historic importance. It is generally believed that these features are the remnants of white-coal hearths/kilns used for drying wood for the purposes of smelting lead-ore and some can date from the late sixteenth century.

In time the roots of the trees would have destroyed the structure of the Q pits. One pit in particular looks very impressive now, and we all got a great deal of satisfaction from the thought that we had protected this small part of Totley's history. There is always a real buzz from working together in the wood and I would like to think the same atmosphere existed when the men of the past worked the kilns together.

Apart from the work, and to add to the morning, one member had a skein of 50 Pink Footed Geese fly overhead calling as he walked across Totley Hall Park to join the working party; another member, as he drank his pre-work coffee, watched a fox ghostly float across a field carrying a prey item in its mouth, and two members flushed a Woodcock from under a nearby hedgerow as they left the wood to head home. A great few hours had by one and all. Come and join us for one of our next sessions; tools, hard hats and gloves are provided and the Rangers even serve up tea, coffee and biscuits.....now that can't be bad!

Our next conservation workday is on Sunday morning July 29th. The other three mornings arranged for later in the year are September 30th, October 28th and November 25th. If you are interested in helping us conserve our wood please get in touch with Dave Gash on 0114 262 0564 or daveygash@hotmail.com, he will be only too pleased to provide you with more detail.

Chris Measures

## **Totley Sports & Social Club**

Official opening of new changing facilities  
Saturday 14th April 2012

Totley Sports & Social Club are delighted to announce the official opening of their new changing facilities will take place on Saturday 14th April 2012. In order to celebrate this, members of the club will be running a FAMILY FUN DAY where hopefully, weather permitting, we will have something to suit everyone. Amongst the events planned will be five a side football, kwik cricket, a 5km novice fell race, egg & spoon races, 3 legged races, and a hog roast for when you have worked up an appetite, along with evening entertainment and bar. We would like to be able to announce that the opening will be made by some famous names in the world of sport, unfortunately we are still trying to confirm who will be attending at the time this goes to press, so fingers crossed. Bring the kids along and join in the fun, we are at Totley Bent, Penny Lane just up from the Cricket pub.

Many thanks to readers who got in touch with regard to the cricket team photos published in the last edition. I am still on the lookout for more information if anyone out there has anything to offer in the way of photos, scorebooks or just memories you would like to share. I can be contacted on 0114 288 0093 e-mail mv.barnsley@yahoo.co.uk or Roger Handley on 0114 265 7825

## **Totley Primary Parking**

I am astounded at some parent's attitudes when dropping their children off at Totley Primary School. I regularly turn left from Sunnyvale Road onto Sunnyvale Avenue only to find a car stopped in the middle of the T junction letting their children out of the car. There is ample parking space next to them and all around them, but they are too LAZY to pull over to the side and allow their children to get out of the car safely. This means any car behind them has no alternative but to go onto the wrong side of the road to get past them. It is DANGEROUS to allow your child/children to get out of a car in the middle of a road. It is SELFISH to block a road for your own convenience. Other people have to get to work as well!

What these irresponsible parents don't realise is; in the winter months, when the sun is shining early in the morning, it is very low and that corner becomes a blind spot. A car coming around the corner might not realise a car is blocking the road until it is too late. Should a child be halfway out of the vehicle if a crash occurred, it might cause them to fall, possibly under their own vehicle. As parents you are supposed to set your children a good example and protect them. At the moment you are failing to do either. If you don't give a damn, I and others like me do. I certainly hope the school and the community police take action to stop this practice before there is an accident.

CONCERNED ADULT, SUNNYVALE ROAD

*Re: The anonymous letter from 'Concerned Adult' regarding the situation of parking on Sunnyvale Road. I share the concerns raised in this letter. We are constantly working hard to raise awareness among our parents of these issues. We have worked closely with the Police for some time to try and ensure people park their vehicles without endangering our pupils' safety.*

*It is important to note however, that the vast majority of our parents have taken on board our concerns and do park their vehicles in a safe and considerate manner. It is a minority of people who, for whatever reason, continue to park in this way. I am in regular contact with the Police who have agreed to monitor the situation and patrol the area.*

*I would also urge 'Concerned Adult' to contact me directly at the school to see how we can work together to ensure the safety of everyone.*

*Regards,*

*Chris Stewart, Headteacher*

## **Stylish support for St Luke's Hospice**

TWO of Sheffield's best known institutions are joining forces for a look at the fashion trends for 2012.

The popular St Luke's Hospice annual Fashion Show will once again see the charity being supported by independent city department store Atkinsons.

The show, which also includes a lunch, will be held at Baldwin's Omega on Monday, April 16, with a 12.30pm start.

Fashions by top designer brands will be provided by the store and Atkinsons staff will also be acting as models for the afternoon.

Tickets cost £30 and are available by calling 0114 236 9911 and asking for the St Luke's Hospice Action Group.

## Without Wires

Early this year, telegraph poles and wires that were very visible stretching across Cowsick Bog and other parts of Blacka Moor were removed. The Campaign for the Protection of Rural England had invited applications for money to be spent on areas of natural beauty that were blighted by power lines. Neil Fitzmaurice from Friends of Blacka Moor had pressed for Blacka Moor to be nominated and accepted as a worthy case. Before work could begin to remove the old power lines, new underground cables had to be laid along the main Hathersage Road. Work to transport the cleared poles across the land was done using a Clydesdale Horse and the result is fantastic.



Telegraph poles on Blacka Moor.



The same area after removal, Jan 2012.

This is one of the few projects undertaken on Blacka Moor, since Sheffield Wildlife Trust started managing the land that has received unanimous community support. Many other projects remain controversial, such as the installation of barbed wire fencing in order to graze cattle on the moor and allow receipt of farm subsidies. This has sadly changed the feel of areas that could be wandered through and enjoyed, free from the stamp of human ownership and control. The moor is still grazed by the inconspicuous herds of wild deer and a glimpse of these is privilege. Perhaps one day we will see these newer poles and wires removed, allowing the untamed character of this land that is so rare and precious to remain.

People feel they belong to this wild land, rather than the land belonging to us; a place to go to escape the modern world, free to learn for oneself. But the future of Blacka Moor is currently in the balance as the council moves towards forming the Sheffield Moors Partnership. This will be a collaboration of the conservation industry players that will take over the management of the land such that it conforms to a masterplan that will keep it in line with the management fashions of the day.

I find it a sad that one attitude of land managers in many places currently seems to be that if public land

You can have your own say on the future of the moors at 3 public workshops, all from 18:45 until 21:00:

- Wed 22nd February, at Topley Rise Methodist Church, Topley
- Thurs 1st March, at Quaker Meeting House, 10 St. James St, Sheffield
- Tues 13th March, at Hathersage Memorial Hall, Oddfellows Rd, Hathersage.

The meetings are free to attend but please book in advance. Tel 01433 670368 or email [rita.whitcomb@nationaltrust.org.uk](mailto:rita.whitcomb@nationaltrust.org.uk)

If anyone wants to see more pictures of the wildlife on Blacka Moor, I would recommend Neil's blog: [www.theblackamoorsite.blogspot.com](http://www.theblackamoorsite.blogspot.com) or to contact Friends of Blacka Moor, email [friendsofblacka@btinternet.com](mailto:friendsofblacka@btinternet.com)  
Dawn Biram



lacks expensive man made interpretations, art installations and management projects, people will have nothing to go there for, to see or to value. One of my winter pleasures on Blacka Moor was standing just over the top of Lenny Hill and noticing how the lilac-grey feathery tree canopies in the valley bottom gave the illusion of mist rolling in; a natural work of art that costs nothing. But now there is a hole in the mist where a large unnatural tree clearing has been made in the woodland. No doubt that will fill up with fern and create the need for yet another management intervention. Unfortunately whilst ever there are land managers in post, there will be more and more land management plans and projects continuously justified and implemented.

## PUZZLE CORNER

### Derbyshire Place Names

Sometimes solutions to cryptic crosswords bring out the comment 'warped minds'. Here are my 'warped mind' clues to give place names in Derbyshire

1. Old fortress weight
2. Sea level changes water source
3. Sounds like a large pub
4. Coins and fire reside
5. Sensible conversation
6. Man at place for vessels
7. Drop behind when tired
8. Garden bird mine
9. Type of paint for short surgeon's work
10. Female shady garden furniture
11. Overcook or just right
12. A Prime Minister's alternative
13. Tardy after first degree
14. Owned a university academic
15. 5ct a weight on fire
16. Salad ingredient not ill
17. The centre twenty hundred weights
18. Sounds as though I'll be sad
19. Mompessan's place
- 20 Silver tree above.



## A TOTLEY GARDEN BIRDWATCH

Did you take part in the RSPB Garden Birdwatch this year? Did you top up those feeders and spread a little extra on the bird table and then eagerly await the birds to arrive?

It is a great opportunity for the family or individuals to count the number of birds they see in their garden in an hour over the designated weekend in January each year. This year it was the weekend of the 28th and 29th. The results are then submitted to the Royal Society for the Protection of Birds ensuring you only quote the maximum number seen of each species during the hour and you don't count the same bird twice. So, I had twelve Chaffinch in my garden all at the same time on one occasion which I thought was a pretty good record as was the eight Goldfinch feeding on the sunflower hearts and niger seed. I am sure I can hear you say "I can do better than that!"

I am always keen to get a good count of House Sparrows when I do the watch because this species' numbers have declined dramatically in recent years. Fortunately I have House Sparrows visiting my garden on a daily basis. My count this year of maximum six in the hour was actually low because I can get at least twice that number on occasions. They are real characters and love the cover of shrubs and hedges and I find they are very selective when it comes to the feeders they visit, usually choosing the ones that are near to cover so they can make a quick escape. I think we are quite lucky in Totley in that we do have, in a few places, small parties of House Sparrows that are still hanging on, but I also know that a number of people in Totley who put bird food out regularly, never see a House Sparrow in their garden which is such a shame. If we all had a House Sparrow nest box placed just under the gutter, on the east side of the house, it could just make that bit of difference to their breeding success.

There are, however, a few lucky people who are getting a small party of Tree Sparrows visiting their feeders, which is excellent as these are cracking little birds with their red-brown crowns and a noticeable black cheek patch on the white background at the sides of their face. The males and females are alike so keep your eye out for these, I do.

Other birds I did manage to see during my hour of watching included a single Blue Tit and a single Coal Tit. I hope you fared better with these birds if you participated in the watch, perhaps you were lucky enough to get a party of Long Tailed Tits passing through. It is always a real pleasure to hear such a party trilling away as they move in a pink and grey flash through the trees in the garden and then cluster around the fat balls or nut basket before they zip off again. Some people have asked me why they are not seeing quite as many Tits in their garden this winter and although such birds are always moving through our area in winter I believe they have been finding sufficient food in the hedgerows and wood judging by the number of Great Tits calling out there and the number of Blue Tits and Coal Tits feeding in the larches of Gillfield Wood.

Unfortunately one bird I did not add to my count this year was Great Spotted Woodpecker. I had one immature male visiting my garden every day during the autumn but it must have moved on, but Great Spotted seem to be doing well in and around Gillfield Wood and have been heard drumming occasionally since at least mid-January. As the bird drums away on a dead branch there is nothing quite like that wonderful loud hollow sound as it resonates through the cold air on a crisp winter's morning.

It is always great to see our small birds such as Robin, Dunnock and Wren surviving the winter and I added one each of these to my tally during the count plus a smart looking Nuthatch which appeared briefly on the nut feeder. Actually I saw 3 Robins together just after I had finished my count which was annoying

but pleasing at the same time, if you know what I mean. One of the Robins made sure that number went down to two very quickly as it aggressively chased one of the others from the garden, as they do.

It is always fascinating to study bird behaviour isn't it? And a bird bath always adds to the interest and excitement in the garden especially if you have Blackbirds and Starlings visiting as I do. Four of each was the count during the hour but I have had eight Blackbirds all at one time since that weekend and I have seen up to forty Starlings in the large Chestnut tree near to the bottom of the garden. They seem to congregate there chattering away, debating which of the gardens below them they will visit next. I do hope you will consider taking part in the count next January if you missed out this year, it is really enjoyable and can always throw up a surprise, and it does add to our overall knowledge regarding the status of our wintering birds. If you would like more information just contact the RSPB direct at their headquarters, The Lodge, Sandy, Bedfordshire SG19 2DL or better still, why not go to the RSPB website which is packed with information. That is [www.rspb.org.uk](http://www.rspb.org.uk).

My garden highlights in January this year have been an immaculate dog Fox searching for food late at night and a male Sparrowhawk twisting and darting through the garden in a vain attempt to grab a Goldfinch off a feeder. With the colder weather, February then brought highlights such as four Lesser Redpoll and a male Siskin, all five feeding on the niger seeds. These finches are probably winter visitors from Scandinavia and I do know that one Totley resident has had a small party of Siskin visiting her garden regularly and as I write this she has a party of fourteen Redwing stripping the berries from her cotoneaster. I had high hopes the berries on my Holly tree would be eaten by these lovely continental Thrushes but the Wood Pigeons got there first.

One thing that I do find really interesting is how birds sing at first light no matter how cold it is, in an effort to establish or reinforce their claim to a territory and attract a mate; that is before the business of feeding. If I had been out there all night in minus how many degrees, I would certainly want my porridge first!

Well must close now and get some more birding done from my window. Hope your garden birds are bringing you as much pleasure. Spring is just around the corner, so enjoy.

The Armchair Birder.

### Slide Projector wanted

Totley History Group is in need to a slide projector. We know the world has moved on to digital, but we occasionally have speakers who have not transferred their slides to a computer. Do you have a slide projector you no longer use? We can give it a good home and an occasional outing. If you can help, please contact Christine on 236 1631.

Thank you!

## Changes to Blue Badge Scheme

From the 1st January 2012 changes were introduced to the Blue Badge (Disabled Parking) scheme. The purpose of the Blue Badge scheme is to help disabled people travel independently, either as a driver or passenger, by allowing them to park as close to their destination as possible.

Here in Sheffield the Blue Badge scheme is administered by the council Customer Services and last year they dealt with 11,500 applications. The changes introduced from 1st January 2012 include: Increasing the fee for a 3 year permit to £10 to cover the costs of administration, production and postage – this is the first time the fee has increased since 1983. Changing the design of the badge to help enforcement by making it harder to tamper with or forge Customer Services will no longer produce the actual disabled parking badges, but will authorise these to be issued from a new nationally operated service who will provide secure printing, personalisation and distribution of the new badges. The facility to apply for a Blue Badge or renew online via [www.direct.gov.uk/bluebadge](http://www.direct.gov.uk/bluebadge)

## Judith's leap into the unknown is leading by example!

WHEN St Luke's Hospice Deputy Chief Executive Judith Park told her team to jump, she realised there was only one thing she could do...jump with them! Which is why she will be leading a hospice team in a sponsored sky dive on June 3.

And she hopes that by taking the plunge – including an initial 5,000 in freefall - she will personally be able to raise at least £1,000 for Sheffield's only hospice. Judith will be performing a tandem jump – which means she will be attached to an experienced sky diver – in the skies above Brigg Airfield on Humberside.

"My aim is to raise £1,000 for the hospice," she said. To support Judith's sky dive visit: [www.justgiving.com/judith-park](http://www.justgiving.com/judith-park)

## Artisan Food Fair Restarts

The first Baslow Food Fair of the year takes place on Sunday 1st April with a full line up of local producers and over 20 stallholders selling a wide range of artisan food. Stalls include: preserves and flavoured oils from locally foraged ingredients, artisan cakes, an Italian deli, coffee, pork pies from Liberty Foods, vegetarian food, home-made steamed puddings from Mother Goose, artisan chocolates, speciality teas and local cheeses. Andrew Auld, an artisan bread baker from the Loaf in Crich, will also be in attendance selling his range of renowned sourdough breads.

The Baslow Food Fair has developed quite a following amongst local foodies since its inception last year and aims to showcase new and exciting food producers from in and around the Peak District. The fairs are the brainchild of Totley based couple Chris Horne and Julie Ryalls who have since gone on to open Hartingtons School of Food in Bakewell.

The Food Fair opens it's doors at 10.30am in Baslow Village Hall and doors close at 4.30pm. For more information on the Food Fairs including future dates go to [www.hartingtons.com](http://www.hartingtons.com).

## TOADS PRESENT

## "MURDER WEEKEND"

WRITTEN  
BY  
**BETTINE MANKTELOW**

"Murder Weekend" is a comedy thriller and is the next play to be performed by TOADS. The dates are from Wednesday 16th May to Saturday 19th May and the venue is, as usual, St John's Hall, Abbeydale Road South, at 7.30pm.

The play centres around a group of people who attend a Murder Mystery weekend in a hotel. Trouble abounds when it transpires that 2 of the guests know each other - very well indeed! An uninvited guest appears, giving us a recipe for a good thriller, with humour aplenty.

Call 2351206 to reserve your ticket - £4 or £3.50 for concessions - or contact any TOADS member.

## Sheffield Bach Choir

**SATURDAY 17 MARCH, 7.30 pm**

Sheffield Bach Choir presents Bach's **MASS in B MINOR** with the NATIONAL FESTIVAL ORCHESTRA AND SOLOISTS Jenny Leadbeater, Anita Wiencelewski, Ben Thapa, Mark Rowlinson at Sheffield Cathedral, Church Street, S1 1AA  
Tickets £12-£15; Students £6

Box Office: 3 Tupton Mews, Crescent Road S10 5EA and at the door. On-line Booking from the Bach Choir Website: [www.sheffieldbachchoir.org.uk](http://www.sheffieldbachchoir.org.uk)

Sheffield Bach Choir presents Bach's choral and orchestral "last will and testament", the Mass in B minor (arguably the greatest musical work ever written) for its March Concert in Sheffield Cathedral. Conductor Dr Simon Lindley has appeared before with the Choir in this work over a decade ago and looks forward with eager anticipation to re-visiting what he regards as one a peak of Western civilisation. Soloists include Ben Thapa from London, Manchester's Mark Rowlinson, Anita Wiencelewski from Leeds and Sheffield's own Jenny Leadbeater, each is a veritable veteran of this particular work with the exception of former G4 star Ben Thapa for whom the Sheffield performance is his debut in the piece. The organist will be Alan Horsey, formerly of Bradford Cathedral.

## BEWARE PHONE SPAMMERS

There have been several reports of phone spammers calling people trying to hack into their computers. The first warning is that the caller display is "out of area". They are from Asia with obvious accents; they even claim to be working for Microsoft and try to frighten you with horror stories of viruses, infections and your computer slowing down. They will attempt to remotely access your computer to copy login names, passwords and payment details.

Hang up, do not talk to them and never ever follow their instructions to even check out your PC. If you are worried about your computer simply call a reputable computer repairs company.



## February Issue

The "TRA Update" in the February edition gives credit to Neil Bunting & I for our input to TRA. We hasten to add, that we are doing it as members of TRA & not as Committee members.

**Front Cover.** The white car is an Austin 3 litre & not a princess. The Princess name was used for the "Wedge" models. The 3 litre looks like an 1800/2200, or Land Crab. The middle section is the same & the doors went on to be used in the Maxi. The main difference about the 3 litre, or Land Lobster, as it became called was that it was rear wheel drive. The bonnet was longer to take the 3 litre engine (a V8 was also used experimentally) & the boot was lengthened making it a very long car. It had a big transmission tunnel which made it seem much smaller inside than the 1800. It was launched in 1967, but did not come onto the road until 1968 & finished production in 1971, having sold less than 10,000 cars. It was thirsty & slow but had some good features, care of Rolls Royce, who had collaborated on some vehicles with BMC. The one photographed appears to have been registered in 1969. Much of my hard earned cash was spent in The Crown, with Jack & Mrs. Taylor (I never knew her name) before I married. My 21st & stag night were both celebrated there. Do any of my fellow drinkers remember the cow's eye?

**SID** Tony Renyolds commented on the value of the SID - Speed indicator device, in the last edition of **Totley Independent**. He is quite right about motorists speeding up again when they hit the dual carriageway. I would like to see the SID have two other locations, actually on the dual carriageway, say near Marstone Crescent, on the City Bound side & near the end of Laverdene Road, outbound. The SID is powered by battery, as the editor rightly says, but apparently, the Community Assembly believed that they had paid for a solar powered version. I understand that the solar panel has now been ordered. The same SID is also used on Twentywell Lane & Rushley Road.

It is disappointing that the Council Highways Officers will not provide reminder speed limits, either painted on the highway, or as repeater signs. They say that it is not legal to provide them, but they have done, elsewhere in the City, i.e. Long Line.

Roger Hart, Ward Forum Traffic Focus Group

## Totley Writers Group

Totley writers group will be held in the local **Totley Library** for anyone with a keen or passing interest in writing. The group began on the 27th February and the next **Monday 12th March** and **every fortnight following** thereafter, the group will be a chance to work on skills through giving and receiving constructive criticism, analysis of character and plot, and a place to have a good chat about story.

I began the group because I wanted a place to talk with fellow writers, to inspire and be inspired and to exercise and receive feedback. I intend it to be a relaxed workshop approach, available to encourage and motivate all forms of writing. I want to work through some of what could be a truly fascinating character, plot or a new idea. My own passion for writing has driven me to embark on this adventure, to converse with other writers and enjoy what can come from writers meeting in one place.

If you want to contact me my mobile is: **07875 295438** and my email address is **philippanettleton@yahoo.co.uk**

DORE ART GROUP

## ART EXHIBITION Dore Old School

Friday 20th April 2012

2.0pm to 6.0pm

&

Saturday 21st April 2012

9.30am to 5.0pm

Refreshments available

Free admission



Mark and Sally Fletcher invite  
you to

## The Grouse Inn

### Longshaw

Sheffield S11 7TZ

Meal times:-

**Mondays 12.00 to 2.30pm**

**Tuesdays to Friday's 12.00 to**

**2.30pm and**

**6-30pm to 9-30 pm**

**Saturdays 12.00 to 3.00pm**

**and**

**6.30pm. to 9.00pm (drinks -  
open all day)**

**Sundays 12.00 to 9.00pm**

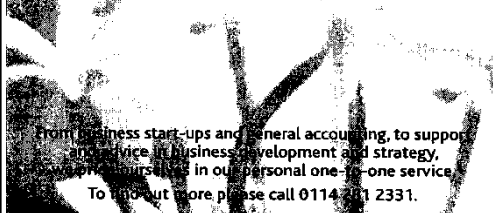
**Phone 01433 630 423**

## R Rose & Co

Chartered Accountants & Business Advisors

Specialists at  
looking after the affairs  
of small businesses.

For a **FREE** initial consultation  
please contact Roger Rose FCA on  
**0114 281 2331**



from business start-ups and general accounting, to support  
and service in business development and strategy,  
we provide a range of services in our personal one-to-one service.  
To find out more please call 0114 281 2331.

621 Chesterfield Road, Woodseats, Sheffield S8 0RX  
Email: info@r-rose.co.uk www.r-rose.co.uk

One man went to mow...  
...but his mower wouldn't go!

Now is the time to call

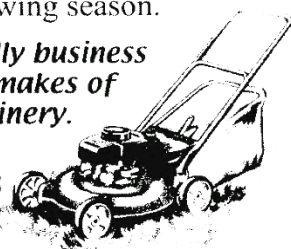
## MOWER MENDER

and be ready for the forthcoming  
growing season.

A local friendly business  
servicing all makes of  
garden machinery.

Phone:  
0114 236 6958

Mobile:  
0781 2211149



Blade Sharpening and  
Collections & Delivery Service Available

## Gentle Exercise to Music

### At the Bannerdale Centre

( Former Abbeydale Girls Grammar School)

**Carterknowle Road**

**Tuesday mornings 10-15a.m.**

**Keep Fit & Coffee**

**Tel: 2585364**



Are there any ladies who recognise themselves in this 1972 photograph taken in the grounds of the Abbeydale Hall? They were members of the keep fit classes organised by Sheffield Education where I, as the teacher, took 4 sessions a week for almost 30+ years until the old Hall was sold by the City Council and we moved down to the road to the former Abbeydale Girls Grammar School, now the Bannerdale Centre. We still have a class on Tuesday mornings and ladies from those early days continue to keep fit. You don't have to be good at maths to work out the number of years I've been involved. There have been hundreds of lovely women in the area who have donned leotards and tights. I have seen them marry, have children, become grannies and great-grannies but we step out in spite of replacement hips, knees etc although leotards, cartwheels and handstands are absent these days.

Happy memories

Pam Denniff

### **Artistic Licence?**

Where do all the ladies go  
Mornings, noon and nights,  
Rushing through the streets of Dore  
With leotard and tights

Why have many ladies

For thirty years or more

Danced and twisted, stretched and curled

From ceiling down to floor

What do lots of ladies do

Inside that big old hall

They make new friends and laugh and learn

And really have a ball

Who are these lovely ladies

Who try so very hard,

Whose aims are health and fitness

And wear a leotard

Well – these energetic ladies

Don't need magic spells

To look good and feel young at heart,

We are "Pam's "Dore and Totley Belles".

## **Weather Report - 2011**

What a beautiful spring it was, with many wonderful blossoms on the trees and shrubs. Temperatures were up on the averages, in fact, according to Weston Park (WP) only July and August were below the average. July and August also had below the average hours of sunshine, as did February. I have no means of measuring sunlight hours, but I do remember on many days when others claimed a sunny day, that it was teatime before the cloud cleared in Totley (T). I also noticed that in the early morning skies were clear only to be covered by cloud by the time breakfast was eaten. The hottest day was 27th June (WP 29.1C, T 28.0C) - the last few days in September and the 1st October almost matching the WP highest temperature. The coldest night showed -3.5C on 21st January WP and -5C 20th Jan T.

The longest dry spells were in March, 12days in WP and T; in April 18 days WP and 10 and 15 days in T. In March there was 16% WP and 14% T less rain than the average and in April 15% WP and 20% T. February and December were wetter than average in both WP and T and October wetter in T. In fact February was almost double the average in T, and there was 60mm more rain in T than in WP in December. The average rainfall for the year in WP is 825mm, WP achieved 560.4mm and T 765.4mm for the year. Snow fell or lay on the ground for 2 days WP and 4 days T. WP recorded 1599 hours of sun during the year, the average standing at 1380 hours.

	<b>Totley</b>	<b>Weston Park</b>
<b>Rain for the Year</b>		
2011	765.4mm	560.4mm
2010	866.3mm	633.9mm
2009	1041.0mm	927.0mm
<b>Coldest Night</b>		
2011 -	-5.0C	-3.5C
2010	-10.0C	-8.7C
2009	-5.5C	-4.7C
<b>Wettest Day</b>		
2011	32.0mm	21.6mm
2010	31.5mm	31.0mm
2009	33.4mm	88.8mm
<b>Hottest Day</b>		
2011	28.0C	29.1C
2010	24.5C	27.7C
2009	27.5C	28.0C
Vivien Filleul		

# Totley and the Tunnel by Brian Edwards

*reviewed by Sally Goldsmith*

Chat with anyone about local history and the conversation is sure to come round to the Totley Tunnel - the building of which changed Totley forever - and Brian Edwards, the local historian. Indeed, only last month both were mentioned, and of course recommended, in a talk about the tunnel by Ted Hancock to the History Group. How timely then that Brian has reprinted his book, this time with a neat spine binding.

Brian tracks us back to a time when Totley, a small village still largely separate from Sheffield, was already rapidly changing. Trains had recently come to the newly built Dore and Totley Station in the 1870s. Land values were rocketing, landowners cashing in with the development of new houses for the well to do on Dore Road - and later around Devonshire Road, Totley Brook Road and Victoria Road. Indeed, the Victorian expansion of Totley can be attributed to the railway - not only new villas for the well to do, but the building of the small terraced houses for workers on Totley Rise (or "Bricky Row") and Lemont Road.

We learn about this huge engineering feat and the organisation responsible - the Midland Railway Company and its backers. A line to Manchester and beyond to Liverpool was to be a hugely profitable enterprise - not so much through passenger travel but because of the money to be made from the transport of coal to the North West. We learn about the engineering problems that had to be solved in order to get under the 1300 feet high moorland and the methods used - some using up to date technology of the time, but mostly still relying on gunpowder, human brawn and craftsmanship. We learn about the Totley Brickworks that made the bricks to line the tunnel, some of the navvies living rough up there. And indeed, we learn about the navvies - the people we seem to be most interested in - those who did the dirty work and sometimes paying with their health and lives.

Here the book does not disappoint with some detailed social history. Living in temporary huts near Moss Road or lodging at The Grouse, Totley Rise, Lemont Road or walking in from further afield, the navvies are surely the real heroes. They had to work in some of the worst conditions seen in railway construction - water from the many watercourses around Totley and Grindleford burst into the tunnel. Indeed at the Padley end some of the navvies even had to get to work by raft. Who cannot be entertained by the contemporary accounts of the challenges to law and order brought by such a massive influx of rough itinerant labourers, even the village policeman taking a knocking? Who cannot sympathise with the tiny village school that had to accept so many extra poor children living in terrible circumstances? Contemporary accounts of navvies sleeping in shifts - some turning out to let the next lot into bed so that up to sixty people could be lodging in one small unsanitary house - are astounding. Who cannot be moved by the accounts of disease - only one out of fourteen houses in Lemont Road unaffected by smallpox? Or by the photo of one of the small gravestones in Dore Churchyard marked perfunctorily "S.P. (ie smallpox) Full Up 1893."

The image that sticks with me is not when the first passenger train travels on the new line to the accompaniment of acrobats and brass bands in Summer 1894, but the moment in October 1892 when the navvies from either end of the tunnel finally meet in the middle - and shake hands.

*Copies of the 4th reprint of Totley and the Tunnel available from Totley Rise Post Office £8.99.*



WEDNESDAY MARCH 28<sup>TH</sup>

TOTLEY LIBRARY, 7.30PM

**DAVID HEY**

## **TALK & SLIDES ON THE HISTORY OF GROUSE SHOOTING IN DERBYSHIRE**

MEMBERS £2, NON MEMBERS £3

WEDNESDAY APRIL 25<sup>TH</sup>

TOTLEY LIBRARY, 7.30PM

**AGM**, FOLLOWED BY TALK BY JIM RIEUWARTS

HISTORY OF LEAD SMELTING IN TOTLEY

Inner Wheel Club of Dronfield presents....

## **'Garden birds in spring and summer'**

A humorous talk by David Tideswell

David Tideswell is an ornithologist and well-known as a speaker and lecturer on birds. Born in Staffordshire, he was raised in the Peak District village of Wooton. David has had an interest in wildlife from a young age, which continued beyond his university studies on the subject and into his regular slots on local BBC radio, during which he shares his knowledge and experience with listeners.

**Date:** 9<sup>th</sup> March 2012

**Time:** 7.30pm

**Location:** Holmesfield Church Hall

(car park behind Angel Inn or Village Hall Car Park)

**Tickets:** £5 to include light refreshments:- tea, coffee and biscuits

For more information or tickets telephone 0114 2620013or 01246 412293

## GARDENING TIPS FOR MARCH

I've just been up to the garden to feed the birds, and check on the greenhouse. The snow has been with us 3 days (early February) the garden looks lovely the pond netting has got a lovely honeycomb frosting on it the pristine snow makes everything look tidy.

The greenhouses are doing a good job keeping the overwintering plants happy. The insulation we did earlier is working well the early seedlings are now at the two leaf stage which is good. They should be ready for planting out late March/ early April. My onion seeds have let me down, not one has germinated. I must have got the seeds damp in the packet, shame, that means I will have to beg, borrow or even buy some seedlings from somewhere otherwise the onion show bench at the Totley Show will be one exhibit less.

The birds are busy doing birdie things we have seen greenfinches, hedge sparrows, blue tits, bullfinches, wrens, blackbirds, long tailed tits, robins and of course the greedy pigeons and doves, It's nice to see them clamouring for the mealworms, seeds, and nuts.

We are planting a few bedding plant seeds this year lobelia trailing and bush, verbena, surfinia, and African and French marigolds most of these, except the marigolds will be used in hanging baskets and tubs, it's a bit more work but very satisfying, and is certainly cheaper if last years plant prices are anything to go on.

I've bought some vegetable seeds ready for planting out they were on special offer at the garden centre so I took advantage, we are still picking purple broccoli and cabbage which has overwintered which tops up what we get from the greengrocer, I hope we have a good crop of veg this year it is much better to nip down the garden and pick our own, nice and fresh and tasty

I see the new allotment area on Mickley Lane is being prepared I hope they get it going in good time to see the results of the allotmenters at the Totley Show, It would be nice to see a few more exhibits in the fresh produce section to give us golden oldies a bit of competition.

It won't be long before the frogs invade the ponds, I hope we are not blessed with as many as last year the poor old fish were really struggling their way through the frog spawn I had to remove quite a lot. It makes such a mess of the pond, it blocks up the fountain pumps and waterfalls and makes a frothy mess on the surface of the water which if left turns green and becomes very smelly, yuk.

Lots to do in March finishing off those jobs you didn't finish in the autumn or perhaps never got started? Such as re-varnishing garden furniture, coating fences and sheds with a good preservative, re-laying wobbly paths, tying back raspberry canes (that reminds me) climbing plants etc. preparing ground for new plantings and the vegetable plot, firming in any plants that have been loosened by the frost.

Who said there's not much to do in March? Don't you believe them.

Enjoy your gardening.....

### Flowers

If you have not sown your annuals already do so now, or you will be running a bit late. Early March is a good time for potting particularly summer and autumn flowering ones and also those which are grown for their foliage. Winter flowering plants are a different matter and are best repotted as soon as they have finished flowering. Sow herbaceous perennials and rock plants, these are quite easy to grow and include delphiniums, lupins, gypsophilas and many more too numerous to list. Towards the end of the month plant gladioli and monbretias make successional sowings over a month to 6-week period. This will lengthen the flowering time. Work in a balanced fertilizer such as Growmore around herbaceous plants. Weed other beds and start hoeing if weather permits. Dead head daffodils. Lift, split up and replant overcrowded clumps of snowdrops. At the end of the month sow hardy annuals where they are to flower in borders. Lift and divide herbaceous perennials such as golden rod, michaelmas daisy and yarrow when clumps become overcrowded.

### Vegetables

Prepare early seed potatoes by exposing them to light in a cool frost-free place (chitting) ready for planting out later in the month. Sow cauliflower, broccoli and other brassicas in a frame. Sow spinach in a sheltered place, make a small sowing now and more later. Sow lettuce outdoors unless the weather is very bad, choose a cabbage or cos type, sow seeds thinly. Sow broad beans and peas outdoors, choose an open cultivated plot.

### Trees, Shrubs and Fruit

Feed cane and tree fruits with balanced fertilizer, give blackcurrants a feed of nitro chalk. Make sure newly planted fruits are firm in the ground and mulch well. Towards end of month prune roses height down to 6

inches or so off the ground. Floribundas 12 inches minimum depending on the type. Plant new raspberry canes and strawberries, complete the planting of tree and bush fruit early in the month.

### Greenhouse and Indoor Plants

If your greenhouse is empty (what a waste!) give it a good clean inside and wash down with disinfectant if it has plants in then wait for a fine day to do this. Clear all of the plants out, most of them will not tolerate even the smallest amount of disinfectant. The greenhouse should be filling up with seedlings and rooted cuttings. These must have plenty of light and air and temperature maintained around 13 to 16C (55 to 60F) for the majority of popular plants. Take cuttings of bedding and greenhouse plants such as heliotrope, fuchsias, pelargoniums (geraniums) as soon as they are long enough, around 3 inches for geranium and 3 inches for fuchsia and heliotrope. Cucumber and melon could be sown now in a warm greenhouse, I generally wait until the end of the month. Gradually increase watering of indoor plants, feed actively growing plants with potash, liquid feed tomato fertilizer is ideal. Put a bit of potting compost on plants such as ferns and aspidistras. Repot cacti towards the end of the month. Sow summer annuals for planting into pots for a late show in the greenhouse such as cigar plant, busy lizzie, stocks, schianthus etc. Houseplants such as maidenhair fern, button fern, and spider plant can be divided and repotted.

### Lawns

Deal with bare patches by returfing or reseeding. Aerate and spike compacted areas. Prepare areas for seeding or turfing next month.

Do not forget the Totley Show in September - Now is the time to make plans.

Cheerio for now, Tom



## Friends of Green Oak Park

If you have been through the park recently you will have noticed the hedge at the back of the bowling green has been cut back. This area has not been maintained for several years. As a result it was overgrown with brambles and full of rubbish. It is impossible to remove all the berberis roots so they will be allowed to re-grow, but will be kept under control. Native hedging, to attract wildlife will be planted in the gaps.

The wild flower area behind the hedge has been strimmed to allow the flower seeds to germinate. A temporary fence will be put in place to protect the bowling green and the new plants.

Friends and regular park users would like to express our thanks to the team from Parks and Countryside who work very hard to improve and maintain our park.

At last we can report the drainage work has begun. This it is hoped will improve the wet muddy area alongside the stream and will stop flooding of the children's playground. When the ground has settled, which could take some time, the three new ponds will be planted up with moisture loving and aquatic plants.

Hopefully everyone has been putting out food and water for the birds during the severe weather we have been experiencing. To care for bird visitors, once feeding has begun it should be continued as birds become used to a supply of food. Most birds need to eat as much as 30% of their own body weight in food every day. As well as feeding the usual visitors, the unexpected can turn up. At the beginning of February 4 redwings arrived in my garden, attracted by the blackbirds. Very shy and easily disturbed they began to feed on the cotoneaster berries. Throughout the week, numbers built up to 20. Some began feeding on the ground on apples I had saved since the autumn.

A week later just as it was getting light I was delighted to see they had been joined by a flock of fieldfares, sitting so close together in my birch tree they were very easy to count, there were 29. As song thrush, mistle thrush, blackbird, redwing and fieldfare numbers are giving concern. The British Trust for Ornithology will be carrying out a survey next winter.

In Green Oak Park we have been putting food on the bird tables every day. Although nothing unusual had been seen, we decided to take part in the Big Garden Bird Watch. Helped by teenagers we saw wood pigeons, collared doves, blackheaded gulls, bluetit, robin, dunnock and rooks. Best of all was a small flock of 11 house sparrows. The boys enjoyed borrowing our binoculars and were eager to spot the birds before we did.

The box building session led by park rangers was a success but it was a pity so few turned up. One family who came thoroughly enjoyed knocking in the nails and chatting to the rangers. Mum had no idea activities like this were held in the park; they are looking forward to the next time.



Our next community event will be in the park on Sunday 13th May 1.30-4.30pm. There will be activities for all the family, led by park rangers.

Look out for posters and details in the April **Totley Independent**.

Thank you to those who have offered snowdrops "in the green."

If you have a few spare, please let me know.

Once again I must remind all dog owners it is their responsibility to clean up after their dog. It is very irresponsible not to clean up. Dog faeces are a health hazard, especially for children.

The park is for everyone not just somewhere to let your dog roam round unsupervised.

Avril Critchley, Chair FoGOP, 236 1568



Tony and Julie at

## The Crown Inn

Welcome you for

Good Quality, Home Cooked Food

Tuesday – Friday

12-2pm & 5.30-8pm

Saturday & Sunday

12-2pm

Come & join us for

Good Beer, Good Food & Good Music

Tel 0114 236 0789

CLOSED SUNDAY EVENING

Visit our website: [www.crowninntotley.co.uk](http://www.crowninntotley.co.uk)

LIVE MUSIC

13th March

EMERALD

27th March

Cary Bayliss and

Ian Bellamy

## Services in March at All Saints, Totley



<b>4<sup>th</sup></b>	10am	Morning Praise
	6.30pm	Holy Communion
<b>11<sup>th</sup></b>	10am	Morning Praise
	6.30pm	Evening Prayer
<b>18<sup>th</sup></b>	10am	<b>Mothering Sunday Service</b>
	6.30pm	Holy Communion
<b>25<sup>th</sup></b>	10am	Holy Communion
	6.30pm	Holy Communion

**April 1st 10.30am**  
**Churches together in S17 at King Egbert School**  
**Preacher Chris Blake – Principal of Cliff College**

### Start the day with Jesus 9am-9.30pm

Monday-Thursday in the church hall lounge.  
Half an hour to reflect quietly read the bible  
and pray together for our community and country.  
**All are welcome.**

The season of **Lent** begins on February 22<sup>nd</sup>.

It is the time for soul searching and repentance and for reflection and taking stock.

By observing the 40 days of Lent the individual Christian imitates Jesus' withdrawal into the wilderness for 40 days.

Christians think about the sacrifice that Jesus made for them upon the cross,

Many now use this time to do something positive, such as to take extra time to read Christian literature, possibly a special course devised for this season, and to meet in small groups to discuss it.

Sometimes simple Lent lunches are held, with the cost of a full lunch being given and sent to a needy cause.

### Activities in March

**March 1<sup>st</sup>** Card making in the church hall

**March 2<sup>nd</sup>** Women's World Day of Prayer at Totley Rise Methodist Church for all in the S17 area

**March 3<sup>rd</sup>** New Wine Women's Day of Christian teaching at Harrogate with Totley Rise Methodists.

**March 12<sup>th</sup>** 10am – 12noon Children's Society Coffee Morning in the church hall. Stalls selling cakes, children's games, books and other things.

**March 15<sup>th</sup>** Card making in the church hall.

**March 17<sup>th</sup>** Quiz Night 8pm Church hall. Free tickets from any church member.

**March 23<sup>rd</sup>** A group taking a service at the Cheshire Home.

**Saturday morning family walks. All welcome**

For people of all ages. 10.30 – Noon

Meet in the church car park **Sat March 17<sup>th</sup>**

**Sat March 31<sup>st</sup>**

**The Children's Society** is a national organisation that helps many vulnerable children and young people through some of the most difficult times of their lives.

One project is the Children Society Safe in the City project. This works with young runaways who are difficult to reach but who are in great danger being homeless and in a city. They seek to make contact with them and offer one to one support to look and their problems and to devise solutions to them.

They also help support young carers who are looking after their families, to be able to have a break from their responsibilities.

Please support them on March 12<sup>th</sup>

### Heart of Stone by Viv Filleul

Lord I feel my heart is cold  
Many times your story told  
Lord don't let me fall asleep  
Come hold me, in safety keep.

Come and breathe new life in me  
Light me up that I may be  
A beam of hope to show the way  
Turning darkness into day

Come and touch me with Your fire  
May the warmth become desire  
So I burn with love for You  
You who are the love so true.

So dear Lord this heart of stone  
May it beat for You alone  
And so good Lord I do implore  
May I love You more and more.



**The Real Easter Egg** is the only Fair-trade charity faith egg to tell the Easter Story on the box. The boxes are colourful and contain an Easter story booklet inside with the egg. Opening the lid you will see Happy Easter and a bible text. Last year four supermarkets ordered small numbers of them and sold out quickly, but they still refused to place large orders. So if you would like to order one on an individual basis you can do so on [www.realeasteregg.co.uk](http://www.realeasteregg.co.uk)

Last year the Meaningful Chocolate Company gave away £26,000 from profits from the eggs as a sign of hope and new life.

**Gay Riley**

## Make a big splash for Macmillan!

Fancy doing something different? Macmillan Cancer Support is looking for teams of four to bomb off the top diving boards at Ponds Forge in Sheffield!

The World Water Bombing Championships, now in its eighth year, will be back with a splash on 2 May 2012 at 6.30pm, and promises to be the biggest event yet! Bombers can get creative with fancy dress and team names for this wet and wonderful way of raising money for people affected by cancer.



Rob Turner, Fundraising Manager for Sheffield explains, "The Bombers will be launching themselves of either the 1m or 3m diving platform, for this fun event which brings lots of people together to raise money for Macmillan. The costumes bring laughs and some of the themes teams come up need to be seen to be

believed. I can't wait to see what this year's teams come up with!"

Teams are graded based on style, splash and presentation by a judging panel which includes two Macmillan nurses and a mystery celebrity guest! But if you don't fancy getting wet you can come down and lend your support for this fantastic event. A PUKKA pie and peas will also be available at the discount price of £2.50 for hungry bombers and their supporters.

To register each teams to pay a £20 registration fee and raise a minimum of £376 sponsorship -. £376 could fund two Macmillan nurses for a whole day, giving vital help and support in Sheffield. Spectators who don't fancy flinging themselves off the diving platforms can watch for a suggested donation of £2 to Macmillan.

To register, call Andrea Longden on 07905 327242 or Email: [wwbc01@gmail.com](mailto:wwbc01@gmail.com) Teams members must be aged 18 and over. There is only space for 14 teams and places are filling up fast! Sign up today, bombs away!



**LEONARD CHESHIRE DISABILITY**

**MICKLEY HALL**

**SPRING FAIR**

**WEDNESDAY APRIL 7<sup>TH</sup>**

**10AM – 12 NOON**

**CAKES, PRESERVES, BOOKS**

**RAFFLE, REFRESHMENTS ETC.**

## Zumba® Numbers Rise at All Saints' Church Hall, Totley!!



**Christine Ventour from All MoVe**

Zumba® the Latin based fitness program is being embraced by the people of Totley. In September of last year, Christine Ventour from All MoVe started delivering Zumba® sessions at All Saints' Church Hall, Totley on Mondays at 12.30pm. Numbers have continued to rise and Christine would like to encourage more people to get fit, come along and have a go. She told us 'the response to Zumba® in Totley has been fantastic. People enjoy the sessions for many reasons, it is a great way to get fit and healthy, to workout at your own fitness level, and to socialise and have fun. What a great way to spend an hour?'

Feedback has been wonderful including:

'I loved this session. Do you deliver on any other days?'

'Will you deliver in the evening as I would like my daughter to attend with me?'

'Your sessions make me feel so much better and my joints don't feel as stiff'

'You know just how to keep our interest with great moves and wonderful music'

Following the on-going success of the Monday daytime session, Christine has shared with us that she has plans to offer another session but in the evening. She said 'I want the Monday session to continue going from strength to strength because it is creating such a great atmosphere. I have been asked to deliver an evening session for people that can't attend during the day. This will commence with a taster session in April. This session will be shorter than the usual one-hour sessions. There will the opportunity for people to ask me questions and to sign-up for the new program also to be launched in April.

Christine is also a licensed Zumba Gold® instructor and would like to deliver a session in Totley and Dore. Zumba Gold® program modifies the moves and pace for participants which is ideal for people that want to do Zumba® but want to take it easy. It is also ideal for people new to fitness and people recovering from illnesses. If you are interested in attending a Zumba Gold® daytime session please contact Christine to register your interest.

To find out more about attending the current Zumba® session in Totley and to register your interest for the new evening session please contact Christine Ventour on:

T: 0788 9797 827

E: [christine.allmove@live.co.uk](mailto:christine.allmove@live.co.uk)

W: [www.allmove.wordpress.com](http://www.allmove.wordpress.com)



## TOPPING OUT CEREMONY AT DORE AND TOTLEY

On the 16th December, 2011, on a surprisingly dry day given the weather we had been experiencing in recent weeks, members of the Dore and Totley United Reformed Church took part in a topping out ceremony on Totley Brook Road.

In case you are not familiar with "topping out" – and not that many people are – it is a term used within the building and construction industry to describe a ceremony usually held when the last beam is placed at the top of a new building. The ceremony can be traced back to the Scandinavian religious practise of placing a tree on top of a new building to appease tree-dwelling ancestors that had been displaced.

It migrated to England when the Vikings took root here. I have no doubt a great deal of drinking and climbing to the roof top, followed by more drinking used to take place, but nowadays the Health & Safety at Work Act is firmly opposed to alcohol being on a building site! Members of the church might have been more lenient in their attitude – it was, after all a celebration – but Jarvale's Contracts Manager, Tony Lee, was quite adamant. There was to be no climbing up to the top of the gable by Reverend Shirley Knibbs either!

Instead, Site Manager, Mick Appleyard deftly rigged a length of rope up to the canvas concealing a date stone commissioned by our Project Manager, Alan Ibbotson, as a gift to the church.

So, to a round of applause and a blessing by Shirley, with both feet firmly on the ground, the covering was whisked away, the stone revealed and we all retreated into the church with the building team to eat mince pies and cake accompanied by apple juice.

The event marked the beginning of the closing chapter in a project begun by church members in 2005/6 when rising maintenance costs and time spent on repairing property were causing concern. Initially the thought had been to construct a permanent, glass covered porch linking the church to the church hall and controlling access to the rear of the property.

At the same time we wanted to make the church more visibly open and accessible to the many people who pass by, or use the hall for social activities. Following feasibility studies which included a daily use of rooms survey, we arrived at a point where we could estimate the cost of a refurbishment programme as averse to a "design for purpose" new build with some refurbishment. The cost of refurbishment – which would include raising the floor level of the church hall in order to provide disabled access throughout the whole of the property, plus new kitchen equipment, plus new toilets – against the cost of new build was resolved by architect John Ferguson subtly suggesting we "should have faith."

It is, you will appreciate, a bit difficult for a church to step back from an issue of faith! So we went for the new build, effectively demolishing our 1920 hall, moving its foot print about 20 metres further back from the road, turning it sideways and re-juggling the room plans to provide a large hall capable of being sub-divided into two rooms, a brand new kitchen with cafeteria onto the main entrance lobby, an additional meeting room with hosting facilities, a vestry/office and plenty of new storage space – plus the seven day a week use of our sanctuary.

All on the same level.

All easily accessible.

Exactly what we set out to achieve when building work first began in the winter of 2009.

It has been an exciting journey (one that is not yet over because the interior re-decoration of the church still has to be completed) and it has certainly made calls upon our planning and adaptability as a congregation progressing through the various stages. But we can take pride in the fact that not one service of worship has been lost throughout the entire period – we even managed a wedding in the midst of all the fencing and scaffolding. And there have only been one or two occasions when our room lets have had to miss a day.

We owe a debt of gratitude to our architect, John Ferguson and our Project Administration Manager, Alan Ibbotson without whom we would have been adrift in a stormy sea. Never, ever embark upon a major building project without the advice and support of professionally skilled people to forge the link between architect, planning officers, contractors and client! Regular watchers of Grand Designs will know what I mean!

I half expected to see Kevin McCloud to come round shaking his head one morning. Once you begin digging into the ground you never know quite what you might find and I never want to hear the word "drains" ever again.

We also owe a debt of gratitude to our neighbours on Totley Brook Road, who have forborne the inconveniences and frustrations of living near a building site for close on two years. The "official" opening ceremony will be taking place in April when we hope all our neighbours and fellow church members will take the opportunity to have a look round the new premises and join with us in giving thanks for all that has been accomplished.

Richard Moffat

### ST JOHN'S CHURCH ABBEYDALE

**Special Services coming: Holy Week and Easter**  
**Maundy Thursday 5th April**

7.30pm Maundy Thursday Service with Holy Communion

**Good Friday 6th April**

10am Family Worship

2pm An hour before the cross

6.30pm Stainer's Crucifixion with the joint choirs of St John's Abbeydale and Holy Trinity Millhouses

**Easter Day 8th April**

8.00am Holy Communion

10.00am Holy Communion

For further details nearer the time visit our website  
[www.stjohnsabbeydale.co.uk](http://www.stjohnsabbeydale.co.uk)

### PUZZLE CORNER

**Answers to Derbyshire Place Names**

- |               |                |
|---------------|----------------|
| 1. Castleton  | 11. Bakewell   |
| 2. Tideswell  | 12. Edensor    |
| 3. Biggin     | 13. Baslow     |
| 4. Moneyash   | 14. Haddon     |
| 5. Chatsworth | 15. Litton     |
| 6. Alport     | 16. Cresswell  |
| 7. Flagg      | 17. Middleton  |
| 8. Sparrowpit | 18. Youlgreave |
| 9. Glossop    | 19. Eyam       |
| 10. Ladybower | 20. Birchover  |

Don Ashford

## AUNT JESSIE

We all have memories of childhood which come to the surface from time to time. Recently because of some findings in our family history, my wife has been reminded of school holidays in the 1930s. On occasions she spent part of the summer holiday at the Grouse Inn on the road between Fox House and Froggatt. The landlord was Thomas Ernest White, though in those days the Grouse was more of a working farm than an inn. Indeed the earlier census returns recorded the occupation as Farmer and Innkeeper. The connection that took my wife there was that her mother's younger sister Jessie was Ernest's wife. There were no young cousins as playmates for my wife but she was befriended by some children, a doctor's family, staying in a "caravan" in the adjacent field. My use of the term "caravan" must not bring to mind the modern mobile home or static vans complete with all modern aspects of living. The doctor's vehicle was in fact a double decker bus adapted for sleeping, as was the railway carriage in another part of the field. Ernest White must have been an early example of what so many modern farmers and indeed innkeepers have done - used some of their land as a caravan park. In those days, as mentioned earlier, the Grouse was truly a farm with pig sties, cow shed, milking parlour and dairy, and Ernest taking milk each morning to Sheffield. My wife has never boasted of learning skills of a farmer's wife such as milking cows but she does remember sitting on what seemed a huge horse used to pull the hay cart. One skill she did mention learning from her playmates — namely to crouch behind the wall and throw dried cowpats at passing vehicles! As a reminder of such events our daughters have been known to shout "duck" when driving past the Grouse.

Two aspects of the situation we have wondered about and not yet found the answers are (1) has the family name White any connection with the popular walking edge opposite the Grouse White Edge, and (2) how did Jessie, daughter of a Sheffield greengrocer, meet and marry Ernest?

The 1911 census, the latest one available to the general public, records Ernest as a boy of 16 living with his parents Samuel and Sarah White along with one sister and four brothers, all children born at the Grouse. Grandma White (Maria) aged 73 is also resident and several others are recorded as visitors.

In particular the names of four visitors are of interest, three for family connection and two for their occupations. Jessie Procter aged 14 is the future Mrs Ernest White, my wife's aunt. Frank Unwin, born in Dore, was an "Inspector of food and drugs". His wife Millicent, born as Millicent Priestly White, was Ernest's sister. Another visitor, named Francis Henry Margerison, was an "Inspector of Nuisances". My wife remembers the names Unwin and Margerison at the time she was there so the connection was maintained some 25 years later.

The early census returns show the White family living at the Grouse Inn for several generations and likewise the Unwin family at Moorside farm in Dore. It seems that Frank the Inspector was not joining the family of farmers. Another Unwin who moved away from farming was John Unwin, sometime early in the early 1800s. Apparently he was an inventor. One of his inventions was a diving bell, taken up and made by a Manchester firm. A bell was made which proved satisfactory when tested. Unfortunately a workman, fascinated by the device, unsuccessfully tested it for himself when alone. Unfamiliar with the controls he pressed a wrong button allowing water in the bell and was drowned. Angry workmates then smashed the bell. My daughter came across this when researching the White/Unwin connection but did not follow it further.

Don't forget to duck when passing the Grouse in case there are any ghosts still playing!

Don Ashford.

## Holmesfield Flower Club invite you to a Talk and DVD presentation: The Story of Winthrop Park (Wickersley)

An inspiring story of the creation of a  
'Nature Therapy Community Park'

Wednesday March 21st in Holmesfield Village Hall.

Winthrop Park has won the highest UK merit award –  
The Queen's Award for Voluntary Service.

(equivalent to an MBE for a charity or voluntary group)

The park features cycle trails and walks, including  
'Ecominds' activities. It has also been chosen (by ITV)  
as one of the 5 best gardens across Yorkshire and  
Lincolnshire and features in the National Garden  
Scheme's Yellow Book.

We are delighted to welcome the creator of this  
amazing project, Mrs Carol Bowser to our club. She  
will tell the story of transformation from sewage  
works to beautiful park and describe the benefits and  
activities of their charity work.

There is no charge but you may like to offer a charity  
donation.

The talk will follow a brief AGM which begins at 7.30,  
to which visitors are welcome. Refreshments are to be  
served at approx 8pm and the talk will follow shortly  
afterwards. Find out more about your local Flower  
Club. We exist to promote the love of flowers.

We would like to share with you the joy experienced  
by learning creative skills using flowers in both  
traditional and modern designs.

We are a small but friendly club, always open to  
visitors.

Visit our web-site at:

[www.holmesfieldflowerclub.clubbz.com](http://www.holmesfieldflowerclub.clubbz.com)

For more details Phone Chris Hibberd on 289 0833.

## Do you need help?

- **In coping with worry,  
illness, depression or  
spiritual problems.**

Christians believe that God, through Jesus Christ,  
comforts, heals and brings peace of mind, in response  
to prayer.

Members from All Saints and Totley Rise Methodist,  
churches are currently offering to pray in confidence  
for anyone who would like to come to:

**TOTLEY LIBRARY BUILDING ON SATURDAYS on:  
10th and 24th MARCH 2012**

**12.30 and 1.45 pm**

For information ring Brian on 07722 236037

# ACTIV physiotherapy

is stronger  
& more flexible

**ACTIV & BRADWAY**  
physiotherapy & Physiotherapy Clinic  
have combined . . .

so our new partnership can offer you a wider  
range of treatments in 3 convenient locations  
. . . Bradway, Totley and Norton Lees



our wide range of treatments include:

- Repetitive Strain Injuries
- Muscle & Joint Problems
- Women's Health Issues
- Sports Injuries
- Back & Neck Pain
- Acupuncture

Registered with major insurance companies,  
BUPA, Aviva, Westfield Health, AXA

email: mail@activphysiotherapy.co.uk  
web: www.activphysiotherapy.co.uk

**ACTIV Physiotherapy 0114 235 2727**

## Dore Moor Garden Centre & Nursery

Under new Family Ownership

Hathersage Road · Dore · Sheffield · S17 3AB

(Opposite the Dore Moor Inn)

**Reopened, restocked and looking forward to  
welcoming you to our first spring season**

Wide range of seeds, bulbs, plants, shrubs, pots, composts and chemicals

Logs, coal and smokeless winter fuels

Specialist section for mowers, strimmers,  
fencing, garden tools and much much more

Stockists for Haddon Stone statuary  
and David Austin Roses

**Quality Plants  
Competitively priced**

Call in and see us

**Enquiries  
0114 235 0092**



**TRISTAN SWAIN**  
Landscaping & Maintenance  
Established 20 years

Fully insured

**GARDEN RESTORATION & MAINTENANCE**

Unit C4  
Sheaf Bank Business Park  
Prospect Road  
Heeley  
Sheffield S2 3EN

Tel/Fax: 0114 255 4689  
Mobile: 07831 802539



**Slimming  
WORLD**

because you're amazing

If you want to lose weight healthily and with no deprivation or  
humiliation then join your local Slimming World class in Totley,

Mondays at 7pm.

Telephone Jo Elsey on 0114 2620523

or 07590 545 253

(Offer cannot be used in conjunction with any other offer)

**1/2 Price membership  
on production of  
this advert**

**MOGGY MAID**



**Gail Kitchen: 07986473415**

Does going away from home mean your cat is sad and unhappy?  
Does a trip to the cattery scare your cat *not to mention your wallet?*

**WORRY NO MORE!**

**MOGGY MAID** is on hand to feed, love and provide  
everything your cat needs in the relaxing comfort of its own home.

As we cat-lovers know, unfamiliar sights and smells can stress your cat,  
whereas leaving them in the familiar surroundings of their own home  
carries less worries, for your cat and for you.

If only for a night, weekend, or a month; holiday, Christmas or any time of  
the year, **MOGGY MAID** is here to help **LIGHTEN YOUR LOAD**

We promise no mischief allowed!

In a professional manner and with quality service, you can ensure  
individual care and attention, whilst you relax away from home.

We haven't forgotten the rest of the family; mice, rabbits, budgies,  
goldfish, etc will receive care and affection too.

**LOCAL FRIENDLY SERVICE**

From £5 a day

For more Information, contact Gail Kitchen on:  
**07986473415** 5 Ullswater Place, Dronfield Woodhouse



# SEE THE DIFFERENCE!



- **COMPREHENSIVE EYE EXAMINATIONS**  
including special tests for glaucoma, colour vision, dyslexia & diabetes
- **CONTACT LENS CONSULTATIONS**  
free contact lens trials and monthly direct debit payment schemes
- **PRESCRIPTION SUNGLASSES**
- **LEISURE SPECTACLES**  
for computer work, fishing, swimming and safety wear
- **ACCESSORIES**  
ready readers, chains and magnifiers

**LENSES BY SEIKO**  
In all non-budget spectacles

**TOTLEY**  
63 Baslow Road  
236 4485

**ABBEYDALE**  
634 Abbeydale Road  
255 6554

For more help and information please phone or call into the practice of your choice  
For a full list of our practices visit

**WWW.MKO.CO.UK**

Terms and conditions apply.



## Shepley Spitfire

56 Mickley Lane, Totley Sheffield - S17 4HE 0114 236 0298

### UNDER NEW MANAGEMENT

2 meals for **£8.95**

Served everyday 11am until 9pm

Carvery every Sunday from 12 noon

Quality Cask Ales

Quiz Night every Tuesday form 9:30pm

### The Home of Big Fish Friday!!

Beer battered Cod fillets, Chips and Peas Two for **£8.99**

Eat in or Takeaway

FOR THOSE OF YOU WITH A LITTLE APPETITE

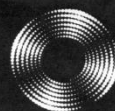
WE HAVE INTRODUCED A SMALL

PLATES MENU FROM **£2.49**

ALL DAY EVERYDAY

Sky Sports & ESPN showing live games

# Entrust Electrical



For all your electrical requirements in or outside the home you can trust **Entrust** to do it right!

- ✓ Full or Partial House Rewiring
- ✓ Additional Sockets, Switches, etc
- ✓ Energy Efficiency Enhancements
- ✓ Contemporary & Classical Refurbishments
- ✓ General Electrical Maintenance & Repair
- ✓ Homebuyer Electrical Safety Surveys
- ✓ Telephone and Computer Data Points
- ✓ Garden, Pond & Other Outdoor Electrics
- ✓ Security Lighting & CCTV



City & Guilds  
Qualified

**(0114) 2352084**  
**07935 250814**

[www.entrustelectrical.co.uk](http://www.entrustelectrical.co.uk)

Old Hay Close, Dore, S17 3GP



## "need *help* in your garden?"

**"right plant, wrong place? Stuck, don't know where to start?"**

We can offer a Design Consultancy without the designer price-tag.

**"Selling your House?"**

We can tidy your garden, also with use of planted containers/hanging baskets, make your house more desirable to prospective buyers.

### Season by Season

- Regular Lawn Maintenance.
- Hedge Cutting.
- Small Tree/ Shrub pruning.
- Beds/Borders tidied, planted.
- Planted Containers.
- Green waste removed



the **Abbeydale** gardeners...  
...we can help you.

Formerly of  
The Abbeydale Garden Centre

Kevin Hunter 07818 20 12 42  
Mark Naylor 07739 75 23 19

[www.theabbeydalegardeners.co.uk](http://www.theabbeydalegardeners.co.uk)

## Music Tuition



Piano • Keyboard • Flute • Singing  
Guitar (rock, metal, blues, jazz, funk, pop, folk)  
Music Theory • GCSE work

Music graduates, each with 25 years  
teaching and playing experience

All ages, beginners welcome.

Exam work or just for fun!

Call Mark or Karin

0114 237 4853 & 07981 888352

## HEARING AIDS

**MAURICE NAYLOR FBSHAA RHAD** is your  
local hearing aid specialist and at your  
request will test your hearing in your own  
home, free of charge, and if needed you can  
try a custom made aid for four weeks  
without obligation to purchase.

Tel : 237 4817

In the ear digital from £495



THE COMPLETE BUILDING SERVICE

New Build & Extension Specialists

**From Design to Completion**

**Full Project Management  
House Building**

**Extensions**

**New Roofs/Tile/Stone**

**Stonework Specialists**

**Loft Conversations**

Find  
us in  
Yell.com

Established for 25 years with over 90%  
of our work coming from recommendations, to  
find out why call:

**0114 2353314**

**Mobile 07973 908187**

[www.mwoolhousebuilders.com](http://www.mwoolhousebuilders.com)



Christchurch Cottage,  
Townhead Road,  
Dore, Sheffield  
S17 3GA



## Kitchen Solutions

By Nigel Watson

Fully fitted quality kitchens at affordable prices,  
planned and designed to your specification. View a  
computer generated impression prior to installation.

For a local, friendly, reliable service call for a free  
brochure and quotation.

TEL: 0114 236 4778

Mobile: 07971 528149

## Horizon Electrical

*Faults, Rewires, Sockets, Lights,  
Cooker Points, Electrical Showers,  
Phone Points, Security Lights*

No job too small

*Fully qualified with friendly advice*

**Ring Totley 236 4364 or**

**Mobile 07772 483154**



Hatha  
..YOGA CLASS..

Totley and Ranmoor

For more information or to book a place call

RACHEL on (0114) 236 9943

BWY Qualified Teacher

BODY, MIND & BREATH

Enjoy the union of yoga



## BRADWAY INSTALLATIONS

**Kitchens, Bathrooms.....and everything in  
between**

- **Complete Kitchens** - Installation or supply and  
installation
- **Kitchen Refits** - Replacement worktops/sink/hob etc.  
Worktop / cabinet repairs
- **Bathrooms** - Cloakrooms - Domestic plumbing - Tiling  
Laminate / Vinyl flooring

All work undertaken is fully insured and guaranteed

**Ring Peter - 0114 236 5995**

**Mobile - 07766 411355**



## SLIMMING WORLD

10 WAYS TO MAKE SURE IT WILL BE THE LAST TIME LOSING WEIGHT IS YOUR NEW YEAR RESOLUTION. THIS TIME MAKE IT LAST FOREVER

1. Focus on your weight loss goal and prioritise it.
2. Be sure you really want to lose weight for yourself. Doing it to please someone else may only lead to short term weight loss.
3. Take advantage of all the group support at your local Slimming World class. Even if you are not a 'joining in' person, you'll be surprised how motivating it is.
4. Accept that you will have ups and downs in your weight loss journey, and be forgiving of yourself if you hit a difficult patch.
5. Listen to your 'inner script' and make a conscious effort to talk to yourself in a positive, encouraging way.
6. Keep up your interest in your healthy eating plan by trying new foods, new recipes, and new ways of using your Sins. This will help you avoid getting in to a dieting rut which can be boring and demotivating.
7. Be honest with yourself about what you are expecting from your weight loss and how you are getting on with Food Optimising week by week. People who set unrealistic targets for weight loss or body shape are more likely to give up than those who set achievable targets and share their ups and downs.
8. Go back to your class even after (especially after) you've had a weight gain. You will not be judged, just helped and supported.
9. Keep setting new goals and rewarding yourself for milestones until you reach your target weight, and afterwards!
10. Don't put your life on hold until you've lost weight. You can still enjoy life and lose weight. Think of your dreams and ambitions and bring them to the fore. The positive feelings you get from starting to 'live a little' can only help your motivation and your weight loss.

Group details:

**St Peter's Church, Greenhill Roundabout, S8 7FN**  
Thu 5pm & 7pm

**Dore Old School, Tues 5.30pm**

Tel: Alison Murphy 07815 046569 for further details

## PhysioFOCUS

at Totley Rise Dental Practice  
85 Baslow Road,  
Sheffield, S17 4DP



**Physiotherapy treatment available for:**

- Back and neck pain
- Sports injuries
- Sprains and strains
- Joint and muscle pain
- Arthritic pain
- Whiplash
- Repetitive strain injury
- Headaches

**Appointments: 0114 2360333**

Also available:

- Pilates classes
- Pilates 1-2-1
- Golf Fitness Screening  
(as used by consultants to UK,  
European and Australian PGAs)

For more information please call:

Emer on: 07792 422909

Rachel on: 07956 908454

## APPLE LANDSCAPES and APPLE FENCING

www.applelandscapes.com

QUALITY SERVICE AT AFFORDABLE PRICES

**Patios • Paths • Walling • Dry Stone Walling • Drainage Work**

**• Indian York Stone Paving • Railway Sleeper Beds**

**Garden Tidy Ups etc. No job too small**

**Fencing & Gates Supplied Only**

**or Supplied & Fitted**

**Only Quality Materials Used**

**FULLY INSURED**

Call for free quote

**01246 237505 • 07782 167540**

## Homeopathy @ Synergy.

162 Baslow Road, Totley, Sheffield, S17 4DR

Advanced Indian Sensation Method Homeopathy

Alternative medical treatment for all chronic conditions

Registered with major insurance companies. Can claim through the Westfield scheme

Registered member of  
The Society of Homeopaths

Ring: Lindsay Allison RSHom for more information:  
0114 235 7845 or 07968 167036

M.Scriven  
(FRUITERAMA)

## MARTIN SCRIVEN

HIGH CLASS FRUIT  
& VEGETABLES

**37, Baslow Road**

**Tel. 236 7116**

**Orders Delivered**

## B.K. JEAVONS PAINTER & DECORATOR



Interior  
Exterior  
Decorating  
No Job too small

**Tel: 01246 416484**

**and mobile 07882 278306**



# GWS

Technology Solutions



PC Problems/ Repairs/ Servicing      No Job Too Small  
 Wireless & Internet Setup      New PC's & Upgrades  
 PC Setup/Data Transfer      Safe PC Disposal      Tuition  
 Software/Hardware      For All Your PC Needs

**Guy Senior**

Phone: 0114 2352662      Mobile: 07890030453

Email: [guy@gwstech.co.uk](mailto:guy@gwstech.co.uk)

Web: [www.gwstech.co.uk](http://www.gwstech.co.uk)

GWS, 5 Conalan Avenue, Bradway, Sheffield S17 4PG

**R.S. HEATING & BUILDING CO**  
 EST. 1971

**HEATING DIVISION:**  
 Experienced Installers of condensing, combination and regular boilers. Systems fully guaranteed. Complete after sales service. Also Bathrooms, showers and small plumbing works.

**BUILDING DIVISION:**  
 Loft conversions, House renovations including general building, joinery, plastering, electrical decorating etc.

**13 Overcroft Rise, Sheffield, S17 4AX**  
**Tel:- 0114 236 4421**  
 Reg. Office:- 62 Machon Bank, Sheffield, S7 1GP  
**Te:- 0114 2559425**  
**Fax:- 0114 255 9431**  
 Email: [enquiries@rsheatingandbuilding.co.uk](mailto:enquiries@rsheatingandbuilding.co.uk)  
 Web: <http://www.rsheatingandbuilding.co.uk>

**LIBERTY FOODS**  
 Caterers  
 Quality Meat Shop  
 & Fresh Farm Produce

Fresh and Frozen Prepared Meals  
 Fresh Meat and Poultry  
 Outside Catering  
 Home Delivery

253 Baslow Road, Sheffield, S17 4DU  
 Tel: 0114 2360 583      Mobile: 07801 346 455

**Dronfield Landscapes**

Gardens cleared and maintained, Lawns mowed, Turfing, Tree felling & pruning, Hedges trimmed & reduced, Pond maintenance, Fencing etc.

for free quotation call  
 Chris on: (0114) 2746158      Mobiles: 07976072785 or  
 Richard on: 07789497104

8am-6pm mon-fri      HazelBarrow Farm, Norton S8 8BA

**R.M.M BUILDING SERVICES**  
**25 YEARS EXPERIENCE**  
 All types of building work carried out including- Drop kerbs, block paving (drives, paths, etc), extensions, general building repairs and maintenance.  
 Phone Rob on- Mob- 07906108567  
 Home-2352190

**Nigel Watson**  
**Carpenter and Joiner**

Fitted kitchens, sliding wardrobe doors with bespoke interiors, internal and external doors supplied and fitted, new handrail and spindles, laminate and wood flooring, locks, architraves, skirting board, stud walling, boxing off etc.

For a reliable and quality service  
 TEL: 0114 236 4778  
 MOBILE: 07971 528149

**Serenta HomeCare**

Are you in need of a little help and support within your own home? The older we get the more help we need to enable us to live a more independent life.

Personal Care • Medication • Domestic • Sitting Service • Social and Leisure activities

To find out more call Sue 07715 636 395 Pat 07715 634 781  
 or visit [www.serentahomecare.co.uk](http://www.serentahomecare.co.uk)  
 For reference from an existing client please call 0114 2366891

**Got a computer?**

**Tim Brown**  
 Building, Installation, Upgrading and Troubleshooting Computer Systems  
 Over 25 years professional experience

**Having Problems?**  
 Is it running slow? Stops responding?  
 Having problems running the latest games or applications? Broadband installation?

**Give me a call!**  
 I'm available for home visits at any time including evenings and weekends. I can also suggest upgrades to improve performance, or even build you a system to your specific requirements.

Phone: 0114 2472619      Fax: 0870 7060080  
 Mobile: 078 17464703      Email: [service@timbrown.plus.com](mailto:service@timbrown.plus.com)



## DRONFIELD LANDSCAPES

### Logs and wood chippings For Sale

Ring for details

Chris 0114 274 6158  
Mobile 07976 072785

Richard  
Mobile 07789 497104

## Totley

### Private Hire

**24 hour taxi service**

**Advanced bookings only**

**Local • long distance • airports**

**Telephone 0114 283 9692**

**Mobile 07974 355 528**



Domestic electrical work by  
award winning  
*Lady Electrician*

- \* House rewires \* Replacement fuse boards \*
- \* New sockets and lights \* Security systems \*
- \* CCTV \* Telephone and computer points \*
- \* Garden power and lighting \*



All work guaranteed and fully  
insured. For a free quotation,  
without obligation,



ring Mandy on 07788-544225



**Tiling, Plastering,  
Plumbing & Complete  
Bathroom Fitting Service**

Tel: 0114 274 6775  
07738 688807

- ◆ Under Floor Heating
- ◆ All Aspects of Home Improvements & Maintenance Work Undertaken
- ◆ Competitive Prices
- ◆ NVQ Qualified
- ◆ No Job Too Small
- ◆ Fully Insured & Guaranteed

A1tilingandplastering.co.uk  
33 Glen View Road, Greenhill, S8 7SF

## G W A Tiling

### Wall & Floor Tiling

Bathrooms Kitchens Wetrooms

No job too small, Best Quality work

George Allen

Mobile 07801 790973

Creating opportunities with disabled people.

Registered Charity No. 218186

**Leonard  
Cheshire  
Disability**

Leonard Cheshire Services in Offers choice & opportunity to people with disabilities. A Specialist Unit for the Younger Disabled. Residential & Respite Care - Single Rooms Day resources - Aromatherapy - Reflexology - Physiotherapy - Toning Tables. Activities include: - Arts & Crafts - Computers - Cookery - Shopping Expeditions - Theatre Outings - Church. Further details can be obtained from - The Service Manager, Mickley Hall, Mickley Lane, Totley, Sheffield S17 4HE. Tel. 0114 236 9952 Fax. 0114 262 0234

The Care at Home Service supports disabled people who wish to remain in their own homes. We provide flexible care packages from 1 hour to 24 hours meeting individual needs. The service operates throughout Sheffield. Our service includes: - help with getting up and going to bed, dressing, washing, bathing, shopping, cooking, light household duties. Further details from: - The Care at Home Manager Tel. 0114235 1400 Fax 0114 235 1499

## John Heath & Sons

AN INDEPENDENT FAMILY FUNERAL BUSINESS

*Sometime.....*

You will probably have the responsibility of making funeral arrangements. No one looks forward to this responsibility, but the death of a family member or friend brings with it an obligation that must be met. There are people who can help you meet this responsibility. We have been helping people combine the different aspects of the funeral into a meaningful service for over 125 years.

Please Call Day Or Night

**(0114) 272 2222**

Head Office - Earsham Street

Also at Meadowhead, Ecclesall Rd,  
Crookes and Stannington

www.johnheath.co.uk



## CHARISMA BLINDS



For  
Windows  
With Style

Sheffield Factory Showroom  
106 PROSPECT ROAD  
HEELEY, SHEFFIELD

Sheffield (0114) 258 5496  
Rotherham (01709) 512113

## TOTLEY & DISTRICT DIARY

<b>MONDAYS</b>	<b>COFFEE MORNING</b> , All Saints' Church Hall, 10am-noon <b>TAI-CHI</b> , United Reformed Church, Totley Brook Road, 11.30am-12.30pm <b>RAINBOWS and GUIDES</b> , All Saints' Church Hall, 5.45pm-9pm
<b>TUESDAYS</b>	<b>COFFEE MORNING</b> , Totley Rise Methodist Church Hall, 10am-noon <b>KEEP FIT &amp; COFFEE</b> , For the not-so-young, Bannerdale Centre, Carterknowle Road, 10.15am, Phone 258 5364 <b>WOODSEATS ADVICE CENTRE</b> , Drop in service, free, impartial, and confidential. TR Methodist Church, 10am-noon <b>CRAFT GROUP</b> , Totley Library, 2pm
<b>WEDNESDAYS</b>	<b>PILATES CLASSES</b> , Dore Old School, 9.00-10.00 and 10.15-11.15. Contact Caroline - Tel: 0781 722 0324, email caroline1north@btinternet.com, www.pilatescarolinenorth.co.uk <b>COFFEE in the LIBRARY</b> , 10am-11.30am <b>TODDLER GROUP</b> , 10am-11.30am, All Saints' Church Hall. Details tel. Andy Holmes 0114 236 2088 <b>HEALTH WALKS</b> , 10.30am, Totley Library foyer. Phone Sue, The Health Walk Ranger: 0114 283 9195 <b>MODERN SEQUENCE DANCING</b> , All Saints Church Hall, 8pm-10pm
<b>THURSDAYS</b>	<b>CHAIROBICS</b> , Heatherfield Club, 1.15pm <b>NCT COFFEE GROUP FOR DORE TOTLEY &amp; BRADWAY</b> , 10am-noon, For mums & babies/toddlers, meeting in various locations, Phone Lucy Street 07837 000405 or email: lucy@streetr.plus.com for further details <b>PUSHCHAIR CLUB</b> , Totley Rise Methodist Church Hall. 1.30pm-3pm. Tel. 236 3157 for further details <b>PILATES CLASS</b> , United Reformed Church, Totley Brook Road, 6.15pm-7.30pm, Phone Emer Coffey 07792 422909
<b>FRIDAYS</b>	<b>PILATES</b> , The Old School, Dore, 10.45-11.45am & 12-1pm. Phone Teresa Tinklin 07906 312372
<b>SATURDAYS</b>	<b>MODERN SEQUENCE DANCING</b> , All Saints Church Hall 2 <sup>nd</sup> . And 4 <sup>th</sup> . Saturdays 8pm-10pm

### MARCH

**SUN 4th CASTLETON FARMERS MARKET**, the Village Hall, 10am-3pm  
**TUE 6th FRIENDS OF GILLFIELD WOOD**, 7-9pm, Totley Library, full details page 4, All are welcome.  
**SAT 10th SATURDAY NIGHT LIVE**, TBC, Heatherfield Club. 8.30pm.  
**SUN 11th MINIATURE TRAIN RIDES**, Abbeydale Road South, First train 1pm - last train 5pm (weather permitting) www.sheffieldsmee.co.uk  
**MON 12th CHILDREN'S SOCIETY COFFEE MORNING**, 10am-12noon, All Saints Church Hall, Free Admission, Refreshments, Toys, Books & Games  
**TUES 20th TOTLEY TOWNSWOMEN'S GUILD**, AGM followed by a talk 'Well Dressings', Mr & Mrs Thomas, Totley Rise Methodist Church Hall, 10am  
**THU 22nd SHEFFIELD FARMERS MARKET**, 8.30am-5pm, Fargate  
**SAT 24th SATURDAY NIGHT LIVE**, BOBBY NORTH, Heatherfield Club. 8.30pm. Non-members welcome  
**SUN 25th MINIATURE TRAIN RIDES**, Abbeydale Road South, First train 1pm - last train 5pm (weather permitting) www.sheffieldsmee.co.uk  
**WED 28th TOTLEY HISTORY GROUP**, Totley Library, 7.30pm, The History of Grouse Shooting with David Hey, all welcome

### APRIL

**SUN 1st CASTLETON FARMERS MARKET**, the Village Hall, 10am-3pm  
**SUN 1st - ARTISAN FOOD FAIR**, Baslow Village Hall, 10.30am to 4.30pm  
 FREE ADMISSION. www.hartingtons.net  
**TUE 3rd FRIENDS OF GILLFIELD WOOD**, 'Walk on the Wildside', Mike Richardson, 7-9pm, Totley Library, full details page 7, All are welcome.  
**SAT 7th SATURDAY NIGHT LIVE**, Easter Special, including buffet, MICHAEL J OLIVER, Heatherfield Club. 8.30pm. Non-members welcome  
**SUN 8th & MON 9th (BH) MINIATURE TRAIN RIDES**, Abbeydale Road South, First train 1 p.m. - last train 5 p.m.(weather permitting) www.sheffieldsmee.co.uk  
**SAT 14th SATURDAY NIGHT LIVE**, THOMAS MARX - top club act, Heatherfield Club. 8.30pm. Non-members welcome  
**TUES 17th TOTLEY TOWNSWOMEN'S GUILD**, 'Story of the Sheffield Flood in 1864', Suzanne Bingham, Totley Rise Methodist Church Hall, 10am

### TOTLEY INDEPENDENT FOR APRIL

The next issue of the Totley Independent will be available from the usual distribution points on

**SATURDAY 31st March 2012**

**COPY CLOSE DATE for this issue**  
*will be*

**SATURDAY 17th March 2012**

Editor: **Ian Clarke**  
 Tel. No: **235 2526** or Email:  
**editor@totleyindependent.co.uk**

Advertising & Distribution:  
**John Perkinson**  
 Tel. No: **236 1601** or Email:-  
**advertising@totleyindependent.co.uk**

Items for publication may be left or sent to:  
**2, Main Avenue, Totley, Sheffield,**  
**S17 4FG or**  
**Totley Library**

www.totleyindependent.co.uk  
**PRINTED by STARPRINT**



- Central Heating,
- Domestic Plumbing,
- Glazing, Double Glazing and Glass,
- House Maintenance,
- UPVC and Wood Windows & Doors



**Mini Digger & Driver, Muck Shifts, Footings Etc.**

**starprint**

**5000**  
 130 GSM GLOSS  
 FULL COLOUR  
 DOUBLE SIDED  
**A5 LEAFLETS**  
**£99.95**

**250**  
 FULL COLOUR  
 SINGLE SIDED  
**BUSINESS CARDS**  
**£19.95** + VAT

**BANNERS**  
 AVAILABLE FROM  
**£29.95** + VAT

**Full design service available!**

**Tel: 0114 258 0707**  
 Email: mail@starprint.co.uk  
 601 Abbeydale Road, Sheffield, S17 1TA