

TOTLEY INDEPENDENT

PUBLISHED CONTINUOUSLY SINCE 1977
FEBRUARY 2012 No. 350

www.totleyindependent.co.uk
20p.



Jack Taylor

This photo of The Crown Inn was given to my son Gary by John Smith, whose granddad was Jack Taylor, landlord of The Crown for about 18 years. John, who now lives in the Butts Hill area of Totley used to spend a lot of his early years visiting his granddad at The Crown.

Going on the make of car and the photo of Jack and John's uncle, we hazard a guess at between 1969 to 1973, the car an Austin Princess would confirm this. John Smith's father, Roger, married one of Jack's daughters and Roger used to help out at weekends. Some items of interest and not well known are that John's father Roger was a Drill Sergeant in the Royal Signals and was also the Regimental Boxing Champion.

John would like to know if anyone remembers the actual year of the photograph being taken and any other of Jack's years of the landlord of The Crown.

J W Abson.

Totley Residents Association Update

I hope you all had a nice Christmas and wish everyone a happy New Year.

December was a busy month, as the funding that was given us by the South West Community Assembly meant that we had a Christmas party for 40 to organise. Due to a change in catering plans we had to change the venue at very short notice, so it was slightly stressful!

The day was a fantastic success, and it was so nice to see it well attended. I have to thank the TRA committee, Rachel, Marlene Marshal, Shelley Gott and Betty and Jim Higgins for helping on the day. Cllr Collin Ross popped in too and took the time to chat to all the attendees. T17 did a splendid job of making sure everyone arrived and got home safely and the Shepley Spitfire looked after the parties every need.

We are keen to run events such as this again and this year will look for further opportunities to do so, please keep feeding back your thoughts and ideas back so we can address the needs of the whole of Totley community. **PTO**

From front page

The committee have had the first meeting of 2012, and there are some exciting events planned for this year. The first event will be the judging of entries and presentation to the logo competition winners, this will be a date in February.

On April the 15th the TRA are going to be holding a farmers market/spring fair on Totley Rise. We would very much like to encourage local people to have a stall selling local goods, Booking forms will be available in Totley Library or Totley Rise Deli. Please place the date in your diary, it should be a fun day and the TRA are keen to support local businesses.

As one of the main sponsors of the Totley Music festival, this year the TRA have decided to hold the barn dance that we had to postpone in November. Further details will follow in the next issue of the TI.

I have met with Stephen George, the new Chairman of Bradway action group and Dawn Biram from Dore Village society, alongside Cllr's Colin Ross and Joe Otten. We discussed the ward forum and have now organised a meeting to discuss the future of the ward forum. This will be held on February the 28th, 7.30pm in the Totley Library.

Roger Hart and Neil Bunting continue to work hard on behalf of the TRA and have gathered a wealth of information on the 20 MPH zones. Public consultations have taken place at short notice, if you want to know more please let us know.

The date has also been set for the Totley Show, this is to be 15th September 2012, at Totley Primary school. This had always been an important date for the TRA and we are once again looking forward to it being a successful event.

We really do want to ensure that Totley benefits from us an organisation and ensure that we put your views forward. We are intending to schedule 3 open meetings a year, I encourage you to attend so you can put forward local issues and your thoughts and opinions. We will continue to work closely with local groups and the 3 local councillors, Keith, Joe and Colin.

The meeting details will be finalised and published in the TI early March and on the notice boards. The committee also meet at least once per month, if you wish to attend please phone me on 07709 780606 for the date as this varies due to other commitments from the committee. Email the TRA at Kathryn Higgins Totley@hotmail.co.uk or leave a message in Totley Library. We will always contact you as soon as we can.

Kathryn Higgins Chair TRA



Christmas Party at the Shepley Spitfire.

Thank You TRA

I would like to say a huge thank you to the Totley Residents Association for the wonderful day myself and another 39 pensioners had on 12 December at the Totley Spitfire.

We all enjoyed a lovely meal with entertainment afterwards, also each of us received a Christmas present. It was such a happy day, in fact it was excellent.

All the TRA and volunteers worked so hard, and made this a day to remember.

Once again I thank all of you for a job well done. God bless you all, and a very happy new year.

Mary Williams.



TOTLEY HISTORY GROUP MEETINGS

WEDNESDAY FEBRUARY 22ND, TOTLEY LIBRARY, 7.30PM

INFORMAL DISCUSSION MEETING

FIND OUT WHAT WE ARE DOING AND WHAT WE WOULD LIKE TO DO IN 2012

WEDNESDAY MARCH 28TH, TOTLEY LIBRARY, 7.30PM

THE HISTORY OF GROUSE SHOOTING ON DERBYSHIRE MOORS

WITH POPULAR SPEAKER DAVID HEY

Bin Collections

It looks as though Sheffield will move to fortnightly black bin collections and lose the garden waste collection service altogether. These proposals by the council would save around £4m if voted through in February, and could take effect as early as April.

The £4m saving represents almost 20% of the £23m of the savings that Sheffield has to make in 2012, with £23m being just 1.5% of the £1,500m budget.

Ed.



"We should write the council a Thank You note."



Transport 17

December was a festive month all round with the various clubs that we service celebrating with special meals prior to the more formal Christmas celebrations within their own homes. All Saints had a lovely Carol Concert combined with a tea party which was thoroughly enjoyed by all who attended.

I was very proud to attend a function at the end of November, with Mrs Jean Finn (Mum). where Michael Finn (our Manager) was presented with his 1st Dan Black Belt for Kick Boxing/Brazilian Jujitsu. Michael has shown great dedication for the past 3 years to achieve this goal and really had a major day doing running and a variety of exercises in Graves Park (in torrential rain) with all the other trainees. It is a great achievement and all those who took part also deserve our congratulations.

We are really in need of some reliable, reasonably fit and healthy people to join our team of volunteers as Escorts with the possibility of training to be a driver after a trial period.

Anyone interested in becoming a volunteer can apply to Michael Finn or John Savournin at our office 172 Baslow Road, Monday to Friday, between 9am and 12noon.

Hopefully we will be holding a Coffee Morning in the next few weeks. If it is before the next edition of the magazine look out on your local information boards.

Finally may I wish you all a very Happy and Healthy New Year.

Felicity Revill

Totley Scouts

I was very pleased to hear that the Duchess of Cambridge (Kate Middleton) has become a volunteer for her local Scout Group in Anglesey, helping out with Beavers and Cubs. I am sure that this announcement will also encourage other people around the country to volunteer at other Scout Groups.

We at Totley Scouts are always in need of more volunteers to help provide exciting activities for local children. We are especially in need now as we wish to start additional Cub and Beaver nights in order to accommodate children on waiting lists. This is in part because of more young children in Totley but also because of the increasing numbers of girls who wish to enjoy scouting.

Please contact me if you are interested in volunteering.

Whilst we are on the subject of requests, we do have an unusual one. You may have read previously that we have a couple of wooden Trek Carts. One has been refurbished but we need another wheel for the second cart. Maybe one the same size as the present or a new pair. Can anyone help us? We would be very grateful. We do intend to use the Trek Carts around Totley later in the year.

Another request is to see how we can help the community. The Scout Association has announced Scout Community Week from 14th-20th May. Totley Scouts will be taking part in some way but we need your suggestions for things we could do.

By the time you read this we will be well into our programme of events for 2012. The Scouts and Explorers have a camp on the weekend of publication. It is aptly called the 'Freezer Camp' and will involve camping in tents. Let's hope it is not too cold!

Richard Frost

Chairman, 1st Totley Scouts, TotleyChair@aol.com

Interested in photography?

Like many people I have recently made the transition from a film camera to digital format. This transition has rekindled my interest in 'photography' rather than capturing 'snaps'. Don't get me wrong the current ability to pull out a camera phone and capture any moment in time is a fantastic development often taken for granted.

What I love to indulge in is the unusual, the photograph taken to challenge my ability, to capture wildlife and the landscapes that surround Totley. In addition, I see photographs and drawings from a time long gone in the **Independent** showing our community as it was and feel a desire to capture Totley and our community as it is now.

Recently I enrolled on a photography course for beginners to make the transition from film to digital and quite frankly it did not meet my expectations. I would like to learn how to make the most of my camera and edit photographs on my PC but the courses are often expensive, don't meet my needs and are miles away. Therefore, if the interest is there I am considering forming a **Totley Photographic Group** to help me and others learn the craft and share the passion of capturing life for fun and/or for posterity.

If you are interested in photography from a beginner to a professional and would like explore the possibility of starting/joining a photographic group to discuss, learn or teach the skills of the camera contact Kevin at **walker.Totley@hotmail.co.uk**

Totley Independent

Since the Totley Independent website went live last spring, there have been over 1,000 UK visitors, 200 US and visitors from a host of other countries such as Brazil, Russia, Belgium, Denmark, and Trinidad & Tobago. Totley folk certainly seem to be well-travelled!

We've not been idle over the Christmas and New Year break - all but the last 12 months back-issues (over 300) are now available to view on the website. Just go to www.totleyindependent.co.uk/back-issues

Scout Lottery

1st Totley Scout Group Lottery December Draw

1st Prize No 25
Christmas Hamper
Mr and Mrs Barron
Sunnyvale Road

2nd Prize No 52, £10
Voucher
Mr and Mrs Frost
Quarry Road

Thank you
Pete Casson

Councillor Surgeries

Liberal Democrats:

2nd Monday in the month 6.00-7.00 p.m., Totley Library, Baslow Road and 2nd Saturday in the month from 10.30 a.m. to 12.00 noon, Dore Old School Hall, Savage Lane, Dore Contact details:

Keith Hill 235 2289 Email: keith.hill@sheffield.gov.uk,

Colin Ross 235 1948 Email: colin.ross@sheffield.gov.uk

Joe Otten 230 3290 Email: joe.otten@sheffield.gov.uk

**Totley Independent Website:-
www.totleyindependent.co.uk**

Farming Scene

Death by Exposure and Starvation

Well, after a dry and mild late autumn the cold winds and rain of December and January have more than compensated for that pleasant weather. In a matter of 3 weeks or so what were previously very dry fields have become saturated and the ditches have been running with water again.

Fortunately most of our Dorset ewes came in for lambing in mid-November and so have lead a sheltered life over the past 10 weeks.

Even more fortunate is the fact that given another 2 or 3 degrees centigrade lower temperatures we would have had a repeat of last year's 3 feet of snow! We had 20 ewes that were not due to lamb in the first 2 weeks with the others. So we left them in a fields down the land until we had lambed a few of the earlier ones, and had made room for them to come inside. Unfortunately, one lambed in the field a few hours before we got them inside. The scanning man had obviously made a mistake in identifying this animal as a late lamber. It was a Saturday when a fresh bitterly cold wind was driving, lashing cold rain across the field.

The net result was that all 3 of her lambs died soon after birth from exposure to the elements. Had she been an older ewe rather than a "first timer" she may well have sought the shelter of a hedge under which to lamb rather than giving birth in the exposed middle of the field.

Not a happy result for the young ewe who otherwise displayed excellent mothering abilities. Not a good result for the shepherd either as he kicked himself for not getting her inside half a day sooner. In general terms we have had all the usual lambing problems this year, plus a higher number of lambs born dead or all tangled up inside the ewe. These were predominantly in the first ewes to lamb and makes us think that perhaps the ewes were chased about by a dog just prior to us bringing them back to the farmstead. In the end we have a goodly number of lambs running about, approximately 200, but not as good as last year which was exceptionally good.

One new problem we have had this year is 4 young first time mothers who have suffered from post natal depression and consequently gone on hunger strike. Perhaps they decided that having twins hassling them for milk all day was not for them and they wanted to "opt out". Unfortunately for them I think we spotted their strategy and have been dosing them up with cortisone injections, a glycerine based drink, and a probiotic feed supplement. 3 of the 4 have now responded to this treatment and are off the danger list. They are happily filling their stomachs once again. The other is still in intensive care, although we would expect it to get back to normal eating shortly. If the ewes do not get enough energy from the diet, they start utilising the fact on their bodies to make milk to feed their lambs. This process results in an illness called Ketosis, a self-poisoning condition. The breakdown of the fats by the liver produces ketones, which poisons the system and leads to loss of appetite and eventual death by starvation if not treated promptly and correctly.

Thankfully, we have a good vet that soon identified the cause of their aversion to food and supplied us with the appropriate medicines to reverse their decline.

Edwin Pocock.

Totley Library Book Group



We are a group meeting at Totley Library on the first Monday of the month at 1.45pm. Each month we read and give our views on a book selected from the Central Library's sets of books.

Although there are no vacancies currently and we have a waiting list, we are always happy to hear from people who are interested in joining us. We would particularly like to hear from two women who expressed an interest in the group towards the end of last year.

At present we are ten women all of whom enjoy chatting and sharing our very diverse views about an eclectic selection of reading material ranging from contemporary fiction to classics to biography and some other non-fiction.

We produce a newsletter, the latest of which can be seen in the library and we take turns in reviewing the books for it.

Some of the books included in this time have been:

- The Secret River, by Kate Grenville, a story of transportees to Botany Bay in the 1800s
- Cranford by Elizabeth Gaskell, the life of a number of gentlewomen in a small town in Victorian England.
- The Help by Kathryn Stockett, charting the lives of both white women and their black servants in 1960s Mississippi,
- Dreams of my Father by Barack Obama, telling events from the colourful life of America's president before he came to power.
- A Married Woman by Maniou Kapur, giving an insight into the sometimes terrifying position of an Asian bride.
- All Quiet on the Western Front, Eric Maria Remarque's well known story of life on the German front line during the first world war: and many others.

Why not drop in and meet us one Monday and find out for yourself?

Totley Library
205 Baslow Road
Sheffield S174DT
Tel: 0114 293 0406

email: totley.reading.group@gmail.com

www.sheffield.gov.uk/libraries

Gillian Cooper

Women's World Day of Prayer

Women's World Day of Prayer, Friday 2 March at 10.30am at Totley Rise Methodist Church.

Speaker Rev Louise Growberg. Everyone welcome. Refreshments served.

Totley Robberies

The lowest of the low

THIEVES have been branded the 'lowest of the low' after breaking into three shops and the library to steal charity boxes.

Three collection boxes - for Macmillan Cancer Support, Marie Curie Cancer Care, and the Royal British Legion's Poppy Appeal - were stolen from Totley Library on Baslow Road.

Totley Pharmacy, Totley Deli, and The Dore and Totley Veterinary Surgery were all also targeted - with the three businesses broken into overnight and the library hit during working hours.

Another Poppy Appeal box went from the pharmacy, the deli had a collection box for an epilepsy charity taken, and the veterinary surgery had boxes for two animal charities stolen along with a till and laptop computer.

Tajinder Singh, who owns Totley Pharmacy, said he will no longer keep collection boxes on his premises.

"It is disgusting that somebody is going around stealing charity boxes, especially those for the Poppy Appeal at this time of year when we have just had Remembrance Day," he said.

"Whoever did this must have realised what time of year it was and that these boxes would be everywhere. "I personally have now given a donation from my own pocket to the Poppy Appeal, based on what I thought would have been in the collection box, as I didn't want the charity to lose out.

"But I've told the charity I won't be able to have a tin next year and risk this happening again.

"Unfortunately I think more and more people will start saying the same - and it will be the charities who lose out."

Martin Slater, who owns the deli, said: "I am really disappointed this has happened when all we were doing was trying to help others.

"It will make businesses think twice about having charity boxes - and it makes you think that whoever is doing this, stealing from charity, is the lowest of the low."

Danii Booth, who works at the veterinary surgery, said she wants businesses in Sheffield to be aware of the break-ins and to keep charity boxes hidden out of sight.

"Whoever did this was determined to get in and smashed a huge pane of glass to get the boxes, but they also took our till and my laptop too," she said.

"When we found out we were not the only ones to have been targeted we wanted to make others aware this is happening - people need to hide the boxes.

"It is the charities I feel sorry for. Even though there would only have been a few pounds in each box, it is the charities that are losing out. "If someone was so desperate I wish they had knocked on our door and asked for £5 rather than causing £200 worth of damage by smashing the window."

Totley library is run by Sheffield Council. Councillor Mick Rooney urged anyone with information to come forward.

"I am absolutely appalled someone would steal money from charities in this way," he said. "These collections were for Macmillan Cancer Support, Marie Curie Cancer Care and the Royal British Legion Poppy Appeal, so the people who are really missing out here are the beneficiaries of the great work these charities do.

Published on Monday 21 November 2011 The Star

South Yorkshire Police South West Team, Good News Stories

Baslow Road Burglaries

Officers from the South West Safer Neighbourhood Team along with other departments (CID and NPG) have been working late shifts and long hours putting together plain clothes Operations to help catch the offender of the shop burglaries on Baslow Road. We are very please to announce a male has been arrested in connection with these offences. This male will be remanded in prison for his crimes.

Totley Primary School Mounted Police visit

Totley Primary School had a real treat at the beginning of December. A visit from Brinsworth and Edlington two of the forces finest Police Horses. The school children enjoyed a presentation from the two mounted officers and got the chance to ask questions and stroke the horses after the talk.



BURGLAR JAILED

THE SERIAL burglar who stole charity boxes in Totley filled with cash intended for cancer patients, blind people and neglected animals was jailed on 11th January.

Jason Thomas - who has previous convictions for 136 prior offences - admitted breaking into two veterinary practices, a chip shop and an Indian restaurant, swiping charity boxes full of shoppers' donations and money from tills

Sheffield Crown Court heard Thomas, aged 39, of West View Lane, went on a six-week crime spree, breaking into businesses in Totley, Millhouses, Abbeydale and Fulwood.

Judge Alan Goldsack QC said his campaign of break-ins was 'serious offending by a man with a dreadful record'.

Thomas was arrested when he burgled The Mohul Indian restaurant in Totley on 10th December. Police were on patrol because of the spate of burglaries, and Thomas was recognised as being wanted for the Abbey Friar break-in.

He admitted four burglaries, stealing £1,178 in total and causing £2,408 of damage.

Friends of Green Oak Park

I am sure you are all aware wildlife is under pressure and many species are in serious decline. Hedgehogs, amphibians, insects, bumblebees, wild flower meadows and many bird species numbers are dropping. The reasons for this are complex. Climate change, habitat loss, alien species, tree felling are some of the possible causes. If nothing is done, in years to come the world will be a poorer place for wildlife and for us. So what can we as individuals do?

The Friends of Green Oak Park have been working for some time to try and improve the environment for wildlife in the park. So far we have planted new trees, which in time will provide shelter for birds and mammals and food for many insects. These in turn will provide food for birds.

Sheffield is reputedly the greenest city in the country. Many trees were planted by the Victorians. These are reaching the end of their lives and need replacing for future generations to enjoy. The Friends are doing this by planting new trees.

Community volunteers and children from both primary schools helped to plant four rowan trees near the climbing boulders on 29th November. We were assisted by Holly Barnes, Parks Tree Officer and Rangers from the South West Team.

In December three hazel trees were planted near the Mickley Lane entrance. The Turkish hazel (the tall one) was planted in memory of my late husband, George. The trees will in time provide nuts and berries for birds and squirrels.



As mentioned in the November **Totley Independent**, we have erected bird tables to encourage birds to visit the park. There are very few at the moment. It is hoped bird boxes will be erected soon, for further encouragement.

Would you and your family like to help? Park Rangers are holding a bird box building session in the park on Wednesday 15th February, 1-3pm, £3.00 contribution for materials. Your box could be put up in the park or in your garden. Further details at the bottom of this page.

I know many people put out food for bird. Did you know it is possible to take part in a national survey where people record what birds visit their garden?

The survey, Garden BirdWatch is organised by The British Trust for Ornithology (BTO). It has been running since 1995. All the data collected is used by scientists and the Department for Environment Food and Rural Affairs (DEFRA).

The resulting data for summer 2011, informs us bluetit remains top of the list for visiting gardens. Woodpigeon is now in second place. House sparrow, starling, song thrush, greenfinch and wren numbers are all dropping. Goldfinches are doing very well, their garden visits are increasing.

If you would like to be part of the scheme get in touch with me for more details. I have been taking part in the scheme since it began and find it fascinating to see which birds are visiting my garden, regularly.

As well as birds, we are hoping to attract more aquatic wildlife to the park once the drainage has been completed and we are able to plant up the new pools.

Once again the project is on hold, because so much rain has fallen, the area is sodden and the park would be damaged if work were to begin.

Can I remind you we are asking for snow drops "in the green" for the park. If you have some to spare we would be very grateful. They establish much better than dry bulbs. Splitting up your clumps after they have flowered will improve yours next year and help the park.

The Friends meet in the park on Tuesday mornings at 10am, weather permitting.

We welcome anyone who is interested to give us a hand or just for a chat. Come and enjoy the fresh air and be part of your community.

Avril Critchley

Chair FoGOP

Tel.236 1568

Celebrate National Nest Box Week at Green Oak Park

Calling families – come along and celebrate National Nest Box week with Sheffield City Council's Park Ranger Service at an event during the half term holiday in Green Oak Recreation Ground, Totley on Wednesday 15th February. You will have the chance to handcraft your own bird box (a charge of £3 will be made for materials) and to learn more about how to attract wild birds to your garden. The event is supported by the Friends of Green Oak Park who work to look after this valuable greenspace.

Launched in 1997, National Nest Box Week encourages everyone to put up nest boxes in their local area. Bird boxes in gardens help to promote and enhance biodiversity and conservation of our breeding birds, by compensating for the loss of natural nest sites such as holes in trees and buildings.

National Nest Box week takes place from the 14th-21st February and gives everyone the chance to contribute to this valuable conservation effort.

For Further information Contact the Council's South West Park Ranger Team on 0114 2686196 or visit www.sheffield.gov.uk/out--about for more details of this and other Ranger events.

Cassa Townsend

Senior Ranger – Park Ranger Service

Sheffield City Council

07764 694 328

cassa.townsend@sheffield.gov.uk

FRIENDS OF GILLFIELD WOOD

OUR NEXT INDOOR MEETING is on **Tuesday 14th February 2012**. The meeting will start at 7pm and will be held in Totley Library. **Edwin Pocock of Totley Hall Farm** hopes to join us, which should make it a very interesting evening.

Please note we will not now be meeting on the 7th as previously advertised because the library is undergoing some alteration work on that date.

We have asked Edwin to come along on the 14th and chat to us about his farm, his work and some of his earlier memories. This should be a rather special evening relating to the Totley farmland adjacent to our wood.

We do hope you too will come along and join us, you will be made very welcome. This meeting is one of our open meetings when we also discuss other aspects of our work in and around the wood. A Ranger from Sheffield City Council should be in attendance to provide updates relating to the wood and answer any questions we raise.

OUR INDOOR MEETINGS following our February meeting will revert back to the first Tuesday in the month so please mark your diaries and calendars: **March 6th; April 3rd and May 8th.**

We have invited Mike Richardson to give a talk entitled **"Walk on the Wildside" on April 3rd**. Mike has been photographing his local wood and the wildlife for over ten years so it should be fascinating with quality photos not to be missed.

We are, of course, hoping the evening will be as successful as our recent meeting on December 6th when Professor Mel Jones gave an excellent illustrated talk entitled "Sheffield's Woodland History". Thank you to everyone who attended; the room at the library was full and it really did make for a great night. Special mention must also go to Sally Goldsmith who put together a wonderful presentation on the group's recent discoveries relating to the history of Gillfield Wood. Her relaxed and friendly delivery encouraged questions and debate and created a lovely atmosphere.

SPRING WALK IN THE WOOD on SATURDAY 28th APRIL

At our December indoor meeting a member of the audience made a special request for a guided walk to be arranged through the wood. In response to that request we are now arranging for such a walk to take place so that information relating to the history and flora and fauna of the area can be shared in the field with anyone who wishes to turn up on the day. So please make a note of the date, April 28th, and do watch this space for further details.

OUR CONSERVATION WORKDAYS: if you are in the slightest bit interested in helping us carry out such work in Gillfield Wood please contact Dave Gash for details on 262 0564 (or daveygash@hotmail.com).

Dave will be more than happy to explain to you what is involved and what sort of work we undertake. All work has been approved by the Council in advance. Some of the work is light and some heavy. We work as a team helping each other, and Rangers from Sheffield City Council are on hand to oversee the work on the day.

We have provisionally earmarked with the Ranger Service the following five dates in 2012 for management work in the wood: February 26th; July 29th; September 30th; October 28th and November 25th. All are Sundays, so pop the dates in your diary if you are interested. Most of the work is carried out during the morning and helpers can come and go as they please.

We did have a very enjoyable and productive day in November when ten members of the group plus two Rangers did some clearance work around one of the oldest beech trees in the wood. This work should now allow light to penetrate the woodland floor around the beech, ground cover to flourish and the beech tree to seed successfully. We still have more work to do in this particular area and similar work nearby to protect a site of historic interest, so please make contact with Dave if you would like to help.

BIO-BLITZ EVENT on 17th to 19th MAY

We are due to run a number of surveys, including another Bug Hunt, in and around our wood during a forty eight hour period. This action packed time will be from 3pm on May 17th to 3pm on May 19th. It is part of the main Sheffield Bio-Blitz event and we will help by trying to find and identify as many species of flora and fauna as possible within our own area. Once

again, please make a note of these dates in your diaries, we would love you to come along and join in. More details will follow in due course.

OUR OWN WEBSITE, DATABASE AND MORE SURVEYS

A new "Friends of Gillfield Wood" website is being created as this article is being written. We are very hopeful that it will be in place shortly and accessible for all to explore via www.friendsofgillfieldwood.com.

We now also have a detailed database into which all our natural history sightings are being entered. Records from individuals as well as the results from various surveys are added to the database and details will then be fed on a regular basis into the Council's own database.

More walks and surveys are in plan or being planned by us for this year so if you have an interest in the history and/or natural history of the area please get in touch with either Dave Gash 0114 262 0564 (or daveygash@hotmail.com) or Sally Goldsmith 0779 063 7016 (or goldsally@googlemail.com), they will be very pleased to chat with you and provide more detail.

Happy New Year everyone. Enjoy February and hope to see you at our next meeting.

Chris Measures

Speed Lights

It isn't often that I agree with the Sheffield Council, but I approve of the installation of the speed warning lights that have been installed on Baslow Rd. I am often amused, when walking back from the Co-op to see vehicles charging down the road, the see the brake lights go on, and the bonnet drop.

They then behave properly through to the top of Mickley Lane, when their Juvenile tendencies kick in again, as far as the lights at the bottom. Can anyone tell me WHY?, all they have achieved is that they have arrived at the Stop light, perhaps a micro second earlier than they would have done.

However, my thanks to all concerned in getting these lights installed.

Tony Reynolds

Ed:- known as a SID by the council, Speed Indication Device. The rechargeable battery needs changing at least every week so at times it may not be working. They are also temporary structures that move around the city around every 8 weeks.

TOTLEY PRIMARY OPPORTUNITY

Do you live or work in Totley?

Do you want to contribute to your local community?
Do you wish to make a positive contribution to children's education?

Are you willing to ask questions and open to ideas?

Totley Primary school is looking for an enthusiastic person to take up the role of a Community Governor. Our Governing body has an important role in the decision making processes with regards to the progression of our school and raising of standards and achievement for all our pupils.

Our Governors make a tremendous contribution. Our Governors are actively involved in the recruitment and selection of staff, overseeing the budget, making sure that our school is the best it can be, as well as much, much more.

What can you offer?

As a member of the School's community your local knowledge will be valuable - you will have a feel for what is important to people in the area.

As a Community Governor, your term of office will be 4 years and you will be required to attend meetings and be involved in policy decisions and monitoring activities. The role of any Governor is voluntary. Governors attend 3 full Governing Body meetings (usually evenings). In addition, Governors are organised into 3 committees that meet 3 times a year. (You can choose to be part of 1, 2 or all of the committees).

This is what our children say about our school....

'Our fantastic school has a safe environment which is a good place to learn in.'

'We have good facilities to have a great education in a wonderful environment.'

'The teachers support you from Reception to Y6.'

'Totley Primary is a great school and takes part in various activities for the whole community to enjoy and participate in.'

'Our school is well organised and fun to be at. The atmosphere is always cheerful and happy.'

We see our community as a significant benefit to our children's learning and believe that an effective school can benefit the community it serves.

If you think that you can make a difference, please put in writing -

Why you would like to be a governor and what you could offer (Please include any particular skills, knowledge or experience which you think could be useful).

Please send to

Mr Martin Farmer, Chair of Governors
c/o Totley Primary School
Sunnyvale Road
Sheffield
S17 4FB

Property maintenance and improvement

All aspects including painting, tiling, flooring and joinery, decking, pointing, garden work and unusual jobs.

**11 years in business, local. References available.
Call Jamie on 0114 235 3297 or 07786 906693**

Totley Primary School Update

Well Santa is having a well-earned rest at the North Pole after delivering presents to all the good boys and girls, I myself received lots because even I was a good boy this year!

On 1st December the whole school went to the Lyceum Theatre to see the magical pantomime *Sleeping Beauty*. Seeing Damian Williams as the Dame Nurse Nellie brought back memories of my own son Ben playing the dame for the first time at Abbeydale Picture House three years ago and how good and professional he was. The show at the Lyceum was fantastic, the kids loved it (Oh yes they did!) and the theatre staff looked after us very well.

The Christmas play at school was the best I've seen; all the children's costumes looked lovely.

At the time this article goes to press we should have a permanent Headteacher. Hopefully it'll be Mr Stewart our acting Head but only time will tell.

Looking towards 2012 we are hoping to have a canopy outside the reception class room, or as it's now called FS2, so the children can play out even if it's raining. Also on the infants field we are looking at erecting an open air class room come art area.

The school council are designing one of our quad gardens. They will get quotes from garden companies and will be funded by our PTA to whom I would like to thank for the wonderful Christmas presents they gave to me and my family, it was much appreciated.

As most of you will be aware our school was number 1 in Sheffield and in the top 200 nationwide. Well done to the staff and especially the kids who listened and took in all the information from their teachers and parents and achieved top SATS results. I am lead to believe even the Headteacher and Deputy Head contributed to this achievement!!!

That's all for now.

Yours,

Allen Miller, Building Supervisor

First World War

I thought you might like to include the attached photo of my father, Maurice, in the **Totley Independent**.

Recent articles on the First World War and the book and film of *War Horse* set me searching old photo albums. My dad served in the Yorkshire Dragoons together with Hedley Bishop.

He was also batman to Capt. Matt Sheppard whose life was documented in the book '*Sheffield Hero*'.

I can remember throughout the years whilst living at home Capt. Sheppard called to see my father once a year.

John Johnson



Resolve to get in shape in 2012

So you want to lose weight in the New Year? Resolutions are much a part of the New Year as champagne and streamers, and top of the priority stakes must be: 'I will lose weight'.

And the easiest and most satisfying way to lose weight permanently, without feeling hungry or deprived and still being able to enjoy life, is by following Slimming World's Food Optimising Plans.

9 times national award winning Slimming World consultant Alison Murphy shares her 10 top tips to making this year the last time losing weight will be your New Year resolution:

1. focus on your weight loss
2. lose weight to please yourself, not someone else
3. take advantage of people who will support and understand, join a group
4. accept that you will have ups and downs, that's life!
5. keep up your interest by trying new foods/recipes
6. set realistic goals along the way and be honest with yourself
7. keep attending the group even on a 'bad' week
8. keep setting new goals, reward yourself for milestones achieved
9. don't put your life on hold until you reach your target. It will help your motivation if you enjoy yourself along the way
10. and never ever give in. No one ever succeeds by doing so!

Alison, who runs groups on Tuesdays at Dore Old School and on Thursdays at St Peters Church Greenhill, has been a slimmer for 34 years and a consultant for 16 years and has helped thousands of men and women lose weight, giving them a better quality of life and a longer life.

She goes on to say 'Members need to know someone understands, they need inspiration, good advice, ideas, support and encouragement, and they get all this plus the amazing plans at the group, and we know it's important to make it fun too, all that plus our money back guarantee makes it a recipe for success'. Contact Alison on tel: 07815 046569

NEW Cookery School & Artisan Pork Pie Course

Local food hero Simon Barnes from Topley's own Liberty Foods has been chosen by a new cookery school Hartingtons of Bakewell to put on a unique artisan pork pie making course. Simon who has been a key part of the farm shop for the last 4 years has been instrumental in developing a whole range of 'new generation' pork pies incorporating contemporary flavours such as: mango chutney, coriander and chilli; black olives, garlic and parsley.

The cookery course will reveal the art of how to make hot water crust pastry and will teach students how to make a traditional pork pie and customise it to their own taste.

Hartingtons is the brain child of a Topley based couple Chris Horne and Julie Ryalls who have also been running a series of artisan food fairs in Baslow for the last year. The cookery school opened its doors in the middle of January and is putting on a whole range of cookery and artisan food making courses in 2012. For more details; www.hartingtons.com

In Cuckoo Land

I had to disagree with Richard Frost's article on Community Centres in the last issue of **Topley Independent**. Green Oak Park is much better for people to walk through now, they will see more things to do, like the things the Friends of Green Oak Park have done for the area. Thank you very much. I want to know where is the 3rd park in the area that Richard is referring to?

I support that Topley needs a community centre referring to Richard's stand against community centres will not affect the Topley area or taking away custom. Topley needs you

Paul Savage

Ed:- Topley's 3 parks are Green Oak Park, Topley Hall Park and Topley Bents.

Topley All Saints School Spring Re Union

At The Cross Scythes Hotel

On Monday 19th March from 7.30pm onwards

For pupils who left around the 1940s to mid-1950s

We look forward to seeing as many pupils as possible

Mark and Sally Fletcher invite you to

The Grouse Inn

Longshaw

Sheffield S11 7TZ

Meal times:-

Mondays 12.00 to 2.30pm

Tuesdays to Friday's 12.00 to

2.30pm and

6-30pm to 9-30 pm

Saturdays 12.00 to 3.00pm

and

6.30pm. to 9.00pm (drinks – open all day)

Sundays 12.00 to 9.00pm

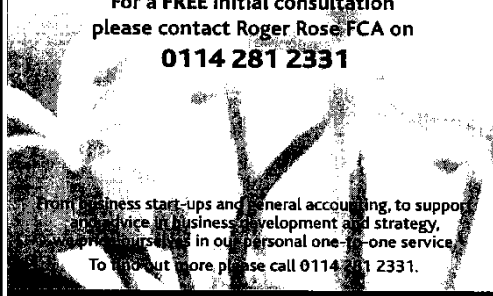
Phone 01433 630 423

R Rose & Co

Chartered Accountants & Business Advisors

Specialists at looking after the affairs of small businesses.

For a **FREE** initial consultation please contact Roger Rose FCA on **0114 281 2331**



621 Chesterfield Road, Woodseats, Sheffield S8 0RX
Email: info@r-rose.co.uk www.r-rose.co.uk

One man went to mow...

...but his mower wouldn't go!

Now is the time to call

MOWER MENDER

and be ready for the forthcoming growing season.

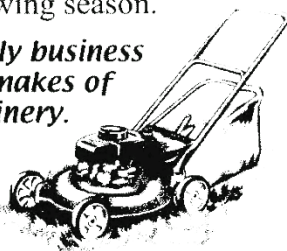
A local friendly business servicing all makes of garden machinery.

Phone:

0114 236 6958

Mobile:

0781 2211149



Blade Sharpening and Collections & Delivery Service Available

The Lord Mayor of Sheffield & Keith Peters Big Band Charity Concert

Sheffield City Hall 28th February 2012, 7:15pm



in aid of



Tickets £12.50 and £10 concessions

Box Office 0114-2789789: www.sheffieldcityhall.co.uk

THE OLD SCHOOL HOUSE

The external works on the old school house on Totley Hall Lane have now been finished and as this is a Grade 2 listed building has been renovated to a very high standard.



The new plaque has also been installed on the front of the house, and has been engraved to match the old one which I understand is to be placed within the property at some stage.

Mrs. Marshall.

Fleur-de-Lys

The new publicans at the Fleur are Alex Gardner and her partner Paul Garside. They have started recruiting staff ahead of the major refurbishment which should take around 6 weeks to complete. Once re-open they will be offering a carvery on Sundays.

In the run-up to the refurbishment the Fleur is opening in the evenings.

Calling all unwanted mobile phones!

A NEW Year and a new mobile...but last year's suddenly unloved old phone could still have a special message for St Luke's Hospice.

St. Luke's can turn unwanted phones and batteries into much needed cash to support the Little Common Lane hospice.

Every year the hospice cares for more than 1,400 people with terminal illnesses and gives vital support to their families – all free of charge.

In 2012 the hospice needs to raise £4m, so every effort is being made to raise funds through recycling – including a new scheme for unwanted mobile phones. Phones and batteries can be taken to any of the St Luke's shops in Abbeydale Road, Chapeltown, Crookes, Ecclesall Road, Gleadless Hillsborough, Nether Edge, Stocksbridge or Woodseats.

Alternatively, anybody who would like to arrange and promote a New Year phone collection in the workplace or who like to regularly donate printer cartridges for recycling should contact Margot Walker, the hospice's Corporate and Trusts Fundraising Manager, on 0114 235 7560.

For the latest information about St. Luke's fundraising initiatives sign up for a regular newsletter or visit the hospice website at www.stlukeshospice.org.uk

Dore & Totley Station Park & Ride

GOVERNMENT funds have finally been secured for a park and ride at Dore and Totley railway station.

A total of £400,000 will go towards a 139-space car park on the site of a former garden centre off Abbeydale Road South.

A new entrance to the car park and railway station is also planned, along with a pedestrian crossing.

Both South Yorkshire Passenger Transport Executive and the council hope the park and ride will ease congestion on surrounding streets after years of complaints from residents, and to encourage more drivers from the south-west of Sheffield to leave their cars and to take the train.

The funding has allowed SYPTE to start the detailed design of the car park with a view to starting construction this year.

David Brown, SYPTE Director General, said: "This proposed facility will be a tremendous asset to the area around Dore, where people have been calling for some time for more parking spaces.

"We will now be working to ensure that this scheme is delivered as soon as possible to provide much needed parking at the station for rail commuters."

There will be a covered cycle shelter and specific parking for blue badge holders.

ST LUKES CHATSWORTH DINNER

LORD Howard of Lympne (Michael Howard) will be the special guest at the 2012 St Luke's Hospice Chatsworth Dinner.

The former Home Secretary will be speaking about his work as chairman of national charity Help the Hospices at the dinner which is held in the Carriage House Restaurant at Chatsworth – with a champagne reception in the Cavendish Rooms – on March 3.

Tickets to the event cost £60 each and are available from Audrey Rose at the hospice on 0114 236 9911.

A Chip off the Old Block by Josephine Rundle

reviewed by Sally Goldsmith

Jo Rundle will be a familiar name to anyone who reads the Independent. I have always looked forward to her pieces about growing up in Totley during and after the First World War. Now in her 90's, she describes a place out of living memory of most of us, and yet with such clarity, such a sense of the moment. Those, like me, who have enjoyed those pieces will not be disappointed by her life story, *A Chip Off the Old Block*, a remarkable book from a remarkable lady.

However, the book surprised me. The pieces in the *Independent* were delightful for their sense of place and time, their vivid local history. The book is much more. Though chronicling one determined woman's life, it is an astounding document, bringing into focus a slice of social history from almost every decade of the twentieth century. Though probably needing some editing (it is 580 pages long), its very minutiae is its strength.

Her strict but much loved father, Isaiah, was manager of the ganister mine at Strawberry Lea - which meant that the family was a slight cut above some of the others in a Totley. However, they were by no means well off, living in one of the small cottages on Baslow Road next to Lane Head. Because money was tight, her father would not allow her to go to Grammar School despite achieving the highest scholarship marks in Derbyshire. You then get the sense that, throughout her life, she will turn her hand to whatever hard work; learning and qualifications will help her. And how she does!

We move through her first job as a kitchen maid below stairs at Totley Hall, work as a photo finisher in Nether Edge, voluntary nursing during the Second World War, gardening, eventually setting up her own nursery on Moorwoods Lane (also involving brick-laying, building, floristry and a greengrocery round), qualifications in floristry and flower arranging - even taking herself off to London to learn with Constance Spry, teaching flower arranging to the middle class women of the 50's and 60's, shop keeping, judging at Horticultural Shows, struggling as a working single parent in the 60's and 70's, occupational therapy for disabled people in Derbyshire, lecturing in the North East, then retirement from 1981 - after which she came back to Totley and took up learning languages, dance teaching, painting, family history, writing and an OU degree. I felt quite exhausted reading about the application and self-reliance of this busy, feisty woman - never one to let any mishap get the better of her.

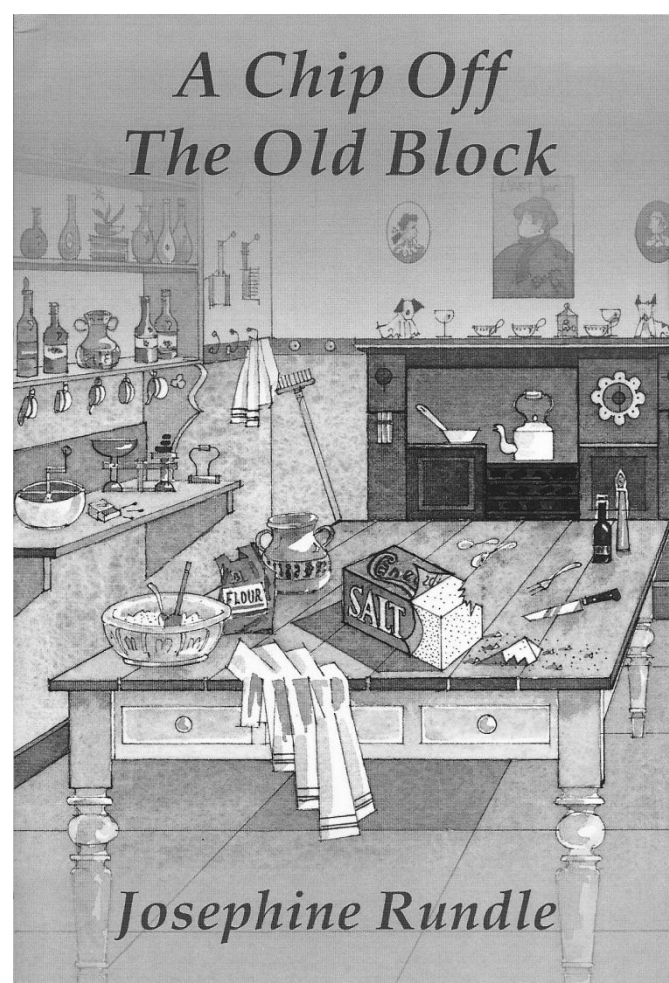
The book is not only clear and detailed but delightfully straight speaking too. Here she is working for Seagraves Nurseries:

Joe was on his inspection rounds when, seeing us digging, he shouted "Joss, tha's got thi' back to t'wind, turn thi'arse round and get thi' face to it...It's a lumbago wind. tha'll gi' thisen back ache if tha' dunt shift thi' arse round." I did as he bid, no point in inviting "I told you so" remarks if they can be avoided.

She is also frank about the sexual mores of the 30's through to the 60's and her difficulties as a wife. Though she says she inherited her strong sense of right and wrong from her parents, you get the sense that she was often brave, self-reliant, and even controversial in going her own way as a woman and as a provider for her family. The strong relationships in the book are with her parents and children, not her husband whom she divorced in the 70's.

We get a feeling for her resourcefulness - and consequently that of other women at the time - pawning the wedding presents to pay for the reception, eking out a ten shilling note until the end of the week, making fancy underclothes out of a barrage balloon, a Christmas Indian headdress for her beloved son Arthur from old feathers, a quiver from a Vim canister. But not only in the small things: also courageously setting up her own businesses - working, for example, into the small hours making

Christmas wreaths, getting up early to bargain at the wholesale markets or coping with the gales of 1962 which destroyed her glasshouses and nursery.



I was left astounded by the detail of this life Jo Rundle is able to recall. Nowhere does she mention that she kept a diary - but the material is fresh, specific and most of all, absorbing.

The book is available for sale at £11.50 plus £3.50 p and p from Bannister Publications, 118 Saltergate, Chesterfield, Derbyshire S40 1NG, telephone 01246 550488, online from Amazon or from any bookseller quoting the title and ISBN 9780956619686. We also hope that Totley Library will buy a copy.

GARDENING TIPS FOR FEBRUARY

It's blowing a gale outside and raining just now (early Jan) so I thought I would give the editor my piece a bit early. I don't fancy going into the garden though there is lots to do, fences to mend, paving to reset, furniture to varnish, etc. etc. (who said there's not much to do at this time). If we don't get a nicer spell I will have to get my old balaclava out (it always reminds me what a battle gardening can be at times) and face the elements can't leave these jobs too long otherwise they are difficult to fit in later.

My show leeks are growing well but the onion seeds are a bit backward in coming forward I may have to re-seed if they don't show soon.

I have been looking through the latest catalogues and have made a list, the plants are a bit pricey so I will be growing my own again from seed. I do have a heated end to one greenhouse witch is ok for bringing on the little seedlings, but if the paraffin goes up in price much more I may have to think again.

I hope you had a good Christmas and New Year break. I hope you got some nice gardening goodies for presents which you can put to good use in preparing all those entries for the Totley Show on September 15th. Don't forget to encourage the children to take part, it was lovely to see the children's show bench and everyone enjoyed looking at the wonderful interpretations of the various categories. It does please the volunteers to see that the work they do is really appreciated by people taking part. If you have not entered before then why not make a new year resolution to enter this year, and try your best not to break it. It is a well-known fact that gardening is the ideal way to get rid of Christmas pud tum just think how much you will be at the show time so get cracking. I hope to see those lissom figures in the near future.

Talking of lissom figures we have had one given to us this Christmas, we have to find a nice cosy (warm) spot in the garden for her as she is very scantily clad, I will have to wrap her up with bubble wrap can't have her catching cold over winter poor thing. Enjoy your gardening.....

Flowers Winter flowering jasmine should be pruned as soon as it has finished flowering. Trim back winter flowering heathers as blooms fade with shears to prevent them getting straggly. Do not forget to look at dahlia tubers in store and dust any mould with flowers of sulphur, do not let Jack Frost nip them, protect them well.

Give herbaceous plants a feed of rotted manure or compost, lightly forked in, or a dressing of good general fertilizer. Fill any gaps in your wallflowers now before they start into active growth. Make sure all plants are firmed in, as some may have been loosened by frost. Give any roses which have suffered with black spot a spraying with fungicide to help prevent a further occurrence, clear away any leaves lying about. Clean up rockeries, top dress with compost and chippings.

Vegetables Check vegetable plots for lime content and add any lime required at least 2 weeks before sowing or planting, work in a dressing Growmore or similar, onions require a very rich soil to get the really good ones for the shows.

Before sowing carrots, rake soil pesticide into the ground. Put seed potatoes in a light airy frost free place to sprout. Watch out for slugs and deal with as quickly as possible. Top dress spring cabbage and sprouting broccoli with nitro chalk. Plant out autumn sown onions. Dig trench for runner beans and celery. Sow herbs chervil, chives, dill and parsley in slight warmth. Sow leeks to be ready for The Totley Show, plant the best seeds in individual pots in warmth to start them off well, moving them to cooler positions later, prior to planting out when the frosts are past, or under cloches. Cauliflower and broccoli benefit from a long growing season. Plant seeds now in deep trays in a cold frost free greenhouse. You will have strong healthy plants in good time for spring planting out.

Trees, Fruit and Shrubs Prepare ground for any spring planting which you are considering. Plant out deciduous shrubs and heathers later in the month. Prune late summer flowering clematis. Cut back hard shrubs like callicarpa trumpet creeper, spirea and tamarisk. Fruit trees growing in grass will need a feed of sulphate of ammonia or nitro chalk to make up nitrogen deficiency, about half an ounce 30 grams to a sq/yd. Prune autumn fruiting raspberries, prune gooseberries, firm in any cuttings of black, red and white currants and gooseberry.

This is the perfect month for tree planting, care at this stage will pay off with rapid sustained growth for the future, take care choosing the right tree for the site, note its eventual size, this will avoid drastic pruning later, bear in mind that pretty blossoms will look lovely for a week or so but how will the tree look in summer and winter? Is it colourful in autumn? Select only the best specimens with even open growth and a good root structure with no obvious defects such as a faulty graft or damaged on the trunk, do not be seduced by size. A small light standard tree will grow just as well as a large heavy tree, needless staking and will most likely be less expensive. Small mature trees called ships will be even less expensive but of course will take longer to mature. Make the planting hole big enough to spread the roots evenly and make sure they never dry out during the planting process, a little slow release fertiliser blended with well-rotted compost will improve the soil onto the roots using your heel to tread it in. Water frequently in the first season while the tree is becoming established and mulch with bark or compost.

Greenhouse and Indoor Plants Gradually increase watering, keep African violets, cyclamen and indoor primulas humid by standing them on moist pebble filled saucers. Plant indoor gladioli corms. Pot up January sown seedlings of geraniums, fuchsias etc. Plant rooted cuttings of late chrysanthemums and carnations. For a nice summer display sow seeds of plants with bush violet, busy lizzie, carnation, gloxinia and schizanthus, poor man's orchid). Sow primrose for winter flowers. Cut back last year's shoots of fuchsia, passion flower and plumbago. Plants particularly seedlings like fresh air but not cold air, so on warm days ventilate freely, especially cold frames but keep a weather eye open for frosty forecasts.

Pollinate and train early vines, later in the month sow half hard annuals and greenhouse plants. Start into growth resting plants such as clivias, bird of paradise etc. Freesias which finished flowering some weeks ago can now be laid on their sides in their pots to dry off. Lobeli cardinalis is becoming more popular, it can be potted now, pull away single shoots with a little root attached and pot each separately in a 3½" pots.

Lawns Rake, spike and top dress with sand, keep off especially when frosty. Spring is just around the corner.

Cheerio for now, Tom

KES UPDATE

Record Results. In November our record breaking 2011 Y11 students were honoured at a special certificate and awards presentation evening.

Presenting certificates and awards, special guest Sheffield United manager Danny Wilson praised the young people for their amazing achievements, which included an all time high 76% pass rate (5 A*-C including English and maths). 50% gained three or more A* and A grades – the top performance of any Sheffield secondary school.

Head teacher Lesley Bowes said: "These results are a fantastic testimony to the hard work of the students and the support of teachers, parents and carers and I am so proud of our GCSE class of 2011. While the results are stunning, King Egbert is about more than examination success, and the school equips our young people with all the skills required to develop their full potential."

Danny Wilson also presented achievement awards to students currently in Y11 for their attainment and progress in Y10.

Worldwide Quiz. Congratulations to the King Egbert team who won the South Yorkshire round of the Geographical Association Worldwide Quiz. This is a national competition for Y9 and Y10 students. Our team (Harry Brebner, Alex Moore and Andy Stevens) came through the preliminary heats to reach the final where they were up against King Edward VII and Silverdale. In a tense competition where the lead changed on several occasions, the King Egbert team emerged as winners and were duly crowned South Yorkshire winners.

They will now go on to represent the school and region in the national finals.

King Egbert recognised for contribution to sport. King Egbert was presented with the John Moss Award at the annual awards ceremony held by the Sheffield Federation for School Sports. This award is for the school PE department which has achieved the most notable overall sporting success over the previous year.

King Egbert Scientists are so nearly Top of the Bench! Congratulations to the King Egbert team that took part in the South Yorkshire heats of the national 'Top of the Bench' science quiz. Teams had to consist of four students, including one from each of Y11, Y10 and Y9.

Our team came 2nd out of 14 schools, only one point behind the winning team. Well done to Emily Newman (Y11), Joe Douglas (Y10), Libby Honour (Y9) and Daisy Veysey (Y9).

Maths Department. In November, seventeen Sixth Form students took the Senior Maths Challenge, organised by the United Kingdom Mathematics Trust and Leeds University.

Last year's results were outstanding with King Egbert Sixth Formers achieving 3 Gold, 8 Silver and 4 Bronze awards, so we await this year's results with anticipation.

KES DIGITAL CHAMPIONS 1 in 5 people in Sheffield are digitally excluded – they don't know how to use a computer or the internet. 60% of these are over 65 yrs old. These people are at a disadvantage. As more and more things move on-line they are being left behind. Ironically, they are precisely the group of people who can gain most from internet access. They can keep in touch with friends and family, pay bills and shop on-line, save money in the process and then use their energies for the better things in life. This is especially true for those with mobility issues.

King Egbert sixth formers volunteered to be trained as Digital Champions, building their confidence and skills, in order to help train local people in taking their first steps with computers and the internet. During the 'Get On- Line week', the sixth formers helped elderly local residents tackle digital exclusion by inviting them for training in using the IT facilities in the school library.

Geography visit to Iceland Over October half term, the geography department took a group of 35 A Level and GCSE students to Iceland to study various aspects of this fascinating country. The itinerary included Reykjavik, tectonic and volcanic landforms (including a study of the impact of the

eruption of the Eyjafjallajökull volcano in 2010), geysers and boiling mud pools, glacial processes, spectacular waterfalls, coastal features and geothermal energy. The group visited a stunning ice lagoon, lava tubes (tunnellike caves under lava flows), Geysir (which gave the name to all geysers), the south coast where there are basalt column landforms similar to the Giant's Causeway and saw where the Eurasian plate is pulling apart from the North American plate. It wasn't all work and the opportunity was taken to swim in open air natural geothermal pools too!



Tony and Julie at

The Crown Inn

Welcome you for

Good Quality, Home Cooked Food

Tuesday – Friday

12-2pm & 5.30-8pm

Saturday & Sunday

12-2pm

Come & join us for

Good Beer, Good Food & Good Music

Tel 0114 236 0789

CLOSED SUNDAY EVENING

Visit our website: www.crowninntotley.co.uk

LIVE MUSIC

31st January

JOEL WHITE

14 February

Cary Bayliss and

Lyndsay Dracass

Celebrating in February

Ideas and activities for celebrating in February at home from members of All Saints Church, Totley

Recipe – Valentine’s Shortbread

180g flour

50g cornflour

80g sugar

180g butter

Mix. Knead. Roll out. Use heart shaped cutter.

Sprinkle with sugar.

Cook in a pre-heated oven.

160C (320F/gas2/3)

Cook for 20 minutes depending on thickness.

Cool. Decorate if desired.

What will 2012 bring?

Perhaps a chance to make new friends

And become healthy, both bodily and spiritually.

Saturday morning family walks

...for people of all ages are planned.

Meet in the church car park to leave at 10.30am.

Return at noon.

Sat Feb 4th

Sat Feb 18th

“Start the Day with Jesus” 9am -9.30am

Monday-Thursday in the church hall lounge.

Half an hour to reflect quietly, read the bible and pray together for our community and country.

All are welcome.

February Festivals

Feb 2nd Candlemas

This celebrates when the baby Jesus was presented at the temple.

Feb 21st Shrove Tuesday or Pancake Day

This is the day before Lent begins. Traditionally people used up their fat and enjoyed making pancakes

Feb 22nd Ash Wednesday, the beginning of Lent.

This is the day when the church remembers Jesus going into the desert, and wrestling with the devil for 40 days before he began His ministry. During

Lent many people fast by giving up chocolates or other luxuries.

It is also an opportunity to focus on spiritual issues. Churches remember Ash Wednesday with a special service during which people are given the sign of the cross on their forehead with ashes. The latter are created by burning the palm crosses from the previous year.

The time between Ash Wednesday and Easter is 40 days excluding Sundays which are not fast days.

To conclude, a quote from Columba who lived from around 521 to 597. He was an Irish monk and missionary in Scotland.



***Be thou a bright flame before me,
Be thou a guiding star above me,
Be thou a smooth path below me,
Be thou a kindly shepherd behind me,
Today - tonight - and for ever.***

Services in February at All Saints, Totley Hall Lane

5th 10am Morning Praise

6.30pm Holy Communion

12th 10am Family Holy Communion

6.30pm Evening Prayer

19th 10am Baptism

6.30pm Holy Communion

22nd 7.30pm Imposition of Ashes
(Ash Wednesday)

26th 10am Holy Communion

Every Wednesday 10am Holy Communion

Gay Riley

Jenny's ready to party after 1 1/4 stone weight loss!

A slimmer from Totley in Sheffield is ready to celebrate in style after losing 1 stone 3.5 lbs and winning a slimming competition.

Jenny has dropped 2 dress sizes, going from a tight size 16 to a slinky 12, since joining the Totley Slimming World group, and was looking forward to slipping into a slinky party dress for the festive season after being aptly named the group's 'Miss Slinky'.



The 64-year-old has slimmed down from 10 stone 3.5lbs to 9 stone since the end of June. Slimming World's annual 'Miss Slinky' competition recognises members who have undergone a huge transformation by becoming slimmer and more confident – and look great in their party outfit too!

Jenny says: "I couldn't believe it when everyone voted me as 'Miss Slinky'. I've never felt "slinky" before but – thanks to Slimming World – I am now, and it feels great!

And Jenny's confident that with the help of her Slimming World group and Consultant Jo Elsey, who runs the group, her new "slinky" self is here to stay. "With Slimming World you don't follow a diet temporarily and then go back to your old habits when you get to the weight you want to be," she says. "I've got a completely new lifestyle now, I fill up on delicious healthy meals made from scratch with fresh food and I'm much more active. I can't imagine not going to my Slimming World group because we have such a laugh together. I know this is me from now on."

Jo Elsey says Jenny's achievements make her a role model for other people in Totley. "There are 14.6 million overweight or obese women in the UK and that picture's no different in our community, many people in Sheffield are already obese and at risk of suffering from illnesses like diabetes, heart disease and even cancer. I think that makes what Jenny's achieved even more staggering. I hope she inspires lots of other people to improve their health by losing weight and shows them that whether you've got a little or a lot to lose, slimming down can make a huge difference to your confidence and self-esteem.

If you're inspired by Jenny's story, come along to the Totley Slimming World group, which runs every Monday from 2nd January at 7pm at Dore & Totley United Reformed Church, Totley Brook Road, or for more information call Jo on 0114 262 0523 or 07590 545 253 or visit www.slimmingworld.com



Festival of Olympic-inspired Art and History for Nether Edge

This Olympic Year, Art in the Park is running the international and intergenerational Nether Edge Arts Festival, funded by the South Community Assembly. The festival will include creative writing workshops in local schools, a regular Saturday Art Club and International Art Days at Common Ground. The project will bring together different generations and take inspiration from countries that will have Olympic training camps in Sheffield, celebrating the diversity of the Nether Edge area.

Saturday Art Club In sessions between January and March, children will learn about different arts and crafts from around the world to link with the 2012 Olympic teams training in Sheffield this year. Children may even get the chance to watch Olympic divers train at Ponds Forge. The sessions will include international crafts such as Indian block printing, Brazilian tribal head-dresses and the local art of basketry using materials from Sheffield Heritage Museum. If any community members or groups would be interested in giving a short talk about an art form from their culture, or to enquire about places, please contact Cassie on 0114 268 6813 or email cassie@artinthepark.org.uk.

International Art Days These will be a chance for everyone to get inspired by the many countries of the 2012 Olympics and try something new. There will be a celebration of the children's work from the Saturday Art Club and a chance for people to have a go themselves. The sessions will be at Common Ground (aka St Peter's Hall), Empire Road, Nether Edge and the dates and times are:

- Monday 13th February 1pm-4pm
- Sunday 26th February 10am-1pm
- Sunday 11th March 10am-1pm

This event is open to adults and children alike, of all ages and abilities. The activities and materials are all free and you don't have to book – just drop in for as long as you like. Children under eight must be accompanied by an adult throughout.

Wise Words Art in the Park will offer two local schools free, intergenerational creative writing workshops. The sessions will be led by a professional writer and the focus will be on writing about living in the area and how things have changed over time. Two sessions will see children interviewing local older people to find out about the past. Participants will be rewarded by seeing their work in print in a small publication. If any older people or groups in the area would like to get involved, please contact Cassie on 0114 268 6813 or cassie@artinthepark.org.uk

Kate Reynolds Update

It is with much sadness, that I have to say that Kate took up residence at Henleigh Hall Care Home, at the beginning of December.

Due to this "upheaval", I was not able to make the **Independent** before the Xmas issue, and the factors of the move were endless. Consequently, I would like to apologise to all the kind people who sent cards to us, and did not receive one in return.

Kate seems resigned to the fact, and is in reasonably good spirit, and is "open to visitors"... just call to confirm on 236 6891.

Thank you all for your good wishes.
Tony.

Totley Sports & Social Cricket Club

For those of you who have not been down to Totley Bents lately I now have pleasure in confirming that the long awaited new changing facilities are almost ready for handing over. We have been promised handover in late January 2012. Watch this space for further news.



As part of the celebrations for the official opening of the new clubhouse I am trying to put together a history of the cricket club that will go on display when completed. I can go back as far as 1951 in terms of Sheffield Cricket League trophies that have been won, but no record of anything before this. I have found two photographs, the first with a young boy in front goes back to the 1920's and the other goes back to 1930, if anyone can fill in any of the long gaps along with details of century makers, hat trick takers and all 10 wickets in an innings, then that would be great. Any memorabilia, photographs, team sheets, scorebooks etc that anyone lend me then I would be most grateful. I can collect, scan and copy then return almost immediately if anyone can help.



On the cricket front, despite not being able to play at Totley Bents recently, Totley Sports Cricket Club continued in their habit of winning trophies, our 16th in the last 22 years. Totley's 2nd XI winning division 4 of the Yorkshire and Derbyshire Cricket League. The 1st XI finishing in a creditable 5th place in the division above.

As always we are on the lookout for new members, particularly a wicketkeeper, so if you can help in any way please contact Roger Handley on 0114 265 7825 or myself Malcolm Barnsley on 0114 288 0093 or by email on mv.barnsley@yahoo.co.uk

All Saints School Update

The children at Totley All Saints School will be planting a native hedge at the back of the school field adjacent to the allotments later in January. They are working with Tinsley Tree Project. This will increase the security of the school grounds and encourage more wild life in to the area.

ST LUKES SEEKS VOLUNTEER

ST Luke's Hospice is looking for a new volunteer who will be a cut above the rest!

The St Luke's hairdressing salon is looking for an experienced stylist who is willing to give some of their time to one of the hospice's most popular patient facilities.

The volunteer, who will have to be over 18 and be qualified to at least NVQ Level 2, will initially work alongside the salon's full time stylist and another volunteer.

"We are looking for the sort of person who, as well as being fully qualified and able to provide the full range of hairdressing services to the highest level, will also be able to create an uplifting and enjoyable environment and demonstrate compassion and an ability to communicate in a friendly manner," said the hospice's Volunteer Coordinator Joy Wigfield.

Although working closely with patients, the volunteer will not take part in patient care, offer counselling, assist with medication, view patient records or discuss personal details and information.

"Our patients, both male and female, really appreciate the services offered by our salon team and it forms a vital part of our Wellbeing services," said Joy.

"The opportunity to join that team will, we believe, be both rewarding and thoroughly enjoyable."

Anybody interested in the volunteer post should contact Joy on 0114 235 7542 or email: j.wigfield@hospicesheffield.co.uk

Sheffield Bach Choir

SATURDAY 17 MARCH, 7.30 pm

Sheffield Bach Choir presents Bach's **MASS in B MINOR** with the NATIONAL FESTIVAL ORCHESTRA AND SOLOISTS Jenny Leadbeater, Anita Wiencelewski, Ben Thapa, Mark Rowlinson at Sheffield Cathedral, Church Street, S1 1AA

Tickets £12-£15; Students £6

Box Office: 3 Tipton Mews, Crescent Road S10 5EA and at the door. On-line Booking from the Bach Choir Website: www.sheffieldbachchoir.org.uk

Sheffield Bach Choir presents Bach's choral and orchestral "last will and testament", the Mass in B minor (arguably the greatest musical work ever written) for its March Concert in Sheffield Cathedral. Conductor Dr Simon Lindley has appeared before with the Choir in this work over a decade ago and looks forward with eager anticipation to re-visiting what he regards as one a peak of Western civilisation. Soloists include Ben Thapa from London, Manchester's Mark Rowlinson, Anita Wiencelewski from Leeds and Sheffield's own Jenny Leadbeater, each is a veritable veteran of this particular work with the exception of former G4 star Ben Thapa for whom the Sheffield performance is his debut in the piece. The organist will be Alan Horsey, formerly of Bradford Cathedral.

British Newspaper Archive

The British Library has launched the British Newspaper Archive online. They have released many millions of pages already and the project, which is due to carry on for a further 10 years aims to make over 40 million pages from British newspapers available from their archives going back to 1700.

A variety of subscriptions are available to access the pages. There are over 11,000 pages that contain the word 'Totley'. www.britishnewspaperarchive.co.uk

£50K I Wish!!!

It has come to our attention that certain people have maliciously been propagating the rumour that we received £50K as a "bribe?" to release from our tenancy the allotment site on Mickley Lane. This was definitely not the case!

It is normal business practice for tenants to receive compensation from their landlords when they are asked to give up possession of assets, be they be property or land, before their lease expires. This practice applies to agricultural enterprises just as it does to other business activities. In our case 2 expert representatives are working on behalf of the landlord and are acting for ourselves negotiated a deal based on normal agricultural criteria. A number of factors were taken into account when arriving at the final figure. 1 The residual value of the under-drainage system put in place by us some 4-5 years ago. 2 The losses incurred by ourselves as result of the delay in bringing this scheme to fruition. 3 The loss of valuable single farm payment entitlements attached to the land. 4 The loss of future income, both enterprise profits and annual single farm payment monies as a result of the release back to the landford of this land. 5 The normal ex-gratia payment for cooperating with a landlord's request.

Net result? £50K, NO!, £30K, NO!, £15K, NO! just £5K!

How this figure managed to get to £50K I do not know. I suspect someone thought of a figure and then doubled it! Whoever it was they obviously knew very little if anything about agricultural practices and compensation levels.

Edwin Pocock

Totley Library Temporary Closure

Totley Library will be closed from
Monday 30th January 2012
and will re-open at 9.30 am on
Friday 10th February 2012.

This is due to the installation of
new self service equipment.

**Please note that customers will
need to bring their Library Card
on every visit from February 2012.**

*Please accept our apologies for any
inconvenience this may cause.*

Totley Library
205 Baslow Road
Sheffield S17 4DT
Tel: (0114) 2930406
Email: totley.library@sheffield.gov.uk



PLANNING A RELAXING HOLIDAY



WHY NOT CONSIDER USING OUR VILLA IN SOUTH WEST PORTUGAL?



The villa is situated on a private small exclusive development with beautiful well maintained gardens, lawns, palm trees and swimming pool. It is on the edge of traditional unspoilt village amongst the gentle rolling hills of the Costa Vincentina Nature Reserve.

- Ideal for all ages
- Sleeps 4/5
- Many nearby unspoilt family beaches
- Area renowned for its warm favourable climate
- Situated between the historic town of Lagos and Cape St Vincent
- Flights from local airports in UK.

Many local activities including walking, bird watching, wild flowers in spring, fishing, golf, dolphin watching, surfing, and much more to do and enjoy.

The nearby towns of South West Portugal have many features of historical interest and the surrounding countryside is rich in natural history and is well worth exploring.

Tel (0114) 236 2456 for further details.

CROSS SCYTHES

PUB RESTAURANT & HOTEL

VALENTINES DAY 2012

£25.00 PER HEAD

>>TO BEGIN<<

GLASS OF SPARKLING PROSECCO

>> FOLLOWED BY <<

CRAYFISH & LOBSTER BISQUE, WITH FRESH HOMEMADE BREAD

OR

MUSHROOMS & PARMESAN CREAM ON HOMEMADE FOCACCIA,
WITH SMOKED BACON & POACHED EGG

OR

SEARED BEEF WITH CHILLI & SESAME SALAD

OR

WARM AUBERGINE TERRINE WITH HOMEMADE BREAD

>>MAIN COURSE<<

WE'LL ALL BE SERVED WITH APPROPRIATE POTATOES AND VEGETABLES

ROAST FILLET OF BEEF, ROSEMARY & PORT SAUCE

OR

DUCK BREAST WITH CHERRY & KIRSCH SAUCE,

OR

COD LOIN WITH PEA & HAM BUEURRE BLANC,

OR

ROAST CHICKEN WITH RED WINE & PANCETTA

OR

5 NUT ROAST WITH WILD MUSHROOM SAUCE

>>DESSERT<<

CHAMPAGNE & CHOCOLATE ASSORTMENT

>>TO FINISH<<

COFFEE AND TEA

MENU MAY CHANGE SLIGHTLY DUE TO SEASONAL AVAILABILITY

DON'T PUT
UP WITH...

PAIN

Activ
Physiotherapy
specialises in:

- Sports Injuries
- Back & Neck Pain
- Joint Problems
- Muscle & Ligament Strains
- Repetitive Strain Injuries
- Post Op. Rehabilitation

Registered with major insurance companies, BUPA, Aviva, Westfield Health

Early morning and evening
appointments are available . . . ring for details

Totley: 0114 235 7845 • Norton Lees: 0114 255 6434
Mobile: 07901 968 549

TRISTAN SWAIN

Landscaping & Maintenance

Established 20 years

Fully insured

GARDEN RESTORATION & MAINTENANCE

Unit C4
Sheaf Bank Business Park
Prospect Road
Heeley
Sheffield S2 3EN

Tel/Fax: 0114 255 4689
Mobile: 07831 802539



Gail Kitchen: 07986473415



Does going away from home mean your cat is sad and unhappy?
Does a trip to the cattery scare your cat *not to mention your wallet?*

WORRY NO MORE!



MOGGY MAID is on hand to feed, love and provide everything your cat needs in the relaxing comfort of its own home.

As we cat-lovers know, unfamiliar sights and smells can stress your cat, whereas leaving them in the familiar surroundings of their own home carries less worries, for your cat and for you.

If only for a night, weekend, or a month; holiday, Christmas or any time of the year, MOGGY MAID is here to help

LIGHTEN YOUR LOAD



We promise no mischief allowed!



In a professional manner and with quality service, you can ensure individual care and attention, whilst you relax away from home.

We haven't forgotten the rest of the family; mice, rabbits, budgies, goldfish, etc will receive care and affection too.



LOCAL FRIENDLY SERVICE

From £5 a day

For more information, contact Gail Kitchen on:
07986473415 5 Ullswater Place, Dronfield Woodhouse

Slimming
WORLD

because you're amazing

If you want to lose weight healthily and with no deprivation or humiliation then join your local Slimming World class in Totley,

Mondays at 7pm.

Telephone Jo Elsey on 0114 2620523

or 07590 545 253

(Offer cannot be used in conjunction with any other offer)

1/2

Price membership
on production of
this advert

SEE THE DIFFERENCE!



- **COMPREHENSIVE EYE EXAMINATIONS**
including special tests for glaucoma, colour vision, dyslexia & diabetes
- **CONTACT LENS CONSULTATIONS**
free contact lens trials and monthly direct debit payment schemes
- **PRESCRIPTION SUNGLASSES**
- **LEISURE SPECTACLES**
for computer work, fishing, swimming and safety wear
- **ACCESSORIES**
ready readers, chains and magnifiers

LENSES BY SEIKO
In all non-budget spectacles

TOTLEY
63 Baslow Road
236 4485

ABBEYDALE
634 Abbeydale Road
255 6554

For more help and information please phone or call into the practice of your choice
For a full list of our practices visit

WWW.MKO.CO.UK

Terms and conditions apply.



Shepley Spitfire

56 Mickley Lane, Totley Sheffield - S17 4HE 0114 236 0298

UNDER NEW MANAGEMENT

2 meals for **£8.95**

Served everyday 11am until 9pm

Carvery every Sunday from 12 noon

Quality Cask Ales

Quiz Night every Tuesday form 9:30pm

The Home of Big Fish Friday!!

Beer battered Cod fillets, Chips and Peas Two for **£8.99**

Eat in or Takeaway

FOR THOSE OF YOU WITH A LITTLE APPETITE

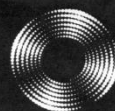
WE HAVE INTRODUCED A SMALL

PLATES MENU FROM **£2.49**

ALL DAY EVERYDAY

Sky Sports & ESPN showing live games

Entrust Electrical



For all your electrical requirements in or outside the home you can trust **Entrust** to do it right!

- ✓ Full or Partial House Rewiring
- ✓ Additional Sockets, Switches, etc
- ✓ Energy Efficiency Enhancements
- ✓ Contemporary & Classical Refurbishments
- ✓ General Electrical Maintenance & Repair
- ✓ Homebuyer Electrical Safety Surveys
- ✓ Telephone and Computer Data Points
- ✓ Garden, Pond & Other Outdoor Electrics
- ✓ Security Lighting & CCTV



City & Guilds
Qualified

(0114) 2352084
07935 250814

www.entrustelectrical.co.uk

Old Hay Close, Dore, S17 3GP



"need *help* in your garden?"

"right plant, wrong place? Stuck, don't know where to start?"

We can offer a Design Consultancy without the designer price-tag.

"Selling your House?"

We can tidy your garden, also with use of planted containers/hanging baskets, make your house more desirable to prospective buyers.

Season by Season

- Regular Lawn Maintenance.
- Hedge Cutting.
- Small Tree/ Shrub pruning.
- Beds/Borders tidied, planted.
- Planted Containers.
- Green waste removed



the **Abbeydale** gardeners...
...we can help you.

Formerly of
The Abbeydale Garden Centre

Kevin Hunter 07818 20 12 42
Mark Naylor 07739 75 23 19

www.theabbeydalegardeners.co.uk

Music Tuition



Piano • Keyboard • Flute • Singing
Guitar (rock, metal, blues, jazz, funk, pop, folk)
Music Theory • GCSE work

Music graduates, each with 25 years
teaching and playing experience

All ages, beginners welcome.

Exam work or just for fun!

Call Mark or Karin

0114 237 4853 & 07981 888352

HEARING AIDS

MAURICE NAYLOR FBSHAA RHAD is your
local hearing aid specialist and at your
request will test your hearing in your own
home, free of charge, and if needed you can
try a custom made aid for four weeks
without obligation to purchase.

Tel : 237 4817

In the ear digital from £495



THE COMPLETE BUILDING SERVICE

New Build & Extension Specialists

From Design to Completion

**Full Project Management
House Building
Extensions**

Find
us in
Yell.com

**New Roofs/Tile/Stone
Stonework Specialists
Loft Conversations**

Established for 25 years with over 90%
of our work coming from recommendations, to
find out why call:

0114 2353314

Mobile 07973 908187

www.mwoolhousebuilders.com



Christchurch Cottage,
Townhead Road,
Dore, Sheffield
S17 3GA



Kitchen Solutions

By Nigel Watson

Fully fitted quality kitchens at affordable prices,
planned and designed to your specification. View a
computer generated impression prior to installation.

For a local, friendly, reliable service call for a free
brochure and quotation.

TEL: 0114 236 4778

Mobile: 07971 528149

Horizon Electrical

*Faults, Rewires, Sockets, Lights,
Cooker Points, Electrical Showers,
Phone Points, Security Lights*

No job too small

Fully qualified with friendly advice

Ring Totley 236 4364 or

Mobile 07772 483154



Hatha
..YOGA CLASS..

Totley and Ranmoor

For more information or to book a place call

RACHEL on (0114) 236 9943

BWY Qualified Teacher

BODY, MIND & BREATH

Enjoy the union of yoga



BRADWAY INSTALLATIONS

**Kitchens, Bathrooms.....and everything in
between**

- **Complete Kitchens** - Installation or supply and
installation
- **Kitchen Refits** - Replacement worktops/sink/hob etc.
Worktop / cabinet repairs
- **Bathrooms** - Cloakrooms - Domestic plumbing - Tiling
Laminate / Vinyl flooring

All work undertaken is fully insured and guaranteed

Ring Peter - 0114 236 5995

Mobile - 07766 411355

SLIMMING WORLD

10 WAYS TO MAKE SURE IT WILL BE THE LAST TIME LOSING WEIGHT IS YOUR NEW YEAR RESOLUTION. THIS TIME MAKE IT LAST FOREVER

1. Focus on your weight loss goal and prioritise it.
2. Be sure you really want to lose weight for yourself. Doing it to please someone else may only lead to short term weight loss.
3. Take advantage of all the group support at your local Slimming World class. Even if you are not a 'joining in' person, you'll be surprised how motivating it is.
4. Accept that you will have ups and downs in your weight loss journey, and be forgiving of yourself if you hit a difficult patch.
5. Listen to your 'inner script' and make a conscious effort to talk to yourself in a positive, encouraging way.
6. Keep up your interest in your healthy eating plan by trying new foods, new recipes, and new ways of using your Sins. This will help you avoid getting in to a dieting rut which can be boring and demotivating.
7. Be honest with yourself about what you are expecting from your weight loss and how you are getting on with Food Optimising week by week. People who set unrealistic targets for weight loss or body shape are more likely to give up than those who set achievable targets and share their ups and downs.
8. Go back to your class even after (especially after) you've had a weight gain. You will not be judged, just helped and supported.
9. Keep setting new goals and rewarding yourself for milestones until you reach your target weight, and afterwards!
10. Don't put your life on hold until you've lost weight. You can still enjoy life and lose weight. Think of your dreams and ambitions and bring them to the fore. The positive feelings you get from starting to 'live a little' can only help your motivation and your weight loss.

Group details:

St Peter's Church, Greenhill Roundabout, S8 7FN
Thu 5pm & 7pm

Dore Old School, Tues 5.30pm

Tel: Alison Murphy 07815 046569 for further details

PhysioFOCUS

at Totley Rise Dental Practice
85 Baslow Road,
Sheffield, S17 4DP



Physiotherapy treatment available for:

- Back and neck pain
- Sports injuries
- Sprains and strains
- Joint and muscle pain
- Arthritic pain
- Whiplash
- Repetitive strain injury
- Headaches

Appointments: 0114 2360333

Also available:

- Pilates classes
- Pilates 1-2-1
- Golf Fitness Screening
(as used by consultants to UK,
European and Australian PGAs)

For more information please call:

Emer on: 07792 422909

Rachel on: 07956 908454

APPLE LANDSCAPES and APPLE FENCING

www.applelandscapes.com

QUALITY SERVICE AT AFFORDABLE PRICES

Patios • Paths • Walling • Dry Stone Walling • Drainage Work
• Indian York Stone Paving • Railway Sleeper Beds

Garden Tidy Ups etc. No job too small

Fencing & Gates Supplied Only
or Supplied & Fitted

Only Quality Materials Used

FULLY INSURED

Call for free quote

01246 237505 • 07782 167540

Homeopathy @ Synergy.

162 Baslow Road, Totley, Sheffield, S17 4DR

Advanced Indian Sensation Method Homeopathy

Alternative medical treatment for all chronic conditions

Registered with major insurance companies. Can claim
through the Westfield scheme

 Registered member of
The Society of Homeopaths

Ring: Lindsay Allison RSHom for more information:
0114 235 7845 or 07968 167036

M.Scriven
(FRUITERAMA)

MARTIN SCRIVEN

HIGH CLASS FRUIT
& VEGETABLES

37, Baslow Road

Tel. 236 7116

Orders Delivered

B.K. JEAVONS PAINTER & DECORATOR



Interior
Exterior
Decorating
No Job too small

Tel: 01246 416484

and mobile 07882 278306



GWS

Technology Solutions



PC Problems/ Repairs/ Servicing No Job Too Small
 Wireless & Internet Setup New PC's & Upgrades
 PC Setup/Data Transfer Safe PC Disposal Tuition
 Software/Hardware For All Your PC Needs

Guy Senior

Phone: 0114 2352662 Mobile: 07890030453

Email: guy@gwstech.co.uk

Web: www.gwstech.co.uk

GWS, 5 Conalan Avenue, Bradway, Sheffield S17 4PG

R.S. HEATING & BUILDING CO
 EST. 1971

HEATING DIVISION:
 Experienced Installers of condensing, combination and regular boilers. Systems fully guaranteed. Complete after sales service. Also Bathrooms, showers and small plumbing works.

BUILDING DIVISION:
 Loft conversions, House renovations including general building, joinery, plastering, electrical decorating etc.

13 Overcroft Rise, Sheffield, S17 4AX
Tel:- 0114 236 4421
 Reg. Office:- 62 Machon Bank, Sheffield, S7 1GP
Te:- 0114 2559425
Fax:- 0114 255 9431
 Email: enquiries@rsheatingandbuilding.co.uk
 Web: <http://www.rsheatingandbuilding.co.uk>

LIBERTY FOODS
 Caterers
 Quality Meat Shop
 & Fresh Farm Produce

Fresh and Frozen Prepared Meals
 Fresh Meat and Poultry
 Outside Catering
 Home Delivery

253 Baslow Road, Sheffield, S17 4DU
 Tel: 0114 2360 583 Mobile: 07801 346 455

Dronfield Landscapes

Gardens cleared and maintained, Lawns mowed, Turfing, Tree felling & pruning, Hedges trimmed & reduced, Pond maintenance, Fencing etc.

for free quotation call
 Chris on: (0114) 2746158 Mobiles: 07976072785 or
 Richard on: 07789497104

8am-6pm mon-fri HazelBarrow Farm, Norton S8 8BA

R.M.M BUILDING SERVICES
25 YEARS EXPERIENCE
 All types of building work carried out including- Drop kerbs, block paving (drives, paths, etc), extensions, general building repairs and maintenance.
 Phone Rob on- Mob- 07906108567
 Home-2352190

Nigel Watson
Carpenter and Joiner

Fitted kitchens, sliding wardrobe doors with bespoke interiors, internal and external doors supplied and fitted, new handrail and spindles, laminate and wood flooring, locks, architraves, skirting board, stud walling, boxing off etc.

For a reliable and quality service
 TEL: 0114 236 4778
 MOBILE: 07971 528149

Serenta HomeCare

Are you in need of a little help and support within your own home? The older we get the more help we need to enable us to live a more independent life.

Personal Care • Medication • Domestic • Sitting Service • Social and Leisure activities

To find out more call Sue 07715 636 395 Pat 07715 634 781
 or visit www.serentahomecare.co.uk
 For reference from an existing client please call 0114 2366891

Got a computer?

Tim Brown
 Building, Installation, Upgrading and Troubleshooting Computer Systems
 Over 25 years professional experience

Having Problems?
 Is it running slow? Stops responding?
 Having problems running the latest games or applications? Broadband installation?

Give me a call!
 I'm available for home visits at any time including evenings and weekends. I can also suggest upgrades to improve performance, or even build you a system to your specific requirements.

Phone: 0114 2472619 Fax: 0870 7060080
 Mobile: 078 17464703 Email: service@timbrown.plus.com

DRONFIELD LANDSCAPES

Logs and wood chippings For Sale

Ring for details

**Chris 0114 274 6158
Mobile 07976 072785**

**Richard
Mobile 07789 497104**

Totley Private Hire

24 hour taxi service

Advanced bookings only

Local • long distance • airports

**Telephone 0114 283 9692
Mobile 07974 355 528**

Domestic electrical work carried out by
City & Guilds and 'Part P' qualified

LADY ELECTRICIAN

- * House rewires * Replacement fuse boards *
- * New sockets and lights * Telephone points *
- * Security systems * Pond pumps * Christmas lights *

*All work guaranteed and
fully insured*



For a free quotation
without obligation



ring Mandy on **07788-544225**



Tiling, Plastering, Plumbing & Complete Bathroom Fitting Service

**Tel: 0114 274 6775
07738 688807**

- ◆ Under Floor Heating
- ◆ All Aspects of Home Improvements & Maintenance Work Undertaken
- ◆ Competitive Prices
- ◆ NVQ Qualified
- ◆ No Job Too Small
- ◆ Fully Insured & Guaranteed

**A1tilingandplastering.co.uk
33 Glen View Road, Greenhill, S8 7SF**



**IKONOGRAFIK
DESIGN
LTD**

Architectural Design and Drawings
by professional Chartered Architectural Technologist

- Creative, practical and economical solutions
- Domestic and commercial work undertaken
- Planning, Building Regs, Listed Buildings, etc.
- Project management
- Sustainable design
- Thorough attention to detail

Contact: Nathan Oliver
T: 0777 384 9 386
E: nathan@ikonografik.co.uk
W: www.ikonografik.co.uk

Creating opportunities with disabled people.

Registered Charity No. 218186

**Leonard
Cheshire
Disability**

Leonard Cheshire Services in Offers choice & opportunity to people with disabilities.
A Specialist Unit for the Younger Disabled.
Residential & Respite Care – Single Rooms
Day resources – Aromatherapy –
Reflexology – Physiotherapy – Toning
Tables.
Activities include: - Arts & Crafts –
Computers – Cookery – Shopping
Expeditions – Theatre Outings – Church.
Further details can be obtained from –
The Service Manager, Mickley Hall,
Mickley Lane, Totley, Sheffield S17 4HE.
Tel. 0114 236 9952
Fax. 0114 262 0234

The Care at Home Service supports disabled people who wish to remain in their own homes.
We provide flexible care packages from 1 hour to 24 hours meeting individual needs.
The service operates throughout Sheffield.
Our service includes: - help with getting up and going to bed, dressing, washing, bathing, shopping, cooking, light household duties.
Further details from: -
The Care at Home Manager
Tel. 0114235 1400
Fax 0114 235 1499

John Heath & Sons

AN INDEPENDENT FAMILY FUNERAL BUSINESS

Sometime.....

You will probably have the responsibility of making funeral arrangements. No one looks forward to this responsibility, but the death of a family member or friend brings with it an obligation that must be met. There are people who can help you meet this responsibility. We have been helping people combine the different aspects of the funeral into a meaningful service for over 125 years.

Please Call Day Or Night

(0114) 272 2222

Head Office - Earsham Street

Also at Meadowhead, Ecclesall Rd,
Crookes and Stannington

www.johnheath.co.uk



**For
Windows
With Style**

**Sheffield Factory Showroom
106 PROSPECT ROAD
HEELEY, SHEFFIELD**

**Sheffield (0114) 258 5496
Rotherham (01709) 512113**

TOTLEY & DISTRICT DIARY

MONDAYS	COFFEE MORNING , All Saints' Church Hall, 10am-noon TAI-CHI , United Reformed Church, Totley Brook Road, 11.30am-12.30pm RAINBOWS and GUIDES , All Saints' Church Hall, 5.45pm-9pm
TUESDAYS	COFFEE MORNING , Totley Rise Methodist Church Hall, 10am-noon KEEP FIT & COFFEE , For the not-so-young, Bannerdale Centre, Carterknowle Road, 10.15am, Phone 258 5364 WOODSEATS ADVICE CENTRE , Drop in service, free, impartial, and confidential. TR Methodist Church, 10am-noon CRAFT GROUP , Totley Library, 2pm
WEDNESDAYS	PILATES CLASSES , Dore Old School, 9.00-10.00 and 10.15-11.15. Contact Caroline - Tel: 0781 722 0324, email caroline1north@btinternet.com, www.pilatescarolinenorth.co.uk COFFEE in the LIBRARY , 10am-11.30am TODDLER GROUP , 10am-11.30am, All Saints' Church Hall. Details tel. Andy Holmes 0114 236 2088 HEALTH WALKS , 10.30am, Totley Library foyer. Phone Sue, The Health Walk Ranger: 0114 283 9195 MODERN SEQUENCE DANCING , All Saints Church Hall, 8pm-10pm
THURSDAYS	CHAIROBICS , Heatherfield Club, 1.15pm NCT COFFEE GROUP FOR DORE TOTLEY & BRADWAY , 10am-noon, For mums & babies/toddlers, meeting in various locations, Phone Lucy Street 07837 000405 or email: lucy@streetr.plus.com for further details PUSHCHAIR CLUB , Totley Rise Methodist Church Hall. 1.30pm-3pm. Tel. 236 3157 for further details PILATES CLASS , United Reformed Church, Totley Brook Road, 6.15pm-7.30pm, Phone Emer Coffey 07792 422909
FRIDAYS	PILATES , The Old School, Dore, 10.45-11.45am & 12-1pm. Phone Teresa Tinklin 07906 312372
SATURDAYS	MODERN SEQUENCE DANCING , All Saints Church Hall 2 nd . And 4 th . Saturdays 8pm-10pm

FEBRUARY

SUN 5th CASTLETON FARMERS MARKET, the Village Hall, 10am-3pm
SAT 11th SATURDAY NIGHT LIVE, GARY NEWLOVE, Heatherfield Club. 8.30pm. Non-members welcome
TUE 14th FRIENDS OF GILLFIELD WOOD, Open Meeting, we are hopeful that we will be joined by Edwin Pocock, 7-9pm, Totley Library. See page 7
TUES 21st TOTLEY TOWNSWOMEN'S GUILD, 'Trundling with a Caravan Part 2', Ann Cresswell, Totley Rise Methodist Church Hall, 10am
WED 22nd TOTLEY HISTORY GROUP, Totley Library, 7.30pm, Open Meeting, all welcome
THU 23rd SHEFFIELD FARMERS MARKET, 8.30am-5pm, Fargate
SAT 25th SATURDAY NIGHT LIVE, MICHAEL J OLIVER, Heatherfield Club. 8.30pm. Non-members welcome

MARCH

SUN 4th CASTLETON FARMERS MARKET, the Village Hall, 10am-3pm
TUE 6th FRIENDS OF GILLFIELD WOOD, 7-9pm, Totley Library, full details page 7, All are welcome.
SUN 11th MINIATURE TRAIN RIDES, Abbeydale Road South, First train 1pm - last train 5pm (weather permitting) www.sheffieldsmee.co.uk
TUES 20th TOTLEY TOWNSWOMEN'S GUILD, A.G.M. and 'Well Dressings', Mr & Mrs Thomas, Totley Rise Methodist Church Hall, 10am
THU 22nd SHEFFIELD FARMERS MARKET, 8.30am-5pm, Fargate
SUN 25th MINIATURE TRAIN RIDES, Abbeydale Road South, First train 1pm - last train 5pm (weather permitting) www.sheffieldsmee.co.uk
WED 28th TOTLEY HISTORY GROUP, Totley Library, 7.30pm, The History of Grouse Shooting with David Hey, all welcome

APRIL

SUN 1st CASTLETON FARMERS MARKET, the Village Hall, 10am-3pm
TUE 6th FRIENDS OF GILLFIELD WOOD, 'Walk on the Wildside', Mike Richardson, 7-9pm, Totley Library, full details page 7, All are welcome.
THU 26th SHEFFIELD FARMERS MARKET, 8.30am-5pm, Fargate

TOTLEY INDEPENDENT FOR MARCH

The next issue of the Totley Independent will be available from the usual distribution points on

SATURDAY 3rd March 2012

COPY CLOSE DATE for this issue
will be

SATURDAY 18th February 2012

Editor: **Ian Clarke**
 Tel. No: **235 2526** or Email:
editor@totleyindependent.co.uk

Advertising & Distribution:
John Perkinson
 Tel. No: **236 1601** or Email:-
advertising@totleyindependent.co.uk

Items for publication may be left or sent to:
2, Main Avenue, Totley, Sheffield, S17 4FG or
Totley Library

www.totleyindependent.co.uk

PRINTED by STARPRINT



- Central Heating,
- Domestic Plumbing,
- Glazing, Double Glazing and Glass,
- House Maintenance,
- UPVC and Wood Windows & Doors



Mini Digger & Driver, Muck Shifts, Footings Etc.

starprint

5000
 130 GSM GLOSS
 FULL COLOUR
 DOUBLE SIDED
A5 LEAFLETS
£99.95

250
 FULL COLOUR
 SINGLE SIDED
BUSINESS CARDS
£19.95 + VAT

BANNERS
 AVAILABLE FROM
£29.95 + VAT

Full design service available!

Tel: 0114 258 0707

Email: mail@starprint.co.uk
 601 Abbeydale Road, Sheffield, S7 1TA