

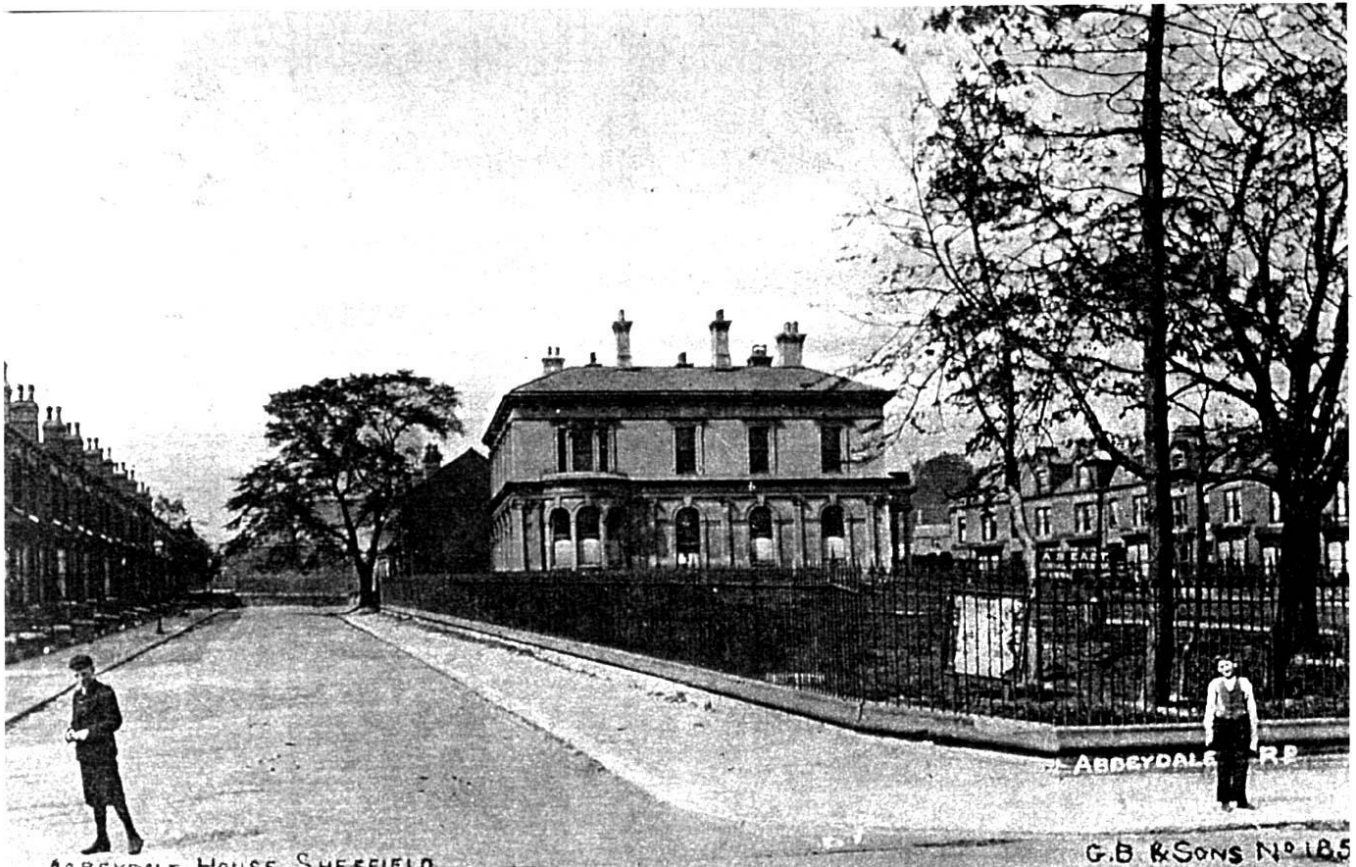
# TOTLEY INDEPENDENT

PUBLISHED BY THE TOTLEY RESIDENTS ASSOCIATION SINCE 1977

OCTOBER 2003

No. 267

15p



## ABBEYDALE HOUSE

The above picture is of Abbeydale House which is situated on Abbeydale Road near the bottom of Woodseats Road. It stands behind the Abbey Glen Laundry and Gilberts Carpet shop and Charlie Browns. It is now understood to be an antique warehouse. J.P.

## TOTLEY SHOW 6th September 2003

This years Show was a great success in every way and at the time of writing it looks as though we will have an excess of around £500 to be able to donate to Transport 17!

This would not have been possible without all those wonderful people who volunteered to give up their time on Friday evening and all day Saturday. They manned stalls, put up gazebos, transported tables and A boards, took registrations, wrote certificates, baked cakes, made teas, collected tombola and raffle prizes, sold programmes, judged the exhibits, kept the traffic flowing, cleaned up afterwards, stewarded the show, helped with the auction, sorted out floats and prize money, and anything else that I have omitted in the list! Thank you all so very much.

Thank you to the show committee who have met regularly since the last show to arrange this one, plus all the jobs they do at the show.

It was great to have Rony with us to open the show, read some poetry, and do the auction with Jim. He is always very enthusiastic about our show and ready to help

We would also like to say a special thank you to the following:

Starprint for sponsoring our programmes, Sweets and Treats for sponsoring the Teddy Bears Parade, to all our local shops and businesses for donations for the raffle and tombola, and displaying posters, and to the school caretaker, Alan, for all his help and co-operation, and Jimmy McWilliams for sorting out our Poetry readings in the tea room. (We have included one of the poems in this issue, maybe you would like to send a poem to the Editor and we could start a Poetry corner in the TI?)

I have really enjoyed my time as Chairman of Totley Show but I feel that the time is right to let someone else take my place. Tom and Christine Steele are also retiring from the show committee this year although Tom is of course life President. With this in mind, we asked for anyone interested in volunteering to help at next years show to give their names to us, and we will be having a meeting on Wednesday 24th of September to make some decisions for next year. It is never too late to offer any help and I will always be happy to pass on any names given.

Thank you to you all for supporting Totley Show. May it continue to be a happy, community event.

Pauline Perkinton

## LOCAL and LIVE COMMUNITY THEATRE GROUP

Our annual production this year will be part of the "Off The Shelf" festival and will take place at several libraries in Sheffield (see below).

We are a local community drama group trying to make live theatre accessible to all, especially small communities. It is a unique group, creating and devising their own shows through "improvisation" (nothing is scripted). Performances are related to local history, news or incidents in local life. Membership is open to anyone aged 16 and over who is interested in our activities. The group endeavours to aid the teaching of all skills necessary to organise, plan and put on a show of this nature. Skills such as:

*Acting, Stage Management, Front of House Organisation, Organisation of Props, Lighting, Sound, Promotional Work, Procurement of Funding and Secretarial.*

This year's show centres around the launching of Sheffield's own cable TV channel "TV Sheff".

"TV Sheff" No, not Jamie Oliver. Not Anthony Worrall Beardy Bloke. It's the opening night of Sheffield's own television station. Every expense has been spared to bring you "Cheap & Cheerful" versions of your favourite programmes. Turn on, tune in, and beware of the interference!

An "Awards For All" grant this year has enabled us to take our show 'on tour' again, extending to an extra venue (Hillsborough). We will be at 4 libraries around the city plus 3 performances at our "home base", the Art Space, Crystal Peaks Library. We are again pleased to welcome the Lord Mayor who will be attending our performance at Highfield Library.

Performance dates are:

Friday 17<sup>th</sup>. October 2003, Totley Library, 205 Baslow Road, S17 4DT, Tel. 236 3067

Tuesday 21<sup>st</sup>. October 2003 Highfield Library, London Road, S2 4NF, Tel. 0114 203 7204

Thursday 23<sup>rd</sup>. October, Friday 24<sup>th</sup>. October, Saturday 25<sup>th</sup>. October 2003

Art Space, Crystal Peaks Library 1-3 Peaks Square, Crystal Peaks S20 7PH, Tel. 0114 245 1127

Tickets priced at £2 adults, £1 concessions, available in advance from each library, secretary 0114 248 2211, or on the door subject to availability. All performances start at 7.30 pm. Suitable for all the family, disabled access at all venues & "deaf Loop" system available at the Art Space.

Principle Director for the 2003 season is Steve Haythorne.

Directing and admin assistance is provided by Dead Earnest Theatre.

Set designer is Gillian Whiteley.

Sponsorship this year comes from:

Awards For All.

Sheffield Performing & Community Arts.

Sheffield Libraries, Archives & Information

We have a "Friends of" mailing list. Anyone wishing to have their name and address added to this list should contact Kath Navratil on 0114 248 2211.

## TOTLEY OPEN GARDENS

A different perspective



Residents of Milldale Road enjoying a communal Barbeque in their non-existent, Totley open gardens, whilst the council carry out remedial work. We are due to be all fenced in again just before Christmas.

Thank heavens for dry weather so far!

## WHATS IN A NAME

Our England cricket captain, Michael Vaughan must feel proud when his team finally won the last Test Match to square the series against South Africa. Let us hope this talented team will have further success on the forthcoming winter tour.

There must be a certain talent with this surname. Here is a list of popular figures from the world of show business.

Who could ever forget that song and dance man the late Frankie Vaughan (Give me the moonlight, give me the girl!) He could really open the "Green Door", what a personality on stage. He learnt his trade with the early dance bands.

To further the list remember the son of a Welsh miner the ballad singer of the 1950's Malcolm Vaughan. He had top hits such as "St. Theresa of the Roses" "More than ever" and "My special angel". Let us give the ladies a special treat with the Jazz singer Sarah Vaughan (Sassy), discovered by the late Billy Eckstein. Remember their classic duet "Passing Strangers". She was also a fine pianist and ranked second to Ella Fitzgerald as a songstress. I often wondered what happened to comedian Norman Vaughan, (Roses grow on you!) who was a popular figure on early T.V. Remember the character actor Peter Vaughan, drama or comedy. He had a T.V. series with Ronnie Barker (Porridge), plus many film roles.

Slightly different spelling the name of Robert Vaughn, recall him in the popular series "The man from UNCLE" and the film "The Magnificent Seven".

A final name probably not so well known here but big in the U.S.A. is the dance bandleader and composer Billy Vaughan. Big song hits with "Melody of Love" and the "Tumbling Tumbleweeds", a sweet style of playing not unlike the Guy Lombard Orchestra.

Let us twist the names around to finish with the classic music composer Vaughan Williams and the singing baritone bandleader Vaughan Monroe, he could swoon the ladies with his rendering of "The Very Thought of You".

There may be other artists with the name of Vaughan that I have missed out but it certainly is a name that stands for talent.

John C. Barrows

## 1<sup>st</sup>. TOTLEY SCOUTS LOTTERY AUGUST DRAW

1<sup>st</sup>. Prize, Philips Comfort Cordless Kettle.  
Mrs. Johnson, Main Avenue.

2<sup>nd</sup>. Prize £10 voucher  
Mrs. Socket, The Grove.

# Whisperer

**Baslow Road.** To be resurfaced at long last between the library and Hillfoot Road including a Puffin crossing to be installed near the old post office, what ever a puffin crossing may be. This work will take about six weeks.

## **Fleur De Lys.**

A planning application has been made to the council for demolition of the two old barns next to the pub and for the large barn to be re built to form a function room.

Anything must be better than the eyesore that has been there for years.

## **Hall Lane Farm.**

A planning application has also been put in to demolish two barns, which are in the conservation area.

## **NEWS and FORTHCOMING SERVICES and EVENTS AT ST. JOHN'S**

### **CHURCH ABBEYDALE Rd. SOUTH. BARN DANCE AT ST. JOHN'S**

St. John's Guild are running their annual Barn Dance in St. John's Church Hall, Abbeydale Road South, on Saturday November 29<sup>th</sup>. 2003 from 7.30 pm until 11pm. Once again "Strings and Reeds" will be providing the music, and Mike Tissington will be "Calling" and endeavouring to put us through our paces with the dances. There will be a licensed bar and a pea & pie supper with a vegetarian option available if ordered at the time of booking tickets.

Our usual Grand Raffle will be enabling us to raise money for Western Park Hospital Cancer Appeal.

**TICKETS**, price £7-50 or £5.00 for children UNDER 14 or those not wanting supper and will be available from:-

Alan Fletcher 0124 641 3453

Phyllis Glossop 0114 236 2597.

Les Cunningham 0114 281 9972.

This is a great fun evening so get your tickets early and avoid disappointment!!

Phyllis Glossop (guild Secretary)

### **SPECIAL SERVICES At ST. JOHN'S.**

### **SUNDAY NOVEMBER 30th. ADVENT CAROL SERVICE.**

A special service of carols and readings for the beginning of our preparation for Christmas. 6.30 pm.

**Advance notice** of the Christmas service of nine lessons & Carols on Sunday December 21st. at 6.30 pm. Carols by candlelight led by the Church Choir.

**Christingle Service** at 5pm.- a family service for all including the lighting of the Christmas tree and the Christingles.

Watch for the programme of all St John's Christmas services in the December copy of the Independent.

## **Who needs Spell Checks**

Aoccdnig to rscheearch at an Elingsh uinervtisy, it deosn't mtttaer in waht oredr the ltteers in a wrod are, the olny iprmoetnt tihng is taht the frist and lsat ltteer is at the rghit pclae.

The rset can be a toatl mses and you can sitll raed it wouthit a porbelm. Tihs is bcuseae we do not raed ervey lteter by itslef but the wrod as a wlohe.

graet, inst it?

Ceehiro

Tnia Husdno

## **PEAK DISTRICT EVENTS**

**Information from the "Peak District 2003" the official guide to the National Park. These events can be seen in the free guide available throughout the Peak District or by visiting their web site [www.peakdistrict.org](http://www.peakdistrict.org)**

### **OCTOBER**

**Wed 1 October to Thurs 23 October**

**MATLOCK BATH ILLUMINATIONS & VENETIAN NIGHTS**

**Sat 11 October to Sun 12 October**

**GREAT PEAK DISTRICT FAIR.** Celebrating local food, arts and crafts. The Octagon, Pavilion Gardens, Buxton. 11th: 10am to 4pm (public). 12th: 9am to 11am (trade), 11am to 4pm (public). E mail: [jeanb@highpeak.gov.uk](mailto:jeanb@highpeak.gov.uk).

Tel: 01298 28400 Ext. 4452

**Sat 18 October to Sun 19 October**

**TEN ARTISTS EIGHTH EXHIBITION**

At Baslow Village Hall, 10 am to 5pm. Tel: 0114 2295174

## **TOTLEY RISE LUNCHEON CLUB HAS VACANCIES.**

The Totley Rise Luncheon Club, which meets at Totley Rise Methodist Youth Church building on Baslow Road each Friday, has vacancies for members.

The club is open to lonely and housebound older people of any faith or none who live in the S17 area. Members are collected by Transport 17 and arrive at the Club around 10.30 am and are returned to their homes by Transport 17 leaving the club around 2.30pm. They have coffee and a chat when they arrive, a 2 course lunch at around 12.15 pm and there is usually some form of entertainment after lunch. The Club is supported by a grant from Sheffield City Council and members pay £2.50 per week towards the meal and transport. If you are someone who would benefit from the friendship and fellowship of the Club, or if you know of someone who would benefit, please contact Angela Lashmar on **262 0033**.

## **COMMUNITY RUBBISH SKIPS**

Dear Ed.

I Trust the location for the above will be decided upon with some thought, a great deal of thought, i.e. not 10 feet away from someone's bedroom window.

As M.Williamson stated in his article, the facility was very much abused in the past.

Filthy mattresses left on the ground, builders rubble, garden rubbish, all open to the elements and also dangerous objects. E.g. Gas or ammonia cylinders and once what appeared to be an industrial oven, which was balanced on, high and left in a very precarious state.

What is needed is a spot, if it could be found, where the skip would not be a source of nuisance, pollution or danger and hopefully could be supervised.

J.Kerridge

## **PUZZLE CORNER**

A Semi-magic square.

The basic puzzle is to arrange the numbers 1 to 16 inclusive in a 4 x 4 grid so that each row and each column add to 34.

There are many solutions to this.

However, I do not think there is a solution which would also allow both of the diagonals each to also add to 34.

Am I wrong?

Don Ashford

**“SNAKEBREATH”** Andrew Hassall  
Cromwell Fiction. Price £7.99 ISBN 1-903930-19-7

It is a long while since I have been intrigued enough to allow a book to take over my life for the time it takes to devour it. This sparkling first novel portrays the conflict between the economically driven moral decadence in which, aware or not, we are living, and the revolt of a few elements of society who have not lost touch with the spirituality rooted in ancient beliefs. Those who seek the power to control other human beings and a perceptive minority who refuse to let this just happen.

Pompous and indigestible? No way! The events unfold at a government centre for “personnel & management” research set on the edge of a lonely moor, and on the moor itself, through which we enter, via the minds of certain of the characters into other dimensions of time and existence, - “beyond the veil” is one of the recurring phrases of the book.

Andrew Hassall's imaginary Derbyshire landscape is Hardy's Wessex brought up to date, with the magic of Mary Stewart and a hint of the Brontes for good measure. Circumstances and physical details may change but human nature remains the same. A cross section of contemporary society is minutely observed and finely reproduced here. The element of parody exists but the characters are individuals as well as “types” so that their emotions, problems and actions absorb us and the story seems to develop naturally from them. Plank, who never really grasps the origin of his nickname, and Stan, gangly, pimpled and with a laugh like a machine-gun, in the company of Muller, the brain of the drop-out trio, provide as many belly laughs as Hardy's yokels, albeit their “romps” take a more violent form. Mosely, the Director of Bleak Edge Hall, is a devious and ambitious civil servant, so coldly selfish that he drives himself like a machine and sets wheels in motion for the things he wants to happen. Without principles, attachments or warmth, his satisfaction derives from controlling the other two-legged machines in his employ and orbit as efficiently as possible for his own advancement. Manipulation of the human mind is the core of the research at Bleak Edge - shades of Orwell and Huxley here - “all the better to eat you with, my dear”, in the words of the old fairy-tale. The village has its wise and eccentric Merlin to protect it from destruction, and there is a witch, several good fairies and the dour watchman at the Hall gates, complete with black dog, in the best of traditions. My intention is in no way to mock; it is a pleasure to read such a gripping tale in delightfully precise and graphic language, rather than the commonplaces of the pornographic English which fill so many pages these days. The Moor becomes magic in all dimensions, not least through the poetic descriptions of the natural beauties.

It is obvious from the warmth and strength of the writing that the concern of man for other men and their shared spiritual and physical dwelling places must eventually win out over crass economic annihilation of our environment for doubtful ends. I am left wondering if this is a deliberate message, or is the author a bit tongue in cheek? No matter - all credit to his subtlety and variety - and, most important of all, it is clear from the unexpected twist in the final pages and the ambiguous cliff-top ending, that there HAS to be a sequel. Soon, please!

GB. Javea 4/03



I would like to take this opportunity to thank you for all your support of our recent events and to let you know that the total net proceeds from the Fete this year reached £4570. This amount has been allocated towards the new specially-adapted Renault Kangoo to be used for the benefit of the residents at Mickley Hall. It replaces the small minibus and has many advantages which assist the residents, carers and drivers who will use the facility. We were most fortunate with the weather on the day of the Fete and thank you to everyone who helped with the stalls and provided items for the raffle and tombola. The excellent support from you, your families and friends helped to make it a happy occasion for all who attended. The Duchess of Devonshire thoroughly enjoyed her afternoon and was most complimentary with her remarks about the Home. In particular she was so impressed with the garden courtyard that she sent her head gardener the following week to get a few ideas for a similar garden at Chatsworth - what a compliment to the Rotarians who worked so hard for us on the project! The residents have been most appreciative of the garden this summer - and the shade hall has proved very useful for those wishing to feel the benefit of fresh air without the sun!.

Some of our residents have enjoyed recent outings to Cleethorpes and Bridlington and look forward to another trip to Blackpool to see the lights. We are most grateful to the musical groups who have generously given their time to entertain us at afternoon and evening concerts in the dining room. A programme for the autumn is being planned and we have already secured the services of Loxley Silver Band in December after their popular appearance at the Fete. Anyone who wishes to join us on these occasions will be most welcome - the residents enjoy your company and refreshments are provided. A list of dates for these concerts will be given on the notice board in the entrance hall.

We look forward to our two major events to celebrate 'Leonard Cheshire Week' and hope you will be able to support these. The Afternoon Tea and Bring & Buy is on Tuesday 7th October at Mickley Hall and the Craft Fair will again be held at Tipton Masonic Hall on Friday 10th October (details of both events enclosed). Please come and bring your friends -and buy your Christmas gifts early this year from our Leonard Cheshire stalls!

The annual Dinner will be held at Whirlowbrook Hall on Friday 21st November and music will be played for your enjoyment during the evening by 'Gentlemen of Jazz'. A short auction of special items donated to our charity will be conducted by Vivienne Milburn FRIC during coffee. Tickets are available if you telephone me on 0114 2367491.

Finally, thank you to everyone who is a volunteer at the Home, assists with and attends our fundraising events or generally has the welfare of the residents at Mickley Hall at heart. Your support is always needed and very much appreciated.

Jackie Short  
Fundraising Co-ordinator

## FRIENDS OF GREENOAK PARK

We would like to thank everyone who attended our fundraising event on July 26TH. at 222, Baslow Road also a special thank you to Mrs. Joanna Elliot for hosting the event in her garden.

From the tea, coffee, cakes and bric-a-brac that was sold along with a donation from Mrs. Elliot, £350 was raised which has given our bank balance a boost. It will show the people concerned that we care about our park.

Many suggestions have been made as to what needs doing; a meeting will be set up to find our priorities.

We will have to find a way to help the teenagers, then perhaps they may stop all the litter and vandalism that we have to put up with at present.

I personally hope the next generation of teenagers have a little more thought and care for their park and surroundings.

So come you mums start teaching your children while they are young.

It will be quite a while before we see any improvements, but we have made a start.

Sylvia Ruddle

# SHEFFIELD BACH SOCIETY

**Saturday 18<sup>th</sup>. October 7-30 p.m.**  
**Ecclesall Parish Church, Ringinglow Road, Sheffield**

**MAGNIFICAT** - Bach  
**FOUNDLING HOSPITAL ANTHEM** - Handel  
**TE DEUM** Charpentier

Soloists from the Royal College of Music.

Tickets £10-00 (Concessions £8-00)  
Students £5-00 at the door

Tickets available at the door or from  
Sheffield Music shop, Broomhill (0114) 266 1000  
Blue Moon Café, St. James Street (0114) 276 3443  
Or by post – SBS, 3, Tapton Mews, Tapton Cres. Rd. S10  
5EA

If you would like to know what time the concert will end,  
please ring 0114 268 3812

## DORE & TOTLEY SUPPORT GROUP FOR THE VISUALLY IMPAIRED.

Dates of meetings 2003  
**STEPHEN HAMBLETON WILL TALK  
ABOUT THE FUTURE OF THE SRBS  
ON  
THURSDAY, OCTOBER 23<sup>rd</sup>.  
NOVEMBER 18<sup>th</sup>. TUESDAY  
ALL MEETINGS ARE AT 11-30 to  
12-30 p.m.  
AT 4, GROVE ROAD, TOTLEY**

## "Steam, Fire and Water"

Themed Living History Sunday at  
**Abbeyle Industrial Hamlet**  
**Sunday 5 October**

See Abbeyle's working waterwheels.

The Hamlet is open from 1 am to 4.45 pm on Sundays

Last admission is one hour before closing time.

Audio-guide available (subject to demand).

Admission Prices £3 Adults, £2 Concessions,

Accompanied Children FREE

On Sunday meet characters from 1851 and explore their life  
and times at the Hamlet. - programme from 11.30 am to 4.15  
pm.

Steam Traction Engines and Storytelling - last public open  
day of the 2003 season.

For further Information : 0114 236 7731

Abbeyle Industrial Hamlet, Abbeyle Road South,  
Sheffield S7 2QW



## ***Transport 17***

We made £55.70 at our stall at the Totley Show. Many thanks  
for all your support, it was a very nice social occasion.

On Friday night chairs and tables were being shipped in from  
various parts of Totley. Stalls and posters and all sorts being  
set up, it was a good community project. We are grateful at  
Transport 17 to all of you.

There is a general meeting for shareholders on **Monday 20<sup>th</sup>.  
October**, this will be at Totley Library at 7-30 pm. Coffee  
and biscuits at the end of business. If you need transport to  
this meeting please ring the office on 2362962.

On **Saturday, 22<sup>nd</sup>. November** we will be having a "Mince  
pie and Coffee morning in our office. This will be from 10  
am. to 12 noon. We are at 172, Baslow Road, Totley. 50  
pence gets you a mince pie and a coffee or tea.

We will have Christmas cards and gifts and anything else we  
can get for sale, new of course.. Please come and see us.

Best wishes to you all

Margaret Barlow

## **Other Days**

Oft in the stilly Night,  
Ere slumbers chain has found me,  
Fond memories bring the light,  
Of other days around me.

When I remember all the friends  
so linked together,  
I've seen around me fall like leaves  
in wintry weather.  
I feel like one who stands alone,  
the countryside deserted.  
Whose lights are fled, and garlands dead,  
and all but He departed.

Oft in the stilly Night,  
Ere slumbers chain has found me,  
fond memories bring the light,  
of other days around me.

(Published by kind permission of Beryl Casson)

## *Holistic Massage & Complementary Therapies*

*Balance. Harmony, Wellbeing*

Reflexology  
Holistic massage  
Stress Massage  
Indian Head Massage  
Facials  
Waxing

Hopi Ear Candles - Auricular Therapy  
Aqua Detox - Detox Programme  
Bridal / Special Occasion Make-Up  
Ladies pamper evenings (max 4 ladies)  
Virgin Vix Parties

For an appointment or brochure call  
**07960 746276**

**Lisa Ryalls**  
**FREE, NIGHT, 1FHEB**  
**Mobile Therapist**

# THE NEW TOTLEY SHOW RESULTS 2003

## OVERALL BEST EXHIBITS OF THE SHOW

**FRESH PRODUCE** Albert Sockett

**NON-PRODUCE SECTIONS** Ann Cullen

**HANDICRAFTS.** Best of class Judy Needham

	First	Second	Third
1.Hand Knitted Garment	M.Fletcher	D.Cooke	D.Cooke
2.Decorative Cushion	S.Andrews	J.Needham	
5. Cross Stitch	A.Cullen	S.Andrews	A.Rose
6. Decoupage	J.Collie		
7. Paper Craft	S.Andrews		
8. Textile Art	J.Needham	M.Andrews	A.Harries

**DOMESTIC SECTION** Best of Class R.and D Gridley

	First	Second	Third
9. Victoria Sandwich	D.Froggatt	L.Hayden	M.Snowdon
10. Dundee Cake	L.Hayden	D.Froggatt	V.Loft
11. Decorative Buns	L.Hayden		
12. 3 Scones	B.Clarke	V.Loft	L.Hayden
13. Apple Pie	R & D.Gridley	M.Snowdon	D.Scotton
14. Jam	B.Bezant	R & D Gridley	L.Blake
15. Lemon Curd	J.Hammond	C.Steel	L.Hayden
16. Marmalade	R & D.Gridley	H.Wisbey	
17. Loaf White Bread	P.Woodcock	R & D.Gridley	L.Hayden
18. Chutney	R.& D.Gridley	K.Watson	L.Hayden

**FLORAL SECTION** Best of Class A.Marriot

	First	Second	Third
19. Table decorations Fresh Up to 6"	A.Marriot	A.Marriot	L.Liddle
20. Table Decorations Fresh over 6"	A.Marriot	M.A. White	A.Harries
22. 3 Cut Flowers	A.Atherton	P.Perkinton	P.Perkinton
24. House Plant Container above 12"	T.Steel	A.Atherton	A.Atherton

**FRESH PRODUCE** Best of Class A.Socket

	First	Second	Third
25. 4 Eating Apples	T.Steel	R.Clarke	J.Street
26. 4 Cooking Apples	A.Sockett	T.Steel	C.Goldie
27. 12 Blackberries	A.Sockett		
28. 4 matching Potatoes	A.Sockett	J.Street	C.Goldie
29. 3 Matching Leeks	A.Sockett	A.Sockett	A.Atherton
30. 3 Matching Onions	A.Atherton	T.Steel	A.Sockett
31. 3 Tray of Mixed Veg.	A.Sockett	T.Steel	J.Street
32. 5 Matching Runner Beans	A.Atherton	A.Atherton	J.Hammond
33. 5 Tomatoes	A.Sockett	J.Perkinton	A.Atherton
34. Cucumber	J.Street	T.Steel	
35. 3 courgettes	A.Sockett	P.Perkinton	
36. Largest Onion	A.Atherton	T.Steel	
37. Heaviest Marrow	A.Atherton	K.Watson	J.Street
38. Longest Runner Bean	A.Atherton	A.Socket	D.Froggatt

**ART** Best of Class John Wells

	First	Second	Third
39. Oil /Acrylic Painting	J.Wells	R.Johnson	R.Lamb
40. Water Colour	R.Palfreyman	A.Socket	L.Capper
41. Pen & Ink Sketch	A.Critchley	R.Lamb	
42. Pencil Sketch	V.Loft	R.Johnson	R.Lamb
43. Open Multi -Media	R.Lamb		

**PHOTOGRAPHY** Best of Class Sue Cullen

	First	Second	Third
44. Colour	A.Marriot	A.Marriot	T.Steel
45. Black & White	S.Cullen	T.Steel	C.Spivey
46. Computer Print	S.Cullen	A.Critchley	S.Cullen

**WOODWORK** Best of Class J.Morgan

	First	Second	Third
47. Wood Turning	D.Andrews	J.Rose	D.Andrews
48. Small Furniture	J.Morgan	J.Morgan	A.Rose
49. Sculpture	M.Loft		

**CHILDRENS SECTION**

Best of Class

Gemma Bale (Minature Garden)

Deborah Voice (Egyptian Veg.) Busy Bee Cup

First

Second

Third

50. Up to 7 Animal Vegetable	D.Bale		
51. 8 to 12 Miniature Garden	G.Bale	K.Rayner	C.Woodcock
53. 9 to 14 Computer art	F.Woodcock	A.Buskwood	N.Woodcock
54. 3 Decorative buns	A.Buskwood	E.Wallbridge and S.Rixham	
55. Open Craft all up to 14	D.Voice	N.Booth	M.Rayner

GUESS THE NAME OF THE DOLL "Joanna" won by Eileen Ogley

GUESS THE WEIGHT OF THE CAKE 4lbs. 1.5 ozs. won by Ann Capper

LUCKY PROGRAMME First lucky Programme number 106

Second 213

Third 184

TEDDY BEARS PARADE (Looking most like their owners)

First Clare Woodcock

Second Chloe Blunden

Third Erica Clayton

Prizes from "Sweets n' Treats", Totley Rise.

**RAFFLE PRIZES**

Many thanks to the following sponsors of the raffle prizes.

Iron Shop, Rosies, Greenways, Totley Rise Post Office, Totley Rise Chemist, Totley Fruit and Flowers, Martin Scriven, Peter Casson, Totley Pharmacy, Liberty Foods, Peter Hamnett, Faye Catton, Totley Deli, Luxury Gap, Totley Rise News Agent and Fred and Gingers.

**Hanging Gardens of Totley!**

Has anyone else noticed the "Hanging Gardens of Totley", on the right hand side of the uphill lane, from the traffic lights to the library? Lush grass is growing from all (?) the road gullies and begs the question, "What is the depth of soil under 'em?" Closely followed by "When were they last cleaned out?"

**GARDEN THEATRICALS**

The wonderful Radio Four programme "I'm Sorry I Haven't A Clue" recently broadcast new versions of theatrical titles to suit gardeners: -

- a.. Henry the Fork Part 2
- b.. Henry Ivy
- c.. Prune Back in Anger
- d.. Dial 'M' for Manure
- e.. The Importance of Breeding Turnips
- f.. Oedipus Rakes
- g.. The Best Little Hoe House in Texas
- h.. The Ditches of Malfi
- i.. Fence and Fencibility
- j.. Troilius and Cress
- k.. The Moletrap
- l.. Lady Windermere's Fern

Any more ideas? I thought of King Leek.....

**Gardeners' Theatrical Outing to "Plotters"**

Would you like to join a group of Totley Gardeners for an evening of musical entertainment about allotments and the people who use them?

Totley's very own Sally Goldsmith, with Chris Foster will be performing at the Quaker Meeting House on Thursday 23rd October at 7.30pm. The show celebrates a special world, from growing to gathering, from chemicals to compost.

If you would like to join us, give me a ring.

Tickets £3 and £2 for concessions.

Jennie Street

236-2302

**LAST POSTING DATES FOR CHRISTMAS 2002.****AIRMAIL**

Outside Europe except Canada, USA & Japan - Mon. 8<sup>th</sup>. Dec.

Eastern Europe - Fri. 12<sup>th</sup> Dec.

Canada, USA and Japan - Fri. 12 Dec.

Western Europe - Mon. 15<sup>th</sup> Dec.

**SURFACE MAIL**

Surface mail is an economical way to send your letters, greeting cards, postcards and gifts abroad but, as the service takes longer than airmail, it pays to plan ahead.

All destinations outside Europe except Canada, Far East, Middle East, Hong Kong,

South Africa and USA. - Thur. 2<sup>nd</sup>. Oct.

Far East, Middle East - Thur. 16<sup>th</sup>. Oct.

Canada Hong Kong, South Africa and USA - Thur. 30<sup>th</sup>. Oct.

Cyprus Greece, Iceland, Malta and Turkey - Wed. 26<sup>th</sup>. Nov.

Eastern Europe - Wed. 26<sup>th</sup>.

Western Europe except Cyprus, Greece, Iceland, Malta & Turkey Wed. 3<sup>rd</sup>. Dec.

Note: - There is no Surface mail service to European destinations for letters, postcards or greeting cards. Gifts may be sent by the Surface Small Packets Service both to Europe and World-wide destinations.

At the time of going to press, there were no surface services to Chad, Iraq and Somalia.

**H.M.Forces**

Recommended last posting dates.

Surface mail letters, cards and small packets only to BPFO's 2, 4, 9, 10, 11, 14 and 51 - Fri. 5<sup>th</sup>. Dec.

Airmail letters, cards and packets including Exercises and Operations - Fri. 12<sup>th</sup>. Dec.

If you have any queries or need further information please ask or at your local Post Office or call:

Royal Mail Customer Services on 08457 740740 (local call)

Or BPFO Customer Care Unit on 0845 697 978



## GARDENING TIPS FOR OCTOBER

Once again the Totley Show was a success, the atmosphere in the afternoon was great, all the people seemed to be really enjoying it. The poetry readers had to shout a bit over the chatterboxes in the dining room, the teddy bears parade went well and was very entertaining. Rony and Jim did the auction well with the usual ribald comments which were taken in good part by the bidders. We can always do with more exhibits as this is what makes a good show. The children's section was a bit sparse especially the "vegetable animal" class, a bit more encouragement next year from parents might make this a better and more amusing class.

The games outside were well patronised with the weather being kind which always helps.

I must say a big thank you to all the volunteers who gave their time throughout the year preparing things, also the people who helped on Friday night and Saturday without them there would not be a show.

Pauline Perkinton, Christine (my wife) and myself are standing down from the show committee this year, I would like to say a further thank you to all the people who have supported us over the past 20 years or so.

As Honorary President I will still be in attendance but we will be leaving the organising to Les Firth and Mike Williamson and a new younger committee, please give them the support and encouragement they need so that the village traditions will carry on and go from strength to strength.

### FLOWERS.

Clean up borders and beds. Prepare ground for autumn planting. Plant out rock and alpine plants and top dress the beds with fine grit. Lift, dry out and store gladioli and acidantheras etc. If the frosts are early this year he prepared to lift and store dahlias (when the tops are blackened by frost). If you haven't already done so, prune and train rambler roses. Plant out wallflowers, polyanthus, forget-me-nots, sweet Williams, foxgloves and other similar plants which are biennials, or grown for spring bedding displays. Don't hang on to the summer plants too long, so that the following plants can get established before the winter weather sets in. Make sure the soil is in good fettle by adding rich compost and bone meal dug into the soil. Most bulb planting should be completed by mid month except tulips, they can be left as late as October. Herbaceous perennials which have got a bit too big can be split up and re-planted.

### VEGETABLES.

Onions which are for keeping should be exposed to as much sun as possible (ha, ha!) and out of the rain, they will keep much longer if they are a nice golden brown colour, strung together in an airy frost-free place.

Gather french and runner beans as they develop, before the frosts finish them. Earth up celery a little at a time. Sweet corn should be gathered before the cob begins to go too yellow. Prepare spare ground for planting spring cabbage.

Leeks can be fed with quick-acting nitrogenous fertilizer, such as nitrate of soda or liquid fertilizer. October is about the latest month for gathering herbs for winter drying. Marrows can be stored if you have too many for immediate use hang them up in old stockings or nets in a cool frost-free place. Carrots and beetroot should be lifted now to prevent the roots from splitting, they will keep well packed in dry sand. Lift young parsnips now for immediate use, leave others in the ground to pull as required, watch out for slugs. Pick winter and perpetual spinach regularly to encourage new growth.

### TREES, FRUIT AND SHRUBS.

Prepare ground for tree, shrub and hedge planting, shelter newly planted evergreens from cold winds with fine mesh netting, protect the roots of young camelias and magnolias from frost with straw. Hardwood shrub cuttings can be taken now, bear in mind these can take quite a long time to root. Put grease bands round apple and cherry trees. Spray trees with fungicide if canker or scab has been a problem. Prune blackcurrants. Plant out new fruit trees between now and November. Clean up strawberry beds, remove dead or dying foliage and weeds, top dress soil around plants.

Check up on the supports for raspberries and renew where necessary. It is a good time to plant raspberries, blackcurrants, gooseberries etc. Try one or two new ones like Tayberries or white raspberries, it makes a change and they look different in your fruit salad. Cut back tall roses by half

to prevent wind rock (I do not prune roses fully until March or April).

### GREENHOUSE AND INDOOR PLANTS.

Chrysanthemums should be brought in before the petals begin to open or if frost threatens they should be brought in straight away. Bring in any tender plants now to prevent any damage or loss by frost. Ventilate the greenhouse well to prevent the build-up of mildew and diseases which are spread by the damp atmosphere. Cineraria must not be allowed to dry out, but they must not be sodden. Move *Primula obconica* into the greenhouse. Keep all pot plants tidy, remove all dead or decaying leaves, especially on geraniums as disease can soon spread to the stems. Feed cyclamen plants with a weak plant food, about once a fortnight. *Schizanthus* and *calceolarias* must not be allowed to become pot-bound. Pot them on as soon as the pots become comfortable full of roots, and place them near the glass to prevent them becoming drawn. Do not use too much heat in the greenhouse yet, just enough to keep the air dry and circulating and to keep out old Jack Frost.

Dry off begonias, gloxinias and achimenes growing in pots, turn the pots on their side and do not water them.

Gradually reduce the amount of water given to fuchsias but do not dry them out, pot on any cuttings, never let them become pot-bound or starved. Check bulbs being brought on in darkness, and water if necessary. Plant cape cowslip, freesia, indoor gladioli, Dutch iris, lilies, daffodils, hyacinths and tulips to flower in the spring and summer keeping them cool and in the dark until the shoots appear.

### LAWNS

Rake, scarify and spike compacted areas. If the weather is mild, turf can be laid. Pick off stones and lightly roll newly seeded lawns.

Cheerio for now

Tom, Busy Bee.

## Magnificent Rose

Oh Rose, Oh Rose I love you  
Your fragrant perfume's so grand  
Thy colour of a pale yellowy mustard  
Almost the colour of sand  
Those leaves and stems of deep burnished green  
The thorns both sharp and strong  
Your whole vision and aroma, once beheld,  
Will stay within a mind's eye, life long.

Don Allott



## PENNINE JOURNEY

*From the Old Nag's Head at Edale does go the Pennine Way,  
And straight to the edge of Kinder upon the very first day;  
You trudge across the peat bog, the first of many moors,  
And when you reach the Snake Pass, you're told there's many more!*

*From Edale to Kirk Yetholm the Pennine Way does go,  
So tramp on through the sunshine, the wind, mist, rain and snow!*

The first verse of a song about the Pennine Way. The route was the brainchild of the late Torn Stephenson who published a letter in the press in the 1930s expressing his desire for a high level-walking route from the Peak District through to the Scottish Borders.

When the treasurer of the Sheffield Group of the Ramblers Association suggested in 1998 that we did the route in manageable stages I had some mixed feelings, but somehow got dragged along to the first of these 'manageable stages', the 16 mile stretch across Kinder and Bleaklow through to Crowden. I was tired but very happy and realised that I was hooked. I likened the Pennine Way to the journey of Christian in the Pilgrims Progress. You walked a bit, rested a bit and met various circumstances, some pleasant, some not so, along the way. At this time I started writing a number of hymns that were inspired by this walk and later incorporated into my hymn collection, Pennine Way Hymns. In doing this I made a serious mistake in naming a tune Kirk Yetholm, after the village at the Scottish end of what is now designated as a National Trail. This meant that I had no option about doing the whole route.

I got on with it, doing some of the route with the group, but quite a lot of it alone or with one particular close friend. Gradually I worked up the route through Malham, over Pen y Ghent, Hawes, Tan Hill Inn (the highest Public House in England), into the delights of Teesdale and its waterfalls [High Force and Cauldron Snout], the two big sections over the Northern Pennines to Cross Fell (2930 ft) and down to Alston and eventually to Hadrian's Wall. Sadly I missed an opportunity to get through to Bellingham whilst life was relatively easy and then we had Foot and Mouth. As well as this, there were problems with my elderly father.

It was not until 2002 that I was able to resume, doing the two forest stages through to the A68 at Byrness (the scenic route to Scotland), the 27 remote miles through The Cheviots remained. I have a slightly weak shoulder and have occasional trouble with my asthma. There is only one contact with a road through The Cheviots. With the help of my friend Paul we did two circular loops on the English side from that beautiful Coquet Valley Road, but to complete it I needed to get round to the Scottish side. This involved a lift up to the remote farm at Cocklawfoot, a 1000 ft climb onto the Cheviot ridge and then a 12-mile walk over Cairn Hill. The Schil (which most people wish was somewhere else!) and then mainly downhill.

A mile from the end one joins the road into Kirk Yetholm, there is a sharp 1/7 climb before the final descent. A man in a red van offered me a lift that I declined. I am a Wednesdayite and even if he had a blue van I would have still needed to refuse. Soon, at 1533 hours on Tuesday 9th September, I completed the 260-mile journey from Edale. As my hymn says.

From Edale's 'Kinder' Vale, to Bleaklow goes the way,  
Black Hill, Cross Fell, we scale, to Yetholm's end some day;  
For ageless hill we give God praise, Lord help us serve Him  
all our days.!

STAN CHANDLER

## Born Yesterday by Hugh Percival

(Adapted from an earlier prose article)

alongside the mare, protective and proud.  
Welcome my bonny to this world of ours.  
May your life be placid, prolonged without cloud.

Tiny, barely nine hands high, docile, brown with a blaze, she takes milk from her mother while we admire, Alan and Hugh of these parts offer praise  
as the foal refreshes herself less she tire.

Teresa, their owner, looks on with mirth.  
Born yesterday - not yet named- she says with pride.  
With regret she was not present at the birth  
but no finer foal to be found far and wide.

Anna the mare no longer feeding her foal gratefully accepts a carrot from Hugh,  
while Alan congratulates Teresa and all  
before returning alone home out of view.

Four carrots in all does the mare eat,  
taken from Hugh's most bounteous stock.  
Hugh then likewise piebald Herbie does treat  
loitering with intent in the paddock.

Farewell for a while to the foal, Teresa and mare,  
Hugh walks on to Debbie's farm and Moss Road,  
to feed Jimbo, Mack, Punch, Jerry and Amber,  
the consumption of carrots lightening his load.

In the top field Hugh feeds Sammy and Aran,  
then the Shetlands Mawva and Jamie at Mrs Hill's farm,  
before returning down hill as if by plan,  
to see that the foal has come to no harm.

The foal comes gently towards him on wobbly legs,  
an innocent sight to soften the hardest of hearts.  
It will not be long, Hugh thinks, before she begs  
for a bit of carrot before Hugh departs.

Not today, however, can Hugh oblige.  
He strokes the foal's blaze on her nose.  
Farewell my lovely, see you next week.  
Goodbye my bonny, fair as a rose.



"I'VE ALWAYS SAID THE POOR ARE  
VERY WELCOME IN TOTLEY AND  
BY THE COLLECTION IT LOOKS AS  
IF THEY'VE ARRIVED!"

## BABIES

Recently some young friends have become the proud parents of twin girls, so we have acquired a renewed interest in babies. We were allowed to meet and hold them when they were only a week old, to be reminded how small six pound babies are. Our youngest grandchild is now eight years old so memories of them as tiny babies are less than clear.

Of course we couldn't help contrasting the present day events with the arrival of our own children. Both our older daughters were home births though our third was born in Jessops in Sheffield. The eldest chose to arrive on a cup final Saturday and my wife never fails to claim that not only I, but also the midwife, were more interested in that on the radio than events in the bedroom. A good thing we didn't have television. Naturally, as in our day, babies need regular feeding, often at ungodly hours, and make their feelings known in the traditional way. However things now are apparently more convenient. Whereas we had to make each bottle feed as required, cooling it to the correct temperature in a jug of cold water, the modern method is to make up a batch of bottles for the day, store in the refrigerator, and warm as required in the microwave. What goes in at one end has to be disposed of at the other, now using disposable nappies. In our day they were stored in an enamel bucket, ready to be hand washed by dad each evening, ready for boiling next day. My wife did all the other washing and the only two aids she had were a portable gas boiler and a hand wringer which clamped to the kitchen table. I don't suppose she ever thought there would come today's method of not only automatic washing by machine, but also machine drying as well. Even though we lived in a newly built house in Doncaster, we had no central heating. The hot water supply was from a back boiler in the dining room coal fire. All drying had to be done outside in fine weather, or hoisted on a rack to the kitchen ceiling

followed by airing round the only coal fire.

Transportation of the babies is also rather different. Each of the new arrivals has a lovely little carry cot to be transported in either dad's car or in mum's car. We didn't even dream of a car but we did have a large "Marmet" pram. This was too big to take on a bus so a visit to my parents involved either a 10 mile push or a three mile push to the train. Visits to my wife's relatives in Sheffield also involved the push at each end of the train journey and again for the return. Of course, in those days, trains were more reliable, though the pram had to travel in the guard's van. He, or a porter, would help to lift the pram on board. Sometimes, if the baby was asleep, one of us also travelled in the van to avoid disturbing her. The pram for the twins is very different - an elegant, very lightweight, three wheeled machine which caused some amusement. Apparently it comes with a pump for the tyres and a puncture outfit! Can you imagine any young mum, with one baby let alone twins, effecting a repair? If mountain bikes can be equipped with tyres to withstand rough terrain, why not a pram? Perhaps this is deemed to be more difficult considering the state of our pavements.

Another noticeable difference concerns communication. We had no telephone and the neighbours on both sides were out at work all day. Hence my wife and the babies

were totally isolated except on daily shopping for food. Now fridges and freezers are commonplace and mobile phones are virtually the norm. Thus our friends, though resembling us in not having relatives living near, can easily get in touch.

I wonder if our young friends, in more than fifty years time, will also be saying "parents today have it easy compared to what we had to do." Forecasts of likely changes might make an interesting topic for conversation. How about a slow release pill under the skin to avoid four hourly feeds?

Don Ashford

## R Rose & Co

Chartered Accountants and  
Business Advisers

*Specialist at looking after the  
affairs of small business.*

For a free initial consultation contact  
**Roger Rose FCA**

621, Chesterfield Road  
Woolseats  
Sheffield S8 0RX

Tel: 0114 281 2331

Fax: 0114 281 2171

Email: [info@r-rose.co.uk](mailto:info@r-rose.co.uk)

Totley Rise Dental Practice  
85 Baslow Road  
*Caring for the smile you always wanted*

**Dr. David Igoe BDS**  
University of Sheffield

- New Patients Welcome
- Emergency Appointments Available
- From 8.30 a.m. Monday to Friday
- Open Until 7.00 p.m. Monday
- Tooth Whitening
- Loose & Ill Fitting Dentures?  
Telephone for a consultation
- Extended payment facilities available

Telephone 236 0333



## BUILDING CONFIDENCE

with over 30 years experience

EXTENSIONS

MAJOR ALTERATIONS

REFURBISHMENTS & MAINTENANCE

Call Bob Tyler for free  
advice & estimates

**bgt** BUILDING  
SERVICES  
LTD

**0114 236 3053**

or **07770 878 643**

## HARD OF HEARING ?

If you need a Hearing Aid, I can cut the cost by  
30% or more on prices currently charged by the  
large Hearing Aid companies.

I offer a first class Hearing Aid service in the  
privacy and comfort of your own home.

For a free, no obligation consultation and Hearing  
test, simply phone me:

**Maurice Naylor MBSHAA:**  
**4 Twentywell Drive, Bradway,**  
**Sheffield. S17 4PY**  
**Tel: 2620010**

## HORIZON ELECTRICAL

FAULTS, REWIRES, SOCKETS, LIGHTS,  
COOKER POINTS, ELECTRIC SHOWERS  
and SECURITY LIGHTS

**NO JOB TOO SMALL.**

FOR FRIENDLY ADVICE  
PHONE TOTLEY **2364364**  
MOBILE **0776 503 6849**

## ROUND THE WORLD IN 92

### DAYS. by Alan Faulkner Taylor Chapter 8.

After Pago Pago *Oriana* then cruised to Honolulu, in Hawaii; in the evening, in the Theatre Royal, we enjoyed watching a spectacular performance by the local folkloric "Halau Hula Olana" troop of 25 children, at the end of the performance some of the children walked into the audience. Some of the ladies in the audience were reduced to tears - the performance had been so moving.

Having crossed the Pacific Ocean, our next port of call was San Francisco where we enjoyed watching the sea lions, there were about ninety, all hauled up on rafts in part of the harbour; one of the bulls had commandeered his own raft and refused to allow any of the other bulls to join him, constantly bellowing his warning note!

We were taken, by coach, to Muir Woods where we saw giant redwood trees; our coach driver told us that forty per cent of the male population of San Francisco are gay; I thought, thinking of Larry Grayson: 'What a gay day!'

Our next port a call was Acapulco, in Mexico, where we watched the daredevil high-divers performing - known as "Le Quebrada"

Having passed through the Panama Canal, we then visited some of the Caribbean Islands: Bonaire, St. Lucia, and Barbados.

After crossing the Atlantic Ocean we called at Funchal in Madeira; having been a colony of Portugal, the currency is in Euros. We needed to make a purchase in a pharmacy and we only had the equivalent of £5 in Euros, but the cost of the item was just over £5; the assistant told us the location of the nearest money exchange, but a policeman told us that we must go to the post office having queued for twenty minutes the assistant told us that they couldn't change our money into Euros, and that we would have to go to the nearest bank. Being a Saturday morning all the banks were closed! So we returned to where the policeman had been standing - but he was no longer there! But we did manage to find the money exchange: just a hole in the wall between two shops, about fifteen yards from where the policeman had been standing, why couldn't he have directed us correctly in the first place? Stupid cop!



Sea lions on their rafts in San Francisco harbour.

### A PRECIOUS GIFT

Have you ever stopped to think  
The effect of a smile, or a cheerful wink?  
The gift of a smile as you go on your way  
Could cheer someone up, even make their day.  
There are many reasons while people look sad  
Maybe they're just feeling lonely or feeling real bad.  
So if you see someone without a smile,  
Stop for a moment and pause a while.  
Why not give them one of yours  
For no other reason than "just because"  
Pat, from Totley

## What on earth I am here for?

Looking down the New York Times Top 20 books this year alongside the likes of John Grisham, J.K. Rowling, Tom Clancy you'd see the name Rick Warren. Warren is an American Pastor and author of the phenomenally successful book 'The Purpose Driven Life', 40 short chapters exploring life's most important question: "What on earth am I here for?" Starting October 12<sup>th</sup>. Totley Rise Methodist is going through the book with the help of Sunday sermons, daily readings and weekly small-groups. You can join us on this spiritual journey by attending one of our small-groups, either at the church or in someone's home. The course lasts exactly 40 days and is free. As Rick Warren says, "Knowing God's purpose for creating you will reduce your stress, focus your energy, simplify your decisions, give meaning to your life, and, most important, prepare you for eternity."

Please contact me if you'd like to know more.

Rev Chris Kirk 236 3157

Totley Rise Methodist Church

## Sunday 19<sup>th</sup>. October

### Fungal Foray

### Blacka Moor



A walk around Blacka Moor to identify the fungi, which can be edible, useful or even deadly!

Meet: 2 pm. to 4 pm. Circular walk from Piper House car park on Hathersage Road (the large lay-by opposite the bus stop. Grid ref. 283 807.

Public transport: The nearest bus stop is Piper House. The 240 and 65 services leave Sheffield Interchange at 1-30 and arrive at 1-53 pm. They return at 4-06 pm (65 service) and 4-59 pm. (240 service). The 272 service leaves Sheffield at 1-00 pm. arriving at 1-20 pm returning at 29 minutes past the hour.

### Senior moments

\*\*\*\*\*

Three old guys out walking.

First one says, "Windy isn't it? "

Second one says, "No it's Thursday!"

Third one says, "So am I. Lets go get a beer."

\*\*\*\*\*

A man was telling his neighbour,

"I just bought a new hearing aid. It cost me four thousand pounds, but it's state of the art. It's perfect."

"Really," answered the neighbour. "What kind is it?"

"Twelve thirty."

\*\*\*\*\*

### Answer to PUZZLE CORNER

Solution to A Semi-magic square.

16	14	1	3
2	5	15	12
7	4	10	13
9	11	8	6

Don Ashford.

## ANIMAL INSTINCTS

### CATS

1. They do what they want, when they want.
2. They rarely listen to you.
3. They're totally unpredictable.
4. They whine when unhappy.
5. When you want to play they want to be left alone.
6. They expect you to cater for their every whim
7. They're moody.
8. They leave their hair everywhere.
9. They drive you nuts.

*CONCLUSION: Cats are small women in fur coats.*

### DOGS

1. Dogs lie around all day sprawled on the most comfortable piece of furniture in the house.
2. They can hear a food package being opened half a block away, but don't hear you when your in the room.
3. They can look dumb and loveable at the same time.
4. They growl when they are not happy.
5. When you want to play they want to play.
6. When you want to be alone they want to play.
7. They are great at begging.
8. They will love you forever if you rub their tummies.
9. They leave their toys everywhere.

*CONCLUSION: Dogs are small men in fur coats.*

## SHEFFIELD HUMANIST SOCIETY DAY CONFERENCE

Saturday 18 October 2003

10.00 am to 4.00 pm

\*\*\*\*\*

**The Fundamentalist  
Threat to World Order  
Speakers and Discussion**

\*\*\*\*\*

**AT  
THE WINDING WHEEL  
HOLYWELL ST  
CHESTERFIELD**

**Contacts for information pack: 0114 230 9754 or  
01246 270 628**

**[www.sheffieldhumanists.org.uk](http://www.sheffieldhumanists.org.uk)**

## **RUBBISH REMOVED**

*Environment agency registered. ID shown*

Beds, settees, garden and DIY, cookers,  
Washers, Baths, carpets, furniture,  
Garages cleared, sheds removed.



*Free quotes! Genuinely no obligation!*

**Tel: Mick 07710 446438 or 0114 2681330**

*Established four years. Courteous reliable service.*

<http://members.lycos.co.uk/draggletail>

123 Prospect Road, Totley Rise, Sheffield S17

## CROSS SCYTHES REOPENS ITS DOORS

New management team would like to welcome customers both old and new to revamped venue.



One of Sheffield's finest pubs has finally re opened, and regulars can look forward to some fantastic changes to their favourite venue following a £150,000 refurbishment.

The pub will be operated by the dynamic team of Roy Meakin, Paul Staley and Paul Leach and has had a full internal revamp.

The new look cosmopolitan atmosphere features more modern decoration, developed garden and patio area, and an exciting new menu to wet the appetites of guests.



CROSS SCYTHES  
Baslow Road  
Totley  
Sheffield

0114 236 0204



**KIMBERLEY ALES  
Tel. CAROL or TONY  
236 0298**

**NEW EXTENSIVE MENU**

**From 10<sup>th</sup> JUNE**

**MON. to SAT 12 to 2-30**

**& 5-30 to 8-30**

**SUN. CARVERY 12-00 to 4-00**

**QUIZZES + JACKPOT PRIZES ON  
THURSDAYS + SUNDAYS**

**STONES - CARLING - STELLA**

**OPEN ALL DAY  
EVERY DAY**

## Eyes in Focus with



**MARTYN  
KEMP  
OPTICIANS**

**Now open at 63 Baslow Road, Totley Rise, Tel: 236 4485  
(Formerly Stuart Fordham Opticians)**

- Eye examination & sight testing, also Diabetic screening
- 100's of Spectacle frames from budget to designer names
- Wide range of lenses available
- All types of Contact Lenses, check-ups, fits & solutions
- Low vision aids; Ready readers; Dietary supplements

## **Local for all things focal**

Also at 739 Abbeydale Road, 255 6554; Shirecliffe; Woodhouse; Stocksbridge;  
Walkley; Firth Park; Manor; Rawmarsh & Rotherham town centre  
Website: [www.mko.co.uk](http://www.mko.co.uk) Email: [martyn.kemp@mko.co.uk](mailto:martyn.kemp@mko.co.uk)

## WIZZ KIDS PRE-SCHOOL and Friends.

**With our strong links with other providers we can offer a full  
and flexible childcare package all within the Totley  
community.**

**PRIME SITE (grounds of Totley Primary)  
OFSTED APPROVED  
FREE PLACES FOR 3 +4YEAROLDS  
SMALL AND FRIENDLY**

**Baby places available through S.M.I.L.E.Y.  
C.S.G**

**Childcare and Education for 2 - 5 year olds.  
(Sessions and full day care available)**

**Early Bird, After Nursery and Holiday Care for  
children attending 'Little Saints Nursery'**

**Early Bird, After School and holiday care for  
children 4 - 11 years at either Wizz Kids or  
Totley After School Club.**

**8a.m - 6p.m  
50 weeks a year**



**For further information on any of  
the above please contact Alison  
Vickers at Wizz Kids 2364319**

**NOW AVAILABLE FOR  
CHILDRENS PARTIES**





**Right choice**  
**PLUMBING & PROPERTY MAINTENANCE**  
*Reliable, tidy and competitive*  
**Please call Steve** on: **07944 715840**  
or: **01142 620944**

**ACORN ANTIQUES**

ROY & BARBARA C. PRIEST

298 Abbeydale Road  
Sheffield S7 1FL

Telephone: (0114) 255 5348  
e-mail: info@acornantique.co.uk



**MILLTHORPE NURSERY**

GROWERS OF QUALITY PLANTS  
Shrubs, Conifers, Hedging, Alpines  
Herbaceous, Grasses, Topiary

- Shrubs from £2.99
- 3ft Golden/Green Laylandii £2.49
- Green/Variiegated Privet £1.99

**Open Seven Days a Week**  
Trade welcome  
Millthorpe lane, Holmesfield  
Call ROBERT on 07876700071



**K.T.V. SERVICES LTD**  
skydigital

**AERIALS AND SATELLITES**

- All Areas - Anytime
- Fast - Efficient - Professional
- Channel 5 - Upgrades - Repairs
- Multi - Point - Satellites - Retuning
- Meter Aligned For Best Reception

**NO CALL OUT CHARGE**  
**NOT VAT REGISTERED**

**OFFICE & EVE 8am to 10pm**  
**0114 258 5181**  
**IMMEDIATE ATTENTION**  
**07930 411337**  
621 Chesterfield Rd, Sheffield

**E & L WILSON**

**Builders and Plumbers**  
Central Heating,  
Domestic Plumbing,  
Glazing, Double Glazing and Glass  
Home Maintenance  
uPVC and Wood Windows

Telephone:-  
**(0114) 236 8343**

*Catherine Clarke*  
M.S.S.C.H. M.B.C.H.A. S.R.N.

*Qualified Chiroprapist*

Westfield accepted  
12 years experience  
Home visits available  
Daytime and evening appointments

192, Baslow Road  
Totley  
Sheffield  
S17 4DS  
Tel: 0114 236 4101

**BUSY BEE**  
D.I.Y. SUPPLIES

170 BASLOW ROAD, TOTLEY, SHEFFIELD S17 4DR.  
Telephone 236 5798

for  
**A COMPREHENSIVE SELECTION OF**  
**D.I.Y., DOMESTIC & GARDENING ITEMS**  
including  
Plywood, Timber, Paint, Hardware,  
Bowls, Buckets, Mops, Tools, Locks,  
Composts, Pots, Fertilizers, etc. etc.  
**KEY CUTTING SERVICE**  
If we do not have your requirements  
in stock we will do our utmost to  
obtain it quickly for you



Tel/Fax.  
(0114) 255 4689  
Mobile  
0831 802539

**TRISTAN SWAIN**  
LANDSCAPING AND MAINTENANCE

72 Nettleham Road  
Sheffield S8 8SX



eddie wright

**edwood joinery**  
62, Thorpe House Rise  
Sheffield S8 9NL  
Joinery Services  
For a prompt and  
Efficient service.

Tel. 0114 255 1099  
Mob. 07885 109502  
E mail edjoinery@hotmail.com



M. Scriven  
(FRUITERAMA)

**MARTIN SCRIVEN**  
HIGH CLASS FRUIT  
& VEGETABLES

37, Baslow road  
Tel. 236 7116  
Orders Delivered



**LADIES FASHIONS**

SKIRTS, DRESSES,  
JUMPERS, T-SHIRTS,  
UNDERWEAR etc  
**ALSO**  
**CHILDRENS WEAR**  
**HABERDASHERY,**  
**WOOL**

Dry Cleaning, Shoe Repair  
& Laundry Service

**ROSIES**  
164 BASLOW ROAD, TOTLEY.  
TEL: 2621060





**Bradway Music**

**MUSIC LESSONS**

For enjoyment or examinations  
from beginner to advanced.



*Piano, Electronic keyboard,  
Theory, Harmony, Aural,*

**Geoff Henthorn GNSM**

For prospectus or further details  
please phone: 235 2575

Mr Robert Colclough  
MSSCh, MBChA, BSc (Hons).

**CHIROPODIST**

*now practicing at*

Faye Catton Health & Beauty  
Totley Rise, S17  
Tel no: (0114) 236 0997  
*call now for an appointment.*  
or call (0114) 235 0256  
*for an immediate home visit.*

**TOTLEY  
PRIVATE HIRE**

PROFESSIONAL CAR SERVICE  
FOR  
AIRPORTS & LONG DISTANCE  
TRAVEL etc.

**Tel: 0114 - 2361547**  
**Mobile: 07974-355528**



**GENTS  
HAIRDRESSING**

**Don Allott**  
*joins*  
**Fred & Ginger's**



Baslow Road  
Sheffield  
Tel No. 0114 2350362

Wednesday, Thursday, Friday  
& Saturday from 9-00a.m. £6-30  
Wednesday & Thursday Pensioners Special £5-00  
Walk in service and appointments available



**SCENICBLUE**  
the complete garden solution

Landscaping  
& Garden Design

**0800 7833428**  
[www.scenicblue.co.uk](http://www.scenicblue.co.uk)

- Patios, Paving, Driveways
- Decking, Fencing
- Turfing, Planting

Sheffield Office:  
Tel. 0114 2562560

Members of  




**CHARISMA  
BLINDS**

For  
Windows  
With Style

Sheffield Factory Showroom  
106 PROSPECT ROAD  
HEELEY, SHEFFIELD

Sheffield (0114) 258 5496  
Rotherham (01709) 512113



**Anton Rich + Associates  
Architects**

Now is the time to plan your  
home extension, or even a new  
home - we specialise in both.

Call us for a chat on  
**Sheffield 250 9200**

A Member of  
The Association for Environment-Conscious Building

FOR SIX GENERATIONS

**THE LEADING FUNERAL DIRECTORS**

**John Fleeth & Sons**

PROMPT and COMPREHENSIVE SERVICE  
AT ALL TIMES

**2 722222**

LIMOUSINES FOR SPECIAL OCCASIONS

Fully Qualified and  
Experienced  
Therapists,  
Specialising in:

- acupuncture
- aromatherapy
- chiropractic
- colon hydrotherapy
- fang shui
- food allergies
- herbal therapy
- hypnotherapy
- lymphatic drainage
- meditation
- muscle toning
- nutrition therapy
- physiotherapy
- reflexology
- relaxation
- shiatsu
- therapeutic massage
- yoga

**Greenways**  
Natural Health Centre

*Naturally We Care for Your Health*

Specialist Health Food  
Shop:  
vitamins  
natural beauty products  
skin care remedies  
homeopathic remedies  
herbal products  
gifts • books • CDs

Full Disabled Facilities  
Large Car Park

Mail Order Catalogue  
Available - Please Call  
for Details

Fully Appointed  
Rooms set in  
relaxed  
surroundings

Full Information Packs  
available on all  
therapies.

**0114 236 0890**

Fax 0114 236 2142  
[www.greenwaysnaturalhealthcentre.co.uk](http://www.greenwaysnaturalhealthcentre.co.uk)

Membership Facilities  
Now Available!

180 Baslow Road, Totley, Sheffield S17 4DS



# ALL WELD FORGE LTD

Wrought Iron From The  
Millhouses Forge

Gates, Furniture, Curtain Poles, Etc  
Commissions Welcome

**Presented By: Bob & Sue Wells**

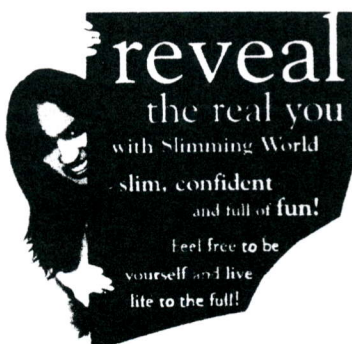
**Tel: 0114 2368239 Mobile: 0781 2910565**  
**Unit 3, 300 Archer Road, Millhouses, Sheffield, S8 0LA**

There's a warm and  
friendly class near you  
where women and men are  
welcome.

Dore Old School DORE  
(Sheffield). Tuesday  
17-30.

The Michael Church.  
LOWEDGES.(Sheffield)  
Wednesdays at 10-00.

Bradway Annexe. BRADWAY, Thursdays at 17-00 & 19-00  
Please contact consultant Alison on 01246  
410145 for further details.



## R.S. Heating & Building Co. EST 1971



### Heating Division

Experienced, Qualified Installers of all types of  
central heating.

10 year guarantee on most new gas systems.  
Complete after care service

### Building Division

Joinery, Electrics, Tiling, Decorating Specialists  
in wall tie replacement  
and house Renovations



**0114 236 4421**

HALL LANE BARN TOTLEY HALL LANE SHEFFIELD S17 4AA

## The Cricket Inn



Penny Lane, Totley

**The Cricket Inn, Penny Lane, Sheffield, S17 3AZ**

**OPEN** Mon. to Fri 11 a.m. to 3 p.m. & 5 p.m. to 11 p.m.

Sat. 11 a.m. to 11 p.m. Sun. 12 noon to 10.30 p.m.

**Food served :-** Mon to Sat Lunch 12 noon to 2 p.m.

Mon to Sat. Evening 6 p.m. to 9 p.m.

Fri. & Sat Evening 6 p.m. to 9-30 p.m.

Sun. 12 noon to 5-30 p.m.

Tel. 0114 236 5256

**Mark & Sally Fletcher invite you to**

## The Grouse Inn

**Longshaw**

SHEFFIELD S11 7TZ

**Open for Meals Every Lunchtime**  
**12 to 2-30 pm.**

**Evenings Tuesday to Sunday**  
**6.45p.m. to 9.15p.m.**

**Phone 01433 630423**

● Airports & Ports

● Business

● Coastal

● Concerts

● Hospitality

● Entertaining

● Sports Events

## Dore 2000

**Executive Car Service**

Air Conditioned vehicles  
for 1 - 6 passengers

Telephone available

for reservations or estimates

Telephone/Fax

Gordon MacQueen

0114 235 3434

Mobile 07711 763 973

## FUNCTION ROOM FOR HIRE for DAYTIME & EVENING PARTIES

WITH  
KITCHEN and BAR FACILITIES

**IDEAL FOR ALL AGE GROUPS**

**HEATHERFIELD CLUB**  
**193, BASLOW ROAD, TOTLEY**

FOR FULL DETAILS TELEPHONE  
**EVENINGS ONLY From 8.30 p.m.**

**(0114) 262 0187**

Creating opportunities with disabled people.

Registered Charity No. 218186

## LEONARD CHESHIRE

Leonard Cheshire Services in Offers choice &  
opportunity to people with disabilities.  
A Specialist Unit for the Younger Disabled.

Residential & Respite Care - Single Rooms

Day resources - Aromatherapy -

Reflexology - Physiotherapy - Toning  
Tables.

Activities include: - Arts & Crafts -

Computers - Cookery - Shopping

Expeditions - Theatre Outings - Church.

Further details can be obtained from -

The Service Manager, Mickley Hall,

Mickley Lane, Totley, Sheffield S17 4HE.

Tel. 0114 236 9952

Fax. 0114 262 0234

The Care at Home Service supports  
disabled people who wish to remain in their  
own homes.

We provide flexible care packages from  
1 hour to 24 hours meeting individual needs.

The service operates throughout  
Sheffield.

Our service includes: - help with getting  
up and going to bed, dressing, washing,  
bathing, shopping, cooking, light household  
duties.

Further details from: -

The Care at Home Manager

Tel. 0114235 1400

Fax 0114 235 1499



## TOTLEY & DISTRICT DIARY

<b>MONDAYS</b>	<b>COFFEE MORNING</b> , All Saints' Church Hall, 10am. To noon
<b>TUESDAYS</b>	<b>COFFEE MORNING</b> . Totley Rise Methodist Church Hall, 10am. To noon. <b>CRAFT GROUP</b> , Totley Library, 2pm.
<b>WEDNESDAYS</b>	<b>COFFEE in the LIBRARY</b> , 10am. to 11.30am. <b>MODERN SEQUENCE DANCING</b> . All Saints Church Hall 8pm. to 10pm. <b>TODDLER GROUP</b> . 10-00 a.m. to 11-30 a.m., All Saints' Church Hall. Details tel. 236 6789 or 236 3603
<b>THURSDAYS</b>	<b>PUSHCHAIR CLUB</b> . Totley Rise Methodist Church Hall. 1.30pm.. to 3pm. Tel. 2363157 for further details.
<b>SATURDAYS</b>	<b>MODERN SEQUENCE DANCING</b> . All Saints Church Hall 2 <sup>nd</sup> . And 4 <sup>th</sup> . Saturdays 7.30pm. to 10pm.

### SEPTEMBER 2003

**SUN. 1<sup>st</sup>. 15<sup>th</sup>. and 29<sup>th</sup>**: **MINATURE TRAIN RIDES**. Abbeydale Road South, first train 1 p.m., last train 5 p.m.

**TUES. 2<sup>nd</sup>**. **WOMEN'S FELLOWSHIP**. "Keswick Convention" 2-30 p.m. Totley Rise Methodist Church

**THUR. to SAT. 4<sup>th</sup>. to 6<sup>th</sup>**. **LONGSHAW SHEEP DOG TRIALS**. Full details inside.

**SAT. 6<sup>th</sup>**. **TOTLEY SHOW**. Totley Primary School Full details inside.

**SAT. 13<sup>th</sup>**. **SATURDAY NIGHT LIVE**. Heatherfield Club, Baslow Rd..8-30 pm. Non Members Welcome Entrance £1.50

**TUES. 16<sup>th</sup>**. **TOTLEY TOWNSWOMEN'S GUILD**, "Making People Laugh"  
Mr.G.Kersey, in. Methodist Church Hall, 10.00 am.

**WED. 16<sup>th</sup>**. **WEDNESDAY FRIENDSHIP**."U.S.A." Revd. Bruce Sage. In the Church Lounge. 8-00 p.m. Totley Rise Methodist Church.

**TUES. 16<sup>th</sup>**. **WOMEN'S FELLOWSHIP**. "A Magistrates Experience" Mr.R.Jackson 2-30 p.m. Totley Rise Methodist Church Lounge.

**WED. 17<sup>th</sup>**. **WEDNESDAY FRIENDSHIP**. "The work of the Gideons World Wide." Dr. Brian Ridgway. 8-00 p.m. Totley Rise Methodist Church.

**SUN. 21<sup>st</sup>**. **FARM FAYRE**. 10 am. to 5 pm. Whirlow Hall Farm. Full details inside.

**FRI. 26<sup>th</sup>**. **COFFEE MORNING**. All Saints' Church Hall, 10 a.m. to noon. Full details inside.

**SAT. 27<sup>th</sup>**. **TABLE TOP SALE**. 10 am. to noon. The Church Hall Townhead Rd. Dore Full details inside.

**SAT. 27<sup>th</sup>**. **SATURDAY NIGHT LIVE**. Adrian Alexander, Heatherfield Club, Baslow Rd..8-30 pm. Non Members Welcome Entrance £1.50

**TUES. 30<sup>th</sup>**. **WOMEN'S FELLOWSHIP**. Harvest Celebration 2-30 p.m. Totley Rise Methodist Church .

**TUES. 30<sup>th</sup>**. **OPEN EVENING AT MICKLEY** 7-30 p.m. Sheffield Cheshire Home, Mickley Hall

**OCTOBER**

**FRI. 3<sup>rd</sup>**. **AFRICAN CHILDRENS CHOIR**. King Ecgbert School, 7-30 pm. Full details inside.

### THE INDEPENDENT FOR OCTOBER

The next issue of the Totley Independent will be available from the usual distribution points on

**SATURDAY 4<sup>th</sup>. OCTOBER**  
**COPY DATE for this issue will be**  
**SATURDAY 20<sup>th</sup>. SEPTEMBER**

**Editor** Ian Clarke Tel. No. 235 2526.  
E mail [iangclarke@hotmail.com](mailto:iangclarke@hotmail.com)

**Editorial team** Les & Dorothy Firth, e mail [firths@fish.co.uk](mailto:firths@fish.co.uk).  
Tel. No. 236 4190,

**Distribution & Advertising**. John Perkinson. 2, Main Avenue,  
Tel. No. 236 1601. Items for publication may be left or sent to  
2, Main Av., 6, Milldale Rd. or Totley Library

**PRINTED by STARPRINT**



601 Abbeydale Road, Sheffield 7. Fax: 0114 258 8599

**DESIGN & PRINTING of**

- **LETTERHEADS • BUSINESS CARDS •**
- **BOOKLETS & PADS •**
- **INVOICES • LEAFLETS •**
- **CARBONLESS SETS • BROCHURES •**
- **RAFFLE TICKETS •**
- **WEDDING STATIONERY •**
- **ENVELOPES & POSTCARDS •**

**SPECIALISTS IN THERMOGRAPHY  
FOIL BLOCKING AND ENCAPSULATION**

**0114 258 0707**  
*For a Quick Quotation*

**B . K . JEAVONS**

**PAINTER & DECORATOR**



**Interior  
Exterior  
Decorating**

**No job too small.**

**86, WOLLATON ROAD  
BRADWAY  
SHEFFIELD, S17 4LG**

**Telephone 2350821**

### JOHN D TURNER CONSTRUCTION

46, LONGFORD ROAD, BRADWAY, SHEFFIELD 17  
BUILDING & PROPERTY REPAIRS, JOINERY  
ELECTRICAL & PLUMBING EXTENSIONS &  
ALTERATIONS.

**ESTIMATES FREE**  
**PHONE SHEFFIELD 236 7594 EVENINGS.**  
**JOHN D TURNER (CONTRACTING) Ltd.**

We welcome letters about local affairs and will publish as many as possible. However the views expressed are not necessarily those of Editor, editorial staff or the Totley Residents Association and must not be imputed to them.