

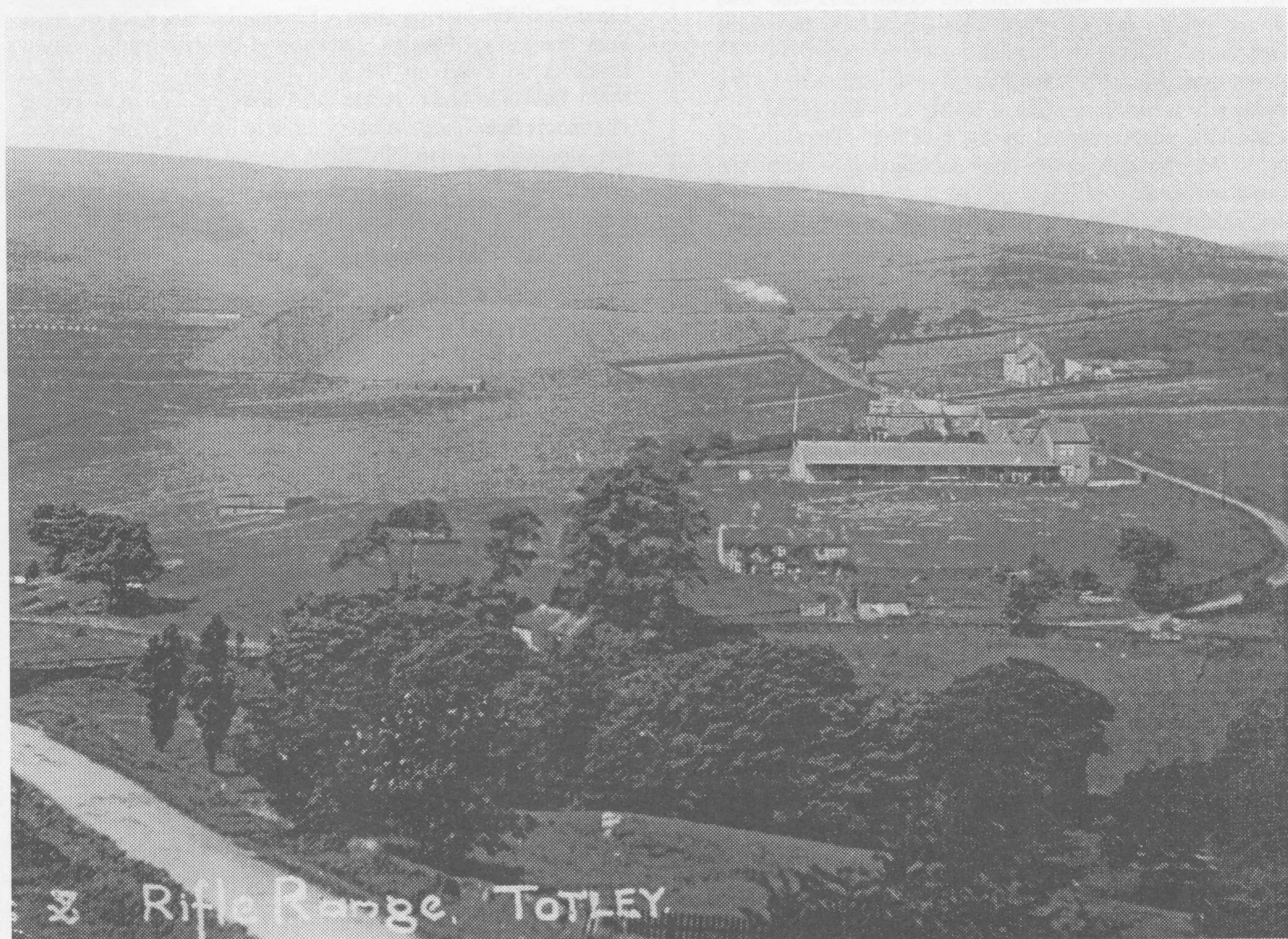
# TOTLEY INDEPENDENT

PUBLISHED BY THE TOTLEY RESIDENTS ASSOCIATION SINCE 1977

MAY 2003

No. 263

15p.



The moors and Totley Rifle Range showing the the old rifle range building and Moss Farm before it was knocked down and re built. To the left near the stream it shows the little old cottage and just above it what was probably a swimming pool for the army.

## Totley Residents Association 2003 AGM

The AGM was held in Totley Library on Monday, 7 April 2003. There was a good attendance of over 40 people. Councillor Keith Hill was present and apologies were received from Councillor Diane Smith, Michael Waters represented the Conservatives. The minutes from the 2002 AGM were circulated. There were no matters arising from those minutes and they were unanimously accepted. Avril Critchley gave a brief report. The past year had been one of change within the TRA and from a personal point a learning curve as the chairman, Kevin Walker, had found it necessary to retire part way through the year for personal reasons and Avril Critchley, deputy chairman, had taken over the job. Thanks were given to all the members of the executive committee for their help during the changeover period. Particular thanks were given to Amanda Hardwick for keeping the minutes, Maurice Snowdon for keeping the accounts, Les Firth and John Perkinson for the Totley Independent. Unfortunately, the Family Day, planned as part of the Silver Jubilee celebrations had to be cancelled due to a

clash of events. The World Cup was more important than our celebrations! Totley Show was again very well attended. It is becoming so popular we are running out of space. Thank you to the show team, ably run by Pauline Perkinson. A new event this year was "Totley Open Gardens" held in July. This proved a great success. Thanks to Jennie Street and the garden owners for making everyone so welcome. Residents and visitors from further afield enjoyed a wonderful weekend. The event raised £1,175.00 which was present to the library in October.

50+ Congress – After putting her name forward as candidate for this area, Avril discovered that she had been elected for Firth Park so resigned from the committee. TRA are facing many problems which we are struggling to overcome for the benefit of the local community. We need people to come forward and assist with their ideas and specialisms.

Continued page 2

## Totley Residents Association 2003 AGM

(continued from page 1.)

Many challenges mentioned in last year's report remain unresolved. Loss of our Post Office and 2 public telephone boxes, uncertainty about what is to happen to Green Oak View, lack of bus shelters, improvements in road safety and transport etc mean we must fight for our community. TRA members continue to work with our councillors, the area panel and youth workers. They were thanked for their help and support.

The treasurer, Maurice Snowden, gave a summary of the accounts which had been audited by Mr R F Wigglesworth. The accounts were accepted by the meeting. Thanks were given to Mr Wigglesworth who has agreed to audit the accounts next year.

Totley Independent – In the absence of the Editor, Les Firth, the chairman gave a brief report. Thanks were given to all the contributors, people were reminded that contributions are always welcome. It was a pleasure to report that Mr Ian Clarke had joined the editorial team during the year and has agreed to edit the Independent in the future. Grateful thanks were given to Les and Dot who have worked so hard for so many years. Thanks also to John Perkinson for his valuable help with distribution and advertising.

The existing committee then stood down, nominations for executive positions and committee members were then proposed, seconded and accepted by the meeting. The new executive committee – Chairman, Avril Critchley, Vice Chairman, Maurice Snowden, Committee Members – Mike Williamson, Lisa Blake, Kevin Walker, John Perkinson, Janet Chapman, Carol Pugsley, Duncan Froggatt, Rita Garnett, Sylvia Boyles, Lynda Sharp, Les Firth???. The date of the next committee meeting is Monday, 12 May at 7.30 pm at Green Oak View.

Any Other Business – Results of the "Totley Wish List" were given to the meeting. Over 60 people responded to the request for suggestions. They are summarised as follows:-

Highways, Pavements and Parking – 45 complaints/suggestions. Speed down Baslow Road – Reduce. Cameras with film may help! Traffic lights or crossings at Baslow Road/Mickley Lane, Baslow Road/Main Avenue, Glover Road/Baslow Road crossing is dangerous for slow people so the length of the crossing time should be extended. Bushey Wood Corner is dangerous.

Calming Required – Queen Victoria Road, Glover Road (one way), Green Oak Road, Aldam Road, Glover Road.

Pavements/Grass Verges – Many complaints from a wide area. Parking should be stopped. Pavement maintenance – Many are in a dreadful state and are dangerous for blind people, old people and children. The recent "in filling" with tarmac is not the answer.

Parking Totley Rise – The double yellow lines are not respected therefore traffic is unable to turn. The bays for parking have not been marked therefore parking at all angles. Day long parking should not be allowed, ie Totley Rise is used as a park and ride for hikers who leave vehicles for the day. Local shops lose trade as people are unable to park. Busy Bee/Co-Op parking in this area means crossing Baslow Road is very difficult.

Community Centre/Hall – 23 suggestions. Found in most areas in Sheffield and missing in Totley, although the library is very good but overcrowded. Extend the library, use Green Oak View. The centre must be near a bus route. Somewhere for all age groups, a café, drop-in centre for old folks, teenagers, a centre for the community for social contacts as a variety of activities, a place to relax in safety.

Transport – 20 suggestions – Required a better, more reliable bus service with more buses, and more buses on Saturdays. Buses to the bus and train stations. Bus shelters with seats, no bus shelters from Abbeydale Sports Club up to the terminus, why do the buses advertise "every 8 minutes"? Buses to Meadowhall. Note – TRA will be asking for answers to these questions at our meeting on 12 May when a representative from the Transport Executive will be present.

Litter/Graffiti/Chewing Gum – 12 complaints – A desire for a litter free Totley, through education of children/adults. Some residents do clean up the area where they live regularly. Many thanks to them. Areas most affected, Co-Op to Totley Pharmacy, Spar Shop, Mickley Lane to Main Avenue. Boxes left alongside Co-Op, Sheffield Animal Hospital bank and Totley Rise shops. A request for a bin at the bottom of the Rise, near the seat on the bridge over the river. Bins need emptying more often.

Green Oak Park – 7 suggestions and ideas from Totley County which have already been published.

Green Oak View – 5 received – Concerns that it should be retained so people who have lived in Totley can remain in the area near their friends. We have more elderly residents in Totley than anywhere else in Sheffield we need the facility.

Miscellaneous – 26 received – Details will be left until the next issue of Totley Independent.

The meeting was open for comments from the floor. Time was spent on discussing Green Oak Park and the problems. It was agreed to set-up a "Friends of Green Oak Park" as soon as possible. Several people agreed to form the group. Anyone wishing to help should get in touch with Trish Dearden. Other matters included a lack of police presence and no facilities for young people. Dave Aspinall outlined plans which could help with the latter. The Chairman thanked everyone for attending the meeting.

It is obvious the TRA Committee are going to be very busy. Please feel free to come forward and help in any way you can. We all live in the community so must try and improve our area wherever possible.

Avril Critchley

**sharrow**  
*SureStart*



### Could You Make A Difference?

**Do You:-**Remember the challenges of parenting?

Have a few hours to spare each week?

**Would You:-**Like to do an accredited course with expenses paid?

Provide support to a family under stress?

If the answer is "YES" then we need you!

Please contact:

Home-Start Sheffield  
Globe Business Centre  
Penistone Road  
Sheffield S6 3AE

**Tel:(0114) 2494938**



# Whisperer

Butts Hill.

Congratulations to the persons concerned for clearing the waste ground and planting the wonderful display of daffodils and other flowers.

Green Oak Park.

There has also been a wonderful display of daffodils again in the park but spoilt by people letting dogs run loose in them and breaking them off

Totley Hall Park.

There is still not much work taking place here to say they were waiting for a dry spell before they could do the work, It can not get much dryer than the last few weeks.

All that seems to have taken place is a wooden horse and pig have arrived and been put in the rough area that has still to be levelled and seeded.

Totley Rise.

The no entry signs which were erected at the bottom of the shop area over two years ago have finally been lit up.

Pinfold.

The seats on the Pinfold have been given a coat of stain.

## DORE & TOTLEY SUPPORT GROUP FOR THE VISUALLY IMPAIRED.

**Dates of meetings 2003**

**MAY 28<sup>th</sup>. WEDNESDAY**

**JUNE 19<sup>th</sup>. THURSDAY**

**JULY 15<sup>th</sup>. TUESDAY**

**AUGUST No Meeting**

**SEPTEMBER 17<sup>th</sup>. WEDNESDAY**

**OCTOBER 23<sup>rd</sup>. THURSDAY**

**NOVEMBER 18<sup>th</sup>. TUESDAY**

**ALL MEETINGS ARE AT 11am. AT 4, GROVE ROAD, TOTLEY**

## PUZZLE CORNER

Equilateral Triangles

Arrange each set of numbers into triangles, three numbers on each side, so that each side of all three triangles add to 33.

Set (A) 6,8,9,11,16,18.

Set (B) 3,5,10,12,18,20.

Set (C) 5,7,9,11,13,15.

Answer page 10

Don Ashford

## PEAK DISTRICT EVENTS

Information from the "Peak District 2003" the official guide to the National Park. These events can be seen in the free guide available throughout the Peak District or by visiting their web site [www.peakdistrict.org](http://www.peakdistrict.org)

### MAY

**Sun 4 May**

**BUXTON BRASS BAND FESTIVAL**

At the Pavilion Gardens, Buxton, from 10am to 7pm E mail [skwnwabba @aol.com](mailto:skwnwabba@aol.com) Tel: 0161 4273670

**Sun 4 May to Mon 5 May**

**MEET A VIKING RAIDER**

At Peveril Castle, Castleton Tel: 01433 620613

**Mon 5 May**

**CHESTERFIELD MAY DAY NARKET AND RALLY**

In Chesterfield town centre, fun fair in town centre.

Admission free. Market open from 9am. Rally starts 10am,

entertainment from 1pm, to be confirmed, E mail

[tourism@chesterfieldbc.gov.uk](mailto:tourism@chesterfieldbc.gov.uk), Web Site: [www.visitchesterfield.info](http://www.visitchesterfield.info). Tel: 01246 345777/8

**Sat 17 May to Sat 24 May**

**FLOWER FESTIVAL 'THE SAINTS'**

At St Giles Church, Great Longstone. Home made

refreshments served in Village Hall all week. Church opens

10am - 6pm. Tel: 01629 640478

**Sat 24 May to Mon 26 May**

**WARDLOW FLOWER FESTIVAL**

At the church of the Good Shepherd, Wardlow. 10am - 6pm

Tel: 01298 871899

**Sat 24 May to Mon 26 May**

**TIDESWELL SPRING MARKET**

Stalls in the Pot Market, 10am to 5pm. Also Wakes stalls

open each day 10am - 5pm. Tel: 01298 872181

**Sat 24 May to Fri 30 May**

**THE FESTIVAL**

At Cliff College, Calver. A major week long Christian event with something for everyone including children, teens and

20s and 30s E mail: [admin@cliffcollege.org](mailto:admin@cliffcollege.org), Web Site:

[www.cliffcollege.org](http://www.cliffcollege.org). Tel: 01246 582321 ext 100.

**Sat 24 May to Fri 30 May**

**MIDDLETON BY YOULGRAVE MARKET & WELL DRESSING**

Market on the 24th from 1.30pm - 4.30pm. One well dressing in the village square. Tel: 01629 636229/636763

**Sun 25 May to Mon 26 May**

**MEET A ROMAN SOLDIER**

At Peveril Castle Castleton. Tel: 01433 620613

**Sun 25 May to Mon 26 May**

**SHEFFIELD & DISTRICT ORCHID SOCIETY'S ANNUAL SHOW**

Cavendish Hall, Chatsworth Park, Near Bakewell. 25th 11am 5pm.

26th 11am - 4pm. Tel: 01405 813756

**Mon 26 May**

**CHESTERFIELD SPRING BANK HOLIDAY MARKET**

In Chesterfield town centre, fun fair in Queens Park, town

centre, Admission free. Market open from 9am.

Entertainment 10am - 4pm. Email: [tourism@chesterfieldbc.gov.uk](mailto:tourism@chesterfieldbc.gov.uk)

Web Site: [www.visitchesterfield.info](http://www.visitchesterfield.info). Tel: 01246 345777/8

**Thur. 29 May to Wed 4 June**

**TISSINGTON WELL DRESSING**

6 wells decorated within the village. E mail: [tisshall@dircon.co.uk](mailto:tisshall@dircon.co.uk), Website: [www.tissington-hall.com](http://www.tissington-hall.com). Tel: 01355 352200

## GOD'S OWN COUNTRY

Our glorious Peak District National Park can offer scenery of the highest order to suit all tastes. Your personal favourite maybe a trip to the Limestone Dales around Monsal Dale, Millers and Lathkill Dales, or possibly the Izaak Walton and Charles Cotton river scenery of Dovedale and the Manifold Valley could be your ideal choice. How about a day out to Chatsworth Park and the Matlocks. The bustling town of Bakewell and the historical village of Eyam has a strong pull. For the seasoned hill walker the areas around Kinderscout, Mam Tor and Win Hill have an appeal many tourists are even drawn to the show caves around Castleton like a magnet. My favourite landscape is what I term as back to God's own country the hills beyond the Upper Derwent Valley. Parking the car at the popular Fairholmes Centre can prove rather difficult most weekends so the recommendation is to travel really early a 10.00am venue is often to find the car park full. Crowds seem to mill around the Ladybower Dam and the Fairholmes Centre plus the attraction of the Dam Busters Exhibition (617 SQDN). In the west tower of Derwent Dam has great nostalgic interest this showcase is run most weekends by Mr Vic Hallam of the Severn Trent Water Authority.

Incidentally this month marks the 60th anniversary for these great heroes's of the RAF.

On your next visit pop into the information centre at Fairholmes where the staff are always most helpful in planning a walk of short duration for you. The free publication guide 'Peak District 2003' gives a programme of events to suit every taste. If unsure of your prowess on the hills the Peak National Park Ranger Service offer guided walks around the area. Book a day out with this team and they will show you quality scenery. Several publications are on sale, plus large scale ordnance survey maps the finest book to the district in my opinion is a 'A Walkers Guide to the Upper Derwent' by Norman Sanders and published by the Peak Park Planning Board 1984, unfortunately now out of print. This book ought to be reissued an absolute gem. One could explore the delights of the upper Derwent Valley forever. The river scenery around the Westend Valley and Abbey Brook, plus to trace the source of the River Derwent at Swains Greave beyond Barrow Stones make for exciting trips into the hills. Magical names abound in this landscape Margery Hill one of the high points in South Yorkshire. Crowstones Edge, Feather Bed Moss, Wilfreys Edge, Gravy, Howden, Black Clough, Fagney Clough and Cranberry Clough to name just a few. Hereabouts the mountain hare runs freely. You may stumble across sites of old grouse shooting cabins tucked away into the folds of the hills. Secret springs such as Lord Edward Howard's spring in lonely Broadhead Clough offer nectar from the Gods. A stroll around the heights of Derwent Edge make for a good days outing. Gritstone outcrops dominate the skyline such as the Hurling Stone, the Wheel Stones often called the Coach and Horses). The Salt Cellar, Cakes of Bread, Lost Lad and the fine escarpment of Backtor. Here the views are breathtaking and would even rival the Lakeland fells of Cumbria. The biggest landslip in England can be traced at Alport Castles. These weird shaped rocks over look the Snake Ashop Woodlands Valley and the heart of Alport Dale. Sprinkle the whole region with even traces of remnants of crashed aircraft from the second world war, lying rusting to the elements, plus teeming with wildlife to interest the bird watcher. The whole area can offer delights for everyone. It only seems like yesterday when the whole region was strictly private land and forbidden to the hillwalker. The Peak Park Authority has

certainly done a grand job in negotiation for access since the early days of 1951. These grand hills are often prone to weather changes, so always be well prepared and remember to leave word of your intended route, honour the country code and enjoy your day around God's own country.

John C. Barrows.



## Transport 17

A small number of people attended the A. G. M. on 24th March. Passenger numbers improve and we are well on the way to the purchase of a new bus. This is all down to a great deal of hard work by the Committee and staff of T. 17. However, we are still in need of more helpers especially as holidays are coming up. With this in mind it would be very helpful if Club organisers could let Michael Finn (2362962) know of their outing needs well in advance as often the normal club times and bus trips will need to be amended.

One of the "Wishes" for Topley was that our office was manned all day. I wish we could do this but it is just not possible. We are out and about on all three buses every day taking many passengers and doing many miles. However, we do have an answer machine service.

Don't forget the Coffee, Cakes and Cuttings morning at the Catholic Church, Baslow Road. This is on Saturday, 17th May at 10am till noon. This is a real local social event. We are all very grateful at T. 17 for all the hard work and funding that people from this area donate to us and this is one of the best and friendliest. On Saturday 21st June we will be having a China and Glass sale at our office. This is at 172 Baslow Road, Topley. It will be from 10am till noon. Entry is 50p and includes refreshments. May I ask people not to bring items on that morning but to get in touch with the office beforehand. Look forward to seeing you and to sunshine!

Many thanks to Don Allot of "Fred and Gingers" for his donation of £110.

This was from the sale of poems called "Voices and Verses". These can be bought from our office for £2-00 a copy.

Best wishes, Margaret Barlow.



**MEN ONLY!**

If you live in South Yorkshire and are a man aged 60-64, you are eligible for a Senior Citizen Pass from 1 April 2003.

From that date you will be able to travel for the concessionary fare of 35p on local buses, trams and trains with the pass. You can apply by visiting a

Transport Executive Travel Information Centre.

**Don't forget to bring along proof of your age (birth certificate, for example) and address, and a recent passport size photograph.**

Your local Travel Information Centres are: -

**Cambridge Street & Exchange Street**

Mon - Fri 0900 - 1700

**Sheffield Interchange**

Mon-Fri 0800-1730

Sat 0830-1700

Sun 0900-1700

## STUART FORDHAM

### The Sad News

On Monday, 7th April, Stuart Fordham retired from his business, S.E. Fordham Opticians, on Totley Rise. Unbelievably, he had been in those premises for just over twenty-five years, since 1st December, 1977. He took over the shop from Mr. Damms, the Shoe Repairer and a Ladies Hairdresser in the back rooms.

Coincidentally, he had opened his first business also on 1st December, but in 1971, in Mr. Gent, Opticians, old shop on Spital Hill. He ran this, along with the Baslow Road shop for many years until the whole block was disintegrating rapidly and when the long promised grant from the Council fell through, he very sensibly sold the Spital Hill shop and concentrated on the business in Totley.

Stuart also, single-handedly, ran the Low Visual Aid clinics at the Royal Hallamshire Hospital two afternoons a week for twelve years. In August 1996, the hospital, in their wisdom, decided to do it themselves. They trained several people to do Stuart's job, and now have a nine-month waiting list. Stuart's waiting list was four weeks at the most. But there you are - that's progress for you!!!

In 1994, Stuart had the flat above the shop completely renovated and moved into it himself. He has recently had his rural views at the rear somewhat altered with the arrival of 19 detached houses on the late Mr. Thompson's wet cow pasture! At least his view has got to be better than that of the new residents whose outlook is the back of the Totley Rise shops and food outlets!

In May 1997, Stuart was suddenly struck down by the very rare Guillain -Barre Syndrome. Within twenty-four hours he was totally paralysed and spent a day short of a year in hospital. He had to learn how to walk again and spent six months convalescing at his parents' bungalow before returning home in November 1998 and coming back to work on a part-time basis. His courage at that time was something to be admired. The Staff on his Ward at the Royal Hallamshire Hospital were in tears when he finally left them. It needed a lot of determination after that to get himself back to work, but he made it in the end.

His own patients were delighted to see him back. Many had been coming to him for years, and some even travelled across from the Spital Hill area when he closed that shop.

Stuart certainly deserves to enjoy a long and happy retirement, and I am sure we all wish him well and thank him for his twenty-five years of excellent service.

### AND NOW THE GOOD NEWS!

Fortunately, 63 Baslow Road, Totley, will not become a Building Society, Offices, or a Take-away. It will remain an Opticians in the very capable hands of Martyn Kemp, who has nine other practices in the Sheffield and Rotherham area. Martyn and Alan Forster will be sharing the job of Optometrist at Totley. I have worked with them both for two weeks and can highly recommend them. And apart from a lovely selection of frames, you will also be able to purchase contact lenses and the cleaning solutions that go with them. Diabetic screenings will continue and there will also be a Domiciliary Service to provide sight tests in the home for those who are housebound. If you were a patient of Stuart Fordham, your records are still there safe and sound. If you weren't, why not give Martyn Kemp a try.

Kate Reynolds

## Christian Aid

### Sheffield Walks

#### May Day Trek 2003

This year's May Day Trek on Monday 5th. May, gives a choice of two routes. Both start and finish at Dore. The shorter route (approximately 7.5 miles) goes through the Limb Valley, Houndkirk, Hathersage Road, Blacka Dyke, Old Hay Brook and Whitelow Road returning to Dore.

The longer route (approximately 10 miles) follows the shorter route to Houndkirk3 with an extra loop, crossing the moor down to Longshaw and then back via Fox House, to rejoin the shorter route at Blacka Dyke.

#### Night Hike

This will take place on Saturday 28th. June and will be a circular walk from Lodge Moor via Hathersage1 (approximately 17 miles).

***Please support the May Day Trek and help build peaceful communities.***

Rev David Jardine

Chair of Christian Aid Walks Committee

### The Beauchief Ladies Group

The Beauchief Ladies Group was formed by ladies from Beauchief and Totley in 1983 who quickly realised the valued assistance of their menfolk! Over the years the group has raised £77,000 for Weston Park Hospital.

This has been achieved by holding Coffee Mornings and Afternoon Markets, and donations have been received in lieu of funeral flowers etc.

St. Gabriel's Dance Class and many individuals support the group.

Last year they bought for the hospital a Volumetric Pump, special cushions for use in wheel chairs and the new Tympanic thermometers at a total cost of £3379. Funding has always been given to purchase items of equipment which will benefit cancer patients - nine Clinirest Electronic Bed Systems for gravely ill patients have been purchased, Syringe Drivers etc.

Their next fund raising event will be a **Coffee Morning at the Beauchief Hotel from 9.30 a.m. to 11.30 a.m. on Wednesday 11th June 2003.** Admission 80p includes coffee and biscuits and there will be stalls of cakes, bric-a-brac, craft goods, jewellery and a raffle. The group is indebted to the Beauchief Hotel for their help with this.

### COFFEE, CAKES and CUTTINGS.

This annual event will be coming round shortly. The actual date is Saturday May 17th - 10 am to 12 noon. As usual it will be held at English Martyrs Church on Baslow Road.

The main beneficiary will be Transport 17. We shall be grateful if you could plant a few extra seeds and produce some plants to sell. We are also in need of books and bric-a-brac in good condition.

Items can, if necessary, be collected by phoning :-  
2367176 or 2365313.

John Artindale



**Bill Allen**  
J.I.B. APPROVED  
**ELECTRICIAN**

HOUSE REWIRING SPECIALIST

FREE SAFETY CHECK  
AND QUOTATION

EXTRA PLUGS - LIGHTS

REPAIRS

AUTOMATIC OUTSIDE LIGHTS

FOR FREE FRIENDLY  
ADVICE  
RING

**TOTLEY 262 0455**

**R Rose & Co**

Chartered Accountants and  
Business Advisers

*Specialist at looking after the  
affairs of small business.*

For a free initial consultation contact

**Roger Rose FCA**

621, Chesterfield Road  
Woodseats  
Sheffield S8 0RX

Tel: 0114 281 2331

Fax: 0114 281 2171

Email: [roger.rose@virgin.net](mailto:roger.rose@virgin.net)

**ELECTRICAL  
REPAIRS**

City & Guilds  
Qualified

EST. 1969

City & Guilds  
Qualified

**HOOVER, HOTPOINT, SERVIS etc:**

- FRIDGE / FREEZERS & COOKERS
- AUTOMATICS & TWIN-TUBS
- TUMBLE-DRYERS
- DIY SPARES

*Don't leave it until it's too late!*

Phone Sheffield:  
**274 8751**  
55 Cobnar Rd  
Woodseats  
Sheffield  
S8 8QA



Engineer Direct:  
**07885  
721123**  
(Mr. D. Elwood)

**FREE ESTIMATES!  
NO CALL-OUT CHARGE!  
12 MONTH GUARANTEE!**

**WOODSEATS DOMESTIC APPLIANCE REPAIRS**

**ADVERTISING**

I seem to remember that a few years ago there was some comment about identical illustrations in travel brochures being used for different holiday locations. I wonder how many readers have noticed this happening in our local free magazines. My wife first mentioned this in a rather unusual way. She is a Sheffield lass whereas I lived in Mexborough, a small town on the Sheffield to Doncaster railway line. After we were married we rented accommodation there for a couple of years so she had more than a passing acquaintance with the town. Now back to the present. One day she drew my attention to a large coloured picture of a very elegant looking lady advertising a dress shop in Mexborough. Now, in no way can the shopping facilities in Mexborough match that sort of Oxford Street elegance and we exchanged comments to that effect. Later in the magazine exactly the same illustration was used for a different shop (this one in Sheffield). As a result of this I have almost a fixation for finding the same illustration used by different advertisers.

This has recently had me wondering about advertising in general, particularly about the cost and work devoted to it. Recently we have been involved in replacing an old boundary hedge in our garden with a fence. We want this to look nice, not just to be a boundary marker, so we have been looking around. The most useful brochure we have is not coloured, contains 38 pages of diagrams of styles, sizes and prices. It looks as though it had been produced on a simple typewriter with hand drawn illustrations, but is full of useful information. We are also considering replacing our garage door and again I noticed an advertisement for a SALE by a supplier, again in the local free magazine. This was a full-page coloured advertisement listing styles and sizes with normal and sale prices and numbers available. Very impressive and helpful you might think. When the identical advertisement with exactly the same information appears in later monthly editions does it imply none have been sold in the time between? Almost as blatant as the T.V. adverts for furniture sales which, week after week "must end at 5p.m.on

Sunday". I suppose that could be true if which Sunday is not specified.

Car advertisements I find particularly annoying, from the scantily clad females draped over them at the motor show to the unwanted and non-informative brochures which must make the postman's lot "not a happy one". We only once saw a camera crew in action though we never saw the finished article. We were walking in the lovely Glen Affric in Scotland when we stopped a while to watch the fun. We saw a car with a camera mounted on a bracket projecting low down from the side of the car, driven near the edge of a dam wall. What we saw must have cost thousands of pounds. I wonder if this wonderful location was also depicted as a non-descript monochrome "could be anywhere" image?

I must confess I find many current T.V. adverts leave me cold. I find I cannot fathom what they purport to advertise, and I don't think this is all attributable to old age and failing eyesight.

Although I have waxed critical of the current advertising industry I must admit a few have amused and been remembered. The first I recall from about the 1920-1930 era was for ROP petrol at 11.5 pence per gallon I have no idea why, my family did not have a car, and I had no idea it stood for "Russian (or was it Rumanian?) Oil Products." Of course, in those days many advertisements were on specially constructed boardings. I wonder when I last saw a bill poster at work, long handled paste brush in one hand, a large flapping section of a poster in the other hand, wobbling high on a ladder in a cold wind. I guess papering the family bedroom was a doddle to him after that.

Of more recent vintage two T.V. adverts come to mind- the chimpanzee family advertising tea and the lass with the Yorkshire (?) accent in the gondola in Venice. And now I can't remember, was she promoting cornetto ice creams or some brand of beer?

Ah the power of advertising!

Don Ashford

## ONWARDS AND UPWARDS

My companion and I look up at the proposed ascent. Not a word is said.

I am apprehensive. I know that soon I shall be climbing up this rocky face, out of breath, my legs and arms aching, and regretting the decision to scramble up this way once again.

My companion is eager to go. He always takes the lead initially. He has far more energy. He is more surefooted on the loose rock. He moves forward and appears to glide effortlessly up the first pitch. Somewhat reluctantly I follow. Before my breathing becomes laboured and audible, I hear the rope that binds the two of us together singing as it slides past the metal fastening. The rope is thin nylon cord. However it is surprisingly strong; it has to be in order to withstand the sudden stresses when my companion pulls when he considers that I am moving too slowly.

Even though I have difficulty catching my breath and my chest is hurting, it is a matter of pride for me to try to match the speed of my partner.

He selects a ledge where he waits for me from whence he can survey the scene. He does not deign to watch me struggling up towards him. He is too interested in looking out for mammals, birds and even insects. Sometimes he will utter a snort of delight as something in particular catches his attention.

So interested is he in focussing on some animal on the hillside that he will allow me to lead on the second pitch. But he becomes impatient with my progress and soon he is in the lead again. After a short respite it is not long before I am rasping again. I am not fit; I regret having had that last pint (or two) last night. There is a flurry of loose stones to disturb my reverie and still we reach upward.

At last we reach the top. Immediately I have forgotten the discomforts. The pain was all worthwhile.

We look down over Totley. **Where am I?** Rock-climbing with a friend in Derbyshire?

No! I have been taking our dog for a walk up Little Poll's Lane, Totley. At the moment he has to be retained on his extender lead.

Peter W. Davis

## Reply to P Todd (April Issue)

I agree with you wholeheartedly on 2 issues. The first one being the Greenways sign being an eyesore, the other which is dog mess. Yes, people should clean-up after their dogs but unfortunately this will be an ongoing thing as you cannot educate every dog owner on this important health and safety issue. If a dog was to foul my premises then, yes, I would feel it my responsibility to clean this up as if left could cause a health hazard. As the Animal Hospital is used by members of the public I feel it is their duty to check to make sure the premises are clean. The other issue regarding the fencing, bank and the trees are all the property of the Animal Hospital, therefore, it is up to them to make sure the fencing is safe as there are 8 broken or missing rails. It was part of the planning concept that the bank should be landscaped and maintained, the trees that have been trimmed should surely by now have been cleared away by them.

Hope this clears a few matters up.

M Marshall

## WHAT'S THE DIFFERENCE

### ROMANCE MATHEMATICS

Smart man + smart woman = romance

Smart man + dumb woman = affair

Dumb man + smart woman = marriage

Dumb man + dumb woman = pregnancy

### OFFICE ARITHMETIC

Smart boss + smart employee = profit

Smart boss + dumb employee = production

Dumb boss + smart employee = promotion

Dumb boss + dumb employee = overtime

### SHOPPING MATH

A man will pay £2 for a £1 item he needs.

A woman will pay £1 for a £2 item that she doesn't need.

### GENERAL EQUATIONS & STATISTICS

A woman worries about the future until she gets a husband.

A man never worries about the future until he gets a wife.

A successful man is one who makes more money than his wife can spend.

A successful woman is one who can find such a man

### HAPPINESS

To be happy with a man, you must understand him a lot and love him a little.

To be happy with a woman, you must love her a lot and not try to understand her at all.

### LONGEVITY

Married men live longer than single men do, but married men are a lot more willing to die.

### PROPENSITY TO CHANGE

A woman marries a man expecting he will change, but he doesn't.

A man marries a woman expecting that she won't change, and she does.

### DISCUSSION TECHNIQUE

A woman has the last word in any argument.

Anything a man says after that is the beginning of a new argument.

### HOW TO STOP PEOPLE FROM BUGGING YOU ABOUT GETTING MARRIED

Old aunts used to come up to me at weddings, poking me in the ribs and cackling, telling me, "You're next." They stopped after I started doing the same thing to them at funerals.

## TOTLEY SCOUT NEWS

The enrolment forms are going out for the Totley Scout lottery 2003.

If you have not received one please ring Peter Casson on 236 3881 and I will do the paper work and contact you later.

The next Antique Fayre at St. Johns' Church Hall for the 1st. Totley Scout Group will be on **Saturday June 21<sup>st</sup>. 10-00 a.m. to 4-30 p.m.**

Peter Casson

## GARDENING TIPS FOR MAY

What did I tell you April can be a bit unpredictable weather wise. We have nearly three weeks of lovely sunshine then the wind turns eastward and with it comes cold and frost which can nip the new buds which have been encouraged by the good weather, I hope you haven't lost much in your garden or greenhouse. My garden certainly looks colourful at the moment, mid April, with several different kinds of daffodil and narcissi nodding their heads, one or two tulips showing their colours, the blue clouds of forget-me-nots spreading everywhere. The pond corner is looking good (with the help of good friends) tadpoles in abundance, the two goldfish have survived the winter and come to be fed when I knock the edge of the pond. I am waiting to see which flowers have survived there was thick ice over in January so I may have lost one or two as I did not practice what I preach and protect them over winter. The greenhouse is looking busy with fuschias and geraniums and other plants waiting to go into hanging baskets or to be planted out. It's nice to see the greenhouse and cold frame full to bursting with promise of all the colour to come. My small veg patch is prepared ready and my onions are getting itchy feet to grow and expand ready for the Totley Show on the 6th SEPT. They should be growing well by the time you read this, (I hope) the veg plants are looking healthy and will be going out soon. I am looking forward to seeing the plot looking full. Nothing like nipping up the garden and pulling your own veg to go straight into the pot, they don't come any fresher than that. The apple trees are just coming into blossom, I'm keeping my fingers crossed that the frost does not nip them off. I can't cover them up they have to take whatever comes, I planted a new batch of raspberries (3 kinds) they don't look very happy at the moment despite being mollycoddled over the last few months, pity. I was hoping to have some fit and healthy ones ready to fruit next year, all these things are sent to try us gardeners. Lots to do in May so get cracking.

### FLOWERS

Prepare beds for summer flowers whilst hardening off the plants. A dressing of Growmore or your favourite fertiliser will give young plants a good start. Water??? if necessary any new plants. Liquid feed container grown plants, take out bulbs which have finished flowering and place them in a trench, out of the way and cover with soil, so that leaves can die back naturally. Stake & tie up Sweet Peas, keep them well mulched. Plant out Dahlia tubers, protect shoots from frost. Give Roses aspray of fungicide to prevent blackspot mix a bit of insecticide with it if aphids are present. Plant out seedlings of hardy perennials, place them in a nursery bed where they can grow undisturbed during the summer. It's a good time to plant up window boxes, hanging baskets, tubs etc. If you can keep them under cover they will be nicely established when it's time to put them out later. Trim Aubretia to prolong the flowering period and top dress with fertiliser. Pinch out the growing points of herbaceous plants such as Phlox, Michaelmas Daisy and Golden Rod. Use your favourite slug bait around tender plants. Sow hardy annuals such as Clarkia, Cornflower, Calendula, Candytuft, Godetia etc.

### VEGETABLES

Earth up potatoes, support peas and runner beans. Thin out carrot, lettuce, parsnip, turnip and spinach seedlings. Keep all crops well watered. Harden off indoor raised vegetables and salad crops. Clear remains of spring greens and prepare bed for leeks. Prepare mounds for planting out courgettes, marrows pumpkins etc. Sow succession sowings of beet, carrots, peas, broad beans, also lettuce, salad onions, radishes and parsley. Sow sweet corn mid May, better results are obtained if they are planted in square pots rather than straight rows. Plant out winter greens, particularly brussels sprouts and cauliflower. Runner beans can be planted outdoors, put 2 seeds together, if both germinate single out later. At the end of the month sow vegetable marrow and ridge cucumber outdoors. They are best grown on a mound, I use 2 bales of straw with a good rich compost between, this keeps them warm & moist and slugs are kept under control better. Watch out for pests and diseases and deal with them early, they may get out of control otherwise.

### TREES, SHRUBS & FRUIT

Mulch round fruit tree bushes & raspberry canes with well rotted manure or~ compost, this helps retain moisture, keep down the weeds, and gives them nourishment. If apples & pears are in fruit, full ringing might help. This involves cutting through the bark so far round the tree trunk, see your

gardening book for exact details or call in the library Spray pears with fungicide if scab was a problem last year, add an insecticide if caterpillars are about. Start to pick gooseberries, thinning out so that the remainder can develop evenly alongside the branches. Keep all fruit well watered. Prune overcrowded raspberry shoots. Summer prune vines. Keep newly planted evergreens mulched and spray with water, especially on hot days. Remove any suckers from trees & roses. Trim over & top dress heathers after flowering. Give your eracacious subjects a treat with Iron Sequestrine plant tonic. Plant out tender shrubs like fuschias and hydrangea. Prune spring flowering shrubs such as flowering currant, forsythia, willows & dogwood. Trim back dead shoots on Rose of Sharon.

### GREENHOUSE & INDOOR PLANTS

As the sun gets stronger it is imperative that you shade & ventilate carefully, Begonias and Gloxinias, in particular enjoy being shaded. Watering will also have to be increased particularly with cucumbers and tomatoes, check them everyday.

Pot on Pelargoniums and other greenhouse plants which were struck earlier. Allow Nerines, Arums, Freesias and Lachenation to go to rest by gradually reducing moisture and place them in a sunny part of the greenhouse, this will ripen the bulbs ready for a good show next season. Don't forget to pollinate tomato flowers, use a soft brush or a rabbit's foot and gently take the pollen from flower to flower. Train and feed cucumbers and melons. Sow a few seeds of Cinerarias if you want to have plants in flower by December. Water freely and liquid feed plants including any which have been in their pots for a month or more. Take cuttings of most common house plants, sow flowering pot plants like Browallia, Indoor Primula, Calceolarias, Cinerarias, Ornamental Peppers & Cacti. Pot on seedlings & cuttings, and once again, watch for the pests and diseases and deal with them promptly.

Watch your weather it can still turn quite cold at night so keep your heaters at the ready.

### LAWNS

Give weedy lawns a dressing of lawn sand. Keep new lawns well watered. Top dress joints in new turf, regular cutting at medium height is better than cutting the grass bald.

Some of you may have noticed I haven't mentioned the Totley Show this month. I thought I would give it a rest, most of you know what's required and no one's going to beat my onions anyway, (now there's a challenge).

Cheerio for now,

Tom Busy Bee.



# Spotlight on

## Peter Casson

### How long have you lived or worked in Totley?

I started my electrical apprenticeship with Mr. Whalley in December, 1958. In February 1970 Mr. Whalley was asked to help organise electrical work on the Manchester Airport extension. My wife Beryl and I bought the business from Mr. and Mrs. Whalley as from February, 1970. So I have had a total of 44 yrs here so far.

### What do you like about the area?

There are a lot of interesting people in and around Totley. A lot of them give their time to give talks, show slides, take part in plays, shows, exhibitions, sport and youth organisations. There are many things that we can participate in, and many people do.

### What would you change if you could?

Nothing really. For better or worse, change is continuous. Some things we like and others we may grow to like. The guardians, when change is due, do the best in their time.

### What do you consider to have been your greatest achievement so far?

I think my greatest achievement was to walk the Pennine Way in June 1986. Alan, my wife's brother, and I walked around Kinder Scout for six months over the winter and I'm sure that helped us to complete the walk. We spent two very strenuous weeks carrying our camping gear, tent, cooking equipment and food from Kirk Yetholm to Edale. Our families met us in Edale car park and as we walked across to them our Andrew, who was seven years old, said "Are you sure that's my Dad?" Unshaven for two weeks we must have looked like a couple of vagrants!

### What gives you hope and encouragement?

To see the face of a youngster persevering with a difficult job, then to watch them with that smile of success. That is hope and encouragement that they will continue to learn, and to do, incorporating what we have taught them. Teach them well!!

### Which historical event would you like to have witnessed?

I would love to have witnessed the building of a pyramid, with all the internal detail and alignment with the stars etc.. I think it may be comparable to us putting a man on the moon.

### How do you spend your spare time?

We still like to spend time hill walking. I'm now on my fourth pair of boots, maybe my last pair? We have also been learning ballroom dancing for almost five years. It's not as easy as walking, but great music, new friends, and still getting exercise in dry conditions during the winter. We danced in Blackpool Tower Ballroom last year to the Wurlitzer Organ. [I still think a warm day at Kinder Downfall is best, but don't tell Beryl I said that!]

### What was your best holiday?

My best holiday was in Switzerland with Beryl and our son Andrew when he was eight years old. Based in Murren we wandered around the mountains for two weeks. The sun was shining nearly every day, great memories as always when the sun shines.

### Where in the world would you most like to visit?

I would like to visit St. Petersburg. I have read a little and seen a lot on television about the city and always say at the end of the programme, "we must try a visit before we get too old to walk".

### What are your favourite book, film, music, or painting?

My favourite book is "The Flight of the Condor" by Michael Andrews. It's a wildlife exploration of the Andes, a wonderful documentary with some 80 pages of photographs and 70 written pages. With so many rare pictures from Cape Horn to the north west Amazon, what a brilliant time these guys must have had. Sea level to 15,000 feet, certainly no picnic.

I like most music, but Bruch's violin concerto after some 30 years is still my favourite.

Every musical film from 1950 onwards is a joy to listen to and sing in the bath!

We love to spend time looking at paintings. Art is a gift I fully appreciate but can only stand back and admire.

### What is your most treasured possession?

It is only a little treasure. I played cricket for Richmond College for over 20 years, Norton and District league. At a game at Coal Aston, fielding at silly mid off and at point, I took four lucky catches and the team presented me with a 4 inch high shield to remember the occasion, a once in a lifetime thing,

---

Apologies to Amanda Hardwick, who answered questions for our March Issue Spotlight, by not saying that she has been a loyal Secretary to the TRA since 1988. Many thanks Amanda.

## State Registered CHIROPODIST

Clare Atkinson BSc (Hons) MChS  
At

Greenways  
Natural Health Centre  
180 Baslow Road, Totley

For an appointment please phone  
(0114) 236 0890

## HORIZON ELECTRICAL

FAULTS, REWIRES, SOCKETS, LIGHTS,  
COOKER POINTS, ELECTRIC SHOWERS  
and SECURITY LIGHTS

**NO JOB TOO SMALL.**

FOR FRIENDLY ADVICE  
PHONE TOTLEY **2364364**  
MOBILE **0776 503 6849**

## The Ladybower Challenge Walk 2003

Do you enjoy walking in the beautiful Derbyshire countryside? Well, King Egbert School Association, is organising a 26 mile Challenge Walk on Saturday, 28<sup>th</sup>. June. It will start and end at our Wessex Building on Totley Brook Road in Dore, going out to Ladybower Reservoir via Burbage Rocks, and returning via Hope and Grindleford Cafe, where the main walk ends and lifts are available back to school.

There will also be a short walk of about 14 miles for those who don't wish to do the full walk. The walk is part of the parent-teacher association fundraising effort, and for the entry fee we provide:-

- checkpoints en route with free cold drinks
- free travel from checkpoints back to the finish for walkers wishing to retire
- a certificate if the walk is completed in 12 hours
- a ploughman's platter and tea at the finish point
- First Aid personnel in attendance

For both walks, it is up to you to decide on your route, but you have to check in at the checkpoints. The cost of the walk is £7.00 (£4.00 for under 18's), and £8.00 on the day. Badges and T-shirts will be available at extra cost, please see application form. Under 16's will have to walk with a responsible adult and under 18's need written parental consent.

For further information or application form please send a SAE. to Walk Organiser, K.E.S.A., King Egbert School, Furniss Avenue, Dore, Sheffield, S17 3QN.

good sound common sense. Of course he is writing from the standpoint of a Jewish teacher and his theological training shows through his writing. Nevertheless he is concerned about ordinary everyday issues. He is concerned about "the Family" and that covers all of us for we all belong to a family. He is concerned about moral issues and about finding happiness. He is concerned about war and peace, indeed he is concerned about everything which we might read about in our newspapers today.

You might think that it is strange for a Christian to extol the writings of a Jew but the book is about life and the way in which we respond to the issues which confront us. Have a read. You will find it easy-going. The "chapters" are very short - few more than 4 pages. Even if you don't read the whole book you will find that each chapter stands alone and so you can pick and choose. I will have returned the copy to the library by the time you read this!

Maurice Snowdon

## T.O.A.D.S SPRING PRODUCTION

Just a reminder that "Kindly Keep it Covered" will be at St. Johns Church Hall, Wednesday to Saturday, May 14<sup>th</sup>. to 17<sup>th</sup>.th. at 7.30p.m.

It is a very funny comedy by Dave Freeman and should be worth £3 or £2.50 of anybody's money.

Tickets from any member, or from me, Kate Reynolds, on 2366891

## A Good Book.

The Totley Independent does not often carry book reviews but this one is special. A new book in large print is "Celebrating Life" by Jonathan Sacks. It was actually published in 2002 but the copy I borrowed from the local library was being borrowed for the very first time. Jonathan Sacks is the Chief Rabbi and is well known for his occasional broadcasts and newspaper articles.

The reason I thought it was so special is that it was full of

## RED NOSE DAY

Red Nose Day for Comic Relief was a great success at Totley Primary School. Sales of noses,, together with a sponsored head-shave and other events raised a whopping £920.00!! Our thanks go to Mr. Bums (Manager of Co-Op Store), Mr Martin (Martins Newsagents), Claire and Diane (Millhouses Park Cafe') and Dobcroft Junior School, who all sold noses on our behalf. A big pat on the back to all who helped in any way.

A.R.Miller

### Eyes in Focus with



**MARTYN  
KEMP  
OPTICIANS**

Now open at 63 Baslow Road, Totley Rise, Tel: 236 4485  
(Formerly Stuart Fordham Opticians)

- Eye examination & sight testing, also Diabetic screening
- 100's of Spectacle frames from budget to designer names
- Wide range of lenses available
- All types of Contact Lenses, check-ups, fits & solutions
- Low vision aids; Ready readers; Dietary supplements

### Local for all things focal

Also at 739 Abbeydale Road, 255 6554; Shirecliffe; Woodhouse; Stocksbridge; Walkley; Firth Park; Manor; Rawmarsh & Rotherham town centre  
Website: [www.mko.co.uk](http://www.mko.co.uk) Email: [martyn.kemp@mko.co.uk](mailto:martyn.kemp@mko.co.uk)

### WIZZ KIDS PRE-SCHOOL and Friends.

With our strong links with other providers we can offer a full and flexible childcare package all within the Totley community.

PRIME SITE (grounds of Totley Primary)

OFSTED APPROVED

FREE PLACES FOR 3 +4 YEAR OLDS

SMALL AND FRIENDLY

Baby places available through S.M.I.L.E.Y. C.S.G

Childcare and Education for 2 - 5 year olds.

(Sessions and full day care available)

Early Bird, After Nursery and Holiday Care for

children attending 'Little Saints Nursery'

Early Bird, After School and holiday care for

children 4 - 11 years at either Wizz Kids or

Totley After School Club.

8a.m - 6p.m  
50 weeks a year



For further information on any of the above please contact Alison Vickers at Wizz Kids 2364319

NOW AVAILABLE FOR  
CHILDRENS PARTIES

## Land of Nod by Hugh Percival

Percival's head hit the pillow and he was in the Land of Nod.

The telephone rang. "This is the chairman of selectors," a voice spoke in desperation. "We want you to fly out to Australia tomorrow and open the innings in the test match beginning at Perth on Friday. A chauffeur will drive you to the airport in the morning."

"Very well" Percival answered nonchalantly. He was well aware that the Aussies had won the first two tests by an innings.

The scene switched to Oz. Perspiring from the heat and lethargic from jet lag, Percival made his way to the wicket in the company of Michael Vaughan. Nasser Hussain had won the toss and elected to bat in ideal conditions.

Vaughan took a single down to fine leg from McGrath's first ball. Percival took guard and prepared to face the next delivery. It pitched short and flew past the batsman's nose to the wicketkeeper. Percival took off his helmet, wiped his brow, replaced the helmet and awaited the next ball. Of full length the batsman cut it hard past third man to the boundary, a risky stroke but perfectly timed. McGrath scowled and unleashed a vicious short length ball which Percival pulled effortlessly to the square leg boundary. The remaining balls of the first over were defended in determined fashion as if the batsman's life depended on the outcome. The umpire called over with the score 0 for 9 in Australian fashion.

Vaughan took two boundaries from Gillespie's first over including a huge six into the stand at mid-wicket. 0 for 19.

The stand prospered, Vaughan making a succession of fluent off drives, on drives and hooks while Percival played several square cuts and leg glances using the pace of the opening bowlers to advantage.

A burst of applause from the crowd heralded the fifty partnership in an hour neither batsman having given a chance.

With the score on 72 Percival gave the first chance, an edge through the slips which the fielder put down. The batsman breathed a sigh of relief. Shane Warne had now come on, his spinners zipping through the air like a top, a new and difficult problem for Percival which he met with a dead bat. Occasionally an odd loose ball was dispatched defiantly to the boundary.

At lunch the scoreboard showed 0 for 108. Percival enjoyed his meal and relaxed at ease.

After lunch both batsman reached fifty and continued regally on their way thereafter. Vaughan was dropped off a difficult chance to short leg and showed his gratitude by hitting Warne for an enormous six over the square leg fielder.

Vaughan reached his century just before tea with the score on 0 for 192.

After tea Percival followed his teammates example, a century in his first test match, in fact his first match in first class cricket.

At stumps the batsmen remained undefeated. 0 for 339. Vaughan 178, Percival 140. The opening pair shook hands with each other and returned to the pavilion to a standing ovation from the vast crowd. The barmy army revelled in their delight. What a day it had been.

The alarm sounded and Percival woke up. He moved his tongue to moisten his mouth dry from the extreme heat. He switched on the radio. England all out 185. Australia 2 for

126. Percival came abruptly to his senses and reality returned with a vengeance. He made his way reluctantly to the bathroom and began his ablutions in solemn mood.

England lost the third test match by an innings in three days. They also lost the fourth test match but did win the last test when Vaughan was proclaimed player of the series. Australia won the series 4-1 and thus retained the ashes.

## PUZZLE CORNER

Answer to puzzle page 3

Answer to Equilateral Triangles.

6	3	15
18 11	12 20	5 7
9 8 16	18 5 10	13 9 11

Don Ashford



"BERT'S TAKING SERBO CROAT  
AT TOTLEY NIGHT SCHOOL!"

## HARD OF HEARING ?

If you need a Hearing Aid, I can cut the cost by 30% or more on prices currently charged by the large Hearing Aid companies.

I offer a first class Hearing Aid service in the privacy and comfort of your own home.

For a free, no obligation consultation and Hearing test, simply phone me:

**Maurice Naylor MBSHAA:**  
**4 Twentywell Drive, Bradway,**  
**Sheffield. S17 4PY**  
**Tel: 2620010**



# The Right choice

## PLUMBING & PROPERTY MAINTENANCE

*Reliable, tidy and competitive*

**Please call**     **on: 07944 715840**  
**Steve**            **or: 01142 620944**

Totley Rise Dental Practice  
 85 Baslow Road  
*Caring for the smile you always wanted*

**Dr. David Igoe BDS**  
 University of Sheffield

- New Patients Welcome
- Emergency Appointments Available
- From 8.30 a.m. Monday to Friday
- Open Until 7.00 p.m. Monday
- *Tooth Whitening*
- *Loose & ill fitting Dentures ?*  
*Telephone for a consultation*
- Extended payment facilities available

Telephone 236 0333

## YOUR PLACE IN THE SUN

Susan Bardell Associates  
Limited

We are specialists in **Spanish**  
**Property** Costa Blanca to Costa  
 Calida – new and resale from  
 £59,000.



Telephone Sue or Terry for a  
 personal service. 0114 235 3713  
 23 Totley Hall Drive  
 S17 4BB

**SHEPLEY SPITFIRE**

KIMBERLEY ALES  
 Tel. CAROL or TONY

**236 0298**

**NEW EXTENSIVE MENU**

**From 10<sup>th</sup>. JUNE**

**MON. to SAT 12 to 2-30**

**& 5-30 to 8-30**

**SUN. CARVERY 12-00 to 4-00**

**QUIZZES + JACKPOT PRIZES ON**  
**THURSDAYS + SUNDAYS**

STONES – CARLING – STELLA

**OPEN ALL DAY**  
**EVERY DAY**

Friends of the Botanical Gardens Sheffield

## MAIN PLANT SALE

IN THE  
**SHEFFIELD BOTANICAL GARDENS**  
 Demonstration Centre Area, Thompson Road Entrance, off Ecclesall Rd

**SUNDAY, 11 MAY 2003**  
**10.30am - 2.30pm**

Thousand of Plants:  
**Perennials, Alpines, Shrubs, etc.**  
 Altered layout due to garden restoration

Information Stand & Sales Tables: Cards, Crafts, Garden Sundries  
 Refreshments  
 Also:

**Evergreen Disabled Gardening Group**  
**Bedding Plants & Hanging Baskets**

Future Event:  
**FOBS AUTUMN PLANT SALE - 14 SEPTEMBER, 2-4pm**



**FUND-RAISING FOR THE RESTORATION OF THE GARDENS**  
 SBG Trust Reg. Charity No. 1057845

*One man went to mow...  
 ...but his mower wouldn't go!*

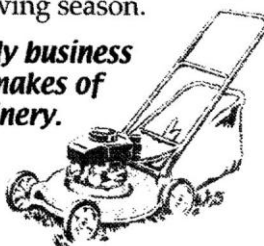
Now is the time to call

## MOWER MENDER

and be ready for the forthcoming  
 growing season.

**A local friendly business**  
**servicing all makes of**  
**garden machinery.**

Phone:  
**0114 236 6958**  
 Mobile:  
**0781 2211149**



**Blade Sharpening and**  
**Collections & Delivery Service Available**



Open up includes

**OVERDALE**  
**POTTERY**

Ray  
 Gridley

Ann  
 Bates

**EXHIBITION PLUS THROWING DEMONSTRATIONS EVERY DAY**

Saturday May 3<sup>rd</sup> - 11 am to 7 pm

*See pots being glazed and the kiln being packed*

Sunday May 4<sup>th</sup> - 11 am to 7 pm

*The big gas kiln will be fired to 1,250°C*

Monday May 5<sup>th</sup> - 11 am to 5 pm

*At 12:30 the kiln will be opened & unpacked*

Address: 129 Prospect Road,  
 Bradway, Sheffield S17 4HX  
 Tel: 0114 262 1122  
 www.overdalehouse.freemove.co.uk  
 e-mail: ray@overdalehouse.co.uk

Public transport: 25 or 25A bus from city centre to Bradway getting off at the 'Old Mother Redcap' pub. Walk down Prospect Road. Overdale Pottery is over the brow of the hill, the first house on the left.

***SWALLOW COTTAGE***  
**TO LET**  
**BEAUTIFULLY RENOVATED**  
**AND**  
**FURNISHED STONE**  
**COTTAGE**  
**ACCOMODATES FOUR**  
**TOTLEY BENTS**

**ACORN ANTIQUES**

ROY and BARBARA C. PRIEST

298 Abbeydale Road

B.A. (Hons) Fine Art

Sheffield S7 1FL

Telephone: (0114) 255 5348

e-mail: info@acomantique.co.uk



**MILLTHORPE NURSERY**

GROWERS OF QUALITY PLANTS  
 Shrubs, Conifers, Hedging, Alpines  
 Herbaceous, Grasses, Topiary

✶ Shrubs from £2.99

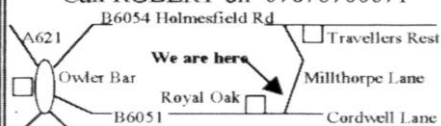
✶ 3ft Golden/Green Laylandii £2.49

✶ Green/Variiegated Privet £1.99

**Open Seven Days a Week**

Trade welcome

Millthorpe lane, Holmesfield  
 Call ROBERT on 07876700071



**K.T.V.**  
 SERVICES LTD  
 skydigital  
**AERIALS AND SATELLITES**

- All Areas - Anytime
- Fast - Efficient - Professional
- Channel 5 - Upgrades - Repairs
- Multi - Point - Satellites - Retuning
- Meter Aligned For Best Reception

**NO CALL OUT CHARGE**  
**NOT VAT REGISTERED**

**OFFICE & EVE 8am to 10pm**  
**0114 258 5181**  
**IMMEDIATE ATTENTION**  
**07930 411337**  
 621 Chesterfield Rd, Sheffield

**E & L WILSON**

**Builders and Plumbers**

**Central Heating,**

**Domestic Plumbing,**

**Glazing, Double Glazing and Glass**

**Home Maintenance**

**uPVC and Wood Windows**

Telephone:-

**(0114) 236 8343**

*Catherine Clarke*  
 M.S.S.CH. M.B.CH.A. S.R.N

*Qualified Chiropodist*

Westfield accepted  
 12 years experience  
 Home visits available  
 Daytime and evening appointments

192, Baslow Road  
 Totley  
 Sheffield  
 S17 4DS  
**Tel: 0114 236 4101**

**BUSY BEE**

D.I.Y. SUPPLIES

170 BASLOW ROAD, TOTLEY, SHEFFIELD S17 4DR.  
 Telephone 2365798

for  
**A COMPREHENSIVE SELECTION OF**  
**D.I.Y., DOMESTIC & GARDENING ITEMS**  
 including

Plywood, Timber, Paint, Hardware,  
 Bowls, Buckets, Mops, Tools, Locks,  
 Composts, Pots, Fertilizers, etc. etc.

**KEY CUTTING SERVICE**

If we do not have your requirements  
 in stock we will do our utmost to  
 obtain it quickly for you



Tel/Fax.  
 (0114) 255 4689  
 Mobile  
 0831 802539

**TRISTAN SWAIN**

**LANDSCAPING AND MAINTENANCE**

72 Nettleham Road  
 Sheffield S8 8SX



**E. J. WRIGHT**  
**JOINERY SERVICES**

All joinery work undertaken,  
 uPVC Windows and doors fitted

Tel: 0114-255-1099

Mobile: 07885-109-502

**M.Scriven**  
 (FRUITERAMA)  
**MARTIN SCRIVEN**  
 HIGH CLASS FRUIT  
 & VEGETABLES

37, Baslow road  
 Tel. 236 7116  
 Orders Delivered



**LADIES FASHIONS**

**SKIRTS, DRESSES,**  
**JUMPERS, T-SHIRTS,**  
**UNDERWEAR etc**  
**ALSO**  
**CHILDRENS WEAR**  
**HABERDASHERY,**  
**WOOL**

**Dry Cleaning, Shoe Repair**  
**& Laundry Service**

**ROSIES**

164 BASLOW ROAD, TOTLEY.  
 TEL: 2621060





**BM Bradway Music BM**

**MUSIC LESSONS**

For enjoyment or examinations  
from beginner to advanced.



*Piano, Electronic keyboard,  
Theory, Harmony, Aurals,*

**Geoff Henthorn GNSM**

For prospectus or further details  
please phone: 235 2575

Mr Robert Colclough  
MSSCh, MBChA, BSc (Hons).

**CHIROPODIST**

*now practicing at*

Faye Catton Health & Beauty  
Totley Rise, S17

Tel no: (0114) 236 0997

*call now for an appointment.*

or call (0114) 235 0256  
for an immediate home visit.

**TOTLEY  
PRIVATE HIRE**

PROFESSIONAL CAR SERVICE  
FOR  
AIRPORTS & LONG DISTANCE  
TRAVEL etc.

**Tel: 0114 - 2361547**  
**Mobile: 07974-355528**



GENTS  
HAIRDRESSING  
**Don Allott**  
*joins*  
**Fred & Ginger's**



Baslow Road  
Sheffield  
Tel No. 0114 2350362

Wednesday, Thursday, Friday  
& Saturday from 9-00a.m. £6-30  
Wednesday & Thursday Pensioners Special £5-00  
Walk in service and appointments available



**SCENICBLUE**  
the complete garden solution

Landscaping  
& Garden Design

**0800 7833428**  
[www.scenicblue.co.uk](http://www.scenicblue.co.uk)

- Patios, Paving, Driveways
- Decking, Fencing
- Turfing, Planting

Sheffield Office:  
Tel. 0114 2562560

Members of  
**BALI**



**CHARISMA  
BLINDS**

For  
Windows  
With Style

Sheffield Factory Showroom  
106 PROSPECT ROAD  
HEELEY, SHEFFIELD

Sheffield (0114) 258 5496  
Rotherham (01709) 512113



**Anton Rich + Associates  
Architects**

Now is the time to plan your  
home extension, or even a new  
home - we specialise in both.

Call us for a chat on  
Sheffield 250 9200

A Member of  
The Association for Environment-Conscious Building

FOR SIX GENERATIONS

**THE LEADING FUNERAL DIRECTORS**

**John Fleath & Sons**

PROMPT and COMPREHENSIVE SERVICE  
AT ALL TIMES

**2 722222**

LIMOUSINES FOR SPECIAL OCCASIONS

Fully Qualified and  
Experienced  
Therapists,  
Specialising in:

acupuncture  
aromatherapy  
chiropractic  
colon hydrotherapy  
feng shui  
food allergies  
homeopathy  
hypnotherapy  
lymphatic drainage  
meditation  
muscle toning  
nutrition therapy  
psychotherapy  
physiotherapy  
reflexology  
reiki healing  
shiatsu  
therapeutic massage  
yoga

**GREENWAYS**  
Natural Health Centre

*Naturally We Care for Your Health*

Specialist Health Food  
Shop:  
vitamins  
natural beauty products  
skin care remedies  
homeopathic remedies  
herbal products  
gifts • books • CDs

Full Disabled Facilities  
Large Car Park

Mail Order Catalogue  
Available - Please Call  
for Details

Fully Appointed  
Rooms set in  
relaxed  
surroundings

Full Information Packs  
available on all  
therapies.

**0114 236 0890**

Fax 0114 236 2142  
[www.greenwaysnaturalhealthcentre.co.uk](http://www.greenwaysnaturalhealthcentre.co.uk)

Membership Facilities  
Now Available!

180 Baslow Road, Totley, Sheffield S17 4DS

# ALL WELD FORGE LTD

Wrought Iron From The  
Millhouses Forge

Gates, Furniture, Curtain Poles, Etc  
Commissions Welcome

**Presented By: Bob & Sue Wells**

**Tel: 0114 2368239 Mobile: 0781 2910565**  
**Unit 3, 300 Archer Road, Millhouses, Sheffield, S8 0LA**

## R.S. Heating & Building Co. EST 1971



**Heating Division**  
Experienced, Qualified Installers of all types of  
central heating.

10 year guarantee on most new gas systems.  
Complete after care service

### Building Division

Joinery, Electrics, Tiling, Decorating Specialists  
in wall tie replacement  
and house Renovations



**0114 236 4421**

HALL LANE BARN, TOTLEY HALL LANE, SHEFFIELD S17 4AA

There's a warm and  
friendly class near you  
where women and men are  
welcome.

Dore Old School DORE  
(Sheffield), Tuesday  
17-30.

The Michael Church,  
LOWEDGES, (Sheffield)  
Wednesdays at 10-00.

Bradway Annexe, BRADWAY, Thursdays at 17-00 & 19-00

Please contact consultant Alison on 01246  
410145 for further details.



## The Cricket Inn



### Penny Lane, Totley

**The Cricket Inn, Penny Lane, Sheffield, S17 3AZ**

**OPEN** Mon. to Fri 11 a.m. to 3 p.m. & 5 p.m. to 11 p.m.

Sat. 11 a.m. to 11 p.m. Sun. 12 noon to 10.30 p.m.

**Food served :-** Mon to Sat Lunch 12 noon to 2 p.m.

Mon to Sat. Evening 6 p.m. to 9 p.m.

Fri. & Sat Evening 6 p.m. to 9-30 p.m.

Sun. 12 noon to 5-30 p.m.

Tel. 0114 236 5256

**Mark & Sally Fletcher invite you to**

## The Grouse Inn

### Longshaw

SHEFFIELD S11 7TZ

**Open for Meals Every Lunchtime**  
**12 to 2-30 pm.**

**Evenings Wednesday to Sunday**  
**7-00 pm. 9-30 pm.**

**Phone 01433 630423**

● Airports & Ports

● Business

● Coastal

● Concerts

● Hospitality

● Entertaining

● Sports Events

## Dore 2000

### Executive Car Service

**Air Conditioned vehicles**  
**for 1 - 6 passengers**

**Telephone available**

**for reservations or estimates**

**Telephone/Fax**

**Gordon MacQueen**

**0114 235 3434**

**Mobile 07711 763 973**

## FUNCTION ROOM FOR HIRE

### for DAYTIME & EVENING PARTIES

WITH  
KITCHEN and BAR FACILITIES

**IDEAL FOR ALL AGE GROUPS**

**HEATHERFIELD CLUB**  
**193, BASLOW ROAD, TOTLEY**

FOR FULL DETAILS TELEPHONE  
**EVENINGS ONLY From 8.30 p.m.**

**(0114) 262 0187**

Creating opportunities with disabled people.

Registered Charity No. 218186

## LEONARD CHESHIRE

Leonard Cheshire Services in Offers choice &  
opportunity to people with disabilities.

A Specialist Unit for the Younger Disabled.

Residential & Respite Care - Single Rooms

Day resources - Aromatherapy -

Reflexology - Physiotherapy - Toning

Tables.

Activities include: - Arts & Crafts -

Computers - Cookery - Shopping

Expeditions - Theatre Outings - Church.

Further details can be obtained from -

The Service Manager, Mickley Hall,

Mickley Lane, Totley, Sheffield S17 4HE.

Tel. 0114 236 9952

Fax. 0114 262 0234

The Care at Home Service supports  
disabled people who wish to remain in their  
own homes.

We provide flexible care packages from  
1 hour to 24 hours meeting individual needs.

The service operates throughout  
Sheffield.

Our service includes: - help with getting  
up and going to bed, dressing, washing,  
bathing, shopping, cooking, light household  
duties.

Further details from: -  
The Care at Home Manager

Tel. 0114235 1400

Fax 0114 235 1499

## TOTLEY & DISTRICT DIARY

<b>MONDAYS</b>	<b>COFFEE MORNING</b> , All Saints' Church Hall, 10am. To noon
<b>TUESDAYS</b>	<b>COFFEE MORNING</b> . Totley Rise Methodist Church Hall, 10am. To noon. <b>CRAFT GROUP</b> , Totley Library, 2pm.
<b>WEDNESDAYS</b>	<b>COFFEE in the LIBRARY</b> , 10am. to 11.30am. <b>MODERN SEQUENCE DANCING</b> . All Saints Church Hall 8pm. to 10pm. <b>TODDLER GROUP</b> . 10-00 a.m. to 11-30 a.m., All Saints' Church Hall. Details tel. 236 6789 or 236 3603
<b>THURSDAYS</b>	<b>PUSHCHAIR CLUB</b> . Totley Rise Methodist Church Hall. 1.30pm.. to 3pm. Tel. 2363157 for further details.
<b>SATURDAYS</b>	<b>MODERN SEQUENCE DANCING</b> . All Saints Church Hall 2 <sup>nd</sup> . And 4 <sup>th</sup> . Saturdays 7.30pm. to 10pm.

### MAY 2003

**SUN. 4<sup>th</sup> & MON. 5<sup>th</sup>. MINATURE TRAIN RIDES**. Abbeydale Road South, first train 1 p.m., last train 5 p.m.  
**MON. 5<sup>th</sup>. MAY DAY TREK. For CHRISTIAN AID**. Details inside.  
**WED. 9<sup>th</sup>. WEDNESDAY FRIENDSHIP**. Jenny & Ian Hardy "Travels in Nepal and India". In the Church Lounge. 8-00 p.m. Totley rise Methodist Church.  
**SAT. 10<sup>th</sup>. SATURDAY NIGHT LIVE.**, Heatherfield Club, Baslow Rd..8-30 pm. Non Members Welcome Entrance £1.50.  
**SUN. 11<sup>th</sup>. PLANT SALE**. Sheffield Botanical Gardens. 10-30 am. to 2-30 pm. Details inside.  
**TUES. 13<sup>th</sup>. WOMEN'S FELLOWSHIP**. Mr.G.Firth "Atkinsons of the Moor" 2-30 p.m. Totley Rise Methodist Church  
**WED.14<sup>th</sup>. TO SAT. 17<sup>th</sup>. "KINDLY KEEP IT COVERED"** by TOADS. St. John's Church Hall 7-30 pm..  
**SAT. 17<sup>th</sup>. COFFEE, CAKES & CUTTINGS**. English Martyrs Church, Baslow Rd. 10 am. to noon. Details inside.  
**SAT. 17<sup>th</sup>. SPRING FAIR**, Dore & Totley URC 10 am to 12 noon  
**TUES. 20<sup>th</sup>. TOTLEY TOWNSWOMEN'S GUILD**, "Ladies Undergarments Past and Present" Mrs. J. Stain. Methodist Church Hall, 10.00 am  
**WED. 21<sup>th</sup>. WEDNESDAY FRIENDSHIP**. Sheila Cooper "My Peruvian Adventure". In the Church Lounge. 8-00 p.m. Totley rise Methodist Church.  
**SAT. 24<sup>th</sup>. SATURDAY NIGHT LIVE.**, Heatherfield Club, Baslow Rd..8-30 pm. Non Members Welcome Entrance £1.50.  
**SUN.25<sup>th</sup> & MON. 26<sup>st</sup>. MINATURE TRAIN RIDES**. Abbeydale Road South, first train 1 p.m., last train 5 p.m.  
**TUES. 27<sup>th</sup>. WOMEN'S FELLOWSHIP**. Rev.C.Kirk "Celebrating a Founder – John Wesley" 2-30 p.m. Totley Rise Methodist Church

### THE INDEPENDENT FOR JUNE

The next issue of the Totley Independent will be available from the usual distribution points on

**SATURDAY 31<sup>st</sup>. MAY**

**COPY DATE** for this issue will be

**SATURDAY 17<sup>th</sup>. MAY**

**Editor** Ian Clarke E mail: [iangclarke@hotmail.com](mailto:iangclarke@hotmail.com)

**Tel. No.** 235 2526.

**Editorial team** Les & Dorothy Firth, e mail [firths@fish.co.uk](mailto:firths@fish.co.uk).

**Tel. No.** 2364190

**Distribution & Advertising**. John Perkinson. 2, Main Avenue,

**Tel. No.** 236 1601.

Items for publication may be left or sent to

2, Main Av., 6, Milldale Rd., Totley Library or V.Martins Abbeydale Rd.

**PRINTED by STARPRINT**

**Starprint**  
 601 Abbeydale Road, Sheffield 7. Fax: 0114 258 8599  
**DESIGN & PRINTING of**  
 • LETTERHEADS • BUSINESS CARDS •  
 • BOOKLETS & PADS •  
 • INVOICES • LEAFLETS •  
 • CARBONLESS SETS • BROCHURES •  
 • RAFFLE TICKETS •  
 • WEDDING STATIONERY •  
 • ENVELOPES & POSTCARDS •  
**SPECIALISTS IN THERMOGRAPHY**  
**FOIL BLOCKING AND ENCAPSULATION**  
**0114 258 0707**  
**For a Quick Quotation**

**B. K. JEAVONS**  
**PAINTER & DECORATOR**  
  
**Interior  
 Exterior  
 Decorating**  
**No job too small.**  
**86, WOLLATON ROAD**  
**BRADWAY**  
**SHEFFIELD, S17 4LG**  
**Telephone 2350821**

### JOHN D TURNER CONSTRUCTION

46, LONGFORD ROAD, BRADWAY, SHEFFIELD 17  
 BUILDING & PROPERTY REPAIRS, JOINERY  
 ELECTRICAL & PLUMBING EXTENSIONS &  
 ALTERATIONS.

**ESTIMATES FREE**

**PHONE SHEFFIELD 236 7594 EVENINGS.**

**JOHN D TURNER (CONTRACTING) Ltd.**