

TOTLEY INDEPENDENT

PUBLISHED CONTINUOUSLY SINCE 1977
DECEMBER 2011/JANUARY 2012

www.totleyindependent.co.uk

No. 349

20p.



A MERRY CHRISTMAS
and a
HAPPY NEW YEAR

Happy posting at Christmas

Everything you need to know to
deliver your seasons greetings



Know your posting dates

Take a look at our last recommended posting
dates in the countdown calendar below:

Last Christmas Posting Dates 2011	
International Surface Mail	
Fri 30 Sep	All non-European destinations except Middle East, South Africa, Far East, the USA & Canada
Tue 4 Oct	Middle East and Far East (except Hong Kong & Singapore)
Tue 18 Oct	South Africa, Hong Kong, Singapore, the USA & Canada
Tue 8 Nov	Eastern Europe, Greece, Cyprus, Turkey, Malta & Iceland
Tue 22 Nov	Western Europe
International Airmail	
Mon 5 Dec	South & Central America, Caribbean, Africa, Middle East, Asia, Far East (incl. Japan), Australia & New Zealand
Fri 9 Dec	Eastern Europe, USA & Canada
Mon 12 Dec	Western Europe
UK	
Wed 14 Dec	Standard Parcels
Sat 17 Dec	Second Class and Recorded Signed For™
Tue 20 Dec	First Class and Recorded Signed For™
Wed 21 Dec	Parcelforce express48
Thu 22 Dec	Parcelforce express24
Special Delivery™	
Thu 22 Dec	Special Delivery™
Fri 23 Dec	Special Delivery™ with Saturday Guarantee

For a full list of last posting dates, please visit
www.royalmail.com/greetings

For British Forces last posting dates, please
visit www.bfpo.mod.uk

And remember, if your card is larger
than 240mm x 165mm x 5mm, then
you need to pay the large letter price.

Green Oak Park Youth Shelter

Interim Review

This is an abbreviated précis of the review.

On June 17 a Youth Shelter was added alongside the M.U.G.A. and the new children's facilities in Green Oak Park. Teenagers were particularly pleased but partner agencies left them under no illusion that their behaviour would be key to its success or otherwise.

Partner Agencies and Stakeholders, including Sheffield Homes, Activity Sheffield, Futures, The South West Community Assembly, Parks & Countryside, South Yorkshire Police, King Egbert Youth Council, the TRA, Friends of Green Oak Park and local City Councillors undertook to monitor the project and asked for an interim review. This took place in October 2011.

Findings of the interim Review were as follows:

- The South West Neighbourhood Policing Team supported this multi-agency approach to community safety.
- There has been a 60% reduction in reported anti-social behaviour relative to the same period last year.
- The local police team have patrolled at various times of the day and night, but have found it to be quiet. They have witnessed cigarette butts and pop bottles.
- Parks have found evidence of drinking, but confirmed no evidence of needles.
- Sheffield Futures reported that the young people they asked were generally positive about the shelter and particularly appreciated something done on their behalf
- King Egbert Youth Council believe the shelter to be a success
- The Friends of Green Oak Park highlighted the increase in litter and broken bottles and question the cost of cleaning. Parks confirms that there has been extra litter but not enough to cause concern.

To conclude, the Shelter has achieved what it was set out to achieve, a meeting point for young people, and has significantly reduced the reports of youth nuisance and anti-social behaviour.

This report does acknowledge that 4 months is only a short period, and that it is unwise to claim anti-social behaviour in and around the park has gone away. A full review at the end of the trial is imperative.

Caroline Jennings, (Safer Neighbourhood Officer)
28th October 2011

SPORTS DAYS IN GREEN OAK PARK

I understand there used to be Sports Days in Green Oak Park some time ago does anyone remember them?

I should be most interested to hear from anyone who has a story to tell about what sports were played. I understand there was a Tug-of-War team, when would that have been does anyone remember this and do you know anyone who took part.

I am hoping to trace the history of Green Oak Park as a member of the Friends Group. I know it used to be a farm at one time around the 1890s before it was taken over by the Council, so any information anyone may have would be most useful, also any photos of Sports Activities they may have I know there was at one time a Cricket Team, Football Team and Tennis was played in what has been turned into the MUGA.

Please contact Marlene. 0114 235 1005



Transport 17

It is the 19th November as I write this contribution for your delectation and what a special day it has been - our Christmas Coffee Morning, which also doubles up as an ideal place to pick up some inexpensive Christmas pressies, has just closed. I did think, at one point, that it was going to be a case of "wherefore art thou our dear and trusted friends and supporters" as we had only had 1 customer by 10.20 but I should have known better and you started to come and buy our goods; not only did we have lots of customers but we had a lovely treat when Les and Dorothy Firth presented us with a cheque from the Totley Show profits for £500. The weather was so good that John Savournin, Wendy Trotter and I were able to receive the cheque outside and have our photograph taken - hopefully Les will be able to submit a copy of the event for inclusion in this edition of the Totley Independent.

We are looking for another driver as regrettably we have lost one of our new recruits due to an unexpected change in his circumstances, so if there is anyone out there who would like to join our happy band we would be happy to receive you into the fold. I would like to close by thanking all of you who have supported us throughout the year and especially our drivers/escorts, as without them there wouldn't be a Transport 17.

I wish you all a happy and healthy festive season and look forward to seeing you in the New Year.

God bless

Felicity Revill



On a bright Saturday morning on 18th. November at Transport 17's Coffee Morning, Les and Dorothy Firth Presented a cheque for £500 to Felicity Revill, John Savournin and Wendy Trotter.

The money was raised at the Totley Show held at Totley Primary School in August and was the result of the Totley Show committee's hard work, the generosity of our sponsors and the support of the people of Totley.
L.F.

Benefit Checks For Older People

If you are aged 60 or over we can arrange to visit you in your home to check that you are getting all the benefits you are entitled to and help with any claims. Are you getting the right amount of money?

Any questions? Please telephone **Woodseats Advice Centre** (0114) 258 4384 and ask to speak to Sue Wharton.

Starry starry nights

Winter has its compensations - among them the clear frosty nights when you can see so many stars punctuating the dark, even at the city's edge in Totley. Easier too, now that Sheffield City Council has decided, after a year's trial period, that the huge lampposts on the Baslow Road out of Totley will be permanently switched off and eventually removed. Local group SPACE - Sheffield and Peak Against City Encroachment - and local people have been pressurising for this result for a long time.

Cast your mind back about three years ago when the lights went up. People knew that the bus terminus was being relocated from its traditional location at the Cross Scythes pub. Many were upset by this. But compounding this upset was the unexpected sight of lines of tall black lampposts hooked over the rural road. This was light pollution and urbanisation of the countryside - and all highly visible from the Peak District National Park.

Council Officers argued that the new 30mph limit on this stretch (reduced from 60mph) was necessary to ensure buses could turn safely out of the new terminus and that the lights were then a legal requirement. Local people objected, and a large petition was presented to the Council. SPACE took advice, wrote, questioned and got the support of many local organisations including the local branch of CPRE (Council for the Protection of Rural England). We spoke and argued at three council meetings, objecting not only on grounds of light pollution and urbanisation, but also because ironically, the road had now become more unsafe with tailgating and dangerous overtaking. Moreover, SPACE proved that Council engineers' own calculations were faulty and that a 40 mph limit at this point was in accordance with Government criteria. SPACE was supported in all of this by two local councillors. We convinced the Council to remove the lights and to make this stretch a more appropriate 40mph. The lights were first switched off for a year on a trial basis, together with the provision of vehicle activated signs for drivers. This has been successful.

Luckily the lights, when finally removed, can be used elsewhere in the city. Removal should be possible when the PFI funding becomes available. We believe this decision is a real victory for the local countryside and for dark skies. What's more, inspired by our campaign, the Peak District National Park Authority asked the public to measure the effects of light pollution and the darkness of the night sky by observing the constellation of Orion (the Hunter). Results should be available soon.

Sally Goldsmith, SPACE, sheffieldspace@gmail.com

Councillor Surgeries

Liberal Democrats:

2nd Monday in the month 6.00-7.00 p.m., Totley Library, Baslow Road and 2nd Saturday in the month from 10.30 a.m. to 12.00 noon, Dore Old School Hall, Savage Lane, Dore Contact details:

Keith Hill 235 2289 Email: keith.hill@sheffield.gov.uk,

Colin Ross 235 1948 Email: colin.ross@sheffield.gov.uk

Joe Otten 230 3290 Email: joe.otten@sheffield.gov.uk

**Totley Independent Website:-
www.totleyindependent.co.uk**

New Discovery Centre invites community into woodlands

A THOUSAND people were joined by the Lord Mayor Dr Sylvia Dunkley to celebrate the official opening of the J G Graves Woodland Discovery Centre at Ecclesall Woods.

The day was a huge success. Families, dog-walkers, nature-enthusiasts, woodworkers, environment groups and artists came together to celebrate the opening of the Discovery Centre on Sunday 30th October.

Children and parents became absorbed in exciting woodland activities; learning how to press apples and make cider, building bug houses, creating seed balls for the birds and experimenting with a range of woodwork activities.

The centre has been built next to the old sawmill, which houses a small cluster of talented wood based businesses. The Sheffield Woodlands Environment Enhancement Project (SWEEP) is also based at the old sawmill. They work with volunteers to improve access in the woodland, as well as creating and maintaining the habitat within the woods. Many others will be working with the Discovery Centre including Friends of Ecclesall Woods, Sheffield's Royal Society for Protection of Birds (RSPB) and independent woodworkers.

The Lord Mayor reflected that it had been a long journey for those involved. She said that in 2006 it had been a "sad looking site". "Someone had the vision to have this area absolutely transformed. The vision was to have a centre that turned the site around and made it look out into the woods and that's exactly what it has done."

The Sycamore Suite and Hectors House are available for education sessions, meetings, events, family celebrations or Weddings. For bookings contact Woodland Discovery Centre staff on 0114 235 6348 or email woodland.discovery@sheffield.gov.uk.



WEDNESDAY DECEMBER 14TH

HEATHERFIELD CLUB 7.30PM

**HISTORY GROUP CHRISTMAS
SOCIAL**

WITH MIKE WILLIAMSON'S

CHRISTMAS DAZZLE SHOW

ALSO FOOD, AND RAFFLE

MEMBERS £2, NON-MEMBERS £3

**COME ALONG AND HAVE A BIT OF
FESTIVE FUN**

FRIENDS OF GILLFIELD WOOD

invite you to a Public Meeting:

OUR LOCAL WOODLAND HISTORY



- An illustrated talk by

PROF MEL JONES

(- nationally recognised authority on Ancient Woodlands)

at 7. 00 pm on Tuesday 6th December

in Totley Library

ALSO – recent discoveries by the group about Gillfield Wood

Entrance free – Donations to our funds welcomed.

Friends of Gillfield Wood are involved, in partnership with Sheffield City Council's Parks and Countryside Department, in voluntary practical activity to protect, improve and learn about this ancient wood.

For further details contact Sally Goldsmith 0779 063 7016.

TRA UPDATE

The TRA are hosting a Christmas Luncheon on Monday 12th December at Totley All Saints Hall for residents over 60. We were successful in gaining funding from the South West Community Assembly. It is an Older Peoples activity grant and totalled £798 to hold a Christmas Party for 40 Older people who are at risk of being isolated from their community. If people would like to attend or nominate someone to attend please call 07709 780606 and Kathryn can give more details. There may even be a visit from Father Christmas!

We think it is going to be a grand event, with entertainment, presents and a full cooked Christmas lunch, and are hoping to extend activities in the New Year. Thank you to the Community Assembly for giving us the opportunity to host the event.

The Logo Competition has been extended to the 2nd December, as we felt that due to Half term, Halloween, Teaching Days, the children had not been given enough time to produce their works of art.

Totley Show's proceeds meant that Les and Dorothy Firth were able to make a donation of £500 to Transport 17.

We would like to give many thanks to Avril Critchley, who this year laid a wreath on Remembrance Day on behalf of the TRA in remembrance of her husband George who sadly passed away earlier this year.

We have many plans for the new year and are looking forward to Spring 2012, when we hope to hold a Farmers' and Craft Market. News to come soon.

Totley Residents Association would like to wish you all a very Happy Christmas and a Healthy and Prosperous New Year.

Hetty Moran. TRA. Secretary

An Accident Waiting to Happen!

I always feel a sense of apprehension when I approach the junction that joins Totley Hall Mead with Totley Hall Lane. If I am coming up the road from our fields at the bottom of Totley Hall Lane I am somewhat more relaxed because there is less chance of being hit by a car exiting Totley Hall Mead than when I am going down the lane. This is not to say that all the cars approaching Totley Hall Lane fail to give way to the traffic on the lane that has the right of way. But sadly a few drivers are not only failing to give way at this junction but doing so in a manner that forces other road users to jam their brakes on to avoid a serious accident. Clearly they have forgotten their Highway Code or are just not watching out for other road users, particularly farm vehicles. I have lost count of the number of times I have had to swerve or brake or both to avoid what can only be described as careless drivers.

On one day this week, Friday 18 November, 2 such incidents occurred. Firstly a driver in a blue car came out of The Mead in front of me without pausing, cut the corner and ended up facing me in the middle of Totley Hall Lane. I had to brake sharply to avoid her, consequently Luke, our Special Needs son, nearly hit the windscreen on our Kawasaki 4 X 4 mule. I noticed as she passed me she was steering with one hand whilst using her mobile phone with the other! Only half an hour or so later another silvery car did exactly the same thing! This time I managed to catch the driver who explained that she had seen me coming but for some unknown reasons (maybe she was late for work?) pulled out in front of me. When I queried this she explained I was going too fast!! My 4 X 4 has a top speed of 23 mph! I was probably travelling at 15-18 mph at the time. If I had been doing 30 mph I would no doubt have hit her vehicle broadside on with the inevitable consequences. One day a car will do the same trick and end up underneath a tractor or telehandler with the driver seriously injured if not killed.

I repeat that not all Totley Hall Mead residents act in this way. Most are very considerate road users and cause no problems.

I have tried to get the Council to either put up a "give way" sign or paint the same message on the road do, to no avail. No doubt we will have to have a serious accident before anything is done.

Edwin Pocock

Music Hall

Vulcan Varieties have just reached their 5th birthday and have a Christmas Special show, appearing at:

- The Gatty Hall, Ecclesfield, on Saturday, 26th November at 7.30pm
- Coal Aston Village Hall, on Saturday, 10th December at 7.30 pm

Tickets available by ringing 0114 243 1339, at £7.50/£6.50 cons.

PUZZLE CORNER

Building up to Pull Apart

Add a single letter at each stage and re-arrange as necessary to form a word to answer the clue.

1. One;
2. Father;
3. Tree juice;
4. Harsh taps;
5. Fruit;
6. Let off;
7. Leaves;
8. Stuck again;
9. Pull apart;

Library Launch at Totley Primary School

Children at Totley primary school could hardly recognise their teachers as they transformed themselves into book characters ranging from Mr Strong and Captain Underpants to Noddy and Big Ears!

The big dress-up, where children also came to school as their favourite book characters was all in aid of the new school library, officially opened by author and poet David Harmer.

Reading is high on the agenda at Totley and months of hard work has proved well worth it as the existing ICT suite has been re-built as a high-tech library resource. This huge overhaul has included buying new books as well as a bank of laptops and wireless broadband connections to enable children to continue to use ICT in classrooms.

Parents and children have donated books and the PTA have purchased the librarian software to ensure that the school can keep track of the books. New seating and beanbags also aim to help children have a positive environment in which to read.

David entertained the whole school with his performance poetry and delivered workshops to all classes and the children created their own poems to be displayed around school. He then officially opened the library in front of the children, staff and parents.

Literacy co-ordinator Nicola Sexton, dressed as 'Mr Strong' launched the school Readathon which will take place over the next few weeks. Children will get sponsorship for the number of books they read and there will be a variety of reading-based competitions taking place.

Headteacher Chris Stewart, dressed as 'Caveman Dave' explained "Reading is such an important skill and this initiative is all about inspiring our children to read. David helped make the library opening really special and the sight of two hundred children and staff walking into assembly dressed as their favourite book characters was fantastic! There's never been so much laughter in the hall! The new library will help us ensure that reading remains high profile across school in the future."

Park and Ride

SYTE have now submitted a funding application to the Department for Transport for the Dore and Totley Station Park & Ride scheme. If the application is successful construction will commence next summer but until such time as the outcome of the application is known the situation remains as at present.



Serenta HomeCare

Are you in need of a little help and support within your own home? The older we get the more help we need to enable us to live a more independent life.

Personal Care • Medication • Domestic • Sitting Service • Social and Leisure activities

**To find out more call Sue 07715 636 395 Pat 07715 634 781
or visit www.serentahomecare.co.uk**

For reference from an existing client please call 0114 2366891

Ward Forum, Traffic Focus Group

20 MPH zones

One of our members, along with our councillors, attended a meeting, set up by this group, with highway engineers, to get more details about 20 MPH Zones & Areas. The meeting was fruitful with details of the differences between zones & areas being explained & also the costs involved.

However, it appears that neither the Government nor the City Council have determined their strategies. The information available suggests that the creation of either zones or areas will be determined by the number of accidents within the boundaries of the chosen areas.

The topic is on the agenda of the next Community Assembly meeting to be held in The Wesley Hall Methodist Church on Crookes, Thursday 15th December, 7pm to 9pm, light refreshments from 5.45pm.

Included on the agenda are also HGV routing & the Sheffield Moors partnership. Any resident is entitled to attend. They appreciate notice of questions before 9 December. The Leader of the Council & other cabinet members will be present.

The Traffic Focus Group were also going to look at the problems of parking in our Ward, but the Councillors are running a survey at present, so we have put that on hold pending the outcome of their survey.

Roger Hart

Traffic Focus Group

The South West Community Assembly Public Meeting and Cabinet in the Community

Cabinet in the Community

Thursday 15th December, 2011, 5:45 – 6:45pm
at

Wesley Hall Methodist Church, Crookes S10 1UD

Cllr Julie Dore, the Leader of Sheffield City Council, and other members of the Cabinet will be in attendance to host a question and answer session with local residents.

Residents are welcome to arrive at the venue from 5:15pm for light refreshments.

If you would like to submit a question to the Cabinet in advance please do so before 9th December. email communityassemblysouthwest@sheffield.gov.uk, or call the South West Community Assembly Team on 205 7212. There will also be an opportunity to submit or ask questions at the actual meeting.

Public Meeting

Thursday 15th December, 2011, 7:00 – 9:00pm
at

Wesley Hall Methodist Church, Crookes S10 1UD

The main agenda items will be a

- Highways Update (including 20mph zones and HGV routing)
- The Sheffield Moors Partnership

You can either submit questions to the South West Community Assembly in advance of the meeting using the contact details above or ask your question during the public questions and petitions section of the meeting.

If you need any help or support to attend this meeting please contact the South West Community Assembly before 9th December 2011

MARTYN KEMP FOCUSES ON THE AIMS OF WORLD SIGHT DAY

When the Sheffield Royal Society for the Blind (SRSB) centre threw open its doors on the recent World Sight Day, one of South Yorkshire's most familiar and reputable optometrists, Martyn Kemp offered free eye checks to more than 40 visitors – including Sheffield's Lord Mayor – to raise awareness that early tests can detect possible visual problems.

International World Sight Day is held annually to focus on the global issue of blindness and visual impairment which can be avoided or detected during an eye test and treated successfully.

Martyn Kemp is the founder and chairman of Martyn Kemp Opticians (MKO) which is South Yorkshire's largest independent firm of opticians with ten practices in Sheffield and Rotherham.

Martyn said: "Good vision really matters. Sight is the sense people most fear losing, yet many don't know the best way to look after their eyes, which is to make regular eye tests part of their healthcare routine – just like visiting the dentist. Unlike some visits to the dentist, however, eye tests are not uncomfortable and can even be life-saving!"



Martyn Kemp is pictured with Sheffield's Lord Mayor, Dr Sylvia Dunkley and Janet Krzbieotka (l) and Tracy Thorpe, who are both senior optical assistants at MKO.

THE FORTUNES OF

Downton Abbey

AND

Totley 1914-18

HAD MANY PARALLELS

Read our Totley village history of this period in

Totley War Memorial WW1 1914-1918

The story of the men from Totley who gave their lives
in The Great War

Published by Totley History Group



Available at Totley Rise Post Office, Seasons and
Dore Post Office price £4.50

Scout Lottery

1st Totley Scout Group Lottery

October Draw

1st Prize No 22
Judge Vista 16cm
Saucepan (by rqst)
Mrs Critchley,
Baslow Road

2nd Prize No 27
£10 Voucher
Mr Bowie,
Sunnyvale Road

November Draw

1st Prize no 33
Trolley type suitcase
set
Mr and Mrs Ruthven,
Meadow Grove

2nd Prize no 44,
£10 voucher ,
Mr J.Westnedge
Green Oak Avenue

Thank you
Pete Casson

LEONARD CHESHIRE DISABILITY, MICKLEY HALL

FRIDAY JANUARY 20TH

BURNS NIGHT

ENTERTAINMENT AND SCOTTISH THEMED FOOD

WITH A WEE DRAM

ADMISSION DETAILS CONTACT OFFICE

0114 236 9952

JOURNEY TO BETHLEHEM 2011

Unbelievably it's almost time to make the Journey to Bethlehem again at Totley Rise Methodist Church. This year's dates are Saturday 10th and Sunday 11th December, with 30 minute tours running between 4-30 and 7-30. There are one or two changes to the journey this year, but many familiar elements remain: the Market Place stalls, the Shepherds (and their sheep), and of course, the most important of all, the stable with baby Jesus. Everyone is invited, and the tours are free, but we do ask that you book your tour in advance, and you can do this by calling 0114 2351001 after November 7th. We look forward to seeing you, your families and friends.

Garden Bird Talk

John Kirkman, on behalf of the Garden Birdwatch which uses volunteers to carry out the world's largest scientific bird survey is giving a talk in All Saints' Church Hall on Thursday 12th January 7.30pm. The talk is free but there may be a small charge made to cover the cost for the use of the hall and for the refreshments.

The Garden Birdwatch Talk will cover:-

1. What it involves
 2. What pattern of garden birds it shows.
 3. The birds you can expect (and hope) to see.
 4. The joys of watching and learning about behaviour.
- Those wishing to attend please contact Wendy Edwards 0114 235 0967 to register interest.

Dinah Burgess

Dinah passed away on November 2nd after living in Totley for 97 years.

She was born on Totley Bents but latterly lived in Aldam Road. She will be remembered with affection by many older residents especially for her interest in the history of the school which she attended from 1919-1928. She was often to be seen with her crochet or other handiwork and was a regular member of All Saints' Church until she had to live in a care home a few years ago, We shall miss her friendship and her loyalty.

Maurice Snowdon

Front Page photograph.

We have had a call from Jack Handley an old Totley Resident now living in Doncaster who along with Bill Glossop seems to think the photograph from the last issue was taken long before the prefabs were built and is looking from Whites Drive or Salts Drive as it was known looking towards the council estate and Green Oak Park.

The barn on the right was demolished before the prefabs were built and the houses in the top left hand corner in the distance are probably Main Avenue.

The footpath running across the fields where the cows are runs down and crosses Green Oak Road and across a bridge over the stream to Whites drive further up-stream from the one near the Spitfire.

A Farmer's Tale

There was a farmer who was growing old and finding life very hard. "Time I got a lad" he told his wife.

An advert in the 'Farmer's Weekly' brought forth one applicant, a youth eighteen years old. Rough and bedraggled from being a long time on the road. "What can tha' do?" questioned the farmer. "I can sleep on a windy night", answered the youth. "Ya cheeky young devil", growled the farmer, but, having no choice he gave the youth the job.

A month passed and the weather changed; the wind blew all day, and by night had reached gale force with winds and rain. Windows and doors rattled as the gusts grew stronger, days passed and the farmer tossed and turned, worried about that broken hinge on the stable door; the tarpaulin covering the stack, the loose tiles on the roof of the barn, until he fell into a troubled sleep.

He arose early to assess the damage, and was amazed; unbelieving: the stable door was safely locked, the hinge repaired: the tarpaulin secured with heavy ropes, and the barn was dry under the newly fixed tiles. An unconcerned youth met him at the breakfast table. "You look tired Boss", pause!, "I told you I could sleep on a windy night"

Jo Rundle.

Christmas Fair

Sat. 3rd December 2011

10am – 12 noon

Dore Old School

**Sale of Books, CDs, DVDs, bric-a-brac, gifts,
cakes and refreshments.**

Abbeydale Miniature Railway



**Sunday 4th December &
Sunday 11th December**

Gate opens at 11 a.m

Last Entrance 3.30 pm

Admission at the gate is £7 each

Admission covers all train rides,
seasonal refreshments,
a visit to Santa in his grotto and a
present for each child.

**Abbeydale Road South, Sheffield S17 3LA
(Next to The Glen Nursing Home)**

**Look for the yellow notice board on the
grass verge**

www.sheffieldsmee.co.uk

Journey to Bethlehem

It is interesting to read that Totley Rise Methodist Church are recreating the Journey to Bethlehem again. This brings back many memories; I have been to the Holyland twice and have lasting memories.

The first time was for a few days, following a forced landing at Lynd Air Base (now Tel Aviv) early 1945.

The second time was around 1999 when the ship took our party to Haifa in Israel and a coach took the party to our hotel in Jerusalem. Our guide for our stay was a young Swedish lady, who had married an Israeli Army Captain. She taught English to Israeli children. She was fluent in Swedish, English and Hebrew.

Once settled in Jerusalem we went to Bethlehem and we ate bread and chickpea pate in a building where supposedly the last supper was taken and a visit to the stalls where Jesus was born and up to the shepherds' field (now only a paddock with no sheep). The Wailing Wall was a revelation with many people posting their pleas in nicks in the wall.

We visited the magnificent temples where Jesus preached and went to the Seven Stations of the Cross, the steps were extremely well worn looking more like a U than steps. It was a tremendous experience walking in the footsteps of Jesus.

One thing that seemed a little out of place having come up the Judean Hills entering the outskirts of Jerusalem, was the Elvis Presley Café marked by a giant white statue of Elvis. Apparently the Café Owner was a great fan of Elvis.

Seeing Bethlehem and Jerusalem was an enlightening and unforgettable experience and I would recommend the local Journey to Bethlehem at the Totley Rise Methodist Church would be an event worthwhile.

J W Abson

All Saints School Update

Totley All Saints CE Primary (TASS) were presented their Silver Eco School Award by Cllr Jackie Drayton this month. Gooshi the Sheffield Eco Schools mascot also attended. Cllr Drayton was very impressed by all that she saw at TASS and remarked on the welcoming, caring, family atmosphere and the confident way our ECO SAINTS could talk about what they had done and how they had achieved Silver status. The school is now working towards the Green Flag Award.

In December or January we will be planting a new native hedge on the rear boundary of our field. We hope that this will attract much wild life to our school grounds. The children are involved in the planting.

20 Mph Consultation

In the New Year the South West Community Assembly will be working with Transport and Highways Officers in the council to inform residents in the South West of Sheffield about the scope for 20mph schemes.

This first round of consultation will take place in late January and will be mostly informative but we would also like to gauge local peoples feeling on the subject before more details options are drawn up. As yet we have not confirmed any venues but we plan to hold a workshop in each of the four wards that make up the assembly area. To find out more you can contact us on 203 7212, e-mail :

communityassemblysouthwest@sheffield.gov.uk or
follow our blog to receive regular updates;
<http://sheffield.gov.uk/southwestnews>

LEONARD CHESHIRE DISABILITY

MICKLEY HALL

CHRISTMAS FAYRE

WEDNESDAY DECEMBER 7TH

10AM-12NOON

FESTIVE FOOD, GIFTS,

CAKES, PRESERVES

FESTIVE RAFFLE AND MUCH MORE

Library Break-In

Totley library was broken into overnight on Friday 4th / Saturday 5th November. Collection boxes were emptied, including the Poppy Appeal collection.

As we go to press, we learn that the vets on the Rise, Totley Pharmacy & Totley Deli have all been similarly attacked.

The police are following up several lines of enquiry following forensic examination.

PUZZLE CORNER

Solution to Building up to Pull apart

1. A; 2. PA; 3. SAP; 4. RAPS; 5. PEARS; 6. SPARED;
7. DEPARTS; 8. REPASTED; 9. SEPARATED.

Don Ashford

Gillfield Wood Extension

Many of you will know that we planted an area of approximately 18 acres (7.5 hectares) of land just off Baslow Road with trees some 15-18 years old

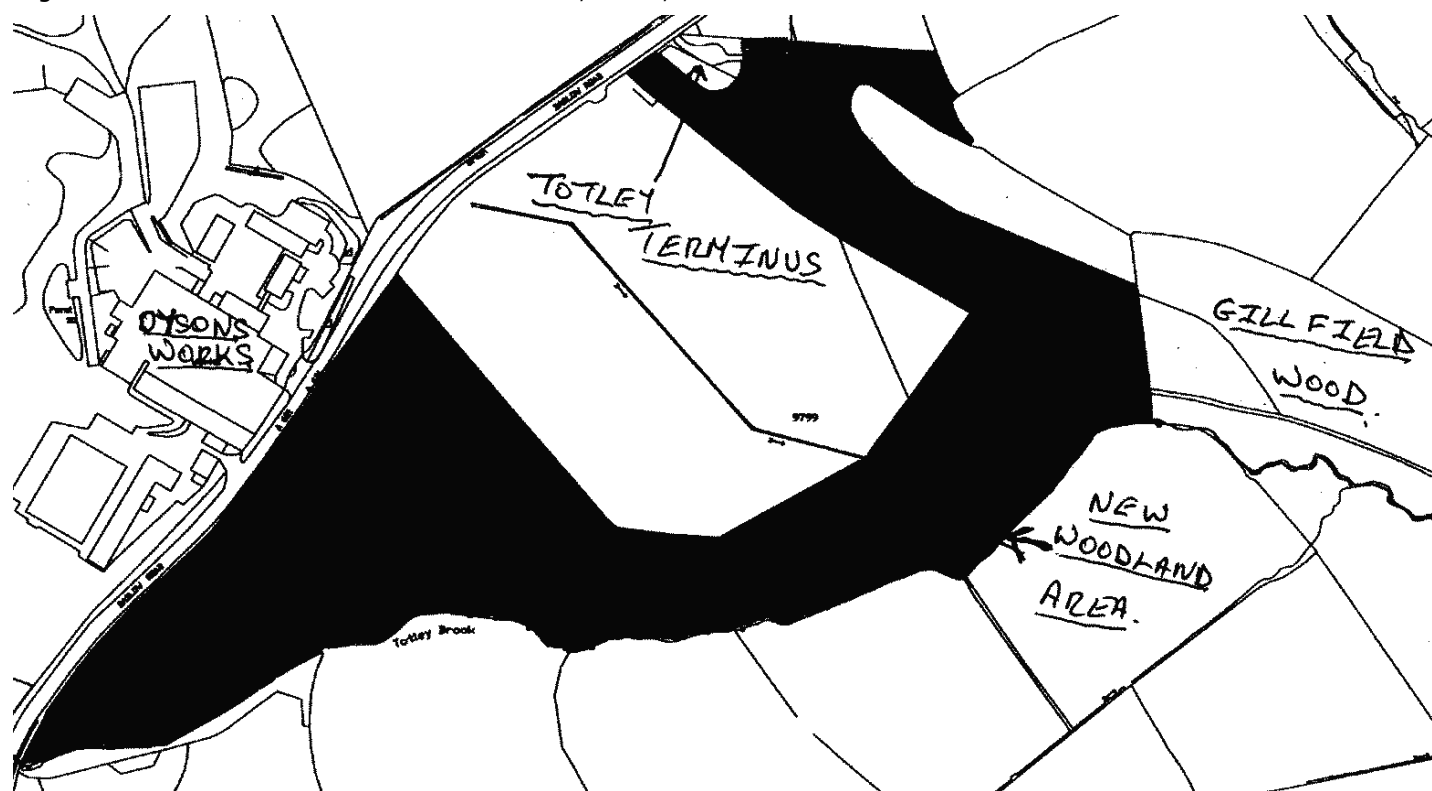
This was done as part of an agreement between ourselves, Sheffield City Council and the Forestry Commission. At that time 2 schemes, The Woodland Premium Scheme and The Community Woodland Scheme, were in place to help fund the planting of Broadleaved woodland in combination with improved community access. As part of the agreement a picnic area was established at the top of the hill above the new bus terminus. From here you can have a good view of the local moors, over Dore, and towards Whirlow. The main area of woodland was planted with oak and ash "whips" some 1-2 feet high. These have now grown into trees some 15-20 feet high and have created a genuine woodland habitat. Around the edge of the main area a mixture of hawthorn, hazel,

field maple and rowan were planted to give varied look to this woodland edge. These are now supplying the local wildlife with nuts and berries.

When the initial agreement was drawn up it was specified that this area of land which we leased from the Council would be released back to them after a period of 15 years. Now, some 2-3 years later than planned, the occupation of this area has reverted back to the Council and in particular their parks and countryside section. They have in effect inherited a well-established extension to Gillfield Wood.

See the accompanying plan for details of the area in "new" woodland.

Edwin Pocock



Mark and Sally Fletcher invite you to

The Grouse Inn Longshaw

Sheffield S11 7TZ

Meal times:-

Mondays 12.00 to 2.30pm

Tuesdays to Friday's 12.00 to

2.30pm and

6-30pm to 9-30 pm

Saturdays 12.00 to 3.00pm

and

6.30pm. to 9.00pm (drinks – open all day)

Sundays 12.00 to 9.00pm

Phone 01433 630 423

R Rose & Co

Chartered Accountants & Business Advisors

Specialists at
looking after the affairs
of small businesses.

For a **FREE** initial consultation
please contact Roger Rose FCA on
0114 281 2331

from business start-ups and general accounting, to support
and advice in business development and strategy,
we provide services in our personal one-to-one service.
To find out more please call 0114 281 2331.

621 Chesterfield Road, Woodseats, Sheffield S8 0RX
Email: info@r-rose.co.uk www.r-rose.co.uk

Mens Hairdressing by Karen

at

Hair by Patricia Barber

53 Wollaton Road,
Bradway

9am to 5pm Thursday

9am to 5pm Friday

9am to 1pm Saturday

appointment or walk-in

0114 236 6247

07984 021 033

FRIENDS OF GILLFIELD WOOD

OUR MEETINGS are on the first Tuesday of each month in Totley Library starting at 7pm. All are very welcome to come along and join us.

Tuesday 6th December 2011 is "Sheffield's Woodland History" an illustrated talk by Professor Mel Jones. This is also an opportunity to learn about the group's recent discoveries relating to the history of Gillfield Wood.

Tuesday 3rd January 2012 and Tuesday 7th February 2012 are open meetings when we discuss conservation work, survey work and a wide range of topics including the flora and fauna in and around the wood. A Ranger from Sheffield City Council usually attends these meetings to provide updates and answer questions.

We are very hopeful that we will be joined **by Edwin Pocock on February 7th** to chat to us about his farm, his work and some of his earlier memories. This should be a rather special evening relating to the Totley farmland adjacent to our wood.

CONSERVATION WORKDAYS: if you are interested in helping us carry out such work in Gillfield Wood with a Ranger from Sheffield City Council please contact Dave Gash for details on 0114 262 0564 (or daveygash@hotmail.com).

MAMMAL SURVEY. This took place over the weekend of the 22nd and 23rd October. Val Clinging of the Sorby Natural History Society provided the traps and her expertise. 15 live traps were set on the Saturday evening in various parts of the wood with food and bedding inside. A group of ten members then met early the next morning with controlled excitement, each wondering what would be found in the traps they had set. 5 of the traps had been triggered and the members were able to inspect, record and safely release the 6 Bank Voles caught. An excellent result to add to our knowledge of our woodland and yes, two voles did manage to get into one trap before setting it off. In addition, during that Sunday morning a dead shrew was also found on the main footpath in the wood. After close inspection and detailed measurements this proved to be a Pygmy Shrew, another good and interesting record. Further mammal surveys will be undertaken in 2012 but in the meantime our thanks go to Val for the interest and enthusiasm she brought to this autumn's survey.

THE BUG HUNT as advertised, took place on Sunday 23rd October. We were blessed with a clear mild day. Sheffield City Council Rangers set up a small marquee down near the Scout Hut off Aldam Road and during a five hour period from 10am onwards over 40 people, mainly in small family groups, took part. All were provided with trays and small pots as they went out eagerly searching the nearby area and the wood so that they could bring back specimens for identification.

Amongst the specimens put under the microscope or merely studied in the trays and pots were Two and Seven spot Ladybirds, Harlequin Ladybirds, Earwigs, Lacewings, Beetles, Spiders, Millipedes and Centipedes and 7 species of Harvestmen...plus much more.

The event was a great success with adults and children equally fascinated to see what had been found on the day. We certainly have one or two budding young Nick Bakers in Totley. Our thanks go to the Rangers, Henk and Chris, for sparing their own valuable time to come along and help us run this survey and share their knowledge regarding this fascinating subject. We are due to run another Bug Hunt and other surveys in and around our wood during Sheffield's special **Bio-Blitz event on 17th to 19th May 2012**, please make a note in your diaries. Fungi and Mammal Surveys are also in plan for next autumn so watch this space.

The Friends of Gillfield Wood extend their very best wishes to all for Christmas and the New Year and hope you manage to get the opportunity to walk the woods and fields over the winter period. Fungi are showing really well this early November. Great Spotted Woodpecker, Nuthatch, Siskin and Jay are in the wood; Buzzard, Sparrowhawk and Little Owl are around the edges and a Woodcock was flushed by a lucky walker in late October. Red Deer and Rabbits can be seen in the fields adjacent to the wood at the right time of day and a Weasel was seen to rush across a field and shoot under a hedge early in November. So you never know what you might find or see when out walking this area. Remember if it snows it is great to search for mammal tracks. Good hunting. Chris Measures

Green Oak Park And Community Centre

As I have written a piece elsewhere on behalf of the Scouts, I would like to say that this letter represents my personal view and is not written on behalf of the Scouts.

I would like to compliment Green Oak Park for three facilities in particular. They are the zip wire, climbing boulder and the shelter. I have not used them personally but my children (who are pre-teens) do so regularly. Often with friends after school. Whilst they are not supervised I have had compliments from other people about the children. Those three things work well together as does the multi games area on the old tennis courts. Since the zip wire, climbing boulder and shelter have been installed Green Oak Park has been used much more by pre-teens. Now, it seems a broader range of ages use the park.

The idea of a Community Centre seems a nice idea so that the community can have a focal point. However I do not support Totley having one. There are obvious issues such as location, planning and finance which I think would be very difficult to resolve. My real concern is, do we need one.

After all there are several community facilities in Totley already. Two Church halls in Totley itself with another (brand new) on Totley Brook Road. The library is already used for community meetings. Totley Primary is already used for the Totley Show. We have three parks where marquees could be erected. And I have not even mentioned local commercial enterprises looking for custom.

If we had a community centre it would take custom away from all these venues upsetting a lot of people. For example, would it be viable to keep open the Church halls?

Totley does seem to be very well served already. If some of the existing facilities were to close down then, I think, it would be sensible to look at the issue again.

Richard Frost

TOTLEY HALL FARM

Totley Hall Lane, Sheffield

Live Nativity Plays with the Animals & Father Christmas

Saturday 17th December - Saturday 24th December



*Your children can dress up and
join in as we retell and act out the
wonderful Christmas story.*

Lots of time to hold the Lambs and ride
the Donkey.

Visit Father Christmas for your present.

Refreshments for all.

Early Booking is essential.

Call Jenny on 0114 236 4761

or for Details, Pictures, Dates, Times, Prices and Booking
form, please visit: www.totleychristmasfestivals.co.uk

MEMOIRS OF DAN REYNOLDS (Part II) By Himself

continued from issue 345, July/August 2011 Life in those days was very hard for our parents, in fact you could describe it as just an existence. The employer was able to call the tune and the employee had no defence. The wives must have had a very trying time making ends meet, what with food and clothing for man, wife and children, of which there would have been five or six in many households. Looking back I often wonder how my mother, and many like her were able to keep going. You can only say it was dedicated love for the children. Just imagine, her day would start at 6 o'clock in the morning till up to 12 o'clock at night, washing, cooking, baking, ironing, mending etc, and during all that time she would have very little rest, and yet was able to find the time to help a neighbour during illness or whatever. A great friend of my mother was Mrs Holding, who lived in a house opposite Shrewsbury Terrace where we lived. I often meet her daughter Mary (Mrs Pearce), and she remembers the times my mother would help her mother with the wall papering and sewing, and besides payment she would give her eggs and a boiling fowl. She was most certainly a good friend, and I'm sure the same was said of my mother by Mrs Holding. This was typical of the small community spirit of those days; what a pity that this is lacking in the way that people choose to live today. The first thing the wives had to do in the morning was to light the fire, which was the only means for boiling water and cooking. The fireplace, or range as it was called, was a Yorkshire range of which there were different types, but every cottage and the so called gentry had this kind of range. It was a fireplace, with its fire in the centre, hot water boiler to the left, and over to the right was the oven, and above there was a plate called a hob, where meals could be kept hot. The fireplace was surrounded with stone slabs, on the top slab there was usually a wooden mantle shelf decorated with a chenille cover, which would hang about nine inches deep. These were of varying design and colour and looked beautiful. After meals a table cloth covered the table, this was also chenille. The stoves were black-leaded two or three times a week and they really looked grand. The fender would be brass or burnished steel with fire irons to match, and believe me; when they were polished, which was every Saturday morning & they looked superb. I suppose you could say it was a pride and joy to the room, when you come to think the stove was always warm due to the fire burning in the region of sixteen hours a day. In fact, the porridge (main breakfast dish) was placed in the oven at 10.00 p.m. and would cook overnight.

Monday was the big wash day. A big pot in the corner of the kitchen was heated by a small fire which was just over half filled with water, when boiling soap and clothes were thrown in and the woman would agitate them with a round stick. When ready they were transferred to a dolly tub and a peggy leg would be used to stir them. Afterwards with added soap they were rubbed up and down the rubbing board then to the sink to be rinsed with cold water, finally to the mangle where they were fed between wooden rollers and turned by a wheel, then hung out to dry: this depended a lot on the weather. They must have had muscles like buck navvies after that, but they didn't flinch or grumble, no it was just another day.

The floors downstairs were stone flags and these were covered with cheap lino and hand pegged rugs. Many are the times we kids would help our mums to cut up the material, anything was used - old coats, trousers and such were cut up into strips about 5" by 3/4". With a hooked awl they were laced into the webbing (webbing is hardly the right name as it was a sugar sack purchased from the grocer). The rugs varied in size but the one in front of the fire would be about 60" x 30" and were very heavy. Every working class household had these rugs, upstairs it was just lino.

Money was scarce, wages were low and everyone lived on the breadline, but it was an accepted way of life. We were happy, brought up properly, discipline was strict at home and at school, we made our own entertainment and were far from being bored. Bored is a very much used word with children and teenagers of today, and this is not entirely due to unemployment but due to parental upbringing.

There were no toilets, hot running water, sewerage, electricity or gas in the cottages rented by the working class. 'Middens' were used for two purposes, at the rear was where the ashes and refuse were thrown, and at the front was where you relieved your call of nature. 'Cesspools' were for sink waste, and lighting was from paraffin lamps which varied in design and fixture. Some hung from the ceiling, but most were free standing. They were made of brass, and once again added brilliance and charm to the room. These lamps had glass chimneys and, of course, accidents would

happen, and when one did break we had to walk to Dronfield Woodhouse to the home of the travelling hardware man by the name of Mr T Gillespie. He came once a week and sold paraffin soaps (carbolic), fuel and whatever, you name it and it would be on his dray.

In those days if your parents, especially your father asked you to do anything you obeyed or woe betide you. You only refused once, when off would come his leather belt and two or three strokes round the legs made you realise who was the master. That was discipline, it was a way of life and you took it in your stride. The same discipline was meted at school, only with a cane by the Headmaster, Mr John Wood. At the time it really hurt but was appreciated in later years.

Mr Wood was a very strict disciplinarian and as headmaster he ruled the pupils' and teachers' lives at school. There were a few times when punishment was administered because he would not listen to an explanation. One instance that sticks in my mind was when I was five years young and in the infants. It concerned a boy called Muggy Belbin (Muggy was a nickname which was common with boys and girls), who lived in Bradway Bank. It was winter time and he and his pals were snowballing each other as they approached the bus terminus at the Cross Scythes. Just as the passengers were walking away from the bus, who should be there but Mr Wood and Miss Crookes, the infant teacher, who always wore those big straw hats decorated with flowers and fruit, and held in position with long hat pins. Well, the inevitable happened; a snowball hit her hat, probably causing a little discomfort. After assembly at school, despite the fact he owned up to throwing the snowball and apologising in front of the children for the incident, he was caned on his legs and paraded in front of each class. I can picture him now, his face streaming with tears. Mr Wood did not accept his explanation. In this case it was pig-headed discipline, but having said that I'm sure we all admired him.

I remember when we reached the age of around eleven and was able to join a competition called the 'Bird and Tree'. A number of pupils were selected to study and make notes of a bird and tree of their choice over a period of twelve months. After that period we were

given one day each for bird and tree to write down our observations under the scrutiny of Mr Wood and a member of the trust. The school was closed, except for the competitors. This competition was organised by the Royal Society for the Protection of Birds, for which I still have a medal. For some unknown reason this no longer exists, which seems wrong because it kept us very much in touch with the wild and plant life, and had there been the same interest today, who knows, it could well have a bearing on conservation in this area. Our schooling was at the C of E School, and children in classes Six and Seven were able to study for a place at Dronfield Grammar School, then called Henry Fanshaw. If you passed with full honours, education and books were free, but for minor honours just education was free. Up to a few years ago pupils at Totley School, when sitting for exams, were able to name Henry Fanshaw as first choice. Whether this choice remains I know not. The C of E School was also the place of worship for protestants, and the Wesleyan Chapel (now a residence) for the Methodists. Both were well patronised by young and old. The services were conducted at the C of E by an ex-army chaplain called Captain Faggerty, and lessons read by Mr A J Foulstone. The latter was a very dedicated man in whatever line he pursued, and always seemed to be in a hurry in all his activities. A great man who should never be forgotten.

The Sunday school for the little ones was cared for by Miss Harris, who at the time of writing is a resident in a private nursing home. Again, a person who performed a good and valuable service for the youngsters, she also gave piano lessons. There were others who assisted at the school, but Miss Harris and Mr Foulstone are the two I will remember for their love of activities that brought much pleasure and religious teaching to children and parents.

After the war ended a memorial to those killed in action was erected, also a club was formed for ex-service men. Many local stone masons were employed in the building of the war memorial. Horatio Taylor was one I remember. The name plate is headed by R Milner who was the son of Mr and Mrs Milner of Totley Hall, so you would assume that was reason enough for his name to head the list, but according to an old friend of mine, Joe Marshall (who furnished me with a lot of information), Roy Milner was the first volunteer and also the first to be killed in action, so it had nothing to do with his, or his parents' status in life, and knowing Joe I believe that to be so. The memorial is on land adjacent to Baslow Road which many years before had been used as a tip. This piece of land, the school playing fields and the allotments belonged to the church (Dore), and rents from such were part of the vicar's living. I feel sure the field next to the Cricket Inn also belonged to the same church authorities.

The club was one-storey stabling of the past converted to a two-storey building with a flight of steps leading to the club, the lower part was for storage and vans. This and surrounding properties were owned by Mr Evans, the grocer. Both he and his wife were grand people to know, caring and understanding and without doubt earned them a lot of respect from the working class who purchased at the shop. Purchases would be paid for on a Saturday after the man had handed his wages to his wife. No doubt tick (credit) existed so I would say profit was not the objective when the club was built.

To be continued

From the Tithe map for Totley 1841 (1839)

Strawberry Lee 73 acres & 75 perches of meadow & pasture land in the occupation of Joseph Dalton, his under tenants, or assigned, and of which Broham Benjamin Pym Barucle of Beauchief Hall ...is the present tenant for life is exempt from the payment of all Tithes as well great and small the same having been parcel of the possessions of the dissolved Abbey of Beauchief one of the greater Monastries which the same was enjoyed free from the payment of Tithes at the time of the dissolution thereof.

A junior branch of the Moorwoods, who gave their name to 'Moorwood Lane Holmesfield purchased Dronfield Alfreton and The Hallows, and when this branch became extinct those of 'The Oaks' who were the senior 'line' took Alfreton, gave 'The Oaks' to a younger Moorwood, and sold Dronfield to Francis Burton son of Jane Selioke in the middle of the 17C.

Richard Burton of Chesterfield was the Founder of the Burtons: he was Steward to John the first Earl of Shrewsbury in 1432 when the Earl was a prisoner of the French having been taken prisoner by Joan of Ark at the battle of 'Patey'. Richard was the Father of John Burton who was still living in Totley in 1511 who had 2 sons, John and Thomas but died in 1556. This John married Joan Poynton of Dronfield Wodehouse and their son John married Elizabeth Mower of Greenhill who were the parents of two sons John, and Thomas of Fanshawe Gate. He, in turn, had a son called Francis who was Sheriff in 1669, the Francis to whom the Moorwoods sold Dronfield, now the Diocese that owned Totley Chapel Lands after the dissolution of Beauchief Abbey.

Jo Rundle

Lost - One Grandma

The computer's swallowed Grandma -
Yes honestly, it's true.
She pressed control and enter
And disappeared from view.

It devoured her completely -
The thought just made me squirm.
Maybe she's caught a virus
Or been eaten by a worm.

I've searched through the recycle bin
And files of every kind.
I've even used the internet
But nothing did I find.

In desperation I asked Jeeves
My searches to refine.
The reply from him was negative
Not a thing was found on line.

So if inside your "Inbox"
My Grandma you should see,
Please "Scan", "Copy" and "Paste" her
In an email back to me.

Valerie Waite

GARDENING TIPS FOR DECEMBER/JANUARY

It's a bit dull at the moment and I am waiting for a delivery of greenhouse insulation so I thought it would be a good idea to get my words of wisdom and encouragement finished so that I have a clear run to get it installed. It should have been done before now but when we took the old insulation out it was a bit grotty so I thought it was time for some nice clean stuff. I use bubble insulation which has been good in the past, let's hope it's not too long before it arrives so that we can get the overwintering plants tucked up before the weather changes for the worst.

I have finished repairs and renovations on the cold frames. I now have 9 ft. of usable covered space to put the less vulnerable plants to shelter from the cold, and a great area for bringing on seedlings later. It looks rather posh with its new green overcoat of preservative. That's more than I can say for the rest of the garden the leaves are dropping and making the place a bit messy. We will be sweeping and bagging them up and leaving them in a quiet corner to turn into useful leaf mould. It will need watering from time to time to accelerate the rotting down process; it takes about a year or so to become usable. If you use a shredding vacuum it does not take quite as long.

The greenhouses are having their annual clean and disinfection to keep down any nasties which may be lurking around looking for a warm place to hibernate.

My onion seeds will be in soon (Boxing Day at the latest) the leeks are on their way already (a new experiment this year) I will be seeding more later just in case old Jack Frost knobbles my earlier efforts.

We are having cabbage and broccoli from the garden very tasty! The leeks are nearly finished, the big show varieties do not keep very well and they will not survive if we have a frost. If you want to keep leek over the winter you must use one of the Japanese varieties.

The apples have been good we are still picking the later ones and very nice they are too, we grow the lesser known ones as well as the old favourites. The different flavours make interesting eating and a change from the usual taste.

The lawn is looking good after the dry spell old Mother Nature (with a little help) has come up trumps again.

The insulation has arrived; we have managed to get the larger of our two greenhouses nearly wrapped up. It's a good quality so the plants should be nice and cosy just the fiddly bits to finish the job off.

The seed and plant catalogues are dropping though the letterbox now. I am always keen to see the latest offers from them, it's interesting to see which plants have changed their names. I'm sure some of the "new" varieties are very often oldies reintroduced with a new label. I suppose they have to tempt us with something, it must be difficult marketing in the current economic climate. It's not very often that we see new things being developed but they do try their best.

Well I must go and do a bit more insulating, so enjoy your catalogues don't spend too much time at it there's always lots to do outside. Don't forget to feed the birds they rely on us when natural food is scarce or under the snow brrrrrr... enjoy your gardening

Flowers

Prune back any large rose bushes; chop them down to about halfway, so that they can be planted properly in the spring. This early chopping down will reduce any wind rock which can severely damage rootstock if rain and frost get down there. It also makes your rose bed look tidier. Work in humus making material into your soil during the winter months, manure, leaf mould, spent hops, garden compost, old Growbags etc. are ideal. All these will have a beneficial effect.

Herbaceous plants sometimes suffer from slug damage during the winter, delphiniums are generally first in line, to help prevent them spoiling your young plants, scrape away a little soil from around the crowns and replace with sharp sand (better still cinder ashes). Check all the structures supporting flowers (arches, fences, trellis etc.) make sure they are sound and ready for next season's weight of flowers and berries.

Mulch over any roots exposed by the rain. Top dress with compost of soil, peat and sand. Large flowered clematis such as Jackmanii can be cut back fairly severely. Order your seeds in good time, try something new this year, there are a lot of new varieties to choose from, or maybe resurrect an old favourite that you haven't sown for a few years. They say a change is as good as a rest. You can divide and move or plant new stock of Michaelmas Daisy and Golden Rod.

Pick over plants in frames or cloches, remove dead leaves etc. and dust with fungicide. Dig and prepare new beds. Place insulation over frames at night to give extra protection from frost, also ventilate well on sunny days. December is the last chance to plant out late tulips. If you haven't given your flower beds a slow acting fertiliser for a year or two, now is a good time (January), a dusting of hoof and horn or bone

meal will do your flowers a world of good. Hoe it into the top inch or so, the worms will do the rest (stand well back in the spring as the flowers burst forth). If you want to increase your stock of perennials or have some plants ready for the various charity stalls or swaps, you could take root cuttings. Dig up the plant to be propagated, or cut a portion from one side, wash off as much soil as possible so that the roots can be separated from each other, cut off the sound roots about the thickness of a pencil, divide into sections about 2ins long (5cm). Trim off small fibrous roots, cut the bottom of the root diagonally and the top straight, so that you know which way up to plant it, insert into pots of cutting compost with the tops just buried. Water well and stand in a frost free cold frame or propagator, if you want them to root faster. Plants with thin roots can be multiplied in a similar way, 3ins (8cm) long pieces laid horizontally in the compost (dusted with fungicide) cover them with another 1—2cm of compost, water well. Some of the plants which can be done this way are acanthus, brunnera, caenothus, dicentra, echinacea, eryngium, Japanese anemones, nepeta, oriental poppies, phlox, rhus, verbascum etc. Remember root cuttings taken from variegated plants will turn out green and NOT variegated.

Vegetables

Firm in any plants loosened by frost. Dig any vacant plots and manure the ground. Apply lime to acid soil where cabbage is to be planted (do not apply at the same time as manure, wait a month or two if possible). Prepare runner bean trench. Take off any yellowing leaves from Brussels sprouts and compost them. In January chit seed potatoes i.e. put them in a frost-free place in shallow boxes with the eye ends upwards, this will encourage them to sprout.

Prepare your onion bed (I'm giving away secrets now). Dig in manure deeply, spread bonfire ash over as well as bone meal and hoof and horn at about 4ozs (100gms) per sq. yd. Prick this into the soil lightly. As mentioned before sow onion seeds around Boxing Day, either in separate pots, two or three seeds per pot, place in propagator or greenhouse at a temperature of 65F. When they have reached the loop stage, discard the weakest seedlings leaving just one per pot. Or put seeds in a tray when they are at the loop stage, transplant into deep boxes or trays, reduce temperature to 55F. Lift a few roots of mint, place them in a deep wooden or plastic box, cover them with potting soil, old stuff will do, place them in a frame or greenhouse, this will give shoots for early picking. Mulch asparagus beds with well-rotted manure break it up well and spread it about 2ins thick.

Shrubs, trees and fruit

Do not let snow hang on conifers, it can break off branches and spoil their shape. Firm in any newly planted trees and check all stakes and supports, make sure they are firm. New fruit trees can be planted now if weather permits (keep roots moist and host free prior to planting). Prime apple and pear trees, remove cankered branches. Prune fruit bushes and canes, check grease bands and renew if necessary.

January is a good time to give fruit trees a tar oil winter wash, choose a fine and wind free day. Black currants will benefit from feeding in January, they like plenty of nitrogen so a top dressing of Sulphate of ammonia or nitro chalk at 4 -6ozs per well-established bush, sprinkle it thinly over the soil and keep it away from the stems. Newly planted black currant and raspberries should be pruned back severely, black currants to 2-3ins from ground level; raspberries 6-9ins above ground. Plant out in mild spells deciduous trees, hedging plants, stored or heeled in shrubs.

Greenhouse and Indoor Plants

Dead-head faded flowers and pick over all pot plants, water sparingly. Keep bulbs fed and watered after flowering, but move to a cool spot. Increase humidity around indoor cyclamen, azaleas and winter cherries. Use insecticide pins to control aphids and white fly, paint patches of scale and mealy bug with methylated spirit. Plant amaryllis, Lily of the Valley and indoor gladioli. Pot on cineraria, primula and slipper flowers. Examine all bulbs placed in the dark, they should be about ready to bring into half light conditions prior to bringing into a light warm house, don't rush them though. Seedlings and cuttings should be kept as near to the glass as possible, stake up schizanthus. Sponge over large leafed evergreen plants with half a teaspoon of milk stirred into a cup of water, this will make them nice and glossy. Make sure the greenhouse glass is kept clean. Cut back old geranium plants, shortening the growths to a joint or bud 6-9ins above the pot. Re-pot the plants, shaking all the soil from the roots. Re-pot them in the smallest pot into which the roots can be placed, use ordinary John Innes compost or similar.

Get ready for seed sowing by cleaning all pots, seed trays and boxes. Pot lilies required for the greenhouse feed fuchsias pruned earlier, as geraniums the plants will be potted on into larger pots as new growth develops. If you have a heated greenhouse you can start tuberous rooted begonias and gloxinias. Keep a careful watch on ventilation. Remember a sunny day can reach quite high temperatures in a greenhouse or cold frame, even in the depth of winter. I have known

mine to shoot up to 95F when snow was on the ground, so be warned. Heat at this time can do a lot of damage to young or freshly shooting plants, and quite a lot of plants cannot put up with large variations in temperature.

Lawns

If you walk on your lawn at this time of year and find squelchy patches they need attention. Spiking is a real pain, but it's a good cure for squelchy bits. Note where they are and when they have dried out a bit (hopefully) go over the area making holes at about 6in intervals with a fork, do a couple of square yards at a time, then brush in a good dressing of sharp sand (not builders sand, unless it has been in the rain for a long time) leave a shallow layer on top, this will encourage rooting in spring. Keep lawns clean and keep off in frosty weather. Clean and overhaul your mower, you could take advantage of the cheaper rates for servicing, up to the end of February.

Please bear in mind that these notes cover two months when doing the various jobs.

Have a Happy Christmas and a lovely gardening year.

Cheerio for now, Tom



The Crown Inn

CHRISTMAS OPENING HOURS

CHRISTMAS EVE

12 noon - 3.30pm (Food 12noon - 2.00pm)

6.30pm - midnight

CHRISTMAS DAY

12 noon - 2.00pm

BOXING DAY CLOSED

NEW YEARS EVE

12 noon - 3.30pm (Food 12 noon - 2.00pm)

6.30pm - 12.30am

NEW YEARS DAY

12 noon - 3.30pm (Food 12 noon - 2.00pm)

BANK HOL (2ND) CLOSED

All others days we shall be open as normal.

**Merry Christmas and Happy New Year
from Tony, Julie and Staff**

Tel 0114 236 0789

CLOSED SUNDAY EVENING

Visit our website: www.crowninntotley.co.uk

LIVE MUSIC

December 6th Frank White

December 13th Highway Child

December 21st Christmas Carols

New York, Paris and... Totley:

The Painted World of Wildago

The Painted World of Wildago is an imaginary world inhabited by a collection of whacky and lovable characters: glamorous party-girl Pearl, her best friend Smokey, the shy, enigmatic Edmund, his faithful dog Todd and many more. It's all the creation of Wilda Goyetche (or 'Wildago' for short), a Canadian artist who now lives and works in Sheffield.

Wildago's work is charming, colourful and fun, but what makes her paintings really special is how you find yourself – without even realising it – being drawn into her imaginary world.

'It was always my intention to create characters people would warm to,' explains Wilda, 'but the way the whole thing's taken off is simply incredible!'

Over the past couple of years Wildago's fan base hasn't just grown – it's gone global. Friends and collectors from all over the world keep in touch with the artist through the Wildago website, Facebook page and Twitter. There is even a rip-roaring blog, 'written' by intrepid newshound Todd-the-Dog.

'What makes it so exciting for me is that the Painted World of Wildago has developed into a two-way relationship,' adds the artist. 'People seem to like suggesting storylines and ideas, sending me fashion tips for Pearl and generally keeping me on my toes!'

But you don't have to be living in New York, Tokyo or Buenos Aires to sample the magic of Wildago, because on Monday, 19th December Pearl and her friends are coming up to Totley for a Christmas Party!

Everyone is warmly invited to the Cross Scythes to Kiss Miss Pearl! Starting at 7.00 pm, it promises to be a heady mixture of glamour and seasonal good cheer: mistletoe, mince pies and mulled wine... plus the chance to do a spot of last-minute Christmas shopping. What more could one ask?

Kiss Miss Pearl at the Cross Scythes

Monday
December 19th



Wildago.com invites you to celebrate with her cheerful painted characters at the Cross Scythes Pub in Totley. Drop in for a mingle and a pop-up art gallery. But beware of hanging mistletoe – Pearl might grab you for a snog! Open to all. Drinks Reception 7:00 PM.

Your Councillors' Update...

THE MICKLEY LANE ALLOTMENTS TAKE SHAPE.

Following Council approval earlier this year Parks & Countryside staff are beginning to erect the stock fencing and marking out the plots at long last. Some will be full size and some half plots, according to demand and the layout of the land.

The size of the plot remains the same but around 60 plots are anticipated instead of the full 72 in order to respond to local residents' concerns.

We expect tenants to take on their new plots early in the New Year, in time for the growing season.

At the latest count over 100 applicants for allotment plots were on the local waiting list (54 for Vicarage Lane and 66 for Francis Fields – the earliest from January 2001!)

In these tough times these have to be a good idea.

THE GREEN OAK PARK GAZEBO / YOUTH SHELTER TRIAL

There has been much debate on this project since it was first mooted in late 2010 and a good number of us have watched its progress with some trepidation.

All the better then that the promised Interim Review, conducted in October, was positive on the whole. The structure is smaller than anticipated and far less intrusive than expected. It does fit in with the new facilities in the park and is not confined to young people. Though litter has increased slightly it is fair to say that our worst fears have not been realised – yet! Elsewhere in these pages a more detailed account will enlighten readers but we would suggest that due note is taken of the final paragraph. This review is merely a snapshot and the trial needs to continue.

GRUMPY or SMILEY?

Following representations from constituents Cllrs. Are trialling the use of Speed Indicator Devices (SIDs) across the ward.

5 locations are being tested on Baslow Rd., Twentywell Lane, Mickley Lane, Rushley Road & Abbeydale Road South.

If successful, we hope to purchase a second SID through the Community Assembly, funding permitting.

ARE YOU IN A NEIGHBOURHOOD WATCH GROUP?

As Christmas nears with its presents round the tree, the hurley-burley of preparations and the attendant dark nights it's time to consider your home security.

We may be one of the most crime-free areas in the city but burglaries and sneak-in thefts etc. continue. The remedy lies in preparing for the worst and hoping for the best.

In Dore and Totley we have upwards of 70 street co-ordinators, each with between 4 and 20 or so neighbours working with Police to keep our community safe.

Lately, home security presentations by Police have been particularly useful in highlighting measures to tackle metal thefts, checking patio locks, removal of vehicle plates, and catalytic converters, shed security etc.

WHY NOT JOIN US & EXTEND OUR NETWORK
ABOVE ALL, LEAVE NOTHING IN SIGHT OR ACCESSIBLE THAT YOU WOULD BE SORRY TO LOSE.

Contact your Councillor (details page 3) if you wish to join.

Keith Hill, Colin Ross, Joe Otten

Time Travellers Up-date

The local Time Travellers Archaeology Group continues to go from strength to strength. The success of the Whirlow Hall Farm Project in the summer boosted interest in the Group so that we started our Autumn and Winter programme with many keen new members.

Certainly we never expected to uncover the wealth of material and spread of age on the dig at Whirlow Hall Farm. On a daily basis extremely important and previously unknown information was discovered so that the Whirlow Hall Farm Project has become of prime importance in addressing issues relating to Sheffield's Pre-history and its subsequent role in the Romano-British Empire.

Work is hoped to continue on the site and new areas within the farm next summer, and volunteers from the Time Travellers (who made some of the unique discoveries themselves) are definitely "polishing trowels in anticipation!"

One of the most exciting discoveries were the remains of a Romano-British building beside a Palisaded ditch, along with pottery remains, including luxury Samian Ware from Gaul. By the end of the first season dig there had been clear evidence of settlement from Pre-historic times which combined with the evidence from the actual farm area meant a run of habitation and farm working from earliest time to the modern day.

But that was the Summer! Since then the Time Travellers have embarked on their autumn and winter Programme which started back in September with a visit to the Abbeydale Industrial Hamlet and a chance to explore and examine aspects of the archaeology and history of the buildings and the site. There are exciting plans for research and development of the site in the near future which will be of particular interest to anyone interested in the local history of our area.

Our programme is very mixed and the visit to the Hamlet was closely followed by a very evocative walk to Gardoms Edge where there is much evidence of early settlement amongst the rocky outcrops - not least the amazing "Cup and Rings" stone which generated lively debate amongst the members as to its potential meaning.

The next venture was to Wincobank Hill Fort with its impressive commanding position overlooking the Don Valley, which again provoked many comments and speculation.

Our most recent meeting was a charismatic talk from Dr Clive Waddington of Archaeological Research Services Ltd based in Bakewell. He talked to a packed audience about his excavation work at Fin Cop near Bakewell which has generated a huge debate about the fate of the many bodies of women and babies found tossed into the ditches round the fort boundaries. Clive was also the main driving force behind the amazing discoveries made at Whirlow Hall Farm and he was able to tell the meeting about the extra-ordinary significance of the Whirlow site.

He indicated that in our very area lies a fundamental reconsideration of what the Romans were doing in Britain, and the interaction of them with the pre-existing population. Little did we think that when the Time Travellers became involved with the Whirlow Hall Farm project that we would be at the very fore-front of historical discovery! It makes next summer's development excavation, where Clive expects to find evidence of a much larger Roman enclave, especially exciting.

The Time Traveller's Group continues after Christmas with another full and varied programme of events - walks, talks, visits and trips. We are all keen amateur and aspiring archaeologists and local historians so if you are interested in joining us we can send you full details of the 2012 Spring Programme. Please contact either: John Baker on 0114 236 9025 or at johnbaker@tesco.net or Dorne Coggins on 0114 236 5769 or at md2.coggins@talktalk.net

Totley Music Festival 2011

The third Totley Music Festival started with a flourish as the Escafeld Brass Band provided the musical backdrop to the Totley Show on Saturday 17th September, and ended with an evening of great food and cool jazz from Verlan Musique at Masterchef on Sunday 25th.

The week attracted around 600 local people to listen to a wide range of music. On Sunday, Howard, Chris and Kevin Walker and the band gave us another evening of jazz; Steve and Gaynor Brook produced an evening of great folk music (where even the most talkative of bar regulars stopped to listen to Gaynor's melodic vocals), and the following night Redback had the rock and pop crowd with them all the way, after losing out badly in the rather challenging pop quiz which preceded their set - everyone else seemed to win prizes! Special thanks to those sponsors who contributed prizes for the quiz!

On Monday evening, whilst Sally Goldsmith and her co-poets entertained an appreciative audience at Totley Library, Cary Baylis and Ian Bellamy presented a superb evening of acoustic guitar classics across the road at the Cross Scythes - and Cary was on stage again with Lyndsay Dracus at the Fleur on Wednesday. Tuesday was another double-bill evening, with celtic rock band Emerald at the Crown, and the wonderful Keith Peters Big Band at Abbeydale Sports Club.

On Wednesday morning, Sally led around 40 (imagine that!) 'Tuneful Totley Tots' singing and playing instruments. A fabulous time was had by our future musicians! That evening, the Variety Cabaret at Mickley Hall featured our wonderful regulars and some new faces to a capacity audience. Our thanks to all the performers - we'll write some more about this fantastic annual event in a later 'Independent'. And on Thursday, Hallmark of Harmony gave us a great selection of their vocal harmony arrangements. As always, our thanks to all the performers, who give their time and their talent to the Festival free; to the venues; and to the Festival sponsors: Totley Residents Association, Masterchef, the Cross Scythes, the Fleur de Lys, Duo Hairdessers, Abbeydale Sports Club and Liberty Foods. Thanks too to Hilary Hall, John Beazer, and John the Quizmeister. Thanks too to YOU for coming along and supporting the Festival events - it wouldn't work without you!

Looking ahead to 2012, we need more feedback from YOU! Every time we report on the Festival in the Independent, we provide our phone number (07956 858944) as well as the Festival email address. If we're to develop the Festival for 2012, we really need to know what you'd like to see and hear. We also need suggestions for performers and venues. Please - write to the Independent, or give us a ring and leave a message! For those of you with access to the internet, you can contact us via our website at www.totleymusicfestival.co.uk - we really want your feedback and ideas! Until next year, music lovers!

IT'S NEVER TOO LATE TO LEARN

Whenever I meet someone new and the question of my job comes up, I say what it is that I help people to do, and the answer is invariably "oh I wish I could do that".

What is it that I do? Well I don't do golf coaching, or teach floristry or some exotic type of cooking, what I do is the pleasurable task of coming alongside people and helping them to explore their musical side through lessons in mostly piano but sometimes flute or singing.

Usually people think of music lessons being for children and certainly children and young people make up the bulk of my numbers, however, over the years, I have had the pleasure of being involved with many adults – either rediscovering the joy of connecting with music through playing (after many years absence having given up childhood lessons and then regretting doing so), or discovering it for the first time.

Adult pupils come from all different backgrounds, nationalities and age groups.

I think of Doreen (55) who arrived at my house on her husband's written instructions after he had secretly arranged lessons for her birthday. She came with her golf clubs in the back of her car because he had written "to help you improve your sense of swing"! Once she realized why she was with me she was thrilled. However she said she didn't have a piano at home so she couldn't practise. When she returned home, sitting on the dining room table was a lovely new keyboard wrapped with a huge red bow. At last she could realize a long held ambition.

I think of Richard, the semi-retired solicitor, who'd always wanted to play Moonlight Sonata by Beethoven. Once he understood that it wasn't going to happen in just a few months he settled down and enjoyed the journey.

I think of Peter, a young pilot, who was getting married and wanted to surprise his bride at the reception by playing her a particular song.

I think of John, the dustman, who ended up playing keyboard for sing-song nights with his caravan club friends, after commencing lessons with me.

I think of Connie (94) who'd had a break from keyboard lessons, (taken up in her 70's!), and wanted to pick them up again.

Programs of study can be as varied or as narrow as you wish. I cover all different types of music so whether you want to study for exams or just for fun, classical, pop, musicals, jazz, ragtime, rock etc., we can do it. Doreen, who I mentioned earlier, had a thing about Richard Clayderman, so after her initial tutor books, that was all she played for some long time. Others want to learn how to read chords or compose simple tunes – that's fine – I enjoy that too.

So I wonder who you are and what you would like to do. Perhaps you would like a new hobby to start in the upcoming winter months, or perhaps revisit something that you have enjoyed in the past and had to put on hold because of studying, work, or family demands.

Whoever you are, and whatever your reasons I would find it a privilege to help you so please give me a ring on 0114 237 4853 and I can explain further what is involved. Cost and time needn't put you off; I have easy payment methods (or we could swap skills), and I even know of people who use the Ad breaks on TV to practise, which if they watch Downton Abbey, means they get rather a lot of practice!

Karin Finney

CHRISTMAS TOYS

Recently when looking at some aspects of our family history I saw that on the census my 77 year old great grandfather was recorded as a toy maker, having been recorded on previous census returns as a coal miner. He died around 1902 so I have no personal memory of him. When I first found this information I imagined a jovial old man, too old to continue mining, turning to making children's toys to help him in his old age.

For people of my generation I suppose toys are usually associated with Christmas and I wonder whether as parents and grandparents we, in our minds, attach more importance to the toys than do the children.

I remember one Christmas in the 1950's, when we only had two of our daughters. The younger one had decided she wanted "a catalogue train"— something she had seen pictured. Father Christmas duly delivered the said train, a simple clockwork driven set with a small circle of rails all packed up in a box. The train did its duty and, with frequent windings, did a few circuits of the track. The new owner soon tired of this and retired behind the settee with the cardboard box the train set had come in. She then sat in the box and was soon joined by her older sister who then sat in the lid of the box. They spent quite a bit of the day in there and had a whale of a time. Their imagination obviously provided them with great adventures, secrets from the adult world. There is a sequel to this story. Many years later we were spending Boxing Day with our third daughter and family. Our gift to them that year was a large table lamp and shade which came in a large cardboard box. No, I am not about to record that this daughter followed her older sisters by spending the day in the box- but her younger daughter did!

By this stage I was getting worried. Numerous TV programmes have informed me we branched away from apes living in trees by a Darwinian process of selection whereby our ancestors changed because of changes in their world and mode of living. Other changes occurred by mutation of genes. Had my genes suffered a mutation thereby urging my descendants to spend time in a box? And then it got worse. In this age of miniaturisation would boxes become too small for normal children to sit in them and thereby cause future descendants to have dwarf children?

By this stage I was getting really worried. In my mind's eye I thought I was aware of rumblings — "This bloke must be going ga-ga; he's got too vivid

an imagination". IMAGINATION that's it; it isn't an urge to sit in a box gene I've passed on. It must be an imagination gene, helping them all to enjoy imagined things in their young years as all children should.

You may ask what my qualifications are for putting forward this hypothesis. That's easy - I'm in my second childhood, runny nose and all!

P.S. I know my great grandfather's classification on the census is not what I first thought, but that's another story.

Don Ashford



SHEFFIELD BACH SOCIETY

MONDAY 5 DECEMBER

Sheffield Bach Choir presents:

Handel's MESSIAH and HEAR MY PRAYER

with THE NATIONAL FESTIVAL ORCHESTRA AND
SOLOISTS Phillipa Hyde, Alison Hudson, Stephen
Liley, Alex Ashworth at
Sheffield Cathedral, Church Street, S1 1AA
7.00 pm

Tickets £12-15; Students £6

Box Office: 3 Tapton Mews, Tapton Crescent Road,
S10 5EA and at the door on the night of the concert.

Accompanied under 16s are admitted free of charge -
boxoffice@sheffieldbachchoir.org.uk

On-line booking from the Bach Choir Website:
www.sheffieldbachchoir.org.uk

For its traditional December complete performance of
Handel's Messiah, Sheffield Bach Choir celebrates the
centenary year of Bradford-born Dr Watkins Shaw,
whose 1958 edition of Handel's masterpiece brought
musicians back to discern so much of what Handel
himself intended rather than the inflated ideas of
others. The concert takes place in Sheffield's historic
Anglican Cathedral, accompanied by Sally Robinson
and her acclaimed National Festival Orchestra. The
performance will be, quite literally, "from cover to
cover" and is not to be missed! Dr Simon Lindley is on
the rostrum and the keyboard accompanist is Alan
Horsey, for many years Organist of Bradford
Cathedral.

FORTHCOMING SHEFFIELD BACH CHOIR CONCERTS IN 2012 INCLUDE

SATURDAY 17 MARCH

Bach - Mass in B minor at Sheffield Cathedral with the
National Festival Orchestra

SATURDAY 30 JUNE

Orff - Carmina Burana at Broomhill, St Mark

St John's Church Abbeydale

Special Services coming up in
the next month



18th December

6.30pm Carol Service - Nine lessons and
carols followed by mulled wine and mince pies

24th December Christmas Eve

5pm Christingle
11.30pm Midnight Eucharist

25th December Christmas Day

9.30am Family Communion

Normal weekly services are:-

8am Either Morning Prayer or Holy Communion
10am Parish Communion. Provision for children is
made on the 1st, 2nd and 3rd Sundays of the month
either by way of Family Communion or Fish Club

SOCIAL EVENTS

Christmas Beetle Drive with Supper

Saturday 10th December 6.30pm

Entrance fee £1 for adults and 50p for 14 and under.

Supper will be £5 for adults, £4.50 - children under 14
but will need to be ordered in advance.

Contact 236 4578

Carols and Quizzes

Friday, 16th December @ 5pm, Old Mother Redcap,
Bradway

Thursday, 22nd December @ 5.30pm, Castle Inn,
Twentywell Road

Friday, 23rd December @ 5pm, Abbeydale Sports
Centre



WEDNESDAY JANUARY 25TH

TOTLEY LIBRARY, 7.30PM

TOTLEY TUNNEL AND THE NAVVIES

TALK AND SLIDES WITH TED HANCOCK

MEMBERS £2, NON-MEMBERS £3

Friends of Green Oak Park

There is not much to report this month, just to thank
residents who have offered wood for bird / bat boxes.
I would like to make another request for help, this
time for snowdrops. We would like to use them at the
Lemont Road entrance. The best way to move them is
"in the green" after they have flowered, so if you have
too many please dig them up and let us have them.
Snowdrops are already coming through in my garden.
We were disappointed in the results of the Natwest
competition for outdoor musical equipment, only 57
votes!

In my last update I mentioned the programme on the
Olympic meadows. Due to last minute schedule
changes this will not now take place until spring 2012.
It will be part of Sarah Raven's TV series "Bees,
Butterflies and Blooms." on BBC 2
Avril Critchley

Carolling in Derbyshire

Hathersage Carollers invite you to join them in singing
popular and their local "village carols" at the following
venues:-

Monday 19 December Millstone Inn at 9.00pm

Wednesday 21 December Plough Inn at 9.00pm

Friday 23 December Scotsmans Pack at 9.00pm

Thursday 29 December Little John Inn at 12 noon.

Do you need help?

In coping with worry, illness, depression or spiritual
problems.

Christians believe that God, through Jesus Christ,
comforts, heals and brings peace of mind, in response to
prayer.

Members from All Saints and Toley Rise Methodist,
churches are currently offering to pray in confidence for
anyone who would like to come to:

TOTLEY LIBRARY BUILDING ON SATURDAYS
between:

12.30 and 1.45 pm up to 17 December 2011.

For information ring Brian on 07722236037.

ALL SAINTS CHURCH, Totley Hall Lane.

Christmas & New Year

Services for December and January

- 4th** 10.00am Holy Communion
6.30pm Holy Communion
- 11th** 10.00am Morning Praise
6.30pm Evening Prayer.
- 18th** 10.00am Christmas Celebration
6.30pm Carol Service
- 24th** 4.30pm Children's Crib Service
11.30pm Holy Communion
- 25th** 9.30am Family Service and Holy Communion
Holy Communion 10.00 am every Wednesday

January

- 1st** 10.00am Family Holy Communion
6.30pm Evening Prayer

Throughout January Services will be held at normal Service times of 10.00am and 6.30pm on Sundays and Holy Communion at 10.00am on Wednesdays.

THE STAR

A star appeared that shone so bright
That came to put the dark to flight
And wise men journeyed from afar
Who followed that amazing star

It came the world the truth to show
That then all peoples there would know
The fact that God does love us all
Contained in babe in stable stall.

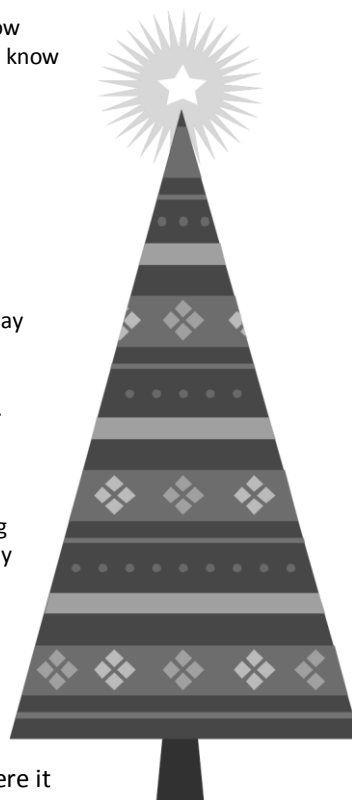
The star lit up the sky that night
And angels sang up in the height
Of peace to all, goodwill to men
So shepherds ran to Bethlehem.

They sought the Son of God who lay
So gently resting on the hay
Mary and Joseph by his side
The peace of God did there abide.

Come let us celebrate with star
The angels, wise men from afar
And with the shepherds let us sing
Honouring The Babe, our Heavenly King.

CHRISTMAS DECORATIONS

Gather some pine cones on autumn walks to hang on the Christmas tree. If you bring them into the house where it is warm, they will open up and they will look very effective with silver glitter or sprayed with gold or silver paint. You can decorate them by gluing sequins or little polished stones and hang them up with a pretty ribbon.



SILENT NIGHT

The little church in the Austrian village of Oberndorf was full for the traditional Christmas Eve service. There was a special surprise item in store. The vicar, Joseph Mohr, had written a new carol for the occasion. He had given the completed manuscript to the organist in good time for him. But now organist, Franz Gruber was in despair. The organ had broken down and he could not play his tune. Undeterred the vicar suggested that he and Herr Gruber should sing their carol as a duet.

In due course, the organ was repaired and as a test-piece during repairs, Herr Gruber played his new tune. The organ repairer was delighted with the new carol, and when he returned to his own village of Zillerthal, he sang and played it there. A glove maker living in Zillerthal had four daughters who used to accompany their father on his glove-selling travels and give concerts in the towns and villages they visited. These girls sang Silent Night to every available audience.

So, the carol which might have lain unknown in the church cupboard at Oberndorf became a firm favourite all over Austria. Soon it was translated into other languages, and on this Christmas Eve more than a century and a half later, it will be sung all over the world.

Mary Batchelor from "The Joy of Christmas".

PARTY CANDLES

A simple but effective party treat. Children could enjoy making these.

Ingredients:-

1 Chocolate Swiss roll, 8 Cadbury's Flakes, 1 can mandarin oranges, Butter icing or plain white icing, Glace cherries.

Cut the Swiss roll into 8 even slices. Stand a flake in the centre of each, sticking it through the cake. Drain the juice from the mandarin oranges. Arrange the mandarin segments on the slices of Swiss roll, round the flake. Pipe or gently draw dribbles of white icing coming down from the top of each flake, to look like candle wax. Cut the cherries into four and stand one piece upright on the top of each flake, to represent the candle "flame". From "The Complete Cadbury's Cook Book."

LOOKING AHEAD TO 2012

Dear Lord of the ages, and King of this coming new year, as I look to You, all things seem new.

Even my worn and sometimes broken life seems transformed. I thank You especially at this season, for the new birth and the new life which follows. Give me the grace to stand firm in the midst of temptation and give me a clearer vision of You and all that you have for me to do. Then, knowing that I am yours forever, I will praise You and love You both now and forever.
Floyd Tompkins.

Dorothy Firth and Kate Caroe.

Totley Scouts

We have had a busy few weeks including weekend activities for four weeks in a row.

On the 23rd October we were pleased to support the Friends of Gillfield Wood in their bug hunt. I understand it was very successful and of course many of our children enjoyed hunting for bugs.

The following weekend, on the 29th, we held our ever popular twice yearly Antiques Fayre at St Johns Church hall. We had record takings that day and after expenses made over £300 for Scout funds. Many of the children helped on the day manning the door, making tea's and coffee's and serving the food, as well as clearing up and washing up. Some of them even made cakes to sell.

The following Friday (4th) we held a bonfire party for all the Beavers, Cubs, Scouts and Explorers together with their parents. This was the first time in many a year that we had organised such an event. As I have previously mentioned our numbers are rising and made it possible to organise. Again many of the children helped with games and food.

We had a bonfire at the front and the fireworks at the back of the hut. We had to raise funds to cover the costs (especially the fireworks) and did this by selling the usual bonfire food of hot dogs, jacket potato's and soup as well as tasty cakes. It was not intended as a fund raiser but nevertheless we still made £70. The most important thing was that everyone had a great time.

And then on Sunday 13th November we helped to commemorate Armistice Day. The Beaver Scouts joined in the service at St Johns Church Abbeydale whilst the Cubs, Scouts and Explorers joined in the

service at All Saints Church Totley and later at the memorial on Baslow Road.

We have now received the 30 trees (or should I say saplings) from the Woodland Trust that I mentioned last time. As the Scout Hut is on the edge of Gillfield Wood we decided to donate all the trees to the Friends of Gillfield Wood. They should have been planted by the time you read this article. I am sure they will help to enhance the wood.

I was also pleased to see that the Beaver Scouts made it into The Star on the 10th November. This was due to their fund raising efforts for Children in Need. How did they raise the money? By pushing frozen peas with their noses! At the time of writing we are still counting the sponsorship money. You can look online for the article at www.thestar.co.uk. Just search Totley Beaver. It was also very nice to see that The Star took a picture of a girl, Cassidy Glossop, to prove that girls do enjoy Scouting also.

Finally, a Totley Scout and also our Beaver leader represented the Youth of the area and Uniformed organisations respectively at the licensing of the new Priest in Charge at St Johns Church in the evening of 16th November. It was a great privilege.

Christmas is now approaching so the Scouts would like to wish you all a happy Christmas; and I look forward to reporting again in 2012.

Richard Frost

Chairman

1st Totley Scouts

TotleyChair@aol.com



A 10 minute i.Fit workout is the equivalent of spending an hour in the gym.

NOW OPEN!

Drop a dress size - without breaking sweat!

- Burn fat
- Tone and tighten skin
- Lose weight
- Reduce cellulite
- Build muscle tone
- Increase flexibility
- Increase circulation and lymphatic drainage
- Increase bone density
- Reduce back and joint pain
- Increase balance and co-ordination
- Decrease blood pressure
- Increase sense of well being

We also offer the latest in stand up tanning!

Opening Times

Mon - Fri	9am - 7pm
Saturday	9am - 5pm
Sunday	Closed

Tone UP! Tan UP! @ Shake UP!



TELEPHONE: 01142 353 440 www.shakeupsheffield.co.uk
77 Baslow Road / Totley Sheffield / S17 4DP (Next to Dore & Totley Vets)

CROSS SCYTHES

PUB, RESTAURANT & HOTEL



We are proud to have picked up a host of accolades:

4* rating from The Star food critic Martin Dawes

4* AA Rating



Great British Pub Award – Regional Winners

Westside 2011 Best Pub Food



Follow us on Twitter
(CrossScythes17)
or Facebook.

twitter



Telephone: 0114 236 0204

Email: enquiries@cross-scythes.com Baslow Road, Totley, Sheffield, S17 4AE

DON'T PUT
UP WITH...

PAIN

Activ
Physiotherapy
specialises in:

- Sports Injuries
- Back & Neck Pain
- Joint Problems
- Muscle & Ligament Strains
- Repetitive Strain Injuries
- Post Op. Rehabilitation

Registered with major insurance companies, BUPA, Aviva, Westfield Health

Early morning and evening
appointments are available . . . ring for details

Totley: 0114 235 7845 • Norton Lees: 0114 255 6434

Mobile: 07901 968 549

WE'RE NOT JUST A
heating company

We won't be beaten ON QUALITY & PRICE!



- Plumbing
- Electrical Services
- Solar Design & Installation
- Bathroom Design & Installation
- Tiling, Plastering & Joinery
- Landlords Gas Safety Certificate
- Total Property Services
- Underfloor Heating
- Central Heating Installation
- Boiler Repair & Maintenance

Buy now
pay later
DEFERRED CREDIT
FOR 12 MONTHS

Free
5 year warranty
with all Boiler Installations

Boiler
service from only
£49.00

Oil Boiler
service from only
£75.00

Aga
service from only
£58.00

*Credit is provided by an independent 3rd party. Subject to status. **Prices plus VAT



Call today: 01433 620 220

1 call, 1 company, total peace of mind

Valley Services

Email: info@valleyserviceslimited.co.uk

Unit 12B, Vincent Works, Brough, Hope Valley S33 9HG



Visit us online at valleyserviceslimited.co.uk

MOGGY MAID



Gail Kitchen: 07986473415

Does going away from home mean your cat is sad and unhappy?
Does a trip to the cattery scare your cat not to mention your wallet?

WORRY NO MORE!

MOGGY MAID is on hand to feed, love and provide everything your cat needs in the relaxing comfort of its own home.

As we cat-lovers know, unfamiliar sights and smells can stress your cat, whereas leaving them in the familiar surroundings of their own home carries less worries, for your cat and for you.

If only for a night, weekend, or a month; holiday, Christmas or any time of the year, MOGGY MAID is here to help **LIGHTEN YOUR LOAD**



We promise no mischief allowed!

In a professional manner and with quality service, you can ensure individual care and attention, whilst you relax away from home.

We haven't forgotten the rest of the family; mice, rabbits, budgies, goldfish, etc will receive care and affection too.



LOCAL FRIENDLY SERVICE

From £5 a day

For more Information, contact Gail Kitchen on:
07986473415

5 Ullswater Place, Dronfield Woodhouse

SEE THE DIFFERENCE!



- **COMPREHENSIVE EYE EXAMINATIONS**
including special tests for glaucoma, colour vision, dyslexia & diabetes
- **CONTACT LENS CONSULTATIONS**
free contact lens trials and monthly direct debit payment schemes
- **PRESCRIPTION SUNGLASSES**
- **LEISURE SPECTACLES**
for computer work, fishing, swimming and safety wear
- **ACCESSORIES**
ready readers, chains and magnifiers

LENSES BY SEIKO
In all non-budget spectacles

TOTLEY
63 Baslow Road
236 4485

ABBEYDALE
634 Abbeydale Road
255 6554

For more help and information please phone or call into the practice of your choice
For a full list of our practices visit

WWW.MKO.CO.UK

Terms and conditions apply.



Shepley Spitfire

56 Mickley Lane, Totley Sheffield - S17 4HE 0114 236 0298

UNDER NEW MANAGEMENT

2 meals for **£8.95**

Served everyday 11am until 9pm

Carvery every Sunday from 12 noon

Quality Cask Ales

Quiz Night every Tuesday form 9:30pm

The Home of Big Fish Friday!!

Beer battered Cod fillets, Chips and Peas Two for **£8.99**

Eat in or Takeaway

FOR THOSE OF YOU WITH A LITTLE APPETITE

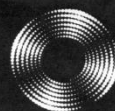
WE HAVE INTRODUCED A SMALL

PLATES MENU FROM **£2.49**

ALL DAY EVERYDAY

Sky Sports & ESPN showing live games

Entrust Electrical



For all your electrical requirements in or outside the home you can trust **Entrust** to do it right!

- ✓ Full or Partial House Rewiring
- ✓ Additional Sockets, Switches, etc
- ✓ Energy Efficiency Enhancements
- ✓ Contemporary & Classical Refurbishments
- ✓ General Electrical Maintenance & Repair
- ✓ Homebuyer Electrical Safety Surveys
- ✓ Telephone and Computer Data Points
- ✓ Garden, Pond & Other Outdoor Electrics
- ✓ Security Lighting & CCTV



City & Guilds
Qualified

(0114) 2352084
07935 250814

www.entrustelectrical.co.uk

Old Hay Close, Dore, S17 3GP



**“need help in
your garden?”**

...we can help *you*

the
ABBEYDALE
gardeners

Kevin and Mark from the recently closed Abbeydale Garden Centre, have started their own Garden Services Business.

Kevin Hunter 07818 20 12 42

Mark Naylor 07739 75 23 19

“give us a call, no job too small.”

Music Tuition



Piano • Keyboard • Flute • Singing
Guitar (rock, metal, blues, jazz, funk, pop, folk)
Music Theory • GCSE work

Music graduates, each with 25 years
teaching and playing experience

All ages, beginners welcome.

Exam work or just for fun!

Call Mark or Karin

0114 237 4853 & 07981 888352

HEARING AIDS

MAURICE NAYLOR FBSHAA RHAD is your
local hearing aid specialist and at your
request will test your hearing in your own
home, free of charge, and if needed you can
try a custom made aid for four weeks
without obligation to purchase.

Tel : 237 4817

In the ear digital from £495



THE COMPLETE BUILDING SERVICE

New Build & Extension Specialists

From Design to Completion

**Full Project Management
House Building**

Extensions

New Roofs/Tile/Stone

Stonework Specialists

Loft Conversations

Find
us in
Yell.com

Established for 25 years with over 90%
of our work coming from recommendations, to
find out why call:

0114 2353314

Mobile 07973 908187

www.mwoolhousebuilders.com



Christchurch Cottage,
Townhead Road,
Dore, Sheffield
S17 3GA



Kitchen Solutions

By Nigel Watson

Fully fitted quality kitchens at affordable prices,
planned and designed to your specification. View a
computer generated impression prior to installation.

For a local, friendly, reliable service call for a free
brochure and quotation.

TEL: 0114 236 4778

Mobile: 07971 528149

Horizon Electrical

*Faults, Rewires, Sockets, Lights,
Cooker Points, Electrical Showers,
Phone Points, Security Lights*

No job too small

Fully qualified with friendly advice

Ring Totley 236 4364 or

Mobile 07772 483154



Hatha
..YOGA CLASS..

Totley and Ranmoor

For more information or to book a place call

RACHEL on (0114) 236 9943

BWY Qualified Teacher

BODY, MIND & BREATH

Enjoy the union of yoga



BRADWAY INSTALLATIONS

**Kitchens, Bathrooms.....and everything in
between**

- **Complete Kitchens** - Installation or supply and
installation
- **Kitchen Refits** - Replacement worktops/sink/hob etc.
Worktop / cabinet repairs
- **Bathrooms** - Cloakrooms - Domestic plumbing - Tiling
Laminate / Vinyl flooring

All work undertaken is fully insured and guaranteed

Ring Peter - 0114 236 5995

Mobile - 07766 411355

SLIMMING WORLD

10 WAYS TO MAKE SURE IT WILL BE THE LAST TIME LOSING WEIGHT IS YOUR NEW YEAR RESOLUTION. THIS TIME MAKE IT LAST FOREVER

1. Focus on your weight loss goal and prioritise it.
2. Be sure you really want to lose weight for yourself. Doing it to please someone else may only lead to short term weight loss.
3. Take advantage of all the group support at your local Slimming World class. Even if you are not a 'joining in' person, you'll be surprised how motivating it is.
4. Accept that you will have ups and downs in your weight loss journey, and be forgiving of yourself if you hit a difficult patch.
5. Listen to your 'inner script' and make a conscious effort to talk to yourself in a positive, encouraging way.
6. Keep up your interest in your healthy eating plan by trying new foods, new recipes, and new ways of using your Sins. This will help you avoid getting in to a dieting rut which can be boring and demotivating.
7. Be honest with yourself about what you are expecting from your weight loss and how you are getting on with Food Optimising week by week. People who set unrealistic targets for weight loss or body shape are more likely to give up than those who set achievable targets and share their ups and downs.
8. Go back to your class even after (especially after) you've had a weight gain. You will not be judged, just helped and supported.
9. Keep setting new goals and rewarding yourself for milestones until you reach your target weight, and afterwards!
10. Don't put your life on hold until you've lost weight. You can still enjoy life and lose weight. Think of your dreams and ambitions and bring them to the fore. The positive feelings you get from starting to 'live a little' can only help your motivation and your weight loss.

Group details:

Bradway Annexe now at **St Peter's Church, Greenhill Roundabout, S8 7FN** Thu 5pm & 7pm

Dore Old School, Tues 5.30pm

Tel: **Alison Murphy 07815 046569** for further details

Heatherfield Club, Baslow Road - Mon 7pm

Tel: **Jo Elsey on 0114 2620523** for further details

PhysioFOCUS

at **Totley Rise Dental Practice**
85 Baslow Road,
Sheffield, S17 4DP



Physiotherapy treatment available for:

- Back and neck pain
- Sports injuries
- Sprains and strains
- Joint and muscle pain
- Arthritic pain
- Whiplash
- Repetitive strain injury
- Headaches

Appointments: 0114 2360333

Also available:

- Pilates classes
- Pilates 1-2-1
- Golf Fitness Screening
(as used by consultants to UK, European and Australian PGAs)

For more information please call:

Emer on: 07792 422909

Rachel on: 07956 908454

APPLE LANDSCAPES and APPLE FENCING

www.applelandscapes.com

QUALITY SERVICE AT AFFORDABLE PRICES

Patios • Paths • Walling • Dry Stone Walling • Drainage Work

• Indian York Stone Paving • Railway Sleeper Beds

Garden Tidy Ups etc. No job too small

Fencing & Gates Supplied Only

or Supplied & Fitted

Only Quality Materials Used

FULLY INSURED

Call for free quote

01246 237505 • 07782 167540

Homeopathy @ Synergy.

162 Baslow Road, Totley, Sheffield, S17 4DR

Advanced Indian Sensation Method Homeopathy

Alternative medical treatment for all chronic conditions

Registered with major insurance companies. Can claim through the Westfield scheme

Registered member of
The Society of Homeopaths

Ring: **Lindsay Allison RSHom** for more information:
0114 235 7845 or 07968 167036



Tel/Fax: (0114) 255 4689

Mobile: 07831 802539

TRISTAN SWAIN

LANDSCAPING AND MAINTENANCE

UNIT C4

Sheaf Bank

Business Park

20 Prospect Road

Sheffield S2 3EN



B.K. JEAVONS
PAINTER & DECORATOR



Interior
Exterior
Decorating
No Job too small

Tel: 01246 416484

and mobile 07882 278306

M. Scriven
(FRUITERAMA)

MARTIN SCRIVEN

HIGH CLASS FRUIT
& VEGETABLES

37, Baslow road

Tel. 236 7116

Orders Delivered





GWS

Technology Solutions



PC Problems/ Repairs/ Servicing No Job Too Small
 Wireless & Internet Setup New PC's & Upgrades
 PC Setup/Data Transfer Safe PC Disposal Tuition
 Software/Hardware For All Your PC Needs

Guy Senior

Phone: 0114 2352662 Mobile: 07890030453

Email: guy@gwstech.co.uk

Web: www.gwstech.co.uk

GWS, 5 Conalan Avenue, Bradway, Sheffield S17 4PG



253 Baslow Road, Sheffield, S17 4DU
 Tel: 0114 2360 583 Mobile: 07801 346 455

R.M.M BUILDING SERVICES

25 YEARS EXPERIENCE

All types of building work carried out including- Drop kerbs, block paving (drives, paths, etc), extensions, general building repairs and maintenance.

Phone Rob on- Mob- 07906108567

Home-2352190



Garden Services & More

Lawn mowing, strimming, weeding, turfing, leaf clearing and lawn care. Hedges trimmed, reduced in height or width. Tree felling and pruning. High Pressure cleaning of driveways and patios.

Phone Bruce on Tel: 0114 2356708 or
 Mob: 07855752761

R.S. HEATING & BUILDING CO

EST. 1971



HEATING DIVISION:

Experienced Installers of condensing, combination and regular boilers. Systems fully guaranteed. Complete after sales service. Also Bathrooms, showers and small plumbing works.

BUILDING DIVISION:

Loft conversions, House renovations including general building, joinery, plastering, electrical decorating etc.



13 Overcroft Rise, Sheffield, S17 4AX

Tel:- 0114 236 4421

Reg. Office:- 62 Machon Bank, Sheffield, S7 1GP

Te:- 0114 2559425

Fax:- 0114 255 9431

Email: enquiries@rsheatingandbuilding.co.uk
 Web: <http://www.rsheatingandbuilding.co.uk>



Gardens cleared and maintained, Lawns mowed, Turfing, Tree felling & pruning, Hedges trimmed & reduced, Pond maintenance, Fencing etc.

for free quotation call

Chris on: (0114) 2746158 Mobiles: 07976072785 or

Richard on: 07789497104

8am-6pm mon-fri

HazelBarrow Farm, Norton S8 8BA



Nigel Watson



Carpenter and Joiner

Fitted kitchens, sliding wardrobe doors with bespoke interiors, internal and external doors supplied and fitted, new handrail and spindles, laminate and wood flooring, locks, architraves, skirting board, stud walling, boxing off etc.

For a reliable and quality service

TEL: 0114 236 4778

MOBILE: 07971 528149



Got a computer?

Having Problems?

Is it running slow? Stops responding?
 Having problems running the latest games or applications? Broadband installation?

Give me a call!

I'm available for home visits at any time including evenings and weekends. I can also suggest upgrades to improve performance, or even build you a system to your specific requirements.

Tim Brown

Building, Installation, Upgrading and Troubleshooting Computer Systems
 Over 25 years professional experience

Phone: 0114 2472619 Fax: 0870 7060080

Mobile: 078 17464703 Email: service@timbrown.plus.com

Dronfield Landscapes

Logs and woodchippings
For Sale

Ring for details
Chris on 0114 2746158
Mobile 07976072785

Richard mobile
07789497104



Central Heating
Domestic Plumbing
Glazing, Double Glazing and Glass
House Maintenance
UPVC and Wood Windows & Doors
Mini Digger & Driver, Muck Shifts, Footings Etc.



TOTLEY PRIVATE HIRE

24HR TAXI SERVICE
ADVANCE BOOKINGS TAKEN
LOCAL • LONG DISTANCE • AIRPORT

Tel: 0114 283 9692
Mobile: 07974 355528

Domestic electrical work carried out by
City & Guilds and 'Part P' qualified

LADY ELECTRICIAN

- * House rewires * Replacement fuse boards *
- * New sockets and lights * Telephone points *
- * Security systems * Pond pumps * Christmas lights *

All work guaranteed and
fully insured



For a free quotation
without obligation



ring Mandy on 07788-544225



Tiling, Plastering,
Plumbing & Complete
Bathroom Fitting Service

Tel: 0114 274 6775
07738 688807

- ◆ Under Floor Heating
- ◆ All Aspects of Home Improvements & Maintenance Work Undertaken
- ◆ Competitive Prices
- ◆ NVQ Qualified
- ◆ No Job Too Small
- ◆ Fully Insured & Guaranteed

A1tilingandplastering.co.uk
33 Glen View Road, Greenhill, S8 7SF

Hypnotherapy

Weight, confidence, smoking, stress,
phobias, anxiety, panic, sleep, etc...

Call 235 1985 Totley

www.sheffieldhypnosis.co.uk



Paul Peace



The
British
Psychological
Society
Chartered Psychologist



Karen Bartle

Creating opportunities with disabled people.

Registered Charity No. 218186

Leonard Cheshire Disability

Leonard Cheshire Services in Offers choice & opportunity to people with disabilities. A Specialist Unit for the Younger Disabled. Residential & Respite Care - Single Rooms Day resources - Aromatherapy - Reflexology - Physiotherapy - Toning Tables.

Activities include: - Arts & Crafts - Computers - Cookery - Shopping Expeditions - Theatre Outings - Church. Further details can be obtained from - The Service Manager, Mickley Hall, Mickley Lane, Totley, Sheffield S17 4HE. Tel. 0114 236 9952 Fax. 0114 262 0234

The Care at Home Service supports disabled people who wish to remain in their own homes.

We provide flexible care packages from 1 hour to 24 hours meeting individual needs. The service operates throughout Sheffield.

Our service includes: - help with getting up and going to bed, dressing, washing, bathing, shopping, cooking, light household duties.

Further details from: - The Care at Home Manager Tel. 0114235 1400 Fax 0114 235 1499

John Heath & Sons

AN INDEPENDENT FAMILY FUNERAL BUSINESS

Sometime.....

You will probably have the responsibility of making funeral arrangements. No one looks forward to this responsibility, but the death of a family member or friend brings with it an obligation that must be met. There are people who can help you meet this responsibility. We have been helping people combine the different aspects of the funeral into a meaningful service for over 125 years.

Please Call Day Or Night

(0114) 272 2222

Head Office - Earsham Street

Also at Meadowhead, Ecclesall Rd,
Crookes and Stanington

www.johnheath.co.uk



CHARISMA BLINDS



For
Windows
With Style

Sheffield Factory Showroom
106 PROSPECT ROAD
HEELEY, SHEFFIELD

Sheffield (0114) 258 5496
Rotherham (01709) 512113

TOTLEY & DISTRICT DIARY

MONDAYS	COFFEE MORNING , All Saints' Church Hall, 10am-noon TAI-CHI , United Reformed Church, Totley Brook Road, 11.30am-12.30pm RAINBOWS and GUIDES , All Saints' Church Hall, 5.45pm-9pm
TUESDAYS	COFFEE MORNING , Totley Rise Methodist Church Hall, 10am-noon KEEP FIT & COFFEE , For the not-so-young, Bannerdale Centre, Carterknowle Road, 10.15am, Phone 258 5364 WOODSEATS ADVICE CENTRE , Drop in service, free, impartial, and confidential. TR Methodist Church, 10am-noon CRAFT GROUP , Totley Library, 2pm
WEDNESDAYS	PILATES CLASSES , Dore Old School, 9.00-10.00 and 10.15-11.15. Contact Caroline - Tel: 0781 722 0324, email caroline1north@btinternet.com, www.pilatescarolinenorth.co.uk COFFEE in the LIBRARY , 10am-11.30am TODDLER GROUP , 10am-11.30am, All Saints' Church Hall. Details tel. Andy Holmes 0114 236 2088 HEALTH WALKS , 10.30am, Totley Library foyer. Phone Sue, The Health Walk Ranger: 0114 283 9195 MODERN SEQUENCE DANCING , All Saints Church Hall, 8pm-10pm
THURSDAYS	CHAIROBICS , Heatherfield Club, 1.15pm NCT COFFEE GROUP FOR DORE TOTLEY & BRADWAY , 10am-noon, For mums & babies/toddlers, meeting in various locations, Phone Lucy Street 07837 000405 or email: lucy@streetr.plus.com for further details PUSHCHAIR CLUB , Totley Rise Methodist Church Hall. 1.30pm-3pm. Tel. 236 3157 for further details PILATES CLASS , United Reformed Church, Totley Brook Road, 6.15pm-7.30pm, Phone Emer Coffey 07792 422909
FRIDAYS	PILATES , The Old School, Dore, 10.45-11.45am & 12-1pm. Phone Teresa Tinklin 07906 312372
SATURDAYS	MODERN SEQUENCE DANCING , All Saints Church Hall 2 nd . And 4 th . Saturdays 8pm-10pm

DECEMBER

SAT 3rd CHRISTMAS FAIR, Dore Old School, 10am- 12 Noon
SUN 4th CASTLETON FARMERS MARKET, the Village Hall, 10am-3pm
SUN 4th MINIATURE TRAIN RIDES, SANTA SPECIAL, Abbeydale Road South, First train 11am-3.30pm (weather permitting) www.sheffieldsmee.co.uk
TUE 6th FRIENDS OF GILLFIELD WOOD, Sheffield's Woodland History, Prof Mel Jones, 7pm, Totley Library, full details page 4, All are welcome.
WED 7th CHRISTMAS FAYRE, Cheshire Homes, 10am-noon, details p 8
THU 8th - SUN 11th SHEFFIELD CHRISTMAS MARKET, Fargate
SAT 10th SATURDAY NIGHT LIVE, Ray David, Heatherfield Club. 8.30pm. Come & play Play Your Cards Right. Non-members welcome
SUN 11th MINIATURE TRAIN RIDES, SANTA SPECIAL, Abbeydale Road South, First train 11am-3.30pm (weather permitting) www.sheffieldsmee.co.uk
WED 14th TOTLEY HISTORY GROUP CHRISTMAS SHOW, Heatherfield Club, 7.30pm, full details page 4, members £2 non-members £3
SAT 17th CHAIRMANS XMAS BASH with Group and Buffet, Heatherfield Club. 8.30pm. Non-members welcome
TUES 20th TOTLEY TOWNSWOMEN'S GUILD, Christmas Meeting, Totley Rise Methodist Church Hall, 10am
THU 22nd SHEFFIELD FARMERS MARKET, 9am-4.30pm, Fargate
MON 26th BOB'S CHRISTMAS CRACKER DISCO, Heatherfield Club. 8.30pm. Come & play Play Your Cards Right. Non-members welcome
SAT 31st NEW YEARS EVE, non-members £4.00, Heatherfield Club. 8.30pm. Come & play Play Your Cards Right. Non-members welcome

JANUARY

TUE 3rd FRIENDS OF GILLFIELD WOOD, Open Meeting, 7-9pm, Library
SAT 14th SATURDAY NIGHT LIVE, act TBA, Heatherfield Club. 8.30pm. Come & play Play Your Cards Right. Non-members welcome
TUES 17th TOTLEY TOWNSWOMEN'S GUILD, 'You've Got it on a Plate (volcanoes)', Paul Cutts, Totley Rise Methodist Church Hall, 10am

TOTLEY INDEPENDENT FOR FEBRUARY

The next issue of the Totley Independent will be available from the usual distribution points on

SATURDAY 28th January 2012

COPY CLOSE DATE for this issue will be

SATURDAY 14th January 2012

Editor: **Ian Clarke**
 Tel. No: **235 2526** or Email: **editor@totleyindependent.co.uk**

Advertising & Distribution:
John Perkinson
 Tel. No: **236 1601** or Email:- **advertising@totleyindependent.co.uk**

Items for publication may be left or sent to:
2, Main Avenue, Totley, Sheffield, S17 4FG or
Totley Library
www.totleyindependent.co.uk

CLEARVIEW STOVES

Pioneer 400 - weight 125kg



This is by far our biggest selling multi-fuel stove. For a typical room size 13ft x 15ft! Producing from 1 to 5kw of heat output - being highly controllable with an updraft and a unique patented down draft to burn the tar off the glass - keeping it crystal clear - hence the name CLEARVIEW. One log lasting up to 1.5 hours given super efficient outputs up to 80% (an open fire runs at 15% efficient!). Seven choices of colour to compliment your decor with optional leg heights from 2 to 10 inches. Clearview Stoves were the worlds first to be approved for burning in 'Smoke Controlled Areas'. We have over 200 installations around Sheffield. We are often told by many of our customers that "It's the best thing we have ever bought"

Showrooms at Burgin Conservatories 302 Abbeydale Road S7 1FL
 Open Tues-Sat 10-5pm • Sundays 10-4pm
www.clearviewstoves.com • www.burgin-conservatories.co.uk
 or please telephone Graham Burgin 07973 321 075
 for advice or FREE QUOTATION

Starprint

601 Abbeydale Road, Sheffield 7. Fax: 0114 258 8599

DESIGN & PRINTING of

- LETTERHEADS • BUSINESS CARDS •
- BOOKLETS & PADS •
- INVOICES • LEAFLETS •
- CARBONLESS SETS • BROCHURES •
- RAFFLE TICKETS •
- WEDDING STATIONERY •
- ENVELOPES & POSTCARDS •

**SPECIALISTS IN THERMOGRAPHY
 FOIL BLOCKING AND ENCAPSULATION**

0114 258 0707
For a Quick Quotation