

TOTLEY INDEPENDENT

PUBLISHED BY THE TOTLEY RESIDENTS ASSOCIATION SINCE 1977

NOVEMBER 2006

No. 298

15p.



LEMONT ROAD

In TOTLEY INDEPENDENT no.33, published in April 1980, Ronald Steer looked back on his earlier days. His parents moved to 34 Lemont Road in 1914 and lived there for 19 years before moving to Furness Avenue. He spoke of butter being churned in an outhouse of no.32; this was before Herbert Parker and family moved in. Ronald mentioned that the land forming Green Oak Park was sold to Norton Rural District Council by Mr. John Carr who lived at the red brick house which had a flight of steps leading up to it. This area was referred to from its early days as Green Oak, a clue to the number of oaks in that area at one time. Of course, there was the Green Oak Inn opposite the top of Mickley. Mr. Clark who lived at the first house on the right of Lemont was a man of great strength and wit. He wrote this poem referring to the people who lived in Green Oak at that time.

There's a KING and a PRINCE in Green Oak
And a TAYLOR to make them a cloak
There's a CARR to be hired anytime that they're tired
And a HILL to STEER, what a joke!!

Lemont Road seems to have come into existence around 1876. Hawthorn Cottages are so dated, although the road is not in existence in the 1876 survey map. The first use of the name Lemont seems to be about 1907 but perhaps a reader of this issue may have different information in their deeds - please let us know. The house shown in the centre was once a greengrocer's shop owned by the Wints. The road was built on parts of a field called Red Wells - this name refers to a small spring, tired remnants of this can be seen occasionally trickling near the bowling green. The name Le Mont is French for The Mountain, hardly an apt one as far as position is concerned, but then the Victorians loved to elaborate. However one house is called Lemont View and that could be the clue, for the rear would have a view of the modest hills of Dronfield Woodhouse. Brian Edwards

Totley Residents Association Update

Police Matters

No doubt you have noticed that once again police officers seem to have deserted us. As a result, youth vandalism problems have begun again.

Groups of young people are congregating near the Co-op, Tesco, the chip shop and in Green Oak Park. Stones have been thrown

Continued page 2

From front page

around up and down Baslow Road, litter and bottles all round the bowling green and tyre marks on the Bowling Green. There are squashed chips all over the pavements attracting rats.

I have spoken to the police who are well aware this area has been neglected.

They assure me that the situation will be corrected by the beginning of November. The Totley Brook Road Police Box is to be used as the headquarters for this area. Money has been found to pay for a computer link so the Box can be linked to Meersbrook Section Station.

New Police Community Support Officers are being recruited. They will be based at Totley Brook Road.

The TRA Committee Meeting in October welcomed PC Dave Spencer and PC Mark Wadsworth. They brought with them Dave's police bike and gave us details of how the bike allows him to cover a greater area and enables him to get to places where trouble can occur. We were shown how the bike has been adapted, so it can be used safely on Blackamoor, in the parks and on the roads.

There are only a limited number of bikes available in Sheffield and we might have to wait 2/3 years before one is allocated to Totley.

The Committee decided to sponsor a bike and specialist equipment for Mark.

The bike will be Totley's own police bike, used and kept in the area.

We are asking the community to help with the sponsorship. Any amount, large or small, will be greatly appreciated.

South West Area Panel

We are sorry to say good bye to Andrea Peers the Co-ordinator who has left to work in her home town of Rotherham. We welcome Rebecca Maddison who takes over in November.

The next SWAP Meeting is on November 29th in Totley, details later.

TRA 30 Years Celebration

Green Oak Park has been booked for 1st July, so put the date in your diary.

Early days yet, but we are hoping to have a brass band and a DJ to put us in the mood. Park Rangers have been booked and Activity Sheffield will be on hand to keep the young people happy.

We are hoping all community groups will join with us to celebrate.

Any ideas, offers of help will be very welcome.

Green Oak Park, Mickley Lane Entrance

The South West Area Panel Meeting, held on Wednesday 25th October, was arranged especially so residents could hear the proposals for altering the entrance.

Around 60 residents braved the heavy rain to listen to the presentation given by Mary Bagley, Director of Parks and Countryside.

Bryan Lodge (Cabinet Member for Streetscene and Green Spaces), Mark Lowe (District Parks Officer), Naomi Hinch (Area Officer), Councillors Roger Davison, Anne Smith and Michael Waters were in attendance. The meeting was chaired by Councillor Keith Hill. The minutes were taken by Martin Riley.

Mary Bagley began her presentation by intimating the Council were looking to the future to work with the Community to make the entrance safe for everyone.

By taking away 2 meters of the lodge keeper's garden, a footpath would be created for pedestrians thus separating them from vehicles. The beech hedge at the edge of the garden will be dug up, moved and replanted. The beech tree,

lilac, mock orange and laburnum on the corner of the garden will be felled, to make it easier to see round the corner.

We will then be able to discuss with the Council forester the trees we would like as replacements.

It was suggested there might be a gate instead of a bollard. The out build at the bottom of Lemont Road would make it safer.

Members of the audience constantly and angrily interrupted the presentation with the following:-

1. Many residents raised very strong objections to the use of our public park as an access road for one household.

2. It was felt unfair that the lodge keeper and his family, who have already lost most of their garden for the house, should lose more for a footpath.

3. In order to access the proposed footpath, it was pointed out that pedestrians would have to cross the road to reach the footpath, twice if going to the Co-op. The path is on the wrong side.

4. The Gate-

Who would control the key?

We were informed Park Staff, The Lodge keeper and the Householder.

Questions were raised about emergency services. They will be given a key.

Why should a private individual control the entrance to a public park?

5. The kerb build out will create parking problems on an already narrow road. This could result in cars parking on the pavements.

How will the bus be able to negotiate the turning into Lemont Road?

Photographs taken by residents showing the present parking problems were given to Mary Bagley.

6. There were suggestions that Health and Safety should be re-assessed.

7. The question of cost was raised. Mary Bagley was not sure, but agreed a suggested £30,000 would be about right.

8. A very knowledgeable member of the audience gave us details of the problems which could be encountered if the proposed alterations were to take place as planned.

9. Parking- How will the Council react if other residents seek planning permission to drive into the park?

Will this be the end of the park as we know it?

10. Suggested bollards at the right hand side of the entrance will NOT stop joy riders.

They will just drive over the grass.

Conclusion

Mary Bagley was made well aware of the depth of feeling and anger of local residents, who want the park left as it was before planning permission was granted.

We need to know why planning permission was granted for a house and road through our public park, when the rest of the community park on the road.

Jan Wilson has stated publicly that permission should not have been granted.

Cllr Anne Smith suggested the Council should compensate the house owner and demolish the house.

Mary Bagley asked if we were prepared to work with the proposed plans.

A vote was taken, the majority were against.

It was agreed the Council must think again. There would be another meeting with planners and engineers present to answer our questions from 2001.

Minutes of the meeting will be available on the Council Web Site shortly.

Avril Critchley

Chairman TRA



Transport 17

We had a few problems in the last month. The clutch went on our oldest bus. We hope to replace this in 2008. This led to some passengers being picked up late. We also had a number of drivers away at the same time. Everyone pulled together, even using their own cars to transport people. I hope everyone understands that we do our best and will bear with us and be patient.

Once again this year, Sheffield Rotary Club Vulcan are including us in their Christmas Draw. Tickets will be on sale soon. Like everything else though, prices have gone up. We cannot expect them to run things on a shoestring. For every pound's worth of tickets we sell we keep 80p. We are very grateful for this support.

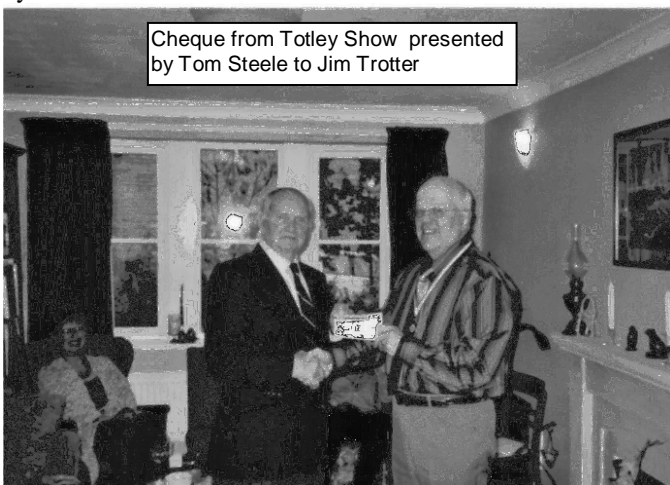
Cheque from Totley Open Garden event presented by Barbara Walker to Jim Trotter



We recently had a get-together and it was very good to see Transport 17ers past and present. Sometimes, because people work the same days of the week, they are like ships that pass in the night. Barry Rigby and Ken Parkin were looking very well and Ray Brown is slowly getting back to good health. Jack Cresswell is about to have a hernia operation. We wish him well and send our good wishes to Dorothy, his wife, who also helps us out now and again. Having had this op myself, last year, I have every sympathy with him and wish him well on behalf of our passengers.

We send our thanks to Daryl Creed, who has been on a scheme and helping us. Although his time with us is up he is continuing to help us as a volunteer. This is much appreciated by all of us.

Cheque from Totley Show presented by Tom Steele to Jim Trotter



Totley Residents Association gave us a cheque for £450. This was the proceeds from Totley Show. Thank you everyone for all your hard work. You should give yourselves a pat on the back. The support of the entrants and customers was also super this year.

God Bless, Margaret Barlow

MORE TOTLEY HISTORY

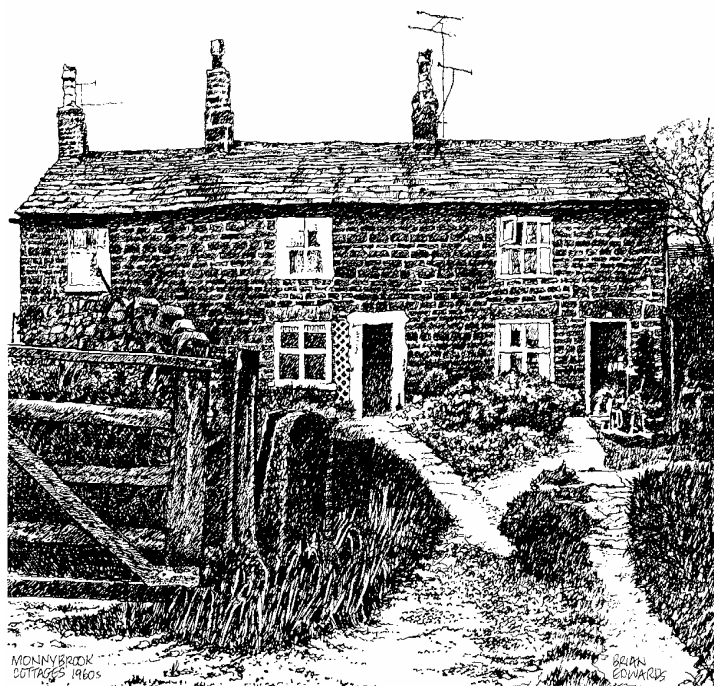
AN ILLUSTRATED TALK BY

BRIAN EDWARDS

LOCAL HISTORIAN, AUTHOR AND ILLUSTRATOR
TOTLEY LIBRARY

7.30pm WEDNESDAY 8th NOVEMBER

TICKETS FROM THE LIBRARY



TRA Website

The Totley website (www.totley.org.uk) recorded, in September, its highest monthly 'hit rate' to date - with 371 people visiting the site.

Most popular destination pages were:

- events
- TRA
- photo tour of Totley

The site had 66 hits from Australia, 23 from Germany and 8 from Canada!!

John Beazer

Councillor Surgeries

Conservatives:

4th Saturday of each month 10.00 to 11.00 am Dore Village Society room, Dore Old School, corner of Vicarage Lane and Savage Lane, Dore,. Contact details: telephone 273 4108
Email: anne.smith@sheffield.gov.uk or michael.waters@sheffield.gov.uk

Liberal Democrats:

2nd Monday in the month 6.00-7.00 p.m., Totley Library, Baslow Road and 2nd Saturday in the month from 10.30 a.m. to 12.00 noon, Dore Old School Hall, Savage Lane, Dore
Contact details: telephone 235 2289 Email: keith.hill@sheffield.gov.uk

TOTLEY RESIDENTS ASSOCIATION WEBSITE

www.totley.org.uk

RSPCA SHEFFIELD BRANCH

Since the up-dating of their premises, the Head Office of the local Co-op Store have decided to cancel the collection of cat and dog food for the RSPCA, which has been so useful. However, we do thank them for their help in the past.

This does not, of course, affect the collection of food at Totley Library, for which we are most grateful. Conditions for Sheffield Branch RSPCA are very difficult at present. As many people know, the premises at Spring St. were obtained under compulsory purchase for the section of the new Ring Road and, after lengthy negotiation with the Council, alternative land has been bought on Woodburn Rd., Attercliffe. This still leaves the cost of re-building kennels, clinics, office accommodation etc., on the new site which will amount to several million, and will probably have to be done section by section as money comes in. A continuing number of fund-raising events will be taking place, and if anyone can help at events or organise something, please do get in touch with Karen on 0114 281 3036 (0114 272 7542 nearly always seems to be engaged). The office is still at Spring Street, despite everything else having closed or moved for the time being. Donations of course are desperately needed, cheques should be made out to RSPCA Sheffield Branch S3 8PD, and for any more information do get in touch with 83, Spring St. S3 8PD, they do still exist!

To go back to food collection, this is greatly needed to give to those kind people who are "fostering" animals during the closure of the home. Some other charities are also looking after extra animals and the loss of 80 kennels and about the same for cats leaves a big gap in provision for unwanted and cruelty cases. Sheffield does need a replacement home, Spring Street opened in 1913 - just think what Sheffield must have looked like in those days. Sheffield Branch is completely independent, self-funding and self-supporting, receiving no financial aid from the National RSPCA nor sources other than local fund-raising, donations and legacies, (which must specify RSPCA Sheffield Branch, 83 Spring St. S3 8PB, Charity Reg. 225570 or they go to Head Office.

Finally, Bonfire Night is here, with rockets and bangs getting louder each year, and earlier. Many pets "go missing" with fright, so please do see yours are safe indoors!

D. Styles

Totley All Saints School Re Union.

A Re Union is to be held on Monday 27th November at **The Fleur De Lys Totley** from 7-30pm onwards for pupils who left school around the mid 1950s to 1960s.

We look forward to seeing as many old friends as possible.

Totley All Saints' Parent and Toddler Group Christmas Fair

2 December 2006 10.00 am to 1.00 pm
Totley Church Hall, Totley Hall Lane.

Toys and Book Stall, crafts, cakes stall, tea, coffee and mince pies, face painting and a special visit from Father Christmas.

Admission is 20p and children are free!

This is our main fundraiser and enables the group to continue for another year.



SANTA SPECIALS

Abbeydale Miniature Railway

Sunday 3rd and 10th December 2006

11am – 4pm, Abbeydale Road South

Admission £5 each – 'unlimited' train rides, visit to Santa, gifts, refreshments.

www.sheffieldsmee.co.uk

Abbeydale Park Bowling Club.

The Annual Dinner and presentation night was held on Friday 20th October. Guest speaker was Mr David Longley who also presented the prizes to the following members.

Ken George Shield (Mid Season Comp)

Winners N.Glover /J.Perkinton
Runners /Up V.Crann / H.Blomfield

Harry Johnson Cup (Captains Day)

Winners A.Wright /L.Carney
Runners /Up P.Thorpe / P.Spittlehouse

Autumn Shield (End Of Season Comp)

Winners R.A.Clarke /N.Glover
Runners /Up M.Stobbs /V.Turner

Curvacious Cup (Round Peg)

Winner J.Perkinton
Runner /Up P.Green

Ladies Doubles (The Greenwood Plate)

Winners N.Glover / K.Stobbs
Runners /Up M.Parkin / A.Eyre

Leslie Hulse Cup (Vets)

Winner M.Hastings
Runner /Up G.Gurnell

Hallett Egg Trophy

Winner G.Torry
Runner /Up M.Stobbs

Roebuck Cup (Mens Doubles)

Winners M.Stobbs / M.Hastings
Runners /Up P.Thorpe / M.Cross

Presidents Shield (Ladies Singles)

Winner M.Green
Runner /Up B.Ainsworth

Val Clarke Shield (Mixed Doubles)

Winners M.Parkin / T.Davies
Runners /Up M.Hastings / A.Eyre

Hargreaves Cup (Mens Open Singles)

Winner J.Perkinton
Runner /Up P.Thorpe

Wooden Spoon.

Winner N.Glover

300 PREMIUM CHRISTMAS TREES

Many direct from the grower to

TOTLEY HALL FARM

**2ND FARM ON RIGHT DOWN
TOTLEY HALL LANE**

**2-10 ft Spruce, Nordman and
Frazer Firs.**

**Needlefast, traditional &
potted.**

Larger sizes to order.

**We may not be the
CHEAPEST
But last year proved
we sell the**

BEST TREES

at a

GOOD PRICE

SELECT YOUR OWN

Free net wrapping service.

**Various types of tree stands
at 20% off RRPrice.**

**OPEN MONDAYS TO
SATURDAYS
9.00AM – 6.00PM**



1st December onwards

For Details



ADVENT & CHRISTMAS AT ST. JOHN'S CHURCH.

(ABBEYDALE ROAD SOUTH) 2006.

Nov. 12th 10a.m. Remembrance Sunday:- A Family service with communion, followed at 10.45a.m. by moving out to the war memorial for the Act of Remembrance, the silence, the laying of the wreath and the Last Post. (If wet, this will be in church). All are welcome.

Dec 3rd. 5.30p.m. Our popular Advent Carol Service :- A very moving service of Advent Carols & Readings led by the Choir.

Dec. 17th 10a.m. A family service of preparation for Christmas with communion

Dec.17th (Friday) 7pm. Our popular Traditional service of Nine Lessons & Carols:- A candlelit service in a beautifully decorated church with carols sung by the choir & well known carols for all to sing. Come early to get a seat! (* Note the change of date and time for this service this year!)

Dec.24th Christmas Eve 5p.m. The Christingle Service:-A family service for everyone (including Grandma & Grandpa) with the lighting of the Christmas Tree & the Christingles.

Dec 24th 11.30pm. Midnight communion by candlelight with carols. All are welcome to come and greet Christmas Day with the first communion of Christmas or for a blessing on Jesus' birthday. This is a sung Eucharist led by the Choir.

Christmas Day at 9.30a.m. A Family Service with communion for everyone.

A very happy & blessed Christmas from all at St. John's to you all.

Totley and District Community Association

Come Sequence Dancing

You have seen it on TV. Why not come and try it? You will be given a warm welcome plus tea and biscuits. We dance every Wednesday 8.00 pm to 10.00 pm, also the 2nd and 4th Saturdays 7.30 pm to 10.00 pm in All Saints Church Hall. Come and join us, it's fun.

ST. JOHN'S CHURCH CHOIR

St. John's has always had a flourishing choir from long before I remember (about 60 years!) and we have always had a good reputation for being one of the best parish choirs in Sheffield. Now we are desperate for new members, especially men. We are fortunate in having a brilliant choirmaster/organist but our men folk are finding it very hard to keep the lower parts going when we often have only 1 Tenor and 1 Bass present. We appeal to anyone who likes singing (especially Tenors & Bases but all voices would be welcome) to come and join us. We practice on Friday evenings from 7pm until 9pm or 9.30pm depending on what we are rehearsing.

We sing regularly at the 10am Sunday service and at a monthly evening service at 6.30pm in the summer or 5.30pm in the winter.

We also do special music at Easter time, Harvest (Oct.) Advent (early Dec) and Christmas.

There are no Auditions, all we ask is that you can sing in tune and offer a reasonable commitment to being available at these times (not necessarily every week!) If you are interested then ring Phyllis on 0114 236 2597 or Alan on 0114 258 0597

Farming Scene

It must be a while now since I last wrote an article for the Totley Independent. Somewhere back in the spring I suspect. A lot has happened since then. The late, cold, wet spring gave way eventually to a very dry and warm summer. Both of these weather patterns restricted the grass growth leading to quite severe livestock feed shortages by the autumn. Many dairy farmers in particular were desperate, having already used some of the forage they had in stock for the winter. However, nature tends to even out the supply over the year, and the unusually warm weather during September and October has generated an abundance of grass now. This should allow many sheep farmers in particular to graze their livestock right through to Christmas without using their winter stockpiles of fodder. In this country the cereal harvest, although interrupted by bad weather in August, has been completed for some time, and a fair proportion of next year's crops are already planted. Total production of wheat and barley is slightly down in this country, but well down in many cereal producing countries. The net result of this is much lower world production and stock levels. Stocks are so short that prices are currently rising quite rapidly but are still short of the values achieved some 10 years ago. The same is happening to beef cattle prices as rising demand and a lower production combine to bring this sector back into profit. Looking back through the records I saw that in 1996 we were selling lambs at £1.20 per kilo liveweight. This weeks average price is £1.15 per kilo!! Little wonder then that we are struggling to make a profit on them. However, most farmers are born optimists, they have to be, and we are still in the lamb production business.

Our Texel ewes are currently enjoying the company of our tups, and all being well should lamb in March and April. The Dorsets are due to begin lambing on November 19th and are looking promisingly tubby at the moment. We have now completed the preliminary health checks and recording tasks that will allow us to sell the progeny as high health status and performance recorded pedigree breeding stock. We can now look forward to hours of cleaning and preening as we 'tart them up' ready for the shows and breed sales.

Sad to say we have now come to the end of another era. Two years ago we finished growing soft fruit. This year we had our final cereal harvest, and have now put nearly all our land down to grass. We may grow a few acres every year as part of an environmental and wildlife enhancement scheme, but commercial production has ceased. We are currently in the process of applying to enter the farm in the new H.L.S. environmental scheme that will enable us to provide new habitats and food resources for the birds, bees, beetles and badgers. Linked into this will be the provision of new footpaths, public open access areas, viewing points, a pond and a special circular, smooth surfaced route to enable wheelchair users to get into and enjoy the countryside. This will be mainly based in our fields at the bottom of Totley Hall Lane, and should readily complement the new Totley Hall park facilities. Have you noticed how the bushes are absolutely covered in seeds and berries this year? Is this a sign of a hard winter to come or merely the result of a frost free spring? Time will tell. We have left our hedge trimming till the spring this year to give the birds ample opportunity to feed on the berries overwinter. This should in theory preserve the existing population whilst drawing others into the area. Again, time will tell.

We are now beginning to get organised for our nativity season. A lot of preliminary planning and organisational work is involved in setting up the facilities in the barn and scheduling the performances. This year we will be holding our first event on November 27th, a week earlier than last year, to cater for the increasing number of schools who want to participate. These events are now becoming very popular with over 2,000 children, teachers and parents enjoying last year's performances.

1st Totley Scout Lottery

Lottery draw for September 2006

1st Prize No 26
Theatre Tickets
Mr and Mrs Parker
Sunnyvale Road

2nd Prize No 68
£10 Voucher
Mr and Mrs
Reynolds
Totley Grange Close

Peter Casson

FORTHCOMING EVENTS at SHEFFIELD CHESHIRE HOME

December 3 rd	DRONFIELD BRASS BAND Cheese & Wine	7pm Tickets £3.50
December 5 th	CHRISTMAS FAYRE	10am – 12noon
December 12 th	CHRISTMAS POETRY EVENING	7pm
December 13 th	LOXLEY SILVER BAND Bar Open, Christmas Snacks	7pm Tickets £3.50
December 21 st	CHRISTMAS ENTERTAINMENT Mulled Wine and Mince Pies	7pm Tickets £3.50
December 31 st	NEW YEAR'S EVE DISCO	
JANUARY	- BURNS NIGHT	

FOR TICKETS AND FURTHER INFORMATION ABOUT
ANY OF THE ABOVE EVENTS,
PLEASE PHONE 0114 236 9952

TABLE TOP SALE

THE HEATHERFIED CLUB
ARE HOLDING A TABLE TOP SALE ON
SATURDAY 11TH. NOVEMBER 2006

DOORS OPEN FROM 11:00 TILL AT 15:00

TEA/COFFEE AND LIGHT REFRESHMENTS
WILL BE AVAILABLE.

TABLES WILL COST £6.00

TO BOOK A TABLE PLEASE CONTACT
KAREN ON 0114 235 2573

OVERDALE POTTERY

24, 25 & 26 November 2006

Friday: 5 pm to 8 pm

Saturday: 11 am to 8 pm

Sunday: 11 am to 6 pm

129 Prospect Road, Bradway,
S17 4HX Tel: 262 1122

www.overdalehouse.freeseve.co.uk

EXHIBITION • THROWING DEMONSTRATIONS • FIRING

Billy Liar

The 53 Theatre Group's forthcoming
production is 'Billy Liar'.

15 - 18 November 2006

Library Theatre, Sheffield

7.30p.m.

Keith Waterhouse & Willis Hall

Tickets: £6 (£5 concessions) 0114 286 2740

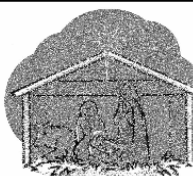
Billy is a hopeless fantasist who chooses to escape his dreary homelife and boring job in a world of dream and make believe. Unfortunately the dream becomes a comic nightmare as the tangled web of lies and deceit starts to unravel.

With his world in tatters and his lies uncovered, Billy is offered a way out, an opportunity to live the dream and be the man he wants to be but has he the courage to take it?

This is bittersweet comedy at its very best. The dialogue is sharp and hilarious and the characters memorable and endearing.

Don't miss it.

CHRISTMAS AT ALL SAINTS' CHURCH, TOTLEY HALL LANE



3rd December	4.00pm	Christingle Service
17th December	10.00am	Service led by the Alive Gang and Sparklers
	6.30pm	Carol Service by Candlelight
24th December	4.00pm	Children's Crib Service
	11.30pm	Christmas Communion
25th December	8.00am	Holy Communion
	9.30am	All Ages All Together service (45 minutes)

Share in the true meaning of
Christmas at your Parish Church -
EVERYONE WELCOME

One man went to mow...
...but his mower wouldn't go!

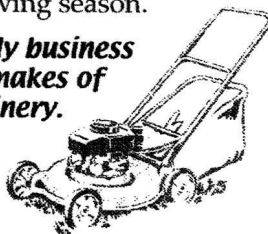
Now is the time to call

MOWER MENDER

and be ready for the forthcoming
growing season.

A local friendly business
servicing all makes of
garden machinery.

Phone:
0114 236 6958
Mobile:
0781 2211149



Blade Sharpening and
Collections & Delivery Service Available

R Rose & Co

Chartered Accountants & Business Advisors

Specialists at
looking after the affairs
of small businesses.

For a FREE initial consultation
please contact Roger Rose FCA on
0114 281 2331

From business start-ups and general accounting, to support
and advice in business development and strategy,
we pride ourselves in our personal one-to-one service.
To find out more please call 0114 281 2331.

621 Chesterfield Road, Woodseats, Sheffield S8 0RX
Email: info@r-rose.co.uk www.r-rose.co.uk



Got a computer?

Having Problems?

Is it running slow? Stops responding?
Having problems running the latest games
or applications?

Give me a call!

I'm available for home visits at any time
including evenings and weekends. I can
also suggest upgrades to improve perform-
ance, or even build you a system to your
specific requirements.

Phone: 0114 2472619 Fax: 0870 7060080

Mobile: 078 17464703 Email: service@timbrown.plus.com

Tim Brown

Building,
Installation,
Upgrading and
Troubleshooting
Computer
Systems at
Reasonable
Rates

Creating opportunities with disabled people.

Registered Charity No. 218186

LEONARD CHESHIRE

Leonard Cheshire Services in Offers choice &
opportunity to people with disabilities.
A Specialist Unit for the Younger Disabled.
Residential & Respite Care - Single Rooms
Day resources - Aromatherapy -
Reflexology - Physiotherapy - Toning
Tables.
Activities include: - Arts & Crafts -
Computers - Cookery - Shopping
Expeditions - Theatre Outings - Church.
Further details can be obtained from -
The Service Manager, Mickley Hall,
Mickley Lane, Totley, Sheffield S17 4HE.
Tel. 0114 236 9952
Fax. 0114 262 0234

The Care at Home Service supports
disabled people who wish to remain in their
own homes.

We provide flexible care packages from
1 hour to 24 hours meeting individual needs.
The service operates throughout
Sheffield.

Our service includes: - help with getting
up and going to bed, dressing, washing,
bathing, shopping, cooking, light household
duties.

Further details from: -
The Care at Home Manager
Tel. 0114 235 1400
Fax 0114 235 1499

Gardening Tips for November

It is pouring down at the moment so I am not going in the garden other than to feed the fish and check the greenhouse. We had a good session yesterday clearing up acorns. Thousands of them have dropped over the top corner from the old oak tree, the most I have ever seen. We also did quite a bit of pruning, the shredder is really coming into its own, reducing the prunings down to manageable sacks. The lawn is looking good at the moment, the earlier treatment of fish, blood and bone seems to have paid off and regular mowing, not too short, is also beneficial. I have managed to dig a bit of the vegetable plot after clearing some of the crops. I have to do this in small batches these days (age you know). The soil is really easy to dig, as I have given it plenty of compost (our own) so we now have a fine tilth, as the gardeners put it. I have been giving the bird feeders a bit of a clean up, they are messy eaters. I have noticed the blackbirds seem to be giving us a wide berth. I have not seen any in the past 3 or 4 weeks which has me a bit worried as I normally see 3 or 4 waiting for food in the mornings and usually one or two about in the garden. I hope their absence is only temporary, they do eat slugs etc., which is a good thing and give us a good song to cheer us up as we do our gardening chores.

November is the month to prepare for the winter. You should have by now cleaned and serviced your heaters, checked over any electrical equipment ready to combat old Jack Frost, have fleece or newspapers handy to cover up any vulnerable plants. Winter wash fruit trees, especially if you have suffered with any fruit tree nasties like codling moth caterpillar which make nasty black holes in the fruit, or aphids which suck out the sap and weaken growth. They also spread virus around so get cracking and nobble them asap. We are not participating in the open gardens next year, we are having a year of consolidation as they say in industry. There will be a lot of new gardens to see so we thought you would be better looking at something new, and it will give us time to get ready with something new to show you in 2008. We have one or two ideas for change, whether we will have time to complete them remains to be seen. The seed catalogues are dropping on the mat these days, so get your orders in, bearing in mind what you are preparing for The Totley Show. Onion seed are traditionally planted on Boxing Day so you have a couple of months to get your seeds in. The craft section of the show was a bit sparse so get cracking on those woolly jumpers, cuddly toys now and you will not be bored during the winter months and will hopefully have them completed in time for the show in September. That also goes for the artists amongst you and when you are taking photographs of your winter break holidays, bear it in mind and take one or two for entering in the show. I look forward to seeing your efforts. I will be preparing my cooking skills ready for entering the domestic section, with a view to winning the cup in this section, so there's a challenge!!

Flowers Clear up and tidy perennial borders. Clear away any leaves, if you are composting these keep them separate from the main compost heap, as these take a little longer to rot down, and they are handier as leaf mould for potting purposes.

Check your dahlia tubers in store, cut out any disease, and if withered, soak and dry them, then dust with flowers of sulphur. Plant out hardy lilies in mild weather and cover with mulch. Plant herbaceous and moisture loving perennials.

Split up perennials like michaelmas daisy and golden rod, replant the young vigorous outer portions. Prepare the tender plants for winter by bringing them indoors or wrapping them up in straw or poly bubble. Complete the planting of tulips and hyacinths, sooner the better. Check bulbs which were potted up earlier, water if necessary, a few which are more forward can be brought into moderately heated greenhouse or a cool bedroom windowsill until the buds are formed. Take down hanging baskets and remove and pot up any plants that are worth saving, also those in tubs, fuchsias, and geraniums are very often worth saving along with ivys and some trailing plants.

Vegetables Dig over any vacant plots, leave the clods large to enable the frost and wind to break them down. Stake up brussel sprouts and remove any yellowing leaves. Cover any green crops with netting or fleece to protect against birds and watch out for slugs and snails and deal with them. Keep the weeds under control, they seem to grow better than the plants in wintertime. Lift and store Jerusalem artichokes in the same way as potatoes, also a few roots of parsnip as they will be difficult to get at if the ground is frozen.

Trees Fruit and Shrubs Move container grown evergreens to a sheltered spot out of the wind. I keep my bay trees in the cold greenhouse until the frost has finished. Protect any tender shrubs from frost by wrapping them with fleece or straw. Any deciduous hedges that have been neglected can be cut back at this time.

Fruit trees trained against a wall or fence should be pruned now. After pruning see that all the branches and shoots are securely tied. Inspect the posts and wires supporting raspberries, make sure they are secure and not in need of replacement. Deal with old or neglected fruit trees now, do

not just go round snipping bits off, but rather the complete removal of a branch here and there to open up the centre of the tree, to let in light and air. Large wounds made this way should be trimmed carefully with a sharp knife and painted with a priming paint, to prevent disease getting into the tree. Look out for canker wounds on the old trees and cut out the affected parts and paint these also. It is a good time to plant blackberries and loganberries. Look over your fruit in store, remove any showing signs of rotting etc. Plant fruit trees apple, pear, plum and cherry. Give tree, bush and cane fruit a tar oil winter wash to help control pests and diseases.

Greenhouse and Indoor Plants During November, lack of light and damp coldness in the atmosphere are two of the principal obstacles that we usually have to overcome in the greenhouse. Make sure the glass is really clean inside and out, also the insulation if any. Ventilate cautiously. Open top ventilators a little for a few hours during the day when the weather is mild and reasonably clear, keep them shut if it is cold and foggy. Remove all decayed leaves or bracts. Avoid splashing water about if you have a mixture of plants stored in your greenhouse, a day temperature of 13 (55F) will be OK but don't let it fall below 7 (45F). As chrysanthemums in the greenhouse finish, cut them back to within 5 or 8 cm (2-3 ins) of ground level, this will make more room and also encourage the roots to throw up suckers which will make ideal cuttings later on.

Cyclamen and winter flowering primulas are ready to come into flower and will benefit from a feed once a fortnight. Remember that calceolarias must be quite dry before they are watered, this rule applies to most pot plants, except those which are in full flower and are growing rapidly in heated houses. Seedlings and cuttings should be kept on a shelf as near to the glass as possible.

Sow cyclamen seeds now, they take about 15 months to make good plants. Pot on seedlings and cuttings planted earlier. Plant indoor gladioli, lilies and hyacinths to flower in spring. Prune flowering maple, musk, fuchsia, oleander and plumbago.

Lawns Keep lawns clear of leaves and debris by raking regularly. Keep off if frost is around, in mild spells dig new lawn sites ready for mowing or turfing in spring.

Cheerio for now, Tom, Busy Bee



The Media come to Totley to film our **LIVE, NATIVITY PLAYS**



Look North, Calendar News the Local and
National Press and Radio Sheffield have all

been to record these events and the atmosphere being created. The look of both awe and happiness on the children's faces as they hold the newborn lambs, and ride on the donkey, is only matched by the enjoyment the proud, happy parents have of seeing their youngsters performing the play.

We have recreated the Bethlehem stable scene in our barn complete with live animals, Sunbeam our cow, Dorset ewes and lambs, and Spirit our donkey, giving it a flavour of real authenticity and atmosphere.

The children who came last year enjoyed dressing up as Mary, Joseph, the angels or wise men and playing out their role as we narrated the wonderful nativity story. The parents filmed or photographed the performance in between joining in the carol singing. The after performance refreshments proved very popular, particularly the mulled wine for the adults! Santa's house was the main attraction for the children as they collected their presents from him, although the free donkey rides were a close second!

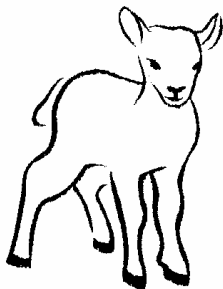
Why not give the whole family a Christmas treat this year

by coming to one of our plays? The whole event lasts approximately 1½ - 2 hours, the narrated play taking about 30 minutes at the beginning. Do visit our web site at www.totleychristmasfestivals.co.uk for pictures of last year's performances and a list of special options for groups and clubs that start at £4 per person. Below is a schedule of this years performances and we would love you to join us for this unique and special start to Christmas.

2006 Ticket Prices

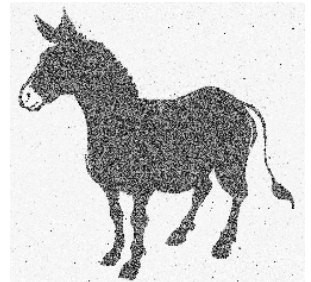
Adults @ £8.75 - includes tea, coffee or mulled wine and mince pies.

Children 3 - 16 @ £8.75, Children 2 and under @ £4.50 –
includes a present, drinks and Christmas biscuit.



Sat 9th Dec	10:30	1:30	4:30	
Thur 14th Dec			4:30	
Fri 15th Dec			4:30	6:30
Sat 16th Dec	10:30	1:30	4:30	6:30

Mon 18th Dec			4:30	6:30
Tue 19th Dec			4:30	6:30
Wed 20th Dec		1:30	4:30	6:30
Thu 21st Dec	10:30	1:30	4:30	6:30
Fri 22nd Dec	10:30	1:30	4:30	6:30
Sat 23rd Dec	10:30	1:30	4:30	6:30



For further information, or to book your places using our
credit card hotline, please call Jenny on 236 4761



Central Heating
Domestic Plumbing
Glazing, Double Glazing and Glass
House Maintenance
UPVC and Wood Windows & Doors
Mini Digger & Driver, Muck Shifts, Footings Etc.

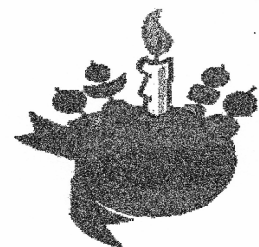


REMEMBRANCE DAY 12th November 2006



**SERVICE AT ALL SAINTS'
CHURCH,
TOTLEY HALL LANE
at 9.45am,
followed by the
ACT OF REMEMBRANCE
at the War Memorial,
Baslow Road
at 11.00am
ALL WELCOME**

Christingle Celebration *Everybody welcome*



**A service for all the family
at All Saints' Church
4 pm on Sunday 3rd December**

View from KES

This new academic year has begun brightly for King Egbert School. Students and staff alike are always a little nervous towards the end of August when the exam results are due out. However, this year, as in the past we enjoyed considerable success.

Overall, our results for this year set new records. Pupils, Parents and staff should be very proud indeed of this achievement – we continue to be a high attaining school! We have received congratulations from many quarters including the Director of Education.

A LEVEL

This was our second best year in terms of overall pass rate and average points score per candidate. Nearly all of the students who applied now have places at their first or second choice university.

GCSE

This year it is the turn of our GCSE results to be our 'jewel in the crown'. Last year we enjoyed good results with our 5+ A*- C grades of 63%. This year they jumped to 70% placing us once more amongst the top performing schools in Sheffield.

SATS

Our results in each of Maths, English and Science were all at school record levels, with a staggering 90% achieving level 5+ in Mathematics.

ADULT EDUCATION CLASSES

We are planning to continue to run a number of adult education classes after October half-term, from Thursday 2nd November.

We shall be running classes in Asian Cookery, Beginners IT, Intermediate IT and this time we are offering a new course a 'Day Skipper course' which is an all theory course over 40 hours covering two terms. This course is approved by the Royal Yachting Association.

If you are interested in any of the above and have not already passed your details onto our staff who deliver these courses, please contact Mr McClafferty and details will be sent to you.

ECDL

A number of parents completed modules for this ICT qualification at our summer school in July and August. Government funding for this qualification runs out in December. Anybody who has worked on this qualification must complete it by the end of the year if they wish to do so for free. Any questions contact Mr McClafferty

HEALTHY LIFESTYLES EVENING

We are holding a Healthy Lifestyles Evening on Wednesday 18th October 7.30-9.30pm. We will have various professionals giving advice and talks on a range of issues around lifestyle in relation to parents of secondary school age children.

There will be a number of workshops, including:

Reflexology, mental health, drug issues, anti-social behaviour and legislation.

We expect this to be a stimulating and informative evening and hope many of our parents will wish to attend. Final details of what workshops will be running can be obtained nearer the time from school.

KESA

King Egbert School Association (KESA) is our parents' group. This group not only raises money and organises events, but also acts as a group of supportive parents with whom the school can easily communicate to gauge parental views.

For those of you who don't know, the year 2007 is the 50th anniversary of the opening of King Egbert School in Dore. You may even have attended the school yourself. King Egbert School Association (KESA) is aiming to support the school in its celebrations, but needs your help to make it a special event for the school, the students and the local community. They need your ideas as to how best to mark this

memorable occasion. I work closely with KESA so any offers of help or ideas can be made through me.

SPONSORED WALK

We are now making the sponsored walk a bi-annual event (as it was when originally introduced 20 years ago). Normally the walk takes place at the end of September. However, this year Ramadan falls at this time, and we did not think it would be fair to ask pupils who are fasting during the day to undertake a 13 mile walk. We will therefore be holding the walk in May.

TRIPS AND VISITS

Over the school year there are many trips and visits, many of which are voluntary and pupils opt into them. As a school we are fortunate that staff run a lot of activities, many that include a residential element. In many schools few such trips are organised because of the pressure of responsibility on members of staff who are responsible for pupils 24 hours a day and who have to complete lengthy risk assessments and undertake training courses in first aid, health and safety etc. The list below shows the wide range of residential trips, home and abroad, that took place last year. In total, these involved 638 pupils for a total of 65 nights away. Put another way, staff were responsible for some 1850 'pupil nights'. We do not take these opportunities provided for pupils for granted – they happen because of the goodwill of our staff who are prepared to give up their time to run them. I thought you would like to see the range of opportunities which are typically offered to youngsters here at KES – certainly this is very different from when I was at school.

- Y7 Languages trip to Lille Christmas markets
- Y8 3 day residential in the Peak District for all pupils
- Y9 Geography fieldwork trip to Malham (Yorkshire Dales)
- Y9 Outdoor activities trip to Snowdonia
- Y10 History trip to WW1 battlefields in Belgium
- Y10 Residential army work experience week
- Y10 Uniformed Services course outdoor activity residential trips (several over the year)
- Y10 Outdoor activities trip to Snowdonia
- Y10-12 Duke of Edinburgh expeditions and practices (Peak District and North Wales)
- Y10-13 Geography trip to Iceland
- Y11-12 Trekking and outdoor activities trip to the Alps
- Y12 A Level Geography field studies week (North Yorkshire)
- Y12 A Level Geography glaciation study weekend in North Wales
- Y12/13 A Level Art study trip to New York
- Y13 A Level Biology field studies trip to North Yorkshire coast
- Y7-Y13 Orchestra tour to Lake Garda, Italy
- Y8-13 Ski trip

There are a number of residential trips each year which form part of curriculum work (e.g. Biology and Geography fieldwork). Pupils are given details about these by their subject teachers. In addition there are a number of trips that are optional, and we thought it would be useful if parents had some idea of what is on offer this year so that you can plan if your children want to go on any of them. Currently, the following extra-curricular residential trips are planned. Other trips may also be arranged during the course of the year.

- Y7-9 German Markets Dec 21st-22nd
 Y10 History trip to the WW1 battlefields in Belgium
November
 Y12-13 Ski Trip (Italy) **February**
 Y8 Peak District Residential (all Y8s are encouraged to go) **June**
 Y7-8 France (Normandy and Paris) **July**
 Y10 Duke of Edinburgh Bronze Award Expeditions
Dates to be confirmed
 Y12 Duke of Edinburgh Gold Award Expeditions
Dates to be confirmed

FENCING

Many of our neighbours on King Egbert Road will be aware that we have now built a fence at the back of our school preventing our students exiting from the rear of the school. This has for the most part had the desired effect and I am pleased to say that our students who have to catch a bus are now all doing so from the terminus at the front of school.

LUNCHTIME IN DORE VILLAGE

The only students to be seen in Dore village at lunchtimes should be either our 6th formers or Y11 students who have been given passes. This is a privilege which can be removed if we hear of poor behaviour.

If you have any questions to put to me or any comments to make, could you write to me at King Egbert School, Totley Brook Road, Dore, S17 3QU

Thank you

Sean McClafferty

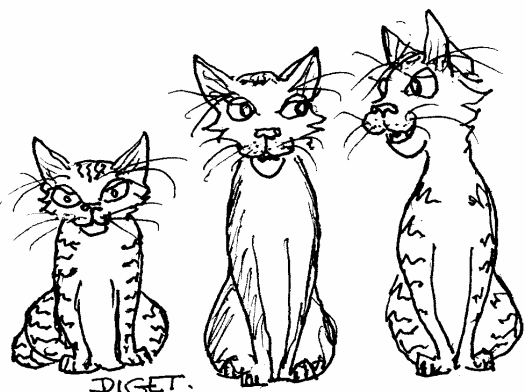
Deputy Headteacher i/c Community and Technology College Status.

AUTUMN PLAY

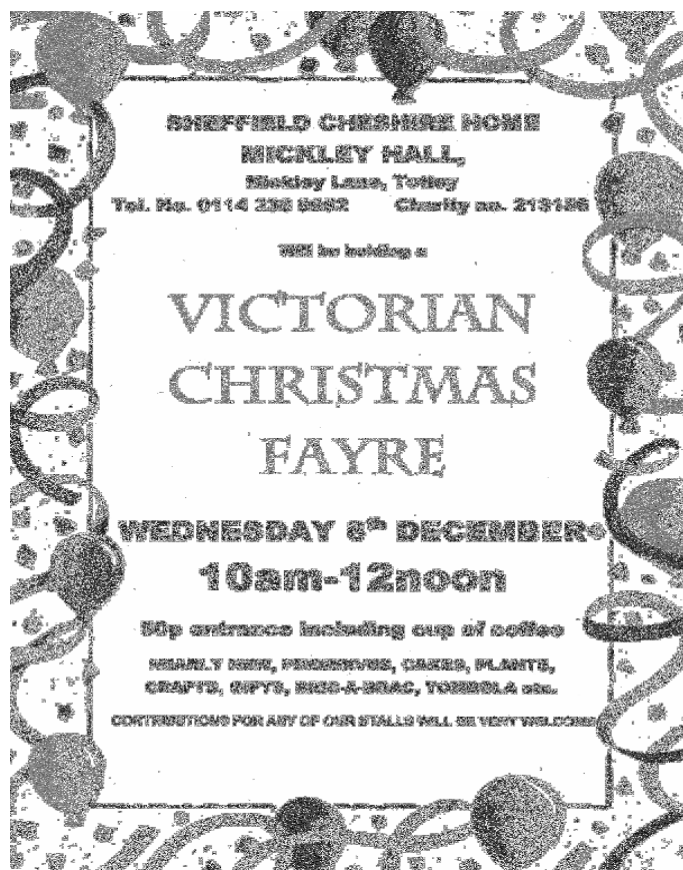
Have you bought your Christmas cards yet? Thought about making the Cake and Pudding? Well, it is not all that long to the big day, and, just to get you in the mood, our November play is all about a family Christmas.

"Season's Greetings" has the usual petty squabbles. Christmas presents are rifled and hilarious highlights include a chaotically incompetent puppet show- Uncle Harvey continues watching films and the TV while things happen around him. In other words, a very funny play by Alan Ayckbourn at his most humorous time

It will be staged at St. John's Church Hall, Abbeydale. Road South, on Wednesday to Saturday, November 22nd to 25th at 7.30pm. Wine, red and white, coffee and orange juice on sale for the interval at great prices, and tickets are still £3.50, or £3 for Concessions from any TOAD you may know, or from me, Kate Reynolds, 236 6891



"THAT'S TOTLEY TOM THE CLAIRVOYANT'S CAT THEY WANTED A FEMALE BUT GOT HIM OWING TO UNFORSEEN CIRCUMSTANCES!"



GREEN OAK BOWLING CLUB

The bowling season has come to an end. It's been a good season and although we have been caught in the rain a few times, generally we have had lovely weather.

The ladies Monday morning veterans team have won the WILBY TROPHY. Congratulations to all concerned. Next year we play in a higher league which will certainly stretch our skills, a little good luck may be needed. The men's veterans team have had a good season also, well done to the gentlemen.

This year we had a Junior Bowling Club and from this we choose the junior team. The juniors played Millhouses Park, Laycocks and Longley Park, home and away. The junior club played and won five out of the twelve, a great result for their first season. All team members have had a great time and enjoyed the experience of playing on different greens and meeting other junior players.

May I take this opportunity to thank the parents who have supported the juniors and taxi-ing their children to different locations.

We will have to see what next year brings for the future of the junior team. The Junior Club will meet again next year come what may, I look forward to seeing all of the juniors new and old next April 2007

Best wishes for next season; see you all about April 2007.

Sylvia Ruddle.

POETRY EVENING

Totley Library
 Tuesday 5th December
 7.00pm - 8.45p

Come and join us and share your favourite Christmas poem or reading.

Mince Pies, Coffe, Quiz

Phone Carole or Elaine 293 0406 for details

A STEP BACK INTO HISTORY

Let us take a walk of some 4 ½ miles to visit historical Beauchief Abbey. Allow 3 hours. Start from the Totley Rise shops, proceed into Poynton Woods via Mill Lane. Take the lower woodland path to Twentywell Lane.

Cross the road and enter Ladies Spring Wood above the railway track keeping to the path above the River Sheaf, skirting the side of Beauchief golf course, before entering the lane to the Abbey.

Continue left down the lane for 400 yards to our final gem, Beauchief Abbey, where one could linger for a full hour. Founded and built by monks in the 12th Century (with dedication to the memory of the murdered martyr Thomas a Becket).

In those early days the canons of Welbeck Abbey owned land stretching all around Derbyshire.

Beauchief Abbey was partly destroyed in the 16th Century, but has stood the ravages of time and weather, and regular services are still held there. The Jacobean interior with the small pulpit and quaint box-pews are a real delight. Note the well kept gardens around the Abbey.

The adjacent old Beauchief Abbey farmstead is now a private residence. Until the 1940's it was a prosperous working farm run by the Adlington family, who later moved to the Calver area when Sheffield City Council took the land over and extended the golf course across the field pastures. I recall many a happy hour hay making in those fields with Mr Adlington in pre-war days. For these small chores he would let us youngsters sail a punt on the top pond. We even cut out steps in the steep wood of Park Bank for a route from the Abbey to Crawshaw Grove.

We continue the walk by retracing our steps along Beauchief Drive and a short distance beyond the private entrance to Cockshutt Farm on our left, locate a broken fence and nearby there is an ancient well with stone carved steps leading down to it. This was a water supply for the Abbey. It is a pity that this little haven could not be restored to its former glory.

Further along the lane we pass the main entrance to Beauchief Hall, once the private residence of the renowned Wilson family, but since has changed hands many times, (note the garden nurseries on the right).

Just beyond the hall drive, a path on the right after the pond, leads through a tree line at the side of the fashionable Abbeydale Golf Course. Continue straight across the open stretch of the links with care. Superb views of Totley Moss from this vicinity. Soon we are on the road from the golf club to Twentywell Lane.

Turn left towards Bradway, cross Twentywell Lane and a few yards on our right a sign leads to the Castle Inn from Twentywell Road, which is certainly worth a lunch time tippie to recall memories of an old inn that once served beer to the builders of the Bradway rail tunnel in the year 1867.

Enter the path at the right hand side of the hotel.

In Poynton Woods you may find a few spoil heaps of rubble, where once stood the Twentywell Brick Company, makers of quality house bricks at the turn of the century.

Nostalgia, once again, recalls happy early hiking days en route from Woodseats to the Cordwell Valley and warming our hands around the kilns (ovens) on keen winter mornings, or returning from Totley Moss to do likewise before sampling Tennants beer at 6 old pence a pint at the Castle Inn. We can dream can't we?

Keep to the top path in Poynton Woods and we are soon back to the bustle of traffic at Totley Rise.

Certainly only a short walk but a trip down memory Lane.

John Campion Barrows

SHEFFIELD
BACH



Registered Charity No 511146

SOCIETY

Conductor - Peter Collis

**Saturday, 18 November 2005 at 7.30 pm
at Sheffield Cathedral**

**Judas Maccabaeus, by Handel
with soloists from the Royal Northern College of Music
and South Yorkshire Symphony Orchestra**

Tickets £11.00 (concessions £8.00)

Tickets available at the door or from

Sheffield Music Shop, Broomhill 0114 2661000

Blue Moon Café, St James Street 0114 2763443

Or by post - SBS, 3 Tipton Mews, Tipton Crescent Road,
S10 5BE

If you would like to know what time the concert will end
please ring 0114 268 3812

BRIAN EDWARDS ART EXHIBITION



Brian, the Great Longstone illustrator, is staging an exhibition of his drawings and paintings at Totley Library, Sheffield, from the 11th to the 25th November. The work on display will cover the Totley and Dore area as well as subjects as far afield as Longstone, Tinsington, Norway, and Switzerland. Brian lived in Totley for many years and is the local historian. Both originals and prints will be available. A proportion of takings will go towards the purchase of children's books. The exhibition will be open during library hours which are:

Monday 10-7; Tuesday, Wednesday, Friday 9.30-5.30;
Thursday closed; Saturday 9.30-12.30. Closed for lunch
12.30-1.30. For further details ring 01629 640752

Calling all 'TWITCHERS'

To help us promote new and improved bird habitats we need details of the types and number of birds seen on or around our land at Totley Hall Farm in the last couple of years. If you have some information that could help us please contact Jenny or Edwin on 236 4761.

Correction to Totley Show Results

Class 43 Winner:- Doreen Scotton not E Scotton



We paint the chips - not the car

THERE WAS A TIME WHEN STONE CHIPS
SCRATCHES AND BUMPER SCUFFS WOULD
COST A SMALL FORTUNE TO FIX
BUT NOT WITH CHIPSAWAY !!!!
THE CHIPSAWAY SYSTEM WAS DEVELOPED
IN THE USA & ALLOWS THE TRAINED OPERATOR,
TO REPAIR THE DAMAGE TO A VEHICLE, BY
PAINTING ONLY THE DAMAGED AREA, INSTEAD
OF THE FULL PANEL.
DEMAND NOW DICTATES THAT THIS SERVICE IS
AVAILABLE TO THE GENERAL PUBLIC.
REPAIRS CAN BE COMPLETED AT A FRACTION
OF THE COST OF CONVENTIONAL
BODYSHOP METHODS.

CHIPSAWAY CAN REPAIR:

VANDAL SCRATCHES

BUMPER SCUFFS

STONE CHIPS

DENTS

ALLOY WHEELS

CALL PAUL TODAY ON

07961 071710

FOR YOUR FREE NO OBLIGATION QUOTE

JEEPERS KEEPERS AUTOCENTRE

COST EFFECTIVE , DEALER QUALITY,
SERVICE & REPAIR IN YOUR LOCAL AREA.

OUR MAIN DEALER TRAINED TEAM ARE
WAITING TO WELCOME YOU AT

JEEPERS KEEPERS AUTOCENTRE.

OUR STAFF HAVE A COMBINED 34 YEARS
OF MOTOR TRADE EXPERIENCE WORKING
WITH TOP QUALITY CARS TO ONLY THE
HIGHEST REPAIR STANDARDS.

IF YOUR CAR NEEDS

SERVICE, CLUTCH, CAMBELT, BRAKES,
MOT, ELECTRONIC DIAGNOSIS, AIR CON,
SHOCKERS, EXHAUST OR TYRES.

ANY MAKE, ANY MODEL, NO JOB TOO SMALL.

CALL PAUL TODAY FOR A FREE QUOTE ON

01246 292806

NOVEMBER & DECEMBER SPECIAL OFFER

OIL & FILTER CHANGE INCLUDING FREE 35
POINT SAFETY CHECK FROM **£42.00 +VAT.**
+ FREE LOCAL COLLECTION & DELIVERY.

UNIT 2B, DRONFIELD IND EST, CALLYWHITE
LANE, DRONFIELD, DERBYSHIRE, S18 2XR.

**ALL
WELD FORGE LTD**
Wrought Iron From The

Millhouses Forge

Gates, Furniture, Curtain Poles, Etc
Commissions Welcome

Presented By: Bob & Sue Wells

Tel: 0114 2368239 Mobile: 0781 2910565

Unit 3, 300 Archer Road, Millhouses, Sheffield, S8 0LA

R.S. Heating & Building Co. EST 1971



Heating Division

*Experienced, Qualified Installers of all types of
central heating.*

*10 year guarantee on most new gas systems.
Complete after care service*

Building Division

*Joinery, Electrics, Tiling, Decorating Specialists
in wall tie replacement
and house Renovations*



0114 236 4421

HALL LANE BARN, TOTLEY HALL LANE, SHEFFIELD S17 4AA

There's a warm and
friendly class near you
where women and men are
welcome.

Dore Old School , savage
Lane, DORE (Sheffield),
Tuesday 17-30.

The Michael Church,
LOWEDGES, Lupton Rd.
(Sheffield), Wednesdays
at 10-00.

Bradway Annexe, BRADWAY, Thursdays at 17-00 & 19-00
(opposite top of Twentywell Lane)

Please contact consultant Alison on 01246 410145 for further
details.

everybody's
**free to
feel good!**

With Slimming World
there are no limits!

Dronfield Landscapes



Gardens cleared and maintained, Lawns mowed,
Turving, Tree felling & pruning, Hedges trimmed &
reduced, Pond maintenance, Fencing etc.

for free quotation call

Chris on: (0114) 2746158 Mobiles: 07976072785 or

Richard on: 07789497104

8am-6pm mon-fri

HazelBarrow Farm, Norton S8 8BA

RUBBISH REMOVED

*Environment agency registered.
ID shown at door.*

Beds, settees, garden and DIY,
Washers, Baths, carpets, furniture,
Cookers Garages cleared, broken
sheds and fencing removed.

Free quotes! Genuinely no obligation!

Tel: Mick 0114 2681330

Mobile 07710 446438

Established five years.

Courteous reliable service.

http://uk.geocities.com/draggletail_waste_services/

Cottage DIY Projects

A leaky tap or wonky shelf ?
New flat pack furniture, Bunged-up
gutters or peeling windows ?

Would you like pipes or radiators
covered ? Or maybe a fitted wardrobe,
A new socket or a dimmer switch &
much more... *For those jobs you don't
have the time, tools or inclination to do:*

Julian Wright - 01433 631535

THE PROFESSIONAL 'HANDY-MAN'

Hourly, day & weekly rates available

(Fully insured)

TOTLEY PRIVATE HIRE

**PROFESSIONAL CAR SERVICE
FOR
AIRPORTS & LONG DISTANCE
TRAVEL etc.**

**Tel: 0114 - 2361547
Mobile: 07974-355528**

PATRICIA BARBER

53 Wollaton Road, Bradway
Sheffield, S17 4LF

Tel 0114 236 6247

Gents Hairdresser

Don Allott

Has now moved to the above address
Thursday, Friday & Saturday from 9.00am
Full Barber Service Available
Walk in service and appointments available



EXECUTIVE TRAVEL

**for 1 to 8 passengers
estate cars & executive 8 passenger
vehicle, for all**

**AIRPORTS : BUSINESS : COASTAL
COURIER : EVENTS : INTER-CITY
OCCASIONS : PORTS : SOCIAL
and SPORTS TRANSFERS**

Hello

Travel Club Limited

The South West Sheffield
Courier & Transfer Company
Telephone or Text

0779 265 2746

Mark & Sally Fletcher invite you to

The Grouse Inn

Longshaw

SHEFFIELD S11 7TZ

**Open for Meals Every Lunchtime
12 to 2-30 pm.**

**Evenings Tuesday to Sunday
6.45p.m. to 9.15p.m.**

Phone 01433 630423

HARD OF HEARING?

**If you need a Hearing Aid, I can cut the cost by
30% or more on prices currently charged by the
large Hearing Aid companies**

**I Am Now Fitting All In The Ear,
Digital Aids from £495**

**For a free, no obligation consultation and
Hearing Test, simply phone me:**

**Maurice Naylor MBSHAA:
4 Twentwell Drive, Bradway,
Sheffield. S17 4PY
Tel: 2620010**

HORIZON ELECTRICAL

*Faults, Rewires, Sockets, Lights,
Cooker Points, Electric Showers
Phone Points and Security Lights
NO JOB TOO SMALL.*

Fully qualified with friendly advice

**Phone Totley 2364364
Mobile 0776 503 6849**

FOR SIX GENERATIONS

THE LEADING FUNERAL DIRECTORS

John Fleath & Sons

**PROMPT and COMPREHENSIVE SERVICE
AT ALL TIMES**

☎ 2 722222

LIMOUSINES FOR SPECIAL OCCASIONS

Sheffield
LEONARD CHESHIRE

MICKLEY HALL CHESHIRE HOME WANTED

CARING INDIVIDUALS TO JOIN OUR DEDICATED TEAM OF SUPPORT WORKERS
WHO OFFER CHOICE AND INDEPENDENCE TO OUR RESIDENTS ENABLING
THEM TO LEAD A MORE FULFILLING LIFE.

NO PREVIOUS EXPERIENCE NECESSARY AS FREE TRAINING WILL BE
PROVIDED.

HOURLY RATE: £5.54 (+ 30% FOR WEEKEND WORKING)
4 WEEKS HOLIDAY IN THE FIRST YEAR + BANK HOLIDAYS
PENSION SCHEME AVAILABLE.

FOR FURTHER INFORMATION OR APPLICATION FORM CONTACT:

CHESHIRE HOME, MICKLEY HALL, MICKLEY LANE,
TOTLEY, SHEFFIELD S17 4HE
TEL: 0114 236 9952

Nigel Watson

Carpenter & Joiner

Doors, locks, floors, architraves, skirting boards,
stairs, stud walling, boxing off etc

No job too small

For a reliable, quality service

Tel: 0114 236 4778

Mobile: 07971 528149

// R.M.M. BUILDING SERVICES

//

Block paving a speciality.

Brickwork

Groundwork

Patio's

Call Rob on

Tel. 0114 2352190

Mob. 07906 108567

For your free estimate

22 years experience, City & Guild Qualified



P | H | F | S

PHFS are your Local Advisers and can provide help with :-

- Investments
- Pensions
- Mortgages*
- Life Assurance
- Pre & Post Retirement Advice
- Tax Planning
- Long Term Care
- Inheritance Tax Mitigation & Estate Management

160 Baslow Road, Totley, Sheffield S17 4DR

Tel: 0114 235 3500

www.phfs-ifa.co.uk

Authorised and Regulated by the Financial Services Authority (FSA)

*Your home is at risk if you do not keep up repayments on a mortgage or other loans secured upon it.

BUSY BEE

D.I.Y. SUPPLIES



170 BASLOW ROAD, TOTLEY, SHEFFIELD S17 4DR.
Telephone 236 5798

for

A COMPREHENSIVE SELECTION OF
D.I.Y., DOMESTIC & GARDENING ITEMS

including

Plywood, Timber, Paint, Hardware,
Bowls, Buckets, Mops, Tools, Locks,
Composts, Pots, Fertilizers, etc etc.

KEY CUTTING SERVICE

If we do not have your requirements
in stock we will do our utmost to
obtain it quickly for you

M.Scriven
(FRUITERAMA)

MARTIN SCRIVEN

HIGH CLASS FRUIT
& VEGETABLES

37, Baslow road

Tel. 236 7116

Orders Delivered



K.T.V.
SERVICES LTD
skydigital

AERIALS AND SATELLITES

- All Areas - Anytime
- Fast - Efficient - Professional
- Channel 5 - Upgrades - Repairs
- Multi - Point - Satellites - Retuning
- Meter Aligned For Best Reception

NO CALL OUT CHARGE
NOT VAT REGISTERED

OFFICE & EVE 8am to 10pm

0114 258 5181

IMMEDIATE ATTENTION

07930 411337

621 Chesterfield Rd, Sheffield



Tel/Fax: (0114) 255 4689

Mobile: 07831 802539

TRISTAN SWAIN

LANDSCAPING AND MAINTENANCE

72 Nettleham Road
Sheffield S8 8SX



LADIES FASHIONS

SKIRTS, JUMPERS
T-SHIRTS,
TROUSERS
HABERDASHERY
& ALTERATIONS

DRY CLEANING
SERVICE
LAUNDRY SERVICE

ROSIES

164 BASLOW ROAD, TOTLEY.
TEL: 26 21060



eddie wright

edwood joinery

62, Thorpe House Rise
Sheffield S8 9NL

Joinery Services

For a prompt and
Efficient service.

Tel. 0114 255 1099

Mob. 07885 109502

E mail edjoinery@hotmail.com



TOTLEY & DISTRICT DIARY

MONDAYS	COFFEE MORNING , All Saints' Church Hall, 10am. To noon
TUESDAYS	COFFEE MORNING . Totley Rise Methodist Church Hall, 10am. To noon. CRAFT GROUP . Totley Library, 2pm. TODDLER GROUP . All Saints Church Hall, 10.00a.m. to 11.30 a.m. Details Jo Smith tel. 262 0741
WEDNESDAYS	COFFEE in the LIBRARY . 10am. to 11.30am. MODERN SEQUENCE DANCING . All Saints Church Hall 8pm. to 10pm. TODDLER GROUP . 10-00 a.m. to 11-30 a.m., All Saints' Church Hall. Details tel. 236 0163 or 236 6789 or 236 3603 HEALTH WALKS . 10-30 a.m., Totley Library foyer. For a current programme and/or further details contact: Sue, The Health Walk Ranger: 0114 2839195 TOTLEY RISE METHODIST PLAYGROUP . Grove Road 9:30-12.00, Phone: Judith 236 3456 or Gill 236 1373
THURSDAYS	PUSHCHAIR CLUB . Totley Rise Methodist Church Hall. 1.30pm.. to 3pm. Tel. 2363157 for further details. CHAIROBICS . Totley Library, 2pm to 3pm. £1. TOTLEY RISE METHODIST PLAYGROUP . Grove Road 9:30-12.00, Phone: Judith 236 3456 or Gill 236 1373
SATURDAYS	MODERN SEQUENCE DANCING . All Saints Church Hall 2 nd . And 4 th . Saturdays 7.30pm. to 10pm.

NOVEMBER 2006

SAT 4th SATURDAY NIGHT LIVE, Heatherfield Club, Ginny Marie, Baslow Road.8-30 pm. Non members welcome

SAT 11th TABLE TOP SALE, Heatherfield Club, Baslow Road.11.00 am – 3.00 pm, refreshments available, tables £6 contact Karen 235 2573.

SAT 18th BEAUCHIEF GARDENS Volunteer Working Morning 2006: 10 to 12 am. All Welcome. Mike Kidder 296 0550

SAT 18th SATURDAY NIGHT LIVE, Heatherfield Club, Tony Christian, Heatherfield Club, Baslow Road.8-30 pm. Non members welcome

SAT 18th SHEFFIELD BACH SOCIETY, Judas Maccabaeus, by Handel, 7.30 pm, Sheffield Cathedral, Tickets 0114 268 3812

TUES 21st TOTLEY TOWNSWOMEN'S GUILD, "Working with the Women of Romania", Mrs. Joan Newton, Totley Rise Methodist Church Hall, 10.00 am.

WED 22nd – SAT 25th TOADS AUTUMN PLAY, St Johns Church Hall, Abbeydale Road, "Seasons Greetings", Tickets 0114 236 6891

WED 22nd TOTLEY & DORE SUPPORT GROUP FOR THE VISUALLY IMPAIRED, Totley Methodist Church, Grove Road, 11.30 a.m. – 12.30 p.m.

DECEMBER 2006

SAT 2nd SATURDAY NIGHT LIVE, Heatherfield Club, Kevin Micheal, Baslow Road.8-30 pm. Non members welcome

SUN 3rd MINIATURE TRAIN RIDES. SANTA SPECIALS, Abbeydale Road South, 11 a.m. – 4 p.m. www.sheffieldsmee.co.uk

WED 6th WEDNESDAY FRIENDSHIP, "Carols by Candlelight", Totley Rise Methodist Church, in the Church, 8.00 p.m.

SUN 10th MINIATURE TRAIN RIDES. SANTA SPECIALS, Abbeydale Road South, 11 a.m. – 4 p.m. www.sheffieldsmee.co.uk

WED 13th WRIGGLY NATIVITY AT Totley Library, 10:30pm, Children from Totley Primary School, all welcome under 5's especially

SAT 16th SATURDAY NIGHT LIVE, Sue Charles, Members Christmas Party. Heatherfield Club, Baslow Road.8-30 pm.

TUES 19th TOTLEY TOWNSWOMEN'S GUILD, "Christmas Meeting", Totley Rise Methodist Church Hall, 10.00 am.

THE INDEPENDENT FOR DECEMBER

The next issue of the Totley Independent will be available from the usual distribution points on

SATURDAY 2nd DECEMBER 2006

COPY CLOSE DATE for this issue will be SATURDAY 18th NOVEMBER 2006

Editor Ian Clarke Tel. No. 235 2526. Email iangclarke@hotmail.com
Distribution & Advertising. John Perkinson. Tel. No. 236 1601.
Email johnandpaulineperkinson@talktalk.net
Items for publication may be left or sent to 2, Main Avenue, Totley, Sheffield, S17 4FG or Totley Library

PRINTED by STARPRINT

B . K . JEAVONS PAINTER & DECORATOR



**Interior
Exterior
Decorating
No job too
small.**

**86, WOLLATON ROAD
BRADWAY
SHEFFIELD, S17 4LG
Telephone 2350821**

Starprint

601 Abbeydale Road, Sheffield 7. Fax: 0114 258 8599

DESIGN & PRINTING of

- LETTERHEADS • BUSINESS CARDS •
- BOOKLETS & PADS •
- INVOICES • LEAFLETS •
- CARBONLESS SETS • BROCHURES •
- RAFFLE TICKETS •
- WEDDING STATIONERY •
- ENVELOPES & POSTCARDS •

**SPECIALISTS IN THERMOGRAPHY
FOIL BLOCKING AND ENCAPSULATION**

0114 258 0707

For a Quick Quotation



For
Windows
With Style

**Sheffield Factory Showroom
106 PROSPECT ROAD
HEELEY, SHEFFIELD**

**Sheffield (0114) 258 5496
Rotherham (01709) 512113**

We welcome letters about local affairs and will publish as many as possible. However the views expressed are not necessarily those of Editor, editorial staff or the Totley Residents Association and must not be imputed to them. © Totley Residents Association 2006.