

TOTLEY INDEPENDENT

PUBLISHED BY THE TOTLEY RESIDENTS ASSOCIATION SINCE 1977

SEPTEMBER 2007

No. 306

15p.



TOTLEY FESTIVAL SUCCESS

Despite weeks of rain before the event, and heavy rain showers on the day, Totley Festival went ahead as planned on Sunday 1st July and was enjoyed by those who came.

About 500 people came along to enjoy the fun and there was something for everyone. Although the rain came down heavily on three or four occasions, the sun came out in between, so spirits weren't dampened too much.

For brass band fans, the Escafield Brass Band was a treat, and their two sets drew big crowds in the marquee. The fact that they played for free, and several of their members have learning difficulties made their performance the better. They loved it so much they are coming to play for Totley Show on Saturday 15th September.

The teenagers had their own space with the Music Truck, kindly loaned to Totley by the Burngreave New Deal for Communities. Complete with sound system, 5 rock bands played to enthusiastic crowds – it was a great opportunity for the bands to showcase their skills.

The Climbing Wall provided by Activity Sheffield gave 60 children the chance to try their hand at rock climbing, and was incredibly popular. Activity Sheffield also provided 4 youth workers who organised races and rounders on the playing field. Even the Lord Mayor, Cllr Arthur Dunworth, who opened the Festival, took part in the egg and spoon race – and won! We think his egg was glued to his spoon....

Totley and Dore Scouts brought along their grass trolley, which provided thrills for children as it shot along boards down the hill. We hope poor Mick Hollingworth's back was not too bad next day!!

Bill Newby led the salsa dancing and had a struggle to get people involved when the heavens opened just before he started. But in the end quite a crowd danced together to that hot beat!

The Norfolk Park mini majorettes gave a lovely show at the end of the afternoon – some of them as young as five – making a wonderful visual display. They also gave their time for free.

continued page 2

TOTLEY SHOW – Saturday 15th September 2007 – Totley Primary School

From page 1

The barbecue ran by All Saints members made £300 for the Lord Mayor's Fund Flood Appeal. The cake stall ran by Totley Methodists and the drinks stall run by Cherry Tree children's home both did brisk trade. The cakes and the Victorian lemonade sold out quickly!

A variety of stalls provided more interest – bric-a-brac, health products, food, jewellery and cookery stalls. The plastic bag knitting workshop created a lot of interest and Wildlife Watch attracted children even though their gazebo nearly sailed away in the wind!

Though we had hoped to have more health stalls, only the stop smoking team from Sheffield PCT turned up. But U3A came along to promote their study opportunities.

The fact that the ice cream van did good business showed that people enjoyed the event despite the weather.

There have been calls for another Festival next year and Totley Residents Association will discuss this in September. If we do, please can more people get involved in helping to plan and run it?

Jennie Street



- Laminate Flooring
- Decorating
- Tiling
- Plastering
- Fitting Kitchens, Bedrooms & Bathrooms

FOR A NO OBLIGATION QUOTE

Tel: 0774 7113582
0777 2252813

ALL TYPES OF WORK UNDERTAKEN

- Paving
- Fencing
- Decking
- Landscaping
- Garden Furniture

Posters were put up in notice Boards and around Green Oak Park. BUT most of the posters in the park were removed.

This is not the first time this has happened. May I remind whoever is doing this that Green Oak Park is a public open space, a place for everyone. This most certainly includes children.

The park is a safe place for children to play. They are better taking part in organised activities than wandering round the area, hanging about on street corners or plastering graffiti everywhere.

This is still happening. Only last week I met a Council Employee from Streetforce, who walks / drives up and

down Baslow Road every fortnight removing graffiti.

There are other teams working in other areas. They need us to tell them where the graffiti is to be found. Please ring 101 and tell them.

This brings me to my usual plea. If you see or hear anything which is anti social behaviour you MUST RING 101 or 2202020 and report it.

I am aware that lots of people think it is a waste of time because the police do not always come. BUT every call is logged; this gives the police a picture of what is building up in the area.

The more incidents that are logged is better for the community, more police will visit Totley to prevent problems from occurring.

PLEASE RING 101 AND REPORT WHAT YOU HAVE SEEN, IT REALLY DOES MATTER.

In view of what happened at Glasgow Airport and in London the Police are asking us to report anything unusual or suspicious to the

ANTI - TERRORISM NUMBER

0800 789321

Have you noticed that the Council listened to Hazel Homes and local residents? The bricks being used on the Green Oak View Development are red not white as recommended by the Council.

We are still working with the Planning and Parks and Countryside Departments to sort out the road or easement in Green Oak Park.

There will not now be a hedge on the easement side of the park. This means we will be able to carry on walking there. The easement is only for access and does not belong to the house owner. It remains part of our park.

Did you see the "Totley Revisited Calendar" at the Festival, but decided it was too soon to buy one?

They are on sale in the Post Office and in the Library price £3.99 and would make a good present for friends and relatives.

If the Calendar has kindled your interest in old Totley and you would like to learn more, do get in touch with Marlene Marshall 235 1005. We are about to begin a local history group.

Avril Critchley
Chairman TRA

Totley Residents Association Update

What ever happened to the scorching hot summer we were promised earlier in the year?

We must look forward to autumn, maybe there will be an Indian summer for us to enjoy!

It would be great if it could happen on the 15th of September for Totley Show. Escafeld Brass Band, who we all enjoyed so much at the Festival have kindly agreed to play for us. We look forward to their performance with great pleasure. I do hope everyone has been preparing to enter, by growing fruit and vegetables, taking photographs, sewing, painting, drawing, baking or making jam. Do encourage your children to enter. It is great fun, someone has to win, and it might be you.

The show is another opportunity for the community to come together.

We can share our talents and chat about the results with our friends over a cup of tea as we listen to the band.

What a difference a day makes. On Saturday 14th July I enjoyed visiting most of the Totley Open Gardens in the sun. Sunday - what a day! Another write off!

On Saturday it was wonderful to sit outside in the sunshine, enjoy a rest, a cup of tea and a delicious piece of cake, after struggling up Queen Victoria Road. It always amazes me when I visit Totley gardens how diverse they are.

Walking round the area as I do with my dogs, it comes as a pleasant surprise to actually go behind the scenes and see what is growing there.

Thank you to all those who gave their time and opened their gardens. Thank you to Jennie for organising the event again.

The Summer Activity Programme, organised city wide, came to Green Oak Park on several occasions.

Activity Sheffield sessions were held in the park on Mondays and Wednesdays. Athletics sessions took place on Thursdays.

The booklet organising events "Go For It" was hard to find. Many children missed out because of a lack of publicity.

TOTLEY SHOW 2007 Saturday September 15th. Totley Primary School

9.30 a.m. to 11-00 a.m. Entrants registration
11-00 a.m.to 12-30 p.m. Judging & awarding of certificates
1-30 p.m. Doors open to the public (Entrance 50p., children 20p.)
2-00 p.m. Official opening by Rony Robinson
3-30 p.m. Prize giving and Auction of donated items

Entry forms available at Totley Library, Totley Post Office, The Ironing Parlour and Rosies and at the door.

Within the photographic section we once again have "Totally Totley", the idea being to bring along your views of Totley in any medium, so let's see plenty of entries as we are sure with digital cameras these days there must be lots of shots available.

Also presenting

The Escafeld Brass Band



If you would like to donate a gift for the Tombola stall, it would be greatly appreciated. Any donation can be left at either "Rosies" on Baslow Road. or at 6, Milldale Road, Totley.
Les Firth



Transport 17

I hope that you have had a chance to enjoy the summer. It

has been a bit of a mix, but quite often autumn can be good. We look forward to seeing some of you at Totley Show on Saturday, 15th September at Totley County Primary School. I am sure the Show Committee would be glad of help on that day and the evening before. It is a really good local event.

We have 2 notice boards in our office at 172 Baslow Road. As we are at the bus stop, quite a few people look at them. If you have an event that needs publicity or you have lost a pet or something, pop the details into us. We also have details of theatres and places of interest, etc. Leaflets for all sorts!

The Shareholders' meeting will be coming up soon, Please keep a look out for the date. Everyone will be notified by post.

If passengers can't come to their club, could they please let us and, especially, the lunch club know.

Thank you for your help. Our number is 236 2962.

Best wishes,

Margaret Barlow

Totley Open Gardens

Totley Open Gardens on Saturday 14th and Sunday 15th July was another victim of the rains we have had this summer.



We had 9 new gardens, which is the most we have ever had since we began. On Queen Victoria Road nos 40 and 42 jointly did teas and cakes. And 18 The Quadrant also provided refreshments.

The Saturday was fine and about 120 visitors went round the gardens. But on the Sunday it rained heavily the whole day, and only one garden managed to get 26 visitors, and some had none.

This compares with previous years when the average number of visitors is about 250 for both days.

The result was that this year we have only made about £700 for Transport 17, in comparison with the £1,500 we took in 2006. Very disappointing, but at least next year will be better.

We already have two new gardens for 2007. If anyone else is interested in opening their garden in 2008, please contact me.

Jennie Street

Tel. 236-2302

jennie@hadish.f9.co.uk

FOUND

On the weekend of 21/22 July on corner of Mickley Lane and Lemont Road a necklace.

If you think it's yours, please ring me and describe it.

Sally Goldsmith 236-7996

Councillor Surgeries

Conservatives:

4th Saturday of each month 10.00 to 11.00 am Dore Village Society room, Dore Old School, corner of Vicarage Lane and Savage Lane, Dore,. Contact details: telephone 273 4108 Email: anne.smith@sheffield.gov.uk

Liberal Democrats:

2nd Monday in the month 6.00-7.00 p.m., Totley Library, Baslow Road and 2nd Saturday in the month from 10.30 a.m. to 12.00 noon, Dore Old School Hall, Savage Lane, Dore Contact details: telephone 235 2289 Email: keith.hill@sheffield.gov.uk or mike.davis@sheffield.gov.uk

TOTLEY RESIDENTS ASSOCIATION WEBSITE

www.totley.org.uk

HELP CREATE A HUGE STIR!

Macmillan Cancer Support is urging Totley Independent readers to become ambassadors for the World's Biggest Coffee Morning on Friday 28 of September.



The coffee morning is the single largest one-day fundraising event in the UK. Last year nearly 2 million people joined in on the fun and hosted or attended coffee morning events across the country. The event raised a staggering £6.7 nationally and over £60,000 in Sheffield to help people through their cancer journey, and this year will be even bigger.

One in three people will be affected by cancer in their lifetime and nearly 1.2 million people are living with the disease in the UK. All the money raised will help fund practical, emotional, and financial support to those affected by cancer. So every cup can truly make a difference in someone's life!

Help Macmillan Cancer Support create a huge stir by holding a coffee morning at home, at work, or at school. To find out more or to register for the World's Biggest Coffee Morning call 0845 602 1246 or visit www.macmillan.org.uk/coffee.

Clothes Sale

Totley All Saints Parent and Toddler Group are holding a toy and clothes sale on Saturday, 10 November 11 am to 1pm. This is to raise funds for the group. If you have any winter clothes and toys in good condition that you would like to sell, the group takes 25% of the sale, then please contact for more details and a seller's number:-

Laura 236 2920

Mel 236 6300

Sally 235 1651

Volunteer Drivers Wanted



The Service Users who live at Mickley Hall, are looking for drivers for occasional outings and short trips to visit shops, local community facilities, theatres and football matches etc.

Mickley Hall is home to several physically disabled adults who are looking for more opportunities to participate in the community and to enjoy life.

We are looking for someone who is enthusiastic, patient and reliable, (preferably with a good sense of humour) with an hour or two to spare each week/month.

We offer a rewarding experience, specialist training and the opportunity to meet new friends.

Please ring Stacey Lewis on 0114 2369952

THE MARRIAGE COURSE

What is the Marriage Course?

The Marriage Course is very practical, giving any married couple the tools to build a strong and healthy marriage that lasts a lifetime.

Over seven evenings spent together, couples talk about important issues that can get swept under the carpet in the rush of daily life.

Topics covered include: recognising each other's needs, learning to communicate effectively, resolving conflict, healing past hurt, knowing how to make each other feel loved, relating to parents and in-laws, good sex, making time for each other and having fun together.

Privacy as a couple is always respected. There is no group discussion and no requirement to disclose anything about your relationship to anyone else.

What's involved?

Each evening contains a talk followed by an opportunity to discuss the topic together as a couple.

The setting, at Totley Rise Methodist Church, is welcoming, relaxed and unthreatening. The cost is £20 per couple.

Who is it for?

The Marriage Course is for any married couple who wants to build a strong and lasting relationship, especially:

- Those who want to enhance their marriage
- Those in the first five years of marriage
- Those at a challenging stage in their marriage e.g. the birth of a child, a career change, teenagers at home, the 'empty nest'
- Those struggling with issues in their marriage.

The course starts 10th October, at Totley Rise Methodist Church and costs £20 per couple.

The course, while based on Christian principles, is very helpful for any couple with or without a Christian faith or church background. It is run by Roger and Margaret Hoyle, who have many years' experience of leading courses and of teaching. For further information, ring them on 0114 236 3844.

The Talk of Totley

A Community Policeman's view.

A Good Bobby never gets wet. That small nugget of advice was given to me many years ago when I was "still in my wrapper". Well I guess I'm not as good as I think I am because like most other Sheffielders this last few months I've been wet, drenched, soaked and I think my bike has rising damp.

I do not wish to dwell on these matters for too long but the heavy rains have caused all of us problems. I for one would like to say WELL DONE. Not just to the people who helped out i.e. my colleagues in the other services, but the people who have suffered damage and disruption. Their stoic response has been inspirational.

The weather though has played havoc with many plans for this summer. Most noticeably for the readers of this publication might be the cancellation of various events. However this did not stop the Totley Festival day. I must confess that I was not sure whether the gamble would pay off but the whole day was a pleasure to Police. My thanks must go to the organisers. WELL DONE. I have read reports that there were letters in the Star complaining about the levels of policing on the day. That is more a reflection of the commitment of your local policing team to Totley and I certainly don't have a problem with that.

As we approach the autumn months and nights draw in my thoughts turn to my policing priorities. These usually centre on anti social behaviour. PC Spencer, constable for Dore, and myself has various strategies and I am pleased to report that these seem to have been successful. I am not a great fan of statistics, but I am pleased to report that our area has seen a substantial fall in anti social behaviour. When compared with this period last year we have seen throughout Sheffield a 39% increase in reports. However in our area we have seen a 14% drop of incidents reported against an overall upward trend. This is the highest recorded figure for the Sheffield Area and really rather pleasing.

One matter that is causing me some concern is a rise in people mentioning having windows damaged by either air pellets or BB Guns etc. If anyone has any info on this can they please contact me at the police box.

Also those of you out and about in the early morning i.e. 5am please keep an eye out for someone who is damaging the papers left at the newsagents on Totley Rise as well as the Co-op Baslow Rd. Any info please call.

I shall briefly mention a few things about Crime prevention (www.crimereduction.gov.uk.) As always I would ask that we are all extra careful with open windows, unlocked cars, unattended bags/purses etc and especially satellite Navigation tools. We still have victims of crime, as an area and I shall only be happy when we have No crime. Especially when a large number of crimes are avoidable. With a little extra thought and little more thought we really can make an impact on this type on "petty" crime. It's purely opportunist stuff, no great plan just a thief taking advantage of local people who either trust too much or think it won't happen to me. It does and there is nothing more frustrating than knowing that Crime could have been avoided.

A brief reminder that the Section house on Totley Brook Road, is still in use and whenever the door is open please feel free to pop in. The phone number is 0114 296 3681.

I shall strive to make Totley a Safe, Crime free and pleasant place for people to live, work and visit. I hope to achieve this through a continual productive relationship with the people of Totley.

P.c. Mark Wadsworth Totley Area Constable.

Original paintings

For sale

by your local artist

Christine Walker

22nd September



Exhibition at
Dore Old School Hall

Savage Lane, Dore

2pm-5pm

refreshments

tel:2351767

LONGSHAW SHEEPDOG TRIALS

The trials are to be held on Thursday, Friday, Saturday, 6th, 7th, 8th September on the field in front of Longshaw Lodge near Grindleford, on the B6521 Grindleford to Sheffield road. This is the 109th year of Longshaw Sheep Dog Trials Association, thought to be the oldest sheep dog trials in England. We attract competitors from all over Great Britain with many of the "One Man and his Dog" television programme competitors running their dogs, including Mr. Gus Dermody and Mr. Jim Cropper who are the commentators on "One Man and his Dog". The eight highest pointed dogs from both Thursday and Friday will compete on the Saturday afternoon for a silver coffee pot that the winner keeps. We also have a parade of local foxhounds at approximately 3.00pm on Thursday 6th, and a display by the Search and Rescue Dogs and the local mountain rescue team at lunch time on Saturday 8th. We are once again having a fell race on Saturday 8th, starting at 11.00am, for which entry is on the field. Food and drinks are available on the field and the array of trophies will be on display. The trials start at 7.30am, weather permitting and finish at approximately 6.00pm.



FOUNDED 1898

PUZZLE CORNER

Numbered towns.

In this puzzle each of the digits 0 to 9 represents a different letter of the alphabet. Find the names of the fifteen cities, towns or villages below. All are in the British Isles.

6849604559; 5329; 7698450351; 812751; 7233167; 67510467; 1420-29-056; 031553; 6345103295; 15534; 123451467; 72135425; 200533; 04215467; 02751329

Letter E occurs most and letter C the lowest number of times. Letter O may be considered to occur an unlucky number of times.

PEAK DISTRICT EVENTS

31 August to 2 September

Chatsworth Country Fair

Massed pipe and military bands, demonstrations and parades, hot air balloons, parachuting, stands and rural crafts 01328 701133

1 September

Ranger Walk – Railway Tunnels Walk

9 miles along the Monsal Trail. Bring £2 bus fare and torch. Meet 10.45 am Bakewell Old Station, finish 5.30pm. Booking essential from 22 July 10am on 01298 871869

2 September

Toy/Train Collectors Fair

Pavilion Gardens, Buxton 01298 23114

6 September

Ranger Walk – Dam Builders and Dam Busters

7 miles to discover the story of "Tin Town" the Dam builders and the Dam busters. Some steep ascents, guide dogs only. Booking essential, meeting 10.30 am at Fairholmes Ranger Centre, finish 4pm 01433 659986

8 to 9 September

Garden and Design Fair

Pavilion Gardens, Buxton 01298 23114

8 to 16 September

Hartington Well Dressing

Blessing service 8 September at 3.00 pm 01298 84380

9 September

Specialist Plant Sale

Chatsworth House and Garden 0115 9830 278

Historic Railway Walk

Peak Village, Rowsley, Near Matlock 0114 2364728

12 September

Behind the Scenes Days – Furniture and Textiles

Chatsworth House and Garden 01246 582204

14 September

Silk Painting Workshop

Buxton, Learn how to do silk painting, booking essential 01298 22117

15 September

Ranger Walk – Taddington's History

6.5 miles around Taddington and Priestcliffe, some steep climbs. Meet 10.30 am at Bramwell Institute finish 4.30 pm 01629 816290

Regional Food Fair

Pavilion Gardens, Buxton 01298 23114

15 to 15 September

Country Music Festival

Palace Hotel Buxton, Proceeds to charity, 01298 70104

19 to 23 September

Reflections Flower Festival

Chatsworth House and Garden 01246 582204

22 September

Ranger Walk – Industrial Archaeology

3 miles around Millers Dale looking at the industrial archaeology. Some very steep climbs and rough ground. Meeting 10.30 am at Millers Dale Old Station, finish 3pm 01629 816290

23 September

Book Fair

Pavilion Gardens, Buxton 01298 23114

29 to 30 September

Rally Car Show

Chatsworth House and Garden 01246 582204

All the above, plus many more events, can be found in "What's On Peak District" the National Parks Free Guide. www.visitpeakdistrict.com

Services at All Saints Church, Totley

SEPTEMBER

2nd Theme: 'Total Commitment'

10.00 a.m. Family Communion

6.30 p.m. Holy Communion

9th Theme: 'Are you off your trolley? A look at the consumerist society'

10.00 a.m. Baptism

6.30 p.m. Holy Communion

16th Theme: 'Making sense of suffering'

10.00 a.m. Holy Communion

6.30 p.m. Evening Prayer

23rd Theme: 'I wish I had his faith'

10.00 a.m. Blue Moon Sunday

6.30 p.m. Holy Communion

30th Theme: 'My soul longs after you'

10.00 a.m. Holy Communion

6.30 p.m. Healing Service

ONCE IN A BLUE MOON

Is it a phrase you use, but wonder what its origin is? It goes back to the middle ages - and indicates something which is as unlikely as the moon appearing blue, or being made of cheese. In fact the moon very occasionally may appear to be blue, when there are very unusual climatic conditions - perhaps after a volcanic eruption.

Another possible link is with months that contain two full moons in the month - which happens 41 times a century, or once every 2½ years.

At All Saints we are holding a "Blue Moon Sunday" on 23rd September (service at 10.00 a.m.) The idea is that if you feel you come to church once in a blue moon - or indeed would like to come, but have never got round to it - then this is the opportunity for you.

Don't know what the weather will be like on 23rd September - but watch the moon in the evening (which also happens to be the first day of autumn).

David Rhodes

Vicar

News from Totley Rise Methodist Church

We may not have had a long hot summer, but the welcome at Totley Rise Methodist Church will make up for it! In addition to our usual weekly services **each Sunday at 10-30 (with creche) and 6-30**, there are two special services planned at which all will be most welcome.

SUNDAY SEPTEMBER 9th AT 10-30 is a special 'GATHERING IN' service, when we get back together after the summer break. This will be an **ALL AGE WORSHIP** led by the Rev Roly Bain 'HOLY FOOL'. Roly is an award winning clown who will provide interest for everyone. As usual, there will be a creche for those under three. **YOU ARE WELCOME TO STAY FOR A BUFFET LUNCH AFTERWARDS.**

SUNDAY OCTOBER 7th AT 10-30 (ALL AGE), AND 6-30 our **HARVEST SERVICES**. These will be led by our minister Rev Garry Dawson-Jones and again there will be lots of activities, this time with a 'WATERY' theme. We shall be raising money to help provide safe water for three villages in Madhya Pradesh in India, so that the people there can enjoy harvest for many years to come as well as a healthier day to day life.

Do come along, we should love to see you!

T.O.A.D.S. AUTUMN PLAY

Although Agatha Christie died thirty one years ago, her murder mystery plays are as popular as ever. Indeed, one will be at the Lyceum in October. But if you would like to save yourselves a lot of money, you can enjoy TOADS Autumn offering of her play "A Murder is Announced", a classic Christie play. All the characters are there, including Miss Marple, but I couldn't possibly reveal the plot or the sensational confrontation towards the end ! I would probably end up a victim as well !!

So, there is nothing for it - you will just have to come along and see for yourself at St. John's Church Hall, Abbeydale Road South, Wednesday to Saturday, November 21st to 24th at 7.30pm. Tickets are a very reasonable £3.50, or £3 for Concessions from any member, or from me, Kate Reynolds on 2366891. Don't miss it - you know we can do it. And red or white wine as well ! Incidentally, our donation to charity this July was to "Sarah's Fund", for three Local Cancer Charities in memory of lovely Sarah Scott who taught at Totley Primary School. She will be greatly missed.

TOTLEY TOWNSWOMEN'S GUILD

Once again this year we were lucky with the weather, when on July 11th Mrs Beryl Tolson held her Summer Strawberry Tea at her home in Rowan Tree Dell.

The sales table was well stocked and some beautiful prizes had been given for the Raffle. A total of £143 was raised for Weston Park Cancer Research.

Meetings begin again on Tuesday, September 18th 2007 at 10.00 a.m. at the Methodist Church Hall, Totley Rise, when the Speaker will be Mr R. Maxwell with "Tales of the Tyrol".

DO COME ALONG AND JOIN OUR. FRIENDLY GUILD - YOU ARE ASSURED OF A WARM WELCOME

Our regular monthly activities include Social Studies/Drama/Choir/Exercise Class/Rambling in Derbyshire and interesting Outings are arranged from time to time.

Contact: Mrs Hazel Brown, Telephone No. 235 812, or just come along.

The Workers' Educational Association

The WEA Adult Education courses at St John's Hall start week commencing Monday 24 September.

A range of subjects is offered including French and Italian, Painting and Drawing and Life Figure Drawing, Gardening, Flower Arranging and Map and Compass Skills.

For the first time this Autumn a Holiday French for Beginners course is offered. This is an opportunity for students to learn enough French to "get by" and enhance their holidays. This commences on Monday 24 September at 7:00pm.

Many other courses also start across the City at various venues and further details may be obtained on Tel. No. 0114 242 3609.

Ian Horsfield

Table Top Sale

Dore Masonic Hall, Sunday 9th September, 11 a.m.
£5 per table, Ring 236 0770 for details.

Scout News

The first draw for the Totley Scout Lottery will be in September and will run until August 2008. If you have not received an application form please ring Vanessa Pearson on 2360513 and we will fill one in for you.

Peter Casson

Open Garden Fund

I would like to say a big thank you to all who supported our Open Garden Fund raising event. Thanks to a superb team of friends and family who served cream teas, sold plants and organised a raffle we raised a total of £2,005 for the Sheffield Children's Hospital Charity

Valerie Taylor

Castleton Silver Band

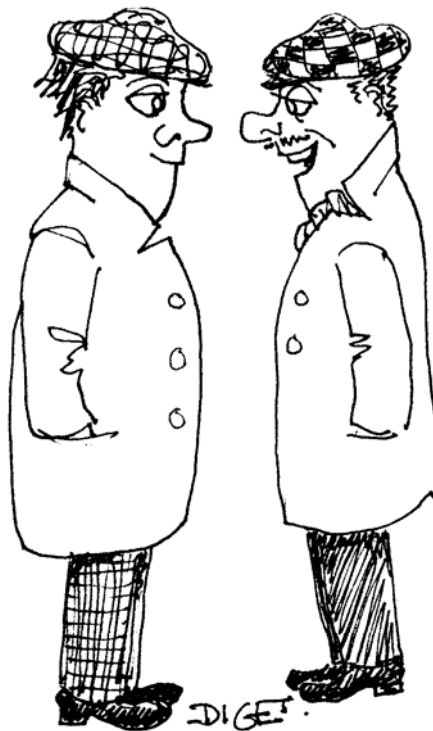
Totley Rise Methodist Church Choir, Baslow Road are hosting a concert given by the Castleton Silver Band under the baton of Bryan Hazlehurst on Thursday, 18 October at 7.30 pm. Refreshments will be served in the church lounge. Entry is free but a retiring collection will be taken for the Bluebell Wood Children's Hospice.

Everyone welcome.

Children's Thoughts on Marriage

You got to find somebody who likes the same stuff, like if you like sports, she should like it that you like sports and she should keep the chips and dip coming - *Alan, aged 10*

No person really decides before they grow up who they are going to marry. God decides it all way before and you get to find out later who you are stuck with - *Kristen aged 10*



"DID YOU HEAR ABOUT THIS PLUMP GENT WHO BOUGHT TWO TICKETS ON A TOTLEY BUS TO HAVE MORE ROOM? THEN FOUND THEY WERE ON OPPOSITE SIDES OF THE ISLE!"

Gardening Tips for September

I have just come in from the garden and it is lovely going around deadheading and weeding, I have also watered a bit this morning because I did not get time yesterday evening. We went to the Ashover Show and it was a bit too late to get the watering cans out. The Ashover Show was a great day out, the domestic and vegetable sections were really worth seeing, the turnout was outstanding, I hope you will all give us your best effort to take part in The Totley Show on 15 September. I will be baking so I will expect a challenge from you, so have a go see if you can beat my scones and Dundee cake. It is a lovely feeling when you get a certificate and even better a cup for best in section.

The weather is a lot better now and the vegetable patch is feeling the benefit of this lovely sunshine we are having, after all the rain previously the only thing that benefited was the fish, it didn't seem to both them, it certainly held other things back a bit, my onions and leeks are not as good as they should be, I was a bit late getting them in, I will be putting some into the show but I don't hold much hope for a prize in that section. Who was it said it's the taking part that matters? I cannot emphasise enough that The Totley Show needs you to enter otherwise there is no show, so please make a real effort to support the volunteers who are working hard to make it a success. I am told there is a special attraction (not me) this year so I hope we have a really good turn out to make the experience and efforts of those talented people worthwhile. Entry forms for the show will be in the Library, the Totley Post Office and Rosie's and in the Stablemate Shop (the old Busy Bee). They are also in the July/August issue of the Totley Independent. We would like to see more efforts for the children's section so please encourage them to take part. It is lots of fun and we always have a good chuckle at the vegetable animals and some of the miniature gardens are really well made. So have a go! If you were watching Alan Titchmarsh on The Garden Show programme recently you will have seen some of the efforts of the youngsters, they really did put up a great show and the pumpkins, I think when you have to have a fork lift truck to lift it that is taking things a bit far. Also, I don't think the longest carrot, 17 foot, 3 inches) would be very tasty, and you needed a long ladder to see the flower on the sunflower plant. I don't expect to see any records broken at our show except perhaps the attendance figures but that is up to you. By the way if you won a cup last year and have not returned it give it a good polish and let me have it or drop it into The Stablemate Shop, Ironing Shop or Rosie's as soon as possible. Thank you

Flowers To encourage a late flush or to help the plants develop into stronger specimens keep up with removing the faded flowers, reduce by half any perennials which have finished flowering to prevent wind rocking them lose. Prepare ground for new borders, clearing away old summer bedding plants. Make ready for spring beddings, add a little bone meal or hoof and horn if you have not done so for a year or so. Lift and pot up geraniums and fuchsias ready for moving indoors. Take cuttings from herbaceous plants as insurance against frost, if you have beds which are ready you could plant out daffodils and narcissi, primrose, polyanthus viola, forget-me-nots and winter flowering pansies, don't let the pansy flower, nip off any buds which appear, this will make stronger plants which can face the winter frosts better. Mildew can be a nuisance at this time, deal with it as soon as it is seen; a good fungicide should help. Pot up hyacinth, tulips and narcissi for forcing, keep them as cool as possible in a dark place for 8-12 weeks, inspect from time to time to ensure they do not dry out or get mildew. Brambler roses will have finished flowering, they can be pruned now, cut out the old canes that have just borne flowers, if there is not much young wood you will have to keep the best of the old, and simply remove the obviously worn out or diseased. If you have to do this cut back all old flower trusses and hips they may be bearing.

Vegetables Gather French and runner beans regularly, do not leave any pods which are ready on the plant unless you are entering the largest bean in Totley Show. Keep the old hoe going removing weeds; make sure that all plants are not short of water, thin out spinach being grown for harvesting late autumn. If your onions are slow ripening turn down the tops, lift and store as soon as they look reasonable (note the ones for the show and leave them until show day then dig them up, leave the roots on trimmed a bit, chop off the tops and bind the chopped end of the onion with a bit of raffia or twine, you need 3 matching and/or one whopper) and the best of luck!

Prepare ground ready for planting spring cabbage later in the month. Marrows can be stored if there are too many for immediate use, hang them in old nylons in a cool frost free place. Earth up leeks and celery. Keep an eye on the weather forecast so that outdoor tomatoes and marrows can be picked before they are spoilt by frost. Lift a bit of parsley and pot up and place in the cold-frame, this will provide pickings for the winter and food for the slugs if you are not careful. Divide and replant chives, thyme and welsh onions.

Trees, Shrubs and Fruit Prepare ground for planting new raspberries and blackcurrants, place grease bands on fruit trees, especially apples. At the end of the month prune blackberries, cut out the old fruited canes and tie in the old shoots. Pick up windfall apples to prevent the spread of disease from the rotting fruit. Prepare ground for planting evergreens including heathers, hedges, shrubs and conifers, plant out at the end of the month. Take hardwood cuttings and semi-ripe cuttings of most shrubs at this time, rooting in a cold-frame, and bear in mind hardwood cuttings can take quite a time to root (2 years sometimes). Start winter pruning apples and pears towards the end of the month.

Greenhouse and Indoor Plants Gradually decrease watering, except plants that are coming into flower, e.g. cyclamen, dry off tuberous begonias, cacti, gloxinias, hot water plants and clivias.

Feed plants in flower such as African violets, bush violets and chrysanthemums as flowering finishes discard summer flowering annuals that have been used as pot plants. Pot up seedlings of cinerarias, cyclamen, primula and poor man's orchid to flower late winter and early spring. Re-pot arum lilies to flower at Easter. Take cuttings of flowering maple, campanula, coleus, fuchsia, busy lizzie, ivy and geranium. Divide plants of pepperonia, mind your own business and rodahy paxis. Detach the plantlets from spider plants and pot them up, be careful watering in the greenhouse as excess water at this time encourages mildew and fungal diseases. Also keep benches and floors clear of leaf droppings etc.

Lawns Continue regular mowing and edging, rake, scarify and spike then apply a top dressing of sieved potting compost. It is a good time to sow new lawns or lay turf on well prepared ground.

General Watch the weather in September, the variation can be quite marked early on, you can expect fine warm days but nights begin to feel colder, ground frost can occur so be prepared. Make space for those tender plants and sort out those insulation covers for cold-frames etc just in case.

DON'T FORGET THE TOTLEY SHOW, 15 SEPTEMBER AT TOTLEY PRIMARY SCHOOL, SUNNYVALE ROAD, SEE YOU THERE.

Cheerio for now, Tom

PS Entry forms at the library and Totley Post Office.

OLD TOTLEY by Jo Rundle

When the new Church School was finished and running smoothly attention turned once more to the prospect of building a Church to fulfil that part of the 1870 Education Act that demanded half an hour of religious education. It is not hard to understand the delicacy of the situation if the children of the Church School were dependent on the Superintendent, or the Minister, of the Wesleyan Chapel for their religious instruction, or am I being too sceptic? The situation as I understood it at the time, although I was only 9 yrs. old, was that a Church was urgent, but where was the land on which to build it?. This is where Mr. and Mrs. Milner came to the rescue, as they had done on many occasions since they made their home at Totley Hall in 1884. Now they offered land in Hall Lane on which to build the Church, and very soon work began. Although this was a few years before the 1929 Wall Street crash and the official 'Depression' there was little work for the untrained men in the village except in the local mines and farms. However, Totley was well equipped with craftsmen, Masons, Bricklayers, Metal-workers, and Joiners, each one ready, willing, and proud to have a hand in their new Church.

The design of the new building soon became a talking-point; a disappointment for some traditionalists who had expected a 19thC. Church like those at Dore and Holmesfield: "This one is nothing like a Church" said some critics, others just turned away not knowing what to think. Soon the news spread; the new Church was the same design as a very popular Church at Buxton; the Architect was famous for his designs; it was just right for its position, and the work was outstanding to the point that, we were told, another Church was to be built exactly like it somewhere in Sheffield. At this it was accepted with pride, and when The Rev. Jermyn Hutton arrived to become the first Vicar of Totley there was great celebration for there never was a more popular Vicar than Mr. Hutton with his strong sense of humour and throaty, chest-heaving laugh, his, and Mrs. Hutton's friendship and kindness, and above all his entry into village life, including his Sunday morning visits after morning service to the Cross Scythes to have a drink with the men, by whom he was greatly respected.

I cannot think of the Rev. Jermyn Hutton without thinking of his words when he spoke as an old friend of the Bride during the toasts at my Wedding Reception. The charge for a marriage at the time was 7s.6d, but it had been waived by the Vicar because I was a Sunday-School Teacher and, bearing in mind that my new husband was a policeman; my maiden name was Salt, and this was 1936 when there was much more decorum than in this free-speaking age, to say that the guests were surprised is an understatement when, after saying a few words that an old friend might say, his smile turned to a broad grin and ended in a rip-roaring, throaty, belly-laugh, as he finished with the following words, "The Bridegroom can never say she wasn't worth the money, because he didn't have to pay. It's the first time I've put handcuffs on a policeman and what's more, I've managed to put a bit of salt on his tail" I'm sure you can imagine the response from the guests, at first unbelieving, then with a resounding cheer.

A new Church of course needs a Congregation, a Choir, an Organist, a Sacristan, a Crucifer, Servers, and Sidesmen and inevitably it had an effect on the other Churches and the Wesleyan Chapel, now almost a hundred years old. The following are those that I remember because most of them were members of the Cross Scythes Bowling Club whom I met each year on Ladies Day and, occasionally when my Father took me to Morning Service on special days. Churches did not allow women in the Choir, so my Father saw no reason for me to leave the Chapel, until I was thirteen years

old when I wished to join Miss Martin's Bible Class. Anything to do with the Choir I have relied on a little help from my Brother.

Perhaps readers will remember other things that I have missed. Mr. Foulstone of course was the Licensed Reader, The first Crucifer was Herbert Crowther Jnr., Sacristan, Percy Crookes, first Server was possibly Ronnie Steer, although I remember Earnest Pearson more easily. There were twelve men and boys in two rows of the Choir, including Mr. Platt and Mr. Nunn, both from Heatherfield, and my Brother Elijah whom my Father had allowed to leave the Chapel for that purpose. The first Organist was Mr. Eccleston, a bachelor from Main Avenue, followed very shortly by Mr. Linfoot. The Sidesmen were Mr. Billy Wise, Mr. Lake, my Father, Mr. Colin Thompson the butcher from Totley Rise, Herbert Crowther Snr. and Mr. Wm. Tym of Totley Hall Farm, whose services rotated, provided there were always four on duty at one time.

One very happy memory for me is the occasion when my youngest Brother Jeff, age sixteen who, for the first time as the Crucifer, carried the Cross before me on my Father's arm as I walked up the aisle on my wedding day. He said many times that it was the proudest moment in his life. A year later my son Arthur Scott Rundle was born, we little knowing that, as a young Graduate he would spend eight years as an Antarctic Explorer, be awarded the Antarctic medal twice, and have a Range of mountains named after him, 'Rundle Peaks'. They can be found on the modern maps of Antarctica at the top of Byrd Glacier.

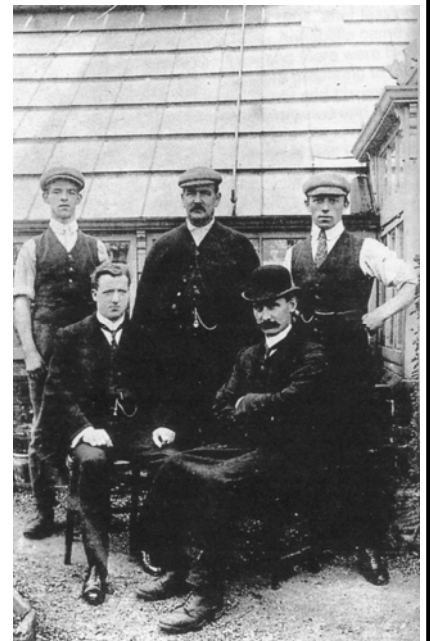
The beginning of the Century produced many unexpected things, despite all the disadvantages quoted today, but that's me, on a 'Hobby-horse' looking back. To be continued

Totley Hall Gardener

Just after my book 'Totley & District in Old Photographs' was published I had a letter from Sonya Lindson. She pointed out that the photograph of the Totley Hall staff included her grandfather David Lewis, from Cumberland, who was taken on as head gardener around 1904, after leaving college in Chester where he had met his future wife Minnie. His sister Annabelle came as housekeeper.

The Lewis family lived in Toft House just up the lane and there were two children; a son in 1907 and daughter 18 months later. As they were preparing to move to Moor View on Butts Hill, Minnie died aged 42. Nevertheless David and his young family did move and lived there until 1929 when David's son was married and his daughter Bessie moved to London where she became a well-known opera

singer. Around that time David moved into the Lodge (but called the bungalow) on Totley Hall Lane. William Aldam Milner the owner of Totley Hall died in 1931. His widow went to live in Baslow shortly after and took the gardener with her. Mr. Milner gave his middle name to Aldam Road and Aldam Way in Totley. BRIAN EDWARDS



PUFF THE MAGIC FAGGON!

Here we are, July 2007 and there has been great controversy over the smoking ban in most buildings. What a difference eighty nine years make. Go back to the 12th November 1918 and the Sheffield Independent is reporting the 'Cease Fire' and in the trenches so many lucky survivors could sit back and enjoy a good drag as they wallowed in mud three or four feet deep. The newspaper (not a subsidiary of the Totley Independent) was a little behind, trumpeting PEACE IN SIGHT and was busy advertising Xmas parcels for the troops 'Another winter on land and sea will not daunt our brave boys, but we at home can make their lot a happier one by providing them with unlimited supplies of cigarettes... our Sheffield Independent Xmas parcel this year, owing to a shortage of other comforts, consists of Cigarettes Only, and we have made arrangements whereby we can send in bulk to regiments etc., parcels containing 80 Roll Call cigarettes so giving pleasure to thousands of our men who would otherwise be neglected'.

The advertisement also promises to send 200 Player's Medium Navy Cut cigarettes, post free, from 'Blighty' to anywhere for just 5 shillings (12.5p). Somehow I just don't think the offer would be appreciated nowadays! However one thing is for sure that those boys, having survived the most horrific health risks, wouldn't dream that cigarettes could be a future hazard. The tobacco firms were, during World War Two, still selling Players Medium along with Gold Flake, Senior Service, Wills Woodbine, little packs of five Players Weights (?).

We had a Sweets and Tobacconist shop and I remember as a lad, 5 or 6 years old, helping to pack varying sizes for the weekly order to most families in our area of Manchester. Each member of a family had his or her own brand and quantity. All of a sudden in 1944 as the end of the war approached, our shop had foreign competition. Just around the corner were scores of huge lorries parked in lines vanishing into the distance and filled with American soldiers who were sprinkled around England, no doubt waiting for Dunkirk. Our new friends dispensed free Camel cigarettes in the first soft packs we had seen. Also new were the first negroes we had ever seen and Beechnut chewing gum in long packets tossed out of the vehicles to we local kids. One morning the lorries had gone by the time we set off for school. The sales reps from the tobacco companies arrived and fascinated me when they performed the bright coloured window displays with strips of crepe paper criss-crossing and focussing on large posters advertising cigarettes. You might say that ciggies featured large in my youth!

BRIAN EDWARDS

PEACE IN SIGHT BUT
 What of the Gallant Lads who have brought this about?
OUR NAVY
 who raided and broke up the U-Boat nests at Ostend and Zeebrugge so that we might have food
 AND
OUR ARMY
 whose heroic fight with their back to the wall before Amiens turned Germany's victorious advance into the greatest defeat in history.
XMAS IS COMING BUT THE ORDER IS STILL TO "CARRY ON"
 Another winter on land and sea will not daunt our brave boys, but we at home can make their lot a happier one by providing them with unlimited supplies of cigarettes. In previous years the "Sheffield Independent" has been the medium whereby its readers could forward supplies to their relatives and friends overseas, and though difficulties in this direction are greater than ever, we invite your co-operation to enable us to live up to that splendid order of the day—"CARRY ON."
OUR XMAS PARCEL

SHOPPING THOUGHTS

When we came to live here 50 years ago we thought we had arrived in paradise compared to where we had left in a Doncaster suburb. In those days most daily necessities were indeed that, and bought on a daily basis, bread, meat, fish, baking provisions and other foods, fruit and vegetables to say nothing of sewing materials, children's clothes, wallpaper, bank and petrol. I willingly admit that local shops which do survive still provide excellent service, but we have succumbed to supermarket shopping.

For me with failing eyesight, shopping there is an almost impossible task, not being able to read labels to identify packages or prices to make sure I don't feel they are extortionate. Fortunately my wife is able to lead our forays while my job is to push the trolley, pay for the goods and carry the bags.

This is not meant to suggest no frustrations for my wife. Her two main grumbles are small labels often either at ground level necessitating a kneeling position to read or too high and needing a telescope to decipher. Her second annoyance is the habit which is part of every supermarket chain - to house an item in one particular place for customers to get familiar with and able to easily find and then, after a time, put it in a completely different place.

However - we as a team have evolved what Baldrick of Black Adder fame would describe as "a cunning plan." I park the trolley as much out of the way as possible and mount guard. She then goes off on a foray to find the elusive items. If the items are small enough she is able to return with them. If they are too heavy or hidden at the back of a high shelf, I have to be led along her discovered route to act as labourer.

On one such occasion recently we followed this routine and I found myself waiting at the end of the aisle containing stacks of toilet rolls. Well when I am on guard like this the only thing I can do is to start thinking, particularly when my wife meets an acquaintance for a chat and is longer than usual before rejoining me. My thoughts began to wonder when toilet rolls were invented. When I was a little boy in the 1920's I had two lots of grandparents living in small towns. My father's parents lived in a semi detached house which boasted a flush lavatory, albeit outside attached to the back of the house. My mother's parents lived in a bigger house, also with an outside toilet, this time a wooden seat with a hole in at the bottom of the garden. I honestly can't remember the toilet paper but I suspect it had more newsprint on it than any present day varieties.

Some years ago a friend of mine did a stint at the University of Ceylon (now Sri Lanka) under the auspices of the British Council. Naturally he was advised about items to take, and these included 200 toilet rolls! I understand local customs involved a tin of water and a sponge. Come to think of it, when he came home on holiday, I didn't ask whether he was taking more supplies or "gone native".

When my wife returned we had to walk along the aisle - more than 50 different packs to choose from. Choices ranged from basic through natural, soft mesh, supersoft to velvet triple and velvet quilted. Colours included white, warm natural, aqua, fresh linen, soft peach and gentle pink. Aloe Vera was also on offer but a poor chap like me doesn't know whether this refers to a texture, a colour or a perfumed type, as also applies to sea breeze. Plain or floral was another choice but whether huggable and huggable puppies was a decoration or a soft toy obtained by sending a cheque and collected coupons was too much for me. Add to all this whether a pack of 4, or 8, or 9, or 12, or 18 and it becomes an hours job to chose. How on earth would Mavis in Arkwright's Emporium, who can never make up her mind between two choices, fare in such a situation?

To end on a personal note. When we last renewed supplies I chose "white triple velvet". Between you and me it's more like a roll of fairly substantial wall paper, so I don't think I shall be asked to chose next time !

Don Ashford

A SIGNALMANS LIFE

Totley's own Glynn Waite has come out with yet another railway publication and in this case he fills 72 pages crammed with details on Charles Burling a signalman from Cromford. As a coincidence Charles's son was Glynn's godfather. After several jobs before being transferred to Cromford Sidings signal box, Charles kept two invaluable notebooks covering the period 1912 to 1917 and 1925 until 1947. This latest book contains many illustrations of stations, rolling stock, personnel - enough to fill lots of anoraks. There are mentions of Longstone, Monsal, Clay Cross Tunnel, and many other local places. The book is entitled Charles Burling, Signalman by Glynn, published by The Rowsley Association, price £9.99. Don't let me go on about the publication too much, just pop down to Matlock Station or other outlets and get one for yourself!

BRIAN EDWARDS.



Local and Live Local Community Drama Group

Performing

"Them Were T' Days"

a tale of war and peace

Wednesday, 19 September at Totley Library, Baslow Road,
Sheffield

Curtain up at 7.30 pm, tickets £2.50, children £2.00.

Refreshments will be served!

The Dorcas Lunch club

Sadly, the Dorcas Lunch Club closed in August. Dorcas was started about the time of the United Reformed Church Centenary, 20 years ago, as an outreach into the community. We operated twice a week for 18 years, and once a week since 2005. One of the aims was to give a break to carers of people with early Alzheimer's disease and other special needs.

Most of our volunteer helpers, past & present, have been involved for many years. We are grateful to local organisations and individuals for their support, especially the Transport 17 team members who are vital to the life of all lunch clubs in the area. Dorcas cannot continue because of the retirement of some long serving helpers, but it will be remembered with affection by many.

Valerie Simpson Co-ordinator

SBS

Schofield Building services

**Kitchen & bathroom fitting
building maintenance
No job too small**

Ring for free quote:

Matt: 07949 299083

Dan: 07932 743878

Come

SCOTTISH COUNTRY DANCING

Sheffield



Branch

Classes for beginners and experienced dancers

Mondays 7.45pm - 10.00pm

Starting Monday September 3rd 2007

**King Edward VII School, Darwin Lane
Sandygate, Sheffield**

For further details contact:

Norma Hutchinson. (0114) 236 6723

Pamela Dall (0114) 258 5909

Visit our website:

<http://extra.shu.ac.uk/rscds>

Sheffield  **Branch**

The Royal Scottish Country Dance Society

PUZZLE CORNER

Solution to Numbered Towns.

0=S; 1=R; 2=O; 3=T; 4=H; 5=E; 6=A; 7=M; 8=C; 9=N

ACHNASHEEN; ETON; MANCHESTER; CROMER;
MOTTRAM; AMERSHAM; RHOS - ON- SEA; STREET;
ATHERSTONE; REETH; ROTHERHAM; MORTEHOE;
OSSETT; SHOREHAM; SOMERTON.

Don Ashford

Creating opportunities with disabled people



TEL. NO. 0114 236 9952

CHARITY NO. 218186

SUMMER FETE

AT MICKLEY HALL, TOTLEY

ON

SATURDAY, JUNE 23rd

2pm – 4.30pm

OPENER TO BE ARRANGED

GAMES, TEAS, CAKES, PLANTS,
PRESERVES, RAFFLE, TOMBOLA,
BRIC-A-BRAC, MUSICAL
ENTERTAINMENT &
LOTS MORE
PLEASE JOIN US FOR A FUN DAY OUT
50p ENTRANCE CHILDREN FREE

EXECUTIVE TRANSFERS for 1 – 8 passengers



TO ANY U.K. DESTINATION
INCLUDING ALL

AIRPORTS : COASTAL
CORPORATE : COURIER
GOLF : PORTS : RACING
RUGBY : SOCCER : SOCIAL

FULLY INSURED
CLIMATE CONTROL & TOWING FACILITY
MEET & GREET POLICY
A SERVICE TAILORED TO YOUR
REQUIREMENTS

TELEPHONE OR TEXT

Hello

Travel Club Limited

0779 265 2746



Hatha

..YOGA CLASS..

Totley Primary School

Tues Evening - 6.15 - 7.45

Ranmoor Parish Centre

Wednesdays 9.30 - 11.00am

For more information or to book a place call

RACHEL on (0114) 236 9943



New term starts 11th September

BODY, MIND & BREATH

Enjoy the union of yoga

One man went to mow...
...but his mower wouldn't go!

Now is the time to call

MOWER MENDER

and be ready for the forthcoming
growing season.

A local friendly business
servicing all makes of
garden machinery.

Phone:
0114 236 6958

Mobile:
0781 2211149



Blade Sharpening and
Collections & Delivery Service Available

R Rose & Co

Chartered Accountants & Business Advisors

Specialists at
looking after the affairs
of small businesses.

For a FREE initial consultation
please contact Roger Rose FCA on
0114 281 2331

From business start-ups and general accounting, to support
and advice in business development and strategy,
we pride ourselves in our personal one-to-one service.
To find out more please call 0114 281 2331.

621 Chesterfield Road, Woodseats, Sheffield S8 0RX
Email: info@r-rose.co.uk www.r-rose.co.uk

www.callhomefix.co.uk

- ✓ Joinery & Painting
- ✓ Plumbing & Electrics
- ✓ Interior & Exterior
- ✓ Unusual fix-it jobs
- ✓ No job too small!
- ✓ From £24!



The Handyman service...
call Julian 01433 631535

Creating opportunities with disabled people.

Registered Charity No. 218186



Leonard Cheshire Services in Offers choice &
opportunity to people with disabilities.
A Specialist Unit for the Younger Disabled.
Residential & Respite Care - Single Rooms
Day resources - Aromatherapy -
Reflexology - Physiotherapy - Toning
Tables.
Activities include: - Arts & Crafts -
Computers - Cookery - Shopping
Expeditions - Theatre Outings - Church.
Further details can be obtained from -
The Service Manager, Mickley Hall,
Mickley Lane, Totley, Sheffield S17 4HE.
Tel. 0114 236 9952
Fax. 0114 262 0234

The Care at Home Service supports
disabled people who wish to remain in their
own homes.
We provide flexible care packages from
1 hour to 24 hours meeting individual needs.
The service operates throughout
Sheffield.
Our service includes: - help with getting
up and going to bed, dressing, washing,
bathing, shopping, cooking, light household
duties.
Further details from: -
The Care at Home Manager
Tel. 0114235 1400
Fax 0114 235 1499

SLIMMING WORLD

10 WAYS TO MAKE SURE IT WILL BE THE LAST TIME LOSING WEIGHT IS YOUR NEW YEAR RESOLUTION. THIS TIME MAKE IT LAST FOREVER

1. Focus on your weight loss goal and prioritise it.
2. Be sure you really want to lose weight for yourself. Doing it to please someone else may only lead to short term weight loss.
3. Take advantage of all the group support at your local Slimming World class. Even if you are not a 'joining in' person, you'll be surprised how motivating it is.
4. Accept that you will have ups and downs in your weight loss journey, and be forgiving of yourself if you hit a difficult patch.
5. Listen to your 'inner script' and make a conscious effort to talk to yourself in a positive, encouraging way.
6. Keep up your interest in your healthy eating plan by trying new foods, new recipes, and new ways of using your Sins. This will help you avoid getting in to a dieting rut which can be boring and demotivating.
7. Be honest with yourself about what you are expecting from your weight loss and how you are getting on with Food Optimising week by week. People who set unrealistic targets for weight loss or body shape are more likely to give up than those who set achievable targets and share their ups and downs.
8. Go back to your class even after (especially after) you've had a weight gain. You will not be judged, just helped and supported.
9. Keep setting new goals and rewarding yourself for milestones until you reach your target weight, and afterwards!
10. Don't put your life on hold until you've lost weight. You can still enjoy life and lose weight. Think of your dreams and ambitions and bring them to the fore. The positive feelings you get from starting to 'live a little' can only help your motivation and your weight loss.

Group details:

Bradway Annexe, Sheffield 17 - Thurs. 5pm and 7pm (6 times award winning group)

Dore Old School, Sheffield 17 - Tues. 5.30pm

The Michael Church, Lowedges Rd, Sheffield 8 - Wed. 10am

Telephone consultant Alison Murphy (01246) 410145 for further information.

Unthank Hall Traditional Meats



Unthank Hall Farm, Holmesfield, Dronfield S18 7WF

07921251634

charlotte_maude@hotmail.com

'Taste The Countryside'

- **This is not just Pork this is Unthank Free Range Pork!!!!**
- **All of our animals are personally cared for on the farm.**
- **Visitors are welcome.**
- **Any amount available.**
- **All orders will be delivered to your door having ordered by the 15th of every month within a 10 miles radius. Very low food miles!**

Apple Fencing

Suppliers of good quality wood and concrete fencing, gates and driveway gates.

Supplied only or supplied and fitted.

Fully insured.

For a free quote call Darren on : 01246 237505 or mobile : 07782167540.

Would you like someone to

Type letters? Pay bills? Help record family memories?
Sort and file papers? Prepare an inventory?
Anything else ???

Then you should call

Secretarial and Administrative Services

Swift, efficient, confidential service at your home.

Pay-as-you-go.

Ring us on 0114 235 0071



Tel/Fax: (0114) 255 4689

Mobile: 07831 802539

TRISTAN SWAIN

LANDSCAPING AND MAINTENANCE

72 Nettleham Road
Sheffield S8 8SX



LADIES FASHIONS

SKIRTS, JUMPERS
T-SHIRTS,
TROUSERS
HABERDASHERY
& ALTERATIONS

DRY CLEANING
SERVICE
LAUNDRY SERVICE

ROSIES

164 BASLOW ROAD, TOTLEY.
TEL: 2621060



**M. Scriven
(FRUITERAMA)**

MARTIN SCRIVEN

HIGH CLASS FRUIT
& VEGETABLES

37, Baslow road

Tel. 236 7116

Orders Delivered



Allweld Forge Ltd

**Bespoke hand made wrought iron
BAY WINDOW CURTAIN POLES**

Large choice of finials and brackets

Also gates, railings, furniture etc.

Unit 3, 300, Archer Road, Millhouses S8 0LA

Next door to Thomas Fencing

Phone/fax 0114 2368239

email: sales@allweldforge.co.uk

Website: allweldforge.co.uk

R.S. HEATING & BUILDING CO

EST. 1971



HEATING DIVISION:
Experienced Installers of condensing, combination and regular boilers. Systems fully guaranteed. Complete after sales service. Also Bathrooms, showers and small plumbing works.

BUILDING DIVISION:
Loft conversions, House renovations including general building, joinery, plastering, electrical decorating etc.



62 Machon Bank, Sheffield, S7 1GP
Tel : 0114 255 9425
Fax 0114 255 9431
 Email: enquiries@rsheatingandbuilding.co.uk
 Web: <http://www.rsheatingandbuilding.co.uk>



LIBERTY FOODS

Caterers
Quality Meat Shop
& Fresh Farm Produce

Fresh and Frozen Prepared Meals
Fresh Meat and Poultry
Outside Catering
Home Delivery

253 Baslow Road, Sheffield, S17 4DU
 Tel: 0114 2360 583 Mobile: 07801 346 455



Dronfield Landscapes

Gardens cleared and maintained, Lawns mowed, Turfing, Tree felling & pruning, Hedges trimmed & reduced, Pond maintenance, Fencing etc.

for free quotation call
 Chris on: (0114) 2746158 Mobiles: 07976072785 or
 Richard on: 07789497104

8am-6pm mon-fri HazelBarrow Farm, Norton S8 8BA

// R.M.M. BUILDING SERVICES //

Block paving a speciality.

Brickwork	Call Rob on
Groundwork	Tel. 0114 2352190
Patio's	Mob. 07906 108567
	For your free estimate


22 years experience, City & Guild Qualified



Nigel Watson

Carpenter & Joiner
 Doors, locks, floors, architraves, skirting boards, stairs, stud walling, boxing off etc
 No job too small

For a reliable, quality service
 Tel: 0114 236 4778
 Mobile: 07971 528149



D.T. TAYLOR

DRIVING INSTRUCTION

Driving Standards Agency Approved Driving Instructor (Car)

South Sheffield & North Derbyshire

Discounts for Students and Block Bookings

Phone: 0114 236 8094
www.dttaylor.net



Got a computer?

Having Problems?
 Is it running slow? Stops responding?
 Having problems running the latest games or applications?
Give me a call!
 I'm available for home visits at any time including evenings and weekends. I can also suggest upgrades to improve performance, or even build you a system to your specific requirements.

Tim Brown
 Building, Installation, Upgrading and Troubleshooting Computer Systems at Reasonable Rates

Phone: 0114 2472619 Fax: 0870 7060080
 Mobile: 078 17464703 Email: service@timbrown.plus.com

RUBBISH REMOVED

*Environment agency registered.
ID shown at door.*

Beds, settees, garden and DIY,
Washers, Baths, carpets, furniture,
Cookers Garages cleared, broken
sheds and fencing removed.

Free quotes! Genuinely no obligation!

Tel: Mick 0114 2681330

Mobile 07710 446438

Established five years.

Courteous reliable service.

http://uk.geocities.com/draggletail_waste_services/



Central Heating

Domestic Plumbing

Glazing, Double Glazing and Glass

House Maintenance

UPVC and Wood Windows & Doors

Mini Digger & Driver, Muck Shifts, Footings Etc.



TOTLEY PRIVATE HIRE

*PROFESSIONAL CAR SERVICE
FOR
AIRPORTS & LONG DISTANCE
TRAVEL etc.*

**Tel: 0114 - 2361547
Mobile: 07974-355528**

PATRICIA BARBER

53 Wollaton Road, Bradway
Sheffield, S17 4LF
Tel 0114 236 6247

Gents Hairdresser

Don Allott



Has now moved to the above address
Thursday, Friday & Saturday from 9.00am
Full Barber Service Available
Walk in service and appointments available

APPLE LANDSCAPES

Quality service at an affordable price!

Patios and walling, paths, steps, Indian stone paving, turfing,
soil, railway sleeper beds, garden tidy-ups, fencing supplied or
fitted.

Only quality materials used. Fully insured.

For a free quote call: 01246 237505 or mobile:
07782167540

Mark & Sally Fletcher invite you to

The Grouse Inn

Longshaw

SHEFFIELD S11 7TZ

**Open for Meals Every Lunchtime
12 to 2-30 pm.**

**Evenings Tuesday to Sunday
6.45p.m. to 9.15p.m.**

Phone 01433 630423

HARD OF HEARING?

If you need a Hearing Aid, I can cut the cost by
30% or more on prices currently charged by the
large Hearing Aid companies

**I Am Now Fitting All In The Ear,
Digital Aids from £495**

For a free, no obligation consultation and
Hearing Test, simply phone me:

**Maurice Naylor MBSHAA:
4 Twentwell Drive, Bradway,
Sheffield. S17 4PY
Tel: 2620010**

Horizon Electrical

*Faults, Rewires, Sockets, Lights,
Cooker Points, Electrical Showers,
Phone Points, Security Lights*

No job too small

Fully qualified with friendly advice

Ring Totley 236 4364 or
mobile 0776 5036849

FOR SIX GENERATIONS

THE LEADING FUNERAL DIRECTORS

John Fleath & Sons

**PROMPT and COMPREHENSIVE SERVICE
AT ALL TIMES**

☎ 2 722222

LIMOUSINES FOR SPECIAL OCCASIONS

TOTLEY & DISTRICT DIARY

MONDAYS

COFFEE MORNING, All Saints' Church Hall, 10am. To noon

TUESDAYS

COFFEE MORNING, Totley Rise Methodist Church Hall, 10am. To noon.

TODDLER GROUP. All Saints Church Hall, 10.00a.m. to 11.30 a.m. Details Jo Smith tel. 262 0741

CRAFT GROUP, Totley Library, 2pm.

WEDNESDAYS

COFFEE in the LIBRARY, 10am. to 11.30am.

TOTLEY RISE METHODIST PLAYGROUP, Grove Road 9:30-12.00, Phone: Judith 236 3456 or Gill 236 1373

TODDLER GROUP, 10-00 a.m. to 11-30 a.m., All Saints' Church Hall. Details tel. 236 0163 or 236 6789 or 236 3603

HEALTH WALKS, 10-30 a.m., Totley Library foyer. For a current programme and/or further details contact:

Sue, The Health Walk Ranger: 0114 2839195

MODERN SEQUENCE DANCING, All Saints Church Hall 8pm. to 10pm.

THURSDAYS

TOTLEY RISE METHODIST PLAYGROUP, Grove Road 9:30-12.00, Phone: Judith 236 3456 or Gill 236 1373

PUSHCHAIR CLUB, Totley Rise Methodist Church Hall. 1.30pm.. to 3pm. Tel. 2363157 for further details.

CHAIROBICS, Totley Library, 2pm to 3pm. £1.

PILATES CLASS, United Reformed Church, Totley Brook Road, 6.30-7.30, Phone Emer Coffee 07792 422909

SATURDAYS

MODERN SEQUENCE DANCING, All Saints Church Hall 2nd. And 4th. Saturdays 7.30pm. to 10pm.

SEPTEMBER 2007

SAT 1st ART IN THE GARDENS, Sheffield Botanical Gardens, 10.30am-5:30pm,

Admission £4 Tel 273 6839

THU 6th – SAT 8th LONGSHAW SHEEPDOG TRIALS See page 5 for details

SAT 8th SATURDAY NIGHT LIVE, Heatherfield Club, Baslow Road. 8-30 pm.

Non members welcome, small charge on door.

SUN 9th TABLE TOP SALE, Dore Masonic Hall, Dore Road 11:00am

SUN 9th MINIATURE TRAIN RIDES, Abbeydale Road South, First train 1 p.m. –

last train 5 p.m. www.sheffieldsmee.co.uk

SAT 15th TOTLEY SHOW, Totley Primary School, doors open 1.30pm, official

opening 2.00pm. See page 3 for details.

TUES 18th TOTLEY TOWNSWOMEN'S GUILD, "Tales of the Tyrol",

Mr. R. Maxfield, Totley Rise Methodist Church Hall, 10.00 am

WED 19th WEDNESDAY FRIENDSHIP, "A History of Dore & Totley", Fred Cocking,

Totley Rise Methodist Church, in the Church Lounge, 7.30p.m.

SAT 22nd – SUN 23rd CHARITY ART EXHIBITION Cheshire Home, Mickley

Hall. 10.00am to 6.00pm, Tickets £6.

SAT 22nd JUMBLE SALE, Dore and Totley United Reformed Church, Totley Brook

Rd, in aid of Church funds, Admission 9.45-10.30 am £2.50, 10.30-12 noon 20p

SAT 22nd SATURDAY NIGHT LIVE, Heatherfield Club, Dave Johns, Baslow Road.

8-30 pm. Non members welcome, small charge on door.

SUN 9th MINIATURE TRAIN RIDES, Abbeydale Road South, First train 1 p.m. –

last train 5 p.m. www.sheffieldsmee.co.uk

SUN 23rd SHEFFIELD FARMERS MARKET, 10.00am-3.00pm, Barkers Pool

SAT 29th.AUTUMN CRAFT FAYRE Cheshire Home, Mickley Hall. 2.00pm to

6.00pm.

OCTOBER 2007

WED 3rd WEDNESDAY FRIENDSHIP, "Love in a Box", Freda Harpham, Totley Rise

Methodist Church, in the Church Lounge, 7.30p.m.

THU 4th FRENCH DINNER with guest speaker, Cheshire Home, Mickley Hall, Tickets

£12, further information 236 9952.

SAT 6th SATURDAY NIGHT LIVE, Heatherfield Club, Trevor Allan, Baslow Road. 8-

30 pm. Non members welcome, small charge on door.

TUES 16th TOTLEY TOWNSWOMEN'S GUILD, "Yorkshire Dialects",

Mrs. M. Maxfield, Totley Rise Methodist Church Hall, 10.00 am

THE INDEPENDENT FOR OCTOBER

The next issue of the Totley Independent will be available from the usual distribution points on

SATURDAY 29th SEPTEMBER 2007

COPY CLOSE DATE for this issue will be

SATURDAY 15th SEPTEMBER 2007

Editor Ian Clarke Tel. No. 235 2526. Email iangclarke@hotmail.com

Distribution & Advertising, John Perkinson. Tel. No. 236 1601.

Email johnandpaulineperkinson@talktalk.net

Items for publication may be left or sent to 2, Main Avenue, Totley, Sheffield, S17 4FG or Totley Library

PRINTED by STARPRINT

B . K . JEAVONS PAINTER & DECORATOR



**Interior
Exterior
Decorating
No job too
small.**

**86, WOLLATON ROAD
BRADWAY
SHEFFIELD, S17 4LG
Telephone 2350821**

Starprint

601 Abbeydale Road, Sheffield 7. Fax: 0114 258 8599

DESIGN & PRINTING of

- LETTERHEADS • BUSINESS CARDS •
- BOOKLETS & PADS •
- INVOICES • LEAFLETS •
- CARBONLESS SETS • BROCHURES •
- RAFFLE TICKETS •
- WEDDING STATIONERY •
- ENVELOPES & POSTCARDS •

**SPECIALISTS IN THERMOGRAPHY
FOIL BLOCKING AND ENCAPSULATION**

0114 258 0707

For a Quick Quotation



For
Windows
With Style

Sheffield Factory Showroom

**106 PROSPECT ROAD
HEELEY, SHEFFIELD**

**Sheffield (0114) 258 5496
Rotherham (01709) 512113**

We welcome letters about local affairs and will publish as many as possible. However the views expressed are not necessarily those of Editor, editorial staff or the Totley Residents Association and must not be imputed to them. © Totley Residents Association 2007.