

TOTLEY INDEPENDENT

PUBLISHED BY THE TOTLEY RESIDENTS ASSOCIATION SINCE 1977

SEPTEMBER 2008

No. 316

15p.



photo by
Colin Major

Kids will love making things for Totley Show. This cucumber crocodile was a prizewinner for James Rose in the 2007 Show.

Totley resident Anne Dussart got into the environmental spirit of the Totley Festival by arriving with the goods for her stall in a wheelbarrow, accompanied by Roxy and Jools.



photo by
Colin Major

*** 20 Pages in this issue of the Totley Independent ***

Totley Residents Association Update

I do hope everyone enjoyed a rest during the Summer break in spite of the weather.

As I indicated in the July / August Independent, TRA have been very busy with matters concerning the Community.

Green Oak Park Master Plan

Thank you to everyone who came to the Project Workshop on 14th July. The suggestions and comments made, have all been taken on board and used to produce the draft plan for our park. As you know we have been working with Parks and Countryside for several months. They are delighted by the positive response from residents.

Some TRA members met with the team on August 17th to look at the draft plans.

The next opportunity for consultation will be at Totley Show on September 20th at Totley Primary School, Sunnyvale Road

The Show opens to the public at 1.30pm.

The Master Plan of all the comments and suggestions so far, will be there for everyone to see.

Do take the opportunity to look at the plans and make further comment.

There will be a follow up meeting in the Library on November 11th at 7.00pm.

This is where decisions will be taken as to which part of the park will be upgraded first.

This will depend on the availability of funding.

TRA are applying for a Green Bond Award.

If we are successful, this money will be used to improve the park for wildlife.

We must remember the Master Plan will change and evolve as work to refurbish the park proceeds.

Everyone can have a say about what they would like to see in Greenoak Park.

If you are unable to visit Totley Show send your comments to Ian Mitchell, Meersbrook Park S8 9FL or e-mail ian.mitchell@sheffield.gov.uk

Baslow Road / Mickley Lane Junction

Many residents have complained about this junction.

We are still waiting for the double yellow lines, the most important part of the alterations. My discussions with Transport Planners have resulted in an apology.

Continued page 2

TOTLEY SHOW – 20th SEPTEMBER 1.30-4.30pm
Totley Primary School

The necessary Traffic Regulation Order has not yet been put in place. It is a legal requirement that before yellow lines can be painted on a road they have to be advertised in the local press for objections, for 3 weeks. This procedure is being carried out now. Residents have also been in touch with Transport Planning about the problems which have been created because the bus now stops in the carriageway and it is impossible to see to pull out safely from parking spaces above the Co-op.

Milldale Road

The build-out, which was put in place as part of the alterations is now being dug up. I understand this is to put in a drain to prevent the build up of water in this area.

97 Bus Terminus

As you are all aware, TRA organised a petition opposing the re-location of the terminus to Totley Grange.

It was also suggested by residents that the area known as Broad Car at the end of Gillfield Wood would make a suitable alternative. I have spoken to Andy Godson this week who tells me meetings have been held with relevant council departments and the tenant farmer. Progress is being made, but more work needs to be done. Planning permission will be required before Public Consultation takes place, organised between TRA and Andy Godson, probably in the Library.

Bus Shelters

I am assured by Andy that the Marstone Crescent shelter will be turned round and re-located, but it may be necessary to move the lamp standard, so this is a big job.

I have persuaded him that the Laverdene Road shelter should be turned round and this has also been agreed with the Passenger Transport Executive. They are responsible for the erection of bus shelters.

The Baslow Road / Glover Road shelter is also in the pipe line.

Hazell Green Oaks

Work is now underway once more, but progress is very slow. Some residents living nearby are still unhappy with the development.

Totley History Group

Another successful walk round Totley took place this week, when 50 residents joined the tour. The walk concentrated on the top of Totley. It was a great social event, enjoyed by all in spite of the midges! Information was shared between residents who have lived here for many years and newcomers.

Thanks to Sue Scattergood for leading the walk.

It is hoped to hold more walks round Totley in 2009.

Our next meeting will be held in the Library on 24th September at 7.30pm.

Please bring any photos, pictures and information about the area to share with others.

Everyone welcome.

Forward date for your diary, 19th November, Professor Mel Jones will be talking to us, details later.

I am looking forward to seeing lots of residents at the Totley Show on 20th September.

Avril Critchley, Chairman

Transport 17 To Collect.....

On Sunday 19th October fundraisers from Transport 17 will be in the foyer of Sainsbury's, Archer Road armed with collection tubs to help boost funds.

Shrewsbury Terrace Footpath

The footpath from Baslow Road to Butts Hill via Shrewsbury Terrace has been used as a public footpath for at least 40 years, although it is not recorded on the definitive map. It has come into general use and there have been no restrictions on the use to keep it a private path. It was signposted by Sheffield City Council as a public footpath well over 20 years ago.

The Highways Act 1980 is quite clear; absence of a record of a public right of way on the "definitive map" is not the same as evidence of there being no public right of way. Section 31 provides that where a specified route has been used for in excess of 20 years, as of right, without let or hindrance and where that use has not been subject to license, then a public right of way can be inferred. If however, a landowner can show acts of interruption such as the periodic locking of a gate, turning people back or the erection of deterrent notices then this can be sufficient to negative an intention to dedicate. In my opinion, installing unlocked gates would not constitute a barrier to public use and so a public right of way exists.

Members of the public should continue to use the path as a public right of way. When doing so they should, of course, respect the occupiers use of the land and their property. Any action to try and negate the validity of the public right of way should be reported to the SCC public rights of way group (tel 273 4448) immediately. They are currently looking into our claims of a right of way under section 31. It may well be towards the end of 2008 before they come to a conclusion due to the need to prioritise claims submitted to them. While we can still physically use the path we remain a relatively low priority. Anyone else who wishes to make a claim can get a form from me or download a copy from the SCC PROW website. Duncan Froggatt

Dore and Totley Councillors

Following the local elections all three of our local Councillors have been given prominent positions in the new administration.

Mike Davis is the Chair of the Scrutiny Board that oversees the performance of the Council. Mike also serves on the Planning board that covers our area.

Keith Hill continues as Chair of the South West Area Panel and is actively involved in progressing the new Community Assembly initiative. This will devolve more funds and decision making powers to the areas so this is an increasingly important and influential position. Keith is also a member of the Children and Young Peoples Scrutiny Board and the City Centre and East Planning Board.

Colin Ross is the Cabinet Adviser to the Leader of the Council. In this role he will assist the Leader in maintaining the strategic objectives of the Council. Colin has also been made Deputy Chair of the Children and Young Peoples Scrutiny Board.

Councillors are paid an allowance for their work on the Council. The basic allowance is £11,315 per year. Some posts carry a Special Responsibility Allowance on top of this, the highest being for the leader of the Council who gets £18,427



Transport 17

I hope that you have been enjoying the good weather,

or will do when it arrives.

We look forward to seeing you all at Totley Show on 20th September where we will have a stall. We will be selling new goods, bric-a-brac and narcissi bulbs.

Sainsbury's, Archer Road have kindly allowed us to collect at their store on Sunday, 19th October. We will be shaking our collection buckets.

We are very grateful for the £600, raised from Totley Open Gardens. This took a great deal of time and effort on the part of the participants. Well done to you all. We need to raise hundreds to keep things moving every week. Fuel and insurance rises don't help.

We, at Transport 17, would like to wish Peter Gauntlet a happy 70th Birthday. Peter has driven for us for a while now. He couldn't do this without the support of his wife, Jane. Happy celebrations to you both.

By the way. Could you drive or escort passengers for us? You have to commit to a whole day. Our passengers need taking to their clubs and fetching home. In the meantime, you can spend time in our office, at home or, possibly, lunch at the club. You can see this takes more than just an hour now and again. It is very interesting work and you get to be quite involved with it all. We have a very special group of people working for us. We are very lucky.

At our last Management Committee meeting, Danny Barlow was made Chairman now that Irene Wells has moved. Felicity Revill takes his place as Secretary.

If you have any queries or goods for stalls (not jumble) or offers of help, please ring 2362962.

Many Thanks.

Margaret Barlow

TOTLEY SHOW NEEDS YOU!

CAN YOU HELP ON THE DAY?

If so, please come along to a briefing Social on Thursday 4th September at 7.30pm in the Heatherfield Club and we will give you a job at the Show! If you miss this date, please ring 236-2302 to offer your support.

COULD YOU SPONSOR A CLASS?

We have 70 classes at Totley Show to find prize money for and we would like sponsorship for the classes. £6 per class. You can choose a class if it has not already been 'taken'!

COULD YOU BAKE A CAKE?

We need some delicious cakes for both the cafe at the Show, and for the cake stall. If you can bake cakes or buns, please bring them along to the Show before 11.00am so we can price and label them.



CAN YOU GIVE A RAFFLE PRIZE?

Totley Show has some great raffle and tombola prizes – can you help perhaps with a bottle of wine or other attractive gifts? If so, please bring them to Rosie's on Baslow Road before 12th September, or 13 Main Avenue between 12th and 19th September.

ALL SUPPORT FOR THE SHOW WILL HELP TO RAISE MONEY TOWARDS THE FUND FOR A COMMUNITY BUILDING FOR TOTLEY.

A MUSIC FESTIVAL FOR TOTLEY

The Totley Residents Association has received a proposal to run - for the very first time - a Totley Music Festival, hopefully to be held during summer 2009.

This would be an opportunity to bring people together, and to celebrate and enjoy the musical talents of Totley people through a number of different kinds of events. These might include Saturday morning busking on Totley Rise, a programme of local bands playing in their own front gardens or garages, some concerts and maybe even a party!

We're looking at this early stage for local musical talent! It doesn't matter what kind of music you play, or whether you are a soloist or in a band or an orchestra – and this is a project for children, young people and adults. The only rule is that you - or at least one of your group - should be a Totley resident. So don't be shy! If you are a musician, or know someone else who is, please get in touch with us. You can ring Phil or Sue on 07956 858944, or send us an email at totleymusicfest@btopenworld.com

Re Double Yellow Lines - Baslow Road/Mickley Lane

Further to my last rantings re lack of the double yellow lines that we had asked for at the junction of Baslow Road and Mickley Lane, after many phone calls to the young man concerned and waiting for news of their "progress meetings" (yes, we both had a laugh about that!), we now have the reason for the delay.

It seems that in order to paint yellow lines on a road, you first have to advertise the fact in the local papers. My man was horrified to discover that no one had thought to do this!! However, it is now being advertised, and providing that no one objects, the work should be done by the end of August, or maybe into September! He says! I say "don't hold your breath"!

Kate Reynolds

PUZZLE CORNER

Squares and cubes

Complete the grid by filling in numbers which are perfect squares or cubes.

	1			4	
	2				8

Councillor Surgeries

Liberal Democrats:

2nd Monday in the month 6.00-7.00 p.m., Totley Library, Baslow Road and 2nd Saturday in the month from 10.30 a.m. to 12.00 noon, Dore Old School Hall, Savage Lane, Dore Contact details: telephone 235 2289 Email: keith.hill@sheffield.gov.uk, colin.ross@sheffield.gov.uk or mike.davis@sheffield.gov.uk

TRA Website:- www.totley.org.uk

SECOND TOTLEY STROLL INTO HISTORY

The walk started at the Cross Scythes; once again very well attended 50 people of all ages came to join in the walk. Sue was our guide.

She explained that part of the Cross Scythes is over 300yrs old, a Samuel Hopkinson rented the building in the early 1800s and he was a farmer and scythes maker. Totley Grange was built in 1875 on land that Ebenezer Hall had bought from a Mr. Parker.

Across the road from the Cross Scythes is what was the Totley police station: this was opened in the early 1900s. Just above the police station was Howards Cottage this was a farm in 1773 it was occupied by the Howard family until early 1900s. On the corner of Totley Hall Lane was the Corner Shop/Post Office, the old village green was somewhere between the Fleur de Lys and the Post Office.

We then proceeded down Totley Hall Lane and stopped at All Saints Church this was opened in 1924, a Mr. William Milner from Totley Hall who gave the land and £2000, towards the new church. The Old Infant School this was built in 1827 there were 11 boys and 19 girls and one school mistress who was Hannah Wild (in 1833) by 1852 Anne Padley was the teacher and stayed for over 20yrs. On the front of the building is a plaque which is illegible now but we understand it reads. *"This building designed as an infant school for inhabitants of Totley was erected by D'Ewes Coke esquire 1827"* Totley Hall was next this was built in 1623 by George Newbould.

We then walked back up Totley Hall Lane, Sue explained about the Fleur de Lys not certain when the original was built but the new Fleur replaced the old in 1933. Across the road and down Hillfoot to be shown the Pinfold and where the old village cross used to be, where is it now? We then proceeded up to Butts Hill and Sue explained about the track from Beauchief Abbey to Strawberry Lee Farm, the walk took the monks along the end of Butts Hill.

We then followed the footpath down Chapel Bank by this time it was becoming dark and so we had to miss several areas out, we followed the path down which lead us onto Penny Lane, up past the Cricket Inn past Lower Bents Farm which is one of the oldest dwellings in Totley with deeds dating back to 1621, the brick building was built with bricks from the Tunnel.

Up Lane Head Road and back on to Baslow Road, to see the War Memorial, then back to the Cross Scythes. The walk was very enjoyable several people took to do the shorter walk but in all I think that everybody really enjoyed the experience, and once again a big Thank You to Sue our guide who did a grand job. If you would like to join us then please come to our next History Group meeting which will be on Wednesday September 24th at 7.30pm in the Library
Marlene Marshall.

ALL SAINTS CHURCH

SERVICES for SEPTEMBER

- | | | |
|------------------|-------|----------------------|
| 7 th | 10.00 | Theme: Alpha Sunday |
| | 6.30 | Holy Communion |
| 14 th | 10.00 | Theme: Some Attitude |
| | 6.30 | Open to God |
| 21 st | 10.00 | Theme: Harvest |
| | 6.30 | Evening Prayer |
| 28 th | 10.30 | Theme: Baptism |
| | 6.30 | Holy Communion. |

Thank you to everyone who came to the Christian Aid Quiz and made it such an enjoyable evening. We raised £190 for Christian Aid.

Cheshire Chat

We have had a busy time at Mickley Hall again this summer. Day trips for the residents to Scarborough, Bridlington and Skegness and the weather managed to be kind to us each time.

We recently took 3 residents, Richard, John and Craig on a barge holiday for 4 days. Local businesses helped to fund the holiday. The wide berth barge is one of 3 boats owned by the Peter Lemarchant Trust which was set up to provide holidays on waterways for people with disabilities. We sailed on the River Soar and Trent and Mersey Canal around Loughborough and Derby, mooring up in the evenings near a pub so that residents and carers could enjoy a nice meal and a drink. It was very relaxing and peaceful, John took lots of photos of birds and other wildlife. We even saw kingfishers but did not managed to film them as they are so fast.

Then we had a classic car show on 10 August in the car park. Amongst the cars on show was a Rolls Royce Silver Shadow, a 1971 Chevrolet Impala and a 1936 Austin Seven. Visitors enjoyed a burger or hot dog as they viewed the cars and there was refreshing glass of Pimms or Sangria on sale to round off the visit.

We have another existing event coming up in September. Voluntary fundraiser Adam Blackwell and 2 of his mates, Paul and Ben, are setting off on a charity car rally called "scally rally" to drive a nearly worthless car across Europe into Rimini in Italy. They paid £100 for the 1980 Audi 90 and have been renovating it all summer to get it roadworthy for the trip. They have also been raising sponsorship at various events and are hoping to get £3,000 towards a new minibus for Mickley Hall. There is a launch party on 10 September at 7pm with champagne, balloons etc. Everyone is welcome to come and see them off and wish them luck.

The weekend of 3-5 October sees our second Art Exhibition at Mickley Hall. The famous wildlife artist Pollyanna Pickering is opening it for us this year and local artists are invited to exhibit their work. Details can be obtained from the office on 236 9952.

We do hope you will continue to support us, look out for us at The Totley Show.

Ann Lee

Volunteer Support Group

1st Totley Scout Lottery

Lottery draw for June 2008

1st Prize No 71
Mr and Mrs Ashby,
Sunnyvale Avenue
3KW Hot and cold
dimplex fan heater
and Aico smoke
alarm

2nd Prize No 23
Mrs Hogg, Baslow
Road
£10 voucher

Lottery draw for July 2008

July 2008
1st Prize No 43
Mrs Jockel,
Sunnyvale Road
Thermal picnic bag
with 2 bottles of wine
and box of Thorntons
chocolates

2nd Prize No 55
Mr and Mrs Illman,
Baslow Road
£10 voucher

Peter Casson

It's not all giant onions and leeks you know.

Well, admittedly there are a few giant onions, but you can buy them in the auction at the end if you didn't grow them!

Those are only a part of it.

Totley Show is a real traditional village show, and there are 70 different classes that you could make or grow something for.

And 14 of the classes are for children.

Surely there's an opportunity for you and the family to enter something?

- A painting?
- A photograph?
- Something you knitted?
- Some jam you made?
- A posy of flowers you picked from the garden?
- A garment you made?
- Some blackberries you picked?



And if you're young, what about making a Lego model?

Or a miniature garden?

No need to live in Totley, anyone can enter – the more the merrier.

And there are big money prizes for all classes - £3 for first prize, £2 for second and £1 for third.

If you want an Entry Form, you can get one from this issue of Totley Independent or in Totley Library, Totley Rise Post Office, The Ironing Parlour, or email jennie@hadish.f9.co.uk

LOST

Rosie a medium sized short coated Yorkshire terrier dog.

Last seen on Monday 4th August in the Dore and Totley area wearing a Red collar with a name tag and the dog is micro chipped. Anyone with any Information please ring 236 8088

Councillor Update

Baslow Road markings (opposite Methodist Church)
Several residents have voiced their concern to us since they were installed as part of the pedestrian crossing point at the same location. We understand that the rationale for this layout is as follows:

The dropped kerbs, enlarged central refuge and built-outs/pinch points are principally to enhance pedestrian safety.

They also have a twin function in slowing vehicles into a single file for through traffic and in providing localised filter opportunities as appropriate.

Highways engineers readily accept that this is a complex location and that no one solution fits all. Requests for a controlled crossing (both here and elsewhere) have had to be refused in order to sustain the bus schedules upon which we all rely.

Although traffic appears to have got used to them fairly quickly your councillors have requested "NEW ROAD LAYOUT AHEAD" signs to help matters. Streetforce will install them as a matter of urgency and they will be placed on the approach from each direction, to remain there for 3 months.

Mickley Lane/Baslow Road junction.

Yellow lines are due to be installed at the top end of Mickley Lane in late September.

Public notices (TRO's) are imminent and three weeks' grace has to be allowed for public comment. The proposals are also expected to include locations at Totley Hall Lane and outside the Tesco lower down but not the bottom end of Dore Road - officers consider these would merely displace parking difficulties elsewhere. Other options are being considered.

PS For the record: the Mickley Lane crossing point was designed following a petition mounted by local councillors and the TRA to secure greater safety for pedestrians. We would have liked it placed slightly higher up but this was turned down for sightline reasons. The plans which were displayed in the Library for some considerable time have always included "double yellows."

Similar initiatives are underway to tackle pedestrian safety on Abbeydale Road South opposite the Dore & Totley railway station.

Green Oak Park "Master Plan"

We'd like to compliment Totley on its commitment to the Green Oak Master Plan (Totley Independent issue 315.) With upwards of £90,000 of funding available it's important that we identify needs and priorities. There will be many in the community who will recall the TRA's survey of the locality in 2005 which identified "somewhere to meet for all ages; better provision for young people; new facilities for Green Oak Park; an extension to the library." This is welcome news indeed!

Moreover, sensibly used, this money could be used for "pump priming" the search for further funding to address the community's wish-list. It is not unreasonable to presume that skilful application to the relevant bodies could double this figure. We look forward to further detail on the costings to inform the community's decisions.

Amongst these priorities must be a serious look at the Bowls pavilion and the changing facilities (or lack of them!) We doubt we shall have a better opportunity in the foreseeable future to enhance our park. Please contribute your views. (FAO Mr. Ian Mitchell, Senior Parks Officer, Meersbrook Park, Brook Road, S8 9FL.)

Cllrs. Mike Davis, Keith Hill & Colin Ross

Totley Festival Was a Totley Success!

Oh yes indeed it was! And over 1,000 people who came along for a good day's entertainment would agree. Including the Lord Mayor, Jane Bird, who gamely took part in the egg and spoon race. Despite the high winds that plucked gazebos from their moorings and blew leaflets right across the park.

One stallholder resorted to the back of a large van for their pot-painting, when their gazebo took off. Others huddled beside the hedge, gave up on the gazebos and carried on. Luckily it didn't rain.

18 stalls came to provide environmental information or goods - among them Bio fuels, Recycling Revolution, composting, organic vegetable boxes, solar energy, Campaign Against Climate Change and the Real Nappy Network. The Green Party gave people the opportunity to work out their carbon footprint.

19 stalls sold a whole variety of goods and crafts from jewellery to books. Among them were several Totley people who run small businesses. In keeping with the environmental theme, Margaret Day, who makes digital portraits, and Anne Dussart who sells children's educational games walked into the Park from their homes - see the photos.

The younger kids loved the pigs and pygmy goats from Whirlow Farm, the Fire Engine, the Scout Trolley, stories read by our wonderful library staff Elaine and Andrea, and the games provided by Activity Sheffield. There was disappointment all round as the Climbing Wall never turned up, but we found out that the van had had a puncture that morning and was not repaired in time to make the Festival.

The Festival was a real partnership event with Totley All Saints Church running a great barbecue, Totley Methodist Church running a wonderful cake stall, Cherry Tree Children's Services running a very efficient drinks stall and the TRA plant stall and seed swap attracting a great deal of interest.

The Burngreave New Deal for Communities Music Truck enabled 4 teenage rock bands to showcase their talents, and Sheffield Futures music mixing van meant teenager

s had a place of their own at the Festival.

Other entertainment was provided by the wonderful Escafeld Brass Band (playing again at Totley Show) and the energetic women's Morris Dance team Lizzie Dripping. And Abbeydale Archers attracted a lot of participants.



photo by
Colin Major

Totley residents David & Margaret Day also took the environmental message of Totley Festival to heart, walking from home with sack barrow and suitcase.

**A1 Tiling ♦ Plastering
Bathroom Refits**

Tel : 0114 274 6775

Mark Paton
07738 688 807

www.A1tilingandplastering.co.uk

Good Rates ♦ Free Quotes ♦ No Job Too Small

33 Glenview Road, Greenhill, Sheffield S8 7SF

And to top it all, the TRA made a clear profit of £1,150 at the Festival, which will go towards the fund for a much-needed community building for Totley.

Those who helped make the Festival such a success are too many to mention, as 37 people were directly involved with planning and working at the Festival, as well as all the others from the churches and our sponsors.

When we have next year's Festival, could you help out? If not, please come along and support what will be another great Totley day.


JUST RE-ROOFS JUST RE-ROOFS

**MR NU ROOFS
LIMITED**

25 YEAR GUARANTEE ON ALL RE-ROOFS

The RE-ROOFING & GUTTERING Specialists


30 YEAR GUARANTEE ON ALL GUTTERING SYSTEMS

LOCAL AUTHORITY **APPROVED**   Sheffield Chamber of Commerce and Industry

Tel: 0800 04 33 098

24/7
or visit www.mrnuroofs.co.uk

**THE ULTIMATE MEMENTO OF YOUR
WEDDING**



Your own dedicated website - capturing your most special day.

Photos, video, audio, messages....whatever you and your guests record on the day.....all presented together, and shared with family and friends - wherever they live - for as long as you wish.

Contact:
John or Jennie on 2362302 or 07795 280 603

www.silverserviceconsultancy.co.uk/memento.htm



**Stag Construction
Services Ltd**

*Qualified registered professionals.
Specialist Builders over 25 years experience.*

Architectural Drawings, Planning Applications,
New Build, Renovations /Refurbishment,
Extensions, Brickwork, Joinery and Plastering,
Landscaping/Drive/Patio Paving
(Block or Natural Stone)

*All Work carried out, is insured plus
peace of mind guarantee.*

For a no obligation competitive
FREE quotation, phone:
08443571462 or 01709868491
(All calls will be charged at local rate)
Visit www.scspsd.co.uk

Peck of the Bunch

Dora adores leftover weetabix, Vera loves bread, Martha loves pasta and they all fight like mad over grapes, woodlice, worms, brassica leaves and leftover cat food. Chickens are omnivores.

A hen's digestive tract is adapted to "little and often". Food is taken via the gullet into the crop, where it is softened, then passed through a glandular stomach into the gizzard where it is ground down by muscular action.

Domestic chickens are generally fed commercially-prepared feeds which have a balance of proteins, minerals, vitamins and fibre. These are usually in the form of layers pellets or dry mash. Since BSE, no animal proteins, fats or animal by-products are allowed. But they contain additives, some necessary like vitamin and mineral supplements, but some with yolk enhancers, and sometimes antibiotics, which are not. Some use genetically-modified soya and maize. If you are worried about additives in commercial mixes, there are organic alternatives.

Hens like to feed when they come off the roost in the mornings, (before they lay, have a midday rest and maybe a dust bath), and then feed again in the mid-late afternoon. They should go to roost with a full crop, so the last feed should not be given so late that they don't have time to fill their crop before the long night.

I feed my hens with pellets or mash in the mornings and then some mixed grain and corn in the afternoon. They much prefer the mixed grain, but when they are confined to the run (rather than being free-range in the garden) they need the balanced pellets. A 60:40 ratio of pellets to grain is a good guide.

In order to get calcium (for strong shells), and to digest the food they eat, chickens need grit in their gizzard, and I provide this in a separate pot beside their nest box, and scattered around the run where they pick it up as they forage.

Every day during dry weather I also dig up a small area of the run. This gets Dora, Martha and Vera very excited. They virtually stand on the fork as I dig and fight over the worms that emerge. It then gives them happy hours of interest scratching away at the turned earth.

It is very important to provide hens with some greens every day. They love parsley, carrot tops, all brassica leaves and lettuce leaves. As a result my hens produce great eggs with very dark yellow yolks.

Make sure to tie leaves up in bundles to enable the birds to peck off small pieces, as they cannot do this with loose leaves lying on the ground.

In summer we also give them the contents of the lawn mowings, which gives them lots to do scratching through it. Suppliers of grit, pellets, mash and corn mix near Totley: Equestrian Stablemate has corn mix, but not organic. Eyres Farm merchants in Brough, (on the road to Bradwell) supply all needs.

Water

Hens need clean fresh water all the time. I place the water container on a large stone, off the ground, so that the water does not get contaminated by earth and mess as the hens scratch around. On advice from the man I bought my hens from, I add a few drops of cider vinegar to the water to help guard against internal parasites.

Eggs at Totley Show 20th Sept

If you already have hens, why not enter 3 of your hens' eggs in Totley Show, where we have a new class this year for eggs? One of them will be broken by the judge to see the yolk colour.

Jennie Street

Next issue: equipment needed.

TOTLEY PRIMARY SCHOOL UPDATE

Y6 Class spent 3 days and 2 nights under canvas at Thornbridge outward-bound course. On the Thursday night I cooked their barbecue and after we had a fireside sing song. It was a lovely evening. At 1.00 a.m. I eventually crawled into my borrowed pop up tent. Unfortunately, I had a terrible night with 2 planes and 1 helicopter all sounding as if they would land on my tent, what sounded like a TB clinic in the tent to the left of me and a child snoring loudly in the tent to my right. I gave up attempting to sleep and my 4.45 a.m. was shaved, showered and dressed.

I have discovered the main problem with camping is that there is no room service, house keeping and you have to cook your own breakfast!!! That aside we all had a wonderful time. My thanks to Mr. Paxman our Y6 teacher for the invite and to Carol Gardener who cooked a great apple crumble and other treats for our meal on Wednesday, some of which I enjoyed the leftovers on Thursday.

On 16th June we had Sports Day and the sun shone bright. As usual I lost my voice shouting encouragement during the tug of war. All the children, parents and grandparents had a very pleasant afternoon. The staff here seem to have got the organisation down to a fine art.



I would like to thank Christine Shimell and her colleagues on the T.R.A. for the time they spent planting our tubs and hanging baskets. We received the Lord Mayor's Bronze Award. Myself, Louisa Bates and Joseph Ashton went and collected the award on behalf of School and P.T.A. Next year we will enter Sheffield in Bloom.

I would like to thank all the people who have helped me with the School Gardening Club with a special thanks to Carole Gardiner for the tool shed. We have, what is looking like, a proper vegetable garden now.

We have had OFSTED Inspectors in and the school has been given the stamp of approval, in fact we achieved a GOOD standard! This means the school is now out of special measures in just a few months. The staff and Governors have worked tirelessly towards this great result. Well done to them and also to the parents of our children for their support during this trying time. Our school motto should be "onwards and upwards".

The school run a 50/50 Club. It costs £12 per year and there is a draw every month with 50% paid back in prize money. The money raised goes to buying playground equipment and other things that the P.T.A. fund for the children. If you would like to join it's well worth it. My family and I have had a few wins. Cheques should be made payable to Totley Primary School P.T.A., not forgetting to give us your name and address in order for us to send your membership number to you.

On Sunday 21st September there will be a car boot in the school grounds. Sellers are welcome from 8.00 a.m. and gates open to the general public at 9.00 a.m. Please support us.

That's all for now.

Allen Miller, Building Supervisor

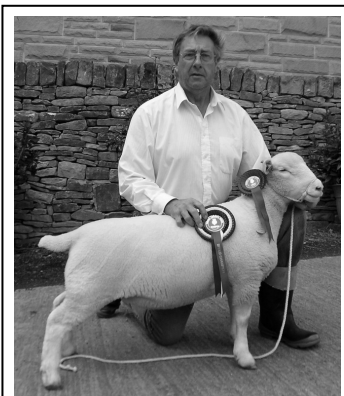
Farming Scene

We are now moving into autumn, but summer, in its truest form, has yet to arrive!!

This is currently (August 12th) causing major problems for arable and livestock farmers alike. Cereal growers are struggling to harvest their crops and livestock producers are struggling to get any good fodder in stock ready to feed their animals over winter. The continual wet and warm weather has kept the grass growing all summer producing very good crops, but also unsuitable weather to make good hay or haylage. Unless we have a sustained period of dry weather shortly there will be very little good hay made this year. We have some grass fields ready to make into hay but have been waiting for at least 6 days continuous dry, sunny weather for over a month now to be certain of baling some good quality fodder.

Many of our April born Texel cross lambs are now big enough and fit enough to sell for slaughter. We are now regularly taking 10 – 15 lambs to Bakewell market early on Monday mornings. The first lots did make some good prices, up to £1.80 per kilo, but recently this has dropped to around £1.25 per kilo of live weight. We have been achieving above average prices for our lambs, particularly the pure breed Texels, but even so cannot produce a profit at today's prices and input costs.

As we get into selling this lamb crop so we are starting the production cycle on the next. Our Poll Dorset flock has been running with the tup for 7 weeks now, and according to the black/red/blue patches on their rumps, should all be in lamb ready to give birth from November 15th onwards. We have 50% more ewes in this flock now, giving approximately 90 ewes to lamb in the 6 week period up to Christmas. Talking of Christmas, our tree supplier has just sent us a price list and order form for this year's trees. Christmas seems to arrive earlier and earlier these days! It looks as if tree prices will be substantially up this year if his prices are anything to go by. We have ordered less this year but the final invoice total will be much higher than last years.



Ewe Lamb

We have taken some of our pedigree Dorsets to shows this year, and have had some very good results. Most notably at The Yorkshire Show, where a yearling ewe came 3rd in her class, a November born ewe lamb came 1st in her class and was reserve female champion in the breed championship. Best of all K400, a ram lamb stood 1st in his class,

was champion in his breed section and was finally chosen as champion shortwool lowland sire. This put him into the show supreme championship where he was beaten by a very good Charolais ewe. Even so, this was an excellent result and well above our expectations. These sheep will now be entered in the main breed show and sale at Exeter in May of next year to see if they can repeat their prizewinning ways. They are pictured sporting their rosettes.

The school holidays will soon be over and that is the signal for us to mail shot 500 schools in a 20mile radius of the farm with information about this year's Nativity plays. We have already taken some bookings for this season, but most schools seem to start planning their activity programmes early in the new term, so we try to co-ordinate the arrival of our information pack with their planning sessions.

You may remember that Sunbeam our 'Nativity cow' developed arthritis early this year and had to be put down. We are now rearing a replacement for her – a



K400 Ram Lamb

nice looking Hereford calf purchased from the Baslow Herd on Old Hay Lane. She is now 3 months old, growing rapidly and being hand fed and halter trained to make her 'customer friendly'. My wife has named her 'Rosie', presumably because she is mainly orange/red in colour.

We have recently been approached by our landlords enquiring about the possibility of using some of our land for allotments. Apparently there is a shortage nationally as well as in the Totley area. These discussions are at an early stage yet, but land at the bottom of Totley Hall Lane would appear to be the

most suitable based on accessibility. From the security and aesthetic points of view they need to be in an area that is not eminently visible from the lane. Thefts and vandalism do occur, and potting sheds and greenhouses have a habit of springing up on allotment sites.

Work has started on the new housing development on what was Hall Lane Farm next door to us. There has been much digging up and carting away of spoil and concrete, but very little actual building work. One gets the impression that they are waiting on some amended planning permission before being able to really get cracking on rebuilding the old cow shippens and the new houses. Once completed, these houses will mean that our farmstead will be completely surrounded by residential property. Since coming to farm here 25 years ago, Totley Hall Lane has gradually become more and more residentially developed to the point where our farmstead is one of only three properties on Totley Hall Lane that has not been built, altered or extended since we arrived. How this area has changed over this time.

Edwin Pocock

A New Minister in South Sheffield

On 5 July at Greenhill Methodist Church the Rev Shirley Knibbs was ordained and Inducted to the pastorate of the 3 Sheffield South Group Churches of Dore and Totley, Meersbrook Park and the Michael Church at Lowedges. All of them being United Reformed Churches, together as a group, with Shirley as our new minister. She follows the Rev David Hudston who retired in January 2008 as South Group Leader. All 3 churches welcome friends of any or no denomination to their services. At Dore and Totley, Sunday worship commences at 10.30 am. There is also a midweek service on Wednesday at 11.30 am.

The other 2 churches have Sunday worship at 10.45 am. You will receive a warm welcome whichever Church you choose to come to.

Earthworks

Weed appreciation

As an old hippy much inclined to lay back and watch the world pass me by, the need to weed is not often on my mind as I walk up the hill to my allotment. But as I get to the gap in the trees on Baslow Road and can look down onto my plot, it is the weeds not the crops that shout up at me the loudest. The pattern of their growth is irregular and wild and even though I cultivate my plot in a patchwork of crops, (no straight rows or big blocks of a single crop for me!), the areas of weed is obvious.

My battle with mare's tail and couch grass is mostly over. I've grown to almost not hate the mare's tail and because I dig the couch grass out as the crops are harvested, its hold in the soil has been slackened. It's the other stuff that I still have battles with; the little weed plants that spring up perky and vigorous all over the plot. My first sowing of carrots was completely swamped by these little blighters. They seemed to appear overnight and out-competed my delicate little carrots. Despite these loses, I had a revelation last week that has changed my attitude towards weeds.

It was Vita Sackville West (the creator of the garden at Sissinghurst) who said that weeds are just plants that are growing in the wrong place. Despite their bullying tendencies, I think I can now be even more generous towards them even than that and have come to the conclusion that they are crucial to the success of crop cultivation. But let me back track a bit, as I feel I might be losing you on this radical overhaul of the public image of weeds!

The rain this summer has encouraged lots of lush growth on crop plants and weeds alike. Right now my runner beans are standing up to their knees in sappy weed. All the patches of green manure I've sown are now invaded with borage, lots of little thistles and teasel seedlings. Beans, squashes and most of the brassicas are robust enough to tolerate sharing their patch of soil with a few weeds. Amongst these crops I just pull out the really big weeds and leave the rest to enjoy their brief life in peace. The alliums on the other hand - the onions, shallots, leeks and garlic - really resent their personal space being encroached upon and unless they are kept weed-free will not do very well. It was whilst weeding my second leek patch that I had my revelation.

On a sunny day the warm, damp soil made weeding easy. With the smell of the earth and the vegetation; the sun on my back and the breezing cooling me, I was lost in gardening heaven. The pile of lush green weeds on the path beside me grew steadily; the leeks were looking good and seemed unaffected by being briefly overwhelmed by these invaders. As I stood back to survey a job well done, my enjoyment in the task spilled over into a sudden and unexpected appreciation for weeds and the realisation that the fertility of the soil on my allotment is almost entirely due on the weeds I put onto the compost heaps. Green vegetation contains lots of nitrogen and as the best compost heaps are created from 75% nitrogenous material, (the rest being made up of carbon rich material such as cardboard, withered

weeds and roots) weeds are vital for successful compost making.

Before I left for home I picked a little bunch of weeds in flower - borage, thistles, buttercups, teasel and dock. They are still in flower now and have out-flowered two lots of sweet peas. What plucky little survivors they are and from now on I will celebrate them for the contribution they make to the fertility of the soil on my allotment.

Christine Shimell

T.O.A.D.S. AUTUMN PRODUCTION

For our next production, we have chosen "Dying For Dinner", a comic whodunit by Paul Beard. Members of an Amateur Dramatic Society meet on the set of their latest production to take part in a social event - a Murder Mystery Dinner. The members arrive in the costumes of the eccentric characters they are playing and the game begins! And, NO, I cannot reveal what happens, but suffice it to say that you will thoroughly enjoy the many twists and turns.

There are twelve characters in this play! How do we do it, you ask yourselves. We also ask that question sometimes! But it's all good fun, and we hope you will come along and see this reasonably new play. Paul Beard was grateful to Alan Ayckbourn for his support in giving him permission to use the characters from his stage play "Table Manners" and for being allowed to make references to his play in "Dying For Dinner", although no part of it was written by Sir Alan.

So, get your diary out - **Wednesday November 26th to Saturday 29th, 7.30pm** at St. John's Church Hall, Abbeydale Road South, Totley. **Tickets £3.50, Concessions £3, from any member, or from me, Kate Reynolds, 236 6891.**

We shall be playing the National Anthem before the curtain rises, and have had a lot of support to continue this tradition. We really do not mind if people prefer to remain seated while it is playing! For those tea-drinkers in the audience, you will be delighted to know that we will be serving Fair Trade tea and coffee, and also fresh orange juice, all at 50p in the interval. We are holding a wine tasting at rehearsal soon to choose the red and white wine for November. We might not get much rehearsing done that night, but we will have our audience's welfare at heart!

Hope to see you in November.

PUZZLE CORNER

Solution to Squares and cubes.

All the solutions I can find duplicate at least one of the numbers (64 in this solution); however I can claim these are different ($4 \times 4 \times 4 = 64$) and ($8 \times 8 = 64$)
Don Ashford

8	1		3	4	3
	2				6
	5	1	2		
			1	6	
2			6	4	
7	2	9			8

Gardening Tips for September

It has come around again The Totley Show. The volunteers have been working hard to make this traditional event even better with new categories to enter and some other interesting items. They need your support to make it a success so get cracking with those craft exhibits, photos, artwork etc. Practicing the cake making everyone likes sampling the trials, the children have a few more entries so please encourage them to enter, I really enjoy judging these entries and it is sometimes very difficult as we do have some very talented young people in Totley.

The weather, what can I say, what a mish mash. My tomatoes are a bit behind, cucumbers are well away they like the damp atmosphere, the plum crop has been good but not as many as last year, apples are looking good none fully ripe as yet I have not got any early types, we should have had some by the end of August. Pruning is giving us a few problems as I have let the trees get a bit too much growth which makes it a bit harder to prune them. The veg patch is looking good, they should be OK for the show so long as the slugs, birds, ants, snails and the weather is kind to them.

I have grown khol rabi this year, I made a buying error and picked up some plants at the garden centre thinking they were purple sprouting broccoli, put them in the plot, was surprised when the stalks started to swell up, it is a weird looking thing but very tasty whether cooked or raw (very nice grated on salads) I shall be growing it gain next year next to the broccoli!!

September is a busy time for gardeners, storing the fruits of your labours, tidying paths and patios, splitting up perennials, taking cuttings and saving seeds, not a lot of time left before the colder weather comes so enjoy the autumnal period.

I also hope you will come and enjoy The Totley Show, do not forget, 20 September, see you there.

PS: Could trophy winners at last year's show please return them to Tom at 172 Baslow Rod, above Stablemate Shop, thank you

FLOWERS Keep up with the dead heading of flowers as this prevents moulds from forming and spoiling later flowers. Take some cuttings of lavender now; they root easily outdoors in a sheltered spot. Put them in a shallow trench to which plenty of sharp sand has been added.

Reduce the growth of herbaceous plants which have finished flowering, don't overdo it though, stake up plants that might be in danger of rocking or breaking when the winds pick up. Take cuttings from violas, insert non-flowering shoots in a sandy soil and put them in the cold frame. In fact there are lots of plant which can be propagated this way, penstemon, calceolaria, honeysuckle, potentilla, weigela etc, etc.

Winter flowering pansies may be producing a few flowers by now, if they are, it will pay off later to nip these flowers off now the plants will be stronger before the winter sets in. Plant hardy primula plants, they will make better plants prior to winter. Plant out bulbs and corms and tubers in beds and borders to flower next spring

September is the month when mildew can be a real nuisance, try to deal with it as soon as it is seen; a good fungicide will help. Pot up hyacinths, tulips, narcissi for forcing, keep them as cool as possible 48 deg (9 deg. C) for the first 8-12 weeks, this can be achieved by covering them with 3 -4 inches of moist peat in a sheltered north facing corner, If the pots are not drained, they should be kept covered from rain etc. Towards the end of the month pot up geranium, fuchsia, begonias which were outdoors etc., which you want to protect over winter, this must be done before the first frosts.

VEGETABLES Gather french and runner beans regularly never leave any pods on the plants to become old and stringy unless they are required for seed (or you're entering the longest runner bean at the show). Earth up celery a little at a time. Prepare ground ready for planting spring cabbage later in the month. Marrows can be stored if there are too many for immediate use, hang them in nets or old nylons in a frost free but cool place. I put collars around my leeks at this time to help the blanching process; I find it cleaner than earthing them up, though a little earthing on the outside of the collar helps to keep them stable.

When the stem of main crop potatoes is set that is it cannot be easily rubbed off by pressure with the thumb; this is a sign that they are ready for lifting.

Keep a weather eye out for warnings of frost so that outdoor tomatoes and marrows can be picked before they are ruined. Lift some parsley seedlings, transplant them into a frame in good soil, they will provide pickings throughout the winter if you use the lights to protect from frost.

TREES, SHRUBS & FRUIT Deadheading is the order of the day especially for roses; you should get a late flush of flowers if you have kept up with the job. Prepare ground ready for planting evergreens, heathers and conifers. Always keep newly planted trees & shrubs well watered. Give new conifers a treat by spraying them on warm, dry, windy days. Take cuttings of shrubs and climbers, root in a cold frame or indoors. Cover autumn fruiting strawberries 'with cloches. Prepare your storage area for apples and pears in a cool airy place. Place grease bands round fruit trees especially apples. Unwanted laterals should be removed from peaches and nectarines for the last time.

GREENHOUSE & INDOOR PLANTS Gradually decrease watering all round and dry off tuberous begonias, cacti, gloxinia, clivias etc. Feed plants in flower such as African violets, begonias, bush violets, chrysanthemums. As flowering finishes, discard summer annuals, which have been used as pot plants. Disbud carnations and chrysanthemums; bring indoors tender plants which have been enjoying their holiday outdoors during the summer. Re-pot arum lilies to flower at Easter. If you want a bit of greenhouse colour in the spring, sow a few annuals such as clarkia godetia, or perhaps a few snaps. Most pot plants will stand a few cuttings taken at this time. Pot up freesias using 5" pots; put 6 to 8 bulbs in each. Give ferns a feed of very weak liquid manure. As I nearly always say, but always needs repeating - watch the ventilation; close up side vents until spring. Wash off any shading except where you are growing shade-loving plants of course. Discontinue spraying and damping down.

LAWNS Continue regular mowing and raking. Give lawns a treat by scarifying, spiking and a top dressing of sieved potting compost. You could mix in some autumn lawn food for good measure.

September is a good time to sow or turf a new lawn.

I look forward to seeing you at the Totley Show.

Cheerio, Tom

TOTLEY SHOW ~ ENTRY FORM 2008

THE TOTLEY SHOW WILL BE HELD AT TOTLEY PRIMARY SCHOOL, SUNNYVALE ROAD, ON
SATURDAY 20th SEPTEMBER

Entries should be made between **9am and 11am**

HANDICRAFTS and TEXTILES

1. Hand Knitted Article
2. Decorative Cushion
3. Soft Toy
4. Tapestry
5. Cross Stitch
6. Collage, any medium
7. Greetings card
8. Open handicraft

DOMESTIC SECTION

9. 4oz. Victoria Sandwich Plain (see recipe)
10. Dundee Cake (see recipe)
11. Carrot Cake (any recipe)
12. 3 Savoury Scones
13. 5 Biscuits
14. Apple Pie
15. 1lb.(455gm) Loaf of white bread not machine made
16. Jam
17. Lemon Curd
18. Marmalade
19. Chutney

FLORAL SECTION

20. Table Decoration Fresh (up to 6").
21. Table decoration Fresh (over 6")
22. Posy of Flowers
23. 3 Cut Flowers of any variety in season
24. Foliage plant in pot
25. Flowering plant in pot

FRESH PRODUCE

26. 1 Plate of 4 Eating apples
27. 1 Plate of 4 Cooking Apples
28. 1 Plate of 8 Blackberries
29. 4 Matching Potatoes
30. 3 Matching Leeks
31. 3 Matching Onions
32. Tray of 6 mixed veg. 40cm x 29cm
33. 5 Matching Runner Beans
34. 1 Plate of 5 Tomatoes
35. 1 cucumber
36. 3 Courgettes
37. Largest Onion
38. Heaviest Marrow or Squash
39. Longest runner Bean(One per person)
40. Miscellaneous Vegetables
41. Tastiest Tomato
42. 1 Plate of 3 Eggs (from your own hens!)

ART AND SCULPTURE

43. Oil or Acrylic Painting
44. Water Colour
45. Pen and Ink Sketch
46. Pencil sketch
47. Open Multi media
48. Reclaimed art/sculpture
49. Sculpture any medium

PHOTOGRAPHY (Prints only)

50. Colour
51. Black and White
52. Computer Prints
53. Totally Totley (any medium)

WOODWORK

54. Wood Turning
55. Small Furniture
56. Wood Sculpture

CHILDRENS SECTION

57. Vegetable Animal for up to 7 years
58. Miniature Garden for ages 8-12 yrs
59. Computer Art A4 size maximum for ages up to 8 years
60. Computer Art A4 size maximum for ages 9-14 years
61. 3 decorated buns for up to 14 years
62. A wibbly wobbly jelly
63. Flower arrangement in an eggcup
64. Painting aged under 5 years
65. Painting aged 6-11 years
66. Painting aged 12-14 years
67. A Lego Model aged 5-8 years
68. A Lego Model aged 9-14 years
69. Colour Photo
70. Children's Open Craft up to 14yrs

Prizes:

First £3, Second £2, Third £1

Entry Fee: 50p per item

* No entry in any class should have been in previous Totley Shows. Entries may be donated to be auctioned at the end of the show but this is not compulsory nor a condition upon which entries will be accepted.

* If less than three entries in a class then there will be a first prize only.

* Any prize monies not collected by 4-30pm will be put into the Totley Show fund for next year.

* You may enter as many classes as you wish.

* If an entry does not fit with a class it can be left for viewing but no prize will be given and there will be no entry charge

* Please leave all exhibits in place until **3.15pm** for public viewing. Perishable goods left after 3.30 will be auctioned.

SHOW TIMETABLE

9.00 am to 11.00 am	Entrants Registration..	2.00 pm	Official Opening and collection of prize money
11 am to 12-30 pm	Judging and Awarding of Certificates	3.30 pm	Prize-Giving & Auction of Donated Items.
1.30 pm.	Doors open to the public. (Entrance fee 50p.Children 20p.)	4.30 pm	End of Show

DUNDEE CAKE

- | | |
|---|--------------------------------|
| 175gms (6oz) plain flour | 1 rounded teaspoon mixed spice |
| 125gms (4oz.) margarine | 3 eggs |
| 125gms (4oz.) soft brown sugar | 125gms (4oz) sultanas |
| 125gms (4oz.) raisins | 125gms (4oz.) currants |
| 75gms (3oz.) chopped mixed peel and chopped cherries. | |
| 40gms (1.5oz.) blanched almonds to decorate. | |
| 2 ¼ level teaspoons of baking powder. | |

METHOD.

Line 7" deep cake tin. Sift flour & spice together. Cream margarine & sugar. Beat in eggs one at a time adding a tablespoon of flour with the last two. Fold in remaining flour and fruit till thoroughly mixed. Put in tin & decorate with nuts. Bake in a preheated oven 140C/290F/Gas mark 2 for 1 hr. Then lower to 130C/270F/Gas mark 1 for ½ to 1 hour approx.

VICTORIA SANDWICH

- | |
|-----------------------------------|
| 125gms. (4oz.) margarine |
| 125gms. (4oz.) castor sugar |
| 125gms. (4oz.) self raising flour |
| 2 eggs. |

METHOD.

Cream margarine and sugar. Beat in eggs one at a time with a little flour. Fold in remaining flour. Divide between two 7" sandwich tins greased or lined with greaseproof paper. Bake in pre-heated oven 180C/350F/Gas mark 4 for 20 – 25 mins. Sandwich with jam and sprinkle top with castor sugar.

ENTRY FEE **50p.** PER ITEM

PLEASE BRING THIS FORM WITH YOU WHEN YOU BRING YOUR ENTRIES.
PUT A TICK AGAINST THE CLASS OR CLASSES YOU WISH TO ENTER.

NAME _____

Total No of Classes Entered: _____

ADDRESS _____

Tel. No. _____

ABBEYDALE PICTURE HOUSE

I have been fascinated by theatre since I was taken to my first show when I was 4. I always loved theatre but never wanted to join a drama group because I was shy. After a visit to the West End in 2004 I decided to join a drama group and ended up playing the lion in The Wiz. Now I'm a member of 2 drama groups including the Picture House Youth Theatre, I'm studying GCSE Drama and I'm also learning different areas of theatre other than acting by working Front Of House and Backstage at the Abbeydale Picture House. The Abbeydale means a lot to me and many other theatre lovers, which is why I'm going to start writing this article for all the theatre lovers in Totley.

The Abbeydale Picture House opened its doors on 20th December 1920 to give the city of Sheffield high class entertainment. The picture house gave people opportunities to see a show, see a movie, have a dance and have a meal. The picture house was known as a picture palace and was the biggest cinema in Sheffield until the Regent opened.

The Abbeydale Picture House closed its doors due to a decrease in audiences because of the introduction of TV and new cinema technology. Now the Picture House is open again but needs a lot of TLC to restore it to its former glory. Since 2003 performances have been wowing audiences once again and I shall be writing periodically to give you information on the upcoming events, reviews on the past events and telling you how the restoration is going.

UPCOMING EVENTS:

September 6th Reels on Wheels-Films return to the picture house for the first time in 30 years:

Bring your children and grandchildren to see 'Hoodwinked' the story of Little Red Riding Hood but with a twist. Dress up as your favourite fairy tale character and immerse yourself in the magic of cinema.

4:30 showing, £15 family ticket (2 adults and 2 children)

Put on your grass skirts and Hawaiian shirts as the Abbeydale has a themed evening for 'South Pacific'. Set in 1943 and the United States Navy have established several bases in the Solomon Islands, in preparation for an invasion towards New Guinea and the Central Pacific. On one such island lives a French planter named Emile de Becque, whom the Navy wishes to employ as a scout to nearby Japanese held islands. To accomplish this task, de Becque is approached by a US Navy nurse named Nellie Forbush. Amidst an outstanding musical score, and breathtaking scenery, the drama of "South Pacific" unfolds. **7:30 showing**, tickets £5

September 13th and 14th English Heritage Open Day 10am - 4pm - Discover the magic of the Abbeydale as you get the chance to go backstage and all around the building as you go on one of our tours. The English Heritage Open Day gives you the chance to look at displays and stalls relating to theatre as well as having the chance to walk around the building to see how it has changed and what needs to be done.

September 24th-27th Me and My Girl -The Picture House Youth Theatre Senior perform one of Britain's most popular and successful musicals. Set in the interwar years it tells the story of a cockney lad who inherits a fortune and a title. With energetic dance routines and a frothy score, with hits including The Lambeth Walk, Leaning on a Lamp-post as well as Me and My Girl, this razzle-dazzle show will delight all the family. **TICKETS:** Wednesday 24th Adults £10

Concessions £8, Thursday 25th-Saturday 27th All tickets £10 **EVENING PERFORMANCES ONLY.**

Still to come, John Reilly and the Stannington Brass Band, The Picture House Family Pantomime and The Abbeydale's Christmas Concert

PALIN'S BAR IS OPEN FOR ALL PERFORMANCES APART FROM THE PICTURE HOUSE FAMILY PANTOMIME.

Visit www.abbeydalepicturehouse.com or phone the Box Office 07775 966 106 for more information on these and upcoming shows as well as information on the Abbey Snooker Club and the upcoming shows and comedy in Bar Abbey. Also ask about becoming a **FRIEND OF THE ABBEYDALE** for just £10 a year. All information correct at time of printing.

Ben Miller

Abundance

Abundance is a project to harvest the seasonal glut of local fruit like apples, pear and plums. Each year hundreds of fruit trees go unpicked either because people don't notice them, may not be physically able to harvest them or there are just too many fruits at one time. Abundance is a team of volunteers who have been helping harvest city fruit and redistributing the surplus to the community on a non-profit basis - to community cafes, nurseries, Surestarts and individuals. Please get in touch if you or anyone or group you know about could use some of the fruit.

If you have a fruit tree and want help with harvesting please contact us - you will get the first share. If you are interested in becoming an urban harvester or want to help with picking, distribution or processing please get in touch. Volunteers have the pleasure of eating fresh, ripe fruit from the tree, finding out more about urban food growing and working alongside enthusiastic people of all ages. Volunteers need to have some free time between August and the end of October.

To find out more, have a look at the Grow Sheffield website at www.growsheffield.com where you will find out how to get involved.

Or for a local contact phone Christine Shimell on 0114 236 1631 or 07800 881760

SHEFFIELD DOG RESCUE

Sheffield Dog Rescue is a registered charity and has been working in rescue since 1984. They always work to full capacity, and have a non destruction policy.

We have in our care at the moment several adult dogs which are often harder to rehome as many people are drawn to the appeal of a cute puppy, but many of these dogs are in kennels through no fault of their own.

CAN YOU HELP? Ben is a 7 year old smooth coated



German Shepherd Dog. Brought in to kennels as unwanted, he has been in kennels since February and we are looking to find him a secure loving home.

He is very friendly with people but does not like other dogs or cats, he is very fit and strong, a knowledge of this breed would be an advantage. If you can help please contact Marlene on 0114 235 1005.

Answers to the Totley Features Quiz

Congratulations to Bet Warwick of Meadow Grove Road who won the Totley Features Quiz, with 16 out of 18 correct answers. She won a free programme to the Totley Open Gardens event.

Both answers and questions are reproduced here.

1. What is the date (month and year) at the end of the words carved high on a beech tree near woods? "In loving memory of (names not visible) who fell to there (sic) death from this point in each others arms" **Answer: 7th June 1972.** This is on the first beech tree you come after entering Gillfield Woods, after the second stile from the Scout Hut. (see below)
2. What was the building dated AD 1887 used for originally? **Answer: The lodge for Totley Hall, on Totley Hall Lane.**
3. Where are three stone troughs now used as flower beds? **Answer: In the Pinfold**
4. How many flying insects feature on the black-painted gate at the end of a cul-de-sac? **Answer: 3 - at 60 The Grove (only the gate at the far end) some creatures are not flying insects!**
5. Which house has 17 chimneys? **Answer: Totley Hall**
6. How many privet arches are there in Totley and where are they? **Answer: 4 - 4, The Green, 6 The Quadrant and 26 (corner of Main and Sunnyvale Ave) and 44 Main Avenue. The arch at 22 The Grove is a honeysuckle arch, not privet - the honeysuckle straddles two privet hedges!**
7. Where is the cherry tree with the perfect "O" of lawn around it? **Answer: 16 The Green**
8. Where is Mr Plantpot trying to look like a snowman? **Answer: 30 Meadow Grove Road**
9. Where is Hawthorn Cottage built in 1876? **Answer: The corner of Lemont Road and Mickley Lane**
10. What and where are Vera and Doris? **Answer: Neighbouring semi-detached houses on Butts Hill**
11. Where is the only oak tree remaining of all those that grew in Totley and gave the name to Greenoak Park? **Answer: On Mickley Lane outside the entrance to Greenoak Park**
12. What is the address of the house named Ruskin Villa - one of Totley's connections with John Ruskin? **Answer: 34 Main Avenue**
13. What date is written on the inscription of the old school building? **Answer: 1827, on Totley Hall Lane.**
14. Where are the 4 monkey puzzle trees visible from the pavement in Totley? **Answer: 2 on Main Avenue, 1 behind Totley Rise shops and 1 on Terrey Road.** A fifth ('discovered' after the Quiz was set!) can be seen between 9 and 11 Aldam Rd.
15. What house has a shrub for a shed roof? **Answer: Hall Lane Barn, Totley Hall Lane**
16. Where is the tree house on the corner? **Answer: 35 Meadow Grove Road**
17. What three complete garden tools are built into a blue-painted gate at which address? **Answer: Spade, fork and rake at 16 The Grove**
18. What date is on the gatepost on Baslow Road, and what building does it refer to? **Answer: 1875. Totley Grange. It's just before the entrance to the Totley Grange estate.**

The Beech Tree Culprits have identified themselves

This is the continuing saga of the Totley Beech Tree inscription.....

In the Totley Features Quiz I asked what was the date on the beech tree in Totley with the following inscription?

"In Loving Memory of (name illegible) and (name illegible) who fell to their deaths in each other's arms."

The answer was 7 June 1972, but it turned out that very few people seemed to even know about this tree's elevated inscription. It's the first beech tree you come to when entering Gillfield Woods, after the second stile from the Scout Hut. High up in the tree the inscription can just be made out when the tree is not in leaf. A good pair of eyes or a pair of binoculars are needed to read the words. Christine Shimell and I reading it in February could not make out any names.

We asked around all the older people in Totley we knew to see if they could throw light on it. Christine even went down to the Sheffield Archives to see if there was a press report of some horrid disaster like this!

Finally a confession emerged: Tim Peacock, who was brought up on Rowan Tree Dell, wrote:

"Indeed I am largely the culprit, though Adrian Hardwick also put penknife to tree to complete the epitaph! As I recall, the words were along the lines of:

'In loving memory of I Shaw who fell to his death from this point whilst in the loving arms of A Sinai' then followed the date I think. I Shaw was in fact our school mate Ian Shaw who also lived on Rowan Tree Dell who from time to time we did not get on with! A Sinai(?) was one Anita Sinai a girl at the school.

Ian did retaliate by making his own carvings but we had already used the prime position and Ian's devotion to his task was not of the same level as mine and Adrian's, and I am not sure his words are now legible. I cannot recall what Ian wrote but I am sure they were not complimentary!

It amuses me to hear the carvings are still newsworthy; my late mum several years ago told me a similar tale whereby some Totley historian was reading the carvings as being a record of a real event until she put him right!

If someone has taken the trouble to transcribe the words I would love to see them as I think my tree climbing days are over!"

So a Totley mystery has been cleared up! Thanks for coming clean Tim Peacock!!

Jennie Street

A warm welcome always awaits you at
The Fleur De Lys, Totley

Home cooked food served

Mon – Fri 12- 2-00pm and 6.30 – 9.00pm

Saturday 6 pm – 8pm

Sunday 12 pm – 3.30pm

Over 60's menu now available 2 courses for £6.50
 or 4 courses for £10.00

Monday Pea & pie night 2 for £7.00

Wednesday Curry and pint or Glass wine £6.00

Friday steak night 2 from £10 for gammon to £18 for 2 T-bone

Tue 2nd Sep. Chinese night 4 course for £15.00 book early

3 Traditional Real Ales and 1 Guest Ale always available

Live Entertainment in September

6th Dj Daves disco & Karaoke

13th Humming birds

20th Dj daves disco & Karaoke

27th band to be announced

Every Thursday Quiz Night Win Beer vouchers and
 Play your cards right for cash prize starts at 10pm

Meeting room available for up to 30 people

We can cater for any occasion eg Birthdays

Weddings Funerals etc.

Tel Anne-Marie or Wayne on 0114 236 8491

**Totley Open Gardens nearly hits
 £10K total**

Don't say you missed Totley Open Gardens this year!

Over the weekend of July 12th and 13th eleven gardens and the Totley Pinfold were open to the public and another new Totley tradition was continued. 14 gardens were listed, but 2 had to drop out from ill-health.

The weather treated us more kindly than 2007, and so visitor numbers were up. This meant our takings were up and we raised £1,255. This sum was decided by Open Gardeners to be split 3 ways: firstly on a small trophy for Totley Show in memory of Maggie White, who always opened her garden with partner Tony Joyce at 2 The Quadrant. Maggie died suddenly on 24th Dec 2007 aged 51 but Tony still opened the garden this year as a tribute to her. Then the money will be split equally between Transport 17 and the Fund for a new community building in Totley.

2 locations - at 20 The Quadrant (Linda Prosser) and jointly at 40 (Jan and Alan Novitzky) and 42 (Trish and Adrian Deardon) on Victoria Rd provided teas which helped make extra money.

I'd like to thank all the Totley Open Gardeners for taking part as it involves some hard work in getting gardens ready and doing this to put Totley on the map and bring a sense of community.

In 2009 we will have several new gardens around Chapel Lane, Lemont Road and The Grove, and would welcome any other gardeners who think they'd like to take part.

And if you didn't make it this year, make sure you visit Totley's open gardens next year.

Jennie Street

jennie@hadish.f9.co.uk

CAR BOOT SALE

Totley School PTA is holding a car boot sale in support of school funds on **Sunday 21st Sept.** The boot sale will take place in the school and will begin at 9 am.

20p entrance fee

Open to all

Anyone wanting to sell please contact the school on 236 4482

£6.00 charge per car



**LEARN LATIN AND BALLROOM
 DANCING**

Adult beginners classes commence

Wednesday 10th September 8.30pm-9.30pm

at Dore Parish Church Hall, Townhead Road, Dore

Learn the cha cha, jive, waltz, foxtrot and many more by a professional teacher and ex-competitor.

Further details please call Janine on 07799 594062

viewsecureTM

vision & security

Specialists in domestic and commercial systems

INTRUDER ALARMS | CCTV

SATELLITE & TELEVISION



01246 455 779



www.viewsecure.co.uk

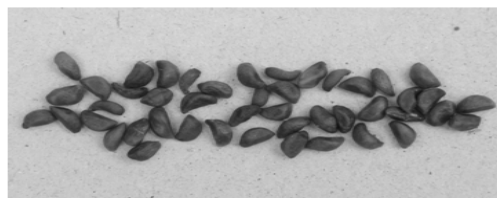
Douglas Turner

Childhood Memories of Totley Bents, as recalled by the late Douglas Turner

Another memory which stands out happened every year at strawberry time, the annual camp at the Rifle Range for the "Hallamshires" (Territorials, I think). This was when the troops used to march up Penny Lane and the baggage train etc. came up on horse-drawn gun limbers. Bell tents were set up in front of the Rifle Range Canteen on what is now a car park. The highlight of the week was the "Strawberry Tea", at the Officers Quarters on the lawn, in marquees. The army band was in attendance and some of the troops used to give drill displays. I used to have a grandstand seat - on the wall above the Officers Quarters. Another view - of the "other ranks" quarters - was from the top of the stone steps leading to the hay loft over the cow sheds at Bank View Farm; at that time belonging to Walter Slater. The steps are still there. (1997?)

My Uncle Billy was Range Warden at the Rifle Range and I little thought at that time that thirteen or fourteen years later I would be doing my firing there after six weeks in the Army and not being allowed home! However, some two or three weeks later we came again and although not allowed leave, I was surprised to find my elder brother Bill, then a Flying Officer in the Air Force, came to see me as he was on leave, and to bring manna in the disguise of Mother's home-baked cake and cookies. It caused some raised eyebrows!

To be continued



Seed swap

Due to popular demand!
The seed swap basket will be at

Totley Show on Saturday 20th September
Totley Primary School
1.30pm.
Admission 50p

Bring along your surplus seeds and you can swap them for any seeds in the seed swap basket.
We have flowers and vegetable seeds, herbs and grasses.

Come and get some inspiration and take your pick from some choice goodies!

For more information contact
Christine Shimell
2361631 or 07800881760
c_shimell@sky.com



Mark and Sally Fletcher invite you to

The Grouse Inn

Longshaw

Sheffield S11 7TZ

Meal times:-

Mondays 12.00 to 2.30pm

Tuesdays to Friday's 12.00 to

2.30pm and

6-30pm to 9-30 pm

Saturdays 12.00 to 3.00pm

and

6.30pm. to 9.00pm (drinks - open all day)

Sundays 12.00 to 9.00pm

Phone 01433 630 423

*One man went to mow...
...but his mower wouldn't go!*

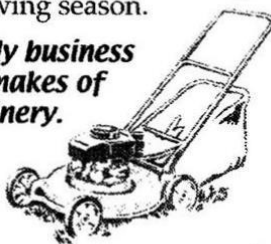
Now is the time to call

MOWER MENDER

and be ready for the forthcoming growing season.

A local friendly business servicing all makes of garden machinery.

Phone:
0114 236 6958
Mobile:
0781 2211149



Blade Sharpening and Collections & Delivery Service Available

R Rose & Co

Chartered Accountants & Business Advisors

Specialists at looking after the affairs of small businesses.

For a FREE initial consultation please contact Roger Rose, FCA on
0114 281 2331

From business start-ups and general accounting, to support and advice in business development and strategy, we pride ourselves in our personal one-to-one service. To find out more please call 0114 281 2331.

213 Derbyshire Lane, Norton Lees, Sheffield S8 8SA
Email: info@r-rose.co.uk

HEART•WOOD tree•care

All aspects of tree and hedge work undertaken.
An ecologically and environmentally friendly service.

all enquiries please contact - PHILIPPA ALLEN

(0114) 2663076 - (07875) 095989 - INFO@HEARTWOODTREECARE.COM
67 MURRAY ROAD - GREYSTONES - SHEFFIELD - SOUTH YORKS - S11 7GF



HEARTWOODTREECARE.COM
FULLY INSURED AND QUALIFIED

Creating opportunities with disabled people.

Registered Charity No. 218186

Leonard Cheshire Disability

Leonard Cheshire Services in Offers choice & opportunity to people with disabilities.
A Specialist Unit for the Younger Disabled.
Residential & Respite Care - Single Rooms
Day resources - Aromatherapy -
Reflexology - Physiotherapy - Toning Tables.

Activities include: - Arts & Crafts -
Computers - Cookery - Shopping
Expeditions - Theatre Outings - Church.
Further details can be obtained from -
The Service Manager, Mickley Hall,
Mickley Lane, Totley, Sheffield S17 4HE.
Tel. 0114 236 9952
Fax. 0114 262 0234

The Care at Home Service supports disabled people who wish to remain in their own homes.

We provide flexible care packages from 1 hour to 24 hours meeting individual needs.
The service operates throughout Sheffield.

Our service includes: - help with getting up and going to bed, dressing, washing, bathing, shopping, cooking, light household duties.

Further details from: -
The Care at Home Manager
Tel. 0114235 1400
Fax 0114 235 1499

Maths & Physics Tuition

David Taylor B.Sc

Experienced tutor at GCSE and A Level

South Sheffield & North Derbyshire

Phone: 0114 236 8094

dave@dt309.demon.co.uk

Domestic electrical work carried out by City & Guilds and
'Part P' qualified

LADY ELECTRICIAN

* House rewires * Replacement fuse boards
* New sockets * Lights * Switches * Telephone points

... and when you want to enjoy those late
summer evenings in the garden ...

* Outside lighting * Deck lights * Water features

ring Mandy on 07788-544225

All domestic electrical work undertaken – no job too small.
Quotes are free of charge and carry no obligation.



A & G Plasterers

Tel 0114 235 0798 / 07951 035783

**Competitive Prices
Free Quotations**



Totley Gardeners

30 years combined experience

Male and Female

53 The Grove

Totley

Sheffield

S17 4AR

Organic fertilizers and biodegradable weed control

Garden Maintenance

Tree Surgery

Fencing

Mowing and Strimming

Commercial and Domestic

Landscaping

Pruning

0114 236 7884

Steven 07967 799957

Pam 07796 513520

stevenbarnett@hotmail.com

"Helping people and trees co-exist"



Your local Rose's Bread stockist

Coffee Shop now open

Monday to Friday 8am to 4pm, Saturday 8am to 1pm

51/53 Baslow Road

Tel: 236 4238

Horizon Electrical

*Faults, Rewires, Sockets, Lights,
Cooker Points, Electrical Showers,
Phone Points, Security Lights*

No job too small

Fully qualified with friendly advice

Ring Totley 236 4364 or

mobile 0776 5036849

MALLORN ROOFING CONTRACTORS

**REROOFS • ROOF REPAIRS
FLAT ROOF • GUTTERING**

0114 235 6002

07853 350085

7 DALEVIEW ROAD, BEAUCHIEF

Catherine Clarke

Qualified Chiropodist

Westfield Accepted

192 Baslow Road

Totley

Sheffield

S17 4DS

M.S.S.Ch.

M.B.Ch.A.

S.R.N.

Telephone

Sheffield

2364101

SLIMMING WORLD

10 WAYS TO MAKE SURE IT WILL BE THE LAST TIME LOSING WEIGHT IS YOUR NEW YEAR RESOLUTION. THIS TIME MAKE IT LAST FOREVER

1. Focus on your weight loss goal and prioritise it.
2. Be sure you really want to lose weight for yourself. Doing it to please someone else may only lead to short term weight loss.
3. Take advantage of all the group support at your local Slimming World class. Even if you are not a 'joining in' person, you'll be surprised how motivating it is.
4. Accept that you will have ups and downs in your weight loss journey, and be forgiving of yourself if you hit a difficult patch.
5. Listen to your 'inner script' and make a conscious effort to talk to yourself in a positive, encouraging way.
6. Keep up your interest in your healthy eating plan by trying new foods, new recipes, and new ways of using your Sins. This will help you avoid getting in to a dieting rut which can be boring and demotivating.
7. Be honest with yourself about what you are expecting from your weight loss and how you are getting on with Food Optimising week by week. People who set unrealistic targets for weight loss or body shape are more likely to give up than those who set achievable targets and share their ups and downs.
8. Go back to your class even after (especially after) you've had a weight gain. You will not be judged, just helped and supported.
9. Keep setting new goals and rewarding yourself for milestones until you reach your target weight, and afterwards!
10. Don't put your life on hold until you've lost weight. You can still enjoy life and lose weight. Think of your dreams and ambitions and bring them to the fore. The positive feelings you get from starting to 'live a little' can only help your motivation and your weight loss.

Group details:

Bradway Annexe, Sheffield 17 - Thurs. 5pm and 7pm (6 times award winning group)

Dore Old School, Sheffield 17 - Tues. 5.30pm

The Michael Church, Lowedges Rd, Sheffield 8 - Wed. 10am

Telephone consultant Alison Murphy (01246) 410145 for further information.

PhysioFOCUS

at Totley Rise Dental Practice
85 Baslow Road,
Sheffield, S17 4DP



Physiotherapy treatment available for:

- Back and neck pain
- Sports injuries
- Sprains and strains
- Joint and muscle pain
- Arthritic pain
- Whiplash
- Repetitive strain injury
- Headaches

Appointments: 0114 2360333

Also available:

- Pilates classes
- Pilates 1-2-1
- Golf Fitness Screening
(as used by consultants to UK, European and Australian PGAs)

For more information please call:

Emer on: 07792 422909

Rachel on: 07956 908454

LEE CAIRA PLASTERING

- Dry Lining
- Rendering
- Re-skim
- Lime Plasters
- Skim Over Artex
- Board Ceilings
- Floor Tiling
- Free Quotes
- Apprenticeship Trained
- Qualified
- References
- Insurance Work Undertaken

Tel: 07816 301295

Email: leeacaira@aol.com

20 Linburn Road, Sheffield S8 0GS



Would you like someone to

Type letters? Pay bills? Help record family memories?
Sort and file papers? Prepare an inventory?
Anything else ???

Then you should call

Secretarial and Administrative Services

Swift, efficient, confidential service at your home.

Pay-as-you-go.

Ring us on 0114 235 0071



Tel/Fax: (0114) 255 4689

Mobile: 07831 802539

TRISTAN SWAIN

LANDSCAPING AND MAINTENANCE

72 Nettleham Road
Sheffield S8 8SX



LADIES FASHIONS

SKIRTS, JUMPERS
T-SHIRTS,
TROUSERS
HABERDASHERY
& ALTERATIONS

DRY CLEANING
SERVICE
LAUNDRY SERVICE

ROSIES

164 BASLOW ROAD, TOTLEY.
TEL: 2621060



M. Scriven
(FRUITERAMA)

MARTIN SCRIVEN

HIGH CLASS FRUIT
& VEGETABLES

37, Baslow road

Tel. 236 7116

Orders Delivered



Allweld Forge Ltd

Bespoke hand made wrought iron
BAY WINDOW CURTAIN POLES
 Large choice of finials and brackets
 Also gates, railings, furniture etc.
 Unit 3, 300, Archer Road, Millhouses S8 0LA
 Next door to Thomas Fencing
 Phone/fax 0114 2368239
 email: sales@allweldforge.co.uk
 Website: allweldforge.co.uk

R.S. HEATING & BUILDING CO
 EST. 1971

HEATING DIVISION:
 Experienced Installers of condensing,
 combination and regular boilers.
 Systems fully guaranteed.
 Complete after sales service.
 Also Bathrooms, showers
 and small plumbing works.

BUILDING DIVISION:
 Loft conversions, House
 renovations including general
 building, joinery, plastering,
 electrical decorating etc.

13 Overcroft Rise, Sheffield, S17 4AX
Tel:- 0114 236 4421
 Reg. Office:- 62 Machon Bank, Sheffield, S7 1GP
Te:- 0114 2559425
Fax:- 0114 255 9431
 Email: enquiries@rsheatingandbuilding.co.uk
 Web: <http://www.rsheatingandbuilding.co.uk>


LIBERTY FOODS
 Caterers
 Quality Meat Shop
 & Fresh Farm Produce
 Fresh and Frozen Prepared Meals
 Fresh Meat and Poultry
 Outside Catering
 Home Delivery
 253 Baslow Road, Sheffield, S17 4DU
 Tel: 0114 2360 583 Mobile: 07801 346 455

Pronfield Landscapes 

Gardens cleared and maintained, Lawns mowed,
 Turfing, Tree felling & pruning, Hedges trimmed &
 reduced, Pond maintenance, Fencing etc.

for free quotation call
 Chris on: (0114) 2746158 Mobiles: 07976072785 or
 Richard on: 07789497104

8am-6pm mon-fri HazelBarrow Farm, Norton S8 8BA

R.M.M BUILDING SERVICES
25 YEARS EXPERIENCE
 All types of building work carried
 out including- Drop kerbs, block paving
 (drives, paths, etc), extensions, general
 building repairs and maintenance.
 Phone Rob on- Mob- 07906108567
 Home-2352190

Nigel Watson

 Carpenter & Joiner
 Doors, locks, floors, architraves, skirting boards,
 stairs, stud walling, boxing off etc
 No job too small

For a reliable, quality service
 Tel: 0114 236 4778
 Mobile: 07971 528149

RICHARDS
TELEVISION, SATELLITE, VCR, DVD
REPAIR OR INSTALLATIONS

- City & Guilds London Inst. Fully Qualified.
- Over 25 Years Professional Experience.
- Most Makes & Models Repaired. No VAT.
- For Prompt, Friendly Service Ring

0114 2876806
 Ask for Richard. Ex Bunker & Pratley.

 **Got a computer?**

Having Problems?
 Is it running slow? Stops responding?
 Having problems running the latest games
 or applications? Broadband installation?

Give me a call!
 I'm available for home visits at any time
 including evenings and weekends. I can
 also suggest upgrades to improve perform-
 ance, or even build you a system to your
 specific requirements.

Tim Brown
 Building,
 Installation,
 Upgrading and
 Troubleshooting
 Computer
 Systems at
 Reasonable
 Rates

Phone: 0114 2472619 Fax: 0870 7060080
 Mobile: 078 17464703 Email: service@timbrown.plus.com

RUBBISH REMOVED

*Environment agency registered.
ID shown at door.*

Beds, settees, garden and DIY,
Washers, Baths, carpets, furniture,
Cookers Garages cleared, broken
sheds and fencing removed.

Free quotes! Genuinely no obligation!

Tel: Mick 0114 2681330

Mobile 07710 446438

Established five years.

Courteous reliable service.

http://uk.geocities.com/draggletail_waste_services/



Central Heating

Domestic Plumbing

Glazing, Double Glazing and Glass

House Maintenance

UPVC and Wood Windows & Doors

Mini Digger & Driver, Muck Shifts, Footings Etc.



TOTLEY PRIVATE HIRE

*PROFESSIONAL CAR SERVICE
FOR
AIRPORTS & LONG DISTANCE
TRAVEL etc.*

**Tel: 0114 - 2361547
Mobile: 07974-355528**

DON ALLOTT Gents Hairdresser

**At PATRICIA BARBER'S
53 Wollaton Rd, Bradway**

Tele: 0114 2366247

Working times now are:

Thursday & Friday

9-00am-5-00pm each week

Plus the first Saturday in

Each month. 8-00am-1-00pm



APPLE LANDSCAPES and APPLE FENCING

www.applelandscapes.com

QUALITY SERVICE AT AFFORDABLE PRICES

**Patios • Paths • Walling • Turfing
• Railway Sleeper Beds • Garden tidy ups etc.**

**Fencing & Gates Supplied Only
or Supplied & Fitted**

Only Quality Materials Used

FULLY INSURED

Call for free quote

01246 237505 • 07782 167540

Hypnotherapy

**Weight, confidence, smoking, stress,
phobias, anxiety, panic, sleep, etc...**

Call 235 1985 Totley

www.sheffieldhypnosis.co.uk



Paul Peace



**The
British
Psychological
Society**

Chartered Psychologist



Karen Bartle

HEARING AIDS

**MAURICE NAYLOR MBSHAA RHAD is your local
hearing aid specialist and at your request will test
your hearing in your own home, free of charge,
and if needed you can try a custom made aid for
four weeks without obligation to purchase.**

In the ear digital from £495

Tel: 0114 262 0010

4 Twentywell Drive, Bradway

FOR SIX GENERATIONS

THE LEADING FUNERAL DIRECTORS

John Fleath & Sons

**PROMPT and COMPREHENSIVE SERVICE
AT ALL TIMES**

☎ 2 722222

LIMOUSINES FOR SPECIAL OCCASIONS

www.callhomefix.co.uk

- ✓ Joinery & Painting
- ✓ Plumbing & Electrics
- ✓ Interior & Exterior
- ✓ Unusual fix-it jobs
- ✓ No job too small!
- ✓ From £24!



**The Handyman service...
call Julian 01433 631535**

TOTLEY & DISTRICT DIARY

MONDAYS
TUESDAYS

COFFEE MORNING, All Saints' Church Hall, 10am-noon
COFFEE MORNING, Totley Rise Methodist Church Hall, 10am-noon
WOODSEATS ADVICE CENTRE. Drop in service, free, impartial, and confidential. Totley Rise Methodist Church, 10am-noon
CRAFT GROUP. Totley Library, 2pm

WEDNESDAYS.

COFFEE in the LIBRARY. 10am-11.30am
TOTLEY RISE METHODIST PLAYGROUP. Grove Road 9.30am-noon, Phone: Judith 236 3456 or Gill 236 1373
TODDLER GROUP. 10am-11.30am, All Saints' Church Hall. Details tel. Mel 236 6300
HEALTH WALKS. 10.30am, Totley Library foyer. Phone Sue, The Health Walk Ranger: 0114 283 9195
MODERN SEQUENCE DANCING. All Saints Church Hall, 8pm-10pm

THURSDAYS

TOTLEY RISE METHODIST PLAYGROUP. Grove Road 9.30am-noon, Phone: Judith 236 3456 or Gill 236 1373
NCT COFFEE GROUP FOR DORE TOTLEY & BRADWAY, 10am-noon, For mums & babies/toddlers, meeting in various locations, Phone Sally Spearing 236 2604 for further details (email: sally@spearings.me.uk)
PUSHCHAIR CLUB. Totley Rise Methodist Church Hall. 1.30pm-3pm. Tel. 236 3157 for further details
CHAIROBICS. Totley Library, 2pm-3pm. £1

SATURDAYS.

PILATES CLASS, United Reformed Church, Totley Brook Road, 6.15pm-7.30pm, Phone Emer Coffee 07792 422909
MODERN SEQUENCE DANCING. All Saints Church Hall 2nd. And 4th. Saturdays 8pm-10pm

SEPTEMBER 2008

SAT 6th SATURDAY NIGHT LIVE, Heatherfield Club, Zoe Summers, Baslow Road. 8.30pm. Non-members welcome, small charge on door
SUN 7th MINIATURE TRAIN RIDES, Abbeydale Road South, First train 1pm. - last train 5pm.(weather permitting) www.sheffieldsmee.co.uk
SUN 7th CASTLETON FARMERS MARKET, the Village Hall, 10am-3pm
TUES 16th TOTLEY TOWNSWOMEN'S GUILD, 'In Search of my Mother', Mr.M.Gildersleve, Totley Rise Methodist Church Hall, 10am
WED 16th WEDNESDAY FRIENDSHIP, 'My Day at the Zoo', Janet Savage, Totley Rise Methodist Church, in the Church Lounge, 7.30pm
SAT 20th SATURDAY NIGHT LIVE, Heatherfield Club, Dave Johns, Baslow Road. 8.30pm. Non-members welcome, small charge on door
SUN 21st CAR BOOT SALE, Totley Primary School, 9.00am, details page 14
WED 24th TOTLEY HISTORY GROUP, Totley Library, 7.30pm, all welcome
WED 24th ABBEYDALE WRITERS AUTUMN MEETING, United Reformed Church, Totley Brook Road 7.00pm, Peter Winnall 236 7351
THU 25th SHEFFIELD FARMERS MARKET, 9am-4.30pm, Barkers Pool
SUN 28th MINIATURE TRAIN RIDES, Abbeydale Road South, First train 1pm. - last train 5pm (weather permitting) www.sheffieldsmee.co.uk

OCTOBER 2008

WED 1st WEDNESDAY FRIENDSHIP, 'The Changing Face of the English Countryside', Catherine Mackay, Totley Rise Methodist Church, in the Church Lounge, 7.30pm
SAT 4th SATURDAY NIGHT LIVE, Heatherfield Club, Trevor Allen, Baslow Road. 8.30pm. Non-members welcome, small charge on door
SUN 5th CASTLETON FARMERS MARKET, the Village Hall, 10am-3pm
SUN 5th MINIATURE TRAIN RIDES, Abbeydale Road South, First train 1pm - last train 5pm (weather permitting) www.sheffieldsmee.co.uk
WED 15th WEDNESDAY FRIENDSHIP, Joint Meeting with the UNA to mark One World Week, Totley Rise Methodist Church, in the Church Lounge, 7.30pm
SAT 18th SATURDAY NIGHT LIVE, Heatherfield Club, Russ Elliot, Baslow Road. 8.30pm. Non-members welcome, small charge on door
SUN 19th MINIATURE TRAIN RIDES, Abbeydale Road South, First train 1pm - last train 5pm (weather permitting) www.sheffieldsmee.co.uk
THU 23rd SHEFFIELD FARMERS MARKET, 10.00am-4.00pm, Barkers Pool

THE INDEPENDENT FOR OCTOBER

The next issue of the Totley Independent will be available from the usual distribution points on

SATURDAY 27th September 2008

COPY CLOSE DATE for this issue will be
SATURDAY 13th September 2008

Editor **Ian Clarke** Email iangclarke@hotmail.com
Tel. No. **235 2526**.

Advertising & Distribution **John Perkinson**. Tel. No. **236 1601**
Email johnandpaulineperkinson@talktalk.net

Items for publication may be left or sent to **2, Main Avenue, Totley, Sheffield, S17 4FG** or Totley Library

PRINTED by STARPRINT

B. K. JEAVONS PAINTER & DECORATOR



**Interior
Exterior
Decorating
No job too
small.**

**86, WOLLATON ROAD
BRADWAY
SHEFFIELD, S17 4LG
Telephone 2350821**

Starprint

601 Abbeydale Road, Sheffield 7. Fax: 0114 258 8599

DESIGN & PRINTING of

- LETTERHEADS • BUSINESS CARDS •
- BOOKLETS & PADS •
- INVOICES • LEAFLETS •
- CARBONLESS SETS • BROCHURES •
- RAFFLE TICKETS •
- WEDDING STATIONERY •
- ENVELOPES & POSTCARDS •

**SPECIALISTS IN THERMOGRAPHY
FOIL BLOCKING AND ENCAPSULATION**

**0114 258 0707
For a Quick Quotation**



**For
Windows
With Style**

**Sheffield Factory Showroom
106 PROSPECT ROAD
HEELEY, SHEFFIELD**

**Sheffield (0114) 258 5496
Rotherham (01709) 512113**

We welcome letters about local affairs and will publish as many as possible. However the views expressed are not necessarily those of Editor, editorial staff or the Totley Residents Association and must not be imputed to them. © Totley Residents Association 2008.