

TOTLEY INDEPENDENT

PUBLISHED BY THE TOTLEY RESIDENTS ASSOCIATION SINCE 1977

APRIL 2008

No. 312

15p.



Photo: Stuart Greenhoff

George Pearson and Sons – Heatherfield Nursery

Pearson's Nursery covered around 1¼ acres with 2,000 sq ft under glass in the area now occupied by Totley library and the flats – the roofs of the houses on the other side of Baslow Road can be seen on the middle right of this photograph still exist. The nursery was established in the early 1920's, prospering for 50 years and provided employment for George Pearson, his brother and sons - they had 2 further nurseries at Dronfield Woodhouse. The Totley site as well as being in full production, was also a retail outlet for all the nurseries. The site was well suited as a nursery, being on a south facing gentle slope with good heavy loam soil. A large hedge along the length of the western edge gave some protection.

Totley Residents Association Update

We all know the gas work down the Rise is essential and must be done, but it seems to have been going on for ages. For the last few weeks, those of us still shopping on the Rise have become used to the assault course necessary when visiting the shops. The shop keepers have been very frustrated as many customers, especially the disabled have been unable to reach them. Councillor Anne Smith has put pressure on Amec, urging them to complete the work as quickly as possible before the shops go out of business.

This has been successful and essential equipment necessary for the job has arrived.

Hopefully the end is in sight and we can all get back to normal.

Please try and use the local shops as they have suffered a loss of trade over the last two months.

They need our support to help them make up for their loss of earnings.

Many people have commented on the destruction of the daffodils on Baslow Road. As part of the team who helped plant them, I agree, but we must remember grass verges are there to cover up the essential services we all use.

Continued page 2

**TOTLEY RESIDENTS ASSOCIATION AGM – 7th APRIL 7.30pm
IN TOTLEY LIBRARY – ALL WELCOME**

TWENTY PAGE ISSUE

TRA Update, continued.

I will be asking for replacement bulbs, so we can all enjoy them next year. We must keep our fingers crossed and hope B.T etc do not decide to work on the verges after they have been re-instated by Amec!

Last month I reported on the bus shelters. As we all know nothing has changed, but this was expected. After Amec have completed their work in the area I will be pressing for the shelters to be turned round as promised.

**TRA AGM will be held in the Library on Monday
7th April at 7.30pm. Please try to attend.**

Come and give us your support and hear about the exciting plans for Totley in the future. It is also your opportunity to have your say and offer your help.

Finally, dates for your diary:-

Third Totley Yard Sale Sunday April 6th

Totley History Group Wednesday 16th April in the Library. NOTE later time of 7.30pm.

Totley Festival Sunday 22nd June

Next Committee Meeting 17th April 7.30pm in the library.

Volunteers needed.

Totley Show Committee Wednesday 23rd April 7.30pm in the library.

Everyone welcome. We need volunteers.

Totley Show Sat. 13th September

Totley Open Gardens Sat 12th and Sun.13th July

Avril Critchley

Chairman TRA

TOTLEY PRIMARY SCHOOL UPDATE

Well, spring is apparently upon us early this year. The bulbs the children planted before Christmas in remembrance of our friend and teacher Sara Scott have flowered and are looking fantastic.

There are quite a few events planned at Totley Primary School for this coming year:

On **15th May** we are having a **Plant Sale**. This is always very popular and if you require an order form please see the two lovely ladies in the office. The quality of the plants and the prices are first rate

For the energetic we have a **Sponsored Walk** on **11th June** around the school grounds. If you would like to sponsor a child please do so.

Weather permitting we will be holding our **Sports Day** on **16th June**.

On Saturday **5th July** is the **Summer Fair** so bring family, friends and yourselves.

On **12th July** St. Luke's Hospice are holding **It's a Knock Out** starting at 9.00 a.m. until 8 p.m. We hope to see people supporting this great establishment.

We are in the process of setting up a gardening club for the kids, so if anyone has an odd packet of seeds (or even half a packet) be it flower or vegetables we would be very grateful. Also, any old gardening tools that you no longer want we could certainly put to good use. I think with the fertile land and the help of the Totley Residents Association members we should do very well and the days of Tom getting the prizes at the Totley Show will be a thing of the past!

I would like to give special thanks to Darren C Harley, Marketing Manager of Hazel Homes, and his staff on the Green Oaks new building estate for their kind help and support with our garden project.

That's all for now - happy gardening.

Allen Miller Building Supervisor

Totley History Group

This group met again on the evening of 12th March at Totley Library. Avril Critchley and Marlene Marshall hosted the evening which over 20 people attended. Everyone attending had the opportunity to state their particular interest for areas of research, and will report progress at subsequent meetings. An idea was put forward, and received enthusiastic support, for 'a stroll down Baslow road'. This can be undertaken as both a talk in the library and a walk proper in a warmer and lighter evening.

If you are interested in joining the group please do come along.

The minutes of the meetings are on the website www.totley.org.uk.

The next meeting of will be held in the Library on **Wednesday 16th April at 7.30pm** (note later time).

Councillor Updates

Why do we have 3 articles from the Lib Dem councillors? I was under the impression that the Independent was non-political. I laughed at our "Smashing new bus shelters". Who are they kidding? There is no protection from wind and rain at the Marstone Crescent and at 122 Baslow Road stops. The way I read it is that the councillors have done all the corresponding with SYPTTE when in fact the chairperson for TRA, Avril Critchley spent hours ringing and conversing with SYPTTE and Street force about the shelters and being told exactly the same. Being a bus pass holder myself I don't need my local councillors telling me about the new National pass and how to get it. I think I am grown up enough to be able to understand the letter and posters on this matter. So dear editor cut it short and leave space for we Totleyites.

A Totley Resident

Ed. We publish all correspondence that is of local interest.

T.O.A.D.S SPRING PRODUCTION

After the success of the Agatha Christie murder play in November, we have chosen a comedy for our Spring production. "An Eye For an Eye, Darling" by Ian Hornby, will probably ring a lot of bells for the husbands in the audience! How many of you have tried to arrange a "special occasion" for the wife, in secret, only to find that everything is going wrong, two and two make five, six, or even seven? With another large cast of eleven, there are a lot of laughs in this play and great characters.

You can have a good evening out, at St.John's Church Hall, Abbeydale Road South, Totley, with coffee, orange, red or white wine in the interval, Wednesday to Saturday, 14th to 17th May at 7.30pm. Tickets available from any member, or from Kate Reynolds on 236 6891.

1st Totley Scout Lottery

Lottery draw for February 2008

1st Prize Number 14
Mr A Swartz
Overcroft Rise
Oscillating Fan

2nd Prize Number 11
Mrs Harris
Main Avenue
£10 Voucher

Lottery draw for March 2008

1st Prize no 57
Mr & Mrs Jackson
The Grove
32 piece cutlery set

2nd Prize no 64
Mr & Mrs Watson
Marstone Crescent
£10 voucher

Peter Casson



Transport 17

In the Totley Independent, February issue, I once again asked for donations for Transport 17. We have to run the office and the buses every week and, as you know, we are hoping to replace our oldest bus.

Many clubs, individuals and local people are very good to us. The Dore and Totley Lunch Club is held in the United Reformed Church. The members decided to have a weekly collection for us. I can't tell you how much this means to us. The kindness and thoughtfulness of people never ceases to amaze me. Well done all of you.

We celebrate 25 years of Transport 17 buses next year so we are pulling all the stops out to get the new bus. We will be having a stall at Totley Festival and Totley Show. These events take a lot of organising on the part of many people. More help is always needed so please support these events. I am sure that you will enjoy them as well as the Totley Open Gardens weekend.

David Longley, one of our drivers, was 65 on 29th March. Congratulations and many thanks go to him. Another driver, Mike Roberts should be settling his new hip in by now. Both do such a lot for our passengers and are well thought of.

We are always looking for more drivers and passenger assistants. If you think that you would be interested, ring our office on 236 2962 or you can come and talk to us at any of the local events where you see our buses or any of our staff in their Transport 17 uniforms.

Take care.

Margaret Barlow

Service details for All Saints Church, Totley

April

6th Theme: 'Church Annual General Meeting'

10.00 a.m. AGM

6.30 p.m. Holy Communion

13th Theme: 'How to affair-proof your marriage'

10.00 a.m. Holy Communion

6.30 p.m. Holy Communion

20th Theme: 'Hands off!! That's mine'

10.00 a.m. Holy Communion

6.30 p.m. Evening Prayer

27th Theme: 'It's only a little white lie'

10.00 a.m. All Ages All Together

6.30 p.m. Holy Communion

John Wade Singers

Trial by Jury and Musical Melodies

**Millhouses Methodist Church
16 and 17 May at 7.30 pm**

Tickets £6.50

Telephone 0114 2360798, 01426 416364

Greenoak Bowling Club

Greenoak Park Bowling Green opens on the 2nd April. Greenoak is a small club with 5 teams playing in the Parks Leagues, new players are always welcome. You don't have to be a team player, just come and play for fun. Members are always around on Sunday afternoons or Tuesday evenings for advice or a chat. Casual players can play all season for £7.50 members fee, bowls are available for hire.

Junior Club Bowling Club starts on Tuesday 15th April, juniors can play anytime between 6.00pm and 7.30pm. A team of 5 junior players will be picked each week to play matches on Saturday mornings (not school holidays). Junior club runs all season, parents are welcome to come and play

For further details on any of the above
call Sylvia 0114 236 5499

FRIENDS OF THE BOTANICAL GARDENS SHEFFIELD

MAIN PLANT SALE

SUNDAY 4TH MAY 2008

10.30am – 2.30pm

At the Sheffield Botanical Gardens

Demonstration Centre Area, Thompson Road
Entrance

Thousands of Plants, Perennials, Alpines, Shrubs,
etc.

Information stand and sales tables, cards, crafts,
pictures

Refreshments: Free admission

Fundraising for the Gardens SBG Trust reg. Charity
No. 1057845

Councillor Surgeries

Conservatives:

4th Saturday of each month 10.00 to 11.00 am Dore Village Society room, Dore Old School, corner of Vicarage Lane and Savage Lane, Dore,. Contact details: telephone 273 4108 Email: anne.smith@sheffield.gov.uk

Liberal Democrats:

2nd Monday in the month 6.00-7.00 p.m., Totley Library, Baslow Road and 2nd Saturday in the month from 10.30 a.m. to 12.00 noon, Dore Old School Hall, Savage Lane, Dore Contact details: telephone 235 2289 Email: keith.hill@sheffield.gov.uk or mike.davis@sheffield.gov.uk

TOTLEY RESIDENTS ASSOCIATION WEBSITE

www.totley.org.uk

National Anthem

How fortunate we are to live in a country where we can choose whether or not to stand for the National Anthem.

When I was a child we always stood for the National Anthem, in fact, my mother insisted we stood even at home if it was played on radio or television. This was not only to honour the monarch, who deserves respect anyway, but to honour our country, a country where we are free to say and think what we like. The monarch, as head of state, is impartial, completely detached from any political party, and I believe this is one of the reasons we are a free country.

I personally was very disappointed when Ecclesall Players stopped using the National Anthem at the beginning of their productions and felt that yet another British tradition had been lost. I do hope Toads will continue to play the National Anthem. Some people still feel this is important in the same way that Americans honour the flag. After all, here we have choice whether to stand or not and who knows? More people might choose to stand if given the chance and are not intimidated. If the Committee of TOADS stops the playing of the Anthem then we shall not have the choice shall we?

Doreen Gillatt

A New Solution

I think I have found a solution for TOADS to get rid of the National Anthem, in its place should be a classical anthem of Land and Hope and Glory which is much better. I do sympathise with Ms Street that the National Anthem is old fashioned and boring. Please give us a classical uplifting rather than gloom.

Paul Savage

Support your local shops

Neighbourhood Shopping Centres in all areas struggle hard to survive now that Supermarkets seem to sell everything from newspapers to pharmaceuticals. To add to the problem, many people use the limited amount of parking outside shops as a 'park and ride' facility. This can have a great impact on local businesses as shoppers will understandably go where they can easily park.

Recently, the shops on Totley Rise have been affected by the seemingly never ending works by Amec. These works have added to the parking problems. Over the past few months, there have been many trials and tribulations for both traders and shoppers. People have had falls, cars have been damaged and services disrupted. During these difficult times, I have been listening to traders and liaising with Amec. The work outside the shops is nearly completed. I hope you will continue to support local shopping areas which not only provide excellent personalised services, but also help to reduce our carbon footprint.

Unless we give our full support to local shops and businesses, the old maxim 'use it or lose it' could very easily come true.

Councillor Anne Smith

Coffee, Cakes and Cuttings

This is a preliminary notice to say that this annual event will be held at the English Martyrs Church, Baslow Road on Saturday, 17 May 10am to 12noon. Any donation of plants, cakes, books and bric-a-brac will be most welcome. The main beneficiary, as usual, of this event is Transport 17.

TOTLEY ALL SAINTS SCHOOL REUNION

At the Fleur De Lys Totley on Monday 14th April 7-30pm onwards.

For pupils who left around the late 1940s early 1950s.

We look forward to seeing as many old friends as possible.

LOCAL STREET NAMES

Overdale Gardens, Rise

From an old house nearby called Overdale. Up to his death in 1909 it was the home of William Richards, well-known pawnbroker.

Oxclose Avenue

From a Bradway field name which was in use in the 16th century and possibly earlier. There was also an Oxclose Farm.

Parkers Lane

There have been several well known people called Parker living at Dore, including 2 vicars, but this lane seems to have been named after Elisha Parker, farmer and post office keeper in the village from 1860s to 1890s.

Penny Lane

The word penny occurs quite often in English place and field names – Penny Hill, Penny Croft, Penny Piece etc. It usually indicates that in ancient times the land referred to produced a rent of one penny.

Prospect Court Drive, Place, Road

Were all built on sites which commanded good views. Because of Sheffield's hills a good many building sites had commanding views so Prospect was popular 19th century street name. Prospect

Road was first called Bradway Bank. It was renamed in 1937.

Quarry Road

Was built near an old quarry.

Rosamond Avenue, Close, Court, Drive, Glade, Place

Probably after Rosamond Hawksworth, who married Cyril Arthington of Hazelbarrow in 16th century. Rosamond was a Roman Catholic and she was named by the Earl of Shrewsbury in a list of "Popish Fugitives" he compiled for Derbyshire. She was one of several Norton people named.

Rushleigh Court, Rushley Avenue, Close, Drive, Road

From an old field name. When the field was offered for sale in 1878 it was described as "a close of land called The Rushley situated in the township of Dore and containing one acre, one rood and 8 perches or thereabouts."

Stocks Green Court, Drive

In the early 1800s Totley village stocks stood in what is now Totley Hall Lane but was then called Stocks Green.

Extracts from STREET NAMES OF SHEFFIELD by Peter Harvey, Sheaf Publishing, ISBN 1 85048 025 7 £17.95

"DEBBIE HILL"

Mobile Hairstylist

Phone 07977 969911
for an appointment

A revolution in recycling



Recycling without the chore? ...Yes please!

Recycling Revolution is a small family-run initiative taking the chore out of recycling for households and small businesses in the west of Sheffield by providing a

friendly and convenient collection service for glass, plastic, and metal recyclable waste.

The service includes the provision of easy to stow containers for glass, metal and plastic, which are delivered to your home, and collection of the recyclable material every week. The plastic and metal is given to a recycling charity called Reclaim, which provides employment to people with learning difficulties. The glass is taken to a South Yorkshire based glass recycling company.

The idea for a recycling collection service came to founder, Mark McCann of Meersbrook, in response to the problems faced by his friends and family who wanted to recycle but didn't have the time, transport or facilities within easy reach. By summer of 2007, what had started as favours for friends turned into Recycling Revolution. Today the service has a steady and loyal following, with new households and businesses joining on the recommendation of friends every month.

Over the course of a month, Mark collects from customers that include families, young professionals, disabled people, and the elderly, and delivers a tonne of glass, and mountains of plastic and metal to be recycled and turned into anything from cavity wall insulation, to fleece jackets.

The fact that Mark once made his living managing the tours of rock bands (let's face it, some of the most excessive people on the planet), makes his idea to set up Recycling Revolution all the more startling.

"My eco-history is as shameful as anyone's," Mark is happy to admit, "but when I realised how much of my black-bin rubbish was re-useable, I was converted. Making recycling easier for people that want to do it was the natural progression of this thought – because it's not always easy when you're busy running a business or a household for that matter."

Now Mark's black bin-rubbish, and those of the households he collects from is reduced by more than half – and the best bit is it's Mark that's got his hands in rubbish and not us!

Weekly recycling collections of glass, metal and plastic are priced at £12 a month for households and start from £30 a month for businesses.

For more information, contact Recycling Revolution at recyclingrevolution@blueyonder.co.uk or call Mark on 07973 343 458.

Re Farming Update

Whilst I understand that the motives behind the complaint against E Pocock (cruelty to animals) were done with the best of intentions, I would have thought that two investigations by the animal welfare organisations would have quelled any fears they might have had. Edwin was completely cleared of any cruelty whatsoever. I would also like to point out that thanks to him farming the land now and hopefully well in to the future, the land will be free from yet another housing development

J.Higgins

Third Totley Yard Sale

By popular demand!

Sell your surplus from your own front garden!
You don't have to travel - the customers will come to you.
And share a garden if yours is not convenient.

So clear out your house and take part.
You won't have the bother of loading up the car and doing an early morning car boot sale.

Sunday 6th April from 10.00 to 2.00pm

Advertising will bring punters from all over Sheffield because lots of Totley people will be selling on the same day.

We will charge £5 per seller. This money will go towards the **Totley Festival** in Greenoak Park on Sunday 22nd June.

If you want to take part, ring or email to register your name and address in preparation for the map and the advertising.

Jennie Street

Tel. 236-2302

jennie@hadish.f9.co.uk

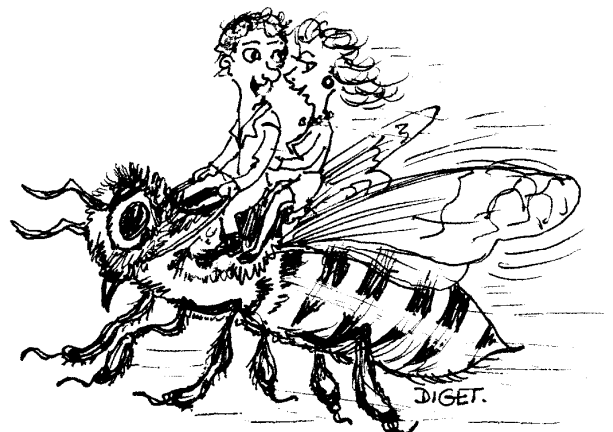
bring your £5 to 16, The Grove
for Totley Residents' Association

Crown Inn Cottage

The photo on the front page of the Totley Independent for February 2008 was the cottage at the bottom of Hillfoot Road, just below The Crown Inn and the person in the doorway was my mother's sister, my aunt, Alice Unwin, wife of Harry Unwin, better known by the older villagers as Goshen.

Stan Dronfield

Late resident of No 2 Summer Lane from 1944 until 1987



"I TOLD YOU I WOULD TAKE YOU HOME ON A TOTLEY BUZZ!"

We have recently opened a branch at 61 Baslow Road, Totley Rise.
If you are thinking of selling your property, we would welcome
the opportunity to give you a **FREE** valuation and discuss our fee
structure and personalised service options.

**SAVE UP
TO 50%
ON YOUR SALES FEES***

*50% saving based on other high street estate agents charging 1% or more

**SALES FEE
FIXED AT
0.5%**

MINIMUM CHARGE £995+VAT

MAXIMUM CHARGE £2,995+VAT

HIP FIXED AT £300+VAT

**"Don't put your property on the
market without first talking
to the Home Game"**

**Carlton Palmer
(Ex-England International)**



61 Baslow Road, Sheffield S17 4DL



Visit **www.thehomegame.net**
or call **0845 225 1777**

TURK'S HEADS IN A RUSH

On Friday 29th June, as part of the 130th anniversary of All Saints School at Totley, I led a party of 7 and 8 years old children on a 'Totley Tunnel Talk and Walk'. Starting from Dore station, I explained about the origins of the railway line running through the tunnel and along to Manchester, I also explained that at one time trains stopped at Dore on their journey towards London. That line had its own footbridge taking passengers over the line to a central platform. I asked the children to time the passage through the tunnel and the results varied between 6 and 7 minutes. We also took some strong torches to illuminate the bricks used in the construction.

At Grindleford, where we left the train, I pointed out where waiting rooms and toilets had been and then we looked at the rushing brown and white torrent coming down from Padley Gorge and various little streams swollen after the torrential rain which had flooded parts of Sheffield, South Yorkshire and many other parts of the country. We had a brief stop at the still-standing station and cafe before being picked up by a bus which took us to Longshaw - which the pupils had previously visited - it was a question of who was leading who. I explained about the origins of the Duke's Lodge and then we walked towards the Wooden Pole, an ancient boundary marker. We crossed to a saturated Totley Moss where all paths held lots of water which greatly entertained the kids as they hopped from one drier bit to another. I showed them how to stand on the tufts of rushes which flatten down and provide a bridge over the worst areas. The moors are crowded with these clumps which are known by some as Turk's Heads after the plumes that spring from the ceremonial helmets. Long ago, rushes were used as roof coverings along with straw and heather. We next examined the huge circular brick ventilation shaft to the Totley Tunnel and I explained how difficult it was to build the shaft and also how dangerous it is to maintain. We explored the surrounding tip of stone and earth and the children pointed out different bricks lying around, some of which may have come from the brickyard about a mile away. I thoroughly enjoyed their company. The children were quick to point out wild flowers, pieces of fossilised material, skylarks, kestrels etc., and I think they thought of this often grim moor as a place of great interest and fun.

By the way, it is easy to see the effects of four wheeled vehicles which combine with wind and rain to create ruts up to five feet deep. Please beware!

Eventually we arrived at the magnificent view point of Brown Edge where we could pick out cooling towers as far away as Lincolnshire. Then a downhill stretch through bilberry bushes, past the rifle range where the tunnel navvies had their huts between 1888 and 1894, and alongside the densely wooded and huge tunnel waste tip. Lastly it was a short uphill stretch through Bushey Bottoms and past the 1848 chapel which the school used as an overflow classroom. The children were absolutely great; I very much enjoyed their company and was most impressed with the quality of their questioning. Accompanying and helping us was Phil Coggins of the Babbling Vagabonds group who were very much involved in the Celebrations - he is great at drawing questions from the children. We also had Lynn, one of the class teachers, and several parents to help with the shepherding. Without them the trip with nearly thirty children could have been quite difficult. Oh yes I should thank the heavens for not



opening up on us, we actually had quite a bit of blue sky. WELL DONE Y4! I also took two classes (one at a time) on a local history tour pointing out the buildings, features and functions within a 300 metre radius. Again the interest shown by the children and the questions asked were a clear indication of the value of local history within the community.

The many other activities organised by Bev and her staff at All Saints School were quite astounding and I was amazed at how well parents and former pupils dovetailed together. No doubt there will be full reports elsewhere.

BRIAN EDWARDS

Totley Festival is coming again!

On Sunday 22nd June 2008 there will be a second Totley Festival in Greenoak Park.

This is just advance notice to anyone who would like to have a stall, help with preparation, run an event or take part in the sports or music competitions.

The Festival is being prepared under the the TRA by a group who would welcome any support and help you can give.

The 2008 Totley Festival should be bigger, better and more fun than 2007 - and without the "weather" we had last July.

The Music Truck for the rock bands has already been booked. So has the ever-popular Escafeld Brass Band and our local celebrity MC Jill Turner from Sheffield Community Radio.

This year the Festival will run for longer from 11-5pm as everyone said we needed more time as there was so much to see and do last time.

If you can help, have any suggestions or want a stall or to organise an event, contact:

Avril Critchley
Tel. 236-1568
Betty Higgins
Tel. 236-8984
Jennie Street
Tel. 236-2302

View from KES

CHARITIES

During the last few weeks of the Autumn term we raised money for two charities we have 'adopted' as a school. One is a local charity – HARC (Homeless and Rootless at Christmas) – that we have supported for the last few years. HARC provides shelter, food and friendship for people in Sheffield who have no home over the Christmas and New Year period (this help is also extended throughout the year). The second is to help build a school in a rural community in Uganda. Pupils from King Egbert visited the area in the summer as part of a World Challenge expedition. They spent two weeks helping with teaching and building a new classroom. The community needs more money to complete the school buildings. Schools there are very basic compared to what we are used to in this country, but our help can make a huge difference.

The Christmas Concert was held early in December, and on the last Tuesday of term pupils from Y7-Y9 ran a variety of stalls at the 'Christmas Cracker'. The idea of this event is to allow pupils to take responsibility for organising fundraising stalls (sideshows, games, sales of homemade food etc.) and to have fun at the same time.

Staff also raised money by busking at the Christmas Cracker and a 'Colleagues' Christmas Card' – instead of sending individual cards, staff made a donation and gave one card for a staffroom display of seasonal greetings.

On the last day of term we held the final of King Egbert's very own X Factor, which was organised by members of the 6th Form. 300 pupils paid on the door and packed the Hall to hear the five acts that had made it to the final. The winner was Sam Henderson of 7MSH, singing 'This Love'.

As a result of these events we were able to send a cheque for £700 to HARC, and we have also raised over £650 towards the Uganda school project.

The next fund-raiser for the Uganda school project is the Battle of the Bands, to be held in March.

'OXBRIDGE' SUCCESS

We have always been proud of the fact that we are a truly comprehensive school that does well for pupils of all abilities, including the academically most able. We have a special programme for supporting applicants to Oxford and Cambridge Universities. The Oxbridge application system is very demanding, involving individual interviews (which most other universities no longer do) and for some subjects additional university tests. Four of our pupils have been offered places at Oxford and Cambridge (two to study Natural Sciences, one for Maths and one to study Oriental Studies). Now they just have the small matter of achieving the required grades ('A's in all subjects!), and we wish them every success in doing so.

SUSPENDED TIMETABLE DAY

- On 12th December we had a Suspended Timetable Day, with different year groups taking part in a variety of activities.
- Y7 went to the English Institute of Sport for half the day for a series of PE aptitude tests, and spent the other half of the day ice-skating.
- Y8 had a PSHE day, focussing on Health (including Sex) Education, personal relationships with families and friends, and aspects of Citizenship which included talks by the local police.
- Y9 had a technology day, which involved designing and building various structures.
- Y10 pupils had a science day, spending the morning discussing issues involving genetics and carrying out practical work on DNA. Their afternoon was spent carrying out science investigations in order to complete GCSE and BTEC coursework.
- Y11 pupils weren't so lucky. They had mock exams.

Aladdin

Once more our pupils and staff did us proud in the Pantomime 'Aladdin' which ran for 3 nights (Wednesday 30th Jan-Friday 1st Feb). In my view and that of many others it was perhaps the best production (certainly the funniest) we have put on in recent years. Great credit goes to Di Nicholls, our Head of Drama who year after year continually manages to stage productions of outstanding quality.

ICELAND

The KES Geography department ran a trip to Iceland for the second time in October half term. 31 Geography students from Year 10 to Year 13 came on this memorable trip. Iceland has fantastic amazing natural features that it is not possible to see in the UK. The trip had many highlights, and each student has their own personal favourite sight or activity. They saw geysers, the rift valley where the Eurasian plate and the North American plate pull apart, awesome waterfalls, lava fields and an interesting lava tube, spectacular glaciers and an amazing ice-lagoon where part of a James Bond movie was filmed. Another highlight was looking for the Northern Lights at night whilst sat in geo-thermal hot tubs outside. They plan another trip to Iceland in 2009 for enthusiastic Geographers.

International links formed with the USA

We continue to forge strong links with galleries nationally and internationally. Through personal contacts we have recently received an invitation to take our students to the Judd Foundation in New York during our stay there. This is a unique opportunity for us to meet with the Director and have a personal tour of the former studio and home of the major minimalist artist Donald Judd. This will be part of our itinerary for our forthcoming visit to New York in March 2008. Information about the Judd Foundation can be found on their website www.juddfoundation.org

Sports Presentation Evening – 8th November

In November we celebrated our pupils' sporting achievements with our annual Sports Presentation Evening. Our special guest was ex-pupil and ex-world champion boxer Paul 'Silky' Jones who presented the awards and spoke of his motivation to become a champion. The major prizes were:

- Team of the Year: Y9 Boys Cricket
- Outstanding Individual Performance: James Milton
- Sportswoman of the Year: Emily Cain
- Sportsman of the Year: Matt Needham (Matt also won 5 MVP awards for other sports he has represented school in!)

LANGUAGES

Language teaching at Totley Primary is in its second year now and the progress the pupils are making is fabulous. Recent visitors to the school, one of whom was French, was particularly impressed with the Year 4 French class who couldn't wait to show off their language skills. They are working on making French signs to put up all around school to enable visitors from other countries to find their way around. They have been acting out role plays to ask and give directions this term and particularly enjoyed the lessons when they were directed to their very own cake shop and asked for, bought and ate a lovely jam tart! - all in French... very impressive!

Continued page 9

Spanish is still being received with enthusiasm and the year 5 class recently learned how to make Gazpacho after tasting the one I made in class. They learned all the ingredients in Spanish, tasted it and then gave opinions in Spanish, opinions were mixed.... not quite the same in cold Sheffield in November as Sunny Spain in July!! but we all had fun. Lots of language activities are planned for all year groups during the run up to Xmas and most will be performing some language songs and plays for pupils and parents for their Xmas concerts. It is lovely to be working with enthusiastic pupils and supportive staff and this partnership with our feeder schools will have long term benefits for everyone. This term sees Totley All Saints and Dore Primary enjoying Key Stage 2 languages too so we really are at the forefront of MFL development in our local community.

Mrs. D. Knights. (Teacher of MFL)

and finally.... King Ecgbert School appointed a new deputy (my replacement) on Thursday 31st January – Pepe Di Iasio who currently works at a school in Doncaster and will take up post after Easter.

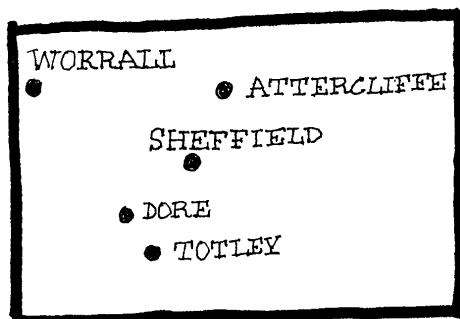
I am moving on to take up a Headship at St Mary's High School in Chesterfield. Can I take this opportunity to thank my regular readers and promise that we shall continue to supply articles, helping the wider community find out a little bit more about what goes on at KES.

Thank you, Sean McClafferty

Deputy Headteacher i/c Community and Technology College Status.

A BEARDED REMOVAL

Slogging away through my huge collection of files, mostly on Totley but occasionally sneaking into Dore, I came across a copy of a settlement certificate dated 15 February 1719/20. Thomas and Mary Beard from Dore applied to move to Worrall north of Sheffield. Why all this fuss over a change of



address? Well in 1662 an Act of Settlement stated that a stranger staying in a parish could be removed by the local Overseer of the Poor if he had no prospect of work within

40 days, or he was unable to rent property worth £10 a year. For example if a stranger came on a temporary basis - say to help with the harvest - he had to have a certificate from his home parish or township guaranteeing to take him back. After 40 days the stranger could claim settlement and become a charge on the poor rate. Persistent vagrants could be punished by transportation. There were some amendments made in 1697 whereby paupers and their families had to wear a capital P on their clothing (which sounds familiar!). If the instruction was not obeyed there could be loss of relief, imprisonment, hard labour or whipping.

Was this Thomas the grandson of Francis Beard a farmer who died in 1640 and whose will and inventory are recorded in 'Seke In Body But Hole In Mind' published by Dore Village Society? Another certificate covers the settlement of Joshua Green (son of John of Totley) and his wife Barbara from Dore to Attercliffe.

Why did these people move; was it job opportunity. Do you know? If so write and tell us.

BRIAN EDWARDS

Zen – Updated

It's always darkest before dawn. So if you're going to steal your neighbour's newspaper, that's the time to do it

Never test the depth of the water with both feet

Before you criticise someone, you should walk a mile in their shoes.

That way, when you criticise them you're a mile away and you have their shoes

If at first you don't succeed, skydiving is not for you.

Give a man a fish and he will eat for a day. Teach him how to fish, and he will sit in a boat and drink beer all day

If you lend someone £20 and never see that person again, it was probably worth it

If you tell the truth, you don't have to remember anything

Some days you are the bug; some days you are the windshield.

Don't worry; it only seems kinky the first time

There are two theories to arguing with women. Neither one works.

Generally speaking, you aren't learning much when your lips are moving

Never miss a good chance to shut up

We are born naked, wet and hungry, and get slapped on our backside...then things get worse

Never, under any circumstances, take a sleeping pill and a laxative on the same night

Everyone seems normal until you get to know them.



Gardening Tips for April

March came in like a lion with wind and rain. Let's hope it goes out like a lamb as the old saying goes then we can get down to some serious gardening in April. It is a lovely time of the year, I always like this month, the winter is more or less over, the longer evenings give us a bit more time to get things done outdoors, things are starting to stir, daffodils, tulips, primroses are showing off, the fish are stirring and the frogs are at it. The roof on the barn is finished, the builders have done a great job reroofing, it looks very smart and is waterproof, one or two plants got squashed in the process, they are starting to recover already. The new hut base is well underway. I am a bit slower these days and working at ground level is painful and my back and wrists ache at the end of the day. I hope it will be worth the effort. The greenhouses are looking busy with seedlings looking very healthy, I will be putting more seeds in shortly cosmos, calendulas, night scented phlox, candy tuft love in the mist and a lovely selection of sweet peas. That should make the borders a bit more interesting. I will also be growing some vegetables and herbs; I will be looking forward to some tasty delights later in the season and maybe have some goodies for The Totley Show! I hope you are planning for this also.

The lawn is looking a bit sad at the moment. I will be giving it a bit of TLC in the near future. It will benefit from a good spring/summer feed, my friend down the road has moles and they are making tunnels into his lawn, we have set traps but they seem to go round them and the lawn has dips where the tunnels are, we will have to make a concerned effort to knobble them before the lawn is devastated. This garden game is one big battle what with aphids, slugs, pigeons, squirrels and now moles it is a wonder we have a decent garden at all. I suppose it gives us something to moan about. As I write, mid March, the weather is a bit cold and miserable. I have had to turn up the paraffin heater a bit or the seedlings will be checked and will take a bit of time to perk up when (if) we get some sunshine. The veg patch is nearly ready for planting, a layer of compost is next job and a test for lime content and the appropriate fertilizer added. Then I shall be planting in earnest. April is the month when you have to keep a wary eye on the weather as your plants start to shoot old Jack Frost can make a real mess of them if you have not given them a bit of protection, a cover or fleece or newspaper is usually enough. The birds are not eating much from the new feeders, I suppose they will use them when they have young ones, I will have to put up one or two more nesting boxes to encourage them, though the pigeons do not need much encouragement and we have a nice pair of collared doves who visit regularly, a couple of carrion crows come occasionally, they can carry off half a breadcake after a shaky take-off. I look forward to more birds coming soon.

April is a very busy month in the garden so get cracking and enjoy.

Flowers Prepare supports for your perennials especially the taller varieties such as lupin, delphiniums and oriental poppies. Complete the planting of herbaceous perennials; continue planting gladioli, corms for a succession of blooms. Alpine plants can be moved and replanted now, give roses a good feed, Tonks formula is recommended, this will encourage first class blooms right through the season. Sow hardy annuals, plant out sweet peas and give them a good supporting frame.

Pansies and violas can be planted now if they have been properly hardened off. A cool semi-shaded place will give a longer lift the flowers. Start dahlias in a frame, cover the tubers with light soil and water sparingly and keep well ventilated unless frost is forecast. Plant out antirrhinums and penstemon once they are hardened off, clematis can be planted now, a good pot grown specimen is best. Keep all beds weed free and mulch them to make it easier to retain moisture.

Vegetables Finish planting early potatoes at the start of the month, plant second earlies at the end of the month. Sow brussel sprouts late summer and autumn cabbage, cauliflower, in a seed bed, and small rows of lettuce and radish every 3 weeks to avoid a glut. Feed spring cabbage which are near maturity with a top dressing of nitrate of soda and hoe it in, and another dressing in 3 weeks time. Plant onion set 4 inches to 6 inches (10 to 15

cms) apart in rows about 30cms (one foot) apart. Prepare trenches for runner beans with plenty of humus and other moisture retaining material in the bottom. Sow parsley outdoors, do not forget that carrot fly grubs love parsley so make a fleece tent to prevent the fly getting to it. For those of you who grow celery prepare trenches now, unless you grow the self blanching variety. If you want a few early French beans sow a few now in pots, and place them in a greenhouse, they need about 13C (55F) to germinate, the seedlings will be hardened off later on for planting out late May. Sow main crop carrots thinly, in drills about half an inch (1cm) deep and 30cm (one foot) apart. If carrot fly is about make a fleece tent to prevent attack. Sow globe beetroot in a fairly sheltered border out of doors. It need not be a large sowing, as it will be followed by another one in May. Sow seeds 15cm (6 inches) apart in rows 30cm (one foot) apart. Sow seed in 3s and reduce the seedlings to one at each point later on.

Trees, Shrubs and Fruit Watch out for disease in apples and pears, if scab and mildew were present last year, spray when leaves start to show and continue this over one month, nimrod T or Supercarb should help to control it. Renew mulches round bushes and cane fruits and rhubarb. Make sure that newly planted trees and shrubs are kept moist during dry spells, forsythia, winter jasmine, flowering currant and other winter flowering shrubs can be cut back to within a few buds of the old growth once the flowers have finished. Prune late flowering clematis, also hybrid T and floribunda roses.

Greenhouse and Indoor Plants Sensitive plants should be shaded from strong sunlight, it is a bit early to use the side vents on your greenhouse as most plants hate draughts, particularly during early development. Prick off seedlings as soon as they can be handled carefully, do not let them get too deep rooted as this will cause them to check their growth when transplanted. Pot on seedlings pricked out earlier. Take cuttings of winter flowering begonia, rest freesias, lachemalias, arum lilies and cyclamen, place them on a shelf near the glass and gradually reduce the watering. Pinch out the tips of chrysanthemum cuttings on those required for spring flowering. Plant tomatoes, cucumbers, capsicum etc in a heated greenhouse, maintain a temperature min 55F otherwise wait a few weeks and buy plants ready brought on. Watch out for all the creepy crawlies and deal with them as soon as they appear, ants and woodlice can wreck a tray of seedlings overnight!!! Gently wash leaves of indoor foliage plants expect the furry leaf kind and put them outside in a warm rain shower. Pot on geraniums and young plants like begonias and gloxinias, feed established plants regularly, split up and re-pot ferns.

Lawns Keep all grass areas clean. Spike, aerate and top dress if you have not already done so. Start or continue routine mowing, deal with any moss patches as soon as possible, trim edges for that looked after appearance. Give a good dressing of fertiliser if you did not autumn feed last year and water it in well.

DO NOT FORGET THE TOTLEY SHOW IN SEPTEMBER.

The Totley Features Quiz

Totley has some interesting historical and quirky features scattered about, some in gardens, some on walls, some on roofs, and some in trees. All of them are visible from paths or pavements. Please do not knock on any doors for the answers, but you may need to search hidden corners and walk around looking carefully!

If you can't complete all of the quiz, send it in anyhow. The first correct or most complete winning entry to this quiz drawn out of a hat will win a programme with free entry to the Totley Open Gardens event on Saturday 12th and Sunday 13th July.

Please return your completed Quiz by June 30th so you have plenty of time to complete the Quiz.

Answers will be published in the September edition of Totley Independent.

1. What is the date (month and year) at the end of the words carved high on a beech tree near woods? "In loving memory of (names not visible) who fell to there (sic) death from this point in each others arms"

Answer:

2. What was the building dated AD 1887 used for originally?

Answer:

3. Where are three stone troughs now used as flower beds?

Answer:

4. How many flying insects feature on the black-painted gate at the end of a cul-de-sac?

Answer:

5. Which house has 17 chimneys?

Answer:

6. How many privet arches are there in Totley and where are they?

Answer:

7. Where is the cherry tree with the perfect "O" of lawn around it?

Answer:

More questions on next page



8. Where is Mr Plantpot trying to look like a snowman?

Answer:

9. Where is Hawthorn Cottage built in 1876?

Answer:

10. What and where are Vera and Doris?

Answer:

11. Where is the only oak tree remaining of all those that grew in Totley and gave the name to Greenoak Park?

Answer:

12. What is the address of the house named Ruskin Villa - one of Totley's connections with John Ruskin?

Answer:

13. What date is written on the inscription of the old school building?

Answer:

14. Where are the 4 monkey puzzle trees visible from the pavement in Totley?

Answer:

15. What house has a shrub for a shed roof?

Answer:

16. Where is the tree house on the corner?

Answer:

17. What three complete garden tools are built into a blue-painted gate at which address?

Answer:

18. What date is on the gatepost on Baslow Road, and what building does it refer to?

Answer:

Name:

Address:

Email:

Tel. No:

Please return to Jennie Street, 16 The Grove. Tel. 236-2302

If you want an electronic copy of this please email:

jennie@hadish.f9.co.uk

OLD TOTLEY by Jo Rundle

The Crown Inn was built on the old packhorse trail from Houndkirk moor passing through the village of Dore and the now extinct Bentley Hamlet and continuing up Town Street to Totley Village. From here it followed the track down (Totley) Hall Lane to Woodthorpe and, circling the edge of Holmesfield Park to Dronfield Woodhouse arrived at the Mother Church of Dronfield carrying the coffins of the deceased before Holmesfield was granted a licence for its own Public Burial Ground in 1836. The date 1813 would appear rather late until I am reminded some of the stories attributed to my GGGrt. Grandfather Henry Peat, who came to live at Stoney Ridge Farm near Fox House soon after the Dore Turnpike road was finished, and retold by my Grt Grandmother, Grt. Aunt Annie, Grt. Uncle Jack, my Mother and members of the Peat family. He was quoted as describing the Crown as a new building that replaced a smaller one, little more than a hut. Although it is better to be cautious of tales handed down from one generation to another by word of mouth (Oral History), there is the possibility that there was a previous Crown Inn.

Throughout the thirties the Crown was a popular 'Pub' especially for the youth of the village for, although not convenient for a casual drink, in the evenings and particularly at the weekends it was the meeting place for the youth of the village; the lads' pub. There were two very understandable reasons for their choice of venue, both of equal importance, for the Crown served beer from Truswell's small Brewery in Sheffield that suited their palates, and was considered by regular drinkers to be the best in the district. However, whether for convenience or cost, it was not served in the village. The Crown also had a piano and the youth of both Totley and Dore were singers; as soon as a few of them got together, whether it be in The Crown or The Devonshire Arms at Dore, it was only a matter of moments before the rafters rang to the tunes of Kathleen Mavourneen, Nellie Dean, The Old Organist, or The Farmer's Boy, and at Christmas the old carols of Richard Furness, 'Awake my harp my lute and cheerful voice', 'Hail delightful sacred morn', 'On the dew-besprinkled lawn', etc., often continuing their chorus in the houses of Dore well into the night.

No unescorted women, and never unmarried ones, frequented the Public houses until after WWII, and even into the 60's suspicious eyes turned on any female who ventured there alone, so I suppose The Crown really was the lads' paradise. It is therefore necessary for me to seek information from my brother that the publican in the thirties was Mr. Snowden, having taken over from Mr. Dungworth in the late twenties, when my Father rented the field behind the Crown to house his three nanny goats, a Billy goat, a shed full of hens and two ponies. In the early twenties it was also the weekend home for the pit-ponies when Elijah, 8yrs old, and I, 6yrs old, were allowed, under the guidance of Mr. Smith, the pit-pony man, to ride on the ponies from Strawberry Lea Pit into the field after the last shift on Saturday noon (sadly Elijah died suddenly a month before his 93rd. birthday).

The Fleur de Lys Inn in Hall Lane was quite different as it was also a brewery. I remember my Great-Aunt Alice, Granddaughter of John Green, telling me that there was believed to have been another Inn on the same site in the 18th.C, and during the passing years I have queried the possibility that a previous Inn/brewery may date back to the days when a mill and a brewery were two of the three credentials necessary for the Head of the Community to be granted the title Thegn, and the community to become a Vill (Village). Great Aunt Alice was the daughter of Arthur Green, John's son. She married my Great Uncle Elijah in 1878 and from 1885-1925 lived in Grange Terrace next to the Police Station. One day she described how she, age 10, and her sister two years older, being barred from the Bar downstairs after opening time, were lying on the floor in their bedroom, and peeping through the gaps in the old floorboards into the Bar below when in walked a man dressed in a flowing cloak and a hat like a highway-man Her sister was completely smitten by the handsome young man and said she was going to marry him. They met next morning to learn that he was the son of the Licensee of The Green Man Inn at Ashbourne; a Maltster who had called for the order for malted barley for brewing of ale. A few years later her sister did marry him.

The name Fleur-de-Lys is not the usual choice of name for Inns in England like 'The Crown', 'The Peacock' from the coat of Arms of the Duke of Rutland' or the patriotic 'The George and Dragon', therefore, it is possible that the original Inn was built in the years of French influence, for the 'Fleur di Lis was used in the coats of Arms of the Gentry and The Crown until the Reign of George III in 1760.

For explanation in the hope of not being boring, Childeric, King of a tribe of Salian Franks, died in 596 when his son Clovis inherited the Crown at the age of 15, which included the Treaty relations with the Roman Empire and special powers in that part of the Empire at Tournai. Clovis's first aim was to conquer the district between the Somme and the Loire, on the outskirts of Soissons defeated the army of Synagries the last representative of Roman rule in western Europe. Clovis married the Niece of King Gunther of Burgundy, Princess Cholilder, a Christian who tried many times to convert Clovis to Christianity without success, until after a memorable victory over the Alamannie, the most formidable of the barbarian invaders of Gaul, who were occupying the area between the Vosges, the Rhine, and Lake Constance. After this victory Clovis finally acknowledged Cholilder's God and was baptised by St. Remi, Bishop of Reims with 3000 of his warriors and in thanksgiving for the victory he is said to have gathered a bunch of wild lilies, known to us as Iris, which grew on the edges of the Rhine, and adopted them as his Emblem; the Emblem of the Frankish Crown. Louie VI used one on his Seal and coins; Louie VIII wore blue vestments embroidered with gold Lilies at his Consecration, and soon a blue shield sprinkled with gold Fleur-di-Lis was adopted as the Royal Arms. In 1376 Charles V limited the Fleur-dis-Lis to 3 in honour of the Holy Trinity and this association with the French Crown led to its inclusion in the arms of many Gentlemen and Municipalities in France. William of Normandy, as we all know, became the King of England bringing with him his own Coat of Arms, with the Fleur dis Lis. From the Derbyshire copy of the Domesday Book 1086 we know that Totley was a well established village, slightly bigger than Dore with whom the name was always associated, under Tholf the Thegn, who was also Thegn of Coal Aston. Other Villages as Barlow, Killamarsh, Old Tapton, Middle, Nether, and West Handley, Calow, Clowne, Ilkeston, naming just a few, were held by different Thegns, but all were under the same 'Holder' of the land; the King, whose Standard was used until the reign of George III in 1760 signifies that the latest date that a new Inn would be called the Fleur dis Lis would be 1759. When the properties and lands of the Manor of Dronfield were sold by Lord Middleton. John Green bought the Fleur de Lys, and after his death a number of short-term Licensees' and various members of his family continued to run it until early in the 20th.C and, although it was an Inn, not an Hotel, there were on occasions others staying there towards the end of the 19thC, but by this time, Inns were losing some of their original intention due to the advent of an expanding railway system.

To be continued.

Farming Scene

Following on from last month's theme of animal welfare and on-farm inspections, we have recently had two further visits from inspectors.

Firstly, about one month ago we had a routine inspection from a representative of the Environmental Agency. He was mostly concerned with pollution risks and waste disposal procedures. He spent about 1½ hours here checking our records of fertiliser, manure and herbicide application, as well as inspecting the buildings and yards for pollution risks. I am happy to report that our management procedures and record keeping were all up to legal requirements and no problem areas were identified.

Just today we have had a routine Farm Assurance inspection, where the inspector was mainly concerned with our animal welfare and husbandry practices. He spent about 2 hours here looking at the stock, the buildings, the sheep handling equipment and the plethora of records we now have to keep. Again, we passed the test with flying colours, and were in fact complimented on the quality of the stock and husbandry. So in a matter of one month's space we spent two half days preparing for, and escorting an inspector around the farm. Some of the areas they were querying were common to both inspections thereby covering the same ground twice. Once is obviously not enough in today's regulatory culture.

If I remember correctly, 168 new regulations have been imposed on the agricultural industry in the last three years. Is it little wonder that farmers are fed up with the constant form filling, record keeping and farm inspections. A major part of their time is now spent doing this rather than productive practical farming. In fact, it is now reckoned that there are more people involved in pen pushing duties dealing with these regulations and corresponding with and inspecting farmers, than there are actual feet on the ground, mucky handed farmers.

This is the crazy situation food producers now find themselves in.

On a more positive note, finished lamb and cattle prices have moved fairly rapidly upwards over the last 2-3 months, bringing the cost of production and sale value more into line. There is a way to go yet, but things are definitely moving in the right direction. Not good news for the consumer in the short term, but should ensure continuity of supply in the longer term as consumption continues to grow faster than production.

Our Texel ewes have now been brought inside ready for lambing. I have told them firmly that no arrivals will be tolerated over the Easter period, (they are due to start on the 26th) but I doubt if they will take any notice of me!! Hopefully, the weather will pick up after Easter so that we can soon return the 'mums and tots' to the field. There is already a fair covering of grass but the ground really needs to dry out before they are put out so they do not get their feet too wet and muddy. Not only do they suffer from these conditions, but the ground takes a long time to recover as well.

One final point.

Dog owners – please keep your dog on a lead when walking through a field with sheep.

Many hundreds of ewes and lambs are killed each year by dog attacks. By being 'kind' to your dog and letting it roam free, you may be guilty of animal cruelty to the sheep you are passing.

So please, to save yourself, your dog and the sheep from any stress or injury, obey the countryside code. All dogs must be on a lead when in an area where there are sheep.

A Night at the Music Hall

Hello! Well Xmas seems a distant memory doesn't it? We at Vulcan Varieties started very early in January, sketching in the framework for our new Production to be ready for early summer bookings. This started with a "brainstorming" session of ideas that the membership thought would make an entertaining show. Mind you, "brainstorming" would probably be too grand a word for the occasion; pencil chewing and lots of "Err... Umm, and What about ..." would be closer to the truth! However, with perseverance (and lots of tea and laughs) we finally decided on the themes, topics and daft situations that we could offer up to an unsuspecting public!

This is fine on paper, but then reality closes in! The bigger the ideas, the more props, costumes and assorted "also rans" are required to fulfil the bright sparks that you have just decided upon. So people are now chasing about making costumes, searching shops, cellars/garages, and elderly relative's attics for particular things that are vital for the show.

I personally have been involved in getting an Edwardian-style frock coat, and a dickens of a job it turned out to be. The size/price ratio wasn't rational at all; for example, £220 for a coat that I couldn't get into, let alone fasten! I was half expecting "Suits you sir" to come into it!! However, I am now fixed up with a nice coat, obtained at a very sensible price. At the other end of the scale, I got from a charity shop, a super, sparkly black/green cummerbund and bow tie, still in it's box for £1.50!

I had to smile whilst watching Antiques Roadshow from Sheffield the other Sunday, when the 'customer' brought his collection of Music Hall/Theatre posters to show. They were very interesting memorabilia, and I applaud the chap's enthusiasm for his hobby. However, the "expert" drew our attention to the fairly low billing of Morecambe & Wise on one of the posters, and suggested that it was obviously early in their career. This is quite true, as I saw them at Scarborough in 1953 (?) and they were hopeless!! On the same show were David Nixon (Comedian/Magician) and a young man who drew caricatures of "Celebrities", then did impersonations of 'em... Very good! He went on to have a fairly well documented relationship with a young lady singer, who later became a World Wide megastar. Whatever happened to him I wonder?

There- are one or two more bookings in the pipeline, so I will let you know for certain later on, but if anyone wants any information, please contact me on 236 6891.

Tony Reynolds



Dore Art Group will be holding their Annual Exhibition of members' paintings

In

"The Old School"

Dore

On

Friday 18th April 2008 – 2.00pm to 6.00pm

&

Saturday 19th April 2008 – 9.30am to 5.00pm

All visitors will be welcome and there will be refreshments.

Admission is free.

This is an excellent opportunity to view or to purchase works by local artists.

Your support has been appreciated in previous years.

Please come again.

Totley Open Gardens

Dates for your diary:

This year the Open Gardens event will be

Sat. 12th and Sun. 13th July

We have some great new gardens taking part. If you also are interested in opening your garden please contact

Jennie Street

Tel. 236-2302

jennie@hadish.f9.co.uk



Seed swap

If you come along to Totley Festival in Greenoak Park on Sunday 22nd June, you might like to bring along some packets or bags of seeds that you have a surplus of.

In exchange you can take away some different seeds that you fancy growing.

The Seed Swap will be beside the Plant Stall, so come and get some new inspiration for your garden!

For more information

Christine Shimell

236-1631

c.shimell@virgin.co.uk



Mark and Sally Fletcher invite you to

The Grouse Inn

Longshaw

Sheffield S11 7TZ

Meal times:-

Mondays 12.00 to 2.30pm

Tuesdays to Friday's 12.00 to

2.30pm and

6-30pm to 9-30 pm

Saturdays 12.00 to 3.00pm

and

6.30pm. to 9.00pm (drinks – open all day)

Sundays 12.00 to 9.00pm

Phone 01433 630 423

*One man went to mow...
...but his mower wouldn't go!*

Now is the time to call

MOWER MENDER

and be ready for the forthcoming growing season.

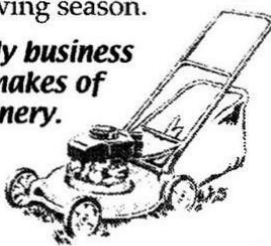
A local friendly business servicing all makes of garden machinery.

Phone:

0114 236 6958

Mobile:

0781 2211149



*Blade Sharpening and
Collections & Delivery Service Available*

R Rose & Co

Chartered Accountants & Business Advisors

Specialists at
looking after the affairs
of small businesses.

For a **FREE** initial consultation
please contact Roger Rose FCA on
0114 281 2331

From business start-ups and general accounting, to support and advice in business development and strategy, we pride ourselves in our personal one-to-one service. To find out more please call 0114 281 2331.

213 Derbyshire Lane, Norton Lees, Sheffield S8 8SA
Email: info@r-rose.co.uk

EVENT VENUE FOR HIRE

Our nativity barn has 2,500 square feet of concrete floor area and is available for hire from May till November

On site car parking for 30 plus cars

Mains services, new toilets, disabled access and facilities

Tables, chairs, audio equipment, tiered seating, staging etc can be provided

Suitable for table top sales, gigs, barn dances, farmers markets, antique fairs, dog training events & public meetings.

You name it, we can probably host it

Reasonable rates.

For more information give Edwin a call on 2364761

Or view www.totleyhallfarmenterprises.co.uk

Creating opportunities with disabled people.

Registered Charity No. 218186

Leonard Cheshire Disability

Leonard Cheshire Services in Offers choice & opportunity to people with disabilities.
A Specialist Unit for the Younger Disabled.
Residential & Respite Care – Single Rooms
Day resources – Aromatherapy –
Reflexology – Physiotherapy – Toning
Tables.

Activities include: - Arts & Crafts –
Computers – Cookery – Shopping
Expeditions – Theatre Outings – Church.
Further details can be obtained from –
The Service Manager, Mickley Hall,
Mickley Lane, Totley, Sheffield S17 4HE.
Tel. 0114 236 9952
Fax. 0114 262 0234

The Care at Home Service supports disabled people who wish to remain in their own homes.

We provide flexible care packages from 1 hour to 24 hours meeting individual needs. The service operates throughout Sheffield.

Our service includes: - help with getting up and going to bed, dressing, washing, bathing, shopping, cooking, light household duties.

Further details from: -
The Care at Home Manager
Tel. 0114235 1400
Fax 0114 235 1499



**The Official Physiotherapy clinic for
the Sheffield Steelers Ice Hockey Team.**

Treatments available for sports injuries, back & neck pain, joint problems, muscle & ligament strains, repetitive strain injuries, post operative rehabilitation, headaches & acupuncture.

Clinic registered with major insurance companies, can claim through the Westfield scheme.

Ring Andy for more information:

0114 235 7845 or 07901 968549

Domestic electrical work carried out by City & Guilds and
'Part P' qualified

LADY ELECTRICIAN

- * House rewires * Replacement fuse boards
- * Outside lighting * Porches * Deck lights * Sheds
- * New sockets * Lights * Switches * Telephone points

Brighten up your house
for Spring!

ring Mandy on 07788-544225

All domestic electrical work undertaken – no job too small.
Quotes are free of charge and carry no obligation.



AA
driving school

pass

with your local AA driving school instructor

- Fully qualified driving instructor
- Fast track or easy pace tuition
- Block booking discount

Ian Radford 0114 235 1153

AA driving instructors are self-employed franchisees and all contracts for the provision of driving tuition are between the pupil and instructor. Full terms and conditions at www.AAdrivingschool.co.uk

DO YOU NEED HELP? LET US DO YOUR:

WAGES/SALARIES, CONSTRUCTION INDUSTRY RETURN

**VAT Returns, Annual Accounts/Tax Returns
Business Plans/Start ups**

FULLMARK ACCOUNTANCY SERVICES ACCOUNTANTS AND BUSINESS ADVISORS

TELEPHONE 0114 262 0399
EMAIL: alan@fullmarkaccs.co.uk

TOTLEY BASED



Your local Rose's Bread stockist

Coffee Shop now open

Monday to Friday 8am to 4pm, Saturday 8am to 1pm

51/53 Baslow Road
Tel: 236 4238

MALLORN

ROOFING CONTRACTORS

**REROOFS • ROOF REPAIRS
FLAT ROOF • GUTTERING**

**0114 235 6002
078533 350085**

7 DALEVIEW ROAD, BEAUCHIEF

RICHARDS TELEVISION, SATELLITE, VCR, DVD REPAIR OR INSTALLATIONS

- City & Guilds London Inst. Fully Qualified.
- Over 25 Years Professional Experience.
- Most Makes & Models Repaired. No VAT.
- For Prompt, Friendly Service Ring

0114 2876806

Ask for Richard. Ex Bunker & Pratley.

Catherine Clarke

Qualified Chiropodist

Westfield Accepted

192 Baslow Road
Totley
Sheffield
S17 4DS

M.S.S.Ch.
M.B.Ch.A.
S.R.N.

Telephone
Sheffield
2364101

SLIMMING WORLD

10 WAYS TO MAKE SURE IT WILL BE THE LAST TIME LOSING WEIGHT IS YOUR NEW YEAR RESOLUTION. THIS TIME MAKE IT LAST FOREVER

1. Focus on your weight loss goal and prioritise it.
2. Be sure you really want to lose weight for yourself. Doing it to please someone else may only lead to short term weight loss.
3. Take advantage of all the group support at your local Slimming World class. Even if you are not a 'joining in' person, you'll be surprised how motivating it is.
4. Accept that you will have ups and downs in your weight loss journey, and be forgiving of yourself if you hit a difficult patch.
5. Listen to your 'inner script' and make a conscious effort to talk to yourself in a positive, encouraging way.
6. Keep up your interest in your healthy eating plan by trying new foods, new recipes, and new ways of using your Sins. This will help you avoid getting in to a dieting rut which can be boring and demotivating.
7. Be honest with yourself about what you are expecting from your weight loss and how you are getting on with Food Optimising week by week. People who set unrealistic targets for weight loss or body shape are more likely to give up than those who set achievable targets and share their ups and downs.
8. Go back to your class even after (especially after) you've had a weight gain. You will not be judged, just helped and supported.
9. Keep setting new goals and rewarding yourself for milestones until you reach your target weight, and afterwards!
10. Don't put your life on hold until you've lost weight. You can still enjoy life and lose weight. Think of your dreams and ambitions and bring them to the fore. The positive feelings you get from starting to 'live a little' can only help your motivation and your weight loss.

Group details:

Bradway Annexe, Sheffield 17 - Thurs. 5pm and 7pm (6 times award winning group)

Dore Old School, Sheffield 17 - Tues. 5.30pm

The Michael Church, Lowedges Rd, Sheffield 8 - Wed. 10am

Telephone consultant Alison Murphy (01246) 410145 for further information.

PhysioFOCUS

at Totley Rise Dental Practice
85 Baslow Road,
Sheffield, S17 4DP



Physiotherapy treatment available for:

- Back and neck pain
- Sports injuries
- Sprains and strains
- Joint and muscle pain
- Arthritic pain
- Whiplash
- Repetitive strain injury
- Headaches

Appointments: 0114 2360333

Also available:

- Pilates classes
- Pilates 1-2-1
- Golf Fitness Screening
(as used by consultants to UK, European and Australian PGAs)

For more information please call:

Emer on: 07792 422909

Rachel on: 07956 908454

We have a few vacancies at the moment in our
Gentleman's Snooker Club
in Millhouses

Comfortable environment with 4 snooker tables
Low Annual Subscription and no extra playing charges



Contact: Sheffield 236 1601 or 236 9008
for further information.

Would you like someone to

Type letters? Pay bills? Help record family memories?
Sort and file papers? Prepare an inventory?
Anything else ???

Then you should call

Secretarial and Administrative Services

Swift, efficient, confidential service at your home.

Pay-as-you-go.

Ring us on 0114 235 0071



Tel/Fax: (0114) 255 4689

Mobile: 07831 802539

TRISTAN SWAIN

LANDSCAPING AND MAINTENANCE

72 Nettleham Road
Sheffield S8 8SX



LADIES FASHIONS

SKIRTS, JUMPERS
T-SHIRTS,
TROUSERS
HABERDASHERY
& ALTERATIONS

DRY CLEANING
SERVICE
LAUNDRY SERVICE

ROSIES

164 BASLOW ROAD, TOTLEY.
TEL: 26 21060



M. Scriven
(FRUITERAMA)

MARTIN SCRIVEN

HIGH CLASS FRUIT
& VEGETABLES

37, Baslow road

Tel. 236 7116

Orders Delivered



Allweld Forge Ltd

Bespoke hand made wrought iron
BAY WINDOW CURTAIN POLES

Large choice of finials and brackets

Also gates, railings, furniture etc.

Unit 3, 300, Archer Road, Millhouses S8 0LA

Next door to Thomas Fencing

Phone/fax 0114 2368239

email: sales@allweldforge.co.uk

Website: allweldforge.co.uk



LIBERTY FOODS

Caterers
Quality Meat Shop
& Fresh Farm Produce

Fresh and Frozen Prepared Meals

Fresh Meat and Poultry

Outside Catering

Home Delivery

253 Baslow Road, Sheffield, S17 4DU

Tel: 0114 2360 583

Mobile: 07801 346 455

R.M.M BUILDING SERVICES

25 YEARS EXPERIENCE

All types of building work carried
out including- Drop kerbs, block paving
(drives, paths, etc), extensions, general
building repairs and maintenance.

Phone Rob on- Mob- 07906108567

Home-2352190



D.T. TAYLOR

DRIVING INSTRUCTION

Driving Standards Agency Approved Driving Instructor (Car)

South Sheffield & North Derbyshire

Discounts for Students and Block Bookings

Phone: 0114 236 8094

www.dttaylor.net

R.S. HEATING & BUILDING CO

EST. 1971

HEATING DIVISION:

Experienced Installers of condensing,
combination and regular boilers.

Systems fully guaranteed.

Complete after sales service.

Also Bathrooms, showers
and small plumbing works.

BUILDING DIVISION:

Loft conversions, House
renovations including general
building, joinery, plastering,
electrical decorating etc.



62 Machon Bank, Sheffield, S7 1GP

Tel : 0114 255 9425

Fax 0114 255 9431

Email: enquiries@rsheatingandbuilding.co.uk

Web: <http://www.rsheatingandbuilding.co.uk>

Pronfield Landscapes



Gardens cleared and maintained, Lawns mowed,
Turving, Tree felling & pruning, Hedges trimmed &
reduced, Pond maintenance, Fencing etc.

for free quotation call

Chris on: (0114) 2746158 Mobiles: 07976072785 or

Richard on: 07789497104

8am-6pm mon-fri

Hazel Barrow Farm, Norton S8 8BA

Nigel Watson

Carpenter & Joiner
Doors, locks, floors, architraves, skirting boards,
stairs, stud walling, boxing off etc

No job too small

For a reliable, quality service

Tel: 0114 236 4778

Mobile: 07971 528149



Got a computer?

Having Problems?

Is it running slow? Stops responding?
Having problems running the latest games
or applications? Broadband installation?

Give me a call!

I'm available for home visits at any time
including evenings and weekends. I can
also suggest upgrades to improve perform-
ance, or even build you a system to your
specific requirements.

Tim Brown

Building,
Installation,
Upgrading and
Troubleshooting
Computer
Systems at
Reasonable
Rates

Phone: 0114 2472619 Fax: 0870 7060080

Mobile: 078 17464703 Email: service@timbrown.plus.com

RUBBISH REMOVED

*Environment agency registered.
ID shown at door.*

Beds, settees, garden and DIY,
Washers, Baths, carpets, furniture,
Cookers Garages cleared, broken
sheds and fencing removed.

Free quotes! Genuinely no obligation!

Tel: Mick 0114 2681330

Mobile 07710 446438

Established five years.

Courteous reliable service.

http://uk.geocities.com/draggletail_waste_services/



Central Heating
Domestic Plumbing
Glazing, Double Glazing and Glass
House Maintenance
UPVC and Wood Windows & Doors
Mini Digger & Driver, Muck Shifts, Footings Etc.



TOTLEY PRIVATE HIRE

*PROFESSIONAL CAR SERVICE
FOR
AIRPORTS & LONG DISTANCE
TRAVEL etc.*

Tel: 0114 - 2361547
Mobile: 07974-355528

DON ALLOTT Gents Hairdresser

**At PATRICIA BARBER'S
53 Wollaton Rd, Bradway**

Tele: 0114 2366247

Working times now are:

Thursday & Friday

9-00am-5-00pm each week

Plus the first Saturday in

Each month. 8-00am-1-00pm



APPLE LANDSCAPE & FENCING SERVICES

QUALITY SERVICE AT AFFORDABLE PRICES

**Patios • Paths • Walling • Turfing
• Railway Sleeper Beds • Garden tidy ups etc.**

*Fencing & Gates Supplied Only
or Supplied & Fitted*

Only Quality Materials Used

FULLY INSURED

Call for free quote

01246 237505 • 07782 167540

**How many times have you
said - I wish I could...**

*Hypnosis for weight loss, stress, pain,
smoking, sleep, fear/phobia and more...*

Call 235 1985 (Totley)



Paul Peace

Sheffield
Hypnosis

www.sheffieldhypnosis.co.uk

GHsc

VALIDATED PRACTITIONER
General Hypnotherapy Standards Council



Karen Bartle

HEARING AIDS

MAURICE NAYLOR MBSHAA RHAD is your local
hearing aid specialist and at your request will test
your hearing in your own home, free of charge,
and if needed you can try a custom made aid for
four weeks without obligation to purchase.

In the ear digital from £495

Tel: 0114 262 0010

4 Twentywell Drive, Bradway

FOR SIX GENERATIONS

THE LEADING FUNERAL DIRECTORS

John I'leath & Sons

**PROMPT and COMPREHENSIVE SERVICE
AT ALL TIMES**

☎ 2 722222

LIMOUSINES FOR SPECIAL OCCASIONS

Painting - Wallpapering - Tiling - Flat Packs & many more

**DIY JOBS NEED COMPLETING
READY FOR SPRING ?
NO TIME OR TOOLS FOR DIY?**



**Exclusively for the Dore, Totley & Bradway
areas high quality home handyman, house
maintenance & decorating services.**

- LOCAL, RELIABLE & TRUSTWORTHY
- NO JOB TOO BIG OR SMALL
- FREE WRITTEN ESTIMATES
- COMPETITIVE PRICES
- NO CALL-OUT CHARGES
- NEW OR UNFINISHED PROJECTS
- FULLY INSURED & GUARANTEED

**FULL DETAILS OF TASKS UNDERTAKEN ON
WEBSITE OR PLEASE JUST PHONE & ASK!**

Call Paul Wharton on

Tel.: 0114 236 2556

Mob.: 0797 403 1134

E-mail: paul@dorehandyman.co.uk

Website: www.dorehandyman.co.uk

Gutters cleaned/replaced - Simple Plumbing & Electrics

Lay Laminated Wooden Floors - Hang curtain, picture & dado rails & shelves

UPVC cleaning - High-pressure jetting - Telephone Extensions - Audio Visual

TOTLEY & DISTRICT DIARY

MONDAYS	COFFEE MORNING , All Saints' Church Hall, 10am to noon
TUESDAYS	COFFEE MORNING , Totley Rise Methodist Church Hall, 10am to noon. CRAFT GROUP , Totley Library, 2pm.
WEDNESDAYS	COFFEE in the LIBRARY , 10am. to 11.30am. TOTLEY RISE METHODIST PLAYGROUP , Grove Road 9:30-12.00, Phone: Judith 236 3456 or Gill 236 1373 TODDLER GROUP , 10-00 a.m. to 11-30 a.m., All Saints' Church Hall. Details tel. Mel 236 6300 HEALTH WALKS , 10-30 a.m., Totley Library foyer. Phone Sue, The Health Walk Ranger: 0114 283 9195 MODERN SEQUENCE DANCING , All Saints Church Hall, 2 nd & 4 th Saturdays, 8pm. to 10pm.
THURSDAYS	TOTLEY RISE METHODIST PLAYGROUP , Grove Road 9:30-12.00, Phone: Judith 236 3456 or Gill 236 1373 NCT COFFEE GROUP FOR DORE TOTLEY & BRADWAY , 10.00-12.00, For mums & babies/toddlers, meeting in various locations, Phone Sally Spearing 236 2604 for further details (email: sally@spearings.me.uk) PUSHCHAIR CLUB , Totley Rise Methodist Church Hall. 1.30pm.. to 3pm. Tel. 2363157 for further details. CHAIROBICS , Totley Library, 2pm to 3pm. £1.
SATURDAYS	PILATES CLASS , United Reformed Church, Totley Brook Road, 6.15-7.30, Phone Emer Coffee 07792 422909 MODERN SEQUENCE DANCING , All Saints Church Hall 2 nd . And 4 th . Saturdays 8pm. to 10pm.

APRIL 2008

SAT 5th SATURDAY NIGHT LIVE, Heatherfield Club, Russell T Bird, Baslow Road. 8-30 pm. Non-members welcome, small charge on door.
SUN 6th TOTLEY YARD SALE, 10am – 2pm, see page 4 for more details.
SUN 6th CASTLETON FARMERS MARKET, the Village Hall, 10.00 am – 3.00pm
SUN 6th MINIATURE TRAIN RIDES, Abbeydale Road South, First train 1 p.m. – last train 5 p.m.(weather permitting) www.sheffieldsmee.co.uk
MON 7th TRA AGM, Totley Library 7:30pm, all welcome
TUES 15th TOTLEY TOWNSWOMEN'S GUILD, 'Support Dogs', Mrs.J.Whitman, Totley Rise Methodist Church Hall, 10.00 am
WED 16th TOTLEY HISTORY GROUP, Totley Library, 7.30 pm, all welcome.
FRI 18th 2pm-6pm & SAT 19th 9.30am-5pm ANNUAL ART SHOW, Dore Old School, all visitors welcome, works for sale. refreshments available, admission free
SAT 19th SATURDAY NIGHT LIVE, Heatherfield Club, Michael J Oliver, Baslow Road. 8-30 pm. Non-members welcome, small charge on door.
SUN 20th MINIATURE TRAIN RIDES, Abbeydale Road South, First train 1 p.m. – last train 5 p.m.(weather permitting) www.sheffieldsmee.co.uk
SUN 27th SHEFFIELD FARMERS MARKET, 10.00am-4.00pm, Barkers Pool

MAY 2008

THU 1st – MON 5th CONTINENTAL MARKETS, Sheffield Fargate
SAT 3rd SATURDAY NIGHT LIVE, Heatherfield Club, Jeff Michaels, Baslow Road. 8-30 pm. Non-members welcome, small charge on door.
SUN 4th & MON 5th (BH) MINIATURE TRAIN RIDES, Abbeydale Road South, First train 1 p.m. – last train 5 p.m.(weather permitting) www.sheffieldsmee.co.uk
WED 7th WEDNESDAY FRIENDSHIP, "Work and Play in the Steel City", Martin Olive, Totley Rise Methodist Church, in the Church Lounge, 7.30 p.m.
WED 14th – SAT 17th T.O.A.D.S. SPRING PRODUCTION, 'An Eye for an Eye, Darling', St Johns Church Hall, 7.30pm tickets, 236 6891
FRI 16th & SAT 17th JOHN WADE SINGERS, 7.30pm, Trial by Jury and Musical Melodies, Millhouses Methodist Church £6.50 from 0114 236 0798, 01426 416364
SAT 17th SATURDAY NIGHT LIVE, Heatherfield Club, John Clifford, Baslow Road. 8-30 pm. Non-members welcome, small charge on door.
SAT 17th COFFEE, CAKES & CUTTINGS, 10.00-12noon, English Martyrs Church
WED 21st WEDNESDAY FRIENDSHIP, "Prince of Scandal", Kenneth Loxley, Totley Rise Methodist Church, in the Church Lounge, 7.30 p.m.

THE INDEPENDENT FOR MAY

The next issue of the Totley Independent will be available from the usual distribution points on

SATURDAY 3rd May 2008

COPY CLOSE DATE for this issue will be SATURDAY 19th APRIL 2008

Editor Ian Clarke Tel. No. 235 2526. Email iangclarke@hotmail.com
Advertising & Distribution, John Perkinton. Tel. No. 236 1601.
 Email johnandpaulineperkinton@talktalk.net

Items for publication may be left or sent to 2, Main Avenue, Totley, Sheffield, S17 4FG or Totley Library

PRINTED by STARPRINT

B . K . JEAVONS PAINTER & DECORATOR



**Interior
Exterior
Decorating
No job too
small.**

**86, WOLLATON ROAD
BRADWAY
SHEFFIELD, S17 4LG
Telephone 2350821**

Starprint

601 Abbeydale Road, Sheffield 7. Fax: 0114 258 8599

DESIGN & PRINTING of

- LETTERHEADS • BUSINESS CARDS •
- BOOKLETS & PADS •
- INVOICES • LEAFLETS •
- CARBONLESS SETS • BROCHURES •
- RAFFLE TICKETS •
- WEDDING STATIONERY •
- ENVELOPES & POSTCARDS •

**SPECIALISTS IN THERMOGRAPHY
FOIL BLOCKING AND ENCAPSULATION**

**0114 258 0707
For a Quick Quotation**



For
Windows
With Style

**Sheffield Factory Showroom
106 PROSPECT ROAD
HEELEY, SHEFFIELD**

**Sheffield (0114) 258 5496
Rotherham (01709) 512113**

We welcome letters about local affairs and will publish as many as possible. However the views expressed are not necessarily those of Editor, editorial staff or the Totley Residents Association and must not be imputed to them. © Totley Residents Association 2008.