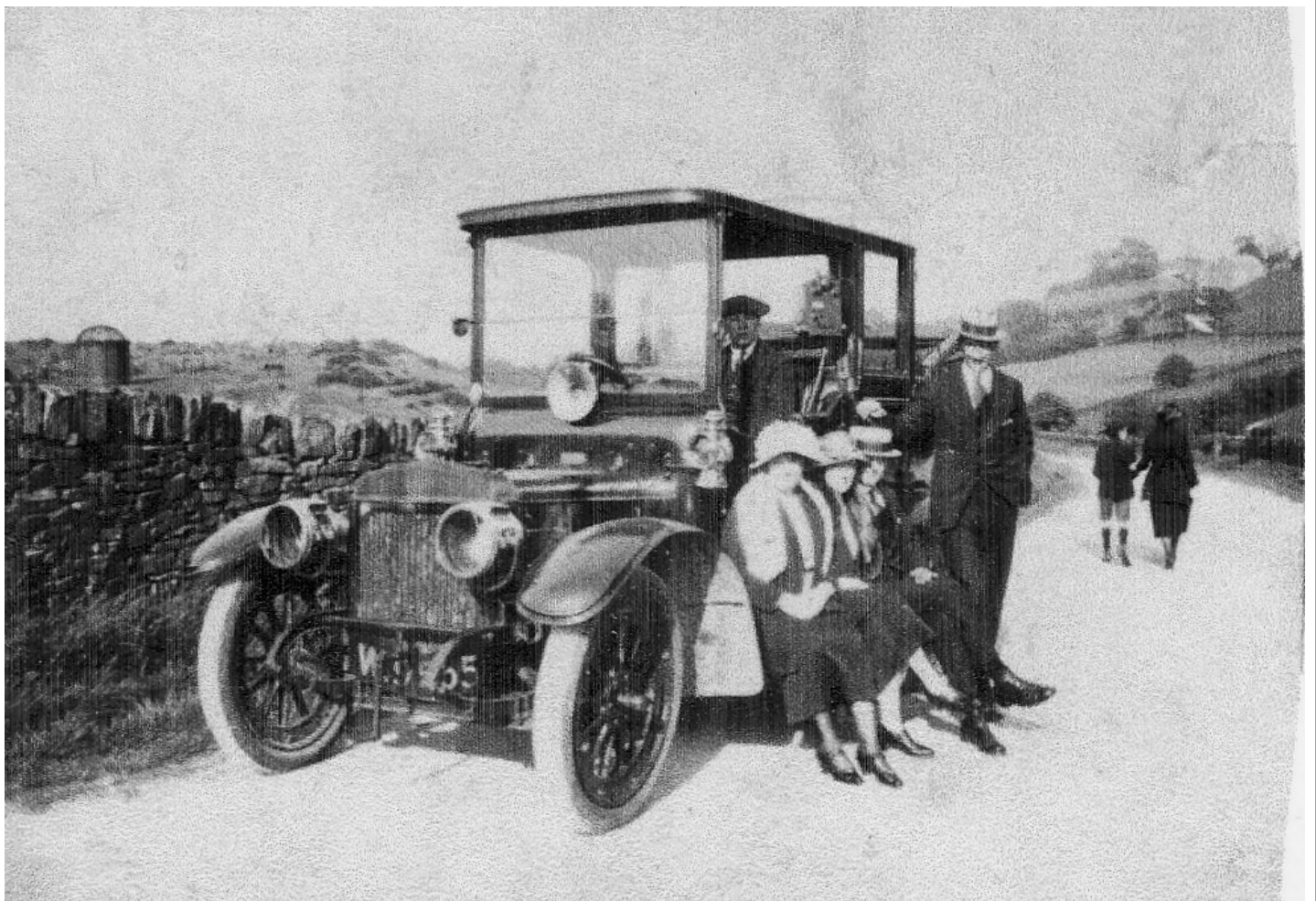


TOTLEY INDEPENDENT

PUBLISHED BY THE TOTLEY RESIDENTS ASSOCIATION CONTINUOUSLY SINCE 1977
FEBRUARY 2009 No. 320

15p.



A spin round the Bents with George Creswick probably in the 1920's, is the steering wheel in the centre of the cab? This wonderful photo was taken on Penny Lane, note the absence of the wooded area around number 1 shaft of Totley Tunnel. The shaft is just visible this time of year but will disappear when the trees leaf up.

Totley Residents Association Update

Welcome to 2009

I trust everyone is enjoying the Baslow Road lights, switched on in time for the Festive Season! We have been inundated with complaints from around the area. They can be seen from Dore, Blackamoor and The Peak District. Many people are horrified at the intrusion of the "airport runway" snaking from the Totley boundary out into the countryside.

According to Council officials they have been put in place to reduce the speed on the A621 Baslow Road to 30mph to prevent further accidents and to enable the 97 Bus to turn safely when the new terminus has been constructed at Gillfield Wood. Work on this is due to begin in February and be completed in May. A further speed reduction of 40mph is also in place from the city boundary to the 30mph limit. The signs were put in place before the deadline of 16th January for objections had been reached!

One wonders who is going to police the road, to ensure the speed limit is adhered to. As Totley residents, we know many drivers do not obey the 30mph limit on Baslow Road now. The lights will only enable drivers to speed in and out of Derbyshire as they will be able to see further ahead.

What thought was given to the light pollution and the effect on wildlife? Not many of us think about it, but there will be an effect on our health and our pockets. We will all be paying for the wasted light energy.

According to the Unitary Development Plan "Protection and enhancement of the landscape will be the over riding consideration". What went wrong?

Obviously lighting will be needed at the bus terminus, but surely not all the way from Totley and beyond.

Three accidents were reported in the last few years, two took place in daylight in the old 30mph limit and the third occurred when the driver took his eyes off the road. On this evidence it seems unnecessary to spend an estimated £375,000 on the lights and the terminus. Pressure is being put on our urban fringes. What will happen when the brick works close? Will Totley eventually spread along Baslow Road to the city boundary or will the, UDP or its

PTO

replacement the SDF, protect the green belt?

A number of concerned residents from Totley and Dore are setting up a new group to try and prevent this happening in the future.

SPACE

Sheffield and Peak Against City Encroachment

If you really care about what happens in the countryside for future generations, please join us, details available at the bottom of this page.

We also wonder what has happened to the bus shelters. They are to be turned round, but when? We are still standing in the rain, being splashed by passing traffic as we wait for a bus. I have lost count of the number of phone calls I have made and been told they will be altered.

The double yellows were put in place but those of us who use the Mickley Lane junction know they are too short on Baslow Road, so it is still impossible to see on coming traffic without pulling well out into the road. The situation is being monitored!

Now to more positive news:-

Multi-Agency Report 16th January

Parks and Countryside are going to re-surface the BMX Track and the hedge will be cut. This should happen before March, when grass cutting begins.

Area Panels cease to exist very soon. They will be replaced by Community Assemblies.

Each Assembly will have 5 Officers:-

Community Manager

Administration Officer

Planning and Performance Officer

Events Organiser

Safer Neighbourhood Officer

The theory behind Assemblies is to give US extra powers to say what we want in our areas. An Annual Community Plan will be produced.

Green Oak Park Master Plan

All the comments and suggestions put forward by the community have been collated under the following headings:-

Environment

Community Facilities

Leisure and Recreation

Access and Movement around the park

Crime and Community Safety

The Master Plan now becomes The Action Plan.

Already the Environment section is moving ahead, management of the park is taking place, soon trees, shrubs and wild flowers will be planted.

Local builders are busy looking at the details of what is required to re-furbish the buildings in the park.

Avril Critchley

Chairman Totley Residents Association

Footnote on the Baslow Road Lights!

A number of constituents have contacted us regarding the above - none are in favour of them! Yes, they will intrude into open country and, together with the turning circle are costly. However, we feel it important that the community is given some explanation about how this came to pass.

In September 2007 the local community learned that the No. 97 bus service to the top of Totley was under threat - the agreement for buses to use the Cross Scythe forecourt as a turning circle/terminus was likely to be discontinued. The bus company was considering shortening the service and were loath to consider extending the service to Owler Bar on cost grounds (upwards of £80,000 pa.).

An emergency public meeting of nearly 100 residents on September 24th insisted that a service to the top of Totley be maintained and overwhelmingly declared their opposition to the use of green space near Totley Grange Road option as an alternative terminus location. A 1300 name petition mounted by the Totley Residents Association supported this view and was presented to full Council.

Accordingly more alternatives were sought. None were without flaws but the Gillfield Wood picnic site emerged as the best option in the circumstances. Proposals were shared with local councillors, and the Totley Residents Association and drawings and the full details were displayed for several weeks in the Totley Library. The report made clear that safety considerations would require speed restrictions and lighting for the turning circle and the highway below. This was approved by the Planning Board before Christmas.

Hence, we would suggest that the engineers made the best of a bad job. The service has been maintained (and extended) and Baslow Road will receive significant traffic calming. It has a long-standing record of serious accidents and the Totley community has consistently campaigned for speeding restrictions. Whilst no measures will compensate for reckless or thoughtless driving the phased drops in speed limits and the lighting must help.

One final point. Many respondents have queried the role of the Council in relation to the bus companies. Put simply, since the buses were deregulated some time ago, local councils have had no control over fares, routes, service frequencies and precious little influence.

Cllrs. Keith Hill, Mike Davis, Colin Ross.

We need SPACE

One of Sheffield's greatest assets is its proximity to stunning countryside. Many people living on the western side of

Sheffield and others visiting this area feel let down by Sheffield City Council's failure to protect the environment of areas fringing the Peak Park.

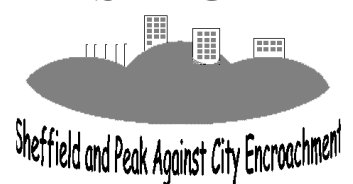
S.P.A.C.E (Sheffield and Peak Against City Encroachment) is a new campaigning group that has been formed, prompted by the recent installation of lighting alongside Totley Moor - yet another example of unacceptable and damaging development in this area.

The aims of SPACE are:

to protect this green border with the Peak National Park. These areas to the west and south-west of Sheffield are particularly vulnerable to creeping urbanisation and inappropriate development as most are unprotected by National Park planning restrictions. We want to work and campaign to maintain the rural sense of place, the character, the views from the Peak Park and thus the experience and enjoyment of this national asset.

Membership is free and open to everyone including established societies and organisations. Totley Resident's Association and The Friends of Blacka Moor have already joined and it is expected that Dore Village Society will join soon. But we need individuals to join up too. We are planning easy ways to make your voice heard. If you are interested, please send us your name and a way that we can contact you (ideally an email address but a phone number or address is fine) to space.sheffield@talktalk.net or phone 0114 235 6907.

SPACE



Losing My Place

I am new to Totley. I delight in its particularities – White Lane where I walk the dog, the new hairdresser's where the owner laughs a lot, the oak tree full of starlings and goldfinches next to Greenoak Park, the way the hill outside our window tips just so, the spot just by the Methodist caretaker's house where I first kissed Rony! We all have these internal maps in our heads of places that mean something to us.

Now, there's an environmental organisation called Commonground who believe in what they call "local distinctiveness." They say that distinctiveness is about valuing particularity. It is about what is special about each locality – its buildings, birds, stone, language, food, customs. Local distinctiveness does not rule out change and the new – but change can either enrich or diminish.

To get back to me. I visited my friend Cath on Boxing Day. Cath lives in one of those semis just along from Grindleford Café with its bacon butties and rude notices. There are no lampposts where Cath lives. Coming out to go home I was struck by the magic of trillions of stars hung on the skin of the night sky. Driving back to the city I was pleased with the thought that, though not as dark as the lane by Cath's house, Totley was still dark enough to enjoy the night sky, especially at the very edge. Coming down from Owl Bar, I couldn't believe my eyes – across the open uninhabited countryside were lines of towering lampposts flooding the road and the sky with light. The usual journey out of the dark into the light by the first cottages was gone. In the daytime the posts now march in urban fashion across one of my favourite walks from Gillfield Wood and on to the footpath towards Monnybrook.

Councillors can say that engineers made the best of a bad job. Did they stop to consider what we value about the distinctiveness of where we live? Just because we are not in the Peak Park doesn't make our own local landscape worthless. There were objections from people who realised that these lights were a consequence of the new speed limit. The Peak Park themselves are concerned that they were not consulted – as they should have been under Section 62 of the Environment Act. The lights were put up, cynically, even before the Planning Board had voted to pass the design of the new terminus. Choices were made alright, but not in a holistic way, taking into consideration all factors. Of course we want to reduce speeding, of course we need a bus service. But £375,000 of your money is being spent on the new terminus and the lights – mostly on the lights which pollute the night sky, scar the view from the hills and are certainly doing their bit for global warming. And the cars are still speeding. What next? Perhaps it will be convenient when they decide to put housing up at the Brickworks to have a lit road, a regular bus service and an extension to the city which can accommodate even more development.

If you too are angry, please join SPACE and/or write to your councillors. Details on opposite page.

Sally Goldsmith

Women's World Day of Prayer

This will be held at Totley United Reformed Church on Friday, 6 March at 10.30 am, the speaker will be Rev S Knibbs. This year's service has been prepared by the women of Papua New Guinea. Everyone is welcome at the service, refreshments will be served. Rosemary Billbin



Transport 17

I hope that 2009 started well for you and that you did not get

one of the bugs which were going round.

John Savournin, our Treasurer won 1st Prize in the Rotary Draw.

Wendy Trotter, who is on our Committee and is also a volunteer escort, had a heart attack at Christmas. She is progressing well, as I write this. Wendy and her husband Jim are super people to know and we wish them all the best.

I was interested to read that Whirlow Farm Trust were finding fund raising more difficult. It is Transport 17's Silver Anniversary in June. We are still hoping to replace our oldest bus, but it is a hard slog. We appreciate all the support that clubs, individuals and all sorts of organisations give us. Sainsbury's are once again allowing us to have a collection day. This will be on Sunday 24th May. Perhaps we will see you there.

One of our passengers was recently robbed by two men posing as water company officials. If you have not got your glasses on when people call, tell them to wait while you get them. Then have a good look at their badges. If you have any doubts, tell them you will phone the police or family and shut the door. I don't know how these villains can live with themselves. Can you imagine the uproar if anyone stole from their families.

Let's look on the bright side though. There are some good and kind people about. We have a lot of them work for us. Take care.

Margaret Barlow

Fairthorn Flats

The developers of the Fairthorn block of flats built near Blacka Moor have had to apply for retrospective planning permission because they apparently built it bigger than the original plans.

Plans can be viewed on the council website www.sheffield.gov.uk, the planning number is 08/06025/FUL. Comments need to be with the council planners by 2nd Feb.



Totley Gardeners

30 years combined experience

Male and Female
53 The Grove
Totley
Sheffield
S17 4AR

Organic fertilizers and biodegradable weed control

Garden Maintenance

Tree Surgery

Fencing

Mowing and Strimming

Commercial and Domestic

Landscaping

Pruning

0114 236 7884

Steven 07967 799957

Pam 07796 513520

stevenbarnett@hotmail.com

"Helping people and trees co-exist"

Councillor Surgeries

Liberal Democrats:

2nd Monday in the month 6.00-7.00 p.m., Totley Library, Baslow Road and 2nd Saturday in the month from 10.30 a.m. to 12.00 noon, Dore Old School Hall, Savage Lane, Dore Contact details: telephone 235 2289 Email: keith.hill@sheffield.gov.uk, colin.ross@sheffield.gov.uk or mike.davis@sheffield.gov.uk

TRA Website:- www.totley.org.uk

I SEE NO LITTER

I was out walking in Derbyshire this month enjoying the beauty of Big Moor, when a couple appeared before me working the verge either side of a road that runs by the north edge of Leash Fen. They had a large black plastic bag in hand. They were picking up litter and had a bag full.

It brought to mind the meeting I had last year with a lady at the top of Padley Gorge. At a distance I thought she was a tramp as she wandered along the pavement and then turned back in a disorientated fashion. It was only when I got nearer and asked if she was alright that I established she was actually looking for a bin in which to put the plastic bags she had in each hand. The bags were full to the brim with rubbish of all sorts. The lady was an elderly active American here in our area for just one day! She was stunned at the amount of rubbish scattered in an area of such beauty and she felt she just had to do something about it so she had collected the rubbish as she walked up through the gorge.

Similarly I have recently taken a visitor from Belgium to a local nature reserve. I was confident she would be impressed with the reserve and the birds in particular but what did she notice.....the litter! What sort of impression do we give to our visitors and what sort of message do they give to their friends?

And now I turn to Totley. I know some Totley residents do clear the litter on Totley Hall playing field and the area around the lay-by on Totley Hall Lane but the litter continues to be dropped in this area and is actually increasing when you look at the bottom of the hedgerows that border the playing field. Is it possible to have a bin placed at the lay-by? Even if it only makes it easier for residents to tidy up! Local football teams and their families visit this area, what impression do they take away from Totley? (and yes, I do know some of them leave litter!)

No explanation can surely be given as to why someone should collect their dog's poo in pink plastic bags and then ignore the red bin on the playing field only to drop the bags in full view a few metres away in the hedge and on the walkway to the playing fields from Sunnyvale Road. If they are going to say "bio-degradable" surely anyone would say at the very least "what an awful eyesore".

Either side of the Baslow Road is covered in litter, this runs from Owl Bar down to the cottages at the head of Lane Head. The entrance into Gillfield Wood from Baslow Road is littered with rubbish. A bin here would not go amiss but could not cater for tyres, brickwork, garden rubbish and a duvet! What impression does this give to the many walkers from other areas that use our footpaths?

Baslow Road is the entrance and exit to our village, the city and the county so what sort of message does this carry to all that travel along this highway? I hope visitors to our village are going away with a better impression than some are getting at the moment.

A LITTER PICKIE

Loyal Chum of the Week

To see Oscar the dog curled up in his basket alongside Arthur the cat wasn't that unusual. What surprised the pet's owners was this, they buried Arthur just the day before, Oscar had even watched. "Oscar managed to climb out through the cat flap in the night" said the owner "Arthur was a huge cat. Oscar must have used all the strength he could muster".

"Arthur's coat was gleaming white. Oscar had obviously licked him clean".

Folk at the Fleur

A new monthly Folk and Acoustic music club has commenced at the Fleur De Lys pub, and is held on the 2nd Tuesday of each month, starting at 8:30pm.



The first meeting, which was held on 13th January, was a great success, and attracted players and singers of a great standard who entertained a very appreciative audience. In fact, the club was established over 10 years ago, and has

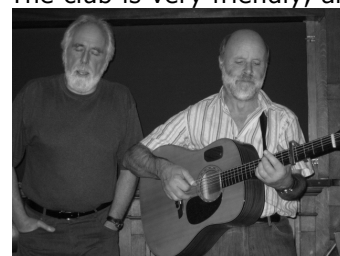
transferred to the Fleur to make use of the excellent facilities there.

The club meets in a dedicated room, which has excellent acoustics and extremely comfortable furnishings.

Club organisers, Steve and Gaynor Brook, of the band Spoil the Dance, said that they are delighted to have found such a comfortable and sympathetic venue.

"The Fleur is a great local pub, with excellent traditional beers and a very welcoming atmosphere", they said. "Host Wayne and his business partner Anne-Marie have made us feel instantly at home, and our club regulars are really looking forward to many excellent nights here".

The club is very friendly, and actively encourages new performers and listeners alike. There is no charge for admission, and everyone will be made to feel most welcome. If you are looking for a great evening out, then make a note in your diary.



The next meeting is on **February 10th**, and a splendid time is guaranteed, judging by the appreciation of Totley residents who attended the opening night.

Further details from Steve and Gaynor on Sheffield 289 1159.

Poynton Woods

In the December/January issue of Totley Independent Brian Edwards asks about the origin of the name Poynton/Pointon.

The Oxford names companion gives -

Poynton - Estate associated with a man called Pofa. An old English personal name and ing (ingas = people of or dwelling at) and tun (farm or enclosure).

Pointon - Same explanation but personal name spelled Pohha

So it would seem the wood belonged to, or was the site of, the farm of Pofa (or Pohha) and his tribe, ie the people dwelling there.

Or, of course, it could have been named after someone who bought the woodland in much more modern times. How early was the name found in the area?

Vera Edwards

Breaking the Ice

Winter affects the chickens just as it affects us. The shorter, duller days mean hens do not lay as much, and at present we're only getting eggs from Martha and Vera about 2 out of 3 days. Dora has not deigned to lay again since she moulted in October and Bertha and Edna haven't even started.

On icy mornings I need to take a can of hot water down and break the ice in their water container. The hens hover round me waiting for the new warm water and then get stuck straight in for a good long drink. I also leave another water container at the top of the garden for their daytime drinks. I do the same for the bird bath for the wild birds.



Bertha & Edna

The ice has also been broken for poor flighty Bertha who was left alone and scared after the murder of Edna

Mark One by the fox in November. Edna Mark Two arrived soon after and has had a wonderful effect on Bertha. She is from the same brood as Edna Mark One and is a lovely calm hen of stately proportions with huge black and white feathers on her legs which make her look rather like she's walking on snow shoes. Sometimes she reminds me of a carthorse with feathery hocks. From the first day Edna was confident and tame, and happy to feed from my hand. Bertha has copied her, following her closely. If Edna moves out of sight Bertha sets up a panicky squawking till she finds her.

When I go to let them out of their run in the morning they are delighted to see me and leave the run in a stately procession with Dora in the lead and the timid Bertha bringing up the rear. While Martha, Vera and Dora are large hens, Bertha and Edna are now even bigger – 5 plumpy backsides marching up the garden is an hilarious view.

They speed up as they get going and with necks stretched out and wings flapping they race happily for the top of the garden where I've left them some grain. Then they go off on their day's work of finding food around mine and the neighbours' gardens. Their favourites are deep leaves where they find lots of lovely treats in the form of worms, grubs and insects. Sometimes I call them in the middle of the day for some tidbits and they emerge from a gap in a fence two gardens away or under a bush where they've been having a short preening break.

During that very wet weather in December the hen run and area outside it became a quagmire. I laid a large amount of straw on the ground in the run, and it did the trick of stopping me slithering around in the mud. The hens had a wonderful few days scratting through it. Hay is not suitable for hen runs as the long thin stalks can get tangled around the hens' legs or stuck in their mouths.

As January is the fox mating season, the foxes have been very vociferous barking during the night in the last few weeks, and of course it puts a chill through

me for my chickens' sake. One morning at 8.15 in early January – daylight of course – there was a big fox lolloping across my lawn in sight of my chickens who were by then out in their run, but was apparently not interested in them. And in November I watched two young foxes playing at 3.30 in the afternoon in the field below our house.

I shut the chickens in their run well before sundown. I go out to call them and they trot after me eager for their evening grain. I feel like the Pied Piper! They never go into their coop until almost dark. Hen-keeping is a risky business, but a good high fence is an important safety measure.

Jennie Street

Totley Primary School Update

On 16 December all the staff and pupils went to the Lyceum to see Aladdin and what a fabulous time we had (oh no we didn't – oh yes we did). It was great to see the look of wonderment on the faces of the children that had never been to the theatre before. That to me was a treat in itself. The staff at the Lyceum really looked after us so many thanks to them.

My family and, what seems like most of Sheffield, have been ill over the festive season with various winter bugs and then on the first day back to work/school it snows. Isn't Mother Nature wonderful!! Over the Christmas holiday Mr Howe, a local plasterer, worked on 2 walls in the dining room and what a brilliant job he did. Our new fold-up tables have just arrived and all in all the dining room is now looking mighty fine!

If all our plans take place the school will resemble a building site during the summer holiday with new pipework throughout, new junior toilets and a new reception office.

Our Gardening Club will start again in March so if anyone has any spare seeds, onion sets or seed potatoes the school can give them a good home.

Mrs Dickinson the Y1 teacher left us at Christmas. She and her family are moving to Australia and, although she will be sadly missed, we wish them all the best for their new life. Mrs Nicholson, a local resident, is the new Y1 teacher and we would like to welcome her to the school.

That's all for new folks.

Allen Miller, Building Supervisor

Puzzle Corner

Difference Triangles

The objective here is to arrange consecutive numbers from 1 so that the difference between 2 numbers always equals the number above

Examples

1	2
2 3	3 5
	4 1 6

So far I have found (including those above)

2 different arrangements for 1-3

4 different arrangements for 1-6

4 different arrangements for 1 – 10

But only 1 for 1-15 and nothing higher

Can any readers find more?

Don Ashford

Last at Healing

As this heading indicates "the unbeliever in our midst" in their letter to the people who read the last Totley Independent has in effect opened up a new division in our community.

In my view, this letter not only shows an intolerance to other people's views and beliefs but also seeks to deride and belittle those who are sincerely trying to help people in genuine need. By starting this unholy war they are seeking to promote their own beliefs, yes beliefs, over those of their fellow Totleyites. Not only is this person showing a lack of neighbourly love, their attitude to others would seem to indicate that they themselves, perhaps unknowingly, are feeling the need of real comfort and love in their lives. I suspect he/she has placed their faith in atheism, darwinism or humanism as their religion, the theology they are living their life by. Although many people in this country, or indeed in Totley, would subscribe to these theories, the vast majority of people in the country would I suspect if asked, have some belief in a supernatural God, even if they did not attend a place of worship regularly. Most major religions have as part of their ethos, the need for their adherents to promote love, care and tolerance for people of all creeds and faiths although they may have a militant fringe that promote vehemently their own beliefs. Sometimes this is by verbal or physical force, as these people try to use a religion to promote their own personal or political ends. As far as I am aware, there are no "militant" Christians in Totley. Indeed the tone of the invitation to the people of Totley by the churches clearly portrays a "no obligation" desire to help those in practical or emotional need.

The letter from the "unbeliever" would therefore seem to be disproportionate and over the top to say the least, the very antipathy to the genuine Christian message they were trying to get cross. Does this person celebrate Christmas or Easter I ask myself. If so, what does it mean to them??

I believe that this "unbeliever" would indeed benefit from a greater understanding of, and partaking in, the joy, comfort, hope and love that having a personal interest in the life, death and resurrection of Jesus can bring. I would be quite willing to discuss these issues on a one to one basis with the person who wrote the letter at a place and time of their choosing.

Edwin Pocock

I read the letter entitled "Healing at Last....." on page 6 of the December/January Issue No. 319 with sadness and dismay. I don't know if I was more disappointed by the vitriolic attack on people offering love and compassion to those who are suffering, or by the fact that the Independent published such a letter in the first place.

I have read the Independent since its first issue and understood that one of the main reasons for its existence was to promote a sense of community and togetherness in Totley. Has this now changed? Can we now expect a series of letters and articles calculated to cause hurt and division in the community between people who have different faiths and beliefs to our own? The world is in a sorry state, and it will only get better when we show love, kindness and respect for one another.

So let's reflect the friendliness of Totleyites, and no more spiteful letters, please.

Josie Dunsmore

I have just read the Totley Independent and the letter from the unbeliever. In this country, unbeliever is perfectly entitled to air his (or her) beliefs or unbeliefs but I would query his assertion that "the majority" share them. I haven't a scientific mind and cannot argue. However, I am fairly certain that no believer would be so ill-mannered as to write such a letter and submit it to a friendly local magazine with the obvious intention of upsetting as many people as possible in the opposite camp, especially at Christmas. In conclusion, I should like to take the opportunity of wishing all the readers of the Totley Independent a very happy new year, whether they are believers or unbelievers!

Joan Nixon

Shut that Door

Shades of Larry Grayson

I answer to Jean Hilton's interesting article about the blitz night at the Abbeydale Cinema. I recall an eventful similar story. That Thursday evening after a late shift at Samuel Osbornes steelworks I decided to visit the cosy little Woodseats cinema. The film on show as a rather corny gangster picture titled "The Early of Chicago". The featured stars were Edward Arnold and Rubert Montgomery. We all sat uneasy in our seats as bombs starting dropping in the area. Patrons started drifting away to the exit doors but a few of us decided to stick it out to the bitter end. Suddenly the film action livened up as Edward Arnold snarled to Bob "shut that door", at that identical second there was a loud thud as a landmine exploded in the vicinity of Scarsdale Road. We did not bother to shut that door as we all bolted for the nearest exit and I finished the night in an air raid shelter at the corner of Abbey Lane. Trying to get to work the next morning was hopeless as one was greeted with all the destruction and chaos along Chesterfield and London Road.

Certainly a night to remember. Shortly after this period I joined the Royal Air Force.

Many weekend leaves were enjoyed at the Abbeydale Ballroom dancing to the music of G Lee and his band. In the intervals we all used to join the band players for a quick pint of Tennants beer down at the local "Broadfield" Inn. Gordon Lees boys always seemed to play better after some light refreshment. One special member of the band was the late Jack Richardson who played tenor saxophone. He later had trials for the great Ted Heath Band and finished his playing career with The Bernard Taylor Orchestra at The City Hall Ballroom at Barkers Pool.

In those early days music had real melody and although there was a war going on they were somehow happy days.

John C Barrows

1st Totley Scout Lottery

Lottery draw for December 2008

1st Prize No 43
Christmas Hamper
Mr and Mrs Parkin,
Green Oak Road

2nd Prize No 44
£10 Voucher
Mr & Mrs Newbould,
The Quadrant

This is the first draw and the lottery will run until November 2009. It is not too late to join. Please ring Peter Casson on 248 9854 we will do the rest.

Thank you, best wishes
Peter Casson

Farming Scene

Well, here we are at the beginning of January and winter has really set in! No real quantities of snow yet, but periods of sustained sharp frosts already set this year apart from the 2 previous exceptionally warm and wet winters. The last 2 or 3 weeks have not only been cold but they have been dry as well. This has allowed the ground to dry up, enabling us to get around the fields without making muddy wheel marks everywhere. A long, cold, dry winter complete with a period of moderate days lying snow would do a world of good. We would be able to get our seasonal clocks back into "kilter" and feel a lot more healthy and refreshed. There would also be a sharp beneficial reduction in the number of bugs, pests and diseases currently inhabiting the land, trees, plants and the atmosphere. This would help to reduce the problems farms face as they try to produce healthy livestock and crops.

Our Poll Dorsets have now finished lambing. This has gone very well apart from one or two hiccups which are all part of the "joys" of lambing time. One ewe would not let her lamb suck and then decided to opt for a short life by killing her lamb. Needless to say she has recently made a one way trip to Bakewell Market. Another ewe produced a dead lamb and prolapsed her uterus in the process. We "popped" this back in and as she had good mothering ability fostered a lamb onto her from a ewe that had no milk at all. This "milkless" ewe is also no longer with us. We have lost 2 or 3 lambs to e-coli infections but have still managed to average over 1.7 lambs reared per ewe. Very good for a November/December lambing. We are off to Devon shortly for 2 weeks of post-nativity recuperation and when we get back one of the first tasks will be to start weaning these lambs. Some of the poorer quality tup lambs will be ready for slaughter in another 6-8 weeks time, say the beginning of March. The better ones will be retained for sale as breeding tups later this year or the following autumn.

The prospects for the sheep industry are beginning to look much better now. We took the last of our April born Texel lambs into Bakewell on Monday and were pleasantly surprised by the prices they achieved. This time last year they were making 95 pence per kilo liveweight, this year they averaged £1.66 per kilo. This is the difference between being paid £48 for a lamb and £85. This is where prices need to be to sustain both farmers livelihoods and lamb products generally. Much of this rise is due to a reduction in supplies from New Zealand, Great Britain and Europe as a whole. The other main driver is the fall in the value of the pound which made imports dearer and boosted our exports to the rest of Europe. Livestock producers generally will all benefit from the decline in the value of the pound. Agriculture has been in recession for over 5 years now but looks to be heading for a more financially secure time now as other sectors go into recession. "It's an ill wind that blows nobody any good!"

Our nativities have done very well again this year. There has been an increase in school visits but the family performance numbers have reduced a bit as people reign in their spending on non-essentials.

This is very true of our Christmas tree enterprise where even after ordering less trees we had approximately 40 left. We have now decided to call it a day for a number of reasons. Over the years we have alternatively made and lost money on these. It is a very speculative enterprise as you do not know from one year to the next just how many you are going to sell. Three other businesses have recently started selling trees in the area which has diluted the available customer base not to mention the supermarket and big DIY chains that are using them as loss leaders to get people into their stores. Needing to have a salesperson available just in case a customer arrives, ties someone up just at a time when we are busy both with nativities and lambing. We shall have 50% more sheep to lamb next year and so

really need to have more time available to supervise the lambings and take care of the "mums and babies".

Whilst on the subject of sheep and lambs can I make my seemingly annual plea for people to respect the Countryside Code and keep their dogs on a short lead when near to fields with sheep in them. We have recently had 2 incidents at the bottom of Totley Hall Lane that can only be explained by the fact that these sheep had been chased by loose dogs. In the first instance an in-lamb ewe suffered a broken leg. Fortunately it was in a front leg below the knee and we were able to bandage and splint this leg for a month until the bones reset and she could put her weight on it once again. In the other we were called out to a ewe that had been driven into the middle of a pond where it had become stuck in the mud. We had to put a rope around its legs to pull it out. No permanent damage appears to have been done in either of these incidents but these animals and their friends could so easily have been killed as hundreds of others are every year.

Whilst we are on the subject of animal welfare, I have to say that once again we have had a visit from the Council Animal Welfare Officer accompanied by an independent expert as a result of complaints to that department. Needless to say Spirit was found to be in very good health and condition and living in an environment that was conducive to his physical and mental welfare.

Those of you that walk down Lane Head Road regularly may be wondering why the original field gate has been replaced by a long wooden pallet. The answer is quite simple. The metal gate plus some feeding troughs were stolen a couple of months ago by scrap metal thieves. We put the pallet there to prevent a repeat loss of a gate. The same people were probably responsible for removing some of the roadside drain covers on Baslow Road on the way up to the brickworks. This was really dangerous as a cyclist could easily have been thrown from their bikes under a lorry had they hit the resulting holes.

The new street lighting should help prevent a repeat of this hazard and make this road safer in many other ways. I understand work on the actual terminus site will start shortly. This will involve the removal of some of the trees but those that remain plus the additional planting should provide a good screen for this urban style facility. A new car parking area will be provided for people wishing to walk through the woods from here. Of course people will now be able to walk from Totley through the woods to the terminus and then catch the bus back to Totley or vice versa.

As we keep more sheep so we are having to erect more permanent fences and gateways. This will be one of the jobs that we will tackle during February, along with the installation of some new styles on the footpaths that cross our land at the bottom of Totley Hall Lane. This should make it easier for walkers to get from field to field and mean we can swing the gate closed rather than having to lift them into position! I must be getting old, and looking for an easier life!

Edwin Pocock

GARDENING TIPS FOR FEBRUARY

I woke up this morning to a white world outside, we had a sprinkling of snow overnight, this makes the garden look quite tidy covering up all the mess I have not had time to clear. I have seen stirrings of plants, one or 2 shoots of snowdrops and daffodils, it will be a little while before they flower but it is nice to see that spring is not too far away. I do not mind a bit of snow at this time it acts like a layer of insulation and stops old Jack Frost nipping at the little shoots. One or 2 jobs to do at this time of year, tidying up beds, clearing any leaves and debris that is still around, give fences, sheds and summerhouses a check over and deal with any damage and refresh the paint or preservative. Clean up the paths and patios and remove any algae and moss so that you avoid any accidents. Most of the household accidents occur in the garden or kitchen so be aware. I hope you are planning your veg patch getting seed together. Onions for the exhibition varieties should be in boxes by now and purple sprouting broccoli should be planted this month along with cauliflower and early cabbage plant in deep trays in a cold frost free greenhouse. Make sure that any trays or pots are well disinfected before use. I am looking forward to starting the gardening club next month at the Primary School. The youngsters will be full of enthusiasm as usual and are keen to learn also a bit impatient. I do not know of any instant cabbage or rapid radishes, let me know if you see any about. The seed companies have been generous with samples of seed etc so I hope we will have a bit of nice weather so that we have a bumper crop which will encourage the children to enjoy gardening. The seed for them need to be planted in good time, some of them in the greenhouse so that they can see something fairly quickly. The chef at the school had a few laughs at the wobblerly carrots and tiny beetroots last year but she managed to prepare quite a few meals from the allotment. There is nothing like fresh vegetables for taste even if they are not straight carrots or the cabbage has one or 2 holes in it. Bear in mind The Totley Show in September, get your TLC going on your plants and those photographs taken and that watercolour finished. I look forward to seeing them.

FLOWERS Winter flowering jasmine should be pruned as soon as it has finished flowering. Trim back winter flowering heathers as blooms fade with shears to prevent them getting straggly. Don't forget to look at dahlia tubers in store, and dust any mould with flowers of sulphur, don't let Jack Frost nip them, protect them well.

Give herbaceous plants a feed of rotted manure or compost, lightly forked in, or a dressing of good general fertilizer. Fill any gaps in your wallflowers now before they start into active growth. Make sure all plants are firmed in, as some may have been loosened by frost. Give any roses which have suffered with black spot a spraying with fungicide to help prevent a further occurrence, clear away any leaves lying about. Clean up rockeries, top dress with compost and chippings.

VEGETABLES Check vegetable plots for lime content and add any lime required at least two weeks before sowing or planting, work in a dressing of Growmore or similar, onions require a very rich soil to get the really good ones for the shows.

Before sowing carrots, rake soil pesticide into the ground. Put seed potatoes in a light airy frost free place to sprout. Watch out for slugs and deal with them as quickly as possible. Top dress spring cabbage and sprouting broccoli with vitro chalk. Plant out autumn sown onions. Dig trench for runner beans and celery. Sow herbs chervil, chives, dill and parsley in slight warmth. Sow leeks to be ready for the Totley Show, plant the best seeds in individual pots in warmth to start them off well, moving them to cooler positions later, prior to planting out when the frosts are past, or under cloches. Cauliflower and broccoli benefit from a long growing season. Plant seeds now in deep trays in a cold frost free greenhouse. You will have strong healthy plants in good time for spring planting out.

TREES, FRUIT & SHRUBS Prepare ground for any spring planting which you are considering. Plant out deciduous shrubs and heathers later in the month. Prune late summer flowering clematis. Cut back hard shrubs like callicarpa trumpet creeper, spires and tamarisk. Fruit trees growing in grass will need a feed of sulphate of ammonia or vitro chalk to make up nitrogen deficiency, about half an ounce (30grams) to a square yard (sq.m). Prune autumn fruiting raspberries. Prune gooseberries. Firm in any cuttings of black, red and white currants and gooseberry. This is the perfect month for tree planting, care at this stage will pay off

with rapid and sustained growth for the future, take care choosing the right tree for the site, note its eventual size, this will avoid drastic pruning later, bear in mind that pretty blossoms will look lovely for a week or so but how will the tree look in summer and winter? Is it colourful in autumn? Select only the best specimens with even open growth and a good root structure and no obvious defects such as a faulty graft or damage on the trunk, do not be seduced by size. A small light standard tree will grow just as well as a large heavy tree, need less staking and will most likely be less expensive. Small mature trees called ships will be even less expensive but of course will take longer to mature. Make the planting hole big enough to spread the roots evenly and make sure they never dry out during the planting process, a little slow release fertilizer blended with well rotted compost will improve the soil, firm the soil onto the roots using your heel to tread it in. Then stake your tree securely. Water frequently in the first season while the tree is becoming established and mulch with bark or compost.

GREENHOUSE & INDOOR PLANTS Gradually increase watering, keep African violets, cyclamen and indoor primulas humid by standing them on moist pebble-filled saucers. Plant indoor gladioli corms. Pot up January sown seedlings of geraniums, fuschias etc. Plant rooted cuttings of late chrysanthemums and carnations. For a nice summer display sow seeds of plants like bush violet, busy lizzie, carnation, gloxinia and schizanthus, (poor man's orchid). Sow cyclamen, indoor primula and cape primrose for winter flowers. Cut back last years shoots of fuschia, passion flower and plumbago. Plants particularly seedlings like fresh air, but not cold air, so on warm days ventilate freely, especially cold frames, but keep a weather eye open for frosty forecasts.

Pollinate and train early vines, later in the month sow half hardy annuals and greenhouse plants. Start into growth resting plants such as clivias, bird of paradise etc. Freesias which finished flowering some weeks ago can now be laid on their sides in their pots to dry off. Lobeli cardinalis is becoming more popular, it can be potted now, pull away single shoots with a little root attached and pot each separately in a 3½" pot.

LAWNS Rake, spike and top dress with sand, keep off especially when frosty. Spring is just around the corner.

Cheerio for now. TOM

SHEFFIELD PHOTOGRAPHIC SOCIETY ANNUAL EXHIBITION 2009

**SHEFFIELD CATHEDRAL
1554 GALLERY**

**Thursday 19th February 2009 – Sunday 22nd
February 2009**

**Thursday to Saturday 9 am to 5 pm Sunday 12
pm to 5 pm
Admission Free**

Sheffield Photographic Society was established in 1864 and is therefore one of the oldest clubs of its type in the world. It is also one of the largest and most thriving photographic societies within the UK, with 120 members who include both enthusiastic amateurs and semi-professional photographers, using both film and digital equipment.

The Society is well known locally for the quality of its Exhibitions, including the Winter Garden Exhibition held each November, and this high profile Annual Exhibition will be the second to be held in the new 1554 Gallery at Sheffield Cathedral in February.

Members of the Society will be on hand at various times throughout the exhibition to give further information about membership or simply to chat about the images or photography in general. Visitors are invited to vote for their favourite image and a trophy is awarded to the photographer who produced it.

The exhibition will be officially opened by Councillor Mrs. Jane Bird, Lord Mayor of Sheffield at 11am on Thursday 19th February 2009

THE CROWN

The Crown has a new landlord. Local musician, Phil Knight, has taken over from John Hicklin. Phil was previously The Crown's popular head barman. We wish Phil every success in his new venture.

At the same time, we note with sadness that the Cross Scythes has closed it's doors.

Domestic electrical work carried out by City & Guilds and
'Part P' qualified

LADY ELECTRICIAN

- * House rewires * Replacement fuse boards
 - * Outside lighting * Porches * Deck lights * Sheds
 - * New sockets * Lights * Switches * Telephone points
- All electrical work undertaken – no job too small.

*All work guaranteed and
fully insured*

For a free quote without obligation

ring Mandy on **07788-544225**



TOTLEY ALL SAINTS REUNION

At the Fleur de Lys, Totley on Monday 9th March 7.30pm onwards. For pupils who left around the late 1940s, early 1950s.

We look forward to seeing as many old friends as possible.

Kiwis 1, Aussies NIL

Three Kiwis & three Aussies are travelling by train to a cricket match at The World Cup in England. At the station, the three Aussies each buy a ticket and watch as the three Kiwis buy just one ticket between them.

"How are the three of you going to travel on only one ticket?" asks one of the Aussies. "Watch and learn," answers one of the Kiwis. They all board the train.

The Aussies take their respective seats but all three Kiwis cram into a toilet and close the door behind them. Shortly after the train has departed, the conductor comes around collecting tickets. He knocks on the toilet door and says "Ticket please." The door opens just a crack and a single arm emerges with a ticket in hand. The conductor takes it and moves on. The Aussies see this and agree it was quite a clever idea. So after the game they decide to copy the Kiwis on the return trip and save some money (being clever with money, and all that).

When they get to the station, they buy a single ticket for the return trip.

To their astonishment, the Kiwis don't buy a ticket at all!! "How are you going to travel without a ticket?" says one perplexed Aussie. "Watch and learn," answers a Kiwi. When they board the train the three Aussies cram into a toilet and soon after the three Kiwis cram into another one nearby. The train departs. Shortly afterwards, one of the Kiwis leaves the toilet and walks over to the toilet where the Aussies are hiding. He knocks on the door and says, "Ticket please".

Mrs Elsie Creswick

I would like to thank the many people who sent their kind condolences and tributes following the death of my mother, Mrs Elsie Creswick. However, to the 2 mindless low-lifes who broke into her home and ransacked it during her funeral, one day some other evil person may cause you to suffer what I am feeling now. You got nothing, because she had nothing. Do you think your mothers would be proud of you? You are beneath contempt.

Pat P

Puzzle Corner

Some solutions to difference triangles

2	1	3	5
1 3	3 4	2 5	4 9
	5 2 6	7 9 4	7 11 2
		8 1 10 6	8 1 12 10
			6 14 15 3 13

Don Ashford

Music Hall Ramblings

Hello! It seems to have been ages since I last "reported in", but I can explain. I missed a deadline! Unforgivable! Naturally, as sod's law decrees, it was the December/January issue, which meant that I had to wait twice as long to bring any news to you. We at Vulcan Varieties, finished off the year on a very high note, with two very well received shows at Gatty Hall, Ecclesfield, and the Village Hall, Holmesfield, together with a new venue, entertaining the Heeley Agewell club for an afternoon concert.

The Society is well on the planned path of building up a "library" of shows that can be mixed & matched to suit any occasion, from a full theatre production to a more personalised birthday/anniversary entertainment. So, if there are any "Activities Secretaries" who are looking for an afternoon or evening's entertainment, I assure you that you will not be disappointed! This has come about by a lot of hard work by the members to create very smart costumes, decorations and props, together with material content, that we feel are in keeping with the authentic atmosphere of the original times. (sometimes with some of the original jokes!)

We have started early this year, with a booking at Harthill on Jan 10th, but there are others (May, June, and November) which I will give details later. Any questions you would like to raise, contact me on 236 6891.

'Bye for now, Tony Reynolds.

Mickley Hall Cheshire Home

Mickley Lane, Totley

BINGO NIGHT

Monday 16th February 2009

7pm until 9pm



Change the
way you see
disability

For more information about fundraising events or Leonard Cheshire Disability please contact
Emma Riley, Area Fundraiser on 07738 329 195
or email:- emma.riley@LCDisability.org

Registered Charity No. 218186

**Leonard
Cheshire
Disability**

Mark and Sally Fletcher invite
you to

The Grouse Inn

Longshaw

Sheffield S11 7TZ

Meal times:-

Mondays 12.00 to 2.30pm

*Tuesdays to Friday's 12.00 to
2.30pm and*

6-30pm to 9-30 pm

*Saturdays 12.00 to 3.00pm
and*

*6.30pm. to 9.00pm (drinks -
open all day)*

Sundays 12.00 to 9.00pm

Phone 01433 630 423

*One man went to mow...
...but his mower wouldn't go!*

Now is the time to call

MOWER MENDER

and be ready for the forthcoming
growing season.

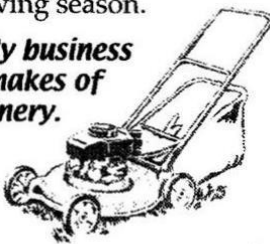
**A local friendly business
servicing all makes of
garden machinery.**

Phone:

0114 236 6958

Mobile:

0781 2211149



**Blade Sharpening and
Collections & Delivery Service Available**

R Rose & Co

Chartered Accountants & Business Advisors

Specialists at
looking after the affairs
of small businesses.

For a **FREE** initial consultation
please contact Roger Rose FCA on
0114 281 2331

From business start-ups and general accounting, to support
and advice in business development and strategy,
we pride ourselves in our personal one-to-one service.
To find out more please call 0114 281 2331.

213 Derbyshire Lane, Norton Lees, Sheffield S8 8SA
Email: info@r-rose.co.uk

JABIRD LANDSCAPES LTD

- Regular garden maintenance
- Tree surgery
- Clearance work
- All aspects of soft landscaping

Call 0114 258 9290

Email jablandscapes@aol.com

Visit www.jabird.co.uk

**100 Queen Victoria Road, Totley
Sheffield S17 4HU**

Creating opportunities with disabled people.

Registered Charity No. 218186

Leonard Cheshire Disability

Leonard Cheshire Services in Offers choice &
opportunity to people with disabilities.
A Specialist Unit for the Younger Disabled.

Residential & Respite Care - Single Rooms

Day resources - Aromatherapy -

Reflexology - Physiotherapy - Toning
Tables.

Activities include: - Arts & Crafts -

Computers - Cookery - Shopping

Expeditions - Theatre Outings - Church.

Further details can be obtained from -

The Service Manager, Mickley Hall,

Mickley Lane, Totley, Sheffield S17 4HE.

Tel. 0114 236 9952

Fax. 0114 262 0234

The Care at Home Service supports
disabled people who wish to remain in their
own homes.

We provide flexible care packages from
1 hour to 24 hours meeting individual needs.

The service operates throughout
Sheffield.

Our service includes: - help with getting
up and going to bed, dressing, washing,
bathing, shopping, cooking, light household
duties.

Further details from: -

The Care at Home Manager

Tel. 0114 235 1400

Fax 0114 235 1499

JABIRD LANDSCAPES LTD

Local award winning company in the design and installation of quality landscaping. From driveway and patios to complete garden projects.

For individual design, planning and landscaping by experienced, friendly tradesmen:

Call 0114 258 9290

Email jablandscapes@aol.com

Visit www.jabird.co.uk

100 Queen Victoria Road, Totley, Sheffield S17 4HU



CHRISTIANS BREAK-OUT AGAIN, IN TOTLEY

Many Christians believe that divine healing takes place today through the power of Jesus Christ and there is a lot of evidence to prove it. Healing prayer is offered regularly at All Saints Parish Church, Totley, with some success.

All Saints along with friends from other local churches have decided to 'break-out' of the confines of the Church to offer divine healing to the public at large, in a public place.

If anyone has an illness or situation which affects their emotions, their mind or their body, they are welcome to come for divine healing prayer, without obligation.



This will happen at the Fleur-de-Lys, Public House Totley, Totley Hall Lane, (Function room, entrance at end of pub near main road, A621 Baslow Road).

**Every Tuesday in February,
4.30 pm to 6.30 pm.**

DIAMOND DOMESTIC PLUMBING

C&G QUALIFIED; FULLY INSURED.

Free estimates

Call outs anytime

All installations, bathrooms, showers, tiling, etc.

All work guaranteed.

Telephone Kevin Malaure on

0114 2360868

or 07775 584169.

**Locally based Accountants and
Business advisors**

VAT Returns

Annual Accounts\Tax Returns

Business Plans\Start ups

Construction Industry Returns

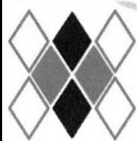
Wages and Salaries

For a free initial consultation at your home\office

CALL ALAN ON 0776 2241495

E MAIL alan@fullmarkaccs.co.uk

A1 Tiling ♦ Plastering Bathroom Refits



Tel : 0114 274 6775

Mark Paton

07738 688 807

www.A1tilingandplastering.co.uk

Good Rates ♦ Free Quotes ♦ No Job Too Small

33 Glenview Road, Greenhill, Sheffield S8 7SF

TOTLEY HISTORY GROUP

**Meeting 4th Wednesday
monthly during 2009 at
Totley Library. Everyone
welcome.**

**Further information on the
Totley Residents website
www.Totley.org.uk**

Also now on Facebook

Dronfield Landscapes

Logs and woodchippings
For Sale

Ring for details

Chris on 0114 2746158

Mobile 07976072785

Richard mobile

07789497104

Maths & Physics Tuition

David Taylor B.Sc

Experienced tutor at GCSE and A Level

South Sheffield & North Derbyshire

Phone: 0114 236 8094

dave@dt309.demon.co.uk

A & G Plasterers

Tel 0114 235 0798 / 07951 035783

**Competitive Prices
Free Quotations**

viewsecure™
vision & security

Specialists in domestic and commercial systems

**INTRUDER ALARMS | CCTV
SATELLITE & TELEVISION**



01246 455 779



www.viewsecure.co.uk

G9 Design

Architects & Design Consultants

- Provision of full architectural services from sketch proposals to final completion certification
- Planning Applications & Building Control Approvals
- New Build or Extensions
- Domestic or Commercial projects
- Complete client commitment

Gary Grayson
5 Newfield Lane,
Dore,
Sheffield S17 3DA

Tel: - (0114) 2352335

Mobile: - 07976431740

Email: - gary@g9design.com

Arb Registered
RIBA Chartered Architect

Totley Deli

Your local Rose's Bread stockist

Coffee Shop now open

Monday to Friday 8am to 4pm, Saturday 8am to 1pm

51/53 Baslow Road

Tel: 236 4238

Horizon Electrical

*Faults, Rewires, Sockets, Lights,
Cooker Points, Electrical Showers,
Phone Points, Security Lights*

No job too small

Fully qualified with friendly advice

Ring Totley 236 4364 or
mobile 0776 5036849

MALLORN ROOFING CONTRACTORS

**REROOFS • ROOF REPAIRS
FLAT ROOF • GUTTERING**

0114 235 6002

07853 350085

7 DALEVIEW ROAD, BEAUCHIEF

Catherine Clarke

Qualified Chiropodist

Westfield Accepted

192 Baslow Road
Totley
Sheffield
S17 4DS

M.S.S.Ch.
M.B.Ch.A.
S.R.N.

Telephone
Sheffield
2364101

SLIMMING WORLD

10 WAYS TO MAKE SURE IT WILL BE THE LAST TIME LOSING WEIGHT IS YOUR NEW YEAR RESOLUTION. THIS TIME MAKE IT LAST FOREVER

1. Focus on your weight loss goal and prioritise it.
2. Be sure you really want to lose weight for yourself. Doing it to please someone else may only lead to short term weight loss.
3. Take advantage of all the group support at your local Slimming World class. Even if you are not a 'joining in' person, you'll be surprised how motivating it is.
4. Accept that you will have ups and downs in your weight loss journey, and be forgiving of yourself if you hit a difficult patch.
5. Listen to your 'inner script' and make a conscious effort to talk to yourself in a positive, encouraging way.
6. Keep up your interest in your healthy eating plan by trying new foods, new recipes, and new ways of using your Sins. This will help you avoid getting in to a dieting rut which can be boring and demotivating.
7. Be honest with yourself about what you are expecting from your weight loss and how you are getting on with Food Optimising week by week. People who set unrealistic targets for weight loss or body shape are more likely to give up than those who set achievable targets and share their ups and downs.
8. Go back to your class even after (especially after) you've had a weight gain. You will not be judged, just helped and supported.
9. Keep setting new goals and rewarding yourself for milestones until you reach your target weight, and afterwards!
10. Don't put your life on hold until you've lost weight. You can still enjoy life and lose weight. Think of your dreams and ambitions and bring them to the fore. The positive feelings you get from starting to 'live a little' can only help your motivation and your weight loss.

Group details:

Bradway Annexe, Sheffield 17 - Thurs. 5pm and 7pm (6 times award winning group)

Dore Old School, Sheffield 17 - Tues. 5.30pm

The Michael Church, Lowedges Rd, Sheffield 8 - Wed. 10am

Telephone consultant Alison Murphy (01246) 410145 for further information.

PhysioFOCUS

at Totley Rise Dental Practice
85 Baslow Road,
Sheffield, S17 4DP



Physiotherapy treatment available for:

- Back and neck pain
- Sports injuries
- Sprains and strains
- Joint and muscle pain
- Arthritic pain
- Whiplash
- Repetitive strain injury
- Headaches

Appointments: 0114 2360333

Also available:

- Pilates classes
- Pilates 1-2-1
- Golf Fitness Screening
(as used by consultants to UK, European and Australian PGAs)

For more information please call:

Emer on: 07792 422909

Rachel on: 07956 908454

LEE CAIRA PLASTERING

- Dry Lining
- Rendering
- Re-skim
- Lime Plasters
- Skim Over Artex
- Board Ceilings
- Floor Tiling
- Free Quotes
- Apprenticeship Trained
- Qualified
- References
- Insurance Work Undertaken

Tel: 07816 301295

Email: leeacaira@aol.com

20 Linburn Road, Sheffield S8 0GS



Would you like someone to

Type letters? Pay bills? Help record family memories?

Sort and file papers? Prepare an inventory?

Anything else ???

Then you should call

Secretarial and Administrative Services

Swift, efficient, confidential service at your home.

Pay-as-you-go.

Ring us on 0114 235 0071



Tel/Fax: (0114) 255 4689

Mobile: 07831 802539

TRISTAN SWAIN

LANDSCAPING AND MAINTENANCE

72 Nettleham Road
Sheffield S8 8SX



LADIES FASHIONS

SKIRTS, JUMPERS
T-SHIRTS,
TROUSERS
HABERDASHERY
& ALTERATIONS

DRY CLEANING
SERVICE
LAUNDRY SERVICE

ROSIES

164 BASLOW ROAD, TOTLEY.
TEL: 2621060



M. Scriven
(FRUITERAMA)

MARTIN SCRIVEN

HIGH CLASS FRUIT
& VEGETABLES

37, Baslow road

Tel. 236 7116

Orders Delivered



Allweld Forge Ltd

Bespoke hand made wrought iron
BAY WINDOW CURTAIN POLES
 Large choice of finials and brackets
 Also gates, railings, furniture etc.
 Unit 3, 300, Archer Road, Millhouses S8 0LA
 Next door to Thomas Fencing
 Phone/fax 0114 2368239
 email: sales@allweldforge.co.uk
 Website: allweldforge.co.uk

R.S. HEATING & BUILDING CO
 EST. 1971

HEATING DIVISION:
 Experienced Installers of condensing,
 combination and regular boilers.
 Systems fully guaranteed.
 Complete after sales service.
 Also Bathrooms, showers
 and small plumbing works.

BUILDING DIVISION:
 Loft conversions, House
 renovations including general
 building, joinery, plastering,
 electrical decorating etc.

13 Overcroft Rise, Sheffield, S17 4AX
Tel:- 0114 236 4421
 Reg. Office:- 62 Machon Bank, Sheffield, S7 1GP
Te:- 0114 2559425
Fax:- 0114 255 9431
 Email: enquiries@rsheatingandbuilding.co.uk
 Web: <http://www.rsheatingandbuilding.co.uk>


LIBERTY FOODS
 Caterers
 Quality Meat Shop
 & Fresh Farm Produce

Fresh and Frozen Prepared Meals
 Fresh Meat and Poultry
 Outside Catering
 Home Delivery

253 Baslow Road, Sheffield, S17 4DU
 Tel: 0114 2360 583 Mobile: 07801 346 455

Pronfield Landscapes 

Gardens cleared and maintained, Lawns mowed,
 Turfing, Tree felling & pruning, Hedges trimmed &
 reduced, Pond maintenance, Fencing etc.

for free quotation call
 Chris on: (0114) 2746158 Mobiles: 07976072785 or
 Richard on: 07789497104


8am-6pm mon-fri HazelBarrow Farm, Norton S8 8BA

R.M.M BUILDING SERVICES
25 YEARS EXPERIENCE
 All types of building work carried
 out including- Drop kerbs, block paving
 (drives, paths, etc), extensions, general
 building repairs and maintenance.
 Phone Rob on- Mob- 07906108567
 Home-2352190

Nigel Watson
 Carpenter and Joiner

*New Kitchens, replacement worktops, doors,
 locks, floors, architraves, skirting boards,
 stairs, stud walling, boxing off etc.*
 No job too small

For a reliable, quality service
Tel: 0114 236 4778
Mobile: 07971 528149

Activ Physiotherapy 
 and sports injury clinic

@ Synergy,
 162 Baslow Road,
 Totley,
 Sheffield, S17 4DR.

**The Official Physiotherapy clinic for
 the Sheffield Steelers Ice Hockey Team.**

Treatments available for sports injuries, back & neck
 pain, joint problems, muscle & ligament strains,
 repetitive strain injuries, post operative rehabilitation,
 headaches & acupuncture.

Clinic registered with major insurance companies,
 can claim through the Westfield scheme.

Ring Andy for more information:
0114 235 7845 or 07901 968549

 **Got a computer?**

Tim Brown

Having Problems?
 Is it running slow? Stops responding?
 Having problems running the latest games
 or applications? Broadband installation?

Give me a call!
 I'm available for home visits at any time
 including evenings and weekends. I can
 also suggest upgrades to improve perform-
 ance, or even build you a system to your
 specific requirements.

Building,
 Installation,
 Upgrading and
 Troubleshooting
 Computer
 Systems
 Over 25 years
 professional
 experience

Phone: 0114 2472619 Fax: 0870 7060080
 Mobile: 078 17464703 Email: service@timbrown.plus.com

RUBBISH REMOVED

*Environment agency registered.
ID shown at door.*

Beds, settees, garden and DIY,
Washers, Baths, carpets, furniture,
Cookers Garages cleared, broken
sheds and fencing removed.

Free quotes! Genuinely no obligation!

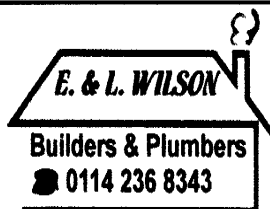
Tel: Mick 0114 2681330

Mobile 07710 446438

Established five years.

Courteous reliable service.

http://uk.geocities.com/draggletail_waste_services/



Central Heating
Domestic Plumbing
Glazing, Double Glazing and Glass
House Maintenance
UPVC and Wood Windows & Doors
Mini Digger & Driver, Muck Shifts, Footings Etc.



TOTLEY PRIVATE HIRE

*PROFESSIONAL CAR SERVICE
FOR
AIRPORTS & LONG DISTANCE
TRAVEL etc.*

Tel: 0114 - 2361547
Mobile: 07974-355528

DON ALLOTT Gents Hairdresser

**At PATRICIA BARBER'S
53 Wollaton Rd, Bradway**

Tele: 0114 2366247

Working times now are:

Thursday & Friday

9-00am-5-00pm each week

Plus the first Saturday in

Each month. 8-00am-1-00pm



APPLE LANDSCAPES and APPLE FENCING

www.applelandscapes.com

QUALITY SERVICE AT AFFORDABLE PRICES

**Patios • Paths • Walling • Turfing
• Railway Sleeper Beds • Garden tidy ups etc.**

Fencing & Gates Supplied Only
or Supplied & Fitted

Only Quality Materials Used

FULLY INSURED

Call for free quote

01246 237505 • 07782 167540

Hypnotherapy

Weight, confidence, smoking, stress,
phobias, anxiety, panic, sleep, etc...

Call 235 1985 Totley

www.sheffieldhypnosis.co.uk



Paul Peace



The
British
Psychological
Society
Chartered Psychologist



Karen Bartle

HEARING AIDS

MAURICE NAYLOR MBSHAA RHAD is your local
hearing aid specialist and at your request will test
your hearing in your own home, free of charge,
and if needed you can try a custom made aid for
four weeks without obligation to purchase.

In the ear digital from £495

Tel: 0114 262 0010

4 Twentywell Drive, Bradway

FOR SIX GENERATIONS

THE LEADING FUNERAL DIRECTORS

John Heath & Sons

**PROMPT and COMPREHENSIVE SERVICE
AT ALL TIMES**

☎ 2 722222

LIMOUSINES FOR SPECIAL OCCASIONS

www.callhomefix.co.uk

- ✓ Interior & Exterior
maintenance & repairs
- ✓ Bathrooms & Kitchens
- ✓ Heating & Windows
- ✓ Plumbing & Electrics
- ✓ Plastering & Joinery
- ✓ **CORGI-NICEIC-FENSA**
- ✓ 'Fix it' & 'snagging jobs'
- ✓ Flexible rates from ?49



**For a FREE estimate call JULIAN
01433 631535 or 07980 988768**

TOTLEY & DISTRICT DIARY

MONDAYS	COFFEE MORNING , All Saints' Church Hall, 10am-noon ANTE NATAL PILATES , United Reformed Church, 6.30-7.30pm, Phone Emer Coffee 07792 422909
TUESDAYS	COFFEE MORNING , Totley Rise Methodist Church Hall, 10am-noon WOODSEATS ADVICE CENTRE . Drop in service, free, impartial, and confidential. Totley Rise Methodist Church, 10am-noon CRAFT GROUP , Totley Library, 2pm
WEDNESDAYS	COFFEE in the LIBRARY , 10am-11.30am TOTLEY RISE METHODIST PLAYGROUP , Grove Road 9.30am-noon, Phone: Sheila 235 0130 or Janine 262 0773 TODDLER GROUP , 10am-11.30am, All Saints' Church Hall. Details tel. Mel 236 6300 HEALTH WALKS , 10.30am, Totley Library foyer. Phone Sue, The Health Walk Ranger: 0114 283 9195 MODERN SEQUENCE DANCING , All Saints Church Hall, 8pm-10pm
THURSDAYS	TOTLEY RISE METHODIST PLAYGROUP , Grove Road 9.30am-noon, Phone: Sheila 235 0130 or Janine 262 0773 NCT COFFEE GROUP FOR DORE TOTLEY & BRADWAY , 10am-noon, For mums & babies/toddlers, meeting in various locations, Phone Sally Spearing 236 2604 for further details (email: sally@spearings.me.uk) PUSHCHAIR CLUB , Totley Rise Methodist Church Hall, 1.30pm-3pm. Tel. 236 3157 for further details CHAIROBICS , Totley Library, 2pm-3pm. £1 PILATES CLASS , United Reformed Church, Totley Brook Road, 6.15pm-7.30pm, Phone Emer Coffee 07792 422909
SATURDAYS	MODERN SEQUENCE DANCING , All Saints Church Hall 2 nd . And 4 th . Saturdays 8pm-10pm

JANUARY 2009

SAT 31st JUMBLE SALE, Totley Primary School, 10am-12pm, All welcome

FEBRUARY 2009

SUN 1st CASTLETON FARMERS MARKET, the Village Hall, 10am-3pm

SAT 7th SATURDAY NIGHT LIVE, Heatherfield Club, Carole Scott, Baslow Road. 8.30pm.

MON 9th USING SHEFFIELD ARCHIVES, Shoreham St, Introductory session, 9am-10am, free, no booking required, 203 9395 for more info

TUE 10th FOLK AT THE FLEUR, Fleur de Lys, 8.30pm, all welcome

MON 16th USING SHEFFIELD LOCAL STUDIES, Central Library, Introductory session, 9am-10am, free, 273 4753 for more info

MON 16th BINGO NIGHT, Cheshire Home, 7pm - 9pm,

TUES 17th TOTLEY TOWNSWOMEN'S GUILD, 'The Gas Man Cometh (Anaesthetics)', Dr.J.A.Caunt, Totley Rise Methodist Church Hall, 10am

THU 19th - SUN 22nd SHEFFIELD PHOTOGRAPHIC SOCIETY EXHIBITION, Sheffield Cathedral, 9am-5pm Thu-Sat, 12pm-5pm Sun, Free entry

SAT 21st HOLMESFIELD FARMERS MARKET, the Village Hall, 11.30am-4pm, Local Produce, Cheese, Meat, Hot Sandwiches & Tea/Coffee

SAT 21st SATURDAY NIGHT LIVE, Heatherfield Club, Michael J. Oliver, Baslow Road. 8.30pm.

WED 25th TOTLEY HISTORY GROUP, Totley Library, 7.30pm, all welcome

THU 26th SHEFFIELD FARMERS MARKET, 9am-4.30pm, Bakers Pool

MARCH 2009

SUN 1st CASTLETON FARMERS MARKET, the Village Hall, 10am-3pm

FRI 6th WOMENS WORLD DAY OF PRAYER, Totley URC 10.30am

SAT 7th SATURDAY NIGHT LIVE, Heatherfield Club, Tony Verno, Baslow Road. 8.30pm.

TUE 10th FOLK AT THE FLEUR, Fleur de Lys, 8.30pm, all welcome

TUES 17th TOTLEY TOWNSWOMEN'S GUILD, AGM, Totley Rise Methodist Church Hall, 10am

SAT 21st HOLMESFIELD FARMERS MARKET, the Village Hall, 11.30am-4pm, Local Produce, Cheese, Meat, Hot Sandwiches & Tea/Coffee

SAT 21st SATURDAY NIGHT LIVE, Heatherfield Club, Keep It Country Duo, Baslow Road. 8.30pm.

WED 25th TOTLEY HISTORY GROUP, Totley Library, 7.30pm, all welcome

THE INDEPENDENT FOR MARCH 2009

The next issue of the Totley Independent will be available from the usual distribution points on

SATURDAY 28th February 2009

COPY CLOSE DATE for this issue will be

SATURDAY 14th February 2009

Editor **Ian Clarke** Email iangclarke@hotmail.com

Tel. No. **235 2526**.

Advertising & Distribution **John Perkinson**. Tel. No. **236 1601**

Email johnandpaulineperkinson@talktalk.net

Items for publication may be left or sent to **2, Main**

Avenue, Totley, Sheffield, S17 4FG or Totley Library

PRINTED by STARPRINT

B . K . JEAVONS

PAINTER & DECORATOR



**Interior
Exterior
Decorating
No job too
small.**

86, WOLLATON ROAD

BRADWAY

SHEFFIELD, S17 4LG

Telephone 2350821

Starprint

601 Abbeydale Road, Sheffield 7. Fax: 0114 258 8599

DESIGN & PRINTING of

- LETTERHEADS • BUSINESS CARDS •
- BOOKLETS & PADS •
- INVOICES • LEAFLETS •
- CARBONLESS SETS • BROCHURES •
- RAFFLE TICKETS •
- WEDDING STATIONERY •
- ENVELOPES & POSTCARDS •

**SPECIALISTS IN THERMOGRAPHY
FOIL BLOCKING AND ENCAPSULATION**

0114 258 0707

For a Quick Quotation



**For
Windows
With Style**

Sheffield Factory Showroom

**106 PROSPECT ROAD
HEELEY, SHEFFIELD**

**Sheffield (0114) 258 5496
Rotherham (01709) 512113**