

# TOTLEY INDEPENDENT

PUBLISHED BY THE TOTLEY RESIDENTS ASSOCIATION CONTINUOUSLY SINCE 1977  
JUNE 2010 No. 334 20p.



Photo taken early September 1947 of potato picking at Edward Bramall's farm on Totley Hall Lane, depicting from left to right:- 1. John Perkinton, 2. Lithuanian displaced person, 3. ? Billing, 4. Edward Bramall, 5. Lithuanian displaced person, 6. A young Brian Bowie?, 7. Joe Abson driving the tractor. The Lithuanians fought against the Germans and Russians during World War II, they were also captured fighting with them and brought over here working for the War Agricultural effort. J W Abson

## Totley Residents Association AGM 2010

**The AGM was held on 19th April in the library.** 45 people attended including Tammy Barrass, South West Community Assembly Manager; Councillor Bob McCann Cabinet Member for Safer Neighbourhoods; Local Councillors Colin Ross; Mike Davis and Keith Hill; PCSO Katie Gavin and Special Constable Andrew Bentley. There were apologies from Russell Hague, Rupert Norris, Lindsay Smith, Jim Higgins and Sergeant Tim Cross. The 2009 Minutes were circulated. There were no questions, the minutes were accepted unanimously.

The Chairman's Annual Report detailing activities for the last year was presented (see in May **Totley Independent**).

**Treasurers Report was presented;** Concerns were raised by Roger Hart about the amount of money in the account. It was agreed to set up a working party to look into charitable status. The accounts were accepted. Thanks to Richard Frost for auditing the accounts.

**Election of Officers;** Chairman – Avril Critchley; Deputy Chairman Marlene Marshall; Treasurer – Norman Rolfe; Secretary—Betty Higgins; Thanks were expressed to members John Perkinton and Richard Wrigglesworth who have retired from the Committee.

John Perkinton is the last of the original committee who set up the TRA in 1977. He will continue to look after the notice boards and work with Ian Clarke producing the **Totley Independent**. Richard Wrigglesworth has acted as Treasurer from 2004-2008, but remained on the committee until now.

**Election of Committee;** The following members were elected-Marlene Marshall; Jennie Street; Ann Lee; Sylvia Ruddle; Jennifer Burns; Dorothy Firth; Pat Parkin; Paul Savage; Dominic Harris; Russell Hague Neil Bunting; Roger Hart; Kara Sams

PTO

**TOTLEY OPEN GARDENS 10th - 11th JULY**

further details inside for these events

**TOTLEY MUSIC FESTIVAL – 12th – 17th JULY**

The following notices were given out:-

1) Hazel Homes Development has now been sold. Hillsden Construction will continue the building work on behalf of the owners. Work is already underway.

2) Residents were reminded about the importance of attending PACT meetings, for the next 3 months at Ecclesall Library 6.45pm 21st April, 19th May and 23rd June. The following 3 months they will be held at Totley Library.

3) Website details of usage see notice board and May **Totley Independent**.

4) Communication problems between Streetforce and SYPTe is the latest reason for the delay in turning round the bus shelters and putting the glass in the new shelter!

Councillor Bob McCann, Cabinet Member for Safer Neighbourhoods was introduced to the meeting. Members of the public put various questions to the Councillor expressing the frustration of residents about the continued problems of youth nuisance in the area. Councillor McCann told the meeting about Community Justice Panels.

This is a unique way of tackling crime and re-offending. The panels bring victims and wrongdoers together to resolve conflict and harm caused by anti-social behaviour. The offender is made to face up to the impact of what they have done. Both parties are given the opportunity to speak. The victim and wrongdoer sign a Community Justice Agreement. Referrals are put forward by the police or Sheffield Homes.

The future of the Totley Brook Road police box was mentioned by members of the meeting. It is felt to be a vital part of reducing the anti social behaviour problem in our area.

Katie Terrington from Sheffield Futures needs a base when meeting young people.

Special Constable Andrew Bentley reported there will be more police officers working in our area. Sergeant Tim Cross will have four PC's assisted by PCSO's and Specials working with him. Shift patterns have been altered so a police constable from the team will be on duty every weekend. Response teams will be available if needed. Officers will be using their police bikes and will have a dedicated police vehicle. Special Constable Andrew Bentley reminded us to ring in and report any problems using 101 or 220 2020

#### **AOB**

Cllr Colin Ross was asked about the rubbish bins at the bottom of the Rise.

There was a request the double yellow lines at the Mickley Lane Baslow Road Junction be looked at again as this junction is dangerous for pedestrians and vehicles.

The meeting was closed at 9.20pm.

Avril Critchley  
Chair TRA

## **Jon Windle Construction**

Building Locally since 1975

Extension Specialists  
Full Design & Build Service  
All Types of Building Work  
Undertaken, House  
Renovations, Patios,  
Walling etc.

" WE BUILD WITH PRIDE "  
contact 07773094528 / 0114  
2356841

## **Ward Forum**

March 17th saw the second Dore and Totley Ward Forum take place at Totley Library. This was attended by approximately 30 people including our three local Councillors. The first part of the agenda comprised an update on the issues raised at the first forum back in December. At its meeting on 24th February, the Community Assembly had been presented with a report by their officers outlining various ways in which these concerns could be addressed. However, there were very few firm proposals for the Assembly to decide upon one way or the other. But it's early days yet, and maybe they need longer to firm up the decision making process.

New concerns that were raised included:

1. An accumulation of litter behind the vet's building on Baslow Road.
2. Inoperative street lights on Greenoak Avenue.
3. Further dismay that a locally generated capital receipt could not be used to develop a community hall for Totley.
4. The provision of access to Community Assembly meetings for people with disabilities.
5. Parking, litter and the lack of dropped crossings at the Baslow Road / Mickley Lane junction.
6. The state of the children's play area, the need for another dog waste bin, and the lack of disabled access to the bowling green in Greenoak Park.
7. The future prospects for the derelict building site behind Totley library.
8. The condition of the public footpath through the old King Ecgbert's site.
9. Possible difficulties arising from changes to the recycling system.

These were forwarded to the Community Assembly officer team for consideration by the Assembly. The next Ward Forum will be held on 2nd June at Totley Library (7.30pm).

Bradway Action Group

Dore Village Society

Totley Residents Association



## *Plea for cakes*

*On the weekend of 17<sup>th</sup> and 18<sup>th</sup> July Totley will get national recognition when the garden at 16, The Grove is open for the National Gardens Scheme's Yellow Book.*

*As part of the opening, teas and cakes will be sold to raise money for charities supported by NGS - Macmillan Nurses among them.*

*It takes about 30 cakes to satisfy the demand at such a weekend!*

*Please would you be willing to provide a cake, or scones or buns, to help promote Totley's welcoming image and help raise money?*

*If so, please ring Jennie on 236-2302 or email:  
[jennie@hadish.f9.co.uk](mailto:jennie@hadish.f9.co.uk)*



## **Transport 17**

Danny and I have just got back from the "Cakes and

Cuttings" event at the English Martyrs Church Totley. The sun came out and then went in and it was a bit windy. All the same, it was a very sociable morning. People were meeting up and having a tea or coffee, buying plants, cakes, books and all sorts. We at Transport 17 would like to thank each and every one of the organisers, stall holders and customers for their contribution to our funds. We have just received £442.80 from the organisers of the Cakes & Cuttings for which we are very grateful.

The new bus should turn up soon. It is slightly larger than the "X" registered bus which it is replacing. We are very excited about it.

Our Project Manager, Mike Finn, will be 50 on 2nd June. Don't worry Mike, you can count it as the end of something or the beginning of new experiences, coupled with the wisdom you have acquired!! Best wishes from all T17ers.

As the better weather is here and "outings" approach, please would clubs give us good notice of trips as it takes a lot of "teeming and lading". You see, I am learning Yorkshire.

Best wishes, Margaret Barlow

## **How Do You Want Sheffield to Develop?**

The Sheffield Development Framework or 'SDF' is the Plan that says how the city should develop in the future.

The Council is gearing up to ask people their views on parts of the draft SDF during the summer. You know your streets and the places you spend your time in better than anyone. This is your chance to share your views on the future of the city.

The plan covers the whole of Sheffield. It is made up of a family of documents and a map. The consultation over the summer will be on the 'City Policies and Sites' document and the 'Proposals Map'. The 'City Policies and Sites' document will help us make planning decisions. It also identifies sites and areas for new development. The 'Proposals Map' shows how these proposals will affect different areas.

To find out more visit [www.sheffield.gov.uk/sdfconsult](http://www.sheffield.gov.uk/sdfconsult) - you will find information on where to see the document and map, how to share your views and details of SDF events. You can also email [sdf@sheffield.gov.uk](mailto:sdf@sheffield.gov.uk) or call the SDF hotline (0114) 205 3075.

## **HOLMESFIELD FLOWER CLUB**

### **Wednesday 16th June**

Invites you to join an Evening Workshop of flower arranging - entitled "Spring is a comin in" - tutor Glyn Spencer on Wednesday 16th June at 7.30 pm at Holmesfield Village Hall (off Woodside Avenue) Holmesfield. Ample parking. Visitors: £3. Everyone, including beginners, are welcome.

Contact Diana on 0114 237 7601 or email: [mail@dianaholland.plus.com](mailto:mail@dianaholland.plus.com) for details of what to bring.

## **FATHERS DAY LUNCH LEONARD CHESHIRE MICKLEY HALL SUNDAY JUNE 20TH FROM 12NOON £3.50**

## **Councillor Surgeries**

### **Liberal Democrats:**

2nd Monday in the month 6.00-7.00 p.m., Totley Library, Baslow Road and 2nd Saturday in the month from 10.30 a.m. to 12.00 noon, Dore Old School Hall, Savage Lane, Dore Contact details: telephone 235 2289 Email: [keith.hill@sheffield.gov.uk](mailto:keith.hill@sheffield.gov.uk), [colin.ross@sheffield.gov.uk](mailto:colin.ross@sheffield.gov.uk) or [mike.davis@sheffield.gov.uk](mailto:mike.davis@sheffield.gov.uk)

**TRA Website:- [www.totley.org.uk](http://www.totley.org.uk)**

## **Totley Music Festival 2010**

With just under two months to go before the second Totley Music Festival, here is an update. Just as the Totley Open Gardens draws to a close and the World Cup ends on July 11th the Music Festival begins. This year's week of musical celebration will run from Monday 12th July to Saturday 17th July. The Festival, whose sponsors so far include the TRA and the Cross Scythes at Totley, will take in a number of evening events throughout the week. The programme is not yet quite finalised, but events already in place include another Variety Cabaret evening at the Leonard Cheshire Home on Mickley Lane; an evening of jazz, a folk music concert, blues piano, and a rock and roll finale. Like last year, a number of these events will be held at the Fleur de Lys pub. The annual concert by the pupils of Totley Primary School will take place during the week, and the organisers promise a memorable evening concert by two award-winning vocal harmony groups. Like last year, all events will be free, so watch out for posters and leaflets over the coming weeks!! Thanks to everyone who is supporting and helping organise - if you are interested in lending a hand, or performing in some way (and this is especially a message to young people), it may not be too late! Contact us on 07956 858944 or by email at [totleymusicfest@btinternet.com](mailto:totleymusicfest@btinternet.com)

Phil Harris and Sue Hare.

## **Public Meeting Friends of Gillfield Wood**

There will be a public meeting on Tuesday 1st June in Totley Library at 7.30pm, re the forming of a Friends of Gillfield Wood conservation group.

The purpose of the meeting will be to discuss, if there is enough interest, the aims, formation and constitution of the group. Joanne Buck, the Assistant Community Partnerships officer for Sheffield City Council will be attending to provide help and advice during the evenings proceedings.

Dave Gash



## Totley All Saints School

### Enterprise Fair

Inspired by "One Hen" by Katie Smith, a true story book about micro financing loans and a small African boy who supports his widowed mother by buying one hen, selling eggs, buying more hens etc until he has several large chicken farms, we decided to hold an Enterprise Week.

Year 5 children wrote persuasive letters (part of the Y5 curriculum) to the PTA asking for a loan of £1 for every child in the school. Each class from Reception to Year 6 researched products that they could make using as many recycled materials as possible. The children learnt about marketing, profit, advertising and working in teams. Time was devoted to making products and we held an Enterprise Fair for parents and friends. Stalls sold a huge range of products including pots of herbs, popcorn, glove puppets, bookmarks, purses, jewelry, cards and buns to name but a few!

The event was very well supported by parents and everything was sold raising £376.25 for charities who help people to set up small businesses in Africa.

The feedback from both parents and children was excellent and the atmosphere at the Enterprise brought tears to our eyes. It was a fantastic way to learn and to help others.



## Picnic at Peace

**Wednesday 2nd June - Sunday 6th June @ Sheffield Peace Gardens, S1 2HH**

Otherwise known as the Festival Hub, Picnic at Peace brings Sheffield Food Festival to the heart of Sheffield City Centre. Browse the Local Producers Market; sample dishes available on the Outdoor Restaurant Stalls; get hands-on in the Grown Your Own Zone; be tutored to at the Good Food Demo Theatre; go nuts in the interactive Kids Zone, or even just grab a Summer Beer and chill out on the grass. Picnic at Peace is filled with the buzz and energy of the whole Festi/val, there's something for everyone, so make sure you're there!

This is part of the major event Sheffield Food Festival 1st - 6th June with many more events, further details available from [www.sheffieldfoodfestival.com](http://www.sheffieldfoodfestival.com)

## TOTLEY PRIMARY SCHOOL UPDATE

After registering our disappointment with the "powers that be" at the cancellation of Sheffield in Bloom we have now been informed it will indeed now go ahead. Let's hope it's third time lucky, as it's our third year of entering, and we get the gold!

I would like to thank TJF Joinery for making me a new gate for my hen run. Let's just say it's a lot more sturdy than my past effort! He has done some remarkable work at the school over the last few years. The Head and Deputy Head made it back to Blighty after the Easter break. Like a lot of people it turned out to be an extended holiday due to the volcano dust.

I would like to say how sorry I was to hear Abbeydale Garden Centre is to close. Both they and Ferndale have supported our school in the past with plants and compost etc. In my first year at the school Mrs Weld and her reception class went to Abbeydale Garden Centre (as they did every year) and gave me a present of a beautiful butterfly to stand in a planter. Another year they gave me a lovely plant in an ornate pot. I still have both of these and they will remind me of happy times when I get old and grey!

It's such a shame to lose another local business and the jobs connected to it. That's why I always try and support local shops and trades people, for example Martin Scrivens on Totley Rise. Not only do you get a great selection of quality fruit and veg but also friendly and helpful service. The relationships we build locally help form a great community.

The school's fruit orchard is in bud for the first time. Hopefully, in six years time when I retire, they will give bountiful supplies of apples, plums and pears. Tom Steel calls them sticks with roots.

This week I accompanied Reception to Cannon Hall Farm. It was a cold day but all enjoyed it. Unfortunately new regulations have been introduced and the children can no longer feed or touch the animals. I understand this is because a pupil in a school in the south of England contracted a bug from a farm animal. It's a shame as the kids have always enjoyed feeding the goats etc. but at the end of the day a healthy child is better than a sick one.

In June all key stage 1 are going to Bridlington for the day so I've got my bucket and spade ready! Last week FS2 had a pirate day with a guest pirate (yours truly). Eat your heart out Johnny Depp!

The PTA plant sale was a great success as was the bags to school and film night. A good amount of money was raised by all. I'd like to thank all the people who gave up their time to help raise funds and also thank you for your undying support to your school.

Allen Miller, Building Supervisor

## PUZZLE CORNER

### ANAGRAMS

Find two words, anagrams of each other, to fit each clue.

1. Route aid ; troops sent abroad
2. Distant ; sky sight
3. Concerning doctors ; point
4. Tick ; straight
5. Unfair play ; showing how
6. Food preparation aid ; exactly
7. Sells ; pragmatist
8. Choristers ; entrance
9. Perpetually youthful ; for deck dexterity
10. Pole star guide ; dance costumes

## Photo of Totley Rise

### Front cover issue 333

Up to the 1940s the shop on the right was Wints Grocery, Wines and Beer Shop, Grattons came a little later in 1940 something. There were 2 butchers shops nearly next door to each other, Colin Thompson's (next to the store) and Frank Cartledge a little further down the rise. Cartledges were later taken over by Lawrence (Lol) Tymn of the farming family, Don Tymn following on from his father at the farm before Totley Hall and another farm up Millhouses Lane. Lol Tymn later moved from Totley Rise to a butcher's shop in the row of shops opposite the top of Mickley Lane.

The shop there had previously been a bread and pastry shop (Pearson and Osthied) who moved next door to Albert Walker another Totley butcher at the top of Main Avenue opposite Walter Evans grocery shop later to be Tinsdales. The chip shop was way down the rise in those days and was owned by Pop Shaw (Hoppy) who lived 2 doors away from me. As for it not being the thing to be seen in the chippie there were hundreds of people who visited the chip shop and who were not unduly bothered who saw them, thank goodness.

Us young boys used to rumble the potatoes in the cellar and receive free chips for our efforts.

Many people well known in Totley used to live above the shops, eg Ackerslys, Marshalls, Charlie 'Rangoon' Cooper etc.

We also used to fetch blood in one gallon cans for Thompsons to make their black pudding with from the slaughter house on Shude Hill in the city centre. We very often used to accidentally spill some in the Pond St bus shelter (bus number 45) to make it look a bit gruesome.

All the shops at the top of Totley Rise had a basement with entry to the Back Lane where Colin Thompson had a few pigs and cattle stalls. At the Milldale end was the Millfield where the annual fair was held. Colin Thompson also had a shop at Dore. Lol Tymn's wife, May was also for a time a teacher at Totley All Saints School.

Bonnors News Shops eventually became Peter Swifts. Davys also had a bread and pastry shop on the Rise.

Across the road at Marstone Crescent were at the far end the doctor's surgery, Dr Connelly, followed by Dr Greg. This has now moved to the other corner, Totley Rise Medical Centre. There was Purdy's paint and wallpaper shop, a bank (very much missed as it was local), I think it was OK to be seen there, and the hardware shop, I believe Maynards.

Happy days.

J W Abson

## Memories of Life in Totley

Last time, I mentioned Mr Tilly, the Lamp Lighter. In about 1962, Grove Road, Totley Rise, was still lit by gaslight. I expect other roads were as well. Every evening Mr Tilly would arrive on his bicycle and go from lamp to lamp pulling a lever which ignited the street light. Mr Tilly was also a gardener and roses were his pride and joy.

Whilst rummaging through a box I found a page from the Sheffield Telegraph date 25 May 1962. *See it on the Totley History section of the TRA website.*

This cutting was probably kept because Cannon Hall in Butts Lane was owned by Margaret and Leslie Dawson who were great friends of my parents. They reclaimed Cannon Hall from dereliction and it really became a life's work and great passion to restore the old buildings and create a garden. Every time we visited the house the Dawsons would be working on a new aspect of the house and barns which they had discovered. For example, the original crock beams, an old fireplace and a secret staircase.

The Dawsons created a beautiful garden, using reclaimed stone and building all the stone walling. Leslie used many lovely old stone items from demolition sites.

On entering the house you were always met by the wonderful smell of wood smoke from logs in the huge hearth in the sitting room. I remember the lovely stone fireplace, there was a worn round shape in the edge where someone had continually lent a poker.

I spent many sleepovers at Cannon Hall. Tiptoeing across the creaking floorboards and snuggling into the huge oak bed. I found all this tremendously exciting and it has inspired my imagination and love of old buildings ever since.

Further on in the article there is a fascinating interview with Joe Marshall, where he describes the building of Totley Tunnel and Walter Ibbotson talks about the horse bus at Cross Scythes.

Mrs Annie Holding proudly claims at the age of 84, to be one of the oldest ladies in Totley. These days 84 is not considered to be exceptionally old. Mrs Mollie Turner, aged 71, looks very ancient. It may be of interest to note that she was caretaker at the C of E School for 30 years. I wonder if their relatives still live in Totley?

I wonder if anyone can recognise themselves in the school photos!

It is a shame that the pupils can no longer look out on a "windswept panorama of the bleak moors constantly changing colour".

Next time, I thought I might describe the old wooden footbridge and the tadpole pond!

Caroline Howden (Settle)

## PUZZLE CORNER

### Solution to Anagrams.

1. SIGNPOST ; POSTINGS
2. REMOTE ; METEOR
3. MEDICAL ; DECIMAL
4. CREDIT ; DIRECT
5. CHEATING ; TEACHING
6. RECIPES ; PRECISE
7. RETAILS ; REALIST
8. SINGERS ; INGRESS
9. AGELESS ; SEALEGS
10. LODESTAR ; LEOTARDS

Don Ashford

## PEAK DISTRICT EVENTS

**Poems in the Landscape** 3 June 6.30 to 9pm, South Peak Estate, bring a poem to share

**A Literary Walk** in Dovedale 5 June 11am, Milldale, discover the dale's literary connections

**Pictures in the Landscape** 5 to 12 June 10am to 4pm Dovedale

**Longshaw Woods and Moors** 6 June 10.30 am to 3.30 pm Longshaw Estate

**Wild Flower Wander** 13 June 10.30 am to 12.30 pm Haywood car park, Longshaw

Further details:- [www.visitpeakdistrict.com](http://www.visitpeakdistrict.com) or [www.peakdistrict.nationaltrust.org.uk/whats-on](http://www.peakdistrict.nationaltrust.org.uk/whats-on)

## Canadian Reminiscences of Totley

Years ago, my husband John and I were lucky enough to have two sabbatical years in Sheffield, while he was at the University. In our first year, 1975-6, the University arranged for us to rent 22 Abbeydale Park Rise for the year. Our children, Ian and Megan, were very young, and when we arrived, I wondered if they actually spoke the same language as the other children. However it turned out that our children and the next door neighbour's children, Paul and Lisa Cousins, bonded immediately. The dialect did not matter at all.

It was a wonderful year for us, as John loved working at the University, and I just puttered about, discovering well-dressings, and other things that had been completely foreign to us. Ian went to Totley Primary school, and I would pick him up after school and make our way down the rise. Megan went to a little nursery up the rise, run by a lovely woman, Mrs. Marsh. Megan was 3, and called her Mrs. Martian – an appellation that the infinitely patient Mrs. Marsh minded not at all. Aside from Paul and Lisa, there were many neighbourhood children who became friends – Simon, Megan's age, just across the road, was one.

It was the year of the big drought, where standpipes were threatened throughout Sheffield, although they never turned up on our street. As the water table fell, one could see the town that had been flooded for the Ladybower Reservoir. The remnants of those buildings stuck up through the fading waters. It was quite a sight.

We watched a major Cricket Match on the Abbeydale Playing grounds from our upstairs bedroom windows at 22 Abbeydale Park rise. I am now told that perhaps Ian Botham played against the West Indian contingent at that time. Maybe. Perhaps a reader can tell us if that is right.

Our drives into the Pennines, walkabouts, and many tours made for a memorable year. Our Vauxhall (you recall the old joke 'you vaux there and vaux all the way back') did punk out on us on many occasions – once in the Loire valley, but, more memorably for me, when I was driving home on the dual carriageway, and just over the hump towards Devonshire Rd, changed gears and found myself holding the clutch in my hand, separated from the car. I glided into the then garage, and the lovely mechanics simply told me this was a genetic problem with Vauxhalls.

I also remember with great fondness the 2p ride on the buses from the farthest stop on the Sheffield line, at the Cross Scythes, where the buses turned in.

Seven years later, and on another sabbatical, we wanted to return and did return to Totley. Such a lovely place to land. If I recall correctly, Jimmy Martin's was still the place to buy newspapers at the little plaza, and now our children went to different schools. Ian went to King Egberts, which then was in two different locations (Mercia and Wessex was it?) and Megan entered middle school. Our second rental home was a little farther up, at 7 Terrey Road, and again, we found some terrific neighbours. Ian and John became immersed in snooker, and went often to the pool hall on the London Road, and then, of course, to the Crucible, and saw the great Steve Davis. There were also several Canadian players, including Mike Werbenuk who drank copious amounts of lager while he played. A true Canadian.

That was a year filled with wonderful memories. Kath from 24 Abbeydale came for dinner with us, her husband Fred had by then died. I am old that Kath now lives in a Totley Nursing home.

So this year, 27 years later, our son Ian now lives in London and has become a British citizen, and we decided to return to Totley. Normally, we visit Ian in London for a week, take another week 'elsewhere' (I am an amateur genealogist, so most self-catering cottages we take for a second week involve other areas than Sheffield for research interests) but this spring we decided to return to our 'real roots' – Totley. It did not disappoint.

Although King Egberts on two campuses, (as we knew it is gone) as is Jimmy Martin's, much remains the same. We rented a lovely cottage (Moorlands) in Totley Bents, and did many walkabouts.

We tried to knock on doors on Terrey Rd to no avail but as we approached 22 Abbeydale Park Rise to ask to take photos, the lovely people at 20 asked if they 'could help'. Indeed they could. Bill and Fidelma Stark invited us in and called our former neighbours the Cousins who had lived at 20 on our first sabbatical and now live in Dore. The Starks could not have been lovelier to absolute strangers. We remain in touch.

I know you in Sheffield and particularly, you in SW Sheffield know you live in a kind of God's country, but the return for us was splendid – the library, the pubs, the wonderful walks.... You are lucky. As are we.

Gail and John Benjafield  
St. Catharines ON Canada

## Totley and Dore in the Yellow Book

Three gardens in Totley and Dore, and one in Millhouses, will this year feature in the National Garden Scheme's Yellow Book for the first time. They are the new kids on the block – along with about 3,700 others also opening in 2010!

This not only puts Totley and Dore on the national gardening map, but is also an accolade for Sheffield, because until 2010, only two Sheffield gardens out of 113 in the Yorkshire section were in the acclaimed Yellow Book.

The gardens will open on different weekends so there is a chance for visitors to get to all of them. These are the gardens, and their opening dates:-

**Sue and Roger Thompson** of Owl End, Newfield Lane, Dore, will open on Saturday 19th and Sunday 20th June from 2-6pm. (45) herbaceous and mixed borders, vegetables and woodland.

**Jennie Street and John Beazer** of 16 The Grove, Totley, will open on Saturday 17th and Sunday 18th July from 12-5pm. (57) Quirky mix of borders and vegetables, junk sculptures and compost heaps. Refreshments available.

**Simon and Julie Olpin** of 124 Dobcroft Road, Millhouses, will open on Sunday 25th July and Sunday 12th September from 11-6pm. (18) Palm and bamboo jungle. Refreshments available.

All these 4 gardens appear in the Derbyshire pages of the Yellow Book, because of their proximity to Derbyshire. Figures in brackets indicate their Derbyshire reference number in the Yellow Book.

All monies raised from these garden openings will go to the charities supported by the NGS – Macmillan Cancer Support, Marie Curie Cancer Care, Help the Hospices and Crossroads Care.

## Activity Sheffield 45/50+ Physical Activity Sessions in the South West

- The below sessions are available to participants of all levels, i.e. new to exercise or a regular exerciser
- The sessions are a fun way to meet new people and to get the daily exercise required to keep you healthy.
- There is no booking system.
- Remember to wear loose comfortable clothing and to bring a drink.

Activity	Venue	Day	Time	Cost
Tai-Chi	Dore & Totley Reformed church	<b>Monday</b>	11:30am – 12:30pm	£2.00
Tai-Chi	Fulwood Scout Hut – 551 Fulwood Road	<b>Monday</b>	1:15pm – 2:15pm	£2.00
Multi-Games	St Tim's Church, Slinn Road, Crookes	<b>Monday</b>	1.45pm – 3:15pm	£1.00
Jogging Club for Beginners	Endcliffe Park – Meet at the cafe	<b>Monday</b> – Started 10 <sup>th</sup> May	5.00pm – 6.00pm	Free
45+ Badminton	Silverdale School Sports Hall	<b>Monday</b> – Started 10 <sup>th</sup> May	6.30pm – 8.00pm	£2.00
45+ Football and Basketball	Silverdale School Sports Hall	<b>Tuesday</b> – Started 11 <sup>th</sup> May	6.30pm – 8.00pm	£2.00
50+ Aerobics and Multi-sport	Ecclesall Parish Halls	<b>Tuesday</b> – Started 4 <sup>th</sup> May	1.00pm – 2.00pm	£2.00
Racketball	Abbeydale Park Sports Club	<b>Wednesday</b> – Starts 2 <sup>nd</sup> June	10:00am – 11.30pm	£3.50
50+ Multi-sport	Ecclesall Parish Halls	<b>Wednesday</b>	1.00pm – 2.00pm	£2.00
50+ Multi-sport	St Columba Church, Crosspool	<b>Thursday</b>	11.00am – 12.00pm	£1.00
Chairobics	Totley Library	<b>Thursday</b>	2.00pm-3.00pm	£1.00
45+ Boxercise & Keep Fit	Gym Plus (SUFC) site. Crookes	<b>Thursday</b>	6.00pm – 7.00pm	£2.00
50+ Gentle Aerobics	Hallam Community Hall	<b>Friday</b>	2.00pm – 3.00pm	£2.00
45+ Netball & Badminton	King Ecgbert School Sports Hall	<b>Friday</b>	6.00pm – 7.00pm	£2.00

If you would like any more information on the sessions shown above or other sessions in your area please contact James Milovanovic-Firth.

Activity Sheffield  
0114 273 4266  
[www.sheffield.gov.uk/activitysheffield](http://www.sheffield.gov.uk/activitysheffield)

**Sheffield** *where everyone matters*



## OLD TOTLEY by Jo Rundle

It was with mixed feelings that I returned home to Lane Head after being met at Sheffield Midland Station by my Father. My Brother Jeff was his usual happy-go-lucky self, probably even looking forward to his first venture outside England, and the challenge of coping with the primitive conditions in Aden and meeting the inhabitants of a totally different country, for he was always adventurous, a 'go-getter', try anything once, type of lad. But there was a certain undercurrent of sadness as expected, and I was glad to have been at home when he left. We stayed over the next weekend and my Father took us home to Gleadless to resume where we had left off. After a few days at home, and another weekend at Totley, a quiet celebration of my son's third birthday in October and mine in November, both warranting an extra day with the family, and this, I thought, would be the pattern until my husband returned, 'when?', who knows?.

It was 6.30 pm. on the evening of Thursday 12th December 1940, all was quiet and peaceful as I prepared for another weekend at Totley when the air-raid sirens blasted their way into the house with their warning that German planes were on their way. Our air-raid shelter standing out there in the garden had never been finished; it having been considered unnecessary in the absence of air-raids. But my now three-year-old son Arthur knew exactly what to do; just out of the bath he dived under the table as he had been taught, gleefully munching the bed-time biscuit as if it were all a game. I was about to wash my hair, but hesitated for a moment or two then, as all was quiet I took the chance and ran upstairs to the bathroom and managed to complete the first lathering just as the first drone could be heard, when I joined him.

As the plane passed safely overhead, I dashed back upstairs and finished my ablutions and again joined Arthur who was quite happy under the table as if it were a game. The drone began again and the noise was terrific, as plane after plane dropped incendiaries as they passed overhead, until the house shook, then a terrifying bang as the first bomb was dropped near enough to make the house tremble and for me to hope that the table would be strong enough if the roof fell in. After another two bombs the planes moved on still dropping their bombs until the sky, and all around was as light as day with fires from the incendiaries and the burning houses but, thankfully, we were safe and about an hour later I thought it safe enough to go to bed.

Next morning my neighbour said that the last bomb had hit a house in the next road and it was still burning; that her husband had tried to get to work but there were no 'busses, and houses on Abbeydale Road and London Road were still burning. Sheffield was ablaze from Abbeydale Road to the Wicker Arches, and The King's Head at the corner of Fitzallan Square was razed to the ground and many people who had been sheltering there had been killed. There was nothing I could do, and I certainly was not going to let Hitler prevent me from going home so, after a quick breakfast, with Arthur warmly dressed in his new Siren- suit, we set out to walk over the top road to Gleadless Town-head, out onto the long road past the balloon barrage, and on towards Norton.

With so many detours the journey was going to be about ten miles but in such situations there is always someone willing to help and, fortunately about half a mile from Norton, a driver stopped his car and offered to take us as far as the bottom of Stubley Hollow. With very grateful thanks I accepted his offer, and the rest of the journey up to Dronfield Woodhouse, down Mickley Lane was easy arriving at Lane Head at 1.30pm without further events, and with great relief. During the following days many people questioned why the hill-top village of Gleadless should have been subjected to such a damaging air-raid, as the only

building to have anything to do with the war was the Balloon Barrage that should have been a deterrent, not an attraction. Two nights later on the 14th December the bombs in a second raid hit the steelworks and munitions factories at Attercliffe and Templeborough, and, despite the gravity of the situation all at Lane Head watched as the sky grew as light as day, and could be heard for almost two hours. Although not known at the time this was the last Air raid on Sheffield. My Cousin May, and her husband Laurie Tym, the butcher, had called that day on their way home to Spitewinter Farm on Eastmoor off Baslow Road via Clod-hall Lane when the conversation inevitably turned to the War and a strange situation two weeks previously.

They arrived at the gate to the farm when, almost immediately a group of rather formidable men with foreign accents challenged them as to why they were there, and it took some time to prove that it was their home. It was quite frightening at the time, and even more mysterious when, next day, they were told that they were Polish prisoners of war, but why, and how, they came to be there was not asked, and for two months remained a mystery.

In the following February, during our usual visit, my Mother said, "Do you know what's happening at the school tonight?" and, not waiting for an answer, continued. "there's a meeting and the Speaker is an official from The Saint John's Ambulance Brigade. She knew that at the age of eighteen I had wanted to be a nurse, but also knew that my Father would not let me go because Bessie Coates, the daughter of one of our neighbours at Lane Head, had done so and the conditions were so bad that her Mother sent her food parcels every week, and the work was extremely hard.

I went to the meeting and grew more and more fascinated, especially when a huge man on the front row fainted when the speaker described the difference in treatment of a patient with a transverse and a vertical wound of the abdomen and its contents. My Mother was very interested and pleased that I had enjoyed event and a few minutes later my Father arrived home after his usual visit to the 'Cross' "Well did you enjoy your lecture lass?", obviously knowing the answer before the question was asked, "So what are you going to do now then?", to which I replied, "What can I do with a three-year old child?". "Well lass", he answered, "Now that your brothers are doing their bit, if you want to do yours you can leave him with us, we'll take care of him"

A week later I started the six-week's Course on war time First Aid, and on March 1st became a Civil Defence Nurse attached to First Aid Post 13 in Pipworth Road School Manor Estate Sheffield. Now, I was defending my country just like my brother Elijah, and had many interesting conversations about the things that were being done to that end. It was during one of these that he told me why that first air-raid



had hit Sheffield City and Gleadless instead of the steelworks.

The Polish prisoners of War were seconded for special duties from one of the various camps in South Yorkshire, who, he understood had been prisoners of the Germans, who had been rescued by the British during the first year of the War. Their job had begun by setting out on a large field on the Moor over a hundred braziers in the pattern of the village of Totley as seen from the air; a 'mock village' so to speak, thus fooling, if that is the right word, the Germans into believing that they were nearer to the Steelworks than they actually were.

They fuelled the braziers during the day so that the smoke they created dispersed before dusk, when groups of them spread over the moor in case of intruders. It was one of these groups that had accosted cousin May and Laurie. The Home Guard's duties covered the large area of Sheffield/Totley /Holmesfield moorland up to the boundary of Chesterfield, on Baslow Hill Road /Clodhall Road area. Whilst the Poles were guarding Eastmoor, the Home Guard were out on manoeuvres practicing their skills with their one issued gun, and guarding their own moors against intruders. My immediate reaction to this explanation was 'ingenious', but later, the 'saving people' side of me had another view when thinking of all those who lost their lives in the City and Gleadless and the surrounding area: it was obviously a matter of importance in a dire situation, 'People' or 'Munitions'?, for many, many lives were lost that night, it could even have been me, and my son!

To be continued. Jo Rundle.

## Is 20 Plenty for Us ?

My recent article highlighted the national upsurge of interest in 20mph zones for residential areas to bring us into line with much of Europe. Some UK authorities have already implemented these, while others are still thinking about it. Following the Town Hall presentation in January and petitions from some local communities, Sheffield City Council has been sparked into giving this serious consideration. Highways officials have been dispatched to see what's happening in other cities and report back to the Cabinet Highways Committee with a viable solution for Sheffield.

But this is only the first step in a long process of public consultation before talk becomes reality. A new website has been set up to provide information and co-ordinate local activities -

[www.20splentyforsheffield.org.uk](http://www.20splentyforsheffield.org.uk).

This has useful links to other websites, including Rod King's slide presentation to the Sheffield On The Move forum on 28th January.

This has been raised at public meetings including the Community Assembly and our new Ward Forum, but it will be up to local communities to monitor progress and maintain pressure until something actually happens in their area. If we leave it to others, we could be in for a long wait.

Alan Kewley

## The Crown

As reported in the last issue of Totley Independent, the Crown re-opened at the end of April. It is getting back up to speed after much of the equipment was stolen when the last licensee left. The new licensees, Tony & Julie hope to start serving food in the near future when the new kitchen refit is completed.

## TOTLEY OPEN GARDENS JULY 10th and 11th

Around Totley there are now a group of people getting their gardens ready to open for Totley Open Gardens on the weekend of July 10th and 11th from 1-5pm.

If you have missed going round the gardens in previous years, put the dates in your diary.

About three weeks beforehand, programmes will be on sale in Totley Library and over the weekend of 10th and 11th programmes can be bought outside the Ironing Parlour on Baslow Road, or at any of the gates of the gardens that are open.

There will again be a variety of gardens, from the quirky to the formal and the small to the large.

Queries to: Jennie Street 236-2302  
[jennie@hadish.f9.co.uk](mailto:jennie@hadish.f9.co.uk)




The Toys Of Totley In Safe Hands



### FUNDRAISING FOR THE NURSERY EXTENSION

**Cost: £20 per brick**

**Inscription: Max 10 characters per brick**

**For an application form:**

**Email: [manager@littlesaintsnursery.org.uk](mailto:manager@littlesaintsnursery.org.uk)**  
**or call 0114 235 2148**




## Ranger Road Show

As part of Sheffield Environment Weeks the Park Rangers will be holding a "Road Show " family event in Green Oak Park on Monday 31st May 11am-3pm. They will be doing parachute games, ten pin bowling swing ball etc.

## GARDENING TIPS FOR JUNE

June already! Usually I would say that gardeners can relax a bit this month, but going on the happenings in my garden just now (early May) with everything a bit behind with the cold wet weather there will not be much relaxation for a good while yet. I don't know whether the volcano ash has affected anything but we could do with some sunshine to bring on the plants. I have not got much planted out yet and what is out is having to be protected by fleece etc. Let's hope that the heat wave that was forecast two years ago turns up, a mini one would be nice, with a drop of gentle rain at night (we gardeners do live in hope). The ponds are back in full swing (or should I say squirt) the fountain which was giving trouble, I was waiting for spares to come from the suppliers, they did not send me spares they sent a lovely new one instead. It was still under guarantee, I thought it was wear & tear, but I am not complaining. Well done Hoselock excellent service and prompt too. The fish have had their fill of tadpoles but they are still in abundance a few look quite large, though no legs yet.

We have a doggie visitor who belongs to the lady in the shop, she comes occasionally with her, I have forgotten what it is like to have a lively Boxer pup around (perhaps some of you remember our Della a lovely well behaved dog). The new visitor is Tilly and is very nosey as young pups are she loves to be in the garden, especially if there is food about. We have to batten down the hatches when she comes, she is no respecter of bedding plants, onion plants or fertiliser, if she rolls in something she does not come up smelling of roses, I can tell you. It is nice to have her around especially when we don't have to take her walkies particularly if it is raining.

The greenhouses are bursting at the seams with hanging baskets, bedding plants, pot plants, over wintering shrubs and vegetable plants all waiting for this better weather, so that we can get them into the garden. I hope things don't get to far behind or we won't have much ready for the Totley Show on September 18th. We gardeners are generally optimistic the buzz phrase is "it will catch up" (we hope). I hope (there goes me hoping again) that all of you folks are getting things shipshape for the show with those photos, tapestries, artwork, knitting, woodwork etc. and encouraging the young ones to be designing their miniature gardens, veggie animals or practising computer art, the lego models put up a good show last year. Let's make this years even better, don't forget I will be reminding you in later editions of **Totley Independent** so get cracking, not much relaxation as I said earlier. Keep at it and enjoy your gardening or whatever you get up to.

### Flowers

Keep an eye on all newly planted bedding and other plants and keep them well watered during dry spells, a bit of liquid feed added to the water now and again will give an added benefit, keep if off the leaves if it is sunny when you are applying it. Stake and tie any taller plants as they grow, otherwise they will be damaged or broken by the wind.

You can lift and divide hardy primulas such as primulas denticulate, primulas japonica etc as soon as they have finished flowering. As alpine plants in the rock garden finish flowering, trim back the growth to keep them neat and compact.

Biennials such as Canterbury bella, wall flowers and sweet williams may be sown now. Bedding plants should be safe enough now from frost so if you have not planted them, do so now.

Place chrysanthemums in their summer quarters, stand them on ashes or gravel to give good drainage, keep them well watered.

Divide mossy saxifrages if they have a brown centre. Discard the brown pieces altogether and replace the green clumps in a semi-shaded place in a good humus soil leaf mould or moss peat. Deadhead peonies after flowering and cut back oriental poppy.

### Vegetables

Keep all vegetables well watered and fed, especially during dry weather. Earth up potatoes. Watch out for aphids and caterpillars and deal with them as soon as they are seen. Plant out outdoor tomatoes, sweetcorn, runner beans, marrows and ridge cucumbers.

Plant out leeds for winter/spring use and celery for autumn/winter.

Sow leaf chichory, endive, spinach and leaf beet for use in autumn/winter. Make succession sowings of beet, carrot, dwarf beans, peas, lettuce, salad onions and radish.

Take cuttings from rosemary and sage and root in pots on a windowsill. Pick any vegetables as soon as they are ready, this will encourage more cropping.

To help rhubarb build up new crowns for next year, stop picking. Any flower shoots that appear should be

removed and the plants well watered and fed. They would also appreciate a top dressing of compost. (I put custard on mine!! Ha ha) Pinch out the tips of broad beans.

### Trees, Shrubs and Fruit

Keep newly planted shrubs and trees well watered.

Remove the dead tips of cotoneaster and cherry. Do not forget to pick the seed of laburnum, especially if there are children around.

Give azaleas, rhododendron, camellias and hydrangeas a feed of sequestrene. You can take semi-ripe cuttings from quite a lot of shrubs and trees, root in a frame or windowsill (not in bright sun). Keep fruit tree trunks clear of weeds and grass.

Trim apples and pears after the June drop of fruitlets.

Do not allow newly planted fruit trees to produce flowers, pick them off to encourage strong plant growth for the future. Tie in a support growing blackberry and loganberry, check supports on other fruits.

Cut out any badly cankered apple branches.

Summer prune gooseberries, grapevines and red and white currants.

### Greenhouse and Indoor Plants

As the weather gets warmer (we hope) ventilation is very important. Watch out at the beginning of the month and be ready to close up if the temperature drops, most plants are happy at 16C or 60F. As usual watering and feeding is the order of the day except of course the ones that are resting.

Stand pots on damp pebbles to maintain humidity. Pot up cuttings taken in May. Watch out for aphids etc and deal with them as soon as they are seen. Smoke cones can be very effective, do not use them if you have seedlings growing, some cucumbers do not like them either. Keep an eye out for mildew and spray or dust with an effective fungicide as soon as possible. Sow calceolaria, cineraria, busy lizzy, french marigolds and indoor primulas to use as pot plants.

Take cuttings of most indoor and greenhouse plants such as fuchsia, heliotrope, kalanchoe, plumbago etc. Leaf cuttings can be taken now from African violets, rex begonias and echeveria. Established fuchsias can

be given a new lease of life if they are taken out of their pots and the old bottom root screwed off and the plant repotted in fresh compost, do not damage any new paler roots as you do this. Nip out the side shoots as tomato plants develop 5 or 6 trusses, regular feeding improves flavour.

#### **Lawns**

Clean up raking regularly, get into a cutting, feeding routine. Keep edges tidy. Do not worry about your lawn drying up in dry weather, it soon recovers when it rains, keep the mower set high during these dry spells and try to keep children and animals off. I think I said you could relax this month, looking at this lot I think I shall have to eat my words.

Finally, don't forget the Totley Show on 18th September, we are all working hard to make it a success so all we need is your encouragement by turning up and better still, having your work on show. Cheerio for now,

Tom

#### **Could you sponsor a Class in Totley Show?**

Totley Residents Association will again be running the Totley Show on Saturday 18<sup>th</sup> September in Totley Primary School.

There are 70 classes. In the Children's Section we again have 14 classes to attract youngsters to take part in the Show.

We give money in prizes - £3 for first prize, £2 for second prize and £1 for third prize. (It's the big time in Totley you know!)

We would like to get all the classes sponsored by local people, which will greatly help in covering the costs of the Show, as we have to purchase medals, cups, entry forms, certificates etc and maintain equipment like the art display boards. Last year we got 55 classes sponsored. This year, can we get all 70 sponsored?

Please could you help by sponsoring a class - for just £6 per class?

If so, please ring or email me and, provided a class has not been "taken", you can choose the class you would like to sponsor! Those who sponsored in previous years - we would love you to help again this year.

We really appreciate support in this way - it all helps the great community spirit we have in Totley.

Jennie Street Tel. 236-2302 [jennie@hadish.f9.co.uk](mailto:jennie@hadish.f9.co.uk)

**WOULD YOU LIKE YOURSELF  
OR OTHERS, TO BE SET FREE  
FROM ILL HEALTH  
OR PROBLEMS ?  
- COME FOR PRAYER.**

**JESUS CHRIST IS LIVING TODAY,  
TO HEAL PEOPLE  
and to give ETERNAL LIFE.**

**COME TO THE TOTLEY  
LIBRARY BUILDING -  
BASLOW RD  
BETWEEN 12.30PM AND  
2.30 PM, every SATURDAY  
IN MAY AND JUNE,**

TOTLEY ALL SAINTS - TOTLEY RISE METHODISTS - (Mob 07877303709)

## **JIM'S GARDEN**



**JIM BIGGIN'S MEMORIAL GARDEN  
AT MICKLEY HALL IS NOW OPEN  
PLEASE FEEL FREE TO COME AND  
SIT A WHILE AND REFLECT ON YOUR  
MEMORIES OF OUR OLD FRIEND**

## **Family Ceilidh**



**Saturday 26<sup>th</sup> June  
All Saints' Totley Church Hall  
3.30 - 5pm**

Country dancing for children of all ages  
and their parents. No experience  
necessary, come and have fun!

Tickets £5 per family  
Kate Caroe tel. 262 1345

## **Abbeydale, Dore and Totley Festival of Local History and Art**

**St John's Church Abbeydale**  
(Opposite Abbeydale Sports Club)

**Saturday June 5<sup>th</sup>  
10.0 am - 4.0 pm**

**Contributors:**  
Dore Village Society, Totley History Group, St. John's  
Church Archives, Local art groups

# Celebrating Saint Peter's Day

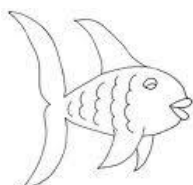
Ideas and activities for celebrating Saint Peter's Day at home from members of All Saints Church, Totley

## Peter

The name Peter has always been special to Marjorie and me. One of the first churches we attended together when we were married was St Peter's in Stockton-on-Tees. On one particular Sunday the Vicar preached a sermon on Peter, the disciple of Jesus, and we were moved to use this name for our second son. We know many other people who have called their sons by this name and it remains one of the most popular.

Of course Peter was one of the original twelve disciples who Jesus chose. He was an ordinary fisherman who was called to be an extraordinary friend. He was originally called Simon and was the first of the disciples to recognise Jesus as "the Christ, the Son of the living God". Jesus' response was to say, "Blessed are you, Simon, you are Peter and on this rock I will build my church" This is particularly remembered by our Roman Catholic friends because, by tradition, Peter became the first Bishop of Rome where he was eventually martyred.

Peter was an impetuous man. One of the gospels records him as being the disciple who cut off the right ear of a man who had come to arrest Jesus in the Garden of Gethsemane. He also vowed that he would never deny Jesus but we are told that he did this three times when Jesus was arrested. It would seem that his enthusiasm caused him to make serious mistakes, but that can be comforting now to all of us when we make mistakes or get things wrong. Altogether Peter was "a man's man", almost larger than life in some respects, yet lovable and very human. It is no wonder that a well-known popular biography is entitled "The Big Fisherman". We shall specially remember him on June 29<sup>th</sup>, his festival day, and rejoice for all he has meant to us.



## Children's Activity for Saint Peter's Day

### Flap the Fish.

Draw a large fish on a piece of A4 paper and cut it out, one for each child. The children could make their fish themselves.

The children then line up at one side of the room with their fish on the floor in front of them. They are each given a wad of newspaper, which they have to use to waft the fish in as straight a line as possible across the room to the finishing line!

## Recipe Idea – Nigel Slater's Moroccan Fried Fish

100ml olive oil

3 tablespoons chopped coriander leaves

Juice of ½ lemon

1 teaspoon mild chilli powder

2 teaspoons ground cumin

2 cloves of garlic, finely crushed with a little salt

½ teaspoon black peppercorns, finely crushed

450g white fish

Plain flour

Mix half the olive oil with the coriander, lemon juice, chilli, cumin and garlic. Add the peppercorns. Put the fish into a shallow dish and rub them with the spice marinade. Leave for 30 minutes.

Heat the remaining oil in a frying pan. Remove the fish from the marinade, shake it to remove excess oil and roll it in the flour. Fry immediately in the hot oil till crisp and golden, a matter of 3-4 minutes, turning once. Drain and season with salt. Serve with lemon and a leaf or tomato salad.

## Poem – St Peter, by Christina Rossetti

St. Peter once: 'Lord, dost thou wash my feet?'

—Much more I say: Lord, dost thou stand and I

At my closed heart more rugged than a rock,

Bolted and barred, for thy soft touch unmeet,

Nor garnished nor in any wise made sweet?

Owls roost within and dancing satyrs mock.

Lord, I have heard the crowing of the cock

And have not wept: ah, Lord, though knowest it,

Yet still I hear thee knocking, still I hear:

'Open to me, look on me eye to eye,



contd from page 12

That I may wring thy heart and make it whole;  
And teach thee love because I hold thee dear  
And sup with thee in gladness soul with soul,  
And sup with thee in glory by and by.'

### A Prayer for St Peter's Day

Heavenly Father,

Thanks you for your disciple Peter and all he tried to do  
to spread the gospel.

We thank you for reminding us that even when we do  
not succeed, you encourage us to keep trying to do our  
best and to tell others about you and share your love  
with those in your world.

Amen.



### Services at All Saints

There are a number of great churches in Totley to  
choose from. Here are details of services at All Saints  
- you would be very welcome:

Sun 6 <sup>th</sup>	10am	Morning Praise
	6.30pm	Evening Service
Weds 9 <sup>th</sup>	10am	Holy Communion
Sun 13 <sup>th</sup>	10am	Ven Martyn Snow, recently appointed Archdeacon
	6.30pm	Evening Service
Wed 16 <sup>th</sup>	10am	Holy Communion
Sun 20 <sup>th</sup>	10am	Holy Communion
	6.30pm	Evening Service
Wed 23 <sup>rd</sup>	10am	Holy Communion
Sun 27 <sup>th</sup>	10am	All Ages Altogether*
	6.30pm	Evening Service
Wed 30 <sup>th</sup>	10am	Holy Communion

### \*Oasis Summer Service

Sunday 27<sup>th</sup> June 10.00am

A special service for families with toddlers and young  
children. Material will be relevant for people of all ages.  
Everyone is welcome!

Maurice Snowdon, Gay Riley & Kate Caroe

Mark and Sally Fletcher invite  
you to

## The Grouse Inn Longshaw

Sheffield S11 7TZ

**Meal times:-**

**Mondays 12.00 to 2.30pm**

**Tuesdays to Friday's 12.00 to  
2.30pm and**

**6-30pm to 9-30 pm**

**Saturdays 12.00 to 3.00pm  
and**

**6.30pm. to 9.00pm (drinks -  
open all day)**

**Sundays 12.00 to 9.00pm**

**Phone 01433 630 423**

## ROBERT SHIPSTON PLASTERING & BUILDING SERVICES

- Plastering
- Dry Lining
- Rendering
- Re-skims
- Brick & Stonework
- Paving & Patios
- Painting & Decorating
- General Building works

**Tel: 0114 250 9965**

**Mob: 07940 257263**

## R Rose & Co

Chartered Accountants & Business Advisors

Specialists at  
looking after the affairs  
of small businesses.

For a **FREE** initial consultation  
please contact Roger Rose FCA on

**0114 281 2331**

From business start-ups and general accounting, to support  
and advice in business development and strategy,  
we pride ourselves in our personal one-to-one service.  
To find out more please call 0114 281 2331.

213 Derbyshire Lane, Norton Lees, Sheffield S8 8SA  
Email: info@r-rose.co.uk



## Tiling, Plastering, Plumbing & Complete Bathroom Fitting Service

**Tel: 0114 274 6775**

**07738 688807**

- ◆ Under Floor Heating
- ◆ All Aspects of Home  
Improvements & Maintenance  
Work Undertaken
- ◆ Competitive Prices
- ◆ NVQ Qualified
- ◆ No Job Too Small
- ◆ Fully Insured & Guaranteed

**A1tilingandplastering.co.uk**  
**33 Glen View Road, Greenhill, S8 7SF**

Creating opportunities with disabled people.

Registered Charity No. 218186

## Leonard Cheshire Disability

Leonard Cheshire Services in Offers choice &  
opportunity to people with disabilities.  
A Specialist Unit for the Younger Disabled.  
Residential & Respite Care - Single Rooms

Day resources - Aromatherapy -  
Reflexology - Physiotherapy - Toning  
Tables.

Activities include: - Arts & Crafts -  
Computers - Cookery - Shopping  
Expeditions - Theatre Outings - Church.  
Further details can be obtained from -  
The Service Manager, Mickley Hall,  
Mickley Lane, Totley, Sheffield S17 4HE.  
Tel. 0114 236 9952  
Fax. 0114 262 0234

The Care at Home Service supports  
disabled people who wish to remain in their  
own homes.

We provide flexible care packages from  
1 hour to 24 hours meeting individual needs.  
The service operates throughout  
Sheffield.

Our service includes: - help with getting  
up and going to bed, dressing, washing,  
bathing, shopping, cooking, light household  
duties.

Further details from: -  
The Care at Home Manager  
Tel. 0114235 1400  
Fax 0114 235 1499

## LOCAL HEAT & WARMTH

(CENTRAL HEATING & HOT WATER SPECIALISTS)

• FULL HEATING SYSTEMS • NEW BOILER INSTALLATIONS • CONTROLS UPGRADE • SYSTEM ZONING • POWER FLUSHING • NEW RADIATORS INSTALLED • UNVENTED HOT WATER SYSTEMS • WET UNDER FLOOR HEATING • GAS SAFE REGISTERED N° 203880 •

Chris and Martin Campion of Totley say:-

*Its refreshing to find professional, honest tradesmen, you know the ones who not only know what they are doing and take pride in their work.*

*Steve and Alan have those values that instil trust and peace of mind, they gave us best advice, and a first class installation job with top quality materials, their after sales service is equally as good. We understand they have completed several installations in the Totley area via recommendations.*

**SO DON'T BE CAUGHT OUT IN THE COLD THIS WINTER**

CALL STEVE AND ALAN FOR YOUR FREE  
"OUT WITH THE OLD, IN WITH THE NEW"  
QUOTATION

**ON FREE PHONE 0800 3286628  
OR ALAN 07976 358988  
STEVE 07967 119094**

**SEASONAL DISCOUNTS WITH THIS ISSUE**

## G9 Design

Architects & Design Consultants

- Provision of full architectural services from sketch proposals to final completion certification
- Planning Applications & Building Control Approvals
- New Build or Extensions
- Domestic or Commercial projects
- Complete client commitment

Gary Grayson  
5 Newfield Lane,  
Dore,  
Sheffield S17 3DA

Tel:- (0114) 2352335

Mobile:- 07976431740

Email:- gary@g9design.com

Arb Registered  
RIBA Chartered Architect



Hatha  
..YOGA CLASS..

Totley and Ranmoor

For more information or to book a place call  
RACHEL on (0114) 236 9943

BWY Qualified Teacher

BODY, MIND & BREATH  
Enjoy the union of yoga



## Ken Helliwell

Joinery

Building \* Property Repairs

Need more space?

Bedroom?

Study?

Playroom?

Or just plain storage?

Have you considered using  
your Roof space?

\*\*\*\*\*

**Free Quotes**

\*\*\*\*\*

**Telephone/Fax: 0114 2356579**

**Mobile: 07802 437 861**

## Paul Reynolds

Licensed  
Hackney Carriage Driver



**For a reliable, wheelchair friendly  
Taxi Service, from S17 to:-**

**Airports, Hospital Appointments,  
Theatres and Restaurants**

**Just call Paul on 07950 418875**

**CHARISMA  
BLINDS**



For  
Windows  
With Style

Sheffield Factory Showroom  
106 PROSPECT ROAD  
HEELEY, SHEFFIELD

**Sheffield (0114) 258 5496  
Rotherham (01709) 512113**



**Want to see  
summer well, safely  
and with style?**

Choose from a wide selection of  
**Prescription Sunspecs**  
including a new stylish  
designer collection at



Men's and women's styles with  
single vision, bifocal, or varifocal  
lenses, with optionals such as  
polarised or transitions, from only

**£65 complete**

For more details and to buy visit  
**www.mko.co.uk**

Terms and conditions apply

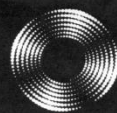


TOMMY HILFINGER  
EYEWEAR

GUESS  
EYEWEAR

GANT  
EYEWEAR

# Entrust Electrical



For all your electrical requirements in or  
outside the home you can trust **Entrust**  
to do it right!

- ✓ Full or Partial House Rewiring
- ✓ Additional Sockets, Switches, etc
- ✓ Energy Efficiency Enhancements
- ✓ Contemporary & Classical Refurbishments
- ✓ General Electrical Maintenance & Repair
- ✓ Homebuyer Electrical Safety Surveys
- ✓ Telephone and Computer Data Points
- ✓ Garden, Pond & Other Outdoor Electrics
- ✓ Security Lighting & CCTV



City &  
Guilds  
Qualified

**(0114) 2352084**  
**07935 250814**

[www.entrustelectrical.co.uk](http://www.entrustelectrical.co.uk)



Old Hay Close, Dore, S17 3GP

## Shepley Spitfire

56 Mickley Lane, Totley Sheffield - S17 4HE Tel: 0114 236 0298

**New menu - two meals for £8**

**Sunday Carvery now £4.99**

With a choice of four meats and vegetarian options

Served between 12 - 5pm

**Hand Pulled Beers available**

Greene King IPA - Ruddles County - Abbeydale Moonshine

**New children's play area - now open!**

Watch all the world cup matches either inside or outside on  
our flat screen TV's.

Barbeque during all weekend evening matches!



**love england , love your local**

## HODGIE'S BOUNCY CASTLES

- **BOUNCY CASTLE HIRE**
- **13FT X 15FT**
- **FULL DAY**
- **HALF DAY**
- **PER HOUR**
- **CHILDRENS PARTIES**
- **CONTACT WAYNE**
- **0114 2375629**
- **07920148013**
- **FULLY INSURED**



## HAIR BY PATRICIA BARBER

at 53 Wollaton Road, Bradway is pleased to introduce our new, **traditional gents' hairdresser**. Karen will be available every Thursday and Friday (9am to 5pm) and every Saturday (9am to 1pm). Telephone for appointments 0114 236 6247 and walk-ins are warmly welcomed. Karen will be pleased to meet you

## COMMUNITY FUN DAY

**Saturday 17 July 1-4pm**  
**Totley Primary school**

Football activity and football prizes, bouncy castles, face and nail painting, splat the rat, throw the sponge, hook a duck, baby and toddler music, sessions guess the name of the teddy bear, fancy dress competition, balloon race  
Tennis taster sessions, Rangers, Fire Engine, Police dogs and many more

**No Admission Charge**

# viewsecure™

vision & security

Specialists in domestic and commercial systems

**INTRUDER ALARMS | CCTV  
SATELLITE & TELEVISION**



**01246 455 779**



[www.viewsecure.co.uk](http://www.viewsecure.co.uk)

# JABIRD LANDSCAPES LTD

- Regular garden maintenance
- Tree surgery
- Clearance work
- All aspects of soft landscaping

Call 0114 258 9290

Email [jablandscapes@aol.com](mailto:jablandscapes@aol.com)

Visit [www.jabird.co.uk](http://www.jabird.co.uk)

100 Queen Victoria Road, Totley  
Sheffield S17 4HU



Your local Rose's Bread stockist

Coffee Shop now open

Monday to Friday 8am to 4pm, Saturday 8am to 1pm

51/53 Baslow Road

Tel: 236 4238

J Barlow t/a

## Horizon Electrical

*Faults, Rewires, Sockets, Lights,  
Cooker Points, Electrical Showers,  
Phone Points, Security Lights*

No job too small

*Fully qualified with friendly advice*

**Ring Totley 236 4364 or  
Mobile 07772 483154**



# MALLORN

ROOFING CONTRACTORS

**REROOFS • ROOF REPAIRS  
FLAT ROOF • GUTTERING**

**0114 235 6002**

**07853 350085**

7 DALEVIEW ROAD, BEAUCHIEF

# BRADWAY INSTALLATIONS

**Kitchens, Bathrooms.....and everything in between**

- **Complete Kitchens** - Installation or supply and installation
- **Kitchen Refits** - Replacement worktops/sink/hob etc. Worktop / cabinet repairs
- **Bathrooms** - Cloakrooms - Domestic plumbing - Tiling Laminate / Vinyl flooring

**All work undertaken is fully insured and guaranteed**

**Ring Peter - 0114 236 5995**

**Mobile - 07766 411355**



## SLIMMING WORLD

**10 WAYS TO MAKE SURE IT WILL BE THE LAST TIME LOSING WEIGHT IS YOUR NEW YEAR RESOLUTION. THIS TIME MAKE IT LAST FOREVER**

1. Focus on your weight loss goal and prioritise it.
2. Be sure you really want to lose weight for yourself. Doing it to please someone else may only lead to short term weight loss.
3. Take advantage of all the group support at your local Slimming World class. Even if you are not a 'joining in' person, you'll be surprised how motivating it is.
4. Accept that you will have ups and downs in your weight loss journey, and be forgiving of yourself if you hit a difficult patch.
5. Listen to your 'inner script' and make a conscious effort to talk to yourself in a positive, encouraging way.
6. Keep up your interest in your healthy eating plan by trying new foods, new recipes, and new ways of using your Sins. This will help you avoid getting in to a dieting rut which can be boring and demotivating.
7. Be honest with yourself about what you are expecting from your weight loss and how you are getting on with Food Optimising week by week. People who set unrealistic targets for weight loss or body shape are more likely to give up than those who set achievable targets and share their ups and downs.
8. Go back to your class even after (especially after) you've had a weight gain. You will not be judged, just helped and supported.
9. Keep setting new goals and rewarding yourself for milestones until you reach your target weight, and afterwards!
10. Don't put your life on hold until you've lost weight. You can still enjoy life and lose weight. Think of your dreams and ambitions and bring them to the fore. The positive feelings you get from starting to 'live a little' can only help your motivation and your weight loss.

Group details:

**Bradway Annexe, Thu 5pm & 7pm**

**Dore Old School, Tues 5.30pm**

Tel: Alison Murphy 07815 046569 for further details

**Transport Club, Greenhill Main Road - Tues 7pm**

**The Michael Church, Lowedges - Wed 10am**

**Norton Oaks Cricket Club, Mon 7pm**

Tel: Wendy 07773 095179 for further details

## PhysioFOCUS

at Totley Rise Dental Practice  
85 Baslow Road,  
Sheffield, S17 4DP



**Physiotherapy treatment available for:**

- Back and neck pain
- Sports injuries
- Sprains and strains
- Joint and muscle pain
- Arthritic pain
- Whiplash
- Repetitive strain injury
- Headaches

**Appointments: 0114 2360333**

Also available:

- Pilates classes
- Pilates 1-2-1
- Golf Fitness Screening  
(as used by consultants to UK,  
European and Australian PGAs)

For more information please call:

Emer on: 07792 422909

Rachel on: 07956 908454

**Jubal Academy**

### Tuneful Tots

singing group for children  
morning classes in Millhouses  
6 months - pre-school age

**First session free! Unlimited play time**

0114 250 9381

www.jubalacademy.com

Would you like someone to  
Type letters? Pay bills? Help record family memories?  
Sort and file papers? Prepare an inventory?  
Anything else ???

Then you should call

### Secretarial and Administrative Services

Swift, efficient, confidential service at your home.

Pay-as-you-go.

Ring us on 0114 235 0071



Tel/Fax: (0114) 255 4689

Mobile: 07831 802539

### TRISTAN SWAIN

LANDSCAPING AND MAINTENANCE

UNIT C4

Sheaf Bank

Business Park

20 Prospect Road

Sheffield S2 3EN



## LADIES FASHIONS

SKIRTS, JUMPERS  
T-SHIRTS,  
TROUSERS  
HABERDASHERY  
& ALTERATIONS

DRY CLEANING  
SERVICE  
LAUNDRY SERVICE

### ROSIES

164 BASLOW ROAD, TOTLEY.  
TEL: 2621060



**M. Scriven**  
(FRUITERAMA)

### MARTIN SCRIVEN

HIGH CLASS FRUIT  
& VEGETABLES

37, Baslow road

Tel. 236 7116

Orders Delivered





# GWS

Technology Solutions



**PC Problems/ Repairs/ Servicing No Job Too Small**  
**Wireless & Internet Setup New PC's & Upgrades**  
**PC Setup/Data Transfer Safe PC Disposal Tuition**  
**For All your PC Needs**

## Guy Senior

Tel: 01142352662 Mobile 07890030453

Email: [guy@gwstechnologiesolutions.co.uk](mailto:guy@gwstechnologiesolutions.co.uk)

Web: [www.gwstechnologiesolutions.co.uk](http://www.gwstechnologiesolutions.co.uk)

## R.S. HEATING & BUILDING CO

EST. 1971



### HEATING DIVISION:

Experienced installers of condensing, combination and regular boilers. Systems fully guaranteed. Complete after sales service. Also Bathrooms, showers and small plumbing works.

### BUILDING DIVISION:

Loft conversions, House renovations including general building, joinery, plastering, electrical decorating etc.



13 Overcroft Rise, Sheffield, S17 4AX

Tel:- 0114 236 4421

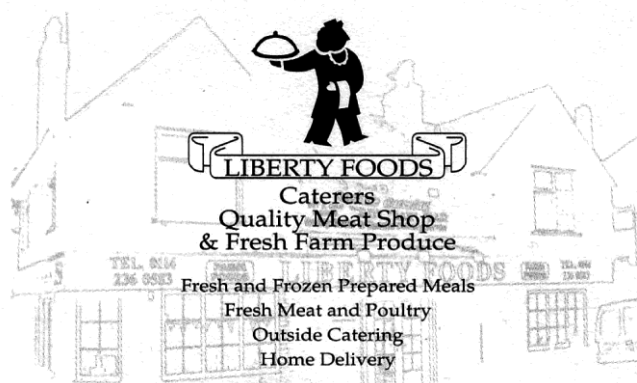
Reg. Office:- 62 Machon Bank, Sheffield, S7 1GP

Te:- 0114 2559425

Fax:- 0114 255 9431

Email: [enquiries@rsheatingandbuilding.co.uk](mailto:enquiries@rsheatingandbuilding.co.uk)

Web: <http://www.rsheatingandbuilding.co.uk>



253 Baslow Road, Sheffield, S17 4DU

Tel: 0114 2360 583

Mobile: 07801 346 455

# Dronfield Landscapes



Gardens cleared and maintained, Lawns mowed, Turfing, Tree felling & pruning, Hedges trimmed & reduced, Pond maintenance, Fencing etc.

for free quotation call

Chris on: (0114) 2746158 Mobiles: 07976072785 or

Richard on: 07789497104

8am-6pm mon-fri

HazelBarrow Farm, Norton S8 8BA

## R.M.M BUILDING SERVICES

### 25 YEARS EXPERIENCE

All types of building work carried out including- Drop kerbs, block paving (drives, paths, etc), extensions, general building repairs and maintenance.

Phone Rob on- Mob- 07906108567

Home-2352190

## Activ Physiotherapy

and sports injury clinic

@ Synergy,  
162 Baslow Road,  
Totley,  
Sheffield, S17 4DR.

**The Official Physiotherapy clinic for the Sheffield Steelers Ice Hockey Team.**

Treatments available for sports injuries, back & neck pain, joint problems, muscle & ligament strains, repetitive strain injuries, post operative rehabilitation, headaches & acupuncture.

Clinic registered with major insurance companies, can claim through the Westfield scheme.

Ring Andy for more information:

0114 235 7845 or 07901 968549

## Nigel Watson

Carpenter and Joiner

New Kitchens, replacement worktops, doors, locks, floors, architraves, skirting boards, stairs, stud walling, boxing off etc.

No job too small

For a reliable, quality service

Tel: 0114 236 4778

Mobile: 07971 528149



## Got a computer?

### Having Problems?

Is it running slow? Stops responding? Having problems running the latest games or applications? Broadband installation?

**Give me a call!**

I'm available for home visits at any time including evenings and weekends. I can also suggest upgrades to improve performance, or even build you a system to your specific requirements.

Phone: 0114 2472619 Fax: 0870 7060080

Mobile: 078 17464703 Email: [service@timbrown.plus.com](mailto:service@timbrown.plus.com)

Tim Brown

Building, Installation, Upgrading and Troubleshooting Computer Systems  
Over 25 years professional experience



## Dronfield Landscapes

Logs and woodchippings  
For Sale

Ring for details  
Chris on 0114 2746158  
Mobile 07976072785

Richard mobile  
07789497104



Central Heating  
Domestic Plumbing  
Glazing, Double Glazing and Glass  
House Maintenance  
UPVC and Wood Windows & Doors  
Mini Digger & Driver, Muck Shifts, Footings Etc.



## TOTLEY PRIVATE HIRE

PROFESSIONAL CAR SERVICE  
FOR  
AIRPORTS & LONG DISTANCE  
TRAVEL etc.

**Tel: 0114 - 2361547**  
**Mobile: 07974-355528**

Chauffeur driven executive travel  
Business & personal travel  
Airport & cruise transfers



**executive travel**  
*arrive in style*

01142 745021 // 0796 2373740  
[www.ccexecutivetravel.co.uk](http://www.ccexecutivetravel.co.uk)

Chris Maltby  
14 Birch Farm Avenue, Norton, S8 8GH

Domestic electrical work carried out by  
City & Guilds and 'Part P' qualified

## LADY ELECTRICIAN

- \* Security lighting \* Pond pumps \* Deck lights
  - \* House rewires \* Replacement fuse boards
  - \* New sockets and lights \* Telephone points
- All electrical work undertaken – no job too small.

All work guaranteed and  
fully insured

For a free quote without obligation

ring Mandy on 07788-544225



## Hypnotherapy

Weight, confidence, smoking, stress,  
phobias, anxiety, panic, sleep, etc...

Call 235 1985 Totley

[www.sheffieldhypnosis.co.uk](http://www.sheffieldhypnosis.co.uk)



Paul Peace



The  
British  
Psychological  
Society  
Chartered Psychologist



Karen Bartle

## HEARING AIDS

MAURICE NAYLOR FBSHAA RHAD is your local  
hearing aid specialist and at your request will test  
your hearing in your own home, free of charge,  
and if needed you can try a custom made aid for  
four weeks without obligation to purchase.

**In the ear digital from £495**

Tel: 0114 262 0010  
4 Twentywell Drive, Bradway

## John Heath & Sons

AN INDEPENDENT FAMILY FUNERAL BUSINESS

### *Sometime.....*

You will probably have the responsibility of making funeral  
arrangements. No one looks forward to this responsibility, but the death of a  
family member or friend brings with it an obligation that must be met. There  
are people who can help you meet this responsibility. We have been helping  
people combine the different aspects of the funeral into a meaningful service for  
over 125 years.

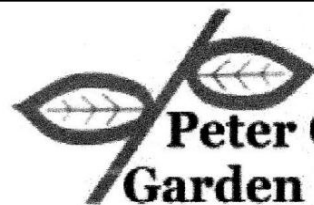
Please Call Day Or Night

**(0114) 272 2222**

**Head Office - Earsham Street**

Also at Meadowhead, Ecclesall Rd,  
Crookes and Stannington

[www.johnheath.co.uk](http://www.johnheath.co.uk)



**Peter Godley  
Garden Design**

Surveying, planning and contract management

Awards for Best in Show  
Design and Quality Plant Selection  
Large Gold Medals & Silver Medal Winners

Homesfield, Dronfield S18 7WJ  
M: 07836 717859 T: 0114 2891365 F: 0114 2890737  
Email: [peter.godley@btconnect.com](mailto:peter.godley@btconnect.com)

## TOTLEY & DISTRICT DIARY

<b>MONDAYS</b>	<b>COFFEE MORNING</b> , All Saints' Church Hall, 10am-noon <b>TAI-CHI</b> , All Saints' Church Hall, 11.30am-12.30pm <b>ANTE NATAL PILATES</b> , United Reformed Church, 6.30-7.30pm, Phone Emer Coffee 07792 422909 <b>RAINBOWS and GUIDES</b> , All Saints' Church Hall, 5.45pm-9pm
<b>TUESDAYS</b>	<b>COFFEE MORNING</b> , Totley Rise Methodist Church Hall, 10am-noon <b>WOODSEATS ADVICE CENTRE</b> . Drop in service, free, impartial, and confidential. TR Methodist Church, 10am-noon <b>CRAFT GROUP</b> . Totley Library, 2pm
<b>WEDNESDAYS</b>	<b>COFFEE in the LIBRARY</b> . 10am-11.30am <b>TODDLER GROUP</b> . 10am-11.30am, All Saints' Church Hall. Details tel. Andy Holmes 0114 236 2088 <b>HEALTH WALKS</b> . 10.30am, Totley Library foyer. Phone Sue, The Health Walk Ranger: 0114 283 9195 <b>MODERN SEQUENCE DANCING</b> . All Saints Church Hall, 8pm-10pm
<b>THURSDAYS</b>	<b>CHAIROBICS</b> . Totley Library, 2pm-3pm. £1 <b>NCT COFFEE GROUP FOR DORE TOTLEY &amp; BRADWAY</b> , 10am-noon, For mums & babies/toddlers, meeting in various locations, Phone Sally Spearing 236 2604 for further details (email: sally@spearings.me.uk) <b>PUSHCHAIR CLUB</b> . Totley Rise Methodist Church Hall. 1.30pm-3pm. Tel. 236 3157 for further details <b>PILATES CLASS</b> , United Reformed Church, Totley Brook Road, 6.15pm-7.30pm, Phone Emer Coffee 07792 422909
<b>FRIDAYS</b>	<b>PILATES</b> , The Old School, Dore, 10.45-11.45am & 12-1pm. Phone Teresa Tinklin 07906 312372
<b>SATURDAYS</b>	<b>MODERN SEQUENCE DANCING</b> . All Saints Church Hall 2 <sup>nd</sup> . And 4 <sup>th</sup> . Saturdays 8pm-10pm

### JUNE 2010

**TUE 1st - SAT 6th SHEFFIELD FOOD FESTIVAL**, Major festival; hub at the Peace Gardens, Pinstone St, much more info [www.sheffieldfoodfestival.com](http://www.sheffieldfoodfestival.com)  
**TUE 1st PUBLIC MEETING, FRIENDS OF GILLFIELD WOOD**; Totley Library, 7.30pm, further details page 3  
**WED 2nd - SAT 5th THE BARLOW PROMS** tickets tel 0754 1234676 or online [www.barlowproms.com](http://www.barlowproms.com)  
**SAT 5th FESTIVAL OF LOCAL HISTORY & ART**, 10am-4pm, St Johns Church, Abbeydale Road South  
**SUN 6th CASTLETON FARMERS MARKET**, the Village Hall, 10am-3pm  
**TUE 8th FOLK AT THE OAK**, Hearts of Oak, Dronfield, 8.30pm, all welcome  
**THU 10th SHEFFIELD FARMERS MARKET**, 9am-4.30pm, Barkers Pool  
**SAT 12th SATURDAY NIGHT LIVE**, Dennis Vincent, Heatherfield Club. 8.30pm. Come & play Bingo & Play Your Cards Right. Non-members welcome  
**SUN 13th MINIATURE TRAIN RIDES**. Abbeydale Road South, First train 1pm - last train 5pm (weather permitting) [www.sheffieldsmee.co.uk](http://www.sheffieldsmee.co.uk)  
**TUES 15th TOTLEY TOWNSWOMEN'S GUILD**, 'Bronte connection with Hathersage', Mr RA Hobson, Totley Rise Methodist Church Hall, 10am  
**SAT 19th & SUN 20th OPEN GARDEN**, Sue and Roger Thompson, Owl End, Newfield Lane, Dore, 2-6pm.  
**WED 23rd TOTLEY HISTORY GROUP**, Totley Library, 7.30pm, all welcome  
**THU 24th SHEFFIELD FARMERS MARKET**, 9am-4.30pm, Barkers Pool  
**SAT 26th SUMMER FAYRE**, Cheshire Home, 11am - 4pm  
**SAT 26th SATURDAY NIGHT LIVE**, Trevor Allan, Heatherfield Club. 8.30pm. Come & play Bingo & Play Your Cards Right. Non-members welcome  
**SUN 27th MINIATURE TRAIN RIDES**. Abbeydale Road South, First train 1pm - last train 5pm (weather permitting) [www.sheffieldsmee.co.uk](http://www.sheffieldsmee.co.uk)

### JULY 2010

**SUN 4th CASTLETON FARMERS MARKET**, the Village Hall, 10am-3pm  
**THU 8th SHEFFIELD FARMERS MARKET**, 9am-4.30pm, Barkers Pool  
**SAT 10th SATURDAY NIGHT LIVE**, Tony Verno, Heatherfield Club. 8.30pm. Come & play Bingo & Play Your Cards Right. Non-members welcome  
**TUE 13th FOLK AT THE OAK**, Hearts of Oak, Dronfield, 8.30pm, all welcome

### TOTLEY INDEPENDENT FOR JULY/AUGUST 2010

The next issue of the Totley Independent will be available from the usual distribution points on

#### SATURDAY 3rd July 2010

**COPY CLOSE DATE for this issue**  
*will be*

**SATURDAY 19th June 2010**

Editor: **Ian Clarke**  
 Email: [editor@totley.org.uk](mailto:editor@totley.org.uk)  
 Tel. No: **235 2526**

Advertising & Distribution:  
**John Perkinson**  
 Tel. No: **236 1601**  
 Email: [advertising@totley.org.uk](mailto:advertising@totley.org.uk)

Items for publication may be left or sent to:  
**2, Main Avenue, Totley, Sheffield, S17 4FG** or  
**Totley Library**

**PRINTED by STARPRINT**

### Julian Oates

Independent Financial Adviser

Pensions . Investments &  
 Savings . Mortgages . Life  
 Insurance

TEL: 07866 635462  
 0114 248 6371

[joates@blake-independent.co.uk](mailto:joates@blake-independent.co.uk)  
 Blake Independent Financial  
 Planning Ltd

### B . K . JEAVONS PAINTER & DECORATOR



**Interior  
 Exterior  
 Decorating**  
**No job too  
 small.**

**86, WOLLATON ROAD  
 BRADWAY  
 SHEFFIELD, S17 4LG**  
**Telephone 2350821**



601 Abbeydale Road, Sheffield 7. Fax: 0114 258 8599

**DESIGN & PRINTING of**

- LETTERHEADS • BUSINESS CARDS •
- BOOKLETS & PADS •
- INVOICES • LEAFLETS •
- CARBONLESS SETS • BROCHURES •
- RAFFLE TICKETS •
- WEDDING STATIONERY •
- ENVELOPES & POSTCARDS •

**SPECIALISTS IN THERMOGRAPHY  
 FOIL BLOCKING AND ENCAPSULATION**

**0114 258 0707**  
**For a Quick Quotation**