

TOTLEY INDEPENDENT

PUBLISHED CONTINUOUSLY SINCE 1977
SEPTEMBER 2011 No. 346

www.totleyindependent.co.uk
20p.



BASLOW ROAD

A rare aerial photo of Baslow Road we believe from the 1940's, but could be earlier. What is now the Totley Primary school field on the right appears to have a horse grazing in it. On the left where the trees are the grounds of Totley Grange. Just beyond the trees there are 4 houses that stand out they are on the Green and to the left of those houses are tennis courts. A section of The Grove is also quite clear. Much earlier than the dual carriageway the front gardens of many houses on Baslow road were quite a bit longer.

Totley Residents Association Report

I hope everyone has been enjoying the sunshine and the school holidays!

It has been very easy travelling to work and cut my journey in half time-wise!

The TRA committee have been planning for the future and how we consult with Totley about what our priorities should be.

It's a pretty exciting time as we now have a Totley Forum up and running and we need you to get using it and posting on there!

To access it here is the web address **totleymatters.proboard.com** alternatively you can Google **totley matters** and it will be there about halfway down the page. Thanks to Stephanie Rice and friend who have worked hard to get this set up.

PTO

TOTLEY SHOW – Saturday 17th September
further details for these events inside
TOTLEY MUSIC FESTIVAL – 17th to 25th September

We are also still in the process of creating a Facebook page. In the autumn there will be a new website too. So we can reach people that have no access to the internet we are going to be placing suggestion boxes in different locations in Totley. They will not be easily missed as they are bright red! We are intending to hold a public meeting where you can meet the organisations who serve our community, including the TRA.

We are very keen to keep the community links that already exist and feel an open forum meeting will be useful. We are also aware that Totley needs more activities for older people, this was the main comment on the questionnaires that were filled out when we attended the Older Persons Road show, and we are currently talking to Activity Sheffield to see how they can help.

We have all volunteered to help at the Totley Show on the 17th September. It will be great day don't forget to diary the date, and get creative. Les and Dorothy Firth have been doing a great job of organising everything and I'm sure it will be a fantastic success.

As you know the ward forum was held in June and it was decided that it would be useful to have a focus group that could discuss specific forum wide issues. We held a meeting with interested parties and agreed the priorities for the group to discuss. Roger Hart has organised the first meeting and an update is published in this issue of **Totley Independent** (page 6). Nice to see that there were representatives from all 3 forums, it will be a useful way to feed into the Ward forum.

At the last committee meeting we agreed that we will be inviting key community figures to meet with us and discuss issues that affect Totley.

We have committee members that have key roles, such as linking to Friends of Green Oak Park and also planning issues.

I popped along to the latest PACT meeting where the police were meeting outside the Co-op it looked to be well attended. I also understand that the Police will be using the building in Green Oak Park as a base at times, I'm sure it will be useful after a long cycle ride! Finally the TRA are very keen to form a Youth Council in Totley, and hopefully once the Facebook page is created it will encourage younger people to get involved. We thought we would kick start the planning by having a design a TRA logo competition, further details to be announced.

We really do need you to become involved, if you are interested, or you want to put forward ideas please get in touch either via the suggestion boxes, the forum, by emailing: kathrynhiggins_totley@hotmail.co.uk or calling 07709 780606.

Kathryn Higgins Chair TRA

Lily Beetle in Totley

Last year we found one lily beetle and this spring we found three on lilies and fritillaries. Lily beetles are bright red and they lay yellow/orange eggs in the soil underneath the plant. They devastate lilies and fritillaries. As far as we know they have not been reported in this area. They are a recognised pest and have spread throughout a large area of the country.

The Royal Horticultural Society asks for sightings to be reported via their web site where more details about the beetle and how to deal with it can be found.

www.rhs.org.uk/Science/Plant-pests/Lily-beetle

Angela & Martin Harpham



TOTLEY SHOW 2011

Saturday September 17th

Totley Primary School

8.45am - 10.45am Entrants registration

11am - 12.30pm Judging & awarding of Certificates

1.30pm Doors open to the public (Entrance 50p, children 20p)

1.45pm Official opening

3pm Prize giving and Auction of donated items

4pm Conclusion

Entry forms available at Totley Library, Totley Post Office, and The Ironing Parlour or at the door on the day.

We have again been fortunate to get the Escafield Brass Band to entertain us in the afternoon playing for two sessions the times of which will be announced during the day. This event will be the start to the **Totley Music Festival** week organised by Phil Harris and Sue Hare who will be able to give further details at the Show. Should you wish to help with the Music Festival please contact Phil or Sue at 07956 858944 or email totleymusicfestival@talktalk.net

The end of the week on Friday 23rd. and Saturday 24th there will be a **Totley Beer Festival** with a musical theme held at the Heatherfield Club with beers from Microbreweries named after tunes.

We have had many offers of help and thank you to all it is most appreciated.

Our next meeting is at Heatherfield Club, Baslow Road and will be on Thursday 1st September 7.30pm.

Another big thank you is to our sponsors for the class prizes who we will be acknowledging separately in next month's edition of the **Totley Independent**.

If you would like to donate a gift for the Tombola stall, it would be greatly appreciated. Any donation can be left at either "The Ironing Shop" on Baslow Road. Or at 6, Milldale Road, Totley.

Any queries to

Les or Dorothy Firth

6, Milldale Road,

Telephone 0114 2364190

e mail lesanddotfirth@talktalk.net

All proceeds after costs will be donated to Transport 17

Les & Dorothy Firth

SHEFFIELD MOVIE MAKERS

You are invited to our OPEN EVENING to see video films and DVDs made by members of the Club.

Wednesday 14th September

7.15pm to 9.30 pm

At The Michael Church on Lowedges Rd.

Also: on the two following Wednesday evenings, 21st and 28th of September you have the chance to see how it is done! (7.15pm to 9.30pm)

Our Club meets weekly between September and April and have been fortunate to receive a generous grant from the South Yorkshire Community Forum, enabling us to buy a new projector, lap-top and screen.

Those who video in High Definition are also well catered for.

At our club we can all learn from each other. Guest speakers also contribute to making an interesting and enjoyable programme of events.

Come along: You will be sure of a friendly welcome.

Contact: Neil on 0114 237 7376



Transport 17

Stuart Hitchman and his staff at the Cross Scythes,

provided a good atmosphere and refreshments at the Coffee Morning held for us in July. The weather was awful but the chatter and laughter said it all. More than £400 was raised including money from the raffle. This will go towards the upkeep of the buses. Stuart gave a "Meal for Two" prize. Other prizes were from Pat Barber, hairdresser at Bradway, Josie Mann and Martin Scrivens, florist and fruit shops at Totley Rise and Lynne at The Ironing Parlour, Baslow Road. Many other individuals gave gifts including committee members. Our T17ers did a grand job selling tickets at the clubs.

Transport 17 is having a stall at Totley Show on Saturday 17th September. Bric-a-brac and books and new items would be very welcome. These can be left at the office. Ring first on 236 2962 to make sure that someone is there.

We really need more drivers and escorts now. Our volunteers are very committed but, like most of us, they have family commitments or just need a break. If you feel that you can help, please get in touch with Mike Finn. Once again the number is 236 2962.

We were very sad in August at the passing of Jim Trotter. Jim drove for us for a while and then joined the Committee. He was standing collecting with us at Sainsburys right to the end. He was also a stalwart at Totley Show and who can forget Totley Festival when it took all of us to hold on to the gazebo, because of the high winds. He was one of those people that you liked to be with and he had a dry sense of humour. We will all miss him very much. His wife, Wendy was an escort for many years and is a Committee member. A great team. We send our love and thoughts to her and the family.

By the time you read this Danny and I will be living in Hampshire. We have enjoyed our time with Transport 17. It has been interesting to say the least. We have worked with many marvellous people who gave their all. Felicity Revill will be Chairman. Please give her and the Committee all the support that you can. Thank you Totley for many happy years (23 in fact). We wish you all well and thank all of you for your company and support to us. There are too many to name individually.

Margaret and Danny Barlow

At our recent coffee morning held at the 'Cross Scythes' we were able to present Margaret and Danny Barlow with a gardening voucher as a thanks for all their hard work in the past 23 years; they will be sadly missed as they have been very active members throughout and with living locally they were able to give everything that extra special touch. We wish them well in their new home and hope that the people in Hampshire learn to appreciate them as much as we all have.

Felicity Revill

Boats and Planes

Web links for anyone who wants to watch aircraft flights & shipping movements from their armchairs or offices;

www.flightradar24.com

www.marinetraffic.com/ais

Click onto a ship or aircraft & see what is coming & going. Can become addictive.

Roger Hart

Totley Townswomen's Guild

New Members Welcome

Would you like to have some new interests and make new friends?

The Guild meets on the 3rd Tuesday of every month at 10am in the Totley Rise Methodist Church Hall where visiting speakers give talks on a wide range of topics during the Guild year. There is a sales table which includes small items, books, handmade cards and sometimes home baking! There is also time for a short meeting followed by tea or coffee with biscuits and a chat.

On other days there is the opportunity to join the Walking Group (Thursday morning), play scrabble (Wednesday morning monthly), sing in the Dore Mercia and Totley Ladies Choir (Tuesday afternoons every week plus concerts) and the Social Studies Group (4th Tuesday morning every month). Outings to interesting places are arranged and there is also the annual birthday lunch.

So come and join us or be a visitor on a Tuesday morning (3rd Tuesday) and see whether you like us. The annual subscription is £25 plus £1 each Build day you attend. The visitor fee is £1.

For more information contact Iris Rodgers (Chairman) tel 236 8659 or Dorothy Murray (Secretary) tel 235 1848 or come along to the meeting.

IRRESPONSIBLE OWNERS

As a member of the Friends of Green Oak Park and working in there on a regular basis, I am appalled at the amount of dog mess which we find around the Park.

We as the Friends group are trying to encourage local people to use the park by having installed activity equipment.

But by the amount of dog mess are people really going to want to frequent this area.

IF YOU OWN A DOG

DO YOU NOT GIVE IT SHELTER

DO YOU NOT FEED IT

DO YOU NOT WATER IT

DO YOU NOT TAKE IT TO THE VETS IF IT IS ILL

THEN WHY WHEN YOUR DOG DOES A MESS DO YOU NOT PICK IT UP.

There are a lot of responsible owners, but for the few owners who are irresponsible please think of others so they can use the Parks safely.

There are 3 dog bins in this Park so there is no excuse. And for these owners they should be ashamed of themselves.

Marlene Marshall.

FoGOP & Dog Owner

Councillor Surgeries

Liberal Democrats:

2nd Monday in the month 6.00-7.00 p.m., Totley Library, Baslow Road and 2nd Saturday in the month from 10.30 a.m. to 12.00 noon, Dore Old School Hall, Savage Lane, Dore Contact details:

Keith Hill 235 2289 Email: keith.hill@sheffield.gov.uk,

Colin Ross 235 1948 Email: colin.ross@sheffield.gov.uk

Joe Otten Email: joe.otten@sheffield.gov.uk

**Totley Independent Website:-
www.totleyindependent.co.uk**

THE OLD SCHOOLHOUSE

I was appalled to see the state of The Old School house for I was born there in 1915, and when we left my Great Uncle Arthur Bradley and his wife Alice moved in from the old Post Office in Hillfoot Road. They were there for a number of years, raising a family whilst Uncle Arthur became the Under-Head-Gardener and keeper of Gillfield Wood, breeding pheasants and other birds for days of shooting.

He was constantly looking-out for the village lads who couldn't resist a little bit of devilment, particularly when old crippled Hob Marshall was around showing them how to lie on their bellies, with one arm outstretched, the other hand full of seeds nicked from the bags in the store further up in the wood. A discreet handful quietly flung in front of the prostrate scavengers never failed to attract a couple or so Pheasants to be immediately grabbed by the other hand, neck quickly squeezed before it could squark then into the bag and home.

Uncle Arthur knew what was going on but it wasn't only pheasants he was worried about. I was thirteen years old when Aunt Alice died and needed a bit of help. My mother always baked bread on Friday and soon she was baking a second batch for Uncle Arthur and it was my job to deliver it after school and soon had the job of cleaning the huge living room and kitchen to be ready with table laid ready for what he had already made for tea; sometimes it was a rook pie, other times a starry-gazy pie. Whatever it was I always learned something, like you use only the breast of a rook because the back is bitter or when making the starry-gazy pie made with the little white fish from the river you always place the fish around the edge of the crust so that they are gazing up to the stars, not wallowing in their own juices.

It was always a silent meal, eating, not a lot of talking, whilst the old 6ft. high Grandfather clock kept on ticking, and the cricket behind it kept on rubbing it's legs together until Uncle Arthur seemed suddenly to be aware of the continuous peep-peep and shout, and I mean shout, "Ya b ----- r Ya b ----- r shurrr-up" and guffaw when it did just that. I shall never forget the cricket behind the clock.

Sadly there came the day when I came home from school to find my mum very near to tears when she told me that Uncle Arthur had had a stroke outside in the garden. He had not turned up for work so Mrs Milner came up to the School-house to find out why when she found him behind the door of the outside toilet, having had a stroke.

My father was told immediately and had gone down to the schoolhouse to take charge, and now I had come home I must take charge here and see that the boys had their teas, already set on the table, and I realised that I would never see my Uncle Arthur again.

Our neighbours - the Smiths were the next inhabitants of the old Schoolhouse, by which time it had been improved with a new staircase, and bedrooms and very soon Nellie Smith was married from there in the church just around the corner. Louie was later married from there, and Billy stayed on for a number of years. By this time I was miles away, at Gleadless but there may be someone in Totley who can continue the Smith story. I believe, but am not quite sure, but I think that Mrs Turner's daughter, who lived opposite at some time lived in the school-house, in what rotation again I am not sure, but I am sure that there is somebody who can fill the gap.

The last time I happened to be in Hall Lane, a few years ago, I remarked to the person I was visiting about the condition of the old name board for, even then it was obvious that some repair was required immediately, I hope now that the house and it's grounds can be rescued for posterity, such memories are priceless

Jo Rundle



The **HARDY PLANT SOCIETY**

South Pennine Group

www.hardy-plant.org.uk

Sale of Plants

Lovingly grown by our members

Sunday 18 September 2011

11am to 3pm

In Sheffield Botanical Gardens

Everyone welcome

Free admission



The Hardy Plant Society is becoming known locally for its excellent plant sales. They sell unusual hardy perennials, which should survive in our northern gardens. These are grown by members and sold for reasonable prices. Plant advice is also available. Our next plant sale is on **SUNDAY, 18 SEPTEMBER** in the Sheffield Botanical Gardens.

The South Pennine Group meet monthly for talks at Shirley House in Sheffield 11, but cover South Yorkshire and North Derbyshire as well as the city.

Activities include garden visits in spring and summer, speakers at monthly meetings, national seed exchange and local seedling swap, annual coach trips and the opportunity to grow plants for the HPS Conservation Scheme.

If you would like to join, contact the Secretary, Judy Coulson, at judycoulson@blueyonder.co.uk or phone 0114 235 1290.

Totley Music Festival 2011



Programme of Events

Although we're still finalising the programme, the events planned for this year so far are detailed below. You can find out more about updates to the programme, plus more information about many of the performers, on our brand-new website – visit us at www.totleymusicfestival.co.uk

Saturday 17 September:

- **The Totley Show:** The start of the Music Festival – and the day of the Totley Show! Making the musical connection will be the popular Escafeld Brass Band, appearing at the Show once again.

Sunday 18 September:

- **Jazz concert** with Howard Walker and the Djangonauts. Totley's Walker family, Howard (Vocals), Chris (Guitar) and Kevin (Double Bass) are joined by Piero Tucci (Piano, Sax, Accordion) and Phil Johnson (Drums, Guitar) for an evening of entertaining, accessible instrumental and vocal jazz. *Venue and time to be confirmed.*

Monday 19 September: Two events!

- **At the Cross Scythes:** Cary Baylis and Ian Bellamy – established local duo Cary and Ian performing acoustic classics from the likes of James Taylor and the Beatles to Crowded House and Django Reinhardt. Acoustic music at its best. Not to be missed! *Cross Scythes Restaurant, Baslow Road.*
www.cross-scythes.com
- **Big Poetry Day** – An evening with Sally Goldsmith, poet and songwriter, who will be reading and singing with Derbyshire Poet Laureates Ann Atkinson and River Wolton. Both here and nationwide, local libraries will be celebrating the 25th Anniversary of The Poetry Business – who publish all three poets.
7pm, Totley Library, Baslow Road

Tuesday 20 September: Two events!

- **The Keith Peters Big Band:** Keith Peters and his Big Band have been wowning audiences all over the region for some years, and we're lucky enough to have them playing at this year's Festival. The band consists of four trumpets, four trombones, five saxophones, four rhythm and three vocalists and they will be playing the old favourites in a range of big band styles (jazz, swing, the lot!) plus modern pieces and classics. So get your feet ready to tap to the beat and sing along with 21 superb musicians in perfect harmony! Don't miss this chance to hear Sheffield's best loved big band playing for this year's Festival!
Abbeydale Sports Club, Abbeydale Road South. Show begins 8.30pm.
www.abbeydalesportsclub.co.uk
- **Celtic Rock at the Crown:** Emerald are a celtic rock band featuring Irish, Scottish and English music. The band are regular visitors to the Crown, and a great evening is guaranteed!
9pm, The Crown pub, Hillfoot Road, 9pm
www.crowninntotley.co.uk

Wednesday 21 September: Two events!

- **Tuneful Totley Tots** – Bounce, bang, tickle and sing with Sally Goldsmith! An interactive music

session for under 5's (including babies), their parents and carers. Refreshments afterwards. Puppets, instruments, action songs and much more.

10 am, Totley Library, Please book with library staff on 0114 293 0406.

- **Variety Cabaret Show** – Another brilliant Variety Cabaret Show at Mickley Hall! Some old friends and some new faces to bring you a mixture of music and a little comedy. Classical, pop, folk and choral – it's all happening!
7.30 pm, Leonard Cheshire Home, Mickley Lane.

Thursday 22 September:

- **An evening with Hallmark of Harmony** – Sheffield's own Barbershop chorus, and (6 times British Barbershop Chorus Champions) are taking part once again in the Totley Music Festival. This chorus of 40+ singers have entertained audiences both in the UK and abroad with their exciting repertoire. Hallmark will be appearing at the Totley Music Festival in the week following their own show on Friday 16th Sept, "Chords of Steel" at the Montgomery Theatre in Sheffield (tickets on line from arenaticketshop.com) – they're looking forward to seeing friends old and new at both performances.
7.30 pm Abbeydale Sports Club, Abbeydale Road South.

Friday 23 September:

- **Festival Folk Concert** – The Folk Concert has been extremely popular for the last two years, and this year's concert promises to be no exception, with several of the performers retained, plus some excellent new artists added to the bill. Please arrive early to reserve your seat at what promises to be another splendid evening's entertainment.
Venue and time to be confirmed.

Saturday 24 September:

- **Rock with Redback!** Totley-based 8-piece rock band Redback who promise 'Motown and More'. Dance the night away to rock and pop songs you'll know well!
Venue and time to be confirmed.

Sunday 25 September:

- **Tapas 'n' Jazz!** A fabulous musical and gastronomic evening with **Verlan Musique** – an acoustic duo comprising Kieran Williams (Guitar) and Andrew Byrne (Tenor Saxophone) bringing you the distinctive music of the Parisian bars and cafes that flourished throughout the 1930's, 40's and 50's. Come and enjoy the music and the Tapas (approx. £5 per person). Bring Your Own wine. First come first served for seating but plenty of standing-room!
7.30 pm, Masterchef Deli, 185 Baslow Road.
www.masterchefcatering.co.uk

** Free Entry to All Events **

The final programme will be available in September in leaflets, posters, and the website. Our contact details – tel 07956 858944, and email totleymusicfestival@talktalk.net

The Organisers of Totley Music Festival would like to thank: Totley Residents Association; John Beazer; Hilary Blythe; the Cross Scythes Restaurant and the Abbeydale Sports Club (sponsors of the 2011 Festival); and of course all the performers for giving their services free of charge. Many thanks!

Ward Forum - Focus Group

Kathryn Higgins, chair of TRA, chaired a discussion group about the future of the Ward Forum. A Focus Group was suggested to discuss traffic problems and ideas within the ward and I offered to coordinate it to get started. The meeting was held with Kathleen Cox representing Whirlow, Alan Kewley and Andrew Tabor - Bradway, Keith Shaw - Dore (Geoff Cope sent his apologies) and Neil Bunting and myself representing Totley.

There was a lively discussion, revealing that a lot of knowledge existed within the group on a wide range of traffic issues (traffic, for the group's purposes, includes anything to do with traffic, including parking, which affects the ward, or is a common issue to different areas of the ward. We do not discuss local matters such as road repairs, or blocked street gullies, for example. These should be reported to Streetforce on 273 4567 or email streetforce@sheffield.gov.uk)

"20s plenty for us" was high on the agenda. This is a proposal to reduce the speed limits in certain areas to 20 mph, to reduce accidents (see article below from Alan Kewley) It appears that it is self-regulating in most areas. Some authorities have created numerous areas, Plymouth being a pilot area, but Sheffield has two areas - one in Stradbroke and the other in Shiregreen. They cannot include "A" roads or "B" roads. They are costly to install because of the bureaucracy in getting the permits to do them. There are two schemes in use. One, favoured by our Council is to use them near to schools, but others create a zone which may or may not include a school. It is a European lead initiative and Sheffield Council have not finalised their policy on the subject. Dore have submitted their proposal on a scheme to the Council.

Parking was also discussed, as the same problem affects Dore, Totley and Bradway - there isn't enough of it. Traders want to park outside their premises, but so do their customers. There is a rumour that bus passengers, from outside Sheffield, as well as locals, drive to a parking area and then get on the bus, blocking a parking space for the day. It is becoming a bigger issue because of the increasing numbers of residents who rely on their cars to get to the shops maintaining independence, in this hilly region of the City.

The next Ward Forum is on September 7th. We hope that the fruits of our research and discussions can be brought to a wider audience if our local community groups support the Focus Group. Our Ward Councillors and representative of the South West Community Assembly, should be in attendance and readers are welcome to attend.

Roger Hart

Traffic Focus Group Coordinator

20's Plenty for Us?

Previous articles in spring and summer 2010 highlighted the national upsurge of interest in "20's Plenty" speed limits for residential streets, and asked - Why is this not being discussed in our area? Over a year later, the same question is valid.

For the past 5 years, National and European guidelines have been encouraging local transport authorities to introduce lower speed limits, and their "How to" guide has been revised to make this easier

and more cost effective using signs only, rather than expensive and unpopular speed bumps.

In response to petitions initiated by Sheffield's Green party, a Highways report was discussed in July 2010 by the Cabinet Highways Committee, who endorsed this, but left it to local communities to decide. Since then, communities in other parts of the city have discussed this, submitted petitions, and some schemes are already in place.

Following the recent political change, the Council's new administration issued a press release indicating their intention to roll this out across Sheffield, taking the views of local communities into account, and various financial and technical constraints. An updated highways report has been requested, and is due to be discussed by the new Cabinet's Highways Committee on 8 Sept, when a decision is expected on the way forward.

Our Ward Forum has set up a grass-roots focus group to look at traffic issues, including 20mph limits, but we were surprised at the lack of awareness or discussion in our area. We've now asked our councillors when local consultation is likely to begin, before we get left behind other parts of the city.

Residents in other parts of UK may wonder why it has taken us so long to transform our residential areas into safer and more pleasant places to live without constant fear of speeding traffic. For an insight into what's already happening elsewhere, here are 2 useful websites -

1) National -- 20's Plenty for Us -- www.20splentyforus.org.uk

2) Local -- 20's Plenty for Sheffield -- www.20splentyfor Sheffield.org.uk

Lack of money is often an excuse for inertia, but where there's a will there's usually a way, especially when long-term benefits outweigh initial costs. Watch this space for an opportunity to learn more and have your say.

Alan Kewley

FRIENDS OF GREEN OAK PARK

DID YOU KNOW?

The friends of Green Oak Park are busy trying to make the park a better place and more environmentally friendly for the community and for future generations.

WHAT'S BEEN HAPPENING?

Last year we obtained funding from the South West Community Assembly for new trees, seats and picnic benches. This year we applied for funding for another picnic bench and seat. We have been accepted to receive this funding so you will see these very shortly in the park.

There is new playground equipment in place and funding will be ongoing for other equipment, possibly for toddlers and younger children. Also fitness equipment to be installed around the park.

We shall be campaigning for more improvements e.g. Wild life area, drainage ponds, flower beds and flower planting around the area.

Hopefully we will be making applications for funding for more equipment and activities in the future.

IF YOU WANT TO OFFER YOUR SUPPORT BY GIVING UP A SMALL AMOUNT OF YOUR TIME or help with work on the flower beds etc., then please contact committee members

PHONE NUMBERS ON THE NOTICE BOARDS IN THE PARK

Farming Scene

A Missed Holiday – A top Tup – Deer in Gillfield Wood – Sloe Gin

One sure way to ensure that we have a week of nice haymaking weather is for Jen and I to book a week's holiday away at the seaside in Devon. It used to be a regular occurrence for us to book a holiday away from the farm, only for the weather to pick up just before we departed. Jen and Luke would then go on their own and I would follow 2-4 days later when I had got an essential job done that required a few nice days. Having purposely not booked a mid-summer break for a few years we thought we would try again this year. We booked a week at the end of July thinking that by then we would have finished shearing, silaging and haymaking to do when the sun began to shine the day before we were scheduled to depart. So once again Jen and Luke went off Devon without me! I was to follow when haymaking was done. Unfortunately, this took all week, so I completely missed my summer holiday, again! Still, as the saying goes "you have to make hay while the sun shines!"

We have now sold most of the Dorset females that we had for sale. The last 9 will be journeying up to Carlisle at the end of this month (August) for the last breed show and sale of the season. We still have 8 yearling tups to sell but these should go to new owners over the next 2 months or so, as the local farmers start thinking of tuppings their sheep. Demand for females has been strong with prices up to £20 per head on last year.

Our Dorset flock ewes have all been tupped now and are scheduled to start lambing on 20 November. The Texel ewes have all been weaned and taken to some fields at Dore well out of earshot of their "bereaved" progeny. A fair proportion of their lambs have already taken a one way journey to Bakewell Market. The rest are mainly ewe lambs which we will be retaining for the next 12 months when we will then sell them on for breeding. Last year's crop of ewe lambs will be sold at Bakewell shortly.

You may remember that I bought an Irish born tup at Exeter in May last year. He was one of the champion pair at that show and sale. Over the last year his progeny have been performance recorded against other top flocks in the country. This has resulted in him being placed in 5th position in the Top Dorset Sire rankings and in the top 1% for recorded performance in all flocks. For once confirmation and performance have come together in one animal.

I spoke too soon in the last article when I observed that the moorland deer were staying at home. Over the last month I have seen 13, yes 13, stags sitting in standing crop of cereals just off Whitelow Lane. It looked very strange seeing these antlers sticking up in the middle of the crop. The farmer must have lost a fair bit of his crop as a result. They have ventured our way as well. For 2 or 3 days running there was a very young fawn trapped in one of our fields next to Gillfield Woods. He/she had obviously jumped over the fence into our fields overnight along with its mum. Unfortunately, she managed to jump back over but the fawn just could not make it and so became trapped.

It must have eventually found a way back to its mum in the wood as I have not seen it lately. What I have seen is some little owls in a copse in the middle of our farm. This is the first time I can recall seeing owls on the farm. I am not sure whether they were little because they were youngsters or whether they were proper little owls. I suspect they were reared in a dead tree in that area.

3 pairs of swallows have also reared young in one of our buildings again this year.

Have you noticed what a good year it has been for plums and sloes this year? We have got a good crop of both on the farm this year. So come on all you winemakers get out into the countryside and get that sloe gin fermenting!

Edwin Pocock.

LONGSHAW SHEEP DOG TRIALS ASSOCIATION

We are please to announce that the Longshaw Sheep Dog Trials will take place this year on 1st, 2nd and 3rd September, on Longshaw Pastures in front of Longshaw Lodge, near Grindelford, starting at 7.30am each morning. We are very honoured this year to have as our President Mr. James Shuttleworth. On 1st and 2nd there will be open class sheep dog trials when many of the "One Man and His Dog" competitors will be taking part, and we are pleased to have Mr. Frank Satterthwaite, who is himself a keen and experienced competitor, to judge the trials. At approximately 3.00pm on 1st there will be a parade of local hounds courtesy of the Barlow Foxhounds, High Peak Harriers, Pennine Foxhounds and Ecclesfield Beagles.



Following the local class sheep dog trial on Saturday 3rd the Longshaw Fell Race is to be run. Starting at 10.30am. this is open to all comers and is enter on the field. Following the fell race there will again, unless they are called away to an incident, be a display by the Search and Rescue Dogs and the local mountain rescue team. (Hopefully not having to rescue any of the fell runners!)

Starting at approximately 12.30 on Saturday 3rd the trials culminate in a double gather championship, which consists of the 8 highest pointed runs from both Thursday and Friday, when the winner will take home the prestigious Longshaw Championship silver tea pot. Entrance charges are just £5 .00 per adult each day, no charge for children, free parking, and we start at 7.30am, weather permitting, finishing at approximately 5.30pm. For further information please contact the Secretary, Mrs. Sheila Humphreys, MBE on 01433 651852, or e-mail lsda@talktalk.net.

This will be the 113st year of the Association, thought to be the oldest sheep dog trials in England. There will be a licensed bar, hot and cold food and drinks, and ice cream available. The magnificent array of trophies will be on display, so please come and join us for a day on the moors to see some of the wisest dogs in the world. We look forward to meeting you.

www.longshawsheepdogco.uk Registered Charity No 234523

PUZZLE CORNER

Coming of Age

Having celebrated my ninetieth birthday earlier this year I thought it would be interesting to see how many words could be made from the letters of NINETIETH. Including the personal pronoun I and seven two letter words I found forty-seven. How many have I missed?

Friends of Green Oak Park

Have you visited the park recently? If not I am sure you will be pleasantly surprised.

The Friends of Green Oak Park have spent a very busy summer working in the park.

We have held detailed discussions with Paul Billington, Director of Culture and Environment, David Hargate from Parks and Countryside and Councillor Garry Weatherall, Cabinet Adviser for Parks and Countryside. Paul and Garry had not visited the park before, so we told them what has happened in the past and what we hope to achieve in the future.

Council teams within the Parks and Countryside Service have been changed so we are now getting to know new members of staff. Dave Wright is the officer with responsibility for all parks within the South West. Miriam Stayte is back as our Project Development officer and Andy Varley is the team leader of gardeners who work with us. Between us we all maintain the park.

As usual, the Friends visit the park daily to check all is well, chat to park users and listen to their suggestions.

We are delighted to welcome several new volunteers; together we work nearly every week in the park. As well as keeping the shrub, flower and herb beds free of weeds we have also tried to keep the newly planted trees watered. This has been a struggle because of the lack of rain.

Our first major task was to clear out the mess room previously used by Streetforce, The walls and floor have now been painted. This is now our mess room where we keep our equipment.

Since the Police box closed on Totley Brook Road our community police officers have had nowhere to take a break or to meet with the community. After consultation with Parks and Countryside it was agreed the police would move into the park. The Friends second task has been to clean out and paint the small building overlooking the park and bowling green. This is now the police box. The police moved in on Friday 12th August.

Our police officers are there to help the community; if you have any concerns please do call to see them, they are only too willing to listen to your problems.

The old wooden park benches have been painted and another one placed in the shade between the stream and the bowling green. This was suggested by park users as not everyone enjoys sitting in the sun.

The stream area is being tidied up and it is hoped drainage will be improved between the stream and the children's playground before too long.

The Lemont Road entrance is in the process of being upgraded. Our aim is to make it welcoming for everyone. So far, we have turned over the bed near the building and made a new bed on the opposite side. By next year we hope to have the area planted up. If you have any plants to spare which could be used in the new beds do get in touch.

We have also met with Parks and Countryside ecologists Brian Armstrong and Michael Senkans. They are advising us how to improve the park for wildlife.

As well as working in the park, the Friends are planning activities for all members of the community. Barnardo's Voices will be holding a second activity session for 8-13year olds on Tuesday September 13th from 3.45pm – 5.45pm.

Already booked is Sunday 13th May 2012, when there will be lots for everyone to enjoy, so put the date in your diary.

Keep an eye on the notice boards for future events.

Avril Critchley, Chair, FoGOP

Digging into the past

Local amateur archaeology group 'The Time Travellers', started their autumn programme of events at the end of July by digging into a BBQ in Totley. A shared interest in the subject has led to new friendships and a sociable background to the groups activities.

Formed earlier this year, the Time Travellers has expanded into a wide range of interests, from field walks to organised trips, including visits to Manor Lodge and Cresswell Crag. Walks have included one to nearby Stone Circles just before the June Solstice, incredibly atmospheric places. More recently the group organised a guided tour of Carl Wark led by local Archaeologist, Mick Savage, as part of the Council for British Archaeology's Annual Festival of British Archaeology.

In more practical terms the group has been heavily involved in the Whirlow Hall Farm Archaeological Project, which has allowed members to have a taste of all the different skills used by 'real' archaeologists. This has included field walking, geophysical and building surveys and excavation.

Currently some members are excavating a number of sites at Whirlow, including the newly discovered potential Romano-British Enclosure. Field Walking was also really successful, because a large number of flint tools of all sorts and sizes were discovered, placing Whirlow firmly on the Pre-Historic Map. Members have also taken part in the on-going excavations at Manor Lodge and Heeley Farm.

The Autumn and Winter Programme is looking full, with a mixture of 'hands-on' archaeology, talks, walks and visits. These include a guided tour of Abbeydale Hamlet looking at the archaeology of the site, and their own project to investigate historic fields around Totley in association with some members of Totley History Group. So, instead of just watching 'Time Team' on the television, why don't you contact either John Baker on 236 9025, or Dorne Coggins on 236 5769, for information about the group and their next event.

Publicity Snatcher

Totley Primary School recently held their Summer Fair on Saturday 25th June 2011 which was a great day despite the showers. The children of the school and the PTA worked very hard prior to the event including spending money on advertising this year. With permission from Sheffield City Council, parents from the school, including myself attached laminated posters on numerous lampposts in the Totley area, including Totley Rise and along Baslow Road, the week before the event. Unfortunately these posters were taken down by someone. As a parent and member of the PTA I am disgusted that someone could do this. As it turns out we had a very good turn out on the day and our efforts were not hampered by the theft of the publicity. I just feel it is very sad that someone felt the need to do this when all we were trying to do was raise money for the school for the children's benefit. I just hope whoever you are are ashamed of yourselves.

Jayne Grayson

Marcroft Family

I read with interest the article concerning the Marcroft family. As a little girl I remember visiting (Great) Uncle Len and Auntie Ethel at their home in The Quadrant, with my grandmother.

My mother was the daughter of Mr and Mrs Robert Smart Marcroft, the brother of Charles Linley.

I have a vague memory of meeting Betty and remember her photograph at the wedding of my Uncle Maurice.

If Michael Kirby is interested I would be delighted to give him more information should he care to contact me.

Pamela Dolby

Reference Michael Kirby's letter in the July/August 2011 of Totley Independent. He asks for memories of his great uncle, Len Marcroft, builder of Totley.

I only knew him through my father, Harry Jackson, who was with Len a member of the Totley Bowling Club. They played on a crown green of irregular shape at the back of The Cross Scythes Hotel.

Len was a rather rotund gentlemen with florid features. He enjoyed the game and a drink.

The Club had an annual Ladies Day, the only day that ladies (and children) were allowed on the hallowed grass.

On that day there were games of skittles etc, lucky dips and an ice-cream man with a large tub. He was a club member and I think his name was Jack Purdy. He was very popular with the children. It was wartime and any visits to Cross Scythes on the Totley bus were a treat for my brother Derek and my mother Doris as well as for me.

My father's main club was at the side of The Beauchief Hotel, now a car park. The pub then was the Abbeydale Station Hotel. No bedrooms, only 2 snooker tables, 2 bars and a large bowling green. I learnt to play there in wartime (1939-45) and first played a league match in 1945 when Abbeydale were one short at Metro-Vicks in Bawtry Road.

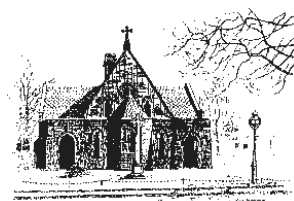
66 years playing bowls and I am still learning!

One other memory of the Cross Scythes green. The players went down 2-3 steps onto the green. The entrance was guarded by 2 brown stone recumbent lions. I wonder where they are now?

Robert Jackson

St John's Church Abbeydale

Special Services coming up in the next few months



25th September

10am Back to Church Sunday Service

9th October

10am Harvest

13th November Remembrance



Sunday

10am Morning Prayer

11am Act of Remembrance

11.15am Holy Communion

27th November

6.30pm Advent Carol Service

18th December

6.30pm Carol Service - Nine lessons and carols

24th December Christmas Eve

5pm Christingle

11.30pm Midnight Eucharist

25th December Christmas Day

9.30am Family Communion

Normal weekly services are:-

8am Either Morning Prayer or Holy Communion

10am Parish Communion. Provision for children is made on the 1st, 2nd and 3rd Sundays of the month either by way of Family Communion or Fish Club

SOCIAL EVENTS

Quiz night - We are holding a Quiz night with a Fish and Chip Supper on Saturday 17th September at 6.30 p.m.

Get your team together and name it!

Tickets will be on sale in early September entrance fee £1 for adults and 50p for 14 and under.

Supper will be £4 per head but will need to be ordered in advance and paid for at the time of purchasing the ticket.

Contact 2364578

Christmas Beetle Drive with Pea and Pie Supper

Saturday 10th December

Cost as Quiz night.

Contact 236 4578

Mark and Sally Fletcher invite you to

The Grouse Inn

Longshaw

Sheffield S11 7TZ

Meal times:-

Mondays 12.00 to 2.30pm

Tuesdays to Friday's 12.00 to

2.30pm and

6-30pm to 9-30 pm

Saturdays 12.00 to 3.00pm

and

6.30pm. to 9.00pm (drinks - open all day)

Sundays 12.00 to 9.00pm

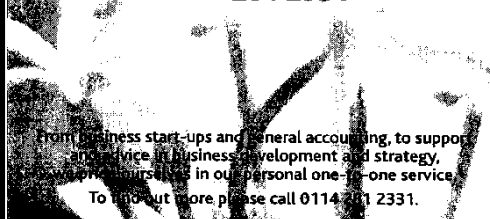
Phone 01433 630 423

R Rose & Co

Chartered Accountants & Business Advisors

Specialists at looking after the affairs of small businesses.

For a **FREE** initial consultation please contact Roger Rose FCA on **0114 281 2331**



From business start-ups and general accounting, to support and advice in business development and strategy, we are specialists in our personal one-to-one service. To find out more please call 0114 281 2331.

213 Derbyshire Lane, Norton Lees, Sheffield S8 8SA
Email: info@r-rose.co.uk

Mens Hairdressing by Karen

at

Hair by Patricia Barber

53 Wollaton Road,
Bradway

9am to 5pm Thursday

9am to 5pm Friday

9am to 1pm Saturday

appointment or walk-in

0114 236 6247

07984 021 033

Totley Memories

My name is Jim Whyte and I have lived in Plymouth since 1962. I picked up a copy of your excellent publication from (what used to be) Gratton's on Totley Rise and was interested in a letter from Anne White, referring to a disused swimming pool in Gillfield Woods.

As a boy, I lived at 14, Rowan Tree Dell from about 1940 until I got married and spent most of my spare time playing in the woods. I was very aware of the derelict swimming pool. I often used to wonder who had gone to the trouble of digging out a large hole and fitting up a water supply and outlet. I never did find out, but one year I remember that a gang of local lads let in water from the river and cleared the surrounds of the pool. For a few days the pool was used for swimming by youngsters from the area. It soon fell into disrepair again. I don't remember the date, but would have thought it was in the mid forties. I was also interested in a letter from Frank Young, who I knew well. I remember using one of the 'Refuge Centres' at Totley Bents as a Scout Hut during the war, but never got involved in a purpose built Scout Hut. One thing I do remember during the war, is the whole Troop loading up a trek cart and pulling all our equipment in it out past Owl Bar and The Surprise, down to Hathersage and up the other side to a field where we camped for a week. At the end of the week, we struggled with the reverse journey. Would anyone do that today I wonder? I recalled this recently while talking to John Woods who's father used to be headmaster of All Saints Primary School. He says that he organised this particular outing.

I thoroughly enjoyed reading your publication. Long may it continue.

Jim Whyte

Green Oak Park

Can I start by saying how well G.O.P. is looking, the new play equipment, then the boulder how great they are, then the arrival of the shelter, it looks as if it was made for that spot. It all makes our park the place to be. I was sorry to hear about the petition to stop the shelter. The shelter is there for the people that use Green Oak Park and not just the youths of Totley. I heard of one person complaining about the shelter because she could see it from her house. Well if you don't like what goes on in the park may be they should consider moving. If you choose to live next to a park or pub then that's your choice don't complain when things happen they are by the nature of what they are NOISY PLACES.

Wayne Hodgkins

I think that the Park Shelter does help young people and children with disabilities to gain confidence in using the park. Does Jean Barber want to take away the independence of young people and children with disabilities. I feel there should be another youth shelter in Totley Hall Park for young people and children with disabilities living in the area. The TRA Chairman wants a Totley Youth Council and this would be fantastic and the opportunity for a representative for people with disabilities and young people in the area.

Paul Savage

I am writing to express my feelings about our park, it should be bringing the community together not tearing us apart.

People who do not live near the park do not hear the noise of as many as 20 young people shouting and screaming or see the litter of beer boxes, cigarettes, bottles and sweet paper etc first thing in the morning. Quite a few people are very nervous to walk through the park in the early evening as the youths intimidate them, also mums have stopped their children playing in the park area.

I feel we the people on the edge of the park have had no say but those who do not live around the park already seem to be telling us what we are to have but I never see these people in the park seeing what trouble they have given us.

Alison.

MacMillan Coffee Morning and Raffle

Totley Library, Wednesday, 28 September, 9.30 am to 12 noon. All support welcome, please join us.

Maggie Maw

SHEFFIELD BACH SOCIETY

MONDAY 19 SEPTEMBER 2011

Sheffield Bach Choir presents THE LARK ASCENDING A Celebrity Concert with Opera North's DAVID GREED violin and DR SIMON LINDLEY at the famous Father Willis Organ at Beacon Methodist Church, Nether Green, S11 7EH

7.30 pm

A very special gala evening with one of Britain's very finest concert violinists presenting music by Vaughan Williams, Handel and Kreisler. Bach Choir conductor Dr Simon Lindley accompanies on the magnificent Father Willis Organ and presents solos on this acclaimed historic instrument. The concert is followed by a Reception in the Lower Hall. All proceeds go towards Sheffield Bach Choir's concert expenses for the coming season.

SATURDAY 29 OCTOBER 2011

Sheffield Bach Choir presents BAROQUE BEAUTY with The National Festival Orchestra leader SALLY ROBINSON

at St Mark's Church, Broomhill, S10 2SE

7.30 pm

Tickets £12-15; Students £6

Accompanied under 16s are admitted free of charge - boxoffice@sheffieldbachchoir.org.uk

Box Office: 3 Tapton Mews, Tapton Crescent Road, S10 5EA and at the door on the night of the concert.

On-line booking from the Bach Choir Website: www.sheffieldbachchoir.org.uk

Sheffield Bach Choir presents some of Baroque music's best-loved classics including Vivaldi's Gloria and Pergolesi's Magnificat. The programme includes some special rarities by Handel - the Anthem on the Peace of 1749 among them - as well as his exquisite early psalm setting, Dixit Dominus of 1707.

MONDAY 19 NOVEMBER 2011

Sheffield Bach Choir presents MENDELSSOHN MASTERWORKS including HYMN OF PRAISE and HEAR MY PRAYER with THE NATIONAL FESTIVAL ORCHESTRA AND SOLOISTS

Joanne Dexter, Jenny Cowling & Ben Thapa at Sheffield Cathedral, Church Street, S1 1AA

7.30 pm

Tickets £12-15; Students £6

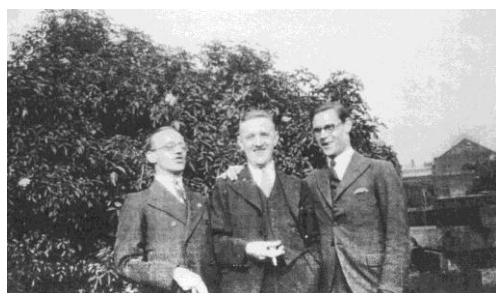
TOTLEY SCOUTS

There is so much speculation and interest in the first Totley Scouts that I think the following might be of interest.

In 1930 a man called Aubrey formed a Scout Group when Mrs Milner allowed them to use the room under the Turret kitchens as their headquarters and my brother Jeff age ten was one of the first to enrol. They were a very dedicated group and by the time he was fifteen he had qualified as a King's Scout and been invited on two occasions to attend Windsor Castle for special celebrations and later, after the death of King George the Fifth, to represent Derbyshire at the Jamboree held near the Scottish border in 1937. Thousands of Scouts from all over the world gathered with the new King George 6th. when their singing and hand-slapping 'Hands, Knees, and Upsa-daisies' went with the rhythm. Their Headquarters remained in the little kitchen and was quite adequate as they spent most of their time on manoeuvres in the little wood and in the stream.

Then came the War in 1939 when Jeff and my next in line brother Geoff immediately volunteered, Elijah the eldest was not allowed as he was in a reserved occupation as the pattern maker of the moulds for making the complicated bricks that lined the kilns when special designs were called for.

No more Scouting was done until 1944 when, so far as England was concerned the war was over, although it continued in Germany until August 12th. 1945. My son Arthur lived with my parents from the age of 2 to the age of 7 whilst I was busy as a SJAB Sister at First-aid Post 13 Prince of Wales Road Darnall when we lived at Gleadless, but soon we were to leave when I bought a field next to the Leylands on Moorwood Lane and created a nursery garden. Our son was now 12yrs. old and had become a Totley Scout, when, I believe, Birley was the name of the Scoutmaster. It is obvious that Arthur had been the



Lesley Aubrey (left) Totley All Saints Scoutmaster 1930-39

scribe for, many years later after leaving Grammar School, and spending four years at Durham University

he spent the next eight years in Antarctica and it was during this time that I found the scribes book in a drawer in his room and noticing that it had not been used for so many years I took it to Totley and was advised to take it to a man called Carter, which I did, but, having arrived amid some sort of argument, he took it from my hand and threw it through an open door onto a sofa in an adjoining room. Nobody knows what happened to it since!! I remember the wooden Scout-hut newly built just over the curb in the field that later was to be the site of the new College. It was to be officially opened the following day by Lady ? who lived in a very large house off Newfield Road, or Lane, Dore. The date 1946, College opened about 1952; I remember standing on Moorwood Lane with G.H.B. Ward and looking down on it when he said "It's like a great big packing case".

Jo Rundle

What's the Alternative?

It was 36 years ago as a student living in Totley, Sheffield that I first experienced it. I was suffering from recurrent bronchitis and my GP was studying Homeopathic medicine and wanted to try it on me. I was both suspicious and curious when after requesting anti-biotics he asked me to come back after surgery. He asked me all sorts of questions about what I was experiencing, what type of person I was, my likes, my dislikes and finally after a good hour sent me to the pharmacist next door where I was given some strange white powders to take. Much to my astonishment within 24 hours I was completely better and out to a concert at Sheffield City Hall, when I'd have expected to be laid up in bed. Throughout my life I've had very few recurrences of the bronchitis I was so prone to as a child and of course I still don't know if this was down to the Homeopathy or not but I expect it was.

I was brought up in Birkenhead, the daughter of a GP and a veterinary surgeon. It was a busy household where we had to take care not to get the thermometers mixed up and the most useful tool in the house was the pair of artery forceps my mother kept in the dining room sideboard! Because of this and my love of helping other people I've always had an interest in medicine. I left school early and worked as a Veterinary Nurse for my father before studying an SRCN at Sheffield School of Nursing. I found the nursing frustrating and depressing because I'd thought I was to help people get better not just nurse them. I was wrong as most of the nursing I was doing was terminal care of babies and children with spina bifida and hydrocephalus on a lifetime of drugs with little prospect of leading a normal life. I decided to leave nursing to follow various studies and a lifetime of careers in management.

In 2006 my internal boiler malfunctioned and the menopause hit me like a ton of bricks, I couldn't sleep, I had hot sweats day and night so bad that I just couldn't function properly. This coupled with the long hours working in the family business made me feel really ill. The Dr. tried to persuade me to go on HRT which I didn't want to do because of recurrent breast cysts so I elected to research alternatives and it was then that I remembered the Homeopathy. I found a Homeopath in Sheffield and the odd little pills worked for me again, I had the best nights sleep for months and I was so intrigued and fascinated by the effect this strange medicine had on me that I thought, maybe just maybe I could go full circle and help people at last in the way that I had aspired to when I set out on that career in Nursing nearly 30 years ago.

Lindsay studied Homeopathy for 4 years at the School of Homeopathy in Stroud and at Aroga School in Unstone, Derbyshire. She has a practice in Totley at Synergy Natural Health & Fitness Centre.

If you would like to find out more about Homeopathy Lindsay is holding information sessions. Places are limited so please call Synergy on 0114 235 7845 or text "Homeopathy" to 07968 167036 to book.

A useful website for looking at your health issues is www.wddty.com



GARDENING TIPS FOR SEPTEMBER

The Totley Show will soon be here I hope you are all getting your exhibits ready. I always look forward to seeing your efforts, and it's always a big relief when people turn up to make the volunteers work worthwhile.

The children's section is always interesting with some wonderful interpretations on the various categories, so if you have children, grandchildren, neighbours children, nephews, nieces, etc. please encourage them to take part.

We were a bit short in the apple pie section last year, I might have a go this year so watch out you budding cooks (I think I have mentioned before that I am certified you know) my Dundee cake made the top three so I will be making an extra effort this year.

Have a good look though the entry form (in **Totley Independent** July or from library, Ironing Shop, Totley PO, or Stablemate shop) and see whether you can enter any of the other sections don't forget it is you who will make the show a success and help to keep up the traditional activities in this area, I hope to see you on the 17th at the Totley Primary School. The times are on the entry forms. By the way if you still have the cups which you won last year can you please give them a polish and return them to me a.s.a.p. or drop them into the Stablemate shop, thanks.

The garden is looking good, very floriferous but a bit untidy here and there. I have been out of commission for a while having cut my hand by accidentally falling into the greenhouse glass a piece went a bit deep. I had to have an operation to remove it therefore I had to be extra careful until it healed up (about three weeks) so things got a bit behind tidying wise.

The tomatoes and cucumbers are doing well the sungold are really coming good they are always the earliest and sweetest of all the tomatoes. The veg patch is doing quite well the onions are looking promising ready for the show bench. The leeks are not too bad but could be better we shall see on the 17th September show day, The runner beans are really tasty and we have had bumper crops after a slow start. The raspberries did not do very well they are suffering from cane blight and will have to be replaced so no raspberries next year. The apples are ripening nicely but they are very small. The dry weather has held them back quite a bit; I hope the bitter pip we had last year has not come again. We shall see in a couple of weeks time I have given them a lot of TLC and a treat or two so I live in hope of lovely sweet apples.

The goldfish are happier now I have managed to eliminate most of the blanket weed. They now have a bit more swimming room, they must be happy because they keep having babies. I've not seen this years brood yet, they are a bit difficult to spot as they are black and very small and they keep fairly deep down until they have grown a little. We spend a lot of time watching them, it's very therapeutic so I'm told.

The lawn is a bit parched, I keep hoping for a drop of rain but Sheffield seems to be in a dry pocket. Everywhere around are getting downpours and we get a little shower if we are lucky. Let's hope the forecast for the next few days will give us a drop enough to make a difference. Lots to do in September so don't just sit there get cracking.....

Flowers To encourage a late flush or to help the plants develop into stronger specimens keep up with removing the faded flowers, reduce by half any perennials which have finished flowering to prevent wind rocking them lose. Prepare ground for new borders, clearing away old summer bedding plants. Make ready for spring beddings, add a little bone meal or hoof and horn if you have not done so for a year or so. Lift and pot up geraniums and fuchsias ready for moving indoors. Take cuttings from herbaceous plants as insurance against frost, if you have beds which are ready you could plant out daffodils and narcissi, primrose, polyanthus viola, forget-me-nots and winter flowering pansies, don't let the pansy flower, nip off any buds which appear, this will make stronger plants which can face the winter frosts better. Mildew can be a nuisance at this time, deal with it as soon as it is seen; a good fungicide should help. Pot up hyacinth, tulips and narcissi for forcing, keep them as cool as possible in a dark place for 8-12 weeks, inspect from time to time to ensure they do not dry out or get mildew. Brambler roses will have finished flowering, they can be pruned now, cut out the old canes that have just borne flowers, if there is not much young wood you will have to keep the best of the old, and simply remove the obviously worn out or diseased. If you have to do this cut back all old flower trusses and hips they may be bearing.

Vegetables Gather French and runner beans regularly, do not leave any pods which are ready on the plant unless you are entering the largest bean in Totley Show. Keep the old hoe going removing weeds; make sure that all plants are not short of water, thin out spinach being grown for harvesting late autumn. If your onions are slow ripening turn down the tops, lift and store as soon as they look reasonable (note the ones for the show and leave

them until show day then dig them up, leave the roots on trimmed a bit, chop off the tops and bind the chopped end of the onion with a bit of raffia or twine, you need 3 matching and/or one whopper) and the best of luck!

Prepare ground ready for planting spring cabbage later in the month. Marrows can be stored if there are too many for immediate use, hang them in old nylons in a cool frost free place. Earth up leeks and celery. Keep an eye on the weather forecast so that outdoor tomatoes and marrows can be picked before they are spoilt by frost. Lift a bit of parsley and pot up and place in the cold-frame, this will provide pickings for the winter and food for the slugs if you are not careful. Divide and replant chives, thyme and welsh onions.

Trees, Shrubs and Fruit Prepare ground for planting new raspberries and blackcurrants, place grease bands on fruit trees, especially apples. At the end of the month prune blackberries, cut out the old fruited canes and tie in the old shoots. Pick up windfall apples to prevent the spread of disease from the rotting fruit. Prepare ground for planting evergreens including heathers, hedges, shrubs and conifers, plant out at the end of the month. Take hardwood cuttings and semi-ripe cuttings of most shrubs at this time, rooting in a cold-frame, and bear in mind hardwood cuttings can take quite a time to root (2 years sometimes). Start winter pruning apples and pears towards the end of the month.

Greenhouse and Indoor Plants Gradually decrease watering, except plants that are coming into flower, e.g. cyclamen, dry off tuberous begonias, cacti, gloxinias, hot water plants and clivias.

Feed plants in flower such as African violets, bush violets and chrysanthemums as flowering finishes discard summer flowering annuals that have been

used as pot plants. Pot up seedlings of cinerarias, cyclamen, primula and poor man's orchid to flower late winter and early spring. Re-pot arum lilies to flower at Easter. Take cuttings of flowering maple, campanula, coleus, fuchsia, busy lizzie, ivy and geranium. Divide plants of pepperonia, mind your own business and rodahy poxis. Detach the plantlets from spider plants and pot them up, be careful watering in the greenhouse as excess water at this time encourages mildew and fungal diseases. Also keep benches and floors clear of leaf droppings etc.

Lawns Continue regular mowing and edging, rake, scarify and spike then apply a top dressing of sieved potting compost. It is a good time to sow new lawns or lay turf on well prepared ground.

General Watch the weather in September, the variation can be quite marked early on, you can expect fine warm days but nights begin to feel colder, ground frost can occur so be prepared. Make space for those tender plants and sort out those insulation covers for cold-frames etc just in case.

DON'T FORGET THE TOTLEY SHOW, 17th SEPTEMBER AT TOTLEY PRIMARY SCHOOL, SUNNYVALE ROAD, SEE YOU THERE.

Cheerio for now, Tom

Local Physiotherapist completes challenge

Andrew Okwera, a physiotherapist working for Activ Physiotherapy at Synergy in Totley recently completed the three peaks challenge where he had to scale three of the highest peaks in the UK, all within 24 hours.

His journey began at Ben Nevis in Scotland on Saturday 9th July, he then moved to Scafell Pike in the Lake District and then on to Mount Snowdon in Wales, completing the challenge in a time of 23 hours and 43 minutes. "The hardest thing was the sleep deprivation", said Andrew. "You could get a little bit of sleep on the minibus between mountains but the adrenaline, and the pain kept me awake".

He completed the challenge with a group of friends for the charity Planeterra, who have projects in developing nations around the world. At present, they are rebuilding Tsunami hit villages in Asia. "The thought of the money raised (a total of £2,000) and a pint at the end of the challenge kept me going".

"We travelled 500 miles, walked 25 miles and climbed 10,000 feet. My legs were in pain for a week after; I definitely was in need of some Physiotherapy." He added. This has not put off Andrew though; he is planning on a 9 day trek to Mount Kilimanjaro next year.



Dore & Totley Park & Ride

Rumours were circulating that SYPTE had "run out of money" for the Park & Ride Scheme. I contacted their Senior Public Consultation Officer, Gillian Palmer, & her reply is as follows;

"To confirm the details of the proposals with reference to finance, the project was unfunded when the proposals were released. Part of the project has been to seek financial support and this is still ongoing.

SYPTE has currently got a bid under review with the 'Station Commercial Project Fund' which is a Department For Transport fund and administered by Network Rail.

The planning application is still under review and we will release an update when a decision is made by Sheffield City Council."

I have asked if the land could be used, as it stands, but a reply has not been received. I think that it would be unlikely for them to agree to this as there would be legal & liability issues.

Roger Hart

TRA

Regarding the repercussions from the AGM of the TRA I was appalled at the disgraceful way the meeting evolved. I felt unable to vote for the Charitable Trust or on any other matter of such importance under the circumstances.

Charitable Trusts can be very successful in accessing funds normally unavailable to groups. As a member of Friends of Sheffield Manor, North Yorkshire Moors Heritage Railway and other groups, I have seen the advantages charitable trusts have brought.

I wish to appeal for all differences to be put aside and everyone pull together for the good of our village and community. I also wish every success to the new committee in their endeavours.

As a long time resident of Totley who has family roots in the area dating back to the 17th century and beyond I feel I have a real affinity with this beautiful area we are all privileged to live in.

Jean Barber



Tony and Julie at

The Crown Inn

Welcome you for

Good Quality, Home Cooked Food

Tuesday – Friday

12-2pm & 5.30-8pm

Saturday & Sunday

12-3pm

Come & join us for

Good Beer, Good Food & Good Music

Tel 0114 236 0789

CLOSED SUNDAY EVENING

Visit our website: www.crowninntotley.co.uk

LIVE MUSIC

30th August

CARY BAYLISS &
LYNSEY DRACAS

13th September

ZAK BLACK

20th September

EMERALD

16th September

CARY BAYLISS &
IAN BELLAMY

11th October

HIGHWAY CHILD



WEDNESDAY SEPTEMBER 28TH

TOTLEY LIBRARY, 7.30PM

LEAD MINING IN DERBYSHIRE

WITH MENTION OF SMELTING IN TOTLEY

JIM RIEUWERTS

MEMBERS £2, NON-MEMBERS £3

WEDNESDAY OCTOBER 26TH

OPEN DISCUSSION MEETING

WEDNESDAY NOVEMBER 23RD

TOTLEY LIBRARY, 7.30PM

THE TURNPIKE ROADS OF TOTLEY

HOWARD SMITH

MEMBERS £2, NON-MEMBERS £3

Phone 101

As of 1 July Sheffield residents making calls to the joint 101 police and council number, to report non-emergency incidents and antisocial behaviour, will pay a flat rate fee of 15p; this is irrespective of the length of call or whether you are calling from a landline or a mobile phone. Currently calls to the 101 service costs a flat rate of 10p.

The change in fee comes as all 43 police forces in England and Wales adopt 101 as their new single non-emergency number, as advised by the Home Office. From July, police forces will begin changing to the 101 number starting with The Metropolitan Police Service and surrounding areas, with South Yorkshire Police making the switch from the current 0114 2202020 non-emergency number in early November.

The 101 service has been available in Sheffield since 2006 and will continue to allow residents of the city to report non-emergency incidents and antisocial behaviour through one single number. In November, 101 will become the police non-emergency number for all of South Yorkshire replacing 0114 2202020, however the council related services will only be available in Sheffield; current caller satisfaction figures show that 95 per cent of callers are satisfied or very satisfied with the service.

In Sheffield, you can call 101 if you have problems with:

- vandalism and graffiti
- noise nuisance
- threatening and abusive behaviour
- abandoned vehicles
- dumping and fly tipping
- drunk and rowdy groups
- drug related anti-social behaviour
- broken street lighting

Friends of Gillfield Wood

On the 15th there's a bat survey walk with Derek Whiteley of Sorby Natural History Society.

On the 25th there's a practical conservation day with Henk Littlewood of Sheffield City Council's Park and Countryside unit.

All members of the public are welcome. For further details on both events contact Dave Gash on 0114 262 0564 (or daveygash@hotmail.com).

Music in the Park

Totley Independent kindly included articles on the Music in the Gardens concerts, held in the Botanical Gardens, & staged by the Rotary Clubs of Sheffield, over 4 nights. A total of 10,000 people attended, & £58,750 was raised for charities, including the Botanical Gardens Trust. Presentations to those charities, will be made by The Lord Mayor, Councillor Dr. Sylvia Dunkley, on October 3rd.

Roger Hart

Chairman of the Management Committee

PUZZLE CORNER ANSWERS

My list for Coming of Age

I, Ee, He, Hi, In, It, Te, Ti, Een, Hen, Hin, Hit, Inn, Nee, Nin, Nit, Tee, Ten, The, Tie, Tin, Tit, Hent, Hint, Nene, Nete, Nett, Nine, Teen, Tene, Tent, Thee, Then, Thin, Tine, Tint, Hithe, Neist, Ninth, Teeth, Tenet, Tenth, Thine, Tithe, Intent, Theine, Ninetieth
Don Ashford

LIFE IS WORTH EXPLORING!

- Do you feel like starting a new adventure?
- Have you questions about Christian beliefs you would like to ask in a relaxed and friendly atmosphere?

You are invited to attend

THE ALPHA COURSE

At Totley Rise
Methodist Church

on Monday evenings for 10 weeks

From 6:45pm to 9:15pm

starting on 19th September 2011 with a

"**taster session**"...come & see -
find out more

Dinner will be served promptly at
7pm, followed by a talk, then a
group discussion.



For more information, & to
reserve a place, call John on
2366819

ALL SAINTS CHURCH, Totley Hall Lane.

Back to School

Now that the Reverend David Rhodes has retired we are in a period of interregnum. The churchwardens (supported by the PCC) are responsible for the church during this time. Please contact Liz Hayden 236 4944 or Steve Spendlove 236 1752

The pattern of services will remain as before,
Morning Service 10am
Evening Service 6.30pm.

New Wine Christian conference at Newark

Together with friends from Totley All Saints and Totley Rise Methodist church and 7,000 others, I enjoyed a week of varied Christian teaching and activities. There was excellent provision for children. They too saw miracles of healing and learnt more of God's love and had great fun.

Speakers included Simon Guillebaud who had seen God work in amazing ways in war ravaged Burundi, escaping death many times. When rebels did not allow a church meeting to leave, the people experienced sight being restored and other healings, which over days resulted in others arriving to push in and join the church meeting! In this country Eden Project set up by Andy Hawthorne supports young Christian couples prepared to live on deprived estates with the support of their church. It is not easy when your house is ransacked, but as time allows relationships to be built up and trust develop they have been able to be there as a living embodiment of Jesus' command to "Love one another". These initiatives are in Manchester, Bradford and Sheffield and are certainly one answer to reach out to young people who have never known compassion or love. Look up The Message Trust on the web and see Andy Hawthorne recently telling over 600 MPs in London "The Bible works, Jesus is the answer".
Gay Riley.

All things bright and beautiful,
All creatures great and small,
All things wise and wonderful
The Lord God made them all.

He gave us eyes to see them
And lips that we might tell
How great is God almighty,
who has made all things well.

(from a hymn by Cecil Frances Alexander 1818-95)



CHANGES

Summer 2011 has been a time of change
Our minister David Rhodes retired at the end of July after 12 years of working for our church and school. Danny and Margaret Barlow have left Totley after 23 years, returning to the south of England. Soon after they arrived in Totley in August 1988, they attended the AGM of the Totley Residents Association and were welcomed on to the committee. Two years later they left the TRA to work as volunteers for Transport 17. Danny and Margaret have been instrumental in maintaining the success of Transport 17, working hard to raise funds for new buses. They will be greatly missed.

Rosie retired and closed her shop on Baslow Rd., after many years of providing a retail and sewing service to the community. So many people have remarked on how they miss her sewing skills.

The people of Totley are fortunate to have had these people serving the community. We thank them and wish them well in the future.

Back to school kit

A rubber band - to remind you of hugging and those times when you want to give a hug or want to receive one.

A tissue - to remind you to dry someone's tears (or perhaps your own, so you can see the tears of others).

A button to remind you to "button your lips" to keep from saying mean things about others or talking when it's not appropriate.

A toothpick - to remind you to "pick out" the good qualities of everyone – including you.

A bandaïd – to remind you of healing hurt feelings, either yours or someone else's.

A candy kiss – to remind you that everyone needs a nice treat occasionally.

A gold thread – to remind you that friendship is the golden thread that ties together the hearts of everyone.

Eraser – to remind you that everyone makes mistakes sometimes, and that's all right.

Lifesaver Candy – to remind you to think of me as YOUR "lifesaver". Whenever you need to talk, feel free to come to me.

A mint – to remind you that you are worth a mint to me!
Love from your school friends.

(from "poems for the beginning of school").

Lynda Liddle and Dorothy Firth

BEDTIME STORIES

As I suppose most couples do my wife and I have always told each other little snippets of information we have come across. In recent years, since my eyesight became too poor to read books for myself, she seems to find bits in her bedtime reading. I thought the most recent example might interest readers as it did me.

The book she is reading is called *Skeleton Hill* by Peter Lovesey and the following pearls of wisdom come from it. My first introduction to it came around midnight about a week ago. As we put out the lights came this comment "This book has a most peculiar beginning". Of course I was duty bound to ask about it. Not wanting to spoil the story for potential readers of the novel I will just say there were two corpses on the battlefield one of whom started talking to the other.

The next extract, which I found more interesting, came not at midnight but around five o'clock in the morning some days later. A tentative voice said "Are you awake?". I am old enough and wise enough and sufficiently wide awake to realise this is not an early call to get up and do some badly needed garden clearing, but presages a question. "When do you think the zip fastener was invented?". Of course, in spite of being only partially awake, I have to try to give some sort of reply. It ran along these lines. "Well I feel sure it didn't come into general use until after the war (meaning 1946) so I guess the 1930s or even the 1940s". "No, much earlier" says my educational adviser. Then continuing the pupil participation theme "who do you think invented the sewing machine?" Remember the circumstances - it is still short of five thirty in the morning. Nevertheless in the interest of maintaining harmony I have to hazard some sort of reply. "Well" I say, knowing its odds on I'll be wrong, "Singer would be my guess".

My wife has now reached page 151 of her Peter Lovesey encyclopaedia of knowledge from which she now continues my education. In 1851 an American, Elias Howe took out a patent for an "Automatic Continuous Clothing Closure" followed in 1914 by "Hookless Fastener Number Two". Apparently Mr Howe also invented the sewing machine. By now, of course, any thought of return to sleep had long gone and we fell to wondering whether any of this was true or a product of Mr Lovesey's imagination. This led on to admiration of how much research is involved for all authors.

As for me I feel enriched by my newly acquired knowledge! So if in the future you see me struggling to fasten my jacket and hear me muttering "Damn this Automatic Continuous Clothing Closure" you will know why.

Don Ashford

HOLMESFIELD FLOWER CLUB

invites you to the following event:

Wednesday 21st September - Demonstration of Flower Arranging by **Elizabeth Helliker** (NAFAS demonstrator) entitled "***Magic of the East***". 7.30 pm at Holmesfield Village Hall (off Woodside Avenue) Holmesfield. Ample parking. Tickets available at the door: £6 (members £3) includes refreshments. The arrangements will be raffled at the end of the show.

EVERYONE IS WELCOME.

RESPONSE TO GYPSY COMMENTS

I do appreciate that Jenny Street was very disappointed in not gaining the TRA at the AGM meeting, but is it fair of her to take her frustration out on the community, there are some very caring and dedicated people in Totley and her comments will be very hurtful to most of them.

She cannot tar everyone with the same brush as her article implies by inferring that all Totley people are gypsies.

The AGM was always going to be passionate considering the issues raised, I know there were a couple of people which were very angry at the meeting but on the whole most of the members were calm. Had the issues been more thought out to be within the keeping of the community things may been different.

I feel therefore that an apology from Ms. Street would be a very magnanimous gesture.

Marlene Marshall.

Crime in Totley

On Tuesday 28th June at about 10.45pm, as I was driving along Baslow Road, out of town, I witnessed a man trying all the car doors of the cars that were parked outside the row of shops that contains "Rosies" etc. (At the top of Mickley Lane). I turned the car round to watch what he was doing. At this point he was trying the door of a burgundy Land Rover parked outside Baslow Road surgery. He was on a mountain bike. When he saw me he ducked inside the driveway of the doctor's. As I drove towards him, he spotted me and got back on his bike and cycled at speed down Baslow Road. I followed him and he cycled down Totley Rise, then disappeared down Milldale Road. At this point I lost him so I called the police to report him.

He was dressed in dark clothing and was on a dark mountain-type bike, with no lights. He was wearing a black baseball cap. He was white.

By Email

*Ed:- A map of crime spots can be found at a new website **www.police.uk** and is updated monthly*

Viva Las Vegas...

and happy birthday to St Luke's Hospice

VIVA Las Vegas! All the glitz and glamour of the world's gambling capital comes to Sheffield in September as St Luke's Hospice celebrates its 40th anniversary with a casino themed ball.

The Vegas themed September 24 event at Baldwin's Omega will feature showgirls, casino tables, live entertainment and a special auction.

Tickets cost £60 each but there is a special early bird price of £55 for anybody who books before the end of August.

"Money raised by the ball will bring us a step closer to the £4 million we need to raise towards the £6 million cost of running the hospice and caring for around 1,400 patients in this 40th anniversary year," said hospice Events Fundraising Manager Anna Sheppard

"With a champagne reception, a great dinner and entertainment into the small hours, we know this is going to be a fabulous birthday celebration and we want as many people as possible to join the fun!"

To book a place or reserve a table call Anna Sheppard on 0114 235 7561 or email:

a.sheppard@hospicesheffield.co.uk

THE ROTARY CLUB OF SHEFFIELD VULCAN



The "Big Society" is a frequently discussed topic of late, not least in respect of what it actually means.

There are many voluntary service and charity organisations who feel that it's meaning is clear to them- it is the giving of time, expertise, and experience in order to help those in need, whether at home, abroad, or both.

The Rotary Club of Sheffield Vulcan is one such body, and as part of the global family of Rotary International (over 100 years old), it works under the motto of "Service above Self" - and does this with fun, fellowship and common aims.

As (some) examples, we have, in the past 12 months, raised over £6000 through a sponsored Wye walk in the Peak District and a Golf day. We have collected for a variety of charities at local supermarkets (Sainsburys, Tesco, Morrisons, Waitrose), and have given time to help steward at the Sheffield half-marathon and Whirlow Hall Farm Fayre. St Lukes, Bluebell Wood, and Ashgate hospices have all benefitted from our help, both in time given and monies raised.

Something like 7000 bulbs have been planted on verges to add to the many thousand planted in previous years, and scrubby, derelict and litter-strewn inner city land has been reclaimed.

Samaritans Purse is a charity that sends "shoeboxes" of useful items and toys to very disadvantaged children mainly in Europe and Africa; Vulcan Rotary Club members annually give around 60 man days of effort to transport the boxes into the Sheffield HQ from outlying areas.

Recognising the potential value of our future generations, we work with local schools giving "mock interviews" to help students prepare for the world outside. We also stage an annual debating contest....and help fund an annual trip to the panto.

Our current international involvement is a project for an Institute for deaf children in Indonesia. Our financial contribution has been doubled via Rotary International, and the local Rotary Club is managing the installation of culinary equipment and the building of an extra room.

Shelterboxes to house families in disaster areas have been funded and sent where needed including Japan following the tsunami.

Our bucket-rattling, raffle-organising and other fund-raising schemes have raised over £20,000 in the past 12 months for both local and national charities. (This excludes our work with other Sheffield Rotary Clubs in putting on "Music in the (Botanical) Gardens" which this year raised over £55,000 for charities.)

All the above and more is carried out in a spirit of camaraderie, and we have a number of social events for members, partners and friends. Our meetings are held most but not all Tuesday evenings at Abbeydale Sports Club (6.30 - 8.30, normally including a meal and speaker), and we know that the pressures of life mean that members cannot make all meetings. We are not concerned with politics, gender, religion, or race - we simply want more like-minded members who feel that they can "put something back" into society and enjoy themselves as they do it.

If you are interested and want to come along as a guest to one of our meetings, then look at our website (www.vulcanrotary.org.uk) or ring our secretary Ruth

Thruston on 0114 296 0208 or Alan Brown on 0114 236 7212.

Alan Brown

Roman farmstead discovered in Whirlow

Remains of a Roman farmstead "of some importance" have recently been unearthed at Whirlow Hall Farm in Sheffield, raising intriguing questions about the extent of Roman activity and settlement in the Sheffield area. Previously no farming settlements of this date had been found within the city.

The rectangular-shaped enclosure formed by a ditch was revealed during a geophysical survey undertaken by professional archaeologists and volunteers as part of an ongoing Heritage Lottery funded project at the farm. The results of the survey go to show just how valuable geophysics can be as a tool for discovering archaeology that would have otherwise have lain undetected.

Archaeologists and volunteers subsequently digging at the site for three weeks, have discovered a wide range of Roman pottery, some of which has come from as far away as Gaul. Initial inspection of the pottery suggests dates in the second century AD - the time of the Roman emperors Hadrian and Antoninus Pius.

The farm is next to an ancient trackway which presumably joined into the local Roman road and the archaeologists believe that the site was designed to provide farm produce to the Roman supply network.

There is also evidence of lead working, and remains of earlier occupation are being discovered underneath the Roman layers.

The project has involved the public and volunteers since April. They have also

undertaken fieldwalking, geophysics and a photographic survey of the historic farm buildings including the medieval cruck barn. The fieldwalking on adjacent fields saw the collection of over 1000 finds including flint tools from the Mesolithic and Early Bronze Age.

The really exciting aspect of this project is that it is revealing the presence of human activity at Whirlow for over 8,000 years. On completion of the project, the findings will be used to produce a heritage trail and a programme of talks and walks detailing the history of the area, which will be made available to visitors and school groups.

Looking for a Healthy Weight Loss Solution ?

A fast and easy way to prepare a healthy meal in a glass for under 220 Cals.



Your Independent Herbalife Distributor is:

Gillian (0114) 236 3992

www.InShape4u.com

feel the difference!

HERBALIFE

Homeopathy @ Synergy.

162 Baslow Road, Totley, Sheffield, S17 4DR

Advanced Indian Sensation Method Homeopathy

Alternative medical treatment for all chronic conditions

Registered with major insurance companies. Can claim through the Westfield scheme



Registered member of

The Society of Homeopaths

Ring: Lindsay Allison RSHom for more information:

0114 235 7845 or 07968 167036

Kitchen Solutions

By Nigel Watson

Fully fitted quality kitchens at affordable prices, planned and designed to your specification. View a computer generated impression prior to installation.

For a local, friendly, reliable service call for a free brochure and quotation.

TEL: 0114 236 4778

Mobile: 07971 528149

DON'T PUT UP WITH...

PAIN

Activ

Physiotherapy
specialises in:

- Sports Injuries
- Back & Neck Pain
- Joint Problems
- Muscle & Ligament Strains
- Repetitive Strain Injuries
- Post Op. Rehabilitation

Registered with major insurance companies, BUPA, Aviva, Westfield Health

**Early morning and evening
appointments are available . . . ring for details**

Totley: 0114 235 7845 • Norton Lees: 0114 255 6434
Mobile: 07901 968 549

Come

SCOTTISH COUNTRY DANCING


rscds
Dance Scottish

and enjoy keeping fit in friendly classes.

Classes for beginners and experienced dancers

Mondays 7.30pm - 9.45pm

Starting Monday September 5th 2011

**Silverdale School, Bents Crescent, S11 9QH
Sheffield**

September 5th - a free Taster session and general class 7.30pm to 8.45pm
General class 9.00pm to 9.45 pm

For further details contact:

Norma Hutchinson. (0114) 236 6723

Ian Dall. (0114) 258 5909

Visit our website:

<http://extra.shu.ac.uk/rscds>

e-mail: rscds.sheffield@gmail.com


Sheffield Branch

The Royal Scottish Country Dance Society



Registered Charity No: 1065106





Gail Kitchen: 07986473415



Does going away from home mean your cat is sad and unhappy?
Does a trip to the cattery scare your cat  *not to mention your wallet?*


WORRY NO MORE!


MOGGY MAID is on hand to feed,  love  and provide everything your cat needs in the relaxing comfort of its own home.

As we cat-lovers know, unfamiliar sights and smells can stress your cat, whereas leaving them in the familiar surroundings of their own home carries less worries, for your cat and for you. 

If only for a night, weekend, or a month; holiday, Christmas or any time of the year, **MOGGY MAID** is here to help **LIGHTEN YOUR LOAD** 

 We promise no mischief allowed! 

In a professional manner and with quality service, you can ensure individual care and attention, whilst you relax away from home. 

We haven't forgotten the rest of the family; mice, rabbits, budgies, goldfish, etc will receive care and affection too. 

LOCAL FRIENDLY SERVICE

From £5 a day

For more Information, contact Gail Kitchen on:
07986473415 **5 Ullswater Place, Dronfield Woodhouse**

Looking for designer labels?

Let our unusual Vision Plan help you pay for them and much more!

Offering all the benefits of 35 years' experience of South Yorkshire's largest independent firm of opticians.

- Friendly, qualified staff
- Eye examinations
- High-tech diagnostic retinal camera and MacuScope
- Wide choice of spectacle lenses, contact lenses and stylish frames
- Special offers



ASK FOR A
VISION PLAN
LEAFLET

GUESS DIESEL GANT
EYEWEAR

POLICE EMPORIO ARMANI

Visit our website and make your choice of designer frames at one of our practices including 63 Baslow Road (tel: 236 4485) and our extensive new premises at 634 Abbeydale Road (tel: 255 6554)

www.mko.co.uk



Shepley Spitfire

56 Mickley Lane, Trolley Sheffield - S17 4HE 0114 236 0298

New Menu launch **From Sept 22nd**

2 meals for **£8.95**

Served everyday 11am until 9pm

Succulent Sunday Lunch only £5.99

Quality Cask Ales

Quiz Night every Tuesday from 9:30pm

The Home of Big Fish Friday!!

Beer battered Cod fillets, Chips and Peas Two for **£8.99**

Eat in or Takeaway

FOR THOSE OF YOU WITH A LITTLE APPETITE

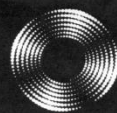
WE HAVE INTRODUCED A SMALL

PLATES MENU FROM **£2.49**

ALL DAY EVERYDAY

CHRISTMAS MENUS NOW AVAILABLE

Entrust Electrical



For all your electrical requirements in or outside the home you can trust **Entrust** to do it right!

- ✓ Full or Partial House Rewiring
- ✓ Additional Sockets, Switches, etc
- ✓ Energy Efficiency Enhancements
- ✓ Contemporary & Classical Refurbishments
- ✓ General Electrical Maintenance & Repair
- ✓ Homebuyer Electrical Safety Surveys
- ✓ Telephone and Computer Data Points
- ✓ Garden, Pond & Other Outdoor Electrics
- ✓ Security Lighting & CCTV



City & Guilds
Qualified

(0114) 2352084
07935 250814

www.entrustelectrical.co.uk

Old Hay Close, Dore, S17 3GP



"need help in your garden?"

...we can help *you*

the
ABBEYDALE
gardeners

Kevin and Mark from the recently closed Abbeydale Garden Centre, have started their own Garden Services Business.

Kevin Hunter 07818 20 12 42

Mark Naylor 07739 75 23 19

"give us a call, no job too small."

Music Tuition



Piano • Keyboard • Flute • Singing
Guitar (rock, metal, blues, jazz, funk, pop, folk)
Music Theory • GCSE work

Music graduates, each with 25 years
teaching and playing experience

All ages, beginners welcome.

Exam work or just for fun!

Call Mark or Karin

0114 237 4853 & 07981 888352



FourSeasonsCare^(UK)

Are you in need of a little help and support within
your own home? The older we get the more help we need
to enable us to live a more independent life.

Personal Care • Medication • Domestic • Sitting Service • Social and Leisure activities

To find out more call Sue 07753 840 097 Pat 07967 927 263
or visit www.fourseasonscare-uk.com

For reference from an existing client please call 0114 2366891

HEARING AIDS

MAURICE NAYLOR FBSHAA RHAD is your
local hearing aid specialist and at your
request will test your hearing in your own
home, free of charge, and if needed you can
try a custom made aid for four weeks
without obligation to purchase.

Tel : 262 0010

In the ear digital from £495

ATTENTION ALL WOOD BURNING AND MULTI-FUEL STOVE OWNERS

Are you looking for an environmentally
friendly fuel for your stove?

Waste Wood Briquettes are made
from waste wood products that would otherwise be
sent to landfill. You can also use our briquettes
on your Stove, B.B.Q. or Chimenea.

PLEASE VISIT OUR WEBSITE
WWW.WASTEWOODBRIQUETTES.CO.UK

OR CALL 01298 872 896

FREE DELIVERY IN YOUR AREA



Your local Rose's Bread stockist

Coffee Shop now open

Monday to Friday 8am to 4pm, Saturday 8am to 1pm

51/53 Baslow Road

Tel: 236 4238

J Barlow t/a

Horizon Electrical

*Faults, Rewires, Sockets, Lights,
Cooker Points, Electrical Showers,
Phone Points, Security Lights*

No job too small

Fully qualified with friendly advice

Ring Totley 236 4364 or
Mobile 07772 483154



Hatha
..YOGA CLASS..

Totley and Ranmoor

For more information or to book a place call
RACHEL on (0114) 236 9943

BWY Qualified Teacher

BODY, MIND & BREATH
Enjoy the union of yoga



BRADWAY INSTALLATIONS

Kitchens, Bathrooms.....and everything in
between

- Complete Kitchens - Installation or supply and installation
- Kitchen Refits - Replacement worktops/sink/hob etc. Worktop / cabinet repairs
- Bathrooms - Cloakrooms - Domestic plumbing - Tiling Laminate / Vinyl flooring

All work undertaken is fully insured and guaranteed

Ring Peter - 0114 236 5995
Mobile - 07766 411355

SLIMMING WORLD

10 WAYS TO MAKE SURE IT WILL BE THE LAST TIME LOSING WEIGHT IS YOUR NEW YEAR RESOLUTION. THIS TIME MAKE IT LAST FOREVER

1. Focus on your weight loss goal and prioritise it.
2. Be sure you really want to lose weight for yourself. Doing it to please someone else may only lead to short term weight loss.
3. Take advantage of all the group support at your local Slimming World class. Even if you are not a 'joining in' person, you'll be surprised how motivating it is.
4. Accept that you will have ups and downs in your weight loss journey, and be forgiving of yourself if you hit a difficult patch.
5. Listen to your 'inner script' and make a conscious effort to talk to yourself in a positive, encouraging way.
6. Keep up your interest in your healthy eating plan by trying new foods, new recipes, and new ways of using your Sins. This will help you avoid getting in to a dieting rut which can be boring and demotivating.
7. Be honest with yourself about what you are expecting from your weight loss and how you are getting on with Food Optimising week by week. People who set unrealistic targets for weight loss or body shape are more likely to give up than those who set achievable targets and share their ups and downs.
8. Go back to your class even after (especially after) you've had a weight gain. You will not be judged, just helped and supported.
9. Keep setting new goals and rewarding yourself for milestones until you reach your target weight, and afterwards!
10. Don't put your life on hold until you've lost weight. You can still enjoy life and lose weight. Think of your dreams and ambitions and bring them to the fore. The positive feelings you get from starting to 'live a little' can only help your motivation and your weight loss.

Group details:

Bradway Annexe now at St Peter's Church, Greenhill Roundabout, S8 7FN Thu 5pm & 7pm

Dore Old School, Tues 5.30pm

Tel: Alison Murphy 07815 046569 for further details

Heatherfield Club, Baslow Road - Mons 7.30pm

PhysioFOCUS

at Totley Rise Dental Practice
85 Baslow Road,
Sheffield, S17 4DP



Physiotherapy treatment available for:

- Back and neck pain
- Sports injuries
- Sprains and strains
- Joint and muscle pain
- Arthritic pain
- Whiplash
- Repetitive strain injury
- Headaches

Appointments: 0114 2360333

Also available:

- Pilates classes
- Pilates 1-2-1
- Golf Fitness Screening
(as used by consultants to UK, European and Australian PGAs)

For more information please call:

Emer on: 07792 422909

Rachel on: 07956 908454

APPLE LANDSCAPES and APPLE FENCING

www.applelandscapes.com

QUALITY SERVICE AT AFFORDABLE PRICES

Patios • Paths • Walling • Dry Stone Walling • Drainage Work

• Indian York Stone Paving • Railway Sleeper Beds

Garden Tidy Ups etc. No job too small

Fencing & Gates Supplied Only

or Supplied & Fitted

Only Quality Materials Used

FULLY INSURED

Call for free quote

01246 237505 • 07782 167540

Would you like someone to

Type letters? Pay bills? Help record family memories?

Sort and file papers? Prepare an inventory?

Anything else ???

Then you should call

Secretarial and Administrative Services

Swift, efficient, confidential service at your home.

Pay-as-you-go.

Ring us on 0114 235 0071



Tel/Fax: (0114) 255 4689

Mobile: 07831 802539

TRISTAN SWAIN

LANDSCAPING AND MAINTENANCE

UNIT C4

Sheaf Bank

Business Park

20 Prospect Road

Sheffield S2 3EN



**B.K. JEAVONS
PAINTER & DECORATOR**



Interior
Exterior
Decorating
No Job too
small

Tel: 01246 416484

and mobile 07882 278306

**M. Scriven
(FRUITERAMA)**

MARTIN SCRIVEN

**HIGH CLASS FRUIT
& VEGETABLES**

37, Baslow road

Tel. 236 7116

Orders Delivered





GWS

Technology Solutions



PC Problems/ Repairs/ Servicing No Job Too Small
 Wireless & Internet Setup New PC's & Upgrades
 PC Setup/Data Transfer Safe PC Disposal Tuition
 Software/Hardware For All Your PC Needs

Guy Senior

Phone: 0114 2352662 Mobile: 07890030453

Email: guy@gwstech.co.uk

Web: www.gwstech.co.uk

GWS, 5 Conalan Avenue, Bradway, Sheffield S17 4PG

R.S. HEATING & BUILDING CO
 EST. 1971

HEATING DIVISION:
 Experienced Installers of condensing, combination and regular boilers. Systems fully guaranteed. Complete after sales service. Also Bathrooms, showers and small plumbing works.

BUILDING DIVISION:
 Loft conversions, House renovations including general building, joinery, plastering, electrical decorating etc.

13 Overcroft Rise, Sheffield, S17 4AX
Tel:- 0114 236 4421
 Reg. Office:- 62 Machon Bank, Sheffield, S7 1GP
Te:- 0114 2559425
Fax:- 0114 255 9431
 Email: enquiries@rsheatingandbuilding.co.uk
 Web: <http://www.rsheatingandbuilding.co.uk>

LIBERTY FOODS
 Caterers
 Quality Meat Shop
 & Fresh Farm Produce

Fresh and Frozen Prepared Meals
 Fresh Meat and Poultry
 Outside Catering
 Home Delivery

253 Baslow Road, Sheffield, S17 4DU
 Tel: 0114 2360 583 Mobile: 07801 346 455

Dronfield Landscapes

Gardens cleared and maintained, Lawns mowed, Turfing, Tree felling & pruning, Hedges trimmed & reduced, Pond maintenance, Fencing etc.

for free quotation call
 Chris on: (0114) 2746158 Mobiles: 07976072785 or
 Richard on: 07789497104

8am-6pm mon-fri HazelBarrow Farm, Norton S8 8BA


R.M.M BUILDING SERVICES
25 YEARS EXPERIENCE
 All types of building work carried out including- Drop kerbs, block paving (drives, paths, etc), extensions, general building repairs and maintenance.
 Phone Rob on- Mob- 07906108567
 Home-2352190

Nigel Watson
Carpenter and Joiner

Fitted kitchens, sliding wardrobe doors with bespoke interiors, internal and external doors supplied and fitted, new handrail and spindles, laminate and wood flooring, locks, architraves, skirting board, stud walling, boxing off etc.

For a reliable and quality service
 TEL: 0114 236 4778
 MOBILE: 07971 528149

One World Week
 Wednesday, 19 October 2011
 at 7.30pm at Totley Rise Methodist Church
 Joint meeting of the Wednesday Friendship and the United Nations Association to mark One World Week.
 Amy Worrall will speak on "Food Sovereignty – Sustainable Food Security" and will report on her visit to Costa Rica in August 2011.



Got a computer?

Having Problems?
 Is it running slow? Stops responding?
 Having problems running the latest games or applications? Broadband installation?
Give me a call!
 I'm available for home visits at any time including evenings and weekends. I can also suggest upgrades to improve performance, or even build you a system to your specific requirements.

Tim Brown
 Building, Installation, Upgrading and Troubleshooting Computer Systems
 Over 25 years professional experience

Phone: 0114 2472619 Fax: 0870 7060080
 Mobile: 078 17464703 Email: service@timbrown.plus.com

Dronfield Landscapes

Logs and woodchippings
For Sale

Ring for details
Chris on 0114 2746158
Mobile 07976072785

Richard mobile
07789497104



Central Heating
Domestic Plumbing
Glazing, Double Glazing and Glass
House Maintenance
UPVC and Wood Windows & Doors
Mini Digger & Driver, Muck Shifts, Footings Etc.



TOTLEY PRIVATE HIRE

24HR TAXI SERVICE
ADVANCE BOOKINGS TAKEN
LOCAL • LONG DISTANCE • AIRPORT

Tel: 0114 283 9692
Mobile: 07974 355528

Domestic electrical work carried out by
City & Guilds and 'Part P' qualified

LADY ELECTRICIAN

- * House rewires * Replacement fuse boards *
- * New sockets and lights * Telephone points *
- * Security lighting * Pond pumps * Deck lights *

All work guaranteed and
fully insured

No job too small
For a free quote, without obligation

ring Mandy on 07788-544225



Tiling, Plastering,
Plumbing & Complete
Bathroom Fitting Service

Tel: 0114 274 6775
07738 688807

- ◆ Under Floor Heating
- ◆ All Aspects of Home Improvements & Maintenance Work Undertaken
- ◆ Competitive Prices
- ◆ NVQ Qualified
- ◆ No Job Too Small
- ◆ Fully Insured & Guaranteed

A1tilingandplastering.co.uk
33 Glen View Road, Greenhill, S8 7SF

Hypnotherapy

Weight, confidence, smoking, stress,
phobias, anxiety, panic, sleep, etc...

Call 235 1985 Totley

www.sheffieldhypnosis.co.uk



Paul Peace



The
British
Psychological
Society



Karen Bartle

Creating opportunities with disabled people.

Registered Charity No. 218186

Leonard Cheshire Disability

Leonard Cheshire Services in Offers choice & opportunity to people with disabilities. A Specialist Unit for the Younger Disabled. Residential & Respite Care - Single Rooms Day resources - Aromatherapy - Reflexology - Physiotherapy - Toning Tables.

Activities include: - Arts & Crafts - Computers - Cookery - Shopping Expeditions - Theatre Outings - Church. Further details can be obtained from - The Service Manager, Mickley Hall, Mickley Lane, Totley, Sheffield S17 4HE. Tel. 0114 236 9952 Fax. 0114 262 0234

The Care at Home Service supports disabled people who wish to remain in their own homes.

We provide flexible care packages from 1 hour to 24 hours meeting individual needs. The service operates throughout Sheffield.

Our service includes: - help with getting up and going to bed, dressing, washing, bathing, shopping, cooking, light household duties.

Further details from: - The Care at Home Manager Tel. 0114 235 1400 Fax 0114 235 1499

John Heath & Sons

AN INDEPENDENT FAMILY FUNERAL BUSINESS

Sometime.....

You will probably have the responsibility of making funeral arrangements. No one looks forward to this responsibility, but the death of a family member or friend brings with it an obligation that must be met. There are people who can help you meet this responsibility. We have been helping people combine the different aspects of the funeral into a meaningful service for over 125 years.

Please Call Day Or Night

(0114) 272 2222

Head Office - Earsham Street

Also at Meadowhead, Ecclesall Rd,
Crookes and Stannington

www.johnheath.co.uk



CHARISMA BLINDS



For
Windows
With Style

Sheffield Factory Showroom
106 PROSPECT ROAD
HEELEY, SHEFFIELD

Sheffield (0114) 258 5496
Rotherham (01709) 512113

TOTLEY & DISTRICT DIARY

MONDAYS	COFFEE MORNING , All Saints' Church Hall, 10am-noon TAI-CHI , United Reformed Church, Totley Brook Road, 11.30am-12.30pm RAINBOWS and GUIDES , All Saints' Church Hall, 5.45pm-9pm
TUESDAYS	COFFEE MORNING , Totley Rise Methodist Church Hall, 10am-noon KEEP FIT & COFFEE , For the not-so-young, Bannerdale Centre, Carterknowle Road, 10.15am, Phone 258 5364 WOODSEATS ADVICE CENTRE , Drop in service, free, impartial, and confidential. TR Methodist Church, 10am-noon CRAFT GROUP , Totley Library, 2pm
WEDNESDAYS	COFFEE in the LIBRARY , 10am-11.30am TODDLER GROUP , 10am-11.30am, All Saints' Church Hall. Details tel. Andy Holmes 0114 236 2088 HEALTH WALKS , 10.30am, Totley Library foyer. Phone Sue, The Health Walk Ranger: 0114 283 9195 MODERN SEQUENCE DANCING , All Saints Church Hall, 8pm-10pm
THURSDAYS	CHAIROBICS , Suspended until further notice NCT COFFEE GROUP FOR DORE TOTLEY & BRADWAY , 10am-noon, For mums & babies/toddlers, meeting in various locations, Phone Lucy Street 07837 000405 or email: lucy@streetr.plus.com for further details PUSHCHAIR CLUB , Totley Rise Methodist Church Hall. 1.30pm-3pm. Tel. 236 3157 for further details PILATES CLASS , United Reformed Church, Totley Brook Road, 6.15pm-7.30pm, Phone Emer Coffey 07792 422909
FRIDAYS	PILATES , The Old School, Dore, 10.45-11.45am & 12-1pm. Phone Teresa Tinklin 07906 312372
SATURDAYS	MODERN SEQUENCE DANCING , All Saints Church Hall 2 nd . And 4 th . Saturdays 8pm-10pm

AUGUST

SUN 28TH - ARTISAN FOOD FAIR, Baslow Village Hall, 10.30am to 4.30pm FREE ADMISSION. www.hartingtons.net

SUN 28th & MON 29th (BH) MINIATURE TRAIN RIDES, Abbeydale Road South, First train 1 p.m. – last train 5 p.m.(weather permitting) www.sheffieldsmee.co.uk

SEPTEMBER

THU 1st – SAT 3rd LONGSHAW SHEEP DOG TRIALS, full details page 7
SAT 3rd SATURDAY NIGHT LIVE, Justin Micheals, Heatherfield Club. 8.30pm. Come & play Play Your Cards Right. Non-members welcome

SUN 4th CASTLETON FARMERS MARKET, the Village Hall, 10am–3pm

TUE 6th FRIENDS OF GILLFIELD WOOD, 7-9pm, Totley Library

SUN 11th AUTUMN PLANT SALE, Botanical Gardens, 11am – 3pm

SUN 11th MINIATURE TRAIN RIDES, Abbeydale Road South, First train 1pm – last train 5pm (weather permitting) www.sheffieldsmee.co.uk

WED 14th SHEFFIELD MOVIE MAKERS, 7.15pm, Michael Church, Lowedges

TOTLEY SHOW SATURDAY 17th TOTLEY PRIMARY SCHOOL

Details page 2

SAT 17th SATURDAY NIGHT LIVE, Dee Andrews, Heatherfield Club. 8.30pm. Come & play Play Your Cards Right. Non-members welcome

SUN 18th PLANT SALE, Botanical Gardens, 11am-3pm

TUES 20th TOTLEY TOWNSWOMEN'S GUILD, 'London From The Monopoly Board', Clive Holliday, Totley Rise Methodist Church Hall, 10am

THU 22nd SHEFFIELD FARMERS MARKET, 9am-4.30pm, Fargate

SUN 25th MINIATURE TRAIN RIDES, Abbeydale Road South, First train 1pm – last train 5pm (weather permitting) www.sheffieldsmee.co.uk

WED 28th MACMILLAN COFFEE MORNING, Totley Library, 9.30 am to 12 noon. All support welcome, please join us.

WED 28th TOTLEY HISTORY GROUP, Totley Library, 7.30pm, Lead Mining in Derbyshire, talk by Jim Rieuwerts, all welcome

TOTLEY INDEPENDENT FOR OCTOBER

The next issue of the Totley Independent will be available from the usual distribution points on

**SATURDAY 1st October
2011**

**COPY CLOSE DATE for this issue
will be**

SATURDAY 17th September 2011

Editor: **Ian Clarke**
Tel. No: **235 2526** or Email:
editor@totleyindependent.co.uk

Advertising & Distribution:
John Perkinson
Tel. No: **236 1601** or Email:-
advertising@totleyindependent.co.uk

Items for publication may be left or sent to:
**2, Main Avenue, Totley, Sheffield,
S17 4FG or
Totley Library**

www.totleyindependent.co.uk

PRINTED by STARPRINT

CLEARVIEW STOVES

Pioneer 400 - weight 125kg



This is by far our biggest selling multi-fuel stove. For a typical room size 13ft x 15ft! Producing from 1 to 5kw of heat output - being highly controllable with an updraft and a unique patented down draft to burn the tar off the glass - keeping it crystal clear - hence the name CLEARVIEW. One log lasting up to 1.5 hours given super efficient outputs up to 80% (an open fire runs at 15% efficient!). Seven choices of colour to compliment your decor with optional leg heights from 2 to 10 inches. Clearview Stoves were the worlds first to be approved for burning in 'Smoke Controlled Areas'. We have over 200 installations around Sheffield. We are often told by many of our customers that "It's the best thing we have ever bought"

Showrooms at Burgin Conservatories 302 Abbeydale Road S7 1FL
Open Tues-Sat 10-5pm • Sundays 10-4pm
www.clearviewstoves.com • www.burgin-conservatories.co.uk
or please telephone Graham Burgin 07973 321 075
for advice or FREE QUOTATION



601 Abbeydale Road, Sheffield 7. Fax: 0114 258 8599

DESIGN & PRINTING of

- **LETTERHEADS • BUSINESS CARDS •**
- **BOOKLETS & PADS •**
- **INVOICES • LEAFLETS •**
- **CARBONLESS SETS • BROCHURES •**
- **RAFFLE TICKETS •**
- **WEDDING STATIONERY •**
- **ENVELOPES & POSTCARDS •**

**SPECIALISTS IN THERMOGRAPHY
FOIL BLOCKING AND ENCAPSULATION**

0114 258 0707
For a Quick Quotation