

TOTLEY INDEPENDENT

PUBLISHED CONTINUOUSLY SINCE 1977

www.totleyindependent.co.uk

JUNE 2011

No. 344

20p.



215th Sheffield (1st Totley)

A familiar view on Totley Hall Lane to many old cubs and scouts in Totley, now lost to housing. The grounds were large enough for various scouting activities as well as fund raising garden parties. It had a well-worn track behind the hut led to the church grounds immediately behind. Please share your memories with us.

Totley Residents Association – AGM

Totley Residents Association AGM was held on May the 9th, 7.30pm in the Totley Library. It was a well attended meeting, chaired by Richard Frost temporary chair. Richard opened the meeting by reading his report from the past year, this was also placed in the April edition of the Independent.

Avril Critchley then gave her report as Chairman at the last AGM (in this issue – see page 2).

The treasurer's report was given by Norman Rolfe and acceptance of the accounts agreed.

There were 3 resolutions to be discussed.

1. Proposal to register with the Charity Commission.
2. Proposal to adopt a new constitution
3. Proposal to consider a change of name

Richard Frost explained the benefits of gaining charitable status and the legal requirement if an organisation's income is greater than £5,000 per annum. Although the proposal to register with the Charities Commission was rejected by a clear majority vote, the current Totley Residents' Committee will examine the status and ensure that we are operating legally and within the law.

As the proposal above was voted against there was no voting on resolution 2 or 3.

The other issues raised & discussed were the Youth Shelter and Chairbics.

Regarding the Youth Shelter for Green Oak Park, it was clear that some of the AGM attendees felt that the

PTO

TOTLEY HISTORY GROUP EXHIBITION

Totley Library - Monday 6th June – Saturday 11th June

further details for these events inside

TOTLEY OPEN GARDENS 9th – 10th July

consultation process was not carried out properly and that feelings of people living around the boundary of the park are very strong on this subject. There was no clear resolution reached. A full public meeting was requested.

Chairrobics was also discussed, and the meeting informed that the class is now running again at the Heatherfield Club.

Election of Officers and Trustees

There was a suggestion from the meeting floor that taking into consideration the recent rift in the TRA, which has not been beneficial to the community of Totley, there should be a totally fresh committee elected.

This was adopted by the meeting and the following members were duly elected.

Kathryn Higgins **Chairman**

Edwin Pocock **Vice Chairman**

Heather Moran **Secretary**

Norman Rolfe **Acting treasurer**

Committee Members

Stephanie Coe

Janet Chapman

David Spivey

The new committee has yet to meet, but we realise that we need to move forward. The spirit will be that of openness and accountability. We will be consulting with Totley folk shortly to find out what you would like the TRA to do for you and your environment. We would also like to recruit some more committee members so all the community is represented, call or email if you are interested in making a difference in the community (call: 07709 780606 or email: kathrynhiggins_totley@hotmail.co.uk). We will update you after the first meeting to be held as soon as possible.

Kathryn Higgins, Heather Moran

*In the May issue of **Totley Independent** we included Richard Frost's interim Chairman's report, here is Avril Critchley's report which was also reported at the AGM.*

Chairmans Report 2010-2011

Most Totley residents are aware there has been a split within the TRA committee; nothing like this has happened since TRA began in 1977. In spite of this, activities have continued as before.

Links with the Police were maintained until November by monthly PACT meetings held alternately in Ecclesall and Totley libraries.

These monthly meetings gave concerned residents the opportunity to meet Police officers and the chance to put their problems directly to them.

Now a monthly newsletter, available to those online, keeps the community informed of the latest crime figures and details of where the police have been dealing with problems. Sessions are held monthly at different venues such as Tesco, Millhouses Park, Totley library or Bents Green, so residents can still speak to an officer if needed.

Some TRA committee members have continued to work with the police. Recently we assisted them with surveillance and intelligence gathering re scrap dealers as they attempted to apprehend them. We were given a special number to report our information.

Highways - The worst pot holes in Totley were reported to the Community Assembly. They were repaired very quickly and several roads have been re-surfaced completely. Graffiti and damaged bus shelters continue to be reported when needed.

After 7 long years a new bus shelter was placed at the Baslow Rd / Glover Rd Junction and 3 others which had been installed incorrectly, were turned round. Working with one highways officer was eventually successful.

The Abbeydale Garden Centre was closed down. There was an excellent turn out for the public consultation on the layout for the new Park and Ride facility at Dore and Totley Station. It was generally welcomed, but most people were concerned about the loss of the mature cherry trees and the lack of a green screen between the road and the car park. It was felt this was needed to maintain the semi rural character of the station. Funding has not yet been obtained, so there may yet be a delay before the scheme can go ahead.

Committee members have attended Ward Forum and Community Assembly meetings throughout the year. Ward Forum details have already been published in the Independent. Details of Community Assembly meetings are available on line.

Totley History Group felt it was time to go it alone. They are now set up as an independent organisation.

The Friends of Green Oak Park has also been re-instated and is now completely separate from the TRA. During the year, the group have continued to work with Parks and Countryside to carry on with the implementation of the Masterplan. The winter weather has had a detrimental effect on the park; hedges have not been cut back and the beds have lost plants. On a positive note the stream area is proving a hit with children and wildlife.

Totley Primary School planted 3 new alder trees and 3 fruit trees in the park on March. Pictures and stories about the tree planting are now on display in the park notice boards.

The Friends planted a liquidambar tree near the bowling hut in memory of Jerry Roberts who looked after the Pinfold for some time.

The usual volunteers planted the bulbs again this year with the help of residents from Cherry Tree. The crocuses planted near the library were a lovely surprise as no one knew they had been planted. The daffodils have been superb; the best ever, so all the hard work has paid off.

The proposed allotment site near Cheshire Homes has been passed by Council Cabinet, but there are still problems to be sorted out before the site goes ahead. Fourteen Totley Gardens were open in July. The money raised was for youth activities. Thank you to everyone who opened their garden.

As the gardens closed, Totley Music Festival began. In spite of inclement weather, Totley people turned out to take part and enjoy another successful event. They were treated to superb performances from young and old. A special mention for pupils of both primary schools; their performances bode well for future music festivals. Thank you to the organisers, those who provided venues and those who sponsored events.

The Show, as well as giving the community the opportunity to display expertise in vegetable growing and a wide variety of arts and crafts also gave us the chance to meet up with members of the Community Assembly, Parks and Countryside officers and for the first time a display by the Police.

Thank you to all who volunteered or gave a donation to help make the show a success.

The Chairiobics class has run as usual in the library on Thursdays until recently. At present it is held in the Heatherfield Club.

There have been some problems with anti social behaviour. The suggestion originally from the police, endorsed by councillors and some TRA committee members that a youth shelter should be trialled in Green Oak Park has been met with a mixed reaction. Many residents living locally and those who use the park regularly feel there has not been a satisfactory consultation on the matter and until this has been carried out the shelter should not be placed in the park.

The scouts were approached by some committee members to try and set up a youth club in the scout hut, but this was not possible as more young people, girls and boys are now joining the movement. The youth club at KES is not operating, because of behaviour problems. Totley Rise Methodist Youth Group has also closed for the time being, because of vandalism.

Discussions have been taking place about TRA becoming a Charity. If this happens it will be necessary to change the present constitution.

Thanks to everyone who has helped run TRA throughout the last year.

In conclusion I must return to the split in the TRA committee. It is regrettable; something all the community must sort out, not just TRA committee.

We must all remember the organisation was set up by a friendly group of individuals 34 years ago.

Totley was a village where everyone could have fun and take part in a variety of different activities. Times have moved on but whatever happens we must give thought to what is the best way forward for all our residents and hope TRA continues with the inclusive, friendly atmosphere which was the original aim of the founders.

Avril Critchley

Chair TRA (2002-2011)

TRA

As a resident of Totley for nearly 50 years, my children attended the local schools, I wish to thank Mrs Avril Critchley and the Committee, the current incumbents of the Totley Residents Association at the time of writing and until notification takes place, for the excellent work they have undertaken over the past few years in enhancing the district, bulb and tree planting etc. Also the upgrading of Green Oak Park, once a sad looking area with poor facilities. It is a pleasure to go in now.

Regarding the proposed "youth shelter" the site appears to be within the existing play area by the M.U.G.A. and children's playground. I fear such a shelter, having seen the one in Herdings Park which is a No Go area when the "youths" are there, will impact on the young children trying to use their facility. At holiday time the little ones stand outside the area by the railings as the older 13 year+ children monopolise the equipment and will not let younger ones near. Also, the main access path will be by it.

I would point out that cannabis is already used in the area, I dread to imagine what could happen when groups congregate.

There are more appropriate sites in the area where more control can be implemented. As a park user,

also in the evenings when walking my dog, I wonder if it will be as safe as it is now, what will happen when older teenagers inhabit the area? Explanation is needed from the people responsible ASAP.

Jean Barber

Response to Jean Barber's letter. The Youth Shelter/pod/or gazebo, is planned to be installed adjacent to the MUGA, at the top of the path which leads to it, on an area of level grass. The area has been approved by a representative of Parks & Countryside. The area was chosen as it is the least visible by many occupiers who live around the park, it is an area where the youth congregate now & it is visible from two roads from which the Police can carry out monitoring. It is not adjacent to any main path, nor is it within the children's play area.

The shelter is not exclusively for the youth. It can be used by anyone, but it is anticipated that the youth will not use it until times when younger children will have left the park. It is close to the zip wire & the boulder (which should be in position, weather permitting) by the time of publication of this edition, both of which were installed at the request of the youth & arranged by the TRA committee.

The installation is on a **TRIAL** basis, & approved by Parks & countryside, the TRA committee & the Friends of Green Oak Park. For it to become permanent, would need approval from park users & local residents, as well as Parks & Countryside management, Friends of Green Oak Park & finances being made available to buy one. I trust that all concerned will give it a fair & objective trial.

Roger Hart

TRA Committee member asked by the then chair to lead on the matter in 2010.

KING ECBERT SCHOOL REUNION

Did you leave King Egberts at either the end of the 5th year in 1984 or after sixth form in 1986?

If so, we'd love to see you at our reunion!

It's being held at Abbeydale Sports Club in June & although we've managed to locate well over 100 former pupils, there are still some names eluding us, so if you are, or know the whereabouts of: Steve Geering, Samantha Graham, Andy Buckley, Warren Desmond, Carolyn Lowe, Paula Smith, Helen Morgan, Nicola Gauntlett, Sarah Cooper or Adrian Gelsthorpe, we'd especially like to hear from you!

For more details, please email Kerri Hickman or Andrea Marshall

kerri@inmyattic.f9.fo.uk

ang@runtothehills.org

Councillor Surgeries

Liberal Democrats:

2nd Monday in the month 6.00-7.00 p.m., Totley Library, Baslow Road and 2nd Saturday in the month from 10.30 a.m. to 12.00 noon, Dore Old School Hall, Savage Lane, Dore Contact details:

Keith Hill 235 2289 Email: keith.hill@sheffield.gov.uk,

Colin Ross 235 1948 Email: colin.ross@sheffield.gov.uk

Joe Otten Email: joe.otten@sheffield.gov.uk

**Totley Independent Website:-
www.totleyindependent.co.uk**

St Lukes

Hospice Summer Fair's birthday treat

WHAT better way to celebrate a 40th birthday than with a party for all your friends?

And that's exactly what the organisers of the annual St Luke's Hospice Summer Fair are planning as they get ready for their big birthday bash!

One of the Little Common Lane hospice's most popular annual events, this year's Summer Fair will be held in the St Luke's grounds on 11th June and will include a whole range of new attractions, including a Food Court with a range of exciting international cuisine, including a Hog Roast.

Also making a return for the second year will be the popular Kelham Island Brewery Beer Tent.

Starting at 1pm and costing just £1 admission – with free entry for children – the hospice grounds will be packed with more than 20 stalls including bric-a-brac, cakes, toiletries, plants and the always popular second hand book selection.

There will be special attractions, rides and games for younger members of the family and music from live performers throughout the afternoon.

There's no parking at the hospice on Summer Fair day but there is an official park and ride scheme operated by bus company First and Tesco with regular free buses running to and from the Tesco Abbeydale Road car park throughout the afternoon.

"Last year's Fair raised more than £12,000 and attracted a record number of visitors," said Hospice Events Fundraising Manager Anna Sheppard,

"As we celebrate our 40th anniversary we aim to shatter that record and give all our guests an afternoon to remember."

Holmesfield Flower Club

Wednesday 15 June - Holmesfield flower club invites you to a demonstration of Flower Arranging by Pauline Foster (NAFAS area demonstrator) entitled "Floral Dance".

7.30 pm at Holmesfield Village Hall

(off Woodside Avenue) Holmesfield.

Ample parking.

Tickets available at the door: £6 (members £3) includes refreshments. The arrangements will be raffled at the end of the show.

EVERYONE IS WELCOME.

The Time Travellers

The local archaeology group 'The Time Travellers' have been following an active agenda recently, with several local field trips in Ecclesall Woods, looking at features from field boundaries to hollow ways and collecting a wide range of artifacts from the Limb Brook itself.

Recent organised trips to Sheffield Manor and Creswell Crags will be followed shortly by a walk exploring local stone circles and a guided tour of Carl Wark led by local author Mick Savage. In the meantime many members of the group are assisting a new archaeology project at Whirlow Farm Trust, with field walking, building surveys, archive research and excavations later this summer.

If you are interested in finding out more about the group or joining in any of these events, please contact John Baker on 236 9025 or Dorne Coggins on 236 5769.

THG ORAL HISTORY

When I interviewed Anne White (nee Russell) for the Totley History Group Oral History Project, she talked about her childhood home and her neighbours and friends at the Totley Chemical Yard. Anne described a close knit community where pretty much anything you needed was at hand. Her father grew vegetables in their large garden and kept pigs on the piece of land he rented from Mr Thompson the Totley Rise butcher. As well as the pigs, he kept chickens, mended shoes for his neighbours and cut their hair. The community relied on the informal shop Anne's mother ran from the house; selling single cigarettes and sweets on tick and running an open house for anyone in need of a meal or a bed for the night or just a cuppa and a chat. Children ran errands and played in the woods, coming home muddy, tired and hungry.

Anne showed me this poem written for her mother when she was 10 years old. The precious original is carefully preserved on now very flimsy paper.

Along with other articles and photographs from Totley history, you can see Anne's map of her childhood world in the Totley History Group Exhibition to be held in Totley library for 1 week from Monday 6th June.

If you are interested in having your memories of Totley recorded, please contact Christine Shimell on 236 1631, who would be happy to explain the process to you.

This is a poem which I wrote when I was about 10 or 11 years old. I remember my mum reading it and liking it. Audrey had kept my original poem and it is now so old that the writing is fading and only just legible so I have decided to type it out before it disappears altogether!

Anne White

Our Cottage

Our cottage stands by the side of a stream.
It is the home of a poet's dream.

And if you come here, I know that you'll find
That the people inside it are loving and kind

So, if you are lonely and have nowhere to roam
Just come to our cottage and make it your home!

We've so many animals, it's just like a zoo
But I'm sure that, somewhere, we'll find room for you

So come to our cottage, the dream that's come true
Your sadness and crying will all be through!

Friends of Green Oak Park

Changes of staff within Parks and Countryside because of Council cuts, means progress with work within the park is not proceeding as quickly as we would like. It takes time for Parks staff and the Friends to get to know each other and to work together effectively.

The climbing boulder is due to be installed by the end of May, just in time for the summer months.

As a group, we are applying for funding for more picnic tables and seats.

We aim to keep everyone updated as to what is happening in the park through notice boards and the **Totley Independent**.

Avril Critchley, Chair FoGOP

Dore & Totley Railway Station

Park & Ride Proposals

The planning application for a car park at Dore & Totley Railway Station has been submitted by South Yorkshire Passenger Transport Executive (SYPTe) to Sheffield City Council (SCC).

During the period of public consultation SYPTe received over 250 responses to the proposals. The response was overwhelming, particularly the public event at Abbeydale Sports Club which was attended by over 150 people. The level of detail in the responses has resulted in a delay in submitting the planning application to ensure that all points of view were considered. The main concerns which people raised were the parking problems on surrounding roads and the removal of the trees.

Following the analysis of all the comments we have worked hard with the designers to produce a design which will retain as many trees as possible and we believe that the community will be pleased to see the majority of the trees on the roadside being retained as well as the mature cherry trees. The re-design has resulted in the loss of only 9 car parking spaces however following the public consultation and the strength of feeling in favour of retaining the trees, the car park will still provide enough spaces for current commuters parking on local roads to relocate to the car park and still provide room to accommodate new users to the station.

The application can be viewed online at www.sheffield.gov.uk and going to the 'Planning and Development' section or at First Point in Howden House. The application reference is 11/01522/FUL.

I would like to thank everyone who took part in the consultation and for taking the time to provide so much detailed feedback as well as making suggestions for other issues relating to this facility.

Gillian Palmer, SYPTe



Transport 17

When Terry Schofield, one of our drivers, celebrated a

"special" birthday on 1st May, he asked for donations to Charities rather than presents. We were lucky to be one of them. We received £215 and send our thanks to him and all those who kindly thought of us.

During the last few months we have sadly lost some of our passengers. They have gone to the "Lunch Club in the sky". So have some of the wonderful people who help at the lunch and social clubs. We think of their families and friends at these times and we are grateful that they give donations to us in memory of their loved ones. God bless them all.

The "Coffee, Cakes and Cuttings" morning was on 21st May. This is a great event where you can buy plants, smashing cakes and have an Irish Coffee or cup of tea and a look through the books and bric-a-brac. It is a time when you quite often meet people you have not seen for a while. We are glad that, once again, we were one of the charities to benefit from the proceeds. The amount raised was a magnificent £386.70. Our thanks go to English Martyrs R.C. Church, Totley and Outreach.

Take care of yourselves. Let's hope we have a good summer.

Margaret Barlow

Music in the Gardens.

This year's first night, coincides with the 175th. anniversary of the opening of the gardens. The evening starts with a fly past, by a Spitfire, from the battle of Britain Memorial Flight, at 7-00 pm. Sheffield University Big Band start the evening's music off, followed by Keith Peters & his big band. It will have a retro feel about it, & this year we are encouraging concert goers to dress in appropriate clothing as befits the occasion. We shall be giving an appropriate prize to the best dressed couple or individual. We hope to have a few cars of the time, & one party of 30 people, are hoping to arrive, from Rotherham, in a Sheffield Bus, from the Bus Museum. A night of nostalgia for some, & a night of education for others. The main charity, this night, is Help4Heroes More details about the event on www.musicinthegardens.co.uk
Roger Hart



A sterilised Pinfold

Could the person who has been unilaterally working on the Pinfold garden and removed some of the existing plants, so that it is now a sterilised bit of suburbia, please realise that the garden has been being cared for by people for several years as a naturalistic garden, and your input is unwelcome?
Name withheld



Plea for cakes

On the weekend of 2nd and 3rd July Totley will get national recognition when the garden at 16, The Grove is open for the National Gardens Scheme's Yellow Book.

As part of the opening, teas and cakes will be sold to raise money for charities supported by NGS - Macmillan Nurses among them.

It takes about 30 cakes to satisfy the demand at such a weekend!

Please would you be willing to provide a cake, or scones or buns, to help promote Totley's welcoming image and help raise money?

If so, please ring Jennie on 236-2302 or email: jennie@hadish.f9.co.uk

George's Downfall

George Elliot and his wife Hannah lived in Totley Bents in 1841 with their children Mary age 12, Phebe (it was spelt like that in the Census), Abraham 7, Samuel 4, and George 2.

George was the father of Reuben Elliot who married my mother's cousin Annie Dalton of Lower Bents Farm, daughter of Elizabeth Peat and Edward Dalton. He holds particular interest because of an escapade told to my mother by Aunt Elizabeth, which resulted in him earning the nickname 'Blonden'.

Here is the story. All Totley were talking about the newly opened Victoria Gardens, a pleasure garden area opened by an Alderman from Sheffield. Amongst the entertainments was a menagerie and Monkey House, which gave rise to the local name of 'The Monkey Gardens' a name still used when I was a schoolgirl in the twenties.

There was a 'Bear Pit' and a performing bear and, the subject of this story, a 'tightrope walker' whose name was 'Olvene'. One day another man from afar, who had a worldwide reputation, a man called Blonden, performed as a guest attraction, and all the villagers went to see him perform and marvelled at his expertise in high-wire walking, except George; he wasn't impressed. "It's not that difficult, I could do that" he boasted.

His 'buddies' took him at his word. They strung a rope between two trees on the tip formed by the Totley Tunnel in the Bents and forced George to prove his boast. George, a little inebriated, climbed on to the wire and teetered there amid shouts of "Ger on wi it" and guffaws from the crowd he made a few wobbly steps and fell I won't tell you exactly how Aunt Elizabeth described it, it might not pass the censor; suffice it to say that George fell to an ignoble undoing straight into a bed of nettles, and forever alter was known as 'Blonden' Elliot

Jo Rundle



FREE EXHIBITION

AT TOTLEY LIBRARY

JUNE 6TH - JUNE 11TH

NORMAL LIBRARY OPENING HOURS

HISTORIC PICTURES AND DOCUMENTS

COME AND SEE WHAT TOTLEY HISTORY GROUP HAVE BEEN WORKING ON RELATING TO TOTLEY HISTORY

LISTEN TO CDS WITH LOCAL PEOPLE TALKING ABOUT THEIR TOTLEY CHILDHOODS ETC.

Keep a note in your diary
for the 10th year of

TOTLEY OPEN GARDENS

SATURDAY 9th and
SUNDAY 10th JULY 2011

1 - 5pm

Programmes available from Totley Library
by the middle of June, and from outside the
Ironing Parlour, 170 Baslow Road, S17 4DR
on the days of opening

Enquiries to Jennie Street on 236 2302 or
email: jennie@hadish.f9.co.uk

PUZZLE CORNER

Deduce their marks

Eight university students had received their marks at the end of their first year and they fell between 50 and 90 per cent.

Only two of them had even number marks and the overall average was 71. Norman had a lot of illness during the year and only just crept into the range. The difference between his and Alison's marks was a square number. Three of the girls had marks which were prime numbers. Brian's mark was both a square and a cube as was the average of Emily and David. Emily found it hard going all year and with Norman, made the only two students not to achieve 60 per cent. She had 8 marks more than Norman. The average of Marion and Emily was also the group average. The difference between Kate and Stewart was a square and so was the average of Emily and David. Kate and Alison had an average of 80.

Deduce each student's mark.

Don Ashford.

Friends of Gillfield Wood Update

The botanical survey day on Sunday 1st May was attended by 11 members of the group and invited floral expert Barry Wright, gave us all an interesting insight into the best surveying techniques and identification skills to be used. A great many species of trees and plants were identified and Barry is currently compiling a map of the data collected, which he is going to let me have in due course.

There is also a practical conservation day being held, in the wood, by Chris Roberts, Sheffield Parks and Countryside Ranger, on Sunday the 5th June. Meet at 10am at the farm gate on Totley Hall Lane.

The date of the next FoGW meeting is Tuesday 28th June at 7pm in Totley library. Everyone welcome.

Dave Gash

Gillfield Wood

My family have always lived in Totley and we moved into a newly built house on Main Avenue in 1936 and I suppose even at that early date we were taken for walks through Gillfield Mood, but I think my memories of playing there would mostly be throughout the 1940's.

At this time, the wood was in two parts. We would reach the smaller wood from the Rowan Tree Dell end. There was not a proper path, just a well-worn way where we clambered over the ditch which ran behind Rowen Tree Dell, then we would cross the field to the wood entrance. My Grandad used to tell us that this ditch was really an old sunken footpath and that there was a milestone somewhere along it, but though I looked for it many times, I never found it. This path left Totley Hall Lane then turned leftwards, a line of trees marked the line of the original route. Eventually it crossed Mickley Lane, then went up Bradway Bank to Tinkers Corner.

Before we entered the wood, the field was a steep slope and at one point there had been a landslip revealing patches of yellow clay which we as children would mould in our hands but apart from rolling it into a round ball and getting my hands filthy, I can't remember any end product.

The two areas of woodland were separated by a steep, grassy field which was a good place then for picking blackberries. The bigger wood was then entered by either a gate or a stile, I can't remember which.

River jumping was a regular game for years for my sister, myself and our old playmates the Bellamy brothers (Michael and Gordon). We would walk or run beside the river jumping across every bend as the river meandered along — wet feet and soggy socks were not unusual!

Most of our walks through the wood were for the purpose of 'sticking' (collecting firewood). Everyone in those days had a coal fire and needed sticks for the kindling. I remember once meeting Mrs Windle who had already gathered a sizeable bundle of sticks, but as it was such a nice day she decided to walk further with us and she put down her bundle of sticks behind the big rock by the path. This rock was always used as a seat and it made a good resting place for the older folk, however, on this particular day when we returned, all the sticks had been picked up by someone else and we had to go and look for some more for Mrs W.

There used to be a swimming pool not far away from 'the rock' and it was usually full of dead branches and leaves and only once do I remember the 'big boys' swimming there. They had thrown out all the debris and cleared the small channel which fed the pool from the river. On that hot summer's day as we watched, the lads jumped in and out splashing merrily but the water was quite brown - heaven knows what colour they were when they returned home.

In the small wood, the river widened out nicely at one point and flowed over an area of flat bed rock. This

made a superb paddling pool and often on hot summer days quite a crowd would gather there to enjoy the cool water. Sometimes some of the Mums would turn up with sandwiches and a thermos flask so that we could play longer before bedtime.

In spring, the woods were white with Wood Anemones, then blue with bluebells. Deep in the big wood (near to where the path through Tims fields entered the wood) there was a group of rhododendrons and it was always a delight to pick a bunch to take home and put in a vase.

By the river, nearer to Owler Bar, daffodils grew — not the small wild ones but big showy ones, more like the King Alfred Daffodils.

My Dad and my Grandparents all called the wood Gillfield (as in Jill) but as we grew older it seemed to become corrupted into Gillyfield.

I'm not sure of the date when Batty Langley, the timber merchant moved in, but the wood as we knew it was never the same again. Huge tripods were erected (some kind of hoist I think for lifting heavy timber). The trees were felled and the plant life crushed by feet and vehicles. All was mud and devastation.

Well that was about 50 or more years ago and the wood is looking beautiful again. I don't get much chance to visit now but the last time I walked there with my mother, I noted that the in-between field has gone and it is now covered in trees so the two woods are now as one.

I have many happy memories of my childhood and Gillfield Wood and I wish you joy in the work you are doing.

Jean Smithson (nee Creswick)

Mark and Sally Fletcher invite you to

The Grouse Inn

Longshaw

Sheffield S11 7TZ

Meal times:-

Mondays 12.00 to 2.30pm

Tuesdays to Friday's 12.00 to 2.30pm and

6-30pm to 9-30 pm

Saturdays 12.00 to 3.00pm and

6.30pm. to 9.00pm (drinks – open all day)

Sundays 12.00 to 9.00pm

Phone 01433 630 423

R Rose & Co

Chartered Accountants & Business Advisors

Specialists at
looking after the affairs
of small businesses.

For a **FREE** initial consultation
please contact Roger Rose FCA on
0114 281 2331



From business start-ups and general accounting, to support and advice in business development and strategy, we provide assistance in our personal one-to-one service. To find out more please call 0114 281 2331.

213 Derbyshire Lane, Norton Lees, Sheffield S8 8SA
Email: info@r-rose.co.uk

Mens Hairdressing
by Karen

at

Hair by Patricia Barber

53 Wollaton Road,
Bradway

9am to 5pm Thursday

9am to 5pm Friday

9am to 1pm Saturday

appointment or walk-in

0114 236 6247

07984 021 033

TOTLEY PRIMARY SCHOOL UPDATE

At last all the money has now been collected in for Comic Relief Red Nose Day and we raised a grand total of £378. I think this was a great effort considering the current global recession.

I would like to take this opportunity to pass my condolences to Avril Critchley at the tragic loss of her husband. My family and all at the school who know Avril send their best wishes. She and her friends in the T.R.A. have done a lot for the Totley community over the years.

How about the Royal Wedding? We are the only country in the world able to put on such a magnificent event and are the envy of the free world. We had a fabulous street party at the top of Sunnyvale Road with bunting, balloons, food, drink and games. It was nice to catch up with old neighbours and meet new ones. I would like to pay tribute to Moira Newman and Clare Harris for organising this wonderful party. It was no mean feat as they had to get permission from the council and organise tables etc. Also thanks to Reverend David Rhodes for being our M.C.

On the few occasions my son Ben allows me to have **MY** car, I have noticed on Abbeydale Road there are speed signs with smiley or sad faces on depending whether you have been good and kept within the speed limit or not. I think we could definitely do with these on Baslow Road just above the Co-op as cars go along there like they were at Brands Hatch!

On 6th May we held the "Totley Cup Final". The game was evenly matched and only won by Aldam Villa with a cracking goal by Charlie Slater. Sir Alex - look out for this lad. Well done to all who took part. The medals were presented by our own media star Martin Farmer (Chair of Governors) and the Lant Trophy was present by our old (some would say very old!!!!) head teacher Angela Lant.

Good luck to all of Y6 who are sitting their SATS as we speak.

Don't forget our Summer Fair on Saturday 25th June. The grounds will be full of stalls, rides, exhibits and food and drink. It should be a brilliant day but, unfortunately, I don't think I will be able to attend as I will be celebrating my 21st birthday that day!!!!

ALLEN MILLER

BUILDING SUPERVISOR

Music Hall

Vulcan Varieties, Sheffield's traditional Music Hall Society, will be delighted to welcome you at their new season of evening Soirees. So that more patrons can be enlightened, amazed, and amused this year, they are taking the event on tour, to take advantage of the balmy (is that spelt correctly?) Summer evenings. Entrance is by ticket only, and may be obtained from the Hon Mrs Launders.

Venues are:

The Lantern Theatre, Sat. 4th June at 7.30pm

The Gatty Hall, Ecclesfield. Fri 17th June at 8pm

Coal Aston Village Hall, Sat. 25th June at 8pm

Tickets £7.50 /Concessions £6.50

Available from Secretary, Chris Launders, 243 1339 Or Tony Reynolds, 236 6891.

Totley Music Festival 2011

You may be wondering about the Totley Music Festival for 2011. Well, once again we're hoping that there will be more fabulous musical events, but this year we're intending that the Festival will take place in September, rather than July. There are various reasons for this, but hopefully we'll choose a week when the weather is OK, when the school term has started so that young people can contribute once again, and everyone is back from their summer holidays! If you want to contact us about the Festival, either to help with the organisation or to perform, please email us on the new TMF address, which is totleymusicfestival@talktalk.net or call Phil or Sue on 07956 858944. We hope to hear from you with your ideas!

The Chemical Yard

The below fills in a few gaps in The Chemical Yard stories.

During and after the war as youngsters we played on the roof of part of the building occupied by Philip Marcroft, the builder, there was a blacksmith, his name was Mr Bradbury, he built us a sledge in 1946. He lived on Queen Victoria Road in a house overlooking The Chemical Yard as did Tommy and Freddie the 2 brothers I knew well. I remember them as being gentle, kind and helpful and not doing anyone any harm. Kids being what they are could be cruel and used to take the mickey out of them. Fairly certainly there was a Tommy Barber living in the yard, he was a character for different reasons. I also well remember the Russell Family living in the yard as children for we used to buy sweets from them, happy days!!

Mike Roberts (Cornwall)

SUMMER FAYRE



LEONARD CHESHIRE DISABILITY

MICKLEY HALL, MICKLEY LANE

SATURDAY JUNE 25TH 11AM-15.30PM

OPENED AT 11AM BY LOCAL ARTIST

JOE SCARBROUGH

LOTS OF STALLS SELLING CAKES, PRESERVES,
PLANTS, JEWELLERY AND MUCH MORE

ENTERTAINMENT, ESCAFELD BRASS BAND,

BARREL ORGAN, PARTY ANIMALS

CREAM TEAS AND CAKES IN THE GARDEN

ENTRY 50P, CHILDREN FREE

South West Policing Team Dore & Totley

Hello Everyone

Here is some news from your local Policing team. We have a new Police Officer joining the Dore and Totley Team. Our new officer is PC Kev Marsh and he will be joining us for the next three months.

Our team now consists of two Police Officers, PC Kev Marsh and PC Mark Wadsworth and one Police Community Support Officer, PCSO Katie Gavin. We can be contacted on the Local Police number 01142 202020 or via email which are:

mark.wadsworth@southyorks.pnn.police.uk

kevin.marsh@southyorks.pnn.police.uk

katie.gavin@southyorks.pnn.police.uk

Police Officer Mark Wadsworth has been covering the Dore and Totley area now for a number of years. PC Wadsworth has been working on a number of Operations in the Dore and Totley area.

Op K Kiddo - which is targeting the key ASB (anti social behaviour) hot spots in the area. PC Wadsworth and PCSO Gavin have been working late shifts on the most common times which ASB has been reported. This operation proved a great success with the reports of ASB falling by a considerable amount.

Op K Anchor - On Monday 11th April 2011 a large operation took place across the whole on the South West area where teams worked with VOSA and the council licensing team checking on scrap metal merchants that are in and around the area. The outcome was very positive with a number of vehicles stopped and checked, some were referred due to licensing problems and others were issued with notices regarding their vehicles. The plan is to repeat this operation in the near future but we would like your help to gather information please. We would like you to report any suspicious vehicles to us giving as much detail as you can i.e. **vehicle registration**, the number of people and what they were wearing and doing.

The South West Policing Team have a Newsletter with updates and crime prevention which is sent out every month if you would like to receive the Newsletter please fill in the sheet (right) or send the details required to me to the address below

Katie Gavin

88 Clarkehouse Road

Sheffield, S10 2LJ

SCOUTS ANNUAL CLASSIC CAR SHOW & GALA

SATURDAY JUNE 11th 2011
Midday - 5pm.

BRADWAY PRIMARY SCHOOL S17 4PD
EXHIBITOR'S ADMISSION FREE

LOTS OF OTHER SIDESHOWS, GALA
EVENTS AND FOOD COURT.

FOR MORE INFORMATION PLEASE GO TO:

www.scoutcarshowandgala.co.uk

Email: info@scoutcarshowandgala.co.uk

Telephone: Malcolm Garrett 01246 419520



Name:.....

E-mail

Address:.....

Address :.....

Phone Number :.....

Are you aware that there is a Safer Neighbourhood Team dedicated to tackling crime and ASB in your area ?

YES / NO

Do you know how to contact your SNT ? YES / NO

Consent

I understand that the details I have provided may be kept on a database by South Yorkshire Police to allow them to contact you (monthly updates, PACT News Letters / good news). They will NOT be passed to other agencies.

Signed :.....

/PCSO 8095 P.A.C.T Area South West

PUZZLE CORNER

Solution to Deduce their Marks.

Alison 87; Marion 83; Stewart 82; Kate 73; David 69; Brian 64; Emily 59; Norman 51.

Do you need help?

- In coping with worry, illness, depression or spiritual problems.

Christians believe that God, through Jesus Christ, comforts, heals and brings peace of mind, in response to prayer.

Members from All Saints and Totley Rise Methodist, churches are currently offering to pray in confidence for anyone who would like to come to:

TOTLEY LIBRARY BUILDING ON SATURDAYS
between 12.30 and 1.45 pm and

HEATHERFIELD CLUB (BASLOW ROAD) on
WEDNESDAYS between 2.00pm and 3.00pm.

For information ring Brian on 07722236037.

JUNE AND JULY 2011

GARDENING TIPS FOR JUNE

I hope you enjoyed the summer type weather and didn't let it get you too enthusiastic with your planting out. It brought most things on sooner than usual one or two of our tender plants were caught out when old Jack Frost came. It should be safe to plant out your bedding plants now if you haven't already done so.

Our garden is looking a bit tidier - the good weather enabled us to get more work done, though the extra watering was an added chore.

The perennials are looking good; we had a lovely spring showing although the flowers did not last as long as usual due to the hot spell - it was nice while it lasted.

My pond exercise that started mid-March is nearly finished; it should be established in time for the open gardens next month. If you find the time when you have been round the other gardens to pop up and visit us for a few minutes you will see the results of my architectural prowess in producing a babbling brook by the pond (a little waterfall really). We are not doing anything special but you are welcome to have a look round.

Jennie has been working hard encouraging other gardeners and I believe there will be more than a dozen gardens to visit, so please make an effort to see some of the nice gardens around the Totley area. We will be selling the programs outside the shop (next to the ironing parlour) on two afternoons on 9th & 10th July.

In June a bit of relaxation is in order, polish up the old barbie and invite your friends around your admire your handiwork and enjoy a burnt sausage or two. Don't forget to keep up with the watering, weeding, slug catching, pigeon chasing, and generally TLCing around the garden so that your produce is ready for the Totley show in September.

Whilst you are relaxing you could finish off the tapestry, your paintings, photographs, Lego models, computer art, and planning the lovely flower arrangements (there was not many last year) for your exhibits at the show. I always look forward to seeing the young people's efforts in the children's section, and I think the visitors to the show are always amazed at the wealth of talent which abounds in this area. I look forward to seeing you there.

Don't forget if you are going on holiday to arrange for a garden sitter to look after your precious plants whilst you are away. Nothing worse than coming home to a burnt out patch which will undo all that lovely sun and sea feeling.

A word of warning when buying potted plants, make sure they are really healthy and keep them away from any special plants you have in the greenhouse - there are one or two nasties about. The lily beetle (bright red you can't miss it) has been seen also shield beetles are around and our old enemy the vine weevil is on the increase, so take care and keep a wary eye open and take remedial action if your plants are unfortunately affected. Apart from that enjoy your garden and try and relax when you can....

Flowers Keep an eye on all newly planted bedding and other plants and keep them well watered during dry spells, a bit of liquid feed added to the water now and again will give an added benefit, keep it off the leaves if it is sunny when you are applying it. Stake and tie any taller plants as they grow, otherwise they will be damaged or broken by the wind.

You can lift and divide hardy primulas such as primulas denticulate, primulas japonica etc as soon as they have finished flowering. As alpine plants in the rock garden finish flowering, trim back the growth to keep them neat and compact.

Biennials such as Canterbury bella, wall flowers and sweet williams may be sown now. Bedding plants should be safe enough now from frost so if you have not planted them, do so now.

Place chrysanthemums in their summer quarters, stand them on ashes or gravel to give good drainage, keep them well watered.

Divide mossy saxifrages if they have a brown centre. Discard the brown pieces altogether and replace the green clumps in a semi-shaded place in a good humus soil leaf mould or moss peat. Deadhead peonies after flowering and cut back oriental poppy.

Vegetables Keep all vegetables well watered and fed, especially during dry weather. Earth up potatoes. Watch out for aphids and caterpillars and deal with them as soon as they are seen. Plant out outdoor tomatoes, sweetcorn, runner beans, marrows and ridge cucumbers.

Plant out leeks for winter/spring use and celery for autumn/winter.

Sow leaf chichory, endive, spinach and leaf beet for use in autumn/winter. Make succession sowings of beet, carrot, dwarf beans, peas, lettuce, salad onions and radish.

Take cuttings from rosemary and sage and root in pots on a windowsill. Pick any vegetables as soon as they are ready, this will encourage more cropping.

To help rhubarb build up new crowns for next year, stop picking. Any flower shoots that appear should be removed and the plants well watered and fed. They would also appreciate a top dressing of compost. (I put custard on mine!! Ha ha) Pinch out the tips of broad beans.

Trees, Shrubs and Fruit Keep newly planted shrubs and trees well watered.

Remove the dead tips of cotoneaster and cherry. Do not forget to pick the seed of laburnum, especially if there are children around.

Give azaleas, rhododendron, camellias and hydrangeas a feed of sequestrine. You can take semi-ripe cuttings from quite a lot of shrubs and trees, root in a frame or windowsill (not in bright sun). Keep fruit tree trunks clear of weeds and grass.

Trim apples and pears after the June drop of fruitlets.

Do not allow newly planted fruit trees to produce flowers, pick them off to encourage strong plant growth for the future. Tie in a support growing blackberry and loganberry, check supports on other fruits.

Cut out any badly cankered apple branches.

Summer prune gooseberries, grapevines and red and white currants.

Greenhouse and Indoor Plants As the weather gets warmer (we hope) ventilation is very important. Watch out at the beginning of the month and be ready to close up if the temperature drops, most plants are happy at 16C or 60F. As usual watering and feeding is the order of the day except of course the ones that are resting.

Stand pots on damp pebbles to maintain humidity. Pot up cuttings taken in May. Watch out for aphids etc and deal with them as soon as they are seen. Smoke cones can be very effective, do not use them if you have seedlings growing, some cucumbers do not like them either. Keep an eye out for mildew and spray or dust with an effective fungicide as soon as

possible. Sow calceolaria, cineraria, busy lizzy, french marigolds and indoor primulas to use as pot plants. Take cuttings of most indoor and greenhouse plants such as fuchsia, heliotrope, kalanchoe, plumbago etc. Leaf cuttings can be taken now from African violets, rex begonias and echeveria. Established fuchsias can be given a new lease of life if they are taken out of their pots and the old bottom root screwed off and the plant repotted in fresh compost, do not damage any new paler roots as you do this. Nip out the side shoots as tomato plants develop 5 or 6 trusses, regular feeding improves flavour.

Lawns Clean up raking regularly, get into a cutting, feeding routine. Keep edges tidy. Do not worry about your lawn drying up in dry weather, it soon recovers when it rains, keep the mower set high during these dry spells and try to keep children and animals off. I think I said you could relax this month, looking at this lot I think I shall have to eat my words.

Don't forget the Totley Show on 17 September, we are all working hard to make it a success so all we need is your encouragement by turning up and better still, having your work on show.

Cheerio for now,
Tom

George Critchley

I would like to say thanks to all who have offered their condolences and messages of sympathy since the death of my husband on 18th April. I have been overwhelmed with well over a hundred cards, letters, emails and phone calls from shops, businesses, members of the Community Assembly and my many friends in the community. Countless people have spoken to me as I have walked round Totley.

Gifts of flowers, chocolates, homemade marmalade, cakes and fresh eggs have all helped me to carry on.

It is a comfort to know there are so many caring community minded people in Totley.

Thank you
Avril

Totley Brook Road – Furniss Avenue to Kings Coppice Lane Closures

Street Force will be carrying out works on the above Scheme from 23rd May 2011 and works should take approximately 4 weeks to complete, weather permitting.

The scheme will improve pedestrian crossing facilities with the provision of new crossing points, new footway and upgraded street lighting.

The works will be constructed under lane closures.

Street Force would like to take this opportunity to apologise in advance for any inconvenience that may be caused but we would appreciate your co-operation and tolerance during the work.

If you have any queries regarding the design of the scheme you should contact Phil Richardson on 273 6118.

ROSIES

Rosies of Baslow Road is closed her business as from Thursday 26th May. We would like to wish her well in her retirement after looking after the local community with her fashion and haberdashery and clothes alterations business for many years. She has advertised with the Totley Independent for almost 19 years since May 1992.

Scout Lottery

Winners of the 1st Totley Scout Lottery April Draw

1st Prize No 73
Jewellery Box
Mrs Knowles
Dore Road

2nd Prize No 51 £10
Voucher
Mrs Attrill
King Ecgbert Road

Peter Casson

Scout News

The April draw is the last of the 2010-2011 series. We have given out 24 prizes to the winners. The Church Office will be printing the enrolment forms for 2011-2012. Please sign your form, delivered by the Scouts to your home or just ring me on 248 9854 and I will ring you back for your address. Message left on 1571 will be OK. Just leave your telephone number. Peter Casson.

Community Cream Tea

The community of Totley (and friends) is invited to a cream tea, in the vicarage garden (37 Sunnyvale Road) on Sat 25th June between 2.00 and 4.00 p.m. All are welcome, and there is no charge. There will be a donation box available, with any gifts going towards the S17 Churches Youth Project.

(In event of poor weather phone 236 2322 for further information.)

David Rhodes



Tony and Julie at

The Crown Inn

Welcome you for

Good Quality, Home Cooked Food

Tuesday – Friday

12-2pm & 5.30-8pm

Saturday & Sunday

12-3pm

Come & join us for

Good Beer, Good Food & Good Music

Tel 0114 236 0789

CLOSED SUNDAY EVENING

Visit our website: www.crown-at-totley.co.uk

LIVE MUSIC

7th June

IAN BELLAMY &
CARY BAYLISS
UNPLUGGED

21st June

The Stones.co.uk

5th July

HIGHWAY CHILD

ALL SAINTS CHURCH, Totley Hall Lane.

Royalist or Republican we hope you enjoyed the Royal Wedding

Bible Reading from the Royal Wedding

Romans 12 v 9 – Romans 13 v 10

Love must be sincere. Hate what is evil; cling to what is good. Be devoted to one another in brotherly love. Honor one another above yourselves. Never be lacking in zeal, but keep your spiritual fervor, serving the Lord. Be joyful in hope, patient in affliction, faithful in prayer. Share with God's people who are in need. Practice hospitality.

Bless those who persecute you; bless and do not curse. ¹⁵ Rejoice with those who rejoice; mourn with those who mourn. ¹⁶ Live in harmony with one another. Do not be proud, but be willing to associate with people of low position. Do not be conceited. Do not repay anyone evil for evil. Be careful to do what is right in the eyes of everybody. If it is possible, as far as it depends on you, live at peace with everyone. Do not take revenge, my friends, but leave room for God's wrath, for it is written: "It is mine to avenge; I will repay," says the Lord. On the contrary:

"If your enemy is hungry, feed him; if he is thirsty, give him something to drink. In doing this, you will heap burning coals on his head."

Do not be overcome by evil, but overcome evil with good.

Everyone must submit himself to the governing authorities, for there is no authority except that which God has established. The authorities that exist have been established by God. Consequently, he who rebels against the authority is rebelling against what God has instituted, and those who do so will bring judgment on themselves. For rulers hold no terror for those who do right, but for those who do wrong. Do you want to be free from fear of the one in authority? Then do what is right and he will commend you. For he is God's servant to do you good. But if you do wrong, be afraid, for he does not bear the sword for nothing. He is God's servant, an agent of wrath to bring punishment on the wrongdoer. Therefore, it is necessary to submit to the authorities, not only because of possible punishment but also because of conscience.

This is also why you pay taxes, for the authorities are God's servants, who give their full time to governing. Give everyone what you owe him: If you

owe taxes, pay taxes; if revenue, then revenue; if respect, then respect; if honor, then honor.

Let no debt remain outstanding, except the continuing debt to love one another, for he who loves his fellowman has fulfilled the law. The commandments, "Do not commit adultery," "Do not murder," "Do not steal," "Do not covet," and whatever other commandment there may be, are summed up in this one rule: "Love your neighbor as yourself." Love does no harm to its neighbor. Therefore love is the fulfillment of the law.

A Poem for Children

...to help them go to bed while it's still light!

Bed in Summer by Robert Louis Stevenson

In winter I get up at night
And dress by yellow candle-light
In summer, quite the other way
I have to go to bed by day.

I have to go to bed and see
The birds still hopping on the tree,
Or hear the grown-up people's feet
Still going past me in the street.

And does it not seem hard to you,
When all the sky is clear and blue,
And I should so much like to play
To have to go to bed by day?

SERVICES FOR JUNE

5th 10.00am Holy Communion
6.30pm Holy Communion
12th 10.00am Morning Praise
6.30pm Open to God @ All Saints
19th 10.00am Baptism
6.30pm Evening Prayer
26th 10.00am Holy Communion
6.30pm Holy Communion

Dorothy Firth and Kate Caroe.

INVITATION TO JOIN IN A SUMMER FUN DAY!

SATURDAY 25TH JUNE 1-4PM

Totley Primary School PTA invite you to take a trip to Totley Primary School on Saturday 25th June 2011 between 1 and 4pm to enjoy our Summer Fun Day. A bouncy castle and slide, face and nail painting and all manner of classic games form part of the programme for both younger and older children alike. These, together with a tombola, a raffle, a variety of stalls, as well as arena events and displays, promise a fun afternoon for the whole family on the green grounds of the School. Refreshments will be available for sale throughout the afternoon including our legendary homemade cakes, a quality barbeque and local ice cream.

Admission to the Summer Fun Day is free and a warm welcome awaits you.

If you'd like to have a stall at the Fun Day, please contact Anne on 07796 326752 or email anne.dussart@hotmail.com

3 The Crescent Open Garden 18th June

For the past 28 years, I have been fortunate enough to sing with the Sheffield Oratorio Chorus which is a charity committed to education in a varied field of choral music bringing first class talent to the city. My garden is another passion and I would like, therefore, to share it with others and, at the same time, raise some money to help the work of the chorus. There will be plants and cakes for sale and refreshments too. Please come along to what I hope will be an enjoyable occasion and, at the same time, help me to raise money to support the chorus in its aims on the 18th June at 3 The Crescent. The next concert is on Saturday 11th June in the Sheffield Cathedral as part of the University Arts Festival. The choral work is Rossini's Petite Messe Solennelle followed by Beethoven's 6th Symphony, played by the Jessop Sinfonia. It will be lively and well worth hearing! The tickets are cheaper if purchased before the event. Hope to see you there!

Doreen Gillatt, Tel: 0114 236 4539

Flood Awareness

To mark the 4th anniversary of the June 2007 floods, Groundwork Sheffield will be holding 3 flood awareness days within communities that are at risk of flooding in Sheffield. The events are part of 'Sheffield Flood Resilience Network', which aims to raise awareness of flood preparedness and how riverside maintenance can reduce the risk of flooding.

The morning of the Flood Awareness Days will focus on understanding the risks and dangers of flooding, and how local people can prepare for it. Members of the Sheffield Flood Resilience Network will be on hand with leaflets and information at our stalls.

The afternoon of the events will focus on practical conservation work with the River Stewardship Company. The river stewards will be looking for volunteer community members to work on improving a stretch of local waterway, removing litter, invasive vegetation and installing wildlife habitats.

Well maintained rivers help to minimise flood risk, so come along and do your bit to improve your local waterway.

The practical conservation works will be fully supervised by a team of river stewards from the River Stewardship Company. Refreshments, tools and materials will be provided for volunteers.

Stalls will be open from 10.00am with afternoon activities starting at 12.45 at our stalls.

Winn Gardens

Friday 3rd June

Meet in the morning at our stall at Winn Gardens Playing Field

Kelham Island

Saturday 12th June

Meet in the morning at our stall at Kelham Island Museum

Sharrow Vale

Saturday 25th June

Meet in the morning at our stall at Hickmott Road Pocket Park, next to Wycliffe Independent Church. Come along and find out more about your local Sheffield Flood Resilience Network.

For more info, contact Anna Cooper:
0114 263 6420

PLANTS NEEDED

Do you have some plants
we could sell for Totley
Open Gardens?

If so, please bring them to
16 The Grove by 30th June.

If no-one in, leave at the
front of the house.



Thank
you



PICTURE HOUSE ARTISTS

EXHIBITION

Of paintings and textiles

BOTANICAL GARDENS

THE CLASSROOM, BOTTOM END

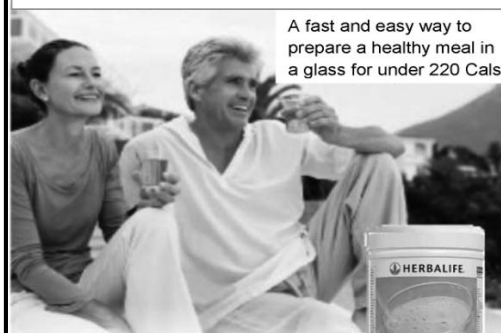
18th & 19th JUNE.

10 am -5pm both days.

Entrance Free *** Refreshments

This is a display of work by students attending classes
at the Abbeydale Picture House, tutor, Isabel Blinow

Looking for a Healthy Weight Loss Solution ?



A fast and easy way to
prepare a healthy meal in
a glass for under 220 Cals.

Your Independent Herbalife Distributor is:

Gillian (0114) 236 3992

www.InShape4u.com



feel the difference!

HERBALIFE

ATTENTION
ALL WOOD BURNING AND MULTI-FUEL STOVE OWNERS

Are you looking for an environmentally friendly fuel for your stove?

Waste Wood Briquettes are made from waste wood products that would otherwise be sent to landfill. You can also use our briquettes on your Stove, B.B.Q. or Chimenea.

PLEASE VISIT OUR WEBSITE
WWW.WASTEWOODBRIQUETTES.CO.UK

OR CALL 01298 872 896
 FREE DELIVERY IN YOUR AREA

LEARN WITH LOUISE

Patient Female Driving Instructor

Competitive Prices

Loyalty Bonuses Available

Phone : 0800 954 5686

Mobile : 07792 018975



For Windows With Style

Sheffield Factory Showroom
 106 PROSPECT ROAD
 HEELEY, SHEFFIELD

Sheffield (0114) 258 5496
Rotherham (01709) 512113

NEW

at **Synergy**
 natural health & fitness centre

162 Baslow Rd
 Totley

- ✓ **Looking** to take **more control** of your life?
- ✓ **Want** to develop **self belief**?
- ✓ **Looking** to develop greater **self awareness**?
- ✓ **Want** career development **options**?
- ✓ **Looking** to implement **change at work**?
- ✓ **Find** the solutions that could **change** your **life**

Executive, Career & Life Coaching



Interactive Leadership & Management Development

For details tel.
 0114 235 7845
 0787 202 5462

G9 Design

Architects & Design Consultants

- Provision of full architectural services from sketch proposals to final completion certification
- Planning Applications & Building Control Approvals
- New Build or Extensions
- Domestic or Commercial projects
- Complete client commitment

Gary Grayson
 5 Newfield Lane,
 Dore,
 Sheffield S17 3DA

Arb Registered
 RIBA Chartered Architect

Tel: - (0114) 2352335
 Mobile: - 07976431740
 Email: - gary@g9design.com

MOGGY MAID



Gail Kitchen: 07986473415

Does going away from home mean your cat is sad and unhappy?
 Does a trip to the cattery scare your cat *not to mention your wallet?*

WORRY NO MORE!

MOGGY MAID is on hand to feed, love and provide everything your cat needs in the relaxing comfort of its own home.

As we cat-lovers know, unfamiliar sights and smells can stress your cat, whereas leaving them in the familiar surroundings of their own home carries less worries, for your cat and for you.

If only for a night, weekend, or a month; holiday, Christmas or any time of the year, **MOGGY MAID** is here to help **LIGHTEN YOUR LOAD**

We promise no mischief allowed!

In a professional manner and with quality service, you can ensure individual care and attention, whilst you relax away from home.

We haven't forgotten the rest of the family; mice, rabbits, budgies, goldfish, etc will receive care and affection too.

LOCAL FRIENDLY SERVICE
 From £5 a day

For more Information, contact Gail Kitchen on:
07986473415
 5 Ullswater Place, Dronfield Woodhouse



Hatha
..YOGA CLASS..

Totley and Ranmoor

For more information or to book a place call
RACHEL on (0114) 236 9943

BWY Qualified Teacher

BODY, MIND & BREATH
 Enjoy the union of yoga



Looking for designer labels?

Let our unusual Vision Plan help you pay for them and much more!

Offering all the benefits of 35 years' experience of South Yorkshire's largest independent firm of opticians.



- Friendly, qualified staff
- Eye examinations
- High-tech diagnostic retinal camera and MacuScope
- Wide choice of spectacle lenses, contact lenses and stylish frames
- Special offers

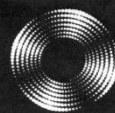
ASK FOR A VISION PLAN LEAFLET

GUESS DIESEL GANT
POLICE EMPORIO ARMANI

Visit our website and make your choice of designer frames at one of our practices including 63 Baslow Road (tel: 236 4485) and our extensive new premises at 634 Abbeydale Road (tel: 255 6554)

www.mko.co.uk

Entrust Electrical



For all your electrical requirements in or outside the home you can trust **Entrust** to do it right!

- ✓ Full or Partial House Rewiring
- ✓ Additional Sockets, Switches, etc
- ✓ Energy Efficiency Enhancements
- ✓ Contemporary & Classical Refurbishments
- ✓ General Electrical Maintenance & Repair
- ✓ Homebuyer Electrical Safety Surveys
- ✓ Telephone and Computer Data Points
- ✓ Garden, Pond & Other Outdoor Electrics
- ✓ Security Lighting & CCTV



City & Guilds
Qualified

(0114) 2352084
07935 250814

www.entrustelectrical.co.uk



Old Hay Close, Dore, S17 3GP



Shepley Spitfire

56 Mickley Lane, Totley Sheffield - S17 4HE 0114 236 0298

Mon to Sat All Day 2 meals for **£8.95**

Served everyday 11am until 9pm

Succulent Sunday Carvery only £5.99

Quality Cask Ales

Quiz Night every Tuesday from 9:30pm

The Home of Big Fish Friday!!

Beer battered Cod fillets, Chips and Peas Two for **£8.99**

Eat in or Takeaway

BOOKINGS NOW BEING TAKEN for

Fathers Day 19th June 2011

CIDER FESTIVAL JUNE 13TH – JULY 3RD

COME TRY OUR NEW RANGE OF CIDERS INCLUDING STELLA ARTOIS CIDRE AND KOPPARBERG

RASPBERRY AND MINT ONLY AVAILABLE TO GREENE KING



love cider love your local

"need help in your garden?"

...we can help *you*

the
ABBEYDALE
gardeners

Kevin and Mark from the recently closed Abbeydale Garden Centre, have started their own Garden Services Business.

Kevin Hunter 07818 20 12 42
Mark Naylor 07739 75 23 19

"give us a call, no job too small."

Music Tuition



Piano • Keyboard • Flute • Singing
Guitar (rock, metal, blues, jazz, funk, pop, folk)
Music Theory • GCSE work

Music graduates, each with 25 years
teaching and playing experience

All ages, beginners welcome.

Exam work or just for fun!

Call Mark or Karin

0114 237 4853 & 07981 888352



FourSeasonsCare^(UK)

Are you in need of a little help and support within
your own home? The older we get the more help we need
to enable us to live a more independent life.

Personal Care • Medication • Domestic • Sitting Service • Social and Leisure activities

To find out more call Sue 07753 840 097 Pat 07967 927 263
or visit www.fourseasonscare-uk.com

For reference from an existing client please call 0114 2366891

HEARING AIDS

MAURICE NAYLOR FBSHAA RHAD is your
local hearing aid specialist and at your
request will test your hearing in your own
home, free of charge, and if needed you can
try a custom made aid for four weeks
without obligation to purchase.

Tel : 262 0010

In the ear digital from £495



Time to change
your Accountant?

AIMS ACCOUNTANTS
FOR BUSINESS

Invest a moment and find out what we offer ...

- Individually Structured Fees agreed in advance
- Complete Accounting and Tax Solutions
- Local Presence and National Strength
- Cost Effective Fees and Cash-Flow Benefits

For your free initial consultation with your local Dore based AIMS Accountant contact:



Mark Randall BA (Hons) FCA
0114 327 8922 / 07908 592 007
E: mark.randall@aims.co.uk
W: www.markrandall.aims.co.uk

J Barlow t/a

Horizon Electrical

*Faults, Rewires, Sockets, Lights,
Cooker Points, Electrical Showers,
Phone Points, Security Lights*

No job too small

Fully qualified with friendly advice

Ring Totley 236 4364 or
Mobile 07772 483154



Your local Rose's Bread stockist

Coffee Shop now open

Monday to Friday 8am to 4pm, Saturday 8am to 1pm

51/53 Baslow Road
Tel: 236 4238

MALLORN

ROOFING CONTRACTORS

REROOFS • ROOF REPAIRS
FLAT ROOF • GUTTERING

0114 235 6002

07853 350085

7 DALEVIEW ROAD, BEAUCHIEF

BRADWAY INSTALLATIONS

Kitchens, Bathrooms.....and everything in
between

- Complete Kitchens - Installation or supply and installation
- Kitchen Refits - Replacement worktops/sink/hob etc. Worktop / cabinet repairs
- Bathrooms - Cloakrooms - Domestic plumbing - Tiling Laminate / Vinyl flooring

All work undertaken is fully insured and guaranteed

Ring Peter - 0114 236 5995
Mobile - 07766 411355

SLIMMING WORLD

10 WAYS TO MAKE SURE IT WILL BE THE LAST TIME LOSING WEIGHT IS YOUR NEW YEAR RESOLUTION. THIS TIME MAKE IT LAST FOREVER

1. Focus on your weight loss goal and prioritise it.
2. Be sure you really want to lose weight for yourself. Doing it to please someone else may only lead to short term weight loss.
3. Take advantage of all the group support at your local Slimming World class. Even if you are not a 'joining in' person, you'll be surprised how motivating it is.
4. Accept that you will have ups and downs in your weight loss journey, and be forgiving of yourself if you hit a difficult patch.
5. Listen to your 'inner script' and make a conscious effort to talk to yourself in a positive, encouraging way.
6. Keep up your interest in your healthy eating plan by trying new foods, new recipes, and new ways of using your Sins. This will help you avoid getting in to a dieting rut which can be boring and demotivating.
7. Be honest with yourself about what you are expecting from your weight loss and how you are getting on with Food Optimising week by week. People who set unrealistic targets for weight loss or body shape are more likely to give up than those who set achievable targets and share their ups and downs.
8. Go back to your class even after (especially after) you've had a weight gain. You will not be judged, just helped and supported.
9. Keep setting new goals and rewarding yourself for milestones until you reach your target weight, and afterwards!
10. Don't put your life on hold until you've lost weight. You can still enjoy life and lose weight. Think of your dreams and ambitions and bring them to the fore. The positive feelings you get from starting to 'live a little' can only help your motivation and your weight loss.

Group details:

Bradway Annexe now at St Peter's Church,
Greenhill Roundabout, S8 7FN Thu 5pm & 7pm
Dore Old School, Tues 5.30pm

Tel: Alison Murphy 07815 046569 for further details

Heatherfield Club, Baslow Road - Mons 7.30pm

PhysioFOCUS

at Totley Rise Dental Practice
85 Baslow Road,
Sheffield, S17 4DP



Physiotherapy treatment available for:

- Back and neck pain
- Sports injuries
- Sprains and strains
- Joint and muscle pain
- Arthritic pain
- Whiplash
- Repetitive strain injury
- Headaches

Appointments: 0114 2360333

Also available:

- Pilates classes
- Pilates 1-2-1
- Golf Fitness Screening
(as used by consultants to UK,
European and Australian PGAs)

For more information please call:

Emer on: 07792 422909

Rachel on: 07956 908454

APPLE LANDSCAPES and APPLE FENCING

www.applelandscapes.com

QUALITY SERVICE AT AFFORDABLE PRICES

Patios • Paths • Walling • Dry Stone Walling • Drainage Work

• Indian York Stone Paving • Railway Sleeper Beds

Garden Tidy Ups etc. No job too small

Fencing & Gates Supplied Only

or Supplied & Fitted

Only Quality Materials Used

FULLY INSURED

Call for free quote

01246 237505 • 07782 167540

Would you like someone to
Type letters? Pay bills? Help record family memories?
Sort and file papers? Prepare an inventory?
Anything else ???

Then you should call

Secretarial and Administrative Services

Swift, efficient, confidential service at your home.

Pay-as-you-go.

Ring us on 0114 235 0071



Tel/Fax: (0114) 255 4689

Mobile: 07831 802539

TRISTAN SWAIN

LANDSCAPING AND MAINTENANCE

UNIT C4

Sheaf Bank

Business Park

20 Prospect Road

Sheffield S2 3EN



B.K. JEAVONS
PAINTER & DECORATOR



Interior
Exterior
Decorating
No Job too
small

Tel: 01246 416484

and mobile 07882 278306

M. Scriven
(FRUITERAMA)

MARTIN SCRIVEN

HIGH CLASS FRUIT
& VEGETABLES

37, Baslow road

Tel. 236 7116

Orders Delivered





GWS

Technology Solutions



PC Problems/ Repairs/ Servicing No Job Too Small
 Wireless & Internet Setup New PC's & Upgrades
 PC Setup/Data Transfer Safe PC Disposal Tuition
 Software/Hardware For All Your PC Needs

Guy Senior

Phone: 0114 2352662 Mobile: 07890030453

Email: guy@gwstech.co.uk

Web: www.gwstech.co.uk

GWS, 5 Conalan Avenue, Bradway, Sheffield S17 4PG

R.S. HEATING & BUILDING CO
 EST. 1971

HEATING DIVISION:
 Experienced Installers of condensing, combination and regular boilers. Systems fully guaranteed. Complete after sales service. Also Bathrooms, showers and small plumbing works.

BUILDING DIVISION:
 Loft conversions, House renovations including general building, joinery, plastering, electrical decorating etc.

13 Overcroft Rise, Sheffield, S17 4AX
Tel:- 0114 236 4421
 Reg. Office:- 62 Machon Bank, Sheffield, S7 1GP
Te:- 0114 2559425
Fax:- 0114 255 9431
 Email: enquiries@rsheatingandbuilding.co.uk
 Web: <http://www.rsheatingandbuilding.co.uk>

LIBERTY FOODS
 Caterers
 Quality Meat Shop
 & Fresh Farm Produce

Fresh and Frozen Prepared Meals
 Fresh Meat and Poultry
 Outside Catering
 Home Delivery

253 Baslow Road, Sheffield, S17 4DU
 Tel: 0114 2360 583 Mobile: 07801 346 455

Dronfield Landscapes

Gardens cleared and maintained, Lawns mowed, Turfing, Tree felling & pruning, Hedges trimmed & reduced, Pond maintenance, Fencing etc.

for free quotation call
 Chris on: (0114) 2746158 Mobiles: 07976072785 or
 Richard on: 07789497104

8am-6pm mon-fri HazelBarrow Farm, Norton S8 8BA

R.M.M BUILDING SERVICES
 25 YEARS EXPERIENCE

All types of building work carried out including- Drop kerbs, block paving (drives, paths, etc), extensions, general building repairs and maintenance.

Phone Rob on- Mob- 07906108567
 Home-2352190

Nigel Watson
 Carpenter and Joiner

New Kitchens, replacement worktops, doors, locks, floors, architraves, skirting boards, stairs, stud walling, boxing off etc.
 No job too small

For a reliable, quality service
Tel: 0114 236 4778
Mobile: 07971 528149

Activ Physiotherapy
 and sports injury clinic

@ Synergy,
 162 Baslow Road,
 Totley,
 Sheffield, S17 4DR.

The Official Physiotherapy clinic for the Sheffield Steelers Ice Hockey Team.

Treatments available for sports injuries, back & neck pain, joint problems, muscle & ligament strains, repetitive strain injuries, post operative rehabilitation, headaches & acupuncture.

Clinic registered with major insurance companies, can claim through the Westfield scheme.

Ring Andy for more information:
 0114 235 7845 or 07901 968549

Got a computer?

Having Problems?
 Is it running slow? Stops responding?
 Having problems running the latest games or applications? Broadband installation?

Give me a call!
 I'm available for home visits at any time including evenings and weekends. I can also suggest upgrades to improve performance, or even build you a system to your specific requirements.

Phone: 0114 2472619 Fax: 0870 7060080
 Mobile: 078 17464703 Email: service@timbrown.plus.com

Tim Brown
 Building, Installation, Upgrading and Troubleshooting Computer Systems
 Over 25 years professional experience

Dronfield Landscapes

Logs and woodchippings
For Sale

Ring for details
Chris on 0114 2746158
Mobile 07976072785

Richard mobile
07789497104



Central Heating
Domestic Plumbing
Glazing, Double Glazing and Glass
House Maintenance
UPVC and Wood Windows & Doors
Mini Digger & Driver, Muck Shifts, Footings Etc.



TOTLEY PRIVATE HIRE

24HR TAXI SERVICE
ADVANCE BOOKINGS TAKEN
LOCAL • LONG DISTANCE • AIRPORT

Tel: 0114 283 9692
Mobile: 07974 355528

Domestic electrical work carried out by
City & Guilds and 'Part P' qualified

LADY ELECTRICIAN

- * House rewires * Replacement fuse boards *
- * New sockets and lights * Telephone points *
- * Security lighting * Pond pumps * Deck lights *

All work guaranteed and
fully insured

No job too small
For a free quote, without obligation

ring Mandy on 07788-544225



Tiling, Plastering, Plumbing & Complete Bathroom Fitting Service

Tel: 0114 274 6775
07738 688807

- ◆ Under Floor Heating
- ◆ All Aspects of Home Improvements & Maintenance Work Undertaken
- ◆ Competitive Prices
- ◆ NVQ Qualified
- ◆ No Job Too Small
- ◆ Fully Insured & Guaranteed

A1tilingandplastering.co.uk
33 Glen View Road, Greenhill, S8 7SF

Hypnotherapy

Weight, confidence, smoking, stress,
phobias, anxiety, panic, sleep, etc...

Call 235 1985 Totley

www.sheffieldhypnosis.co.uk



Paul Peace



The
British
Psychological
Society
Chartered Psychologist



Karen Bartle

Creating opportunities with disabled people.

Registered Charity No. 218186

Leonard Cheshire Disability

Leonard Cheshire Services in Offers choice & opportunity to people with disabilities. A Specialist Unit for the Younger Disabled. Residential & Respite Care - Single Rooms Day resources - Aromatherapy - Reflexology - Physiotherapy - Toning Tables.

Activities include: - Arts & Crafts - Computers - Cookery - Shopping Expeditions - Theatre Outings - Church. Further details can be obtained from - The Service Manager, Mickley Hall, Mickley Lane, Totley, Sheffield S17 4HE. Tel. 0114 236 9952 Fax. 0114 262 0234

The Care at Home Service supports disabled people who wish to remain in their own homes.

We provide flexible care packages from 1 hour to 24 hours meeting individual needs. The service operates throughout Sheffield.

Our service includes: - help with getting up and going to bed, dressing, washing, bathing, shopping, cooking, light household duties.

Further details from: - The Care at Home Manager Tel. 0114 235 1400 Fax 0114 235 1499

John Heath & Sons

AN INDEPENDENT FAMILY FUNERAL BUSINESS

Sometime.....

You will probably have the responsibility of making funeral arrangements. No one looks forward to this responsibility, but the death of a family member or friend brings with it an obligation that must be met. There are people who can help you meet this responsibility. We have been helping people combine the different aspects of the funeral into a meaningful service for over 125 years.

Please Call Day Or Night

(0114) 272 2222

Head Office - Earsham Street

Also at Meadowhead, Ecclesall Rd,
Crookes and Stannington

www.johnheath.co.uk



Peter Godley Garden Design

Surveying, planning and contract management

Awards for Best in Show
Design and Quality Plant Selection
Large Gold Medals & Silver Medal Winners

Homesfield, Dronfield S18 7WJ
M: 07836 717859 T: 0114 2891365 F: 0114 2890737
Email: peter.godley@btconnect.com

TOTLEY & DISTRICT DIARY

MONDAYS	COFFEE MORNING , All Saints' Church Hall, 10am-noon TAI-CHI , United Reformed Church, Totley Brook Road, 11.30am-12.30pm RAINBOWS and GUIDES , All Saints' Church Hall, 5.45pm-9pm
TUESDAYS	COFFEE MORNING , Totley Rise Methodist Church Hall, 10am-noon KEEP FIT & COFFEE , For the not-so-young, Bannerdale Centre, Carterknowle Road, 10.15am, Phone 258 5364 WOODSEATS ADVICE CENTRE . Drop in service, free, impartial, and confidential. TR Methodist Church, 10am-noon CRAFT GROUP , Totley Library, 2pm
WEDNESDAYS	COFFEE in the LIBRARY , 10am-11.30am TODDLER GROUP , 10am-11.30am, All Saints' Church Hall. Details tel. Andy Holmes 0114 236 2088 HEALTH WALKS , 10.30am, Totley Library foyer. Phone Sue, The Health Walk Ranger: 0114 283 9195 MODERN SEQUENCE DANCING , All Saints Church Hall, 8pm-10pm
THURSDAYS	CHAIROBICS , Suspended until further notice NCT COFFEE GROUP FOR DORE TOTLEY & BRADWAY , 10am-noon, For mums & babies/toddlers, meeting in various locations, Phone Lucy Street 07837 000405 or email: lucy@streetr.plus.com for further details PUSHCHAIR CLUB , Totley Rise Methodist Church Hall, 1.30pm-3pm. Tel. 236 3157 for further details PILATES CLASS , United Reformed Church, Totley Brook Road, 6.15pm-7.30pm, Phone Emer Coffey 07792 422909
FRIDAYS	PILATES , The Old School, Dore, 10.45-11.45am & 12-1pm. Phone Teresa Tinklin 07906 312372
SATURDAYS	MODERN SEQUENCE DANCING , All Saints Church Hall 2 nd . And 4 th . Saturdays 8pm-10pm

JUNE

SUN 5th CASTLETON FARMERS MARKET, the Village Hall, 10am-3pm
MON 6th-SAT 11th EXHIBITION AT TOTLEY LIBRARY, Totley History Group, Normal library hours
SAT 11th CLASSIC CAR SHOW, Bradway Primary School, details page 9
SAT 11th SATURDAY NIGHT LIVE, Tony Verno, Heatherfield Club. 8.30pm. Come & play Play Your Cards Right. Non-members welcome
SUN 12th MINIATURE TRAIN RIDES, Abbeydale Road South, First train 1pm - last train 5pm (weather permitting) www.sheffieldsmee.co.uk
WED 15th FLOWER ARRANGING, Holmesfield Flower Club, Holmesfield Village Hall, 7.30pm, details page 4
TUES 21st TOTLEY TOWNSWOMEN'S GUILD, 'For Valour (the Victoria Cross)', Kenneth Loxley, Totley Rise Methodist Church Hall, 10am
WED 22nd TOTLEY HISTORY GROUP, Totley Library, 7.30pm, Catch Up with Research, all welcome
THU 23rd SHEFFIELD FARMERS MARKET, 9am-4.30pm, Fargate
SAT 25th SUMMER FAYRE, Cheshire Home, 11am-3.30pm details page 8
SAT 25th SUMMER FUN DAY, Totley Primary School, 1-4pm, details page 13
SAT 25th COMMUNITY CREAM TEA, All Saints Vicarage, 2-4pm, details page 11
SAT 25th SATURDAY NIGHT LIVE, Ray David, Heatherfield Club. 8.30pm. Come & play Play Your Cards Right. Non-members welcome
SUN 26th MINIATURE TRAIN RIDES, Abbeydale Road South, First train 1pm - last train 5pm (weather permitting) www.sheffieldsmee.co.uk

JULY

SUN 3rd CASTLETON FARMERS MARKET, the Village Hall, 10am-3pm
SAT 9th SATURDAY NIGHT LIVE, Ian Andrews, Heatherfield Club. 8.30pm. Come & play Play Your Cards Right. Non-members welcome
SUN 10th MINIATURE TRAIN RIDES, Abbeydale Road South, Open Day & Exhibition, First train 1pm - last train 5pm (weather permitting) www.sheffieldsmee.co.uk
TUES 19th TOTLEY TOWNSWOMEN'S GUILD, 'Khaki Suited Me, Bessie Renwick, Totley Rise Methodist Church Hall, 10am

TOTLEY INDEPENDENT FOR JULY/AUGUST

The next issue of the Totley Independent will be available from the usual distribution points on

SATURDAY 2nd July 2011

COPY CLOSE DATE for this issue will be

SATURDAY 18th June 2011

Editor: **Ian Clarke**
 Tel. No: **235 2526** or Email: editor@totleyindependent.co.uk

Advertising & Distribution:
John Perkinson
 Tel. No: **236 1601** or Email: advertising@totleyindependent.co.uk

Items for publication may be left or sent to:
2, Main Avenue, Totley, Sheffield, S17 4FG or
Totley Library

www.totleyindependent.co.uk

PRINTED by STARPRINT

CLEARVIEW STOVES

Pioneer 400 - weight 125kg



This is by far our biggest selling multi-fuel stove. For a typical room size 13ft x 15ft! Producing from 1 to 5kw of heat output - being highly controllable with an updraft and a unique patented down draft to burn the tar off the glass - keeping it crystal clear - hence the name CLEARVIEW. One log lasting up to 1.5 hours given super efficient outputs up to 80% (an open fire runs at 15% efficient!). Seven choices of colour to compliment your decor with optional leg heights from 2 to 10 inches. Clearview Stoves were the worlds first to be approved for burning in 'Smoke Controlled Areas'. We have over 200 installations around Sheffield. We are often told by many of our customers that "It's the best thing we have ever bought"

Showrooms at Burgin Conservatories 302 Abbeydale Road S7 1FL
 Open Tues-Sat 10-5pm • Sundays 10-4pm
www.clearviewstoves.com • www.burgin-conservatories.co.uk
 or please telephone Graham Burgin 07973 321 075
 for advice or FREE QUOTATION

Starprint

601 Abbeydale Road, Sheffield 7. Fax: 0114 258 8599

DESIGN & PRINTING of

- LETTERHEADS • BUSINESS CARDS •
- BOOKLETS & PADS •
- INVOICES • LEAFLETS •
- CARBONLESS SETS • BROCHURES •
- RAFFLE TICKETS •
- WEDDING STATIONERY •
- ENVELOPES & POSTCARDS •

**SPECIALISTS IN THERMOGRAPHY
 FOIL BLOCKING AND ENCAPSULATION**

0114 258 0707
For a Quick Quotation