

TOTLEY INDEPENDENT

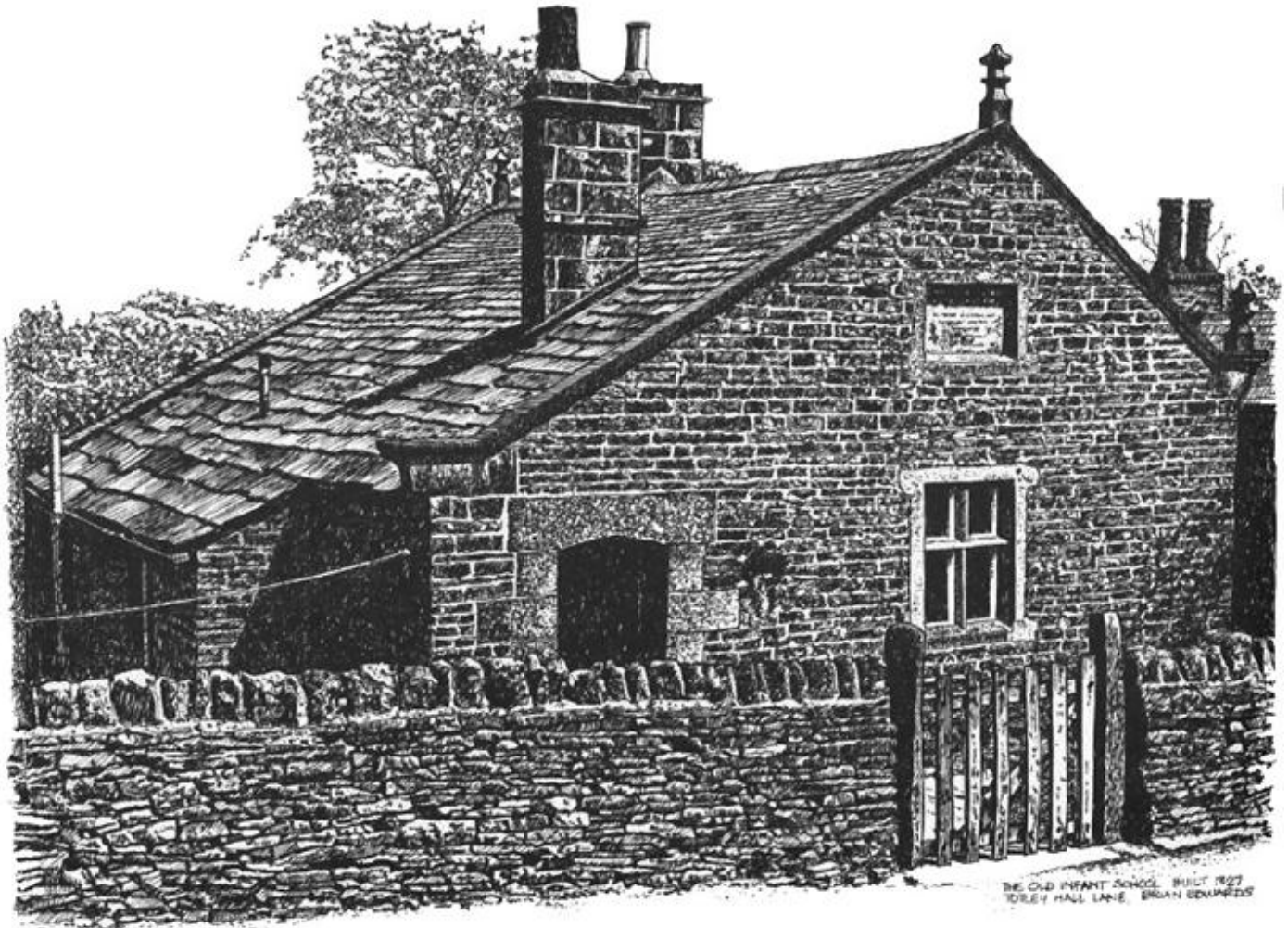
PUBLISHED CONTINUOUSLY SINCE 1977

www.totleyindependent.co.uk

JULY/AUGUST 2011

No. 345

20p.



THE OLD SCHOOL HOUSE

In 1827 D'Ewes Coke the then owner of Totley Hall had the old school house built on his land.

The old school house on Totley Hall Lane has been used for private living but has been stood empty for quite some time. Work has now started on the house. The builders, Glen Dean Construction Ltd, work mostly on listed buildings and previously restored the Old Rectory (Grade 2) listed of 1710. I have spoken to Dean the builder and asked if he found any items that would be of interest to the Totley History Group would he save them for me which he has done.

We now have 4 glass bottles and one stone jar, also a silver spoon and some marbles which Dean says may have come from two of the bottles which were possibly pop bottles and left by the original builders of the house back in 1827.

We are also helping by providing them with the original wording from the old plaque from the front of the house which unfortunately has been eroded away over the years. They are hoping to have a stone replica made and placed in front of the original one to help preserve what is left of the original.

It will be good to see the old house being lived in once again and helping to preserve it for years to come.

Marlene Marshall.

Round up of TRA activities for June

This is the first Totley Residents Association report since we had a committee meeting and the past few weeks have been pretty busy. I would like to start by thanking past members of the TRA for helping and passing on relevant information it certainly made the process a little easier!

PTO

TOTLEY OPEN GARDENS 9th – 10th July

further details for these events inside

TOTLEY SHOW – Saturday 17th September

The first commitment of the TRA was to chair the Ward Forum on the 8th of June. Given that we had 4 days notice to secure a venue we were really pleased that around 20 people attended. The closure of the Natwest Bank in Bradway was discussed and local councillors alongside people in Bradway are talking to the powers that be in the bank. The development of the car park at Dore station was also on the agenda and the impact on the removal of trees between the proposed car park and station platform. Comments on this matter are being received throughout June should be directed to Sheffield City council and a decision will be made by them in July. Speeding Indicator Devices (SID) are also to be used in the ward and will be on trial rotated around trouble spots. Discussions were carried on that had been initiated in the March forum and the meeting agreed that focus groups to address ward wide issues would be formed. The first one of these meetings is to be held on July the 7th, venue to be arranged. The next Ward Forum will be on the 7th September venue again to be agreed.

The new TRA committee finally met for the first time on 9th June in the Heatherfield club. The main focus of the meeting was to look at the aims of the TRA and suggest ways to consult with Totley residents to ensure we are representing the community as a whole. It was decided that we will be placing suggestion boxes around Totley and also offer people a variety of ways to get in touch with us. Watch this space for a Totley Forum, new website and a face book page coming soon! We will also hold some open meetings very soon to discuss Totley issues. We really do want to run the association for you so please let us know your views, what you'd like us to do and what you would like to see in Totley. We will also intend to examine the present constitution and strengthen it to make it more effective and inclusive. We are also considering the suggestion of TRA becoming a charity and will ensure we are acting fully within the law with regard to income.

It was agreed that the new TRA committee needed a strategy to provide uninterrupted continuation of events and committee members were nominated to be links to the Totley show, Totley Music festival and Friends of Greenoak Park.

We are underwriting the Totley music festival by £1000 and will be making donations to Transport 17 and Escafeld Brass band.

Jennie Street has sadly withdrawn her organisation of Totley Show and the TRA wish to thank her for her contribution to the success of the show over the past few years. Les and Dorothy Firth have kindly offered to book the venue and organise the show this year, so thanks to them too alongside Tom and Christine Steel. The TRA will continue to support the show financially and practically.

Heather Moran attended the AGM at Cherrytree and both organisations are keen to carry on joint working where possible.

Chairobics is being held currently on Thursday afternoons at Heatherfield club on Baslow Road. I have been in discussions with Activity Sheffield who can ensure the future of the class although it's possible the day and venue will change.

We also had a stall at Dore and Totley Older Persons Road show held at Totley Rise Methodist Church. We devised a questionnaire that enabled people to say what they would like to see in Totley and how we could help make this happen. There was a general consensus that more activities for Older People are

needed. It was also useful to meet members of the South Community assembly and put faces to names. Some pupils from King Egbert School attended the Road Show and had an in-depth discussion with the police, Activity Sheffield and the local councillors. The TRA will discuss forming a Totley youth council at the next meeting to give young people a real say in what they want to happen in Totley. We will roll out the questionnaire to all the community of Totley.

Most of you will know that the youth shelter was placed in Greenoak Park on Friday the 17th of June.

The TRA Committee feel that it is very important to keep the residents of Totley informed of the situation regarding the Youth Shelter. We have made enquiries into the process of agreeing the trial and a majority decision of 7 to 4 voted in favour of the trial (TRA minutes September 2010).

As you will appreciate the new Committee were voted in at the AGM on May 9th and did not make the decision to have the Shelter installed. The trial has been financed by money raised from Totley Open Gardens 2010, as it was donated to the TRA to fund youth activities. This was detailed in Richard Frost's temporary Chair report for 2010. The public of Totley ran an independent consultation and on the 15th of June the TRA received around 150 names, addresses and signatures with people either for or against the Shelter. The majority of people were against the Shelter being placed in the park. I have passed on questions raised through the consultation process to Keith Hill who has assured me he will answer as thoroughly as he is able.

The TRA wish to impress on residents that this is for a trial period only, permanent installation will be subject to a full public consultation.

Kathryn Higgins
Chair TRA

Do you need help?

- In coping with worry, illness, depression or spiritual problems.

Christians believe that God, through Jesus Christ, comforts, heals and brings peace of mind, in response to prayer.

Members from All Saints and Totley Rise Methodist churches are currently offering to pray in confidence for anyone who would like to come to:

TOTLEY LIBRARY BUILDING ON SATURDAYS
between 12.30 and 1.45 pm and

HEATHERFIELD CLUB (BASLOW ROAD) on
WEDNESDAYS between 2.00pm and 3.00pm.

For information ring Brian on 07722236037.

JULY 2011 only

Cliffhanger 2nd 3rd July

Cliffhanger is one of the UK's largest outdoor pursuits festivals, based in one of Sheffield's biggest green spaces with over 20,000 visitors in 2 days.

The aim of the event is to Inspire & Involve. Featuring elite competitions and/or professional demonstrations in rock climbing, orienteering, kayaking, mountain biking, running, mountain boarding, skateboarding, slacklining, adventure racing and more. Visitors are able to watch incredibly talented sports people of all ages at the top of their game, and then take part in the very sports they have just been inspired by.

The activities are aimed at people of ALL ages.

2nd July 2011 to 3rd July 2011

Start Time: **10:30am**

End Time: **6:30pm**

Visit the event Sheffield website to find out more;
www.eventsheffield.com/event/20126/cliffhanger

Run for ALL Life

A big thank you to the runners that raised money for the Dr Hadwen Trust for Humane Research on Sat 21st May in Ecclesall Woods. This is the second year that the Run for ALL Life has been held and the weather was again fantastic. My thanks also go to the Abbeydale Model Railway for the use of the meadow, Pure Gym for the warm up, Dore Co-op for donating water and Dore Village Society.

The Dr Hadwen Trust funds medical research projects that use and develop technologies that replace the use of animals. Choosing the most ethical path often proves in the long run to be by far the most progressive, cost effective and healthy. Animal based medical research is fundamentally flawed as the results apply to the particular species of animal used in the experiment. Investment in humane technologies may therefore lead to faster medical progress. Replacing animals in medical research needs real commitment, not just lip service; the Dr Hadwen Trust has that commitment.

According to the latest Home Office statistics, over 3.5 million animals are still being used annually in experimental procedures in the UK. This includes 3,564 pigs, 4,129 dogs, and 2,815 non-human primates. If anyone wants to help to change this you can donate online www.justgiving.com/Run-for-ALL-Life or for more information about the Dr Hadwen Trust visit www.drhadwentrust.org

Dawn Biram

Totley Scout Hut

When was the Totley scout hut first built? Was it 1946/47 or later. The reason for asking is, I helped by working on the inside of the building.

I started work (aged 14) on the 17 September 1945 at Hadfields steel works as an apprentice pattern maker (wood worker), so I was into making things out of wood and I made one of the doors that covered the electric meters, plus other things.

The scout leaders at that time were Arthur Birley, Raymond (Kim) Gale, Peter Williams and John Bowie, who were the others? Ask John Bowie.

Before we moved to Hall Lane, we were on the sic(k) in one of the buildings that was to be used for bombed out people. Also at that time, the Parra troops were in tents on the sic getting ready to go to Arnhem!!!

Frank Young, formally of 25 Green Oak Road



Transport 17

On Saturday 16th July we will be holding a Coffee Morning at the "Cross Scythes", Baslow Road, Totley. This will be from 9.30am till 11.30am. Coffee, tea and pastries will be supplied by Stuart Hitchman and his staff. We will have our newest bus there and there will be a raffle. We are very grateful for the chance to show what we do and hope that as many people as possible will come along to support us. There will be a charge and any extra donations will be much appreciated. We are very grateful for the kindness shown to us by Stuart especially the "Meal for Two" as a prize in the raffle.

We get financial help from S.Y.P.T.E., but, because everything such as fuel, servicing and repairs are getting more expensive, fund raising is more important than ever. Michael Finn, our Manager, keeps our 3 buses in very good order. They do a lot of journeys which involve much stopping and starting, often in confined areas and hilly places (well we are in Sheffield!!).

John Savournin and the Committee make sure that all our money is well spent and that not one penny is wasted. Our drivers and escorts work really hard and are committed to T17 and, more importantly, our passengers.

Many clubs and organisations help us with money and that is much appreciated. Let us hope that the Coffee Morning does well. New buses will cost in excess of £50,000 so the longer we can keep ours running, the better. Some of the money will go to making sure there is no rust or chips anywhere.

Jennie Street has just told us that the proceeds from the "Open Gardens" weekend will be coming to us this year. This is brilliant news. The amount of work that goes into this is amazing. People show their gardens with pride and make everyone welcome and will talk about the plants etc. I know some sell cakes and teas and plants as well. Thank you one and all.

Transport 17 will close for a break in August. The office will be closed from Monday, 15 August and will re-open on Wednesday, 31st August. This is to give everyone a break. Some clubs will have different times when they close for summer. I would ask passengers to check this with their individual organisations.

I hope that we will all have a lovely summer and that Transport 17 will go on and on. After all, it celebrated 27 years in May/June this year.

Best wishes to you all.

Margaret Barlow

Councillor Surgeries

Liberal Democrats:

2nd Monday in the month 6.00-7.00 p.m., Totley Library, Baslow Road and 2nd Saturday in the month from 10.30 a.m. to 12.00 noon, Dore Old School Hall, Savage Lane, Dore Contact details:

Keith Hill 235 2289 Email: keith.hill@sheffield.gov.uk,

Colin Ross 235 1948 Email: colin.ross@sheffield.gov.uk

Joe Otten Email: joe.otten@sheffield.gov.uk

Totley Independent Website:-
www.totleyindependent.co.uk

THE MEMOIRS OF DAN REYNOLDS (Part I) By Himself

This is a true story of my life from when I was six years young, spent in what was a lovely village. There were persons of whom I like to think of as characters, not that they did anything deserving honours, but were typical of life in those days.

It was the year of 1916 and the Great War was in progress. This was very apparent in Totley as it was like a small garrison town. Soldiers came by the thousand to do their gunnery training on the rifle ranges, also wounded soldiers from the front line in France were brought to the field hospital (recreation ground fronting Cricket Inn) for treatment. St John's Hospital on Abbeydale Road (now postal sorting office) was the operating theatre for severe cases, and were then transferred to the field hospital on recovery. A Dr Dick Evans, a member of the American Consulate, was a frequent visitor to the sick bay at Totley Bents, where I understand he was able to offer his valuable expertise. I gathered most of this information from his daughter Cornelius, who at the age of seventy two came from America to visit the place and home of her birth, which happens to be where I have lived for fifty three years. That was about ten years ago, and though we started corresponding, the letters ceased to come, but she was able to tell me a lot about her family. Apparently, when war was declared she was sent back to relations in America; her father and two brothers didn't go with her, she did not know why. The brother I remember was called Richard and, like a lot of the lads, was a real daredevil. It was not until her father and brothers returned to America that she was able to acquire the information on the hospitals. This was, of course, after the armistice.

The rifle ranges at that time were spaced at every hundred yards. At nine hundred yards, just inside the field, left hand side of Lane Head Road, they practised with the Gatling and Lewis machine guns, and of a Saturday and Sunday they were watched by many grown ups and we children. To us it was fantastic, but to the grown ups it must have been traumatic.

As happened during the 1939 war, it was compulsory to billet members of the forces if you had the room available. Any buildings which were spare were used to stable the horses, so as you may gather, the friendship between civilian and soldier was simply grand.

Offset from the range was the camp where many bell tents and marquees were erected. These were what the soldier used as his home during training. Eight, or even ten men to a bell tent! There was a specially built swimming pool where they were able to take a bath, and most likely to do any washing. There was no supply of water: the pool relied on water from land drains, and surplus water eventually found the stream. The narrow lane opposite the entrance to Monny Brook Farm leads to the stream, and on close examination you will find an iron pipe with running clear water, which was carried from here to wherever. I would imagine the water supply to the pipe was from a spring in the vicinity. Up to around 1975 this was the only water available for the tenants at Monny Brook Cottages, the last tenant being a Miss Diana Burgess. These were sold, demolished and then rebuilt. As I understand there were many springs in times past which supplied water for the population. A friend of mine, Willis Pearson, was told by his father that there was a well at the rear of 5 Hillfoot Road, and it was his great-grandfather's duty, twice a day to unlock the cover to the well, and the womenfolk would come along to collect water. There was also one on Summer Lane, and according to Arthur Turner this was continually over-flowing, and he and Fred Fox were detailed to concrete over the well.

Yet another which I remember in use was in Hall Lane which was protected by an iron gate, and I most remember its use when the steam roller, which maintained the roads, used to lower a pipe into the well to pump water back to its tanks.

During the years of war we children were interested by the searchlights probing the skies for any aircraft, presumably Zeppelin as it found its way to Sheffield and, I am told, dropped bombs on Skelton Works which I think was in the Heeley district. No doubt data can be found on this in records at the Town Hall.

To be continued

**Keep a note in your diary
for the 10th year of**

**TOTLEY
OPEN GARDENS**

**SATURDAY 9th and
SUNDAY 10th JULY 2011**

1 - 5pm

**Programmes available from Totley Library
by the middle of June, and from outside the
Ironing Parlour, 170 Baslow Road, S17 4DR
on the days of opening**

**Enquiries to Jennie Street on 236 2302 or
email: jennie@hadish.f9.co.uk**

Get online @ home

Refurbished computers available for charities at a reduced cost. Refurbished computers are available to charities for £95 along with a pre-installed latest version of Windows (Windows 7) and a range of Microsoft software for documents, emails, messaging and pictures, along with security and accessibility software. The computers are also available at this price to people receiving certain types of benefits. Other people can purchase the computers for £165. Website: www.getonlineathome.org

Totley All Saints C of E Primary School receives a "good" Ofsted

"Totley All Saints is a good school in which pupils achieve well. Equally importantly, the school promotes their personal development effectively, through a range of activities and responsibilities. As a result, pupils have wide-ranging skills to aid them in their secondary education, which are assisted by both their high attendance and good behaviour.

Many parents and carers indicated their satisfaction with thematic learning, the positive and caring atmosphere and the good range of opportunities for pupils to develop important skills for the future. There was recognition of the good leadership of the headteacher. Inspection evidence supports these views."

This is a well-deserved acknowledgement of the hard work and commitment from our children, parents and all staff. We are very proud of our achievements Mrs Bev Houghton, headteacher.

HOLMESFIELD FLOWER CLUB

Saturday 9 July - "A Taste for Flowers". A free event open to all to have a go at flower arranging - no experience necessary. All materials and flowers provided - just bring scissors. Professional tuition. Two sessions available - 10am - 12 midday and 2pm - 4pm at **Holmesfield Village Hall**, Holmesfield. Also lunches/refreshments, cakes, plants and flower arranging materials for sale. To reserve a place(s) contact Sandra: tel. 01709 541187, mobile 07900 827581 or Natalie on 0114 267 8564. Also email sandra.goacher@blueyonder.co.uk Book by 4th July to avoid disappointment.

Saturday 9th July: CHAIRMAN'S DAY We invite you to join us at **Holmesfield Village Hall** between 12 midday - 2pm for coffee, cakes and lunches - also plants, cakes for sale, books, cards, flower accessories etc and raffle. In addition, all are invited to see the arrangements being created at the free taster session. Everyone welcome.

Highland cattle are grazing the heathland of Blacka



Heathland has developed through hundreds of years of human intervention including forest clearance and grazing. It is inherently dynamic, so grazing helps to keep the heathland relatively open, which is one of the things that people love about Blacka Moor. Highland and Highland/Short Horn Cross heifers (females) of varying ages are grazing, and they'll be on the site from May to October. Cattle have numerous benefits to heathland such as:

- ❖ Keeping the spread of birch, rowan and bramble under control and conserving the open heathland character.
- ❖ Helping reduce bracken re-growth following other methods of control, by trampling the emerging bracken fronds.
- ❖ Increasing diversity of plants e.g. Cowsick Bog through light trampling & creating gaps where finer-leaved plants can establish.
- ❖ Creating small open pools for invertebrates through trampling; this provides a food source for chicks.
- ❖ Helping prevent the build-up of nutrients (by grazing off the grasses), and hence retaining the nutrient-poor conditions needed by heathland plants e.g. heather & bilberry.

For emergencies out of office hours regarding cattle only, phone the grazier on 07811 378 666. For other info call 0114 263 4335, email a.kennedy@wildsheffield.com or go to www.wildsheffield.com.

Re: Youth Shelter

Response to Roger Hart's reply in June issue

I am aware of the site for the above mentioned, within the present facilities for children - MUGA, playground, zip wire and rocks, thus with the potential to restrict movement between them, also intimidating young children.

I see someone looked up the meaning of gazebo.

As we now have a large rock it is obviously doing the job of a gazebo quite adequately so therefore Herdings can keep their shelter thus saving a lot of money ultimately funded by us the ratepayers, cleaning and removing graffiti - a good result!!

I and other members of Friends of Green Oak Park must be consulted on all matters relating to the park.

I must point out that there are procedures to be followed relating to any proposals regarding work to be carried out that has to be put before the Friends Group.

Jean Barber

1st Totley Scout Hut.

The appearance of the photograph, on the front of the June **TI**, was topical as I had recently been discussing the names of those who helped to build the new hut.

My son joined cubs around 1978 & I joined the committee. How it happened, I cannot remember, but I became chairman. The Sheffield City Council had served 'Notice to Quit' the Totley Hall Lane site & I fancied the challenge of getting a new site & building, for a worthwhile organisation.

Cllr. Gordon Wragg, to become Lord Mayor of Sheffield, was instrumental in acquiring the land, at the rear of properties in Aldam Road, on our behalf, from the Council for a peppercorn rent. It is a super site next to the river. Consultation with local residents was positive, one or two of them helping us out occasionally. From somewhere we acquired a surplus prefabricated office building & again, by fortune, we found that the Government were funding, through Voluntary Action Sheffield, a scheme to help unemployed craftsmen to find "work". We had to pay for materials & to fit out the inside & decorate. Working parties were needed.

Gordon Wragg submitted the drawings for planning & Building regulation approval. A contractor was employed to dig out the foundations & ditches for the services. We collected paper & bottles to raise funds. Workers from VAS erected the building & put the roof on.

Electrical work was done by Brian Furness (now deceased). Brian Andrews fetched materials with his truck, helped, guided & supervised.

The secretary was Tricia Whitehouse & the Treasurer was Alan Vitty both of whom held it all together.

Scout Leader Robin Carter (now deceased) & leaders Tony Marples & John Lawrie helped.

Mick Stokes, Philip Needham & Brian Crookes also helped, as did many others, with wives & partners and various sons & daughters as well.

Can you fill in the gaps in my memory? Who else helped? Where did the building come from?

My son left Cubs not long after I joined!

Recent upgrading works to comply with current regulations has been expensive. Joining the Scout Lottery will help to replace spent funds & continue the good work which the Scouts do.

Roger Hart

Farming Scene

We are now into the pedigree livestock showing season. The first show and sale we attended was at Exeter. This is the Premier event for the Dorset Horn and Poll Dorset breed society. Over 100 rams and 2,700 females were sold to pedigree and commercial sheep farmers who had travelled from all over England, Wales and Ireland. This is a 2 day event with vendors vying for the coveted first and championship places in the classes on the first day. The second day begins at 9.30 am with the auction sale of the pens of females and finishes at approximately 3.30 pm when the last of the show females are sold.

We took one of our yearling rams there to sell and purchased 10 yearling females from a top breeder to bring a new bloodline into our flock. These will be introduced to our rams along with the next of the flock at the end of June so that they should start lambing the 3rd week of November.



The second show we attended was the Staffordshire County Show on the 1st and 2nd June. We took 7 sheep, 3 males and 4 females and came back with 2 x 1st prizes, 2 x 2nd prizes and the overall class championship. Hall Lane

Nice One as we call him stood out from the rest the judge said as he gave him the Championship.

We, like many Northern farmers, are now paying the price for the long spell of dry weather during April and May. We are now getting the wet, showery, changeable weather that we should have had in April. This is causing problems and delays as us livestock farmers we try to make haylage and silage in between the enforced stops of rain.

This harvest was initially delayed by the slow grass growth during the previous very dry weather and now looks as if it will drag on till the end of June when we should be into the haymaking season.

Surprisingly we seem to have a lot of wildlife about the farm at the moment. I would have thought that the very cold winter would have thinned out many of the species particularly rabbits, pigeons and squirrels. I have seen more rabbits and pigeons in the fields this month than I have seen for 2 or 3 years.

The grey squirrels are in abundance as ever and the badger population and their setts are multiplying up rapidly. Many former rabbit burrow are now new homes for badgers as they extend their territory. I wonder if the badgers have pushed the foxes out of the area and that is why there are so many rabbits about.

The moorland deer seem to be staying where they should be at the moment, rather than invading the local farmland. We do however seem to have gained a resident pair of curlews. I have seen them a few times on our fields near to Baslow Road. We used to have a pair of snipe down that end of the farm but I have not seen them this year. Perhaps they succumbed to the snow and sharp frosts.

Some of you may have seen a couple of tipis or is it wigwams in one of our fields next to Gillfield Wood. No, it was not some Indians on holiday from the USA but a local couple who wanted to have a wedding and reception in a country setting. This was an ideal spot in a grass field away from suburbia, surrounded by woodland and fields where it was quiet and relatively secluded. A good time was had by all I am told!

Edwin Pocock



GOALIE NEEDED

Keeper wanted for Totley Sports Football team.



Currently in the Premier division of the South Derbyshire amateur Saturday league.

Experience at good level essential. Training is on Thursday evenings at Graves Park. For more details please contact Mark Daniels on 07984 989893 or Jim on 07879 427407."

THE TOTLEY PINFOLD

We have read the article entitled "A Sterilized Pinfold" submitted by "name withheld" in the June, 2011 **Totley Independent**. The writer was asked to contact us (as we are one of the couples who have volunteered to help with the Pinfold) regarding the concerns they had and an e.mail was sent via the Editor of the **Totley Independent** to be forwarded on to this person. However, we have received no response.

There are currently two couples (of which we are one couple) who voluntarily care for and maintain the Pinfold. It must also be borne in mind that this is an open garden, open to all, so plants could be removed by anyone. Perhaps the writer could advise us as to who is being referred to?

The Pinfold, since its inception, has had a number of volunteers through the years maintaining it, also many people in Totley have donated plants from their own gardens and continue to do so. As this is the case, the Pinfold is an historical representation of both the people of Totley and the volunteers who have worked on the Pinfold, so we would not and have not taken any plants out of the Pinfold garden.

We have been helping on a voluntarily basis in the Pinfold since approximately last October, although input has been put into the garden by us in Jerry Roberts time; mainly to help him tame the rear of the Pinfold as at that time it was badly overgrown (rather like a jungle). After that time Jerry carried on single handedly and did so for many years.

Our aim has **not** been to change the garden. However, we have formed a pathway to obtain easy access for all to the back of the Pinfold, weeded, and trimmed generally and planted mainly to the back of the Pinfold, (woodland & sympathetic type plants to the area, which we purchased, and plants which have been donated).

In conclusion, unless the writer can explain their comments, anyone who has read the original article in the **Totley Independent**, must be completely at a loss as to what the problem is, including us!

Ray and Kate Townsend

The Old Fleur de Lys

The original Fleur de Lys in Totley was almost certainly one of the old inns where travellers could not be turned away without offering them food and drink and somewhere to sleep. The inn at Totley was probably built during the time when a mill and a brewery were two of the three credentials necessary for the head of the community to be granted the title Thegn and the community to become a Vill (Village).

The name, of course tells us that it had a French influence, it comes from the time of Clovis's victory over the most formidable invaders of Gaul, after which he became a Christian and celebrated his victory by gathering a bunch of wild lilies, which we know as Iris, that grew on the edges of the Rhine and were adopted as emblems of the Frankish Crown. Many years had passed since that victory to the day when the Duke of Normandy invaded Britain when there was still the necessity for inns to accommodate the amount of travellers in this, their new homeland. However, over the years travelling had become easier through the advent of trains and the inns became obsolete as compulsory overnight accommodation and it is likely that the inn at Totley was the last to be used in this way.

When Lord Middleton sold all his estates it included the Fleur-de-Lys and it was sold to John Green, grand-father of my Great Aunt Alice who married my Great Uncle Elijah Salt and for a while lived at The Pewit, Owl Bar, before moving to Grange Terrace in the house next to the Police Station, where they both died.

Jo Rundle

Fleur Planning Applications

As we go to press, Sheffield City Council has received 2 planning applications from agents of Enterprise Inns. They relate to the demolition of the small barn that fronts onto Baslow Road, erection of smokers shelter and walk in fridge/freezer unit to rear, erection of gateposts and railings to front, provision of lighting in car park and landscaping works.

Also of concern is the potential to compromise the Public Right of Way that crosses the Fleur boundaries. The applications can be viewed and commented on by 8th July either online at www.sheffield.gov.uk (and going to the 'Planning Applications' section or type these into your internet browser:

<http://tinyurl.com/5va44oj> for the first and

<http://tinyurl.com/5wdakkt> for the second) or at First Point in Howden House. The application references are 11/01854/FUL and 11/01855/CAC.

GOLF COACHING

Golf coaching sessions at Moor View Driving Range, Bradway. The session will continue to take place on Mondays (Except for Bank Holidays) between 1pm and 2pm.

Tuition is FREE, all you have to do is pay £3 for the golf balls.

The session will continue until the end of July and is led by Activity Sheffield's PGA Pro Coach. Feel free to bring along your own Golf clubs, but we can also provide use of our Golf clubs as well.

For more details contact James from Activity Sheffield James.Milovanovic-firth@sheffield.gov.uk

Tel:0114 205 3724

Mobile: 07753 577 571

Sheffield Food Festival

Taste something new!

4 - 10 July 2011

sheffieldfoodfestival.com

Sheffield Food Festival is back for a second helping, offering you the chance to taste something new! The full programme is available to download from the food festival website on www.sheffieldfoodfestival.com. Call 0114 273 6895 or follow us @FoodFestSheff on Twitter. Food fun at events in every Community Assembly area, and the City Centre!

Restaurant, Café & Bar Programme

4-10 July

An exciting programme of special events in restaurants, cafés and bars across the city.

Festival Classroom

6-10 July

Your chance to learn from the experts at food and drink master classes and tutored tastings.

Festival Fringe and community programme

4-10 July

City Centre Weekend Extravaganza

8-10 July

SUMMER FOOD FAIRS

Following the huge success of their first three Food Fairs at Baslow Village Hall in April, May and June, Totley based food events company Hartingtons are putting on further Food Fairs over the summer. The first Fair on Sunday 10th July features 20 local producers and retailers from in and around the Peak District including Totley's very own Liberty Foods, who will be showcasing a new range of pork pies putting their unique spin on a "Great British Classic" with a range of new flavours and toppings.

There are two Food Fairs in August. The first one takes place on Sunday 7th August when the event will have a Mediterranean theme including lots of Italian, Spanish and Greek delicacies and later in the month on Sunday 28th August there will be an Artisan Food Fair. A tremendous variety of produce will be on sale at all events with free tastings and demonstrations.

The Fairs take place at Baslow Village Hall from 10.30am to 4.30pm. A full line up of stallholders can be found on Hartingtons website www.hartingtons.net and there is a link to their blog, which is regularly updated about all the events.

Chris Horne of Hartingtons says "We are really delighted that the residents of Totley supported our first three Food Fairs. One of the nice things about the Fairs is that visitors get the chance to meet the producers and hear their stories. Everyone is welcome at the Summer events, admission is FREE and you can always combine a visit with a walk in the grounds of Chatsworth House which is close by".

Fairs: 10th July, 7th August and 28th August at Baslow Village Hall. 10.30 a.m. to 4.30 p.m. FREE ADMISSION. www.hartingtons.net

Highland cattle are grazing the heathland of Blacka

Anyone visiting Blacka Moor Nature Reserve may have noticed the highland cows are grazing the heathland area again. There are 16 in total, a mixture of highland, short horned highland crosses, and x 3 small black ones (that look like calves but are 7 months old).

Heathland has developed through hundreds of years of human intervention including forest clearance and grazing. It is inherently dynamic, so grazing helps keep the heathland relatively open, which is what people love about Blacka Moor.

Cattle have numerous benefits to heathland such as: **Keeping the spread of birch, rowan and bramble under control** and conserving the open heathland character.

Helping reduce bracken re-growth following other methods of control, by trampling the emerging bracken fronds.

Increasing diversity of plants e.g. Cowsick Bog through light trampling & creating gaps where finer-leaved plants can establish.

Creating small open pools for invertebrates through trampling; this provides a food source for chicks.

Helping prevent the build-up of nutrients (by grazing off the grasses), and hence retain the nutrient-poor conditions needed by heathland plants e.g. heather & bilberry.

If you are interested in getting involved and helping keep an eye on the cattle you can join our Looking scheme.

Contact details: www.wildsheffield.com or phone 0114 263 4335. Email a.kennedy@wildsheffield.com for information.

Marcroft Family

I am writing to enquire if any of your Totley residents have memories of the Marcroft family.

My great uncle, Charles Linley ("Len") Marcroft lived in Totley and built many of the properties in the area. He was responsible for Marstone and Stonecroft developments for example and The Quadrant, where the family lived at number 14.

I never met him personally but am related to him through my mother's side of the family. She was a niece and William Henry Marcroft, her father, was of course a brother of Charles. I am in touch with a daughter of Charles, Betty, who is fit and well, aged 90, and lives in Sussex.



Charles Lindley Marcroft with 'Peggy' and trap at 14 The Quadrant 1925

We would appreciate any anecdotes or memories some of your older residents may have of the Marcroft family.

Thank you
Michael Kirby



High standard animal care at affordable prices

Dore & Totley Veterinary

Dore & Totley Veterinary offers a high standard of animal care at affordable prices ranging from routine vaccinations to advanced medical and surgical procedures, all carried out on site by our local, experienced veterinary surgeon, James Farrell.

Please call to speak to one of our friendly staff for advice about your pet, whether its general information on how to look after your new addition to the family, or concerns about an older companion growing old.

**We are here to help:
We are open
for appointments**

**Monday to Friday
8:30am – 7:00pm
Saturday 8:30am – 1:00pm**



77 Baslow Road, Totley, Sheffield, S17 4DP
0114 262 1444
www.doretotleyveterinary.co.uk



Plea for cakes

On the weekend of 2nd and 3rd July Totley will get national recognition when the garden at 16, The Grove is open for the National Gardens Scheme's Yellow Book.

As part of the opening, teas and cakes will be sold to raise money for charities supported by NGS - Macmillan Nurses among them.

It takes about 30 cakes to satisfy the demand at such a weekend!

Please would you be willing to provide a cake, or scones or buns, to help promote Totley's welcoming image and help raise money?

If so, please ring Jennie on 236-2302 or email: jennie@hadish.f9.co.uk

Park Shelter

Past and present members of the TRA Committee attended installation of the Shelter (called an 'Upton Shelter' by the supplier), into Green Oak Park on Friday June 17th. When the idea was first discussed by the committee it was agreed that funding should be sort to purchase one. The funding was not forthcoming but in May 2010 the opportunity to borrow one, on a free trial, arose from a conversation with the Police.

The committee, agreed by a majority decision to take up the opportunity. The Open Gardens scheme, run by Jennie Street, gave the proceeds of the event to TRA to be used for the benefit of youth in Totley & the committee agreed to use some of the money to install the shelter. Edwin Pocock, present vice chair of TRA, ably assisted the installation with his teleporter, saving over £300.

The trial is for 6 months & it is hoped that young, old & those in between will give it a fair trial with objective comments, passed to Amie.Rowland@sheffield.gov.uk.
Roger Hart



From left to right,
PC Kevin Marsh, Edwin Pocock, Andy Philips, Amie Rowland, both from Parks & Countryside, Neil Bunting, former TRA committee member, Cllr. Keith Hill, PCSO Katie Gavin, Roger Hart former member of TRA Committee.

Blacka Moor Volunteer Days help protect your patch and the wildlife it supports



Sheffield &
Rotherham

It's a great time of year to get out and about making the most of the summer weather whilst helping conserve your local nature reserve. Right on the doorstep of Totley and Dore, Blacka Moor Nature Reserve is only a short walk away. Come along and learn some conservation skills and give Sheffield Wildlife Trust a hand on their monthly volunteer days. Join us for the whole day or just for a couple of hours, tools, advice and refreshments are provided.

The next sessions will be bracken bashing and pulling to help conserve the heathland species and control the bracken spread. The bilberries will be ripe so bring the family along too and pick some bilberries whilst your there. It's not all hard work. Due to the success of the weekend days Sheffield Wildlife Trust are also setting up mid week volunteer days as well.

Saturday volunteer days dates and tasks are:

- **July 2nd:** Bracken control in the woodland glade
- **August 6th:** Bracken control on Lenny Hill
- **September 3rd:** Rhododendron management at Strawberry Lee Plantation
- **October 1st:** Thinning and coppicing at Bole Hill

Mid Week volunteer days will be running of the third Thursday of the month starting in August.

Sheffield Wildlife Trust would like to say a Big Thank you to everyone that have helped so far, installing benches, carrying out vegetation and footpath work and been out and about in all weathers!

The support is really appreciated and all the extra hands have made light work of all the tasks.

Volunteer days volunteer days start at 10am, and finish 3pm Meet at: Stony Ridge car park, A625 Hathersage Road, grid reference SK 278 806.

Please wear warm clothes and sturdy footwear, and bring a packed lunch

For more information phone Hannah Wittram (Community Wildlife Ranger) on 0114 263 4335.

Mark and Sally Fletcher invite
you to

The Grouse Inn

Longshaw

Sheffield S11 7TZ

Meal times:-

Mondays 12.00 to 2.30pm

Tuesdays to Friday's 12.00 to 2.30pm and

6-30pm to 9-30 pm

Saturdays 12.00 to 3.00pm and

6.30pm. to 9.00pm (drinks – open all day)

Sundays 12.00 to 9.00pm

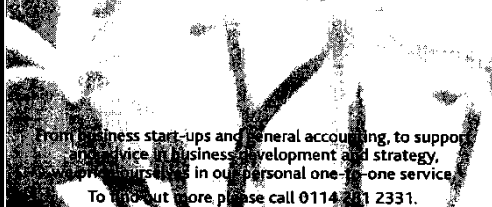
Phone 01433 630 423

R Rose & Co

Chartered Accountants & Business Advisors

Specialists at
looking after the affairs
of small businesses.

For a **FREE** initial consultation
please contact Roger Rose FCA on
0114 281 2331



From business start-ups and general accounting, to support and advice in business development and strategy, we provide ourselves in our personal one-to-one service.
To find out more please call 0114 281 2331.

213 Derbyshire Lane, Norton Lees, Sheffield S8 8SA
Email: info@r-rose.co.uk

Mens Hairdressing by Karen

at

Hair by Patricia Barber

53 Wollaton Road,
Bradway

9am to 5pm Thursday

9am to 5pm Friday

9am to 1pm Saturday

appointment or walk-in

0114 236 6247

07984 021 033

TOTLEY SHOW 2011

Saturday September 17th.

Totley Primary School

8.45am to 10.45am Entrants registration

11am to 12.30pm Judging & awarding of Certificates

1.30pm Doors open to the public (Entrance 50p, children 20p)

1.45pm Official opening

3pm Prize giving and Auction of donated items

4pm Conclusion

Entry forms available in this issue of **Totley Independent**, at Totley Library, Totley Post Office and The Ironing Parlour or at the door on the day.

Offers of help would be appreciated. There will be a planning meeting at 7.30pm Heatherfield Club, Baslow Road on Thursday 21st July

Within the photographic section we once again have "Totally Totley", the idea being to bring along your views of Totley in any medium, so let's see plenty of entries as we are sure with digital cameras these days there must be lots of shots available.

Escafeld Brass Band have been booked to play again.

If you would like to donate a gift for the Tombola stall, it would be greatly appreciated. Any donation can be left at either "The Ironing Shop" on Baslow Road or at 6 Milldale Road, Totley.

Any group wishing to have a stall at the Show, please contact Les or Dorothy Firth, 6 Milldale Road, Tel 0114 236 4190, e mail "lesanddortfirth@talktalk.net"

All proceeds after costs will be donated to Transport 17

Les & Dorothy Firth

TRA, TOG & The Show

The report of the Totley Residents Association AGM printed in the June 2011 issue of Totley Independent failed to mention that Totley Residents Association had an income of £18,000 in 2010 and that this falls way beyond the boundary of legality for voluntary associations. Charity law states that a voluntary body which has an income of over £5,000 MUST register as a charity.

I wish to inform residents of Totley, that as a member of the TRA until the AGM in May, I was one of the people who took legal advice that the TRA needed to become a charity, and we had thus all worked on a Constitution according to the Charity Commission's guidelines. The TRA in 2010 had in fact voted to become a charity and work towards that end. Like it or not, this constitution was long and complicated, but we have to realise the world has changed.

Mob rule, false rumour and false accusations ruled at the AGM and it was the most appalling example of hostile and irrational behaviour that I have ever seen in my life - and that is saying something, because for 6 years in the 1970s I was the Chair of The Gypsy and Traveller Support Group and have been on the platform at some very hostile meetings in communities where a traveller site was proposed. But never at that time did I witness as dreadful behaviour as that of certain Totley people at the May AGM.

Those among us who want to turn the clock back have been very successful in Totley, but another disastrous outcome of the vote against the TRA becoming a registered charity is that it will disqualify the TRA from funding from a whole host of funders. The TRA had already not only been turned down for funding by one

funder for having a wholly inadequate constitution, but other funders stated that since the TRA was not a charity it did not qualify for their funding. Some voices say the TRA doesn't get funding because it is not an area of deprivation. Actually, this is a spurious claim, because a well-presented funding bid, for a good cause, and fitting a funder's criteria, will succeed.

It is with regret then that I have withdrawn from being the Co-ordinator of Totley Show. I took over this role in 2009 and ran a highly successful operation making £1,000 profit, involving many children and their families, an aspect that had sadly declined previously. The reason I am not going to be involved this year is because I cannot ethically be part of an organisation which deliberately and publicly chose to flout the law. When we act in a voluntary capacity for the local community, it is essential that we are seen to act not only with probity, but within the law, and accountable as such.

Furthermore, as a result of the AGM, the Totley Open Gardeners have unanimously decided to become a separate organisation, since they also do not want to be under an organisation that chooses to operate illegally. The Totley Open Gardens Association is now a constituted voluntary body and will decide where it gives its proceeds to and is not now part of Totley Residents Association.

The tragedy of all this is that the voluntary community of Totley has become dissipated - it is now several separate organisations and not one. The strength of a community is the sum of its parts, and Totley is now in lots of separate parts.

I trust that one day Totley will come to its senses and realise that the world has moved on and they cannot live in the past - we have to accept the reality of current legislation.

Jennie Street

TRA response:

We are very concerned about Jennie Street's article regarding Totley Residents' Association.

Jennie states that the income for 2010 was £18,000 and we can quite understand why Charitable Status was required for this level of revenue.

However this year, as you will be aware from Jennie's article Totley Gardens are now acting as a separate body, as are Friends of Green Oak Park, Totley History Group and we are in discussion with Activity Sheffield about Chairbics.

Jennie refers to "Mob Rule" and we cannot understand why she would refer to Totley Residents as a Mob, in our opinion they are just good people wanting the best for Totley.

Jennie gave much of her valuable time to act as Co-ordinator of the Totley Show, however to denigrate the hard work put in prior to 2009 is unacceptable.

We understand that Jennie feels very unnerved and upset by what has happened and hope that at some time in the future she would feel able to give her invaluable support to the residents of Totley, and would like to take this opportunity to thank her.

We can confirm that the Totley Show is going ahead, thanks to core members of the community and will take place on Saturday 17th September 2011 at Totley Primary School.

The Totley show has been an important event on the TRA calendar for many years and we will ensure it is for many years to come.

Kathryn Higgins Chair TRA

TOTLEY SHOW ENTRY FORM 2011

THE TOTLEY SHOW THIS YEAR WILL BE HELD AT TOTLEY PRIMARY SCHOOL, SUNNYVALE ROAD, ON
SATURDAY, SEPTEMBER 17th. ENTRIES BETWEEN 8-45 am. To 10.45 am.

The classes for this year are as follows: -

HANDICRAFTS

1. Hand Knitted Garment
2. Decorative Cushion
3. Soft Toys
4. Tapestry
5. Cross Stitch
6. Collage, any medium
7. Greetings card

DOMESTIC SECTION.

8. 4oz. Victoria Sandwich Plain(see recipe)
9. Dundee Cake (see recipe)
10. Carrot cake
11. 5 Biscuits
12. 3 Scones
13. Apple Pie
14. Jam
15. Lemon Curd
16. Marmalade
17. Chutney

FLORAL SECTION

18. Table decorations Fresh (up to 6")
19. Table decorations Fresh (over 6")
20. Posy of flowers
21. 3 Cut Flowers of any variety in season
22. Foliage Plant in pot
23. Flowering plant in pot

FRESH PRODUCE.

24. 1 Plate 4 Eating apples
25. 1 Plate 4 cooking Apples
26. 1 Plate 8 Blackberries
27. 4 Matching Potatoes
28. 3 Matching Leeks
29. 3 Matching Onions
30. 5 Matching Runner Beans
31. 1 Plate of 5 Tomatoes
32. 1 cucumber
33. 3 Courgette
34. Largest Onion
35. Heaviest Marrow or Squash

36. Longest runner Bean(One per person)
37. 1 plate of three eggs from your own hen

ART

38. Oil or Acrylic Painting
39. Water Colour
40. Pen and Ink Sketch
41. Pencil sketch
42. Open Multi media
43. Open Multi Media
44. Reclaimed art/ sculpture
45. Sculpture any medium
- PHOTOGRAPHY (Prints only)**
46. Colour
47. Black and White
48. Computer Prints
49. Totally Totley (any medium)
- WOODWORK**
50. Wood Turning
51. Small furniture
52. Wood sculpture

CHILDRENS SECTION.

53. Vegetable animal
54. Age 8 to 12, Miniature Garden
55. Computer Art A4 size maximum for ages up to 8 yrs
56. Computer Art A4 size maximum for ages up to 9-14 yrs
57. 3 decorative buns (up to 14 yrs)
58. A Wibbly Wobbly Jelly
59. Flower arrangement in an eggcup
60. Painting- age under 5 years
61. Painting- aged 6-11 years
62. Painting- aged 12 to 14 years
63. A Lego Model aged 5 -8 years
64. A Lego model aged 9-14 years
65. Colour Photo

DUNDEE CAKE

- | | |
|--|---------------------------------------|
| 175gms.(6oz) Plain Flour | 1 rounded teaspoon mixed ground spice |
| 125gms.(4oz.) Margarine | 3 eggs |
| 125gms.(4oz.) Soft brown sugar | 125gms.(4oz) Sultanas |
| 125gms.(4oz.) Raisins | 125gms.(4oz.) Currants |
| 75gms. (3oz.) Chopped mixed peel and chopped cherries. | |
| 40gms.(1.5oz.) Blanched almonds to decorate. | |
| 2¼ level teaspoons of baking powder. | |

METHOD.. Line 7" deep cake tin. Sift flour, baking powder & spice together. Cream Margarine & sugar, Beat in eggs 1 at a time adding a tablespoon of flour with the last two. Fold in remaining flour and fruit till thoroughly mixed. Put in tin & decorate with nuts.

Bake in a preheated oven 140c:290f: gas 2: for 1 hr. then lower to 130c:270F: gas 1 for ½ to 1 hour approx., pierce with skewer to test.

VICTORIA SANDWICH

- | |
|-----------------------------------|
| 125gms. (4oz.) Margarine |
| 125gms. (4oz.) Caster Sugar |
| 125gms. (4oz.) Self Raising Flour |
| 2 eggs. |

METHOD. Cream margarine and sugar. Beat in eggs 1 at a time with a little flour. Fold in remaining flour. Divide between 2* 7" sandwich tins greased or lined with greaseproof paper.

Bake in pre-heated oven 180c:350f: gas mark 4: for 20 – 25 mins. Sandwich with jam and sprinkle top with castor sugar.

1. No entry in any class should have been in previous Totley shows.
2. Entries may be donated to be auctioned at the end of the show but this is not compulsory nor a condition upon which entries will be accepted.
3. Prize money may be collected from 1-45 p.m.
4. If less than three entries in a class Then there will be a first prize only, except in Children's section.
5. Any prize monies not collected by 4-00 p.m. will be put towards next year.
6. You may enter as many classes as you wish. (The more the Better)
7. If an entry does not fit a class, it can be left for viewing but no prize will be given and there will be no entry charge.
8. You may only collect your entries after the public viewing ends at 3-00pm.
9. Goods left after 3-30 will be auctioned

SHOW PROGRAMME

8.45am. to 10.45am. Entrants registration
11am. to 12.30pm. Judging and awarding of certificates
1.30pm. Doors open to the public **Entry 50p, children 20p.**

1.45pm. Official opening and collection of prize money.
3pm. Prize giving and Auction of Denoted Items
4pm. End of Show

Prizes First £3.00, Second £2.00, Third £1.00
Entries 50p. each

ENTRY FEE **50p.** PER ITEM

PLEASE BRING THIS FORM WITH YOU WHEN YOU BRING YOUR ENTRIES.
PUT A TICK AGAINST THE CLASS OR CLASSES YOU WISH TO ENTER.

NAME

ADDRESS.

Tel no.

Total number of classes entered.

GARDENING TIPS FOR JULY/AUGUST

Well the dry spell ended with a really good splash! A few flowers were beaten down with the heavy rain, the peonies were the worst hit; they had just come into full bloom and looked to be the best ever. I will have to stake them up as best I can (there's always something extra to do). We must be thankful for the rain - the farmers are worried I don't suppose their troubles are over yet. The lawn came up green instantly (almost) after the downpour and looks a treat; I'm always amazed how quickly it recovers from a dry spell.

The ponds are behaving themselves after all the bother we had with leaks etc., the fish have had babies so we have little black darters dashing around, and we waste an awful lot of time sitting watching them. I'm told it's very therapeutic; well that's my excuse anyway.

The birds must be feeding a lot of young ones - the food is disappearing fast; I think the pigeons must take a lot. It's nice to see the variety of birds which visit us.

My tomatoes are a bit slow at setting this year therefore I don't think I will be having my traditional first sungold - the little orange variety - on my birthday (13th July nod nod wink wink). I don't think it will be much after; it's surprising how quickly they catch up. Did you know that tomatoes are one of the fastest growing fruit (from seed to crop) that we have?

The veg garden is coming along nicely the onions and leeks should be ready in time for the Totley Show in September (17th). I hope you are getting your exhibits ready; the schedule is in this issue of the **Totley Independent**. So you will be able to plan your campaign to sweep the board with your magnificent exhibits, the committee are working hard to keep this traditional activity going despite the TRA troubles. The thing that makes a good show is for you good Totley folk to make a real effort to support the people who volunteer, we cannot have a show if you do not join in by putting your skills on show. I look forward to seeing the talents I know are in and around the Totley area so please make that extra effort to be there. I know you will enjoy taking part - I do - even if you don't get a cup or medal you will be able to see your efforts on display and argue with the judge's decision (it's all part of the fun).

It's holiday time so don't forget to arrange for plant sitters whilst you are away, you don't want to come back to a dried up mess in the garden, or to a droopy lot of indoor pot plants.

I can hear Christine calling me so I must go we are trying to make the garden at least a bit tidier for you to visit on the open gardens weekend on July 9th and 10th, I hope to see you then for a nice chinwag, and I will be able to tell you about my leek project for next year's show - WOW!!!!

FLOWERS If you lift your tulips and hyacinth bulbs now is the time to lay them in shallow trays and stand them in a cool dry airy place to dry (not in the sun). Perennials and biennials sown earlier will need pricking out into a nursery bed (in your garden not in that old cot!)

Border carnations can be increased by layering, bend over a young non-flowering shoot to ground level, make a small slit and peg it down, cover at this point with sandy soil and keep well watered, in 4-6 weeks they should have rooted and can be planted elsewhere, or potted up to use later.

The end of July is an ideal time to plant Madonna lilies, plant them 8 inches apart (20 cm) and only cover them with 2 inches (5 cm) of soil. If they push themselves up DO NOT cover them again, they like a sunny position and a good rich soil that has not been freshly manured.

Don't forget to keep taking off dead heads from flowers, thus encouraging better growth and possibly more flowers. By late August most hydrangeas will have finished flowering and will benefit from a little pruning, cut off each faded flower truss as far back as the first plump looking growth bud, remove any weak looking stems. Don't forget to give plants a feed during July and August; it really does pay dividends giving you strong healthy plants and better flowers. Ericaceous (lime hating) varieties will love a tonic of sequestrine fertilizer, especially if leaves are showing yellow patches. Watch out for mildew and moulds on plants, especially towards the end of August and deal with it as soon as it is seen, a good quality fungicide should cure most attacks if it is caught early enough.

VEGETABLES Earth up early celery and draw up about 4 inches of soil every ten days or so until only the leaves can be seen. To keep them clean you could tie brown paper round them before earthing. They should be just right for the show on Sept.17th. Don't forget it is a bit of fun and you might win a prize (see show schedule on Page 11 for entry catalogue).

Give runner beans a fairly thick mulch of well-rotted manure, keep them well watered and don't forget to leave a long specimen on for the show - longest bean gets a prize.

It is time to sow spring cabbage, sow one lot now and another in the second week in August, the later ones may be better, it depends on the weather. Scatter the seeds thinly on finely broken soil and cover lightly, water freely if the weather is dry. Make a final sowing of parsley for autumn and winter use, sow in a sheltered place, and transplant some of the seedlings to a frame if you want parsley for Christmas. Continue blanching leeks until you have about a foot of blanched stem. To help onions ripen (ready for the show) bend over the leaves just above the neck of each bulb.

TREES, SHRUBS, and FRUIT Water and mulch around azaleas, rhododendrons, hydrangeas, magnolias (grass cuttings are O.K. if they don't have weed killer on them). Dead head flowers as they fade, especially roses and buddleia. Tie in new replacement growth on rambler roses and cut old flowered shoots down to ground level. Half ripe cuttings, rooted in a shaded cold frame can be made from most shrubs and trees, though rhododendrons, clematis, honeysuckle and wisteria do better if layered.

Prune shrubs which have finished flowering. Cut back established wisteria taking out tips of young shoots at 3 or 4 leaves. In August stop feeding roses but watch out for greenfly, blackspot and rust and deal with it as soon as it is seen. Thin out fruit on apples and pears where crops are too heavy, prop up heavily laden branches. Tie in cane on trained blackberries etc. Clean up and clip over strawberry beds when fruit is finished. Summer prune apples, pear, cherry, peach, plum and blackcurrants.

Cut out raspberry canes when they have fruited. Watch out for mildew and other fungal diseases and spray with a good fungicide, do not pick fruit until the

required time is past, see the manufacturer's instructions.

GREENHOUSE and INDOOR PLANTS Feed plants, keep them well ventilated and shaded from the hot sun (we hope). Pick over plants regularly (daily is ideal) removing dead or yellowing leaves. Pot up seedlings of cineraria, primula etc. Re-pot cyclamen and start into growth. In August pot up hyacinths to be ready for Christmas. Spray pot plants with water in the morning; keep them on pebbles to increase humidity, sponge the leaves of foliage plants, except hairy species.

July and August is a good time to take cuttings, most will root in a sandy compost, especially pelargoniums, and fuchsias. Ventilation is the order of the day for greenhouse owners. I find my automatic vent openers invaluable, they can be set to suit the plants all year round, and the doors have to be left open when it is hot. I use a piece of wire netting across the doorway to keep out cats etc. Watch out for greenhouse pests, spider mite, greenfly etc., they love the warmth of a greenhouse. Pot on seedlings which were planted earlier. Continue to remove side shoots on indoor tomatoes, don't forget melons and tomatoes need fertilizing to make fruit set (it is a real sex orgy this gardening game!)

Keep feeding and watering to get the best out of your plants.

LAWNS Set mowers high if the weather is dry, take the grass box off so that fine clippings act as a mulch to keep in the moisture. At the end of August seed can be sown in a prepared bed, keep well watered.

Have a good holiday. Come back refreshed and ready for the Totley Show on 17th September. See you there

Tom

Help protect your local wildlife



As most people who visit Blacka Moor know, it's a haven for wildlife. At this time of year, during the bird breeding season, there are ground and scrub nesting birds present on site. This means extra care must be taken so as not to disturb nests. Eggs and young will soon die without protection from their parents.

Most people are aware of the need to keep their dogs under control from 1st March to 31st July. Legally, you do not have to use a lead on public paths but we ask that dogs are kept under close control. This means ensuring dogs stay on the actual path route and within sight, and respond to being called. If you can't rely on your dog's obedience, put it on a lead. This is especially important on the heathland and pastures.

There is real potential for nightjar to nest at Blacka Moor, and there is a good variety of birds nesting, but with the presence of dogs running across the heath and pastures during breeding season there is little chance of them breeding successfully.

For more information phone Annabelle Kennedy (Reserves Manager) on 0114 263 4335. For more information about dogs and the law, go to www.countrysideaccess.gov.uk

Protecting Wildlife for the Future



The Crown Inn

Tony and Julie at

The Crown Inn

Welcome you for

Good Quality, Home Cooked Food

Tuesday – Friday

12-2pm & 5.30-8pm

Saturday & Sunday

12-3pm

Come & join us for

Good Beer, Good Food & Good Music

Tel 0114 236 0789

CLOSED SUNDAY EVENING

Visit our website: www.crown-at-totley.co.uk

LIVE MUSIC

5th July

HIGHWAY CHILD

19th July

TBA

2nd August

EMERALD

16th August

FRANK WHITE



FORTHCOMING EVENTS

WEDNESDAY JULY 20TH

VISIT TO BEAUCHIEF ABBEY

MEET AT THE ABBEY AT 7PM.

WHEN WE WILL BE SHOWN AROUND THE ABBEY

THIS WILL BE FOLLOWED BY A WALK AROUND THE GROUNDS AND A TALK BY TONY SMITH.

PLEASE WEAR STOUT SHOES.

PLEASE NOTE –THERE IS NO MEETING IN AUGUST.

WEDNESDAY SEPTEMBER 28TH

TOTLEY LIBRARY 7.30PM

LEAD MINING IN DERBYSHIRE

(WITH MENTION OF SMELTING IN TOTLEY)

TALK BY JIM RIEUWERTS

ALL SAINTS CHURCH, Totley Hall Lane.

The Reverend David Rhodes

David Rhodes is to retire as Vicar of Totley All Saints on 31st August. During his ministry in Totley, David has worked hard to encourage, inspire and instruct to equip the church community to “Love God, love one another and love a broken world”. David is a man who has not been afraid to stand up for Christian value whilst at the same time seeking to present the Christian faith in an accessible way that is relevant to modern day life. Much of what David does goes unseen and unsung but he is a man of great kindness and compassion. David has devoted his life to the service of God and to serving the needs of others. He has encouraged others in their faith, challenged us to be bold and unashamed to share the love of Jesus with others. Of course as David retires and moves away from Totley, the church also loses his wife Sally. Sally has played the organ, introduced new and exciting worship music, encouraged and supported young musicians to lead worship and the church owes her a huge debt of gratitude for this and all that she does to support David’s ministry. Sally is not retiring, however, so you may still see her at school where she will continue with her music tuition. We will miss both David and Sally and we wish them both every happiness for their future and pray that David will have a long and well deserved retirement. David’s last service will be at 10.00am on Sunday 17th July.

Liz Hayden and Steve Spendlove.
Churchwardens.

The pattern of services will remain as before.
Morning Service 10.00am
Evening Service 6.30pm.

Once David has retired the church enters a period of interregnum. The churchwardens (supported by the PCC) are responsible for the church during this time. Please contact Liz Hayden 236 4944 or Steve Spendlove 236 1752.

As we approach the end of the school term and the beginning of summer holidays here is a student’s (and perhaps a teacher’s) prayer.

Dear God,
School’s out!
One more year over and
I’m so ready for a break.
If I had to take one more test,
if I had to eat one more whatever-it-is
from the school cafeteria
I know I’d scream
very loudly.
Thank you for getting me through another year.
Thank you for times to stay up late –
and for times to sleep in!
Thank you for a chance
to just take it easy for a while
and to get some much needed rest
Thank you for summer holidays.

Summer Smoothie

115g blueberries
115g raspberries
150ml apple juice
2tbsps natural yoghurt
some crushed ice
extra raspberries and blueberries to garnish.

Pop all ingredients in a
blender and whizz until
smooth. Pour into a glass
and garnish with extra
fruit.

Add a scoop or two of ice
cream if you like.



Dorothy Firth

Book Reviews

Man's impact on the landscape is an ongoing story, part of all our histories. **The Making of the British Landscape** by Francis Pryor, now published in paperback, helps us to understand the process, interpret what we can see, and what it tells us about the past. This is the changing story of Britain from prehistory to the present day, as it has been preserved in our fields, farms, roads, buildings, towns and villages, mountains, forests and islands. Historian, archaeologist, farmer, familiar face on Time Team, Francis Pryor explains how these clues interlock to tell the fascinating history of our land and how people have lived on it. The book covers both urban and rural landscapes and is full of pictures, maps and reference information. Despite its length, the book is an easy read that will permanently change the way you see your surroundings. Published by Penguin in paperback, 800 pages, price £14.99 ISBN: 978-0-141-04059-2

Wherever you go in the Derbyshire countryside you will find history under your feet and all around you. Now in its second edition, **Walks in the ancient Peak District** by Robert Harris details 28 walks, from 4 to 9 miles long which will bring you into contact with the different periods of the area's history. From stone carvings on Gardom's edge, past stone circles, burial mounds and fortifications. Each walk is circular with details of starting point, length, and time necessary. There is a sketch map for each walk, a description of the route and what you will see along the way, complete with pen and ink drawings of interesting features. There is no better way to understand our past than to see things first hand. Published in paperback by Sigmamapress, 200 pages, price £8.99 ISBN: 978-1-85058-859-7

For many people, written history starts with the Domesday Book, not because it is the earliest written work, far from it, but because it is the first attempt at recording population and resources across the country, and in terms that can be related to places today. So if you are interested in history **Domesday Book, Derbyshire** with the original wording and recent translations is irresistible. Not only does it record the situation at a specific time, 1086, but it refers to earlier land values, so indicating in many cases the impact of the Norman conquest on ordinary folk. Thus Holmesfield is held by Walter of Aincourt and valued at 20s against 40s before 1066, while Peaks Arse (around Castleton) is valued at 50s against 40s before 1066 no doubt due to the addition of Peverel's Castle. Published by Phillimore & Co Ltd price £10.80

Cycling in the Peak District is a new guide to cycling in and around the Peak District National Park, on road or trail bike. The area is a popular cycling destination with its network of quiet lanes, gentle off-road trails and stunning upland views just right for two-wheeled exploration. The guide covers 20 day routes and one multi-day cycle Tour. Routes are graded from Easy to Hard according to a combination of distance, gradient, terrain and ascent. All are described in detail, with information about nearby refreshments, cycle hire, public transport and parking, and illustrated with OS maps and route profiles. Appendices cover cycle hire outlets, car parks and public transport in detail as well as outlining a basic toolkit and basic tips on bike maintenance and repairs. Published by Cicerone in paperback, 220 pages, price £12.95 ISBN: 978-1-85284-630-5

A Grim Almanac of South Yorkshire by Kevin Turton is a collection of stories from the county's past, some bizarre, some fascinating, some macabre, but all equally absorbing. Revealed here are the dark corners of the county, where witches, body snatchers, highwaymen and murderers, in whatever guise, have stalked. Accompanying this cast of gruesome characters are old superstitions, omens, strange beliefs and long-forgotten remedies for all manner of ailments. Set out by month, date and year the Almanac's pages give a fascinating glimpse of life in the not so distant past. Comprehensively illustrated, this is a book to dip into - on a daily basis! Published by The History Press in paperback, 138 pages price £14.99 ISBN: 978-0-7524-5678-2

One of the most magnificent great houses of the Elizabethan period, Hardwick New Hall was built in the 1590s by Elizabeth, Countess of Shrewsbury ('Bess of Hardwick'), and stands in stark contrast to the ruinous remains of the Old Hall, also built by Bess in the 1580s. A new book **Hardwick A Great House and its Estate** by Philip Riden and Dudley Fowkes, looks at the history of both the halls and the wider estate, the changing fortunes of the Cavendish family, and the growth and eventual decline of the coal mining industry in the area. With over a hundred photographs and illustrations, many in colour, this book is a must for all those interested in finding out more about the social and physical history of this great hall and its surrounding villages. Published by Phillimore & Co Ltd, 198 pages, price £14.99 ISBN: 978-1-86077-544-4

Walking with kids can be fun or a nightmare depending on how you choose to approach it. To our rescue comes a new book **Walking with Kids** by Angela Youngman, offering a collection of games and activities which will make taking kids for a walk fun, entertaining and educational. Children like to have reasons and things to do when they go for a walk. Talking about tracking wild animals, hunting minibeasts or searching for the Green Man can encourage a burst of enthusiasm and a dash for hats and coats. It just needs a little bit of advance thought and planning. This book aims to help with lots of ideas and suggestions for activities, games and things to do while walking. The book's illustrations are by Angela's own artist daughter, Karis. Published by Sigmamapress in paperback, 128 pages price £8.99 ISBN: 978-1-85058-887-0

We are all familiar with the importance of watermills and water power in the development of Sheffield and its industry.

Step over the border into Derbyshire and you will find a similar picture. In his book **Water Mills on the Derbyshire Wye**, Alan Roberts traces the significance of water mills along the length of river Wye. From the Otter Hole corn mill at Burbage to Rowsley fulling mill, this single river enabled the

processing of grain, timber and lead ore, the production of cotton, combs and ornamental marble. Averaging more than one per mile over the entire length of the Wye, water mills played essential roles in their own localities influencing development and reflecting changes in technology or the wider market place. Each mill is listed on a table of locations complete with grid references. The Domesday Survey gives mills at Bakewell and Ashford, while later records relate to the strict control of operations over the ensuing centuries, involving Lords of the Manor, the Church and even the monarch. Many sites can be visited today and one at least has been converted into a restaurant in Bakewell, with water still rushing by under a glass floor. The book, illustrated with some 50 photographs, drawings and plans, is published by the author in A4 format, 45 pages price £9.50 incl p&p and available from 01298 24952.

John Baker

Looking for a Healthy Weight Loss Solution ?

A fast and easy way to prepare a healthy meal in a glass for under 220 Cals.



Your Independent Herbalife Distributor is:

Gillian (0114) 236 3992

www.InShape4u.com

feel the difference!

HERBALIFE

Chemical Yard Memories

Now that I have 'discovered' your magazine I am eager to contribute some more of my memories! The response from my childhood memories of The Chemical Yard has been very satisfying and I am pleased that so many people have read and enjoyed my story.

Before I embark on another epic story I thought I would write a short reply to some of the comments and provide other little snippets of information.

Many people have commented that I did not write about the Siddall brothers. They were called Tommy and Freddie and they did live in The Chemical Yard possibly during the late 1930's early 1940's. My memories are from the mid 1940's to late 1950's and during this time the two brothers were living on Queen Victoria Road with their sister Mrs Sharpe, her husband and daughter Jennifer. Jennifer was just a few months younger than me and we were good friends. Their house overlooked our cottage. As Mike Roberts says in his letter in your June issue, Tom and Fred were gentle, kind and helpful. I couldn't have used better words to describe them! My mum was especially fond of them and she would find little jobs for them to do on our tiny smallholding. She would reward them with cigarettes for their help. Sadly, some children did tease them but our mum always taught us to treat others with respect and she wouldn't have tolerated us making fun of them. We just knew that they were a bit different to us, that's all. They, in return thought a lot about my mum, she was always kind to them. One day, they were helping us to tidy the garden and they were filling the wheelbarrow with weeds and overgrown branches etc. They worked hard and were eager to please but my mum was upset to discover that one of them had ventured into the greenhouse and pulled out her carefully nurtured grape vine and tossed it into the barrow where it lay irretrievably buried under all the other garden waste!

I am so pleased that Mike describes the blacksmith and gives his name as Mr Bradbury who lived on Queen Victoria Road. I can distinctly remember watching the blacksmith at work; I recall the heat from his fire and the loud ringing sound as he hammered out the red hot glowing horseshoes on his anvil. I instinctively knew that I would be allowed to watch as long as I didn't get too close or make a nuisance of myself and I was fascinated. I must have been a very small child and I wonder when Mr Bradbury retired. I think that Mr Marcroft bought the premises when their role as a blacksmiths ended. My step-gran told me that the horses which were brought to be re-shoed had often been walked for a long distance and they would be taken into the river which was similar to a shallow ford at this point so that their feet could be cooled down. Mike describes a sledge made for his family by Mr Bradbury. We also owned a large sledge, it was heavy and had strong iron runners, I wonder if this was one of Mr Bradbury's creations too.

On the map of The Chemical Yard, which I attempted to draw as accurately as possible, I didn't quite get the river in the right place as it ran directly behind the blacksmiths and Marcroft's Builders yard.

I find so much of interest in the **Totley Independent** and I loved the picture of the cottages in Totley Hall Lane which was featured on the front page of the May issue. I remember Mrs Stubbs very well. She was a dinner lady when I attended Totley All Saints School during the 1940's. Her son, I think his name was John, was in my class. He was off school once for quite some time and our teacher told us that John was feeling lonely and isolated and that he was missing seeing all his friends from school. Our teacher thought that it would be a nice idea and a friendly gesture if some of us would visit him. I went to their cottage and Mrs Stubbs kindly invited me inside and showed me into John's bedroom where he was tucked up in bed looking lost and forlorn. Both John and his mum seemed pleased and grateful to have me visit them. I don't know what his illness was but I trust that it wasn't contagious!

I also enjoyed reading Jean Smithson's contribution to your June Issue. I always knew the woods by the name of Gillyfield and, the first time that I saw the name in print, I thought that the printers had got their facts wrong! I remember walking through the woods in early springtime, they were full of bluebells

and the sun's rays shone through the baby green leaves of the beech trees, I thought I was in the Garden of Eden. I recall seeing the remains of the swimming pool and wondering why it was there. I would often go for walks all by myself or often accompanied by one or more of our dogs. One of my favourite pastimes was jumping over the river just as Jean describes and I would always have friends with me on those occasions. One day, we came across a large, square piece of stone which was partly in the river, partly on the riverbank and partly buried. We examined it with curiosity and thought that some of the writing on it was similar to Roman lettering. When one of my friends suggested that it might be a headstone from a grave we hurriedly left and never went back to it again. I wonder if this was by any chance the milestone which Jean mentioned?

I only intended to write a few short words but, finally, I have to mention Tommy Barber as both Mike Roberts and J W Abson have mentioned him in their letters to your magazine. Others have asked if I knew him and I understand that he was quite a well-known character for various dubious reasons. Well, he did indeed live in The Chemical Yard. My step-gran was his mother and his father was my maternal grandfather who I have only recently discovered was also called Thomas. My grandfather had 5 children (one of them being my mum) with his first wife, Hannah. Hannah died and granddad married Ada, my step-gran. Together, they had seven more children and it seems a shame that, out of all my grandfather's children, it is only my Uncle Tom who is remembered so well. The rest of his siblings grew into hardworking and respectable people who were a credit to the local community. I am beginning to realize that he must have been the black sheep of the family. When speaking to me or writing about him people have been guarded and discreet, they probably know more about him than I do as I only knew him well when I was a child and rarely saw him in later years. Today, in this era of open-mindedness and acceptance, his behaviour might not seem as scandalous.

My step-gran was a lovely mum and grandma and the people who knew her respected and admired her honesty and down-to-earth attitude. She was what was then known as a 'grafter', her home was spotlessly clean and she was a good cook. Her life hadn't been an easy one but she had dignity and a pride in her appearance. She worked as a cleaner at

Gratton's shop on Totley Rise and as a cleaner at Mrs Gratton's home.

One incident which highlights my childhood naivety was when I was sent on an errand one day to Gratton's. I was about 9yrs old and as I walked along the Back Lane holding on tightly to the money I had been given, I kept repeating to myself the name of the product I had been asked to purchase. I reached the shop and stepped inside; even though the shop was only small it was always staffed by several assistants. No self-service in those days! One of the assistants came to serve me. "Please may I have a jar of Pond's vanishing cream?" I asked politely. I felt smugly proud that I had remembered the purpose of my errand but my pride and confidence swiftly vanished as she held out two jars and asked which size I wanted. "I don't know" I said. One of the other assistants came over to help. They checked my money, I had enough to buy the larger jar so we didn't know if I should buy that one or take the smaller one and some change. Seeing my bewilderment, one of the assistants asked in a gentle voice, "Who is it for Anne, is it for your gran?" When I answered her question I was even more bewildered as all the assistants looked embarrassed, they exchanged knowing looks and put their hands over their mouths to try and still their nervous laughter. I had replied with the total honesty and innocence of a child, "No, it's for my Uncle Tom!"

Enough said I think!

Anne White (Russell)

Chemical Yard

I read with interest memories of the Chemical Yard by Anne White in issue 342 of the Totley Independent. My name is David Lee and like Anne was born in 1941 and went to Totley All Saints School.

I was friendly with the Nicholson family at that time and can remember playing in the river outside the cottages with them and either Anne or Audrey Russell. I am not sure which perhaps they could enlighten me! We used to catch small fish putting them in glass jars filled with water one of these fish I remember was named a "BulleyHead".

One strange thing I remember was a Jaguar car parked up in the Chemical Yard only a few years old which would have been in my opinion worth a considerable amount of money at the time of its abandonment.

In those days very few people had a car at all let alone a Jaguar! It was being slowly vandalised and used as a plaything by local children. How it came to be there and who had owned it I never knew, does anyone know?

Just behind the car there was a large tree high up on the embankment to which we had tied a long rope which we would all swing from.

Times were happy then except for a terrible accident when one of the twin boys of the Nicholson family named Eddie was knocked down and killed on Totley Rise at a very young age.

I never found out why the place was called The Chemical Yard and in 1958 we moved up to the North of England and so lost touch with the whole thing.

I returned to Sheffield in 1978 twenty years later by which time it had radically changed, but I still maintain warm memories of that bygone age.

David Lee

262 0890

Bee Buddies is a buzzing success

Sheffield's air is abuzz with 2 million honeybees introduced by our Bee Buddies project. The 12 month project set out to address the dramatic decline in UK honey bee numbers over the last few years. The British Beekeepers' Association estimate that one-third of all honeybee colonies were lost last year, and that if positive action is not taken immediately, Britain's honeybees will disappear by 2018.

The project introduced 35 new domestic bee hives to the city – situated on Sheffield's urban spaces including allotments, museums and rooftops to demonstrate that bees can thrive in underused city locations. The hives were used as an educational tool to train a new generation of beekeepers. They were managed by the local community in partnership with Head Beekeeper Jez Daughtry, facilitating knowledge and skills transfer.

The project has delivered over 20 educational events to schools and the local community, engaging over 400 children and 100 adults. The 2-day Introduction to Beekeeping courses attracted a diverse range of attendees now keen to get started with their own hives.

Over 10 local primary schools received education sessions from the Head Beekeeper which included honey tasting and beeswax candle making. The bees provided an excellent way to engage children with environmental issues, including current hot topics such as climate change and the origins of foodstuffs.

Gail Hudson from Springfield School commented "*The beekeeping session was a great success, capturing the imagination of pupils and children alike. We have now created a bee friendly area within the school grounds using the bee seed mix produced through the project. The sessions were well delivered and featured engaging activities, and greatly complemented the Eco Schools programme.*"

Over 20,000m² of foraging habitat have been planted in Sheffield's back gardens through the specialist seed mix created as part of the project. This will replace bee habitat lost to development, and help to ensure colonies have enough food stored to survive winter.

The legacy of the project lies in the re-establishment of the Sheffield Beekeepers Association, which will offer long term support and advice to local beekeepers. Educational resources established through the project, including the Pocket Guide to Beekeeping and a Teachers Resource Pack are available on request from Groundwork Sheffield.

Gillfield Wood Update

A practical conservation day was held in the wood on Sunday 5th June. The metal gate, at the top boundary, was replaced with a wooden one, which blends in very well with its surroundings.

Also, on the 8th and 9th June, some volunteer workers from the Works and Pensions Dept. at Sheffield City Council, with the help of a Countryside and Parks ranger, put in some new wooden benches and drainage channels, at various locations, along the main footpath through the wood.

The next meeting is on Tuesday 26th July in Totley library at 7pm.

All are welcome.

Dave Gash

**ATTENTION
ALL WOOD BURNING AND MULTI-FUEL STOVE OWNERS**

Are you looking for an environmentally friendly fuel for your stove?

Waste Wood Briquettes are made from waste wood products that would otherwise be sent to landfill. You can also use our briquettes on your Stove, B.B.Q. or Chimenea.

PLEASE VISIT OUR WEBSITE
WWW.WASTEWOODBRIQUETTES.CO.UK

OR CALL 01298 872 896
FREE DELIVERY IN YOUR AREA

LEARN WITH LOUISE

Patient Female Driving Instructor

Competitive Prices

Loyalty Bonuses Available

Phone : 0800 954 5686

Mobile : 07792 018975



**For
Windows
With Style**

Sheffield Factory Showroom

**106 PROSPECT ROAD
HEELEY, SHEFFIELD**

**Sheffield (0114) 258 5496
Rotherham (01709) 512113**

**LOOKING FOR A HOLIDAY
IN JULY / AUGUST**

**VILLA AVAILABLE IN S.W. PORTUGAL
SLEEPS 4 / 5 IDEAL FOR FAMILY HOLIDAYS**

Tel : 0114 236 2456



G9 Design

Architects & Design Consultants

- Provision of full architectural services from sketch proposals to final completion certification
- Planning Applications & Building Control Approvals
- New Build or Extensions
- Domestic or Commercial projects
- Complete client commitment

**Gary Grayson
5 Newfield Lane,
Dore,**

Sheffield S17 3DA

Tel: - (0114) 2352335

Mobile: - 07976431740

Email: - gary@g9design.com

**Arb Registered
RIBA Chartered Architect**

MOGGY MAID



Gail Kitchen: 07986473415

Does going away from home mean your cat is sad and unhappy?
Does a trip to the cattery scare your cat *not to mention your wallet?*

WORRY NO MORE!

MOGGY MAID is on hand to feed, love and provide everything your cat needs in the relaxing comfort of its own home.

As we cat-lovers know, unfamiliar sights and smells can stress your cat, whereas leaving them in the familiar surroundings of their own home carries less worries, for your cat and for you.

If only for a night, weekend, or a month; holiday, Christmas or any time of the year, **MOGGY MAID** is here to help **LIGHTEN YOUR LOAD**

We promise no mischief allowed!

In a professional manner and with quality service, you can ensure individual care and attention, whilst you relax away from home.

We haven't forgotten the rest of the family; mice, rabbits, budgies, goldfish, etc will receive care and affection too.

LOCAL FRIENDLY SERVICE

From £5 a day

**For more Information, contact Gail Kitchen on:
07986473415 5 Ullswater Place, Dronfield Woodhouse**



**Hatha
..YOGA CLASS..**

Totley and Ranmoor

**For more information or to book a place call
RACHEL on (0114) 236 9943**

BWY Qualified Teacher

**BODY, MIND & BREATH
Enjoy the union of yoga**



Looking for designer labels?

Let our unusual Vision Plan help you pay for them and much more!

Offering all the benefits of 35 years' experience of South Yorkshire's largest independent firm of opticians.

- Friendly, qualified staff
- Eye examinations
- High-tech diagnostic retinal camera and MacuScope
- Wide choice of spectacle lenses, contact lenses and stylish frames
- Special offers



ASK FOR A
VISION PLAN
LEAFLET

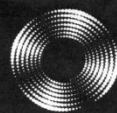
GUESS DIESEL GANT
EYEWEAR

POLICE EMPORIO ARMANI

Visit our website and make your choice of designer frames at one of our practices including 63 Baslow Road (tel: 236 4485) and our extensive new premises at 634 Abbeydale Road (tel: 255 6554)

www.mko.co.uk

Entrust Electrical



For all your electrical requirements in or outside the home you can trust **Entrust** to do it right!

- ✓ Full or Partial House Rewiring
- ✓ Additional Sockets, Switches, etc
- ✓ Energy Efficiency Enhancements
- ✓ Contemporary & Classical Refurbishments
- ✓ General Electrical Maintenance & Repair
- ✓ Homebuyer Electrical Safety Surveys
- ✓ Telephone and Computer Data Points
- ✓ Garden, Pond & Other Outdoor Electrics
- ✓ Security Lighting & CCTV



City & Guilds
Qualified

(0114) 2352084
07935 250814

www.entrustelectrical.co.uk

Old Hay Close, Dore, S17 3GP



Shepley Spitfire

56 Mickley Lane, Totley Sheffield - S17 4HE 0114 236 0298

Mon to Sat All Day 2 meals for **£8.95**

Served everyday 11am until 9pm

Succulent Sunday Lunch only £5.99

Quality Cask Ales

Quiz Night every Tuesday from 9:30pm

The Home of Big Fish Friday!!

Beer battered Cod fillets, Chips and Peas Two for **£8.99**

Eat in or Takeaway

FOR THOSE OF YOU WITH A LITTLE APPETITE

WE HAVE INTRODUCED A SMALL

PLATES MENU FROM **£2.49**

ALL DAY EVERYDAY



Find us on
Facebook

love good food love your local

"need help in your garden?"

...we can help *you*

the
ABBEYDALE
gardeners

Kevin and Mark from the recently closed Abbeydale Garden Centre, have started their own Garden Services Business.

Kevin Hunter 07818 20 12 42
Mark Naylor 07739 75 23 19

"give us a call, no job too small."

Music Tuition



Piano • Keyboard • Flute • Singing
Guitar (rock, metal, blues, jazz, funk, pop, folk)
Music Theory • GCSE work

Music graduates, each with 25 years
teaching and playing experience

All ages, beginners welcome.

Exam work or just for fun!

Call Mark or Karin

0114 237 4853 & 07981 888352



FourSeasonsCare^(UK)

Are you in need of a little help and support within
your own home? The older we get the more help we need
to enable us to live a more independent life.

Personal Care • Medication • Domestic • Sitting Service • Social and Leisure activities

To find out more call Sue 07753 840 097 Pat 07967 927 263
or visit www.fourseasonscare-uk.com

For reference from an existing client please call 0114 2366891

HEARING AIDS

MAURICE NAYLOR FBSHAA RHAD is your
local hearing aid specialist and at your
request will test your hearing in your own
home, free of charge, and if needed you can
try a custom made aid for four weeks
without obligation to purchase.

Tel : 262 0010

In the ear digital from £495



Time to change
your Accountant?

AIMS ACCOUNTANTS
FOR BUSINESS

Invest a moment and find out what we offer ...

- Individually Structured Fees agreed in advance
- Complete Accounting and Tax Solutions
- Local Presence and National Strength
- Cost Effective Fees and Cash-Flow Benefits

For your free initial consultation with your local Dore based AIMS Accountant contact:



Mark Randall BA (Hons) FCA
0114 327 8922 / 07908 592 007
E: mark.randall@aims.co.uk
W: www.markrandall.aims.co.uk

J Barlow t/a

Horizon Electrical

*Faults, Rewires, Sockets, Lights,
Cooker Points, Electrical Showers,
Phone Points, Security Lights*

No job too small

Fully qualified with friendly advice

Ring Totley 236 4364 or
Mobile 07772 483154



Your local Rose's Bread stockist

Coffee Shop now open

Monday to Friday 8am to 4pm, Saturday 8am to 1pm

51/53 Baslow Road
Tel: 236 4238

MALLORN

ROOFING CONTRACTORS

REROOFS • ROOF REPAIRS
FLAT ROOF • GUTTERING

0114 235 6002

07853 350085

7 DALEVIEW ROAD, BEAUCHIEF

BRADWAY INSTALLATIONS

Kitchens, Bathrooms.....and everything in
between

- Complete Kitchens - Installation or supply and installation
- Kitchen Refits - Replacement worktops/sink/hob etc. Worktop / cabinet repairs
- Bathrooms - Cloakrooms - Domestic plumbing - Tiling Laminate / Vinyl flooring

All work undertaken is fully insured and guaranteed

Ring Peter - 0114 236 5995
Mobile - 07766 411355

SLIMMING WORLD

10 WAYS TO MAKE SURE IT WILL BE THE LAST TIME LOSING WEIGHT IS YOUR NEW YEAR RESOLUTION. THIS TIME MAKE IT LAST FOREVER

1. Focus on your weight loss goal and prioritise it.
2. Be sure you really want to lose weight for yourself. Doing it to please someone else may only lead to short term weight loss.
3. Take advantage of all the group support at your local Slimming World class. Even if you are not a 'joining in' person, you'll be surprised how motivating it is.
4. Accept that you will have ups and downs in your weight loss journey, and be forgiving of yourself if you hit a difficult patch.
5. Listen to your 'inner script' and make a conscious effort to talk to yourself in a positive, encouraging way.
6. Keep up your interest in your healthy eating plan by trying new foods, new recipes, and new ways of using your Sins. This will help you avoid getting in to a dieting rut which can be boring and demotivating.
7. Be honest with yourself about what you are expecting from your weight loss and how you are getting on with Food Optimising week by week. People who set unrealistic targets for weight loss or body shape are more likely to give up than those who set achievable targets and share their ups and downs.
8. Go back to your class even after (especially after) you've had a weight gain. You will not be judged, just helped and supported.
9. Keep setting new goals and rewarding yourself for milestones until you reach your target weight, and afterwards!
10. Don't put your life on hold until you've lost weight. You can still enjoy life and lose weight. Think of your dreams and ambitions and bring them to the fore. The positive feelings you get from starting to 'live a little' can only help your motivation and your weight loss.

Group details:

Bradway Annexe now at St Peter's Church, Greenhill Roundabout, S8 7FN Thu 5pm & 7pm

Dore Old School, Tues 5.30pm

Tel: Alison Murphy 07815 046569 for further details

Heatherfield Club, Baslow Road - Mons 7.30pm

PhysioFOCUS

at Totley Rise Dental Practice
85 Baslow Road,
Sheffield, S17 4DP



Physiotherapy treatment available for:

- Back and neck pain
- Sports injuries
- Sprains and strains
- Joint and muscle pain
- Arthritic pain
- Whiplash
- Repetitive strain injury
- Headaches

Appointments: 0114 2360333

Also available:

- Pilates classes
- Pilates 1-2-1
- Golf Fitness Screening
(as used by consultants to UK, European and Australian PGAs)

For more information please call:

Emer on: 07792 422909

Rachel on: 07956 908454

APPLE LANDSCAPES and APPLE FENCING

www.applelandscapes.com

QUALITY SERVICE AT AFFORDABLE PRICES

Patios • Paths • Walling • Dry Stone Walling • Drainage Work

• Indian York Stone Paving • Railway Sleeper Beds

Garden Tidy Ups etc. No job too small

Fencing & Gates Supplied Only

or Supplied & Fitted

Only Quality Materials Used

FULLY INSURED

Call for free quote

01246 237505 • 07782 167540

Would you like someone to

Type letters? Pay bills? Help record family memories?

Sort and file papers? Prepare an inventory?

Anything else ???

Then you should call

Secretarial and Administrative Services

Swift, efficient, confidential service at your home.

Pay-as-you-go.

Ring us on 0114 235 0071



Tel/Fax: (0114) 255 4689

Mobile: 07831 802539

TRISTAN SWAIN

LANDSCAPING AND MAINTENANCE

UNIT C4

Sheaf Bank

Business Park

20 Prospect Road

Sheffield S2 3EN



**B.K. JEAVONS
PAINTER & DECORATOR**



Interior
Exterior
Decorating
No Job too
small

Tel: 01246 416484

and mobile 07882 278306

**M. Scriven
(FRUITERAMA)**

MARTIN SCRIVEN

**HIGH CLASS FRUIT
& VEGETABLES**

37, Baslow road

Tel. 236 7116

Orders Delivered





GWS

Technology Solutions



PC Problems/ Repairs/ Servicing No Job Too Small
Wireless & Internet Setup New PC's & Upgrades
PC Setup/Data Transfer Safe PC Disposal Tuition
Software/Hardware For All Your PC Needs

Guy Senior

Phone: 0114 2352662 Mobile: 07890030453

Email: guy@gwstech.co.uk

Web: www.gwstech.co.uk

GWS, 5 Conalan Avenue, Bradway, Sheffield S17 4PG



253 Baslow Road, Sheffield, S17 4DU
Tel: 0114 2360 583 Mobile: 07801 346 455

R.M.M BUILDING SERVICES

25 YEARS EXPERIENCE

All types of building work carried out including- Drop kerbs, block paving (drives, paths, etc), extensions, general building repairs and maintenance.

Phone Rob on- Mob- 07906108567

Home-2352190

**Activ
Physiotherapy**
and sports injury clinic

@ Synergy,
162 Baslow Road,
Totley,
Sheffield, S17 4DR.

**The Official Physiotherapy clinic for
the Sheffield Steelers Ice Hockey Team.**

Treatments available for sports injuries, back & neck pain, joint problems, muscle & ligament strains, repetitive strain injuries, post operative rehabilitation, headaches & acupuncture.

Clinic registered with major insurance companies, can claim through the Westfield scheme.

Ring Andy for more information:

0114 235 7845 or 07901 968549

R.S. HEATING & BUILDING CO

EST. 1971



HEATING DIVISION:

Experienced Installers of condensing, combination and regular boilers. Systems fully guaranteed. Complete after sales service. Also Bathrooms, showers and small plumbing works.

BUILDING DIVISION:

Loft conversions, House renovations including general building, joinery, plastering, electrical decorating etc.



13 Overcroft Rise, Sheffield, S17 4AX

Tel:- 0114 236 4421

Reg. Office:- 62 Machon Bank, Sheffield, S7 1GP

Te:- 0114 2559425

Fax:- 0114 255 9431

Email: enquiries@rsheatingandbuilding.co.uk
Web: <http://www.rsheatingandbuilding.co.uk>

Dronfield Landscapes



Gardens cleared and maintained, Lawns mowed, Turfing, Tree felling & pruning, Hedges trimmed & reduced, Pond maintenance, Fencing etc.

for free quotation call

Chris on: (0114) 2746158 Mobiles: 07976072785 or

Richard on: 07789497104

8am-6pm mon-fri

HazelBarrow Farm, Norton S8 8BA

Nigel Watson

Carpenter and Joiner

New Kitchens, replacement worktops, doors, locks, floors, architraves, skirting boards, stairs, stud walling, boxing off etc.

No job too small

For a reliable, quality service

Tel: 0114 236 4778

Mobile: 07971 528149



Got a computer?

Having Problems?

Is it running slow? Stops responding?
Having problems running the latest games
or applications? Broadband installation?

Give me a call!

I'm available for home visits at any time including evenings and weekends. I can also suggest upgrades to improve performance, or even build you a system to your specific requirements.

Phone: 0114 2472619 Fax: 0870 7060080

Mobile: 078 17464703 Email: service@timbrown.plus.com

Tim Brown

Building,
Installation,
Upgrading and
Troubleshooting
Computer
Systems
Over 25 years
professional
experience

Dronfield Landscapes

Logs and woodchippings
For Sale

Ring for details
Chris on 0114 2746158
Mobile 07976072785

Richard mobile
07789497104



Central Heating
Domestic Plumbing
Glazing, Double Glazing and Glass
House Maintenance
UPVC and Wood Windows & Doors
Mini Digger & Driver, Muck Shifts, Footings Etc.



TOTLEY PRIVATE HIRE

24HR TAXI SERVICE
ADVANCE BOOKINGS TAKEN
LOCAL • LONG DISTANCE • AIRPORT

Tel: 0114 283 9692
Mobile: 07974 355528

Domestic electrical work carried out by
City & Guilds and 'Part P' qualified

LADY ELECTRICIAN

- * House rewires * Replacement fuse boards *
- * New sockets and lights * Telephone points *
- * Security lighting * Pond pumps * Deck lights *

All work guaranteed and
fully insured

No job too small
For a free quote, without obligation

ring Mandy on 07788-544225



Tiling, Plastering, Plumbing & Complete Bathroom Fitting Service

Tel: 0114 274 6775
07738 688807

- ◆ Under Floor Heating
- ◆ All Aspects of Home Improvements & Maintenance Work Undertaken
- ◆ Competitive Prices
- ◆ NVQ Qualified
- ◆ No Job Too Small
- ◆ Fully Insured & Guaranteed

A1tilingandplastering.co.uk
33 Glen View Road, Greenhill, S8 7SF

Hypnotherapy

Weight, confidence, smoking, stress,
phobias, anxiety, panic, sleep, etc...

Call 235 1985 Totley

www.sheffieldhypnosis.co.uk



Paul Peace



The
British
Psychological
Society
Chartered Psychologist



Karen Bartle

Creating opportunities with disabled people.

Registered Charity No. 218186

Leonard Cheshire Disability

Leonard Cheshire Services in Offers choice & opportunity to people with disabilities. A Specialist Unit for the Younger Disabled. Residential & Respite Care - Single Rooms Day resources - Aromatherapy - Reflexology - Physiotherapy - Toning Tables.

Activities include: - Arts & Crafts - Computers - Cookery - Shopping Expeditions - Theatre Outings - Church. Further details can be obtained from - The Service Manager, Mickley Hall, Mickley Lane, Totley, Sheffield S17 4HE. Tel. 0114 236 9952 Fax. 0114 262 0234

The Care at Home Service supports disabled people who wish to remain in their own homes.

We provide flexible care packages from 1 hour to 24 hours meeting individual needs. The service operates throughout Sheffield.

Our service includes: - help with getting up and going to bed, dressing, washing, bathing, shopping, cooking, light household duties.

Further details from: - The Care at Home Manager Tel. 0114 235 1400 Fax 0114 235 1499

John Heath & Sons

AN INDEPENDENT FAMILY FUNERAL BUSINESS

Sometime.....

You will probably have the responsibility of making funeral arrangements. No one looks forward to this responsibility, but the death of a family member or friend brings with it an obligation that must be met. There are people who can help you meet this responsibility. We have been helping people combine the different aspects of the funeral into a meaningful service for over 125 years.

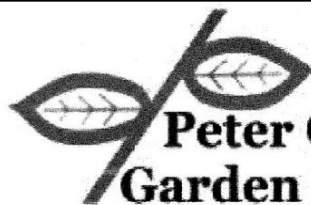
Please Call Day Or Night

(0114) 272 2222

Head Office - Earsham Street

Also at Meadowhead, Ecclesall Rd,
Crookes and Stannington

www.johnheath.co.uk



Peter Godley Garden Design

Surveying, planning and contract management

Awards for Best in Show
Design and Quality Plant Selection
Large Gold Medals & Silver Medal Winners

Homesfield, Dronfield S18 7WJ
M: 07836 717859 T: 0114 2891365 F: 0114 2890737
Email: peter.godley@btconnect.com

TOTLEY & DISTRICT DIARY

MONDAYS	COFFEE MORNING , All Saints' Church Hall, 10am-noon TAI-CHI , United Reformed Church, Totley Brook Road, 11.30am-12.30pm RAINBOWS and GUIDES , All Saints' Church Hall, 5.45pm-9pm
TUESDAYS	COFFEE MORNING , Totley Rise Methodist Church Hall, 10am-noon KEEP FIT & COFFEE , For the not-so-young, Bannerdale Centre, Carterknowle Road, 10.15am, Phone 258 5364 WOODSEATS ADVICE CENTRE , Drop in service, free, impartial, and confidential. TR Methodist Church, 10am-noon CRAFT GROUP , Totley Library, 2pm
WEDNESDAYS	COFFEE in the LIBRARY , 10am-11.30am TODDLER GROUP , 10am-11.30am, All Saints' Church Hall. Details tel. Andy Holmes 0114 236 2088 HEALTH WALKS , 10.30am, Totley Library foyer. Phone Sue, The Health Walk Ranger: 0114 283 9195 MODERN SEQUENCE DANCING , All Saints Church Hall, 8pm-10pm
THURSDAYS	CHAIROBICS , Suspended until further notice NCT COFFEE GROUP FOR DORE TOTLEY & BRADWAY , 10am-noon, For mums & babies/toddlers, meeting in various locations, Phone Lucy Street 07837 000405 or email: lucy@streetr.plus.com for further details PUSHCHAIR CLUB , Totley Rise Methodist Church Hall. 1.30pm-3pm. Tel. 236 3157 for further details PILATES CLASS , United Reformed Church, Totley Brook Road, 6.15pm-7.30pm, Phone Emer Coffey 07792 422909
FRIDAYS	PILATES , The Old School, Dore, 10.45-11.45am & 12-1pm. Phone Teresa Tinklin 07906 312372
SATURDAYS	MODERN SEQUENCE DANCING , All Saints Church Hall 2 nd . And 4 th . Saturdays 8pm-10pm

JULY

SAT 2nd & SUN 3rd CLIFFHANGER, Millhouses Park, details page 3
SUN 3rd CASTLETON FARMERS MARKET, the Village Hall, 10am-3pm
MON 4th - SUN 10th SHEFFIELD FOOD FESTIVAL, details page 7
SAT 9th & SUN 10th TOTLEY OPEN GARDENS, 1-5pm, details page 4
SAT 9th SATURDAY NIGHT LIVE, Ian Andrews, Heatherfield Club. 8.30pm. Come & play Play Your Cards Right. Non-members welcome
SUN 10th - ARTISAN FOOD FAIR, Baslow Village Hall, 10.30am to 4.30pm FREE ADMISSION www.hartingtons.net
SUN 10th MINIATURE TRAIN RIDES, Abbeydale Road South, Open Day & Exhibition, First train 1pm - last train 5pm (weather permitting) www.sheffieldsmee.co.uk
SAT 16th COFFEE MORNING, Cross Scythes 9:30-11.30 details page 3
TUES 19th TOTLEY TOWNSWOMEN'S GUILD, 'Khaki Suited Me, Bessie Renwick, Totley Rise Methodist Church Hall, 10am
WED 20th TOTLEY HISTORY GROUP, 7pm, Evening at Beauchief Abbey; a guided walk around the Abbey and district, all welcome, details page 13
SAT 23rd SATURDAY NIGHT LIVE, Tony Brooklyn, Heatherfield Club. 8.30pm. Come & play Play Your Cards Right. Non-members welcome
SUN 24th MINIATURE TRAIN RIDES, Abbeydale Road South, First train 1pm - last train 5pm (weather permitting) www.sheffieldsmee.co.uk
THU 28th SHEFFIELD FARMERS MARKET, 9am-4.30pm, Fargate

AUGUST

SAT 6th SATURDAY NIGHT LIVE, Raine Russell, Heatherfield Club, 8.30pm, Come & play Play Your Cards Right. Non-members welcome
SUN 7th CASTLETON FARMERS MARKET, the Village Hall, 10am-3pm
SUN 7th - ARTISAN FOOD FAIR, Baslow Village Hall, 10.30am to 4.30pm FREE ADMISSION. www.hartingtons.net
SUN 7th MINIATURE TRAIN RIDES, Teddy Bears Picnic, Abbeydale Road South, First train 1pm - last train 5pm (weather permitting) www.sheffieldsmee.co.uk
SAT 20th SATURDAY NIGHT LIVE, Justine Andrews, Heatherfield Club. 8.30pm. Come & play Play Your Cards Right. Non-members welcome

TOTLEY INDEPENDENT FOR SEPTEMBER

The next issue of the Totley Independent will be available from the usual distribution points on

SATURDAY 27th August 2011

COPY CLOSE DATE for this issue will be

SATURDAY 13th August 2011

Editor: **Ian Clarke**
 Tel. No: **235 2526** or Email: editor@totleyindependent.co.uk

Advertising & Distribution:
John Perkinson
 Tel. No: **236 1601** or Email:- advertising@totleyindependent.co.uk

Items for publication may be left or sent to:
2, Main Avenue, Totley, Sheffield, S17 4FG or
Totley Library

www.totleyindependent.co.uk

PRINTED by STARPRINT

CLEARVIEW STOVES

Pioneer 400 - weight 125kg



This is by far our biggest selling multi-fuel stove. For a typical room size 13ft x 15ft! Producing from 1 to 5kw of heat output - being highly controllable with an updraft and a unique patented down draft to burn the tar off the glass - keeping it crystal clear - hence the name CLEARVIEW. One log lasting up to 1.5 hours given super efficient outputs up to 80% (an open fire runs at 15% efficient!). Seven choices of colour to compliment your decor with optional leg heights from 2 to 10 inches. Clearview Stoves were the worlds first to be approved for burning in 'Smoke Controlled Areas'. We have over 200 installations around Sheffield. We are often told by many of our customers that "It's the best thing we have ever bought"

Showrooms at Burgin Conservatories 302 Abbeydale Road S7 1FL
 Open Tues-Sat 10-5pm • Sundays 10-4pm
www.clearviewstoves.com • www.burgin-conservatories.co.uk
 or please telephone Graham Burgin 07973 321 075
 for advice or FREE QUOTATION

Starprint

601 Abbeydale Road, Sheffield 7. Fax: 0114 258 8599

DESIGN & PRINTING of

- **LETTERHEADS • BUSINESS CARDS •**
- **BOOKLETS & PADS •**
- **INVOICES • LEAFLETS •**
- **CARBONLESS SETS • BROCHURES •**
- **RAFFLE TICKETS •**
- **WEDDING STATIONERY •**
- **ENVELOPES & POSTCARDS •**

**SPECIALISTS IN THERMOGRAPHY
 FOIL BLOCKING AND ENCAPSULATION**

0114 258 0707
For a Quick Quotation