

TOTLEY INDEPENDENT

PUBLISHED CONTINUOUSLY SINCE 1977

www.totleyindependent.co.uk

MAY 2011

No. 343

20p.



Totley Hall Lane

This postcard drawing discovered by Colin Pinder was drawn by his uncle, Colin Hill – his mother's brother. Colin's mother, Ella Pinder of Dronfield, had put it in an addressed envelope to 'Mrs Ward, Hall Lane, Totley' but for some reason it never got posted. Note that the drawing (dated 16 July 1933) and Mrs Pinder knew Totley Hall Lane just as 'Hall Lane' in those days. There was a Mrs Ward that lived in the cottage near the Fleur-de-Lys featured on the front cover of our December 2010 issue. In the three cottages featured in the drawings in the first cottage (from the right) lived Mrs Stubbs, in the next were the Turners and the far one the Somersets. At the farm in those days were probably the Wakefields.

CHAIRMAN'S REPORT

AGM 9TH MAY 2011

As I was appointed Temporary Chairman at the SGM on the 21st February I am very grateful for the input from others for my report.

The first part of my report will list some of the achievements of the TRA during 2010.

The most important thing is to thank everyone who helped with everything the TRA did last year. Without all the volunteers and sponsors the TRA could not organise so many events.

Totley Open Gardens took place on 9th and 10th July with 13 gardens and the Pinfold taking part. Teas and cakes were served in 2 gardens and a total of £2,751 was raised towards the youth shelter and youth activities in Totley. This year's Open Gardens will be held on Saturday 9th and Sunday 10th July.

Totley Show was held on 18th September and raised £1035.17 despite entries being down on last year. There were 313 entries in the 70 classes, but above all 51 people volunteered their help in the planning of the Show, and in helping on the day. Thanks also go to all the local businesses that support the Show with donations. This year's Show will be held on Saturday 17th September.

The Totley History Group decided that it was now at a stage where it would be better for it to be a separate PTO

TOTLEY RESIDENTS ASSOCIATION AGM

Totley Library - Monday 9th May 7.30pm (rearranged date)

organisation and this was achieved last year. We wish the History Group every success.

Friends of Green Oak Park was re-established as it was also felt it would be better for a separate organisation to look after the interests of Green Oak Park. The TRA will still be looking to support projects in Green Oak Park as well as the other open spaces in Totley.

The Totley Music Festival was run very successfully again last year in July despite the poor weather. There were 10 events over a period of a week. I am particularly pleased that both the primary schools took part. This year a bigger and better festival is planned for September.

The Totley Independent also had another successful year and raised £1,456. It has grown in size and attracted many more advertisers. And of course continues to provide a lot of local information to Totley.

Anti-social behaviour was prevalent again. Two committee members had developed a working relationship with the Police, & the Chief Inspector suggested trialling a youth shelter, for 6 months. A survey of the 129 dwellings around the park was carried out. 49 residents were spoken to & only 4 objected to the trial. 80 residents were either out or did not answer their doors & a leaflet was left for them, with contact details on, for them to discuss the proposals. We understand that the youth shelter should be in the park shortly and hope that the trial will be a success.

I would now like to turn to events since my appointment.

Unfortunately Chairobics, which had been running most Thursdays in the library, had to be suspended. We do hope to be able to restart in the future. Avril, who had been organising Chairobics on behalf of the TRA felt unable to continue. We did try to find others to help but were not successful. It also became apparent that because Chairobics was aimed at helping the elderly there were issues to do with First Aid and CRB checks to be resolved. When we have a volunteer who has appropriate First Aid qualifications and who has been CRB checked we will be able to restart.

I also need to report that neither Avril (Chair), Marlene (Vice-Chair) or Betty (Secretary) have been to any of the three committee meetings since my appointment. The rest of the committee have attended all three meetings. Kara Sams has done an admirable job as stand in Secretary.

Despite this all members of the committee have been sent minutes of all the committee meetings and various drafts of the proposed constitution. I have had no comments back from Avril, Betty or Marlene. They were also sent a draft of this report for their input. Again I have received no comment from them.

I have tried very hard to be inclusive as Avril, Marlene and Betty were still committee members but unfortunately they did not feel able to be included.

I and the rest of the committee have worked very hard over the last few weeks to enable us to have a constructive AGM.

The TRA is now at a critical juncture and needs to move forward to serve the needs of Totley. I feel that my work in guiding the TRA is not yet finished and so I will be standing for election as a Trustee and Chairman.

I have a vision for the TRA which sees it as a more effective and more open organisation. I would like

more people to be involved and to do good things for the good of the community.

More open means communicating better with everyone. A number of ideas have already been suggested including more public meetings and ways of people to feed back to the committee.

Later we have resolutions reflecting the legal requirement to register as a charity with the Charity Commission. This is an important step to making the TRA work better. I shall make more comment when we come to the resolutions.

Richard Frost

5 April

News from KES

King Egberts School have been crowned champions of Wembley after a sudden death penalty shootout win in the inaugural npower Football League U13s Girls Cup Final on Sunday 3rd April 2011.

King Egberts sealed victory in dramatic fashion as opponents Queens' School (Watford) missed the decisive spot kick after both had failed to score in normal time.

After both teams hit home their opening penalties, the tie went to sudden death. Both sides then hit the bar but a conversion by Egberts keeper Tegan Allen-Warwick (of Totley), followed by a heart breaking miss from Queens' sent the trophy back to Sheffield.

The girls had battled through 10 rounds of local and regional tournaments to reach the competition's climax played ahead of kick-off in the Johnstone's Paint Trophy Final.

Well done to all the girls for a fantastic team performance.

King Egberts Team: Tegan Allen-Warwick, India Thompson-Carr, Daisy Hope, Tilly Hallas Potts, Steph Rose, Hannah Koszalinski, Sam Tierney and Aela Brown.



The triumphant team from King Egberts with their trophy and winners medals at the home of English football on 3rd April

Toy and Clothes Sale

Totley All Saints Church Hall

Saturday 14th May, noon-1.30pm

Proceeds going to Totley All Saints School PTA. Phone Sally 235 1651 or Laura 236 2920 to get a sellers number if you would like to sell items, otherwise come along on the day and grab yourself a bargain!!

Feel free to park in the Fleur De Lys.



Transport 17

There were very few shareholders at our AGM on 28th March.

Perhaps this means that people are satisfied with our service! A lot of people are a bit worried about being on a committee so we decided that although we could do with a few more members, we would also appreciate other help. Would you like to be a Friend of Transport 17 and help out at fund-raising events like Coffee Mornings and Totley Show, etc.? Stella Jockel and Pauline Perkinton were the first two to volunteer. Stella was a "star" at the Coffee Morning on 9th April and Pauline and her grandson were good customers.

The Committee are :

Chairman - Danny Barlow

Treasurer - John Savournin

Secretary and Deputy Chairman - Felicity Revill

Committee Members - Wendy and Jim Trotter, Mike Roberts and Margaret Barlow

Our thanks to the Manageress of the Co-op, Baslow Road, for donating bags for us to use and also to Mrs Wragg at Woodseats Club who made jams and marmalade and gave us £25 from their sale.

Michael Church Lunch Club, Low Edges, organised a raffle on our behalf. They brought the prizes and money already raised to our Coffee Morning. This, plus the proceeds on the day and the generous donations gave by customers and others, raised over £340. We are absolutely thrilled with this. Thanks to all concerned.

Terry Schofield, one of our drivers, has a "special" birthday on 1st May. We send him best wishes and many thanks. Another driver, Colin Price and his wife Lesley, had a new grandson, called Dylan, in March. Congratulations to them and to their daughter and her husband.

We will continue to do our best and thank you for all your support.

Margaret Barlow

**Keep a note in your diary
for the 10th year of**

**TOTLEY
OPEN GARDENS**

**SATURDAY 9th and
SUNDAY 10th JULY 2011**

1 - 5pm

**Programmes available from Totley Library
by the middle of June, and from outside the
Ironing Parlour, 170 Baslow Road, S17 4DR
on the days of opening**

**Enquiries to Jennie Street on 236 2302 or
email: jennie@hadish.f9.co.uk**

Ward Forum

The latest meeting of the Forum took place on Wednesday 9th March at Totley library with 34 people in attendance, including Councillors Hill and Ross. The meeting began with a lengthy debate about the recent increase in itinerant scrap collectors and the tendency for some to stray onto peoples' property and steal anything of value. Speakers included Mark Parry (Environmental Protection Service), who explained the licensing requirements for such activity, and PC Wilkinson of Broomhill & Sharrow who outlined the measures being taken to address the current problem. Further issues discussed were the problem of long term parking in local shopping centres, the current state of affairs regarding the introduction of 20mph zones, and a concern over cold calling. The main item on the agenda was a review of the structure of the Forum. The main point to emerge was that the Forum ought to concentrate on Ward-wide issues, with more local concerns being left for either the local community groups to pursue or for individuals to raise directly with their local councillors. It was felt that these wider issues would be best tackled via a series of Focus Groups, under the guidance of an elected Management Committee. The next meeting of the Forum will be on Wednesday 8th June at a venue to be announced.

Bradway Action Group

Dore Village Society

Totley Residents Association

INVITATION TO JOIN IN A SUMMER FUN DAY!

SATURDAY 25TH JUNE 1-4PM

Totley Primary School PTA invite you to take a trip to Totley Primary School on Saturday 25th June 2011 between 1 and 4pm to enjoy our Summer Fun Day. A bouncy castle and slide, face and nail painting and all manner of classic games form part of the programme for both younger and older children alike. These, together with a tombola, a raffle, a variety of stalls, as well as arena events and displays, promise a fun afternoon for the whole family on the green grounds of the School. Refreshments will be available for sale throughout the afternoon including our legendary homemade cakes, a quality barbeque and local ice cream.

Admission to the Summer Fun Day is free and a warm welcome awaits you.

If you'd like to have a stall at the Fun Day, please contact Anne on 07796 326752 or email anne.dussart@hotmail.com

Councillor Surgeries

Liberal Democrats:

2nd Monday in the month 6.00-7.00 p.m., Totley Library, Baslow Road and 2nd Saturday in the month from 10.30 a.m. to 12.00 noon, Dore Old School Hall, Savage Lane, Dore Contact details: telephone 235 2289 Email: keith.hill@sheffield.gov.uk, colin.ross@sheffield.gov.uk or mike.davis@sheffield.gov.uk

**Totley Independent Website:-
www.totleyindependent.co.uk**

TRA Website:- www.totley.org.uk

LEONARD CHESHIRE DISABILITY

MICKLEY HALL, MICKLEY LANE

FRIDAY MAY 20TH, 7.30PM



FEATURING

"GENTLEMEN OF JAZZ"

AND OUR FAMOUS BURGERS AND

HOTDOGS

BAR OPEN

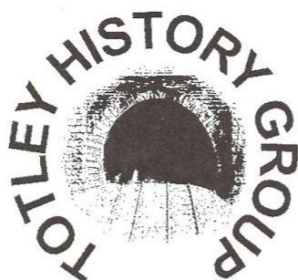
FREE ENTRY

Councillor Keith Hill

Cllr Hill was the subject of two formal complaints, to the City Council's Standards Committee, one made by Avril Critchley, as the then chair of TRA, & the other by a resident. The first one was made 12 May 2010 & referred to matters from October 2009 to April 2010. The second one was sent undated, but referred to an unrelated allegation.

Investigations have taken place over 11 months, the committee met on 24 March 2011 to deliver its findings. It apologised for the delay in reporting. In both cases, the committee found that "there has not been a failure to comply with the Councillor's Code of Conduct"

Roger Hart



WEDNESDAY MAY 25TH, TOTLEY LIBRARY,

7.30PM

OPEN MEETING TO LOOK AT THE CONTENTS FOR THE
FORTHCOMING EXHIBITION IN TOTLEY LIBRARY

The Chemical Yard

It was good to read the article on the Chemical Yard by Anne White. In the 1930s there was a blacksmiths in the yard and I believe a joiner's shop.

The Siddal family lived in one of the cottages and the 2 brothers used to bring bundles of sticks (firewood) for lighting fires by trolley (by sledges in winter) to the shops in Totley, Tommy was one, the other brother's name escapes me.

In those days the yard was known as the Comical Yard by the Totley villagers.

In the floods that Anne mentions the bridge at the bottom of Mickley Lane was damaged as were the row of houses near the bridge.

Laverdene Avenue, in those days, was a cul-de-sac with a footpath to the Back Lane on Totley Rise.

Ann mentions that her grandfather was a Thomas Barber. In the 1930s there was a well known Tommy Barber but I don't know whether he came from The Chemical Yard.

J W Abson

The Wye Charity Walk

Saturday 14th May 2011

Sheffield Vulcan Rotary Club is to hold their annual Wye Charity Walk in the scenic Derbyshire countryside on Saturday 14th May 2011. This is a sponsored round walk starting and ending at Lady Manners School, Shutts Lane, Bakewell DE 45 11A.

The walk takes in the superb scenery of Haddon, Chatsworth and Ashford in the Water, and walkers are given the option of three distances 6.5miles, 10.5miles or 16.5miles depending on ability and enthusiasm.

Entry costs £6 per person, or £15 for a family, and walkers are encouraged to gain sponsorship for either St Luke's Hospice Sheffield or Ashgate Hospice Chesterfield

Ample free parking and facilities are available at the Registration Point at Lady Manners School. Start times are between 9.00 and 10.30am for the full walk (16.5miles) or between 9.00 and 11.00am for the shorter walks. Entries must be in by Monday 9th May 2011

All sponsorship money and donations together with Gift Aid pledged will go to either

St Lukes Hospice Sheffield or Ashgate Hospice Sheffield

Full walk details will be provided on Registration and stewards will be available along the route to assist walkers

Details, Entry Forms and Sponsorship Forms are available to down load from the internet at the Sheffield Vulcan Rotary Club website:

www.vulcanrotary.org.uk

telephone 0114 235 7556(Sheffield) or 01246 565048 (Chesterfield)

Sheffield Vulcan Rotary Club is a registered charity No. 1139500



TRA AGM

Due to the sudden death of George Critchley on the day of the planned AGM, the AGM was postponed as a mark of respect. The revised date has been confirmed as Monday 9th May 7.30pm Totley Library.

Totley Music Festival 2011

You may be wondering about the Totley Music Festival for 2011. Well, once again we're hoping that there will be more fabulous musical events, but this year we're intending that the Festival will take place in September, rather than July. There are various reasons for this, but hopefully we'll choose a week when the weather is OK, when the school term has started so that young people can contribute once again, and everyone is back from their summer holidays! If you want to contact us about the Festival, either to help with the organisation or to perform, please email us on the new TMF address, which is totleymusicfestival@talktalk.net or call Phil or Sue on 07956 858944. We hope to hear from you with your ideas!

Voting 2011

On Thursday 5 May, if you are registered to vote, you will not only be able to vote in the local elections as normal, but also a national referendum on the voting system.

The local elections are your opportunity to vote to elect the Councillors of Sheffield who will represent your views for the ward in which you live.

The referendum will ask a question about the national referendum held on the voting system for UK parliamentary elections. The Electoral Commission are sending an information booklet explaining this referendum in full to every household in the UK. You should receive this booklet during April.

If you are not already registered on the Electoral Register then you need to register by the 14th April.

For more information about the local elections and the referendum visit:

www.sheffield.gov.uk/your-city-council/elections

Update on Gillfield Wood

As a result of the meeting held on Tuesday 12th April, it gives me great pleasure to announce the official formation of the Friends of Gillfield Wood group. The aim of the group is to improve the biodiversity and general upkeep of the wood, with the help of the Parks and Countryside department at Sheffield City Council. Anyone wishing to join the group who is interested in helping, then please contact Dave Gash (Chairman), at daveygash@hotmail.com or on 0114 262 0564. The Treasurer is Richard Hibberd and secretary is Sally Goldsmith. The date of the next meeting is Tuesday 17th May in Totley library at 7pm. Everyone welcome.

The practical conservation day held on Sunday 10th April was well attended by 7 members of the group who were given instruction by Parks and Countryside ranger Henk Littlewood. The work undertaken was the trimming back of the bushes on the left hand side of the footpath, at the top of the wood, from the kissing gate to the bus terminus. Also, some of the branches were cut off the conifer trees on the right hand side of the path, to allow more light to reach the woodland floor. This practice also improves the quality of the wood for future use.

Dave Gash

George Critchley

Our condolences to Avril Critchley on the sudden death of her husband George on Monday 18th April.
Totley Residents Association

MASTERCHEF

Popular local café and deli run by Matt Holdsworth at 185 Baslow Road is set to expand into the premises next door. The current menu is set to continue but will increase the range for breakfasts and lunches. The planned open date is 20th May when Matt will hold an early evening reception to thank all his customers who have supported him in the 2 years since the café opened. Keep a lookout at the café for further updates.

TENNIS

Adults - Learn how to play tennis this summer!

Any one for Tennis? About 1 million people in the UK play tennis once a month on one of Britain's 23000 tennis courts. With Wimbledon fast approaching don't leave tennis to the professionals! Playing tennis can help improve your aerobic fitness so you can burn more fat and improve your energy levels. When playing tennis you need to constantly adjust your body position to get ready to hit the ball, this helps improve co-ordination and improves your mental strength.



Tennis can be enjoyed by people of all ages and ability although some people are put off joining a club. If you're new to tennis or perhaps haven't picked up a racket for a long time then come along to our beginners coaching for adults. Graves Tennis and Leisure Centre are offering 5 week coaching blocks at only £40 for the block or £35 if you have a slice card. That's £3.50 per hour of tennis coaching! You may not be the next Andy Murray within 5 weeks but you can improve your tennis skills, meet new people and have some fun. Don't just watch Wimbledon – have a go in a friendly, relaxed environment. The coaching will take place 11am – 1pm every Monday, the first block starts on 9 May (excluding 30 May which is a bank holiday) and the second block starts on 20 June, both for 5 weeks. Places are limited, secure your place by calling Graves Tennis and Leisure Centre on 0114 283 9900.

Activity Sheffield

Garden Waste

Green sacks are now available for residents to collect at the usual outlets such as local libraries, the Town Hall and Central Library.

Once filled residents currently need to ring the Veolia call centre on 0114 273 4567 to request a collection. Residents can place out for collection between 3 and 12 sacks at a time for collection and these should be placed at the boundary of your property so they are visible from the street but not blocking footpaths or verges.

Sheffield City Council is working towards the introduction of scheduled collections to households for these sacks in the near future to remove the need for residents to ring the call centre to request collections. This change will be communicated directly to residents but for now residents need to ring the call centre to request a collection.

For further information on this service or for other recycling enquiries go to the Veolia website www.veolia.co.uk/sheffield alternatively email them at: sheffieldenquiries@veolia.co.uk or ring the Veolia Call Centre on 0114 273 4567.

Friends of Green Oak Park Update

It seems a long time since we were suffering from deep snow and exceptionally low temperatures, but the consequences of this weather for the park, are still with us. The Parks and Countryside team were unable to complete the trimming of the beech hedge along the Lemont Road side of the park and the tree near the Mickley Lane entrance has not been pruned.

Now spring has arrived, the sap is rising and birds could be nesting in the hedge, so the job may have to wait. As well as this, the mowing in the orchard did not take place. Already there are blue germander speedwell, lilac cuckoo flowers and of course dandelions in flower. The circular flower bed has lost the white penstemons and the verbena so it looks empty at the moment. The sensory bed has done much better with only the odd loss. The daffodils have been superb this year, in the park and all over Totley. The hard work of planting and dead heading them has proved worthwhile. We have received many appreciative comments and thanks. Over 2,000 wild daffodils and bluebells were planted near the children's playground in the Autumn.

The stream area continues to prove a hit both with wildlife and children. Frogspawn was laid on 28th of February this year. There was not as much as in previous years, probably because some adult frogs did not survive the winter weather. Tadpoles are now enjoying the sun. Amphibians are in decline in many areas because of loss of habitat so we are doing our bit for the environment and conservation. The stream is also used by a variety of birds and the odd fox, for drinking and bathing.

On 23rd March two classes from Totley Primary School spent the morning planting new trees in the park. The children were split into groups each responsible for planting a tree. Three alders were planted down the edge of the park at the other side of the stream. These trees were chosen because they enjoy damp conditions so they will help to use up the excess water in this area. Three more fruit trees were planted in the orchard. After planting the trees the children enjoyed looking in the stream for tadpoles and taking a turn on the zip line or in the playground before returning to school.



Later, year 1 drew pictures and wrote about their experiences. Their work is displayed in the notice boards in the park. Thanks to Tree Officer Holly Barnes and Tinsley Tree Project for their expert help. The Friends planted a special tree, a liquidambar near the bowling green. This was planted in memory of Jerry Roberts who used to look after the Pinfold. It is so named because of the fragrant resin. In Mexico it is cultivated for the resin which is used for adhesives, perfumes and incense. It was discovered by a Spanish naturalist in 16th century and was introduced to Britain in 1681. Here it is a popular ornamental tree, grown for its magnificent autumn colours.

The Council cuts are already having an effect on the park. The project officer we have been working with has been transferred and her replacement will only be here until June. This is very unsettling for everyone as it takes time to build up a working relationship.

We are still waiting for the boulder to be built; it is supposed to be in place during May. We must just wait and see if it arrives.

Avril Critchley, Chair F.O.G.O.P



SATURDAY MAY 21ST.

PADLEY CHAPEL 2PM.

VISIT TO PADLEY CHAPEL

WITH CELIA WHITE

**THERE IS THE OPTION TO TRAVEL BY TRAIN
TO GRINDLEFORD THROUGH TOTLEY
TUNNEL FROM DORE STATION. DEPARTING
1.20PM. £2.90 RETURN**

**AN OPTIONAL DONATION TO HELP WITH
THE UPKEEP OF THE CHAPEL WOULD BE
GRATEFULLY RECEIVED.**

**BRING A PICNIC OR EAT AT GRINDLEFORD
STATION AND WEAR STOUT SHOES.**

Music Hall

Vulcan Varieties, Sheffield's traditional Music Hall Society, will be delighted to welcome you at their new season of evening soirees. So that more patrons can be enlightened, amazed, and amused this year, they are taking the event on tour, to take advantage of the balmy (is that spelt correctly?) summer evenings. Entrance is by ticket only, and may be obtained from the Hon Mrs Launders.

Venues are:

The Lantern Theatre, Sat. 4th June at 7.30pm

The Gatty Hall, Ecclesfield. Fri 17th June at 8pm

Coal Aston Village Hall, Sat. 25th June at 8pm

Tickets £7.50 /Concessions £6.50

Available from Secretary, Chris Launders, 243 1339
Or Tony Reynolds, 236 6891.

CHERRYTREE

Cherrytree has been part of the social fabric of Totley for more than 150 years. Its origins go back to 1863 when Cherrytree Orphanage was founded in Nether Edge. Quickly outgrowing the original accommodation, seven and a half acres of land were acquired on Mickley Lane, and the building that now is the Leonard Cheshire Home was purpose built as an orphanage. Later on it became a children's home, and now provides supported accommodation under the Supporting People umbrella.



In the 1960s the premises were sold and a new facility was built in the retained portion of the land. This property is the current Cherrytree.

Cherrytree is a charity that works with young people between the ages of 16 and 21 who, for the most part through no fault of their own, find that they cannot live at home. There are 20 beds at the Mickley Lane site, and a further 8 beds at another site on Granville Road near to the city centre. Each resident has their own room but bathroom and kitchen facilities are shared.

"It is important to understand what we are not!" says General Manager, Chris Ward. "We are not a bail hostel, a naughty boys' home, a care home, or a hotbed of criminal activity. Sad to say all these suggestions have been heard expressed by local residents in and around Totley."

"Rather Cherrytree provides a home for young people in need of support and encouragement to overcome some of life's challenges that have been thrown at them at an early age. Working with other agencies our key-workers and support staff teach them the basic life skills necessary for independent living such as cooking, laundry, budgeting and financial planning, looking after themselves and so on, with a view to establishing them in independent living or in some cases to return to their family. To help develop social interaction skills, engagement with the local community is very much encouraged- last year residents helped at Totley Show, helped plant bulbs with TRA, and helped with teas & coffees at Bradway Fun Day. Residents are also supported with enrolment and attendance on training courses."

Residents are referred to Cherrytree mainly from the Local Authority Housing Department or Social Services. An initial interview determines if their needs can be met or if more specialist support is required. Cherrytree cannot support those with alcohol or drug addiction or anyone with a history of violence. Residents usually stay for at least 6 months, but this can be longer as everyone develops at their own pace. Residents are expected to adhere to a set of house rules. In extreme cases where they do not, and only after several warnings, a resident may be asked to leave the project. But over 85% of residents move on positively into their own accommodation - usually either a local authority or housing association tenancy.

We are always grateful for donations of furniture, household goods, clothes and membership of the charity is open to all. If you would like to know more about our work and how you can help please visit our web-site at www.cherrytreesupportservices.co.uk or e-mail us at info@cherrytreesupportservices.co.uk or telephone on 0114 2620216.

TIN TOWN VILLAGE OF BIRCHENLEE

I picked up a most wonderful book in Bakewell, called *Memories of Tin Town* by Prof Brian Robinson whose mother was a Birchenlee baby. A He writes about the town being well run and had its own School, Church, Police Station, Hospital and isolation hospital, also Post Office, and many more shops. The village of Birchenlee endured for only 14 years and yet the people who lived there were proud and by all accounts happy. At its peak, the population came close to 1,000.

The Derwent Valley Water Act of 1899 had a statutory obligation to provide a satisfactory environment for the care and accommodation of its employees the Board admirably utilised these responsibilities when it constructed and operated its workman's village of Birchenlee, before this the navvies were accommodated in pig stys, haystacks or barns- these squalid conditions caused considerable illness.

At the end of 14 yrs a few huts that were still intact were sold locally. One is part of a now book shop I understand in Hope, and the other is used as a stable in Hathersage.



Some furniture endures too, most notably the two billiard tables from the recreation hall, resident in the Bamford Institute where there are also cups and medals won by the village's sports team.

From 1913 huts were being dismantled and a large

part of the village was commandeered in October, 1914 by the War Office, dormitories, family terraces, the bathhouse and the recreation hall were transferred to a prisoner of war camp near



Wakefield.

In the book there is no mention of the Tin Tab referred to in the April **Totley Independent** but if you go onto the website (Birchenlee Navvy Village) some mention of the Tin Tab may be on there, I have found it fascinating reading and I am hoping to visit what is left of the village this summer. The photos are

from the website, and some of the writing is from Prof B. Robinsons Book, also the website. One photo is a marker for the Birchenlee Village, and the other is of the building in Hope. Marlene Marshall.

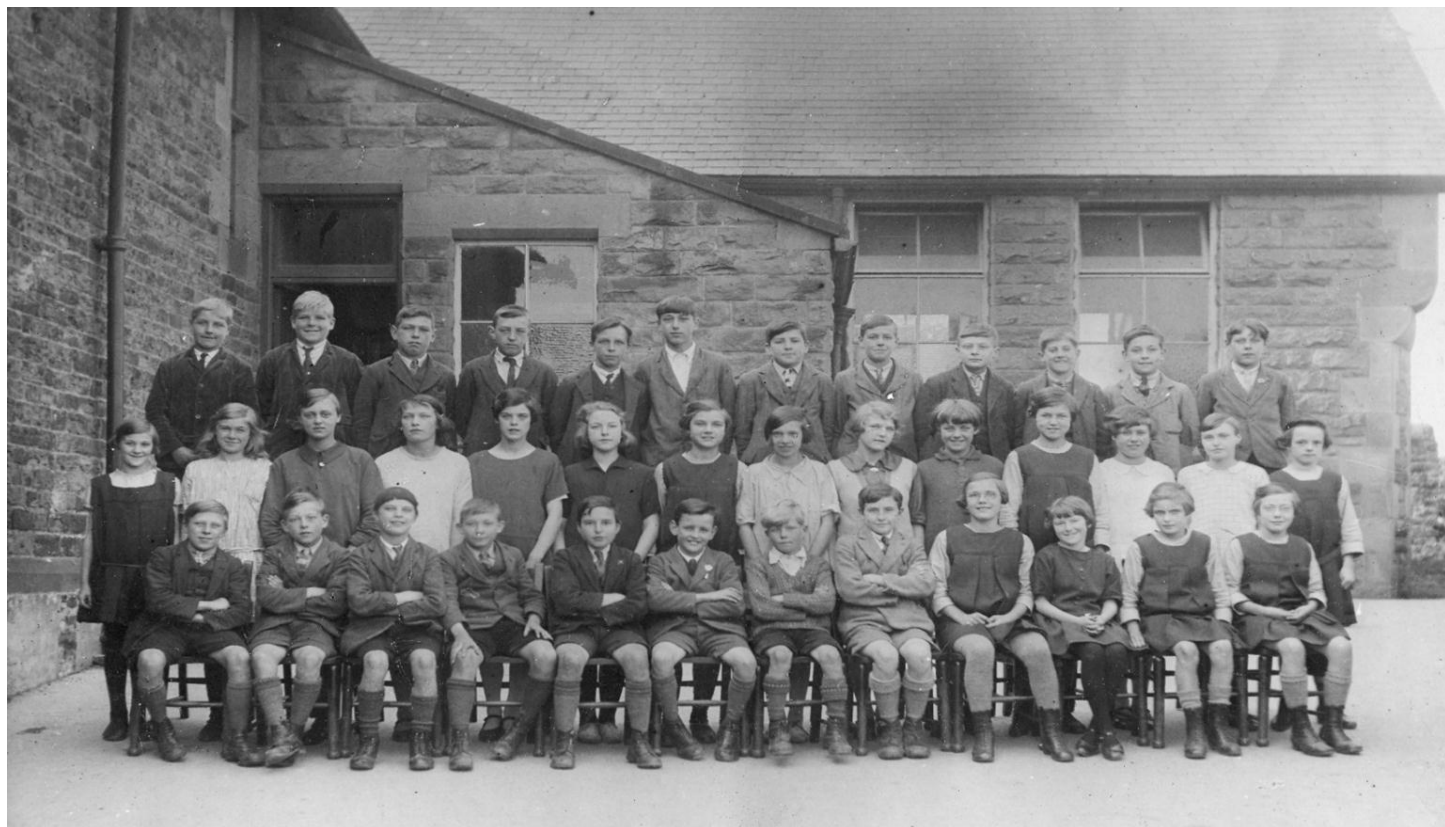
B.K. JEAVONS PAINTER & DECORATOR



Interior
Exterior
Decorating
No Job too small

Tel: 01246 416484

and mobile 07882 278306



Totley All Saints School Photo around 1927

Back Row Leslie Hill*, Cecil Hill*, Harold Wint, Ernest Taylor, "Billy" Smith, Dick Wortley, Kenneth Belshaw, Elijah Salt, Tom Robinson, George Johnson, Philip Whiteman, ?

Middle Row Patty Glossop, Josephine Salt, Olive King, Gertie Truswell, Vera Dronfield, Agnes Taylor, ?*, Nelly Drury, Irene Booth, Isabel Small, Margaret ?*, Phylis Ward, Thelma Nodder, Mary McDougal*

Front Row Austin King, Dennis Marshall, Stanley Dronfield, Gilbert Johnson, Harry Hodgkin, Eric Street, Frank Gill, Joe Reynolds, Alice Fearn*, Margaret Sproson, Mary Shaw*, ?*

*Cherrytree Orphanage Children

Mark and Sally Fletcher invite
you to

The Grouse Inn Longshaw

Sheffield S11 7TZ

Meal times:-

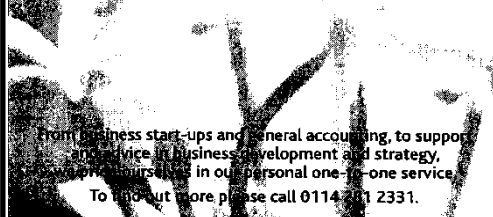
Mondays 12.00 to 2.30pm
Tuesdays to Friday's 12.00 to
2.30pm and
6-30pm to 9-30 pm
Saturdays 12.00 to 3.00pm
and
6.30pm. to 9.00pm (drinks –
open all day)
Sundays 12.00 to 9.00pm
Phone 01433 630 423

R Rose & Co

Chartered Accountants & Business Advisors

Specialists at
looking after the affairs
of small businesses.

For a **FREE** initial consultation
please contact Roger Rose FCA on
0114 281 2331



from business start-ups and general accounting, to support
and service in business development and strategy,
we provide a range of services in our personal one-to-one service.
To find out more please call 0114 281 2331.

213 Derbyshire Lane, Norton Lees, Sheffield S8 8SA
Email: info@r-rose.co.uk

Mens Hairdressing by Karen

at

Hair by Patricia Barber

53 Wollaton Road,
Bradway

9am to 5pm Thursday
9am to 5pm Friday
9am to 1pm Saturday

appointment or walk-in

0114 236 6247
07984 021 033

Call for Cakes

Two events in Totley this summer require cakes! Can you help with a tasty offering?

On 2nd and 3rd July, the garden of 16 The Grove will again hit the national spotlight when it opens for the Yellow Book – the National Garden Scheme.

On Saturday 17th September the annual highlight of the Totley year, the Totley Show, will have a cake stall, a cafe and a Guess the Weight of the Cake.

We should be delighted if you could contribute

cakes for either of these events. Last year's wonderful response for cakes meant that 16 The Grove raised £960 for cancer charities, and the Totley Show raised £1,000 for local activities.

If you can help, please ring 236-2302 or email jennie@hadish.f9.co.uk or bring your cakes on 2nd or 3rd July to 16, The Grove.



Music in the Gardens



Good news for music lovers with primary school age or younger children. There will be no entry charge for the children when accompanied by a full paying adult. For children of secondary school age or over, it will be full price.

Tickets are selling well, with demand from over the Pennines as well as local. To date, over £19,000 worth have been sold (as at 15/04/11) & gazebos are selling fast. The flypast by the Spitfire is scheduled for 7pm on Wednesday 29th June. It will be going over an event in Hathersage as well.

You are welcome to bring your own picnic, buy from one of the food outlets at the event or order on line to pick up your food once you are in the event. The bar will be charging "pub" prices. The Botanical Gardens celebrate their 175th anniversary this year & we will be helping them celebrate with a significant donation. The Saturday night will feature "Last night of the Proms" music & flags will be on sale at bargain prices to enable you to celebrate & participate in style.

Full details at musicinthegardens.co.uk, the Botanical gardens shop or The City Hall Booking office (including Crucible & Arena).

Switch Off Sally Success

Over 100,000 Sheffielders took part in Sheffield's My Planet's "Switch Off and Save Challenge," reducing the carbon footprint of the city and raising awareness of the importance of switching electrical appliances off standby when not in use.

Fifteen organisations got involved with the campaign, including: the University of Sheffield, Sheffield Hallam University, NHS Sheffield, Sheffield City Council, Sheffield Theatres, Novotel, and John Lewis.

The majority recorded a drop in electricity use, saving money and contributing to long-term sustainability plans. However, amazing short-term savings were also made – Sheffield Theatres saved a colossal 2 tons of carbon and £280 in one week!

Food Fair – Success!

Totley based food business Hartingtons first food fair in Baslow was a great success at the start of April. The event attracted up to a thousand visitors during its two days, many of them from in and around Dore and Totley.

Hartingtons are now busily preparing for their second food fair due to take place on the 7th & 8th May. The Baslow Food Fair at Baslow Village Hall, 9.30am – 4.30pm both days, will feature over 25 local food producers and retailers and even include a hog roast on the Sunday as well as an array of free tastings.

In addition to their series of food fairs, Julie and Chris the co-owners of Hartingtons who live in Totley Grange have just signed a 5 year lease on part of Rutland Mill in Bakewell with a view to convert the premises into a cookery school and food events hub. Conversion of the premises will start next month with the aim of having their first cookery classes running by the summer.

The landlord of Hartingtons new cookery school is none other than Brian Edwards. Residents of Totley will know that Brian has written a series of local history books about Totley including Totley and the Tunnel about the building of the railway. He was also one of the founder members of Totley Running Club.

For more information on the Food Fair and the Cookery School visit: www.hartingtons.net.

Scout Lottery

Winners of the 1st Totley Scout Lottery March Draw

1st Prize No 20
Philips Steam Iron
Mrs Purnell
Milldale Road

2nd Prize No 61 £10
Voucher
Mr and Mrs Reynolds
Totley Grange Close

Peter Casson

GOLF COACHING

Golf coaching sessions will continue to take place on Mondays (except for Bank Holidays) between 1pm and 2pm. Tuition is FREE, all you have to do is pay £3 for the golf balls. The session will continue until the end of July and is led by Activity Sheffield's PGA Pro Coach. Feel free to bring along your own Golf clubs, but we can also provide use of our Golf clubs as well.

Reading Test

I cdnuolt blveiee that I cluod aulacity uesdnatnrd what I was rdanieg.

THE PAOMNNEHAL PWEOR OF THE HMUAN MNID

Aoccdnrig to a rscheearch at Cmabrigde Uinervtisy, it deosn't mtttaer in what order the ltteers in a word are, the olny iprmoatnt thing is that the frist and lsat ltteer be in the rghit pclae. The rset can be a taotl mses and you can still raed it wouthit porbelm. This is bcuseae the human mind deos not raed ervey lteter by istlef, but

the word as a wlohe.

Amzanig huh

An American tourist asks an Irishman:

"Why do Scuba divers always fall backwards off their boats into the water?"

To which the Irishman replies: "If they fell forwards they'd still be in the boat!"

GARDENING TIPS FOR MAY

We have just spent the biggest part of the day in the garden taking advantage of the sunny weather; I have been laying a small extension to our lawn. One of the borders was a bit wide and awkward to manage so we have reduced it by adding a piece of grass, we can now reach the back of the border to weed, hoe etc.

The pond is still leaky after three attempts at repair so I will have to resort to plan B as I mentioned in April a bit bigger job but it will be better than having the nagging doubt that the leak will continue even if I did manage a repair.

Pricking out is well underway with tomatoes, lettuce, cabbage, broccoli etc, and the flower seedlings looking nice and healthy, I must say it's very satisfying when they all look quite perky. We just hope that old Jack Frost does not nobble any I only keep a very small amount of heat in the greenhouse so I will have to cover them with fleece if the forecast is severe.

The perennials are showing plenty of new shoots we haven't lost many to the winter's severe weather. Shrubs have got some blossom on giving us a bit of colour around.

The late snow drops look nice I prefer these taller variety they seem to last longer (though it is nice to see the early ones as they tell us spring is on the way).

By the time you read this the apple blossom will be out and looking very pretty along the pathway to the garden.

The onions and leeks are hardening off in the cold frame they should be ok for the Totley Show in September.

Christine has just come back from town with a couple of craft books (she's very crafty you know) - you will never guess what one is about "Knit your own garden" would you believe it? I don't know whether she wants me to have a go or not, I think I will stick to the real thing, for now anyway perhaps later. I wonder if it's classed as an organic garden I suppose wool is organic it's quite natural stuff, I notice the birds like it I have put sheep fleece around the garden and they have taken it for nesting material, perhaps they will be knitting egg cosies with it you never know!

May is a very erratic month weather-wise you must take care with ventilation watch the weather forecast...

I must sign off now if I am to get some knitting practice.

Flowers - Prepare beds for summer bedding and harden off the plants. Clear out spring bedding plants carefully, lifting any bulbs and heel them in elsewhere to die down naturally. Stake and train sweet peas and keep them mulched. Top dress and mulch around flowers and plants.

Trim over aubretia to prolong the flowering period, then top dress. Dead head bulbs do not let the seed heads form as this saps the strength of the bulb, which will give next year's flowers. Pinch out the growing points of herbaceous plants such as plox, michaelmas daisy and golden rod to ensure bushiness. Cut back herbaceous plants after flowering. As always watch out for slugs and deal with them before they can do too much damage, they are particularly fond of delphiniums and hollyhocks and other young plants that are growing fast, as they need plenty of nourishment at this time. Greenfly will be getting prolific now, if they get too much of a nuisance deal with them using your favourite insecticide, soft soap spray etc. Plant dahlia tubers outside cover tubers with about 8cm soil then the frost (if any) will not bother them. For you chrysanthemum growers, it is time to stop them, if no flower buds are showing. Keep an eye on lilies and tulips for virus attack - signs are unusual stunting, yellowing, mottling or distortion, lift and burn the affected bulbs.

Plant anemones De Caen and St Brigid doubles to flower in the autumn. Plant up containers including hanging baskets and window boxes; keep them in the cold frame or greenhouse until the plants are fully recovered from the transplanting operation. Sowing time for clarkia, cornflower, calendula, candytuft, godetia under cloches: wallflowers, sweet Williams, Canterbury bells, forget me not, foxglove, Iceland poppy and polyanthus for next year's plants. Also, under cloches or cold frame perennials, delphiniums, oriental poppy, pyrethrum, scabious and fleabane.

Vegetables - Earth up potatoes, support peas and runner beans. Thin out carrots, lettuce, parsnip, turnip and spinach seedlings and April sown herbs.

Keep all crops well watered. Clear remains of spring greens and prepare mounds for planting out marrows, courgettes, pumpkins and squashes. I put 2 bales of

straw about 18ins to 2ft apart and fill the space with well-rotted compost topped with soil. If you do something similar we should see some handsome specimens on the show bench on 6 September at the Totley Show.

Prepare the ground for outdoor tomatoes. Plant out indoor raised French and runner beans, cabbage, cauliflower, sprouts and lettuce. Sow winter greens and maincrop beetroot. Keep plots clear of weeds. Keep plants well watered especially during dry spells.

Trees, shrubs and fruit - Mulch around newly planted evergreens and give them a good spraying regularly. Water and give a liquid feed to shrubs and trees in containers. Remove any suckers from trees and roses which are grafted, these suckers if left will sap the strength of the main plant. Give acid loving plants (ericaceous) a tonic of sequestrine. Plant out container grown clematis and other climbers and provide supports. Plant out tender shrubs like fuchsias and hydrangeas. Prune spring flowering shrubs such as flowering currant, forsythia, kerria and dogwood. Lightly prune specimen evergreens to shape. Trim back dead shoots on rose of Sharon. Watch out for aphids and caterpillars on gooseberries and deal with them as soon as seen, thin out and use small fruit. Newly planted fruit trees appreciate an early evening spraying with clear water to speed up their development. Keep all fruit well watered. Thin out raspberry canes to 6 canes per plant.

Rather than spraying to eliminate the codling moth which can spoil apple and pears. I am trying a trap which attracts male moths when they enter, they stick to the base and they cannot get to the females (poor things!).

As young shoots of blackberries and loganberries grow, keep tying them to supporting wires.

Greenhouse and Indoor Plants - Water and liquid feed flowering and fruiting plants. Shade most plants from strong sunshine, all plants like fresh air. Pinch back any straggly shoots on pot plants. Take cuttings of various houseplants such as shrub plant, cacti, coleus fuchsia, busy lizzy, mother in law's tongue. Sow seeds of pot plants like browallia, indoor primulas, calceolarias, cinerarias and cacti.

Pot up seedlings of plants sown earlier. Watch out for aphids and scale insects and deal with them promptly before they get too troublesome. It may be necessary to shade greenhouses as the sun becomes stronger, especially if you have young seedlings growing nicely. A close watch on watering at this time is essential, also watch the ventilation, not many plants like temperatures about 70, so adjust vents accordingly. Allow nerines, arums, and freesias to rest by reducing the amount of water. Take off side shoots from tomato plants as they develop, stop growth when they reach 5 or 6 trusses, except smaller types such as Sungold, they can go another truss or 2, remember they also need pollinating. I use a small cane with a bit lamb's wool on the end, also tapping the support canes can help. Cucumbers are prolific feeders and will benefit from regular waterings of liquid nitrogenous feed. They like to be in a humid atmosphere, though the modern varieties such as Petita are quite happy with the tomatoes.

Lawns – Mow regularly; trim edges for that smart appearance. Apply feed if it is looking a bit dull, add a weed killer if weeds are a nuisance.

Don't forget to nurture those special plants and vegetables you are preparing for the Totley Show on 17 September. Let's have the best show ever. I know the artists and photographers are working hard so come on you gardeners get cracking.

Cheerio for now,
Tom



Tony and Julie at

The Crown Inn

Welcome you for

Good Quality, Home Cooked Food

Tuesday – Friday

12-2pm & 5.30-8pm

Saturday & Sunday

12-3pm

Come & join us for

Good Beer, Good Food & Good Music

Tel 0114 236 0789

CLOSED SUNDAY EVENING

Visit our website: www.crown-at-totley.co.uk

LIVE MUSIC

10th May

**ZAK
BLACK**

24th May

KATIE CAMPBELL BAND

7th June

**IAN BELLAMY &
CARY BAYLISS**

Green Communities Conference

Communities in the Peak District are taking the lead on green issues and sustainability, seeking local solutions for shops and services, food production and renewable energy.

To help them, the Peak District National Park Authority is organising a Green Communities Conference at the Nightingale Centre, Great Hucklow, on Friday May 6 (9.30am-3pm) to capture this energy, enthusiasm and expertise.

The conference will be an opportunity for residents to learn from each other and develop their own environmentally friendly ways of addressing local issues.

Informal workshops will cover topics including: community-based food production, renewable energy, community planning, access to services and village halls and community buildings.

National Park officers Dan Yates and Adele Metcalfe explained: "Local residents will be talking about projects from their communities and encouraging others to get started. The day will include some interesting guest speakers, a networking lunch and displays of projects from around the National Park."

Anyone interested in attending this free event should get in touch with the Live & Work Rural team on liveandworkrural@peakdistrict.gov.uk or 01629 816338."



Green Communities Conference

You are invited to a special event to learn about community led projects in the Peak District National Park and share your experience with other residents.

- Take part in friendly and informal workshops to chat with other residents who have experience of developing successful community projects
- Topics include: community based food production; community renewable energy; community planning; access to services; village halls and community buildings
- Presentations from guest speakers

Friday 6th May 2011

9:30am – 3:00pm

The Nightingale Centre, Great Hucklow

Free event. Refreshments and lunch provided.

If you would like to discuss the event in more detail, contact Dan Yates or Adele Metcalfe.

Direct line telephone number: 01629 816258

email: daniel.yates@peakdistrict.gov.uk or adele.metcalfe@peakdistrict.gov.uk



Live & Work Rural

Celebrating May

Ideas and activities for celebrating May at home from members of All Saints Church, Totley

CHRISTIAN AID WEEK 2011

15TH – 21ST MAY

Thank you to the people of Totley who last year helped All Saints to raise £1,200 for Christian Aid. Before the red envelopes appear through your doors again, I thought you may be interested to know what the money raised by the Sheffield Christian Aid Group could make possible in 2011.

- Help for 5 villages in El Salvador to produce enough food to make the whole community healthy and have a decent income.
- Food, clothes and emotional support for one year for nearly a thousand South African children who have lost their parents to HIV.
- The construction and installation of 6 water tanks in Kenyan slums bringing water to 7,200 people every day.
- 30,000 seedlings in Ethiopia resulting in trees, fruit, shade, water, bigger harvests and healthier livelihoods.

THE PRAYER FOR HEALING TAKING PLACE IN TOTLEY EACH WEEK: What's it all about?

Some readers may be puzzled, sceptical or even critical about the Prayer Sessions for healing currently offered by members of All Saints and Totley Rise Methodist Churches in the Library, Heatherfield Club and previously two local pubs. After all, it seems clear that not everyone is healed instantly or completely, (if they were, doctors and hospitals would be redundant!); and even more obviously, we all die eventually, as did those whose miraculous healings by Jesus are recorded in the Bible.

Nevertheless many Christians believe that the power of Jesus is still available to everyone today through His Holy Spirit, and as many can and do testify, seemingly miraculous healings often follow on from the prayers of believers, sometimes quickly, and sometimes over a longer period.

Likewise do many people truthfully say that God has blessed them with perhaps an otherwise inexplicable sense of peace; perhaps an inner strength to endure pain or hardship and perhaps a new or strengthened acknowledgement and experience of the reality and presence of the Living God.

Why some people are healed and some not, and why tragedies and suffering afflict some people more than others perhaps remains a mystery. We do not see the bigger picture as God does and we live in a broken world which is still subject to suffering and evil.

Fortunately as Christians we have the faith to look forward to an eternal life hereafter where suffering and death no longer exist, and at the same time to believe that God can and does help us to participate in the building of His Kingdom here on earth in response to and as a result of our prayers. For this reason the prayers we offer in the Library or elsewhere are that recipients will be blessed by the joy and peace of a lasting faith just as much as by an alleviation of or release from their present troubles.

A Prayer for Christian Aid Week

God who is more than we could ever imagine,

Give us a bigger picture of the world:

Give us a broader view of justice:

Give us dreams of love

That are not defined by boundaries of geography or race or religion, or by the limitations of worldly structures and systems.

Enlarge our imaginations and inspire our courage to put ourselves in that bigger picture.

Keep us struggling,

Keep us faithful,

Keep us strong,

So that we never give up on the promise of your kingdom, where the world is transformed

And all can enjoy life in all its fullness.

Dorothy Firth, Ken & Vivien Filleul

Coffee Cakes and Cuttings

Annual fund raising event at English Martyrs Catholic Church, Baslow Road (across from the Co-op) will take place on Saturday 21st May - 10am - 12noon. In aid of 'Transport 17 and other charitable causes. Plants can be collected by arrangement (a few days before the event). Please contact Frank Donnelly, tel: 236 2789

Do you need help?

- In coping with worry, illness, depression, or spiritual problems.

Christians believe that God, through Jesus Christ, comforts, heals and brings peace of mind, in response to prayer.

Members from All Saints and Totley Rise Methodist, churches are currently offering to pray in confidence for anyone who would like to come in May, June, and July 2011, to:

TOTLEY LIBRARY BUILDING ON SATURDAYS between 12.30 and 1.45 pm and

HEATHERFIELD CLUB (BASLOW ROAD) on WEDNESDAYS between 2.00 and 3.00pm.

For information ring Brian on 07877303709.

TOADS

present

"DEADLY NIGHTCAP"

by Francis Durbridge

Deadly Nightcap, written by Francis Durbridge, is the title of the next play to be performed by TOADS. The dates are Wednesday 11th May to Saturday 14th May, and the venue is as usual, St John's Hall, Abbeydale Road South, at 7.30pm.

Murder and mystery abound in this ingenious play from the master of the genre! Is our heroine really going out of her mind, or is there something more sinister afoot? Of course there is!!

Deadly Nightcap marks the debut of four new TOADS members, who are delighted to be treading the boards for the first time in this great thriller.

Call 235 1206 to reserve your ticket - £4, or £3.50 for concessions - or contact any TOADS member.

Pinders

It was interesting to see the photograph of Colin Pinder the salesman of Cross Scythes Motors in your March issue. There were 30 Pinders baptised at Dore Church between 1742 and 1800 and 28 Pinders are buried in the churchyard.

Almost all the farmers of Dore and Totley were Pinders. The 1901 census shows just one Pinder family, John E Pinder, age 37 a hay cutter living at Totley Bents.

Sid Wetherill

Heeley History Group

G9 Design

Architects & Design Consultants

- Provision of full architectural services from sketch proposals to final completion certification
- Planning Applications & Building Control Approvals
- New Build or Extensions
- Domestic or Commercial projects
- Complete client commitment

Gary Grayson
5 Newfield Lane,
Dore,
Sheffield S17 3DA

Tel: - (0114) 2352335

Mobile: - 07976431740

Email: - gary@g9design.com

Arb Registered
RIBA Chartered Architect

STEVE HAYES KITCHENS & BEDROOMS

- 25 YEARS EXPERIENCE MAKING & FITTING KITCHENS & WARDROBES.
- MANY REFERENCES & RECOMENDATIONS.
- SPECIALIST IN HANDMADE OAK KITCHENS, BEDROOMS AND BUILT IN FITTED FURNITURE.
- HIGH GLOSS KITCHENS WITH COLOUR CO-ORDINATED CABINETS.
- GRANITE WORK SURFACES SUPPLIED TEMPLATED AND FITTED.
- ABSOLUTLEY ANY SIZE KITCHEN AND BEDROOM DOORS AND DRAWERS.
- REPLACEMENT DOORS, DRAWERS & WORKTOPS SERVICE.
- FULL PLANNING SERVICE
- TILING, PLASTERING, PLUMBING & ELECTRICS.
- FULL APPLIANCE RANGE ALL TOP MAKES BOSCH, FRANKE, RANGEMASTER E.T.C.
- FRIENDLY & RELIABLE SERVICE.

FOR A FREE QUOTE, WITHOUT OBLIGATION.

TELEPHONE STEVE: 0114 236 5774..OR...0781 7717531



Hatha ..YOGA CLASS..

Totley and Ranmoor

For more information or to book a place call
RACHEL on (0114) 236 9943

BWY Qualified Teacher

BODY, MIND & BREATH
Enjoy the union of yoga



**ATTENTION
ALL WOOD BURNING AND MULTI-FUEL STOVE OWNERS**

Are you looking for an environmentally
friendly fuel for your stove?

Waste Wood Briquettes are made
from waste wood products that would otherwise be
sent to landfill. You can also use our briquettes
on your Stove, B.B.Q. or Chimenea.

PLEASE VISIT OUR WEBSITE
WWW.WASTEWOODBRIQUETTES.CO.UK

OR CALL 01298 872 896
FREE DELIVERY IN YOUR AREA



For
Windows
With Style

Sheffield Factory Showroom

106 PROSPECT ROAD
HEELEY, SHEFFIELD

Sheffield (0114) 258 5496
Rotherham (01709) 512113

KITCHEN FACE LIFTS

BY STEVE & ROB HAYES.

SEVENTY NEW DOOR STYLES & COLOURS



HAVE YOUR KITCHEN DOORS, DRAWERS, WORKTOPS &
APPLIANCES REPLACED.

ANY SIZE, ALL MADE TO MEASURE.

LESS FUSS, LESS MESS, LESS MONEY !!!!!

TELEPHONE STEVE OR ROB :- 0114 236 5774...07817 717531

FOR A FREE FRIENDLY QUOTE.

J-TEK ELECTRICAL

SERVICES  **DOMESTIC
INSTALLER**

- ✓ FULLY QUALIFIED WITH 23 YEARS EXPERIENCE
- ✓ DOMESTIC
- ✓ COMMERCIAL
- ✓ INDUSTRIAL
- ✓ FIRE ALARMS
- ✓ EMERGENCY LIGHTING...CALL-OUTS
- ✓ ALL TESTING & CERTIFICATION
- ✓ REWIRES
- ✓ FUSEBOARDS

I AM REGISTERED WITH NICEIC AND PART P QUALIFIED

FOR A FREE FRIENDLY QUOTE

TELEPHONE JASON ANY TIME ON

07792 558841 OR EVENING 01246 431148



Gail Kitchen: 07986473415

Does going away from home mean your cat is sad and unhappy?
Does a trip to the cattery scare your cat *not to mention your wallet?*

WORRY NO MORE!

MOGGY MAID is on hand to feed, love and provide
everything your cat needs in the relaxing comfort of its own home.

As we cat-lovers know, unfamiliar sights and smells can stress your cat,
whereas leaving them in the familiar surroundings of their own home
carries less worries, for your cat and for you.

If only for a night, weekend, or a month; holiday, Christmas or any time of
the year, **MOGGY MAID** is here to help **LIGHTEN YOUR LOAD**

We promise no mischief allowed!

In a professional manner and with quality service, you can ensure
individual care and attention, whilst you relax away from home.

We haven't forgotten the rest of the family; mice, rabbits, budgies,
goldfish, etc will receive care and affection too.

LOCAL FRIENDLY SERVICE

From £5 a day

For more Information, contact Gail Kitchen on:
07986473415 5 Ullswater Place, Dronfield Woodhouse

Looking for designer labels?

Let our unusual Vision Plan help you pay for them and much more!

Offering all the benefits of 35 years' experience of South Yorkshire's largest independent firm of opticians.



- Friendly, qualified staff
- Eye examinations
- High-tech diagnostic retinal camera and MacuScope
- Wide choice of spectacle lenses, contact lenses and stylish frames
- Special offers

ASK FOR A VISION PLAN LEAFLET

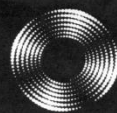
GUESS DIESEL GANT

POLICE EMPORIO ARMANI

Visit our website and make your choice of designer frames at one of our practices including 63 Baslow Road (tel: 236 4485) and our extensive new premises at 634 Abbeydale Road (tel: 255 6554)

www.mko.co.uk

Entrust Electrical



For all your electrical requirements in or outside the home you can trust **Entrust** to do it right!

- ✓ Full or Partial House Rewiring
- ✓ Additional Sockets, Switches, etc
- ✓ Energy Efficiency Enhancements
- ✓ Contemporary & Classical Refurbishments
- ✓ General Electrical Maintenance & Repair
- ✓ Homebuyer Electrical Safety Surveys
- ✓ Telephone and Computer Data Points
- ✓ Garden, Pond & Other Outdoor Electrics
- ✓ Security Lighting & CCTV



City & Guilds Qualified

(0114) 2352084
07935 250814

www.entrustelectrical.co.uk

Old Hay Close, Dore, S17 3GP



Shepley Spitfire

56 Mickley Lane, Totley Sheffield - S17 4HE 0114 236 0298

Mon to Sat All Day 2 meals for **£8.95**

Served everyday 11am until 9pm

Succulent Sunday Carvery only £5.99

Quality Cask Ales

Quiz Night every Tuesday from 9:30pm

The Home of Big Fish Friday!!

Beer battered Cod fillets, Chips and Peas Two for **£8.99**

BOOKINGS NOW BEING TAKEN for Easter Sunday

Royal Wedding Weekend 29th - 1st May

Watch the royal wedding at our garden party! Formal dress not required, but would be fun! Children activities during the day / BBQ See our website for details

www.gkpubs.co.uk/pubs-in-sheffield/shepley-spitfire-pub/



love royal weddings love your local

"need help in your garden?"

...we can help *you*

the
ABBEYDALE
gardeners

Kevin and Mark from the recently closed Abbeydale Garden Centre, have started their own Garden Services Business.

Kevin Hunter 07818 20 12 42

Mark Naylor 07739 75 23 19

"give us a call, no job too small."

Music Tuition



Piano • Keyboard • Flute • Singing
Guitar (rock, metal, blues, jazz, funk, pop, folk)
Music Theory • GCSE work

Music graduates, each with 25 years
teaching and playing experience

All ages, beginners welcome.

Exam work or just for fun!

Call Mark or Karin

0114 237 4853 & 07981 888352

HEARING AIDS

MAURICE NAYLOR FBSHAA RHAD is your
local hearing aid specialist and at your
request will test your hearing in your own
home, free of charge, and if needed you can
try a custom made aid for four weeks
without obligation to purchase.

Tel : 262 0010

In the ear digital from £495



Your local Rose's Bread stockist

Coffee Shop now open

Monday to Friday 8am to 4pm, Saturday 8am to 1pm

51/53 Baslow Road

Tel: 236 4238

MALLORN

ROOFING CONTRACTORS

REROOFS • ROOF REPAIRS
FLAT ROOF • GUTTERING

0114 235 6002

07853 350085

7 DALEVIEW ROAD, BEAUCHIEF

French Tuition

Wanting to learn another language at home?
Available from a native and experienced person
living locally. Beginners to advanced

Computers and Internet For Beginners Made Easy

Local tutor offering one-to-one training and support
using your computer, in your own home, at your
own pace. Learn about surfing the internet, order
goods online, Skype... One off or ongoing classes.

Tel Anne on 235 3297 or 07796 326752



Time to change
your Accountant?

AIMS ACCOUNTANTS
FOR BUSINESS

Invest a moment and find out what we offer ...

- Individually Structured Fees agreed in advance
- Complete Accounting and Tax Solutions
- Local Presence and National Strength
- Cost Effective Fees and Cash-Flow Benefits

For your free initial consultation with your local Dore based AIMS Accountant contact:



Mark Randall BA (Hons) FCA
0114 327 8922 / 07908 592 007
E: mark.randall@aims.co.uk
W: www.markrandall.aims.co.uk

J Barlow t/a

Horizon Electrical

*Faults, Rewires, Sockets, Lights,
Cooker Points, Electrical Showers,
Phone Points, Security Lights*

No job too small

Fully qualified with friendly advice

Ring Totley 236 4364 or
Mobile 07772 483154



BRADWAY INSTALLATIONS

Kitchens, Bathrooms.....and everything in
between

- Complete Kitchens - Installation or supply and
installation
- Kitchen Refits - Replacement worktops/sink/hob etc.
Worktop / cabinet repairs
- Bathrooms - Cloakrooms - Domestic plumbing - Tiling
Laminate / Vinyl flooring

All work undertaken is fully insured and guaranteed

Ring Peter - 0114 236 5995

Mobile - 07766 411355

SLIMMING WORLD

10 WAYS TO MAKE SURE IT WILL BE THE LAST TIME LOSING WEIGHT IS YOUR NEW YEAR RESOLUTION. THIS TIME MAKE IT LAST FOREVER

1. Focus on your weight loss goal and prioritise it.
2. Be sure you really want to lose weight for yourself. Doing it to please someone else may only lead to short term weight loss.
3. Take advantage of all the group support at your local Slimming World class. Even if you are not a 'joining in' person, you'll be surprised how motivating it is.
4. Accept that you will have ups and downs in your weight loss journey, and be forgiving of yourself if you hit a difficult patch.
5. Listen to your 'inner script' and make a conscious effort to talk to yourself in a positive, encouraging way.
6. Keep up your interest in your healthy eating plan by trying new foods, new recipes, and new ways of using your Sins. This will help you avoid getting in to a dieting rut which can be boring and demotivating.
7. Be honest with yourself about what you are expecting from your weight loss and how you are getting on with Food Optimising week by week. People who set unrealistic targets for weight loss or body shape are more likely to give up than those who set achievable targets and share their ups and downs.
8. Go back to your class even after (especially after) you've had a weight gain. You will not be judged, just helped and supported.
9. Keep setting new goals and rewarding yourself for milestones until you reach your target weight, and afterwards!
10. Don't put your life on hold until you've lost weight. You can still enjoy life and lose weight. Think of your dreams and ambitions and bring them to the fore. The positive feelings you get from starting to 'live a little' can only help your motivation and your weight loss.

Group details:

Bradway Annexe now at **St Peter's Church, Greenhill Roundabout, S8 7FN** Thu 5pm & 7pm
Dore Old School, Tues 5.30pm

Tel: Alison Murphy 07815 046569 for further details

Heatherfield Club, Baslow Road - Mons 7.30pm

Tel: Anne 0114 235 0431 for further details

PhysioFOCUS

at Totley Rise Dental Practice
85 Baslow Road,
Sheffield, S17 4DP



Physiotherapy treatment available for:

- Back and neck pain
- Sports injuries
- Sprains and strains
- Joint and muscle pain
- Arthritic pain
- Whiplash
- Repetitive strain injury
- Headaches

Appointments: 0114 2360333

Also available:

- Pilates classes
- Pilates 1-2-1
- Golf Fitness Screening
(as used by consultants to UK, European and Australian PGAs)

For more information please call:

Emer on: 07792 422909

Rachel on: 07956 908454

APPLE LANDSCAPES and APPLE FENCING

www.applelandscapes.com

QUALITY SERVICE AT AFFORDABLE PRICES

Patios • Paths • Walling • Dry Stone Walling • Drainage Work

• Indian York Stone Paving • Railway Sleeper Beds

Garden Tidy Ups etc. No job too small

**Fencing & Gates Supplied Only
or Supplied & Fitted**

Only Quality Materials Used

FULLY INSURED

Call for free quote

01246 237505 • 07782 167540

Would you like someone to

Type letters? Pay bills? Help record family memories?

Sort and file papers? Prepare an inventory?

Anything else ???

Then you should call

Secretarial and Administrative Services

Swift, efficient, confidential service at your home.

Pay-as-you-go.

Ring us on 0114 235 0071



Tel/Fax: (0114) 255 4689

Mobile: 07831 802539

TRISTAN SWAIN

LANDSCAPING AND MAINTENANCE

UNIT C4

Sheaf Bank

Business Park

20 Prospect Road

Sheffield S2 3EN



LADIES FASHIONS

HABERDASHERY

&

ALTERATIONS



ROSIES

164 BASLOW ROAD, TOTLEY.
TEL: 26 21060

**M. Scriven
(FRUITERAMA)**

MARTIN SCRIVEN

**HIGH CLASS FRUIT
& VEGETABLES**

37, Baslow road

Tel. 236 7116

Orders Delivered





GWS

Technology Solutions



PC Problems/ Repairs/ Servicing No Job Too Small
 Wireless & Internet Setup New PC's & Upgrades
 PC Setup/Data Transfer Safe PC Disposal Tuition
 Software/Hardware For All Your PC Needs

Guy Senior

Phone: 0114 2352662 Mobile: 07890030453

Email: guy@gwstech.co.uk

Web: www.gwstech.co.uk

GWS, 5 Conalan Avenue, Bradway, Sheffield S17 4PG

R.S. HEATING & BUILDING CO

EST. 1971



HEATING DIVISION:

Experienced Installers of condensing,
 combination and regular boilers.
 Systems fully guaranteed.
 Complete after sales service.
 Also Bathrooms, showers
 and small plumbing works.

BUILDING DIVISION:

Loft conversions, House
 renovations including general
 building, joinery, plastering,
 electrical decorating etc.



13 Overcroft Rise, Sheffield, S17 4AX

Tel:- 0114 236 4421

Reg. Office:- 62 Machon Bank, Sheffield, S7 1GP

Te:- 0114 2559425

Fax:- 0114 255 9431

Email: enquiries@rsheatingandbuilding.co.uk
 Web: <http://www.rsheatingandbuilding.co.uk>



253 Baslow Road, Sheffield, S17 4DU

Tel: 0114 2360 583

Mobile: 07801 346 455

Dronfield Landscapes



Gardens cleared and maintained, Lawns mowed,
 Turfing, Tree felling & pruning, Hedges trimmed &
 reduced, Pond maintenance, Fencing etc.

for free quotation call

Chris on: (0114) 2746158 Mobiles: 07976072785 or

Richard on: 07789497104

8am-6pm mon-fri

HazelBarrow Farm, Norton S8 8BA

R.M.M BUILDING SERVICES

25 YEARS EXPERIENCE

All types of building work carried
 out including- Drop kerbs, block paving
 (drives, paths, etc), extensions, general
 building repairs and maintenance.

Phone Rob on- Mob- 07906108567

Home-2352190

**Activ
 Physiotherapy**
and sports injury clinic



@ Synergy,
 162 Baslow Road,
 Totley,
 Sheffield, S17 4DR.

**The Official Physiotherapy clinic for
 the Sheffield Steelers Ice Hockey Team.**

Treatments available for sports injuries, back & neck
 pain, joint problems, muscle & ligament strains,
 repetitive strain injuries, post operative rehabilitation,
 headaches & acupuncture.

Clinic registered with major insurance companies,
 can claim through the Westfield scheme.

Ring Andy for more information:

0114 235 7845 or 07901 968549

Nigel Watson

Carpenter and Joiner

**New Kitchens, replacement worktops, doors,
 locks, floors, architraves, skirting boards,
 stairs, stud walling, boxing off etc.**

No job too small

For a reliable, quality service

Tel: 0114 236 4778

Mobile: 07971 528149



Got a computer?

Having Problems?

Is it running slow? Stops responding?
 Having problems running the latest games
 or applications? Broadband installation?

Give me a call!

I'm available for home visits at any time
 including evenings and weekends. I can
 also suggest upgrades to improve perform-
 ance, or even build you a system to your
 specific requirements.

Tim Brown

Building,
 Installation,
 Upgrading and
 Troubleshooting
 Computer
 Systems
 Over 25 years
 professional
 experience

Phone: 0114 2472619 Fax: 0870 7060080

Mobile: 078 17464703 Email: service@timbrown.plus.com

Dronfield Landscapes

Logs and woodchippings
For Sale

Ring for details
Chris on 0114 2746158
Mobile 07976072785

Richard mobile
07789497104



Central Heating
Domestic Plumbing
Glazing, Double Glazing and Glass
House Maintenance
UPVC and Wood Windows & Doors
Mini Digger & Driver, Muck Shifts, Footings Etc.



TOTLEY PRIVATE HIRE

24HR TAXI SERVICE
ADVANCE BOOKINGS TAKEN
LOCAL • LONG DISTANCE • AIRPORT

Tel: 0114 283 9692
Mobile: 07974 355528

Domestic electrical work carried out by
City & Guilds and 'Part P' qualified

LADY ELECTRICIAN

- * House rewires * Replacement fuse boards *
- * New sockets and lights * Telephone points *
- * Security lighting * Pond pumps * Deck lights *

All work guaranteed and
fully insured

No job too small
For a free quote, without obligation



ring Mandy on 07788-544225



Tiling, Plastering, Plumbing & Complete Bathroom Fitting Service

Tel: 0114 274 6775
07738 688807

- ◆ Under Floor Heating
- ◆ All Aspects of Home Improvements & Maintenance Work Undertaken
- ◆ Competitive Prices
- ◆ NVQ Qualified
- ◆ No Job Too Small
- ◆ Fully Insured & Guaranteed

A1tilingandplastering.co.uk
33 Glen View Road, Greenhill, S8 7SF

Hypnotherapy

Weight, confidence, smoking, stress,
phobias, anxiety, panic, sleep, etc...

Call 235 1985 Totley

www.sheffieldhypnosis.co.uk



Paul Peace



The
British
Psychological
Society
Chartered Psychologist



Karen Bartle

Creating opportunities with disabled people.

Registered Charity No. 218186

Leonard Cheshire Disability

Leonard Cheshire Services in Offers choice & opportunity to people with disabilities. A Specialist Unit for the Younger Disabled. Residential & Respite Care - Single Rooms Day resources - Aromatherapy - Reflexology - Physiotherapy - Toning Tables.

Activities include: - Arts & Crafts - Computers - Cookery - Shopping Expeditions - Theatre Outings - Church. Further details can be obtained from - The Service Manager, Mickley Hall, Mickley Lane, Totley, Sheffield S17 4HE. Tel. 0114 236 9952 Fax. 0114 262 0234

The Care at Home Service supports disabled people who wish to remain in their own homes.

We provide flexible care packages from 1 hour to 24 hours meeting individual needs. The service operates throughout Sheffield.

Our service includes: - help with getting up and going to bed, dressing, washing, bathing, shopping, cooking, light household duties.

Further details from: - The Care at Home Manager Tel. 0114235 1400 Fax 0114 235 1499

John Heath & Sons

AN INDEPENDENT FAMILY FUNERAL BUSINESS

Sometime.....

You will probably have the responsibility of making funeral arrangements. No one looks forward to this responsibility, but the death of a family member or friend brings with it an obligation that must be met. There are people who can help you meet this responsibility. We have been helping people combine the different aspects of the funeral into a meaningful service for over 125 years.

Please Call Day Or Night

(0114) 272 2222

Head Office - Earsham Street

Also at Meadowhead, Ecclesall Rd,
Crookes and Stannington

www.johnheath.co.uk



Peter Godley Garden Design

Surveying, planning and contract management

Awards for Best in Show
Design and Quality Plant Selection
Large Gold Medals & Silver Medal Winners

Homesfield, Dronfield S18 7WJ
M: 07836 717859 T: 0114 2891365 F: 0114 2890737
Email: peter.godley@btconnect.com

TOTLEY & DISTRICT DIARY

MONDAYS	COFFEE MORNING , All Saints' Church Hall, 10am-noon TAI-CHI , United Reformed Church, Totley Brook Road, 11.30am-12.30pm RAINBOWS and GUIDES , All Saints' Church Hall, 5.45pm-9pm
TUESDAYS	COFFEE MORNING , Totley Rise Methodist Church Hall, 10am-noon KEEP FIT & COFFEE , For the not-so-young, Bannerdale Centre, Carterknowle Road, 10.15am, Phone 258 5364 WOODSEATS ADVICE CENTRE . Drop in service, free, impartial, and confidential. TR Methodist Church, 10am-noon CRAFT GROUP , Totley Library, 2pm
WEDNESDAYS	COFFEE in the LIBRARY , 10am-11.30am TODDLER GROUP , 10am-11.30am, All Saints' Church Hall. Details tel. Andy Holmes 0114 236 2088 HEALTH WALKS , 10.30am, Totley Library foyer. Phone Sue, The Health Walk Ranger: 0114 283 9195 MODERN SEQUENCE DANCING , All Saints Church Hall, 8pm-10pm
THURSDAYS	CHAIROBICS , Suspended until further notice NCT COFFEE GROUP FOR DORE TOTLEY & BRADWAY , 10am-noon, For mums & babies/toddlers, meeting in various locations, Phone Lucy Street 07837 000405 or email: lucy@streetr.plus.com for further details PUSHCHAIR CLUB , Totley Rise Methodist Church Hall, 1.30pm-3pm. Tel. 236 3157 for further details PILATES CLASS , United Reformed Church, Totley Brook Road, 6.15pm-7.30pm, Phone Emer Coffey 07792 422909
FRIDAYS	PILATES , The Old School, Dore, 10.45-11.45am & 12-1pm. Phone Teresa Tinklin 07906 312372
SATURDAYS	MODERN SEQUENCE DANCING , All Saints Church Hall 2 nd . And 4 th . Saturdays 8pm-10pm

MAY

SUN 1st CASTLETON FARMERS MARKET, the Village Hall, 10am-3pm
SUN 1st & MON 2nd (BH) MINIATURE TRAIN RIDES, Abbeydale Road South, First train 1 p.m. - last train 5 p.m. (weather permitting) www.sheffieldsmee.co.uk
SUN 8th PLANT SALE, Botanical Gardens, 11am - 3pm
WED 11th - SAT 14th T.O.A.D.S. SPRING PLAY, details page 13
SAT 14th TOY & CLOTHES SALE, All Saints Church Hall, noon-1.30pm
SAT 14th SATURDAY NIGHT LIVE, The Stars 10th Anniversary Show, Heatherfield Club, 8.30pm, Play Your Cards Right. Non-members welcome
SUN 15th MINIATURE TRAIN RIDES, Abbeydale Road South, First train 1pm - last train 5pm (weather permitting) www.sheffieldsmee.co.uk
FRI 20th BBQ, Cheshire Homes, 7.30pm, details page 4
SAT 21st COFFEE, CAKES & CUTTINGS, English Martyr's Catholic Church, 10am-noon, details page 13
SAT 21st TOTLEY HISTORY GROUP, Visit to Padley Chapel, conducted by Celia White, 2pm. Option to travel by train, D&T Station 1.21pm £2.90 e/w
WED 25th TOTLEY HISTORY GROUP, Totley Library, 7.30pm, Research meeting preparing for library exhibition, all welcome
THU 26th SHEFFIELD FARMERS MARKET, 9am-4.30pm, Fargate
SAT 28th SATURDAY NIGHT LIVE, Russ Elliott, Heatherfield Club, 8.30pm. Come & play Play Your Cards Right. Non-members welcome
SUN 29th & MON 30th (BH) MINIATURE TRAIN RIDES, Abbeydale Road South, First train 1pm - last train 5pm (weather permitting) www.sheffieldsmee.co.uk

JUNE

SUN 5th CASTLETON FARMERS MARKET, the Village Hall, 10am-3pm
MON 6th-SAT 11th EXHIBITION AT TOTLEY LIBRARY, Totley History Group, Normal library hours
SAT 11th SATURDAY NIGHT LIVE, Tony Verno, Heatherfield Club, 8.30pm. Come & play Play Your Cards Right. Non-members welcome
SUN 12th MINIATURE TRAIN RIDES, Abbeydale Road South, First train 1pm - last train 5pm (weather permitting) www.sheffieldsmee.co.uk

TOTLEY INDEPENDENT FOR JUNE

The next issue of the Totley Independent will be available from the usual distribution points on

SATURDAY 4th June 2011

**COPY CLOSE DATE for this issue
will be**

SATURDAY 21st May 2011

Editor: **Ian Clarke**
 Tel. No: **235 2526** or Email: editor@totleyindependent.co.uk

Advertising & Distribution:
John Perkinson
 Tel. No: **236 1601** or Email: advertising@totleyindependent.co.uk

Items for publication may be left or sent to:
2, Main Avenue, Totley, Sheffield, S17 4FG or
Totley Library

www.totleyindependent.co.uk

PRINTED by STARPRINT

CLEARVIEW STOVES

Pioneer 400 - weight 125kg



This is by far our biggest selling multi-fuel stove. For a typical room size 13ft x 15ft! Producing from 1 to 5kw of heat output - being highly controllable with an updraft and a unique patented down draft to burn the tar off the glass - keeping it crystal clear - hence the name CLEARVIEW. One log lasting up to 1.5 hours given super efficient outputs up to 80% (an open fire runs at 15% efficient!). Seven choices of colour to compliment your decor with optional leg heights from 2 to 10 inches. Clearview Stoves were the worlds first to be approved for burning in 'Smoke Controlled Areas'. We have over 200 installations around Sheffield. We are often told by many of our customers that "It's the best thing we have ever bought"

Showrooms at Burgin Conservatories 302 Abbeydale Road S7 1FL
 Open Tues-Sat 10-5pm • Sundays 10-4pm
www.clearviewstoves.com • www.burgin-conservatories.co.uk
 or please telephone Graham Burgin 07973 321 075
 for advice or FREE QUOTATION

Starprint

601 Abbeydale Road, Sheffield S7. Fax: 0114 258 8599

DESIGN & PRINTING of

- **LETTERHEADS • BUSINESS CARDS •**
- **BOOKLETS & PADS •**
- **INVOICES • LEAFLETS •**
- **CARBONLESS SETS • BROCHURES •**
- **RAFFLE TICKETS •**
- **WEDDING STATIONERY •**
- **ENVELOPES & POSTCARDS •**

**SPECIALISTS IN THERMOGRAPHY
FOIL BLOCKING AND ENCAPSULATION**

0114 258 0707
For a Quick Quotation