

# TOTLEY INDEPENDENT

PUBLISHED CONTINUOUSLY SINCE 1977

[www.totleyindependent.co.uk](http://www.totleyindependent.co.uk)

APRIL 2011

No. 342

20p.



## 65 Baslow Road

We think this photo was taken in the late 1940's, perhaps not long after Shentall's opened at 65 Baslow Road. Prior to John Shentall owning the grocery store it was for many years under ownership of the Wints. The bakers, Arthur Davy & sons took over from Shentalls in the late 60's/early 70's. Nowadays it's the Abbey Friar. Do let us know if you recognise anyone in the photo.

## Totley Residents Association notice of Annual General Meeting

This year the AGM will be held at 7.30pm on Monday 18th April in the library.

It has already been reported that at the Special General Meeting held on the 21st February, by a large majority, I was appointed the temporary Chairman of the TRA. It was an irony that Avril Critchley was the person who asked me to go along.

I am sure everyone would like to join me in thanking Avril for all the good work she has done in Totley over the last few years; and I hope will continue to do so in the future.

Many of you will already know me but to those that don't a short resume follows:

I was born in Woodseats and have lived in umpteen places since. I had the opportunity through work to come 'home' in 1996. My wife and I moved to Totley in January 1998. Our two boys were born here (Jessops really).

Amongst other things I am Treasurer of the URC Scout Group and Chairman of the Totley Scout Group. I was also an original Friend of Green Oak Park being instrumental in getting the tennis courts converted to the Multi Games facility which my boys love.

It has been a very eventful few weeks since my appointment and I have had to learn a lot in a very short time. **PTO**

**TOTLEY RESIDENTS ASSOCIATION AGM**  
**Totley Library - Monday 18th April 7.30pm**

The SGM was called because of friction within the committee. My appointment was made to hopefully resolve the issues which were causing the friction and to move the TRA forward. Since then the committee has been working constructively to resolve all difficulties amicably.

This year at the **AGM** we have some important issues to discuss and vote on. They will have a large bearing on the future of the TRA.

You will already realise that the TRA has charitable objects and therefore by default is a charity. There has been some debate within the TRA in the past about the desirability or otherwise to become a **registered charity**.

However the legal position is very clear on this issue. By law the TRA should register as a charity because it has an income of over £5000pa. As a matter of procedure there will be a vote at the AGM. However I do not expect that anyone wishes the TRA to break the law.

Some people believe becoming a **registered charity** is onerous. I believe it is not and would also bring many benefits. If anyone wishes to find out more please have a look at the **Charity Commission** website ([www.charitycommission.gov.uk](http://www.charitycommission.gov.uk)).

Becoming a registered charity means that we have to review the constitution as the existing one is not acceptable to the Charity Commission. The committee have produced a new constitution to be voted on at the AGM. The proposed constitution has been drawn up based on the model on the Charity Commission website and after a great deal of expert advice from Voluntary Action Sheffield.

Please take time to have a look at the proposed constitution by following the link on the **Totley Independent** website (details page 3). Alternatively you could email me ([TotleyChair@aol.com](mailto:TotleyChair@aol.com)) to request a copy to be sent back by email. We will also ensure that there is a copy available to look at in the library.

At the AGM we will also be conducting the usual business of reviewing last year's accounts and electing trustees and officers of the TRA.

I have also had a proposal that we give consideration to a change of name in order to better reflect what the TRA does. One idea is 'Totley Community Association'.

In the future I wish the TRA to be much more open and to communicate with members more frequently. Various ideas have been raised as to how this can be done. Members input would be useful.

Talking of members, the proposed constitution requires the TRA to have a register of members. It would mean that in future you will have to apply to be a member, which we propose to be free. It will be a very simple process whereby you will need to supply your name, address, telephone number, and if you have one, an email address. The information will be used solely by the TRA to communicate with you and not passed on to any other organisation or person. Although the Charity Commission requires us to have a membership register, it will also enable us to communicate more easily with members, which will help foster more openness and community spirit.

I do anticipate a lively discussion on all these issues at the AGM and look forward to seeing as many people as possible.

At the time of writing I do expect to have a full agenda available in advance of the AGM by following the link on the **Totley Independent** website, or emailing me requesting a copy.

Richard Frost  
Chairman

## Friends of Green Oak Park

The winter weather of 2010 is still causing problems for Parks and Countryside staff as they are now over a month behind with work which should have been carried out in the late autumn / early winter. Even so, a working morning took place in Green Oak Park on 9th March, when the Friends and Team 4 from Parks, worked hard to cut down the old vegetation and weeded the beds. New plants were put in to replace those lost during the winter.

Alliums, ornamental onions, are still to be planted in the herb bed. There is still work still work to be done in the orchard. The lowering of the beech hedge on the Lemont Road boundary still needs completing before the sap begins to rise.

£1,311 from the South West Community Assembly "You Choose Pot" granted to the Friends in 2010 is to be spent on new trees for the park. These will be planted before the end of March.

The provision of new equipment for young people has also been affected by the weather. The bases for the climbing boulders are now in place and we are reliably informed the boulders will be built sometime in May, again depending on the weather.

Once again the newly cleaned out stream has proved a magnet for the local frogs. They have been busy laying their spawn. There is not as much as last year, probably because many of the frogs froze to death in the low temperatures.

But now we can look forward to the spring. The first swallow was recorded in Cornwall on 10th January.

Avril Critchley  
Chair FOGOP

## GREEN OAK BOWLING CLUB

The bowling season begins in April and finishes at the end of September. We are a small club situated in Green Oak Park. We have four ladies teams and two gents teams playing every week in the Sheffield Parks Leagues. We would welcome new players. Unfortunately this year members of the bowling club are having to pay £45 each to the council for the season. Because of cuts and shortage of money the Parks dept. are having to manage their budget which has been reduced. Casual bowling is £2.25 per person in agreement with the Parks dept. No one will be at the green unless matches are being played.

If anyone wishes to play bowls on the green details can be obtained from Sylvia Tel. 236 5499 – 235 0216. Any Sunday afternoon members are always available on the green for a chat or a game. Please come along.

### Junior Bowls

Unfortunately we have no junior club this year. We have no one in a position to run it. We still have the team kit and bowls so hopefully someone in the near future will volunteer to have a go.

We had a junior success to finish with. JAMES HIGGINS won 3 trophies last season including the Junior Civic Merit. Well done James. Green Oak wishes him well as he enters the adult bowling leagues.

Sylvia Ruddle (secretary)





## ***Transport 17***

We will be having one of our Coffee Mornings, in our office on Saturday 9th April. This is at 172 Baslow Road, Totley, from 10 am to noon. New items, bric-a-brac, books and a raffle, hot-cross-buns, tea and coffee. I am sure that we can come up with an alternative if you don't like hot-cross-buns!

The weather in the last few weeks has covered snow, fog, gale force winds, rain and sun. I hope that by now it will be better and that you all have a Happy Easter.

Best wishes.

Margaret Barlow

## **TOTLEY PRIMARY SCHOOL UPDATE**

**HELP!** Is there anyone out there that can help me to find out who to contact about the land at the back of our school grounds? It is kept in Trust I'm lead to believe and no building permission can be granted as there is no road access to it. I'd love to look at the possibility of using the land for a school farm. It would be a big project I know, but what an addition to our school and perhaps neighbouring schools as their pupils will be able to see, feed and help look after the animals.

The new fence and automatic gate is up and running. This was one of the Ofsted's requirements from their last visit in order to keep the children safe.

Hopefully this year the gardening club is going to grow in bulk and have a veg shop to sell their produce to parents and staff. I think Martin Scrivens can sleep soundly as it clearly won't be on his scale.

I would like to bring your attention to the hero of Sunnyvale Road. Our paperboy found a walker who had collapsed on the pavement and, not only did he phone for an ambulance, but he also stayed with her until help arrived. In my opinion, he is a star and a credit to his family.

Y3 class had a Saxon theme "sleep over" recently and a good time was had by all. Probably not much sleep though!

Reception class or FS2 as it is now called planted 3 silver birch trees in their new outside play area.

By the time this copy goes on sale Mrs Lant will only have one more week left at our school before taking up her new post in Hillsborough. I wish her well and will miss her dreadfully. I keep telling her it is not too late to change her mind, but to no avail. On the plus side we a good leader in Mr Stewart who I know is up to the task of steering us onwards and upwards.

Allen Miller

Totley Primary School

## **Totley Independent Website**

There is now a website for the Totley Independent which gives details on how to contact us and other information. It's very new so if you have any suggestions about what additional information we should have on it please get in touch.

**[www.totleyindependent.co.uk](http://www.totleyindependent.co.uk)**

## **Hospital Bus**

In recent issues of Dore to Door (available at Totley Library or online at [www.doretodoor.co.uk](http://www.doretodoor.co.uk)) there has been considerable debate about problems with parking within Dore village. Of course Totley is far from immune from parking issues and it was raised as a general problem at the March Ward Forum meeting. One of the numerous reasons for parking congestion is when visitors to the hospitals park in Dore to catch the 30 bus.

What is not well known though is the park and ride operated by Tesco and TM Travel.

Service 505 runs from Tesco Abbeydale Road to and from the Arundel Gate Mini-Exchange via Hunters Bar, the Hallamshire Hospital and Western Bank from early morning to early evening, Monday to Friday. It operates at least hourly but half-hourly at the start and end of the day.

Following prices are from Tesco Abbeydale to the Hallamshire past the University and into the city.

**Adult Single:** £1.70, **Adult Day Return:** £2.70, **Park & Ride Weekly:** £9.00, *Weekly multi journey on 505 service only, with expiry date.*

**Ten Trip Park & Ride** £10.00 *Ten trips on 505 service only with no expiry date, aimed primarily for part time workers*

**Normal concessions apply.**

Pick up a timetable from Travel South Yorkshire or online at: - [tinyurl.com/6cmymrzm](http://tinyurl.com/6cmymrzm)

## **Scout Lottery**

**Winners of the 1<sup>st</sup> Totley Scout Lottery  
February Draw**

1st Prize No 45  
RussellHobbs Blender  
Mr and Mrs Frost  
Quarry Road

2nd Prize No 67  
£10 Voucher  
Mr and Mrs Lawry  
Totley Brook Road

Peter Casson

## **Friends of Gillfield Wood**

The next meeting of the Friends of Gillfield Wood group is Tuesday 12th April 2010 - Totley Library at 7pm.

There is also a practical conservation day on Sunday the 10th April. Meet at the bus terminus at the top of the wood at 10am.

Finally, there is a botanical survey day planned for Sunday 1st May. Meet on Totley Hall Lane near the farm gate at 9.30am.

## **Councillor Surgeries**

**Liberal Democrats:**

2nd Monday in the month 6.00-7.00 p.m., Totley Library, Baslow Road and 2nd Saturday in the month from 10.30 a.m. to 12.00 noon, Dore Old School Hall, Savage Lane, Dore Contact details: telephone 235 2289 Email: [keith.hill@sheffield.gov.uk](mailto:keith.hill@sheffield.gov.uk), [colin.ross@sheffield.gov.uk](mailto:colin.ross@sheffield.gov.uk) or [mike.davis@sheffield.gov.uk](mailto:mike.davis@sheffield.gov.uk)

**Totley Independent Website: -  
[www.totleyindependent.co.uk](http://www.totleyindependent.co.uk)**

**TRA Website: - [www.totley.org.uk](http://www.totley.org.uk)**

## Totley Residents Association

When I moved to Totley from Dore some thirteen years ago I was pleased to find that the Residents' Association existed. I was even more pleased to see that the condition to be a member was simply to be a Totley resident. It was inclusive of all residents, there was no "us and them"

The meeting on the 21st February, obviously orchestrated, made alarm bells ring.

Charitable status was obviously on the agenda, but how can a whole village become a charity? A society can become a charity, for example, the music group or the Friends of Greenoak Park, but surely not a whole village. If this is so will all the villages and districts in Britain want to become charities? I don't think Dave means this when he talks of the big society! Then, I ask myself; is the proposed new constitution going to bring about changes in membership? Is the association going to become exclusive? If so Totley will never be the same again. If the cabal wants an exclusive group perhaps they can form a different society and leave the T.R.A. alone. Before any votes are taken at the A.G.M. of the RESIDENTS' Association I feel we must all have sight of the proposed constitution†.

I would like to thank Avril and everyone who has worked on behalf of the residents of Totley. Meetings may have been informal and not to rule, I wouldn't know about this, but everyone has, I am sure, worked hard and for the right reasons.

Doreen Gillatt

†**Ed:- See page 2 for details how to view the proposed new constitution.**

## The Wye Charity Walk

**Saturday 14th May 2011**

Sheffield Vulcan Rotary Club is to hold their annual Wye Charity Walk in the scenic Derbyshire countryside on Saturday 14th May 2011. This is a sponsored round walk starting and ending at Lady Manners School, Shutts Lane, Bakewell DE 45 11A.

The walk takes in the superb scenery of Haddon, Chatsworth and Ashford in the Water, and walkers are given the option of three distances 6.5miles, 10.5miles or 16.5miles depending on ability and enthusiasm.

Entry costs £6 per person, or £15 for a family, and walkers are encouraged to gain sponsorship for either St Luke's Hospice Sheffield or Ashgate Hospice Chesterfield

Ample free parking and facilities are available at the Registration Point at Lady Manners School. Start times are between 9.00 and 10.30am for the full walk (16.5miles) or between 9.00 and 11.00am for the shorter walks. Entries must be in by Monday 9th May 2011

All sponsorship money and donations together with Gift Aid pledged will go to either

St Lukes Hospice Sheffield or Ashgate Hospice Sheffield

Full walk details will be provided on Registration and stewards will be available along the route to assist walkers

Details, Entry Forms and Sponsorship Forms are available to download from the internet at the Sheffield Vulcan Rotary Club website:

**[www.vulcanrotary.org.uk](http://www.vulcanrotary.org.uk)**

telephone 0114 235 7556(Sheffield) or 01246 565048 (Chesterfield)

## HOLMESFIELD FLOWER CLUB

### NEW MEMBERS WELCOME

Are you looking for a club to learn about or practise your flower arranging skills? If so, our long-standing friendly club would be pleased to hear from you. Membership is open to all and irrespective of ability, so why not come along and meet us to find out more. We have regular workshops with tutors, practise nights and demonstrations by national and regional NAFAS demonstrators.

We also run an annual event for charity, have occasional talks and a club lunch. Meetings take place on the third Wednesday of the month (except December) at the Village Hall in Holmesfield, commencing 7.30 pm.

The subscription for 2011 is £20 and ticket prices for the demonstrations is £6 for visitors and £3 for members (includes refreshments). Visitors to workshops £3.

For more information contact Diana Holland tel: 0114 237 7601 email: [mail@dianaholland.plus.com](mailto:mail@dianaholland.plus.com)


## Date for your diaries!

### Calling all stallholders!

Totley Primary School PTA Summer Fayre will be held on Saturday 25th June from 1 till 4pm.

Building on the success of last year's event there will be a wide range of fun activities and games for all the family and a number of stalls selling interesting and varied products.

If you'd like to have a stall at the Fayre, please contact Anne on 07796 326752 or email [anne.dussart@hotmail.com](mailto:anne.dussart@hotmail.com)



**JOHN WADE SINGERS**

\$

Present...

**A Showtime Spectacular**

Holy Trinity Church  
Grove Road, Millhouses  
**Friday 15th April**  
at 7.30pm

**Conductor**  
Richard Swift

**Accompanist**  
Jonathan Lazell

**Tickets £9**  
**Concession £7**  
**Child £3**  
Net proceeds to local charities

Ticket sales and information  
**Jenny Parker 0114 236 0798**  
**Helen Hancock 0114 235 1433**

[www.johnwadesingers.co.uk](http://www.johnwadesingers.co.uk)

## Farming Scene

### The Duck Walk!

It looks as if the old adage "If a duck can walk across a pond before Christmas, it will be a mild winter" is going to be correct again this year. Although we had some very severe cold weather in November and early December, causing ponds and rivers to freeze over, since then it has been relatively mild. There must be a practical meteorological explanation for this, but the old proverb still seems to hold good even in these days of climate change. Conversely, we always used to reckon that if we were to have a long period of laying snow it would begin after Christmas and carry on into January and February. Somehow winter proper came 2 months early this year! It now looks as if spring could be early this year as well. The grass is starting to grow now and the sun is really warm now when it manages to break through the clouds. In the farming community these warm sunny days inspire relief and optimism. Spring must be just round the corner, winter is nearly over and soon the crops will be growing and the sheep and cows will be able to feed themselves on the rich, tasty spring grass.

All our weaned Dorset ewes are back out in the fields now and their lambs, the ones we are keeping for breeding anyway, will shortly follow them out. Our Texel ewes have now been brought in ready for lambing and perhaps half of them should have lambed by the time you read this. Some in fact may already be back out in the fields by then. Back in January these ewes were ultrasound scanned to identify the number of lambs each ewe was carrying. This identified a higher than normal number of ewes that were either "empty" or carrying only one lamb. There are a number of factors that could explain this poor result.

The exceptionally cold weather soon after tugging may have caused some embryos to be reabsorbed rather than becoming attached to the uterine wall and growing pure bred Texels tend to have a lower number of lambs than some other pure or hybrids. In our case we also had a dog chasing them round and out of the field when the tups were still in. This could also have had a serious effect on the number of embryos retained in individual ewes.

Normally we would try to keep the ewes quiet and undisturbed for at least 40 days after tugging to maximise embryo retention. Being stressed out by a loose, aggressive dog is the last thing they need during that period. Whether it was this or the snow or a combination of both we will never know. Let's hope we have an easy lambing now with few losses and no repeat of the 3 feet of snow we had when our Dorsets lambed!!

Edwin Pocock

## Puzzle Corner

### Countdown

Thinking about the TV Countdown Programme I jotted down the 6 numbers 75, 9, 7, 6, 4, 1.

I then had to use some or all of these numbers but only once each, to make 767. Having solved this I then wondered if all 3 digit combinations of 6 and 7 could be got using the same set of 6 numbers. Readers may like to try, 666, 667, 676, 677, 766, 767, 776, 777

## Cross Scythes Motors

### Issue 341

I knew Alec Jepson quite well in fact all the family, and remember him taking over the garage.

In those days he had no sales team but he relied quite a lot on local youths, my brother worked for him for a short period. The top picture would be around 1950 as there is a Austin A30/A35 and a Morris Minor on display.

My first car was an Austin A30 which I used to park on Alec's plot. Each week Alec used to take 2 or 3 local youths to the car sales at Meashem and they would drive the cars back to Totley.

Later Sam Longson lorries used to park up overnight at the compound and I believe Alec had some connection with Sam Longson, as outside the Longson Offices at Chapel-en-le-Frith under Sam's nameplate was a brass nameplate depicting the Head Office of Cross Scythes Motors. This plate was still there a number of years ago when I was in Chapel-en-le-Frith. After Alec finished a building firm took over enlarging the site, but after a short time, prior to the houses being built, it was developed into the car sales supermarket.

Before the War Alec and his brother were decent footballers in their younger days.

After the supermarket closed the site was dormant for a time and a block of public toilets were built and soon demolished and houses and flats built.

J W Abson

## Totley Music Festival 2011

You may be wondering about the Totley Music Festival for 2011. Well, once again we're hoping that there will be more fabulous musical events, but this year we're intending that the Festival will take place in September, rather than July. There are various reasons for this, but hopefully we'll choose a week when the weather is OK, when the school term has started so that young people can contribute once again, and everyone is back from their summer holidays! If you want to contact us about the Festival, either to help with the organisation or to perform, please email us on the new TMF address, which is [totleymusicfestival@talktalk.net](mailto:totleymusicfestival@talktalk.net) or call Phil or Sue on 07956 858944. We hope to hear from you with your ideas!

## Voting 2011

On Thursday 5 May, if you are registered to vote, you will not only be able to vote in the local elections as normal, but also a national referendum on the voting system.

The local elections are your opportunity to vote to elect the Councillors of Sheffield who will represent your views for the ward in which you live.

The referendum will ask a question about the national referendum held on the voting system for UK parliamentary elections. The Electoral Commission are sending an information booklet explaining this referendum in full to every household in the UK. You should receive this booklet during April.

If you are not already registered on the Electoral Register then you need to register by the 14th April.

For more information about the local elections and the referendum visit:

[www.sheffield.gov.uk/your-city-council/elections](http://www.sheffield.gov.uk/your-city-council/elections)

## Digital Switchover

Analogue TV channels are being switched off in 2 stages this year, 10th August BBC2 is switched off and 24th August the remaining analogue TV channels are switched off, after which the digital TV signals will be given additional power.

If you've not already done so, now is the ideal time to get ready for the switchover; after the Christmas rush and ahead of the switchover itself. Doing nothing could leave you without a TV signal after switchover dates.

Things to think about:

How many TVs in your house do you want to continue watching after switchover?

Does your existing TV have a SCART socket? This will help you decide if you need a box with a SCART socket or an RF-modulator. An RF modulator, is a device that enables TVs without a SCART socket to be converted to digital, providing you have an aerial socket.

Do you record one channel while you are watching another? If so, you should think about buying a digital TV recorder that will also convert your TV

Do you need a new aerial? If you are eligible and take up the Help Scheme, they can explain all your digital options and help you to choose the way to switch that suits you best.

TV/radio adverts and literature are appearing now to help us decide and much more information is available online at [www.digitaluk.co.uk](http://www.digitaluk.co.uk).



## Gillfield Wood

As young lads pre-War we used to spend a lot of time in the Woods, swimming in the deeper pools, fishing or jumping from one side to the other of the river. I well remember the felling of numerous trees in the 40s and the huge lorries used to haul the enormous trunks up Hall Lane. Coming out of the Woods, through the fields, the deposited huge amounts of mud and clay on the Lane. Much of which was trodden into the Post Office, providing Mr and Mrs Perkinton with the never ending job of keeping the floors clean.

As to the pronunciation of the term Gillfield in those days it was always pronounced Jill Field, supposedly after its namesake the flower Gillflower of which an abundance grew in the Woods or the old half pint gill of milk (Jill) or ground ivy.

Many people will beg to differ but why worry we have a beautiful wood and stream on our doorstep.

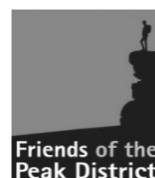
J W Abson

## The Peak District's 60th Birthday Charity Walk

Join Friends of the Peak Districts fantastic charity walk on 16th April to celebrate the 60th birthday of the UK's first national park! Starting from the stunning Thornbridge Hall, there is a choice of two circular routes along the beautiful Monsal Trail – either the more challenging 15 miles (starting at 8.30am) or a more leisurely 7.5 miles (starting at 11.30am). Both walks return you to Thornbridge Hall where you can then rest your weary feet, enjoy a nice piece of birthday cake and help celebrate 60 years since the Peak District gained its national park status.

Cost: adults £13.50, children £6.00 (all proceeds to Friends of the Peak District). We also ask if you can help raise sponsorship towards our work protecting Peak District landscapes.

Registration form available at [www.friendsofthepeak.org.uk](http://www.friendsofthepeak.org.uk). OR phone 0114 266 5822 OR email [danny@friendsofthepeak.org.uk](mailto:danny@friendsofthepeak.org.uk)



LEONARD CHESHIRE DISABILITY

MICKLEY HALL, MICKLEY LANE

WEDNESDAY APRIL 6<sup>TH</sup> 10AM-12 NOON

SPRING FAYRE



CRAFTS, GIFTS, DELICIOUS CAKES

AND COOKIES, RAFFLE, AND MUCH MORE

PLEASE COME AND SUPPORT US

DORE ART GROUP  
**ART**  
**EXHIBITION**  
*Dore Old School*  
Friday 8th April 2011  
2.0pm to 6.0pm  
&  
Saturday 9th April 2011  
9.30am to 5.0pm  
Refreshments available  
Free admission



## St John's Church Abbeydale



**17th April Palm Sunday**

8am Holy Communion

10am Holy Communion to include blessing of the palms

**21st April Maundy Thursday**

7.30pm Holy Communion

**22nd April Good Friday**

10am Family Service

2pm An Hour by the cross

**24th April EASTER SUNDAY**

8am Morning Prayer

10am Parish Communion

**8th May ST GEORGE'S DAY SERVICES**

8am Holy Communion

10am Morning Prayer - Uniformed organisations service - baptism

## Dore & Totley URC's Easter Services

Dore & Totley URC, on Totley Brook Road, is a member of the Sheffield South Group of United Reformed Churches, the other two being Meersbrook Park on Chesterfield Road and The Michael Church on Low Edges Road. A copy of our magazine "Take Notice" is distributed to all clergy and Churches in S17, and a copy is regularly on display in Totley library.

This year, Easter is almost as late as it can be, and probably will not have snow, as has happened on occasion, when Easter is late March or early April.

- On April 21st, the Maundy Thursday Communion Service at 7pm. will be led by Rev. Shirley Knibbs.
- On Good Friday, April 22nd, there will be a Group Service at 11.30am at The Michael Church, preceded by hot-cross-buns and coffee from 10.30am.
- On Easter Sunday at 10.30am, the Rev. Shirley Knibbs will lead the Family Service with Communion at Dore & Totley URC.

We look forward to meeting visitors and friends at any of these Services.

Judith Norris

## Archaeology group

Are you interested in archaeology? A small local group has now been formed calling itself the 'Time Travellers'. Eleven members took part in the first event in January, a guided field trip looking at the archaeology of Ecclesall Woods. There are two more field trips in early March, a visit and guided tour of Manor Lodge and recent excavations on the 17th March, with lots more activities planned for the summer. The group aims to share enthusiasm/information/ideas but eventually to research, develop and pull together a record of what we know about the surrounding area. Would you, or anyone living locally who you know, be interested? If so please contact John Baker on 236 9025 or Dorne Coggins 236 5769 to find out more

## TOTLEY RISE METHODIST CHURCH 2011



**'He Has Risen'**

A warm welcome awaits you at Totley Rise Methodist this Easter

**Palm Sunday - 17 April**

9.30 am - Meet at Cross Scythes for procession to Church.

Why not come along and join our journey to church in the company of a donkey? All Age Worship at 10.30 am at Totley Rise Methodist.

**Good Friday - 22 April**

10.00 am - Meet at Totley Library for procession to Church with a cross. Come along and remember all that Jesus did for us.

10.30 am - Worship at Church.

**Easter Day - Sunday 24 April**

8.30 am - Early Morning Communion followed by a light breakfast.

10.30 am - Celebrating Easter

6.30 pm - Easter Praise with Communion

This Easter enjoy an Easter egg, spend time doing the garden, but why not take a moment to consider what it really is about?

## King Egbert School Concert

On Thursday 17th, Kate and I went to see "A Night at The Musicals", which the school had been rehearsing since last October - and it paid off!

It was excellent!! The Chorus numbers, both in singing and dancing, were good in enthusiasm, timing and costumes; the solos and duets were similar, believable and enjoyable, whilst the music provided by The Band sounded terrific.

I don't know the Sunday name for the "backing group", whom we were sat near to, but they worked their socks off.

Had Simon Cowell been There, he would have snapped up the lot of 'em on the spot, so, thank you School for a very, very pleasant evening out.

Tony & Kate Reynolds

P.S. I have never liked Wizard of Oz, but in your production, I will make an exception

## DO YOU NEED HELP?

-In coping with worry, depression, addiction or illness (physical, mental or spiritual)

Christians believe, through Jesus, God can and does, comfort, heal and bring peace of mind, in response to prayer.

Members from All Saints and Totley Rise Methodist churches are currently offering to pray in confidence for anyone who would like to come to:

**TOTLEY LIBRARY BUILDING ON SATURDAYS**

between 12.30 and 2.30pm

and

**HEATHERFIELD CLUB (BASLOW ROAD) on WEDNESDAYS between 2 and 3pm**

For information ring Brian 07877 303709

## TIN TAB

The article by Richard Moffat in number 340 of the Totley Independent was very interesting. For me, like so many incidents from bygone days, it stirred thoughts of what a sight the transfer must have been and how much local interest it must have provoked. Of course, in those days, Totley was a Derbyshire village. The bogey turning into Totley Brook Road would not have been faced with fast traffic hurtling down from Totley Rise.

I had understood the building referred to was originally from the village of Birchinlee constructed in the early 1900s to house navvies (and their families) employed in the construction of the Derwent and Howden I reservoirs. The name derives from Birchinlee Farm which was near the site of the village. Because the buildings were largely of corrugated iron it became more familiarly known as Tin Town.

The provision of a complete sizeable village to house the workers seems a considerable improvement on the more casual housing of the navvies working on the Totley Tunnel some 20 years earlier. Brian Edwards in his book about the Totley Tunnel tells us that, although some wooden huts were provided for the workers, many lodged in surrounding areas including Totley. Houses on Totley Rise, many now used as shops, are one example.

My first personal memory of the dam area dates from the 1930s. I was a schoolboy living in Mexborough but sometimes cycled into Derbyshire. On one such occasion I remember standing somewhere below the Yorkshire Bridge Inn to marvel at the dam wall of the Ladybower reservoir then under construction. I had no inkling at the time that 10 years later I would be courting a lass from Sheffield and going for long walks around these dams; that 20 years later we would come to live in Totley and therefore nearer these dams; more than 70 years later I would be reminded of this long ago cycle trip via the **Totley Independent!**

Unlike today, when huge blocks of high rise flats can be razed to the ground after a comparatively short period of use, many Tin Town buildings were moved and used for other purposes, when no longer needed for the navvies. Presumably they were dissembled for transfer and put together again at their new site. Unfortunately I cannot remember why I thought the Tin Tab came from Birchinlee. If I am correct I imagine it would be conveyed to Dore and Totley station by train, probably in sections. Would the tunnel dimensions allow conveyance of the fully erected building even if it could be removed from Birchinlee as a whole? This would fit in with my understanding the Tin Tab was first erected and used on a site near the Dore station. I presume the bogey transfer in the article was the complete building - a much more impressive sight than a pile of sections.

I do not remember this building from Birchinlee but I have seen two others. One was in the village of Abney, used for many years as the village hall and now replaced by a brick building. The other was used as a shop on the Edale road out of Hope. Perhaps other readers can add to the story.

Not much now remains of the Birchinlee village but there is a "memorial" to it near the site on the opposite side of the road round the dam.

Don Ashford

## Art Exhibition

By local artists **Christine Walker**

**Simon Deeks**

**St Johns Church Hall, Abbeydale Rd.**

**Sat 16<sup>th</sup> April 2011,**

**10.30am-3.30pm**



Refreshments  
available

Free admission



WEDNESDAY APRIL 20TH, TOTLEY LIBRARY, 7.30PM

## AGM

ANNUAL REPORT, FINANCIAL REPORT

RE-ELECTION OF COMMITTEE

NON-MEMBERS WELCOME BUT NOT ALLOWED TO VOTE

FOLLOWED BY

**"TURNPIKE ROADS AROUND TOTLEY AND  
DORE"**

A TALK BY HOWARD SMITH

MEMBERS £1.00, NON-MEMBERS £2.00

## Puzzle Corner

### Solution to Countdown

1.  $75 + (9 \times 4) = 111$ ,  $111 \times 6 = 666$
2.  $75 \times 9 = 675$ , subtract  $(7 + 1) = 667$
3.  $75 \times 9 = 675$ , add 1 = 676
4.  $75 \times 9 = 675$  add  $(6 - 4) = 677$
5.  $(75 + 6 + 4) \times 9 = 765$ , add 1 = 766
6.  $75 \times (9 + 1) = 750$ ;  $(6 \times 4) - 7 = 17$ , add = 767
7.  $75 + (9 \times 4) = 111$ , multiply  $\times 7 = 777$ , subtract 1 = 776
8.  $75 + (9 \times 4) = 111$ , multiply  $\times 7 = 777$

Don Ashford



## 1965 CANNON HALL – BUTTS HILL

The above picture of Cannon Hall kindly loaned to me by Mrs Jo Salmon (Mrs Baker) deserves a few comments, on its place in the history of the village of Totley. Cannon Hall was originally a farmhouse in the 16th century and what is called a cruck building. Cruck relates to the size, shape and strength of the many wooden beams involved and would originally have had a thatched roof. These cruck buildings were built on high ground to ward off any attacking force.

Cannon Hall is believed to be Sheffield's oldest occupied house (still occupied) and legend has it that a Cromwellian Cannon Battery was stationed nearby, when the house was at least 100 years old. Others state that Cannon Hall had some connection with the cannon of Beauchief Abbey – so take your choice.

It is worth recalling that in 829 history has it that King Ecgbert's journey to Dore to meet King Eanred would have taken him past the cruck building at sites at Whittington Moor farm, the Hallows at Dronfield, Dronfield Woodhouse Hall and Cannon Hall. There were other cruck buildings at Cartledge Hall and Gosthorth Hall.

History has it that there was an important cruck garden, shrubs, giving it gardens of beauty and charm.

building at Dore on a site opposite what was once a chapel but now the church and as with most of these buildings they would have a thane (a King's supporter) living by.

There would also be a cruck ruler (court for settling disputes) at Dore not far from King's Croft, reputedly the site of the famous meeting in 829.

Cannon Hall itself had been sadly neglected for many years until purchased by Leslie and Margaret Rawson who spent many years and much time lovingly restoring it and putting down gardens of flowers, herb



I remember Cannon Hall as a youngster in the 1930s and after the war when I used to garage my car with the Dawsons and later with Mr and Mrs Baker.

It is amazing to see the transformation over the years not only from only a building point of view but the gardens and fruit trees climbing the walls plus of course the pigeons in the loft.

At this point I would like to thank Mrs Jo Salmon for the help with detail.

J W Abson

# Celebrating Easter

Ideas and activities for celebrating Easter at home from members of All Saints Church, Totley

## Cracking Open Easter

Easter isn't just about fluffy rabbits, chickens and chocolate eggs. The true meaning of Easter is that God loved us so much that he gave His only Son to die for us, on the day we call Good Friday. He showed His power by raising him from the dead on the third day. This is known as the resurrection, which is celebrated on Easter Sunday.

Over 80 million Easter eggs are sold each year and until 2011, not one mentions Jesus on the box. A number of churches, cathedrals, independent shops and supermarkets are stocking the Real Easter Egg on a trial basis to see if they will sell. Over 50,000 eggs were ordered in the first 12 weeks of the egg being on sale. The egg is produced by the Meaningful Chocolate Company, an accredited Fairtrade Company and registered with the Fairtrade body and the Fairtrade Foundation. Supermarkets stocking the Real Easter Egg:- Waitrose, Morrisons and The Co-op at a limited number of shops.

30 pence per egg will be donated to the charity Traidcraft Exchange and a further 10 per cent from profits will go to Baby Lifeline, buying everything from medical equipment for new mums in the UK to chickens for farmers in Africa.

"The Real Easter Egg gives consumers their first ever chance to buy an Easter Egg that not only tastes good but does good, bringing to light the Easter themes of hope and new life. I believe there will be widespread support for the product from the faith community and wider afield with many millions likely to be interested. The Real Easter Egg is a chance to educate and do good – giving money to charitable projects."

**Archbishop of York, Dr. John Sentamu.**

Source and for further information  
[www.realeasteregg.co.uk](http://www.realeasteregg.co.uk)



## The Lenten Season

I'd hate to think that I exist  
Because some nuclear physicist  
Has not, as yet, blown up the earth  
And done away with life and birth.  
I'd hate to think our final fate  
Was at the mercy of the State,  
That love and joy and all ambitions  
Were made for us by politicians,  
There must, there must be something more,  
Roll back the stone! The tomb explore.

**John Betjeman.**

## Easter at All Saints

If you'd like to celebrate Easter by coming to church, there are a number in Totley to choose from! Here are details of services at All Saints - you would be very welcome:

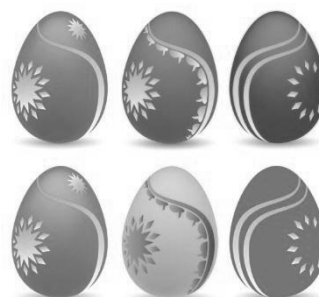
### Services for April at All Saints

3rd	10am	Holy Communion
	6.30pm	Holy Communion
10 <sup>th</sup>	10am	Baptism
	6.30pm	<b>OPEN TO GOD</b> Joint service
17 <sup>th</sup>	10am	<b>PSALM SUNDAY</b>

A musical presentation of **Pharaoh to Freedom** will be performed in the context of the morning service. **All Welcome!**

	6.30pm	Holy Communion
24 <sup>th</sup>	10am	<b>EASTER DAY</b> Family Communion
	6.30pm	Holy Communion
1 <sup>st</sup> May	10am	Family Communion
	6.30pm	Holy Communion

*Dorothy Firth, Gay Riley, Kate Caroe*



## Music in the Gardens

Music in the Gardens, is run by Sheffield Rotary Clubs, in the Botanical gardens. Last year it raised £45,000 for charity. Planning of this years event is going well & tickets should be available on the internet at [www.musicinthegardens.co.uk](http://www.musicinthegardens.co.uk).



the internet at

Appearing on June 29th will be Keith Peters Big Band, with the Battle of Britain Spitfire fly past (weather & other conditions being favourable). On June 30th will be Sheffield's own Paul Carrick, on Friday July 1st will be Courtney Pine & Omar Puente, who are making this part of their European Tour, after release of a new album in March. On Saturday 2nd July will be Dodworth Colliery Band & Sheffield Philharmonic (the last half will be like "Last Night of the Proms"). Food can be ordered online, for collection at the event, as well as there being a variety of food stalls. The bar, we are assured, will be charging pub prices. Roger Hart

## T.O.A.D.S.

present

### "DEADLY NIGHTCAP"

by Francis Durbridge

Deadly Nightcap, written by Francis Durbridge, is the title of the next play to be performed by TOADS. The dates are Wednesday 11th May to Saturday 14th May, and the venue is as usual, St John's Hall, Abbeydale Road South, at 7.30pm.

Murder and mystery abound in this ingenious play from the master of the genre! Is our heroine really going out of her mind, or is there something more sinister afoot? Of course there is!!

Deadly Nightcap marks the debut of four new TOADS members, who are delighted to be treading the boards for the first time in this great thriller.

Call 235 1206 to reserve your ticket - £4, or £3.50 for concessions - or contact any TOADS member.

## CHERNOBYL NUCLEAR ACCIDENT 25TH ANNIVERSARY

On 26th April 1986, reactor number 4 at the Chernobyl nuclear plant in the Ukraine exploded, sending clouds of radiation all over Europe, including Britain. Some farms in Cumbria are still affected, as well as the lives of many people in Belarus and the Ukraine.

On the eve of the anniversary of the disaster, at 8 pm on Monday 25th April, we will be lighting candles in the shape of a 25 in Graves Park near the Rose Garden cafe. Similar events will be happening all over Britain and Europe at the same time. Please join us if you can. More information from Elaine Ferguson, Chernobyl Children's Life Line, 236 5607.

## Holmesfield Flower Club

**Wednesday 20th April:**

Holmesfield flower club invites you to a demonstration of Flower Arranging by Tim Kirkham (NAFAS area demonstrator) entitled "Pandora's Box". 7.30 pm at Holmesfield Village Hall (off Woodside Avenue) Holmesfield. Ample parking. Tickets available at the door: £6 (members £3) includes refreshments. The arrangements will be raffled at the end of the show. **EVERYONE IS WELCOME**

Let the

## CAPRICCIO QUARTET

and friends from the University of Sheffield

entertain you on

**Saturday 9th April 7:30pm**

at

**Dore & Totley United Reformed Church**

**Totley Brook Road**

with coffee and cakes

Donations in aid of Chernobyl Children Lifeline  
More details call Elaine Ferguson 0114 2365607

## Mens Hairdressing by Karen

at

**Hair by Patricia Barber**

53 Wollaton Road,  
Bradway

9am to 5pm Thursday

9am to 5pm Friday

9am to 1pm Saturday

appointment or walk-in

**0114 236 6247**

**07984 021 033**

## Totley Drum School

Drum lessons in a relaxed and friendly environment. Topics such as music reading, hand and feet development, double bass playing and different styles, along with general advice and guidance. The lessons are aimed at beginner and intermediate players, with any age or gender welcome

Very reasonable rates, and the first lesson is half price



Contact Lee on 07815 168 338 or email  
[totleydrum-school@yahoo.co.uk](mailto:totleydrum-school@yahoo.co.uk)

## HINES 57 DOG GROOMING

\* Grooming

\* Clipping

\* Bathing

\* Hand Stripping

\* Professional Qualified Friendly Service

For more information or to book an appointment:

Call Anita Hine on: 07747 016550

Limb Lane, Dore, S17 3ES

# GARDENING TIPS FOR APRIL

The sun is shining the air is warm after what seems a long period of cold damp miserable weather, a bit of sunshine always manages to cheer us up and encourages us to get cracking in the garden.

Lots to do this month, ponds to clean up (lots of frogs have returned to do their spring activities and fill the pond with their spawn) this is a messy job but it is essential if we are to have a healthy environment for the fish and wildlife, we are altering the shape of the pond no.2; it has sprung a leak so whilst we are relining we will take the opportunity to deepen it and extend it and incorporate a small waterfall, I'm looking forward to seeing it completed so that we can sit and enjoy watching the goings on with the pond life. I've prepared the veg. plot with extra care this year with a view to getting first class onions and leeks for the show the seedlings are looking good already ( I don't like counting chickens before they hatch) but if everything is ok they should make magnificent specimens. The cabbage, broccoli and lettuce seedlings are coming along nicely (12th March) they should be nice and sturdy by the time you read this unless the weather decides otherwise. The flowers around the garden are starting to give us a bit of colour, I was a bit worried that we might have lost a lot of plants during that nasty spell of very low temperatures during the winter months, but old mother nature seems to have come up trumps once again, I see perennials putting up new shoots, one or two are a bit backward perhaps the angels fishing rods and a couple of penstemons may have succumbed, but on the whole I can't grumble (well I can but it won't do any good). The greenhouse plants suffered the worst I will have to restock with fresh plants. It's time to finish seeing to paths, fences, huts, that have not been tackled before or have been blown about during the high winds last month, I need to repaint our fences as they are looking a bit pale I will have to get stuck into a bit of preservative (not for me for the fences) it is a long tedious job. The lawn is a bit tatty it needs a good feed now, and we will be cutting and raking and getting into a regular routine to keep it looking good.

The birds are busy finding mates and building nests or eying up nest boxes, I have been feeding them regularly they are looking very healthy, watch out when feeding them peanuts make sure they cannot take whole nuts especially when they are feeding young the chicks may choke on larger pieces.

Keep a wary eye on the weather forecast April can have a few surprises it has been known to snow and also have heat waves so we have to take special care with ventilation and shading. It's particularly important if you have little seedlings growing, big variations in temperature can devastate a tray of young plants in no time, this can be very disappointing and also set back your growing plans especially in your vegetable garden. It's raining again so I will have time to type this article and be in good time which will please the editor, enjoy your gardening.

**Flowers.** There is still time to plant herbaceous perennials moved from open ground but the sooner this work is completed the better; container grown plants can be put in anytime provided they are sufficiently well established to be moved with roots and soil intact. Plant a few more gladioli in small batches throughout the month so that you get a succession of blooms later. April is a good time to plant or move Alpines. Also for making a new violet bed out of doors to provide clumps for forcing next winter. Sow hardy annuals in beds where they are to flower. Plant out and stake sweet peas. Start dahlias in frames if you have not already done so watch out for frost forecasts and cover at night.

Some bedding plants could also be transferred to the frame. Watch the ventilation carefully, especially on sunny days, keep them moist. Antirrhinums and penstemons raised in autumn from seeds or cuttings may be planted out in their flowering quarters if they have been properly hardened off. It is a good time to take cuttings of chrysanthemums that are going to make dwarf specimens in pots. You can use standard chrysanthemum plants for this but some varieties take to this treatment better than others. Weed, clean up and stir the soil crust of bed and borders and prepare them for new plantings Stake up tall plants.

Feed top dress and mulch around perennials. Deadhead flowers as they fade. Don't strip the flowers from bulbs or corms let them die down naturally and give them a feed to encourage flowering next year. Keep newly planted plants well watered. Plant up patio pots with summer flowering bulbs. These can be placed in borders to add a touch of colour especially amongst shrubs and plants which have flowered.

**Vegetables.** Dig over and prepare any spare plots for future plantings, check lime content, if you are not sure brassicas need quite a good top dressing of lime, do not put manure on at the same time. Give springs cabbage a top dressing of Nitrate of soda (14g per sq. meter). Hoe it in. A further dressing in about three weeks will be beneficial.

Plant onion sets in well prepared soil 15cm apart in rows 30 cm apart, just cover the main bulb. Most vegetables can be sown now. Don't put out bean plants until every chance of frost is past. Earth up potatoes as they make new growth. Plant out herb plants, which have been in containers.

**Trees, Shrubs and Fruit.** Apply Tonks fertiliser to roses; this will give them a good start for a summer show of quality flowers. Some flowering shrubs such as hardy fuchsias, buddleia, leycasteria, willows etc. can be pruned now, with all these pruning should be hard, last years growth cut back quite close to older wood, with buddleias you could leave a few branches to remain to build up a framework of growth if a large bush is required.

Spray gooseberries and black currants, If you have suffered in the past from mildew, use one of the new fungicides which have now replaced the suspect chemical ones. If your black currants suffer from big bud mite, pull off the affected buds and burn them if necessary spray with a quality insecticide. Make sure to check your tree ties have not loosened over the winter and replace any broken ones, release any that are too tight and are cutting into the bark. Remove greases bands and bums them. Make sure new growth of raspberries and blackberries are tied in well.

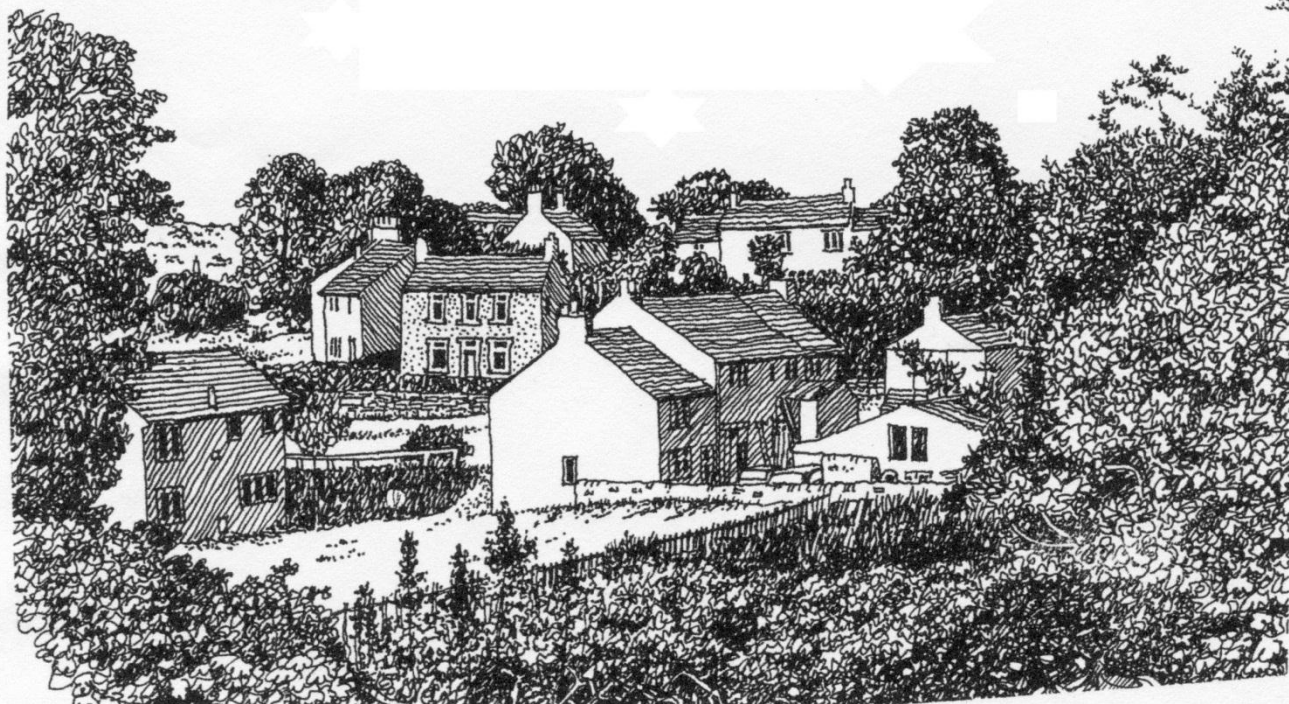
**Greenhouse and Indoor Plants.** Your greenhouse should be bulging by now with cuttings; seedlings etc. so watch the ventilation carefully and shade any tiny seedlings from the hill sun. Cyclamen seedlings planted last summer will need potting on singly in 3in (8cm) pots. Bedding plants and half- hardy annuals can be hardened off later in the month. Watch out for green fly and other pests and deal with them as soon as possible, remember though if you are using strong pesticides or smoke cones, protect or remove seedlings as they will be killed or severely set back by these products. April is a busy month in the greenhouse pricking out seedlings, potting on cuttings. don't neglect any of these tasks at this time, as pot-bound plants and seedlings take a long time to recover and don't make very good specimen plants. Freesias, lachenalias, lilies and cyclamen which have been flowering during the winter months must now be allowed to rest, place them quite near to the glass and reduce the water supply; this does not apply to the young cyclamen previously mentioned. Train and pollinate melons.

Thin out peaches and nectarines, Plant cucumbers in heated greenhouses. Sow aubergines and capsicums. Sow arrows, melons in 3inch (8cm) pots in greenhouse at 60F (16C). Gradually increase watering and feed established houseplants. Plant tubers of begonias and hot water plants. Sow in warmth indoor primulas, asparagus fern, cacti etc. Gently wash leaves of foliage plants and give them a dose of fresh air outside on a warm rainy day.

**Lawns.** Rake and lightly roll. Scarify, spike, aerate apply lawn feed or dressing. Start routine mowing. Seed new lawns and keep well watered in dry weather.

Enjoy your gardening, cheerio for now, Tom.

**P.S. Totley Show, 17th September.  
MAKE A NOTE TO BE THERE**



VIEW FROM BASLOW ROAD

BRIAN EDWARDS

## Do the Properties of the Universe provide Evidence for a Creator?

**Dr Chris Booth**

**7:30 p.m. on Wednesday 11th May  
Totley Library**

Modern science provides a dramatic account of the development of the Universe over the last 13.7 billion years. The Big Bang, processes inside stars and supernova explosions have all moulded the cosmos that we see. A remarkable aspect is the fact that the physical laws appear fine-tuned to provide an environment for intelligent beings like ourselves to exist. Is this an accident? Is it inevitable? Or is it an indication of something more profound? The evidence will be presented, and various possible scientific and philosophical explanations or interpretations will be explored.

This talk is aimed at those with an existing interest in scientific issues, who enjoy science programmes such as "Horizon" and Brian Cox's "Wonders of the Universe". Some of the material will necessarily be technical! However, every effort will be made to ensure it remains accessible to a non-specialised audience.

Chris Booth is a Reader in Experimental Particle Physics at the University of Sheffield, a researcher at CERN and other particle physics laboratories and a member of All Saints' Church here in Totley.

*Light refreshments will be served. There is no charge for admission.*

## Toy and Clothes Sale

**Saturday 14th May, noon-1.30pm**

**Totley All Saints Church Hall**

Proceeds going to Totley All Saints School PTA. Phone Sally 235 1651 or Laura 236 2920 to get a sellers number if you would like to sell items, otherwise come along on the day and grab yourself a bargain!!

Feel free to park in the Fleur De Lys.



The Crown Inn

**Tony and Julie at**

## The Crown Inn

**Welcome you for**

**Good Quality, Home Cooked Food**

**Tuesday – Friday**

**12-2pm & 5.30-8pm**

**Saturday & Sunday**

**12-3pm**

**Come & join us for**

**Good Beer, Good Food & Good Music**

**Tel 0114 236 0789**

**CLOSED SUNDAY EVENING**

Visit our website: [www.crown-at-totley.co.uk](http://www.crown-at-totley.co.uk)

**LIVE MUSIC**

**12th April**

**HIGHWAY**

**CHILD**

**26th April**

**BADGE**

**10th May**

**ZAK BLACK**

## Anne White

I was born in one of the little cottages in the Chemical Yard, Totley in 1941. My parents were Annie and Albert Russell and I was the youngest of their children. I had an older brother Kenneth and a sister, Audrey. Even as a very young child, I always felt that, somehow, I was very lucky and privileged to live in such a beautiful place. I always felt so happy and safe wandering around the fields and open countryside around our home and I learnt all about the animals and flowers which were part of my 'little world'. I could write a book about my many memories of my childhood and I only wish that I had the time to do so.

Despite the fact that our family seemed to be plagued by many personal tragedies, I recall my childhood days as being happy and contented. Our home was just a small cottage with only two bedrooms and no hot water; there was an outside toilet at the bottom of the garden which we shared with our neighbours. My parents were hardworking people, they never seemed to stop, they strived to be self-sufficient and they had a fierce pride in their appearance and conduct. They taught us good manners, politeness and kindness to others and they provided many guidelines for the behaviour they expected from us which laid a firm foundation for the rest of our lives. Most importantly, our home was always filled with love.

All my grandparents had died before I was born although I did have a step-gran who I will always remember with love and gratitude because she cared for me and fed me when my world was falling apart. I have led a very full and active life, and still do, I decided recently that I would add to my list of many hobbies and would try to research some of my family's ancestry. I began with my mother's side of the family. I knew her maiden name was Barber and, of course, I know the names of her siblings. I discovered that my grandfather's name was Thomas and my grandmother's name was Hannah. Just having this small scrap of information made me see them as 'real' people and I am extremely keen to find out more.

According to the 1901 census, my grandfather was living at home with his father and mother and younger brother at No: 11 Totley Rise. It's a long time ago since I used to know this area well, so, last Sunday; we decided to drive to this row of houses to see if we could identify No: 11. I remember the beginning of 'The Rise' as Topham's the newsagents, his shop and the houses adjoining it are now business premises which I think begin with No: 15 so what has happened to No: 11 I wonder?

My partner Dennis and my daughter and grandson went for a walk down the back lane to have a look around the area where I used to live. I didn't want to go, I know that many changes have taken place and I think that I would have found the whole experience too upsetting. On their travels they stopped to speak with a lady who lives on the road leading out of The Chemical Yard and onto Queen Victoria Road. She was very interested in their reasons for being there and she kindly gave them a copy of the February Issue of The Totley Independent. What a coincidence that this issue has an old photo of the houses at the bottom of Totley Rise on its front page!

This has prompted me to write this letter to you. It's quite difficult to know just how much information I can write in one single letter. I have decided that my best approach is to write as much as I can remember about The Chemical Yard and the people who lived there when I was a child. I am certainly not an artist but I will draft out a rough drawing of the surroundings to help to illustrate my memories.

The houses were not numbered but I will number them so that they can be identified.

In cottage No: 1 lived a family who we referred to as the Gutsers but I believe they were probably called Goodsirs. There was Mr and Mrs Goodsir and their son Joseph. When I was about 10 or 11 yrs old they left and a family by the name of Hanwell moved in. There were Mr and Mrs Hanwell and their sons Clive and David. They had moved from Heeley and Mrs Hanwell

hated living in the 'countryside'. She complained about the mud from the back lane which was just a rough track way back then and she told my mum that she couldn't wait to go back to 'civilisation' with its tarmacked paths etc. I became good friends with David who was just a little bit older than me and I showed him the many walks to be explored and all the fun and exciting places to play.

In cottage No: 2 lived the Nicholson family, the parents had about nine children. Their twin daughters Pamela and Mary were just a fortnight younger than me and I loved playing with them. We all attended Totley All Saints Church of England School, in those days, it was rare for a parent to accompany their children to school and I often came home from school on foot and using different routes. One day, when I was 6/7yrs old, I was coming home with the twins and we were using the bus. As it pulled up at the top of Totley Rise there was a resident waiting there who spoke to the twins and said they had to go with her to her house. I felt very puzzled as I walked home alone. We heard later that the twin's younger brothers, also twins, and only aged five, had been on the previous bus. They had crossed the main road then attempted to cross Glover Road. I'm ashamed to say that I cannot remember their names; I think they were called Colin and Edward but one of them had been run over and had died. I remember the day of the funeral and seeing a table in the Nicholson's house laden down with lovely food. As a child it seemed strange to me that people would want to eat on such a sad day. Still, that's how children see the world around them and try to understand it.

When I was 10yrs old the Nicholson family left their cottage. I was heartbroken and cried and cried; I thought my world had come to an end and couldn't envisage a future without Pamela and Mary. Mr and Mrs Markham moved into their cottage with their son Stephen.

Next door to them, at No: 3, lived my step-gran Ada Barber and one of her sons, my Uncle Tom.

The end of the row of cottages, No: 4 was occupied by an elderly gentleman living on his own called Mr Thompson. I know that he was related to the family of Thompson's the butchers but I'm not sure of the relationship. To me, Mr Thompson seemed very old, he walked with a stick and I believe that he suffered from gout. He didn't have electricity in his home and he would sit at a large wooden table in front of his window with a candle burning in front of him. This cast strange shadows across his face at night-time and I must admit that this terrified me. Sometimes, during the day, he would call to me and ask me to run an errand to the local shops for him. We were used to being asked by our neighbours to go shopping for

them, it was the way life was back then. He would reward me with a half-penny if he was feeling generous that day! One morning, he was discovered lying on the floor of his cottage unable to get to his feet. My mum and our neighbour Mrs Stanway looked after him and I remember seeing my mum making his fire for him in his old Yorkshire range and cooking fried eggs and bacon for his breakfast. The local doctor came and said Mr Thompson had to go into hospital. I never saw him again and, not long after, his cottage was occupied by the Pashley family. Jean Pashley became very good friends with my mum. She and her husband became parents to Dianne and Richard and I would baby-sit for them when I was about 13yrs old.

At the end of the row of cottages were the outside toilets. I can't remember how many there were but I think there may have been three, each one to be shared by two families?

All the cottages I have mentioned didn't have back doors and the river ran along the back of them.

My parent's cottage stood well back from the river and we had a long front garden. We also had a long garden at the side which contained a greenhouse, sheds, gooseberry, raspberry, blackcurrant and redcurrant plants and the old air-raid shelter which we used for storage. Across the river was a little wooden bridge which my father had made and that gave us access to the land adjoining the back lane which my father rented from the Thompson's. He built a pigsty here and grew vegetables on part of the land. I have written some of my dad's life story which was published about two years ago in a book called 'Earning a Living' which is still available from a book shop on Surrey Street which specializes in local history.

Our cottage was called North West Cottage and our neighbours were Mr and Mrs Stanway and their son Eddie. In time, Eddie married a lady called Winnie and she moved into the cottage, they later had a daughter, Susan and a son, Robert. After a few years Mr and Mrs Stanway moved to another cottage in Totley.

These are my earliest memories of The Chemical Yard until the late-fifties, nothing lasts forever and many changes were due to take place.

On 12th March 1955, my brother married and left home, on 26th March 1955 my sister also married and she too left home. Our lovely mum died in August the same year so, in just one year, we went from having five people living at home to only two, myself and my dad. Just a few weeks later we discovered that our dad had terminal cancer and only had a few months left to live. He was such a proud and strong man and we didn't tell him although I'm sure that he was aware of how ill he was. He had rented our cottage from Mr Marcroft (Colin or Philip?) who owned a building company within The Chemical Yard. Mr Marcroft was having financial problems and he offered all his tenants in the yard the opportunity to buy their homes from him.

Now, my dad was a working class man who had never seen himself as a property owner. He had enough savings to buy but was unsure about what he should do. We had a good friend, Mr Sutcliffe, who lived on Whirlowdale Road at Millhouses and my dad sought his advice. As a result my dad invested his life savings and bought our cottage for the princely sum of £100!

All the other residents bought their homes too.

Dad's illness meant that he spent time in and out of hospital and I lived in our cottage on my own with just our dog to keep me company. This is when my gran came to my rescue. She would have a meal ready for me when I returned home late at night after visiting my dad. Because of our circumstances I left school in July 1956 when I was 14yrs old and I had to wait until August when I became 15yrs old and could start working in the offices at Laycock's Engineering Company on Archer Road.

In April 1957 my dad died. At his request, my sister and her husband were going to live in the cottage and I would live with them. Audrey and her husband Peter decided that they would have the cottage modernised before they moved in. They had all the walls and ceiling re-plastered plus a new concrete floor, our dad had already had the old Yorkshire Range replaced with a smart, new, marble-tiled fireplace. The electrics were renewed and the kitchen modernized also all the bedrooms re-decorated. Of course, all this work took a long time and I lived in the house on my own while the alterations were taking place. My gran fed me and I sometimes slept at her home.

Eventually, at Christmas 1957, Audrey and Peter moved in. The cottage looked lovely as they had bought all new furniture and carpets and had the alcoves in the living room lined with mirror tiles and concealed lighting. What a transformation! Life there should have been idyllic but, just a few months later, in July 1958, we awoke one morning to a deathly silence.



*The flood between Back Lane & the Chemical Yard,  
July 1958*

The first thing that I realised was that I couldn't hear the birds singing and something seemed very wrong. Our cottage had become the victim of sever flooding, the tranquil little stream which ran at the bottom of the garden had burst its banks and

flooded all the cottages. If I were to write a book then this event alone would require a chapter of its own.

In December of the same year, 1958, at the tender age of seventeen, I was married at Totley All Saints Church in a very simple wedding ceremony. The church had a stone floor, but, just a week before I was due to be married, a brand new red carpet was fitted and I was the first bride to walk on it down the aisle! I moved with my new husband to shared rented accommodation in Raleigh Road at Heeley.

As a result of the freak flooding of the cottages, all the owners were told by the council that their homes had been built too close to the river and they would have to be demolished.

Disheartened by the destruction of all their new furnishings and belongings and all the sad events that had happened, my sister didn't oppose the council's decision and she and Peter moved to Lowedges to a modern house with all mod-cons. All the other residents decided to move too. Our Gran had experienced the flood but had since died. Ironically, the only people to officially object to their home being demolished were the Hanwell family, they won their case and I believe that their cottage still stands today with strong fortifications in case of further flooding.

I have written my memories with happiness, sadness and great nostalgia. I have many more stories to tell so if you find that your readers are interested in my recollections then I will happily send my stories to you. I am hoping that my family will treasure them and enjoy reading them. I have tried my utmost to be as accurate as possible and hope that I have succeeded.

Anne White

**Ed:-** See the 'Memories of Totley' section of the TRA website ([www.totley.org.uk](http://www.totley.org.uk)) for the map of the Chemical Yard area Anne White has drawn from memory.

## Chairobics

Unfortunately due to difficulties in continuing to run the Thursday weekly Chairobics sessions at the library, Chairobics is suspended until further notice. We do hope we can restart in the not too distant future.

## Coffee Cakes and Cuttings

Annual fund raising event at English Martyrs Catholic Church, Baslow Road (across from the Co-op) will take place on Saturday 21st May - 10am - 12noon. In aid of Transport 17 and other charitable causes. Plants can be collected by arrangement (a few days before the event).

Please contact Frank Donnelly, tel: 236 2789

## Puzzle Corner

### Apology

The gremlins attached the How for Puzzle in No 341. The passing of time of 2½ minutes got changed to 2%! I assume anyone interested would work back from the solution and find it should have read 2½ minutes.



## Totley All Saints School 1921

**Back Row** Josephine Salt, Joe Reynolds, Gladys Cartwright, Charlie Truswell, Annie Pearson, Kenneth Belshaw, Frank Gill,

**Front Row** Philys Inman, Susie Hall, Albert Drury, Sylvia Whiteman, Thomas Ibbottson

## Book Reviews

Cicerone guides have a justified reputation amongst walkers for their comprehensive detail, accuracy and ease of use. Three new guides easily live up to this reputation.

Since its creation in 1951 the 555 square miles of the Peak District National Park has proved a magnet to walkers, given its much-loved landscape, treasured wildlife habitats and lots of recreational opportunities. The first two complimentary new guides **White Peak Walks - The Northern Dales** and **The Southern Dales** have been written by Mark Richards, a well known outdoor writer and broadcaster. Each contains a wide selection of easy circular routes of up to 10 miles, illustrated with OS map extracts. Details of parking, terrain and refreshments supplement the clear route guidance, illustrated by frequent colour photographs.

Each book runs to some 200 pages, produced in a handy pocket size with plastic cover. The northern edition includes the gritstone uplands south of Edale, the Wye and its tributary dales, the southern the limestone plateau and deep dales.

The third guide, **Walking in Derbyshire**, by Elaine Burkinshaw covers a wider area, with walks specially selected for their historical interest, taking you through the county's past, from the remnants of ancient civilisations to today's fine market towns and picturesque villages. Following the same handy and informative format, this guide contains 60 walks from 2 - 9 miles in its 290 pages suitable for all the family.

**White Peak Walks - The Northern Dales** ISBN 978152845179;

**White Peak Walks - The Southern Dales** ISBN 9781852845186;

**Walking in Derbyshire** ISBN 9781852846336

All published by Cicerone price £12.95.

\*\*

George Willis Marshall (1904 - 1992), known to his friends and family as Willis, lived in Sheffield. Roaming the Peak District and Derbyshire was his great love and he and his friends went forth in sunshine and rain, roaming hills and dales, often sleeping in haystacks or under the stars. They walked with GHB Ward and the Sheffield Clarion Ramblers, and took part in the Famous Kinder Trespass of April 24th 1932.

He kept a journal of these walks, dotted with sketches, as well as quotes from his favourite poems. **Days of Sunshine and Rain** by Ann Beedham weaves together words and photographs from his life, taking us back to a bygone time when people rambled in tweed suits, with hobnails hammered into their boots, ISBN 9781905278442 price £8.99.

\*\*

Published in conjunction with the Wildlife Trusts, this new guide **Wildlife Walks** by Malcolm Tait comprehensively covers great days out at over 500 of the UK's top nature reserves, all of them owned and managed by the unique network of 47 Wildlife Trusts. Each entry includes information on access, conditions, opening times, facilities, how to get there, and local attractions. Information is divided into regions and illustrated throughout with excellent colour photographs and maps. If you are planning a holiday in the UK then this is an ideal reference guide in planning your walks on the wild side. Published by A & C Black, in 320 pages, price £14.99 ISBN 97811408130254

**Everything you can do in the garden without actually gardening.** This amusing book by Philippa Lewis is not about gardening but about what to do when that is done, or never started. The author looks at how people have enjoyed their gardens over the centuries, combining quotations from the many words written on the subject with contemporary illustrations.

Some of the very imaginative ideas for garden use will certainly make you think again about how you might use your outdoor space. Not that you would want to sit naked in the summer house, reciting passages from Milton's Paradise Lost, as William Blake did with his wife.

Gardens are places for escape and inspiration, fresh air and exercise, sun and shade, eating, drinking and smoking, children, games, parties, and so on. So put down your gardening tools and dip into these pages and be reminded of all the pleasures there are in being out of doors! Published by Frances Lincoln Ltd in hardback, 216 pages price £16.99 ISBN 9780711230378

\*\*

**The Gardens of English Heritage** by Gillian Mawrey & Linden Groves is the first book to describe the magnificent parks and gardens owned by English Heritage which are far less well-known than its evocative medieval abbeys or Victorian mansions. Yet these remarkable places offer a wide-ranging variety of gardening pleasures. Some have stunning designs, while others are important for their history or their plants. A surprising number are brand new and a few of the best are tiny. All have marvellously atmospheric surroundings.

From the formality of Chiswick House, through the rolling parkland slopes around Kenwood House, to the exotic Quarry Garden at Belsay Hall. Here are gardens from every corner of England and almost every century. The chapters tell the story of how each was created and of the sometimes eccentric families who owned them. This sumptuous book,

full of colour and black & white photographs is published by Frances Lincoln in hardback, 216 pages price £25 ISBN 9780711227712

John Baker

Mark and Sally Fletcher invite you to

**The Grouse Inn**

**Longshaw**

Sheffield S11 7TZ

**Meal times:-**

**Mondays 12.00 to 2.30pm**

**Tuesdays to Friday's 12.00 to 2.30pm and**

**6-30pm to 9-30 pm**

**Saturdays 12.00 to 3.00pm and**

**6.30pm. to 9.00pm (drinks - open all day)**

**Sundays 12.00 to 9.00pm**

**Phone 01433 630 423**

**R Rose & Co**

Chartered Accountants & Business Advisors

Specialists at looking after the affairs of small businesses.

For a FREE initial consultation please contact Roger Rose FCA on **0114 281 2331**

from business start-ups and general accounting, to support and advice in business development and strategy, we put ourselves in our personal one-to-one service. To find out more please call 0114 281 2331.

213 Derbyshire Lane, Norton Lees, Sheffield S8 8SA  
Email: info@r-rose.co.uk

**B.K. JEAVONS**  
**PAINTER & DECORATOR**



Interior  
Exterior  
Decorating  
No Job too small

**Tel: 01246 416484**

**and mobile 07882 278306**

## LOOK AFTER YOUR WASTE

In the last year, 8 Sheffield residents narrowly missed being prosecuted by the Council after Environmental Enforcement officers found that their waste had been fly-tipped. They were issued with a formal caution which stays on record for two years.

While they had not fly tipped the waste themselves, they had given it to 'one man and a van' operators without checking that they were authorised to carry waste.

Rogue operators are becoming a growing problem. They approach householders and offer to remove waste for a ridiculously low price, typically £20-£50. Since they cannot dispose of it legitimately for such a low figure, they simply dump it and pocket the cash. Householders have a legal responsibility to take 'reasonable measures' to ensure that waste produced on their property is passed on only to an authorised person.

If you give your waste to a rogue operator with 'no questions asked' you're committing a criminal offence. If fly-tipped waste can be traced back to you, you can be fined up to £5,000 - even if you didn't dump the waste yourself.

People authorised to carry waste are registered by the Environment Agency. A list of registered waste carriers can be obtained from [www.environment-agency.gov.uk/publicregister](http://www.environment-agency.gov.uk/publicregister), (look for "waste carriers") or by ringing 08708 506506. Householders can dispose of waste without charge at any of the five household waste recycling centres, e.g. Blackstock Road, Gleadless; Opening hours are: April to September, 8am-7.30pm; October to March,

8am- 5.30pm. Further information is available from [www.veolia.co.uk](http://www.veolia.co.uk) or by calling the recycling helpline on 0845 355 5515.

Sheffield City Council can also collect bulky items, costing around £30 for up to 10 items. The service can be contacted on 0114 273 4567.

Sheffield Homes tenants may be able to access this service free by contacting their area housing office.

## Dog Owners Must Clear Up

DOG owners are being urged to take the same care in the countryside as they do in urban areas following a rise in infected faeces.

It comes after reports of rising abortions in cattle due to the disease neospora, spread through the faeces of infected dogs.

Dogs initially become infected from eating contaminated live-stock material such as placentas from newly-calved cows. Neospora is now the most common cause of cattle abortions in the UK. But there is a worrying increase in the incidence of - Sarcocystosis in cattle and sheep, also spread through dog faeces contaminating pasture.

NFU Scotland vice-president and qualified vet Nigel Miller said dogs were presenting a growing threat to the well-being of farm animals: "Through highlighting the health threats to cattle and sheep posed by diseases such as neospora or sarcocystosis, I believe the public can be encouraged to lift dog faeces on farmland."

Similarly, farmers should play their part by disposing of fallen stock and collecting placental material when cows calve outside.

## G9 Design

Architects & Design Consultants

- Provision of full architectural services from sketch proposals to final completion certification
- Planning Applications & Building Control Approvals
- New Build or Extensions
- Domestic or Commercial projects
- Complete client commitment

Gary Grayson  
5 Newfield Lane,  
Dore,  
Sheffield S17 3DA

Tel: - (0114) 2352335

Mobile: - 07976431740

Arb Registered

RIBA Chartered Architect

Email: - [gary@g9design.com](mailto:gary@g9design.com)



## The Croft Podiatry & Chiropody Practice

**DOMINIQUE MATTHEWMAN**

**B.Sc. (Hons) MChS**

**HPC REGISTERED**

**CLINIC APPOINTMENTS &  
HOME VISITS**

**41, BASLOW ROAD  
TOTLEY RISE SHOPS, S17 4DL**

**ACCEPTED BY WESTFIELD & MANY OTHER  
HEALTH SCHEMES**

**TEL.MOB. 07738 359584**



## Hatha ..YOGA CLASS..

Totley and Ranmoor

For more information or to book a place call

RACHEL on (0114) 236 9943

BWY Qualified Teacher

BODY, MIND & BREATH

Enjoy the union of yoga



For  
Windows  
With Style

**Sheffield Factory Showroom  
106 PROSPECT ROAD  
HEELEY, SHEFFIELD**

**Sheffield (0114) 258 5496  
Rotherham (01709) 512113**

# Looking for designer labels?

Let our unusual Vision Plan help you pay for them and much more!

Offering all the benefits of 35 years' experience of South Yorkshire's largest independent firm of opticians.

- Friendly, qualified staff
- Eye examinations
- High-tech diagnostic retinal camera and MacuScope
- Wide choice of spectacle lenses, contact lenses and stylish frames
- Special offers



ASK FOR A  
VISION PLAN  
LEAFLET

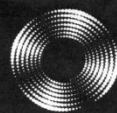
GUESS DIESEL GANT  
EYEWEAR

POLICE EMPORIO ARMANI

Visit our website and make your choice of designer frames at one of our practices including 63 Baslow Road (tel: 236 4485) and our extensive new premises at 634 Abbeydale Road (tel: 255 6554)

[www.mko.co.uk](http://www.mko.co.uk)

# Entrust Electrical



For all your electrical requirements in or outside the home you can trust **Entrust** to do it right!

- ✓ Full or Partial House Rewiring
- ✓ Additional Sockets, Switches, etc
- ✓ Energy Efficiency Enhancements
- ✓ Contemporary & Classical Refurbishments
- ✓ General Electrical Maintenance & Repair
- ✓ Homebuyer Electrical Safety Surveys
- ✓ Telephone and Computer Data Points
- ✓ Garden, Pond & Other Outdoor Electrics
- ✓ Security Lighting & CCTV



City & Guilds  
Qualified

(0114) 2352084  
07935 250814

[www.entrustelectrical.co.uk](http://www.entrustelectrical.co.uk)

Old Hay Close, Dore, S17 3GP



## Shepley Spitfire

56 Mickley Lane, Totley Sheffield - S17 4HE 0114 236 0298

Mon to Sat All Day 2 meals for **£8.95**

Served everyday 11am until 9pm

Succulent Sunday Carvery only £5.99

Quality Cask Ales

Quiz Night every Tuesday from 9:30pm

**The Home of Big Fish Friday!!**

Beer battered Cod filets, Chips and Peas Two for **£8.99**

**BOOKINGS NOW BEING TAKEN for Easter Sunday**

Royal Wedding Weekend 29<sup>th</sup> - 1<sup>st</sup> May

Watch the royal wedding at our garden party! Formal dress not required, but would be fun! Children activities during the day / BBQ See our website for details

[www.gkpubs.co.uk/pubs-in-sheffield/shepley-spitfire-pub/](http://www.gkpubs.co.uk/pubs-in-sheffield/shepley-spitfire-pub/)



love royal weddings love your local

# "need help in your garden?"

...we can help *you*

the  
**ABBEYDALE**  
gardeners

Kevin and Mark from the recently closed Abbeydale Garden Centre, have started their own Garden Services Business.

Kevin Hunter 07818 20 12 42  
Mark Naylor 07739 75 23 19

"give us a call, no job too small."

## Music Tuition



Piano • Keyboard • Flute • Singing  
Guitar (rock, metal, blues, jazz, funk, pop, folk)  
Music Theory • GCSE work

Music graduates, each with 25 years  
teaching and playing experience

All ages, beginners welcome.

Exam work or just for fun!

Call Mark or Karin

0114 237 4853 & 07981 888352

## HEARING AIDS

MAURICE NAYLOR FBSHAA RHAD is your  
local hearing aid specialist and at your  
request will test your hearing in your own  
home, free of charge, and if needed you can  
try a custom made aid for four weeks  
without obligation to purchase.

Tel : 262 0010

In the ear digital from £495



Your local Rose's Bread stockist

Coffee Shop now open

Monday to Friday 8am to 4pm, Saturday 8am to 1pm

51/53 Baslow Road

Tel: 236 4238

## MALLORN

ROOFING CONTRACTORS

REROOFS • ROOF REPAIRS  
FLAT ROOF • GUTTERING

0114 235 6002

07853 350085

7 DALEVIEW ROAD, BEAUCHIEF

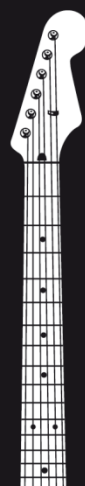
## French Tuition

Wanting to learn another language at home?  
Available from a native and experienced person  
living locally. Beginners to advanced.

## Computers and Internet For Beginners Made Easy

Local tutor offering one-to-one training and support  
using your computer, in your own home, at your  
own pace. Learn about surfing the internet, e-mails,  
BBC i Player, ordering goods online. One off or  
ongoing classes.

Tel Anne on 235 3297 or 07796 326752



## Guitar tuition

acoustic • electric  
bass • all styles

Sit grade exams or play for fun!

All ages welcome –  
beginners to advanced

Jane Bowns

T 0114 236 0202 M 0779 8151 172



J Barlow t/a

## Horizon Electrical

*Faults, Rewires, Sockets, Lights,  
Cooker Points, Electrical Showers,  
Phone Points, Security Lights*

No job too small

*Fully qualified with friendly advice*

Ring Totley 236 4364 or  
Mobile 07772 483154



## BRADWAY INSTALLATIONS

Kitchens, Bathrooms.....and everything in  
between

- Complete Kitchens – Installation or supply and  
installation
- Kitchen Refits – Replacement worktops/sink/hob etc.  
Worktop / cabinet repairs
- Bathrooms - Cloakrooms - Domestic plumbing - Tiling  
Laminate / Vinyl flooring

All work undertaken is fully insured and guaranteed

Ring Peter - 0114 236 5995

Mobile - 07766 411355

## SLIMMING WORLD

**10 WAYS TO MAKE SURE IT WILL BE THE LAST TIME LOSING WEIGHT IS YOUR NEW YEAR RESOLUTION. THIS TIME MAKE IT LAST FOREVER**

1. Focus on your weight loss goal and prioritise it.
2. Be sure you really want to lose weight for yourself. Doing it to please someone else may only lead to short term weight loss.
3. Take advantage of all the group support at your local Slimming World class. Even if you are not a 'joining in' person, you'll be surprised how motivating it is.
4. Accept that you will have ups and downs in your weight loss journey, and be forgiving of yourself if you hit a difficult patch.
5. Listen to your 'inner script' and make a conscious effort to talk to yourself in a positive, encouraging way.
6. Keep up your interest in your healthy eating plan by trying new foods, new recipes, and new ways of using your Sins. This will help you avoid getting in to a dieting rut which can be boring and demotivating.
7. Be honest with yourself about what you are expecting from your weight loss and how you are getting on with Food Optimising week by week. People who set unrealistic targets for weight loss or body shape are more likely to give up than those who set achievable targets and share their ups and downs.
8. Go back to your class even after (especially after) you've had a weight gain. You will not be judged, just helped and supported.
9. Keep setting new goals and rewarding yourself for milestones until you reach your target weight, and afterwards!
10. Don't put your life on hold until you've lost weight. You can still enjoy life and lose weight. Think of your dreams and ambitions and bring them to the fore. The positive feelings you get from starting to 'live a little' can only help your motivation and your weight loss.

Group details:

**Bradway Annexe now at St Peter's Church, Greenhill Roundabout, S8 7FN Thu 5pm & 7pm Dore Old School, Tues 5.30pm**

**Tel: Alison Murphy 07815 046569 for further details**

**Heatherfield Club, Baslow Road - Mons 7.30pm**

**Tel: Anne 0114 235 0431 for further details**

## PhysioFOCUS

at Totley Rise Dental Practice  
85 Baslow Road,  
Sheffield, S17 4DP



**Physiotherapy treatment available for:**

- Back and neck pain
- Sports injuries
- Sprains and strains
- Joint and muscle pain
- Arthritic pain
- Whiplash
- Repetitive strain injury
- Headaches

**Appointments: 0114 2360333**

Also available:

- Pilates classes
- Pilates 1-2-1
- Golf Fitness Screening  
(as used by consultants to UK, European and Australian PGAs)

For more information please call:

**Emer on: 07792 422909**

**Rachel on: 07956 908454**

## APPLE LANDSCAPES and APPLE FENCING

[www.applelandscapes.com](http://www.applelandscapes.com)

**QUALITY SERVICE AT AFFORDABLE PRICES**

**Patios • Paths • Walling • Dry Stone Walling • Drainage Work**

**• Indian York Stone Paving • Railway Sleeper Beds**

**Garden Tidy Ups etc. No job too small**

**Fencing & Gates Supplied Only  
or Supplied & Fitted**

**Only Quality Materials Used**

**FULLY INSURED**

Call for free quote

**01246 237505 • 07782 167540**

Would you like someone to

Type letters? Pay bills? Help record family memories?

Sort and file papers? Prepare an inventory?

Anything else ???

Then you should call

**Secretarial and Administrative Services**

Swift, efficient, confidential service at your home.

Pay-as-you-go.

Ring us on 0114 235 0071



Tel/Fax: (0114) 255 4689

Mobile: 07831 802539

**TRISTAN SWAIN**

**LANDSCAPING AND MAINTENANCE**

UNIT C4

Sheaf Bank

Business Park

20 Prospect Road

Sheffield S2 3EN



**LADIES FASHIONS**

**HABERDASHERY**

**&**

**ALTERATIONS**



**ROSIES**

164 BASLOW ROAD, TOTLEY.  
TEL: 26 21060

**M. Scriven  
(FRUITERAMA)**

**MARTIN SCRIVEN**

**HIGH CLASS FRUIT  
& VEGETABLES**

37, Baslow road

Tel. 236 7116

Orders Delivered





# GWS

Technology Solutions



PC Problems/ Repairs/ Servicing      No Job Too Small  
 Wireless & Internet Setup      New PC's & Upgrades  
 PC Setup/Data Transfer      Safe PC Disposal      Tuition  
 Software/Hardware      For All Your PC Needs

**Guy Senior**

Phone: 0114 2352662      Mobile: 07890030453

Email: [guy@gwstech.co.uk](mailto:guy@gwstech.co.uk)

Web: [www.gwstech.co.uk](http://www.gwstech.co.uk)

GWS, 5 Conalan Avenue, Bradway, Sheffield S17 4PG

## R.S. HEATING & BUILDING CO

EST. 1971



### HEATING DIVISION:

Experienced Installers of condensing,  
 combination and regular boilers.  
 Systems fully guaranteed.  
 Complete after sales service.  
 Also Bathrooms, showers  
 and small plumbing works.

### BUILDING DIVISION:

Loft conversions, House  
 renovations including general  
 building, joinery, plastering,  
 electrical decorating etc.



13 Overcroft Rise, Sheffield, S17 4AX

**Tel:- 0114 236 4421**

Reg. Office:- 62 Machon Bank, Sheffield, S7 1GP

**Te:- 0114 2559425**

**Fax:- 0114 255 9431**

Email: [enquiries@rsheatingandbuilding.co.uk](mailto:enquiries@rsheatingandbuilding.co.uk)

Web: <http://www.rsheatingandbuilding.co.uk>



253 Baslow Road, Sheffield, S17 4DU

Tel: 0114 2360 583

Mobile: 07801 346 455

# Dronfield Landscapes



Gardens cleared and maintained, Lawns mowed,  
 Turfing, Tree felling & pruning, Hedges trimmed &  
 reduced, Pond maintenance, Fencing etc.

for free quotation call

Chris on: (0114) 2746158 Mobiles: 07976072785 or

Richard on: 07789497104

8am-6pm mon-fri

HazelBarrow Farm, Norton S8 8BA

## R.M.M BUILDING SERVICES

### 25 YEARS EXPERIENCE

All types of building work carried  
 out including- Drop kerbs, block paving  
 (drives, paths, etc), extensions, general  
 building repairs and maintenance.

Phone Rob on- Mob- 07906108567

Home-2352190

**Activ  
 Physiotherapy**  
*and sports injury clinic*



@ Synergy,  
 162 Baslow Road,  
 Totley,  
 Sheffield, S17 4DR.

**The Official Physiotherapy clinic for  
 the Sheffield Steelers Ice Hockey Team.**

Treatments available for sports injuries, back & neck  
 pain, joint problems, muscle & ligament strains,  
 repetitive strain injuries, post operative rehabilitation,  
 headaches & acupuncture.

Clinic registered with major insurance companies,  
 can claim through the Westfield scheme.

**Ring Andy for more information:**

**0114 235 7845 or 07901 968549**

## Nigel Watson

*Carpenter and Joiner*

**New Kitchens, replacement worktops, doors,  
 locks, floors, architraves, skirting boards,  
 stairs, stud walling, boxing off etc.**

**No job too small**

**For a reliable, quality service**

**Tel: 0114 236 4778**

**Mobile: 07971 528149**



## Got a computer?

### Having Problems?

Is it running slow? Stops responding?  
 Having problems running the latest games  
 or applications? Broadband installation?

### Give me a call!

I'm available for home visits at any time  
 including evenings and weekends. I can  
 also suggest upgrades to improve perform-  
 ance, or even build you a system to your  
 specific requirements.

**Tim Brown**

Building,  
 Installation,  
 Upgrading and  
 Troubleshooting  
 Computer  
 Systems  
 Over 25 years  
 professional  
 experience

Phone: 0114 2472619 Fax: 0870 7060080

Mobile: 078 17464703 Email: [service@timbrown.plus.com](mailto:service@timbrown.plus.com)

## Dronfield Landscapes

Logs and woodchippings  
For Sale

Ring for details  
Chris on 0114 2746158  
Mobile 07976072785

Richard mobile  
07789497104



Central Heating  
Domestic Plumbing  
Glazing, Double Glazing and Glass  
House Maintenance  
UPVC and Wood Windows & Doors  
Mini Digger & Driver, Muck Shifts, Footings Etc.



## TOTLEY PRIVATE HIRE

24HR TAXI SERVICE  
ADVANCE BOOKINGS TAKEN  
LOCAL • LONG DISTANCE • AIRPORT

Tel: 0114 283 9692  
Mobile: 07974 355528

Domestic electrical work carried out by  
City & Guilds and 'Part P' qualified

## LADY ELECTRICIAN

- \* House rewires \* Replacement fuse boards \*
- \* New sockets and lights \* Telephone points \*
- \* Security lighting \* Pond pumps \* Deck lights \*

All work guaranteed and  
fully insured

No job too small  
For a free quote, without obligation

ring Mandy on 07788-544225



## Tiling, Plastering, Plumbing & Complete Bathroom Fitting Service

Tel: 0114 274 6775  
07738 688807

- ◆ Under Floor Heating
- ◆ All Aspects of Home Improvements & Maintenance Work Undertaken
- ◆ Competitive Prices
- ◆ NVQ Qualified
- ◆ No Job Too Small
- ◆ Fully Insured & Guaranteed

A1tilingandplastering.co.uk  
33 Glen View Road, Greenhill, S8 7SF

## Hypnotherapy

Weight, confidence, smoking, stress,  
phobias, anxiety, panic, sleep, etc...

Call 235 1985 Totley

www.sheffieldhypnosis.co.uk



Paul Peace



The  
British  
Psychological  
Society  
Chartered Psychologist



Karen Bartle

Creating opportunities with disabled people.

Registered Charity No. 218186

## Leonard Cheshire Disability

Leonard Cheshire Services in Offers choice & opportunity to people with disabilities. A Specialist Unit for the Younger Disabled. Residential & Respite Care - Single Rooms Day resources - Aromatherapy - Reflexology - Physiotherapy - Toning Tables.

Activities include: - Arts & Crafts - Computers - Cookery - Shopping Expeditions - Theatre Outings - Church. Further details can be obtained from - The Service Manager, Mickley Hall, Mickley Lane, Totley, Sheffield S17 4HE. Tel. 0114 236 9952 Fax. 0114 262 0234

The Care at Home Service supports disabled people who wish to remain in their own homes.

We provide flexible care packages from 1 hour to 24 hours meeting individual needs. The service operates throughout Sheffield.

Our service includes: - help with getting up and going to bed, dressing, washing, bathing, shopping, cooking, light household duties.

Further details from: - The Care at Home Manager Tel. 0114 235 1400 Fax 0114 235 1499

## John Heath & Sons

AN INDEPENDENT FAMILY FUNERAL BUSINESS

Sometime.....

You will probably have the responsibility of making funeral arrangements. No one looks forward to this responsibility, but the death of a family member or friend brings with it an obligation that must be met. There are people who can help you meet this responsibility. We have been helping people combine the different aspects of the funeral into a meaningful service for over 125 years.

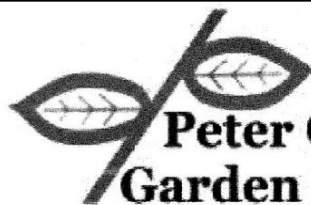
Please Call Day Or Night

(0114) 272 2222

Head Office - Earsham Street

Also at Meadowhead, Ecclesall Rd,  
Crookes and Stannington

www.johnheath.co.uk



## Peter Godley Garden Design

Surveying, planning and contract management

Awards for Best in Show  
Design and Quality Plant Selection  
Large Gold Medals & Silver Medal Winners

Homesfield, Dronfield S18 7WJ  
M: 07836 717859 T: 0114 2891365 F: 0114 2890737  
Email: peter.godley@btconnect.com

## TOTLEY & DISTRICT DIARY

<b>MONDAYS</b>	<b>COFFEE MORNING</b> , All Saints' Church Hall, 10am-noon <b>TAI-CHI</b> , United Reformed Church, Totley Brook Road, 11.30am-12.30pm <b>ANTE NATAL PILATES</b> , United Reformed Church, 6.30-7.30pm, Phone Emer Coffey 07792 422909 <b>RAINBOWS and GUIDES</b> , All Saints' Church Hall, 5.45pm-9pm
<b>TUESDAYS</b>	<b>COFFEE MORNING</b> , Totley Rise Methodist Church Hall, 10am-noon <b>KEEP FIT &amp; COFFEE</b> , For the not-so-young, Bannendale Centre, Carterknowle Road, 10.15am, Phone 258 5364 <b>WOODSEATS ADVICE CENTRE</b> . Drop in service, free, impartial, and confidential. TR Methodist Church, 10am-noon <b>CRAFT GROUP</b> . Totley Library, 2pm
<b>WEDNESDAYS</b>	<b>COFFEE in the LIBRARY</b> . 10am-11.30am <b>TODDLER GROUP</b> . 10am-11.30am, All Saints' Church Hall. Details tel. Andy Holmes 0114 236 2088 <b>HEALTH WALKS</b> . 10.30am, Totley Library foyer. Phone Sue, The Health Walk Ranger: 0114 283 9195 <b>MODERN SEQUENCE DANCING</b> . All Saints Church Hall, 8pm-10pm
<b>THURSDAYS</b>	<b>CHAIROBICS</b> . Suspended until further notice <b>NCT COFFEE GROUP FOR DORE TOTLEY &amp; BRADWAY</b> , 10am-noon, For mums & babies/toddlers, meeting in various locations, Phone Lucy Street 07837 000405 or email: <a href="mailto:lucy@streetr.plus.com">lucy@streetr.plus.com</a> for further details <b>PUSHCHAIR CLUB</b> . Totley Rise Methodist Church Hall. 1.30pm-3pm. Tel. 236 3157 for further details <b>PILATES CLASS</b> , United Reformed Church, Totley Brook Road, 6.15pm-7.30pm, Phone Emer Coffey 07792 422909
<b>FRIDAYS</b>	<b>PILATES</b> , The Old School, Dore, 10.45-11.45am & 12-1pm. Phone Teresa Tinklin 07906 312372
<b>SATURDAYS</b>	<b>MODERN SEQUENCE DANCING</b> . All Saints Church Hall 2 <sup>nd</sup> . And 4 <sup>th</sup> . Saturdays 8pm-10pm

### APRIL

**SAT 2nd SATURDAY NIGHT LIVE**, Tony Christian, Heatherfield Club. 8.30pm. Come & play Play Your Cards Right. Non-members welcome

**SUN 3rd CASTLETON FARMERS MARKET**, the Village Hall, 10am-3pm

**SUN 3rd MOTHERS DAY LUNCH**, Cheshire Homes, 236 9952

**SAT 9th COFFEE MORNING**, Transport 17 172 Baslow Road, 10am-noon, bric-a-brac, new items, books, raffle, refreshments

**SUN 10th MINIATURE TRAIN RIDES**. Abbeydale Road South, First train 1pm - last train 5pm (weather permitting) [www.sheffieldsmee.co.uk](http://www.sheffieldsmee.co.uk)

**TUE 12th FRIENDS OF GILLFIELD WOOD**, Totley Library, 7pm

**SAT 16th SATURDAY NIGHT LIVE**, John Clifford, Heatherfield Club. 8.30pm. Come & play Play Your Cards Right. Non-members welcome

**TUES 19th TOTLEY TOWNSWOMEN'S GUILD**, 'An Elizabethan Wardrobe', Maureen Taylor, Totley Rise Methodist Church Hall, 10am

**WED 20th TOTLEY HISTORY GROUP**, Totley Library, 7.30pm, AGM followed by 'Turnpike Roads', Howard Smith, all welcome

**SUN 24th & MON 25th (BH) MINIATURE TRAIN RIDES**. Abbeydale Road South, First train 1pm - last train 5pm (weather permitting) [www.sheffieldsmee.co.uk](http://www.sheffieldsmee.co.uk)

**THU 28th SHEFFIELD FARMERS MARKET**, 9am-4.30pm, Fargate

**SAT 30th SATURDAY NIGHT LIVE**, Vince Lee Gayle, Heatherfield Club. 8.30pm. Come & play Play Your Cards Right. Non-members welcome

### MAY

**SUN 1st CASTLETON FARMERS MARKET**, the Village Hall, 10am-3pm

**SUN 1st & MON 2nd (BH) MINIATURE TRAIN RIDES**. Abbeydale Road South, First train 1 p.m. - last train 5 p.m.(weather permitting) [www.sheffieldsmee.co.uk](http://www.sheffieldsmee.co.uk)

**SUN 8th PLANT SALE**, Botanical Gardens, 11am - 3pm

**WED 11th - SAT 14th T.O.A.D.S. SPRING PLAY**, details page 11

**SAT 14th TOY & CLOTHES SALE**, All Saints Church Hall, noon-1.30pm

**SAT 14th SATURDAY NIGHT LIVE**, The Stars 10th Anniversary Show, Heatherfield Club, 8.30p,m Play Your Cards Right. Non-members welcome

### TOTLEY INDEPENDENT FOR MAY

The next issue of the Totley Independent will be available from the usual distribution points on

**SATURDAY 30th April 2011**

**COPY CLOSE DATE for this issue  
will be**

**SATURDAY 16th April 2011**

Editor: **Ian Clarke**  
Tel. No: **235 2526** or Email:  
[editor@totleyindependent.co.uk](mailto:editor@totleyindependent.co.uk)

Advertising & Distribution:  
**John Perkinson**  
Tel. No: **236 1601** or Email:-  
[advertising@totleyindependent.co.uk](mailto:advertising@totleyindependent.co.uk)

Items for publication may be left or sent to:  
**2, Main Avenue, Totley, Sheffield, S17 4FG** or  
**Totley Library**  
[www.totleyindependent.co.uk](http://www.totleyindependent.co.uk)  
**PRINTED by STARPRINT**

## CLEARVIEW STOVES

### Pioneer 400 - weight 125kg



This is by far our biggest selling multi-fuel stove. For a typical room size 13ft x 15ft! Producing from 1 to 5kw of heat output - being highly controllable with an updraft and a unique patented down draft to burn the tar off the glass - keeping it crystal clear - hence the name CLEARVIEW. One log lasting up to 1.5 hours given super efficient outputs up to 80% (an open fire runs at 15% efficient!). Seven choices of colour to compliment your decor with optional leg heights from 2 to 10 inches. Clearview Stoves were the worlds first to be approved for burning in 'Smoke Controlled Areas'. We have over 200 installations around Sheffield. We are often told by many of our customers that "It's the best thing we have ever bought"

Showrooms at Burgin Conservatories 302 Abbeydale Road S7 1FL  
Open Tues-Sat 10-5pm • Sundays 10-4pm  
[www.clearviewstoves.com](http://www.clearviewstoves.com) • [www.burgin-conservatories.co.uk](http://www.burgin-conservatories.co.uk)  
or please telephone Graham Burgin 07973 321 075  
for advice or FREE QUOTATION



601 Abbeydale Road, Sheffield 7. Fax: 0114 258 8599

**DESIGN & PRINTING of**

- **LETTERHEADS • BUSINESS CARDS •**
- **BOOKLETS & PADS •**
- **INVOICES • LEAFLETS •**
- **CARBONLESS SETS • BROCHURES •**
- **RAFFLE TICKETS •**
- **WEDDING STATIONERY •**
- **ENVELOPES & POSTCARDS •**

**SPECIALISTS IN THERMOGRAPHY  
FOIL BLOCKING AND ENCAPSULATION**

**0114 258 0707**  
**For a Quick Quotation**