

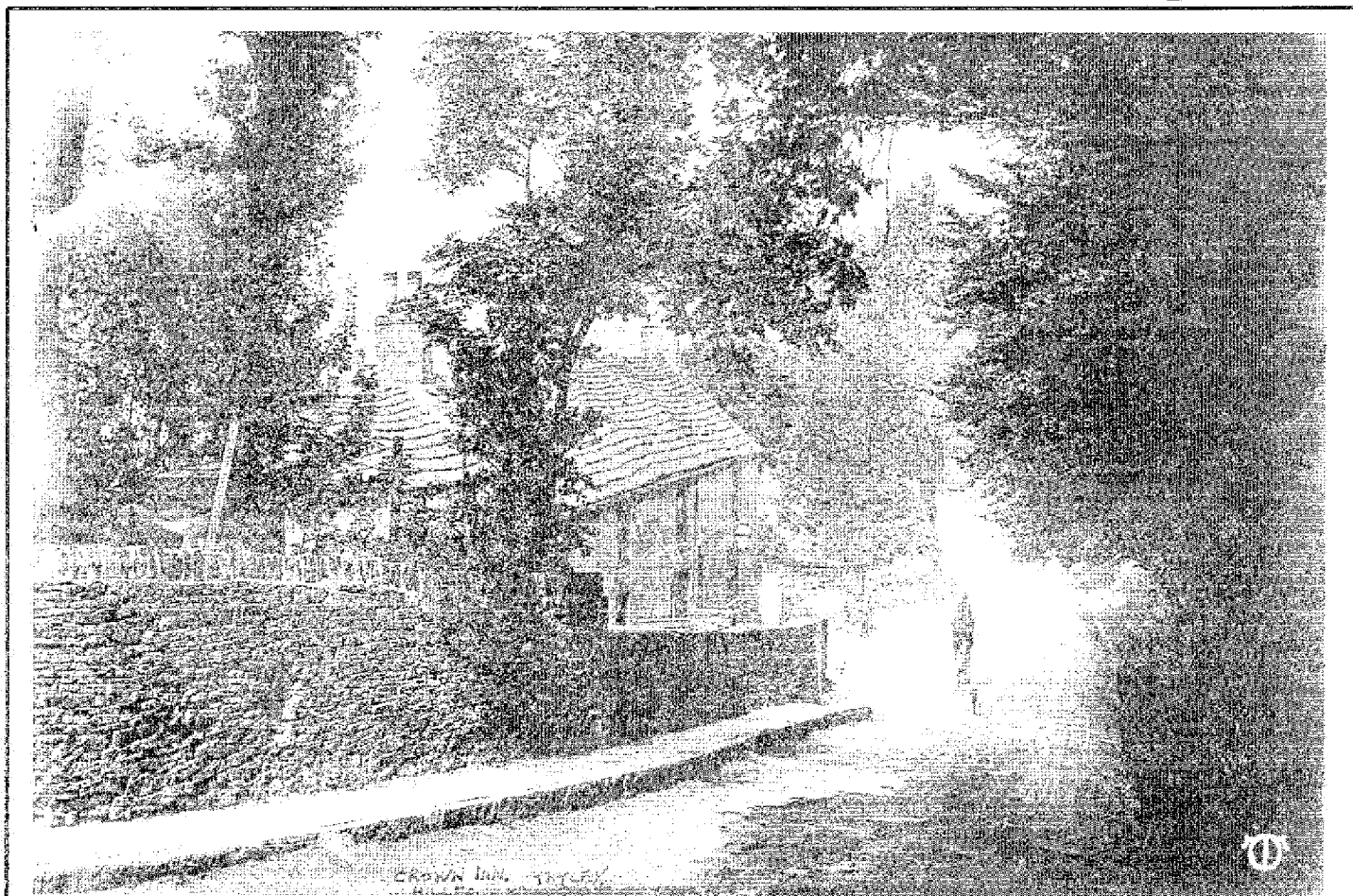
TOTLEY INDEPENDENT

PUBLISHED BY THE TOTLEY RESIDENTS ASSOCIATION SINCE 1977

JUNE 2001

No. 244

15p.



The Crown Inn Totley

Totley Residents Association Up-Date May 2001

At the TRA AGM held on Monday 23rd April the following items were discussed and a new committee for 2001 – 2002 were duly elected.

- It was pointed out at the start of the meeting that next year will be Silver Jubilee Year for the Association.
- Pauline Perkinson as outgoing Chair reported on another busy year for TRA. One issue that was raised was the Animal Hospital – not Veterinary Hospital as stated in last month's Independent. It was made clear that the only Veterinary Hospital in Sheffield is Park Veterinary Hospital at Millhouses which was accredited on 21.03.01
- Maurice Snowdon reported on the Churches in Totley's intention to employ a Youth Worker for Totley and Bradway and that plans were well under way. It is hoped that someone will be in post for September.
- Some concerns over planning applications were raised by local residents. Of concern among some are the proposals for an all-weather pitch at All Saints School.
- Outgoing committee members Edwin Pocock, Ros Stokes, Delya Bond and Brian Hodges were thanked for their hard work. Thanks were also expressed to Pauline Perkinson for all her hard work; the position of Chair demands a huge range of issues to be addressed, which Pauline has carried out very efficiently.

COMMITTEE FOR 2001 - 2002

Chairman Kevin Walker

Secretary Amanda Hardwick

Committee Members :- Duncan Froggatt

Carol Pugsley Andy Gledhill

Rita Garnett John Lawry

Deputy Chair Pauline Perkinson (Elected at May Committee Meeting)

Treasurer Maurice Snowdon

John Perkinson

Janet Chapman

Lisa Blake

Mike Williamson

Les Firth (Totley Independent)

Heather Johnson

Avril Critchley

A Nature Reserve On Your Doorstep

A public meeting to discuss the future of the new nature reserve at Blacka Moor was held at Totley Methodist Hall Church on 16th May.

The meeting was held to allow anyone with an interest in the new nature reserve at Blacka Moor, near Dore, an opportunity to discover more about this valuable wildlife and amenity site, and comment on its future. It is hoped that a local advisory group can be formed, to play an essential role in the management and development of the reserve.

The meeting included a short presentation by Sheffield Wildlife Trust, followed by an open discussion on the challenges facing the reserve and possible ways forward.

There was then be a formal invitation for people to join the Blacka Moor Reserve Advisory Group.

Blacka Moor has become one of Sheffield Wildlife Trust's nine new nature reserves due to its rich mosaic of heather moor, woodland and peat bog. The 180-hectare site has recently been designated a Site of Special Scientific Interest in recognition of its importance for birds.

What the Nature Reserves Project has been set up to achieve (for SWT):

1. To enhance local biodiversity and environmental quality (as part of local, regional, national and international strategies, plans and policies).
2. To protect wildlife (habitats and species) from damaging development and harmful (or inappropriate) management - particularly UAP priority habitats and species².
3. To implement and improve current best practice in nature conservation land management
4. To publicise and promote land management for nature conservation.
5. To promote and encourage wildlife-related recreational, educational and scientific activities, whilst minimising any potentially harmful effects on the wildlife species, habitats and ecosystems present.
6. To provide a focus for training and volunteer activity for all - either by members of SWT, or by other voluntary organisations, community groups and individuals.
7. To attract funds for the management of important sites, from sources that would otherwise be inaccessible.
8. To give SWT increased credibility with other bodies and individuals within Sheffield, across the UK and Europe.
9. To attract increased support (political, financial and personal) for the environmental movement (in general) and SWT (in particular).
10. To provide a high profile physical presence for SWT as a clear indication of our long term commitment to communities across Sheffield, and to particular habitats and/or species.
11. To place the protection, enhancement and understanding of the natural heritage at the centre of urban and rural regeneration in and around Sheffield, in part by capacity building at a local level.
12. To establish appropriate (sustainable) productive land uses on sites of high natural heritage value.

The next meeting will be held on Tuesday 3rd July at 10-00 a.m. at Totley Rise Methodist Church. All interested parties will be welcome.

TOTLEY YOUTH F.C. SPORTING AWARDS

Totley Youth F.C. has just completed their sixth season at Under 12, 13 and 14 age groups and have been recognised for two sporting achievements by the Sugg's Sunday League.

The U13 age group managed by Paul Hanson was voted the most sporting side in their division and the U12's managed by Graham Nash were voted the most sporting side in their whole age group. The U12's achievement was the second time a Totley team has won this award over the other 72 teams in their age group. The Chairman of Totley Youth Football Club Kevin Walker was delighted with the awards. "This is the fifth successive season that T.Y.F.C. has been voted for by the other teams in their respective leagues and age groups and is recognised by the FA and League officials as an impressive achievement, the boys and their parents are justly proud".

The league secretary Sheila Allsibrooke presented the awards at the clubs presentation night held at Bramall Lane on Friday 18th May. Graham Nash and his players were unaware that the team had won this highly coveted award and as he received the Fair Play Shield he said "wh..... wh..... I don't know what to say". Albeit Graham, the players and parents were very proud of their peers recognising that the boys from Totley play the game in a fair and sporting manner. As well as the award the U12 team finished an impressive sixth place in their league.

SPECIALIST HELP NEEDED

Can you design a web page for Totley?

The Totley Residents Association held their 24th A.G.M. in the Totley Library on 23rd April 2001. Kevin Walker was elected to Chair the TRA and thanked Pauline Perkinson for her five years hard work.

Kevin Walker and his committee are very keen to ensure that every resident of Totley or people working in the area have the full support of the TRA. Totley has a higher number of pensioners and young people / head of population than any other area of Sheffield. The needs of the people in the area are varied and constantly changing and the TRA were going to hold a needs analysis of people in the area in conjunction with the Human Geography Department of Sheffield University. However, due to the foot and mouth outbreak all Sheffield University field projects have been cancelled for this year's examination students.

Additionally, the department were trying to find a placement student to design and set up a Web-page for the TRA. Unfortunately no resource was available without us contributing £2,000 towards the costs.

Therefore, if you can help with how to design, set up and run a web-page (with little to no money) please call Kevin on 0114 2351862.

DORE and TOTLEY UNITED REFORMED CHURCH
TOTLEY BROOK ROAD

OUTDOOR SERVICE

LED BY

THE SALVATION ARMY

ON SUNDAY, 17th JUNE 3-00 p.m.

We look forward to seeing you there!

CHURCHES TOGETHER IN S17

Half full or half empty? Depends on how positive you are!

The Positive Approach is used by many people. Some use it *consciously*; some use it *unconsciously*. However it is employed, the benefits are the same.

As a young person, I was unconsciously positive in my approach but I did not realise the impact I had on others. As a more mature person, I became aware of the power of being positive through using three main elements: *Words, Eye Contact* with a smile and *Touch*.

Words of praise make people feel worthy and appreciated. It makes their effort worthwhile. It can be used to maintain good behaviour, by noticing it and acknowledging it. *Words* of praise produce the 'feel good factor'. *Eye Contact*, with a smile, is silent approval. We all like to be liked; we all appreciate being noticed either for our own self or the work we have done.

Eye contact produces the 'feel good factor'.

Touch is perhaps the most powerful positive action of all. There is a message in each touch: I like you or I like your behaviour. We British do very little touching.

A psychologist reported observing two couples having coffee together; one in London and the other in Puerto Rico. The London couple never touched each other in the one hour they were together whereas the Puerto Rican couple touched 160 times during the hour.

This psychologist was promoting the idea that we all need eight hugs a day for good mental health (for hugs you could insert touch!). Think how well the Puerto Rican couple must have felt!

Touch produces that 'feel good factor'.

Many people have told me that they found that greeting each other as a sign of God's peace in our church service, was hard at first, but just think of the benefits: within the greeting are the three most powerful elements to make people feel good - *Words, Eye Contact and Touch!*

Jeannie Foster

Our Lady of Beauchief and St Thomas of Canterbury

Chapel-of-Ease English Martyrs, Totley

Tel: 0114 2747257

June

... In the leafy month of June...

HOLY DAYS	Thursday	14 June	Corpus Christi
	Friday	29 June	SS Peter and Paul
Masses:	Vigil	7-30 pm.	English Martyrs
	Day	10-00 am.	OLST
		7-30 pm.	OLST

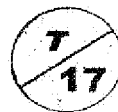
Why not celebrate the onset of Summer by taking part in the annual Sponsored Walk organised by the De La Salle Ramblers? Details available from the churches.

Sunday 17 June. SVP annual trip to Bridlington for disabled parishioners and carers.

Tuesday 19 June Parish business meeting in the Parish Rooms OLST 8-00 pm. All welcome.

Sunday 24 June Summer Fayre at St Thomas of Canterbury School Chancel Wood Drive. Many attractions for young and older. Come along at 1pm and enjoy the fun

Many other events are planned. Details from the churches or phone 0114 2367736.



Transport 17

On Saturday, 7th July we are having a Coffee Morning in our office from 10 a.m. till noon. There will be books, bric-a-brac, refreshments and hopefully anything we can get our hands on to sell. Please come along and support us.

Irene Wells and ourselves are organising a day trip to Skegness. This will be on Monday, 9th July.

This trip will be open to anyone and costs £6-00.

We will leave from our office (172, Baslow Road) at around 8-45 a.m. There will be stops on the way there and back. We will leave Skegness at about 4-00 p.m., depending on the weather. Your time is your own while you are there.

Some of our passengers will need our minibuses to get them to the office. Please ring us on 236 2962 to arrange this.

The trip itself will be in a full size "Gordon's" coach. This has a side lift so anyone who has trouble with steps or has a wheelchair can be accommodated. Perhaps friends or family could book to take someone who has not been to the seaside for a while.

Please ring Irene Wells on 236 0602 or me on 236 5063 to book seats or for more information.

Many thanks to English Martyrs Church for once more for a donation of £490.50 from their "Coffee Cakes & Cuttings". It is very much appreciated.

We were sad in our office to see that someone had vandalised their garden. It is always so well kept.

Margaret Barlow

Totley Summer Special

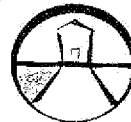
A fun day out for all the family.

Saturday 30th June 2001

11-00 a.m. 3-00 p.m.

Totley Primary School, Sunnyvale Road, Totley

Organised by Totley Primary School PTA.



All proceeds to benefit school

SPONSORED BY THE SHEFFIELD ANIMAL HOSPITAL

The warmer weather is just about with us and PTA members at Totley Primary School are once again swinging into action to organise the annual summer fair.

Sponsored by our new local vet SHEFFIELD ANIMAL HOSPITAL, Totley Summer Special is an afternoon of fun and games for all the family to enjoy. With over 40 stalls, a bouncy castle, raffle, the TA, football competition, coconut shy, barbecue, cream teas and the Gentlemen of Jazz providing even more entertainment, we are confident that everyone will have a good time.

Entry is free and prices are low so we hope that you will turn out to support what has become our biggest fundraiser. This takes on even more importance this year following a recent break-in at the school in which £5,000 worth of new computer equipment was stolen. It is difficult to believe that this can happen in a place like Totley, but it has and we now need to make up this huge loss. PTA members will be out and about in our community looking for everything from adverts in the fair programme to raffle prizes and places to display our posters. Now more than ever I hope you feel able to give us your support.

If you would like to help and need more information then call Alison Bolton on 235 6432.

Wizz Kids Pre-School Group

May we start by apologising for the disruption caused on Baslow Road on Tuesday 17th April. The long awaited delivery of our new mobile building caused quite a traffic queue. We thank you for your tolerance, as it was an important occasion for Wizz Kids.

Planning for this new extension began with a few ideas and dreams some 3 years ago, moving on to being awarded a New Opportunities Fund Grant from the National Lottery. Next came the planning permission and a favourable lease from the L.E.A. The culmination was the events of Tuesday 17th April.

Wizz Kids Pre-school Group has developed from humble beginnings, operating as a play group with two unpaid members of staff in the table tennis hall at Abbeydale Sports Club, to what is now a fully voluntary committee run group with six professional members of staff, and having excellent facilities ideally situated within the grounds of Totley Primary School.

Wizz Kids will now be offering a full day childcare service aimed at meeting everyone's child care needs. Opening from 8.00 am to 6.00pm, it can offer full day, part day or sessional care together with holiday play schemes.

Both the Committee and Staff are fully committed and really care about the children's welfare and education. It has been registered to receive Nursery Grants for the past 4 years and as the latest recently published Ofsted report shows, has gone from strength to strength.

The group has excellent and positive links with Totley Primary School enabling Wizz Kids to introduce children to school life, through being invited to participate in assemblies, story times, sports days and many other activities. Even if the children move on to other primary schools, they leave us with greater confidence and understanding of what awaits them come 4½.

All staff have worked in childcare for many years and during those years have experienced many humorous moments. These are a few that I would like to share with you:

small boy aged 3 I can't do that, I can't
adult don't worry just try your hardest
small boy (looking around table) Where is my
hardest?

child aged 4, returning after Chicken Pox
adult Are you feeling better now?
child Yes, but do you know, that chicken even
put spots in my car?

After a week learning about senses including sight impairment, the children were asked:



Can anyone remember what animal do some people use to help them when they cannot see?

child Kangaroo

Small girl aged 2 playing outside:

adult Isn't the sun lovely?

child That's not the sun, the sun

has sticks coming out of it.

After reading these lovely stories, is it any wonder the Nursery Inspector stated that the staff really listened to the children and gave them every opportunity to extend their vocabulary - was he referring to the staff or the children we ask?

WIZZ KIDS NURSERY

Open 8.00am to 6.00 p.m. 51 weeks a year

Totley Primary School, Sunnyvale Road, Totley

Sheffield S17 4FB

Manager - Alison Vickers

Telephone 2364319, please

phone any time for further information and enquiries

Visitors always welcome.

See display at Totley Library - week commencing 4th June, for 2 weeks.

Next Open Day: Totley Primary School Summer Fair 30th June, 2001

Doesn't anyone in Totley, listen to Radio Sheffield?

I went to church on Easter day, before Jack Shaw announced the winners of the Radio Sheffield's 2001 Church Magazine Competition.

When my telephone rang later in the week, Jack Shaw asked, "Doesn't anyone in Totley, listen to Radio Sheffield? Hasn't anyone told you that All Saints' News had been awarded the plaque?"

The cup was awarded to the very professional looking UpFront magazine, a production of Rotherham New Life Christian Centre. A graphic designer produces their zingy, glossy cover and eye catching interior presentation. Another young man edits the written material.

Our magazine, as many of you will know, is produced on my personal computer, printed on the church's Riso printing machine and collated & delivered by a group of willing helpers.

Changes have taken place in the time I have been the editor. When I first produced the magazine, I used an Apple Mac machine - ancient in terms of computers. After attending desktop publishing classes at Norton College, I realised I could produce more interesting pages if I had a P.C. I was able to use clip-art and produce and save a booklet where advertisements could be returned without 'cutting and sticking'. The most recent development has been the replacement of the printing machine. The magazine is now printed more quickly and photographs can be included.

Jack Shaw presented the awards during the next Sunday Programme. I was very proud to receive the plaque and to show it to everyone attending the Sunday morning services. It is now in the vestibule of the church hall and will remain with us as there are no more spaces for names of winners.

Jeanne Foster, Editor of All Saints' News.

Professional Cleaning by

NEW PIN CLEAN LTD

Daily • Weekly • Fortnightly • Monthly

- Spring Clean • House Moves
- Full Ironing Service • One Offs
- Fully Insured • Free Quotations

Our trained staff will clean your home thoroughly. We offer a customised service to suit your requirements.

NEW! The Iron Shop

Why not bring your ironing to us?
Local Collection & Delivery

0114 236 2943

For Commercial Cleaning Call

South Yorkshire Industrial Cleaners Ltd on 0114 235 6690

49 Wolfaton Road, Bradway, Sheffield, S17 4LF

Stampede Roller Hockey Club

Totley based Stampede Roller Hockey Club has put Totley on the youth sporting map. This fast developing youth sport is based entirely on the ice hockey game played by the Steelers.



However, there are two subtle differences. The game is not played on ice, the players wear in-line roller boots and the youth game is non-contact.

Stampede plays both the puck and ball version of the game and won the Division 1 title at the end of the season. The trophies were presented to the team at the presentation night held at the Heatherfield Club by Shane McCosh the Steelers hot shot.

Additionally, the team won the league Fair Play award and they were recognised for their achievements by going on to the ice at the Steelers game against Newcastle. This is a tremendous achievement and like Totley Youth F.C. they are both winners and fair sportsmen.

The picture shows Team members from King Ecgberts School Back Row: David Marsh, Sam Brewster, Matthew Walker, Danny Holmes and James Marsh. Kevin Walker

FAMILY NAME ASSOCIATIONS

Dear Ed

Further to Don Ashford's article on "Family Name Associations", my mother's family were named according to the accepted pattern he mentioned, boys after mother's father, father's father their father and girls after father's mother, mother's mother their mother.

As the third daughter my mother was given her mother's name Caroline. However as all the children had two Christian names and my grandparents had eleven children there was still plenty of scope for them to chose names which appealed to them personally.

Kathleen M.Jones

MEADOWHEAD COMMUNITY CHOIR

(Previously known as Meadowhead Parents Choir)
Present a wide range of music with a selection from Joseph by Andrew Lloyd Weber. Instrumental solo items included.

at

TOTLEY RISE METHODIST CHURCH
MONDAY 11TH. JUNE, 2001, 7-30 p.m.

£3-00 including light refreshments.

Proceeds for National Children's Home

1ST. TOTLEY SCOUTS LOTTERY RESULTS

1st. Prize. Fuchsia 10" Crystal Vase

No. 27

Mr. & Mrs. Smith, Queen Victoria Rd.

2nd. Prize. £10 voucher

No. 12

Mrs. Harrop, Green Oak Av.



SHEFFIELD BACH SOCIETY

Registered Charity No. 511146

Visit our Website at <http://www.sheffieldbachsociety.org.uk>

CONDUCTOR PETER COLLIS

Saturday 9th June 2001, 7.30 p.m.
Sheffield Cathedral (Church Street)

A Feast of Vaughan Williams

Toward the Unknown Region

A Vision of Aeroplanes

Five Mystical Songs

Dona Nobis Pacem

Jenny Leadbeater, soprano

David Townend, bass

Sheffield Bach Players,
Leader Harvey Marsden



Tickets £8
(Concessions £6)
available from
Sheffield Music
Shop, Broomhill
(266 1000)
NPC Music
Sheffield City Hall,
or at the door.
Students £3
at the door.

E.J.WRIGHT

**Carpentry &
joinery
Services**

**FOR A PROMPT AND
EFFICIENT SERVICE**

TELEPHONE 255 1099
MOBILE 0585 109502

M. SCRIVEN
(FRUITERAMA)

MARTIN SCRIVEN

**HIGH CLASS FRUIT
& VEGETABLES**

37

BASLOW ROAD

☎ 2367116

Orders Delivered

LADIES FASHIONS

**SKIRTS, DRESSES,
JUMPERS, T-SHIRTS,
UNDERWEAR etc**
ALSO
CHILDRENS WEAR
**HABERDASHERY,
WOOL**

**Dry Cleaning, Shoe Repair
& Laundry Service**

ROSIES

164 BASLOW ROAD, TOTLEY.
TEL: 2621060



LEONARD CHESHIRE

Sheffield



Mickley Lane, Totley, Sheffield GRAND RAFFLE 2001

Raffle Tickets for our Annual Raffle are now available. Each book contains 5 tickets @ 50p. per ticket. These are available for collection from the General office at Mickley Hall or can be sent to you direct if you telephone **Jackie Short (Tel: 01142367491).**

There are some wonderful prizes including:

1st Prize - Weekend Break for Two

2nd Prize - Colour Television

3rd Prize - Combination Microwave Oven

All proceeds from the Raffle this year will be donated to the 'Garden Courtyard Project' which will greatly improve the outdoor facilities for our residents at Mickley Hall.

Please help us to achieve our goal by selling raffle tickets to your friends and families. We do need your help - if everyone sold just one book we could achieve a record year with the Raffle! Thank you in advance for your support.

Tickets will also be available for sale at the Fete but all money, counterfoils and unused tickets should be returned to the above address by **Friday 15th June** please.

Salmon & Strawberry Lunch & Auction

We are holding a Salmon & Strawberry Lunch followed by an Auction of 'Items & Promises' on **Saturday 28th July 2001** at the home of Bob & Sarah Brown, The Orange, Housley Park, Chapeltown, Sheffield who are loyal supporters of the Sheffield Cheshire Home. It is extremely kind of them to offer their house and garden for the event in this way and we are very grateful indeed. Vivienne Milburn who is an Auctioneer and Valuer for ELR Auctions Ltd has kindly agreed to conduct the auction. Lunch will commence at 12 noon followed by the auction at 2 pm -finishing at around 4 pm with a cup of tea. The cost of the lunch including a glass of wine or juice and auction catalogue will be £10. Places for lunch will be limited to 100 but anyone who would like to attend the afternoon auction without lunch may do so at a cost of £2 for entry and catalogue. Telephone bids will be accepted beforehand if you wish to make an offer and can not attend! Some items will have a reserve price but we hope there will be 'something for everyone's pocket'.

All proceeds from the above event will be donated to the garden project which is being kindly undertaken by members of Abbeydale and Hal lam Rotary Clubs. We are delighted that they have offered to provide their services free and LCSS only have to raise funds of approximately £5000 to pay for materials required for this exciting project. Renovation of the 'courtyard' will include work on the existing goldfish pond, a new water feature, decking ramp, raised flower bed,

gazebo to provide a shaded area, fencing and provision of new plants, shrubs, garden urns etc. The main aim is to make the whole area more attractive and serviceable for our wheelchair residents, staff and everyone who visits the Home. We are most grateful to the Rotarians for offering assistance in this way and we know that the appearance of this area of Mickley Hall will be greatly improved in readiness for the summer.

We would of course be most grateful for offers of items for the auction - antiques, memorabilia, novelties or unwanted gifts are all acceptable! If you have a special talent (we already have offers of preparation of a Will, engraved brass plate, aromatherapy session, chiropody - other ideas include registered childminding, baking items for the freezer, gardening, offer of holiday cottage or flat, etc.) please consider donating a 'promise' as this will cause extra interest and hopefully help towards raising the funds on the day for this project.

Please complete and return the enclosed form to book your lunch places and/or the auction. Your support would be much appreciated and will ensure that the event is a happy and successful occasion for everyone concerned.

Jackie Short, Fundraising Co-ordinator

Rotary Gets Down To Earth

Members of the Rotary Clubs of Abbeydale and Hallam are re-landscaping the courtyard at the Leonard Cheshire Home at Totley over the next few weeks. The courtyard has been designed by Michael Hill, one of the members, and will consist of an oriental teahouse, decking area to view the existing pool, ramps and raised beds to make wheelchair access easy, a foam fountain and pebbles and a pergola to create some shade and give some height for climbers. The design has posed a challenge to provide interest from every aspect as the garden is viewed from all the bedrooms around the courtyard.

Trellis work has been erected round the courtyard walls which, once planted, will soften the building lines. Two large specimen trees, *Betula jacquemontii* and *Acer griseum* (Paperbark Maple) will give height but dappled shade. Other planting will include grasses and architectural plants and some seasonal colour by the conservatory. The garden will be ready for the summer fete in June.

Sue Wood

Money lost, nothing lost: honour lost, much lost; courage lost all lost

TOP KNOTS 'N' TAILS
MOBILE DOG TRIMMING
ALL BREEDS

Expert trimming in your own home

Telephone Karen
0114 235 0823
Mobile 07932 477 855

BUILDER CARPENTER PLASTERER TILER
B.I.C. PROPERTY REPAIRS BOUNDARY WALLS
BRICK PAVING ALTERATIONS KITCHEN UNITS
SMALL JOBS POINTING PATIOS
ALL ODD JOBS

FOR A FREE QUOTE AND PERSONAL SERVICE PLEASE PHONE

HOWARD on HOME: 0114 235 0358
MOBILE: 07939 394273

P.S. If you don't need my services, perhaps a friend might!

PEAK EVENTS

JUNE

9 - 17 ASHFORD IN THE WATER WELL DRESSINGS
6 dressed wells around the village and flower festival in the church.

9 June Sheepwashing 3pm at Sheepwash Bridge. Art exhibition and refreshments in the Old School all week. The Ashford Memorial Institute will serve refreshments during the daytime on Saturday and Sunday 9 & 10 June. Tel. Mrs Sheldon on 01629 813005 for details.

10 - 16 GRINDLEFORD CARNIVAL WEEK. 14 June Fell race, 7.30pm at Grindleford Pavilion, 16th June Carnival, 2.45 pm at Grindleford Playing Fields. Tel. 01433 630221 for details.

21 MIDSUMMER TALES, LONGSHAW NATIONAL TRUST Midsummer Tales on the longest day and a storytelling for the whole family, refreshments after. Meet Visitor Centre 7pm. £4.00 adults, £2.00 children & booking essential. Tel. 01433 631708.

23 - 25 CHELMORTON FLOWER FESTIVAL. Church Flower Festival stalls, embroidered panels. Stalls in village street and stalls and cafe in the Village Institute. Band concert and cream teas on Sunday afternoon plus many other events. Flower festival 10am until evening. Flower festival closes Monday 25th June at 5.30pm. Tel. 01298 85555 for details.

23 - 29 CHELMORTON WELL DRESSING. One well below church blessed at 3pm on 23 June. Tel. 01298 85555 for details.

23 - 29 ROWSLEY WELL DRESSING AND ROWSLEY FLOWER FESTIVAL. 2 wells at centre of village. Flower festival in St Katherines Church 10am to 6pm approx. Wells Tel. 01629 733282 for details. Flower Festival Tel. 01629 732526 for details.

23 - 30 HOPE WAKES AND WELL DRESSING. Four wells dressed. Blessed on Sunday 24th June starting from St Peters Church at 7pm. Tel. 01433 621312 for details. 23 June to 1 July LITTON WELL DRESSING AND WAKES. Two wells dressed, location in centre of village. Chapel well and childrens well. Wakes, sidestall, skittles, barbecue, bouncy castle, coconuts. Blessing on Sunday 24 June at 3pm. Litton wakes on Tues 26 June from 6.30pm, torchlight procession at 10pm. Tel. 01298 871569 for details.

23 June - 1 July TIDESWELL WAKES AND WELL DRESSING WEEK 3 or 4 wells Tel. 01298 871840 for details.

30 TIDESWELL CARNIVAL DAY. Carnival parade at 2.30pm and 7.15pm. Torchlight procession at 10pm. Tel. 01298 871873 for details.

30 EDENSOR ST PETERS VILLAGE DAY. Edensor Green and St Peter's Church, 2pm to 4.30pm. Tel. 01246 583545 or 01246 582130

30 WORLD TOE WRESTLING CHAMPIONSHIPS

At Ye Olde Royal Oak Inn, Wetton, Ashbourne. Charity knockout competition for men and women to crown the toe wrestling champions of the world. Suitable for all the family. International television coverage. Parking and refreshments. 11am to 12 midnight.

Information from the • PEAK DISTRICT 2001 • the official guide to the National Park.

More events can be seen in the free guide available throughout the Peak District or by visiting their Web Site www.peak-district.org.

NB Please check if the event will be on or not due to current Foot and Mouth problems.

A PEAK PERFORMER

Publications on the Peak District continue to pour out of the publishers and many of them are very similar, going over the same old ground (in both senses). One thing is for sure; when Roly Smith of Bakewell is involved you can be sure that the quality and content of the book is several notches higher than most.

Collins Rambler's Guide to the Peak District is a walk book with a difference and one of the best productions I know. Firstly you have a precise introduction before being launched into thirty walks, spread over 190 pages, carefully described and beautifully illustrated with photographs by Karen Frenkel of Little Hucklow, excellent maps and profile diagrams. The profiles are particularly useful, for those with disabilities and old age, showing the steepness of climbs and a rough guide to the time that the walk will take. Having spent many years walking in Switzerland, I am used to signposts that are highly visible in bright yellow and bearing the name of the destination and the time it will take, at a leisurely pace, to get there. In England the sign posting varies between appalling and dreadful, cunningly disguised in sun-blached wood, and giving any visitor the distinct feeling that every route leads to the same village called public footpath. So it is a welcome aid when you get your hands on a book like this Rambler's Guide, for it is a handy (rucksack pocket) size, with good quality paper and a tough plastic cover. It covers interesting walks precisely detailed with notes on various features, including the wild life hopefully encountered en route. Topically and typically, the guide even warns about the flooding along Millers Dale and Water cum Jolly. The last time I was there I decided to paddle, took off my boots, carefully tied them together and promptly dropped them in the water! If we have another year like 2000 and provided this dreadful foot and mouth epidemic ends, can I suggest packing a pair of waders or an inflatable canoe for Walk 127.

Roly has really done a great job and I have only one criticism, aimed particularly at the publishers. There is no doubt at all that the book owes a great deal to the careful and relevant choice of stunning photos, but why, oh why, does the name of Karen Frenkel not appear on the cover, the only acknowledgement being a tiny one inside. Perhaps Collins will address this point in the next edition and accept that having illustrations by such a fine photographer is a huge asset. The book is superbly printed and bound in Scotland and that makes a change because the vast majority of publishers, including National Trust, have their nice picture books printed in Singapore, Italy or Timbuktu! Well-done Collins, designers Drum Enterprises, Roly Smith and KAREN FRENKEL! *Brian Edwards*

LADYBOWER CHALLENGE WALK CANCELLED

With great regret, King Egbert School Association has had to cancel the Ladybower Challenge Walk which was planned for June 30th. This is due to the uncertainty about footpaths being open around farms owing to the current foot and mouth crisis and our wish to support local farmers at this time. Hopefully we'll be up and running (or walking) again next year. Thanks to all those who had already offered to help, and to those who had enquired about the walk.

This was the third year that we had organised the 26 miles in 12 hours walk, which had attracted interest from all over the country. The trek from King Egbert School out to Ladybower Reservoir and back sounds a challenge not only because of the wonderful scenery but also because of the different terrain covered. We had been hoping to increase our numbers to more than the 70 entrants who successfully completed the walk in the last two years. So..... WATCH THIS SPACE NEXT YEAR.

GARDENING TIPS FOR JUNE

The weather seems to be warming up a bit (I hope), the past weather pattern is best forgotten with all the wet, cold and frost things are a little bit behind. June with its long evenings and generally warm weather, enables us to spend a little extra time enjoying our gardens, be it with a BBQ or just lazing in the deck chair watching the birds nibbling at your vegetables, or perhaps catching up on the gardening chores that have been neglected. Keep in mind as you go around your plot the Totley Show in September, we had a really good one last year with the cakes and jazz band, as well as a good array of produce, and the very talented folk who gave us a lovely showing of arts and craft, photography etc. not forgetting the children's section, so make a big effort to attend this year and an extra effort to exhibit your talents whatever, wherever they may lie.

FLOWERS Make sure all plants, especially recently planted ones, are kept well watered and fed on a regular basis, containers need an extra careful watch over as they can soon dry out in the lovely sunshine!! Thin out seedlings which have been sown in borders. Stake and tie the taller plants such as lilies, gladioli, delphiniums etc. dead head all flowers as they fade, this will encourage further flushes to enhance your borders. Perennials and biennials can be sown now, they will make good sturdy plants for placing in their flowering positions in the Autumn these include Canterbury Bells, Wallflowers, Verbascom, Sweet William, Lupines, Hollyhocks, Delphiniums etc. Place chrysanthemums in their summer position; divide auricular, polianthus and primroses growing in the open. Cut back aubrietias, arabis, and perennial candytuft quite drastically after flowering, this will prevent them spreading too far. If you lift your spring bulbs, now is the time to do it, store them in a light airy place until all the greenery has died back, then store in a dark, cool place until required for planting out later, watch out for all the nasties, like aphids, mildew etc. and deal with them straight away before they get out of control. As alpine plants finish flowering cut them back, this will keep the plants neat and compact and encourage them to make new growth for next year. Cuttings can be taken at this time this will give you extra alpine plants to fill in any gaps you may have, root them in a good sandy compost.

VEGETABLES Plant marrows now, plant them in a well prepared bed of rich compost raised up a foot or so, I put mine between two bales of straw with compost between them, this helps to retain the moisture, and keep them off the ground, they should be just right for the show in September. Thin out carrots and beetroot sown earlier, plant out celery plants and keep them well watered. To keep onions growing sturdily, water when soil is dry and give a nitrogenous feed, once a week until the end of July, then change to a feed high in phosphate until they are ready (for the show of course). Plant out leeks, make a hole with a dibber or pointed stick about 6" or so deep about 12" to 18" apart. Drop the leek in each hole, then water them, as you water let it carry in a little soil, enough to cover the roots, no more filling is necessary.

Plant out runner beans, watch out for slugs and put out traps for them. Earth up potatoes, support peas as they grow, plant out outdoor tomato plants, also sweet corn and ridge cucumbers. Plant out cauliflowers, cabbage, and sprouts for autumn use and Savoy's and winter broccoli, for winter and spring. Make successional sowings of vegetables such as beet, carrot, dwarf beans, peas, lettuce, salad onions and radish. Pinch out the tips of broad beans when they have set about four clusters, this helps prevent black fly and encourages the development of the pods. Start picking herbs for drying and freezing. To help rhubarb build up a good crown remove any flower stalks and keep them watered and well fed.

TREES, SHRUBS and FRUIT Keep fruit trees clear of weeds and grass. Remove unwanted strawberry runners and surplus or weak raspberry canes.

Continue to spray apples, pears and soft fruit against aphids,

blackfly and mildew. Spray raspberries 10 days after flowering with a fungicide to prevent cane spot. Cut out badly cankered apple branches, summer prune gooseberries, grapevines and white currants. At the end of the month stop picking rhubarb to give it a chance to recover for next year. Keep all newly planted trees and shrubs well watered and weed free. If azaleas, rhododendrons, camellia or hydrangeas are yellowing apply sequestrine or sulphate of iron to bring back the colour, and make the plants stronger. Remove suckers from roses and give them a feed after the first flush of flowers, spray with fungicide to prevent black spot and mildew. It's a good time to take cuttings from many shrubs to increase your stock or to pass on to friends or give to charity events, they can be rooted in a frame or on a window sill. Don't forget to remove laburnum pods from your tree, and on the ground, especially if you have children in your garden, they are poisonous and are attractive to youngsters as they do look like miniature peas.

GREENHOUSE and INDOOR PLANTS Your greenhouse should now be a picture of health and vigour with all the flowers and plants put in earlier. Feed flowering and fruiting plants, stand pots on damp pebbles to maintain humidity, pot up rooted cuttings taken in May, take leaf cuttings of African violets, begonia rex and echeveria. Cuttings, to increase your stock, can be taken now from busy lizzy, fuschia heliotrope, plumbago etc. Watch out for white fly, aphids, mildew etc. and spray as soon as they are spotted, otherwise they will take over and spoil all your hard work. Sow calceolarias, busy lizzy and indoor primulas to use as pot plants. Train and feed melon and cucumbers, don't over water they soon rot at the base, if you do. Do not allow tomatoes to dry out as the weather gets warmer. If you see signs of green back where the hard skin forms at the top of the fruit, water with a solution of 1 ozs. of sulphate of potash in 1 gallon of water (or the metric equivalent), that should help them get over it. Be very wary of the weather, watch your ventilation, June nights can be a bit unpredictable.

LAWNS Continue regular mowing and edging, if it turns hot, we hope, raise the cutters on your mower. New lawns should be rolled and very lightly trimmed at first. Dig up weeds or apply selective or spot weed killer as they appear. That's a bit to be going on with. Cheerio for now.
TOM, BUSY BEE

TOTLEY RISE POST OFFICE

Katherine and Lindsay Garrad wish to thank Jim, Glenice and all the staff for their help and support over the last few months. We also wish them all the best in their retirement and look forward to seeing them when they pop in.

With the invaluable help and experience of the existing staff, Ann Jean and Hillary we will endeavour to provide as good a service as they have over the years.

Thank you to everyone for their lovely welcome and for being patient while we are still going through our Post Office training.

Please note we are now open Monday afternoons.
Katherine & Lindsay

Music Society

Hello again! It seems ages since I last wrote to you. That is because we hit a sort of a "flat spot" in our calendar almost to the end of March. Since then however, we have done concerts at Roe Wood, Cheshire Homes, and Henleigh (Beauchief) homes where we were received with warmth and enthusiasm.... Also repeat bookings, so perhaps we are beginning to get it together in terms of content and balance.

We have had minor alterations in membership - two coming, two going - one to be a Holiday Rep, and with a voice like she's got, she should have no trouble in keeping the guests happy! Another plan, that went wrong, was one of our ladies (three times lead in the "Mikado") was asked to sing for another member's mother, "My Mother's Eyes". This was to be a very "hush-hush" operation, and Mum didn't know anything about it. However, the daughter slipped in the snow, and broke her leg (still in pot!) and obviously did not attend rehearsals in the run up to the big night. How she explained to her mum that they were still going is not certain, but we do know that on the night, in she stomps with mother in tow, plonks her on the front row, and had her favourite song sung by Christine... Tears all round... Lovely!!

I mentioned earlier that we are starting to get members coming forward to do solos, and this is now broadening our horizons, because you never know what someone is going to stand up and sing. There have been two or three real "gems" materialise, and when asked "why didn't you do this before?" the answer is invariably that they didn't want to appear "pushy"!!!

We are learning new songs to be included in the near future concerts (not quite ready yet for Public Consumption!) but they include an Al Jolson favourite, one from "Half a Sixpence" three from "Carousel", (including "You'll Never Walk Alone" - but unlike the Liverpool FC supporters choir(?), this one is in tune!), and a favourite of mine the "Nun's Chorus". I tried desperately to get into that, but they kept chucking me out. - said it was something to do with the size of me feet... ridiculous!!

As I've said before, anyone interested in joining, whether to sing or just listen (I guarantee that you will be singing by the end of the night!), please contact me on 2366891

Tony Reynolds

CRICKET at ABBEYDALE PARK

After eight months the Yorkshire League Cup Final took place on a cool Sunday afternoon in May. Sheffield

Collegiate beat Doncaster by 49 runs, scores Collegiate 228 all out, Doncaster 179 for 9. Three home batsmen scored 50 or more in their innings and veteran spin bowler, John Hespe had figures of 2 for 17 from 10 overs.

The usual five spectators and the dog turned up in their "Damarts" but were heavily outnumbered by the visitors. This win completed a fantastic treble for their first XI, National Club K.O, Yorkshire League Championship and Cup. The 2nd. XI Whitworth Cup Runners-up. 3rd. XI Y.D.C.L Cup winners.

Unfortunately the Quadruple success was tempered by the sad news of the death on the 12th. May of the Club President, Charles Buck, he had served the Club for many years as player, official and loyal spectator.

J.G. (name and address supplied)



THE GREAT SHEFFIELD ART SHOW

ART SHOW
ADMISSION
£3.50
OAP £3.00
(INCLUDES CATALOGUE)
CHILDREN FREE

YEAR 2001

THE BIGGEST ART EXHIBITION IN THE NORTH OF ENGLAND

FRI 6th JULY	10am-9pm
SAT 7th JULY	10am-9pm
SUN 8th JULY	10am-6pm

AIR CONDITIONED
OCTAGON CENTRE
WESTERN BANK SHEFFIELD 10
1400 PICTURES
BY LOCAL ARTISTS.

ARTISTS AND CRAFT SUPPLIES, CHILDRENS' MURAL
ARTISTS' DEMONSTRATIONS, WORKSHOPS
BAR, REFRESHMENTS.

ON A57, BUSES 50, 51, 52, 60, 95
CLOSE TO SUPERTRAM.

PARK AND RIDE MAY BE AVAILABLE
by First Mainline from
TESCO CAR PARK Abbeydale Road South
FRI & SAT 10 - 5.00

POSTER SPONSORED BY
GREENUPS PACKAGING LTD

Catherine Clarke
M.S.S.C.H. M.B.Ch.A. S.R.N.

Qualified Chiroprapist

Westfield accepted
12 years experience
Home visits available
Daytime and evening appointments

192, Baslow Road
Totley
Sheffield
S17 4DS

Tel: 0114 236 4101

BUSY BEE

D.I.Y. SUPPLIES

170 BASLOW ROAD, TOTLEY, SHEFFIELD S17 4DR.
Telephone 2365798

for
**A COMPREHENSIVE SELECTION OF
D.I.Y., DOMESTIC & GARDENING ITEMS**
including

Plywood, Timber, Paint, Hardware,
Bowls, Buckets, Mops, Tools, Locks,
Composts, Pots, Fertilizers, etc. etc.

KEY CUTTING SERVICE

If we do not have your requirements
in stock we will do our utmost to
obtain it quickly for you



Tel/Fax.
(0114) 255 4689
Mobile
0831 802539

TRISTAN SWAIN
LANDSCAPING AND MAINTENANCE

72 Nettleham Road
Sheffield S8 8SX



Every virgin birth has an explanation



When keen local gardener Jennie Street put a pond in her garden in April last year, she deliberately did not put in any fish. She and her son, Hadish, then aged eight,

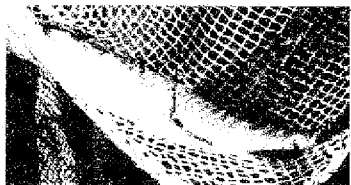
wanted a wildlife pond for frogs, newts and other water creatures. So she put in 26 oxygenating plants and hung a mesh bag of barley straw in the water to keep algae down. This had the right effect of keeping the water crystal clear without a pump or running water.

However, by last winter Hadish, who spent many hours studying the wildlife of the pond, claimed to have spotted a fish. "I dismissed this as childish wishful thinking," Jennie reported, although he repeated his claim several times.

But Hadish proved a keen observer and when one bright sunny day Jennie was able to see the fish clearly lurking in the water she was horrified to identify it as a pike.

A pike! How can a fish get into a pond like this?

The Observer book of fish states that pike lay their eggs on water plants, and when the larvae hatch out they are sticky and adhere to the plants for about five days after hatching. "It must have been within these 5 days that I bought the plants with the larvae attached," explained Jennie. So much for virgin birth and wild theories about birds carrying the fish in, or pike making their way from one water source to another.



In early May, keen fisherman Geoff Birtles came on a rescue mission, and with Hadish's help caught the pike in a large net. It was about a foot long.

"I'm pleased we've got rid of it," Hadish said, "as it's been eating the tadpoles and newts and my water boatmen larvae."

But the pike lives happily on. It has now found a good home in David Corby's pond, by the river in Totley.

Who are the "Friends of Totley All Saints' School?"

Totley All Saints' School is lucky enough to have some very special people who, although they don't currently have children of their own at our school, are still willing to help us out during school and social events. (These are mainly members of Totley All Saints' Church.) Therefore, we decided to re-name our Parent Teacher Association the "Friends of Totley All Saints' School" to recognise our friends valued contributions.

So, whenever you see this name, it is simply to referring to what is generally known as the PTA at other schools.

We would like to thank Marjorie Dunn for her recent talk "Slum to Sunshine" held in aid of School Funds. Marjorie had parents, grandparents and children enthralled as she told us about the poor children of Victorian Sheffield who were treated to a day in the countryside once a year by "Pearson's Holiday Scheme." The talk was illustrated by a collection of magic lantern slides taken at the turn of the century. We saw images of the children climbing onto the train at Neepsend Station, eagerly anticipating their one day of fresh air, as they set off for Oughtibridge. It was amazing to see how these very poor children, who had no shoes and very little food to eat, managed to walk miles from Oughtibridge railway station to a farm at Wharncliffe Side. This trip out was considered a real treat and schoolchildren would behave themselves for months beforehand when threatened with not being allowed to go.

Today, as we rely on our cars for everything, how many of our children would consider this trip to be such a treat? Indeed, how many, despite being well nourished and well clothed, would even be able to walk the distance these poor children did back then?

My daughter's class found it something of a shock to be expected to walk from their science fact-finding trip at Dore Recreation Ground back to Totley All Saints' School (Of course, they had all been dropped off in Dore by car first thing, so they only had to walk one way, poor little souls !!)

Heather Johnson

Secretary, Friends of Totley All Saints' School.

GOLDEN OLDIES

Thanks to the editors for including my last short notice regarding forming a friendship group. We have made a beginning calling ourselves the "golden oldies". Our meetings have gone well. We went together to see "Billy Eliot" at the cinema and had lunch in town. We visited the "Shepley Spitfire" for an evening, having a meal and staying on for the Quiz in which we performed quite well although not the winners. Our next visit will be to see "Toads" latest production. As summer is approaching (we hope) we have other outings in mind. We would welcome a few other members in our age group 60 to 70. So if you hesitated last time and wish to meet new people, just pick up the phone and call Pat on 236 8009 further information.

Glanmore

Bed and Breakfast Totley Rise.

A warm welcome awaits your visiting friends and family.

Reasonable rates

Tel. 0114 2351349

Mobile. 07989070297

E-mail. Glanmore@tesco.net

E & L WILSON

Builders and Plumbers

Central Heating,

Domestic Plumbing,

Glazing, Double Glazing and Glass

Home Maintenance

uPVC and Wood Windows

Telephone:-

(0114) 236 8343

Totley Summer Special

A fun day out for all the family.

Saturday 30th. June 2001

11-00 a.m. 3-00 p.m.

Totley Primary School, Sunnyvale Road, Totley



Organised by Totley Primary School PTA.

All proceeds to benefit school

SPONSORED BY THE SHEFFIELD ANIMAL HOSPITAL

The warmer weather is just about with us and PTA members at Totley Primary School are once again swinging into action to organise the annual summer fair.

Sponsored by our new local vet SHEFFIELD ANIMAL HOSPITAL, Totley Summer Special is an afternoon of fun and games for all the family to enjoy. With over 40 stalls, a bouncy castle, raffle, the TA, football competition, coconut shy, barbecue, cream teas and the Gentlemen of Jazz providing even more entertainment, we are confident that everyone will have a good time.

Entry is free and prices are low so we hope that you will turn out to support what has become our biggest fundraiser. This takes on even more importance this year following a recent break-in at the school in which £5,000 worth of new computer equipment was stolen. It is difficult to believe that this can happen in a place like Totley, but it has and we now need to make up this huge loss. PTA members will be out and about in our community looking for everything from adverts in the fair programme to raffle prizes and places to display our posters. Now more than ever I hope you feel able to give us your support.

If you would like to help and need more information then call Alison Bolton on 235 6432.

VOTES OF THANKS AND QUESTIONS

by Alan Faulkner Taylor

It sometimes falls to my lot to make a vote of thanks.

At one of Dore Probus Club's recent meetings, the speaker was Mrs J Ainsworth, the subject of her talk being: "Seven Wonders of the Peak".

Naturally, the Peak District being one of my favourite parts of the UK, I'd volunteered to make the vote of thanks.

I'd thought for a week or so about the way I would tackle the subject. Which would my seven wonders be? Naturally, geological wonders first came to mind: (a) Winatts Pass, (b) Dream Cave in Treack Cliff Cavern, (c) Alport Castles, (d) Peak Cavern, (e) Blue John Cavern, (f) Ilam Rock in Dovedale. But then I was stuck!

It never dawned on me to consider man-made wonders, such as Chatsworth House.

Mrs Ainsworth's "Seven Wonders" were taken from the Charles Cotton book, and Chatsworth House was one of the seven.

When it came to the vote of thanks, I started: 'I've been wondering for weeks which the wonders might be, would you...? To alliterate further it would be a lot easier if our speaker's name would be Winnie Wainwright! I've even forgotten our speaker's name!

To which the lady laughingly responded: 'Ainsworth!

On another occasion, when proposing a vote of thanks, this time to a friend and neighbour - Fred Cocking. His talk was about the growth of the film industry. I also knew that Fred was an exceptionally good painter in oils. I said that, in view of his ability to paint so well, that Fred would never, ever have to wear fredbare clothes!

Another speaker at Dore Probus was a solicitor. As soon as most of the questions seem to have subsided, I asked the speaker: "Now that solicitors are allowed to advertise, can you solicit in the same way as prostitutes?" The audience laughed!

TOTLEY & DORE SUPPORT GROUP FOR THE VISUALLY IMPAIRED.

NEXT MEETING WEDNESDAY JUNE 27th.

A DISCUSSION WITH FRIENDS FROM S.R.S.B.

THE MEETINGS ARE AT 11am. AT 4, GROVE ROAD, TOTLEY

Bill Allen

J.I.B. APPROVED

ELECTRICIAN

HOUSE REWIRING SPECIALIST

FREE SAFETY CHECK
AND QUOTATION

EXTRA PLUGS - LIGHTS

REPAIRS

AUTOMATIC OUTSIDE LIGHTS

FOR FREE FRIENDLY
ADVICE
RING

TOTLEY 262 0455



KIMBERLEY ALES

Tel. MARTIN or HELEN

236 0298

A MOUTH WATERING MENU

OF SNACKS, STARTERS+ MAIN COURSES

MON. to SAT 12 till 2 & 5-30 to 8-30

SUN. LUNCH 12 to 2-30

**QUIZZES + JACKPOT PRIZES ON
THURSDAYS + SUNDAYS**

STONES - CARLING - STELLA

TRY OUR NEW SIZZLEING MENU

**NOW OPEN ALL DAY
MONDAY to SUNDAY**

R Rose & Co

Chartered Accountants and
Business Advisers

*Specialist at looking after the
affairs of small business.*

**For a free initial consultation contact
Roger Rose FCA**

**621, Chesterfield Road
Woodseats
Sheffield S8 0RX**

Tel: 0114 281 2331

Fax: 0114 281 2171

Email: roger.rose@virgin.net

Netherley V Sandell (Continued from previous issue) by Hugh Percival

Tea was taken between innings in the wooden pavilion. An animated discussion of the run-out incident ensued. The consensus of opinion, when tempers had cooled, had it that the correct decision was to call 'dead ball' delete that delivery from the scorebooks and allow the batsman to remain at the wicket.

The Netherley umpire acknowledged that this interpretation was probably correct, although he would like confirmation from the authorities at Lords, but that, without the advantage of hindsight, the decision once made must stand. He added that no one was perfect.

The Sandell umpire, having recognised the difficulty facing his fellow-umpire, remarked as an afterthought that the most difficult decision an umpire had to make was to decide whether or not a batsman had been caught behind when the deflection of the ball was minimal and the sound inaudible. The Netherley umpire concurred sourly on the assumption that the umpire in question was both shortsighted and hard of hearing.

After tea Dave Bowen arranged his field while the opening batsmen John Winter and Barry Batchelor, Ian's older brother, took their places at the wicket. The sun still shone from a cloudless sky though less intensely than earlier.

The opening stand prospered and had reached 37 when Barry was adjudged lbw to the bowling of Donald Graves by the Sandell umpire. The batsman's pleas to the umpire and to Captain Bowen that he had played the ball on to his pad with his bat fell on deaf ears. Barry eventually returned to the pavilion under protest. He had scored 30 runs out of the opening stand.

John Winter, in his habitual dour mood, was joined at the wicket by Captain Swan. The captain, a powerful strokemaker, made 20 runs quickly and was then caught in the outfield off the slow left-arm bowling of Nigel Booth. 60 for 2.

Four runs later John Winter's innings came to an end, brilliantly caught off his favourite stroke (some said his only stroke), a square cut played hard as recommended. The elongated form of Bryan Swallow dived to his left and held the ball inches from the ground in his outstretched hand. John Winter shook his head and retired to the pavilion. He had scored but 12 runs of the total 64 for 3.

Reginald Forsythe, batsman number five, strode nonchalantly to the wicket. A graceful player with a good repertoire of strokes, he played for Netherley at the invitation of John Winter when his many other activities allowed him to do so.

Two or three of the Netherley players amused themselves and adjacent spectators by giving a facetious commentary on the play. "The next man in is Reginald Forsythe" announced Alan Ray in an eloquent tone. "He is not, I repeat not, related to Sir Marmaduke Forsythe, the inventor of the wheel. I am able to say so with confidence as I have documentary evidence from an impeccable source to support the statement. I have before me a copy (certified by Markby, Markby, and Markby solicitors) of a deed (the original of which is securely held in the strong room of a bank in Threadneedle Street in the City of London)

signed by Sir Marmaduke shortly before his demise and witnessed by two clerks employed by his solicitors the aforesaid Markby, Markby and Markby. It reads as follows? I the undersigned wish to record for posterity without reservation that Reginald Arbuthnot Forsythe of no fixed address, but who frequents the counties of Yorkshire and Derbyshire, is no relation of mine, never has been a relation of mine and, hopefully, never will be a relation of mine

however remote or however many times removed."

Forsythe, conspicuous in a pink and white striped cap, blissfully unaware of Ray's remarks, drove his first ball gloriously through the covers for four but was bowled shortly afterwards by Nigel Booth without adding to his score. The total 74 for 4 at this juncture.

"Bowled by a chinaman. Damn!" Reginald exclaimed as he approached the pavilion.

"I see no oriental," said the American spectator nearby watching the game through his binoculars.

"A chinaman is the term used to describe the left arm bowler's googly" explained Alan Ray.

"Quite so" replied the American. The perplexed expression on his face intimated that he understood the explanation rather less well than an Eskimo would.

"A googly, sir, is the off break of the right arm bowler bowled with a leg break action. Conversely, a Chinaman is the leg break of the left arm bowler bowled with an off break action. In other words the natural spin of a right arm bowler is off spin and the natural spin of a left arm bowler is leg spin - to a right hand batsman of course."

"I think I should understand if you wouldn't explain in such detail" replied the American with a smile of despair.

"One short" cried Alan Ray to scorer Johnson, who acknowledged the umpire's signal.

"What does that signify?" asked the American.

"One of the batsmen did not complete his first run before setting off for the second run" Alan Ray replied.

The American pondered anxiously before remarking "If one run was short surely both runs were short."

The logic of this remark struck Ray like a bolt of lightning.

"Yes, that would seem so - but the batsman had covered sufficient ground to exceed the extent of one run" Alan replied off the cuff hoping to forestall further criticism of the game original thought it might be.

Alan did not succeed in his endeavour.

"I note the umpire calls over quite frequently but continues nevertheless" said the American, keen of hearing a little while later.

"The game is not over until both sides are all out - or until one side has passed the other side's all out or declared total - or time or overs run out" replied Ray succinctly.

"Why then does the umpire call over when the game patently is not over?" continued the American in his determination to understand the game.

"An over is a term for a period of six successive deliveries by a bowler. When that happens - assuming of course that no delivery is a wide or a no-ball - the over is over, and the umpire, who counts the deliveries, informs the players accordingly by calling 'over' replied Ray, irritated at the American's persistence.

Quite frankly (as he told Captain Swan later when the two of them were alone together) he would not be sorry when the game was over, the visit of the American was over and the visitor was back home over there. Fortunately for his piece of mind the fifth Netherley wicket fell at a total of 94 and it was his turn to bat.

Alan Ray laid claim to be an all-rounder but his uninhibited batting was not of classical style. No manual on the game for young players would have exhibited his strokes (cricket that is - they would have been held in high esteem in a golf manual). Divots flew out of the pitch, wedge shots safely eluded fielders, lofted drives went for four (not fore) and on one occasion for six. Ray refused to hole out and increased his and the Netherley score rapidly with plus fours, plus a six,

plus ones, twos and threes.

Unconcerned at losing partners at 119 and 134 he continued merrily on his round until an enormous hit for six brought the scores level at 166. At that score Ray's innings came to an end when caught on the boundary off a skied drive. He had scored an invaluable and rapid 41 runs.

The batsman returned to the pavilion to loud applause and cheering from the home spectators and from team-mates. "Well played Alan. A good round" remarked scorer Johnson.

Unbelievably the last two Netherley wickets, Jim Ward and Basil Hardwick, fell to the bowling of Donald Graves without adding to the score. The match was tied at 166 runs to each side. The distressed home supporters and players could not believe their eyes. Victory had slipped from their grasp. Graham Swan and Dave Bowen shook hands at the pavilion entrance. "Well played Graham. A grand game" remarked the Sandell captain relieved at the outcome. "Yes Dave" replied the Netherley leader trying hard to hide his disappointment.

Both sides, after changing, made their way to the Plough Inn for refreshment, preceded by some spectators including the American. On the warm, sunny evening the yank quaffed a pint of ale, blissfully aware of the cool liquid as it lubricated his throat. He drank a second pint at the invitation of scorer Johnson, followed rapidly by a third at the instigation of Reginald Forsythe.

"Do many Chinamen take wickets in your national game?" the American enquired of Reginald. Forsythe, resplendent in pink and white striped blazer, replied in his upper class, refined accent. "Very few actually. Today is the first time I have lost my wicket in that way. Damn clever these chinese. Of course cricket is a fine game for the summer but the best game of all is rugby. A noble game. A manly game."

"Similar to our football, I believe" suggested the American. "Only in a few respects, I understand" replied Reginald. "We wear less padding and our stratagems are less complicated". Reginald held forth on this topic for an hour or more, citing instances of violent play ad infinitum much to the delight of his auditor. The American seemed keen to report the warlike propensity of the natives when he returned home.

At closing time the remaining players, spectators and regular patrons left the inn for home. Reginald bade the American an effusive farewell. The yank had booked a room at the inn for the night and stayed at the bar drinking and talking amiably to the landlord until the small hours. In a drowsy state he retired to his room to dream of left-handed chinamen with pigtailed playing cricket and umpires giving not-out decisions when batsmen had been caught off skiers or clean-bowled. What stories he would have to tell back home.

THE END

PUZZLE CORNER

MAGIC SQUARES

I think all readers will have seen the so called magic square in which the numbers 1 to 9 are arranged into a three by three grid so that all horizontal, vertical and diagonal rows each add to 15.

4	9	2
3	5	7
8	1	6

A more difficult puzzle, published some years ago in the Sunday Times, required nine prime numbers, each less than 100, to be arranged in the three by three grid, so that each row, column and diagonal totals the same. My puzzle is much easier. Make magic squares for (a) the nine odd numbers 1 to 17, and (b) using the even numbers 2 to 18.

PUZZLE CORNER MAY ANSWERS

The answer to each of the following cryptic clues is the name of a local road.

- 1 Maybe arm passage **Limb Lane**
 - 2 Sea arcade **Main Avenue**
 - 3 Heard for ritually washing a sandy tract not far away
Laverdene Close
 - 4 Leave car on road after priory valley but before it starts to climb **Abbeydale Park Rise**
 - 5 Sounds as though this entry hacked **Dore Road**
 - 6 Edge stream glen **Brinkburn Vale**
 - 7 Ash dale **Rowan Tree Dell**
 - 8 Knurl glen carriageway **Mildale Road**
 - 9 Len and Mike add clay to make this road **Mickley Lane**
 - 10 Drink cut short and low before Dora is upset **Baslow Road**
- From the answers take the first letter from 1, second letter from 2, third letter from 3 and so on to show a food from Wales. Laver bread.
Don Ashford

ABBEYDALE HALL DEVELOPMENT

Every time I pass this building site I cringe at the thought that our Town Hall based planners (who objected to the use of flower boxes and baskets on a certain City Centre Public House) would allow the desecration of Abbeydale Hall. Trees have been cut down to provide one more dangerous access to Abbeydale Road South. The old cartcaker's stone built cottage has been demolished to be replaced by a three storey flat roofed block of apartments. Generally the scale and choice of materials (mostly brick with a few imitation stone panels) is not compatible with the old hall. I trust that more sensitivity is shown if and when Totley Hall is purchased and developed. I reserve judgement on this if the Planners that allowed the adjacent £200,000 detached houses to be built with garages that appear to be too small to accommodate an average sized car are given full rein.
J.G. (name and address supplied)

BRADWELL ANTIQUES CENTRE

30 dealers located in the heart of the Peak District
National Park midway between S. Yorkshire and
the Greater Manchester conurbations.

10am - 5pm Mon - Sat

11am - 5pm Sunday

Ample car parking • Disabled access
• Licensed cafe

NEWBURGH HALL, BRADWELL,
HOPE VALLEY, DERBYSHIRE
Tel/Fax: 01433 621000


K.T.V.
SERVICES LTD
skydigital

AERIALS AND SATELLITES

- All Areas - Anytime
- Fast - Efficient - Professional
- Channel 5 - Upgrades - Repairs
- Multi - Point - Satellites - Retuning
- Meter Aligned For Best Reception

**NO CALL OUT CHARGE
NOT VAT REGISTERED**

OFFICE & EVE 8am to 10pm
0114 258 5181
IMMEDIATE ATTENTION
07930 411337
621 Chesterfield Rd, Sheffield

ALL WELD

HAND CRAFTED BROUGHT IRON WORK

SECURITY GRILLES & GATES
HOUSEHOLD GATES & BALLUSTRADES
CURTAIN POLES & ACCESSORIES
COFFEE - CONSOLE - LAMP TABLES
CANDLE HOLDERS ALL & FREESTANDING
MARKET STALLS & ACCESSORIES
WELDING & FABRICATION WORK
ONE-OFF DESIGNS CATERED FOR
'NO JOB TOO SMALL'

UNIT 3
300 ARCHER ROAD
MILLHOUSES
SHEFFIELD S8 0LA
0114 236 8239





R.S. Heating & Building Co. EST 1971

Heating Division
Experienced, Qualified Installers of all types of central heating.
10 year guarantee on most new gas systems.
Complete after care service

Building Division
Joinery, Electrics, Tiling, Decorating Specialists
in wall tie replacement
and house Renovations

0114 236 4421

HALL LANE BARN, TOTLEY HALL LANE, SHEFFIELD S17 1AA




Slimming? Together we can do it

welcome home

Your nearest class

Bradway Annex Thursday at 1700 & 1900
Dore Old School, Dore, Tuesday at 1730

Contact Consultant Alison
01246 410145 for further details

The welcome is warmer
at Slimming World.
More food, more fun.
Come inside, enjoy our
warmth and find more
success than you
believed possible




The Cricket Inn

Penny Lane, Totley

The Cricket Inn, Penny Lane, Sheffield, S17 3AZ
OPEN Mon. to Fri 11 a.m. to 3 p.m. & 5 p.m. to 11 p.m.
Sat. 11 a.m. to 11 p.m. Sun. 12 noon to 10.30 p.m.

Food served :- Mon to Sat Lunch 12 noon to 2 p.m.
Mon to Sat Evening 6 p.m. to 9 p.m.
Fri. & Sat Evening 6 p.m. to 9.30 p.m.
Sun. 12 noon to 5.30 p.m.
Tel. 0114 236 5256



Mark & Sally Fletcher invite you to

The Grouse Inn
Longshaw
SHEFFIELD S11 7TZ

Bar menu Tuesday to Sunday nights
& every lunchtime.

Phone 01433 630423

Dore 2000
Executive Car Service

- Airports & Ports
- Business
- Coastal
- Concerts
- Hospitality
- Entertaining
- Sports Events

Air Conditioned vehicles
for 1 - 6 passengers
Telephone available
for reservations or estimates
Telephone/Fax
Gordon MacQueen
0114 235 3434
Mobile 07711 763 973

FUNCTION ROOM FOR HIRE
for DAYTIME & EVENING PARTIES

WITH
KITCHEN and BAR FACILITIES

IDEAL FOR ALL AGE GROUPS

HEATHERFIELD CLUB
193, BASLOW ROAD, TOTLEY

FOR FULL DETAILS TELEPHONE
EVENINGS ONLY From 8.30 p.m.
(0114) 262 0187

Creating opportunities with disabled people. Registered Charity No. 218186

LEONARD CHESHIRE

Leonard Cheshire Services in Offers choice & opportunity to people with disabilities.
A Specialist Unit for the Younger Disabled.
Residential & Respite Care - Single Rooms
Day resources - Aromatherapy -
Reflexology - Physiotherapy - Toning
Tables.

Activities include: - Arts & Crafts -
Computers - Cookery - Shopping
Expeditions - Theatre Outings - Church.
Further details can be obtained from -
The Service Manager, Mickley Hall,
Mickley Lane, Totley, Sheffield S17 4HE.
Tel. 0114 236 9952
Fax. 0114 262 0234

The Care at Home Service supports disabled people who wish to remain in their own homes.
We provide flexible care packages from 1 hour to 24 hours meeting individual needs.
The service operates throughout Sheffield.

Our service includes: - help with getting up and going to bed, dressing, washing, bathing, shopping, cooking, light household duties.

Further details from: -
The Care at Home Manager
Tel. 0114235 1400
Fax 0114 235 1499

Bradway Music

MUSIC LESSONS

For enjoyment or examinations
from beginner to advanced.



*Piano, Electronic keyboard,
Theory, Harmony, Aurals,*

Geoff Henthorn GNSM

For prospectus or further details
please phone: 235 2575

Mr Robert Colclough
MSSCh, MBChA, BSc (Hons).

CHIROPODIST

now practicing at

Wendy Flowers Health and Beauty
Totley Rise, S17

Tel no: (0114) 236 0997
call now for an appointment.
or call (0114) 235 0256
for an immediate home visit.

**TOTLEY
PRIVATE HIRE**

PROFESSIONAL CAR SERVICE
FOR
AIRPORTS & LONG DISTANCE
TRAVEL etc.

Tel: 0114 - 2361547
Mobile: 07974-355528

**J&C WROUGHT IRON
WORK**

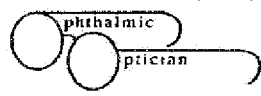
ALL TYPES OF WORK CONSIDERED
DRIVEWAY GATES, WALK THROUGH
GATES, FENCES, CURTAIN POLES, BANISTERS &
BALASTRADES ETC.

PHONE CRAIG 07779770013 OR
JOHN 07941 460474

**STUART FORDHAM F.A.D.O.
OPTICIAN**

The fourth generation
- devoted to family eyecare since 1871.
N.H.S. and Private examinations
by a qualified optometrist.
Wide range of frames from budget to designer
at prices to suit every pocket.
Advice gladly given on frames, lenses and
low visual aids for the partially sighted.
Emergency repairs carried out on the premises.
63, Baslow Road, Totley Rise
Tel. 236 4485 (24 hr answering line)

DORE OPTICIANS
PETER BLAND BSc(Hons) MCOptom



FULL SIGHT TESTS/EYE EXAMINATIONS - NHS OR PRIVATE
FREE GLASSES FOR CHILDREN AND NHS BENEFICIARIES
ALL TYPES OF CONTACT LENSES AND SOLUTIONS
CHILDREN AND FAMILIES ARE WELCOME
FRIENDLY HELPFUL SERVICE - FREE CONTACT LENS TRIAL
GLASSES REPAIRED - SPORT GLASSES - OPEN 6 DAYS

A Personal Service on your doorstep
Telephone: 236 3200
25 Townhead Road, Sheffield S17 3GD

**Anton Rich + Associates
Architects**

Now is the time to plan your
home extension, or even a new
home - we specialise in both.

Call us for a chat on
Sheffield 250 9200

A Member of
The Association for Environment-Conscious Building

**CHARISMA
BLINDS**



For
Windows
With Style

Sheffield Factory Showroom
106 PROSPECT ROAD
HEELEY, SHEFFIELD

Sheffield (0114) 258 5496
Rotherham (01709) 512113



FOR SIX GENERATIONS

THE LEADING FUNERAL DIRECTORS

John Fleath & Sons
PROMPT and COMPREHENSIVE SERVICE
AT ALL TIMES
☎ 2 722222
LIMOUSINES FOR SPECIAL OCCASIONS

TOTLEY & DISTRICT DIARY

MONDAYS TUESDAYS

COFFEE MORNING, All Saints' Church Hall, 10am. To noon
COFFEE MORNING, Totley Rise Methodist Church Hall, 10am. To noon.
CRAFT GROUP, Totley Library, 2pm.

LADIES EXERCISE TO MUSIC, All levels, United Reformed Church, 10.30am. to 12 noon. Tel 2359298

WEDNESDAYS

COFFEE in the LIBRARY, 10am. to 11.30am.

MODERN SEQUENCE DANCING, All Saints Church Hall 8pm. to 10pm.

AMERICAN LINE DANCING, United Reformed Church 8pm. to 9.30pm.. Tel. 2369298

TODDLER GROUP, 10-00 a.m. to 11-30 a.m., All Saints' Church Hall. Details tel. 2360097 or 2620741

THURSDAYS

PUSHCHAIR CLUB, Totley Rise Methodist Church Hall, 1.30pm. to 3pm. Tel. 2363157 for further details.

AMERICAN LINE DANCING, United Reformed Church 1pm. to 3pm.. Tel. 2359298

SATURDAYS

MODERN SEQUENCE DANCING, All Saints Church Hall 2nd. And 4th. Saturdays 7.30pm. to 10pm.

JUNE 2001

MON. 4th, WIZZ KIDS, Display for two weeks, Totley Library, Full details inside.

TUES. 5th, WOMEN'S FELLOWSHIP, "Tales from the Pharmacy" by Mr. F. Cocking 2-30 pm. Totley Rise Methodist Church.

WED. 6th, WEDNESDAY FRIENDSHIP, "The Cruise" Mrs. A. Lashmore, Totley Rise Methodist Church Primary Room, 8-00 p.m.

SAT. 9th, A FEAST OF VAUGHAN WILLIAMS, Sheffield Bach Society, Sheffield Cathedral, 7-30 pm. Details inside.

SUN. 10th, MINIATURE TRAIN RIDES, Abbeydale Road South, 1 p.m. to 5p.m.

MON. 11th, MEADOWHEAD COMMUNITY CHOIR, Totley Rise Methodist Church 7-30p.m. (Details inside.)

SUN. 17th, OUTDOOR SERVICE with the Salvation Army 3 p.m. Details inside.

TUES. 19th, TOTLEY TOWNSWOMEN'S GUILD, "Bess of Hardwick" Mr. Tony Davis, Totley Rise Methodist Church Hall, 10am

TUES. 19th, WOMEN'S FELLOWSHIP, "Water, Water Everywhere", Rev. C. Kirk., Totley Rise Methodist Church 2.30 pm

WED. 20th, WEDNESDAY FRIENDSHIP, "Wills of the Rich & Famous" Mr. P.J. Freeman-Kid, Totley Rise Methodist Church Primary Room, 8-00 p.m.

SAT. 23rd, SUMMER FETE, Sheffield Cheshire Home, Mickley Hall 2 pm. to 5 pm. Full details inside.

SUN. 24th, MINIATURE TRAIN RIDES, Abbeydale Road South, 1 p.m. to 5p.m.

TUES. 26th, MUSICAL EVENING, Sheffield Cheshire Home Mickley Lane, 7pm. For further details contact Jackie Short 0114 236 7491.

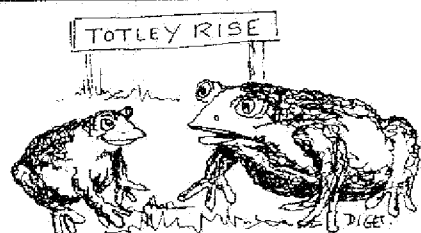
SAT. 30th, TOTLEY SUMMER SPECIAL, Totley Primary School, Sunnyvale Rd. 11 a.m. to 3 p.m. Full details inside.

THE INDEPENDENT FOR JULY/AUGUST

The next issue of the Totley Independent will be available from the usual distribution points on **SATURDAY 30th JUNE**. Copy date for this issue **SATURDAY 16th JUNE**.

Editors Les & Dorothy Firth, 6, Milldale Rd. Tel. No. 236 4190 **E Mail** les@lesfirth19.co.uk. **Distribution & Advertising** John Perkinson, 2, Main Avenue, Tel. No. 236 1601. Items for publication may be left or sent to 6, Milldale Rd., 2, Main Av., Totley Library or V. Martins Abbeydale Rd.
PRINTED by STARPRINT

We welcome letters about local affairs and will publish as many as possible. However the views expressed are not necessarily those of Editor, editorial staff or the Totley Residents Association and must not be imputed to them.



"I ALWAYS THOUGHT WE LIVED IN TOTLEY RISE!"

Starprint
 601 Abbeydale Road, Sheffield 7. Fax 0114 258 8599
DESIGN & PRINTING
 • LETTERHEADS • BUSINESS CARDS •
 • BOOKLETS & PADS •
 • INVOICES • LEAFLETS •
 • CARBONLESS SETS • BROCHURES •
 • RAFFLE TICKETS •
 • WEDDING STATIONERY •
 • ENVELOPES & POSTCARDS •
SPECIALISTS IN THERMOGRAPHY
FOIL BLOCKING AND ENCAPSULATION
0114 258 0707
 For a Quick Quotation

B. K. JEAVONS
PAINTER & DECORATOR

 Interior
 Exterior
 Decorating
 No job too small.
86, WOLLATON ROAD
BRADWAY
SHEFFIELD, S17 4LG
Telephone 2350821

JOHN D TURNER CONSTRUCTION

46, LONGFORD ROAD, BRADWAY, SHEFFIELD 17
 BUILDING & PROPERTY REPAIRS, JOINERY
 ELECTRICAL & PLUMBING EXTENSIONS &
 ALTERATIONS.

ESTIMATES FREE

PHONE SHEFFIELD 236 7594 EVENINGS.

JOHN D TURNER (CONTRACTING) Ltd.