

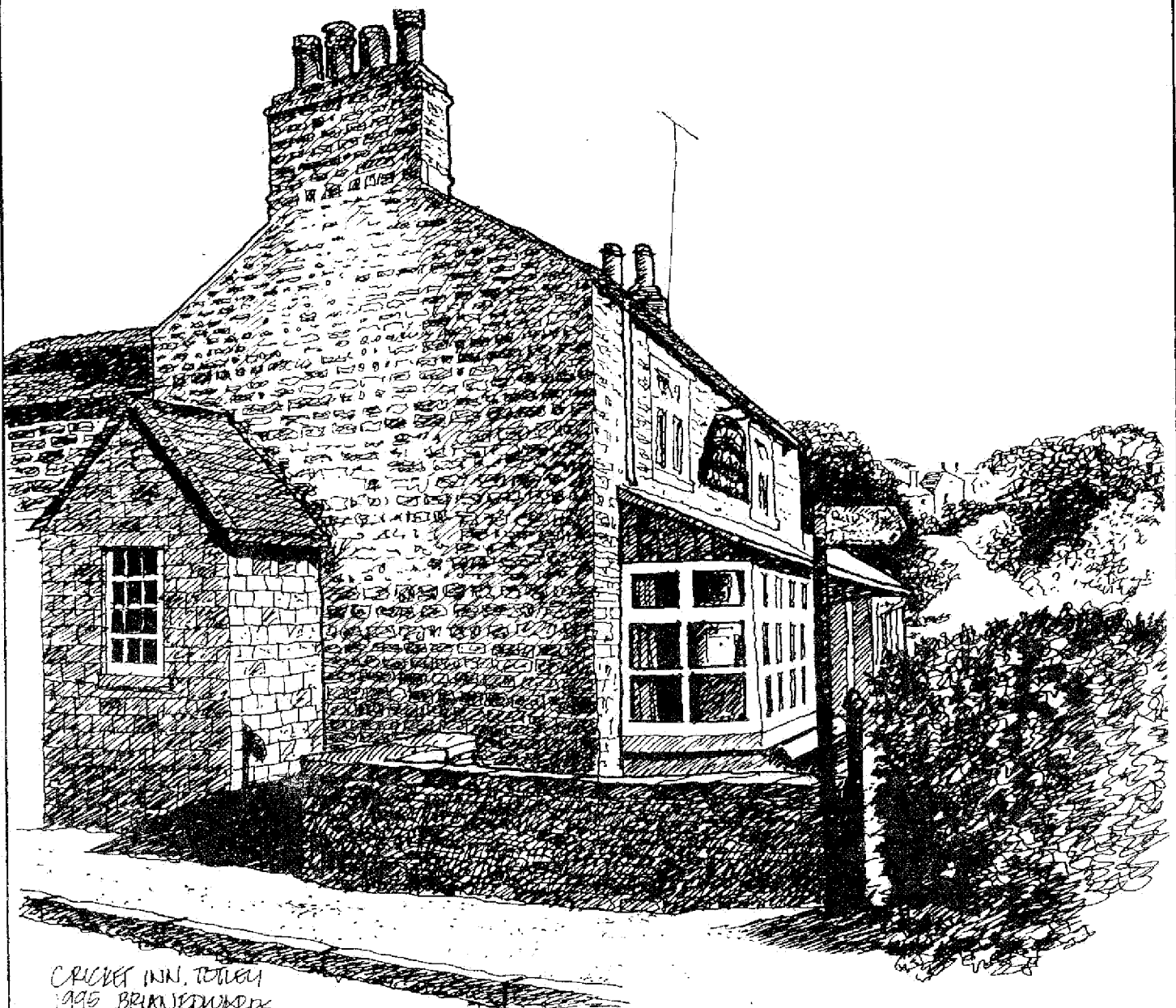
TOTLEY INDEPENDENT

PUBLISHED BY TOTLEY RESIDENTS ASSOCIATION SINCE JULY 1977

NOVEMBER 1995

No.188

15p



CRICKET INN, TOTLEY
1995 BRUNEDWARDS
P. 511

THE CRICKET INN , TOTLEY BENTS

The Cricket Inn at totley Bents overlooks the recreation ground which was awarded to the inhabitants of Totley in 1839 during the enclosures. The field was at one time called Well Bents.

Since September 13th. the Cricket Inn has been closed for modifications to the living accommodations, kitchens and toilets with facilities for disabled. It is planned for reopening on November 16th.

PANIC IN THE HILLS

"Not a bad life Campy retorted Jock Howie as we lazed on the beach at Llanbedr. "This is better than flogging up the gullies on Craig Cwm Silyn, Jock" I replied.

We had returned that summer afternoon from a routine trip to the same mountain. Both Jock Howie and I were members of the R.A.F. Mountain Rescue team at Llanbedr near Harlech. Extra duties had included the servicing of the mountain warning beacons on Craig-Cwm-Silyn and Foel Grach. These beacons were radio sets, known in R.A.F. jargon as "squeakers", to warn low flying aircraft of the dangers of the Snowdonia hills.

Dreams of Hedy Lamarr were suddenly shattered "WAKY WAKY," yelled L.A.C. Jeep driver Jim Bradford. Corporal Ernest Jackson shouted "Crash on the Carnedd, we've got your climbing gear". Jock and I got changed in the jeep as it headed for the Ogwen valley. The medical officer Squadron Leader Tom Soudamore and the rest of the team had gone on ahead and were waiting at the head of Llyn Ogwen.

He quickly briefed his team for a search for a liberator aircraft in the mountains. The gen was that a pilot had radioed from an Anson to his base camp that he had spotted the wreckage of a large aircraft over the Carnedd. The mountain rescue team had to follow up his report which gave a map reference near the summit of Carnedd Dafydd.

The team split up into three groups, complete with backpacks, ropes, first aid kit, walkie talkie sets, verey pistol etc. and headed into the hills. It was approximately 9-00 pm. as Jock and I squelched our way across the Afon Lloes (stream), darkness was approaching, so torches at the ready.

The wind strengthened and the mist was sweeping up the Nant Ffrancon valley. The medical officer and Jim Bradford were traversing across the steep slopes of Pen-yr-Oleu-Wen, whilst Sgt. Mick McTigue and Ernie Jackson tackled the crags around Ffnonilugwy, difficult terrain ahead. Each party in radio contact and with base camp manned by corporal Johnny De'ath at Llyn Ogwen.

"Blast this torch," cursed Jock as the battery faded and he stumbled over a rock. "Think I'll fire off a verey light" he remarked. He fired the pistol out over the lake (Ffnonilloer). The next second to our horror and amazement the burning red ball smacked into a jutting outcrop of rocks narrowly missing a small tent. all hell seemed to brake loose as two pyjama clad climbers came rushing out of their high level sanctuary crying out into the night, "Don't shoot, don't shoot." They must have thought the commandos were going into action at that midnight hour. Their dreams of forthcoming climbs on Craig-Y-Ysfa were really shattered.

We apologised for the panic we had caused, although one could hardly have expected to find a tent in such an isolated spot. The two young climbers were having a well earned break from a Lancashire factory. The war in Europe was over and they had earned their holiday. After the calm we all had a good laugh and to compensate left them a couple of self heating tins of soup.

Enquiries about a recent plane crash after their two days in the hills drew a blank. They must have thought us mad wandering around in the wee small hours so we parted as they still stared in disbelief.

Our search continued towards the summit ridge and past the site of a

P-L-U-S :: O-N-E YOUR PARTNERS IN TRAVEL

John & Helen Few

TRAVEL INSURANCE, FOREIGN CURRENCY, SCHEDULED & CHARTER FLIGHTS, FERRIES, HOLIDAY PACKAGES ALL AREAS, CAR HIRE, SPECIALIST ADVICE FOR EVERY ISLAND IN THE CARIBBEAN.

41, BASLOW ROAD, TOTLEY RISE, SHEFFIELD, S17 4DL
Phone 0144 2621515 (9am. - 4-30pm. MON. to FRI.
9am. - 2 pm. SAT.)
or MOBILE 0831 - 211648 8am. - 10pm. ANY DAY.



PORCH CRAFT

ORNATE DOOR
CANOPIES

ENTRANCE PORCHES
STAINED OR PAINTED

CONTACT: Mr. HUNTER
TEL. 0114 246 3986 (24Hrs.)

Boston Hawk which crashed in October 1944. We finally rendezvoused with the other parties at the summit of Carnedd Dafydd and they had found nothing.

It was now getting light so a sweep search was made across the huge bulk of Carnedd Llewelyn, at 3483 feet the highest mountain in the Conway range. At 6-00am. the M.O. sent a message via the radio to abandon the search. a signal finally from the Air Ministry had confirmed that no Liberators were missing in North Wales.

The hills around Tryfan and the Glyders were a breath taking site as we scrambled back down the valley.

The following afternoon the medical officer flew across the area with the Anson pilot who had reported the crash. The Liberator turned out to be a C.47 Dakota which had crashed into the cliffs of Craig Dulyn back in November '44.

A most unusual false alarm call out.

John.C. Barrows

TOTLEY RISE METHODIST CHURCH

COFFEE MORNING

Saturday 11th. November
10-00 am. to 12 noon

In aid of NCH Action for Children

Along with various stalls such as book stall, cakes, plants, white elephant, bottle stall stationery and others there will be an exhibition by

Penny Walsh

Textile Artist

Admission 50p. including Coffee & Biscuits, All welcome.

THE SPIRIT OF PENTACOST LIVES ON.

Richard Lamb's article in the September Totley Independent was a valuable summary of that wonderful week in June, when all the churches in the area shared in a week of events in and around Green Oak Park. It placed on record what happened and allowed everyone to see just how special the week was.

The churches' view of the situation is that these events were just a beginning - a beginning of a new interest and enthusiasm in co-operation and a beginning of a refreshed and renewed life for many. It is not planned to have a marquee in the Park again in the immediate future but the mood of Pentecost '95 lives on and indeed is growing.

So what are the fruits of Pentecost '95? There are new prayer groups meeting. There are new Bible Study groups. There are new plans for emphasising the Week of Prayer for Christian Unity in January. There will be ecumenical Lent Groups meeting again in 1996. There is a joint celebration planned for a weekday evening in February.

Further ahead it is hoped that there will be an ecumenical Act of Witness on Palm Sunday in 1996 and also a further major gathering of the churches in June 1996. These are exciting times and no one can say that the churches are dead or that there is no co-operation between them.

Beyond all that however, is the impact on individuals. Many people can tell us that God moved in a special way in their own personal lives. The changes that have sprung from that very important week are significant. It is no exaggeration to say that those lives which have been changed, will bear witness for a long time to come, that we do indeed have an active and loving God.

B. K. JEAVONS PAINTER & DECORATOR



Interior
Exterior
Decorating
No job too small.

86, WOLLATON ROAD
BRADWAY
SHEFFIELD, S17 4LG
Telephone 2350821

BRIAN SELLARS JOINERY



FOR ALL TYPES OF GENERAL REPAIRS
NO JOB TOO SMALL
FREE ESTIMATES
WINDOWS, DOORS, SHELVES
CUPBOARDS, PORCHES etc.
ALSO SHOP WINDOW DISPLAYS
FLATPACK FURNITURE SERVICE
6 Woodside Avenue, Sheffield S18 5WV
Telephone : (0114) 289 0921

E & L WILSON



Builders and Plumbers

Central Heating,
Domestic Plumbing,
Glazing, Double Glazing and Glass
Home Maintenance
uPVC and Wood Windows

17 West View Close
Totley Rise
Sheffield S17 3LT
Telephone:-



2368343

TALES OF THE UNBELIEVABLE

"You are tired" said the sheep. I had been taking my usual stroll across the fields, when my woolly friend came trotting up to the gate. "I am not" I retorted, "What makes you think I am?". "By the way you were making your way very slowly in this direction". I could not accept that, just because I walk a little sedately, with a dignity which befits my age and status and I added that she must not put a wrong interpretation on my ambling. "Then there is no truth in the rumour that elderly ladies with Zimmer frames whiz past you on the way to the Post Office?". "Certainly not", I had to explain, "in fact I can put on a very fair turn of speed and suitable agility, especially when I have to jump smartly out of the way of motorists with poor eyesight, who rush out of the No-Exit end of the layby at the Rise". "Nevertheless", said the sheep "you did look tired, do you sleep well?". "Of course I do, I have a firm programme of sleeping through the 1 o'clock news, the afternoon news, the 6 o'clock news, with forty winks through the 9 o'clock and 10 o'clock news. I may not be well informed internationally, but I am very rested". "Then it seems to be a fair programme for not sleeping well at night", said the sheep, "is it still fashionable to count sheep when lying awake in bed?". "Some may do", I admitted, "but the mathematically minded count their legs and divide by four - although it is a bit awkward if you find yourself starting with an odd number - however, isn't there a hymn which suggests that we should count our blessings rather than sheep?".

By now I had really warmed to my theme and explained that so many people had



their pet theories - some get up, walk to the window, get back into bed and sleep. Others nip downstairs and make a cup of tea, and then fall asleep in an armchair looking at late night movies. Of course a book by the bedside is of great help - whilst one of my friends lets the strain of a little light music drift through his mind - which might be very good so long as he does not pick Pavarotti's 'Nessun Dorma'. It could be that in this new age there may be a pleasant dream of working out how to spend the millions to be won on the National Lottery. "I could never imagine you doing that with the Lottery money" the sheep observed. "Whyever not?" I had to ask. "You would be too busy staying awake all night, counting it to make certain that it was all there".

TOTLEY HALL FARM PRODUCE

TOTLEY HALL LANE

101b & 551b. BAGS OF RED OR WHITE POTATOES

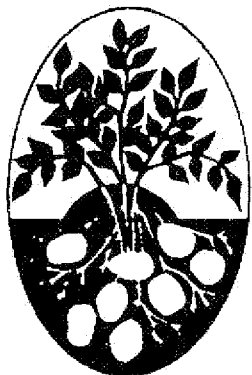
AT WHOLESALE PRICES

EGGS, HAY AND STRAW ALSO AVAILABLE

OPEN 8-00 a.m to 8-00 p.m. MON. to SAT.

RING JENNY OR EDWIN ON 2364761

FOR FURTHER INFORMATION



SPECIAL OLYMPICS FUN DAY

Held at: Midland Bank Sports Ground,
Dore on Sat. 23rd September.

May we take the opportunity through the Totley Independent to thank members of Totley Residents' Association for their help and support for the races held that day. The Lord Mayor and Lady Mayoress, Councillor David Heslop and Mrs Caroline Heslop opened the Fun Day and started the first competitors off on the assault course. All the competitors

seemed to enjoy the course purposely designed by Lt. Col. John McGrory of the Duke of Wellington Regiment.

Sheffield Army Careers Office came in with the best time (Military), Midland Bank personnel best time (Civilians). A special cup was awarded to the MENCAP team which was a disabled group who completed the course faster than some of the able-bodied teams.

Janet Chapman, Lynn Robinson

SHEFFIELD AND ROTHERHAM SPECIAL OLYMPIC GROUP FUN DAY RACE RESULTS

<u>Race</u>	<u>First</u>	<u>Second</u>	<u>Third</u>	<u>WELL DONE</u>
<u>25m. Toddlers</u>	Aiden Mis,	Louise Hancock,	James Dillon,	Katy Watkinson
<u>50m. Girls 5/7</u>	Eleanor Moore,	Alex Moore,		Katherine Harris
<u>50m. Boys 5/7</u>	Christopher Mis,	Aaron Harris,	Oliver Knell	
	<u>First</u>	<u>Second joint</u>	<u>Second</u>	
<u>40m. Mixed</u>	James Baird,	Alison Rogers	Emily Hardy	
<u>Wheelbarrow</u>	Andrew Baird,	Becky Brown	Natasha Pearce	
<u>15yrs./under</u>				
<u>Race</u>	<u>First</u>	<u>Second</u>	<u>Third</u>	<u>WELL DONE</u>
<u>40m. Open</u>	Dave Allen	Emily Hardy	Christopher Mis	Anthea Harris
<u>Wheelbarrow</u>	Melody Dillon	Natasha Pearce	Andrea Mills	Tara Harris
<u>60m. Girls 8/10</u>	Kirsty Jeeves	Emily Hardy	Melody Dillon	Katy Long & Orla Burke
<u>60m. Boys 8/10</u>	Killian Burke	Christopher Mis	James Hancock	Anthony Harris
<u>50m. Mixed</u>	Amanda Irwin	Emily Hardy	Alison Rogers	Katherine Harris
<u>15yrs/under</u>	Zoe Cholewa	Natasha Pearce	Katy Watkinson	Aaron Harris
<u>3 Legged</u>				
<u>60m. Open Mix.</u>	Amanda Irwin	Becky Dillon	Kerston Gresswell	Emily Hardy
<u>Pairs, Three</u>	Zoe Cholewa	Andrea Mis	Claire Moran	Natash Pearce
<u>Legged</u>				
<u>Mums 60m.</u>	Louisa Wall	Becky Dillon	Andrea Mis	
<u>Dads 60m.</u>	Dave Allen	Neil Gilmartin	Gary Moore	Bob Dillon

TOTLEY HALL FARM TRADITIONAL FARM FRESH OVEN READY TURKEYS



8lbs. to 25lbs. ORDER NOW
RING JENNY or EDWIN for FURTHER
INFORMATION ON 2364761

Ladies Exercise to Music

for Beginners / Intermediates

IMPROVE YOUR HEALTH & FITNESS

Many health benefits for older ladies. Offers high/low alternatives to you.

A FULL PROGRESSIVE EXERCISE PROGRAMME

* STIMULATES CARDIOVASCULAR SYSTEM. * MOBILITY OF JOINTS * TONING OF MUSCLES. * STRETCHES. * RELAXATION
Regular practice will:- Strengthen heart, lungs, circulation. Lower blood pressure. Remove excess weight. Increase flexibility. Improve body shape & posture. Increase energy levels. Relieve stress/anxiety. Promote general well being.

SAFELY & EFFECTIVELY.

RSA/YMCA QUALIFIED INSTRUCTOR

Where UNITED REFORMED CHURCH, TOTLEY BROOK Rd.

When TUESDAYS 10 to 11 am.

Price £2.00 (FIRST ONE FREE)

☎ 236 8572

We welcome letters about local affairs and will publish as many as possible. However the views expressed are not necessarily those of the Editor, Editorial Staff or Totley Residents Association and must not be imputed to them.

MESURMENTS - WHAT NEXT ?

I had just finished chatting to the Weights and Measures Inspectorate chap the other day who had come to update us on the new regulations regarding metrication, when Mr Bonnywell (who has just left Totley) walked in the shop with a list of old measurements he had found whilst packing up to move to his new home. He thought I might be interested, I was, some I remembered from my schooldays: chains, rods, poles and perches, pecks and bushels, though we didn't use them much in everyday life. Although, my son uses a chain (albeit metric) in his job as a civil engineer. I suppose that's where the name for that came from, each link on an imperial chain was a foot long; I remember that from my building college days, I suppose the metric one has 1/4 metre links.

Apart from the very precise engineering people who say they will adjust easily, the ramifications of metrication in everyday things and phrases is quite considerable. It's not too bad in the shop, because we have been using metric measurement for a number of years now, though most people bring their cutting lists in good old feet and inches, we do a quick conversion or I use an imperial rule when the Inspector's not around.

Some old sayings will sound a bit odd: getting a quart into a pint pot, metric (getting a litre into a 1/2 litre pot). Give him an inch and he'll take a mile, metric (Give him a centimetre and he'll take a kilometre). Doesn't have the same ring to it does it? Cricket and football pitches will alter eventually and girls hockey pitches will change. I suppose ice hockey is metric already.

I think us golden oldies will miss

all these traditional things, perhaps a few will stick, the younger element already think in metric and look a bit puzzled if I mention feet and inches to them. I wonder what changes they will see in their lifetime; perhaps a Klingon hand will measure 1 metre and a Warp will be 1,000,000 metres per hour, who knows?

Here is a copy of the tables Mr Bonnywell gave me - I hope it brings back happy memories for some of you.

Tom BUSY BEE

IMPERIAL ARITHMETICAL TABLES

Copied from the back of a very old Children's exercise book.

STERLING MONEY

4 Farthings	= 1 Penny
12 Pence	= 1 Shilling
2 Shillings	= 1 Florin
2 Shillings & 6 pence	= 1 Half Crown
5 Shillings	= 1 Crown
10 Shillings	= 1 Half Sovereign
20 Shillings	= 1 Pound
21 Shillings	= 1 Guinea

TROY WEIGHT

(Gold Silver Jewels)

24 Grams	= 1 Pennyweight
20 Pennyweights	= 1 Ounce
12 Ounces	= 1 Pound

APOTHECARIES WEIGHT

(Medicine)

20 Grains	= 1 Scruple
3 Scruples	= 1 Dram
8 Drams	= 1 Ounce
12 Ounces	= 1 Pound



E. J. WRIGHT

Carpentry & Joinery Services

FOR A PROMPT AND

EFFICIENT SERVICE

66 Rowan Tree Dell
Totley
Sheffield S17 4FN

Telephone:
0114 236 1612



HERBALIFE™

FEEL THE POWER

CELLULAR NUTRITION PROGRAMME

*EFFECTIVE WEIGHT MANAGEMENT

*OPTIMUM HEALTH

*MAXIMUM ENERGY

*ULTIMATE PERFORMANCE IN SPORT

*EMBODIES CONCEPTS OF

COMPLETELY BALANCED MICRO

NUTRITION, CELLULAR

HEALING AND ENERGISING

FEEL THE DIFFERENCE YOURSELF

Call 0114 2363992

YOUR HERBALIFE DISTRIBUTOR IN TOTLEY

(10% off on producing this advert)

WE ALSO NEED HELP FULL OR PART TIME
EXPANDING IN U.K./SPAIN/France/GERMANY

**JOHN K LAYCOCK
& SON**

(Established 1952)

DECORATORS

70 Dalewood Road,
Sheffield 8.

Exteriors, Domestic
shops and offices

Telephone
2364109 or 2585640

AVOIRDUPOIS WEIGHT

(ALL GOODS EXCEPT GOLD SILVER JEWELRY)

16 Drams	= 1 Ounce
16 Ounces	= 1 Pound
14 Pounds	= 1 Stone
28 Pounds	= 1 Quarter
4 Quarters	= 1 Hundredweight
20 Hundredweights	= 1 Ton

HAY & STRAW WEIGHT

36 Pounds Straw	= 1 Truss
56 Pounds Old Hay	= 1 Truss
60 Pounds New Hay	= 1 Load

CLOTH MEASURE

2.25 Inches	= 1 Nail
4 Nails	= 1/4 Yard
4 * 1/4 Yards	= 1 Yard

IMPERIAL DRY MEASURE

(Avoird of water) lb - oz

2 Glasses	= 1 Noggin	5
4 Noggins	= 1 Pint	1 - 4
2 Pints	= 1 Quart	2 - 8
4 Quarts	= 1 Gallon	10 - 0
2 Gallons	= 1 Peck	20 - 0
4 Pecks	= 1 Bushel	80 - 0
8 Bushels	= 1 Quarter	640 - 0

SQUARE MEASURE

144 Square Inches	= 1 Square Foot
9 Square Feet	= 1 Square Yard
30.25 Square Yards	= 1 Square Pole
40 Square Poles	= 1 Rood
4 Roods	= 1 Acre

SOLID or CUBIC MEASURE

1728 Cubic Inches	= 1 Cubic Foot
27 Cubic Feet	= 1 Cubic Yard
27.75 Cubic Feet	= 1 Solid Perch - Masons
12.375 Cubic Feet	= 1 Solid Perch - Brickwork

IMPERIAL HEAPED MEASURE

(Avoird of Water) lbs

8 Gallons	= 1 Bushel	80
3 Bushells	= 1 Sack	240
12 Sacks	= 1 Chaldron	2880

LONG or LINEAR MEASURE

12 Lines	= 1 Inch
12 Inches	= 1 Foot
3 Feet	= 1 Yard
2 Yards	= 1 Fathom
5.5 Yards	= 1 Pole
40 Poles	= 1 Furlong
8 Furlongs	= 1760 yds = 1 mile = 5280ft.

TIME

1 Year	= 524,160 mins = 31,449,600 secs.
--------	-----------------------------------

THE CIRCLE & CIRCUMFERENCE

OF THE EARTH = 360 DEGREES

60 Seconds	= 1 Minute
60 Minutes	= 1 Degree
30 Degrees	= 1 Sign
12 Signs	= 360 Degrees

DANCE MUSIC WANTED

The revival of interest in old Time Dancing has given me a problem.

I have been asked to play but cannot find the music.

If you have the sheet music for dances such as the Valeta and the Gay Gordons (Scotland the Brave) that you could lend me for a few days I would be most grateful.

Colin Wells Tel. No. 236 0602

WALKING COAST TO COAST

On Monday, November 13th. at Totley Library, 7-45 am. the Totley Residents Association present an illustrated talk on "Walking Coast to Coast" by Mrs. Dorothy M. Firth. Entrance is free. All are welcome.

RICHARD WALKER PROPERTY & GARDEN MAINTENANCE

INTERIOR:- PAPERING, PAINTING, TILING, DADO'S, COVING
PLASTERING, SKIRTING, NEW FLOORS, KITCHENS
FITTED, LOFTS CONVERTED, GLAZING REPAIRS

EXTERIOR:- FLAGGING, PAVING, POINTING, FLAT ROOF
REPAIRS, GUTTERS REPAIRED & CLEARED,
PAINTING OF WINDOW FACIAS, PEBBLEDASHING,
GARAGES, FENCING ETC.

GARDEN:- ONE-OFF OR REGULAR MAINTENANCE,
GARDENS TIDIED, PATIOS LAID, TURF LAID, FENCES
ERECTED, ROCKERIES + PONDS CREATED.
OUTBUILDINGS DEMOLISHED.

**FOR A FREE FRIENDLY NO OBLIGATION QUOTE
CALL 0114 236 0037 (TOTLEY)**

R.S. Heating & Building Co.

Regd. Office : 62 MACHON BANK

SHEFFIELD S7 1GP

HEATING DIVISION

Experienced, Qualified Installers of all types of
Central Heating.

10 Year Guarantee on all New Gas Systems.

Complete After Sales Service.

BUILDING DIVISION

Specialist in Wall Tie Replacement
and House Renovations

All work to B.E.C. Standards and carries their full Guarantee

RING SHEFFIELD 2364421

CALOR

GARDENING TIPS FOR NOVEMBER

I am writing these tips whilst we are on holiday in Ness in North Yorkshire. I am overlooking a lovely cottage garden next to a granary conversion. It's interesting to see someone else's ideas and difficulties dealt with. They have a very informal approach with trees and shrubs, quite close together. They are close to a river, so the area is quite damp; the grass is quite soggy. First thing in the morning they have to cover everything they want to harvest, because the birds are very prolific. Despite these problems, they have a colourful garden even at this time. I don't think his vegetables would win many prizes at the local show; they have the usual country garden problem - the big battle must be the weeds; if they are left for a short time, they grow really fast. I suppose we all have our problems.

FLOWERS. Clean up all your borders. Cut back roses to about 1/2 their height, this will help to stop wind rock until they will be pruned properly in Spring. From now on, any plants kept in frames need to be kept an eye on regularly. Open right up during the day when the weather is mild, don't forget to cover them at the end of the day. Inspect all the cuttings and remove all yellowing leaves and stir the top of the soil lightly to aerate it. Finish planting tulips and hyacinths the sooner the better.

VEGETABLES. Gather up all sizeable marrows and store them in a frost-free place. Keep an eye on stored potatoes and onions. Remove any diseased ones as soon as they are seen. Choose a day when the soil is reasonably dry on top to hoe between Spring cabbage. Lift and store late-sown carrots and beetroot; no point leaving them in the soil. Stake up Brussel sprouts, especially if the soil is light. Remove any yellowing leaves - these and cabbages will also benefit from a dressing of fertiliser. Lift a few parsnips and store in case the frost makes the ground too hard later.

TREES, SHRUBS AND FRUIT. Prepare the ground for planting all kinds of fruit trees, bushes and fruiting canes. Give tree, bush and cane fruits a tar-oil winter wash to help control pests and diseases. Prune newly planted apples, pears etc. This is a good month for planting trees and bushes, both ornamental and fruiting - the sooner the work can be completed after the leaves have fallen, the better. Protect the roots from the sun and drying winds, until you are ready to plant, then prepare a hole wide enough to spread the roots in a natural manner and deep enough to permit the uppermost roots to be covered by a clear 3"-4" (8-10cm) of soil. Cut off broken or bruised root ends, hold the bush in position in the middle of the hole - you may need help to do this - throw back the soil a little at a time, gently jerking the plant up and down so that the soil

particles work down between the roots. When the hole is almost full, tread the soil down really firmly, return the rest of the soil but leave this loose and level on the surface.

All standard trees should be staked firmly and made secure immediately before planting.

GREENHOUSE & INDOOR PLANTS. Water sparingly and feed plants which are in flower. Dry off summer flowering bulbs, corms and tubers; leave in containers in an airy frost-free place. Stand azaleas, cyclamen and winter cherry on damp, pebble-filled trays. Put up insulation as soon as possible after cleaning down the glass. Prune flowering maple, musk, fuchsia, oleander and plumbago. Keep the greenhouse clean and free from dead leaves or bracts, dust plants with flowers of sulphur to prevent spread of disease.

There is not much point in trying to keep bunches of grapes hanging on the vine any longer, especially if you have a cool, dark, dry room in which you can store them; cut each bunch with 9" or more of the ripened lateral from which it is hanging. Insert the lower end of this into a bottle filled with clean, soft water containing a few pieces of charcoal, then stand the bottle in a rack or on a shelf, tilting it sufficiently to prevent the berries from coming into contact with it or anything else.

Keep an eye on the weather and take care with ventilation; side vents can be left closed at this time - use top vents; only keep them shut if it is cold or foggy. A small sump heater or greenhouse heater can make a world of difference to the health of your plants, if you can afford the upkeep.

LAWNS. Keep lawns clean by raking up leaves etc. - spike and scarify and give an Autumn top dressing. Keep off in frost. An old gardener told me once that grass grows by inches and is spoiled by feet (how would you say that in metric?).

Bye for now, Cheerio
Tom BUSY BEE.

TOTLEY RISE LUNCHEON CLUB

Although the local clubs are mostly held on Church premises, they are open to any needy person regardless of whether they are connected with the Church or not. This also applies to the Volunteers of which there is a great shortage!

DO YOU HAVE TWO AND A HALF HOURS TO SPARE ONCE EACH CALENDAR MONTH? TO ASSIST IN THE LAYING OF TABLES, MAKING AND SERVING COFFEE, WASHING-UP ETC; OR COULD YOU COOK A SIMPLE FIRST COURSE EITHER AT HOME OR ON THE PREMISES?

Without your help, this much used service will have to be closed down as elderly helpers have retired and there is no-one to replace them.

If you feel that you are able to help, please contact B. Handley on 2366575 or call in to the Luncheon Club any Friday between 10a.m. and 2.30p.m.

AUTUMN FAYRE

ALL SAINTS CHURCH HALL

SATURDAY 25th. NOVEMBER 2-00pm.

Books, cakes, toys, crafts, something special, children's games, tombola and refreshments. Admission Free.

WEDNESDAY FELLOWSHIP

This group is part of the life of Totley Rise Methodist Church, but its meetings (at 8p.m. on the 2nd and 4th Wednesday of each month from September to Easter) are open to anyone and there has been encouraging support from the wider community.

The meetings open with a prayer, then there is a talk (often illustrated by slides) by a visiting speaker, followed by a cup of tea and biscuits; ending at about 9.30p.m.

On 8th November Sister Ann Ellenor from Hanover Methodist Church will give her impressions of Bahrein, from visits to her sister who is living there.

On 22nd November Capt. Alan Turner of the Church Army will talk from first-hand experience about homeless people in Sheffield and those who are trying to help them e.g. through the Cathedral breakfasts and the 'Homeless and Rootless at Christmas' project (HARC).

The Carols by Candlelight (13th December) organised jointly by Totley Rise Methodist Choir and Wednesday Friendship, will this year be in aid of work among Sheffield's homeless people.

CATHERINE CLARK
Qualified Chiropodist

*192 Baslow Road,
Totley
Sheffield
S17 4DS*

M.S.S.Ch.
M.B.Ch.A.
S.R.N.

Telephone
Sheffield
2364101

BUSY BEE

D.I.Y. SUPPLIES

170 BASLOW ROAD, TOTLEY, SHEFFIELD S17 4DR.
Telephone 2365798

for
A COMPREHENSIVE SELECTION OF
D.I.Y., DOMESTIC & GARDENING ITEMS
including

Plywood, Timber, Paint, Hardware,
Bowls, Buckets, Mops, Tools, Locks,
Composts, Pots, Fertilizers, etc., etc.

KEY CUTTING SERVICE

If we do not have your requirements
in stock we will do our utmost to
obtain it quickly for you

TRISTAN SWAIN

**Garden Services &
Maintenance**

**80 Bocking Lane
Beauchief**

Sheffield S8 7BH

Phone 2620387

WINTER DIGGING

PROVIDED YOUR SOIL ISN'T TOO STICKY NOW IS A GOOD TIME TO PREPARE FOR WINTER.

...AND REMOVING FLESHY ROOTED PERENNIAL WEEDS FOR BURNING.

BY SPRING, YOU'LL HAVE A GOOD FRIABLE SOIL, RARING TO GO!

IF AVAILABLE, INCORPORATE COMPOST OR MANURE...

...AND EVERY 2-3 YEARS LIME HEAVY OR ACID SOILS.

LET THE FORK DO THE WORK, NOT YOUR BACK.

Mr. Fothergill's Seeds
NEWMARKET, SUFFOLK

**A LITTLE EXTRA HELP IS
NEVER FAR AWAY**



Get a little extra
help with your
your investments.

HALIFAX

Local agent
**OLDALES, 55 BASLOW ROAD,
TOTLEY, SHEFFIELD S17 4DL**

SCOUT NEWS

SCOUT LOTTERY RESULTS

1st. Prize No. 35 Hoover Double Duty Vacuum & Tefal Steam Cuisine.

Mr. & Mrs. Pilgrim, Aldam Close

2nd. Prize No. 27 £10 Voucher

Mr. & Mrs. Moseley, Abbeydale Rd.

SCOUT CHRISTMAS POST

As in previous years the local Scout Groups are taking part in the Scout Christmas Post scheme.

From 25th. November to 16th. December 1995 special stamps will be on sale at various outlets in the area. These can be used to post Christmas Greeting cards in the special post boxes for delivery to addresses in the area.

Leaflets will be available and posters displayed with a map of the area to which cards may be sent. This covers all Sheffield, Rotherham, Dronfield and Chesterfield as well as some other outlying areas.

The price of each stamp is 13p., a part of which is retained by the Scout Group for its own funds and therefore for the benefit of youngsters in the area. After running costs the remainder of the profit is distributed to local charities, a list of which will be displayed on the posters.

The main conditions of use of this scheme are :-
Christmas Greeting Cards only, no enclosures.

Post only in special Scout boxes, NOT Royal Mail.

Use only special Scout stamps.

For use in the area on the leaflets and posters.

Last posting date is 16th. December.

Once again a "Santa Line" will be available where youngsters who would like to write to Santa, can do so. They

just need to address the envelope to Santa, it will be sent directly to the North Pole and if they include their name and address they may even get a reply.

For collectors, First Day Covers will be on sale from the same outlets.

We do hope you will support the scheme which has now been running successfully for 14 years, and which continues to grow. Please look out for the distinctive yellow posters which will appear in shops and house windows from the 24th. November. There will also be sales of stamps in the streets, but should you have a problem in obtaining supplies contact any member of the local Scout organisations at 1st. Totley, 85th. St. Johns, Abbeydale, or 115th. URC.

UNITED NATIONS ASSOCIATION

On Saturday November 18th, the local U.N.A. branch members will be helping with a U.N.A. stall at the Annual Peace & Craft Fair in the Town Hall - 10.30a.m. to 4.30p.m. If you are in town that day, why not call in? There is always a large number of stalls with a big variety of goods; both new and second-hand on sale. Many campaigning groups and charitable organisations take part and there is also entertainment, refreshments and a creche.

On Saturday December 2nd, the Dore, Totley & Bradway U.N.A. hold their own Annual Coffee Morning and Market, from 10a.m. to 12 noon at Dore Methodist Church. This is in aid of U.N. work among refugees. (Last year the U.N.H.C.R. had to deal with a rise in the number of refugees from 19 million to 23 million).

• S. A. SWIFT • • C • A • T • E • R • I • N • G •

"SPECIALIST CATERING SERVICES FOR ALL OCCASIONS"

- Function Caterers
- Corporate Events
- Exclusive Hampers
- Buffets
- Lunches
- Dinners
- Meetings
- Celebrations



FOR MORE INFORMATION AND MENUS CALL:

0114 2367560

THE TOTLEY COFFEE SHOPPE
51 BASLOW ROAD, TOTLEY, SHEFFIELD, S17 4DL

LEONARD CHESHIRE SERVICES IN SHEFFIELD



Offering choice and opportunities to people with disabilities
If a person with a disability needs care we can help by providing:

- * Long term care
- * Respite care
- * Day care
- * Single rooms
- * Computers
- * Many activities
- * Aromatherapy
- * Physiotherapy
- * Aquatherapy

(For our new "Care at Home Service" see separate advertisement)

Any other requirement could be considered

MICKLEY LANE, SHEFFIELD S17 4HE
Telephone (0114) 2369952/3

WORKING DAYS AND STEAM GATHERING, ABBEYDALE INDUSTRIAL HAMLET

3rd, 4th, 5th November 1995
10.00 a.m. to 5.00 p.m. daily
Admission: Adults £3.00,
Child/OAP/Student £1.50
Family (2 + 2) £6.00
UB40 and Reg. Disabled Free

STEAM DOWN TO THE HAMLET!

November at Abbeydale Industrial Hamlet begins with the ever popular Working Days, plus a Steam Gathering, bringing the excitement of steam plus the skills of a diverse range of crafts to this popular destination. The water wheels will be turning as usual and there will be metal casting at intervals during the weekend, using the Hamlet's unique Crucible Steel Furnace.

Crafts on display will include modern jewellery, crafted walking sticks, surgical instruments, bread making (in the Victorian kitchen), pewterware, Windsor chairs and chair caning, illustration, sculpture and wood carving. Sheffield's award winning jewellery designer Brett Payne will be demonstrating his skills, as he has done for several years at Abbeydale's Working Days. There will also be demonstrations of broomstick knitting, mark making, blacksmith's wrought iron work, together with Abbeydale's traditional crafts of scythe grinding and tool making. New residents at Abbeydale Industrial Hamlet, Stage Right Puppets will be demonstrating their craftsmanship from their caravan base in the orchard.

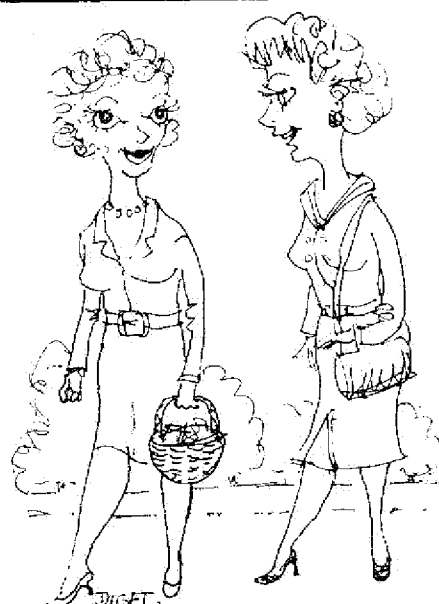
Paul Wainwright and friends make a welcome return with an exciting gathering of steam engines, road rollers, farm and fairground engines, plus other traction engines. These giants of the past will be "in steam", demonstrating the sheer might and

beautiful craft engineering that was commonplace in Victorian times. Visitors can also view the beautifully restored 1855 Abbeydale stationary steam engine.

The Working Days provide the last opportunity to view the Autumn Exhibition in the Abbeydale Gallery. "Feast Your Eyes" features the colourful and intricate oil paintings of local artist Andrew Heath and the exhibition closes on Sunday 5th November.

The Hamlet's gift shop stocks a range of British and Sheffield-made goods and the Cafe's growing reputation for excellent home-baked delicacies is richly deserved.

For further details, contact Julia Waterhouse Tel. 0114 2367731.



"I WANT TO CALL AT THE GROCERS
FOR SOME TOTLEY TEA BAGS!"

LEONARD CHESHIRE SERVICES IN SHEFFIELD



introduce

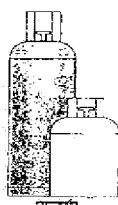
CARE AT HOME

A new service to provide
care to people in their
own homes.

LEONARD CHESHIRE SERVICES
Mickley Hall, Mickley Lane
Sheffield S17 4HE
Tel 0114 2351400

SHIRE gas

your local gas dealer



SHEFFIELD
0114
261 1141

Delivery Service Available 50p

NO DEPOSIT - FREE REGULATOR - OPEN 7 DAYS - AVAILABLE 24 HRS

7 Kg Butane	£7.50
13 Kg Butane	£9.20

JOINER BUILDER PLUMBER
PROPERTY REPAIRER

TREVOR NORMAN

6 Totley Grange Rd.

Sheffield, S17 4AF

Tel. 2364626

TRANSPORT 17

A good number of people attended our General Meeting on 16th October and enjoyed the quiz. I was surprised to see anyone as "Bet left The Rovers" that evening !

The best news of the evening was that our new bus the "OUTWARD BOUNDER" will be arriving in November. This has been bought with money from local people, shops, organisations, Trust funds and S.Y.P.T.E. money which pays for our Manager and the running of the office. Graham Moore of Westfield Health Insurance will officially hand the bus over to T.17 on 20th November at about 2.30 p.m. This will be at Totley Rise Methodist Hall and coincides with Monday Club. Please come along and join in our celebration and have a cup of tea and pat yourselves on the back. The bus was ordered with the expertise of 'Help the Aged'.

Our 'Mulled Wine and Mince Pie' evening is on Saturday 25th November at 4, The Grove. Tickets will be £2 and festivities start at 6 p.m. We hope to have a Christmas stall there. Please come along and treat yourselves and help us at the same time.

Once again, thanks to Mike Finn, our office workers, drivers and escorts and Management Committee and all of you for our "NEW BUS".

Margaret Barlow

COUNCIL for the PROTECTION of RURAL ENGLAND

The CRPE are joining with other groups to plant trees in Ecclesall Park, Ecclesall Common during National Tree Week. Volunteers will be welcome to help plant trees. Please come along and join us Friday 24th. & Saturday 25th. November between 11-00 am. & 3-00 pm.

KING ECBERT SCHOOL ASSOCIATION

King Egbert School Association have organised the following events open to all.

Table Top Sale, Saturday November 11th.
10-00 am. to 1-00 pm., Wessex Hall,
King Egbert School

Further details contact Ann Anderson
Tel No. 236 8497

"Oliver" performed by Sheffield Light
Opera, Montgomery Theatre,
Wednesday 29th. November to Saturday
2nd. December.

(Evenings 7-15pm. plus Saturday Matinee
2-00 pm.) Tickets from £4-00,
Tel No. 236 8497.

Christmas Cracker at King Egbert School,
Wessex Hall, Thursday 14th, December
7-00pm. Festive stalls, and musical
entertainment. All welcome.

SHEFFIELD CHESHIRE HOME

The next event on the calendar will
be the Christmas Coffee Morning on
Wednesday 6th December
10 am. to 12 noon.

Hand-made cards, gifts and bric-a-brac will be for sale from the Activities Centre and there will be tea or coffee served in the Dining Room which is included in your entrance fee of 50p.

THE UNITED REFORMED CHURCH

TOTLEY BROOK ROAD
invite you to their
CHRISTMAS FAIR
on

Saturday November 18th.
10-00 am. to 12-30 pm.

J. SCRIVEN & SON
(FRUITERAMA)

JOHN SCRIVEN
HIGH CLASS FRUIT
& VEGETABLES

37

BASLOW ROAD

☎ 2367116

Orders Delivered

P.J.C.
P. J. COOPER
GENERAL BUILDER

24hr. Emergency Call Out

127, PROSPECT ROAD,

BRADWAY

Tel. No. 0114 236 4286

EXTENSIONS

ALTERATIONS

ROOF REPAIRS

ALL INSURANCE WORK

A Complete Service in Home

Improvement

LADIES FASHIONS

SKIRTS, DRESSES,
JUMPERS, T-SHIRTS,
UNDERWEAR etc
ALSO
CHILDRENS WEAR
HABERDASHERY,
WOOL

Dry Cleaning, Shoe Repair
& Laundry Service

ROSIES

164 BASLOW ROAD, TOTLEY.
TEL: 2621060



TOTLEY ALL SAINTS CHURCH SCHOOL GROWS

Exciting news from the Church School is that we have experienced another summer of building work. You may recall that last year we had our new offices and entrance reception area built. This year it was a new classroom constructed in the upper part of the Victorian Block accessed by an extremely impressive new staircase. This work has really transformed the building and also made the classroom below much more attractive. The building work took the whole of the five weeks when the children were on holiday. Consequently, the painters and decorators are having to work at weekends to complete their part of the work.

It was personally very satisfying for me to know that the School had grown sufficiently for us to need a sixth classroom, as ten years ago when I arrived, it was a three class school. Since then the School has more than doubled in numbers and indeed, we anticipate that next summer, funds permitting, we shall most likely be building another upstairs room in the remainder of that block. By September 1997 we will be a full One-Form Entry School with seven classes.

Later in the term, when the decorating is completed, we hope to hold an 'Open Day and Evening' for anyone to come and look around. This may be of particular interest to former pupils. Please watch this space for further details.

Joan Stratford (Headteacher)

TOTLEY RESIDENTS CHRISTMAS PARTY.

UNITED REFORMED CHURCH HALL
SATURDAY DECEMBER 2nd. 4-00pm.

HELENS WHEELCHAIR FUND

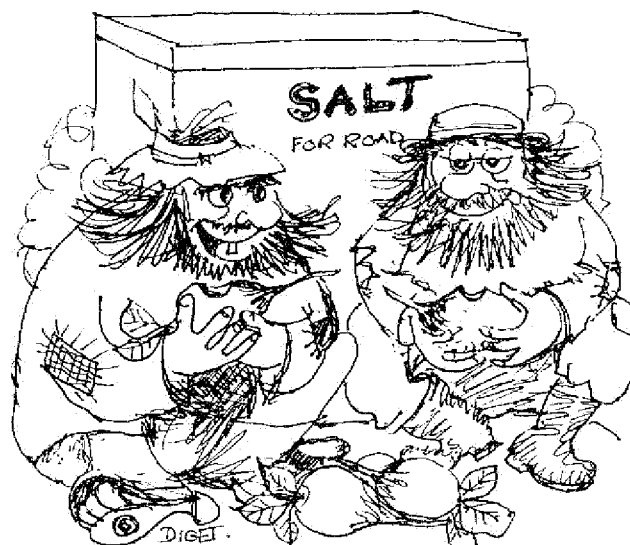
Almost to date, one year on, I find myself writing another "Thankyou" to our friends in Totley, their friends, our friends, new friends and anonymous friends.

It's thanks to everyone's enormous generosity that I am now zooming around Totley in my new pearlised pink, go-fast, lightweight wheelchair. With my new wheelchair I have found new independence and I am eternally grateful to you all.

I have been overwhelmed by everyone's efforts in fundraising and their enormous goodwill. It has enabled me to actively participate in my children's fun and games and endeavour to get fit again.

My family and I thank you very much.

Helen Spencer



"THESE TOTLEY TURNIPS ARE GOOD AND THEY'VE EVEN PROVIDED THE CRUET AS WELL!"

FOR SIX GENERATIONS

THE LEADING FUNERAL DIRECTORS

John Fleath & Sons
PROMPT and COMPREHENSIVE SERVICE
AT ALL TIMES

☎ 2 722222

LIMOUSINES FOR SPECIAL OCCASIONS

STUART FORDHAM F.A.D.O. OPTICIAN

THE FOURTH GENERATION, DEVOTED TO FAMILY EYECARE
SINCE 1871

N.H.S. and PRIVATE Examinations by a
QUALIFIED OPTOMETRIST

We have a wide range of Frames from Budget to Designer at prices to suit every pocket.
Advice gladly given on Frames, Lenses and Low Visual Aids for the partially sighted.
Emergency repairs carried out on the premises.

63. Baslow Road, Totley Rise.

Telephone 2364485

(Answer Phone for messages out of hours)

PRESTIGIOUS AWARD FOR ABBEYDALE INDUSTRIAL HAMLET

The sponsorship by local companies of repair work to Abbeydale Industrial Hamlet's water wheels has won a government award, leading to further cash for this popular museum and tourist destination.

Stanley Tools, British Steel Engineering Steels, Forgemasters Steel and Engineering all joined forces to fund vital restoration work to the Hamlet's main water wheel.

In one of the first awards of its kind, this sponsorship has received matching funding under the "Pairing Scheme" (the National Heritage Arts Sponsorship Scheme) which is managed by the Association for Business Sponsorship of the Arts (ABSA). Established in the Arts for a number of years now, the Pairing Scheme is currently operating a pilot project for what it terms "Built Heritage". It is hoped that the incentives of effectively doubling the sponsorship amount and increasing the publicity for the sponsor, will encourage other companies to come forward and reap the benefits of Heritage Sponsorship.

Abbeydale Industrial Hamlet's Marketing Officer, Julia Waterhouse said "We are grateful to our sponsors and delighted that their support has been recognised by a Pairing Scheme Award. We are equally delighted that we now have more money to spend on restoration work at the site. The bulk will be spent on repair and maintenance work around the Hamlet but I have to admit that we are creeping into the 20th century slightly and using some of the money to purchase a fax machine!"

Described by an ABSA representative as the "best example of a Built Heritage sponsorship project", it is hoped that this sponsorship will be the first of many successful partnerships with the

private sector.

Abbeydale Industrial Hamlet has a number of further sponsorship projects - large and small and would be happy to hear from potential patrons and sponsors.

For further information, please contact Julia Waterhouse Tel. 2367731.

T.O.A.D.S.

The T.O.A.D.S. Autumn production is "Look, No Hans", a riotous comedy by John Chapman and Michael Pertwee.

The West Berlin office of a British car company (where selling cars is like selling pork chops at a barmitzvah) is the unlikely setting for our tale of industrial espionage, many comings and goings and much confusion. For those of you expecting "Hay Fever" in November, we hope that our change of plans will provide you with just as much fun and we will get back to a Noel Coward offering in the future.

As usual, you will find us at St. John's Church Hall, Abbeydale Road South, Wednesday to Saturday 22nd to 25th November 1995, at 7.30 p.m.

Tickets are still £2, and £1.50 for children and Senior Citizens, available from any member or phone me, Kate Reynolds, 236 6891 by Friday 10th November if possible.

FRIENDS OF ABBEYDALE WILDLIFE GARDEN

COFFEE MORNING

A coffee morning with Gifts and Bring and Buy Sale will be held at Totley Library, on 11th. November 10-00 am to 12 noon, with proceeds going towards Management of the Gardens. Coffee and mince pies 50p.



MINI EXCAVATOR FOR HIRE WITH OPERATOR

FOUNDATION, DRAINAGE AND SERVICE TRENCHES
DRIVE CONSTRUCTION, BLOCK PAVING
GARDEN PONDS, TREE STUMP/HEDGE REMOVAL
AREAS CLEARED AND LANDSCAPED
ONLY 3.5 FEET ACCESS WIDTH REQUIRED
FOR FREE QUOTATIONS AND ADVICE



PAUL MEGGITT 2890789



TOTLEY STUDIOS

portrait

and

wedding photography

Cine to Video, Copy and Restoration of your Treasured Photographs

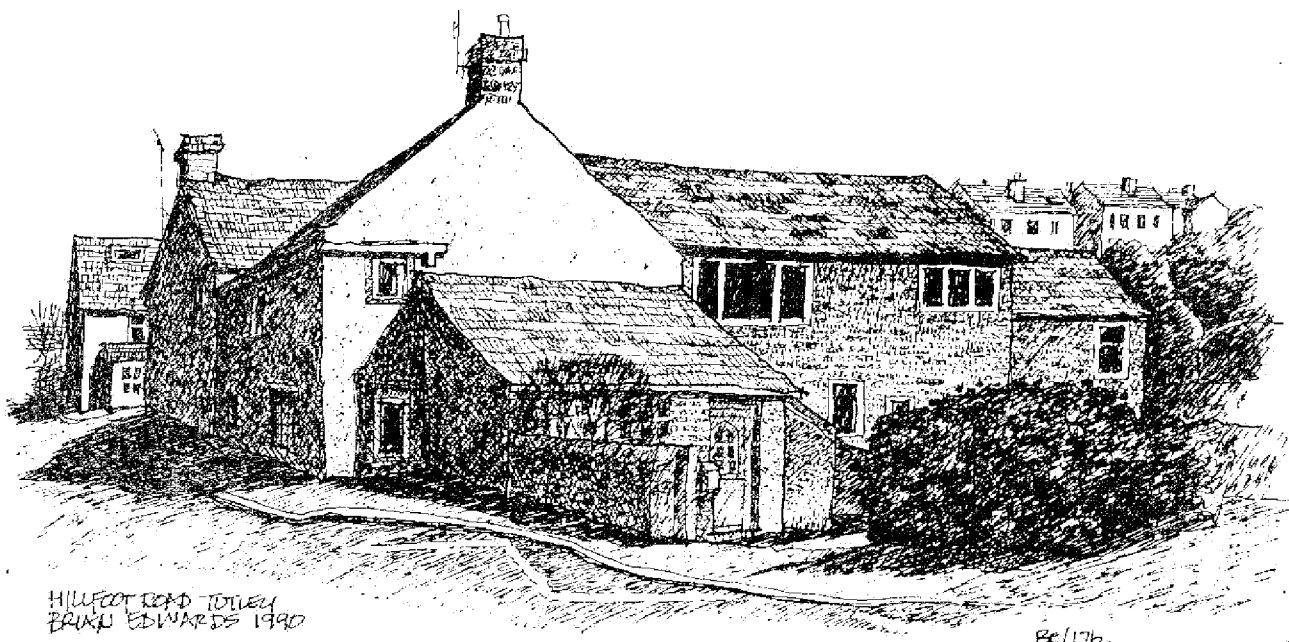
Quality and Service

J R Carroll LMPA

69 Baslow Road Sheffield S17 4DL

Tel: 0114-236 0997

© DIAJOZO DESIGN 1995



HILLFOOT LANE HASN'T CHANGED A LOT OVER THE YEARS DESPITE MODERNISATION TO THE COTTAGES. OLDER RESIDENTS WILL REMEMBER A SMALL SHOP ON THE ROADSIDE IN ONE OF THESE COTTAGES.

TOTLEY PRIVATE HIRE

24 HOUR TAXI AND 8 SEATER MINI
COACH SERVICE
LOCAL, LONG DISTANCE, AIRPORTS,
FISHING TRIPS ETC.
ESTABLISHED FAMILY BUSINESS

TEL. 2361547

SHEPLEY SPITFIRE

MICKLEY LANE, TOTLEY

**HARDY & HANSONS
KIMBERLEY ALES**

**Hot & Cold Snacks
Mon - Sat**

**HOSTS
Albert & Norma Young**

Bernie's
DORE TO DOOR
Travel

8 SEATER MINIBUS

**Airports
Coast
Local.**

**Tel. No.
(0114) 236 0651**

The Famous Cricket Inn

Penny Lane, Totley
Your Local Country Pub

**A WARM WELCOME AWAITS ONE & ALL
FROM MINE HOSTS**

KATH & PHIL & ALL THE STAFF

OF

THE FAMOUS CRICKET INN

Lighttime on Brewery (240) 4-29, 5.30 - 8.00 Mon-Fri

Provisioning Sunday Service

PENSIONERS SPECIAL MENU and

CHILDRENS MEALS AVAILABLE

Real Fire - Real Food - Real Character

Large Function Room Available For all Occasions

Extensive Buffet Meal Selections To Suit All Your Requirements

Tel. 0114 2365256

NA T. 046 22347

**NINA and HARRY CROWNSHAW
WELCOME FRIENDS OLD AND NEW**

to the

CROWN INN TOTLEY

**LUNCHES AVAILABLE 7 DAYS
TRADITIONAL SUNDAY LUNCH**

**EVENING MEALS MONDAY to FRIDAY
6-00pm to 8-00pm.**

Telephone 2360789

TOTLEY & DISTRICT DIARY

MONDAYS COFFEE MORNING, All Saints' Church Hall, 10-00am. - noon
 TUESDAYS COFFEE MORNING, Totley Rise Methodist Church Hall, 10-00am. - noon
 CRAFT GROUP Totley Library.
 WEDNESDAYS COFFEE in the LIBRARY 10-00 am. to 11-30.
 THURSDAYS OPEN DOOR, United Reformed Church, 10-00a.m. - noon

NOVEMBER

SAT. 4th. AUTUMN BAZAAR, St. John's Church Hall, Abbeydale Rd., 11-30 am. in aid of the R.S.P.C.A.
 WED. 8th. "IMPRESSIONS of BAHREIN" by Sister Ann Ellenor, Totley Rise Methodist Church Hall, 8-00pm. Details inside.
 FRI. 10th. TOTLEY EVENING GUILD, "A Victorian Christmas" by Mr. Mike Williamson 7-30pm. Abbeydale Hall.
 SAT. 11th. COFFEE MORNING, Totley Rise Methodist Church, 10am. to 12 noon, Details inside.
 SAT. 11th. COFFEE MORNING, Totley Library, 10-00am. to 12 noon. Details inside.
 SAT. 11th. TABLE TOP SALE, King Egbert School, 10-00 am. to 1-00 pm.
 MON. 13th. LIBRARY TALK, "Coast to Coast" by Dorothy M. Firth, Totley Library, 7-45 (Details inside)
 SAT. 18th. CHRISTMAS FAYRE, The United Reformed Church, Totley Brook Rd., 10am. to 12-30 pm. Details inside.
 SAT. 18th. CHRISTMAS BAZAAR, Dore Church Hall, 10am to noon.
 TUE. 21st. TOTLEY TOWNSWOMEN'S GUILD, Methodist Church Hall, 10-00am.
 WED. 22nd. HOMELESS in SHEFFIELD by Captain Allen Turner, Totley Rise Methodist Church Hall, 8-00pm. Details inside.
 WED. 22nd. to SAT. 25th. T.O.A.D.S. present "Look, No Hans" by John Chapmen & Micheal Pertwee. Details inside.
 SAT. 25th. AUTUMN FAIR, All Saints Church Hall, 2-00pm. Details inside.
 SAT. 25th. "MULLED WINE & MINCE PIE EVENING, 4, The Grove, 6-00pm. Details inside.
 WED. 29th. to 2nd DEC. "OLIVER", Montgomery Theatre, Details inside.

DECEMBER

SAT. 2nd. U.N.A. COFFEE MORNING & MARKET, Dore Methodist Church, 10-00am. to 12 noon Details inside.
 WED. 6th. CHRISTMAS COFFEE MORNING, Cheshire Home, 10am. to noon, Details inside.

NEXT DIARY TO COVER DECEMBER AND JANUARY

THE INDEPENDENT FOR DECEMBER/JANUARY

The NEXT issue of the Totley Independent will be available from the usual distribution points on SATURDAY 3rd. DECEMBER. Copy date for this issue will be SATURDAY 11th. NOVEMBER 1995.

EDITORS Les & Dorothy Firth, 6, Milldale Rd., Tel. No. 2364190

DISTRIBUTION AND ADVERTISING John Perkinson, 2, Main Avenue, Tel. No. 2361601

TYPING Vicky Crookes and Louisa Kearns, Items for publication may be sent to or left at 6, Milldale Rd. 2, Main Avenue, Totley Library or V. Martin's (Abbeydale Rd.) PRINTED BY STARPRINT

Tel: 580707

Starprint
 INSTANT PRINTERS

601-603

ABBEYDALE ROAD,
 SHEFFIELD S7 1TA

* LETTERHEADS * INVOICES *
 * CARBONLESS SETS * BUSINESS CARDS *
 * BOOKS * PADS * RAFFLE TICKETS *
 * BROCHURES * LEAFLETS * ENVELOPES *
 * WEDDING STATIONERY *
 * FULL COLOUR LEAFLETS POSTCARDS *
 * & BUSINESS CARDS *

***** DESIGN & TYPESETTING

THERMOGRAPHED AND FOIL BLOCKED STATIONERY
 PHOTOCOPYING & FAX SERVICE
 A PHONE CALL COSTS PENCE IT COULD SAVE YOU £s

Tel: 258 0707

JOHN D TURNER CONSTRUCTION

46. LONGFORD ROAD. BRADWAY. SHEFFIELD 17
 BUILDING & PROPERTY REPAIRS, JOINERY
 ELECTRICAL & PLUMBING EXTENSIONS &
 ALTERATIONS.

ESTIMATES FREE

PHONE SHEFFIELD 236 7594 EVENINGS.
 JOHN D TURNER (CONTRACTING) Ltd.

Your Local General Store
 for Groceries and
 Fresh Bread Daily

AVENUE STORES

(Francis and Mary Hall)

253 BASLOW ROAD, TOTLEY

Telephone 236 0583

Orders Delivered