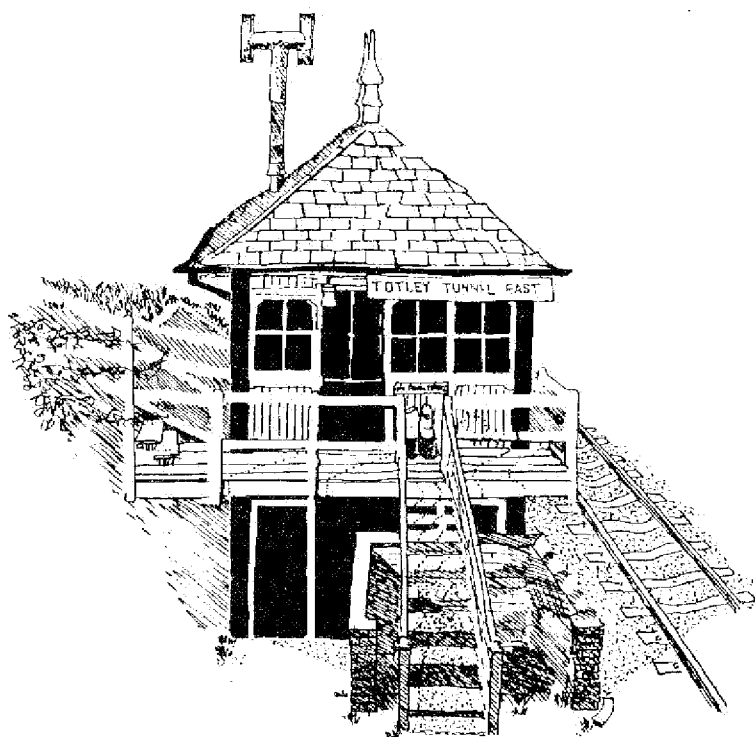


# TOTLEY INDEPENDENT

Published by Totley Residents Association No 138 15p  
**NOVEMBER 1990**



Our drawing this month is from David White of Grove Road. The Totley Tunnel East Signal Box portrayed was built at the same time as the railway and will soon be 100 years old. It is in the typical Midland Railway style of that period and still contains the original signal and point levers, known as the "lever frame", which are also a Midland Railway pattern. Although Midland Railway lever frames can be seen at various places, this one is more unusual in that it is equipped with a system of mechanical interlocking known as tumbler locking, which prevents the signalman from operating the levers in the wrong sequence. For many years from its opening, the signalbox controlled the arms of semaphore signals via lineside wires and pulleys, but in 1972 the semaphores were replaced by colourlight signals and the signal levers now operate electrical contacts to control these.

## BRING AND SING MESSIAH

A bring and sing Messiah is to be held at Our Lady and St Thomas Church, Meadowhead on Saturday Dec 1st at 7.00 p.m. Soloists are Hazel Mason, Marilyn Craig-Smith, Mike Philpott and Stephen Dowson. The Conductor is James Kirkwood and the Organist Alan East. Admission by programme £2. Hire of scores 25p. Proceeds to Brasov Children's Hospital, Romania.  
For programmes phone 367176 or 368354.

## BONFIRE AND FIREWORK EVENING.

The Cricket Inn.

Monday 5th November.

Bonfire to be lit at 7.00 p.m.

Fireworks to follow.

FREE ENTRY to all.

Donations of fireworks to the Cricket Inn will be appreciated.

Bar-B-Q, Parkin and Bonfire Toffee with Wards Beer.

Any profits made to be donated to FAMILY SPORTS.

## MUSICAL NEWS

For many years there has been an amateur orchestra in this district known as the Dore and Totley Orchestra, latterly playing in Abbeydale Hall. Owing to changes of circumstances the musical activities are now in Abbeydale Grange School premises under the auspices of Norton College. These are:-

String Orchestra, on Tuesdays at 7.0 p.m.

Full Orchestra on Wednesdays at 10.0 a.m.

There is also a Training Orchestra on Thursdays at 7.0 p.m. but this is at Norton College itself.

These are all very friendly affairs and anybody who can play at any level is welcome to come and enjoy a jolly time. More information from Ray Kohn at Norton College (372741) who is the musical director and will also give advice and instruction on playing or from Ken Soulsby in Totley (367631). There is a very nice creche and a refreshment bar.

Ken Soulsby.

## DORE MALE VOICE CHOIR.

Dore Male Voice Choir has been invited to take part in a concert at the Royal Albert Hall, London, on 17th November. Tickets are from £7.50 to £20.

You can however hear the Choir along with their guests for the evening - the Manchester Boys Choir - at the Firth Hall, Sheffield, on Saturday 10th November for just £3.00!

Tickets are available from D.Fry (620210), N.Brearley (369212) or any member of Dore Male Voice Choir.

### GREEN OAK BOWLING CLUB.

Contrary to what the local, and in some cases the national, press report, Green Oak Bowling Club have again had a very successful season.

The 'A' team did very well to finish third in the first division and were triumphant in two major cup matches. They won the Mansfield Ales Mason Cup final, a competition which is open to all clubs in the South Yorkshire area. Their biggest triumph however was the Brotherton Cup which they won in Shipley, beating teams from Bradford and Shipley along the way. Having won this competition they now have the honour of going through to the British Parks Bowling Association finals which are played at Irlam in Greater Manchester. If they could win that, then Green Oak would certainly be on the bowling club 'map'.

The 'B' team also had a very successful season. Having been promoted last year they have again got promotion winning their Saturday afternoon league by 38 points. Special mention must be made of their captain, Trevor Stacey, who went through the season undefeated after playing 21 games - a feat only matched by two other players in the Parks bowling association. The best team performance was in the Batchelor Cup final which they won for the first time, beating High Hazels, who play in the third division, at Meersbrook Park.

The 'B' team were undefeated throughout the season. In the Tuesday night league they also gained promotion after being promoted last year. They won the league by 25 points. The men's Thursday afternoon league which Green Oak won last year was again won by the Tottle club but due to an error on the score sheet, which has been well reported by the Sheffield Star, Green Oak were disqualified and had all their points taken from them. Appeals are going ahead in an effort to get the disqualification rescinded.

The ladies also had an excellent season. The Thursday afternoon side were promoted having won their league by 16 points. In the Wednesday night league they finished in a very respectable third position.

The biggest cliff-hanger of the season however belongs to the men's veteran league. In the final match of the season they could not afford a loser and had to win 10-0. They managed to achieve this "impossible dream" and won by that margin thus winning the league by just 1 point - a tremendous climax to the season.

One piece of sad news is that Cyril Hughes, chairman of the club, collapsed at home shortly after this match and is seriously ill in hospital. Our very best wishes to him and his family.

Having had teams in seven different leagues and winning five of these plus two major cup competitions, Green Oak have got a hard act to follow next season. The Annual Dinner takes place at Dore Masonic Hall on Saturday November 24th and all tickets have been sold.

Once again the club is always on the look-out for new players and anyone interested should contact the secretary, Trevor Stacey. Telephone 350789.

Duncan Merrill.

### ANIMAL WELFARE.

Our attention is drawn to the posters in the Library and elsewhere about export of animals overseas. Many of us feel strongly about this and we are invited to write in protest to our M.P., the Minister for Agriculture or the E.C. Commissioner. Further details can be obtained from Mrs D.E. Styles, 10 The Quadrant.

Nearer home there are the usual collection points for tins of cat or dog food from mid-Nov. onwards. These are at Oldales, (Halifax B.S.), Tottle Rise, Anne's Dress Shop on Baslow Road and Valerie of Dore.

We are also reminded about the P.D.S.A. Charity Shop at the bottom of the Moor, 16, Cumberland Street. A good opportunity for Christmas shopping!

## T.O.A.D.S.

T.O.A.D.S. next production is "Pack of Lies", a play by Hugh Whitemore. It is a powerful, moving, fictional account of the real life drama of Barbara and Bob Jackson, a quietly respectable couple suddenly caught up in a web of deceit and intrigue.

For those who can remember back to 1961, as the story unfolds, it will no doubt bring back memories of newspaper headlines.

For all to be revealed, go along to St John's Church Hall, Abbeydale Road South, Wednesday to Saturday, November 28th, 29th, 30th, December 1st, at 7.30 p.m. Tickets are still £1 or 70p for Senior Citizens and children, obtainable from any member of T.O.A.D.S. or phone Kate Reynolds - 366891.

J. SCRIVEN AND SON  
(FRUITERAMA)

**JOHN SCRIVEN**

HIGH CLASS FRUIT  
& VEGETABLES

37  
BASLOW ROAD

367 116

Orders Delivered

**ELECTRICAL/ELECTRONIC  
SALES & SERVICE**

- A Quick & Efficient Service
- Guaranteed Parts & Labour
- Reasonable Rates
- Personal Attention

**PLUS** • Collect/Delivery Locally  
**FREE!** • Microwave Safety Checks  
• Help & Advice if Required

**PHONE 367625**  
**NOW! JAGGERS**  
(SHEFFIELD)

7 Terrey Road, Totley

RADIO'S, CASSETTES, HI-FI, TV, VIDEO,  
MICROWAVES &  
SMALL DOMESTIC APPLIANCES

John and Sandra  
invite you to

**THE  
CROWN**

360789

bar snacks available  
Monday to Saturday  
Lunchtime

LOOK GOOD

FEEL GOOD

*Debbie*

MOBILE HAIRDRESSER  
Telephone: 350751

A warm welcome awaits you at

**Cricket Inn**

Penny Lane, TOTLEY

Bar Snacks

Ward's Sheffield Best Bitter

Room available for  
Private Functions

**tel 365256**

**JOHN K LAYCOCK & SON.**

(Established 1952.)

DECORATORS.

70 Dalewood Road,  
Sheffield 8.

Exteriors, domestic,  
shops and offices.

Telephones:-  
364109 or 585640.

PROFESSIONAL HAIRDRESSING  
FOR ALL THE FAMILY

**Hair Design**



86 Baslow Road  
Totley  
Telephone 363409

AUTHORISED WELLA  
SYSTEM PROFESSIONAL  
SALON

**G. ASHMORE**

(Proprietor: Arthur Robinson)

HIGH CLASS FAMILY BUTCHER  
TOP CLASS MEAT AT  
REASONABLE PRICES  
249 BASLOW ROAD  
TOTLEY

SHEFFIELD S17 4DU  
Telephone 360634



**RUNNING TIME  
VIDEO CLUB**

160 BASLOW ROAD, TOTLEY, SHEFFIELD  
Tel: 369821

**FREE MEMBERSHIP  
V.H.S.**

T.V., VIDEO and  
AUDIO REPAIRS

**OPENING HOURS**

**12.00 to 9.30**

**six days per week**

**Sat 10.00 to 9.30**

**CARE IN YOUR HOME.**

Professional Care and Domestic  
Services Provided.

Friendly Experienced  
Personnel.

Night Sitters Available.

Tel Nos:- Daytime - 552792.  
Evenings - 450101  
- 550873

Your Local General Store  
for Groceries and  
Fresh Bread Daily

**AVENUE STORES**

(Francis and Mary Hall)

253 BASLOW ROAD, TOTLEY  
Telephone: 360583

Orders Delivered

**TRISTAN SWAIN**

Garden Services &  
Maintenance

51 Tavistock Road  
Sheffield  
S7 1GF

Telephone  
587466  
(after 6 p.m.)

# GARDENING TIPS

## READY FOR WINTER

Time to tuck up your garden for the winter by general tidying round, insulating the greenhouse, cleaning and checking your heaters, preparing cloches etc. This month often starts with stormy or cold frosty spells. During the quiet time you have an excellent opportunity to get ahead with the digging whenever possible. It is also a time to plan what you are going to show at next years Totley Produce Show!

### Flowers.

- \* Clear up perennial borders.
- \* Clear any annuals which you may have left.
- \* Check dahlias in store - cut out any disease. If withered soak and dust with sulphur.
- \* Dust gladioli bulbs with insecticide.
- \* Protect carnations and pinks from birds with strings of thread.

### Vegetables.

- Generally as for October. Renew slug bait. Net greens against birds. Remove yellowing and rotting leaves from all crops.
- \* Sow May Queen lettuce indoors to plant out in February and March.
  - \* Sow broad beans (Aquadulce) under cloches.
  - \* Sow mustard, cress and sprouting salad seeds indoors on a windowsill.
  - \* Keep picking sprouts, winter and perpetual spinach, cabbage, savoys, carrots etc.

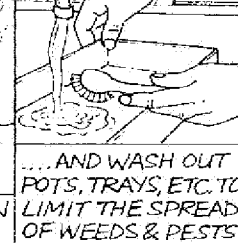
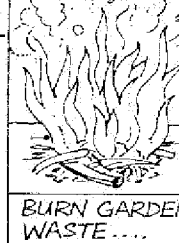
### Fruit.

- Prepare ground for planting trees or bushes. Plant as soon as they arrive.
- \* Cover rhubarb with straw-filled bucket to bring it on for early pulling.
  - \* Give tree, bush and cane fruits a tar oil winter wash to help control pests and disease.
  - \* Plant soft fruit bushes.
  - \* Prune newly planted apples, pears and bush and cane fruit.

### Trees and Shrubs.

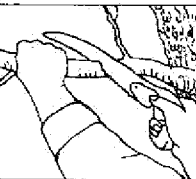
- As for October. Tie in conifers to prevent spreading under snow.
- \* Move container grown evergreens like bay and camellia into sheltered positions out of the wind.

IF SOIL IS DRY, COMPLETE ANY DIGGING—ADDING COMPOST OR WELL-ROTTED MANURE.

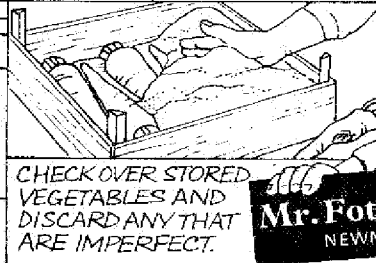


KEEP THE COMPOST HEAP GOING WITH POTATO PEELINGS, CABBAGE LEAVES, ETC.

TRIM BACK DANGEROUS TREES....



...AND ENSURE THAT PATHS AND STEPS ARE SAFE AND FREE OF SURFACE WATER.



CHECK OVER STORED VEGETABLES AND DISCARD ANY THAT ARE IMPERFECT.

**Mr. Fothergill's Seeds**  
NEWMARKET SUFFOLK

- \* Protect semi-tender plants with netting.
- \* Cut back neglected hedging.
- \* Plant roses of all kinds.
- \* Plant deciduous trees of all kinds.
- \* Take hardwood cuttings from your shrubs and root under a frame or in a sheltered spot outdoors.

### Greenhouse and indoor plants.

- Water sparingly and feed plants which are in flower.
- \* Pinch out the tips of winter cherry
  - \* Stand azaleas, cyclamen and winter cherry on damp pebble filled saucers and mist over azaleas as well as foliage plants.
  - \* Cut down late chrysanthemums after flowering.
  - \* Sow cyclamen.
  - \* Pot on seedlings or cuttings of indoor azaleas, cineraria, hydrangea etc early in the month.
  - \* Prune flowering maple, musk, fuchsia, oleander and plumbago.

### Lawns.

- Rake leaves off lawns (and pools).
- \* Dig new lawn sites ready for spring.
  - \* Take your lawn mower in for service and sharpening. It is usually cheaper (about 10%) to do it during the winter rather than in the spring.

Tom. Busy Bee.

### SENIOR CITIZENS' CHRISTMAS PARTY.

On Saturday December 1st in the United Reformed Church Hall at 4.00 p.m. Tea, Raffle and the usual full programme of entertainment. Tickets, price £1.20, from both Totley Post Offices from Nov. 12th. In case of need of transport ring 361601.

### TOTLEY RISE METHODIST CHURCH.

Local residents will have observed building activity at the above church. Increased congregations meant that the original building, constructed in the 1890's, was inadequate and church members, under the leadership of the Rev George Palmer, decided to extend and improve the premises.

Work has advanced quickly since Messrs J & T. Holmes started work early in July. Completion by Christmas is hoped for, when the public will be warmly invited to inspect the building and to share in the worship. The extended church will have seating for about three hundred and a new church lounge and kitchen will be provided. The new areas can be modified by the use of folding screens giving greater adaptability for church and community use. A bigger car park and landscaping of the church grounds are also proposed.

Last year £122,000 was donated towards the cost and a second Gift Day held on 20th Oct. resulted in a further £15,450 being pledged, with an additional £18,000 of interest free loans. A grant of £20,000 has been promised by the Joseph Rank Benevolent Fund, and in order to cover the costs a further £14,000 is required.

## **cheshire home**

On 22nd Sept a Caribbean Evening was organised by the residents. The food had a Caribbean flavour and the music had the Caribbean beat. The evening was a resounding success and raised nearly £400.

On 28th Sept a Jazz Night and Barbecue was held. The "Late Arrivals", residents and guests jazzed their way through an unusually enjoyable evening raising £170 in the process.

Several residents spent a day at Woburn Abbey. The weather was good and helped make this a most memorable occasion.

On 11th Oct a Silent Auction was held. Coffee and biscuits were available and a pleasant night was had by all. Approximately £200 was raised. Many thanks for items donated by local people.

Congratulations to Mrs Hilda Braddock who was invited to attend a prize-giving in London on 20th Oct to collect a first prize for her entry in the Collage Section of the National Creative Activity Competition. This event also resulted in an interview by Radio Sheffield.

The Christmas Coffee Morning will be held on Thursday 6th December from 10 to noon.

## **Dear Sir....**

I fear I must disillusion your anonymous correspondent regarding the late night opening of Lateshopper. It may be "of great benefit" to the people living opposite in that the gang of youths no longer congregate on the corner, but they have now moved up Devonshire Road to the corner at the beginning of the Public Footpath and throw all their rubbish into the stream there.

This stream runs at the end of our garden and we have cleared it and planted bulbs and shrubs on the banks in an effort to improve the environment and encourage bird and pond life. On 4 or 5 mornings every week, I take out of the stream two Vodka bottles, various tins and cigarette packets.

Today I have found 7 empty bottles and 6 tins - all alcoholic - a pile of cigarette packets and chocolate wrappers. Perhaps a local bottle bank would help both the environment and the re-cycling programme as I'm afraid I put all I find into the dustbin, not having a car and no inclination to walk up to Dore with other people's bottles!

(name and address supplied)

### HONEYMOON COUPLE.

By the time we appear in print John Bramall, erstwhile farmer and well-known milkman of Totley will have married Katie Taylor at All Saints' Church. John has managed to escape the matrimonial net for 39 years but Katie, a teacher of the deaf with the Maud Maxfield Service for the Hearing Impaired has hooked him. Not only that but she has managed to get John off on a holiday for the first time in 15 years.

We take this opportunity of wishing them both all the best for their married life and hope that they will continue to be very happy in Totley for many years to come.

### THE HILL BROTHERS.

We are sorry to report the recent deaths of two well known local farmers. Charlie Hill-Pickford lived and worked most of his life at Bents Farm, Totley Bents. He will be remembered by some for working his land with shire horses and for pig-keeping. The funeral took place in All Saints Church on August 17th.

His brother Richard was also brought up at Bents Farm but later farmed at Moss Farm. He will be remembered for driving his truck round the cattle markets. His funeral took place on October 16th.

# FARMING SCENE



The long dry autumn has enabled most arable farmers to sow their autumn planted cereals and Oilseed Rape in near perfect conditions. The recent rains have encouraged rapid growth of these crops as well as an abundant crop of wild mushrooms. The spores of these mushrooms can lie dormant in the soil for several years until just the right climatic conditions. A dry warm soil moistened by a warm rain activates them into growth and reproduction, which continues until cold weather or frost stops their growth. There is nothing as appetising, tasty or satisfying as a plate of newly picked mushrooms, fried with 2 eggs, 3 rashers, 3 sausages and 2 rounds of bread! Now that is what I call a real farmer's breakfast! No doubt the "experts" would say that a more lethal cocktail of injurious food would be hard to find, with obesity, salmonella, listeria, heart disease and indigestion sure to follow!! However, as nothing appears to be safe to eat at the moment I will take my chances and add liver and kidneys to the menu on Sundays as a special treat!

We have just started harvesting our potatoes, hence the current spell of very wet weather, and the quality of them looks very good this year. Some varieties prone to drought stress have yielded badly but many of the second early and late varieties have done very well.

## HEALTHY EATING

The hot dry summer hasn't been very kind to the crop of 'greens' hence the rather poor quality of the early runner beans and the relatively high price of vegetables generally.

However things are improving and this has been helped by the introduction of a comparatively newcomer to the vegetable world.

This is the 'ROMANESQUE' - a new variety of cauliflower. Pale green in colour the 'flower' is made up of small firm shell shaped florets. Richer in flavour than a conventional cauliflower it adds a touch of colour to any meal.

John Scriven.

We shall be "dipping" our sheep tomorrow prior to putting the tups in next week. We still have a few of this years lambs left and yet we are already setting in motion the production plan for next year's crop.

We must be the only industry in the country that is currently selling its produce at lower prices than those achieved 8 years ago and is being asked to accept even lower prices. Agriculture is the most efficient industry in the country with a productivity record that shames public and private industry alike. And yet this most essential producer is currently inundated with criticism including food poisoning, environmental pollution, over-production, subsidisation, wildlife genocide, pesticide residuals, lack of planning control, lack of access for the public, profiteering, animal cruelty, etc. The morale and financial condition of many farmers is now so low that they are giving up the unequal struggle in despair. Who, in their right mind would invest £1½ million in a business to see a profit of just £20,000 as many bigger farms now are?

Edwin Pocock.

## ON THE BUSES

Once again rumours are circulating, chiefly amongst our Senior Citizens, that the M 17 service between Dore, Totley, Bradway and Jordanthorpe is to be withdrawn. I am assured by S.Y.P.T.E. that this is not so. In the unlikely event of S.Y.T., who operate the service, doing something peculiar, the M 17 service is safe until March 1992 when it next comes up for tender.

Andrews, the bright blue and yellow named double deckers, are operating certain journeys on their 24 service via Meadowhall, providing a direct service from Totley to this eighth wonder of the world. During school holidays they leave Totley at 11.15, 11.35 and 14.57. Return journeys from Meadowhall are at 10.05, 10.25, 13.50 and 14.10. During school term time departures are at 10.00 and 11.23 with returns at 13.15 and 13.35. On Saturdays departure from Totley is at 11.15, 11.35, 14.57 and 15.20. with returns at 10.05, 10.25, 13.50 and 14.10. The journey each way takes about 50 mins. and the indicator shows ROTHERHAM via MEADOWHALL.

Sadly, Sheaf Line evening services have been withdrawn. S.Y.T. provide a half-hour service as they did previously.

Don Clare

## TOTLEY MEMORIES.

Articles in the last few issues about Totley in bygone years have produced several interesting comments from people who have obviously enjoyed a bit of nostalgia. We cannot print them all in full but thank you all for writing.

The Smith family (July issue) have rallied round. Charles writes to say he remembers working in the mine at Strawberry Lea and because it was close to the tunnel the L.M.S. inspector used to examine the mine every six months. He tells us that the horse which fell down the mine shaft had been backed over the hole after someone had moved the planks. He helped bring it out. He mentions names of Totley men around the time of World War one. Shoppy Charlie, Blower Weston, Jack Stock, "Obb" Marshall, Piggy Hill, Cobby Green, Old Bradley and others. Charles writes from Kings Bromley. His sister Louie (Needham) still lives in Sheffield and remembers living in the Old School house.

Mr George Creswick tells us about the Totley buses turning round at the Robin Hood at Millhouses. In those days they had open tops and solid rubber tyres! Referring to Mrs Wheeler's letter (September issue) he points out that there was never a school in Totley Bents but the school to which Mrs Wheeler refers was the Church School. He remembers the "Union" Church Hall being called "The Tin Tab".

Mrs Josephine Rundle reminds us of a Foden steam engine and a Cheflex lorry (1924-25) in Totley. She too remembers Rechabite trips to Baslow and Darley Dale as well as the lorry being used for football matches. The lorry, belonging to Jack Pearson, was kept in the garage next to the Cross Scythes.

Mr William Carter, writing from Windsor, remembers going to the Misses Crossland's school from 1910 till 1912 but then went to Dronfield Woodhouse Council School from 1913 till 1915. He walked from King Egbert Road every day which certainly does not seem to have done him any harm!

Do write in with more letters and we will do our best to pass on the memories which are so precious.

### BARNARDO'S.

The local organiser for Barnardo's is asking for help for the annual Flag Day Appeal on 8th December. If anyone is able to help this worthy cause please contact Mrs Helen Watson on 304932.

## totley library

The library staff would like to thank everyone who signed the petition against cuts in the library service. We would like you to know that the library will remain open for the foreseeable future. There will however be a cut in staffing levels, which may mean a reduction in opening hours.

There have already been cuts in the services we provide, e.g. no new books are being bought between July and the end of the financial year next March, and all newspapers and magazines have been cancelled, apart from "The Star" and the weekly "Sheffield Telegraph".

So, please try to be understanding if you have to queue because we are short of staff or if we can't get the books you want. We don't like this situation either.

\* \* \* \* \*

We are looking for volunteers to help run coffee mornings at the Library on Wednesday mornings. Please enquire at the Library - Tel No 363067.

\* \* \* \* \*

Forthcoming exhibitions at the Library include:- Photographs, mainly landscapes, by Mr Gordon Rawlins - local photographer. Nov 12th-24th and:- Paintings, mainly portraits, by Mr F.H.Scott, a local painter, in oils and watercolours. Nov 26th - Dec 8th.

### ALL SAINTS, TOTLEY. MENS FELLOWSHIP.

The Mens' Fellowship at All Saints has embarked on a series of monthly meetings using as their theme, "The next ten years, a personal view".

The meetings take the form of an address by a visiting speaker, giving us their view of the next ten years, followed by refreshments and discussion. In the last two meetings our discussions have taken us on a 'Cook's tour' of the world's economy, politics, spirituality, ecology and environment and even feminine theology.

Our next meeting will be on Tuesday Nov. 13th at 8.00 p.m. in the Church Hall. Our speaker that evening will be the Rev. Philip Hacking from Fulwood.

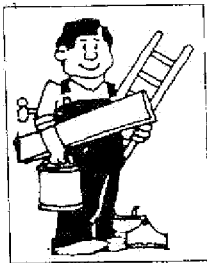
The meetings are open to both sexes and all ages. Please come along. I can promise you a lively evening.

Robin Carter.

A BUMPER 16-page EDITION next month.  
Make sure you get your copy!



# BRIAN SELLARS JOINERY



FOR ALL TYPES OF GENERAL REPAIRS  
NO JOB TOO SMALL  
FREE ESTIMATES

**WINDOWS, DOORS, SHELVES  
CUPBOARDS, PORCHES etc.  
ALSO SHOP WINDOW DISPLAYS  
FLATPACK FURNITURE SERVICE**

6 Woodside Avenue, Sheffield, S18 5WW  
**Telephone: (0742) 890921**

## DO YOU HAVE A HEARING PROBLEM ?

IMPAIRED HEARING CAN MAKE YOU MISS SO MUCH !  
DO YOU FEEL LEFT OUT IN FAMILY CONVERSATIONS ?  
DO YOU HEAR PEOPLE TALKING BUT CAN'T UNDERSTAND  
WHAT IS SAID ?

DOES EVERYBODY 'MUMBLE' ?  
DO YOU HAVE TO KEEP TURNING THE T.V. LOUDER ?  
IF SO, CONTACT YOUR LOCAL HEARING AID SPECIALIST

**MAURICE NAYLOR M.S.H.A.A.**

4 TWENTYWELL DRIVE, BRADWAY

**SHEFFIELD S20 010**

TESTS AND ADVICE ARE FREE AND WITHOUT OBLIGATION

"In Your Own Home If Desired"



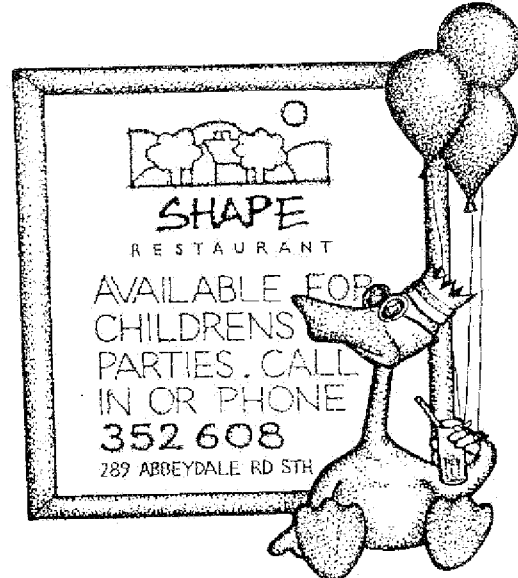
You could lose excess lbs with **THE effective  
weight loss programme**  
**MONEY BACK IF NOT DELIGHTED**

Phone Gillian  
on (0742) 363992

Your Herbalife Distributor

We have put the flags out especially for **YOU**  
Come and talk to **US** and let us save or make **YOU** money  
Thinking of selling or buying a property ?  
Talk to **US** before making your offer  
Had an Accident Let **US** try and get **YOU** compensation.  
Got matrimonial or other problems ? **WE** can help.  
Made your Will ? Do not delay, phone us **NOW**.  
**YOUR SOLICITOR IS YOUR VITAL LINK - TALK TO US  
FIRST**

**CHESTER & SIMMERSON**  
**222 LONDON ROAD,**  
**SHEFFIELD S2 4LW.**  
**Telephone 580731**



## TOTLEY PRIVATE HIRE

24 HOUR TAXI AND 8 SEATER MINI COACH SERVICE  
LOCAL, LONG DISTANCE, AIRPORTS, FISHING TRIPS ETC.  
ESTABLISHED FAMILY BUSINESS

**TEL: 361547**



## P.A. HIGGINS Builder

All Building Work Undertaken  
Inc. Extensions, Porches,  
Garages, Garden Walls,  
Conservatories,  
Fire Places &  
Barbecues  
A Speciality

90 Greenoak Road,  
Totley,  
Sheffield S17 4FR.  
Tel: (0742) 364866

## R.S. Heating & Building Co.

Regd. Office: 62 MACHON BANK  
SHEFFIELD S7 1GP

### HEATING DIVISION

Experienced, Qualified Installers of all types of  
Central Heating.

10 Year Guarantee on all New Gas Systems.  
Complete After Sales Service.

### BUILDING DIVISION

Specialist in Wall Tie Replacement, Black Ash  
Mortar Removal and House Renovations

All work to B.E.C. Standards and carries their full Guarantee  
**RING SHEFFIELD 364421**





### TALES OF THE UNBELIEVABLE.

We are so fortunate having wonderful scenery surrounding us, and coupled with the articles by John Barrows, one cannot fail to extend the wish to explore our fields, woods and moors. Whether we use John's walks in detail or make various detours, the glories about us build up a keen appreciation of the open air. So, having wandered here and there during the summer months, there comes the idea of doing the "big one" before the days start closing in - to stride just that little bit further, even though Anno Domini dictates just that little bit longer. To conjure up such a day to achieve such a walk that the talk of it will bore listeners through the long winter months. Of course any hint of inclement weather can reduce the enjoyment of what should be a perfect day, so that it becomes increasingly necessary to keep a watchful eye on the weather forecasts.

This is where we are lucky in Totley. I was told of an old gentleman who knew the weather signs inside out, and to get his considered opinion was considered the best insurance of a successful day. I wandered round the various taverns, finally coming to the "Shepley Cricket". It wasn't easy to get him round to the weather. It cost the first pint to cover his views on Sheffield, the second pint brought him nearer to home and finally the third pint focussed his attention upon the weather. He wasn't the real expert, he said, it was his little nephew who was training to be one of them meterowatdoyecallit men, and his nephew really knew. "So what does your nephew forecast for tomorrow?" I asked. "Oh, easy! A marvellous day from dawn to sunset, you can't go wrong tomorrow". At a cost of three pints of best bitter, it seemed a reasonable price to pay for such a favourable forecast. However, just to be on the safe side, I listened to Radio Totley, which confirmed the good news, and as an added precaution I telephoned the announcer to see if that was really up to date. "Can't go wrong, old chum". he reported in a friendly way. "We get our forecasts from the old lad in the village, and he is never known to fail - a perfect day tomorrow".

### TOTLEY LADIES EVENING GUILD.

The Coffee Morning in October made a profit of £67 so a total of £100 will be sent to the 'CHRIS FUND' at the Childrens' Hospital.

I was satisfied with that and set off without a care early next morning. You can bet what happened, the heavens opened and it poured down all day. I was more than a little upset, and started my round of complaints by telephoning the announcer at Radio Totley. "Don't blame us", he said, "we only pass information supplied by the old man in the village". Off I went to find the fraudulent forecaster and in due course I located him in the "Spitfire Crown". I tore off a right strip, about him and his nephew and his weather lore. "You can't blame me", he replied, "I only get the story from my little nephew, and you can't really blame him either, 'cos he only gets it from Radio Totley!"

Anon.

## whisperer...

An application for Planning Permission has been made for four houses with double garages on Summer Lane..... Work has started on tree thinning in Gillfield Wood ..... Pruning of the trees near Greenoak Crescent may not be popular with the rooks and nor with one of our correspondents either! ..... I am looking forward to next month's bumper 16-page edition of Totley Independent. .... Must remember to get a ticket for the talk on "Mountain Walking in the Alps" in the library on 26th Nov. .... and the next night there is a Prose and Poetry reading in All Saints' Church Hall .... Sounds good!



"No Chuffworthy, that is not the Totley Cub Scout wood-work medal!"

Tel: 580707

# Starprint

INSTANT PRINTERS  
601-603  
Abbeydale Road  
Sheffield S7 1TA

Menus, Brochures, Leaflets, Raffle Tickets,  
Multi-Colour Printing, Letterheads, Business  
Cards, Invoices, Multi-Part Sets, Booklets,  
Wedding Stationery Thermography

For a personal service ask for Mike or Malcolm Senior  
to quote for all your printing requirements.  
A phone call costs PENCE — it could save you POUNDS

## "CURLY Q"

162 BASLOW ROAD  
TOTLEY.

OFFERS PROFESSIONAL HAIR  
CARE BY HIGHLY QUALIFIED  
STYLISTS.

Relax and acquire an all year  
round Mediterranean tan in our  
new "Sun-Room" using a Solar-  
mobile sun bed.

Tel. **350362**

**TOTLEY HALL FARM PRODUCE.**  
**TOTLEY HALL LANE.**

**HOME PRODUCED MEAT.**

**LAMB.** Cut and packed ready  
for the freezer @ 85p per lb.

**FRESH CHRISTMAS TURKEYS.**  
8-25 lbs Oven Ready. Order Now!

**HAY.** £2.50 per bale.  
**STRAW.** £1.00 per bale.

**CARA AND RED POTATOES.**  
55lbs d/d £3.50 coll. £3.25.  
10lbs d/d £1.00 collected 80p.  
(All prices at 20th October)

Ring JEN or EDWIN on 364761 for  
further details, delivery etc.  
or call in  
Monday to Saturday  
8.00 a.m. to 8.00 p.m.

## GRANT'S BLINDS & CURTAINS

**FREE CURTAIN MAKING**  
(Wascops cotton velours)  
ON  
MADE-TO-MEASURE  
CURTAINS

627 Chesterfield Road, Woodseats, Sheffield  
Telephone: 589168

## E & L WILSON

**BUILDERS & PLUMBERS**

House Maintenance  
Glazing - Glass

Please Ring **ERIC**  
**368343**

## SHEPLEY SPITFIRE

**MICKLEY LANE TOTLEY**

**HARDY & HANSONS  
KIMBERLEY ALES**

**Hot & Cold Snacks  
Mon - Sat**

**HOSTS**  
**Albert & Norma Young**

## CARE FOR THE DISABLED

### THE SHEFFIELD CHESHIRE HOME

Long or short term care  
for physically disabled  
people, single rooms,  
lively activity centre,  
physiotherapy, chiropody,  
hairdressing etc.

**MICKLEY LANE, SHEFFIELD 17**  
Telephone : 369952 / 3

## BUSY BEE

DIY SUPPLIES

170 BASLOW ROAD, TOTLEY, SHEFFIELD S17 4DR.  
Telephone 365798

for  
A COMPREHENSIVE SELECTION OF  
D.I.Y., DOMESTIC & GARDENING ITEMS  
including  
Plywood, Timber, Paint, Hardware,  
Bowls, Buckets, Mops, Tools, Locks,  
Composts, Pots, Fertilizers, etc., etc.

★ **KEY CUTTING SERVICE** ★

If we do not have your requirements  
in stock we will do our utmost to  
obtain it quickly for you.

FOR SIX GENERATIONS

**THE LEADING FUNERAL DIRECTORS**

## John Fleath & Sons

PROMPT and COMPREHENSIVE SERVICE  
AT ALL TIMES  
☎ **722222**

LIMOUSINES FOR SPECIAL OCCASIONS

## RICHARD GREAVE

### ELECTRICIAN

FOR ALL YOUR ELECTRICAL  
REQUIREMENTS

160 Springfield Road  
Sheffield S7 2GJ  
Tel: Sheffield 352813 (Evenings)

# Scouts

## 215th Sheffield (1st Totley) Scout Group.

Totley Scouts are having a Christmas Fayre at Scout Headquarters on Aldam Road on Tuesday Dec 4th at 7.00 p.m. There will be:- Free Invitation "lucky number" Draw for senior citizens, Christmas Raffle (prizes on tickets), Christmas Fancy Goods, White Elephant, Tombola, Cakes, Games and Sweets stalls. Scout Stamps for Christmas Post on Sale at 13p. Coffee and Mince Pies. Everyone Welcome.

\* \* \* \* \*

The Scout Christmas Post will be operating this year from 1st to 15th December. We hope to list post boxes and stamp selling places in the next issue of the Independent.

## 297th Sheffield (Bradway) Scout Group.

The sixth annual free admission Bradway Craft Fair takes place in Bradway Scout Centre, in the grounds of Sir Harold Jackson School, off Prospect Road, on Saturday, November 24th from 10 a.m. to 4.30 p.m.

The event, in aid of Bradway Scout Group funds, will have a total of 25 stalls, with the minimum of duplication, and offering the widest possible range of hand-crafted gifts.

Light refreshments will be on sale all day with a cake stall restocked at regular intervals.

## "100 CLUB"

You are invited to join Totley All Saints School new "100 Club" which will augment P.T.A. funds for facilities at the school. For just £1 per month you will receive a number between 1 and 100. Each month a draw will be made with a chance of winning substantial cash prizes. Membership is limited to 100 applicants and the closing date for applications is Dec 1st 1990. For more information contact Robert Woolvin, 16, Queen Victoria Road, tel: 351295.

## CRAFT FAIR.

### TOTLEY (Morning) TOWNSWOMEN'S GUILD.

are sponsoring a Craft Fair at All Saints Church Hall, Totley on Saturday 17th Nov. from 10.00 a.m. to 3.00 p.m. There will be a display covering such crafts as:- Indian Lace, 3-D pictures, Dolls, Patchwork, Woodcarving, Knitwear, Water Colour Paintings and many more.

Admission 25p

Refreshments available

Proceeds to Martin House Hospice.

## TOTLEY RISE DENTAL CARE

Craig B. Mitchell & Associates

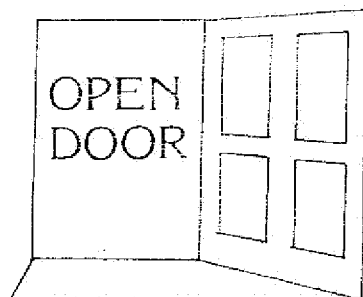
NHS and PRIVATE Dentistry

Mon/Tues/Wed/Fri 9.00-12.30 2.00-5.30

Thurs 9.00-2.00 6.00-9.00

85 BASLOW ROAD TOTLEY Tel 360333

Please call in at



for a 'cuppa', a chat and help if you need every Thurs. 10--noon Church Hall, Totley Brook Road.

## PYRAMID DEVELOPMENTS

REPOLYMERISING, REPAIRING, REFINISHING, REPAINTING, REUPHOLSTERING, REUPHOLSTERING, REUPHOLSTERING, REUPHOLSTERING

Painters and Decorators

Property Repairs

WE WILL BEAT ANY QUOTE

Special Rates for O.A.P.'s

Free Estimates

Telephone 360333

# Whirlow

*The story of an ancient Sheffield hamlet*

by Shirley Frost

This new book, which contains maps, drawings and over 60 photographs, gives a fascinating insight into the life and times of Whirlow and traces its development over the centuries to the present day.

AVAILABLE 5TH NOVEMBER FROM:  
SHAPE DESIGN

289 Abbeydale Road South. Tel: 620476

OR PHONE:

SHIRLEY FROST ON 620690

Price £8.95 (Post & packing extra)

# NOVEMBER DIARY

- Mon. Nov. 5th Bonfire and Fireworks. Cricket Inn. 7.00 p.m.
- Thurs. 8th Open Door, U.R.C. Totley Brook Rd. 10 a.m.  
Health Visitor (Kathy Watson) in attendance.
- Fri. 9th Ladies Evening Guild. Mrs. D. Simons. Abbeydale Hall 7.30 p.m.
- Sat. 10th Coffee Morning and Market. Dore Old School. 10.30 - 12.00.  
United Nations Association
- Sat. 10th Scouts Paper Collection. Skip at College Car Park.
- Sat. 10th Dore Male Voice Choir. Firth Hall.
- Mon-Sat 12th-24th Photographs on Exhibition in Totley Library.
- Tues. 13th All Saints Mens Fellowship. Rev Philip Hacking. 8.00. p.m. Church Hall
- Thurs. 15th Open Door, U.R.C. Totley Brook Rd. 10 a.m. 4th Birthday Celebration.
- Sat. 17th Craft Fair. Totley Townswomen's Guild. All Saints Church Hall.  
10.00 a.m. to 3.00 p.m.
- Sat. 17th Xmas Fayre. St John's Church Hall. 2.00 - 4.00 p.m.  
(uniformed Organisations Parents Association)
- Sat. 17th Dore Male Voice Choir. Royal Albert Hall, London.
- Tues. 20th Townswomens Guild. Methodist Church Hall. 10.00 a.m.
- Tues. 20th Liaison Lunch. All Saints' Church Hall. 12.15 p.m.
- Tues. 20th Copy Date for October Independent.
- Thurs. 22th Open Door, U.R.C. Totley Brook Rd. 10 a.m.  
Health Visitor (Kathy Watson) in attendance.
- Sat. 24th Bradway Scouts Craft Fair. Sir Harold Jackson School. 10a.m.-4.30 p.m.
- Mon-Sat 26th-Dec 8th Paintings on Exhibition in Totley Library.
- Mon. 26th "Mountain Walking in the Alps" Illustrated Talk in Totley Library  
by Tony Marples. 7.45 p.m. (arranged by Residents Association).
- Tues. 27th "These I have loved". All Saints' Church Hall. 7.30 p.m.
- Weds-Sat Nov 28th to Dec 1st. T.O.A.D.S. St John's Church Hall. 7.30 p.m. (see notice)
- Fri. 30th Cheshire Home 50's Night. 7.30. Admission by ticket only.
- Sat. Dec 1st Senior Citizens' Christmas Party. United Reformed Church Hall.  
4.00 p.m Totley Residents Association.
- Sat. 1st Bring and Sing Messiah. St Thomas Church, Meadowhead. 7.00 p.m.
- Tues. 4th Christmas Fayre. Aldam Road Scout Headquarters. 7.00 p.m.

## THE INDEPENDENT FOR DECEMBER/JANUARY.

The NEXT issue of Totley Independent will be available from the usual distribution points on Saturday 1st December. Copy date for this issue will be Tuesday 20th November 1990.

### EDITOR

Maurice Snowden. 1, Quarry Road, - 362822

### DISTRIBUTION AND ADVERTISING

John Perkinson, 2, Main Avenue, - 361601

### EDITORIAL TEAM

Mike Williamson, Colin Wells.

Items for publication may be sent to or left at 1, Quarry Road, 2, Main Avenue, V. Martin's (Abbeydale Road South) or Totley Library..

## JOHN D TURNER CONSTRUCTION

46 LONGFORD ROAD,  
BRADWAY, SHEFFIELD 17.

BUILDING & PROPERTY REPAIRS  
JOINERY  
ELECTRICAL & PLUMBING  
EXTENSIONS & ALTERATIONS

ESTIMATES FREE  
PHONE SHEFFIELD 367594  
EVENINGS

JOHN D. TURNER (CONTRACTING) LTD