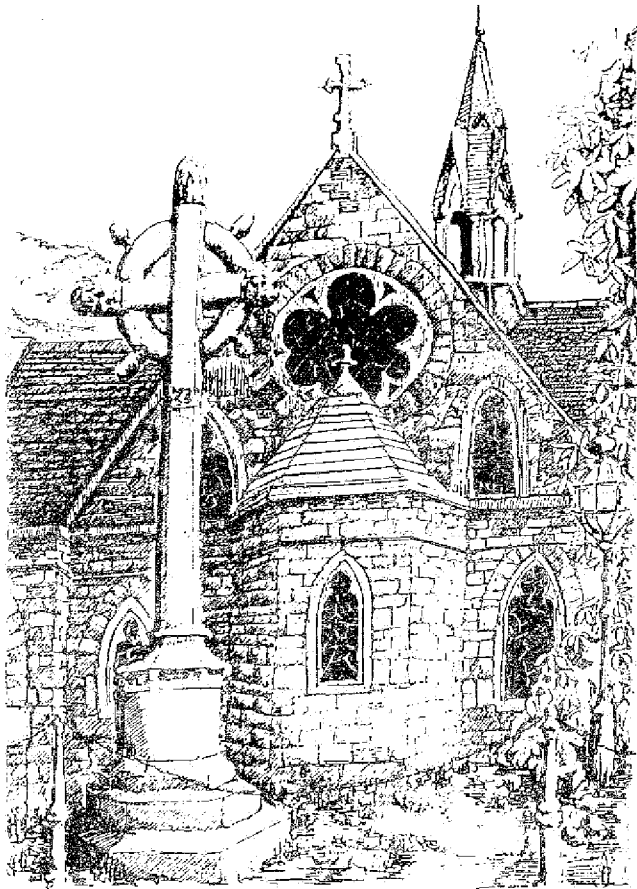


TOTLEY INDEPENDENT

Published by Totley Residents Association No 126 15p

SEPTEMBER 1989



Our artist, Peter Inman, has visited a well-known local building to give us this month's cover drawing. Ah, yes, you say, St John's Church, Abbeydale. Full marks if you got that far but there is a bonus mark if you can recognise what is wrong with the drawing. Have a good look and see if you can spot the error and then see page 9 to see if you have won the bonus mark.

LONDON TRIP OCTOBER 14th.

A day trip to London on Saturday October 14th has been organised by the P.T.A. of Totley All Saint's School. The coach will leave Totley at 7.30 a.m. and return at approx 9 p.m. Once in London you are free to do as you please. The cost is just £5 per seat and there are a few places still available. If you would like to join us tickets can be obtained from: Mrs Barbara Ward, 22 Stocks Green Drive (361743) or any member of the P.T.A. Committee.

Missile Attack on Totley

Many residents of Totley, especially those who live in or near Baslow Road are well aware that missiles are launched on Totley with painful frequency. The missiles in question normally have four wheels but sometimes the two-wheeled variety make up the barrage and add excessive noise to the physical threat of contact with the missiles.

We refer, of course, to the cars which speed up and down Baslow Road. Are they people who slept in and fear that they will be late for work (or play) if they don't hurry or are they just simply speed mad? There may be other "reasons" too but none of them are good enough to excuse this flagrant breaking of the law and the creation of a considerable hazard to life and limb to all those who move more modestly on two or four legs.

We seem relatively powerless to do anything about the problem, especially since most of the offenders are probably not Totley people, but let us agree that this is indeed a serious matter and bring it to the attention of all and sundry who may be able to influence this very unsatisfactory state of affairs.

BUSES TO DORE

From 7th August the M17 service which connects the City with various parts of Totley has been extended to include Dore. The service remains essentially a day-time service but as it passes through Totley in both directions it is still possible to get it to stop anywhere on request. The extension to Dore should be a very welcome modification since it has been under discussion for some time. As previously we can only urge people in Totley to use the service as much as possible to demonstrate that it is indeed a worth-while modification.



Cheshire Home

It is with great regret that we have to announce the death on the 8th August of Percy 'Monty' Scott, who, with his family, was very well known in this area. Monty came to Mickley Hall in February 1987, and has been a much-loved member of our community together with Mrs Scott, who has been a daily visitor. He will be greatly missed by everyone.

Last year at this time we made an appeal for assistance at mealtimes, (Lunchtime 11.45 - 1.00pm, teatime 4.30 - 5.45pm), and we could still do with more helpers in this area. Any mums who have got their children off to school and have a little time to spare midday, or people whose children have gone away might be able to spare a lunchtime or teatime each week. For more information please phone Mrs. Styles at Mickley Hall on 369952 (Office Hours).

Our next fund-raising event will be a "Silent Auction" at 7.30pm at Mickley Hall on Friday 22nd September. Admission £1 including coffee and biscuits. Tickets on sale at the Home. (Items for the auction would also be very welcome).

On Thursday, 28th September, there will be a "Race Night" on our behalf at Bramall Lane Executive Suite - details from the Home later.

TOTLEY SHOW.

This year's Totley Produce Show will again be held at Totley Rise Methodist Church and the date is **SATURDAY SEPTEMBER 9th**. A list of classes was included in the Totley Independent in June but entry forms are now available in both the local Post Offices and also in the Library. Entries should be brought along from 11.00 a.m. on the morning of the show (entry forms can be filled in at the show). Judging will be at 12.30 p.m. and the entries will be available for viewing from 2.00 p.m. Donated items will be auctioned at 3.30 p.m. After the high quality of many of the entries in previous years there should be a good show again this year.

In addition there will be various stalls and displays and a raffle. Refreshments will be available. There will be a Residents Association stall and contributions of bric-a-brac and other saleable items will be very welcome. If in doubt have a word with Margaret Coldwell on 367021.



SCOUT NEWS

215th SHEFFIELD (1st TOTLEY) SCOUTS

The Totley Scout Lottery Draw took place in the Library on 30th June.

A 14" Colour Television was won by No 142 Mrs Hobson of Green Oak Road.

The £10 Coles Voucher was No 181 Mr Crookes of Marstone Crescent.

In July the 1st prize Picnic Hamper was No 126 Mrs Quintrell.

The 2nd prize £10 voucher was No 189 Mrs Holding.

The Scouts need a Minute Secretary for ten monthly meetings per year on a voluntary basis. Contact P.C.Casson 363881 for further details.

FAMILY SPORTS 1989.

Family Sports Day was a great success this year. Our guest personalities, Fred Flintstone and Barney Rubble brought with them the sunshine which is the main ingredient for a good outdoor sports day.

Fell race, Tug of War, Childrens races and the now famous 60 metre Splash were enjoyed by all. Afterwards when all the clearing away was finished the books were balanced. After expenses were paid, St Lukes Hospice received a cheque for £1000 and money has been put aside ready to finance next years "Family Sports Day".

ST LUKES HOSPICE wish to express their thanks to the committee involved and also to all the people who attended and supported Family Sports Day as all donations enable them to continue giving the very special care that is needed.

It was unfortunate that Family Sports Day was spoilt by the loss of a banner which had been specially made and presented by Beach Signs. The sign, which was designed so that the date could be changed each year, was removed from a private fence on Baslow Road. It has no use to any other organisation. It is a great embarrassment to have been most generously presented with this sign and then to have lost it. Should anyone have any knowledge of the whereabouts of this sign or any relevant information please contact the Cricket Inn or Barrie Catton 369217.

FLOWER ARRANGING FOR THE BEGINNER.

A Seminar is to be held at Bradway Scout Centre on Saturday Sept 23rd from 10.a.m. to 4.p.m. The cost is £15. Further details can be obtained from Barbara Wilkinson on 747547.

J. SCRIVEN AND SON
(FRUITERAMA)


JOHN SCRIVEN

**HIGH CLASS FRUIT
& VEGETABLES**

37
BASLOW ROAD

367 116

Orders Delivered



LOOK GOOD FEEL GOOD


Debbie

MOBILE HAIRDRESSER

Telephone: 350751

G. ASHMORE
(Proprietor: Arthur Robinson)

HIGH CLASS FAMILY BUTCHER
TOP CLASS MEAT AT
REASONABLE PRICES
249 BASLOW ROAD
TOTLEY
SHEFFIELD S174DU
Telephone 360634



A warm welcome awaits you at

Cricket Inn

Penny Lane, TOTLEY

Bar Snacks

Ward's Sheffield Best Bitter

.....

Room available for
Private Functions

.....

tel 365256

**RUNNING TIME
VIDEO CLUB**
160 BASLOW ROAD, TOTLEY, SHEFFIELD
Tel: 369821

**FREE MEMBERSHIP
V.H.S.**

T.V., VIDEO and
AUDIO REPAIRS

OPENING HOURS
12.00 to 9.30
six days per week
Sat 10.00 to 9.30

Tel: 580707

Starprint

PRINTERS
601-603
Abbeydale Road
Sheffield S7 1TA

Menus, Brochures, Leaflets, Raffle Tickets,
Multi-Colour Printing, Letterheads, Business
Cards, Invoices, Multi-Part Sets, Booklets,
Wedding Stationery Thermography

For a personal service ask for Mike or Malcolm Senior
to quote for all your printing requirements.

A phone call costs PENCE — it could save you POUNDS

GRANT'S BLINDS & CURTAINS

**FREE
CURTAIN
MAKING**
(except cotton velours)

ON
MADE-TO-MEASURE
CURTAINS



627 Chesterfield Road, Woodseats, Sheffield
Telephone: 589168

TOTLEY PRIVATE HIRE

24 HOUR TAXI AND 8 SEATER MINI COACH SERVICE
LOCAL, LONG DISTANCE, AIRPORTS, FISHING TRIPS ETC.
ESTABLISHED FAMILY BUSINESS

TEL: 361547

John and Sandra
invite you to


THE CROWN

360789

bar snacks available
Monday to Saturday
Lunchtime

PROFESSIONAL HAIRDRESSING
FOR ALL THE FAMILY

Hair Design



86 Baslow Road
Totley
Telephone 363409

AUTHORISED WELLA
SYSTEM PROFESSIONAL
SALON

**Your Local General Store
for Groceries and
Fresh Bread Daily**


AVENUE STORES

(Francis and Mary Hall)

253 BASLOW ROAD, TOTLEY
Telephone: 360583

Orders Delivered

Dore Tree Services



Nick Denniff
361552 / 890961

Walks

Around

Totley

Walk No 7.

Further walks around Totley.

Poynton Wood, Bradway, Dronfield Woodhouse Circular Walk. 6 miles. Allow 3 hours.

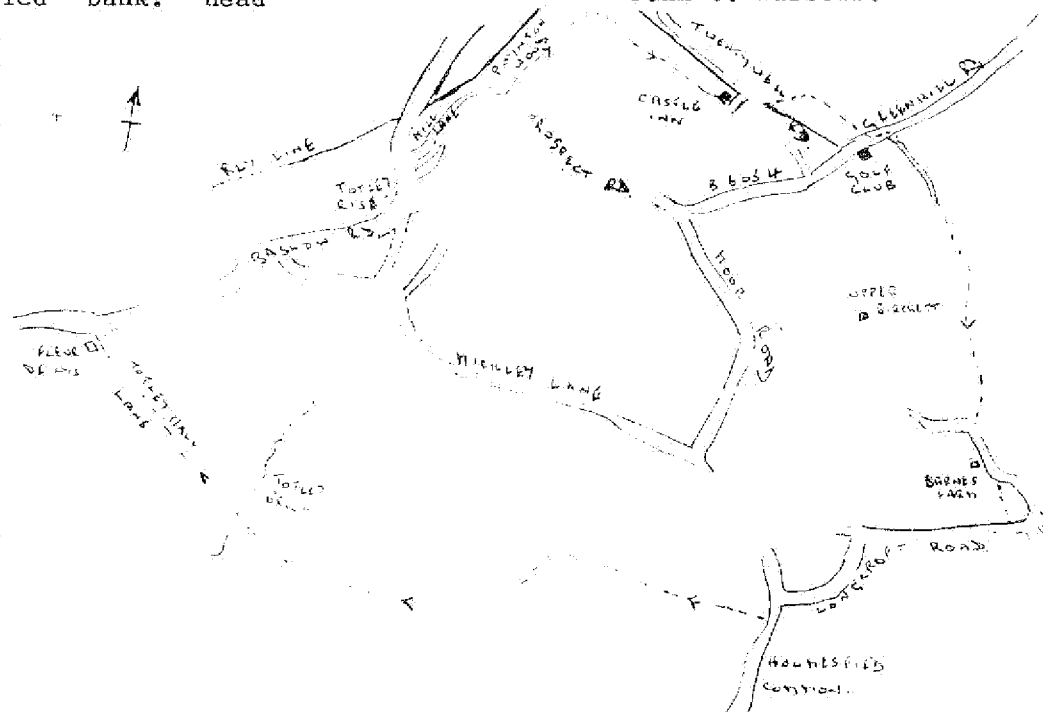
A pleasant walk through delightful woodland and field paths.

Start from Totley Rise, proceed along Mill Lane and path which runs behind Milldale Road where the bubbling streams of Old Hay and Totley Brook join forces to feed the river Sheaf. Cross a footbridge and enter Poynton Woods. Keep to the top level of the tree line path and after nearly 1 mile from the start the clearing opens out to a broad path at the side of the "Castle" Inn. Through the woodland glade you may note debris of house bricks in the undergrowth. Hereabouts the Twentywell Brick Company used to be a thriving industry up to the period of the last war. Also down in the valley, near the railway line were traces of water power and mills for the production of steel right up to the turn of the last century. Cupola furnaces were once an industry in old Totley. Lovely views right across to Ecclesall Woods and Dore hereabouts.

Turn left from the Castle Inn on to Twentywell Lane. Walk to the right for 150 yards towards Bradway. A footpath sign points a fairly steep climb between houses on our left into another woodland glade. After a few yards the path breaks out across a gorse sprinkled bank. Head forward to the crest of the hill. We are soon onto sports fields adjacent to the Dore and Totley (Bradway tunnel railway air shafts). Locate a trig point and enjoy panoramic views. Tarry awhile at this grand spot. Cross the sports fields and the path takes us behind the Bradway Hotel. Cross the busy B6054 (Bradway to Holmesfield Road). Just beyond the Dore and Totley Golf Club House locate a footpath between modern properties which takes us directly onto the golf course.

(This is a public right of way at all times) Keep well over to our right and past another rail tunnel air shaft. Here the path leaves the golf area and markers point the way over several stiles and across fields towards a bridleway to the left of Upper Birchitt Farm. After fording a delightful stream, head forward up the last field to the bridle track to Barnes Farm. Locate a stile at the end of Farm Buildings and a field path takes us into a cutting between houses into Longcroft Road, Dronfield Woodhouse. Turn right along Longcroft Road for 750 yards and head towards the "Hearts of Oak" Inn along the main Holmesfield Road. Just across the highway and slightly to our left a finger post points the way across field areas towards Totley. This path starts at the side of a chapel and takes us forwards through Pearson's Nurseries. The route is well marked. After leaving the garden areas, we crest a bank and descend towards the woodland fringe of Holmesfield Parkwood. Pause awhile to drink in the glorious views from the city around to Houndkirk, Ringinglow and the heights of Totley Moss. Cross a wooden bridge over stream and keep to the edge of the wood. A short stroll and we are on to the lane leading to Woodthorpe Hall (immediately right at the end of the wood). Just before the Hall an iron gate joins a series of field paths to the left. The route is well marked to Shepherd's Hill and well known white bridge over the Totley Brook in Gillfield Wood. Keep straight forward across two field tracks and we rejoin Totley Hall Lane and College. The "Fleur de Lys" looks mighty tempting on this occasion.

John C. Barrows.



FARMING SCENE



Much has happened since my last article in June, so I will begin with a general update of the farming scene.

I suppose the most relevant and surprising feature has been the continuing warm dry weather which has benefited many crops, most livestock and also the land, particularly heavy soils, where the deep cracks have greatly improved soil structure and drainage capabilities.

Soft fruit growers have had their best year since '86, with the dry hot weather keeping moulds at bay, while encouraging people to get out to P.Y.O. units or have fruit and cream for tea. We were open for 7 weeks and sold approx. 16 tonnes of strawberries, raspberries and blackcurrants. The strawberries and blackberries look set to produce a good crop again next year, but the raspberries look very sick due to a soil borne fungus and lack of moisture. However the new plantation is thriving and should give a small crop next year.

The sheep have been enjoying the heat, with the lambs growing much quicker than during the previous 2 years. As a result 75% of our lambs have already been sold, and most of the rest should be ready by the end of this month.

The cereal harvest is now finished, and has been one of the earliest, easiest and cheapest to complete for some time. Although yields have been about average with total national production around 21-22 million Tonnes, the dry sunny weather has increased the protein content of the grain so that for the first time since the 40's we shall as a country be self-sufficient in breadmaking wheat. However, what is good for the Millers is bad news for the Brewers as they require low protein barley for malting, of which there is very little. Consequently prices are rising sharply which will be bad news for beer drinkers.

As those of you who have lawns to cut will know, grass growth has been retarded, consequently much less forage has been conserved for winter feeding, although the quality has been very good. In fact many

farmers, particularly in the south west, are having to feed hay and silage to their stock now to supplement the little grass that is available. Milk production has been directly affected with supplies being insufficient to meet demand. The doorstep pinta has been given priority and maintained, but supplies for manufacturing have been reduced, particularly for cheese production which is well down and this will be reflected in shorter supplies and higher prices later on in the year.

The next objective is to replant all the cereal land with next years crops, this needs to be done by the end of this month/beginning of October if optimum yields are to be obtained. Lets hope September sees a continuation of summer so that we can achieve this quickly in excellent conditions.

Edwin Pocock.

HEALTHY EATING

Kiwi Fruit

A native of New Zealand, this exotic fruit originally called a Chinese Gooseberry, is now grown universally, and as close to home as Guernsey. Best peeled and sliced into a fruit salad. Sweet, juicy and full of vitamins sales have rocketed in recent years.

As a special treat for children, place in an egg cup and eat as you would a hard boiled egg.

Recipe

Fed up with Bacon and Egg for breakfast? Try the following;

Pledge yourself to a Fresher Breakfast with MELON ORANGE AND APPLE SALAD (serves 4)

Ingredients: 4 wedges melon, 2 oranges, peeled and segmented, 1 green desert apple, cored and sliced, 2 tblsp chopped walnuts, juice 1 lemon, 2 tsp honey.

Method: Cut the melon flesh into cubes. Mix the chopped melon with the orange segments, apple4 slices and walnuts. Mix the lemon juice with the honey and stir into the fruits and nuts, and spoon into stemmed glasses.

TRISTAN SWAIN.

GARDEN SERVICES & MAINTENANCE.

51, TAVISTOCK ROAD
SHEFFIELD S7 1GF

TELEPHONE
587466(after 6 p.m.)

GARDENING TIPS

Just like the good old days. Long hot days, lovely flowers and fragrances. I hope you enjoyed it and were not put off by all that watering-can work. I hope you had good neighbours who looked after everything whilst you were on holiday.

The garden still looks good despite the wind and rain. Recently I've had a lovely show with my hanging baskets, they really excelled themselves this year. It's not over yet! Still plenty to do!

- * Give lawns a good rake, spike and feed using an autumn type fertilizer only.
- * Re seed where the lawn has bare patches.
- * Keep seeded areas well watered during any dry spell.
- * Use a lawn weed and moss killer where necessary.
- * Last chance to take cutting of silver leafed plants and tender perennials.
- * Sow hardy primulas in gritty compost shallow pots keep in cold frame.
- * Plant spring flowering bulbs - better looking in groups than scattered about.
- * Keep on dead heading plants in containers - they will keep flowering well into the autumn.
- * As the flowers finish cut back herbaceous plants including border phlox, chrysanth's, dahlias, golden rod, red hot poker, michaelmas daisy etc.
- * End of the month prepare ground for new borders clearing summer bedding and making ready for planting spring bedding.
- * Lift and pot up flowering maple, bedding geraniums, fuchsias, cana etc. and move them indoors.
- * Dead head and shorten the flowering shoots of roses.
- * Towards the end of the month start to plant out container grown conifers and evergreens into permanent beds or into patio tubs and planters.
- * Gradually decrease watering indoor plants and dry off tuberous begonias, cacti, gloxinia, hot water plants and clivias.
- * Feed plants in flower such as African violets, begonia, bush violets and chrysanthemums.
- * Pot up bulbs, crocus, daffodil, freesia, hyacinth etc for flowering from christmas onward.
- * Re-pot arum lilies to flower at Easter.

- * Try to clear your green house when empty. Disinfect before you bring in the tender plants from the frame or garden.
- * Sow further batches of schizanthus and calceolaria to provide plenty of colour right through until spring.
- * Check your greenhouse heater is in full working order.
- * Finish summer pruning of apples and pears early in the month.
- * Mulch top fruit which has finished cropping.
- * Put grease bands on apple trees to trap winter moth.
- * Spray gooseberry and currants against mildew.
- * Pick up windfall apples to prevent diseased fruits setting up an infection like brown rot.
- * Plant out summer fruiting strawberries in beds, barrels or containers where they are to fruit.
- * Complete the cutting out fruited canes of blackberry and loganberry tying in new growths.
- * Finish planting spring cabbages and earth up other winter greens to give them extra support.
- * Cut back sage almost into hard wood to prepare it for winter.
- * Make sure runner beans, courgettes and celery have plenty of water.
- * Thin out turnips.
- * Bend one or two leaves over cauliflower curds for protection.
- * Pull up tomatoes at the end of the month.
- * Lift potatoes, dry off and store in a dark sack in a frost free place.
- * Lift celeriac, cut off the tops and store in sand where it will keep for up to two months.
- * When bulb onions have ripened store on slatted trays indoors (pick 3 of the best for Totley show).
- * Pull beet and carrots.
- * Divide and replant thyme, chives, and clumps of welsh onions.
- * Tidy up and clear away old crops, putting rubbish on the compost heap. Debris left lying around will provide hiding places for pests and diseases.

I hope to see you at the Totley Show, if you are not showing just come along and look at my onions. They will be well worth a visit! I think so anyway!

Cheerio for now
Tom
Busy Bee.

Dear Sir.....

I was given a copy of the Totley Independent for May 1989. The first thing that caught my eye was the drawing of Totley Post Office. I have so many memories of Mr and Mrs Perkinton and the birth of their son John. Totley has more than one memory for me. In 1939, the year the Second World War broke out, I was living in Cannon Hall Cottages, Butts Hill, with my husband and 2 small boys Barry and Trevor and pregnant with my third child. My husband had joined the R.A.A.F. in 1938 as he was certain war was pending. he went to camp in July 1939 but never returned to his work as a butcher at the Co-op as he was called up for permanent duties. My daughter Gloria was born September 8th 1939. She was Totley's first war baby. She is now a nursing sister at St Lukes Nursing Home in Sheffield. I remember so well the day she was born. I had not yet received my Air Force Pension and things were grim. I can recall Mr Perkinton saying "please come and get any food you need from my shop as I shall have your Pension Book eventually." Mr and Mrs Perkinton were truly good christians and I believe they carried on good work for people as the years went by. The thing that has stuck in my mind over the last 30 years is when the midwife came the next day she remarked, "I have been given an envelope by a lady who wished to remain anonymous to give to my first war baby in Totley." When I opened it it contained a white five pound note. God had surely answered my prayers because also that morning my Pension Book arrived. I received £1.12.6 for myself and the two boys.

I am now 71 years old and have lots of memories of Totley. My mother and father-in-law lived at 17 Main Avenue. I will just add my husband returned from the war after 7½ years in the service and we have lived in Sheffield ever since. He is now 73 years old.

Pat Ford.

Coffee and Crafts

Totley All Saints Parent and Toddler Group will be holding a Coffee and Crafts afternoon in the Church Hall on Saturday 30th September, from 2.00 to 4.00 p.m. Cakes, plants, wooden goods, soft toys etc. Come along and have a cup of tea or coffee and buy some Christmas presents early. Admission 20p.

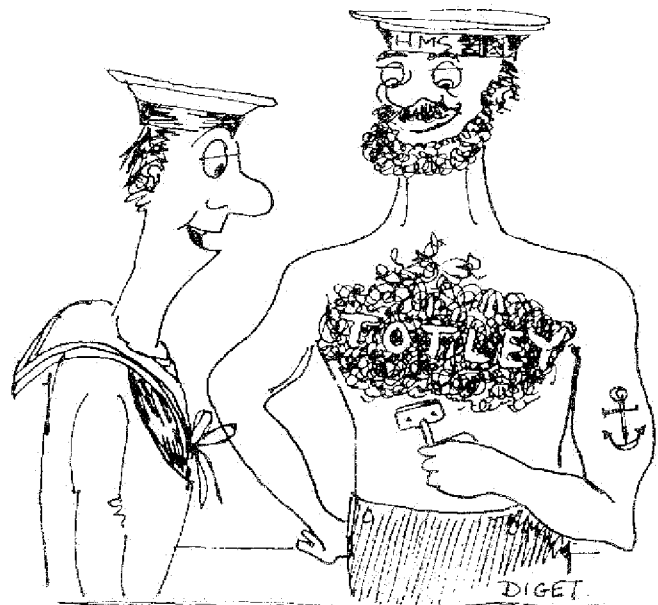
HAYMAKING IN BYGONE YEARS.

The cover picture in the July/August edition of the "Independent" was intended to draw attention to haymaking but one of our readers found that the photograph showed her as a youngster! We apologise to Pat Jepson (nee Shaw) for putting her picture all over Totley but we trust no harm has been done because she has also been able to identify the men in the picture. It was apparently Bill Mather himself on the top of the hay and his brother Sam in the foreground of the picture. The other man at the side of the cart was Frank Thompson, butcher of Totley. Pat believes that the photograph was taken by Mr Hutton who was, at the time, the Vicar of All Saint's Church. Thank you, Pat, for writing about this. Perhaps someone else will add to this little saga?

SPECIAL TRAIN

There are still a few places available on the special train to Llandudno on 16th September. This train will leave Dore shortly after 8 a.m. arriving at the resort at lunchtime. The return journey leaves around 6 p.m. and gets back to Dore about 10 p.m. The fare is £11 for adults and £8 for children. Bookings must be made **NOW** to Mrs E. Davidson, 34 Moorland Road, Hathersage.

Tel: Hope Valley (97) 50744



"It's a good job you don't come from Llanfesteinsogwynelegogogo like me!"

TRIP TO EPWORTH.

The Dore, Totley, Totley Rise and Bradway Christian Council are organising an outing to John Wesley's birthplace, The Old Rectory at Epworth, Lincolnshire on Sunday 15th October. A coach will leave Totley Rise Methodist Church at 1.00 p.m. returning to Totley by approx. 6.00 p.m. The aim of the outing is to encourage fellowship between the members of the different churches and to visit this lovely and interesting old house which is now a museum owned by the World Methodist Council. Booking forms are available at all the churches or contact Rev. Stewart Rayner at All Saint's Vicarage.

AGE CONCERN.

Age Concern is planning to rebuild the premises in Division Street so that the range of facilities can be extended. Sheffield has the highest proportion of people of retirement age in the country and of course Totley itself has many senior citizens. The coffee morning in Totley Rise Methodist Church Hall on Sept. 23rd (10.30-12noon) is aimed to help Age Concern to develop and extend its facilities and is well worth supporting.

LOOKING FOR A JOINER?

DOOR AND WINDOW REPAIRS,
THOSE EXTRA SHELVES OR
CUPBOARDS NEEDED
NO JOB TOO SMALL - ANY TYPE
PHONE:- BRIAN - SHEFF. 890921

WORD PROCESSOR AT TOTLEY LIBRARY.

Totley Library now has a word processor which is available for public use. It is an Amstrad PCW 8256 with a single disc drive. It can be used for any work which can be done on a typewriter, e.g. writing letters, articles, C.V.s etc.

If you would like to use it, it would be advisable for you to ring the library in advance, to check that there will be someone available to show you how to use it. As we are still learning ourselves we can only give basic instruction in its use.

For further information ring Totley Library - 363067.

HERBALIFE

You could lose excess lbs with **THE effective weight loss programme**
MONEY BACK IF NOT DELIGHTED

Phone Gillian
on (0742) 363992
Your Herbalife Distributor

P.A. HIGGINS Builder

All Building Work Undertaken
Inc. Extensions, Porches,
Garages, Garden Walls,
Conservatories,
Fire Places &
Barbecues
A Speciality

90 Greenoak Road,
Totley,
Sheffield S17 4FR.
Tel: (0742) 364866

R.S. Heating & Building Co.

Regd. Office: 62 MACHON BANK,
SHEFFIELD S7 1GP

HEATING DIVISION

Experienced, Qualified Installers of all types of
Central Heating.
5 Year Guarantee on all New Gas Systems.
Complete After Sales Service.

BUILDING DIVISION

Specialist in Wall Tie Replacement and Black Ash
Mortar Removal.
All work to B.E.C. Standards and carries their full Guarantee
RING SHEFFIELD 500122

We have put the flags out especially for YOU
Come and talk to US and let us save or make YOU money.
Thinking of selling or buying a property?
Talk to US before making your offer.
Had an Accident? Let US try and get YOU compensation.
Got matrimonial or other problems? We can help.
Made your Will? Do not delay, phone us NOW.
YOUR SOLICITOR IS YOUR VITAL LINK-TALK TO US FIRST.

CHESTER & SIMMERSON,
222, LONDON ROAD,
SHEFFIELD. S2 4LW.
TELEPHONE 580731



Victim Support Sheffield

We are a registered charity
which helps victims of crime.

NEW VOLUNTEERS ARE NEEDED

to visit victims in their homes
offering support and advice.

We specially need volunteers to work in
areas 1,2,3,4,5,6,9,12 and 13.

Our next Preparation Course will be held
on September 30 and October 7 1989.

10.00 a.m. to 4.00 p.m.

with a follow-up morning on

November 18 1989 10.00 a.m. to 12.30 p.m.

If you are a warm, caring person and
have at least an hour a week to spare,
please contact us for more information on
Tel. 758411 or call at 69 Division Street.

ABBEYDALE HALL

Abbeydale Hall Community Education Centre
is proposing to offer a wide range of
Adult and Community Education courses
starting in September, 1989. These will
include modern languages, arts, crafts,
music and writing workshops.

Other proposed interest areas will include
subjects varying from English literature,
bird watching and music appreciation to
discussion groups on philosophy and the
civilisations of Greece and Crete together
with a look at the immediate post war
period of history, cathedrals of England
and geology.

Proposed active participation courses will
include yoga, sequence dancing, keep fit
and ballet and tap for all ages.

Enrolment dates are Wednesday 13 September
and Thursday 14th September depending upon
individual courses. Full details are
contained in the centre brochures which
will be available from late August -
please look out for them.

Telephone information can be obtained from
early September on 368931 (Abbeydale Hall)
or 372741 (Norton Campus).

MUSICAL EVENING.

The "Linden Ensemble" conducted by Bert
Lowe will be presenting a musical evening
in All Saint's Church Hall on Thursday
28th September at 7.30 p.m. Admission £1
including coffee and biscuits.

MARCH FOR JESUS

On Saturday 16th September members of all
the local churches will be taking part in
a major national event. Probably 10,000
people in Sheffield alone will be walking
through the Wicker into the centre of the
City as a demonstration of the growth of
the Church and as an act of witness to the
Christian Faith. This will be simultaneous
with similar marches in 44 other towns and
cities up and down the country.

Whether you will be marching, watching or
just staying at home on that day, you
should know that, exciting though this is,
it is just a prelude to a decade in which
the churches of all denominations are
seeking to demonstrate their faith to all.

FORMER TOTLEY VICAR.

The Rev David Hallatt will be remembered
as the Vicar of Totley from 1967 to 1975.
He is currently the Rector of St. James's
and Emmanuel, Didsbury in Manchester but
it has recently been announced that he is
to become Archdeacon of Halifax. He and his
wife, Margaret were in Totley not so long
ago for the funeral of Connie Stansfield.
Without doubt he will be moving to the
Wakefield Diocese with the best wishes of
their many friends in this area.

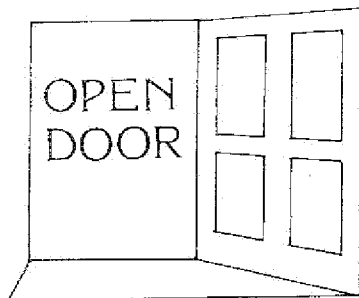
HARVEST 1989.

Dore and Totley U.R.C., Totley Brook Road
is celebrating its Harvest Festival this
year with a Coffee Morning from 10.00 a.m.
to 12 noon on Sept 23rd to give people the
opportunity to also look round the Church
before or after coffee and enjoy seeing
the decorated sanctuary on the theme "All
Things Bright and Beautiful"
Services on Sunday Sept 24th will be at
10.30 a.m. conducted by Mrs Mary
Jefferson; and at 6.30 p.m. by Rev Mark
Bryan from Atlanta, Georgia and presently
studying at the University.

ST. JOHN'S CHURCH, ABBEYDALE.

The deliberate mistake on the cover
picture was to include the tower from the
nearby Church Rooms on top of the church.
Perhaps it is actually an improvement
because the present structure on top of
the church is certainly not very
beautiful. The ability to carry out this
type of alteration is one of the
advantages of being an artist instead of a
photographer!

Please call in at



for a 'cuppa', a chat
and help if you need
every Thurs. 10-noon
Church Hall, Totley
Brook Road.

**THE OLD MOTHER
REDCAP**
PROSPECT ROAD, BRADWAY

*Samuel Smiths
Traditional Ales*

BAR MEALS
NOW AVAILABLE

PHONE : 360179

Hosts : Alan & Sue

TOTLEY HALL FARM PRODUCE.
TOTLEY HALL LANE.

HOME PRODUCED MEAT

$\frac{1}{2}$ or whole pig or lamb cut and
packed ready for freezer.

FARM FRESH EGGS.

60p -1.05p per doz from straw
-bedded hens.

HAY. £1.50 per bale.

STRAW. 75p per bale.

NEW POTATOES.

RED or WHITE now available in
10lb or 55lb bags

Open Mon-Sat 8 a.m.-8 p.m.

or ring JEN or EDWIN on 364761 for
fuller details or delivery.

SHEPLEY
SPITFIRE

MICKLEY LANE TOTLEY

HARDY & HANSONS
KIMBERLEY ALES

Hot & Cold Snacks
Mon - Sat

HOSTS

Albert & Norma Young

**CARE
FOR THE
DISABLED**
**THE SHEFFIELD
CHESHIRE HOME**

Long or short term care
for physically disabled
people, single rooms,
lively activity centre,
physiotherapy, chiropody,
hairdressing etc.

MICKLEY LANE, SHEFFIELD 17
Telephone : 369952 / 3

BUZZ ALONG TO
BUSY BEE
DIY SUPPLIES

170 BASLOW ROAD TOTLEY SHEFFIELD S17 4DR
Telephone 365798

TIMBER, PLYWOOD, HARDBOARD,
SCREWS, LAMINATES, NAILS, HINGES,
CONTI-BOARD in fact for most of your D.I.Y. requirements

"CURLY Q"
162 BASLOW ROAD

TOTLEY.

OFFERS PROFESSIONAL HAIR
CARE BY HIGHLY QUALIFIED
STYLISTS.

Relax and acquire an all year
round Mediterranean tan in our
new "Sun-Room" using a Solar-
mobile sun bed.

Tel. **350362**

FOR SIX GENERATIONS

THE LEADING FUNERAL DIRECTORS

John Fleath & Sons

PROMPT and COMPREHENSIVE SERVICE
AT ALL TIMES

☎ 722222

LIMOUSINES FOR SPECIAL OCCASIONS

E & L WILSON

BUILDERS & PLUMBERS

House Maintenance

Gleazing - Glass



Please Ring **ERIC**
368343

CAR

FORECOURT

PERSONAL

Service Service Service

At your local
TOTLEY GARAGE

- ┐ Any make or model servicing and repair
- ┐ MOT testing while you wait with free retest
- ┐ Diagnostic engine tuning
- ┐ Accessory fitting (eg. Alarm Systems, Sunroofs, Towbars, Car Phones etc.)
- ┐ Conversion to unleaded petrol

- ┐ Petrol at competitive prices - Lead Free now available
- ┐ Forecourt Shop - Milk, Cigarettes, Barbeque Supplies
- ┐ We're full from floor to ceiling.
- ┐ FREE AIR!
- ┐ Opening Hours
7.30 - 10.00 Mon to Sat
9.00 - 10.00 Sun

- ┐ Free loan car (by appointment)
- ┐ Free collection/delivery service - (Dore, Bradway, Dronfield, Greenhill)
- ┐ Businessman's Service Package (Loan car, Free wash, Collection & Delivery)
- ┐ For friendly personal service and professional advice please contact John Green our service manager

We're just too good to drive past!



MARSTONE GARAGE

Baslow Road, Totley, Sheffield

TEL: (0742) 351415



The company
which specialises
in happy customers

NEW DAIHATSU

QUALITY USED CARS

PEGGY CLARE.

Our sympathy is extended to Don Clare, Vice-chairman of the Totley Residents Association on the death of his wife Peggy who was well known in the area as a teacher. She first taught in Darnall in 1940 and came to Totley with Don in the early fifties, first in Glover Road and later in The Grove. Having taught in both schools in Totley she will be remembered by a large number of people still in the area and also by former pupils now scattered far and wide. She had not enjoyed good health in the last few years and therefore found great pleasure at home and in the garden where she was specially gifted.

Some readers will also remember that Peggy's mother (Mrs Griffiths) kept a wet fish shop at Totley Rise in the premises next to the National Westminster Bank.

ELSIE WILLIAMS.

We are very sorry to have to record the passing of another old Totleyite. Mrs Williams was born here and lived in Totley for all her 85 years. She will be remembered with affection by many residents of Totley and our sympathy is extended to her daughter Dorothy Simons and son-in-law Eric.

MONTY SCOTT.

As reported in the Cheshire Home news Monty Scott died recently and many people who have lived in Totley over the years will be saddened by his passing. He came to Totley with his wife and young son during the war and worked as a barber in the shop then owned by Mr Marcroft which is now "Busy Bee". Within a short time Mr Marcroft died and Monty bought the shop and continued to live on the premises until he retired in 1973. Since then he and his wife lived in Baslow Road until Monty's illness and disability meant that full time care was necessary.

A quiet man who was well loved by all who new him, Monty shared his Sheffield background with his wife throughout 63 years of married life. Since his admission to the Cheshire Home kind friends and neighbours have offered transport to make it possible for Mrs Scott to visit him every day and she has asked the "Independent" to thank everyone concerned for their help. She is also very grateful for the care and attention which the staff at the Cheshire Home gave to Monty in the last months of his life.

Monty is survived by his wife and a daughter who lives in Australia.

SEPTEMBER DIARY

Fri. Sept 8th "France and its food and wine" Miss Poiraud. Ladies Evening Guild. Abbeydale Hall 7.30.p.m.

Sat. 9th Scouts Paper Collection. Skip at College Car Park.

Sat. 9th TOTLEY PRODUCE SHOW.

Mon-Sat 11th-30th Totley Library. Exhibition of watercolour paintings by Mr Keith Tingle.

Tues. Sept 12th Liaison Lunch. All Saint's Church Hall. 12.15. p.m.

Weds & Thurs 13th-14th Enrolment dates at Abbeydale Hall.

Sat. Sept 16th Rail Trip to Llandudno.

Sat. 16th March for Jesus. (see details)

Tues 19th Townswomens Guild. Methodist Church Hall 10.00 a.m.

Weds. 20th Copy date for October "Independent".

Fri. 22nd Silent Auction. Mickley Hall Cheshire Home. 7.30. p.m.

Sat. 23rd Coffee Morning, Bring and Buy, Cake Stall for Age Concern. Totley Rise Methodist Church Hall 10.30 - 12.

Sun. 24th Whirlow Farm Fayre. 10.00 a.m. to 5.00 p.m.

Thurs 28th Musical Evening by "Linden Ensemble". All Saints Church Hall. 7.30.p.m.

Sat 30th Coffee and Crafts. All Saints Parent and Toddler Group. All Saints Church Hall. 2.00 - 4.00 p.m.

Mon-Sat Oct 2nd-14th Totley Library. Painting Exhibition - oils, pastels and gouache (watercolour) by Valerie Blake.

CHILDREN'S SCOTTISH COUNTRY DANCING.

Totley schoolchildren who would like to learn Scottish Country Dancing might be interested in a new children's class starting on Thursday 7th September at 4.45 p.m in Greenhill Infant School Hall. For further details please contact Mrs J. Porteous, Tel 366674.

WHIRLOW FARM FAYRE.

After a year without such an event the Whirlow Hall Farm Trust are again staging a FAYRE on Sunday 24th September. Open from 10.00 a.m. to 5.00 p.m. this is sure to offer a good trip out for all members of the family. For details see local posters.

THE INDEPENDENT FOR OCTOBER.

The NEXT issue of Totley Independent will be available from the usual distribution points on Monday 2nd October. Copy date for this issue will be Wednesday 20th September.

EDITOR

Maurice Snowden. 1, Quarry Road, - 362822

DISTRIBUTION AND ADVERTISING

John Perkinson, 2, Main Avenue, - 361601

EDITORIAL TEAM

Chris Woodhead, Mike Williamson, Clare White, Colin Wells, Bill Carter-Wigg.

Items for publication may be sent to or left at 1, Quarry Road, 2, Main Avenue, V. Martin's (Abbeydale Road South) or Totley Library..

JOHN D TURNER CONSTRUCTION

46 LONGFORD ROAD,
BRADWAY, SHEFFIELD 17.

BUILDING & PROPERTY REPAIRS
JOINERY
ELECTRICAL & PLUMBING
EXTENSIONS & ALTERATIONS

ESTIMATES FREE
PHONE SHEFFIELD 367594
EVENINGS

JOHN D. TURNER (CONTRACTING) LTD