

# TOTLEY INDEPENDENT

Published by Totley Residents Association No 115

15 p

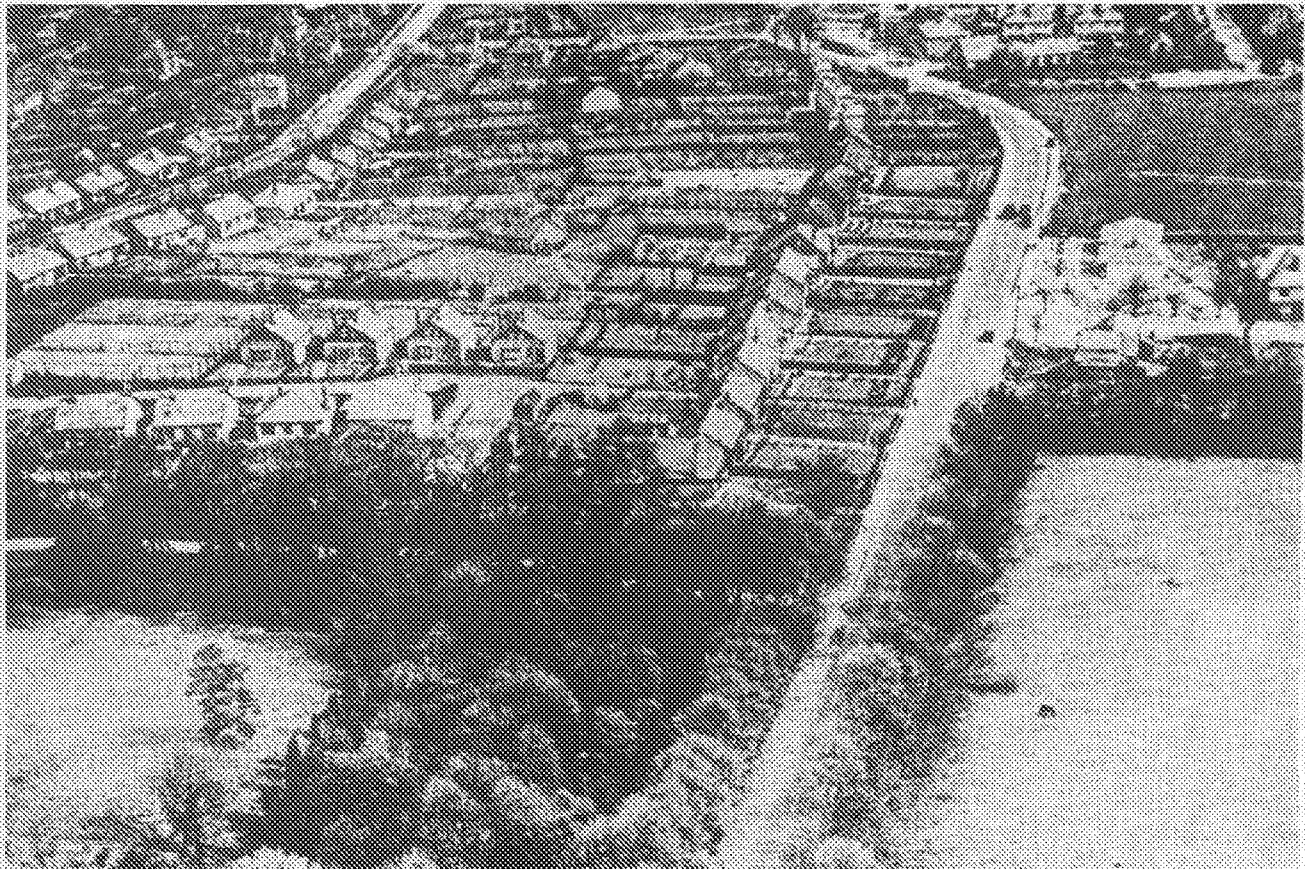
JULY/AUGUST 1988

## WEATHER <sup>SP</sup> FLASH

Totley residents driving home from the City Centre may frequently have noticed how much heavier the rain seems to get (and how much deeper the snow!), and local readings over recent months in a Totley garden confirm this impression. In the 6 month period from October 1987 to March 1988 half as much rain again was recorded in Totley compared with the officially recorded amounts at Weston Park Meteorological Station (692mm compared with 463mm).

And yes, it was a wet start to the year, the first 3 months in Totley showing 431mm of rain (17 inches for those who are not metrically minded) - nearly twice as much as normal. But this news is encouraging, because the rest of the year should be much drier than normal if averages are anything like accurate. Holiday in Totley anyone?!

V.F.



A New View of Totley

Well, actually, it is an old view as you can see because there are now a lot more houses on Baslow Road and trees were growing where now is the

Totley Grange area. So when was the photograph taken? We think it was around 1930 but are not quite sure. If anyone can tell us we shall be very interested.



215th SHEFFIELD (1st TOTLEY)  
SCOUTS

#### Lottery Winners

April - 1st Ricoh 35mm Camera  
No 226 Mrs D. Vitty

2nd £10 Coles Voucher  
No 202 Mrs S Hughes

May 1st Ferguson Remote Control  
Video

No 202 - Mrs S Hughes

2nd £10 Coles Voucher  
No 122 - H Kelham

The draws are usually made at  
Totley Library and are always  
independently witnessed.

#### Paper Collections

Skips will be in the College car park  
on the second Saturday in each month  
from 9am to 12 noon. There will be  
an normal street collection on 9th  
July but please note owing to many  
helpers being on holiday there will  
NOT be a full street collection on  
13th August. However, please help  
us, if possible by taking your papers  
to the skip in August.

#### Change of Personnel

Please note the following phone  
numbers:-

Paper Collection - Dorling 363220  
Went 366186

Booking Secretary for use of Scout  
building - Marilyn Stokes 351669

P.S. Don't forget August paper  
collections. No street collection  
can be guaranteed but there will be  
a skip in the car park as usual.  
Normal service will be resumed on  
10th Septemebr.

Many thanks for your kind support in  
thepast - please keep up the good  
work.

KING ECGBERT



## SCHOOL

Many parents or old students at  
King Egberts will be familiar with  
King's Croft which has been used as  
a Sixth Form Centre since the early  
seventies. It may be no surprise  
that with falling numbers and tight-  
ening budgets new arrangements are  
now to be made for the Sixth Form to  
be more closely integrated with the  
rest of the school in the two main  
buildings, Wessex and Mercia.

Numbers are around 850 in the school  
(including 111 in the sixth form)  
whereas at peak in the seventies the  
roll numbered 1500. The present  
number however is near the bottom  
of the trough and the forecast is  
that numbers will rise again in the  
1990's.

There is also to be a new head of  
Sixth Form as Ted Croot is taking  
early retirement. Ann Ferdinand is  
taking over and will implement the  
changes to the Sixth Form accom-  
modation which will take place in  
September.

Our challenge in the February  
"Totley Independent" produced  
this response:- (answers on  
page 7).

Five consonants in a row?

If you think it --RTHWH--(1)  
trying, you don't need to use  
--TCHCR--(2) or be an (clue  
there!) -RCHDR--(3) in a  
--GHTSH--(4) to guess at  
---CKSPR---(5).

If you're not too fussy about  
hyphens you could have a  
--TCHFL- (6) in your garden,  
but hopefully not an(!)  
--RTHCL----(7).

How about six? If --TCHSTR---  
(8) is a little antique, there's  
one of these at Abbeydale Park, if  
not in Totley:- --GHTSCR--- (9).

Pseudotrinos

J. SCRIVEN AND SON  
(FRUITERAMA)

**JOHN SCRIVEN**

HIGH CLASS FRUIT  
& VEGETABLES

37  
BASLOW ROAD

367 116

Orders Delivered

LOOK GOOD

FEEL GOOD

*Debbie*

MOBILE HAIRDRESSER

Telephone: 350751

**G. ASHMORE**

HIGH-CLASS FAMILY BUTCHER

TOP CLASS MEAT AT  
REASONABLE PRICES

249 BASLOW ROAD  
TOTLEY  
SHEFFIELD, S17 4DU  
Telephone 361124



**THE OLD MOTHER  
REDCAP**  
PROSPECT ROAD, BRADWAY

(Under new Management)

*Samuel Smiths  
Traditional Ales*

BAR MEALS  
NOW AVAILABLE

**PHONE : 360179**  
*Hosts : Alan & Sue*

RUNNING TIME  
VIDEO CLUB

160 BASLOW ROAD, TOTLEY, SHEFFIELD  
Tel: 369821

**FREE MEMBERSHIP**  
**VHS**  
**t.v.video and**  
**audio repairs**

**OPENING HOURS**  
12.00 to 9.30  
six days per week  
sat 10.00 to 9.30

Tel: 580707

**Starprint**  
INSTANT PRINTERS  
601-603  
Abbeydale Road  
Sheffield S7 1TA

Menus, Brochures, Leaflets, Raffle Tickets,  
Multi-Colour Printing, Letterheads, Business  
Cards, Invoices, Multi-Part Sets, Booklets,  
Wedding Stationery Thermography

For a personal service ask for Mike or Malcolm Senior  
to quote for all your printing requirements.

A phone call costs PENCE — it could save you POUNDS

**GRANT'S BLINDS &  
CURTAINS**

**FREE  
CURTAIN  
MAKING**

(Except cotton valances)

**ON  
MADE-TO-MEASURE  
CURTAINS**

627 Chesterfield Road, Womblesley, Sheffield  
Telephone: 589168

**TOTLEY  
PRIVATE HIRE**

24 HOUR TAXI AND 8 SEATER MIN. COACH SERVICE  
LOCAL, LONG DISTANCE, AIRPORTS, FISHING TRIPS ETC.

ESTABLISHED FAMILY BUSINESS

**TEL: 361547**

John and Sandra  
invite you to

**THE  
CROWN**

360789

bar snacks available  
Monday to Saturday  
Lunchtime

PROFESSIONAL HAIRDRESSING  
FOR ALL THE FAMILY

**Hair Design**



86 Baslow Road  
Totley  
Telephone 363409

AUTHORISED WELLA  
SYSTEM PROFESSIONAL  
SALON

For all your Groceries, Beers  
Wines, Spirits & Glass Hire  
Come to

**R. N. KELLY**  
Grocer & Free Off Licence  
158 BASLOW ROAD  
Tel. 360187

A warm welcome and friendly service  
always assured  
**ORDERS DELIVERED**

**Dore Tree Services**

FREE SURVEY  
AND QUOTES

Natural Stone work - Fencing

Telephone: Nick Denuiff  
361552 / 890961

# POETS

## CORNER

### Memo to Parents from Son

Dear Mum and Dad, you are not really too bad,  
But some of your ways just drive me mad.  
When you tidy my bedroom I can't find a thing,  
And when you take a bath must you always sing?

My football gear is never ready on time,  
Minutes before matches it's out on the line!  
Tom Jones is so boring, he's had his day,  
And Crystal Gayle, who's she anyway?

My tea's always late when I'm going out early,  
Any if I grumble you say I'm surly.  
I like to eat burgers but you give me health foods,  
And say "Too many additives cause your bad moods".

Why is it when I want to borrow the car  
And I ask if you're needing it, you always are?  
Why shouldn't hair gel, and socks and stuff  
Come out of my board, I pay enough!

You overhear when I'm on the phone,  
Then jump to conclusions and start to moan.  
They say age brings wisdom, I don't think that's true,  
But I must say I've learnt quite a lot from you two.

You listen to problems when I've had a hard day,  
And now and again you let me have my say,  
I don't think you're bad when all's said and done,  
And I hope you'll agree I'm not such a bad son!

Sue Wright

### WHERE TO BUY YOUR T.I.

You can now buy your Totley Independent at:-  
Totley Library  
Totley Post Office  
Totley Rise Post Office  
Avenue Stores  
Whidbornes - Main Ave  
Anne's - Baslow Road  
R.N. Kelly's  
John Scriven (Fruiterama)  
V. Martin  
United News Shop (Totley Rise)

Shepley Spitfire  
Cricket Inn  
Payne's (Bradway)  
Green's (Dore)

A warm welcome awaits you at

## Cricket Inn

Barry Lane, TOTLEY

Bar Snacks

Ward's Sheffield Best Bitter

.....

Room available for

Private Functions

.....

tel 365256

## R.S. HEATING CO.

Regd. Office: 62 MACHON BANK,  
SHEFFIELD S7 1GP

A Complete Heating Service  
Experienced and Imaginative Design at  
Competitive Prices

Minimum upheaval by skilled Heating Engineers  
Experts in zoned heating

5 year guarantee on all new gas systems  
Complete after sales care by 'Radio Controlled' Service  
Engineers

RING SHEFFIELD 500122



REGISTERED  
CORR  
GAS INSTALLER



CALOR



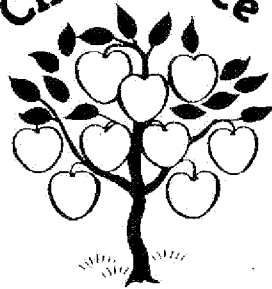
## T O P S .

### VACANCIES NOW

Every Wednesday afternoon -  
2-4pm at the Heatherfield  
Conservative Club, Baslow Road.  
Come and enjoy the company -  
Tea and biscuits - 15p.  
Bingo and cards and singalong  
etc. Coach trips and holidays  
organised in the summer.

Transport 17 can be made  
available.

More information from -  
Chairman/Secretary -  
Sid Otter  
37 Longford Drive  
Bradway  
Tel. 364690.



At the beginning of 1987 we were converting Taylor House into a Hostel for young people. We did this because Cherrytree's traditional roll since the last war - that of looking after children of all sorts in need of care - was in less demand. Fostering and adoption and a host of other factors meant that fewer and fewer children required the sort of care that Cherrytree could provide. Nevertheless, at the beginning of 1987 we still had eleven youngsters in the Carter House being cared for by Janet Timperley and her staff in the traditional Cherrytree manner. By the end of 1987 however, all but two of these youngsters had moved on and there had been no further intake referred to us by the Family and Community Services Department. The beginning of 1987 saw Taylor House, next door, converted into a Hostel with Warden accommodation and it immediately became apparent that we had indeed tapped into an area of urgent need. The first youngsters were admitted on the 26th January and we quickly reached a full complement. There has been an average of 7/8 youngsters accommodated during the year. Further, it appears that we are not yet satisfying demand. We have come to the conclusion, therefore, that Carter House should now also become a Hostel run separately from Taylor House and with an independent Warden. In keeping the Units small and separate we believe that we shall keep the independent family atmosphere in each house. Plans are therefore now afoot, and indeed well advanced, for the creation of a further Warden's flat in Carter House. Happily, the house once again lends itself to adaptation in this way. Before 1988 is out we intend to have appointed another Warden and be in a position to accommodate further homeless youngsters.

and changes in the sources of income are constantly with us. Our buildings are badly in need of attention outside and 1988 looks like being an expensive year for this reason. Mr Earp, reliable as ever, once again provided a Christmas Tree and lights. The Variety Club of Great Britain invited our youngsters to an Ice Show and to see Sheffield United play Barnsley. It is the thought that counts. By comparison, I notice that in the Chairman's Report for 1921, Mr Wilson gave twenty rabbits and Mrs Bedford gave three bags of sweets.

Cherrytree has altered course a little but is still serving the needs of young people in the local community and I hope you agree with me that those needs are worth serving.

DEREK GRAYSON  
CHAIRMAN OF TRUSTEES

## coffee....

Totley All Saints Parent and Toddler Group are holding a Coffee and Crafts afternoon in the Church Hall on Saturday 9th July, from 2.00pm to 4.00pm.

Cake Stall, Plants, Books and various craft stalls.

Admission 30p., including refreshments

## ..more coffee!

The Totley Good Companions Club are holding their Annual Coffee Morning and sale at Abbeydale Hall, on Thursday July 21st from 10.00am to 12 noon.

There will be various stalls - cakes, white elephant, books, plants and nearly new etc. A very warm welcome awaits everyone. Come along and share coffee and companionship.

### FOR SALE

PAASCHE F#1 AIRBRUSH SET WITH EXTRAS AND HARD BACK "CREATIVE AIRBRUSHING." TOTAL COST OVER £50. ALL IN ABSOLUTELY MINT CONDITION £20 - PH367850.  
(after 7th July)

# GARDENING TIPS

On average July is the warmest month of the year (lets hope so) so watch the weather, if there is a wet period watch out for fungus diseases and catch them early.

## Jobs for July

Make sowings of veg. and salads for picking through late summer and autumn.

- \* Prune summer flowering shrubs
- \* Summer prune fruit trees and shrubs
- \* Propagate border carnations, pinks and iris.
- \* Water container plants thoroughly, watch they don't dry out.
- \* Lift, clean and store bulbs and corms.
- \* Stake and tie perennials
- \* Prepare new beds and borders
- \* Disbud begonias
- \* Prick out bi-ennials
- \* Stop outdoor tomatoes
- \* Thin dahlias
- \* Earth up brussel sprouts
- \* Gather herbs for drying

## AUGUST

- \* Take off dead heads of flowers to encourage new growth
- \* Sow indoor potplants, Cinerraria, Cyclamen etc.
- \* Take tip cuttings of Geranium, Fuschias, Pelargoniums
- \* Mulch sweetpeas and liquid feed them
- \* Protect Chrysanthemums and Dahlias from earwigs
- \* Make sure you are giving your plants plenty of feed
- \* Prune shrubs which have finished flowering
- \* Cut back established Wisteria, taking out tips of young shoots at 3 or 4 leaves.

- \* Cease watering onions as they start to yellow and bend over the leaves.

NOTE THE ONE YOU ARE GOING TO SET ASIDE FOR THE SHOW IN SEPTEMBER.

- \* Keep feeding those runner beans, pick beans regularly to make sure you get a good yield, except the ONES YOU ARE BRINGING FOR THE LONGEST BEAN COMPETITION.
- \* If you have more lettuce than you can cope with pull up the heads by the roots and stand in a bowl of water and cover, they will keep about 2 weeks.
- \* Prune gooseberries and redcurrants and white currants at the end of the month
- \* Prune blackcurrant bushes as soon as possible after picking
- \* Make final preparation for any areas you want to sow as lawn, seed towards the end of the month.

I hope you all have a pleasant holiday. If you are going away don't forget to make arrangements for watering and ventilating during your absence.

Tom  
Busy Bee.

## SPECIAL TRAIN

Does anyone fancy a trip to Whitby in September? The Hope Valley Rail Users Group has hired a train to run from Edale to Whitby on 17th September, and it will call at Dore Station on the way. We do not yet have precise timings, but it will depart about breakfast time and be back by the middle of the evening, giving about four or five hours at the resort. The cost is £12.00 for adults and £9.00 for accompanied children. Further details from me, but bookings from Mrs E Davidson, on Hope Valley (97) 50744.

Hugh Porteous 115 Woolaton Road  
Bradway Tel 366674



# round up...

There is growing pressure for a cash dispenser somewhere in the Totley area. With banks closed on Saturdays, higher bus fares and the availability of technology, there seems to be a strong case but so far we have not heard of any one willing to instal a machine. Can we not persuade someone, somewhere?...

We hear that there is a request around for a "lollipop lady" (why not a lollipop man?) near the Baslow Road, Hillfoot Road junction for the benefit of all Saints school children. It sounds like a good idea and lets hope we don't have to have a nasty accident to persuade someone to make it happen.

Some local residents indulged in a wry smile when they saw a house in Oldwell Close being advertised for sale with a seventeenth century well. They remember the well when it was situated in Totley Hall Lane, just opposite to Toft House! It's a good job that we don't depend on local wells for water supply in Totley these days!

Another feature in the Totley Hall Lane area has caused an eyebrow to lift. A very ordinary twentieth century door has appeared on the School House. This is council property in a conservation area where high standards have been required of other property owner's nearby. Perhaps the door is only temporary?

Five in a row - see page 2

- 1 WORTHWHILE
- 2 WITCHCRAFT
- 3 ARCHDRUID
- 4 NIGHTSHIRT
- 5 CLOCKSPRING
- 6 CATCHFLY
- 7 EARTHCLOSET
- 8 LATCHSTRING or WATCHSTRAP
- 9 SIGHTSCREEN

## RETIREMENT

Local butcher Mr G Ashmore is retiring after many years in the trade. Mr Ashmore and his wife came to Totley about 15 years ago after being in business at Grimesthorpe Road, Pitsmoor when premises there came under compulsory purchase order.

Totley Independent would like to wish them luck and many more years of happiness in their retirement.

Taking over the business is Mr Arthur Robinson who has worked for the Ashmores both at Pitsmoor and at Totley more or less from leaving school. We wish him luck in his venture.

## ABBEYDALE HALL COMMUNITY EDUCATION CENTRE

OPEN DAY: Tuesday, 12 July, 10.30 am - 3.00 pm and 7.30 - 9.00pm.

Abbeydale Hall is set in extensive grounds used for field studies by school children city wide.

This Autumn offers a wide range of Community Education for adults. As the centre expands courses are offered to suit all tastes varying from Foreign Languages, a range of Arts and Crafts, Word processing and leisure pursuits for all abilities and ages.

Many daytime courses have linked child care provision offered by experienced and friendly staff and a well equipped creche.

Flexible learning situations are offered in The Open Access Workshop for a range of study skills and we extend a very warm welcome to all on our OPEN DAY, to view exhibitions of Multicultural work and an insight into Creative Writing and publishing by our Adult Writing Groups.

## WANTED

Has anyone got a photograph of a steam train in the Totley area? One of our artists would like to borrow it to make a drawing for the Totley Independent. Please contact the Editor 362822.

# FARMING SCENE



Does anyone remember the great drought of '76? The dry weather of May and June is reminiscent of that year, and with dry weather forecast to continue for a while, added to the fact that a certain well known weather prophet has not forecast a long, hot, dry summer, would indicate that we are in for a reversal of the short wet summers of the last two years. If the drought currently affecting the U.S.A. comes this way, then we really will have a scorching summer. They are comparing the current dry conditions with the "dust bowl" of 1930 and with crop yields likely to be well down, prices have started to rise sharply with Soya meal up 25% in only 4 weeks.

The dry conditions in this country have up until now benefitted farmers, as they have been able to get on with silage and hay making in near ideal conditions, with good crops of both being made much earlier than in previous years.

Sheep shearing is also well underway and with most lowland flocks done, only the hill sheep have still got their "jackets" on.

The soft fruit season is now upon us, and most strawberry crops look good at the moment, but most raspberry plantations are suffering from last years wet weather which was ideal for fungal spores to infect this years fruiting canes. The incidents of Core blight, Spur blight and botrytis has reduced the number of fruiting laterals considerably, and in some cases killed the cane completely.

## action aid

The "Action Aid" Garden Party at Abbeydale Hall on Saturday 23rd July at 2.00pm will include stalls, games, entertainments and refreshments. For contributions or help on the day please contact Irish Lamb 350422.

TOTLEY HALL FARM PRODUCE  
TOTLEY HALL LANE

## PICK YOUR OWN

STRAWBERRIES AND  
RASPBERRIES

NOW OPEN

Mon to Sat 1.00 - 9.00 pm  
(Weather permitting! If in doubt ring 364761)

## THE BAND WE COULDN'T FIND!

Surely you can't lose a marching band! That's what we thought when we went looking for the King Egberts ATC Marching Band on 18th June. It was the day of the All Saints Garden Party and the band was scheduled to lead a procession from Totley Rise to All Saints Church. The annoying thing was that we could hear it in the distance but where was it?

In the end all was well. It was just that we didn't know the route which actually included Glover Road, Mickley Lane, Lemont Road, Green Oak Avenue, Green Oak Road, Main Avenue, Sunnyvale Road, Main Avenue again, Baslow Road and Totley Hall Lane. The procession was interesting too. Apart from the Sunday School Princess and her entourage, the mechanically minded welcomed a BMW and a farm tractor as well as "a full supporting cast."

All this was a prologue to a very happy afternoon on the Church Lawn. All the usual stalls and side shows, teas and ice-cream. Obviously this is one event in Totleys calendar which, we hope, will go on for year after year. Full marks to the organisers too. A lot of hard work goes into these events but the social benefit is worth it quite apart from the charitable and fund raising aspect which also was very creditable.



# E. WHITECLIFFE & CO LTD

ROOFING AND BUILDING  
CONTRACTORS

DOMESTIC - INDUSTRIAL  
COMMERCIAL

ALL TYPES OF:

- SLATING
- TILING
- RIDGE TILES
- FELT ROOFS
- ROOF SEALS
- COMPLETE NEW ROOFS, REPAIRS
- CHIMNEYS RENEWED, REPOINTED
- GUTTERS RENEWED, REPAIRED
- INSURANCE QUOTES A SPECIALITY



GOOD QUALITY WORK CARRIED OUT  
AT COMPETITIVE RATES

FOR PROMPT ATTENTION TEL:  
**SHEFFIELD 26622 OR ROTHERHAM 553814**



RUDYARD ROAD, HILLSBOROUGH, SHEFFIELD

## holiday season

It is commonplace these days for some people to take holidays abroad. They risk queues at airports or ferry terminals to go off seeking sun and/or cheap wine at all sorts of places - some very much on the Tourist Brochure maps but some really out of the way. We have heard already of several who have achieved thousands of miles but we wonder who has been farthest? or who has had the most exciting time? or who found the most unusual things? or who felt they really did have the holiday of a lifetime?

Do write and tell us and then others can share your experiences. We shall be glad to give space in the autumn issues to keeping these memories alive.

But don't be discouraged if you only went to Dronfield or Baslow or Hathersage. You could still have had a good holiday and you still might like to tell others about it.

We shall be pleased to hear from you!

## YOUTH IN TOTLEY

Following the letter printed in the March issue expressing concern over the lack of facilities for the local youth and a recent reply, the committee of Totley Residents Association have arranged to meet two Senior representatives from the Youth Office of the City Council Education Department on Monday 4th July.

It is hoped to progress the current situation by questioning and thoroughly discussing the whole issue.

M. Williamson

**S. O. S.**

Do You Read 'LIVEWIRES' Newsletter?

Support our Cake and Bric-a-Brac stall at the Cricket Inn on Family Sports day - Sunday 3rd July.

For collections of donations

Tel. Diane - 352109  
Lynn - 360653

Please help. We have no more money for the next copy.

**ENDING**

We have put the flags out especially for YOU  
 Come and talk to US and let us save or make YOU money.  
 Thinking of selling or buying a property?  
 Talk to US before making your offer.  
 Had an Accident? Let US try and get YOU compensation.  
 Got matrimonial or other problems? We can help.  
 Made your Will? Do not delay, phone us NOW.  
**YOUR SOLICITOR IS YOUR VITAL LINK-TALK TO US FIRST.**

CHESTER & SIMMERSON,  
 222, LONDON ROAD,  
 SHEFFIELD. S2 4LW.  
 TELEPHONE 580731

**TOTLEY HALL FARM PRODUCE**

**TOTLEY HALL LANE**

**MEAT**

$\frac{1}{2}$  pig, still only 60p lb!  
 $\frac{1}{2}$  lamb price now falling,  
 please ring 364761 for  
latest price.

**FARM FRESH EGGS**

**NOT BATTERY PRODUCED!**

Sizes 1-6 @ 40 - 90p doz

CLOSED SUNDAYS

**SHEPLEY  
 SPITFIRE**

**MICKLEY LANE TOTLEY**

**HARDY & HANSONS  
 KIMBERLEY ALES**

**Hot & Cold Snacks  
 Mon - Sat**

**HOSTS  
 Albert & Norma Young**

**CARE  
 FOR THE  
 DISABLED  
 THE SHEFFIELD  
 CHESHIRE HOME**

Long or short term care for  
 the physically disabled, single  
 roomed, lively activity centre,  
 physiotherapy, chiropody,  
 hairdressing, etc.

**MICKLEY LANE, SHEFFIELD 17**  
 Telephone : 369952 / 3

**BUSY BEE**  
 D.I.Y. SUPPLIES

162 BASLOW ROAD TOTLEY SHEFFIELD S17 4DR  
 Telephone 365798

TIMBER, PLYWOOD, HARDBOARD  
 SCREWS, LAMINATES, NAILS, HINGES  
 CONT.-BOARD, in fact for most of your D.I.Y. requirements

**"CURLY Q"**  
**162 BASLOW ROAD**

**TOTLEY.**

OFFERS PROFESSIONAL HAIR  
 CARE BY HIGHLY QUALIFIED  
 STYLISTS.

Relax and acquire an all year  
 round Mediterranean tan in our  
 new "Sun-Room" using a Solar-  
 mobile sun bed.

Tel. **350362**

FOR FIVE GENERATIONS

**THE LEADING FUNERAL DIRECTORS**

**John Fleath & Sons**

**PROMPT and COMPREHENSIVE SERVICE  
 AT ALL TIMES**

**☎ 722222**

**LIMOUSINES FOR SPECIAL OCCASIONS**

**E & L WILSON**

**BUILDERS & PLUMBERS**

House Maintenance

Glazing - Glass

**Please Ring ERIC  
 368343**

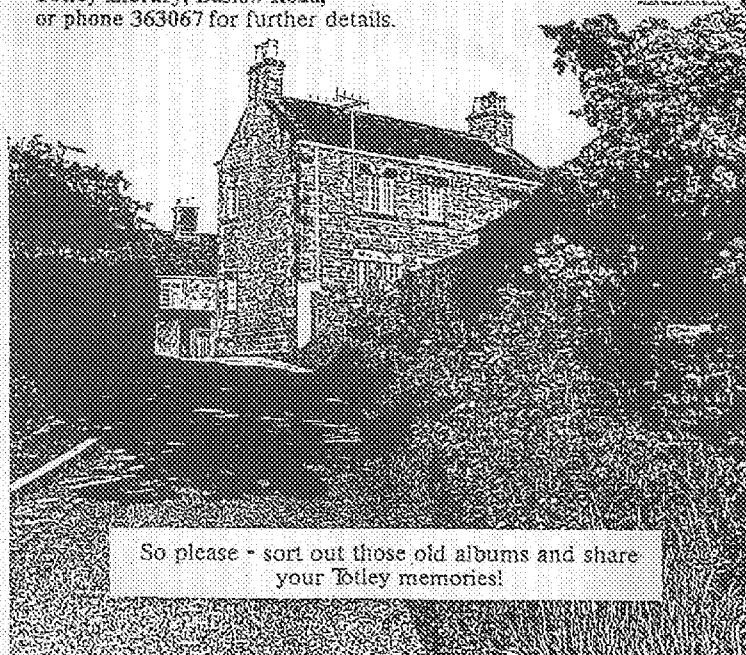
# Picture history of Totley ?



At Totley Library we're starting a collection of photos of the Totley area - views, street scenes, events and people from the past. If you have any interesting pictures from the distant or recent past we'd be very grateful if you would allow us to copy them. The originals, of course, we return safely to you.

Just call in at  
Totley Library, Baslow Road,  
or phone 363067 for further details.

SHEFFIELD  
LIBRARIES



So please - sort out those old albums and share your Totley memories!

## BARN DANCE

It sounded like fun to have a Barn Dance in a Barn but I wasn't so sure when I knew that sheep-shearing was going on in the barn a few days before. Should I bother to clean my shoes? and what about the smell.

I needn't have worried. Somebody (and I can guess who) had worked very hard to get Edwin Pocock's barn "alright on the night". And it was fun too - just the right thing for a summer evening. What a pity we have to wait till next year to do it again. But, believe me, I shall watch out for the date being fixed and make sure it goes in my diary!

We were sorry to lose Miss Edna Cashmore in May, she was one of our very early residents, coming to Mickley in 1969. What a lot of changes have taken place over the twenty years she has been with us; the building of the single storey bedroom wing the year she came, giving accommodation for 36 residents (prior to that we only had ten residents, 8 women and 2 men, in the old stone-built Cherry Tree building. Later the Craftroom was built, the garden planted, the first garden party in 1975 opened by Ian Carmichael. In 1977, our tenth anniversary, Group Captain Cheshire laid the foundation stone for the Dining Room Extension, and planted the cherry tree you can see near the entrance. Later the extension was opened by our patron, the Duchess of Devonshire. Our most notable achievement we feel was the recent new bedroom wing, opened by the Duchess of Gloucester in March, 1985, which has given all the residents a single room. - However, although we have been helped considerably by legacies, the most recent of which are those from two local ladies, Miss Vickers and Miss Jones, we are still repaying the loan from Head Office at the rate of £18,000 per annum for some years to come. We are always very grateful for local support.

We should also be very pleased to hear of one or two local people who would be prepared to drive our mini-buses on occasions - we have a Renault Master and a Renault Traffic, and no special licence is required to drive them. Norman Taylor, our Hon. Treasurer, will be pleased to take any volunteers out for a trial run if you contact him at the home during office hours - Tel 369952/3.



# JULY - AUGUST DIARY

Sat July 2nd County Fayre. Totley County School 4-10pm.  
 Sun " 3rd Family Sports '88  
 Fri " 8th Ladies Evening Guild "Decoupage" (Craft)  
 Wendy Wilson. Abbeydale Hall 7.30pm  
 Sat " 9th Scouts Paper Collection. Skip at College Car Park  
 Sat " 9th Coffee and Crafts All Saints Church Hall 2-4pm  
 Tues " 12th Open Day. Abbeydale Hall Community Education  
 Centre. 10.30am - 3.00pm, 7.30 - 9.00pm.  
 Thurs " 21st Coffee Morning & Sale. Totley Good Companions  
 Club. Abbeydale Hall 10.00am - Noon.  
 Sat " 23rd Garden Part for "Action Aid" 2.00pm, Abbeydale Hall.

## AUGUST

Sat Aug 13th Scouts Paper Collection. Skip at College Car Park.  
 Mon " 22nd Copy Date for September "Independent"

### TOTLEY COUNTY SCHOOL

#### COUNTY FAYRE

SATURDAY JULY 2ND

4 - 10 pm

Stalls, games, magic,  
barbecue, live music.

ADMISSION 25p

## Royal Academy

### Prize

Rupert Hebblethwaite of Lane Head Road is one of 4 Yorkshire prizewinners at this year's Royal Academy Summer Exhibition. An architectural drawing of a bazaar in Jaipur, India, was chosen for a Bovis/Architects Journal Book prize which are awarded to students or younger architects for works of outstanding merit. The pencil and crayon drawing was prepared this winter during a year out from Cambridge University following survey work carried out last year. This summer Rupert is undertaking a 1,000 mile sponsored cycle ride in aid of the Rotary Charity Polio Plus. He is following a 12th Century pilgrimage south from Mont St Michel in France to Santiago De Compostela.

### The Independent for September

THE NEXT issue of Totley Independent will be available from the usual distribution points on Thursday 1st September. Copy date for this issue will be Monday 22nd August

### EDITOR

Maurice Snowdon, 1 Quarry Road  
362822

### DISTRIBUTION & ADVERTISING

John Perkinton, 2 Main Ave.  
361601

### EDITORIAL TEAM

Chris Woodhead, Chris Walker,  
Mike Williamson, Clare White,  
Colin Wells, Bill Carter Wigg

Items for publication may be sent to or left at 1 Quarry Rd, 2 Main Avenue, V. Martins (Abbeydale Rd. South) or Totley Library.

## JOHN D TURNER CONSTRUCTION

46 LONGFORD ROAD, BRADWAY, SHEFFIELD 17  
 BUILDING & PROPERTY REPAIRS JOINERY  
 ELECTRICAL & PLUMBING EXTENSIONS & ALTERATIONS  
 ESTIMATES FREE PHONE SHEFFIELD 367594 EVENINGS

JOHN D. TURNER (CONTRACTING) LTD