

Wedding Bell Tolls



The Wragg family lived up at the old Owlter Bar Toll cottage, which was near the buildings now forming part of Fanny's nightclub. (A later Toll cottage is still to be seen at the edge of the road below the Peacock). However, in 1840, bachelor John Wragg was in charge of the Stony Ridge Toll Bar. This building was situated on the Hathersage Road on the top of the hill before the drop down to Fox House. John married a Sheffield girl, Mary Muscroft, at Dore Church in September 1844. G.H.B. Ward, possibly the greatest authority on Totley, wrote about the wedding in his Clarion Ramblers handbook of 1924/25.

"It was rather romantic, for his dad, unlike his brother James, "was a bit shy" and "didn't want to see a lot of curiosity-mongering and skylarking at his wedding." So he arranged with the Rev. Richard Martin, an Irish clergyman (the first Vicar of Dore from 1844 to 1849, and curate-in-charge of the parish - then under Dronfield - from 1840) to mumble out the banns each week. His father said that the parson did this job very successfully, for there was scarcely anybody in church when the party turned up - fully an hour late, and the parson and those present were shivering.

The reason was that his father had directed the bridal party of his mother and the best man to turn through the stile opposite Wing's farm (the ruins by Dore and Totley station) and follow the footpath until they met him. They reached the stile alright but it was already ankle deep in the fast falling snow. They then lost the track and wandered about until the bridegroom found them.

However, they got properly wedded and then plodded homewards, knee-deep up the road to Stony Ridge Toll Bar."

It is hard to imagine that bitterly cold slog through the snow along the Hathersage Road, which at that time would be a rough and stony way. Mr. Ward carries on "On the Sunday after the marriage, Mr. Martin, the clergyman, appeared at Stony Ridge Toll Bar house for the purpose of presenting a bible and prayer book to the newly married couple, this being I think, the custom in former times. His father, however, grievously offended him by saying, in a joke, that "He had better brought a good pair of blankets." Mr. Martin was an Irishman, and he never spoke to him afterwards.

Apparently, this first Vicar of Dore would go into the local pubs and sit cross-legged to hide one knee whilst his hat would cover the other so that no-one would see the holes in his trousers. He would also place his hands over his elbows and his clothes were patched like a tramp's. The legend doesn't mention how he picked up his well-liked drink while he was doing this,

Residents 'Make Up' A Good Night

Seventy locals, ranging from the young to the young-at-heart, attended the first ever Totley Residents Assoc. Dinner Dance on Saturday 20th Feb. After a satisfying, well-presented 4 course meal at Abbeydale Sports Club, there followed an enjoyable social evening. (Confirmed by the photos in the Morning Telegraph). The dancing, presented by Mr. George Mullins, catered for all tastes and a very entertaining

interlude, by courtesy of members of the Totley Tug of War Team, had everyone in fits of laughter. Stewart Ashton, aided by "Gloria", 'encouraged' six unsuspecting males, Jeff Knibb, Barry Catton, Dave Walters, Martin Underwood, Jim Higgins and Rev. Alan Jockel, into turning female, with a little help from the ladies. With "Gloria", unable to decide on an outright winner - a wheelbarrow race

Night

resulted. "Nellie" (alias Jim Higgins) being finally declared the outstanding lady. He immediately disappeared with "Gloria" as his prize ;

The evening passed all too quickly and with cries of "when's the next one ?" this is sure to become an annual event.

Good support for this type of function, from a broad cross - section of Totleyites, gives confidence in suggesting similar future ventures.

THUNDERER

BEING ABLE, once again, to report on three local amateur shows, in one edition is indeed most gratifying.

Not only do a great many people give time and effort in their production, but support given to them is most encouraging.

The number of young children and teenagers who have recently 'trod the boards' surely highlights the fact that if more facilities were available in this direction, perhaps by way of a Totley Youth Theatre or Theatre Workshop, then the "House Full" sign would go up because of the wealth of applicants. What do you think?

Totley may have lost a lot of its village appearance, but the atmosphere created at such shows (and indeed most other local events) is very much that of a friendly, modern village community. Long may it be so.

Once a month, the elected committee members of Totley Residents Association meet. All details of these meetings are recorded, and it may be of interest to publish "highlights" of the meetings, on a monthly basis, just to keep you informed of the activities and topics.

For example, on the 11th January, amongst the items discussed were: a Community Centre, the War Memorial and the flooding that occurred at the bottom of Mickley Lane, coming down from Totley Lane.

Due to the interval in the date of the monthly meeting and the publication of the Independent, these reports will usually be a month behind, and certain cases, two months.

whisperer...

..... Budding athlete, Diane Herbert, of Sunnyvale Road, won the City and County Championship of the 1981/2 Intermediate Girls Discus, and also takes part in the Girls Hockey at Abbeydale Sports Club.... New sign for Tyn's Butchers Shop....
... Also at Totley Rise the sign for the Halifax Building Society goes up as the shop work nears completion..... Vandalism raises its ugly head again with the rubber handles being cut off the dustbin lids, at the flats in Green Oak Road,..... T.R.A. are supporting the proposal, by Totley college students, of a bus shelter to be sited at or near the Cross Scythes terminus...

CRICKET

TOTLEY SPORTS CRICKET CLUB

The A.C.M. of the above club takes place on Thursday, 18th March, @ 8pm. in the Cross Scythes.

Could all members please try and attend and any new members are very welcome.

Any new members who wish to play but cannot attend, please contact: J. Holding - 365037.

The club runs 2 teams in the Sheffield League.

Membership Fee is £1 plus 60p - match.

T.O.P.S.

T.O.P.S. (Totley Older Peoples Society).

The Group which was responsible for launching this Society and steering it through its first year has bowed itself out in favour of a larger, formally elected Committee. Anyone over 60 who is interested in learning more about the Society should contact either the Chairman, Mr. W. Wigg at 367850, or the new Secretary, Mrs. E. Parker, at 362019.

See diary for this months events.

New Book Old Dore

Some 50 years after John Wesley's initial visit to Sheffield, and about thirty years after the first known Methodist preaching at TOTLEY, we find the earliest mention of Methodism in neighbouring Dore.

This was in 1790, and John Dunstan has written a fascinating and detailed account in 'The Story of Methodism in Dore 1790-1907'. Another excellent publication from Dore Village Society, following Johns Story of Methodism in Totley (now out of print) the new book is priced 50p plus postage.

There are a number of references to Totley and to local families such as the Unwins, Greens, Hancocks, Savages, Wrights, Daltons and so on.

We have come to realise that John Dunstan always does his homework and carries out intensive research so you can rely on this new book as a valuable and reliable source. Available from some local shops or from Mrs. Harper at 94 Totley Brook Road.

Cycle speedway

SINCE THEIR FIRST trials in the sport last year, the Totley team have been preparing for their first full season of league racing. The site for the Totley track cannot be developed (and subject to planning approval) until after it has been used for its annual purpose as a car park for Abbeydale Hamlets Craftsmans Fair in June.

Therefore, Totleys early matches in the Yorkshire League will have to be ridden at Parkwood Springs. The team colours will be blue and yellow and at the time of going to print, the club is still negotiating a date for a fund raising disco, along with Totley Youth Club.

This will be to raise money for kit etc. Look out for further news.

There is still room in the 1982 Totley team for anyone who would like to have a go at Cycle Speedway racing. There is no age limit! Contact Steve Perkinton on 361601 for further information. We have some leaflets available giving details of the sport and the kind of bikes used.

The first official practice this year is on Sunday March 14th at Parkwood, so don't forget, if you want to try the sport, get in touch and we will arrange to take you to the practice session.

If you are just interested in the supporting category (and the lads will need it!) get in touch or keep reading the Independent for details of forthcoming matches and the route to Parkwood Springs. News of the teams progress will be published regularly.

Pinfold

YOU SHOULD shortly be receiving, through your letter box, a letter from Totley and District Environment Society (T.A.D.E.S.), which is an appeal for donations to help complete the current work on Totley Pinfold.

Contributions can be sent direct to the Treasurer, Mr. A. C. Ticknor, 42 The Grove, or, into boxes at the following shops. Rollin's - Totley Post Office, Schofield's - Main Ave Fruit Stores, Croft's - Totley Fruit Stores, Fletcher's - Avenue Stores, Ashmore's - Butcher - Baslow Rd, Peter Swift - Newsagent - Totley Rise and V. Martin (next to Totley Bridge Service Station). Your support will be both beneficial and appreciated.

SILVER PLATING

Have those old treasured items re-plated with silver.

Dishes, trays etc.

Dents removed & repairs carried out.

Scrap silver items purchased.

CONFIDENTIAL SERVICE

For free estimate:

 369920

GRANT'S BLINDS

WINDOW BLIND SUPPLIERS

SPECIALISTS IN SUN CONTROL

627, Chesterfield Road,

Woodseats,

Sheffield 8.

Telephone:- Sheffield 589168

TOTLEY BROOK STORES

GROCCERS AND

GENERAL OFF LICENCE

TOTLEY BROOK ROAD

★ ★ ★ OPENING HOURS ★ ★ ★

Mon - Sat 9.00 am - 8.30 pm

Lunch 1.30 pm - 3.30 pm

Sundays 12.00 pm - 2.00 pm

7.00 pm - 9.00 pm

MICRO ALARMS

Registered Office: 629 Abbeydale Road Sheffield S7 1TB

TEL. Sheffield 372847

Dronfield 416187

Intruder Alarms Installed to B.S.4737

Domestic, Industrial Commercial

Systems from £175

Local 24 hour service

Estimates free

Existing systems taken and updated

Door Window Locks Supplied & Fitted

Ring today for your Free Estimate

JOHN SCRIVEN

FLOWERS FOR ALL OCCASIONS

Sprays supplied at short notice
Weddings & Funerals a speciality

37 & 59
BASLOW ROAD

phone 367116

350831

John and Sandra
invite you to

THE CROWN

bar snacks available
Monday to Friday
Lunchtime

G.E. SOCKETT

32 Twentywell Road
BRADWAY
SHEFFIELD

Phone 368744 AFTER 4 pm.

(ELECTRICAL CONTRACTOR)

RE-WIRES. REPAIRS.

SOCKETS AND LIGHTS FITTED.

Alistair Humphrey & Co



CHARTERED VALUATION
SURVEYORS & ESTATE AGENTS

33 TOWNHEAD ROAD,
DORE, SHEFFIELD. S17 3GD

The Local Estate
Agent For The
DORE Area

SHEFFIELD
362253 OR 362420

G. BROWNHILL (TOTLEY)

BUILDING WORK - ALL TYPES
PROPERTY MAINTENANCE
and REPAIR WORK
PLUMBING and ELECTRICAL
ESTIMATES FREE

tel. 351222

368984

PAINTING & DECORATING CONTRACTORS

9 Great Croft
Dronfield Woodhouse
Sheffield S18 1XR
Tel: 410682

J & D Decorating Co. Ltd.
DESIGN & PAINT 1 DAY 1 WORK

19 Rowan Tree Dell
Totley Rise
Sheffield
S17 4FL
Tel: 150621

BUILDERS, JOINERS & SHOPFITTERS

BUILDING
CONTRACTORS

Full building service,
including plans drawn up,
and submitted to local
authority for approval.

JOINERS &
SHOPFITTERS

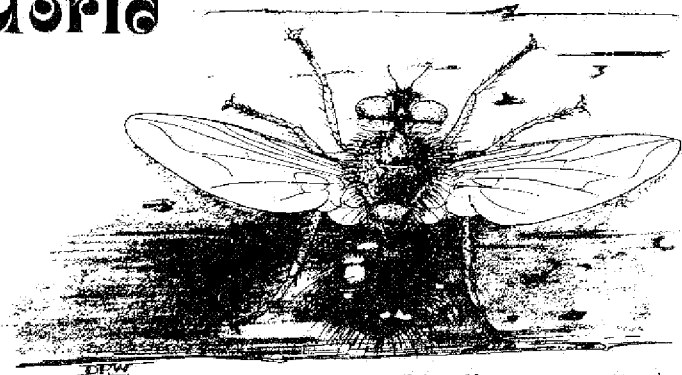
Fitted kitchens and
wardrobes,
loft conversions,
replacement doors and
windows,
storm porches,
shopfitting contractors,
works maintenance.

PAINTING &
DECORATING

Domestic interiors, and
exterior decorating,
Industrial & Commercial
painting contractors.

YOUR LOCAL
ESTABLISHED BUILDER

Warburtons World



BEFORE THE ADVENT of Man and his devastating impact upon the World, some ingenious devices had been 'invented' to keep the numbers of animals and plants in check. It is almost as if animals were designed solely to keep plants numbers within reasonable bounds, and then to regulate their own numbers. The obvious regulation is by one creature eating another in a straightforward 'predator-prey' relationship. There is a more subtle form of check however, which we tend to overlook, but which often works to our (horticultural) advantage: this is parasitism. Here one creature (or plant) lives off another whilst either attached to, or inside, its host. This seems quite repulsive to us, but it is a very common occurrence in the natural scheme of things, and is economically important. Farmers are all too aware of the harmful parasites which can infest their livestock, and increasingly, parasites are being used to control insect pests rather than insecticides.

The reason that this topic occurred to me is that about this time of year, I have regularly looked for, and found a large parasitic fly in Gillfield Wood. Like many of its clan, its presence raises more questions than answers. Upon what does its larvae feed? There are no caterpillars about in March. How does it lay its eggs? Singly, or scattered in the hope that a caterpillar may conveniently blunder along? What is known is that its larva lives inside certain moth caterpillars, which carries on feeding although it is surely doomed. When the larva is nearly fully grown, it finishes off its host, pupates and changes into an adult fly.

This all seems pretty dramatic, but there are even more amazing twists; the parasitic larva, inside its host, may be parasitized itself by smaller even more specialized flies or wasps. Thus the old rhyme may not be so far from the mark:

'Big fleas have little fleas upon their backs to bite 'em,
And little fleas have lesser fleas have smaller fleas,
So on ad infinitum.'

If any children have been carefully nurturing a chrysalis through the winter, and a butterfly or moth doesn't emerge, but another insect does, I would be most grateful to receive it. Our knowledge of these creatures is ridiculously limited, and every scrap of information is most valuable.

TOTLEY PAST

DODGING THE TRAINS

The 'Sheffield Telegraph' interviewed the Totley tunnel workers in the 1950's.

"This coming winter, like all others, will seem very long for seven railway workers near Sheffield. Saturday will be the only day when they will see daylight.

They are the men who maintain the Totley tunnel between Grindleford and Totley. Their day starts at 7.30 am., and ends at five in the evening.

They are in the tunnel all day. It is dark when they start work and dark when they finish. Only on Saturdays, when they finish at midday - and occasionally Sundays - do they see daylight.

Do the men like their work? No, they do not. They do not mind making their feelings known about it though. "It's not the sort of work

anyone would like." says 67 year old ganger, Wilfred Slater.

But "Wilf" would not leave the tunnel now. He's been working there nearly 40 years and has a sort of sentimental attachment for the 6,230 yards of darkness.

How do you dodge the trains when you are in the dark? is the question most people ask the men.

"You have to watch the smoke"

was the answer ganger Frank Midgeley, of Hathersage, gave.

"It moves in the same direction as the train, sometimes, when the smoke is thick, your lamp is no good to you," he says. "You cannot see your lamp light even. You cannot hear a thing. A train could be upon you before you know what is happening. It's a question then of keeping your wits about you. And there is always the man with the warning horn."

The warning horn? "Two men stand about 100 yards on either side of a gang of men working in the tunnel. Each has a horn about 18" long which he blows when a train is approaching."

Then the men stand at the side of the tunnel. Sometimes they stand in manholes let about 18" into the wall.

But there are manholes at only 22 yards intervals along either side of the tunnel. Even if a train is coming on only one line, the other line must be clear too.

In a soft West of Scotland burr, 44 year old sub-ganger, William Kelly, explained "When there is a train coming and there is smoke, you cannot hear one coming the other way. If you stand clear of the sleeper ends you are safe."

When a train comes into the tunnel, a newcomer is terrified at first. He sees a thick blanket of smoke come towards him like something solid. Then it is all over him, warm and damp, and he knows it is really alright. In about 15 seconds it has gone and he is shivering from the sudden fall in temperature.

The system for maintaining the tunnel is this: Ganger Slater with two men works from Totley end to the middle and ganger Midgeley with three men works from the other. From the middle, where there is the summit of the slight hump in the tunnel, you can occasionally see tiny pieces of daylight far away on either side of you. But that is not often."

Incidentally, Wilf Slater retired, aged 72, at the end of 42 years in the service of Totley tunnel, earning him the title of King of the Tunnel Rats.

THE LOCAL STAGE

SING A SONG OF SIXPENCE



PANTOMIME

THE POLICY OF letting the teenagers and younger children take all the leading roles, with only a couple of adult "dames" in the cast, at the United Reformed Church Hall, continues to work well. There were competent performances from all; but of particular interest were Richard Joel as Simple Simon, with a natural relaxed style and Hazel Edisbury as Witch Watt, who made sure that not only did those at the back of the hall hear her - but also those at each end of Totley Brook Road! nobody sleeps whilst she's on stage. The haunted bedroom scene 'spooked' the interest of the younger members of the audience and Dame Durdon's (Phil Jubb) bedtime striptease drew applause from the Dads and Grandads!

In spite of a somewhat cumbersome title "Sing a Song of Sixpence" turned out to be far more of a traditional presentation than last year's 'Cinderladdin', and the storyline of this nursery rhyme lends itself so well, that it should become one of the more familiar panto titles. Those on stage obviously had as much fun as those seated, and being half-term week, there was time for little sleepy eyes to recover the following morning.

KING EGBERT



SCHOOL

BLACK COMEDY

BY PETER SHAFFER

Presented by King Egbert School on 3rd, 4th and 5th February.

The lights went out, the audience was hushed, and the play began, IN COMPLETE DARKNESS! The audience whispered, "what's gone wrong?" Where were the stage lights? Was this the significance of the title?

There was a sigh of relief as the footlights came on and the playwrights intention became clear. The whole action of the play takes place in an artist's flat where a mains fuse has blown. To create the effect of total darkness, Peter Shaffer substituted light for dark and vice-versa. The result was a very entertaining play, which must have been difficult for the pupils to perform. But they convincingly acted "blind" when supposed to be in the dark and the outcome was hilarious. The principal character was played to perfection by Mathew Molteno, whilst the older Colonel was immaculately portrayed by Nigel Watt. Indeed, all the cast are worthy of a mention. Sadly, there was not a capacity audience, (do people have difficulty in obtaining tickets), which may have been due to the fact that it was the first night. But future audiences please note, there were no first night hitches, and only one, barely noticeable, loss of lines. DO watch out for their next production.

Pauline Perkinson.

PANTO

DICK

WHITTINGTON



HAVE YOU ever wondered where rats go to in the winter time? Well, I found out recently. They go to Totley All Saints School P. T. A. Pantomime, and a splendid time they have there too.

This year's offering, 'Dick Whittington', was up to the usual high standard that we have come to expect from the very hard working cast, from the Principals right down to the smallest rodent, who would insist on playing with her tail after Tommy the cat had killed all the rats!

The sound effects were superb, very professional, particularly the thunder and lightning scene and King Rat's entrances, complete with blackouts and lots of hissing smoke - lovely and sinister it was! Just the stuff for pantomime.

Captain Cuttle's arrival at the back of the hall riding a 'trolley ship' was a nice touch too - plenty of audience involvement. It hadn't occurred to me before

that All Saints have two look-alikes, 'Jack' could have been Roy Castle, and 'Dame Sarah', Dame Edna Everage, except that Sarah's costumes were even better and more outrageous than ever. It seemed so sad that the wedding dress and 'biggest bouquet in the world' were only on view so briefly after the hours of preparation that must have gone into their creation.

It would be unfair to single out any 'star' of the cast, because they all gave 100% effort and it showed. Even the beautiful cat Tommy, who made you feel you wanted to take 'him' home with you.

I look forward to next year's production - surely they can't get any better, or are they going to surprise us yet again?

Kate Walker.

Footnote. Photos of this page are now on display in Totley Library.

Keep Fit - more news

Due to lack of numbers, DISCO KEEP-FIT at the Kay Gee Bee is now FRIDAY mornings only. 9.45 - 11.15 am.

AN EVENING KEEP-FIT is starting on Thursday 25th February at Abbeydale Middle School. 7 - 9 pm.

TAP DANCING (Adult Beginners) A new class is starting on Tuesday 23rd February at Holt House (top of long drive, Bannerdale Road) 7 - 8.30 pm.

Any queries about any of these classes - ring Dawn - 550815.

PETER SWIFT

15-19 BASLOW ROAD,
TOTLEY RISE

TEL: 364411

Totley's
independent
newsagent

Fleur De Lys

**Real Ale
Real Fires
Real Prices**

**6p off Doubles
all Spirits**

"CURLY Q"
162 BASLOW ROAD

TOTLEY.

OFFERS PROFESSIONAL HAIR
CARE BY HIGHLY QUALIFIED
STYLISTS.

Relax and acquire an all year
round Mediterranean tan in our
new "Sun-Room" using a Solar-
mobile sun bed.

Tel. **350362**

G. ASHMORE

HIGH-CLASS FAMILY BUTCHER

TOP CLASS MEAT AT
REASONABLE PRICES

249 BASLOW ROAD
TOTLEY

SHEFFIELD, S17 4DU
Telephone: 360634



*Woodthorpe
Gardens*

Landscaping
Garden construction
& Garden Maintenance
Tree surgery
Dry stone walling
Rotovating

ESTIMATES FREE

**Holmesfield
Sheffield**

Tel: Sheffield 360065 & 360134

PROFESSIONAL HAIRDRESSING
FOR ALL THE FAMILY

Hair Design



86 Baslow Road
Totley
Telephone 363409

AUTHORISED WELLA
SYSTEM PROFESSIONAL
SALON

**TOTLEY
PRIVATE
HIRE CARS
Anywhere Anytime**

LOCAL, LONG DISTANCE,
AIRPORTS and COAST.

45 THE GROVE
Tel. **361547**

J. Scriven & Son

(FRUITERAMA)

**HIGH CLASS FRUIT
& VEGETABLES**

Orders Delivered

37 BASLOW ROAD

☎ 367116

ROBERT.J. HILL

**RUSH & CANE
SEATING
SPECIALIST**

363107

A warm welcome awaits you at

Cricket Inn

Penny Lane, TOTLEY

Bar Snacks

Ward's Sheffield Best Bitter

.....

Room available for

Private Functions

.....

HOSTS:

RENEE & CLIFF HODGKINSON

tel. 365256

FOR FIVE GENERATIONS

THE LEADING FUNERAL DIRECTORS

John Fleath & Sons

PROMPT and COMPREHENSIVE SERVICE

AT ALL TIMES

☎ 23229

LIMOUSINES FOR SPECIAL OCCASIONS

Peaceful Neighbours

ARE YOU AWARE that there is a local peace group in Totley. We are a group of people who have become increasingly concerned about the current arms race. We are opposed to nuclear weapons and all violent solutions to world problems and believe there must be alternative peaceful means to solving these difficulties. Our group is composed of people with and without political, religious or other convictions - our main concern is peace.

The group was formed originally to collect signatures for the World Disarmament Petition - a multilateral petition which basically calls upon all Governments to abandon nuclear weapons and ultimately conventional weapons of war. The petition is to be presented at the United Nations Second Special Session on Disarmament in June, 1982. So far we have collected approx. 2,700 signatures in Dore and Totley alone so we are aware of tremendous support. We do, however, need help on the final "leg". We aim to collect signatures in the Bradway area from door to door asking people if they would like to sign the petition. Leaflets containing information about the petition will have been previously delivered. So please - if you are one of those people who feel helpless about the situation and who are always saying - "yes, but what can we do?" - well here is something positive which you could do to help.

Our group also hopes to promote debate and provide information. Our next event is a showing of "The Bomb" - this is the film, presented by Jonathan Dimbleby which brings the controversial film "The War Game" up to date. The film will be shown on March 4th - 8pm. at All Saints Church Hall. There will be opportunity for discussion during the evening. We also propose to make a collection to aid the women of Greenham Common. Greenham Common is a proposed site for U.S. controlled Cruise Missiles due in 1983.

A hard core of about twelve women have camped outside the U.S. base since June 1981 and will register their protest hopefully until this decision is reversed.

We are also hopeful that during the evening we will recruit more help for our peace group. We need every single person's help -

Remember - "Nobody made a greater mistake than he who did nothing because he could only do a little" (Edmund Burke - writer and orator 1729-97).

Irene M. Ivison.

Anyone requiring further information please contact: Richard Hibberd - Tel: 890833 - Secretary, Dore, Totley and Abbeydale Peace Group.

LIBRARY

NO-ONE WHO CAME to last season's talk about Iceland will need to be reminded that Cath MacKay is not only a most interesting speaker but also a dab hand with a camera. It is precisely because of her success last year that she has been asked to speak to us again on the 16th March, regrettably the last library talk of the current season, when her subject will be "The Scandinavian Peninsula". Looking at a relief map of the peninsula, it is immediately apparent that the right hand slice is mainly green, while the left hand section is mainly dark brown or, to put it another way, much of Norway is about 2,000 ft. higher than most of Sweden. This obviously makes for all kinds of differences between the two countries in terms of weather, vegetation, scenery and the way people live, and this variety will certainly be brought out by the four main areas which Mrs. MacKay will cover. She will start us off on the desert-like islands in the Baltic Sea, and then move us progressively westwards, passing the forests and lakes of the central Swedish plain on the way, making us climb over the Norwegian mountains to look at the glaciated valleys and the snowfields, and finally dropping us down to the coast to explore the spectacular fjords. "The Scandinavian Peninsula" will start at 8 pm. on Tuesday, 16th March, in Totley Library.

Terry Whitham
Branch Librarian.

FOR SALE

A Riding Hat, Good Condition.
Small size 6 $\frac{1}{4}$ £5 o.n.o.
Phone 368856.

FOR SALE

Large, Old, Tallboy. £5.
"Greenkat" Bow (26lb), arrows,
etc. £12.
Ladies or teenage Bow (32lb) and
accessories. £8.
Phone 361601.

LETTERS

IF T.A.D.E.S. and or the local Scouts/Cubs want a worthwhile project to undertake this spring, may I suggest they consider cleaning up the area between Baslow Road and the allotments above the war memorial?

This bank, mercifully mostly screened in summertime by trees and thick undergrowth, is rapidly degenerating into a tip. Amongst a wide selection of junk can be seen a Highway Authority road lamp and sign, an eviscerated washing machine and a couple of large soft drinks crates.

If it were decided to act on this suggestion I would be prepared to subscribe £5 toward the cost of hiring a skip, in the hope that this would inspire some other Totley residents to follow suit.

Early action would be desirable as the undergrowth is largely brambles and by early summer it may be impenetrable!

Name and address supplied.
Please contact the magazine if anyone wishes to locate the £5 subscription.

TOTLEY TUG-O-WAR CLUB

MORE NEW MEMBERS are still required. Training sessions are held behind the Cross Scythes from 7 pm. on Tuesdays and Thursdays.

The club are now members of Derbyshire Tug of War Assoc., and should shortly become a member of the 3 A's. Incidentally, the Annual General Meeting of the Derbys. T. O. W. Assoc., is being held in the Cross Scythes on Monday 1st March.

Still on the subject of Tugging, the Totley team will be helping to organise the local competition on Sports Night in July. The club team members themselves, will not be taking part; so perhaps other local teams may feel willing to compete once again.

Children who pull faces are in danger during March. If the wind changes direction whilst they are doing it, they will not be able to change it back!

MARCH DIARY

- 3rd Wed. T.O.P.S. - Demonstration of Flower Arrangement by Mrs. White.
- 3rd Wed. I.S.P.A. Squash Competition, Abbeydale Sports Club (to 10th)
- 4th Thur. All Saints P.T.A. A.G.M. 7.30pm. Cross Scythes.
- 4th Thur. Cheshire Home, Mickley Lane. 7.30pm. Dea Fashions.
- 4th Thur. Film "The Bomb" 8pm. All Saints Church Hall.
- 6th Sat. and 7th Sun. Working Day at Abbeydale Indust. Hamlet.
- 8th Mon. T.R.A. Committee Meeting. 37 Sunnyvale Rd. 8pm.
- 9th Tues. "Bass Bias" King Egbert Lower School Hall. 7.45pm.
- 10th Wed. T.O.P.S. Regular Weekly Meeting.
- 12th Fri. All Saints P.T.A. Dinner Dance. Abbeydale Golf Club. 8pm. Tickets £5.75 each. For details ring Ros. Hill - 360683.
- 16th Tues. U.N.A. Open Meeting. 8pm. at 32 Stonecroft Rd. 'Early Childhood in the Third World'. Speaker - Prof. A. Heron.
- 17th Wed. T.O.P.S. Regular Weekly Meeting.
- 18th Thur. Totley Sports Cricket Club A.G.M. 8pm. Cross Scythes.
- 23rd Tues. Annual Gen. Meeting at Mickley Hall, Cheshire Home. All friends most welcome. 7.30pm.
- 24th Wed. T.O.P.S. Regular Weekly Meeting.
- 27th Sat. "Country Market" Totley Rise Meth. Church. 10 - 12 noon. Stalls, Comps., games. 20p Adults, 10p Children.
- 31st Wed. T.O.P.S. Fashion Parade, by AVIENNE of Bradway.

APRIL

- 3rd Sat. 10 - 11.30am. Mr. John Osborn M.P. will be available for interview at Heatherfield Conservative Club, Baslow Road. Local Government Councillors will be present. For appointment Tel. 584563.

SPRING IN

St. John's Scouts and Guides are holding a Family Spring Social on Saturday 27th March. It will be held in St. John's Church Hall and tickets will cost £1.50 adults and £1.00 children (under 18) which will include a 'Ploughmans Supper' and coffee.

HELLO MUM!

MOTHERING SUNDAY and Mothers' Day are now regarded as one and the same. In fact, they are two quite separate events. Mothering Sunday was the middle Sunday of Lent. In bygone days, when holidays were by no means as frequent as they are today, young people who were working

away (in service for example) were given the day off to visit their mother. Unlike today when cards, flowers or chocolates are the order of the day, the gift they took home was usually a Simnel Cake, the most common form being a fruit cake with marzipan. The name simnel is said to have been named after a certain couple - Simon and Nellie - but that's another story. Mothers Day is an American tradition introduced as late as 1914, occurring on the second Sunday in May. A certain lady from Philadelphia, who had recently lost her own mother, wished to see all mothers honoured on one particular day. This became fused into our existing Mothering Sunday.

 <p>Swift & Co. ESTABLISHED 1936</p>		CHARTERED SURVEYORS VALUERS, AUCTIONEERS & ESTATE AGENTS COMPULSORY PURCHASE SPECIALISTS
		16 NORFOLK ROW, SHEFFIELD S1 2PA TEL: SHEFFIELD 0742-22516

PRINCIPAL: PETER H SWIFT ARICS CONSULTANT: WILFRIED H SWIFT PSYA

A personal service from a family firm.
 Valuations carried out for clients on all matters relating to land and property, professional advice given on the sale and purchase of property.

Free Valuations on residential sales, without obligation.

RESIDENTIAL SALES UNDERTAKEN AT 1% COMMISSION PLUS ADVERTISING COSTS.

Telephone: 22516 (Office) or Mr. Peter H. Swift, Telephone : 364465 at 60 Old Hay Close, Dore.

SHEPLEY
SPITFIRE

REAL ALE AT
COMPETITIVE PRICES

Hot & Cold Snacks

MON - FRI
12 to 2pm

harry & margaret
welcome you

COME TO
AVENUE
STORES FIRST

MOST OF YOUR GROCERY AND
HOUSEHOLD REQUIREMENTS ALWAYS
IN STOCK.
Norman and Jackie Fletcher are pleased
to serve you.

STAFF

DISTRIBUTION & ADVERTISING
JOHN PERKINTON
2 Main Avenue 361601

MIKE & ANTHEA WILLIAMSON
1 Green Oak Avenue 365415
CHRISTOPHER WOODHEAD
33 Stonecroft Road 364821
DAVID BROWN
7 Milldale Road 366425

CONTRIBUTORS
 Bob Warburton, Brian Edwards,
 Pauline Perkinson, Don Bellamy

Items for publication may be sent to
 or left at J. Perkinson, 2 Main Avenue,
 Peter Swifts, Totley Rise and V. Martin,
 Abbeydale Road South.

COPY DATE FOR APRIL ISSUE
 IS SATURDAY MARCH 20th.