

A Happy New Year

TOTLEY INDEPENDENT

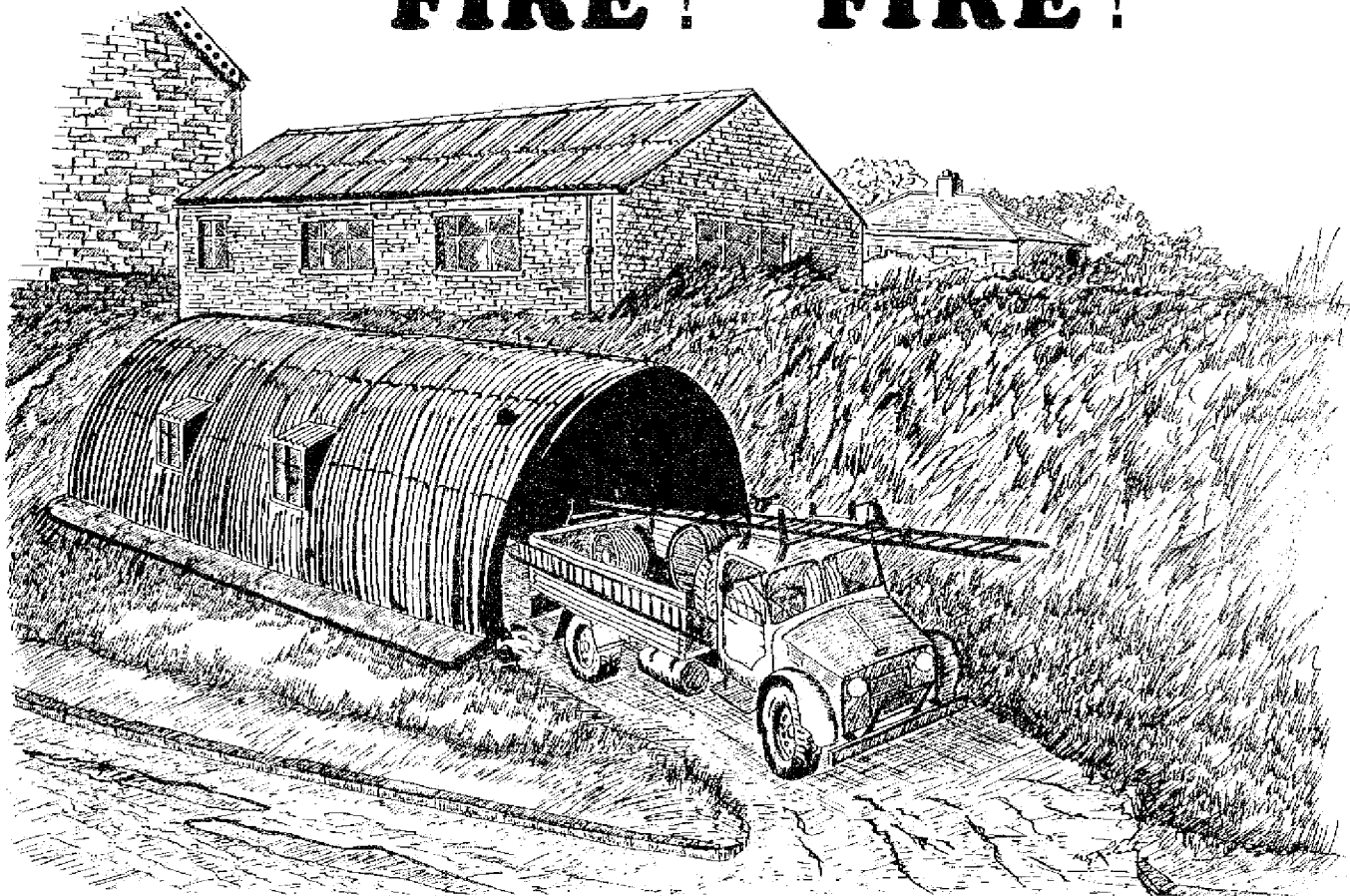
Published by Totley Residents Association 12p NO 53 JANUARY 1982

THIS MONTHS drawing, by Mike Roberts of Totley Brook Road, shows Glover Road during the Second World War, when the Auxiliary Fire Station was sited on what is now Sheaf Motors.

The road was not made up until after the War. Reference has been made to the Fire Station and its occupants in earlier issues.
The drawing is viewed from what is now Wine Sellers (at the top of Back Lane).

The present Sheaf Motors is a relatively new building. When the building picture here became Marstone Garage, the gable end was to become a local land-mark, with its large painted tiger - advertising a certain brand of petrol.

FIRE ! FIRE !



RING OUT THE OLD

RING IN THE NEW

DINNER DANCE

Tickets for Totley Residents Association Dinner Dance, to be held at Abbeydale Sports Club, Abbeydale Rd. South on Saturday 20th February, can be obtained from any T.R.A. Committee Member. They will also be on sale at the Ticket Table in Totley Library between 2-4pm, on the following Saturdays: January 23rd and 30th, February 6th.

Ticket price is in the region of £6.50 per head. See local posters for exact details.

THUNDERER

AT THE TIME of going to print, Totley is recovering from what must be some of the most severe weather in recent times, including heavy snowfalls and extremely low, freezing temperatures.

Being a suburb, we suffer as much as most. We are fortunate to have amongst us shopkeepers, milkmen and others who are determined to maintain good local services, come what may. We are indebted to them all.

Many local functions were postponed or re-arranged with surprisingly only one or two being cancelled outright. The Independent managed to get to the Junior and Infant Christmas Concerts at Totley All Saints School but not regrettably, Totley County School.

The Senior Citizens Christmas Party was early enough not to be seriously affected.

It is at times such as these that we are immediately reminded of the many older residents who can so easily become isolated or cut off. It was distressing to receive a phone call asking if any local organisation could be called upon to help with shopping etc. We were able to help in a few individual cases, but most local groups were not meeting due to the holiday period. Maybe this is something to keep in mind for future emergencies. Again, a central meeting point would have proved most useful, from which to operate relief services.

During January, members of the T.R.A. Committee, will be meeting and discussing with a view to further the suggestions made at November's Public Meeting, with regard to a Community Centre. We hope to report their findings next month.

SPOTLIGHT

DICK WHITTINGTON

Maintaining the annual tradition of family pantomime, Totley All Saints Parent Teachers Association have chosen "Dick Whittington", as this year's production. Ticket prices are 75p Adults and 50p Children and Senior Citizens.

Tickets can be obtained from John Youdan 28 The Grove, tel. 364036. Any member of the cast or committee will also be pleased to help in obtaining them. Performance dates are in February as follows: Fri. 5th, Sat. 6th, (Matinee only) Tues. 9th, Wed. 10th, Thurs. 11th, Fri. 12th, Sat. 13th, Matinee & Evening.

SING A SONG OF SIXPENCE

The pantomime season is upon us once again and, amidst the cold nights of freezing fog and winter snow, families may look forward to being entertained by a variety of artistes, ranging from the truly professional to the polished amateur. This year the Dramatic Society at Dore and Totley United Reformed Church on Totley Brook Road are presenting "Sing A Song Of Sixpence".

As with the production last year, members of the Dramatic Society will be supported by members of the Junior Church, providing a colourful evening of entertainment for the family.

The performances will be at 7.30 pm on the 16th, 17th, 18th and 19th February, with a matinee performance only, at 2.30 pm on Saturday, 20th February. Tickets may be obtained from Martins Newsagents (tel. 362403), or any member of the Society.

PARTY

Saturday December 5th again saw the Totley Senior Citizens Christmas Party at the college.

The food was prepared and presented by the Students and Polytechnic Staff, and members of the T.R.A. Committee (who also helped with transport). Then followed what has become an annual event in Buchanan Hall - the Entertainment, this year provided by the fine vocal style of Howard Walker, with the usual excellent accompaniment together with Mr. Walker Junior, assisted by two young ladies. Arthur Milnes called the bingo and TV licence stamps were given as prizes. (Someone said last years prizes also took some licking). These proved lighter to carry than the raffle prizes, drawn earlier.

A sing-along was accompanied by Rev. Alan Jackel and others found the lure of the footlights too much to ignore and gave a party piece.

A fitting finale was given by Sheffield Barbershop Harmony Club (Hallmark of Harmony), whose harmonies, neat appearance and smiling faces were complemented by a lively sprinkling of jokes and comedy.

Many people put in time and energy and the results of their joint efforts was another success enjoyed (and appreciated) by over 120 of our older residents. Finally, a word of thanks to Totley Youth Club for their donation towards the cost.

whisperer...

... The movement of traffic on the Service Road at Totley Rise Shops, can be summed up in one word - CHAOS! Fire Brigade called to remove dangerous guttering on several occasions at Totley Rise Shops, during recent bad weather. The 1981 Poppy Appeal raised a total of £691 in Dore & Totley, this was an increase of 170% on the previous year, the collecting team was raised from the Girls Venture Corps and lads from the 366 Air Training Squadron. The team was led by new organiser Edith Pollard. Congratulations to Dr. Marion Jepson of Rowan Tree Dell on being awarded the M.B.E. in the New Year Honours list. She retired last September as Sheffield Area Health Authority's specialist in community medicine for child health.

..... Unofficial observations at the new traffic lights have noted the following - traffic incorrectly turning left out of Glover Road into Baslow Road - drivers ignoring 'No Entry' signs and proceeding straight into Glover Road - parking on the double yellow lines. Who's for another White Christmas?

Will all local Groups and Associations please make a New Year resolution, to send all their items, articles, reports and diary dates, as early as possible each month, for inclusion in the Independent.

TERRY JOINER
DIXON

Tel: 350621

19 Rowan Tree Dell,
Totley Rise,
Sheffield.
S17 4FL.

GRANT'S BLINDS

WINDOW BLIND SUPPLIERS
SPECIALISTS IN SUN CONTROL

627, Chesterfield Road,
Woodseats,
Sheffield 8.

Telephone:- Sheffield 589168

TOTLEY BROOK STORES

GROCERS AND

GENERAL OFF LICENCE
TOTLEY BROOK ROAD

★ ★ ★ OPENING HOURS ★ ★ ★

Mon - Sat 9.00 am - 8.30 pm
Lunch 1.30 pm - 3.30 pm

Sundays 12.00 pm - 2.00 pm
7.00 pm - 9.00 pm

MICRO ALARMS

Registered Office: 625 Abbeydale Road Sheffield S7 1TG

TEL. Sheffield 372847

Dronfield 416187

Intruder Alarms Installed to
B.S.4737

Domestic, Industrial
Commercial

Systems from £175

Local 24 hour service

Estimates free

Existing systems taken and
updated

Door - Window Locks
Supplied & Fitted

Ring today for your Free Estimate

JOHN SCRIVEN

FLOWERS FOR ALL OCCASIONS

Sprays supplied at short notice
Weddings & Funerals a speciality

37 & 59
BASLOW ROAD

phone 367116
350831



John and Sandra
invite you to

THE CROWN

bar snacks available
Monday to Friday
Lunchtime

G.E. SOCKETT

32 Twentywell Road

BRADWAY

SHEFFIELD

Phone 368744 AFTER 4 pm.

(ELECTRICAL CONTRACTOR)

RE-WIRES. REPAIRS.

SOCKETS AND LIGHTS FITTED.

Alistair

Humphrey & Co



CHARTERED VALUATION
SURVEYORS & ESTATE AGENTS

33 TOWNHEAD ROAD,
DORE, SHEFFIELD, S17 3GD

The Local Estate
Agent For The
DORE Area

SHEFFIELD
362253 OR 362420

G. BROWNHILL
(TOTLEY)

BUILDING WORK - ALL TYPES
PROPERTY MAINTENANCE
and REPAIR WORK
PLUMBING and ELECTRICAL
ESTIMATES FREE

tel. 351222
368984

Nether Edge Tutors

OUR TEAM OF EXPERIENCED GRADUATE TEACHERS
OFFERS PRIVATE TUITION IN
MOST SCHOOL SUBJECTS
(ENGLISH FOR FOREIGN STUDENTS)
CANDIDATES PREPARED FOR CSE, O-LEVEL, A-LEVEL
AND UNIVERSITY ENTRANCE.

For further information, contact:
The Principal,
Mrs. J. S. Meek, B.Sc. ARCS,
32 Kenwood Park Road,
Sheffield S7 1NF
Telephone 62134

COME TO
AVENUE STORES FIRST

MOST OF YOUR GROCERY AND
HOUSEHOLD REQUIREMENTS ALWAYS
IN STOCK.
Norman and Jackie Fletcher are pleased
to serve you.



TOTLEY

ROVER

(WITH MEMORIES OF SUMMER)

HOUNDKIRK DELIGHTS

Walks around Totley continued.

Let us take a stroll of around 7 miles and explore the charm of Houndkirk and Blacka Moor.

Proceed along Hillfoot Road to Chapel Lane and cross the causeway and field path to Penny Lane and the Cricket Inn. 200 yards above the pub and opposite the Sports Field we enter Bents Farm. To the right of the farmyard we pick up a stile. (Note the adjacent home-stead which was the site of the Grouse Inn). Totley was always proud of its hostelries.

The path swings left from the stile and we head for Old Hay. Cross a quaint bridge that spans the infant Old Hay Brook. Enter a drive on our left as we fringe Hillfoot Road. 350 yards along the drive and we pass the fine Avenue Farm. Note the attractive Weir across the field. The dogs may greet you as you leave Avenue Farm but they are always friendly. Follow the yellow markers to the second gate. Keep to the left of the field where the feeders of the tiny Old Hay Brook join. After a few hundred yards we come to a white bridge, where we leave the stream and swing right across steep fields to Shorts Lane (home of the Dare Riding Stables).

Here we enter the charm of Blacka Moor. A glorious landscape of Beech, Ash, Oak and Sycamore abound. The path is often muddy due to the horse riders, but we are not deterred for the distant hills beckon us forward. Past the Blacka Dyke on our left and beyond the Ford to the main "Piper House Gate" route where 50 yards along we cross a tiny footbridge over the stream where a sign points to Devils Elbow Gate. The path climbs fairly steeply for ½ mile through sheer enchantment of mixed woodland. Conifers abound in the middle stretches, Scotch Pine, Firs and Larch, Oak seedlings and Silver Birches in profusion. A gritstone causeway threads its route through bilberry patches as we head for the Hathersage road.

Walk back towards Whirlow and just beyond the old site of the Devils Elbow Road (now a Corporation storage and tip site), imagine modern traffic coping with that notorious bend of yesteryear, we enter a kissing gate on our left directly opposite the top of Whittow Lane.

Glorious heather moors to tread, we pause to enjoy the fine views right across the whole of Sheffield and Totley.

Proceed along the path to our right under the flanks of Houndkirk Hill, after 200 yards the path fades - so strike directly for the summit of the hill. The short pull is worth the effort to stand on the top of Houndkirk Hill with its fine gritstone edge. At nearly 1400 ft the views are really fine.

The Ox Stones beyond the Houndkirk Road are clearly seen and sheep graze in the hollow of the Red Car Brook, the high feeder of the River Sheaf. The moorland scene stretches right across to Stanage and the Hope Valley.

To the North the wild Hallam Moors, South the scene presents Totley Moss and Big Moor, the whole of South Yorkshire and the industrial scene seems to belong to another world.

One could linger on this ridge forever but we must leave and head for the Fox House Road. Descend the ridge, past an isolated concrete post and pick up a continuing line of gritstone edge

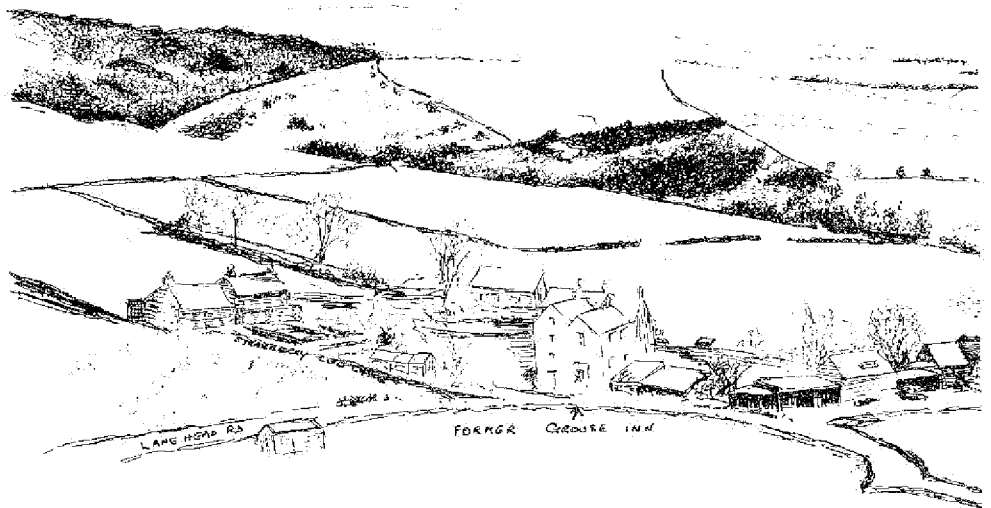
which runs parallel with the Houndkirk Road (site of Roman Road). After a ½ mile we join an ancient coach track on our right, which takes us directly on to the Houndkirk Road track. As we head for Stony Ridge and the Fox House Road, the whole magnificent scene of the Hope Valley spreads before us. From Stony Ridge proceed back along the main road towards Blacka Moor and we enter the lovely Rhododendron lined track across to our own Totley Moor.

The site of lonely Strawberry Lee Farm must have commanded a dignity from its lofty position.

The main path under Blacka Hill takes a tremendous amount of punishment from the elements of weather and horse riders, but Sheffield Corporation Parks Dept., do a first class job in keeping the surface in good repair for all to enjoy.

The route to Strawberry Lee Lane past the fine Beech avenue under Bole Hill seems to improve with every visit. In Autumn the colours are a joy to see. Stroll down to Hillfoot Road via the Sports Field and just above the Crown Inn, take the final steep path to the end of The Grove and Butts Hill. Drink in the full walk you have enjoyed from the little seat at the top of The Grove. Maybe the best view in Sheffield!

John C. Barrows.



TOTLEY BENTS REC. GROUND



EVENING AND DAYTIME CLASS PROSPECTUS

SHEAF VALLEY DIVISION OF
ADULT EDUCATION

ABBEYDALE HALL (enq. 584964)

Starting week beginning Monday January 18th 1982. Day and evening classes.

Courses continuing from last term which may have vacancies :- French, German, Spanish, Italian, Ladies Keep-Fit, Over 60's Keep-Fit, Ballet/Dance, Art, Dressmaking, Embroidery, Upholstery, Classical Guitar, Gardening, Floral Art Groups.

New or recently introduced courses :-

WHAT MAKES A GOOD READ Tues 10 - 12 (University Course) with creche
Lecture/discussion group looking at a series of fiction, autobiography, poetry and drama. Why do we enjoy literature?, how does the author establish his or her point of view?

MAKING SENSE OF SOCIETY Wed 10 - 12 (University Course) with creche
The aim of this course is to help people understand the complexities and changes which are taking place in society. It involves friendly and informal discussions about the changing roles of women, family life, crime rates, class, educational debates, micro chips and the media.

WOMEN AND HEALTH Thurs 10 - 12 (W.E.A. Course) with creche
Informal group for all women interested in talking and learning about issues affecting our daily lives. The way in which our experiences as women, mothers, wives and workers influence mental attitudes; health and a sense of well being.

GET WEAVING Wed 10 - 12 Cont. from last term. With creche
An introduction to frame and back strap weaving. Advice on making your own simple equipment. Starting from samples you should soon be weaving wall hangings and other useful items.

TRACING YOUR FAMILY TREE Thurs 10 - 12 (University Course) with creche
NEW COURSE

Tracing your family tree is Britain's fastest-growing hobby. In recent years many old documents have become available for study for the first time. In Sheffield two first-class record offices are open to the public. They have their own vast collections of original documents and microfirms of important collections that are held elsewhere. Who were your ancestors? What were their occupations and where did they live? David Hey of the University of Sheffield's Division of Continuing Education is to teach a course showing people how to begin and how to trace their ancestors step by step. He can trace his own ancestors back ten generations to a John Hey, who died in 1633, and has found his surname in the same part of Yorkshire a century earlier. He is chairman of the Sheffield and District family History Society, which has 220 members eagerly tracing their own family trees.

This is a course designed to start you off on a fascinating Do-It-Yourself hobby. It will be held at Abbeydale Hall on Thursday mornings from 10 - 12 noon, beginning on January 21st. The course will last for five weeks but may be extended to ten.

Enrolment - enrol on the first meeting on January 21st 1982.

Fees - £1 per session, 30p per session for O.A.P's.

KING EGBERT UPPER SCHOOL

For all enquiries tel. 584964

Every Monday evening 7.15 to 9.15pm.

Starting on January 18th - cont. from last term.

Woodwork, Art and Pottery, French, German.

Starting on January 11th. University courses.

Parish Churches (cont. from last term)
NEW - Computers for parents.

COMPUTERS FOR PARENTS

Is your child learning about computers at school? Keep up with your children by coming along to this course and learn about the history of computers, how they are being used in schools today, simple programming techniques, impact of computer technology on all aspects of our lives. Run by Clive Opie a teacher at King Egbert School.

NEW - PSYCHOLOGY FOR BEGINNERS

Starting January 18th 1982.

This short introductory course will consider some of the ideas that psychologists have about why we do some of the things we do, how we influence each other, how we are affected by the people we meet. Includes body language, group conformity, unemployment and its affects on individuals. Initially 5 weeks but could continue.

KING EGBERT LOWER SCHOOL

Every Friday morning 10 - 12 am.

Starting Friday 22nd January.

Cookery on a budget

Sewing for the family

These practical daytime courses are aimed at anyone in the local area; parents with young children, pensioners, shiftworkers, the unemployed etc.

CHESHIRE HOME

Everyone at Mickley Hall Cheshire Home would like to thank all those who helped and supported all our events in 1981, and the voluntary helpers who visit the home.

We wish you all a Happy New Year, and although it's difficult to visualise the summer just at present, our Garden Party will be on Saturday 26th June, 1982.



Fleur De Lys

Real Ale
Real Fires
Real Prices

6p off Doubles
all Spirits

"CURLY Q"
162 BASLOW ROAD

TOTLEY.

OFFERS PROFESSIONAL HAIR
CARE BY HIGHLY QUALIFIED
STYLISTS.

Relax and acquire an all year
round Mediterranean tan in our
new "Sun-Room" using a Solar-
mobile sun bed.

Tel. **350362**

G. ASHMORE

HIGH-CLASS FAMILY BUTCHER

TOP CLASS MEAT AT
REASONABLE PRICES

249 BASLOW ROAD
TOTLEY

SHEFFIELD, S17 4DU
Telephone: 360034



*Woodthorpe
Gardens*



Landscaping
Garden construction
& Garden Maintenance
Tree surgery
Dry stone walling
Rotovating

ESTIMATES FREE

Holmesfield
Sheffield

Tel: Sheffield 360065 & 360134

**TOTLEY
PRIVATE
HIRE CARS**
Anywhere Anytime

LOCAL, LONG DISTANCE,
AIRPORTS and COAST.

45 THE GROVE
Tel. **361547**

W. STODDART

ROOF & PROPERTY REPAIRS

SLATING & TILING

WINDOWS & GUTTERING

JOINERY WORK

tel. **663256**

PROFESSIONAL HAIRDRESSING
FOR ALL THE FAMILY

Hair Design



86 Baslow Road
Totley
Telephone 363409

AUTHORISED WELLA
SYSTEM PROFESSIONAL
SALON

ROBERT.J. HILL

RUSH & CANE
SEATING
SPECIALIST

363107

**PETER
SWIFT**

15-19 BASLOW ROAD,
TOTLEY RISE

TEL: 364411

**Totley's
independent
newsagent**

FOR FIVE GENERATIONS

THE LEADING FUNERAL DIRECTORS

John Fleath & Sons

A REVERENT & HELPFUL SERVICE
AT ALL TIMES

☎ **23229**

LIMOUSINES FOR SPECIAL OCCASIONS

LIBRARY

The Yosemite National Park in California contains some of the most spectacular scenery in the world. Based on the Yosemite Valley (pronounced Y'semi-ty) which is 7 miles long and a mile wide, the park contains 1,200 square miles of meadows, forests, waterfalls and mountains, and everything seems to be larger than life. Besides the red fir, pine and incense cedar that cover the mountain sides, there are also groves of huge sequoi trees. One such tree in Mariposa Grove is known as "The Grizzly Giant" (Yosemite is an Indian word meaning grizzly bear), and is 35ft. thick, with a circumference of nearly 100 ft., and a height of over 200 ft. There are many waterfalls throughout the park, but the most magnificent must be the Upper Falls in the Yosemite Valley itself, which plunge a staggering 1,430 ft. down a sheer drop, or nine times the height of Niagara Falls. Mountains worthy of mention include The Three Brothers (a trio of leaning peaks piled on top of each other to a height of 4,000 ft.), the twin 2,700 ft. peaks known as The Cathedral Spires, and El Capitan. This awe-inspiring cliff-face, 3,500 ft. high, is the largest known single block of granite in the world, a huge outcrop which does not have a single fracture on its entire perpendicular wall. Needless to say, a challenge like that acts like a magnet to climbers from all over the world, including John Fleming from Sheffield. In 1978 he and a companion from Minnesota climbed a route called "The Shield", straight up El Capitan, and the following year he climbed a similar route, "The Zodiac", this time with a friend from Sheffield. Both routes had previously been unclimbed by anyone from this country. On Tuesday the 26th January, John will come to Totley Branch Library to describe his experiences on the rock face. To set the scene, he will start with a slide show of the beauties of the Yosemite National Park, and will then move on to describe his two epic 3,000 ft. ascents. "Climbing in the Yosemite" will begin at 8pm., and admission is free.

T. Whitton. Branch Librarian.



Nowt So Queer As

LOCAL FOLK-LORE, FAIRY TALES AND SUPERSTITIONS.

The following are extracts from the book "Household Tales and other Traditional Remains", by Sydney Oldall Addy and published in 1895.

THE CARD PLAYER AND THE DEVIL.

A man had been playing at cards with some friends at Totley, in Derbyshire, and was angry because he had lost. And, therefore, he stole the cards and said he would play with the Devil as he went home through a wood. As soon as he had got well into the wood a figure, with cloven feet and horns on his head, came out of the bushes with a small table in his hands, and set it down and said: "I am ready to play." But the man was so afraid that he knelt down and called on God, when the figure disappeared.

Children living at Dore, in the parish of Dronfield, near Sheffield, were afraid to fetch water from a well called Sparken Well, because, they said, it was haunted by a spirit.

It is unlucky not to be standing on grass when you first hear the cuckoo; you ought not to be standing on a stone. At Dore, near Sheffield, scythe-grinders did not begin their business until the cuckoo's voice had been heard. When you first hear the cuckoo, run as fast as you can until you are tired. Then take off your shoe, and in it you will find a lock of your lover's hair.

Many years ago a woman, who lived at Morewood's Farm, pronounced "Murruds" in those days, Owlter Bar, went away from home to her daughter's funeral. Although she left the house empty and locked up, when she came back she found that the fire was still burning and the house put in order. She believed that the fairies had done this, and the affair was a good deal talked about.

A horse having fallen ill at Dore, a man bled it, and then rubbed some of the blood into the horse's back, with the idea of strengthening that part.

At Dore, the following wild herbs were "laid in," that is, hung up and dried, to be used for medicine, namely, meadow-sweet, mountain-flax, sanctuary, and wood-betony. Also the following garden herbs, namely, rosemary, hyssop, and herb-a-grass. They were plucked when in flower.

At Dore, it was customary when a corpse was laid out to lay a pewter plate containing a handful of salt upon the breast. (The object was to keep the witch away).

LETTERS

SNOW BUSINESS

I do wish folk wouldn't obstruct the footpath with snow cleared from their driveways. We're still having to risk life and limb walking in the road long after the normal snow has melted because thoughtless people have piled it up without leaving a gap. Pity the pram pushers and the elderly.

(Name and address supplied)

A Reader Writes

"With reference to the most attractive cover on the December issue, deer being fed during a severe winter at Chatsworth, perhaps it might be appropriate to remind readers that ponies 'wintering out' need plenty of extra feed this time of year, the birds are glad of fats, nuts, bread during the bad weather, and should anyone have been rash enough to get a puppy or kitten at Christmas and not be sure on feeding and looking after it, the library has plenty of books on pet care, and the animal charities P.D.S.A. and R.S.P.C.A. do produce leaflets on the care of most pets, hamsters and rabbits included."

STAFF

DISTRIBUTION & ADVERTISING
JOHN PERKINTON
2 Main Avenue 361601

MIKE & ANTHEA WILLIAMSON
1 Green Oak Avenue 365415
CHRISTOPHER WOODHEAD
33 Stonecroft Road 364821
DAVID BROWN
7 Milldale Road 366425

CONTRIBUTORS

Bob Warburton, Brian Edwards,
Pauline Perkinson, Don Bellamy

Items for publication may be sent to
or left at J. Perkinson, 2 Main Avenue,
Peter Swifts, Totley Rise and V. Martin,
Abbeysdale Road South.

COPY DATE FOR FEBRUARY ISSUE
IS SATURDAY JANUARY 23rd.



(NOT FORGETTING THE GUIDES).

The Committee of St. John's Scouts and
Guides would like to thank everyone
who made the Christmas Fayre the huge
success it was. On the day, we raised
£305, with a generous donation from
Geo. Basserts of £25 making a total of
£330.

The winners of the raffle are as follows :
1. Miss Susan Smith 2. Steve Simpson
3. Rev. Trevor Hudson 4. Eastwood
5. Ballentine.

The name of the doll was SAMANTHA,
which was won by Mrs. Harris.
The cake weighed in at 5lb 9oz and was
won by Mrs. Hayes.

Thank you all once again and may we
take this opportunity to wish everyone
a Happy and Healthy 1982.

ADVERTS

PLEASE NOTE. Due to the continuing
demand for advertising space in the
magazine, we are, from 1st January,
1982, only able to accept NEW adverts
that are pre-paid. At a time when our
costs and overheads continue to rise,
this will help keep our postage, paper-
work etc., to a minimum.
Your co-operation will be much appreci-
ated.

DIARY

Next month's Diary should be back to
full strength.

JANUARY

11th, Mon. T.R.A. Committee Meeting.
8pm. 37 Sunnyvale Road.

21st, Thurs. Pilgrimage of Prayer in
connection with the Week of Prayer for
Christian Unity begins 7.30pm. English
Martyrs, 8.15 pm. Totley Rise Meth. and
9 pm. at St. John's.

26th, Tues. Totley Library. Talk - 8 pm.
John Fleming "Climbing in the Yosemite".

29th, Fri. UNA meeting - 8 pm. United
Reformed Church, Totley Brook Road.
"The Changing Nature of the United
Nations". Speaker - Frank Hooley M.P.
Admission free. All welcome.

FOR SALE

Convertible Settee

Converts into Single Bed. Suitable for
a Bedsitter. £12

Phone 350970.

J. & S. CATERING

Hot and Cold Buffets
for all occasions

368906 ☎ 368807

J. Scriven & Son

(FRUITERAMA)

HIGH CLASS FRUIT
& VEGETABLES

Orders Delivered

37 BASLOW ROAD

☎ 367116

SHEPLEY

SPITFIRE

REAL ALE AT
COMPETITIVE PRICES

Hot & Cold Snacks

MON - FRI
12 to 2pm

harry & margaret
welcome you

Wilfred H
Swift & Co.
ESTABLISHED 1936



CHARTERED SURVEYORS
VALUERS, AUCTIONEERS & ESTATE AGENTS
COMPULSORY PURCHASE SPECIALISTS

16 NORFOLK ROW, SHEFFIELD S1 2PA
TEL: SHEFFIELD 0742-22516

WHS

PRINCIPAL: PETER H SWIFT ARICS

CONSULTANT: WILFRED H SWIFT FSVA

A personal service from a family firm.

Valuations carried out for clients on all matters relating to land and
property, professional advice given on the sale and purchase of property.

Free Valuations on residential sales, without obligation.

RESIDENTIAL SALES UNDERTAKEN AT 1% COMMISSION PLUS ADVERTISING COSTS.

Telephone: 22516 (Office) or Mr. Peter H. Swift, Telephone : 364465 at
60 Old Hay Close, Dore.