

TOTLEY INDEPENDENT

PUBLISHED BY THE TOTLEY RESIDENTS ASSOCIATION CONTINUOUSLY SINCE 1977

APRIL 2010

No. 332

20p.



"Grandma Green and friend Mrs Hopkinson, my bantams and ducklings", photo from the late Roy Green. This photo was taken behind Grange Terrace on Baslow Road from just off Totley Hall Lane.

Totley Residents Association Update

Spring at last!

As I write, the blackbirds in my garden are fighting for the best place to nest, while the blue tits are busy in a nest box. Dunnocks and a wren have been singing for some time.

The crocuses are brightening up the top of Mickley Lane and daffodils are just showing colour. Let's hope they give us a good show again and don't get damaged.

My annual reminder----to make sure our bulbs flower again for years to come, the leaves **must be allowed to die down naturally**. They may look unsightly for a short time, but we can put up with that in order to have a display in years to come.

It is vital the leaves are not cut down too soon as they provide the food to produce the flowers for next year.

We need to take care of our bulbs as Streetforce may not have money to give us any more, due to budget cuts. So all you of you who feel the need to go out and cut the grass verge in front of your property, please wait a bit longer.

Cuts are taking place in all Council departments across the city.

Green Oak Park has been affected. As you all know, The Friends of Green Oak Park are working with Parks and Countryside to carry on with the Masterplan. We have been working with Miriam Stayte for a long time, but her contract ends at the end of March. We would like to thank Miriam for her hard work and enthusiasm.

Mary Bagley, Director of Parks and Countryside has let me know the project will continue and Miriam's place will be taken by Kate Clark. This means the project will slow down as it will take time for us to get to know each other.

New play equipment mentioned in the last Totley Independent may not appear as soon as we had hoped.

The good news is six trees were planted on March 19th.

Totley Primary School came in the morning and planted two multi-stemmed white birch to replace the willows which were felled. This was necessary because they had reached the end of their lives, were rotten inside and were a danger to us all. The children also planted a Mountain Ash to replace the one that was vandalised.

PTO

**TOTLEY RESIDENTS ASSOCIATION AGM - 19th APRIL 7.30pm
IN TOTLEY LIBRARY - ALL WELCOME**

Totley All Saints School came in the afternoon and planted an Evergreen Oak which can be seen as you come into the Mickley Lane Entrance. Nearby, they planted a Turkish Hazel and a Handkerchief Tree. Before planting the trees, the children were given a



Totley Primary School and Totley All Saints School children having fun planting the new trees.

lesson in how to use a spade safely, by Tinsley Tree Project. They also learned how to mulch the trees to keep in the moisture.

They all seemed to enjoy the experience and we were lucky to have a lovely warm sunny day. Thanks to Jerry Gunton from Parks and Countryside for arranging the planting for us.

The Dore Ward Forum Meeting held on 17th March was a lively affair with topics ranging from allotments and traffic to dustbins and the lack of a Community facility in Totley.

Details in the next edition of the *Independent*.

THE TOTLEY RESIDENTS ASSOCIATION ANNUAL GENERAL MEETING WILL BE HELD ON 19TH APRIL, 7.30PM IN TOTLEY LIBRARY

Do come along to hear what has been going on throughout the last year. There will be a chance to ask questions and put forward your concerns. We are always looking for new members to come and join us.

The Home Office states a volunteer is someone who commits time and energy for the benefit of society, the community and the environment, undertaking this freely, by choice and without concern for financial gain.

Do come and offer to help your community.

In the last Totley Independent, I wrote that Inspector Craig Patchett had informed us at the February PACT Meeting that the Totley Brook Road Police Box was to be upgraded with computers paid for by the Community Assembly. This was to enable a team of police officers to work from there and thus save time and our taxes travelling to Meersbrook and back to prepare reports etc. We have now learned this will not happen. So it will be business as usual and we will be very surprised to see a police officer on the beat in Totley. On the other hand we now have officers patrolling the area in the evenings at the weekends, in an attempt to keep the youth vandalism problems under control.

It was a pleasure to go down Totley Rise this morning and to meet a group of teenagers from KES, who were preparing to clean cars to enable them to go abroad. Here they will help to build a school house for teachers, so they can be nearer the children they are trying to educate. Congratulations

Avril Critchley, Chair TRA

Handkerchief or Dove Tree

This tree (*Davidia involucrata*) is a native of Central China. It was discovered by a Jesuit missionary Pere Armand David in 1869. Introduced to Europe as recently as 1904, it is found in large gardens in the South West. The tree was planted in Trebah in Cornwall in 1906. It can be found in Sheffield Botanical Gardens where it flowers annually.

The tree is conic shaped and becomes domed with radiating branches, has purple bark, flaking pale brown and fine vertical tissues. The leaves are deeply indented, toothed and when young smell of blackcurrants.

It is best known for the flowers that appear in May, purplish and surrounded by large, thin white paper-like bracts, one larger than the other, resembling a handkerchief. The fruit is a very hard nut, surrounded by a green husk which contains three to six seeds.

Avril Critchley

King Egbert School

Arts catch up.

As Spring arrives we can look back on a very busy term at King Egbert School. The school production of "Titanic" produced some extremely accomplished performances from our pool of talented young actors and the show was appreciated by the packed house who managed to get hold of tickets. Cheryl Bartlett, head of drama once again showed herself to be a superb director of young people's performances.

Also in the Arts area, our film club has had great success with a number of pupils gaining recognition for the reviews they have written of films and the club being selected as a leading film club in the country and invited to a celebration in London.

The Jazz Band are preparing themselves for a European tour this summer when they will play at several venues in the first week of the summer holidays.

A group of mainly sixth form art students will visit New York at Easter in order to sample the wide range of galleries and exhibitions available there. This is a fantastic opportunity to see some of the greatest collections in the World together with the stunning backdrop of Manhattan in the Spring.

Our manufacturing group currently have some of their silver work on exhibition in the V and A museum in London and a visit will be made by the pupils to see their work in this prestigious venue. This is a huge accolade to the quality of work these Y10 pupils have produced.

The music department will also be staging "Songs from the Shows" with a cast of 100 after Easter with some of the best known songs from popular musicals being performed. A lively "feelgood" evening is promised.

The annual "Battle of the Bands" competition took place on March 18th when 4 pupil bands and 2 staff bands will go head to head on the school stage. At least one of the pupil bands already has bookings in Sheffield venues and has featured in the Sheffield Telegraph. We might well have the next big thing from Sheffield right here. Move over "Arctic Monkeys"! So this snapshot goes to show that "The Arts" in the widest sense are thriving at King Egbert thanks to the skill and commitment of the teaching staff and the dedication of the pupils who are keen to be involved in all aspects of this work.



Transport 17

It is lovely to see a bit of sunshine for a change. It has made the bulbs and shrubs grow a bit and the birds are busy making nests. It is a time when many of us think of having a break or are lucky enough to have grand-children to look after. This means that sometimes Transport 17 is having a hard time organising drivers and escorts. Do you think that you would like to volunteer to help us? Come in and have a chat with Michael Finn or ring us on 236 2962. You would be made very welcome.

Jack Cresswell came to drive for us about 9 years ago. He grew up in Beighton and went to Eckington Grammar. A few years ago another volunteer came into the office. It was our lunch time. Jack recognised his name, Peter Varley, and they realised that he had also been at the same school, but not at the same time.

Sadly on 3rd March, Jack passed away. He will be sadly missed by all Transport 17ers and especially the passengers. He was a caring, kind and funny person. If I could not do my escorting with him, his wife Dorothy (Dot), would help us out. She became part of the team that dealt with Dore Methodist lunch club on Wednesdays.

Jack had been a semi-professional musician for most of his life. His Show Band was The Johnny Mann Seven. They played many places including the Cutlers Hall and the Locarno. In fact his first date with Dot was at the Locarno. He was a very good pianist and organist. It became a tradition for him to play the organ for the Lunch Club's Carol Service.

Jack also played at services in Frecheville Methodist Church. He ran a musical group called "Friends in Harmony". They sang an arrangement he had done just before Christmas of the song "May each day".

He was a joy to have as a friend and Danny and I and all at T17 will miss him very much.

We were sorry to hear of the death of Marjorie Wordsworth, also in March. She was a member of a couple of lunch clubs and Dore Women's Fellowship. She became frail but her brain was as sharp as ever and she kept in touch with us all. Our prayers and condolences go to both families.

Congratulations to Darryl Creed on joining the "Bus Pass Club". He doesn't look old enough.

We look forward to getting our new bus later this year and, of course, fund raising!!

Happy Easter
Margaret Barlow

Friends of Sheffield Manor Lodge Event

On 19th May, 7.30pm Alison Weir is coming to the Platinum Suite, Sheffield United FC, Cherry Street, Sheffield. Alison will talk on her new book "The fall of Anne Boleyn".

Ticket prices £7 non members £6 members

For tickets contact David Templeman on 01246 415497 or email: templeman3@tiscali.co.uk

David Templeman
Chair of the Friends of Sheffield Manor Lodge

Kate Reynolds II

This is a small update about Kate's progress following a stroke, after a few weeks.

She has responded slowly to the "physios", due to being disabled and her state of mind. Her rate of progress is slow, but they are carrying on with the treatment for a couple more weeks or so. Her speech has improved very much, and her memory is unimpaired, together with her sense of humour.

Once again, I would thank all the kind enquiries and offers of help, but as of yet they have not been required 'Thank you' all the same.

However, a topic has cropped up. Kate will not be able to drive again, So her car is up for sale. She would like to find it a 'good home' preferably within the Totley area, so that she may see it running about, when she comes back into circulation.

Briefly it is; Citroen Xsara 1400, Golden, Bought new Jan 2000 with 45,000 miles on the clock. It is in very good condition and taxed to end of year, but no MOT. Guide price around £1,295 but "No sensible offer refused", as they say! Please contact me on 236 6891.

May I remind her 'personal' clients that TOADS ticket purchases should be obtained from Jeff Bagnall, 235 1206, who is standing in for her on this occasion

Thank you all once more,
Tony Reynolds.



The **HARDY PLANT SOCIETY**
South Pennine Group
www.hardy-plant.org.uk

Sale of Plants

lovingly grown by our members

Sat 15 May 2010

1.00 – 3.30 pm

&

Sun 16 May 2010

11:00 am - 3:00 pm

in

Sheffield Botanical Gardens

Free Admission
Everyone welcome

Councillor Surgeries

Liberal Democrats:

2nd Monday in the month 6.00-7.00 p.m., Totley Library, Baslow Road and 2nd Saturday in the month from 10.30 a.m. to 12.00 noon, Dore Old School Hall, Savage Lane, Dore Contact details: telephone 235 2289 Email: keith.hill@sheffield.gov.uk, colin.ross@sheffield.gov.uk or mike.davis@sheffield.gov.uk

TRA Website:- www.totley.org.uk

Mothering Sunday

We have recently been celebrating Mother's Day, with bunches of flowers, and Mother's Day cards, but how many readers know that the idea of holding such a day was due to a young School-teacher in Grafton West Virginia, U.S.A. in 1908?

Anne Jarvis loved her Mother very much, but sadly she died in 1905 and Anne was overcome with grief and guilt when she thought about all those occasions when she could have helped but didn't, until two years later on the second anniversary of her Mother's death she confided in a group of friends with what they thought was a brilliant idea; to hold an Annual National Thanksgiving and Celebration of Mothers called 'Mother's Day'.

The first Mother's Day Service was held on May 10th 1908 and attended by Mothers and Fathers, and their children, quickly growing in popularity against the wishes of the Senate who questioned why Mothers should have a special day, however, The House of Representatives quickly passed a resolution that 'Mother's Day' should be celebrated on May 8th 1914 when the President of America Woodrow Wilson signed a proclamation designating the second Sunday in May as 'Mother's Day'. Exactly when the custom started in Britain is not clear for almost at once the first World War began and Britain already had its own Christian 'Mothering Sunday' on the fourth Sunday in Lent when all young women who worked in houses many miles away from home were allowed one day off to visit their families, taking with them a traditional Simnel Cake, and with them, to worship in the Mother Church (the main one in a group of Churches) on 'Mothering Sunday'. Now it would appear that 'Mother's Day' has taken over from 'Mothering Sunday'. Is it a loss to the Church, or a gain for Mothers?.

Jo Rundle.

TOTLEY PRIMARY SCHOOL UPDATE

By popular demand from my avid readers (all two of them) I am back! Despite what you may have thought I am not dead but have been absent from work for nearly three months following an operation on my foot or, as I like to guilt trip my wife when she is moaning at me, "major surgery". I'd like to thank my friends in Totley who have come to see me and for walking my dog Lloyd (or did he walk them?). You know who you are.

I was glad to get back to work and have been busy since my return. We have planted twelve fruit trees and thirty very young trees like silver birch and cherry trees in our gardening club. All thanks to £250 we received from the Allotment Society Rose Bowl competition we entered last year and also trees from the Woodland Trust.

Eight children helped Tim Shortland from the Community Forestry Park and Woodlands to plant a tulip tree near to Baslow Road to fill in a gap left after a tree was felled many years ago. The main field looks great with the different coloured crocuses and daffodils that the school has planted over the years. This year we hope to grow more flowers and enter into Totley Open Gardens. The council has cancelled the Lord Mayor in Bloom because of the cost of running the event. Over the past two years the school gardening club has gone from strength to strength and I know the kids will miss going to the Town Hall and meeting the Lord Mayor. The silver gilt award we received last year was a testament to the kids and helpers hard work tilling the soil.

Well, that's all for now.

Allen Miller

Building Supervisor

EASTER SERVICES

St. John's Church, Abbeydale Road South

April 4th **EASTER SUNDAY**

10am Parish Communion

PUZZLE CORNER

Recently my attention was drawn to an article in a Sunday newspaper (Observer 14.02.2010) deploring the poor results when some primary school teachers attempted questions set to 11 year old pupils. I have long argued that many people, seeing a problem, immediately say "I can't do that". without really trying to think about it. So here is an invitation!

How Many Lines

One question read "A B C D E is a pentagon. Name all its diagonals" The answer is AC, AD, BD, BE, CE. This was answered correctly by 39 teachers, 25% of those tested.

Instead of writing out all the possible diagonals I suggest the question could be "How many?". 5 diagonals in the pentagon above. Perhaps then try how many in a hexagon and so on. Is it possible to pick out a pattern so that you can calculate how many diagonals for figures with many more sides - say 26 with points A---Z? And finally into a cube. How many lines joining two comers other than these which are edges of the cube?

Don Ashford

SPRING FAYRE

WEDNESDAY APRIL 7TH

10AM-12NOON

CHESHIRE HOME,

MICKLEY HALL

0114 236 9952

PRESERVES, CAKES

PLANTS, GAMES



Tai Chi Controversy

I would like to try and clear up some of the confusion over Tai chi which has led to the present situation regarding our group and the members of All Saint's Church.

The history of Tai chi is clouded. According to one account the very earliest records show that it began as a series of physical exercises for a group of monks. The movements were devised by their physician because they sat meditating for lengthy periods and he thought this unhealthy.

It then developed into a philosophy and a way of living that had many of the aspects of a Christian life. Over the years many other aspects of other thought processes were added or incorporated and it took many different directions. So it became associated with martial arts and eastern philosophies and religions.

Thus it has become a practise which can be performed at many levels and to many degrees. I can assure the members of the church that we ladies who have been using your church hall have been attending the classes purely for the physical aspects. Harmony Gentleness and Peace are our main aims. Not incompatible with the aims of the church. Anything beyond the physical is a free choice and not a doctrine.

Pat Parkin

A LITTLE BIT OF LOCAL DIFFICULTY

Most readers will no doubt have been aware that Totley, and the use of the church hall, has had media coverage recently. So, being in the eye of the storm, can we offer some comments on how it has come about, from the church's perspective.

The last thing we have wanted to do is in any way stand in judgment over individuals, what they may think or wish to do, or indeed the experience of the Tai Chi class in the church hall. However, as a church, our focus is on Jesus Christ. We believe that we are called to live as those who believe in, trust in, follow, and seek to become like Him, and that this is how human beings have been made, and meant to live. Our conviction is it is Jesus who is the route to peace and gives the fullest life possible, and we have a calling to share this as widely as possible. Whatever the experience of the class in the hall, it is a fact that Tai Chi is an integral part of the Chinese Taoist philosophy of life, which takes a very different approach (information is readily available on the internet). We are in no way criticising or attacking this, or those drawn to it – but it is different from the Christian faith. We stand in the tradition of the church, which goes back to its very beginning of having a focus clearly on Jesus, and so we have felt it is not right to host activities with clear roots elsewhere. We are very pleased indeed to host a wide variety of groups and activities in the hall – which we have found has been increasingly used in the last couple of years, so we felt very much on the horns of an uncomfortable dilemma in the matter in question.

Having said all that, we were then in a difficult position, in that the circumstances of the booking meant that we were unaware of the nature of the class, until it had started. The leaders of the church considered long and hard what to do, because the last thing we wanted was to cause offence and upset. In the event, we felt we had to say that we were not comfortable hosting the class and gave plenty of warning to the organisers, so that they could seek somewhere else.

In the wake of all the media coverage, David has received lots of messages, emails etc. Interestingly, a number of these have come from church leaders, both locally and further afield, who have faced very similar situations and dilemmas, and responded in very similar ways.

"Tai Chi happens in other church halls", you may say – which is indeed the case. Such decisions are very much down to individual churches and their leaders, and at All Saints, we have felt it right to take the view we have.

If anything, does this matter underline the need for a local community centre, which clearly would operate on a different basis?

If anyone would like to discuss the matter with David, he is very happy to do so.

David Rhodes and the leaders at All Saints

Tai Chi Class Restarts at URC

Totley Tai Chi will be restarting at the Dore and Totley United Reform Church, Totley Brook Road on the 12th of April 11.30am-12.30pm as usual.

Letters & emails regarding Tai Chi in the Church Hall:

I was very encouraged to read (in The Star) that All Saints Church does not want to be involved in facilitating Tai Chi classes. It has worried me for years that many people take part just for the exercise without knowing that it is an Eastern religion. I, therefore, welcome the fact that this has been publicised as well as being glad to see the Church standing up for what we believe in.

While the desire of all churches is to be a blessing to the local community, I would hate to think that people would want the church to be there for their convenience without thinking why it is there.

Thank you All Saints Church. God bless you all
Sheila Eke

Email from a student in another Tai Chi class.

We discussed this issue at my Tai Chi class last night, when our tutor explained that it was a very long time before the taoist approach evolved into a philosophy of life, and another very long time before it evolved into something that could be considered a religion. As taoism has no deity, how can there be a clash with christianity?

On the radio the vicar says they believe spirituality should be reached through Jesus (exclusively I guess). So if this exercise gives you a sense of well-being & peace of mind (spirituality?) then there's a conflict. It's a leap of logic and very dodgy ground as many more things should give this sense of well being than don't - well they do in my world! It's actually just an exercise class which is good for you physically and makes you feel good.

Brings into focus that the church has to approve what goes on in the hall and it's not the true community facility it should or could be.

Totley and Dore in the Yellow Book

Three gardens in Totley and Dore, and one in Millhouses, will this year feature in the National Garden Scheme's Yellow Book for the first time. They are the new kids on the block – along with about 3,700 others also opening in 2010!

This not only puts Totley and Dore on the national gardening map, but is also an accolade for Sheffield, because until 2010, only two Sheffield gardens out of 113 in the Yorkshire section were in the acclaimed Yellow Book.

The gardens will open on different weekends so there is a chance for visitors to get to all of them. These are the gardens, and their opening dates:-

Mike and Norma Jackson of 9 Newfield Crescent, Dore, will open on Saturday 22nd and Sunday 23rd May from 2-6pm (42) Alpines, bog garden, rockery and ponds. Refreshments available.

Sue and Roger Thompson of Owl End, Newfield Lane, Dore, will open on Saturday 19th and Sunday 20th June from 2-6pm. (45) herbaceous and mixed borders, vegetables and woodland.

Jennie Street and John Beazer of 16 The Grove, Totley, will open on Saturday 17th and Sunday 18th July from 12-5pm. (57) Quirky mix of borders and vegetables, junk sculptures and compost heaps. Refreshments available.

Simon and Julie Olpin of 124 Dobcroft Road, Millhouses, will open on Sunday 25th July and Sunday 12th September from 11-6pm. (18) Palm and bamboo jungle. Refreshments available.

All these 4 gardens appear in the Derbyshire pages of the Yellow Book, because of their proximity to Derbyshire. Figures in brackets indicate their Derbyshire reference number in the Yellow Book.

All monies raised from these garden openings will go to the charities supported by the NGS – Macmillan Cancer Support, Marie Curie Cancer Care, Help the Hospices and Crossroads Care.

Local History Class

The class will run for 10 weeks from **Friday 7th May** (not 23rd April as advertised in our March issue), on Fridays 10am-12noon at Totley All Saints Church Hall, Totley Hall Lane. The cost is £25 and includes a guided tour of the Local Studies library. The class is aimed at beginners or people with some experience of researching local history.

The aim of the course will be how to access primary resources in order to complete a local history project. Each week I focus on a particular subject, such as trade directories or maps, explain what they are and the history of their development, demonstrate how they work and explain how they can be accessed.

At the end of the term, learners will put together a visual project of a local history study they have been working on, using at least two lots of resources, ie photos and census records. The project will be displayed in the local library.

For further information please contact:

Suzanne Bingham at either: Tel: 255 1273 or Email: suzannebingham@hotmail.co.uk

Green Oak Bowling Club

It is now the start of the bowling season. Hopefully the weather will get better and there will be plenty of sunshine for us all to enjoy.

The Bowling Club has 5 teams competing in the Parks Leagues, more players are always welcome, especially the men's veterans. If any one fancies a game or would like to join the teams call 0114 236 5499 for details. Bowls can be hired at a nominal fee.

The Bowling Green is not at its best at the moment due to the extreme winter weather. The Green Keeper is working very hard to improve the condition, hopefully it won't be long before we see the benefits. The Bowling Club wishes to remind everyone that the Green is for bowling only. The upkeep of the Green is paid for by Green Oak Bowling Club. Everyone who wishes to give it a go why not come and join us, you will be made to feel most welcome.

Junior Bowling Club

The Juniors practice session is for all children aged 5 - 15 years old and is every Tuesday evening between 6.00 - 7.00pm. Inter-parks matches are played on Saturdays mornings in term time. A team of 5 are picked to play during the weekly practice sessions for the following Saturday. Again everyone is welcome to give it a go, adults are welcome to come along to support but do not need to stay.



The best player for the Juniors for the past 3 years has been James Higgins, he won the trophy for the highest score in 2009 season. James also plays for South Yorkshire along with Cameron Ford another Green Oak Juniors regular player. Unfortunately the 2010 season will be their last season as juniors due to both their ages. Green Oak Bowling Club

is always looking for juniors to join the team, bowls and tuition is provided and young people do not have to commit to attending the full 1 hour practice session.

For further details contact Sylvia Ruddle 0114 236 5499

Abbeydale Park Bowling Club

The Abbeydale Park Bowling Club is holding two **OPEN MORNINGS** for anyone who would like to try their hand at Crown Green Bowling. They will be held on Saturday 10th April and Saturday 17th April between 10.00am and 12noon. Previous experience is not necessary as instruction will be given. The Bowls Pavilion and Green are situated at the top of the Abbeydale Park Sports Club site where ample car parking is available. The Club is now a mixed club with the number of lady members rapidly approaching the number of male members. Please bring your own suitable footwear (no heels) and all other equipment will be provided. For further information contact John Hall (Hon Sec) on 236 7174.



Further to the article in the February issue of **Totle Independent** about 'Fox Hunting in Totley 2010' ARTHUR FOX, grandson of Fred Fox has given us this treasured photo of the 1929 Totley Sports Football Club. Standing (L-R) are Mr Folestone (President), Fred Fox (West View), Billy Crooks, Bob Havenhand, Willis Pearson, Jack Stacey, Ben Biggin, Frank Taylor, Albert Fox (Chippy), William Martin Fox, Billy Drury, Fred Pearson Seated (L-R) ?, Vic Crooks, Percy Crooks, Herbert Crowther, Earnest Pearson

THE BOUNDARY STREAM
BETWEEN YORKSHIRE
AND DERBYSHIRE
(PRE 1935) RUNS UNDER
THE ROAD



VICTORIAN HOUSES ON ABBEYDALE ROAD SOUTH

BRIAN EDWARDS 1996

OLD TOTLEY by Jo Rundle

On Saturday, September 9th.1939 on our first visit to Lane Head since the declaration of War all was quiet and apparently normal except that my Mother was unusually quiet after my two brothers had left for Padgate, to be fitted-out with uniforms and to receive postings to training camps to which they had been assigned. Unusually, my Father was not in his allotment and I was idly looking through the front window and about to ask where he was when he and my Brother Elijah appeared on the footpath outside, marching in step, with right arm swinging and shoulders back, on which one held a garden rake, the other a hoe, obviously to simulate the carrying of a rifle, whilst they looked very serious and solemnly marched past the house without a sideways look.

My Mother said that they had reported to the newly established Recruiting Centre in the village. Where?, I never knew, and never thought to ask, but possibly the School. There they had been sworn in to the Local Defence Volunteers - the L.D.V. for short, whose duties were to defend their own community against foreign intruders according to the instructions that had been broadcast on the wireless all week. The whole exercise was to familiarise them with the handling of guns, and the discipline essential to the security and safety of themselves, those working with them, and an army that might be called on to fight. At that stage, no one knew what was in store! Both were carrying them with pride and perhaps a feeling of importance, an arm-band showing the large letters L.D.V.

Events had moved fast for, during the short time of one week, sufficient L.D.V. arm-bands had been produced to equip a whole army, unless, of course, they had been lying in boxes in store-rooms throughout the country ready for the expected War. By the following week some things had changed when my Father was told to undertake responsibility for the safety of the Strawberry Lea mine, Moss Mine, Dore, and the land in the immediate vicinity of both pits, whilst at Totley, the local L.D.V. would be responsible for Totley village.

The outer boundary of Sheffield had been extended in 1934 and now reached as far as Ramsley, the outer boundaries of Holmesfield and Cordwell, and the boundary of Sheffield and Chesterfield on Eastmoor. It was evident that another L.D.V. Station was necessary, to be manned by those men who were familiar with the area. Elijah was transferred from the Totley group, and joined by those from Fox Lane and other outlying farms and houses in the moorland countryside. The new station was set-up at Owl Bar in the small, one roomed hut that was the original Toll Bar Cottage built on the side of the first toll road to Totley, and later incorporated into the outbuildings just inside the front gates of the newly built Peacock Hotel. It was a very small one-roomed shack, boasting a single large fireplace that Elijah often recounted as being 'Mighty welcome' when they returned in the early hours on a winter's morning after a night of very questionable activities.

They had been issued with one gun, which each in turn was allowed to carry on manoeuvres, and which, to ensure the seriousness of the situation, contained one live bullet that was supposed to be taken out at the end of the exercise before returning to the Station. Elijah told me that one night it was the turn of Willie Woodbine of Fox Lane to carry it, which he did very proudly, but he forgot to take out the bullet before returning to the station. Jack Shepley of Woodthorpe Hall was their Commanding Officer, in front of whom they paraded and stood to attention ready to be dismissed. Willie, only about 4ft. tall, forgot that the bullet was still in the rifle when he stood to attention, banging the gun on the floor, when it went off and the bullet shot up to the roof and sent them all into praying-mode on the floor. Only one of many stories from our own 'Dad's Army'.

One may be forgiven for thinking that this was all 'Dad's Army' joking, but there was a serious side also, probably not known to all Totley residents during the first year of the War for, although there had been a mild shock during that false alarm on the first morning, the following months were quiet and uneventful.

Our weekly trip to Lane-Head continued; Identity cards, Ration Cards and Clothing Coupons had been issued immediately, and a complete blackout was ordered when black fabric could be purchased free of coupons, and the smallest chink of light brought the Air-raid Wardens shouting "Put out that light". Car headlights were dimmed, and street lighting absent except where absolutely essential, where it was dimmed and kept down to the minimum. I had registered my Food-coupon book at Frank Evan's shop in Hillfoot Road as it was more convenient for me to collect our weekly rations there.

Of course, I speak from my own experience, and almost everybody will have a different story to tell, for there was a great difference between the areas around the Docks of Liverpool, Hull, Grimsby, and Bristol, and the small inland towns and villages who posed no danger to the enemy. By February it was clear that my husband would not be home on leave as some of the soldiers were during this quiet year, for many more soldiers would soon be needed and the Drill and small and large arms instructors were turning-out conscripted young men in six weeks instead of the usual three months, and there was no time for Leave.

The weekends grew longer and I soon found a little niche where I could make myself useful. Rationing of food was little or no problem, for the Government, knowing that there would be a War, had had adequate time to make plans. Production was good throughout the country. Nurseries and Market gardeners could no longer grow flowers in their huge glass-houses, which had to be turned over to food production, and a few hens, or a pig, were allowed in the back yard and to be slaughtered at home, until after the War when the law changed and they had to be sent to the Abattoir for slaughter, the carcass being returned to the producer for cutting-up.

Many lessons had been learned during and since the first World War when food was scarce and distribution haphazard, and wherever two or three people were seen together at a shop window or door, others would join them until a long queue formed, often not knowing for what they were waiting; just a habit, not always a need. By 1939 rationing was well controlled, although coastal towns and cities, and of course the ports, fared worse than inland cities and villages where usually there were two shops both being allocated sufficient rationed foods for the whole population, which included visitors, and soldiers at home on leave who brought their own ration-books and coupons. Consequently, there was no shortage of rationed foods, and often the shopping-basket

continued next page

received a small added bonus of whatever happened to be surplus to ration requirements that week.

There were occasions when rations were not quite sufficient for special occasions, like weddings, and this is where my training at Totley Hall came in handy. Usually the Bride's Mother could bargain with friends and neighbours for a few ounces of butter and sugar to make the cake which was passed on to me with the icing-sugar and other ingredients for the almond paste and Royal icing (fondant icing had not yet become popular). The price was £3.00 for a single 12" cake delivered, which my Father took care of, but one woman wanted two-tiers and because she had no ornament for the top, I was to loan her the one from my own cake. As usual, my Father asked how much I was charging and refused to deliver it unless I charged £5.00. I did, but the Mother was angry and never returned my ornament. Sometimes you can't win!

Clothes rationing was less stressful and clothing coupons were adequate for most people, and there were 'roll ends', 'end of bales' and short pieces of cloth that could be adapted and used for garments for all ages. This was where I found my other small niche, for when my son was born in 1937 my Mother had given to me her old Wheeler & Wilson treadle sewing machine, since when he had worn (home-made) clothes. Easter had just passed and the thoughts of mothers were on Whitsuntide dresses for their daughters, and many of them could not make dresses, nor had the equipment to do so, but they could buy odd lengths of suitable fabrics at very little cost and no coupons. This led to Mums' skirts and dresses, one lady being delighted with her new lingerie made from silk given to her 5yrs. earlier.

To be continued.

Live music at the Cross Scythes

Our next live acoustic night will be Sunday 2nd of May
start time 8.30pm

**Our acoustic duo will be locals Ian Bellamy &
Cary Baylis from Acoustic Angels**

Free Entry

Food served until 8pm

Arrive early to avoid disappointment

For more info visit www.cross-scythes.com

The Crown

The Crown has closed down, we hope it reopens its doors soon. A spokesperson from Punch Taverns has said "It is our priority to re-open the Crown as soon as possible. We are actively recruiting the right licensee to take on this lovely village pub and work with Punch to create the resource that the community deserves. If any readers are interested in this opportunity they can speak to our recruitment team on 0844 848 3279. In some instances, in order to re-open pubs as soon as possible we might ask a management company or a temporary operator to run sites whilst we continue to recruit but we're not yet in a position to confirm any details."

ADULT LEARNING CLASSES FOR TOTLEY

In January, adult learning classes in Art, Yoga, Computers, Spanish, Digital Imaging and Local History started in Totley.

This is the first time that Totley has got such services, so it was a welcome development.

However, the bad snow and unavoidably short notice for the start of the courses meant these

classes were poorly attended, and so Art, and Digital Imaging have had to close.

But the good news is that all the classes, except Digital Imaging, will recommence for 10 weeks in the week beginning Monday April 19th.

So, if you are interested, please come along to the April classes, which will be as follows:

Art Mondays from 12-2pm (beginners) and 2-4 (intermediate) in the Heatherfield Club from Monday 19th April

Yoga Tuesdays 6.30pm at Abbeydale Sports Club from April 20th

Wednesdays 1pm at Abbeydale Sports Club from April 21st

Wednesdays 6.30pm from April 21st venue to be confirmed

I.T. Thursdays 5-7pm (beginners) at King Ecgbert School from April 22nd

Thursdays 7-9pm (intermediate) at King Ecgbert School from April 22nd

Spanish Thursdays 6-8pm at King Ecgbert School from April 22nd

Local History Fridays 10-12am at All Saints Church Hall from May 7th

King Ecgbert School are keeping a list for the courses to be run there - number is 0114-235-3855. All others are bookable through Glynn Stones via glynn.stones@sheffield.gov.uk or phone 07764661181

If you have any queries, or want courses that are not listed here, please contact your voluntary Learning Advocates Jennifer Burns Tel. 235-0071 jburnstotley@supanet.com, Jennie Street Tel. 236-2302 jennie@hadish.f9.co.uk or Laura Gibson Tel 273-5787 laura.gibson@sheffield.gov.uk.

On a positive note, the Tai Chi class run through Activity Sheffield, which was thrown out of Totley All Saints church hall, has been accepted by the United Reformed Church and the class will recommence on 12th April in the URC church hall on Totley Brook Road.

Dore and Totley Clothes and Toy Sale

Children/Adult Clothes, Toys and Equipment
plus Cake Stall and Refreshments

Saturday 22nd May 2010
Totley All Saints Church Hall
1 pm - 3pm

For a seller's number call Laura 236 2920 or Sally 235 1651

Organised by and on behalf of Totley All Saints School PTA

Celebrating Spring

Ideas and activities for celebrating Spring at home from members of All Saints Church, Totley

Recipe: May Day Cake

Make a Victoria Sponge Cake and use lemon butter cream icing in the middle, with lemon soft royal icing over the whole of the outside. Alternatively, have the inside filled with jam and whipped cream and the whole cake covered with lemon soft royal icing.

For the Maypole, you can either attach ribbons to one end of a piece of barley sugar which you then press into the middle of the cake, allowing the ribbons to fall over the outside of the cake and decorate the top of the Maypole with a few small flowers, or you can wind coloured ribbons around a knitting needle and create a similar effect.

Victoria Sponge Mix

4 oz SR flour

1 teaspoon baking powder

4 oz margarine

4 oz caster sugar

2 large eggs

Pre-heat oven to 170C gas mark 3

Add all ingredients to a bowl and whisk them till thoroughly combined. If the mixture doesn't drop off a wooden spoon easily when tapped on side of bowl, then add 1 – 2 tsps warm water and whisk again.

Divide the mixture between two prepared tins, level off and bake for about 30 minutes. When cooked leave them in tins for only about 30 seconds then turn them out onto a cooling rack.

Soft Royal Icing

1 lb icing sugar

2 egg whites

1 teaspoon lemon juice

½ teaspoon glycerine

(Add minute amounts yellow colouring if desired)

Pass the icing sugar through a sieve, whisk egg whites to a froth, add icing sugar, a tablespoon at a time, beating thoroughly. Stir in the lemon juice and glycerine and continue beating until icing will stand in peaks.

A Spring Poem

The Busy Sunbeam

Anonymous

The sunbeam knocked on the Snail's front door,
"Open!" it cried. "for it's Spring once more!
Put out your horns and your little grey head,
And hurry away to the wallflower bed."

Then the sunbeam went to a mossy stone,
For sleeping there was a Toad, alone.
It tickled his ribs with a warm little hand,
And sang, "Wake up, for the sunshine's grand!"

Then to the pond went the sunbeam bright
And called to the Frogs that slept out of sight:
"Come out of the mud, give your legs a shake,
For spring is here, and it's time to awake!"

It woke the Squirrel, it woke the Bee,
It found the Snakes in the hollow tree,
It tickled the Dormouse – then it lay
Warming my crocuses all the day!

Did you know?

"Blue-doming" was a term in use many years ago – have you heard of it? It means to go out into the countryside and enjoy being surrounded by God's creation under a wide, hopefully blue (!), sky. With the sunny Spring weather we have had lately it is wonderful to go out into the Peak District and be close to nature. This is where many people catch a glimpse of God and feel their soul nourished and refreshed by our creator God who loves them.

A Prayer for Spring

Dear God in Heaven,

Thank you for the new growth of Spring, for the beautiful flowers and buds. Please help there be new growth in my life – new things to learn, new friendships to make, a fresh discovery of you and your love for me.

Amen.

Maurice Snowdon & Kate Caroe

Spring at All Saints

If you'd like to come to church this Spring, there are a number of great churches in Totley to choose from! Here are details of services at All Saints - you would be very welcome. Refreshments are served in the church hall after the morning services.



2nd April Good Friday

12noon Meditation "The Road to Calvary"

4th April Easter - *Theme: Alive!*

8.45a.m. Easter Breakfast in church hall - book in at vicarage on 236 2322

10:00 a.m. Holy Communion

3:30 p.m. Holy Communion at Cheshire Home

6:30 p.m. Holy Communion

11th April Easter 2 - *Theme: On the third day He rose again*

10:00 a.m. Family Baptism

6:30 p.m. Open to God

18th April Easter 3 - *Theme: He is seated at the right hand of God the Father*

10:00 a.m. Family Holy Communion

3:30 p.m. Informal Service at Cheshire Home

6:30 p.m. Evening Prayer

25th April Easter 4 - *Theme: The Holy Spirit*

10:00 a.m. Morning Praise

6:30 p.m. Holy Communion

Totley Townswomen's Guild.

We can look forward to an interesting year, with a good mix of Speakers, including such subjects as "The Bronte connection with Hathersage", "Personal Safety and Home Security", "How the media works", "Houses and Gardens of Derbyshire" and "An Elizabethan Wardrobe".

Our meetings are held at Totley Rise Methodist Church Hall, Baslow Road on the third Tuesday of each month (excluding August) starting at 10.00 a.m. and finishing at noon.

Coffee and biscuits are served at 10.30 a.m., with a chance to chat and make new friends.

Our other monthly activities include Social Studies/Rambling in Derbyshire/Choir, and outings to places of interest from time to time.

DO COME ALONG - VISITORS ARE ALWAYS MOST WELCOME - JUST WALK IN!

Music Hall

Vulcan Varieties, Sheffield's traditional Music Hall Society, will be attacking the troops and civilians in theatres of war and entertainment, as part of their new season. (But then, we always were a bit over the top!)

About the only thing that isn't new are the jokes, but don't let that put you off coming and seeing what a lot of folks got upto in the Blackout.

Venues are:

The Lantern Theatre, Sat. 8th May at 7.30 pm

Coal Aston Village Hall Sat. 15th May at 8.00 pm

The Gatty Hall, Ecclesfield Sat. 22nd May at 8.00 pm

Tickets £7.00 /Concessions £6.00

Available from Secretary, Chris Launder, ph 2431339

ST GEORGE'S DAY FRIDAY APRIL 23RD

7PM



LAST NIGHT OF THE PROMS

TICKETS £5. 50

CHESHIRE HOME, MICKLEY HALL

0114 236 9952

Coffee, Cakes and Cuttings

This annual notice is to remind you that coffee, cakes and cuttings will be held at English Martyrs, Baslow Road on Saturday, 15 May. As usual we ask you to donate books, bric-a-brac or plants for the event. Please ring 2365313 if you wish to deliver any of these before the date. Proceeds are mainly for Transport 17.

Thank you

GARDENING TIPS FOR APRIL

For many gardeners April is their favourite month, Spring flowers are often at their best, summer bedding plants are on sale, and the herbaceous border seems to grow by the day. The longer days not only benefits the plants, they also provide more opportunities for the gardener to work in and enjoy the garden. Rapid plant growth this month means it is one of the busiest months of the year in the garden. If you grow your own bedding plants these may well need daily watering and feeding while they are still in their trays and pots. Many established plants in the borders also require attention staking, tying in and sometimes pruning; while in the kitchen garden vegetable sowing is usually at its peak. The lawn now requires regular mowing often twice a week. The weather is a deciding factor as to whether the time is right the lawn cannot be cut if it's covered with frost, planting out is delayed also by colder weather. I am a bit behind this year due to the snow, rain, frost etc. Hope things will catch up, and we are in good time with our produce for the Totley Show in September. We managed to get into the garden for a couple of days this week (mid march) it was nice and sunny but very cold, you may recall me saying about temperature variation, here is an example, I went into the greenhouse this morning it was 80 degrees I opened the door it dropped to 60 degrees within 5 min. by 4-30 the sun had gone in, the temperature was 45 degrees, it is very difficult at this time to keep a reasonably constant temperature which the seedlings and plants can tolerate. The propagating section in the greenhouse keeps seedlings warm and cosy overnight but the daytime temperature is a bit more difficult, especially if you are going away for any length of time, good neighbours are a godsend, unless you have a very posh greenhouse with air conditioning (I wish). Be very careful when planting out bedding plants make sure they are properly hardened off, and don't plant them out when frost is forecast, if you do plant them early have fleece or newspaper handy to give them a bit of protection overnight. It might pay you to keep them back for a week or two if the weather is really cold, if you have to delay until May you will still have a good show for the summer. My ponds are in need of a good fettle, I have a bit of blanket weed (you know that slimy green stuff). I think the UV lamps in the filters may need cleaning or changing. The water is reasonably clear and the frogs have just paid us a visit, but up to now only one or two, I expect the other 60 or so will not be long and the croaking and other activities will start, last year we were inundated with spawn but we did not get many tadpoles the cold got to them also. I am looking forward to watching the fish doing what they do on a nice sunny afternoon with a cup of tea and a biscuit or two. The tree pruning is completed - my friend got me cracking, and with his help we got the job done in good time, they look a bit shorn at the moment - their good looks should come back when the leaves come once again, I don't think there will be much blossom this year as we had to cut a lot of branches which were diseased or getting out of hand, so we won't be seeing many plums this year. Easter is upon us so don't let the holiday feeling get you planting too early. I hope the weather is fine and you all enjoy your garden or whatever else you get up to...

FLOWERS.

Given the right weather, seedlings and young plants can be planted out. Some will need a little support use dead twigs or split cane, choose a showery day as the sun can be a bit traumatic for them at first, all your borders should be weed free and large clumps divided. Don't be in a rush to plant dahlias they are a bit vulnerable to late frosts. Iris unguicularis can be planted now. Plant butterfly gladioli for cutting, put a bit of sand under each corm if your soil is a bit heavy. Weed and replant when necessary in the rockery, the garden centres will be offering small plants in containers try not to disturb the roots when planting out, there's lots to choose from. Try to mix the colours a bit to give a bit of a change, fork in a sprinkling of bone meal. Prepare your window boxes, tubs and containers with rich compost for planting. Towards the end of the month sow the last of the annuals thinning them to 2 or 3 inches apart, those with long tap roots like poppies rarely transplant happily. Biennials should be sown, include sweet Williams and wallflowers, the fiery red wallflowers are magnificent, but try some of the primrose, rose, lavender and purple varieties for a change.

Make sure the taller border plants have all the support they need, a bit of a gusty wind can devastate your delphiniums, lupins etc. All garden flowering chrysanthemums should be planted out during a mild spell. Keep the rows at least 2ft apart so that you can work comfortably amongst the plants. Remove dead head from daffodils and narcissi but be patient and allow foliage to die back naturally. Pick off pansy and viola deadheads otherwise the plants will stop flowering and concentrate on producing seeds, watch out for greenfly.

Water lilies can be planted from late April to June. Warning don't let them dry out whilst waiting to be

planted, they do not need a great depth of water 18" suits them well.

VEGETABLES.

Thin any vegetable seedlings that are in danger of growing leggy due to overcrowding. Prepare celery trenches for further sowings. Catch crops of radishes and lettuce can be sown between slower growing vegetable rows and in odd corners. Onions not destined for the " Totley Show ", in September, can be grown in the less cultivated part of the garden, sets can be planted out now, protect them with a cloche or newspaper if frost is forecast. Potatoes, apply a complete fertilizer mixture of 3 lbs of superphosphate, 1½ lbs of sulphate of potash and 1½ lbs of sulphate of ammonia at 2-3 ozs to the yard run of drills at planting time or dig in well rotted manure or compost. Keep the potato growing tips lightly covered with soil if frost threatens or cover them with straw. Spring cabbage will benefit by an application of nitro chalk, 2ozs per yard run, apply in showery weather keep it clear of foliage. Brussels sprouts should be planted out in a rich loam that has been well fed from a previous crop, keep them well watered. Another sowing of french beans can be made for a continuity crop. Leeks need a rich deep soil if you are interested in having those fine specimens for the show.

Make the first sowing of runner beans in deep boxes or pots under glass. Sow winter cabbage, savoys, broccoli, cauliflowers and a pinch of beetroot and lightly cover with finely sieved soil. Sow marrows in pots in the greenhouse. Ridge cucumbers can be raised in cold frames, cover with sacks or insulate if frost is forecast over night, don't forget to remove it during the day. Sow carrots thinly to avoid having to thin them as this encourages carrot fly. A tent of fleece is an effective deterrent or a dressing of soot if you can find any.

TREES SHRUBS and FRUIT.

Spray blackcurrants if big bud is seen, break off and burn any affected buds. Spray gooseberries against mildew. Keep an eye on newly planted fruit stock make sure they do not dry out. Spray or dust raspberries against the dreaded raspberry beetle. Spray apples with a fungicide if your trees have suffered from scab in previous years, whatever you spray avoid the period when the blossoms are in full flower we do not want to knobble Ian's bees even if they do come from New Zealand. Keep raspberry canes well mulched as their roots are fairly close to the surface; be careful when hoeing round them for the same reason. Prune back any rose shoots that have not developed any buds, rub out any inward growing or unwanted buds. If you use lawn mowings as mulch do not put more than an inch or so because they can create heat which will not do the plants much good. Make sure newly planted trees, shrubs and fruit are firmed in well and are kept free of weeds.

Evergreen planting should be completed this month. Give roses a treat, a dressing of Rose fertilizer based on Tonk's formula will do them a world of good, you can buy it ready mixed if you care to mix it yourself the formula is: - 10 parts nitrate of potash, 12 parts superphosphate of lime 8 parts sulphate of ammonia, 1 part sulphate of iron, 2 parts sulphate of magnesium, Wear protection when mixing. Forsythia, winter jasmine, flowering currant and other winter flowering shrubs can be cut back to within a few buds of the old growth, once the flowers have finished. Prune late flowering clematis, hybrid tea and floribunda roses.

GREENHOUSE and INDOOR PLANTS

Re-pot indoor azaleas and camellias as soon as they have finished flowering. Take cuttings of winter flowering begonias, rest freesias lachenal, as arum lilies and cyclamen. place them on a shelf near the glass and gradually reduce the water supply. Take cuttings of greenhouse plants, fuchsia, geraniums etc, you can increase your stock quite easily for fuchsia take a non flowering shoot about 2 or 3 inches long, dip it in a bit of rooting powder and put it in a 3 inch pot with a label on and water well. Allow to drain surplus water then put it in a clear plastic bag and pop it in the propagator at about 60-65F, 3 or 4 weeks should see it well rooted. Geraniums are easy place non flowering shoots in a tray filled with damp, sandy compost or vermiculite dip in rooting powder, pop them in the tray about 3" apart and hey presto! more plants, if you have too many save them for the plants and cuttings stall at your local church or school. Keep an eye on the weather and shade young plants and seedlings from strong sun, ventilate well (don't use side vents yet young plants don't like draughts) close up in late afternoon. Offsets from many houseplants can be detached and potted up if they have a heel or rootlet so much the better. When watering in the greenhouse it is best done in the morning. Plants not in flower will enjoy a spray with tepid water (except hairy varieties). Sow winter flowering primulas if you want a few plants to cheer you up in the winter and early spring.

LAWNS

A regular mowing schedule should be established at this time, a good rake and spike if you haven't done it already. Also after spiking a top dressing of a good lawn fertilizer will work wonders, water it in if rain is not imminent. April is a good time to sow a new lawn,

a good firm bed is important spread seed as evenly as possible, water well, keep birds off do not let it dry out. Keep the blades on your mower high, do not cut lower than 1 inch Here's another formula for a good spring lawn fertilizer: 3 parts sulphate of ammonia, 3 parts dried blood, 4 parts super phosphate, 4 parts bone meal, 1 part sulphate of potash.

We are all hoping to have a better summer this year so keep an eye on those special plants you have got earmarked for the Trolley Show. Let's make it even better than the excellent Show we had last year. Cheerio for now. TOM.

TOTLEY OPEN GARDENS

JULY 10th and 11th - a date for your diary

Around Totley there are now a group of people getting their gardens ready to open for Totley Open Gardens on the weekend of July 10th and 11th from 1-5pm. If you have missed going round the gardens in previous years, put the dates in your diary. About



three weeks beforehand, programmes will be on sale in Totley Library and over the weekend of 10th and 11th programmes can be bought outside the Ironing Parlour on Baslow Road, or at any of the gates of the gardens that are open.

There will again be a variety of gardens, from the quirky to the formal and the small to the large.

Queries to: Jennie Street 236-2302
jennie@hadish.f9.co.uk



The **HARDY PLANT SOCIETY**
South Pennine Group

www.hardy-plant.org.uk

Sale of Plants

lovingly grown by our members

Sat 15 May 2010

1.00 – 3.30 pm

&

Sun 16 May 2010

11:00 am - 3:00 pm

in

**Sheffield Botanical
Gardens**

Free Admission

Everyone welcome

May Day

The tradition of May Day goes back into ancient and Celtic history with pagan connections since this was before the time of Christianity.

It was celebrated on the first day of summer when live-stock were driven to summer pastures and everyone hoped for a good harvest. Bonfires were lit on hills and mountains.

In more recent centuries May boughs and garlands were hung on doors and windows and a May bush was erected in farmyards which was garlanded with flowers and ribbons. From this idea must have developed the maypole with its bright ribbons around which people danced to the accompaniment of singing or whatever musical instruments were available. Some villages had processions with a May Queen and attendants.

Sheffield's contribution to the Festival of May Day Sheffield's John Ruskin has much to do with reviving the tradition of celebrating the festival with a May Queen, through his friendship with John Faunthorpe who was in the 1880s, principal of Whitelands college, in Chelsea, then an all women's teacher training college. He suggested to the Principal that the girls elect one of their own by secret ballot, so they could choose, in Ruskin's own words "the likeablist and lovablest" girl among them to look after their welfare, and in return they would embroider her a beautiful dress and garland the college with flowers.

Thus the first May Queen was elected in 1881 and a procession with her friends and the rest of the students in attendance to the chapel for a dedication service was followed by celebrations which included Maypole dancing, and still does!

The secret ballot was only announced on the morning of May Day, and the queen's dress would have been made in secret. (Every girl had to give her measurements at the same time as voting for the queen! This still happened in the 1960s when I was there, but since the announcement has been made in advance, and the dresses tailor made. I do remember the needlework lecturer saying that she looked at one girl and knew the measurements were wildly wrong, and so had to do some very close looking and guessing!) The original dresses for the first few decades were in fact quite draped and with trains, so the exact fit was not as critical.

Each year the previous May Queens are invited back to join the procession, and records are kept so that any floral head garlands or particular flowers are ready for her to don together with the costume. Many costumes have had to be let out and in fact renewed. They are a living historical record of the changing face of fashion and now many are finding their way into the Victoria and Albert museum, though the college archives have a lot of information and artefacts relating to the early correspondence between John Ruskin and John Faunthorpe.

A gold cross, each unique is made and presented to the May Queen.

Since 1904 the students have given the queen a gold ring decorated with an English rose for remembrance.

Throughout college the queen is always known as such to their friends. Thus for my year I still meet Queen Jean and my friends and I always refer to her as such. It is just a tradition that has remained.

Part of the tradition has been the aspect of caring for others, which I suppose is implicit in the values of a Church of England training college. The May Queen was in charge of overseeing various charitable deeds. When I was at college, the site had moved to Putney beside "The hospital for the Incurables." (We would not have such a name today.) Those that could were encouraged to visit patients regularly and the Queen would match patients to students. Such relationships often continued beyond college. I know that mine did. When we had Christmas and May Balls, the queen

organised students to don their ball gowns, and we would process up the main road on a Sunday afternoon to the amazement of the traffic, and go into the home and parade in our finery. Such things meant a lot to home bound patients.

Today things have changed but not as much as might be expected.

The college became mixed. What would the men think about such a tradition? Would it die?

But no, the men embraced it in its entirety and even though it has become a part of the Roehampton Institute and is now at Roehampton, the chapel service (where various bishops have found it an unusual occasion to preside,) and procession of the old May queens continues, except, it is now a procession of May Monarchs! The first male to be elected was in 1986 and certainly for the first ten years despite working abroad, he made the commitment to return for the annual ceremony.

1997 saw another landmark with the 116th Monarch being a young man of Ghanaian decent who chose to wear a striking ceremonial national dress with a cross whose central motif means "I fear nothing but God."

The charitable side of college life now seems to centre around the May Queen choosing a charity for which there is fund raising throughout the year.

However the values of service and encouraging children to choose people for such values does live on in the number of students who have gone to schools throughout the country and held their own May day festivals over the years.

Should anyone be interested enough to see some of the photos and more information I have some books which I will be happy to share if you would like to contact me.



Gay Riley

Abbeyle Hall

Do any readers know anything about who these stone sculptures are representative of - any dignitary? They are used at Abbeyle Hall.



STONE CARVING AT ABBEYLE HALL (5) BRIAN EDWARDS 1996

Brian Edwards



STONE CARVING AT ABBEYLE HALL (6) BRIAN EDWARDS 1996

Abbeydale Picture House

Winter will not seem as cold in the Abbeydale from now on because Sheffield City Council has very kindly donated roof insulation above the auditorium. For an entire week in March we had deliveries of insulation and workers crawling between the roof of the auditorium and the roof of the building trying to lay it.

If anyone caught Fiddler on the Roof at the Lyceum Theatre this year by Croft House Operatic you will no doubt have seen the marvellous bed and tombstones in the musical number "Tevey's Dream" which were made by the Wednesday Group at the Abbeydale Picture House. I believe the run at the Lyceum went well with near full houses every performance. Croft House's next production will be Full Monty the Musical at the City Hall in August.

Those of you who are planning on going to see the PHYT's performance of Bugsy Malone in May will not be disappointed. Rehearsals are going very well and it should prove to be a spectacular production with some more sets being built by our talented team, not to mention the period costumes. Please note that if you are coming to see the performance that there are two casts meaning that different performer's will be playing different parts on different nights for example, the actor playing the lead in performance one may not be playing the lead in performance two. So if you know a member of the cast and wanting to see them in their role make sure you book for the correct performance.

Abbeydale has improved sight lines for audience members by moving the seating in the auditorium, this allows for, not only better views of the stage, but hopefully better audio as we have tried to avoid placing seats in areas that the sound from our speakers finds hard to reach.

On behalf of everyone at Abbeydale I would like to say a "speedy recovery" to our wonderful baker and wardrobe assistant Aunty Sue as she's known to Abbeydale (real name Sue Holliday). She recently went in for a small, routine operation but is doing very well. Don't panic though, the coffee morning are still going strong and scones are still available. Every Saturday morning 10:30 - 12:30, however coffee morning is not open on April 3rd. April 17th, May 22nd or May 29th.

That is all from me this month but don't forget to visit our coffee mornings, play some snooker in Abbey Snooker, enjoy the world of music in Bar Abbey or contribute by becoming a friend, a volunteer or donating to the Abbeydale Picture House. All details are on our website. Or you can go to our facebook site and our flickr site.

STILL TO COME:

APRIL 5th Jazz at the Picture House. BAR ABBEY
Alice Coulam

After touring with the Nick Ross Orchestra & the Len Phillips Big Band, Alice who now lives & works in London comes back to her Sheffield roots for a very welcome return appearance at the good old Picture House Jazz Club !

PROCEEDS FROM THIS EVENT TO RESTORATION OF THE ABBEYDALE

APRIL 10TH Northern Soul. BAR ABBEY

APRIL 27TH Keith Peter's Big Band. BAR ABBEY

APRIL 29th Abbcom Comedy Night. BAR ABBEY

MAY 3rd. Jazz. BAR ABBEY

MAY 11th. Northern Soul. BAR ABBEY

MAY 21st and 22nd. Bugsy Malone. MAIN HOUSE - ABBEYDALE

The talented PHYT produce their annual musical. More details to follow.

To book call our box office on 07775966106

MAY 25th Keith Peter's Big Band. BAR ABBEY

MAY 27th. Abbcom Comedy Night. BAR ABBEY

SEPTEMBER 11th and 12. OPEN WEEKEND. Join us to experience the magic behind the Abbeydale. Delve into the past and look towards the future of this magnificent building. Our highly experienced tour guides be with you every step of the way. FREE

Visit: www.abbeydalepicturehouse.co.uk for details

Box Office for Main House: 07775966106

For details on Bar Abbey events call: 0114 258 0414

Ben Miller

TOTLEY HISTORY GROUP MEETINGS

Are you interested in the history of your house? Why not join like minded people doing the same thing? Would you like to find out about local historic footpaths?, look of old maps of Totley or explore the influx of the Totley tunnel navvies. We meet monthly on the 4th Wednesday in Totley Library at 7.30pm.

FORTHCOMING EVENTS

Saturday April 10th at 2pm.

Visit to Fanshawgate Hall and talk by Cynthia Ramsden.

Wednesday April 28th at 7.30pm Totley Library.

AGM. Everyone welcome, followed by Joan Stratford talking about The History of All Saints: School.

Wednesday May 28th at 7.30pm Totley Library

The whole meeting dedicated to research projects

Saturday June 5th at St John's Church Abbeydale Road

Exhibition of History of Dore and Totley

Wednesday June 23rd at 7.30pm Totley Library

Suzanne Bingham advising members on researching skills and sources of information.

All events £2 for non-members, £1 for members.

HIGH LIVING IN OLD AGE

Recently my youngest daughter mentioned an item she had heard on the radio. Apparently someone was requesting submissions of "Letters you wish you had written". By coincidence that day's post contained the letter informing me of my state pension for the coining year. The two sort of ran together in my mind.
To the Secretary of State for Pensions.

Dear Minister,

I am writing to thank the government for the weekly 25p (£0.25) Age Addition to my pension. I realise I did. not pay for this during my 43 years of contributions in my working life, as it was not paid when I first reached pension age. I believe it started when I became 80 years old. In my first delight at this unexpected bonus I had thoughts of treating myself to a bar of chocolate. I then realised the smallest bar of "Yorkie", my favourite, could not become a weekly habit as it costs 53p. More sober reflection cautioned me not to waste my newfound wealth - if I saved it for a whole month I could buy an extra loaf of bread.

Having a worrying kind of nature I then began to wonder how much it cost the department to administer the 25p per week for the increasing number of people due to receive the Age Addition. I admit I am only an ex working chap who was never the brightest star in the firmament but it does make me wonder whether this exercise is worthwhile. A simple calculation shows that it would take some 18 years of the present Age Addition to equate to one 40 hour week of the minimum wage.

I apologise if I have missed something which ought to be obvious to me and thereby wasted your valuable time.

*Yours faithfully
 Don Ashford*

PUZZLE CORNER

Solution to How many Lines?

The first thing to notice is that we do not form diagonals when we join each point to the adjacent ones, these are sides of the figure. So each point can be joined to every other point except 3. Each point can be treated in the same way. Total number of joinings looked at this way would be Total number of points X 3 less than Total Number. BUT

doing this would count each diagonal twice. AD is the same line as DA.

So we need only half that number. In general terms a figure of n sides will have

$$\frac{1}{2} \times n \times (n-3)$$

For the pentagon $\frac{1}{2} \times 5 \times 2=5$

For the Hexagon $\frac{1}{2} \times 6 \times 3=9$

For A----Z $\frac{1}{2} \times 26 \times 23=299$

A cube has 8 corners. Each corner is joined to 3 other corners by edges of the cube. Thus the number of lines joining two corners and not being edges is $\frac{1}{2} \times 8 \times (8-4)=16$

Don Ashford

Totley Foxes

J W Abson's article brought back many happy memories for me. I spent a lot of my childhood playing on the tipping and how scared we all were of Jack. The Boxing Day meal at The Crown was never missed. The landlady "Annie Bower" I believe was "Annie Bolwell", there were many plaques around the pub, one I remember well "There is no depression in this house", the pub was quite dark and dismal - not exactly welcoming!

Pat Liversidge nee Ludlam

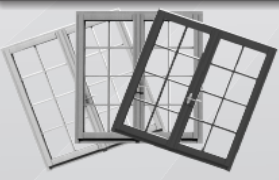


Sheffield
**WINDOW
 COMPANY**



- All jobs are controlled by our project manager
- Made to your exact specification
- Choice of colours - White, Mahogany and Light Oak

ALL WINDOWS AND DOORS ARE MANUFACTURED IN OUR 20,000 SQ FT FACTORY



**7 WINDOWS
 &
 2 DOORS**

From **£2995**



0% FINANCE AVAILABLE

We will not be beaten on price and quality

**FOR FREE NO OBLIGATION QUOTE CALL
 08000 433097**

info@sheffieldwindowcompany.co.uk www.sheffieldwindowcompany.co.uk

**SAVE £££££'s on your energy bills with
 'A rated' energy efficient windows with Thermal Inserts.**



An Owd But Good 'Un.

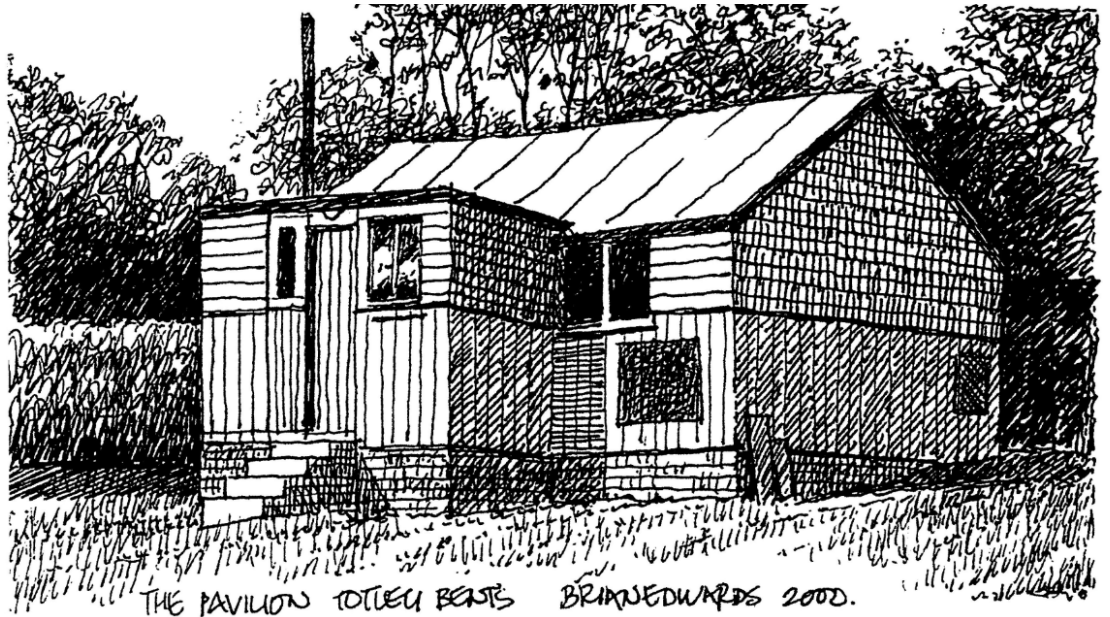
For the few people who do not know the rules of cricket, may I help to clarify?

You have two sides; one out in the field, and one in. Each man that's in the side that's in, goes out, and when he's out, he comes in, and the next man goes in until he's out.

When they are all out, the side that's out comes in and the side that's been in goes out and tries to get those coming in out.

Now, sometimes you get men still in and not out. When both sides have been in and out, including the not outs....

That is the end of the game. Owzat??



THE PAVILION TOTLEY BEATS BRIAN EDWARDS 2000.

Mark and Sally Fletcher invite you to

The Grouse Inn Longshaw

Sheffield S11 7TZ

Meal times:-

Mondays 12.00 to 2.30pm

Tuesdays to Friday's 12.00 to 2.30pm and

6-30pm to 9-30 pm

Saturdays 12.00 to 3.00pm and

6.30pm. to 9.00pm (drinks – open all day)

Sundays 12.00 to 9.00pm

Phone 01433 630 423

ROBERT SHIPSTON PLASTERING & BUILDING SERVICES

- Plastering
- Dry Lining
- Rendering
- Re-skims
- Brick & Stonework
- Paving & Patios
- Painting & Decorating
- General Building works

Tel: 0114 250 9965

Mob: 07940 257263

R Rose & Co

Chartered Accountants & Business Advisors

Specialists at
looking after the affairs
of small businesses.

For a **FREE** initial consultation
please contact Roger Rose, FCA on
0114 281 2331

From business start-ups and general accounting, to support and advice in business development and strategy, we pride ourselves in our personal one-to-one service. To find out more please call 0114 281 2331.

213 Derbyshire Lane, Norton Lees, Sheffield S8 8SA
Email: info@r-rose.co.uk



A1 Tiling, Plastering, Plumbing & Complete Bathroom Fitting Service

Tel: 0114 274 6775

07738 688807

- ◆ Under Floor Heating
- ◆ All Aspects of Home Improvements & Maintenance Work Undertaken
- ◆ Competitive Prices
- ◆ NVQ Qualified
- ◆ No Job Too Small
- ◆ Fully Insured & Guaranteed

A1tilingandplastering.co.uk
33 Glen View Road, Greenhill, S8 7SF

Creating opportunities with disabled people.

Registered Charity No. 218186

Leonard Cheshire Disability

Leonard Cheshire Services in Offers choice & opportunity to people with disabilities. A Specialist Unit for the Younger Disabled. Residential & Respite Care – Single Rooms Day resources – Aromatherapy – Reflexology – Physiotherapy – Toning Tables. Activities include: - Arts & Crafts – Computers – Cookery – Shopping Expeditions – Theatre Outings – Church. Further details can be obtained from – The Service Manager, Mickley Hall, Mickley Lane, Totley, Sheffield S17 4HE. Tel. 0114 236 9952 Fax. 0114 262 0234

The Care at Home Service supports disabled people who wish to remain in their own homes. We provide flexible care packages from 1 hour to 24 hours meeting individual needs. The service operates throughout Sheffield. Our service includes: - help with getting up and going to bed, dressing, washing, bathing, shopping, cooking, light household duties. Further details from: - The Care at Home Manager Tel. 0114235 1400 Fax 0114 235 1499

LOCAL HEAT & WARMTH

(CENTRAL HEATING & HOT WATER SPECIALISTS)

- FULL HEATING SYSTEMS • NEW BOILER INSTALLATIONS • CONTROLS UPGRADE • SYSTEM ZONING • POWER FLUSHING • NEW RADIATORS INSTALLED • UNVENTED HOT WATER SYSTEMS • WET UNDER FLOOR HEATING • GAS SAFE REGISTERED N° 203880 •

Chris and Martin Campion of Totley say:-

Its refreshing to find professional, honest tradesmen, you know the ones who not only know what they are doing and take pride in their work.

Steve and Alan have those values that instil trust and peace of mind, they gave us best advice, and a first class installation job with top quality materials, their after sales service is equally as good. We understand they have completed several installations in the Totley area via recommendations.

SO DON'T BE CAUGHT OUT IN THE COLD THIS WINTER

CALL STEVE AND ALAN FOR YOUR FREE "OUT WITH THE OLD, IN WITH THE NEW" QUOTATION

**ON FREE PHONE 0800 3286628
OR ALAN 07976 358988
STEVE 07967 119094**

SEASONAL DISCOUNTS WITH THIS ISSUE

WILLIAMS DRIVING SCHOOL

2 FREE lessons

PLUS

Discounts for Block Bookings EVERY LESSON £15



This time next year you could be driving past the bus stop instead of standing at it

call:

**0114 255 0460
07793 129 689**

G9 Design

Architects & Design Consultants

- Provision of full architectural services from sketch proposals to final completion certification
- Planning Applications & Building Control Approvals
- New Build or Extensions
- Domestic or Commercial projects
- Complete client commitment

Gary Grayson
5 Newfield Lane,
Dore,
Sheffield S17 3DA

Tel: - (0114) 2352335

Mobile: - 07976431740

Arb Registered

RIBA Chartered Architect

Email: - gary@g9design.com

Paul Reynolds

Licensed
Hackney Carriage Driver



**For a reliable, wheelchair friendly
Taxi Service, from S17 to:-**

**Airports, Hospital Appointments,
Theatres and Restaurants**

Just call Paul on 07950 418875



Hatha ..YOGA CLASS..

Totley and Ranmoor

For more information or to book a place call
RACHEL on (0114) 236 9943

BWY Qualified Teacher

BODY, MIND & BREATH
Enjoy the union of yoga



For
Windows
With Style

Sheffield Factory Showroom
106 PROSPECT ROAD
HEELEY, SHEFFIELD

Sheffield (0114) 258 5496
Rotherham (01709) 512113

Looking for designer labels?

Let our unusual Vision Plan help you pay for them and much more!

Offering all the benefits of 35 years' experience of South Yorkshire's largest independent firm of opticians.



- Friendly, qualified staff
- Eye examinations
- High-tech diagnostic retinal camera and MacuScope
- Wide choice of spectacle lenses, contact lenses and stylish frames
- Special offers



GUESS EYEWEAR DIESEL GANT

POLICE EMPORIO ARMANI

Visit our website and make your choice of designer frames at one of our practices including 63 Baslow Road (tel: 236 4485) and our extensive new premises at 634 Abbeydale Road (tel: 255 6554)

www.mko.co.uk



Joanne & the team would like to welcome you to the Shepley Spitfire.

Two Meals for £7 Available Every Day

Food Served 11am until 9pm

Lunch Time Meal Deal £3.95

Children's Menu available from £2.95

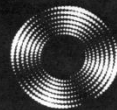
Carvery Every Sunday 12-5pm

£5.45 Adults ~ £2.95 Children

Quiz Night Every Tuesday from 9.30pm.

56 Mickley Lane, Totley, Sheffield S17 4HE
Tel: 0114 236 0298

Entrust Electrical



For all your electrical requirements in or outside the home you can trust **Entrust** to do it right!

- ✓ Full or Partial House Rewiring
- ✓ Additional Sockets, Switches, etc
- ✓ Energy Efficiency Enhancements
- ✓ Contemporary & Classical Refurbishments
- ✓ General Electrical Maintenance & Repair
- ✓ Homebuyer Electrical Safety Surveys
- ✓ Telephone and Computer Data Points
- ✓ Garden, Pond & Other Outdoor Electrics
- ✓ Security Lighting & CCTV



City & Guilds
Qualified

(0114) 2352084
07935 250814



www.entrustelectrical.co.uk

Old Hay Close, Dore, S17 3GP

HODGIE'S BOUNCY CASTLES

- **BOUNCY CASTLE HIRE**
- **13FT X 15FT**
- **FULL DAY**
- **HALF DAY**
- **PER HOUR**
- **CHILDRENS PARTIES**
- **CONTACT WAYNE**
- **0114 2375629**
- **07920148013**
- **FULLY INSURED**



DISCOVER PLAN WEIGHT WATCHERS

Learn new habits and lose weight.

Local meeting at Abbeydale Sports
Club on Mondays at 6pm.

All are welcome.
Tel 0114 236 3314

A & G Plasterers

Tel 0114 235 0798 / 07951 035783

Competitive Prices
Free Quotations

viewsecure™

vision & security

Specialists in domestic and commercial systems

**INTRUDER ALARMS | CCTV
SATELLITE & TELEVISION**

 **01246 455 779** 
www.viewsecure.co.uk

JA BIRD LAND SCAPES LTD

- Regular garden maintenance
- Tree surgery
- Clearance work
- All aspects of soft landscaping

Call 0114 258 9290

Email jablandscapes@aol.com

Visit www.jabird.co.uk

100 Queen Victoria Road, Totley
Sheffield S17 4HU

Totley Deli

Your local Rose's Bread stockist

Coffee Shop now open

Monday to Friday 8am to 4pm, Saturday 8am to 1pm

51/53 Baslow Road
Tel: 236 4238

J Barlow t/a

Horizon Electrical

*Faults, Rewires, Sockets, Lights,
Cooker Points, Electrical Showers,
Phone Points, Security Lights*

No job too small

Fully qualified with friendly advice

Ring Totley 236 4364 or
Mobile 07772 483154



MALLORN ROOFING CONTRACTORS

**REROOFS • ROOF REPAIRS
FLAT ROOF • GUTTERING**

**0114 235 6002
07853 350085**

7 DALEVIEW ROAD, BEAUCHIEF

BRADWAY INSTALLATIONS

**Kitchens, Bathrooms.....and everything in
between**

- Complete Kitchens - Installation or supply and installation
- Kitchen Refits - Replacement worktops/sink/hob etc. Worktop / cabinet repairs
- Bathrooms - Cloakrooms - Domestic plumbing - Tiling Laminate / Vinyl flooring

All work undertaken is fully insured and guaranteed

Ring Peter - 0114 236 5995
Mobile - 07766 411355

SLIMMING WORLD

10 WAYS TO MAKE SURE IT WILL BE THE LAST TIME LOSING WEIGHT IS YOUR NEW YEAR RESOLUTION. THIS TIME MAKE IT LAST FOREVER

1. Focus on your weight loss goal and prioritise it.
2. Be sure you really want to lose weight for yourself. Doing it to please someone else may only lead to short term weight loss.
3. Take advantage of all the group support at your local Slimming World class. Even if you are not a 'joining in' person, you'll be surprised how motivating it is.
4. Accept that you will have ups and downs in your weight loss journey, and be forgiving of yourself if you hit a difficult patch.
5. Listen to your 'inner script' and make a conscious effort to talk to yourself in a positive, encouraging way.
6. Keep up your interest in your healthy eating plan by trying new foods, new recipes, and new ways of using your Sins. This will help you avoid getting in to a dieting rut which can be boring and demotivating.
7. Be honest with yourself about what you are expecting from your weight loss and-how you are getting -on with Food Optimising week by week. People who set unrealistic targets for weight loss or body shape are more likely to give up than those who set achievable targets and share their ups and downs.
8. Go back to your class even after (especially after) you've had a weight gain. You will not be judged, just helped and supported.
9. Keep setting new goals and rewarding yourself for milestones until you reach your target weight, and afterwards!
10. Don't put your life on hold until you've lost weight. You can still enjoy life and lose weight. Think of your dreams and ambitions and bring them to the fore. The positive feelings you get from starting to 'live a little' can only help your motivation and your weight loss.

Group details:

Bradway Annexe, Thu 5pm & 7pm

Dore Old School, Tues 5.30pm

Tel: Alison Murphy 01246 410145 for further details

Transport Club, Greenhill Main Road - Tues 7pm

The Michael Church, Lowedges - Wed 10am

Norton Oaks Cricket Club, Mon 7pm

Tel: Wendy 07773 095179 for further details

PhysioFOCUS

at Trolley Rise Dental Practice
85 Baslow Road,
Sheffield, S17 4DP



Physiotherapy treatment available for:

- Back and neck pain
- Sports injuries
- Sprains and strains
- Joint and muscle pain
- Arthritic pain
- Whiplash
- Repetitive strain injury
- Headaches

Appointments: 0114 2360333

Also available:

- Pilates classes
- Pilates 1-2-1
- Golf Fitness Screening
(as used by consultants to UK,
European and Australian PGAs)

For more information please call:

Emer on: 07792 422909

Rachel on: 07956 908454

MICKLEY HALL

**ST. DAVIDS DAY LUNCH
BARBER SHOP SINGERS**



**MONDAY MARCH 1ST
12-2PM
£3 PER PERSON**

Would you like someone to

Type letters? Pay bills? Help record family memories?
Sort and file papers? Prepare an inventory?
Anything else ???

Then you should call

Secretarial and Administrative Services

Swift, efficient, confidential service at your home.

Pay-as-you-go.

Ring us on 0114 235 0071



Tel/Fax: (0114) 255 4689

Mobile: 07831 802539

TRISTAN SWAIN

LANDSCAPING AND MAINTENANCE

UNIT C4
Sheaf Bank
Business Park
20 Prospect Road
Sheffield S2 3EN



LADIES FASHIONS

SKIRTS, JUMPERS
T-SHIRTS,
TROUSERS
HABERDASHERY
& ALTERATIONS

DRY CLEANING
SERVICE
LAUNDRY SERVICE



ROSIES

164 BASLOW ROAD, TOTLEY.
TEL: 2621060

**M. Scriven
(FRUITERAMA)**

MARTIN SCRIVEN
HIGH CLASS FRUIT
& VEGETABLES

37, Baslow road
Tel. 236 7116
Orders Delivered



Ribbons

Beauty Ltd

- Dermalogica facials
- Dermalogica body treatments
- Massage and holistic therapy
- Jessica Nails
- Nail enhancements
- Waxing
- Eye treatments
- Caci

Tel: 0114 2352233

dermalogica®
a skin care system researched and developed by The International Dermal Institute

zenspa

nsi
nail systems international



R.S. HEATING & BUILDING CO

EST. 1971

HEATING DIVISION:
Experienced Installers of condensing, combination and regular boilers. Systems fully guaranteed. Complete after sales service. Also Bathrooms, showers and small plumbing works.

BUILDING DIVISION:
Loft conversions, House renovations including general building, joinery, plastering, electrical decorating etc.

13 Overcroft Rise, Sheffield, S17 4AX
Tel:- 0114 236 4421
Reg. Office:- 62 Machon Bank, Sheffield, S7 1GP
Te:- 0114 2559425
Fax:- 0114 255 9431
Email:enquiries@rsheatingandbuilding.co.uk
Web:http://www.rsheatingandbuilding.co.uk

LIBERTY FOODS

Caterers
Quality Meat Shop
& Fresh Farm Produce

Fresh and Frozen Prepared Meals
Fresh Meat and Poultry
Outside Catering
Home Delivery

253 Baslow Road, Sheffield, S17 4DU
Tel: 0114 2360 583 Mobile: 07801 346 455

Dronfield Landscapes

Gardens cleared and maintained, Lawns mowed, Turfing, Tree felling & pruning, Hedges trimmed & reduced, Pond maintenance, Fencing etc.

for free quotation call
Chris on: (0114) 2746158 Mobiles: 07976072785 or
Richard on: 07789497104

8am-6pm mon-fri HazelBarrow Farm, Norton S8 8BA

R.M.M BUILDING SERVICES

25 YEARS EXPERIENCE

All types of building work carried out including- Drop kerbs, block paving (drives, paths, etc), extensions, general building repairs and maintenance.

Phone Rob on- Mob- 07906108567
Home-2352190

Nigel Watson

Carpenter and Joiner

New Kitchens, replacement worktops, doors, locks, floors, architraves, skirting boards, stairs, stud walling, boxing off etc.
No job too small

For a reliable, quality service

Tel: 0114 236 4778
Mobile: 07971 528149

Activ Physiotherapy

and sports injury clinic

@ Synergy,
162 Baslow Road,
Totley,
Sheffield, S17 4DR.

The Official Physiotherapy clinic for the Sheffield Steelers Ice Hockey Team.

Treatments available for sports injuries, back & neck pain, joint problems, muscle & ligament strains, repetitive strain injuries, post operative rehabilitation, headaches & acupuncture.

Clinic registered with major insurance companies, can claim through the Westfield scheme.

Ring Andy for more information:
0114 235 7845 or 07901 968549

Got a computer?

Having Problems?
Is it running slow? Stops responding?
Having problems running the latest games or applications? Broadband installation?

Give me a call!
I'm available for home visits at any time including evenings and weekends. I can also suggest upgrades to improve performance, or even build you a system to your specific requirements.

Tim Brown
Building, Installation, Upgrading and Troubleshooting Computer Systems
Over 25 years professional experience

Phone: 0114 2472619 Fax: 0870 7060080
Mobile: 078 17464703 Email: service@timbrown.plus.com

Dronfield Landscapes

Logs and woodchippings
For Sale

Ring for details
Chris on 0114 2746158
Mobile 07976072785

Richard mobile
07789497104



Central Heating
Domestic Plumbing
Glazing, Double Glazing and Glass
House Maintenance
UPVC and Wood Windows & Doors
Mini Digger & Driver, Muck Shifts, Footings Etc.



TOTLEY PRIVATE HIRE

PROFESSIONAL CAR SERVICE
FOR
AIRPORTS & LONG DISTANCE
TRAVEL etc.

Tel: 0114 - 2361547
Mobile: 07974-355528

Chauffeur driven executive travel
Business & personal travel
Airport & cruise transfers



executive travel
arrive in style

01142 745021 // 0796 2373740
www.ccexecutivetravel.co.uk

Chris Maitby
14 Birch Farm Avenue, Norton, S8 8GH

Domestic electrical work carried out by
City & Guilds and 'Part P' qualified

LADY ELECTRICIAN

- * Security lighting * Pond pumps * Deck lights
 - * House rewires * Replacement fuse boards
 - * New sockets and lights * Telephone points
- All electrical work undertaken – no job too small.

All work guaranteed and
fully insured

For a free quote without obligation

ring Mandy on 07788-544225



Hypnotherapy

Weight, confidence, smoking, stress,
phobias, anxiety, panic, sleep, etc...

Call 235 1985 Totley

www.sheffieldhypnosis.co.uk



Paul Peace



Chartered Psychologist



Karen Bartle

HEARING AIDS

MAURICE NAYLOR FBSHAA RHAD is your local
hearing aid specialist and at your request will test
your hearing in your own home, free of charge,
and if needed you can try a custom made aid for
four weeks without obligation to purchase.

In the ear digital from £495

Tel: 0114 262 0010
4 Twentywell Drive, Bradway

John Heath & Sons

AN INDEPENDENT FAMILY FUNERAL BUSINESS

Sometime.....

You will probably have the responsibility of making funeral
arrangements. No one looks forward to this responsibility, but the death of a
family member or friend brings with it an obligation that must be met. There
are people who can help you meet this responsibility. We have been helping
people combine the different aspects of the funeral into a meaningful service for
over 125 years.

Please Call Day Or Night

(0114) 272 2222

Head Office - Earsham Street

Also at Meadowhead, Ecclesall Rd,
Crookes and Stannington

www.johnheath.co.uk



Surveying, planning and contract management

Awards for Best in Show
Design and Quality Plant Selection
Large Gold Medals & Silver Medal Winners

Homesfield, Dronfield S18 7WJ
M: 07836 717859 T: 0114 2891365 F: 0114 2890737
Email: peter.godley@btconnect.com

TOTLEY & DISTRICT DIARY

MONDAYS	COFFEE MORNING , All Saints' Church Hall, 10am-noon TAI-CHI , All Saints' Church Hall, 11.30am-12.30pm ANTE NATAL PILATES , United Reformed Church, 6.30-7.30pm, Phone Emer Coffee 07792 422909 RAINBOWS and GUIDES , All Saints' Church Hall, 5.45pm-9pm
TUESDAYS	COFFEE MORNING . Totley Rise Methodist Church Hall, 10am-noon WOODSEATS ADVICE CENTRE . Drop in service, free, impartial, and confidential. TR Methodist Church, 10am-noon CRAFT GROUP . Totley Library, 2pm
WEDNESDAYS.	COFFEE in the LIBRARY . 10am-11.30am TODDLER GROUP . 10am-11.30am, All Saints' Church Hall. Details tel. Mel 236 6300 HEALTH WALKS . 10.30am, Totley Library foyer. Phone Sue, The Health Walk Ranger: 0114 283 9195 MODERN SEQUENCE DANCING . All Saints Church Hall, 8pm-10pm
THURSDAYS	CHAIROBICS . Totley Library, 2pm-3pm. £1 NCT COFFEE GROUP FOR DORE TOTLEY & BRADWAY , 10am-noon, For mums & babies/toddlers, meeting in various locations, Phone Sally Spearing 236 2604 for further details (email: sally@spearings.me.uk) PUSHCHAIR CLUB . Totley Rise Methodist Church Hall. 1.30pm-3pm. Tel. 236 3157 for further details PILATES CLASS , United Reformed Church, Totley Brook Road, 6.15pm-7.30pm, Phone Emer Coffee 07792 422909
FRIDAYS	PILATES , The Old School, Dore, 10.45-11.45am & 12-1pm. Phone Teresa Tinklin 07906 312372
SATURDAYS.	MODERN SEQUENCE DANCING . All Saints Church Hall 2 nd . And 4 th . Saturdays 8pm-10pm

APRIL 2010

SAT 3rd SATURDAY NIGHT LIVE, Jon Clifford, Heatherfield Club. 8.30pm. Come & play Bingo & Play Your Cards Right. Non-members welcome
SUN 4th CASTLETON FARMERS MARKET, the Village Hall, 10am-3pm
SUN 4th & MON 5th (BH) MINIATURE TRAIN RIDES. Abbeydale Road South, First train 1 p.m. - last train 5 p.m.(weather permitting) www.sheffieldsmee.co.uk
WED 7th SPRING FAYRE, Cheshire Home 10am, further details page 4
THU 8th SHEFFIELD FARMERS MARKET, 9am-4.30pm, Barkers Pool
TUE 13th FOLK AT THE OAK, Hearts of Oak, Dronfield, 8.30pm, all welcome
SAT 17th SATURDAY NIGHT LIVE, Ian Andrews, Heatherfield Club. 8.30pm. Come & play Bingo & Play Your Cards Right. Non-members welcome
SUN 18th MINIATURE TRAIN RIDES. Abbeydale Road South, First train 1pm - last train 5pm (weather permitting) www.sheffieldsmee.co.uk
MON 19th TOTLEY RESIDENTS ASSOCIATION AGM, Totley Library 7.30pm, All Welcome.
TUES 20th TOTLEY TOWNSWOMEN'S GUILD, 'Heeley City Farm', Ms. Rian Harding, Totley Rise Methodist Church Hall, 10am
THU 22nd SHEFFIELD FARMERS MARKET, 9am-4.30pm, Barkers Pool
FRI 23rd ST GEORGES DAY, Cheshire Home 7Pm, further details page 11
WED 28th TOTLEY HISTORY GROUP, Totley Library, 7.30pm, all welcome

MAY 2010

SAT 1st SATURDAY NIGHT LIVE, Vince Lee Gayle, Heatherfield Club. 8.30pm. Come & play Bingo & Play Your Cards Right. Non-members welcome
SUN 2nd CASTLETON FARMERS MARKET, the Village Hall, 10am-3pm
SUN 2nd & MON 3rd (BH) MINIATURE TRAIN RIDES. Abbeydale Road South, First train 1 p.m. - last train 5 p.m.(weather permitting) www.sheffieldsmee.co.uk
TUE 11th FOLK AT THE OAK, Hearts of Oak, Dronfield, 8.30pm, all welcome
THU 13th SHEFFIELD FARMERS MARKET, 9am-4.30pm, Barkers Pool
SAT 15th /SUN 16th PLANT SALE, Botanical Gardens, 1pm Sat, 11am Sun
SAT 15th SATURDAY NIGHT LIVE, Sammy Gale, Heatherfield Club. 8.30pm. Come & play Bingo & Play Your Cards Right. Non-members welcome
SAT 15th COFFEE, CAKES & CUTTINGS, English Martyrs tel 236 5313
SUN 16th MINIATURE TRAIN RIDES. Abbeydale Road South, First train 1pm - last train 5pm (weather permitting) www.sheffieldsmee.co.uk

TOTLEY INDEPENDENT FOR MAY 2010

The next issue of the Totley Independent will be available from the usual distribution points on

SATURDAY 1st May 2010

COPY CLOSE DATE for this issue will be

SATURDAY 17th April 2010

Editor: **Ian Clarke**
 Email: editor@totley.org.uk
 Tel. No: **235 2526**

Advertising & Distribution:
John Perkinson
 Tel. No: **236 1601**
 Email: advertising@totley.org.uk

Items for publication may be left or sent to:
2, Main Avenue, Totley, Sheffield, S17 4FG or
Totley Library

PRINTED by STARPRINT

Julian Oates
 Independent Financial Adviser

Pensions . Investments & Savings . Mortgages . Life Insurance

TEL: 07866 635462
 0114 248 6371

joates@blake-independent.co.uk
 Blake Independent Financial Planning Ltd

B . K . JEAVONS
PAINTER & DECORATOR



**Interior
 Exterior
 Decorating
 No job too small.**

**86, WOLLATON ROAD
 BRADWAY
 SHEFFIELD, S17 4LG
 Telephone 2350821**

Starprint

601 Abbeydale Road, Sheffield 7. Fax: 0114 258 8599

DESIGN & PRINTING of

- LETTERHEADS • BUSINESS CARDS •
- BOOKLETS & PADS •
- INVOICES • LEAFLETS •
- CARBONLESS SETS • BROCHURES •
- RAFFLE TICKETS •
- WEDDING STATIONERY •
- ENVELOPES & POSTCARDS •

**SPECIALISTS IN THERMOGRAPHY
 FOIL BLOCKING AND ENCAPSULATION**

0114 258 0707
 For a Quick Quotation